

Current status of water-related planning for climate change adaptation in the Spree River basin, Germany

Saskia Arndt¹, Stefan Heiland¹

¹Chair of Landscape Planning and Development, Technische Universität Berlin, Berlin, 10623, Germany

5 *Correspondence to:* saskia.arndt@tu-berlin.de

Abstract. Fuelled by climate change, low flows, heavy rain and flooding likely intensify in the future, adding to the pressures experienced by rivers in Western and Central Europe in recent decades. To meet these challenges, comprehensive water-related adaptation to climate change is indispensable. Based on the case study of the Spree River basin in Germany, this study analysed legally defined plans for water management, spatial and landscape planning for their current status of integrated climate change adaptation. To pre-structure the document analysis, eight water management fields of action for adaptation to climate change were identified using official recommendations for action. 39 % of the 28 plans analysed specify objectives and measures for adapting to climate change. Of these, 55 % address the diverse impacts of climate change in a more comprehensive way, including prevention and mitigation of droughts and floods, and protection of water ecosystems and groundwater resources. Filling these planning gaps may include more frequent updating of plans, greater focus on evidence from informal plans, multifunctional measures, and adaptation of best practice examples for systematic integration of climate change impacts and adaptation. Planning and implementing comprehensive climate change adaptation will strengthen the resilience of ecosystems and secure human livelihoods.

1 Introduction

According to the Intergovernmental Panel on Climate Change ([IPCC, 2022](#)), climate change is already affecting rivers in Western and Central Europe with high confidence, and impacts are expected to accelerate. Precipitation in recent decades has significantly increased river flooding in Western and Central Europe and is estimated to further exacerbate in the future, as are the intensity and frequency of heavy rainfall events and related pluvial flooding ([Ranasinghe et al., 2021](#)). Furthermore, low flows are likely to become more frequent and severe, leading to streamflow droughts and water scarcity (*ibid.*). Over the last century, an increase in water temperature of about 1–3 °C has been observed in European rivers, with an upward trend in the future, which may lead to significant changes in species composition and aquatic ecosystem functioning ([EEA, 2017](#); [Wanders et al., 2019](#); [Garack et al., 2022](#)).

In recent years, Germany has repeatedly experienced extreme weather events with deadly consequences, demonstrating the diverse threats associated with climate change. For example, heavy rainfall and flooding along the Ahr River in July 2021

caused deaths and damage to homes, businesses, and critical infrastructure (Tradowsky et al., 2023), summing up to an estimated €40.5 billion direct and indirect costs (Trenczek et al., 2022). Another widely regarded example is the Oder River: low water levels and higher water temperatures have made the river more sensitive to sewage disposal and pollutants, causing the collapse of the ecosystem in August 2022 with a fish kill of about 360 tonnes over a length of 500 km (Free et al., 2023).

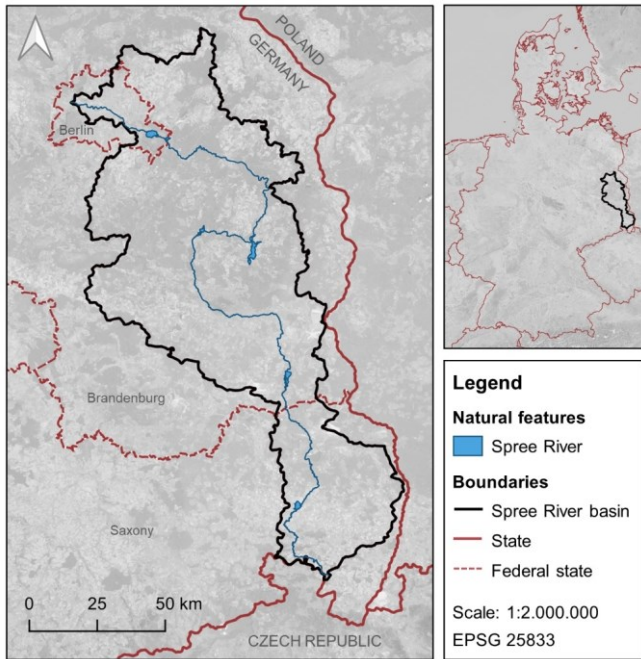
The Spree River basin is located in the largest driest and warmest region of Germany, where climate change is expected to lead to a strong increase in heat days and tropical nights with resulting droughts and low water levels as well as an increase in heavy rainfall events (Kahlenborn et al., 2021). Preventing and mitigating these and other effects of water-related hazards requires appropriate planning that fully addresses the impacts of climate change. Using ~~the example of~~ the Spree River basin and its challenges posed by climate change, this study examines the current status of climate change adaptation in water-related planning. To this end, a document analysis of legally defined plans for water management, spatial and landscape planning was carried out. The results serve as a first systematic overview of the current state of climate change adaptation planning in the formal framework of water governance in the Spree River basin and identify opportunities for improvement.

2 Study area and scope

2.1 Spree River basin and its water management challenges

The Spree River basin (Fig. 1) is part of the German Elbe River basin (FGG Elbe, 2021b) and covers a river length of approximately 382 km (Uhlmann et al., 2023). It springs in south-eastern Saxony, flows northwards through Brandenburg and into the Havel in Berlin. It is therefore located in an area with one of the lowest precipitations in Germany, with average precipitation values of 500–700 mm in the Berlin-Brandenburg region for the years 1991–2020 (Umweltatlas Berlin, 2024). The middle section of the Spree, on the border between Saxony and Brandenburg, is part of the Lusatia region (Uhlmann et al., 2023). Here, large areas of the Spree River basin are characterised by around 150 years of active open-cast lignite mining and the resulting post-mining landscapes with many artificial lakes. To the north of the Lusatia region, the Spree flows through the Spree Forest, a lowland with extensive floodplains, moors, and swamps with a large water-related tourism industry (MLUR, 2000). The last part of the Spree River is heavily influenced by the capital region of Berlin with large sealed areas and a high population density (SenStadtUm, 2016).

Despite the environmental heterogeneity of the Spree River basin, Kahlenborn et al. (2021) estimate similar climatic changes across the entire river basin: The number of heat days, tropical nights and heavy rainfall events are expected to increase. The area will be particularly affected by droughts and low water levels, as well as flash floods and pluvial flooding. Overall, the Spree River basin is likely to remain one of the driest and warmest regions in Germany in the future (ibid.).



60 **Figure 1. Spree River basin. Map data acquired from © Esri, Maxar, Earthstar Geographics, and the GIS User Community, @EuroGeographics (2020), © GeoBasis-DE / BKG (2009), © GDI-BB / LfU (2020), BfG (2016), LfULG (2021). For full map data references see Table S19 in the Supplement.**

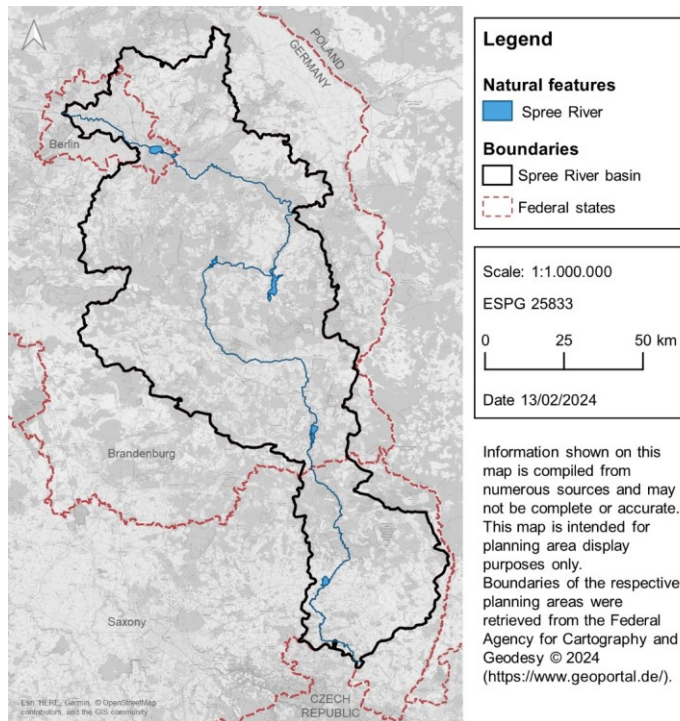
65 The coal phase-out by 2038 for climate change mitigation is putting **further** pressure on water management in the Spree River basin (Uhlmann et al., 2023). Due to lignite mining, the groundwater level is kept artificially low and **swamp** water is pumped into the Spree River. This, together with the construction of dams, has led to artificial discharge conditions and a water surplus in the Spree **for over 60 years**, benefiting the water balance in the subsequent Spree Forest and the Spree-dependent water supply for the capital region of Berlin. As part of the coal phase-out, the remaining open-cast mines in the Lusatia region must be redeveloped. Under the given environmental conditions, water resources of the Spree River **basins**

70 without pumped water will not be sufficient to fill all dams and opencast mining holes located in the Spree region for efficient water storage, as was originally intended. The coal phase-out will consequently lead to a higher risk of water shortages in the Spree, negatively affecting the protected ecosystems and regionally significant tourism in the Spree Forest

and the metropolitan water supply (ibid.). Regarding the latter, around 70 % of Berlin's water supply is currently obtained from bank filtration along the rivers Spree and Havel (BWB, 2022), illustrating the high water supply **as a strong** pressure on the Spree's water **balance**. Climate change is expected to exacerbate the impending challenges to water management through rising temperatures, evaporation and water demand (Uhlmann et al., 2023).

Therefore, the case study of the Spree River basin exemplifies the complexity of future water management, providing a study area with diverse demands on water **as a habitat and resource** for the following analysis.

Figure 1. Spree River basin.



80 2.2 Water-related planning

In Germany, water issues are regulated by a variety of laws for water management (WHG¹), spatial planning (ROG²), land use planning (BauGB³) and landscape planning (BNatSchG⁴). Addressed are inter alia flood protection (§ 2 ROG, Section 6 WHG), rainwater management (§ 55 WHG, § 9 BauGB), protection of groundwater resources (§ 1 BNatSchG, § 2 ROG) or protection of water(-dependent) ecosystems (§ 1 BNatSchG, § 6 WHG).

85 Water management in accordance with the Floods Directive (FD) and the Water Framework Directive (WFD) refers to plans of cross-administrative river basins. The Flood Risk Management Plan, the River Basin Management Plan and the Programme of Measures of the German Elbe River basin are usually legally binding for the federal state authorities (§ 2 BWG;⁵ ~~MdJ, 2021~~ § 24 BbgWG;⁵ § 87 SächsWG). River basin management plans and programmes of measures can be concretised by river development plans on the sub-basin level (Article 13 WFD). Their preparation is not required by law, 90 and the objectives described do not impose binding obligations on public authorities. As such, they do not constitute formal planning. Nevertheless, they are useful, if not necessary, for the spatially specific implementation of the overarching river basin management plans and programmes of measures, and thus for achieving the objectives of the WFD targets (~~Ormond et al., 2018~~ Garack et al. 2022). Given that Germany is significantly lagging behind in meeting the WFD targets (BMUV & UBA, 2022), their preparations are arguably even more important.

95 Spatial, land use and landscape plans usually exist at the administrative levels of the federal states, regions and municipalities (§ 13 ROG, § 5 to 10 BauGB, § 10 to 11 BNatSchG). Spatial plans deal with the overall spatial development and are legally binding for public authorities (§ 3 ROG). Landscape plans concentrate on the sustainable development of natural assets (biodiversity, soil, water, air, climate, landscape) and open space recreation (§ 1 and 9 BNatSchG) and usually have to be integrated into spatial or land use plans to become legally binding (§ 10 and 11 BNatSchG). However, even 100 without such integration, their content must be considered (not strictly followed) in all plans and projects that may affect nature and landscape (§ 9 BNatSchG).

~~To analyse and assess the current status of water related climate change adaptation in the Spree River basin, the study scope covers relevant plans of water management, spatial and landscape planning. The study focuses on formal plans that have a legal basis and need to be prepared and updated, with the exception of the river development plans, which have a legal basis in the WFD but are not required to be prepared or updated. Selection criteria for the plans included a spatial reference to the Spree River basin, a preparation by or on behalf of a public authority, and digital availability. In the case of the Flood Risk~~

¹ *Wasserhaushaltsgesetz* (Federal Water Act of July 2009), incorporates the WFD in Germany

² *Raumordnungsgesetz* (Federal Spatial Planning Act of December 2008)

³ *Baugesetzbuch* (Federal Building Code in the version of the announcement of November 2017)

⁴ *Bundesnaturschutzgesetz* (Federal Nature Conservation Act of July 2009)

110 Management Plan, the River Basin Management Plan and the Programme of Measures of the German Elbe River basin, the study scope includes measures limited to a smaller part of the Elbe River basin, the coordination area “Havel”. For plans requiring mandatory updating, the most recently published version or the current draft (if already publicly available and participation procedures completed) was analysed. Land use and landscape plans on the municipal level were not investigated, due to their large number, which exceeded the working capacities. Berlin is an exception, as it is a city state with only two formal administrative levels (city-state and districts).

3 Methodology

115 To analyse and assess the current status of water-related climate change adaptation planning in the Spree River basin, the study scope covers relevant plans of water management, spatial and landscape planning. The study focuses on formal plans that have a legal basis and need to be prepared and updated, with the exception of the river development plans, which have a legal basis in the WFD but are not required to be prepared or updated. Selection criteria for the plans included a spatial reference to the Spree River basin, a preparation by or on behalf of a public authority, and digital availability. In the case of the Flood Risk Management Plan, the River Basin Management Plan and the Programme of Measures of the German Elbe 120 River basin, the study scope includes measures limited to a smaller part of the Elbe River basin, the so-called coordination area “Havel” (see Fig. S1 in the Supplement). For plans requiring mandatory updating, the most recently published version or the current draft (if already publicly available and participation procedures completed) was ~~was~~ were analysed. Land use and landscape plans on the municipal level were not investigated, due to their large number, which exceeded the working capacities. Berlin is an exception, as it is a city-state with only two formal administrative levels (city-state and districts).

125 A document analysis (Bowen, 2009) allowed the evaluation of the current status of water-related climate change adaptation in the study’s relevant ~~mentioned~~ plans. Firstly, a general analysis examined the consideration of climate change aspects in the plans, using three predefined categories (Table 1).

Table 1. Analysis categories.

Category	Description
CC	Climate change or a closely related term (e.g., global warming) is mentioned in the plan.
CCI	(Potential) climate change impacts concerning the planning area are described in the plan.
CCA	Climate change adaptation is considered in the context of water management in the plan.

130 Secondly, a more detailed analysis investigated the comprehensiveness of climate change adaptation within the plans. Here, the pre-structuring of the data largely corresponds to the updated Climate Change Report of 2020 by the German Working Group on water issues of the Federal States and the Federal Government (*Bund/Länder-Arbeitsgemeinschaft Wasser*) (LAWA, 2020). The report contains 15 nationwide ~~water management~~ fields of action for water management with an extensive list of (~~superordinated~~) measures and (subordinated) actions to adapt to climate change for each field of action. For

the Spree River basin and with ~~consideration regard to~~ the selected ~~water management, spatial and landscape~~ plans, eight
135 fields of action are relevant for ~~the our~~ analysis:

- (a) Low water management
- (b) Groundwater protection and use
- (c) Public water supply
- (d) Agricultural irrigation
- 140 (e) Water ecosystem protection
- (f) Flood protection during heavy rain
- (g) Inland flood protection
- (h) Urban drainage and wastewater treatment

~~The exclusion of some measures from the~~ These eight fields of action contain a list of 71 climate change adaptation
145 measures ~~proposed by the LAWA increased its suitability for the study area and the examined plans. Nine of them were excluded as they do not fall within the remit of the plans analysed, are of little relevance to the study area, or do strongly overlap with other measures in the same field of action.~~

The final selection of the ~~water management~~ fields of action and associated climate change adaptation measures ~~with potential and~~ actions provides an overview of possibilities to implement climate change adaptation in the Spree River basin
150 (see [Table S1–S8](#) in the Supplement) and serves as the basis for the analysis of the [current state of](#) climate change adaptation [in formal planning status](#).

~~Planning A statements in the plan concerning objectives, measures or actions were was~~ included in the analysis as ~~direct quotes if they it~~ met [all of](#) the following requirements:

- 155 ~~▪ The statement is described contains in the context of climate change adaptation an objective/measure/action that is generally described as appropriate for adapting to climate change, or that is specifically aimed at minimising an impact of climate change and its (potential) impacts (e.g. increasing heavy rainfall or drought due to climate change).~~
- ~~—~~
- The statement is linked to at least one of the water management fields of action suggested by the LAWA.
- 160 ~~▪ The statement corresponds with a proposed climate change adaptation measure and/or action by the LAWA.~~
- ~~The statement refers explicitly to (parts of) the Spree River basin or to water management in general (see discussion, Sect. 6).~~

~~It should be emphasised that the analysis excluded planning statements that are relevant to but without textual reference to climate change adaptation but do not explicitly refer to it. This ensured the focus on the current consideration of climate change adaptation in water management, rather than the potential for climate change adaptation (see discussion, Sect.~~
165

~~5.6). This decision was made to focus our research on the intentional consideration of climate change adaptation in planning, rather than on the potential of objectives and measures that primarily serve other purposes (see discussion, Sect. 6).~~

4 Results

The document analysis includes a total of 28 plans, consisting of 19 water management plans, 5 spatial plans and 4 landscape plans (Table 2). ~~The location of the respective planning areas is shown in Fig. S1–S4 in the Supplement.~~ Not all regional and landscape master plans falling within the Spree River basin could be analysed, as they only exist in analogue form or only parts of the plans are available. ~~The River Basin Management Plan and the Programme of Measures of the German Elbe River basin are considered together and therefore counted as one plan in the analysis.~~ 17 river development plans constitute the largest share. The plans' publication dates range from 2021 back to 2000. In the following, we do not intend to rank the different types of plans in comparison to each other, as they have different legally defined aims and tasks.

Table 2. Overview of the plans examined and their allocation to the analysis categories (n = 28, 1 = applies). Plan abbreviations are composed of plan acronym, area allocation and publication date. Plan acronyms are FRMP (flood risk management plan), RBMP (river basin management plan), PoM (programme of measures), RDP (river development plan), SDPro (state development programme), SDP (state development plan), RP (regional plan), LUP (land use plan), LaPro (landscape programme) and LaMaP (landscape master plan). Area allocations for water management plans are the German Elbe River basin (Elbe) or Spree River sub-basins (divers) with federal state affiliation (BB for Brandenburg, BE for Berlin, SN for Saxony). Area allocations for spatial and landscape plans refer to their respective administrative levels, either labelled with the federal state or the region/county with federal state affiliation.

Scope	Plan abbreviations (plan acronym, area allocation, publication date)	Citation	Analysis categories		
			CC	CCI	CCA
Water management (according to the WFD and FD)	FRMP_Elbe_2021*	FGG Elbe, 2021a	1	1	1
	RBMP+PoM_Elbe_2021*	FGG Elbe, 2021b, 2021c	1	1	1
	RDP_Berste_BB_2013	LUGV, 2013a	1		
	RDP_Cottbuser_Spree_BB_2011	LUGV, 2011a			
	RDP_Erpe_BB_2011	LUGV, 2011b			
	RDP_Erpe_BE_2013	SenStadtUm, 2013			
	RDP_Greifenhainer_Fließ_BB_2011	LUGV, 2011c	1	1	1
	RDP_Großes_Fließ_BB_2011	LUGV, 2011d	1	1	
	RDP_Kleine_Spree_SN_2011	LfULG, 2011	1	1	
	RDP_Krumme_Spree_BB_2013	MLUV, 2013	1	1	1
	RDP_Löcknitz_BB_2013	LUGV, 2013b			
	RDP_Mügelspree-see_BE_2015	SenStadtUm, 2015			
	RDP_Panke_BB_2009	MLUV, 2009			
	RDP_Panke_BE_2009	SenGUV, 2011			
	RDP_Pretschener_Spree_BB_2013	LUGV, 2013c			
	RDP_Schwielochsee-Dammühlenfließ_BB_2016	LUGV, 2016			
	RDP_Spree-2_SN_2020	LfULG, 2020	1	1	1
	RDP_Unterer_Spreewald_BB_2012	LUGV, 2012	1	1	
RDP_Wuhle_BE_2014	SenStadtUm, 2014				
Spatial planning	SDPro_BE-BB_2007*	GL, 2007	1		
	SDP_BE-BB_2019*	GL, 2019	1	1	1
	SDP+LaPro_SN_2013*	SML, 2013a, 2013b	1	1	1
	RP+LaMaP_Oberlausitz-Niederschlesien_SN_2019*	RPV Oberlausitz-Niederschlesien, 2019	1	1	1
	LUP_BE_2020*	SenSW, 2020	1	1	1
Landscape planning	LaPro_BB_2000*	MLUR, 2000			
	LaPro_BE_2016*	SenStadtUm, 2016	1	1	1
	LaMaP_Oder-Spree_BB_2021*	Landkreis Oder-Spree, 2021a, 2021b	1	1	1
	LaMaP_Spree-Neiße_BB_2009*	Landkreis Spree-Neiße, 2009			
			16	14	11

Formatiert: Zentriert

Formatiert: Zentriert

Spatial planning	SDPro_BE-BB_2007*	GL_2007	+		
	SDP_BE-BB_2019*	GL_2019	+	+	+
	SDP+LaPro_SN_2013*	SMI_2013a_2013b	+	+	+
	RP+LaMaP_Oberlausitz-Niederschlesien_SN_2019*	RPV_Oberlausitz-Niederschlesien_2019	+	+	+
	LUP_BE_2020*	SenSW_2020	+	+	+
Landscape planning	LaPro_BB_2000*	MLUR_2000			
	LaPro_BE_2016*	SenStadtUm_2016	+	+	+
	LaMaP_Oder-Spree_BB_2021*	Landkreis Oder-Spree_2021a_2021b	+	+	+
	LaMaP_Spree-Neiße_BB_2009*	Landkreis Spree-Neiße_2009			
			16	14	11

185 * Formal plans (preparation and updating are legally required)

4.1 Consideration of climate change

Regarding the analysis category “CC” (Table 1), 16 plans examined (57 %) mention climate change. 9 out of 21 plans published before 2019 address climate change, and from 2019 onwards all plans do (see [Figure S51](#) in the Supplement). Of the 11 formal plans (marked with * in Table 2), 9 plans (82 %) consider climate change, their publication dates range from 2007 to 2021. Among the 17 river development plans published between 2009 and 2020 (preparation and updating is not legally required), 7 plans (41 %) mention climate change.

4.2 Consideration of climate change impacts

Concerning the analysis category “CCI” (Table 1), 14 plans (50 %) recognise climate change as an issue for the water balance in the planning area and describe (potential) impacts of climate change. The thematic focus lies on increasing low water situations and decreasing water supply due to climate change (described in 12 plans) (see [Figure-Table S92](#) in the Supplement). Seven plans refer to increasing heavy rainfall events and flooding as (potential) climate change impacts. Five plans address the deterioration of the water status in the context of climate change. Overall, 4 out of the 14 plans with climate change impacts (29 %) cover the full range of potential impacts (increasing low water, heavy rainfall and flooding events as well as deterioration of the water status) in their respective planning area.

4.3 Consideration of climate change adaptation

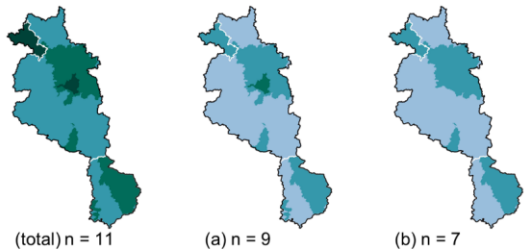
With regard to the analysis category “CCA” (Table 1), 11 plans (39 %) contain planning statements on adaptation to climate change, all of them also considering climate change impacts. Of nine formal plans that consider climate change, all plans except the oldest one (from 2007) address climate change adaptation. Of the seven river development plans recognising climate change, three address climate change adaptation.

Figure 2 panel “(total)” ~~gives-provides an -spatial~~ overview of the spatial overlaps of the 11 plans considering climate change adaptation. Panels (a) to (h) show the consideration and spatial distribution of the plans in relation to each water management field of action. Whereas all 11 plans consider the ~~water-management~~ field of action-“Water ecosystem protection”, only five

take into account “Flood protection during heavy rain”. Regarding the latter, relevant measures such as “Water retention in urban areas” or “Exploiting infiltration potentials” are assigned to the action field “Urban drainage and wastewater treatment”, and must therefore also be considered (see also Table 3). All other fields of action are dealt with by 6 to 9 plans.

Regarding the consideration of the action fields per plan, four plans refer to all eight or seven action fields, another three plans consider six or five action fields and the remaining four plans, including the three river development plans, address two or three action fields (see Table S10 in the Supplement⁹). The latter group includes the three river development plans.

Considering the scope of measures mentioned in the plans for each ~~The~~ water management fields of action, **most comprehensively addressed by the plans are** “Groundwater protection and use”, “Agricultural irrigation” and “Inland flood protection” ~~are the most comprehensive~~. Here, more than half of the plans considering the respective field of action refer to more than two measures (see Table S12~~4~~, S14~~3~~ and S17~~6~~ in the Supplement). For the remaining five action fields more than half of the plans **only** refer to one or two measures (see Table S11~~0~~, S13~~2~~, S15~~4~~, S16~~5~~ and S18~~7~~ in the Supplement).



Legend

Overlaps

- 5 plans
- 4 plans
- 3 plans
- 2 plans
- 1 plan

Boundaries

- Spree River basin
- Federal states

Climate change adaptation

(total) Total of plans considering water-related climate change adaptation

Water management fields of action

- (a) Low water management
- (b) Groundwater protection and use
- (c) Public water supply
- (d) Agricultural irrigation
- (e) Water ecosystem protection
- (f) Flood protection during heavy rain
- (g) Inland flood protection
- (h) Urban drainage and wastewater treatment

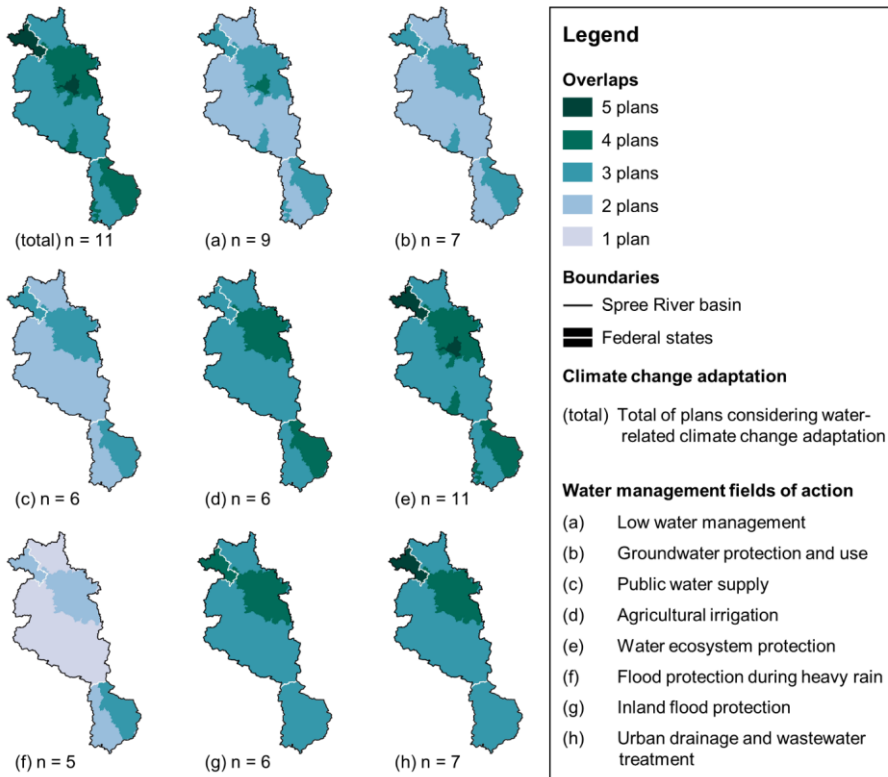


Figure 2. Spatial distribution-overlaps of plans with proposed climate change adaptation measures corresponding with water management fields of action of the Spree River basin. Boundaries of the respective planning areas were retrieved from the Federal Agency for Cartography and Geodesy © 2024 (<https://www.geoportal.de/>). Plan overlaps may be compared with the planning areas in Fig. S1–S4. Map data acquired from BFG (2016), © GeoBasis-DE / BKG (2009), LfU (2014) and LfULG (2021). For full map data references see Table S19 in the Supplement.

Regarding the consideration of the action fields per plan, four plans refer to all eight or seven action fields, another three plans consider six or five action fields and the remaining four plans address two or three action fields (see Table S9). The latter group includes the three river development plans.

Considering the scope of measures mentioned in the plans for each water management field of action, “Groundwater protection and use”, “Agricultural irrigation” and “Inland flood protection” are the most comprehensive. Here, more than

~~half of the plans considering the respective field of action refer to more than two measures (see Table S11, S13 and S16 in the Supplement). For the remaining five action fields more than half of the plans refer to one or two measures (see Table S10, S12, S14, S15 and S17 in the Supplement):~~

235 Table 3 gives an overview of the climate change adaptation measures proposed by the [LAWA for each action field\(2020\)](#) and the number of plans with corresponding ~~planning~~ statements. For a better understanding of the ~~individual single~~ measures, ~~please note the proposed actions for each measure by the LAWA listed in~~ [sc Table S1–S8](#) in the Supplement or ~~the original~~ Appendix II of the Climate Change Report by the [LAWA \(2020\)](#).

240 Table 3. Water management fields of action with climate change adaptation measures adopted from the Climate Change Report by the LAWA (2020) and number of plans with corresponding **planning** statements in the context of climate change adaptation.

Water management fields of action (Total of plans)	Climate change adaptation measures according to the Climate Change Report by the LAWA (2020)	Number of plans with corresponding planning statements
(a) Low water management (n = 9)	Low water and temperature forecasting	0
	Water use restrictions	5
	Ensuring water quality	5
	Oxygen management through aeration	0
	Artificial raising of low water levels	3
	Creating artificial water reservoirs	1
(b) Groundwater protection and use (n = 7)	Promoting natural water retention	7
	Climate-specific evaluation and adaptation of groundwater monitoring	0
	Promoting groundwater-friendly agriculture (quality and quantity)	4
	Land use changes	5
	Protecting groundwater-dependent terrestrial ecosystems (peatlands)	7
	Promoting groundwater recharge	7
(c) Public water supply (n = 6)	Increasing groundwater supply	1
	Sustainable groundwater management	3
	Redundant water harvesting systems	1
	Adapting water supply infrastructure	3
	Rainwater harvesting	1
	Reducing water demand	3
(d) Agricultural irrigation (n = 6)	Improving water quality in the pipeline network	0
	Advanced drinking water treatment	0
	Comprehensive water supply management	3
	Soil and erosion protection	6
	Conservation tillage	4
	Humus accumulation	4
(e) Water ecosystem protection (n = 11)	Adaptations in cultivation	1
	Efficient irrigation	1
	Groundwater substitution	0
	Improving continuity of flowing waters	1
	Variation of hydromorphological structures	8
	Protecting and developing riparian strips	3
	Installing sedimentation barriers	4
	Nature-conserving watercourse maintenance	2
	Conservation and expansion of protected areas and biotope networks	6
	Reducing diffuse pollutant entry and nutrient inputs	4
	Adapting abstraction and discharge threshold values	4
Water quality warning service	0	
Climate-specific adaptation and evaluation of water monitoring	1	
(f) Flood protection during heavy rain (n = 5)	Retention through changes in forest management	3
	Establishing and securing emergency waterways	0
	Object protection in case of flood risk	1
	Organised measures in case of extreme rainfall and flash flooding events	1
	Behavioural precautions and training in the event of extreme rainfall and flash flooding	3
	Regular maintenance and inspection of the drainage systems	1
(g) Inland flood protection	Flood risk assessment (e.g., heavy rain hazard and risk maps)	1
	Technical flood protection	5
	Recovery of flood plains and renaturation of floodplains	5

(n = 6)	Activating additional and optimising existing retention areas	5
	Land use regulations in flood plains/areas at risk of flooding	4
	Designation of <i>Vorranggebiet</i> ⁵ and <i>Vorbehaltsgebieten</i> ⁶	1
	Flood hazard and risk maps	4
	Identifying and mapping areas at risk of waterlogging (groundwater)	0
	Property protection in the event of damaging high groundwater levels	2
	Flood partnerships	2
	Organised measures in case of an extreme inland flooding event	2
	Behavioural precautions and training in the event of extreme inland flooding	4
		Optimising the construction and operation of existing sewer systems
(h) Urban drainage and wastewater treatment (n = 7)	Adapting wastewater treatment operations	1
	Installations for precipitation water treatment	1
	Water retention in urban areas	4
	Exploiting infiltration potentials	7
	Incentives for rainwater management	0
	Protecting wastewater facilities from floods	1

5 Discussion

The analysis reveals some considerable gaps in the comprehensiveness of climate change adaptation in water-related planning. Merely half of the plans we examined refer to (potential) climate change impacts within their designated planning areas, and less than half also make planning statements about adapting to these changes. Only about one third of the plans mentioning climate change adaptation refers to all eight or seven water management fields of action. Gaps become particularly evident in the limited extent of measures (only one or two) on “Low water management”, “Public water supply”, “Water ecosystem protection”, “Flood protection during heavy rain” and “Urban drainage and wastewater treatment” that most plans refer to. Therefore, the subsequent sections elaborate on opportunities to improve the integration of climate change adaptation into planning instruments that treat water management issues.

5.1 Updating plans more frequently

The analysis shows that the publication date has a significant impact on the extent to which climate change is addressed in the plans. The year 2019 draws the line from which all plans address climate change, its impacts and adaptation measures (7 out of 7). The plans published before 2019 show lower consideration rates. Here, only one third of the plans describes climate change impacts (7 out of 21 plans), and only 19 % climate change adaptation measures (4 out of 21) (see Figure S4.5 in the Supplement).

⁵ *Vorranggebiet* is an designated area in spatial plans in which certain spatially significant functions or land uses (here: preventive flood protection) have priority over conflicting uses and must be designated by spatial planning (Scholich, 2018).

⁶ *Vorbehaltsgebiet* is an designated area in spatial plans in which certain spatially significant functions or land uses (here: preventive flood protection) must be given special weight when considering balancing different competing spatially significant land uses and giving priority to one of them must be designated by spatial planning (Scholich, 2018).

260 [Schliep et al. \(2017\)](#) examined landscape programmes and landscape master plans in Germany concerning their consideration of climate change and associated objectives and measures in the context of biodiversity conservation. The study shows similar results: the more recent the plan, the higher the rate of climate change consideration. According to § 10 of the BNatSchG, landscape master plans have to be updated at least every ten years. [Taiber \(2023\)](#) indicates a high need for action regarding the updating and digital provision of landscape master plans in Germany, with the majority exceeding a ten-year planning horizon.

5.2 Including insights from informal planning

275 Regular updating of plans allows for the inclusion of ongoing environmental changes and new policy priorities. For example, the Berlin Senate faced (potential) impacts of climate change, the coal phase-out and a growing population in the informal Master Plan Water from 2022 ([SenUMVK, 2022](#)). The plan includes a variety of measures in the areas of low water management, rainwater management, wastewater infrastructure and public water supply, where the analysed formal plans for Berlin show gaps. In Brandenburg, the informal Federal Low Water Concept has been introduced in 2021 ([MLUK, 2021](#)). Among other things, it addresses the introduction of a water quality warning service focused on low water, which was not envisaged in the water management field of action “Water ecosystem protection” by any of the preceding plans. Such informal plans are not legally formalised, standardised and directly legally binding but are characterised by a high degree of flexibility and adaptability, allowing pressing issues to be addressed in a timely manner ([Danielczyk and Sondermann, 2018](#)). Incorporating their respective findings and suggestions into formal plans offers opportunities for a more comprehensive integration of climate change adaptation, achievable if formal plans are regularly updated.

275 5.3 Promoting multifunctional measures to address various climate change impacts

Four out of 14 plans describing ~~the potential impacts of climate change impacts on water management~~ address the variety of ~~potential-impacts of climate change~~ (increasing low water, heavy rain and flood events and deterioration of water status) for their respective planning area (see [FigTableure S92](#) in the Supplement). Only 2 out of 11 plans addressing climate change adaptation measures for all eight water management fields of action, another two plans do so for seven action fields, another two for six, one for five and the remaining four plans mention measures for two or three action fields (~~see Table S9~~). Here, the river development plans in particular show a very narrow planning approach, as they do not formulate climate adaptation measures for the water management fields of action “Public water supply”, “Agricultural irrigation”, “Flood protection during heavy rain”, “Inland flood protection” or “Urban drainage and wastewater treatment”. However, according to Article 1 of the WFD, inland surface waters should also be developed and protected in the most natural way possible for sustainable and equitable water use and to minimise flooding. Furthermore, the majority of plans that mention climate change adaptation

for the water management fields of action “Low water management”, “Water ecosystem protection”, “Flood protection during heavy rain” and “Urban drainage and wastewater treatment” refer to only one or two measures.

Such planning gaps could be filled by focusing more on the multifunctionality of measures. Planning approaches like the sponge landscape concept ([BBSR, 2023a](#)), sponge city concept ([BBSR, 2023b](#)) or nature-based solutions ([EU, 2015](#)) already include integrative planning for both periods of water abundance and water scarcity.

Many potential climate change adaptation measures are multifunctional and serve multiple water management fields of action. They contribute to improving the functioning of ecosystems and the quality of human life, also in the absence of climate change impacts, and can therefore be defined as no-regret measures (cf. [FGG Elbe, 2021b](#)). Measures promoting natural water retention and groundwater recharge, improving water quality and protecting biodiversity include peatland protection, floodplain restoration, establishing riparian strips and riverbank planting, soil-conserving agriculture, forest protection and afforestation, forest restructuring from pure pine to mixed broadleaved forests and unsealing. For comprehensive and efficient climate change adaptation in water-related planning, planned measures should be multifunctional and address multiple potential climate change impacts.

5.4 Adopting best practice examples for systematic integration of climate change impacts and adaptation

The analysis shows considerable variation in the way climate change impacts and adaptation are addressed. Out of 14 plans that refer to (potential) climate change impacts, only five do so by a separate section or extensive references. The remaining nine plans include only sporadic references to (potential) climate change impacts.

Given that climate change is already having an impact on the natural environment and is expected to further do so, plans should systematically include (potential) climate change impacts. Climate scenarios and models can be used to assess climate change-related hazards for the planning area. The [DWD \(2021\)](#) provides guidance on the possible interpretations of climate models. [Linke \(2023\)](#) specifically helps with the interpretation of regional climate model data, which may be helpful for German planners.

Of the 11 plans that refer to climate change adaptation, eight do so systematically or through extensive references. The remaining three plans only sporadically mention climate change adaptation. The systematic and extensive consideration of climate change adaptation in eight plans contrasts with the five plans that comprehensively address climate change impacts, meaning that at least three plans consider adaptation measures without having thoroughly addressed climate change impacts. This discrepancy might be attributed to (one of) the following reasons: high level of uncertainty in predicting and interpreting climate change impacts at regional/local level, insufficient databases and resources in terms of time, money, staff and expertise. However, this discrepancy shows that adaptation to climate change and precautionary measures (e.g., no-regret measures) can be taken into account in planning even under conditions of uncertainty.

A best practice example for the systematic integration of climate change adaptation is the review of a plan's catalogue of measures for its potential for adaptation to climate change, as demonstrated in the Flood Risk Management Plan, the River Basin Management Plan and the Programme of Measures of the German Elbe River basin (FGG Elbe, 2021a, 2021b, 2021c). In these plans, all planned measures are assessed from two perspectives: firstly, their suitability for adaptation to climate change, and secondly, their vulnerability to progressive climate change. Table 4 illustrates an example from the Programme of Measures of the German Elbe River basin.

Table 4. Best practice example of a systematic integration of climate change adaptation of the catalogue of measures, adopted from the Programme of Measures of the German Elbe River basin (FGG Elbe, 2021c, Anhang M1; translation by the authors).

Measure	Potential actions	Does the measure support adaptation to climate change?	Does climate change affect the effectiveness of the measure?
Improving habitats in the riparian zone	Creation of riparian strips with native trees and shrubs, replacement of technical structures with bioengineering constructions	Yes, because near-natural water bodies are more resilient to climate-related changes in the hydrological regime.	No, because it supports adaptation to climate change.
Establishing linear continuity at dams and retention basins	Construction of passable structures such as bypass channels or fish ladders	Possible, because improved river continuity allows aquatic organisms to avoid adverse climate-related changes in the water body.	Possible, because climate change may change the assessment bases for low and high water levels in water bodies and facilities.
Reducing the impact of leisure and recreational activities	Regulation of recreational use and visitor guidance, prohibition of travelling on waters, camping and/or making fire	Possible, if the adverse effects in the water body are due to activities caused by climate-related changes (e.g., heatwaves).	Yes negatively, longer periods of drought and heat increase the demand for activities in and around water.

The adoption of best practice examples can help to facilitate and systematise the integration of climate change adaptation into planning, and can also be beneficial when prioritising measures for implementation.

5.5 Mentioning Addressing climate change explicitly in the WFD and its planning instruments

All 18 water management plans according to the WFD included in the analysis address measures to improve water status. This is based on the objective in Article 4 of the WFD to achieve “good surface water status” by ensuring at least good ecological and chemical status in surface waters. Eight water management plans mention climate change, of which seven also refer to climate change impacts. However, only two of the latter make a specific link between climate change and the deterioration of water status (see Table S9 in the Supplement), thus addressing a potentially more challenging achievement of good ecological and chemical status (see Figure S2 in the Supplement).

The WFD does not explicitly mention climate change. This has already been addressed and criticised in the literature (Hendry, 2017; Lamon et al., 2009; Reese et al., 2016). However, the 2019 evaluation of the WFD concludes that the directive is generally fit for purpose, but that implementation needs to be accelerated (DG ENV, 2019). Nevertheless, specifically mentioning climate change as an aggravating factor in achieving the WFD targets and emphasizing its consideration in the planning of measures may strengthen the integration of climate change adaptation into water-related planning. In this respect, Garack et al. 2022, propose to integrate special climate impact monitoring into the WFD monitoring

hat formatiert: Englisch (Vereinigtes Königreich)

hat formatiert: Hyperlink, Englisch (Vereinigtes Königreich)

hat formatiert: Englisch (Vereinigtes Königreich)

hat formatiert: Englisch (Vereinigtes Königreich)

hat formatiert: Englisch (Vereinigtes Königreich)

and to ensure that the measures defined in the programmes of measures for the river basins contribute to adaptation to climate change and not only serve the medium-term objectives of the WFD, but also remain effective with regard to long-term climatic changes (no-regret measures).

5.6 Limitations of the methodological approach

There are mainly ~~three~~ four methodological limitations to our study. Firstly, not ~~all~~ all planning areas of the analysed plans lie ~~entirely within the Spree River basins, but also extend beyond it.~~ all statements made in the 11 plans covering an area larger than the Spree River basin can be clearly assigned to a specific (sub)area of the respective planning area. Therefore ~~Although, we tried to excluded all measures and statements referring to areas outside the Spree River basin, this was not always possible with certainty, as far as possible. In some cases, this was not possible with certainty, which is why it cannot be ruled out that planning statements have been included in the analysis that do not relate to the Spree River basin. This may lead to slightly skewed analysis results for these 11 plans.~~ Secondly, climate change adaptation measures in these 11 plans, which ~~solely referring solely~~ solely referring solely to other river basins, were not included in the analysis. This leads to a distorted picture regarding the single plans ~~Therefore, it cannot be excluded that, regarding the single plans, we do not fully have done justice to them with regard to how they and their consideration of climate change adaptation in water management.~~

Thirdly, all analysed plans mention measures relevant to climate change adaptation ~~are also mentioned in the plans~~ without explicitly addressing the measure's particular importance in the context of climate change for it. These measures were excluded from the ~~document~~ document analysis, as ~~the our primary research~~ the our primary research interest was to determine the extent to which existing plans consciously and explicitly consider the climate-water nexus, ~~resulting in the applied methodological approach and the predefined analysis categories.~~ resulting in the applied methodological approach and the predefined analysis categories. This leads to a partly ~~distorted-biased picture-estimation~~ distorted-biased picture-estimation of the actual potential of the plans for climate change adaptation ~~in planning.~~ However, establishing and clearly showing and considering the links between ~~already existing~~ already existing measures ~~that primarily serve other goals~~ that primarily serve other goals and climate change adaptation is necessary to consciously take precautions against climate change impacts. Moreover, primarily to deliberate and therefore fully use any measure that could promote climate change adaptation and to ensure highlight conflict awareness of potential conflicts between adaptation to climate change and other objectives, with the aim of reducing such conflicts in plans and to consciously take precautions against climate change impacts. It may also help ~~See~~ See ~~secondarily~~ secondarily to facilitate the prioritisation of actions ~~in the context of ongoing climate change and to demonstrate the diversity of climate change adaptation~~ in the context of ongoing climate change and to demonstrate the diversity of climate change adaptation ~~promote multifunctional measures.~~ promote multifunctional measures. Lastly, due to the overview character of this study, we cannot provide a detailed analysis of the different environmental situation and the status quo of climate change adaptation in water-related planning in the sub-regions of the Spree River basin. For this purpose, a more detailed inventory had to be carried out, including an analysis of spatial and landscape plans at local level. This remains to be a future task.

370 **7.6 Conclusions**

This study analysed the current consideration of climate change, its impacts and adaptation in water-related planning as a governance instrument in the case study of the Spree River basin. We analysed 28 water management, spatial and landscape plans. 16 (57 %) ~~explicitly~~ refer to climate change, ~~and~~ 14 (50 %) also address (potential) impacts of climate change ~~on the respective planning area. Furthermore, a total of~~ ~~and~~ 11 plans (39 %) also mention climate change adaptation measures. ~~Here,~~ 375 ~~the~~ majority of the ~~latter plans~~ ~~addresses~~ water ecosystem protection, low water management, groundwater protection, urban drainage and wastewater treatment, public water supply, agricultural irrigation and inland flooding. Flood protection during heavy rainfall is considered by less than half of the ~~11 plans with integrated climate change adaptation~~. The findings indicate gaps in a comprehensive planning approach to the different impacts of climate change, particularly evident in the limited ~~extent number~~ of measures mentioned in the water management fields of action “Low water management”, “Public water supply”, “Water ecosystem protection”, “Flood protection during heavy rain” and “Urban drainage and wastewater treatment”. Shortcomings ~~in planning~~ might be caused by insufficient update of the plans and therefore a lack of appropriate ~~mentioning consideration~~ of climate change. In particular, the river development plans, which are an essential contribution to the implementation of the WFD at the sub-basin level, lack references to climate change.

The results ~~also~~ show a ~~great~~ need for updating plans, especially for many river development plans and to some ~~extent~~ ~~degree~~ for landscape plans in Brandenburg. Also, recognizing ~~and addressing~~ climate change ~~in the WFD and its planning instruments~~ as a threat to the achievement of ~~environmental~~ ~~the~~ WFD objectives ~~in the legal basis~~ may strengthen the integration of climate change adaptation into ~~water-related~~ planning. ~~To enable comprehensive and effective water management in times of climate change~~ Additionally, more attention should be paid to the findings from current informal plans, to the multifunctionality of ~~existing~~ measures, and to a consistently structured integration of climate change impacts and adaptation into plans ~~to enable comprehensive and effective water management in times of climate change~~. This work aims to encourage authorities, planning agencies and water management practitioners to ~~comprehensively consider use the potential of water-related planning for~~ climate change adaptation to enhance the resilience of the Spree River ecosystem and to ensure a liveable future in the Spree River basin.

395 *Author contribution.* Stefan Heiland conceptualised the research idea and objective. Stefan Heiland and Saskia Arndt developed the research methodology. Saskia Arndt carried out the document analysis and wrote the initial draft. Both authors repeatedly reviewed and edited the following draft versions.

Competing interests. The authors declare that they have no conflict of interest.

400

Funding. This study was funded by the Einstein Research Unit ‘Climate and Water under Change’ of the Einstein Foundation Berlin and the Berlin University Alliance. We acknowledge support from the German Research Foundation and the Open Access Publication Fund of TU Berlin.

405 *Acknowledgement.* ~~We would like to thank the two anonymous reviewers and the editorial team for their careful and valuable feedback.~~ We recognise the use of DeepL Translator and DeepL Write for improved ~~translation and formulation~~ from German into English ~~and writing~~.

References

- 410 BBSR (Bundesinstitut für Bau-, Stadt- und Raumforschung) (Ed.): Das Konzept der Schwammlandschaft – Wasser in der
Landschaft halten, [https://gruen-in-der-
schwammstadt-2](https://gruen-in-der-stadt.de/aktuelles/veroeffentlichung-der-grafiken-schwammlandschaft-und-schwammstadt-2)~~https://gruen-in-der-
schwammlandschaft-und-schwammstadt-2~~, last access: 13 March 2024, 2023a.
- BBSR (Bundesinstitut für Bau-, Stadt- und Raumforschung) (Ed.): Das Konzept der Schwammstadt: Hitze-, Dürre- und
415 Überflutungsvorsorge, [https://gruen-in-der-
schwammstadt](https://gruen-in-der-stadt.de/aktuelles/veroeffentlichung-der-grafiken-schwammlandschaft-und-schwammstadt), last access: 13 March 2024, 2023b.
- BMUV (Bundesministerium für Umwelt, Naturschutz, nukleare Sicherheit und Verbraucherschutz) and UBA
(Umweltbundesamt) (Ed.): Water Framework Directive – The status of German waters 2021 – Progress and Challenges.
Bonn, Dessau, Germany, 124 pp., ISSN 2363-8311, 2022.
- Bowen, G. A.: Document Analysis as a Qualitative Research Method, *Qualitative Research Journal*, 9, 27–40,
420 <https://doi.org/10.3316/QRJ0902027>, 2009.
- BWB (Berliner Wasserbetriebe) (Ed.): Damit es auch künftig reicht – Umweltsenatorin und Wasserbetriebe rufen zum
bewussten Umgang mit Wasser auf: https://www.bwb.de/de/27237_27519.php, last access: 13 March 2024, 2022.
- Danielczyk, R. and Sondermann, M.: Informelle Planung, in: *Handwörterbuch der Stadt- und Raumentwicklung*, Akademie
für Raumforschung und Landesplanung, Hannover, Germany, ISBN 978-3-88838-559-9, 2018.
- 425 DG ENV (Directorate-General for Environment) (Ed.): Evaluation of EU water legislation concludes that it is broadly fit for
purpose but implementation needs to speed up, [https://commission.europa.eu/news/evaluation-eu-water-legislation-
concludes-it-broadly-fit-purpose-implementation-needs-speed-2019-12-12_en](https://commission.europa.eu/news/evaluation-eu-water-legislation-concludes-it-broadly-fit-purpose-implementation-needs-speed-2019-12-12_en), last access: 13 March 2024, 2019.
- DWD (Deutscher Wetterdienst) (Ed.): *Klimavorhersagen und Klimaprojektionen*, Offenbach/Main, Germany, 36 pp., 2021.
- EEA (European Environment Agency) (Ed.): *Climate change, impacts and vulnerability in Europe 2016 – An indicator-
430 based report*, EEA Report, Luxembourg, 424 pp., <https://dx.doi.org/10.2800/534806>, 2017.

- EU (European Union) (Ed.): Towards an EU research and innovation policy agenda for Nature-Based Solutions & Re-Naturing Cities – Final Report of the Horizon 2020 Expert Group on ‘Nature-Based Solutions and Re-Naturing Cities’, Luxembourg, 74 pp., <https://doi.org/10.2777/765301>, 2015.
- 435 FGG Elbe (Flussgebietsgemeinschaft Elbe) (Ed.): Hochwasserrisikomanagementplan für den deutschen Teil der Flussgebietseinheit Elbe für den Zeitraum von 2021 bis 2027 gemäß § 75 WHG, Magdeburg, Germany, 376 pp., 2021a.
- FGG Elbe (Flussgebietsgemeinschaft Elbe) (Ed.): Zweite Aktualisierung des Bewirtschaftungsplans nach § 83 WHG bzw. Artikel 13 der Richtlinie 2000/60/EG für den deutschen Teil der Flussgebietseinheit Elbe für den Zeitraum von 2022 bis 2027, Magdeburg, Germany, 338 pp., 2021b.
- 440 FGG Elbe (Flussgebietsgemeinschaft Elbe) (Ed.): Zweite Aktualisierung des Maßnahmenprogramms nach § 82 WHG bzw. Artikel 11 der Richtlinie 2000/60/EG für den deutschen Teil der Flussgebietseinheit Elbe für den Zeitraum von 2022 bis 2027, Magdeburg, Germany, 50 pp., 2021c.
- Free, G., van de Bund, W., Gawlik, B., van Wijk, L., Wood, M., Guagnini, E., Koutelos, K., Annunziato, A., Grizzetti, B., Vigliak, O., Gneccchi, M., Poikane, S., Christiansen, T., Whalley, C., Antognazza, F., Zerger, B., Hoesche, R., and Stielstra, H.: An EU analysis of the ecological disaster in the Oder River of 2022 – Lessons learned and research-based recommendations to avoid future ecological damage in EU rivers, a joint analysis from DG ENV, JRC and the EEA, Luxembourg, 43 pp., <https://data.europa.eu/doi/10.2760/067386>, 2023.
- 445 [Garack, S., Neubert, M., Sauer, A., Albrecht, J., Günther, K., Friedrichs-Manthey, M., Wollrab, S., Jähnig, S., Berger, S. A., Kienel, U., and Kirillin, G.: Entwicklung der ökologischen Beschaffenheit von Oberflächengewässern im Klimawandel, Umweltbundesamt \(UBA\), Dessau-Roßlau, Germany, 252 pp., ISSN 1862-4804, 2022.](#)
- 450 GL (Gemeinsame Landesplanungsabteilung Berlin-Brandenburg) (Ed.): Landesentwicklungsprogramm 2007, Potsdam, Germany, 42 pp., 2007.
- GL (Gemeinsame Landesplanungsabteilung Berlin-Brandenburg) (Ed.): Landesentwicklungsplan Hauptstadtregion Berlin-Brandenburg, Potsdam, Germany, 174 pp., 2019.
- Hendry, S.: The EU Water Framework Directive – Challenges, Gaps and Potential for the Future, Journal for European Environmental & Planning Law, 14, 249–268, <https://doi.org/10.1163/18760104-01403001>, 2017.
- 455 IPCC (Intergovernmental Panel on Climate Change) (Ed.): Climate Change 2022 – Impacts, Adaptation and Vulnerability. Contribution of Working Group II to the Sixth Assessment Report of the Intergovernmental Panel on Climate Change, Cambridge, UK and New York, NY, USA, 3056 pp., <https://doi.org/10.1017/9781009325844>, 2022.
- 460 [Kahlenborn, W., Porst, L., Voß, M., Hölscher, L., Undorf, S., Wolf, M., Schönthaler, K., Crespi, A., Renner, K., Zebisch, M., Fritsch, U. and Schausser, I.: Klimawirkungs- und Risikoanalyse 2021 für Deutschland, Teilbericht 6: Integrierte Auswertung – Klimarisiken, Handlungserfordernisse und Forschungsbedarfe, Umweltbundesamt \(UBA\), Dessau-Roßlau, Germany, 172 pp., 2021.](#)

- Lamon, L., Dalla Valle, M., Critto, A., and Marcomini, A.: Introducing an integrated climate change perspective in POPs modelling, monitoring and regulation, *Environmental Pollution*, 157, 1971–1980, 465 <https://doi.org/10.1016/j.envpol.2009.02.016>, 2009.
- Landkreis Oder-Spree (Ed.): Landschaftsrahmenplan Landkreis Oder-Spree Band 1 Grundlagen, Bestandsaufnahme und Bewertung, Beeskow, Germany, 288 pp., 2021a.
- Landkreis Oder-Spree (Ed.): Landschaftsrahmenplan Landkreis Oder-Spree Band 2 Planung, Beeskow, Germany, 356 pp., 2021b.
- 470 Landkreis Spree-Neiße (Ed.): Landschaftsrahmenplan Landkreis Spree-Neiße Band I, Entwicklungsziele und Maßnahmen, Germany, 244 pp., 2009.
- LAWA (Bund/Länder-Arbeitsgemeinschaft Wasser) (Ed.): Auswirkungen des Klimawandels auf die Wasserwirtschaft – Bestandsaufnahme, Handlungsoptionen und strategische Handlungsfelder (Kurztitel: LAWA Klimawandel-Bericht 2020), München, Germany, 315 pp., 2020.
- 475 LfULG (Sächsisches Landesamt für Umwelt, Landwirtschaft und Geologie) (Ed.): Vorhabens- und Sanierungsplan OWK Spree-2, Dresden, Germany, 231 pp., 2020.
- LfULG (Sächsisches Landesamt für Umwelt, Landwirtschaft und Geologie) (Ed.): Maßnahmenplanung EG-WRRL Kleine Spree - Braunkohlefolgelandschaft, Dresden, Germany, 68 pp., 2011.
- Linke, C.: Leitlinien zur Interpretation regionaler Klimamolldaten – Erstellt durch das Bund-Länder-Fachgespräch 480 „Interpretation regionaler Klimamolldaten“, Potsdam, Germany, 75 pp., 2023.
- LUGV (Landesamt für Umwelt, Gesundheit und Verbraucherschutz) (Ed.): Gewässerentwicklungskonzept für das Teileinzugsgebiet „Cottbuser Spree“ (Tschugagraben bis Nordumfluter), Cottbus, Germany, 248 pp., 2011a.
- LUGV (Landesamt für Umwelt, Gesundheit und Verbraucherschutz) (Ed.): Endbericht Gewässerentwicklungskonzept Neuenhagener Mühlenfließ / Erpe, Cottbus, Germany, 251 pp., 2011b.
- 485 LUGV (Landesamt für Umwelt, Gesundheit und Verbraucherschutz) (Ed.): Gewässerentwicklungskonzept (GEK) für das Teileinzugsgebiet Greifenhainer Fließ (Kzschischoka) Kurzfassung, Cottbus, Germany, 43 pp., 2011c.
- LUGV (Landesamt für Umwelt, Gesundheit und Verbraucherschutz) (Ed.): Gewässerentwicklungskonzept Oberer Spreewald Schwerpunkt Großes Fließ Teil A – GEK, Cottbus, Germany, 302, pp., 2011d.
- LUGV (Landesamt für Umwelt, Gesundheit und Verbraucherschutz) (Ed.): Gewässerentwicklungskonzept (GEK) Unterer 490 Spreewald, Cottbus, Germany, 439 pp., 2012.
- LUGV (Landesamt für Umwelt, Gesundheit und Verbraucherschutz) (Ed.): Erarbeitung des Gewässerentwicklungskonzeptes (WRRL-GEK) für das Teileinzugsgebiet „Berste (SpM Berste)“ – Abschlussbericht, 284 pp., Cottbus, Germany, 2013a.
- LUGV (Landesamt für Umwelt, Gesundheit und Verbraucherschutz) (Ed.): Gewässerentwicklungskonzept Löcknitz (untere Spree): Teil 1 – Bericht, Cottbus, Germany, 302 pp., 2013b.

- 495 LUGV (Landesamt für Umwelt, Gesundheit und Verbraucherschutz) (Ed.): Gewässerentwicklungskonzept (GEK) Pretschener Spree – Endbericht, Cottbus, Germany, 165 pp., 2013c.
- LUGV (Landesamt für Umwelt, Gesundheit und Verbraucherschutz) (Ed.): Gewässerentwicklungskonzept (GEK) Schwielochsee und Dammühlenfließ – V. Kurzfassung Teil I: Seen und Fließgewässer, Potsdam, Germany, 119 pp., 2016.
- 500 MLUK (Ministerium für Landwirtschaft, Umwelt und Klimaschutz des Landes Brandenburg) (Ed.): Landesniedrigwasserkonzept Brandenburg, Germany, 65 pp., 2021.
- MLUR (Ministerium für Landwirtschaft, Umweltschutz und Raumordnung des Landes Brandenburg) (Ed.): Landschaftsprogramm Brandenburg, Potsdam, Germany, 70 pp., 2000.
- MLUV (Ministerium für Ländliche Entwicklung, Umwelt und Verbraucherschutz) (Ed.): Gewässerentwicklungskonzept (Konzeptionelle Vorplanung für Maßnahmen zur Erreichung der Ziele für den guten ökologischen Zustand nach EU-WRRL) für die Panke vom Quellbereich am Pankeborn in Bernau bis zur Landesgrenze Brandenburg / Berlin, Germany, 117 pp., 2009.
- 505 MLUV (Ministerium für Ländliche Entwicklung, Umwelt und Verbraucherschutz Brandenburg) (Ed.): Teil A Erläuterungsbericht Gewässerentwicklungskonzept “Krumme Spree” zwischen Neuendorfer See und Schwielochsee, Potsdam, Germany, 315 pp., 2013.
- 510 ~~Ormond, T., Crilly, D., Dragoi, G., Flemming-Hansen, K., Franke, K., Hofmann, G., Pintilie, V., Stanič-Raeman, D., and Wasilewska, A.: Guideline on River Development Planning, The European Union Network for the Implementation and Enforcement of Environmental Law (IMPEL), 52 pp., 2018.~~
- Ranasinghe, R., Ruane, A. C., Vautard, R., Arnell, N., Coppola, E., Cruz, F. A., and Dessai, S.: Climate Change Information for Regional Impact and for Risk Assessment, in: Climate Change 2021 – The Physical Science Basis. Contribution of Working Group I to the Sixth Assessment Report of the Intergovernmental Panel on Climate Change, edited by: Masson-Delmotte, V., Zhai, P., Pirani, A., Connors, S. L., Péan, C., Berger, S., Caud, N., Chen, Y., Goldfarb, L., Gomis, M. I., Huang, M., Leitzell, K., Lonnoy, E., Matthews, J. B. R., Maycock, T. K., Waterfield, T., Yelekçi, O., Yu, R., and Zhou, B., Cambridge University Press, 1767–1926, <https://doi.org/10.1017/9781009157896.014>, 2021.
- 515
- 520 Reese, M., Möckel, S., Bovet, J. and Köck, W.: Rechtlicher Handlungsbedarf für die Anpassung an die Folgen des Klimawandels – Analyse, Weiter- und Neuentwicklung rechtlicher Instrumente, Umweltbundesamt (UBA), Dessau-Roßlau, Germany, 513 pp., ~~ISSN 1862-4359~~, 2016.
- RPV Oberlausitz-Niederschlesien (Regionaler Planungsverband Oberlausitz-Niederschlesien) (Ed.): Zweite Gesamtfortschreibung des Regionalplans für die Planungsregion Oberlausitz-Niederschlesien – Entwurf für die Beteiligung nach § 9 ROG in Verbindung mit § 6 SächsLPiG, Bautzen, Germany, 284 pp., 2019.
- 525

- Schliep, R., Bartz, R., Dröschmeister, R., Dziock, F., Dziock, S., Fina, S., Kowarik, I., Radtke, L., Schäffler, L., Siedentop, S., Sudfeldt, C., Trautmann, S., Sukopp, U., and Heiland, S.: Indikatorensystem zur Darstellung direkter und indirekter Auswirkungen des Klimawadels auf die biologische Vielfalt, BfN-Skripten 470, Bundesamt für Naturschutz (BfN) (Ed.), Bonn, Germany, 249 pp., <https://doi.org/10.19217/skr470>, 2017.
- 530 Scholich, D.: Vorranggebiet, Vorbehaltsgebiet und Eignungsgebiet, in: Handwörterbuch der Stadt- und Raumentwicklung, edited by: ARL – Akademie für Raumforschung und Landesplanung, Verlag der ARL, Hannover, Germany, 2841–2855, ISBN 978-3-88838-559-9, 2018.
- SenGUV (Senatsverwaltung für Gesundheit Umwelt und Verbraucherschutz Berlin) (Ed.): Panke – Pilotprojekt zur vorbereitenden Maßnahmenplanung – Textband mit Anhang, Berlin, Germany, 383 pp., 2011.
- 535 SenStadtUm (Senatsverwaltung für Stadtentwicklung und Umwelt) (Ed.): Technisch-integrative Zusammenfassung der vorbereitenden Maßnahmenplanung Erpe (Berlin), Berlin, Germany, 35 pp., 2013.
- SenStadtUm (Senatsverwaltung für Stadtentwicklung und Umwelt) (Ed.): Vorbereitende Maßnahmenplanung im Einzugsgebiet der Wuhle – Konzeptionelle, raumbezogene Planungen und Kostenabschätzungen zur Erreichung der Ziele nach EG-Wasserrahmenrichtlinie, Berlin, Germany, 399 pp., 2014.
- 540 SenStadtUm (Senatsverwaltung für Stadtentwicklung und Umwelt) (Ed.): Erstellung eines flächenspezifischen Entwicklungskonzeptes zur Sicherung und Erreichung der gewässerbezogenen Umweltziele nach WRRL und NATURA 2000 für die Müggelspree zwischen Dämeritzsee und Müggelsee, inklusive des Großen und Kleinen Müggelsees und der Bänke: Endbericht als Grundlage für den Maßnahmenentwurf, Berlin, Germany, 145 pp., 2015.
- SenStadtUm (Senatsverwaltung für Stadtentwicklung und Umwelt) (Ed.): Landschaftsprogramm – Artenschutzprogramm – Begründung und Erläuterung 2016, Berlin, Germany, 153 pp., 2016.
- 545 SenSW (Senatsverwaltung für Stadtentwicklung und Wohnen) (Ed.): Stadt vorausdenken – Flächennutzungsplanung für Berlin – FNP-Bericht 2020, Berlin, Germany, 56 pp., 2020.
- SenUMVK (Senatsverwaltung für Umwelt, Mobilität, Verbraucher- und Klimaschutz) (Ed.): Masterplan Wasser Berlin – 1. Bericht, Berlin, Germany, 116 pp., 2022.
- 550 SMI (Sächsisches Staatsministerium des Innern) (Ed.): Landesentwicklungsplan 2013, Dresden, Germany, 193 pp., 2013a.
- SMI (Sächsisches Staatsministerium des Innern) (Ed.): Anhang A 1 zum Landesentwicklungsplan 2013 – Fachplanerische Inhalte des Landschaftsprogramms, Dresden, Germany, 70 pp., 2013b.
- Taiber, B.: Aktueller Stand der Landschaftsrahmenplanung in Deutschland: Aufstellung, Fortschreibung und Digitalisierung, Natur und Landschaft, 98, 228–237, <https://doi.org/10.19217/NuL2023-05-02>, 2023.
- 555 Tradowsky, J. S., Philip, S. Y., Kreienkamp, F., Kew, S. F., Lorenz, P., Arrighi, J., Bettmann, T., Caluwaerts, S., Chan, S. C., Cruz, L. de, Vries, H. de, Demuth, N., Ferrone, A., Fischer, E. M., Fowler, H. J., Goergen, K., Heinrich, D., Henrichs, Y., Kaspar, F., Lenderink, G., Nilson, E., Otto, F. E. L., Ragone, F., Seneviratne, S. I., Singh, R. K., Skålevåg, A.,

- Termonia, P., Thalheimer, L., van Aalst, M., van den Bergh, J., van de Vyver, H., Vannitsem, S., van Oldenborgh, G. J., van Schaeybroeck, B., Vautard, R., Vonk, D., and Wanders, N.: Attribution of the heavy rainfall events leading to severe flooding in Western Europe during July 2021, *Climatic Change*, 176, 90, <https://doi.org/10.1007/s10584-023-03502-7>, 2023.
- 560 Trenczek, J., Lühr, O., Eiserbeck, L. and Leuschner, V.: Projektbericht „Kosten durch Klimawandelfolgen“ – Schäden der Sturzfluten und Überschwemmungen im Juli 2021 in Deutschland – Eine ex-post-Analyse, Bundesministerium für Wirtschaft und Klimaschutz (BMWK), Berlin, Germany, 33 pp., 2022.
- 565 Uhlmann, W., Zimmermann, K., Kaltofen, M., Gerstgraser, C., Grosser, F., and Schützel, C.: Wasserwirtschaftliche Folgen des Braunkohleausstiegs in der Lausitz, Umweltbundesamt (UBA), Dessau-Roßlau, Germany, 266 pp., ISSN 1862-4804, 2023.
- Umweltatlas Berlin (Ed.): Niederschlagshöhe vieljähriger Mittelwert 1991-2020, https://www.berlin.de/umweltatlas/_assets/klima/niederschlagsverteilung/de-abbildungen/a408_01_1991-2020.jpg?ts=1705017659, last access: 26 March 2024.
- 570 ~~Wanders, N., Vliet, M. T. H., Wada, Y., Bierkens, M. F. P., and Beek, L. P. H.: High Resolution Global Water Temperature Modeling, *Water Resources Research*, 55, 2760–2778, <https://doi.org/10.1029/2018WR023250>, 2019.~~