

Figure S1. Spread and RMSE for raw and calibrated FWI forecasts and RMSE of the climatology averaged over NEU region for each month of the fire season.

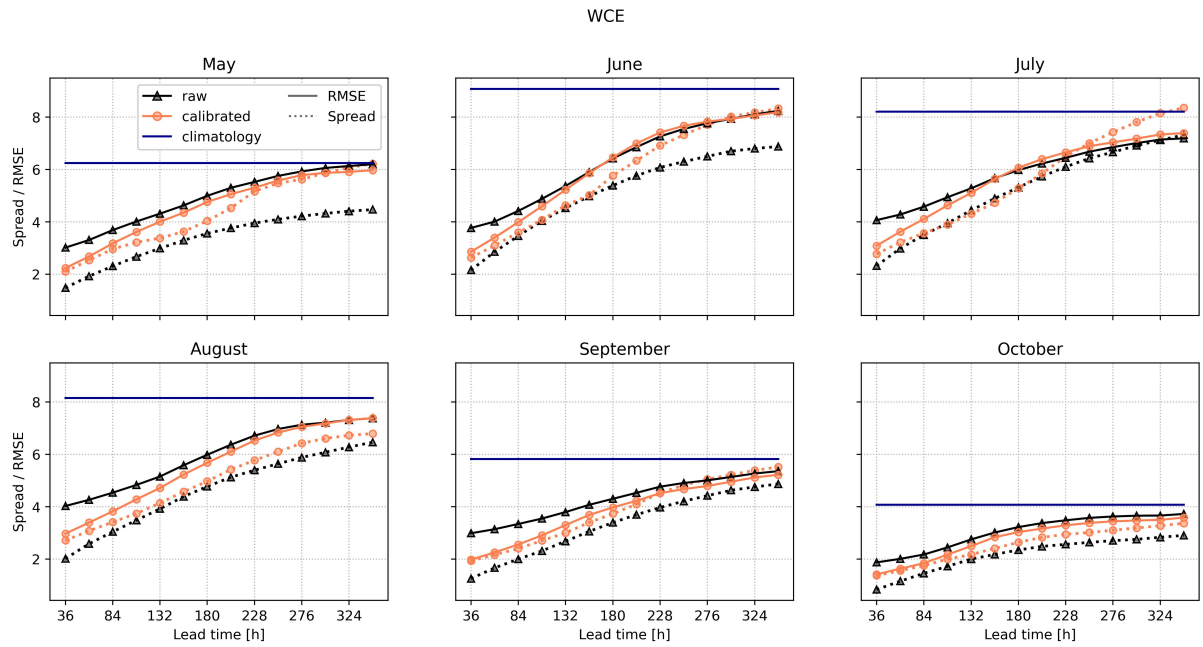


Figure S2. Same as S1 for WCE region.

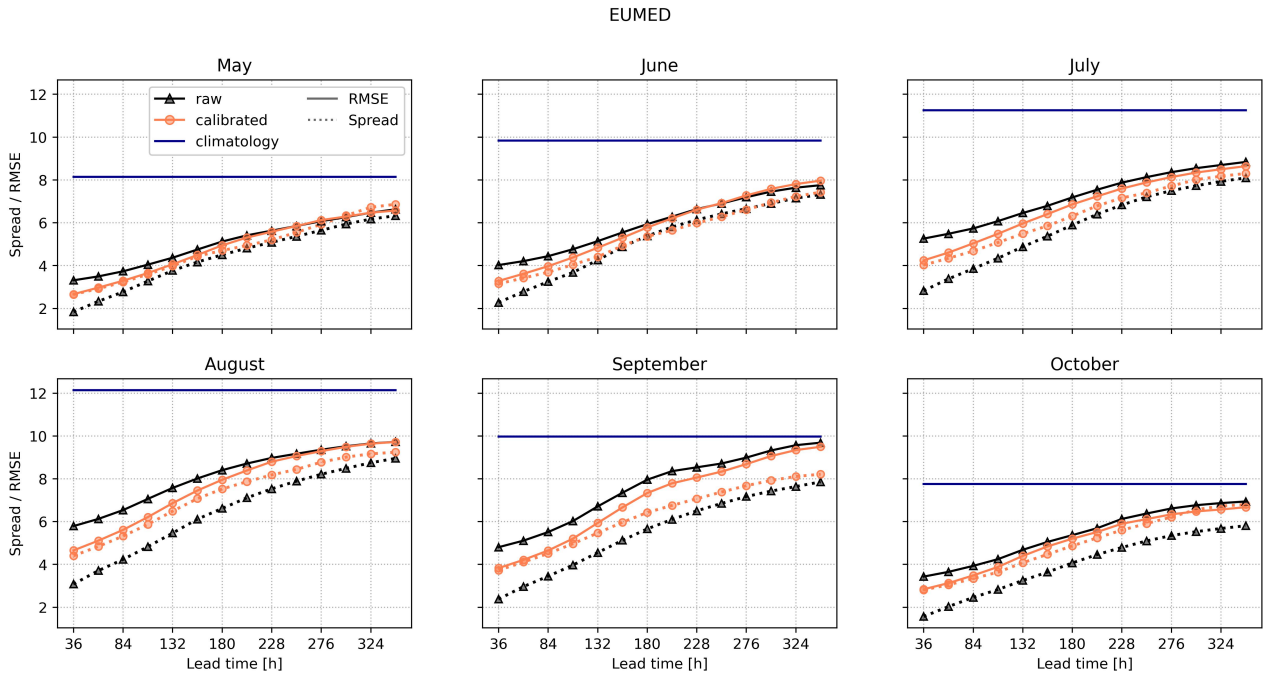


Figure S3. Same as Fig. S1 for EUMED region.

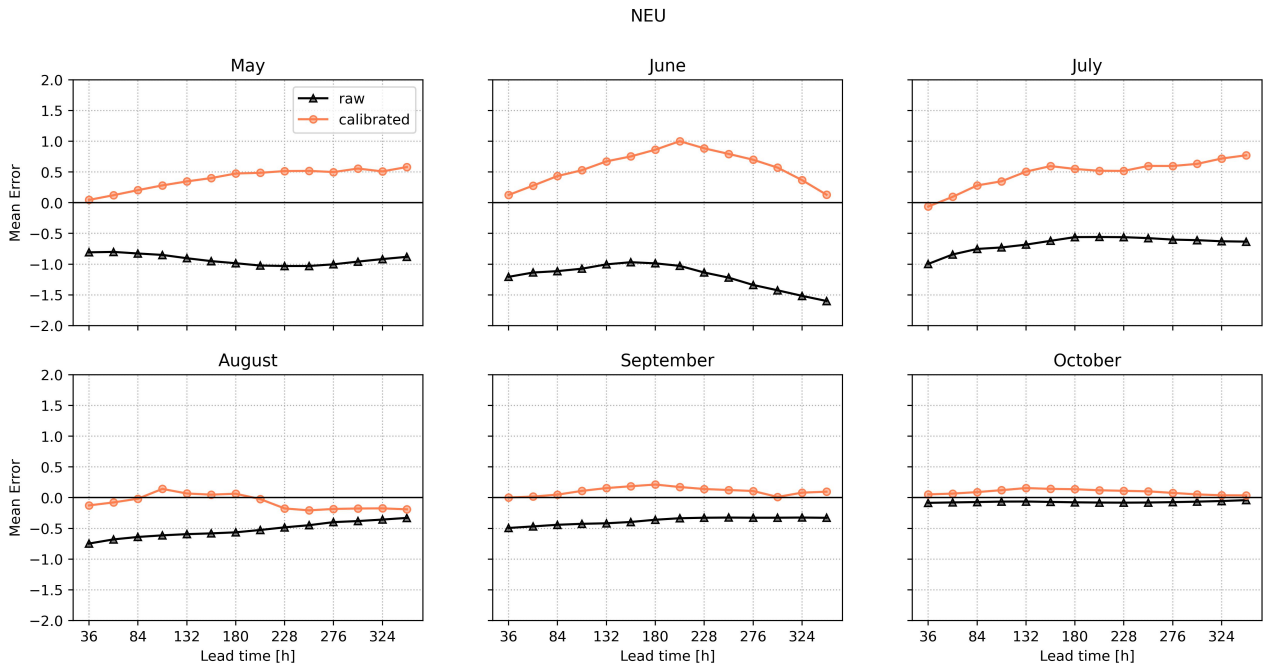


Figure S4. Mean error averaged over the NEU region for each month.

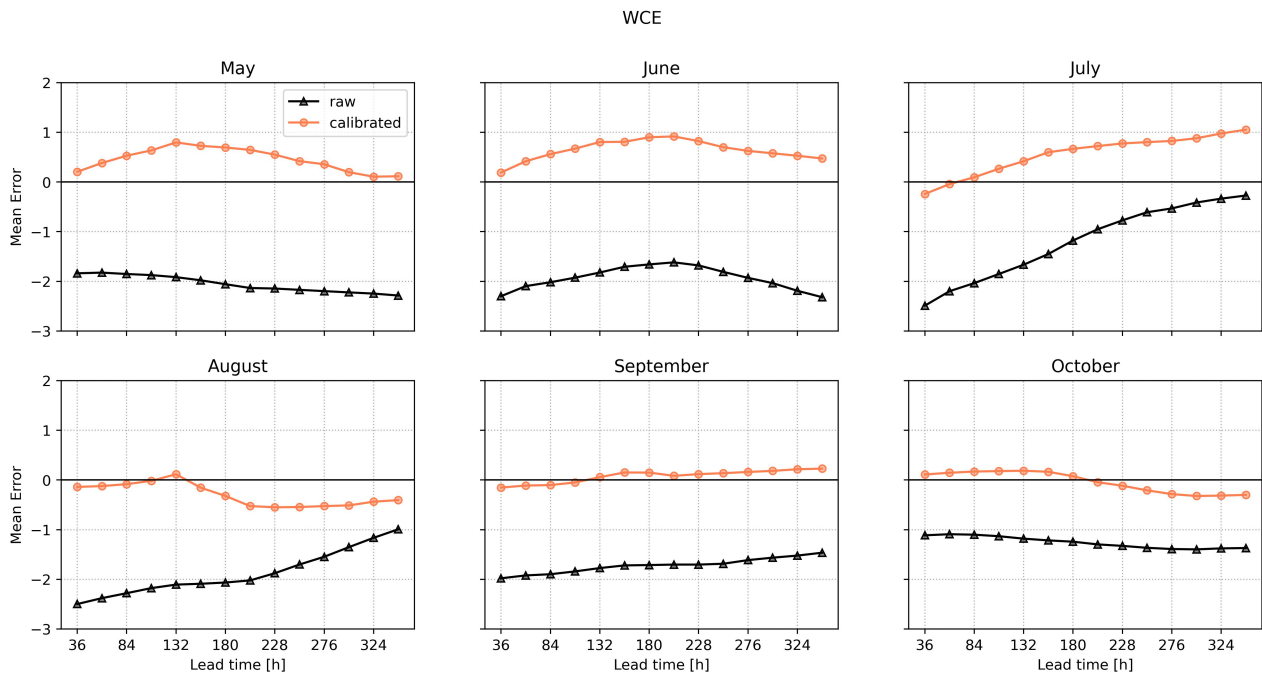


Figure S5. Same as Fig. S4 for WCE region.

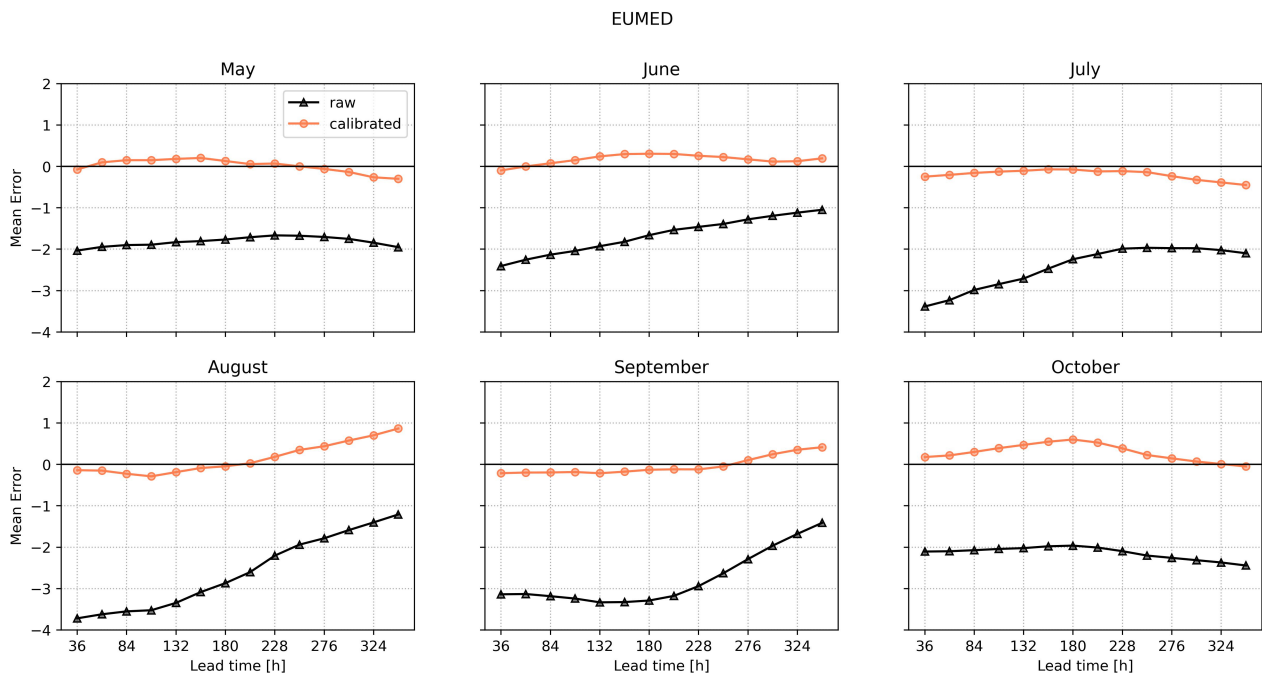


Figure S6. Same as Fig. S4 for EUMED region.

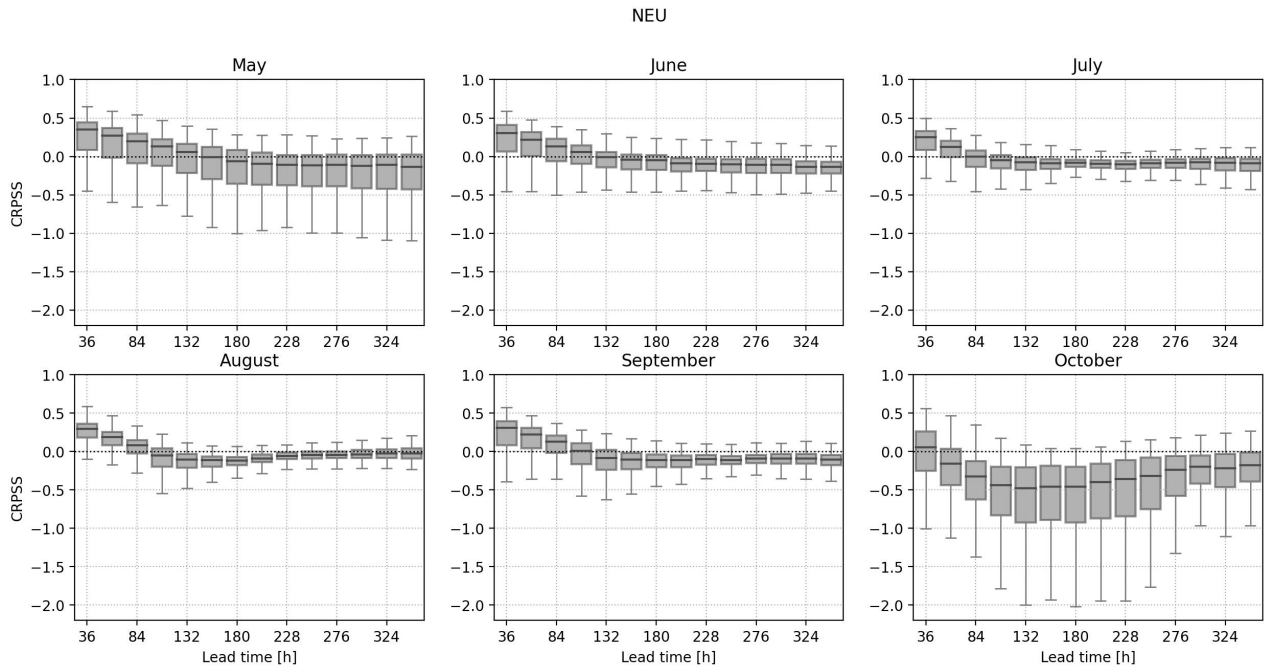


Figure S7. Continuous ranked probability skill score with the raw forecast as reference averaged over the NEU region for each month.

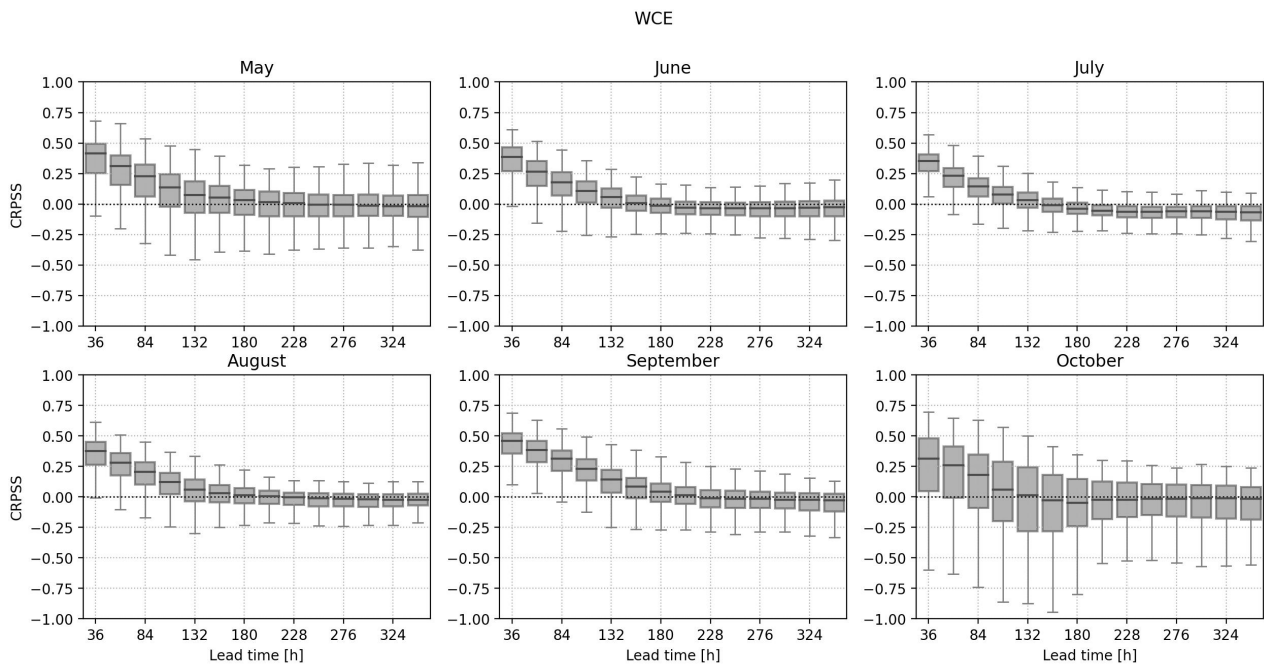


Figure S8. Same as Fig. S7 for WCE region.

EUMED

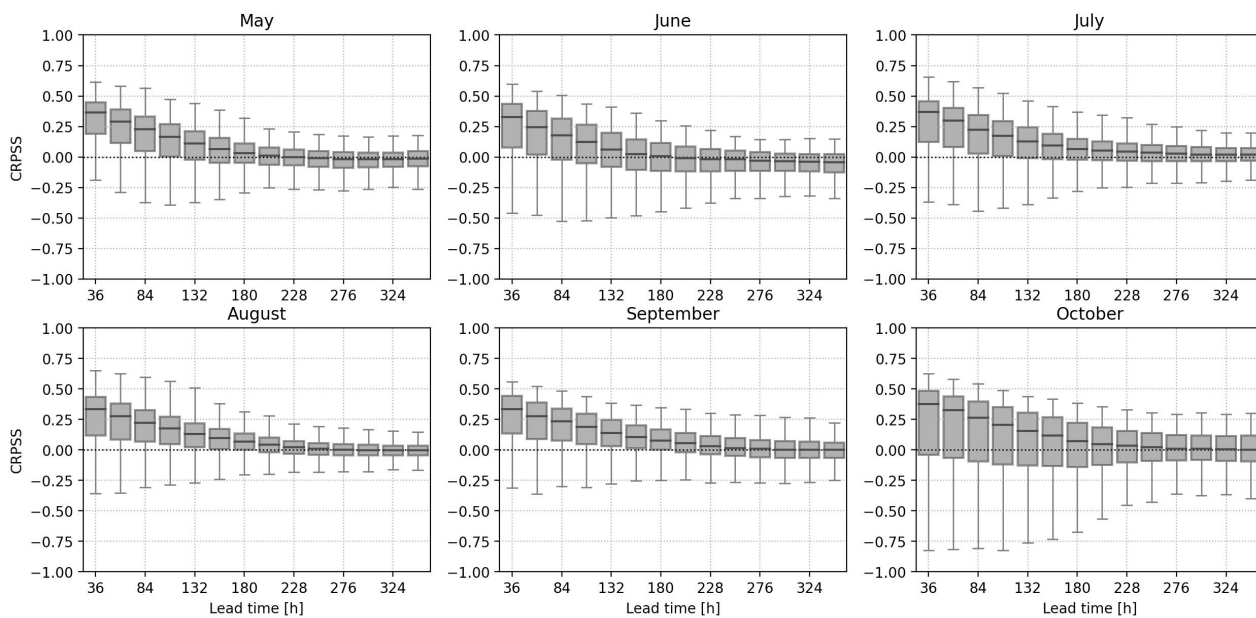


Figure S9. Same as Fig. S7 for EUMED region.