

Failure of Marmolada Glacier (Dolomites, Italy) in 2022: Data-based back analysis of possible collapse mechanisms ~~as related to recent morpho-climatic evolution and possible trigger factors~~

Roberto G. Francese^{1,2}, Roberto Valentino¹, Wilfried Haeberli³, Aldino Bondesan^{4,5}, Massimo Giorgi², Stefano Picotti², Franco Pettenati², Denis Sandron², Gianni Ramponi⁶, and Mauro Valt⁷

¹Department of Chemistry, Life Sciences and Environmental Sustainability, University of Parma, Parma, 43124, Italy

²National Institute of Oceanography and Applied Geophysics – OGS, Sgonico, 34010, Italy

³Department of Geography, University of Zurich, Zurich, 8057, Switzerland

⁴Department of Historical and Geographic Sciences and the Ancient World, University of Padova, Padova, 35122, Italy

⁵Department of Military Geography, University of Stellenbosch, Stellenbosch, 7602, South Africa

⁶Department of Engineering and Architecture, University of Trieste, Trieste, 34127, Italy

⁷Environmental Protection Agency of Veneto, Centro Valanghe di Arabba, Arabba, 32020, Italy

Correspondence to: Aldino Bondesan (aldino.bondesan@unipd.it)

Abstract:

A small, isolated portion of the Marmolada glacier ~~partially~~ broke off on July 3, 2022. The detached ice mass had an estimated volume of 70,400 m³ and slid down the slope killing 11 mountaineers after having travelled for approximately 2.3 km along the northern slope. This event is considered among the deadliest ice avalanches historically recorded in the Alps. ~~The cause of the collapse is most likely to be closely related to anomalously high air temperatures in late spring and early summer of that year and also to progressive warming of basal ice layers and subglacial permafrost. Increased melting resulted in significant amounts of water that could not be discharged but remained trapped in crevasses of the isolated, cold ice body. The usually high permeability of karst systems in limestone are likely to have been blocked by subglacial and surrounding permafrost rocks, thereby increasing basal water pressure. Morpho-climatic data, satellite and aerial images and geophysics were analysed to better understand role and interaction of the controlling factors. This enabled the implementation of a conceptual model that was further investigated through numerical simulations using the Limit Equilibrium Method. The outcome from the back analysis indicates that a combination of driving forces was required to finally trigger the collapse. The seasonal alternation of prolonged heating and refreezing meltwater of subglacial permafrost (i.e. the active-layer) could have caused the plasticization of the basal ice resulting in the presence of a “weak-bottom layer” where the available shear strength progressively dropped, finally triggering the failure.~~

The unusually high air temperatures in late spring and early summer of that year led to an excess of meltwater, which, since mid-June, overpressurized the englacial discharge network, partly blocked due to frozen conditions at its base. Ice temperature, subglacial permafrost, and heat exchange from meltwater were among the primary factors controlling the thermal state of the sliding surface.

The cause of the collapse was investigated by exploiting a conceptual model that was further corroborated through simplified numerical simulations using the Limit Equilibrium Method. Pre- and post-failure satellite and aerial images, laser mapping, geophysics and morpho-climatic data were gathered in a comprehensive database and analysed to better understand the role and interaction of the predisposing and triggering factors as well as their mutual interaction. Particular attention was given to reconstructing the varying conditions of the failure surface, which partly developed along ice foliations near the glacieret's base and partly right at the ice-bedrock interface. An earthquake triggering the failure was excluded based on the processing of the available seismological observations.

It resulted that none of the three forces considered in the numerical analysis—namely, hydrostatic pressure in crevasses, hydraulic jacking, and basal friction reduction—individually caused the condition of instability. To reach this condition, it was necessary to invoke a combination of these actions, for which it was finally possible to estimate their relative weights.

1 Introduction

The catastrophic collapse of the Marmolada Glacier (Dolomites, Italy) fits into the broader worldwide context of mountain glaciers that are experiencing unprecedented rates of retreat associated with climate change (Hock et al., 2019; Marzeion et al., 2020; Pelto, 2020; Marta et al., 2021; Rounce et al., 2023; Zemp et al., 2019). Alpine glaciers retreat has markedly accelerated since the late 1980s (Haeberli and Hoelzle, 1995; Paul et al., 2004; Zemp et al., 2015), with collapse events increasing in frequency since the early 2000s (Chiarle et al., 2022). This acceleration has further been enhanced by rapid feedback effects, as the degradation of permafrost (permanently-frozen ground) occurring at a global scale (e.g., Biskaborn et al., 2019; Rossi et al., 2022), which plays an increasingly important role on the stability of glaciers (e.g., Allen et al., 2022; Noetzli and Gruber, 2009). ~~The phenomenon extends to the Antarctic Peninsula, where major ice shelves are collapsing due to the acceleration and thinning of feeding glaciers (Zhao et al., 2017). In the Northern Hemisphere, Greenland's glaciers are experiencing an increase in gigaton-sized iceberg calving events, further accelerating mass loss from the Greenland Ice Sheet (Greene et al., 2024) while Himalayan glaciers are increasingly reducing their mass (Boleh et al., 2012).~~

This rapid mass loss has triggered a related increase in the frequency and

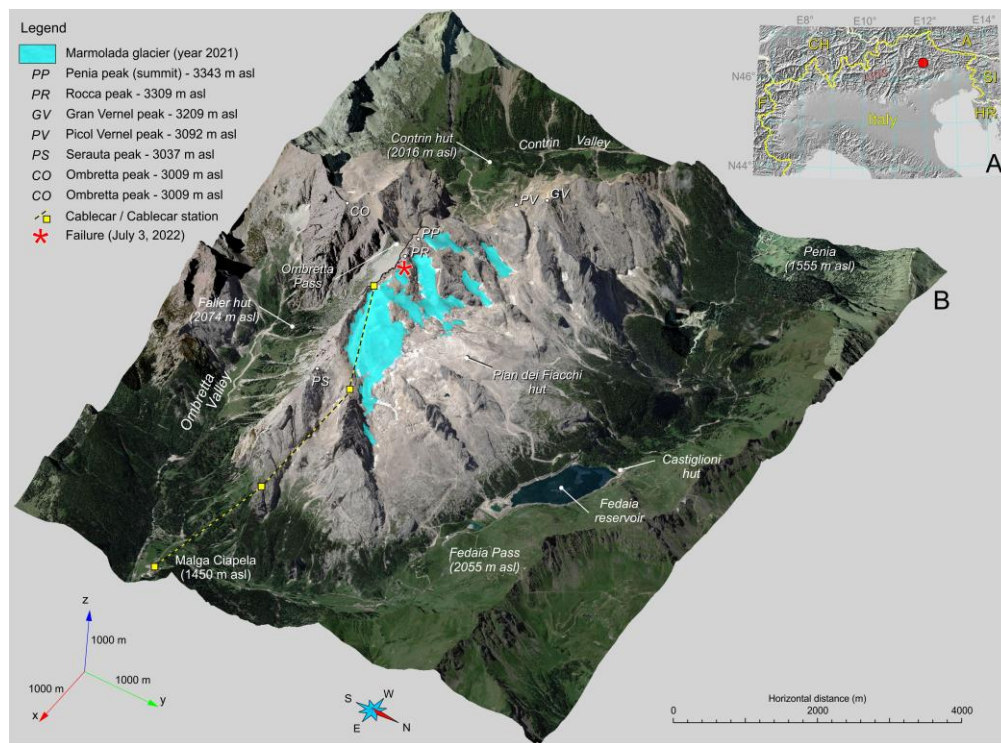


Figure 1: (A) Alpine chain with marked position of the Marmolada glacier in the north-eastern Alps in Italy. (B) Orthomosaic of satellite and aerial images of the Marmolada massif draped on a 5m by 5m digital terrain model. The lettering mark topographic and anthropic features. The failure site is marked with a red asterisk.

The magnitude of glacial collapse events (Alean, 1985; Dutto et al., 1991; Margreth et al., 2011; Gilbert et al., 2015; Lützow et al., 2023) that could be really harmful (Tian et al., 2017). The massive failure at Juuku pass in Kyrgyzstan, on July 9, 2022, involved an ice volume three times larger than the Marmolada case (Gascoin and Berthier, 2023) and fortunately occurred in an uninhabited landscape. Similar events are documented in other regions such as the French and Swiss Alps (Vincent et al., 2015; Bodin et al., 2017; Egli et al., 2021), in the Central Andes of Argentina (Falaschi et al., 2019) or in the Tibetan Plateau (Zhao et al., 2022). In Switzerland, the increased frequency of collapse events in retreating glaciers is attributed to ice thinning and reductions in glacier longitudinal ice flux (Egli et al., 2021). In the Aosta Valley, in the Italian Western Alps, and in many other alpine regions, the significant glacier retreat and the neo-formation of new glacial and

~~subglacial~~ lakes is posing further potential ~~risks~~treats such as outbursts and floods (Aggarwal et al., 2016; Haeberli et al., 2017; Huggel et al., 2002; Viani et al., 2020).

~~Icefalls and particularly rock ice avalanches (Noetzli et al., 2006; Bessette-Kirton and Coe, 2020; Chiarle et al., 2021) instantly release a large amount of energy, often without evident or with very few warning signs. Therefore, it is important to understand the causes that drive glacial instability to ensure better protection for downstream infrastructure and communities threatened by these severe hazards (Margreth et al., 2011; 2017).~~

Rock, rock-ice and ice avalanches from steep and cold mountain slopes often start from detachment zones affected by permafrost and cold or polythermal ice partially or totally frozen to its bed. These aspects can involve complex, climate-related thermo-hydraulic interactions (Haeberli et al., 2004a; Margreth et al., 2017), which must be considered in integrative hazard analyses and assessments (Allen et al., 2022). The large amount of energy instantly released during such failures (Noetzli et al., 2006; Bessette-Kirton and Coe, 2020), often with little to no evident warning signs, emphasizes the importance (Margreth et al., 2011; 2017) of identifying and understanding the key factors driving instability.

Despite the growing body of research on glacial collapses (Haeberli et al., 2004b; Pralong and Funk, 2006; Faillettaz et al., 2011), significant gaps remain in our knowledge regarding the interplay of various factors contributing to instability. In addition the variables controlling ice avalanche rheology are poorly known (Hutter, 1997; Faillettaz et al., 2015; Thibert et al., 2018).

This study aims to ~~partly~~partially address this gap ~~by focusing on~~with a dual objective: first, to identify the controlling factors of the collapse and classify them as predisposing or triggering; and second, to develop a numerical model to assess the relative influence of the different triggering factors. Multiple variables contributed to the catastrophic collapse of a portion of the upper Marmolada Glacier resulting in a devastating landslide that claimed several lives on July 3, 2022 (Chiarle et al., 2022; Olivieri and Bettanini, 2022; Bondesan and Francese, 2023). Variables such as permafrost degradation (Noetzli and Gruber, 2009; Rossi et al., 2022) and ice temperature probably played a primary role concerning the changing conditioning or predisposition and final triggering of the collapse. Presumably cold ice was surrounded by rocks in permafrost conditions and the top layer of permafrost, subject to seasonal thawing and freezing (i.e., This required the active layer) increased significantly during the anomalous summer of 2022. This occurrence affected several variables thus requiring the development of collection and reorganization of various data into a comprehensive digital database (see Supplementary Material for details) for better understanding the collapse. The database comprises a wide range of glaciological and meteorological records, along with historical and modern topographic maps, aerial and satellite imagery, geophysical surveys, and geological and geomorphological data collected and catalogued over the past two decades (Bondesan and Francese, 2023). The extent to which different factors contributed to the collapse can be evaluated by jointly analysing all this data providing valuable insights in understanding of glacier instability in a changing climate scenario to gain deeper insight.

There are few papers dealing with numerical simulation of glacial collapses (Jouvet et al., 2011; Logan et al., 2017; Löfgren et al., 2023) mostly due to the difficulties of inferring the appropriate physical and mechanical parameters of the ice and of

the ice-bedrock ~~ensemble~~contact and secondly because of the relatively rare occurrence of such events. The complex relationship between frictional sliding, water infiltration and tensional cracking (Faillettaz et al., 2011; Stearns and Van Der Veen, 2018) affects the effectiveness of deterministic approaches focused on forecasting hazards (Faillettaz et al., 2015).

We ~~report here about~~used a data-based back-analysis approach to infer the basal properties of the failure surface, in order to understand the critical interactions among englacial water (which altered temperature and get insight on the Marmolada collapse, pressure fields within the glacier and at its base), permafrost in rocks and sediments (Noetzli and Gruber, 2009; Rossi et al., 2022), the glacier's thermal state, and the possible existence of a thin, heterogeneous, and discontinuous layer at the ice-bedrock interface (Zoet and Iverson, 2020; Huang et al., 2024).

Numerical simulations were conducted by means of the Limit Equilibrium Method (LEM), which is routinely used for slope stability analyses (Saim and Kasa, 2023) in geotechnical engineering. Particular attention was given in defining ~~geometry and physical the~~ properties of the ice body, especially for those characterizing the interactions ~~withbetween~~ the materials surrounding ~~materials at~~ the ice-rock interface, as well as the geometry and physical properties of the ice body. The purpose was achieved by re-processing and carefully analysing both ~~existingpre-~~ and post-failure RES (Radio-Echo Sounding) profiles (Fretwell et al., 2013; Francese et al., 2019), which contributed to the conceptualization of the model for numerical simulations. Pre- and post-failure aerial and satellite imagery as well as aerial and terrestrial laser data further contributed to this development. Available meteorological data (air temperature, rainfall and snow cover) as well as cryospheric data (permafrost and ice temperature) were carefully analysed. Finally, seismological observations were included to assess the possibility of an earthquake triggering the failure.

~~By analysing changes in the glacier's geometry, surface features, and surrounding meteorological conditions, we aim to identify the controlling factors that contributed to its failure. We investigated diverse combinations of processes that may have led to glacier instability and collapse, including factors such as ice fracturing, basal lubrication, and subglacial water pressure. The complex interactions between the glacier's base and the underlying bedrock are also discussed. The factors addressed include basal temperature, water content, bedrock properties, permafrost, and till distribution, all of which had a significant impact on glacier stability.~~

The overall structure of the paper ~~could be outlinedis~~ as follows: ~~Section~~section 2 provides information on ~~the~~geology, morphology and glaciology of the Marmolada massif; ~~Section~~section 3 describes the various data types considered for the study along with the different processing methods; ~~The results-~~section 4 examines the temporal and spatial evolution of the factors responsible for the collapse and introduces the outcome of the numerical simulations used to evaluate the glacier stability; ~~Finally~~finally, an ample discussion is provided in section 5 on the importance of the various factors; their complex mutual relationships are modelled in the numerical simulations.

2 General Settings

The Marmolada Glacier (ID 941, Italian Glacier Inventory) represents a prominent location within the Dolomites in northeastern Italy (46°26'32" N, 11°51'53" E). This glacier drapes the northern flanks of the Marmolada massif (Fig. 1), the Dolomites' highest peak, reaching an elevation of 3343 m above sea level (asl). The signature of glacial landform shaping is clearly evident in the region (Carton et al., 2017). The underlying bedrock consists primarily of Ladinian limestone (Antonelli et al., 1990; Bosellini, 1996). The slope exposed to the North is in permafrost condition (Boeckli et al., 2012) and this is also confirmed by the temperature data collected at various depths in the nearby Piz Boè borehole. The Marmolada massif was designated a UNESCO World Heritage Site in 2009.

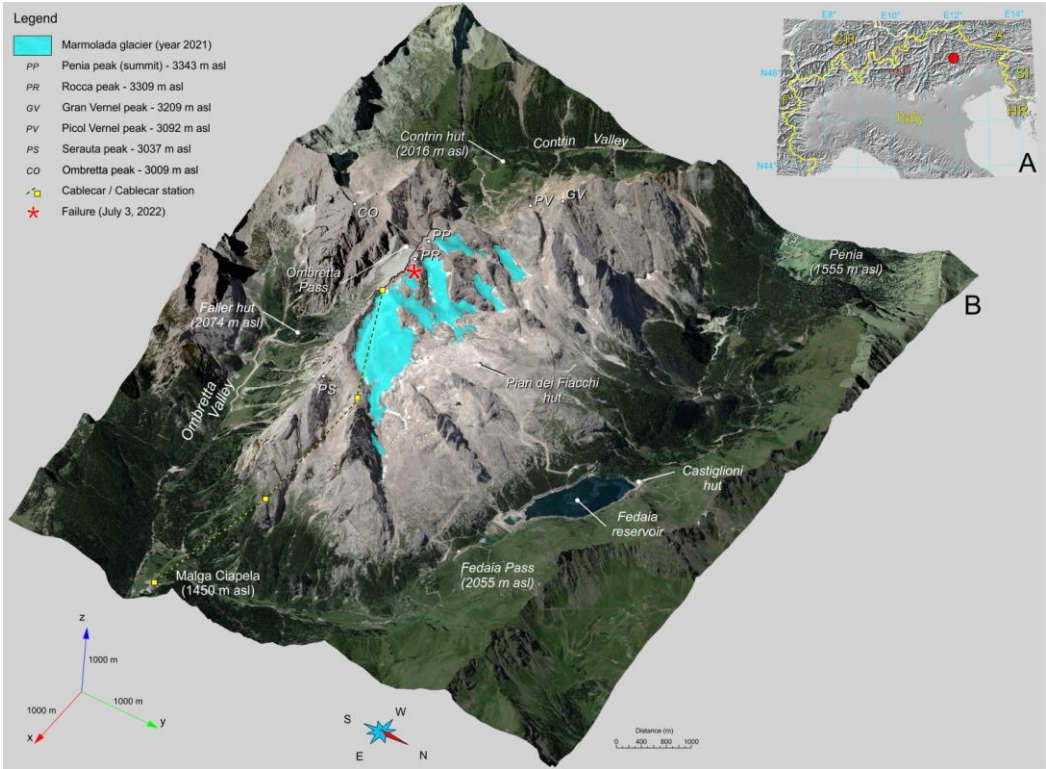


Figure 1: (A) Alpine chain with marked position of the Marmolada glacier in the north-eastern Alps in Italy. (B) Orthomosaic of satellite and aerial images of the Marmolada massif draped on a 5m by 5m digital terrain model. The lettering mark topographic and anthropic features. The failure site is marked with a red asterisk.

2.1 Geomorphological and geological framework

The Marmolada massif features a multifaceted geological structure dominated by Ladinian limestones (Calcare della Marmolada), which forms part of the Dolomia dello Sciliar formation (Antonelli et al., 1990; Bosellini, 1996). This formation encapsulates a rich record of the region's geological evolution, ranging from Palaeozoic volcanic activity to the development of Triassic carbonate platforms. Structurally, the massif exhibits a monoclinical arrangement, with bedding planes dipping northward, creating a stepped “cuesta” morphology. The massif is bordered by several significant valleys, including the Ombretta, Contrin, Avisio, and Pettorina valleys, which define its margins and modulate local glacial dynamics. A striking feature along the southern side is a nearly vertical fault line running through the Ombretta Valley. The signature of glacial landform shaping is clearly evident in the region (Carton et al., 2017). Moreover, the landscape bears abundant evidence of past glacial activity, with well-preserved, although small, moraine ridges, roches moutonnées, hanging valleys, and glacial cirques.

2.2 Climate

The climate over the Marmolada massif exhibits pronounced variations with elevation, reflecting the steep altitudinal gradients typical of high mountain environments. At mid-elevations—around 1500 m—the climate is classified as subalpine/subarctic (Köppen Dfc). In these zones, winters are long and cold, with average temperatures near -4°C , while summers are brief and mild, averaging between $+13$ and $+15^{\circ}\text{C}$; extreme summer temperatures can reach up to 28°C , and winter lows may drop to -15°C . As elevation increases, temperatures decline significantly. At approximately 2100 m the mean annual temperature is around 3.6°C , and by 3000 m it falls to roughly -2°C . Within the alpine tundra zone—typically spanning 3000 to 3300 m (Köppen ET)—even the warmest month barely exceeds the freezing point, with July temperatures ranging from $+2$ to $+4^{\circ}\text{C}$ and record winter lows nearing -21°C , as observed at Punta Rocca (3250 m) in January 2020. The slope exposed to the north is partially in permafrost conditions (Boeckli et al., 2012). Precipitation also varies with altitude, increasing from about 1000 mm at lower elevations to over 1500 mm above 2500 m. The surrounding valleys typically experience 60–70 days per year with measurable precipitation (≥ 1 mm), with a pronounced summer maximum driven by convective storms and frontal systems.

2.3 The glacier

The glacier exhibits a well-documented history of retreat, particularly accelerating in recent decades following the conclusion of the Little Ice Age – LIA (Bondesan and Francese, 2023; Crepaz et al., 2013; Santin et al., 2019). This retreat has resulted in the fragmentation of the glacier into distinct sectors, with the Main Glacier (ID 941: CGI-CNR, 1962) representing the central unit. The Punta Penia Glacier (ID 941.2) flanks the massif's highest peak to the north, while the Central Glacier (ID 941.1) lies below Punta Penia.

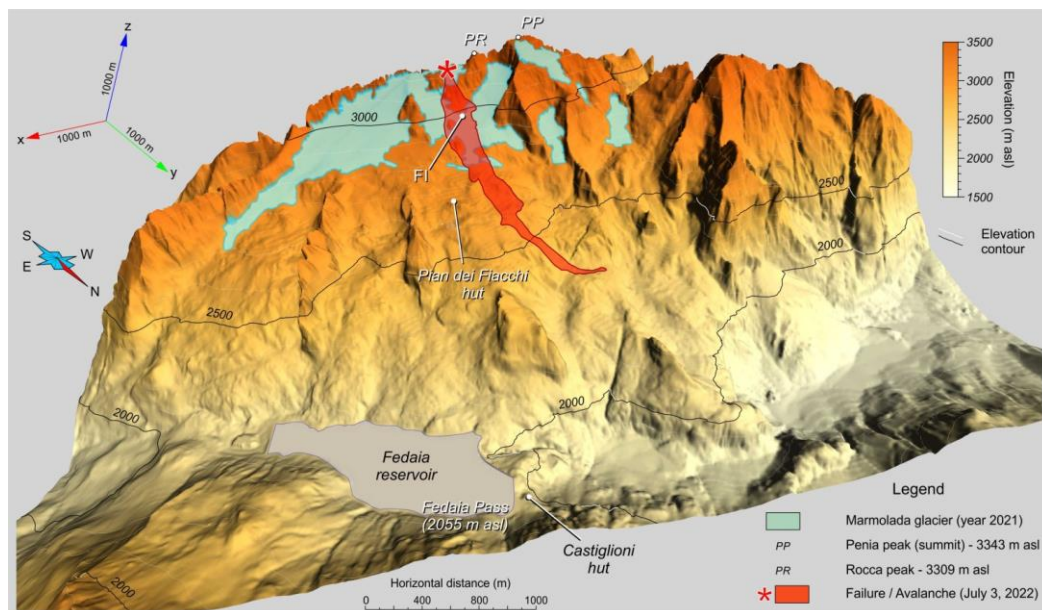


Figure 2: DTM of the Marmolada massif at the time of failure showing the flow path of the ice avalanche which extended from 3213 m asl to 2300 m asl. FI indicates the position of the first vertical impact of the collapsed mass on the lower glacier surface. The ice avalanche was only 250 meters away from the hut "Plan dei Fiacchi", which was already destroyed by a snow avalanche in 2020.

A comparison of glacier inventories highlights the dynamic nature of the Marmolada glacial system. The 1962 inventory (CGI, 1962) identified up to eight glaciers within the massif. Subsequent years, however, witnessed significant changes, including the disappearance of some glaciers and the fragmentation of others. The most recent inventory (Smiraglia and Diolaiuti, 2016) streamlined the number of glacial units to seven and implemented revisions to their boundaries. The collective glacial front currently extends nearly 3 km.

It is worth highlighting that during World War I (WWI) the Alpine glaciers offered sufficient thickness to accommodate tunnels and subterranean defenses/defences, with the Marmolada Glacier housing about 300 Austro-Hungarian soldiers (Bondesan et al., 2015). By 2004, the maximum glacier thickness had already diminished to around 45 m, while other glaciers experienced even more drastic reductions (Pasta et al., 2005).

2.24 The 2022-collapse

The collapse in the early afternoon- of 3 July 2022 occurred at an altitude of approximately 3200 m and affected a small, isolated glacier or glacieret located in a small cirque just below Punta Rocca (3309 m asl). This massive ice body was about 160 m wide, 140 m long and 30° steep when it collapsed. The failure occurred along a large median traverse crevasse and the detachment area was shaped like a rectangle of 70 m by 90 m leaving an overhanging ice wall of about 23 m (Bondesan and Francese, 2023). The failed mass ran over the normal route to the summit (Punta Penia – 3343 m asl), overwhelming many of the mountaineers climbing at that time and resulting in 11 people killed and seven severely injured. The avalanche reached a maximum speed of 80-90 km/h and ~~traversed~~travelled 2.3 km (Fig. 2) before ending in a lateral valley at an elevation of 2330 m asl.

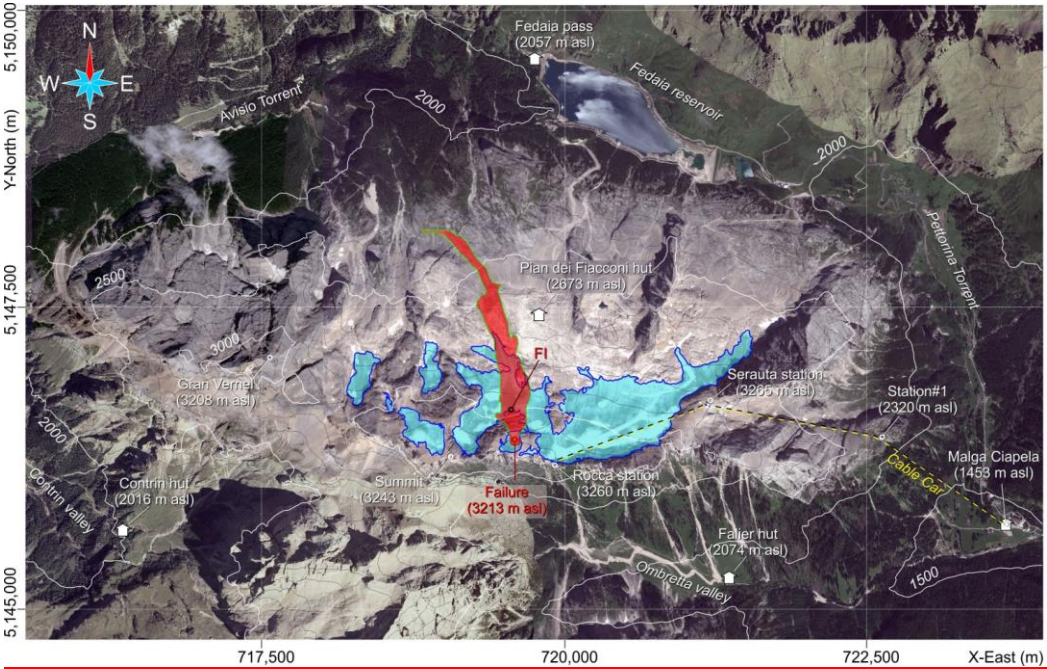


Figure 2: Satellite imagery of the Marmolada massif showing the flow path of the ice avalanche which extended from 3213 m asl to 2300 m asl. FI indicates the position of the first vertical impact of the collapsed mass on the lower glacier surface. The ice avalanche was only 250 meters away from the hut "Pian dei Fiacconi", which was already destroyed by a snow avalanche in 2020.

At the time of the collapse, crevasses were completely water-filled and approximately 11,000 m³ of water were suddenly discharged with the failed mass (Bondesan and Francese, 2023). The flowing mass along its travel path discharged the

subglacial till and also the loose glacial debris that had been deposited at the front in recent decades. A cloud of droplets, fine ice crystals, ice fragments, and debris, forming the flowing mass, widened over a front larger than 500 m and covered a surface area of approximately 350,000 m². The event was recorded by the seismic network and the resulting magnitude ~~could~~ was estimated as 0.6 ±0.3.

3 Data, methods and concept

The multi-disciplinary approach of the present study involves several research topics and different data types along with the specific methods of data acquisition, analysis and processing. ~~Predisposing and triggering factors, as well as the July 2022 failure were analysed and discussed by aid of:~~ Data were gathered in a large database comprising a wide range of glaciological and meteorological records, along with historical and modern topographic maps, aerial and satellite imagery, geophysical data, geological and geomorphological data collected and catalogued over the past two decades (see Supplementary Material for details).

- ~~– meteorological time series (temperature, rain/snowfall, snow thickness);~~
- ~~– permafrost and ice temperature data;~~
- ~~– aerial and satellite imagery;~~
- ~~– aerial and terrestrial laser scan measurements;~~
- ~~– active and passive geophysics;~~
- ~~– glaciological and geomorphological observations.~~

~~Major predisposing factors included: bedrock inclination, morphology of the niche hosting the glacieret; overall evolution of glacier and permafrost distribution in the Marmolada massif; englacial water network; progressive weakening of the ice body caused by crevasses.~~

~~Short term conditioning or predisposition and final triggering factors may predominantly relate to the anomalously high air temperatures during late spring and early summer of the year 2022, combined with the blocking of subglacial drainage by permafrost. As a result, a significant water production by progressive intensification of surface melt, accumulated inside the cold ice body of the glacieret. This effect of prolonged heating must be seen in relation to longer term conditioning/predisposition aspects such as the thawing and refreezing of the ground active layer, combined with changing of the plasticity conditions of a thin, basal ice layer located close to the ice-bedrock interface.~~

3.1 Historical glacier evolution and recent meteorological and glaciological data

Time-lapse reconstruction of the glacier geometry (~~1888~~1880-2021) was ~~based on high resolution geophysical mapping of a two-step process. Initially,~~ the subglacial bedrock topography was determined using RES and on digital processing of laser measurements, where it was covered by ice and exposed, respectively. Subsequently, the glacier surface was reconstructed at different time periods using digitization techniques applied to historical and modern maps along with analysis and processing

~~of maps, digital maps,~~ aerial and satellite images, and ~~finally,~~ for the most recent ~~models, using periods,~~ light detection and ranging (LIDAR) and terrestrial laser scan (TLS) data. ~~Calculations~~The top (ice surface) and bottom (bedrock surface) were ~~carried out~~computed using aligned 5 m by 5 m meshes for grids, ensuring that both the glacier top and bottom surfaces share the same node coordinates to simplify calculations. A total of 12 triplets “area, surface-area, volume” could be calculated from the set of available data. Volume error estimates range from a maximum of 25% in the year ~~1888~~1880 to a minimum of 7% in the year 2021. A comprehensive summary of the used data is listed in the Supplementary Material along with the computational error theory.

Available meteorological data were processed to compute yearly and monthly averages for the reference period 1900-2020 and for the year 2022. Nine weather stations located around the Marmolada massif (see Supplementary Material for the location map) were considered to provide daily time series of air temperature (min, avg. and max), snow thickness and precipitation. Among these stations, Punta Rocca (PRC) is the closest to the failure site as it is located at 3200 m asl at a distance of approximately 400 m. Missing values were reconstructed (see Supplementary Material for details) using a variety of techniques (Bondesan and Francese, 2023). The periodical observations on the glacier front, carried out by the Italian Glaciological Committee (IGC), were also ~~implemented~~considered in the form of yearly time series to further estimate retreat rates for the period 1985-2023.

3.2 Permafrost and ice temperature data

The permafrost information for the study area was inferred from the 25 m x 25 m model for the Alpine chain (Boeckli et al., 2012; Gruber, 2012) and from the nearby borehole of the Piz Boè (PZB) equipped with operational temperature sensors since the year ~~2011~~2010 (Crepaz et al., 2011).

The model devised by Boeckli (2012) is based on Mean Annual Air Temperature (MAAT) of the period 1960-1990. PZB data ~~are crucial to extend the validity of confirm~~ this model; ~~and provide some information about ongoing permafrost warming in the region.~~ The PZB borehole ~~was drilled in 2011~~is located at 2905 m asl, ~~which is about~~approximately 300 m lower than the failure site, on the eastern slope of the Piz Boè massif, about 8 km to the NNW.

Ice temperature estimates for the Marmolada glacier were inferred by using and updating published data (Haeberli et al., 2004a; Fischer et al., 2022). In early August 2024, a borehole (~~Fig. 9~~) was drilled in the residual ice body just above the failure scarp using a steam-based drill bit and was equipped with four temperature sensors. The sensors were located ~~at just above~~ the ice-bedrock interface (at a depth of 11.5 m below the surface) and at -2.5 m, -5.5 m, -8.5 m from the ice surface respectively (~~Fig. 12~~).

3.3 Satellite imagery ~~and Seismology~~

Pre- and post-event satellite images were taken by the Pléiades Neo constellation (AIRBUS Defence & Space), pansharpened, pancromatic 30 cm native Ground Sample Distance (GSD); 6 multi-spectral channels, 1.2 m native GSD. Pancromatic sensors span from ~450 nm to ~800 nm; multispectral sensors span from ~380 nm to ~880 nm. A pre-failure

270 shot was taken on Jun 20, 2022, h 10:06:67 GMT while two post-failure shots were taken on Jul 8, 2022, h 10:02:07 GMT and Jul 9, 2022, h 10:20:21 GMT respectively.

The resolution of each normalized band was increased by a factor 3 to enhance readability on a 4k display; a Lanczos-3 interpolation kernel was used, since it provides a good balance between visual image quality and the introduction of undesired spectral components (Madhukar et al., 2013). The high frequency content of each normalized band was then enhanced by subtracting from the data the output of a linear Gaussian filter having standard deviation equal to 0.9 and a gain factor of 2. The Normalized Difference Water Index (NDWI) was finally calculated computing the difference between the NIR (Near InfraRed) and green bands (McFeeters, S.K., 1996).

3.4 Seismology

280 The seismicity of the area was inferred analysing data provided by the NOAN - North-Eastern Alps Network of OGS (CRS, 2024; Rebez et al., 2024). The seismic stations are located south-east and north-west of the glacier (~~Fig. 13A~~). The failure-generated earthquake was located using an automatic routine based on the HYP071 algorithm (Lee ~~&~~ and Lahr, 1975) that mostly uses logic and arithmetic resulting in high computational efficiency. Additional information was retrieved via the filter picker algorithm (Lomax et al., 2012). Event onset detection was ~~late~~ later refined via a detailed picking of the body wave phases (in this case P-wave only) in the records of six of the surroundings NOAN stations. The localization of the event appears accurate as it corresponds to the real position with an error of about 2km (~~Fig. 13B~~) despite there being no NOAN stations in the north-east quadrant.

3.4.5 Geometry of the failure zone

290 At the collapse site, surface morphology was reconstructed immediately after the event mostly using UAV (Unmanned Aerial Vehicle) LIDAR and TLS data while the buried bedrock geometry was reconstructed using a combination of pre- and post-failure geophysical profiles (~~Fig. 9~~). The residual ice surface and the outcropping bedrock were modelled using a 0.05 m by 0.05 m mesh. Post-failure RES profiles were collected in October 2022 just above and around the failure edge. The profiles were collected using a Subsurface Interface Radar (SIR) 4000 equipped with 200 MHz and 500 MHz antennas (~~Fig. 9~~). Some additional scanlines, located around the failure edge, were recovered from the 2004 RES campaign (Pasta, 2004). These data required to be converted back to amplitude time series (see Supplementary Material for details) prior to be geo-referenced and re-processed. Seismic Unix (Stockwell; 1999; Picotti et al., 2017) was utilized for the purpose. The buried bedrock response was then interpolated over a 1.0 m grid. This set of RES profiles was ~~functional~~ used to the reconstruction of the geometry and physical properties of the ice-rock interface ~~below~~ beneath the failed glacier ice mass.

3.5 Glacieret stability and back analysis

300 ~~The~~ In a simplified way, disregarding the progressive failure, the stability of the glacieret was assessed along a representative 2D cross section by means of the Limit Equilibrium Method (LEM), which is routinely used for slope stability analyses in

geotechnical engineering. LEM ~~considers~~ is based on the ~~equilibrium-of~~ principle that a rigid body, such as the slope or the glacier mass (in this case, made by ice), will fail when the driving forces, due to gravity and external loads, exceed the resisting forces, due to shear strength along a ~~slip~~ predefined failure surface of any shape. From this equilibrium, the driving. In the present study, the main driving force is the weight of the unstable mass, but further destabilising actions, represented by hydrostatic forces in various configurations, were considered, as will be explained later. The calculated driving actions are ~~calculated and~~ compared to the available resistance, which is calculated according to Mohr-Coulomb's shear strength criterion. From this comparison, Referring to this shear strength criterion, specific strength parameters are assumed for the involved materials, i.e. ice and rock. The method considers the equilibrium of forces and/or moments along a predefined failure surface. The stability is expressed through the Factor of Safety (FoS) ~~is derived. FoS), which~~ is the ratio between resisting and driving actions:

~~, assuming that the mass is in a condition of incipient motion.~~ The lower the FoS the higher the possibility of instability and collapse. If FoS is less than one, the slope is unstable and FoS = 1 is assumed as the limit stability value. ~~Among the variety of methods of slices available to determine FoS, three different methods were used in this analysis, namely, Janbu simplified — J (Janbu et al., 1956), Janbu corrected — Jc (Janbu, 1954; 1973), and GLE/Morgenstern-Price (Morgenstern and Price, 1965).~~

~~The ice shear strength parameters (cohesion and friction angle) were inferred by the available literature. Seaki et al., (1985) conducted a multi-temporal analysis on cohesion and friction angle of sea ice over a six-year period and in different temperature conditions. Tang et al.,~~ In the framework of LEMs, slice methods are used to analyse the stability of slopes by dividing the unstable mass into vertical slices. These methods evaluate the equilibrium of each slice while considering forces acting within and between them. Each slice is analysed separately, considering its weight, normal force, shear force, and inter-slice forces. The stability of the entire slope is determined by calculating FoS based on shear strength and equilibrium conditions. ~~Among the variety of methods of slices available to determine FoS, three different methods were used in this analysis, namely, Janbu simplified - Js (Janbu et al., 1956), Janbu corrected - Jc (Janbu, 1954; 1973), and GLE/MP (General Limit Equilibrium; Morgenstern and Price, 1965), by using the SLIDE2 software from Rocscience®. In particular, the Janbu's simplified method is based on equilibrium of slices along two orthogonal directions. It assumes only horizontal interslice forces and thus the interslice shear forces are zero (Janbu et al., 1956). The Janbu corrected FoS is obtained by multiplying the Janbu simplified FoS by a modification factor, which is function of the slope geometry and the strength parameters of the material. The Janbu modification factor is an attempt to compensate for the fact that the Janbu simplified method satisfies only force equilibrium and assumes zero interslice shear forces. Instead, GLE/Morgenstern-Price method assumes a half sine function to define interslice forces and it is based on a complete equilibrium of slices along two orthogonal directions and with respect to rotation. This is why this method is 'rigorous'. It should be noted that, although the failure surface was fully known, in the LEM model it was defined only at its base (i.e., at the ice-rock interface), with the aim of comparing the predicted and observed failure scarp within the ice mass.~~

The parameters considered for the stability analysis are cohesion and friction angle, defining the shear strength of the glacial mass, and the underlying bedrock substrate.

(2024) carried out direct shear tests on polycrystalline ice at temperatures ranging between -0.5 and -40 °C, obtaining Mohr-Coulomb shear strength parameters. The upper portion of the Marmolada glacier could be probably considered polythermal, at least above 3000 m of elevation (Bondesan and Francese, 2023; Boeckli et al., 2012). Similar ice temperature conditions were encountered during summer campaigns in the Ortler-Cevedale massif approximately at the same elevation (Francese et al., 2019). In addition, data from PermaNet (Crepaz et al., 2011), a long-term permafrost monitoring project confirm these temperature conditions. Based on the above considerations and known ice temperatures of Alpine sites (Fig. 8B), an ice temperature ranging from -2.5 °C to -4 °C was selected to estimate the appropriate parameters and carry out the numerical simulations. These initial values were confirmed by borehole temperature measurements in the ice collected in August, 2024 right at the failure site (see Section 3.2).

Equivalent parameters for the Marmolada limestone were also inferred from the available literature and particularly from a systematic classification of the Dolomitic rocks (Longo, 2018) based on the RMR – Rock Mass Rating System (Bieniawski, 1989).

Additional and more detailed information on data and methods can be found in the Supplementary Material and in Bondesan and Francese (2023) in both the paper and the appendix.

4. Results

4.1 ~~Overall evolution~~Evolution of the Marmolada glacier

Field measurements ~~conducted by the IGC~~available since the early Eighties (Fig. 3A and Fig. 3B) clearly show the progress of the retreat. Distance and elevation measurements are referred to specific benchmarks located in the western, central and eastern sector respectively. Retreat in the eastern sector is not as drastic as in the central and western sectors. The averaged ~30-year trend clearly exhibits three different gradients for both distance and elevation. The sudden jump occurring in the year 2000 is caused by a partition of the glacier in correspondence with a vertical step in the outcropping bedrock. The three gradients could be also recognized in the graph reporting the lowering of the glacieret's surface (Fig. 3C) right at the failure site.

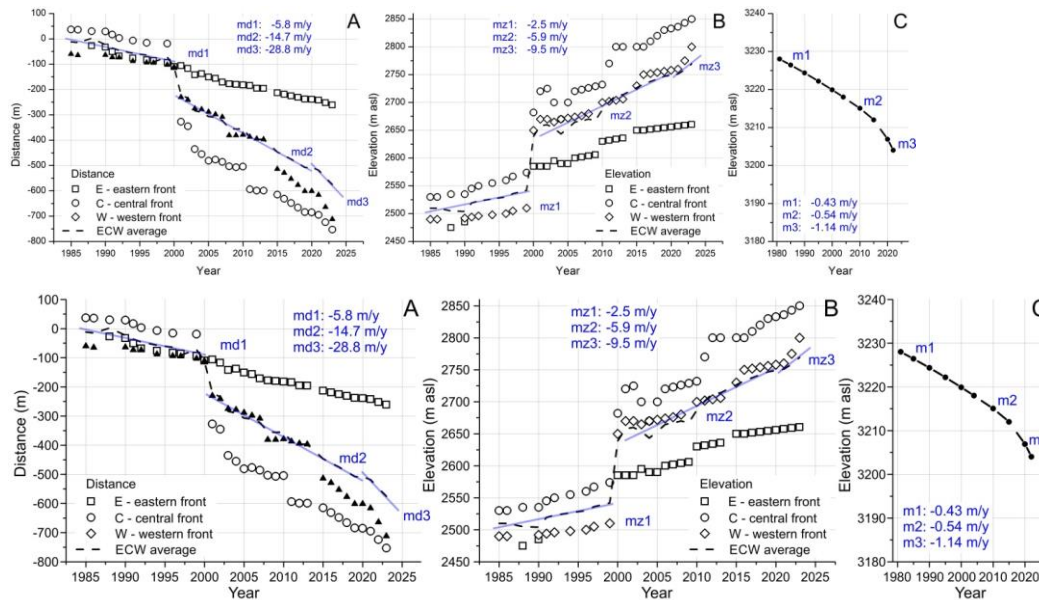


Figure 3: Front migration and surface ablation measurements for the Marmolada glacier. A reference point was available for each of the different glacier sections (see also Fig. SM 4). (A) Inclined distance taken from the glacier front over the period 1985-2023. (B) Vertical distance taken from the glacier front over the period 1985-2023. (C) Progressive lowering of the glacier surface in the period 1980-2022 computed right at the point of collapse.

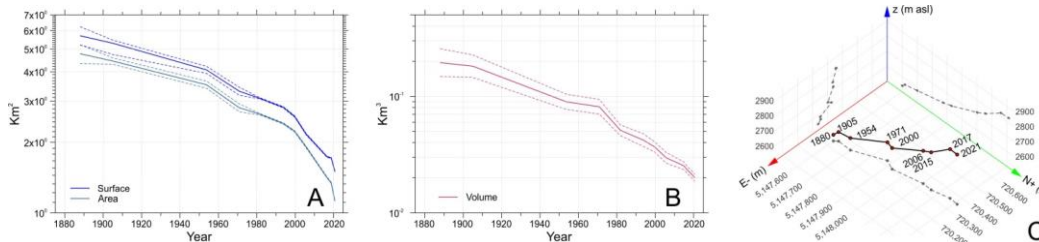


Figure 4: Over a century (1888-2021) of retreat of the Marmolada glacier as for area, surface, volume and front migration obtained via GIS/CADD analysis and processing. (A) Area and surface reduction, the interval of confidence is represented by dashed lines. (B) Volume reduction, the interval of confidence is represented by dashed lines. (C) Tri dimensional spatial migration of the centroid of the glacier front (the centroid was calculated as the arithmetic mean of the xyz coordinates of the nodes in the polyline representing the glacial front in different years).

Area, surface and volume, computed for 12 time frames since 1888, show the longer-term retreat trend (Fig. 4A, Fig. 4B). The space migration of the centroid of the glacial front is also a good indicator of the retreat trend (Fig. 4C). After approximately one century (1982) the surface area was $53.9 \pm 0.7\%$ of the initial surface, while the volume was $26.2 \pm 12.5\%$ of the initial volume. In the year before the failure (2021) the surface was $26.4 \pm 0.5\%$ of the initial surface, while the volume was $10.2 \pm 7.5\%$ of the initial volume. In a period of about 130 years the Marmolada glacier lost approximately 73% of the surface area and 90% of the volume.

This overall evolution of the Marmolada glacier, in terms of surface reduction and mass balance, shows a trend similar to that of the other European glaciers (Bondesan and Francese, 2023) and glaciers worldwide (Dyurgerov and Meier, 2004).

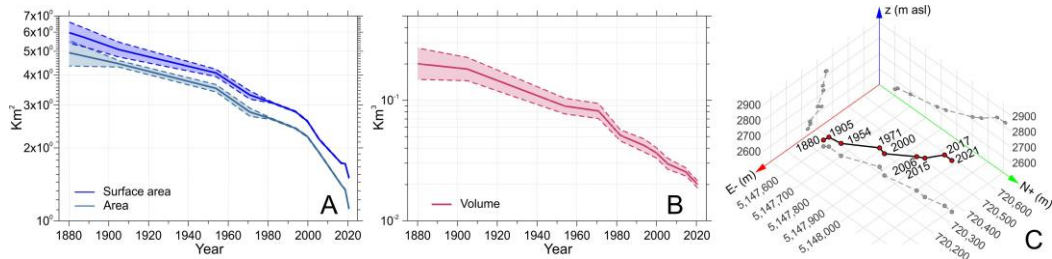


Figure 4: Over a century (1880-2021) of retreat of the Marmolada glacier as for area, surface, volume and front migration obtained via GIS/CADD analysis and processing. (A) Area and surface reduction, the interval of confidence is represented by dashed lines. (B) Volume reduction, the interval of confidence is represented by dashed lines. (C) Tri-dimensional spatial migration of the centroid of the glacier front (the centroid was calculated as the arithmetic mean of the xyz coordinates of the nodes in the polyline representing the glacial front in different years, see SM in Bondesan and Francese, 2023 for details).

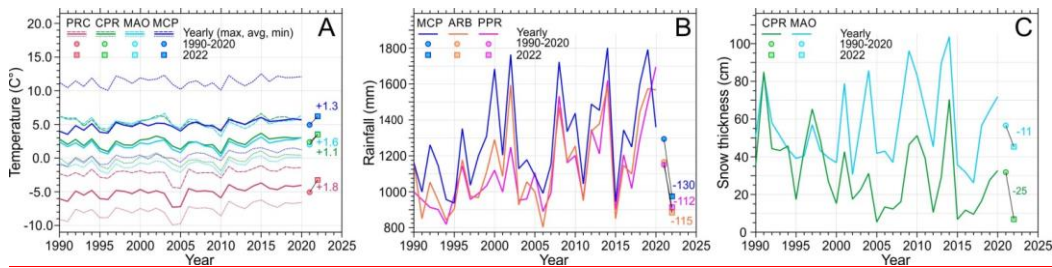


Figure 5: Annual meteorological variables pertaining to the ~30-year reference period 1990-2020, see Supplementary Material for station code and position; PRC is located at 3250 m asl and it is the closest to the failure site (~400 m); in each panel is graphed: the annual curve; the ~30-year average (circle mark); the 2022 value (square mark). The numbers on the right of each panel represent the Δ between the ~30-year average and the 2022 value. (A) Minimum, maximum and average temperature curves, Δ were computed for the average values only. (B) Rain/snowfall. (C) Snow thickness. See text for further details.

395 **4.2 Meteorological variables and permafrost conditions**

The year 2022 proved to be particularly anomalous as for temperature, rainfall/snowfall and snow cover in comparison to the ~30-year period 1990-2020.

The annual temperatures for the year 2022 showed a marked positive shift in comparison with the 30-year average for the period 1990-2020. The positive shift of average temperature (labeled avg in Fig. 5A) was +1.8°C, +1.1°C, +1.6°C and +1.3°C for the stations PRC, CPR, MAO and MCP respectively (Fig 5A). The positive shift for the station PRC is particularly high and it is also higher considering the positive shift of the minimum value that happened to be equal to +1.9°C. Contrarily annual ~~precipitations~~precipitation for the year 2022 (Fig. 5B) showed a negative shift of about 120 mm (average of three stations) corresponding to a reduction in annual ~~precipitations~~precipitation of approximately 22%. Finally considering the snow thickness for the year 2022 (Fig. 5C), a negative shift of about 18 cm (average of two stations) was
405 observed, corresponding to a reduction in annual snow thickness by about 41%.

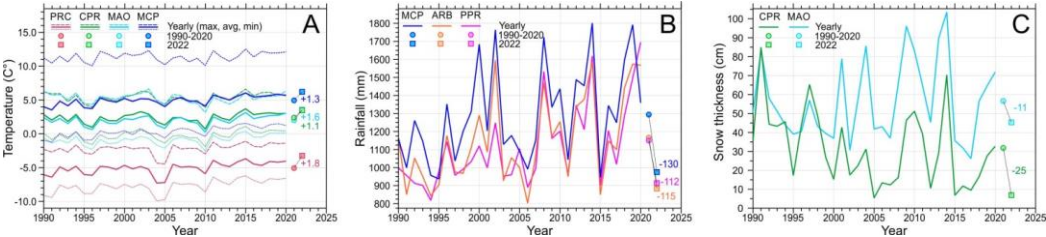
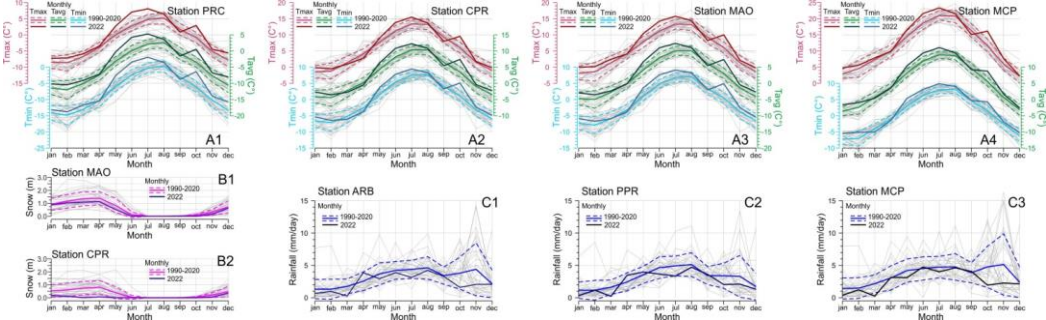


Figure 5: Annual meteorological variables pertaining to the ~30-year reference period 1990-2020, see Supplementary Material for station code and position. PRC is located at 2250 m a.s.l and it is the closest to the failure site (~400 m); in each panel is graphed the annual curve, the ~30 year average (circle mark), the 2022 value (square mark). The numbers on the right of each panel represent the Δ between the ~30 year average and the 2022 value. (A) Minimum, maximum and average temperature curves, Δ were computed for the average values only. (B) Rain/snowfall. (C) Snow thickness. See text for further details.

A more accurate analysis could be done considering the monthly time series (Fig. 6). Data from the year 2022, similarly to yearly time series analysis, are compared to the 30-year period 1990-2020.



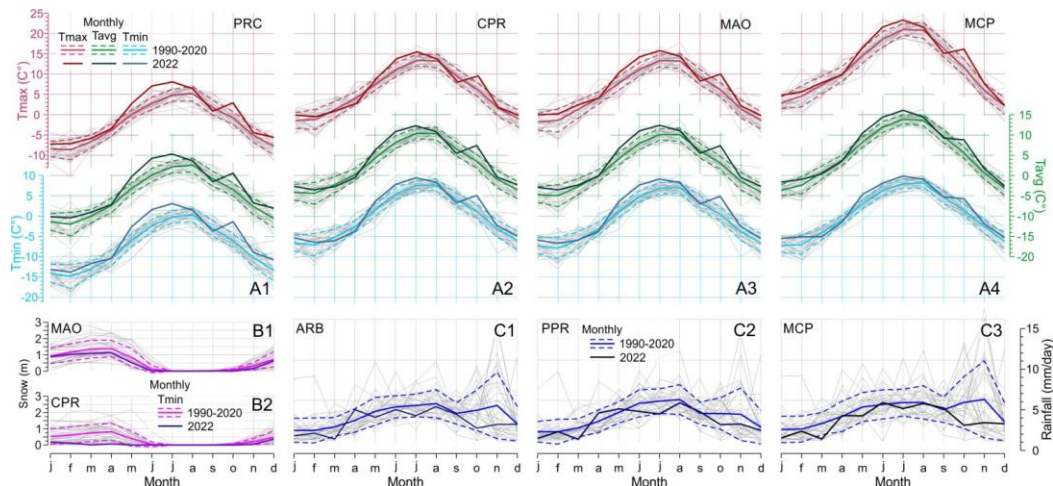


Figure 6: Monthly meteorological variables related to the ~30-year reference period 1990-2020, see Supplementary Material for station code and position: PRC is located at 3250 m asl and it is the closest to the failure site (~400 m); in each panel is graphed: the monthly curve per each year (solid line in gray color); the ~30-year average (solid line); the standard deviation interval (dashed line); the monthly curve for the year 2022. (A) Minimum, maximum and average temperature curves. (B) Snow thickness. (C) Rain/snowfall. See text for further details.

Monthly temperature averages (Fig. 6A) clearly show how during the period May-July 2022 the recorded temperatures fall outside the standard deviation range for the 30-year reference period as for minimum, average and maximum values. It is worthwhile to notice that the values recorded at the PRC station, during the year 2022, reach the absolute maxima for the period May-July (Fig. 6A1). With regard to rainfall/snowfall (Fig. 6C) the 2022 values fall within the standard deviation range for the reference period although the curve is very close to the lower bound.

Snow cover during winter and spring of the year 2022 was particularly thin (Fig. 6B). The thickness value was just below the average (Fig. 6B1) north of the Marmolada glacier (MAO station) and approximately along the lower bound of the standard deviation interval (Fig. 6B2) south of the Marmolada (CPR station).

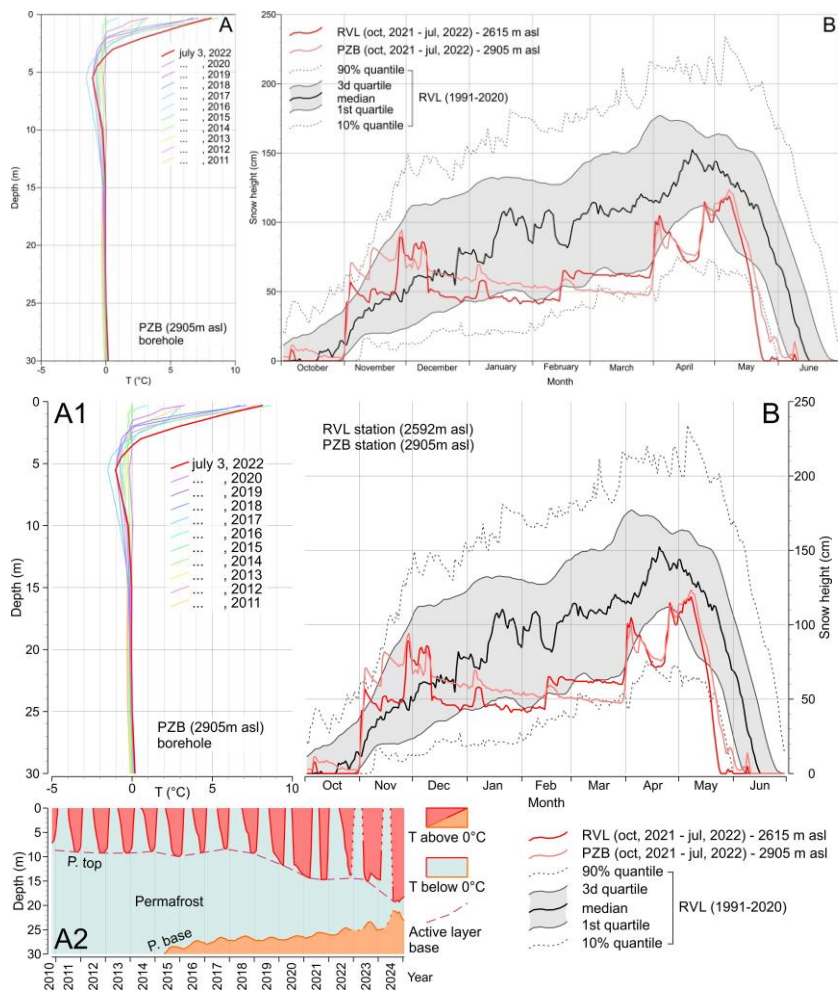
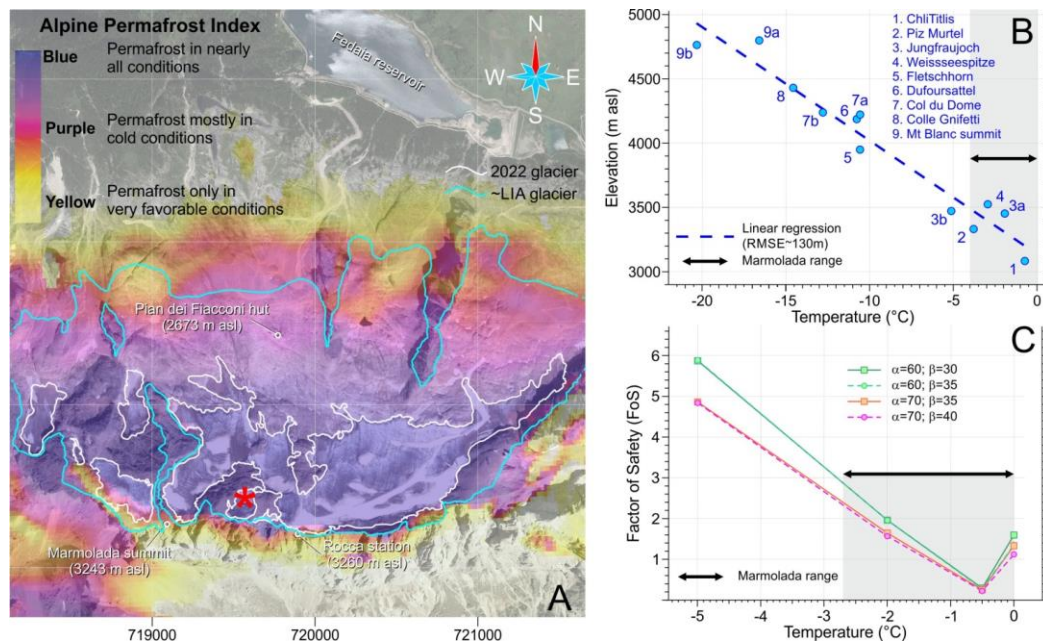


Figure 7: **(A1)** Borehole temperature measurements collected on July 3 of each year since 2011 at the PZB station (see Supplementary Material for station code and position). **(A2)** Temporal evolution of the depths of the active layer base (P. top) and the permafrost base (P. base) from October 2010 to December 2024 at the PZB station. **(B)** Seasonal snow height at RVL and PZB stations in 2022 in comparison to the average snow height of the period 1990-2020 measured at the RVL station (see Supplementary Material for station code and position).

440 Snow cover during winter and spring of the year 2022 was particularly thin (Fig. 6B). The thickness value was just below the average (Fig. 6B1) north of the Marmolada glacier (MAO station) and approximately along the lower bound of the standard deviation interval (Fig. 6B2) south of the Marmolada (CPR station).



445 **Figure 8: (A) Modeled permafrost occurrence in the Marmolada massif (after Boeckli et al., 2012). The detachment zone is marked with a red asterisk. A strong contrast exists between the sun exposed, ice free south wall with its warm, probably non-frozen rocks, and the cold north slope oriented away from the sun and with widespread permafrost. The glacier boundary in July 2022 is outlined with a white line while the line in cyan color outlines the boundary of the LIA glacier. (B) Ice temperature measured at different sites in the Alps (redrawn from Haeberli et al., 2004a and updated including the Weissseespitze from Fischer et al., 2022). The guessed thermal conditions at the Marmolada detachment fit the linear regression curve. The graph is indicative as this temperature information is from different times and obtained with different methods/accuracies. (C) Overall stability of frozen rocks with ice filled clefts as a function of rock temperature from centrifuge experiments for four sets of slope angle “α” and inclination of discontinuity “β” (redrawn from Davies et al., 2001).**

455 Analysis of snow thickness was extended including daily time series from two additional stations (Fig. 7B) to overcome local variability uncertainty (exposition, wind, etc.). These stations are located a few kilometers north (PZB) and north-east (RVL) to the Marmolada glacier. Snow cover in the period October, 2021 – June, 2022 is compared to snow cover during the 30-year reference period 1991-2020 recorded at the RVL station. The snow-cover curves, in the first months of the year 2022 are way below the average and close to the 10% quantile limit for both the two stations. In early April and early May the curves enter the first quartile of the reference period but in late May the curves drop to almost zero thickness falling

460 below the 10% quantile. These data show clearly how in the year 2022 the snow melted one month early and that at an elevation of 3000 m asl there is very little snow left after ~~the mid-of~~ June. The negative shift of the RVL curve depends mostly on its lower elevation.

465 Permafrost occurs around the detachment zone and in ice-free terrain. It was most probably colder and reached lower altitudes during the LIA. Due to ongoing global warming, permafrost rocks are warming rapidly (Biskaborn et al., 2019, Noetzli et al. 2024). Permafrost data were not directly measured for the Marmolada massif as there are no boreholes or other sensor installations. The nearest sensor is located in a borehole (station PZB) in the Sella massif (See Supplementary Material for the location map) at an elevation of 2905 m asl (Fig. 7A) and it is operational since the year 2011 (Crepaz et al., 2011) continuously sampling the temperature. Temperature values collected in early July of each year were graphed beginning from the summer 2011. On 3 July 2011, permafrost in carbonate rocks below an active layer of about 2 meters was already near 0°C at the depth of zero annual amplitude (zaa, ~15 m) and below but still reached beyond 30 m, while in 470 2022 the permafrost base is at about 25 m below the surface and the active layer is around 3 meters.

The surface temperature on July 3rd 2022 is near the maximum of this time series. The temperatures at depth close to 0°C and the near zero temperature gradient/heat flow suggest that there is long term warming and degradation of permafrost going on at the PZB site and in the region as it is generally characteristic for permafrost on Earth because of the ongoing global warming (Biskaborn et al., 2019). Together with the modelled permafrost occurrence (Boeckli et al., 2012; Gruber, 2012), this suggests that permafrost occurs around the detachment zone, although degraded, in nearly all conditions (Fig. 8A). It should be finally noted that permafrost in ice-free terrain was colder and reached lower altitudes during the LIA.

475 The PZB borehole temperature at a warm, east-exposed site documents a thick active layer and a nearly-isothermal permafrost layer with temperatures ranging between -1.5°C and 0°C in 2022 (Fig. 7A1). Moreover, the temperature starts to increase above 0°C at about 25 m depth (Fig. 7A1), marking the base of permafrost. Despite the permafrost conditions at the Marmolada detachment site are quite uncertain, being this site north-exposed and thus colder than the PZB site, the near-surface temperature should most likely be around about -2 °C.

480 Analysis of the temperature time series from the PZB borehole (Fig. 7A2) reveals that the base of the permafrost has risen from approximately 30 m below the surface in 2014–2015 to around 22 m below the surface in 2024.

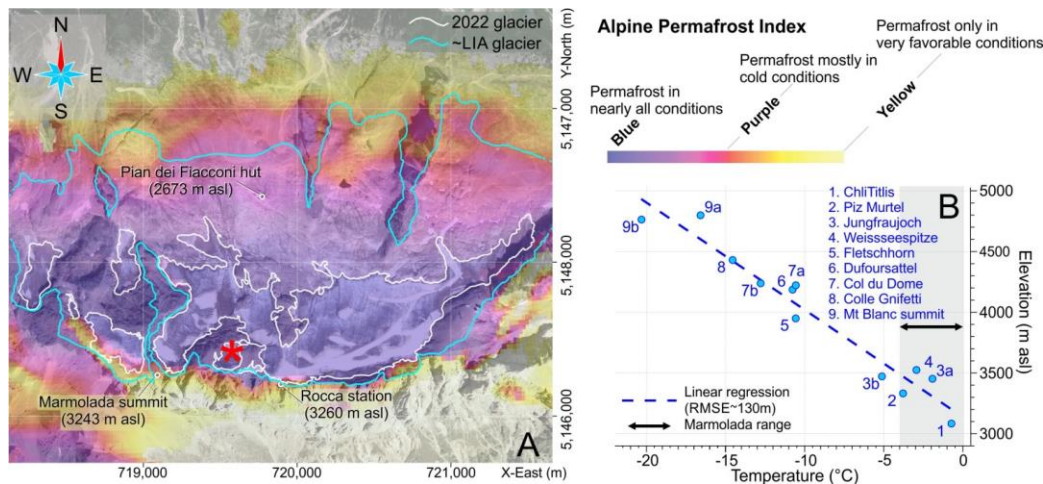


Figure 8: (A) Modelled permafrost occurrence in the Marmolada massif (after Boeckli et al., 2012). The detachment zone is marked with a red asterisk. A strong contrast exists between the sun-exposed, ice-free south wall with its warm, probably non-frozen rocks, and the cold north-slope oriented away from the sun and with widespread permafrost. The glacier boundary in July 2022 is outlined with a white line while the line in cyan colour outlines the boundary of the LIA glacier. (B) Ice temperature measured at different sites in the Alps (redrawn from Haeberli et al., 2004a and updated including the Weissseespitze from Fischer et al., 2022). The thermal conditions at the Marmolada detachment fit the linear regression curve. The large grey band for the Marmolada detachment site indicates the uncertainty in temperature information obtained from different times and using different methods/accuracies.

Modelled permafrost occurrence in the Marmolada massif (Fig. 8A) shows that, at the failure site (as of 2012), permafrost is present under nearly all conditions (Boeckli et al., 2012). Ice temperature, at the failure site (Fig. 8B), could similarly be estimated in the range of 0°C to -4°C, based on a simple 'T-Elevation' function developed for the Alpine region (Haeberli et al., 2004a; Fischer et al., 2022).

4.3 Characterization of the failure zone

Pre- and post-failure satellite imagery provided some insight on the collapsed glacieret. Image analysis mostly focused on the failure surface and on the water content.

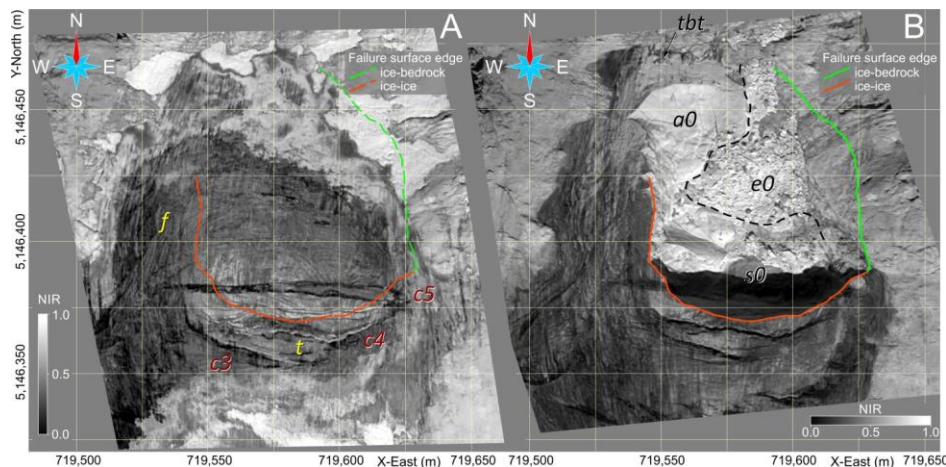


Figure 9: Near-Infrared satellite images (Pleiades Neo, AIRBUS Defence & Space) of the glacieret taken before and after the failure. (A) Date of acquisition: June 20, 2022; f – foliated ice; t – small supraglacial torrent flowing eastward across the glacier; cx – crevasse. (B) Date of acquisition: July 8 and July 9, 2022; a0 – relatively thick residual ice layer; s0 – re-gelation thin ice layer; e0 – exposed bedrock; tbt – thin basal till. See text for details.

The NIR (Near-Infrared) map (Fig. 9A) before the failure clearly shows a highly foliated ice body with a wedge-shaped median/traverse crevasse (c5 in Fig. 9A) along with a series of the rear crevasses. The median crevasse appears to be filled with water with floating ice and snow. The maximum width of the median crevasse occurs on the eastern side and it measures approximately 5 m.

A narrow bédrière (a small supraglacial torrent running (marked with letter 't'), fed by meltwater, flows eastward over the glacier's surface of a glacier and fed by meltwater) developed on top of. It has formed atop one of the rear crevasses (c4 in Fig. 9A) and it is oriented almost transversally/transversely to the slope, with its discharge to the east on the glacieret surface occurring right at the intersection with the large median crevasse. The flow is transverse because the lower face of the crevasse forms a counter-slope, preventing the water from flowing in the longitudinal direction.

The same map after the failure (Fig. 9B) provides important details on the detachment surface. The area of the basal detachment surface is about 6200 m² and the rupture occurred at the boundary of three different materials: ~32% along a foliation (a0, ice-ice); ~36% near/almost at bedrock (s0, ice-re-gelation thin ice); ~32% at the top of the bedrock (e0, ice-bedrock). The bedrock in the a+e0 sector is just partly visible because it is completely covered by ice/snow blocks and ice debris.

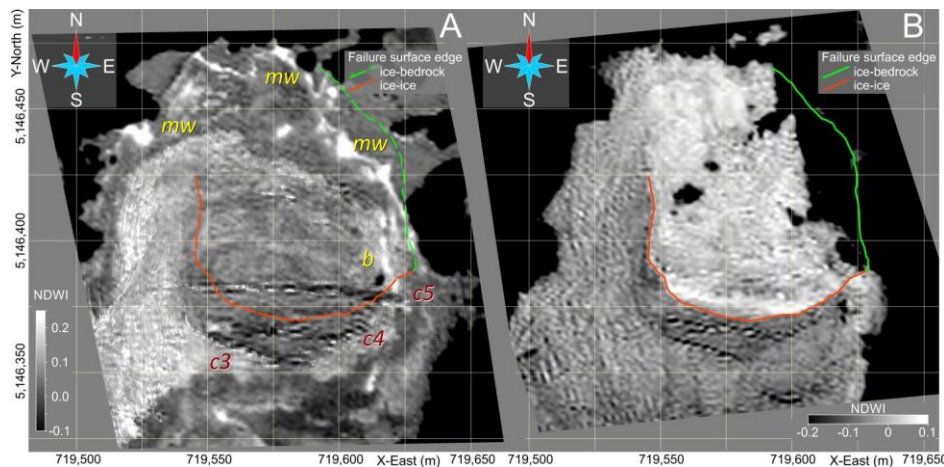


Figure 10: NDWI (Normalized Difference Water Index) map obtained via processing of multispectral satellite images (Pléiades Neo, AIRBUS Defence & Space) of the glacieret before and after the failure. (A) Date of acquisition: June 20, 2022; b = longitudinal bédrière; mw = meltwater. (B) Date of acquisition: June 20, 2022. See text for details.

The NDWI (Normalized Difference Water Index) map (Fig. 10A) before the failure is mostly effective in detecting the presence of water (outlined by high values of NDWI). A bédrière-like outflow pattern is visible in correspondence to the eastern edge of the large median crevasse (marked by letter b in Fig. 10A) indicating that the crevasse is mostly water-filled below a snow/ice plug. A high NDWI response is also visible along the edge of the various crevasses suggesting the presence of water below plugs of snow and ice.

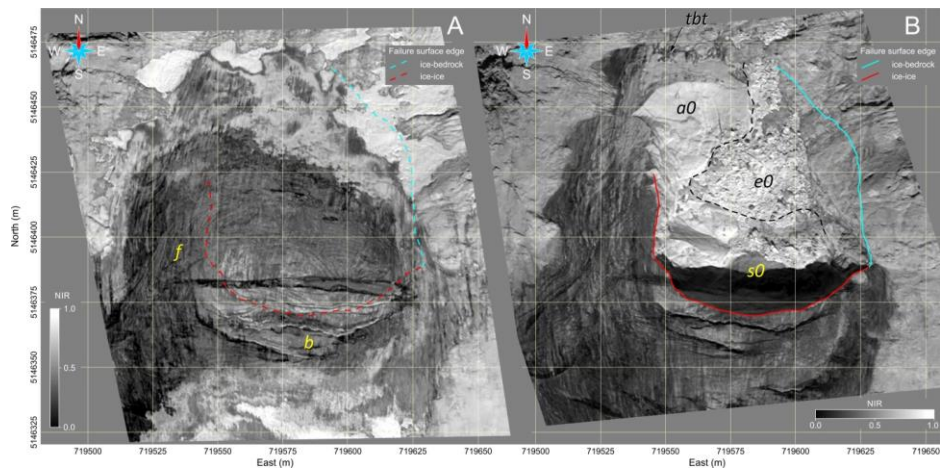


Figure 9: Near InfraRed satellite images (Pleiades Neo, AIRBUS Defence & Space) of the glacieret taken before and after the failure. (A) Date of acquisition: June 20, 2022; f – foliated ice; b – transversal bédrière. (B) Date of acquisition: July 8 and July 9, 2022; a0 – relatively thick residual ice layer; s0 – exposed bedrock; e0 – thin ice layer; tbt – thin basal till. See text for details.

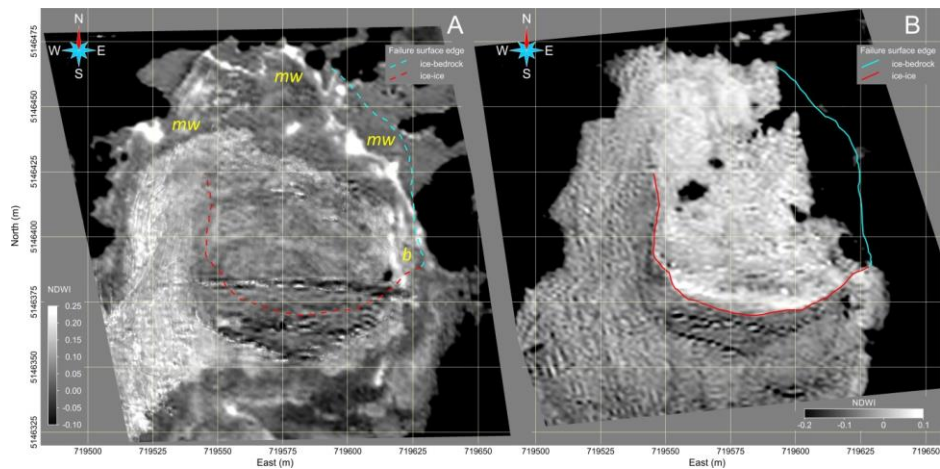
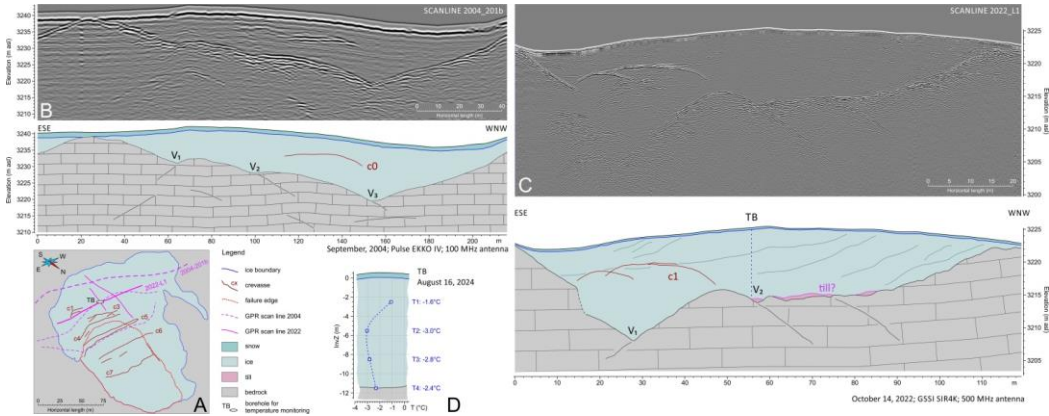


Figure 10: NDWI (Normalized Difference Water Index) map obtained via processing of multispectral satellite images (Pleiades Neo, AIRBUS Defence & Space) of the glacieret before and after the failure. (A) Date of acquisition: June 20, 2022; b – longitudinal bédrière; mw – meltwater. (B) Date of acquisition: June 20, 2022. See text for details.

Meltwater is finally visible along the snow-ice boundary and it probably accumulates because of the counter slope caused by the snow layer. Apparently there is no water discharge at the toe of the glacieret. Very little evidence of water evidences are visible after the failure (Fig. 10B) indicating that most of the englacial water was somehow discharged during the collapse.

RES profiles (Fig. 11 and Fig. 12) aided in outlining the buried bedrock morphology and the ice structure above and on the side of the failure scarp. A first profile collected several years before the failure (Fig. 11B) outlines the bedrock morphology in the upper slope, at a distance of approximately 50 m from the failure scarp. The bedrock exhibits three incisions (V1, V2 and V3) with a maximum ice thickness of about 20 m at incision V3. The response of a crevasse (c0), no longer present, is visible in-between V2 and V3. A second profile collected three months after the failure just above the failure scarp (Fig. 12B) shows similar features but with greater resolution. Two incisions are clearly visible and they nicely correlate with V1 and V2 of the previous profile while V3 is just lightly engraved. High-amplitude diffraction hyperbolas mark the top of some humps in bedrock morphology.



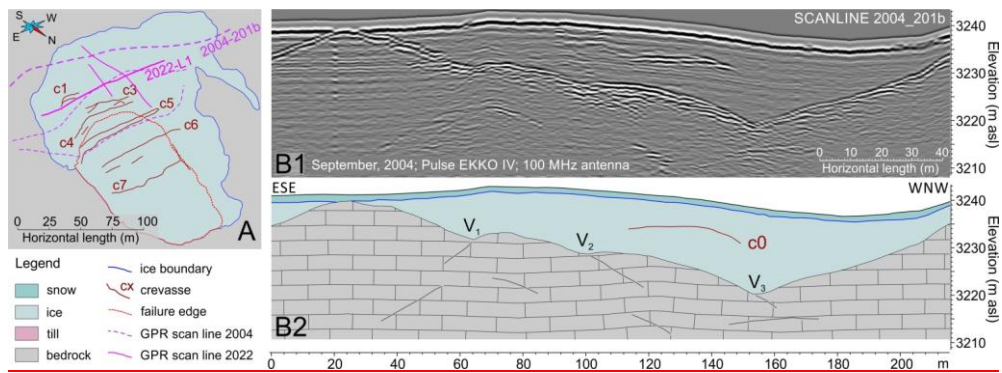


Figure 11: RES profiles collected just above the failure scarp before and after the collapse. (A) Sketch map showing the location of the profiles. (B) Scanline 2004-201b (reprocessed from Pasta, 2004): data (B1) and interpretation (B2); bedrock and crevasse response is clearly visible.

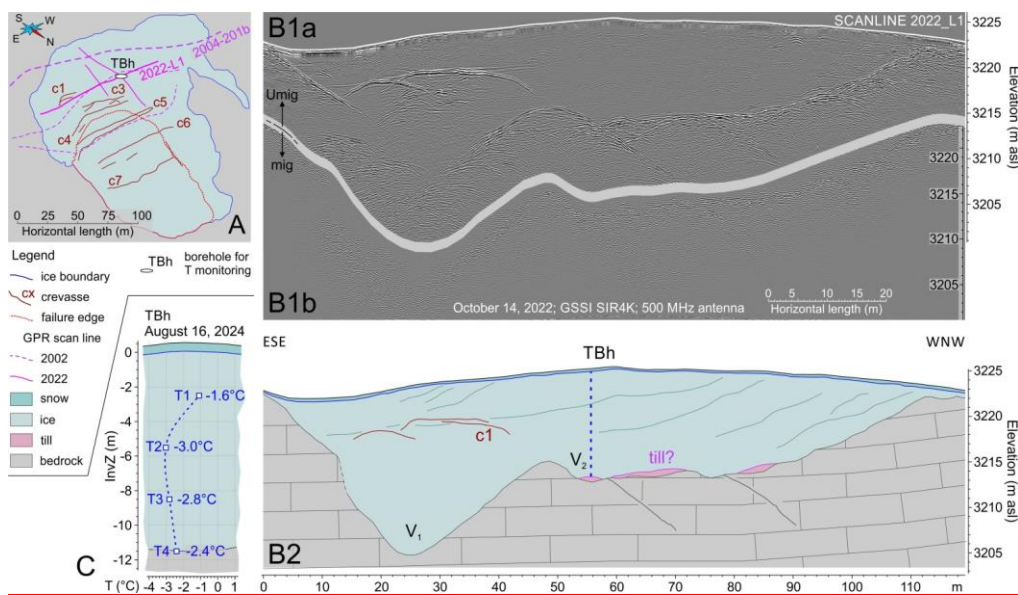
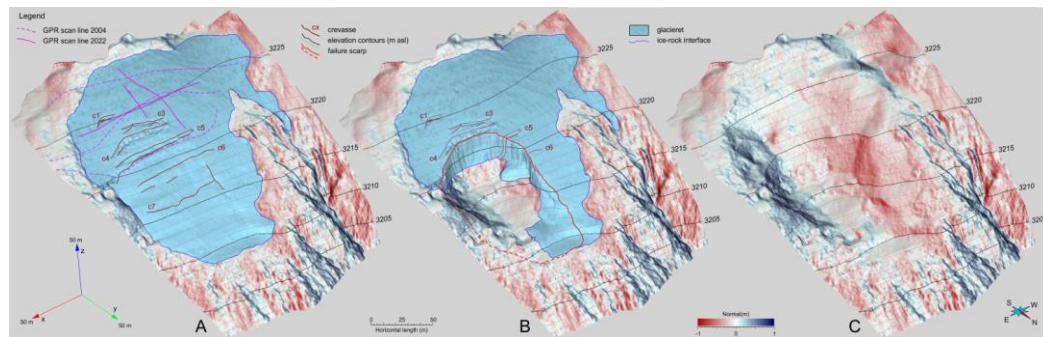


Figure 12: RES profile collected just above the failure scarp after the collapse. (A) Sketch map showing the location of the profiles. (B) Scanline 2022-L1: (B1a) Processed data, not migrated; (B1b) Processed and interpretation migrated data with a focus on the bedrock response; the maximum spatial shift of the bedrock in the migrated data was less than 1 m. (B2) Interpretation; bedrock morphology is clearly imaged along with crevasses, foliations and some thin layers of anomalous response interpreted as basal tills.

Troughs Vi could be correlated across the two different profiles. (9C) Temperature record from the borehole measurements taken on August 16, 2024. See text for further details.

RES profiles (Fig. 11A) aided in outlining the buried bedrock morphology and the ice structure above and on the side of the failure scarp. A first profile collected several years before the failure (Fig. 11B) outlines the bedrock morphology in the upper slope, at a distance of approximately 50 m from the failure scarp. The bedrock exhibits three incisions (V1, V2 and V3) with a maximum ice thickness of about 20 m at incision V1. The response of a crevasse (c0), no longer present, is visible in between V2 and V3. A second profile collected three months after the failure just above the failure scarp (Fig. 11C) shows similar features but with greater resolution. Two incisions are clearly visible and they nicely correlate with V1 and V2 of the previous profile while V3 is just lightly engraved. High amplitude diffraction hyperbolas mark the top of some humps in bedrock morphology. The maximum ice thickness is about 16 m at incision V1. Diffractions and reflections from crevasse c1 are visible at the beginning of the radar profile. A series of low-amplitude and east-dipping reflectors are embedded in the ice body. It is the response of the ice foliations described in the satellite images. Very short wavelength radio waves are needed to outline these tiny reflectors. Gently east-dipping bedding planes are partly outlined by reflections within the bedrock and the response of some fractures is also clearly visible. The profile was collected almost parallel to the strike of the strata.

Ice foliations and rock beddings are barely detectable in the 2004 profile due to the low frequency of the radar transducer (100 MHz) while foliations are clearly imaged in the RES-scan collected in October 2022 (Fig. 11C). The foliation planes apparently dip eastward, with an inclination of less than 6-7 degrees. Some low-reflectivity thin layers are visible right on top of the bedrock in the central and western segment of the 2022 RES-scan. The poor degree of reflectivity suggests the presence of a dispersive medium, typical of cohesive sediments, which could be reasonably interpreted as a basal till comprised of finely crushed rocks.



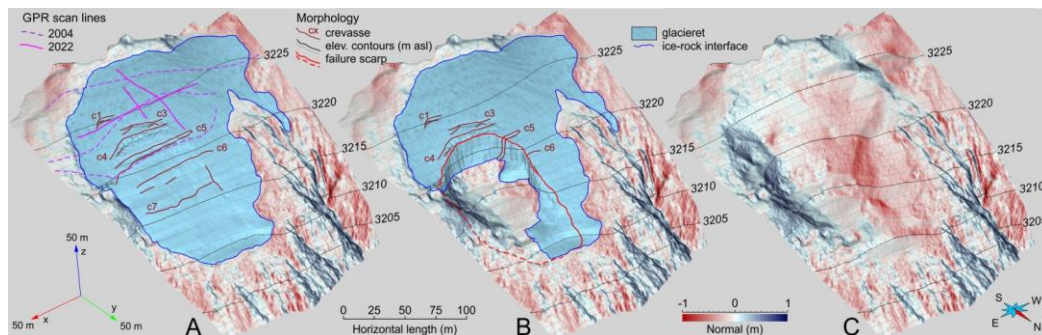


Figure 13: 3D-morphology of the rock-ice ensemble modelled right at the detachment site. (A) Pre-failure settings; the volume of the glacieret is approximately 159,000 m³. (B) Immediate post-failure settings; the residual ice volume is approximately 89,000 m³. (C) Bedrock morphology reconstructed via RES imaging below the residual ice body; the bedrock niche where the glacier failed had a basal dip that ranged from 41 degrees in the rear portion to 20 degrees in the frontal part.

The reconstruction of the buried bedrock morphology allowed for a precise modelling of the area of the collapse (Fig. 42I13). The volume of the glacieret, prior to collapse, was approximately 159,000 m³ (Fig. 42A13A), contained within a perimeter of ~800 m, while the collapse involved about 70,000 m³ (Fig. 42B13B) of ice, water and various debris leaving ~89,000 m³ of ice in-situ. The perimeter of the failed mass is about 375 m and the failure surface, including the nearly vertical faces, could be estimated at 9,700 m². The failed mass was hosted in a rock niche with a steep rear portion and a gentle frontal part. The bedrock inclination is approximately 41° in the rear portion and it is less than 20° in the frontal part (Fig. 42C13C). The temperature of the ice surface along the failure scarp was measured several times with IR airborne sensors: the early morning after the failure (7:00 AM of Jul 4, 2022; at the beginning of September (Sep 7, 2022) and in mid-October (9:00 AM of Oct 14, 2022). The maximum temperature value was -9°C in summer time and -10°C in early autumn (See Supplementary Material for details and figures). These temperatures, always taken in the early morning, represent skin temperatures, but they are significantly lower than the nighttime air temperatures. This difference is mainly due to the high intrinsic uncertainty of these sensors, which require a complicate calibration procedure. Anyway, the values are significant because remain consistent and comparable, despite being collected in different seasons, confirming—at least qualitatively—that the ice body is cold. The post-failure exposed bedrock temperature was similarly measured in the early morning on the day after the failure (M. Zumiani, personal communication) and ranged between 0 and -1°C. This skin value, equally influenced by nighttime air temperatures, indicates that surface thermal conditions are close to the melting point. The post failure exposed bedrock temperature was similarly measured in the early morning the day after the failure (M. Zumiani, personal communication): the value was below zero suggesting permafrost conditions in agreement with the Alpine model (Boeckli et al., 2012).

Formatted: Superscript

Following the drilling and sensor installation in August 2024, the vertical ice temperature profile was obtained two weeks later, after the thermal conditions around the borehole in the residual glacier had stabilized. The temperature at the ice-bedrock interface (-11.5 m below the ice surface) was -2.4 °C while the temperature within the ice body was of -2.8 °C, -3.1°C and -1.6°C at -8.5 m, -5.5 m and -2.5 m below the ice surface respectively (Fig. 44-12C). The average ice temperature can thus be estimated at some -2.4°C.

4.4 Seismology

Earthquakes in this area mainly occur far from the Marmolada massif (Fig. 14).

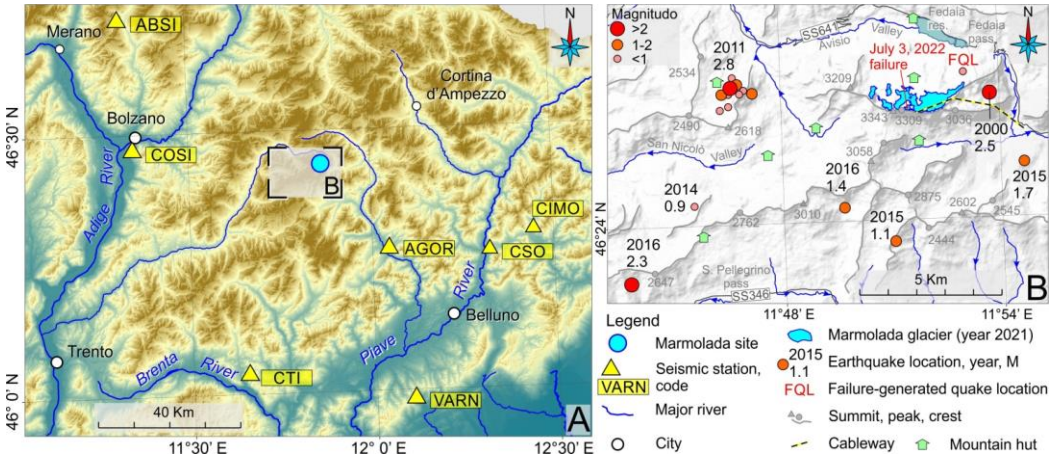


Figure 14: Seismological settings. (A) Topographic map showing the location of the seismic stations around the Marmolada glacier. (B) Historical earthquakes occurred in the vicinity of the failure site; the FQL letter designates where the earthquake that was caused by failure was recorded by the nearby seismic stations; an earthquake with magnitude 2.5 was detected in the year 2000 just east of the glacier. On the day of the collapse only three earthquakes (Table 2) occurred in northern Italy and they were located more than 50 km from the glacier.

Typical earthquakes occur east and southeast of Agordo and of the Piave river along the outer front of the Southeastern Alps (Gentili et al., 2011; Sukan and Peruzza, 2011). In the last twelve years, the seismicity within 5 km of Marmolada (Fig. 13B-14B) has been limited to a cluster located south of Canazei (west of Marmolada) and a few $M < 2.5$ magnitude events, including the $M 2.5$ earthquake occurred in 2000, which is the closest event to Marmolada. The latter is located just south of Malga Ciapela. This uncertainty falls within the typical errors for seismic event location (D'Alessandro et al., 2011). An accurate positioning was then achieved minimizing the misfit of the arrival times and considering a regional velocity model devised for this area of the north-east Alpine chain.

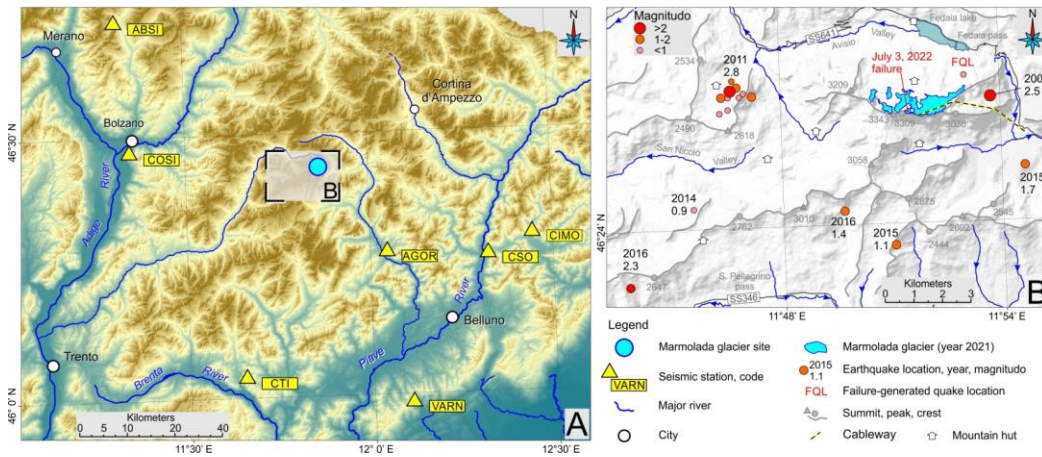
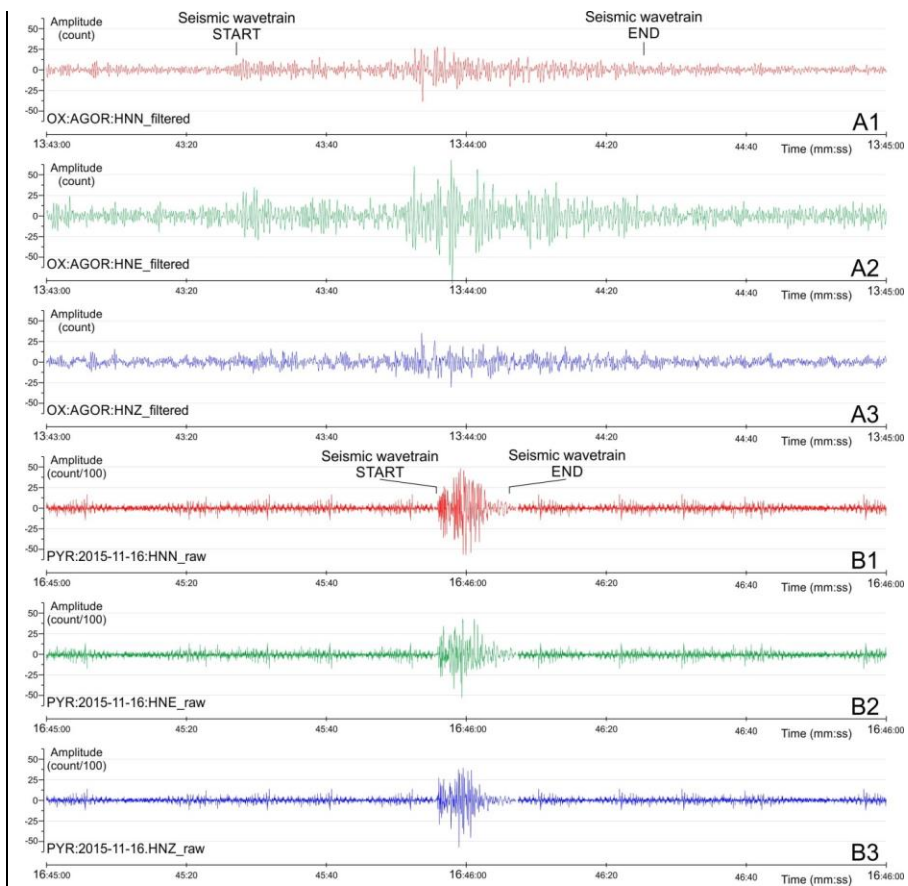


Figure 13: Seismological settings. (A) Topographic map showing the location of the seismic stations around the Marmolada glacier. (B) Historical earthquakes occurred in the vicinity of the failure site; the FQL letter designates where the earthquake that was caused by failure was recorded by the nearby seismic stations; an earthquake with magnitude 2.5 was detected in the year 2000 just east of the glacier. On the day of the collapse only three earthquakes (Table 2) occurred in northern Italy and they were located more than 50 km from the glacier.

The seismic wavetrain generated by the glacial collapse ice avalanche was recorded in all three xyz components (Fig. 14A)15). The period of greatest vibration intensity lasts for approximately about 60 seconds and this time interval roughly approximately corresponds with to the durationparoxysmal phase of the eventdeduced collapse, as can be inferred from the various available video footages. The seismic record (Fig. 15A1–A3) appears to be mostly dominated by the horizontal component components of body and surface waves (Rayleigh and Love) with a dominant frequency in the range comprised between 1.5 Hz and 5 Hz. The major amplitudes were recorded in the horizontal channels and particularly in the EW channel (Fig. 14A2). Most of the energy was released after 25–35 s since the first major impact of the avalanche on the glacier surface located 250 m below the failure zone). The strongest vibrations are visible about 20–25 seconds after the start of the wave train related to the event. The initial peak at 43' and 27" corresponds to the moment of detachment and is followed by a phase of low intensity, which should correspond to the initial stages of sliding.



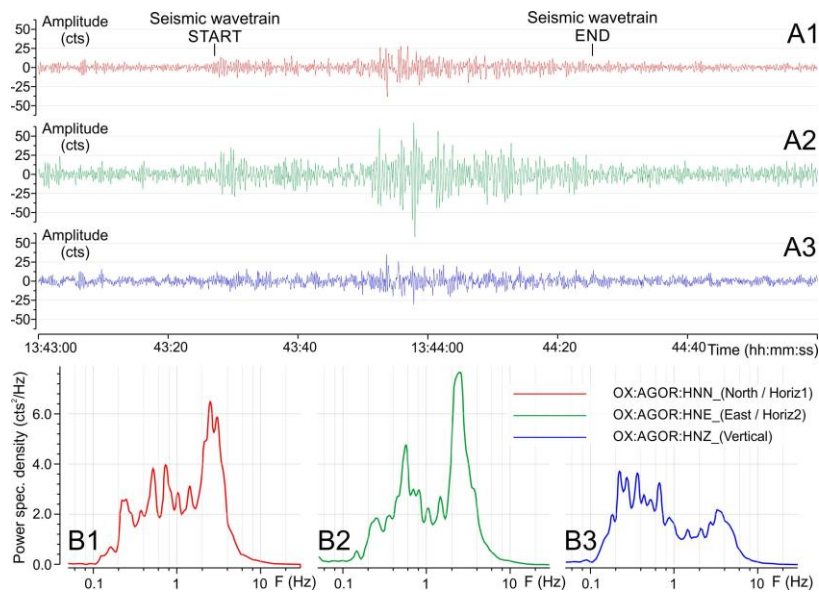


Figure 15: Seismological records. (A) Time series of the horizontal (A1 and A2) and vertical (A3) components of the ground motion induced by the Marmolada failure. **Surface waves dominate** (B) Power spectral density computed for the recordings indicating that the rupture occurred very close to the surface thus negating the hypothesis of seismic triggering of the rupture. (B) Time series of the horizontal (B1 and B2) and vertical (B3) components of the typical ground motion caused by an ice-rock fall as recorded in the Himalaya region nearby the Everest base camp.

The character of the seismic wavetrains of the Marmolada failure, as for surface waves, is particularly similar to the records of an ice-rock avalanche recorded in the Himalaya region nearby the Everest base camp in the year 2015 (Fig. 14B). The difference in the duration of the wavetrain is mostly related to the distance between the recording station and the event itself that is approximately 22 km and 6 km in the Marmolada and Everest cases respectively.

The amplitude spectra of the different channels reveal the frequency signature of the wavetrain generated by the collapse (Fig. 15 B1–B3). The most energetic segment of the spectrum falls within the 0.2–4 Hz range. Most of the energy is concentrated in the horizontal components, as evidenced by the two highest-amplitude peaks (B1 and B2 in Fig. 15), both occurring at frequencies above 2 Hz. These peaks represent the impact of the ice mass on the underlying glacier after an almost vertical fall of approximately 250 m. The horizontal components exhibit higher energy due to the inclination of the glacial surface in the impact zone, which exceeds 30 degrees. The spectral amplitude in the vertical component (B3 in Fig. 15) is lower in amplitude, confirming that most of the energy was released as transverse motion components. Similar observations can be made by analysing the spectrograms (time-frequency graphs) provided in the Supplementary Material.

4.5 Slope stability back analysis

The comprehensive characterization of the collapse zone led to the construction of a detailed pre-failure model of the glacieret (Fig. 15-16) that could be conceptualized for numerical modelling.

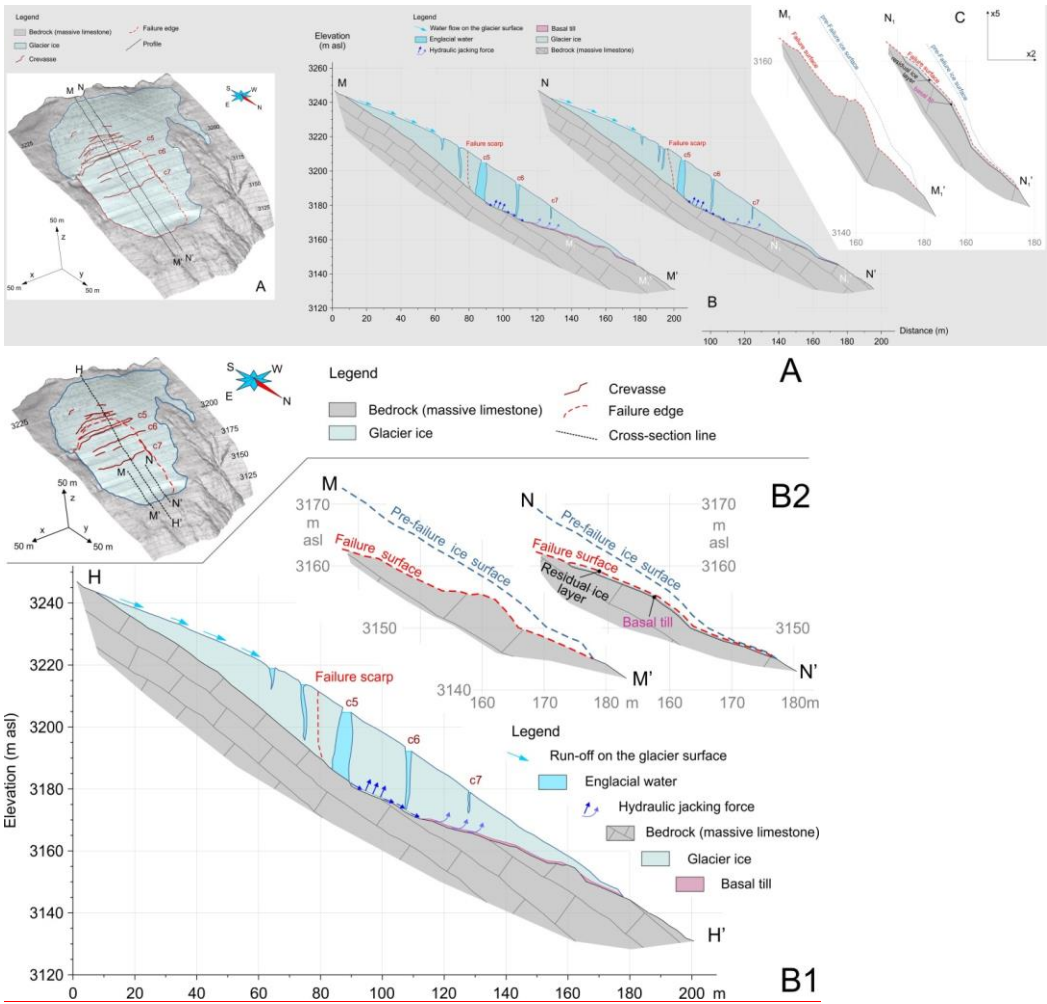


Figure 16: (A) Pre-failure model of the glacieret with evidenced the lower transversal crevasses and the cross sections H-H', M-M' and N-N'. (B1) Pre-failure cross section M-M' and N-N' showing a schematization of the glacieret with indicated: failure surface; bedrock morphology; hydraulic jacking forces, etc. (B2) Post-failure models of the lower portion of the failure

680 surface along cross sections M_1M_1' and N_1N_1' (letters are indicated in panel B). MM' and NN' . The failure surface developed along
an ice foliation in N_1N_1' while the detachment reached the underlying bedrock in M_1M_1' .

685 Two parallel sections (Fig. 15B and Fig. 15C) were used to explain the different properties of the detachment surface. The
long cross-section (cross-section HH' in Fig. 16B1) shows the actual failure scarp, along with the positions of the main
crevasses and the thin basal moraine, which is mainly present in the medial and frontal sectors.

On the east side, the collapse involved the entire glacial body down to the bedrock, which was exposed after the failure
(cross-section MM' in Fig. 15C16B2). The basal till, that was located at the base of the glacieret, was completely washed
out. On the west side, the collapse occurred partly along a foliation plane and marginally at the bedrock interface (cross-
section NN' in Fig. 15C16B2). The presence of the basal till was inferred from both RES images and direct observations of
690 the residual ice surface on the western side of the post-failure niche (Bondesan and Francese, 2023). This basal layer appears
to thin towards the west, with a variable thickness, generally estimated to be on the order of severalsome decimetres.

Three different potential triggering factors, combined in several scenarios, were considered in the slope stability analysis
based on the Limit Equilibrium Method (Fig. 16): (1) the hydrostatic pressure in the crevasses filled with water, (2) the
hydraulic jacking pressure (Irvine Fynn et al., 2011), and (3) the progressive reduction of friction along a weak layer at the
695 base of the ice body. This weak layer could be referred to as a mixture of melt water, till and ice (Huang et al., The stability
calculation was roughly performed along a cross-section that follows the longitudinal axis of the glacier, partly shifted on the
eastern side, where the rupture mostly occurred at the ice-rock interface.

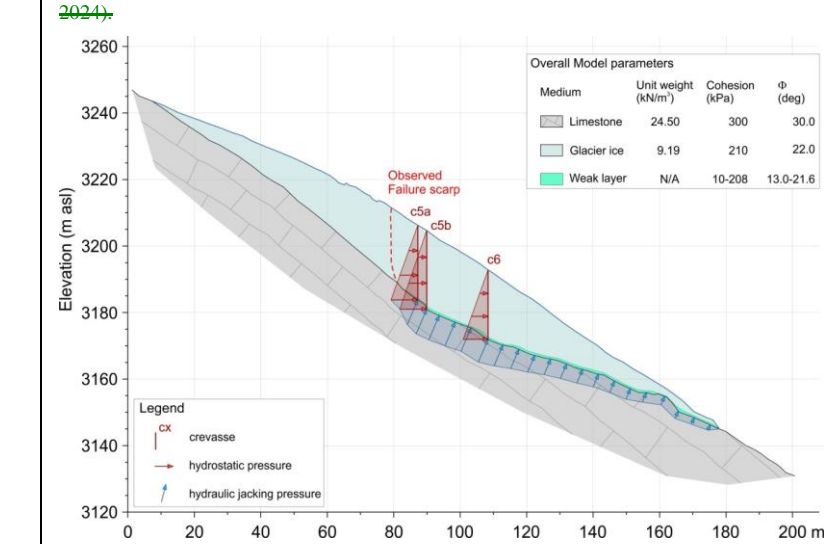


Figure 16: Conceptualization of the model utilized for the numerical simulations. Driving forces: hydrostatic pressure in crevasses; hydraulic jacking pressure; reduction of the basal friction caused by the plasticization of a thin layer of subglacial ice (namely the weak layer) on top of the bedrock.

Table 1a. Base scenarios (A, B or C) considered for numerical simulations.

Scenario		Type	HYP in crevasse			HJP	WL	Factor of Safety (FoS)			
			c5a	c5b	c6		Cohesion	Friction angle	Js	Jc	Computational method
			(kN/m ²)			(kN/m ²)	(kPa)	(degrees)	MCPMP /GLE		
A	1	HYP	220						4.25	4.58	4.38
	2	HYP	220	220					2.97	3.23	2.87
	3	HYP	220	220	200				2.33	2.51	2.27
B		HJP				220			5.67	6.08	5.91
C	1	WL					208	21.6	5.84	6.23	5.86
	2	WL					156	19.2	5.16	5.50	5.40
	3	WL					104	16.8	4.42	4.70	5.27
	4	WL					52	14.4	3.97	4.22	4.86
	5	WL					10	13.0	3.56	3.75	3.66

A - HYP: hydrostatic pressure in crevasses (ekcx indicates crevasse id);

B - HJP: hydraulic jacking pressure;

C - WL: weak layer.

The short-term driving actions have been attributed to hydrostatic forces: (1) the hydrostatic pressure in the crevasses filled with water, (2) the hydraulic jacking pressure (Irvine-Fynn et al., 2011) and (3) the progressive reduction of friction along a thin weak layer located at the ice-bedrock interface. This weak layer could be referred to as a mixture of melt water, basal till, voids and ice (Zoet and Iverson, 2020; Huang et al., 2024).

The actual variability of the sliding surface was streamlined in the numerical model, and for the application of hydraulic jacking pressure and basal friction reduction, it was considered homogeneous from the base of the median crevasse to the glacieret's toe.

The driving action of these three triggering factors have been considered both individually (one at a time) and in combination (multiple factors acting simultaneously).

B - HJP: hydraulic jacking pressure;

C - WL: weak layer.

A first group of 9 numerical simulations (Table 1a) considered the separate contribution of each triggering factor (base scenarios), while a second group of 18 simulations (Table 1b) evaluated the combined effects of the various factors (combined scenarios). Three different computational methods were adopted for each simulation (see Supplementary Material for further details) resulting in 81 different slope stability models. In the base scenarios, the values of the Factor of Safety

Formatted: Font: Bold, English (U.S.)

Formatted: Font: Bold, English (U.S.)

(FoS) were always greater than 1, corresponding to a stable condition, while in only three cases of the combined scenarios the FoS values were less than 1 (Table 1), evidencing the unstable condition.

Table 1b. Combined senarios (AiB and AiBCj) considered for numerical simulations.

Scenario		Type	HYP in crevasse			HJP	WL		Factor of Safety (FoS)		
			c5a	c5b	c6		Cohesion	Friction angle	Computational method		
			(kN/m ²)			(kN/m ²)	(kPa)	(degrees)	Js	Jc	MCPMP/GLE
AB	1	A1+B	220			220			3.25	3.49	3.25
	2	A2+B	220	220		220			2.31	2.48	2.32
	3	A3+B	220	220	200	220			1.79	1.92	1.75
ABC	1	1 A1+B+C1	220	220	200	220	208	21.6	3.19	3.42	3.25
		2 A1+B+C2	220	220	200	220	156	19.2	2.79	2.98	2.84
		3 A1+B+C3	220	220	200	220	104	16.8	2.40	2.56	2.54
		4 A1+B+C4	220	220	200	220	52	14.4	2.35	2.50	2.37
		5 A1+B+C5	220	220	200	220	10	13.0	2.20	2.34	2.28
	2	1 A2+B+C1	220	220	200	220	208	21.6	2.24	2.41	2.27
		2 A2+B+C2	220	220	200	220	156	19.2	2.00	2.13	1.99
		3 A2+B+C3	220	220	200	220	104	16.8	1.62	1.72	1.69
		4 A2+B+C4	220	220	200	220	52	14.4	1.16	1.23	1.45
		5 A2+B+C5	220	220	200	220	10	13.0	0.71*	0.75*	1.19
	3	1 A3+B+C1	220	220	200	220	208	21.6	1.71	1.84	1.75
		2 A3+B+C2	220	220	200	220	156	19.2	1.54	1.65	1.55
		3 A3+B+C3	220	220	200	220	104	16.8	1.24	1.32	1.30
		4 A3+B+C4	220	220	200	220	52	14.4	0.83*	0.89*	0.93*
		5 A3+B+C5	220	220	200	220	10	13.0	0.42*	0.44*	0.71*

A - HYP: hydrostatic pressure in crevasses (ekcx indicates crevasse id);

B - HJP: hydraulic jacking pressure;

C - WL: weak layer;

* Factor of Safety (FoS) < 1.

5. Discussion

The failure of the Marmolada glacier is the result of an uneven combination of conditioning/predisposing and triggering factors in the quasi-extreme atmospheric conditions that occurred in the Alps during the late spring and summer of 2022. The overall evolution of the glacier itself, over the last century, has shown a marked retreat trend in terms of surface/area/volume (Fig. 4) and withdrawal rates (Fig. 3). This trend is fully comparable with what is generally observed for glaciers of the Alps and worldwide world (Dyurgerov and Meier, 2004) as a consequence of ongoing global warming (Gilbert et al., 2010; Zemp et al., 2015). Over the last 40 years, the withdrawal rate of the Marmolada glacier shows an accelerating trend with three distinct time intervals (1985-2000; 2000-2020; post 2020) in which the slope of the average evolution curves (obtained by

local measurements) increases progressively (Fig. 3). Similar distinct time intervals could be observed also in the area/surface area/volume graphs (Fig. 4). The retreat and disaggregation of the originally polythermal and largely warm-based glacier in a permafrost environment caused the detachment and transformation of part of its former firm area into a small, cold glacieret frozen to its permafrost bed at the detachment site with correspondingly critical thermohydraulic conditions.

The post-LIA retreat and disaggregation of the originally polythermal Marmolada glacier led to the detachment and transformation of part of its former firm area into a smaller glacier. As a result of ongoing global warming (Gilbert et al., 2010; Zemp et al., 2015), this smaller glacier further fragmented into minor units, one of which has recently become isolated from the main ice body, forming the glacieret that recently collapsed. It is still worth emphasizing that some thermal effects are both predisposing and triggering, as the dynamic components of these effects—such as the heat transported within the glacier by meltwater and the heat waves propagating through the exposed rocks—are in some ways more triggering than conditioning.

5.1 Predisposing factors at the detachment site

The longer-term conditioning/predisposing factors are mostly determined by the relationships between the geometry of the glacieret and that of the carbonate bedrock. Further predisposing factors depend on the internal structure of the glacieret itself, on the physics and stratigraphy of the basal layers, the permeability of the frozen sub- and peri-glacial glacial rocks, and on the amount of winter-spring snow precipitation, which affects the timing of glacier ice exposure during the summer.

5.1.1 Bedrock geometry and glacier structure

The glacieret occupied a small bedrock niche ~~in~~ on the generally steep slope (Fig. 12). It was, partially suspended above a sub-vertical wall and, since 2012, due to progressive melting, it was left without an ice foot which to some extent kept it anchored to the underlying bedrock. In addition, warming induced permafrost degradation (Gruber and Haeberli, 2007; Rossi et al., 2022) is likely to have created critical instability conditions at the ice front.

Just below Rocca peak, the annual rate of lowering of the glacial surface was 0.58 m in the period 1990–2022 (Fig. 3C). At the same time, increased extending flow towards the lost glacier connection caused a progressive opening of the crevasses, which partly divided the ice body into blocks, favoring its instability, and creating additional storage for surface meltwater. (Figs. 11–13). The underlying bedrock surface is steep, with an average slope of 33° below the crest, 39° across along the failure edge, and 20° in the middle and lower portions of the failure surface, respectively (Fig. 12B). The steep bedrock topography is often ~~recognized as~~ considered a key predisposing factor for the initial sliding (Faillietaz et al., 2011), particularly especially when associated coupled with specific thermal conditions at the bedrock (Röthlisberger, 1981).

Just below Rocca Peak, the annual rate of glacial surface lowering was 0.58 m from 1990 to 2022. At the same time, increased downward flow caused crevasses to progressively open, partly dividing the ice body into blocks, increasing instability, and creating additional storage for surface meltwater. In particular, the large transversal crevasse, which extends

down to the underlying bedrock, has effectively divided the eastern part of the glacieret into two blocks thus lowering the overall stability.

Many foliations are visible in the glacial body and they represent ductile structures that could play a major role in both water-routing (Jennings and Hambrey, 2021) and the development of a failure mechanism. Foliations, which could result from migration of air bubbles and fine debris (Hooke and Hudleston, 1978), are best depicted on the sub-vertical ice face of the fracture scarp, where they show spatial extents of several decimeters (see Supplementary Material). The high englacial RES reflectivity of the foliation planes indicates the presence of a significant contrast in electrical impedance and therefore the presence of major sub-horizontal discontinuities in the ice body that affected the development of the failure plane during rupture. The thin basal layers interposed between the ice and the underlying bedrock, affect the overall stability of the glacieret. Unfortunately there is very little evidence about the existence and spatial distribution of this basal layer along the failure surface, with the exception of some deposits visible on the residual front of the glacieret (marked tbt in Fig. 9B).

5.1.2 Snow cover

The winter 2021-2022 was characterized by a sum of new snow, from October to May, which was among the 10 lowest in the last 100 years (Fig. 7B Figs. 5-7), as evidenced by the SAI anomaly index calculated on 8 stations in the Dolomites.

Unfortunately, there are no snow thickness sensors at the PRC station, but ~30 years of data (1991-2020) from the nearby RVL station could be utilized as a reference and data from RVL (2615 m asl) and PZB (2905 m asl) stations, in the winter 2021-2022, could be used for comparison instead of PRC. The snow cover in RVL highlights the early winter snowfall and the following long period with little thickness of snow on the ground (about 0.5 m), which was increased by a precipitation in mid-February. The snow cover increased again in late winter with the interposition of a melting period in the second tensmiddle of April. This late-winter snow melted rapidly due to the mild temperature of the second decade of May onwards.

In general, fresh snow is highly reflective and therefore absorbs less solar radiation, but on the other hand it is much less compact and therefore melts more quickly. In the Marmolada case the unpacked snow was prone to accelerated melting with high production of liquid water as compared to the typical compacted winter snow. In addition, due to the high porosity of the recent snow layer (Clifton et al., 2007), there is a very little surface runoff and melting water penetrate right into the glacier body as inferred by the satellite images taken two weeks before the failure. A rough estimate (Bondesan and Francese, 2023) indicates that around 15,000 m³ of melt water had infiltrated the glacier since mid-May. The snow cover in PZB has a similar trend to RVL despite this station (facing the Marmolada glacier) is located ~300 m higher in elevation than RVL.

The limited snow cover in the months of February and March could be observed in the images taken by the webcam positioned at Cima Padon, right in front of the Marmolada glacier, and available online (<https://portaveseovo.panomax.com/>). The failure site appears to be covered by snow in the images taken in April and May. The temperature in February was relatively mild, while in March it was much colder. This particular temperature trend could be the cause of a different thermal inertia in the exposed glacial body.

5.1.3 Permafrost and ice thermal conditions

Evolution of ~~permafrost~~thermal conditions around the failure zone is crucial to get better insight in possible collapse mechanisms. ~~A strong contrast exists between the sun-exposed, ice-free south wall of Marmolada with its warm, probably unfrozen rocks, and the cold northern slope facing away from the sun and with widespread permafrost (Boeckli et al., 2012) but involves complex transient glacier-permafrost interactions (Figs. 7-8).~~ Where bedrock of the northern slope has remained free of glaciers during past decades, its temperature can be estimated at a few °C below freezing temperature, probably close to 0°C at lower altitudes, around 2400-2600 m asl, and reaching -1°C to -4°C towards the uppermost parts. ~~These temperature estimates were confirmed by several shots taken with a drone mounted thermal imaging camera the morning after the failure on the newly exposed bedrock. With such estimated~~With such surface temperatures, permafrost depth may in places exceed several tens of m (Etzelmüller et al., 2020; Rossi).

~~In the Alps, pervious firn zones, warmed up by percolating and refreezing meltwater, are temperate up to altitudes between approximately 3400 and 3900 m above sea level (Haeberli and Alean 1985; Suter et al., 2022). Ice (2001; Bohleber, 2019) while the impermeable ice of the ablation zones in areas with permafrost tends to be cold. The LIA glacier at the Marmolada site with extensive warm firn areas may therefore have been polythermal and predominantly warm-based (cf., Wilson and Flowers, 2013) with only its lowest margins containing cold ice, partially frozen to bedrock. Higher parts of bedrock underneath the LIA glacier could therefore have been largely unfrozen. Interestingly, ice~~ temperatures recorded several tens of cm within the walls of some WWI tunnels, dug in the Marmolada glacier in 1917 (Hess, 1940), in the elevation range 2800-3200 m asl, showed average values of -1.32°C in tunnel “32” (located in the vicinity of the failure site) and of -1.27°C in tunnel “S” (located ~700 m west of the failure site). ~~With, i.e., moderately cold conditions such as~~ on the northern side of the Marmolada, glaciers tend to be polythermal or at least partially warm-based (Wilson and Flowers, 2013) as also inferred ~~computing RES velocity data for this glacier (Forte et al., 2020). In~~. With the Alps, ~~pervious~~progressive loss of warm firn zones, warmed up by percolating and refreezing meltwater, are temperate up to altitudes between approximately 3500 and 3900 m above sea level (Haeberli and Alean 1985; Suter et al., 2001; Bohleber, 2019) while ~~areas, such cooling of surface ice especially also affected the impermeable ice of body, from which the ablation zones may be cold~~ice avalanche later detached. The LIA glacier at the Marmolada site (Fig. 8A) was predominantly temperate/warm-based and only its very top portions and its lowest margins may have been cold and partially frozen to bedrock indicating that bedrock underneath the LIA glacier was largely unfrozen.

As mentioned, the stability in the detachment zone was recently lowered by the disconnection ~~long-term thermal evolution~~ of the failed ice body from the former glacier by the opening of large transversal crevasses but it was also strengthened by the transformation from a warm-based firn area with basal sliding to a cold ice body with permafrost penetration into the bedrock underneath the ice.

Formatted: Font: Bradley Hand Bold

840 ~~Permafrost penetration may still be in its initial stage but is likely to already have reduced the hydraulic permeability of the~~
~~karstic dolomitic rocks underneath the ice through the process of ground-glacieret has, on one hand, caused the freezing. This~~
~~permeability reduction could have helped building up high water pressures in the ice body.~~
~~The vertically of its ice base to the underlying rock, as confirmed by temperature measurements taken in the ice borehole~~
845 ~~throughout the upper portion last summer. On the other hand, the warming-induced permafrost degradation (Gruber and~~
~~Haeberli, 2007), suggested by the fifteen-year temperature and active layer and permafrost thickness monitoring in the rock~~
~~borehole at PZB (Fig. 7), has likely to be created instability conditions in the frontal zone. The curved geometry of the~~
median crevasse, clearly visible after the failure, suggests that the glacier was ~~mostly~~primarily deformed under the ~~action of~~
~~the gravity force~~influence of gravitational forces, with negligible basal sliding, ~~hence, This further confirmingsupports~~ the
850 ~~hypothesis of a local cold ice base~~locally cold ice base. Moreover, as clearly shown in Fig. 9B, large portion of basal ice
~~remained frozen to bedrock after the failure (see more details in subsection 5.2.2). Such recent subglacial freezing may likely~~
~~have influenced the hydraulic permeability of the karstic subglacial rocks and, hence, the drainage mechanisms of the cold~~
~~surface ice body. This permeability reduction could have helped building up high water pressures in the ice body.~~

5.2 Triggering factors

855 ~~The trigger factors are closely interrelated with the conditioning factors, as the trigger factors considered individually would~~
~~not have been sufficient to induce the collapse.~~

5.2.1. Seismic shock

A small earthquake had originally been considered the factor causing the initial sliding of critical glacieret block thus
triggering the entire failure- (Figs. 14-15). Such occurrences are quite frequent (Podolskiy et al., 2010) and the hypothesis
was likely suggested by analogy to events associated with the recent Gorkha earthquake (Pettenati et al., 2023) that affected
860 the Kathmandu valley in the Himalaya region in April 2015, causing the Langtang Valley disaster (Fujita et al., 2017). The
same earthquake also triggered an ice avalanche (Kargel et al., 2016) that struck Everest base camp killing 24 people and
injuring 61 causing the deadliest disaster on the mountain ever. However, on July 3, 2022, the NOAN seismic network
reports only three events which are far away from the Marmolada glacier (Table 2). Two events occurred several hours
before while the third event occurred approximately two hours later. No suspicious seismic activity was recorded nearby the
865 Marmolada glacier the day of the collapse.

Table 2. Seismic events occurred on July 3, 2022 in northern Italy and surrounding regions.

Site	Region	Magnitude	CEST	Latitude	Longitude
		M_L	hh:mm:ss	decimal degrees N	decimal degrees E
Forni di Sotto (F. Venezia-Giulia)	Eastern Alps	1.0	6:33:40	46.336	12.621
Gioigo dello Stelvio (Alto-Adige)	Central Alps	0.5	7:18:44	46.558	10.482
Sassuolo (Emilia-Romagna)	N. Apennines	2.3	17:53:25	44.545	10.798

870 The seismological localization of the Marmolada collapse and avalanche is accurate, as it corresponds closely to the ~~real~~actual position within a reasonable error range, despite ~~there being no the absence of~~ seismic stations in the ~~north-east~~northeast quadrant. The ~~waveform is recorded~~ waveforms are dominated by surface waves, indicating that the rupture occurred very near the surface, and they show the typical ~~of response associated with~~ an avalanche or ~~of~~ an ice-rock fall (Fig. 14B).

875 The matching filter method (Gibbons and Ringdal, 2006; Suga et al., 2014) was applied ~~onto~~ the time series ~~off from~~ the AGOR station to ~~dispel further doubts~~dispel any uncertainties that the collapse was triggered by an earthquake triggered the collapse. The collapse-related time series considered the two minutes of the event itself and the three preceding minutes. Two low-magnitude seismic shocks occurred in 2023 (M0.9 on April 19th at 22:12:50 and M1.3 on July 10th at 22:47:41) were used as the template for the cross-correlation. The matching process resulted in a degree of cross-correlation that did not exceed the value of 0.40, confirming that the failure was not triggered by a seismic shock.

880 Neglecting the seismic shock, the overall triggering factor should be sought in a complex interaction between the extremely high air temperatures, which lasted for more than two months, and the resulting thermo-hydraulic conditions of the ice of the glacieret and of the bedrock.

- Formatted: English (U.K.)
- Formatted: English (U.K.)
- Formatted: English (U.K.)
- Formatted: English (U.K.)
- Formatted: English (U.K.)
- Formatted: English (U.K.)
- Formatted: English (U.K.)

5.2.2 Thermal conditions

885 There is no doubt about the temperature anomaly (Figs. 5-6) that characterized the late spring and early summer of 2022. At PRC station the 70 days preceding the collapse showed monthly temperatures (max, avg and min) not only above the standard deviation range for the 30-year period 1990-2020 but these values turned out to be absolute maxima (Fig. 6A1).

The temperature in the PZB borehole on July 3, 2022, reaches almost an absolute maximum near the surface, while it is an absolute maximum in the depth range between 0.5 m and 3.5 m.

890 The effect of ~~the elevate~~elevated temperatures is ~~two fold~~twofold: it ~~represented~~caused an intense heatwave over the glacier (Chen et al., 2023) and impacted the exposed bedrock. This enhanced, affecting both the production of melting water and the progressive warming of the bedrock. A rough estimate (Bondesan and Francese, 2023) indicates that around 15,000 m³ of melt water had infiltrated the glacier since mid-May. This prolonged heating must be considered in relation to longer-term conditioning factors, such as ice temperature and sub-glacial permafrost.

895 The meltwater, which penetrated into filled the crevasses of the glacieret, filling them and warming and warmed the ice down to their bottom. The latter phenomenon, particularly at the large median crevasse that reaches the underlying bedrock. The melting may have been amplified also accelerated by the asymmetry strong north-south thermal contrast between the warm south face and the cold northern slope of the mountain. The strong north south thermal contrast in the mountain that caused an heat flow across the mountain ridge induces a marked horizontal heat flow (Noetzli et al., 2007), affecting the failure zone that is located just below the crest (Fig. 2). The marked warming up of the uppermost rock layers is clearly

evidenced by the temperature data from the PZB borehole (Fig. 7A). On July 3, 2022, the positive thermal anomaly reaches down to 3.5 meters below the surface and it represents an absolute maximum in the ten years of observation.).

A detailed analysis of the failure surface provides further information on the thermal conditions of the coupled bedrock-ice system at the time of the failure: (Figs. 9-10). The failure occurred along a rather complex surface.

Considering the frontal wedge, it is ~~clear~~evident that, ~~to the west~~, at least ~~two-thirds~~one-third of the failure plane developed along an envelope surface of foliation planes (area marked a0 in Fig. 9B). ~~In its southern, central, and~~), with the remaining portion along a vertical discontinuity on the western part it is mostly a flank. To the east the detachment ~~within~~is right at the ice ~~and not a newly formed failure surface~~, while in the eastern portion the ~~bedrock is~~ interface (area marked e0 in Fig. 9B) with the bedrock clearly exposed; along the entire western shoulder. To the south, a ~~thick ice~~thin residual layer of basal ice, due to meltwater refreezing at the bottom of the crevasse, was left on top of bedrock after the failure (area marked a0 in Fig. 9B) while to the north the residual ice layer is very thin (area marked s0 in Fig. 9B) but it). It took several days before ~~it~~this thin layer melted completely, as documented in several videos taken in the weeks after the failure. Similarly to the failure of the Altel glacier event. This rear portion of the sliding surface is precisely the area surrounding the foot of the crevasse where the ice in the basal layer underwent phase changes, eventually leading to conditions of instability.

Similar to the failure of the Altels Glacier in 1895 (Faillietaz et al., 2011), a large portion of basal ice is clearly frozen to the bedrock, at least at the ~~north-west~~northwest front (labeled 'a0' in Fig. 9B). ~~Many foliations are visible in the glacial body (Fig. 9A) and they represent ductile structures that could play a major role in both water routing (Jennings and Hambrey, 2021) and the development of a failure mechanism. Foliations, which could result from migration of air bubbles and fine debris (Hooke and Hudleston, 1978), are best depicted on the sub-vertical ice face of the fracture scarp, where they show spatial extents of several decimeters (see Supplementary Material).~~ In the RES signature (Fig. 11A) there is with no evidence of warm ice (*sensu* Forte et al., 2020).

The residual portion of the glacieret ~~seems to be then~~is comprised of moderately cold ice, ~~in agreement~~consistent with the prediction curve (Haeberli et al., 2004a) and with the borehole measurements taken during the summer of 2024.

5.2.3 Englacial drainage network

Regarding the presence of flowing melt water at the base of the glacier, some observations could be made. There is no evidence of a frontal discharge in the aerial image (SAT, 2022) and in the satellite images (Figs 9-10) taken the day before and a few days before the collapse respectively. This indicates that the meltwater is not routed in a channelized subglacial drainage, as it is common for larger warm-based glaciers (Röthlisberger and Lang, 1987; Richards et al., 1996). On the contrary, there is clear evidence of water outflowing from the eastern edge of the large median crevasse routed along a bédrière (marked with letter b in Fig. 10A), confirming that an englacial drainage network is not developed. Anyhow, englacial water is present in the glacieret but its cold ice frozen to permafrost rocks prevents basal or subglacial water flow (Paterson, 1994).

935 ~~Fig. 8B). The high englacial reflectivity of the foliation planes indicates the presence of a significant contrast in electrical impedance and therefore the presence of major sub-horizontal discontinuities in the ice body that affected the development of the failure plane during rupture. The thin basal layers interposed between the ice and the underlying bedrock, affect the overall stability of the glacieret. Unfortunately there is very little evidence about the existence and spatial distribution of this basal layer along the failure surface, with the exception of some deposits visible on the residual front of the glacieret (marked tbt in Fig. 9B).~~

940 ~~Regarding the presence of flowing melt water at the base of the glacier, some observations could be made. There is no evidence of a frontal discharge in the aerial image (SAT, 2022) and in the satellite images (Fig. 9A, Fig. 10A) taken the day before and a few days before the collapse respectively. This indicates that the meltwater is not routed in a channelized subglacial drainage, as it is common for larger warm-based glaciers (Röthlisberger and Lang, 1987; Richards et al., 1996). On the contrary, there is clear evidence of water outflowing from the eastern edge of the median crevasse routed along a bédrière (Fig. 9A), confirming that an englacial drainage network is not developed. Anyhow, englacial water is present in the glacieret but its cold ice frozen to permafrost rocks prevents basal or subglacial water flow (Paterson, 1994).~~

945 5.3 Numerical simulations

Insights into the significance of the driving forces that triggered the failure can also be obtained from numerical simulations of glacier slope stability (Figs 16-18).

950 The ice shear strength parameters (cohesion and friction angle) were inferred from the available literature. Seaki et al. (1985) conducted a multi-temporal analysis on cohesion and friction angle of sea ice over a six-year period and in different temperature conditions. Tang et al. (2024) carried out direct shear tests on polycrystalline ice at temperatures ranging between -0.5 and -40 °C, obtaining Mohr-Coulomb shear strength parameters. Available temperature data suggest that the upper portion of the Marmolada Glacier, at least above 3000 meters in elevation, is polythermal (Bondesan and Francese, 2023; Boeckli et al., 2012). Polythermal ice conditions were encountered during the summer campaigns in the Ortler-Cevedale massif, approximately at the same elevation (Francese et al., 2019). Based on the above considerations and known ice temperatures of Alpine sites (Fig. 8B), an ice temperature ranging from -2.5°C to -4°C was selected to estimate the appropriate parameters and carry out the numerical simulations. These initial values were confirmed by borehole temperature measurements taken from the ice at the failure site in August 2024 (Fig. 12C).

960 Equivalent parameters for the Marmolada limestone were also inferred from the available literature and particularly from a systematic classification of the Dolomitic rocks (Longo, 2018) based on the RMR - Rock Mass Rating System (Bieniawski, 1989).

~~—The overall failure mechanism can be reasonably interpreted as a simple frictional model of a solid mass sliding along a surface, and for this reason the LEM was used. The 2D approach used for the simulation has certainly some limitation but the currently available parameters prevent a meaningful 3D approach. In addition, it is worth mentioning that the failed ice body, to the west, was firmly joined to the western glacial shoulder—which did not collapse. This limit, which did not~~

collapse. It is still possible that the rupture along the sub-vertical portion of the western surface was influenced by the presence of a longitudinal discontinuity. In some of the aerial and satellite images from previous years, the presence of a longitudinal fracture was indeed visible right at the location of this rupture. This limitation could results in an underestimation of the FoS values calculated via a simple 2D approach.

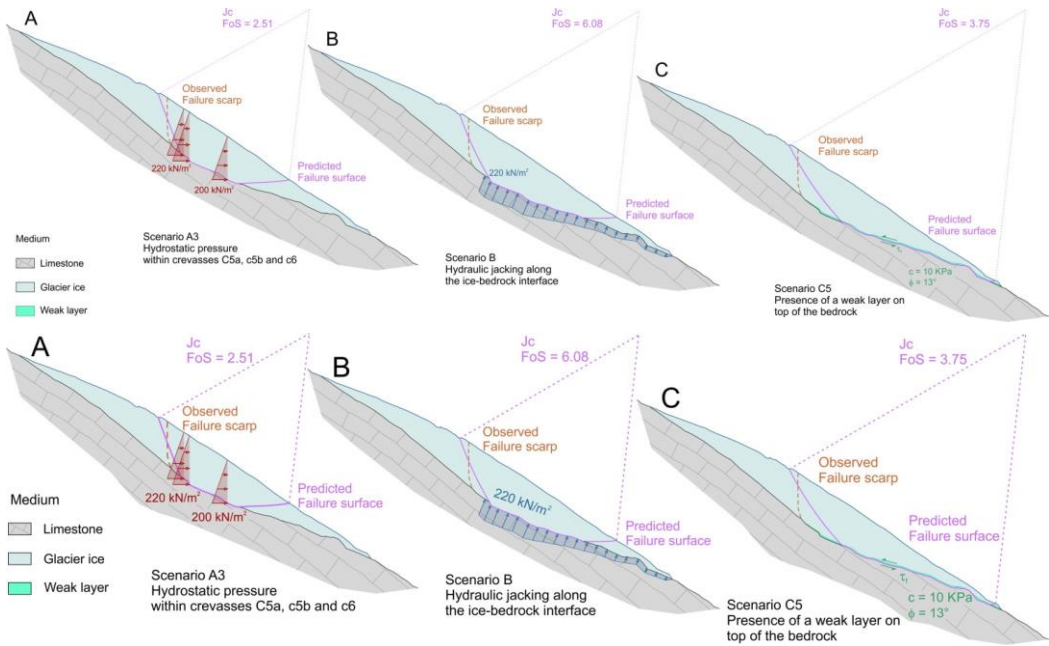


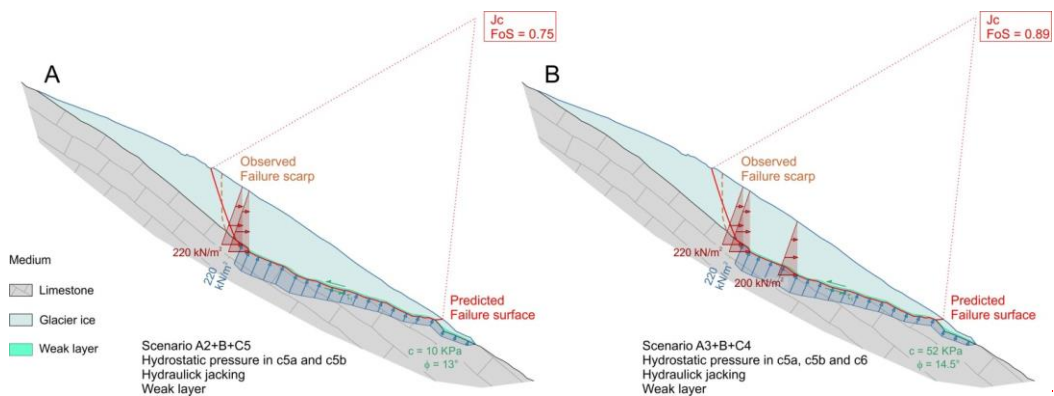
Figure 17: Numerical simulations: base scenarios. (A) Scenario A3 - hydrostatic pressure acting on crevasses 5a, 5b and 6; (B) Scenario B - hydraulic jacking pressure acting along the ice-bedrock interface; (C) Scenario C - reduction of the basal friction caused by a weak layer on top of the bedrock in the worst case ($c=10$ kPa; $\phi=13^\circ$). See text and Table 1a for details.

The base scenarios, conceptualized in Fig. 16, weights the effects of three single causes of instability: hydrostatic pressure in crevasses, hydraulic jacking pressure, and presence of a weak layer at the base. The nature of this weak layer essentially depends on its genesis and, is still under investigation, but available data provide several indications. The presence of a water layer tout court can be ruled out, as aerial and satellite images indicate no frontal discharge, excluding the presence of a developed basal drainage network as indicated by . Among the absence of a frontal water discharge, various hypotheses can be made on possible alternatives, the causes that determined its formation: (1) Transfer of heating from the outcropping rocks forming the east shoulder of the niche could have caused the most probable is a softening/plasticization of the ice at the ice-bedrock interface resulting in a plastic mixture of water, ice and debris (Huang et

al., 2024). This could be particularly true in consideration of the extreme thermal conditions, which occurred during the late spring and early summer of 2022 and must have affected the fragile equilibrium of the permafrost. (2) The large volume of meltwater stored in the crevasses, because of the absence of a continuous drainage network in the basal layer, caused an overpressure by pressurized water (Church et al., 2021) that finally resulted stored in the water median crevasse, forcing its way throughout the basal till layer or a foliation surface, thus through it and forming a locally connected drainage system (Kavanaugh and Clarke, 2001). In both cases, the While other alternatives are possible, this scenario is the most likely. The process led to the formation of a multi-decimeter basal layer composed of a mixture of water, ice, debris, and voids, resulting in a reduction of shear strength, which allowed shear stress could have to easily exceeded the resisting forces, thereby causing instability. Moreover, warm permafrost with temperatures between about 0°C and -1.5°C contains ice with unfrozen water. Such “warm permafrost” is weaker not only than colder but also than unfrozen bedrock (Davies et al., 2001; cf. Fig. 8C). The resistance of basal rocks may also have become critical (Fig. 15B); this is a further element suggesting including the weak layer in the model.)

In the three base scenarios (Table 1a and Fig. 17) the minimum FoS is largely above the value of 1 for the three different computational methods. The values of FoS computed with the different methods are more or less comparable. The “Janbu corrected” (Jc) will therefore be considered for the purpose of this discussion.

The summed effects of the hydrostatic pressure in multiple crevasses lower the FoS to a minimum value of 2.51 (Fig. 17A) while the effect of the hydraulic jacking pressure alone seems to be negligible, as the FoS value is significantly higher than the previous scenarios indicating overall stability (Fig. 17B). The weak layer alone does not generate instability also when modelled using the minimal values for the c - ϕ (cohesion - friction angle) pairs (Fig. 17C) as it results in a FoS of 3.75. The predicted failure surface is surprisingly close to reality in the case of hydraulic jacking pressure alone (Fig. 17C and Fig. 7B), albeit along a cross section shifted less than 10 m westward compared to the cross-section modelled in the simulations.



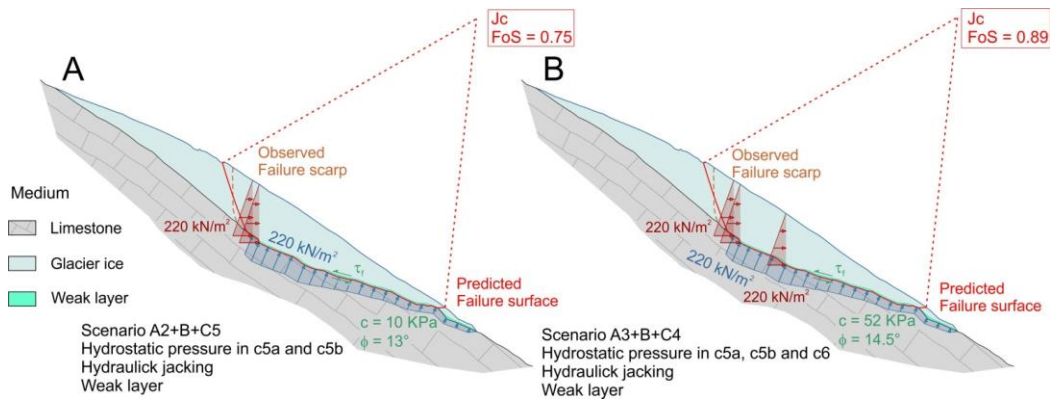


Figure 18: Numerical simulations: combined scenarios. (A) The instability condition, with relative FoS less than 1, is reached in the scenario A2 (hydrostatic pressure in two crevasses) + B (hydraulic jacking pressure) + C5 (worst c , ϕ pair in the weak layer); (B) The instability condition, with relative FoS less than 1, is reached in the scenario A3 (hydrostatic pressure in all crevasses) + B (hydraulic jacking pressure) + C4 (second worst c , ϕ pair in the weak layer). See text and Table 1b for details.

The minimum FoS (2.51) in the three basic scenarios corresponds to the hydrostatic pressure condition acting in all crevasses. Therefore, it seems possible to exclude the single driving action for the triggering of the collapse and this finding is consistent with what happened in other similar cases (Mortara and Dutto, 1990; Haerberli et al., 2004b; Faillettaz et al., 2015). The FoS was always largely greater than 1 in the 27 simulations in the group of the base scenarios.

The combined scenarios weight the effect of different associations of the factors of instability. The FoS is always greater than 1 in case of hydrostatic pressure associated with hydraulic jacking pressure (scenarios Ai+B in Table 1b) with a minimum of 1.92, suggesting that the driving action of meltwater alone cannot induce the failure. The inclusion of the weak layer determines conditions of instability (in combination at least with scenario A2, which considers the hydrostatic pressure in two of the three crevasses) but only in the condition of minimum resistance (scenario C5) of the weak layer itself (Fig. 18A). The FoS in the A2+B+C5 scenario drops to 0.75. The predicted failure surface almost reaches the front of the glacieret. This result is consistent with the model used for the simulations, in which the weak layer was extended down to the front of the glacieret. This predicted failure surface corresponds to reality for the ice volume located in the eastern half of the glacieret (Fig. 18B). Considering finally the hydrostatic pressure acting on all three crevasses (scenario A3+B+Cj in Table 1b), instability already occurs starting from a weak layer characterized by a couple of parameters c - ϕ (C4) which is the second most unfavourable among those modelled (Fig. 18B). The FoS in the A2+B+C5 scenario drops to 0.89. The FoS was less than 1 in just 8 of the 54 simulations in the group of the combined scenarios.

The considered triggering causes are almost equivalent as none alone prevails over the others. However, it could be possible to establish a “ranking”, considering the values of FoS, based on how close they are to one, although they are greater than

1030 one. In this sense, the worst triggering factor relates to the water-filled crevasses (FoS = 2.51, lower than the others). It is followed by the weak layer characterized by the worst parameters (FoS = 3.75). The least important is hydraulic jacking (FoS = 6.08). However, there are many uncertainties about the parameters of the weak layer.

1035 As ~~far as for~~ the predisposing factors ~~are concerned~~, the initial formation of deep crevasses in cold ice frozen to permafrost rocks appears to ~~represent~~be the most critical ~~predisposing~~ condition. as water that seasonally penetrates the crevasse can lead to its progressive deepening, transferring heat to the deeper layers of the glacier (Gilbert et al., 2020). Without their presence, hydraulic jacking would be more difficult to initiate and, as a chain, the degradation of the basal (weak) layer would also be slower. Moreover, the loss of shear strength of the basal interface is connected with the decrease in effective stresses due to the increase in water pressure. In other words, it can be assumed that the other predisposing/triggering factors also depend upon the development of the crevasses.

1040 The “sine qua non” condition for the instability of the ice mass that collapsed on 3 July 2022 is then a combined action of three instability factors, none of which alone determines a FoS condition lower than 1.

1045 Particularly anomalous temperature conditions also occurred during the spring and summer of 2003. The only difference was a shorter duration and values falling outside the standard deviation range for the reference period 1990–2020 only in the month of June, when the monthly maximum temperature was 3.5°C higher than the average for the reference period (in June 2022 the positive difference was 4.3 °C). On that occasion as well, as evidenced by satellite images, the large median crevasse was completely filled with meltwater, which overflowed from the eastern edge and generated a bédrière (Bondesan and Francese, 2023). In 2003, instability did not occur, most likely due to the smaller volume of meltwater, which—by penetrating the crevasse—warmed the basal layer, and due to the greater extent of the glacieret, which, despite the thicker ice, was well frozen to its bed throughout the entire frontal area.

1050 Finally, some considerations must be made on the predictability of the glacial collapses. It is known that cold-based glaciers show very few precursors detectable at the surface (Röthlisberger, 1981), while in case of warm-based glaciers some surface effects could be observed in the imminence of the break-off (Faielletaz et al., 2011). Surface velocity is the parameter to be monitored but, in general, the time window for predicting a failure is very short and no longer than a few days or at best weeks (Pralong et al., 2005), with the danger of false alarms. Quantitative glacier monitoring is probably more effective than

1055 visual glacier observations but it is also more costly and then possibility of false alarms must be taken into account. Glacier seismicity (Walter et al., 2009) could be used to correlate ice quakes with ice dynamics but this seismicity is also controlled by surface melting and changes in subglacial water pressure (Mikesell et al., 2012), resulting in inherent difficulty in transposing ice quake occurrences into an effective collapse precursor.

1060 An alternative strategy may be to create hazard scenarios based on sets of key parameters (e.g. temperature, snow cover, melting rate, etc.) to be cost-effectively collected or reliably estimated but only after having achieved a full knowledge on glacier (including major crevasses) and bedrock morphology. A good control on the glacier geometry allows for the use of advanced ice flow models (Zekollari et al., 2022) that could be turned into effective numerical simulations of stability. Current technology allows the simple and cost-effective acquisition of time-lapse geophysical images of almost all Alpine

glaciers (Ruols et al., 2023) via UAV-mounted broadband RES antennas, which could be flown just above the glacier surface, preventing the loss of resolution that generally affects helicopter-based RES surveys.

5. Conclusions

The failure of the Marmolada glacier resulted from an unfortunate combination of conditioning/predisposing and triggering factors, which, acting over different time frames and with varying weights, favoured instability under the unusual atmospheric conditions that occurred in the Alps during the late spring and summer of 2022, ultimately leading to the collapse. A thorough compilation of information on recent morpho-climatic evolution combined with in-situ geophysical imaging, seismological analysis and geothermal data was used as a to define pre-failure settings providing the basis for numerical back-analysis concerning the deadly 2022.

~~The broken ice collapse at the Marmolada Glacier.~~

The detachment zone was originally part of the the probably temperate firn/accumulation zone of the Little Ice Age glacier. As a body, as a consequence of the warming-induced disaggregation of the LIA/Little Ice Age glacier, it became y—during at least the last three decades—an isolated cold glacieret—consisting of massive, impermeable—but crevassed ice—yet crevassed ice—at least over the past three decades. The progressive opening of a large median crevasse increased the glacieret capability of storing englacial water. Its average summer ice temperature can be estimated at some -2.4°C, i.e., relatively close to melting conditions but with at least partially freezing or frozen bed. In proximity of the crest, continued climate-induced warming of the nearby south face and onset of cooling related to changing ice conditions on Additional conditioning factors included the northern slope, increased the thermal contrast and related sub-horizontal heat flow across the mountain.

The collapse was caused by an uneven combination of predisposing and triggering factors which, acting in different time frames and with variable weights, favoured instability until the tragic failure occurred in July 2022.

The progressive retreat of the glacier, its fragmentation into smaller individual ice bodies, together with the high steep slope inclination and the asymmetric permafrost conditions close to the ridge with a warm south face certainly influenced the conditioning/predisposition of the collapse. Further conditioning elements must have been the complicated thermal settings of the ice-bedrock interface; the presence of low-angle discontinuities, particularly close to the bottom, such as ice foliations in the ice and/or the discontinuous layers of basal till deposits layers; and the complex thermal conditions at the ice-bedrock interface, which may be associated with permafrost degradation.

The probably most influential/likely triggering factors are associated with minimal winter snowfall and the a prolonged positive thermal anomaly that characterized late spring and early summer 2022, considered as a sort of an “annus horribilis”. The marginal/limited thickness of low-permeable/permeability snow layers and especially the—combined with extreme air temperatures—resulted in an—allowed excess of meltwater penetrating deep to penetrate into the glacier. In fact, This resulted in water filling the deep crevasses could have produced and generating subglacial water pressures in excess of exceeding

floating conditions. ~~Its freezing due to the cold crevasse walls induced not only efficient warming by latent heat exchange but also added downslope stress.~~ The absence of a connected drainage network, because of basal ice frozen to bedrock, created the condition for the development of an increasing hydraulic over-pressure. Meltwater also contributed to heat exchange at the foot of the large median crevasse, promoting, through alternating melting and refreezing, the softening of the basal ice. This process eventually resulted in water progressively forcing its way beneath the glacieret and, ultimately, in a reduction of the shear strength within its thin complex basal layer comprised of ice, water, debris and voids.

An earthquake, as the final triggering mechanism ~~could, can~~ be excluded ~~and results, Results~~ from numerical simulations ~~suggested~~ suggest that the triggering of the final collapse ~~must was~~ most ~~probably be seen as a likely due to the~~ simultaneous interaction of hydrostatic pressure in crevasses, hydraulic jacking pressure, and a reduction of the ~~in~~ basal friction caused ~~relating to by the presence of~~ a weak basal layer. ~~The weak basal~~ This thin layer appears to be a key factor ~~of the failure. Its~~ evolution may be associated with permafrost degradation at the ice-bedrock interface, which resulted in a local plasticization ~~of basal ice and fine glacial deposits~~ in the failure, as instability does not occur by hydraulic pressure alone.

Numerical back analysis was conducted with the LEM creating bi-dimensional base and combined scenarios of driving forces but it should be noted that some resisting forces, due to the real three dimensional shape (i.e. lateral failure), were neglected, partly limiting the effectiveness of numerical simulations. The 3D morphology of the niche and the existence of mild counter slopes in the calcareous bedrock are further aspects that could not be fully considered in a simple 2D modeling approach. Ranking of the predisposing/triggering factors accurately is not a straightforward task, but it's possible that the most influential predisposing factor is related to the progressive widening of crevasses while the crucial triggering factor could be associated with the water infill of crevasses along with the weakening of the basal layer.

Finally, it should be noted that some resisting forces, due to the real three-dimensional shape (i.e. lateral failure), were neglected for simplicity. However, this simplified 2D conceptualization is very effective in describing the physics of the failure process, without loss of generality. The 3D morphology of the niche and the existence of mild counter slopes in the calcareous bedrock are additional aspects that could be further considered to refine the model.

Future improvement of the numerical simulations will include a full 3D modelling of the failure, based on new borehole measurements of the ice and bedrock temperatures and high-resolution RES geophysical images data that are planned to be collected.

~~Determinist modeling of glacier instability seems to be really complicated and feasible only in specific conditions and its effectiveness depends upon the control on the different variables. Extensive monitoring is likewise costly and hardly implementable in a systematic manner. The generation of instability scenarios could be a reasonable compromise if based on the standard parameters collected with the meteorological network associated with time-lapse geophysical imaging of the glacier geometry and physics.~~

CRedit authorship contribution statement

RF and AB both designed the study, organized, and participated in geophysical field surveys along with SP and MG. RF re-organized, and re-structured the various data types implementing the GIS and the database. GR processed the satellite images. WH and MV provided information on climatic variables and permafrost. FP and DR processed the seismological data. RV implemented the numerical models and conducted the simulations. All the authors equally contributed to the analysis of the results and to the writing of the manuscript.

Formatted: Font color: Auto

Declaration of competing interest

The authors declare that they have no known competing financial interests or personal relationships that could have appeared to influence the work reported in this paper.

Formatted: Font color: Auto

Funding

Research was funded by: FFABR 2017 (MIUR, Francese); FIL 2019 (University of Parma, Francese); DOR (Dotazione Ordinaria Ricerca) 2015–2021 (University of Padova, Bondesan); PRAT2013 (Progetto di Ateneo 2013, University of Padova, Bondesan). Other funds were provided by the National Institute of Oceanography and Applied Geophysics (OGS).

Formatted: Font color: Auto

Data availability

~~Some of the data could be made available upon request while some others are confidential.~~
Topographical, RES, seismological, IR, and borehole temperature data are available from the authors. The meteorological time series (temperature, snow cover, and rainfall) are publicly available, but a request must be submitted to the Italian agency ARPAV (<https://www.arpa.veneto.it/>).

Formatted: Font color: Auto

Acknowledgments

The authors gratefully thank Nicola Casagli (UNIFI) for providing and processing TLS data collected just after the collapse. The authors are also grateful to Riccardo Percacci for his help and suggestions in applying the matched-filter method. Particular thanks to Nuccio Bucceri of Land & Technology Srl for his aid in processing the IR images. Special thanks to Provincia di Trento and to the cartographic bureau of Regione del Veneto for providing past satellite/aerial imagery and LIDAR data and to Alberto Carton for providing historical maps. Additional thanks to the Provincia di Trento for providing the steam probe for ice drilling. AB is a research fellow at the University of Stellenbosch, and RF is a research fellow at the National Institute of Oceanography and Applied Geophysics.

Formatted: Font color: Auto

References

Aggarwal, A., Jain, S. K., Lohani, A. K., and Jain, N.: Glacial lake outburst flood risk assessment using combined approaches of remote sensing, GIS and dam break modelling, *Geomatics Nat. Hazards Risk*, 7(1), 18–36, doi:10.1080/19475705.2016.1144652, 2016.

Alean, J.: Avalanches de glace, *Alpen*, 61, 3, 121-132, 1985.

Allen, S., Frey, H., Haeberli, W., Huggel, C., Chiarle, M., and Geertsema, M.: Assessment principles for glacier and permafrost hazards in mountain regions, *Oxford Res. Encyc. Nat. Haz. Sci.*, doi:10.1093/acrefore/9780199389407.013.356, 2022.

Antonelli, R., Barbieri, G., Dal Piaz, G. V., Dal Pra, A., De Zanche, V., Grandesso, P., Mietto, P., Sedea, R., and Zanferrari, A.: Carta geologica del Veneto 1: 250.000 - Una storia di cinquecento milioni di anni, *Geological Map of the Veneto Region 1:250,000*, 32 pp., 1990.

Bessette-Kirton, E. K., and Coe, J. A.: A 36-Year Record of Rock Avalanches in the Saint Elias Mountains of Alaska, With Implications for Future Hazards, *Front. Earth Sci.*, 8, 293, doi:10.3389/feart.2020.00293, 2020.

Bieniawski, Z. T.: Engineering rock mass classifications, John Wiley & Sons, New York, 251 pp., ISBN-13: 9780471601720, 1989.

~~Biskaborn, B. K., Smith, S. L., and 47 co-authors, Lantuit, H.~~ Permafrost is warming at a global scale. *Nature Communications*, 10, 264, ~~Doi~~doi: 10.1038/s41467-018-08240-4, 2019.

Bodin, X., Krysiecki, J. M., Schoeneich, P., Le Roux, O., Lorier, L., Echelard, T., et al.: The 2006 collapse of the Bérard rock glacier (Southern French Alps), *Permafr. Periglac. Process.*, 209-223, doi:10.1002/ppp.1887, 2017.

Boeckli, L., Brenning, A., Gruber, S., and Noetzli, J.: Permafrost distribution in the European Alps: calculation and evaluation of an index map and summary statistics, *Cryosphere*, 6, 807–820, doi:10.5194/tc-6-807-2012, 2012.

Bohleber, P.: Alpine Ice Cores as Climate and Environmental Archives, *The Oxford Encyclopedia of Climate Science*, doi:10.1093/acrefore/9780190228620.013.743, 2019.

~~Boleh, T., Kulkarni, A., Kääb, A., Huggel, C., Paul, F., Cogley, J. G., Frey, H., Kargel, J. S., Fujita, K., Scheel, M., Bajracharya, S., and Stoffel, M.:The state and fate of Himalayan glaciers, *Science* 336.6079, 310-314, doi:10.1126/science.1215828, 2012.~~

Bondesan, A., and Francese, R. G.: The climate-driven disaster of the Marmolada Glacier (Italy), *Geomorphology*, 431, 108687, doi:10.1016/j.geomorph.2023.108687, 2023.

Bondesan, A., Carton, A., and Laterza, V.: Leo Handl and the ice city (Marmolada Glacier, Italy), *Rendiconti Online della Società Geologica Italiana*, 36, 31–34, doi:10.3301/ROL.2015.137, 2015.

Bosellini, A.: *Geologia delle Dolomiti, Athesia*, ISBN-13: 9788870148893, 1996.

Carton, A., Bondesan, A., and Benetton, S.: Marmolada, la regina delle Dolomiti, *Itinerari Glaciologici sulle Montagne Italiane 3*, Itinerari 19A e 19B, Comitato Glaciologico Italiano, 89–212 pp., 2017.

Formatted: Font color: Auto

Formatted: Italian (Italy)

Formatted: Font: Times New Roman

Formatted: Font: Times New Roman

Formatted: Font: Times New Roman

Formatted: Font: Times New Roman

Formatted: Italian (Italy)

- Chen, W., Yao, T., Zhang, G., Woolway, R. I., Yang, W., Xu, F., and Zhou, T.: Glacier surface heatwaves over the Tibetan Plateau, *Geophysical Research Letters*, 50, e2022GL101115, doi:10.1029/2022GL101115, 2023.
- Chiarle, M., ~~Geertsema, M., Mortara, G., Clague, J. J.: Relations between climate change and mass movement: perspectives from the Canadian Cordillera and the European Alps, *Glob. Planet. Chang.*, 202, 103499, doi:10.1016/j.gloplacha.2021.103499, 2021.~~
- Chiarle, M., Viani, C., Mortara, G., Deline, P., Tamburini, A., and Nigrelli, G.: Large glacier failures in the Italian Alps over the last 90 years, *Geogr. Fis. Dinam. Quat.*, 19-40, doi:10.4461/GFDQ.2022.45.2, 2022.
- Church, G., Bauder, A., Grab, M., and Maurer, H.: Ground-penetrating radar imaging reveals glacier's drainage network in 3D, *Cryosphere*, 15, 8, 3957–3988, doi:10.5194/tc-15-3975-2021, 2021.
- Clifton, A., Manes, C., Rüedi, J-D., Guala, M., and Lehning, M.: On Shear-Driven Ventilation of Snow, *Boundary-Layer Meteorology*, 126, 249–261, doi:10.1007/s10546-007-9235-0, 2007.
- CGI - Comitato Glaciologico Italiano, CNR - Consiglio Nazionale delle Ricerche: Catasto dei Ghiacciai Italiani, Anno Geofisico Internazionale 1957-1958 - Ghiacciai delle Tre Venezie e dell'Appennino, Comitato Glaciologico Italiano, Torino, 4, 309 pp, 1962.
- Crepaz, A., Baldo, M., Frigerio, S., Gabrieli, J., Galuppo, A., Magnabosco, L., Mantovani, M., and Pasuto, A.: Permafrost in Veneto Region: distribution, analysis and potential environmental effects, PERMANET Project-Alpine Space Programme, Regione del Veneto, Technical Report, 100 pp., 2011.
- Crepaz, A., Cagnati, A., and De Luca, G.: The evolution of Dolomitic glacier during the last century, *Mountains Under Watch*, Forte di Bard, Aosta, February, 20-21, 2013.
- CRS – Centro Ricerche Sismologiche, National Institute of Oceanography and of Applied Geophysics – OGS, Real Time Seismic Network, <https://rts.crs.inogs>, 2024.
- D'Alessandro, A., Luzio, D., D'Anna, G., and Mangano, G.: Seismic Network evaluation through simulation: an application to the Italian national Seismic Network, *Bull. Seismol. Soc. Am.*, 101, 3, 1213–1232, doi:10.1785/0120100066, 2011.
- Davies, M. C. R., Hamza, O., and Harris, C.: The effect of rise in mean annual temperature on the stability of rock slopes containing ice-filled discontinuities, *Permafr. Periglac. Process.*, 12, 69–77, doi:10.1002/ppp.376, 2001.
- Dutto, F., Godone, F., and Mortara, G.: L'écroulement du glacier supérieur de Coolidge (Paroi nord du Mont Viso, Alpes occidentales), *Rev. Géogr. Alp.*, 79(2), 7-18, doi:10.3406/rga.1991.3597, 1991.
- Dyrgerov, M. B., and Meier, M. F.: *Glaciers and the Changing Earth System: A 2004 Snapshot*, 58 pp., Inst. Arct. Alp. Res., Univ. Colorado, 2004.
- Egli, P., Irving, J., and Lane, S.: Characterization of subglacial marginal channels using 3-D analysis of high-density ground-penetrating radar data, *J. Glaciol.*, 67, 759–772, doi:10.1017/jog.2021.26, 2021.
- Etzelmüller, B., Guglielmin, M., Hauck, C., Hilbich, C., Hoelzle, M., Isaksen, K., Noetzli, J., Oliva, M., and Ramos, M.: Twenty years of European mountain permafrost dynamics – the PACE legacy, *Environ. Res. Lett.*, 15, 104070, doi:10.1088/1748-9326/abae9d, 2020.

Formatted: Italian (Italy)

- 1220 Faillettaz, J., Funk, M., and Vincent, C.: Avalanching glacier instabilities: review on processes and early warning perspectives, *Rev. Geophys.*, 53, 203–224, doi:10.1002/2014RG000466, 2015.
- Faillettaz, J., Sornette, D., and Funk, M.: Numerical modeling of a gravity-driven instability of a cold hanging glacier: reanalysis of the 1895 break-off of Altelsgletscher, Switzerland, *J. Glaciol.*, 57, 205, 817–831, doi:10.3189/002214311798043852, 2011.
- 1225 Falaschi, D., Kääb, A., Paul, F., Tadono, T., Rivera, J. A., and Lenzano, L. E.: Collapse of 4Mm3 of ice from a cirque glacier in the Central Andes of Argentina, *Cryosphere*, 13, 997–1004, doi:10.5194/tc-13-997-2019, 2019.
- Fischer, A., Stocker-Waldhuber, M., Frey, M., and Bohleber, P.: Contemporary mass balance on a cold Eastern Alpine ice cap as a potential link to the Holocene climate, *Sci. Rep.*, 12, 1331, doi:10.1038/s41598-021-04699-2, 2022.
- 1230 ~~Forte, E., Santin, I., Colucci, R., Dossi, M., Guglielmin, M., Pipan, M., Roncoroni, G., and Žebre, M.: GPR data analysis for cold and warm ice detection and characterization in polythermal glaciers, 18th Int. Conf. Ground Penetrating Radar, Golden, Colorado, USA, 14–19 June, Soc. Explor. Geophysicists, 69–72, 2020.~~
- Francese, R. G., Bondesan, A., Giorgi, M., Picotti, S., Carcione, J., Salvatore, M. C., Nicolis, F., and Baroni, C.: Geophysical signature of a World War I tunnel-like anomaly in the Forni Glacier (Punta Linke, Italian Alps), *J. Glaciol.*, 65, 253, 798–812, doi:10.1017/jog.2019.59, 2019.
- 1235 Fretwell, P., Pritchard, H. D., Vaughan, D. G., Bamber, J.L., Barrand, N. E., et al.: Bedmap2: improved ice bed, surface and thickness datasets for Antarctica, *Cryosphere*, 7, 375–393, doi:10.5194/tc-7-375-2013, 2013.
- Fujita, K., Inoue, H., Izumi, T., Yamaguchi, S., Sadakane, A., Sunako, S., Nishimura, K., Immerzeel, W. W., Shea, J.M., Kayastha, R. B., and Sawagaki, T.: Anomalous winter-snow-amplified earthquake-induced disaster of the 2015 Langtang avalanche in Nepal, *Nat. Hazards Earth Syst. Sci.*, 17, 5, 749–764, doi:10.5194/nhess-17-749-2017, 2017.
- 1240 Gascoin, S., and Berthier, E.: Remote sensing analysis of Marmolada (Italy) and Juuku pass (Kyrgyzstan) glacier collapses, EGU General Assembly 2023, Vienna, Austria, 24–28, EGU23-14011, doi:10.5194/egusphere-egu23-14011, 2023.
- Gentili, S., Sugan, M., Peruzza, L., and Schorlemmer, D.: Probabilistic completeness assessment of the past 30 years of seismic monitoring in north-eastern Italy, *Phys. Earth Planet. Inter.*, 186, 81–96, doi:10.1016/j.pepi.2011.03.005, 2011.
- Gibbons, S. J., and Ringdal, F.: The detection of low magnitude seismic events using array-based waveform correlation, *Geophys. J. Int.*, 165, 1, 149–166, 2006.
- 1245 Gilbert, A., Vincent, C., Gagliardini, O., Krug, J., and Berthier, E.: Assessment of thermal change in cold avalanching glaciers in relation to climate warming, *Geophys. Res. Lett.*, 42, 6382–6390, doi:10.1002/2015GL064838, 2015.
- Gilbert, A., Wagnon, P., Vincent, C., Ginot, P., and Funk, M.: Atmospheric warming at a high elevation tropical site revealed by englacial temperatures at Illimani, Bolivia (6340 m above sea level, 16°S, 67°W), *J. Geophys. Res.*, 115, D10109, doi:10.1029/2009JD01296, 2010.
- 1250 ~~Greene, C. A., Gardner, A. S., Wood, M., and Cuzzone, J. K.: Ubiquitous acceleration in Greenland Ice Sheet calving from 1985 to 2022, *Nature*, doi:10.1038/s41586-023-06863-2, 2024.~~

- 1255 [Gilbert, A., Sinisalo, A., Gurung, T. R., Fujita, K., Maharjan, S. B., Sherpa, T. C., and Fukuda, T.: The influence of water percolation through crevasses on the thermal regime of a Himalayan mountain glacier, *The Cryosphere*, 14, 1273–1288, <https://doi.org/10.5194/tc-14-1273-2020>, 2020.](#)
- Gruber, S., and Haeberli, W.: Permafrost in steep bedrock slopes and its temperature-related destabilization following climate change, *J. Geophys. Res.*, 112, F02S18, doi:10.1029/2006JF000547, 2007.
- Gruber, S.: Derivation and analysis of a high-resolution estimate of global permafrost zonation, *Cryosphere*, 6, 221–233, doi:10.5194/tc-6-221-2012, 2012.
- 1260 Haeberli, W., and Alean, J.: Temperature and accumulation of high-altitude firn in the Alps, *Ann. Glaciol.*, 6, 161–163, 1985.
- Haeberli, W., and Hoelzle, M.: Application of inventory data for estimating characteristics of and regional climate-change effects on mountain glaciers: a pilot study with the European Alps, *Ann. Glaciol.*, 21, 206–212, 1995.
- Haeberli, W., Frauenfelder R., Kääb, A., and Wagner, S.: Characteristics and potential climatic significance of “miniature ice caps” (crest- and cornice-type low-altitude ice archives), *J. Glaciol.*, 50, 168, 129–136, doi:10.3189/172756504781830330, 2004a.
- 1265 Haeberli, W., Huggel, C., Kääb, A., Zraggen-Oswald, S., Polkvoj, A., Galushkin, I., Zotikov, I., and Osokin, N.: The Kolka-Karmadon rock/ice slide of 20 September 2002: An extraordinary event of historical dimensions in North Ossetia, Russian Caucasus, *J. Glaciol.*, 50, 171, 533–546, doi:10.3189/172756504781829710, 2004b.
- 1270 Haeberli, W., Schaub, Y. and Huggel, C.: Increasing risks related to landslides from degrading permafrost into new lakes in de-glaciating mountain ranges, *Geomorphology* 293, 405–417. doi:10.1016/j.geomorph.2016.02.009, 2017.
- ~~Haeberli, W., Wegmann, M., and Vonder Mühll, D.: Slope stability problems related to glacier shrinkage and permafrost degradation in the Alps, *Eclogae Geol. Helv.*, 90, 407–414, 1997.~~
- 1275 ~~Hess, H.: Leo Handl’s Temperatur-Messungen des Eises und der Luft in den Stollen des Marmolata-Gletschers und denen des Ortlergebietes, *Z. Gletscherkd.*, 27, 1–2, 168–171, 1940.~~
- Hock, R., Bliss, A., Giesen, R., Marzeion, B., Hirabayashi, Y., Huss, M., Radic, V., and Slangen, A.: GlacierMIP - A model intercomparison of global-scale glacier mass-balance models and projections, *J. Glaciol.*, 65, 251, 453–467, doi:10.1017/jog.2019.22, 2019.
- Hooke, R. L. B., and Hudleston, P.: Origin of foliation in glaciers, *J. Glaciol.*, 20, 285–299, doi:10.3189/S0022143000013848, 1978.
- 1280 Huang, D., Meng, Q., Songa, Y., Guc, D., Cend, D., and Zhonghe, Z.: Experimental study on the shear mechanical behavior of ice-rich debris–rock interface: effects of temperature, stress, and ice content, *Can. Geotech. J.*, 61, 1051–1072, doi:10.1139/cgj-2023-0375, 2024.
- Huggel, C., Kääb, A., Haeberli, W., Teyssie, P., and Paul, F.: Remote sensing-based assessment of hazards from glacier lake outbursts: A case study in the Swiss Alps, *Can. Geotech. J.*, 39, 2, 316–330, 2002.
- 1285 Hutter, K.: Snow and Glacier Rheology, *Appl. Rheol.*, 7, 6, 266–276, doi:10.3933/ApplRheol-7-266, 1997.

Formatted: German (Switzerland)

Formatted: German (Switzerland)

Formatted: German (Switzerland)

- Irvine-Fynn, T. D. L., Hodson, A. J., Moorman, B. J., Vatne, G., and Hubbard, A. L.: Polythermal glacier hydrology: a review, *Rev. Geophys.*, 49, RG4002, doi:10.3189/172756501781831972, 2011.
- Janbu, N.: Application of composite slip surface for stability analysis, *Proceedings of European conference on stability of earth slopes*, Stockholm, 3, 43–49, 1954.
- Janbu, N., Bjerrum, L., and Kjaernsli, B.: Soil mechanics applied to some engineering problems, *Norwegian Geotechnical Institute Publication 16*, Oslo, Norway, 1956.
- Janbu, N.: Slope stability computations, in: *Embankment Dam Engineering, Casagrande Memorial Volume* (eds E. Hirschfield and S. Poulos), 47–86, New York, Wiley, 1973.
- Jennings, S. J. A., and Hambrey, M. J.: Structures and deformation in glaciers and ice sheets, *Rev. Geophys.*, 59, e2021RG000743, doi:10.1029/2021RG000743, 2021.
- Jouvet, G., Picasso, M., Rappaz, J., Huss, M., and Funk, M.: Modelling and Numerical Simulation of the Dynamics of Glaciers Including Local Damage Effects, *Math. Model. Nat. Phenom.*, 6, 5, 263–280, doi:10.1051/mmnp/20116510, 2011.
- Kargel, J. S., Leonard, G. J., Shugar, D. H., Haritashya, U. K., Bevington, A., Fielding, E. J., Fujita, K., Geertsema, M., Miles, E. S., Steiner, J., and Anderson, E.: Geomorphic and geologic controls of geohazards induced by Nepal’s 2015 Gorkha earthquake, *Science*, 351, 6269, aac8353, 2016.
- Kavanaugh, J. L., and Clarke, G. K. C.: Abrupt glacier motion and reorganisation of basal shear stress following the establishment of a connected drainage system, *J. Glaciol.*, 47, 158, 472–480, doi:10.3189/172756501781831972, 2001.
- Lee W. H., and Lahr, J. C.: Hypo71 (revised): a computer program for determining local earthquake hypocentral parameters, magnitude, and first motion pattern of local earthquakes, *US Geol. Survey Open-file Report 75-311*, doi:10.3133/ofr75311, 1975.
- Löfgren, A., Zwinger, T., Råback, P., Helanow, C., and Ahlkrona, J.: Increasing numerical stability of mountain valley glacier simulations: implementation and testing of free-surface stabilization in Elmer/Ice, *EGUsphere*, doi:10.5194/egusphere-2023-1507, 2023.
- Logan, L. C., Lavier, L. L., Choi, E., Tan, E., and Catania, G. A.: Semi-brittle rheology and ice dynamics in DynEarthSol3D, *Cryosphere*, 11, 1, 117–132, doi:10.5194/tc-11-117-2017, 2017.
- Lomax, A., Satriano, C., and Vassallo, M.: Automatic picker developments and optimization: FilterPicker--a robust, broadband picker for real-time seismic monitoring and earthquake early warning, *Seismological Research Letters*, 83, 3, 531–540, doi:10.1785/gssrl.83.3.531, 2012.
- Longo, E.: La determinazione della resistenza a compressione uniassiale nelle rocce: un confronto tra i principali metodi applicati alla serie dolomitica, *MSc Thesis*, University of Padova, 133 pp., 2018.
- Lützow, N., Veh, G., and Korup, O.: A global database of historic glacier lake outburst floods, *Earth Syst. Sci. Data*, 15, 2983–3000, doi:10.5194/essd-15-2983-2023, 2023.
- Madhukar, B. N. and Narendra, R.: Lanczos Resampling for the Digital Processing of Remotely Sensed Images, *Proceedings of VCASAN-2013, Lecture Notes in Electrical Engineering*, Springer, 258, 403–411, 2013.

Formatted: Italian (Italy)

- Margreth, S., Faillettaz, J., Funk, M., Vagliasindi, M., Diotri, F., and Broccolato, M.: Safety concept for hazards caused by ice avalanches from the Whymper hanging glacier in the Mont Blanc Massif, *Cold Reg. Sci. Technol.*, 69, 194–201, 2011.
- Margreth, S., Funk, M., Tobler, D., Dalban, P., Meier, L., and Lauper, J.: Analysis of the hazard caused by ice avalanches from the hanging glacier on the Eiger west face, *Cold Reg. Sci. Technol.*, 144, 63–72, doi:10.1016/j.coldregions.2017.05.012, 2017.
- Marta, S., Azzoni, R. S., Fugazza, D., Tielidze, L., Chand, P., Sieron, K., Almond, P., Ambrosini, R., Anthelme, F., Alviz Gazitúa, P., et al.: The Retreat of Mountain Glaciers since the Little Ice Age: A Spatially Explicit Database, *Data*, 6, 107, doi:10.3390/data6100107, 2021.
- Marzeion, B., Hock, R., Anderson, B., Bliss, A., Champollion, N., Fujita, K., et al.: Partitioning the uncertainty of ensemble projections of global glacier mass change, *Earth's Future*, 8, e2019EF001470, doi:10.1029/2019EF001470, 2020.
- McFeeters, S. K.: The use of the Normalized Difference Water Index (NDWI) in the delineation of open water features, *International Journal of Remote Sensing*, 17, 7, 1425–1432, 20461996.
- Mikesell, T., van Wijk, K., Haney, M. M., Bradford, J. H., Marshall, H.-P., and Harper, J. T.: Monitoring glacier surface seismicity in time and space using Rayleigh waves, *J. Geophys. Res.: Earth Surf.*, 117, F2, doi:10.1029/2011JF002259, 2012.
- Mortara, G., and Dutto, F.: A case of sudden evolution of Monviso glaciers: the ice avalanche of Upper Coolidge Glacier, *Geogr. Fis. Dinam. Quat.*, 13, 187–189, 1990.
- Morgenstern, N. R., and Price, V.E.: The analysis of the stability of general slip surfaces, *Geotechnique*, 15, 1, 79–93, 1965.
- Noetzli, J., and Gruber, S.: 2009, ~~Transient thermal effects in Alpine permafrost, *The Cryosphere*, 3, 85–99, doi:10.5194/tc-3-85-2009~~Isaksen, K., ... Phillips, M.: Enhanced warming of European mountain permafrost in the early 21st century, *Nature Communications*, 15, 10508, doi: 10.1038/s41467-024-54831-9, 2024.
- ~~Noetzli, J., and Gruber, S.: Transient thermal effects in Alpine permafrost, *The Cryosphere*, 3, 85–99, doi:10.5194/tc-3-85-2009, 2009.~~
- Noetzli, J., Gruber, S., Kohl, T., Salzmann, N., and Haerberli, W.: Three-dimensional distribution and evolution of permafrost temperatures in idealized high-mountain topography, *J. Geophys. Res.*, 112, F02S13, doi:10.1029/2006JF000545, 2007.
- Noetzli, J., Huggel, C., Hoelzle, M., and Haerberli, W.: GIS-based modelling of rock-ice avalanches from Alpine permafrost areas, *Comput. Geosci.*, 10, 161–178, doi:10.1007/s10596-005-9017-z, 2006.
- Olivieri, L., and Bettanini, C.: Preliminary observation of Marmolada glacier collapse of July 2022 with space-based cameras, *Remote Sens. Lett.*, 14, 1, 21–29, doi:10.1080/2150704X.2022.2152754, 2022.
- ~~Pasta, M.: 2004, *Esecuzione ed interpretazione di misure georadar sul ghiacciaio della Marmolada e studi di fattibilità su ghiacciai del Fradusta e dell'Antelao Superiore*, Università di Genova, DipTeRis, Technical Report, 20 pp.~~
- ~~Pasta, M., Pavan, M., Sonda, D., Carollo, F., and Cagnati, A.: *Prospezione di alcuni ghiacciai dolomitici tramite tecniche GPR e GPS*, *Neve e Valanghe*, 56, 50–59, 2005.~~

Formatted: Italian (Italy)

Formatted: Italian (Italy)

- 1355 ~~Pasta, M.~~: Esecuzione ed interpretazione di misure georadar sul ghiacciaio della Marmolada e studi di fattibilità su ghiacciai
del Fradusta e dell'Antelao Superiore, Univ. Genova, DipTeRis, Technical Report, 20 pp., 2004.
- Pasta, M., Pavan, M., Sonda, D., Carollo, F., and Cagnati, A.: Prospezione di alcuni ghiacciai dolomitici tramite tecniche
GPR e GPS, *Neve e Valanghe*, 56, 50–59, 2005.
- Paterson, W. S. B.: The Physics of Glaciers, 3rd ed., Pergamon, Oxford, U.K., 480 pp., ISBN-13: 9780080379457, 1994.
- Paul, F., Kääb, A., Maisch, M., Kellenberger, T., and Haeberli, W.: Rapid disintegration of Alpine glaciers observed with
1360 satellite data, *Geophys. Res. Lett.*, 31, 21, L21402, 1–4, doi:10.1029/2004GL020816, 2004.
- Pelto, M., WGMS Network: Alpine glaciers, in State of the Climate in 2019, *Bull. Am. Meteorol. Soc.*, 101, 8, S37–S38,
doi:10.1175/2020BAMSSStateoftheClimate.1, 2020
- Pettenati, F., Maharjan, D. K., Paudyal, S., Sandron, D., Wagle, S., Cravos, C., Giorgi, M., and Shrestha, S. N.: Structure of
the Kathmandu basin inferred from microtremor measurements: a preliminary study, *Geophys. J. Int.*, 1–16,
1365 doi:10.1093/gji/ggac465, 2023.
- Picotti, S., Francese, R., Giorgi, M., Pettenati, F., and Carcione, J. M.: Estimation of glaciers thicknesses and basal properties
using the horizontal-to-vertical component spectral ratio (HVSr) technique from passive seismic data, *J. Glaciol.*, 63, 229–
248, doi:10.1017/jog.2016.135, 2017.
- Podolskiy, E. A., Nishimura, K., Abe, O., and Chernous, P. A.: Earthquake-induced snow avalanches: I. Historical case
1370 studies, *J. Glaciol.*, 56, 197, 431–446, doi:10.3189/002214310792447815, 2010.
- Pralong, A., and Funk, M.: On the instability of avalanching glaciers, *J. Glaciol.*, 52, 176, 31–48,
doi:10.3189/172756506781828980, 2006.
- Pralong, A., Birrer, C., Stahel, W. A., and Funk, M.: On the predictability of ice avalanches, *Nonlinear Process. Geophys.*,
12, 849–861, doi:10.5194/npg-12-849-2005, 2005.
- 1375 Rebez, A., Renner, G., Sandron, D., and Slejko, D.: The eastern Alps earthquake catalogue (1977–2022), *Bull. Geophys.*
Oceanogr., 65, 1, 115–122, doi:10.4430/bgo00453, 2024.
- Richards, K., Sharp, M., Arnold, N., Gurnell, A., Clark, M., Tranter, M., Nienow, P., Brown, G., Willis, I., and Lawson, W.:
An integrated approach to modeling hydrology and water quality in glacierized catchments, *Hydrol. Process.*, 10, 4, 479–
508, 1996.
- 1380 Rossi, M., Dal Cin, M., Picotti, S., Gei, D., Isaev, V. S., Pogorelov, A. V., Gorshkov, E. I., Sergeev, D. O., Kotov, P. I.,
Giorgi, M., and Rainone, M. L.: Active Layer and Permafrost Investigations Using Geophysical and Geocryological
Methods - A Case Study of the Khanovey Area, Near Vorkuta, in the NE European Russian Arctic, *Front. Earth Sci.*, 10,
910078, doi:10.3389/feart.2022.910078, 2022.
- Röthlisberger, H., and Lang, H.: Glacial hydrology, in *Glacio-Fluvial Sediment Transfer: An Alpine Perspective*, edited by
1385 A.M. Gurnell and M.J. Clark, John Wiley, Chichester, U.K., 207–284, 1987.

Formatted: Italian (Italy)

- Röthlisberger, H.: Eislawinen und Ausbrüche von Gletscherseen, in Kasser, P., ed., *Gletscher und Klima – glaciers et climat*, Jahrbuch der Schweizerischen Naturforschenden Gesellschaft, wissenschaftlicher Teil 1978. Basel, Birkhäuser Verlag, 170–212, 1981.
- Rounce, D. R., Hock, R., Maussion, F., Hugonnet, R., Kochtitzky, W., Huss, M., Berthier, E., Brinkerhoff, D., Compagno, L., Copland, L., Farinotti, D., Menounos, B., and McNabb, R. W.: Global glacier change in the 21st century: Every increase in temperature matters, *Science*, 379, 6627, 78–83, doi:10.1126/science.abo1324, 2023.
- Ruols, B., Baron, L., and Irving, J.: Development of a drone-based ground penetrating radar system for efficient and safe 3D and 4D surveying of alpine glaciers, *J. Glaciol.*, 1–12, doi:10.1017/jog.2023.83, 2023.
- Saeki, H., Ono, T., En Zong, N., and Nakazawa, N.: Experimental study on direct shear strength of sea ice, *Ann. Glaciol.*, 6, 1, 218–221, 1985.
- Saim, N. M., and Kasa, A.: Comparative Analysis of Slope Stability using Finite Element Method (FEM) and Limit Equilibrium Method (LEM), 2023 IEEE 14th Control and System Graduate Research Colloquium, ICSGRC 2023 - Conference Proceeding, 224–229, doi:10.1109/ICSGRC57744.2023.10215453, 2023.
- Santin, I., Colucci, R., Žebre, M., Pavan, M., Cagnati, A., and Forte, E.: Recent evolution of Marmolada glacier (Dolomites, Italy) by means of ground and airborne GPR surveys, *Remote Sens. Environ.*, 235, 111442, 2019.
- SAT – Società Alpinistica Tridentina, Commissione Glaciologica: Marmolada, le immagini del ghiacciaio dal drone il giorno prima della valanga - UAV video of the marmolada glacier taken the day before the ice-avalanche, accessed Jul. 4, 2022, https://www.youtube.com/watch?v=QkpvW4L1WJ4&-ab_channel=CorrieredellaSera.
- Smiraglia, C., and Diolaiuti, G., *The New Italian Glacier Inventory*, EVK2CNR, 395 pp., ISBN unavailable, 2016.
- Stearns, L. A., and Van Der Veen, C. J.: Friction at the bed does not control fast glacier flow, *Science*, 361, 6399, 273–277, doi:10.1126/science.aat2217, 2018.
- Stockwell, J. W., Jr.: Free software in education: a case study of CWP/SU: Seismic Unix, *Leading Edge*, 61, 3, 759–775, 1999.
- Sugan, M., and Peruzza, L.: Distretti sismici del Veneto, *Boll. Geofis. Teor. Appl.*, 52, Suppl., s3–s90, 2011.
- Sugan, M., Kato, A., Miyake, H., Nakagawa, S., and Vuan, A.: The preparatory phase of the 2009 Mw 6.3 L'Aquila earthquake by improving the detection capability of low-magnitude foreshocks, *Geophys. Res. Lett.*, 41, 17, 6137–6144, 2014.
- Suter, S., Laternser, M., Haeberli, W., Frauenfelder, R., and Hoelzle, M.: Cold firn and ice of high-altitude glaciers in the Alps: measurements and distribution modeling, *J. Glaciol.*, 45, 156, 85–96, 2001.
- Tang, M., Zhao, H., Xu, Q., Ni, W., Li, G., Zuo, Z., Chen, X., Zhong Y.: Experimental study on the shear strength and failure mechanism of mountain glacier ice, *Natural Hazards and Earth System Sciences*, EGUsphere, preprint, <https://doi.org/10.5194/egusphere-2024-1522>, 2024.
- Thibert, E., Faug, T., Naaim, M., Bonnefoy-Demongeot, M., Gilbert, A., Vincent, C., Gagliardini, O., and Funk, M.: Retrieving Ice-avalanche basal friction law parameters from a back-analysis of the collapse of Altels glacier (1895, Bernese

Formatted: German (Switzerland)

Formatted: Italian (Italy)

Formatted: Italian (Italy)

- 1420 Alps, Switzerland). Application to Taconnaz glacier instability (French Alps), Int. Snow Sci. Workshop, Innsbruck, Austria, 66–70, 2018.
- Tian, L., Yao, T., Gao, Y., Thompson, L., Mosley-Thompson, E., Muhammad, S., Zong, J., Wang, C., Jin, S., and Li, Z.: Two glaciers collapse in western Tibet, J. Glaciol., 63, 194–197, doi:10.1017/jog.2016.122, 2017.
- Viani, C., Chiarle, M., Paranzunzio, R., Merlone, A., Musacchio, C., Coppa, G., and Nigrelli, G.: An integrated approach to
1425 investigate climate-driven rockfall occurrence in high alpine slopes: the Bessanese glacial basin, Western Italian Alps, J. Mt. Sci., 17, 2591–2610, doi:10.1007/s11629-020-6216-y, 2020.
- Vincent, C., Thibert, E., Harter, M., Soruco, A., and Gilbert, A.: Volume and frequency of ice avalanches from Taconnaz hanging glacier, French Alps, Ann. Glaciol., 56, 70, doi:10.3189/2015AoG70A017, 2015.
- Walter, F., Clinton, J. F., Deichmann, N., Dreger, D. S., Minson, S. E., and Funk, M.: Moment tensor inversions of
1430 icequakes on Gornergletscher, Switzerland, Bull. Seismol. Soc. Am., 99, 2A, 852–870, 2009.
- Wilson, N. J., and Flowers, G.: Environmental controls on the thermal structure of alpine glaciers, Cryosphere, 7, 167–182, doi:10.5194/tc-7-167-2013, 2013.
- Zekollari, H., Huss, M., Farinotti, D., and Lhermitte, S.: Ice-dynamical glacier evolution modeling—A review, Rev. Geophys., 60, e2021RG000754, doi:10.1029/2021RG000754, 2022.
- 1435 Zemp, M., Frey, H., Gärtner-Roer, I., Nussbaumer, S. U., Hoelzle, M., Paul, F., et al.: Historically unprecedented global glacier decline in the early 21st century, J. Glaciol., 61, 228, doi:10.3189/2015JoG15J017, 2015.
- Zemp, M., Huss, M., Thibert, E., et al.: Global glacier mass changes and their contributions to sea-level rise from 1961 to 2016, Nature, 568, 382–386, doi:10.1038/s41586-019-1071-0, 2019.
- Zhao, C., Yang, W., Westoby, M., An, B., Wu, G., Wang, W., Wang, Z., Wang, Y., and Dunning, S.: An approximately 50
1440 Mm³ ice-rock avalanche on 22 March 2021 in the Sedongpu valley, southeastern Tibetan Plateau, Cryosphere, 16, 1333–1340, doi:10.5194/tc-16-1333-2022, 2022.
- ~~Zhao, Zoet, L.K., Iverson, N.R.: A slip law for glaciers on deformable beds, Science, 368 (6486), 76-78, doi: 10.1126/science.aaz1183, 2020. Li, Yang, Y., Cheng, W., Ji, D., and Moore, J. C.: Glacier evolution in high mountain Asia under stratospheric sulfate aerosol injection geoengineering, Atmos. Chem. Phys., 17, 6547–6564, doi:10.5194/acp-17-6547-2017, 2017.~~
- 1445