

# Improving Pluvial Flood Simulations with Multi-source DEM Super-Resolution

Yue Zhu<sup>1,6</sup>, Paolo Burlando<sup>1</sup>, Puay Yok Tan<sup>2</sup>, Christian Geiß<sup>3,4</sup>, and Simone Faticchi<sup>5</sup>

<sup>1</sup>Institute of Environmental Engineering, ETH Zurich, Switzerland

<sup>2</sup>Department of Architecture, National University of Singapore, Singapore

<sup>3</sup>German Remote Sensing Data Center (DFD), German Aerospace Center (DLR), Germany

<sup>4</sup>Department of Geography, University of Bonn, Germany

<sup>5</sup>Department of Civil and Environmental Engineering, National University of Singapore, Singapore

<sup>6</sup>Future Cities Laboratory, Singapore-ETH Centre, Singapore

Correspondence to: Yue Zhu (yue.zhu@sec.ethz.ch)

**Abstract.** Accurate flood simulation remains a significant challenge in many flood-prone regions, particularly in developing countries and urban areas, where the availability of high-resolution topographic data is especially limited. While publicly available Digital Elevation Model (DEM) datasets are increasingly accessible, their spatial resolution is often insufficient for reflecting fine-scaled elevation details, which hinders the ability to simulate pluvial floods in built environments. To address this issue, we implemented a deep learning-based method, which efficiently enhances the spatial resolution of DEM data, and quantified the effect of the improved DEM on flood simulation. The method employs a tailored multi-source input module, enabling it to effectively integrate and learn from diverse data sources. By utilizing publicly open global datasets, low-resolution DEM datasets (i.e., 30m SRTM) in conjunction with high-resolution multispectral imagery (e.g., Sentinel-2A), our approach allows to produce a super-resolution DEM, which exhibits superior performance compared to conventional methods in reconstructing 10m DEM data based on 30m DEM data and 10m multispectral satellite images. We evaluated the performance of the super-resolution DEM in flood simulations. Compared to conventional methods (e.g., bicubic interpolation), the simulation results demonstrated that our approach significantly improved the accuracy of flood simulations, with a reduction in the mean absolute error of floodwater depth of about 13.1% and an increase in the IoU for inundation area predictions of about 46%. Accordingly, this study underscores the practical value of machine-learning techniques that leverage publicly available global datasets to generate DEMs that allow enhancing flood simulations.

## 1 Introduction

The occurrence of severe urban floods has been on the rise, partly influenced by climate change, which contributes to more frequent extreme rainfall events (Tabari, 2020). To address these challenges, high-resolution flood modelling is essential for making informed flood management decisions (Sanders et al., 2024; Y. Wang et al., 2018). As one of the key inputs for flood simulations, accurate Digital Elevation Model (DEM) data supports reliable flood simulation, in

Formatted

Formatted: Font: 10 pt

Formatted: Font: 10 pt

Formatted: Not Highlight

Formatted: Not Highlight

Formatted: Not Highlight

Deleted: from 0.137 to 0.119 (-)

Formatted: Not Highlight

Deleted: %

Formatted: Not Highlight

Deleted: from 0.207 to 0.302 (+45.9%), This

Formatted: Font: 10.5 pt

Formatted: Font: 10.5 pt

Deleted: increased significantly due to

Deleted: intensifies

Formatted: Font: 10.5 pt

Formatted: Font: 10.5 pt

Formatted: Font: 10.5 pt

Formatted: Font: 10.5 pt

Deleted: (Y. Wang et al., 2018). As one of the key inputs for flood simulations, accurate Digital Elevation Model (DEM)

Formatted: Font: 10.5 pt

turn enabling the assessment of various flood mitigation strategies. However, the fidelity of flood simulations is heavily contingent upon the spatial resolution of DEM data (Hawker et al., 2018). At present, open datasets of DEM data with global coverage are predominantly available at raster resolutions coarser than (or equal) 30m (Marsh et al., 2023), failing to capture the fine-resolution local topography details that are crucial for flood modelling (Hawker et al., 2018). The lack of publicly open high-resolution DEM is particularly affecting data-scarce regions of the developing world, which are often the most vulnerable to the devastating impacts of floods (Malgwi et al., 2020). In response to these challenges, this research examines the effect of implementing a deep learning-based image super-resolution model for generating high-resolution DEM data, and demonstrates the performance of the enhanced DEM data on improving pluvial flood simulations.

### 1.1 Existing methods for improving the spatial resolution of DEM

Methods to enhance the spatial resolution of DEM data have been widely adopted across geospatial applications to improve risk estimates. These advancements have significantly enhanced the accuracy and reliability of natural hazard mapping, including flood prediction (Löwe & Arnbjerg-Nielsen, 2020; Tan et al., 2024), landslide modelling (Brock et al., 2020), volcanic flow assessment (Deng et al., 2019), and snow avalanche forecasting (Miller et al., 2022). The most widely adopted approaches in existing studies of DEM super-resolution can be categorised into interpolation-based, data fusion-based, and learning-based methods (Zhou et al., 2023). The interpolation methods, such as bilinear and bicubic interpolations (Rees, 2000), are based on the concept of spatial autocorrelation, which posits that points in closer proximity are more alike than those that are more distant (Arun, 2013). While being straightforward and computationally efficient, their performance is often limited by the simplicity of terrain continuity and smoothness, potentially leading to over-smoothed terrain features (Y. Zhang & Yu, 2022). Data fusion-based approaches combine the strengths of data from different sources to create a more accurate and comprehensive representation of terrain (Yue et al., 2015). During the fusion process, tools such as elevation error maps or weight maps are commonly used to assign importance to each DEM source, ensuring that higher-quality data has a greater influence on the final output. However, these methods often introduce inaccuracies by altering elevation values and failing to address edge effects (Okolie & Smit, 2022), such as abrupt transitions or mismatches between overlapping DEM datasets.

Deep learning methods have significantly advanced the field of single-image super-resolution, achieving superior performance in reconstructing high-resolution images from their low-resolution counterparts (Yang et al., 2019). The implementations of deep learning-based super-resolution methods have been shown to substantially improve the performance of remote sensing applications (Ling & Foody, 2019; Shang et al., 2022; Xie et al., 2022) and promote the utilisation of spatial data that was previously underutilized due to limited spatial resolution (Zhu et al., 2021). includes the applications of enhancing low-resolution DEM data (Demiray et al., 2021a, 2021b; Jiang et al., 2023; Kubade et al.,

Formatted: Font: 10.5 pt

Formatted: Font: 10.5 pt

Deleted: At present, open datasets of DEM data with global coverage are predominantly available at raster resolutions coarser than 30x30 meters,

Formatted: Font: 10.5 pt

Formatted: Font: 10.5 pt

Formatted: Font: 10.5 pt

Formatted: Font: 10.5 pt

Formatted: Font: 10.5 pt

Deleted: ,

Formatted: Font: 10.5 pt

Deleted: Improving the quality and spatial resolution of DEM data is in great demand in the fields of geospatial analysis and environmental modelling, as this can substantially improve the performance of a wide range of applications, particularly for natural hazard mapping, such as predicting floods (Tan et al., 2024), landslides...

Deleted: and

Deleted: flows

Deleted: .

Deleted: While being straightforward and computationally efficient, their performance is often limited by the simplicity of terrain continuity and smoothness, potentially leading to over-smoothed terrain features (Yifan Zhang & Yu, 2022). Data fusion-based approaches leverage the unique strengths of different multi-source DEMs

Deleted: of multiple DEM sources, height

Deleted: were

Deleted: adopted for determining the

Deleted: of

Deleted: .

Deleted: simple

Deleted: may wrongly alter height

Deleted: cannot adequately resolve

Deleted: .

Formatted: No Spacing, Main text, Indent: First line: 1.27 cm

Deleted: Single Image Super-Resolution (SISR).

Deleted: Thus, besides interpolation-based and data fusion-based methods, deep learning-based super-resolution techniques have been implemented to enhance low-resolution DEM data (Demiray et al., 2021a, 2021b; Jiang et al., 2023; Kubade et al., 2020; Z. Li et al., 2023; Yue et al., 2015; Zhou et al., 2023, 2021, 2021). The implementations of deep learning-based SISR methods

Deleted: .

105 2020; Z. Li et al., 2023; Yue et al., 2015; Zhou et al., 2023, 2021, 2021). For instance, Demiray et al. (2021) utilized Generative Adversarial Networks (GANs) to upscale low-resolution DEMs (50ft) to high-resolution DEMs (3ft), although this study demonstrated the potential of adversarial training in spatial resolution enhancement, GANs are known for instability in training, facing challenges such as mode collapse and vanishing gradients (Jabbar et al., 2021). Zhou et al. (2021) introduced a double-filter deep residual neural network, leveraging residual learning to improve feature extraction and enhance the accuracy of reconstructed DEMs. More recently, Li et al. (2023) proposed a transformer-based deep learning network for upscaling DEM across multiple upsampling factors (e.g.,  $\times 2$ ,  $\times 4$ ), showcasing the effectiveness of attention mechanisms in capturing long-range dependencies and spatial relationships. Building on the advances of these existing methods, we refine a DEM super-resolution method by employing a computationally efficient architecture with attention mechanisms to achieve accuracy and robustness. In the previous studies, the majority of the deep learning applications in DEM super-resolution only employed low-resolution DEM data as input, without incorporating additional information. This is a limitation to accurately capture the unique terrain features that characterize high-resolution DEM (Zhou et al., 2023) and that are required to support accurate flood modelling.

## 1.2 Multi-source deep learning for remote sensing applications

120 In general remote sensing applications, the benefits of integrating multi-source inputs have been increasingly recognised, as the combination of complementary data sources enhances the robustness and reliability of model performance (J. Li et al., 2022). For instance, Shen et al. (2019) developed a deep learning-based model for drought monitoring, which employed multi-source remote sensing data as input, including DEM data, and meteorological and soil data. Lu et al. (2022) proposed a deep learning framework taking Google Earth imagery and point of interest heatmap as input data for urban functional zone extraction. Blöschl et al. (2024) integrated riverbed geometry information into the DEM to enhance national-scale flood hazard mapping.

125 With respect to the input for DEM super-resolution, it can be argued that, solely relying on a single source of low-resolution (LR) DEM input can be an ill-posed task, as high-resolution details can hardly be accurately reconstructed without additional reference information (Yue et al., 2016). Studies have been made to include additional features generated from low-resolution DEM data. For instance, Zhang et al. (2023) calculated terrain gradient maps based on DEM data to guide the optimisation process of a Convolutional Neural Network (CNN)-based DEM super-resolution. Zhou et al. (2023) proposed a terrain feature-based CNN for DEM super-resolution, which extracts slope and aspect from low-resolution DEM data and deploys them as additional features for model inputs and loss function.

130 Besides generating additional features based on low-resolution DEM, efforts have also been made to fuse different data sources to offer fine-granular details related to terrain features, which can improve performance. One example following this direction is found in Argudo et al. (2018), who examined the feasibility of combining natural colour aerial

**Deleted:** 2021a

**Deleted:** employed Generative Adversarial Networks (GAN) for constructing a 3 feet high-resolution DEM from a 50 feet low-resolution DEM.

**Formatted:** Font: Not Italic

**Formatted:** Font: Not Italic

**Deleted:** proposed a double filter deep residual neural network for DEM super-resolution. Demiray et al. (2021b) employed EfficientNetV2 as the backbone model to reconstruct DEMs up to 16 times finer than their initial spatial resolution.

**Formatted:** Font: Not Italic

**Deleted:** developed

**Deleted:** data with different

**Deleted:** i.

**Deleted:** .,  $\times 2$ ,  $\times 4$ ). However, it should be noted that

**Deleted:** can be insufficient

**Deleted:** The increasing availability of data from diverse sensors has provided a practical basis for multi-source data analysis applications (Choi & Lee, 2019). The key benefits of integrating multi-source inputs include enhanced model performance through the combination of complementary data sources, and improved robustness and reliability of model performance in various remote sensing applications

**Formatted:** Font: Not Italic

**Deleted:** Many existing studies on

**Deleted:** tend to

**Formatted:** English (UK)

**Formatted:** English (UK)

**Deleted:** based

**Formatted:** English (UK)

**Deleted:** , which

**Deleted:** This also includes the attempts

**Formatted:** Font: Not Italic

**Deleted:** optimization

**Deleted:** Although the additional low-resolution features facilitate performance gains in DEM super-resolution model training, they are constrained by an inherent lack of high-frequency details.

**Deleted:** Arguably, an effective method to enhance DEM resolution could be that of fusing different data sources, such as integrating spatial data from higher-resolution sources (e.g., optical images), which offer more details related to terrain features, rather than directly upscaling low-resolution DEM (Tan et al., 2024), thereby offering great potential to improve the performance of learning-based DEM super-resolution.

**Formatted:** No Spacing, Main text

**Formatted:** Font: Not Italic

images ~~together with~~ low-resolution DEM data as input to train a CNN for producing high-resolution DEM, suggesting improved performance compared with interpolation-based methods. Tan et al. (2024) introduced a deep learning-based DEM upscaling network that ~~uses~~ high-resolution optical images ~~to predict elevation differences~~, and then ~~fuses~~ these predictions with the original DEM data through additional convolutional layers. It should be noted that these studies mainly employed natural colour images for feature fusion. In contrast, multispectral images can provide further features from non-visible wavelengths, such as near-infrared, allowing for more detailed and ~~specialised~~ analysis. This is supported by Chen et al. (2013), showcasing the effects of ~~utilising~~ multispectral bands of satellite images on improving the performance of an interpolation-based DEM densification method. ~~More recently, a few attempts have explored the effects of integrating low-resolution DEM with remote sensing imagery for DEM super-resolution. Gao & Yue (2024) used the red band of Sentinel-2 images to provide auxiliary high-frequency information for DEM super-resolution training. Paul & Gupta (2024) incorporated 3-band satellite images with low-resolution DEM to develop a GAN-based DEM super-resolution model.~~

### 1.2 Significance of this study

In this literature context, this study aims to investigate the effectiveness of improving flood simulations using an enhanced DEM super-resolution generating method, which incorporates multispectral images, including the near-infrared band, as additional input for a deep learning-based DEM super-resolution model. Specifically, we provide the following main contributions: (i) ~~we develop~~ an efficient DEM super-resolution method that incorporates a tailored input module for processing multi-source and multi-scale input data, including both low-resolution DEM data and high-resolution multispectral satellite images; (ii) ~~by using~~ publicly open datasets, ~~we ensure~~ the generalizability of the method, especially for DEM-related applications in data-scarce regions; (iii) ~~we provide a~~ quantitative assessment of the performance of the generated super-resolution DEM maps ~~with regards to~~ pluvial flood simulations. The latter is achieved by evaluating the flood inundation maps generated based on different DEM super-resolution methods in terms of both floodwater depth and ~~inundated~~ area. Overall, this study represents a methodological advancement that showcases the practical value of multi-sourced deep learning-based methods for enhancing pluvial flood simulations, thus offering an exemplary pathway to address the issue of lacking high-resolution DEM for reliable risk assessments in the context of land use planning and disaster management.

## 2 Methodology

~~To improve the spatial resolution of DEM data for enhancing flood simulations, we further develop a deep learning-based DEM super-resolution method. This method~~ employs the Residual Channel Attention Network (RCAN) (Y. Zhang

**Deleted:** and

**Deleted:** enhances low-resolution DEMs by predicting elevation differences using

**Deleted:** fusing

**Deleted:** specialized

**Formatted:** Font: Not Italic

**Deleted:** utilizing

**Deleted:**

**Deleted:** the development of

**Deleted:** the use for this purpose of

**Deleted:** , which ensures

**Deleted:** the

**Deleted:** in improving

**Deleted:** inundation

**Deleted:** 2.1 Residual Channel Attention Network (RCAN)  
The proposed

**Deleted:** as the backbone structure, which is a widely recognised method for single-image super-resolution

et al., 2018) as the backbone structure and incorporates a tailored multi-source input block to leverage multi-sourced input data, contributing to improved performance in reconstructing high-resolution DEM data.

220 **2.1 Residual Channel Attention Network (RCAN)**

RCAN is a widely recognised method for single-image super-resolution (Y.Zhang et al., 2018). One of the key features employed in an RCAN is a deep residual network structure that integrates residual in residual (RIR) blocks. The RIR block combines long and short skip connections, enabling the network to learn more high-dimensional features from low-resolution to high-resolution images with a very deep structure, meanwhile avoiding the issue of vanishing gradient during training processes. Another key feature of RCAN is its use of channel attention mechanisms within each residual block. The channel attention mechanism weighs the importance of each channel, thus allowing RCAN to adaptively emphasise features from more important channels while suppressing less useful ones, thereby optimising reconstruction performance by focusing on the most significant features. This channel-attention mechanism can be particularly useful for processing multi-source input data (X. Liu et al., 2021). By integrating the RIR structure with channel-attention mechanisms, RCAN can extract and exploit hierarchical features from the input image effectively. However, since RCAN has been developed for image super-resolution tasks on single natural colour images, we tailored the structure of its input module to handle inputs from different data sources.

230 **2.2 Multi-source and multi-scale input data fusion**

235 The proposed method, referred to as RCAN-Multispectral (RCAN-MS), incorporates a tailored multi-source and multi-scale input module, which is the key distinction from the original RCAN. The input module enables the integration of high-resolution multispectral satellite images with low-resolution DEM data, leveraging the complementary information from both sources to reconstruct high-resolution DEMs with enhanced accuracy (Fig. 1). Multispectral satellite images contain information captured across various spectral bands, including both visible light and near-infrared bands, which offer a wealth of information about surface materials, vegetation coverage, water bodies, and other landscape features (Carrão et al., 2008), making them ideal for compensating for the coarse information in low-resolution DEMs. By combining high-resolution multispectral imagery with low-resolution elevation data, deep learning models can access a more comprehensive feature set, facilitating the reconstruction of detailed topographic information.

240 The tailored multi-source input module is integrated into the model structure before the first layer of the RCAN backbone structure (Fig. 1). In particular, the 30m DEM data is fed into a 2D convolutional layer with a kernel size of 3x3, a stride of 1, and padding size of 1. Meanwhile, the 10m multispectral satellite images are passed to another 2D

Deleted: -

Deleted: -

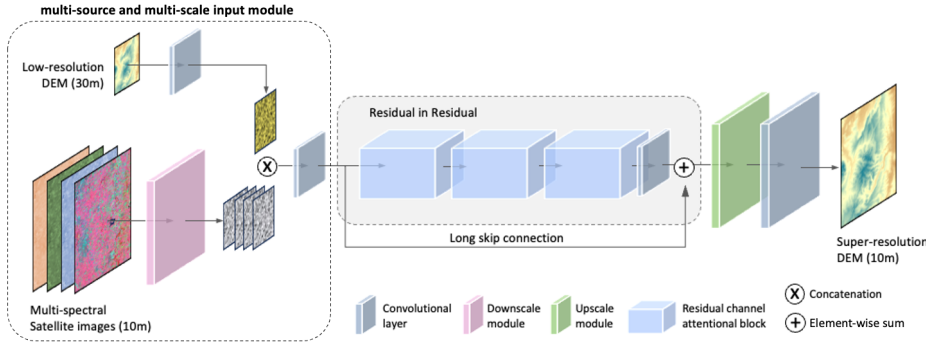
Deleted: is

Deleted: the model may need modification when handling

Deleted:

Deleted: By using RCAN as the backbone structure, this study proposes a multi-source method for DEM super-resolution, which incorporates high-resolution multispectral satellite images with low-resolution DEM data as the input to reconstruct high-resolution DEM data. Multispectral satellite images contain information captured across various spectral bands, including both visible light and invisible bands, which offer a wealth of information about surface materials, vegetation coverage, water bodies, and other landscape features (Carrão et al., 2008). Given the rich information and the open accessibility of high-resolution multispectral images, there is great potential to leverage the high-resolution spectral features from multispectral satellite images to compensate for the coarse information in low-resolution DEM and facilitate the reconstruction of high-resolution information on topography. It is anticipated that, by combining multispectral imagery with elevation data, deep learning models can access a more comprehensive set of features for prediction.

Given that two types of input data have different sizes, a tailored multi-source input block



**Fig. 1 The structure of the proposed DEM super-resolution model, MS-RCAN. Low-resolution DEM data and four-band multispectral satellite images are fused using a tailored multi-source and multi-scale input module to facilitate the reconstruction of high-resolution DEM data.**

convolutional layer that has a kernel size of 3x3 but with a stride of 3, which can effectively reduce the spatial dimensions of the input by a factor of 3. A Rectified Linear Unit (ReLU) activation function follows the convolution, introducing non-linearity and enhancing feature representation. As such, the information in 4-band multispectral input is encoded to a 4-channel tensor that has the same size as the encoded low-resolution data flow. Upon the same size of the two data flows, they can be concatenated along the channel dimension, and then processed by another 2D convolutional layer for data fusion of spatial and spectral information from multi-source inputs. After that, the concatenated multi-source input is passed through the RCAN backbone structure, which consists of RIR blocks and includes a 2D convolutional layer at the end of the model structure to upscale the data flow to the size of the high-resolution DEM map. The proposed method is tested with two datasets at different geographical locations by comparing it with a series of baseline models in the following sections.

### 3 Experiment settings

#### 3.1 Datasets

Although publicly open DEM datasets with global coverage have limited spatial resolution (approximately 30m or coarser), the spatial resolution of publicly open multispectral satellite imagery with global coverage can reach 10m spatial resolution, such as Sentinel-2A, which has great potential to provide fine-grained features adding complementary information for DEM super-resolution. Considering the availability of datasets and the generalizability at global scales,

Formatted: Not Highlight

Deleted: is named RCAN-Multispectral (RCAN-MS) and

Deleted:

Deleted: <object>

Formatted: Not Highlight

Deleted: than 30m

Deleted: Thus, by employing the RCAN as the backbone model, this study proposes a novel method that utilises 10m multispectral satellite images and 30m DEM data to produce 10m super-resolution DEM data. Thus, considering

Deleted: as

we chose to work with a scale factor of  $\times 3$  for testing DEM super-resolution models, which is also a scale factor widely adopted in most of the existing studies on image super-resolution (P. Wang et al., 2022).

Two datasets at different geographical locations were employed in this study for training and evaluation of DEM super-resolution methods, as well as for the simulation of pluvial floodwater distribution. The data are all collected from publicly open sources, including SRTM, TanDEM-X, and Sentinel-2, which have been widely adopted for remote sensing applications, e.g., urban environments (Wu, et al., 2019; Geiß et al., 2015; C. Li, et al., 2021). SRTM utilized dual radar antennas to collect interferometric radar data, which was then processed into digital topographic data with a resolution of 1 arc second (Farr et al., 2007). TanDEM-X mission uses a single-pass interferometric synthetic aperture radar (InSAR) system to produce 12 m resolution global digital surface models. The Sentinel-2 satellites carry the Multi-Spectral Instrument (MSI), which captures imagery in 13 spectral bands, with the blue, green, red, and near-infrared bands having a 10m spatial resolution (Spoto et al., 2012).

The two selected locations cover the areas of (i) England, UK (Dataset 1), and (ii) Shenzhen and Hong Kong, China (Dataset 2). Each dataset contains three different data sources (Table 1), including a 10m high-resolution DEM map, a 30m low-resolution DEM map, and the corresponding 10m multispectral satellite image composed of four bands (i.e., red, blue, green, near-infrared). It should be noted that, although the spatial resolution of the high-resolution DEM data in both datasets was pre-processed at the same resolution of 10m, they were collected from different sources due to data availability. However, such differences in data sources can also be leveraged to test the robustness and generalizability of the proposed methods.

Table 1. Information on the DEM data and multispectral satellite images in two datasets for the tests of DEM super-resolution models

		Dataset 1.	Dataset 2.
		England	Shenzhen & Hong Kong
10m DEM	Collection source	LIDAR Composite DTM 2019, published by UK Environment Agency (2023)	TanDEM-X, provided by German Aerospace Centre (DLR))
	Spatial resolution	Resampled from 2m to 10m resolution using a bilinear interpolation	Resampled from 12m to 10m resolution using a bilinear interpolation
	Acquisition date	2019-09-01	2016-01-13
30m DEM	Collection source	Shuttle Radar Topography Mission (SRTM), published by NASA JPL (2013)	Shuttle Radar Topography Mission (SRTM), published by NASA JPL (2013)
	Spatial resolution	1 arc-second (~ 30m) resolution	1 arc-second (~ 30m) resolution
	Acquisition date	2014-09-23	2014-09-23
10m Multispectral Images	Collection source	Sentinel-2A	Sentinel-2A
	Spatial resolution	10m resolution	10m resolution
	Bands	Band 2 – Blue, Band 3 – Green, Band 4 – Red, Band 8 - Near-infrared	Band 2 – Blue, Band 3 – Green, Band 4 – Red, Band 8 - Near-infrared
	Acquisition date	2022-11-25 / 2023-01-21/ 2023-02-13	2023-12-25

Deleted: , Bayram, & Sertel,

Formatted: Font: 9 pt

Field Code Changed

Deleted: <object>

Deleted: All the

Deleted: in these two datasets

Deleted: that

Deleted: in

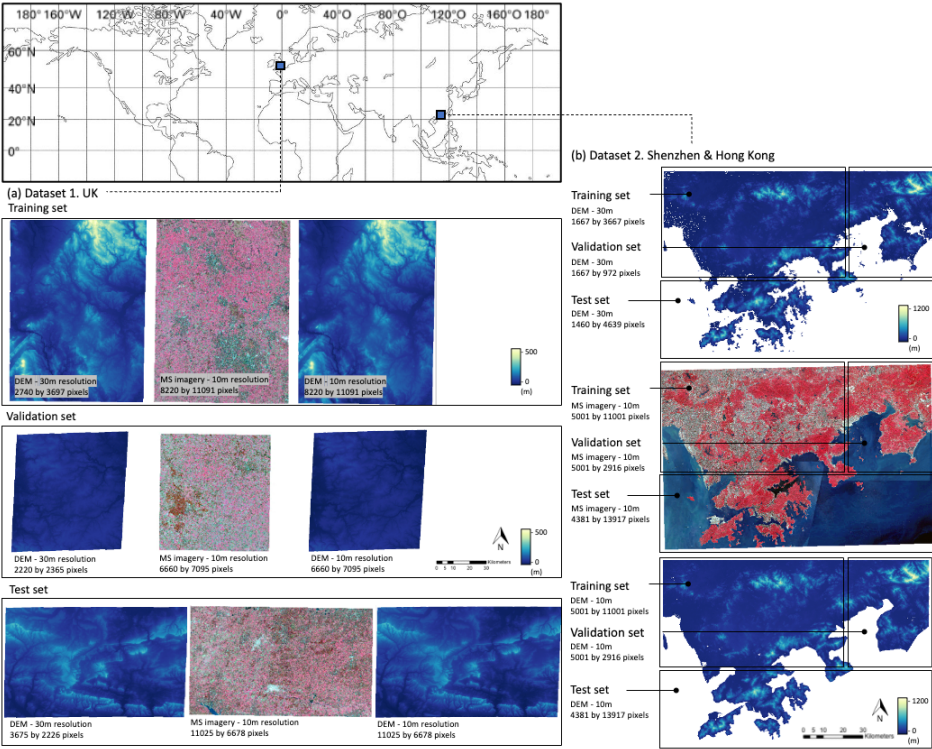
Deleted: , including SRTM

Deleted: , TanDEM-X (Geiß et al., 2015), and Sentinel-2A (C. Li, et al., 2021). The two datasets cover the areas of (i) England, UK (Dataset I), and (ii) Shenzhen and Hong Kong, China (Dataset II). Each dataset contains three different data sources (



As shown in Fig. 2, each dataset for the test on DEM super-resolution methods was split into three subsets, which are the training set, validation set, and test set. There are no spatial overlapping areas between the three subsets. In each dataset, the three subsets were randomly subsampled into 2000, 200, and 300 small patches for training, validation, and testing, respectively. The size of the subsampled low-resolution DEM patches is 80×80 pixels, and the sizes of the subsampled high-resolution DEM and multispectral images are 240×240 pixels. Correspondingly, the DEM super-resolution models are trained with a target of upscaling the DEM data to three times its original size.

Deleted: in each dataset.



**Fig. 2** Overview of the two datasets for DEM Super-resolution. (a) the training, validation, and test sets of Dataset 1. (b) the training, validation, and test sets of Dataset 2 (see Table 1 for data source).



3.2. Experiment setup

The experiments were composed of two main stages (Fig. 3): (i) DEM super-resolution, and (ii) pluvial flood simulation. The first stage was centred on assessing the performance of DEM Super-resolution methods in enhancing the resolution of the original DEM data, whereas the second stage was to quantify the effects of adopting the super-resolution DEM on enhancing pluvial flood simulations. This quantification offers two main benefits: (i) provides a more comprehensive performance evaluation of how DEMs generated through different methods perform in impact applications; (ii) examines whether the proposed deep-learning approach provides a cost-efficient solution for improving flood simulations.

In the first stage, besides using the original high-resolution DEM data for performance evaluation, four additional baseline methods were employed for comparison with the performance of the proposed method, RCAN-MS. These baseline methods include a conventional bicubic interpolation method, and three other widely adopted neural network-based super-resolution methods, which are Super-Resolution Convolutional Neural Network (SRCNN, Dong et al., 2016), Very Deep Convolutional Network (VDSR, Kim et al., 2016), and Residual Channel Attention Network (RCAN, Y. Zhang et al., 2018).

The training of DEM Super-resolution models was established and trained with PyTorch on two NVIDIA GeForce RTX 4090 GPUs on high-performance computing (HPC) clusters. All baseline models were implemented using the default parameter settings for hidden layers as specified in their original papers. The input and output layer configurations were adapted to suit the task of DEM super-resolution. The baseline methods used as benchmarks utilized single-band input and output layers, except for RCAN-MS, which was configured with five input bands (i.e., single-band DEM and four-band multispectral image). All the test methods adopted the same training strategy, they were all trained with a batch size of 8 and a learning rate of  $1 \times 10^{-4}$ . With an adaptive learning rate scheduler, the learning rate decreases to a

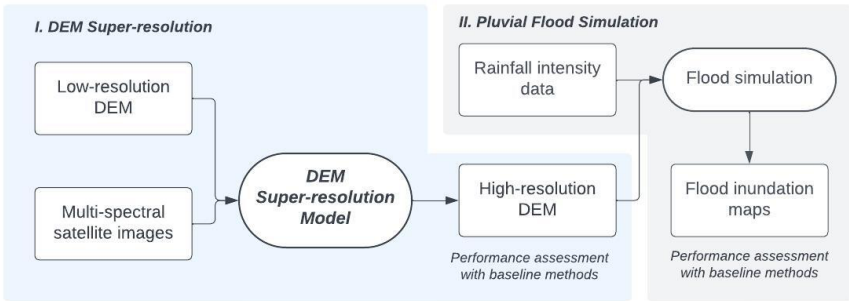


Fig. 3. Workflow of the experiments, including (i) establishing a DEM Super-resolution model to reconstruct a high-resolution DEM, then (ii) adopting the high-resolution DEM for pluvial flood simulations.

fraction of 0.8 when the validation loss stops decreasing for 50 epochs. The optimizer adopted for all the methods is Adam with default momentum parameters. The loss function is the Mean Absolute Error (MAE). Regarding the stopping criteria for mode performance evaluation, all the models were trained for 200 epochs with the data in the training set, after which the epoch yielding the smallest MAE values on the validation set was selected for further performance evaluation on the test sets.

The MAE, Mean Square Error (MSE), Peak Signal-to-Noise Ratio (PSNR) and Structural Similarity Index Measure (SSIM) were employed to evaluate the performance of DEM super-resolution models. PSNR and SSIM are two widely used evaluation metrics in image super-resolution tasks (Dong et al., 2016; Kim et al., 2016; Yang et al., 2019). The PSNR measures the quality of reconstruction of a lossy transformation (e.g., image compression) (Z. Wang et al., 2021), with higher values indicating a smaller difference. The SSIM measures the similarity between two images, specifically targeting changes in brightness, contrast, and structure (Z. Wang et al., 2021).

For both the UK and China datasets, the DEM data generated by all the downscaling methods in the super-resolution test were adopted as input for flood simulation. In each dataset, a subarea of 450 by 600 pixels was cropped for pluvial flood simulation. The simulation is conducted using a cellular automata model, Caddies (Guidolin et al., 2016), which is known for efficient pluvial flood simulation in urban environments (H. Liu et al., 2018; Y. Wang et al., 2019; Y. Wang et al., 2023; Zhu et al., 2024).

The pluvial flood simulation was based on a 100-year return period, and 30-minute duration rainfall as a forcing scenario. Since the two geographical locations feature different climate conditions, the rainfall intensity corresponding to the 100-year return period rainfall was set based on the Intensity-Duration-Frequency (IDF) curves for the UK and Hong Kong regions, respectively. The IDF curve for the UK area is computed using the hourly rainfall data recorded at the rain gauge station of Seathwaite, North England, and downloaded from the MIDAS UK sub-hourly rainfall observations dataset (Met Office, 2006). The adopted IDF curve for Hong Kong is according to a report published by the Civil Engineering and Development Department, the Government of the Hong Kong Special Administrative Region (Tang & Cheung, 2011). Specifically, the 100-year return period rainfall intensity for a 30-minute duration is 42 mm/h for Dataset 1, and 190 mm/h for Dataset 2. The simulated flood maps were evaluated by comparing their similarity with the flood map generated based on reference high-resolution DEM data. Both flood depth values and flood area coverage were assessed. The evaluation metrics to measure flood depth values are MAE and MSE, and the metric for evaluating the flood areas is Intersection over Union (IoU), which is a widely adopted method to assess the accuracy of a predicted area in comparison to the target area found in ground truth data (Rahman & Wang, 2016).

**Deleted:** elevation. In particular, the assessments of model performance were conducted on the test set, which was neither involved in the training process nor in the stopping criteria. The Mean Absolute Error (MAE),

**Deleted:**

**Deleted:** (Liu, et al., 2018; Y. Wang, et al., 2019; Y. Wang et al., 2023).

**Deleted:** duration-frequency

**Deleted:** of

**Deleted:** of

**Deleted:** I

**Deleted:** II

4 Results

4.1 DEM Super-resolution

The experimental results of the comparison between the proposed DEM super-resolution method and the baseline methods are presented in Table 2, including the comparisons in both datasets. For Dataset 1, the RCAN-MS method demonstrates a marked improvement over the Bicubic method, reducing the MAE from 3.0 to 2.2 m (-26.7%), and the MSE from 19.0 to 8.7 m<sup>2</sup> (-54.2%). This enhancement is also reflected in the values of PSNR (+9.9%) and SSIM (+34.8%), suggesting a substantially improved fit to the target high-resolution DEM. Similarly, Dataset 2 results reveal that RCAN-MS significantly outperforms the bicubic interpolation method, with the MAE sharply decreasing from 9.9

Table 2. Evaluation results of all the tested DEM resolution enhancement methods on two test sets with different geographical locations

	Test set of Dataset 1.				Test set of Dataset 2.			
	MAE (m)	MSE (m <sup>2</sup> )	PNSR	SSIM	MAE (m)	MSE (m <sup>2</sup> )	PNSR	SSIM
bicubic	3.0078	19.0206	33.4055	0.4621	9.2924	163.0170	35.4505	0.6091
SRCNN	2.7665	15.5027	34.2901	0.5776	6.8153	94.1950	37.8500	0.6794
VDSR	2.6530	13.4866	34.8653	0.5737	6.6412	88.7638	38.1110	0.6811
RCAN	2.5967	12.9453	35.0460	0.5975	6.4150	83.5288	38.3950	0.6838
RCAN-MS	2.1822	8.7103	36.7505	0.6205	5.8101	66.6201	39.3243	0.7111

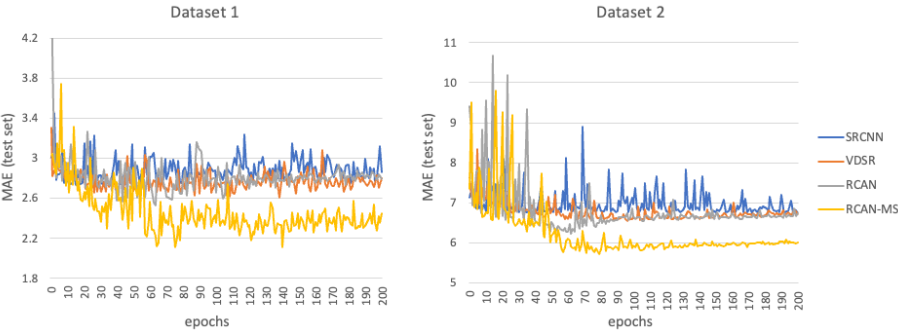


Fig. 4 Changes in the MAE values of all the tested models as training epochs increase for Dataset 1 (left) and Dataset 2 (right).

Deleted: 4 Experiment settings

Deleted:

Deleted: all

Deleted: I

Deleted: 01

Deleted: 20,

Deleted: 02

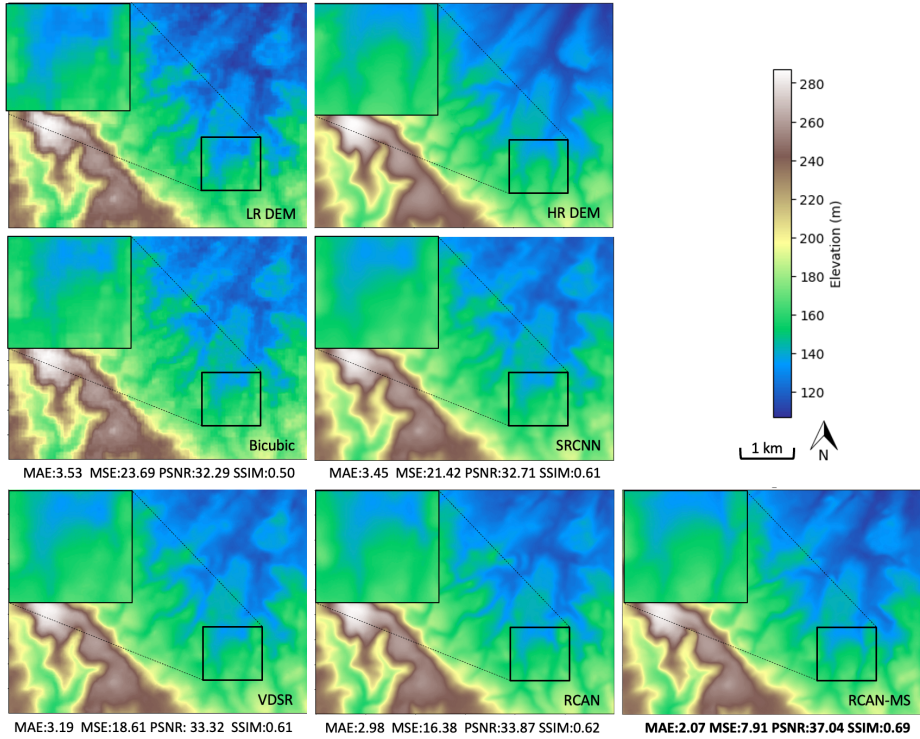
Deleted: 71.

Deleted: , which increase from 33.41 to 36.76, and from 0.46 to 0.62, respectively,

Deleted: II

Deleted: 976

to 5.9 m (-40.4%), and the MSE from 186.0 to 67.6 m<sup>2</sup> (-63.7%). The RCAN method, serving as the backbone method for RCAN-MS, shows better results than the other deep learning-based methods such as SRCNN and VDSR across both datasets, underscoring the superior performance of the RCAN-based architecture in the task of DEM resolution enhancement. Specifically, for Dataset 1, RCAN posts an MAE of 2.60 m and an MSE of 12.9 m<sup>2</sup>, which are better than those for SRCNN and VDSR. In Dataset 2, RCAN achieves an MAE of 6.4 m and an MSE of 83.5 m<sup>2</sup>, further confirming its robustness. The performance superiority of the proposed RCAN-MS method is evident across all metrics in both datasets, demonstrating its enhanced capability in generating high-fidelity super-resolution DEM data. This is exemplified by the significant reductions in MAE and MSE and the corresponding increase in PSNR and SSIM values.



**Fig. 5 Comparison of DEM maps in the test set of Dataset 1, generated by the proposed method, RCAN-MS, other baseline methods and the original high-resolution DEM map in Dataset 1. The values of the evaluation metrics (i.e., MAE, MSR, PSNR, SSIM) for each method are presented.**

Deleted: 918,  
 Deleted: 035  
 Deleted: 588.  
 Deleted: super-solution.  
 Deleted: I  
 Deleted: 95, with a PNSR of 35.05 and an SSIM of 0.60  
 Deleted: II  
 Deleted: 41  
 Deleted: 53, with a PNSR of 38.40 and an SSIM of 0.68  
 Deleted: , signifying its substantial improvements over the baseline methods. ...

445

Fig. 5 and Fig. 6 present the two selected patches from the test sets of Datasets 1 and 2 for visual assessment of the performance of the super-resolution DEM maps, in which a subarea of exemplary patches is additionally enlarged for further visual comparison of details. The corresponding reference low-resolution DEM and high-resolution DEM map are also presented for comparison. The ranking of the performance of all the tested methods is aligned with the overall evaluation of the test sets reported in Table 2, suggesting that RCAN offers a larger magnitude of enhancement than SRCNN and VDSR, and RCAN-MS stands out among all the tested methods, recording the lowest MAE and MSE values. These two exemplary patches of the test sets are employed for pluvial flood simulation in the following section.

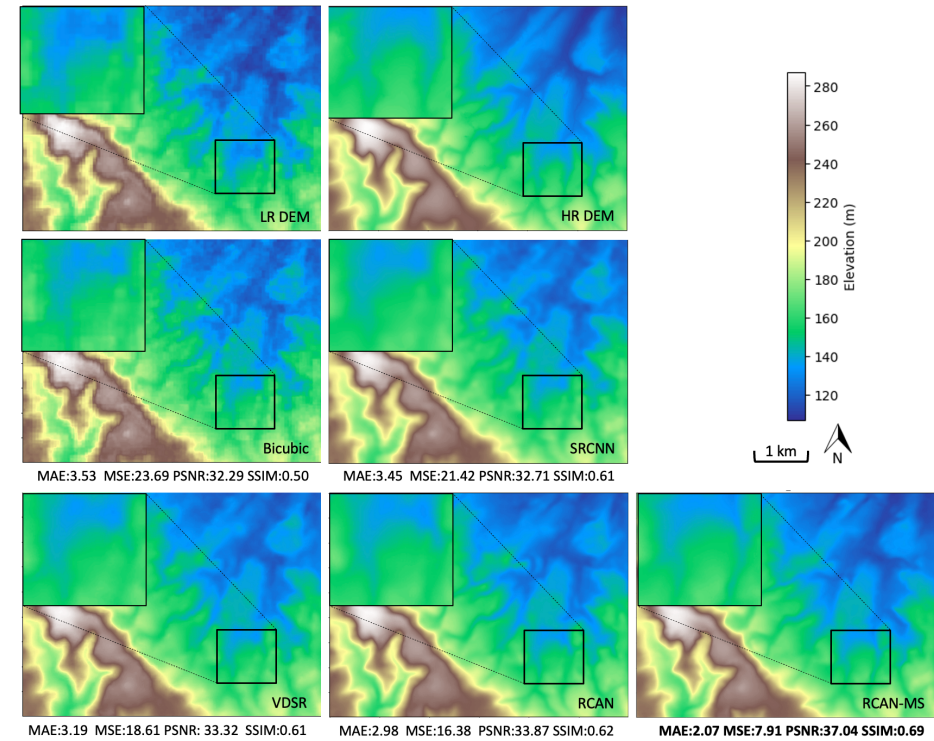


Fig. 6 Comparison of DEM maps in the test set of Dataset 1, generated by the proposed method, RCAN-MS, other baseline methods and the original high-resolution DEM map in Dataset 1. The values of the evaluation metrics (i.e., MAE, MSR, PSNR, SSIM) for each method are presented.

Deleted: <object>

Deleted: Fig. 5

Deleted: I

Deleted: II

Deleted: <object>

Deleted: These two exemplary patches of the test sets are employed for pluvial flood simulation in the following section.

Deleted: performance related to using the super-resolution DEM maps produced by all the tested methods was compared with that of the ...

Deleted: . The values of the evaluation metrics (i.e., MAE, MSR, PSNR, SSIM)...

Deleted: summarised in the two figures

Deleted: . For the exemplary patch from Dataset I, bicubic interpolation exhibits an MAE of 3.53 and an MSE of 23.69, with a PSNR of 32.29 and an SSIM of 0.497.

Deleted: with an MAE of 2.98 and an MSE of 16.38, with a PSNR of 33.87 and an SSIM of 0.617, demonstrating a notable increase in precision....

Deleted: of 2.07 and an MSE of 7.91, while also achieving

Deleted: highest PSNR of 37.04 and the highest SSIM of 0.685.

470 We note that the enlarged area of Dataset 2 is situated at a relatively higher elevation in the patch (Fig. 6). Despite the different geographical locations of the exemplary patches in the two datasets, the results of the DEM super-resolution test on Dataset 2 align with the results of Dataset 1. RCAN gained the second-best performance, and the proposed RCAN-MS still shows the best performance among the models tested, highlighting its effectiveness in reconstructing fine-grained information and also capturing the complexity of terrain elevations.

475 In contrast to the exemplary patch from Dataset 2 (Fig. 6), the patch from Dataset 1 is characterized by a relatively flatter terrain (Fig. 5). Arguably, flatter areas could pose a greater challenge due to smaller variations in elevation, which are closer in magnitude to the vertical accuracy of the DEM, potentially increasing the likelihood of error. Given the superior overall performance of RCAN-MS in Dataset 1, this suggests its potential effectiveness in handling subtler elevation changes. However, as we looked at two geographical regions only, the method performance in a wider range of terrain characteristics remains to be tested.

480 The conventional image interpolation method, bicubic, presents the worst performance in the exemplary patches from both Dataset 1 and Dataset 2 with pixelated DEM maps that lack fine-grained features. Regarding the deep-learning-based super-resolution methods in Dataset 1 (Fig. 5), the super-resolution DEM images generated by SRCNN and VDSR exhibit over-smoothing effects which lead to a loss of details. In contrast, the super-resolution DEM images produced by RCAN and RCAN-MS presented substantially less blurring effect than other baseline methods. Furthermore, by incorporating multispectral satellite images as part of the input, RCAN-MS generated a super-resolution DEM image with finer details in elevation difference compared with RCAN, which showed the best performance among all the baseline methods.

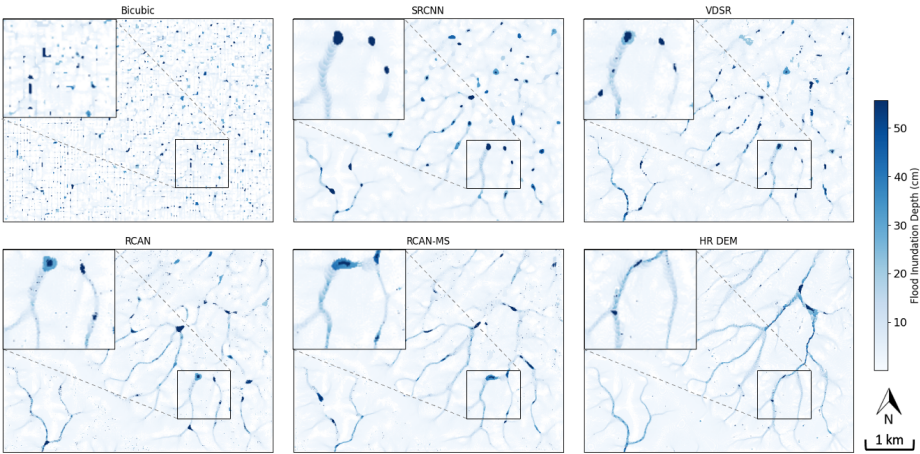
490 To assess the extent to which the improved DEM data can facilitate pluvial flood simulation, the exemplary patches of the two test sets were adopted as the input data in the pluvial flood simulations.

#### 4.2 Pluvial flood simulation

495 Pluvial flood simulations were conducted using the super-resolution DEM data of the two exemplary patches presented in Fig. 5 and Fig. 6, including the DEM data produced by all the tested methods. As mentioned further above, the rainfall scenario for pluvial flood simulation was set to be a 30-minute duration for a 100-year return period for both datasets, with intensities set according to the geographical location, respectively 42 mm/h for England in Dataset 1 and 190 mm/h for Hong Kong in Dataset 2.

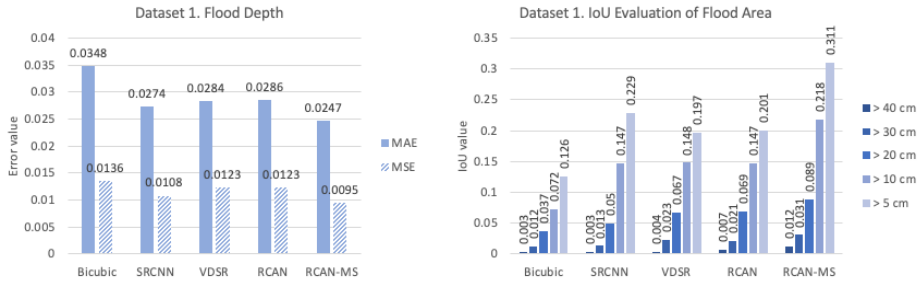
- Deleted: The
- Deleted: II
- Deleted: Fig. 5
- Deleted: II
- Deleted: I
- Deleted: method surpasses SRCNN
- Deleted: VDSR with an MAE of 5.70 and an MSE of 57.38, coupled with a PNSR of 39.91 and an SSIM of 0.685. The
- Deleted: method
- Deleted: also presents in the case of Dataset II
- Deleted: methods
- Deleted: with the lowest error metrics with an MAE of 5.19 and an MSE of 47.40, and the highest values in PNSR (40.74) and SSIM (0.743),
- Formatted: Font: Calibri, 11 pt, Italic, Font colour: Custom Colour (RGB(70,70,70)), English (US)
- Deleted: Arguably, in
- Deleted: II
- Deleted: Fig. 5
- Deleted: I
- Deleted: it is noteworthy that
- Deleted: Thus, demonstrating
- Deleted: effectiveness
- Deleted: such conditions, as seen with
- Deleted: I, manifestly provides a more stringent test of
- Deleted: capabilities
- Deleted: maintaining accuracy across
- Deleted: I
- Deleted: II
- Deleted: I
- Deleted:
- Formatted: Indent: First line: 1 cm
- Deleted: next stage experiment for
- Deleted: simulation.
- Deleted:
- Deleted: Fig. 5
- Deleted: I
- Deleted: II.





**Fig. 7** Maps of pluvial flood inundation depth simulated using super-resolution DEM data and compared with the flood inundation depth simulated using the original high-resolution DEM data in an exemplary patch of Dataset 1.

**Fig. 7** demonstrates the simulated pluvial floodwater inundation maps using super-resolution DEM maps of the exemplary patch of Dataset 1, which are illustrated in **Fig. 5**. Comparing the various flood inundation maps in **Fig. 7**, it can be observed that the flood inundation map generated based on RCAN-MS replicates more similarly the floodwater distribution obtained using the high-resolution DEM, compared to the other considered super-resolution generating methods (i.e., Bicubic, SRCNN, VDSR, RCAN), thus reflecting the effects of smaller elevation errors of DEM in flood



**Fig. 8** Performance evaluation of pluvial flood simulations based on super-resolution DEM data compared with the original high-resolution DEM data in the exemplary patch of Dataset 1. Left: MAE and MSE comparison of flood depth values; right: IoU evaluation of the spatial coverage of flood area delineated by different depth thresholds from 5cm to 40 cm.



simulation. This can be particularly observed in the enlarged areas in Fig. 7, the inundated area predicted based on the  
 545 RCAN-MS method exhibits greater consistency with the inundated area obtained using the high-resolution DEM, with  
 the distribution of floodwater appearing more contiguous, while other methods display more abrupt changes in water  
 levels, which can be inferred from the scattered dark blue shading within the maps.

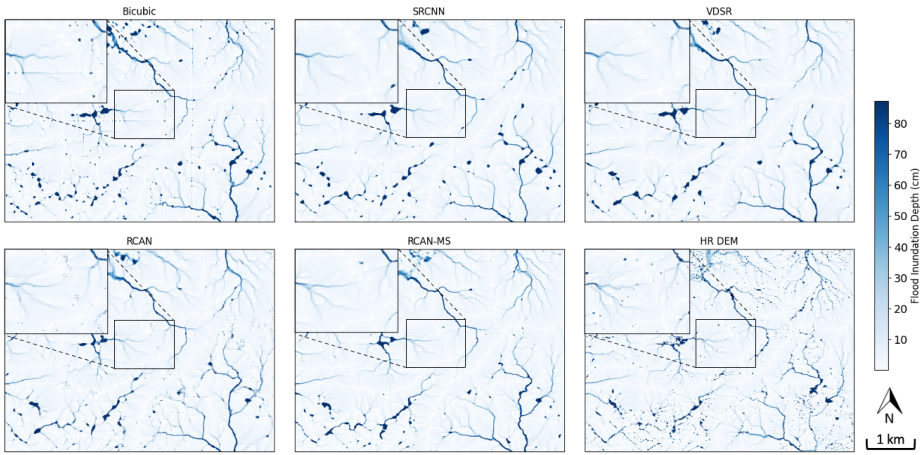
The performance in terms of floodwater depth and flood inundation area using super-resolution DEM data in the  
 exemplary patch of Dataset 1 was also quantitatively evaluated and compared with the values obtained from simulations  
 550 that used the reference high-resolution DEMs (Fig. 8). The errors of floodwater depth were evaluated using MAE and  
 MSE. The RCAN-MS method outperforms the other methods with the lowest MAE of 0.0247 m and the lowest MSE of  
 0.0095 m<sup>2</sup>, scoring an approximately 30% improvement compared with conventional bicubic methods in both MAE and  
 MSE. The accuracy of flood areas, defined using varying thresholds (i.e., 5 cm, 10 cm, 20 cm, 30 cm, 40 cm), was  
 assessed using IoU, which measures the overlapping areas between the predicted flood areas defined using these  
 555 thresholds. Here, the RCAN-MS method generally shows higher IoU values at different depth thresholds compared to  
 other methods, suggesting better precision in predicting the actual flood-affected area that will emerge from using the  
 original DEM. Particularly for the flooded area with thresholds of 5 cm and 10 cm, the RCAN-MS method exhibits the  
 highest IoU values with an improvement of 146% and 202% compared with bicubic interpolation.

Deleted: <object>

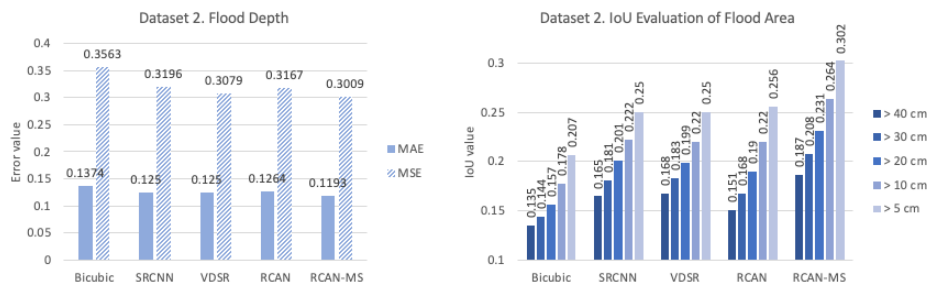
Deleted: 1

Deleted: Intersection over Union (IoU),

Deleted: it is more precise



**Fig. 9** Maps of pluvial flood inundation depth simulated using super-resolution DEM data and compared with the flood inundation depth simulated using the original high-resolution DEM data in an exemplary patch of Dataset 2.



**Fig. 10** Performance evaluation of flood simulation maps produced based on super-resolution DEM data compared with the original high-resolution DEM data in the exemplary patch of Dataset 2. Left: MAE and MSE comparison of flood depth values; right: IoU evaluation of the spatial coverage of flood area delineated by different depth thresholds from 5cm to 40 cm.

The comparison of flood simulation results generated based on super-resolution DEM data from Dataset 2 are presented in Fig. 9 and Fig. 10. The visual inspection of flood inundation maps and quantitative evaluation suggest that results generally align with the performance obtained for Dataset 1. In particular, the flood inundation map generated based on RCAN-MS shows more fine-resolution details matching the floodwater distribution generated with the reference high-resolution DEM. Furthermore, the RCAN-MS-based flood inundation map yields the smallest MAE (0.1193 m) and MSE values (0.3009 m<sup>2</sup>), indicating approximately 13% and 15% improvement in flood depth errors compared with the bicubic-based flood inundation map.

It can be observed in Fig. 8 and Fig. 10 that, although the proportional increase in IoU indicates that the proposed methods are correctly identifying more flood-prone areas compared to baseline methods, the IoU for high water depth thresholds is much lower than for lower water depth thresholds. This can be attributed to the significantly smaller spatial extent of deep floodwater areas. At higher thresholds, even small misalignments between the predicted and actual flood zones can result in a substantial reduction in IoU. While it becomes more challenging to simulate deep flood levels in their exact locations, flood simulation based on RCAN-MS still achieved the best performance in simulating deep floodwater areas compared to all baseline methods in both datasets.

## 5 Discussion

Among the investigated techniques to generate super-resolution DEMs, the here developed RCAN-MS provided superior performance compared to other baseline methods not only in terms of accuracy with respect to the high-resolution DEM, but also for the impact that its use has on flood simulation. Such superior performance is due to learning from multi-source inputs, particularly incorporating high-resolution multispectral satellite images, enables it to achieve fine-

Deleted: II

Deleted: Fig. 9

Deleted: I

Deleted: <object>

Deleted: <object>

Deleted: reference

Deleted: with respect to

Deleted: the incorporation of

Deleted: , enabling

595 resolution details, while mitigating the pepper-and-salt ~~noises~~ in the super-resolution DEM generated by RCAN. Concurrently it avoids over-smoothing as instead occurs in the SRCNN and VDSR. Arguably, in RCAN-MS, the improvement effect of the multi-source input on DEM super-resolution is due to the ~~input~~ from multispectral information, that contributes to a better understanding of how land cover features interact with different terrains, thus leading to more

600 Most importantly, the RCAN-MS method to build a high-resolution DEM substantially enhances the accuracy of flood simulations by producing DEM data with sufficient spatial resolution and improved terrain reconstructions. It is important to note that in principle better performance in DEM super-resolution does not necessarily guarantee an improvement in flood simulation accuracy. This is evident in the experimental results that, although the backbone method RCAN achieved the second-best performance in the evaluation of DEM super-resolution tests in both datasets, RCAN  
605 fell short in pluvial flood simulation when compared to SRCNN and VDSR. This inferior performance can likely be attributed to the presence of pepper-and-salt noise within the flood inundation maps simulated from RCAN, where shallow-depth flooded pixels appear scattered. In contrast, SRCNN and VDSR, known for producing smoother ground surfaces, result in DEMs that lead to fewer instances of scattered floodwater pixels. Therefore, despite RCAN yielding fewer errors in DEM super-resolution compared to SRCNN and VDSR, the latter models achieve higher scores in  
610 simulated flood inundation maps due to the reduced occurrence of pepper-and-salt noise. This issue was substantially alleviated in the results of RCAN-MS due to the integration of multi-spectral satellite images. Such integration has proven to be effective in reducing noise and improving flood simulation accuracy. Incorporating additional data sources enables the model to better represent complex terrain features, which play crucial roles in flood simulation performance.

615 The terrain characteristics can influence the effectiveness of interpolation and super-resolution methods in flood simulation. Specifically, the improvement in flood simulation maps achieved by RCAN-MS is more evident in Dataset 1 than in Dataset 2. A key factor contributing to this discrepancy is the difference in terrain between the two datasets. As shown in Fig. 5 and Fig. 6, Dataset 1 features a relatively flat landscape, while Dataset 2 is characterized by hillier topography. In the flatter terrain of Dataset 1, floodwater tends to be distributed in a wider area, resulting in less distinct patterns and greater noise in the simulation results generated by baseline methods (e.g., bicubic interpolation). In contrast,  
620 the hilly terrain of Dataset 2 naturally promotes more concentrated flow accumulation, leading to visually coherent flood patterns across different methods, even using the DEM generated with bicubic interpolation. Therefore, the improvement

**Deleted:** noise effects

**Deleted:** but avoiding

**Deleted:** likely

**Deleted:** additional feature extracted

**Deleted:** , which can facilitate the estimation of the reflectance of varying land cover types, and contribute

**Deleted:**

**Deleted:** The

**Deleted:** of multi-spectral satellite imagery in the RCAN-MS method

provided by the proposed super-resolution method tends to be more significant in regions with less pronounced topography.

While the present study shows the significantly better-performing nature of the RCAN-MS technique compared to other well-established methods, one should note that the study is also characterised by some limitations. First, for the two datasets tested in this study, as we intend to examine the performance of proposed models with a direct and efficient workflow, we did not apply data pre-processing techniques (e.g., noise reduction) on the high-resolution DEM data. There may still be room for improvement in flood simulations using super-resolution DEM data that have pre-processed high-resolution DEM as training datasets. Also, it should be acknowledged that variations in acquisition dates of data from diverse sources can lead to minor inconsistencies in datasets. These temporal discrepancies, especially between multispectral satellite imagery, and between low-resolution and high-resolution images, may affect the efficacy of DEM super-resolution generation, potentially reducing its performance. In addition, one should observe that the model was trained and evaluated in two specific geographic areas. Thus, its straight transferability without minor adjustments (e.g. fine tuning of parameterisation) may not be guaranteed in other regions, particularly those with significantly different terrain characteristics. However, retraining or fine-tuning of the model, which is generally possible, is expected to allow for effective implementation in many different regions.

In future work, further tests could focus on investigating the impact of including additional inputs on model performance. This study takes advantage of multi-scale and multi-source input data for DEM super-resolution but only incorporates 4-band multispectral satellite images as additional features. Other terrain-related features (e.g., slope, aspect) may potentially improve model performance and were not tested. Thus, future work can explore the impact of terrain-related features on enhancing model performance, as well as examine the performance of the proposed methods with different downscaling factors, where higher-resolution DEM data are available as training targets. Moreover, this study performed pluvial flood simulations using a cellular automata-based model forced with a rainfall scenario of a 1-in-100-year return period, further tests could assess the effects of super-resolution DEM with alternative rainfall scenarios, and other flood simulation models that involve further elements influencing the flooding, such surface permeability and drainage networks. In addition, this improvement also paves the way for potential applications on other types of hazard simulations that are sensitive to variations in DEM resolution and noise, such as landslides, tsunamis-derived floods, and volcanic flows.

## 6 Conclusion

This study addresses the critical challenge of accurate flood simulation in regions where high-resolution DEM data is unavailable or of limited extent. We developed and implemented a deep learning-based DEM super-resolution method,

**Deleted:** First, we tailored the model structure to take advantage of multi-scale and multi-source input data for DEM super-resolution, but only incorporated 4-band multispectral satellite images as additional features, other terrain-related features (e.g., slope, aspect) that may bring further improvement to model performance were not tested in this study. Second

**Deleted:** targets. Finally

**Deleted:** works

**Deleted:** on

**Deleted:**

**Deleted:** is

incorporating multi-source input data, including low-resolution DEM and high-resolution multispectral imagery. The experiment suggests that the enhanced multi-source DEM super-resolution method, RCAN-MS, significantly improves the accuracy of the DEM for pluvial flood simulations, particularly in terms of floodwater depth and inundation area predictions. The integration of Sentinel-2A multispectral data with the 30m SRTM DEM allows for the reconstruction of 10m DEM data with higher fidelity compared to conventional methods. The improved performance of RCAN-MS in flood simulation, compared to its backbone method RCAN, underscores the value of incorporating multispectral images as they enhance terrain representation and reduce noise in the super-resolution DEM, thus leading to more accurate flood simulation results.

By leveraging publicly available global datasets, this approach offers a promising solution for regions with limited availability to high-resolution topographic data, enabling not only more precise flood simulations, but also the potential to generate large-scale high-resolution DEMs from existing publicly available coarse DEMs and, thus, opens new possibilities for resilience development and resource allocation, potentially not only contributing to flood risk reduction, but also to broader applications in simulating other natural hazards where accurate terrain representation is essential.

**Data and Code availability.** Except for the data from TanDEM-X, which requires a proposal submission and approval for data acquisition, all other data and codes are openly accessible here: <https://zenodo.org/records/14868516>. The software for cellular automata-based pluvial flood simulation can be downloaded from the CADDIES website (<https://www.exeter.ac.uk/research/centres/cws/resources/caddies/>).

**Author contributions.** All authors contributed to the idea and scope of the paper. Yue Zhu contributed to conceptualization, data curation, formal analysis, methodology, data analysis, software and script, validation, and original draft writing. Paolo Burlando, Puay Yok Tan, and Simone Fatichi contributed to supervision, review and editing, and funding acquisition. Christian Geiß contributed to data acquisition and supervision.

**Conflict of Interest.** No conflict of interest amongst the authors.

**Acknowledgements**

This research was funded in part by the Future Cities Lab Global programme. Future Cities Lab Global is supported and funded by the National Research Foundation, Prime Minister's Office, Singapore under its Campus for Research Excellence and Technological Enterprise (CREATE) programme and ETH Zurich (ETHZ), with additional contributions

from the National University of Singapore (NUS), Nanyang Technological University (NTU), and the Singapore University of Technology and Design (SUTD).

References

715 Argudo, O., Chica, A., & Andujar, C. (2018). Terrain Super-resolution through Aerial Imagery and Fully Convolutional Networks. *Computer Graphics Forum*, 37(2), 101–110. <https://doi.org/10.1111/cgf.13345>

Arun, P. V. (2013). A comparative analysis of different DEM interpolation methods. *The Egyptian Journal of Remote Sensing and Space Science*, 16(2), 133–139. <https://doi.org/10.1016/j.ejrs.2013.09.001>

720 Blöschl, G., Buttinger-Kreuzhuber, A., Cornel, D., Eisl, J., Hofer, M., Hollaus, M., Horváth, Z., Komma, J., Konev, A., Parajka, J., Pfeifer, N., Reithofer, A., Salinas, J., Valent, P., Vyleta, R., Waser, J., Wimmer, M. H., & Stiefelmeyer, H. (2024). Hyper-resolution flood hazard mapping at the national scale. *Natural Hazards and Earth System Sciences*, 24(6), 2071–2091. <https://doi.org/10.5194/nhess-24-2071-2024>

Brock, J., Schratz, P., Petschko, H., Muenchow, J., Micu, M., & Brenning, A. (2020). The performance of landslide susceptibility models critically depends on the quality of digital elevation models. *Geomatics, Natural Hazards and Risk*, 11(1), 1075–1092. <https://doi.org/10.1080/19475705.2020.1776403>

725 Carrão, H., Gonçalves, P., & Caetano, M. (2008). Contribution of multispectral and multitemporal information from MODIS images to land cover classification. *Remote Sensing of Environment*, 112(3), 986–997. <https://doi.org/10.1016/j.rse.2007.07.002>

Chen, Z., Qin, Q., Lin, L., Liu, Q., & Zhan, W. (2013). DEM Densification Using Perspective Shape From Shading Through Multispectral Imagery. *IEEE Geoscience and Remote Sensing Letters*, 10(1), 145–149. [IEEE Geoscience and Remote Sensing Letters](https://doi.org/10.1109/LGRS.2012.2195471), <https://doi.org/10.1109/LGRS.2012.2195471>

730 Demiray, B. Z., Sit, M., & Demir, I. (2021a). DEM Super-Resolution with EfficientNetV2 (No. arXiv:2109.09661). *arXiv*. <https://doi.org/10.48550/arXiv.2109.09661>

Demiray, B. Z., Sit, M., & Demir, I. (2021b). D-SRGAN: DEM Super-Resolution with Generative Adversarial Networks. *SN Computer Science*, 2(1), 48. <https://doi.org/10.1007/s42979-020-00442-2>

735 Deng, F., Rodgers, M., Xie, S., Dixon, T. H., Charbonnier, S., Gallant, E. A., López Vélez, C. M., Ordoñez, M., Malservisi, R., Voss, N. K., & Richardson, J. A. (2019). High-resolution DEM generation from spaceborne and terrestrial remote sensing data for improved volcano hazard assessment—A case study at Nevado del Ruiz, Colombia. *Remote Sensing of Environment*, 233, 111348. <https://doi.org/10.1016/j.rse.2019.111348>

Dong, C., Loy, C. C., He, K., & Tang, X. (2016). Image Super-Resolution Using Deep Convolutional Networks. *IEEE Transactions on Pattern Analysis and Machine Intelligence*, 38(2), 295–307. [IEEE Transactions on Pattern Analysis and Machine Intelligence](https://doi.org/10.1109/TPAMI.2015.2439281), <https://doi.org/10.1109/TPAMI.2015.2439281>

740 Farr, T. G., Rosen, P. A., Caro, E., Crippen, R., Duren, R., Hensley, S., Kobrick, M., Paller, M., Rodriguez, E., Roth, L., Seal, D., Shaffer, S., Shimada, J., Umland, J., Werner, M., Oskin, M., Burbank, D., & Alsdorf, D. (2007). The Shuttle Radar Topography Mission. *Reviews of Geophysics*, 45(2). <https://doi.org/10.1029/2005RG000183>

745 Gao, B., & Yue, L. (2024). DEM Super-Resolution Assisted by Remote Sensing Images Content Feature. *2024 5th International Conference on Geology, Mapping and Remote Sensing (ICGMRS)*, 122–126. <https://doi.org/10.1109/ICGMRS62107.2024.10581275>

Guidolin, M., Chen, A. S., Ghimire, B., Keedwell, E. C., Djordjević, S., & Savić, D. A. (2016). A weighted cellular automata 2D inundation model for rapid flood analysis. *Environmental Modelling & Software*, 84, 378–394. <https://doi.org/10.1016/j.envsoft.2016.07.008>

750 Hawker, L., Bates, P., Neal, J., & Rougier, J. (2018). Perspectives on Digital Elevation Model (DEM) Simulation for Flood Modeling in the Absence of a High-Accuracy Open Access Global DEM. *Frontiers in Earth Science*, 6. <https://www.frontiersin.org/articles/10.3389/feart.2018.00233>

Jabbar, A., Li, X., & Omar, B. (2021). A Survey on Generative Adversarial Networks: Variants, Applications, and Training. *ACM Comput. Surv.*, 54(8), 157:1–157:49. <https://doi.org/10.1145/3463475>

755 Jiang, Y., Xiong, L., Huang, X., Li, S., & Shen, W. (2023). Super-resolution for terrain modeling using deep learning in high mountain Asia. *International Journal of Applied Earth Observation and Geoinformation*, 118, 103296. <https://doi.org/10.1016/j.jag.2023.103296>

Kim, J., Lee, J. K., & Lee, K. M. (2016). Accurate Image Super-Resolution Using Very Deep Convolutional Networks. *2016 IEEE Conference on Computer Vision and Pattern Recognition (CVPR)*, 1646–1654. <https://doi.org/10.1109/CVPR.2016.182>

Kubade, A. A., Sharma, A., & Rajan, K. S. (2020). Feedback Neural Network Based Super-Resolution of DEM for Generating High Fidelity Features. *IGARSS 2020 - 2020 IEEE International Geoscience and Remote Sensing Symposium*, 1671–1674. <https://doi.org/10.1109/IGARSS39084.2020.9323310>

760

Formatted: Font: 9 pt

Formatted: Line spacing: single

Deleted: :

Deleted: :

Formatted: Line spacing: single

Deleted: :

Deleted: :

Deleted: doi:

Deleted: Choi, J.-H., & Lee, J.-S. (2019). EmbraceNet: A robust deep learning architecture for multimodal classification. *Information Fusion*, 51, 259–270. doi: 10.1016/j.inffus.2019.02.010

Formatted: Line spacing: single

Deleted: :

Deleted: Demiray, B. Z., Sit, M., & Demir, I. (2021b, September 20). *DEM Super-Resolution with EfficientNetV2*. arXiv. doi: 10.48550/arXiv.2109.09661

Deleted: ...

Deleted: :

Deleted: doi:

Deleted: Geiß, C., Wurm, M., Breunig, M., Felbier, A., & Taubenböck, H. (2015). Normalization of TanDEM-X DSM Data in Urban Environments With Morphological Filters. *IEEE Transactions on Geoscience and Remote Sensing*, 53(8), 4348–4362. doi: 10.1109/TGRS.2015.2396195

Formatted: Line spacing: single

Deleted: :

Deleted: Retrieved from

Formatted: Line spacing: single

Deleted: :

Deleted: :

Deleted: :

Li, J., Hong, D., Gao, L., Yao, J., Zheng, K., Zhang, B., & Chanussot, J. (2022). Deep learning in multimodal remote sensing data fusion: A comprehensive review. *International Journal of Applied Earth Observation and Geoinformation*, 112, 102926. <https://doi.org/10.1016/j.jag.2022.102926>

790 Li, Z., Zhu, X., Yao, S., Yue, Y., García-Fernández, A. F., Lim, E. G., & Levers, A. (2023). A large scale Digital Elevation Model super-resolution Transformer. *International Journal of Applied Earth Observation and Geoinformation*, 124, 103496. <https://doi.org/10.1016/j.jag.2023.103496>

Ling, F., & Foody, G. M. (2019). Super-resolution land cover mapping by deep learning. *Remote Sensing Letters*, 10(6), 598–606. <https://doi.org/10.1080/2150704X.2019.1587196>

795 Liu, H., Wang, Y., Zhang, C., Chen, A. S., & Fu, G. (2018). Assessing real options in urban surface water flood risk management under climate change. *Natural Hazards*, 94(1), 1–18. <https://doi.org/10.1007/s11069-018-3349-1>

Liu, X., Jiao, L., Li, L., Tang, X., & Guo, Y. (2021). Deep multi-level fusion network for multi-source image pixel-wise classification. *Knowledge-Based Systems*, 221, 106921. <https://doi.org/10.1016/j.knsys.2021.106921>

800 Löwe, R., & Arnbjerg-Nielsen, K. (2020). Urban pluvial flood risk assessment – data resolution and spatial scale when developing screening approaches on the microscale. *Natural Hazards and Earth System Sciences*, 20(4), 981–997. <https://doi.org/10.5194/nhess-20-981-2020>

Lu, W., Tao, C., Li, H., Qi, J., & Li, Y. (2022). A unified deep learning framework for urban functional zone extraction based on multi-source heterogeneous data. *Remote Sensing of Environment*, 270, 112830. <https://doi.org/10.1016/j.rse.2021.112830>

805 Malgwi, M. B., Fuchs, S., & Keiler, M. (2020). A generic physical vulnerability model for floods: Review and concept for data-scarce regions. *Natural Hazards and Earth System Sciences*, 20(7), 2067–2090. <https://doi.org/10.5194/nhess-20-2067-2020>

Marsh, C. B., Harder, P., & Pomeroy, J. W. (2023). Validation of FABDEM, a global bare-earth elevation model, against UAV-lidar derived elevation in a complex forested mountain catchment. *Environmental Research Communications*, 5(3), 031009. <https://doi.org/10.1088/2515-7620/acc56d>

Met Office. (2006). *MIDAS: UK Sub-hourly Rainfall Data*. <https://catalogue.ceda.ac.uk/uuid/455f0dd48613dada7bfb0ccfcb7a7d41>

810 Miller, A., Sirguey, P., Morris, S., Bartelt, P., Cullen, N., Redpath, T., Thompson, K., & Bühler, Y. (2022). The impact of terrain model source and resolution on snow avalanche modeling. *Natural Hazards and Earth System Sciences*, 22(8), 2673–2701. <https://doi.org/10.5194/nhess-22-2673-2022>

Okolie, C. J., & Smit, J. L. (2022). A systematic review and meta-analysis of Digital elevation model (DEM) fusion: Pre-processing, methods and applications. *ISPRS Journal of Photogrammetry and Remote Sensing*, 188, 1–29. <https://doi.org/10.1016/j.isprsjprs.2022.03.016>

815 Paul, S., & Gupta, A. (2024). *High-resolution Multi-spectral Image Guided DEM Super-resolution using Sinkhorn Regularized Adversarial Network* (No. arXiv:2311.16490). arXiv. <https://doi.org/10.48550/arXiv.2311.16490>

Rahman, M. A., & Wang, Y. (2016). Optimizing Intersection-Over-Union in Deep Neural Networks for Image Segmentation. In G. Bebis, R. Boyle, B. Parvin, D. Koracin, F. Porikli, S. Skaff, A. Entezari, J. Min, D. Iwai, A. Sadagic, C. Scheidegger, & T. Isenberg (Eds.), *Advances in Visual Computing* (pp. 234–244). Springer International Publishing. [https://doi.org/10.1007/978-3-319-50835-1\\_22](https://doi.org/10.1007/978-3-319-50835-1_22)

820 Rees, W. G. (2000). The accuracy of Digital Elevation Models interpolated to higher resolutions. *International Journal of Remote Sensing*, 21(1), 7–20. <https://doi.org/10.1080/014311600210957>

825 Sanders, B. F., Wing, O. E. J., & Bates, P. D. (2024). Flooding is Not Like Filling a Bath. *Earth's Future*, 12(12), e2024EF005164. <https://doi.org/10.1029/2024EF005164>

Shang, C., Li, X., Foody, G. M., Du, Y., & Ling, F. (2022). Superresolution Land Cover Mapping Using a Generative Adversarial Network. *IEEE Geoscience and Remote Sensing Letters*, 19, 1–5. <https://doi.org/10.1109/LGRS.2020.3020395>

830 Shen, R., Huang, A., Li, B., & Guo, J. (2019). Construction of a drought monitoring model using deep learning based on multi-source remote sensing data. *International Journal of Applied Earth Observation and Geoinformation*, 79, 48–57. <https://doi.org/10.1016/j.jag.2019.03.006>

Spoto, F., Sy, O., Laberinti, P., Martimort, P., Fernandez, V., Colin, O., Hoersch, B., & Meygret, A. (2012). Overview Of Sentinel-2. *2012 IEEE International Geoscience and Remote Sensing Symposium*, 1707–1710. <https://doi.org/10.1109/IGARSS.2012.6351195>

835 Tabari, H. (2020). Climate change impact on flood and extreme precipitation increases with water availability. *Scientific Reports*, 10(1), 13768. <https://doi.org/10.1038/s41598-020-70816-2>

Tan, W., Qin, N., Zhang, Y., McGrath, H., Fortin, M., & Li, J. (2024). A rapid high-resolution multi-sensory urban flood mapping framework via DEM upscaling. *Remote Sensing of Environment*, 301, 113956. <https://doi.org/10.1016/j.rse.2023.113956>

Tang, C. S. C., & Cheung, S. P. Y. (2011). *Frequency Analysis of Extreme Rainfall Values* (No. GEO Report No. 261; p. 209 p.). Civil Engineering and Development Department, HKSAR Government. [https://www.cedd.gov.hk/eng/publications/geo/geo-reports/geo\\_rpt261/index.html](https://www.cedd.gov.hk/eng/publications/geo/geo-reports/geo_rpt261/index.html)

840 Wang, P., Bayram, B., & Sertel, E. (2022). A comprehensive review on deep learning based remote sensing image super-resolution methods. *Earth-Science Reviews*, 232, 104110. <https://doi.org/10.1016/j.earscirev.2022.104110>

**Deleted:** Li, C., Shao, Z., Zhang, L., Huang, X., & Zhang, M. (2021). A Comparative Analysis of Index-Based Methods for Impervious Surface Mapping Using Multiseasonal Sentinel-2 Satellite Data. *IEEE Journal of Selected Topics in Applied Earth Observations and Remote Sensing*, 14, 3682–3694. doi: 10.1109/JSTARS.2021.3067325

**Deleted:** :

**Deleted:** :

**Deleted:** :

**Deleted:** :

**Deleted:** :

**Formatted:** Line spacing: single

**Deleted:** :

**Deleted:** :

**Formatted:** Line spacing: single

**Deleted:** Retrieved 6 March 2024, from

**Formatted:** Line spacing: single

**Deleted:** :

**Formatted:** Line spacing: single

**Deleted:** ... T.

**Deleted:** Cham:

**Deleted:** :

**Deleted:** :

**Formatted:** Line spacing: single

**Deleted:** doi:

**Deleted:** :

**Formatted:** Line spacing: single

**Deleted:** :

**Deleted:** :

**Deleted:** Retrieved from Civil Engineering and Development Department, HKSAR Government website:

**Deleted:** :



870 Wang, Y., Chen, A. S., Fu, G., Djordjević, S., Zhang, C., & Savić, D. A. (2018). An integrated framework for high-resolution urban flood modelling considering multiple information sources and urban features. *Environmental Modelling & Software*, 107, 85–95. <https://doi.org/10.1016/j.envsoft.2018.06.010>

Wang, Y., Meng, F., Liu, H., Zhang, C., & Fu, G. (2019). Assessing catchment scale flood resilience of urban areas using a grid cell based metric. *Water Research*, 163, 114852. <https://doi.org/10.1016/j.watres.2019.114852>

875 Wang, Y., Zhang, C., Chen, A. S., Wang, G., & Fu, G. (2023). Exploring the relationship between urban flood risk and resilience at a high-resolution grid cell scale. *Science of The Total Environment*, 893, 164852. <https://doi.org/10.1016/j.scitotenv.2023.164852>

Wang, Z., Chen, J., & Hoi, S. C. H. (2021). Deep Learning for Image Super-Resolution: A Survey. *IEEE Transactions on Pattern Analysis and Machine Intelligence*, 43(10), 3365–3387. <https://doi.org/10.1109/TPAMI.2020.2982166>

880 Wu, J., Zhong, B., Tian, S., Yang, A., & Wu, J. (2019). Downscaling of Urban Land Surface Temperature Based on Multi-Factor Geographically Weighted Regression. *IEEE Journal of Selected Topics in Applied Earth Observations and Remote Sensing*, 12(8), 2897–2911. <https://doi.org/10.1109/JSTARS.2019.2919936>

Xie, J., Fang, L., Zhang, B., Chanussot, J., & Li, S. (2022). Super Resolution Guided Deep Network for Land Cover Classification From Remote Sensing Images. *IEEE Transactions on Geoscience and Remote Sensing*, 60, 1–12. <https://doi.org/10.1109/TGRS.2021.3120891>

885 Yang, W., Zhang, X., Tian, Y., Wang, W., Xue, J.-H., & Liao, Q. (2019). Deep Learning for Single Image Super-Resolution: A Brief Review. *IEEE Transactions on Multimedia*, 21(12), 3106–3121. <https://doi.org/10.1109/TMM.2019.2919431>

Yue, L., Shen, H., Li, J., Yuan, Q., Zhang, H., & Zhang, L. (2016). Image super-resolution: The techniques, applications, and future. *Signal Processing*, 128, 389–408. <https://doi.org/10.1016/j.sigpro.2016.05.002>

890 Yue, L., Shen, H., Yuan, Q., & Zhang, L. (2015). Fusion of multi-scale DEMs using a regularized super-resolution method. *International Journal of Geographical Information Science*, 29(12), 2095–2120. <https://doi.org/10.1080/13658816.2015.1063639>

Zhang, X., Zhang, W., Guo, S., Zhang, P., Fang, H., Mu, H., & Du, P. (2023). UnTDIP: Unsupervised neural network for DEM super-resolution integrating terrain knowledge and deep prior. *International Journal of Applied Earth Observation and Geoinformation*, 122, 103430. <https://doi.org/10.1016/j.jag.2023.103430>

895 Zhang, Y., Li, K., Li, K., Wang, L., Zhong, B., & Fu, Y. (2018). Image Super-Resolution Using Very Deep Residual Channel Attention Networks. *arXiv:1807.02758 [Cs]*. <http://arxiv.org/abs/1807.02758>

Zhang, Y., & Yu, W. (2022). Comparison of DEM Super-Resolution Methods Based on Interpolation and Neural Networks. *Sensors*, 22(3), Article 3. <https://doi.org/10.3390/s22030745>

900 Zhou, A., Chen, Y., Wilson, J. P., Chen, G., Min, W., & Xu, R. (2023). A multi-terrain feature-based deep convolutional neural network for constructing super-resolution DEMs. *International Journal of Applied Earth Observation and Geoinformation*, 120, 103338. <https://doi.org/10.1016/j.jag.2023.103338>

Zhou, A., Chen, Y., Wilson, J. P., Su, H., Xiong, Z., & Cheng, Q. (2021). An Enhanced Double-Filter Deep Residual Neural Network for Generating Super Resolution DEMs. *Remote Sensing*, 13(16), Article 16. <https://doi.org/10.3390/rs13163089>

905 Zhu, Y., Burlando, P., Tan, P. Y., Blagojevic, J., & Faticchi, S. (2024). Investigating the influence of urban morphology on pluvial flooding: Insights from urban catchments in England (UK). *Science of The Total Environment*, 953, 176139. <https://doi.org/10.1016/j.scitotenv.2024.176139>

Zhu, Y., Geiß, C., & So, E. (2021). Image super-resolution with dense-sampling residual channel-spatial attention networks for multi-temporal remote sensing image classification. *International Journal of Applied Earth Observation and Geoinformation*, 104, 102543. <https://doi.org/10.1016/j.jag.2021.102543>

910

Deleted: :

Deleted: :

Deleted: :

Deleted: doi:

Deleted: doi:

Deleted: doi:

Deleted: :

Deleted: :

Deleted: :

Deleted: :

Deleted: Zhang, Yifan, & Yu, W.

Moved down [1]: (2022). Comparison of DEM Super-Resolution Methods Based on Interpolation and Neural Networks. *Sensors*, 22(3),

Deleted: 745. doi: 10.3390/s22030745

Deleted: Retrieved from

Moved (insertion) [1]

Formatted: Line spacing: single

Deleted: :

Deleted: 3089. doi:

Formatted: Line spacing: single

Deleted: :

Formatted: Bibliography