

Revision 1: nhess-2024-101

A methodology to compile multi-hazard interrelationships in a data-scarce setting: an application to Kathmandu Valley, Nepal

Harriet E. Thompson¹, Joel C. Gill², Robert Šakić Trogrlić³, Faith E. Taylor¹, Bruce D. Malamud⁴

5 ¹Department of Geography, King's College London, London, WC2B 4BG, UK

²School of Earth and Environmental Sciences, Cardiff University, Cardiff, CF10 3AT, UK

³International Institute of Applied Systems Analysis, Laxenburg, A-2361, Austria

⁴Institute of Hazard, Risk and Resilience (IHRR) and Department of Geography, Durham University, Durham, DH1 3LE, UK

10

Correspondence to: Harriet E. Thompson (harriet.e.thompson@kcl.ac.uk)

15

Abstract. This paper introduces a multifaceted methodology to identify and compile single natural hazards and multi-hazard interrelationships within the context of data-scarce urban settings, exemplified by Kathmandu Valley, Nepal. This approach integrates (i) five blended types of evidence to support a more nuanced and holistic understanding of a hazardscape where data are scarce and (ii) a 2-hour [practitioner](#) stakeholder workshop with seven participants to provide greater context to the hazards, consider their impacts through the co-production of multi-hazard interrelationship scenarios, and how this methodology could support more people-centred disaster risk reduction (DRR) strategies. We use blended evidence types, including academic literature, grey literature, media, databases, and social media, to systematically search for exemplars of single hazard [types](#) and multi-hazard interrelationships that have influenced or could potentially influence Kathmandu Valley. We collated 58 sources of evidence for single hazard [types](#) and 21 sources of evidence for multi-hazard interrelationships. Using these sources, our study identified [2121–19](#) single hazard types across six hazard groups (geophysical, hydrological, shallow Earth processes, atmospheric, biophysical, and space/celestial hazards) and 83 multi-hazard interrelationships (12 that have direct case study evidence of previous influence in Kathmandu Valley) that might influence Kathmandu Valley. These exemplars are collated into ~~thea two databases~~ [Kathmandu Valley Single Hazards and Multi-Hazard Interrelationships Database \(Thompson et al., 2024\)](#) ~~that accompany~~ [accompanying](#) this paper. We supplement these exemplars with multi-hazard interrelationship scenarios and multi-hazard impacts developed by [practitioner](#) stakeholders engaged in DRR research and practice in Kathmandu Valley. The results illustrate the complexity of the hazard-~~land~~scape, with many single hazard [types](#) and multi-hazard interrelationships potentially influencing Kathmandu Valley. The research emphasises the importance of inclusive DRR strategies that recognise disaggregated impacts experienced by different social groups. This knowledge can inform the development of dynamic risk scenarios in planning and civil protection, thus strengthening multi-hazard approaches to DRR in “Global South” urban areas such as Kathmandu Valley.

25

30

1. Introduction

This paper introduces a multifaceted methodology designed to identify and compile single hazard types and multi-hazard interrelationships in data-scarce urban areas in the “Global South”, setting out a rationale and approach to identifying and using exemplars of multi-hazard events to characterise the hazard landscape. In this introduction, we ~~(i)~~ present previous work on multi-hazard interrelationships (Sect. 1.1), the challenges in characterising single hazard types and multi-hazard interrelationships in data-scarce urban areas, (ii) describe the methodology developed in this study outline current trends in multi-hazard research (Sect. 1.2), and (iii) introduce single hazards and multi-hazards in Kathmandu Valley, Nepal (Sect. 1.3), and consider multi-hazard data challenges in the Kathmandu Valley context (Sect. 1.4) as the setting to which we apply our methodology.

1.1 Previous work on multi-hazard interrelationships

Studies of natural hazards often focus on single, discrete hazards, such as earthquakes, floods, and storms, with more limited knowledge of multi-hazard interrelationships and their impacts (Gill et al., 2020; De Angeli et al., 2022; Ward et al., 2022). Different authors have developed classifications for multi-hazard interrelationships (e.g., Kappes et al., 2010; Duncan, 2014; Van Westen et al., 2014). However, each classification shares many features and typically includes one or more of the following interrelationship types (Gill and Malamud, 2016, 2017; Ciurean et al., 2018; Gill et al., 2022):

- Compound (or coincident hazards): two or more independent hazards affect the same area spatially and/or temporally.
- Concurrent or consecutive hazards: two or more hazards occur consecutively, resulting in increased stress on a certain area.
 - Triggering relationships: one hazard causes another hazard to occur.
 - Increased probability relationships: one hazard increases the magnitude and/or likelihood of further hazards in the future.
- Catalysis/impedance relationships: the action of a primary hazard triggers or increases the probability of a secondary hazard.

Examples of multi-hazard interrelationships include an earthquake triggering a landslide, which may block a river and trigger flooding downstream, or drought increasing the probability of wildfire. Single hazard events are often well documented in the literature (e.g., Nehren et al., 2013; ~~The~~ World Bank Group and the Asian Development Bank, 2021) and international databases such as EM-DAT (CRED, 2023) and DesInventar Sendai (UNDRR and LA RED, 2023), particularly concerning events with large magnitudes or where impacts turn into disasters. Databases detailing the breadth of single hazard types in particular regions are generally rarer in the “Global South”, yet localised perspectives on multiple single hazards are improving (GFDRL, 2021; GFDRL Innovation Lab, 2021). Conversely, the systematic knowledge of multi-hazard interrelationships in individual regions or urban areas, and their impacts, is still limited, particularly concerning

65 further characterisation and quantification of these interrelationships using a universal framework (Tilloy et al., 2019; Gill et al., 2020; Ward et al., 2022; Hochrainer-Stigler et al., 2023). **Table 1** summarises six ~~systematic~~ studies compiling multi-hazard interrelationships on a regional scale, including the systematic methodologies used and the region to which the methodology is applied. The methodologies vary from critical literature reviews to multi-hazard risk analyses as tools to gather information about multi-hazard interrelationships across geographical regions. ~~Table 1 situates the methodology we describe in this paper in the broader context of six systematic studies that collate multi hazard interrelationships on a regional scale.~~

70

Table 1: Summary of six systematic studies compiling multi-hazard interrelationships on a regional scale.

Publication name	Systematic methodologies	Region methodology is applied to
A multi-hazard framework for spatial-temporal impact analysis (De Angeli et al., 2022)	Critical literature review and stakeholder workshops. The methodology considered types of multi-hazard interrelationships, impacts and stakeholder perspectives to develop a multi-hazard impact framework.	Po Valley, Italy
Hazard interaction analysis for multi-hazard risk assessment: a systematic classification based on hazard-forming environment (Liu et al., 2016)	Given different potential multi-hazard interrelationship types, the probability and magnitude of multi-hazards occurring together were calculated using hazard interaction analysis.	Yangtze river delta <u>River Delta</u> , China
Spatial pattern of hazards and hazard interactions in Europe (Tarvainen et al., 2006)	A causal correlation was used to identify multi-hazard interactions-interrelationships and select those which exceeded average hazard intensities for a given region.	Europe
Construction of regional multi-hazard interaction frameworks, with an application to Guatemala (Gill et al., 2020)	Comprehensive, systematic, and evidenced regional interaction multi hazard interrelationships framework populated using internationally accessible literature, locally accessible civil protection bulletins, field observations, stakeholder interviews A comprehensive, systematic, and evidenced regional multi-hazard interrelationships framework was populated using internationally accessible literature, locally accessible civil-protection bulletins, field observations, stakeholder interviews, and a stakeholder workshop.	Guatemala (<u>national</u>) and Southern <u>Highlands of</u> <u>Guatemala (sub-national)</u>
From Single- to Multi-Hazard Risk Analyses: a concept addressing emerging challenges (Kappes et al., 2010)	Multi-hazard interactions-interrelationships were identified using a matrix, modelled, and incorporated into a multi-hazard risk analysis.	Barcelonnette Basin, French Alps
A theoretical model for cascading effects analyses (Zuccaro et al., 2018)	Development of a cascading effects scenario analysis model, incorporating exposure data and hazard and impact models. This scenario analysis was applied to a hypothetical hazard cascade of an eruption of Nea Kameni Volcano, Santorini, Greece.	Santorini, Greece

75 1.2 Current trends in multi-hazard research

In the past decade, the natural hazard community has evolved towards a more nuanced understanding of multi-hazards, defined as ~~(UNDRR, 2017)~~ the “(1) selection of multiple major hazards that the country faces, and (2) specific contexts where hazardous events may occur simultaneously, cascadingly or cumulatively over time, and taking into account the potential interrelated effects” [\(UNDRR, 2017b\)](#). There has been increasing awareness of the importance of considering multi-hazards since its inclusion in the Sendai Framework for Disaster Risk Reduction (DRR) 2015-30 (UNDRR, 2015) and implementation of the UNDRR (2017b) definition. Multi-hazard approaches to DRR are an integral part of the vision and research objectives of the Sendai Framework. In Nepal, the focus of this paper, decision-makers and multi-hazard researchers have expressed the need to better integrate multi-hazard approaches into DRR strategies (Government of Nepal, 2018; Gautam et al., 2021), ~~although-However,~~ practical adoption is much more challenging (Aksha et al., 2020). Single hazard events in Nepal are documented in open-access databases such as the Nepal DRR Portal [\(Nepal DRR Portal, 2024\)](#), BIPAD (Building Information Platform Against Disasters) ~~Pportal~~ [\(BIPAD Portal, 2024\)](#) ~~Youth Innovation Lab, 2020b)~~, EM-DAT (CRED, 2024) and DesInventar Sendai (UNDRR ~~and~~ LA RED, 2024). It would be beneficial to have a similarly standardised framework for collecting and recording multi-hazard event data [\(Tamrakar and Bajracharya, 2020\)](#) ~~Youth Innovation Lab, 2020b)~~.

90 A political declaration at the midterm review of the Sendai Framework noted, in Article 8, the increasingly complex nature of disaster risk, considering interrelated impacts across regions and sectors ~~(UNDRR, 2023)~~ and, in Article 20, called for improved collection and analysis of hazard, disaster event and impact data, specifically disaggregated data by social group, e.g., by “income, sex, age and disability” (UNDRR, 2023). The scarcity of multi-hazard event and impact data in some “Global South” urban areas presents a significant challenge to risk-sensitive DRR strategies (Paudyal et al., 2015; Aksha et al., 2020). Within the context of these urban areas, where the interaction of exposure to multiple hazards and high vulnerability combine to exacerbate risk (Hallegatte et al., 2020; Shrestha et al., 2020), mapping of multi-hazard interrelationships can inform effective and people-centred DRR strategies (Scolobig et al., 2015; UNDRR, 2023). Considering these challenges, the DRR community has identified the need for a greater breadth and depth of ~~(multi-)hazard~~ data from diverse sources. This call for more nuanced multi-hazard data is as a critical priority in better understanding hazardscapes, applied in this paper as a framework to understand the connections between hazards, physical landscapes, socio-political factors and global influences (e.g., Mustafa, 2005; Khan, 2009), ~~-~~ and their impacts (Gill et al., 2021b; Šakić Trogrlić et al., 2022; Šakić Trogrlić et al., 2024a). ~~This paper~~ Here, we ~~applyes~~ a single-hazard and multi-hazard interrelationship scoping methodology using blended evidence types in the context of Kathmandu Valley, Nepal, as an example of a multi-hazard, data-scarce urban setting.

105 **1.3 Single hazards and multi-hazards in Nepal**

The global population in urban areas, as of 2022, is estimated to be 4.2 billion people, with the most rapid growth in informal settlements being in low- to middle-income countries with lower adaptive capacity (Dodman et al., 2022). Within these countries, Nepal experiences high exposure to multi-hazards, which is coupled with challenges presented by its medium Human Development Index (HDI) of 0.602 in 2021, on a scale of 143 out of 191 countries globally (CEDLAS and World Bank, 2022). Nepal has an estimated global Multidimensional Poverty Index (MPI) of 0.074 based on a 2019 survey, compared to an estimated MPI of 0.091 for the South Asia region based on surveys between 2011 and 2022 (Alkire et al., 2023).

In the Nepali context, most previous research and building of databases, by academics, government organisations and non-governmental organisations (NGOs) has centred on the impacts of single hazards (Bhatta and Adhikari, 2024). There is an increasing shift from single hazard to multi-hazard approaches, exemplified by studies such as Khatakho et al.'s (2021) multi-layer risk assessment in the Kathmandu Valley that superimposed earthquake, fire, flood and landslide risk. In response to recent multi-hazard events such as the Melamchi debris flow in 2021, part of a hazard cascade that caused multi-sectoral impacts on a regional scale across one year (Sharma et al., 2023), more research is focused on multi-hazard impact and risk assessments (e.g., Dunant et al., 2024). Examples of the breadth of natural hazard events in Nepal and subsequent cascading hazards or impacts include the following:

- The high-profile disaster of the Gorkha earthquake in April 2015 caused devastating impacts in Kathmandu Valley and beyond (Takai et al., 2016; Khatakho et al., 2021), with subsequent landslides on the periphery of the valley exacerbating these effects and prolonging the recovery effort (Kargel et al., 2015).
- Urban fires occur frequently and spread rapidly in areas of Kathmandu Valley with high population density (Khatakho et al., 2021), particularly in informal settlements where “marginalised” communities experience disproportionate hazard impacts and may have lower capacity to prepare and respond to hazard events (Brown et al., 2019; Dodman et al., 2022).
- Both fluvial and pluvial flooding are frequent in Kathmandu Valley during the mid-June to early September monsoon season. For example, during floods in early September 2021, heavy rainfall caused severe inundation across large areas of the valley and displaced hundreds of families in the Banshi Ghat area (Chaulagain et al., 2023). These earthquake, fire, flood and landslide multi-hazard events exemplify the complexity of the interrelationships between hazards and their impacts and highlight the need to understand how these events relate to the geographical contexts in which they occur.

135 **1.4 Multi-hazard data challenges in the Kathmandu Valley context**

Similar to geographical contexts globally, across national income levels and “Global North and South” categorisation, one of the significant challenges facing urban areas in Nepal is the scarcity of disaggregated multi-hazard impact data, which is a

140 ~~barrier to effective DRR strategies (Panta, 2020; De Maio et al., 2024). Nepali hazard event databases, including the Nepal DRR Portal (2024) and BIPAD Portal (2024), predominantly document direct and tangible impacts, with some basic disaggregation by gender. One of the significant challenges facing urban areas in Nepal is the scarcity of hazard impact data, which is a barrier to effective DRR strategies (Chatterjee et al., 2015; SIAS, 2016).~~ For example, within the Nepal DRR Portal, one of Nepal's primary sources of damage and loss data, there are data gaps concerning spatial and temporal coverage, estimated losses, and incomplete loss indicators. These challenges are coupled with ~~restructuring the restructuring of~~ Nepal's administrative divisions in 2015, making spatial comparisons pre- and post-restructuring more difficult (BIPAD, 2020a).

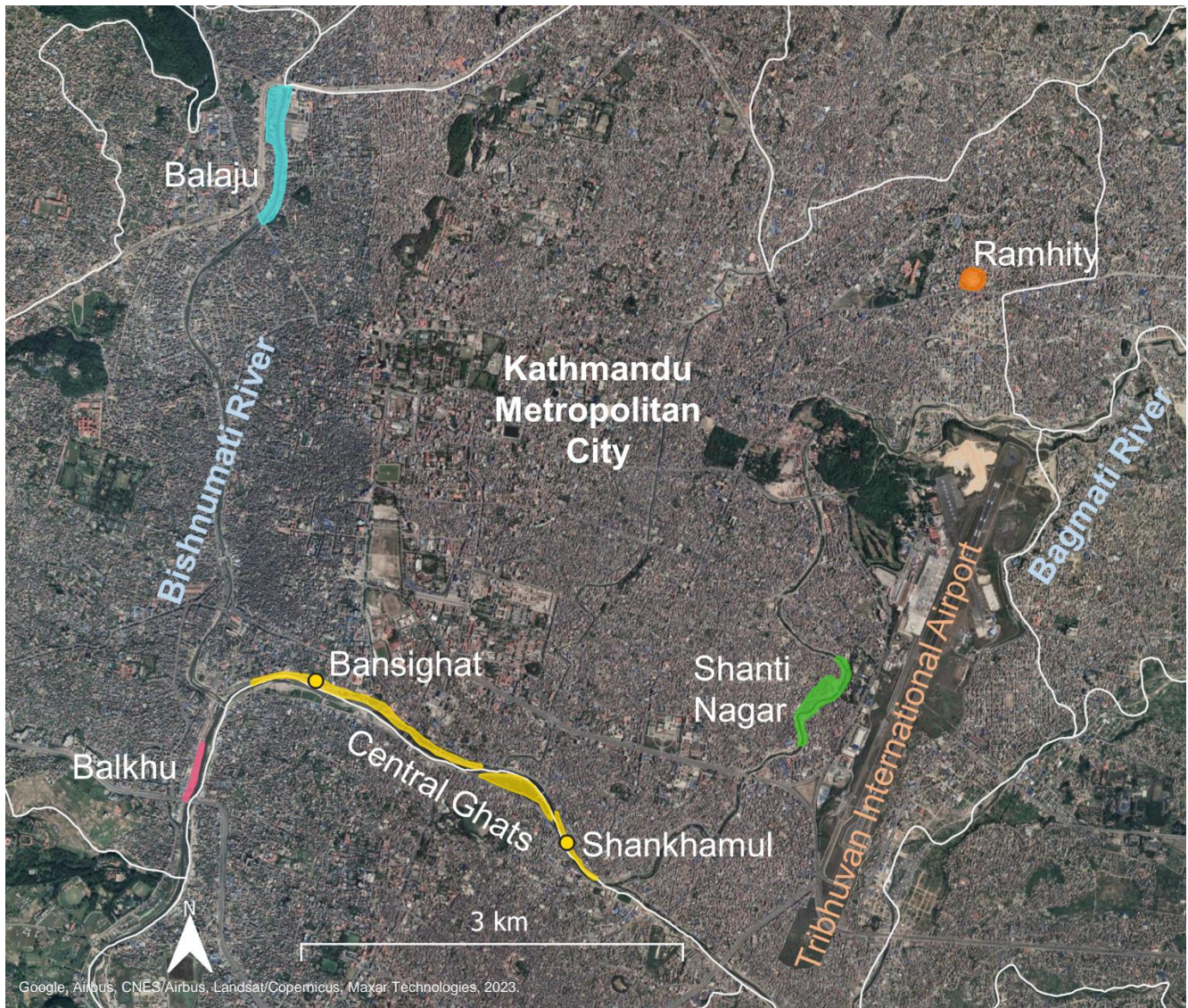
145 Kathmandu Valley, Nepal, experiences a variety of single natural hazard and multi-hazard events against the backdrop of significant urbanisation, rapid population growth and climate change-related challenges (Nehren et al., 2013; Pradhan-Salike and Pokharel, 2017). ~~In 2023, Kathmandu had about 1.57 million people in an area of about 49.4 km² (31,800 people per km²) (The World Factbook, 2024).~~ According to the Nepal National Population and Housing Census 2021, Kathmandu Valley had a total population of 3,025,386 people, comprising 2,041,587 people in Kathmandu district (5,169 people per

150 ~~km²), 551,667 people in Lalitpur district (1,433 people per km²) and 432,132 people in Bhaktapur district (3,631 people per km²) (National Statistics Office, 2023) comprising the valley.~~ Within this population, "marginalised" communities, including residents of squatter settlements within the broader grouping of urban poor communities, experience a disproportionate burden of hazard impacts due to their heightened socio-economic vulnerability (Pelling et al., 2004; Gorman-Murray et al., 2018; Dodman et al., 2022). In mainstream hazard impact data, more vulnerable groups often lack representation (Osuteye et

155 ~~al. 2017). Addressing this data gap is crucial to prevent DRR strategies from unintentionally exacerbating existing social inequalities (Brown et al., 2019). To illustrate the spatial distribution of socially marginalised communities in one region of Kathmandu Valley, Fig. 1 presents six squatter settlements, with a total population of 7270 people in 2019 (Khanal and Khanal, 2022), out of 53 squatter settlements that are documented in the valley (DUDBC, 2010).~~ ~~Figure 1 presents six squatter settlements, with a total population of 7270 people in 2019 (Khanal and Khanal, 2019), out of 53 squatter settlements that are documented in Kathmandu Valley (DUDBC, 2010).~~ Within Kathmandu Valley, many squatter settlements, 35 out of 53, are located along the banks of major river corridors like Bagmati (Fig. 1). This urban agglomeration experiences a breadth of single natural hazards (Pradhan et al., 2020; Whitworth et al., 2020; Khatakho et al., 2021), with the potential for interrelationships to occur between these and across varying spatial and temporal scales. Within Kathmandu Valley, many 35 of 53 (66%) squatter settlements, 35 out of 53, are located along the banks of significant river

160 ~~corridors like Bagmati (Fig. 1). Kathmandu Valley experiences a breadth of single natural hazard types (Pradhan et al., 2020; Whitworth et al., 2020; Khatakho et al., 2021), with the potential for interrelationships to occur between these hazards types and across varying spatial and temporal scales.~~

165 corridors like Bagmati (Fig. 1). Kathmandu Valley experiences a breadth of single natural hazard types (Pradhan et al., 2020; Whitworth et al., 2020; Khatakho et al., 2021), with the potential for interrelationships to occur between these hazards types and across varying spatial and temporal scales.



170

Figure 1: Map showing the location of six selected squatter settlements in Kathmandu Valley, Nepal (Balaju—solid blue; Shanti Nagar—solid green; Ramhity—solid orange; Balkhu—solid pink; Central Ghats—solid yellow); main rivers (Bishnumati and Bagmati); Tribhuvan International Airport (orange text); and administrative boundaries (white solid line). [Location of squatter settlements adapted from: Dowse et al., 2014. Map data: Google, Airbus, CNES/Airbus, Landsat/Copernicus, Maxar Technologies, 2023. Shapefile data: Survey Department, 2020.]

175

In this paper, we systematically develop an overview of single hazard types and multi-hazard interrelationships influencing Kathmandu Valley in our *Kathmandu Valley Single Hazards and Multi-Hazard Interrelationships Database* (Thompson et al., 2024). These sources provide evidence of hazards that have already influenced Kathmandu Valley and those that could potentially influence it, with descriptions of impacts where available in the sources. We supplement these blended source

180 ~~types with a workshop of practitioner stakeholders engaged in DRR in Kathmandu Valley. We used a similar methodology applied in Nairobi, Kenya, and Istanbul, Türkiye, in the context of the GCRF Tomorrow's Cities Hub (<https://tomorrowscities.org/>), under which part of this research has been conducted, which also looked at single hazard types and multi-hazard interrelationships in both hub cities (Šakić Trogrlić et al., 2024b). Within Kathmandu Valley, many squatter settlements, 35 out of 53, are located along the banks of significant river corridors like Bagmati (Fig. 1). Kathmandu Valley experiences a breadth of single natural hazards (Pradhan et al., 2020; Whitworth et al., 2020; Khatakho et al., 2021), with the potential for interrelationships to occur between these and across varying spatial and temporal scales.~~ Examples of the breadth of natural hazard events in Nepal and subsequent cascades of triggering other hazards or impacts include the following.

- 190 ● ~~The high profile disaster of the Gorkha earthquake in April 2015 caused devastating impacts in Kathmandu Valley and beyond (Takai et al., 2016; Khatakho et al., 2021), with subsequent landslides on the periphery of the valley exacerbating these effects and prolonging the recovery effort (Kargel et al., 2015).~~
- ~~Both fluvial and pluvial flooding are frequent in Kathmandu Valley during the mid June to early September monsoon season. For example, during floods in early September 2021, heavy rainfall caused severe inundation across large areas of the valley and displaced hundreds of families in the Banshighat area (Chaulagain et al., 2023).~~
- 195 ● ~~Urban fires occur frequently and spread rapidly in areas of the valley with high population density (Khatakho et al., 2021), particularly in informal settlements where “marginalised” communities carry disproportionate hazard impacts and may have lower capacity to prepare and respond to hazard events (Brown et al., 2019; Dodman et al., 2022).~~

~~These earthquake, fire, flood and landslide events exemplify the complexity of the interactions between hazards and their impacts and highlight the need to understand how these events relate to the geographical contexts in which they occur.~~

~~The subsequent sections are organised as follows: **Section 2** develops the methodology, **Section 3** systematically develop an overview of single hazard types and multi hazard interrelationships influencing Kathmandu Valley in two Excel databases (**Supplementary Material A. Kathmandu Valley Single Hazard Database** and **Supplementary Material B. Kathmandu Valley Multi-Hazard Interrelationship Database**). These sources provide evidence of hazards that have already influenced Kathmandu Valley and those that could potentially influence it, with descriptions of impacts where available in the sources. **Section 4** and **Section 5** describe our methodology to supplemented these blended source types with a workshop with stakeholders engaged in DRR in Kathmandu Valley. We used a similar methodology applied in Nairobi and Istanbul in the context of Tomorrow's Cities, which also looked at single hazard types and multi hazard interrelationships in both hub cities (Šakić Trogrlić et al., submitted). **Section 6** describes the results of both databases, followed by a discussion of findings in **Section 7**. We suggest that our methodology can support the understanding of hazardscapes in other data-scarce urban contexts.~~

2 Methodology

~~This paper focuses on natural hazards and will not include technological, environmental, or biological hazards as defined by the UNDRR (2017).~~ This section outlines our methodology for creating ~~thea~~ databases of single hazard and multi-interrelationships exemplars in a low-data availability context. ~~Our methodology focuses on natural hazards and does not include technological, environmental, or biological hazards as defined by the UNDRR (2017b), apart from urban fire owing to the high risk of incidence in Kathmandu Valley.~~ ~~The~~ ~~Our~~ ~~ese~~ ~~database~~ *Kathmandu Valley Single Hazards and Multi-Hazard Interrelationships Database* (Thompson et al., 2024) ~~iss~~ ~~are~~ based on blended sources, comprising different evidence types. Although ~~the primary aim of the collation of sources was~~ collating sources primarily aimed to evidence single hazard types and multi-hazard interrelationships influencing Kathmandu Valley, we also reviewed all ~~of the~~ selected sources ~~and noted.~~ We noted impacts when they were described (*Column 9, Sheet “A. Single Hazards Evidence”*—*in Supplementary Material A* and *Column 6.1, in Sheet “B. Hazard Interrelationships Evidence”*—*Supplementary Material B*). In the context of this paper, we note that “influence” refers to a single hazard or multi-hazard interrelationship occurring in, or having a theoretical possibility of occurrence in Kathmandu Valley. Whereas “impact” refers to this occurrence or the theoretical possibility of occurrence realising consequences that affect Kathmandu Valley. A workshop with practitioner stakeholders engaged in DRR in the context of Nepal supplements the databases, to add richness ~~to the databases~~ and incorporate additional multi-hazard interrelationship scenarios not included in the original exemplars.

Researchers are increasingly integrating blended (varied) sources of evidence to collate hazard events and their impacts. This use of blended sources of evidence ~~builds upon~~ is similar to Gill et al. (2020) ~~regional interaction frameworks of multi-hazard interrelationships that, who used~~ uses a “comprehensive, systematic, and evidenced” approach to ~~collate~~ build create a framework for multi-hazard interrelationships on a regional scale. Gustafsson et al. (2023) and Šakić Trogrlić et al. (2024b) adopted this methodology to compile natural hazard ~~interrelationships~~ interactions for Sweden, and Nairobi and Istanbul, respectively, ~~using reviews of the literature and government agency documents, a workshop conducted with experts in the field and statistical data.~~

Our study builds upon the methodology of Gill et al. (2020) ~~methodology~~ and develops it further to include multi-hazard interrelationship data on a much finer spatial scale. In the case of Kathmandu Valley, this equates to ward level and individual urban poor settlements as the highest spatial resolution of data collated from the blended sources. The issue of data availability becomes more complex at finer spatial scales (Osuteye et al. 2017), which our study contributes towards resolving.

Section 2.1 outlines the commonalities between searches undertaken for single hazard types and multi-hazard interrelationships. **Section 2.2** describes specific information relevant to the searches for single hazard types, and **Section 2.3** the multi-hazard interrelationships. **Section 2.4** closes with a description of a workshop undertaken with practitioner stakeholders engaged in DRR in Kathmandu Valley.

2.1 Systematic mapping of single hazard types and multi-hazard interrelationships

245 This work builds upon previous studies utilising blended evidence sources to systematically review and collate multi-hazard events and impacts and supplement these sources with practitioner stakeholder knowledge (Neri et al., 2008; Gill et al., 2020; Taylor et al., 2020). Our methodology aims to be systematic but not comprehensive in gathering evidence for the potential for a specific single hazard or multi-hazard interrelationship relevant to Kathmandu Valley. Our methodology followed elements of a systematic mapping process, which aims to systematically find, evaluate, and integrate evidence using predefined guidelines (Grant and Booth, 2009; James et al., 2016). We outline the methodological steps as follows:

- We searched for exemplars of single hazard types and multi-hazard interrelationships that either have influenced or could influence Kathmandu Valley in academic literature, grey literature (e.g., national society, NGO/INGO and multilateral development bank reports), media, databases, and social media (e.g., YouTube videos).
 - Here, we define grey literature as material produced outside of commercial publishers, using Auger's (1998) definition: "that which is produced on all levels of governmental, academics, business and industry in print and electronic formats, but which is not controlled by commercial publishers" (Auger, 1998).
 - We did not specify the spatial boundary around Kathmandu Valley; instead, we considered case studies ~~to be~~ relevant if they directly or indirectly influenced people, the economy, infrastructure, or the environment in the valley.
- Variations of the single hazard terms (e.g., singular and plural) and Kathmandu were used to find evidence for the single hazard types (e.g., "landslide* AND Kathmandu") where * represents zero or more characters (e.g., landslide, landslides, landsliding).
- A simple Boolean search was used to find evidence for the multi-hazard interrelationships, with the following keywords: ~~(a)~~ the multi-hazard interrelationship type AND, ~~(b)~~ "Kathmandu ~~Valley~~" AND impact*.
 - ~~An example for earthquakes would be "earthquake* AND Kathmandu AND impact*", where * represents zero or more characters (e.g., impacts, impacting).~~ An example of an earthquake triggering or increasing the probability of a landslide would be: "earthquake* AND landslide* AND Kathmandu AND impact*".
 - We conducted searches in English as the authors do not speak Nepali, although ideally, we would complete the search in both languages.
- We applied our literature searches to two online databases of academic publications (Web of Science and Google Scholar). If these returned no results, we conducted similar searches in three online English-language Nepali newspapers (*The Himalayan Times*, *The Kathmandu Post* and *Nepali Times*), global and national disaster databases (e.g., EM-DAT; Nepal DRR Portal) and YouTube using their in-built search tools.
 - We reviewed the literature for each source type (academic literature, grey literature, media, databases, and social media (e.g., YouTube videos), and where available, we chose publications from 2010 onwards. We selected only one publication as exemplar evidence for each in the single hazard types evidence (*Sheet "A*

~~Single Hazards Evidence”) database (Supplementary Material A) and one publication as exemplar evidence for each for in the each multi-hazard interrelationship types evidence database (Sheet “B. Hazard Interrelationships Evidence”) in the Kathmandu Valley Single Hazards and Multi-Hazard Interrelationships Database (Thompson et al., 2024) Supplementary Material B) that were published prior to before 2010.~~

- We focused on more recent events to capture the present hazardscape and its evolution. However, if recent events were ~~not available~~ unavailable, we searched for ~~hazard event information~~ information on hazard events extending further back in time.
- If the Boolean search returned no results with this iteration, ~~we omitted “impact*” was omitted~~ from the search string ~~and conducted the searches again in the same search engines.~~ ~~When searching for examples of multi-hazard interrelationship events, four Boolean search terms including “impact*” returned no results. In these cases, we removed “impact*” from each Boolean search term and conducted the searches again in the same search engines.~~
- We then selected exemplars of hazard events from these blended sources of academic literature, grey literature, media, databases, and social media.
 - When searches for a specific single hazard type or multi-hazard interrelationship returned more than ten results per search engine, we skimmed titles and abstracts for an indication of spatial and temporal occurrence, and we selected up to five pieces of evidence that documented previous influence in Kathmandu Valley (case studies) or had a theoretical possibility of influencing Kathmandu Valley.
 - If this examination of case study evidence returned no results for a particular hazard, we searched for any indication that the hazard may be theoretically possible of imparting impact in or around Kathmandu Valley.
 - Where we found no examples of specific single hazards or multi-hazard interrelationships impacting Kathmandu Valley, such as “tornado*” or “geomagnetic storm*”, we searched for evidence of the hazard occurring within, ~~or having a theoretical possibility of occurrence, or having a theoretical possibility of occurrence~~ in Nepal with recorded or potential impacts in Kathmandu Valley.

2.2 Single hazard types

~~To decide which single hazard types we would apply our conducted systematic searches (Section 2.1) of blended evidence, academic literature, grey literature, media, databases, and social media to gather exemplars of single hazard events that have influenced or could potentially influence Kathmandu Valley.~~ We started with the categorisation that Gill and Malamud (2014) developed with six hazard groups and 21 single natural hazards. ~~There, recognising that there are other classifications, such as the (e.g., the hazard types described in the UNDRR-ISC Hazard Information Profiles (Murray, et al., 2021)).~~ We added fog to the atmospheric hazard group and urban fire to the biophysical hazard group ~~—~~ where the nature of their fuel distinguishes urban fire and wildfire. Our hazard categorisation for Kathmandu Valley comprised six hazard groups divided into 23 single natural hazards (**Table 2**).

310 Table 2: Classification of the six hazard groups and 23 single natural hazards ~~used in Kathmandu Valley~~. Adapted from the original classification developed by Gill and Malamud (2014).

Hazard Group	Hazard	Code
Geophysical hazards	Earthquake	EQ
	Tsunami	TS
	Volcanic eruption	VO
	Landslide	LA
	Snow avalanche	AV
Hydrological hazards	Flood	FL
	Drought	DR
Shallow Earth processes	Regional subsidence	RS
	Ground collapse	GC
	Soil subsidence	SS
	Ground heave	GH
Atmospheric hazards	Storm	ST
	Fog	FO
	Tornado	TO
	Hailstorm	HA
	Snowstorm	SN
	Lightning	LN
	Extreme temperature (Heat)	ET(H)
	Extreme temperature (Cold)	ET(C)
Biophysical hazards	Wildfire	WF
	Urban fire	UF
Space/Celestial hazards	Geomagnetic storm	GS
	Impact event	IM

The six hazard groups used here (Table 2) were geophysical, hydrological, shallow Earth processes, atmospheric, biophysical, and space/celestial hazards. We used the methodology described in the literature review in Sect. 2.1 to conduct

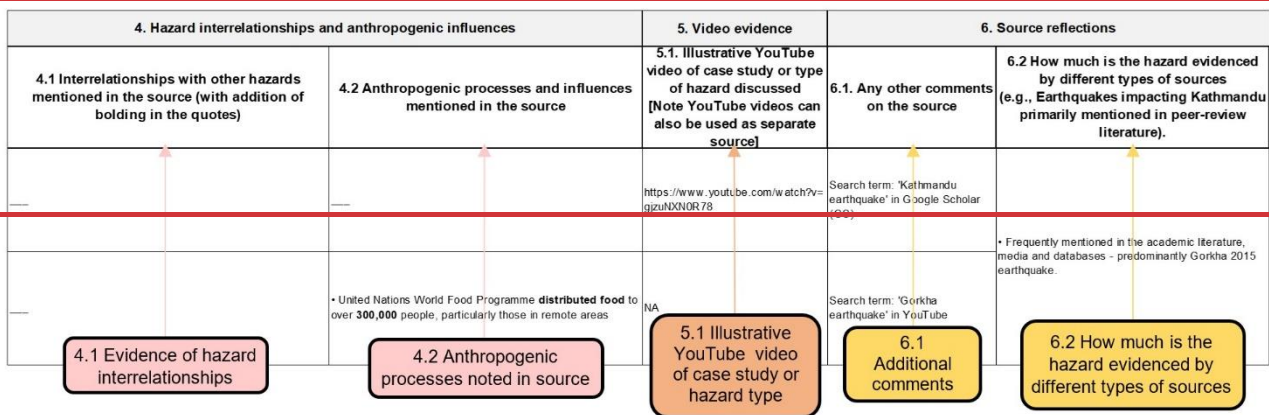
315 Boolean searches for potential single hazard types and multi-hazard interrelationships that have influenced or could potentially influence ~~might occur in~~ Kathmandu Valley. The examples of single hazard types (Sheet "A. Single Hazards Evidence")~~s~~ were collated into the ~~an~~ Kathmandu Valley Single Hazards and Multi-Hazard Interrelationships Database

(Thompson et al., 2024)Excel spreadsheet database_ ~~Supplementary Material A. Kathmandu Valley Single Hazard Database~~, to summarise the ~~collected~~ evidence collected. A subset of this database is shown in **Fig. 2**. Each Excel row in **Fig. 2** details evidence of a single hazard influencing Kathmandu Valley. Column thematic groups in the database include hazard type, source information and link, source content, multi-hazard interrelationships and anthropogenic processes~~influences~~, video evidence, source and major event typical frequency~~hazard frequency magnitude~~ reflections, and impact.

1. Hazard type				2. Source information and link			3. Source content		
1.1 Hazard Group	1.2 Hazard	1.3 Code	1.4 Component hazards	2.1 Case Study (C)/ Review (R)/	2.2 Type of evidence: Academic (A); Grey Lit (G); Media (M); Database (D); Social Media (SM); Not Applicable (NA)	2.3 Source	2.4 Link	3.1 If case study, area impacted [Nepal, Kathmandu valley, Kathmandu]	3.2 Description of the themes covered in the source
1.1 Hazard group	1.2 Hazard	1.3 Code	1.4 Component hazards	2.1 Case study/review	2.2 Type of evidence	2.3 Source	2.4 Link	3.1 If case study, area impacted	3.2 Description of themes in source
Geophysical			Ground Shaking, Rupture, Liquefaction, Co-Seismicity, Seismicity, Seismicity, Seismicity, Seismicity	C	A	Takal, N., Shigefuji, M., Rajuure, S., Björkthien, S., Ichiyonagi, M., Dhtal, W.R. and Sasatani, T. (2016) Strong ground motion in the Kathmandu Valley during the 2015 Gorkha, Nepal, earthquake. <i>Earth, Planets and Space</i> , 68, 1-12. doi:10.1007/s11434-016-0383-7	https://earth-planet-space.springeropen.com/articles/10.1186/s11434-016-0383-7	Kathmandu	<ul style="list-style-type: none"> • Example of ground shaking and ground rupture in Kathmandu • Mw 7.8 on 25 April 2015 • Epicentre occurred 80 km northwest of Kathmandu in Gorkha region • Seismic response of soft lake sediments is main factor for significant damage
				C	SM	United Nations (2015) Nepal: The Gorkha Earthquake [Online] Available from: https://www.youtube.com/watch?v=egzuNXNDR78 [Accessed 12 August 2021]	https://www.youtube.com/watch?v=egzuNXNDR78	Kathmandu	<ul style="list-style-type: none"> • Overview of the Gorkha earthquake in 2015 • Summary of major impacts and short-term responses in Kathmandu

1. Hazard type				2. Source information and link			
1.1 Hazard group	1.2 Hazard	1.3 Code	1.4 Component hazards	2.1 Case Study (C)/ Review (R)/	2.2 Type of evidence: Academic (A); Grey Lit (G); Media (M); Database (D); Social Media (SM); Not Applicable (NA)	2.3 Source	2.4 Link
Geophysical	A. Earthquake	EQ	Ground Shaking, Ground Rupture, Liquefaction, Co-Seismic Subsidence and Uplift	C	A	Takai, N., Shigefuji, M., Rajaura, S., Bijukchhen, S., Ichyanagi, M., Dhital, M.R. and Sasatani, T. (2016) Strong ground motion in the Kathmandu Valley during the 2015 Gorkha, Nepal, earthquake. <i>Earth, Planets and Space</i> , 68(1), pp. 1-8.	https://earth-planets-space.springeropen.com/articles/10.1186/s40623-016-0383-7
				C	SM	United Nations (2015) Nepal: The Gorkha Earthquake [Online] Available from: https://www.youtube.com/watch?v=gjzuNXN0R78 [Accessed 12 August 2021]	https://www.youtube.com/watch?v=gjzuNXN0R78

3. Source content		4. Hazard interrelationships and anthropogenic influences		5. Video evidence
3.1 If case study, area impacted [Nepal, Kathmandu valley, Kathmandu]	3.2 Description of the themes covered in the source	4.1 Interrelationships with other hazards mentioned in the source (with addition of bolding in the quotes)	4.2 Anthropogenic processes and influences mentioned in the source	5.1. Illustrative YouTube video of case study or type of hazard discussed [Note YouTube videos can also be used as separate source]
Kathmandu	<ul style="list-style-type: none"> • Example of ground shaking and ground rupture in Kathmandu • Mw 7.8 on 25 April 2015 • Epicentre occurred 80 km northwest of Kathmandu in Gorkha region • Seismic response of soft lake sediments is main factor for 'significant damage' 	—	—	https://www.youtube.com/watch?v=gjzuNXN0R78
Kathmandu	<ul style="list-style-type: none"> • Overview of the Gorkha earthquake in 2015 • Summary of major impacts and short-term responses in Kathmandu 	—	<ul style="list-style-type: none"> • United Nations World Food Programme distributed food to over 300,000 people, particularly those in remote areas 	NA



6. Source reflections		7. Major event typical frequency reflection	8. Any other reflection on a single hazard	9. Impact	
6.1. Any other comments on the source	6.2 How much is the hazard evidenced by different types of sources (e.g., Earthquakes impacting Kathmandu primarily mentioned in peer-review literature)	6.3 Difficulty in finding sources 1 = Frequent Kathmandu specific sources across multiple types of evidence 2 = Frequent Kathmandu specific sources, limited to a few main types of evidence 3 = Kathmandu specific sources are scarce 4 = Sources are scarce, focused on regional scale hazards 5 = Sources are very scarce, focused on national scale or very rare hazards	7.1. Reflection on how frequently a hazard of a given size occurs (e.g. earthquakes of a magnitude X or larger occur about every Y years) (Text in blue letters is input from the __)	8.1. Additional reflection by local stakeholders (Text in blue letters is input from the __)	9.1 Impact on the documented area
Search term: 'Kathmandu earthquake' in Google Scholar (GS)	Frequently mentioned in the academic literature, media and databases - predominantly Gorkha 2015 earthquake.	1	<ul style="list-style-type: none"> Medieval earthquake magnitudes are unknown, Mw ~7.8 in 1833, Mw 8.2 in 1934 and Mw 7.8 in 2015 Earthquake clusters from 12-14th centuries and 19th century onwards 1833 and 1934 earthquakes caused liquefaction 'on a large scale', 2015 earthquake caused moderate liquefaction in the Kathmandu Valley versus minimal liquefaction in the distal Bihar Plains (Rajendran, 2021) 	<ul style="list-style-type: none"> 8000 fatalities, majority of which were in Kathmandu More than 8000 fatalities, 17,000 people injured 75% of buildings in Kathmandu destroyed Tens of thousands of people made homeless - housed in temporary shelters 2 million children and their families needed immediate help - many children separated from their families 	
Search term: 'Gorkha earthquake' in YouTube					

6. Source reflections	7. Hazard frequency-magnitude reflection	8. Any other reflection on a single hazard	9. Impact
6.3 Difficulty in finding sources 1 = Frequent Kathmandu specific sources across multiple types of evidence 2 = Frequent Kathmandu specific sources, limited to a few main types of evidence 3 = Kathmandu specific sources are scarce 4 = Sources are scarce, focused on regional scale hazards 5 = Sources are very scarce, focused on national scale or very rare hazards	7.1. Reflection on how frequent a hazard of a given size occurs (e.g. earthquakes of a magnitude X or larger occur about every Y years) (Text in blue letters is input from the __)	8.1. Additional reflection by local stakeholders (Text in blue letters is input from the __)	
1	<ul style="list-style-type: none"> Medieval earthquake magnitudes are unknown, Mw ~7.8 in 1833, Mw 8.2 in 1934 and Mw 7.8 in 2015 Earthquake clusters from 12-14th centuries and 19th century onwards 1833 and 1934 earthquakes caused liquefaction 'on a large scale', 2015 earthquake caused moderate liquefaction in the Kathmandu Valley versus minimal liquefaction in the distal Bihar Plains (Rajendran, 2021) 		<ul style="list-style-type: none"> 8000 fatalities, majority of which were in Kathmandu More than 8000 fatalities, 17,000 people injured 75% of buildings in Kathmandu destroyed Tens of thousands of people made homeless - housed in temporary shelters 2 million children and their families needed immediate help - many children separated from their families
6.3 Difficulty in finding sources	7.1 Reflection on how frequent a hazard of a given size occurs	8.1 Additional reflection by local stakeholders	9. Impact

330

Figure 2: Extract of the Kathmandu Valley single hazard types evidence Excel spreadsheet from (Sheet "A. Single Hazards Evidence" in the Kathmandu Valley Single Hazards and Multi-Hazard Interrelationships Database (Thompson et al., 2024) Supplementary Material A, Tab 1) for a section of the geophysical hazard group. This, including information on (1.1) hazard group, (1.2) hazard type, (1.3) shorthand code of the hazard, (1.4) component hazards, (2.1) case study/review, (2.2) type of evidence, (2.3) source, (2.4) link to the source, (3.1) if case study, the case study area was influenced, (3.2) description of the themes covered in the source, (4.1) interrelationships with other hazards mentioned in the source, (4.2) anthropogenic processes, (5.1) YouTube evidence, (6.1) additional comments on the source, (6.2) how much is the hazard evidenced by different types of sources eases evidence the hazard, (6.3) difficulty in finding sources, (7.1) major event typical frequency hazard frequency-magnitude reflection, (8.1) additional reflection by local practitioner stakeholders any other reflection on a single hazard, and (9.1) impact on the documented area impact.

335

340

2.3 Multi-hazard interrelationships

Applying a similar systematic search to that described in Section 2.2-Single hazard types -above, we collated exemplars of multi-hazard interrelationships that have either influenced or could potentially influence Kathmandu Valley. Following the visualisation matrix developed by Gill and Malamud (2014), the 23 single hazards-hazard types included in the methodology could interact to produce a maximum number of $23 \times 23 = 529$ theoretically possible interactions-interrelationships. Some of the single hazards-hazard types or their interactions-interrelationships do not apply to Kathmandu Valley (e.g., tsunami and snow avalanche) or have a low probability of occurrence (e.g., impact event triggering earthquake; volcanic eruption triggering or increasing the probability-likelihood of earthquake). We documented which low-probability events have a

345

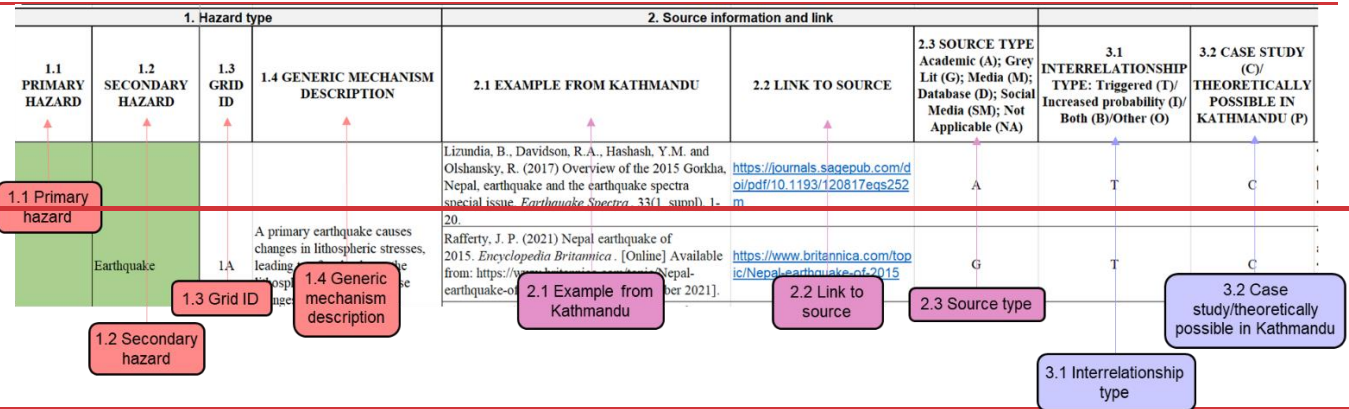
theoretical chance of occurring in, or could influence Kathmandu Valley. These interrelationships may be omitted from
350 government or community preparedness plans yet pose significant impacts if they occur, especially if strategies are not in
place to mitigate the effects.

Cognisant of these single hazard types, we searched the literature to determine how many theoretically possible multi-hazard
interactions-interrelationships have evidence of influence-occurrence in Kathmandu Valley. We focused on two types of
multi-hazard interrelationships (Gill and Malamud, 2017, p. 261):

- 355
- *Triggering relationship*: “One primary natural hazard triggers a secondary natural hazard.”
 - *Increased probability relationship*: “One primary natural hazard increases the likelihood of a secondary natural
hazard.”

We chose to search for triggering and increased probability multi-hazard interrelationships (consecutive hazards) to build on
the same methodology used by Gill et al. (2020) and to increase the number of returned search results compared to less well-
360 documented hazard-interrelationship multi-hazard interrelationship types, such as compound or coincident hazards (~~Gill et
al., 2020~~). We collated the multi-hazard interrelationship results (*Sheet “B. Hazard Interrelationships Evidence”*) ~~into the an
Excel~~ Kathmandu Valley Single Hazards and Multi-Hazard Interrelationships Database (Thompson et al., 2024)
~~spreadsheet database Supplementary Material B. Kathmandu Valley Multi Hazard Interrelationship Database,~~ with primary
and secondary hazard rows ~~with~~ an extract ~~sample~~ of the database is given in **Fig. 3**. This database includes detailed source
365 information to gauge the reliability of the sources used to populate the database. Columns in the database are listed in the
figure caption.

1. Hazard type				2. Source information and link		
1.1 Primary hazard	1.2 Secondary hazard	1.3 Grid ID	1.4 Generic mechanism description	2.1 Example from Kathmandu Valley	2.2 Link to source	2.3 Source type Academic (A); Grey Lit (G); Media (M); Database (D); Social Media (SM); Not Applicable (NA)
Earthquake	Earthquake	1A	A primary earthquake causes changes in lithospheric stresses, leading to aftershocks as the lithosphere responds to these changes.	Lizundia, B., Davidson, R.A., Hashash, Y.M. and Olshansky, R. (2017) Overview of the 2015 Gorkha, Nepal, earthquake and the earthquake spectra special issue. <i>Earthquake Spectra</i> , 33(1_suppl), 1-20.	https://journals.sagepub.com/doi/pdf/10.1193/120817eqs252m	A
				Rafferty, J. P. (2021) Nepal earthquake of 2015. <i>Encyclopedia Britannica</i> . [Online] Available from: https://www.britannica.com/topic/Nepal-earthquake-of-2015 [Accessed 1 September 2021].	https://www.britannica.com/topic/Nepal-earthquake-of-2015	G



3. Source content		4. Hazard sequence		5. Source reflections	
3.3 DESCRIPTION	3.4 ANY ADDITIONAL COMMENTS (e.g. more than one hazard, future developments and planning)	4.1 HAZARD SEQUENCE	5.1 SEARCH CRITERIA	5.2 HOW MUCH IS THE INTERRELATIONSHIP EVIDENCED BY DIFFERENT TYPES OF SOURCES? (e.g., Earthquakes triggering landslides primarily mentioned in peer-review literature).	
<ul style="list-style-type: none"> Mw 7.8 earthquake with epicentre near Gordha, with 4 aftershocks >Mw 6.0 occurring by March 2016. Largest magnitude aftershock was Mw 7.3 on 12 May 2015 recorded 140 km southeast of the main earthquake. Details the Gorkha earthquake and aftershocks in 2015. Within one day of the main earthquake, two aftershocks of magnitudes 6.6 and 6.7 occurred, followed by "dozens" of smaller magnitude aftershocks over the following days. 	<ul style="list-style-type: none"> Earthquake triggered aftershocks AND liquefaction AND landslides/ground failure. The initial earthquake triggered landslides that devastated "some of the most densely populated parts of Kathmandu." 	<ul style="list-style-type: none"> earthquake -> landslides earthquake -> aftershocks -> landslides earthquake -> liquefaction earthquake -> earthquake earthquake -> landslide 	Kathmandu AND earthquake* AND aftershock* AND impact* (Web of Science) Kathmandu AND earthquake* AND earthquake* (Ecosia)	<ul style="list-style-type: none"> Earthquakes triggering earthquakes are found across evidence types, although there is a strong focus on the 2015 Gorkha earthquake, secondary hazards and impacts. 	
3.3 Description	3.4 Any additional comments	4.1 Hazard sequence	5.1 Search criteria	5.2 How much is the interrelationship evidenced by different types of sources?	

3. Source content		4. Hazard sequence		5. Source reflections			
3.1 Interrelationship type: Triggered (T)/ increased probability (I) Both (B)/Other (O)	3.2 Case study (C)/ Theoretically possible in Kathmandu Valley (P)	3.3 Description	3.4 Any additional comments (e.g. more than one hazard, future developments and planning)	4.1 Hazard sequence	5.1 Search criteria	5.2 How much is the interrelationship evidenced by different types of sources? (e.g., earthquakes triggering landslides primarily mentioned in peer-review literature)	5.3 Difficulty in finding sources across multiple types of evidence 1 = Frequent Kathmandu specific sources across multiple types of evidence 2 = Frequent Kathmandu specific sources, limited to a few main types of evidence 3 = Kathmandu specific sources are uncommon 4 = Sources are scarce, focused on regional scale hazards 5 = Sources are very scarce, focused on national scale or very rare hazards
T	C	<ul style="list-style-type: none"> Mw 7.8 earthquake with epicentre near Gordha, with 4 aftershocks >Mw 6.0 occurring by March 2016. Largest magnitude aftershock was Mw 7.3 on 12 May 2015 recorded 140 km southeast of the main earthquake. Damage occurred in Kathmandu. 	<ul style="list-style-type: none"> Earthquake triggered aftershocks AND liquefaction AND landslides/ground failure. 	<ul style="list-style-type: none"> earthquake -> landslides earthquake -> aftershocks -> landslides earthquake -> liquefaction 	Kathmandu AND earthquake* AND aftershock* AND impact* (Web of Science)	<ul style="list-style-type: none"> Earthquakes triggering earthquakes are found across evidence types, although there is a strong focus on the 2015 Gorkha earthquake, secondary hazards and impacts. 	1
T	C	<ul style="list-style-type: none"> Details the Gorkha earthquake and aftershocks in 2015, and their impacts in Kathmandu. Within one day of the main earthquake, two aftershocks of magnitudes 6.6 and 6.7 occurred, followed by "dozens" of smaller magnitude aftershocks over the following days. 	<ul style="list-style-type: none"> The initial earthquake triggered landslides that devastated "some of the most densely populated parts of Kathmandu." 	<ul style="list-style-type: none"> earthquake -> earthquake earthquake -> landslide 	Kathmandu AND earthquake* AND earthquake* (Ecosia)	<ul style="list-style-type: none"> Earthquakes triggering earthquakes are found across evidence types, although there is a strong focus on the 2015 Gorkha earthquake, secondary hazards and impacts. 	1

5. Source reflections	6. Impact	7. Input from stakeholders	8.1 INPUT FROM STAKEHOLDERS - PRIORITISATION
5.3 DIFFICULTY IN FINDING SOURCES 1 = Frequent Kathmandu specific sources across multiple types of evidence 2 = Frequent Kathmandu specific sources, limited to a few main types of evidence 3 = Kathmandu specific sources are uncommon 4 = Sources are scarce, focused on regional scale hazards 5 = Sources are very scarce, focused on national scale or very rare hazards	6.1 IMPACT <ul style="list-style-type: none"> Over 8,790 fatalities and 22,300 injuries. Half a million homes destroyed. Hundreds of historical and cultural sites destroyed/severely damaged. Infrastructure damaged, such as roads and hospitals. Approximately 9000 fatalities, 16,800 injuries and 2.8 million people displaced. The UN reported that over 8 million people (or 1/4 of Nepal's population) were "affected by the event and its aftermath". Initial damage estimates were \$5 billion to \$10 billion. 	7.1 INPUT FROM STAKEHOLDERS 1. Is the identified interrelationship relevant for/applicable to Kathmandu? Kathmandu? 2. Would you classify the identified interrelationship as important for today's Kathmandu? 3. Is this interrelationships relevant for future Kathmandu (e.g., will become of increasing importance) and should be taken into account in urban planning?	8.1 INPUT FROM STAKEHOLDERS - PRIORITISATION Based on your inputs in Column Q, can you please: 1) INDICATE THE MOST IMPORTANT HAZARD INTERRELATIONSHIPS IN TODAY'S KATHMANDU: - - - 2) LIST HAZARD INTERRELATIONSHIPS WHICH YOU FEEL WILL BE RELEVANT FOR TOMORROW'S KATHMANDU (including the interrelationships which are already relevant today)? - - -
5.3 Difficulty in finding sources	6.1 Impact	7.1 Input from stakeholders	8.1 Input from stakeholders – prioritisation

6. Impact	7. Input from practitioner stakeholders	8.1 Input from practitioner stakeholders - prioritisation
6.1 Impact <ul style="list-style-type: none"> Over 8,790 fatalities and 22,300 injuries. Half a million homes destroyed. Hundreds of historical and cultural sites destroyed/severely damaged. Infrastructure damaged, such as roads and hospitals. Approximately 9000 fatalities, 16,800 injuries and 2.8 million people displaced. The UN reported that over 8 million people (or 1/4 of Nepal's population) were "affected by the event and its aftermath". Initial damage estimates were \$5 billion to \$10 billion. 	7.1 Input from practitioner stakeholders 1. Is the identified interrelationship relevant for/applicable to Kathmandu Valley? 2. Would you classify the identified interrelationship as important for today's Kathmandu Valley? 3. Is this interrelationships relevant for future Kathmandu Valley (e.g., will become of increasing importance) and should be taken into account in urban planning?	8.1 Input from practitioner stakeholders - prioritisation Based on your inputs in Column Q, can you please: 1) Indicate the most important hazard interrelationships in today's Kathmandu Valley: - - - 2) List hazard interrelationships which you feel will be relevant for tomorrow's Kathmandu Valley (including the interrelationships which are already relevant today): - - -

375 **Figure 3: Extract of the Kathmandu Valley ~~_hazard_interrelationships~~multi-hazard interrelationships evidence from Sheet “B.**
Hazard Interrelationships Evidence” Excel spreadsheet in the Kathmandu Valley Single Hazards and Multi-Hazard Interrelationships
Database (Thompson et al., 2024) (Supplementary Material B, Tab 3) for the earthquake (primary hazard) triggering earthquake
380 (secondary hazard) section. This ~~extract~~ includes information on (1.1) primary hazard, (1.2) secondary hazard, (1.3) grid ID, (1.4)
generic mechanism description, (2.1) example from Kathmandu Valley, (2.2) link to source, (2.3) source type, (3.1)
interrelationship type, ~~and~~ (3.2) case study/theoretically possible in Kathmandu Valley, (3.3) description, (3.4) any additional
comments, (4.1) hazard sequence, (5.1) search criteria, ~~and~~ (5.2) how much ~~different source types~~the evidence the multi-hazard
interrelationship is evidenced by different source types, (5.3) difficulty in finding sources, (6.1) impact, (7.1) input from
practitioner stakeholders, and (8.1) input from practitioner stakeholders – prioritisation.

385 2.4. Workshop on multi-hazard interrelationships and impacts

We facilitated a workshop to supplement the single ~~hazards-hazard types~~ and multi-hazard interrelationships collated using the blended source types and examine their impacts. This 2-hour workshop, “Multi-hazard Interrelationships and Impacts in Kathmandu Valley”, took place on 12 April 2023 with seven participants engaged in DRR in Kathmandu Valley ([King’s College London Research Ethics Registration Number: MRSP-21/22-26736](#)). The workshop was organised [as follows](#):

390 • ~~into a~~ presentation on single ~~hazards-hazard types~~ and multi-hazard interrelationships in the context of Kathmandu Valley (30 ~~minutes~~min.)

• ~~followed by a~~Activities ~~40 minute activity~~ to gather participant perspectives on the Kathmandu Valley hazardscape (40 min.)~~. The activity was subdivided into components as follows:~~

• ~~o~~ Multi-Hazard Scenario ~~Activities~~:

395 ◻ A. Group discussion: ~~multi-hazard scenario generation~~ (10 ~~min.~~);

◻ B. Individual input in Padlet (10 ~~min.~~); ~~and~~

◻ C. Group discussion: ~~broad themes and synthesis of multi-hazard scenarios~~ (10 ~~min.~~);

• ~~o~~ Multi-hazard Impacts ~~Activities~~:

▪ ~~—~~D. Individual input in Padlet (10 ~~min.~~);

400

~~After the activity there was a 10 minute dDiscussion on the case study and theoretical multi-hazard scenarios that participants shared in the Padlet (10 min.)~~

~~In the discussions,~~ Participants were encouraged to elaborate on details of the examples they shared, such as ~~the~~ magnitude and duration of the events, and to consider the nature of the interrelationships (i.e., triggering, increased probability, and compound hazards). ~~The motivation of this discussion wase~~ ~~discussions also aimed~~ to examine the multi-hazard interrelationships and impacts that participants considered ~~to be~~ significant in the Kathmandu Valley context; and to relate these to the broader hazardscape.

405

The ~~virtual Teams~~ workshop aimed to co-produce multi-hazard interrelationship scenarios and their impacts through two workshop activities. ~~We conducted the workshop on Teams as the participants attended virtually from the UK and Nepal.~~ To minimise ~~theone~~ potential effect of power asymmetries (Secor, 2010; Wolf, 2018), we ~~aimed to~~ ~~balanced~~ the number of Nepali or Nepal-based (four) and British or UK-based (three) participants, and female (two) and male (five) participants to support participants in feeling comfortable to share their knowledge and perspectives. These participants were selected based on their in-depth knowledge of ~~single hazards and multi-hazard interrelationships in the Kathmandu Valley context, the Kathmandu Valley context and as well as~~ existing connections built on pre-established working relationships (Wilmsen, 415 2008). ~~Participants worked for organisations spanning~~ ~~were drawn from the following sectors:~~ ~~the non-governmental organisation (NGO) or international non-governmental organisation (INGO), (1 participant) national society (1 participant).~~

~~research institute (2 participants), and
academic sectors (three participants)~~

420 ~~sectors, with one, one, two and three from each sector respectively. The research backgrounds of participants were social
scientists (not listed due to consent form responses), physical scientists (e.g., Geography), and interdisciplinary scientists
(e.g., Thematic Lead: Climate and Resilience) and and physical scientists (not listed due to consent form responses),
ranging from early career (e.g., Research Associate) to senior career (e.g., Professor of Physical Geography).~~

We utilised the snowball sampling technique (Secor, 2010) to encourage participants to suggest any further colleagues who
425 they thought might be interested in participating in the same workshop for us to contact. All participants gave informed
consent for ~~their~~ participation, indicating their requested level of anonymity (i.e., any combination or none of the following:
full name, position, institution). ~~We facilitated the workshop under the King's College London Research Ethics Registration
Number: MRSP 21/22 26736 as a Minimal Risk study.~~

430 During the workshop, we prompted discussion and knowledge sharing on multi-hazard interrelationships and multi-hazard
impacts that could ~~influence~~ affect Kathmandu Valley in the future. We investigated these themes through group discussion
in the main Teams meeting room, supported by the chat function, and individual input into Padlet (**Fig. 4**). The virtual
pinboard within Padlet (**Fig. 4**) is an online resource that supports sharing ideas by posting content on a shared webpage. In
the Padlet, we prompted participants to share their perspectives on the following themes:

1. *Multi-hazard Interrelationship Scenarios*

- 435
- Examples of case studies and theoretical multi-hazard scenarios (triggering, increased probability, and compound hazards) in Kathmandu Valley.
 - Additional information about multi-hazard scenarios (e.g., magnitude, duration).

2. *Multi-hazard Impacts*

- 440
- Examples of multi-hazard impacts in Kathmandu Valley and their significance.
 - Which social groups are most vulnerable to these impacts?

:Padlet


Thompson, Harriet + 7 • 2mo

Activity - Multi-hazard interrelationship scenarios (Part B) Please complete individually.

Use the plus sign below your name to add your input. You can add comments to each other's multi-hazard scenarios. Once we have finished today, we will remove people's names who have not consented to their name being used. [This activity is located at <https://tinyurl.com/scenarios-activity>]


Useful information

Multi-hazard interrelationships matrix for Kathmandu Valley



Refer to this matrix as you brainstorm multi-hazard interrelationship scenarios in Kathmandu Valley. Click on image above to enlarge.

Teams meeting link



Part B - Multi-hazard interrelationship scenarios

Part B - Multi-hazard interrelationship scenarios (10')

Please write down your examples of case studies and theoretical multi-hazard scenarios in Kathmandu Valley. Add any details (e.g., magnitude, duration) you are aware of for each scenario. Consider triggering, increased probability and compound hazards.

EXAMPLE
Harriet Thompson

Scenario: Storm → (increases probability) → Landslide → (triggers) → Flood.

Details: ...

Scenario:

Person A

Impacts on highways

Earthquake - direct damage to bridges but also land sliding blocking highway access to/from KTM Valley - difficulty in getting supplies in and out of the valley

Wildfire

Don't know of a specific case study but extensive development is now extending into the hills around the valley which means drought - wildfire is becoming more likely - not sure what infrastructure exists to fight these

Anonymous 5mo

I recall a discussion of fire and EQs in KTM...where a big risk was associated with the roller shutter doors on every fire station, where the risk was that all of the doors would likely jam in an EQ...

Person B

Two days of heavy rainfall of 2022 monsoon caused the Hanumante river to burst its banks flooding various parts of Bhaktapur area of Kathmandu valley. The flood waters from the river have affected hundreds of people in the area including several school buildings, hospitals and temples.

Melamchi Flood of 2021 indirectly affect the Melamchi drinking water project infrastructure which has been a priority project of Nepal since last 20 years. Heavy pre-monsoon rain and thereby start of monsoon rain trigger landslides which blocked

Person D

Anthropogenic influences on the hazard portfolio: from creation of new hazard risks to influencing cascading hazards as well as influencing cumulative hazard portfolio. New physical infrastructure projects such as roads. Thinking about changes in land use.

Thinking about decreasing space for agriculture, increasing population density

Figure 4: Image of a portion of the populated virtual pinboard wall (Padlet) page used in the “Multi-hazard Interrelationship Scenarios” section of the 1212th of April 2023 workshop. The top of the image shows the title and brief description of the activity, with the participants’ comments displayed below. We have replaced actual participant names with Person A, B, C, ..., and and GD (7 participants).

445

Verbal group discussions were ~~in a semi-structured format~~ semi-structured to support participants in sharing their perspectives on the themes with prompts to guide the conversation where needed. As facilitators, we aimed to balance the contribution of each participant to minimise domination of the discussions by one or more participants and to ensure that all participants felt comfortable sharing their thoughts. Many researchers have emphasised that when we work with individuals and communities, we must be aware of the contradictions of conducting fieldwork that centres equity and social justice in contexts where structural power imbalances exist between the researcher and those individuals and communities on whom the research is focused ~~being researched~~ (Subedi, 2006; Ozkazanc-Pan, 2012; Manning, 2018; Wolf, 2018). Throughout this study, we were reflexive about our positionalities, how our “Otherness” contributes towards power relations (Subedi, 2006; Mishra, 2018), and how we could minimise these effects in our research. Further discussion of positionality is presented in **Sect. 4.4.24** and explores the impact ~~of on the workshop results of who was present or not present~~ on the workshop results of who was present or not in the room.

3 Results

Here, we give the results of single hazard (**Sect. 3.1**) and multi-hazard interrelationship exemplars (**Sect. 3.2**) that have or could influence Kathmandu Valley as documented in blended source types. This is followed by insights from workshop participants (**Sect. 3.3**), including multi-hazard scenarios and their impacts.

3.1 Single hazard types influencing Kathmandu Valley

Using the methodology described in **Sects. 2.1** and **Sect. 2.2**, we compiled 58 sources of evidence for single hazard types (*Sheet “A. Single Hazards Evidence”*) in the *Kathmandu Valley Single Hazards and Multi-Hazard Interrelationships Database* (Thompson et al., 2024) ~~Supplementary Material A. Kathmandu Valley Single Hazard Database~~ that have or might influence Kathmandu Valley. These sources evidenced ~~21+9~~ of the ~~23+~~ single hazard types given in **Table 2**, not including the following:

- *Tsunamis*: There are no large lakes or bodies of water near enough or in Kathmandu Valley for tsunami occurrence.
- *Snow avalanches*: The incidence of heavy snow is very infrequent in Kathmandu Valley. In the ~~Government of Nepal DRR Portal~~ aster Risk Reduction Portal (Nepal DRR Portal, 2024), there are no recorded snow avalanche events in Bhaktapur, Kathmandu and Lalitpur (the three districts comprising Kathmandu Valley) from ~~either the DesInventar Sendai (DesInventar Sendai, 2024) or Ministry of Home Affairs (Nepal DRR Portal, 2024)~~ sources.

For the ~~other 21+9~~ single hazard types evidenced that might influence Kathmandu Valley, academic literature comprised the largest proportion of source types across the single hazards. All the sources were published from 2010 to 2021; the only exception was an example of soil subsidence published in 2002, as evidence of this hazard was challenging to find. Additionally, there have been no recorded tornadoes in Kathmandu Valley to date. However, we included the hazard type in the database due to the occurrence of Windstorm Parvana in southeast Nepal in March 2019. ~~A team of~~

~~researchers~~ Researchers from The Small Earth Nepal and the country's Department of Hydrology and Meteorology reported the windstorm as Nepal's first recorded tornado (Mallapaty, 2019; Gautam et al., 2020).

480 ~~Across the single hazard types, those that occur most frequently (e.g., flood, urban fire) or recently occurred with higher magnitudes (e.g., earthquake), such as earthquake, flood, and urban fire, were the most common hazard type most common across source types reported by different sources, and the impacts of the hazard were often described in more detail. Conversely, it was more challenging to find evidence for hazard types where (a) major events which occur less frequently (or have no direct evidence of occurrence, i.e., may only be theoretically possible in Kathmandu Valley), such as volcanic eruption or impact events or (b) where typical 'major' events have are localised small impacts and are considered an every-day occurrence by the local population have small magnitudes such as soil subsidence. These single hazards include volcanic eruption, soil subsidence, and impact events.~~ These limitations are explored further in **Sect. 4.4**.

485 ~~As illustrated by the results for single hazard types. Across the single hazard types, those which occur most regularly or with the most significant magnitudes, such as earthquake, flood, and urban fire, were most common across source types and often described impacts of the hazard in more detail. Conversely, it was more challenging to find evidence for hazards which occur less frequently (or have no direct evidence of occurrence, i.e., may only be theoretically possible in Kathmandu Valley) or have small magnitudes. These single hazards include volcanic eruption, soil subsidence and impact event. These limitations are explored further in Sect. 4.5.~~ Kathmandu Valley is exposed to a plethora of hazard types, notably earthquake, urban fire, flood and landslide (Gautam et al., 2021; Khatakho et al., 2021), owing to factors such as its tectonic location, high building density, position in the wider Bagmati River Basin, incidence of the annual monsoon, and steep topography; among other factors. In extracting major event typical frequency information from our analysis, shown in **Table 3**, we aim to give a preliminary indication of the prevalence and size of specific hazard types where this information is available, especially for hazard types that may be overlooked as a risk to Kathmandu Valley.

500 **Table 3. Summary of major event typical frequencies for four single hazard types occurring in Kathmandu Valley or Nepal.**

<u>Hazard</u>	<u>Major events, including date and magnitude</u>	<u>Typical frequency of major events</u>
<u>Earthquake</u>	<ul style="list-style-type: none"> 1255 (magnitude unknown), 1344 (magnitude unknown), 1833 (Mw ~7.7), 1934 (Mw 8.2) and April 2015 (Mw 7.8) (Rajendran, 2021). 	<ul style="list-style-type: none"> At least one major earthquake each century in Nepal (Tiwari and Paudyal, 2024). Magnitude Mw 5.0-6.5 earthquakes in Nepal have 5-10 years mean return period (Sharma and Biswas, 2024).
<u>Volcanic eruption</u>	<ul style="list-style-type: none"> Only 20 Volcanic Explosivity Index (VEI) 6-8 eruptions were have been dated between 1.2 Ma to 1991 AD in Southeast Asia (De Maisonneuve and Bergal-Kuvikas, 2020). 	<ul style="list-style-type: none"> Probabilities of VEI 6, 7 and 8 volcanic eruptions occurring somewhere in Southeast Asia in 10 years are ~0.15, ~0.012 and ~0.001 (Whelley <u>et al.</u> 2015).

Flood	<ul style="list-style-type: none"> • “Frequent” flooding during the annual monsoon season (magnitudes not mentioned) (e.g., Chaudhary et al., 2024; Danegulu et al., 2024). 	<ul style="list-style-type: none"> • Daily maximum floods for 5, 10 and 25-year return periods were estimated as 876, 1077, and 1331 m³ s⁻¹ under present climatic conditions (Mishra et al. 2024).
Tornado	<ul style="list-style-type: none"> • Windstorm Parvana was the first recorded tornado in Nepal (mean speed: 250 km h⁻¹; estimated size: 200 km²) (Chhetri et al., 2019). 	<ul style="list-style-type: none"> • Windstorm Parvana was the largest-scale storm in over seventy years (Gautam et al., 2020).

Taking the major event typical frequencies presented in **Table 3** as exemplars rather than an exhaustive compilation, these records suggest that specific hazards within the geophysical, hydrological, and atmospheric hazard groups have the most quantitative information on major event typical frequencies in the context of Kathmandu Valley. The remaining hazard groups – shallow Earth processes, biophysical and space/celestial – have some major event typical frequency information for some hazard types influencing Kathmandu Valley, but this is typically limited to qualitative descriptions.

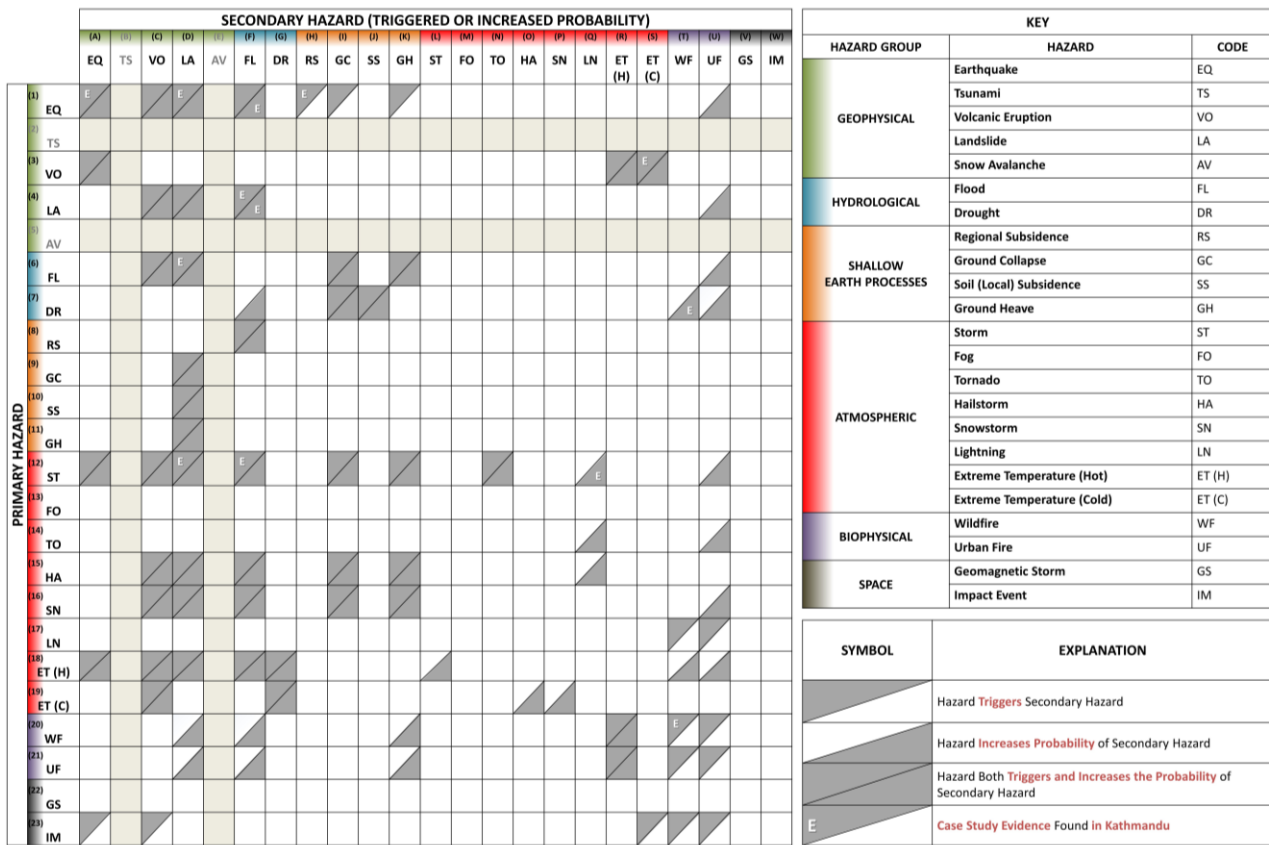
3.2 ~~3.2~~ Multi-hazard interrelationships influencing Kathmandu Valley

Searching for evidence of multi-hazard interrelationships ~~pairss~~ that might influence Kathmandu Valley focused on triggering and increased probability relationships ~~(Seet. 2.3)~~ for primary to secondary hazards, using the 21 single hazard types in **Sect. 3.1** as our primary and secondary hazards. Using the methodology given in **Sect. 2.3**, we found 83 multi-hazard interrelationships ~~(out of a possible 21 x 21 = 441)~~ ~~(out of a potential of 21 x 21 = 441)~~, of which 12 were directly evidenced using 21 blended sources (academic, grey literature, media, disaster databases; see *Sheet “B. Hazard Interrelationships Evidence”*) ~~Supplementary Material B~~ in the *Kathmandu Valley Single Hazards and Multi-Hazard Interrelationships Database* (Thompson et al., 2024).

We use a 23-cell x 23-cell ~~hazard interrelationship~~ ~~(for completeness, we include tsunami and snow avalanche, that do not influence the Valley)~~ multi-hazard interrelationship matrix (**Fig 5.**; ~~data in Supplementary Material B~~) to visualise observed and theoretically possible interrelationships of primary to secondary hazards influencing Kathmandu Valley:

- *Triggering only*: 14 (17%) of 83.
- *Increased probability only*: 23 (28%) of 83.
- *Triggering and increased probability*: 46 (55%) of 83.

This interrelationship matrix, definitions of hazards (Gill and Malamud, 2014), ~~hazard interrelationship~~ multi-hazard interrelationships (Gill and Malamud, 2014), and sources (Gill et al., 2020) are included in the *Kathmandu Valley Single Hazards and Multi-Hazard Interrelationships Database* (Thompson et al., 2024) ~~Supplementary Material B. Kathmandu Valley Multi-Hazard Interrelationship Database~~.



525

Figure 5: 23-cell x 23-cell matrix of hazard interrelationship multi-hazard interrelationships that are theoretically possible in Kathmandu Valley, Nepal, from the Kathmandu Valley Single Hazards and Multi-Hazard Interrelationships Database (Thompson et al., 2024). Primary hazards are on the y-axis, secondary hazards are on the x-axis, and the hazards are coded as detailed in the legend on the right. The hazards are categorised into geophysical (green), hydrological (blue), shallow earth processes (orange), atmospheric (red), biophysical (purple) and space (grey) hazard groups. The matrix shows where a primary hazard triggers a secondary hazard (upper left triangle shaded), a primary hazard increases the probability of a secondary hazard (lower right triangle shaded), a primary hazard both triggers and increases the probability-probability of a secondary hazard (both triangles shaded), and where evidence is found for the interrelationship influencing Kathmandu Valley (white letter E). This figure follows the visualisation and classification methodology developed by Gill and Malamud (2014) except that (i) tsunamis and snow avalanche hazards are not found in Kathmandu Valley and therefore not considered here for interrelationship multi-hazard interrelationships (Rows 2, 5 and Columns B, E, greyed out), and (ii) fog and urban fire hazards are added as they are relevant in Kathmandu Valley (Rows 13, 21 and Columns M, UN).

530

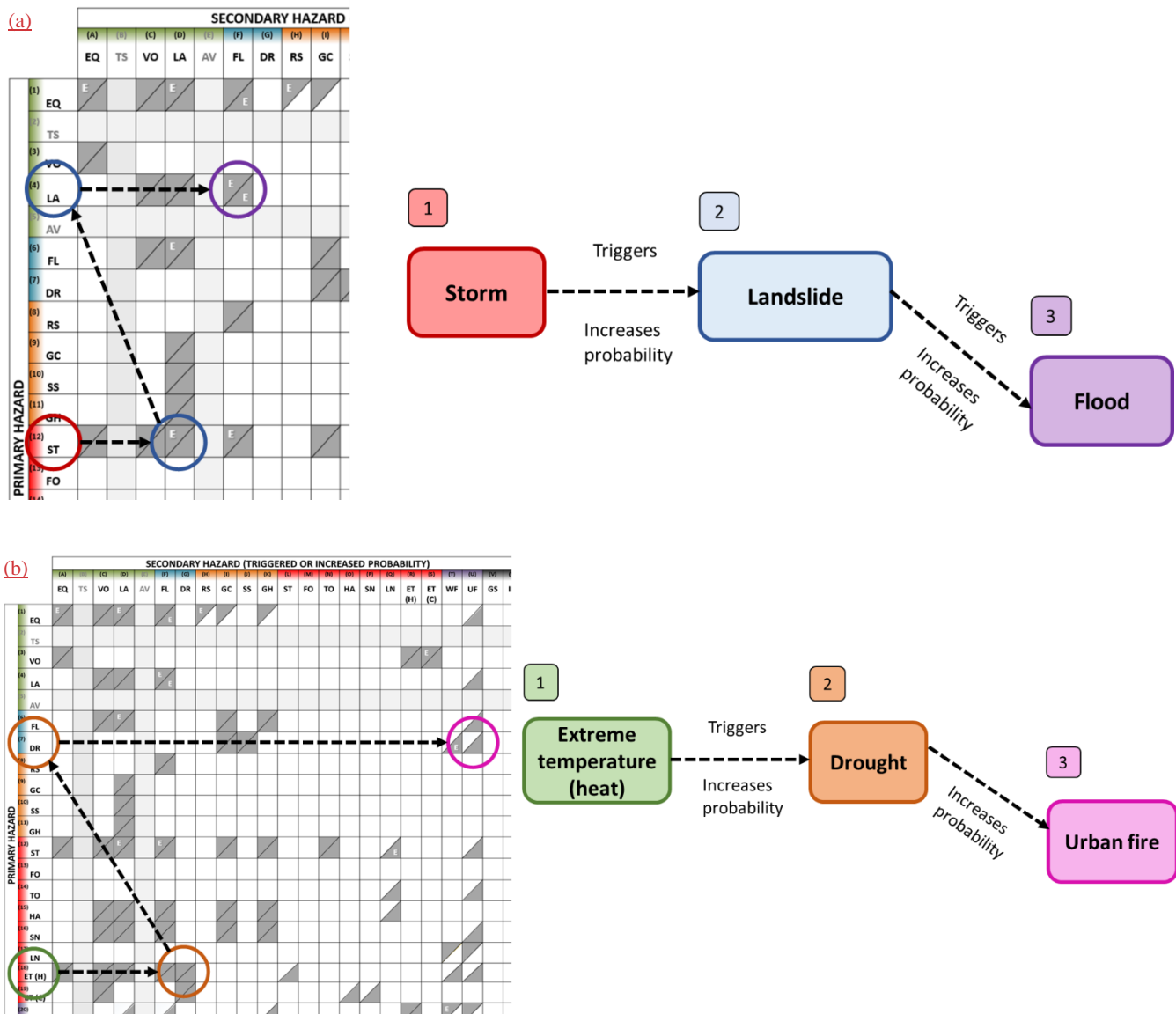
535

540

The multi-multi hazard interrelationship matrix in **Fig. 5** visualises which scenarios have influenced or could potentially influence Kathmandu Valley. We have justified interrelationships where a primary hazard increases the probability of urban fire (e.g., 1U: earthquake increases the probability-probability of urban fire) but not wildfire by considering anthropogenic processes as an intermediary step. For example, an earthquake could rupture gas mains or cause electricity pylons to fall, increasing the probability of an urban fire. The figure Fig. 5 provides an efficient tool for quickly assessing which multi-multi hazard interrelationship pairs or cascades of more than two hazards are relevant for-to the Kathmandu Valley context.

545 Within these interrelationship types, the reader can rapidly determine the proportion of triggering interrelationships,
increased probability interrelationships and both of these interrelationships; ~~in addition to and~~ where we found direct
evidence for a ~~multi-multi~~-hazard interrelationship influencing ~~the~~ Kathmandu Valley ~~context~~. ~~In Figure 6, we illustrate~~
~~scenarios for~~ two multi-hazard ~~scenarios cascades (more than two hazards)~~ that either have influenced or could potentially
influence Kathmandu Valley using the multi-hazard interrelationship matrix in **Fig. 5**.

550



555

560

565

Figure 6: Two examples of scenarios for multi-hazard scenarios-cascades that could influence Kathmandu Valley, Nepal: (a) storm to landslide to flood, and (b) extreme temperature (heat) to drought to urban fire. Both multi-hazard scenarios could involve triggering or increased probability interrelationships and are illustrated using the hazard-interrelationship multi-hazard interrelationship matrix (see Figure 5). Multi-hazard scenario (a), storm to landslide to flood, extreme temperature (heat), to drought to urban fire, has, has evidence of influence in Kathmandu Valley. Primary hazards are shown on the y-axis, secondary hazards are shown-displayed on the x-axis, and the hazards are coded as detailed in the legend in Figure 5. The matrix shows where a primary hazard triggers a secondary hazard (upper left triangle shaded), a primary hazard increases the probability of a secondary hazard (lower right triangle shaded), a primary hazard both triggers and increases the probability-probability of a secondary hazard (both triangles shaded), and where evidence is found for the interrelationship multi-hazard interrelationship influencing Kathmandu Valley (white letter E). The multi-hazard interrelationship matrix is from the Kathmandu Valley Single Hazards and Multi-Hazard Interrelationships Database (Thompson et al., 2024).

The two multi-hazard scenarios in **Fig. 6** clarify how to interpret which ~~interrelationship~~ multi-hazard interrelationships are relevant to the Kathmandu Valley context, as shown in ~~Figure~~ **5**. For instance, the two multi-hazard scenarios show the interrelationships between single hazard types and hazard groups, where scenario (a) describes the cascade from a primary atmospheric hazard to a secondary geophysical hazard to a tertiary hydrological hazard, and scenario (b) from a primary atmospheric hazard to a secondary hydrological hazard to a tertiary biophysical hazard. These two examples emphasise the interconnections between various Earth systems and the complex nature of ~~interaction~~ interrelationships between single hazards, ~~in turn~~ further supporting the need for holistic multi-hazard approaches to mitigating disaster risk. The dynamic multi-hazard scenarios (causal diagrams) given on the right-hand side of Fig. 6 are one of many scenarios that can be derived from the matrix. Two additional examples include:

- Storm triggers and increases the probability of flood.
- Extreme temperature (heat) increases the probability of urban fire.

~~Additionally, we shared Fig. 6 with workshop participants to illustrate the value of the multi-hazard interrelationship matrix in extracting relevant multi-hazard scenarios.~~

The accompanying Kathmandu Valley Single Hazards and Multi-Hazard Interrelationships Database (Thompson et al., 2024) database (Supplementary Material B) provides further information for each ~~multi-multi~~ multi-hazard interrelationship (Sheet “B. Hazard Interrelationships Evidence”) ~~included given~~ in **Fig. 5** and **Fig. 6**, including hazard type, source information, source content, hazard sequence, source reflections, impact, and input from practitioner stakeholder inputs. This additional information provides greater context to the figures and enables the methodology to be scalable to other geographical regions, as discussed in **Sect. 4.56**.

~~Searching for evidence of multi-hazard interrelationships was more challenging than single hazards/hazard types. The source types primarily discuss single hazards and their impact in some depth yet neglect to describe interrelationships between hazards and may only superficially state hazard impacts. We explore this challenge in greater depth in Sect. 4.2.~~

3.3 Insights from workshop participants

We planned and facilitated a 2-hour workshop with practitioner stakeholders engaged in DRR work in Kathmandu Valley following the methodology described in **Sect. 2.4**. To supplement the single hazard types and multi-hazard interrelationships blended evidence sources in the Kathmandu Valley Single Hazards and Multi-Hazard Interrelationships Database (Thompson et al., 2024), ~~Supplementary Material A and B~~, we designed the co-production of multi-hazard ~~interrelationship~~ scenarios to gather practitioner stakeholder perspectives on current applications of multi-hazard knowledge, opportunities for practitioner stakeholders to use multi-hazard scenarios, and implementation of these scenarios in DRR strategies in Kathmandu Valley. We shared Fig. 6 with workshop participants to illustrate the value of the multi-hazard interrelationship matrix in extracting relevant multi-hazard scenarios. Figure 6 was then made available virtually to participants during workshop discussions and acted as a visualisation tool and talking point to explore further multi-hazard

interrelationships that have influenced or could influence Kathmandu Valley beyond those archetypal examples that participants may associate with the region.

We present below ~~The~~ the main ~~outputs~~ results of the workshop, ~~(Sect. 3.3.1 and Sect. 3.3.2)~~ were the production of multi-hazard ~~interrelationship~~ scenarios (Sect. 3.3.1) and ~~multi-hazard~~ impacts (Sect. 3.3.2). Participants discussed these ~~contributions~~ multi-hazard scenarios and impacts as a group before independently noting their ~~own~~ examples on the Padlet pages. Through the workshop, we identified which ~~multi-~~ multi-hazard interrelationships and impacts are most common, which are practitioner stakeholder priorities, and which are overlooked but may have significant implications in the future ~~as discussed in Sect. 4.4.~~

3.3.1 Multi-hazard interrelationship scenarios

The practitioner stakeholder workshop had an activity of 40 minutes where participants individually designed multi-hazard interrelationship scenarios and discussed these scenarios as a group. Participants individually added these scenarios to a ~~Padlet page~~ (virtual pinboard (Padlet) page), also noting whether it was a case study that had previously influenced or a theoretical example that might influence Kathmandu Valley in the future. Participants were encouraged to add any additional contextual information, such as comments about vulnerability and exposure, where known. **Table 43** shows 11 multi-hazard interrelationship scenarios that the seven participants shared on the workshop Padlet page.

Table 43: List of 11 multi-hazard interrelationship scenarios that include two or more hazards shared by participants in a virtual pinboard wall (Padlet) page during a workshop. Each scenario is either a Case Study (CS) that has influenced Kathmandu Valley or a Theoretical Example (TE) that could influence Kathmandu Valley in the future. Any additional notes that provide context to the scenario are also given, including direct quotes by participants and summaries of information shared by participants.

Scenario Number	Multi-hazard Interrelationship Scenario	Case Study (CS) or Theoretical Example (TE)	Additional Notes Including Participant Quotes
1	Earthquake →→ Damage to infrastructure + Landslide →→ Blocked supply access to Kathmandu Valley	TE	
2	Drought →→ Wildfire	TE	Exacerbated by development extending into the hills surrounding the valley.
3	Earthquake →→ Urban Fire	TE	Shutter doors in fire stations could jam in an earthquake; restricted and restrict fire engine access due to road debris.
4	Storm →→ Flooding →→ Infrastructure damage + Restricting Transportation affected	CS	“Two days of heavy rainfall [during the] 2022 monsoon caused the Hanumante river to burst its banks flooding various parts of Bhaktapur area of Kathmandu Valley. The floodwaters from the river affected hundreds of people in the area including several school buildings, hospitals and temples.” – Kathmandu Workshop Participant B.
5	Storm →→ Landslide →→ Flood	CS	“Melamchi Flood of 2021 indirectly affect[ed] the Melamchi drinking water project infrastructure which has been a priority project of Nepal [for the] last 20 years. Heavy pre-monsoon rain and thereby start of monsoon rain trigger[ed] landslide which blocked Melamchi river for about 45 minutes, and when that burst, [the] flood [caused] by that had [a] significant impact on downstream communities.” – Kathmandu Workshop Participant B.
6	Earthquake →→ (increasing probability of) →→ Fire	TE	Consideration of the impact of seasonality on hazard cascades: here, an earthquake occurring, here, an earthquake occurs in the dry season.
7	Earthquake →→ (cascading) →→ Landslide →→ (cascading) →→ Sedimentation →→ Flood	TE	Consideration of the impact of seasonality on hazard cascades: here, an earthquake occurring, here, an earthquake occurs in the monsoon season.
8	Storm →→ Flood	CS	“Kalanki Settlement Area flooded in 2019. In 2019, 3-days heavy precipitation in Kathmandu resulted [in] flooding in [a] small stream near Kalanki city area. Water filled inside houses and roads [were] blocked. Many 2-wheeler vehicles swept away. Lots of [the] core city area in Kathmandu was flooded [at] that time.” – Kathmandu Workshop Participant F.
9	Wildfire →→ Air pollution	CS	“Air pollution due to Forest Fire. In 2021, Nepal battled its worst forest fires in years. As per the officials, the fire smoke waft[ed] across [the] mountains and sour[ed] the air as it settle[d] into the bowl that holds the capital city of Kathmandu. People were asked to stay in and Tribhuvan University class[es] were] also suspended for few days to avoid pollution.” – Kathmandu Workshop Participant F.
10	Haphazard development + Faulty electrics →→ Urban fire	TE	
11	Haphazard construction and development + Soil conditions →→ Ground displacement	TE	

Of the 11 multi-hazard interrelationship scenarios shared by participants (Table 43), the majority include hazards from the biophysical, geophysical, and hydrological hazard groups. Five scenarios include fire (biophysical), four include earthquake

(geophysical), three include landslide (geophysical), and three include heavy rainfall or precipitation (hydrological). Although most (7 of 11) of the proposed scenarios are simple primary to secondary ~~multi-hazard interaction~~interrelationships, there are some examples of more complex ~~interaction~~interrelationships. Scenarios 6 and 7 in **Table 43** illustrate how meteorological conditions can significantly influence the unfolding scenario and its impacts. If an earthquake occurs in the dry season, it is more likely to increase the probability of fire. Conversely, in the monsoon season, an earthquake could cascade into a landslide, increasing river sedimentation and the likelihood of flooding. These contrasts in environmental conditions illustrate how seasonality can significantly ~~influence~~impact ~~multi-hazard~~ cascades.

In the 20-minute group discussion, participants cited anthropogenic ~~processes~~factors as influencing hazards. For example, Scenario 2 in **Table 43** (drought $\rightarrow\rightarrow$ wildfire) states that development into the hills surrounding Kathmandu Valley exacerbates the ~~hazard~~ ~~interrelationship~~ ~~multi-hazard~~ ~~interrelationship~~ and the resulting impacts. This challenge was echoed in Scenario 10 (haphazard development + faulty electrics $\rightarrow\rightarrow$ urban fire) and Scenario 11 (haphazard construction and development + soil conditions $\rightarrow\rightarrow$ ground displacement), which detail how rapid, ~~and sometimes “unmanaged” and sometimes “unmanaged”~~ urbanisation increases the exposure of communities to multi-hazard events in Kathmandu Valley.

The multi-hazard scenarios proposed by participants support those in the multi-hazard matrix (developed before the workshop) in **Fig. 5**. Scenarios 4 (rainfall $\rightarrow\rightarrow$ flood) and [Scenario 5](#) (rainfall $\rightarrow\rightarrow$ landslide $\rightarrow\rightarrow$ flood) in **Table 43** are not included in the original matrix as rainfall is grouped under storm hazard. The same is true of Scenario 8 (rainfall $\rightarrow\rightarrow$ flood). The only three scenarios in **Table 43** that are not present in the original matrix in **Fig. 5** are those involving air pollution (Scenario 9: wildfire $\rightarrow\rightarrow$ air pollution) and processes of rapid urbanisation (Scenario 10: haphazard development + faulty electrics $\rightarrow\rightarrow$ urban fire, and Scenario 11: haphazard construction and development + soil conditions $\rightarrow\rightarrow$ ground displacement). Building upon Gill and ~~Malamud-Malamud's~~ (2014) ~~multi-hazard~~ ~~interaction~~interrelationship framework, we ~~focused on~~~~decided only to include~~ natural hazards in the multi-hazard interrelationship matrix – ~~the only exception being urban fire due to the high risk of occurrence in Kathmandu Valley~~. Including anthropogenic ~~hazards and related~~ processes could form the basis of future developments of this work.

3.3.2. ~~Multi-hazard~~ Multi-hazard impacts

In the final component of the 40-minute workshop activity, we asked participants to individually add two or three examples of impacts from multi-hazard interrelationship scenarios in Kathmandu Valley to a ~~Padlet page~~ (virtual pinboard ([Padlet page](#))). We used the UNDRR (2017a) definition of (disaster) impact as:

“The total effect, including negative effects (e.g., economic losses) and positive effects (e.g., economic gains), of a hazardous event or a disaster. The term includes economic, human and environmental impacts, and may include death, injuries, disease and other negative effects on human physical, mental and social well-being.”

We requested that participants ~~focused~~focus on impacts which they believed are most significant for people in Kathmandu Valley and, where possible, to list ~~who~~ ~~which types of people~~ (e.g., which social group) might be most affected by these impacts. **Table 54** shows 12 impact examples that the seven participants shared on the Padlet page.

655 Table 54: List of 12 impact examples shared by participants in a virtual [pinboardwall](#) (Padlet) [page](#) during a [practitioner stakeholder workshop](#). The table lists the number of ~~the~~ [impact exampleexamples](#), direct quotes shared by participants, and the hazard types causing the impacts.

Impact Example Number	Direct quote shared by participant	Hazard types causing impacts
1	“Communities along highways into valley - high exposure to EQ [earthquake] + landslide damage, but also dependent on traffic for livelihoods.” – Kathmandu Workshop Participant A .	Earthquake and landslide
2	“Indirect impacts: still only limited capacity to respond to disasters at municipality or provincial level, so direction + materials must still come from capital. So if KTM [Kathmandu] is responding to an event, other parts of the country will have to wait.” – Kathmandu Workshop Participant A .	All theoretically possible hazards
3	“Flood has a direct impact on urban poor mainly those living in a temporary shelter built in the bank of Bagmati river. Every year, flood[s] terrify those who are living in the informal settlements. These temporary households [are] also affected by windstorm. Assets damaged and or assets los[t] due to these hydro-climatic impacts have direct connection with livelihoods of the people.” – Kathmandu Workshop Participant B .	Flood and storm (windstorm)
4	“Multi-hazard scenarios increase 'uncertainty' which affect primarily migrants and marginalized dwellers.” – Kathmandu Workshop Participant C .	All theoretically possible hazards
5	“Multi-hazards effect on land uses increasing inundation and landslides which affect farmers, women and labour.” – Kathmandu Workshop Participant C .	All theoretically possible hazards
6	“Flooding of homes and businesses impacts society particularly those who are more vulnerable, [including] migrants.” – Kathmandu Workshop Participant D .	Flood
7	“Landslides impact physical infrastructure, livelihoods, landscapes and increases uncertainty in people.” – Kathmandu Workshop Participant D .	Landslide
8	“Migrants who cannot vote in KV's [Kathmandu Valley's] cities are particularly vulnerable to impacts.” – Kathmandu Workshop Participant D .	All theoretically possible hazards
9	“Impacts of EQ [earthquake] or large monsoon on hydropower function and electricity supply to KTM [Kathmandu], via direct damage to infrastructure (shaking/landslides) or protracted sedimentation →→ impact upon wider power grid →→ impacts all users of power via load shedding.” – Kathmandu Workshop Participant E .	Earthquake and storm (monsoon rain)
10	“Socio-economic impact, gender inequality, development challenge and challenge in meeting development goals. Increased vulnerability of ecosystem[s] and communities.” – Kathmandu Workshop Participant F .	All theoretically possible hazards
11	“Direct Impact: human death, building damage, physical infrastructures such as road, bridge etc.” – Kathmandu Workshop Participant G .	All theoretically possible hazards
12	“ If [But needs to think about] jobs and livelihood, social-cultural and organizational impacts (e.g. system, ethics, indigenous Indigenous , organizations, traditional festiv[iti]es), health infrastructure, education, and micro-infrastructures.” – Kathmandu Workshop Participant G .	All theoretically possible hazards

The 12 impact examples shared by workshop participants focus on hazard types that ~~have the most significant impacts~~ ~~on significantly impact~~ people in Kathmandu Valley, ~~namely earthquake, flood, landslide and storm (monsoon rain and windstorm; earthquakes, floods, landslides and storms (monsoon rain and windstorms))~~. Participants also described impacts that could more broadly apply to all hazard types ~~that are~~ ~~that are~~ theoretically possible in Kathmandu Valley. Although some impacts shared by participants were direct and tangible ~~in nature~~, many examples considered indirect and intangible impacts ~~with attention directed towards the complex interaction~~ ~~interrelationships between impacts,~~ ~~with attention directed~~ ~~towards the complex interrelationships between impacts~~ and socio-political and anthropogenic ~~processes~~ ~~factors~~. Indeed, the impact examples shared by workshop participants in **Table 54** can be divided into three main themes: cascading impacts, disaggregated impacts, and impacts on “marginalised” communities, which we discuss in **Sect. 4.23.2**. Within this discussion section (**Sect. 4.23.2**), we explore the positive feedback loop between multi-hazard events, increasing informality, and the interrelationships between “marginalisation” and vulnerability in the Kathmandu Valley context in greater detail.

670 **4 Discussion**

In this discussion, we highlight five major themes. First, we ~~discuss frequency magnitude relationships, giving some examples for single hazard events (Section 4.1)~~. Next, we consider the challenges in finding evidence of multi-hazard interrelationships in the blended source types (**Sect.ion 4.12**), detailing specific multi-hazard interrelationships and reasons for fewer multi-hazard interrelationship exemplars. Following this, we discuss findings from the workshop with practitioner stakeholders engaged in DRR strategies in Kathmandu Valley (**Sect.ion 4.23**) and the single hazard and multi-hazard interrelationship impacts described in the blended evidence types (**Sect.ion 4.34**). We then consider the limitations within the methodology (**Sect.ion 4.45**). Finally, we outline the scalability of our methodology to other data-scarce urban settings (**Sect.ion 4.56**) and suggest future research directions (**Sect.ion 4.67**).

4.1 Frequency magnitude information

680 ~~The availability of frequency magnitude information varied significantly by single hazard type. Here we present some examples for the following single hazards:~~

685 ~~*Earthquake:* For example, geological records show that significant earthquakes have influenced Kathmandu Valley several times in the last 800 years (Rajendran, 2021), namely in 1255, 1344, 1833 (Mw 7.7), 1934 (Mw 8.2) and April 2015 (Mw 7.8). The pulse of earthquakes in the 12th and 14th centuries (that may have liquefied the valley region), succeeded by a period of inactivity until the 17th century, has led to a proposed cyclicity of seismicity in the Himalaya region (Rajendran, 2021).~~

690 ~~*Volcanic eruption:* Another geophysical hazard that has well-documented frequency magnitude relationships is volcanic eruption. A study by Liang et al. (2019) found that since 1650, large volcanic eruptions in tropical regions most probably caused severe pre-monsoon droughts in the central Himalayas. Tree ring records show that of eight large volcanic eruptions in Southeast Asia since 1650, six were associated with droughts in Langtang, Manaslu and Sagarmatha valleys in central Nepal (Liang et al., 2019).~~

~~*Flooding:* Considering hydrological hazards, a modelling study by Pradhan-Salike and Pokharel (2017) showed that urbanisation and future climate change will increase pluvial flooding in Kathmandu Valley. For a 25-year return period, they forecasted a 40% increase in flooding (Salike and Pokharel, 2017).~~

695 ~~*Tornado:* Within the atmospheric hazards group, storm occurrence in Nepal is not frequent; Windstorm Parvana was the largest-scale storm in over seventy years (Gautam et al., 2020). Parvana was described as the first recorded tornado in Nepal, with a mean speed of 250 km per hour and an estimated size of 200 km by 200 km (Chhetri et al., 2019).~~

700 ~~Taking these exemplars of hazard events, rather than an exhaustive compilation, it is apparent that specific hazards within the geophysical, hydrological, and atmospheric hazard groups have the most quantitative frequency-magnitude information. The remaining hazard groups—shallow Earth processes, biophysical and space/celestial—have some frequency-magnitude information for some hazard types, but this is typically limited to qualitative descriptions.~~

705 **4.12 Challenges in finding case study evidence of multi-hazard interrelationships that have influenced Kathmandu Valley**

710 ~~We found 21 single hazard types and 83 potential multi-hazard interrelationships that have influenced or could potentially influence Kathmandu Valley, of which 15 (71%) of the single hazard types and 12 (14%) of the multi-hazard interrelationships were evidenced by case studies. For multi-hazard interrelationships, we found only 21 sources of evidence, compared to the 58 sources of evidence for single hazards. These results support the findings of Gill et al. (2020) and Šakić Trogrlić et al. (2024b), which emphasise [that there is a the](#) focus on detailed reporting and describing of single hazards [which is not found, both in at the cost of](#) research and understanding, [or for](#) multi-hazard interrelationships.~~

~~Based on the limited amount number (we found 21 sources) of multi-hazard interrelationship case studies that have previously influenced Kathmandu Valley, we identify the following challenges:~~

715 ~~● Globally, there is a focus on reporting and describing single hazards instead of detailed information on hazard interrelationships.~~

~~● Globally, research and understanding of single hazards are more established than for multi hazard interrelationships.~~

720 ~~For finding case studies of single and multi hazard interrelationships that have influenced Kathmandu Valley, we found 19 single hazard types and 83 potential multi hazard interrelationships that might influence Kathmandu Valley, of which 15 (79%) of the hazard types and 12 (14%) of the hazard interrelationships were evidenced by it much easier to find case studies, for single hazards (15 out of 19 single hazards) compared to multi hazard interrelationships (12 out of 83). This low proportion (14%) of direct evidence for multi-hazard interrelationships is likely not due to lack of occurrence of multi-hazard interrelationships, but rather~~ a lack of documented multi-hazard events in Kathmandu Valley and the fact that we only

725 searched for evidence in English language sources ~~rather than lack of occurrence~~. Within these exemplars of multi-hazard interrelationships, we identified ~~that there were~~ differences in the number of sources available for the interrelationships of each primary hazard. For example, case studies of earthquake triggering landslide, earthquake triggering earthquake, storm triggering landslide, and storm triggering flood were the most prevalent multi-hazard interrelationship ~~pairss~~ in the literature. Conversely, we found no case study evidence for earthquake triggering volcanic eruption or ground heave triggering

730 landslide. ~~Similar to Šakić Trogrlić et al.'s (2024b)'s study in Nairobi, Kenya, and Istanbul, Türkiye, we found that many sources predominantly described single hazard events, with brief mentions of additional hazard types rather than explicitly documenting multi-hazard interaction interrelationships (Šakić Trogrlić et al., 2024b).~~ These challenges contribute to ~~multi-hazard data scarcity in Kathmandu Valley, specifically regarding cascading events and their impacts.~~ ~~The evidence base of single hazard and multi-hazard interrelationship exemplars in the Kathmandu Valley Single Hazards and Multi-Hazard~~

735 ~~Interrelationships Database (Thompson et al., 2024), gathered using the methodology, could contribute towards resolving this knowledge gap through evidence-based decision-making in the context of Kathmandu Valley.~~

~~Within our research~~Future work, we could ~~partially resolve these issues~~ build upon our ~~multi hazard databassae~~ by developing our methodology from a series of Boolean searches to a systematic review, utilising data mining techniques (De Brito, 2021), searching non-online sources (e.g., archival material); and engaging in discussions with practitioner

740 stakeholders, as **Sect. 4.6** outlines.

~~The relative scarcity of multi-hazard interrelationships within our findings mirrors broader concerns the DRR community has expressed. Currently, there are three main databases that capture multi-hazard events across a regional to global scale: DesInventar Sendai, EM-DAT, and Munich Re. Recent studies have developed methodologies to systematically gather multi-hazard events into global multi-hazard datasets (e.g., Claassen et al., 2023; Jäger et al., 2024; Lee et al., 2024) to~~

745 ~~complement these existing disaster databases. On local to national scales, there are examples of multi-hazard interrelationship databases situated in “Global South” contexts, for example, Guatemala (Gill et al., 2020); the hydrological catchments of the Red River, Vietnam, and the Marikina Basin, Philippines (Payo et al., 2022); Nairobi, Kenya, and Istanbul, Türkiye (Šakić Trogrlić et al., 2024b); and the Philippines (Ybañez et al., 2024). Our database contributes to this growing~~

750 catalogue of multi-hazard event records and responds to calls for continued multi-hazard characterisation, the focus of many recent studies on multi-hazard interrelationships and impacts (e.g., De Angeli et al., 2022; Ward et al., 2022) to address knowledge gaps in multi-risk and its components (Šakić Trogrlić et al., 2022). Multi-hazard case studies may be available from grey literature sources; however, these seldom go through the peer-review publication process (Šakić Trogrlić et al., 2024a) and may not be translated into additional languages.

755 Additionally, our database's broad coverage of hazard groups demonstrates how blended evidence sources can mitigate an overrepresentation of certain hazard groups, as documented by Owolabi and Sajjad (2023) in their review of multi-hazard risk analysis research published from 1994 to 2022. A lack of research across hazard groups has been exacerbated by a paucity of international collaboration between scholars from “Global South” regions, including South Asia and South America, despite higher exposure to multi-hazard impacts across many of these regions (Owolabi and Sajjad, 2023). This underrepresentation in research on multi-hazard events can be attributed to barriers to systematically collecting and documenting multi-hazard data, including information on interrelationships and impacts. These include governance-related factors, such as siloes between organisations working on specific hazards and fragmentation in multi-hazard approaches (Šakić Trogrlić et al., 2024a). Limitations in resources and reduced institutional capacities also contribute towards a continued focus on single hazard and multi-layered single hazard approaches to data collection and documentation (Šakić Trogrlić et al., 2024a).

760 In the context of Kathmandu Valley, the combination of numerous factors, including limited resources, public demands, fixed tenure, and bias towards physical infrastructure investment, contribute towards a de-prioritisation in DRR activities (Poudel et al., 2021), including the continued shift towards multi-hazard DRR approaches. To address these challenges, we make the following tentative suggestions:

- 770 • Continued communication beyond traditional disciplinary boundaries to combat siloed working and fragmentation.
- Enhancing Regional collaboration to standardise multi-hazard event data collection and documentation strategies.
- Adaptation of existing frameworks to support the shift from single-hazard and multi-layered single-hazard to multi-hazard approaches.
- 775 • Augmenting existing Support of digitised, open-access, multi-hazard event databases with the potential for language translation.

Examining our methodology's limitations (Sect. 4.4) and scalability (Sect. 4.5) is critical in mitigating these overarching issues in multi-hazards research.

4.23 Workshop findings

4.23.1 Multi-hazard interrelationship scenarios

780 The findings from ~~our~~the workshop, conducted with practitioner stakeholders engaged in DRR in Kathmandu Valley, supplemented the exemplars collated from blended sources of evidence (Sect. 3.1 and Sect. 3.2 refer to section) ~~described above~~. The workshop provided a forum for participants to share their perspectives on multi-hazard interrelationship scenarios and multi-hazard impacts ~~influencing~~affecting Kathmandu Valley. The diversity in the subject backgrounds of participants provided a broad range of insights that complements the information collated from the blended evidence types (academic literature, grey literature, media, databases, and social media) described in **Sect. 3.1** and **Sect. 3.2** (Matanó et al., 2022). The discussions produced some novel findings concerning the hazardscape in Kathmandu Valley, specifically in producing multi-hazard interrelationship scenarios for the context of Kathmandu Valley by practitioner stakeholders working within DRR. These multi-hazard interrelationship scenarios complement existing literature that documents the variety of multi-hazard scenarios that have influenced Kathmandu Valley and those that could theoretically influence the valley in the future (Gautam et al., 2021~~0~~; Gill et al., 2021a; Khatakho et al., 2021).

The discussion of multi-hazard interrelationship scenarios centred around biophysical, geophysical, and hydrological hazard groups and simple triggering or increased probability interrelationships. In both case studies and theoretical examples, participants described how anthropogenic ~~processes~~factors increased the severity of multi-hazard impacts and altered response efforts following hazard events. A systematic ~~multi-hazard~~ risk assessment (~~including hazard probability, vulnerability and exposure~~) of multiple hazard types (earthquake, floods, landslides, earthquakes, and urban fire) in Kathmandu Valley conducted by Khatakho et al. (2021) found that old settlements, densely populated settlements, and the central valley were the most risk-prone regions in the valley, supporting the participants' expert knowledge of the Kathmandu Valley context. Participant A commented on how the extension of development into the hills surrounding Kathmandu Valley has increased the exposure of communities to multi-hazard impacts, particularly when coupled with heightened social vulnerabilities such as lower socio-economic status or "marginalised" identities. Indeed, urban poor communities, ~~and other "marginalised" groups, and other "marginalised" groups~~ experience heightened risk due to high exposure to multi-hazards and social vulnerabilities (Pelling et al., 2004). The multi-hazard scenarios developed by participants provided further evidence for multi-hazard interrelationship ~~pairs~~ already given in the listed in the multi-hazard interrelationship matrix for Kathmandu Valley (~~in Fig. 5~~). Additional scenarios that supplement those included in the matrix are Scenarios 9 (wildfire \rightarrow air pollution), 10 ("haphazard development" + faulty electrics \rightarrow urban fire), and 11 ("haphazard development" + soil conditions \rightarrow ground displacement). Note ~~that the participants were not restricted to discussing the hazards that are included in our multi-hazard interrelationship matrix (Fig. 5)~~ Gill and Malamud (2014) did not include air pollution, both a natural hazard and anthropogenic process, in their original classification.

To expand upon the methodology developed by Gill and Malamud (2014), ~~w~~We included the co-production of multi-hazard interrelationship scenarios, similar to Šakić Trogrlić et al. (2024b), and additionally their impacts, ~~to expand upon the~~

methodology developed by Gill and Malamud (2014). The multi-hazard impacts shared by participants are summarised into three main themes: cascading impacts, disaggregated impacts, and the disproportionate impact on “marginalised” communities. Participants discussed how cascading impacts can interact dynamically across spatial and temporal scales and contribute to systemic impacts propagating across sectors. This systems thinking mirrors the development of Gill and Malamud’s (2014) matrix by Matanó et al. (2022) to include socio-economic impacts. For example, the impact of earthquake or monsoon events on hydropower function and electricity supply has wide-reaching effects across Kathmandu Valley due to load-shedding power cuts. This reduction in energy supply is likely to disproportionately impact urban poor communities due to less reliable electricity connections even before load-shedding activities. Within these communities, the burden of power outages ~~is expected to be unevenly distributed owing to complex sociocultural factors (Bajracharya et al., 2022)~~ ~~is expected to fall on women and youth~~, emphasising the importance of a disaggregated and intersectional approach to multi-hazard impacts (Brown et al., 2019). Participants commented on the relationships between higher vulnerabilities of “marginalised” communities, notably the positive feedback loops between multi-hazard events and increasing informality. Of note is the increase in landslides following the 2015 Gorkha earthquake ~~(e.g., as evidenced by, supported by studies such as~~ Kargel et al., ~~2015, who~~) reviewed ~~of~~ satellite observations), contributing to increased informality within Kathmandu Valley. These observations by participants reflect the informal conditions that many long-term internally displaced people (IDPs) experienced whilst still living in camps and temporary accommodation in the urban periphery many years after the Gorkha earthquake (Titz, 2021).

Facilitating workshops to ~~surface~~ better understand multi-hazard cascades can be valuable for practitioner stakeholders considering emerging risks and future scenarios to inform decision-making processes (e.g., Riddell et al., 2019; Strong et al., 2020). Developing multi-hazard scenarios from workshop participants and the multi-hazard interrelationship matrix (Fig. 5) can be helpful for hazard practitioners and agencies working in the DRR space. Applications include evaluating the effectiveness of preparedness and response systems, guiding land-use planning, communicating educational messages towards at-risk communities, and facilitating dialogue between practitioner stakeholders and at-risk communities (Gill et al., 2020). In the Nepali context, developing and quantifying multi-hazard scenarios would support preparedness and recovery strategies and the allocation of resources on provincial and national scales (Gautam et al., 2021).

4.2.3.2 Impact examples

The impact examples shared by participants on the Padlet page (**Table 54**) can be subdivided into the following themes:

- cascading impacts,
- disaggregated impacts, and
- impacts on “marginalised” communities.

Cascading, or networks of interdependent, ~~impacts~~ impacts, may be dynamic and change over space and time (De Brito, 2021). They also occur as part of broader systems that emphasise ~~feedbacks~~ feedback between impacts (Spoon et al., 2020; Hochrainer-Stigler et al., 2023). One participant commented on how the “impacts of ~~an~~ earthquake or large monsoon on

hydropower function and electricity supply to KTM [Kathmandu], via direct damage to infrastructure (shaking/landslides) or
845 protracted sedimentation, ~~{can}~~ impact upon ~~{the}~~ wider power grid [which] impacts all users of power via load shedding.”
As noted in Sect. 4.2.1 ~~{This observation demonstrates how direct impacts of a hazard event can have broader systemic~~
effects that ~~influence~~ ~~affect~~ communities across greater spatial and temporal scales than the hazard event itself.

Another theme ~~that emerged~~ in the Padlet pages is the disaggregation of multi-hazard impacts. In this case, we define
disaggregated impacts by social group, i.e., gender, age, socio-economic status, disability, etc. One participant noted that we
850 must think beyond direct tangible impacts to consider “multi-hazards affecting land use, increasing inundation and
landslides, which disproportionately impact farmers [and] women”. Effects such as “assets damaged and or assets los[t] due
to these hydro-climatic impacts ~~{which}~~ has ~~{a}~~ direct connection with livelihoods of the people” ~~contributes~~ ~~contribute~~
towards anxiety and a chronic state of emergency experienced by urban poor communities. The consideration of indirect and
intangibile impacts is necessary when addressing “socio-economic impact{s}, gender inequality, ~~{and}~~ development
855 challenge{s}”.

Considering “marginalised” communities was a closely related theme to disaggregated impacts. Participants emphasised the
increased vulnerability of urban poor communities who live in temporary accommodation on riverbanks; “flood has a direct
impact on ~~{the}~~ urban poor, mainly those living in temporary shelter{s} built on the bank{s} of Bagmati river. Every year,
flood{s} terrifi[y] those living in the informal settlements.”. Participants also noted the vulnerability of other “marginalised”
860 groups, where “multi-hazard scenarios increase ‘uncertainty’ which affect primarily migrants and marginalised dwellers”
and “migrants who cannot vote in Kathmandu Valley’s cities are particularly vulnerable to impacts”. ~~One participant~~
~~commented that following the 2015 Gorkha earthquake, increased landslides on the periphery of and outside Kathmandu~~
~~Valley contributed to a rise in informality in Kathmandu Valley.~~

Despite increasing focus on cascading and disaggregated impacts, there remain gaps in multi-hazard interrelationship
865 knowledge, including a detailed understanding of the direct and indirect impacts of multi-hazards necessary for effective
mitigation (Šakić Trogrlić et al., 2024a). A potential extension of the workshop with practitioner stakeholders is to
incorporate questions that consider variables of vulnerability and impact into the multi-hazard interrelationship matrix.
Existing multi-hazard visualisations (e.g., Gustafsson et al., 2023) illustrate the ~~interaction~~ interrelationships and impacts
resulting from hazard cascades and provide potential approaches to incorporating these variables within our methodology.
870 For example, Sharma et al. (2023) illustrate hazard cascades and their impacts in the central Himalayas, including the
duration, scale and sector influenced by each hazard cascade event using a multi-hazard interrelationship matrix similar to
Fig. 5 in our paper.

Another important consideration in visualising the multi-hazard interrelationship matrix is the useability of the tool by
practitioner stakeholders engaged in the hazardscape region. When incorporating the tool into existing DRR strategies,
875 understanding the spatial and temporal components of multi-hazard events is critical in coordinating an appropriate and
tailored response. For example, De Angeli et al. (2022) developed a multi-hazard risk framework for spatial-temporal impact
analysis and applied it to a seismic and flood damage scenario in the Po Valley, Italy. The spatial and temporal evolution of

the multi-hazard event scenario is visualised with the following components: hazard maps at various time instants, the temporal evolution of hazard impacts, and the impacted area.

880 Both Sharma et al. (2023) and De Angeli et al.'s (2022) visualisations present potential approaches to expanding our existing multi-hazard interrelationship matrix in the Kathmandu Valley context. Including impact variables within Fig. 5 would enhance our methodology's scalability and utility within DRR strategies (discussed further in Sect. 4.5 and Sect. 4.6). A clear visualisation of the evolution of impacts across type and spatial-temporal extent in a figure or series of figures would be helpful as a dissemination tool in decision-making processes.

885 **4.34 Single hazard and multi-hazard interrelationship impacts**

While we compiled literature on evidence for single hazard types and multi-hazard interrelationships influencing Kathmandu Valley, we also noted the impacts described. Within the exemplars we collated from blended source types, as documented in the Kathmandu Valley Single Hazards and Multi-Hazard Interrelationships Database (Thompson et al., 2024), we found the most detailed descriptions of single hazard (*Column 9, Sheet "A. Single Hazards Evidence" in Supplementary Material A*) and multi-hazard interrelationship (*Column 6.1, Sheet "B. Hazard Interrelationships Evidence" in Supplementary Material B*) impacts in academic literature and grey literature (e.g., UNDRR reports). Media and social media (e.g., YouTube videos) also provided informative accounts, but descriptions often described generic and larger spatial impacts rather than event-specific ones. The depth of information on impacts usually reflected the typical frequency of the hazard and or its level of impact. For example, information about the impacts of extreme temperature (cold) events was 895 limited to generic descriptions of environmental and socio-economic consequences due to the rare occurrence of low temperatures in the valley. Most impact information was centred on direct quantitative information, such as infrastructure damage, economic losses, injuries and loss of life. For instance, ~~Descriptions of ground collapse impacts were limited to general information about fatalities and disruption. Of note was an impact intensity scale developed by the local community in response to Windstorm Parvana in south-central Nepal in March 2021. The classification assessed building and infrastructure damage to determine the storm's intensity as an example of a grassroots developed impact intensity scale (Gautam, 2020).~~ 900 The limited number of indirect and intangible impacts could be due to sampling bias of the source types used in the study, the sample size of the hazard events impacting Kathmandu Valley, and information accuracy when verification of source types is not possible (Matanó et al., 2022).

When indirect and qualitative impacts of single hazard events were documented, the three main themes were common: the disproportionate burden experienced by some social groups ~~common themes were the disproportionate burden some social groups experienced~~ 905 (disaggregated impacts) due to variable exposure, vulnerability and anthropogenic processes ~~factors~~. For example, following the 2015 Gorkha earthquake, aftershocks (and resulting landslides) contributed towards 2.5-3.5% of the national population entering poverty – equivalent to 700,000 additional poor people (ILO, 2017) – where low caste and poorer communities experienced the greatest severity of impacts due to “marginalised status, limited resources and 910 livelihood options” (UNDRR, 2019). These impacts emphasised the relationship between communities’ socio-economic

status and vulnerability. The disproportionate burden on some social groups was echoed in ~~the the reporting of reporting of~~ drought events impacting Kathmandu Valley (IIED, 2010). Long-term drought in the early 2000s resulted in gendered consequences where missed education significantly ~~affected~~ affected girls and increased water theft from neighbouring wells and water trenches (IIED, 2010). The impacts of drought, exacerbated by overpopulation and rapid urbanisation, may
915 undermine social cohesion as water shortages ~~increase the likelihood of~~ promote conflict between communities in the valley in the future (Adhikari, 2019).

Less impact information was documented for multi-hazard events, perhaps since fewer details of multi-hazard interrelationships ~~we~~ are recorded across all source types. As a result of the 2015 Gorkha earthquake and aftershocks, over 50% of fatalities were of individuals from “marginalised” communities. ~~For example,~~ Tamang communities experienced
920 disproportionate impacts of the event due to “poverty, neglect and outright discrimination” (Magar, 2015). Higher ~~magnitude~~ frequency magnitude multi-hazard events generally included a greater breadth and depth of impact information as these events have more significant spatial and temporal impacts and are more likely to be documented across source types. For example, storm-triggered flood events in 2019 increased the occurrence of diseases like Dengue fever (Molden and McMahon, 2019). Further storm-triggered floods and landslides in 2021 disproportionately affected urban poor
925 communities, owing to the most significant damage occurring in low-lying informal settlements (ReliefWeb, 2021).

~~Incorporating single hazard and multi-hazard interrelationship impacts into our methodology extends our work from previous studies that focused primarily on the hazard component. By incorporating broader aspects of Kathmandu Valley’s hazardscape, we emphasise the importance of an interdisciplinary approach to DRR research. In doing so, our work responds to calls for hazard scientists to continue~~ integrating a diverse range of data sources to support a more nuanced understanding
930 ~~of multi-hazard scenarios and broader hazardscapes (Gill et al., 2021b).~~

4.45 Limitations

We recognise that limitations in ~~our~~ the methodology may have altered ~~which hazard events, impacts~~ the types and relative
935 ~~quantity of specific hazard events, impacts,~~ and multi-hazard scenarios we observed in our results. ~~In this section we highlight~~ This section highlights the following limitations to encompass the in (a) the collation of blended sources of evidence and (b) the ~~practitioner~~ stakeholder workshop.

4.4.1 Limitations in collation of blended ~~sources of evidence~~ sources

Two main factors contributed to uncertainty during the systematic approach to selecting evidence. ~~These include the following:~~

- We used a *limited number of keywords* during the search process, thus limiting the number of publications returned; alternative keywords would have yielded different results. This limitation includes variations on

hazard terms, such that different spatial or temporal terminology versions do not limit the number of returned publications (Taylor et al., 2015).

- We searched for evidence using *English language* databases, search engines and media websites. Solely conducting searches in English reduced the number of publications returned whilst also losing the nuance and context of single hazard types and multi-hazard interrelationships described in Nepali language publications (Šakić Trogrlić et al., 2024submitted).

We minimised these limitations by considering efficient and practical solutions for each source of uncertainty. It would be impractical to include a long list of keywords during the search process; instead, we included three to four specific words to target the most relevant publications for each single hazard or multi-hazard interrelationship. For instance, “Kathmandu AND storm* AND flood* AND impact*” identified examples of storm-to-flood hazard sequences without specifying the type of ~~hazard interrelationship~~ multi-hazard interrelationship, which may have excluded the return of some publications (Taylor et al., 2015). Searching in three reputable online English-language Nepali newspapers reduced the English language limitation. By searching across online newspapers, a greater breadth and depth of sources could be returned than by solely using one newspaper, whilst also returning publications detailing events across greater spatial and temporal scales (De Brito et al., 2021). We focused on publications from 2010 onwards to outline recent hazard events whilst not excluding low probability high impact events. This decision enables exemplars to be viewed in the current context regarding multi-hazard knowledge and approaches to DRR.

4.4.2 Limitations in workshop with practitioner stakeholders

The findings from the workshop represent a snapshot of the hazardscape in Kathmandu Valley. They are a product of the perspectives and identities of those present in the discussion and those absent (Leonard et al., 2014), with findings potentially affected by professional interests, lack of gender balance and researcher positionalities. Regarding participants’ professional interests, three specialised in the knowledge of multi-hazards from a physical sciences perspective, three in interdisciplinary approaches and one in understanding risk from a social sciences context. Although we approached participants with a range of subject expertise (Matanó et al., 2022), due to availability, there was a bias towards landslide and earthquake hazards, cascades, and impacts, as three of the participants had expertise in these fields.

As described in **Sect. 2.44.2** the ratio of Nepali or Nepali-based to British or British-based participants was designed to minimise the effect of power asymmetries within the discussion and create an atmosphere where all participants felt able to share their perspectives (Secor, 2010; Wolf, 2018). Conversely, the gender balance between participants was less representative, despite approaching approximately equal numbers of male and female participants. To minimise this imbalance, we aimed to facilitate the session in a manner that decentred our role as facilitators and limited control of the conversation by one or a few individuals. Our ~~positionalities as researchers may have affected the discussion dynamics, particularly in~~ positionalities as researchers may have affected the discussion dynamics, particularly regarding what information was shared or withheld, how participants described case studies and theoretical examples, and what details they

975 included. By inviting participants with whom we have working connections and partnerships or are within our ~~network as~~
~~researchers~~ research network, we hoped to share knowledge built on these sustainable connections and a greater sense of trust
(Wilmsen, 2008). The following section examines ~~how we could develop the work of this paper in the future~~ the scalability
of our methodology to other data-scarce urban contexts.

4.56 Scalability to other data-scarce urban settings

980 Building upon previous work (Gill et al., 2020; Matanó et al., 2022; Gustafsson et al., 2023; Šakić Trogrlić et al.,
2024~~submitted~~), this study has furthered existing methodologies to collate blended sources of evidence of single hazard
types, multi-hazard interrelationships and their impacts. We demonstrate that it is possible to systematically gather case
studies and theoretical examples of multi-hazard events to improve knowledge of hazardscapes in data-scarce urban settings.
This challenge is particularly relevant in urban settings in low- to middle-income countries (Osuteye et al., 2017).

985 With application to Kathmandu Valley, we have developed this methodology to collate single hazard and multi-hazard event
data on finer spatial resolutions (e.g., ward level within Kathmandu Valley) than in previous studies, and impact data. ~~that~~
~~consider disaggregation by social group (e.g., gender, age, disability)~~. We have achieved this finer spatial resolution and
~~disaggregation of impacts~~ by using a systematic review of blended sources of evidence (academic literature, grey literature,
media, databases, and social media) to minimise the effect of data scarcity and provide evidence from various perspectives.

990 The workshop component of the methodology enables practitioner –stakeholders engaged in DRR work in Kathmandu
Valley to co-produce multi-hazard interrelationship scenarios and their impacts. This knowledge generation supplements the
blended evidence sources we collated for single hazard types and multi-hazard interrelationships and emphasises the most
significant scenarios and impacts in the Kathmandu Valley context. These multi-hazard interrelationship scenarios can
support dialogue between practitioner stakeholders engaged in ~~people-centred~~ people-centred DRR strategies in the local
995 context. These scenarios can raise awareness in at-risk communities, support risk-sensitive land use planning, and strengthen
hazard preparedness and response strategies (Gill et al., 2020; Gill et al., 2021a).

Applying learnings from the Kathmandu Valley context, this methodology has ~~the~~ scalability to other data-scarce urban
settings as it utilises a variety of blended source types, given their availability. Once the researcher applies spatial and
temporal boundaries to the chosen study area, they can use systematic searches (Sect.ion 2.1) to gather theoretical and case
1000 study events across blended source types, and workshop considerations outlined in Sect. 2.4 to co-produce results with
groups responsible for managing risk in that location. Although it may be appropriate to focus on more recent hazard events

to capture the current state of the hazardscape, searching across a broader temporal range would enable an analysis of how
patterns in multi-hazard events and their impacts change across space and ~~types~~ nature of ~~interaction~~ interrelationships. The
researcher should consider what resolution is possible for the urban context chosen and how data scarcity affects which
1005 single ~~hazards~~ hazard types, multi-hazard interrelationships and impacts are returned in searches (Matanó et al., 2022). The
methodology should be regularly assessed to gauge necessary improvements and apply recommendations (e.g., using Theory
of Change) (Gill et al., 2021b).

1010 Our methodology's applicability to other geographical contexts, communities and scales represents one aspect of its value as a "useful, usable and used" tool (Boaz and Hayden, 2002). On local and regional scales, the multi-hazard interrelationship matrix (Fig. 5) supports discussions between practitioner ~~practitioner~~ stakeholders, including hazard managers, policymakers, academics, NGO practitioners, and members of at-risk communities, on multi-hazard preparedness and planning. The methodology can act as a bridging tool between communities (Gill et al., 2020) to support the continued and required shift from single hazard and multi-layered single hazard approaches towards multi-hazard strategies (Ward et al., 2022). Breaking down siloes between organisations engaged in DRR work is critical in working towards effective preparedness planning and mapping future multi-hazard scenarios (Scolobig et al., 2017; Gill et al., 2021b). This action could involve the inclusion of multi-hazard interrelationships and impacts within existing DRR training materials and educational frameworks for locally situated learning or the development of effective multi-hazard early warning systems (MHEWS).

1020 On an international level, developing this study's *Kathmandu Valley Single Hazards and Multi-Hazard Interrelationships Database* (Thompson et al., 2024) could help ~~could have the potential to inform and enrich existing international disaster datasets (e.g., DesInventar, EM-DAT), including those (e.g., ADD example).~~ Populating current databases with further examples of multi-hazard events and impacts can broaden evidence bases, particularly in more data-scarce regions, for use in funding applications, awareness raising of multi-hazard interrelationships, and developing preparedness plans. In the UK multi-hazard context, ~~the outcomes of the a review of the UK 2019 National Security Risk Assessment (NSRA) methodology identified multi-hazard interrelationship frameworks as being a useful/valuable tool to explore interdependencies, aiming to improve risk assessment practice to support were used to prioritise planning processes and, inform policy through gathered evidence, act as a communication tool, and guide implementation across scales (Royal Academy of Engineering, 2023).~~ Systematic multi-hazard information can complement new multi-hazard datasets, particularly those focused on urban contexts such as the MYRIAD project's "VulneraCity" database of urban vulnerability drivers (Stolte et al., 2024) and centre the need for dynamic multi-hazard approaches to disaster risk.

4.67 Future work

1035 In the future, we suggest that researchers engage further with local practitioner stakeholders and at-risk/affected communities to ~~enable the collection of~~ collect critical insights into their main concerns regarding multi-hazards and DRR strategies. This engagement would support the implementation of the methodology we have outlined in this paper in the Kathmandu Valley context as a pilot for other data-scarce urban areas.

To this end, we included an additional column for hazard impacts in ~~the- *Kathmandu Valley Single Hazards and Multi-Hazard Interrelationships Database* (Thompson et al., 2024)~~ **Supplementary Material B** to allow for further context and insight into the consequences of each exemplar. We included a column for input from practitioner stakeholders

1040 (~~Supplementary Material B~~ Column 7. Input from practitioner stakeholders, Sheet “B. Hazard Interrelationships Evidence”)
to assess:

- Is the identified interrelationship relevant for/applicable to Kathmandu Valley?
- Would you classify the identified interrelationship as important for today’s Kathmandu Valley?
- Is this interrelationship relevant for future Kathmandu Valley (e.g., will become increasingly important), and should it be considered in urban planning?

1045

We listed a final column for practitioner stakeholder prioritisation (~~Supplementary Material B~~ Column 8.1 Input from practitioner stakeholders – prioritisation, Sheet “B. Hazard Interrelationships Evidence”), asking practitioner stakeholders to:

1050

- Indicate the most critical ~~hazard interrelationship~~ multi-hazard interrelationships in today’s Kathmandu Valley.
- List ~~hazard interrelationship~~ multi-hazard interrelationships that you feel will be relevant for Tomorrow’s Kathmandu Valley (including the interrelationships which are already relevant today).

1055

Providing an up-to-date summary of single hazard types ~~influencing/affecting~~ Kathmandu Valley, or with a theoretical chance of occurrence, could give practitioner stakeholders a more detailed insight into the natural hazards influencing the valley. These practitioner stakeholders include government agencies (e.g., Ministry of Home Affairs, —MOHA), non-governmental organisations (e.g., Practical Action Nepal; Lumanti Support Group for Shelter), academia (e.g., Tribhuvan University) and private sector (e.g., Atullya Foundation Pvt. Ltd.)—working on inclusive approaches to DRR in Kathmandu Valley and Nepal more widely.

1060

Additionally, including anthropogenic processes within the methodology can add nuance to the breadth of single hazard types and multi-hazard interrelationships across geographical contexts. Here, we understand anthropogenic processes as “intentional, non-malicious human activities” as defined by Gill and Malamud (2017). In their research, Gill and Malamud (2017) present a systematic literature review of past research on anthropogenic processes, focusing on categorising artificial ground and land use. Following this, they characterise the role of anthropogenic processes in triggering natural hazard events and catalysing or impeding the ~~interaction~~interrelationships between natural hazards (Gill and Malamud, 2017). Moving forward, we recognise the need to develop our methodology further to include anthropogenic processes as an integral component of any hazardscape.

1065

Another ~~necessary potential addition~~ expansion is the inclusion of non-natural hazards, including the following clusters as defined in the UNDRR-ISC Hazard Information Profiles (Murray et al., 2021):

1070

- Biological: a broad range of hazards of “organic origin”.
- Chemical: human exposure to chemicals of human and natural origin.
- Environmental: degradation of “natural systems and ecosystem services”.
- Societal: “human activities and choices” that present risks to communities and environments.
- Technological: failure of existing and emerging technology, impacting both within and outside systems.

1075 Although our methodology has focused on natural hazard types, it can be applied to a broader dataset, including additional hazard types and spatial and temporal scales, to capture hazardscapes across different geographical contexts. Natural hazards are situated within the wider systems in which they occur and can be directly or indirectly influenced by anthropogenic processes (Gill and Malamud, 2017), particularly in urban contexts. We aspire that integrating anthropogenic processes and additional hazard types into the existing methodology and multi-hazard interrelationship matrix results in a more nuanced understanding of urban hazardscapes. These elements will extend existing multi-hazard scenarios to incorporate risk variables. This knowledge is significant for practitioner stakeholders working in specific urban contexts to evaluate which components of dynamic risk scenarios can be targeted to reduce impacts on at-risk and “marginalised” communities.

5 Conclusions

1085 This paper has detailed the systematic and evidenced process of collating exemplars of single hazard types and multi-hazard interrelationships in a data-scarce urban area with application to Kathmandu Valley. We supplemented these exemplars with the perspectives of practitioner stakeholders engaged in DRR in the Kathmandu Valley context. Using blended evidence types increases the depth of information about~~captures~~ multi-hazard interrelationship scenarios and their impacts ~~in greater depth than using fewer source types~~ (Neri et al., 2008; Gill et al., 2020; Taylor et al., 2020). Data-scarce urban areas in the “Global South” represent an important research focus for deepening understanding of multi-hazard interrelationship scenarios and impacts. ~~High vulnerabilities of urban poor communities, combined with rapidly increasing population growth and exposure to complex multi-hazard interactions (Dodman et al., 2022), present a significant challenge to effective community-led~~The high vulnerabilities of urban poor communities, combined with rapidly increasing population growth and exposure to complex multi-hazard interrelationships (Dodman et al., 2022), present a significant challenge to effective community-led DRR strategies. Improved knowledge of multi-hazard ~~interaction~~interrelationships and cascades in Kathmandu Valley would enable a more holistic approach to DRR from various practitioner stakeholders. We argue that this paper promotes the use of~~ing~~ blended evidence types in collating single hazard and multi-hazard event information in data-scarce urban settings. It demonstrates the importance of disaggregated impact information in supporting communities to respond to hazard ~~events~~ and increase their resilience to future events. We suggest that the methodology presented in this paper could contribute towards resolving some of these data obstacles across ~~urban~~ data-scarce urban regions (UNDRR, 2023).

1090
1095
1100 Across our systematic searches~~the source types we searched,~~ exemplars of blended sources detailing single hazards types were more prevalent across multiple source types~~common~~ (i.e., academic literature, grey literature, media, databases, and social media), There was~~with greater~~ greater detail of the anthropogenic processes driving the hazards and impacts for single hazard exemplars than the multi-hazard interrelationship exemplars. The 58 single hazard sources we selected from the literature search evidenced 21 single hazard types that might influence Kathmandu Valley. Discussions with participants

105 supported the single hazard types documented in the blended source types. In contrast, searching for evidence of triggering
and increased probability-multi-hazard interrelationships in Kathmandu Valley was challenging across all source types. We
selected 21 multi-hazard interrelationship sources ~~which evidenced 12 specific multi hazard interrelationships that might~~
~~influence Kathmandu Valley, out of 83 that we propose as having, which evidenced 12 specific multi-hazard~~
110 ~~interrelationships that might influence Kathmandu Valley out of 83 we propose to have~~ a theoretical possibility of
~~influencingaffecting~~ the valley. Participants confirmed the challenge of documenting complex multi-hazard
interrelationships by predominantly describing ~~simpler~~ primary to secondary multi-hazard interactioninterrelationships. The
discussion also developed the process of considering multi-hazard impacts in Kathmandu Valley, specifically knowledge of
cascading impacts, disaggregated impacts by social group and the disproportionate impact borne by “marginalised”
communities (Brown et al., 2019; Dodman et al., 2022).

115 ~~OurThese~~ *Kathmandu Valley Single Hazards and Multi-Hazard Interrelationships Database* (Thompson et al., 2024) ~~single~~
~~hazard and multi hazard interrelationship databases~~ can support assessing which hazard types and multi-hazard
interactioninterrelationships are most significant in Kathmandu Valley and how this may change. Local practitioner
stakeholders can integrate a better understanding of the hazardscape, ~~and resulting impacts, and resulting impacts~~ in
Kathmandu Valley into more holistic approaches towards multi-hazard DRR. We suggest that this paper’s findings ~~will~~
120 could contribute to developing multi-hazard interrelationship scenarios as part of the objectives of the midterm review of the
Sendai Framework (UNDRR, 2023) and other national and international research priorities.

Data availability

The blended sources used to collate the single hazard types and multi-hazard interrelationships in Kathmandu Valley are
available in the Kathmandu Valley Single Hazards and Multi-Hazard Interrelationships Database. This database was
125 compiled using the methodology described in this paper and is available in the online open-access repository “Zenodo”
(<https://doi.org/10.5281/zenodo.13749299>) with CC-BY 4.0 International rights, cited as Thompson et al.
(2024).Supplementary Material A. Kathmandu Valley Single Hazard Database and Supplementary Material B.
Kathmandu Valley Multi-Hazard Interrelationship Database.

Author contribution:

1130 HET, JCG, RST and BDM conceptualised the research and developed the methodology. HET analysed the data, undertook
the investigation, visualised the results and wrote the manuscript draft. JCG, RST, FET and BDM supervised the research.
All co-authors reviewed and edited the manuscript.

Competing interests:

Two authors (BDM and RST) are members of the editorial board of *Natural Hazards and Earth System Sciences*.

1135 Disclaimer

We have not published any part of this paper elsewhere, nor is this paper or any component of it under consideration by any other journal.

Acknowledgements

We are grateful to the seven [practitioner](#) stakeholder workshop participants described in this paper for their rich and detailed insights into the hazardscape of Kathmandu Valley. This work was supported by the Department of Geography, King's College London in-kind contribution to Tomorrow's Cities Research Grant (UKRI/GCRF fund under grant [NE/S009000/4](#)); London's in-kind contribution to Tomorrow's Cities Research Grant (UKRI/GCRF fund under grant [NE/S009000/1](#)), and the British Geological Survey University Funding Initiative (BUFI) [PhD Studentship \(S466\)](#).-

References

- 1145 Adhikari, B.R., Shrestha, S.D., and Shakya, N.M.: Future Urban Water Crisis in Mountain Regions: Example of Kathmandu Valley, Nepal, in: Urban Drought, Springer, Singapore, 169-182, https://doi.org/10.1007/978-981-10-8947-3_11, 2019.
- Aksha, S.K., Resler, L.M., Juran, L., and Carstensen Jr, L.W.: A geospatial analysis of multi-hazard risk in Dharan, Nepal, *Geomat. Nat. Haz. Risk*, 11(1), 88-111, <https://doi.org/10.1080/19475705.2019.1710580>, 2020.
- 1150 Alkire, S., Kanagaratnam, U., and Suppa, N.: A methodological note on the global Multi-dimensional Poverty Index (MPI) 2023 changes over time results for 84 countries, OPHI MPI Methodological Note 57, Oxford Poverty and Human Development Initiative, 2023.
- [Auger, C.P.: Information sources in grey literature \(guides to information sources\), 4, London, Bowker Saur, ISBN 3110977230, 1998.](#)
- [Bajracharya, A., Shrestha, K.K., Zwi, A.B., and Baldry, E.: Reframing Gendered Disaster: Lessons from Nepal's Indigenous women, *Int. J. Disast. Risk Re.*, 83, 103422, <https://doi.org/10.1016/j.ijdr.2022.103422>, 2022.](#)
- [Bhatta, S. and Adhikari, B.R.: Comprehensive risk evaluation in Rapti Valley, Nepal: A multi-hazard approach, *Progress in Disaster Science*, 23, 100346, <https://doi.org/10.1016/j.pdisas.2024.100346>, 2024.](#)

1160

- Boaz, A. and Hayden, C.: Pro-active evaluators: enabling research to be useful, usable and used, *Evaluation*, 8(4), 440-453, <https://doi.org/10.1177/13563890260620630>, 2002.
- Brown, S., Budimir, M., Upadhyay Crawford, S., Clements, R., and Sneddon, A.: Gender and Age Inequality of Disaster Risk: Policy Brief, UNICEF and UN Women, 2019.
- 165 [Building Information Platform Against Disasters Portal \(BIPAD Portal\)](https://bipadportal.gov.np/): <https://bipadportal.gov.np/>, last access: 12 August 2024.
- Butcher, S.: Research solidarity? Navigating feminist ethics in participatory action-research in Kathmandu, Nepal, *Gender Place Cult.*, 28(4), 497-518, <https://doi.org/10.1080/0966369X.2020.1751087>, 2021.
- 170 [Center for Distributive, Labor and Social Studies \(CEDLAS\)](#) and World Bank.: ICF Macro Demographic and Health Surveys, UNESCO Institute for Statistics and UNICEF Multiple Indicator Cluster Surveys, 2022.
- [Centre for Research on the Epidemiology of Disasters \(CRED\), University of Louvain \(UCLouvain\)](#).: [The Emergency Events Database \(EM-DAT\) \[data set\]](#), <https://public.emdat.be/>, 2024.
- 175 [Chaudhary, U., Shah, M.A.R., Shakya, B.M., and Aryal, A.: Flood Susceptibility and Risk Mapping of Kathmandu Valley Watershed, Nepal, Sustainability](#), 16(16), 7101, <https://doi.org/10.3390/su16167101>, 2024.
- [Chatterjee, R., Shiwaku, K., Das Gupta, R., Nakano, G., and Shaw, R.: Bangkok to Sendai and Beyond: Implications for Disaster Risk Reduction in Asia, Int. J. Disast. Risk Re.](#), 6, 177-188, <https://doi.org/10.1007/s13753-015-0055-4>, 2015.
- Chaulagain, D., Rimal, P.R., Ngando, S.N., Nsafon, B.E.K., Suh, D., and Huh, J.S.: Flood susceptibility mapping of Kathmandu metropolitan city using GIS-based multi-criteria decision analysis, *Ecol. Indic.*, 154, <https://doi.org/10.1016/j.ecolind.2023.110653>, 2023.
- 180 Chhetri, T.B., Dawadi, B., and Dhital, Y.P.: Detection of a Tornado Event on 31 March 2019 and Its Effects on the Eastern Part of Nepal, *Indian Journal of Science and Technology*, 12(38), <https://doi.org/10.17485/ijst/2019/v12i38/146311>, 2019.
- 185 ~~[Centre for Research on the Epidemiology of Disasters \(CRED\), University of Louvain \(UCLouvain\)](#).: [The Emergency Events Database \(EM-DAT\) \[data set\]](#), <https://public.emdat.be/>, 2024.~~
- [Ciurean, R., Gill, J., Reeves, H.J., O'Grady, S., and Aldridge, T.: Review of multi-hazards research and risk assessments, British Geological Survey, Nottingham](#), <https://nora.nerc.ac.uk/id/eprint/524399>, 2018.
- 190 [Claassen, J.N., Ward, P.J., Daniell, J., Koks, E.E., Tiggeloven, T., and de Ruiter, M.C.: A new method to compile global multi-hazard event sets, Sci. Rep.](#), 13(1), 13808, <https://doi.org/10.1038/s41598-023-40400-5>, 2023.
- [Danegulu, A., Karki, S., Bhattarai, P.K., and Pandey, V.P.: Characterizing urban flooding in the Kathmandu Valley, Nepal: the influence of urbanization and river encroachment, Nat. Hazards](#), 1-25, <https://doi.org/10.1007/s11069-024-06650-w>, 2024.

- 1195 De Angeli, S., Malamud, B.D., Rossi, L., Taylor, F.E., Trasforini, E., and Rudari, R.: A multi-hazard framework for spatial-temporal impact analysis, *Int. J. Disast. Risk Re.*, 73, <https://doi.org/10.1016/j.ijdr.2022.102829>, 2022.
- De Brito, M.M.: Compound and cascading drought impacts do not happen by chance: A proposal to quantify their relationships, *Sci. Total Environ.*, 778, <https://doi.org/10.1016/j.scitotenv.2021.146236>, 2021.
- 1200 [De Maio, F.V., De Stefano, R., Lanfranconi, C., Osmani, S., Fuggini, C., and Basso, P.: Deliverable D2.3: A diagnosis and assessment of the primary types of cascading impacts related to European areas. Multi-hazard and Risk-informed System for Enhanced Local and Regional Disaster Risk Management \(MEDiate\), 77, 2024.](#)
- [De Maisonnewe, C.B. and Bergal-Kuvikas, O.: Timing, magnitude and geochemistry of major Southeast Asian volcanic eruptions: identifying tephrochronologic markers, J. Quaternary Sci., 35\(1-2\), 272-287, https://doi.org/10.1002/jqs.3181, 2020.](#)
- Department of Urban Development and Building Construction (DUDBC): Department of Urban Development and Building Construction's Report on Squatter Settlements in Kathmandu Valley, DUDBC: Kathmandu, Nepal, 2010.
- 1205 DesInventar Sendai: <https://www.desinventar.net/>, last access: 26 February 2024.
- Dodman, D., Hayward, B., Pelling, M., Castan Broto, V., Chow, W., Chu, E., Dawson, R., Khirfan, L., McPhearson, T., Prakash, A., Zheng, Y., and Ziervogel, G.: Cities, Settlements and Key Infrastructure, in: *Climate Change 2022: Impacts, Adaptation and Vulnerability, Contribution of Working Group II to the Sixth Assessment Report of the Intergovernmental Panel on Climate Change*, Cambridge University Press, Cambridge, UK and New York, NY, USA, 907–1040, <https://doi.org/10.1017/9781009325844.008>, 2022.
- 1210 Dowse, L., Holland, G., Johnson, R., Li, R., and Aiken Winter, J.: Scoping Kathmandu: Exploring settlements, the city and the valley, CASS Faculty of Art, Architecture and Design, London Metropolitan University, https://www.academia.edu/9126743/Scoping_Kathmandu_Exploring_Settlements_the_City_and_the_Valley_by_AR_CSR, 2014.
- 1215 [Dunant, A., Robinson, T.R., Densmore, A.L., Rosser, N.J., Rajbhandari, R.M., Kinsey, M., Li, S., Awasthi, P.R., Van Wyk de Vries, M., Guragain, R., and Harvey, E.: Impacts from cascading multi-hazards using hypergraphs: a case study from the 2015 Gorkha earthquake in Nepal, EGUsphere \[preprint\], 1-28, https://doi.org/10.5194/egusphere-2024-1374, 2024.](#)
- 1220 [Duncan, M.J.: Multi-hazard assessments for disaster risk reduction: lessons from the Philippines and applications for non-governmental organisations, Ph.D. thesis, University College London, London, https://discovery.ucl.ac.uk/id/eprint/1452516, 2014.](#)
- 1225 Gautam, D., Adhikari, R., Jha, P., Rupakhety, R., and Yadav, M.: Windstorm vulnerability of residential buildings and infrastructures in south-central Nepal, *J. Wind Eng. Ind. Aerod.*, 198, <https://doi.org/10.1016/j.jweia.2020.104113>, 2020.

- Gautam, D., Thapa, S., Pokhrel, S., and Lamichhane, S.: Local level multi-hazard zonation of Nepal, *Geomat. Nat. Haz. Risk*, 12, <https://doi.org/10.1080/19475705.2021.1879941>, 2021.
- 1230 Gill, J.C., and Malamud, B.D.: Reviewing and visualising the interactions of natural hazards, *Rev. Geophys.*, 52(4), 680-722, <https://doi.org/10.1002/2013RG000445>, 2014.
- [Gill, J.C. and Malamud, B.D.: Hazard interactions and interaction networks \(cascades\) within multi-hazard methodologies, Earth Syst. Dynam., 7\(3\), 659-679, https://doi.org/10.5194/esd-7-659-2016, 2016.](https://doi.org/10.5194/esd-7-659-2016)
- Gill, J.C., and Malamud, B.D.: Anthropogenic processes, natural hazards, and interactions in a multi-hazard framework, *Earth-Science Reviews*, 166, 246-269, <https://doi.org/10.1016/j.earscirev.2017.01.002>, 2017.
- 1235 Gill, J.C., Malamud, B.D., Barillas, E.M., and Guerra Noriega, A.: Construction of regional multi-hazard interaction frameworks, with an application to Guatemala, *Nat. Hazard Earth Sys.*, 20(1), 149-180, <https://doi.org/10.5194/nhess-20-149-2020>, 2020.
- Gill, J.C., Hussain, E., and Malamud, B.D.: Workshop Report: Multi-Hazard Risk Scenarios for Tomorrow's Cities, *Tomorrow's Cities*, <http://dx.doi.org/10.7488/era/1005>, 2021a.
- 1240 ~~[Gill, J.C., Taylor, F.E., Duncan, M.J., Mohadjer, S., Budimir, M., Mdala, H., and Bukachi, V.: Invited perspectives: Building sustainable and resilient communities—recommended actions for natural hazard scientists, Nat. Hazard Earth Sys., 21\(1\), 187-202, https://doi.org/10.5194/nhess-21-187-2021, 2021b.](https://doi.org/10.5194/nhess-21-187-2021)~~
- ~~[Gill, J.C., Taylor, F.E., Duncan, M.J., Mohadjer, S., Budimir, M., Mdala, H., and Bukachi, V.: Invited perspectives: Building sustainable and resilient communities—recommended actions for natural hazard scientists, Nat. Hazard Earth Sys., 21\(1\), 187-202, https://doi.org/10.5194/nhess-21-187-2021, 2021b.](https://doi.org/10.5194/nhess-21-187-2021)~~
- 1245 ~~[https://doi.org/10.5194/nhess-21-187-2021, 2021b.](https://doi.org/10.5194/nhess-21-187-2021)~~
- [Gill, J., Duncan, M., Ciurean, R., Smale, L., Stuparu, D., and Schlumberger, J.: MYRIAD-EU D1.2 Handbook of Multi-hazard, Multi-Risk Definitions and Concepts, \(H2020 MYRIAD EU Project, grant agreement number 101003276. Retrieved from https://www.myriadproject.eu/wp-content/uploads/2022/11/D1_2_Handbook.pdf, 2022.](https://www.myriadproject.eu/wp-content/uploads/2022/11/D1_2_Handbook.pdf)
- 1250 ~~[Think Hazard: Bagmati, Nepal, https://thinkhazard.org/en/report/22351-nepal-central-bagmati, last access: 22 November 2021.](https://thinkhazard.org/en/report/22351-nepal-central-bagmati)~~
- Global Facility for Disaster Reduction and Recovery (GFDRR) Innovation Lab: Search: Nepal, GeoNode, https://www.geonode-gfdrrlab.org/search/?title__icontains=Nepal&limit=5&offset=0, last access: 22 November
- 1255 2021.
- [Gorman-Murray, A., McKinnon, S., Dominey-Howes, D., Nash, C.J., and Bolton, R.: Listening and learning: Giving voice to trans experiences of disasters, Gender Place Cult., 25\(2\), 166-187, https://doi.org/10.1080/0966369X.2017.1334632, 2018.](https://doi.org/10.1080/0966369X.2017.1334632)
- 1260 Government of Nepal, Ministry of Home Affairs: Disaster Risk Reduction National Strategic Plan of Action 2018 – 2030, United Nations Development Programme, Kathmandu, Nepal, 2018.

- Grant, M.J., and Booth, A.: A typology of reviews: an analysis of 14 review types and associated methodologies, *Health Info. Libr. J.*, 26(2), 91-108, <https://doi.org/10.1111/j.1471-1842.2009.00848.x>, 2009.
- Gustafsson, V.S., Hjerpe, M., and Strandberg, G.: Construction of a national natural hazard interaction framework: The case of Sweden, *Iscience*, 26(4), <https://doi.org/10.1016/j.isci.2023.106501>, 2023.
- 1265 Hochrainer-Stigler, S., Trogrlić, R.Š., Reiter, K., Ward, P.J., de Ruiter, M.C., Duncan, M.J., Torresan, S., Ciurean, R., Mysiak, J., Stuparu, D., and Gottardo, S.: Toward a framework for systemic multi-hazard and multi-risk assessment and management, *Iscience*, 26(5), <https://doi.org/10.1016/j.isci.2023.106736>, 2023.
- International Institute for Environment and Development (IIED): In the Grip of Drought, https://www.youtube.com/watch?v=GVVbGSzr_nc, last access: 13 August 2021, 2010.
- 1270 International Labour Organization (ILO): Nepal Labour Market Update, ~~Kathmandu~~, ILO Country Office for Nepal, Kathmandu, https://www.ilo.org/wcmsp5/groups/public/---asia/---ro-bangkok/---ilo-kathmandu/documents/publication/wcms_543497.pdf, 2017.
- James, K.L., Randall, N.P., and Haddaway, N.R.: A methodology for systematic mapping in environmental sciences, *Environmental evidence*, 5(1), 1-13, <https://doi.org/10.1186/s13750-016-0059-6>, 2016.
- 1275 Jäger, W.S., de Ruiter, M.C., Tiggeloven, T., and Ward, P.J.: What can we learn from global disaster records about multi-hazards and their risk dynamics?, *Nat. Hazard. Earth Sys. Discussions [preprint]*, <https://doi.org/10.5194/nhess-2024-134>, 25 July 2024.
- Kappes, M.S., Keiler, M., and Glade, T.: From Single- to Multi-Hazard Risk Analyses: a concept addressing emerging challenges, in: *Proceedings of the Mountain Risks International Conference*, edited by: Malet, J.P., Glade, T., and Casagli, N., 351–356, ISBN 2-95183317-1-5, 2010.
- 1280 Kargel, J.S., Leonard, G.J., Shugar, D.H., Haritashya, U.K., Bevington, A., Fielding, E.J., Fujita, K., Geertsema, M., Miles, E.S., Steiner, J., and Anderson, E.: Geomorphic and geologic controls of geohazards induced by Nepal's 2015 Gorkha earthquake. *Science*, 351(6269), aac8353, <https://doi.org/10.1126/science.aac8353>, 2015.
- 1285 Khan, S.: A geographical assessment of hazardscape of Wellington region: influences on intra-regional response. Ph.D. thesis, Victoria University of Wellington, Wellington, 421, <https://doi.org/10.26686/wgtn.16968442>, 2009.
- Khanal, K., and Khanal, S.P.: The Study of Slum Definitions, its Demographic Characteristic and Distribution Patterns in Kathmandu Valley, Nepal, *Nepal Journal of Mathematical Sciences*, 3(1), 59-74, <https://doi.org/10.3126/njmathsci.v3i1.44126>, 2022.
- 1290 Khatakho, R., Gautam, D., Aryal, K.R., Pandey, V.P., Rupakhety, R., Lamichhane, S., Liu, Y.C., Abdouli, K., Talchabadel, R., Thapa, B.R., and Adhikari, R.: Multi-hazard risk assessment of Kathmandu Valley, Nepal, *Sustainability*, 13(10), <https://doi.org/10.3390/su13105369>, 2021.
- Lee, R., White, C.J., Adnan, M.S.G., Douglas, J., Mahecha, M.D., O'Loughlin, F.E., Patelli, E., Ramos, A.M., Roberts, M.J., Martius, O., and Tubaldi, E.: Reclassifying historical disasters: From single to multi-hazards, *Sci. Total Environ.*, 912, 169120, <https://doi.org/10.1016/j.scitotenv.2023.169120>, 2024.

- 1295 Leonard, M., Westra, S., Phatak, A., Lambert, M., van den Hurk, B., McInnes, K., Risbey, J., Schuster, S., Jakob, D., and Stafford-Smith, M.: A compound event framework for understanding extreme impacts, *Wiley Interdisciplinary Reviews: Clim. Change*, 5(1), 113-128, <https://doi.org/10.1002/wcc.252>, 2014.
- Liang, E., Dawadi, B., Pederson, N., Piao, S., Zhu, H., Sigdel, S.R., and Chen, D.: Strong link between large tropical volcanic eruptions and severe droughts prior to monsoon in the central Himalayas revealed by tree-ring records, *Sci. Bull.*, 64(14), 1018-1023, <https://doi.org/10.1016/j.scib.2019.05.002>, 2019.
- 1300 Liu, B., Siu, Y.L., and Mitchell, G.: Hazard interaction analysis for multi-hazard risk assessment: a systematic classification based on hazard-forming environment, *Nat. Hazard. Earth Sys.*, 16(2), 629-642, <https://doi.org/10.5194/nhess-16-629-2016>, 2016.
- Mallapaty, S.: Nepali scientists record country's first tornado, *Springer Nature*, <https://doi.org/10.1038/d41586-019-01159-w>, <https://www.nature.com/articles/d41586-019-01159-w>, last access: 13 June 2023, 2019.
- 1305 Manning, J.: Becoming a decolonial feminist ethnographer: Addressing the complexities of positionality and representation. *Manage. Learn.*, 49(3), 311-326, <https://doi.org/10.1177/1350507617745275>, 2018.
- Matanó, A., de Ruiter, M.C., Koehler, J., Ward, P.J., and Van Loon, A.F.: Caught Between Extremes: Understanding Human-Water Interactions During Drought-To-Flood Events in the Horn of Africa, *Earth's Future*, 10, <https://doi.org/10.1029/2022EF002747>, 2022.
- 1310 [Mishra, B.K., Kobayashi, K., Murata, A., Fukui, S., and Suzuki, K.: Hydrologic modeling and flood-frequency analysis under climate change scenario, *Modeling Earth Systems and Environment*, 10, 1-13, https://doi.org/10.1007/s40808-024-02082-4, 2024.](#)
- Mishra, M.: Fieldwork among Women in Nepal: A Female Researcher Revisits Her Experience, *Dhaulagiri Journal of Sociology and Anthropology*, 12, 27-36, <https://doi.org/10.3126/dsaj.v12i0.22177>, 2018.
- 1315 Murray, V., Abrahams, J., Abdallah, C., Ahmed, K., Angeles, L., Benouar, D., Brenes Torres, A., Chang Hun, C., Cox, S., Douris, J., Fagan, L., Fra Paleo, U., Han, Q., Handmer, J., Hodson, S., Khim, W., Mayner, L., Moody, N., Moraes, L.L., Osvaldo; Nagy, M., Norris, J., Peduzzi, P., Perwaiz, A., Peters, K., Radisch, J., Reichstein, M., Schneider, J., Smith, A., Souch, C., Stevance A. Triyanti, A., Weir, M., and Wright, N.: Hazard Information Profiles: Supplement to UNDRR-ISC Hazard Definition & Classification Review: Technical Report, ~~Geneva, Switzerland~~, United Nations Office for Disaster Risk Reduction and, ~~Paris, France~~, International Science Council, <https://doi.org/10.24948/2021.05>, 2021.
- 1320 [Mustafa, D.: The Production of an Urban Hazardscape in Pakistan: Modernity, Vulnerability, and the Range of Choice, *Ann. Assoc. Am. Geogr.*, 95\(3\), 566–586, https://doi.org/10.1111/j.1467-8306.2005.00475.x, 2005.](#)
- 1325 [National Statistics Office, Government of Nepal \(National Statistics Office\): National Population and Housing Census 2021 \(National Report\), National Statistics Office, Government of Nepal, Kathmandu, 614 pp., ISBN 978-9937-1-3221-3, 2023.](#)

- Nehren, U., Subedi, J., Yanakieva, I., Sandholz, S., Pokharel, J., Lal, A.C., Pradhan-Salike, I., Marfai, M.A., Hadmoko, D.S., and Straub, G.: Community perception on climate change and climate-related disaster preparedness in Kathmandu Valley, Nepal, *JNRD-Journal of Natural Resources and Development*, 3, 35-57, <https://doi.org/10.5027/jnrd.v3i0.04>, 2013.
- Nepal Disaster Risk Reduction Portal (Nepal DRR Portal): <https://drportal.gov.np/>, last access: 11 April 2024.
- Nepali Times: The Tamang epicentre, <https://archive.nepalitimes.com/article/nation/april-25-earthquake-tamang-epicentre.2407>, last access: 1 September 2021, 2015.
- Nepali Times: In Nepal's weather, erratic is the new normal, <https://www.nepalitimes.com/here-now/in-nepals-weather-erratic-is-the-new-normal/>, last access: 2 September 2021, 2019.
- Neri, A., Aspinall, W.P., Cioni, R., Bertagnini, A., Baxter, P.J., Zuccaro, G., Andronico, D., Barsotti, S., Cole, P.D., Ongaro, T.E., and Hincks, T.K.: Developing an event tree for probabilistic hazard and risk assessment at Vesuvius, *J. Volcanol. Geoth. Res.*, 178(3), 397-415, <https://doi.org/10.1016/j.jvolgeores.2008.05.014>, 2008.
- Osuteye, E., Johnson, C., and Brown, D.: The data gap: An analysis of data availability on disaster losses in sub-Saharan African cities, *Int. J. Disast. Risk Re.*, 26, 24-33, <https://doi.org/10.1016/j.ijdr.2017.09.026>, 2017.
- [Owolabi, T.A. and Sajjad, M.: A global outlook on multi-hazard risk analysis: A systematic and scientometric review, Int. J. Disast. Risk Re., 92, 103727, https://doi.org/10.1016/j.ijdr.2023.103727, 2023.](https://doi.org/10.1016/j.ijdr.2023.103727)
- Ozkazanc-Pan, B.: Postcolonial feminist research: challenges and complexities, *Equality, Diversity and Inclusion: An International Journal*, <https://doi.org/10.1108/02610151211235532>, 2012.
- [Panta N.: Damage and Loss Data Standards for BIPAD, Youth Innovation Lab, Kathmandu, 20 pp., 2020.](#)
- Paudyal, K., Baral, H., Burkhard, B., Bhandari, S.P., and Keenan, R.J.: Participatory assessment and mapping of ecosystem services in a data-poor region: Case study of community-managed forests in central Nepal, *Ecosyst. Serv.*, 13, 81-92, <https://doi.org/10.1016/j.ecoser.2015.01.007>, 2015.
- [Payo, A., Arnhardt, R., Galindo, A.C.R., Van Dong, P., Guzman, M.A.L.G., Hatta, Y.O., Bevan, A., and Monje, J.C.N.: Developing an open database to support forensic investigation of disasters in South East Asia: FORINSEA v1. 0, Front. Earth Sci., 10, 833599, https://doi.org/10.3389/feart.2022.833599, 2022.](https://doi.org/10.3389/feart.2022.833599)
- [Pelling, M., Maskrey, A., Ruiz, P., Hall, L., Peduzzi, P., Dao, Q.H., Mouton, F., Herold, C., and Kluser, S.: Reducing disaster risk: a challenge for development, United Nations Development Bank, Bureau for Crisis Prevention and Recovery, New York, 161, ISBN 9211261600, 2004.](#)
- [Poudel, D.P., Ensor, J., and Barcena, A.: Production of Risks and Local Risk Governance in Kathmandu Valley: Tomorrow's Cities Working Paper, Tomorrow's Cities, 36, http://dx.doi.org/10.7488/era/1947, 2021.](http://dx.doi.org/10.7488/era/1947)
- Pradhan, B., Sharma, P., and Pradhan, P.K.: Urban growth and environment and health hazards in Kathmandu Valley, Nepal, in: *Urban Health Risk and Resilience in Asian Cities*, edited by: Singh, R.B., Srinagesh B., and Anand, S., Springer, 293-324, https://doi.org/10.1007/978-981-15-1205-6_17, 2020.

- Pradhan-Salike, I., and Pokharel, J.R.: Impact of urbanisation and climate change on urban flooding: a case of the Kathmandu valley, *JNRD-Journal of Natural Resources and Development*, 7, 56-66, <https://doi.org/10.5027/jnrd.v7i0.07>, 2017.
- 1365 Rajendran, C.P.: Constraints on previous earthquakes from the liquefaction sites in the Kathmandu Valley associated with the 2015 Gorkha earthquake and their regional implications, *Quatern. Int.*, 585, 44-54, <https://doi.org/10.1016/j.quaint.2020.10.053>, 2021.
- ReliefWeb: Nepal: Floods and Landslides - Jun 2021, <https://reliefweb.int/disaster/fl-2021-000134-npl>, last access: 8 September 2021.
- 1370 [Riddell, G.A., van Delden, H., Maier, H.R., and Zecchin, A.C.: Exploratory scenario analysis for disaster risk reduction: Considering alternative pathways in disaster risk assessment, *Int. J. Disast. Risk Re.*, 39, 101230, <https://doi.org/10.1016/j.ijdr.2019.101230>, 2019.](#)
- [Royal Academy of Engineering: Building resilience: lessons from the Academy's review of the National Security Risk Assessment methodology, *Royal Academy of Engineering*, 58 pp., 2023.](#)
- 1375 Šakić Trogrlić, R., Donovan, A., and Malamud, B.D.: Invited perspectives: Views of 350 natural hazard community members on key challenges in natural hazards research and the Sustainable Development Goals, *Nat. Hazard. Earth Syst.*, 22(8), 2771-2790, <https://doi.org/10.5194/nhess-22-2771-2022>, 2022.
- Šakić Trogrlić, R., Reiter, K., Ciurean, R.L., Gottardo, S., Torresan, S., Daloz, A.S., Ma, L., Fumero, N.P., Tatman, S., Hochrainer-Stigler, S., and de Ruiter, M.C.: Challenges in assessing and managing multi-hazard risks: A European stakeholders perspective, *Environ. Sci. Policy*, 157, 103774, <https://doi.org/10.1016/j.envsci.2024.103774>, 2024a.
- 1380 Šakić Trogrlić, R., Thompson, H.E., Menteşe, E.Y., Hussain, E., Gill, J.C., Taylor, F.E., Mwangi, E., Öner, E., Bukachi, V.G., and Malamud, B.D.: Multi-hazard Interrelationships and Risk Scenarios in Urban Areas: A Case of Nairobi and Istanbul, *Earth's Future*, 12, e2023EF004413, <https://doi.org/10.1029/2023EF004413>, 2024b.
- 1385 Scolobig, A., Prior, T., Schröter, D., Jörin, J., and Patt, A.: Towards people-centred approaches for effective disaster risk management: Balancing rhetoric with reality, *Int. J. Disast. Risk Re.*, 12, 202-212, <https://doi.org/10.1016/j.ijdr.2015.01.006>, 2015.
- [Scolobig, A., Komendantova, N., and Mignan, A.: Mainstreaming multi-risk approaches into policy, *Geosciences*, 7\(4\), 129, <https://doi.org/10.3390/geosciences7040129>, 2017.](#)
- 1390 Secor, A.J.: Chapter 12: Social Surveys, Interviews, and Focus Groups, in: *Research Methods in Geography: A Critical Introduction*, edited by: Gomez, B., and Jones III, J.P., Blackwell Publishing, 194-205, ISBN 978-1-444-32773-1, 2010.
- [Sharma, V. and Biswas, R.: Statistical analysis of seismic b-value using non-parametric Kolmogorov-Smirnov test and probabilistic seismic hazard parametrization for Nepal and its surrounding regions, *Nat. Hazards*, 120, 1-28, <https://doi.org/10.1007/s11069-024-06531-2>, 2024.](#)
- 1395

- Sharma, S., Talchabhadel, R., Nepal, S., Ghimire, G.R., Rakhali, B., Panthi, J., Adhikari, B.R., Pradhanang, S.M., Maskey, S., and Kumar, S.: Increasing risk of cascading hazards in the central Himalayas, *Nat. Hazards*, 119(2), 1117-1126, <https://doi.org/10.1007/s11069-022-05462-0>, 2023.
- Southasia Institute of Advanced Studies (SIAS): *Post Earthquake Disaster Governance in Nepal: Reflections from Practice and Policy*; Nepal South Asia Institute of Advanced Studies: Kathmandu, Nepal, 2016.
- 1400 Spoon, J., Hunter, C.E., Gerkey, D., Chhetri, R.B., Rai, A., Basnet, U., and Dewan, A.: Anatomy of disaster recoveries: Tangible and intangible short-term recovery dynamics following the 2015 Nepal earthquakes, *Int. J. Disast. Risk Re.*, 51, <https://doi.org/10.1016/j.ijdr.2020.101879>, 2020.
- 1405 Stolte, T.R., Koks, E.E., de Moel, H., Reimann, L., van Vliet, J., de Ruiter, M.C., and Ward, P.J.: *Report on VulneraCity – drivers and dynamics of urban vulnerability based on a global systematic literature review*, MYRIAD-EU project, <https://doi.org/10.5281/zenodo.12755274>, 2024.
- Strong, K., Carpenter, O., and Ralph, D.: *Scenario Best Practices: Developing Scenarios for Disaster Risk Reduction*, Cambridge Centre for Risk Studies at the University of Cambridge Judge Business School and Lighthill Risk Network, 44 pp., 2020.
- 1410 Subedi, B.: Theorising a ‘halfie’ researcher’s identity in transnational fieldwork, *International Journal of Qualitative Studies in Education*, 19(5), 573-593, <https://doi.org/10.1080/09518390600886353>, 2006.
- Survey Department, Government of Nepal.: *New political and administrative boundaries*, Shapefile of Nepal, Open Data Nepal [data set], <https://opendatanepal.com/dataset/new-political-and-administrative-boundaries-shapefile-of-nepal>, 2020.
- 1415 Takai, N., Shigefuji, M., Rajaure, S., Bijukchhen, S., Ichyanagi, M., Dhital, M.R., and Sasatani, T.: Strong ground motion in the Kathmandu Valley during the 2015 Gorkha, Nepal, earthquake, *Earth Planets Space*, 68(1), 1-8, <https://doi.org/10.1186/s40623-016-0383-7>, 2016.
- Tamrakar, A. and Bajracharya, R.: *Standardization of Loss and Damage Datasets on BIPAD*, Youth Innovation Lab, Kathmandu, 33 pp., 2020.
- 1420 Tarvainen, T., Jarva, J., and Greiving, S.: Spatial pattern of hazards and hazard interactions in Europe, *Geol. S. Finl.*, 42, 2006.
- Taylor, F.E., Malamud, B.D., Freeborough, K., and Demeritt, D.: Enriching Great Britain’s national landslide database by searching newspaper archives, *Geomorphology*, 249, 52-68, <https://doi.org/10.1016/j.geomorph.2015.05.019>, 2015.
- Taylor, F.E., Millington, J.D., Jacob, E., Malamud, B.D., and Pelling, M.: Messy maps: Qualitative GIS representations of resilience, *Landscape Urban Plan.*, 198, <https://doi.org/10.1016/j.landurbplan.2020.103771>, 2020.
- 1425 *The World Factbook: Nepal*, <https://www.cia.gov/the-world-factbook/countries/nepal/>, last access: 19 October 2021. *Think Hazard: Bagmati, Nepal*, <https://thinkhazard.org/en/report/22351-nepal-central-bagmati>, last access: 22 November 2021.

- 1430 Thompson, H.E., Gill, J.C., Šakić Trogrlić, R., Taylor, F.E. and Malamud, B.D.: Kathmandu Valley Single Hazards and Multi-Hazard Interrelationships Database, Zenodo [data set], <https://doi.org/10.5281/zenodo.13749299>, 2024.
- Tilloy, A., Malamud, B.D., Winter, H., and Joly-Laugel, A.: A review of quantification methodologies for multi-hazard interrelationships, *Earth-Science Reviews*, 196, <https://doi.org/10.1016/j.earscirev.2019.102881>, 2019.
- Titz, A.: Geographies of doing nothing—internal displacement and practices of post-disaster recovery in urban areas of the Kathmandu valley, Nepal, *Soc. Sci.*, 10(3), <https://doi.org/10.3390/socsci10030110>, 2021.
- 1435 Tiwari, R.K. and Paudyal, H.: Analysis of the b, p values, and the fractal dimension of aftershocks sequences following two major earthquakes in central Himalaya, *Heliyon*, 10(2), E24476, <https://doi.org/10.1016/j.heliyon.2024.e24476>, 2024.
- Tomorrow's Cities: Urban Risk in Transition, <https://tomorrowcities.org/>, last access: 19 October 2021.
- United Nations Development Programme (UNDP): Bureau for Crisis Prevention and Recovery, Reducing disaster risk: a challenge for development, United Nations Development Programme, New York, ISBN 92-1-126160-0, 2004.
- 1440 United Nations Office for Disaster Risk Reduction (UNDRR): Sendai Framework for Disaster Risk Reduction 2015-2030, United Nations General Assembly, <https://www.preventionweb.net/files/resolutions/N1516716.pdf>, 2015.
- United Nations Office for Disaster Risk Reduction (UNDRR): Terminology: Disaster impact, <https://www.undrr.org/terminology/disaster>, last access: 10 September 2024, 2017a.
- United Nations Office for Disaster Risk Reduction (UNDRR): Terminology: Hazard, <https://www.undrr.org/terminology/hazard>, last access: 20 October 2021, 2017b.
- 1445 United Nations Office for Disaster Risk Reduction (UNDRR): Disaster Risk Reduction in Nepal: Status Report 2019, ~~United Nations Office for Disaster Risk Reduction (UNDRR)~~, Regional Office for Asia and the Pacific, Bangkok, Thailand, 2019.
- United Nations Office for Disaster Risk Reduction (UNDRR): The Report of the Midterm Review of the Implementation of the Sendai Framework for Disaster Risk Reduction 2015–2030, UNDRR, Geneva, Switzerland, 2023.
- 1450 United Nations Office for Disaster Risk Reduction (UNDRR) and La Red de Estudios Sociales en Prevención de Desastres en América Latina (LA RED): DesInventar Sendai (Sistema de Inventario de Desastres Sendai), UNDRR [data set], <https://www.desinventar.net/DesInventar/>, 2024.
- Van Westen, C., Kappes, M.S., Luna, B.Q., Frigerio, S., Glade, T., and Malet, J.P.: Medium-scale multi-hazard risk assessment of gravitational processes, in: Mountain risks: from prediction to management and governance, edited by: Van Asch, T., Corominas, J., Greiving, S., Malet, J.P., and Sterlacchini, S., Springer, Dordrecht, 201-231, https://doi.org/10.1007/978-94-007-6769-0_7, 2014.
- 1455 ~~Ward, P.J., Daniell, J., Duncan, M., Dunne, A., Hananel, C., Hochrainer-Stigler, S., ... and De Ruiter, M.C. Tjissen, A., Torresan, S., Ciurean, R., Gill, J., and Sillmann, J.:~~ Invited perspectives: A research agenda towards disaster risk management pathways in multi-(hazard-) risk assessment, *Nat. Hazard Earth Sys.*, 22(4), 1487-1497, <https://doi.org/10.5194/nhess-22-1487-2022>, 2022.
- 1460

- Whelley, P.L., Newhall, C.G., and Bradley, K.E.: The frequency of explosive volcanic eruptions in Southeast Asia, *B. Volcanol.*, 77, 1-11, <https://doi.org/10.1007/s00445-014-0893-8>, 2015.
- 1465 Whitworth, M.R.Z., Boulton, S., and Jones, J.: Implementing the Sendai Framework in developing countries using remote sensing techniques for the evaluation of natural hazards, International Association of Lowland Technology (IALT), Special Issue on: Engineering Geology and Geotechniques for Developing Countries, 2020.
- Wilmsen, C.: Chapter 10: Extraction, empowerment, and relationships in the practice of participatory research, in: Towards Quality Improvement of Action Research, edited by: Boog, B., Slager, M., Preece, J., and Zeelen, J., Brill, 135-146, ISBN: 978-90-8790-594-1, 2008.
- 1470 Wolf, D.L.: Chapter 1: Situating Feminist Dilemmas in Fieldwork, in: Feminist Dilemmas in Fieldwork, edited by: Wolf, D.L., Routledge, <https://doi.org/10.4324/9780429493843-1>, 2018.
- World Bank Group and Asian Development Bank: Climate Risk Country Profile: Nepal, <https://climatenepal.org.np/resources/climate-risk-country-profile>, last access: 21 October 2021.
- 1475 Ybañez, R., Lagmay, A.M.F., and Malamud, B.: A Systematic Overview of Hazard Interrelationships in the Philippines, *EGU24*, 14–19 April 2024, EGU24-4275, <https://doi.org/10.5194/egusphere-egu24-4275>, 2024.
- ~~Youth Innovation Lab.: Damage and Loss Data Standards for BIPAD, 2020a.~~
- ~~Youth Innovation Lab.: Standardisation of Loss and Damage Datasets on BIPAD, 2020b.~~
- Zuccaro, G., De Gregorio, D., and Leone, M.F.: Theoretical model for cascading effects analyses, *Int. J. Disast. Risk Re.*, 30, 199-215, <https://doi.org/10.1016/j.ijdrr.2018.04.019>, 2018.