

Assessing LISFLOOD-FP with the next generation Digital Elevation Model FABDEM using household survey and remote sensing data in the Central Highlands of Vietnam~~Assessing the next generation of Global Flood Models in the Central Highlands of Vietnam~~

5 Laurence Hawker¹, Jeffrey Neal¹, James Savage², Thomas Kirkpatrick¹, Rachel Lord¹, Yanos Zylberberg³, Andre Groeger⁴, Truong Dang Thuy⁵, Sean Fox¹, Felix Agyemang⁶, Pham Khanh Nam⁵

¹School of Geographical Sciences, University of Bristol, Bristol, BS8 1SS, UK

²Fathom, Bristol, BS8 1EJ, UK

³School of Economics, University of Bristol, Bristol, BS8 1TU, UK

10 ⁴Universitat Autònoma de Barcelona (UAB), Bellaterra, 08193, Spain and Barcelona School of Economics (BSE), Barcelona, 08005, Spain

⁵School of Economics, University of Economics Ho Chi Minh city, Ho Chi Minh city, 700000, Vietnam

⁶Department Planning and Environmental Management, University of Manchester, Manchester, M13 9PL, UK

Correspondence to: Laurence Hawker (laurence.hawker@bristol.ac.uk)

15 **Abstract.** Flooding is an endemic global challenge with annual damages totalling billions of dollars. Impacts are felt most acutely in in low and middle-income countries, where rapid demographic change is driving increased exposure. These areas also tend to lack high precision hazard mapping data with which to better understand or manage risk. To address this information gap a number of Global Flood Models have been developed in recent years. However, there is substantial uncertainty over the performance of these data products. Arguably the most important component of a Global Flood Model is the Digital Elevation Model (DEM), which must represent the terrain without surface artifacts such as forests and buildings. Here we develop and evaluate a next generation of global hydrodynamic flood model based on the recently released FABDEM DEM. We evaluate the model and compare to a previous version using the MERIT DEM at three study sites in the central highlands of Vietnam using two independent validation data sets based on a household survey and remotely sensed observations of recent flooding. The global flood model based on FABDEM consistently outperformed a model based on
20 MERIT, and the agreement between the model and remote sensing was greater than the agreement between the two validation data sets.

1 Introduction

Flooding is the most frequent and deadliest natural hazard, with annual flood damages totalling billions of dollars globally (Munichre, 2020). Fatalities and impacts on livelihoods from flooding are disproportionately felt in developing countries
30 (Jongman et al., 2012; Rentschler et al., 2022). Moreover, the impacts from flooding are expected to increase in the future due to climatic changes (Arnell and Gosling, 2016; Dottori et al., 2018) and expanding populations onto floodplains (Winsemius

et al., 2016), resulting in more people becoming exposed to flooding (Hirabayashi et al., 2021; Tellman et al., 2021; Rentschler et al., 2022) and a greater economic impact (Willner et al., 2018; Bates et al., 2023). Understanding the severity of flood hazard is crucial in informing planning decisions to protect people and assets and for emergency response. South-East Asia is particularly at risk from severe flooding, often driven by tropical cyclones (Chen et al., 2020). Using CMIP6 climate projections, Hirabayashi et al. (2021) observe an increase in flood frequency in South-East Asia and an increase in population exposed to flooding, with the region seeing one of the highest increases in population exposure globally.

Vietnam is one of the most flood prone countries in the world, with a long coastline, concentrated populations and assets in deltas and floodplains, and a susceptibility to heavy precipitation primarily driven by tropical cyclones (Nguyen et al., 2021). In the past 2 decades, Vietnam has the 7th highest number of recorded disasters, with 52% classed as hydrological events (Undrr, 2020). With population exposed to flooding already high in Vietnam (38% for 50 year return period with no flood protection), and set to increase to 46% (increase of 13-27% above current exposure) (Bangalore et al., 2019), there is a pertinent need to understand flood risk in Vietnam. In addition, there is a necessity to understand the socio-economic nuances that could exasperate or negate the risk, with Bui et al. (2014) finding from the Vietnam National Living Standard Survey of 2008 that natural disasters account for a ~6.9% reduction in household income, with floods and storms being the most common source of shock.

In this work, we focus on the Central Highlands of Vietnam and surrounding provinces. The region consists of the five largely mountainous inland provinces of Kon Tum, Gia Lai, Dak Lak, Dak Nong, and Lam Dong. To the east there are six coastal provinces named Quang Nam, Quang Ngai, Binh Dinh, Phu Yen, Khanh Hoa and Ninh Thuan. These eleven provinces are frequently hit by tropical cyclones, causing coastal, fluvial (river) and pluvial (surface) flooding. Examples of such events include Ketsana (2009), Mirinae (2009), Podul (2013), Damrey (2017) and Molave (2020), with Mirinae causing an estimated 122 fatalities (Digregario, 2013). Compared to other regions in Vietnam, especially the Mekong Delta (Dung et al., 2011; Apel et al., 2016; Triet et al., 2017; Triet et al., 2020) there have been a dearth of studies on flood risk in the Central Highlands, both from a physical and socio-economic perspective. A recent review of flood literature by Nguyen et al. (2021) found no studies in the Central Highland region (five inland provinces). The Central Highlands also has some of the highest levels of poverty in the country and extensive reliance on agriculture (Le et al., 2021), making this under-researched area suitable for further investigation.

Flood hazard is typically mapped by running computational calculations using a hydrodynamic model. These models use information about discharge, topography and river geometry to produce hazard estimates (typically water depth and extent), usually given in terms of an annual exceedance probability (AEP) (Sampson et al., 2015; Dottori et al., 2016; Trigg et al., 2016) or sometimes by simulating a past flood event (Neal et al., 2009; Wood et al., 2016; Wing et al., 2019; Wing et al., 2021; Alemu et al., 2023). Few locations have enough data to produce high quality flood hazard estimates, with these locations limited to the reach-scale or data-rich countries (e.g. UK or USA). Furthermore, where a good coverage of hazard maps does exist the quality and age of the underlying models can vary substantially and details regarding input data and model structure often go unreported (Bates, 2022). Global Flood Models (GFMs) can produce flood hazard information where high quality

models do not exist and provide a spatially consistent modelling framework that allows for direct comparisons of hazard and risk to be made between countries and regions e.g Rentschler et al. (2022).

70 However, as GFM's utilise global datasets and rely on model structures and parameterisations that have been developed and tested primarily in data rich locations (Sampson et al., 2015; Bates, 2022) there is considerable uncertainty over the efficacy of the model outputs in most locations. Studies comparing first generation GFMs (here defined as those developed
75 five to ten years ago) found substantial differences in simulated hazard and exposure from different modelling systems. For example, Aerts et al. (2020) identified a factor of four difference between GFMs with a range of resolutions and model structures, while even similar model structures with different climate forcings had a factor of two difference. Trigg et al. (2016) compared a similar set of first generation GFMs across the African continent finding that they disagree more than they agree
80 on the location of the 1-in-100 year floodplain and that agreement was particularly poor over deltas. Although, on large, confined floodplains model agreement could be much higher due to valley filling where the flood extent become insensitive to magnitude and process representation. Validation work undertaken by Bernhofen et al. (2018) found that agreement between historical floods over three African floodplains observed by the MODIS satellite and GFM hazard maps varied from 40% to 70% (critical success score). The sensitivity of simulated hazard and population exposure to return period was also surprisingly
85 low (Trigg et al., 2016), with analysis of historical satellite observations suggesting that overprediction of frequent floods was particularly problematic (Hawker et al., 2020). This bias can be expected in part due to a lack of flood defences and other anthropogenic mitigations in the GFMs, however low magnitude non-valley filling floods are also more difficult to simulate and are highly sensitive to the accuracy of elevation data and how floodplain-channel interactions are simplified in the GFM (Neal et al., 2021; Devitt et al., 2023). Furthermore, many early generation models focused on km+ resolution grids that tend
90 to inflate exposure estimates, especially for smaller floods, due to the tendency for people to live close to but not on hazardous floodplains (Smith et al., 2019). When assessing the utility of global data sets for riverine flood risk management at national scales for five countries, Bernhofen et al. (2022) still found poor agreement between the latest GFMs, and between population datasets.

These studies showed that fine resolution (substantially sub km) is necessary and that more validation work is needed
90 to understand the performance of different GFM frameworks across a range of locations and hazard magnitudes. A key input dataset to hydrodynamic models at the resolution needed for hazard mapping is gridded information on topography (Horritt and Bates, 2002), typically in the form of a Digital Elevation Model (DEM). Hydrodynamic models use topographic information to route flood water through floodplains, with the accuracy of the flood extent and depths a function of the similarity of the topographic data to reality. In general, a finer grid spacing in elevation datasets results in more accurate flood
95 predictions (Fewtrell et al., 2011; Saksena and Merwade, 2015). However, finer resolution hydrodynamic simulations can yield superfluous detail at a high computational cost (Savage et al., 2016), while small increases in the ratio of DEM vertical errors to floodwater depths can substantially alter flood simulations. Thus, finer resolution simulations should generally be justified by a commensurate DEM vertical accuracy. The ability of a DEM and model to correctly represent river-floodplain interactions is also a key factor impacting the accuracy of flood simulations.

100 To validate GFMs, comparisons are either made to other hazard models (Trigg et al., 2016; Bernhofen et al., 2018; Fleischmann et al., 2019; Aerts et al., 2020; Bernhofen et al., 2022) or remotely sensed imagery from satellite missions [e.g. MODIS, Sentinel] (Bates et al., 2004). Remotely sensed imagery is popular due to its global coverage, adequate resolution and availability to use on many platforms. However, remotely sensed imagery has drawbacks: the acquisition time may not match a flood event, and even if it does artifacts in the imagery such as clouds and emergent objects (e.g. vegetation and buildings) will affect the quality of the image classification. Additional validation against terrestrial observations can therefore enhance confidence by providing an independent alternative assessment of model performance. Common terrestrial validation data sources used at the reach scale include wrack/water marks (Neal et al., 2009), gauging stations, surveys and reports of fatalities/financial losses (Zischg et al., 2018). However, these have had limited use for GFM validation outside some data rich countries (Bates et al., 2010). Here, we conduct a GFM validation in Vietnam, a particularly flood-prone country classified as a lower-middle income by the World Bank.

105 As part of the FIERCE project, we conducted a household survey of three flood-prone villages in Dak Lak Province in the Central Highlands of Vietnam. A component of this household survey asked participants to geolocate previous floods in their land parcels. Such data has not been previously used to validate GFMs, but similar data types have been used to validate local models (Rollason et al., 2018; Petersson et al., 2020). Unlike other disciplines, validation sources are rarely cross-referenced in flood model evaluation, thus with the data available here we can analyse the effectiveness of household survey data to validate GFMs and compare it to remotely sensed imagery.

115 The overall aim of this research are (a) to integrate the latest global DEM data into an existing GFM, (b) cross-validate this model with remote sensing imagery and household survey data, and (c) compare with previous versions and discuss the impact this has on hazard and population exposure estimates.

120 **2 Hydrodynamic Modelling Materials and methods**

Hydrodynamic simulations were conducted using the University of Bristol/Fathom Global Flood Model (GFM) (Sampson et al., 2015). Since this model has been described elsewhere only a brief description of the primary model components is included here with references to more detailed model descriptions. The model utilises a 1D approximation of the St Venant equations that neglects convective acceleration terms (Bates et al., 2010) to provide rapid yet accurate simulations under gradually varied flow conditions. To help represent floodplain dynamics across a large domain, a sub-grid channel structure is used where the governing equations are arranged on a 2D gridded floodplain with a 1D river network embedded in the grid as described in the LISFLOOD-FP model (Neal et al., 2012).

125 All river basins with an upstream catchment area $>50\text{km}^2$ are simulated, with river network information taken from resampling MERIT-Hydro (Yamazaki et al., 2019) to 1 arc second, which is the finest DEM resolution used in this study. Model boundary conditions are generated from a regionalised flood frequency analysis calculated at a global scale (Smith et al., 2015), which links river discharge and rainfall measurements in gauged catchments to ungauged catchments based on

climatological and upstream catchment characteristics. This approach is necessary for our study area as the gauge record is sparse and temporally limited. River bathymetry for the sub-grid channels is estimated from the flood frequency, DEM and river network data as described by Neal et al. (2021). As a result, flood hazard estimates (inundation extent and water depth) are produced in terms of a return period (RP), or its inverse and annual exceedance probability (AEP).

All catchments with an upstream area of less than 50km² are represented within a pluvial flood model. The pluvial model utilises the same channel network as the fluvial model, but simulates rainfall directly onto the DEM using the same LISFLOOD-FP solver (following the method introduced by Sampson et al. (2013)). Pluvial boundary conditions are determined by the global rainfall Intensity-Duration-Frequency (IDF) relationships (methodology described by Sampson et al. (2015)). These relationships are calculated for a number of locations globally, are pooled together and split by climate classification (based on the Koppen-Geiger classifications), with Annual Average Rainfall and climate classification used as predictors in selecting the appropriate IDF relationships for the location of interest. Again, such an approach is necessary as pre-existing IDF relationships do not exist for our study locations. We simulate pluvial flooding for the 1, 6 and 24 hour extreme rainfall durations which are combined (taking the max of each layer) to produce a pluvial flood hazard estimate, in the same format as the fluvial approach.

2.1 Evolution of GFM DEM data and treatment of DEM data in this research

The University of Bristol/Fathom GFM has been implemented with a variety of DEMs, with the FABDEM implementation in this paper the most recent addition. For national scale implementations, such as Bates et al., 2010 in the US and Bates et al., 2023 in the UK, significant improvements in inundation accuracy over global models have been shown where LiDAR derived elevations makes up a high proportion of the DEM. The global scale DEM (GDEM) data available for GFM simulations has undergone significant development over the last two decades. Below we review the major developments in GFM relevant global DEMs before setting out the two DEM's that will be compared in this paper.

The Shuttle Radar Topography Mission (SRTM) DEM has been the topographic dataset of choice for the majority of GFMs as it provides openly accessible elevation data at a 3 arc-second grid spacing (~90m at the equator), between 56°S to 60°N and with a mean average error of ~6m (Rodriguez et al., 2006). SRTM has errors from noise and striping, and biases from vegetation and buildings that are not conducive to high quality hydrodynamic simulations that require information on the terrain of the earth as opposed to the surface. In other words, hydrodynamic models require a Digital Terrain Model (DTM) as opposed to a Digital Surface Model (DSM). The MERIT DEM (Yamazaki et al., 2017) reduced most of these aforementioned errors, except buildings, and thus became an improved SRTM derived source of 3 arc second topographic information to use in GFMs (Hawker et al., 2020). In 2020, SRTM was reprocessed to create NASADEM, at 1 arc-second resolution (~30m at the equator) (Crippen et al., 2016), however this dataset includes vegetation and buildings in the terrain models, limiting its current potential for flood hazard mapping.

The TanDEM-X mission by German Space Agency (DLR) produced a global DEM passed on multiple satellite overpasses between 2011-2015 (Rizzoli et al., 2017). A free-to-download version at 3 arc seconds grid spacing (~90m) called

165 TanDEM-X 90 was released in 2019 and was found to be more accurate in floodplain locations than other contemporary global
DEMs, except if the floodplain contained trees (Hawker et al., 2019). Subsequently, a 1 arc second (~30m) version was released
with additional processing called Copernicus GLO-30 (referred to hereafter as COPDEM30) (Airbus, 2020). Nevertheless,
both TanDEM-X 90 and COPDEM30 are still DSMs. A further popular global DEM is ALOS AW3D30 DSM (hereafter
170 ALOS) produced by JAXA (Tadono et al., 2016; Takaku et al., 2020). The ALOS DEM is at 1 arc second grid spacing, and
since version 3.2, has global coverage. ALOS differs to the global DEMs mentioned here as it is produced using
photogrammetry, rather than radar interferometry.

Numerous studies have assessed the impact of DEMs on model quality for both GFMs and bespoke local models
(Archer et al., 2018; Mcclean et al., 2020). With the recent evolution of global DEMs many of these studies have reduced
relevance as they do not consider the most recent versions, or exclude some DEMs entirely. Garrote (2022) found COPDEM30
175 had clear improvements for flood simulations over 7 other global DEMs for a case study in Mozambique, suggesting
COPDEM30 is the benchmark GDEM for GFMs. Recently, FABDEM (Forest And Building removed Copernicus Digital
Elevation Model) has been released (Hawker et al., 2022b). FABDEM removes buildings and forests from the Copernicus
30m DEM (COPDEM30) (Airbus, 2020) using a Random Forest machine learning method, providing a first global terrain
map at 1 arc-second grid spacing (~30m at the equator). Prior to the release of FABDEM, Guth and Geoffroy (2021) noted
180 that the Copernicus GLO-30 DEM should become the ‘gold standard’ for global DEMs, thus superseding SRTM and other
global DEMs. FABDEM has been found to be more accurate than both Copernicus GLO-30 and the current global DEM of
choice for GFM simulations – MERIT DEM (Hawker et al., 2022b). For instance, in floodplains, the mean error of FABDEM
was -0.03m for FABDEM, and 0.17m and 0.66m for Copernicus GLO-30 and MERIT DEM respectively. FABDEM is
available from data.bris.ac.uk. Due to the infancy of FABDEM, there has been limited assessment of it’s use in hydrodynamic
185 models (Guan et al., 2023; Iqbal et al., 2023), and none using a GFM. Example GFM simulations on SRTM, MERIT and
FABDEM are plotted in Fig. 1 for illustrative purposes, issues with noise in the original SRTM data can be clearly seen in Fig.
1 a) as water is unable to propagate far over the floodplain from the channel. Therefore, in this study we compare two versions
of GFMs, both based on global terrain data. These two versions are GFM MERIT (i.e. using MERIT DEM at 3 arc second
grid spacing) and GFM FABDEM ((using FABDEM at 1 arc second grid spacing). We chose not to examine other GDEMs
190 as they are nominally DSMs. Note the version of FABDEM used was FABDEM V1.0.

3 Model Evaluation Materials and Methods

This study uses a unique mixture of 2 validation data sets: (i) on-the-ground observations of flooding taken from a
household survey, and (ii) remotely sensed imagery from the Sentinel 1 satellite.

3.1 House Survey Data

195 In October 2019, an extensive household survey was conducted by the authors in four flood-prone villages in Dak
Lak Province. In total, 947 households and approximately 4,000 individuals were surveyed on topics covering health,
education, occupation, income, consumption, transfers, credit, assets, risk/shocks. In the risks/shocks section, respondents were
asked to identify their land parcels from a cadastral map, and whether the land parcel(s) had flooded in the last 10 years.
Respondents subsequently gave the month and year of the flood of their parcel. This dataset provides a unique opportunity to
200 corroborate flood observations with remotely sensed flood observations, as well as to test the accuracy of the flood simulations
from the hydrodynamic model. Additionally, the corroboration of datasets will allow us to assess the quality of the household
responses, especially in terms of recall where the quality of response decreases the more time that passes from an event [i.e. a
respondent is more likely to more accurately recall a flood event from 1 year ago as opposed to one from 9 years ago] (Bell et
al., 2019). For this analysis, we focussed on three villages - Buon Triet, Thon 3 Khue Ngoc Dien and Thon 6 Vu Bon. These
205 three villages are located along the Krong Ana river in southern Dak Lak Province and experienced flooding in 2016 according
to the remotely sensed record (see Fig. 2). We excluded Ea Sup village in northern Dak Lak as this village did not experience
flooding in the period of the remotely sensed record.

3.2 Remote Sensing Data

Sentinel 1 synthetic aperture radar imagery was processed with Google Earth Engine using a change detection
210 approach (UNOOSA, 2021). An image taken before the flood (baseline) is compared to an image taken during/immediately
after the flood (target), and a different threshold applied to classify areas in the flooded image where radar backscatter is
lowered – and thus indicating the presence of surface water. Discharge records from Giang Son (see Fig. 2. for location)
suggested peak discharge occurred on 6th November 2016. A search of the catalogue of Sentinel scenes yielded no images for
6th November 2016, with this search limited to images with ‘VH’ polarization. However, scenes were present on the 7th, 10th
215 and 16th of November, and were used as target images. Scenes from 4th and 12th December were also included to capture the
second flood peak of 2016 that occurred in early December. Scenes from September 2016 were selected as a dry ‘baseline’.
Through trial and error, a difference threshold of 1.30 was used.

3.3 Gauge Data

Daily discharge data for Giang Son gauge was obtained from two sources. A record from 1978 to 1992 was sourced
220 from the Global Runoff Data Centre (GRDC), and a record from 2000 to 2020 was sourced from Economy and Environment
Partnership for Southeast Asia. This gave a comparatively short record of 36 years (Fig. 3). Annual maxima discharge (AMAX)
was calculated for the record. The older data (1978-1992) only had three AMD readings over 600 m³/s (~21% of years) with
an average AMAX of 396 m³/s, whereas the later record (2000-2020) had eight AMAX readings (40% of years) above 600m³/s,
and an average of 538 m³/s.

225 Flood frequency analysis was performed by selecting the most suitable probability distribution for the flood frequency
curve. The choice of the model was assessed using three model selection criteria, namely Akaike Information Criterion (AIC),
Bayesian Information Criterion (BIC) and the Anderson-Darling goodness-of-fit test (ADC). The ADC test has been reported
to perform well for small sample sizes and heavy tail distributions and performs marginally better for a sample size used in
this study [36] (Di Baldassarre et al., 2009). No model selection criterion is consistently the best, thus there is utility using
230 multiple model selection criterion (Laio et al., 2009).

Using the nsRFA package in R (Viglione, 2020) we find the best distribution based on the AIC and BIC criteria is
Pearson Type III (P3). However, the ADC test results suggest the Generalized Extreme Value (GEV) distribution is the best
model, with a minimum A2 score of 0.52. As there is no clear best distribution, we follow the advice of Laio et al. (2009) and
use both models for the next stage of our analysis – deriving the design flood using the Bayesian Markov Chain Monte Carlo
235 (MCMC) method.

The Bayesian approach has the advantage over other common methods (moments, maximum likelihood) to estimate
the parameters of at-site flood frequency curves in that it can provide credibility intervals (Gaume, 2018). This is important in
our analysis where we are trying to match the return period calculated from a short record to inundation maps. The Bayesian
MCMC approach is comprehensively described in Reis and Stedinger (2005). We describe the Bayesian MCMC interface
240 approach here briefly. First, initial parameter estimates are made through the posterior distribution, calculated using Bayes’
theorem (Eq..1). For flood frequency, we determine the probability that a frequency function (P) has parameters θ given the
observed realizations D (i.e our data). We use this to describe the way in which one’s belief about observing parameters θ for
a given P are updated having observed D.

$$P(\theta|D) = P(D|\theta) \times \frac{P(\theta)}{P(D)} \quad (1)$$

245 $P(\theta|D)$ is the conditional probability of θ given the observed realizations (D). In other words, $P(\theta|D)$ is the posterior
probability and ultimately what we would like to infer. The prior probability not taking into account any realizations (D) is
 $P(\theta)$. The probability of D given θ is given by $P(D|\theta)$. The final term is $P(D)$, which is the prior probability of D and acts as a
normalizing constant. Due to the extreme difficulty in computing the normalization constant, a simulation Monte Carlo
technique is used (Haddad and Rahman, 2011).

250 Markov Chain Monte Carlo Simulations (MCMC) sample probability distributions based on constructing a Markov
Chain with the desired distribution as its equilibrium distribution (Haddad and Rahman, 2011). The algorithm used here is
the Metropolis-Hastings algorithm. The Markov chain is started from a random initial value and run for many iterations
using a Gaussian proposal density. More details of the Metropolis-Hastings algorithm can be found in Metropolis et al.
(1953), Hastings (1970) and Chib and Greenberg (1995).

255 Using the Bayesian MCMC interface, we find the return period of the 2016 flood to be ~10 years. However, when
considering the 90% confidence interval the return period ranges between 6 to 44 years for the P3 distribution (Fig. 4) and 5

to 25 years for the GEV distribution (Fig. 5) for the 2016 event, thus showing the sensitivity of flood return period estimation based on the distribution used.

3.4 Population Data

260 To calculate the population exposed to flooding, we require gridded estimates of population counts. For this analysis, we chose the building constrained population estimates at 3 arc-second (~90m) from WorldPop (Stevens et al., 2015; Bondarenko et al., 2020). This version of WorldPop distributes census information from administrative units to building locations using a random forest approach with various spatial covariates. Population estimates are for 2020. The census data used to create this version of WorldPop is from the 2009 Vietnamese census but has been projected to the year 2020 and adjusted to match United Nations
265 (UN) population estimates. An alternative method to disaggregate population is called ‘unconstrained’, where the population is distributed to all habitable land pixels. We avoided using such an unconstrained gridded population dataset as the unconstrained versions tend to distribute population to uninhabited land (i.e. a frequently flooded floodplain) (Stevens et al., 2019; Niveves et al., 2021), which typically leads to overestimation of flood risk (Smith et al., 2019).

3.5 Land Type Data

270 To investigate flood exposure by land use type, we used the Global Human Settlement Layer Settlement Model Grid (GHS-SMOD) (Pesaresi et al., 2019) to classify three land types – rural; peri-urban and urban. After reprojecting the data, we resampled by nearest neighbour to the resolution of each GFM. We then classified the 7 settlement typologies in GHS-SMOD to 3 classes. For our urban class, we used grid cells from the “Urban Centre”, “Dense Urban Cluster” and “semi-dense urban cluster” classes in GHS-SMOD. For peri-urban, we used the “suburban or peri-urban” class in GHS-SMOD, while our rural
275 class was made up from the remaining classes in GHS-SMOD.

4 GFM Evaluation

Here we evaluate the MERIT and FABDEM based GFM fluvial hazard outputs against remotely sensed flood extents and village level flood data. An analysis is also undertaken of pluvial hazard maps due to the potential for flooding on streams smaller than the minimum catchment size represented by the fluvial model. However, we first compare the remotely sensed
280 flood extents with the household survey data and discuss the utility of these observation data.

The principal metric for this evaluation is the well-known contingency table based critical success index (CSI) that uses binary flooded or not flooded information to measure the agreement between two data sets as shown in eq.2:

$$\text{CSI} = \frac{a}{a+b+c} \quad (2)$$

285 In this case the spatial unit of the comparison is the land parcels reported in the household survey data, with land
parcels considered flooded in the GFM simulation or remote sensing if any part of the land parcel intersects with the flood
extent from these datasets. Thus a is the number land parcels flooded in both data sets, and b and c are the number flooded
land parcels uniquely flooded in one data set but not the other. Therefore, value a is the number of land parcels where the data
sets agree and $b+c$ equals the number of land parcels where they do not agree. The critical success index will be 1 when all
290 land parcels are correctly simulated and 0 when none are. Note that the critical success index generally improves for rivers
with larger floodplains because a greater number of land parcels can be far from the flood edge, meaning direct inter site
comparison should be treated with caution.

4.1 Comparison of remote sensing and household survey data

Summary statistics in Table 1 indicate that Thon 3 KND has the greatest agreement between the remotely sensed
295 flood extent from 2016 and the household survey data at 62% CSI when including land parcels reported flooded in 2016 and
those reported flooded between 2009 and 2019. Land parcels only flooded in the remote sensing were twice as prevalent (101
land parcels) as land parcels only flooded in the household data (48 land parcels). The spatial arrangement of the land parcels
that are dry in the household data but wet in the remote sensing is plotted in Figs. 6-86(a&b). The distribution of these suggest
that the vast majority were likely flooded because they sit between land parcels identified as flooded in both data sets, meaning
300 that there is likely to be a recall bias towards non reporting amongst the households. Furthermore, despite widespread remotely
observed flooding in 2016, households commonly report flooding in other years that were typically observed dry in the
available remote sensing data (not shown here), suggesting recall of historical flood year was also unreliable. Most of the land
parcels flooded only in the household data sit close to the edge of the remotely sensed flood extent, potentially indicating that
shallow flood depths are under reported in the remotely sensed data (which would be expected in locations of low flood depth
305 due to emergent vegetation or other surface objects).

Agreement between the remotely sensed and household data at Thon 6 VB and Buon Triet was substantially lower in
Table 1. In the case of Thon 6 VB a CSI score of 37% was made up of 114 land parcels where the data sets agree, but 132 land
parcels that were only flooded in the household data and 61 land parcels only flooded in the remotely sensed data. As with
Thon 3 KND, most of the land parcels flooded only in the remote sensing data sit in flat locations between land parcels flooded
310 in both data sets, suggesting a recall bias towards omission of flooding in the household data (see Fig. 7(a&b)). The potential
omission rates are similar between Thon 3 KND and Thon 6 VB and in both cases the recall accuracy regarding the year
flooded also appears to be low.

Land parcels flooded only in the household survey data are more prevalent at Thon 6 VB than the other sites. In some
cases these are topographically too high to be part of the fluvial floodplain. It is possible that some of these land parcels are
315 flooded by pluvial events not associated with the fluvial floodplain, with 11 land parcels in the north east quarter of the village
identified as flooded by households sitting within the GFM simulated pluvial floodplain but not the fluvial floodplain (pluvial
flooding is discussed in more detail later in section 4.3). However, households in the villages surveyed typically own a number

of land plots distributed around the village meaning it is also possible that some household land plots have been geolocated incorrectly. The remotely sensed flood extents are more fragmented at this site than the other two villages and numerous patches of flooding lack connectivity to the channel, suggesting some flooding is misclassified or unresolved at this site in the remotely sensed data or that pluvial flooding from local sources might have played a greater role here than at the other sites.

Buon Triet had the highest number of land parcels flooded only in the remotely sensed data (Table 1). As with the other villages the spatial arrangement of the land parcels (Fig. 8) suggests a substantial recall bias, although field observations indicate the presence of flood defences on the north side of the Krong Ana river potentially complicating the data at this site. If CSI is recalculated in Table 1 without penalising for flooded only in the remote sensing data (i.e. ignoring the recall bias) the metrics increase to 0.84 (Thon 3 KND) 0.46 (Thon 6 VB) and 0.74 (Buon Triet), which are scores more typical of accuracy statistics commonly reported in the literature for SAR flood extent mapping.

In summary, both datasets appear to be useful for assessing the performance of the GFM at the three villages, however the household survey almost certainly underreports fluvial flooding, especially when the data are thinned to specify flooding in 2016. Therefore, subsequent analysis will only consider the flooded parcel count from the household survey for the combined years between 2009-2019. Consistency between the data sets in terms of hits and flooded only in the household data is consistent with typical performance metrics for SAR derived flood extent mapping at Thon 3 and Buon Triet, with some evidence that the remote sensing under reports around the flood edge. At Thon 6 VB the remotely sensed imagery is fragmented with the household data suggesting a significant under identification of flooded areas possibly due to resolution or shallow flooding under vegetation, but this cannot be proven with the data available. In subsequent analysis we have disaggregated the analysis of hits, misses and false alarms when comparing the GFM return periods to observed data such that the observation data error characteristics can be discussed.

4.2 Evaluation of GFM fluvial hazard simulations based on MERIT and FABDEM DEMs

Gauging station data at Giang Son (see Fig. 3-5) indicate that the 2016 flooding observed in the remote sensing data was most likely a 0.1 AEP (1 in 10 year) event, with confidence interval from 0.2 to 0.02 AEP due to the short record length. The flood return period will also change in space adding additional unknown uncertainty at the villages which sit up to 20 km away from the gauge. Nevertheless, informal discussions with households and the fact that none reported flooding of their dwellings suggests that the best estimate AEP was plausible and that this was not a once in a lifetime magnitude flood.

Extreme discharge return periods in the GFM are based on regionalization of gauging station data (Smith et al., 2015) that will include significant errors at individual river reaches despite aiming to be unbiased at large scale (Devitt et al., 2021). Uncertainties in channel conveyance and friction parameters were not assessed here and would also modulate the discharge to flood extent relationship. We therefore compare observations to simulated hazard across all AEPs for both the MERIT and FABDEM based GFM and plot CSI scores in Fig. 96 under the assumption that a better DEM will allow for more accurate simulation of the observed data at some event magnitude. As with the intercomparison of household and remotely sensed data,

the unit of space used is the land parcel rather than the individual remotely sensed or GFM pixels. These locations and the GFM simulated hazard are plotted in Figs. 67-89 subplots c&d for the MERIT GFM and subplots e&f for the FABDEM GFM.

In addition to the CSI, the proportion of observed wet and observed dry land parcels simulated as wet at each return period were plotted in Figure 10 as normalized cumulative distributions (normalization is needed due to differing numbers of observed wet and dry cells). This visual metric avoids assessing the accuracy of a given AEP and allows the hit rate to be disaggregated from false alarms, which we believe to be necessary when interpreting the household data due to the bias outlined above. A GFM that is inherently better able to simulate the flood hazard will see a growth in the proportion of observed wet land parcels prior to a growth in the proportion of observed dry land parcels inundated by the model (note that the metric is limited by the number of return periods simulated and the best simulation might sit between return periods). Ideally, all observed wet land parcels would be inundated before the observed dry cells (perfect model), while a model will be worse than a random guess if a greater proportion of observed dry land parcels are inundated before the observed wet land parcels. Although, for the household survey we expect to see simulation of observed dry land parcels due to recall bias.

For all villages the peak CSI between the remote sensing and GFM simulations was greater than between the village data and GFM. For Thon 3 KND and Thon 6 VB the best model performance against both the household and remotely sensed data occurs in the range of 0.02-0.05 AEP, with very good agreement (>0.8 CSI) between FABDEM and the remotely sensed data. When disaggregated into wet and dry CDF plots the FABDEM GFM inundates almost all (80-100%) of identified wet land parcels by 0.05 AEP at Thon 3 KND and Thon 6 VB, although inundation of dry land parcels increases around the same AEP at these villages suggesting the model optimal performance might sit just above 0.05 AEP. The increase in dry land parcels inundation at this AEP in the Thon 3 KND household survey data is nearly twice that shown with the remotely sensed data, which is likely the result of previously mentioned recall bias in the household survey data.

The MERIT GFM has a more gradual increase in the land parcels inundated suggesting a fundamentally different inundation dynamic. For FABDEM GFM much of the valley bottom inundates at the about the same magnitude, while for the MERIT GFM the inundation extents have a relatively gradual increase with flood magnitude. MERIT DEM tends to be smoother than FABDEM due to larger filtering windows that were applied to reduce noise from the underlying SRTM DEM relative to that required when processing the Copernicus DEM data that underpins FABDEM. On the one hand this might be expected to flatten the valley floor and result in widespread inundation at a particular magnitude (and may do so on larger floodplains), however it also reduces the definition between the valley bottom and sides at our sites such that FABDEM appears to have a clearer demarcation between valley floor and valley sides.

In summary, the FABDEM GFM was able to attain greater accuracy to both sets of observation data and simulated a sharper transition from high hazard (valley bottom) to lower hazard (valley side). Local scale inundation models based on LiDAR often show a characteristic ‘valley filling’ event magnitude, where a substantial area of the floodplain inundates shortly after the river overtops its banks, followed by substantial drop in inundation extent growth with event magnitude after the river valley has filled. MERIT GFM simulated a relatively gradual increase in inundation extent with magnitude and has less fidelity at segmenting the most and least exposed locations.

385 At Buon Triet the MERIT GFM obtained a greater CSI, although for a very high magnitude flood around 0.005-0.002
AEP, and both GFM best fit the data at below 0.01 AEP (> 1 in 100 year return period). Analysis of Fig. 89 indicates that
many of the location only inundated during very high magnitude flooding sit on the northern side of the village along a small
tributary that is below the minimum catchment size represented in the fluvial component of the GFM. Therefore an analysis
of pluvial flood model outputs is presented next.

390 4.3 Evaluation of GFM pluvial hazard simulations based on FABDEM DEM

When simulating flood hazards, flooding caused by intense rainfall at the local scale is often simulated separately
from the fluvial flood hazard and referred to as pluvial or surface water flooding. The exact definition of this type of flooding
and how it should be simulated with respect to fluvial flooding is contested. True surface water flooding where no river
channels are involved in the inundation dynamics represents one definition, however all fluvial models fail to capture small
395 streams at some scale and in practice flooding from these is often only simulated as part of a pluvial model if at all. The concept
behind the modelling is further complicated by compounding effects between fluvial and surface water flooding that are rarely
simulated. There are also substantial challenges associated with capturing data for model validation at these scales due to the
limited inundation extents and durations. Remote sensing often misses pluvial flooding due to its short duration and flow
inundation depths, however the household survey data obtained here is useful because it observes household land parcels being
400 impacted by flooding in a way that is insensitive to event duration, spatial extent or source and only needs to be intense enough
for the household to recall the event.

In the GFM used here the demarcation between the fluvial and pluvial model occurs for any river channel with a
catchment smaller than 50 km², thus the pluvial model extends far into what many practitioners will class as fluvial floodplain.
Most GFM do not include a pluvial model due to low expectations around accuracy and challenges associated with model
405 validation, however commercially focused models, like the one used here, often include a pluvial component due to historically
significant losses from such flooding (Rözer et al., 2019; Singh et al., 2023). Here we attempt one of the first evaluations of a
GFM pluvial model, but restrict the discussion of map data to FABDEM due to its greater accuracy for the fluvial modelling.

Hazard at our village sites from the FABDEM GFM pluvial flood model is mapped in Fig. 11 b,d&f, with fluvial
hazard plotted in subplots a,c&e. At Thon 3 KND the pluvial hazard sits largely within the fluvial floodplain, but increases the
410 hazard to the south and along the norther edge of the survey land parcels. The principal fluvial floodplain to the north and
north-west of the village is not inundated by the pluvial model. At Thon 6 VB the pluvial model identifies increased hazard
along a topographic depression that runs from the centre towards the north-east of the village where a number of land parcels
observed as wet in the household survey data only flood in the fluvial model at high magnitude. At Buon Triet the pluvial
model doesn't inundate the fluvial floodplain to the south of the village, however the hazard is significantly greater along the
415 northern edge of the village along a stream that is too small to be represented in the fluvial model.

At all three villages the CSI scores were lower for combined fluvial and pluvial hazard due to an increase in the false
alarm rate that was greater than the additional hit rate benefit. Although the inclusion of the pluvial model had less impact on

the CSI scores than the choice of DEM. Cumulative density functions tracking agreement with observed wet and dry land parcels are plotted on Fig. 12. These are identical to those in Figure 10 except the flood hazard takes the maximum of the fluvial and pluvial model AEP. At Thon 3 KND and Thon 6 VB the inclusion of the pluvial model has a minor visual impact on these plots for rare flood events (AEPs below 0.05), but somewhat increases the hit rate and false alarms for the more frequent floods. At Buon Triet the impact is more pronounced due to the tributary entering the floodplain to the north of the village as discussed previously in relation to the fluvial hazard maps.

In conclusion, the pluvial model can identify some of the hazard related to flooding from small tributaries that is not captured in the GFM fluvial model. For a risk adverse application of the GFM, considering outputs from the pluvial model is likely to be beneficial, especially for smaller rivers that sit close to the minimum catchment size represented in the fluvial model. False alarms increase marginally faster than the hits, which might indicate the model is less accurate due to over-prediction of the hazard. However, our observations are likely to lack the fidelity to identify if the model has skill with respect to 'true' surface water flooding away from a river channel and we would therefore expect the pluvial hazard to over-predict the observation data available. In the case of the remotely sensed data, it almost certainly does not capture surface water flooding due to the expected short duration, low depth and limited spatial extent. While in the case of the household survey data we can hypothesise, although not validate, that the under-reporting bias will likely increase for smaller scale flooding of limited spatial impact given that households are reporting flooded agricultural land rather than buildings. A different set of test cases will be needed to disaggregate the performance of the GFM with respect to surface water flooding.

5. Flood Exposure for the Central Highlands of Vietnam

Flood exposure (i.e. the number of people in flooded pixels in the GFM) is calculated for 11 Vietnamese provinces for both fluvial and pluvial flooding for both versions of the GFM. Population count is taken from WorldPop data.

5.1 Exposure calculations

Estimates of flood exposure for the region reveal GFM FABDEM gives consistently higher exposure estimates than GFM MERIT across all return periods (Fig. 13). We compare flood exposure from GFM FABDEM by province for the 1-in-100 year flood event. The 1-in-100 year flood event is commonly used for planning purposes thus was selected. Our analysis in Figure 14 reveals that Quang Nam province has the most exposure with 459,000 exposed to flooding, or 31.9% of the province's population. Other coastal province's of Binh Dinh, Khanh Hoa and Quang Ngai have significant exposure between 340,000 and 370,000, or 25-30% of total province population. The other coastal province in this analysis, Phu Yen, has less exposure of around 130,000, or approximately 14% of province population. Of the inland provinces, Lam Dong has the largest exposure with approximately 200,000, or ~14% of the province population. Dak Lak, the province of our villages, has exposure of around 187,000 or 8% of the population. Quang Nam, the most exposed province has ~8x as much exposure as the least

exposed (Dak Nong). Nevertheless, the exposure, and particularly the % province population exposed to flooding is significant for all regions, with even the lowest % province population exposed 7.4%.

450 For fluvial flooding we found 32.8% more exposure in the GFM FABDEM model compared to GFM MERIT for the 1-in-20 year flood event and 25.5% more for the 1-in-100 year flood event (~0.5 million people) (Table 2). Variation between provinces varies significantly, with Ninh Thuan actually showing a decrease in exposure in GFM FABDEM for the 1-in-20 year flood event. Pluvial flooding gives greater exposure (Table 3) than fluvial flooding, with GFM FABDEM giving 32% and 16.1% more exposure for the 1-in-20 and 1-in-100 year flood respectively. There is even greater variation between
455 provinces compared to fluvial flooding, with Kon Tum province having ~10% less exposure for both the 1-in-20 and 1-in-100 year flood events in the GFM FABDEM model. The biggest difference is in Dak Nong province, with GFM FABDEM estimating almost 50% more exposure compared to GFM MERIT.

Across the spectrum of return periods analysed, GFM FABDEM gives more exposure than GFM MERIT for all return periods except above the 1-in-250 year event in Kon Tum. For one of the most extreme climate scenario (SSP5-RCP8.5),
460 Hirabayashi et al (2021) used CMIP6 data to estimate the present day 1-in-100 year flood event could become between the 1-in-20 and 1-in-50 year flood event by 2071-2100 for this region. In other words, the 1-in-100 year flood event exposure shown in our figures could occur 2-5x more frequently than present day, significantly altering the risk profile of the region.

5.1 Exposure by land use type

Further analysis across land use types reveals intriguing differences between GFM MERIT and GFM FABDEM.
465 GFM FABDEM gives greater exposure across all return periods (Fig. 17), but for all return periods has a higher proportion in urban areas. The greatest differences are at the most frequent flood return periods, where the proportion of people exposed is approximately 7% higher in GFM FABDEM compared to GFM MERIT for the 1-in-5 year flood and the 1-in-10 year flood (Fig. 18). This could be explained by FABDEM removing buildings from the DEM, while MERIT does not. Exposure in rural areas is approximately the same % between both models. The increase in % of exposure in urban areas in the GFM FABDEM
470 is made up with approximately the same percentage less exposure in the peri-urban areas.

Exposure by land use type varies greatly between the provinces (Fig. 19 & 20). The coastal provinces, particularly Khanh Hoa and Ninh Thuan have a high % of exposure in urban areas, with Ninh Thuan being between 60-70% across return periods (Figure. 20). Conversely, the inland central highland provinces have a much greater composition of risk in rural areas, in particular Dak Lak and Dak Nong, with ~70% of people exposed to flooding in rural areas. With increasing urbanization
475 throughout the region, risk profiles could shift to more urbanized areas, thus care should be taken when planning new urban developments. Flood defences were not included in any of the model simulations here and would likely make a significant difference to the exposure, especially for FABDEM.

6 Conclusions

In this paper, we assess a new GFM, taking a unique approach to validate using two data sources – commonly used
480 remote sensing data and household survey data. We find that the GFM that uses FABDEM DEM matches more closely to a
relatively frequent flood event (~1-in-10 year flood event) than a GFM using the MERIT DEM. The improved grid spacing (1
arc second compared to 3 arc second), and most importantly removal of both buildings and trees, means FABDEM gives more
realistic inundation extents when compared to a GFM using MERIT, as the GFM FABDEM follows the behaviour of more
local scale models built with LiDAR data that show a characteristic ‘valley filling’ event magnitude.

485 By using two sources of validation data, we found that neither are perfect to the extent that the FABDEM GFM could
provide a better fit to both validation data sets (in terms of CSI) than they could to each other. Household surveys, where
participants were asked to specify the year of a flood on a given land parcel, suffered from recall bias. The longer ago the flood
event, the more difficulty the participants had in remembering the timing and severity of the flood. This could have been due
to no ‘once in a generation’ flood impacting the surveyed villages in the survey period – instead there were several relatively
490 small non-problematic floods. The remote sensing data, often assumed by practitioners to depict the ‘true’ flood, and thus be
the most suitable data to benchmark a model, is not without its deficiencies. By using two data sources, as well as field surveys,
we find that the remote sensing data is not always reliable, especially on the flood margins. Remote sensing allows us to ‘see’
flooding from space, but what remote sensing sees may not directly correlate to true risk. If participants do not recall events,
it is unlikely the event had much impact, highlighting potential adaptations that are invisible to remotely sensed images.
495 Therefore, when assessing flood model performance, multiple validation dataset sources are preferable and sources should be
rigorously assessed. Often only remote sensing sources will be available, but wherever possible different classification schemes
and/or different satellites should be used and augmented with auxiliary sources (e.g social media and media reports).

Lastly, we presented flood exposure estimates for 11 provinces in the central region of Vietnam. This helps fulfil the
dearth of studies for the region (Nguyen et al., 2021) and comprehensive flood hazard information across a spectrum of flood
500 severities. The flood hazard data presented in this paper is available from NERC EIDC (Hawker et al., 2022a). We find the
coastal provinces have the most exposure, with Binh Dinh, Quang Nam and Quang Ngai having the most exposure for both
fluvial and pluvial flooding. For the 1-in-100 year flood, we estimate ~2.5m will be exposed to fluvial flooding and ~3m to
pluvial flooding. The proportion of people exposed to flooding in each province is significant with almost a third of the total
population of Ninh Thuan and Quang Ngai exposed to the 1-in-100 year event. The FABDEM model finds a greater proportion
505 of flood exposure in urban areas relative to MERIT DEM, prior to considering flood defences. With extreme events set to
become more common, and the urbanisation in the region which can encroach onto risky floodplain areas, it is essential proper
planning is implemented to minimise the flood risk.

Acknowledgments

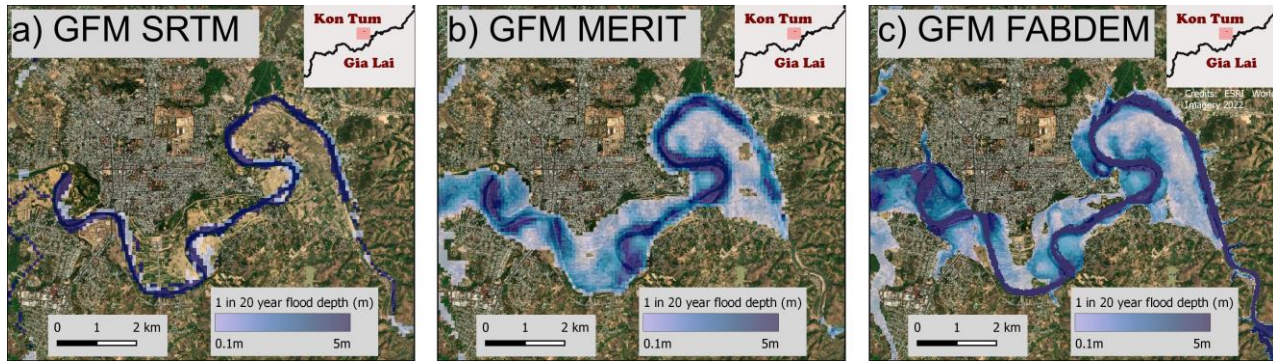


Figure 1: Flood hazard map of Kon Tum, Vietnam, for the one in 20-year flood event. Three versions of a Global Flood Model (GFM), each with a different underlying elevation dataset, are compared. Panel a) uses the SRTM elevation dataset, Panel b) uses MERIT DEM, and Panel c) uses FABDEM. Note the improved delineation of floodplain features in panel c and lack of flood propagation in panel a. Basemap ESRI World Imagery

515

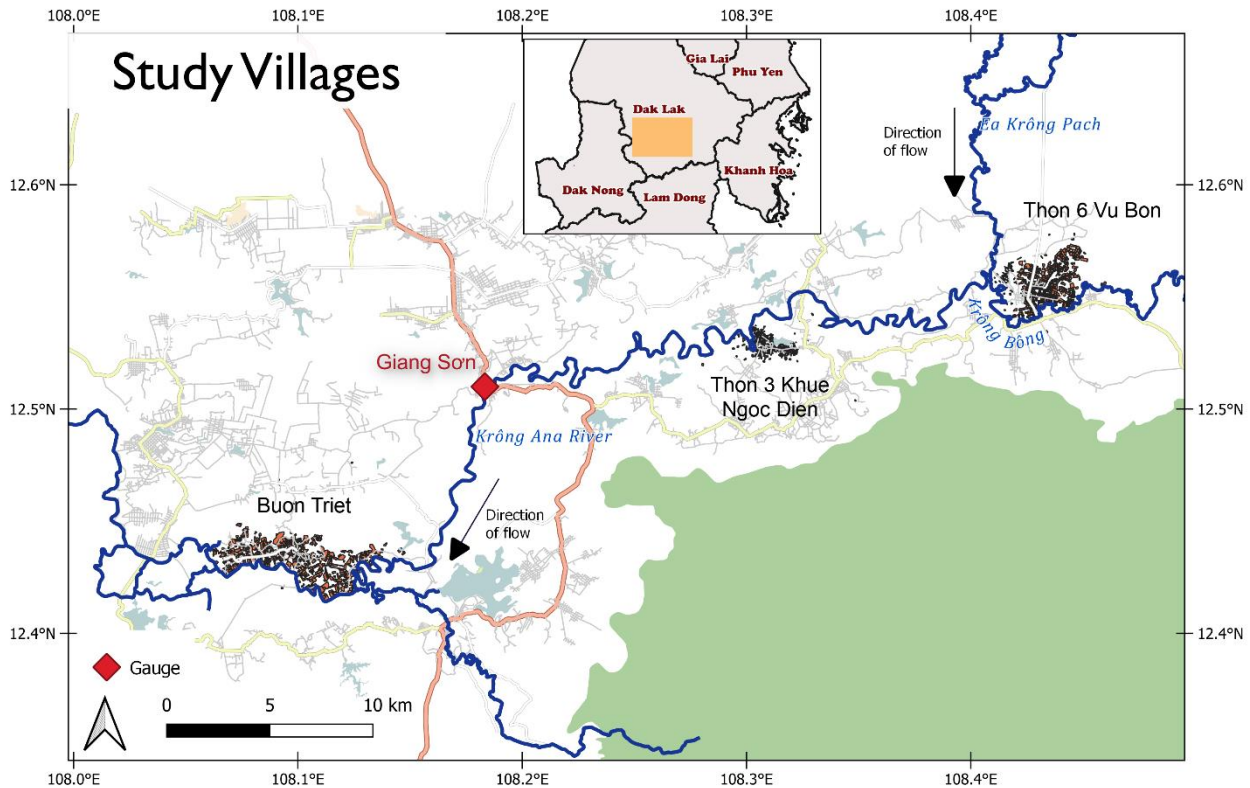


Figure 2: Location of the three villages that were the focus of our household survey (Buon Triet, Thon 3 Khue Ngoc Dien and Thon 6 Vu Bon) in Dak Lak Province. The river gauge record is displayed with a red diamond. Basemap © OpenStreetMap contributors.

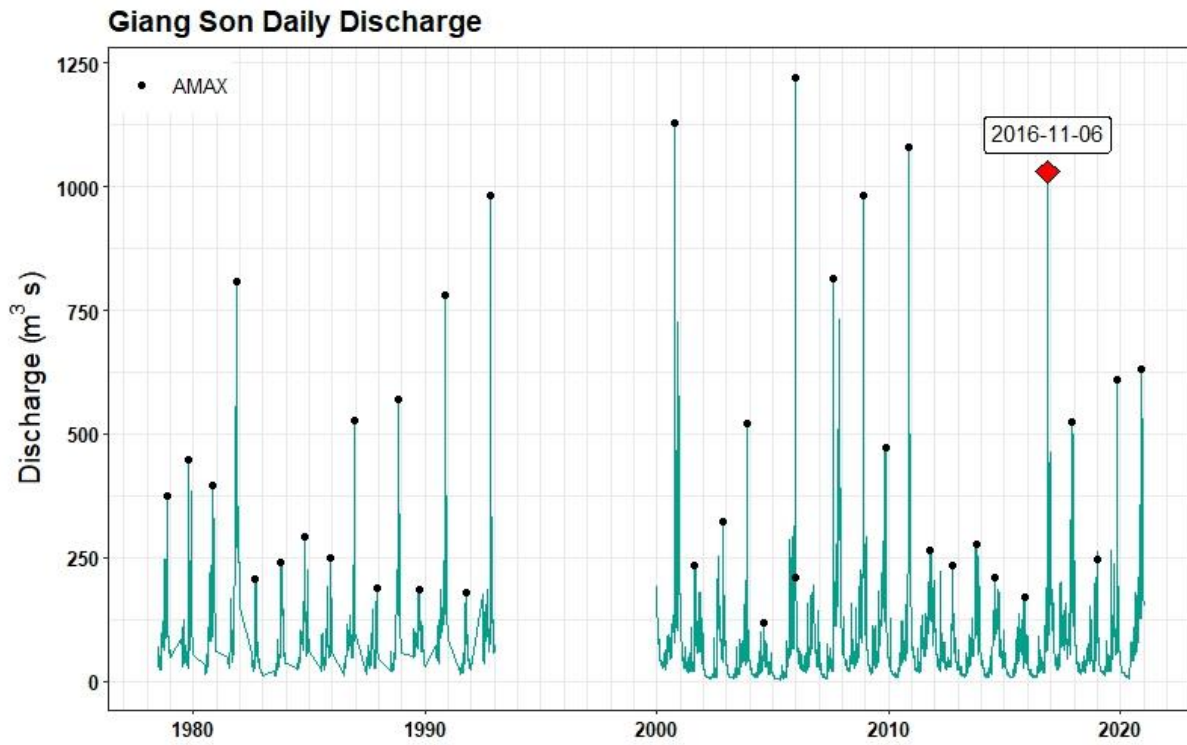
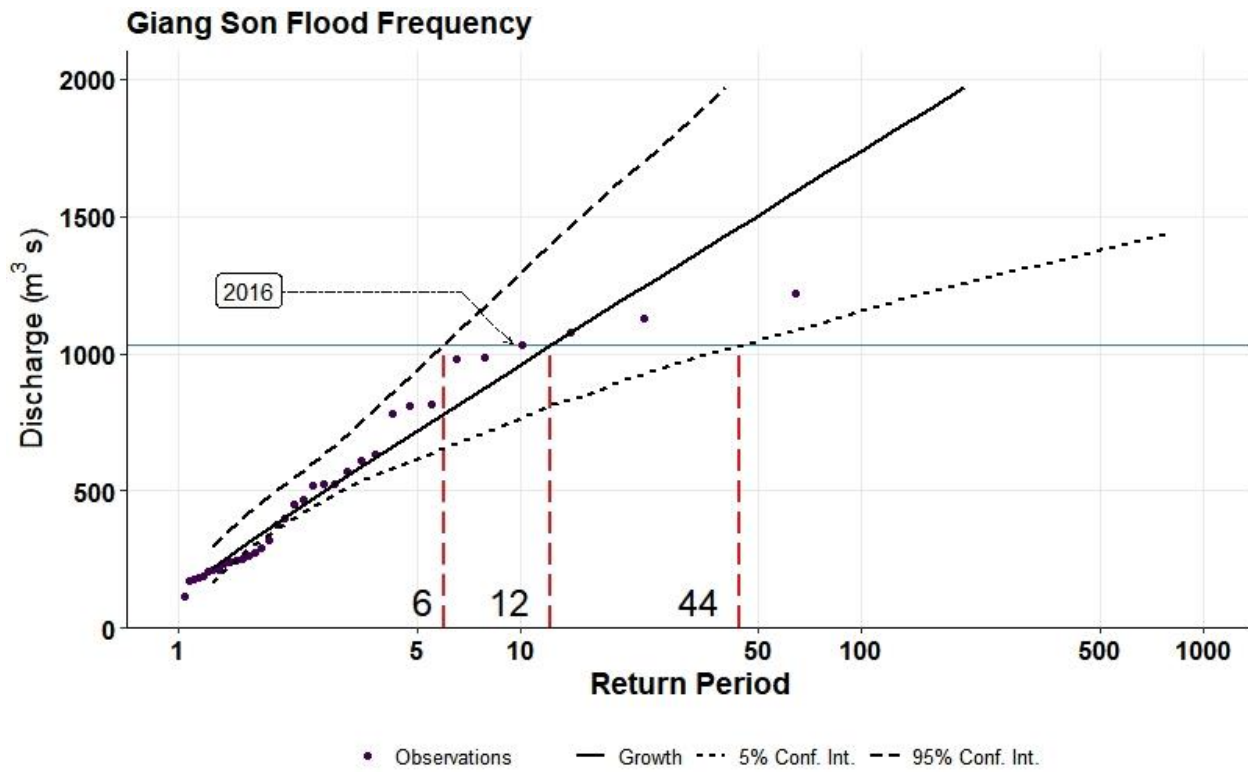


Figure 3: Hydrograph for Giang Son Gauge. Annual flow maximum (AMAX) depicted with black dots, with the AMAX for 2016 highlighted with a red diamond.



525 Figure 4: Design Flood Estimation at Giang Son using the Bayesian MCMC interface and the Pearson Type III (P3) distribution.

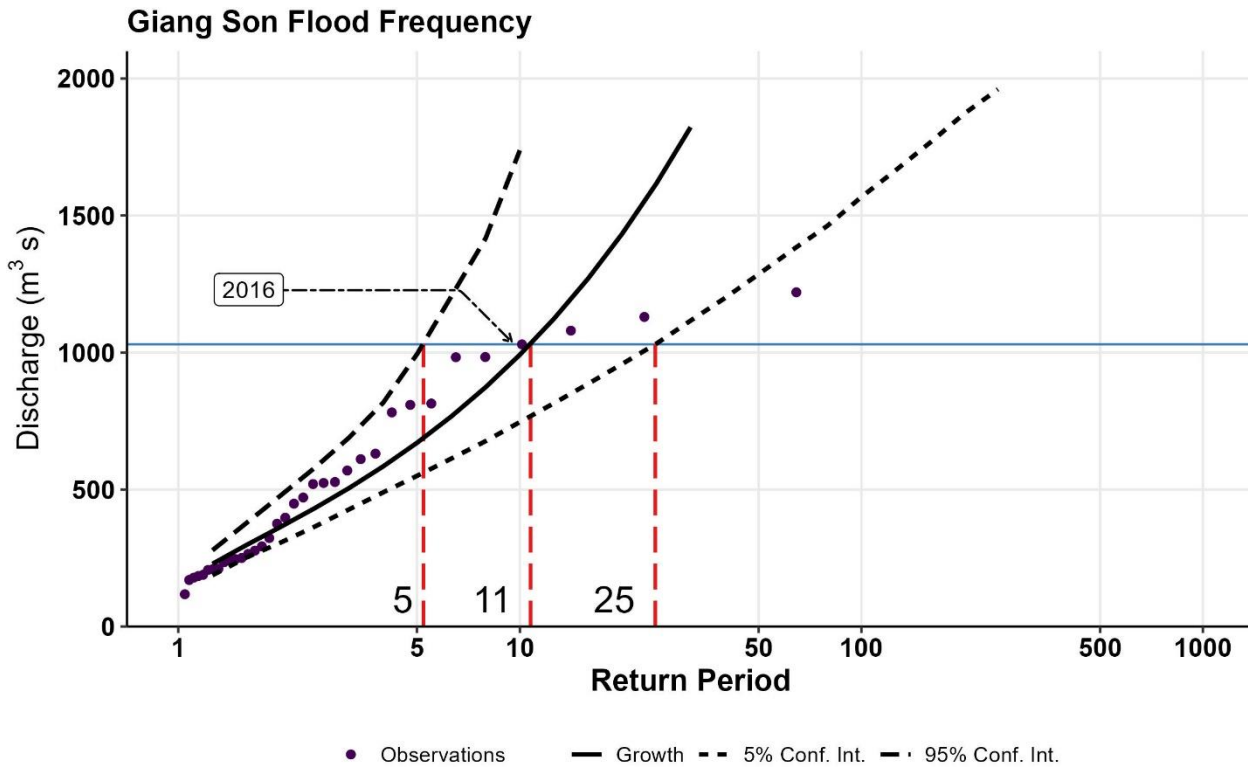


Figure 5: Design Flood Estimation at Giang Son using the Bayesian MCMC interface and the Generalized Extreme Value (GEV) distribution.

530 Table 1: Comparison of flooded land parcel data from remotely sensed imagery and household survey responses

	Flooded in both data sets	Flooded in only household data	Flooded only in remote sensing data	CSI (without penalising for only flooded in RS)
Thon 3	252	48	101	0.62 (0.84)
Thon 6	114	132	61	0.37 (0.46)
Buon Triet	184	62	225	0.39 (0.74)

535

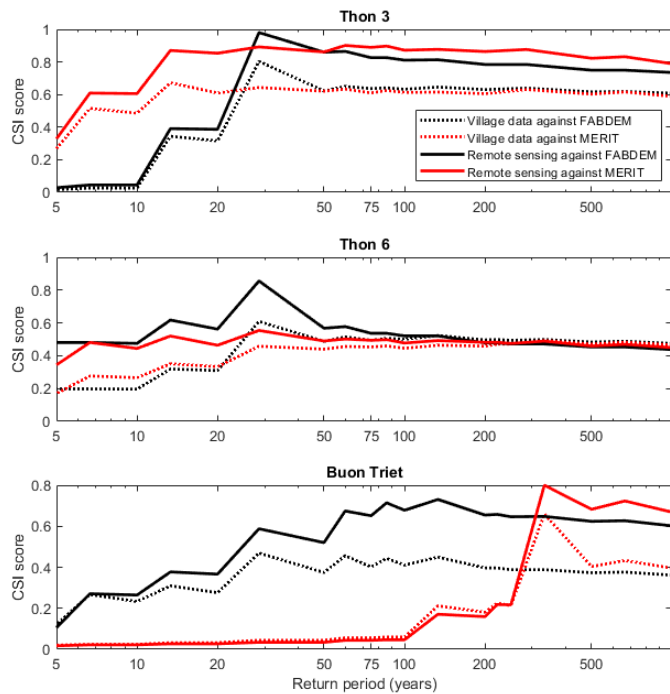
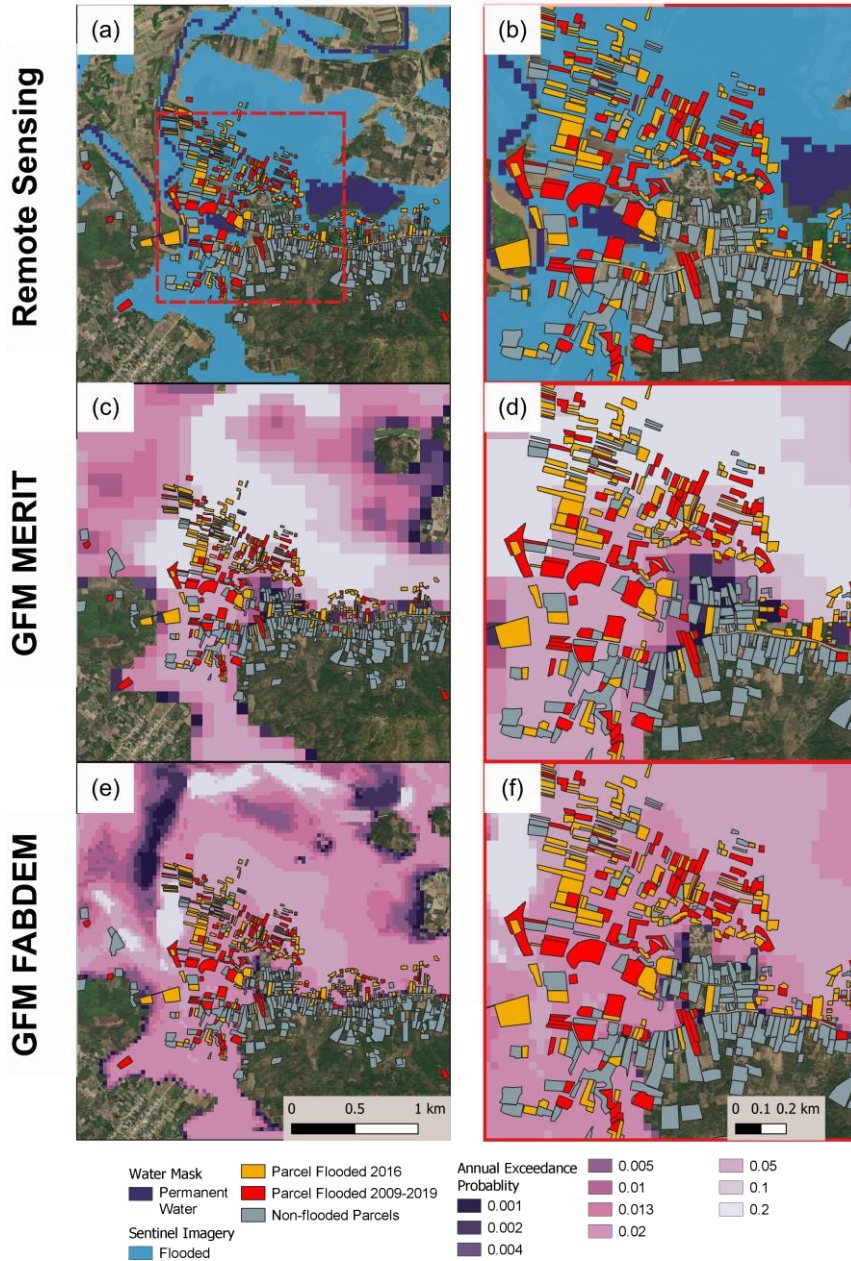


Figure 6: Critical success index scores by return period against remotely sensed (solid lines) and household survey (dotted lines) validation data for MERIT (red) based GFM and FABDEM (black) based GFM.

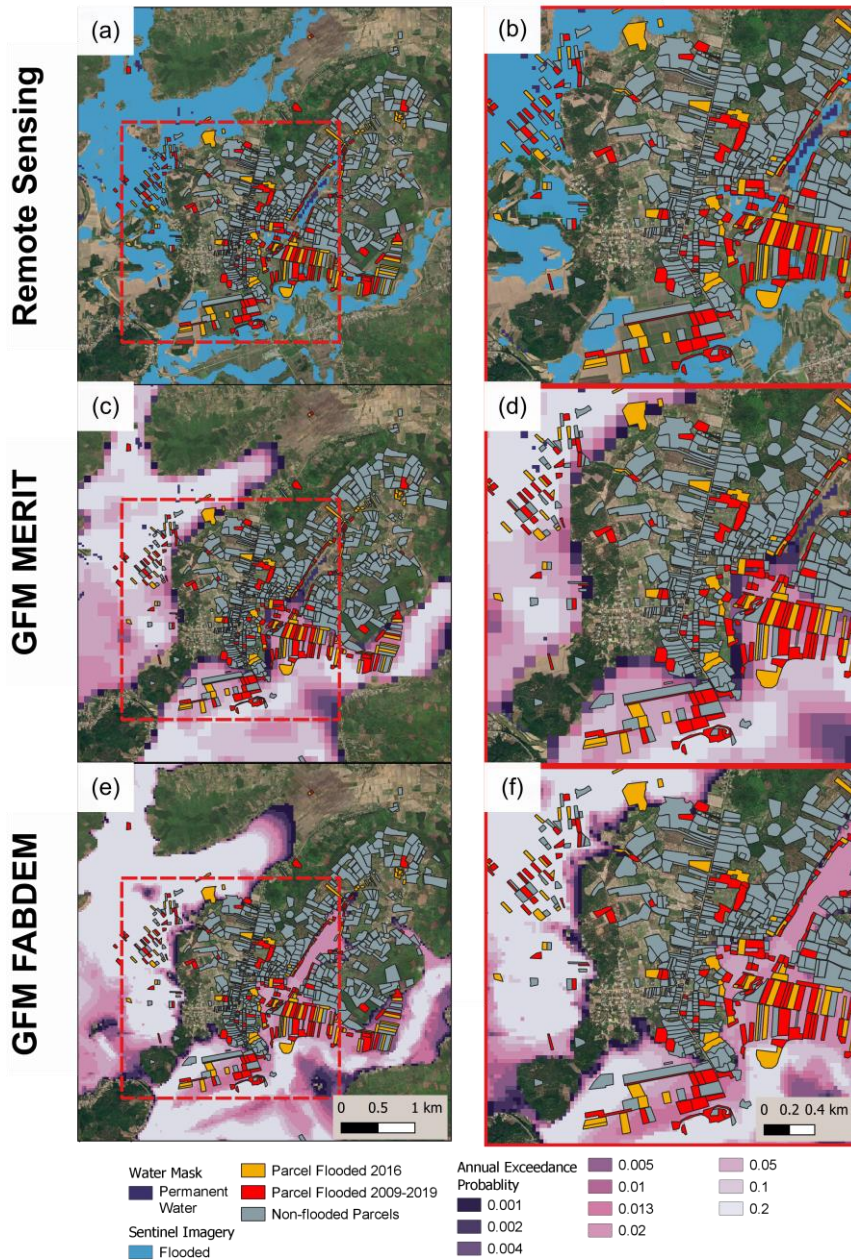
540

Thon 3 Khue Ngoc Dien



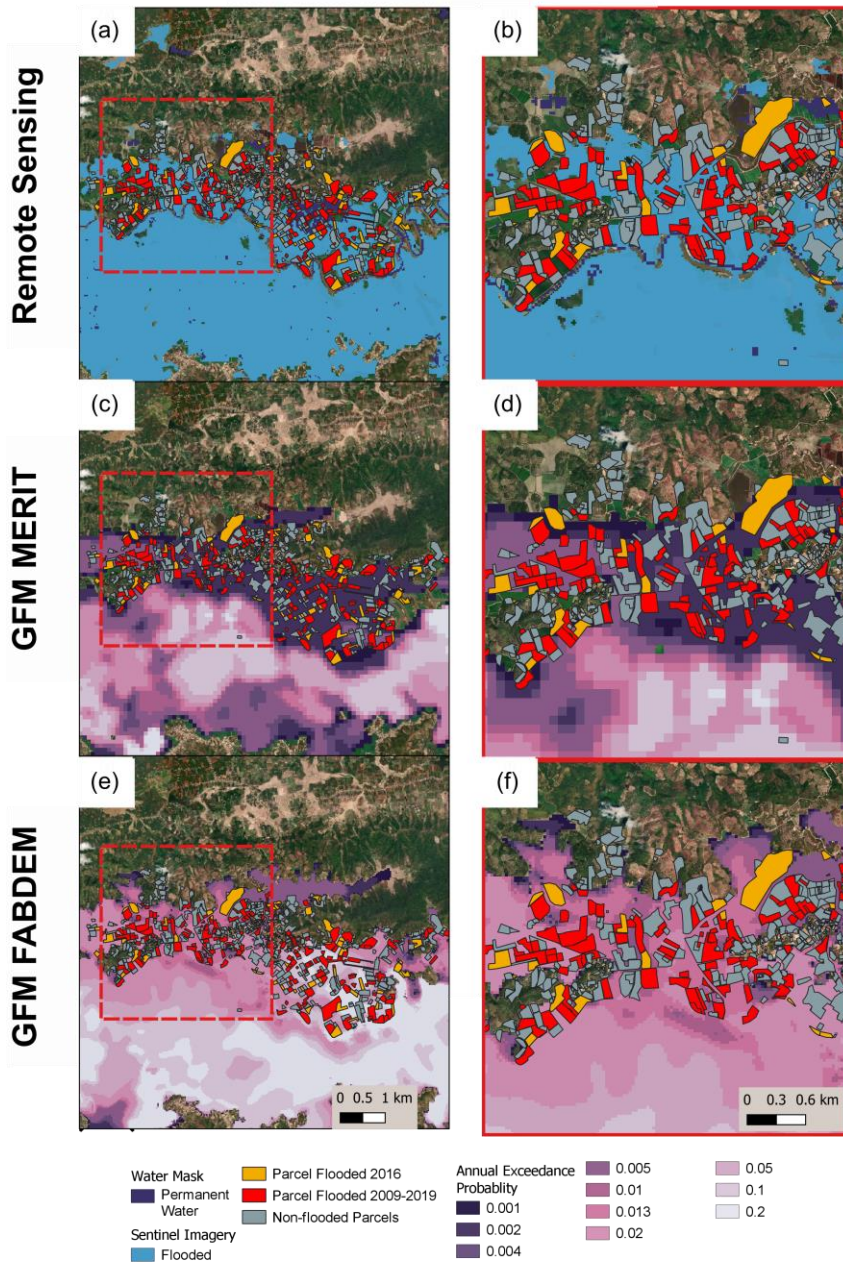
545 **Figure 67:** Flood Maps for Thon 3 Khue Ngoc Dien. Panel (a) shows flood extent from 2016 acquired from Sentinel 1 data. Panel (c) shows annual exceedance probability (AEP) for GFM V2, and panel (e) shows AEP for GFM V3. Panels (b), (d) and (f) show zoomed in versions of the remote sensing and GFM outputs.

Thon 6 Vu Bon



550 **Figure 78:** Flood Maps for Thon 6 Vu Bon. Panel (a) shows flood extent from 2016 acquired from Sentinel 1 data. Panel (c) shows annual exceedance probability (AEP) for GFM V2, and panel (e) shows AEP for GFM V3. Panels (b), (d) and (f) show zoomed in versions of the remote sensing and GFM outputs.

Buon Triet



Basemap - ESRI World Imagery - Sources: Esri, DigitalGlobe, GeoEye, i-cubed, USDA FSA, USGS, AEX, Getmapping, Aerogrid, IGN, IGP, swisstopo, and the GIS User Community

555

Figure 89: Flood Maps for **Buon Triet-Thon 6 Vu Bon**. Panel (a) shows flood extent from 2016 acquired from Sentinel 1 data. Panel (c) shows annual exceedance probability (AEP) for GFM V2, and panel (e) shows AEP for GFM V3. Panels (b), (d) and (f) show zoomed in versions of the remote sensing and GFM outputs.

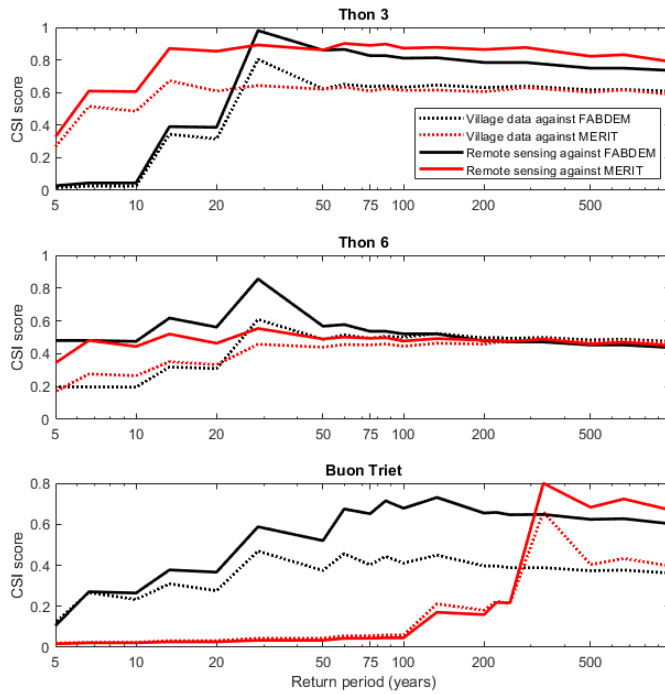
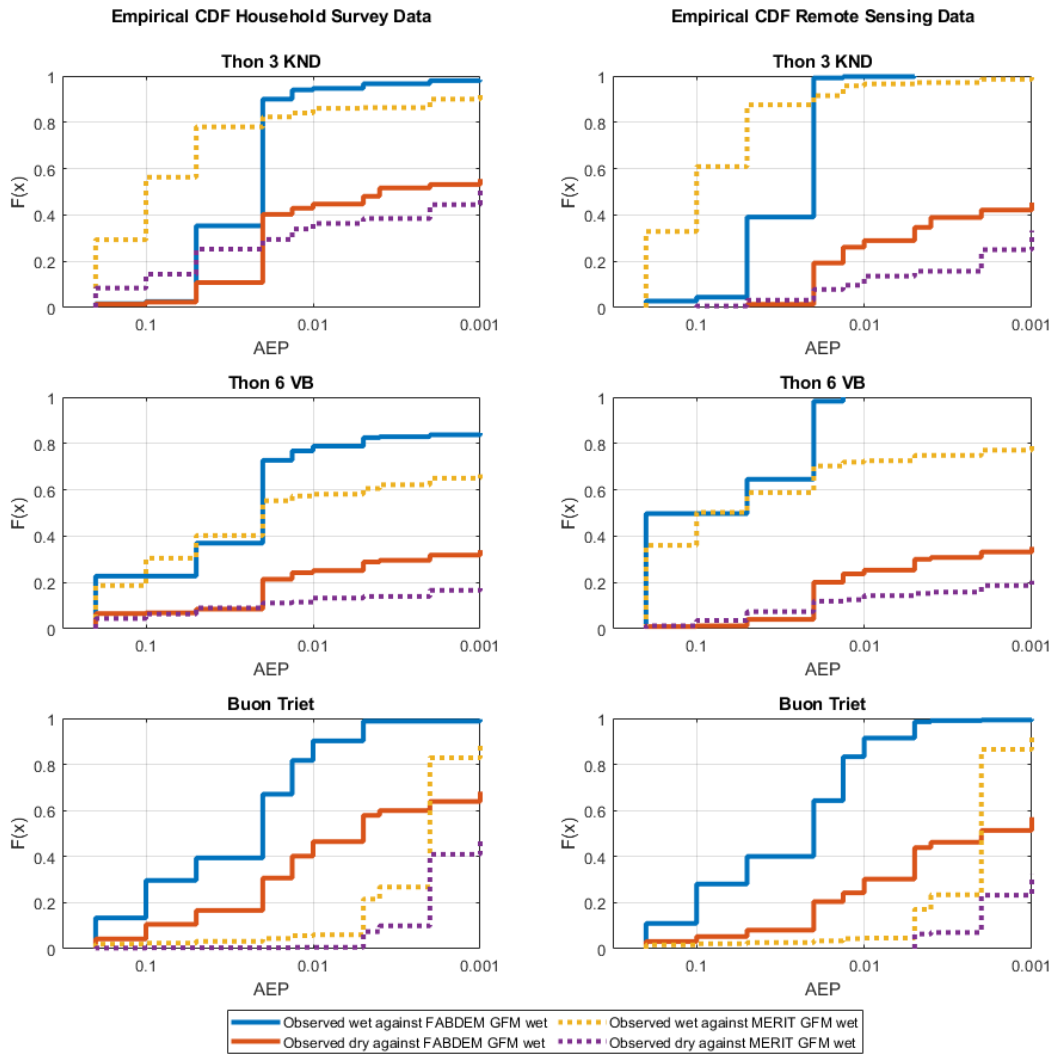


Figure 96: Critical success index scores by return period against remotely sensed (solid lines) and household survey (dotted lines) validation data for MERIT (red) based GFM and FABDEM (black) based GFM. The return period on the x-axis refers to the flood return period from the GFM.

560

565



570 **Figure 10 : Cumulative density functions tracking agreement with observed wet and dry land parcels in the household survey data (left) and remotely sensed data (right). Solid lines are FABDEM GFM and dotted lines are MERIT GFM.**

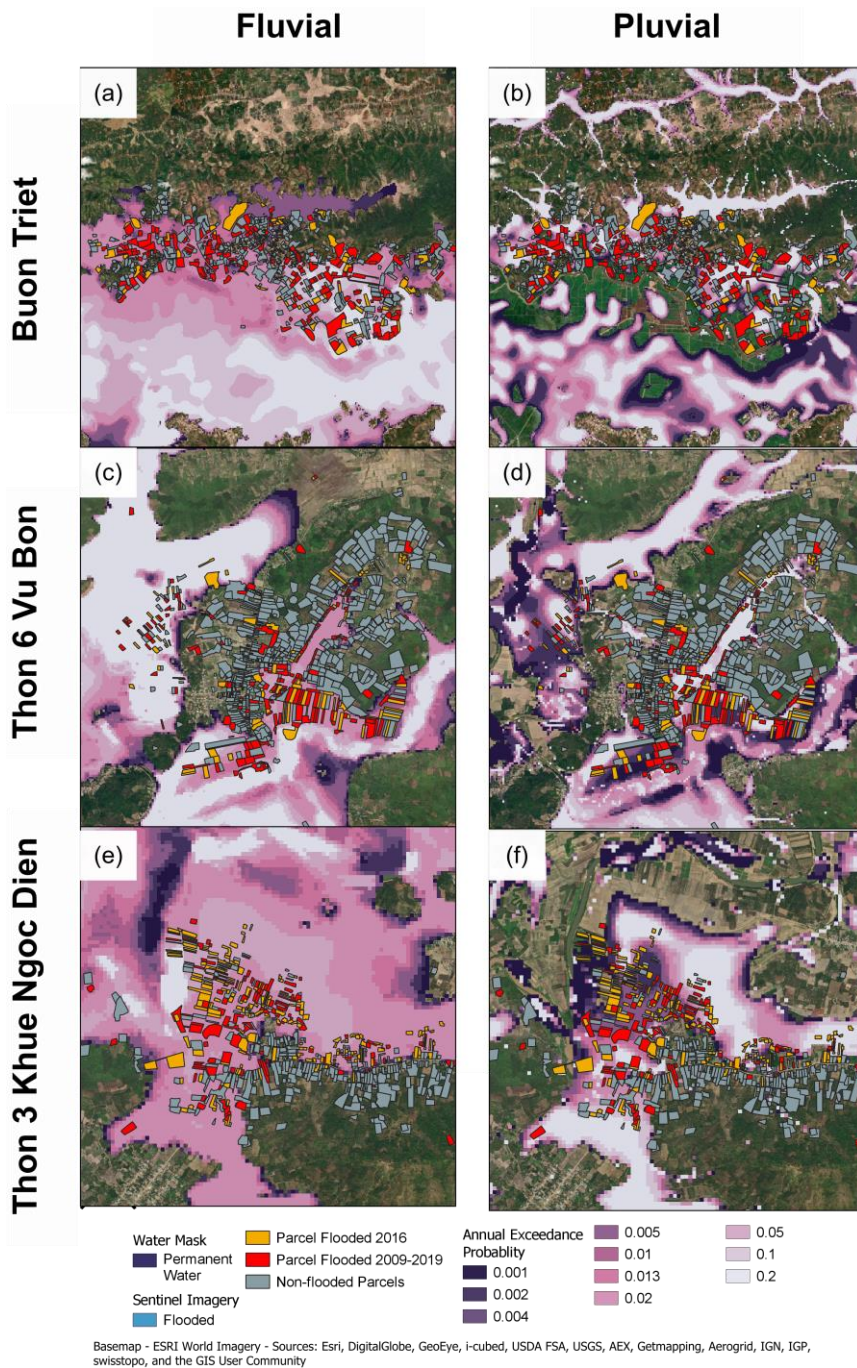
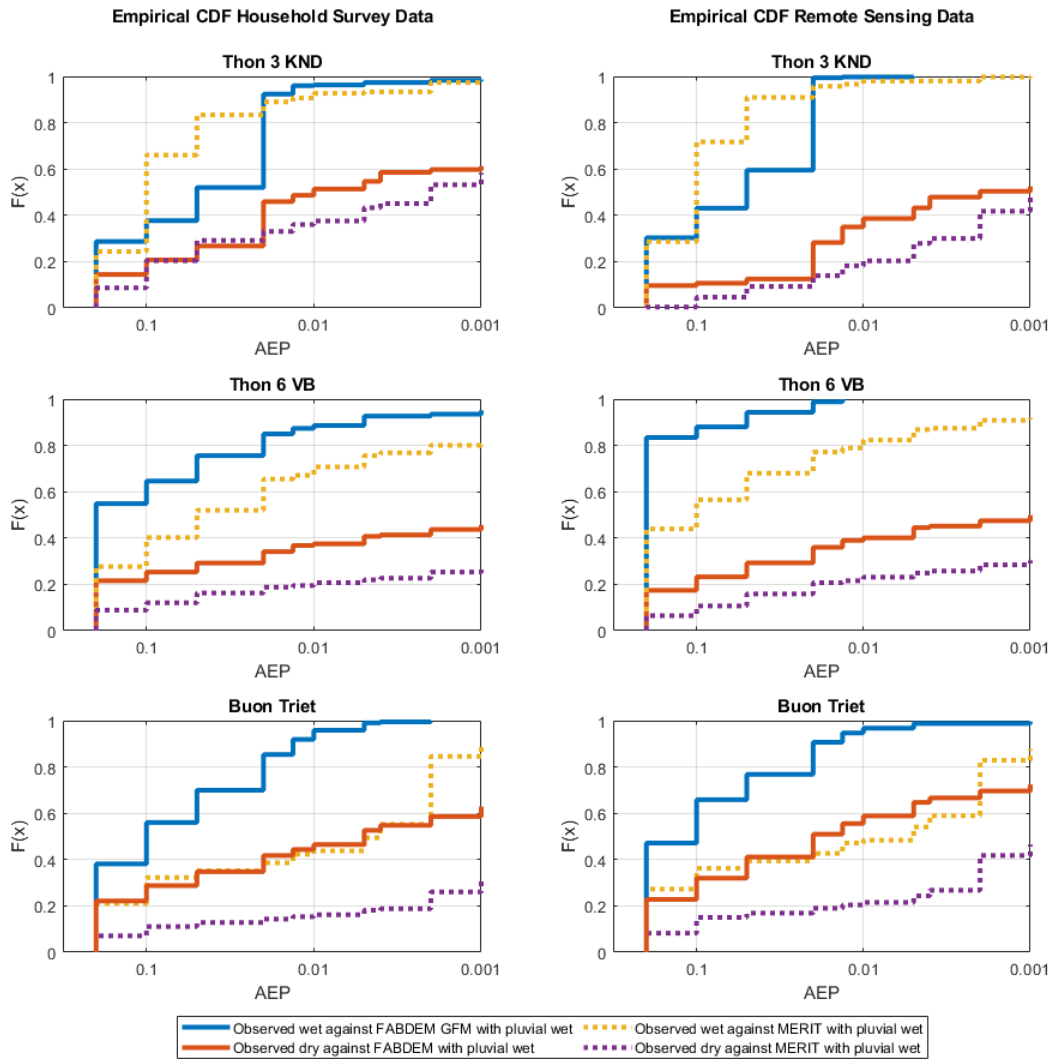


Figure 11: Six panel fluvial vs pluvial flood maps for three villages. Only FABDEM GFM results are plotted.



575 **Figure 12: Cumulative density functions tracking agreement with observed wet and dry land parcels in the household survey data (left) and remotely sensed data (right). Solid lines are FABDEM GFM including combined pluvial and fluvial hazard and dotted lines are MERIT GFM including combined pluvial and fluvial.**

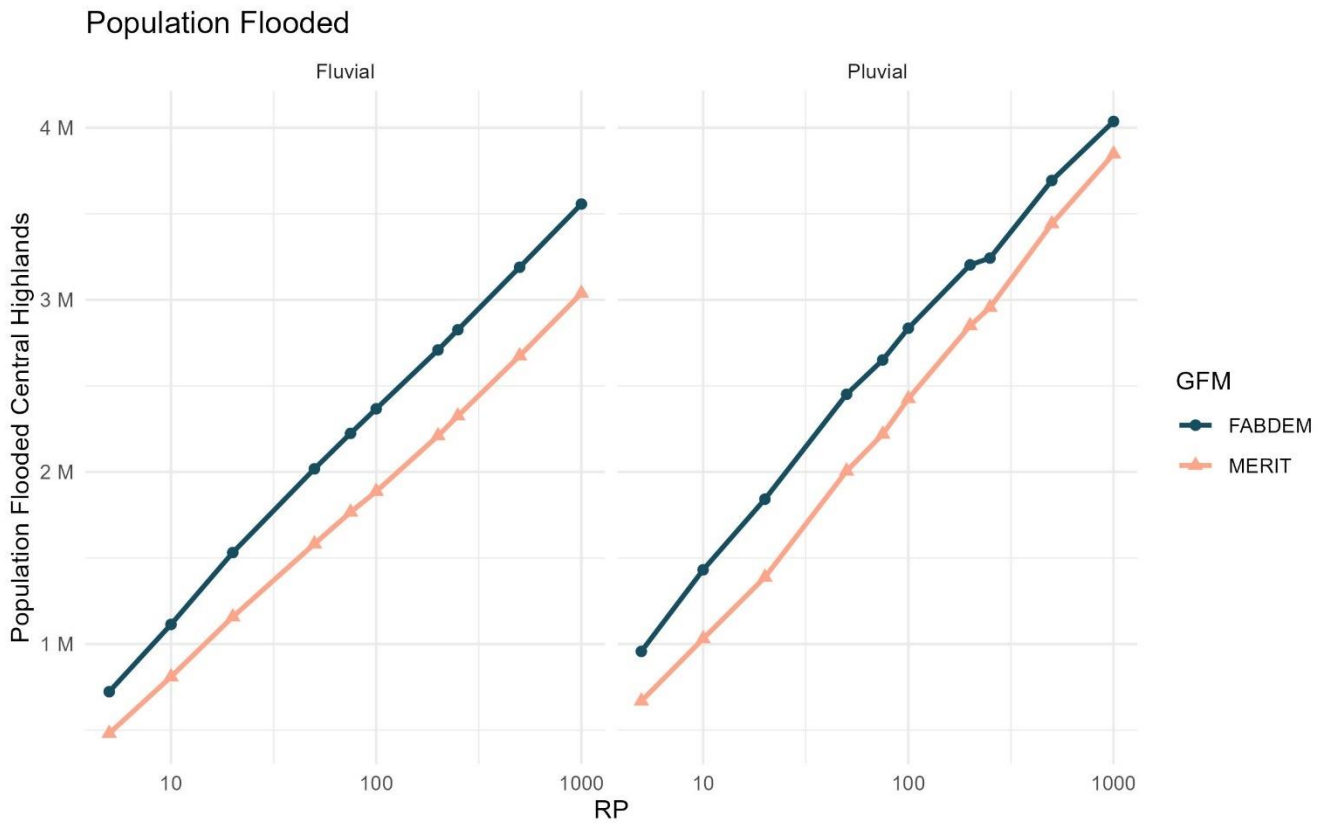
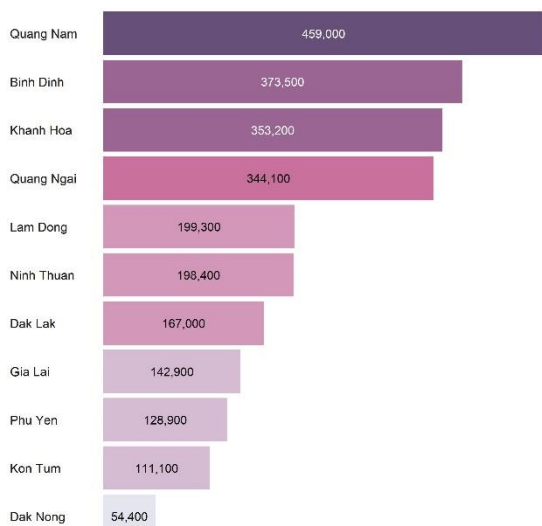


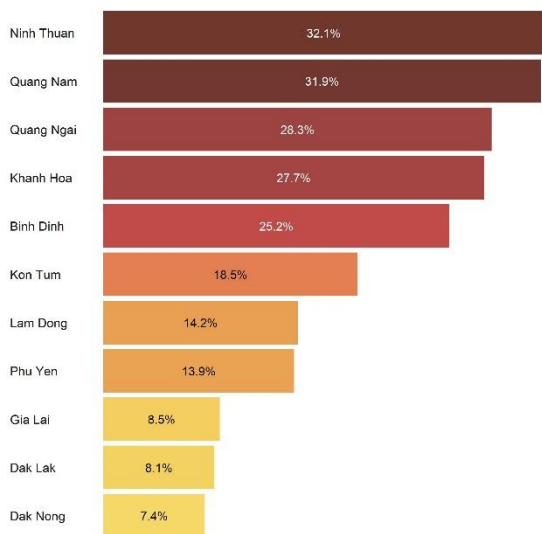
Figure 13: Total exposure for fluvial and pluvial flooding for the 11 provinces analysed. Flood return periods (RP) range from the 1-in-5 year flood to the 1-in-1000 year flood (x-axis). GFM MERIT model are given in orange and GFM FABDEM in blue.

1 in 100 year Flood Exposure

GFM FABDEM WorldPop



50K-100K 100K-150K 150K-200K 200K-300K 300K-350K 350K-400K 400K-450K 450K-500K



10% 15% 20% 25% 30%

Figure 14: Flood exposure for the 1-in-100 year flood return period as total numbers per province (purples) and % of total province population (oranges)

Table 2: Fluvial flood exposures for the 1-in-20 and 1-in-100 year return period flood for both GFM MERIT and GFM FABDEM

<u>VA</u> <u>RN</u> <u>AM</u> <u>E_1.</u> <u>..1</u>	<u>GFM FABD</u> <u>EM FUD 1i</u> <u>n20 binary</u> <u>10cm WorldP</u> <u>op</u>	<u>GFM MER</u> <u>IT FU 1in2</u> <u>0 binary 10</u> <u>cm WorldPo</u> <u>p</u>	<u>GFM FABD</u> <u>EM FUD 1i</u> <u>n100 binary</u> <u>10cm WorldP</u> <u>op</u>	<u>GFM MER</u> <u>IT FU 1in1</u> <u>00 binary 1</u> <u>0cm WorldP</u> <u>op</u>	<u>Fluvial 2</u> <u>0 FABD</u> <u>EM_min</u> <u>us MER</u> <u>IT</u>	<u>Fluvial 1</u> <u>00 FABD</u> <u>EM_min</u> <u>us MERI</u> <u>T</u>	<u>Fluvi</u> <u>al_pc</u> <u>diff</u> <u>1in2</u> <u>0</u>	<u>Fluvi</u> <u>al_pc</u> <u>diff</u> <u>1in1</u> <u>00</u>	<u>VA</u> <u>RN</u> <u>AM</u> <u>E_1</u> <u>..1</u>
<u>Bin</u> <u>h</u> <u>Din</u> <u>h</u>	<u>237,300</u>	<u>166,600</u>	<u>373,500</u>	<u>287,300</u>	<u>70700</u>	<u>86200</u>	<u>29.80</u> <u>%</u>	<u>23.10</u> <u>%</u>	<u>Bin</u> <u>h</u> <u>Din</u> <u>h</u>
<u>Dak</u> <u>Lak</u>	<u>129,400</u>	<u>92,700</u>	<u>167,000</u>	<u>135,400</u>	<u>36700</u>	<u>31600</u>	<u>28.40</u> <u>%</u>	<u>18.90</u> <u>%</u>	<u>Dak</u> <u>Lak</u>
<u>Dak</u> <u>Non</u> <u>g</u>	<u>48,200</u>	<u>25,800</u>	<u>54,400</u>	<u>34,400</u>	<u>22400</u>	<u>20000</u>	<u>46.50</u> <u>%</u>	<u>36.80</u> <u>%</u>	<u>Dak</u> <u>Non</u> <u>g</u>
<u>Gia</u> <u>Lai</u>	<u>107,400</u>	<u>75,900</u>	<u>142,900</u>	<u>107,300</u>	<u>31500</u>	<u>35600</u>	<u>29.30</u> <u>%</u>	<u>24.90</u> <u>%</u>	<u>Gia</u> <u>Lai</u>
<u>Kha</u> <u>nh</u> <u>Hoa</u>	<u>242,900</u>	<u>185,400</u>	<u>353,200</u>	<u>283,100</u>	<u>57500</u>	<u>70100</u>	<u>23.70</u> <u>%</u>	<u>19.80</u> <u>%</u>	<u>Kha</u> <u>nh</u> <u>Hoa</u>
<u>Kon</u> <u>Tu</u> <u>m</u>	<u>97,000</u>	<u>71,400</u>	<u>111,100</u>	<u>97,700</u>	<u>25600</u>	<u>13400</u>	<u>26.40</u> <u>%</u>	<u>12.10</u> <u>%</u>	<u>Kon</u> <u>Tu</u> <u>m</u>
<u>La</u> <u>m</u> <u>Don</u> <u>g</u>	<u>150,500</u>	<u>80,600</u>	<u>199,300</u>	<u>132,000</u>	<u>69900</u>	<u>67300</u>	<u>46.40</u> <u>%</u>	<u>33.80</u> <u>%</u>	<u>Lam</u> <u>Don</u> <u>g</u>
<u>Nin</u> <u>h</u> <u>Thu</u> <u>an</u>	<u>123,000</u>	<u>129,500</u>	<u>198,400</u>	<u>187,400</u>	<u>-6500</u>	<u>11000</u>	<u>-</u> <u>5.30</u> <u>%</u>	<u>5.50</u> <u>%</u>	<u>Nin</u> <u>h</u> <u>Thu</u> <u>an</u>
<u>Phu</u> <u>Yen</u>	<u>72,300</u>	<u>65,300</u>	<u>128,900</u>	<u>104,600</u>	<u>7000</u>	<u>24300</u>	<u>9.70</u> <u>%</u>	<u>18.90</u> <u>%</u>	<u>Phu</u> <u>Yen</u>

Quang Nam	<u>256,100</u>	<u>225,500</u>	<u>459,000</u>	<u>383,100</u>	<u>30600</u>	<u>75900</u>	<u>11.90</u> %	<u>16.50</u> %	Quang Nam
Quang Ngai	<u>182,100</u>	<u>120,200</u>	<u>344,100</u>	<u>263,800</u>	<u>61900</u>	<u>80300</u>	<u>34.00</u> %	<u>23.30</u> %	Quang Ngai
Tot al	<u>1,646,200</u>	<u>1,238,900</u>	<u>2,531,800</u>	<u>2,016,100</u>	<u>407,300</u>	<u>515,700</u>	<u>32.80</u> %	<u>25.50</u> %	Tota l
VA RN AM E_1 ...1	GFM_FABDEM_FUD_in20_binary_10cm_WorldPop	GFM_MERIT_FU_in20_binary_10cm_WorldPop	GFM_FABDEM_FUD_in100_binary_10cm_WorldPop	GFM_MERIT_FU_in100_binary_10cm_WorldPop	Fluvial_20_FABDEM_minus_MERIT	Fluvial_100_FABDEM_minus_MERIT	Fluival_diff_in20	Fluival_diff_in100	VA RN AM E_1 ...1
Bin Dinh	<u>237,300</u>	<u>166,600</u>	<u>373,500</u>	<u>287,300</u>	<u>70700</u>	<u>86200</u>	<u>29.80</u> %	<u>23.10</u> %	Bin Dinh
Dak Lak	<u>129,400</u>	<u>92,700</u>	<u>167,000</u>	<u>135,400</u>	<u>36700</u>	<u>31600</u>	<u>28.40</u> %	<u>18.90</u> %	Dak Lak
Dak Nong	<u>48,200</u>	<u>25,800</u>	<u>54,400</u>	<u>34,400</u>	<u>22400</u>	<u>20000</u>	<u>46.50</u> %	<u>36.80</u> %	Dak Nong
Gia Lai	<u>107,400</u>	<u>75,900</u>	<u>142,900</u>	<u>107,300</u>	<u>31500</u>	<u>35600</u>	<u>29.30</u> %	<u>24.90</u> %	Gia Lai
Khan Hoa	<u>242,900</u>	<u>185,400</u>	<u>353,200</u>	<u>283,100</u>	<u>57500</u>	<u>70100</u>	<u>23.70</u> %	<u>19.80</u> %	Khan Hoa
Kon Tum	<u>97,000</u>	<u>71,400</u>	<u>111,100</u>	<u>97,700</u>	<u>25600</u>	<u>13400</u>	<u>26.40</u> %	<u>12.10</u> %	Kon Tum

Lam Don g	150,500	80,600	199,300	132,000	69900	67300	46.40 %	33.80 %	Lam Don g
Ninh Thuan	123,000	129,500	198,400	187,400	-6500	11000	- 5.30 %	5.50 %	Ninh Thuan
Phu Yen	72,300	65,300	128,900	104,600	7000	24300	9.70 %	18.90 %	Phu Yen
Quang Nam	256,100	225,500	459,000	383,100	30600	75900	11.90 %	16.50 %	Quang Nam
Quang Ngai	182,100	120,200	344,100	263,800	61900	80300	34.00 %	23.30 %	Quang Ngai
Total	1,646,200	1,238,900	2,531,800	2,016,100	407,300	515,700	32.80 %	25.50 %	Total

590

595

600

Table 3: Pluvial flood exposures for the 1-in-20 and 1-in-100 year return period flood for both GFM MERIT and GFM FABDEM

Province	GFM FABDEM 1 in 20	GFM MERIT 1 in 20	GFM FABDEM 1 in 100	GFM MERIT 1 in 100	% Difference GFM FABDEM to GFM MERIT 1 in 20	% Difference GFM FABDEM to GFM MERIT 1 in 100
Binh Dinh	290,500	179,300	457,800	335,600	38.3%	26.7%
Dak Lak	199,400	151,100	299,700	260,700	24.2%	13.0%
Dak Nong	88,300	45,800	119,500	80,500	48.1%	32.6%
Gia Lai	172,700	159,300	251,100	245,500	7.8%	2.2%
Khanh Hoa	217,100	160,200	375,400	291,900	26.2%	22.2%
Kon Tum	99,300	110,900	137,300	156,200	-11.7%	-13.8%
Lam Dong	217,800	141,500	293,900	233,100	35.0%	20.7%
Ninh Thuan	104,200	81,000	182,000	161,600	22.3%	11.2%
Phu Yen	141,500	102,800	224,400	187,800	27.3%	16.3%
Quang Nam	235,000	207,100	358,800	375,500	11.9%	-4.7%
Quang Ngai	207,100	156,100	320,300	271,700	24.6%	15.2%
<i>Total</i>	<i>1,972,900</i>	<i>1,495,100</i>	<i>3,020,200</i>	<i>2,600,100</i>	<i>32.0%</i>	<i>16.2%</i>

Population Flooded Fluvial

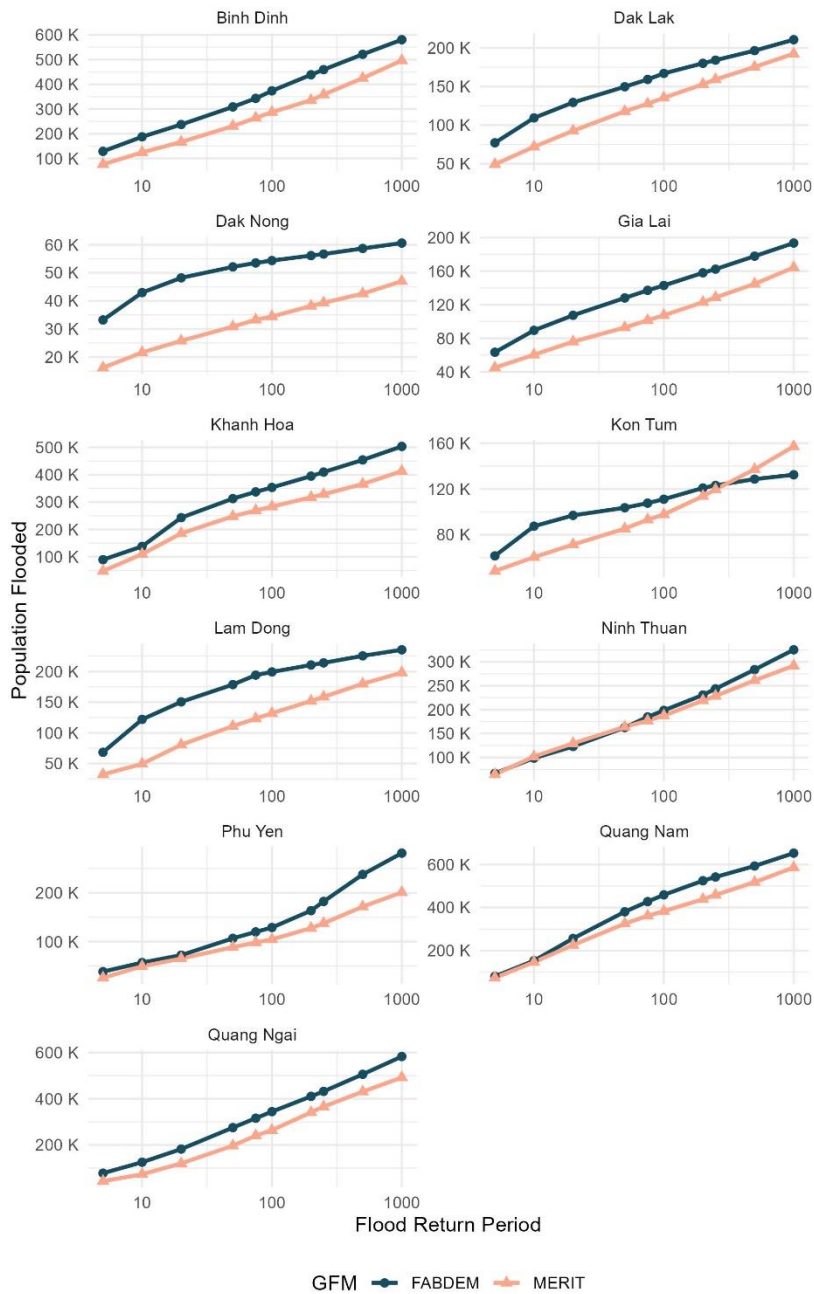
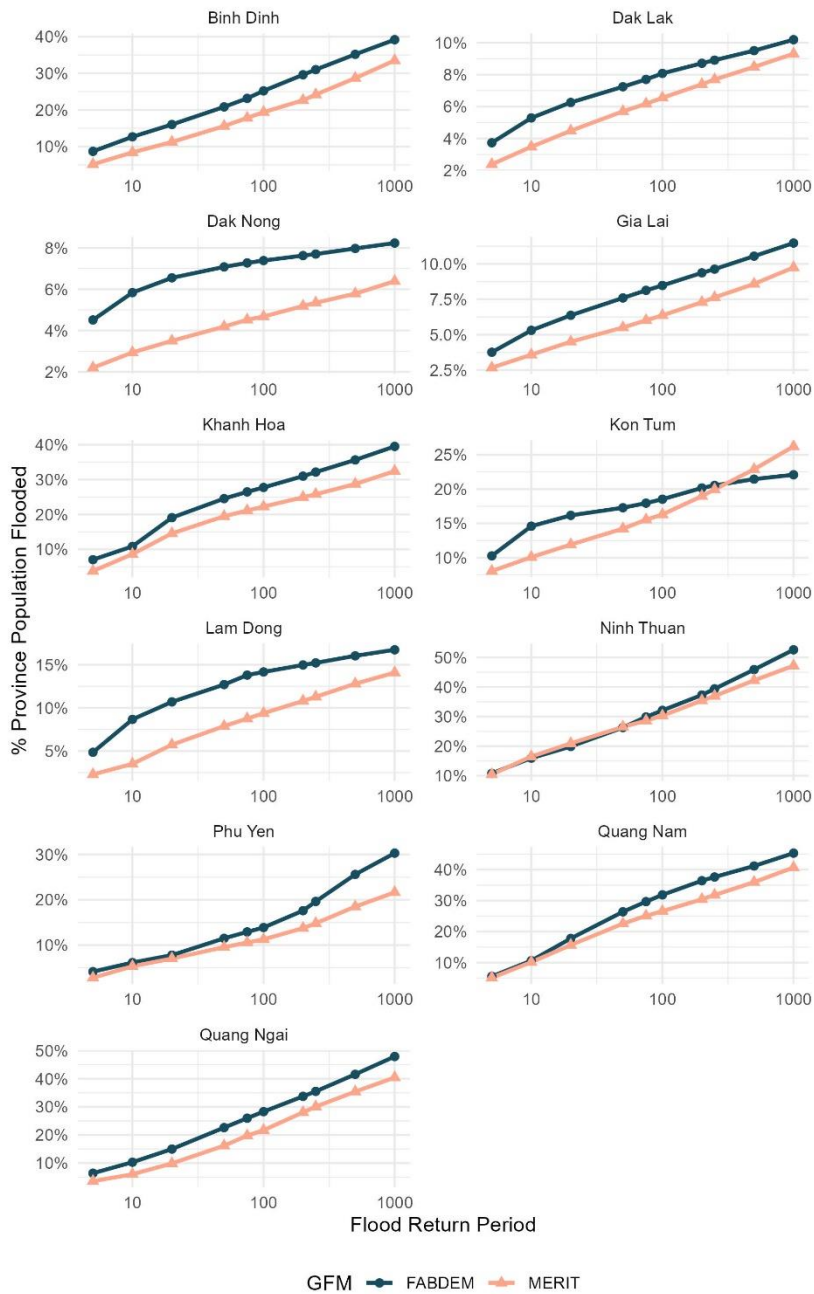


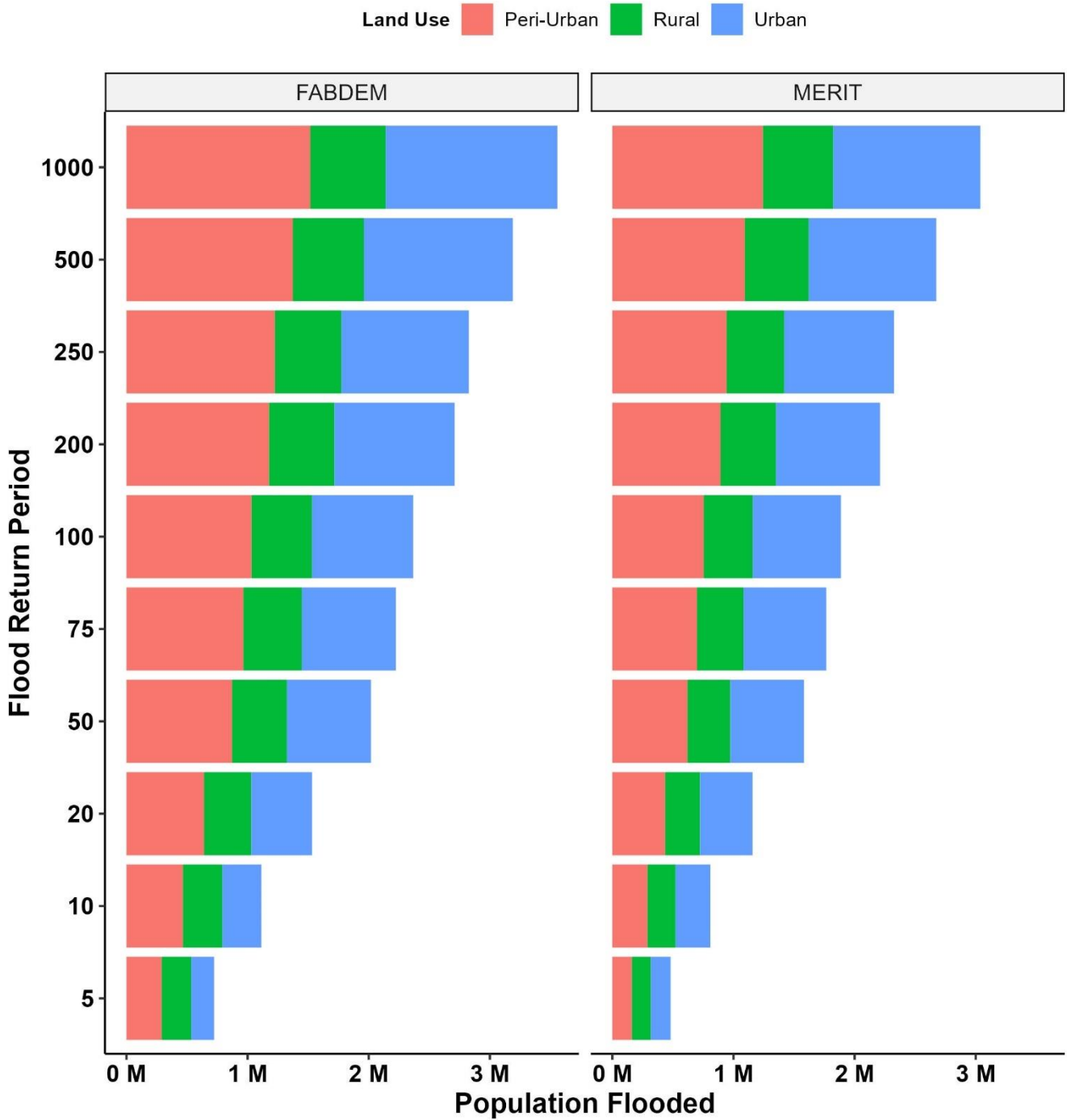
Figure 15: Flood exposure per province for fluvial flooding. Results shown for GFM MERIT (orange) and GFM FABDEM (blue). Flood return periods (RP) range from the 1-in-5 year flood to the 1-in-1000 year flood (x-axis). Note the y-axis (exposure to flooding) varies per province.

Population Flooded Fluvial



620

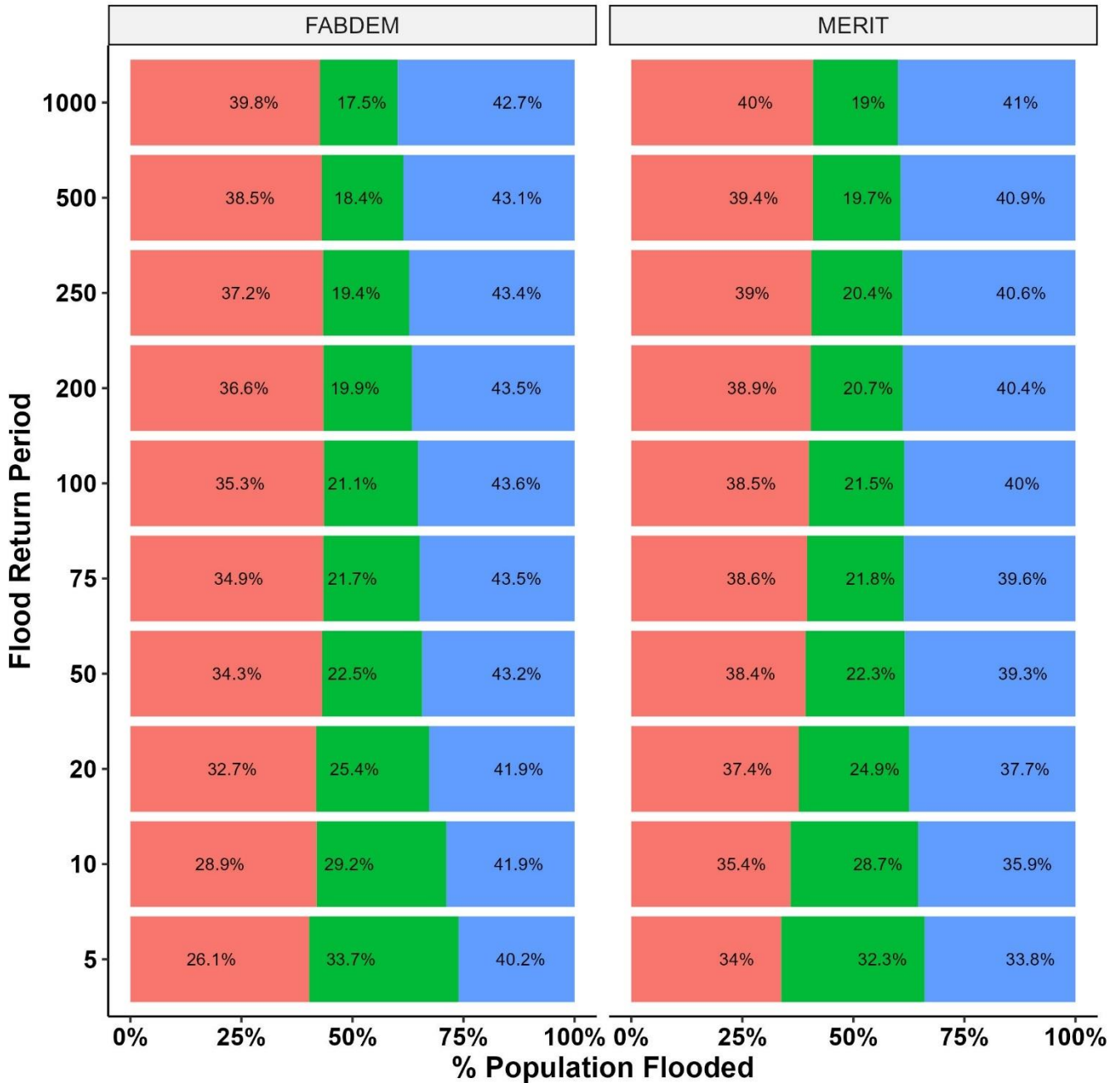
Figure 16: Flood exposure per province for fluvial flooding as a percentage of total province population. Results shown for GFM MERIT (orange) and GFM FABDEM (blue). Flood return periods (RP) range from the 1-in-5 year flood to the 1-in-1000 year flood (x-axis). Note the y-axis (% province population exposed to flooding) varies per province.



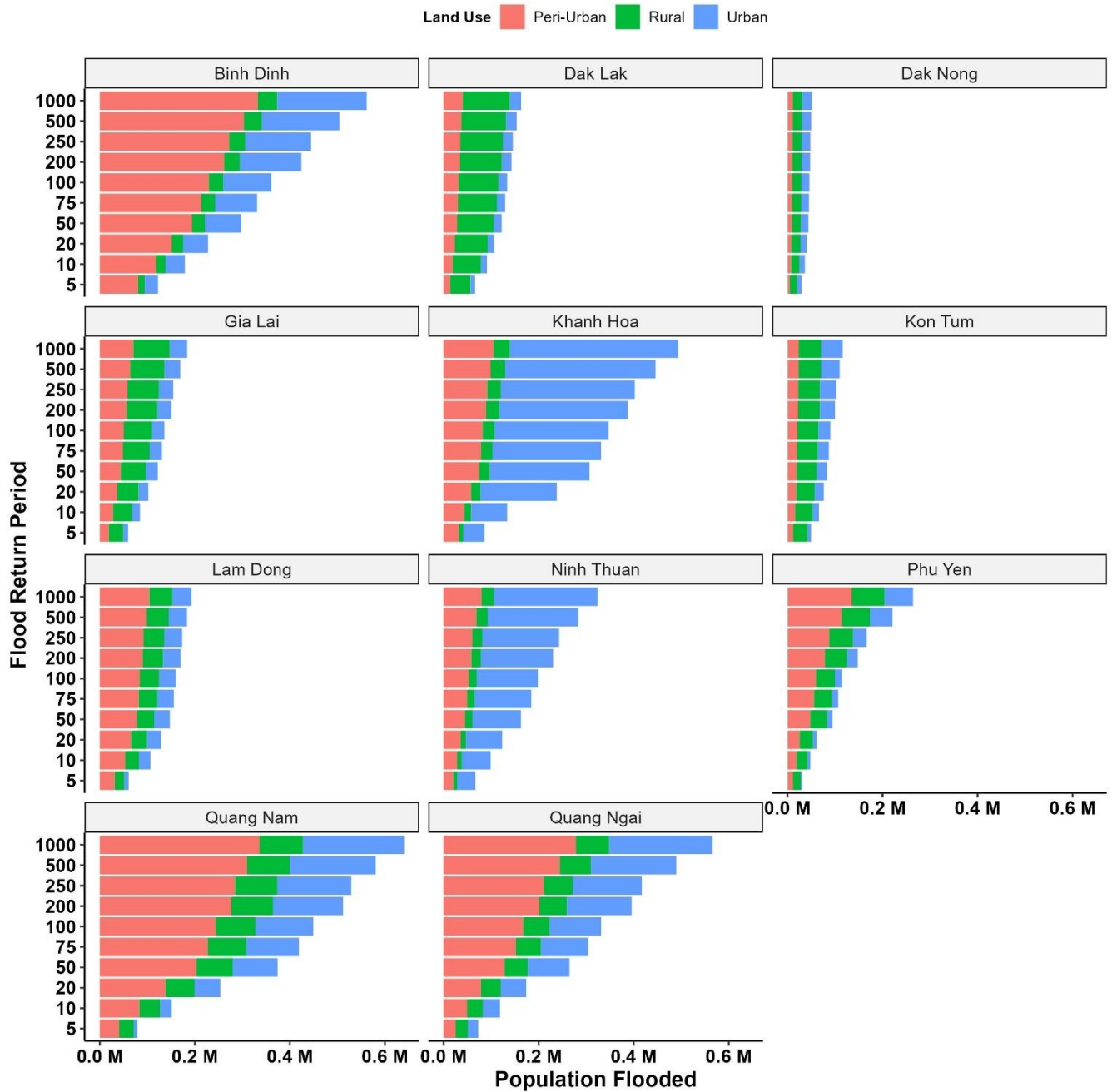
625

Figure 17: Total exposure (y-axis) for fluvial flooding by landcover (rural, peri-urban and urban) for GFM MERIT and GFM FABDEM. Flood return periods (x-axis) range from the 1-in-5 year flood to the 1-in-1000 year flood.

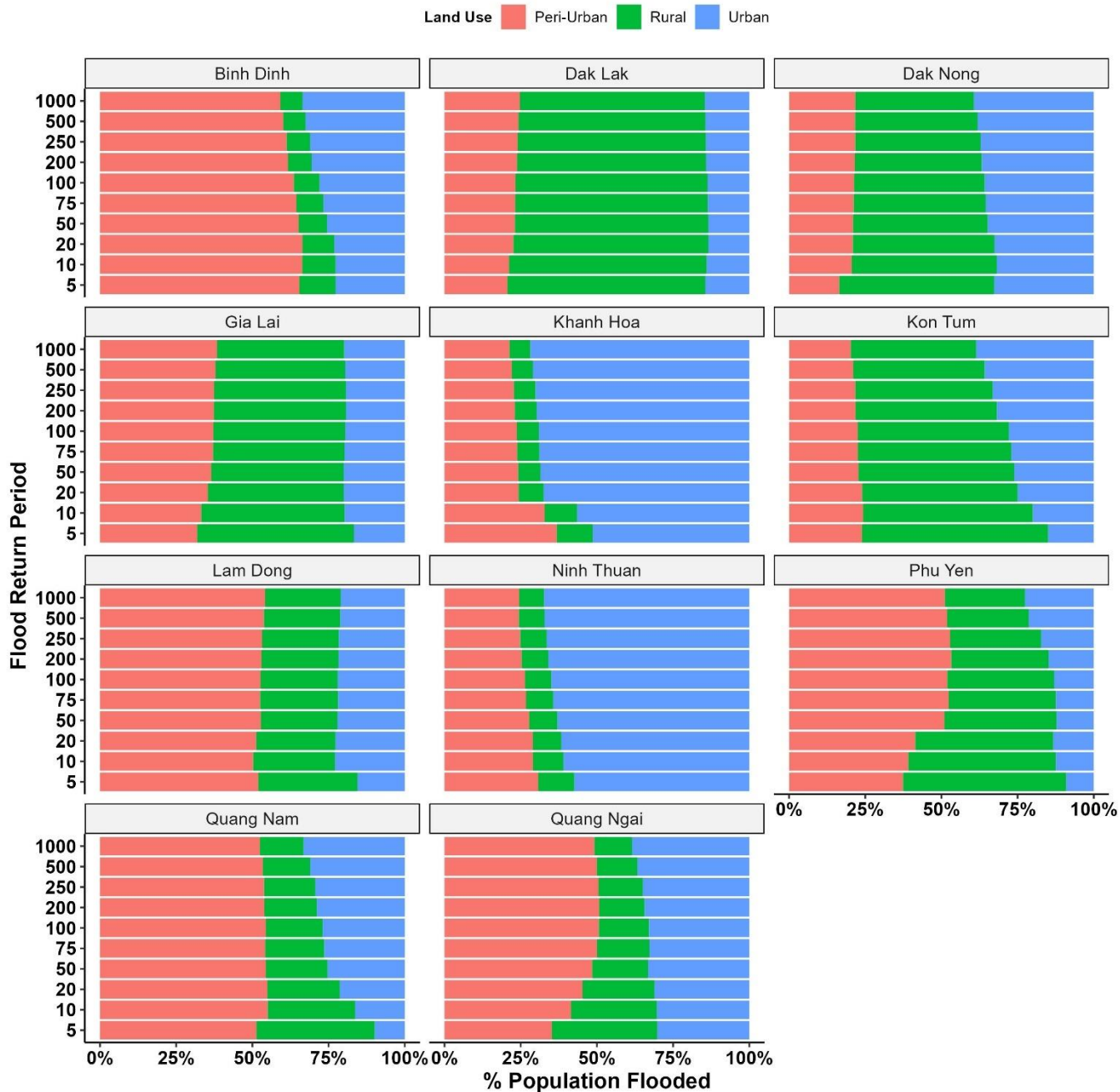
Land Use ■ Peri-Urban ■ Rural ■ Urban



630 Figure 18: Total exposure per flood return period as a percentage by landcover (rural, peri-urban and urban) for GFM MERIT and GFM FABDEM (y-axis). The percentages refer to the % of exposure for the associated return period in the given landcover (x-axis).



635 Figure 19: Total exposure (y-axis) for fluvial flooding by landcover (rural, peri-urban and urban) for GFM FABDEM per province. Flood return periods (x-axis) range from the 1-in-5 year flood to the 1-in-1000 year flood.



640 **Figure 20: Total exposure per flood return period as a percentage by landcover (rural, peri-urban and urban) for GFM FABDEM (y-axis) per province. The percentages refer to the % of exposure for the associated return period in the given landcover (x-axis).**

Competing Interests

The authors declare that they have no conflict of interest.

645 References

- Aerts, J. P. M., Uhlemann-Elmer, S., Eilander, D., and Ward, P. J.: Global flood hazard map and exposed GDP comparison: a China case study, *Nat. Hazards Earth Syst. Sci. Discuss.*, 2020, 1-26, 10.5194/nhess-2020-1, 2020.
- Airbus: Copernicus DEM: Copernicus Digital Elevation Model Product Handbook, 2020.
- 650 Alemu, A. N., Haile, A. T., Carr, A. B., Trigg, M. A., Mengistie, G. K., and Walsh, C. L.: Filling data gaps using citizen science for flood modeling in urbanized catchment of akaki, *Natural Hazards Research*, <https://doi.org/10.1016/j.nhres.2023.05.002>, 2023.
- Apel, H., Martínez Trepát, O., Hung, N. N., Chinh, D. T., Merz, B., and Dung, N. V.: Combined fluvial and pluvial urban flood hazard analysis: concept development and application to Can Tho city, Mekong Delta, Vietnam, *Natural Hazards and Earth System Sciences*, 16, 941-961, 10.5194/nhess-16-941-2016, 2016.
- 655 Archer, L., Neal, J., Bates, P., and House, J.: Comparing TanDEM-X Data with Frequently Used DEMs for Flood Inundation Modelling, *Water Resources Research*, 54, 10,205–210,222, <https://doi.org/10.1029/2018WR023688>, 2018.
- Arnell, N. W. and Gosling, S. N.: The impacts of climate change on river flood risk at the global scale, *Climatic Change*, 134, 387-401, 10.1007/s10584-014-1084-5, 2016.
- Bangalore, M., Smith, A., and Veldkamp, T.: Exposure to Floods, Climate Change, and Poverty in Vietnam, *Economics of Disasters and Climate Change*, 3, 79-99, 10.07/s41885-018-0035-4, 2019.
- 660 Bates, P. D.: Flood Inundation Prediction, *Annual Review of Fluid Mechanics*, 54, 287-315, 10.1146/annurev-fluid-030121-113138, 2022.
- Bates, P. D., Horritt, M. S., and Fewtrell, T. J.: A simple inertial formulation of the shallow water equations for efficient two-dimensional flood inundation modelling, *Journal of Hydrology*, 387, 33-45, 10.1016/j.jhydrol.2010.03.027, 2010.
- 665 Bates, P. D., Horritt, M. S., Aronica, G., and Beven, K.: Bayesian updating of flood inundation likelihoods conditioned on flood extent data, *Hydrological Processes*, 18, 3347-3370, 10.1002/hyp.1499, 2004.
- Bates, P. D., Savage, J., Wing, O., Quinn, N., Sampson, C., Neal, J., and Smith, A.: A climate-conditioned catastrophe risk model for UK flooding, *Nat. Hazards Earth Syst. Sci.*, 23, 891-908, 10.5194/nhess-23-891-2023, 2023.
- Bell, A., Ward, P., Tamal, M. E. H., and Killilea, M.: Assessing recall bias and measurement error in high-frequency social data collection for human-environment research, *Popul Environ*, 40, 325-345, 10.1007/s11111-019-0314-1, 2019.
- 670 Bernhofen, M. V., Whyman, C., Trigg, M. A., Sleigh, P. A., Smith, A. M., Sampson, C. C., Yamazaki, D., Ward, P. J., Rudari, R., Pappenberger, F., Dottori, F., Salamon, P., and Winsemius, H. C.: A first collective validation of global fluvial flood models for major floods in Nigeria and Mozambique, *Environmental Research Letters*, 13, 10.1088/1748-9326/aae014, 2018.
- 675 Bernhofen, M. V., Cooper, S., Trigg, M., Mdee, A., Carr, A., Bhave, A., Solano-Correa, Y. T., Pencue-Fierro, E. L., Teferi, E., Haile, A. T., Yusop, Z., Alias, N. E., Sa'adi, Z., Bin Ramzan, M. A., Dhanya, C. T., and Shukla, P.: The Role of Global Data Sets for Riverine Flood Risk Management at National Scales, *Water Resources Research*, 58, 10.1029/2021wr031555, 2022.
- Bondarenko, M., Kerr, D., Sorichetta, A., Tatem, A., and WorldPop: Census/projection-disaggregated gridded population datasets for 51 countries across sub-Saharan Africa in 2020 using building footprints, 10.5258/SOTON/WP00682, 2020.
- 680 Bui, A. T., Dungey, M., Nguyen, C. V., and Pham, T. P.: The impact of natural disasters on household income, expenditure, poverty and inequality: evidence from Vietnam, *Applied Economics*, 46, 1751-1766, 10.1080/00036846.2014.884706, 2014.
- Chen, A., Giese, M., and Chen, D.: Flood impact on Mainland Southeast Asia between 1985 and 2018—The role of tropical cyclones, *Journal of Flood Risk Management*, 13, 10.1111/jfr3.12598, 2020.
- 685 Chib, S. and Greenberg, E.: Understanding the Metropolis-Hastings Algorithm, *The American Statistician*, 49, 327-335, 10.1080/00031305.1995.10476177, 1995.
- Crippen, R., Buckley, S., Agram, P., Belz, E., Gurrola, E., Hensley, S., Kobrick, M., Lavelle, M., Martin, J., Neumann, M., Nguyen, Q., Rosen, P., Shimada, J., Simard, M., and Tung, W.: Nasadem Global Elevation Model: Methods and Progress, *ISPRS - International Archives of the Photogrammetry, Remote Sensing and Spatial Information Sciences*, XLI-B4, 125-690 128, 10.5194/isprsarchives-XLI-B4-125-2016, 2016.

- Devitt, L., Neal, J., Wagener, T., and Coxon, G.: Uncertainty in the extreme flood magnitude estimates of large-scale flood hazard models, *Environmental Research Letters*, 16, 064013, 10.1088/1748-9326/abfac4, 2021.
- Devitt, L., Neal, J., Coxon, G., Savage, J., and Wagener, T.: Flood hazard potential reveals global floodplain settlement patterns, *Nature Communications*, 14, 2801, 10.1038/s41467-023-38297-9, 2023.
- 695 Di Baldassarre, G., Laio, F., and Montanari, A.: Design flood estimation using model selection criteria, *Physics and Chemistry of the Earth, Parts A/B/C*, 34, 606-611, 10.1016/j.pce.2008.10.066, 2009.
- DiGregorio, M.: Learning from Typhoon Mirinae: Urbanization and Climate Change in Quy Nhon City, Vietnam, Institute for Social and Environmental Transition-Vietnam, Ha Noi, Vietnam, 64, 2013.
- Dottori, F., Salamon, P., Bianchi, A., Alfieri, L., Hirpa, F. A., and Feyen, L.: Development and evaluation of a framework for global flood hazard mapping, *Advances in Water Resources*, 94, 87-102, 10.16/j.advwatres.2016.05.002, 2016.
- 700 Dottori, F., Szewczyk, W., Ciscar, J.-C., Zhao, F., Alfieri, L., Hirabayashi, Y., Bianchi, A., Mongelli, I., Frieler, K., Betts, R. A., and Feyen, L.: Increased human and economic losses from river flooding with anthropogenic warming, *Nature Climate Change*, 8, 781-786, 10.38/s41558-018-0257-z, 2018.
- Dung, N. V., Merz, B., Bárdossy, A., Thang, T. D., and Apel, H.: Multi-objective automatic calibration of hydrodynamic models utilizing inundation maps and gauge data, *Hydrology and Earth System Sciences*, 15, 1339-1354, 10.5194/hess-15-1339-2011, 2011.
- 705 Fewtrell, T. J., Duncan, A., Sampson, C. C., Neal, J. C., and Bates, P. D.: Benchmarking urban flood models of varying complexity and scale using high resolution terrestrial LiDAR data, *Physics and Chemistry of the Earth, Parts A/B/C*, 36, 281-291, 10.1016/j.pce.2010.12.011, 2011.
- 710 Fleischmann, A., Paiva, R., and Collischonn, W.: Can regional to continental river hydrodynamic models be locally relevant? A cross-scale comparison, *Journal of Hydrology X*, 3, 10.16/j.hydroa.2019, <https://doi.org/10.0027>, 2019.
- Garrote, J.: Free Global DEMs and Flood Modelling - A Comparison Analysis for the January 2015 Flooding Event in Mocuba City (Mozambique), *Water*, 14, 176, <https://doi.org/10.3390/w14020176>, 2022.
- Gaume, E.: Flood frequency analysis: The Bayesian choice, *WIREs Water*, 5, 10.1002/wat2.1290, 2018.
- 715 Guan, M., Guo, K., Yan, H., and Wright, N.: Bottom-up multilevel flood hazard mapping by integrated inundation modelling in data scarce cities, *Journal of Hydrology*, 617, 129114, <https://doi.org/10.1016/j.jhydrol.2023.129114>, 2023.
- Guth, P. L. and Geoffroy, T. M.: LiDAR point cloud and ICESat-2 evaluation of 1 second global digital elevation models: Copernicus wins, *Transactions in GIS*, 25, 2245-2261, <https://doi.org/10.1111/tgis.12825>, 2021.
- Haddad, K. and Rahman, A.: Selection of the best fit flood frequency distribution and parameter estimation procedure: a case study for Tasmania in Australia, *Stochastic Environmental Research and Risk Assessment*, 25, 415-428, 10.1007/s00477-010-0412-1, 2011.
- 720 Hastings, W. K.: Monte Carlo sampling methods using Markov chains and their applications, *Biometrika*, 57, 97-109, <https://doi.org/10.1093/biomet/57.1.97>, 1970.
- Hawker, L., Neal, J., and Bates, P.: Accuracy assessment of the TanDEM-X 90 Digital Elevation Model for selected floodplain sites, *Remote Sensing of Environment*, 232, 10.16/j.rse.2019.111319, 2019.
- 725 Hawker, L., Neal, J., and Pham, K. N.: Fluvial and pluvial flood maps for the central highlands of Vietnam and surrounding provinces, 2022, NERC EDS Environmental Information Data Centre [dataset], 2022a.
- Hawker, L., Uhe, P., Paulo, L., Sosa, J., Savage, J., Sampson, C., and Neal, J.: A 30 m global map of elevation with forests and buildings removed, *Environmental Research Letters*, 17, 10.1088/1748-9326/ac4d4f, 2022b.
- 730 Hawker, L., Neal, J., Tellman, B., Liang, J., Schumann, G., Doyle, C., Sullivan, J. A., Savage, J., and Tshimanga, R.: Comparing earth observation and inundation models to map flood hazards, *Environmental Research Letters*, 15, 10.88/1748-9326/abc216, 2020.
- Hirabayashi, Y., Tanoue, M., Sasaki, O., Zhou, X., and Yamazaki, D.: Global exposure to flooding from the new CMIP6 climate model projections, *Sci Rep*, 11, 3740, 10.38/s41598-021-83279-w, 2021.
- 735 Horritt, M. and Bates, P.: Evaluation of 1D and 2D numerical models for predicting river flood inundation, *Journal of Hydrology*, 268, 87-99, 2002.
- Iqbal, A., Mondal, M. S., Veerbeek, W., Khan, M. S. A., and Hakvoort, H.: Effectiveness of UAV-based DTM and satellite-based DEMs for local-level flood modeling in Jamuna floodplain, *Journal of Flood Risk Management*, 10.1111/jfr3.12937, 2023.

- 740 Jongman, B., Ward, P. J., and Aerts, J. C. J. H.: Global exposure to river and coastal flooding: Long term trends and changes, *Global Environmental Change*, 22, 823-835, [10.1016/j.gloenvcha.2012.07.004](https://doi.org/10.1016/j.gloenvcha.2012.07.004), 2012.
- Laio, F., Di Baldassarre, G., and Montanari, A.: Model selection techniques for the frequency analysis of hydrological extremes, *Water Resources Research*, 45, <https://doi.org/10.1029/2007WR006666>, 2009.
- Le, T., Sun, C., Choy, S., and Kuleshov, Y.: Regional drought risk assessment in the Central Highlands and the South of Vietnam, *Geomatics, Natural Hazards and Risk*, 12, 3140-3159, [10.1080/19475705.2021.1998232](https://doi.org/10.1080/19475705.2021.1998232), 2021.
- 745 McClean, F., Dawson, R., and Kilsby, C.: Implications of Using Global Digital Elevation Models for Flood Risk Analysis in Cities, *Water Resources Research*, 56, [10.29/2020wr028241](https://doi.org/10.1029/2020wr028241), 2020.
- Metropolis, N., Rosenbluth, A. W., Rosenbluth, M. N., Teller, A. H., and Teller, E.: Equation of State Calculations by Fast Computing Machines, *The Journal of Chemical Physics*, 21, 1087-1092, [10.1063/1.1699114](https://doi.org/10.1063/1.1699114), 1953.
- 750 MunichRe: NatCatSERVICE database. Natural disasters of 2019 in figures, 2020.
- Neal, J., Schumann, G., and Bates, P.: A subgrid channel model for simulating river hydraulics and floodplain inundation over large and data sparse areas, *Water Resources Research*, 48, [10.1029/2012wr012514](https://doi.org/10.1029/2012wr012514), 2012.
- Neal, J., Hawker, L., Savage, J., Durand, M., Bates, P., and Sampson, C.: Estimating River Channel Bathymetry in Large Scale Flood Inundation Models, *Water Resources Research*, 57, e2020WR028301, <https://doi.org/10.1029/2020WR028301>,
- 755 2021.
- Neal, J. C., Bates, P. D., Fewtrell, T. J., Hunter, N. M., Wilson, M. D., and Horritt, M. S.: Distributed whole city water level measurements from the Carlisle 2005 urban flood event and comparison with hydraulic model simulations, *Journal of Hydrology*, 368, 42-55, [10.1016/j.jhydrol.2009.01.026](https://doi.org/10.1016/j.jhydrol.2009.01.026), 2009.
- Nguyen, M. T., Sebesvari, Z., Souvignet, M., Bachofer, F., Braun, A., Garschagen, M., Schinkel, U., Yang, L. E., Nguyen, L. H. K., Hochschild, V., Assmann, A., and Hagenlocher, M.: Understanding and assessing flood risk in Vietnam: Current status, persisting gaps, and future directions, *Journal of Flood Risk Management*, [10.1111/jfr3.12689](https://doi.org/10.1111/jfr3.12689), 2021.
- 760 Niveves, J. J., Bondarenko, M., Kerr, D., Ves, N., Yetman, G., Sinha, P., Clarke, D. J., Sorichetta, A., Stevens, F. R., Gaughan, A. E., and Others: Measuring the contribution of built-settlement data to global population mapping, *Social Sciences & Humanities Open*, 3, 100102, 2021.
- 765 Pesaresi, M., Florczyk, A., Schiavina, M., Melchiorri, M., and Maffenini, L.: GHS settlement grid, updated and refined regio model 2014 in application to ghs-built r2018a and ghs-pop r2019a, multitemporal (1975-1990-2000-2015) r2019a, European Commission, Joint Research Centre (JRC), 10, 2019.
- Pettersson, L., ten Veldhuis, M.-C., Verhoeven, G., Kapelan, Z., Maholi, I., and Winsemius, H. C.: Community Mapping Supports Comprehensive Urban Flood Modeling for Flood Risk Management in a Data-Scarce Environment, *Frontiers in Earth Science*, 8, [10.3389/feart.2020.00304](https://doi.org/10.3389/feart.2020.00304), 2020.
- 770 Reis, D. S. and Stedinger, J. R.: Bayesian MCMC flood frequency analysis with historical information, *Journal of Hydrology*, 313, 97-116, [10.1016/j.jhydrol.2005.02.028](https://doi.org/10.1016/j.jhydrol.2005.02.028), 2005.
- Rentschler, J., Salhab, M., and Jafino, B. A.: Flood exposure and poverty in 188 countries, *Nature Communications*, 13, [10.1038/s41467-022-30727-4](https://doi.org/10.1038/s41467-022-30727-4), 2022.
- 775 Rizzoli, P., Martone, M., Gonzalez, C., Wecklich, C., Borla Tridon, D., Bräutigam, B., Bachmann, M., Schulze, D., Fritz, T., Huber, M., Wessel, B., Krieger, G., Zink, M., and Moreira, A.: Generation and performance assessment of the global TanDEM-X digital elevation model, *ISPRS Journal of Photogrammetry and Remote Sensing*, 132, 119-139, [10.1016/j.isprsjprs.2017.08.008](https://doi.org/10.1016/j.isprsjprs.2017.08.008), 2017.
- Rollason, E., Bracken, L. J., Hardy, R. J., and Large, A. R. G.: The importance of volunteered geographic information for the validation of flood inundation models, *Journal of Hydrology*, 562, 267-280, <https://doi.org/10.1016/j.jhydrol.2018.05.002>,
- 780 2018.
- Rözer, V., Kreibich, H., Schröter, K., Müller, M., Sairam, N., Doss-Gollin, J., Lall, U., and Merz, B.: Probabilistic Models Significantly Reduce Uncertainty in Hurricane Harvey Pluvial Flood Loss Estimates, *Earth's Future*, 7, 384-394, <https://doi.org/10.1029/2018EF001074>, 2019.
- 785 Saksena, S. and Merwade, V.: Incorporating the effect of DEM resolution and accuracy for improved flood inundation mapping, *Journal of Hydrology*, 530, 180-194, [10.1016/j.jhydrol.2015.09.069](https://doi.org/10.1016/j.jhydrol.2015.09.069), 2015.
- Sampson, C. C., Bates, P. D., Neal, J. C., and Horritt, M. S.: An automated routing methodology to enable direct rainfall in high resolution shallow water models, *Hydrological Processes*, 27, 467-476, [10.1002/hyp.9515](https://doi.org/10.1002/hyp.9515), 2013.

- 790 Sampson, C. C., Smith, A. M., Bates, P. D., Neal, J. C., Alfieri, L., and Freer, J. E.: A high-resolution global flood hazard model, *Water Resources Research*, 51, 7358-7381, 10.1002/2015wr016954, 2015.
- Savage, J., Pianosi, F., Bates, P., Freer, J., and Wagener, T.: Quantifying the importance of spatial resolution and other factors through global sensitivity analysis of a flood inundation model, *Water Resources Research*, 52, 9146-9163, 10.1002/2015wr018198, 2016.
- 795 Singh, H., Nielsen, M., and Greatrex, H.: Causes, impacts, and mitigation strategies of urban pluvial floods in India: A systematic review, *International Journal of Disaster Risk Reduction*, 93, 103751, <https://doi.org/10.1016/j.ijdr.2023.103751>, 2023.
- Smith, A., Sampson, C., and Bates, P.: Regional flood frequency analysis at the global scale, *Water Resources Research*, 51, 539-553, 10.1002/2014wr015814, 2015.
- 800 Smith, A., Bates, P. D., Wing, O., Sampson, C., Quinn, N., and Neal, J.: New estimates of flood exposure in developing countries using high-resolution population data, *Nat Commun*, 10, 1814, 10.38/s41467-019-09282-y, 2019.
- Stevens, F. R., Gaughan, A. E., Linard, C., and Tatem, A. J.: Disaggregating census data for population mapping using random forests with remotely-sensed and ancillary data, *PLoS One*, 10, e0107042, 10.1371/journal.pone.0107042, 2015.
- Stevens, F. R., Gaughan, A. E., Nieves, J. J., King, A., Sorichetta, A., Linard, C., and Tatem, A. J.: Comparisons of two global built area land cover datasets in methods to disaggregate human population in eleven countries from the global South, 805 *International Journal of Digital Earth*, 13, 78-100, 10.1080/17538947.2019.1633424, 2019.
- Tadono, T., Nagai, H., Ishida, H., Oda, F., Naito, S., Minakawa, K., and Iwamoto, H.: Generation of the 30 M-Mesh Global Digital Surface Model by Alos Prism, *ISPRS - International Archives of the Photogrammetry, Remote Sensing and Spatial Information Sciences*, XLI-B4, 157-162, 10.5194/isprsarchives-XLI-B4-157-2016, 2016.
- 810 Takaku, J., Tadono, T., Doutsu, M., Ohgushi, F., and Kai, H.: UPDATES OF 'AW3D30' ALOS GLOBAL DIGITAL SURFACE MODEL WITH OTHER OPEN ACCESS DATASETS, *Int. Arch. Photogramm. Remote Sens. Spatial Inf. Sci.*, XLIII-B4-2020, 183-189, 10.5194/isprs-archives-XLIII-B4-2020-183-2020, 2020.
- Tellman, B., Sullivan, J. A., Kuhn, C., Kettner, A. J., Doyle, C. S., Brakenridge, G. R., Erickson, T. A., and Slayback, D. A.: Satellite imaging reveals increased proportion of population exposed to floods, *Nature*, 596, 80-86, 10.38/s41586-021-03695-w, 2021.
- 815 Triet, N. V. K., Dung, N. V., Fujii, H., Kummu, M., Merz, B., and Apel, H.: Has dyke development in the Vietnamese Mekong Delta shifted flood hazard downstream?, *Hydrology and Earth System Sciences*, 21, 3991-4010, 10.5194/hess-21-3991-2017, 2017.
- Triet, N. V. K., Dung, N. V., Hoang, L. P., Duy, N. L., Tran, D. D., Anh, T. T., Kummu, M., Merz, B., and Apel, H.: Future projections of flood dynamics in the Vietnamese Mekong Delta, *Science of The Total Environment*, 742, 140596, 820 <https://doi.org/10.1016/j.scitotenv.2020.140596>, 2020.
- Trigg, M. A., Birch, C. E., Neal, J. C., Bates, P. D., Smith, A., Sampson, C. C., Yamazaki, D., Hirabayashi, Y., Pappenberger, F., Dutra, E., Ward, P. J., Winsemius, H. C., Salamon, P., Dottori, F., Rudari, R., Kappes, M. S., Simpson, A. L., Hadzilacos, G., and Fewtrell, T. J.: The credibility challenge for global fluvial flood risk analysis, *Environmental Research Letters*, 11, 10.1088/1748-9326/11/9/094014, 2016.
- 825 UNDRR: The Human Cost of Disasters: An Overview of the Last 20 Years (2000–2019), UN Office for Disaster Risk Reduction Geneva, Switzerland, Geneva, Switzerland, 2020.
- Viglione, A.: Non-Supervised Regional Frequency Analysis [R package nsRFA version 0.7-15] (0.7-15), CRAN [code], 2020.
- Willner, S. N., Otto, C., and Levermann, A.: Global economic response to river floods, *Nature Climate Change*, 8, 594-598, 830 10.1038/s41558-018-0173-2, 2018.
- Wing, O. E. J., Sampson, C. C., Bates, P. D., Quinn, N., Smith, A. M., and Neal, J. C.: A flood inundation forecast of Hurricane Harvey using a continental-scale 2D hydrodynamic model, *Journal of Hydrology X*, 4, 10.16/j.hydroa.2019<https://doi.org/10.0039>, 2019.
- Wing, O. E. J., Smith, A. M., Marston, M. L., Porter, J. R., Amodeo, M. F., Sampson, C. C., and Bates, P. D.: Simulating historical flood events at the continental scale: observational validation of a large-scale hydrodynamic model, *Nat. Hazards Earth Syst. Sci.*, 21, 559-575, 10.5194/nhess-21-559-2021, 2021.

- Winsemius, H. C., Aerts, J. C. J. H., van Beek, L. P. H., Bierkens, M. F. P., Bouwman, A., Jongman, B., Kwadijk, J. C. J., Ligtvoet, W., Lucas, P. L., van Vuuren, D. P., and Ward, P. J.: Global drivers of future river flood risk, *Nature Climate Change*, 6, 381-385, 10.38/nclimate2893, 2016.
- 840 Wood, M., Hostache, R., Neal, J., Wagener, T., Giustarini, L., Chini, M., Corato, G., Matgen, P., and Bates, P.: Calibration of channel depth and friction parameters in the LISFLOOD-FP hydraulic model using medium-resolution SAR data and identifiability techniques, *Hydrology and Earth System Sciences*, 20, 4983-4997, 10.5194/hess-20-4983-2016, 2016.
- Yamazaki, D., Ikeshima, D., Sosa, J., Bates, P. D., Allen, G., and Pavelsky, T.: MERIT Hydro: A high-resolution global hydrography map based on latest topography datasets, *Water Resources Research*, 10.29/2019wr024873, 2019.
- 845 Yamazaki, D., Ikeshima, D., Tawatari, R., Yamaguchi, T., O'Loughlin, F., Neal, J. C., Sampson, C. C., Kanae, S., and Bates, P. D.: A high-accuracy map of global terrain elevations, *Geophysical Research Letters*, 10.1002/2017gl072874, 2017.
- Zischg, A. P., Mosimann, M., Bernet, D. B., and Röthlisberger, V.: Validation of 2D flood models with insurance claims, *Journal of Hydrology*, 557, 350-361, 10.1016/j.jhydrol.2017.12.042, 2018.