

Mapping current and future flood exposure using a 5-metre flood model and climate change projections

Connor Darlington¹, Jonathan Raikes^{1,2}, Daniel Henstra³, Jason Thistlethwaite¹, Emma K. Raven⁴

¹School of Environment, Enterprise and Development, University of Waterloo, Waterloo, Ontario, N2L 3G1, Canada

²Sustainability Research Centre, University of the Sunshine Coast, Sippy Downs, Queensland, 4556, Australia

³Department of Political Science, University of Waterloo, Waterloo, Ontario, N2L 3G1, Canada

⁴JBA Risk Management, Broughton, Skipton, BD23 3FD, United Kingdom

10 *Correspondence to:* Jonathan Raikes (jraikes@uwaterloo.ca)

Abstract. Local stakeholders need information about areas exposed to potential flooding to manage increasing disaster risk. Moderate and large-scale flood hazard mapping is often produced at a low spatial resolution, typically using only one source of flooding (e.g., riverine), and it often fails to include climate change. This article assesses flood hazard exposure in the City of Vancouver, Canada, using flood mapping produced by flood risk science experts JBA Risk Management, which represented baseline exposure at 5-metre spatial resolution and incorporated climate change-adjusted values based on different greenhouse gas emission scenarios. The article identifies areas of both current and future flood exposure in the built environment, differentiating between sources of flooding (fluvial, pluvial, storm surge), and climate change scenarios, and return periods. The case study demonstrates the utility of a flood model with a moderate resolution for informing planning, policy development, and public education. Without recent engineered or regulatory mapping available in all areas across Canada, this model provides a mechanism for identifying possible present and future flood risk at a higher resolution than is available at Canada-wide coverage.

Keywords. Flood hazard mapping; flood risk management; exposure; climate change; flood modelling

25 **Plain Text Summary.** The impacts of climate change on local floods require precise maps that clearly demarcate changes to flood exposure; however, most maps lack important considerations that make their utility in policy and decision-making difficult. This article presents a new approach to identifying current and projected flood exposure using a 5-metre model. The results highlight advancements in the mapping of flood exposure with implications for flood risk management.

30 1.0 Introduction

The exposure of people and infrastructure to flood hazards is increasing globally due to factors such as population growth, development in flood-prone areas, and more frequent and intense extreme weather caused by climate change (Field et al., 2012; UNDRR, 2022). Moreover, it is expected that all major types of flooding, including fluvial

(riverine), pluvial (rainfall) and storm surge (coastal) will intensify as the climate changes (Alfieri et al., 2016; Arnell & Gosling, 2016; Hirabayashi et al., 2021; [IPCC, 2019](#); Muis et al., 2016; ~~IPCC, 2019~~; Winsemius et al., 2016).

Coastal cities are especially susceptible to flooding, due to their dense populations, socio-economic development, impervious surfaces, and proximity to major hydrological features such as lakes and oceans (Hallegatte et al., 2013; Lincke et al., 2022; McDermott, 2022; Neumann et al., 2015). Managing flood risk in coastal cities requires adopting actions that reduce the vulnerability of people and property to current flood hazards, but also [to anticipating](#) the likely scope and extent of future flooding. Flood hazard modeling and mapping that uses climate scenarios to estimate future flood exposure enables coastal cities to better support flood risk management, inform land use planning, organize emergency management, and increase public awareness (Dransch et al., 2010; Handmer, 2013; Porter & Demeritt, 2012).

Despite the importance of flood hazard mapping for flood risk management, few studies have mapped community exposure to multiple flood types and used future climate scenarios to assess changes to exposure (Cea & Costabile, 2022). Modeling techniques to estimate flooding under different climate scenarios vary considerably in existing scholarship, and the quality and granularity of local and regional flood maps are also highly variable (Cea & Costabile, 2022; Costabile et al., 2015; de Moel et al., 2009; Henstra et al., 2019; Mudashiru et al., 2021). These limitations underscore the need to develop flood hazard models and maps that capture flood exposure accurately and at a resolution that is useful for planning and decision-making.

[The purpose of this paper is to expand on traditional physically-based flood exposure modeling and mapping methodologies that often lack consideration of multiple flood mechanisms and climate change at a high resolution.](#) This paper presents the results of a flood model that was used to produce flood hazard maps under various climate change scenarios for the City of Vancouver, Canada. Using a 5-metre resolution baseline and climate change-adjusted flood data produced by flood risk science experts at JBA Risk Management (JBA), we determined areas of existing building exposure to multiple flood types, as well as new exposure based on climate change scenarios for 2050 and 2080. The findings demonstrate the utility of local and regional flood exposure analysis using different climate change scenarios, which offers guidance for local planners, policy- and decision-makers, and other stakeholders to recognize areas of current and future flood risk and enact measures to manage this risk.

The paper begins by reviewing current scholarship on flood hazard mapping to distinguish different methodologies, assess their applicability in Canada and beyond, and identify knowledge gaps. It then describes the flood hazard mapping approach used in this study and its application in Vancouver. The third section reports the study's main findings. The paper concludes with a broader discussion on the strengths and limitations of the method, directions for its use in local and regional planning, and areas for future research.

Formatted: Not Highlight

2.0 Literature Review: Flood Hazard Mapping Methodologies

70 Scholarship on flood hazard mapping has been increasing for decades. Early approaches to flood hazard modeling were incapable of incorporating long-term climate projections and variations to hydrological processes (Batista, 2018). More contemporary approaches rely on computer modeling and mapping that can apply scenario-based projections of climate change and precipitation (Mudashiru et al., 2021; Teng et al., 2017). This section reviews current scholarship on methodologies for modeling flood exposure and its application in Canada with climate change.

75 2.1 Modeling Flood Exposure

There are three main methodologies for producing flood hazard maps, which include physical modeling, physically-based modeling, and empirical modeling (Mudashiru et al., 2021; Teng et al., 2017). Physical models map flood hazards using field measurements and observations of hydrological features, such as the velocity and flow of a meandering river (Mubialiwo et al., 2022; Paquier et al., 2017). Physical models produce the most accurate and highest resolution picture of flood hazards (e.g., 1-metre), but the on-site measurement and testing requirements are onerous, time-consuming, and costly, such that these models are typically limited to a small spatial coverage (Bellos, 2012).

Physically-based models simulate real-world hydrological processes to identify areas that could be inundated under various conditions (e.g., extreme weather, riverine flow patterns) (Mudashiru et al., 2021). These models are increasingly relied on by flood risk management practitioners because of their abilities to integrate 1-, 2-, and 3-dimensional hydrodynamic models (Anees et al., 2016). 1D models are mostly adopted for river studies when the computational requirements required to estimate flood exposure are more limited (Horritt & Bates, 2002; Dazzi et al., 2021). Meanwhile, 2D approaches are becoming more common in the field of flood hazard modelling and mapping due to increased access to Digital Terrain Models for geographically large areas (Dazzi et al., 2021). However, the computational requirements to run sophisticated flood models using 2D hydrodynamic models over a large area are significant. In data-sparse regions and areas where data acquisition and procurement may be more limited due to administrative constraints, access to high-quality 2D approaches may be hindered. Similarly, 3D models will provide a more nuanced examination of flood hazard exposure, but the computational requirements to run such a model are prohibitive and then mapping those results requires highly specialized technical expertise. Overall, these physically-based models reduce the need for field observations, which are instead simulated in a lab, enabling researchers to extrapolate field observations to cover a larger area in less time. However, the accuracy of these maps is sometimes challenged by critics who question assumptions about the hydrological processes that have not been fully tested in the field (Costabile et al., 2015; Mark et al., 2004).

100 Empirical modeling is a more recent development in flood hazard assessment that typically combines satellite imagery, remote sensing, machine learning, artificial intelligence, and geographic information systems to predict areas exposed to flood inundation (Devia et al., 2015). This approach has become more common in conventional flood hazard mapping because it can produce maps with large spatial coverage, it is less onerous and more efficient than physical and physically-based models from a cost-benefit perspective, and it is capable of incorporating environmental changes

105 such as those associated with climate change (Jehanzaib et al., 2022; Mosavi et al., 2018; Mudashiru et al., 2021).
However, empirical models typically produce lower-resolution maps (e.g., 30-metre or lower) and make broader
assumptions about physical conditions than physical and physically-based models (Avand et al., 2022; Li et al., 2013;
Woznicki et al., 2019).

110 Physically-based maps producing high levels of accuracy tend to be costly and require significant resources and time,
whereas empirical models are less accurate but require less resources and can be deployed at a broader scale.
Policymakers must assess these trade-offs when determining which maps should be generated for specific locations
and audiences. For example, small and remote communities might lack the financial capacity to conduct physical
modeling, so a cost-efficient, multiple return period model might be desirable, as it can map hazard exposure and
115 incorporate climate change projections at a moderate resolution that is sufficient for planning and decision-making.
For this reason, this study used a physically-based modeling approach as a sensible middle ground and starting point.
The next section describes the evolution of flood mapping in Canada and how maps are used in flood risk management.

2.2 Modeling Canada's Flood Exposure Under Climate Change Scenarios

Formatted: Not Highlight

120 Despite the value of flood hazard maps for land use planners, emergency managers, and other stakeholders, several
factors limit their utility in practice. In particular, many existing flood hazard maps lack high-resolution data, fail to
represent multiple sources of flooding (e.g., fluvial, pluvial, and storm surges), and neglect to incorporate the influence
of climate change on flood exposure (Cea & Costabile, 2022; de Moel et al., 2009; Teng et al., 2017). Moreover, the
variable accuracy and reliability of flood hazard maps produced through different modeling approaches, often with
different assumptions and using coarse resolution data, as well as the technical and financial requirements to produce
125 higher-quality maps, often hinders their availability and effective use by non-expert stakeholders, such as planners
and policymakers (Dransch et al., 2010; Hagemeyer-Klose & Wagner, 2009; Pralle, 2019; Wing et al., 2018).

Flood hazard mapping in Canada is highly variable, due in part to the country's large geographic area and diverse
topography (Elshorbagy et al., 2018). Flood mapping is a provincial and territorial responsibility, with some provinces
130 and territories performing mapping in-house, while others contract flood mapping to private industry (Natural
Resources Canada, 2022a). Because provincial governments have primary responsibility for flood hazard mapping,
there is a patchwork of coverage and map availability across Canada. Further, despite recent data initiatives to compile
flood data (Natural Resources Canada, 2023), there is no national, high-resolution physical modeling for all of Canada.

135 ~~There have been several major intergovernmental initiatives to improve and expand flood hazard mapping in Canada.
First, in 1976 the Government of Canada collaborated with provincial governments to launch the Flood Damage
Reduction Program (FDRP), which aimed to identify areas with high flood exposure as the basis for implementing
actions that would reduce future flood losses (Bruce, 1976). According to Watt (1995), the central objective of the
FDRP was to direct development away from designated flood risk areas. Although the program was effective in
140 mapping large swaths of flood exposure throughout the country, it ended in 1998, leaving provincial and territorial~~

~~governments to maintain and disseminate flood hazard maps. Today, many flood hazard maps are outdated and publicly inaccessible, limiting their usefulness for local planners, policymakers, and other stakeholders to pursue flood risk management actions (Henstra et al., 2019).~~

145 The second major Canadian flood hazard mapping initiative began with the National Disaster Mitigation Program (NDMP), a \$200 million initiative launched in 2015 that aimed to fund provincial and territorial efforts to reduce flood risk, including through mapping (Public Safety Canada, 2021). Between 2015 and 2019, the NDMP funded more than 130 flood hazard mapping projects across the country (Public Safety Canada, 2019). Moreover, during this period the
150 Government of Canada also published a series of documents intended to advance flood mapping activities, which set out guidelines for aspects such as flood damage estimation, geomatics, hydrologic and hydraulic procedures, and LiDAR (Public Safety Canada, 2022). Finally, the intergovernmental emphasis on flood mapping was extended in 2021 with the launch of the Flood Hazard Identification and Mapping Program, a \$63 million initiative to support provincial and territorial efforts to undertake flood hazard assessments, map flood hazard areas, and disseminate flood hazard information to the public (Natural Resources Canada, 2022).

155 ~~Despite these initiatives, which produce local flood hazard products,~~ There are significant gaps in flood mapping coverage across Canada, and the dominant focus of nearly all regulatory flood mapping is fluvial (riverine) flooding. To date, physically-based flood hazard modeling has been relatively unavailable in Canada, particularly modeling that includes widespread coverage, captures multiple sources of flooding, and accounts for climate change (MMM Group Limited, 2014). However, ~~a few commercial risk modeling companies offer solutions with national or near-national coverage that include areas not otherwise mapped in Canada.~~ Whereas organizations such as the First Street Foundation and Fathaom offer comprehensive coverage of the United States and elsewhere, no such modelling in Canada has been completed. To accomplish such large-scale modeling, considerable climate modeling, hydraulic modeling, data collection, and computational resources are required. Such models can be a useful source of flood
160 intelligence as computational and physically-based modeling improve in accuracy with advancements in data availability and computational resources.
165

Against this backdrop, we present here an assessment of flood exposure using JBA's physically-based flood hazard model at a 5-metre resolution that includes multiple flood types—fluvial, pluvial and storm surge—and estimates future changes due to climate change based on the Representative Concentration Pathways (RCP) 4.5 and 8.5 climate scenarios. We apply this model using a case study of the City of Vancouver, British Columbia, which faces risks from all three flood types. This study illustrates a practical application of physically-based modeling for the purposes of generic flood exposure assessment and flood risk planning.

3.0 Methods

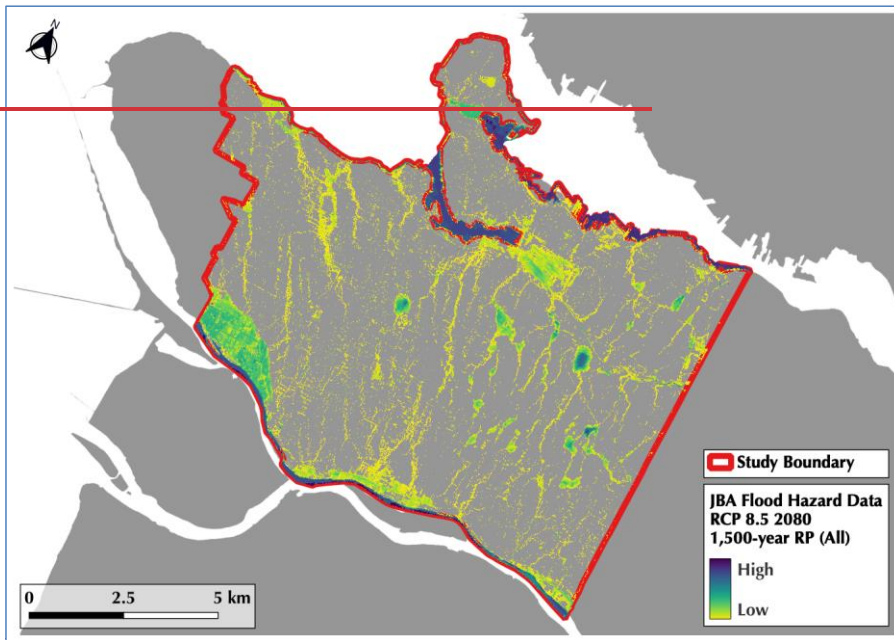
175 This section describes the methods used to harness the physically-based flood hazard model and its application to the City of Vancouver. It includes an overview of the study area and research methods that were used to assess the current

Formatted: Not Highlight

and projected changes to local flood exposure based on climate change scenarios, multiple sources of flooding, and time horizons.

3.1 Study Area

180 The scope of this assessment was limited to the JBA Canada 5-metre Baseline and Climate Change Flood MapData study site for the Vancouver area (JBA Risk Management Limited, 2022). This dataset contained fluvial, pluvial, and storm surge flood hazard data under non-climate change (NCC) and climate change states, specifically RCP 4.5 and RCP 8.5 climate scenarios for 2050 and 2080 (Figure 1). The flood hazard data was produced by JBA and shared with the University of Waterloo research team for the Vancouver metropolitan area. This area delineates 117 contiguous census tracts in the city from the 2016 census-open census tract boundary file (Statistics Canada, 2019). A breakdown of the



190 **Figure 1: Study Boundary of the JBA (2022) flood hazard data for Vancouver, British Columbia using RCP 8.5, 2080 climate conditions at the 1,500-year return period to show the broadest flood coverage observed from modeling in the study site. The flood mechanisms mapped include all three of the JBA included sources: fluvial, pluvial, and storm surge flooding. Low and high values indicate different relative depths of water from each of the flood mechanisms individually. Other map data includes the Statistics Canada (2022) Provinces and Territories boundary file of Canada.**

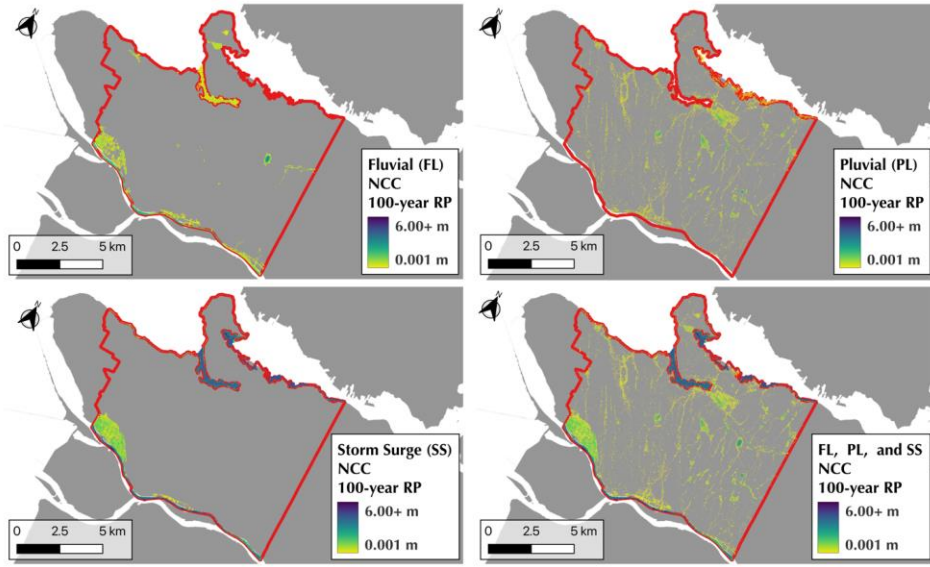
Formatted: Justified

195 ~~Figure 1 provides an outline of the study area, along with the JBA flood hazard data at the most extreme climate state and return period available for mapping, the RCP 8.5 to 2080 scenario at the 100, 500-year return period. This was done for illustrative purposes to indicate the extent of flooding within the study region. The fluvial, pluvial, and storm surge flood modeling mechanisms in Vancouver can further be broken down by flood mechanism is provided in Figure 12 illustrates the three sources of flooding at the non-climate change (NCC) state and at the 100, 500-year return period, utilized for illustrative purposes.~~

200

Commented [JD1]: We used the 1,500 year in the map, it is the NEXT one that we did at the 100 year

Commented [JD2]: We mapped the 1,500 year to show broader coverage than the 100 year



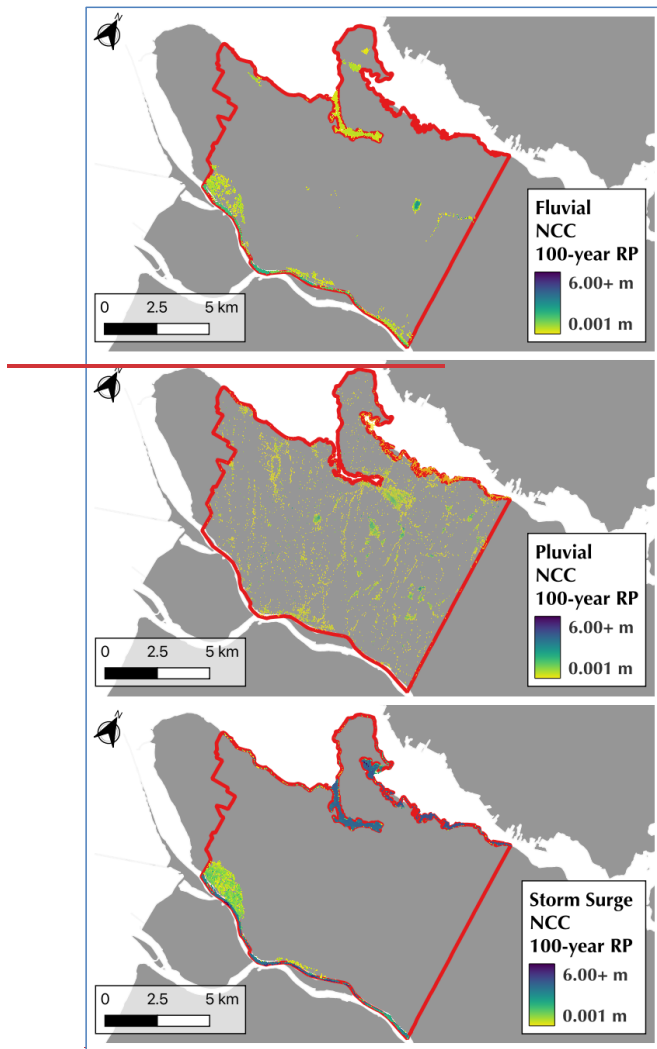


Figure 12: Study boundary of the JBA (2022) flood hazard data for Vancouver, British Columbia for the JBA (2022) fluvial, pluvial, and storm surge flood hazard modeling at the 100-year return period non-climate change state. All three flood mechanisms are provided in the same map to illustrate the overall flood exposure independent of flood mechanism. Other map data includes the Statistics Canada (2022) pProvinces and tTerritories boundary file of Canada.

205

210 The study area illustrated in Figure 11 and Figure 12 are used for the remainder of the assessment. An example
exposure data set provided by Microsoft (2019) was incorporated to indicate the types of analysis that could be
conducted using the JBA data.

3.2 Research Methods

215 This study is based on JBA's Canada 5-metre Baseline and Climate Change Flood Map data (and Canada-wide flood
hazard 30m data), obtained through a data sharing agreement with the University of Waterloo. In brief, the pluvial
and small river modelling captured flooding using rainfall inputs from Environment and Climate Change Canada. An
infiltration coefficient was applied to remove the proportion of rainfall that would infiltrate the ground, and the rest
of the rainfall was hydrodynamically routed across the digital terrain model using JBA's in-house 2-dimensional
hydrodynamic flood model, JFlow (see Lamb et al., 2009). For the river flood maps, a regional flood frequency
220 analysis was used. At a series of locations along the river network, design flow depths (representing the depth of water
associated with a specific return period flood) were derived using statistical analysis of flood peak gauge data
extrapolated from the Water Survey of Canada's HYDAT database (Environment and Climate Change Canada, 2018).
The depths were used as inputs to JFlow to hydrodynamically spread flood water across the floodplain to create and
estimate of flood depths and extents. Coastal maps were based on a statistical analysis of sea level extremes alongside
225 a surge and tide model. GIS horizontal projection modelling was then applied to determine the extent and depth of
coastal flooding from these sea level extremes across the inland terrain data.

230 This study is based on JBA's Canada 5-metre Flood Data, baseline and future (and Canada-wide 30m flood hazard
data), obtained through a data sharing agreement with the University of Waterloo. JBA's in-house two-dimensional
hydrodynamic flood model, JFlow (see Lamb et al., 2009 for more information) was used to map fluvial and pluvial
flood extents and depths. JFlow solves the shallow water equations to simulate flooding and is configured differently
to generate the pluvial and fluvial flood maps (e.g. modeling along a river network, or across pluvial rainfall
catchments). The modeling was performed on the best available terrain data which included 1m LiDAR in the
Vancouver urban area. The terrain data were used to derive river locations and catchment boundaries, and were
235 processed and edited to improve quality (e.g. by removing structures such as bridges which block the natural flow of
water). The hydrological inputs required by the hydraulic model vary for different configurations. Depending on
catchment size, separate model set ups were used to represent the different way small and large rivers respond to storm
events.

240 Rivers draining areas greater than 400km² were classed as 'large rivers' and were modeled to create the fluvial flood
maps. For these rivers, hydrographs for each return period being modeled were derived from a statistical analysis of
flood peak gauge data extrapolated from the Water Survey of Canada's HYDAT database (Environment and Climate
Change Canada, 2018). To perform this analysis, the median annual maximum flood (QMED) was calculated,
representing the 2-year river flow return period. QMED was directly identified for gauged stations with a minimum
245 data record of 10 years. At ungauged locations, QMED was statistically derived, accounting for regional and local

climatic factors. After QMED had been calculated for all locations, this was scaled to generate peak flow data for the return periods required using flood growth curves. A flood growth curve describes the ratio between the QMED flow and those at other return periods. The impact of snowmelt was implicitly accounted for in the peak flow data analysis. The design flood depths were turned into hydrographs that represent the volume of water through time, and routed through JFlow.

Rivers draining less than 400km² were classed as 'small rivers and pluvial maps'. Small river and pluvial catchments are more responsive to highly localised, intense rainfall than large rivers; therefore, a different approach was applied to capture the maximum likely flood hazard in these smaller catchments. The approach used, referred to as direct-rainfall modeling, estimates design rainfall hyetographs (the distribution of rainfall intensity over time). Rainfall intensity-duration-frequency statistics available from Environment and Climate Change Canada were used to interpolate rainfall estimate data for all catchments. A range of design storm durations were modeled to identify the critical rainfall duration, or maximum likely flood hazard, in each catchment. Short, intense rainfall events tend to generate more flooding in steep-sided valleys, whereas flatter regions are often adversely affected by slower moving storms with longer storm durations. To account for this, rainfall totals for 1-hour, 3-hour and 24-hour storm durations were used to create multiple modeled flood extents per return period. The flood extent with the greatest water depths was then used for each modeled return period. These estimated rainfall data were used to generate storm hyetographs and an infiltration coefficient was applied to remove the proportion of rainfall that would infiltrate the ground due to urban drainage, infiltration and interception. This varies across different land surfaces and climate types: defined using the eco-geographical divisions, called ecozones, from the National Ecological Framework of Canada (Canada Agriculture and Agri-food Canada, 2023). For urban areas, a runoff value of 85% was applied (i.e. 15% loss). This value was selected based on the well-established US SCS curve number method (USDA, 1986b) where high numbers represent higher runoff (e.g. 98 for completely paved and 46 for low-density residential with permeable soil). After sensitivity testing of curve numbers, an infiltration coefficient of 85 was selected as a single best value to represent Canadian urban areas. The impacts of seasonality, including the role of frozen ground and seasonal snowmelt were also accounted for in the small river and pluvial hydrology. A post-processing step was used to extract all the small rivers from the direct rainfall modeling and add them to the fluvial flood maps using the National Hydro Network.

For JBA's coastal flood maps, extreme sea-levels for a range of return periods were estimated using permanent tide gauge data from Fisheries and Oceans Canada and the U.S. National Oceanographic and Atmospheric Administration. In addition, JBA generated hindcast modeled water levels (using ADCIRC and TELEMAC-2D hindcast models) at locations between gauge sites to derive a complete set of extreme sea levels around the coastline. GIS horizontal projection modeling was used to determine the extent and depth of coastal flooding from these sea-level extremes across the inland terrain data.

Formatted: Default Paragraph Font

To produce climate change-adjusted flood mapping, JBA adjusted the input hydrology to reflect anticipated changes. By comparing the statistical differences between the baseline and future climate change scenarios, 'change factors' were calculated to quantify the measure of change. These change factors were then applied to the baseline hydrology to create a new set of future inputs. The new inputs were run in JFlow to map future flood extents and depths. For pluvial flooding, precipitation intensity-duration-frequency (IDF) curves for present day and potential future scenarios at gauged and ungauged locations were obtained from Western University (Simonovic et al., 2023). Future precipitation depths and associated durations were divided by present day volumes to obtain the change factor, which was multiplied by the timesteps in the hyetograph to provide the future projected design hyetograph. To calculate change factors for fluvial flooding, future projections of precipitation and temperature were obtained from the Climate Atlas (Prairie Climate Centre, 2022). Monthly adjustments were extrapolated to the daily scale and used to adjust rainfall-runoff data in JBA's baseline fluvial models to derive future estimates of river flow extremes. These were also modelled in JFlow to map new fluvial flood extents and depths under climate change. For the coastal climate change estimates, sea-level rise information was obtained from the Canadian Extreme Water Level Adaptation Tool (Zhai et al., 2023) and future sea-level extremes were used to adjust coastal boundary conditions to map future coastal flooding. For climate related flood mapping, JBA adjusted the input hydrology to reflect anticipated changes. By comparing the statistical differences between the baseline and the future precipitation, 'change factors' were calculated to quantify the measure of change. These change factors were then applied to the baseline hydrology to create a new set of future rainfall inputs. The new inputs were run in JFlow to map future flood extents and depths. To calculate 'change factors' for fluvial flooding, future projections of rainfall and temperature were obtained from the Climate Atlas (Prairie Climate Centre, 2022). Using JBA's baseline fluvial models in combination with these future climate conditions, future estimates of river flow extremes were established. The difference between the baseline and future river flow statistics provided 'change factors', which were used in a similar way as the pluvial change factors to calculate new future hydrographs. These were also modelled in JFlow to map new fluvial flood extents and depths under climate change. For the coastal climate change estimates, sea level rise information was obtained from the Canadian Extreme Water Level Adaptation Tool (Zhai et al., 2023) and future sea level extremes were used to map future coastal flooding.

Access to the 5-metre baseline and climate change flood map data was intended to pilot and explore the benefits of higher resolution local flood hazard maps compared to the Canada-wide resolution which is traditionally 30-metre resolution. The data were provided as a series of raster files, with each file reflecting a return period, flood mechanism, and climate state. For example, one raster file consisted of the 100-year return period, fluvial-sourced, NCC flood hazard estimation. JBA data include three main sources of flooding: (1) fluvial, (2) pluvial, and (3) storm surge flooding, each at seven different return periods (Table 1).

Table 1: Flood Hazard Data Provided by JBA

Return Period	Annual Exceedance Probability (AEP)
20	0.05000

50	0.02000
75	0.01333
100	0.01000
200	0.00500
500	0.00200
1500	0.00067

320 Additionally, JBA developed climate change flood hazard estimations at the RCP 4.5 and RCP 8.5 scenarios. Two separate time periods of assessment were used in this study: 2021 to 2050 and 2050 to 2080. This means that there was a total of five different climate scenarios, including NCC state based on 2020-2021 modeled data and four climate altered scenarios (Table 2).

Table 2: Climate Scenarios Used in the Analysis

Climate State	Epoch	Time Period
NCC	2021	2021
RCP 4.5	2050	2021 to 2050
RCP 4.5	2080	2051 to 2080
RCP 8.5	2050	2021 to 2050
RCP.8.5	2080	2051 to2080

325 To establish a workflow for rapidly comparing flood hazard exposure from the various JBA flood model estimates, an example exposure dataset was constructed using the open-sourced Microsoft Canadian Building Footprints (MCBF) dataset (Microsoft, 2019). This dataset contains roughly 11.8 million computer-generated building footprints across Canada using deep learning, computer vision, and Artificial Intelligence techniques rooted in image recognition. Buildings are usually spatially expressed as polygon or point features (Koivumäki et al., 2010), the former representing the buildings shape, and the latter representing a single point usually inside of the structure. The benefit of building footprint data is it includes more information (full shape) and is more likely to capture overlap than a single point inside of a polygon, which could miss partial flood overlap. Specifically, the MCBF have been used before in flood exposure assessments (Allen et al., 2020; Buchanan et al., 2020; Huang & Wang, 2020; Porter et al., 2023), as it constitutes a readily-available source of building location information across entire countries such as Canada and the United States, and including more remote areas not mapped by other means.

330 A spatial computation is needed for to determine which buildings are exposed to flooding. Techniques for estimating flood exposure to buildings inherently involve the combination of either a flood extent polygon or flood depth raster file and a vector building dataset. For example, Allen et al. (2020) estimated the number of buildings affected by flooding by computing the intersection of each building footprint with a flood extent polygon. Buchanan et al. (2020) assumed each building polygon was exposed to flooding if it is on land at a lower elevation than a given water height, and Huang and Wang (2020) estimated exposure as buildings which fall in a floodplain boundary. The

345 approach used in this analysis is an overlap, whereby the hazard value(s) of overlap indicate an exposure, and if multiple depth values are observed, the maximum depth is selected. Intersections of building data with flood extent polygons may not include a depth, only a binary exposure indicator (exposed or not exposed), based on whether a building has any overlap with a flood extent.

Formatted: Font color: Auto

350 MCBF data were downloaded from the Microsoft Github repository, specifically for British Columbia. The data were decompressed, then imported into QGIS in its raw geojson file format. To extract a sample of the MCBF data relevant to the study area, the Clip algorithm was used in QGIS using study boundary file, as shown in Figure 23. This resulted in 103,935 individual building polygons for the Vancouver study area.



355 **Figure 23: Study boundary with Microsoft Canadian Building Footprint data (n=103,935). Other map data: Google Satellite Imagery ©2023, TerraMetrics ©2023**

To assess flood exposure across numerous flood hazard scenarios, a Python script was developed which combined the MCBF polygon file with each of the JBA flood scenarios and return periods. Since there were five climate scenarios (CS), three flood mechanisms (FM), and seven return periods (RP), each building was assigned 105 flood depth values (21 per climate scenario):

360

$$\begin{aligned} \text{Flood hazard scenarios} &= N_{CS} \times N_{FM} \times N_{RP} \\ \text{Flood hazard scenarios} &= 5 \times 3 \times 7 \\ \text{Flood hazard scenarios} &= 105 \end{aligned}$$

365

To start, the MCBF building polygon dataset was opened as a *geopandas* file in Python. Then, a systematic loop was implemented which: (1) imported one of the flood hazard files using the *rasterio* package, and (2) computed summary statistics of the hazard files using the *rasterstats* zonal statistics function for each building. This procedure was repeated for each of the 105 flood hazard files, summarizing the hazard data at each building polygon. For this assessment, the maximum depth was chosen as the metric for determining exposure, such that buildings were assigned the maximum flood hazard depth for each return period intersecting a given building polygon. If any portion of a building was implicated by flood hazard data, the maximum value of flood depth was assigned.

370

375

The practice of using any building overlap is common to flood exposure estimation (Allen et al., 2020; Buchanan et al., 2020; Huang & Wang, 2020), but more information can be gleaned when also using flood depth at exposure. Since multiple flood depth measurements could occur for a given building, one must choose which to include for depth-related assessments based on the purpose of the assessment. Much like Arrighi et al. (2020), zonal statistics were computed using a series of summary statistics. However, for the purposes of this assessment, the choice of maximum flood depth at a given building was used to articulate the worst exposure possibility at a given building, which aligns with other research (Porter et al., 2023). However, some authors have opted to use a combination of maximum and mean flood depths to factor in outliers of the maximum depth which may be caused by erroneous cells of the terrain model (Bertsch et al., 2022). For the purposes of this assessment, the maximum depth constitutes the worse of exposure scenarios for buildings where multiple depth measurements are observed, and allows for the estimation of higher in-building exposure than using other summary metrics. Although there is uncertainty in the selection of a summary metric, the selection of a maximum depth is reasonable for the purposes of gauging exposure and assessing the effects of climate change.

380

385

390

For each climate state scenario, flood water depths were associated with each flood mechanism and return period for each address. To illustrate, Table 3 provides the different flood hazard sampling for the NCC scenario. The same information provided in Table 3 also applied to the different RCP and time scenarios illustrated in Table 2.

Table 3: Example CS-FM-RP Level Data at Each Location

Item	Climate State	Flood Mechanism	Return Period
1-7	NCC	Fluvial	20
			50
			75

			100
			200
			500
			1500
8-14	NCC	Pluvial	20
			50
			75
			100
			200
			500
			1500
15-21	NCC	Storm Surge	20
			50
			75
			100
			200
			500
			1500

395

The result of this analysis was a building file that contained an associated maximum flood depth at each return period for each flood mechanism and climate state. Despite the numerous return periods available by JBA, we will continue with the remainder of the analysis using the 100-year return period as to focus discussion on differentiating between sources of flooding (fluvial, pluvial, storm surge), and climate change scenarios. Future works by the authors will leverage multiple return periods to discuss the effects of climate change on different exposures at different return periods.

400

For this assessment, a flood depth value greater than zero indicated that a given asset was ‘exposed’ at the corresponding return period, however, it is important to note that greater depths of water are associated with a higher likelihood of damage or loss. To account for this, three exposure metrics were computed:

405

1. any building with a flood depth greater than 0 m (any exposure),
2. any building with a flood depth greater than or equal to 0.3 m (moderate exposure),
3. any building with a flood depth greater than or equal to 0.6 m (severe exposure).

410

These thresholds were selected based on expert consultation, and are also based on the 0.3 m or 0.6 m freeboard which is sometimes included in provincial flood maps as an additional margin of safety in the flood elevation (National Research Council of Canada, 2021). These heights approximate 1 foot (0.3048 m) and 2 feet (0.6096 m) and were selected as general first floor elevation (FFE) possibilities, which are reasonable building FFE’s in various contexts

Formatted: Not Highlight

415 across Canada for residential structures. Although there may be considerable variability in first floor elevation across
 420 Vancouver, and subjective variability in a the classification of moderate or severe exposure, these values reflect a
 starting point for the assessment that is informed by Canadian land use information.

Commented [JR3]: Reviewer 2: Comment 3

Commented [JD4R3]: Addressed in the comments document

420 These different depths account for differences in first floor elevation and doorstep height across the study area. These
 factors, along with other property-level considerations or broader flood defense considerations, may differentiate risk
 and whether floodwaters would enter a home and cause damage. From this assessment, an evaluation of individual
 return period event exposure and the suite of return period exposure was taken to determine where new flood exposure
 might occur because of climate change. The results of this process are described below.

4.0 Results

425 Overall, there were 103,935 building footprints identified in the study area. Of these, 16,820 (16.2%) were identified
 as exposed to flooding at the 100-year return period in the NCC condition from any flood type or multiple combination
 of flood types, the latter referring to buildings which may be exposed to more than one flood mechanism at the 100-
 year return period such as fluvial and pluvial flooding. For moderate exposure – that which is greater than or equal to
 0.3m – there were 11,050 (10.6%) buildings identified in the study boundary. For severe exposure – that which is
 430 greater than or equal to 0.6m – there were 6,840 (6.6%) buildings identified in the study boundary. Table 4 provides
 a detailed breakdown of exposure by flood type for the NCC state at the 100-year return period.

Table 4: Breakdown of FM of Exposure for the NCC state, 100-Year RP Flood Hazard

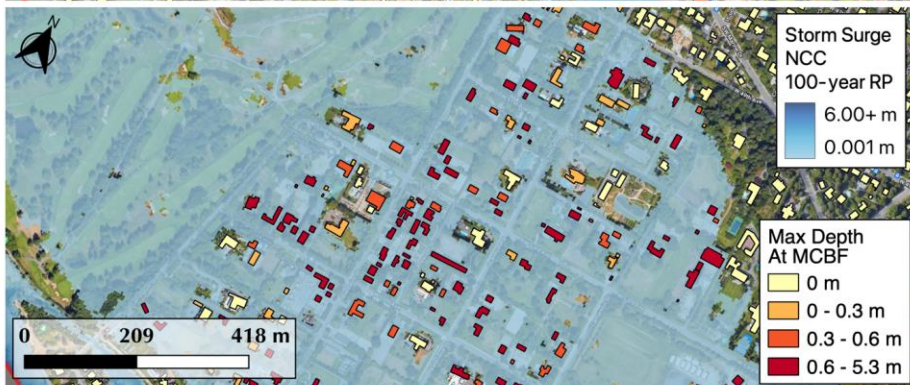
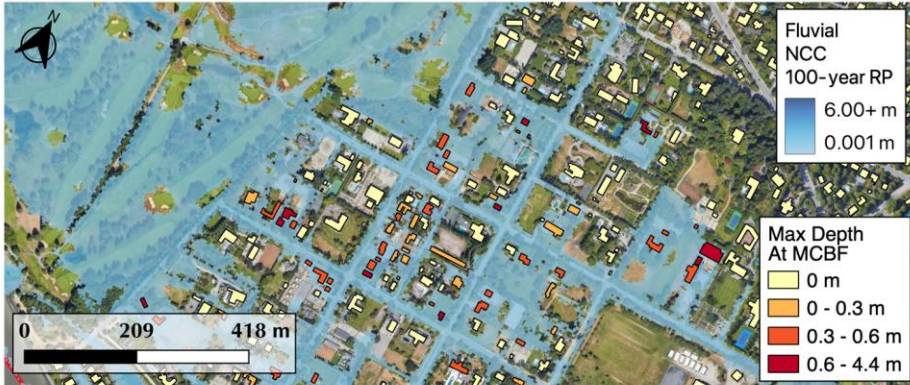
Flood Mechanism(s)	n % of		n % of		n % of	
	Exposed (Any)	Exposure (Any)	Exposed (Moderate)	Exposure (Moderate)	Exposed (Severe)	Exposure (Severe)
Fluvial	118	0.7 %	73	0.7 %	34	0.5 %
Pluvial	16,252	96.6 %	10,629	96.2 %	6,585	96.3 %
Storm Surge	182	1.1 %	214	1.9 %	175	2.6 %
Fluvial and Pluvial	71	0.4 %	41	0.4 %	10	0.1 %
Fluvial and Storm Surge	124	0.7 %	68	0.6 %	22	0.3 %
Pluvial and Storm Surge	45	0.3 %	21	0.2 %	13	0.2 %
All Three Mechanisms	28	0.2 %	4	0 %	1	0 %
TOTAL	16,820	100 %	11,050	100 %	6,840	100 %

435 For all types of exposure in Vancouver, the overwhelming majority occurred due to pluvial flooding. Of the 16,820
buildings with any exposure to flooding, 16,252 (96.6%) occurred from pluvial only sourcing. The dominant exposure
to pluvial flooding compared to other flood types is common partly because the geographic area is not limited to areas
close to rivers or along the coast and because the drainage capacity in urban environments may be insufficient to
handle the volumes of rain experienced under current and anticipated climates. The same general distribution of
440 exposure by flood mechanism occurred across any, moderate and severe exposure types, with pluvial being the
dominant source; however, there was slightly higher proportions of severe exposure occurring from storm surge
compared to estimates when using exposure at any depth.

It is worth noting that pluvial flooding involves a greater degree of uncertainty, in part due to the complexity of
445 incorporating human-generated subsurface drainage infrastructures and waterways. For the purposes of this study,
only drainage capacity assumptions were applied and not specific details on stormwater infrastructure. Though the
results indicated that pluvial flooding was the primary driver of exposure in Vancouver, this may not be true in other
settings where fluvial or storm surge flooding are the drivers of exposure. Figure 34 shows the -(top) and Figure 4
(bottom) show the same Southlands region of Vancouver with fluvial, pluvial, and-and storm surge flooding, showing
displaying that though both are all are impacted, implicated, storm surge appears to lead to more severe exposure than
450 fluvial-fluvial or pluvial flooding. This differentiation is important for determining flooding that is more likely to cause
structural damage due to greater water depths.

When different climate change scenarios are factored in, flood hazard exposure can differ. Table 5, Table 6, and Table
7 provide a detailed breakdown of the different exposures for the 100-year return period under each climate scenario
455 for any exposure, moderate exposure, and severe exposure, respectively. For all three exposure levels, the total number
of building footprints exposed increased in each climate change scenario. For example, using any exposure, the total
number of buildings increased from 16,820 to 18,163 (7.98%) for the RCP 8.5 (2050) climate change state.
Interestingly, this exposure is similar in magnitude for the RCP 8.5 (2080) scenario, which estimated 18,156 MCBF,
a 7.94% increase. Also of interest is that the total number of exposed properties at any depth decreased from RCP 4.5
460 (2050) to RCP 4.5 (2080), though both showed an estimated increase from the baseline of 16,820. It is generally
accepted that RCP 8.5 is more reflective of the projected climate state than RCP 4.5. The same general distributions
of flood exposure occurred by flood type, with pluvial-sourced flooding the dominant flood type leading to exposure
in the study area of Vancouver.

Formatted: Not Highlight



465

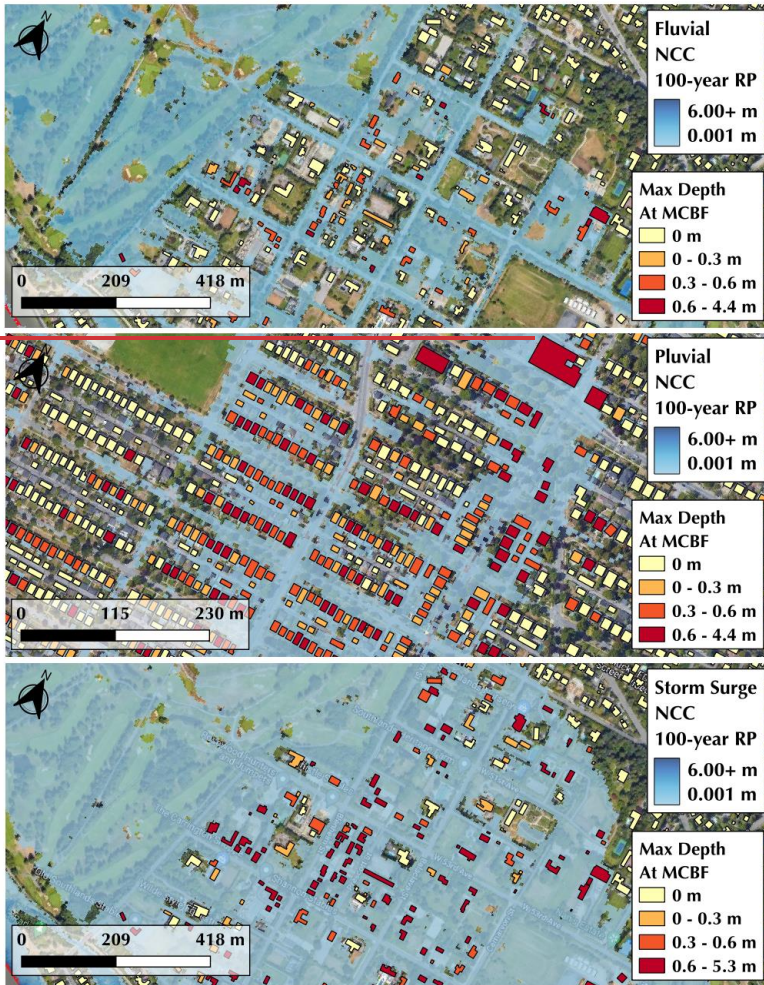


Figure 34: Flood exposure from fluvial, pluvial, and storm surge flooding for any exposure ($> 0\text{m}$), moderate exposure ($\geq 0.3\text{m}$), and severe exposure ($\geq 0.6\text{m}$) in the Southlands of Vancouver (top and bottom) and northeastern reaches of the Arbutus Ridge Neighbourhood in Vancouver (middle). Other map data: Google Satellite Imagery ©2023, CNES / Airbus, Maxar Technologies ©2023

470

Table 5: Breakdown of Any Exposure by FM for the Various Climate States at the 100-Year RP Flood Hazard

Formatted: Font: 10 pt, Italic

Flood Mechanism(s)	n Exposed (NCC)	% of Exposure (NCC)	n Exposed (RCP 4.5, 2050)	% of Exposure (RCP 4.5, 2050)	n Exposed (RCP 8.5, 2050)	% of Exposure (RCP 8.5, 2050)	n Exposed (RCP 4.5, 2080)	% of Exposure (RCP 4.5, 2080)	n Exposed (RCP 8.5, 2080)	% of Exposure (RCP 8.5, 2080)
Fluvial	118	0.7 %	133	0.8 %	151	0.8 %	124	0.7 %	143	0.8 %
Pluvial	16,252	96.6 %	16,767	96.2 %	17,451	96.1 %	16,543	95.8 %	17,390	95.8 %
Storm Surge	182	1.1 %	212	1.2 %	205	1.1 %	235	1.4 %	235	1.3 %
Fluvial and Pluvial	71	0.4 %	47	0.3 %	76	0.4 %	44	0.3 %	57	0.3 %
Fluvial and Storm Surge	124	0.7 %	142	0.8 %	160	0.9 %	142	0.8 %	171	0.9 %
Pluvial and Storm Surge	45	0.3 %	97	0.6 %	87	0.5 %	124	0.7 %	113	0.6 %
All Three Mechanisms	28	0.2 %	39	0.2 %	33	0.2 %	50	0.3 %	47	0.3 %
TOTAL	16,820	100 %	17,437	100 %	18,163	100 %	17,262	100 %	18,156	100 %
TOTAL Δ from NCC	•	•	617	3.67%	1,343	7.98%	442	2.63%	1,336	7.94%

Table 6: Breakdown of Moderate Exposure by FM for the Various Climate States at the 100-Year RP Flood Hazard

Flood Mechanism(s)	n Exposed (NCC)	% of Exposure (NCC)	n Exposed (RCP 4.5, 2050)	% of Exposure (RCP 4.5, 2050)	n Exposed (RCP 8.5, 2050)	% of Exposure (RCP 8.5, 2050)	n Exposed (RCP 4.5, 2080)	% of Exposure (RCP 4.5, 2080)	n Exposed (RCP 8.5, 2080)	% of Exposure (RCP 8.5, 2080)
Fluvial	73	0.7 %	84	0.7 %	104	0.9 %	77	0.7 %	97	0.8 %
Pluvial	10,629	96.2 %	10,960	95.7 %	11,354	95.6 %	10,815	95.3 %	11,324	95 %
Storm Surge	214	1.9 %	248	2.2 %	237	2 %	283	2.5 %	287	2.4 %
Fluvial and Pluvial	41	0.4 %	26	0.2 %	44	0.4 %	22	0.2 %	36	0.3 %
Fluvial and Storm Surge	68	0.6 %	76	0.7 %	91	0.8 %	77	0.7 %	96	0.8 %
Pluvial and Storm Surge	21	0.2 %	45	0.4 %	43	0.4 %	59	0.5 %	57	0.5 %
All Three Mechanisms	4	0 %	13	0.1 %	9	0.1 %	20	0.2 %	18	0.2 %
TOTAL	11,050	100 %	11,452	100 %	11,882	100 %	11,353	100 %	11,915	100 %
TOTAL Δ from NCC	•	•	402	3.64%	832	7.53%	303	2.74%	865	7.83%

Table 7: Breakdown of Severe Exposure by FM for the Various Climate States at the 100-Year RP Flood Hazard

Flood Mechanism(s)	n Exposed (NCC)	% of Exposed (NCC)	n Exposed (RCP 4.5, 2050)	% of Exposed (RCP 4.5, 2050)	n Exposed (RCP 8.5, 2050)	% of Exposed (RCP 8.5, 2050)	n Exposed (RCP 4.5, 2080)	% of Exposed (RCP 4.5, 2080)	n Exposed (RCP 8.5, 2080)	% of Exposed (RCP 8.5, 2080)
Fluvial	34	0.5 %	35	0.5 %	49	0.7 %	33	0.5 %	45	0.6 %
Pluvial	6,585	96.3 %	6,837	95.4 %	7,133	95.3 %	6,723	94.8 %	7,114	94.6 %
Storm Surge	175	2.6 %	237	3.3 %	235	3.1 %	269	3.8 %	283	3.8 %
Fluvial and Pluvial	10	0.1 %	7	0.1 %	16	0.2 %	6	0.1 %	14	0.2 %
Fluvial and Storm Surge	22	0.3 %	26	0.4 %	28	0.4 %	26	0.4 %	31	0.4 %
Pluvial and Storm Surge	13	0.2 %	19	0.3 %	19	0.3 %	30	0.4 %	29	0.4 %
All Three Mechanisms	1	0 %	3	0 %	1	0 %	5	0.1 %	4	0.1 %
TOTAL	6,840	100 %	7,164	100 %	7,481	100 %	7,092	100 %	7,520	100 %
TOTAL Δ from NCC	•	•	324	4.74%	641	9.37%	252	3.68%	680	9.94%

Of the 16,820 MCBF considered exposed in the baseline climate scenario (Table 5), 11,050 (65.7%) were considered to have moderate exposure (Table 6) and 6,840 (40.7%) were considered to have severe exposure (Table 7). Though pluvial flooding is the dominant source of all three exposure levels, storm surge has an increasing proportion of severe exposure in all climate change scenarios (Table 7). Although the total exposure increases for all climate scenarios, the effect of climate change seems more pronounced for severe exposure. Specifically, severe exposure increased for RCP 8.5 2050 and RCP 8.5 2080 between 9.3% and 10%, while any exposure and moderate exposure showed increases between 7.5% and 8.0% (Tables 5-7).

For a more detailed breakdown of the change in exposure associated with climate change projections, asset exposure was disaggregated into ~~three-three~~ general categories: (1) continued exposure, (~~22~~) new exposure, and (~~33~~) former exposure.

Continued exposure refers to assets that were considered exposed to flooding at a given return period both in a non-climate change state and given altered climate change state, and is further broken down into three sub-categories: (A) lessened exposure, (B) similar exposure, and (C) worsened exposure. New exposure refers to the assets that were not considered exposed to flooding at a given return period but are exposed under an altered climate state. Former exposure refers to the assets that were considered exposed to flooding at a given return period but were not exposed under an altered climate state. To compute each sub-category of continued exposure, the flood depths at each building were rounded to the nearest millimetre as to avoid exceedingly small changes from being classified as worsened or lessened exposures when differences are negligible.

Of the 16,820 buildings that were considered exposed to any 100-year flood type and depth (i.e., fluvial, pluvial, and storm surge) under the NCC state, 16,806 continued to be exposed in the RCP 8.5 2080 climate state at any depth, while 14 were no longer considered exposed. Of the continued exposure (n=16,806), 16,051 (95.5%) worsened in the RCP 8.5 2080 climate state, 640 (3.8%) had similar flood depths, and 115 (0.7%) lessened in flood depth. Additionally, there were 1,350 new assets exposed to flooding due to climate change. This is summarized in Table 8. The result is a total estimated exposure of 18,156 buildings for the RCP 8.5 2080 climate state at any depth. An overview of this comparison is provided in Figure 44.

Table 8: Exposure breakdown between the baseline NCC state and the RCP 8.5 2080 climate state for the 100-year return period using all flood mechanisms

Exposure Breakdown	n
Continued Exposure	16,806
Lessened Exposure	115
Similar Exposure	640
Worsened Exposure	16,051
New Exposure	1,350
No Exposure	85,765
Former Exposure	14

Formatted: Font: Bold

Formatted: Font: Bold

Formatted: Indent: Left: 1.27 cm

Formatted: Font: Bold

Formatted: Font: Bold

Formatted: Font: Bold

35

For the 16,806 buildings classified as having ‘continued’ exposure both at the NCC and RCP 8.5 2080 climate states, we observed differences in the proportion of exposure that is considered moderate and severe. Of the 16,806 buildings, 11,044 (65.7%) were considered moderate at NCC conditions whereas 11,536 (68.6%) were considered moderate at RCP 8.5 2080 conditions, a 4.5% (n = 492) increase in the moderately exposed buildings. Severe exposure increased as well. Of the 16,806 buildings, 6,837 (40.7%) were considered severely exposed at the NCC conditions, while 7,320 (43.6%) were considered severely exposed at the RCP 8.5 2080 conditions. This reflects a 7% (n = 483) increase in the severely exposed buildings. The exposed properties were distributed all over the study site, which is to be expected from the widespread pluvial flood hazard estimation.

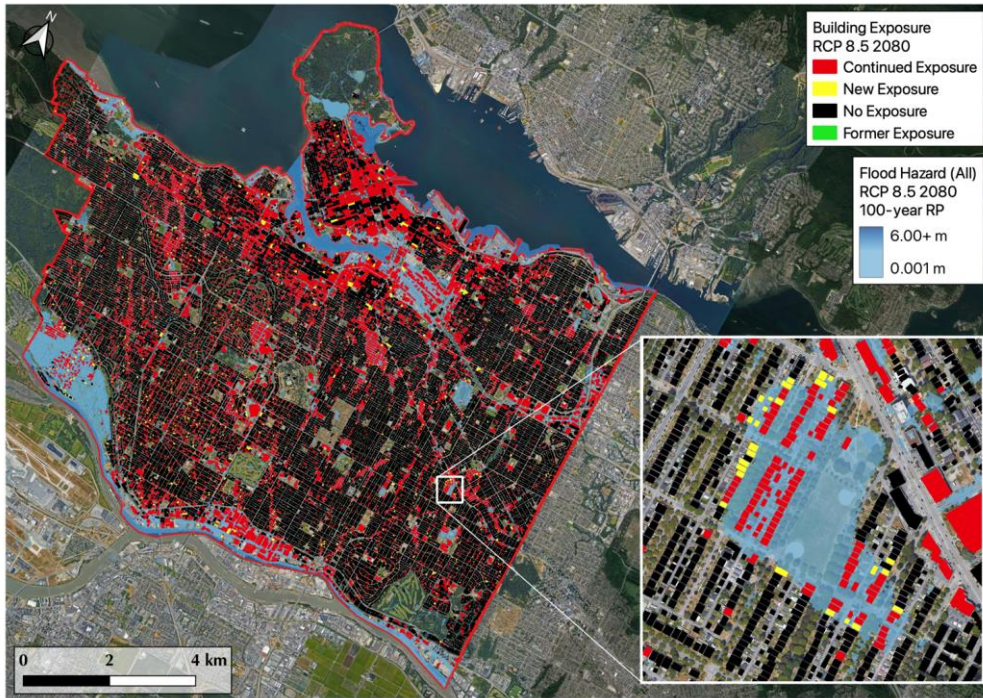
40

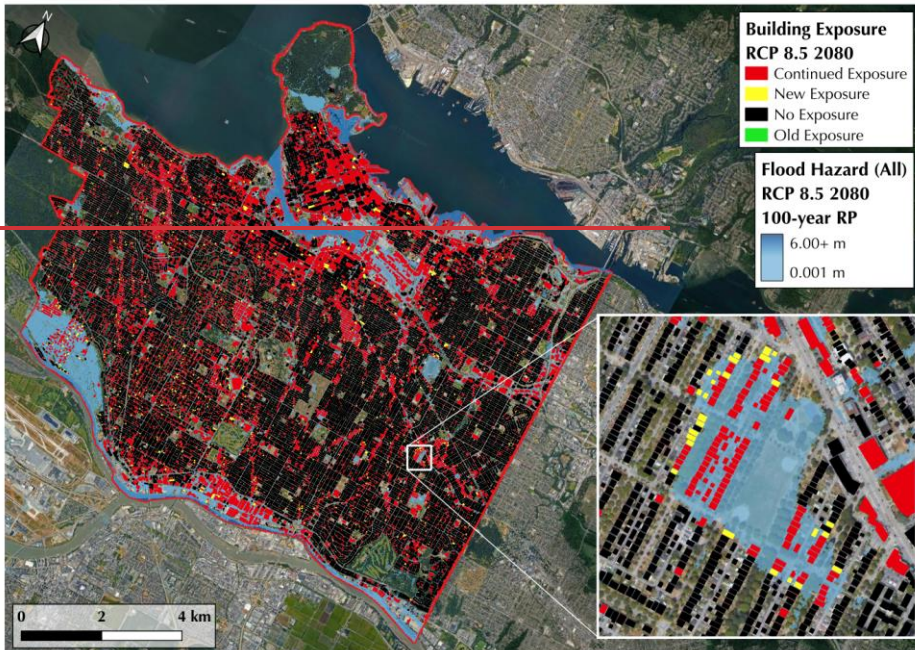
45

The overwhelming majority of these assets continued to be exposed under the RCP 8.5 2080 climate state and, due to the diffuse nature of pluvial flooding, the new exposure was scattered throughout the study site. As depicted in Figure 5, in some cases we noted **larger** amounts of water leading to **further** exposure on the periphery of regions affected under the NCC state (inset map of Figure 5). Such instances would be explained by more water occurring from flooding in the same areas exposed in the baseline non-climate change state, leading to an expansion of the flood extent and greater depths of water at previously exposed buildings. **Further, of the ‘continued’ exposure, the average change in flood depth at each building was a roughly 0.04 m increase (-0.62 m to 1.53m range), although some buildings did continue to be exposed in the climate change condition but at a lesser flood depth (n=115).**

50

Formatted: Not Highlight





55 **Figure 45:** Overview of Continued, New, and Former Exposure in Vancouver using the RCP 8.5 2080 Climate State at the 100-year return period. Other map data: Google Satellite Imagery ©2023, TerraMetrics ©2023 CNES / Airbus, Maxar Technologies ©2023

Generally, we expected that most properties exposed in a NCC state would also be exposed in a climate-altered state, largely due to the expectation that all major types of flooding, including fluvial (riverine), pluvial (rainfall) and storm surge (coastal) will intensify as the climate changes (Alfieri et al., 2016; Arnell & Gosling, 2016; Hirabayashi et al., 2021; IPCC, 2019; Muis et al., 2016; Winsemius et al., 2016) and the similar assumptions embedded into the JBA climate change modules involving precipitation, temperature, and run-off. assumptions about warmer air carrying more moisture and other flood modeling assumptions under an altered climate. A few buildings (n = 14) were determined to be exposed at the baseline non-climate change state that were classified as non-exposed at RCP 8.5 2080. For example, Figure 6 illustrates provides two of the three assets of the 14 assets -classified as ‘former’ exposure, which were considered exposed in the NCC state but not under the RCP 8.5 2080 climate state at the 100-year return period. Ultimately, these were investigated individually and determined to be all pluvial-sourced flooding at shallow flood depths and are likely artifacts of the flood hazard data representation and almost always occurred in small pockets of disjoint pools of water. These very small artifacts in map output (e.g., where we

Commented [JD5]: “Assumptions” being referenced in review comments (two in same sentence)

Formatted: Not Highlight

Formatted: Font: (Default) +Body (Times New Roman), 1 pt, Not Highlight

Formatted: Font: (Default) +Body (Times New Roman), 1 pt, Not Highlight

seeing flooding in the future map was not that wasn't present in the non-climate change state) reflect the complexity in the modelling process, and for example, the way the rounding of parameters can propagate through to the end map slightly differently.



Figure 6: Example of Two Assets Considered Exposed at the NCC State and not at RCP 8.5 2080 Climate State. Other map data: Google Satellite Imagery ©2023, CNES / Airbus, Maxar Technologies ©2023

5.0 Discussion

The Vancouver case study demonstrates the applicability and granularity of the flood hazard mapping tool for identifying local flood exposure under a changing climate. This simplified flood hazard mapping approach was able to capture changes to flood

Formatted: Font: (Default) +Body (Times New Roman), 1

Formatted: Pattern: Clear (Custom Color(RGB(252,252,25

Formatted: Not Highlight

80 exposure based on different climate states, flood types, and return periods. Interestingly, most of the engineered flood hazard mapping in Canada pertains to fluvial flooding (MMM Group Limited, 2014), meaning pluvial and storm surge inclusions could reflect an uncaptured source of flood risk in Vancouver by stakeholders relying on publicly available engineered maps only. Given that the results of this study indicate that pluvial flooding is the driving mechanism for anticipated flood exposure in the Vancouver area, excluding this in flood mapping could result in harmful consequences on the accuracy and totality of flood hazard maps. Moreover, its absence from planning could lead to decision-making that puts vulnerable populations at higher risk to disasters by enabling further development decisions in high-risk zones, an issue that is a significant driver of current disaster risk in Canada and elsewhere.

85

90 More broadly, the higher resolution data (5-metre) constitutes an improvement from 30+ metre resolution models being produced nationally, although local engineered mapping is typically around 2-metre resolution. By modeling climate change, this type of exposure assessment enables mapping of changes to flood exposure for future climate states. Other benefits of this approach include its capacity to differentiate flood exposure based on the source of flooding, its scalability, and its ability to provide a generalized analysis for planners and policymakers. This approach is deemed scalable as it can be replicated in any other location in Canada, with researchers needing to only substitute the flood hazard and exposure data of interest into the established code, and the analysis can be re-run in the new setting. Although the availability of 5m resolution and climate change data is not universally available at present, JBA offers 30m non-climate change coverage in all areas across Canada.

95 Although there is greater uncertainty in the pluvial flood estimation, largely because nearly all regulatory flood mapping to compare and calibrate against is fluvial and city-specific engineered drainage systems are not typically available, it constitutes a largely unmapped source of risk that can become increasingly important in urban environments.

100 The use of higher resolution hazard data, climate change conditions and multiple flood mechanisms in this analysis improves upon mapping techniques that are often low resolution, lack climate change considerations, and are highly complex to develop (Cea & Costabile, 2022; Costabile et al., 2015; de Moel et al., 2009; Mudashiru et al., 2021; Teng et al., 2017). Moreover, this mapping approach demonstrates the relevance of physically-based modeling as a modern approach to flood hazard mapping that is less costly and onerous to produce than conventional approaches. This may be especially appealing to planners and engineers who can now more effectively argue that some communities should have policies encouraging property-level flood

105 protections.

Although the model and case study demonstrate a general and easy-to-use approach to local flood hazard mapping, they have some limitations. First, the analysis does not distinguish between building types. When reviewing Figure 4 more closely, some structures were not identified as buildings based on the exposure dataset. Most of these structures are assumed to be sheds, but

110 their exposure is still relevant. While this represents a limitation of the MCBF data, the use of this data in this model is a

strength as well. This limitation is a product of the MCBF and its coding. In many parts of the world, modeling flood exposure is limited by poor or even non-existent exposure datasets, such that assumptions must be made by scientists regarding population density. Here, the produced flood hazard maps show that despite some limitations within the datasets used, the overall quality of the model remains high.

115

Second, this model used a constant exposure dataset based on recent building data availability (2019). Conditions in 2050 and 2080 would also include more buildings and more exposure, which can constitute another considerable source of additional flood risk. It is anticipated that future development will lead to higher risks under future climate conditions because of the anticipated added density and number of buildings that will be exposed to flooding. ~~new buildings will contribute a considerable source of new exposure that will add to the risk in future climate conditions. With more buildings and exposure, it is likely that there will be more possible sources of flood exposure.~~ For this analysis, exposure was held constant while flood hazard was modified to different climate change scenarios. Future research could consider the influence of new development on additional flood risk.

120

125

Third, this method for flood hazard mapping identified buildings using an estimated polygon from the source data, but it does not account for building information such as building type (residential, commercial, industrial, etc.). This approach makes it difficult to differentiate flood exposure by land use, classification, or for other relevant characteristics. Though there are inherent inaccuracies and a recency problem to the dataset – which was released in 2019 – the general flood exposure approach was the focus of this paper.

130

Finally, ~~while~~ the produced flood hazard maps using the model presented here are considered by industry standards to be a higher resolution than most other models, given that most maps are produced at a 30-metre or smaller resolution. ~~Local-scale~~ flood models that ~~are use~~ physical methods to identify flood exposure could further ~~can~~ improve the precision of these results by presenting flood exposure at an even finer scale ~~is further~~ (e.g., at a 1-metre or 2-metre resolution). This becomes computationally challenging, especially if the spatial extent of the area grows from a single city to a provincial or even national scale, to offer consistency. Further, comparisons and validation of the flood hazard data against local engineered mapping or past flood events could reveal the hazard accuracy to known events or to on-the-ground results in Vancouver. The strengths of this approach, however, are a reasonable trade-off since this efficient flood hazard mapping approach nevertheless produces visual outputs that would be valuable for future land use planning, emergency management, policymaking, and risk awareness.

135

140

Additionally, the approach may be appealing to smaller municipalities that lack resources to pursue higher-resolution modeling.

Formatted: Not Highlight

Formatted: Not Highlight

Formatted: Not Highlight

Formatted: Not Highlight

Validation of the model results is needed to rectify some of these issues. For example, a manual inspection of structures throughout the study area and comparing the results of this model against others that have higher and lower resolutions would allow us to monitor the overall accuracy of the findings. [Like many other 2D hydrologic models, the JBA model makes spatial and temporal assumptions on the heterogeneous properties of the local environment \(see Abbaszadeh et al., 2022; Anees et al., 2017\). These assumptions are a source of uncertainty that need to be tested and calibrated by investigating the effects of model inputs \(Willis et al., 2019\).](#) In the absence of any validating experiments, these maps should be viewed through a cautionary lens. Moreover, this model identifies changes to exposure due to climate change but does not consider changing socioeconomic characteristics of the area or economic consequences of flooding, [nor does it include existing drainage or stormwater storage capacity, which may impact the results.](#) These are areas requiring further research.

6.0 Conclusion

The acceleration of flood risk caused by climate change and expanding development in flood-prone areas requires local flood hazard maps that will enable governments, non-governmental organizations, and others to plan and implement interventions that will protect assets and populations. However, flood hazard maps often fail to account for climate change, are developed through highly technical methodologies, depict exposure to only one source of flooding, and have a coarse resolution. Leading scholarship has suggested that simplified mapping approaches are needed to overcome these weaknesses while permitting practical use by non-experts.

This paper presented a simple modeling approach to produce local flood hazard maps using a moderate 5-metre resolution based on JBA Risk Management's 5-metre Baseline and Climate Change Flood Map Data for Canada. In using these data, we demonstrated an empirical approach to local flood hazard mapping that produces generalizable flood exposure information. The approach can model changes to flood exposure based on the flood type, climate change projections, and return periods. [This is novel to flood hazard mapping because of its scalability and its ability to capture climate change and pluvial flood exposure. This is the first study that maps Vancouver's current exposure to fluvial, pluvial and coastal flood at a 5-metre resolution and based on climate change information. While other models, like First Street Foundation, FLO-2D and Fathom, do provide physically-based solutions to mapping flood exposure across large geographic areas, including at a fairly high resolution, no such models exist in Canada. This represents a significant gap in geographic coverage for a country that experiences a high volume of floods annually. Moreover, as the most widely used model in the Canadian insurance market,](#) this study demonstrates the utility of the JBA model at providing comprehensive coverage for fluvial, pluvial, and coastal flooding. [This is novel to flood hazard mapping because of its scalability and its ability to capture climate change and pluvial flood exposure.](#) While certain limitations do exist – including the inability to differentiate exposure based on building type

(e.g., residential versus commercial) – the approach enables local planners, policymakers, and other stakeholders to pursue flood risk management strategies.

175

Further research is needed to validate the findings of the current model and its replicability in other jurisdictions. Comparing the resulting local flood hazard map with maps produced using other methodologies – including physical and empirical models – and against historical flood events would allow us to validate the findings even further. Validating climate change hazard estimation remains a challenge due to the uncertainty surrounding climate change effects; however, this model constitutes a step forward in the use of forward-looking flood hazard and exposure estimation.

180

Data Availability

As per the policy on data sharing, access to data used in this research can be made available upon reasonable request to JBA Risk Management. Access to the MCBF data can be found on GitHub ([GitHub - microsoft/CanadianBuildingFootprints: Computer generated building footprints for Canada](https://github.com/microsoft/CanadianBuildingFootprints-Computer-generated-building-footprints-for-Canada)).

185 Author Contributions

Connor Darlington developed the research methodology and carried out the data analysis. Jonathan Raikes prepared the manuscript with contributions from all co-authors.

Competing Interests

The authors declare that they have no conflict of interest.

190 Acknowledgements

The authors thank JBA Risk Management Limited for providing the data necessary to produce this analysis. This research was funded by the Social Sciences and Humanities Research Council of Canada (grant #435-2018-0377).

References

195

[Abbaszadeh, P., Muñoz, D.F., Moftakhari, H., Jafarzadegan, K., & Moradkhani, H. \(2022\). Perspective on uncertainty quantification and reduction in compound flood modeling and forecasting. *iScience*, 25\(10\), 105201. <https://doi.org/10.1016/j.isci.2022.105201>.](https://doi.org/10.1016/j.isci.2022.105201)

[Agriculture and Agri-food Canada. \(2023\). Terrestrial Ecozones of Canada. Ottawa: Government of Canada.](https://open.canada.ca/data/en/dataset/7ad7ea01-eb23-4824-bccc-66adb7c5bdf8)
<https://open.canada.ca/data/en/dataset/7ad7ea01-eb23-4824-bccc-66adb7c5bdf8>

Formatted: Indent: Left: 0 cm, Hanging: 1.27 cm

Alfieri, L., Bisselink, B., Dottori, F., Naumann, G., de Roo, A., Salamon, P., Wyser, K., & Feyen, L. (2016). Global projections of river flood risk in a warmer world. *Earth's Future*, 5(2), 171–182. <https://doi.org/10.1002/2016EF000485>

[Allen, M., Gillespie-Marthaler, L., Abkowitz, M., & Camp, J. \(2020\). Evaluating flood resilience in rural communities: a case-based assessment of Dyer County, Tennessee. *Natural Hazards*, 101, 173-194.](#)

[Anees, M.T., Abdullah, K., Nordin M.N.M., Rahman, N.N.N.A., Syakir, M.I., & Kadir, M.O.A. \(2017\). One- and Two-Dimensional Hydrological Modelling and Their Uncertainties. In: T. Hromadka & P. Rao \(eds.\), *Flood Risk Management*. InTech. <https://doi.org/10.5772/intechopen.68924>.](#)

Formatted: Indent: Left: 0 cm, Hanging: 1.27 cm

[Anees, M.T., Abdullah, K., Nawawi, M.N.M., Rahman, N.N.N.A., Piah, A.R.M., Zakaria, N.A., Syakir, M.I., & Omar, A.K.M. \(2016\). Numerical modelling techniques for flood analysis. *Journal of African Earth Studies*, 125, 478-486. <https://doi.org/10.1016/j.jafrearsci.2016.10.001>.](#)

Arnell, N. W., & Gosling, S. N. (2016). The impacts of climate change on river flood risk at the global scale. *Climate Change*, 134, 387–401. <https://doi.org/10.1007/s10584-014-1084-5>.

[Arrighi, C., Mazzanti, B., Pistone, F., & Castelli, F. \(2020\). Empirical flash flood vulnerability functions for residential buildings. *SN Applied Sciences*, 2, 1-12.](#)

Formatted: Indent: Left: 0 cm, Hanging: 1.27 cm

Avand, M., Kuriqi, A., Khazaei, M., & Ghorbanzadeh, O. (2022). DEM resolution effects on machine learning performance for flood probability mapping. *Journal of Hydro-Environment Research*, 40, 1–16. <https://doi.org/10.1016/j.jher.2021.10.002>.

Batista, C. M. (2018). Coastal flood hazard mapping. In *Encyclopedia of Coastal Science*. Springer, Cham. https://doi.org/10.1007/978-3-319-48657-4_356-1.

Bellos, V. (2012). Ways for flood hazard mapping in urbanised environments: A short literature review. *Water Utility Journal*, 4, 25–31.

[Bertsch, R., Glenis, V., & Kilsby, C. \(2022\). Building level flood exposure analysis using a hydrodynamic model. *Environmental Modelling & Software*, 156, 105490.](#)

[Bruce, J. P. \(1976\). The National Flood Damage Reduction Program. *Canadian Water Resources Journal*, 1\(1\), 5-13. <https://doi.org/10.4296/cwrj0101005>.](#)

[Buchanan, M. K., Kulp, S., Cushing, L., Morello-Frosch, R., Nedwick, T., & Strauss, B. \(2020\). Sea level rise and coastal flooding threaten affordable housing. *Environmental Research Letters*, 15\(12\), 124020.](#)

Cea, L., & Costabile, P. (2022). Flood risk in urban areas: Modelling, management and adaptation to climate change. A review. *2022*, 9(3), 50. <https://doi.org/10.3390/hydrology9030050>.

- 230 Costabile, P., Macchione, F., Natale, L., & Petaccia, G. (2015). Flood mapping using LIDAR DEM. Limitations of the 1-D modeling highlighted by the 2-D approach. *Natural Hazards*, 77, 181–204. <https://doi.org/10.1007/s11069-015-1606-0>.
- Dazzi, S., Shustikova, I., Domeneghetti, A., Castellarin, A., & Vacondio, R. (2021). *Environmental Modelling & Software*, 146, 105225. <https://doi.org/10.1016/j.envsoft.2021.105225>.
- 235 de Moel, H., van Alphen, J., & Aerts, J. C. J. H. (2009). Flood maps in Europe—Methods, availability and use. *Nat. Hazards Earth Syst. Sci.*, 9, 289–301.
- Devia, G. K., Ganasri, B. P., & Dwarakish, G. S. (2015). A review on hydrological models. *Aquatic Procedia*, 4, 1001–1007. <https://doi.org/10.1016/j.aqpro.2015.02.126>.
- Dransch, D., Rotzoll, H., & Poser, K. (2010). The contribution of maps to the challenges of risk communication to the public. *International Journal of Digital Earth*, 3(3), 292–311. <https://doi.org/10.1080/17538941003774668>.
- 240 Elshorbagy, A., Bharath, R., & Ahmed, M. (2018). Flood risk assessment in Canada: Issues of purpose, scale, and topography. *Building Tomorrow's Society*. CSCE, Fredericton, Canada. https://csce.ca/elf/apps/CONFERENCEVIEWER/conferences/2018/pdfs/Paper_DM29_0608011755.pdf.
- Environment and Climate Change Canada (2018). *National Water Data Archive: HYDAT*. Ottawa: Government of Canada. <https://www.canada.ca/en/environment-climate-change/services/water-overview/quantity/monitoring/survey/data-products-services/national-archive-hydat.html>.
- 245 Field, C. B., Barros, V., Stocker, T. F., Qin, D., Dokken, D. J., Ebi, K. L., Mastrandrea, M. D., Mach, K. J., Plattner, G.-K., Allen, S. K., Tignor, M., & Midgley, P. M. (2012). *Managing the Risks of Extreme Events and Disasters to Advance Climate Change Adaptation* [Special Report of the Intergovernmental Panel on Climate Change]. Cambridge University Press.
- 250 Hagemeyer-Klose, M., & Wagner, K. (2009). Evaluation of flood hazard maps in print and web mapping services as information tools in flood risk communication. *Nat. Hazards Earth Syst. Sci.*, 9, 563–574. <https://doi.org/10.5194/nhess-9-563-2009>.
- Hallegatte, S., Green, C., Nicholls, R. J., & Corfee-Morlot, J. (2013). Future flood losses in major coastal cities. *Nature Climate Change*, 3, 802–806. <https://doi.org/10.1038/nclimate1979>
- 255 Handmer, J. (2013). Flood Hazard Maps as Public Information: An Assessment within the Context of the Canadian Flood Damage Reduction Program. *Canadian Water Resources Journal*, 5(4), 82–110. <https://doi.org/10.4296/cwrj0504082>.
- Henstra, D., Minano, A., & Thistlethwaite, J. (2019). Communicating disaster risk? An evaluation of the availability and quality of flood maps. *Nat. Hazards Earth Syst. Sci.*, 19, 313–323. <https://doi.org/10.5194/nhess-19-313-2019>.
- 260 Hirabayashi, Y., Tanoue, M., Sasaki, O., Zhou, X., & Yamazaki, D. (2021). Global exposure to flooding from the new CMIP6 climate model projections. *Scientific Reports*, 11, 3740. <https://doi.org/10.1038/s41598-021-83279-2>.

Formatted: Indent: Left: 0 cm, Hanging: 1.27 cm

Horritt, M.S., & Bates, P.D. (2002). Evaluation of 1D and 2D numerical models for predicting river flood inundation. *Journal of Hydrology*, 268(1-4), 87-99. [https://doi.org/10.1016/S0022-1694\(02\)00121-X](https://doi.org/10.1016/S0022-1694(02)00121-X).

Huang, X., & Wang, C. (2020). Estimates of exposure to the 100-year floods in the conterminous United States using national building footprints. *International Journal of Disaster Risk Reduction*, 50, 101731.

Intergovernmental Panel on Climate Change (IPCC) (2019). Summary for Policymakers. In H.-O. Pörtner, D.C. Roberts, V. Masson-Delmotte, P. Zhai, M. Tignor, E. Poloczanska, K. Mintenbeck, A. Alegría, M. Nicolai, A. Okem, J. Petzold, B. Rama, and N.M. Weyer (eds.), *IPCC Special Report on the Ocean and Cryosphere in a Changing Climate*. Cambridge, UK and New York, NY: Cambridge University Press. <https://doi.org/10.1017/9781009157964.001>

JBA Risk Management Limited. (2022). *About Us*. <https://www.jbarisk.com/about-us/>.

Jehanzaib, M., Ajmal, M., Achite, M., & Kim, T.-W. (2022). Comprehensive review: Advancements in rainfall-runoff modelling for flood mitigation. *Climate*, 10(10), 147. <https://doi.org/10.3390/cli10100147>.

Koivumäki, L., Alho, P., Lotsari, E., Käyhkö, J., Saari, A., & Hyypä, H. (2010). Uncertainties in flood risk mapping: a case study on estimating building damages for a river flood in Finland. *Journal of flood risk management*, 3(2), 166-183.

Lamb, R., Crossley, M., & Waller, S. (2009). A fast two-dimensional floodplain inundation model. *Proceedings of the Institution of Civil Engineers - Water Management*, 162, 363–370. <https://doi.org/10.1680/wama.2009.162.6.363>.

Li, S., Sun, D., Goldberg, M., & Stefanidis, A. (2013). Derivation of 30-m-resolution water maps from TERRA/MODIS and SRTM. *Remote Sensing of Environment*, 134, 417–430. <https://doi.org/10.1016/j.rse.2013.03.015>.

Lincke, D., Hinkel, J., Mengel, M., & Nicholls, R. J. (2022). Understanding the drivers of coastal flood exposure and risk from 1860 to 2100. *Earth's Future*, 10(12), e2021EF002584. <https://doi.org/10.1029/2021EF002584>.

Mark, O., Weesakul, S., Apirumanekul, C., Aroonnet, S. B., & Djordjević, S. (2004). Potential and limitations of 1D modelling of urban flooding. *Journal of Hydrology*, 299(3–4), 284–299. <https://doi.org/10.1016/j.jhydrol.2004.08.014>.

McDermott, T. K. J. (2022). Global exposure to flood risk and poverty. *Nature Communications*, 13, 3529. <https://doi.org/10.1038/s41467-022-30725-6>.

Microsoft. (2019). Canadian Building Footprints: Computer generated building footprints for Canada. <https://github.com/microsoft/CanadianBuildingFootprints>.

MMM Group Limited. (2014). *National Floodplain Mapping Assessment—Final Report*. Public Safety Canada. <https://www.slideshare.net/glenmccgillivray/national-floodplain-mapping-assessment>.

Mosavi, A., Ozturk, P., & Chau, K. (2018). Flood prediction using machine learning models: Literature review. *Water*, 10(11), 1536. <https://doi.org/10.3390/w10111536>.

- 295 Mubialiwo, A., Abebe, A., Kawo, N. S., Ekolu, J., Nadarajah, S., & Onyutha, C. (2022). Hydrodynamic modelling of floods and estimating socio-economic impacts of floods in Ugandan River Malaba sub-catchment. *Earth Systems and Environment*, 6, 45–67. <https://doi.org/10.1007/s41748-021-00283>.
- Mudashiru, R. B., Sabtu, N., Abustan, I., & Balgoun, W. (2021). Flood hazard mapping methods: A review. *Journal of Hydrology*, 603(Part A), 126846. <https://doi.org/10.1016/j.jhydrol.2021.126846>.
- Muis, S., Verlaan, M., Winsemius, H. C., Aerts, J. C. J. H., & Ward, P. J. (2016). A global reanalysis of storm surges and extreme sea levels. *Nature Communications*, 7, 11969. <https://doi.org/10.1038/ncomms11969>.
- 300 [National Research Council of Canada \(2021\). Guide for design of flood-resistant buildings. Government of Canada. <https://doi.org/10.4224/40002704>](https://doi.org/10.4224/40002704)
- Natural Resources Canada (2022a). Flood mapping community. <https://natural-resources.canada.ca/science-and-data/science-and-research/natural-hazards/flood-mapping-community/24229>.
- 305 ~~Natural Resources Canada. (2022b). Flood Hazard Identification and Mapping Program. <https://www.nrcan.gc.ca/science-and-data/science-and-research/natural-hazards/flood-hazard-identification-and-mapping-program/24044>~~
- ~~Natural Resources Canada (2023). Data related to flood mapping. <https://natural-resources.canada.ca/science-and-data/science-and-research/natural-hazards/data-related-flood-mapping/24250>.~~
- 310 Neumann, B., Vafeidis, A. T., Zimmermann, J., & Nicholls, R. J. (2015). Future coastal population growth and exposure to sea-level rise and coastal flooding—A global perspective. *PLoS ONE*, 10(6), e0131375. <https://doi.org/10.1371/journal.pone.0131375>.
- Paquier, A., Proust, S., & Faure, J.-B. (2017). Hydrodynamic modeling to characterize floods and predict their impacts. *Floods, I-Risk Knowledge*, 129–147. <https://doi.org/10.1016/B978-1-78548-268-7.50008-0>.
- Porter, J., & Demeritt, D. (2012). Flood-risk management, mapping, and planning: The institutional politics of decision support in England. *Environment and Planning A*, 44, 2359–2378. <https://doi.org/10.1068/a44660>.
- 315 [Porter, J. R., Marston, M. L., Shu, E., Bauer, M., Lai, K., Wilson, B., & Pope, M. \(2023\). Estimating Pluvial Depth–Damage Functions for Areas within the United States Using Historical Claims Data. *Natural Hazards Review*, 24\(1\), 04022048.](https://doi.org/10.1068/a44660)
- 320 Pralle, S. (2019). Drawing lines: FEMA and the politics of mapping flood zones. *Climatic Change*, 152, 227–237. <https://doi.org/10.1007/s10584-018-2287-y>.
- Prairie Climate Centre (2022). *Climate Atlas of Canada*. <https://climateatlas.ca/>.
- 325 ~~Public Safety Canada. (2019). Evaluation of the National Disaster Mitigation Program. <https://www.publicsafety.gc.ca/ent/rsres/pbletns/vltu-ntnl-dsstr-mtgn-prgm-2019/vltu-ntnl-dsstr-mtgn-prgm-2019-en.pdf>.~~

Public Safety Canada. (2021). *National Disaster Mitigation Program*. <https://www.publicsafety.gc.ca/ent/mrgnc-mngmnt/dsstr-prvntn-mtgn/ndmp/index-en.aspx>.

Public Safety Canada. (2022). *Federal Flood Mapping Guidelines Series*. <https://www.publicsafety.gc.ca/ent/mrgnc-mngmnt/dsstr-prvntn-mtgn/ndmp/fldpln-mppng-en.aspx>.

330 Simonovic, S.P., Schardong, A., Srivastav, R., and Sandink, D. 2023. *IDF CC Web-Based Tool for Updating Intensity-Duration-Frequency Curves to Changing Climate – Ver 7.0*. Western University Facility for Intelligent Decision Support and Institute for Catastrophic Loss Reduction. <https://www.idf-cc-uwo.ca>.

Formatted: Font: Italic

Statistics Canada. (2019). 2016 Census - boundary files: census tracts. <https://www12.statcan.gc.ca/census-recensement/2011/geo/bound-limit/bound-limit-2016-eng.cfm>.

335 Statistics Canada. (2022). 2021 Census - boundary files: provinces and territories. <https://www12.statcan.gc.ca/census-recensement/2021/geo/sip-pis/boundary-limit/index2021-eng.cfm?year=21>.

Teng, J., Jakeman, A. J., Vaze, J., Croke, B. F. W., Dutta, D., & Kim, S. (2017). Flood inundation modelling: A review of methods, recent advances and uncertainty analysis. *Environmental Modelling & Software*, 90, 201–216. <https://doi.org/10.1016/j.envsoft.2017.01.006>.

340 United Nations Office for Disaster Risk Reduction (UNDRR). (2022). *Global Assessment Report on Disaster Risk Reduction. Our World at Risk: Transforming Governance for a Resilient Future*. <https://www.undrr.org/publication/global-assessment-report-disaster-risk-reduction-2022>.

United States Department of Agriculture (USDA). 1986. *National Engineering Handbook, Part 630 - Hydrology*. Natural Resources Conservation Service, Conservation Engineering Division. <https://directives.sc.egov.usda.gov/OpenNonWebContent.aspx?content=18380.wba>

345 Watt, W. E. (1995). The National Flood Damage Reduction Program: 1976–1995. *Canadian Water Resources Journal*, 20(4), 237–247. <https://doi.org/10.4296/cwrj2004237>.

Willis, T., Wright, N., & Sleigh, A. (2019). Systematic analysis of uncertainty in 2D flood inundation models. *Environmental Modelling & Software*, 122, 104520. <https://doi.org/10.1016/j.envsoft.2019.104520>.

Formatted: Indent: Left: 0 cm, Hanging: 1.27 cm

350 Wing, O. E. J., Bates, P. D., Smith, A. M., Sampson, C. C., Johnson, K. A., Fargione, J., & Morefield, P. (2018). Estimates of present and future flood risk in the conterminous United States. *Environmental Research Letters*, 13(3), 034023. <https://doi.org/10.1088/1748-9326/aaac65>.

Winsemius, H. C., Aerts, J. C. J. H., van Beek, L. P. H., Bierkens, M. F. P., Bouwman, A., Jongman, B., Kwadijk, J. C. J., Ligtvoet, W., Lucas, P. L., van Vuuren, D. P., & Ward, P. J. (2016). Global drivers of future river flood risk. *Nature Climate Change*, 6(4), 381–385. <https://doi.org/10.1038/nclimate2893>.

355 Woznicki, S. A., Baynes, J., Panlasigui, S., Mehaffey, M., & Neale, A. (2019). Development of a spatially complete floodplain map of the conterminous United States using random forest. *Science of the Total Environment*, 647, 942–953. <https://doi.org/10.1016/j.scitotenv.2018.07.353>.

Zhai, L., Greenan, B.J.W., & Perrie, W. (2023). *The Canadian Extreme Water Level Adaptation Tool (CAN-EWLAT)*.

360 Dartmouth, NS: Bedford Institute of Oceanography.