

Fixed photogrammetric systems for natural hazard monitoring with high spatio-temporal resolution

Xabier Blanch^{1,2}, Marta Guinau², Anette Eltner¹, Antonio Abellan³

¹ Institute of Photogrammetry and Remote Sensing, Technische Universität Dresden, 01062 Dresden, Germany

² RISKNAT Research Group, GEOMODELS Research Institute, Universitat de Barcelona, 08028 Barcelona, Spain

³ Center for Research on the Alpine Environment (CREALP), Sion, CH1950 Valais, Switzerland

Correspondence to: Xabier Blanch (xabier.blanch@tu-dresden.de)

Abstract: In this publication we address the ~~lack of technical expertise in the geoscience community in limited understanding and competence within the geoscience community regarding~~ the design and construction of photogrammetric systems for ~~monitoring natural hazards at~~ high spatio-temporal resolution ~~monitoring~~. Accordingly, we provide in-depth information on the components, assembly instructions, and programming codes required to build them, making them accessible to researchers from different disciplines who are interested in 3D change-detection monitoring. Each system comprises five photographic modules and a wireless transmission system for real-time image transfer. As an alternative to LiDAR (Light Detection and Ranging), high-end digital cameras offer a simpler and more cost-effective solution for the generation of 3D models, especially in fixed time-lapse monitoring systems. The acquired images, in combination with algorithms that allow the creation of improved 3D models, offer change detection performance comparable to LiDAR. We showcase the usefulness of our approach by presenting real-world applications in the field of geohazards monitoring. Our findings highlight the potential of our method to detect pre-failure deformation and identify rockfalls with a theoretical change-detection threshold of only 3-4 cm, thereby demonstrating the potential to achieve similar accuracies to LiDAR but at a much lower cost. Furthermore, thanks to the higher data acquisition frequency, the results show how the overlap of events that leads to an erroneous interpretation of the behaviour of the active area is minimized, allowing, for example, more accurate correlations between weather conditions and rockfall activity.

1 Introduction

Close-range remote sensing monitoring is a powerful tool for understanding and capturing natural environments, especially used in the field of natural hazards (Giordan et al., 2022). Its ability to provide detailed and accurate data in real time makes it a key monitoring tool in natural science research. This approach applied in the investigation, modelling and understanding of geological hazards is of utmost importance for our society, with a wide range of applications including the investigation of landslide phenomena using different 3D surveying techniques such as traditional photogrammetry (Gili et al., 2021) or LiDAR (Jaboyedoff et al., 2012) to advanced systems that can detect volumetric changes (Kromer et al., 2018) or pre-failure deformation (Royán et al., 2015) on active rockfalls.

Among the different close-range monitoring strategies that can process both 2D and 3D information, digital photogrammetry has played a crucial role in natural hazards monitoring. Its popularity is reflected in the large number of publications that use photographic images to make 2D measurements or obtain point clouds for 3D analysis (Anderson et al., 2019). As an example, one evidence of this role is the widespread use of really low-cost, easy-to-install cameras capturing time-lapse images, such as a) wild cameras for glacier front monitoring (Mallalieu et al., 2017) or b) Raspberry Pi cameras to monitor rock walls (Blanch et al., 2020, Santise et al., 2017). While these cameras offer a novel, ready-to-use and quite cost-effective resource for 2D and 3D monitoring, their limitations, such as low-resolution images and ~~significant~~ geometric distortion in the captured images ~~quality~~, must be taken into account. In consequence, there is a motivation to explore photogrammetric systems for 3D monitoring using digital cameras whose price, size and weight is not a constraint.

The use of high-definition photogrammetric systems for 3D monitoring can yield superior results in comparison to the low-cost systems. By deploying fixed time-lapse systems equipped with high-quality cameras and lenses, researchers can acquire 3D models that can be compared to those captured by other high-end monitoring devices, albeit at a lower cost. High-end cameras for digital photogrammetry also offer several advantages, including lower infrastructure costs, ease of installation in remote locations, and a low learning curve, contributing to its democratization as a monitoring strategy in geosciences (Eltner and Sofia, 2020; Smith et al., 2015; Westoby et al., 2012). As an example of its widespread use, high-end photogrammetric systems are employed to analyze and monitor objects and surfaces in a wide variety of fields such as building structures (e.g., Artese et al., 2016; Bartonek and Buday, 2020; Castellazzi et al., 2015; Meidow et al., 2018) or natural surfaces (e.g., Eltner et al., 2016; Nesbit and Hugenholtz, 2019; Westoby et al., 2012).

When high-end cameras are installed as a single system, the camera can capture time-lapse image sequences from a single location, which have been widely utilized in various scientific studies that work with 2D data. Evidence of the effectiveness

of such approach can be found in numerous publications like: a) the use of a camera for semi-automatic flood monitoring of a proglacial outwash plain (Hiller et al., 2022), b) the installation of a camera to monitor the active areas on Alpin terrain (Hendrickx et al., 2022; Travelletti et al., 2012), c) the tracking of glaciers with a monoscopic camera (Hadhri et al., 2019; Schwalbe and Maas, 2017) or d) the monitoring of processes in glacial fronts (How et al., 2019; Lenzano et al., 2014).

55 Integrating a second photographic module enables the creation of a basic photogrammetric strategy, i.e., stereo-pair time-lapse. 3D information can be derived from the 2D images captured utilizing photogrammetric processing algorithms. Thereby, 3D models can be reconstructed providing a more comprehensive understanding of the monitored subject's spatial characteristics. The advantages of this strategy are illustrated in the various studies covering different fields of geosciences: a) the use of oblique stereo-pair time-lapse imagery to characterize active lava flows (James and Robson, 2014), b) the application of two cameras fixed on a monorail to perform interior tunnel monitoring (Attard et al., 2018), c) the assessment of a two-camera system for fluvial surface monitoring (Bertin et al., 2015), d) the installation of two cameras for rockfall monitoring (Giacomini et al., 2020; Roncella et al., 2021) or the setup of two cameras to analyse glacial oscillations in the Glaciar Perito Moreno (Lenzano et al., 2018).

65 As a result of the performance of Structure-from-Motion and Multi View Stereo algorithms (SfM-MVS), which has been extensively detailed in the literature (e.g., Eltner and Sofia, 2020; Iglhaut et al., 2019; Mike R. James and Robson, 2014; Westoby et al., 2012), it is becoming increasingly common to observe the deployment of more comprehensive photogrammetric systems for natural hazard monitoring purposes. Notable examples of such systems, resembling the approach proposed in this publication, are the five cameras installed at a distance of 80 meters to a slope for rockfall monitoring (Kromer et al., 2019), this system had data transfer capabilities and could achieve a level of detection between 0.02 to 0.03 m. A similar approach was recently conducted by Núñez-Andrés et al. (2023) with an installation of three cameras in front of the Castellfollit de la Roca cliff (NE Spain) with the aim to identify pre-failure deformations. Finally, Kneib et al., (2022) install two sets of cameras (12 in total) in debris-covered glaciers in High Mountain Asia (China) to analyse the melt rates on a sub-seasonal basis.

75 However, these publications did not provide comprehensive descriptions of the construction of the high-end photogrammetric systems, the products used, and the codes developed for its operation. Moreover, not all of these systems were capable of transmitting data remotely. Sometimes they are controlled by basic intervalometers, or they are installed in urban environments with access to the power grid. These monitoring systems can be implemented using a variety of methods and materials, including expensive commercial systems. But this study focuses on the systems that are installed on a fixed or semi-permanent basis and require custom-built enclosures, batteries, and control systems, tailored to the particular needs of the research, and which can be built DIY (do it yourself).

1.1 High-End Photogrammetry vs LiDAR

85 In the field of geosciences, LiDAR has become a popular method for 3D surface monitoring (Petrie and Toth, 2008) due to its ability to capture 3D models from long distances and at high speeds. Leading to significant advancements, for example, in the characterization of rockfalls (Abellán et al., 2006; Royán et al., 2014) or in a large landslide monitoring (Jaboyedoff et al., 2012) using high frequency data acquisition. These advances, coupled with the high quality of the data, especially considering the spatially consistent error behaviour, has resulted in a steady increase in the use of LiDAR in geosciences (Guzzetti et al., 1999; McKean and Roering, 2004; Buckley et al., 2008; Tarolli, 2014; Tonini and Abellan, 2014).

90 Despite its many advantages, LiDAR technology also presents certain limitations such as high infrastructure costs, difficulties in the use in remote locations, and high fixed installation costs (Cook, 2017; Smith et al., 2015). These challenges make LiDAR implementation incompatible for a massive deployment in the field of natural hazards monitoring (Cook, 2017; Sturzenegger et al., 2007; Wilkinson et al., 2016) where data collection needs to be repeated periodically.

95 Many studies have attempted to assess the accuracy of digital photogrammetry in geosciences (Brunier et al., 2016; Cook, 2017; Eltner & Schneider, 2015; James and Quinton, 2014; Luhmann et al., 2016; Buckley et al., 2008; Smith et al., 2015). Thanks to advances in digital photogrammetry and computer vision, the image-based 3D reconstruction results can now be compared to those obtained by LiDAR (Cook and Dietze, 2019; James and Robson, 2012; Rowley et al., 2020; Stumpf et al., 2015). Furthermore, the effectiveness of high-end photogrammetry for fixed time-lapse monitoring can be comparable to those obtained using LiDAR technology (Kromer et al., 2019), which highlights the potential of ad hoc fixed photogrammetric systems as a viable alternative for real-time natural hazards monitoring.

100 However, there is a requirement for further progression in the realm of high-resolution photogrammetric systems. In particular, there is a pressing need to make the installation more robust and improve the reliability of these systems in order to guarantee time-lapse acquisition as well as to increase real-time data capture and transmission to support autonomous data collection in harsh environments. Such advancements, along with the integration of advancements in point cloud and SfM-MVS processing (Blanch et al., 2020; Brodu and Lague, 2012; Feurer and Vinatier, 2018; Gómez-Gutiérrez et al., 2015), can enable these

105 systems to carry out real long-term natural hazards monitoring with accuracy and reliability comparable to LiDAR, but at a significantly lower cost.

Last, these LiDAR vs digital photogrammetry comparisons cannot be generalized because [they](#) are dependent on factors such as the camera used, the number of photographs taken, and the distance and shape of the object (Eltner et al., 2016). Due to these complex uncertainties, one potential way to analyse the performance of the 3D measurement methods consists of making measurements of the same object with the acquisition instrument emplaced at the same distance. Thus, this study compares change-detection metrics using LiDAR instrumentation (Abellán et al. 2010) and the high-resolution photogrammetric system described in this publication. Both data acquisitions have been carried out on the Puigcercós study area (NE, Spain) with the LiDAR and the cameras placed at the same distance from the escarpment.

The subsequent section delves into the specific requirements for autonomous photogrammetric systems, providing a comprehensive overview of their components and assembly. A practical demonstration of their application in real-world scenarios is then presented, along with the resultant data and an evaluation of its reliability for rockfall monitoring. Finally, insightful discussions on potential areas of improvement and the mitigation of common errors are provided, with the goal of advancing fixed time-lapse photogrammetric systems for change-detection monitoring.

With the aim of assisting researchers from various disciplines who may not have experience in photography, electronics, or computing, this publication ~~provides~~[includes in an open access to distribution of the](#) assembly instructions, programming codes, and components used to successfully develop advanced high-resolution photogrammetric systems. There is a large opportunity to empower society in acquiring more data and gaining a deeper understanding of its environment by making this information freely accessible. This has not only the potential to enhance the knowledge across disciplines, but also increase the overall safety and security of society by providing a greater awareness of its environment and its hazard, regardless of society's economic resources.

125 2 Material and methods

2.1 Photogrammetric system

There is no consensus in the literature on the definition of a photogrammetric system. The works shown above use different photographic modules to obtain time-lapse images from which 3D models can be reconstructed. Each of these systems has its own peculiarities and is adapted to the specific research task. It is therefore difficult to homogenise the basic characteristics that define a photogrammetric system versus a simple cameras array.

How we see it, a photogrammetric system is described as a set of synchronised cameras able to simultaneously capture images of an object aiming to generate a 3D reconstruction of the reality. The autonomous system described in this work is characterized by its ability to reliably monitor remote areas, for a long-time period and without the need of on-site intervention. The photogrammetric system consists of a combination of basic components, including a set of imaging devices comprising of a lens and sensor, a control unit for data acquisition, a robust network infrastructure for data transmission, and a self-sufficient power supply to ensure continuous operation in remote locations. The development of these systems is based on three basic principles:

i) On demand. ~~Control~~ ~~The programming/programming of the control~~ units must allow full control of the shooting times and modes of the camera, ~~-(e.g.,~~ [capture demand](#) and a [rapid sequence burst](#) of 15 photographs ([burst mode](#)) every five hours during the day. Note that systems with an external trigger, e.g., associated with a rain sensor, humidity sensor or seismic sensor should also be considered programmable because they can acquire the data on demand, too (e.g., camera triggered by a change in infrared levels in Hereward et al., 2021).

ii) Data transfer. Due to the large amount of data that can be acquired with these systems, the photogrammetric systems should be remotely accessible to facilitate data transfer in both directions, i.e., capable of transmitting data as well as receiving basic programming instructions. In addition, IoT-based ([Internet of Things](#)) approaches where processing is done on-site and only small data amount, e.g., a result or alarm, is transmitted, are also considered as "data transfer" devices.

iii) Stand-alone power system. Fixed monitoring systems can be supplemented with appropriate power systems that allow not only a high degree of autonomy but also the ability to be self-sufficient from a power consumption standpoint. Thanks to the use of batteries, solar panels or other alternative power sources, it is now possible to install photogrammetric systems on remote location without access to conventional electrical infrastructure. Additionally, the use of very low energy consumption systems that allow several months up to years of operation are also considered.

Although, much cheaper photogrammetric systems may be available (based on low low-cost sensors) the design presented here is also referred to as low-cost or low budget according to the general terminology used in the literature (e.g., Anderson et al., 2019; Gabrieli et al., 2016; Giordan et al., 2016; Khan et al., 2021). This is because the final cost of the system is largely

155 controlled by the cost of the camera and lens, which can be easily adapted to the budget and is much lower than other systems
such as LiDAR, Radar, or total station (Smith et al., 2015).

2.2 Components of the photogrammetric systems

160 Several key components are required to create a photogrammetric system. On the one hand, the photographic modules
discussed in this study, which contain the cameras, the control units and the electronics that enable an advanced acquisition
system. On the other hand, the system of data transmission and the real-time photogrammetric processing workflow (Blanch
et al., 2021). **Figure S1** in the supplementary material shows in detail the materials used for the development of the
photogrammetric systems. In this study we share the knowledge and experience gained from systems installed at the Puigcercós
cliff (NE Spain), located in the Origenes UNESCO Global Geopark, and at the Alhambra de Granada (S Spain), an UNESCO
World Heritage place. Both are protected areas of high cultural value that present rockfall activity.

165 The purpose of giving full details on the different elements that make up the photogrammetric system (i.e., brands and models),
including the explanation of their assemblage and functioning, is to provide specific information to non-experts, who would
like to setup their own autonomous 3D monitoring system. The decision to expose the components in detail is associated with
the possibility of sharing the codes (software) and making them fully functional – i.e., plug&play - with the provided hardware.
The codes can be found in open-source format in the first author GitHub repository: <https://github.com/xabierblanch/DSLR-System>.
170 System.

2.2.1 Photographic sensor and lens

175 Three different camera models and lenses have been tested. In the Puigcercós study site, three photographic modules use a
full-frame (35.9 × 24 mm) mirrorless Sony Alpha 7R III with a resolution of 42.4 MPx (pixel pitch of 4.51 μm). These cameras
are equipped with a 35 mm f/2.8 lens. Two other photographic modules use a Canon 77D DSLR camera with an APS-C sensor
(22.3 x 14.9 mm) and a resolution of 24.2 MPx (3.72 μm pixel pitch). The Canon cameras are equipped with a 24 mm f/2.8
pancake lens. Using a 24 mm lens on a cropped APS-C sensor produces approximately the same field of view as a 35 mm full-
frame lens (**Figure S1 a and b**).

180 At the Alhambra de Granada study site, all five photographic modules were set up with the Nikon D610 DSLR full-frame
camera (35.9 × 24 mm) with a resolution of 24.3 MPx (5.95 μm pixel pitch). This publication also includes some preliminary
evaluations with the Nikon Z5, a full-frame (35.9 × 24 mm) mirrorless camera with 24 MPx resolution (5.97 μm pixel pitch).

2.2.2 Control Unit and Real Time Clock – RTC

185 A microcomputer is used as control system of the photographic modules. The unit control is a Raspberry Pi 3 Model B+
(Raspberry Pi Foundation, 2016) (**Figure S1c**). It operates the system, controls image capture, transmits data and manages the
camera's battery. A commercial Witty Pi 3 board from UUGear is used as a real-time clock and power management system
for the Raspberry Pi 3 (**Figure S1d**). Specifically, the Witty Pi board allows to interrupt the activation of the system shutdown
through the GPIO (General Purpose Input/Output) pinouts of the Raspberry Pi. This function is used in our design to allow
remote access, without time limitation, to enable code modifications and upgrades of the system.

2.2.3 Network connection system:

190 The photogrammetric system includes a network infrastructure that allows images to be uploaded to a server. The solution
provided in the repository codes is based on the Dropbox data transfer system. However, the same solution can be applied to
private servers or other proprietary and open-source cloud systems (**Figure S1e**). In addition, a connectivity unit is used in the
Puigcercós (NE, Spain) and Alhambra de Granada (S, Spain) study areas with dedicated hardware to provide 4G connectivity
to the study area. The main component of this system is the router with 4G capabilities that converts the phone signal into Wi-
Fi. The router is powered by a battery and a solar panel (in the same way as the photographic modules). A 12V timer is in
195 charge of switching the router on and off to prevent wasting energy during periods of inactivity.

200 The system is modular and easily scalable. In the case of the Puigcercós connectivity module, the default omnidirectional
antennas of the modem have been replaced by longer range antennas. Both to receive the 4G signal (directional panel antenna)
and to send the Wi-Fi signal to the photographic modules (semi-directional antenna). For the 4G antenna it is recommended
to use panel antennas that have a highly concentrated radiation pattern at a single point. With a precise installation this antenna
can be oriented in the direction of the nearest telephone antenna, optimising the radiation pattern to obtain the highest possible
energy. **Figure S2** in the supplementary material shows the assembly scheme of the connectivity system, and **Figure S3** shows
some images of the connectivity modules installed in the Puigcercós study site and the Alhambra in Granada.



Figure 1. Images of the photogrammetric systems installed in the Puigcercós site: a and b) Images showing the inside of the photogrammetric unit with part of the connections shown in Figure 3; c) Construction of the concrete base and installation of the PVC pipe for the installation of the photographic units and d) external view of the installed system.

2.2.4 Power supply and electrical components

The system employs 12 V batteries to power its components (**Figure S1f**), as they require a higher voltage and consume more power than very low-cost alternatives which often use small batteries (1.5 V) or power banks (5 V). The sealed lead AGM batteries used in the system have been proven to be reliable and durable, with capacities ranging from 7 Ah to 12 Ah. Solar panels of 10 W or 20 W have been utilized to power the batteries (**Figure S1g**). The panels must be connected to a solar charge controller (**Figure S1h**), which manages the battery's charging and discharging processes.

The designed system is characterised by the need for small electronic elements that are responsible for adapting the power supply that reaches all the devices. Mainly, two systems are needed: The DC-DC voltage converter is responsible for modifying the 12 V voltage of the power supply, i.e., the battery, to the required voltages (**Figure S1h**). Typically, one will be needed to modify the voltage to suit the requirements of the camera and one to supply the power to the control unit. The second electrical components are the relays, ~~these which will switch the camera and other peripherals to save power. These~~ relays can be either mechanical or based on MOSFETs (**Figure S1i**). One relay is responsible for disconnecting the camera ~~and save energy~~ while the second relay plays an important role in allowing remote access to the ~~Raspberry Pi devices~~ as ~~its activation this relay~~ prevents the WittyPi from automatically shutting down the Raspberry Pi.

2.2.5 Protective case

All these components have been installed in an enclosure to protect them from environmental conditions (**Figure 1a and b**). The boxes were perforated to embed a circular photographic filter which acts as protective glass. For the specific development of the Puigcercós and Alhambra de Granada systems, metal boxes were used, which provided very good robustness but some poor reception of the Wi-Fi signal. The anchoring of the boxes in their location varies depending on the characteristics of the study area. In the case of Puigcercós, concrete bases built ad hoc were used to anchor the boxes (**Figure 1c**), while in Granada they were mainly located in building sites, such as window frames or balconies. In the same way, the solar panels were either supported on the wall or anchored by means of pillars on the concrete bases (**Figure 1d**).

The total cost of the components of each photo module cannot be standardised, as it is controlled by the cost of the camera and lens used. However, the basic components (excluding the camera and lens) usually cost around € 120. The basic connectivity module components can be purchased for around € 300.

2.3. Module assembly

The assembly of these units requires basic electrical knowledge, as they require correct polarity management of the wires and soldering of the devices. In addition, a multimeter is necessary to correctly adjust the output voltages of the DC-DC converters. To activate the solar charge controller the 12 V battery is connected to it. Once the solar charge controller is powered, the solar panel can be connected to it (connecting it beforehand may damage the charge controller). From the solar charge controller, there are two power lines: one line serves to supply power to the control unit, while the other serves to supply power to the camera. The line ~~powering that powers~~ the control unit, incorporates a DC-DC converter, ~~which efficiently converts that~~

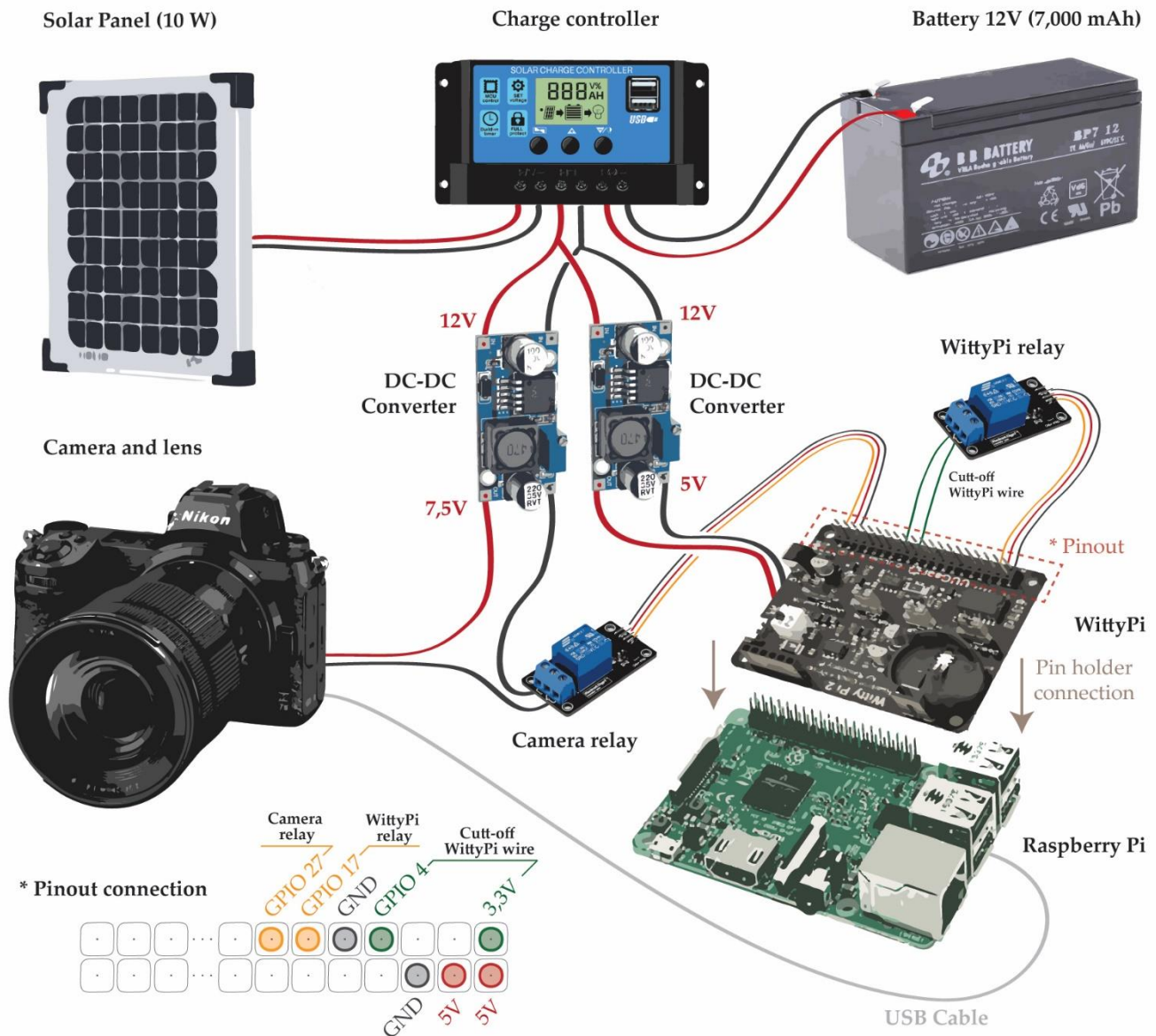


Figure 2. Installation sketch of the components. The solar panel and the battery are connected to the solar charge controller. Voltage regulators are installed at the output of the controller to adjust the voltage to the required for the camera (7.5V) and the control unit (5V). The relays are controlled by the control unit and allow switching the camera on and off as well as activating the system shutdown. The pinout connection of the control unit is shown in detail in the bottom left of the image.

235 ~~transforms~~ the 12V input ~~to 2 V~~ to the 5V required ~~5 V used~~ by the Raspberry Pi (via the USB port). It is important to note that from WittyPi 3 onwards, it is possible to connect the 12V input. This DC-DC can be avoided by connecting the 12V directly connected to the WittyPi board using the appropriate connector (XH2.54 connector). However, (from version 3 onwards), but this approach may ~~will~~ result in ~~lower power~~ conversion ~~efficiency~~ ~~efficiencies~~ and higher board heating of the board (Figure 2).

240 The line that delivers power to the camera also uses a DC-DC converter as the cameras work with a lower voltage (mostly around 7.5 V). This can be identified on the original batteries or on the product datasheet. The camera is connected to the power supply using a dummy battery. In addition, the camera power line incorporates a relay to prevent the camera from being turned on continuously. The relay is connected to the GPIO pins of the Raspberry Pi (Figure 2).

245 Finally, the camera is connected to the Raspberry Pi via USB. It is important to note that most modern cameras can also be powered via the USB connection if the output amperage is sufficient for the camera. In this case, it is not necessary to create a power line with the DC-DC converter and the relay ~~for the camera.~~ The camera will be activated with the correct voltage when the Raspberry Pi receives power. Finally, the designed system incorporates a relay that cuts the connection between GPIO 4 and the 3.3V GPIO. When this relay is activated and GPIO4 and 3,3V are connected ~~closed~~, the WittyPi board deactivates the automatic shutdown of the Raspberry Pi equipment, and it remains switched on. This allows active remote connections to be maintained since the system will not shut down automatically.

250

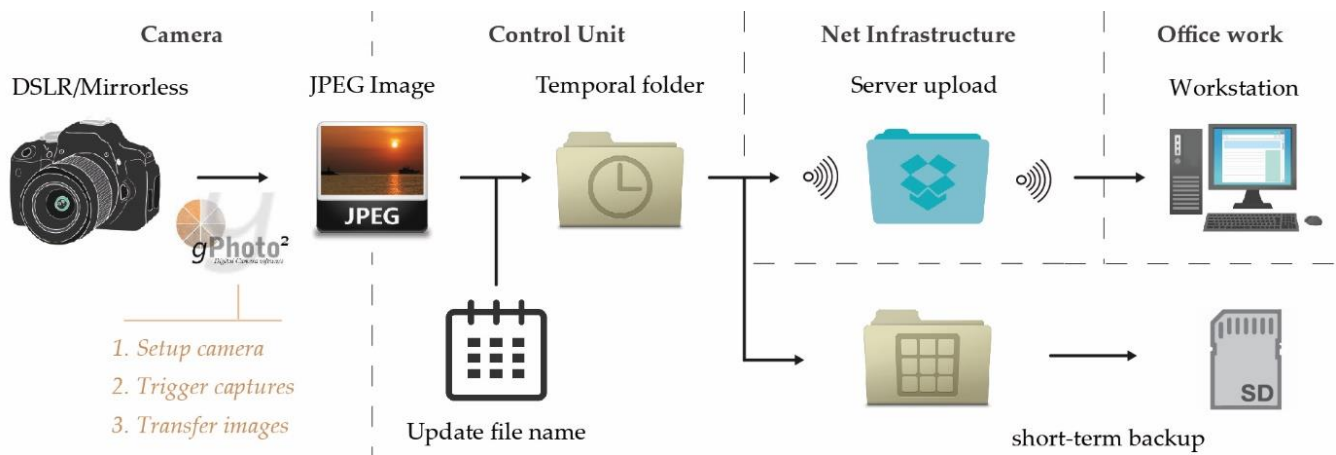


Figure 3. Illustrative scheme of the workflow implemented in the control unit to communicate with the camera, trigger the camera, send the images remotely, avoiding filling the internal memory of the devices.

2.4 Proposed workflow and software

A code pipeline has been developed that automatically starts with the photographic capture and ends with the telematic transmission of images while providing a backup on the device's internal memory until it is depleted (**Figure 3**). The workflow comprises of the following steps: a) image capture, b) transfer of images from the camera to the control unit, c) addition of a timestamp to the file name, d) storage of images in a temporary folder, e) uploading of images to a server, and f) transfer of uploaded images to the control unit's backup (**Figure 3**). Basic information on installing the OS on the Raspberry Pi and the WittyPi software can be found in the supplementary material.

The integration of different devices (i.e., camera, Raspberry Pi, WittyPi, Relays) implies developing adapted codes to integrate them effectively. The use of commercial cameras implies the need to use software to externally control the camera (non-native system) both in terms of communication and power supply. Thus, the Raspberry Pi communicates with commercial cameras via the gPhoto2 framework. The gPhoto2 software and its accompanying libgphoto2 library enable the Raspberry Pi to serve as an advanced control unit for commercial cameras. GPhoto2 is a free, redistributable, and ready-to-use suite of digital camera software applications for Unix systems. The workflow described in **Figure 4** can be reproduced using the codes provided in the first author's GitHub repository. The codes are divided into a main code and auxiliary codes written in Python and bash.

The main code (*main.py*) is in charge of performing the following operations (**Figure 4**):

1. Delete files from the camera (avoid corrupted images remaining).
2. Create/check correct paths.
3. Remove old files (more than [...] days) from "backup folder".
4. Identify camera.
5. Set up capture properties and focus camera (if needed).
6. Capture images and download images to the unit control.
7. Change file name by timestamp.
8. Store it in "temporal folder".
9. Try to upload to Dropbox server (library: *Dropbox*).
 - a. If success -> Move to backup folder.
 - b. If fails -> remain in "temporal folder".

The *main.py* code is executed by an auxiliary code *run.sh*, which is in charge of starting the different auxiliary codes and eventually giving the instruction to shut down the system. The *log.py* code is used to collect a log of the execution of the software as well as the log of the WittyPi board. Both logs are uploaded to the server.

The proposed system includes a mechanism for remote access to the control unit through the use of a relay and the WittyPi control board. Normally, to initiate the shutdown of the system, the WittyPi control board sends the shutdown command to the Raspberry Pi (**Figure 4**). However, this order is not run if a connection between GPIO4 and 3.3 V is established. In order to control this connection, a relay is integrated into the system with an open state. During normal operation, the WittyPi will activate the Raspberry Pi's shutdown command at the end of the *run.sh* code.

However, the *keepalive.sh* code activates the relay allowing the connection between GPIO4 and the 3.3 V pinouts (**Figure 2**). In this case, the automatic shutdown is stopped and remote access to the control unit can be established through a remote

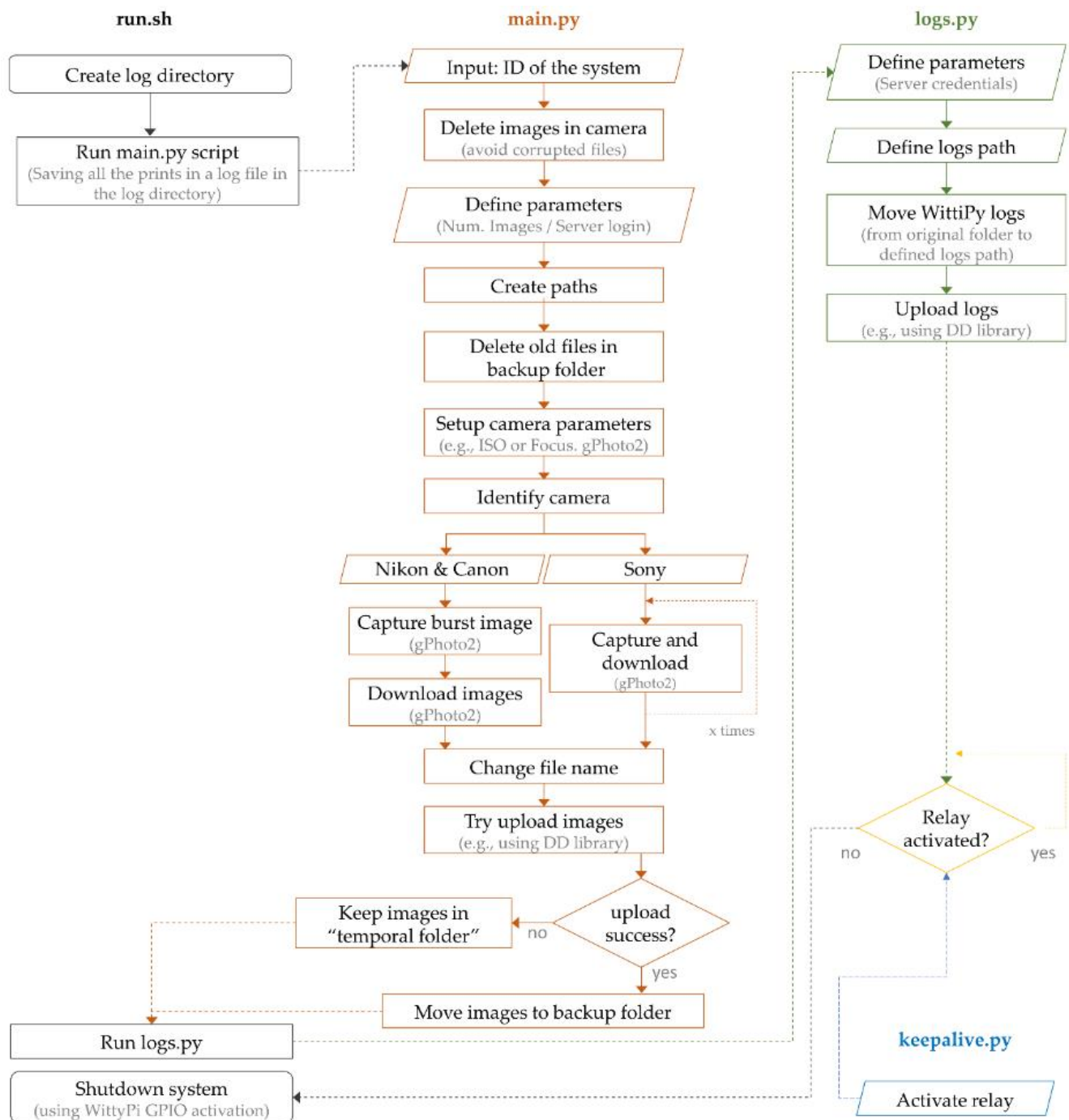


Figure 4. Structured flowchart of the open-source codes distributed in the repository of this publication. In grey, the startup code "run.sh", in orange the main code "main.py", in green the code "logs.py" and in blue, the code "keepalive.py" that avoid the shutdown process.

desktop connection. To revert the situation, the shutdown.sh code is in charge of deactivating the relay that forces the shutdown of the control unit.

3 Results

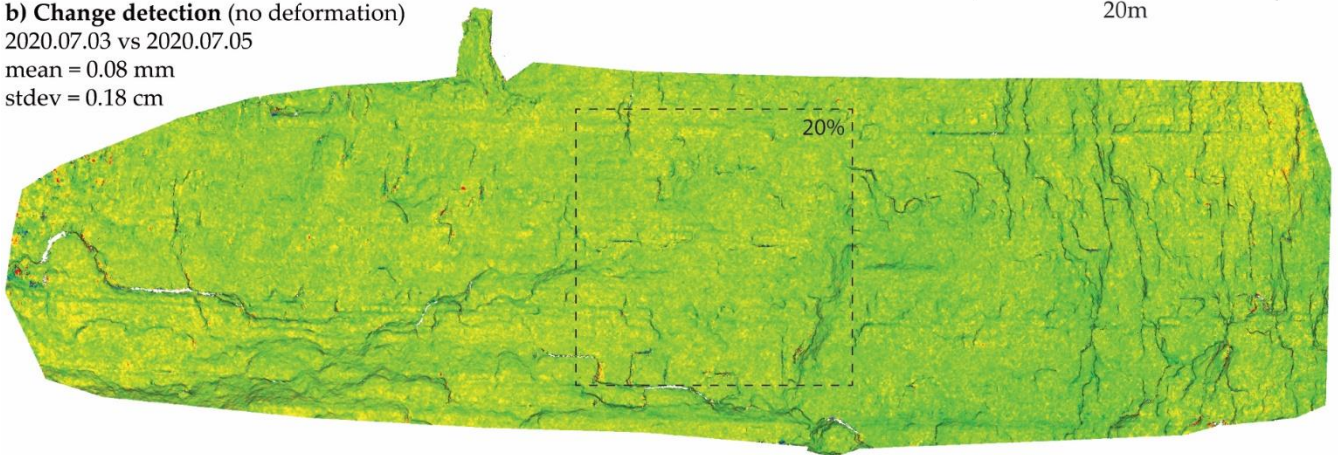
3.1 Implementation in real scenarios

The systems presented in this publication have been installed in the study area of Puigcerçós (NE Spain) and the study area of Alhambra de Granada (S Spain). Both systems have been installed in front of rockfall active cliffs and have been in operation for over a year (Blanch, 2022). The Puigcerçós system comprises five photographic modules, (Figure S4), which are situated approximately 100 meters from the escarpment and are separated by approximately 30 meters from each other (Figure S3). The connectivity module is installed at the highest point of the escarpment to optimize 4G signal reception (Figure S4a, S3a, b and c). This system is located in the same area as the low-cost system used in Blanch et al. (2023, 2020), and where the LiDAR that captured the data in Abellán et al. (2009) was placed. The system installed in the Alhambra de Granada is

a) Puigcercós Cliff
3D Dense Cloud
2020.07.03



b) Change detection (no deformation)
2020.07.03 vs 2020.07.05
mean = 0.08 mm
stdev = 0.18 cm



c) Change detection (no deformation)
2020.07.03 vs 2020.07.05
(2 days)

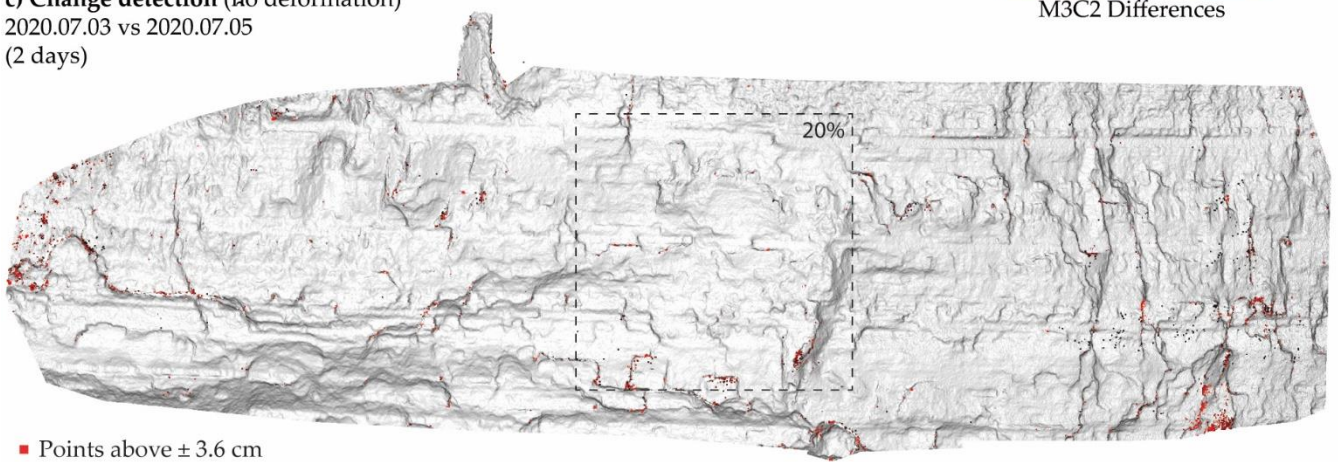


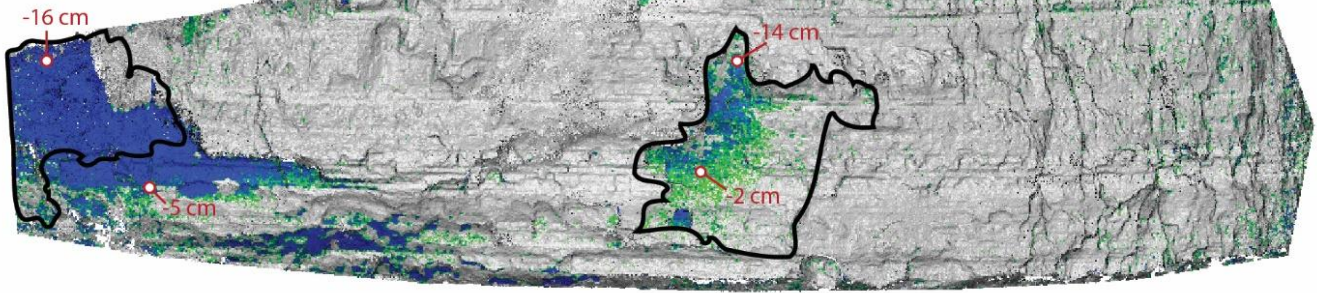
Figure 5. a) Point cloud obtained with the very high-resolution photogrammetric system installed in Puigcercós (obtained with MEMI workflow). b) M3C2 (Lague et al., 2013) comparison of two consecutive acquisitions (no expected deformation). c) Same comparison than in b) highlighting in red the points with a deformation higher than 0.036 m. In b) and c) a crop within the central region is delineated, covering around 20% of the cliff.

composed of five photographic modules (Figure S5) and three different connectivity systems (Figure S4dS3d). Due to its urban grid location, the camera geometries in this system are irregular, with the closest camera being 70 meters from the escarpment and the furthest being more than 250 meters away. Nevertheless, both systems have a common feature, which is that each camera captures a full view of the escarpment, resulting in 100% coverage in each image (Figure S6S4 and S7S5). The cameras are configured to take five images in burst mode (rapid sequence of images in quick succession) once daily, which facilitates the application of change-detection enhancement algorithms (Blanch et al., 2021; Feurer and Vinatier, 2018).

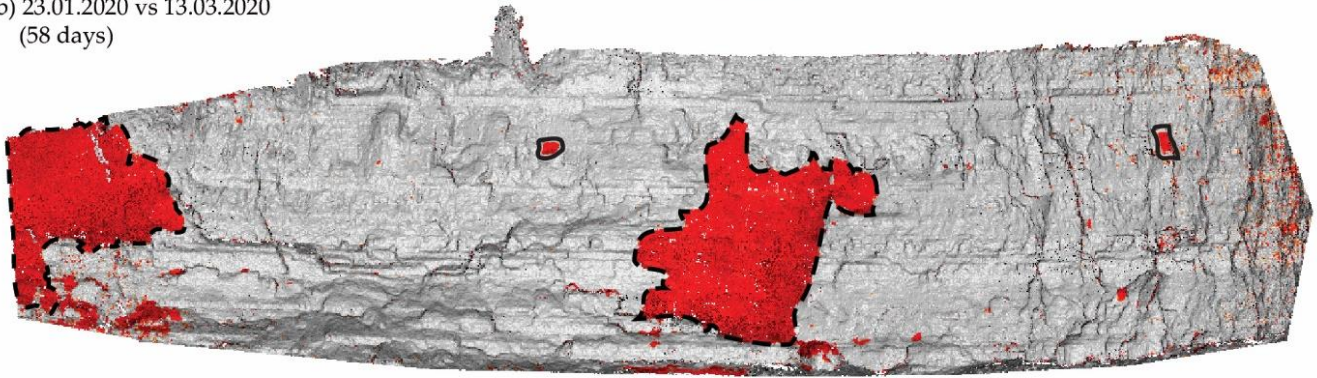
In the Puigcercós area we obtain a GSD (Ground Sample Distance) of approximately 2 cm pixel^{-1} for the Canon devices and $1.7 \text{ cm pixel}^{-1}$ for the units with the higher resolution Sony cameras. The MEMI (Multi-Epoch Multi-Imagery) workflow (Blanch et al., 2021) has been applied to a stack of four images acquired by each of the five cameras of the photogrammetric system. This workflow takes advantage of the use of still cameras, as it uses the images from the different

Change detection

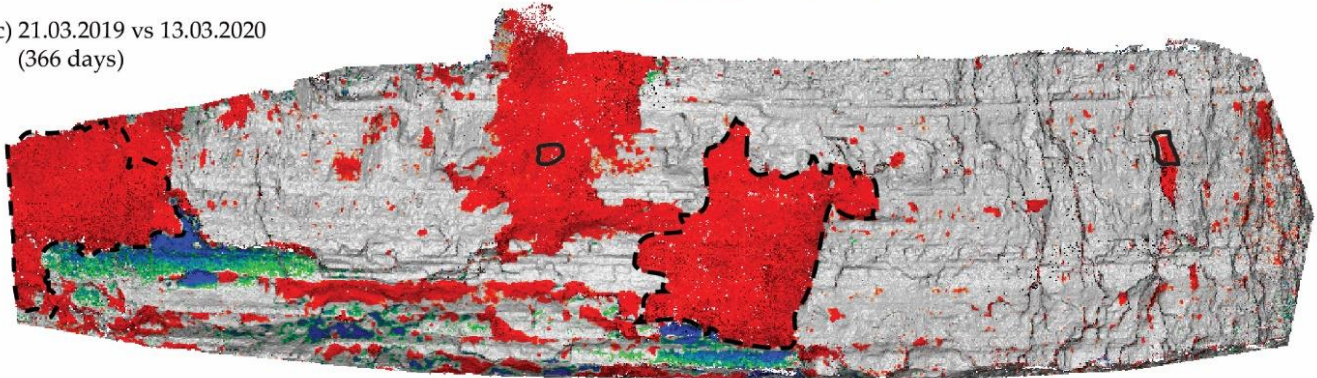
a) 21.03.2019 vs 23.01.2020
(308 days)



b) 23.01.2020 vs 13.03.2020
(58 days)



c) 21.03.2019 vs 13.03.2020
(366 days)



-15 cm -1.5 cm > 3 cm
M3C2 Differences

20m

Figure 6. Examples of pre-failure deformations and rockfalls detected. a) Accumulated pre-failure deformation of two active blocks after 308 days. The comparison has been done with the M3C2 algorithm and the MEMI workflow. b) Change detection obtained 58 days after the detection of pre-failure deformation shown in a), with the two detached blocks identified in red. c) Change detection after approximately one year. The red clusters identify rockfalls, while the green-blue areas indicate pre-failure deformation. For all results 0.015 m has been used as level of detection.

epochs to be compared (multi-epoch) to jointly determine the internal and external camera parameters, since their position is the same over time. Furthermore, by using image bursts (5 images in a few seconds), it uses more than one image per epoch (multi-image) to perform the bundle adjustment. As a result, the use of the MEMI workflow results in denser point clouds with better comparison performance, as it does not require co-registration between the compared models, since the reconstruction parameters used to generate the point clouds are the same. Using this workflow, a With this workflow, an RMS reprojection error of 0.23 (0.38 pix) has been obtained. A dense point cloud (after filtering and clipping the scarp) of about 15 million points has been generated with a mean point surface density of 6,000 points m² using Agisoft Metashape software with the highest quality setting.

-The model has been scaled using virtual GCPs (Ground Control Points (GCPs)) extracted from a terrestrial LiDAR scan model of the same study area. The use of virtual points is necessary due to the inaccessibility of the escarpments. After identifying the most suitable reference points, the detection of these points in images from other epochs is performed automatically (e.g., using the Lucas-Kanade algorithm, as described by Blanch et al., 2021). Once the points are identified, a 3D coordinate obtained from the LiDAR model is assigned to them. Implementing this strategy in stable regions visible to the camera and around the escarpment ensures the accurate scaling of the model. Figure 5a shows the photogrammetric model obtained on the Puigcerçós cliff, while Figure S8S6, in supplementary material, showcases the 3D model generated in the

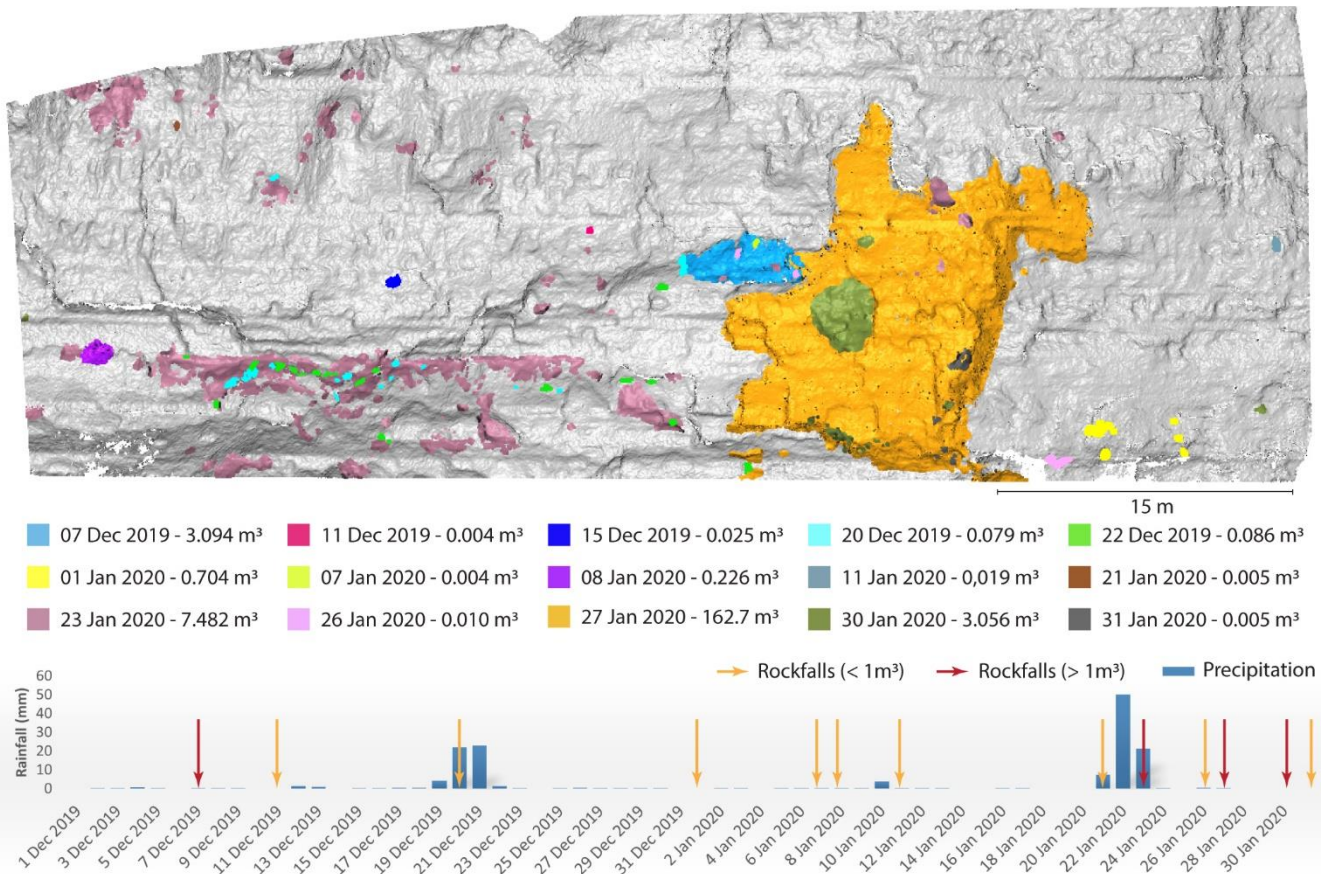


Figure 7. Rockfalls occurred on the Puigercós cliff (NE, Spain) between December 1st and January 31st. Each color corresponds to a different detection date, and the total volume of rockfall per day is calculated. The graph displays the precipitation levels in the area and the days with rockfall activity. Red arrows indicate a total volume detached greater than $1m^3$, while orange arrows indicate a volume less than $1m^3$.

Alhambra study area. Links to an online view of a subsample models are also provided in the **Appendix A** (Puigercós cliff, Spain) and **Appendix B** (Alhambra de Granada cliff, Spain).

325 In order to estimate the instrumental error of the photogrammetric system and estimate the minimum change detection value, two captures obtained in Puigercós between 2020.07.03 and 2020.07.05 were compared ([images from 2020.07.04 cannot be used due to bad weather](#)). Since there has been no significant change in the analysis period, the result of the comparison should tend to zero (**Figure 5b**). A mean value of the comparison of 0.08 mm and a standard deviation of 0.018 m has been obtained using the M3C2 algorithm for point cloud change detection (Lague et al., 2013). [The comparison has been made using the normals calculated in photogrammetric software and a projection diameter of 0.1m.](#) Although this result is highly dependent on the algorithm, as will be discussed below, this result allows us to define a change detection threshold of only 0.036 m, using the methodology described in Abellán et al., (2009) that describe the detection threshold as two times the standard deviation of a model comparison without deformation. If we apply the same methodology but on a crop in the central area of the escarpment ([Figure 5bc](#), 20%), the standard deviation obtained decreases to only 0.007 m, which corresponds to a change detection threshold of only 0.014 m.

335 **Figure 5c** highlights in red the points that exceed the change detection threshold of 0.03604 m in the comparison between the two days period without deformation. It is noteworthy that most of the points with higher deformation are located at the margins of the model. Both the points exceeding the threshold found at the edges of the model, and those found in more central areas (these more scattered), are associated with fractures, edges, and shadows of the 3D model. The points shown in red represent 0.24% of the total point cloud, so 99.76% of the points in the M3C2 comparison fall within the deformation range of -0.036 m to +0.036 m for a comparison without deformation (consecutive days without rockfall activity).

3.2 Contribution to process understanding: detecting rockfalls and pre-failure deformation.

345 With the fixed time-lapse photogrammetric systems, results can be obtained that benefit from the high frequency of data acquisition. The comparison of point clouds with 308 days' time lapse performed with the MEMI workflow (Blanch et al., 2021) allowed detecting pre-failure deformations in two active zones of the Puigercós cliff (**Figure 6**). The observed deformation increases along the vertical axis of the mobilized blocks reaching deformation values of 0.16 m in the left block and 0.15 m in the right block, thus the process can be characterized as rock toppling (Hungur et al., 2014). Although in the

previous section we calculated the ~~theoretical~~ limit of detection at 0.04 m for the entire escarpment, and 0.014 for the central region, a change detection threshold of only 0.015 m was used to be able to identify the deformation in the whole region. The use of this threshold is supported by two observations. The first corresponds to the identification of a standard deviation of change-detection of only 0.007 m in the central 20% of the escarpment, the second observation is based on the homogeneity and density of the points that generate the deformation clusters in large volumes. For this reason, **Figure 6a** shows useful results obtained with a change-detection threshold of only 0.015 m, which, although it shows a greater amount of noise especially at the margins (far from the central 20% of the escarpment), allows the identification of the pre-failure blocks.

The comparison covering a period of 58 days after the detection of two active zones with pre-failure deformation revealed the detachment of two rockfalls of great magnitude (more than 100 m³) (**Figure 7b**). It is noticeable that in the central rockfall the detached zone overlaps with the deformation detected in **Figure 6a**, while at the rockfall on the far right the detached zone does not cover the entire pre-failure deformation area detected in **Figure 8a**. For this reason, in later comparisons (**Figure 6c**) part of the deformation is still detected at the left end of the figure (part of the mobilized block remains active).

Figure 6c shows a comparison of the detection of changes in the Puigcerçós cliff after one year (366 days), covering the two time-lapses shown in **Figures 6a** and **6b**. Therefore, the figure shows the rockfalls detected in **Figure 6b** but as part of larger rockfall, which makes it impossible to individualise them and leads to an over-interpretation of the rockfall volumes of each event. In addition, one of the small rockfalls detected in **Figure 6b** is completely masked by a new larger rockfall in **Figure 6c**, which results in ignoring part of the rockfall activity of the cliff. A problem that is solved by fixed photogrammetric systems that allow daily or sub-daily frequency monitoring.

Last, **Figure 7** shows another example of monitoring the Puigcerçós cliff, which benefits from high temporal resolution data acquisition provided by the fixed time-lapse photogrammetric systems described in this publication. The figure shows a daily analysis carried out over a period of 2 months (December 2019 - January 2020), where rock falls are identified, and the volumes of all material detached per day are included. A threshold of 0.05 m has been used to identify positive deformations (rockfalls). As in the previous **Figure 6**, overlapping rockfalls are observed in the areas of greatest activity. In addition, it is observed that this overlapping occurs closely in time (27-30-31 January 2020), allowing us to infer a triggering sequence. The largest detected volume corresponds to the 162 m³ rock fall that occurred on January 27, 2020, while the smallest detected volume is 0.004 m³, corresponding to a block approximately 20x20 cm and 10 cm deep. Finally, a graph is included with the precipitation recorded in the village of Tremp (NE Spain) located 4 km from the Puigcerçós cliff (XQ-XEMA, Meteorological Service of Catalonia). The graph also displays the days with rockfall activity, categorized by magnitudes greater than and less than 1m³.

4 Discussion

4.1 Overall approach

The results obtained in the rockfall monitoring in Puigcerçós (NE Spain) (**Figure 6 and 7**) demonstrate that the photogrammetric system presented in this publication is useful for 3D change-detection using high-end cameras and is particularly appropriate for those processes that require a high temporal frequency of data acquisition while maintaining good accuracy. The systems installed in Puigcerçós cliff and Alhambra de Granada have been in operation for more than one year, requiring some maintenance to keep them operational. In some cases, continuity of data acquisition could not be guaranteed. However, thanks to the use of independent systems, even with the failure of two photographic modules the photogrammetric system captured images from three different locations guaranteeing 3D results. This allows us to obtain, as a whole, a more robust system than installations based on stereo cameras.

Maintenance has occurred for a variety of reasons, but there are two main limitations of this type of systems. The first relates to the specific design of the systems and their ability to withstand a severe climate with precipitation, high humidity and a very wide temperature range. The construction of the boxes are weak points because they allow humidity to enter, which can seriously damage the electronic systems (**Figure 8a**). Although many efforts to waterproof the electronics were taken, it was not possible to completely isolate the systems. Furthermore, the reached temperatures inside the metal boxes in Puigcerçós were high (reaching 60 degrees Celsius). Thus, solutions such as silicone sealant, power tape or thermal adhesives were not valid as they can soften and lose their firmness and properties over time. Other methods such as encapsulation in epoxy resin or insulation with high resistance polymer had been tried, but the operation is very difficult because the electronic components have elements that cannot be submerged or covered by resins (e.g., microSD card or USB connectors).

One way to improve the insulation of these enclosures is to replace the circular photographic filter that is embedded in the enclosure. Due to weather conditions, the filter glass was no longer fixed to the metal chassis that held it in place, allowing the glass to rotate freely and consequently allowing humidity to enter. Other alternatives such as adding a larger and thicker glass window to the enclosure should allow for greater strength and insulation. In addition, the use of metal boxes hindered the reception of the Wi-Fi signal (Faraday cage effect), forcing the need of an extra hole for the external antenna. In addition, it

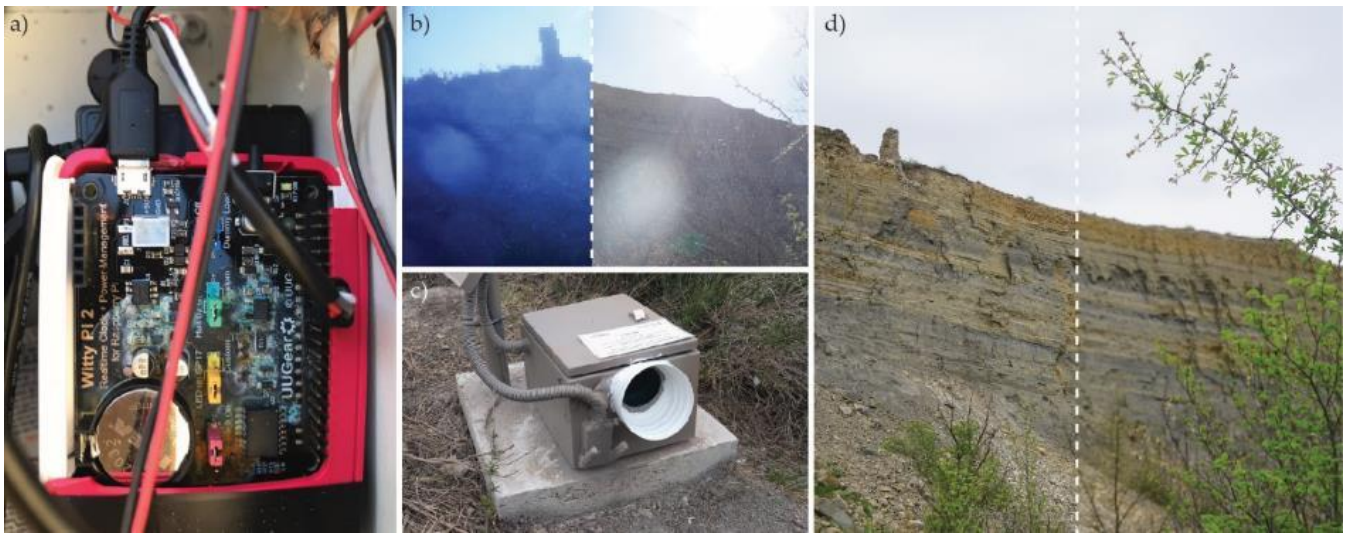


Figure 8. Limitations of the high-quality system: a) Rust on the control unit due to water infiltration; b) Image defects due to not incorporating a lens hood. Left: Water drops in the filter glass. Right: lens flare due to the sun's rays; c) Incorporation of the lens hood to avoid the defects shown in b) and the external Wi-Fi antenna; d) Problem due to automatic focus. Left: image with the focus on the cliff. Right: image with the focus on the vegetation in the foreground.

should be noted that not all pictures are systematically usable for monitoring, unlike other instrumentation, the robustness of the results is conditioned both by the time of day (image acquisition only during daylight hours) and by weather conditions (Figure 8b). Thus, it is not possible to obtain images during periods of heavy rain, fog, or direct sunlight/flairs on the lens. To try to mitigate the negative effects caused by drops of water on the glass or light reflections, a hood has been added to the system (Figure 8c). Although the results have not been noticeably better, given the low cost of the improvement, it is a change to be considered.

4.2 Hardware and software [improvements](#)

Another limitation of the system has been the integration of all the hardware from different brands that comprise the system. These limitations range from the failure of the electronic components to the need to rewrite the code because some cameras are not fully compatible with the gPhoto2 library used to connect the camera to the control unit.

The main electrical installation can be seen in detail in Figure 2. However, it was decided to replace the mechanical relays (electromagnets) for static relays SSR (solid state relays). The mechanical relays have caused problems in the different installations due to either the quality of the devices or climatic conditions. For this reason, they have been replaced by MOSWITCH-SPDT relays of the UUGear brand. These new relays no longer depend on a mechanical component that is activated by the passage of current (electromagnet) that activates the switch as in mechanical relays. In contrast, the SSR relays are activated by the state of activation of the MOSFET transistors (metal-oxide-semiconductor field-effect transistor) incorporated in the device.

The most distinctive aspect of this high-resolution system lies in its camera selection. The chosen camera significantly impacts the cost of the system, the communication protocol with the control unit, and even the electrical system. Based on the results obtained using the different systems, Table 1 gives a short summary of critical factors in order to optimize the results.

Table 1. Cameras installed in the different systems and specification of the most important features.

Camera model	Sensor size	Sensor resolution	Camera type	Focus memory	gPhoto2 functions	USB Powered
Nikon D610	Full Frame	24 MPx	DSLR	n/a	Full	No
Nikon Z5	Full Frame	24 MPx	Mirrorless	Yes	Full	Yes
Canon 77D	APS-C	24 MPx	DSLR	n/a	Full	No
Sony a7 II	Full Frame	42 MPx	Mirrorless	No	Limited	No

On DSLR cameras the focus position can be fixed externally on the lens. However, the new mirrorless cameras incorporate much more electronics than their predecessors, and many of them perform automatic focus travel at start-up so that the last focus position is not memorised even when manual focus is selected. For this reason, some of the systems created in this

research had to activate the automatic focus of the cameras, which led to higher battery consumption, a longer delay in the acquisition of photos and, most seriously, an error in obtaining the focus (**Figure 8d**).

In the same way, choosing cameras with full compatibility with the gPhoto2 library makes it possible to generalise the image acquisition codes. In this study, the Sony camera was not able to execute the burst shooting command. The camera could only be controlled by the "shoot and download" command, which made it difficult to obtain simultaneous bursts with the other photographic units.

The possibility of powering the new mirrorless cameras via USB cable directly from the control unit makes it possible to eliminate the need for a power supply line, a relay and a DC-DC converter. However, it must be ensured that the current supplied by the USB port of the Raspberry Pi is sufficient to power the camera. Last, the cameras with the most electronics are the ones that have reported the most difficulties in the field, as well as incompatibilities and malfunctions (camera freezing or corrupted files), so the choice of the robust DSLR can still be a winning point.

4.3 Applications in real scenarios

The high-resolution system allows high quality change detection models, this result is consistent with other authors such as Kromer et al., (2019) or Kneib et al., (2022) who have already demonstrated the potential of using automatic multi-camera photogrammetric systems for natural hazard monitoring. The theoretical detection threshold obtained with the high-resolution cameras (0.04 m) is 50% lower than those obtained [in the same study area](#) with ~~the~~ low-cost systems [built with 8 Mpx Raspberry Pi Camera V2](#). ([Blanch et al., 2020](#)). Considering ~~that these~~ the low-cost systems shown in [Blanch et al., \(2023\)](#) were located at a shorter distance from the Puigcercós escarpment (60 m), the real differences in change detection thresholds would have been much greater if they had been located at the same distance, with an increase in the detection threshold of 3 to 4 times. Given that the captured images have 100% coverage of the area of interest and thus have high overlap, the obtained model was robust and showed better model edge coherence compared to very low-cost devices. Moreover, the results were achieved by the use of cameras with different characteristics (sensor size and number of different pixels). It can be assumed that if all systems used cameras with the highest quality (e.g., all cameras with 45 MPx, and same prime lens), the quality of the model could have been much higher, too.

One of the main advantages of using fixed systems is the possibility of acquiring data with high temporal frequency. When comparisons are made using long data intervals, accurate but incomplete information is obtained. On that way, **Figures 6** and **7** highlight the importance of working with high temporal resolutions to obtain accurate rockfall inventories. For example, the four rock falls detected in **Figure 6b** would have been identified as major rock falls if the change detection analysis is performed on an annual basis (**Figure 6c**). Additionally, **Figures 6** and **7** show how the monitored sequence of rockfalls varies based on the frequency of monitoring. While in **Figure 6c** a single large rockfall is identified, thanks to the daily analysis in **Figure 7** it is possible to identify that the largest rockfall area was the result of different rockfalls occurred on 7th December 2019, 23rd, 27th, 30th, and 31st January 2020. Thus, long time-lapse comparisons generate distorted inventories that do not respond to the natural behaviour of the escarpment (Williams et al., 2018). [This sampling effect is observed in both large and small rockfalls, favouring, for example, the rollover effect in the magnitude-frequency curves \(Van Veen et al., 2017\). While our focus has been on technical setup, it's worth noting that high-frequency monitoring may unveil connections between weather conditions and rockfall activity \(Birien & Gauthier, 2023\), as hinted by Figure 7. Nevertheless, due to the complexity, further specific analysis is warranted for conclusive insights.](#)

~~This sampling effect is observed in both large and small rockfalls, favouring, for example, the rollover effect in the magnitude-frequency curves (Van Veen et al., 2017). Moreover, high frequency monitoring may allow for analyses to assess the relationship between weather conditions and rockfall activity. Although this publication did not focus on this aspect, Figure 7 suggests a potential correspondence between precipitation and rockfall activity, as the episodes with the highest detached volume (23rd and 27th January) occurred during a precipitation episode, which may corroborate the relationship between weather conditions and rockfall shown in similar studies (Birien & Gauthier, 2023). However, the purpose of Figure 7 is only to demonstrate that the presented photogrammetric systems can be a cost effective and useful tool to accurately obtain these relationships, as such correlations need to be done with longer time series.~~

In this study, the standard deviation of the comparison has been ~~employed~~ used as a quality metric ~~to~~for evaluate the ~~outcomes of change detection. This metric serves as a basis for comparison result, and in order to compare~~ with the LiDAR results published ~~by in~~ [Abellán et al., \(2010\)](#), where simultaneous LiDAR captures were conducted at the Puigcercós site. ~~Notably, these studies employ distinct change detection algorithms, which justifies slight differences in the metrics obtained.~~ However, [Blanch et al., 2021](#) show results obtained with the same photogrammetric system ~~and the same processing~~ considering ~~the~~ error propagation, and obtaining ~~individualised~~ the accuracies in X, Y and Z as a function of the location in the 3D model ([James et al., 2017](#)). The values published in ~~that work~~ [Blanch et al., 2021](#), which also ~~obtains the~~ allow obtaining change detection thresholds, are consistent with those obtained in this work. ~~Abellán et al., (2010) performed two simultaneous LiDAR captures on the Puigcercós site, with the LiDAR device located in the same place, so the results obtained in both studies can~~

480 [be compared. However, in terms of metrics, it should be noted that the algorithms for change detection are quite different. And in the case of the M3C2 algorithm \(used in this study\) the metrics are highly dependent on the parameters used for comparison.](#)

Abellán et al., (2010) obtain a standard deviation of 0.0168 m, highlighting that the artefacts occur at the margins of the occluded parts. This standard deviation value allows to define a change detection threshold of 0.0336 m (Abellán et al., 2009). This value can be directly compared with the result of 0.0360 m obtained in this publication. In addition, the distribution of errors is similar in the two works, highlighting the appearance of errors in shadow zones and fractures of the cliff. (Figure 5). Furthermore, the results obtained are consistent, in terms of change-detection model, with those obtained under different conditions by Kromer et al., (2019).

485
490 Finally, it should be noted that due to the number of error points over the threshold (0.24% of total points), its distribution (edge effects and shadows) and their composition (density and clustering) it is possible to use change-detection thresholds below the theoretical value. This is supported by the distribution of the error, which instead of being random throughout the 3D model (as background noise in LiDAR) is concentrated at the extremes of the model and in the shadow zones (associated with fracture zones). Similar works where pre-failure deformation is identified also use detection thresholds below the theoretical one, as for example Royán et al., (2014) apply a NN (near neighbours) moving median to the change-detection result. This strategy allows them to smooth the background noise, obtaining lower standard deviations and consequently lower thresholds. In the example shown in Figure 6, the blocks present a large deformation so that it is easily distinguishable from the background noise, however, the application of NN filters may allow to identify areas with incipient precursor deformation.

495
500 This threshold reduction will become increasingly noticeable as AI (artificial intelligence) elements are used to improve the identification of true clusters that correspond to rockfalls. Thus, just as we have seen an increase in algorithms that allow for improved 3D modelling (e.g., Blanch et al., 2020; Feurer and Vinatier, 2018), it is likely to be possible in the future to see deep learning applications that reduce these detection thresholds without modifying the photogrammetric acquisition systems; allowing to improve change detection processes significantly.

5 Conclusions

505 Two high-resolution photogrammetric systems have been designed, constructed, and installed in the escarpment of Puigcercós (N Spain) and the Alhambra de Granada (S Spain), comprising five photographic modules and different wireless transmission system for image transfer. These modules use high-end DSLR and mirrorless cameras and are controlled by the gPhoto2 library and a Raspberry Pi [together with a Real Time Clock board. The systems are equipped with the necessary electronic components to capture images on demand, with data transfer capabilities and stand-alone power system. Open-source codes have been developed for the operation of the systems.](#)

510 -The acquired images, in combination with algorithms that facilitate the creation of improved 3D models (e.g., MEMI, Multi-Epoch Multi-Imagery), offer change detection performance comparable to LiDAR. The system presented has been used to successfully monitor rockfalls, allowing comparison of 3D change detection models with the same accuracy as previous work using LiDAR. [The low threshold for change detection allowed the system to detect rockfalls and pre-failure deformation.](#) Thus, the results obtained demonstrate the usefulness of these systems for monitoring natural hazards. In addition, our findings support that a high frequency of monitoring yields a more accurate rockfall inventory, and consequently a more reliable characterisation of the behaviour of the active cliffs.

515 **Appendix A:** High-resolution 3D photogrammetric model (Puigcercós cliff, Spain): <https://skfb.ly/o7QvV>

Appendix B: High-resolution 3D photogrammetric model (Alhambra de Granada cliff, Spain): <https://skfb.ly/o7QEX>

Code availability: all the necessary codes supporting the contents of this publication are available in the first author digital repository: <https://github.com/xabierblanch/DSLR-System>.

520 **Author Contributions:** **XB:** Conceptualization, methodology, software, investigation, writing-original, figures; **MG:** conceptualization, writing - review and editing, supervision; **AE:** conceptualization, methodology, writing - review and editing, supervision; **AA:** conceptualization, writing - review and editing, supervision.

Competing interest: The authors declare that they have no conflict of interest. The use of brand names in the manuscript has been made without any commercial relationship.

525 **Disclaimer:** All data, figures and codes provided in this publication are published under open-source license. The content of this publication is adapted from the Doctoral Thesis of the first author (Blanch, 2022), that is available at the following link: <http://hdl.handle.net/2445/189157>

Acknowledgments: The authors would like to thank Origenes UNESCO Global Geopark for granting permission to work on Puigcercós rock cliff, the Patronato de la Alhambra y el Generalife for granting permission to work on Tajo de San Pedro cliff,

530 to the institutions and private buildings that have accepted and cared for photogrammetric systems on their properties, to the colleagues of the University of Granada who have assisted us in the fieldwork, the doctoral thesis examining board for their comments that have improved this publication and the reviewers and the editor for the valuable comments and suggestions that contributed to the improvement of the present manuscript.

535 **Financial support:** The presented study was supported by the PROMONTEC Project (CGL2017-84720-R) funded by the Ministry of Science, Innovation and Universities (MICINN-FEDER). The first author (X. Blanch) was supported by an APIF grant funded by the University of Barcelona. Anette Eltner was funded by the DFG (EL 926/3-1).

References

- Abellán, A., Calvet, J., Vilaplana, J.M., Blanchard, J., ~~2010~~. Detection and spatial prediction of rockfalls by means of terrestrial laser scanner monitoring. *Geomorphology*, 119, 162–171. doi:10.1016/j.geomorph.2010.03.016, [2010](#).
- 540 Abellán, A., Jaboyedoff, M., Oppikofer, T., Vilaplana, J.M., ~~2009~~. Detection of millimetric deformation using a terrestrial laser scanner: experiment and application to a rockfall event. *Natural Hazards and Earth System Sciences*, 9, 365–372. doi:10.5194/nhess-9-365-2009, [2009](#).
- Abellán, A., Vilaplana, J.M., Martínez, J., ~~2006~~. Application of a long-range Terrestrial Laser Scanner to a detailed rockfall study at Vall de Núria (Eastern Pyrenees, Spain). *Engineering Geology*. ~~Eng Geol~~ 88, 136–148. doi:10.1016/j.enggeo.2006.09.012, [2006](#).
- 545 Anderson, K., Westoby, M.J., James, M.R., ~~2019~~. Low-budget topographic surveying comes of age: Structure from motion photogrammetry in geography and the geosciences. *Progress in Physical Geography: Earth and Environment*, 43, 163–173. doi:10.1177/0309133319837454, [2019](#).
- Artese, S., Lerma, J.L., Zagari, G., Zinno, R., ~~2016~~. The survey, the representation and the structural modeling of a dated bridge, in: Proceedings of the ARQUEOLÓGICA 2.0, Computer Graphics, Cultural Heritage and Innovation. Universitat Politècnica València, ~~Valencia~~. doi:10.4995/arqueologica8.2016.3559, [2016](#).
- 550 Attard, L., Debono, C.J., Valentino, G., Di Castro, M., ~~2018~~. Tunnel inspection using photogrammetric techniques and image processing: A review. *ISPRS Journal of Photogrammetry and Remote Sensing*, 144, doi:10.1016/j.isprsjprs.2018.07.010, [2018](#). doi:10.1016/j.isprsjprs.2018.07.010
- 555 Bartonek, D., Buday, M., ~~2020~~. Problems of creation and usage of 3D model of structures and their possible solution. *Symmetry (Basel)* 12, 1–13. doi:10.3390/SYM12010181, [2020](#).
- Bertin, S., Friedrich, H., Delmas, P., Chan, E., Gimel'farb, G., ~~2015~~. Digital stereo photogrammetry for grain-scale monitoring of fluvial surfaces: Error evaluation and workflow optimisation. *ISPRS Journal of Photogrammetry and Remote Sensing*, 101. doi:10.1016/j.isprsjprs.2014.12.019, [2015](#).
- 560 Birien T, Gauthier F., ~~2023~~. Assessing the relationship between weather conditions and rockfall using terrestrial laser scanning to improve risk management. *Natural Hazards and Earth System Sciences*, 23, 343-360. doi:10.5194/nhess-23-343-2023, [2023](#).
- Blanch, X., ~~2022~~. Developing Advanced Photogrammetric Methods for Automated Rockfall Monitoring. Doctoral dissertation. Universitat de Barcelona. Retrieved from: <http://hdl.handle.net/10803/675397>, [2022](#).
- 565 Blanch, X., Abellan, A., Guinau, M., ~~2020~~. Point Cloud Stacking: A Workflow to Enhance 3D Monitoring Capabilities Using Time-Lapse Cameras. *Remote Sensing, Sens (Basel)* 12, 1240. doi:10.3390/rs12081240, [2020](#).
- Blanch, X., Eltner, A., Guinau, M., Abellan, A., ~~2021~~. Multi-Epoch and Multi-Imagery (MEMI) Photogrammetric Workflow for Enhanced Change Detection Using Time-Lapse Cameras. *Remote Sensing, Sens (Basel)* 13, 1460. doi:10.3390/rs13081460, [2021](#).
- 570 [Blanch, X., Guinau, M., Eltner, A., Abellan, A.: A Cost-Effective Image-Based System for 3d Geomorphic Monitoring: An Application to Rockfalls, SSRN \[preprint\], doi:10.2139/ssrn.4489458, 23 June 2023.](#)

- Brodu, N., Lague, D., ~~2012~~. 3D terrestrial lidar data classification of complex natural scenes using a multi-scale dimensionality criterion: Applications in geomorphology. *ISPRS Journal of Photogrammetry and Remote Sensing*, 68, 121–134. doi:10.1016/j.isprsjprs.2012.01.006. [2012](#).
- 575 Brunier, G., Fleury, J., Anthony, E.J., Gardel, A., Dussouillez, P., ~~2016~~. Close-range airborne Structure-from-Motion Photogrammetry for high-resolution beach morphometric surveys: Examples from an embayed rotating beach. *Geomorphology*, 261, 76–88. doi:10.1016/J.GEOMORPH.2016.02.025. [2016](#).
- Castellazzi, G., D’Altri, A.M., Bitelli, G., Selvaggi, I., Lambertini, A., ~~2015~~. From laser scanning to finite element analysis of complex buildings by using a semi-automatic procedure. *Sensors (Switzerland)* 15. doi:10.3390/s150818360. [2015](#).
- 580 Cook, K.L., ~~2017~~. An evaluation of the effectiveness of low-cost UAVs and structure from motion for geomorphic change detection. *Geomorphology* 278, 195–208. doi:10.1016/j.geomorph.2016.11.009. [2017](#).
- Cook, K.L., Dietze, M., ~~2019~~. Short Communication: A simple workflow for robust low-cost UAV-derived change detection without ground control points. *Earth Surface Dynamics*, 7, ~~Discussions 1–15~~. doi:10.5194/esurf-7-1009-2019. [2019](#). doi:10.5194/esurf-2019-27
- 585 Eltner, A., Kaiser, A., Castillo, C., Rock, G., Neugirg, F., Abellán, A., ~~2016~~. Image-based surface reconstruction in geomorphometry-merits, limits and developments. *Earth Surface Dynamics*, 4, 359–389. doi:10.5194/esurf-4-359-2016. [2016](#).
- Eltner, A., Sofia, G., ~~2020~~. Structure from motion photogrammetric technique, in: *Developments in Earth Surface Processes*. pp. 1–24. doi:10.1016/B978-0-444-64177-9.00001-1. [2020](#).
- 590 Feurer, D., Vinatier, F., ~~2018~~. Joining multi-epoch archival aerial images in a single SfM block allows 3-D change detection with almost exclusively image information. *ISPRS Journal of Photogrammetry and Remote Sensing*, 146, 495–506. doi:10.1016/j.isprsjprs.2018.10.016. [2018](#).
- Gabrieli, F., Corain, L., Vettore, L., ~~2016~~. A low-cost landslide displacement activity assessment from time-lapse photogrammetry and rainfall data: Application to the Tessina landslide site. *Geomorphology*, 269, 56–74. doi:10.1016/j.geomorph.2016.06.030. [2016](#).
- 595 Giacomini, A., Thoeni, K., Santise, M., Diotri, F., Booth, S., Fityus, S., Roncella, R., ~~2020~~. Temporal-Spatial Frequency Rockfall Data from Open-Pit Highwalls Using a Low-Cost Monitoring System. *Remote Sensing, Sens (Basel)* 12, 2459. doi:10.3390/rs12152459. [2020](#).
- Giordan, D., Allasia, P., Dematteis, N., Dell’Anese, F., Vagliasindi, M., Motta, E., ~~2016~~. A Low-Cost Optical Remote Sensing Application for Glacier Deformation Monitoring in an Alpine Environment. *Sensors*, 16, 1750. doi:10.3390/s16101750. [2016](#).
- 600 Gómez-Gutiérrez, Á., De Sanjosé-Blasco, J.J., Lozano-Parra, J., Berenguer-Sempere, F., De Matías-Bejarano, J., ~~2015~~. Does HDR pre-processing improve the accuracy of 3D models obtained by means of two conventional SfM-MVS software packages? The case of the corral del veleta rock glacier. *Remote Sensing, Sens (Basel)* 7, 10269–10294. doi:10.3390/rs70810269. [2015](#).
- 605 Guzzetti, F., Carrara, A., Cardinali, M., Reichenbach, P., ~~1999~~. Landslide hazard evaluation: a review of current techniques and their application in a multi-scale study, Central Italy. *Geomorphology*, 31, 181–216. doi:10.1016/S0169-555X(99)00078-1. [1999](#).
- Hadhri, H., Vernier, F., Atto, A.M., Trouvé, E., ~~2019~~. Time-lapse optical flow regularization for geophysical complex phenomena monitoring. *ISPRS Journal of Photogrammetry and Remote Sensing*, 150. doi:10.1016/j.isprsjprs.2019.02.007. [2019](#).
- 610 Hendrickx, H., Le Roy, G., Helmstetter, A., Pointner, E., Larose, E., Braillard, L., Nyssen, J., Delaloye, R., Frankl, A., ~~2022~~. Timing, volume and precursory indicators of rock- and cliff fall on a permafrost mountain ridge (Mattertal, Switzerland). *Earth Surf Process Landforms, Landf* 47. doi:10.1002/esp.5333. [2022](#).

- 615 Hereward, H.F.R., Facey, R.J., Sargent, A.J., Roda, S., Couldwell, M.L., Renshaw, E.L., Shaw, K.H., Devlin, J.J., Long, S.E., Porter, B.J., Henderson, J.M., Emmett, C.L., Astbury, L., Maggs, L., Rands, S.A., Thomas, R.J.: ~~2021~~. Raspberry Pi nest cameras: An affordable tool for remote behavioral and conservation monitoring of bird nests. *Ecol Evol*, 11, 21. doi:10.1002/ece3.8127, 2021.
- Hiller, C., Walter, L., Helfricht, K., Weisleitner, K., Achleitner, S.: ~~2022~~. Flood Flow in a Proglacial Outwash Plain: Quantifying Spatial Extent and Frequency of Inundation from Time-Lapse Imagery. *Water* ~~(Switzerland)~~ 14, 590. doi:10.3390/w14040590, 2022.
- 620 How, P., Schild, K.M., Benn, D.I., Noormets, R., Kirchner, N., Luckman, A., Vallot, D., Hulton, N.R.J., Borstad, C.: ~~2019~~. Calving controlled by melt-under-cutting: Detailed calving styles revealed through time-lapse observations. *Ann Glaciol*, 60, 20–31. doi:10.1017/aog.2018.28, 2019.
- 625 Hungr, O., Leroueil, S., Picarelli, L.: ~~2014~~. The Varnes classification of landslide types, an update. *Landslides*, 11, 167–194. doi:10.1007/s10346-013-0436-y, 2014.
- Iglhaut, J., Cabo, C., Puliti, S., Piermattei, L., O’Connor, J., Rosette, J.: ~~2019~~. Structure from Motion Photogrammetry in Forestry: a Review. *Current Forestry Reports*, 5, 155-168. doi:10.1007/s40725-019-00094-3, 2019.
- Jaboyedoff, M., Oppikofer, T., Abellán, A., Derron, M.H., Loye, A., Metzger, R., Pedrazzini, A.: ~~2012~~. Use of LIDAR in landslide investigations: A review. *Natural Hazards*, 61, 5–28. doi:10.1007/s11069-010-9634-2, 2012.
- 630 James, M.R., Quinton, J.N.: ~~2014~~. Ultra-rapid topographic surveying for complex environments: The hand-held mobile laser scanner (HMLS). *Earth Surf Process and Landforms*, 39, 138–142. doi:10.1002/esp.3489, 2014.
- James, M. R., Robson, S.: ~~2014~~. Sequential digital elevation models of active lava flows from ground-based stereo time-lapse imagery. *ISPRS Journal of Photogrammetry and Remote Sensing*, 97. doi:10.1016/j.isprsjprs.2014.08.011, 2014.
- 635 James, Mike R., Robson, S.: ~~2014~~. Mitigating systematic error in topographic models derived from UAV and ground-based image networks. *Earth Surf Process and Landforms*, 39, 1413–1420. doi:10.1002/esp.3609, 2014.
- James, M.R., Robson, S.: ~~2012~~. Straightforward reconstruction of 3D surfaces and topography with a camera: Accuracy and geoscience application. *J Geophys Res Earth Surf*, 117, 1–17. doi:10.1029/2011JF002289, 2012.
- James, M.R., Robson, S., Smith, M.W.: ~~2017~~. 3-D uncertainty-based topographic change detection with structure-from-motion photogrammetry: precision maps for ground control and directly georeferenced surveys. *Earth Surf Process and Landforms*, 42, 1769–1788. doi:10.1002/esp.4125, 2017.
- 640 Khan, M.W., Dunning, S., Bainbridge, R., Martin, J., Diaz-Moreno, A., Torun, H., Jin, N., Woodward, J., Lim, M.: ~~2021~~. Low-Cost Automatic Slope Monitoring Using Vector Tracking Analyses on Live-Streamed Time-Lapse Imagery. *Remote Sensing*, *Sens (Basel)* 13, 893. doi:10.3390/rs13050893, 2021.
- 645 Kneib, M., Miles, E.S., Buri, P., Fugger, S., McCarthy, M., Shaw, T.E., Chuanxi, Z., Truffer, M., Westoby, M.J., Yang, W., Pellicciotti, F.: ~~2022~~. Sub-seasonal variability of supraglacial ice cliff melt rates and associated processes from time-lapse photogrammetry. *Cryosphere*, 16, 4701–4725. doi:10.5194/tc-16-4701-2022, 2022.
- Kromer, R., Walton, G., Gray, B., Lato, M., Group, R.: ~~2019~~. Development and Optimization of an Automated Fixed-Location Time Lapse Photogrammetric Rock Slope Monitoring System. *Remote Sensing*, *Sens (Basel)* 11, 1890. doi:10.3390/rs11161890, 2019.
- 650 Lague, D., Brodu, N., Leroux, J.: ~~2013~~. Accurate 3D comparison of complex topography with terrestrial laser scanner: Application to the Rangitikei canyon (N-Z). *ISPRS Journal of Photogrammetry and Remote Sensing*, 82, 10–26. doi:10.1016/j.isprsjprs.2013.04.009, 2013.
- 655 Lenzano, M.G., Lannutti, E., Toth, C., Lenzano, L., Lo Vecchio, A., Falaschi, D., Vich, A.: ~~2018~~. Analyzing the oscillations of the Perito Moreno Glacier, using time-lapse image sequences. *Cold Reg Sci Technol*, 146, 155–166. doi:10.1016/j.coldregions.2017.11.015, 2018.

- Lenzano, M.G., Lannutti, E., Toth, C.K., Lenzano, L.E., Lovecchio, A., ~~2014~~. Assessment of ice-dam collapse by time-lapse photos at the Perito Moreno glacier, Argentina. *The International Archives of the Photogrammetry, Remote Sensing and Spatial Information Sciences*, XL-1, 211–217. doi:10.5194/isprsarchives-XL-1-211-2014, [2014](#).
- 660 Luhmann, T., Fraser, C., Maas, H.G., ~~2016~~. Sensor modelling and camera calibration for close-range photogrammetry. *ISPRS Journal of Photogrammetry and Remote Sensing*, 115, 37–46. doi:10.1016/j.isprsjprs.2015.10.006, [2016](#).
- Mallalieu, J., Carrivick, J. L., Quincey, D. J., Smith, M. W., & James, W. H. M., ~~(2017)~~. An integrated Structure-from-Motion and time-lapse technique for quantifying ice-margin dynamics. *Journal of Glaciology*, 63, ~~(242)~~, 937–949, doi:10.1017/jog.2017.48, [2017](#).
- 665 McKean, J., Roering, J., ~~2004~~. Objective landslide detection and surface morphology mapping using high-resolution airborne laser altimetry. *Geomorphology*, 57, doi:10.1016/S0169-555X(03)00164-8, [2004](#).
- Meidow, J., Usländer, T., Schulz, K., ~~2018~~. Obtaining as-built models of manufacturing plants from point clouds. *At-Automatisierungstechnik*, 66, doi:10.1515/auto-2017-0133, [2018](#).
- Nesbit, P.R., Hugenholtz, C.H., ~~2019~~. Enhancing UAV-SfM 3D model accuracy in high-relief landscapes by incorporating oblique images. *Remote Sensing, Sens (Basel)* 11, [239](#), doi:10.3390/rs11030239, [2019](#).
- 670 Núñez-Andrés, M.A., Prades-Valls, A., Matas, G., Buill, F., Lantada, N., ~~2023~~. New Approach for Photogrammetric Rock Slope Premonitory Movements Monitoring. *Remote Sensing, Sens (Basel)* 15, 293. doi:10.3390/rs15020293, [2023](#).
- Buckley, S.J., Howell, J.A.A., Enge, H.D.D., Kurz, T.H.H., ~~2008~~. Terrestrial laser scanning in geology: data acquisition, processing and accuracy considerations. *J Geol Soc London*, 165, 625–638. doi:10.1144/0016-76492007-100, [2008](#).
- 675 Petrie, G., Toth, C., ~~2008~~. Introduction to Laser Ranging, Profiling, and Scanning. *Topographic Laser Ranging and Scanning*, 1–28. doi:10.1201/9781420051438.ch1, [2008](#).
- Roncella, R., Bruno, N., Diotri, F., Thoeni, K., Giacomini, A., ~~2021~~. Photogrammetric Digital Surface Model Reconstruction in Extreme Low-Light Environments. *Remote Sensing, Sens (Basel)* 13, 1261, doi:10.3390/rs13071261, [2021](#).
- 680 Rowley, T., Ursic, M., Konsoer, K., Langendon, E., Mutschler, M., Sampey, J., Pocwiardowski, P., ~~2020~~. Comparison of terrestrial lidar, SfM, and MBES resolution and accuracy for geomorphic analyses in physical systems that experience subaerial and subaqueous conditions. *Geomorphology*, 355, 107056, doi:10.1016/j.geomorph.2020.107056, [2020](#).
- Royán, M.J., Abellán, A., Jaboyedoff, M., Vilaplana, J.M., Calvet, J., ~~2014~~. Spatio-temporal analysis of rockfall pre-failure deformation using Terrestrial LiDAR. *Landslides*, 11, 697–709, doi:10.1007/s10346-013-0442-0, [2014](#).
- Santise, M., Thoeni, K., Roncella, R., Sloan, S.W., Giacomini, A., ~~2017~~. Preliminary tests of a new low-cost photogrammetric system. *The International Archives of the Photogrammetry, Remote Sensing and Spatial Information Sciences*, XLII-2/W8, 229–236, doi:10.5194/isprs-archives-XLII-2-W8-229-2017, [2017](#).
- 685 Schwalbe, E., Maas, H.-G., ~~2017~~. Determination of high resolution spatio-temporal glacier motion fields from time-lapse sequences. *Earth Surface Dynamics*, 5, 861–879, ~~Discussions 1–30~~. doi:10.5194/esurf-5-861-2017, 2017, doi:10.5194/esurf-2017-33
- 690 Smith, M.W., Carrivick, J.L., Quincey, D.J., ~~2015~~. Structure from motion photogrammetry in physical geography. *Prog Phys Geogr*, 40, 247–275, doi:10.1177/0309133315615805, [2015](#).
- Stumpf, A., Malet, J.P., Allemand, P., Pierrot-Deseilligny, M., Skupinski, G., ~~2015~~. Ground-based multi-view photogrammetry for the monitoring of landslide deformation and erosion. *Geomorphology* 231, 130–145, doi:10.1016/j.geomorph.2014.10.039, [2015](#).
- 695 Sturzenegger, M., Yan, M., Stead, D., Elmo, D., ~~2007~~. Application and limitations of ground-based laser scanning in rock slope characterization. *Proceedings of the 1st Canada-US Rock Mechanics Symposium - Rock Mechanics Meeting Society's Challenges and Demands*, 1, 29–36, doi:10.1201/noe0415444019-c4, [2007](#).
- Tarolli, P., ~~2014~~. High-resolution topography for understanding Earth surface processes: Opportunities and challenges. *Geomorphology*, [216, 295-312](#), doi:10.1016/j.geomorph.2014.03.008, [2014](#).

- 700 Tonini, M., Abellan, A., ~~2014~~. Rockfall detection from terrestrial LiDAR point clouds: A clustering approach using R. ~~Journal of Spatial Information Science~~, 8, 95–~~11,440~~. doi:10.5311/josis.2014.8.123, ~~2014~~.
- Travelletti, J., Delacourt, C., Allemand, P., Malet, J.P., Schmittbuhl, J., Toussaint, R., Bastard, M., ~~2012~~. Correlation of multi-temporal ground-based optical images for landslide monitoring: Application, potential and limitations. ~~ISPRS Journal of Photogrammetry and Remote Sensing~~, 70, 39–55. doi:10.1016/j.isprsjprs.2012.03.007, ~~2012~~.
- 705 Van Veen, M., Hutchinson, I.D.J., Kromer, R., Lato, M., Edwards, T., ~~2017~~. Effects of sampling interval on the frequency - magnitude relationship of rockfalls detected from terrestrial laser scanning using semi-automated methods, ~~Landslides~~, 14, 1579–1592. doi:10.1007/s10346-017-0801-3, ~~2017~~.
- Westoby, M.J., Brasington, J., Glasser, N.F., Hambrey, M.J., Reynolds, J.M., ~~2012~~. ‘Structure-from-Motion’ photogrammetry: A low-cost, effective tool for geoscience applications. ~~Geomorphology~~ 179, 300–314. doi:10.1016/j.geomorph.2012.08.021, ~~2012~~.
- 710 Wilkinson, M.W., Jones, R.R., Woods, C.E., Gilment, S.R., McCaffrey, K.J.W., Kokkalas, S., Long, J.J., ~~2016~~. A comparison of terrestrial laser scanning and structure-from-motion photogrammetry as methods for digital outcrop acquisition. ~~Geosphere~~, 12, 1865–1880. doi:10.1130/GES01342.1, ~~2016~~.
- Williams, J.G., Rosser, N.J., Hardy, R.J., Brain, M.J., Afana, A.A., ~~2018~~. Optimising 4-D surface change detection: An approach for capturing rockfall magnitude-frequency. ~~Earth Surface Dynamics~~, 6, 101–119. doi:10.5194/ESURF-6-101-2018, ~~2018~~.
- 715