

The influence of aftershocks on seismic hazard analysis: A case study from Xichang and the surrounding areas

Qing Wu¹, Guijuan Lai¹, Jian Wu², Jinmeng Bi^{1,3}

¹Institute of Geophysics, China Earthquake Administration, Beijing, China

²China Earthquake Disaster Prevention Center, Beijing, China

³Tianjin Earthquake Agency, Tianjin, China

Correspondence to: Qing Wu (wuqing908@sina.com), Guijuan Lai (laigj@cea-igp.ac.cn)

Abstract: In some instances, a strong aftershock can cause more damage than the mainshock. Ignoring the influence of aftershocks may underestimate the seismic hazard of some areas. Taking Xichang and its surrounding areas as an example, and based on the Seismic Ground Motion Parameter Zoning Map of China (GB18306-2015), this study used the Monte Carlo method to simulate ~~the~~ synthetic mainshock sequences. Additionally, the Omi-Reasenber-Jones (Omi-R-J) aftershock activity model is used to simulate the aftershock sequences that follow mainshocks above a certain magnitude threshold. Then, the mainshock and the aftershocks are combined to calculate the regional seismic hazard using ground motion prediction equations (GMPEs). Finally, the influence of aftershocks on seismic hazard analysis is examined and considered. The results show that in areas with moderate to strong seismic backgrounds, the influence of aftershocks on probabilistic seismic hazard analysis can exceed 50%. These results suggest that the impact of aftershocks should be properly considered for future probabilistic seismic hazard analyses, especially in areas with moderate to strong seismic activity backgrounds and in areas prone to secondary disasters such as landslides and mudslides.

Keywords: Aftershocks; Omi-R-J model; ETAS model; Monte Carlo method; Seismic hazard analysis.

1 Introduction

Aftershocks are commonly removed from observed earthquake catalogs during probabilistic seismic hazard analyses, assuming that ~~earthquakes-mainshocks~~ follow a Poisson distribution. However, the strong aftershocks that follow an earthquake may cause more damage than the mainshock and should not be underestimated. As there is not enough time to repair damages between the mainshock and ~~the~~ subsequent

aftershocks, buildings ~~will~~can suffer cumulative damage from aftershocks, which ~~will~~can lead to additional casualties and property losses (Bi et al., 2022). For example, after the 1976 M7.8 Tangshan earthquake in China, most houses in the aftershock zone collapsed, and the railway lines on the deck of ~~the~~a local bridge were damaged during the M7.1 and M6.9 aftershocks (Lv et al., 2007). The M5.0 aftershock that followed the 2003 M8.0 Hokkaido earthquake in Japan caused a secondary fire disaster due to a spilled tank (Zhao et al., 2005). The M6.3 aftershock that followed the 2010 M7.1 Christchurch earthquake in New Zealand caused damage to buildings, 146 deaths, and over 300 people to go missing (Zhang et al., 2011). Lv et al. (2007) statistically analyzed the aftershocks that followed 21 M >7.0 mainshocks in China and found that the proportion of peak ground accelerations caused by aftershocks that exceeded that of the mainshock was 76.2%; that is, aftershocks may cause more severe damage than the mainshock. Therefore, ignoring the impact of aftershocks may underestimate the seismic risk in some areas. The cumulative damage-induced losses caused by strong aftershocks have attracted considerable attention in the field of disaster and catastrophe insurance modelling (Xiong, 2019).

Cornell (1968) proposed the classical probabilistic seismic hazard analysis (PSHA) method, and, based on that work, Wiemer (2000) proposed the aftershocks probabilistic seismic hazard analysis (APSHA). Gallovič & Brokešová (2008) combined the generalized form of the Omori law (Omori, 1894; Utsu, 1961; Utsu et al, 1995) that was given by Shcherbakov et al. (2004), refined the APSHA steps and parameterizations, and analyzed the seismic hazard probability of aftershocks that followed several earthquakes as case studies. Shen & Yang (2018) used the APSHA method established by Gallovič & Brokešová (2008) to analyze the aftershock seismic hazard probability of the 2017 M7.0 Jiuzhaigou earthquake in China. In addition, many scholars have derived the influence of aftershocks on seismic hazard analysis by using analytical solutions (Yeo & Cornell, 2009; Marzocchi & Taroni, 2014; Iervolino et al., 2014; Davoudi et al., 2020; Taroni & Akinici, 2021). Boyd (2012) and Xu & Wu (2017) used the Epistemic Epidemic-type Aftershock Sequence (ETAS, Ogata, 1988,1998) model to generate catalogs with and without aftershocks. They used a spatially smooth seismicity model to calculate the impact of aftershock clusters for

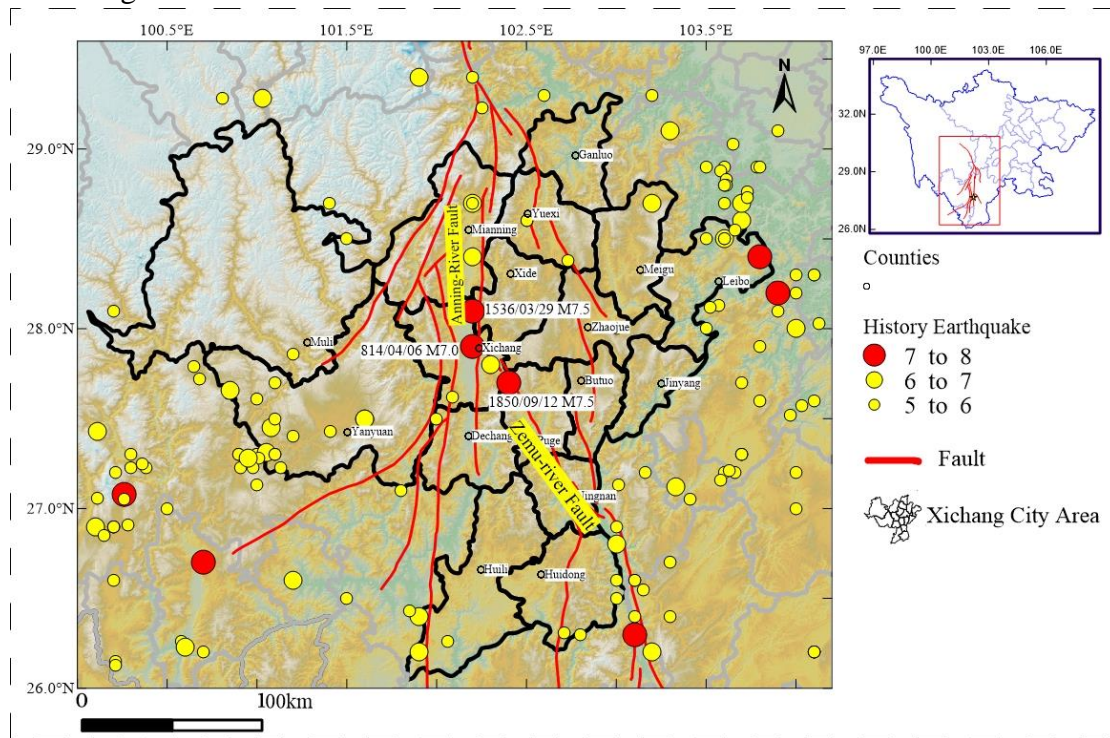
probabilistic seismic hazard analysis. Canales & Baan (2020) used the Poisson model to generate mainshock sequences and the ETAS model to generate aftershock sequences. Field et al. (2021) use the Third Uniform California Earthquake Rupture Forecast (UCERF3) ETAS model (UCERF3-ETAS) to evaluate the effects of declustering and Poisson assumptions on seismic hazard estimates. Wang et al. (2022) compared the ETAS-simulated hazard with approximations based on the declustered Poisson approach (DP), the nondeclustered Poisson approach (NDP), and the recently proposed sequence-based PSHA (Iervolino et al., 2014). ~~By analyzing and comparing the *b* values of different sequences, the recurrence rate of the largest event can be estimated.~~

Based on the Seismic Ground Motion Parameter Zoning Map of China (GB18306-2015), this study used the Monte Carlo method to simulate synthetic mainshock sequences. Then, according to the magnitude of the mainshock, the Omi-Reasenberg-Jones (Omi-R-J) aftershock activity model (Omi, 2013, 2016, 2019) is used to simulate the aftershock sequences that follow mainshocks for a certain magnitude threshold. Finally, the mainshocks and the aftershocks are combined to calculate the regional seismic hazard using ~~the~~ ground motion prediction equations (GMPEs). Thus, the influence of aftershocks on seismic hazard analysis is analyzed.

Xichang city, one of the three major space launch facilities in China, is located in the Anning River Valley in southwestern Sichuan Province. The Anning River fault and the Zemu River fault run through the city. Historically, ~~there have been~~ three $M \geq 7.0$ earthquakes have occurred in the region; ~~an~~ an $M7.0$ event in 814, ~~an~~ an $M7.5$ earthquake in 1536 and ~~an~~ an $M7.5$ event in 1850 (Fig. 1). The Anning River fault is one of the main faults in the North-South Sichuan-Yunnan tectonic belt and is also an important fault in Southwest China. According to regional geological data (Li, 1993; He & Ikeda, 2007), the Anning River fault zone is the boundary of different tectonic units ~~from the~~ with Paleozoic to Mesozoic ~~eras~~ ages. The west side of the fault contains ~~the a~~ a metamorphic complex and magmatic rock belt, and ~~the a~~ a Mesozoic-Cenozoic sedimentary basin ~~falls~~ lies on the east side. The Zemu River fault has been active throughout the Holocene (Li, 1997; Du, 2000) and is connected to the Anning River fault zone in the north and the Xiaojiang ~~Fault~~ fault Zone ~~zone~~ in the south. The fault

has an overall strike of 330° , a fault plane dip angle of more than 60° and a dip direction of northeast or southwest. Since the late Quaternary, the Anning River fault and Zemu River fault have been characterized by continuous strike-slip movements (Xu et al., 2003a; Xu et al., 2003b). The Anning River fault and Zemu River fault are located at the boundary of the central Yunnan secondary block in the rhombus-shaped Sichuan-Yunnan ~~rhombus~~-block, which controls the focal positions of most nearby earthquakes with $M \geq 7$ (Lu et al., 2012).

Xichang is located in an area prone to strong earthquakes ~~s-prone-area~~. Considering the impact of aftershocks in seismic hazard assessment, it is of critical importance to focus on fortifying areas subject to strong aftershocks, especially against landslides, debris flows and other secondary geological disasters. However, these preparations require the development of accurate disaster prevention technologies.



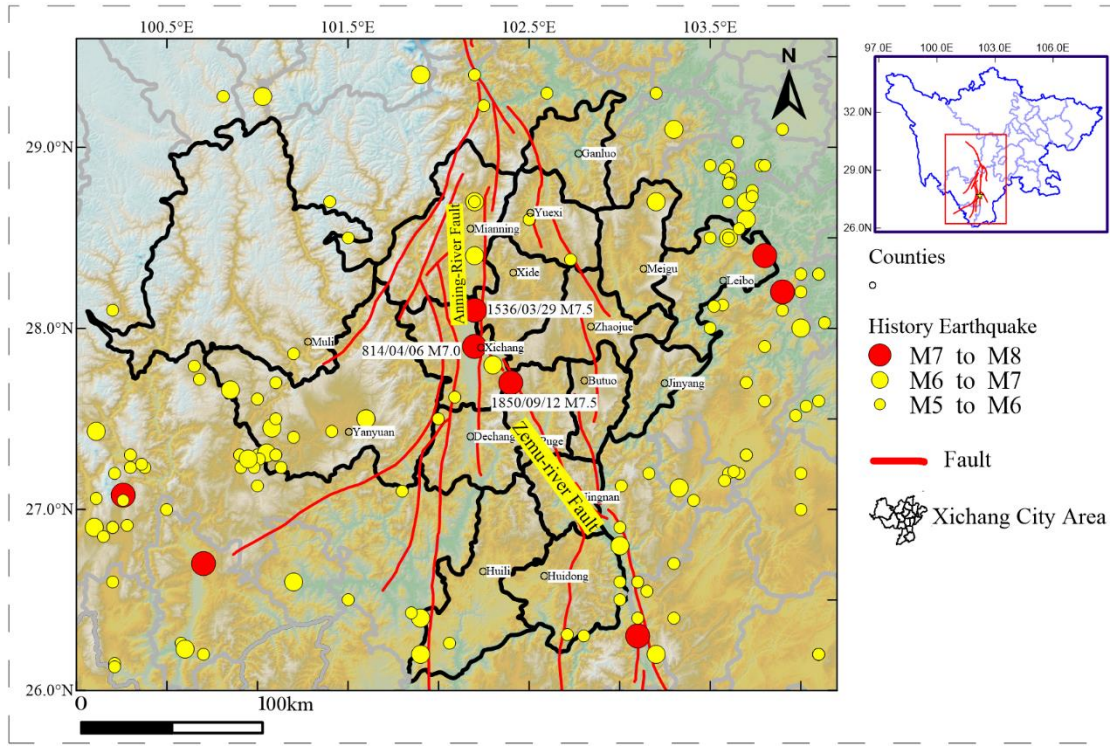


Figure 1 Distribution of seismic events and the tectonic background in Xichang and its surrounding areas

2. Aftershock activity models and their parameters

2.1 Omi-R-J aftershock sequence model

After moderate or strong earthquakes, when direct information is available, the early activity characteristics of the aftershock sequences are used for sequence type determination (Jiang et al., 2007), strong aftershock prediction (Omi et al., 2013) and short-term aftershock probability prediction (Reasenber & Jones, 1989; Gerstenberger et al., 2005). These characteristics have important scientific value and practical significance in earthquake relief, regional earthquake risk assessment and understanding of the earthquake sequence itself. Reasenber and Jones (1989) developed the R-J model to predict the occurrence rate of early aftershocks based on the Omori-Utsu formula (Omori 1894; Utsu 1961) and the Gutenberg-Richard (G-R) law (Gutenberg & Richard, 1944).

According to the R-J model, the aftershock intensity function, with a magnitude no less than M at time t in the earthquake sequence, can be expressed as:

$$\lambda(t, M) = \frac{k}{(t+c)^p} 10^{-bM} \quad (1)$$

where t is the time after the mainshock. ~~The parameter k controls the overall aftershock productivity~~
~~The parameter k controls the activity of aftershocks, which largely depends on a single aftershock sequence and has little relationship with the magnitude of the mainshock (Bi et al., 2022).~~ The parameter p represents the decay
130 degree of the seismic sequence. Parameter c is used to adjust the incompleteness of the aftershock records within a very short time after the mainshock. This parameter is a positive and small constant and is negatively correlated with the focal depth (Shebalin & Narteau, 2017). Parameter b represents the stress accumulation level (Wiemer & Katsumata, 1999; Enescu et al., 2011). This model is simple in principle
135 and suitable for estimating the parameters of moderate to strong earthquake sequences with simple decay laws. As a classical seismic sequence analysis method, it is widely used in aftershock prediction throughout the world and for earthquake hazard assessments by the Global Earthquake Model (GEM) project.

After the occurrence of moderate or strong earthquakes, ~~a large number of many~~
140 small aftershocks will be "submerged" in the early stage, resulting in a reduction in the completeness of the earthquake catalogs, making it difficult to ~~apply-assess~~ many of the small earthquakes below the magnitude of completeness. ~~On the basis of~~
~~on~~ the R-J model, Omi et al. (2013) proposed the "Omi-R-J" model by considering the aftershocks below the magnitude of completeness during the early stage of the
145 earthquake sequence in the model parameter fitting and in the aftershock occurrence rate prediction. Omi et al. (2013) used the expression of the detection rate function $q(M)$ given by Ogata and Katsura (1993) (OK1993 model) to describe the detection rate of the incomplete part of the earthquake catalog. The actual recorded earthquake probability density function can be expressed as:

$$P(M|\beta, \mu, \sigma) = \frac{e^{-\beta M} q(M|\mu, \sigma)}{\int_{-\infty}^{+\infty} e^{-\beta M} q(M|\mu, \sigma) dM} = \frac{e^{-\beta M} q(M|\mu, \sigma)}{e^{(-\beta\mu + \beta^2\sigma^2/2)} / \beta} = \beta e^{-\beta(M-\mu) + \beta^2\sigma^2/2} q(M|\mu, \sigma) \quad (2)$$

where β is equal to $b \ln 10$, μ represents the corresponding magnitude when the detection rate is 50%, σ is the corresponding magnitude dispersion and $\mu+2\sigma$ or $\mu+3\sigma$ is usually used to approximate the minimum magnitude of completeness M_c . In the parameter estimation of formula (2), the "state-space" model developed by Omi et al.
155 (2013) was used to estimate the time varying factor $\mu(t)$. Specifically, $\mu(t)$ is set as the

discrete distribution function corresponding to the aftershock time sequence $t_1 \leq t \leq t_{i+1}$ ($i=1, 2, \dots, n$). The hyperparameter V is set to control the smoothness of the distribution, assuming a priori distribution with a smooth constraint on $\mu(t)$. After the parameters β , σ , and V are optimized and the maximum a posteriori estimation is performed by the maximum expectation (EM) iterative algorithm, the parameter $\mu=(\mu_1, \mu_2, \dots, \mu_n)^T$ is obtained by Bayesian estimation. In the early period after a mainshock, the waveforms of small earthquakes are submerged by the waveforms of large earthquakes, making it difficult to identify small earthquakes and resulting in the lack of a catalog of small earthquakes. The EM algorithm is based on the super parameter estimation of the Newton iterative algorithm. It can optimize the parameters in the case of missing small earthquakes in the early period, reducing the error of the Newton iterative algorithm and obtaining more objective parameters. The earthquake detection rate function considering incomplete earthquake records can be expressed as $\nu(t, M) = \lambda(t, M)q(M | \mu(t), \sigma)$. The logarithmic likelihood function related to parameters p , c , and k is:

$$\ln L(k, c, p) = \sum_{M_i \geq M_c} \ln \nu(t, M) - \int_{M_c}^{\infty} dM \int_0^T dt \nu(t, M) \quad (3)$$

where t_i and M_i are the time and magnitude of the i -th aftershock that occurred within the "learning period" $[0, T]$ during model fitting. Then, the parameters p , c , k and the standard deviation are further determined by combining the Omori-Utsu formula and the maximum likelihood method.

2.2 ETAS time series model

The ~~Epistemic Type Aftershock Sequence (ETAS)~~ model introduces the idea of self-similarity and assumes that both background earthquakes and triggered earthquakes can stimulate their own aftershocks, and ~~a large number of many~~ direct aftershocks and indirect aftershocks (aftershocks of aftershocks) can be generated after a mainshock. Therefore, the ETAS model is constructed with branch point process characteristics (Ogata, 1988; Bi & Jiang, 2019). The conditional intensity function can be expressed as:

$$\lambda(t) = \mu_{ETAS} + K_{ETAS} \sum_{t_i < t} \frac{e^{\alpha_{ETAS}(M_i - M_0)}}{(t - t_i + c_{ETAS})^{p_{ETAS}}}, M_i > M_0$$

(34)

where $t-t_i$ represents the elapsed time of seismic event i and K_{ETAS} is a normalized constant that determines the expected number of aftershocks directly triggered by the M_i event. The parameter α_{ETAS} represents the ability of a seismic event to stimulate secondary aftershocks (Ogata 1989; 1992). Compared with isolated earthquakes and main aftershocks, the α_{ETAS} of ~~the a~~ swarm-type earthquake sequence is smaller, generally $\alpha_{ETAS} < 1$ (Ogata, 2001), and p_{ETAS} represents the decay degree of the seismic sequence. Parameter c_{ETAS} is used to adjust the incompleteness of aftershock records within a very short time ~~that follows~~ following the mainshock. Parameter μ_{ETAS} indicates the occurrence rate of background earthquakes. In the calculation process, when the occurrence rate of background earthquakes in the area is low, $\mu_{ETAS}=0$ is ~~set-used~~ set-used to better ensure the stability of parameter fitting.

The maximum likelihood method (MLEs) is used to estimate the parameters [K_{ETAS} , c_{ETAS} , α_{ETAS} , p_{ETAS}] in the ETAS model. The likelihood function L is expressed as:

$$\log L = \sum_{i: S \leq t_i < T} \lg \lambda(t_i) - \int_S^T \lambda(t) dt \quad (45)$$

2.3 Aftershock sequence models in the Xichang area

Gao (2015) divided the Chinese mainland and its adjacent areas into 29 seismic belts, of which 25 seismic belts are located inside mainland China. Since 1970, the Xianshuihe East-Yunnan seismic belt, where the Xichang area is located (see Fig. 2), has experienced six $M \geq 7.0$ earthquakes; the 1970 M7.8 Tonghai earthquake in Yunnan, 1973 M7.6 Luhuo earthquake in Sichuan, 1973 M7.2 Nima earthquake in Tibet, 1974 M7.1 Dagan earthquake in Yunnan, 1997 M7.4 Nima earthquake in Tibet, and ~~the~~ 2010 M7.1 Yushu earthquake in Qinghai. As the early seismic monitoring ability in Tibet is limited and the number of recorded aftershocks is low, the two M7.0+ earthquakes in Tibet cannot be used to fit aftershock parameters. We estimated the aftershock sequence parameters of the other 4 M7.0+ earthquakes by using the ETAS model and Omi-R-J model. The results are shown in Table 1 and Table 2. To obtain more samples of aftershock sequence parameters, we use the Omi-R-J model to calculate the aftershock sequence parameters of 40 M4.5-7.0 earthquakes. The results are also shown in Table 2.

Table 1 ~~The~~ **Basic information of** ~~on~~ **four mainshocks with $M \geq 7.0$ and aftershock sequence parameters, as calculated by the ETAS model, from the Xianshuihe East-Yunnan seismic belt, where the Xichang area is located**

No.	1	2	3	4
Time (BJT)	1970/01/05 01:00:34	1973/02/06 18:37:05	1974/05/11 03:25:16	2010/04/14 07:49:36
Longitude	102.6	100.4	104	96.59
Latitude	24.1	31.5	28.1	33.22
Magnitude	7.8	7.6	7.1	7.3
p	1.27	1.01	0.96	0.99
Error (p)	0.14	0.11	0.07	0.05
c	0.0323	0.0235	0.0053	0.0016
Error (c)	0.0327	0.0214	0.0109	0.0014
k	0.0276	0.0284	0.002	0.036
Error (k)	0.0162	0.0178	0.0022	0.0089
α	1.51	1.22	2.06	0.96
Error (α)	0.24	0.17	0.28	0.11
M_C	3.3	2	2	2
C_0	0.1024	0.0742	0.0491	0.0186
Number of events above M_C	364	585	728	461
Number of events	1278	1044	947	2558

Table 2 ~~The~~ **Basic information of** ~~on~~ **44 mainshocks with $M \geq 4.5$ and aftershock sequence parameters, as calculated by the Omi-R-J model, from the Xianshuihe East-Yunnan seismic belt, where the Xichang area is located**

No.	Time (BJT)	Lon.	Lat.	Mag.	p	Error(p)	c	Error(c)	k	Error(k)	b	Error(b)
1	1970/01/05 01:00:34.34	102.6	24.1	7.8	1.34	0.05	0.3212	0.0553	0.0231	0.012	0.84	0.05
2	1973/02/06 18:37:05.05	100.4	31.5	7.6	0.95	0.04	0.1524	0.0515	0.0004	0.0002	0.92	0.04
3	1974/05/11 03:25:16.16	104	28.1	7.1	0.86	0.02	0.0204	0.0084	0.0085	0.0033	0.78	0.03
4	2010/04/14 07:49:36.36	96.59	33.22	7.3	0.81	0.01	0.0041	0.002	0.0052	0.0014	0.71	0.02
5	1970/07/31 21:10:46.46	103.6	28.53	5.4	0.88	0.09	0.0403	0.0557	0.0103	0.0117	0.99	0.12
6	1971/08/16 12:57:59.59	103.6	28.8	5.9	1.11	0.06	0.9602	0.2154	0.3468	0.1227	0.7	0.04
7	1972/09/30 04:24:39.39	101.57	30.17	5.7	0.69	0.06	0.007	0.016	0.0057	0.0058	0.77	0.09
8	1975/01/12 05:22:27.27	101.53	24.8	5.4	0.67	0.04	0.0223	0.0309	0.0553	0.0212	0.67	0.03
9	1975/01/15 19:34:37.37	101.8	29.43	6.2	0.99	0.07	0.0651	0.0312	0.0128	0.0107	0.81	0.06
10	1975/07/09 21:55:42.42	103.03	23.88	5.3	0.59	0.05	0.0045	0.0099	0.0041	0.0051	0.82	0.06
11	1976/11/07 02:04:05.05	101.08	27.5	6.7	0.69	0.02	0.004	0.0034	0.0195	0.0071	0.83	0.03
12	1976/12/13 14:36:55.55	101.05	27.35	6.4	0.75	0.05	0.0214	0.0263	0.0087	0.0063	0.85	0.06
13	1978/05/20 09:40:52.52	100.3	25.55	5.3	0.62	0.03	0.03	0.0401	0.0385	0.0084	0.84	0.02
14	1978/09/26 05:49:36.36	99.58	29.87	5	0.51	0.06	0.0043	0.0127	0.0203	0.0143	0.88	0.09
15	1980/02/02 20:29:14.14	101.29	27.85	5.8	0.61	0.02	0.0036	0.0018	0.0242	0.0054	0.87	0.02
16	1982/06/16 07:24:32.32	100.03	31.96	6	1.12	0.03	0.0144	0.0037	0.0005	0.0006	1.06	0.07
17	1982/07/03 16:13:31.31	99.87	26.53	5.4	0.8	0.02	0.0138	0.006	0.0328	0.0109	0.83	0.03
18	1983/06/04 17:34:41.41	103.4	26.97	5	0.83	0.07	0.0012	0.0024	0.0185	0.0195	0.68	0.10
19	2001/02/23 08:09:20.20	101.1	29.42	6	0.92	0.1	0.0202	0.043	0.002	0.0052	0.93	0.15
20	2003/06/17	102.3	27.87	4.6	0.91	0.1	0.0248	0.0312	0.001	0.0011	1.03	0.10

	22:46:18.18											
21	2003/07/21 23:16:00.00	101.2	26	6.2	0.87	0.05	0.0182	0.0179	0.014	0.0088	0.84	0.06
22	2003/10/16 20:28:04.04	101.3	25.92	6.1	0.76	0.06	0.0238	0.0175	0.0076	0.0069	0.9	0.10
23	2003/11/15 02:49:43.43	103.7	27.2	5.1	0.54	0.04	0.0031	0.0076	0.0477	0.0211	0.63	0.04
24	2005/08/05 22:14:43.43	103.1	26.6	5.4	1.15	0.08	0.0999	0.0548	0.0045	0.0047	0.96	0.08
25	2008/08/30 16:30:52.52	101.92	26.28	6.1	1.05	0.08	0.0307	0.0287	0.017	0.0124	0.75	0.06
26	2009/07/09 19:19:14.14	101.03	25.6	6.3	1.14	0.06	0.1662	0.0633	0.0137	0.0063	0.78	0.03
27	2010/02/25 12:56:51.51	101.94	25.42	5.2	0.99	0.05	0.0019	0.0015	0.0051	0.003	0.79	0.07
28	2012/06/24 15:59:34.34	100.69	27.71	5.7	1.14	0.09	0.244	0.0489	0.0299	0.0206	0.96	0.02
29	2012/09/07 11:19:41.41	103.97	27.51	5.7	0.7	0.02	0.0043	0.0027	0.0606	0.0097	0.7	0.02
30	2013/01/18 20:42:50.50	99.4	30.95	5.5	1.2	0.08	0.0091	0.0059	0.0043	0.0058	0.86	0.10
31	2013/08/31 08:04:17.17	99.35	28.15	5.9	0.81	0.01	0.0028	0.0015	0.0156	0.0022	0.98	0.01
32	2014/01/15 03:17:46.46	101.17	26.86	4.5	0.99	0.09	0.0032	0.0136	0.0048	0.0082	0.74	0.11
33	2014/05/07 22:11:42.42	101.92	25.49	4.7	0.88	0.09	0.015	0.0194	0.0053	0.0069	0.86	0.13
34	2014/08/03 16:30:12.12	103.33	27.11	6.6	0.73	0.02	0.0047	0.0029	0.0264	0.0075	0.72	0.02
35	2014/08/17 06:07:59.59	103.51	28.12	5.2	0.84	0.07	0.011	0.0298	0.0258	0.0137	0.75	0.05
36	2014/10/01 09:23:29.29	102.74	28.38	5.2	1.14	0.1	0.1486	0.0976	0.0104	0.0083	0.78	0.07
37	2014/11/22 16:55:28.28	101.68	30.29	6.4	0.53	0.01	0.0043	0.0054	0.0004	0.0001	1.03	0.02
38	2016/09/23 00:47:13.13	99.6	30.08	5.2	1.01	0.03	0.0192	0.0073	0.0214	0.0095	0.92	0.05
39	2017/02/08 19:11:39.39	103.37	27.09	4.9	0.84	0.1	0.0359	0.058	0.0035	0.0042	0.96	0.13
40	2018/05/16 16:46:12.12	102.31	29.23	4.5	1.16	0.05	0.0023	0.0011	0.0138	0.0072	0.82	0.07
41	2018/08/13 01:44:25.25	102.72	24.18	5.1	1.14	0.05	0.1091	0.0315	0.1725	0.0418	0.61	0.02
42	2018/10/17 13:29:19.19	102.25	25.89	4.6	0.85	0.12	0.0305	0.143	0.0035	0.005	0.94	0.11
43	2018/10/31 16:29:56.56	102.09	27.62	5.1	1.4	0.1	1.2964	0.3135	0.0006	0.0008	1.06	0.06
44	2018/12/13 23:32:52.52	98.84	29.6	4.9	1.08	0.07	0.009	0.0061	0.0192	0.0179	0.83	0.11

225

3 Probabilistic seismic hazard analysis method considering aftershocks

3.1 Probabilistic seismic hazard analysis considering only the Poisson distribution

230

Wu et al. (2020) used the Monte Carlo method to simulate synthetic earthquake catalogs for probabilistic seismic hazard analysis based on the Seismic Ground Motion Parameters Zonation Map of China (GB18306-2015). ~~See reference Wu et al. (2020) for the specific seismicity model and Monte Carlo procedure. On this basis, this paper further considers aftershocks in seismic hazard analysis.~~

235

The seismic source zone model used by the Seismic Ground Motion Parameters Zonation Map of China (GB18306-2015) is based on seismological and geological

data for China. To reflect the heterogeneity of potential seismicity and describe the structural complexity more faithfully, the model adopts a three-level delineation of seismic belts, uses background and structural sources, and considers the tectonic differences between eastern and western China (Zhou et al. 2013). The spatial relationship of the three source levels is as follows (see Fig. 2): the base layer is the seismic belt (seismic statistical area), which is used to reflect the overall statistical characteristics of seismicity; the middle layer is the background potential sources, which are used to reflect the differences in seismic characteristics of small- and moderate-magnitude earthquakes under different tectonic conditions; and the upper layer consists of the structural potential sources, which are used to reflect the small-scale spatial seismic heterogeneity caused by the differences in local seismic structural conditions. This is a peculiar property of the seismicity model used for probabilistic seismic hazard assessment in China (CPSHA). Figure 2 shows the spatial distribution of the potential sources for the Xianshuihe East-Yunnan seismic belt where the Xichang area is located.

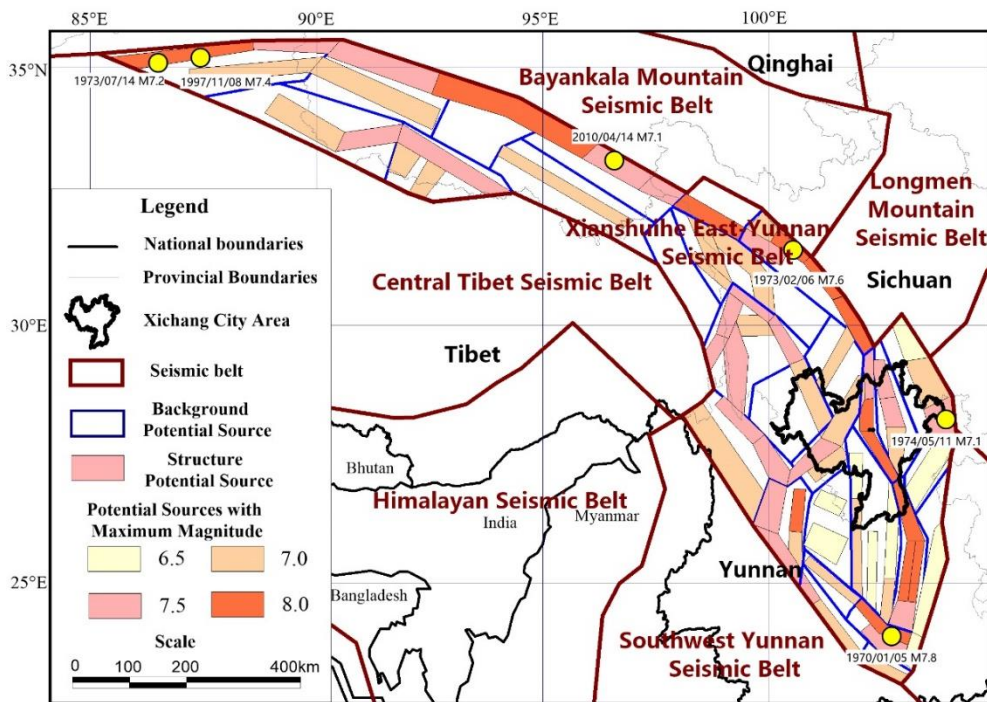


Figure 2 The spatial distribution of the potential sources for the Xianshuihe East-Yunnan seismic belt where the Xichang area is located, and six $M \geq 7.0$ earthquakes in the belt since 1970

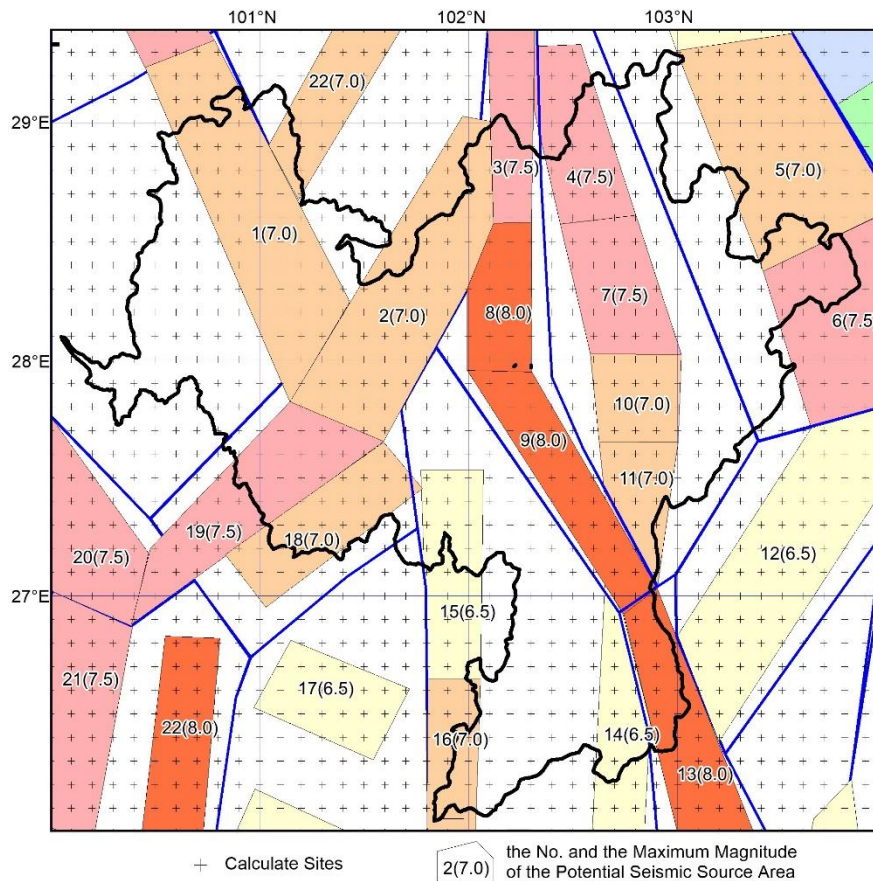


Figure 3 The calculation sites and the potential seismic sources in and around Xichang. The meaning of the color of the potential seismic source is the same as that in Figure 2.

The seismic zoning map of China (GB18306-2015) has established the corresponding probability model and spatial distribution model of earthquake occurrence, and gives the basic parameters of each seismic zone. Figure 3 shows the potential seismic sources in and around Xichang.

According to the basic assumptions and seismicity parameters of the zoning map (Table 3), the following steps are used to synthesize the sets of earthquake sequences (Wu & Gao, 2018; Wu et al., 2020):

(1) Based on the assumption that the occurrence of earthquakes in seismic zones satisfies the Poisson distribution, the time length T of the simulated earthquake sequence and the average annual occurrence rate ν_4 of earthquakes with magnitude 4 and above in the seismic zone should be determined first. Then, a Poisson distribution random number L is generated with T and ν_4 as parameters, where L is the number of earthquakes in the seismic zone for the length of time T to be simulated.

275

Table 3 The list of seismicity parameters of potential seismic sources in and around Xichang

No.	M_{UZ}	b value	V_4	Strike	No.	M_{UZ}	b value	V_4	Strike
1	7.0	0.85	32	120°	12	6.5	0.85	32	50°
2	7.0	0.85	32	55°	13	8.0	0.85	32	120°
3	7.5	0.85	32	90°	14	6.5	0.85	32	80°
4	7.5	0.85	32	115°	15	6.5	0.85	32	90°
5	7.0	0.85	32	120°	16	7.0	0.85	32	90°
6	7.5	0.85	32	120°	17	6.5	0.85	32	150°
7	7.5	0.85	32	115°	18	7.0	0.85	32	30°
8	8.0	0.85	32	90°	19	7.5	0.85	32	45°
9	8.0	0.85	32	125°	20	7.5	0.85	32	120°
10	7.0	0.85	32	90°	21	7.5	0.85	32	55°
11	7.0	0.85	32	80°	22	7.0	0.85	32	55°

(2) Based on the assumption that the magnitude distribution of seismic zones satisfies the truncated Gutenberg-Richter relationship (magnitude-frequency relationship), with the minimum magnitude level M_0 and the maximum magnitude level M_{UZ} , the magnitudes of earthquakes to be simulated are determined.

280

The magnitude-frequency relationship is represented as:

$$\log N = a - bM \quad (6)$$

where a and b are coefficients, N is the number of earthquakes whose magnitude are equal to or greater than M , and the initial magnitude of the zoning map is 4. The cumulative number of earthquake events is:

285

$$N(M) = e^{a-bM} \quad (7)$$

If we take $\Delta M = 0.1$, then

$$N(M) > N(M + \Delta M) \quad (8)$$

Based on $M=4.1, 4.2, 4.3, \dots, M_{UZ}$, a random number u that satisfies a uniform distribution between 0 and 1 is generated. Then, the following is determined:

290

$$u \in \frac{N(M + \Delta M)}{N(4)} \sim \frac{N(M)}{N(4)} \quad (9)$$

If the above formula is true, the magnitude M of an earthquake event is determined.

295

(3) Determination of epicenter location. First, the potential source area H where the earthquake is located should be determined. According to the magnitude M determined in the previous step, the magnitude range d to which the earthquake belongs is determined. Because the probability $P_d(\mathbf{h})$ of each magnitude range in

300 each potential source area is known, a random number u is generated that satisfies a uniform distribution between 0 and 1. The following is then determined:

$$u \in \sum_{h=1}^{H-1} P_d(h) \sim \sum_{h=1}^H P_d(h) \quad (10)$$

305 If so, the potential source area H where the earthquake event is located is determined. Based on the assumption that the epicenter is evenly distributed in the potential source area, a point is randomly selected in the potential source area H as the epicenter location of an earthquake.

(4) According to the azimuth of the potential source area, the azimuth of the earthquake is determined.

310 At this point in the calculation, the basic elements of an earthquake have been determined. Steps (2) ~ (4) are repeated until the required number L of earthquakes in the seismic zone is obtained, accounting for all possible seismic zones that may affect the site, thus determining a seismic sequence and completing one sampling.

If the time length T is set to one year, the seismic sequence obtained by one sampling is called a one-year seismic sequence in this paper. When the time length is set to 10 years, the sequence is called a 10-year earthquake sequence.

315 For each earthquake in seismic sequences, the peak ground acceleration (PGA) of each site is calculated by the optimal ellipse search algorithm through ground motion prediction equations (GMPEs).

320 For 5000000 simulations of a 1-year earthquake sequence, if a site is affected by ground motions exceeding specific values, the sequence is assigned a value of 1. The sum of earthquake sequences identified as 1 is counted, and is divided by the total number of earthquake sequence simulations (i.e., 5000000), resulting in the annual exceedance probability of specific ground motions. Through the annual exceedance probability, the 50-year exceedance probabilities of 10% and 2% can be calculated.

This is how the probabilities of seismic hazard are obtained.

325 **3.2 Probabilistic seismic hazard analysis considering aftershocks**

Since there are only a few strong earthquakes with $M \geq 7$ in the Xianshuihe East-Yunnan seismic belt, the Omi-R-J model is selected as the aftershock parameter model. According to the spatial division of the Seismic Ground Motion Parameters

Zonation Map of China (GB18306-2015), the median values of the p , c , K and b values (see Table 2) used in the Omi-R-J model (Omi et al., 2013, 2016, 2019) for the aftershock sequence samples from the Xianshuihe East-Yunnan seismic belt are 0.8747, 0.0187, 0.0133 and 0.8361, respectively. The aftershock sequences are generated according to these median values and the following steps:

(1) The mainshock sequences are simulated by the Monte Carlo method based on the Seismic Ground Motion Parameters Zonation Map of China (GB18306-2015). Each synthetic sequence represents a 1-year possible distribution of earthquakes in the region that is consistent with the seismicity model (Wu et al., 2020). Considering the destructiveness of the earthquake, when the magnitude threshold for the mainshock is met (i.g., $M \geq 6.0$ in this study considering a potential sufficiently large impact on the site, and the value can be adjusted as needed), the aftershock sequence sampling is started.

(2) The minimum magnitude of the aftershock sequence is set to 4.0, and the maximum magnitude is equal to the magnitude of the mainshock. In fact, the magnitude of aftershocks can be greater than that of the mainshock. In this study, we focus on the ‘aftershocks’, so we adopted the assumption of Iervolino et al. (2014). That method assumes foreshocks do not contribute exceedances, aftershocks do not trigger their own aftershocks, and aftershocks are smaller than the mainshocks. The aftershock sequence satisfies the magnitude-frequency relationship $N(M)=10^{a-bM}$. The aftershock occurrence time t is within 30 days after the mainshock and follows the Omori-Utsu formula $N(t)=\frac{K}{(t+c)^p}$. The time interval between a strong aftershock and the mainshock varies from a few seconds to several years, but most strong aftershocks occur a few days or even a day after the main shock (Japan Meteorological Agency, 2009; Tahir et al., 2012). A length of 30 days is taken as the duration for a simplified calculation, and can be changed as needed. According to the median values of p , c , K and b and the upper limit of magnitude of the potential sources, the magnitude and time series of aftershocks with $M \geq 4$ are simulated.

(3) According to the empirical relationship between the magnitude of the mainshock and the rupture scale (Wells & Coppersmith, 1994), the rupture length and width are calculated by:

$$L=10^{(-3.22+0.69M_w)} \quad (11)$$

$$W=10^{(-1.01+0.32M_w)} \quad (12)$$

The rupture strike is taken as the direction of the potential source area where the mainshock is located, and the model of Felzer & Brodsky (2006) is adopted; that is, the aftershock density decays exponentially with increasing distance r from the fault, $\rho(r) = cr^{-n}$, where n is 1.37, and c is a constant. Thus, the locations of the aftershock epicenters can be determined.

(4) The number of aftershocks. We have accounted for the number of M4.0+ aftershocks for M5.0+ mainshocks in the Chinese mainland and its surrounding area, and found that when the mainshock is greater than 6.0, the number of M4.0+ aftershocks within a month (30 days) increases with the magnitude of the mainshock, yielding the statistical relationship: $\log_{10}(N)=0.84M-4.57$ (shown by the red line in Fig. 4). This relationship fluctuates within the range of ± 0.8 (shown by the two dotted red lines), and obeys the normal distribution under linear coordinates. The number of aftershocks corresponding to a certain magnitude is generated according to this relationship.

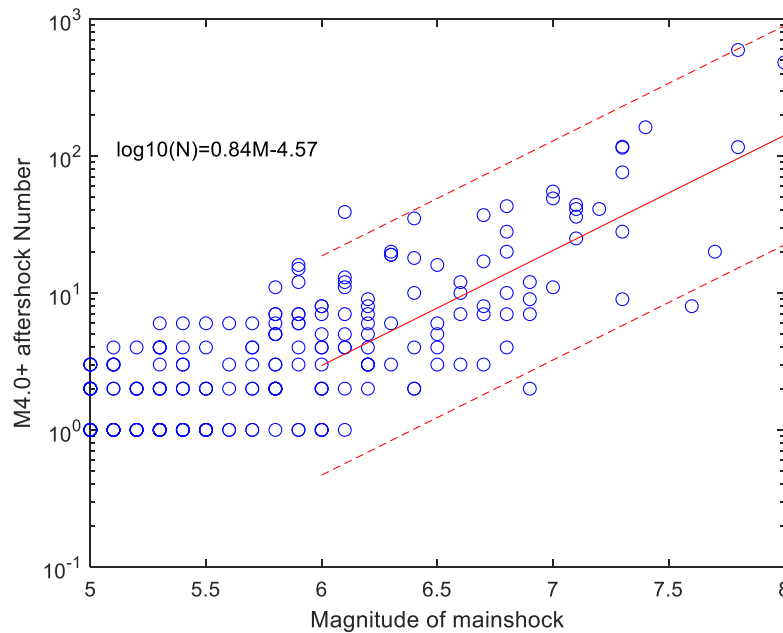
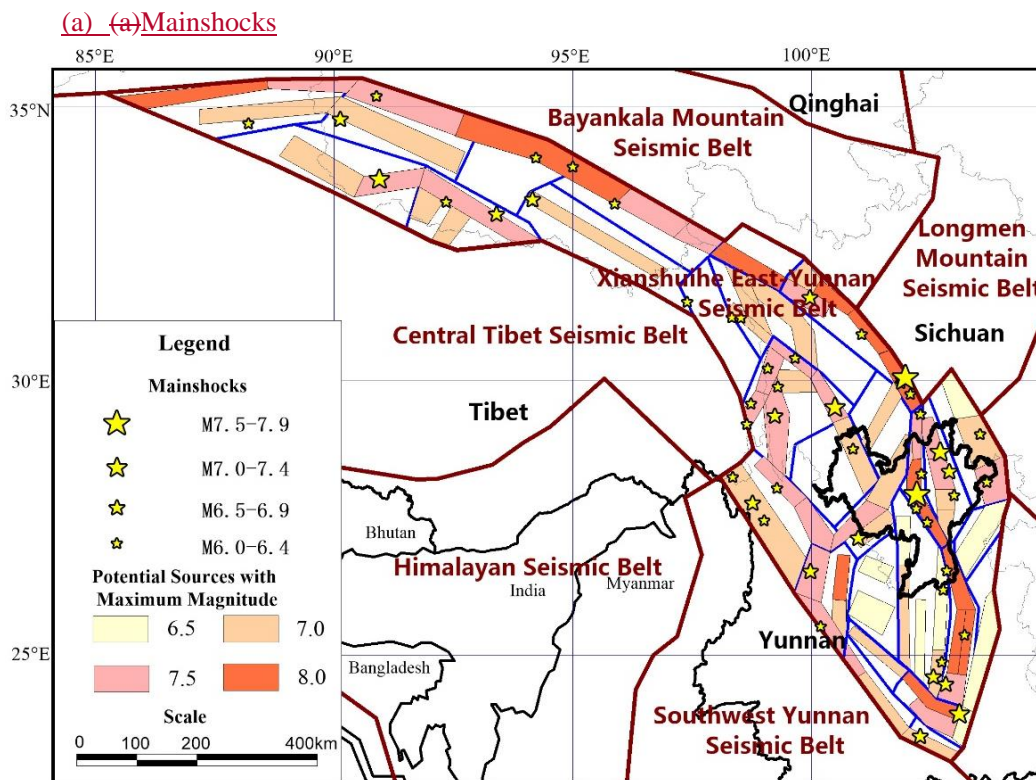


Figure 4 The M5.0+ mainshocks and the number of their M4.0+ aftershocks for the Chinese

mainland and its surrounding areas.

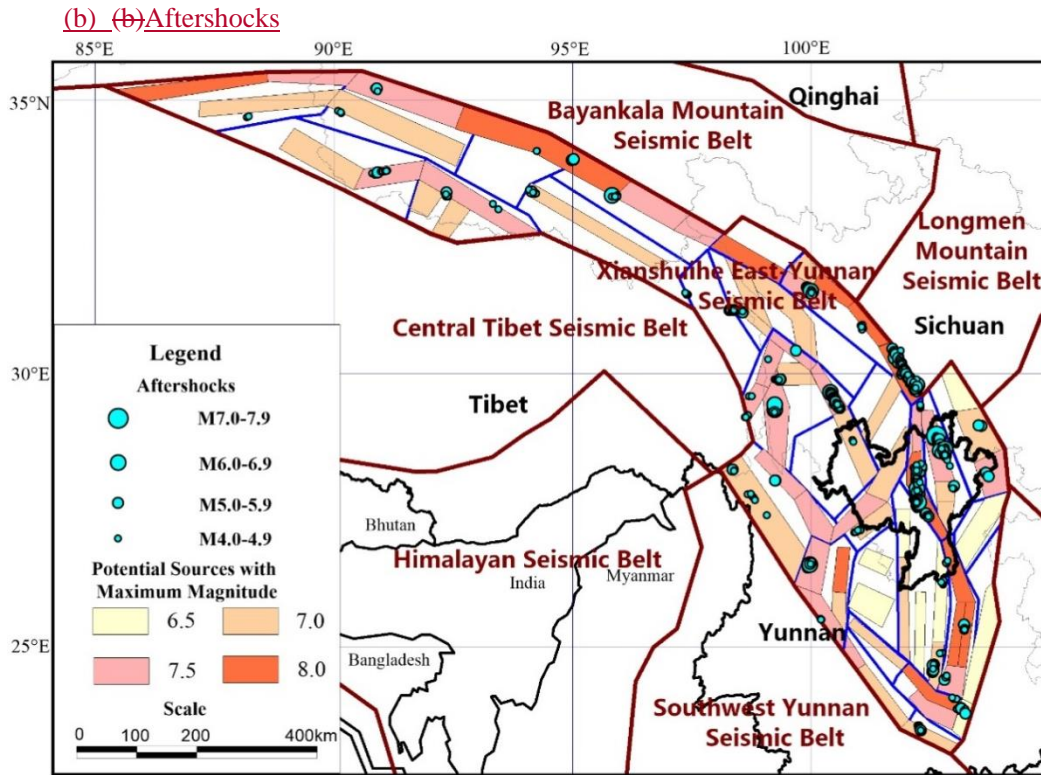
380 Figure 3-5 (a) shows a schematic diagram of the spatial distribution of 1-year
mainshocks with $M \geq 6$ sampled 100 times. The yellow star in the figure is the
location of the mainshock. Figure 3-5 (b) is a schematic diagram of the spatial
distribution of the corresponding aftershocks. The small blue dot in the figure is the
385 aftershock corresponding to the mainshock. The distribution direction of the
aftershocks refers to the strike of the potential source area where the mainshock is
located. In this study, considering the destructiveness of the earthquake, when the
magnitude of the mainshock is ≥ 6.0 , random sampling of the aftershock sequence
is begun, and the sampling time is set within 30 days after the mainshock. The
model program user interface can be used to adjust and refine the aftershock model
390 in order to account for random aftershock sequences in the future that may have
different requirements. To ensure the stability of the results, we conducted 5 million
1-year samplings.



395

400

405



410 **Figure 3-5** Distribution of 1-year mainshocks with $M \geq 6$ and their corresponding aftershocks in 100 samplings

After the aftershocks are obtained, the mainshocks and aftershocks are combined, the ground motion value of the site is calculated by using the ground motion prediction equations (GMPEs), and the exceedance probability for a specific case is counted; thus, a probabilistic seismic hazard analysis that considers aftershocks can be carried out. Figure 4-6 shows the calculation process for this analysis. According to the Seismic Ground Motion Parameters Zonation Map of China (GB18306-2015), the GMPEs of peak ground acceleration (PGA) suitable for the Xichang area are as follows (Xiao, 2011):

420

When $M < 6.5$,

$$\begin{cases} \log_{10} \bar{G}_T(M, R) = 2.331 + 0.646M - 2.431 \log(R + 2.647 \exp(0.366M)) \\ \log_{10} \bar{G}_S(M, R) = 1.017 + 0.614M - 1.866 \log(R + 0.612 \exp(0.457M)) \end{cases} \quad (513-1)$$

When $M \geq 6.5$,

$$\begin{cases} \log_{10} \bar{G}_l(M, R) = 3.846 + 0.413M - 2.431 \log(R + 2.647 \exp(0.366M)) \\ \log_{10} \bar{G}_s(M, R) = 2.499 + 0.388M - 1.866 \log(R + 0.612 \exp(0.457M)) \end{cases}, \quad (5-13-2)$$

where $G(M, R)$ is the peak ground acceleration (PGA), M is the magnitude, R is the epicentral distance, and the other coefficients are obtained by regression.

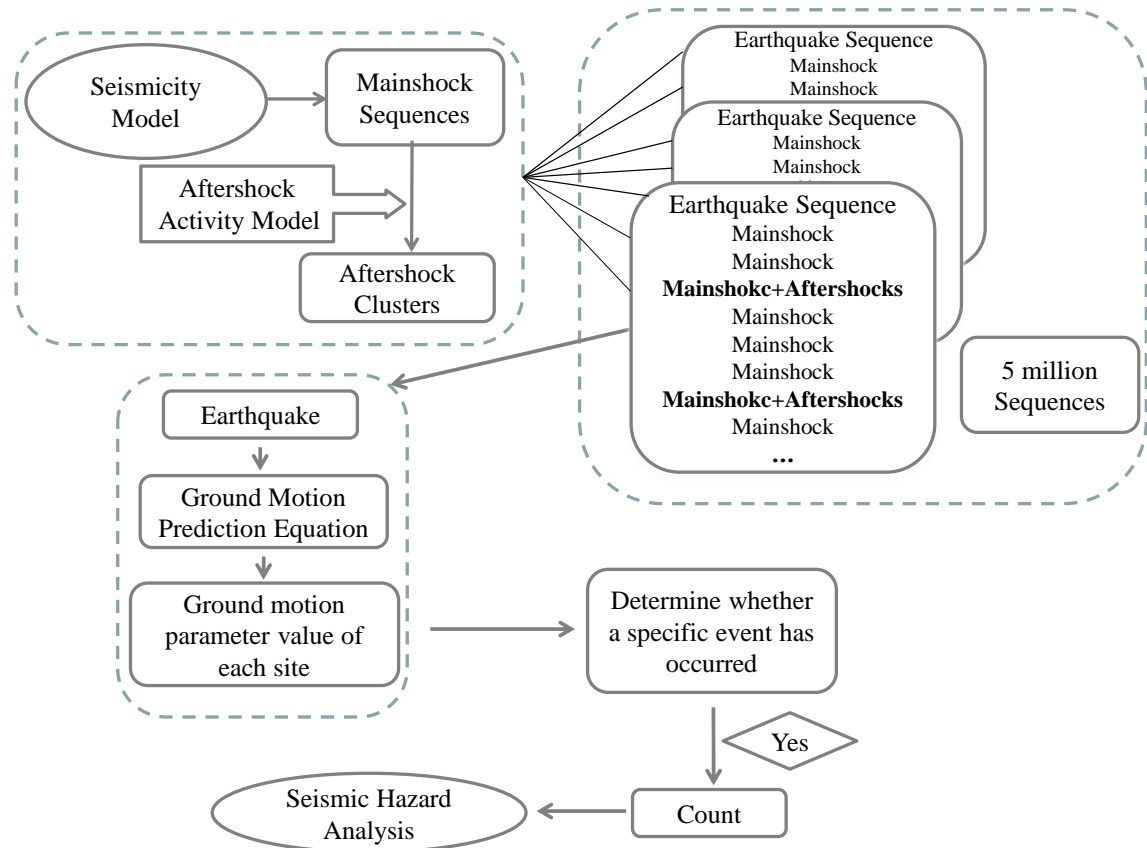


Figure 4-6 Flow chart of seismic hazard analysis when considering aftershocks

4 Influence of aftershocks on probabilistic seismic hazard analysis

To calculate the impact of aftershocks on seismic hazard analysis, Xichang and its surrounding areas were divided into a $0.1^\circ \times 0.1^\circ$ grid (see Fig. 3), and the PGA values of the 50-year exceedance probability of 10% and 2% were calculated for each grid point. The results of the calculation with and without aftershocks were compared.

Figure 5-7 shows the PGA (gal) contour map of the 50-year exceedance probability of 10% in Xichang and its surrounding areas calculated without and with aftershocks as well as the aftershock impact rate distribution map.

To calculate the aftershock impact rate, we take the difference between the calculation results of the aftershock model and the calculation results of the model

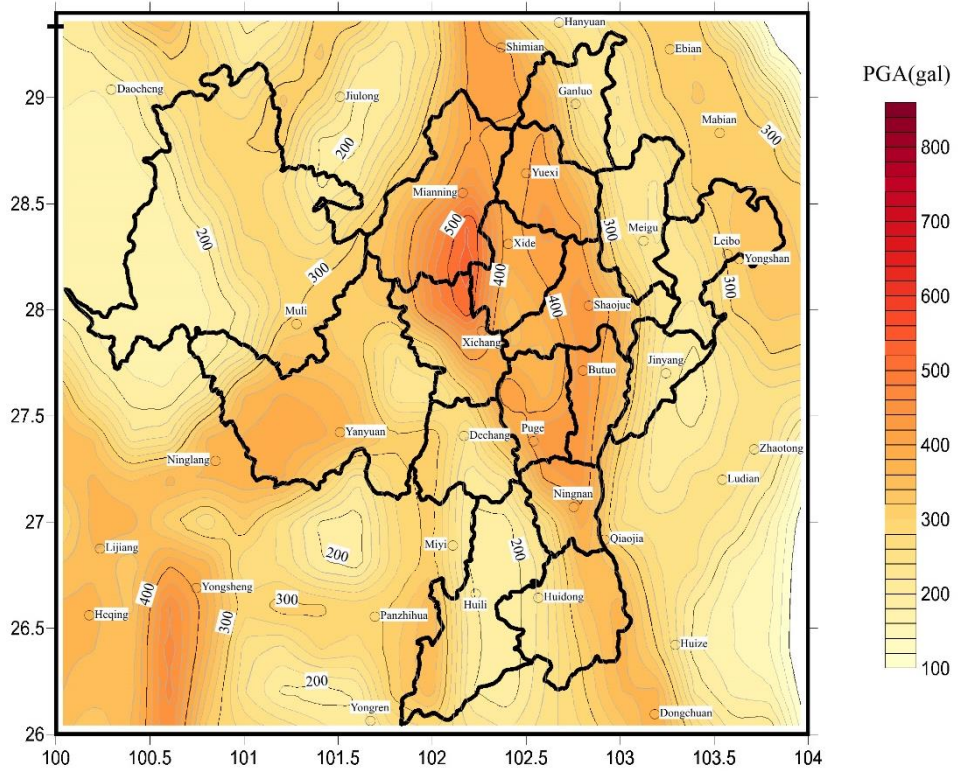
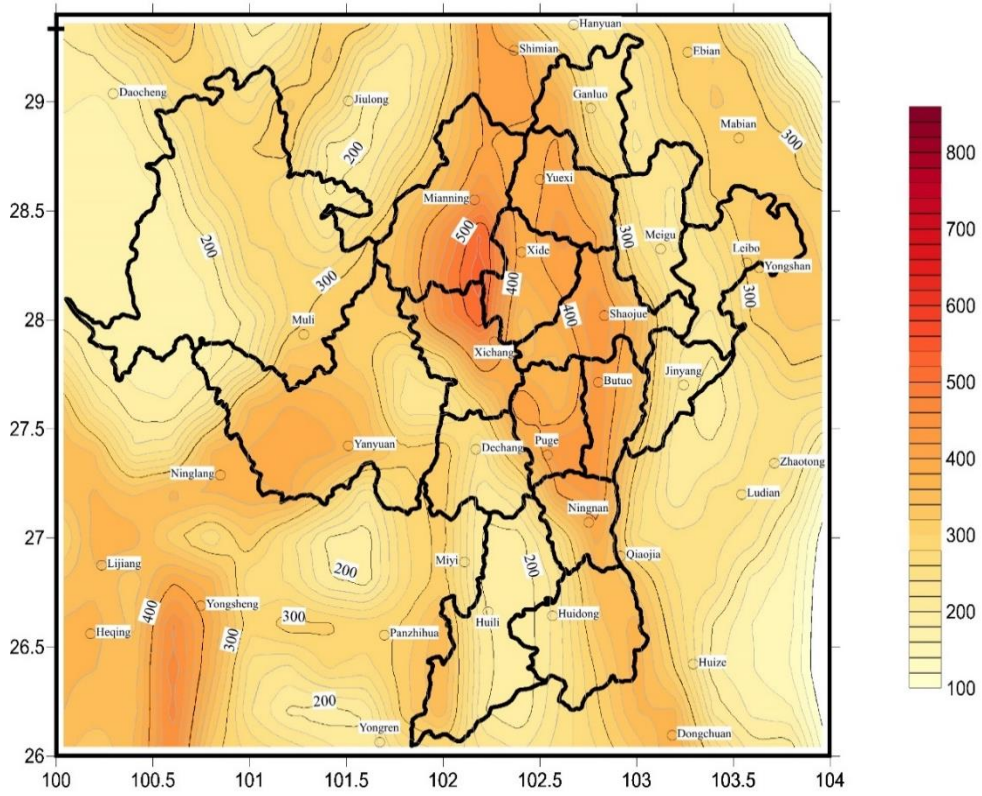
without aftershocks and divide that value by the calculation results of the model
440 without aftershocks-. That is:

$$\text{impact rate} = \frac{(\text{results with aftershocks} - \text{results without aftershocks})}{\text{results without aftershocks}}$$

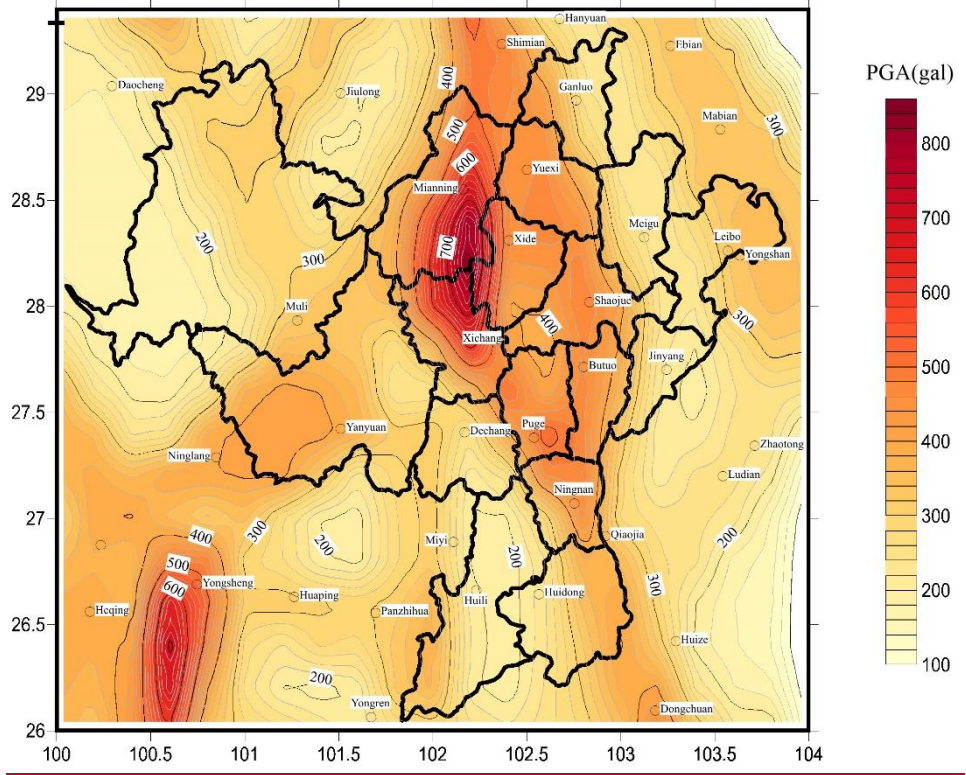
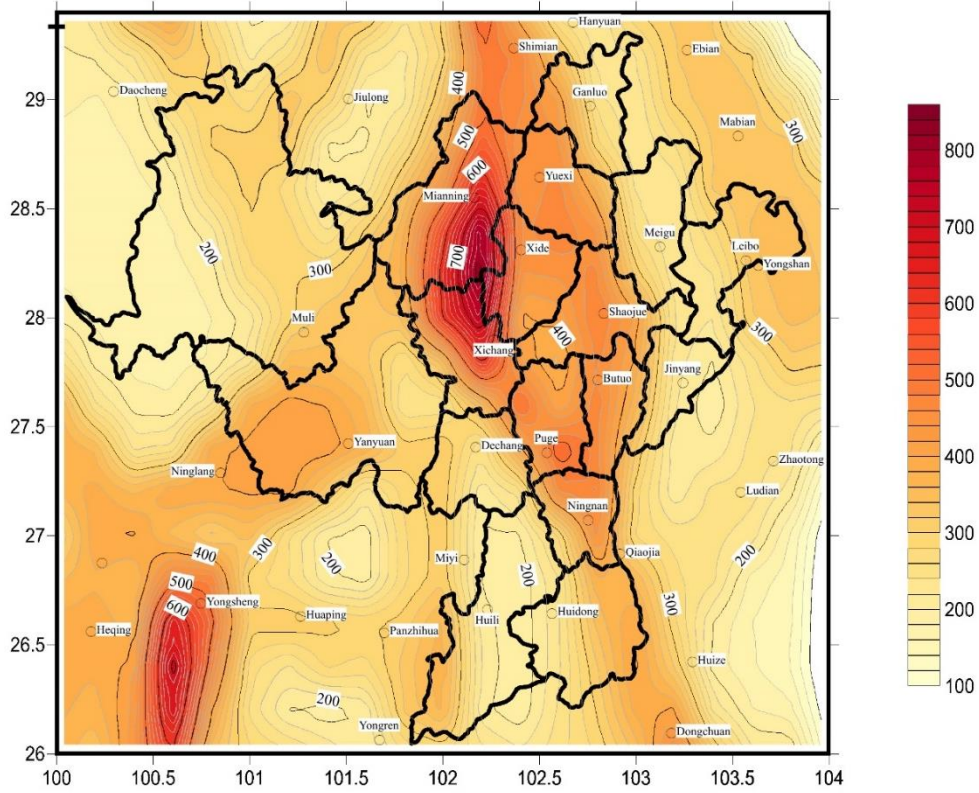
The maximum impact rate of aftershocks in Xichang and its surrounding areas is
445 0.5555%, the minimum is 0%, and the average is 0.1010%. Aftershocks have the
largest impact in the Xichang urban area, where there was an M7 earthquake in 814,
an M7.5 earthquake in 1536 and an M7.5 earthquake in 1850. The upper limit of
magnitude of the potential source area is 8.0.

Figure 6-8 shows the PGA (gal) contour map of the 50-year exceedance
probability of 2% in Xichang and its surrounding areas calculated with and without
aftershocks. Additionally, this figure also shows the aftershock impact rate
450 distribution map. The maximum impact rate of aftershocks in Xichang and its
surrounding areas is 0.7272%, the minimum is 0%, and the average is 0.1010%. The
greatest impact of aftershocks is also in the Xichang urban area, where there was an
M7 earthquake in 814, an M7.5 earthquake in 1536 and an M7.5 earthquake in 1850.
The upper limit of magnitude of the potential source area is 8.0. In this calculation,
455 only mainshocks with $M \geq 6.0$ can generate aftershocks. Therefore, the calculated
results are consistent with the aftershock model. The seismic hazards for sites with
different seismic backgrounds are affected by aftershocks to different degrees.

460 (a) without aftershocks



(b) with aftershocks



465

(c) the aftershock impact rate

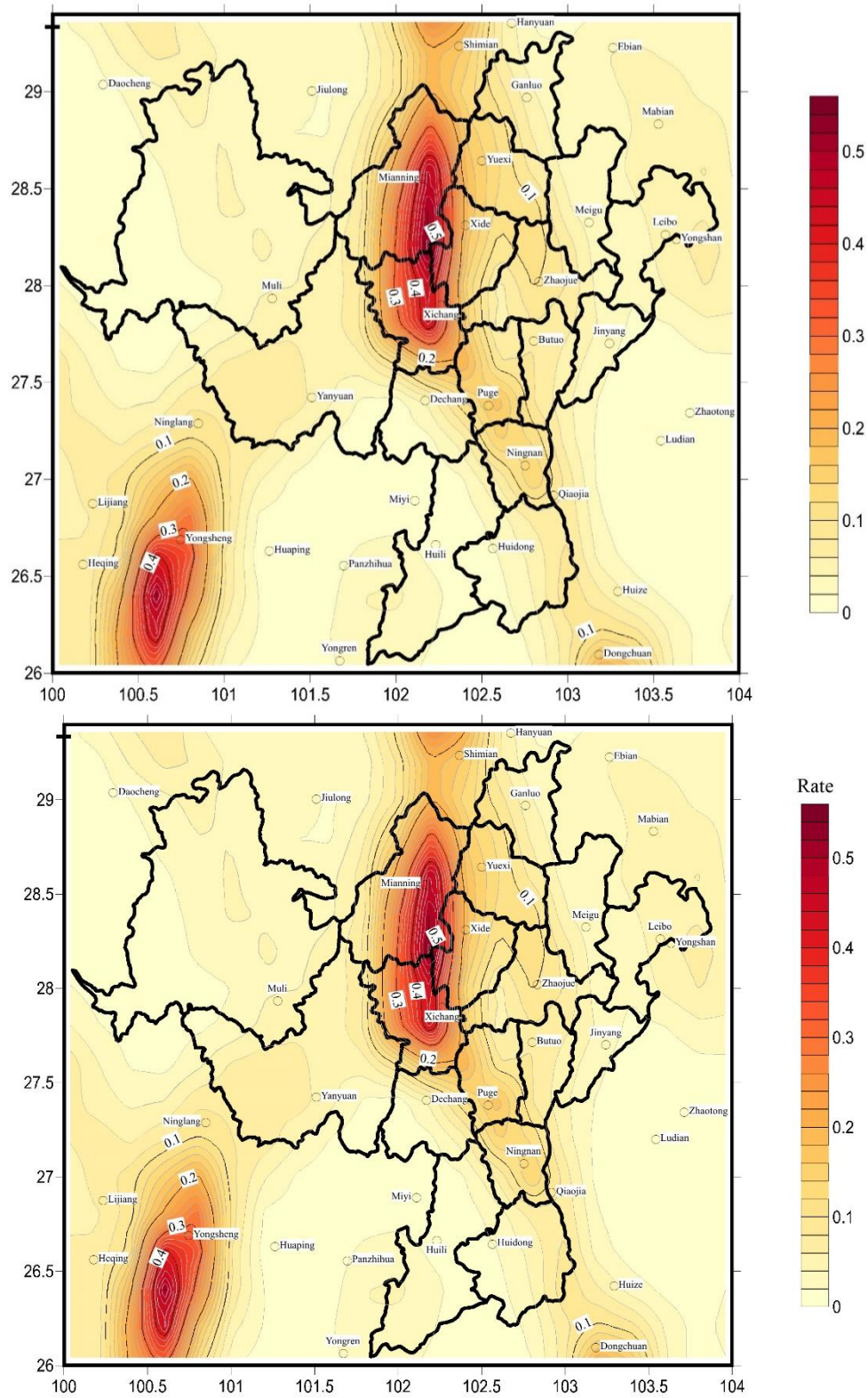
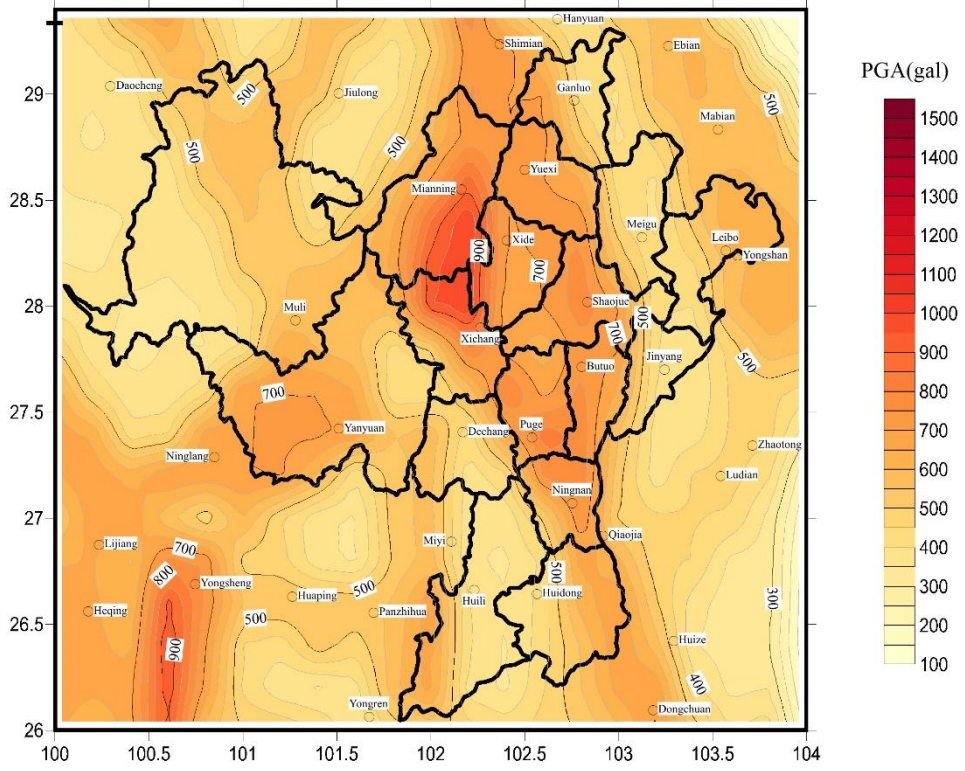
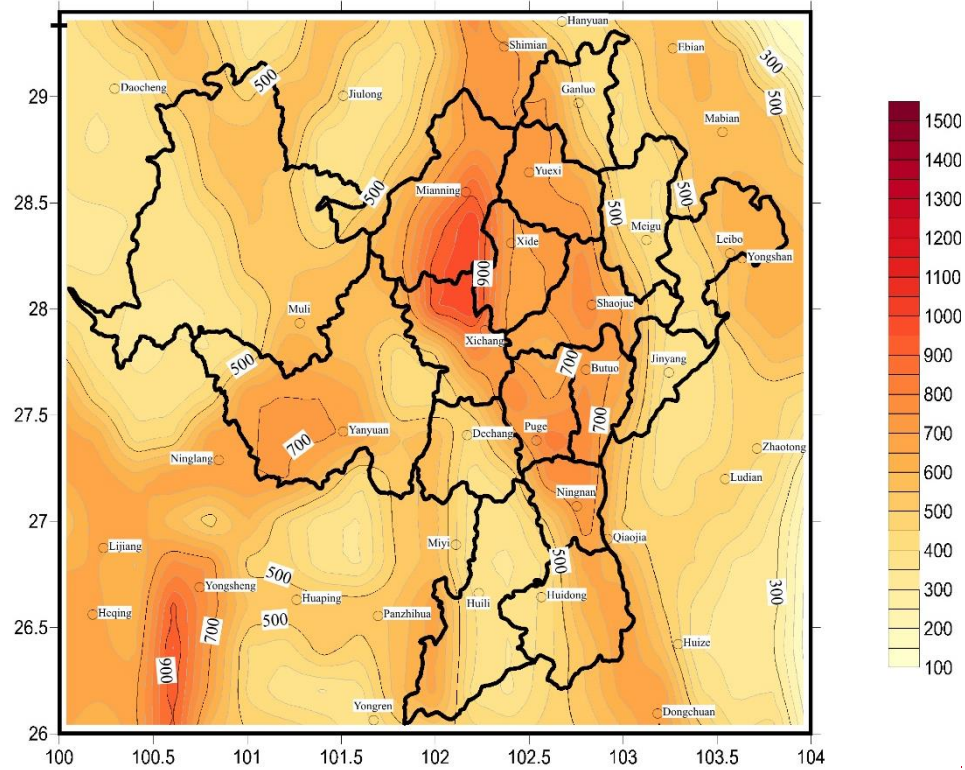


Figure 7 Comparison of the aftershock impacts on PGA (gal) with a 10% exceedance probability over 50 years in Xichang and its surrounding areas. (a) PGA(gal) contour map of the 50-year exceedance probability of 10% considering only the mainshocks; (b) PGA(gal) contour map of the 50-year exceedance probability of 10% considering the mainshocks and aftershocks simultaneously; (c) distribution map of the aftershock impact rate, aftershock impact rate = (calculation results of model with aftershocks - calculation results of model without aftershocks)/calculation results of model without aftershocks.

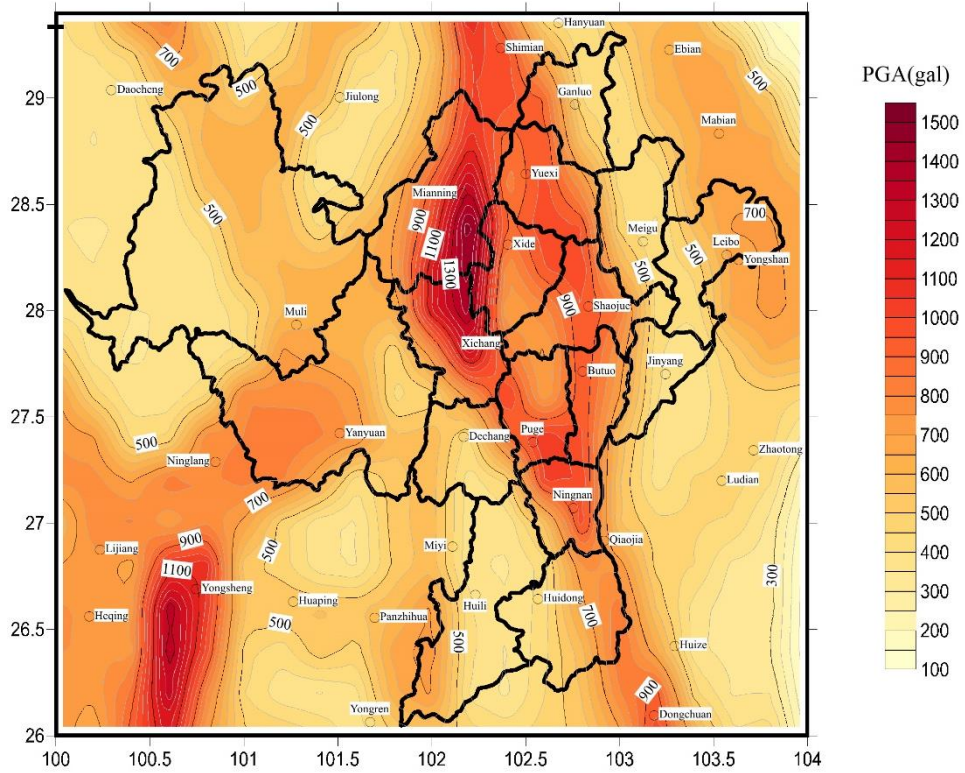
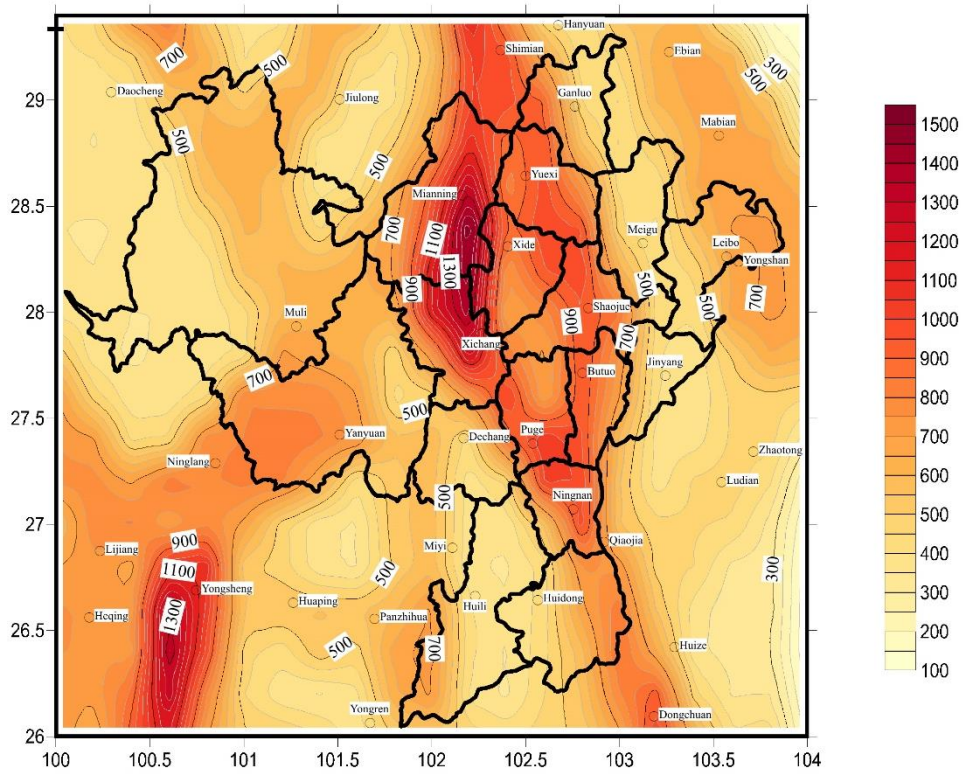
5 Comparison of the aftershock impacts on PGA (gal) with a 10% exceedance probability over 50 years in Xichang and its surrounding areas

480

(a) without aftershocks

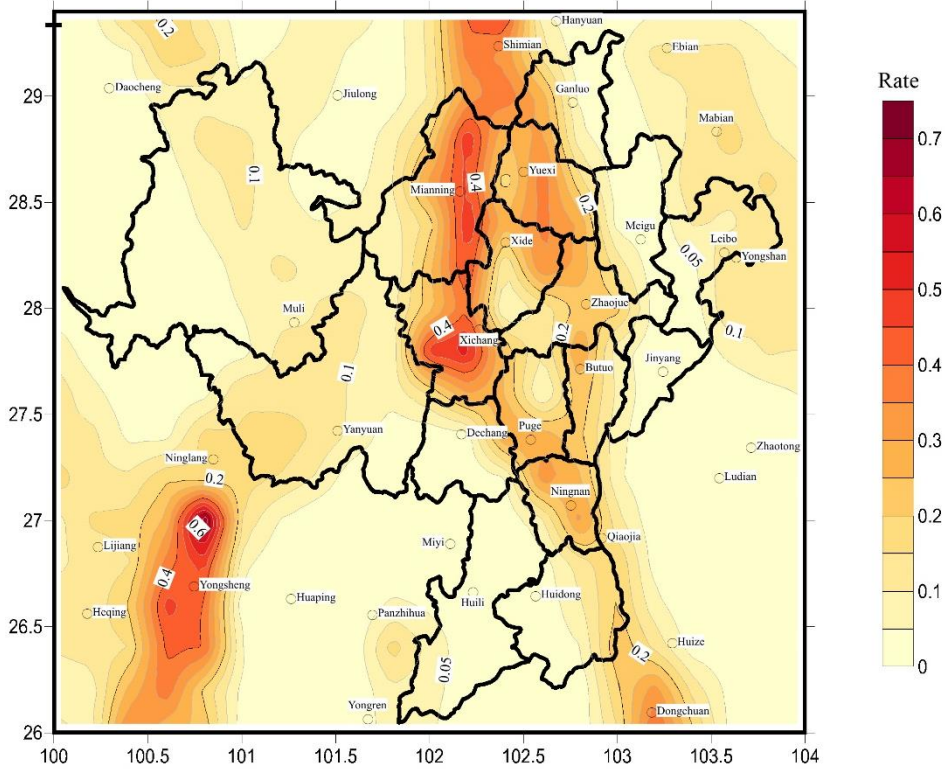
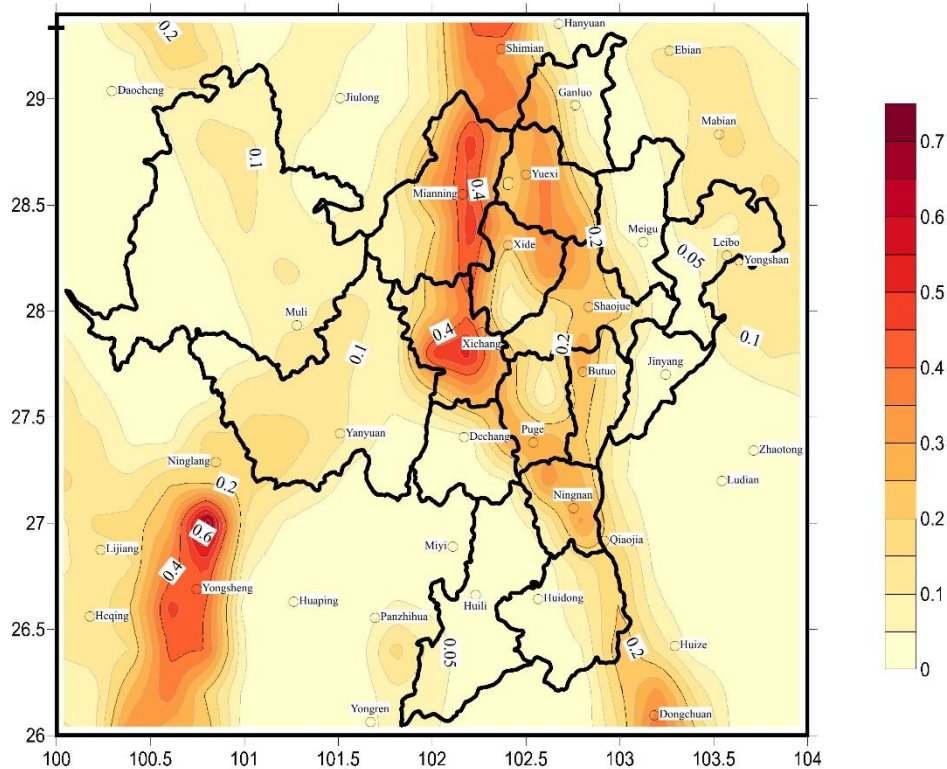


(b) with aftershocks



485

(c) the aftershock impact rate



490 **Figure 8 Comparison of the aftershock impacts on PGA (gal) with a 2% exceedance**
probability over 50 years in Xichang and its surrounding areas. (a) PGA(gal) contour map of
the 50-year exceedance probability of 2% considering only the mainshocks; (b) PGA(gal)
contour map of the 50-year exceedance probability of 2% considering the mainshocks and
aftershocks simultaneously; (c) distribution map of the aftershock impact rate , aftershock
impact rate = (calculation results of model with aftershocks - calculation results of model
495 **without aftershocks)/calculation results of model without aftershocks.**
Figure-6 Comparison
of the aftershock impacts on PGA (gal) with a 2% exceedance probability over 50 years in

5 Discussion

500 The ETAS model is a widely used statistical method for capturing short-term spatiotemporal earthquake clustering. However, its application is occasionally impeded by the challenge of estimating a substantial number of unknown parameters. Recent advancements in ETAS formulations introduce spatial and temporal variability in certain parameters, further complicating their estimation process. Mancini and Marzocchi (2023) introduced a simple ETAS method called SimpleTAS. The basic
505 idea behind SimpleTAS is that the earthquake clustering process in crustal regions is time- and space- independent, a premise substantiated by empirical analyses conducted by Stallone and Marzocchi (2019).

The functions adopted in SimpleTAS are defined as follows:

$$\lambda(t, x, y, m) = [\nu\mu(x, y) + \sum_{it_i < t} \kappa(m_i) g(t - t_i) f(x - x_i, y - y_i; m_i)] s(m) \quad (14)$$

510
$$\kappa(m_i) = A e^{\alpha(M_i - M_{\min})} \quad (15)$$

$$g(t - t_i) = \frac{c^{p-1}(p-1)}{(t - t_i + c)^p} \quad (16)$$

$$f(x - x_i, y - y_i | m_i) = \frac{q-1}{\pi D e^{\gamma(M_i - M_{\min})}} \left[1 + \frac{(x - x_i)^2 + (y - y_i)^2}{D e^{\gamma(M_i - M_{\min})}} \right]^{-q} \quad (17)$$

515 in which A is the productivity; α is the coefficient of the exponential magnitude-dependent productivity law; c and p are the time constant and the exponent of the modified Omori law, respectively; q and D define the spatial distribution of triggered events; γ accounts for the correlation between the aftershock area and the magnitude of the triggering event; t_i , x_i , and y_i are the temporal and spatial distances of the i th past earthquake from the present time t and from the considered location (x, y) , respectively.

520 In the model, the seven parameters in the conventional ETAS formulation governing earthquake clustering, namely $\{\alpha, p, c, D, \gamma, q, \beta\}$, are predetermined. Only the total background seismicity rate (ν) and the seismic productivity (A) remain to be estimated, which exhibit significant variations depending on the region. The SimpleTAS model can work as well as the ETAS model.

525 Therefore, in this study, we follow the SimpleTAS model and use their codes to
simulate 10,000 sets of earthquake catalogs in Xichang and the surrounding areas for
comparison analysis. Referring to sections 2.2 and 2.3, Table 4 shows the
corresponding parameters. The background seismicity spatial PDF is shown in Figure
530 9. When estimating the PDF, the M4.0+ earthquake catalog from January 1, 1970, to
August 23, 2023 is used. The primary catalog spans from January 1, 1975, to August
23, 2023, while the auxiliary catalog covers the period from 1400 to August 23, 2023.
Figure 10 shows the distribution map of the simulated 10,000 earthquake catalogs by
SimpleTAS.

535 **Table 4 The SimpleTAS parameters used for simulations, with $M_{min}=3.95$, which is similar to Mancini and Marzocchi (2023).**

Parameter	Value	Type
$V(\text{eqks/yr})$	21.9030	estimated
$\mu(x,y)$	Background seismicity spatial PDF	From Dr. Li
A	0.0953	estimated
b	0.85	fixed
c	0.04	fixed
p	1.06	fixed
$D(\text{km}^2)$	1	fixed
q	1.5	fixed
γ	1.5	fixed
a, β	$b \times \ln(10)$	fixed

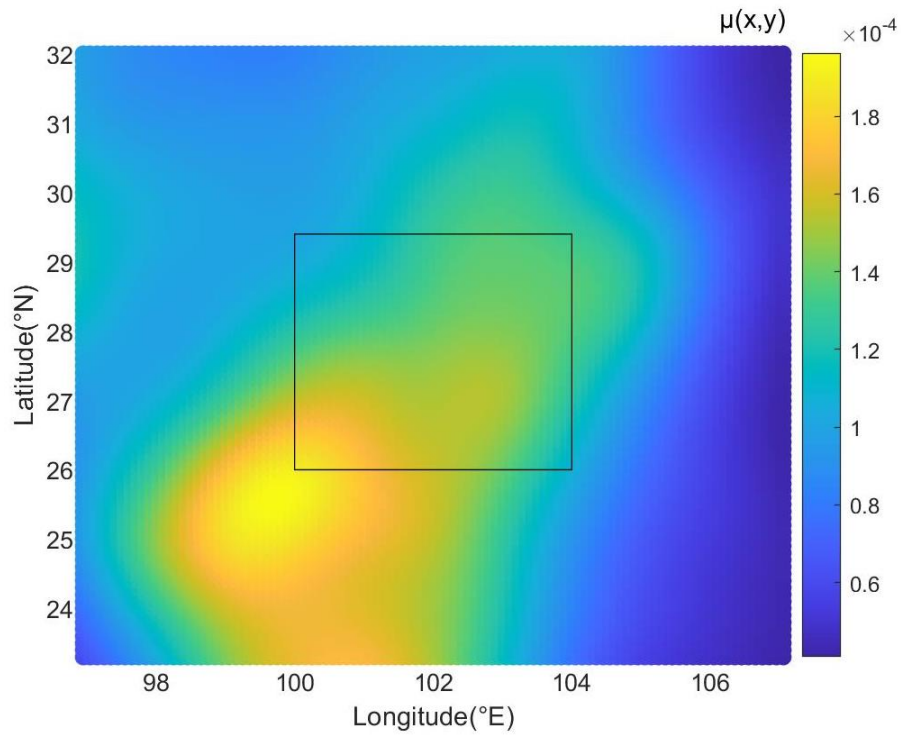
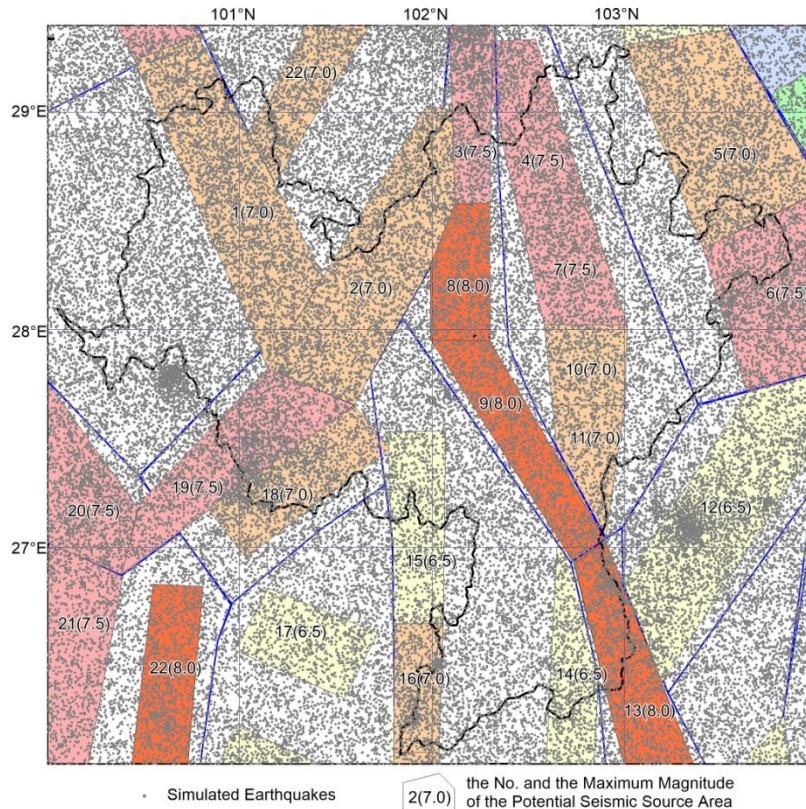


Figure 9 The estimated background seismicity spatial PDF $\mu(x,y)$ for the Sichuan-Yunnan region. The black rectangle represents the area where Xichang is located.

540

From Figure 10, it can be seen that there is a significant difference between the location of earthquake clusters simulated by SimpleTAS and the distribution of the main- and aftershocks in Section 3.2.



545 **Figure 10 The distribution map of the simulated 10,000 earthquake catalogs by SimplicETAS**

Several studies have shown that the estimates of the ETAS parameters are highly susceptible to the assumptions made, such as the magnitude cutoff, time dependency of the background rate, anisotropic aftershock triggering, and aftershock incompleteness (Seif et al., 2017; Zhuang et al., 2017). Bearing this in mind, it becomes apparent that comparing parameter values across different studies using diverse catalogs (with variations in quality, magnitude of completeness, and spatial and temporal windows) is not a straightforward task. Moreover, the inherent statistical correlation among the parameters further complicates the comparison process.

555 The outcomes of the study conducted by Lacoletti et al. (2022) suggest that the traditional region-wide calibration approach is inadequate for constructing an ETAS model suitable for simulation-based PSHA. Generally, sequence-averaged ETAS models prove to be more acceptable, exhibiting both a higher number of aftershocks and consistent spatial and magnitude–frequency distributions. Nevertheless, numerous regions (such as Xichang) face a challenge due to an insufficient occurrence of active sequences within the required (short and recent) period according to the method's criteria.

565 Šipčić et al. (2022) conducted a comparison of three alternative models (Poisson, Omori, and ETAS) under two different initial conditions: an “unconditional” case, with initial conditions characterized by average seismicity, and a “conditional case,” incorporating initial conditions of an ongoing active earthquake sequence. As expected, the traditional Poissonian approach for earthquake occurrence modeling tends to provide lower hazard estimates. As anticipated, the traditional Poissonian approach for earthquake occurrence modeling tends to yield lower hazard estimates. The inclusion of aftershocks in the Omori model and consideration of all events in the
570 ETAS model significantly enhance hazard estimates, providing more realistic values by not solely accounting for the effect of the largest events, as seen in the case of the Poissonian approach.

575 In our study, we have examined the classical Poissonian model that considers only mainshocks and the model that combines the Poissonian model for mainshocks and the Omi-R-J model for aftershocks, which is considered an approach for clustered seismicity modeling that is less complicated than ETAS, and the Omi-R-J model is sensitive to the identification of mainshocks.

580 The significant feature of our study is the simulation of the mainshocks based on the potential source model and the seismicity model of the Seismic Ground Motion Parameter Zoning Map of China (GB18306-2015). These models comprehensively consider various data, such as paleoearthquakes, historical earthquakes, seismogenic structures, stress-strain fields, and provide probability functions for the spatial distribution of earthquakes with different magnitude ranges (Gao, 2015), thereby limiting the location of mainshocks (especially high magnitude earthquakes). After the
585 determination of the mainshocks, the aftershocks are distributed around the mainshocks. However, the ETAS model is an empirical statistical model, and the fundamental data are only earthquake catalogs. Therefore, the accuracy of the ETAS model depends on having well-characterized catalogs. These findings suggest the need to additionally investigate and improve the models through more sophisticated
590 statistics and physics-based models (Hardebeck et al., 2023).

6 conclusions

In this study, a probabilistic seismic hazard analysis based on the Monte Carlo

method was combined with the Omi-R-J model to systematically study how aftershocks impact seismic hazard analyses in Xichang city and the surrounding areas.

595 The results show that in areas with moderate to strong seismic backgrounds, the influence of aftershocks on probabilistic seismic hazard analysis can exceed 50%. Aftershocks are typically ignored ~~for~~in traditional probabilistic seismic hazard analyses, which underestimates the seismic hazard to some extent and may cause potential risks. Our results suggest that the impact of aftershocks should be properly
600 considered during future probabilistic seismic hazard analyses, especially in areas with moderate to strong seismic activity backgrounds and in areas prone to secondary disasters such as landslides and mudslides.

The model settings adopted for the calculation processes presented in this study can be modified according to the actual situation and specific requirements. The
605 Monte Carlo method is highly adaptable and can take into account different parameters ~~for~~in different models. In future work, we can attempt to adjust the initial magnitude of the mainshock and the aftershock. Additionally, we can adjust the duration of the aftershock and use different mainshock models and aftershock models to study how aftershocks impact probabilistic seismic hazard analysis.

610 This work provides a scientific basis for governmental departments to minimize disaster losses and formulate corresponding earthquake prevention and disaster mitigation measures. Furthermore, this work plays ~~a~~very important ~~roles~~roles in engineering decision making and judgment, the implementation of catastrophe insurance, ~~etc~~and other fields.

615 **Data availability**

All raw data can be provided by the corresponding authors upon request.

Author contributions

All authors contributed to the study conception and design. Material preparation, data collection and analysis were performed by Qing Wu and Guijuan Lai. The first
620 draft of the manuscript was written by Qing Wu and all authors commented on previous versions of the manuscript. All the authors have read and approved the final manuscript.

Competing interests

The authors declare that they have no conflict of interest.

625 Acknowledgments

We thank the Compiling Committee of the Seismic Ground Motion Parameters Zonation Map of China for providing the seismic source zone model, seismicity model and GMPE model data. ~~Thanks are extended to you to~~ Dr. Zongchao Li for his help in drawing the map showing the seismic event distribution and tectonic
630 background in Xichang and its surrounding areas. Thanks are also extended to Dr. Jiawei Li for his assistance with the ETAS model. The authors thank Matteo Taroni and two anonymous reviewers for the insightful comments, which helped improve the quality of this article.

Financial support

635 This work was supported by the National Key Research and Development Program (grant number 2022YFC3003502) and the National Key Research and Development Key R&D Program of Xinjiang Uygur Autonomous Region (grant number 2020B03006-4), ~~the Science and Technology Basic Resources Investigation Program of China (grant number 2018FY100504), and the Special Fund of the~~
640 ~~Institute of Geophysics, China Earthquake Administration (grant number DQJB22Z02-8, DQJB22Z03-4).~~

References

- Bi, J. M., & Jiang, C. S.: Distribution characteristics of earthquake sequence parameters in North China. *Chinese Journal of Geophysics*, 62(11), 4300-4312,
645 2019. (in Chinese)
- Bi, J. M., Jiang, C. S., Lai, G. J., et al.: Effectiveness evaluation and constrains of early aftershock probability forecasting for strong earthquakes in continental China. *Chinese Journal of Geophysics*, 65(7), 2532-2545, 2022. (in Chinese)
- Boyd, O. S.: Including foreshocks and aftershocks in time-independent probabilistic
650 seismic-hazard analyses. *Bulletin of the Seismological Society of America*, 102(3), 909-917, 2012.
- Canales, M. R., & Baan, M. V. D.: Are aftershock sequences pertinent to long-term

- seismic hazard assessments? Insights from the temporal ETAS model. *Journal of Geophysical Research: Solid Earth*, 125, e2019JB019095, 2020.
- 655 Cornell, C. A.: Engineering seismic risk analysis. *Bulletin of the Seismological Society of America*, 58(5), 1583–1606, 1968.
- Davoudi, N., Tavakoli, H. R., Zare, M., Jalilian, A.: Aftershock probabilistic seismic hazard analysis for Bushehr province in Iran using ETAS model. *Natural Hazards*, 100, 1159-1170, 2020.
- 660 Du, P. S.: Recurrence interval on macroearthquake along the active fault of Zemuhe. *Earthquake Research in Sichuan*, 1-2, 102-118, 2000. (in Chinese)
- Enescu, B., Enescu, D., Ito, K.: Values of b and p: their variations and relation to physical processes for earthquakes in Japan and Romania. *Romanian Journal of Physics*, 56(34): 590-608, 2011.
- 665 Felzer, K., & Brodsky, E.: Decay of aftershock density with distance indicates triggering by dynamic stress. *Nature*, 441(7094), 735-8, 2006.
- Field, E. H., Milner, K. R., & Luco, N.: The seismic hazard implications of declustering and Poisson assumptions inferred from a fully time-dependent model. *Bulletin of the Seismological Society of America*, 112(1), 527-537, 2022.
- 670 Gallovič, F., & Brokešová, J.: Probabilistic aftershock hazard assessment I: Numerical testing of methodological features. *J Seismol*, 12(1), 53–64, 2008.
- Gao, M. T. (editor in chief):: Publicity and implementation textbook of the Seismic Ground Motion Parameters Zonation Map of China (GB18306-2015), V1.0, Standards Press of China, ISBN: 978-7-5066-7888-9, 2015. (in Chinese)
- 675 Gerstenberger, M. C., Wiemer, S., Jones, L. M., et al.: Real-time forecasts of tomorrow's earthquakes in California. *Nature*, 435, 328–331. DOI:10.1038/nature03622, 2005.
- Gutenberg, B., & Richter, C. F.: Frequency of earthquakes in California. *Bulletin of the Seismological Society of America*, 34(4), 185–188. doi: 10.1038/156371a0, 1944.
- 680 Hardebeck, J. L., Llenos, A. L., Michael, A. J., et al.: Aftershock Forecasting. *Annual Review of Earth and Planetary Sciences*, 52, 2.1–2.24. doi:

[10.1146/annurev-earth-040522-102129](https://doi.org/10.1146/annurev-earth-040522-102129), 2023.

685 He, H. L., & Ikeda, Y.: Faulting on the Anninghe fault zone, southwest China in late quaternary and its movement model. *Acta Seismologica Sinica*, 29(5), 537-548, 2007. (in Chinese)

[Iacoletti, S., Cremen, G., Galasso, C.: Validation of the Epidemic-Type Aftershock Sequence \(ETAS\) Models for Simulation-Based Seismic Hazard Assessments. *Seismological Research Letters*, 93 \(3\), 1601–1618, 2022.](#)

690

[Iacoletti, S., Cremen, G., Galasso, C.: Integrating long and short-term time dependencies in simulation-based seismic hazard assessments. *Earth and Space Science*, 9, e2022EA002253, 2022.](#)

695 Iervolino, I., Giorgio, M., Polidoro, B.: Sequence-based probabilistic seismic hazard analysis, short note. *Bulletin of the Seismological Society of America*, 104(2), 1006-1012, 2014.

Jiang, H. K., Zheng, J. C., Wu, Q., et al.: Earlier statistical features of ETAS model parameters and their seismological meanings. *Chinese Journal of Geophysics*, 50(6), 1778-1786, 2007. (in Chinese)

700

Li, P., & Wang, L. M.: Discussion on the basic characteristics of seismogeology in Western Sichuan-Yunnan. Beijing: Seismological Press, 1977. (in Chinese)

Li, P.: Xianshuihe-Xiaojiang fault zone. Beijing: Seismological Press, 1993. (in Chinese)

705 Lu, P., Yuan, Y. F., Yuan, H. K., et al.: Probabilistic estimate of strong earthquake risk in the Anninghe-Zemuhe tectonic zone. *Earthquake*, 32(4), 62-72, 2012. (in Chinese)

Lv, X. J., Gao, M. T., Gao, Z. W., Mi, S. T.: Comparison of the spatial distribution of ground motion between mainshocks and strong aftershocks. *Acta Seismologica Sinica*, 29(3), 295-301, 2007. (in Chinese)

710

Marzocchi, W., & Taroni, M.: Some thoughts on declustering in probabilistic seismic hazard analysis. *Bulletin of the Seismological Society of America*, 104(4), 1838-1845, 2014.

[Mancini, S., & Marzocchi, W.: SIMPLETAS: A Benchmark Earthquake Forecasting](#)

715

[Model Suitable for Operational Purposes and Seismic Hazard Analysis. *Seismological Research Letters*. doi: 10.1785/0220230199, 2023.](#)

720

Ogata, Y.: Statistical models for earthquake occurrences and residual analysis for point processes. *Journal of the American Statistical Association*, 83(401), 9–27, 1988.

Ogata, Y.: Statistical model for standard seismicity and detection of anomalies by residual analysis. *Tectonophysics*, 169(1-3), 159-174, 1989.

725

Ogata, Y.: Detection of precursory relative quiescence before great earthquakes through a statistical model. *Journal of Geophysical Research: Solid Earth*, 97(B13), 19845-19871, 1992.

Ogata, Y., & Katsura, K.: Analysis of temporal and spatial heterogeneity of magnitude frequency distribution inferred from earthquake catalogues. *Geophysical Journal International*, 113(3), 727-738, 1993.

730

Ogata, Y.: Space-time point-process models for earthquake occurrences. *Annals of the Institute of Statistical Mathematics*, 50(2), 379–402, 1998.

Ogata, Y.: Increased probability of large earthquakes near aftershock regions with relative quiescence. *Journal of Geophysical Research*, 106, 8729-8744, 2001.

Omi, T., Ogata, Y., Hirata, Y., et al.: Forecasting large aftershocks within one day after the mainshock. *Scientific Reports*, 3, 2218, doi: 10.1038/srep02218, 2013.

735

Omi, T., Ogata, Y., Shiomi, K., et al.: Automatic aftershock forecasting: A test using real-time seismicity data in Japan. *Bulletin of the Seismological Society of America*, 106(6), 2450-2458, doi: 10.1785/0120160100, 2016.

740

Omi, T., Ogata, Y., Shiomi, K.: Implementation of a real-time system for automatic aftershock forecasting in Japan. *Seismological Research Letters*, 90(1), 242-250, 2019.

Omori, F.: On after-shocks of earthquakes. *J Coll Sci Imp Univ Tokyo*, 7, 111–200, 1894.

Reasenber, P. A., & Jones, L. M.: Earthquake hazard after a mainshock in California. *Science*, 243, 1173-1176, 1989.

745

[Seif, S., Mignan, A., Zechar, J. D., Werner, M. J., Wiemer, S.: Estimating ETAS: The](#)

effects of truncation, missing data, and model assumptions. *Journal of Geophysical Research*, 122(1), 449–469. doi: 10.1002/2016JB012809, 2017.

750 Shebalin, P., & Narteau, C.: Depth dependent stress revealed by aftershocks. *Nature Communications*, 8(1), 1317, 2017.

Shen, W. H., & Yang, F.: Probabilistic aftershock hazard assessment for Jiuzhaigou MS7.0 earthquake in 2017. *Acta Seismologica Sinica*, 40(5), 654–663. doi: 10.11939/jass.20170204, 2018.

755 Shcherbakov, R., Turcotte, D. L., Rundle, J. B.: A generalized Omori 's law for earthquake after shock decay. *Geophys Res Lett*, 31(11), L11613, 2004.

Šipčić, N., Kohrangi, M., Papadopoulos, A. N., Marzocchi, W., Bazzurro, P.: The Effect of Seismic Sequences in Probabilistic Seismic Hazard Analysis. *Bulletin of the Seismological Society of America*, 112 (3), 1694–1709, 2022.

760 Stallone, A., & Marzocchi, W.: Features of seismic sequences are similar in different crustal tectonic regions. *Bulletin of the Seismological Society of America*, 109(5), 1594–1604. doi: 10.1785/0120180175, 2019.

765 Taroni, M., & Akinci, A.: Good practices in PSHA: declustering, b-value estimation, foreshocks and aftershocks inclusion; a case study in Italy. *Geophys. J. Int.*, 224, 1174–1187, 2021.

Utsu, T.: A statistical study on the occurrence of aftershocks. *Geophys Mag*, 30, 521–605, 1961.

Utsu, T., & Ogata, Y., Matsu'ura, R. S.: The centenary of the Omori formula for a decay law of aftershock activity. *J Phys Earth*, 43(1), 1–33, 1995.

770 Wang, S., Werner, M. J., & Yu, R.: How well does Poissonian probabilistic seismic hazard assessment (PSHA) approximate the simulated hazard of epidemic-type earthquake sequences? *Bulletin of the Seismological Society of America*, 112(1), 508–526, 2022.

775 Well, D. L., & Coppersmith, K. J.: New empirical relationships among magnitude, rupture length, rupture width, rupture area, and surface displacement. *Bulletin of*

the Seismological Society of America, 84(4), 974-1002, 1994.

Wiemer, S.: Introducing probabilistic aftershock hazard mapping. *Geophys Res Lett*, 27(20), 3405–3408, 2000.

780 Wiemer, S., & Katsumata, K.: Spatial variability of seismicity parameters in aftershock zones. *Journal of Geophysical Research: Solid Earth*, 104(B6), 13135-13151, 1999.

Wu, Q., Wu, J., Gao, M. T.: Correlation analysis of earthquake impacts on a nuclear power plant cluster in Fujian province, China. *Environmental Research*, 187, doi: 10.1016/j.envres.2020.109689, 2020.

785

Wu, Q., & Gao, M. T.: A preliminary study on the correlativity of seismic hazard between Beijing area and Xiong'an New Area. *Seismology and Geology*, 40(4), 935-943. doi: 10.3969/j.issn.0253-4967.2018.04.015, 2018. (in Chinese)

790 Xiao, L.: Study on the attenuation relationship of horizontal ground motion parameters near the source of rock site. Doctor's Degree Thesis. Beijing: Institute of Geophysics, China Earthquake Administration, 120, 2011. (in Chinese)

Xiong, Z. H.: The study and application of catastrophe model for earthquake insurance. Doctor's Degree Thesis. Beijing: Institute of Geophysics, China Earthquake Administration, 2019. (in Chinese)

795

Xu, W. J., & Wu, J.: Effect of temporal-spatial clustering of aftershocks on the analysis of probabilistic seismic hazard. *Chinese Journal of Geophysics*, 60(8), 3110-3118, 2017. (in Chinese)

Xu, X. W., Wen, X. Z., Zheng, R. Z., et al.: The latest tectonic variation pattern and its dynamic source of active blocks in Sichuan-Yunnan region. *Science China (Series D)*, (33 Z), 151-162, 2003. (in Chinese), a

800

Xu, X. W., Cheng, G. L., Yu, G. H., et al.: Tectonic and paleomagnetic evidence for the clockwise rotation of the Sichuan-Yunnan rhombic block. *Seismology and Geology*, 25(1), 61-70, 2003. (in Chinese), b

805

Yeo, G. L., & Cornell, C. A.: A probabilistic framework for quantification of aftershock ground-motion hazard in California: methodology and parametric study. *Earthquake Engng Struct Dyn*, 38, 45–60, 2009.

810 Zhao, J. B.: Damage assessment of reinforced concrete frame structures under main
and aftershocks. Master's Degree Thesis. Beijing: Institute of Geophysics, China
Earthquake Administration, 2005.

Zhang, C. J., Hou, Y. Y., Hu, B., Xu, H. H., Wang, D. B.: Analysis on the seismic
activities and hazards of M7.1 earthquake, 2010 and M6.3 earthquake, 2011 in
New Zealand. *Recent Developments in World Seismology*, 4, 44-51, 2011. (in
Chinese)

815 Zhou, B. G., Chen, G. X., Gao, Z. W., et al.: The technical highlights in identifying
the potential seismic sources for the update of national seismic zoning map of
China. *Technol Earthq Disaster Prev*, 8(2), 113–124, 2013. (in Chinese)

820 [Zhuang, J. C., Ogata, Y., Wang, T.: Data completeness of the Kumamoto earthquake
sequence in the JMA catalog and its influence on the estimation of the ETAS
parameters. *Earth Planets Space*, 69\(1\), 1–12. doi: 10.1186/s40623-017-0614-6,
2017.](#)