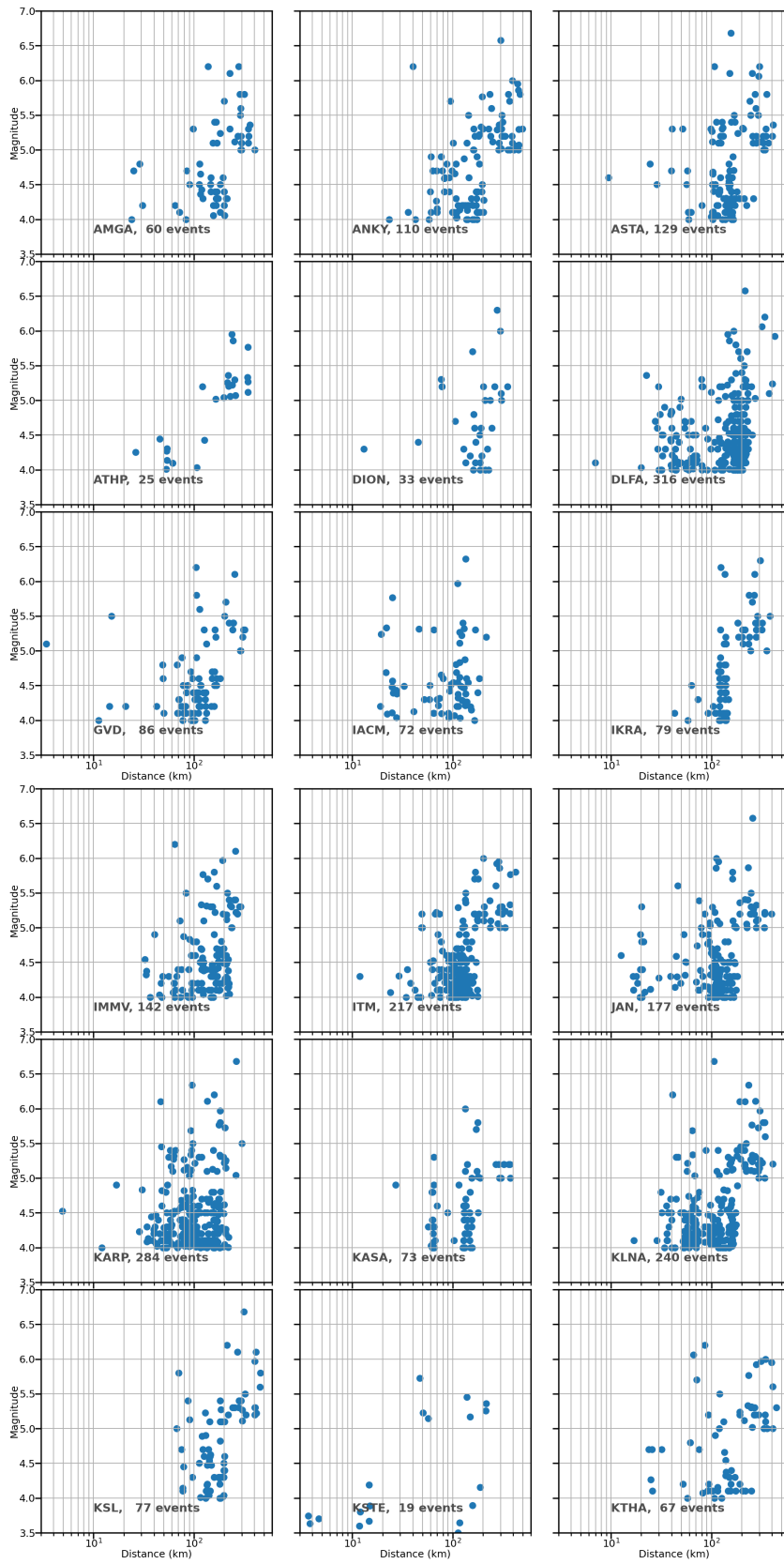
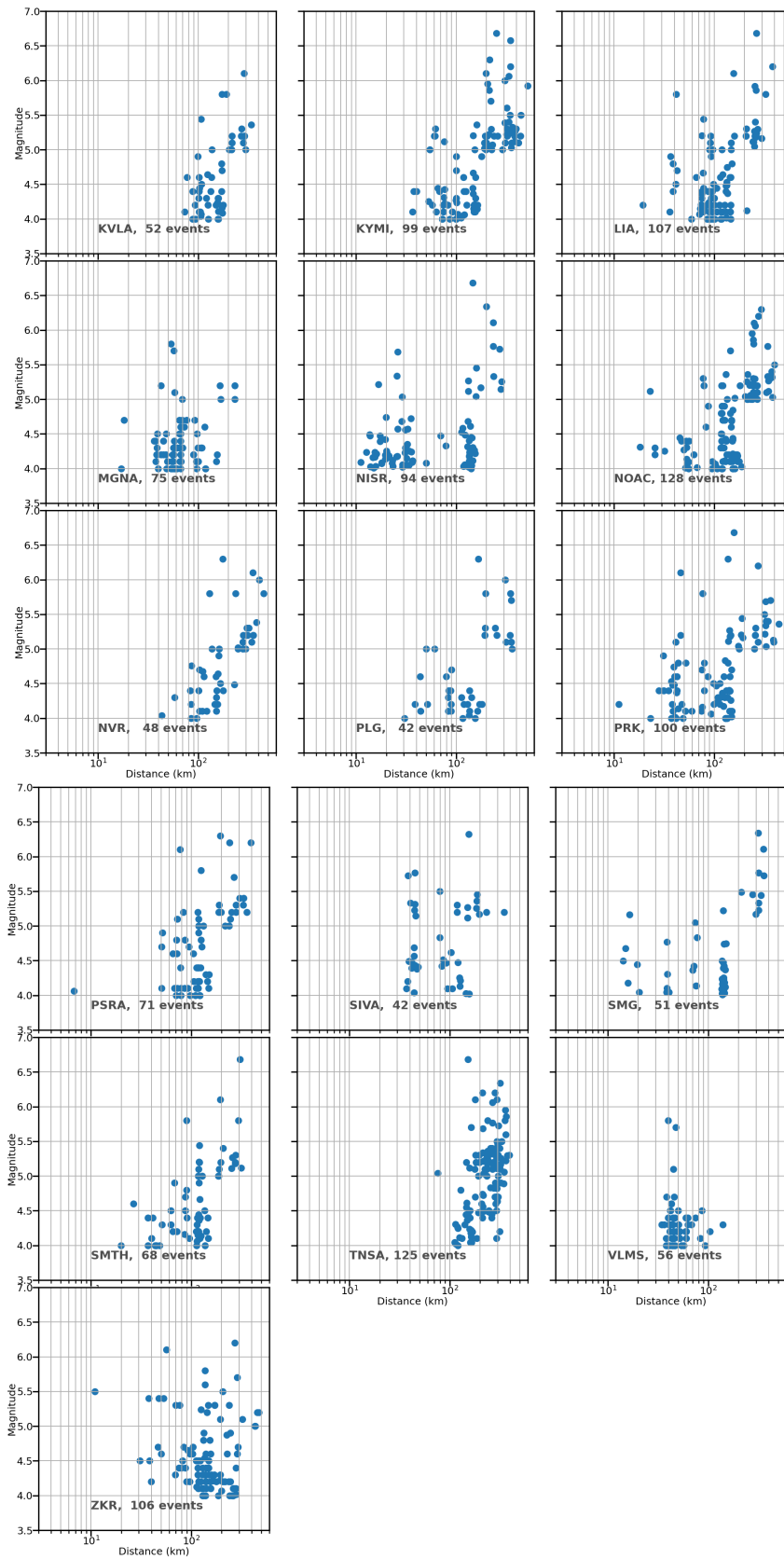


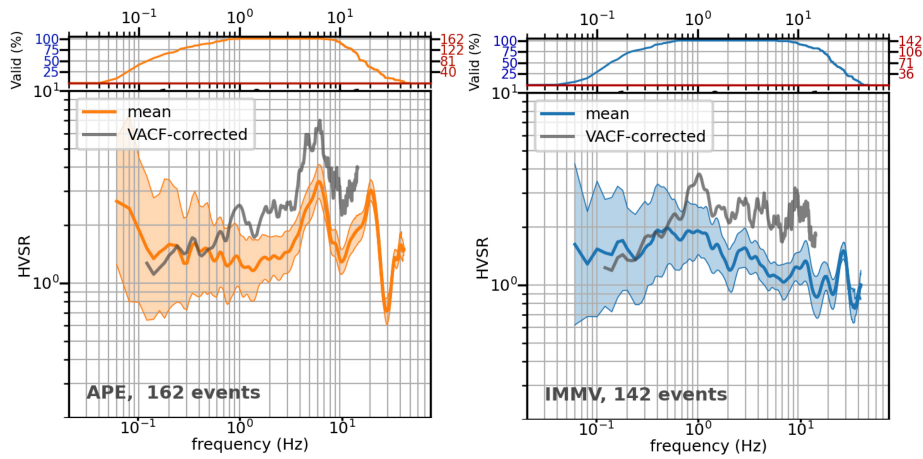
**Figure S1:** Distribution of magnitude (local) and distance (epicentral) for all data analysed per HH station.



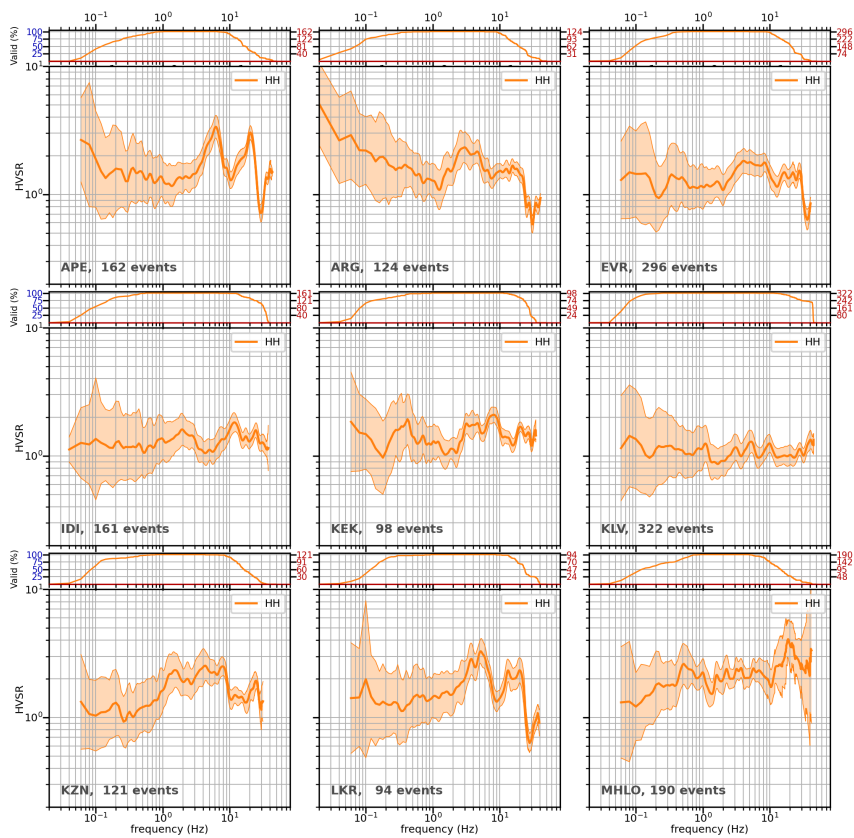


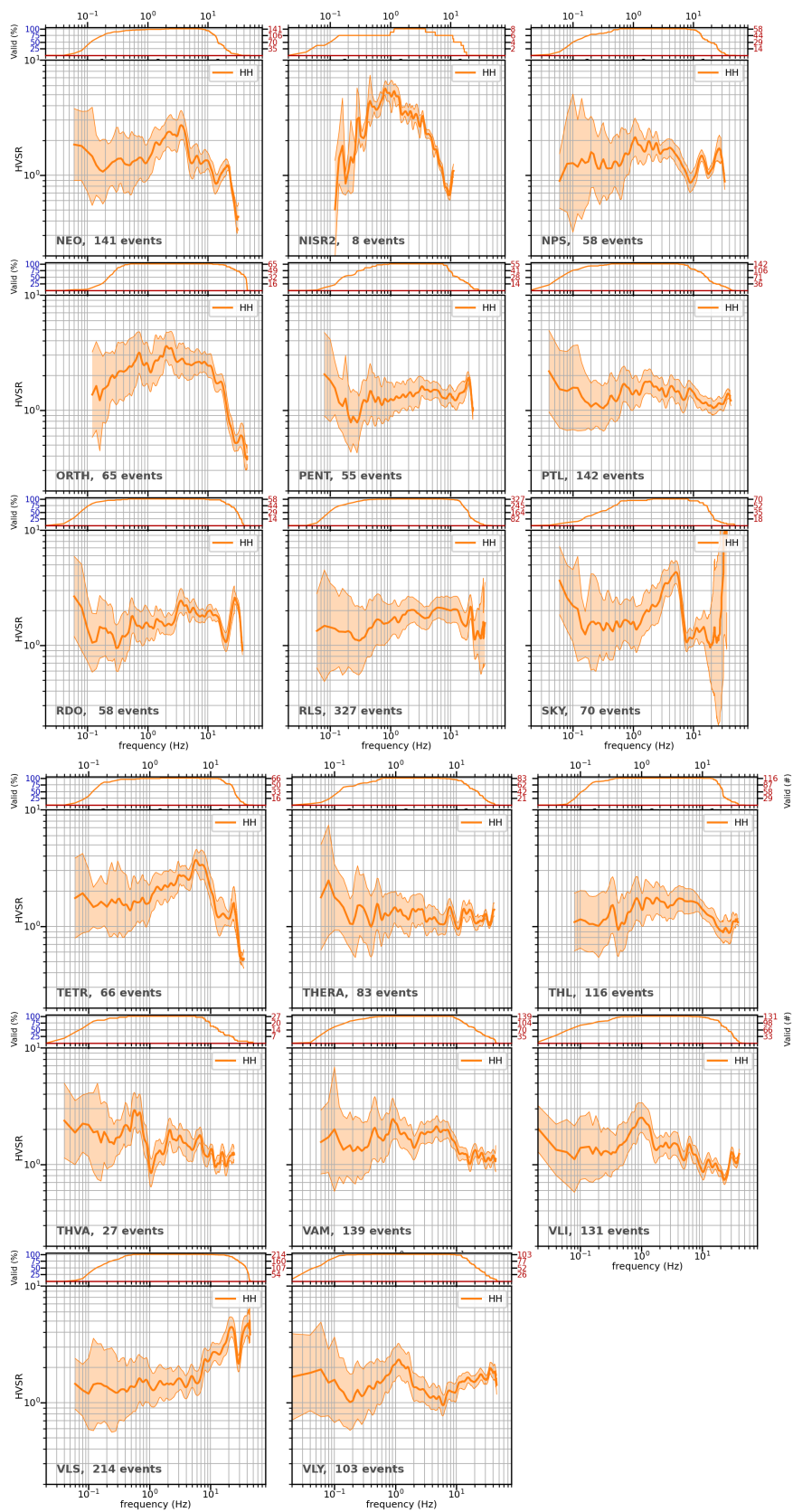
**Figure S2:** Distribution of magnitude (local) and distance (epicentral) for all data analysed per HN station.



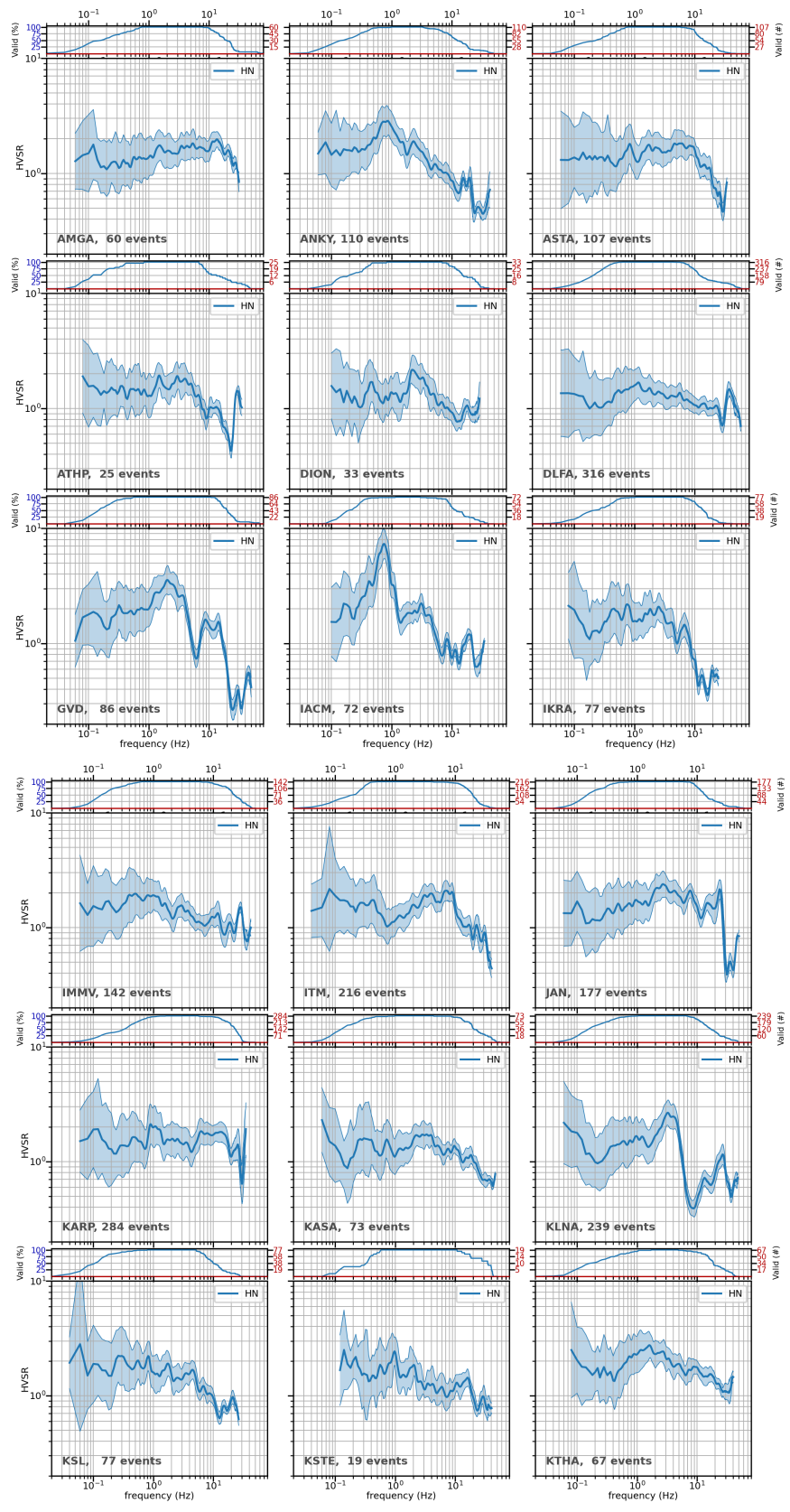


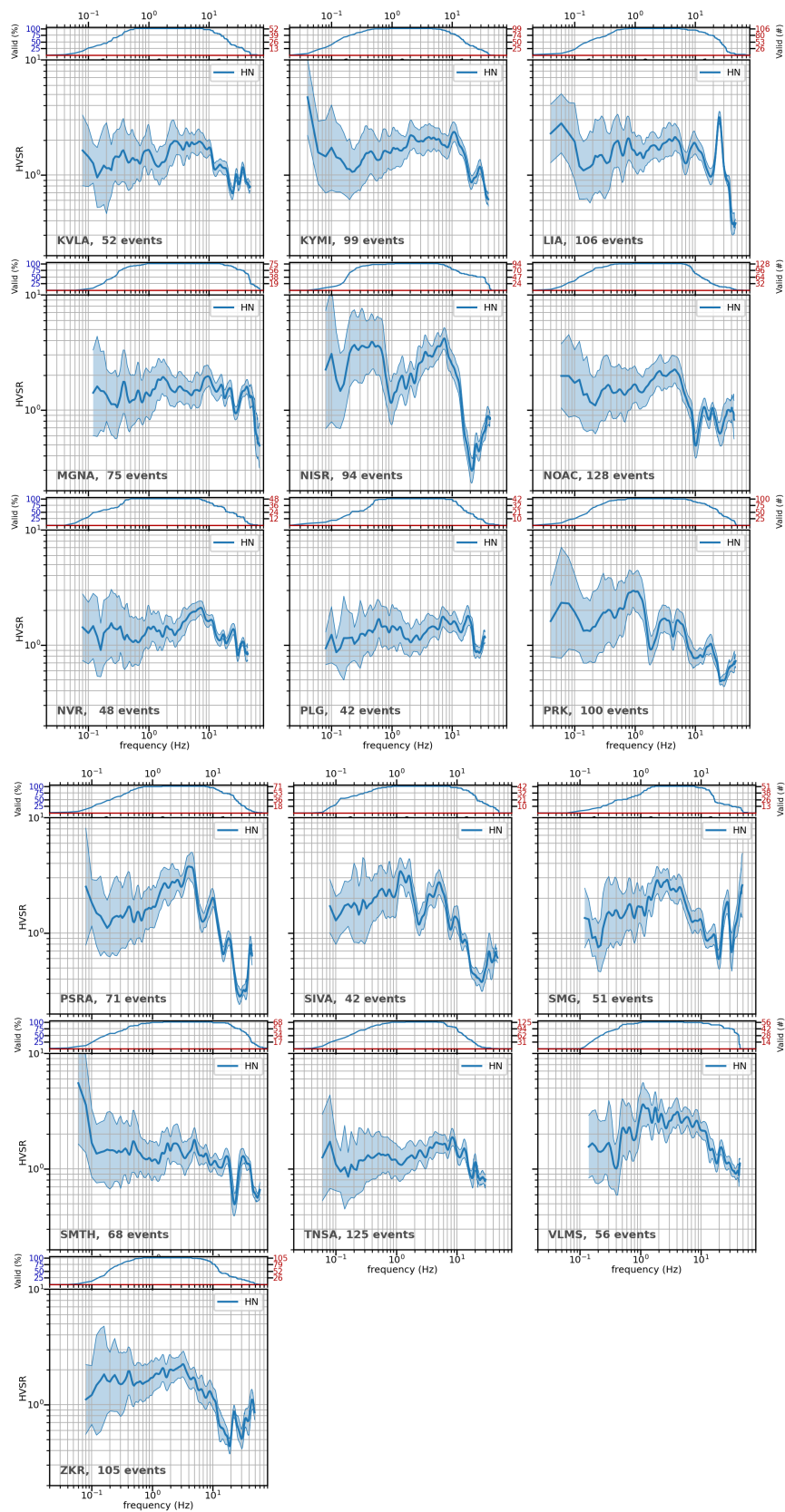
**Figure S3:** Indicative correction of HVSR using Ito et al. (2020) correction function for the vertical component (VACF) at two stations.



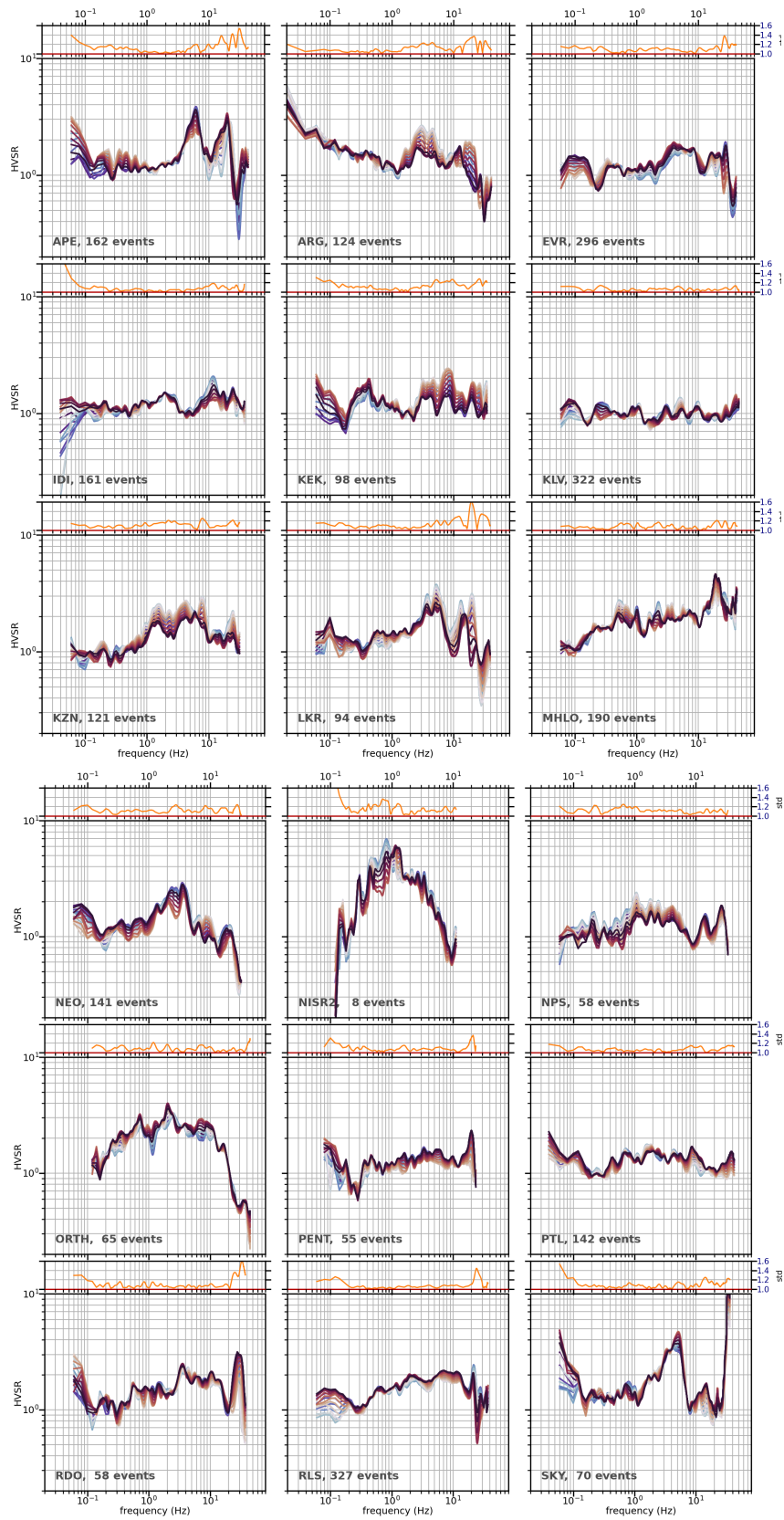


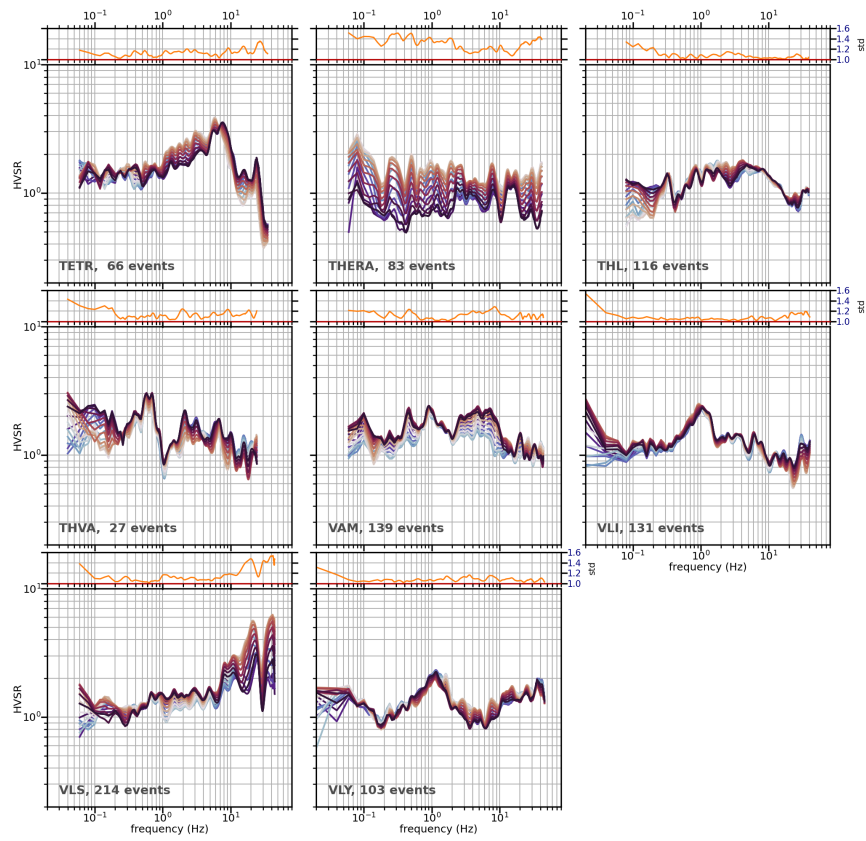
**Figure S4:** Mean orientation-invariant (SRSS) HVSr±1 standard deviation for all HH stations.



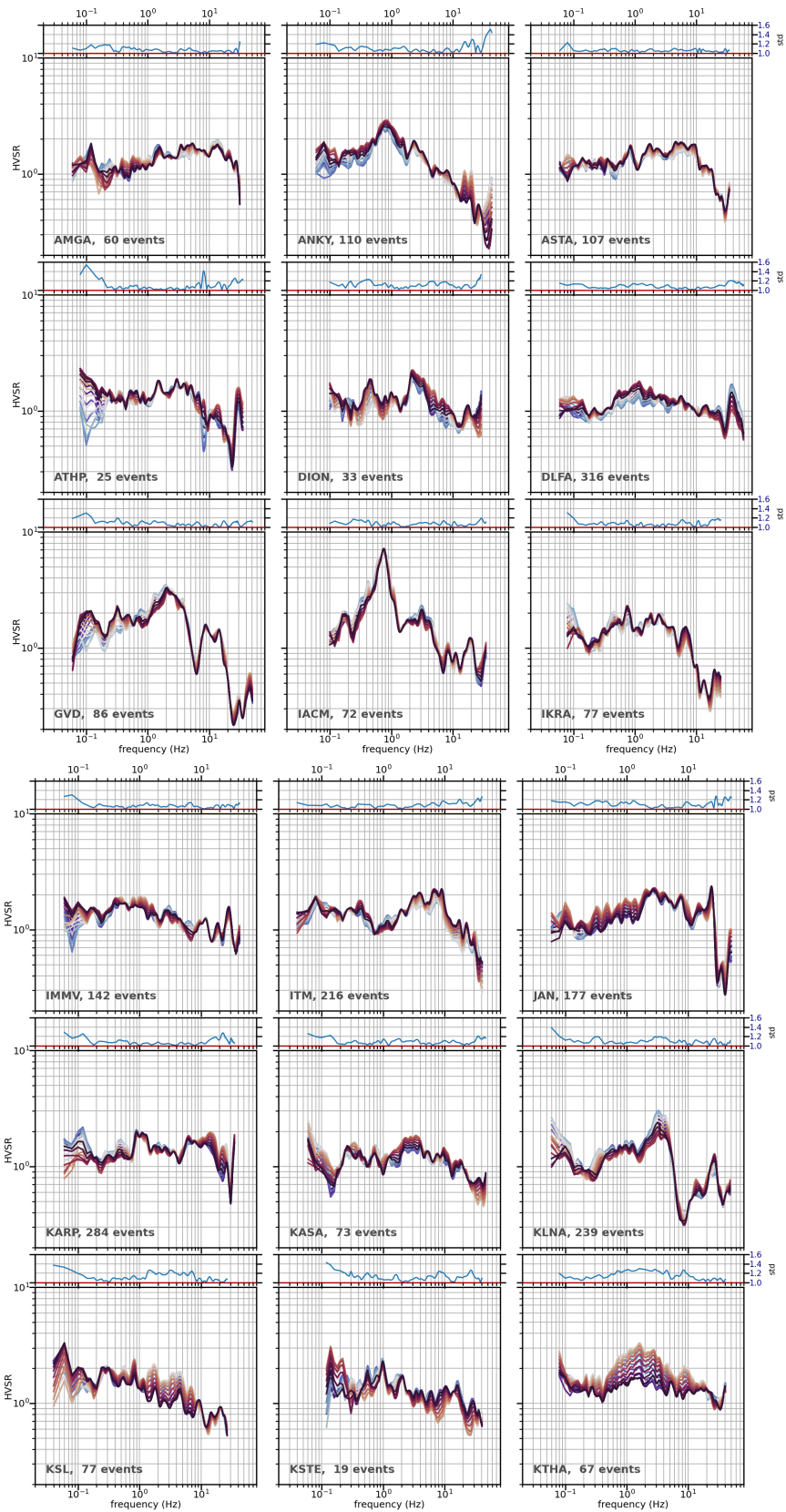


**Figure S5:** Mean orientation-invariant (SRSS) HVSR±1 standard deviation for all HN stations.

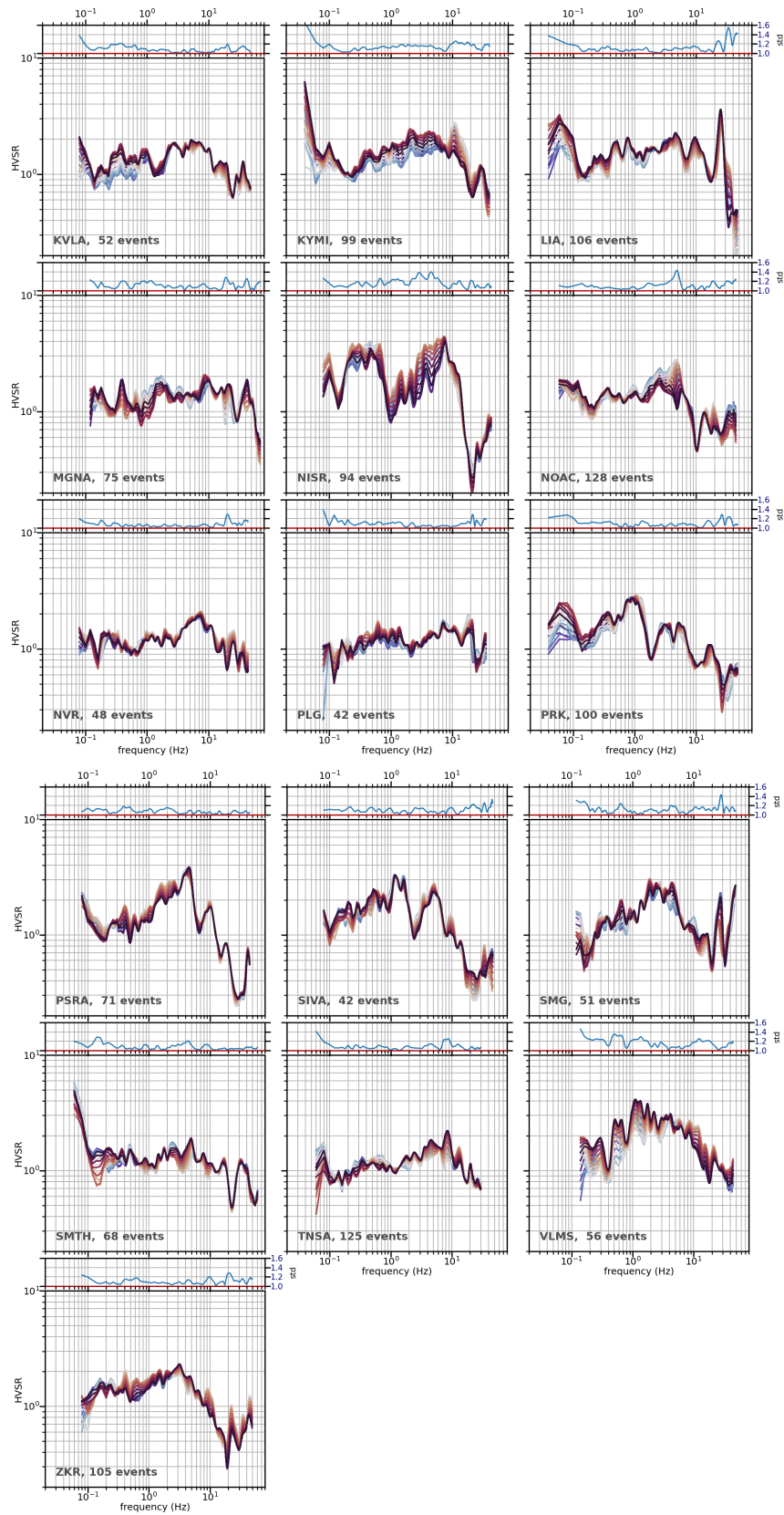




**Figure S6:** Sensitivity of mean HVSR of components rotated by 10 degree increments, for all HH stations.







**Figure S7:** Sensitivity of mean HVSR of components rotated by 10 degree increments, for all HN stations.