

*Supplementary Material*

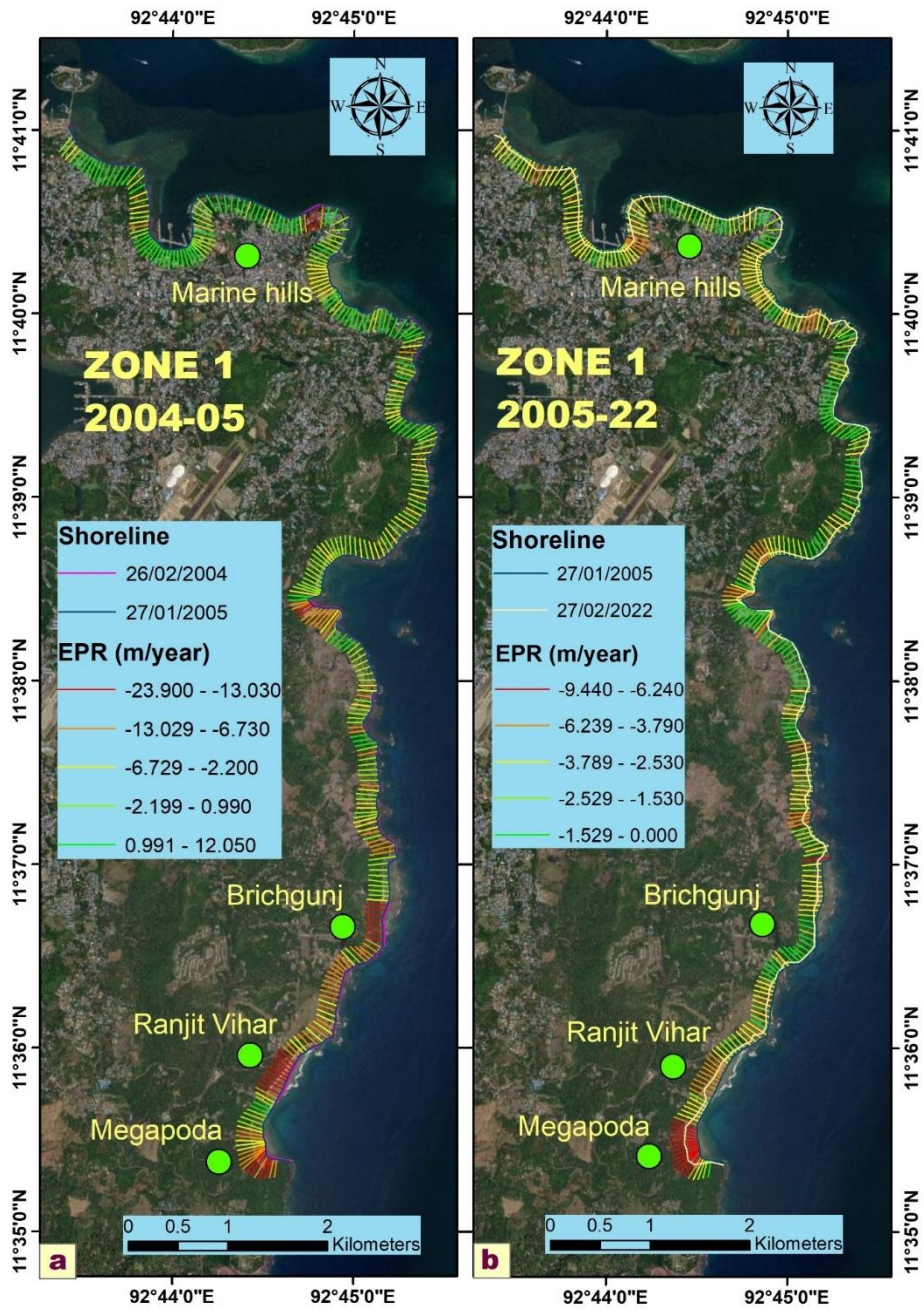
of

**Shoreline and Land Use Land Cover Changes along the 2004 tsunami-affected South Andaman Coast: Understanding Changing Hazard Susceptibility**

Vikas Ghadamode<sup>1,2</sup>, Aruna Kumari K<sup>1</sup>, Anand K Pandey<sup>1,2</sup> Kirti Srivastava<sup>1</sup>

1. CSIR- National Geophysical Research Institute, Hyderabad, 500007 India.

2. Academy of Scientific and Innovative Research (AcSIR), Ghaziabad 201002, India.



**Figure S1** Analysis of the Erosion and Accretion rate in Zone 1 of the South Andaman shoreline between (a) 2004 to 2005 and (b) 2005-2022 using EPR methods (Source: Background images are from © Google Earth)

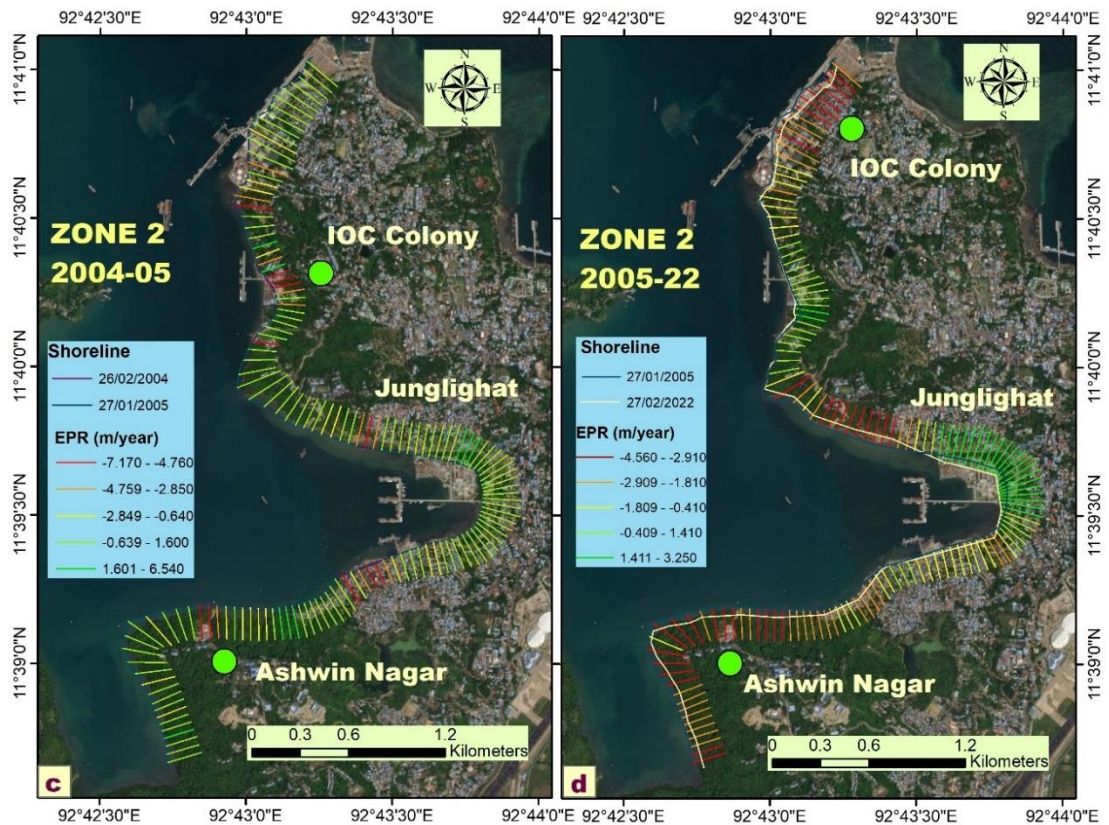


Figure S2: Erosion and Accretion rate occurred between (c) 2004-2005 and (d) 2005-2022 in Zone 2 of the South Andaman shoreline using EPR methods (Source: Background images are from © Google Earth).

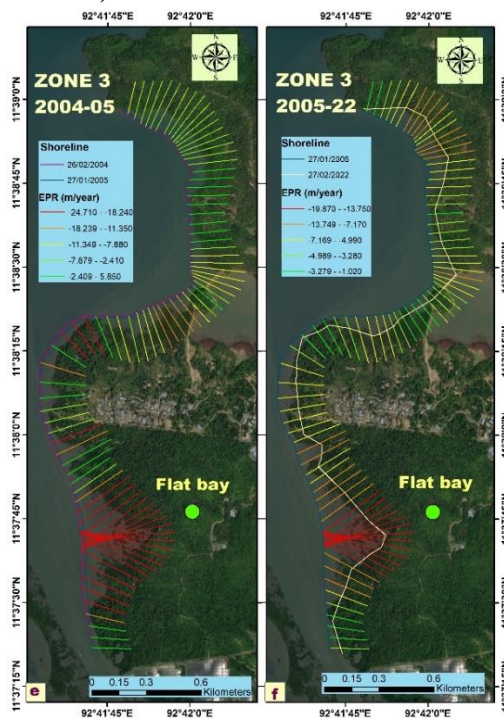


Figure S3: Erosion and Accretion rate occurred between (e) 2004-2005 and (f) 2005-2022 in Zone 3 of the South Andaman shoreline using EPR methods (Source: Background images are from © Google Earth).

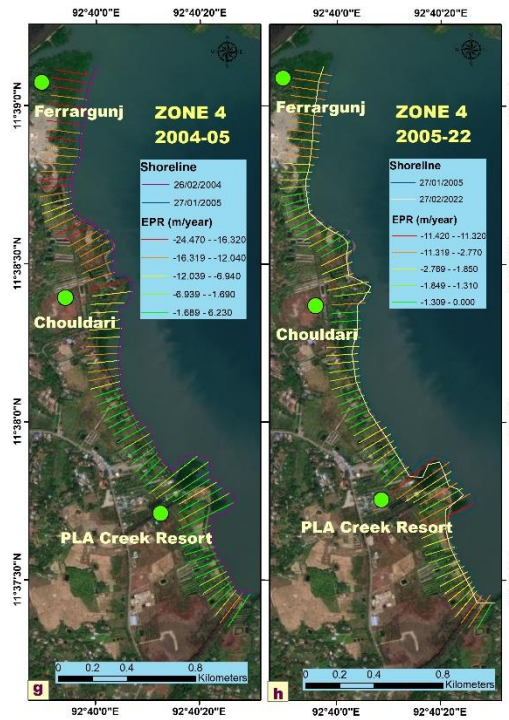


Figure S4: Erosion and Accretion rate occurred between (g) 2004-2005 and (h) 2005-2022 in Zone 4 of the South Andaman shoreline using EPR methods (Source: Background images are from © Google Earth)

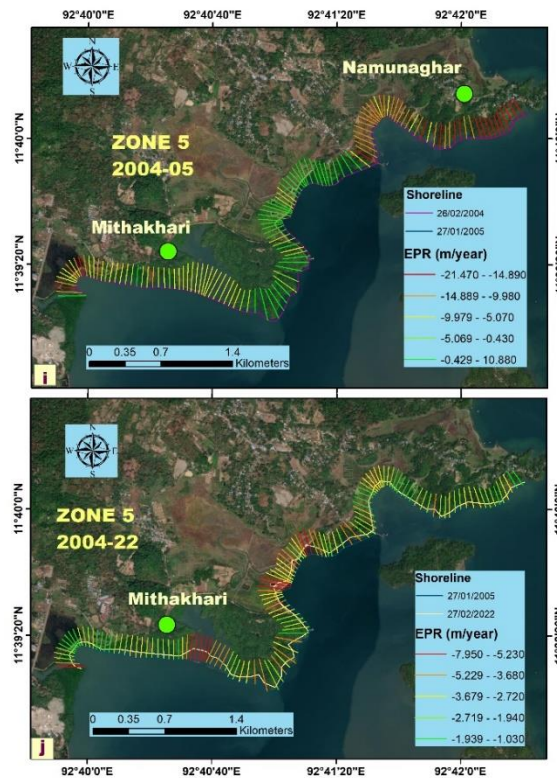


Figure S5: Erosion and Accretion rate occurred between (i) 2004-2005 and (j) 2005-2022 in Zone 5 of the South Andaman shoreline using EPR methods (Source: Background images are from © Google Earth)

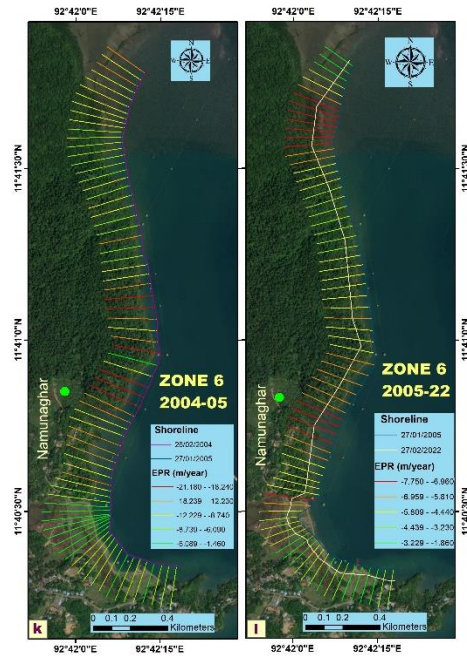


Figure S6: Erosion and Accretion rate occurred between (k) 2004-2005 and (l) 2005-2022 in Zone 6 of the South Andaman shoreline using EPR methods (Source: Background images are from © Google Earth)

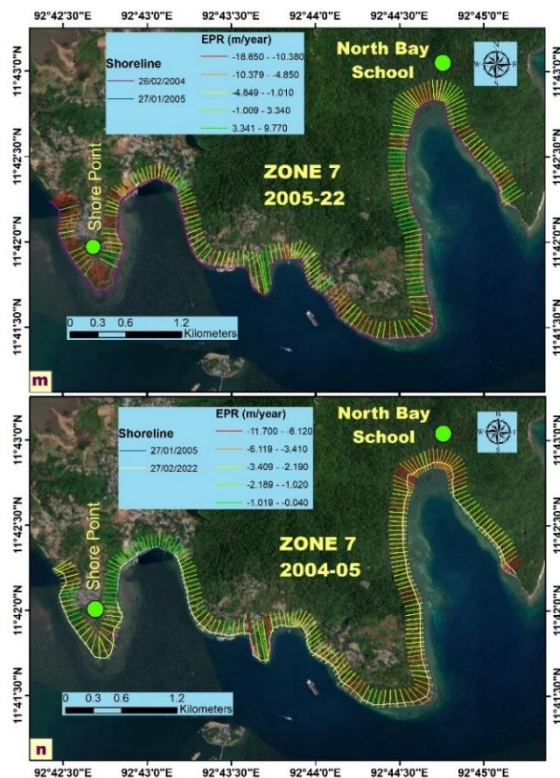


Figure S7: Erosion and Accretion rate occurred between (m) 2004-2005 and (n) 2005-2022 in Zone 7 of the South Andaman shoreline using EPR methods (Source: Background images are from © Google Earth)