

# A coupled hydrological and hydrodynamic modelling approach for estimating rainfall thresholds of debris-flow occurrence

Zhen Lei Wei<sup>a, c</sup>, Yue Quan Shang<sup>b</sup>, Qiu Hua Liang<sup>a, c\*</sup>, Xi Lin Xia<sup>d</sup>

5 a State Key Laboratory of Geohazard Prevention and Geoenvironment Protection, Chengdu University of

Technology, Chengdu, 610059, China

b College of Civil Engineering and Architecture, Zhejiang University, Hangzhou 310058, China

c School of Architecture, Building and Civil Engineering, Loughborough University, Loughborough LE11 3TU,  
UK

10 <sup>d</sup>School of Engineering, University of Birmingham, Birmingham B15 2TT, UK

\* Corresponding author: Qiu Hua Liang, q.liang@lboro.ac.uk

## Abstract

15 Rainfall-induced hydrological processes and surface water flow hydrodynamics may play a key role in initiating debris flows. In this study, a new framework based on an integrated hydrological and hydrodynamic model is proposed to estimate the Intensity-Duration (I-D) rainfall thresholds that trigger debris flows. In the new framework, intensity-duration-frequency (IDF) analysis is carried out to generate design rainfall to drive the integrated models to calculate grid-based hydrodynamic indices (i.e. unit-width discharge). The hydrodynamic indices are subsequently  
20 compared with hydrodynamic thresholds to indicate the occurrence of debris flows and derive rainfall thresholds through the introduction of a zone threshold. The capability of the new framework in predicting the occurrence of debris flows is verified and confirmed by application to a small catchment in Zhejiang Province, China, where observed hydrological data are available. Compared with the traditional statistical approaches to derive Intensity-Duration (I-D) thresholds, the current  
25 physically-based framework can effectively take into account the hydrological processes controlled by meteorological conditions and spatial topographic properties, making it more suitable for application in ungauged catchments where historical debris flow data is lacking.

**Keywords:** debris flow; hydrological model; hydrodynamic model; rainfall threshold; hydrodynamic indicator

# 30 1. Introduction

As a common type of natural hazard in mountainous areas, debris flows usually consist of a mix of rocks, mud, water, and air (Hürlimann et al., 2019). The velocity and impact force of a debris flow could be tremendous, imposing a serious threat to the people, property, and infrastructure systems in the affected areas. It is important to establish early warning systems to enhance the preparedness of at-risk communities to reduce potential impact. Early warning may be achieved through reliable estimation of rainfall thresholds linked to the occurrence of debris flows.

Considering the hydrological interaction between debris flows and rainfall, two types of initiation mechanisms have been identified: 1) debris flows initiated by landslides (Iverson et al., 1997), and 2) debris flows triggered by runoff (Kean et al., 2013). A landslide-triggered debris flow often involves loose soils or materials overlying the bedrock on a steep slope following a landslide. When rainfall-induced infiltration increases the saturation level of the soil (initially unsaturated) above the infiltration front or forms a perched water table in the superficial soil layers, the loose soil may become unstable and develop into a debris flow (Berti and Simoni, 2010; Godt et al., 2009). For runoff-generated debris flows, different initiation mechanisms are recognized, which may be related to grain-by-grain erosion, mass failure, bank failure and the so-called ‘firehose’ effect (Gregoretti and Dalla Fontana, 2008). The current study will focus on runoff-generated debris flows.

Previous studies have demonstrated that three key factors may contribute to the triggering of debris flows, including steep slope, availability of sediment, and input water flow (Mcguire et al., 2017; Coe et al., 2008; Imaizumi et al., 2006; Hürlimann et al., 2014; Berti and Simoni 2005). The water inflow that triggers debris flows usually varies rapidly across the temporal and spatial scales (Gregoretti and Dalla Fontana 2008; Cannon et al., 2008). Rainfall provides the primary source of water inflow and the strong correlation between debris flow initiation and rainfall conditions has been confirmed in many existing studies (Berti et al., 2020). Estimation of the rainfall conditions triggering debris flows, i.e. rainfall thresholds, has become a widely used approach to support early warning (Wei et al., 2017; 2018; Guzzetti et al., 2008).

At present, the most commonly used rainfall thresholds of debris flows are derived from intensity-duration (I-D) curves due to the simple calculation process and availability of influencing factors (Guzzetti et al., 2008). The traditional I-D rainfall thresholds are mostly generated by analyzing the historical data of debris flow occurrence, and the intensity and duration of the triggering rainfall events using statistical approaches (Guo et al., 2016; Ma et al., 2016; Staley et al., 2013). The generation of these statistical I-D rainfall thresholds relies on the availability of rich datasets of rainfall events that have triggered debris flows. However, debris flow commonly has a low occurrence frequency, making it challenging to collect high-quality observation data, especially for a specific gully or catchment. Furthermore, due to the spatial variability of rainfall, the statistical I-D rainfall thresholds may be also influenced by the locations of rain gauges, introducing uncertainties to any observation data (Nikolopoulos et al., 2014). So, the reliable statical rainfall

thresholds for a specific catchment may be derived when sufficient high-quality data of debris flow events is available (Oorthuis et al., 2023, Hirschberg et al., 2021, Bel et al., 2017, Abancó et al., 2016). However, in the areas with limited data availability, it will be technically challenging to reliably define the statistical I-D thresholds of debris flows. It may be more useful to propose a physical-based approach to estimate the rainfall thresholds in such data-scarce areas.

Moreover, the derivation of statistical I-D thresholds only focuses on the correlation between rainfall characteristics and debris flow occurrence. Although they are closely related to the initiation and occurrence of debris flows, the hydrological processes and land surface characteristics including topography and soil types are not considered when deriving statistical I-D models (Bogaard and Greco, 2018). It is suggested that approaches involving more input variables rather than just mean rainfall intensity and duration are needed to improve the accuracy of I-D thresholds (Hirschberg et al., 2021).

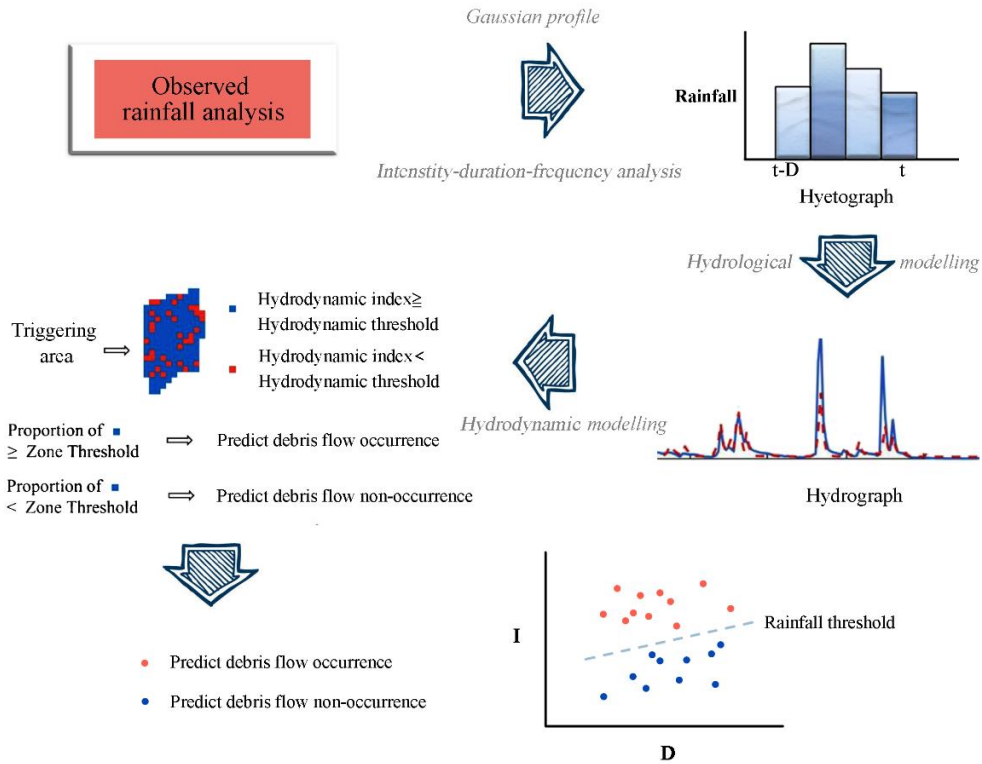
Related to rainfall-hydrological processes, the hydrodynamic forcing represented by unit-width discharge could be one of the important indicators controlling the occurrence of debris flows, which has been validated by laboratory experiments and in-situ observations (Tang et al., 2019; Tillery and Rengers 2019; Rengers et al., 2019; Wang et al., 2017; McGuire and Youberg, 2019; Gregoretti, 2000). This implies that a trigger-based threshold established by effectively taking into account hydrodynamic conditions may be more reliable in predicting the occurrence of runoff-generated debris flows to support early warning. Attempts have been reported to analyze the initiation conditions for runoff-generated debris flows using a hydrological approach (Renger et al., 2016; Capra et al., 2018; Pastorello et al., 2020; Marino et al., 2022; Li et al., 2021; Bernard and Gregoretti, 2021). However, direct measurement of flow discharge that is closely related to the initiation of runoff-generated debris flows in headwater catchments is still technically challenging, and high-quality monitoring data is rare. So, most of the hydrological or hydrodynamic models used in the previous studies were not properly calibrated and validated by field observations (Capra et al., 2018; Pastorello et al., 2020), making the reliability of simulation results and the following analysis questionable. Attempting to overcome the problems, Gregoretti et al. (2016) built a weir at the outlet of a small headwater catchment to directly measure the flow discharge in a debris-flow source area. Peak discharge has garnered widespread acceptance as a standard critical parameter for predicting debris flow occurrences (Wei et al., 2018). For instance, Li et al. (2021) established rainfall intensity-duration thresholds based on process-based critical runoff discharge. Bernard and Gregoretti (2021) proposed an approach to determine debris flow occurrence by coupling a hydrological model with a critical discharge relationship using rainfall and raw radar data. However, in these existing frameworks, the peak discharge is usually predicted by a hydrological model; such an approach may predict the occurrence but not the scale of debris flow.

To fill the current research and practical gaps, we aim to propose in this study a new framework based on an integrated hydrological and hydrodynamic modeling approach to more reliably estimate the rainfall thresholds of runoff-generated debris flows, i.e. providing a physically based approach to estimate trigger-cause-based rainfall thresholds. In addition, the proposed modeling framework

will effectively incorporate meteorological conditions, catchment topographic properties, and grain-size distribution of debris materials, making it more suitable for application in areas with limited historical data. The rest of the paper is organized as follows: Section 2 describes the proposed framework; Section 3 introduces the case study including the flow monitoring scheme; Section 4 presents the validation results; Section 5 discusses the advantages and limitations of the proposed method, followed by brief conclusions drawn in Section 6.

## 2. The new framework

As illustrated in Fig. 1, the proposed framework aims to depict the rainfall-induced hydrological processes and estimate the I-D rainfall thresholds for runoff-generated debris flows by integrating hydrological and hydrodynamic predictions. The framework comprises four main components: rainfall estimation, hydrological analysis, hydrodynamic prediction, and quantification of hydrodynamic thresholds. Firstly, intensity-duration-frequency (IDF) analysis and a Gaussian distribution profile are used to generate synthetic rainfall events. These synthetic rainfall events provide the meteorological inputs to the adopted hydrological model for predicting runoff in the debris-flow triggering areas. Driven by the discharge hydrographs of different return periods produced by the hydrological model as boundary conditions, a hydrodynamic model will be used to calculate the grid-based flow information including spatially and temporally varying flow depth and velocity in the areas prone to debris flows. The produced flow information is then used to calculate the hydrodynamic metrics based on unit-width discharge for comparison with the corresponding hydrodynamic thresholds to indicate the occurrence of debris flows. In practice, it is not realistic to generate the I-D rainfall thresholds of debris flows at a cell scale. So, a zone threshold is further introduced to indicate the initiation of debris flows at a catchment scale. Combining the hydrodynamic thresholds with the zone threshold, an integrated threshold is finally generated to predict the occurrence of debris flows.



**Fig. 1 An integrated hydrological and hydrodynamic modelling framework for estimating rainfall thresholds for the occurrence of runoff-generated debris flows.**

## 2.1 Rainfall analysis

The IDF (Intensity-Duration-Frequency) analysis plays a pivotal role in generating various synthetic rainfall events for driving hydrological modeling and subsequent analyses within the proposed framework. The IDF curves employed in this study have been derived in accordance with the Atlas of Storms Statistical Parameters for Zhejiang Province, China, the region where our case study is situated (Zhejiang Province Bureau of Hydrology, 2003). This Atlas is a comprehensive compilation that draws from rainfall observations spanning the years 1953 to 2013 and serves as the authoritative reference for guiding hydraulic engineering design within Zhejiang Province.

Derived from the Pierson Type III probability density function, our IDF curves effectively encompass the range defined by the upper and lower bounds of curves generated by other types of probability functions, such as extreme value and long-term probability functions. As outlined in the Atlas of Storms Statistical Parameters, it is possible to compute extreme rainfall for various return periods and durations, denoted as  $H_p$  as below:

$$H_p = K_p \bar{H} \quad (1)$$

where  $\bar{H}$  is the maximum average rainfall of a specific duration,  $K_p$  is a coefficient with the subscript  $p$  denoting the rainfall duration. The values of both  $\bar{H}$  and  $K_p$  can be obtained from the

Atlas.

Nevertheless, it's important to note that the Atlas exclusively provides information on extreme  
150 rainfalls for durations of 1 hour, 6 hours, and 24 hours. Therefore, a method for estimating rainfall  
with a 3-hour duration becomes imperative for the scope of this study. Within the Atlas, one can  
readily compute the rainfall depth ( $H_i$ ) for rainfall events spanning durations ( $t_i$ ) between 1 and 6  
hours using the following approach:

$$H_i = H_{1h} t_i^{1-n_{1,6}} \quad (2)$$

$$n_{1,6} = 1 + 1.2851 \lg(H_{1h} / H_{6h}) \quad (3)$$

where  $H_{1h}$  and  $H_{6h}$  are respectively the extreme rainfall depths of the 1h and 6h events, and  $n_{1,6}$  is  
155 the corresponding attenuation coefficient.

Whilst the IDF analysis only specifies the total rainfall amount (i.e. depth) and duration, a  
Gaussian profile is further used to distribute the rainfall amount over a specific duration, following  
the approach used by Tang et al. (2019) and Berti et al. (2020). Compared with other similar studies  
which suggested the rainfall amount arbitrarily (McGuire and Youberg, 2019; Tang et al., 2019), the  
160 design hyetographs generated from IDF analysis may better reflect the actual rainfall characteristics  
of the study area due to the use of local guidance created from multiple observations.

## 2.2 Hydrological analysis

The Nedbør Afstrømnings Model (NAM) (Madsen, 2000) is adopted to simulate the  
hydrological response to the design rainfall in the headwater catchment of the study site. The NAM  
165 model is part of the MIKE 11 river modelling system (Madsen, 2000), which was developed for  
simulating rainfall-runoff process in sub-catchments and has been successfully applied in  
catchments across various climatic regimes including humid areas like the case study site (Butts et  
al., 2004; Nayak et al., 2013). The structure of the model mainly consists of four mutually  
interrelated storage components, i.e. snow storage (not used in this work), surface storage, lower  
170 zone (root zone) storage and groundwater storage, to account for different physical specifications in  
the precipitation-runoff process (Makungo et al., 2010; Liu and Sun, 2010). The main inputs of the  
NAM model are rainfall and temperature (which is only needed when snow storage is considered  
and so it is not relevant in this work).

As NAM is a conceptual model, most of the model parameters are of empirical or conceptual  
175 nature and determined through calibration against hydrological observations. NAM model  
calibration involves the optimization of multiple objectives that consider different aspects of a  
hydrograph: (1) water balance, (2) profile of the hydrograph, (3) peak flows, and (4) low flows. An  
automatic optimization procedure based on the shuffled complex evolution algorithm is introduced  
for solving the multi-objective calibration problem to support model calibration (Masen, 2000).

180 Table 1 lists the nine model parameters used in the simulations conducted in this work, which  
are linked to the surface zone, the root zone, and the groundwater storage as mentioned.

**Table 1 Parameters of the NAM model involved in this work.**

Parameter	Description	Limits of the parameters	
		Lower bound	Upper bound
$U_{MAX}$ (mm)	Maximum water content in the surface storage.	5	35
$L_{MAX}$ (mm)	Maximum water content in the lower zone storage.	50	350
CQOF (-)	Overland flow runoff coefficient.	0	1
TOF (-)	Threshold value for overland flow.	0	0.9
TIF (-)	Threshold value for interflow.	0	0.9
TG (-)	Threshold value for recharge.	0	0.9
$CK_{IF}$ (h)	Time constant for interflow from the surface storage.	500	1000
$CK_{1,2}$ (h)	Time constant for overland flow and interflow routing.	3	72
$CK_{BF}$ (h)	Base flow time constant.	500	5000

To evaluate the hydrological simulation results, two statistical indices are adopted, i.e. Nash-Sutcliffe Efficiency (NSE) coefficient (Nash and Sutcliffe 1970) and Schulz criterion (Schulz et al., 1999; Gregoretti et al., 2016). NSE has been widely adopted for evaluating the performance of hydrological models (Nayak et al., 2013; Makungo et al., 2010). The Schulz criterion has been used to validate hydrological simulations in small catchments prone to debris flows, similar to the current case study (Gregoretti et al., 2016). The Nash-Sutcliffe coefficient is defined as

$$NSE = 1 - \frac{\sum_{i=1}^N [q_o(i) - q_s(i)]^2}{\sum_{i=1}^N [q_o(i) - \bar{q}_o]^2} \quad (4)$$

where  $i$  is the data index;  $N$  is the total number of data points;  $q_o$  is the observed discharge ( $m^3/s$ );  $q_s$  is the simulated discharge ( $m^3/s$ ); and  $\bar{q}_o$  is the average of the observed discharge ( $m^3/s$ ). The Schulz criterion is a model performance indicator defined as follows:

$$D = 200 \frac{\sum_{i=1}^N |q_s(i) - q_o(i)| q_o(i)}{N(q_{o,max})^2} \quad (5)$$

where  $q_{o,max}$  is the observed maximum discharge ( $m^3/s$ ). The Schulz criterion classifies the performance of a hydrological model into four categories, ranging from very good to insufficient, as listed in Table 2.

**Table 2 Model performance classified by the Schulz criterion (Schulz et al., 1999)**

Performance indicator	Very good	Good	Sufficient	Insufficient
D	0-3	3-10	10-18	>18

## 2.3 Hydrodynamic modeling

200 In the proposed modelling framework, a hydrodynamic model, the High-Performance Integrated hydrodynamic Modelling System (HiPIMS) (Xia et al. 2019), is employed to predict the grid-based flow information (i.e. water depth and velocity/discharge) in the debris flow triggering area, driven by the output hydrograph(s) from hydrological modelling/analysis in the considered headwater catchment. HiPIMS solves the following fully 2D shallow water equations (SWEs):

$$205 \quad \frac{\partial \mathbf{q}}{\partial t} + \frac{\partial \mathbf{f}}{\partial x} + \frac{\partial \mathbf{g}}{\partial y} = \mathbf{S}_b + \mathbf{S}_f \quad (6)$$

where  $t$  is the time,  $\mathbf{q}$  is the vector containing the flow variables,  $\mathbf{f}$  and  $\mathbf{g}$  are the flux vectors in the  $x$  and  $y$ -directions, and  $\mathbf{S}_b$  and  $\mathbf{S}_f$  are the source term vectors representing bed slope and friction effect, respectively. The vector terms are given by

$$\mathbf{q} = \begin{bmatrix} h \\ uh \\ vh \end{bmatrix} \quad \mathbf{f} = \begin{bmatrix} uh \\ u^2h + \frac{1}{2}gh^2 \\ uvh \end{bmatrix} \quad \mathbf{g} = \begin{bmatrix} vh \\ uvh \\ v^2h + \frac{1}{2}gh^2 \end{bmatrix} \quad (7)$$

$$\mathbf{S}_b = \begin{bmatrix} 0 \\ -gh \frac{\partial b}{\partial x} \\ -gh \frac{\partial b}{\partial y} \end{bmatrix} \quad \mathbf{S}_f = \begin{bmatrix} 0 \\ -\frac{\tau_{bx}}{\rho} \\ -\frac{\tau_{by}}{\rho} \end{bmatrix} \quad (8)$$

210

where  $h$  is the water depth,  $u$  and  $v$  are the two depth-averaged velocity components in the  $x$  and  $y$ -directions,  $\rho$  is the water density,  $g$  is the gravitational acceleration, and  $\tau_{bx}$  and  $\tau_{by}$  are the frictional stresses estimated using the Manning equation:

$$\tau_{bx} = \rho C_f u \sqrt{u^2 + v^2} \quad \tau_{by} = \rho C_f v \sqrt{u^2 + v^2} \quad (9)$$

215 in which  $C_f$  is the roughness coefficient calculated using

$$C_f = gn^2 / h^{1/3} \quad (10)$$

where  $n$  is the Manning coefficient.

HiPIMS solves the above governing equations using a Godunov-type finite volume numerical



scheme, making it suitable for simulating different types of shallow flow hydrodynamics, including  
 220 the high-transient flash flooding processes induced by dam breaks or intense rainfall. HiPIMS is  
 also implemented on multiple graphics processing units (GPUs) to achieve high-performance  
 computing and has been intensively tested for modelling catchment-scale overland flow and  
 flooding processes as well as other types of flood hydrodynamics (Ming et al., 2022; Chen et al.,  
 2022). HiPIMS is therefore suited for predicting the transient and complex flow hydrodynamics  
 225 across different flow regimes in the debris flow triggering area, as required by this work. More  
 details of the model can be found in Xia et al. (2019) and Ming et al. (2020).

## 2.4 Hydrodynamic indices and thresholds

Previous studies have demonstrated that the transition from runoff to a debris-dominated flow  
 may occur when the surface-water flow exceeds the thresholds of critical flow discharge (Gregoretti  
 230 and Fontana, 2008; Gregoretti 2000; Recking 2009). Different formulae have been reported to  
 estimate the critical discharge that triggers a runoff-generated debris flow. In this study, the  
 equations proposed by Wang et al. (2017) and Whittaker and Jäggi. (1986) are considered. The  
 formula introduced by Wang et al. (2017) calculates the critical unit-width discharge ( $q_c$ ) as

$$q_c = 0.32 \frac{d_{84}^{2.5}}{(\tan \theta)^2 d_{16} C_u C_c^{0.4}} \quad (11)$$

235 where  $\theta$  is the mean gradient angle of the triggering area,  $d_{84}$  and  $d_{16}$  are the 84% and 16% grain  
 diameters in the particle size distribution curve and  $C_u = d_{60}/d_{10}$  and  $C_c = (d_{30})^2/(d_{60}d_{10})$  are the non-  
 uniformity and curvature coefficients, with  $d_{60}$ ,  $d_{30}$  and  $d_{10}$  respectively denoting the 60%, 30% and  
 10% grain diameters. Equation (11) explicitly takes into account the inhomogeneity of sediment and  
 has been shown to provide a reliable estimation of critical discharge (Wang et al. 2017). Most  
 240 previous formulae are based on the mean grain diameter by assuming homogeneous or narrowly  
 graded sands and therefore do not consider the effect of inhomogeneity of gully bed materials on  
 debris flow initiation, which may potentially lead to less accurate results. Specifically relevant to  
 the current study, the mean slope of the triggering area under consideration is within the range  
 investigated by Wang et al. (2017).

245 The equation reported by Whittaker and Jäggi (1986) was developed to calculate the critical  
 discharge that leads to the destabilization of artificial block ramps (hydraulic structures built with  
 boulders to stabilize riverbeds), written as:

$$q_c = 0.257(s-1)^{0.5} g^{0.5} d_{65}^{1.5} (\tan \theta)^{-1.17} \quad (12)$$

where  $s$  is the ratio of the sediment density ( $\rho_s$ ) to water density ( $\rho$ ), and  $d_{65}$  is the 65% grain diameter  
 250 in the particle size distribution curve. As Equation (12) was proposed to evaluate the erosion of  
 block ramps with large blocks, it is used in this work to calculate the critical discharge that initiates  
 the motion of large boulders in the triggering area.

In the implementation, the grid-based water depths and flow velocities predicted by HiPIMS are used to calculate the corresponding unit-width discharge  $q$  (m<sup>2</sup>/s) at each grid cell in the triggering area as

$$q = h\sqrt{u^2 + v^2} \quad (13)$$

which is then used to define the hydrodynamic index in each grid cell and compared with the hydrodynamic thresholds (i.e. critical unit-width discharges) calculated using Equations (11) and (12) to indicate the potential occurrence of debris flows.

### 3. Case study

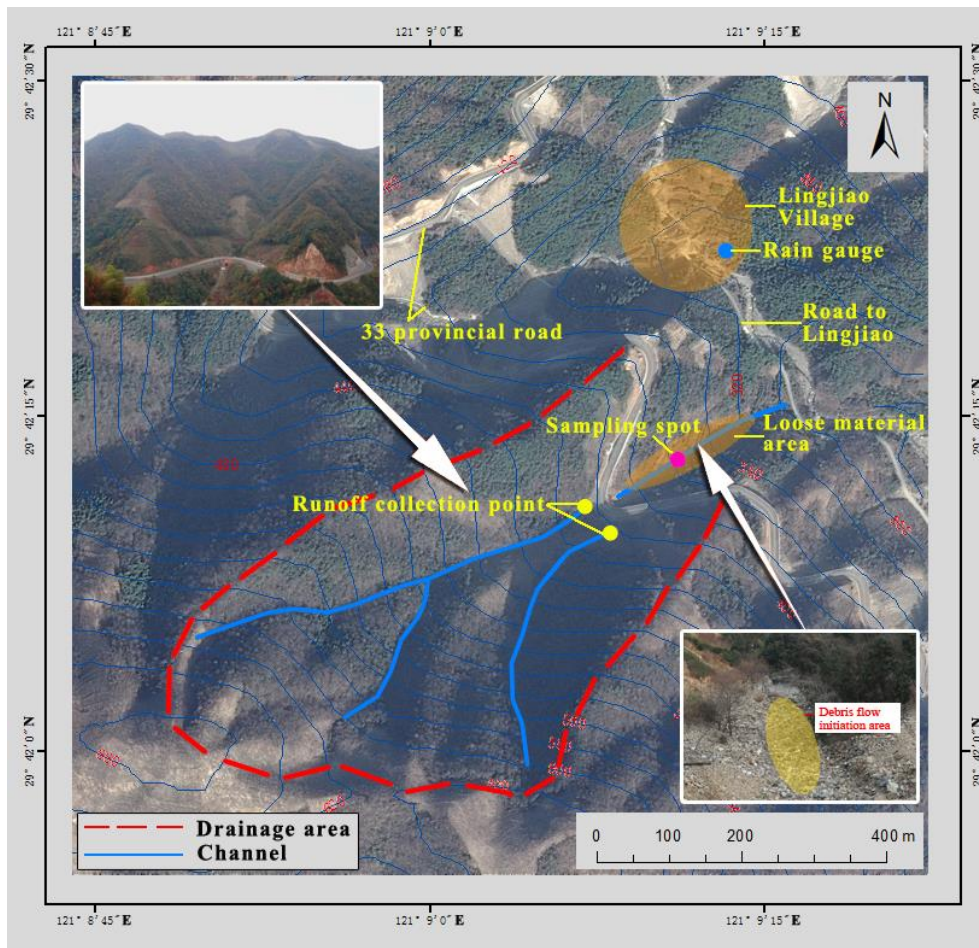
The proposed framework is applied to estimate the rainfall thresholds for triggering runoff-generated debris flows in a small catchment in Zhejiang Province, China.

#### 3.1 Description of the study site

The study catchment is located in Fenghua City, Zhejiang Province, China. As shown in Fig. 2, the catchment has an area of about 0.17 km<sup>2</sup>, and is crossed by a provincial road (No. 33 Provincial Road) constructed in 2013. Downstream of the catchment, a countryside road connects the Linjiao Village to the outside. The area is dominated by a subtropical monsoon climate with most of the precipitation occurring in the summer months (1000–1700 mm of annual rainfall). In particular, the study catchment often suffers from typhoons which may bring in extreme rainfall and cause flooding and other hydro-geohazards, e.g. debris flows. For example, the excessive rainfall associated with Typhoon Fitow triggered a debris flow on 5th October 2013. The deposit fan of debris flow blocked the aforementioned countryside road, severely interrupting people's livelihoods. The increased risk of debris flows in the catchment is attributed to the availability of loose debris material disposed in channels (triggering area). The loose material was produced during the construction of Provincial Road No. 33 and can be easily eroded and transit into debris flows once the necessary hydrodynamic conditions are met.

As illustrated in Fig. 2, the study catchment is divided into two parts by the provincial road; south of the road is the headwater catchment area, and north of the road is the triggering area where the loose construction wastes are distributed. In Fig. 2, the top left image provides an aerial view of the study area, offering a comprehensive overview of the geographic context. The bottom right image specifically focuses on the debris flow initiation area, providing a close-up view to highlight the key features and characteristics. When a large rainfall event hits the headwater catchment area, the induced overland flow will converge into the main channel. Through the culvert underneath the road, the flow will travel into the triggering area and erode the loose soil materials to create a large volume of water and sediment mixture, subsequently forming a debris flow. Table 3 summarizes the

morphological characteristics of the catchment, extracted from the ASTER Global Digital Elevation Model (ASTER GDEM) of  $5 \times 5$  m spatial resolution (Wei et al., 2018).



**Fig. 2** The study area and locations of monitoring instruments (modified from Wei et al., 2018).

290 Grain-size distribution (GSD) has been demonstrated to be an effective index to characterize the rheological behavior of debris flows. Herein, we adopt a simple sieving method to obtain the GSD of the loose material. An approx.  $0.1 \text{ m}^3$  soil sample is taken from a  $2 \text{ m} \times 1 \text{ m}$  rectangular window at the site. The maximum grain size is analyzed to be about 120 mm whilst the minimum grain diameter is approx. 0.075 mm (Fig. 3). Bardou et al. (2003) classified debris flows into two  
 295 main rheo-physical types, i.e. the viscoplastic class including the muddy debris flows that demonstrate a Herschel-Bulkley or Bingham flow behavior and the collisional class of stony debris flows that are featured with a Coulomb-like flow behavior. As shown in Fig. 3, the study area may be characterized as a collisional regime, most likely forming stony debris flows.

**Table 3** Morphological characteristics of the catchment ( $A_c$  is the catchment area ( $\text{km}^2$ );  $\theta_{\text{TRIG}}$  is the average slope of the triggering area;  $Y_{\text{out}}$  is the altitude at the outlet;  $Y_{\text{org}}$  is the altitude at the channel head).

300

$A_c$ ( $\text{km}^2$ )	$\theta_{\text{TRIG}}$ ( $^\circ$ )	$Y_{\text{out}}$ (m)	$Y_{\text{org}}$ (m)
0.17	18	384	668

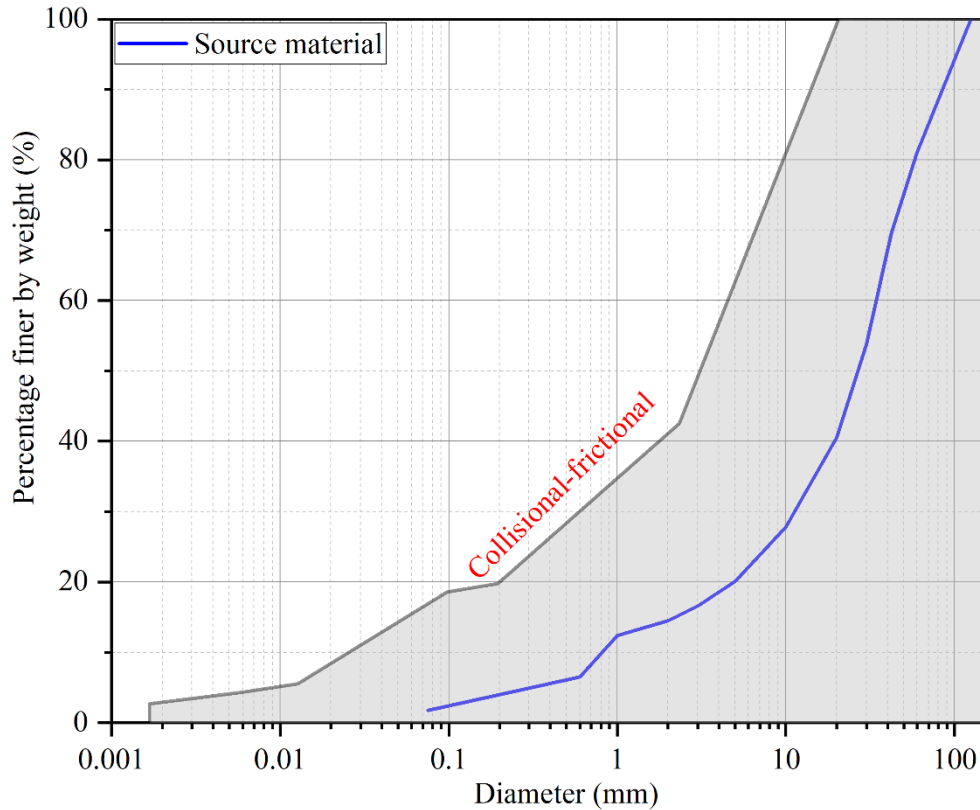


Fig. 3 Grain-size distribution derived from the soil sample collected in the triggering area; the rheological classes proposed by Bardou et al. (2003) are added as a reference.

### 305 3.2 Monitoring system

A monitoring system was set up to record rainfall and flow discharge in the case study site. For rainfall monitoring, a HOBO RGM-3 tipping bucket rain gauge produced by Onset Company, USA was installed. The rain gauge has a resolution of 0.2 mm per tip, meaning that the device will generate records for cumulative rainfall greater than 0.2 mm. Debris flows are usually triggered by locally convective rainfall that covers only a small storm cell (a few square kilometers or even less). It is therefore important to install a rain gauge as close as possible to the triggering zone to ensure the reliability of rainfall records (Simoni et al., 2020). In this case, the rain gauge was installed on the roof of a house in Lingjiao Village (Fig. 2), which is only about 200 m away from the study site and can effectively avoid misrepresenting rainfall conditions.

To measure flow discharge, two triangular weirs were installed at the outlets of the two channels from the headwater catchment, just in front of the culvert (Fig. 4). The flow discharge is derived from a rating curve based on the measured water level. The rating curve used in this study is computed by solving the continuity equation recommended by Berti et al. (2020). To minimize water surface oscillations that may affect the reliability of water level measurement during extreme flow conditions, two approximately rectangular stilling basins (about 1.2 m wide and 2.0 m long) were also constructed at the upstream sides of the weirs. The bottom of the stilling basins was

flattened and built with concrete. The water level was measured using a pressure water-level recorder (Odyssey Capacitance Water Level Logger) installed inside a vertical PVC pipe, which has a resolution of approximately 0.8 mm. The PVC pipe was installed in each of the stilling basins to improve stability, i.e. avoiding vibration of PVC pipe caused by the water flow. In addition, holes were also created along the vertical direction to synchronize the changing water level with the ambient flow (Wei et al., 2018). The data logger sampled the water level records at a 10-min interval. The weirs were thin-walled with a 90° notch. The monitoring system operated successfully for about one month, during which six rainfall events occurred, which provides short but reliable high-quality measurements to support the current study.

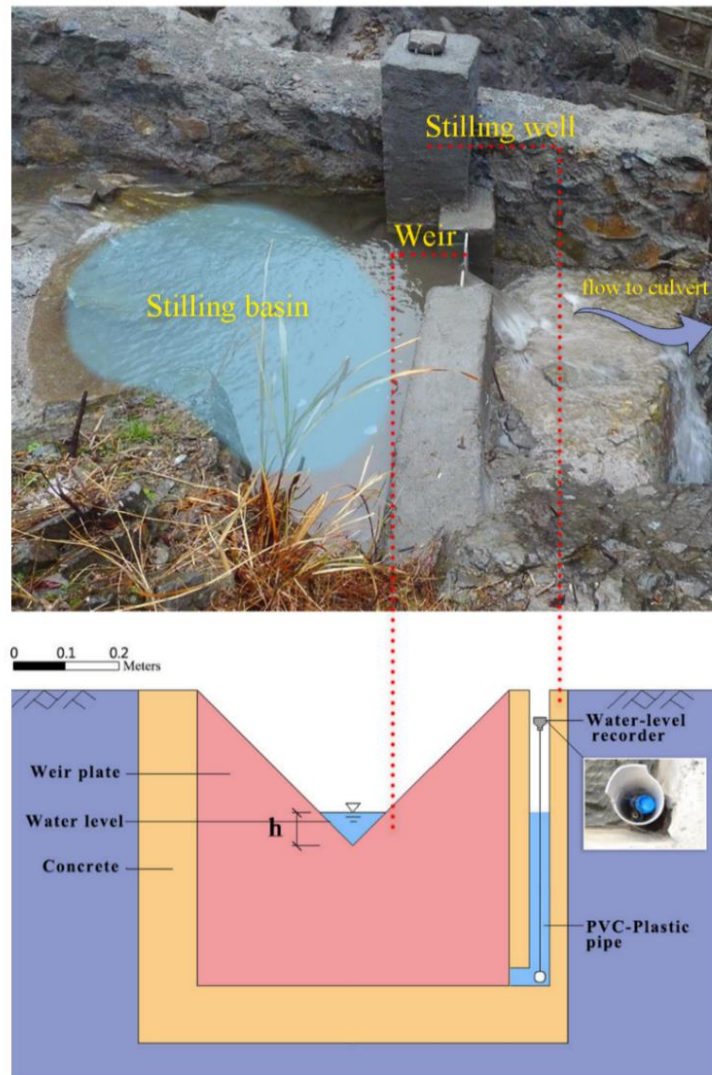


Fig. 4 Water discharge measuring system (modified from Wei et al., 2018).

The outflow discharge ( $Q_w$ ) from the head catchment is estimated based on the continuity equation:

$$Q_w(t) = \frac{dV_b}{dt} + Q_b \quad (14)$$

335

where  $V_b$  is the volume of water in the stilling basin which is a function of the water depth,  $dV_b/dt$  can be approximated using the backward finite difference method:

$$\frac{dV_b}{dt} \approx \frac{\Delta V_b}{\Delta t} = \frac{V_b(i) - V_b(i-1)}{10 \cdot 60} = \frac{A_b h_b(i) - A_b h_b(i-1)}{10 \cdot 60} \quad (15)$$

where  $h_b$  is the water depth recorded at a 10-min interval,  $i$  indexes the timestep,  $\Delta t = 10 \times 60$  (s),  
 340  $A_b = 2.4 \text{ m}^2$  is the area of the stilling basin, and  $Q_b$  ( $\text{m}^3/\text{s}$ ) is the discharge over the weir calculated using the formula recommended by the Water Supply and Drainage Design Manual of China (Southwest Institute of Municipal Engineering Design and Research, 2000):

$$Q_b = 1.343(h / 1000)^{2.47} \quad (16)$$

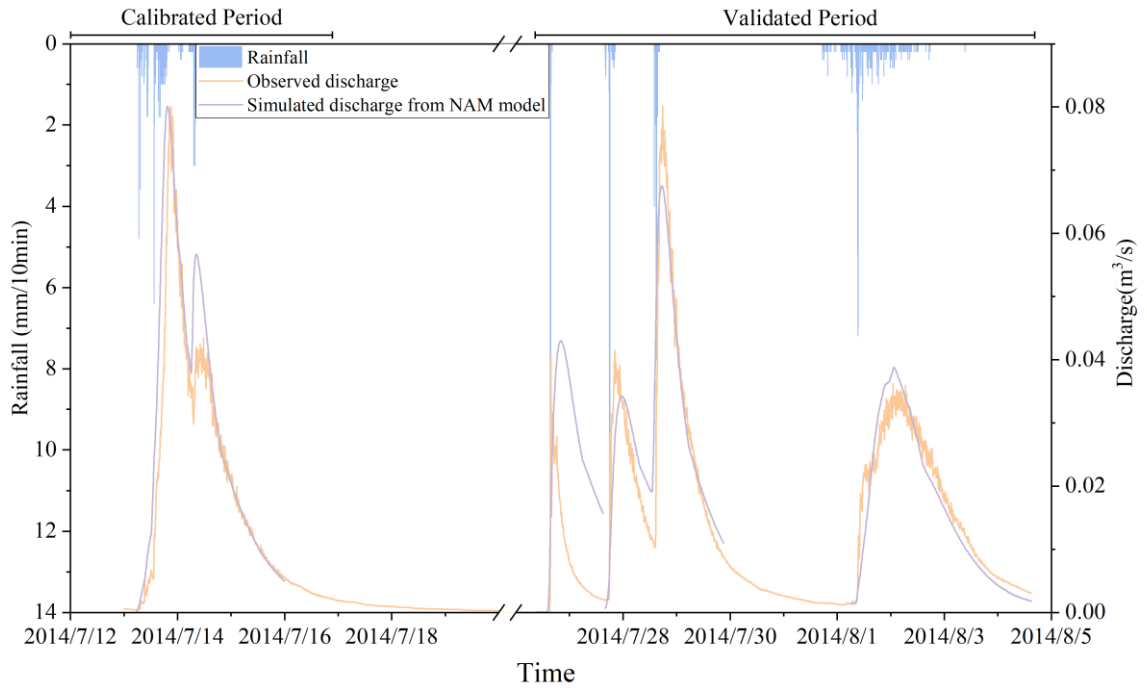
The formula is applicable for thin-walled weirs with a weir angle of 90 degrees, and the water  
 345 depth over the weir falls within the range of 0.02 m to 0.35 m. The discharge calculated using this equation should range from  $8.9 \times 10^{-5} \text{ m}^3/\text{s}$  to  $0.1 \text{ m}^3/\text{s}$ .

## 4 Results

In this section, the predicted flow discharge is first compared with the observation data to  
 350 calibrate and verify the hydrological model. Then, rainfall events with and without triggering a debris flow are considered to validate the proposed modelling methodology. Finally, driven by the design rainfall events generated from IDF analysis, the proposed framework is applied to predict the rainfall thresholds for triggering debris flows. For the hydrological modelling, the time interval of the input rainfall data is 1h and the temporary resolution of the predicted hydrographs is 10 mins. The hydrodynamic modelling results are recorded every 10 min to maintain consistency with the  
 355 hydrological modelling outputs.

### 4.1 Hydrological simulation results

The effective discharge measurement data is considered herein to evaluate the hydrological  
 360 model introduced in Section 2.2, which covers six rainfall events over one month, as shown in Fig. 5. The monitoring period is divided into two parts, i.e. from July 3 to July 15 and from July 26 to August 3, to respectively use for model calibration and verification. It is important to note that no debris flow occurred during the depicted rainfall events and the observed discharge in Fig. 5 all corresponds to clear water flow.



**Fig. 5 Recorded rainfall, observed discharge, and simulated discharge in the study site**

365 The NAM model is first calibrated automatically to decide the initial parameters, using an automatic calibration scheme as introduced in Section 2.2. Subsequently, a trial-and-error method is further used to refine parameter values by visually comparing the simulated and observed hydrographs. Hydrological simulations in the study area were already conducted by Wei et al. (2018) using part of the hydrological monitoring data, which are enriched in this study using more monitoring data to further validate the hydrological model. The final values of the model parameters are listed in Table 4. Fig. 5 compares the predicted discharges with the observed data during the calibration process. The predicted flow discharges agree reasonably well with the observations. The model predicts a peak discharge at 0.081 m<sup>3</sup>/s, which is close to the observed peak of 0.079 m<sup>3</sup>/s. Quantitatively, the Nash-Sutcliffe coefficient (*NSE*) and Schulz criterion (*D*) calculated from the NAM predictions are presented in Table 5. In Table 5, the rainfall events on July 13 and July 14 of the calibration period and also the ones on July 27 and July 28 of the validation period are jointly assessed as they occurred close to each other and are reasonable to be considered as ‘continuous’ events. The NAM model returns 0.89 and 4.64 respectively for *NSE* and *D*. According to the Schulz criterion, the performance of NAM model is ranked as ‘good’.

380 **Table 4 Calibrated model parameters for the NAM model.**

Parameter	Value
$U_{MAX}$ (mm)	10
$L_{MAX}$ (mm)	100
CQOF (-)	0.96
TOF (-)	0.11
TIF (-)	0.21
TG (-)	0.66

CK <sub>IF</sub> (h)	754
CK <sub>1,2</sub> (h)	11.3
CK <sub>BF</sub> (h)	2441

**Table 5 The statistical matrices calculated from model calibration and verification.**

Statistical indicators	Calibration period		Verification period	
	July	July	July	August
	13–15	26–27	27–29	01–04
NSE	0.89	-2.48	0.90	0.90
D	4.64	13	3.36	8.08

The calibrated NAM model is then applied to reproduce the 2<sup>nd</sup> part of the one-month measured data for model verification and the predicted discharges are compared with the observations. The discharge hydrograph predicted for 26<sup>th</sup> to 27<sup>th</sup> July does not compare well with the measurements, as reflected by the returned low value for NSE and high value for Schulz criterion, i.e.  $NSE = -2.48$  and  $D = 13$ . The poor performance of the model for this specific event may be because the model is not specifically calibrated for short-duration and high-intensity storms as the one under consideration (36 mm in 25 min). During the calibration period, the rainfall intensity was relatively low, and the runoff was mainly generated as a result of insufficient catchment storage following a sufficiently long rainfall event. However, for the event during 26-27 July, the intensity of the rainfall was excessive and may be significantly greater than the catchment infiltration rate, subsequently generating excess infiltration runoff. Even so, the NAM model estimates the peak discharge to a reasonable level of accuracy, i.e.  $0.041 \text{ m}^3/\text{s}$  against the observed value of  $0.043 \text{ m}^3/\text{s}$ , and the relative error is only 5%.

From the results as shown in Fig. 5, it can be seen that the NAM model performs better for the rest of the verification period and satisfactorily reproduces the observed hydrographs, which is confirmed by the returned values of the statistical indicators, i.e.  $NSE = 0.90$  and  $D = 3.3$  and  $NSE = 0.90$  and  $D = 8.1$ . Following model verification, it is recommended that the NAM model can effectively reflect the rainfall-runoff process in the study site and can be used in the following simulations and analysis.

Close examination of the numerical results can find that the NAM model may slightly overestimate or underestimate flood peaks in both the calibration and validation periods. The relative errors calculated against the observed and simulated peak discharges for the six rainfall events are 1.2%, 25%, 5%, 17%, 14% and 6%, respectively. Sensitivity analysis was previously conducted by Wei et al. (2018) to identify the key parameters influencing peak discharge calculation. The results revealed that CQOF,  $U_{\max}$  and  $CK_{12}$  exhibited a more profound influence on peak discharge calculation. Whilst the sensitivity analysis provided valuable insights, further research may be still needed in the future to investigate and confirm the performance of the model in



reproducing catchment response to different rainfall patterns when more measured data becomes available to support model calibration and validation.

To further test the capability of the calibrated NAM model in simulating the hydrological response to short-duration and high-intensity rainfall as the 26-27 July rainstorm, an experiment is conducted to re-calibrate the model to the event. The comparison between observed and simulated discharge hydrographs for the event is shown in Fig. 6. Herein, the simulated discharge is also associated with clear water flows. It should be noted that only the 26-27 July rainstorm was used as the calibration process. It is clear that the NAM model performs better during the re-calibration process and satisfactorily reproduces the observed hydrographs, which is confirmed by the returned values of statistical indicators, i.e. NSE = 0.59 and D = 10.4. The model parameters obtained after re-calibration are listed in Table 6. To further support model evaluation, the Kling-Gupta Efficiency (KGE') index is also considered for the re-calibration process (Kling et al., 2012). The KGE' values obtained in this study are around 0.56, providing an additional assessment and confirmation of model performance.

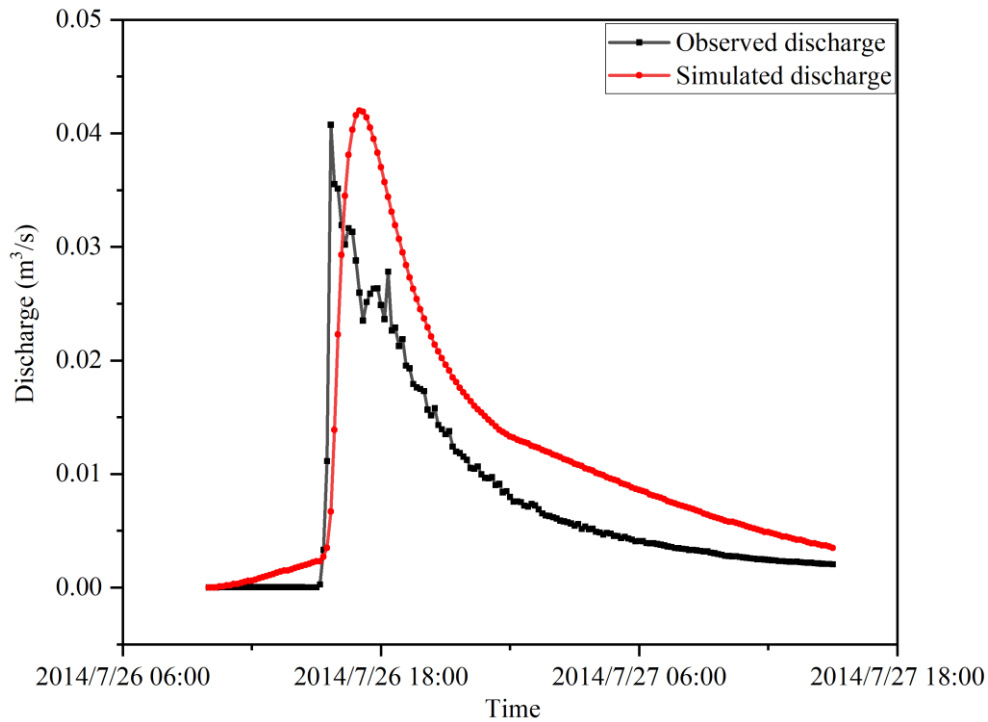


Fig. 6 Comparison between observed and simulated hydrographs for the 26-27 July storm.

Table 6 The re-calibrated parameter values for the NAM model

Parameter	Value
$U_{MAX}$ (mm)	10
$L_{MAX}$ (mm)	100
CQOF (-)	0.96
TOF (-)	0.11
TIF (-)	0.21

TG (-)	0.66
CK <sub>IF</sub> (h)	120
CK <sub>1,2</sub> (h)	5.2
CK <sub>BF</sub> (h)	2441

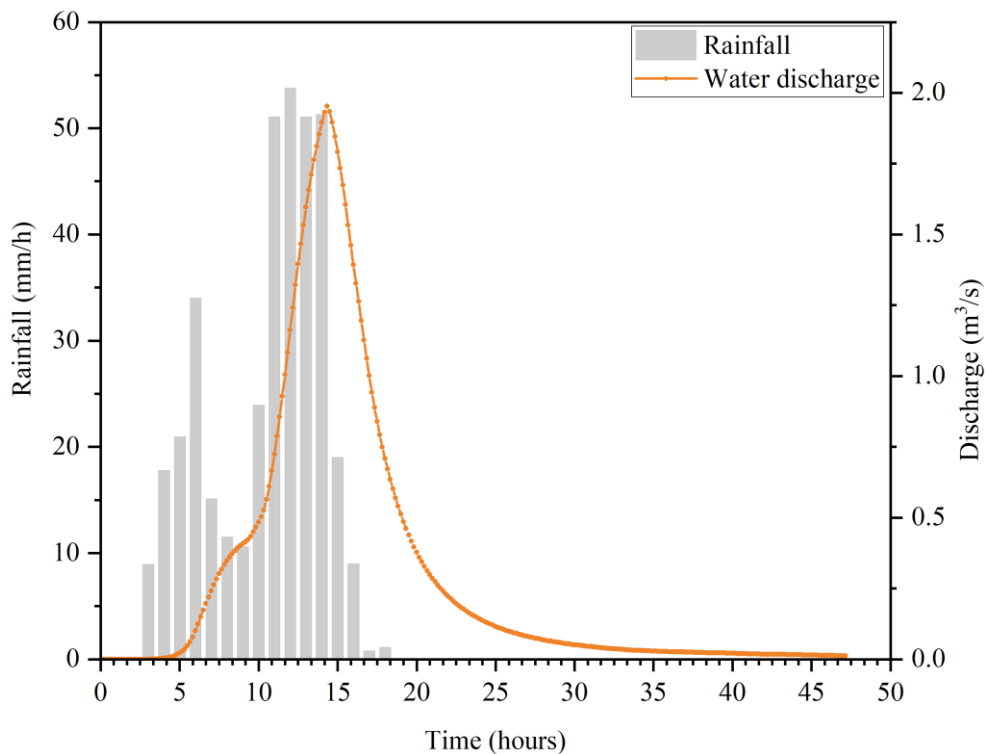
430 From Table 6, it can be found that only the values of CK<sub>IF</sub> and CK<sub>1,2</sub> changed significantly  
whilst the other model parameters do not experience much change during re-calibration. The  
calibrated values of CK<sub>IF</sub> and CK<sub>1,2</sub> have changed from 754 and 11.3 respectively at the initial  
calibration to 125 and 5 following re-calibration. CK<sub>IF</sub> and CK<sub>1,2</sub> are the time constants related to  
the routing of overland flow and may have a significant effect on the lag time between the timing  
435 of peak discharge and rainfall. The values of CK<sub>IF</sub> and CK<sub>1,2</sub> should therefore be carefully calibrated  
and checked for cases of short-duration and high-intensity storms. Based on the definition provided  
by Simoni et al. (2020), a rainfall burst or short-duration and high-intensity rainfall event occurs if  
the rainfall intensity reaches or exceeds 0.2 mm per 5 minutes (i.e. burst intensity threshold).  
Following this definition, a rainfall event with a duration shorter than 1 hour and an intensity greater  
440 than 25 mm/h may be classified as a short-duration, high-intensity rainfall event, e.g. the 26-27 July  
event considered in this work. The reproduction of the 26-27 July event indicates that the selected  
model is capable of simulating the hydrological responses to different hyetographs including short-  
duration, high-intensity rainfall events. Even though the occurrence frequency of short-duration and  
high-intensity events is rare in the study area (See Supplement Fig. S1 and Fig. S2). The proposed  
445 framework may be used to estimate the initiation of runoff-generated debris flows under a wide  
range of rainfall conditions, including rainstorms leading to infiltration excess overland flows and  
those events causing saturation excess overland flows.

## 4.2 Validation of the proposed framework

In this section, the proposed methodology framework is tested for predicting a runoff-generated  
450 debris flow. As described in Equation 6, the initiation of runoff-generated debris flows is primarily  
influenced by the grain-size distribution and the slope of the channel. In this study, the initiation  
area is relatively small, so we did not take into account the spatial variations in the grain-size  
distribution. Instead, we treated the grain-size distribution as constant throughout the area. The slope  
of the channel also plays a role in the initiation of debris flows. We analyzed the statistical features  
455 of the slope in the triggering area, using a digital elevation model (DEM) with a resolution of  
approximately 5m \* 5m. The results indicated that the standard deviation of the slope was only  
about 3.2°. Therefore, we assumed that the slope can be adequately represented by its mean value,  
and we considered the hydrodynamic threshold to be spatially constant. Based on the grain size  
distribution and the topography characteristics of the study area, the critical discharge calculated  
460 from Equation (11) is 0.024 m<sup>2</sup>/s, which is defined as the hydrodynamic threshold  $G$ . To calculate

the critical discharge mobilizing larger blocks, we follow a similar process as reported by Pastorello et al. (2020). The grain size is chosen to be 100 mm (i.e.  $d_{65} = 100$  mm as the representative size for boulders) as the maximum grain size in the triggering area is about 125 mm. Then, based on Equation (12), the critical discharge for mobilizing sparse boulders is calculated to be  $0.12 \text{ m}^2/\text{s}$ , which is defined as the hydrodynamic threshold  $W$ .

In October 2013, a debris flow occurred in the case study site, triggered by the intense rainfall brought in by Typhoon Fitow. Unfortunately, no monitoring instrumentation was installed in the study area at the time, i.e. the catchment was ungauged. So, the rainfall data from the nearest station (Huangtuling; 10 km away) is used. The total rainfall amount of October 2013 rainfall event is 380 mm with the rainfall duration being 16 hours. The characteristics of the rainfall event were analyzed by Wang et al. (2015), showing that the heavy rainfall was larger than 300 mm and covered an area of about  $258 \text{ km}^2$  (including the current study area). The rainfall records from the Huangtuling station are considered to be relevant and used to drive the calibrated NAM model to predict the hydrograph out of the upper catchment, as shown in Fig. 7.



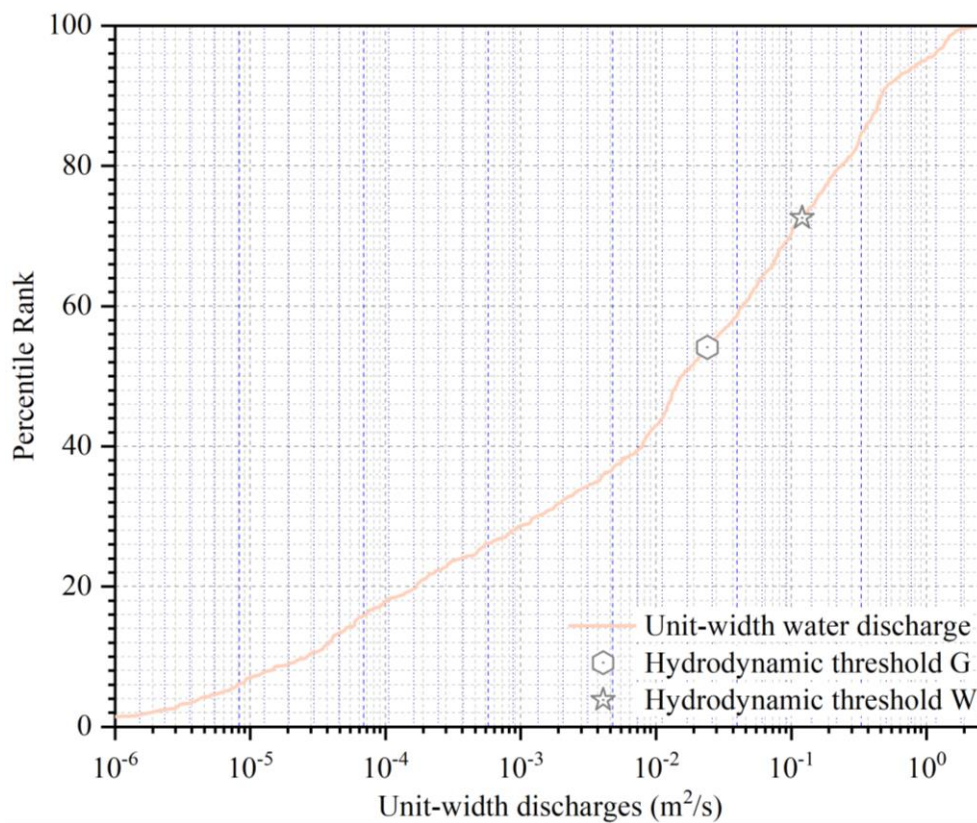
475

**Fig. 7 The rainfall input and predicted hydrograph during Typhoon Fitow in the study area.**

The predicted hydrograph is then used as the input to drive HiPIMS to predict grid-based hydrodynamic information (i.e. water depth and flow velocity) in the triggering area, discretized using a DEM of 5 m spatial resolution. A uniform Manning coefficient of 0.04 is used to reflect the vegetation cover of the study area as suggested by Arcement and Verne (1989). The input hydrograph is applied at a particular input point/cell located at the outlet of the culvert beneath the road as the point-source boundary conditions to drive HiPIMS to simulate the subsequent flow dynamics. During an intense rainfall event occurred in the headwater catchment area, the generated

480

overland flow converges into the main channel, passes through the culvert beneath the road, reaches  
 485 the triggering area, and erodes the available loose soil materials to initiate a debris flow. From the  
 output simulation results in terms of water depth and velocity, the unit-width discharges are  
 calculated at each grid cell, across the entire simulation domain. Fig. 8 presents the distribution of  
 the unit-width discharges from each cell in the triggering area at the time when the peak flow  
 discharge is reached, along with the threshold values.



490

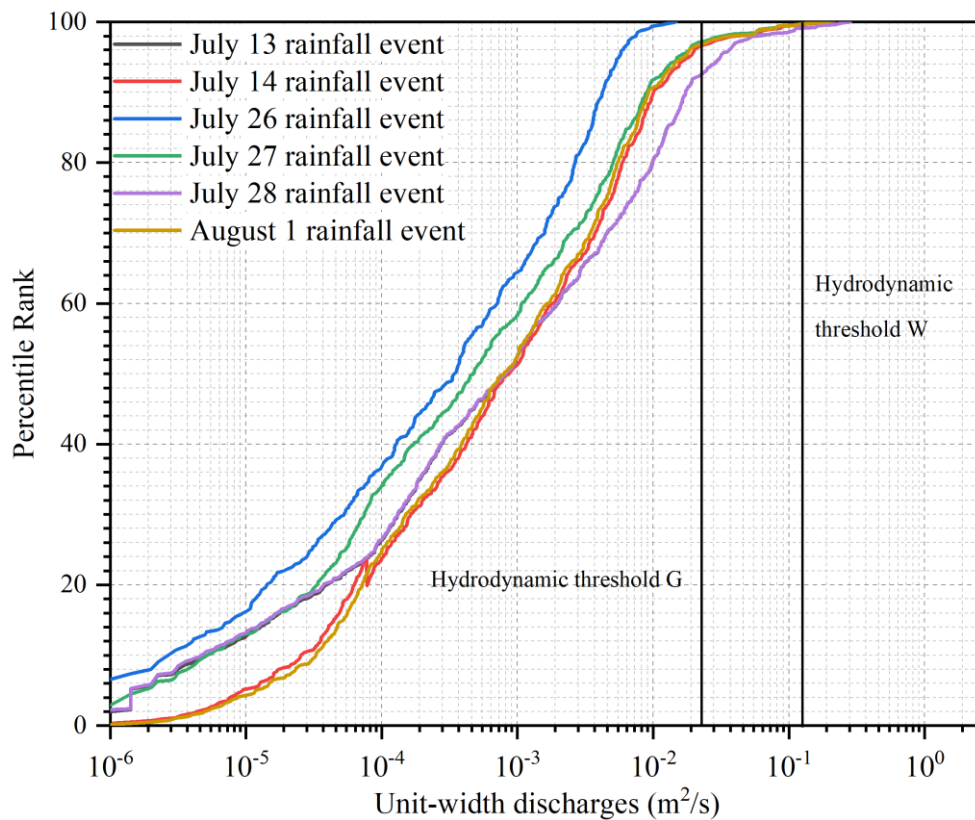
**Fig. 8 Distribution of unit-width discharges along with the threshold values.**

From Fig. 8, it can be seen that the unit-width flow discharge ranges from 0 to 2.42 m<sup>2</sup>/s across  
 the triggering area. From the discharge distribution curve, the corresponding percentiles of the unit-  
 495 width discharge reaching the hydrodynamic thresholds *G* and *W* are 54% and 72%, respectively.  
 This essentially means that 46% and 28% of the grid cells in the computational domain (i.e.  
 triggering area) are predicted with a unit-width discharge larger than the hydrodynamic thresholds  
*G* and *W*. That is also to say that the hydrodynamic conditions for a runoff-generated debris flow  
 have been met in areas covered by 46% of the grid cells according to the hydrodynamic threshold  
 500 *G*. Even based on the much higher threshold *W*, 28% of the grid cells have been predicted with the  
 required hydrodynamic conditions. So, considerably large areas (at least 28%) are estimated to reach  
 the required conditions that can trigger a debris flow. The results are consistent with the actual  
 observation, i.e. a debris flow did occur during the typhoon event, demonstrating that the proposed  
 methodology successfully predicted the occurrence of this debris flow event.

505

We also consider the six rainfall events that did not trigger a debris flow to further test and

confirm the predictability of the proposed framework. Fig. 9 shows the unit-width discharges predicted in each grid cell for the six events, along with the threshold values. The distributions of the unit-width discharges between the 13 July and 28 July events are very similar as the rainfall peaks are almost the same. Table 7 further lists the relevant hydrological information. Among the six non-triggering rainfall events, it is observed that the lowest percentiles for the unit-width discharge reaching the hydrodynamic thresholds  $G$  and  $W$  are 95% and 99.3%, respectively. These percentiles indicate that only 5% and 0.7% of the grid cells inside the triggering area are predicted to reach or exceed the hydrodynamic thresholds of  $G$  and  $W$ . This implies that the hydrodynamic conditions necessary for triggering a debris flow are met in only a small fraction of the grid cells and the likelihood of debris flow occurrence is very low. This conclusion aligns with the actual observations, i.e. no debris flow was observed during these six rainfall events. As a whole, these numerical tests demonstrate the capability of the framework including the adopted hydrodynamic thresholds in predicting six observed non-debris flow events and one actual debris flow event.



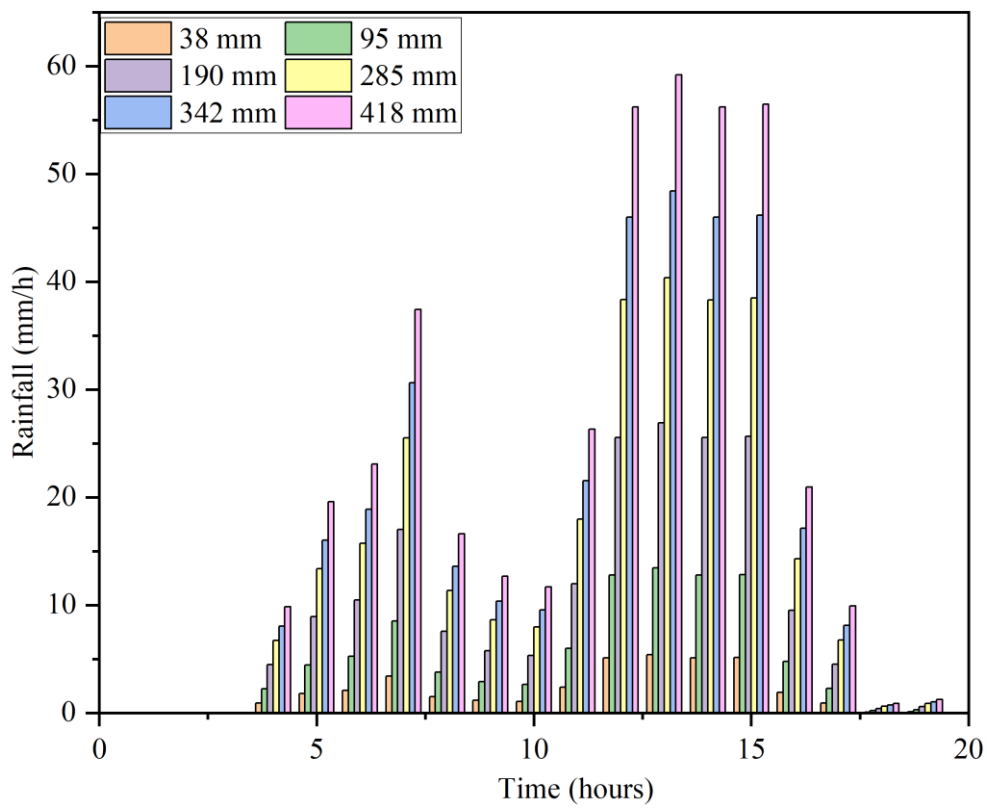
520 **Fig. 9 Distribution of unit-width discharges along with the threshold values predicted for the six rainfall events that did not trigger debris flow.**

**Table 7 Hydrological information of the six rainfall events that did not trigger a debris flow.**

Rainfall event	Cumulative rainfall (mm)	Peak discharge (m <sup>3</sup> /s)	Percentile of Threshold G (%)	Percentile of Threshold W (%)
July 13	51.4	0.079	95	99.3
July 14	13	0.044	97	99.8

July 26	34.8	0.040	100	100
July 27	30.6	0.041	97	99.7
July 28	27.6	0.080	95	99.3
Aug 1	62.8	0.045	98	99.6

To further demonstrate the feasibility of the threshold framework, we have also conducted several extra scenario simulations. Specifically, we modified the input rainfall events, varying the cumulative amount from 10% to 110% of the original rainfall that triggered the 2013 debris flow. The rainfall distribution is presented in Fig. 10. The cumulative input rainfall ranges from 38 mm to 418 mm, with the original value that triggered the 2013 debris flow being 380 mm. The calculated discharge for each scenario is shown in Fig. 11. Additionally, the calculated peak discharge and the corresponding proportion of triggering cells based on the Thresholds G are detailed in Table 8.



**Fig. 10** Rainfall distribution of the extra scenario simulations.

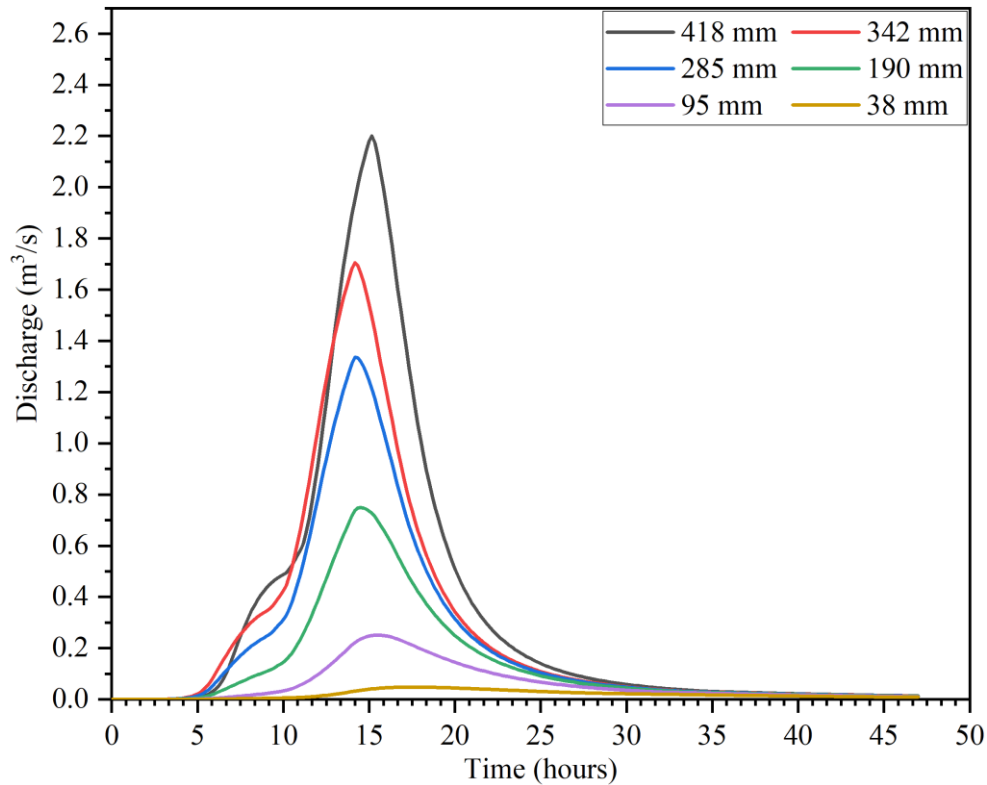


Fig. 11 Calculated runoff of the extra scenario simulations.

535

Table 8 The calculated peak discharge and the corresponding proportion of triggering cells

Parameter	Value					
Cumulative amount of input rainfall (mm)	418	342	285	190	95	38
Calculated peak discharge (m³/s)	2.2	1.7	1.3	0.75	0.25	0.048
Proportion of triggering cells (%)	48	44	39	33	17	3

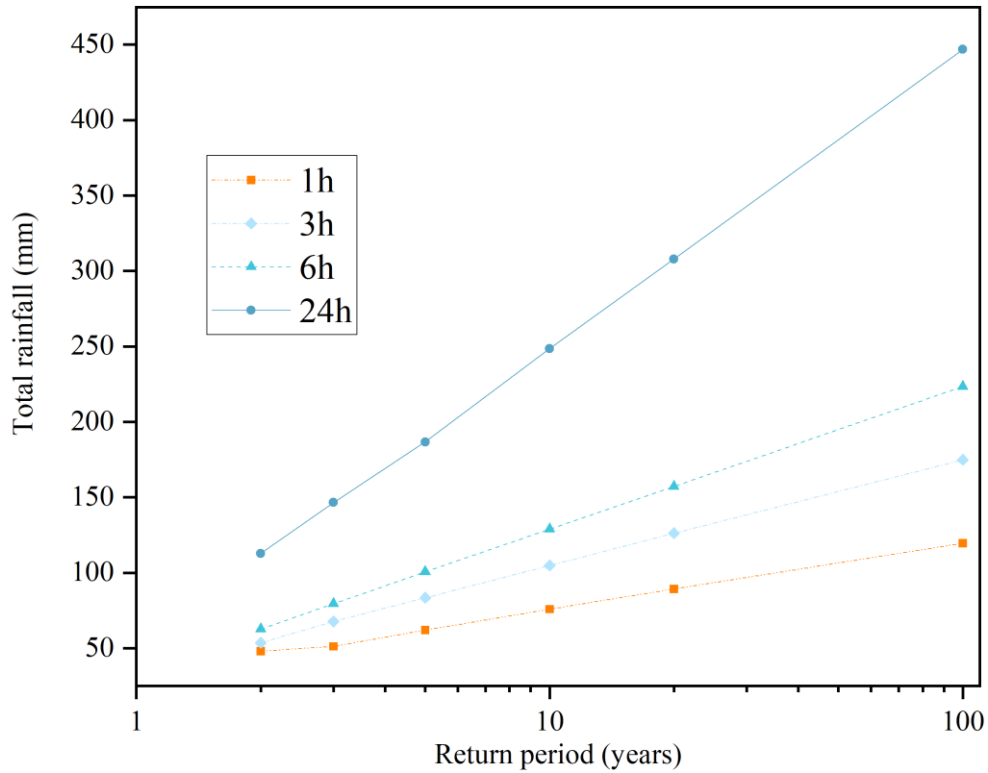
The calculated peak discharge from the rainfall that triggered the 2013 debris flow is 2.0 m³/s. As shown in Table 8, rainfall events resulting in discharges greater than the one in 2013 could also result in debris flow events, with the calculated proportion of triggering cells for a 418 mm rainfall event being 48%. Even slightly lower discharges than the 2013 event may trigger a debris flow, as indicated by the 342 mm rainfall event, which has a calculated triggering cell proportion of 44%. This demonstrates that the calculated proportion of triggering cells is consistent with the change in the input rainfall.

540

### 4.3 Estimation of rainfall thresholds using the proposed framework

Design rainfall of different return periods and durations is obtained for the study area through IDF analysis. In this study, we consider rainfall with a return period of 100, 20, 10, 5, 3 and 2 years and a duration of 1, 3, 6, and 24 h. Therefore, a total of 24 design rainfall events are generated, as illustrated in Fig. 12.

545



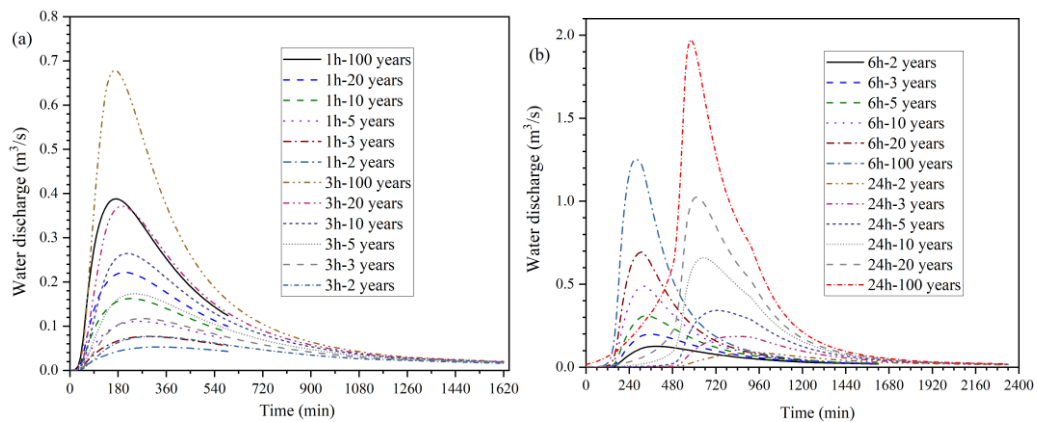
550

**Fig. 12 The design rainfall events obtained through IDF analysis.**

The 24 design rainfall events are then input to the NAM model to predict the corresponding flow hydrographs out from the headwater catchment, which are shown in Fig. 13. The resulting rainfall profiles have different times to peak for design events of different rainfall durations. For example, the times to peak for the 3h rainfall and 6h rainfall are respectively 120 mins and 240 mins.

555

From the results, it can be seen that shorter rainfall duration, e.g. 1 h or 3 h, leads to lower flow discharge, relative to an event with a longer duration (e.g. 6 h or 24 h). This is consistent with other studies in the literature. For example, Pastorello et al. (2020) reported a similar conclusion and suggested that longer rainfall duration is needed to generate large enough flow discharge to mobilize large blocks.



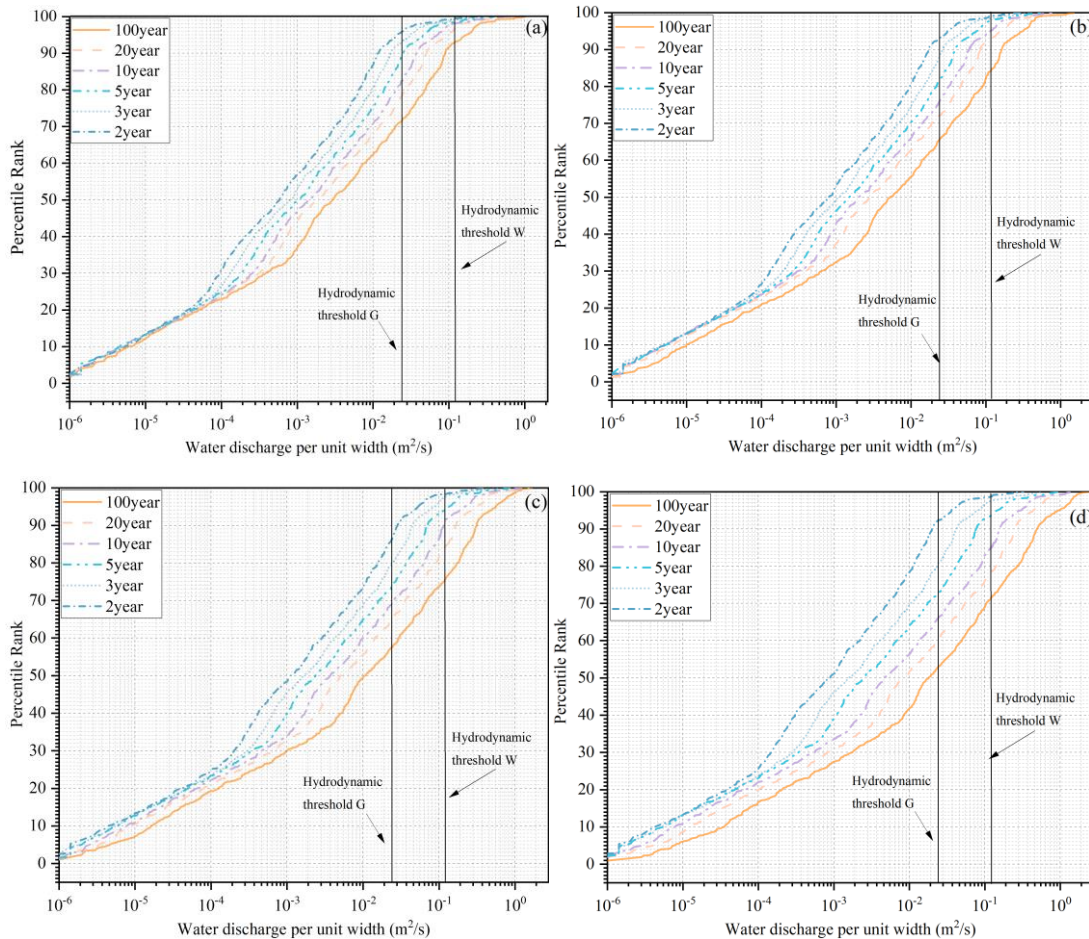
560

**Fig. 13 Predicted hydrographs for different design rainfall events: (a) 1h and 3h events; (b) 6h and 24h events. In the legends, for example, “1h-100 years” means the rainfall event of 100 years return period and 1h duration.**



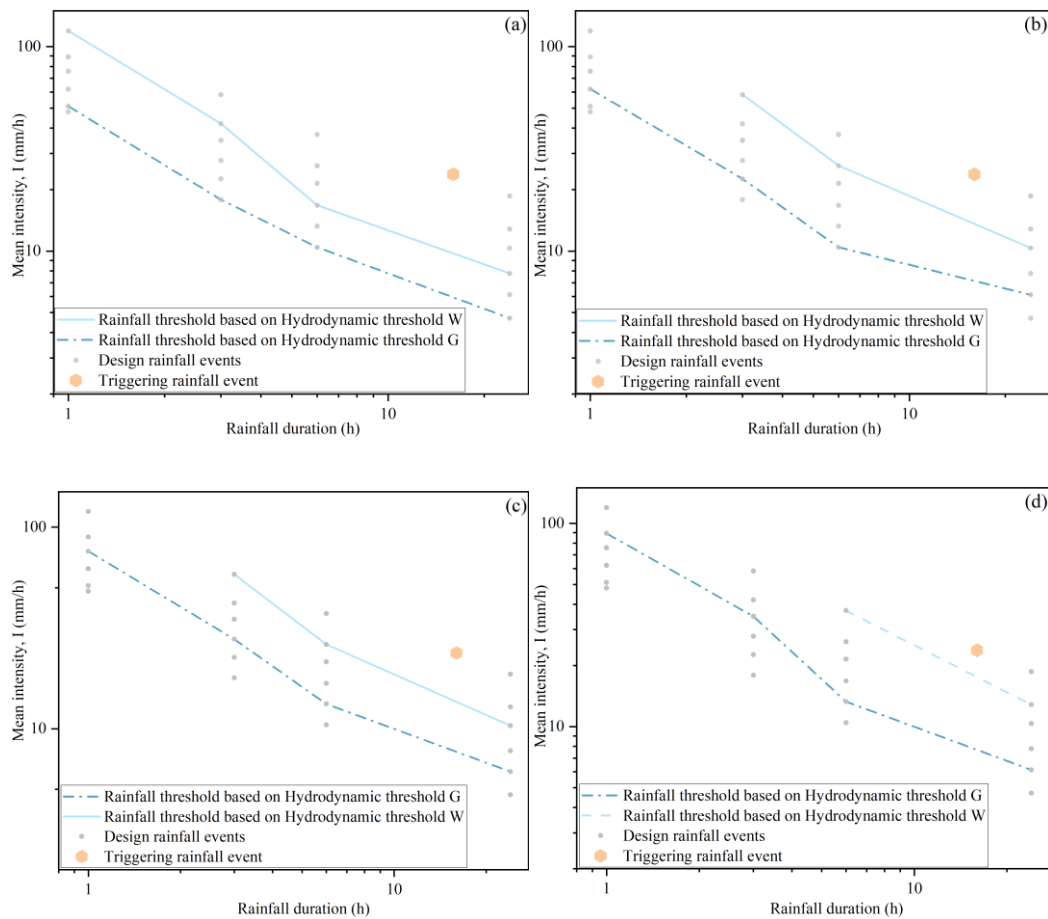
The predicted hydrographs are then used as the inputs for HiPIMS to predict the corresponding grid-based flow information for calculating unit-width discharges. Fig. 14 shows the distributions of unit-width discharge for different design rainfall events along with the relevant hydrodynamic thresholds. The results may be then analyzed to indicate the likely occurrence of a debris flow.

The objective of this study is to calculate I-D rainfall thresholds to classify rainfall events into two categories, trigger events and non-trigger events. Rather than predicting the occurrence of debris flows at each grid cell, the focus is on determining whether a given rainfall event will potentially trigger debris flows at the catchment scale. To achieve this, it is necessary to establish a criterion based on a critical proportion of trigger cells in the triggering area to determine whether a specific rainfall event can be classified as a trigger event for the entire catchment. Following the approach reported by Zhao et al. (2020), such a critical proportion is defined as the zone threshold for the triggering area, which can then be integrated with the hydrodynamic thresholds to estimate a rainfall threshold.



580 **Fig. 14 Distributions of unit-width discharge when the peak flow discharge occurs, along with corresponding Hydrodynamic thresholds: (a) 1h rainfall events; (b) 3h rainfall events; (c) 6h rainfall events; (d) 24h rainfall events.**

To define the zone threshold, the calculated grid-based unit-width discharges are compared with the hydrodynamic thresholds G and W. If any of the thresholds are exceeded, the associated grid cell is registered as a trigger cell. If the proportion of trigger cells in the triggering area exceeds a critical value, i.e. zone threshold, a debris flow is considered to be triggered; otherwise, it will be considered as a non-occurrence event (Fig. 1). In this study, a proportion of 5% of the grid cells is used to define the non-triggering rainfall condition whilst 46% is used to define the triggering rainfall condition. Six different zone thresholds (i.e. 5%, 10%, 15%, 20%, 25%, and 30%) are tested to investigate their influence on the results. A trigger rainfall event is identified if a zone threshold is exceeded (as presented in Fig. 14). In this way, the rainfall thresholds associated with different zone thresholds can be decided, which are shown in Fig. 15. The rainfall conditions of the Typhoon Fitow event is also included in Fig. 15, which has a return period of about 100 years.



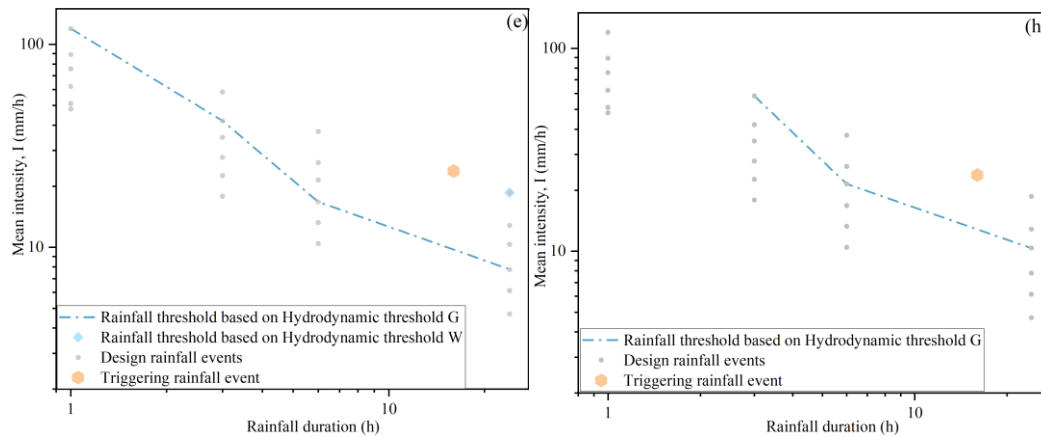


Fig. 15 Rainfall thresholds associated with different zone thresholds: (a) 5%; (b) 10%; (c) 15%; (d) 20%; (e) 25%; (h) 30%.

600

From Fig. 15, the calculated rainfall thresholds show an increasing trend as the zone threshold increases. This is as expected since a larger amount of rainfall is needed to generate more triggering cells. In addition, the rainfall conditions of Typhoon Fitow are beyond both the rainfall threshold based on threshold  $G$  and threshold  $W$  considering different zone thresholds. It means the proposed rainfall threshold is reasonable. The chosen values of zone threshold can also represent different levels of conservatism or adventurousness in the generated rainfall thresholds.

605

Comparing the two adopted hydrodynamic thresholds, the rainfall thresholds calculated based on  $W$  are normally larger whilst those calculated based on  $G$  are smaller. The initiating mechanism to derive hydrodynamic threshold  $G$  assumes progressive scouring occurs in sediment layers, which requires a lower critical discharge and subsequently a smaller amount of rainfall. Hydrodynamic threshold  $W$  is built on the assumption of full bed failure, which needs a larger hydrodynamic force and a larger rainfall to trigger the failure. The intervals between the two corresponding rainfall thresholds are also related to the dynamics of a debris flow. At the beginning of a rainfall event, the resulting flow discharge is small, which increases as the rainfall amount and duration increase. When the discharge reaches the hydrodynamic threshold  $G$ , the first surge of debris flow may form although the volume is usually small. If the rainfall continues to intensify, the hydrodynamic conditions continue to evolve. When the maximum discharge exceeds the hydrodynamic threshold  $W$ , bed failure may occur, which will lead to a sudden increase in the debris flow volume. Mobilization of large blocks may worsen the situation and lead to the generation of the peak of the debris flow in terms of both flow and sediment volumes. Capra et al., (2018) investigated the temporal sequence of debris flows by comparing monitoring data (including video images, seismic records and rainfall data) with the numerically predicted hydrologic response of the watershed under consideration. It was shown that the pulses of a debris flow event are not randomly distributed in time and the largest pulse is most commonly connected with the peak discharge.

615

620

625

Specifically, in Fig. 15(d), it can be seen that only three sets of design rainfall (24h-100 years, 24h-20 years and 6h-100 years) may trigger a debris flow associated with hydrodynamic thresholds  $W$ . When the zone threshold is taken to be 25%, only one design rainfall event (24h-100 years) can potentially trigger a debris flow. In Fig. 15(h), no design rainfall under consideration can trigger a debris flow again if the calculation is based on the hydrodynamic threshold  $W$ .

Herein, we also compare the proposed I-D rainfall thresholds with the regional rainfall intensity-duration (I-D) statistical thresholds. Fig. 16 presents the comparison between the proposed rainfall thresholds obtained with a zone threshold = 10% and the empirical I-D thresholds. The regional empirical rainfall thresholds were obtained after analyzing the main characteristics (duration and intensity) of rainfall events that had triggered 1569 landslides (including many runoff-generated debris flows events) in Zhejiang Province during the period between 1990 and 2013 (Ma et al., 2015). Ma et al. (2015) also estimated the ID thresholds of 62 mountainous counties or cities in Zhejiang Province, including Fenghua City in which the study area is located. It should be noted that the I-D threshold from Ma et al. (2015) is the only rainfall threshold developed in the study area. From Fig. 16, it is evident that both the proposed I-D rainfall threshold and the empirical rainfall threshold can effectively distinguish one triggering and six non-triggering rainfall events, highlighting the feasibility of the proposed framework. In addition, the present rainfall thresholds are located above the empirical thresholds when the rainfall duration is short (e.g. 1h and 3h). But as rainfall duration increases, the empirical rainfall thresholds cross all three curves of the proposed rainfall thresholds and then they are located below the empirical thresholds. Using the proposed thresholds as references, the results indicate that the empirical thresholds may underestimate the occurrence of debris flow for short-duration rainfall events and overestimate the occurrence for longer-duration rainfall.

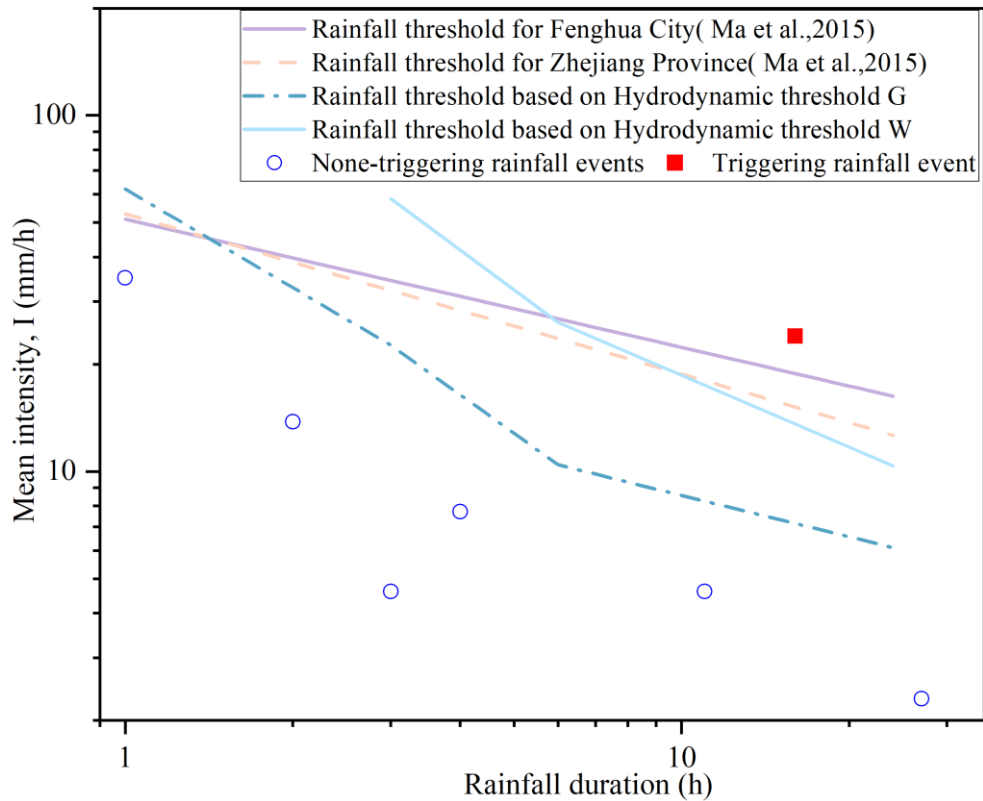
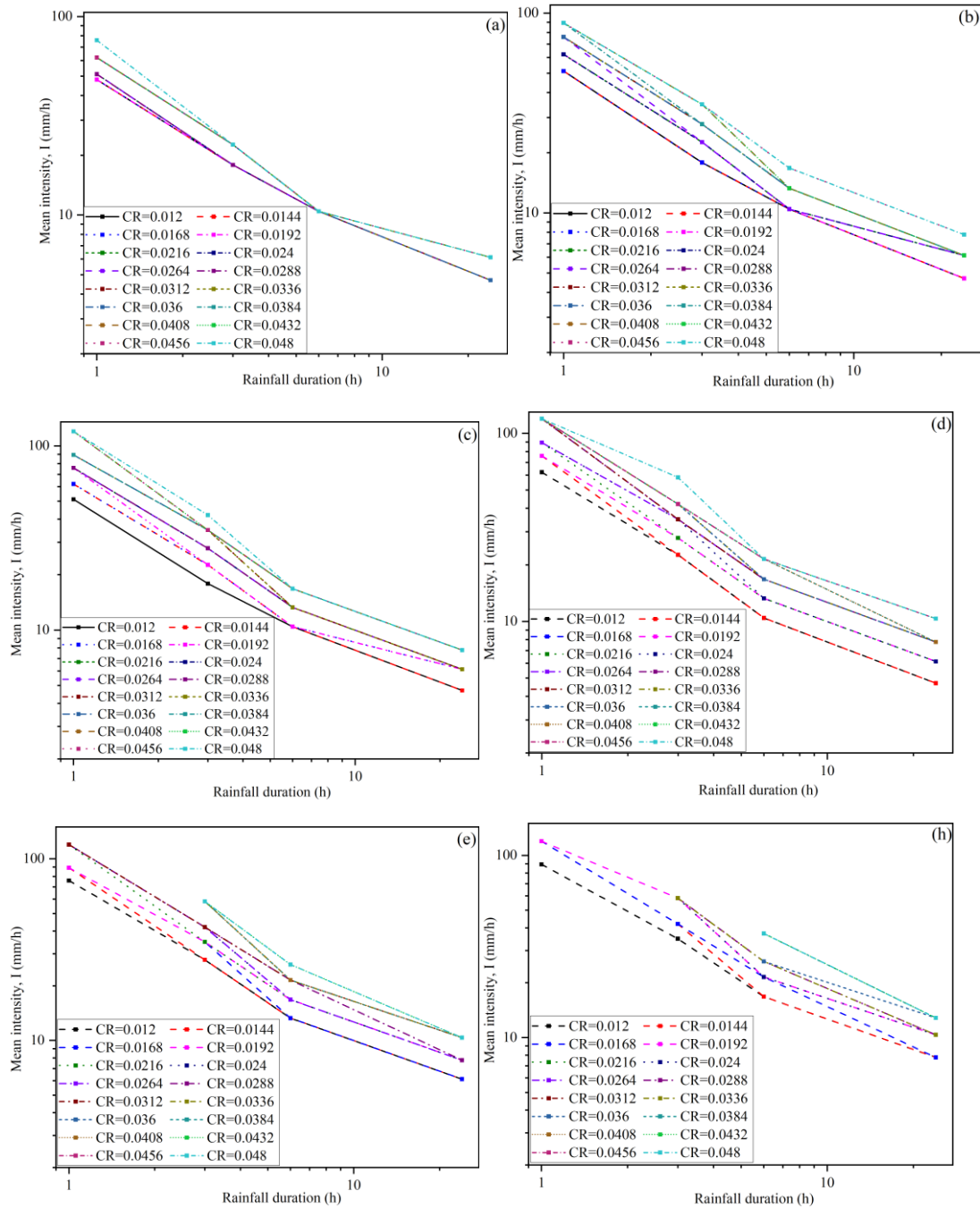


Fig. 16 Comparison between present rainfall thresholds and the regional empirical ID thresholds

## 655 5. Discussion

Model assumptions and physical processes in the targeted catchment will have a direct effect on the final estimation of rainfall thresholds. For example, The grain size of sediment may increase as surface flow washes away the fine particles. Such progressive coarsening of the debris flow material is called “grain coarsening”. Field observations suggested that such a process can be quick and fine soil may be washed away over just a few years (Domènech et al., 2019). To evaluate the potential uncertainties, the values of physical thresholds are changed from 50% to 200% with an increment of 10%, creating a total of 16 physical thresholds. The estimated rainfall thresholds corresponding to the different zone thresholds are shown in Fig. 17 and Fig. 18. For the hydrodynamic threshold  $G$ , the values of critical threshold (CR) change from  $0.012 \text{ m}^2/\text{s}$  to  $0.048 \text{ m}^2/\text{s}$ ; whilst for hydrodynamic threshold  $W$ , the CR varies from  $0.06 \text{ m}^2/\text{s}$  to  $0.24 \text{ m}^2/\text{s}$ .



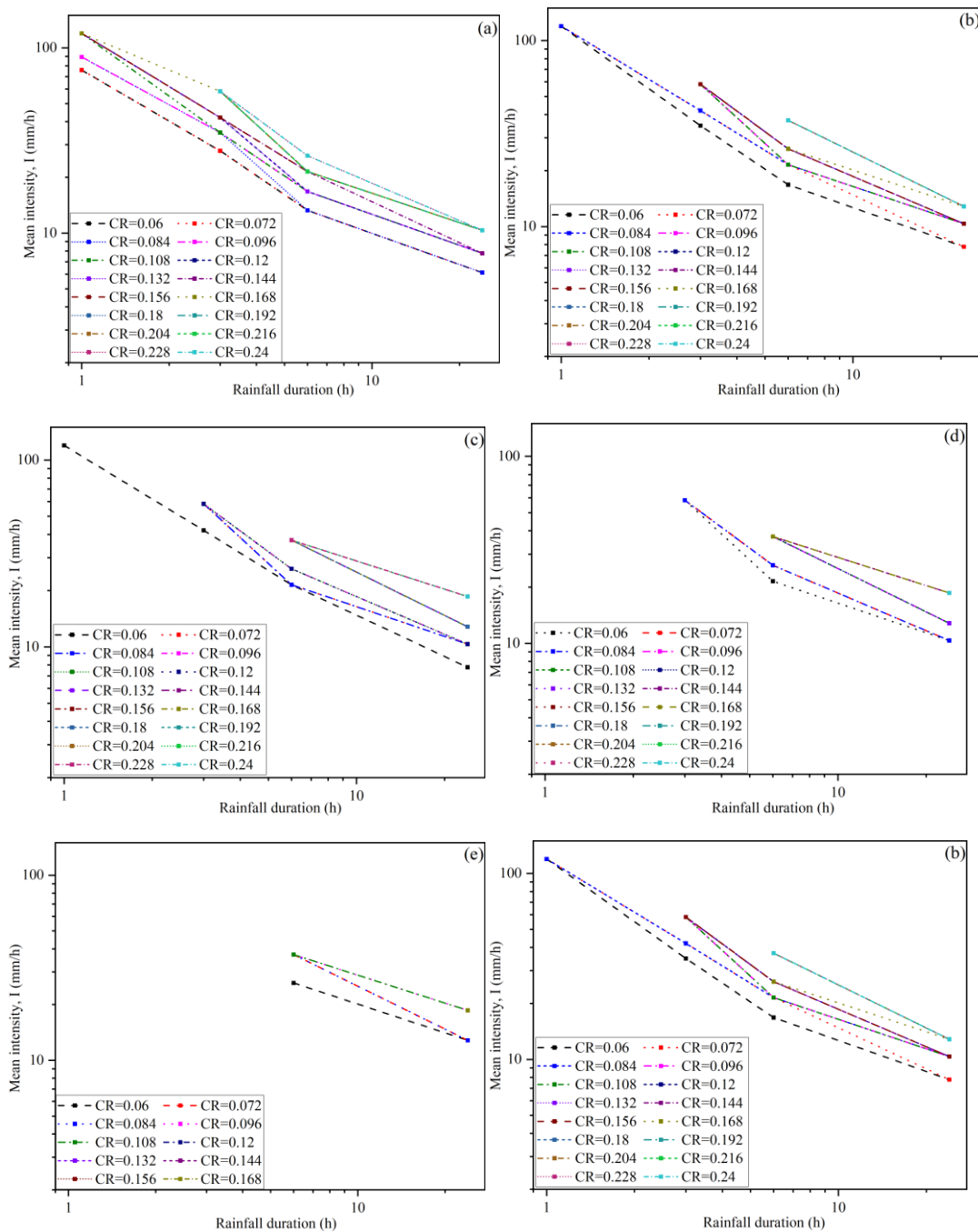
670 **Fig. 17 Sensitivity analysis of rainfall thresholds based on hydrodynamic threshold  $G$  associated with different zone thresholds: (a) 5%; (b) 10%; (c) 15%; (d) 20%; (e) 25%; (h) 30%.**

From Fig. 17, it is clear that the variation range of rainfall intensity is narrow when the zone threshold is small. When the zone threshold is 5%, the rainfall intensity only increases from 48 mm/h to 79 mm/h for 1h event; when the rainfall duration is 6h, there is not much change in the rainfall intensity even when the physical threshold changes significantly. Therefore, the rainfall intensity is not sensitive to the variation of the physical threshold when the zone threshold is small, indicating that it is not suitable to set the zone threshold to be overly small (like 5%). The variation range of rainfall intensity widens when the zone threshold increases. When the zone threshold is set to 20%, the rainfall intensity increases from 62 mm/h to 112 mm/h for 1h event and the change

675

680 becomes even greater for events with longer rainfall durations, e.g. 3h, 6h, and 24h. This indicates that rainfall intensity is sensitive to the change of physical thresholds when the zone threshold is sufficiently large.

Fig. 18 shows the variation of the rainfall intensity following the change of hydrodynamic threshold  $W$ . Compared with the results related to hydrodynamic threshold  $G$  as shown in Fig. 17, 685 the rainfall intensity is found to vary in a wider range even when the zone threshold is small (Fig. 18a). When further increasing the zone threshold, fewer rainfall events can trigger debris flows. When the zone threshold reaches 30% (Fig. 18h), no rainfall event can induce debris flows when the critical threshold is assumed to be larger than 0.096 m<sup>2</sup>/s.



690

**Fig. 18 Sensitivity analysis of rainfall thresholds based on hydrodynamic threshold  $W$  associated with different zone thresholds: (a) 5%; (b) 10%; (c) 15%; (d) 20%; (e) 25%; (h) 30%.**

695 The importance of hydrological and hydrodynamic processes in triggering runoff-generated debris flows has been recognized and discussed. Due to the scarcity of observed flow data but better availability of rainfall data, the statistical I-D rainfall thresholds are still mostly used although their development does not consider the hydrological process and flow hydrodynamics. However, the reliability of statistical I-D rainfall thresholds depends on the data being used and therefore high-  
700 quality long-term observations are essential to derive reliable thresholds. This indicates that a statistical approach may be difficult to be reliably applied in ungauged catchments where high-quality historical data is missing.

In this work, a new approach is explored to predict the potential occurrence of runoff-generated debris flows by integrating hydrological and hydrodynamic models to predict rainfall-induced  
705 hydrological response and the resulting surface flow hydrodynamics. Compared with the traditional statistical I-D analysis approaches that only consider meteorological factors, the proposed modeling framework can effectively take into account the meteorological conditions, topographic properties of the targeted catchment, and grain-size distribution of debris materials. The use of a fully physically based hydrodynamic model enables the proposed framework to generate rainfall  
710 thresholds in areas with limited historical data on debris flow occurrence. As the hydrodynamic thresholds (e.g. critical discharge) should not vary against the hydrological properties of the catchments, the framework can be readily applied to other similar catchments (e.g. Alpine region) when essential data are available for model calibration and setup.

Actually, several studies have been reported to establish Intensity-Duration (ID) rainfall  
715 thresholds through a numerical approach (Domènech et al., 2019). In the previous studies, runoff-induced erosion is considered to occur when the bed shear stress exceeds a critical value, and the volumetric concentration of solids in the debris flow is smaller than an equilibrium value. Furthermore, most of the previous studies adopt simplified hydrological simulations, e.g. calculating runoff using a basic lumped infiltration model that neglects the initial moisture content of the soil.  
720 Different from these existing attempts, the proposed approach focuses on predicting spatially varying hydrodynamic index (unit-width discharge) at each cell to indicate the occurrence of runoff-generated debris flows.

In the authors' previous works (Wei et al. 2018; Wei et al. 2017), the rainfall thresholds in the same study site were also calculated using a runoff prediction model. Wei et al. (2018) developed  
725 an approach solely based on a hydrological model, whilst Wei et al. (2017) presented a machine learning model for runoff prediction. These approaches are different from the current integrated hydrological and hydrodynamic modeling framework which provides a more robust method to directly incorporate overland flow dynamics into debris flow occurrence estimation. Furthermore, our previous studies used peak discharge as the critical parameter to indicate debris flow occurrence;



730 if the peak discharge predicted by the adopted hydrological model exceeds the critical discharge,  
debris flow occurrence is confirmed. Whilst such peak discharge-based approaches can estimate  
debris flow occurrence, they cannot provide any insights related to the magnitude and scale of a  
debris flow. Our new framework includes the use of a hydrodynamic model to predict detailed  
overland flow dynamics to derive grid-based hydrodynamic indices in the areas susceptible to debris  
735 flows. This enables not only the prediction of debris flow occurrences but also provides insights  
into the magnitude and scale of a debris flow

Furthermore, to evaluate debris flow occurrence at a catchment scale, we introduce a new  
concept as "zone threshold" to represent varying degrees of conservatism or adventurousness in  
rainfall thresholds. By associating different zone thresholds with the corresponding level of warning,  
740 the framework facilitates decision-making and response actions based on identified rainfall  
thresholds, allowing the implementation of risk management strategies tailored to the different level  
of caution or preparedness. However, the specific values of zone thresholds are not predetermined  
for individual catchments. Therefore, to calculate the rainfall thresholds based on the proposed  
framework, governmental decision-makers or other users must assign the values for zone thresholds  
745 according to applications. Consequently, the zone threshold should be established by users to reflect  
catchment settings and applications.

Although the proposed approach can entail the hydrological processes related to the initiation  
of runoff-generated debris flows and better represent the underlying physics, there are still some  
limitations. The main limitation is that the proposed framework is only applied and tested in one  
750 case study catchment due to the challenge of collecting high-quality observed hydrological data and  
debris-flow data in small and unstable channels. The adoption of a conceptual NAM hydrological  
model represents another limitation of the proposed modelling framework. The model adopts the  
bucket-style description of the hydrological computation units (HCUs), where the catchments or  
sub-catchments are treated as HCUs, overlooking essentially physical characteristics inside these  
755 units. Ideally, a more physically-based hydrological model should be used. However, a physically-  
based model possesses many parameters that represent the physical characteristics of the catchment  
and need to be determined through field measurements. The lack of abundant field measurements  
imposes challenges in properly calibrating a physically based model in this work. Consequently, all  
of the model parameters can only be determined solely through simple calibration and the adopted  
760 NAM represents a suitable choice for the current application. The aim of this work is to propose a  
new framework for estimating rainfall thresholds for debris flow occurrence. The NAM model can  
be replaced by a physically based model to simulate hydrological response in the future if essential  
observation data becomes available. Actually, attempts have been made to directly apply  
hydrodynamic models to simulate the whole flooding process from rainfall runoff, overland flow to  
765 inundation in data-rich catchments (Ming et al. 2020). It is expected that data scarcity will become  
less of an issue in the future with the increasing availability of high-resolution remote sensing data,  
e.g. LiDAR data. Furthermore, it should be noted that the proposed approach is more suited for the  
cases where the initiation area and headwater catchment area are easy to identify. Such debris flows

are different from those initiated “by rilling”. Rills are common in steep slopes and usually form  
770 complex and highly connected distributary networks. Although debris flows in such catchments  
may still be triggered by overland flows, they involve a gradual transition from clear water flow to  
debris flow, and it is therefore difficult to identify the source and triggering areas (Berti et al., 2020).  
In such cases, hydrological analysis is far more complicated and extensive field surveys are  
necessary to identify the initiating areas.

## 775 **6. Conclusions**

The occurrence of runoff-generated debris flows is recognized to be closely related to the  
surface flow hydrodynamics following a rainfall event. This work presents a framework to  
estimate the rainfall thresholds that trigger runoff-generated debris flows by comparing  
hydrodynamic indices with threshold values. An integrated hydrological and hydrodynamic  
780 modelling approach is used to calculate the grid-based hydrodynamic indices, i.e. unit-width  
discharges, in the triggering area, which are compared with the specific hydrodynamic  
thresholds to predict the occurrence of debris flows. The integrated modelling framework can  
reliably predict the spatio-temporal varying hydrological process and hydrodynamics driven  
by meteorological inputs and influenced by topographic properties of the catchment. Moreover,  
785 in comparison with the previous studies that solely used peak discharge as a critical parameter  
for predicting debris flow occurrence (Li et al., 2020; Bernard and Gregoretti, 2021; Wei et al.,  
2018), the current integrated hydrological and hydrodynamic modeling approach offers  
potentially a more detailed and reliable estimation by directly considering overland flow  
dynamics in susceptible debris flow areas. With grid-based hydrodynamic indices and through  
790 identifying the spatial distribution of triggering cells, the proposed framework facilitates the  
prediction of occurrence, and meanwhile, the magnitude and scale of debris flows. The  
proposed approach has been validated and applied to derive rainfall thresholds for runoff-  
generated debris flows in a small catchment in Zhejiang Province, China. Due to the use of a  
physically based hydrodynamic model to predict the rainfall-induced flow hydrodynamics, the  
795 approach may be used to estimate rainfall thresholds in areas where there is a lack of  
observational records of debris flow occurrence.

However, there are still some limitations to this work. The main limitation is that the  
proposed framework was tested on only one debris flow event and a few non-debris flow events.  
Further measurements are needed to validate the proposed approach comprehensively.  
800 Although the approach is designed for data-scarce cases, having more data available for  
validation will make the assessments of the model's performance more robust. Therefore,  
additional studies should be conducted in similar catchments to better evaluate the validity and  
reliability of the proposed model in the future.

## Acknowledgements

805 This research is financially supported by the National Natural Science Foundation of China (Grant No. 42230702 and 42307262 ), UK Natural Environment Research Council through the SHEAR project WeACT (NE/S005919/1), State Key Laboratory of Geohazard Prevention and Geoenvironment Protection Independent Research Project (No. SKLGP2021Z024) and the Natural Science Foundation of Sichuan Province (Grant No. 2022NSFSC1129).

## 810 Author contributions

All authors contributed to the study conception and design. Material preparation, data collection and analysis were performed by Zhen-lei Wei, Yue-quan Shang and Xilin Xia. The first draft of the manuscript was written by Zhen-lei Wei and Qihua Liang. All authors commented on previous versions of the manuscript. All authors read and approved the final manuscript.

## 815 Declaration of interests

The authors declare that they have no known competing financial interests or personal relationships that could have appeared to influence the work reported in this paper.

## Data availability

All data can be provided by the corresponding authors upon request

## 820 References

- Abancó, C., Hürlimann, M., Moya, J., Berenguer, M., 2016. Critical rainfall conditions for the initiation of torrential flows. Results from the Rebaixader catchment (Central Pyrenees). *Journal of Hydrology*, 541, 218-229.
- Arcement, G.J. and Verne, R. S. Guide for selecting Manning's roughness coefficients for natural channels and flood plains. U.S. GEOLOGICAL SURVEY WATER-SUPPLY PAPER 2339,1989 :pp.4-5.
- 825
- Bardou, E., Ancey, C., Bonnard, C., Vulliet, L., 2003. Classification of debris-flow deposits for hazard assessment in alpine areas. In: Rickenmann, D., Chen, C.-L. (Eds.), *DebrisFlow Hazards Mitigation: Mechanics Prediction and Assessment*. Millpress, Rotterdam, Davos (Switzerland), pp. 799–808.
- 830
- Butts, M.B., Payne, J.T., Kristensen, M., Madsen, H., 2004. An evaluation of the impact of model

- structure on hydrological modelling uncertainty for streamflow simulation. *Journal of Hydrology*, 298: 242-266.
- Berti, M. and Simoni, A., 2005. Experimental evidences and numerical modelling of debris flow initiated by channel runoff. *Landslides*, 2(3): 171-182.
- Berti, M., Simoni, A., 2010. Field evidence of pore pressure diffusion in clayey soils prone to landsliding. *Journal of Geophysical Research. Earth Surface* 115, F03031
- Berti, M., Bernard, M., Gregoretti, C., Simoni, A. 2020. Physical interpretation of rainfall thresholds for runoff-generated debris flows. *Journal of Geophysical Research: Earth Surface*, 125, e2019JF005513. <https://doi.org/10.1029/2019JF00>
- Bernard, M. and Gregoretti, C. 2021. The use of rain gauge measurements and radar data for the model-based prediction of runoff-generated debris-flow occurrence in early warning systems. *Water Resources Research*, 57(3): e2020WR027893.
- Bel, C., Liébault, F., Navratil, O., Eckert, N., Bellot, H., Fontaine, F., Laigle, D. 2017. Rainfall control of debris-flow triggering in the Réal Torrent, Southern French Prealps. *Geomorphology* 291:17–32.
- Bogaard, T., Greco, R., 2018. Invited perspectives: Hydrological perspectives on precipitation intensity-duration thresholds for landslide initiation: proposing hydro-meteorological thresholds, *Natural Hazards Earth System Science* 18: 31–39.
- Cannon, S. H., Gartner, J. E., Wilson, R. C., Bowers, J. C. and Laber, J. L., 2008. Storm rainfall conditions for floods and debris flows from recently burned areas in southwestern Colorado and Southern California. *Geomorphology*, 96(3): 250-269.
- Capra, L., Coviello, V., Borselli, L., Márquez-Ramírez, V.-H., Arámbula-Mendoza, R., 2018. Hydrological control of large hurricane-induced lahars: evidence from rainfall runoff modeling, seismic and video monitoring. *Natural Hazards Earth System Science*. 18, 781–794
- Coe, J.A., Kinner, D.A. and Godt, J.W., 2008. Initiation conditions for debris flows generated by runoff at Chalk Cliffs, central Colorado. *Geomorphology*, 96(3): 270-297.
- Chen, H.L., Zhao, J.H., Liang, Q.H., Maharjan, S.B., Joshi, S.P. 2022. Assessing the potential impact of glacial lake outburst floods on individual objects using a high-performance hydrodynamic model and open-source data. *Science of The Total Environment*, 806, Part3:151289.
- Domènech, G., Fan, X.M., Scaringi, G., Van Asch, T.W.J., Xu, Q., Huang, R.Q. and Hales, T.C. 2019. Modelling the role of material depletion, grain coarsening and revegetation in debris flow occurrences after the 2008 Wenchuan earthquake. *Engineering Geology*. 250:34-44.
- Fan, L.F., Lehmann, P., Zheng, C.M., Or, D., 2020. Rainfall intensity temporal patterns affect shallow landslide triggering and hazard evolution. *Geophysical Research Letters*, 47: e2019GL085994.
- Gregoretti, C. and G. Dalla Fontana., 2008. The triggering of debris flow due to channel-bed failure in some alpine headwater basins of the Dolomites: analyses of critical runoff. *Hydrological Processes*, 22(13): 2248-2263.
- Gregoretti, C., 2000. The initiation of debris flow at high slopes: experimental results. *Journal of*

Hydraulic Research, 38(2): 83-88.

- Gregoretto, C., Degetto, M., Bernard, M., Crucill, G., Pimazzoni, A., De Vido, M., M. Berti, A. Simoni, and S. Lanzoni., 2016. Runoff of small rocky headwater catchments: Field observations and hydrological modeling. *Water Resources Research*, 52(10): 8138–8158.
- 875 Godt, J.W., Baum, R.L., Lu, N., 2009. Landsliding in partially saturated materials. *Geophysical Research Letter*. 36, L02403.
- Guo, X.J., Cui, P., Li, Y., Ma, L., Ge, Y.G., Mahoney, W.B., 2016. Intensity–duration threshold of rainfall-triggered debris flows in the Wenchuan Earthquake affected area, China. *Geomorphology*. 253, 208-216.
- 880 Guzzetti, F., Peruccacci, S., Rossi, M., Stark, C.P., 2008. The rainfall intensity–duration control of shallow landslides and debris flows: an update. *Landslides* 5 (1):3–17.
- Hürlimann, M., Coviello, V., Bel, C., Guo, X.J., Berti, M., Graf, C., Hübl, J., Miyata, S., Smith, J.B., Yin, H.Y., 2019. Debris-flow monitoring and warning: Review and examples. *Earth-Science Reviews*. 199, 102981
- 885 Hürlimann, M., Abancó, C., Moya, J. and Vilajosana, I., 2014. Results and experiences gathered at the Rebaixader debris-flow monitoring site, Central Pyrenees, Spain. *Landslides*, 11(6):939-953.
- Hirschberg, J., Badoux, A., McArdeell, B. W., Leonarduzzi, E., Molnar, P., 2021. Evaluating methods for debris-flow prediction based on rainfall in an Alpine catchment. *Natural Hazards Earth System Science*, 21: 2773–2789.
- 890 Imaizumi, F., Sidle, R. C., Tsuchiya, S. and Ohsaka, O., 2006. Hydrogeomorphic processes in a steep debris flow initiation zone. *Geophysical Research Letters*, 33(10): 229-237.
- Iverson, R.M., Reid, M.E., LaHusen, R.G., 1997. Debris-flow mobilization from landslides. *Annual Review of Earth and Planetary Sciences*. 25, 85–138.
- 895 Kean, J.W., McCoy, S.W., Tucker, G.E., Staley, D.M., Coe, J.A., 2013. Runoff-generated debris flows: observations and modeling of surge initiation, magnitude, and frequency. *Journal of Geophysical Research. Earth Surface*. 118 (4), 2190–2207.
- Kling, H., Fuchs, M., & Paulin, M. (2012). Runoff conditions in the upper Danube basin under an ensemble of climate change scenarios. *Journal of Hydrology*, 424, 264-277
- 900 Li, Y.J., Meng, X.M., Guo, P., Dijkstra, T., Zhao, Y., Chen, G., Yue, D.X., 2021. Constructing rainfall thresholds for debris flow initiation based on critical discharge and S-hydrograph. *Engineering Geology*, 280:105962.
- Liu, Y., Sun, F., 2010. Sensitivity analysis and automatic calibration of a rainfall–runoff model using multi-objectives. *Ecological Informatics*. 5, 304–310.
- 905 Marino, P., Subramanian, S.S., Fan, X.M., Greco, R. 2022. Changes in debris-flow susceptibility after the Wenchuan earthquake revealed by meteorological and hydro-meteorological thresholds. *Catena*, 210:105929.
- Ma, T.H., Li, C.J., Lu, Z.M. and Bao, Q.Y., 2015. Rainfall intensity–duration thresholds for the initiation of landslides in Zhejiang Province, southeast China. *Geomorphology*, 245:193-206.

- 910 Makungo, R., Odiyo, J.O., Ndiritu, J.G., Mwaka, B., 2010. Rainfall–runoff modelling approach for ungauged catchments: A case study of Nzhelele River sub-quadernary catchment. *Physics and Chemistry of the Earth*. 35, 596–607
- Madsen, H., 2000. Automatic calibration of a conceptual rainfall–runoff model using multiple objectives. *Journal of Hydrology*, 235: 276-288.
- 915 Ma, C., Wang, Y. J., Du, C., Wang, Y. Q. and Li, Y. P., 2016. Variation in initiation condition of debris flows in the mountain regions surrounding Beijing. *Geomorphology*, 273:323-334.
- McGuire, L. A., Rengers, F. K., Kean, J. W. and Staley, D. M., 2017. Debris flow initiation by runoff in a recently burned basin: is grain-by-grain sediment bulking or en-masse failure to blame?. *Geophysical Research Letters*. 44: 7310–7319.
- 920 McGuire, L. A., Youberg, A.M., 2019. Impacts of successive wildfire on soil hydraulic properties: Implications for debris flow hazards and system resilience. *Earth Surface Process and Landforms*, 44, 2236–2250.
- Ming, X.D., Liang, Q.H., Xia, X.L., Li, D.M., Fowler, H.J., 2020. Real time flood forecasting based on a high performance 2-D hydrodynamic model and numerical weather predictions. *Water Resources Research*, 56(7): e2019WR025583.
- 925 Ming, X.D., Liang, Q.H., Dawson, R., Xia, X.L., Hou, J. 2022. A quantitative multi-hazard risk assessment framework for compound flooding considering hazard inter-dependencies and interactions. *Journal of Hydrology*, 607:127477.
- Southwest Institute of Municipal Engineering Design and Research China, 2000. China  
930 Construction Industry Press, Beijing, pp. 682-684.
- Nikolopoulos, E.I., Crema, S., Marchi, L., Marra, F., Guzzetti, F., Borga, M., 2014. Impact of uncertainty in rainfall estimation on the identification of rainfall thresholds for debris flow occurrence. *Geomorphology*, 221:286-297.
- Nash, J.E. and Sutcliffe, J.V., 1970. River flow forecasting through conceptual models part I — A  
935 discussion of principles . *Journal of Hydrology*, 10(3), 282-290.
- Nayak, P.C., Venkatesh, B., Krishna, B., Jain, S.K., 2013. Rainfall-runoff modeling using conceptual, data driven, and wavelet based computing approach. *Journal of Hydrology*, 493: 57-67.
- Oorthuis, R., Hürlimann, M., Vaunat, J., Moya, J., Lloret, A. 2023. Monitoring the role of soil hydrologic conditions and rainfall for the triggering of torrential flows in the Rebaixader  
940 catchment (Central Pyrenees, Spain). *Landslides*, 20(2), 249-269.
- Pastorello, R., D’Agostino, V., Hürlimann, M., 2020. Debris flow triggering characterization through a comparative analysis among different mountain catchments. *Catena*. 186, 104348.
- Rengers, F.K., McGuire, L.A., Kean, J.W., Staley, D.M., Youberg, A.M., 2019. Progress in simplifying hydrologic model parameterization for broad applications to post- wildfire  
945 flooding and debris-flow hazards. *Earth Surface Process and Landforms*. 44(4), 3078-3092.
- Recking, A., 2009. Theoretical development on the effect of changing flow hydraulics on incipient bed load motion. *Water Resource Research*, 45, W04401.
- Staley, D. M., Negri, J. A., Kean, J. W., Laber, J. L., Tillery, A. C., Youberg, A. M. 2017. Prediction

- of spatially explicit rainfall intensity duration thresholds for post-fire debris-flow generation in  
950 the western United States. *Geomorphology*, 278:149–162.
- Schulz, K., Beven, K. J., Huwe, B. V., 1999. Equifinality and the problem of robust calibration in  
nitrogen budget simulations, *Soil Science Society of America Journal* 63(6), 1934-1941.
- Simoni, A., Bernard, M., Berti, M., Boreggio, M., Lanzoni, S., Stancanelli, L., Gregoretti, C. 2020.  
Runoff-generated debris flows: observation of initiation conditions and erosion-deposition  
955 dynamics along the channel at Cancia (eastern Italian Alps). *Earth Surface Processes and  
Landforms*. doi:10.1002/esp.4981
- Staley, D.M., Kean, J.W., Cannon, S.H., Schmidt, K.M., Laber, J.L. 2013. Objective definition of  
rainfall intensity-duration thresholds for the initiation of post-fire debris flows in Southern  
California. *Landslides*, 10(5), 547–562.
- 960 Tang, H., McGuire, L. A., Rengers, F. K., Kean, J. W., Staley, D. M., Smith, J. B. 2019. Developing  
and testing physically based triggering thresholds for runoff-generated debris flows.  
*Geophysical Research Letters*, 46. <https://doi.org/10.1029/2019GL083623>.
- Wang, Y., Cui, P., Wang, Z.Y., Liang, S.Q., 2017. Threshold criterion for debris flow initiation in  
seasonal gullies. *International Journal of Sediment Research*, 32:231-239.
- 965 Wang, Y., Xu, X., Zhao, L.F., 2015. Analysis of rain-storm flood induced by Typhoon Fitow in  
Yongjiang basin. *China Flood Drought Management*. 25 (1), 57–61 (in Chinese with abstract  
in English).
- Wei, Z.L., Shang, Y.Q., Zhao, Y., Pan, P. and Jiang, Y.J., 2017. Rainfall threshold for initiation of  
channelized debris flows in a small catchment based on in-site measurement. *Engineering  
970 Geology*, 217:23-34.
- Wei, Z.L., Xu, Y.P., Sun, H.Y., Xie, W., Wu, G., 2018. Predicting the occurrence of channelized  
debris flow by a cascading flood debris-flow model in a small debris flow-prone catchment.  
*Geomorphology*, 308 :78-90
- Whittaker, J., Jaggi, M., 1986. *Blockschwellen*, no. 91, Versuchsanstalt für Wasserbau, Hydrologie  
975 und Glaziologie, ETH, Zurich, Switzerland.( in German)
- Zhao, B.R., Dai, Q., Han, D.W., Zhang, J., Zhuo, L., Berti, M., 2020. Application of hydrological  
model simulations in landslide predictions. *Landslides*. 17, 877–891.