

Figure R1: Time series of the maximum 10-meter winds within a box over the Lahaina domain

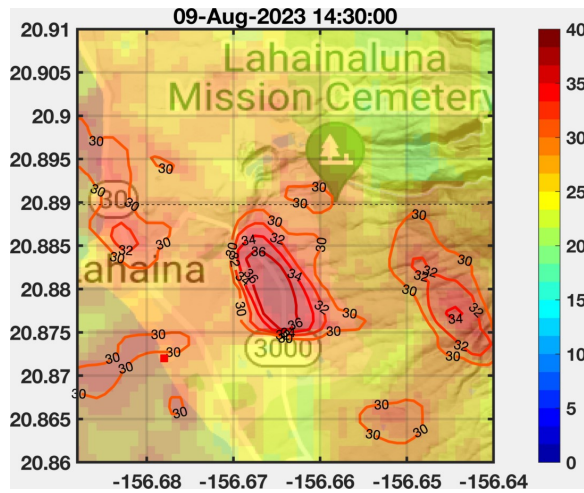


Figure R2: Plan view of 10-meter wind speeds over the town of Lahaina over the duration of the simulation (culminating at 14:30 UTC)

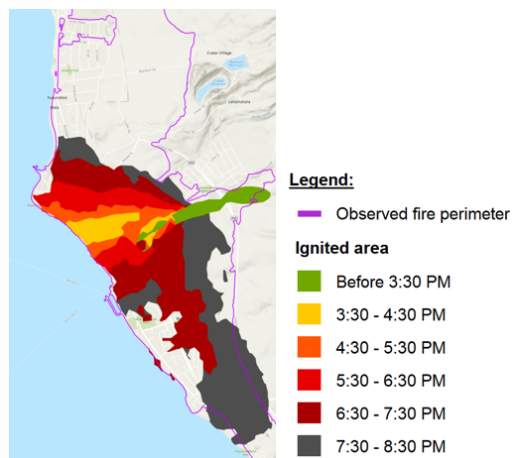


Figure 3: Fire perimeters from SWUIFT simulation at 1-hour intervals compared against the observed final fire perimeter