

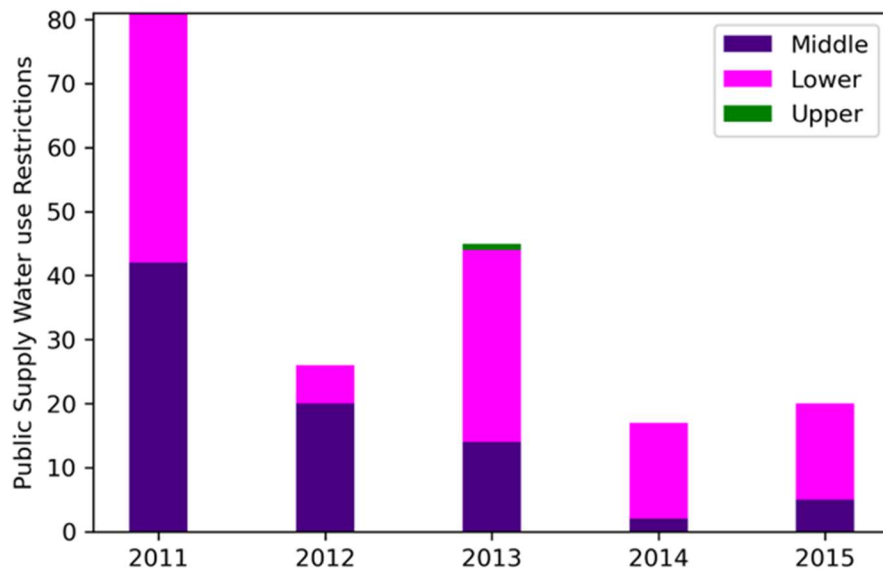
Multisectoral analysis of drought impacts and management responses to the 2008-2015 record drought in the Colorado Basin, Texas: A blueprint for regional multisectoral drought impact assessment

5 Stephen B. Ferencz¹, Ning Sun¹, Sean Turner¹, Brian A. Smith², Jennie S. Rice¹

¹Pacific Northwest National Laboratory, Richland, WA, United States
²Barton Springs Edwards Aquifer Conservation District, Austin, TX, United States

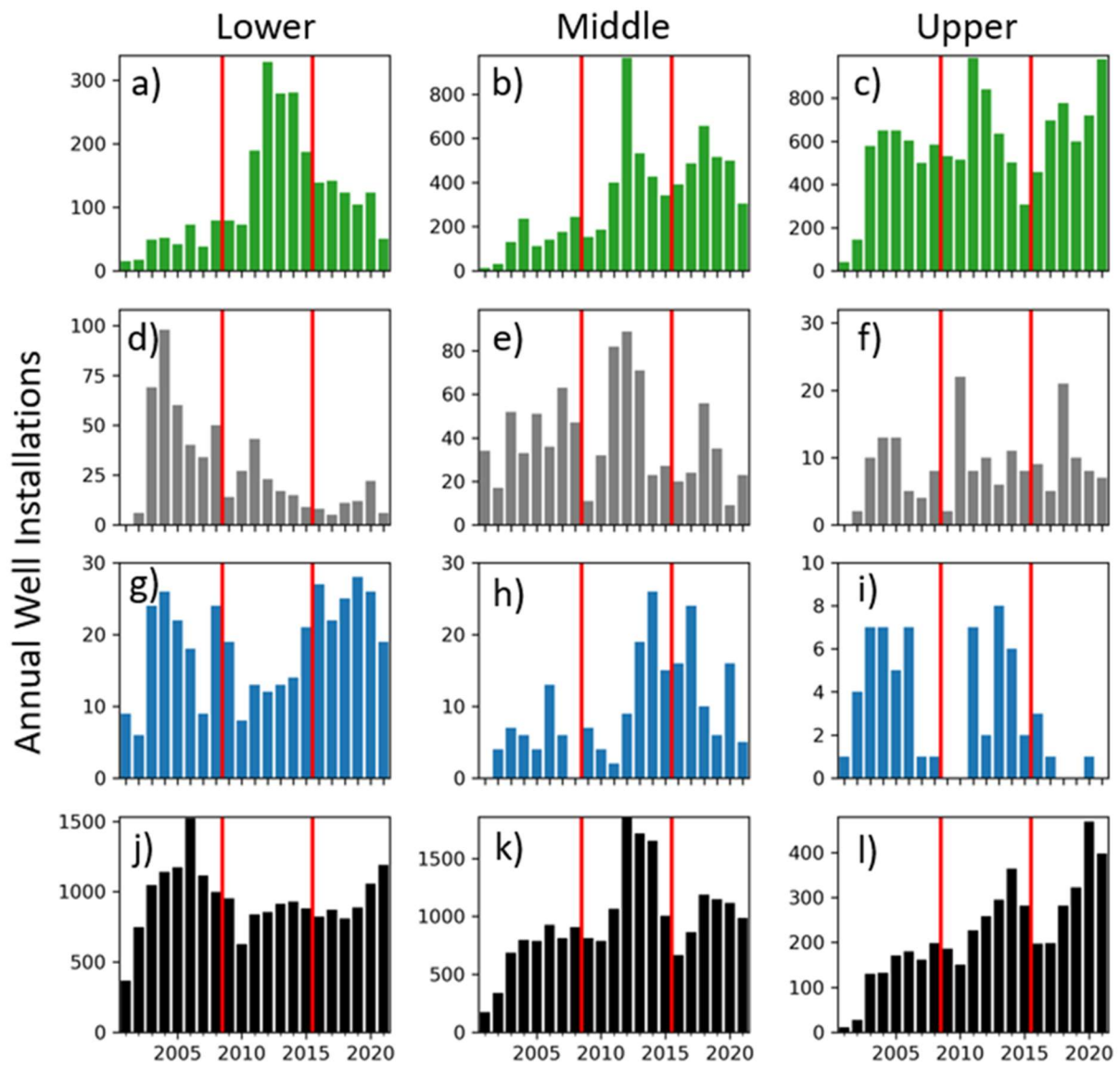
Correspondence to: Stephen B. Ferencz (stephen.ferencz@pnl.gov)

10 Supplemental Figure 1:



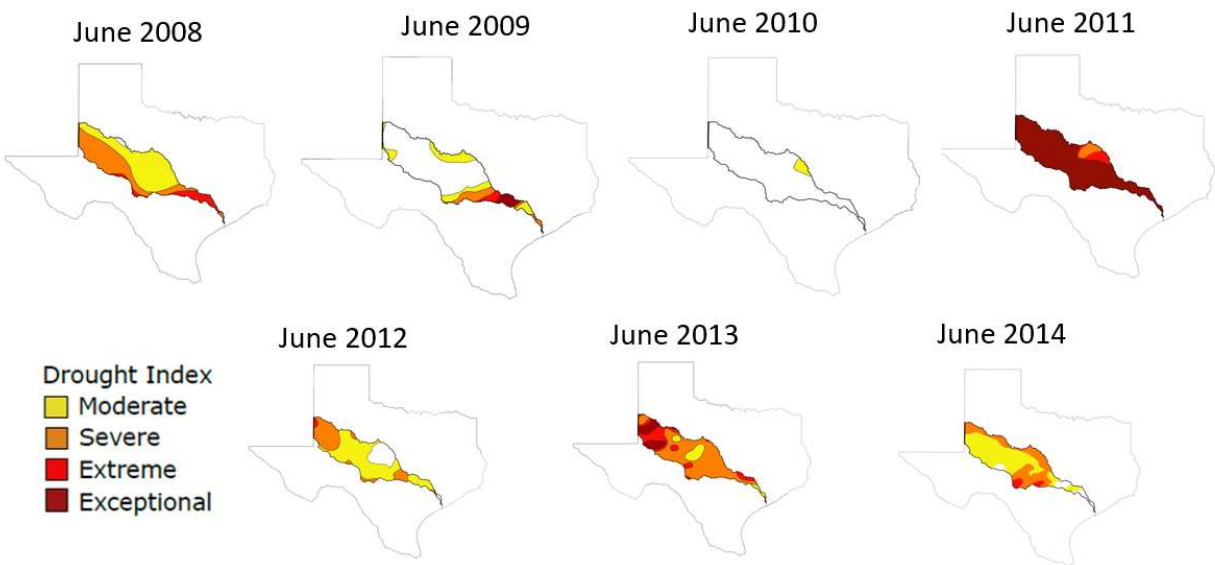
SI Figure 1: Number of public water supply water use restrictions enforced from 2011 to 2015 within each of the basin regions. Data prior to 2011 was unavailable. Only counties shown in Figure 1f presented.

15



SI Figure 2: Annual well installations in the three water planning regions for irrigation (a-c), industry (d-f), public supply (g-i), and domestic (j-l). Data from the Texas Water Development Board (TWDB). Only counties shown in Figure 1f presented.

Supplemental Figure 3:



30

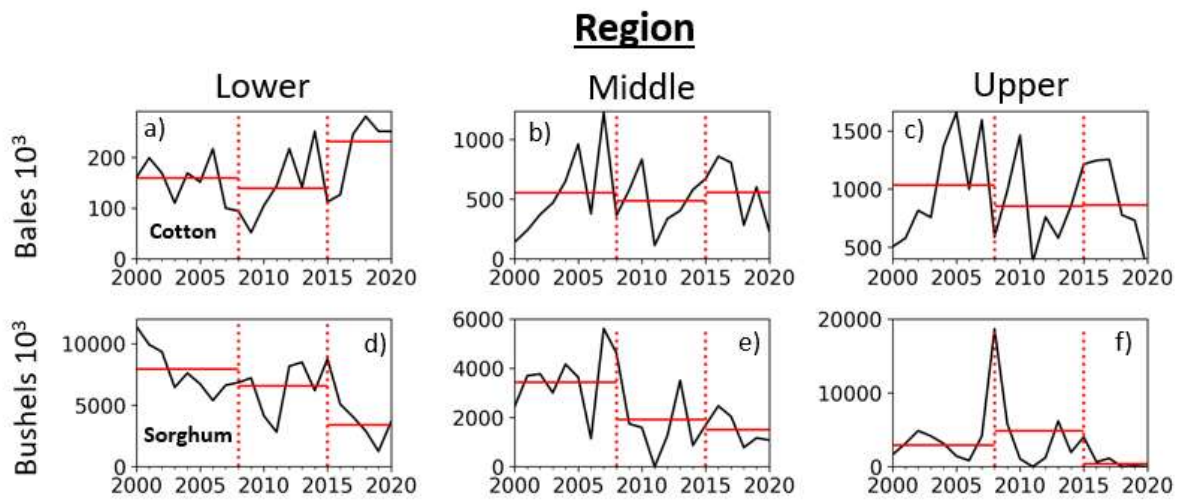
SI Figure 3: Snapshots of US Drought Monitor drought index in June for 2008 to 2014 show the spatial heterogeneity of drought conditions within the basin.

35

40

45

50 Supplemental Figure 4:



SI Figure 4: Sorghum and cotton production in the three regions.

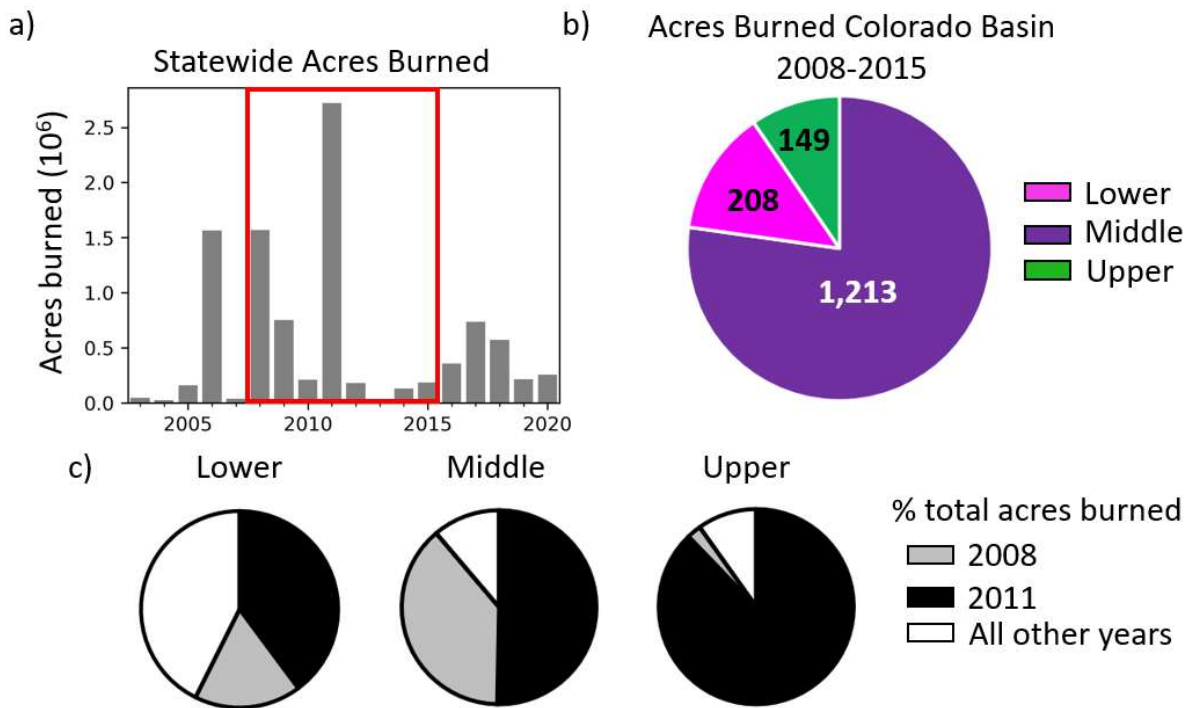
55

60

65

70

Supplemental Figure 5:



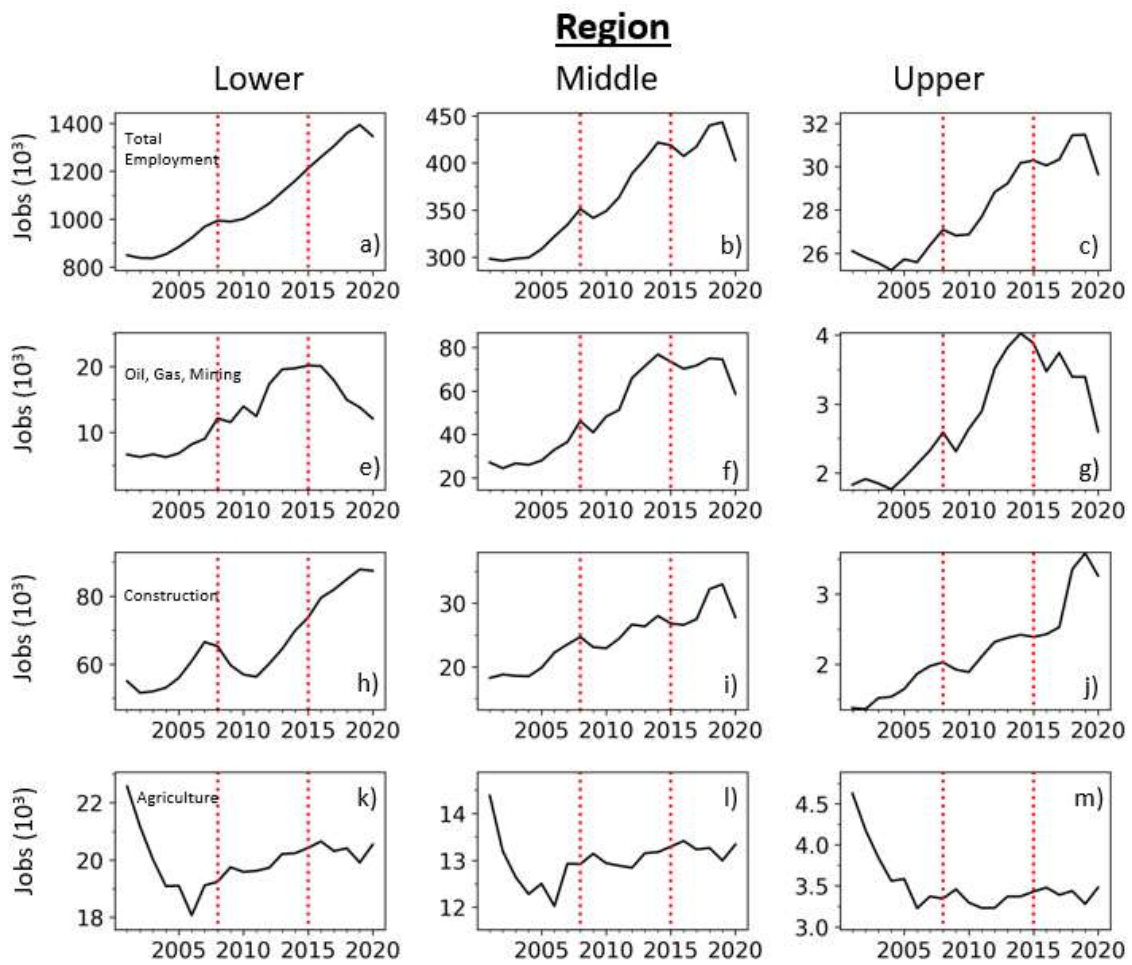
75 **SI Figure 5:** Estimated annual acres burned in Texas from 2003 – 2020 (a). Acres burned during the drought in the Colorado Basin (b), and fraction of acres burned during 2008, 2011, and the rest of the drought (c). Data from NOAA, 2022.

80

85

90

Supplemental Figure 6:

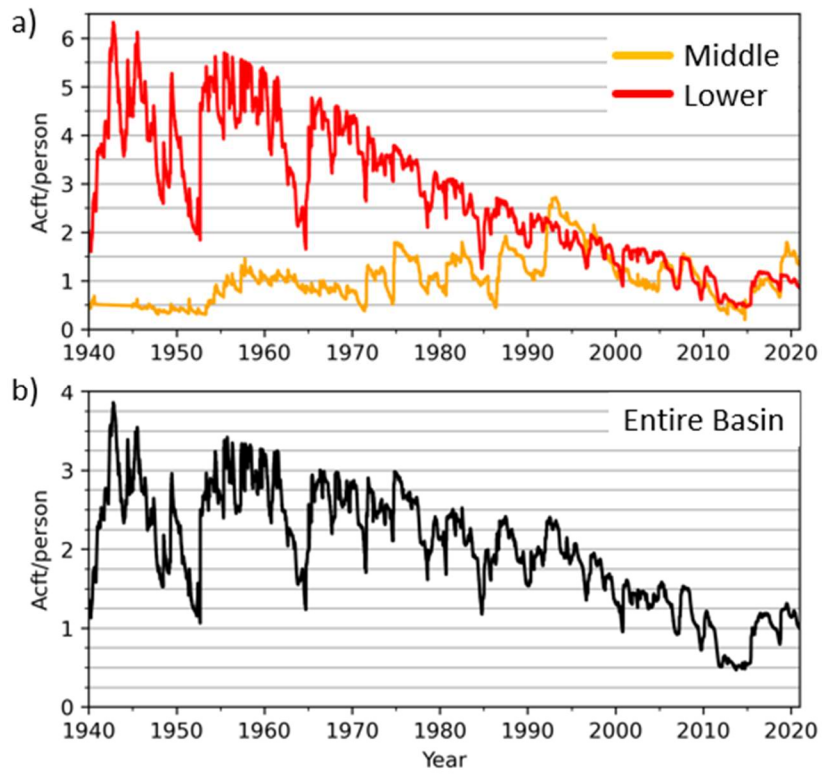


SI Figure 6: Annual regional employment data for total employment (a-c), oil, gas, and mining (e-f), construction (h-j), and agriculture (k-m).

95

100

Supplemental Figure 7:



105 **SI Figure 7:** Per capita reservoir storage for the middle and lower regions of the basin (a) and for the basin as a whole (b). Reservoir data from TWDB and population data from the US Census.