

Development of a regionally consistent and fully probabilistic earthquake risk model for Central Asia

Mario A. Salgado-Gálvez¹, Mario Ordaz^{1,2}, Benjamín Huerta¹, Osvaldo Garay¹, Carlos Avelar¹, Ettore Fagà³, Mohsen Kohrangi³, Paola Ceresa³, Georgios Triantafyllou³, Ulugbek T. Begaliev⁴

5 ¹ERN International. Mexico City, Mexico.

²Instituto de Ingeniería, Universidad Nacional Autónoma de México. Mexico City, Mexico

³RED Risk Engineering Development, Pavia, Italy

⁴International University of Innovation Technologies. Bishkek, Kyrgyz Republic

10 *Correspondence to:* Mario A. Salgado-Gálvez (mario.sal.gal@gmail.com)

Abstract

A fully probabilistic earthquake risk model was developed for five countries in Central Asia, providing updated earthquake loss estimates with a higher level of details on all components with respect to previous studies in the region, besides having used a regionally consistent approach that on the one hand, allows direct comparisons at different disaggregation levels (e.g.,
15 Country and Oblast). On the other hand, this updated earthquake risk assessment aims to facilitate initiating a policy dialogue regarding national and regional disaster risk financing and insurance applications. This earthquake risk model made use of a regional probabilistic seismic hazard analysis, as well as a comprehensive exposure database on which different types of assets and sectors were included, and for which two scenarios (years 2020 and 2080) were modeled. For each type of asset, a unique vulnerability function was derived and later used for the convolution with the hazard data that allowed estimating the loss
20 exceedance curve, at different disaggregation levels, from where other risk metrics such as the average annual loss (AAL) and specific return period losses, were obtained. The regional earthquake AAL for the five countries and for the 2020 exposure scenario has been estimated in around \$2 Bn, being Kyrgyzstan and Tajikistan the countries with the highest earthquake risk levels in the region. Besides the probabilistic earthquake risk results, as-if scenarios were modeled using a pseudo-deterministic approach to assess the human and economic losses for realistic and representative earthquakes for the main cities within
25 earthquake prone regions in the five countries of the study area.

Short summary

Central Asia is prone to earthquake losses which can heavily impact population and assets of different types. This paper presents the details of a probabilistic earthquake risk model which made use of a regionally consistent approach to assess the
30 feasible earthquake losses in five countries. Results are presented in terms of commonly used risk metrics, which are aimed to facilitate a policy dialogue regarding different disaster risk management strategies, from risk mitigation to disaster risk financing.

1 Introduction and Previous Studies

A regionally consistent and fully probabilistic earthquake risk model was developed for Central Asia, under the sponsorship
35 of the World Bank, in the framework of the *Strengthening Financial Resilience and Accelerating Risk Reduction in Central Asia* project (SFRARR). Central Asia is an area characterized by a complex and active tectonic deformation, on which earthquakes besides having the possibility to inflict damages and losses because of the ground motion, can trigger secondary hazards such as landslides, and naturally dammed lake outbursts. The model described in this paper provides updated earthquake loss results for Kazakhstan, Tajikistan, Turkmenistan, Uzbekistan, and the Kyrgyz Republic. To achieve this, it
40 was needed the development of a probabilistic seismic hazard analysis (PSHA), an exposure database for buildings and infrastructure (representative of years 2020 and 2080), and a set of earthquake vulnerability functions for all representative building classes and infrastructure assets.

Within this same project, a probabilistic flood risk assessment was carried out for the same exposed assets, which details can
45 be found in Coccia et al., (2023). The project required a multi-hazard risk approach, hence a peril-agnostic risk assessment

methodology was chosen, which is based on the proposal by Ordaz (2000) and has been implemented in the R-CAPRA software (ERN, 2022), a tool that has been used for probabilistic risk assessments for different hazards and at different resolution levels (see for instance Salgado-Gálvez et al., 2014; Jaimes et al., 2016; Ordaz et al., 2019). Earthquake and flood hazards are represented through synthetic catalogs of 10000 years, whereas the relationship between the hazard intensity measures (i.e., ground motion for earthquakes and water depth for floods) and the expected losses (both human and economic) is represented through vulnerability functions.

There have been previous regional and national earthquake risk assessments in Central Asia, such as the one developed in 2009 by the Central Asia and Caucasus Disaster Risk Management Initiative (CAC-DRMI, 2009), which generated earthquake risk profiles at national, regional, and sub-regional levels, based on historical data covering the 1988-2007 period. In the framework of the Global Risk Model by the United Nations Office for Disaster Risk Reduction (UNDRR), a global and probabilistic earthquake risk assessment was carried out for 216 countries, which included the five nations that are part of this study, obtaining reference values in terms of average annual losses (AAL) and loss exceedance curves (LEC) for earthquakes and floods (Ordaz et al., 2014; Cardona et al., 2014; UNISDR, 2015). In 2016, The Global Facility for Disaster Reduction and Recovery (GFDRR) produced earthquake risk profiles for Central Asia at provincial and national levels, with results in terms of affected people and economic losses for multiple return periods, the latter normalized by the country gross domestic product (GDP) (GFDRR, 2016). More recently, in 2017, an earthquake risk assessment was carried out for the Kyrgyz Republic (World Bank, 2017) which estimated economic losses for different sectors (e.g., residential buildings, schools, fire stations, roads, bridges, and hospitals), although loss metrics such as the AALs are not available for all of them; the same study provided, using a deterministic methodology, human and economic losses for 12 scenarios. Some studies were developed for the region also to quantify earthquake risk at urban scale, such as the one carried out by the Government of Japan which analyzed three major historical earthquakes that caused significant losses and disruptions in Almaty, with the aim of providing the bases for the formulation of the earthquake disaster risk management plan for Almaty City (JICA, 2009).

The earthquake model described in this paper was developed with the objective of facilitating strategic discussions with relevant stakeholders, allowing for coherent and consistent strategic financial solutions across the geographical study area and the key economic sectors of the five countries, as well as to inform the World Bank's engagement in supporting regional and national disaster risk financing and insurance applications, as for instance traditional and parametric solutions for the structuring of a regional program. However, results are only intended to inform and enable the World Bank to initiate a policy dialogue, and do not have yet the sufficient detail to recommend or support the design of specific disaster risk management initiatives. The results of the earthquake risk assessment include LECs and year loss tables (YLT), that can be further disaggregated at two administrative levels (country – ADM0, and Oblast – ADM1). In addition, the model allows obtaining return period loss estimates and AALs for these two aggregation levels, and for each sector included in the exposure model.

Four (4) different exposure models were developed in this project, which full details can be found in the accompanying paper of this Special Issue in Scaini et al., (2023; 2024). The first exposure model provides a reliable and detailed representation of the conditions for year 2020 for multiple sectors, whereas the other three exposure models depict a projection to year 2080, for the residential sector only, considering three different shared socioeconomic paths (SSP), namely SSP1, SSP4 and SSP5. Since earthquake hazard can be assumed as stationary, the occurrence characteristics of the PSHA developed for today's conditions can be considered as the same for the next 60 years, reason why no variations in the hazard model for the year 2080 earthquake risk estimates were introduced.

In addition to the probabilistic risk results, a pseudo-deterministic method was used to estimate human and economic losses for five credible and feasible earthquakes, one for each capital city (except for Kazakhstan where the scenario analysis was carried out for Almaty City). These earthquakes were selected from the YLT after having disaggregated the losses for a 100-year return period. Finally, the modeled losses have been used to derive a relationship between them and the total emergency costs, which details can be found in Berny et al., (2024), to complement the relevant information required for the design and implementation of a comprehensive disaster risk management plan.

2 Risk Assessment Methodology

This section describes the fully probabilistic risk assessment methodology that was used to estimate the potential earthquake losses in the five countries in Central Asia. As previously mentioned, the methodology is peril-agnostic and is the same that was used for estimating flood losses in the same study area, which details and results can be found in Coccia et al., (2023). The main objective of any probabilistic risk assessment, regardless of the hazard, is to provide a long-term relationship between the losses (e.g., fatalities and/or economic losses), and their occurrence frequencies. Figure 1 shows the general framework of the risk assessment methodology used in this study, noting that it is at the loss module where the combination of the different outputs of the hazard, exposure, and vulnerability modules is made, yielding in this case the estimates of human and economic losses induced by earthquakes.

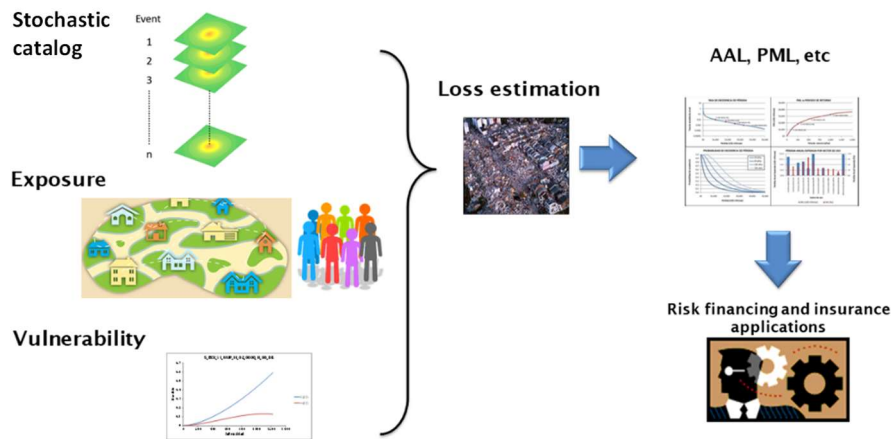


Figure 1: Components and results for the risk assessment

The probabilistic risk assessment methodology employed in this study required the following analytical steps:

- A probabilistic seismic hazard analysis (PSHA) which output consists of a synthetic earthquake catalog with a duration of 10000 years; a timeframe that was deemed as a long enough to provide an acceptable balance between risk results stability (for long return periods) and the computational effort. This synthetic earthquake catalog contains thousands of earthquake events, for which on each case, the characteristics about the location, depth, magnitude, and geometry of the rupture (e.g., strike, dip, shape, aspect ratio) are included, so that the estimation of the probability distribution of the ground motion intensities (i.e., peak ground acceleration, PGA) produced by the event in the surrounding region can be made. For generating the synthetic earthquake catalog, a PSHA was developed for the area under study, which details are fully described in two accompanying papers of this Special Issue by Poggi et al., (2023a; 2023b). The outputs of the PSHA were converted into the format required by R-CRISIS (Ordaz et al., 2021; 2023) so that it could be used in R-CAPRA, the chosen risk assessment tool for this study.
- Definition of the inventory of exposed assets: for the five countries in the study area of this project, different exposure models (1 for year 2020 and 3 for year 2080) were developed including information about the location of the assets,

their replacement cost, and structural characteristics (e.g., construction material, height, structural system, among others). The exposure model for year 2020 accounts for the following types of assets:

- Population
- Building stock
 - Residential buildings
 - Non-residential buildings (schools, healthcare facilities, industrial and commercial buildings)
- Infrastructure
 - Transportation system (roads, railways, and bridges)
 - Airports and airstrips
 - Supply infrastructure

Each one of the other three exposure models that provide a projection of the exposure for year 2080 considered a different Shared Socioeconomic Path (SSP): SSP1, SSP4 and SSP5, and only the residential buildings were included.

- The relationship between the hazard intensity measure and the expected human and physical losses was represented through vulnerability functions, which provide a continuous, quantitative, and probabilistic relationship between the hazard intensity measure (PGA in this case), the expected loss, and a dispersion measure. A unique vulnerability function was derived for each class of asset included in the exposure datasets (buildings and different types of infrastructure).
- Hazard, exposure, and vulnerability data were combined in the loss module, where for each synthetic earthquake, the possible economic and human losses were estimated for the five countries. In a nutshell, the human and economic losses for each exposed asset were computed after convolving the ground acceleration distribution at the site of interest, with the corresponding vulnerability function. This procedure provides a distribution of the mean loss ratio (i.e., the repair cost normalized by the asset replacement cost), which is later multiplied by the total value of the asset to obtain the distribution of losses for the asset caused by a given earthquake. The total loss for each synthetic earthquake is obtained after summing up the losses for all exposed assets. Because every synthetic earthquake has an annual occurrence probability, the losses for all events in the catalog are combined using the methodology proposed by Ordaz (2000), which is explained in detail next.

The probability density function of the loss for the i^{th} synthetic earthquake (hereinafter denoted as event) is computed after aggregating the losses of the individual assets in the exposure database. The expected value of the loss, denoted as $E(l|Event$

$i)$, and its variance, $\sigma^2(l|Event$

$$E(l|Event_i) = \sum_{j=1}^{NE} E(l_j) \quad (1)$$

$$\sigma^2(l|Event_i) = \sum_{j=1}^{NE} \sigma^2(l_j) + 2 \sum_{k=1}^{NE-1} \sum_{j=2}^{NE} \underset{k < j}{cov}(l_k, l_j) \quad (2)$$

where NE represents the total number of exposed assets within the ground motion footprint, $E(l_j)$ the expected value of the loss of the j^{th} exposed asset given the occurrence of the i^{th} event, $\sigma^2(l_j)$ corresponds to the variance of the loss at the j^{th} exposed asset given the occurrence of the i^{th} event, and $cov(l_k, l_j)$ the covariance of the loss of two different exposed assets. This covariance is estimated by using a correlation coefficient, denoted as $\rho_{k,j}$, besides considering the standard deviations of the losses for

160 different exposed assets. It is worth noting that the selection of a correlation model is likely to have effects in the spatially aggregated losses. Equation 2 can therefore be rewritten as:

$$\sigma^2(l|Event_i) = \sum_{j=1}^{NE} \sigma^2(l_j) + 2 \sum_{k=1}^{NE-1} \sum_{\substack{j=2 \\ k < j}}^{NE} \rho_{k,j} \sigma(l_k) \sigma(l_j) \quad (3)$$

165 The key outcome of this fully probabilistic risk assessment methodology corresponds to the LEC, which provides a relationship between different loss values and their annual exceedance frequencies. This model has calculated the LEC using the following expression, which corresponds to one of the possible ways that the Total Probability Theorem can adopt.

$$v(l) = \sum_{i=1}^N \Pr(L > l | Event_i) \cdot F_A(Event_i) \quad (4)$$

170

$v(l)$ represents the exceedance rate of the loss l , $\Pr(L > l | Event_i)$ is the probability that the loss is larger than l given the occurrence of the i^{th} event, and $F_A(Event_i)$ is the annual occurrence frequency of the i^{th} event. The sum of the equation is carried for all the events included in the synthetic catalog. Finally, the return period of any loss value of interest, $Tr(l)$, can be calculated as the inverse value of its loss exceedance rate.

175

$$Tr(l) = \frac{1}{v(l)} \quad (5)$$

Since the loss computed in a group of exposed assets for each synthetic earthquake is an uncertain quantity, it must be treated as a random variable. We have considered the uncertainty in the occurrence of future earthquakes, the uncertainty related to the estimation of the hazard intensities caused by an event (i.e., through the σ value of the ground motion models, GMMs) and the uncertainty in the vulnerability functions (i.e., the dispersion measure for the expected loss).

The loss probability distribution for each synthetic earthquake is calculated by first determining the distribution of the hazard intensity value at the location of each exposed asset and then evaluating the probability distribution of the loss given that hazard intensity value. This is a standard approach that simplifies the problem of assessing the loss distribution by dividing it into two steps. The probability of exceeding a loss with a given value l , conditioned to the occurrence of an earthquake, is thus expressed as:

$$\Pr(L > l | Event_i) = \int_I \Pr(L > l | I) f(I | Event_i) dI \quad (6)$$

190

In Equation 6, $\Pr(L > l | I)$, corresponds to the probability that the loss will exceed the value l given that the local ground motion intensity was I . This term represents the vulnerability model and the uncertainty associated with the expected loss given a certain value of ground motion. $f(I | Event_i)$ represents the probability density function of the hazard intensity, conditional to the occurrence of the event. In this case, it represents the evaluation of the ground motion, which is uncertain, given the occurrence of an earthquake by means of the GMMs. The probability distribution of the ground motion intensity includes the aleatory uncertainty associated with the estimate of the ground motion caused by the event as computed by a GMM, and the epistemic uncertainty due to the use of more than one GMM to assess the ground motion intensity (i.e., logic-trees).

3 Earthquake vulnerability functions and loss validation and calibration

3.1 Development of a set of regional earthquake vulnerability functions

200 For each type of asset included in the exposure database, a unique earthquake vulnerability function was derived to estimate the human and economic losses using PGA as hazard intensity measure. Vulnerability functions can be derived using different approaches, namely analytical, empirical, and expert opinion based, although usually a combination of all these is used. In this project, the empirical approach (i.e., the one that uses post-earthquake damage and loss observed data for different types of assets) was discarded because of the lack of sufficient data about ground motion and building damages and losses from past earthquakes occurred in the study area. The methodology adopted for this study involved collecting and reviewing multiple sets of existing fragility and vulnerability functions from various references relevant for the region, including local studies, international literature and previously developed projects by the World Bank in the region. Such analysis allowed creating a large database of vulnerability functions that were classified in accordance with the taxonomy used in our exposure model. These functions were further harmonized and processed, and a single class-specific function was extracted to capture the mean loss and its variation in the database compiled.

Because of the objective of the project and the lack of local data, in particular for some countries in the region, the earthquake vulnerability functions were derived at regional level considering the similarities in construction practice in the whole area. Hence no differences between the countries could be captured, although they may exist and for which further studies are needed. As explained in detail by Scaini et al., (2023; 2024), six building types and fifteen building subtypes were included in the taxonomy for the residential Central Asian buildings. For the non-residential building category eight building types were identified whereas for the infrastructure assets (e.g., roads, railways, and bridges), 10 classes were included.

The starting point for the development of the regional vulnerability model was to compile a set of fragility curves (Kircher and McCann, 1983), which define the probability of exceeding a damage state (DS) given the ground motion intensity, properly classified in accordance with the exposure taxonomy. These are later combined with consequence functions that define the expected loss ratio (i.e., the fraction of earthquake losses with respect to the total replacement cost of an asset), for a given DS. To define these parameters, different studies previously developed for the region were reviewed, as for instance, the works by Kostov et al., (2004); Ahmad et al., (2011); Karantoni et al., (2011); and Lagomarsino and Cattari (2014), as well as the existing national earthquake resistant building codes and the Seismic Risk Assessment in the Kyrgyz Republic by the World Bank (2017). Also, for specific buildings such as schools, global libraries of vulnerability functions such as the one by the Global Library of School Infrastructure (GLOSI) were considered. The functions from the different references were harmonized to the same intensity measure (e.g., PGA) and when fragility curves were reported, the functions were combined with an appropriate consequence function, compatible with the DS assumed in the original reference. The harmonization allowed to make a direct comparison of the information provided in the different references considered. The harmonization procedure resulted in a unique function for each building class, accounting for the uncertainty implied by the combination of functions derived with different approaches and methodologies. This allowed, for the first time in the Central Asia context, deriving a new model applicable for the entire region leveraging the most recent international research outcomes and the local observations and expertise. Moreover, the approach adopted allowed to consider the uncertainty associated with the evaluation of the damage due to the different approaches that could be adopted to define the vulnerability (i.e., the variability among the studies analyzed). It should be noted that the choice of an efficient and sufficient Intensity Measure is crucial in an earthquake risk assessment (Luco and Cornell, 2007; Kohrangi et al., 2016). It is widely recognized that PGA may not be an optimal predictor for damage and, eventually, losses, especially for some building typologies. The reasons behind such a choice herein,

240 especially in a context like the one in Central Asia, is due to the limited information on existing fragility and vulnerability curves in the region while the limited information is mainly available as a function of PGA.

Figure 2 shows some examples of the earthquake vulnerability functions used in this study to estimate earthquake losses on different types of buildings and infrastructure components. The full details of the vulnerability models can be found in the technical report of the project (RED, 2023).

245

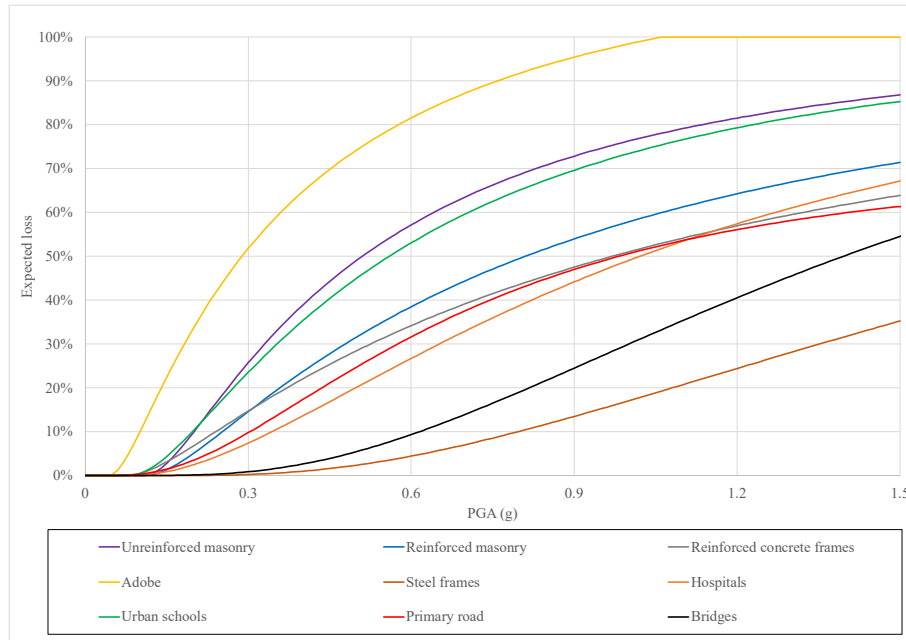


Figure 2: Example of earthquake vulnerability functions for Central Asian residential buildings and infrastructure assets

3.2 Loss model calibration and validation

250 Using the vulnerability functions derived with the procedure explained in Section 3.1, a comparison between the total direct losses obtained from the model and the reported losses from the data of 7 historical earthquakes in the region was carried out. With the initial vulnerability functions, in most cases the losses computed with the model were higher with respect to the reported ones. The difference of the losses can be partially explained by the changes in the exposed assets at the time of the event compared to the current exposure assets (on which losses were estimated in this study). However, part of the difference of the losses can be the result of the conservatively high loss ratios in the original vulnerability curves, mainly the loss ratios in the initial (left) side of the vulnerability curves, where the intensity measure (e.g., PGA) tends to be very low. Therefore, a calibration procedure of the original vulnerability functions was carried out through an iterative process on the original set of functions, which was carried out by comparing the results of the model on an event-by-event basis, in terms of economic losses and fatalities, with those included in publicly available reports. Reported losses were obtained from different sources and it must be highlighted that these values are affected by large uncertainties and the following limitations exist:

260

- The accuracy of the reported losses is variable since different methodologies were used in each case, at different times, in each of the five countries. Because of the use of different methodologies, the same event could have different values of reported human and economic losses.
- The reported losses were trended using the methodology by Pielke et al., (2003) to account for the effect of the national population, inflation, local currency deflator and gross domestic product growth, among others to make them

265

comparable with the modeled values. This process is another source of uncertainty because many factors that occurred after the event are unknown. In general, the oldest the event, the most uncertain its reported losses.

- 270
- Reported losses usually account for the sum of direct and indirect (and in some cases content) losses and this detail is often unspecified, or the losses are not disaggregated by type. The earthquake losses computed in this study are representative only for the direct losses on buildings and infrastructure.
- 275
- For earthquakes such as the 2003 Kazakhstan event, the available economic losses were reported the local currency (Tenge). Since the comparisons were carried out in terms of US dollars, additional variability was included to the procedure by adopting an average exchange rate for the time of occurrence.

With the support of the local specialists involved in the development of this project, data from the seven historical earthquakes listed in Table 1 were compiled and used for validation purposes.

280 **Table 1: Location, magnitude and depth parameters for the historical earthquakes used in the loss validation process**

Event ID	Country	Date	M _w	Latitude (°)	Longitude (°)	Depth (km)
1	KGZ	05/10/2008	6.7	73.44	39.31	40
2	KGZ	19/08/1992	7.3	73.63	42.07	25
3	UZB	20/07/2011	6.3	71.42	40.16	20
4	UZB	26/05/2013	6.2	67.40	39.20	18
5	TJK	07/12/2015	7.2	72.78	38.21	22
6	TJK	29/07/2006	5.6	68.83	37.26	34
7	KAZ	23/05/2003	6	80.52	42.91	10

With the data shown in Table 1 and considering the GMM and rupture's characteristics that were used in the PSHA for this project, the PGA footprints were generated to estimate the losses for the different types of assets. The methodology employed for calculating the losses of these historical earthquakes is the same as for the fully probabilistic risk assessment. For most of the historical earthquakes, there are reported two possible fault planes from the moment tensor solution and then, based on the tectonic environment while maintaining coherence with the PSHA assumptions, the most appropriate was chosen to define the geometric and orientation characteristics of each rupture. Note that the adopted vulnerability functions have been calibrated based on the outcomes of the estimated losses for the historical events. This was informed by finding an intermediate solution based on the historical reported losses in the region as well as by comparing the outcomes of the normalized losses (i.e., the ratio of the total estimated losses over the total replacement value) for the historical events of the region with other regions of the world with similar seismicity and exposure. Figure 3 shows the comparison between the reported and modeled losses (before and after the calibration). A similar methodology was followed for the calibration of the vulnerability functions to estimate human losses, for which a comparison between the modeled and reported fatalities was made, allowing improving the fit between the two values.

295

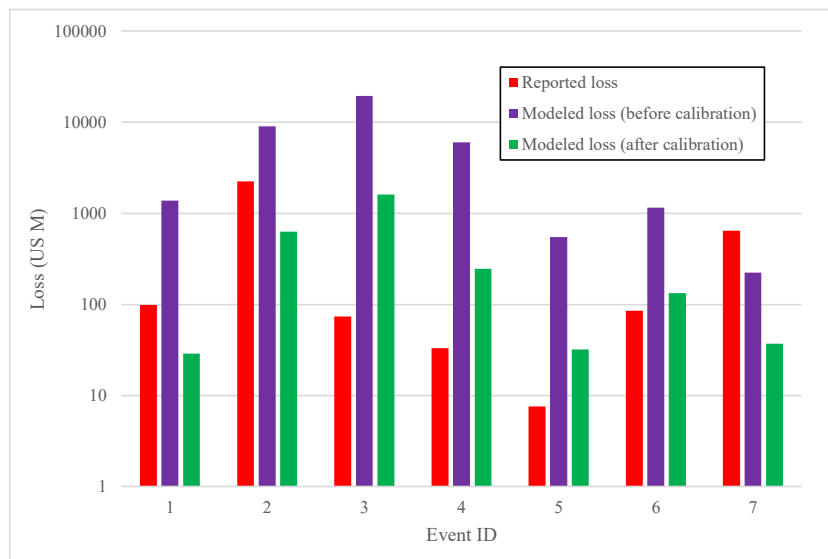


Figure 3: Comparison of monetary losses between the observed (reported) values and the modeled losses before and after the calibration

Figure 4 shows the shakemaps, based on the selected ground motion models for the PSHA carried out for this study, for peak ground acceleration (PGA) for the Kyrgyz Republic earthquakes listed in Table 1. Figure 5 shows the comparison between the modeled and reported economic losses and fatalities for the two events. The average value is indicated in green and is limited by the black squares that depict the upper and lower limits of the reported values, as per the different data sources.

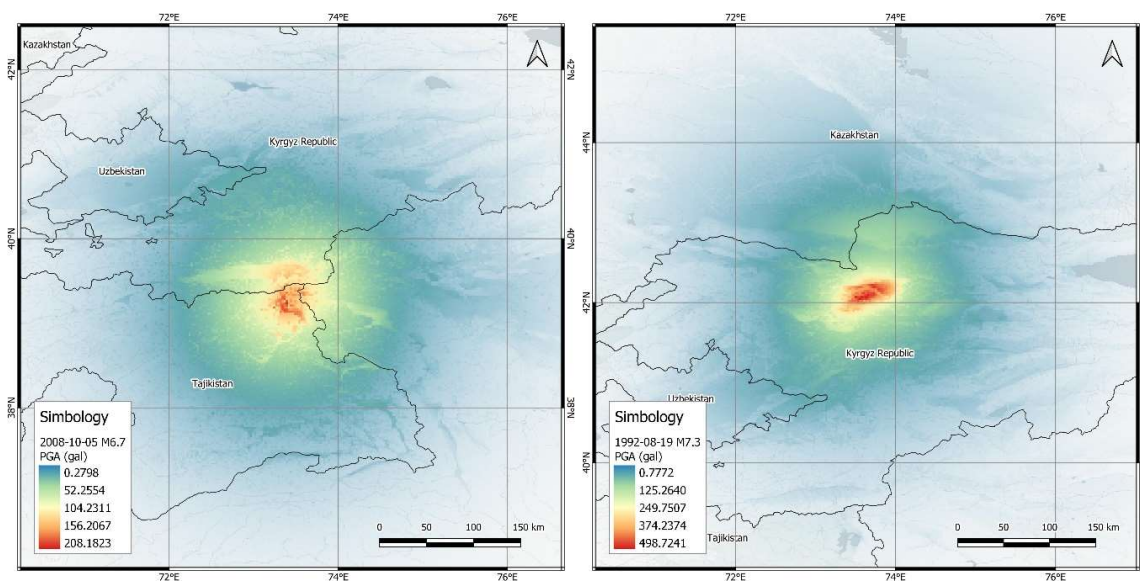
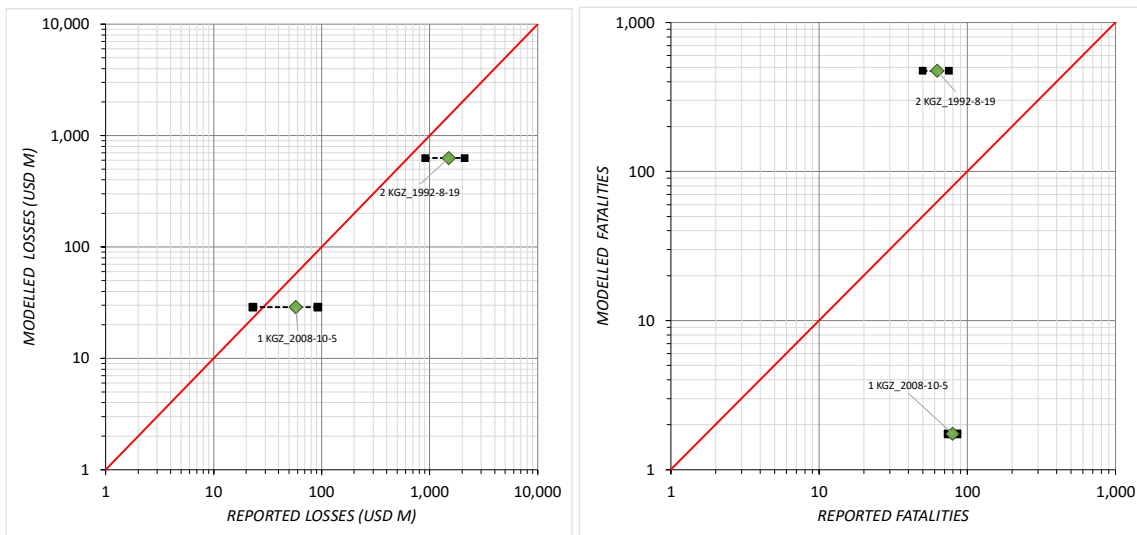


Figure 4: Shakemaps (PGA) for the October 5th, 2008 (left) and the August 19th, 1992 (right) Kyrgyzstan earthquakes



305

Figure 5: Comparison of modeled economic losses (left) and fatalities (right) for the historical earthquakes in the Kyrgyz Republic

The reported economic losses for the two historical earthquakes used in the validation procedure in the Kyrgyz Republic are higher than the modeled losses by a factor of almost three. However, it should be stressed again that the reported losses have large uncertainties associated, as for instance what they include (e.g., only residential buildings? Emergency costs?). For the modeled fatalities, of the 2008 event the obtained results are lower than the reported one, whereas the opposite occurs for the 1992 event. As mentioned before, the use of a regional vulnerability model can leave aside different considerations that are particular for a country and therefore, these differences can be explained by that.

310

The differences between the modeled and the reported losses for the 7 historical events, despite being non-negligible can be explained by different reasons. First, during the development of the earthquake vulnerability functions for this project there were not enough specific data, neither about the vulnerability characteristics, nor about the reported losses to be able to distinguish and calibrate the models at country level. Therefore, a regional approach was adopted for the development of the vulnerability functions. As shown in Figure 3, there are some overestimations (e.g., Uzbekistan 2011 earthquake) and underestimations (e.g., Kyrgyzstan 1992 earthquake) against the reported losses that are normal in this type of modelling, even if these are systematic for a given country. Even if part of the differences can be related to the characteristics of the exposed assets at the time of the event, compared to the current ones, another possible explanation could be the choice of conservative (i.e., high) loss ratios, particularly for low PGA levels, which can affect the aggregated losses. This occurs because the number of exposed assets in areas far from the epicenter (and thus affected by low ground motion intensities) is usually much larger than that close to it for these 7 events, and even very small loss ratios in the low PGA range, when summed for all those far exposed assets, might unrealistically increase the total aggregated losses. Note that, the reported losses after earthquakes commonly consider the losses induced by the mainshock event and all other aftershocks (i.e., the entire sequence). Herein, however, the loss estimates reflect the results of the loss calculations related only to the mainshock (or the largest event in the sequence) which may explain the underestimation of the losses in some of the cases. The other components of the risk assessment (i.e., earthquake hazard and exposure) were subject to separate validation processes, which details can be found in the accompanying papers in this Special Issue by Poggi et al., (2023a; 2023b) and by Scaini et al., (2023; 2024).

315

320

325

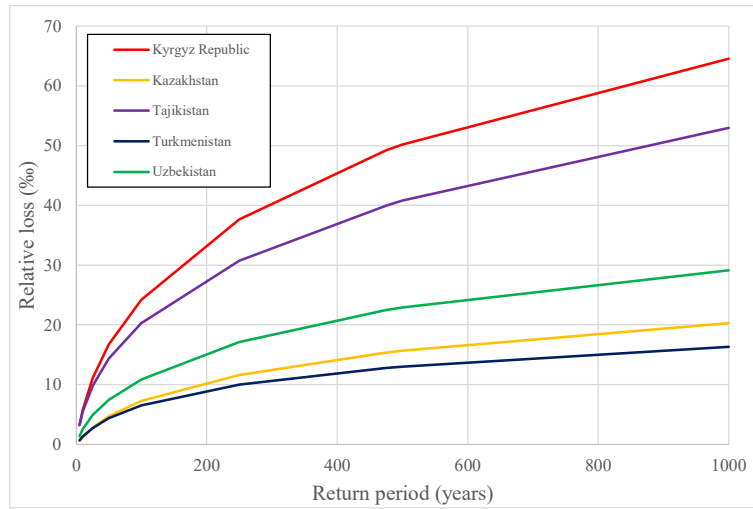
330

4 Results

4.1 Aggregated earthquake loss estimates

Earthquake risk results have been calculated at different aggregation levels, being the Oblast one the most refined, followed with the national and by the regional cases. In the latter, aggregated results for the five countries in the study area were obtained.

335 For each case, a LEC was estimated, as shown in Figure 6, providing a relationship between different loss levels and their annual occurrence frequencies. As it is well-known, the inverse value of the annual occurrence frequency represents the return period (in years).



340 **Figure 6: Country level earthquake loss exceedance curves**

Tables 2 to 5 show the tabulated results for the earthquake losses (in absolute values and normalized by their exposed value) in terms of the AAL and return period losses between 5 and 1000 years at country and regional level, for the 2020 exposure and the three SSPs for year 2080. Appendix 1 includes the earthquake risk results at Oblast level, for the residential sector and year 2020 exposure for the five countries in the study area.

345

Table 2. Tabulated earthquake losses at regional and country level for the 2020 exposure (all sectors)

Tr (years)	Absolute values (US M)						Relative values (%)					
	Regional	KGZ	KAZ	TJK	TKM	UZB	Regional	KGZ	KAZ	TJK	TKM	UZB
5	\$1,797	\$184	\$303	\$247	\$38	\$1,280	1.07	3.18	0.54	3.27	0.68	1.38
10	\$3,031	\$335	\$648	\$416	\$72	\$2,380	1.81	5.8	1.15	5.51	1.29	2.57
25	\$5,403	\$640	\$1,549	\$738	\$149	\$4,548	3.22	11.1	2.76	9.78	2.7	4.91
50	\$7,929	\$964	\$2,629	\$1,082	\$242	\$6,873	4.73	16.7	4.68	14.3	4.38	7.41
100	\$11,331	\$1,397	\$4,066	\$1,533	\$362	\$10,065	6.75	24.2	7.23	20.3	6.54	10.9
250	\$17,366	\$2,174	\$6,528	\$2,320	\$554	\$15,913	10.35	37.7	11.6	30.7	10	17.2
475	\$22,518	\$2,841	\$8,627	\$3,018	\$708	\$20,842	13.42	49.2	15.4	40	12.8	22.5
500	\$22,955	\$2,898	\$8,807	\$3,079	\$720	\$21,252	13.68	50.2	15.7	40.8	13	22.9
1000	\$29,175	\$3,724	\$11,426	\$4,000	\$902	\$26,971	17.39	64.5	20.3	53	16.3	29.1
AAL	\$1,924	\$192	\$351	\$238	\$34	\$1,109	1.15	3.32	0.62	3.15	0.62	1.2

Table 3. Tabulated earthquake losses at regional and country level for the 2080 exposure (residential sector only), SSP1

Tr (years)	Absolute values (US M)						Relative values (%)					
	Regional	KGZ	KAZ	TJK	TKM	UZB	Regional	KGZ	KAZ	TJK	TKM	UZB
5	\$814	\$95	\$131	\$166	\$14	\$549	0.72	2.96	0.39	2.97	0.70	0.80
10	\$1,389	\$161	\$275	\$270	\$26	\$1,043	1.23	5.00	0.82	4.84	1.31	1.52
25	\$2,530	\$291	\$668	\$464	\$53	\$2,038	2.24	9.05	1.98	8.32	2.64	2.97
50	\$3,772	\$433	\$1,211	\$667	\$84	\$3,121	3.33	13.44	3.60	11.96	4.21	4.55
100	\$5,472	\$631	\$1,994	\$936	\$126	\$4,618	4.84	19.58	5.92	16.78	6.31	6.73
250	\$8,609	\$1,011	\$3,452	\$1,427	\$196	\$7,510	7.61	31.40	10.26	25.59	9.87	10.94
475	\$11,361	\$1,362	\$4,793	\$1,885	\$256	\$10,150	10.04	42.29	14.24	33.80	12.87	14.78
500	\$11,597	\$1,393	\$4,912	\$1,926	\$261	\$10,378	10.25	43.25	14.59	34.53	13.12	15.11
1000	\$15,017	\$1,846	\$6,681	\$2,550	\$335	\$13,603	13.28	57.33	19.85	45.73	16.81	19.81
AAL	\$931	\$103	\$163	\$162	\$13	\$491	0.82	3.19	0.48	2.9	0.63	0.72

350

Table 4. Tabulated earthquake losses at regional and country level for the 2080 exposure (residential sector only), SSP4

Tr (years)	Absolute values (US M)						Relative values (%)					
	Regional	KGZ	KAZ	TJK	TKM	UZB	Regional	KGZ	KAZ	TJK	TKM	UZB
5	\$822	\$96	\$131	\$166	\$14	\$557	0.73	2.97	0.39	2.96	0.70	0.81
10	\$1,403	\$162	\$275	\$271	\$26	\$1,056	1.24	5.02	0.82	4.83	1.30	1.54
25	\$2,553	\$293	\$668	\$467	\$53	\$2,062	2.25	9.08	1.98	8.32	2.64	3.00
50	\$3,802	\$435	\$1,211	\$673	\$84	\$3,153	3.36	13.49	3.60	11.98	4.22	4.58
100	\$5,511	\$634	\$1,996	\$946	\$126	\$4,661	4.87	19.63	5.93	16.82	6.34	6.78
250	\$8,668	\$1,014	\$3,455	\$1,443	\$197	\$7,572	7.65	31.42	10.27	25.67	9.91	11.01
475	\$11,436	\$1,364	\$4,795	\$1,906	\$257	\$10,231	10.10	42.27	14.26	33.91	12.92	14.87
500	\$11,676	\$1,395	\$4,914	\$1,947	\$262	\$10,459	10.31	43.22	14.61	34.64	13.17	15.20
1000	\$15,120	\$1,848	\$6,683	\$2,577	\$336	\$13,707	13.35	57.29	19.87	45.86	16.87	19.93
AAL	\$938	\$103	\$163	\$163	\$13	\$497	0.83	3.2	0.48	2.89	0.63	0.72

Table 5. Tabulated earthquake losses at regional and country level for the 2080 exposure (residential sector only), SSP5

Tr (years)	Absolute values (US M)						Relative values (%)					
	Regional	KGZ	KAZ	TJK	TKM	UZB	Regional	KGZ	KAZ	TJK	TKM	UZB
5	\$822	\$96	\$132	\$166	\$14	\$557	0.73	2.98	0.39	2.99	0.71	0.81
10	\$1,404	\$163	\$276	\$269	\$26	\$1,057	1.24	5.05	0.82	4.86	1.31	1.54
25	\$2,557	\$296	\$670	\$463	\$53	\$2,065	2.26	9.15	1.99	8.34	2.65	3.00
50	\$3,808	\$440	\$1,216	\$664	\$84	\$3,159	3.36	13.60	3.61	11.97	4.24	4.59
100	\$5,518	\$640	\$2,003	\$931	\$127	\$4,666	4.87	19.81	5.95	16.78	6.35	6.78
250	\$8,668	\$1,023	\$3,467	\$1,418	\$198	\$7,569	7.65	31.65	10.30	25.56	9.92	11.00
475	\$11,431	\$1,374	\$4,813	\$1,872	\$258	\$10,219	10.09	42.53	14.30	33.75	12.94	14.85
500	\$11,671	\$1,405	\$4,932	\$1,913	\$263	\$10,446	10.30	43.49	14.65	34.49	13.19	15.18
1000	\$15,111	\$1,861	\$6,707	\$2,534	\$337	\$13,688	13.34	57.58	19.92	45.68	16.89	19.89
AAL	\$938	\$104	\$163	\$162	\$13	\$497	0.83	3.21	0.49	2.91	0.64	0.72

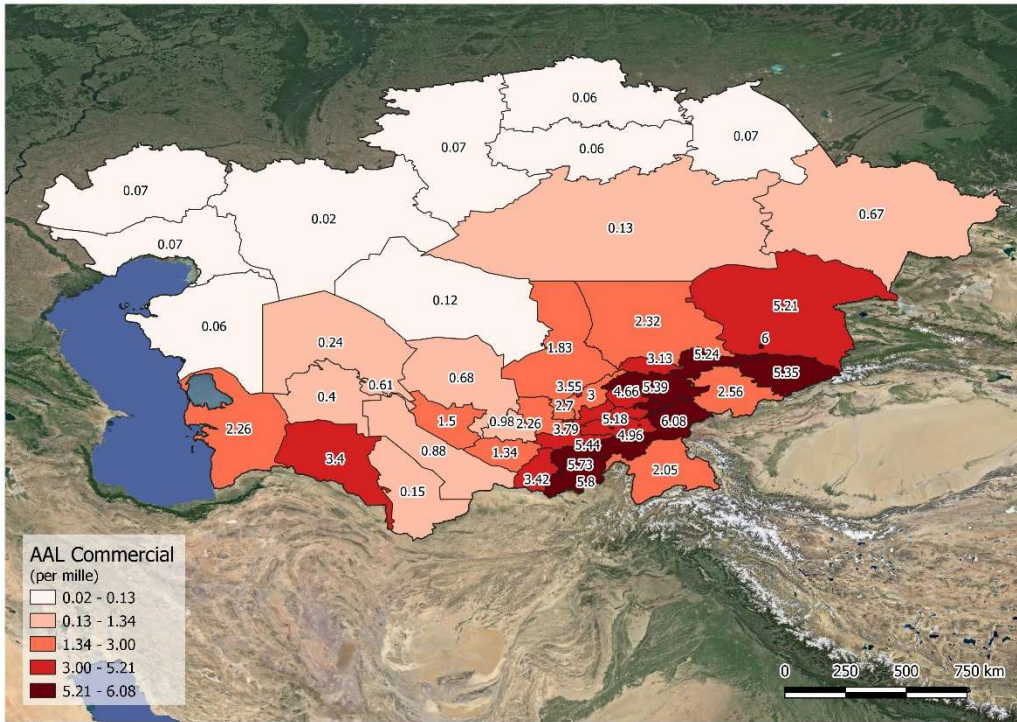
355

Tables above show the absolute and relative earthquake losses at country level and at regional level for the current exposure scenario (year 2020). Regional level refers to the aggregated results for the five Central Asia countries. Although the largest absolute losses are found for Uzbekistan, these values do not indicate that the largest earthquake risk in the region is in that country. In relative terms (per mille - ‰), it can be seen from the same table that the Kyrgyz Republic and Tajikistan have larger losses due to a combination of the higher earthquake levels at locations with exposure concentrations, and earthquake vulnerability. From Tables 2 to 5, it can also be seen that this metric is additive, meaning that the regional AAL is the sum of the individual AAL's calculated for each of the five countries. However, the same additive property does not hold true for specific return period losses, meaning that the regional loss for a given return period is different (lower) than the sum of the individual losses for that same return period calculated for each country (see Ordaz, 2000 for mor details).

365

When interpreting the absolute losses of the exposure representative of year 2080, it must be noted that it was developed only for the residential sector. Therefore, since the total exposed value is lower in the region for the 2080 case, the absolute losses are lower too. It must be noted that this does not mean that risk will decrease in the future under the assumptions adopted in this study. Besides the losses shown in the previous tables, earthquake losses can be further disaggregated by sector (into as many as included in the exposure databases). For instance, Figure 7 shows the normalized AAL at Oblast level in the study area for the commercial buildings only.

370



375 **Figure 7: Geographical distribution of the earthquake AAL (%) by Oblast for the commercial buildings in Central Asia. Background satellite image © Google Earth**

4.2 Scenario earthquake loss estimates

Some disaster risk management applications, as the development of emergency response plans, require, in addition to the probabilistic risk results, additional information such as scenario (or pseudo-deterministic) risk assessments, on which only one event is included in the risk equation. We denote this risk assessment approach as pseudo-deterministic since they are only deterministic from the occurrence perspective (i.e., F_A takes a value equal to 1.0 in Equation 4), given that the loss assessment is still probabilistic and the uncertainties associated to the hazard and vulnerability components are identified, quantified, and propagated throughout the process. This approach yields results in terms of the expected economic and human losses, as well as allowing obtaining the probability density function (PDF) of the loss. In this project, five scenario analyses using the previously described approach were carried out, for selected cities. The cities correspond to the capitals of each country, except for Kazakhstan, where the scenario analysis was carried out for Almaty City because of the relatively low seismic hazard at Astana.

The criterion followed for choosing the critical scenarios was based on the disaggregation of the loss at an arbitrarily chosen return period, in this case set equal to 100 years. For this, the following steps were followed:

1. The LEC for the Oblasts where the cities of interest are located were used, and the loss with a 100-year return period is read as a reference. However, if a different return period is needed, all the required information is at the LECs.
2. Knowing the 100-year return period loss, from the year loss tables (YLT) different events that cause similar loss amounts are identified. Depending on the seismotectonic and vulnerability characteristics, these events can have either, similar locations and magnitudes (e.g., all moderate magnitude at close distances to the city), or different locations and magnitudes (e.g., some with moderate magnitude at close distances to the city and some with larger magnitudes but farther from the city).

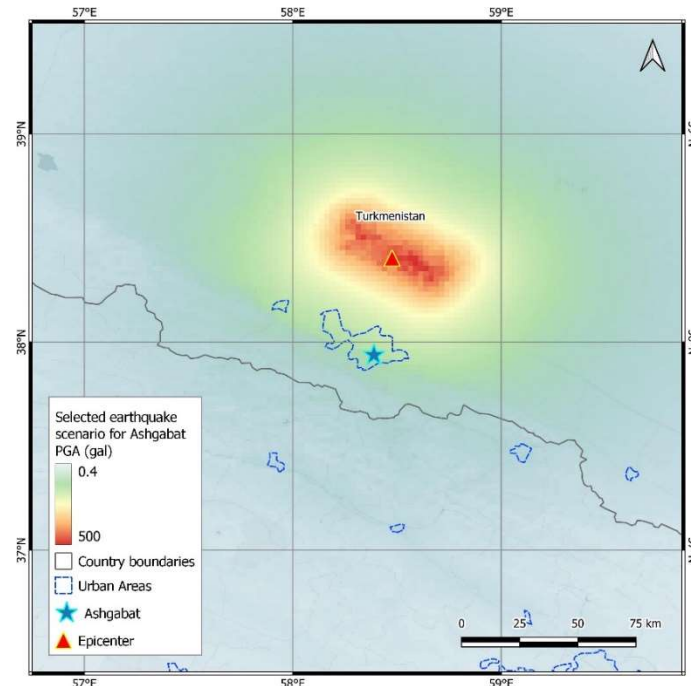
3. From each of these events, the key parameters are identified, such as their magnitude, location, depth, and rupture characteristics (e.g., strike and dip). For each city, between 4 to 5 synthetic events causing similar losses than the one with the 100-year return period were identified.

405 4. After that shortlisting, on which only different earthquakes with different magnitudes and locations causing similar losses to that one of the 100yr return period, a single event was chosen, and the pseudo-deterministic risk assessment was carried out.

Table 6 shows the characteristics of the chosen earthquakes for the five analyzed cities. In general, all magnitudes are moderate except for the event in Turkmenistan where, based on the 100yr-loss disaggregation results, an event with $M_w > 7.0$ was selected. Figure 8 shows the modeled PGA for the Ashgabat event as an example.

Table 6. Characteristics of the selected earthquake scenarios for the pseudo-deterministic earthquake risk assessment

Country	City	M_w	Longitude (°)	Latitude (°)	Depth (km)
Kazakhstan	Almaty	6.6	77.147	43.505	15
Kyrgyzstan	Bishkek	5.4	74.560	42.811	15
Uzbekistan	Tashkent	5.6	69.421	41.361	25
Turkmenistan	Ashgabat	7.1	58.477	38.404	15
Tajikistan	Dushanbe	5.8	68.725	38.712	15



415 **Figure 8: Shakemap (PGA) for the deterministic event of $M_w=7.1$ at 50km of Ashgabat, Turkmenistan**

Table 7 shows the expected values for the economic and human losses after performing the risk assessment for these five events. These results include the economic losses modeled for all the sectors considered in the exposure database and are in all cases very close to that one of the 100yr return period of each Oblast.

Table 7. Expected economic losses and fatalities for the pseudo-deterministic earthquake risk assessment

Country	City	Loss (US M)	Fatalities
Kazakhstan	Almaty	1,401	367
Kyrgyzstan	Bishkek	948	1,089
Uzbekistan	Tashkent	1,959	122
Turkmenistan	Ashgabat	381	159
Tajikistan	Dushanbe	325	434

420

5 Discussion and Conclusions

This paper presented the methodological framework for the development of a regionally consistent and fully probabilistic earthquake risk assessment for Central Asia, which yielded results in terms of loss exceedance curves (LEC), average annual losses (AAL) and specific return period losses, namely the commonly used risk metrics within any comprehensive disaster risk management strategy. Earthquake risk has been estimated considering four different exposure models, one representative for today's conditions, and three others for year 2080 but accounting for different shared socioeconomic pathways (SSP). The level of detail for all the components of this earthquake risk model is higher with respect to previous studies in the region and all components of this study were subject to comprehensive validations and calibrations, using the best available public data. This refinement has been complemented too with the inclusion of additional sectors in the exposure databases that enabled the derivation of a more comprehensive overview of the earthquake risk level in the study area.

The earthquake losses calculated in this project allowed having an order of magnitude for the feasible losses up to the subnational level, which was possible because of the good enough resolution level used for the representation of both, hazard, and exposure. Also, by having used a regionally consistent approach, the results are directly comparable among them, besides having used consistent assumptions, modelling approaches and treatment of uncertainties which, considering the final objective of the study (i.e., the regional calculation of earthquake losses) is a key issue.

Additional to the earthquake risk, flood risk was also of interest within this project and because of that, a peril-agnostic and fully probabilistic risk assessment methodology was used. This was achieved by using the same representation of all the key risk components (i.e., hazard, exposure, and vulnerability) and a key benefit is having obtained the results in terms of the same risk metrics. At the same time, the exposure model disaggregated the assets into different sectors, therefore allowing the estimation of earthquake results for each of them and providing valuable information for policy and decision makers involved in different activities both, at subnational and national levels.

It must be noted too that the results of this earthquake risk assessment are intended to inform the World Bank's engagement in the support of regional and national disaster risk financing and insurance applications, which can include, for instance, traditional and parametric solutions for the structuring of a regional program. However, the level of detail of this study may not be sufficient to, alone, support the planning and design of specific risk management infrastructure, although clearly can be used to enable the World Bank to initiate a policy dialogue.

Central Asia lacks detailed analysis of historical emergency costs. Because of this, a methodology was proposed in the framework of the project (See Berny et al., 2024) considering all the relevant aspects identified after a literature review and taking as a reference the modeled earthquake losses.

A major limitation found during the development of this earthquake risk model was the lack of data to carry out a comprehensive validation and calibration process. A regional approach was used to build the earthquake vulnerability model for the five countries, and peculiarities of each country have not been taken into account due to the lack of detailed data; however, no significant differences within the region are expected and a calibration process was performed to match the reported economic and human losses available for historical events. Finally, and regarding the exposure projections to year 2080 of the residential buildings, it must be highlighted that catastrophe risk models always have associated levels of uncertainty when performed for the current hazard and exposure characteristics, that in this case tend to increase due to the

uncertainties for this future scenario. For this reason, although these results have been made available, they must be taken as indicative and only used for comparison purposes.

Data availability

465 Data and results of this study are available at: <https://datacatalog.worldbank.org/search?q=sfrarr%20central&start=0&sort=>

Acknowledgments

The Strengthening Financial Resilience and Accelerating Risk Reduction in Central Asia (SFRARR) project was funded by the European Union and was implemented by the World Bank. Authors are thankful to the World Bank Specialists, in particular Chyi-Yun and Stuart Fraser for their contributions and constructive criticism during the development of the earthquake risk
470 model. Authors are also thankful to Dr. Sergey Tyagunov for the assistance and support in the finding and validation of local data.

Author contribution

MASG: conceptualization, validation, formal analysis, writing and editing. MOS: conceptualization, risk assessment methodology, software, validation, formal analysis, writing review and editing. BH, OG & CA conceptualization, software,
475 formal analysis, and validation. EF, MK, PC and ZF: conceptualization, vulnerability model development, vulnerability methodology, formal analysis, validation, and calibration.

Competing interests

All authors declare that they do not have conflicts of interest of any type.

Special issue statement

480 This paper is to be considered in the Special Issue: Regionally consistent risk assessment for earthquakes and floods and selective landslide scenario analysis in Central Asia.

References

- Ahmad, N., Crowley, H. and Pinho, R.: Analytical fragility functions for reinforced concrete and masonry buildings and buildings aggregates of Euro-Mediterranean Regions – UPAV methodology. Internal Report, Syner-G Project. 2011.
485
- Berny, E., Avelar, C., Salgado-Gálvez, M.A., and Ordaz, M.: Estimating emergency costs for earthquakes and floods in Central Asia based on modeled losses, *Nat Hazard Earth Sys*, 24, 53-62, 2024.
- CAC-DRMI: Risk assessment for Central Asia and Caucasus: desk study review. 2009.
490
- Cardona, O.D., Ordaz, M., Mora, M., Salgado-Gálvez, M.A., Bernal, G.A., Zuloaga, D., Marulanda, M.C., Yamín, L.E. and González, D.: Global risk assessment: a fully probabilistic seismic and tropical cyclone wind risk assessment, *Int J Disast Risk Re.*, 10(B), 461-476, 2014.

- 495 Coccia, G., Ceresa, P., Bussi, G., Denaro, S., Bazzurro, P., Martina, M., Fagà, E., Avelar, C., Ordaz, M., Huerta, B., Garay, O., Raimekova, Z., Abdrakhmatov, K., Mirzokhonova, S., Ismailov, V. and Belikov, V.: Large-scale flood risk assessment in data scarce areas: an application to Central Asia. *Nat Hazard Earth Sys. Sci. Discuss.* [preprint], <https://nhess.copernicus.org/preprints/nhess-2023-157>, in review, 2023.
- 500 ERN – Evaluación de Riesgos Naturales: R-CAPRA. Program for probabilistic and multi-hazard risk assessment, Evaluación de Riesgos Naturales, Mexico City, Mexico, 2022.
- GFDRR: Europe and Central Asia Country Risk Profiles for Floods and Earthquakes. 2016
- 505 Jaimes, M.A., Reinoso, E., Ordaz, M., Huerta, B., Silva, R., Mendoza, E. and Rodríguez, J.C.: A new approach to probabilistic earthquake-induced tsunami risk assessment, *Ocean Coast Manage*, 119, 68-75, 2016.
- JICA: The Study on Earthquake Disaster Risk Management for Almaty City in the Republic of Kazakhstan. 2009.
- 510 Karantoni, T., Lyrantzaki, F., Tsionis, G. and Fardi, M.N.: Analytical fragility functions for masonry buildings and building aggregates. *UPAT Methodology*. 2011.
- Kircher, C.A. and McCann, M.W.: Appendix A: development of seismic fragility curves for sixteen types of structures common to cities of the Mississippi Valley Region. Jack Benjamin and Associates Inc., Mountain View, California, USA, 515 1983.
- Kohrangi, M., Vamvatsikos, D. and Bazzurro, P.: Implications of Intensity Measure Selection for Seismic Loss Assessment of 3-D Buildings, *Earthq. Spectra*, 32(4), 2167-2189, 2016.
- 520 Kostov, M., Vaseva, E., Kaneva, A., Koleva, N., Verbanov, G., Stefanov, D., Darvarova, E., Salakov, D., Simeonova, S. and Cristoskov, L: Application to Sofia, Report RISK-UE WP13, 2004.
- Lagomarsino, S. and Cattari, S. Fragility Functions of Masonry Buildings. In: Pitilakis, K., Crowley, H. and Kaynia, A. (eds). *SYNER-G: Typology Definition and Fragility Functions for Physical Elements at Seismic Risk. Geotechnical, Geological and* 525 *Earthquake Engineering (GGEE, volume 27)*, 2014.
- Luco, N. and Cornell C.A.: Structure-Specific Scalar Intensity Measures for Near-Surface and Ordinary Earthquake Ground Motions. *Earth. Spectra.*, 23(2), 357-392, 2007.
- 530 Ordaz, M. Metodología para la evaluación del riesgo sísmico enfocada a la gerencia de seguros por terremoto, technical report, Universidad Nacional Autónoma de México, Mexico City, Mexico, 2000.
- Ordaz, M., Cardona, O.D., Salgado-Gálvez, M.A., Bernal, G.A., Singh, S.K. and Zuloaga, D.: Probabilistic seismic hazard assessment at global level. *Int J Disast Risk Re.*, 10(B), 419-427, 2014.
- 535 Ordaz, M., Salgado-Gálvez, M.A., Huerta, B., Rodríguez, J.C. and Avelar, C.: Considering the impacts of simultaneous perils. *Disaster Prev Manag*, 28(6), 823-837, 2019.

- 540 Ordaz, M., Salgado-Gálvez, M.A., and Giraldo, S.: R-CRISIS: 35 years of continuous developments and improvements for Probabilistic Seismic Hazard Analysis. *B Earthq Eng*, 19, 2797-2816, 2021.
- Ordaz, M., Martinelli, F., Aguilar, A., Arboleda, J., Meletti, C. and D'Amico, V.: R-CRISIS, Program for computing seismic hazard, Instituto de Ingeniería, Universidad Nacional Autónoma de México, Mexico City, Mexico. Available at: www.r-crisis.com (last accessed on July 18th, 2023), 2023.
- 545 Pielke, R.A., Rubiera, J., Landsea, C., Fernández, M.L. and Klein, R.: Hurricane Vulnerability in Latin America and The Caribbean: Normalized Damage and Loss Potentials, *Nat Hazards Rev*, 4(3), 101, 2003.
- 550 Poggi, V., Parolai, S., Silacheva, N., Ischik, A., Abdrakhmatov, K., Kobuliev, Z., Ismailov, V., Ibragimov, R., Karaev, J., Ceresa, P. and Bazzurro, P.: Harmonizing seismicity information in Central Asian countries: earthquake catalog and active faults, *Nat Hazard Earth Sys. Sci.* (preprint under review), 2023a.
- Poggi, V., Parolai, S., Silacheva, N., Ischik, A., Abdrakhmatov, K., Kobuliev, Z., Ismailov, V., Ibragimov, R., Karaev, J., Ceresa, P. and Bazzurro, P.: Development of a regional probabilistic seismic hazard model for Central Asia, *Nat Hazard Earth Sys. Sci.*, (preprint under review). 2023b.
- 555 RED – Risk Engineering Development: Earthquake vulnerability for the regional consistent risk assessment for earthquakes and floods and selective landslide scenario analysis for strengthening financial resilience and accelerating risk reduction Central Asia, Technical Report Task 5a. 2023.
- 560 Salgado-Gálvez, M.A., Zuloaga, D., Bernal, G.A., Mora, M.G. and Cardona, O.D.: Fully probabilistic seismic risk assessment considering local site effects for the portfolio of buildings in Medellín, Colombia, *B Earthq Eng*, 12(2), 671-695, 2014.
- 565 Scaini, C., Tamaro, A., Adilkhan, B., Sarzhanov, S., Ismailov, V., Umaraliev, R., Safarov, M., Belikov, V., Karayev, J. and Fagà, E.: A new regionally consistent exposure database for Central Asia: population and residential buildings. *Nat Hazard Earth Sys. Sci.* (preprint under review). DOI:10.5194/nhess-2023-94, 2023.
- 570 Scaini, C., Tamaro, A., Adilkhan, B., Sarzhanov, S., Ismailov, V., Umaraliev, R., Safarov, M., Belikov, V., Karayev, J. and Fagà, E.: A regional scale approach to assess non-residential buildings, transportation and croplands exposure in Central Asia, *Nat Hazard Earth Sys*, 24, 355-373, 2024.
- UNISDR: “Global Assessment Report on Disaster Risk Reduction 2013”, Geneva, Switzerland. 2015
- 575 World Bank: Measuring Seismic Risk in Kyrgyz Republic. Seismic Risk Reduction Strategy. Scientific Technical Report 240323-00. 2017

Appendix A: Earthquake risk results at Oblast level for the five countries in Central Asia

Table A1. Earthquake losses for different return periods and AAL for the residential sector in the Kyrgyz Republic. The first line shows the absolute loss (in US M) and the second line the normalized loss (%)

Oblast	Modeled loss (US M)									
	[Relative loss to replacement cost (%)]									
	5yrs	10yrs	25yrs	50yrs	100yrs	250yrs	475yrs	500yrs	1000yrs	AAL
Batken	\$15	\$28	\$52	\$75	\$103	\$151	\$194	\$198	\$255	\$11
	[4.966]	[9.509]	[17.701]	[25.577]	[35.217]	[51.744]	[66.614]	[67.924]	[87.39]	[3.845]
Chuy	\$17.3	\$65.5	\$201.3	\$364.7	\$608.0	\$1,095.3	\$1,543.2	\$1,581.3	\$2,113.9	\$34.4
	[1.555]	[5.889]	[18.091]	[32.768]	[54.63]	[98.413]	[138.661]	[142.085]	[189.94]	[3.088]
Jalal-Abad	\$28.1	\$58.4	\$123.3	\$191.7	\$276.7	\$415.2	\$528.8	\$538.5	\$674.2	\$24.8
	[4.139]	[8.605]	[18.146]	[28.218]	[40.744]	[61.127]	[77.85]	[79.273]	[99.254]	[3.658]
Naryn	\$3.8	\$7.7	\$14.6	\$21.0	\$28.6	\$41.1	\$53.0	\$54.1	\$72.8	\$3.0
	[2.816]	[5.639]	[10.738]	[15.481]	[21.042]	[30.301]	[39.035]	[39.856]	[53.607]	[2.224]
Osh	\$34.80	\$75.00	\$169.40	\$275.80	\$415.20	\$661.40	\$892.90	\$914.10	\$1,247.80	\$37.10
	[3.892]	[8.392]	[18.947]	[30.851]	[46.434]	[73.977]	[99.867]	[102.239]	[139.562]	[4.15]
Talas	\$1.0	\$5.7	\$20.9	\$38.9	\$62.9	\$103.9	\$138.0	\$140.9	\$181.9	\$3.2
	[0.86]	[4.799]	[17.646]	[32.903]	[53.175]	[87.812]	[116.65]	[119.111]	[153.754]	[2.692]
Ysyk-Kol	\$12.6	\$25.4	\$49.9	\$73.9	\$102.3	\$148.8	\$197.0	\$202.0	\$285.8	\$10.5
	[4.785]	[9.637]	[18.944]	[28.02]	[38.787]	[56.455]	[74.728]	[76.61]	[108.391]	[3.997]

580

Table A2. Earthquake losses for different return periods and AAL for the residential sector in Tajikistan. The first line shows the absolute loss (in US M) and the second line the normalized loss (%)

Oblast	Modeled loss (US M)									
	[Relative loss to replacement cost (%)]									
	5yrs	10yrs	25yrs	50yrs	100yrs	250yrs	475yrs	500yrs	1000yrs	AAL
Badakhshan Autonomous Mountainous Region	\$3.2	\$5.6	\$10.1	\$14.7	\$20.3	\$29.2	\$36.3	\$36.9	\$45.5	\$2.6
	[2.589]	[4.617]	[8.321]	[12.046]	[16.626]	[23.91]	[29.781]	[30.276]	[37.303]	[2.127]
Dushanbe	\$2.8	\$13.7	\$64.7	\$153.8	\$288.4	\$524.5	\$724.6	\$741.6	\$986.3	\$12.6
	[0.549]	[2.705]	[12.751]	[30.293]	[56.809]	[103.315]	[142.72]	[146.081]	[194.273]	[2.472]
Khatlon Province	\$104.5	\$184.7	\$328.9	\$469.9	\$644.4	\$945.5	\$1,219.6	\$1,244.0	\$1,607.5	\$81.3
	[5.609]	[9.911]	[17.651]	[25.219]	[34.587]	[50.747]	[65.458]	[66.766]	[86.276]	[4.366]
Sughd Province	\$42.6	\$95.3	\$212.4	\$344.6	\$520.1	\$832.4	\$1,121.8	\$1,148.1	\$1,564.0	\$41.7
	[2.351]	[5.26]	[11.722]	[19.014]	[28.701]	[45.931]	[61.901]	[63.354]	[86.303]	[2.299]
Cities and Districts of the Republican Subordination	\$54.2	\$105.0	\$228.2	\$371.0	\$561.9	\$893.3	\$1,177.6	\$1,202.0	\$1,565.7	\$55.9
	[3.732]	[7.235]	[15.723]	[25.559]	[38.714]	[61.546]	[81.135]	[82.819]	[107.876]	[3.849]

585

Table A3. Earthquake losses for different return periods and AAL for the residential sector in Turkmenistan. The first line shows the absolute loss (in US M) and the second line the normalized loss (%)

Oblast	Modeled loss (US M)									
	[Relative loss to replacement cost (%)]									
	5yrs	10yrs	25yrs	50yrs	100yrs	250yrs	475yrs	500yrs	1000yrs	AAL
Ahal	\$6.4	\$17.3	\$44.8	\$81.1	\$133.6	\$224.5	\$299.8	\$306.2	\$396.7	\$8.1
	[1.166]	[3.141]	[8.121]	[14.696]	[24.199]	[40.658]	[54.301]	[55.461]	[71.841]	[1.473]
Balkan	\$4.3	\$8.8	\$17.1	\$25.3	\$35.5	\$52.7	\$67.7	\$69.0	\$87.8	\$3.4
	[2.06]	[4.234]	[8.274]	[12.238]	[17.158]	[25.488]	[32.723]	[33.35]	[42.452]	[1.656]
Tashauz	\$0.00	\$0.00	\$0.10	\$1.20	\$8.30	\$41.60	\$81.30	\$84.90	\$142.10	\$0.60
	[0.0]	[0.0]	[0.026]	[0.367]	[2.622]	[13.09]	[25.547]	[26.698]	[44.684]	[0.204]
Chardzhou	\$0.7	\$3.6	\$13.7	\$27.9	\$48.5	\$87.5	\$122.8	\$125.9	\$170.4	\$2.4
	[0.174]	[0.872]	[3.331]	[6.783]	[11.802]	[21.294]	[29.876]	[30.625]	[41.47]	[0.58]
Mary	\$0.0	\$0.0	\$0.3	\$1.2	\$4.7	\$18.2	\$42.3	\$45.2	\$101.2	\$0.4
	[0.0]	[0.002]	[0.045]	[0.223]	[0.846]	[3.269]	[7.616]	[8.134]	[18.221]	[0.079]

Table A4. Earthquake losses for different return periods and AAL for the residential sector in Kazakhstan.
The first line shows the absolute loss (in US M) and the second line the normalized loss (%)

Oblast	Modeled loss (US M)									
	[Relative loss to replacement cost (%)]									
	5yrs	10yrs	25yrs	50yrs	100yrs	250yrs	475yrs	500yrs	1000yrs	AAL
Almatinskaya	\$72.0	\$181.0	\$482.1	\$852.6	\$1,324.9	\$2,064.8	\$2,684.2	\$2,738.6	\$3,560.5	\$92.4
	[1.168]	[2.937]	[7.824]	[13.835]	[21.5]	[33.508]	[43.559]	[44.441]	[57.78]	[1.499]
Almaty City Area	\$0.7	\$12.0	\$129.6	\$439.4	\$1,007.0	\$2,123.0	\$3,146.4	\$3,236.3	\$4,541.5	\$38.8
	[0.027]	[0.484]	[5.241]	[17.763]	[40.707]	[85.825]	[127.196]	[130.83]	[183.593]	[1.57]
Akmolinskaya	\$0.00	\$0.00	\$0.00	\$0.00	\$1.00	\$5.80	\$14.30	\$15.50	\$69.40	\$0.40
	[0.0]	[0.0]	[0.0]	[0.001]	[0.059]	[0.323]	[0.803]	[0.869]	[3.9]	[0.022]
Atyrauskaya	\$0.0	\$0.0	\$0.0	\$0.1	\$1.1	\$6.3	\$14.2	\$15.0	\$31.4	\$0.3
	[0.0]	[0.0]	[0.0]	[0.011]	[0.13]	[0.774]	[1.738]	[1.84]	[3.846]	[0.032]
Aktyubinskaya	\$0.00	\$0.00	\$0.00	\$0.20	\$1.60	\$5.80	\$10.60	\$11.00	\$19.80	\$0.10
	[0.0]	[0.0]	[0.0]	[0.027]	[0.173]	[0.643]	[1.165]	[1.215]	[2.184]	[0.011]
Vostochno-Kazachstanskaya	\$4.3	\$10.3	\$25.8	\$47.5	\$85.3	\$186.6	\$299.0	\$309.3	\$479.2	\$6.2
	[0.153]	[0.363]	[0.913]	[1.68]	[3.018]	[6.602]	[10.577]	[10.943]	[16.953]	[0.218]
Mangistauskaya	\$0.00	\$0.00	\$0.00	\$0.10	\$0.60	\$3.60	\$9.60	\$10.30	\$28.50	\$0.20
	[0.0]	[0.0]	[0.0]	[0.006]	[0.044]	[0.265]	[0.71]	[0.762]	[2.108]	[0.013]
Severo-Kazachstanskaya	\$0.0	\$0.0	\$0.0	\$0.0	\$2.5	\$12.0	\$23.7	\$24.9	\$49.1	\$0.6
	[0.0]	[0.0]	[0.0]	[0.001]	[0.078]	[0.376]	[0.741]	[0.779]	[1.538]	[0.02]
Pavlodarskaya	\$0.00	\$0.00	\$0.00	\$0.40	\$2.70	\$11.20	\$26.10	\$27.70	\$54.30	\$0.30
	[0.0]	[0.0]	[0.0]	[0.021]	[0.134]	[0.549]	[1.278]	[1.359]	[2.664]	[0.015]
Karagandinskaya	\$0.0	\$0.0	\$1.0	\$3.9	\$10.8	\$37.2	\$78.1	\$82.8	\$195.4	\$1.2
	[0.0]	[0.0]	[0.026]	[0.104]	[0.291]	[1.0]	[2.101]	[2.23]	[5.258]	[0.033]
Kyzylordinskaya	\$0.00	\$0.00	\$0.00	\$0.30	\$1.80	\$20.60	\$53.50	\$56.80	\$117.90	\$1.00
	[0.0]	[0.0]	[0.0]	[0.011]	[0.071]	[0.789]	[2.047]	[2.173]	[4.513]	[0.036]
Kustanayskaya	\$0.0	\$0.0	\$0.0	\$0.3	\$3.4	\$14.2	\$27.4	\$28.8	\$54.3	\$0.4
	[0.0]	[0.0]	[0.0]	[0.018]	[0.174]	[0.722]	[1.396]	[1.467]	[2.766]	[0.019]
Turkistan	\$23.30	\$70.00	\$178.90	\$302.10	\$473.50	\$827.80	\$1,246.00	\$1,287.80	\$1,955.90	\$31.60
	[0.644]	[1.936]	[4.949]	[8.354]	[13.095]	[22.892]	[34.459]	[35.614]	[54.09]	[0.873]
Zapadno-Kazachstanskaya	\$0.0	\$0.0	\$0.0	\$0.3	\$3.4	\$8.7	\$13.9	\$14.4	\$23.0	\$0.3
	[0.0]	[0.0]	[0.0]	[0.041]	[0.474]	[1.224]	[1.947]	[2.016]	[3.222]	[0.036]
Jambylskaya	\$16.5	\$39.2	\$85.3	\$135.6	\$208.3	\$373.3	\$562.0	\$579.8	\$857.8	\$16.4
	[1.139]	[2.71]	[5.899]	[9.386]	[14.416]	[25.829]	[38.887]	[40.123]	[59.356]	[1.138]

Table A5. Earthquake losses for different return periods and AAL for the residential sector in Uzbekistan. The first line shows the absolute loss (in US M) and the second line the normalized loss (%)

Oblast	Modeled loss (US M)									
	[Relative loss to replacement cost (%)]									
	5yrs	10yrs	25yrs	50yrs	100yrs	250yrs	475yrs	500yrs	1000yrs	AAL
Andijan	\$39.8	\$163.3	\$544.6	\$1,049.3	\$1,762.1	\$3,036.5	\$4,164.5	\$4,263.0	\$5,719.7	\$92.3
	[0.885]	[3.633]	[12.12]	[23.352]	[39.215]	[67.576]	[92.68]	[94.872]	[127.29]	[2.055]
Bukhara	\$3.1	\$24.2	\$90.0	\$214.2	\$537.1	\$1,336.9	\$2,004.4	\$2,059.3	\$2,812.3	\$24.8
	[0.078]	[0.602]	[2.238]	[5.328]	[13.361]	[33.254]	[49.859]	[51.225]	[69.955]	[0.617]
Fergana	\$74.20	\$294.30	\$911.80	\$1,658.30	\$2,644.10	\$4,349.10	\$5,891.70	\$6,029.70	\$8,123.50	\$147.10
	[0.819]	[3.245]	[10.054]	[18.285]	[29.156]	[47.956]	[64.966]	[66.487]	[89.575]	[1.622]
Jizzakh	\$3.7	\$24.9	\$149.8	\$451.5	\$1,051.0	\$2,245.1	\$3,290.7	\$3,380.6	\$4,680.1	\$42.8
	[0.058]	[0.392]	[2.356]	[7.102]	[16.532]	[35.315]	[51.762]	[53.176]	[73.617]	[0.673]
Khorezm	\$0.00	\$0.00	\$2.70	\$23.40	\$95.80	\$386.60	\$762.10	\$796.30	\$1,298.30	\$6.10
	[0.0]	[0.0]	[0.095]	[0.817]	[3.35]	[13.514]	[26.64]	[27.839]	[45.385]	[0.212]
Namangan	\$30.9	\$124.5	\$453.7	\$926.1	\$1,625.3	\$2,874.0	\$3,936.7	\$4,028.1	\$5,345.5	\$80.7
	[0.644]	[2.59]	[9.438]	[19.264]	[33.808]	[59.783]	[81.889]	[83.79]	[111.194]	[1.678]
Navoiy	\$0.1	\$1.8	\$9.7	\$25.2	\$67.5	\$219.2	\$432.7	\$452.8	\$733.8	\$4.1
	[0.007]	[0.087]	[0.467]	[1.208]	[3.237]	[10.512]	[20.753]	[21.717]	[35.191]	[0.199]
Kashkadarya	\$1.4	\$16.2	\$122.3	\$349.2	\$748.1	\$1,507.8	\$2,178.8	\$2,238.2	\$3,124.8	\$30.0
	[0.026]	[0.304]	[2.293]	[6.547]	[14.027]	[28.272]	[40.855]	[41.968]	[58.592]	[0.563]
Karakalpakstan	\$0.0	\$0.0	\$2.8	\$14.7	\$43.2	\$138.2	\$261.0	\$272.9	\$453.8	\$2.4
	[0.0]	[0.0]	[0.084]	[0.445]	[1.309]	[4.19]	[7.909]	[8.27]	[13.753]	[0.074]
Samarkand	\$0.2	\$5.2	\$69.7	\$265.8	\$751.2	\$2,041.1	\$3,427.3	\$3,555.4	\$5,560.5	\$35.4
	[0.002]	[0.049]	[0.657]	[2.508]	[7.087]	[19.255]	[32.333]	[33.542]	[52.457]	[0.334]
Sirdarya	\$3.4	\$29.1	\$193.3	\$504.1	\$1,012.0	\$1,981.7	\$2,842.1	\$2,916.7	\$3,995.3	\$41.8
	[0.076]	[0.659]	[4.37]	[11.395]	[22.879]	[44.8]	[64.25]	[65.936]	[90.321]	[0.945]
Surkhandarya	\$14.2	\$52.0	\$150.3	\$261.0	\$399.7	\$622.3	\$807.0	\$823.2	\$1,064.6	\$23.6
	[0.728]	[2.666]	[7.715]	[13.393]	[20.511]	[31.936]	[41.415]	[42.242]	[54.629]	[1.209]
Tashkent	\$73.8	\$301.2	\$938.9	\$1,758.2	\$2,943.0	\$5,100.8	\$7,021.8	\$7,189.4	\$9,627.8	\$158.1
	[0.568]	[2.317]	[7.223]	[13.525]	[22.638]	[39.237]	[54.014]	[55.303]	[74.06]	[1.216]
Tashkent City	\$0.7	\$14.2	\$158.8	\$576.8	\$1,547.0	\$3,956.9	\$6,445.9	\$6,664.5	\$9,668.5	\$66.0
	[0.014]	[0.282]	[3.16]	[11.478]	[30.784]	[78.741]	[128.27]	[132.621]	[192.399]	[1.314]