

## AutoATES v2.0: Automated avalanche terrain exposure scale mapping

Håvard B. Toft<sup>1,2\*</sup>, John Sykes<sup>3,4</sup>, Andrew Schauer<sup>4</sup>, Jordy Hendrikx<sup>5,6,2</sup> and Audun Hetland<sup>2</sup>

<sup>1</sup> Norwegian Water Resources and Energy Directorate, Oslo, Norway

<sup>2</sup> Center for Avalanche Research and Education, UiT the Arctic University of Norway, Tromsø, Norway

<sup>3</sup> SFU Avalanche Research Program, Department of Geography, Simon Fraser University, Canada

<sup>4</sup> Chugach National Forest Avalanche Center, Girdwood, AK, USA

<sup>5</sup> Antarctica New Zealand, Christchurch, New Zealand

<sup>6</sup> Department of Geosciences, UiT the Arctic University of Norway, Tromsø, Norway

### *\*Corresponding author address:*

Håvard B. Toft, Norwegian Water Resources and Energy Directorate, Oslo, Norway; tel:

+47 454 82 195; email: [htla@nve.no](mailto:htla@nve.no)

Keywords: ATES, GIS, snow, avalanche,

### Abstract

Avalanche risk assessments is complex and challenging, with terrain assessment as one of the most fundamental factors. To aid people's terrain assessment, Parks Canada developed the Avalanche Terrain Exposure Scale (ATES), a system that classifies the severity of avalanche terrain into five classes from non-avalanche terrain to extreme terrain. Manual classification is laborious and dependent on expert's assessments. To ease the process Larsen and his colleagues developed an automated ATES model (AutoATES v1.0). Although the model allowed large-scale mapping, it had some significant limitations. This paper presents an improved AutoATES v2.0 model improving the potential release area (PRA) model, utilizing the new Flow-Py runout simulation package. Furthermore, it and incorporates forest density data in the PRA, Flow-Py and in a newly developed post-forest-classification step. AutoATES v2.0 has also been rewritten in open-source software making it more widely available. The paper includes a validation of the model measured against two consensus maps made by three experts at two different locations in Western Canada. For Bow Summit, the F1 score (a measure of how well the model performs) improved from 64% to 77%. For Connaught Creek, the F1 score improved from 40% to 71%. The main challenge limiting large-scale ATES classification mapping is the determination of optimal input parameters for different regions and climates. In areas where AutoATES v2.0 is applied, it can be a valuable tool for avalanche risk assessment and decision-making. Ultimately, our goal is for AutoATES v2.0 to enable efficient, regional-scale, and potentially global ATES mapping in a standardized manner rather than based solely on expert judgement.

### 1. Introduction

Snow avalanches lead to a yearly average of 140 fatal accidents in Europe and Northern America (Techel et al., 2016, 2018; Birkeland et al., 2017). More than 90% of fatal avalanche accidents are related to recreational activity and triggered by the victim or someone in their party (Schweizer and Lütschg, 2001; Techel and Zweifel, 2013; Engeset et al., 2018). This means that avalanche accidents are not random, but rather a result of less-than-optimal decisions. Strengthening people's ability to make better decisions by raising awareness, providing information and education is important and may ultimately save lives. To do so, many countries have established avalanche forecasting services (Engeset et al., 2018). However, despite access to updated avalanche forecast, the complexity and variability of the of the snowpack still leaves avalanche risk management a complex task. The inherent lack of feedback from the environment also turns avalanche terrain into a wicked learning environment (Fisher et al., 2022). Reliable information and decision-making support are therefore crucial. The most efficient method to mitigate the avalanche hazard is to choose appropriate terrain for the given avalanche conditions (Thumlert and Haegeli, 2017).

50 Assessing avalanche terrain may be intuitive for avalanche professionals (Landrø et al., 2020); however, this  
may not be the case for recreational users of avalanche terrain. To aid non-professionals terrain assessment  
Parks Canada developed the Avalanche Terrain Exposure Scale (ATES v1.0). This is a terrain classification  
system to communicate the potential exposure to avalanches and thus how difficult avalanche management  
55 would be in different types of terrain (Statham et al., 2006). The complexity of avalanche terrain is the result  
of interactions of multiple release areas, tracks, and deposition areas. Within these three areas, other factors  
like, e.g., terrain traps or forest density, could make terrain management more complex due to a more severe  
outcome.

60 Originally, ATES v1.0 categorized popular backcountry routes into three levels: Simple (1), Challenging (2),  
and Complex (3). With the growing adoption of ATES, its application expanded beyond individual routes to  
spatial zones, such as the initiative by Avalanche Canada which mapped several thousand square kilometers  
of avalanche terrain (Campbell and Gould, 2013). An update to the system led to ATES v2.0, which introduced  
two new classes: Non-avalanche terrain (0) and Extreme (4). This revised version also expand the scope of  
65 ATES to include spatial representations like zones, areas, and corridors. The updated scale is referred to as  
ATES v2.0 and a more thorough description can be found in Statham and Campbell (2023).

ATES classification has been used to provide guidelines for terrain use linked to people's specific avalanches  
management skills (CAA, 2016) or for recreational purposes (Campbell and Gould, 2013; Thumlert and  
Haegeli, 2017; Larsen et al., 2020; Schumacher et al., 2022). ATES mapping has also been used to describe  
70 backcountry users' terrain preferences recorded by GPS (i.e., Hendrikx et al., 2022; Johnson & Hendrikx,  
2021; Sykes et al., 2020).

The development of ATES maps for Avalanche Canada from 2009 through 2012 was done using a combination  
of manual mapping and a GIS-assisted workflow (Campbell and Gould, 2013). ATES zoning was labor  
75 intensive, relied heavily on expert judgement and as a result ATES maps were typically only available in high-  
use areas. Campbell and Gould (2013) identified the limitations of this method and presented a more  
quantifiable zonal model that could leverage GIS tools for more systematic terrain classification.

80 An automated model to classify avalanche terrain would need the following ~~components; components~~: 1) A  
model of potential release areas (PRA) for avalanches and 2) a run-out simulation which is an estimation of  
where and how far an avalanche would slide.

Formatert: Brødtekst, Venstre

85 The first attempt at a fully automated ATES model was made by Larsen et al. (2020) using a combination of  
the zonal and technical model of ATES (Campbell and Gould, 2013; Statham et al., 2006). Larsen et al. (2020)  
developed an automated ATES (AutoATES v1.0) model that was able to make ATES zones for all of Norway,  
using only a digital elevation model (DEM) as input. This simple approach to terrain characteristics does not  
consider overhead exposure into account and the performance of the simple avalanche runout simulation is  
also insufficient in flatter terrain. In addition, the model did not account for forest density, which has been  
90 found to be one of the most important factors for ATES classification (Delparte, 2008, Schumacher et  
al 2022). A final challenge was that the model was heavily dependent on proprietary software (Larsen et al.,  
2020), thereby increasing the monetary and computing costs to operate the model and limiting open-source  
access.

### 95 1.1 Improving potential release areas (PRA) model.

~~In AutoATES v1.0, Larsen et al. (2020) used the PRA model developed by Veitinger et al. (2016) due to its  
continuous raster output ranging from 0 to 1. The model uses windshelter, roughness, slope angle and forest  
density as inputs. However, the forest density is only processed as a binary input, meaning that the input is  
either forested or non-forested. If an area is defined as forested, it is not processed by the PRA model and  
defined as a non-PRA. Sharp (2018) improved the PRA model by incorporating forest density as a parameter~~

formaterte: Engelsk (USA)

100 in the fuzzy logic operator, making the interaction of forest density dynamic and equally important compared to roughness, slope angle and windshelter.

105 The PRA establishes the baseline for where avalanches may release and is used as an input for the avalanche runout simulations. In AutoATES v1.0, Larsen et al. (2020) utilized the PRA model by Veitinger et al. (2016), which outputs a continuous range of values between 0 and 1. This model considers factors such as ~~windshelter~~ wind shelter, terrain roughness, slope angle, and forest density. Originally, forest density was only a binary input, effectively categorizing areas as either 'forested' or 'non-forested'. In the binary approach, any 'forested' area was not further processed by the PRA model and was simply labeled as non-PRA. In 2018, Sharp improved the PRA model by including the forest density parameter in what's known as a fuzzy logic operator. Fuzzy logic, unlike binary, does not restrict inputs to yes-or-no values; instead, it allows for degrees of truth (continuous). ~~For instance, instead of an area being classified as simply 'forested' or 'not forested,' it could be 'somewhat,' 'mostly,' or 'completely' forested.~~ This method ~~recognizes~~ acknowledges the differences nuances in forest density and treats it with equal importance to other factors like roughness, slope angle, and wind shelter. ~~The PRA establishes the baseline for where avalanches may release and is used as an input for the avalanche runout simulations.~~

formaterte: Engelsk (USA)

## 1.2 Improvements for run-out simulations

120 There are several avalanche runout simulation models available to estimate the potential track and deposition area, given specific start zone inputs from the PRA model (Christen et al., 2010; Sampl and Zwinger, 2004; Tarboton, 1997; D'Amboise et al., 2022). In principle, these runout models can be divided into two categories: (1) process-based, which attempt to calculate all the physical properties involved, or (2) empirical models which are driven by data-based observations. Selecting an appropriate modelling approach depends on the problem to be solved, data availability, the required accuracy and the spatial scale (D'Amboise et al., 2022). Given access to highly detailed data and unlimited computational power, the process-based models outperform the data-based empirical models. However, given the limitations in computational power when processing large areas and the need for more accurate digital elevation models (DEMs) in many countries, the data-based model is more suitable for large-scale mapping applications.

formaterte: Skrift: Ikke Kursiv

130 Two of the most common process-based simulation tools for avalanche hazard assessment are the RAMMS (Christen et al., 2010) and Samos-AT (Sampl and Zwinger, 2004) models. Both models are made to simulate an accurate prediction of avalanche runout distances, flow velocities and impact pressures in a ~~3-~~ 3-dimensional space. These models are typically calibrated towards known avalanches with long return periods and define potential avalanche terrain. These models are suitable for avalanche terrain zoning, where the aim is to divide the potential avalanche terrain into different zones, across large spatial areas such as regional forecast areas or entire countries, these models are less suitable. Even though the computational power required to apply the process-based models over large areas is a factor, it could be done at regional scales (e.g., Bühler et al. 2022).

140 In contrast to the process-based models, data-based models are computationally inexpensive and can more easily be applied to large geographic areas. A common data-based method to delineate avalanche runout is applying the classical runout angle concepts and path routing in ~~3th~~ three-dimensional terrain (D'Amboise et al. 2022). Comparison of the model results to more computationally expensive simulation type models shows that they respond adequately for the delineation of broad scale terrain classification.

145 In prior automated ATES mapping work, Larsen et al. (2020), used the multiple flow direction model D-infinity (Tarboton, 1997). This model is coupled with the alpha angle (also known as travel angle). The D-infinity model identifies the cells downslope of the starting cell for each PRA cell. The model spreads downslope until a defined alpha angle is reached from the starting cell (as per Heim, 1932; Lied & Bakkehøi, 1980; Toft et al.,

2023). While used in hydrology applications, a substantial weakness of the D-infinity model is that it cannot appropriately model avalanche movement, which may occasionally flow in flat and uphill terrain.

Recently, D'Amboise et al. (2022) presented a new customizable simulation package (Flow-Py) to estimate the runout distance and intensity ~~(the effect from the runout simulation at a specific location)~~ of dense core avalanches (not considering powder clouds). The model utilizes persistence-based routing instead of terrain-based routing, enabling the simulation to respond appropriately to flat or uphill terrain. Where the D-infinity model only considers flow direction, the Flow-Py model also considers flow process intensity. Both models use the same stopping criteria to estimate the runout distance by defining the alpha angle from the initial starting cell.

## 2. Model development

The main objective of the AutoATES v2.0 model is to improve large-scale spatial ATES mapping, update the mapping to reflect recent changes in ATES v2.0 and improve the model workflow. For AutoATES v2.0 to be a viable option for large-scale ATES classification, the model performance should be at least as accurate as manual mapping.

### 2.1 Implementation

To secure a broad adaptation of the new AutoATES model it is important that the model is open-source and easy to use. The v1.0 model was written using proprietary software. We have resolved this by rewriting the entire v2.0 model into the programming language Python using widely available and open-source modules. The AutoATES v2.0 model is available on GitHub (Toft et al., 2023).

### 2.2 Input data

The minimum input data required to run the full AutoATES v2.0 is a DEM and forest density raster (a digital representation of the terrain/elevation and forest density) using the GeoTIFF format. It is also possible to run the model with only a DEM as input, but the output would then only be valid for open, non-forested terrain. Both rasters must have a matching spatial resolution and extent and be defined using a projected coordinate system. The model has been tested with spatial resolutions ranging from 5 to 30 m (cell sizes), but it should be possible to run other spatial resolutions.

Our parametrization for forest density allows for various metrics of forest density inputs. The model is designed to work with stem density, percent canopy cover, basal area or no forest (only for mapping of open terrain). The forest type must be defined in the beginning of the Python script. Forest density influences snow accumulation and snowpack stability, with denser forests generally reducing the risk of avalanches (Bebi et al., 2009).

#### 2.3.1 Percent canopy cover

Canopy cover has a direct relationship with radiation balance and can impact formation of persistent weak layers as well as give an estimate of the degree of snowfall intercepted by trees prior to falling onto the snowpack (Bebi et al., 2009). Forest canopy also impedes wind transport of snow reducing the formation of wind slabs. Percent canopy cover is a widely used metric that quantifies the extent of forest density by measuring the proportion of the ground area obscured by tree canopies when viewed from above. Percent canopy cover can be estimated using various methods including aerial photography, satellite imagery, remote sensing techniques, and ground-based measurements. The resultant parameter used in our model has a value ranging from 0 to 100.

#### 2.3.2 Stem density

Stem density is a metric used to quantify the number of tree stems (trunks) per unit area, typically expressed as stems per hectare or stems per square meter, which provides insight into forest structure and

200  
205

composition. Stem density can influence the snowpack stability and avalanche initiation, as a higher stem density generally results in more trees obstructing and anchoring the snow, thereby reducing the likelihood of avalanche occurrence (Bebi et al., 2009). Stem density can be measured through various techniques, including field surveys, aerial imagery analysis, or remote sensing data. The resultant parameter used in our model can have a value ranging from zero to a couple of thousands (depending on minimum stem diameter) and is stated in number of stems per hectare.

**2.3.3 Basal area**

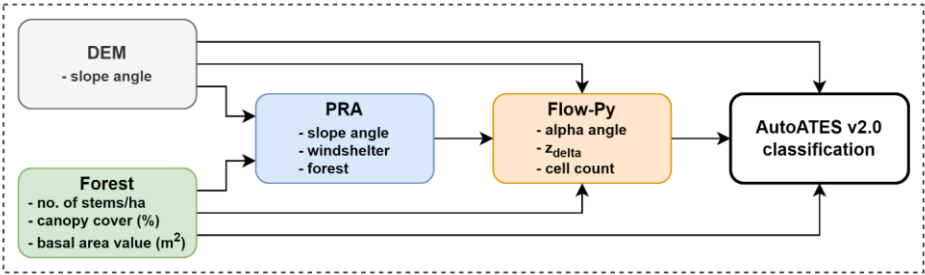
210  
215

The basal area is a unit used to describe the sum of the cross-sectional areas of all trees within a given space, specifically those in the dominant, co-dominant, and high intermediate positions within the forest canopy. It's a measure of the density of trees and is quantified in square meters per hectare (Sandvoss et al., 2005). The advantage with basal area over canopy cover and stem density are that it incorporates the size of trees in addition to the number of trees and is a more direct measurement of the density of the forest vegetation. The basal area value can have any value starting from zero upwards. While theoretically, there is no upper limit to this value, practically it is generally capped at around 60 square meters per hectare to reflect realistic forest conditions.

**2.4 Model components**

220

The AutoATES v2.0 model is split into two main components: (1) pre-processing and (2) the AutoATES classifier. In the pre-processing step, the DEM and forest density rasters are used as input for the start zone PRA model. When the PRA calculations are complete, the PRA and DEM are used to calculate the avalanche runout using the Flow-Py component. When all the key components are calculated, they are used as input for the AutoATES classifier which assigns the final ATES classes for each raster cell (Figure 1).



225

Figure 1: The main components of the AutoATES v2.0 model. First, a pre-processing step is completed to calculate all the necessary raster layers using PRA and Flow-Py. Finally, the AutoATES classifier is used to assign the final ATES classifications.

**2.4.1 PRA**

230  
235

The PRA model uses a Cauchy membership functions to determine the importance of each parameter. The AutoATES v1.0 model (Larsen et al., 2020) incorporated the PRA model developed by Veitinger et al. (2016) to calculate the potential release areas. This PRA model (v1.0) uses slope angle, roughness and windshelter as input parameters. Sharp (2018) modified this model to also include forest density. The models apply Cauchy membership values to determine how important each parameter is. A Cauchy membership value reflect how strongly an input variable belongs within a certain set (Jang et al., 1997). A Cauchy membership value must be defined for each input variable (Eq. 1).

$$\mu(x) = \frac{1}{1 + \left(\frac{x-c}{a}\right)^{2b}} \tag{1}$$

where  $\mu(x)$  is the Cauchy membership value;  $x$  is an input variable (e.g., slope angle, [windshelter](#), or forest); and  $a$ ,  $b$ , and  $c$  are parameters which control the weight of each input variable. We use the membership values suggested by Veitinger et al. (2016) for slope angle and [windshelter](#), while using the value suggested by Sharp (2018) for stem density (Figure 2). In our modified version of the PRA model (v2.0), we have chosen to remove the roughness parameter due to the scale issues with 5-30 m cell sizes (the original PRA model was made to work with a 2 m cell size). The removal of roughness makes it less ideal for higher resolution DEM's (< 5 m cell sizes), see section 4.1.4 for a discussion around this. We have also defined new membership functions for canopy cover and basal area based on input from Parks Canada avalanche experts and through testing of the AutoATES model on our two study areas. These values could be fine-tuned for specific datasets and applications to improve the performance of the PRA model.

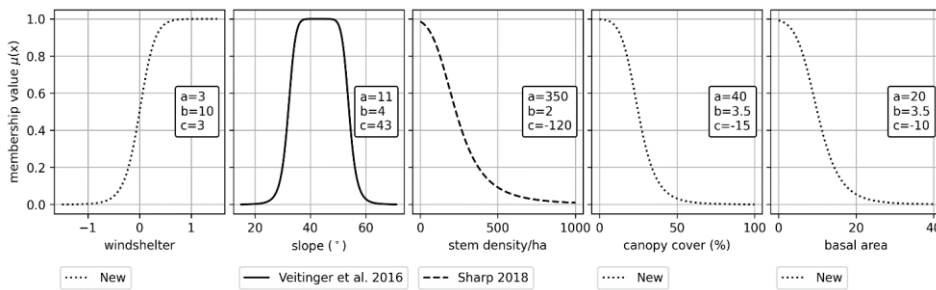


Figure 2: The different Cauchy functions used by Veitinger et al. (2016) and Sharp (2018) for slope angle and stem density. The values  $a$ ,  $b$  and  $c$  are inputs for the Cauchy membership value (Eq. 1). We have suggested new membership values for [windshelter](#), canopy cover (%) and basal area. We recommend that these values are fine-tuned for specific datasets and applications. Read a more in-depth discussion of this in section 4.3.

The Cauchy membership values from slope angle, [windshelter](#) and forest density are used as inputs for the fuzzy operator. We use the same “fuzzy AND” operator used by both Veitinger et al. (2016) and Sharp (2018), originally defined by Werners (1988). The PRA value is therefore defined as follows in Eq. 2:

$$\mu_{PRA}(x) = \gamma \cdot \min(\mu_s(x), \mu_w(x), \mu_f(x)) + \frac{(1-\gamma) + (\mu_s(x), \mu_w(x), \mu_f(x))}{3} \quad (2)$$

$x \in X, \gamma \in [0, 1]$

With three fuzzy sets slope angle  $\mu_s(x)$ , [windshelter](#)  $\mu_w(x)$ , forest density  $\mu_f(x)$  and with  $\gamma$  defined in Eq. 3 as:

$$\gamma = 1 - \min(\mu_s(x), \mu_w(x), \mu_f(x)) \quad (3)$$

The PRA output is a continuous layer ranging between 0 (not likely) to 1 (very likely). Most data-based runout models need release areas in a binary format where 0 is no potential release areas, while the potential release areas are encoded as 1. To convert the PRA layer to a binary format, we select a cut off threshold ( $PRA_{threshold}$ ) where all pixels above this value are included in the potential release area for the runout modelling. We found the  $PRA_{threshold}$  from Larsen et al. (2020) to be too conservative for our study areas and have therefore increased the value to 0.15. The  $PRA_{threshold}$  could be adjusted depending on whether frequent or more extreme avalanche scenarios are of interest.

We have also adjusted how the [windshelter](#) index is calculated. Using a 2 m DEM, Veitinger et al. (2016) resampled the DEM by a factor of 5 (from 2 m to 10 m) and applied a 11x11 sliding window (a

formaterte: Engelsk (USA)

technique where a fixed-size segment of data moves over the entire data set one step at a time). This is according to the recommendations of Plattner et al. (2006), which found the optimal radius to be 60 meters, followed by a secondary optimal radius of 250 m. To achieve the same results, we removed the down sampling factor of 5 and used the 10 m DEM directly to calculate the [windshefterwind shelter](#) index. If other DEM resolutions are to be used, the [windshefterwind shelter](#) index should be adjusted accordingly to use either 60 m (recommended) or 250 m as the radius around each cell. This could be done by either resampling the spatial resolution or changing the size of the sliding window.

#### 2.4.2 Avalanche simulation

The Flow-Py model developed by D'Amboise et al. (2022) is used for the avalanche simulation of the potential track and deposition area. [Flow-Py is a dense core model, thus AutoATES v2.0 is based on dense core runout extents and does not consider powder clouds.](#) -It is similar to the TauDEM model utilized in AutoATES v1.0 which uses the alpha angle to limit the flow (Larsen et al., 2020; Tarboton, 1997). Flow-Py also includes a flow process intensity parameter which makes it able to handle mass movement in flat and uphill terrain, significantly improving the output compared to AutoATES v1.0. Another advantage of the FlowPy model is the additional output layers which represent the overhead exposure. We utilize the cell count and  $z_{\text{delta}}$  layer by scaling the two layers from 0-100 and taking their average value which represents the overhead exposure layer. In the AutoATES v2.0 model it is possible to select cell count,  $z_{\text{delta}}$  or both to represent the overhead exposure. The layer enables us to quantify the exposure from different release areas at every raster cell. We use the forest detrainment module of Flow-Py which makes it possible to use forest density as an input layer to limit spreading and runout distance. An in-depth description of the Flow-Py simulation package can be found in D'Amboise et al. (2022).

#### 2.4.3 AutoATES classifier

When the pre-processing of PRA and Flow-Py is completed, the AutoATES classifier uses a set of map algebra equations to define each ATES class. The following raster layers from the pre-processing step are used as input in the AutoATES classifier:

- Slope angle (calculated from the DEM)
- Forest density (provided by the user, as per section 2.3.1-2.3.3)
- PRA (calculated from the DEM and forest data)
- Runout distance as a function of alpha angle (calculated from PRA and Flow-Py)
- Overhead exposure (cell count,  $z_{\text{delta}}$  or both) (calculated from PRA and Flow-Py)

The first step of the AutoATES classifier is controlled by adjustable thresholds for slope angle, runout distance, overhead exposure and island filter size (Table 1). Using these parameters, the AutoATES model outputs a preliminary, and conservative, layer with the categorical classes (1) simple, (2) challenging, (3) complex and (4) extreme terrain by keeping the maximum value of the 3 input rasters.

Table 1: The recommended input parameters for AutoATES according to Sykes et al. (2023). The encoding describes the name of each parameter in the AutoATES model.

Input parameter	Class	Range	Encoding
Slope angle threshold (SAT)	Simple (1)	< 18°	SAT12=18°
	Challenging (2)	18 – 28°	SAT23=28°
	Complex (3)	28 – 39°	SAT34=39°
	Extreme (4)	> 39°	
Alpha angle threshold (AAT)	Simple (1)	< 24°	AAT12=24°
	Challenging (2)	24° – 33°	AAT23=33°
	Complex (3)	> 33°	
Overhead exposure	Simple (1)	< 5	OE12=5

<b>(OE)</b>	Challenging (2)	5 – 40	OE23=40
	Complex (3)	> 40	
<b>Island filter size (ISL<sub>size</sub>)</b>			30,000 m <sup>2</sup>

320 The second step of the AutoATES classifier is to reduce the exposure in certain ATEs classes depending on forest density. The forest density is applied in a secondary step to increase the importance of the forest density criteria. The forest density layers are divided into four different categories with different thresholds for each forest density input (Table 2).

325 Table 2: The recommended input parameters for AutoATES according to Sykes et al. (2023). The encoding is the same for all three forest types, but the forest input type can be defined by a string in the AutoATES script.

Input parameter	Class	Range	Encoding
<b>Canopy cover (%)</b>	Open	0 – 20	TREE1=20 TREE2=55 TREE3=75
	Sparse	20 – 55	
	Moderate	55 – 75	
	Dense	75 – 100	
<b>Stem density (no. of stems/ha)</b>	Open	0 – 100	TREE1=100 TREE2=250 TREE3=500
	Sparse	100 – 250	
	Moderate	250 – 500	
	Dense	> 500	
<b>Basal area (m<sup>2</sup>/ha)</b>	Open	0 – 10	TREE1=10 TREE2=20 TREE3=25
	Sparse	10 – 20	
	Moderate	20 – 25	
	Dense	> 25	

330 Once the forest density parameter has been coded into the four classes of forest density (i.e., open, sparse, moderate, and dense), as a function of the forest density input parameter used, we mapped these categorical descriptors on to ATEs classes (Table 3).

Table 3: Forest criteria applied to the second step of the AutoATES.

Forest criteria		Initial ATEs rating			
		Simple (1)	Challenging (2)	Complex (3)	Extreme (4)
<b>Open</b>	PRA & Runout	Simple (1)	Challenging (2)	Complex (3)	Extreme (4)
<b>Sparse</b>	PRA & Runout	Simple (1)	Simple (1)	Challenging (2)	Complex (3)
<b>Moderate</b>	PRA	Simple (1)	Simple (1)	Challenging (2)	Complex (3)
	Runout	Simple (1)	Simple (1)	Simple (1)	Complex (3)
<b>Dense</b>	PRA	Simple (1)	Simple (1)	Simple (1)	Challenging (2)
	Runout	Simple (1)	Simple (1)	Simple (1)	Complex (3)

335 Finally, the island filter size is applied removing clusters smaller than a specified area and incorporating it to the surrounding class. The filter size is not a new addition to the model as it is a part of the v1.0 model, but Sykes et al. (2023) found that a filter size of 30,000 m<sup>2</sup> (Table 1) was the optimal filter size for all the spatial resolutions tested.

## 2.5 AutoATES outputs

340 The outputs from AutoATES v2.0 have the same spatial resolution as the input. The following outputs are available:

- Continuous PRA



- 345 • Flow-Py raw outputs (D'Amboise et al. 2022).
- Preliminary ATEs classification of slope angle
- Preliminary ATEs classification of runout distance
- Preliminary ATEs classification of overhead exposure
- Forest density criteria
- AutoATES v2.0
- 350 • AutoATES v2.0 with island size filter

### 2.6 Model validation

355 To evaluate the performance of AutoATES v2.0, we use two Canadian benchmark maps made explicitly for Connaught Creek, British Columbia and Bow Summit, Alberta Canada (Figure 3). These are the only locations that have manually mapped maps using the ATEs v2.0 model (Sykes et al., 2023). The benchmark maps were made by combining individual maps from a panel of three experts, utilizing methodologies such as Geographic Information Systems (GIS), remote sensing imagery, local knowledge, and field-based investigations. Sykes et al. (2023) provide an in-depth description of how the benchmark maps were developed.

360 For the model validation, the benchmark maps are compared against the AutoATES v2.0 model described above using the optimized parameters from Sykes et al. (2023). Input data for the validation model is a 26 m ALOS DEM combined with forest density data (basal area) from the British Columbia Vegetation Resource Inventory (BC VRI). For more information about the input data, see Sykes et al. (2023).

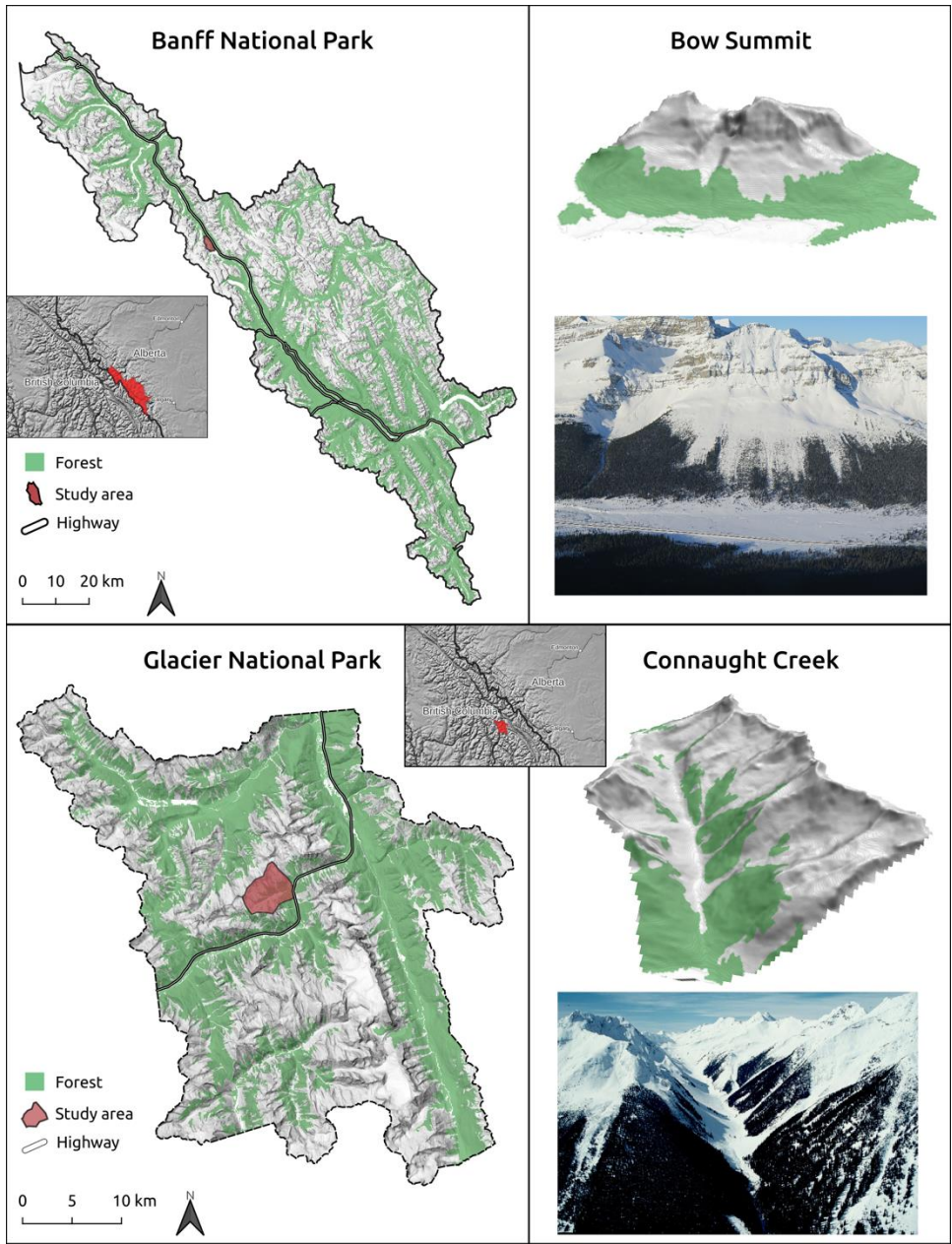


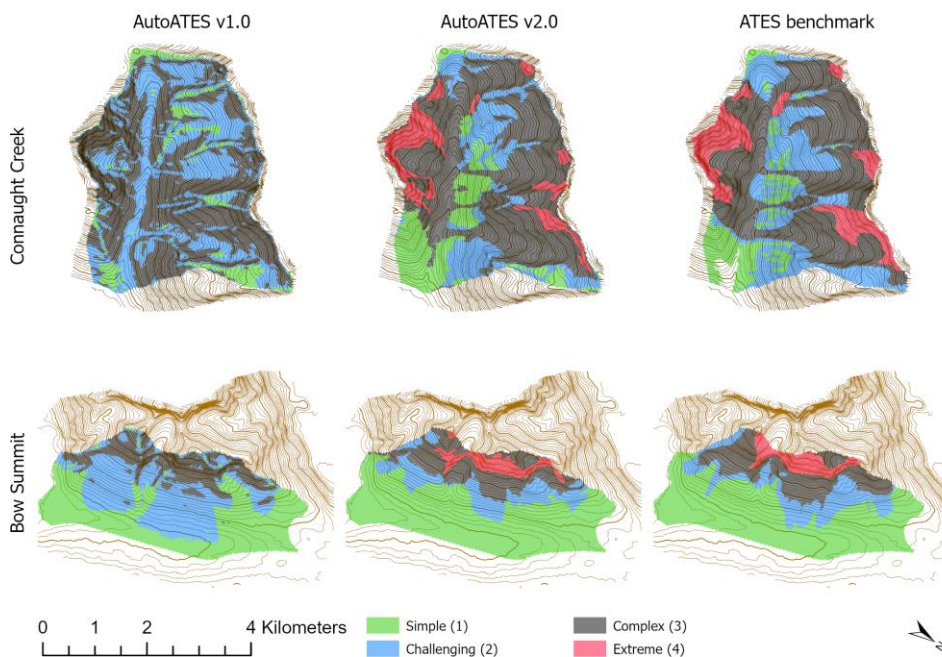
Figure 3: Two areas where benchmark maps for the updated ATES are available in Glacier and Banff National Park. An overview of the greater area with the study areas in 3D view and overview photo (adapted from Sykes et al., 2023).

370 We use the metrics accuracy, precision, recall, and F1-score to evaluate the performance of the model. These  
metrics provide a more detailed assessment, accounting for class imbalance and varying prediction results.  
They have been widely used in various fields, including avalanche literature (e.g., Keskinen et al., 2022). For  
a more in-depth understanding of these metrics and their sources, see Liu et al. (2014), who provides a  
comprehensive review of evaluation metrics for classifiers.

### 375 3. Results and validation

#### 3.1. Model accuracy

There is no true validation dataset for AutoATES due to differences in scale between automated and manual  
methods, but we believe the new benchmark maps made by Sykes et al. (2023) provides the best spatial  
validation maps to date. In figure 4, we visualize the differences between AutoATES v1.0, v2.0 and the ATES  
380 benchmark maps for Connaught Creek and Bow Summit.



385 Figure 4: A visual comparison between AutoATES v1.0, v2.0 and the ATES benchmark maps for Connaught Creek and  
Bow Summit using the European ATES color scheme (Statham et al., 2023). AutoATES v1.0 does not use the extreme (4)  
class.

We use a confusion matrix for each study area to compare the ATES benchmark, which serves as the ground  
truth, against the results generated by the AutoATES v2.0 model (Table 4). The confusion matrices enable us  
to evaluate the performance of the AutoATES v2.0 model by calculating various metrics, such as accuracy,  
390 precision, recall, and F1-score. For Bow Summit, the model performs well for simple terrain with 91.97%  
accuracy, but the accuracy for challenging terrain is much lower at 65%. Complex and extreme terrain is  
closer to the average, both with an accuracy of 79% (Table 4). The accuracy distribution between the four  
classes is slightly different for Connaught Creek. The v2.0 model performs the worst in simple terrain with an  
accuracy of 63%. Challenging terrain has an accuracy of 71.0%, complex has an accuracy of 78.0% and  
395 extreme terrain has an accuracy of 83% (Table 4).

Table 4: A confusion matrix is used to compare the ATES benchmark maps with AutoATES v2.0. Bow Summit is presented above, while Connaught Creek is presented below. The accuracy of each terrain class is marked out with grey shading (area or percent of pixels correctly identified).

Bow Summit		AutoATES v2.0			
		Simple (1)	Challenging (2)	Complex (3)	Extreme (4)
ATES benchmark	Simple (1)	4,527,848 m <sup>2</sup> (91.97%)	140,608 m <sup>2</sup> (10.78%)	16,900 m <sup>2</sup> (1.01%)	0 m <sup>2</sup> (0.00%)
	Challenging (2)	391,404 m <sup>2</sup> (7.95%)	852,436 m <sup>2</sup> (65.34%)	179,816 m <sup>2</sup> (10.75%)	0 m <sup>2</sup> (0.00%)
	Complex (3)	4,056 m <sup>2</sup> (0.08%)	310,960 m <sup>2</sup> (23.83%)	1,316,172 m <sup>2</sup> (78.70%)	110,188 m <sup>2</sup> (21.03%)
	Extreme (4)	0 m <sup>2</sup> (0.00%)	676 m <sup>2</sup> (0.05%)	159,536 m <sup>2</sup> (9.54%)	413,712 m <sup>2</sup> (78.97%)
Connaught Creek					
ATES benchmark	Simple (1)	1,364,844 (63.31%)	263,640 m <sup>2</sup> (10.64%)	76,388 m <sup>2</sup> (1.03%)	0 m <sup>2</sup> (0.00%)
	Challenging (2)	683,436 (31.30%)	1,757,600 (70.96%)	884,208 m <sup>2</sup> (11.92%)	676 m <sup>2</sup> (0.05%)
	Complex (3)	102,752 m <sup>2</sup> (4.77%)	449,540 m <sup>2</sup> (18.15%)	5,787,236 m <sup>2</sup> (78.00%)	237,276 m <sup>2</sup> (17.01%)
	Extreme (4)	4,732 m <sup>2</sup> (0.22%)	6,084 m <sup>2</sup> (0.25%)	671,944 m <sup>2</sup> (9.06%)	1,156,636 m <sup>2</sup> (82.94%)

formaterte: Hevet

formaterte: Hevet

formaterte: Hevet

formaterte: Hevet

### 3.2 Ablation study

The performance of the AutoATES v2.0 model has improved **dramatically** compared to the AutoATES v1.0. The transition from v1.0 to v2.0 has been marked by numerous internal iterations, featuring improvements such as an optimized PRA model accounting for forest data, incorporating the Flow-Py runout model, considering forest data in the final terrain class model, and more. To fully understand the underlying factors behind the improvements of AutoATES v2.0, it is crucial to examine each of the components that have been modified. This will help clarify how each modification contributes to the overall performance of the model.

To do this, we utilize the concept of an ablation study which is a common method used to evaluate the importance or contribution of individual components within a system **or model, model, or model**. It is a type of sensitivity analysis that aims to understand the impact of removing or *ablating* specific components on the overall performance or output of the system. Ablation studies are commonly employed in machine learning, computational neuroscience, and other scientific disciplines to analyze and understand the roles and relationships of different elements in a complex system (Meyers et al., 2019).

The general procedure for an ablation study involves the following steps:

1. Train or develop the full model or system with all its components and parameters intact and measure its performance on a given task or dataset.
2. Systematically remove or disable one component or parameter at a time, keeping the rest of the model unchanged.
3. Measure the performance of the modified model without the removed component or parameter.
4. Compare the performance of the modified model to the performance of the original, complete model.
5. Repeat steps 2-4 for each component or parameter of interest.

For AutoATES v2.0, we have identified six components of the model that have been developed since v1.0. Using the concepts of an ablation study approach, we have calculated the precision, recall and F1-score by removing different components of the model (Table 5). The reference model is the final AutoATES v2.0. A lower F1-score for a model has compared to the reference, indicates an important the component has been removed. In Bow Summit, the most important component is the inclusion of forest data in the PRA model (dev4). In Connaught Creek, the most important factor is the post-forest-classification (dev6). In general, all

new components in AutoATES v2.0 improve the model by several percent, except the inclusion of the alpha angle threshold between challenging and simple terrain (dev2), which only improves by 0.08-0.14% for the two study areas.

435

Table 5: The results from the ablation study where different components are removed to measure the effect for Bow Summit. The term *dev1-6* defines the development model being evaluated, *SAT34* is the slope angle threshold between complex and extreme terrain and *AAT23* is the alpha angle threshold between challenging and complex terrain.

	Version	Component removed	Pixel accuracy	Precision	Recall	F1-score	F1-score change
<b>Bow Summit</b>	v1.0*		67.40%	68.75%	66.07%	64.06%	-13.24 %
	dev1*	SAT34 threshold	87.63%	78.74%	76.05%	81.81%	4.51 %
	dev2	AAT23 threshold	84.20%	82.82%	80.97%	77.16%	-0.14 %
	dev3	Forest data from PRA v1.0	78.40%	78.6%	75.90%	70.21%	-7.09 %
	dev4	Forest data from PRA v2.0	76.80%	71.29%	70.61%	68.03%	-9.27 %
	dev5	Flow-Py (back to TauDEM)	79.10%	69.82%	68.99%	72.66%	-4.64 %
	dev6	Post-forest-classification	80.30%	73.38%	72.12%	75.49%	-1.81 %
	v2.0	Reference	84.40%	75.74%	76.19%	77.30%	0.00 %
<b>Connaught Creek</b>	v1.0*		49.44%	40.21%	38.70%	38.70%	-32.68 %
	dev1*	SAT34 threshold	80.20%	72.43%	74.73%	72.79%	1.41 %
	dev2	AAT23 threshold	74.70%	73.65%	70.89%	71.30%	-0.08 %
	dev3	Forest data from PRA v1.0	71.80%	71.23%	64.12%	66.71%	-4.67 %
	dev4	Forest data from PRA v2.0	72.70%	73.33%	64.68%	67.73%	-3.65 %
	dev5	Flow-Py (back to TauDEM)	65.50%	66.78%	67.55%	65.87%	-5.51 %
	dev6	Post-forest-classification	59.90%	56.40%	48.20%	48.30%	-23.08 %
	v2.0	Reference	74.90%	73.80%	70.94%	71.38%	0.00 %

440 \* AutoATES v1.0 and dev1 uses the old ATES v1.0 framework with three terrain classes, which could lead to higher F1-scores. See section 4.1.1 for an in-depth discussion.

#### 4. Discussion

445 One of the primary challenges when developing AutoATES v2.0 has been to create a robust process for validating the output. Initial attempts by Larsen et al., (2020) compared AutoATES v1.0 to available linear and spatial ATES ratings in Norway, however the validity of these ratings was uncertain because they were developed [with](#) limited [peer-review](#) [and could be biased.](#)

450 In contrast, the approach by Sykes et al. (2023), attempts to address these deficiencies and create benchmark maps for two regions in Canada. Their approach – which used three experts to map each study area and then create benchmark maps based on their individual output – is a more comprehensive methodology to address this issue. For the purpose of our analysis, we consider these benchmark ATES maps as the standard to which we will measure any AutoATES models.

455 While the benchmark maps provide the best available validation dataset there are still fundamental differences in how terrain rating experts create ATES maps versus AutoATES. The scale of analysis for terrain rating experts is generally focused on terrain features, classifying an entire ridgeline, bowl, or gulley as a single unit of analysis. In contrast, AutoATES is a raster-based model which operates on a pixel-by-pixel analysis scale. The size of the pixels depends on the DEM data available for a given study area. Variability in DEM resolution and quality is one of the biggest challenges of applying AutoATES in data sparse regions (e.g. Western Canada). The scale mismatch between terrain rating experts and AutoATES is a persistent difference and an issue that needs to be thoroughly considered with further validation efforts. The optimal scale of use for AutoATES is outside the scope of this current work, but detailed analysis by Sykes et al., (2023) has

465 considered the impact of DEM resolution on AutoATES and notes that there is no real difference in  
performance using DEM datasets with a spatial resolution ranging from 5-26 m. We therefore recommend  
470 that the spatial resolution of the DEM and forest data is between 5 to 30 meters.

#### 4.1 Model performance

475 We investigated the performance of the AutoATES v2.0 model compared to the v1.0 model both designed to  
identify potential release and runout areas. Although the underlying concept remains consistent between  
the two versions, numerous components have been altered or refined in the latest iteration.

##### 4.1.1 Extreme terrain (dev1)

475 The first modification to the AutoATES v2.0 model was to include the extreme terrain class from ATES v2.0.  
We incorporated the new class by including another slope angle threshold (SAT). We measured the  
importance of this change by using the results from the ablation study (Table 5, dev1). The result is that the  
ablated model performs better with regards to F1-score (e.g., 4.51% improvement for Bow Summit, and  
480 1.41% for Connaught Creek) than the reference model. This means that excluding the SAT34 threshold (e.g.,  
complex / extreme threshold) increases the accuracy of the model. However, without it, the model would be  
using the old ATES v1.0 classification excluding extreme terrain. This implies that excluding the SAT34  
threshold enhances the model's numerical accuracy. Nonetheless, its absence would cause the model to  
employ the outdated ATES v1.0 classification, which does not account for extreme terrain, and therefore  
diminishing its value for ATES v2.0.

485 When working with classification problems, decision boundaries are the borders or thresholds that separate  
different classes (Lee and Landgrebe, 1993). The complexity of the decision boundaries often depends on the  
number of classes. When there are fewer classes, the decision boundaries tend to be simpler, as there are  
fewer regions to separate in the feature space. With simpler decision boundaries, the model may have an  
easier time making accurate predictions, as there is less chance of overfitting or incorrectly assigning data  
490 points to the wrong class. This could lead to higher precision, recall, and ultimately higher F1 scores. We  
believe the fewer classes in the ATES v1.0 is the reason why it performs better than the ATES v2.0 reference  
model.

##### 4.1.2 Terrain traps (dev2)

495 To improve the model's ability to identify terrain traps such as depressions and gullies, another alpha angle  
threshold (AAT) was added to be included in complex terrain. The previous model only had AAT thresholds  
which defaulted terrain into simple and challenging terrain. The extra component was added in the early  
stages of the development of AutoATES v2.0. The ablation analysis shows that this change has very little  
effect on the overall performance of the model (Table 5, dev2) with a 0.14% decrease for Bow Summit and  
500 0.08% for Connaught Creek. This method would not help for modeling other common terrain traps such as  
cliffs, crevasses and forest. We have not made any attempts to model other types of terrain traps because  
we believe it would have a very limited effect on the overall performance given our spatial resolution.

##### 4.1.3 Forest data in PRA (dev3 and dev4)

505 Forest density is one of the most important parameters for ATES classification. In the original PRA v1.0 from  
Veitinger et al. (2016) it was not possible to include forest density as one of the inputs. The modified PRA  
v2.0 used in the AutoATES v2.0 model builds on the work from Sharp (2018).

510 When comparing the importance of PRA v1.0 (dev3) and PRA v2.0 (dev4) to the reference model, we see that  
the forest density into PRA is among one of the most important components (Table 5, dev3-4) (e.g., 7.09-  
9.27% decrease for Bow Summit, and 3.65-4.67% for Connaught Creek). Comparing the results between PRA  
v1.0 and PRA v2.0, we can measure the difference between the two models without forest input. We found  
that the PRA v1.0 performed better than v2.0 in Bow Summit, but the opposite is the case in Connaught

515 Creek. However, given that Larsen et al. (2020) did not adapt the PRA v1.0 model according to the  
recommendations of Veitinger et al. (2016), we believe the changes are conceptually still important even  
520 though there are no substantial differences between the two in the ablation validation.

#### 4.1.4 Roughness in PRA

520 The PRA was initially developed and optimized for a 2 m DEM, while we utilize a 10 m DEM as default. If  
roughness was calculated using a 10 m DEM, it would measure the roughness at basin scale, instead of the  
roughness at the slope scale (Blöschl, 1999; Blöschl and Sivapalan, 1995). The roughness is also dependent  
of a snow depth value which is impossible to define without assessing the snowpack properties at a given  
time. Sykes et al. (2023) demonstrate minimal value in running AutoATES v2.0 using high resolution DEM's  
( $< 5$  m). Sykes et al., (2023) further illustrates the impact of DEM scale on ATES mapping. We have therefore  
525 chosen to remove the roughness parameter from our version of the PRA model.

#### 4.1.5 Flow-Py (dev5)

530 The previous iteration of AutoATES had some severe issues with the runout simulation of avalanches where  
avalanches were simulated using a flow model for water. The Flow-Py simulation works in a similar fashion  
where the flow is limited by an alpha angle threshold, but the flow model has been changed to give more  
realistic outputs in terms of snow avalanches. Some other advantages with the Flow-Py simulation suite are  
that there are additional outputs such as cell count and  $z_{\text{delta}}$  which makes it possible to account for the  
exposure of multiple overlapping paths and avalanche paths with high kinetic energy. When we compare the  
Flow-Py outputs compared to the TauDEM we see a substantial improvement when using the Flow-Py  
535 outputs (Table 5, dev5), with a 4.64% decrease for Bow Summit, and 5.51% for Connaught Creek.

#### 4.1.6 Post-forest-classification (dev6)

540 Even though the inclusion of forest density in the PRA model improved the performance of AutoATES, we  
found the need to reclassify sections that were obviously densely forested and resulted in a higher ATES  
rating than needed. To improve this, we added a post-forest-classification criteria. This was efficient for  
Connaught Creek, but less efficient for Bow Summit (Table 5, dev6) (1.81% decrease for Bow Summit, and  
23.08% for Connaught Creek). The forest impact of dev6 is minimal at Bow Summit, but important for  
Connaught Creek. ~~We don't know why this is~~The reason for this is unclear, but one hypothesis is that there  
545 is more steep forested terrain in Connaught Creek, and the model therefore relies more on the post-forest-  
classification. Connaught Creek also has more large runouts and overhead hazard that rely on the post-forest-  
classification.

In the future, we hope to be less reliant on the post-forest-classification criteria by optimizing the forest  
detrainment module in Flow-Py. This module of Flow-Py makes it possible to reduce the runout length in  
550 areas with dense forest.

#### 4.1.7 Discrepancies

555 The discrepancy in accuracy scores between the two study areas is mainly attributed to the complex terrain  
of Connaught Creek with many smaller topographical features and the limitations of the BC VRI forest data  
resolution in capturing local forest characteristics (Sykes et al., 2023). This issue significantly affects the  
assessment of overhead hazards and ~~the boundaries~~ delineation of boundaries between ATES classes, with  
challenging (2) terrain showing the lowest accuracy and high rates of underprediction errors. Sykes et al.  
(2023) provides an extended discussion of the differences between the two study sites.

#### 4.3 Application

560 AutoATES v2.0 is meant to be a stand-alone tool for mapping large-scale areas, but it should first be validated  
for a smaller area by experts to assess whether there is a need to make some changes to the input

parameters. When the user is confident with their maps, the parameters could be used to generate ATEs maps for a larger surrounding area.

565

While it is possible to run the presented version of AutoATES v2.0 without making any changes, we recommend a workflow where the optimal parameters are first identified. The suggested parameters in this paper are valid for the two test areas in Western Canada. When applying AutoATES v2.0 for other areas, the parameters will likely need to be re-evaluated. ~~Blindly~~ applying the parameters presented in this document to other regions without site specific calibration risks inaccurate ATEs mapping, and potential catastrophic outcomes. Users should apply this model at their own risk. We therefore urge all future users of our code to conduct a local validation before proceeding with the generation of large-scale ATEs maps. This is especially important when the target group is the general public.

570

575

Begin with a relevant test area which should include a variety of terrain and all terrain classes. We recommend a workflow where the PRA model and Flow-Py is processed independent of the AutoATES classifier. The output from PRA and Flow-Py is easier to validate by local experts compared to the AutoATES output. It is more intuitive as avalanche experts have more tangible experience with identifying start and runoff zones. In our experience, we complete approximately 1-3 iterations of PRA and Flow-Py before moving on to the AutoATES classifier. In general, we have experienced that the 'c' parameter in the Cauchy function for slope angle combined with the max alpha angle for Flow-Py are the most effective for customizing the output. We also recommend fine-tuning all parameters in the Cauchy function for PRA when using forest density data that is different than what we used in this validation. This could be done by using a local avalanche terrain expert to review the output from each Cauchy membership value and adjust until the output is appropriate.

580

585

When these steps are done in advance, our experience is that the output of the AutoATES classifier tends to be much more accurate. The final AutoATES could then be shared among local experts who provide further feedback. Changes could then be made to the AutoATES classifier parameters and improved during an iterative process. When the final input parameters are set, they could be used to generate larger areas. A description of the input parameters used should be shared as metadata with the resulting spatial maps.

590

#### 4.3.1 Large scale application

We have used the DEM from ALOS at a spatial resolution of 26 m. This dataset is available worldwide and could enable large scale application of AutoATES v2.0 in the future. The main limitation right now is that to our knowledge, there is no global forest data available that have a suitable accuracy and resolution. In all countries we have tested AutoATES (Norway, Canada, USA) there has been a considerable testing period to determine the best available forest data and fine tuning of model parameters to work well with local forest data. This is the rationale for providing multiple 'default' settings for the input forest data including stem density, canopy cover, and basal area. The PRA parameters used for each of these are unique and need to be locally tested before large scale application of AutoATES v2.0.

595

600

#### 4.4 Limitations

Despite the notable improvements of the AutoATES v2.0 model, there are still some limitations that should be acknowledged.

605

- [In the context of large-scale ATEs classification \(e.g. Norway, 385,207 km<sup>2</sup>\), Flow-Py becomes computationally heavy, which may present challenges when processing large datasets or applying the model in real-time applications.- We executed the Flow-Py algorithm across all of Norway on an Amazon Web Services Elastic Cloud Compute Instance \(AWS EC2 c6g.metal\), which took 30 days to complete at a cost of \\$1,600.](#) This could potentially limit the scalability and accessibility of the model for certain use cases and users with limited computational resources.

610



615

620

625

630

635

640

645

650

655

660

- Determining the optimal input parameters for the AutoATES model is important to get the best performance possible. The suitability of these parameters across different snow climates and terrain types remains an open question. Further research and validation are needed to ensure that the chosen parameters provide accurate and reliable results in various contexts. Users should not **blindly** adopt the input parameters stated in this paper.
- The model does not account for changes in vegetation over time such as natural events like landslides or forest fires. Therefore, it is important to update the ATES mapping periodically to account for major changes in the landscape.
- Due to the limited sample size of mapped class 0 terrain in the validation data sets that we used to develop **A**utoATESv2.0, we do not feel that there has been sufficient research on this topic to warrant publication at this time. AutoATES is a promising tool for estimating areas with no exposure to avalanche terrain, however there is significant liability associated with deeming an area safe from avalanche hazard. Further development of the autoATESv2.0 model and consultation with avalanche community stakeholders is necessary before delving into automated mapping of class 0 terrain.

Addressing these limitations in future work could enhance the performance, applicability, and reliability of the AutoATES model, ensuring its effectiveness across a wide range **of** climates and terrain characteristics.

### 5. Conclusion

In conclusion, the development of AutoATES v2.0 has focused on creating a more robust and accurate model for mapping avalanche terrain into ATES ratings by incorporating new components to improve the model. This has been achieved by integrating new components that enhance the model's performance, including the addition of an extreme terrain class, improved PRA with support for multiple forest density types, Flow-Py, and a post-forest-classification criteria. Moreover, a significant portion of the code has been rewritten to increase efficiency and eliminate dependency on proprietary software.

However, limitations related to the determination of optimal input parameters for different regions and climates need to be considered for future model development. By addressing these limitations and continuing to refine the model through iterative testing and expert feedback, AutoATES v2.0 can serve as a valuable tool for avalanche risk assessment and decision-making in a wide range of snow climates and terrain types. Ultimately, our goal is for AutoATES v2.0 to enable efficient, large-scale, and potentially global ATES mapping in a standardized manner.

### 6. Code and data availability

To reproduce the results from this study, please find the AutoATES v2.0 model and validation data from the ablation study in the [OSF repository](#). For future application of AutoATES v2.0, a [GitHub repository](#) will be maintained with future iterations of the model available (Toft et al. 2023).

### 7. Author contribution

Håvard Toft was the developer of the first version of automated ATES. The model improvement has been led by Håvard Toft with substantial contributions from John Sykes and Andrew Schauer. The ablation study has been carried out by Håvard Toft with inputs from John Sykes. Håvard Toft prepared the final manuscript with input from Andrew Schauer and John Sykes. Jordy Hendrikx and Audun Hetland have contributed with review and edits as their role as supervisors. All authors contributed to the final manuscript.

### 8. Competing interests

The authors declare that they have no conflict of interest.

### 9. References

Feltkode endret

Feltkode endret

- Andres, J. and Chueca Cia, J.: Mapping of avalanche start zones susceptibility: Arazas basin, Ordesa and Monte Perdido National Park (Spanish Pyrenees), *J Maps*, 8, 14–21, 2012.
- 665 Barbolini, M., Pagliardi, M., Ferro, F., and Corradeghini, P.: Avalanche hazard mapping over large undocumented areas, *Natural Hazards*, 56, 451–464, <https://doi.org/10.1007/S11069-009-9434-8>, 2011.
- BFF and SLF: Richtlinien zur Berücksichtigung der Lawinengefahr bei raumwirksamen Tätigkeiten, Eidgenössische Drucksachen- und Materialzentrale, 42, 1984.
- 670 Birkeland, K. W., Greene, E. M., and Logan, S.: In Response to Avalanche Fatalities in the United States by Jekich et al, *Wilderness Environ Med*, 28, 380–382, <https://doi.org/10.1016/j.wem.2017.06.009>, 2017.
- Blöschl, G.: Scaling issues in snow hydrology, *Hydrol Process*, 13, 2149–2175, [https://doi.org/10.1002/\(SICI\)1099-1085\(199910\)13:14/15<2149::AID-HYP847>3.0.CO;2-8](https://doi.org/10.1002/(SICI)1099-1085(199910)13:14/15<2149::AID-HYP847>3.0.CO;2-8), 1999.
- 675 Blöschl, G. and Sivapalan, M.: Scale issues in hydrological modelling: A review, *Hydrol Process*, 9, 251–290, <https://doi.org/10.1002/hyp.3360090305>, 1995.
- Bühler, Y., Kumar, S., Veitinger, J., Christen, M., and Stoffel, A.: Automated identification of potential snow avalanche release areas based on digital elevation models, *Natural Hazards and Earth System Sciences*, 13, 1321–1335, <https://doi.org/10.5194/nhess-13-1321-2013>, 2013.
- 680 Bühler, Y., von Rickenbach, D., Stoffel, A., Margreth, S., Stoffel, L., and Christen, M.: Automated snow avalanche release area delineation – validation of existing models and proposition of a new object-based approach for large-scale hazard indication mapping, *Natural Hazards and Earth System Sciences*, 18, 3235–3251, <https://doi.org/10.5194/nhess-18-3235-2018>, 2018.
- 685 [Bühler, Y., Bebi, P., Christen, M., Margreth, S., Stoffel, L., Stoffel, A., Marty, C., Schmucki, G., Caviezel, A., Kühne, R., Wohlwend, S., and Bartelt, P.: Automated avalanche hazard indication mapping on a statewide scale, \*Nat. Hazards Earth Syst. Sci.\*, 22, 1825–1843, <https://doi.org/10.5194/nhess-22-1825-2022>, 2022](https://doi.org/10.5194/nhess-22-1825-2022)
- CAA: Technical Aspects of Snow Avalanche Risk Management – Resources and Guidelines for Avalanche Practitioners in Canada (C. Campbell, S. Conger, B. Gould, P. Haegeli, B. Jamieson, & G. Statham Eds.), Canadian Avalanche Association, 2016.
- 690 Campbell, C. and Gould, B.: A proposed practical model for zoning with the Avalanche Terrain Exposure Scale, in: International Snow Science Workshop Proceedings, Grenoble – Chamonix Mont-Blanc, 385–391, 2013.
- Christen, M., Kowalski, J., and Bartelt, P.: RAMMS: Numerical simulation of dense snow avalanches in three-dimensional terrain, *Cold Reg Sci Technol*, 63, 1–14, <https://doi.org/10.1016/j.coldregions.2010.04.005>, 2010.
- Chueca Cia, J., Andrés, A. J., and Montañés Magallón, A.: A proposal for avalanche susceptibility mapping in the Pyrenees using GIS: the Formigal-Peyreget area (Sheet 145-I; scale 1:25.000), *J Maps*, 10, 203–210, <https://doi.org/10.1080/17445647.2013.870501>, 2014.
- 700 D’Amboise, C. J. L., Neuhauser, M., Teich, M., Huber, A., Kofler, A., Perzl, F., Fromm, R., Kleemayr, K., and Fischer, J.-T.: Flow-Py v1.0: a customizable, open-source simulation tool to estimate runout and intensity of gravitational mass flows, *Geosci Model Dev*, 15, 2423–2439, <https://doi.org/10.5194/gmd-15-2423-2022>, 2022.
- Delparte, D. M.: Avalanche terrain modeling in Glacier National Park, Canada, PhD thesis, 1–195, <https://doi.org/10.1007/s13398-014-0173-7.2>, 2008.
- 705 DIBK: Byggteknisk forskrift (TEK17), Kommunal- og distriktsdepartementet, 2017.
- Engeset, R. V., Pfuhl, G., Landrø, M., Mannberg, A., and Hetland, A.: Communicating public avalanche warnings – what works ?, *Natural Hazards and Earth System Science*, 18, 2537–2559, <https://doi.org/https://doi.org/10.5194/nhess-18-2537-2018>, 2018.
- 710 Fisher, K. C., Haegeli, P., and Mair, P.: Exploring the avalanche bulletin as an avenue for continuing education by including learning interventions, *Journal of Outdoor Recreation and Tourism*, 37, 100472, <https://doi.org/10.1016/J.JORT.2021.100472>, 2022.

Formatert: Innrykk: Første linje: 0 cm

- Ghini, A. and Chung, C.-J.: STARTER: a statistical GIS-based model for the prediction of snow avalanche susceptibility using terrain features—application to Alta Val Badia, Italian Dolomites, *Geomorphology*, 66, 305–325, <https://doi.org/10.1016/j.geomorph.2004.09.018>, 2005.
- 715 Harvey, S., Schmudlach, G., Bühler, Y., Dürr, L., Stoffel, A., and Christen, M.: Avalanche Terrain Maps For Backcountry Skiing in Switzerland, in: *International Snow Science Workshop Proceedings*, Innsbruck, Austria, 1625–1631, 2018.
- Heim, A.: *Bergsturz und Menschenleben*, Zürich, Fretz und Wasmuth, 1932.
- 720 Hendriks, J., Johnson, J., and Mannberg, A.: Tracking decision-making of backcountry users using GPS tracks and participant surveys, *Applied Geography*, 144, 102729, <https://doi.org/10.1016/J.APGEOG.2022.102729>, 2022.
- Johnson, J. and Hendriks, J.: Using Citizen Science to Document Terrain Use and Decision-Making of Backcountry Users, *Citiz Sci*, 6, <https://doi.org/10.5334/cstp.333>, 2021.
- 725 Keskinen, Z., Hendriks, J., Eckerstorfer, M., and Birkeland, K.: Satellite detection of snow avalanches using Sentinel-1 in a transitional snow climate, *Cold Reg Sci Technol*, 199, 103558, <https://doi.org/10.1016/j.coldregions.2022.103558>, 2022.
- Landrø, M., Hetland, A., Engeset, R. V., and Pfuhl, G.: Avalanche decision-making frameworks: Factors and methods used by experts, *Cold Reg Sci Technol*, 170, 102897, <https://doi.org/10.1016/j.coldregions.2019.102897>, 2020.
- 730 Larsen, H. T., Hendriks, J., Slåtten, M. S., and Engeset, R. V.: Developing nationwide avalanche terrain maps for Norway, *Natural Hazards*, 103, <https://doi.org/10.1007/s11069-020-04104-7>, 2020.
- Lee, C. and Landgrebe, D. A.: Decision boundary feature extraction for nonparametric classification, *IEEE Trans Syst Man Cybern*, 23, 433–444, <https://doi.org/10.1109/21.229456>, 1993.
- 735 Lied, K. and Bakkehoi, S.: Empirical calculations of snow avalanche run-out distances based on topographic parameters, *Journal of Glaciology*, 26, 165–177, 1980.
- Maggioni, M. and Gruber, U.: The influence of topographic parameters on avalanche release dimension and frequency, *Cold Reg Sci Technol*, 37, 407–419, [https://doi.org/10.1016/S0165-232X\(03\)00080-6](https://doi.org/10.1016/S0165-232X(03)00080-6), 2003.
- 740 Meyes, R., Lu, M., de Puiseau, C. W., and Meisen, T.: Ablation studies in artificial neural networks, arXiv preprint, 2019.
- Pistocchi, A. and Notarnicola, C.: Data-driven mapping of avalanche release areas: a case study in South Tyrol, Italy, *Natural Hazards*, 65, 1313–1330, <https://doi.org/10.1007/s11069-012-0410-3>, 2013.
- 745 Plattner, C., Braun, L., and Brenning, A.: The spatial variability of snow accumulation at Vernagtferner, Austrian Alps, in winter 2003/2004, *Z. Gletscherk., Glazialgeol.*, 39, 43–57, 2006.
- Sampl, P. and Zwinger, T.: Avalanche simulation with SAMOS, *Ann Glaciol*, 38, 393–398, <https://doi.org/10.3189/172756404781814780>, 2004.
- Sandvoss, M., McClymont, B., and Farnden, C.: *A user's guide to the vegetation resources inventory*, Tolko Industries, Ltd.: Williams Lake, BC, Canada., 2005.
- 750 Schläppy, R., Jomelli, V., Grancher, D., Stoffel, M., Corona, C., Brunstein, D., Eckert, N., and Deschatres, M.: A New Tree-Ring-Based, Semi-Quantitative Approach for the Determination of Snow Avalanche Events: use of Classification Trees for Validation, *Arct Antarct Alp Res*, 45, 383–395, <https://doi.org/10.1657/1938-4246-45.3.383>, 2013.
- Schmudlach, G. and Köhler, J.: Method for an automatized avalanche terrain classification, in: *Proceedings, International Snow Science Workshop - Breckenridge, Colorado*, 729–736, 2016.
- 755 Schumacher, J., Toft, H., McLean, J. P., Hauglin, M., Astrup, R., and Breidenbach, J.: The utility of forest attribute maps for automated Avalanche Terrain Exposure Scale (ATES) modelling, *Scand J For Res*, 37, 264–275, <https://doi.org/10.1080/02827581.2022.2096921>, 2022.
- Schweizer, J. and Lütschg, M.: Characteristics of human-triggered avalanches, *Cold Reg Sci Technol*, 33, 147–162, [https://doi.org/10.1016/S0165-232X\(01\)00037-4](https://doi.org/10.1016/S0165-232X(01)00037-4), 2001.
- 760 Sharp, E.: Evaluating the exposure of heliskiing ski guides to avalanche terrain using a fuzzy logic avalanche susceptibility model, University of Leeds, Leeds, 2018.

- Statham, G. and Campbell, C.: The Avalanche Terrain Exposure Scale v2.0, [Manuscript in preparations], 2023.
- 765 Statham, G., McMahon, B., and Tomm, I.: The Avalanche Terrain Exposure Scale, International Snow Science Workshop Proceedings, Telluride, Colorado, 491–497, 2006.
- Sykes, J., Hendriks, J., Johnson, J., and Birkeland, K. W.: Combining GPS tracking and survey data to better understand travel behavior of out-of-bounds skiers, *Applied Geography*, 122, <https://doi.org/10.1016/j.apgeog.2020.102261>, 2020.
- 770 Sykes, J., Haegeli, P., and Bühler, Y.: Automated snow avalanche release area delineation in data-sparse, remote, and forested regions, *Natural Hazards and Earth System Sciences*, 22, 3247–3270, <https://doi.org/10.5194/nhess-22-3247-2022>, 2022.
- Sykes, J., Toft, H., Haegeli, P., and Statham, G.: Automated Avalanche Terrain Exposure Scale (ATES) mapping - Local validation and optimization in Western Canada, [Manuscript submitted for publication], 2023.
- 775 Tarboton, D. G.: A new method for the determination of flow directions and upslope areas in grid digital elevation models, *Water Resour Res*, 33, 309–319, <https://doi.org/10.1029/96WR03137>, 1997.
- Tarboton, D. G.: Terrain analysis using digital elevation models (TauDEM), Utah State University, Logan, 2005.
- 780 Techel, F. and Zweifel, B.: Recreational avalanche accidents in Switzerland: Trends and patterns with an emphasis on burial, rescue methods and avalanche danger, in: International Snow Science Workshop Proceedings, Grenoble-Chamonix, 1106–1112, 2013.
- Techel, F., Jarry, F., Kronthaler, G., Mitterer, S., Nairz, P., Pavšek, M., Valt, M., and Darms, G.: Avalanche fatalities in the European Alps: long-term trends and statistics, *Geogr Helv*, 71, <https://doi.org/10.5194/gh-71-147-2016>, 2016.
- 785 Techel, F., Mitterer, C., Ceaglio, E., Coléou, C., Morin, S., Rastelli, F., and Purves, R. S.: Spatial consistency and bias in avalanche forecasts -a case study in the European Alps, *Natural Hazards and Earth System Sciences*, 18, 2697–2716, <https://doi.org/10.5194/nhess-18-2697-2018>, 2018.
- Thumlert, S. and Haegeli, P.: Describing the severity of avalanche terrain numerically using the observed terrain selection practices of professional guides, *Natural Hazards*, 1–27, <https://doi.org/10.1007/s11069-017-3113-y>, 2017.
- Toft, H. B., Sykes, J. M., and Schauer, A.: AutoATES v2.0, <https://github.com/AutoATES>, 2023a.
- Toft, H. B., Müller, K., Hendriks, J., Jaedicke, C., and Bühler, Y.: Can big data and random forests improve avalanche runout estimation compared to simple linear regression?, *Cold Reg Sci Technol*, 211, 103844, <https://doi.org/10.1016/j.coldregions.2023.103844>, 2023b.
- 795 Veitinger, J., Purves, R. S., and Sovilla, B.: Potential slab avalanche release area identification from estimated winter terrain: a multi-scale, fuzzy logic approach, *Natural Hazards and Earth System Sciences*, 16, 2211–2225, <https://doi.org/10.5194/nhess-16-2211-2016>, 2016.
- 800 Werners, B.: Aggregation models in mathematical programming, *Mathematical Models for Decision Support*, 48, 295–305, 1988.