

# Regional seismic risk assessment based on ground conditions in Uzbekistan

Vakhitkhan Alikhanovich Ismailov<sup>1</sup>, Sharofiddin Ismatullayevich Yodgorov<sup>1</sup>, Akhror Sabriiddinovich Khusomiddinov<sup>1</sup>, Eldor Maxmadiyrovich Yadigarov<sup>1</sup>, Bekzod Uktamovich Aktamov<sup>1</sup>, Shukhrat Bakhtiyorovich Avazov<sup>1</sup>.

<sup>1</sup> Institute of Seismology of the Academy of Sciences Republic of Uzbekistan, Tashkent, 100128, Uzbekistan

Correspondence to: Sh.Yodgorov (sh.i.yodgorov@gmail.com)

**Abstract.** The assessment of losses from strong earthquakes and the reduction of earthquake consequences are of great importance in maintaining the seismic safety. Special attention is given to evaluating the magnitude of economic losses caused by earthquakes, particularly the assessment of different levels of seismic risk, in order to protect the population and territories located in seismically active areas. To ensure sustainable development of countries, it is essential to estimate the economic losses that will occur in regions due to strong earthquakes and forecast them within the specified return periods at a given probabilities. Measures can then be implemented to mitigate the consequences of earthquakes.

For the basis of seismic risk assessment, maps of seismic intensity increment and an improved map of seismic hazard have been developed, taking into account the engineering-geological conditions of the territory of Uzbekistan and the seismic characteristics of soils.

For seismic risk map development, databases were created based on GIS platforms allowing us to systematize and evaluate the regional distribution of information on seismic hazards, number of buildings and construction types, coefficient of the seismic vulnerability of buildings, cadastral value of buildings, etc.

## 1. Introduction

As of January 1, 2022, the permanent population of Uzbekistan reached 35,271,276 people. Currently, approximately half of all Uzbekistan citizens (17.9 million people) live in urban areas and 17.4 million people live in rural areas<sup>1</sup>. At the territory of Uzbekistan and adjacent regions, both during the historical period and recent years, earthquakes with a local magnitude  $M_l \geq 5$  and an intensity at the epicenter  $I_0$  reaching VI-X according to the MSK-64 scale have been recorded, such as Chatkal (1946), Gazli (1976), Tashkent (1966) and others. Many relatively strong earthquakes have occurred in Uzbekistan.

Therefore, the problem of ensuring seismic safety at the territory of Uzbekistan is very relevant. The geological structure of Uzbekistan is very diverse, but the territory basically consists of two tectonic structures of the Tien Shan orogenic region and Turan plate. In the territory of Uzbekistan, tectonic movements are actively continuing nearly everywhere. In the geological history of Uzbekistan, throughout all stages of development, in particular, in the formation of the modern structural plan, faults, especially zones of deep faults, played an important role. These faults transect the entire Earth's crust, often penetrate into the mantle and are the natural boundaries of large structural elements. One of the challenges in assessing seismic risk involves considering the influence of soil conditions on the modification of seismic effects on the ground surface. Thus, a key objective of this study was to investigate the geological and lithological structure of the upper strata.

Risk assessment is crucial for preventing major disasters in the event of a significant seismic threat. The first systematic studies on seismic risk assessment, conducted about 60 years ago, laid the groundwork for future activities (Cornell, 1968; Algermissen et al., 1972; Keilis-Borok et al., 1973; Whitman et al., 1975; Lomnitz and Rosenblueth, 1976). In recent decades, particularly during the International Decade for Natural Disaster Reduction (IDNDR, 1990–2000), the global community has increasingly recognized the significance of the issue. The shift in focus from hazard to risk, driven by a series of devastating earthquakes worldwide, has prompted the development of procedures and techniques for assessing seismic vulnerability, damage, and conducting risk analysis on various geographical scales, e.g., PELEM (1989), Chen et al. (1992, 2002), Papadopoulos and Arvanitides (1996), King et al. (1997), McCormack and Rad (1997), Zonno et al. (1998), FEMA-NIBS (1999), Faccioli and Pessina (2000), RADIUS (2000), Bendimerad (2001), Fah et al. (2001), Coburn and Spence (2002), Lang (2002), Frolova et al. (2003), Giovinazzi and Lagomarsino (2004), Mouroux et al. (2004), Trendafiloski and Milutinovic (2004), Tyagunov et al. (2006), Di Pasquale et al. (2005), Wang et al. (2005), and many others. Different interpretations of the risk concept can be found in different publications, although the general consensus is that risk is a quantified possibility of losses.

In the study by Rashidov et al. (2003), the seismic risk of Tashkent was evaluated using a scenario earthquake. Similarly, in the RADIUS (1992) project, the seismic risk of the city was assessed employing a scenario earthquake. The estimated total damage resulting from this scenario earthquake, encompassing the disruption of life support systems and infrastructure in Tashkent, amounts to approximately 1 billion Uzbekistani soms. (These loss figures are determined based on 1991 prices and are considerably underestimated).

Given Tashkent's status as the capital, responsible for a quarter of the country's gross domestic product, the repercussions of an earthquake are poised to impact the entire nation. The potential disruption of numerous international commercial, banking,

---

<sup>1</sup> [https://countrymeters.info/ru/Uzbekistan#population\\_densit](https://countrymeters.info/ru/Uzbekistan#population_densit)

and insurance networks was anticipated. Human casualties are projected to be significant, with economic recovery likely to span several years. Furthermore, the cessation of industrial production is anticipated to result in losses totaling around 1 billion U.S. dollars. Preliminary calculations indicate that the scenario earthquake could incur damages exceeding 10 billion U.S. dollars, considering the book value of fixed assets determined at 1991 prices. Expert assessments suggest that roughly 80 % of communication facilities may remain inoperative for an extended duration, while ongoing construction projects may suffer irreparable damage estimated at approximately 1 billion U.S. dollars.

[Tyagunov et al. \(2012\)](#) evaluated the seismic risk of Central Asian countries. As of today, [Peresan et al. \(2023\)](#), [Poggi et al. \(2021\)](#), [Bragato et al. \(2020\)](#), [Petrovic et al. \(2022\)](#), [Scaini et al. \(2021, 2023\)](#), [Bhochhibhoya et al. \(2022\)](#), and [Xin et al. \(2021\)](#) explore contemporary methods for assessing seismic risk and hazard using modern information technologies. [Bhochhibhoya et al. \(2022\)](#) integrated earthquake risk assessments with vulnerability parameters (social and economic factors) in Nepal. The calculation of the Social Vulnerability Index (SoVI) used a principal component analysis method. OpenQuake, based on classical Probabilistic Seismic Hazard Analysis (PSHA), was utilized for calculating annual average losses from engineering risk. In the work of [Peresan et al. \(2023\)](#), the focus is on data collection about buildings through crowdsourcing and distance learning for new opportunities to engage students in seismic risk reduction.

The combined aspects of the seismic hazard distribution, seismic vulnerability and exposed assets provide the necessary basis for seismic risk analysis. A similar analysis of the territory of Uzbekistan was the goal of this study, conducted as part of the implementation of the above paragraphs of the Decree of the President of the Republic of Uzbekistan dated July 30, 2020, No. 4794, by the Institute of Seismology of the Academy of Sciences of the Republic of Uzbekistan.

To develop a seismic risk map for the territory of Uzbekistan, databases were created based on GIS platforms allowing systematization and evaluation of the regional distribution of information on seismic hazard, number of buildings and structural types, geographical location of residential buildings, coefficient of the seismic vulnerability of buildings and territories, cadastral building value, etc.

Seismic vulnerability analysis was conducted using GESI\_Program, which is based on the methodology for the assessment of seismic damage to buildings. At the same time, the existing buildings in the territory of the republic were collected and classified according to the building structural type. There are 5 types of buildings: buildings built using local clay materials, brick buildings, wooden buildings, buildings constructed using a metal frame and reinforced concrete buildings. In previous studies of urban and regional territories, seismic data analysis considered the influence of local soil conditions (microzoning and detailed zoning), inventory of buildings and asset values (element-by-element inventories or based on representative units) ([Ismailov et al. \(2022a\)](#), [Ismailov et al. \(2022b\)](#), [Ismailov et al. \(2023a\)](#)).

The developed seismic risk map of the territory of the Republic of Uzbekistan was based on an assessment of probable economic losses within administrative districts combined with seismic hazard factors, seismic vulnerability and concentration of values, ranging from zero to hundreds of trillions of Uzbekistan soms. It is important to emphasize that the level of seismic hazard used in the calculation of physical and economic damage corresponds to a 90 % probability of not exceeding seismic impacts over a period of 50 years, which corresponds to an average return period of 475 years. This level of probability is the generally accepted standard in seismic hazard assessment during the design and construction of conventional buildings and structures. Of course, considering a different probability, level of hazard and consequently, the assessment of damage and potential losses may differ from the data presented.

In the development of map of seismic risk for the territory of the Republic of Uzbekistan, seismological and macroseismic databases of the Institute of Seismology of the Academy of Sciences of the Republic of Uzbekistan<sup>2</sup>, database on the housing stock of Uzbekistan of the State Cadastral Agency under the Tax Committee of Uzbekistan<sup>3</sup> and research experience and publications of the Institute of Seismology<sup>1</sup> and the Institute of Mechanics and Seismic Stability of Structures of the Academy of Sciences of the Republic of Uzbekistan<sup>4</sup> and JSC ToshuyjoyLITI<sup>5</sup> were considered during the implementation of this research.

The present study is concentrated on the assessment of direct economic losses that may be caused by structural damage to residential buildings as a result of seismic actions. At the same time, given that residential buildings predominate in the development of cities and administrative districts in Uzbekistan, the presented results could serve as a clear reference for a comparative analysis of seismic risk in various administrative districts.

## 2. Data and methods

### 2.1. Characteristics of the engineering-geological conditions

Based on the analysis of geomorphological and geologic-lithological structure, as well as groundwater distribution and exogenous geological processes, engineering-geological zoning has been conducted.

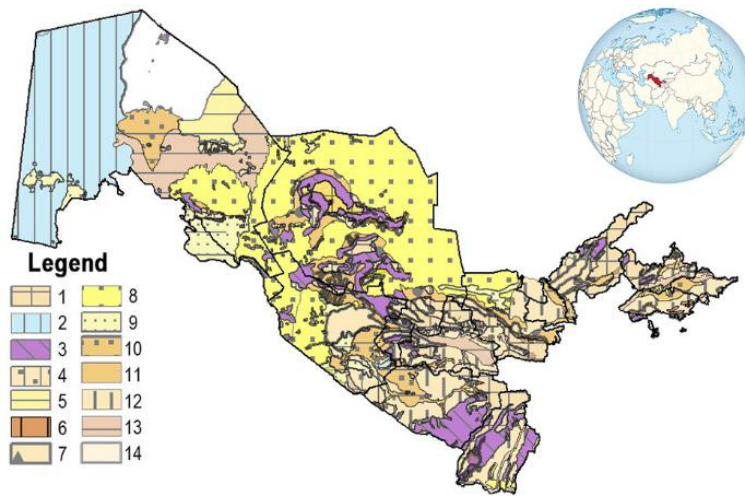
The peculiarities of the engineering-geological conditions of Uzbekistan's territory have been identified and described in the works of [Mavlyanov et al. \(1987\)](#), [Kasymov \(1979\)](#), [Islamov et al. \(1968\)](#) and others. In the territory of the Republic of Uzbekistan there are 14 typical types of soils: Rock soils; Limestones; Sands and sandstones and others. More detailed information and map are provided in [Figure 1](#).

<sup>2</sup> <https://seismos.uz/>

<sup>3</sup> <https://kadastr.uz/uz>

<sup>4</sup> <https://instmech.academy.uz/ru>

<sup>5</sup> <https://toshuyjoyliti.uz/>



110 **Fig. 1: Engineering-geological map of Republic of Uzbekistan. Autors: Islamov et al. (1968).** 1-Rock soil; 2-Limestone; 3-Sand and  
 115 sandstone; 4-Clay and sand; 5-Clay, marl, sandstone; 6-Clay, sandy clay, sand; 7-Gravel; 8-Sand; 9-Sand, sandy clay, sand; 10-Sandy loam,  
 sand; 11-Gravel, pebble, rubble; 12-Loess, loess loam, and sandy clay; 13-Clay, loam and sandy clay; 14- Gypsum, loam and clay.

115 The complexity of geological structure of the upper soil layers (10-15 m), the diversity of petrographic and lithological  
 composition of soils, the geomorphological characteristics and the unique climate determine the variety of engineering-  
 geological conditions in Uzbekistan's territory. The main features of the republic's orography are closely related to the  
 peculiarities of the geological structure of numerous mountain ranges. Wide plains, intermountain uplifts and depressions are  
 located between the mountain ranges, characterized by an abundance of weathering products [Kasymov S.M. \(1979\)](#).

120 The complexity and diversity of the engineering-geological conditions in Uzbekistan can be explained by the broad distribution  
 of different geological and lithological strata, which exhibit a certain zoning. While metamorphic, igneous, and sedimentary  
 rocks are developed in mountainous and foothill areas, gravel, pebbles, sands and loamy deposits are prevalent in the vicinity  
 of mountains. Aeolian and alluvial loams, loess soils and sands are widespread in lowland areas.

The first groundwater tables are distributed at various depths depending on the geomorphological structure. The highest  
 groundwater levels are observed in the plains, especially in areas with active agricultural land development. Groundwaters in  
 rock deposits is mainly confined to fractures and fault zones.

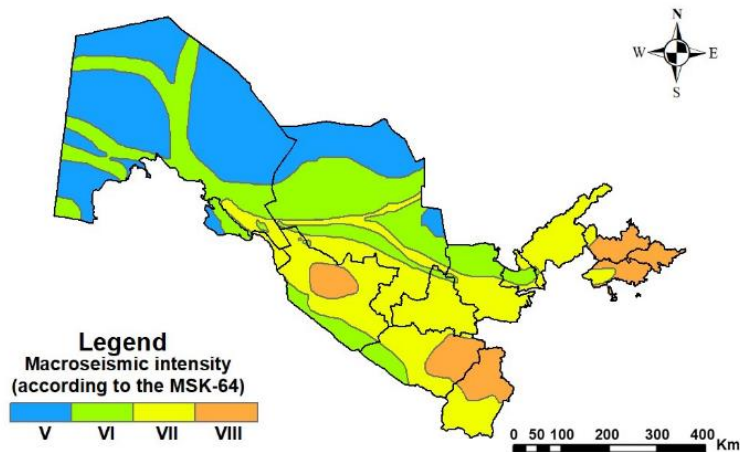
125 Exogenous geological processes are primarily developed in mountainous and foothill plains and are represented by landslides,  
 rockfalls and soil erosion.

The seismic risk probability and economic map of the administrative districts of the Republic of Uzbekistan were developed  
 based on the engineering geological conditions and maps of General Seismic Zoning (GSZ-2017) ([Artikov et al. \(2020\)](#)).  
 130 Subsequently, seismic vulnerability levels were assessed using the GESI\_Program software developed by the RADIUS  
 program of the International Federation of Red Cross and Red Crescent Societies during 1999-2001. The assessment  
 considered various construction materials based on cadastral information, considering the types of buildings and their  
 vulnerability functions. The seismic vulnerability levels of buildings were then evaluated in the districts of the Republic.  
 Considering the ground conditions, the economic map of seismic risk probability in the administrative districts of Uzbekistan  
 was developed, showing the probability of not exceeding 50% within 90 years (in trillion soums).

## 135 2.2. Seismic Hazard and Seismic Risk

### 2.2.1. Assessment of seismic hazard considering soil conditions and comparison with previous studies

Variation of seismic intensity increments across the territory of Uzbekistan has been examined. An improved map of seismic  
 zoning of the territory of the Republic of Uzbekistan ([Artikov et al. \(2020\)](#)) has been compiled, considering the seismic  
 140 properties of soils of different categories ([Fig. 2](#)).

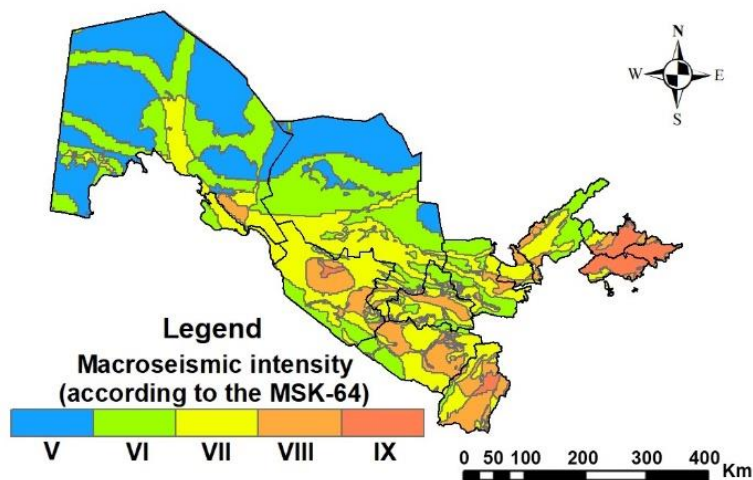


**Fig. 2:** Map of General Seismic Zoning (GSZ-2017) of the Republic of Uzbekistan with a probability of not exceeding  $P=90\%$  in 50 years. Authors: T. Artikov, R. Ibragimov, T. Ibragimova, M. Mirzaev (adapted from [Artikov et al., 2020](#)).

145 In the National Building Code No.2.01.03-19 "Construction in Seismic Areas" ([Ismailov et al., 2023](#)), soils have been systematically classified into three categories based on their seismic properties, with corresponding seismic intensity increments established for each category, taking into account the engineering-geological conditions of the soils. The assessment specifically targeted the upper 10-meter strata. For the 1st category, encompassing rock soils, the seismic intensity increment is reduced by 1. This adjustment is based on the observation that structures within the region tend to experience a lower intensity, typically differing by approximately -1 from the regional intensity during an earthquake. Similarly, the 2nd category, comprising sandy and analogous soils, maintains the same seismic intensity as the considered region. In contrast, the 3rd category, encompassing clays, loess, and other soils with limited seismic resistance, witnesses a seismic intensity increment increased by 1. The general seismic zoning (GSZ-2017) (Fig. 2) is calculated based on the 2<sup>nd</sup> category of soils. Using the lithological data of rocks located within the territory of the Republic of Uzbekistan depicted in Fig. 1, along with the General Seismic Zoning (GSZ-2017) (Fig. 2), we have created a schematic map illustrating seismic intensities across the Republic of Uzbekistan (Fig. 3).

150

155



**Fig. 3.** The schematic map of seismic intensity in the territory of the Republic of Uzbekistan.

160 The assessment of seismic risk in the territory of the Republic of Uzbekistan was conducted taking into account the experience of such countries as Germany ([Tyagunov et al., 2006](#)), Italy ([Pasquale et al., 2005](#)) and Russia ([Zaalishvili et al., 2019](#)). The basis for this assessment was the General Seismic Zoning (GSZ-2017) map for a 90% probability of not exceeding seismic effects over a 50-year period. Therefore, we utilized the General Seismic Zoning (GSZ-2017) of the territory of Uzbekistan ([Artikov et al., 2020](#)) for evaluation of seismic hazard of the territory.

165 In accordance with the local building code, all soils have been systematically classified into three categories based on their seismic properties, and corresponding seismic intensity increments have been determined for each category. The evaluation focused on the upper 10-meter strata. For the 1st category, encompassing rock soils, the seismic intensity increment was reduced by 1. This adjustment is rooted in the observation that when the region is subjected to an earthquake, structures within it experience a lower intensity, typically differing by approximately -1 from the regional intensity. Similarly, the 2nd category, consisting of sandy and analogous soils, maintains the same seismic intensity as the considered region. In contrast, the 3rd category, which includes clays, loess, and other soils with limited seismic resistance, witnesses a seismic intensity increment increased by 1. Consequently, a seismic intensity increment map has been compiled at a scale of 1:1000000. The Republic of Uzbekistan has been partitioned into zones reflecting seismic intensity increments of -1, 0, and 1. In simpler terms, this map

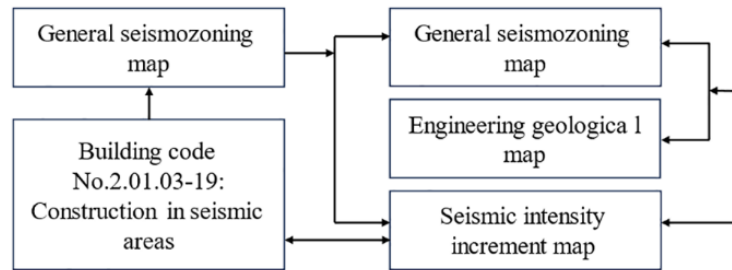
170

delineates areas where the same earthquake may induce more significant destruction due to unfavorable soil conditions and areas where the impact would be comparatively reduced.

Based on the compiled map of seismic intensity increments, adjustments have been made to the map of General Seismic Zoning (GSZ-2017) (Artikov et al., 2020) (Fig. 2). As a result, the seismic intensity for the entire territory of Uzbekistan has been determined, taking into account the soil categories based on seismic properties. Fig. 3 shows the map of seismic intensity in macroseismic units developed using a methodology (Fig. 4) that incorporates soil conditions in assessing earthquake intensity. As can be seen on the map (Fig. 3), a zone with an intensity of 9 has appeared, which indicates that there were unfavorable soil conditions such as areas with clays or loess soils with high level of water table (Table 1).

**Table 1.** Comparison of the ratio of areas with different intensities (based on the MSK-64 macroseismic scale) between two seismic hazard maps, one considering ground conditions and the other not

|  | V     | VI    | VII   | VIII  | IX   |
|--|-------|-------|-------|-------|------|
| Seismic hazard map   | 31,1% | 26,8% | 31,8% | 9,3%  |      |
| Seismic hazard map with consideration of ground conditions | 16,2% | 39,5% | 27,1% | 10,7% | 6,5% |



**Fig. 4:** Procedure to compile the seismic hazard map of the Republic of Uzbekistan

There are some differences in values and established boundaries of seismic hazard zones between the map of General Seismic Zoning (GSZ-2017) of the Republic of Uzbekistan and the compiled map of seismic intensity in the territory of the Republic of Uzbekistan. These differences are due to the delineation of different zones based on seismic intensity parameters, related to the distribution of soils of Categories I and III. For example, in the map of General Seismic Zoning (GSZ-2017) of the Republic of Uzbekistan GSZ-2017, the zone with  $I = VII$  is subdivided into zones with intensities of VI, VII, and VIII on the seismic intensity map, depending on the soil conditions. However, the entire territory of the republic is divided into zones with seismic intensities of V, VI, VII, VIII and IX.

### 2.2.2. The regional seismic risk assessment

"The pilot project titled 'Regional Seismic Risk Assessment Based on Soil Conditions in Uzbekistan' encompassed the entirety of Uzbekistan's territory. We conducted seismic risk assessments for both the Jizzakh region (Aktamov et al., 2020) and the city of Tashkent (Rashidov et al., 2003). Utilizing geological, seismotectonic, and seismological data, earthquake scenarios were formulated to evaluate the seismic risk in these areas (RADIUS). Additionally, social (individual) seismic risk was calculated for the Andijan region based on the earthquake scenario.

In the RADIUS project (1992), the seismic risk of Tashkent was evaluated using an earthquake scenario. The estimated total damage from such a scenario earthquake, accounting for the disruption of life support systems and infrastructure in Tashkent, stands at approximately 1 billion soms. (These loss figures, based on 1991 prices and book values, are significantly underestimated). Given Tashkent's status as the capital, where a quarter of the country's gross domestic product is generated, the earthquake's repercussions are expected to extend nationwide. Numerous international commercial, banking, and insurance connections are likely to face temporary disruptions, and the human toll will be significant. Economic recovery is projected to span years, with industrial production shutdowns expected to result in losses of approximately US\$1 billion. Preliminary calculations indicate that a scenario earthquake could incur damages exceeding 10 billion US dollars (taking into account the book value of fixed assets determined at 1991 prices). Expert estimates suggest that roughly 80 % of communication facilities may remain inoperative for an extended duration, while ongoing construction projects could suffer approximately US\$ 1 billion in irreparable damage.

For individual (social) seismic risk assessment, a scenario earthquake map was developed using the GIS tool 'Extremum,' jointly developed by the Center for Emergency Situations, the Seismological Center of the Institute of Geocology of the Russian Academy of Sciences, and the Research Institute of Geocology of the Russian Academy of Sciences under the Ministry of Civil Defense, Emergency Situations and Disaster Relief of Russia. Data from the 1902 Andijan earthquake was utilized. Based on these calculations, a map depicting individual seismic risk was produced for the Andijan region and surrounding areas (Inagamov et al., 2005). It is estimated that casualties among the population could reach 8,260, with total casualties (including injuries) potentially reaching 13,440.

"During the assessment of seismic hazards, a seismic hazard map of the Republic of Uzbekistan was developed based on the engineering geological conditions of the research areas and general seismic zoning maps. Subsequently, seismic vulnerability levels were evaluated, utilizing the GESI\_Program software developed under the international RADIUS project of the United

Nations from 1999 to 2001, and data provided by the cadastral agency of the Republic of Uzbekistan. Accordingly, considering the types of construction materials based on the information provided by the cadastral agency, the vulnerability functions were established, and based on these functions, the seismic vulnerability levels of buildings constructed in districts across the Republic were assessed in a systematic manner. Taking into account soil conditions, an economic map of seismic risk in the administrative districts of the Republic of Uzbekistan was developed, with a probability of seismic risk not exceeding 50 % within 90 years (in billion soms).

### 2.3. Seismic vulnerability

Seismic vulnerability of buildings is to the ratio of expected costs of restoring structures that may be subjected to destructive seismic events of a given intensity, to their initial cost. Vulnerability ranges from 0 (no damage) to 1.0 (unrepairable). By knowing the current value of a structure, the monetary damage can be determined. The relationship between vulnerability and seismic impact (e.g., in degrees) is referred to as the vulnerability function. Vulnerability functions play a central role in regional seismic loss assessment.

A vulnerability function represents the relationship used to forecast statistics (such as mean value or standard deviation) of seismic losses distribution. It predicts the extent of damage that a structure (e.g. residential building or bridge) will experience under probability of seismic events. It should be noted that vulnerability functions are calculated separately for each type of building listed in the cadaster.

Vulnerability functions for the identified structural building types within the territory of the Republic of Uzbekistan were developed using the "GESI\_Program", which is a computer program based on the assessment of structural damage under specified seismic events (Fig. 5), which we used for the vulnerability of buildings to assess the seismic risk of the territory of the Republic of Uzbekistan. This software was developed as part of the United Nations' Global Earthquake Safety Initiative (GESI) Pilot Project in 1999-2001. The primary data used for the program's development was collected within the framework of the international RADIUS project (Risk Assessment Tools for Diagnosis of Urban Areas against Seismic Disasters), conducted by the UN-IDNDR Secretariat in 1998-1999. The vulnerability function used to assess seismic risk was created in an experiment involving cities such as Addis Ababa (Ethiopia), Antofagasta (Chile), Bandung (Indonesia), Guayaquil (Ecuador), Zigong (China), Izmir (Turkey), Skopje (Macedonia), Tashkent (Uzbekistan) and Tijuana (Mexico). The experiment utilized identical building materials in the respective cities. The vulnerability index for the city of Tashkent in the experiment did not exceed 10 % of the total (RADIUS, 2000).

In Fig. 5, in addition to the vulnerability functions, the boundary conditions of damage are also presented, characterized by the overall direct costs of restoring buildings to their initial condition and the relationship between PGA and intensity (according to the MSK-64 macroseismic scale) was calculated using the equation  $I_{max}=0.41I-0.755\pm 0.08$  (Aptikaev, 2012).

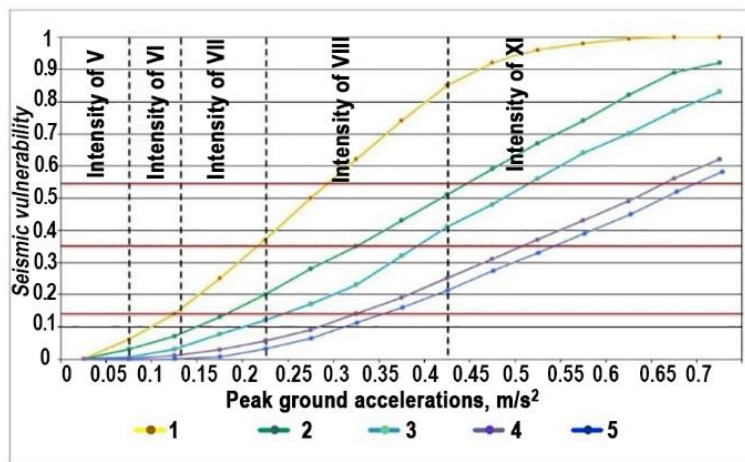


Fig. 5: Vulnerability function for the different building types. 1-Adobe (local); 2- Masonry; 3- Wooden; 4- Concrete; 5- Metal frame.

Buildings built using local materials (adobe, guvalyak, pakhsa and raw bricks); masonry buildings; wooden (chopped or panel) residential buildings; concrete (panel, large-panel, monolithic and reinforced concrete) buildings; and buildings with a metal frame or a frame with diaphragms (ties).

As of February 1, 2021, at the republican level, 7,135,881 residential buildings were analyzed and systematized by employees of the Institute of Seismology of Academy of Sciences of Uzbekistan with a total area of 4.4 billion square meters. These buildings were categorized by the material of structural system and aggregated by administrative regions (Table 2).

Table 2. Residential buildings by the material of structural system within zones of different seismic intensities

| Seismic intensity zones | Total   | Residential buildings by structural types |        |         |             |                       |
|-------------------------|---------|---|--------|---------|-------------|-----------------------|
|                         |         | RC  | Wooden | Masonry | Metal frame | Local adobe materials |
| 5                       | 6031    | 758                                       | 1      | 2933    | 0           | 2339                  |
| 6                       | 398838  | 24431                                     | 3323   | 62787   | 126         | 308171                |
| 7                       | 1956323 | 176113                                    | 10029  | 338873  | 3292        | 1428018               |

|   |         |        |       |        |      |         |
|---|---------|--------|-------|--------|------|---------|
| 8 | 2960146 | 169079 | 31954 | 985165 | 6318 | 1767630 |
| 9 | 1819597 | 133535 | 23030 | 217787 | 3025 | 1442220 |

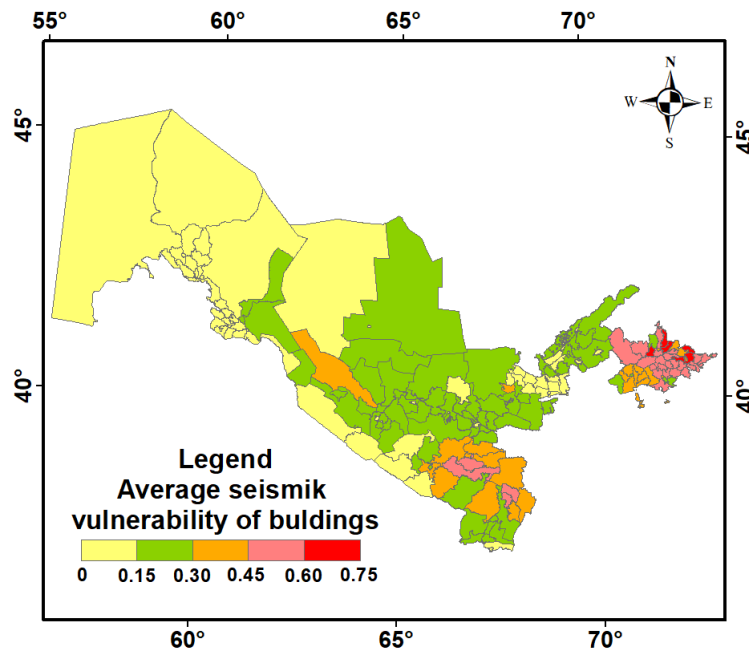
The vulnerability function for each structural type of buildings was determined using the GESI\_Program, which served as the basis for calculating seismic vulnerability by administrative regions. For aggregation of values of seismic vulnerabilities of buildings, the equation proposed by Tyagunov, S.A. et al. (2007) was used Eq. (1).

$$MRV = \frac{\sum_{i=1}^n N_i \cdot MVR_i}{\sum_{i=1}^n N_i} \quad (1)$$

Here, MVR represents the average value of seismic vulnerability for the territory of the district, MVR<sub>i</sub> represents the average value of seismic vulnerability for the identified structural types of buildings and N represents the number of buildings by structural types within the administrative district.

Thus, administrative districts with seismic vulnerability values of 0-0.15, 0.16-0.3, 0.31-0.45, 0.46-0.6 and 0.61-0.75 were identified. These values were aggregated to create a schematic map of seismic vulnerability for the administrative districts of the Republic of Uzbekistan (see Fig. 6).

The schematic map of seismic vulnerability is the basis for the assessment of possible damage at given values of seismic impacts.



**Fig. 6:** Map of average values of seismic vulnerability of buildings by administrative districts of the Republic of Uzbekistan

The GESI\_Program<sup>6</sup> consists of five sets of input parameters that characterize the type of structure, design features, quality of construction, quality of building materials and level of seismic impacts in the peak acceleration process. Based on these input parameters, a damage diagram and building vulnerability function are constructed. Damage to buildings is rated at four levels: light, moderate, heavy and very heavy (Table 3).

**Table 3.** Damage characteristics of buildings:

| Grade | State of damage | Description  |
|-------|-----------------|--|
| 1     | Minor           | - light non-structural damage, including cracks in plaster (up to 0.5 mm wide), chipping of small plasters from walls and frame elements, and thin cracks in partitions, cornices and floor screeds.<br>- light structural damage (complete or almost complete absence). Minor damage requires maintenance costs. According to norms, the cost can reach up to 15 % of the book value of the object.   |
| 2     | Moderate        | - moderate non-structural damage, including chipping of rather large pieces of plaster, falling roof tiles, cracks in chimneys, falling parts of chimneys, through cracks in partitions and lintels above openings, cracks in the masonry of gables and parapets, and their partial displacement.<br>- light structural damage, including small cracks in walls, between prefabricated floor panels, along the counter of large blocks, and in the load-bearing elements of frames. Overhaul costs are calculated based on damage to the building, ranging from 15–35 %. |

<sup>6</sup> [https://iisee.kenken.go.jp/net/saito/gesi\\_program/index.html](https://iisee.kenken.go.jp/net/saito/gesi_program/index.html) (retrieved on September 21, 2023)

|   |             |   |
|---|-------------|---|
| 3 | Severe      | - severe non-structural damage, including falling chimneys, gable wall parapets, collapse of individual or many load-bearing and self-supporting elements, and destruction of lintels over openings.<br>- moderate structural damage, including large deep and through cracks in walls, loss of connections between structural elements and separation of longitudinal walls from transverse ones. In the case of severe damage, the restoration costs are determined depending on the nature of the damage and are decided by an expert commission. Restorative repair is determined depending on the damage, ranging from 35 % to 55 %. |
| 4 | Very severe | - non-structural destruction, including the collapse of individual sections of internal walls and collapse of partitions.<br>- structural destruction, including delamination of the masonry of load-bearing walls, gaps in walls, destruction of connections between individual parts of the building, and rupture of the joints of prefabricated structures. In case of damage to the building of the 4th degree, the building is subject to demolition   |

285 The seismic vulnerability is estimated as a percentage of the damage due to peak acceleration. According to the definition, the vulnerability of buildings is considered a property of a given structure capturing the loss of qualitative or quantitative indicators of reliability and safety due to any impact. The vulnerability ranges from 0 (no damage) to 1 (unrepairable). The dependence of the vulnerability on seismic impact (for example, in intensity) is denoted as the vulnerability function.

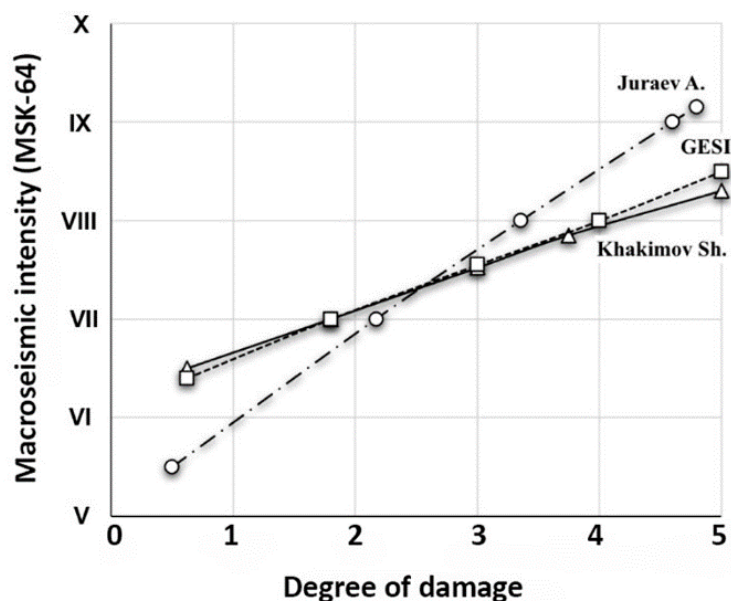
290 The vulnerability function relating the degree of damage to the level of seismic impact, given in intensity is usually determined empirically.

For a detailed assessment of the damage to buildings under different intensities of seismic impacts and to compile vulnerability functions for specific structural types of buildings, calculations were performed in the GESI\_Program.

295 A comparison of the results revealed (Fig. 7) that macroseismic observations of the damage to the buildings under consideration greatly differ from the calculation results obtained with GESI\_Program, but at the intensity of 7.3 the observations and calculation results coincide. Closer matches are shown in graphs obtained via calculation using GESI\_Program (RADIUS, 2000) and experimental data of Khakimov Sh. (2017). Based on these data, it can be assumed that the use of GESI\_Program in the assessment of the vulnerability of various construction types of buildings yields better results, at least excluding subjective opinions when comparing the vulnerability of buildings.

300 The vulnerability function, which relates the degree of damage to the level of seismic impact, given in MSK-64 intensity or peak ground acceleration values, is usually determined empirically or via calculation methods. When studying the engineering consequences of strong local earthquakes, world statistics of damage data for classes of objects located in the study area under similar seismogeological conditions are involved. To date, the Institute of Seismology of the Academy of Sciences of Uzbekistan has accumulated a large amount of data on the consequences of strong earthquakes. However, the range of observed intensities remains insufficient to obtain full-fledged regional loss matrices. Therefore, at this stage, we limited ourselves to

305 using the GESI\_Program, which, at the moment, is the best way to model and evaluate the relationship between the degree of damage and level of seismic impact.



310 **Fig. 7:** Graph of changes in the average degree of damage to individual mudbrick houses depending on the seismic intensity according to different authors.

This paper represents the first attempt to compile an extensive database of residential buildings in Uzbekistan and involves significant efforts to include the most at-risk assets in the territory. At the same time, a database of the housing stock in the



republic was formed based on the database of the State Cadastral Chamber of the Cadastral Agency under the Tax Committee of Uzbekistan.

Residential buildings in the territory of Uzbekistan could be divided into 5 main types of structural systems:

1. Type A: local adobe materials (guvalyak, pakhsa and raw bricks);
2. Type B: masonry.
3. Type C: wooden (chopped or panel);
4. Type D: concrete (panel, monolithic and reinforced concrete);
5. Type E: metal frame or a frame with diaphragms (ties).

These 5 types of buildings could be subdivided into 20 different subtypes according to their structural features and year of construction (Table 4). This classification of the buildings is typical not only for Tashkent, but can be used for other cities in Uzbekistan and Central Asia. The buildings were also classified according to the number of stories and type of material of the supporting structures.

We have taken the classification data of buildings from the database of the Cadastral Agency of Uzbekistan. For reference, the comparison between our data and EMCA is presented in [Table 4](#).

**Table 4. Residential building taxonomy**

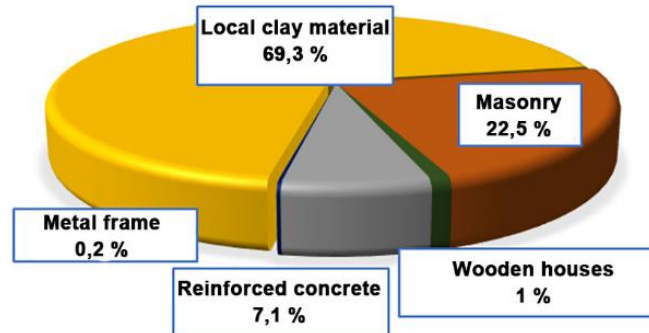
|   | Classification of the Cadastral Agency of the Republic of Uzbekistan | Classification of buildings in Uzbekistan  | EMCA Classification |
|---|--|--|---------------------|
| 1 | Adobe (local)  | Residential buildings constructed from local low-strength materials (without anti-seismic measures)<br>One-story clay walls of the guvalyak and pakhsa types   | EMCA4               |
| 2 | Masonry  | Three- to five-storey frameless brick buildings with wooden floors constructed until 1958<br>One- to two-storey frameless brick walls with wooden floors<br>Walls made of bricks, small concrete or natural stones; ceilings - prefabricated reinforced concrete<br>Buildings with external load-bearing brick walls; internal - reinforced concrete frame elements<br>Walls made of large blocks (concrete, vibro-brick, or reinforced vibro-brick panels)<br>Reinforced concrete frame with brick filling  | EMCA1               |
| 3 | Wooden   | One- to two-storey wooden houses (chopped or panel)<br>One- to two-storey wooden frames filled with raw bricks (sinch)   | EMCA5               |
| 4 | Concrete   | Prefabricated reinforced concrete frame made of linear elements with a welded joint in the zone of maximum effort, or the same with stiffening diaphragms in one direction (framework III of the IIS-04 series and their modifications)<br>Large-panel walls without anti-seismic measures<br>Walls of complex construction (with reinforced concrete inclusions); ceilings - prefabricated reinforced concrete<br>Large panel walls<br>Monolithic reinforced concrete frame<br>Prefabricated reinforced concrete frame-braced frame with monolithic nodes, with stiffening diaphragms in two directions or stiffening cores<br>Frame made of spatial elements (volumetric cross) with monolithic knots<br>Frame made of spatial elements (volumetric cross) with monolithic knots<br>Volumetric blocks per room | EMCA2<br>EMCA3      |
| 5 | Metal frame  | Metal frame or frame with diaphragms (bonds)   | EMCA6               |

## 2.4. Distribution of residential buildings by the material and their cadastral value

According to cadastral data, as of February 1, 2021, the housing stock in Uzbekistan consists of 7135881 houses and apartments.

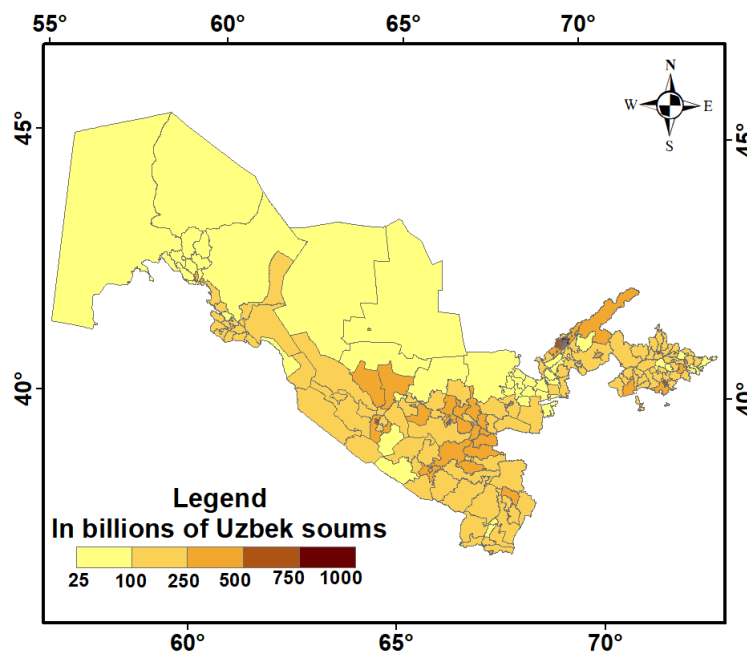
Depending on the demographic situation, the number of residential buildings in the territory of the republic exhibits a very uneven distribution. The housing stock in Uzbekistan is divided in 2 main types: individual houses (80.1 %) and multi-story residential buildings (19.9 %). Individual houses are typically one or two-story buildings intended for one or two families, while residential buildings consist of multiple separate apartments.

It should be noted that in the housing stock of the republic, there are 44827 multi-story buildings, where there are 1375623 apartments, which are also considered when compiling the residential building database.



**Fig. 8:** Distribution of residential buildings by the material of structural system.

These types of buildings are distributed unevenly in quantitative terms and spatially, so among these buildings, buildings built using local materials are the most widespread. These buildings are highly represented in rural areas (settlements, towns, cities, etc.) and comprise about 70 % of the total number of residential buildings in Uzbekistan. The buildings built of wood (including panel houses) or metal frames, comprise less than 1 % of the total number of residential buildings. [Figure 8](#) shows the distribution of residential buildings by the material of structural system.



**Fig. 9:** Map of the total cadastral value of the housing stock within the administrative regions of the Republic of Uzbekistan.

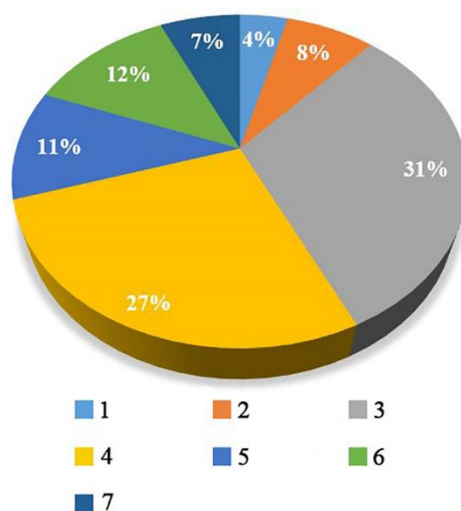
Cadastral value of residential buildings by administrative areas is also an important information for developing maps of seismic risk, as well as for the government that implementing policies for increasing the seismic resilience of buildings and structures. [Figure 9](#) shows the cadastral value of housing stock within the Republic of Uzbekistan and its administrative areas.

Based on given data, seismic risk assessment of the territory of the Republic of Uzbekistan will be performed in the next chapter.

### 3. Seismic risk assessment

Analysis of given data demonstrates a large spread in the number of buildings by structural types. For example, in the Kashkadarya region, the share of buildings built from local clay material exceeds 83 % (27 trillion Uzbekistani soms) of the total number of residential buildings; in the Samarkand (40 trillion Uzbekistani soms) and Andijan regions (21 trillion Uzbekistani soms), the share is 82 %; and in the Tashkent region, 48.3 % (16 trillion Uzbekistani soms). In large cities, the percentage of adobe residential buildings is smaller and ranges from 13 % to 27 %. This circumstance must be considered when assessing the seismic risk, since the amount of damage due to an earthquake in the selected territorial units depends on the proportion of the specific structural types of buildings.

To assess the seismic risk within the context of the administrative districts of the Republic of Uzbekistan, it is necessary to take into account the share of the housing stock across all administrative districts, considering zones with different intensities. The number of residential buildings located in the territory with different seismicity values, expressed by peak ground accelerations is shown in Figure 10. This diagram shows that a large number of buildings, approximately 31 % of the total number of residential buildings are located in the territory with PGA ranging from 0,1 to 0,15 m/s<sup>2</sup>, 27 % of the buildings are located in areas with PGA of 0,15–0,20 m/s<sup>2</sup> and more than 30 % are located in areas with peak accelerations higher than 0,20 m/s<sup>2</sup>, representing the zone with an intensity of VIII (according to EMS-98, [https://www.franceseisme.fr/EMS98\\_Original\\_english.pdf](https://www.franceseisme.fr/EMS98_Original_english.pdf)).



**Fig. 10.** Distribution of residential buildings in areas with different seismic effects (values of the peak ground acceleration are given in m/s<sup>2</sup>). 1: 0-0.05; 2: 0.05-0.10; 3: 0.10-0.15; 4: 0.15-0.20; 5: 0.20-0.25; 6: 0.25-0.30; 7: 0.30-0.35

Information on the distribution of residential buildings by the material of structural system depending on zones with different seismic effects is given in Tables 5.

**Table 5.** Distribution of residential buildings by the material of structural system in (as of February 1, 2021)

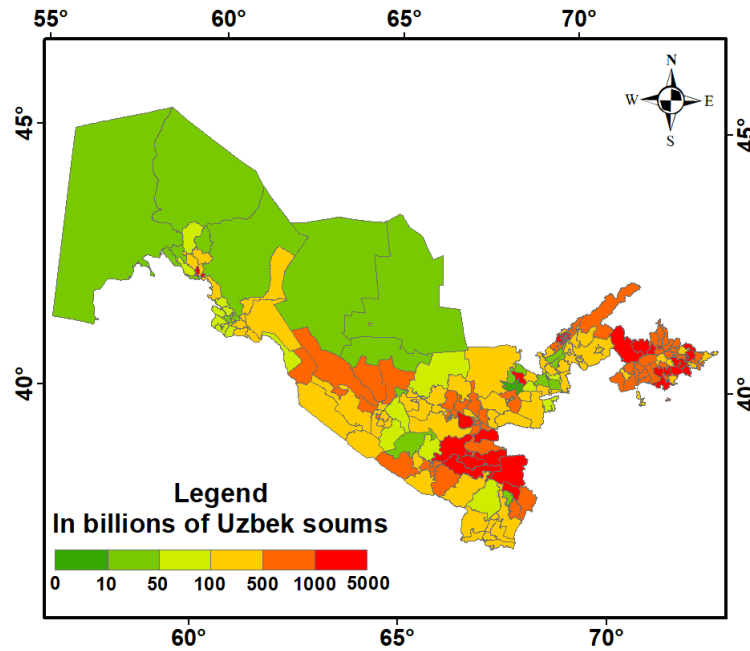
| Structural type of the building | Total, % | including (%) |                |
|---------------------------------|----------|---------------|----------------|
|                                 |          | in cities     | in rural areas |
| Type A                          | 69,2     | 27,2          | 84,8           |
| Type B                          | 22,5     | 54            | 10,9           |
| Type C                          | 1        | 0,6           | 1,1            |
| Type D                          | 7,1      | 18            | 3,1            |
| Type E                          | 0,2      | 0,2           | 0,1            |

Figure 11 shows a microscale map depicting the seismic risk assessment of potential economic losses across the territory of the Republic of Uzbekistan. This seismic risk map assesses the probability of economic damage within the administrative districts under the maximum level of seismic impact for a return period of T=475 years.

The developed map of seismic risk of the territory of Republic of Uzbekistan is based on the assessment of probable economic losses within administrative regions, depending on the combination of seismic hazard factors, seismic vulnerability and concentration of values. It is important to emphasize that the level of seismic hazard used in the calculation of physical and economic damage corresponds to a 90 % probability of not exceeding of seismic impacts for 50 years, which corresponds to an average return period of 475 years. This study is limited to the use of the return period of 475 years because this level of probability is generally accepted standard in seismic hazard assessment during the design and construction of conventional buildings and structures. Of course, considering a different probability, the level of danger and estimates of damage and potential losses may differ from the data presented.

The present study covered only the assessment of direct economic losses that may be caused by structural damage to residential buildings as a result of seismic events. At the same time, given that residential buildings predominate in the development of

cities and administrative districts of the Republic of Uzbekistan, the presented results could serve as a clear reference for a comparative analysis of the seismic risk in various administrative districts.



**Figure 11.** Seismic risk assessment of the probable economical losses (in billions Uzbekistani soums) by administrative regions of the Republic of Uzbekistan

400 **4. Conclusions**

Based on the study of geomorphological and geological structure, as well as changes in the composition of the upper 10-meter soil strata, features of changes in engineering-geological conditions and seismic resistance of soils in the territory of Uzbekistan have been identified. Using the map of General Seismic Zoning (GSZ-2017) of the country with a 90 % probability of not exceeding seismic impacts over a 50 year period and considering seismic intensity increments, a microscale seismic intensity map (1:1 000 000) for the entire republic has been developed. The seismicity of the territory has been calculated, taking into account soil categories by their seismic properties. Seismically hazardous areas consist of different soil conditions, whereas the General Seismic Zoning (GSZ) map considers average soil conditions. By meticulous consideration of soil conditions of the regions, the reliability of the assessment of seismic hazard in regions has been increased.

405

At the national level, as of February 1, 2021, a systematic electronic database has been created, containing information on 7135881 real estate properties, specifically residential buildings. Each property has been grouped based on its construction type and coordinates in relation to administrative districts. This comprehensive database has been established to facilitate the quantitative assessment of potential building damage during strong earthquakes, enabling the identification of preventive measures to mitigate possible losses.

410

Based on the compiled schematic map of seismic intensity for the territory of Uzbekistan and the vulnerability functions established for each construction type, the seismic vulnerability of the developed areas within the administrative districts has been determined. The values of seismic vulnerability for the administrative districts fall within the following ranges: 0-0.15; 0.16-0.3; 0.31-0.45; 0.46-0.6; 0.61-0.75. From these vulnerability values, it is possible to determine the degree of vulnerability for each region.

415

Seismic vulnerability analysis and assessment were conducted using GESI\_Program. Vulnerability models built depending on the construction types of residential buildings characterized the vulnerability of residential buildings in all administrative regions of Uzbekistan, which are subsequently considered as calculation cells. To assess the magnitude of potential damage in monetary terms, cost indicators of the restoration of residential buildings were used. Seismic impacts were considered within the framework of the project in the form of a probabilistic seismic hazard map. This approach allows for a comparative analysis of the distribution of seismic risk across seismically hazardous areas.

420

The present study covered only the estimation of direct economic losses of residential buildings in the Republic of Uzbekistan. At the same time, considering that residential construction predominates in the development of many states, the presented results can serve as a clear guide for a comparative analysis of risks across the entire seismically hazardous territory. The obtained results and such seismic risk maps can serve as a basis for the development of plans and measures to reduce the existing level of risk and prevent catastrophic consequences of future earthquakes for government agencies dealing with emergency situations.

425

430

**Author contributions**

All of the authors contributed to the process of writing and verifying the research work and analyzed the results.

### Competing interests

435 The authors declare that they have no known competing financial interests or personal relationships that could have appeared to influence the work reported in this paper.

### Disclaimer

Publisher's note: Copernicus Publications remains neutral with regard to jurisdictional claims in published maps and institutional affiliations.

### Acknowledgements

440 This work was funded by grants from the Academy of Sciences of the Republic of Uzbekistan, "Development of scientific foundations for assessing various levels of seismic risk and reducing earthquake losses in seismically active areas", "Research of the compaction properties of dispersed soils during strong earthquakes in laboratory and field conditions and development of its classification" and the Agency for Innovation Development, #ALM202311142839 "Creation of a simulation digital model of the city of Tashkent allowing to assess the level of economic damage from strong earthquakes" and #AL5822012294  
445 "Development of technology for predicting the risk of strong earthquakes", #AL5822012298 "Create an electronic database on seismological soil characteristics to replace Table 1.1 in the regulatory document. seismological part of KMK "Construction of seismic areas"", as well as the project "Regionally coordinated assessment of earthquake and flood risks and selective analysis of landslide scenarios to strengthen financial resilience and accelerate risk reduction in Central Asia", funded by the EU Program "Strengthening Financial Resilience" and Accelerating Risk Reduction" (SFRARR) funded by the European  
450 Union and implemented by the World Bank. We sincerely thank all the project team members, in particular Sergey Tyagunov, Paola Ceresa, Antonella Peresan, Gabriele Coccia, Denis Sandron and Stefano Parolai, and the World Bank specialists, in particular Stuart Alexander Fraser and Madina Nizamitdin, for their constructive contributions to the project. We are grateful for the suggestions and feedback from the editor and the two reviewers, which substantially improved the manuscript.

### References

- 455 Algermissen, S.T., Riehart, W., Dewey, J., Steinbrugge, K.V., Lagorio, H.J., Degenkolb, H.J., McClure, F.E., Scott S., Gordon, R.F.: A study of earthquake losses in the San Francisco Bay area: Data and analysis. National Oceanic and Atmospheric Administration (NOAA), Washington, DC, 1972. [a](#), [b](#)
- Aptikaev F.F.: Instrumental scale of seismic intensity. Moscow: "Nauka i Obrazovanie", 175., ISBN 978-5-906235-02-2, 2012. [a](#)
- 460 Artikov, T.U., Ibragimov, R.S., Ibragimova, T., Mirzaev, M.A.: Complex of General Seismic Zoning (GSZ-2017) of Uzbekistan. Geodesy and Geodynamics., 11, 273-292, <https://doi.org/10.1016/j.geog.2020.03.004>, 2020. [a](#), [b](#), [c](#), [e](#), [z](#)
- Aktamov, B.U., Ismailov, V.A., Yodgorov, Sh.I.: Earthquake damage assessment of buildings in rural areas (in the sample of Jizzakh region). International Journal of Geology, Earth & Environmental Sciences., 10, 35–42, 2020, [a](#)
- 465 Bendimerad F.: Modeling and Quantification of Earthquake Risk: Application to Emerging Economies: Mitigation and financing of seismic risks, edited by: Kleindorfer, P. R. and Sertel, M. R., Kluwer Acad. Publ., 40., ISBN:9780792370987, 2001. [a](#)
- Bragato, P. L., Barnaba, C., Scaini, C. and Sukan, M.: "Time-invariance and geographical divide of earthquake mortality in Italy since 1800", Annals of Geophysics, 63(6), p. 660. <https://doi.org/10.4401/ag-8406>, 2020. [a](#)
- 470 Bhochhibhoya, S. and Maharjan, R.: Integrated seismic risk assessment in Nepal. Natural Hazards and Earth System Sciences., 22, 3211–3230, <https://doi.org/10.5194/nhess-22-3211-2022>, 2022. [a](#), [b](#)
- Chen, Y., Chen, X. L., Fu, Z. X., Ying, Z. Q., and Yang, M.D.: Estimating Losses from Earthquakes in China in the Forthcoming 50 Years, Seismological Press, Beijing, 60, 1992. [a](#)
- Chen, Y., Chen, Q. F., Liu, J., Chen, L., and Li, J.: Seismic Hazard and Risk Analysis: A Simplified Approach, Science Press, Beijing, 228, ISBN: 9781108425056, 2002. [a](#)
- 475 Coburn, A. and Spence, R.: Earthquake Protection, Second edition, John Wiley & Sons Ltd., 448., ISBN: 978-0-470-85517-1 2002. [a](#)
- Cornell, C. A.: Engineering seismic risk analysis, Bull. Seism. Soc. Am., 58, 1583-1606, 1968. [a](#), [b](#)

- Di Pasquale, G., Orsini, G., and Romeo, R. W.: New developments in seismic risk assessment in Italy, *Bull. Earthq. Eng.*, 3, 101-128, <https://doi.org/10.1007/s10518-005-0202-1>, 2005. [a](#)
- 480 Faccioli, E. and Pessina, V.: The Catania Project: Earthquake damage scenarios for high risk area in the Mediterranean, CNR-GNDT. Roma 225, 2000. [a](#)
- Giovinazzi, S., Lagomarsino, S.: A macroseismic method for the vulnerability assessment of buildings, in: *Proc. of the 13th World Conference on Earthquake Engineering*, Vancouver, Canada, 896, 2004. [a](#)
- 485 Fah, D., Kind, F., Lang, K., and Giardini, D.: Earthquake scenarios for the city of Basel. *Soil Dyn. Earthq. Eng.*, 21, 5, 405-413, 2001. [a](#)
- Inagamov R.Sh., Mavlyanova N.G.: Seismic risk criteria for zoning seismically active territories. *Problems of Seismology in Uzbekistan.*, № 2, 194–201. 2005. [a](#)
- Frolova, N., Larionov, V., Sushchev, S., and Ugarov, A.: Extremum system for earthquake risk and loss assessment, in: *Proc. of the Conference Skopje Earthquake - 40 Years of European Earthquake Engineering*, Ohrid, Macedonia, CD-ROM, 2003. [a](#)
- 490 Ismailov, V.A., Yodgorov, Sh.I., Allayev, Sh.B.: Seismic microzoning of the Tashkent territory based on calculation methods. *Soil Dynamics and Earthquake Engineering*, Vol: 152, 107045. <https://doi.org/10.1016/j.soildyn.2021.107045>, 2022. [a](#)
- Ismailov, V., Khusomiddinov, S., Khusomiddinov, A., Yodgorov, SH., Aktamov, B., Avazov, SH.: Seismic Risk Assessment of Jizzakh Region. *AIP Conference Proceedings* 030035, <https://doi.org/10.1063/5.0089664>, 2022. [a](#), [b](#)
- 495 Ismailov, A.I., Yodgorov, Sh.I., Khusomiddinov, A.S., Yadigarov, E.M., Allayev, Sh.B. & Aktamov, B.U.: New classification of soils by seismic properties for the building code in Uzbekistan, *Geomechanics and Geoengineering An International Journal*, <https://doi.org/10.1080/17486025.2023.2296975>, 2023. [a](#)
- King, S. A., Kiremidjian, A. S., Basoz, N., Law, K., Vucetic, M., Doroudian, M., Olson, R. A., Eiding, J. M., Goettel, K. A., and Horner, G.: Methodologies for evaluating the socio-economic consequences of large earthquakes, *Earthq. Spectra*, 13, 565-584, 1997. [a](#)
- 500 Kasymov, S.M.: Engineering-geological basis of detailed seismic zoning and microzoning (on the example of Uzbekistan), Tashkent, 224, 1979. [a](#)
- Khakimov Sh.A.: Seismic safety of structural systems of modern residential and civil buildings of the Central Asian region. *Georisk*. 10, 33-38. 2017. [a](#)
- 505 Khakimov Sh.A.: Vulnerability of buildings at earthquakes and questions of reduction of seismic risk in the urbanized territories, *Architecture and construction of Uzbekistan*. 3, 23-25, 2000. [a](#)
- Keilis-Borok, V. I., Kantorovich, L. V., and Molchan, G. M.: Seismic risk and principles of seismic zoning, in: *Computational and Statistical Methods for Interpretation of Seismic Data*, Moscow, Nauka, (in Russian), 3-20, 1973. [a](#), [b](#)
- Islamov, A.I., Karpov, P.M., Kasimov, SM., Korrel, R.F., Krukovsky, G.L. Moskovec, V.F., Tolokonnikov, V.V., Nazarov, V.Z., Pushkarenko, V.P.: Engineering-geological map of Uzbekistan, Tashkent, 1968. [a](#), [b](#)
- 510 Lang, K.: Seismic vulnerability of existing buildings. Dissertation, Inst. of Struct. Eng., Swiss Federal Inst. Technology, Zurich, 196, 2002. [a](#)
- Lomnitz, C. and Rosenblueth, E.: *Seismic Risk and Engineering Decisions*, Elsevier, Amsterdam, 425, ISBN:0444414940, 1976. [a](#), [b](#)
- 515 McCormack, T. C. and Rad, F. N.: An earthquake loss estimation methodology for buildings based on ATC-13 and ATC-21, *Earthq. Spectra*, 13, issue 4, 605-621, <https://doi.org/10.1193/1.1585971>, 1997. [a](#)
- Mavlyanov, G.A., Kasymov, S. M., Shermatov, M. S.: The Uzbekistan loess, genesis and distribution., *GeoJournal*, 15, 145–150, <https://doi.org/10.1007/BF00157940>, 1987. [a](#)
- 520 Mouroux, P., Bertrand, E., Bour, M., Le Brun, B., Depinois, S. and Masure, P.: The European RISK-UE Project: An Advanced Approach to Earthquake Risk Scenarios. *The 13th World Conference on Earthquake Engineering*, Vancouver, Canada, 3329, 2004. [a](#)
- Petrovic, B., Scaini, C. , Parolai, S.: Applying the damage assessment for rapid response approach to the august 24 M6 event of the seismic sequence in central Italy (2016). *Frontiers in Earth Science*. October 2022. DOI:10.3389/feart.2022.932110. [a](#)
- Papadopoulos, G. A. and Arvanitides, A.: Earthquake Risk Assessment in Greece, in: *Earthquake Hazard and Risk*, edited by: Schenk, V, Kluwer Acad. Publ., 221-229, 1996. [a](#)
- 525 Valerio Poggi, Chiara Scaini, Luca Moratto, Gabriele Peressi, Paolo Comelli, Pier Luigi Bragato, Stefano Parolai.: Rapid Damage Scenario Assessment for Earthquake Emergency Management. *Seismological Research Letters*, 92 (4): 2513–2530. <https://doi.org/10.1785/0220200245>, 2021. [a](#)
- PELEM (Panel of Earthquake Loss Estimation Methodology): *Estimating Losses from Future Earthquakes*, National Academy Press, 248, 1989. [a](#)

- 530 Peresan, A., Scaini, C., Tyagunov, S., and Ceresa, P.: Capacity Building Experience for Disaster Risk Reduction in Central Asia, *Nat. Hazards Earth Syst. Sci. Discuss.* [preprint], <https://doi.org/10.5194/nhess-2023-156>, in review, 06 Sep 2023. [a](#)
- Peresan A, Scaini C and Barnaba C.: Crowd-Sourced Buildings Data Collection and Remote Training: New Opportunities to Engage Students in Seismic Risk Reduction. *Earth Sci. Syst. Soc.* 3:10088. [doi.org/10.3389/esss.2023.10088](https://doi.org/10.3389/esss.2023.10088), 2023. [a](#)
- 535 Rashidov T., Kuzmina E., Mamysheva D, & Rashidov I.: Assessment and reduction of seismic risk in Tashkent, Uzbekistan. *Problems of Preventing the Consequences of Destructive Earthquakes. Reports of the Second Kazakh-Japanese Seminar*, 19-27. 2003. [a](#), [b](#), [c](#)
- RADIUS: Risk Assessment Tools for Diagnosis of Urban Areas against Seismic Disasters, Geneva, Switzerland: IDNDR Secretariat, United Nations, 38-63, 2000. [a](#), [b](#).
- 540 Scaini, C., Tamaro, A., Adilkhan, B., Sarzhanov, S., Ismailov, V., Umaraliev, R., Safarov, M., Belikov, V., Karayev, J., and Fagà, E.: A new regionally consistent exposure database for Central Asia: population and residential buildings, *Nat. Hazards Earth Syst. Sci.*, 24, 929–945, <https://doi.org/10.5194/nhess-24-929-2024>, 2024. [a](#)
- Scaini, C., Petrovic, B., Tamaro, A., Moratto, L., Parolai, S.: Near-real-time damage estimation for buildings based on strong-motion recordings: An application to target areas in northeastern Italy., *Seismological Research Letters*, 92(6), [doi.org/10.1785/0220200430](https://doi.org/10.1785/0220200430), 2021. [a](#)
- 545 Trendafiloski, G. and Milutinovic, Z.: GIS-oriented method for elaboration of probabilistic earthquake scenarios, in: *Proc. of the 13th World Conference on Earthquake Engineering*, Vancouver, Canada, 1809, 2004. [a](#)
- Tyagunov, S., Grunthal, G., Wahlstrom, R., Stempniewski, L., and Zschau J.: Seismic risk mapping for Germany, *Nat. Hazards Earth Syst. Sci.*, 6, 573-586, [doi.org/10.5194/nhess-6-573-2006](https://doi.org/10.5194/nhess-6-573-2006), 2006. [a](#)
- 550 Tyagunov, S.A., Shtimpnieviske, L., Gryuntal, G., Valstryom, R, Shau, Y.: Seismic vulnerability and seismic risk in Germany, *Problemy analiza riska, naucno-prakticeskij zurnal*, 4(3-4), 60-66, 2007. [a](#)
- Xin, D., Daniell, J. E., Tsang, H.H., and Wenzel, F.: Residential building stock modelling for mainland China targeted for seismic risk assessment, *Nat. Hazards Earth Syst. Sci.*, 21, 3031–3056, <https://doi.org/10.5194/nhess-21-3031-2021>. 2021. [a](#)
- Wang, Y., Shi, P.J., and Wang J.A.: The housing loss assessment of rural villages caused by earthquake disaster in Yunnan Ptvince, *Acta Seismol. Sinica*, 18, 590-601, 2005. [a](#)
- 555 Tyagunov, S., Abakanov, T., Abdrakhmatov, K., Begaliev, U., Bindi, D., Charyev, M., Ilyasov, I., Ishuk, A., Mavlyanova, N., Mikhailova, N., Moldobekov, M., Ospanov, A., Parolai1, S.m, Pilz1, M., Pittore, M., Rashidov T., Saidiy, S., Ullah, Sh., Usmanova, M., Wieland, M., Yasunov, P., Ziyautdinov, F., Zschau., J.: Seismic risk assessment in the countries of central asia. <https://doi.org/10.13140/2.1.2443.5207>, 2012. [a](#)
- 560 Whitman, R. V., Biggs, J. M., Brennan, J. E., Cornell, C. A., Neufville, R. L., and Vanmarcke, E. H.: Seismic design decision analysis, *ASCE Struct. Eng. J.*, 101, 1067-1084, 1975. [a](#), [b](#)
- Zonno, G., Cella, F., Luzi, L., Menoni, S., Meroni, F., Ober, G., Pergalani, F., Petrini, V., Tomasoni, R., Carrara, P., Musella, D., Garcia-Fernandez, M., Jimenez, M. J., Canas, J. A., Al faro, A. J., Barbat, A. H., Mena, U., Pujades, L. G., Soeters, R., Terlien, M. T. J., Cherubini, A., Angeletti, P., Di Benedetto, A., Caleffi, M., Wagner, J. J., and Rosset, P.: Assessing seismic risk at different geographical scales: concepts, tools and procedures, in: *Proc. of the 11th European Conference on Earthquake Engineering*, Paris, France, CD-ROM, 1998. [a](#)
- 565 Tyagunov, S., Grünthal, G., Wahlström, R., Stempniewski, L., & Zschau, J.: Seismic risk mapping for Germany. *Natural Hazards and Earth System Sciences*, 6(4), 573–586. <https://doi.org/10.5194/nhess-6-573-2006>, 2006. [a](#)
- Pasquale, G. D., Orsini, G., & Romeo, R. W.: New developments in seismic risk assessment in Italy. *Bulletin of Earthquake Engineering*, 3(1), 101–128. <https://doi.org/10.1007/s10518-005-0202-1>, 2005. [a](#)
- 570 Zaalishvili, V., Burdzieva, O., Kanukov, A., & Melkov, D.: Seismic risk of modern city. *The Open Construction and Building Technology Journal*, 13(1), 308–318. <https://doi.org/10.2174/1874836801913010308>, 2019. [a](#)