

Figure S1. Color-enhanced infrared imageries of blackbody cloud-top temperatures ($^{\circ}\text{C}$, scale at bottom) over central Vietnam from the Himawari satellite at 1-h intervals from 1200 UTC 8 to 1100 UTC 9 Dec 2018.

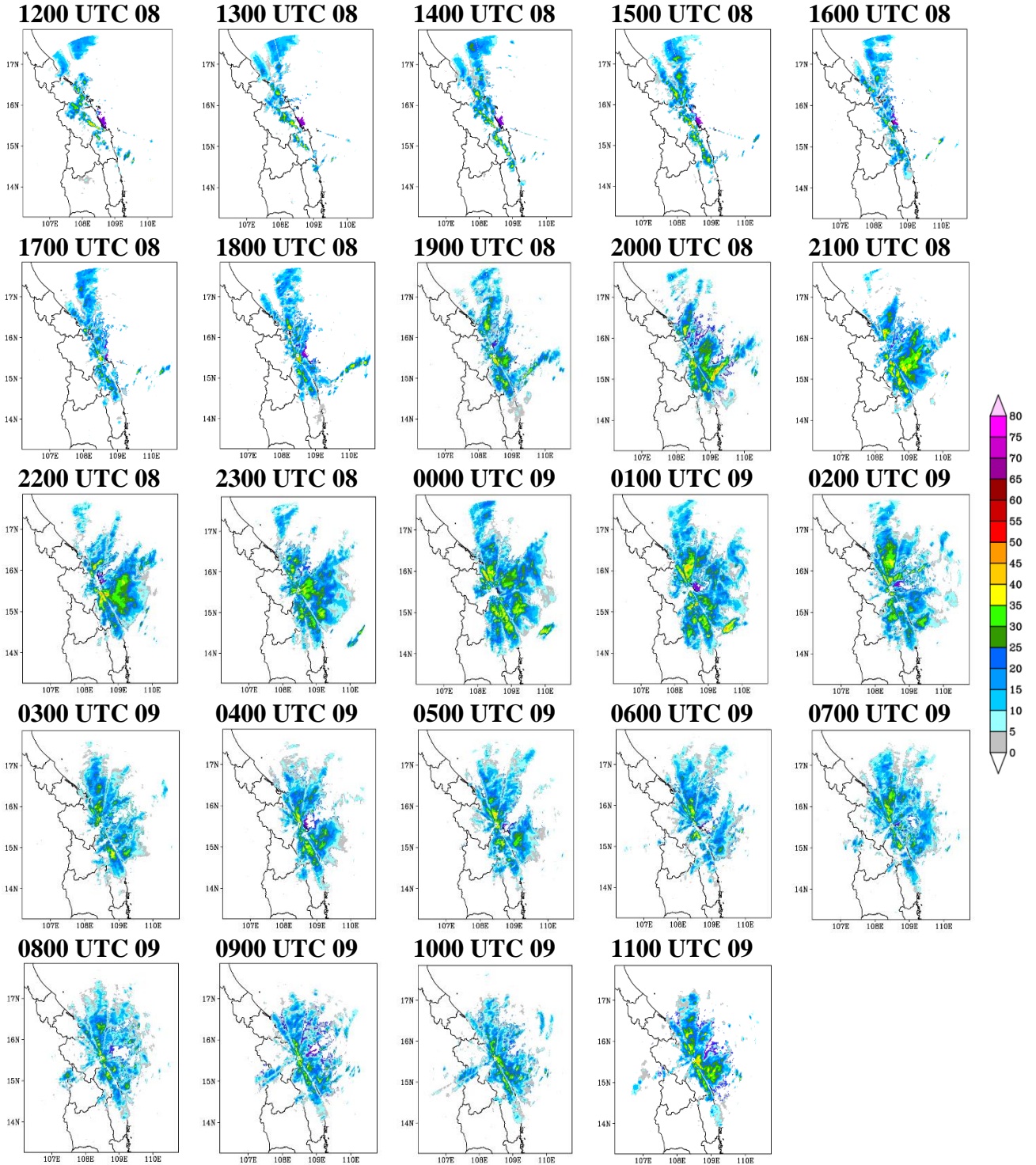


Figure S2. Column-maximum radar reflectivity (dBZ) over central Vietnam at 1-h intervals from 1200 UTC 8 to 1100 UTC 9 December 2018.

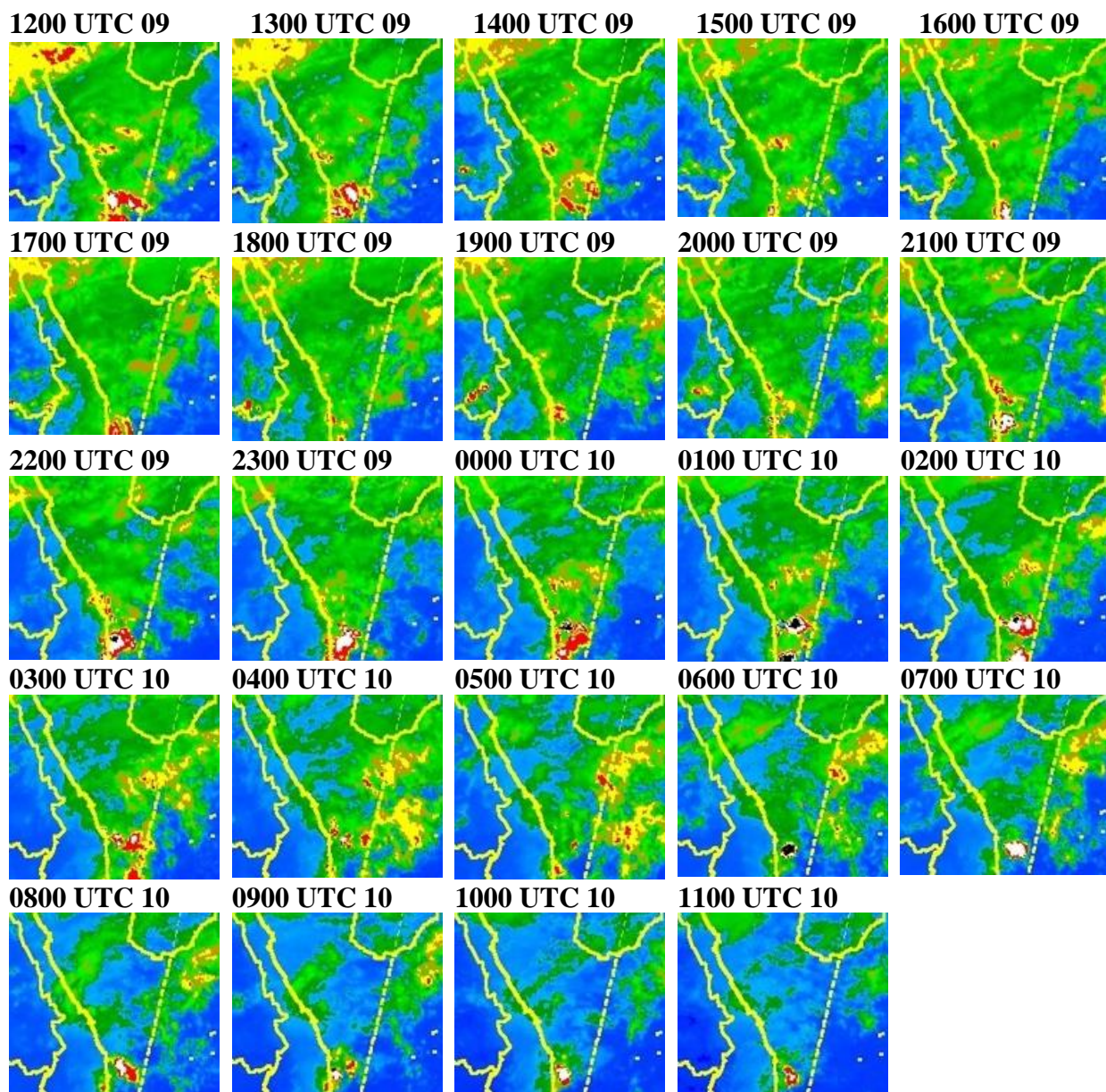
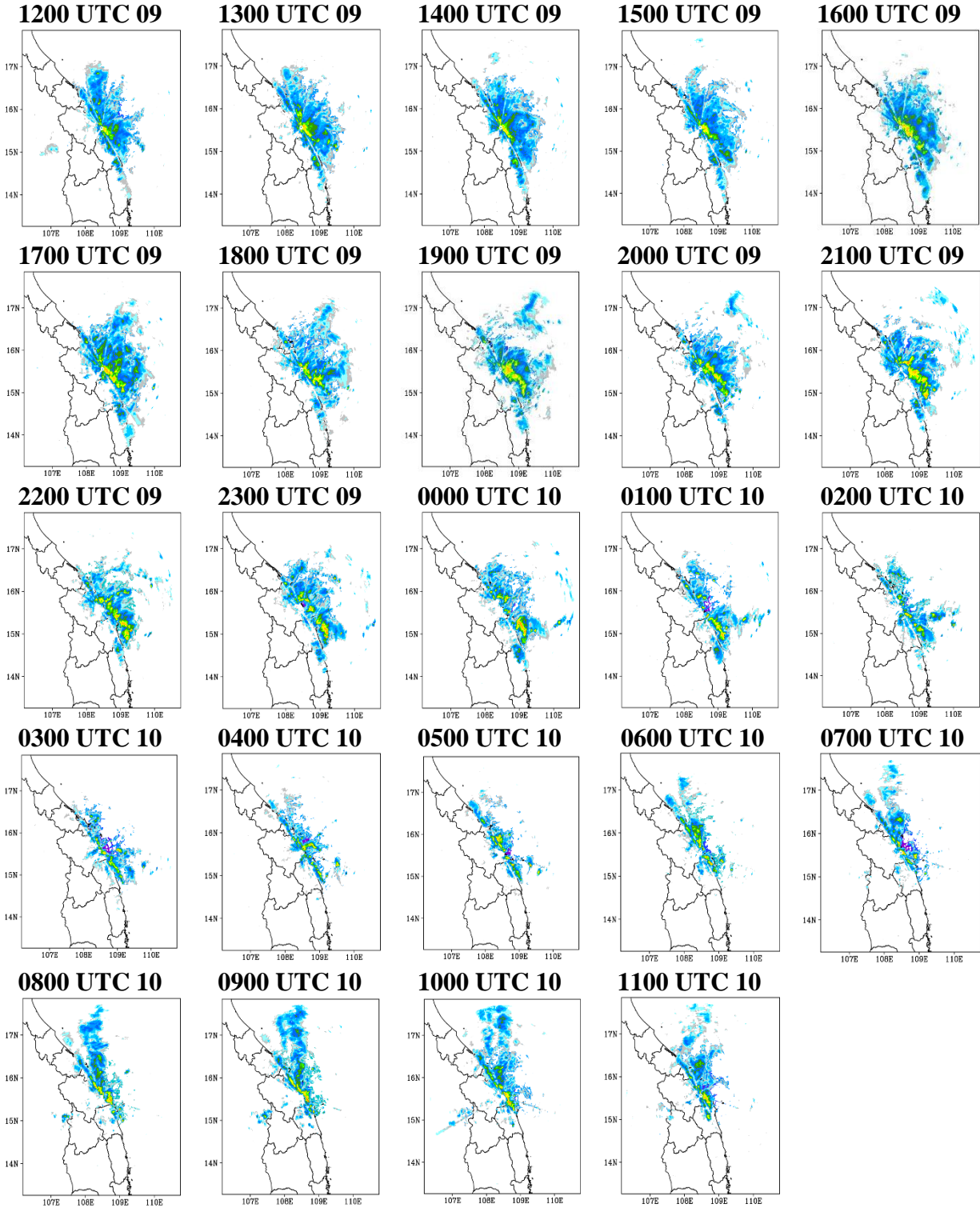


Figure S3. As in Fig. S1, except from 1200 UTC 9 to 1100 UTC 10 Dec 2018.



599

600 **Figure S4.** As in Fig. S2, except from 1200 UTC 9 to 1100 UTC 10 Dec 2018.

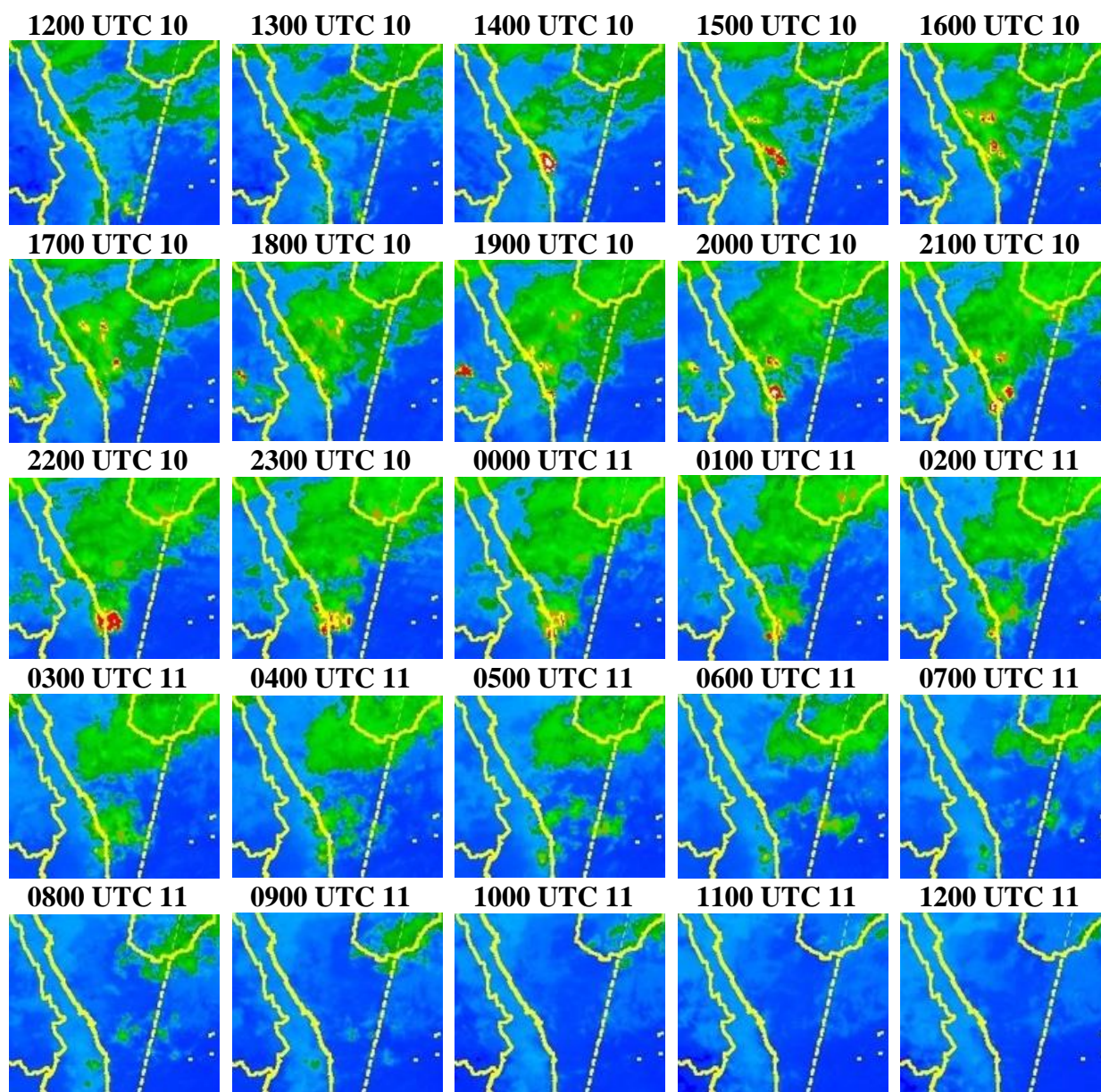


Figure S5. As in Fig. S1, except from 1200 UTC 10 to 1200 UTC 11 Dec 2018.

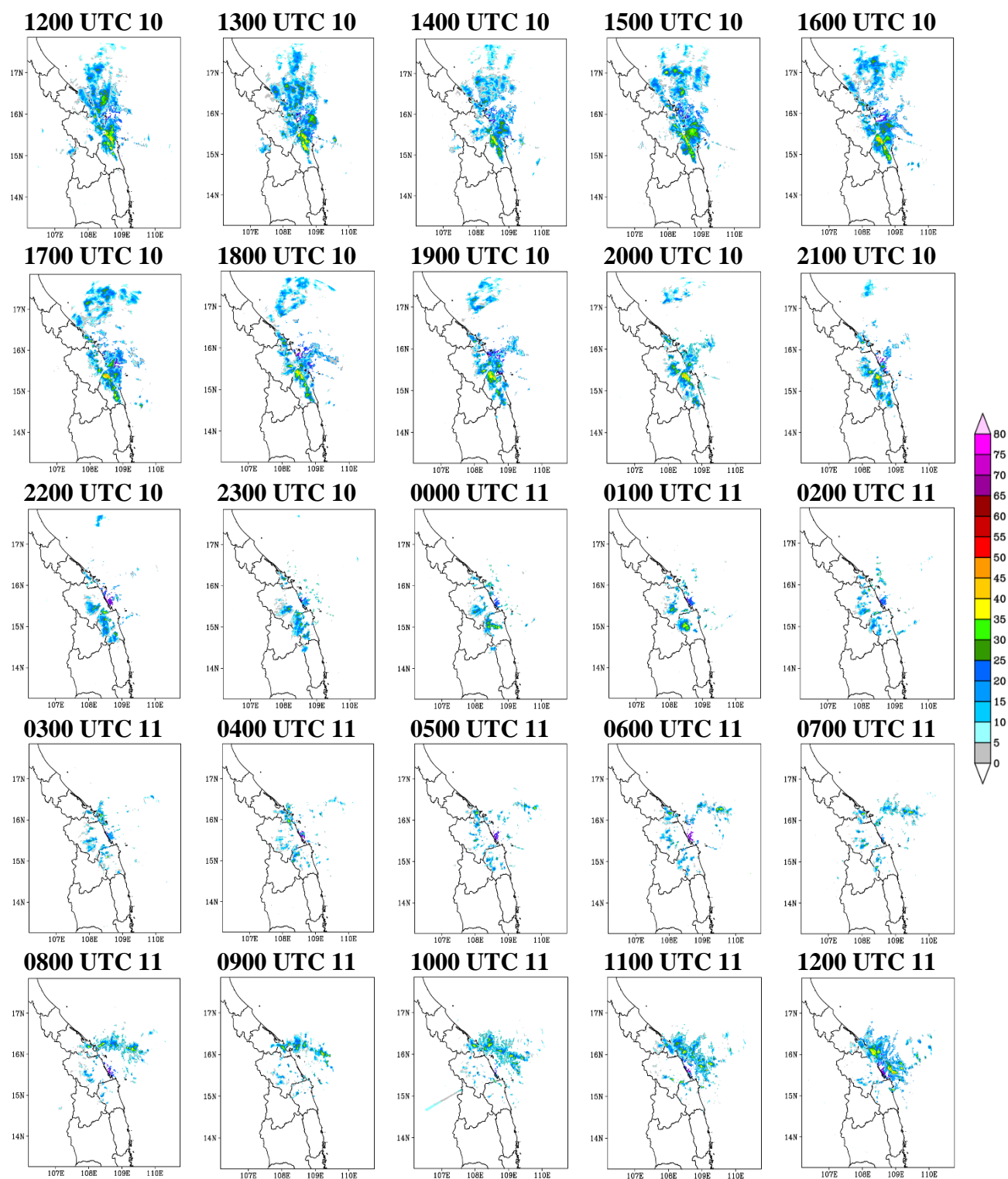


Figure S6. As in Fig. S2, except from 1200 UTC 10 to 1200 UTC 10 Dec 2018.