

# Human influence on growing-period frosts like the early April 2021 in Central France

Robert Vautard<sup>1</sup>, Geert Jan van Oldenborgh<sup>2,†</sup>, Rémy Bonnet<sup>1</sup>, Sihan Li<sup>3</sup>, Yoann Robin<sup>4</sup>, Sarah Kew<sup>2</sup>, Sjoukje Philip<sup>2</sup>, Jean-Michel Soubeyroux<sup>4</sup>, Brigitte Dubuisson<sup>4</sup>, Nicolas Viovy<sup>5</sup>, Markus Reichstein<sup>6</sup>, Friederike Otto<sup>7</sup>, Iñaki Garcia de Cortazar-Atauri<sup>8</sup>

<sup>1</sup>Institut Pierre-Simon Laplace, CNRS, Sorbonne Université, Université de Versailles - Saint Quentin en Yvelines, France

<sup>2</sup>Koninklijk Nederlands Meteorologisch Instituut, de Bilt, Netherlands

<sup>3</sup>School of Geography and the Environment, University of Oxford

<sup>4</sup>Météo-France, Toulouse, France

<sup>5</sup>Laboratoire des Science du Climat et de l'Environnement, CEA, CNRS, Université de Versailles - Saint Quentin en Yvelines, IPSL, France

<sup>6</sup>Department of Biogeochemical Integration, Max-Planck Institute for Biogeochemistry, 07701 Jena, Germany

<sup>7</sup>Grantham Institute, Imperial College, London, United Kingdom

<sup>8</sup>INRAE, US AgroClim, 84914, Avignon, France

<sup>†</sup>Deceased, 12 October 2021

*Correspondence to:* Robert Vautard (Robert.vautard@lsce.ipsl.fr)

**Abstract.** In early April 2021 several days of harsh frost affected central Europe. This led to very severe damages in grapevine and fruit trees in France, in regions where young leaves had already unfolded due to unusually warm temperatures in the preceding month (march 2021). We analysed with observations and 172 climate model simulations how human-induced climate change affected this event over central France, where many vineyards are located. We found that, without human-caused climate change, such temperatures in April or later in spring would have been even lower by 1.2°C [0.75°C;1.7°C]. However, climate change also caused an earlier occurrence of bud burst, that we characterized in this study by a growing-degree-day index value. This shift leaves young leaves exposed to more winter-like conditions with lower minimum temperatures and longer nights, an effect that over-compensates the warming effect. Extreme cold temperatures occurring after the start of the growing season such as those of April 2021 are now 2°C colder [0.5°C to 3.3°C] than in pre-industrial conditions, according to observations. This observed intensification of growing-period frosts is attributable, at least in part, to human-caused climate change with each of 5 climate model ensembles used here simulating a cooling of growing-period annual temperature minima of 0.41°C [0.22°C to 0.60°C] since pre-industrial conditions. The 2021 growing-period frost event has become 50% more likely [10%-110%]. Models accurately simulate the observed warming in extreme lowest spring temperatures, but underestimate the observed trends in growing-period frost intensities, a fact that remains yet to be explained. Model ensembles all simulate a further intensification of yearly minimum temperatures occurring in the growing period for future decades, and a significant probability increase for such events of about 30% [20%-40%] in a climate with global warming of 2°C.

1 Introduction

Frost days and cold spells are decreasing in frequency and intensity worldwide (IPCC, 2021; van Oldenborgh et al., 2019). Yet, severe cold spells continue to pound many mid-latitude areas, due to the occasional invasion of polar air being transported well into lower latitudes as a consequence of the chaotic motion of Rossby waves. When occurring in spring, such cold events can create a range of impacts on agriculture such as in April 2021, when young leaves and flowers have started to develop in fruit trees or grapevines. The frost event which took place from 6 to 8 April 2021 was exceptional with daily minimum temperatures below -5°C recorded in several places. In several places, such low temperatures left no chance to save grapevines and fruit trees by frost management strategies (e.g. local heating from braseros or spreading water to keep frost moderate at the surface of plants). The cold temperatures led to broken records at many weather stations (see Figure 1, right-hand-side). Unfortunately, this cold event happened a week after an episode of record-breaking high March temperatures also in many places in France and Western Europe (Figure 1, left-hand-side). This sequence led the growing season to start early, with bud burst occurring in March and the new leaves and flowers left exposed to the deep frost episode that followed.

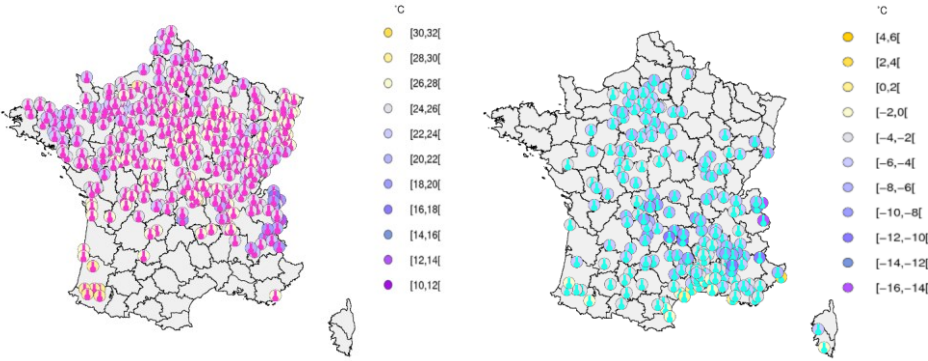


Figure 1: Stations with March (left) high records broken (pink thermometer) and April (right) low records broken (since at least 20 years) (blue thermometers) in 2021 in France. Symbols are superimposed with the record value of the temperature.

In 2021, the wine production has been historically low, with 33 bn hectoliters produced, a level that is 25% below the average production of the previous 5 years, and that is lower than the 2017 production, which was also hit by a late frost (Ministère de l'Agriculture, 2021). Beyond the frost and its consequences, the losses were amplified by a relatively cool and wet summer season allowing Mildew and Botrytis development. In general early varieties in vineyards were affected by frost (for example Sauvignon in Bordeaux). The losses were widespread, but the frost hit the vineyard differently. In hardest hit places such as in Burgundy or Jura, about ⅓ of the production was destroyed. In other places such as in the Beaujolais, later developing species made the losses less severe. In the Champagne vineyards, and in many places across France the losses ranged from 30% to 50% (Agreste, 2021).

Fruit production was also severely hit for some fruits. Estimates of production losses are of about 50% for pears, cherries, ~25% for peaches and ~20% for apples (with large departures from average depending on the region). Some other productions were also impacted (as sugar beet emergence) but final yields were not finally affected because of favorable production conditions (Agreste, 2021).

The occurrence of such an event called for investigating the role of climate change. From the weather point of view, the event is rather classical for cold outbreaks, when air masses of polar origin invade Western Europe. The large-scale flow pattern was characterized by a strong high-latitude anticyclone extending from Greenland to the North-Western European coasts, which was found among the 4 most recurrent or stationary North-Atlantic flows (the “Greenland Blocking” pattern of Michelangeli et al., 1995, and Vautard et al., 1990), inducing a negative value of the North-Atlantic Oscillation (NAO) Index. The combination of polar air advection, cloud-free sky and still long nights led to hours of intense frost. Such dynamical events are not observed to have become more frequent (Screen et al., 2013, Blackport and Screen, 2020) despite the ongoing debate on the role of narrower sea ice extent favoring the occurrence of blocking anticyclones (Barnes and Screen, 2015). ~~The trend in circulation in April is the same as in winter, an intensification of westerly flows that is not related to the weather observed in 2021 (not shown).~~ However, human-induced changes in dynamical conditions, especially leading to cold outbreaks, remain largely uncertain and can be viewed from various indices (Shepherd, 2014), and their understanding would require an in-depth, dedicated analysis.

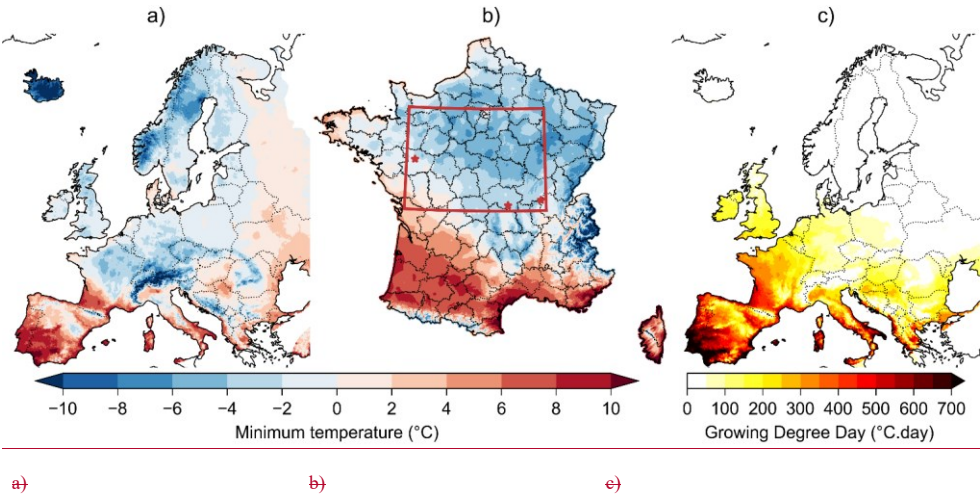
Here we ~~focus on perform~~ a statistical attribution analysis of the 2021 late frosts and their to climate change trends from an impact perspective. The effects of climate change on late frosts and their consequences are complex because several processes are in competition, in particular the earlier start of the growing season and the general regression of cold extremes and frost days (IPCC, 2021). The exceptional nature of the warm period preceding the 2021 event led to advancing phenology. The advance in the start of the growing season has increased the number of frost days occurring after the start of the growing season in several places worldwide, including in Europe (Liu et al., 2018). Using several indices for grapevine exposure, it has been found that the date of the last frost day has not regressed as fast as the date of growing season start (Sgubin et al., 2018). However, so far no formal attribution study of a “growing period frost” has been carried out to quantify the role of anthropogenic climate change in these observed trends. ~~This article is devoted to an attribution study of the “growing period frost” event witnessed in April 2021, with a focus on change in intensities and frequencies of the most extreme cases. In order to carry out the attribution study, we~~ uses several indices and event definitions characterizing cold temperatures in the growing season, and the well-established attribution methodology described in Philip et al. (2020) and van Oldenborgh et al. (2021).

A rapid attribution analysis was carried out in June 2021 and reported in (Vautard et al., 2021, <https://www.worldweatherattribution.org>), with several indices developed and analyzed, showing that while spring frosts are generally becoming less severe and frequent, frosts occurring after the growing season start are becoming more intense due to climate change. Since then, observations were consolidated, more model data has been collected and simulation data processing was homogenized. This article reports the final results, which confirm the conclusions of the preliminary analysis.

We present several definitions of the frost event in section 2, and the corresponding indices chosen. In Section 3, [we present methods, observations and models used](#), and trends in observations are analyzed, and in section 4, results from [observations and model ensembles](#) are analyzed. This is followed by a synthesis of results, a discussion and a conclusion in Section 5.

2 Event definition and indices used

The cold spell of 6-8 April 2021 hit much of Central and Northern Europe (see Figure 2a). However, we focus here on central/northern France in order to investigate a relatively homogeneous, mostly plain or low-elevation area (see Figure 2b). This area [-1°- 5°E; 46°-49°N] covers most of the grapevine agriculture areas of Champagne, Loire Valley and Burgundy which were identified as specifically vulnerable regions under climate change (Sgubin et al., 2018). The area also covers regions with high crop and fruit production.



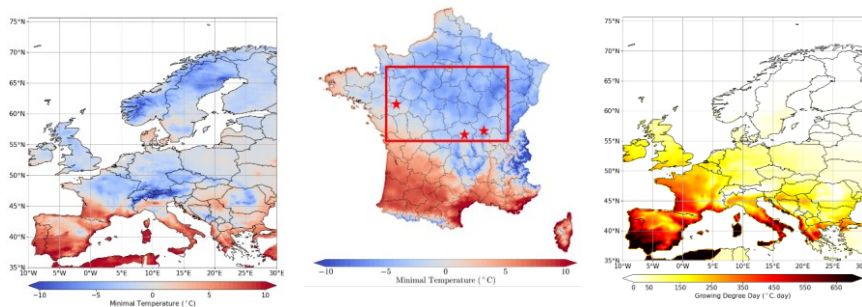


Figure 2. a) Minimum temperatures on 6 April 2021 in Europe from the E-OBS database (see Section 3); b) focus on France with a higher resolution dataset, using the Anastasia data (Météo-France, Besson et al. 2019). The study area is shown in this panel by the bounded box in red; stars indicate the location of the 3 stations used to assess local trends; c) Spatial distribution of the Growing Degree Day index in Europe on 5 April 2021 as calculated from E-OBS.

We use several event definitions, accounting for different phenological aspects. Differences in results for these definitions also test the robustness of the attribution. In each case, the “event” is defined as the yearly minimum temperature (TNn) obtained under specific conditions, and then averaged over the area, or taken at specific station locations. A basic reference conditioning is the fixed-season minimum temperature and does not consider phenology: the TNn is calculated over the April-July months (index TNnApr-Jul). The second index accounts for phenology. The TNn is calculated conditioned upon the Growing Degree Day above 5°C (hereafter denoted “GDD”) being larger than thresholds characterizing bud burst conditions, which depend on species. In this study, our aim is not to tie thresholds to specific plants’ phenology but to provide a general overview for different thresholds. GDD is calculated, at each grid point, with a starting date of the previous winter solstice, in a similar approach used by Garcia de Cortazar-Atauri et al. (2019), assuming that the dormancy break period for grapes is finished in the calculation period. The formula for the GDD at day  $t$  during year  $y$  is therefore:

$$(1) \quad GDD(t, y) = \sum_{k=t_{start}}^{k=t} \max(TM_k - 5, 0)$$



with  $TM$  the daily mean temperature and  $t_{start} = 1/12/21$  is the 21 december of previous year  $y-1$  (starting time of the cumulation). In 2021, the values of GDD obtained on the day before the frost events in the concerned area vary in the range 150°C.day to 350°C.day, with an average value on 5 April of 259°C.day over the study domain. This value is high for this

Mis en forme : Police :14 pt

Mis en forme : Police :14 pt

Mis en forme : Paragraphe de liste, Numéros + Niveau : 1 +  
Style de numérotation : 1, 2, 3, ... + Commencer à : 1 +  
Alignement : Gauche + Alignement : 0,63 cm + Retrait :  
1,27 cm

Mis en forme : Police :14 pt

Mis en forme : Police :14 pt

Mis en forme : Police :14 pt

Mis en forme : Police :14 pt

Mis en forme : Police :14 pt

Mis en forme : Police :14 pt

Mis en forme : Police :14 pt

Mis en forme : Police :Italique

Mis en forme : Police :Italique

calendar day (rank=14th since 1921 in the E-OBS extended dataset) but the record value was obtained in 2020, with a mean  
125 GDD of 320°C.day. Given the range of values taken in the domain, we considered 3 thresholds for GDD: 250°C.day as a  
central value, and 150°C.day and 350°C.day as sensitivity experiments. This range of values also helps to capture a range of  
bud burst values of grapevine cultivars as found in Garcia de Cortazar-Atauri et al. (2009). For each GDD threshold, the yearly  
minimum TN values (TNn), respectively called hereafter “TNnGDD250”, “TNnGDD150” and “TNnGDD350” for the three  
GDD thresholds, is calculated over subsequent days and until the end of July at each grid point and then averaged over the  
130 domain study area [-1°- 5°E; 46°-49°N]. Despite the fact that the average characterizes the mean lowest temperature that can  
occur after crossing the GDD threshold, the average can mix several dates as the GDD threshold crossing and the yearly  
minimum does not necessarily occur on the same date over the whole domain. In 2021, for instance, the TNnGDD250 was  
already reached during the 6-8 Apr episode for most of the area, but not in the easternmost part and in some other parts, because  
GDD did not exceed 250°C.day during the April frosts.

135 In order to focus on specific phenological periods when young leaves and flowers are sensitive to frost after bud burst and  
flowering, we also defined indices over limited ranges of GDD values. The number of possibilities are large, in most cases  
providing qualitatively similar results. The analysis is reported here only for the range 250-350°C.day, by using the yearly  
minimal temperature over this GDD range (index TNnGDD250-350). This index is again calculated by grid point before being  
averaged spatially over the study region, or is taken at stations.

140 **3. Methods, observations and models**

**3.1 Methods**

Event attribution methods used in this study are well documented in previous studies. The rapid attribution methodology is a  
classical probabilistic approach, described in Philip et al., 2020 and van Oldenborgh et al., 2021, and has been used in many  
case studies for heat waves (e.g. Kew et al., 2019, Vautard et al., 2020), extreme precipitation (e.g. Philip et al., 2018), or more  
145 complex events such as wildfire weather (van Oldenborgh et al., 2020). It uses a stepwise approach analyzing observations  
with a Generalized Extreme Value (GEV) with a global warming index as a covariate, then using ensembles of models  
validated on the event indices and their extreme value statistics by comparison with observations, and finally using the GEV  
with the covariate fit to build a statistical model of the data under some assumptions.

In all cases (observations and models), we used data in the 1951-2021 period for the GEV fit for attribution and for future  
150 trend estimates for a global warming of 2°C, we used the period from 2000 to 2050. For observations, the covariate is the  
smoothed observed GISTEMP Global Mean Surface Temperature (GMST), while for models the smoothed Global mean  
Surface Air Temperature (GSAT) (5-year running average) is used. The only exception is the High Resolution Model  
Intercomparison Project (HighResMIP) SST-forced ensemble (see below), for which the observed GMST was used, because  
of the ensemble forcing. For attribution statistics we used global temperature scaling from the 1951-2020 period and for future  
155 trend estimates for a global warming of 2°C, we used the model GSAT scaling from 2000 to 2050. Change statistics are

Mis en forme : Titre 1

calculated with respect to the 2021 year and estimated return period from observation as a reference. As an example, for estimating changes in return periods (probability ratios) or changes in intensities in model ensembles, for T<sub>Nn</sub>GDD250 the method uses an event with a 8-year return period in 2021.

3-Observations and past trends

3.2 Observations and model ensembles

The observations used here for the attribution are the E-OBS v23e dataset of daily minimum temperatures (Cornes et al., 2018). The above indices are calculated for each grid point, spaced every 0.25° in this dataset, and then averaged over the study area. In Figure 3 we show the annual time series of the indices, together with trend statistics for the 1951–2020 period. Even though it is displayed in Figure 3, we did not take into account 2021 in the analysis to avoid selection bias in trend calculation. The Apr-Jul T<sub>Nn</sub> has a slightly upward linear trend of +0.13°C/Decade, which is however not significant at the 90% (two-sided) level because of the large interannual and interdecadal variabilities. By contrast, both T<sub>Nn</sub>GDD250 and T<sub>Nn</sub>GDD250–350 have a significant cooling trend of -0.21 and -0.25°C/Decade respectively. The warming trend in T<sub>Nn</sub>Apr-Jul is partly due to larger values since 2000, but these higher values are not reflected in the other indices because GDD also has increased during this period, allowing lower daily minimum temperatures to be counted earlier in the season. We conclude that, on average, since 1950, extreme yearly minimum temperatures for GDD>250 have cooled by about 1.5–2.0°C. Very low-growing-period frosts were also found in 1957 and 1991, with lower values than in 2021.

For different thresholds we also find cooling trends, however with lower significance (Figure 3b). The significance of the signal remains. Interestingly, over the last 50 years (1971–2020) the trends have increased and become more significant (for instance +0.29°C/Decade, p<0.1 for T<sub>Nn</sub>Apr-Jul, and -0.37°C/Decade for T<sub>Nn</sub>GDD250, p<0.1; see also Figure 4).

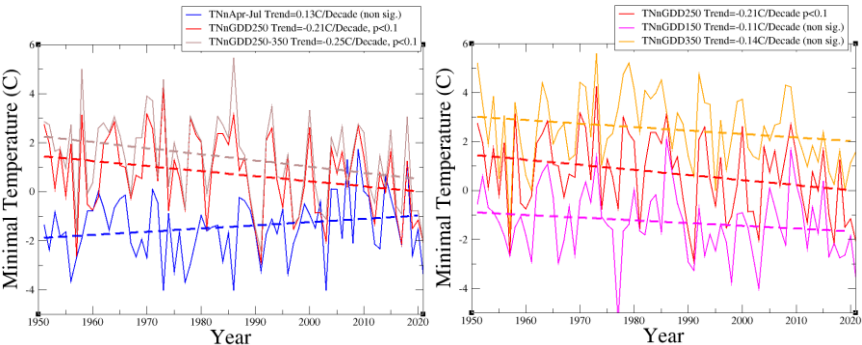


Figure 3: a) Time-series of the yearly-indices and their respective linear-trends calculated over the 1951–2020 period; b) Same as a) but for T<sub>Nn</sub>GDD250, T<sub>Nn</sub>GDD150 and T<sub>Nn</sub>GDD350.

When considering trends in low extremes of these indices, the results are qualitatively similar but significance is increased when considering GEV fitting using the smoothed observed GMST as covariate instead of assuming a linear trend (see Table 1). We estimate that the event, defined as minimum temperatures over Apr-Jul, has a return period of 78 years [at least 19 years], which means a very rare event in the current climate. However, in a climate corresponding to a global temperature 1.2°C cooler, this would have been about a 1 in 7 year event (best estimate). By contrast, the minimum temperature, taken over the growing period as characterized by the GDD index, instead of fixed month, has significantly cooled by almost 2°C with large varying uncertainty ranges and significance depending on the chosen index. The observational analysis is however not sufficient to conclude a role of climate change, which would require models with factual and counterfactual assumptions:

E-OBS statistics 0 to 1.2° global warming level	TNnApr-Jul	TNnGDD250	TNnGDD250-350	TNnGDD150	TNnGDD350
Observed 2021 (°C)	-3.4°C	-2.1°C	-2.0°C	-3.5°C	1.6°C
Return Period 2021 (Yr)	78 [19;inf]	8 [4;25]	12 [5.0;70]	9 [4-57]	2 [1.4-3.2]
Return Period -1.2C (Yr)	7.2 [3.8;19]	88 [24;inf]	780 [>53]	26 [>10]	9 [3.7;31]
Probability Ratio	0.09 [0;inf]	11 [2.0;inf]	63 [>2.3]	3 [>0.6]	4.4 [1.3;21]
Intensity Change (°C)	+1.4 [0.2;2.7]	-2.0 [-3.3; -0.50]	-2.0 [-3.5; -0.53]	-0.80 [-2.0;0.34]	-2.0 [-3.4; -0.38]

Table 1: Extreme value statistics and observations for the various indices and using the 1951-2020 period and a GEV fit with GMST covariate. Bold font denotes statistical significance.

To assess the changes at local scale, we also calculated trends for 3 specific stations in the domain (stars in Figure 2). We selected a subset of 3 Météo-France reference stations, which were selected in grapevine regions (Beaucouzé: downstream Loire valley; Charnay-les-Mâcon: Burgundy; Charmeil: Saint-Pourçain grapevine), with several characteristics: for Beaucouzé, light frost and non-exceptional event (-1.3°C) but high GDD (321°C.day on 5 April); for Charnay-les-Mâcon: record frost (-4.4°C, with 266°C.day on 5 April), and for Charmeil: the most severe frost among stations at our disposal (-6.6°C with 244°C.day on 5 April). Detection results are shown in Table 2, for these stations, and for the three main indices: TNnApr-Jul, TNnGDD250 and TNnGDD250-350. In almost all cases, the trends are positive for the fixed season index and negative for the growing season period. However, almost no result is statistically significant. We conclude that at local scale, variability is dominating trend signals (Table 2).

Mis en forme : Anglais (États-Unis)

Mis en forme : Anglais (États-Unis)

Mis en forme : Anglais (États-Unis)

Mis en forme : Anglais (États-Unis)

Mis en forme : Anglais (États-Unis)

Mis en forme : Anglais (États-Unis)



	Beaucouzé		Charnay-lès-Mâcon		Charmeil	
▲	Value Ret. Per.	PR ΔI	Value Ret. Per.	PR ΔI	Value Ret. Per.	PR ΔI
TNnAprJul	-1.3°C 11-yr	0.3 [0.02;1.2] 1.4 [-0.3;3.0]	-4.4°C >100-yr	0.03 [0;0.9] 1.5 [0.1;2.8]	-6.6°C 85-yr	0.2 [0.01;7.2] 1.2 [-0.7;3.0]
TNnGDD250	-1.3°C 5-yr	1.4 [0.2;9.0] -0.4 [-2.2;1.8]	-4.4°C >50-yr	>1e-4 0.2 [-2;2]	-5.3°C 18-yr	2.0 [0.2] -1.0 [-3;1]
TNnGDD250-350	-1.3°C 7-yr	1.1 [0.14;7.2] -0.2 [-2.5;2.3]	-4.4°C >90-yr	Infinite 0.3 [-2.0;2.6]	-6.6°C 83-yr	>0.7 -1.5 [-4;1]

Table 2: Return periods, probability ratios and changes in intensities obtained from the observations at three stations located as in Figure 2b. Red color indicates a warming change and blue color a cooling change.

Results here differ from the rapid attribution analysis (Vautard et al., 2021) in the completion and adjustment of the E-OBS dataset by the producers. This led to slightly different values for the observed indices in 2021. For instance, the estimation of the TNnGDD250 index based return period was estimated here to 8 years instead of 12 years in the rapid attribution. However the results are qualitatively similar to those found in the preliminary analysis.

4 Models

4.1 Model ensembles

For the attribution of the frost event, we use five model ensembles. Each simulation of each ensemble was bias-adjusted using the CDFt method (Vrac et al., 2016) using the daily minimum and the daily average temperatures from E-OBS over the 1981-2020 period. Bias correction is an important step here since GDD calculations use a threshold. This method was assessed for use in climate services in Bartok et al. (2019), and showed good performance. We used statistics of pooled ensembles, using data until 2021 for the GEV fit of the distributions. Indices are calculated exactly as for the observations: model GDD values are calculated at each grid points using Equation (1), and the indices are averaged over the area of study (rectangle in Figure 2b).

For attribution statistics we used global temperature scaling from the 1951-2020 period and for future trend estimates for a global warming of 2°C, we used the model GSAT scaling from 2000 to 2050. Change statistics are calculated with respect to the 2021 year and estimated return period from observation as a reference. As an example, for estimating changes in return periods (probability ratios) or changes in intensities in model ensembles, for TNnGDD250 the method uses an event with a 8-year return period in 2021.

The first model ensemble is the Euro-CORDEX (0.11° resolution, EUR-11) multi-model ensemble. It is composed of 75 combinations (as of May 2021) of Global Climate Models (GCMs) and Regional Climate Models (RCMs) for downscaling

Mis en forme : Anglais (États-Unis)

Mis en forme : Anglais (États-Unis)

Mis en forme : Anglais (États-Unis)

Mis en forme : Couleur de police : Rouge, Anglais (États-Unis)

Mis en forme : Couleur de police : Rouge, Anglais (États-Unis)

Mis en forme : Anglais (États-Unis)

Mis en forme : Couleur de police : Rouge, Anglais (États-Unis)

Mis en forme : Anglais (États-Unis)

Mis en forme : Anglais (États-Unis)

Mis en forme : Couleur de police : Bleu, Anglais (États-Unis)

Mis en forme : Anglais (États-Unis)

Mis en forme : Couleur de police : Rouge, Anglais (États-Unis)

Mis en forme : Anglais (États-Unis)

Mis en forme : Couleur de police : Bleu, Anglais (États-Unis)

Mis en forme : Anglais (États-Unis)

Mis en forme : Couleur de police : Bleu, Anglais (États-Unis)

Mis en forme : Anglais (États-Unis)

Mis en forme : Couleur de police : Rouge, Anglais (États-Unis)

Mis en forme : Anglais (États-Unis)

Mis en forme : Couleur de police : Bleu, Anglais (États-Unis)

(see Vautard et al., 2021 and Coppola et al., 2021 for the description of the ensemble which has increased since these publications). Each simulation consists of a historical period simulation and a RCP8.5 scenario simulation with fixed aerosol concentrations. For the attribution of past evolutions historical and scenario are concatenated until 2020. Some simulations start in 1971, whereas most simulations start from 1951. Given that we need to use data from the previous year for starting GDD accumulation, all yearly indices are calculated from their second simulation year (i.e. 1972 and 1952 respectively). The second model ensemble used to study the influence of internal variability was the IPSL-CM6A-LR model (see Boucher et al., 2020 for a description of the model and Bonnet et al., 2021 for a presentation of the ensemble). It is composed of 32 extended historical simulations, following the CMIP6 protocol (Eyring et al., 2016) over the historical period (1850-2014) and extended until 2029 using all forcings from the SSP2-4.5 scenario, with the exception of the ozone concentration which has been kept constant at its 2014 level (as it was not available at the time of performing the extensions). The third model ensemble is a selection of the CMIP6 historical and SSP3-7.0 simulations. To keep the ensemble balanced we retained a maximum of three realizations per model. Not all CMIP6 models could be processed at the time of the study. Models are detailed in the Appendix A, and constitute an ensemble of 45 simulations. The fourth ensemble used is a set of 10 SST-forced HighResMIP simulations (Haarsma et al. 2016). For the historical time period (1950-2014), the SST and sea ice forcings used are based on observed dataset, and for the future time period (2015-2050) the SST and sea ice are derived from CMIP5 RCP8.5 simulations and a scenario as close to RCP8.5 as possible within CMIP6. The analysis of this ensemble was carried out using the observed GMST as for the observations. The fifth ensemble is the same set of models run in coupled mode, and the model GSATs were used. Again, more details can be found in the Appendix A.

Note that we bring together available simulations which do not follow the same greenhouse gas emission scenarios, which could lead to large difference in climate response for given times. Such would also be the case for individual models' responses. However, this should not be a problem as long as results are compared with fixed degree of warming. Such an approach is also followed by the recent IPCC report where changes in extremes are compared (see IPCC, 2021).

The differences with the rapid attribution in models is (i) the homogeneous bias correction, while it was model-dependent in the rapid attribution, (ii) the addition of the HighResMIP coupled runs, and the change in the CMIP6 selection which was based on least-biased models instead of bias-corrected models. The present analysis is therefore more consistent across ensembles.

### 34.32 Model evaluation

As stated in the Philip et al. methodology, we only keep model ensembles which have extreme statistics compatible with observations. We compared the model GEV fit parameters over the overlapping model periods (1951-2020 or 1971-2020) in order to check the ability of models to simulate such extremes. For reference, sSuch ability was not confirmed for heat waves (eg. Vautard et al., 2020). In the current case, we found that model ensembles are compatible with the observations accounting for uncertainties (see Table-Figure 3) for most indices but not all. Models are said to be compatible with observations when

Code de champ modifié

Mis en forme : Couleur de police : Automatique

Mis en forme : Couleur de police : Automatique

260

265

270

GEV scale and shape parameters have overlapping 95% confidence intervals. The comparison is made for two indices for simplicity. For TNnGDD250 the fitted model scale parameter is compatible with the observed one. The shape parameter is very uncertain in observations, leaving all model fits compatible with them. The same occurs for the TNnApr-Jul, but in this case all models have an overestimated scale parameter (in terms of amplitude). Only Euro-Cordex and HighResMIP-SST appear to have a parameter compatible with observations. Given this evaluation for this index, for the final model “weighted average” (see Philip et al., 2020), only Euro-Cordex and HighResMIP-SST should in principle be considered for the statistical evaluation of probability ratio and intensity change, while for the TNnGDD250 index, all ensembles can be considered. However, we have here considered all model ensembles even for the TNnApr-Jul index for consistency across indices, and because results are qualitatively similar, keeping all models or retaining only the compatible models. Given this evaluation, for the final model “weighted average” (see Philip et al., 2020), only Euro-Cordex and HighResMIP-SST should in principle be considered for the statistical evaluation of probability ratio and intensity change, while for the TNnGDD250 index, all ensembles can be considered. However, we have here considered all model ensembles even for the TNnApr-Jul index (see also discussion in Section 5).

Model ensemble / Observation	Index	Scale parameter	Shape parameter
Observation	TNnApr-Jul	1.18 [0.94;1.38]	-0.24 [-0.42; 0.04]
Euro-Cordex		1.40 [1.34;1.45]	-0.21 [-0.25; 0.19]
IPSL-CM6A-LR		1.60 [1.54;1.64]	-0.21 [-0.23; 0.18]
CMIP6		1.54 [1.50;1.58]	-0.24 [-0.26; 0.22]
HighResMIP-SST		1.46 [1.35;1.54]	-0.30 [-0.34; 0.25]
HighResMIP	TNnGDD250	1.51 [1.42;1.58]	-0.32 [-0.38; 0.30]
Observation		1.42 [1.12;1.67]	-0.19 [-0.52;+0.07]
Euro-Cordex		1.52 [1.45;1.56]	-0.24 [-0.26; 0.22]
IPSL-CM6A-LR		1.54 [1.48;1.59]	-0.26 [-0.29; 0.24]
CMIP6		1.61 [1.56;1.65]	-0.21 [-0.24; 0.20]
HighResMIP-SST		1.55 [1.46;1.64]	-0.23 [-0.29; 0.19]
HighResMIP		1.50 [1.40;1.58]	-0.24 [-0.31; 0.20]

Table

Mis en forme : Police :Non Italique, Couleur de police : Automatique

Mis en forme : Anglais (États-Unis)

Mis en forme : Anglais (États-Unis)

Mis en forme : Anglais (États-Unis)

Mis en forme : Anglais (États-Unis)

Mis en forme : Anglais (États-Unis)

Mis en forme : Anglais (États-Unis)

Mis en forme : Anglais (États-Unis)

Mis en forme : Anglais (États-Unis)

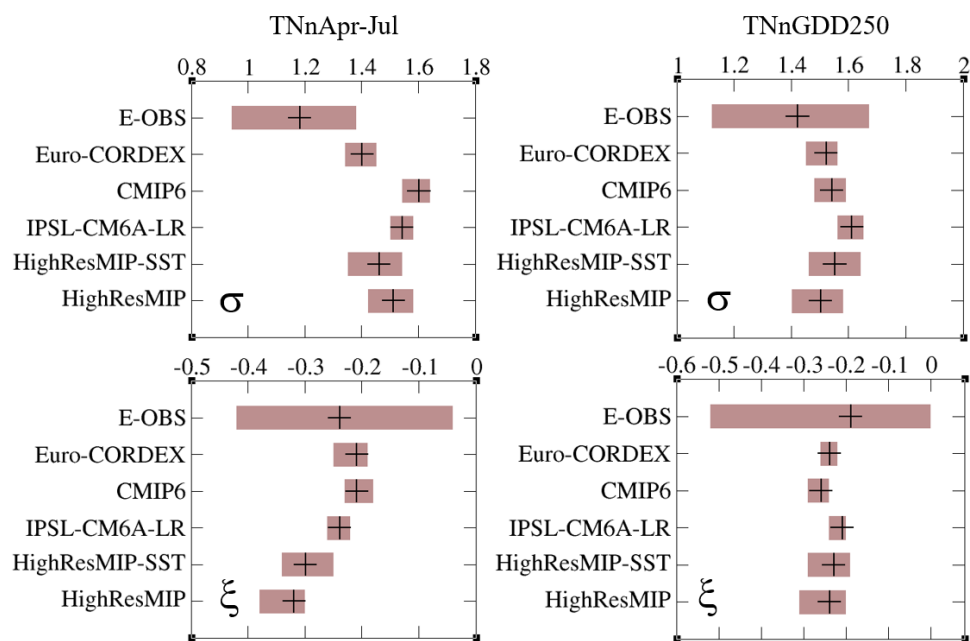
Mis en forme : Anglais (États-Unis)

Mis en forme : Anglais (États-Unis)

Mis en forme : Anglais (États-Unis)

Mis en forme : Anglais (États-Unis)

Mis en forme : Anglais (États-Unis)



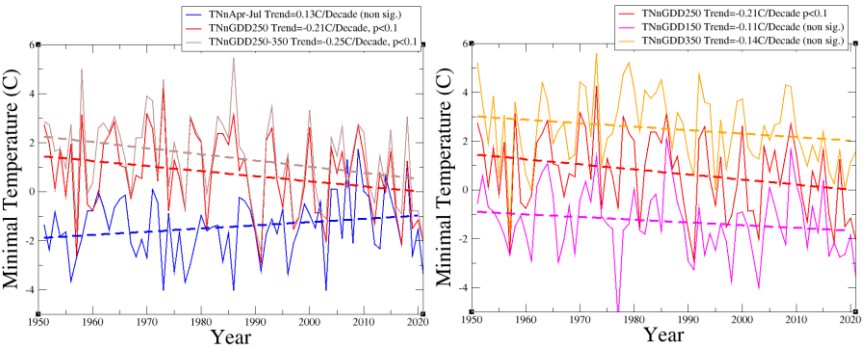
**Figure 3:** Model evaluation, using 2 main indices, (TNnApr-Jul (left panels) and TNnGDD250 (right panels)). The estimates of the scale parameters are displayed in the first row, and the estimates for the shape parameters in the second row. Results for TNnGDD250-350 are qualitatively similar to those for TNnGDD250.

## 4. Results

### 4.1 Observations

In Figure 4, we show the annual time series of the indices as obtained from E-OBS, together with simple trend statistics for the 1951-2020 period. The Apr-Jul TNn has a slightly upward linear trend of +0.13°C/Decade, which is however not significant at the 90% (two-sided) level because of the large interannual and interdecadal variabilities. By contrast, both TNnGDD250 and TNnGDD250-350 have a significant cooling trend of -0.21 and -0.25°C/Decade respectively. The warming trend in TNnApr-Jul is partly due to larger values since 2000, but these higher values are not reflected in the other indices because GDD also has increased during this period, allowing lower daily minimum temperatures to be counted earlier in the season.

We conclude that, on average, since 1950, extreme yearly minimum temperatures for  $GDD>250$  have cooled by about 1.5-2.0°C. Very low growing-period frosts were also found in 1957 and 1991, with lower values than in 2021. For different thresholds we also find cooling trends, however with lower significance (Figure 4b). The significance of the signal remains. Interestingly, over the last 50 years (1971-2020) the trends have increased and become more significant (for instance +0.29°C/Decade,  $p<0.1$  for  $TN_{Apr-Jul}$ , and -0.37°C/Decade for  $TN_{GDD250}$ ,  $p<0.1$ ).



a) b)  
**Figure 4: a) Time series of the yearly indices and their respective linear trends calculated over the 1951-2020 period; b) Same as a) but for  $TN_{GDD250}$ ,  $TN_{GDD150}$  and  $TN_{GDD350}$ .**

When considering trends in low extremes of these indices, the results are qualitatively similar but significance is increased when considering GEV fitting using the smoothed observed GMST as covariate instead of assuming a linear trend (see Table 1). We estimate that the event, defined as minimum temperatures over Apr-Jul, has a return period of 78 years [at least 19 years], which means a very rare event in the current climate. However, in a climate corresponding to a global temperature 1.2°C cooler, this would have been about a 1-in-7-year event (best estimate). By contrast, the minimum temperature, taken over the growing period as characterized by the GDD index, instead of fixed month, has significantly cooled by almost 2°C with large varying uncertainty ranges and significance depending on the chosen index. The observational analysis is however not sufficient to conclude a role of climate change, which would require models with factual and counterfactual assumptions.

<b>E-OBS statistics</b> <b>0 to 1.2° global warming level</b>	<b>TNnApr-Jul</b>	<b>TNnGDD250</b>	<b>TNnGDD250-350</b>	<b>TNnGDD150</b>	<b>TNnGDD350</b>
<b>Observed 2021 (°C)</b>	-3.4°C	-2.1°C	-2.0°C	-3.5°C	1.6°C
<b>Return Period 2021 (Yr)</b>	78 [19;inf]	8 [4;25]	12 [5.0;70]	9 [4-57]	2 [1.4-3.2]
<b>Return Period -1.2°C (Yr)</b>	7.2 [3.8;19]	88 [24;inf]	780 [>53]	26 [>10]	9 [3.7;31]
<b>Probability Ratio</b>	0.09 [0;inf]	<b>11</b> [2.0;inf]	<b>63</b> [>2.3]	3 [>0.6]	<b>4.4</b> [1.3;21]
<b>Intensity Change (°C)</b>	<b>+1.4</b> [0.2;2.7]	<b>-2.0</b> [-3.3;-0.50]	<b>-2.0</b> [-3.5;-0.53]	-0.80 [-2.0;0.34]	<b>-2.0</b> [-3.4;-0.38]

**Table 1: Extreme value statistics and observations for the various indices and using the 1951-2020 period and a GEV fit with GMST covariate. Bold font denotes statistical significance at the two-sided 95% level** The observed value of each index is shown in the first row, the calculated return periods from the GEV fit of the yearly data series for 2021 and for the preindustrial climate (assumed to have a global temperature 1.2°C lower than today) are shown in rows #2 and #3. The probability ratio (the ratio of the return periods) is shown in Row #4 and the resulting intensity change from the GEV fit is shown in Row #5 (see Philip et al., 2020 for methodological details).

To assess the changes at local scale, we also calculated trends for 3 specific stations in the domain (stars in Figure 2). We selected a subset of 3 Météo-France reference stations, which were selected in grapevine regions (Beaucouzé: downstream Loire valley; Charnay-les-Mâcon: Burgundy; Charmeil: Saint-Pourçain grapevine), with several characteristics: for Beaucouzé, light frost and non-exceptional event (-1.3°C) but high GDD (321°C.day on 5 April); for Charnay-les-Mâcon: record frost (-4.4°C, with 266°C.day on 5 April), and for Charmeil: the most severe frost among stations at our disposal (-6.6°C with 244°C.day on 5 April). Detection results are shown in Table 2, for these stations, and for the three main indices: TNnApr-Jul, TNnGDD250 and TNnGDD250-350. In most cases, the trends are positive for the fixed season index and negative for the growing season period. However, almost no result is statistically significant. We conclude that at local scale, variability is dominating trend signals (Table 2).

	Beaucouzé		Charnay-lès-Mâcon		Charmeil	
	Value Ret. Per.	PR $\Delta I$	Value Ret. Per.	PR $\Delta I$	Value Ret. Per.	PR $\Delta I$
TNnAprJul	-1.3°C 11 yr	0.3 [0.02;1.2] 1.4 [-0.3;3.0]	-4.4°C >100 yr	0.03 [0;0.9] 1.5 [0.1;2.8]	-6.6°C 85 yr	0.2 [0.01;7.2] 1.2 [-0.7;3.0]
TNnGDD250	-1.3°C 5 yr	1.4 [0.2;9.0] -0.4 [-2.2;1.8]	-4.4°C >50 yr	>1e-4 0.2 [-2;2]	-5.3°C 18 yr	3.0 [>0.2] -1.0 [-3;1]
TNnGDD250-350	-1.3°C 7 yr	1.1 [0.14;7.2] -0.2 [-2.5;2.3]	-4.4°C >90 yr	Infinite 0.3 [-2.0;2.6]	-6.6°C 83 yr	>0.7 -1.5 [-4;1]

Table 2: Return periods, probability ratios (PR) and changes in intensities ( $\Delta I$ ) obtained from the observations at three stations located as in Figure 2b. Red color indicates a warming change and blue color a cooling change.

Results here differ from the rapid attribution analysis (Vautard et al., 2021) in the completion and adjustment of the E-OBS dataset by the producers. This led to slightly different values for the observed indices in 2021. For instance, the estimation of the TNnGDD250-index based return period was estimated here to 8 years instead of 12 years in the rapid attribution. However, the results are qualitatively similar to those found in the preliminary analysis.

4.3.2 Simulated mean trends

The trends in the two main indices for the 5 model ensembles is analyzed in the form of histograms (Figure 45), in order to examine the variability across ensemble members. There is a large range of minimum temperature trends from April to July, which are almost all positive. The observed trend in the minimum temperature from April to July is close to the median middle of the distribution for the Euro-Cordex and the CMIP6 ensemble, while it is closer to the lower tail of the distribution of the remaining three ensembles. A large range of possibilities is also found for the trends of the TNnGDD250 index, with a large part of the simulations showing negative and lower trends than those of the minimum temperature from April to May, consistent with the observations. We conclude from these figures that, despite the general trend towards cooling of the growing period frosts, the expected trend, for a given singular member, can also be a warming one, albeit with a smaller chance than for a cooling one. This large uncertainty also has to be taken into account in any adaptation strategy.

Mis en forme : Normal

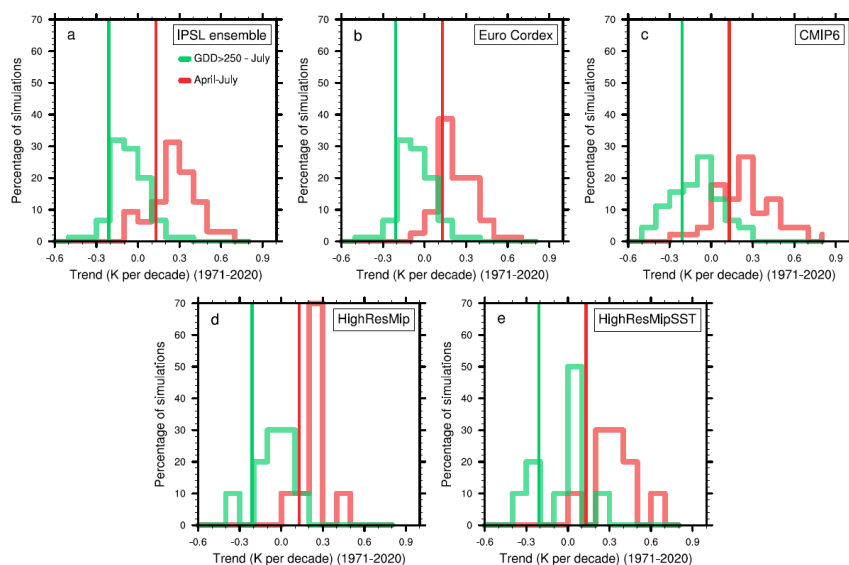


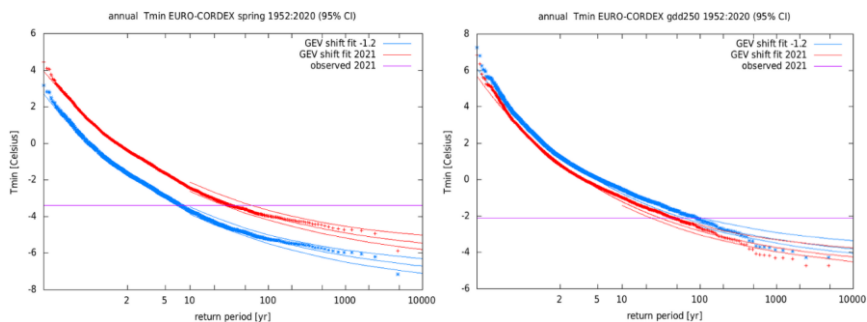
Figure 54. Histogram of the daily minimum temperature trend calculated from (a) the IPSL ensemble, (b) the Euro-Cordex ensemble, (c) the CMIP6 ensemble, (d) the HighResMip ensemble and (e) the HighResMipSST ensemble (See Section 4.1 and Annex 1 for more details about these ensembles). The observations are represented with the vertical lines. The trends are calculated over the 1971-2020 period for (green) GDD>250 and (red) from April to May.

#### 4.34 Simulated growing period frost extreme trends and attribution

Figure 5-6 shows, as an example, the change in return values vs. return periods for indices TNnApr-Jul and TNnGDD250 for the Euro-Cordex ensemble, and Table 34 shows the extreme value statistics for all indices for this ensemble as well as other ensembles used. Models show large agreement with observations on changes in return periods and intensities between the preindustrial and current climates for the fixed-calendar TNn index (TNnApr-Jul). The trends in all models seem however underestimated compared to observations for the indices with a GDD conditioning (TNnGDD250).

The behaviour present in all model analysis is illustrated in Figure 65: a clear, significant increase in TNnApr-Jul and an opposite trend sign for the TNnGDD250. Despite being weaker, this increasing trend in low extremes is significant for all ensembles but for HighResMIP-SST (Table 34), with a clear signal of increase in coldest temperatures when considered over the growing period, and with a threshold of 250°C.days. Such a trend is also clear and significant in most ensembles when considering the sensitive range 250<GDD<350 where young leaves and flowers are vulnerable to frost. For the other indices, trends are also significant in most cases but not all.





355 **Figure 56.** Return value vs. return period for Euro-CORDEX and the indices TnApr-Jul (left panel) and TnGDD250 (right panel) averaged iover the study area (the rectangle shown in Figure 2b). The observed values from E-OBS are marked by the purple line. Note however that the observed values were not the values used to calculate the probability ratio of the event in the Euro-CORDEX ensemble, as the ensemble has a bias toward higher values.

Model ensemble / Observation	Index		Probability Ratio 2021 vs 2021 -1.2°C	Intensity change (°C) 2021 vs 2021 -1.2°C
Observation	TnApr-Jul	RP=78 [19, Inf]	0.09 [0;inf]	+1.4 [0.22;2.7]
Euro-Cordex 2C changes relative to 2021 (+0.8°C)		2021 vs p.i. 2C vs 2021	0.24 [0.14;0.37] 0.50 [0.29;0.67]	+1.0 [0.67;1.2] +0.36 [0.21;0.57]
IPSL-CM6A-LR		2021 vs p.i.	0.19 [0.13;0.25]	+1.3 [1.1;1.5]
CMIP6 2C changes relative to 2021 (+0.8°C)		2021 vs p.i. 2C vs 2021	0.23 [0.15;0.28] 0.23 [0.12;0.29]	+1.0 [0.86;1.2] +0.71 [0.60;0.81]
HighResMip-SST		2021 vs p.i.	0.07 [0.03;0.16]	+1.8 [1.2;2.1]
HighResMip		2021 vs p.i. 2C vs 2021	0.10 [0.03;0.16] 0.09 [0;0.17]	+1.3 [1.0;1.6] +0.64 [0.54;0.89]
Model average 2C changes relative to 2021 (+0.8°C)	TnGDD250	2021 vs p.i. 2C vs 1.2C	0.18 [0.08;0.37] 0.31 [0.004;2.0]	+1.2 [0.75;1.7] +0.58 [0.24;0.92]
Observation		RP=8 [4-25]	11 [2;inf]	-2.0 [-3.3, -0.5]
Euro-Cordex 2C changes relative to 2021 (+0.8°C)		2021 vs p.i. 2C vs 1.2C	1.5 [1.1;1.9] 1.3 [1.1;1.6]	-0.39 [-0.60;-0.05] -0.34 [-0.48;-0.07]
IPSL-CM6A-LR		2021 vs p.i.	1.5 [1.2;2.0]	-0.36 [-0.61;-0.18]
CMIP6 2C changes relative to 2021 (+0.8°C)		2021 vs p.i. 2C vs 1.2C	1.4 [1.3;1.7] 1.1 [1.0;1.3]	-0.39 [-0.54;-0.23] -0.14 [-0.23;-0.02]
HighResMip-SST		2021 vs p.i.	1.2 [0.65; 1.8]	-0.21 [-0.58;0.41]

Mis en forme : Couleur de police : Rouge

Mis en forme : Couleur de police : Rouge

Mis en forme : Couleur de police : Rouge

Mis en forme : Couleur de police : Rouge

Mis en forme : Couleur de police : Rouge

Mis en forme : Couleur de police : Rouge

Mis en forme : Couleur de police : Rouge

Mis en forme : Couleur de police : Bleu

Mis en forme : Couleur de police : Bleu

Mis en forme : Couleur de police : Bleu

Mis en forme : Couleur de police : Bleu

Mis en forme : Couleur de police : Bleu

HighResMip	TNnGDD250-350	2021 vs p.i. 2C vs 1.2C	<span>▲</span> 2.3 [1.6;3.6] <span>▲</span> 1.3 [1.1;1.6]	-0.73 [-1.1;-0.38] -0.21 [-0.41;-0.06]
Model average		2021 vs p.i. 2C vs 1.2C	<span>▲</span> 1.5 [1.1;2.1] <span>▲</span> 1.2 [1.1;1.4]	-0.41 [-0.60;-0.22] -0.20 [-0.30;-0.08]
Observation		RP=12 [5.0;70]	<span>▲</span> 63 [2.3;Inf]	-2.0 [-3.5;-0.57]
Euro-Cordex		2021 vs p.i. 2C vs 2021	<span>▲</span> 1.7 [1.2;2.7] <span>▲</span> 1.1 [0.98;1.7]	-0.50 [-0.80;-0.14] -0.14 [-0.47;0.01]
IPSL-CM6A-LR		2021 vs p.i.	<span>▲</span> 1.9 [1.4;2.8]	-0.54 [-0.82;-0.29]
CMIP6		2021 vs p.i. 2C vs 2021	<span>▲</span> 1.5 [1.3;2.0] <span>▲</span> 1.1 [0.99;1.3]	-0.43 [-0.64;-0.27] -0.09 [-0.23;0.01]
HighResMip-SST		2021 vs p.i.	<span>▲</span> 1.0 [0.44;1.8]	-0.03 [-0.54;0.69]
HighResMip		2021 vs p.i. 2C vs 2021	<span>▲</span> 2.8 [2.1;8.9] <span>▲</span> 1.3 [0.93;1.6]	-0.82 [-1.3;-0.58] -0.21 [-0.36;0.05]
Model average 2C changes relative to 2021 (+0.8°C)		2021 vs p.i. 2C vs 2021	<span>▲</span> 1.7 [0.89;3.2] <span>▲</span> 1.1 [1.0;1.3]	-0.50 [-0.94;-0.07] -0.12 [-0.23;-0.04]
Observation	TNnGDD150	9 [5;82]	<span>▲</span> 3 [>0.7]	-0.80 [-2.1;0.35]
Euro-Cordex		2021 vs p.i.	<span>▲</span> 1.3 [1.1;2.0]	-0.29 [-0.74;-0.12]
IPSL-CM6A-LR		2021 vs p.i.	<span>▲</span> 1.2 [1.0;1.4]	-0.28 [-0.46;-0.02]
CMIP6		2021 vs p.i.	<span>▲</span> 1.4 [1.2;1.6]	-0.36 [-0.52;-0.19]
HighResMip-SST		2021 vs p.i.	<span>▲</span> 1.1 [0.61;1.4]	-0.09 [-0.40;0.54]
HighResMip		2021 vs p.i.	<span>▲</span> 1.7 [1.3;3.9]	-0.62 [-0.95;-0.21]
Observation	TNnGDD350	2 [1.4;3.2]	<span>▲</span> 4.4 [1.3;21]	-2.0 [-3.4;-0.38]
Euro-Cordex		2021 vs p.i.	<span>▲</span> 1.1 [0.98;1.3]	-0.24 [-0.49;+0.05]
IPSL-CM6A-LR		2021 vs p.i.	<span>▲</span> 1.2 [1.0;1.3]	-0.27 [-0.45;-0.07]
CMIP6		2021 vs p.i.	<span>▲</span> 1.1 [1.0;1.2]	-0.19 [-0.41;-0.08]
HighResMip-SST		2021 vs p.i.	<span>▲</span> 1.4 [1.1;1.7]	-0.54 [-0.94;-0.11]
HighResMip		2021 vs p.i.	<span>▲</span> 1.4 [1.2;1.8]	-0.56 [-0.87;-0.21]

Mis en forme : Couleur de police : Bleu

Mis en forme : Couleur de police : Bleu

Mis en forme : Couleur de police : Bleu

Mis en forme : Couleur de police : Bleu

Mis en forme : Couleur de police : Bleu

Mis en forme : Couleur de police : Bleu

Mis en forme : Couleur de police : Bleu

Mis en forme : Couleur de police : Bleu

Mis en forme : Couleur de police : Bleu

Mis en forme : Couleur de police : Bleu

Mis en forme : Couleur de police : Bleu

Mis en forme : Couleur de police : Bleu

Mis en forme : Couleur de police : Bleu

Mis en forme : Couleur de police : Bleu

Mis en forme : Couleur de police : Bleu

Mis en forme : Couleur de police : Bleu

Mis en forme : Couleur de police : Bleu

Mis en forme : Couleur de police : Bleu

Mis en forme : Couleur de police : Bleu

Mis en forme : Couleur de police : Bleu

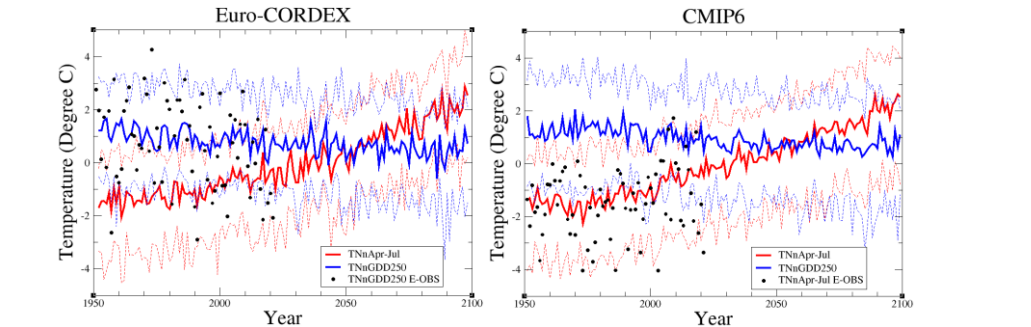
Table 34: Change in extreme value statistics for all model ensembles and observations, with the GEV model fitted from data over the 1951-2020 period for the past trends estimates, and over the 2000-2050 period for future trends (when estimating the changes for a 2°C warming above pre-industrial levels); We assume here that pre-industrial (p.i.) global warming level is 1.2°C cooler than the 2021 one, and therefore the 2°C warming level is reached when the warming is 0.8°C above the current level. In each row, the values of the probability ratio (the ratio between inverse return periods) are shown as well as the intensity change obtained by using the same return period threshold as in the observations, together with their 95% confidence levels as obtained from a bootstrap

365 estimate using 1000 samples. Numbers in blue indicate a decrease of TN, and in red an increase of TN. The last row indicates changes  
for a 2°C warming level. Boldface numbers indicate statistical significance against a “no change” assumption.

Despite a sign agreement between models and observations on trends, models generally simulate much weaker trends for the  
GDD-conditioned indices than observed, a fact that remains unexplained, just as the underestimation in extreme temperatures  
in summer heat waves (see eg. Vautard et al., 2020; van Oldenborgh et al., in revision). For TNNGDD250, all ensembles  
370 simulate an increase in the frequency of growing-period low extreme temperatures ranging from 10% to 110% with a weighted  
best estimate of 50% (see also Section 5). For the other indices the range of factors is rather similar, despite lower values for  
TNNGDD350. Changes in intensities are also all negative but remain below 1°C.

4.5.4 Future trends

Indices have similar future projected trends as in the past decades in the ensembles and scenarios considered here. Figure 76  
375 shows evolutions of the ensemble-median and 10th and 90th percentiles for Euro-Cordex [RCP8.5] and CMIP6 [SSP3-7.0],  
for example, but similar results hold for the other ensembles, which have less members or shorter time coverages. In both  
cases, the median of April-July minimum temperatures over the region continues to increase with mean values around 2°C  
while they are below frost level in 2021. By the end of the century, frost such as in 2021 will become a very rare occurrence  
in April or after in these scenarios. However, frost can still be expected earlier in the year, while at the same time the growing  
380 season starts earlier. This can be seen in the development of the TNNGDD250 index throughout the 21st century which shows  
a weak decreasing trend. It is noteworthy that in the second half of the century, the 10th percentile often nears or exceeds the  
2021 value. More frequent events like the 2021 are therefore expected. By the end of the century for this scenario, we also  
expect deep frosts in the growing period with intensities which have never been met in 2021 or in earlier years.



385 **Figure 67.** Time evolution of the median (thick line), and the 10th and 90th percentiles (dashed lines) of the ensembles Euro-Cordex (75 members) and CMIP6 (45 members) for the indices TNNApr-Jul (Red) and TNNGDD250 (blue). Black dots represent the observations from E-OBS, on the left panel for Euro-CORDEX, on the right panel for CMIP6.

Figure 6-7 also includes the observed time series for the two indices. For TnGDD250, even though points generally fit well the 10%-90% model range (expected because the models are bias-corrected), we observe a bias in low extremes with variability in the observations inducing frequent excursion in temperatures far below the 10% quantile. Such bias is not found in the TnApr-Jul index.

We restrict the analysis of future trends in extremes to the 2°C warming level above the P.I. conditions, which is assumed to be 0.8°C above current level in 2021. This restriction is made to be on the safe side with potential nonlinearity of response of the extreme indices to global warming while we assume linearity here with the covariate GEV method. In this future case the GEV fit is carried out over the 2000-2050 period, and probability ratios and intensity changes are given for events with a similar return period as for the 2021 event.

Results are shown along with attribution results in Table 46. Extreme cold temperatures for the April-July period will continue to become less extreme. Euro-Cordex simulations, which are the only ones consistent with observed trends, project that events similar to the 2021 event would become about half as frequent in a 2°C warming climate. The other models predict factors ranging from between 3 and 10 times less frequent. In contrast, the growing-period extreme frost intensity is increasing, and the 2021 event with a GDD>250 is projected to have an increasing frequency by about 30% [10% - 60%] for a 2°C warmer climate than preindustrial in Euro-Cordex, 10% [0%-30%] for CMIP6 selections and 30% [10% - 60%] for HighResMIP (coupled).

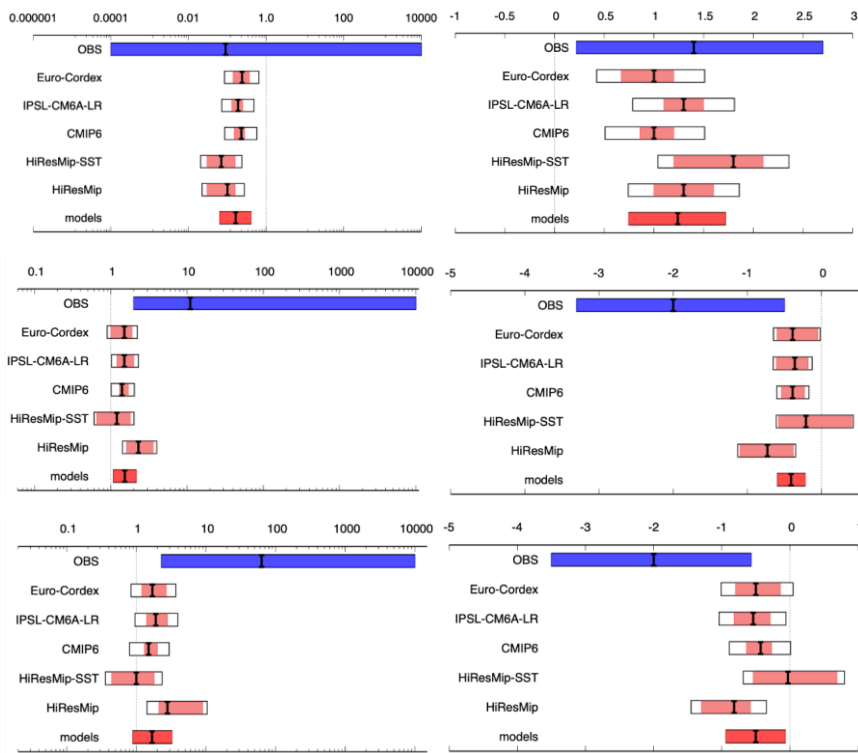
## 5. Synthesis, summary and discussion

The individual assessments described above for probability ratio and intensity changes in the past period are summarized in Figure 78. Given the large differences between models and observations for the growing-period indices TnGDD250 and TnGDD250-350, we do not combine the observational and model results to form a single "synthesis" but instead we present the model weighted average for comparison with the observations. In the case of the TnApr-Jul index, only two ensembles, Euro-Cordex and HighResMip-SST, pass the validation criteria. However, the three additional models (IPSL-CM6A-LR, CMIP6 and HighResMip) that validate well for TnGDD250 and TnGDD250-350, give similar results to the other ones. Incorporating them in the weighted average has no impact on the high significance of the change found, and makes the comparison across indices consistent.

While uncertainties are comparably large for the quantitative assessment of probability ratios there is a significant decrease in the likelihood of cold waves as defined above for TnApr-Jul. The event that has occurred in 2021, taken as a fixed-season extreme, has become rare, with a return period of at least 19 years, and with a best estimate of 78 years. The intensity of a cold wave as observed in April is also decreasing, by a well-constrained best estimate of 1.2°C. When considering the lowest temperatures after the growing season start simulated by the GDD thresholds, models and observations quantitatively disagree with respect to probability ratio and intensity, but the qualitative agreement is clear and shows an increase in the likelihood of damaging frost as well as an increase in the intensity across all indices. This is corroborated by the fact that these trends

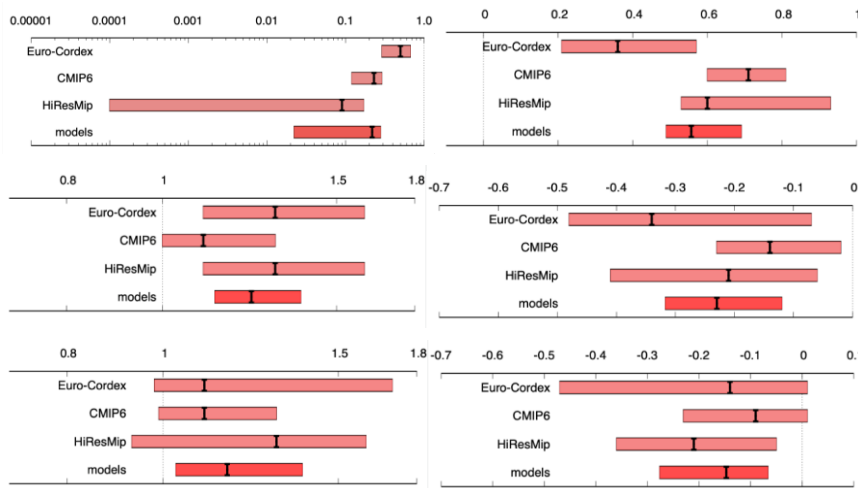
continue under future warming (see below). This allows a clear qualitative attribution of these trends to anthropogenic climate change with the model results serving as lower bounds.

In Figure 8-9 we summarize the projected changes in probability and intensity between the present and +2°C climate, showing an unweighted average for the three model ensembles Euro-Cordex, CMIP6 and HighResMIP. We again use all available models for TNn-Apr despite CMIP6 and HighResMIP ensembles not passing the validation over the historical period. We do so because (i) all models are included for the other two indices and we do not know how well they validate for the future, (ii) no synthesis is formed so the unweighted average shown is only of qualitative use. Probability ratios are less than unity for TNnApr-Jul, indicating that the current trend for decreasing frequency of cold snaps is likely to continue in the future. Projections indicate a decrease by a factor of about 5 in the type of event witnessed in 2021. Likewise, the projections for change in intensity indicate that Apr-Jul cold snaps will continue to warm, by a best-estimated increase of about 0.6°C. Growing-period minimum temperatures with GDD=250 degree.day continue to decrease with a best estimate of about 0.2°C and an increase in frequency of about 20%.



Mis en forme : Gauche, Interligne : simple

Figure 87. Changes between the past and present: summary of observational (blue) and model (red) results for probability ratio (left, giving the change in the probabilities between the climate with a 1.2°C cooler global temperature and the current climate) and change in intensity [°C] (right) in the three indices TNnApr-Jul (top), TNnGDD250 (middle) and TNnGDD250-350 (bottom), as averaged over the study area (see rectangle in Figure 2b). Extent of the bars gives the two-sided 95% confidence intervals accounting for internal variability (pink) of each ensemble within the data sets and model spread added (white), calculated as explained in Philip et al. (2020) where appropriate, with the black marker indicating the best estimate. A weighted average of model results is shown in bright red (label “models”). Note that, for the index TNnApr-Jul, only Euro-Cordex and HighResMIP-SST passed the validation step but other models are included in the weighted average for reasons described in the text.



**Figure 89.** Projected changes between the present and +2degC climate: summary of results for probability ratio (left) and change in intensity [°C] (right) in the three indices TnApr-Jul (top), TnGDD250 (middle) and TnGDD250-350 (bottom). Extent of the bars gives **two-sided** 95% confidence intervals accounting for variability within the data sets, with the black marker indicating the best estimate. A weighted average of the results is shown in bright red.

While the growing season is starting earlier, necessary plant dormancy characteristics also change and the lack of chilling winter days may delay the bud burst in many species (Chuine et al., 2016). This effect is not taken into account here and could alter our results concerning changes in bud burst dates. Such dates are also dependent on species. We have tested the dependence on thresholds of a simple GDD index, which provide similar results than the central thresholds discussed in the synthesis. Dormancy effects, as well as other specific plant effects can only be studied through impact models, which was not the goal in this study.

The applicability of our results at local scale is limited in quantitative terms. The local station analysis, and the trends histograms show that given locations are more likely to exhibit cooling of extreme growing-period temperatures than warming, but a warming cannot be excluded at these scales and at present day warming levels.

The discrepancy between trends in models and in observations in the historical periods currently remains unexplained. It shows that either large variability inhibits an accurate estimation of trends of cold extremes or that other factors come into play which may not be well simulated such as trends in radiation or cloudiness as a response to either warming or aerosols. These factors should be investigated in future studies.

Above all, the finding that trends identified up until now continue under future warming indicates that anthropogenic climate change is an important driver of the observed trends and suggests that the models indeed underestimate the effect of change

due to forcing factors and that the discrepancy between observed and simulated trends is not entirely explainable by unmodelled factors other than human-induced climate change.

475 In conclusion, we identify two key attributable effects, the decrease in likelihood and intensity of minimum temperatures and the increase of likelihood and intensity of minimum temperatures when conditioned on growing degree indices. These findings are consistent across the different lines of evidence pursued despite the quantitative differences. The GDD-indices are however a crude representation of the vulnerability of different species to frost. Thus, our findings highlight that growing season frost damage is a potentially extremely costly impact of climate change already damaging the agricultural industry but to inform adaptation strategies for specific species impact-based modeling will need to complement our assessment. Other studies, in particular, indicated that impacts may be highly variable across locations and species (Leolini et al., 2018), emphasizing this need.

#### Author contribution

RV, GJVO and RB designed the experiments and the related analyses, advised by FO, NV, MR, and IGCA. SL, SK, SP, YR, RB, BD and JMS helped preparing the datasets. All authors contributed to the text.

#### Acknowledgements

We are grateful to James Ciarlo (ICTP) who made available in advance to publication on ESGF one of the regional climate simulations for the Euro-Cordex ensemble. The analysis benefitted from the collection of the Euro-Cordex simulation made within the Copernicus Climate Change Service. The final analysis of this study is partly supported by the European Union's Horizon 2020 research and innovation programme under grant agreement No 101003469 (XAIDA project). It is among the case studies treated in this project. We acknowledge the E-OBS dataset from the EU-FP6 project UERRA (<http://www.uerra.eu>) and the Copernicus Climate Change Service, and the data providers in the ECA&D project (<https://www.ecad.eu>). Our colleague co-author Geert Jan van Oldenborgh started the analysis with the author's team but sadly passed away in October 2021 before the article was submitted. The first author dedicates this study to his mother who passed away on the day before the frost event and who gave him her passion for flowers, nature and weather.



Annex I. Model ensembles description

This annex provides more details about the model ensembles used in this study.

1 EURO-CORDEX

500 The Euro-Cordex ensemble is made of 75 simulations of 12 Regional climate models downscaling 8 Global Climate Models. The description of the ensemble is detailed in Vautard et al. (2021) and Coppola et al. (2020), but between the article publication and the start of the study, the ensemble size passed from 55 models to 75 models. The reader is referred to this publication for a description and an assessment of this ensemble in the historical period. Daily mean and minimum temperatures were corrected at grid point level using the E-OBS observation dataset from 1981 to 2020. Bias correction follows

505 the method described in Vrac et al. (2016) refined in Bartok et a. (2019) and applied on daily data instead of hourly data. The GCM-RCM ensemble is described in Table A.1 below.

RCM / GCM	CNRM	EC-EARTH	HadGEM	MPI	NorESM	IPSL	CanESM	MIROC
CCLM								
HIRHAM		3						
RACMO		3						
RCA		3		3				
REMO				3				
WRF361H								
WRF381P								
ALADIN53								
ALADIN63								
RegCM								
COSMO -crCLIM		3		3				
HadREM								

Table A.1: Euro-CORDEX Simulations analyzed in this study. Grey cells indicate a GCM-RCM couple used, and numbers in the cell indicate the number of realizations used (essentially 3 for two of the GCMs).

2 CMIP6 selected ensemble

510 The CMIP6 multi-model ensemble is a set of global climate models, developed by several institutes around the world (Eyring et al., 2016). Here a subset of CMIP6 models are used, with historical and SSP3-7.0 experiments (Meehl et al. 2014; O’Neill

et al. 2014, Vuuren et al. 2014, and O'Neill et al. 2016) together spanning the period between 1850 and 2099 for tas and tasmin variables. The analysis, as for the other ensembles, is however restricted to the years after 1950. Simulations were also bias-corrected but we kept only 3 members maximum per ensemble in order not to overload the results with models having many  
515 members. In total, given the available simulations initially, we obtained 45 simulations with models described in Table A.2 below.

Model	Realization	Model	Realization
ACCESS-CM2	r1i1p1f1 r2i1p1f1 r3i1p1f1	INM-CM5-0	r1i1p1f1 r2i1p1f1 r3i1p1f1
ACCESS-ESM1-5	r1i1p1f1 r2i1p1f1 r3i1p1f1	IPSL-CM6A-LR	r1i1p1f1 r2i1p1f1 r3i1p1f1
AWI-CM-1-1-MR	r1i1p1f1 r2i1p1f1 r3i1p1f1	KACE-1-0-G	r1i1p1f1 r3i1p1f1 r1i1p1f1
BCC-CSM2-MR	r1i1p1f1 r1i1p1f1	MIROC6	r1i1p1f1 r2i1p1f1 r3i1p1f1
CanESM5	r1i1p2f1 r2i1p1f1	MIROC-ES2L	r1i1p1f2 r1i1p1f1
CNRM-CM6-1	r1i1p1f2	MPI-ESM1-2-LR	r2i1p1f1 r3i1p1f1 r1i1p1f1
CNRM-ESM2-1	r1i1p1f2		r2i1p1f1 r3i1p1f1 r1i1p1f1
EC-Earth3-AerChem	r1i1p1f1	MRI-ESM2-0	r1i1p1f1 r2i1p1f1 r3i1p1f1
EC-Earth3	r1i1p1f1 r4i1p1f1		r1i1p1f1 r1i1p1f1 r1i1p1f2
EC-Earth3-Veg-LR	r1i1p1f1	NorESM2-LM	r2i1p1f2 r3i1p1f2
EC-Earth3-Veg	r1i1p1f1	NorESM2-MM	
GFDL-ESM4	r1i1p1f1	UKESM1-0-LL	
INM-CM4-8	r1i1p1f1		

520    **Table A.2: CMIP6 models used in this study, together with the realization when several were available**

3 **IPSL-CM6 single model ensemble**

The IPSL-CM6A-LR model ensemble is a 32-member ensemble of the coupled climate model with the same name. The model is described in Boucher et al. (2020) and the ensemble is presented and evaluated in Bonnet et al., (2021). Simulations start in the pre-industrial period with slightly different initial conditions and are saved in this study for the whole historical period and beyond, until 2029. The ensemble has been used for attribution studies, for instance in the 2019 heatwave attribution described in Vautard et al. (2020).
 525

4 **HighResMIP SST-forced and coupled ensembles**

We also consider two sets of ensembles from the High Resolution Model Intercomparison Project (HighResMIP, Haarsma et al. 2016), which is a coordinated set of experiments as a part of CMIP6, designed to assess the impact of model horizontal resolution. HighResMIP consists of atmosphere-only (SST-forced) and coupled runs, both spanning 1950-2050. In this study, we make use of both the SST-forced and coupled ensembles. As briefly described in the main text, in the SST-forced ensemble, for the ‘present’ time period (1950-2014), the SST and sea ice forcings used are based on the daily, 0.25° x 0.25° Hadley Centre Global Sea Ice and Sea Surface Temperature dataset, with area-weighted regridding used to map this to each model grid; for the ‘future’ time period (2015-2050), SST/sea-ice data are derived from RCP8.5 (CMIP5) data, and combined with
 530

535 greenhouse gas forcings from SSP5-8.5 (CMIP6) simulations (interested readers are referred to Section 3.3 of Haarsma et al.  
2016 for further details).  
Bias correction was performed using the same method as for the other ensembles.

Model	High	Medium	Low	DOI	Contributed by	Number of simulations used
CNRM-CM6-1-HR		720*360		<a href="https://doi.org/10.22033/ESGF/CMIP6.1387">https://doi.org/10.22033/ESGF/CMIP6.1387</a>	CNRM (Centre National de Recherches Meteorologiques), CERFACS (Centre Europeen de Recherche et de Formation Avancee en Calcul Scientifique) (CNRM-CERFACS)	1
CNRM-CM6-1			256*128	<a href="https://doi.org/10.22033/ESGF/CMIP6.1375">https://doi.org/10.22033/ESGF/CMIP6.1375</a>	CNRM-CERFACS	1
EC-Earth3P-HR	1024*512			<a href="https://doi.org/10.22033/ESGF/CMIP6.2323">https://doi.org/10.22033/ESGF/CMIP6.2323</a>	EC-Earth-Consortium	3
EC-Earth3P		512*256		<a href="https://doi.org/10.22033/ESGF/CMIP6.2322">https://doi.org/10.22033/ESGF/CMIP6.2322</a>	EC-Earth-Consortium	3
HadGEM3-GC31-HM	1024*768			<a href="https://doi.org/10.22033/ESGF/CMIP6.446">https://doi.org/10.22033/ESGF/CMIP6.446</a>	the Met Office Hadley Centre	1
HadGEM3-GC31-MM		432*324		<a href="https://doi.org/10.22033/ESGF/CMIP6.190">https://doi.org/10.22033/ESGF/CMIP6.190</a>	the Met Office Hadley Centre	1

Code de champ modifié

Code de champ modifié

Code de champ modifié

Code de champ modifié

Code de champ modifié

Code de champ modifié

540 Table A3. Spatial grids of the HighResMIP models in high-, medium-, and low-resolution groups used in this study, along with relevant references for the simulations, their origins, and the number of simulations used in the analysis

## References

- AGRESTE (2021): Bilan conjoncturel 2021. Synthèses conjoncturelles. December 2021 Nb 383. Agreste. Ministère de l'agriculture et de l'alimentation.
- Barnes, E.A. and Screen, J.A. (2015), The impact of Arctic warming on the midlatitude jet-stream: Can it? Has it? Will it?. *WIREs Clim Change*, 6: 277-286. <https://doi.org/10.1002/wcc.337>
- Bartok, B., Tobin, I., Vautard, R., Vrac, M., Jin, X., Levavasseur, G., ... & Saint-Drenan, Y. M. (2019). A climate projection dataset tailored for the European energy sector. *Climate services*, 16, 100138.
- Blackport, R., & Screen, J. A. (2020). Insignificant effect of Arctic amplification on the amplitude of midlatitude atmospheric waves. *Science advances*, 6(8), eaay2880.
- Besson F., Dubuisson B., Etchevers P., Gibelin A.-L., Lassegues P., Schneider M., Vincendon B., (2019). Climate monitoring and heat and cold waves detection over France using a new spatialization of daily temperature extremes from 1947 to present. *Adv. Sci. Res.* 16, 149-156. doi: 10.5194/asr-16-149-2019
- Bonnet, R., Boucher, O., Deshayes, J., Gastineau, G., Hourdin, F., Mignot, J., ... & Swingedouw, D. (2021). Presentation and evaluation of the IPSL-CM6A-LR Ensemble of extended historical simulations. *Journal of Advances in Modeling Earth Systems*, 13(9), e2021MS002565.
- Boucher, O., Servonnat, J., Albright, A. L., Aumont, O., Balkanski, Y., Bastrikov, V., ... & Vuichard, N. (2020). Presentation and evaluation of the IPSL-CM6A-LR climate model. *Journal of Advances in Modeling Earth Systems*, 12(7), e2019MS002010.
- Chuine, I., Bonhomme, M., Legave, J. M., García de Cortázar-Atauri, I., Charrier, G., Lacointe, A., & Améglio, T. (2016). Can phenological models predict tree phenology accurately in the future? The unrevealed hurdle of endodormancy break. *Global Change Biology*, 22(10), 3444-3460.
- Coppola, E., Nogherotto, R., Ciarlo', J. M., Giorgi, F., van Meijgaard, E., Kadyrov, N., ... & Wulfmeyer, V. (2021). Assessment of the European climate projections as simulated by the large EURO-CORDEX regional and global climate model ensemble. *Journal of Geophysical Research: Atmospheres*, 126(4), e2019JD032356.
- [Cornes, R., G. van der Schrier, E.J.M. van den Besselaar, and P.D. Jones. 2018: An Ensemble Version of the E-OBS Temperature and Precipitation Datasets, J. Geophys. Res. Atmos., 123. doi:10.1029/2017JD028200.](#)
- EC-Earth Consortium (EC-Earth) (2018). EC-Earth-Consortium EC-Earth3P-HR model output prepared for CMIP6 HighResMIP. Version 20201214[1].Earth System Grid Federation. <https://doi.org/10.22033/ESGF/CMIP6.2323>.
- EC-Earth Consortium (EC-Earth) (2019). EC-Earth-Consortium EC-Earth3P model output prepared for CMIP6 HighResMIP. Version 20201214[1].Earth System Grid Federation. <https://doi.org/10.22033/ESGF/CMIP6.2322>.
- Eyring, V., S. Bony, G. A. Meehl, C. A. Senior, B. Stevens, R. J. Stouffer, and K. E. Taylor (2016). "Overview of the Coupled Model Intercomparison Project Phase 6 (CMIP6) experimental design and organization". In: *Geosci. Model Dev.* 9.5, pp. 1937–1958. doi: 10.5194/gmd-9-1937-2016.

Garcia de Cortazar-Atauri et al., 2009 - Int J Biometeorol (2009) 53:317–326. doi: 10.1007/s00484-009-0217-4

Haarsma, R. J., Roberts, M. J., Vidale, P. L., Senior, C. A., Bellucci, A., Bao, Q., et al. (2016). High Resolution Model Intercomparison Project (HighResMIP v1.0) for CMIP6. Geoscientific Model Development, 9(11), 4185–4208. <https://doi.org/10.5194/gmd-9-4185-2016>.

Kew, S. f., Philip, S. Y., Jan van Oldenborgh, G., van der Schrier, G., Otto, F. E. L., & Vautard, R. (2019). The Exceptional Summer Heat Wave in Southern Europe 2017, *Bulletin of the American Meteorological Society*, 100(1), S49–S53. doi:10.1175/BAMS-D-18-0109.1

Leolini, L., Moriondo, M., Fila, G., Costafreda-Aumedes, S., Ferrise, R., & Bindi, M. (2018). Late spring frost impacts on future grapevine distribution in Europe. *Field Crops Research*, 222, 197–208.

Liu, Q., Piao, S., Janssens, I. A., Fu, Y., Peng, S., Lian, X. U., ... & Wang, T. (2018). Extension of the growing season increases vegetation exposure to frost. *Nature Communications*, 9(1), 1–8.

Meehl, G. A., R. Moss, K. E. Taylor, V. Eyring, R. J. Stouffer, S. Bony, and B. Stevens (2014). “Climate Model Intercomparisons: Preparing for the Next Phase”. In: *Eos Trans. AGU* 95.9, pp. 77–78. doi: 10.1002/2014EO090001.

Michelangeli, P. A., Vautard, R., & Legras, B. (1995). Weather regimes: Recurrence and quasi stationarity. *Journal of Atmospheric Sciences*, 52(8), 1237–1256.

Ministère de l’Agriculture (2021): [https://www.google.com/url?q=https://agreste.agriculture.gouv.fr/agreste-web/download/publication/publie/IraVit21114/2021\\_114inforapviticultureV2.pdf&sa=D&source=docs&ust=1641641720052540&usg=AOvVaw2aDnnUYnoxHTrKmA3Cbis2](https://www.google.com/url?q=https://agreste.agriculture.gouv.fr/agreste-web/download/publication/publie/IraVit21114/2021_114inforapviticultureV2.pdf&sa=D&source=docs&ust=1641641720052540&usg=AOvVaw2aDnnUYnoxHTrKmA3Cbis2)

O’Neill, B. C., E. Kriegler, K. Riahi, K. L. Ebi, S. Hallegatte, T. R. Carter, R. Mathur, and D. P. van Vuuren (2014). “A new scenario framework for climate change research: the concept of shared socioeconomic pathways”. In: *Clim. Change* 122.3, pp. 387–400. doi: 10.1007/s10584-013-0905- 2.

O’Neill, B. C., C. Tebaldi, D. P. van Vuuren, V. Eyring, P. Friedlingstein, G. Hurtt, R. Knutti, E. Kriegler, J.-F. Lamarque, J. Lowe, G. A. Meehl, R. Moss, K. Riahi, and B. M. Sanderson (2016). “The Scenario Model Intercomparison Project (ScenarioMIP) for CMIP6”. In: *Geosci. Model Dev.* 9.9, pp. 3461–3482. doi: 10.5194/gmd-9-3461-2016.

Philip, S., Kew, S., van Oldenborgh, G. J., Otto, F., Vautard, R., van der Wiel, K., King, A., Lott, F., Arrighi, J., Singh, R., and van Aalst, M.: A protocol for probabilistic extreme event attribution analyses, *Adv. Stat. Clim. Meteorol. Oceanogr.*, 6, 177–203, <https://doi.org/10.5194/ascmo-6-177-2020>, 2020.

Roberts, Malcolm (2017). MOHC HadGEM3-GC31-HM model output prepared for CMIP6 HighResMIP. Version 20210407[1].Earth System Grid Federation. <https://doi.org/10.22033/ESGF/CMIP6.446>.

Roberts, Malcolm (2017). MOHC HadGEM3-GC31-MM model output prepared for CMIP6 HighResMIP. Version 20210407[1].Earth System Grid Federation. <https://doi.org/10.22033/ESGF/CMIP6.1902>.

Screen, J. A., and Simmonds, I. (2013), Exploring links between Arctic amplification and mid-latitude weather, *Geophys. Res. Lett.*, 40, 959–964, doi:[10.1002/grl.50174](https://doi.org/10.1002/grl.50174).

- 610 Sgubin, G., Didier Swingedouw, Gildas Dayon, Iñaki García de Cortázar-Atauri, Nathalie Ollat, Christian Pagé, Cornelis van Leeuwen, The risk of tardive frost damage in French vineyards in a changing climate, *Agricultural and Forest Meteorology*, Volumes 250–251, 2018, Pages 226-242, ISSN 0168-1923, <https://doi.org/10.1016/j.agrformet.2017.12.253>
- Van Oldenborgh, G.J., van der Wiel, K., Kew, S. *et al.* Pathways and pitfalls in extreme event attribution. *Climatic Change*, 166, 13, <https://doi.org/10.1007/s10584-021-03071-7>, 2021.
- 615 van Vuuren, D. P. van, E. Kriegler, B. C. O'Neill, K. L. Ebi, K. Riahi, T. R. Carter, J. Edmonds, S. Hallegatte, T. Kram, R. Mathur, and H. Winkler (2014). "A new scenario framework for Climate Change Research: scenario matrix architecture". In: *Clim. Change* 122.3, pp. 373–386. doi: 10. 1007/s10584-013-0906-1.
- Vautard, R. (1990). Multiple weather regimes over the North Atlantic: Analysis of precursors and successors. *Monthly weather review*, 118(10), 2056-2081.
- 620 Vautard, R., van Aalst, M., Boucher, O., Drouin, A., Haustein, K., Kreienkamp, F., ... & Wehner, M. (2020). Human contribution to the record-breaking June and July 2019 heatwaves in Western Europe. *Environmental Research Letters*, 15(9), 094077.
- Vautard, R., Kadyrov, N., Iles, C., Boberg, F., Buonomo, E., Bülow, K., ... & Wulfmeyer, V. (2020). Evaluation of the large EURO-CORDEX regional climate model ensemble. *Journal of Geophysical Research: Atmospheres*, e2019JD032344. doi: <https://doi.org/10.1029/2019JD032344>
- 625 Voldoire, Aurore (2019). CNRM-CERFACS CNRM-CM6-1-HR model output prepared for CMIP6 HighResMIP. Version 20210407[1].Earth System Grid Federation. <https://doi.org/10.22033/ESGF/CMIP6.1387>.
- Voldoire, Aurore (2018). CNRM-CERFACS CNRM-CM6-1 model output prepared for CMIP6 CMIP. Version 20210407[1].Earth System Grid Federation. <https://doi.org/10.22033/ESGF/CMIP6.1375>.
- 630 Vrac, M., Noël, T., & Vautard, R. (2016). Bias correction of precipitation through Singularity Stochastic Removal: Because occurrences matter. *Journal of Geophysical Research: Atmospheres*, 121(10), 5237-5258.