

# A Multi-strategy-mode-waterlogging-prediction Framework for Urban Flood Depth

Zongjia Zhang<sup>1,2</sup>, Jun Liang<sup>2</sup>, Yujue Zhou<sup>3</sup>, Zhejun Huang<sup>2</sup>, Jie Jiang<sup>3</sup>, Junguo Liu<sup>4</sup>, Lili Yang<sup>2</sup>

<sup>1</sup>School of Environment, Harbin Institute of Technology, Harbin, 150001, China

<sup>2</sup>Department of Statistics and Data Science, Southern University of Science and Technology, Shenzhen, 518055, China

<sup>3</sup>Department of Computer Science and Engineering, Southern University of Science and Technology, Shenzhen, 518055, China

<sup>4</sup>School of Environmental Science and Engineering, Southern University of Science and Technology, Shenzhen, 518055 China

*Correspondence to:* Lili Yang (yangll@sustech.edu.cn)

10 **Abstract.** Flood is one of the most disruptive natural disasters, causing substantial loss of life and property damage. Coastal cities in Asia face floods almost every year due to monsoons influences. Early notification of flooding events enables governments to implement focused preventive actions. Specifically, short-term forecasts can buy time for evacuation and emergency rescue, giving flood victims with timely relief. This paper proposes a novel multi-strategy-mode-waterlogging-prediction (MSMWP) framework for forecasting waterlogging depth based on time series prediction and a machine learning regression method. The framework integrates the historical rainfall and waterlogging depth to predict the near future waterlogging in time under future meteorological circumstances. An expanded rainfall model is proposed to consider the positive correlation of future rainfall on waterlogging. By selecting a suitable prediction strategy, adjusting the optimal model parameters, and then comparing the different algorithms, the optimal configuration of prediction is selected. In the actual value testing, the selected model has high computational efficiency, and the accuracy of predicting the waterlogging depth after 30 minutes can reach 86.1%, which is superior to many data-driven prediction models for waterlogging depth. The framework is useful for accurately predicting the depth of a target point promptly. The prompt dissemination of early warning information is crucial to preventing casualties and property damage.

## 1 Introduction

With the development of globalization, extreme weather and climate events occur frequently and cause a series of disasters. According to the Fifth Assessment Report of the Intergovernmental Panel on Climate Change (IPCC), global extreme weather and climate events have increased and intensified over the past 50 years, and such events will occur more frequently in the future (Jefferson, 2015). According to the Global Risk Report 2021 released by the World Economic Forum (WEF), extreme weather and climate events in 2017-2020 ranked first for four consecutive years in terms of the probability of occurrence of the top 10 global risks. Flood disaster is one of the most destructive natural disasters, usually caused by extreme weather and climate events, mainly including river basin flood, mountain flood, storm surge, urban waterlogging, and other disaster types.

Urban waterlogging can cause great damage to human life, infrastructure, agriculture, and social system (Hu et al., 2021). From July 21 to 22, 2012, Beijing was hit by the heaviest rainstorm and waterlogging in 61 years, resulting in 79 deaths and property losses of 11.64 billion yuan. Population density and land utilization rate are increasing year by year and urban waterlogging caused by extreme rainstorms has become one of the serious threats to urban security. Low-lying areas often suffer from waterlogging disasters and the lack of drainage capacity further exacerbates the risk.

In the aspect of disaster prediction, most of the previous research focused on torrential and watershed floods, but the research and application of waterlogging disaster prediction were few. Scenario simulation is the main research method, which simulates the flood routing process. The submerged area, depth and duration of waterlogging can be obtained by establishing hydrodynamics models or other models. Facing severe waterlogging disasters, the government needs to build a complete, reliable and accurate waterlogging prediction and risk identification system, focusing on early warning, prevention, rapid decision-making and emergency rescue. Robust and accurate prediction contributes highly to water resource management strategies, policy suggestions and analysis, and further evacuation modeling (Xie et al., 2017). However, waterlogging predicting is complex and difficult due to the dynamics of meteorological conditions. (Mosavi et al., 2018). Timely and accurate waterlogging monitoring is of great significance for disaster prevention, early warning information to the public, targeted blockade of affected roads, and reduction of casualties and property losses caused by waterlogging (Wang et al., 2018).

## **2 Literature Review**

### **2.1 Physically based models**

Conventional modeling approaches (1D and 1D-1D) can simulate quite accurately the drainage network. But it is difficult to accurately simulate the inundation depth and describe the dynamic development process of waterlogging under severe rainfall. 2D raster-based diffusion-wave model was applied to determine patterns of fluvial flood inundation in urban areas by using high-resolution topographic data and explored the effects of spatial resolution upon estimated inundation extent and flow routing process. The disadvantage of the 2D model was that raster data model was difficult to predict the submerged area changing with time, and the performance of flow process is relatively simplified due to poor description of momentum transfer on a flood plain (Yu and Lane, 2006a). But its advantages were also obvious, compared with the finite element method, finite difference method and finite volume method, the 2D model is easy to write, with high computational efficiency and simplified calibration (Yu and Lane, 2006b). SCS-CN method estimated surface runoff, superimposed flow direction grid and weight grid to obtain flow length grid, and then obtained Travel Time Grid (Abedin and Stephen, 2019). Zhang (2015) proposed a 3D flooding model, which adopted unstructured mesh finite element, to solve the Navier-Stokes equations and developed based on Fluidity. CADDIES flood model could identify flooded areas and constructed a flood resilience model based on cellular automata but the calculation time is long because all grids need to be retraversed every time (Wang et al., 2019). Physical models showed great capabilities for predicting a diverse range of flooding scenarios, but they often require various types of hydro-geomorphological monitoring datasets. Development of physically-based models often required in-depth

65 knowledge and expertise (Kim et al., 2015). Although relatively fine simulation results can be obtained, comprehensive and large-scale calculations are commonly required. Therefore, it is difficult to be applied to large-scale urban flood risk identification.

## 2.2 Statistical methods

70 Flood-vulnerable locations have been identified using statistical techniques and sophisticated algorithms. A statistical model based on static Bayesian networks was used to detect floods (Hong et al., 2016). Method used Bayesian parameter estimation was proposed in 2014. It estimated the Topographic Wetness Index (TWI) threshold based on the inundation curve calculated by the spatial window and to identify locations susceptible to waterlogging (Jalayer et al., 2014). Taking into account nine types of factors, it could predict flood through weighted superposition processing by GIS (Mukherjee and Singh, 2019). The statistical methods are simple, practical and easy to operate, mainly used for risk assessment and sensitivity analysis. However, it relies on historical statistics and lacks prediction process, so it often make semi-quantitative prediction.

## 2.3 Data-driven models

75 Data-driven models can numerically predict the flood solely based on historical data without requiring knowledge about the underlying physical processes. They are used to induce regularities and patterns, providing easier implementation with low computation cost, as well as fast compared to physical models (Faizollahzadeh Ardabili et al., 2018). Machine learning methods have contributed greatly to the development of prediction systems over the past two decades, providing better performance and cost-effective solutions. Characteristics of the methods need to be clarified with respect to the type and amount of available training data, and the type of prediction task, e.g., water level and streamflow. Jia (2022) classified urban catchment areas to realize the waterlogging risk prediction based on unmanned aerial vehicle images and machine learning algorithms. Puttinaovarat (2020) proposed a novel flood forecasting system based on fusing meteorological, hydrological, geospatial, and crowdsourced big data in an adaptive machine learning framework. EPSs were demonstrated to have the capability for improving model accuracy in flood modeling (Zhang et al., 2018). The accuracy of prediction is improved through DWT, which decomposes the original data into bands, leading to an improvement of flood prediction lead times. 85 Neural networks have been widely used for flood prediction. Kim (2016) developed an ANN forecast model for hourly lead time consisting of meteorological and hydrodynamic parameters of three typhoons. Danso-Amoako (2012) provided a rapid system for predicting floods with an ANN, an  $R^2$  value of 0.70 for the ANN model proved that the tool was suitable for predicting flood variables with a high generalization ability. Kourgialas (2015) created a modeling system for the prediction of extreme flow based on ANNs 3 h, 12 h, and 19 h ahead of the flood, which was more effective than conventional hydrological models. In hourly forecasting, NARX worked better in short-term lead-time prediction compared to BPNN. The NARX network produced an average  $R^2$  value of 0.7, showing that it is effective in urban flood prediction (Chang et al., 2014). Some studies defined waterlogging prediction as a classification problem. By defining waterlogging prediction as a binary classification problem, Ke (2020) divided disasters record into flood and non-flood events and used 14 models for comparison . 90

95 Some studies used regression to predict the change of waterlogging water level. Wu (2020) constructed a regression model with deep learning algorithm, named Gradient Boosting Decision Tree to predict the depth of urban flooded areas (GBDT). Combined the GBDT model with hydrological variables, they learned the relationship between each condition factor and the occurrence of waterlogging through training, then predicted the range and depth of waterlogging.

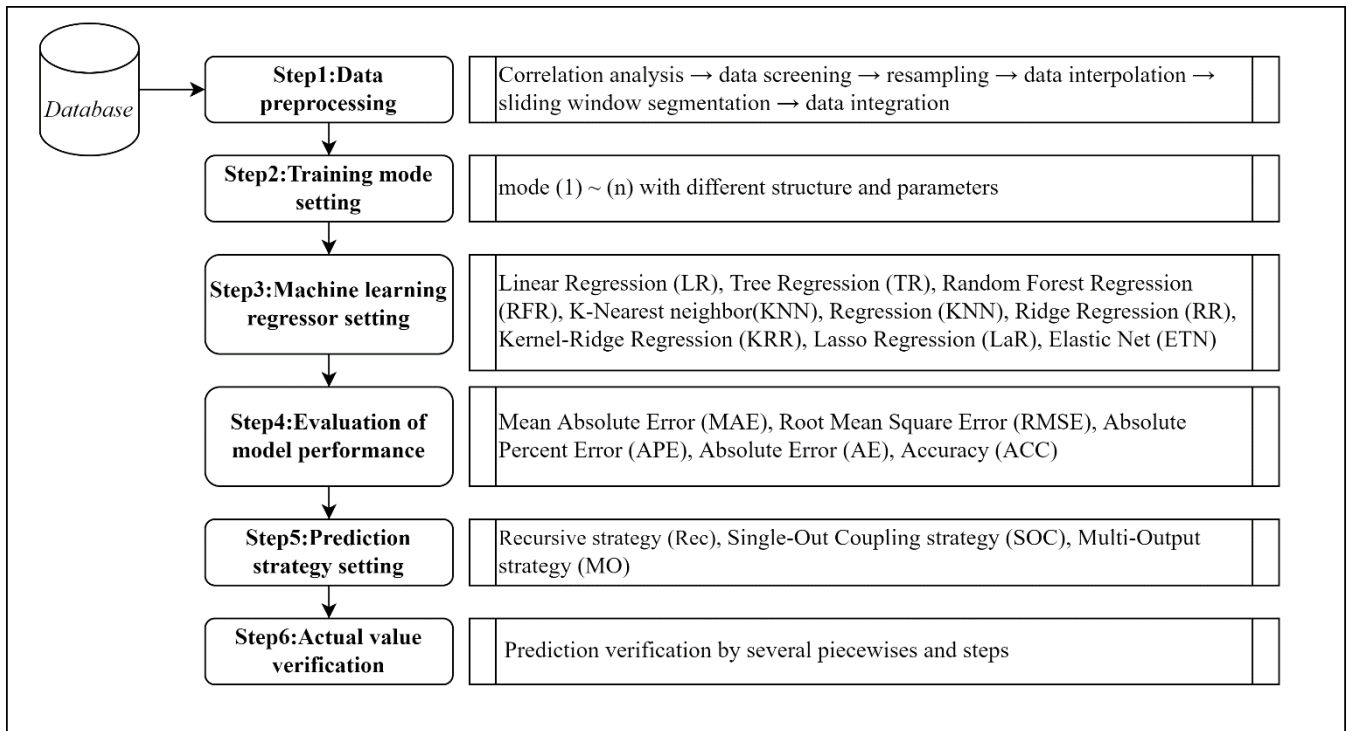
## 2.4 Hybrid machine learning methods

100 Most of the research used a single algorithm or model to predict and worked in different datasets to test the generalization ability of the model. To improve the quality of prediction, an ever-increasing trend in building hybrid machine learning methods had been developed. Hybrid machine learning methods were numerous such as FFRM–ANN (Hsu et al., 2010), ANN-hydrodynamic model, SVM–FR (Tehrany et al., 2015) WNN–BB, RNN–SVR (Hong, 2008). The application of machine learning methods to predict waterlogging disasters also had many shortcomings. If the data was scarce or does not cover  
105 varieties of tasks, their ability to learn decreased. The second aspect was the performance of each machine learning algorithm, which might vary across different types of tasks. For example, some algorithms might perform well for short-term predictions, but not for long-term predictions. These characteristics of the algorithms needed to be clarified with respect to the available training data and the type of prediction task.

## 3 Methodology

### 110 3.1 MSMWP Framework

Accumulated rainfall is one of the most direct factors affecting the formation of waterlogging. Through data correlation analysis, we conclude that there is a certain functional relationship between rainfall and waterlogging depth, which is related to soil permeability, impervious area, air humidity, and drainage system capacity in this area.



115 **Figure 1: The Multi-strategy-mode waterlogging prediction framework (MSMWP Framework).**

Due to the advantages of a black-box model in data-driven methods, machine learning methods can summarize these factors into an overall mechanism. Making full use of the characteristics of accumulated rainfall data will help improve the accuracy of waterlogging prediction.

120 To improve the accuracy of waterlogging depth prediction, this paper proposes a prediction framework (As shown in **Figure 1**) for urban waterlogging depth called MSMWP (Multi-strategy-mode waterlogging prediction) based on a variety of machine learning strategies, modes, and different algorithms for time series data. In this framework, the process of waterlogging prediction is shown as follows.

### 3.2 Working process

#### Step1. Data preprocessing

125 Statistical analysis, box-plot tests and correlation analysis were used to deal with missing values and outliers. Redundant data were eliminated according to the configuration conditions of the model, and an interpolation method was selected to impute the missing data after unifying the data sampling rate. Data processing goes through five steps: (1) Correlation analysis. Calculate the correlation of various meteorological data (rainfall, wind speed, temperature, minimum pressure etc.) and waterlogging depth. (2) Data screening. Use domain knowledge to set thresholds to identify abnormal data. (3) Resampling.

130 Different sensors have different working mechanisms so the sampling time interval is different. The sampling interval is unified

through Resampling function in Python to prepare for model training. (4) Data interpolation. Data interpolation is used to complete the data after resampling to make the time series continuous and fit the real situation. (5) Sliding window segmentation and data integration. According to the mode structure requirements, the time series are sliding segmented and input model by data integration.

## 135 Step2. Training mode setting

In this paper, the accumulated rainfall data set ( $R$ ) and the historical waterlogging depth data set ( $D$ ) are used to predict the waterlogging depth in the future. By adjusting the data combination method  $\Phi$ , a new data set  $X$  can be constructed by Eq. (1):

$$X = \Phi(R, D) \quad (1)$$

140 For each input data  $x_i$ , it is the vector combining  $r_i (r \in R)$  and  $d_i (d \in D)$  in the set sharding mode; vector  $r_i$  can be represented by  $[r_{i+1} \ r_{i+2} \ \dots \ r_{i+m-1} \ r_{i+m}]$  and vector  $d_i$  can be represented by  $[d_{i+1} \ d_{i+2} \ \dots \ d_{i+n-1} \ d_{i+n}]$ . The sharding mode is realized by adjusting the sliding window size  $m$  and  $n$ . The combined input vector  $x_i$  can be represented as  $[r_{i+1} \ r_{i+2} \ \dots \ r_{i+m-1} \ r_{i+m} \ d_{i+1} \ d_{i+2} \ \dots \ d_{i+n-1} \ d_{i+n}]$ . Through the continuous iteration of  $i$  the sliding window can loop through all the training data and combine it into the input data set  $X$ , (Eq. 2 to 9) which is a high-dimensional matrix.

$$145 \quad R = [r_1 \ r_2 \ r_3 \ r_4 \ \dots \ r_{l-1} \ r_l] \quad (2)$$

$$r_i = [r_{i+1} \ r_{i+2} \ \dots \ r_{i+m-1} \ r_{i+m}], r \in R \quad (3)$$

$$D = [d_1 \ d_2 \ d_3 \ d_4 \ \dots \ d_{l-1} \ d_l] \quad (4)$$

$$d_i = [d_{i+1} \ d_{i+2} \ \dots \ d_{i+n-1} \ d_{i+n}], d \in D \quad (5)$$

$$x_i = [r_i \ d_i] = [r_{i+1} \ r_{i+2} \ \dots \ r_{i+m-1} \ r_{i+m} \ d_{i+1} \ d_{i+2} \ \dots \ d_{i+n-1} \ d_{i+n}] \quad (6)$$

$$150 \quad \begin{cases} i \in (1, l - m + 1), m \geq n \\ i \in (1, l - n + 1), m < n \end{cases} \quad (7)$$

$$X = \begin{bmatrix} r_1 & r_2 & \dots & r_m & d_1 & d_2 & \dots & d_n \\ r_2 & r_3 & \dots & r_{m+1} & d_2 & d_3 & \dots & d_{n+1} \\ r_3 & r_4 & \dots & r_{m+2} & d_3 & d_4 & \dots & d_{n+2} \\ r_4 & r_5 & \dots & r_{m+3} & d_4 & d_5 & \dots & d_{n+3} \\ \vdots & \vdots & & \vdots & \vdots & \vdots & & \vdots \\ r_{i-1} & r_i & \dots & r_{m+i-1} & d_{i-1} & d_i & \dots & d_{n+i-1} \\ r_i & r_{i+1} & \dots & r_{m+i} & d_i & d_{i+1} & \dots & d_{n+i} \end{bmatrix} \quad (8)$$

$$y = \begin{bmatrix} y_1 \\ y_2 \\ \vdots \\ y_{i-1} \\ y_i \end{bmatrix} \quad (9)$$

Where  $y$  is the label of the model, which stands for the output of the regressor, and it is a vector with the same length as  $X$ .

There are five training modes under the MSMWP Framework.

155 **(1) Only multi-R input (R)**

Through the analysis of data correlation, the maximum correlation coefficient between rainfall and waterlogging was 0.61. It can be concluded that there is an obvious positive correlation between rainfall and waterlogging depth, which proves that it is feasible to use accumulated rainfall to predict waterlogging.

**(2) Multi-R and single-D input (mR&D)**

160 In reality, waterlogging often occurs after raining for a period of time. Therefore, waterlogging has a certain delay characteristic compared with rainfall. The fluctuation of waterlogging is a continuous physical process affected by multiple factors, so the waterlogging depth at the next moment is often the most closely related to the previous one. In multi-R and single-D mode, only one historical waterlogging data is selected as input.

**(3) Single-R and multi-D input (R&mD)**

165 This situation corresponds to multi-R and single-D, in which both rainfall and waterlogging data are taken into consideration as input, but the proportion of rainfall input is reduced, while the proportion of waterlogging depth input is increased.

**(4) Multi-R and multi-D input (mR&mD)**

This mode also covers more rainfall and waterlogging depth information, because it can better extract the characteristics of time series, balance the weight of the two data sets coupling, and better conform to the law of time change of rainfall-  
170 waterlogging.

**(5) Expanded-multi-R and multi-D (E-mR&mD)**

This paper proposes a new training mode for waterlogging prediction. The prediction value is not only related to the past rainfall and the rainfall at the current time point, but the subsequent change of rainfall will largely affect waterlogging depth. This mode makes up for the lack of future rainfall information in mode (4) and can better reflect the dominant role of accumulated rainfall. In real applications, real-time rainfall forecast data will be added. Due to the lack of rainfall forecast data for this area, sliding rainfall data is used as an approximation. There are two main reasons for this. Firstly, the expanded part (15-30 minutes) only accounts for 12.5%-25% of the sliding rainfall (2 hours or longer) and has little effect on the whole. Second, rainfall forecasts, especially short-term forecasts of heavy rains, are now more than 90 percent accurate. It is important to note that the article does not consider only the multi-D input, because this mode building of input matrix  $X$  contains only  
180 waterlogging depth information changes over time and does not consider the size of the accumulated rainfall. In this mode, with the extension of prediction time, the prediction ability of the model decreases rapidly, so it is not suitable for long-term warning. In the latter part of this paper, the results of this mode are discussed.

**Step3. Machine learning regressor setup**

Prediction of future data based on historical data is here defined as a regression problem. We adopt the sliding window to slice  
185 the time series data in cycles. Traversal is performed in order of data index to preserve the characteristics of continuous changes in the time dimension of the data. In this paper, eight types of regression algorithms are selected, which can simultaneously perform one-dimensional and multidimensional regression output. They are **Linear Regression (LR)**, **Tree Regression (TR)**,

**Random Forest Regression (RFR), KNN Regression (KNN), Ridge Regression (RR), Kernel-Ridge Regression (KRR), Lasso Regression (LaR) and Elastic Net (ETN).** The above eight methods are frequently employed in the field of time series prediction. As a simple regression method, linear regression has good applicability although it is sensitive to outliers. On the foundation of general linear regression, the objective function of ridge regression adds the L2 regularization, which provides the best fitting error and makes the parameters as simple as possible, giving the model excellent generalizability. Yu (2007) realized hydrological time series prediction using ridge regression algorithm based on feature space. Additionally, the Kernel Ridge regression approach was effectively used to the prediction of monthly mean precipitation (Ali et al., 2020). Shen (2021) took human action prediction by EEG signals as an example to study multivariate time series prediction based on elastic net and high order fuzzy cognitive map. Normalization of Lasso regression is achieved by applying L1 regularization to the loss function. Wang (2017) used Lasso regression to accurately predict stock market fluctuations. A tree regression model was created to analyze and predict time series of air pollution since tree regression can describe complex nonlinear data (Gochevalieva et al., 2019). Wu (2017) used random forest regression algorithm to analyze the time series of weekly influenza-like incidence and made good findings. Martinez (2017) proposed a time series prediction method using KNN regression algorithm.

#### **Step4. Evaluation of model performance**

In this paper, the evaluation is mainly divided into two stages: test stage and prediction verification stage. Among them, the indicators in the test stage mainly include the following three categories:  $R^2$  score, Mean Absolute Error (**MAE**) and Root Mean Square Error (**RMSE**). In the verification stage of actual value, a time series of a specific length is taken to carry out the evaluation from two parts. Firstly, in order to test the model's ability to predict the variation trend of waterlogging depth, time series covering water rising, platform and falling are intercepted. Secondly, by comparing the predicted value with the actual value, the Absolute Percent Error (**APE**) is used to calculate the model's ability of correct prediction, namely Accuracy (**ACC**). However, it is worth noting that the APE cannot be completely evaluated the model, so Absolute Error (**AE**) is needed to supplement the evaluation. Because when the waterlogging depth is low, a large APE may correspond to a small AE.

#### **Step5. Prediction strategy setting**

Different mode settings can greatly affect the training results of the model, and the training strategies are also crucial. This paper compares three training strategies, which are Recursive, Single-Output Coupling and Multi-Output. The optimal prediction strategy is selected by comparing their performance on the test set of waterlogging prediction and the actual value test.

$Y$  can be divided into two parts, the historical data  $Y_{HIS}$  and the prediction data  $Y_{PRE}$ . The time interval of each data set should be uniform. Even if the sensor sampling rate is different, it should be processed uniformly. We define this time interval as  $\tau$  (Ben Taieb et al., 2012). In order to predict  $s$  time steps after the current time  $t$ , the total time of prediction is defined as  $t$ , where  $t = \tau \times s$ , according to the number of time steps covered by the time span of the desired output variable. Therefore,



the set of desired output variables can be expressed as  $Y_T, Y_T \in Y_{PRE}$ . In a certain span of time  $T$ , between  $Y_{HIS}$  and  $Y_{PRE}$ ,  
 220 we use a common notation  $f^*$  in Eq. (11) to denote the functional dependency.

$$y_{pre} = f(y_{his}) + b_i \quad (10)$$

where  $y_{his}$  is the inputs of each set;  $y_{pre}$  stands for outputs, the functional relationship between them can be expressed as  $f$ ;  $b$  stands for modeling error, disturbances or noise.

$$Y_{PRE} = f^*(Y_{HIS}) + \sum b_i \quad (11)$$

225 **i. Recursive strategy (Rec)**

The intuitive forecasting strategy is the Recursive (also called Iterated or Multi-Stage) strategy. The result of the prediction of the first step is embedded into the final element of the input vector for the subsequent prediction, and the result of the prediction of the second step is obtained. In Eq. (12), when  $s=1$ ,  $y_t, y_{t-1}, \dots, y_{t-n}$  can be used to predict  $\hat{y}_{t+1}$ . When  $s=2$ , the previous predicted value  $\hat{y}_{t+1}$  is used to replace the first element of the input vector, and the following elements are replaced in turn.

230 The original last element  $y_{t-n}$  is removed from the input vector. The model is iterated recursively, and the mixed vector of historical data and forecast data is used as the model input. The algorithm for this method can be expressed as **Algorithm 1**. The prediction vector  $\hat{\mathbf{y}}_{pre}[\mathbf{p}]$  in the first step can be obtained based on historical data. Then the final element of the input vector  $X_{pre}[\mathbf{p}][d_s - 1]$  is replaced by  $\hat{\mathbf{y}}_{pre}[\mathbf{p} - \mathbf{1}]$  and the new  $\hat{\mathbf{y}}_{pre}$  is obtained through the input model. And so on, move the value of  $X$  forward one bit and add the new predicted value.

$$235 \quad \hat{y}_{t+s} = \begin{cases} \hat{f}(y_t, y_{t-1}, \dots, y_{t-n}), & s = 1 \\ \hat{f}(\hat{y}_{t+s-1}, y_{t+s-2}, \dots, y_{t+s-n}), & s = 2 \\ \vdots & \\ \hat{f}(\hat{y}_{t+s-1}, \dots, \hat{y}_{t+s-n}), & s \in (2, n] \end{cases} \quad (12)$$

---

**Algorithm 1.** Recursive Strategy

---

**Input:**  $D = \{X, Y_{HIS}\}$ , Training Dataset.

**Input:**  $Reg = \{Regressor^{(n)}\}$ ,  $n$  kinds of regression method.

**Input:**  $M = \{mode(1 \text{ to } 5)\}$ , Mode.

**Output:**  $\hat{y} = \{\hat{y}_{pre}\}$ , the prediction of the output of the selected series.

**1** Using training data, different models and regressors were selected for model training.

**2 for**  $k \in (1, N)$  **do**, test model for  $N$  times, select the best output.

**3 for**  $p \in \{1, s\}$  **do**.

**4**  $d_s = len(x_i)_{x_i \in \{X\}}$ , recursive index

**5**  $APE = \left| \frac{\hat{y}_{pre}^{(p)} - y^{(p)}}{y^{(p)}} \right|$

**6**  $AE = \left| \hat{y}_{pre}^{(p)} - y^{(p)} \right|$

**7**  $MSE = \sum_m^1 (y - \hat{y})$

**8**  $e(k) = \{APE^{(k)}, AE^{(k)}, MSE^{(k)}\}$ , comprehensive error evaluation.

**9**  $\hat{y}_{pre}[p] = model.predict(X_{pre}[p])$

**10**  $X_{pre}[p][d_s - s - 1] = X_{pre}[p - 1][d_s - s]$

**11** .....

**12**  $X_{pre}[p][d_s - 2] = X_{pre}[p - 1][d_s - 1]$

**13**  $X_{pre}[p][d_s - 1] = \hat{y}_{pre}[p - 1]$

**14 end**

**15**  $k = arg \min_{k \in \{1 \dots N\}} e(k)$ .

**16**  $\hat{y} = \{y_{pre}^{(k)}\}$ .

**17 return**  $\hat{y}$ .

---

## ii. Single-Out Coupling strategy (SOC)

The Single Output Coupling strategy is similar to the Direct strategy proposed by Hamzacebi (2009). Different machine learning models have been used to implement the Direct strategy for multi-step ahead forecasting tasks, for instance neural networks (Khashei and Bijari, 2010), nearest neighbors (Sorjamaa et al., 2007) and decision trees (Guimarães Santos and Silva, 2014). It consists of forecasting each horizon independently from the others. The biggest difference from Recursive strategy is that Single-Out Coupling does not use any approximated values to compute the forecasts, so having no accumulation of errors. In this strategy, error of the previous prediction results will not have a great influence on the later prediction results.

Each  $f$  is supported by a corresponding model and trained with its own independent data (Eq. 13). When  $s=1$ , it is the same as one-step prediction. When  $s>1$ , the model makes prediction across the time interval of  $s$  steps. Finally, the results of Single-Out  $y_{t+1}, y_{t+2}, \dots, y_{t+s-1}, y_{t+s}$  coupling by Eq. (14) into a new forecast time series  $[y_{t+1}, y_{t+2}, \dots, y_{t+s-1}, y_{t+s}]$ .

$$y_{t+s} = f_s(y_t, y_{t-1}, \dots, y_{t-n+1}) \quad (13)$$

$$\begin{cases} y_{t+1} = f_1(y_t, y_{t-1}, \dots, y_{t-n+1}) + b_i \\ y_{t+2} = f_2(y_t, y_{t-1}, \dots, y_{t-n+1}) + b_i \\ \vdots \\ y_{t+s} = f_s(y_t, y_{t-1}, \dots, y_{t-n+1}) + b_i \end{cases} \quad (14)$$

### 250 **iii. Multi-Output strategy (MO)**

The two previous strategies (Recursive and Single-Out Coupling) may be considered as Single-Output strategies, which neglects the existence of stochastic dependencies between future values and consequently affects the forecast accuracy. Multi-Output strategy requires the design of Multiple-Response modeling techniques. The output is no more a scalar quantity but a vector of length  $s$ . Using only one model, output a time series of  $s$  time intervals (Eq. 15). Compared with Single-Output Coupling strategy, this strategy has simple operation and fast calculation. The disadvantage is that some regression algorithms such as Bayesian regression, GBRT and Adaboosting, do not support multidimensional output directly.

$$[y_{t+s}, y_{t+s-1}, \dots, y_{t+2}, y_{t+1}] = f_m(y_t, y_{t-1}, \dots, y_{t-n+2}, y_{t-n+1}) + \vec{b}_t \quad (15)$$

Where  $f_m$  is vector-valued function.  $b_i$  is a noise vector.

### **Step6. Actual value testing**

260 In order to prevent over-fitting phenomenon or insufficient prediction, it is necessary to test the performance of the framework in actual waterlogging data sets after completing training and testing.  $N$  groups of continuous time series are selected for actual value test and the application results in actual data will be discussed.

## **4 Case Study**

### **4.1 Research area and objectives**

265 As an important city in south China and a representative of China's special economic zones, Shenzhen is one of the core cities of the Guangdong-Hong Kong-Macao Greater Bay Area. Over the past 40 years, Shenzhen's GDP has grown rapidly from 270 million yuan in 1980 to 2,767.024 billion yuan in 2021.

In the process of rapid urban development, Shenzhen is also facing many challenges from natural disasters and accidents, which often bring serious threats to urban public safety and security. Shenzhen, located in the southeast coast of China, has a subtropical monsoon climate. Influenced by the Pacific monsoon current, it is greatly influenced and receives sufficient rainfall all year round. The rainfall is unusually concentrated from June to September every year, and heavy rains or extremely heavy rains occur frequently. In particular, the frontal rainfall in Shenzhen area is subject to topography, which often forms local sudden rainstorms with short duration. According to the statistics of rainfall data in Shenzhen from 1960 to 2012, there were 8.8 times of heavy rainfall with daily rainfall of more than 50mm, 75.2% of which were heavy rain, 21.4% of which were 270 torrential rain, and 3.4% of which were extremely torrential rain (Chen et al.,2020). In May 2014, Pingshan District, Shenzhen,

was hit by a sudden rainstorm, with 261mm of rainfall in three hours, causing 150 houses to be flooded and 2,600 people affected. The rainstorm event on April 11, 2019 saw the heaviest rainfall in April since Shenzhen began meteorological records, and it led to 11 deaths (Liu et al., 2020).

This paper focuses on the areas vulnerable to waterlogging in Shenzhen. A data-driven prediction model of urban rainstorm waterlogging depth is established, which can realize the advance perception and accurate prediction of water level change of a waterlogging point.

280

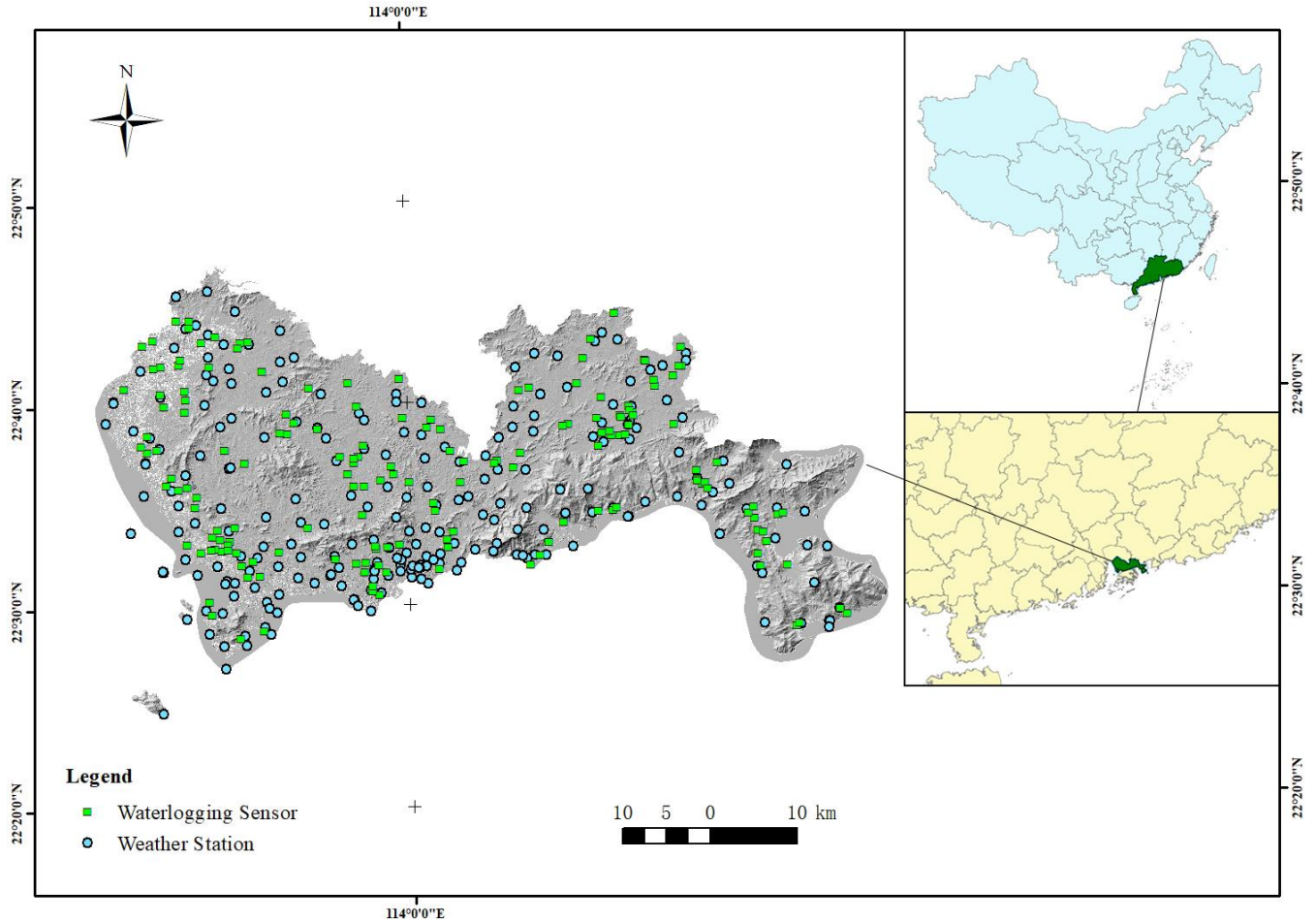


Figure 2: Waterlogging sensors and weather stations in Shenzhen.

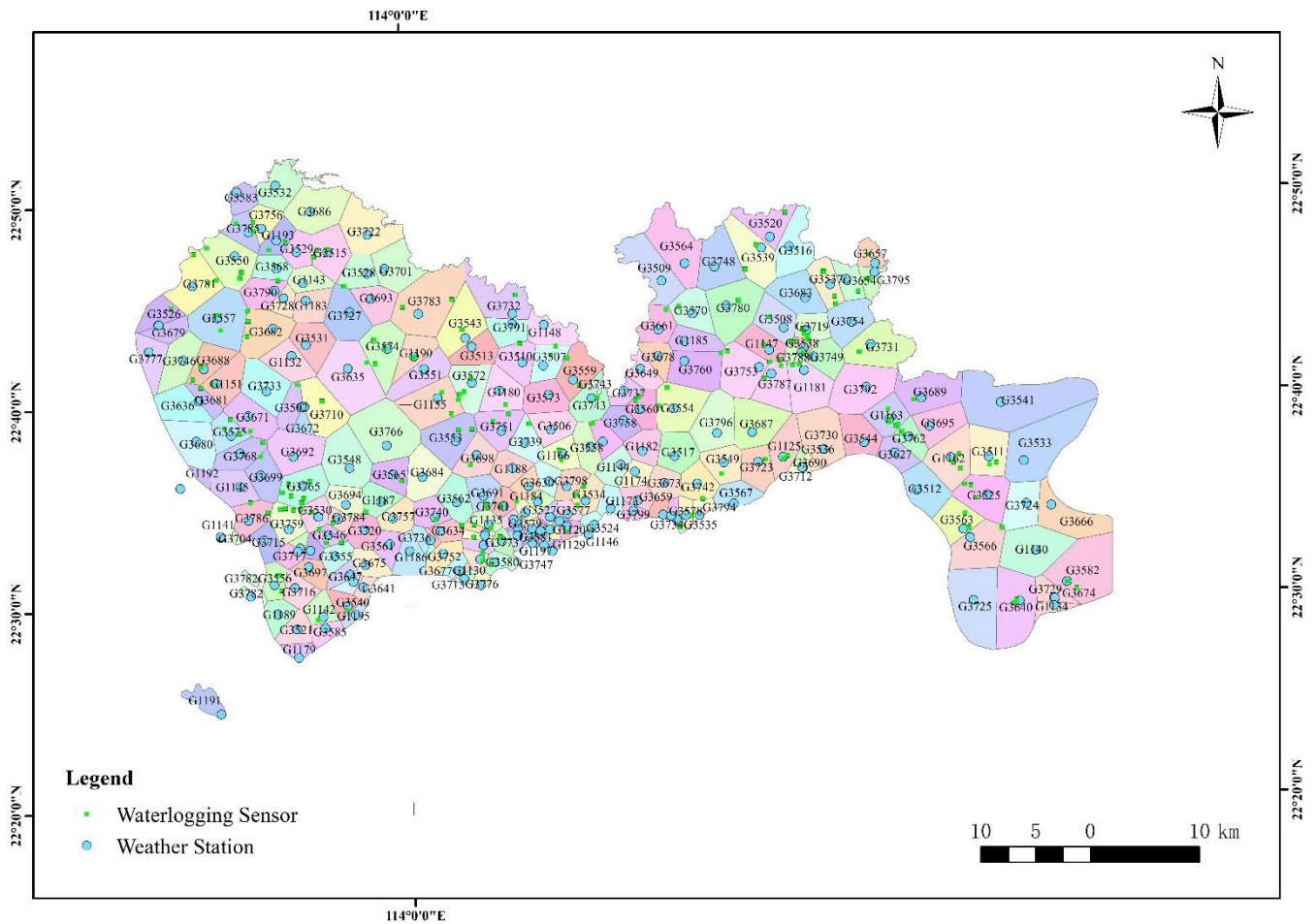


Figure 3: Rainfall region division obtained by Tyson polygon algorithm in Shenzhen.

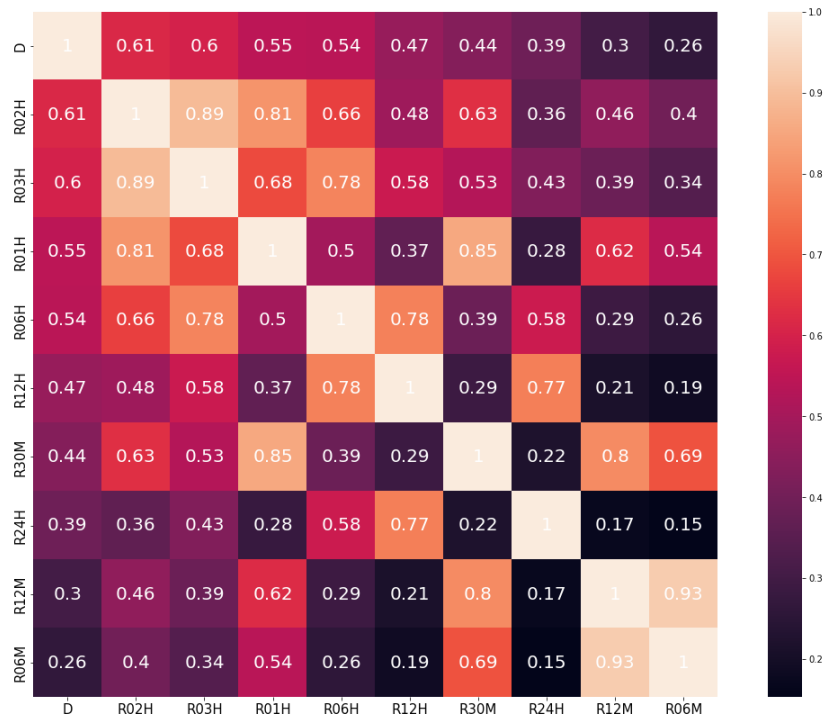
#### 4.2 Step1: Data preprocessing

There are two main sources of the data used in the study. The first is the meteorological observation data of Shenzhen provided by the Shenzhen Meteorological Bureau. The data covers the time ranging from March 8th, 2019, to August 17th, 2020, including the meteorological observation data of rainfall, wind speed, visibility, temperature and humidity at 242 stations in the city. The second is the waterlogging depth sensor data of 170 observation stations in the city provided by Shenzhen Municipal Water Bureau, with an accuracy of 1 cm. Changes in waterlogging depth affect parameters such as refractive index and pressure. The sensor senses the changes and converts physical signals into electrical signals, which are transmitted to the database through optical fibers. The longest time range is from January 1st, 2019, to July 18th, 2020.

Observation points of meteorological data and waterlogging depth data cover all 10 districts of Shenzhen, and their spatial distribution is shown in the **Figure 2**. Tyson polygon algorithm is used to divide regions according to the geographical location of meteorological stations, and the rainfall coverage of each station is obtained. The polygon surface of each region indicates

that meteorological data of this station is used in this region (**Figure 3**)(Men et al., 2020). Through this classification form, it is determined that 170 observation stations of waterlogging depth have unique corresponding meteorological input, which unified the model input and output relationship in spatial dimension.

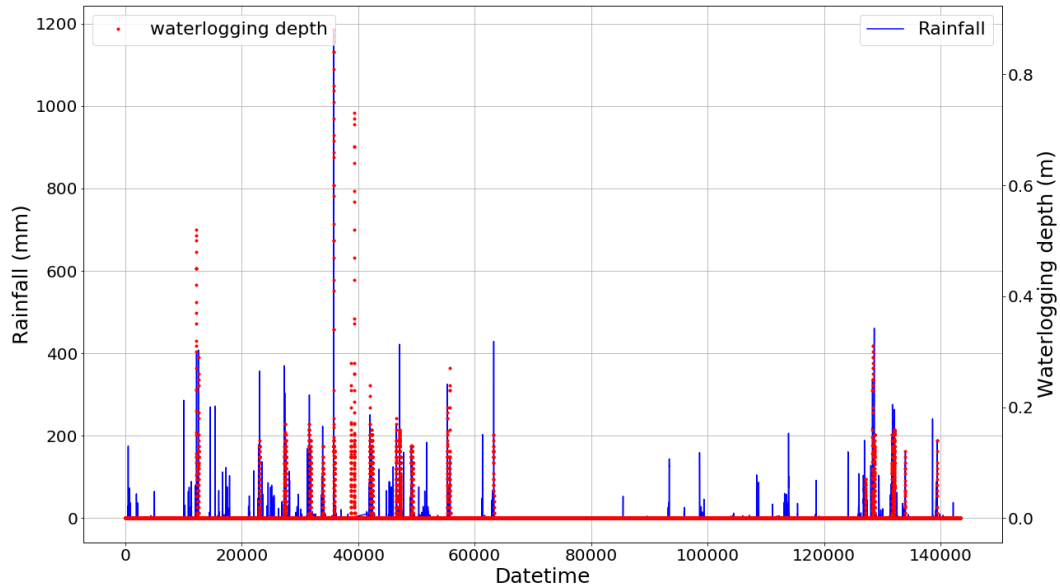
Due to the fact that waterlogging sensors are configured in batches, the total operating time and data storage capacity of each sensor varies. Among 170 waterlogging sensors, we selected the sensor\_123 with a long operation time and a large amount of data as the research object. Through data analysis and testing the consistency of meteorological data, it has been determined that precipitation is the most influential element on waterlogging depth. Rainfall data include sliding rainfall with different window lengths, *R10M R30M, R01H R02H, R03H, R06H, R12H, R24H* and *R72H* for 10 minutes, 30 minutes, 1 hour, 2 hours, 3 hours, 6 hours, 12 hours, 24 hours and 72 hours of sliding rainfall values. *D* means the waterlogging depth. Through the data correlation analysis between sliding rainfall and waterlogging depth data of each station (**Figure 4**), it is concluded that *R02H* has the largest correlation degree of **0.61** with waterlogging depth. In the **Figure 4**, the darker the color, the lower the correlation, and the lighter the color, the higher the correlation.



**Figure 4: Data correlation analysis of rainfall data at weather station\_G3795 and waterlogging depth data at sensor\_123, the maximum correlation coefficient with D is 0.61 (D and R02H) and the minimum is 0.26 (D and R06M).**

Due to the special working mechanism of the waterlogging depth sensor, the data sampling rate is not uniform. In the period when there is no water accumulation (the waterlogging depth is 0), it is collected at irregular intervals of several hours or even several days. In the period when the water level changes dramatically, the sensor can collect data a per minute at the fastest, which brings some difficulties to our research. Considering that the interval of rainfall data is 5 minutes, in order to balance

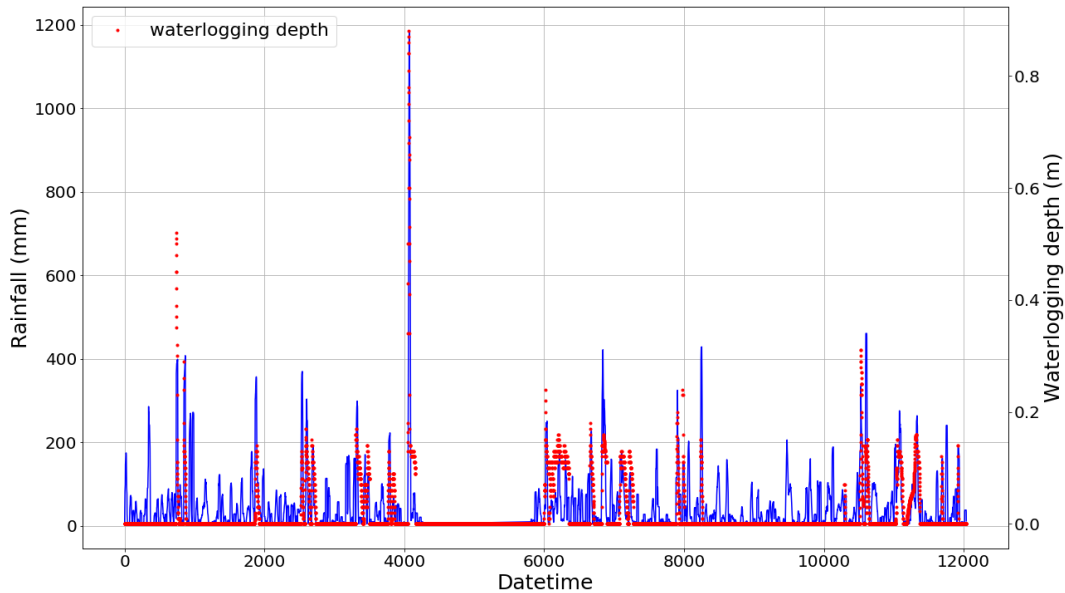
the model accuracy and training efficiency, the data of waterlogging depth is resampled first, which is consistent with the rainfall data on the time scale. Then data interpolation is performed on the newly added blank interval of resampling, which does not destroy the original characteristic attributes of the data. Since the fluctuation process of waterlogging is a smooth and continuous process, the waterlogging-depth curve is smooth. Five commonly used interpolation methods, Cubic, Quadratic, Linear, Zero and Nearest, are used and compared in this paper. The optimal interpolation method is determined by comparing the MAPE of the interpolation data  $Y_{insert}$  and the actual data  $Y_{true}$  and observing the fitting of the interpolation curve and the actual one. Finally, the Linear interpolation method is applied. (Cubic and Quadratic may have negative values, while Zero and Nearest have obvious ladder characteristics, which are not consistent with the continuous characteristics of the waterlogging depth). After analysis, we obtain a total of 527 non-zero interpolation data, accounting for 0.46% of the total data set (143,424). Interpolation data are mainly concentrated at the beginning and end of the water, and the values are generally low. This part of data preprocessing unified the model input and output relationship in the time dimension, and the time range of the final rainfall and waterlogging depth data was unified from 00:00:00 on March 8th, 2019, to 23:55:00 on July 18th, 2020, with an interval of 5 minutes.



**Figure 5: Rainfall and waterlogging from 00:00:00 on March 8th, 2019, to 23:55:00 on July 18th, 2020 (with an interval of 5mins).**

After determining the location correlation between rainfall stations and waterlogging observation stations and unifying the time scale, the two data were integrated into one data. From **Figure 5**, it can be seen that in most of the time interval, when the rainfall is 0, the frequency of waterlogging accumulation data is less. This is because there is no rainfall in most time interval, which is consistent with the reality. Despite the fact that the proportion of impervious water surface in urban construction areas increases annually the frequency of waterlogging accumulation caused by surface runoff has decreased due to the continuous improvement of drainage system construction and the application of sponge city engineering. However, in the event of strong

typhoon or heavy rain, the drainage volume still cannot meet the needs of urban drainage. This would overload the drainage system and allow large amounts of urban surface runoff to accumulate in low-lying areas. In this study, considering the factors of surface infiltration, vegetation leaf canopy interception effect and evaporation, surface runoff cannot be formed under extremely low rainfall and non-rainfall, so the waterlogging depth is always 0. In order to avoid the interference of such factors on model training, the minimum rainfall threshold is set here as 5 millimeters. By searching the entire data set, lock the start and end time stamps of each rainfall event interval, named  $R\_STA$  and  $R\_END$ , Rainfall duration is denoted by  $R\_DUR$ . In the entire data set,  $R\_STA$  and  $R\_END$  are paired to represent the rainfall start and end index. A total of 251 rainfall event time series (982.34 hours in total, average rainfall duration is 3.91 hours) were obtained by screening 143,424 data points from this site, and a new dataset  $Rain\_Set$  with 12,309 data points (**Figure 6**) was constructed. This method eliminates the interference of a large number of sunny weather inputs to the model, which is proved to improve the efficiency and accuracy of the model calculation.



350 **Figure 6: Rainfall (blue solid line) and waterlogging (red dotted line) according to  $Rain\_Set$ .**

### 4.3 Step2: Training mode setting

Based on MSMWP framework, after data preprocessing, different training modes are constructed by changing  $\phi$  to adjust  $R$  and  $D$  combination mode. Each rainfall time series is processed by cyclically cutting in the form of sliding windows, we can get a matrix  $R$  as Eq. (16). In the five modes, input vectors of different dimensions can be constructed by adjusting the values of  $\mathbf{m}$  and  $\mathbf{n}$ , and multiple models would be trained. The goal of the model is to accurately predict the waterlogging depth at a certain time. Assume that the current time is  $t$ , and the predicted target value of the waterlogging depth in the future is  $y_{t+1}, y_{t+2}, y_{t+3}, \dots, y_{t+s-1}, y_{t+s}$ . When  $\mathbf{m}=6$  and  $\mathbf{n}=1$ , the model selects rainfall in 30 minutes and waterlogging in 5 minutes



before time  $t$  as input for training. When  $\mathbf{m}=12$  and  $\mathbf{n}=3$ , the model selects the rainfall in 1h and waterlogging in 15minutes before time  $t$  as input for training. Under different combination conditions of  $\mathbf{m}$  and  $\mathbf{n}$ , the five combination modes are selected as shown in **Table 1**:

**Table 1: Mode (1) to (5) with different parameter  $\mathbf{m}$  and  $\mathbf{n}$ .**

(1) Only multi-R input	(2) Multi-R and single-D input	(3) Single-R and multi-D input	(4) Multi-R and multi-D input	(5) Expanded-multi-R and multi-D
m=6	m=6, n=1	m=1, n=6	m=6, n=3	m=6(3:3), n=3
m=12	m=12, n=1	m=1, n=12	m=12, n=3	m=12(9:3), n=3
m=18	m=18, n=1	m=1, n=18	m=18, n=3	m=18(12:6), n=3
m=24	m=24, n=1	m=1, n=24	m=24, n=3	m=24(18:6), n=3
—	—	—	m=6, n=6	m=6(3:3), n=6
—	—	—	m=12, n=6	m=12(9:3), n=6
—	—	—	m=18, n=6	m=18(12:6), n=6
—	—	—	m=24, n=6	m=24(18:6), n=6

$$Rainfall\ set: R = \begin{bmatrix} [ 5, 18, 41, 63, \dots, 97, 99, 130, 147 ] \\ [ 18, 41, 63, 74 \dots 99, 130, 147, 151 ] \\ [ 41, 63, 74, 83 \dots 130, 147, 151, 158 ] \\ [ \dots \dots \dots \dots \dots \dots \dots \dots ] \\ [ 6, 4, 2, 1, \dots \dots \dots \dots, 0, 0, 0, 0 ] \\ [ 4, 2, 1, 1, \dots \dots \dots \dots, 0, 0, 0, 0 ] \end{bmatrix} \quad (16)$$

Since rainfall is the fundamental factor affecting waterlogging, the dimension of rainfall in the latter two modes is basically higher than that of waterlogging. In expanded multi-R and multi-D, the rainfall input is split with  $t$  as the dividing line to emphasize the influence of the subsequent continuous rainfall input on the model. For example,  $\mathbf{m}=12(9:3)$  means that rainfall 45 minutes before  $t$  and 15 minutes after  $t$  are selected as input.

The strategy in step 5 influences the label selection of the model. The Recursive strategy requires direct prediction of  $y_{t+1}$  and then recursion with label  $y_{t+1}$ .

#### 4.4 Step3: Machine learning regressor setting

In this paper, eight regression algorithms are selected. They are Linear Regression (LR), Tree Regression (TR), Random Forest Regression (RFR), KNN Regression (KNN), Ridge Regression (RR), Kernel-Ridge Regression (KRR), Lasso Regression (LaR) and Elastic Net (ETN), which can simultaneously perform one-dimensional and multidimensional regression output.

#### 4.5 Step4: Evaluation of model performance

The data set constructed was divided into training set and test set at a ratio of 70% and 30%. Different modes, strategies and regression algorithms were applied for training, and evaluated by **RMSE**, **MAE** and **R<sup>2</sup> score**. The curve fitting of the predicted data on the test set was compared with the actual data, and the test results of each configuration were analyzed and sorted.

$$MAE = \frac{1}{m} \sum_{i=1}^m |\hat{y}^{(i)} - y^{(i)}| \quad (17)$$

$$RMSE = \sqrt{\frac{1}{m} \sum_{i=1}^m (\hat{y}^{(i)} - y^{(i)})^2} \quad (18)$$

$$R^2 = 1 - \frac{\sum_i (\hat{y}^{(i)} - y^{(i)})^2}{\sum_i (\bar{y} - y^{(i)})^2} \quad (19)$$

#### 380 4.6 Step5: Prediction strategy setting

The Rec policy is set to replace only the last value of the waterlogging vector at a time. Single-Out Coupling strategy outputs 5 minutes, 10 minutes until the moment  $(s \times 5)$  minutes of waterlogging, so the label is  $y_{t+1}, y_{t+2}, y_{t+3}, \dots, y_{t+s}$ . Multi-Output strategy outputs the waterlogging value vector of minutes at  $(5 \text{ to } s \times 5)$  at the same time, so its label is  $[y_{t+1}, y_{t+2}, y_{t+3}, \dots, y_{t+s}]$ .

#### 385 4.7 Result and discussion

This section presents and discusses the testing results of the different mode and forecasting strategies. For each mode, we report the results obtained in the eight different regression methods. Based on the results of actual value verification, different prediction strategies are discussed.

##### 4.7.1 Testing result

390 The time series intercepted with rainfall events were integrated into a new data set, with a total of 12,039 data points. The first 70% constituted a training set with 8,428 points of data, and the last 30% constituted a testing set with 3,611 points of data. In the testing set, eight regression methods were used to test 5 modes, and the model structure inside each mode was changed by adjusting the input parameters **m** and **n**. The testing results of different modes are shown in **Table A1** to **Table A4** in **Appendix** and **Table 2**. The numbers in brackets represent the ranking of evaluation indicators (MAE, RMSE,  $R^2$ score) among different modes of the same algorithm. Bold font indicates the top results of the same algorithm with different modes. The underlined number indicates that the indicator is in the top 50% of the best results (bold) between different algorithms. Taking mode (3)-KRR as an example, in KRR optimal indicator, RMSE is 0.0051, ranking the second, MAE is 0.0013, ranking the third,  $R^2$ score is 0.9779, ranking the third, so the underlined indicator of KRR is 3.

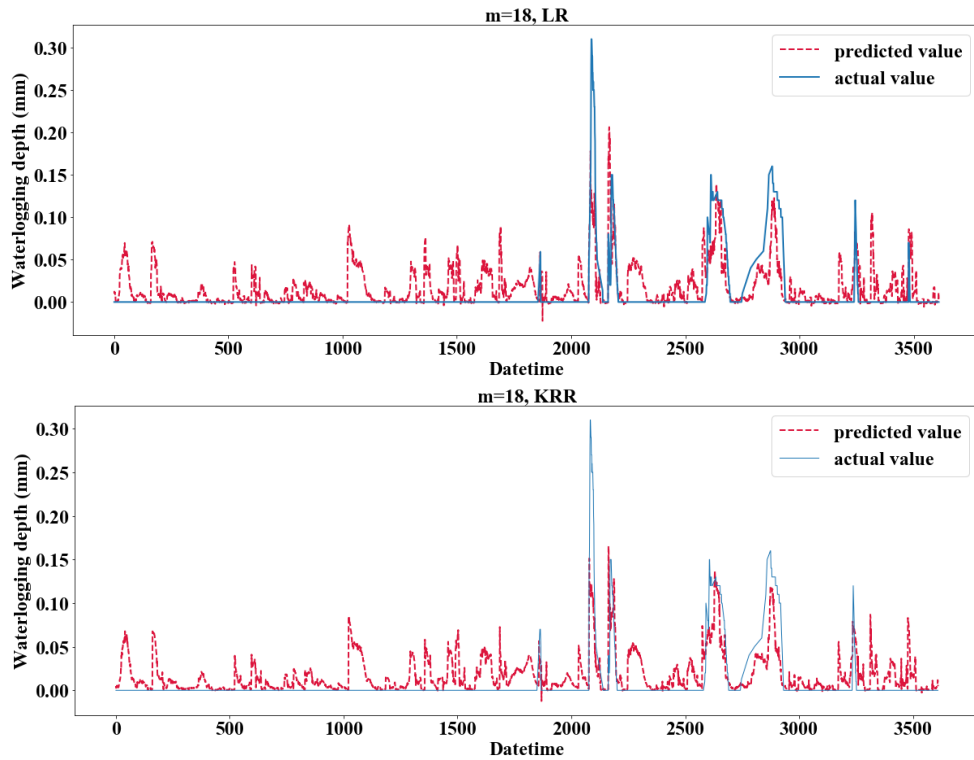
**Table 2: Testing result of mode (5) Expanded-multi-R and multi-D.**

Mode	Evaluation Indicator	Regression methods							
		LR	TR	RFR	KNN	RR	KRR	LaR	ETN
m=6(3:3) n=3	MAE	0.0011(8)	0.0014(6)	0.0010(2)	0.0168(1)	0.0024(5)	0.0024(8)	0.0199(7)	0.0191(7)
	RMSE	0.0046(8)	0.0076(6)	<b><u>0.0053(2)</u></b>	0.0336(1)	0.0061(8)	0.0061(8)	0.0308(7)	0.0314(7)
	R <sup>2</sup> score	0.9826(8)	0.9528(5)	<b><u>0.9766(2)</u></b>	0.0659(2)	0.9697(6)	0.9698(6)	0.2183(7)	0.1877(7)
m=12(9:3) n=3	MAE	0.0010(6)	0.0013(3)	<b><u>0.0010(2)</u></b>	0.0176(5)	0.0024(5)	0.0023(4)	0.0197(5)	0.0189(5)
	RMSE	0.0039(4)	0.0077(7)	0.0061(3)	0.0351(3)	0.0060(4)	0.0059(3)	0.0303(5)	0.0307(5)
	R <sup>2</sup> score	0.9870(5)	0.9506(7)	0.9686(3)	-	0.9701(4)	0.9702(4)	0.2256(5)	0.2040(5)
m=18(12:6) n=3	MAE	0.0009(4)	<b><u>0.0012(2)</u></b>	0.0011(4)	0.0181(7)	0.0023(4)	0.0023(4)	0.0194(3)	0.0185(3)
	RMSE	0.0039(4)	0.0061(2)	0.0063(4)	0.0367(7)	0.0059(3)	0.0059(3)	0.0299(3)	0.0299(3)
	R <sup>2</sup> score	0.9871(4)	0.9687(2)	0.9665(5)	-	0.9704(3)	0.9704(3)	0.2382(3)	0.2373(3)
m=24(18:6) n=3	MAE	<b><u>0.0008(2)</u></b>	0.0016(8)	0.0011(4)	0.0171(3)	0.0020(2)	0.0019(2)	<b><u>0.0191(1)</u></b>	<b><u>0.0179(1)</u></b>
	RMSE	<b><u>0.0029(2)</u></b>	0.0141(8)	0.0073(8)	0.0358(5)	<b><u>0.0054(2)</u></b>	<b><u>0.0054(2)</u></b>	<b><u>0.0293(1)</u></b>	<b><u>0.0284(1)</u></b>
	R <sup>2</sup> score	<b><u>0.9924(2)</u></b>	0.8246(8)	0.9532(8)	-	<b><u>0.9742(2)</u></b>	<b><u>0.9744(2)</u></b>	<b><u>0.2474(1)</u></b>	<b><u>0.2947(1)</u></b>
m=6(3:3) n=6	MAE	<b><u>0.0000(1)</u></b>	<b><u>0.0001(1)</u></b>	<b><u>0.0001(1)</u></b>	<b><u>0.0168(1)</u></b>	<b><u>0.0005(1)</u></b>	<b><u>0.0005(1)</u></b>	0.0199(7)	0.0191(7)
	RMSE	<b><u>0.0000(1)</u></b>	<b><u>0.0007(1)</u></b>	<b><u>0.0005(1)</u></b>	<b><u>0.0336(1)</u></b>	<b><u>0.0025(1)</u></b>	<b><u>0.0025(1)</u></b>	0.0308(7)	0.0314(7)
	R <sup>2</sup> score	<b><u>1.0000(1)</u></b>	<b><u>0.9996(1)</u></b>	<b><u>0.9998(1)</u></b>	<b><u>0.0661(1)</u></b>	<b><u>0.9948(1)</u></b>	<b><u>0.9948(1)</u></b>	0.2183(7)	0.1877(7)
m=12(9:3) n=6	MAE	0.0010(6)	0.0013(3)	0.0011(4)	0.0176(5)	0.0024(5)	0.0023(4)	0.0197(5)	0.0189(5)
	RMSE	0.0040(7)	0.0076(5)	0.0063(4)	0.0351(3)	0.0060(4)	0.0060(6)	0.0303(5)	0.0307(5)
	R <sup>2</sup> score	0.9868(7)	0.9510(6)	0.9666(4)	-	0.9699(5)	0.9701(5)	0.2256(5)	0.2040(5)
m=18(12:6) n=6	MAE	0.0009(4)	0.0013(3)	0.0011(4)	0.0181(7)	0.0024(5)	0.0023(4)	0.0194(3)	0.0185(3)
	RMSE	0.0039(4)	0.0064(3)	0.0065(6)	0.0367(7)	0.0060(4)	0.0060(6)	0.0299(3)	0.0299(3)
	R <sup>2</sup> score	0.9870(5)	0.9648(3)	0.9635(6)	-	0.9695(7)	0.9696(7)	0.2382(3)	0.2373(3)
m=24(18:6) n=6	MAE	0.0008(2)	0.0014(6)	0.0011(4)	0.0171(3)	0.0022(3)	0.0021(3)	<b><u>0.0191(1)</u></b>	<b><u>0.0179(1)</u></b>
	RMSE	0.0030(3)	0.0070(4)	0.0071(7)	0.0358(5)	0.0060(4)	0.0059(3)	<b><u>0.0293(1)</u></b>	<b><u>0.0284(1)</u></b>
	R <sup>2</sup> score	0.9924(2)	0.9566(4)	0.9557(7)	-	0.9687(8)	0.9690(8)	<b><u>0.2474(1)</u></b>	<b><u>0.2947(1)</u></b>
Underlined indicator		6	4	6	0	2	2	0	0

400

Among the five modes, mode (1) only uses rainfall data to predict waterlogging accumulation and gets the worst testing result. When m changes from 6 to 24, the R<sup>2</sup> score of RR changes from 0.1209 to 0.3954, which is 3.27 times of the initial value. In this mode, the larger m is, the more information the model learns and the better the testing performance is. By comparing the predicted value with the actual value, the results of the eight kinds of regression methods all have large noise when the actual waterlogging depth is 0. Even though KRR and LR can achieve good trend prediction at the peak, there are still large noise fluctuations in most of the time (**Figure 7**). This phenomenon may be caused by the lack of historical waterlogging time series input, so the noise suppression is not good.

405



410 **Figure 7: Testing result using LR and KRR method when  $m=18$ .**

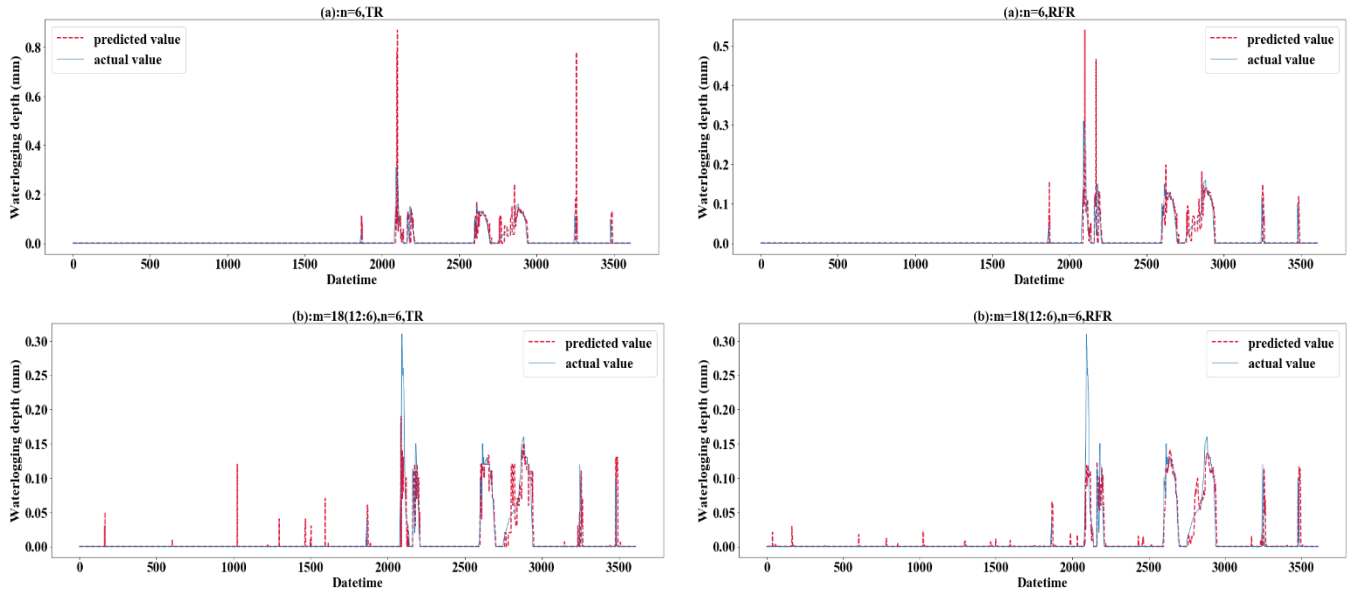
In mode (2), the prediction performance of LR and TR becomes better as  $m$  increases, which is the same as that of mode (1). However, RFR, RR, KRR are not sensitive to parameter changes.

In mode (3), the larger the parameter  $n$  is, the better the model may not be. For example, the optimal results of RFR, RR and KRR are obtained when  $n=6$ , which the  $R^2$ score of the three exceeds 0.977, indicating that the early information of waterlogging depth is not helpful to the prediction of waterlogging depth in the future, and may cause some interference. For LR, with the same number of parameters, the result of mode (3) is better than that of mode (2). The main reason is that mode (3) extracted more historical waterlogging depth information, which changes by a continuous process in short-term prediction. However, this does not mean that the model has the best performance, because it contains insufficient rainfall information and may not perform well in the practical application of prediction.

420 Mode (4) coupled multiple rainfall and waterlogging inputs. Overall, the results of mode (4) are better than that of mode (2) and mode (3) with one-dimensional input ( $m=1$  or  $n=1$ ). In this mode, the TR and RFR methods achieved the best testing results. TR achieved **0.9778**  $R^2$ score and 0.0050 RMSE ( $m=24$ ,  $n=3$ ). The  $R^2$ score of RFR reached **0.9803** and RMSE reached **0.0049** ( $m=6$ ,  $n=3$ ).

425 Mode (5) expanded the rainfall input and considered the influence of future rainfall. When parameters are adjusted to  $m=6(3:3)$  and  $n=6$ , LR evaluation indicator ( $MAE=0$ ,  $RMSE=0$  and  $R^2$ score=1) is abnormal. This problem also exists in RFR, TR, etc. The main reason is that the prediction label has been included in the input time series, so the result of  $m=6(3:3)$ ,  $n=6$  in mode

(5) should be removed in the discussion. Based on the performance of mode (5) on the test set, the performance of mode (5) will get better after the predicted time is expanded. The reason is that mode (5) expands the rainfall input and considers the influence of future rainfall. Especially, the rainfall model with short duration and high intensity is more suitable for this mode. As shown in **Figure 8**, (a) only 30 minutes of waterlogging data were used for prediction, and (b) 30 minutes of waterlogging with 90 minutes of expanded rainfall were used as input. With the increase of prediction time, the difference of prediction performance between them increases gradually. In the prediction of 40minutes waterlogging,  $R^2$ score of (b: 0.6841) is 2.4 times that of (a: 0.2847) when TR method is applied. Using the RFR method,  $R^2$ score and MAE of (b:  $R^2$ score=0.7428, MAE=0.0044) also significantly exceeds (a:  $R^2$ score=0.6488, MAE=0.0053). Especially for the prediction of medium-high value, in the case of high value (0.30m) and medium value (0.13m), the prediction results of (a) are 0.82m and 0.73m, and the large error leads to poor accuracy in the prediction of medium-large scale waterlogging.



**Figure 8: Testing result of mode (5) and only-D prediction using TR and RFR (when both  $n=6$ ).**

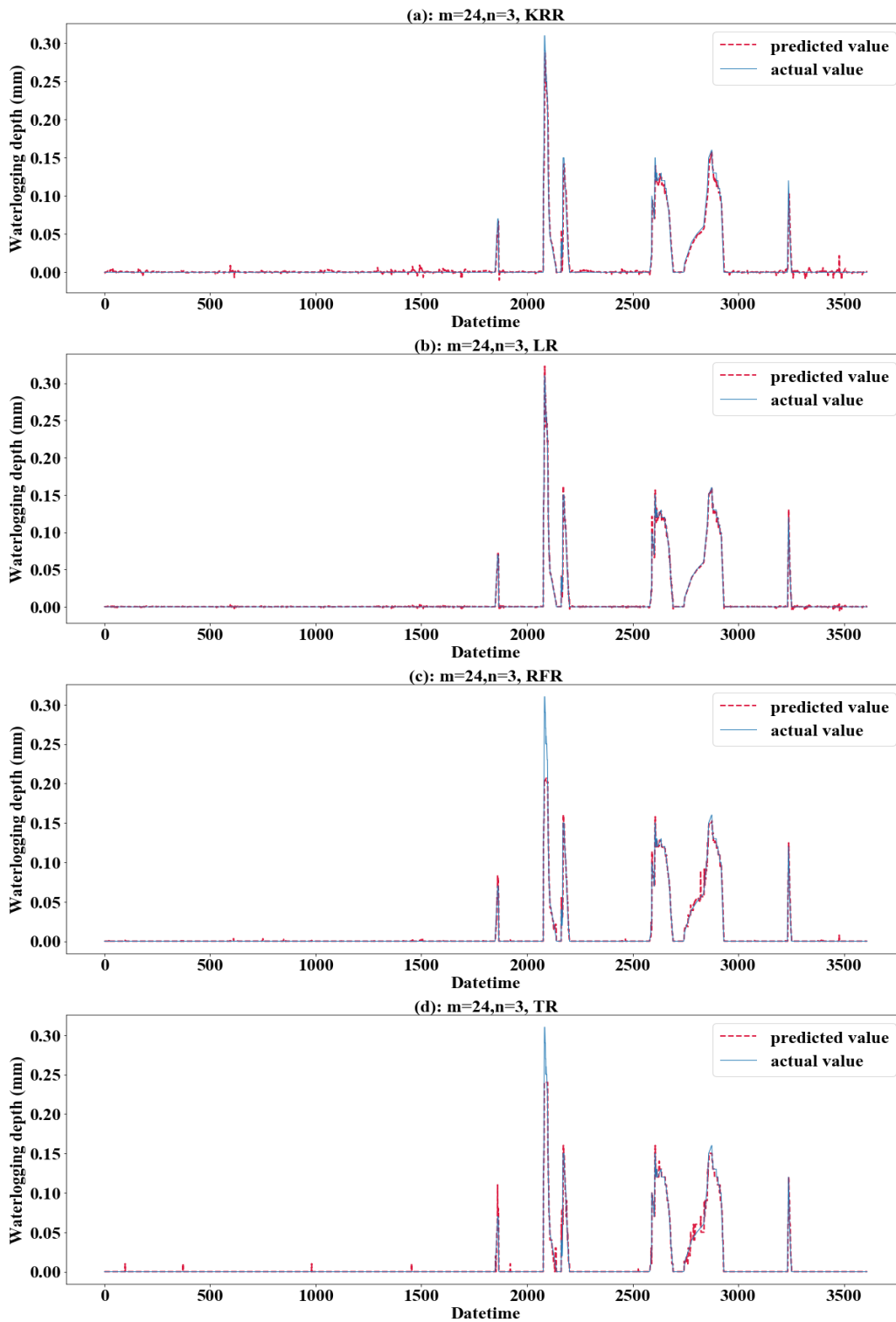


Figure 9: Testing result using different method when  $m=24, n=3$ . (a) for KRR, (b) for LR, (c) for RFR, (d) for TR.

From the perspective of comparison of regression methods, the performance of LR, TR, RFR, RR and KRR are relatively better, which is reflected in the strong generalization ability of the model (**Figure 9**). KRR, as Ridge Regression with kernel function added, is more suitable for high-dimensional data. In this study, it shows a slightly stronger regression performance than RR. It can be seen from the comparison (**Figure 9(a)(b)**) that LR and KRR have strong prediction ability for high values, but poor noise suppression for low values and 0 values, and the model fluctuates constantly around the x axis. The prediction of RFR for the highest value is insufficient, but the prediction performance for other high values is better. Its noise control for low values is better. TR has the best noise control effect for 0 value, but the curve is not smooth or ladder shape at high value. Of course, this is related to the principle of the algorithm. When applying RFR, selecting the parameter  $n_{\text{estimators}}$  which is equal to 100 can solve the problem of TR (**Figure 9(c)**). LR, RFR, KRR, TR show strong fitting ability in the training set (TR has the MAE:0.0000 RMSE:0.0000 score:1.0000) (**Figure 10**) in, KNN and ETN show relatively poor fitting ability. KNN, LaR and ETN have weak ability of fitting and generalization, which are not suitable for regression prediction of such data (**Figure 11**). KNN methods have negative  $R^2$  score in mode (1), mode (2), mode (4) and mode (5). For most data sets with eigenvalues of 0, the prediction performance is often poor, which can explain why the results of KNN method are the worst (**Figure 11(a)**). LaR and ETN are mode-insensitive and have the same results in mode (1) and mode (2). However, within each mode, as  $m$  and  $n$  change, the results will be different. The poor results of the LaR method (**Figure 11(c)**) may be that the method is suitable for multi-variable model, and the variables are selected by adjusting the  $\lambda$  value to change the compression variable coefficient, but there are fewer variables in this study. Similarly, considering that ETN (**Figure 11(b)**) works well when many features are interconnected, while this model has a small number of features, the model with similar basic principles to Lasso Regression also has poor performance.

To sum up, mode (5) performs better than any other modes, indicating that the short-term prediction of waterlogging considering the change of future rainfall trend is more realistic. LR seems to have achieved good prediction results in all the five modes. However, the factor that cannot be ignored is that the original waterlogging depth data is sparse and uneven, which must be resampling interpolation processing. It is necessary to go through actual value test to judge whether LR method is really applicable to prediction.

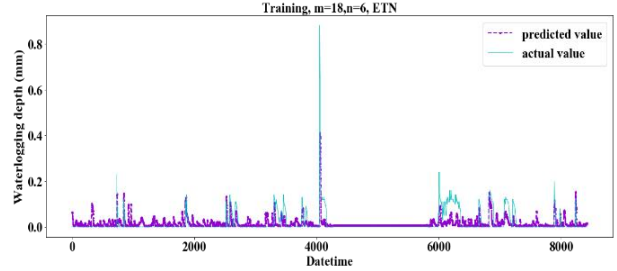
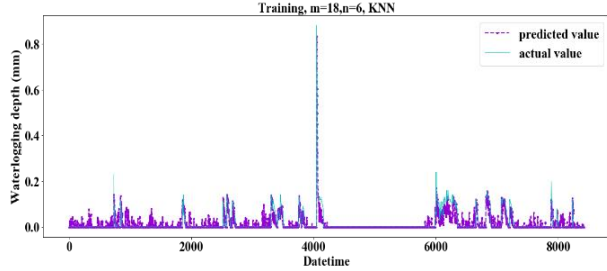
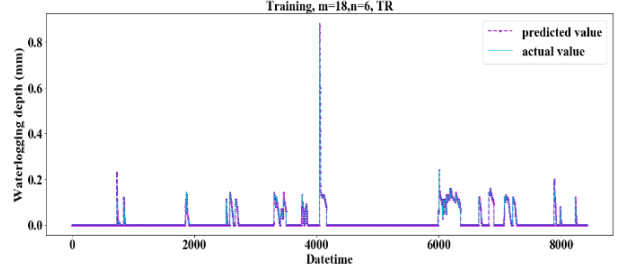
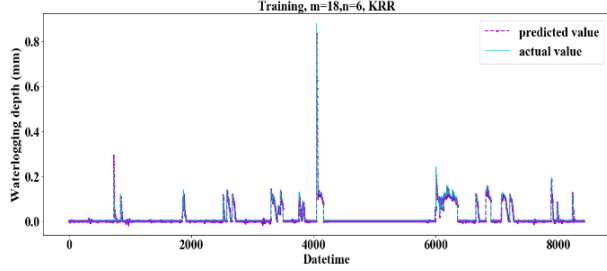
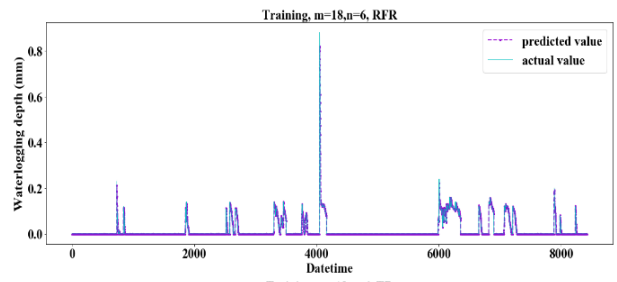
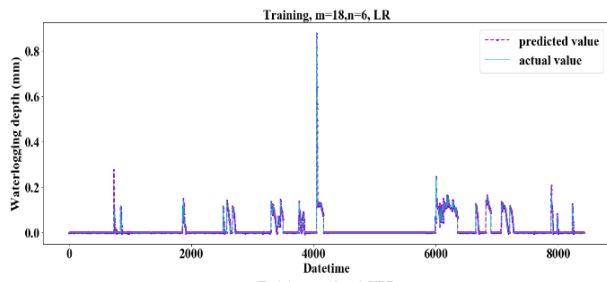


Figure 10: Fitting performance of different regression methods on training set when  $m=18, n=6$ .



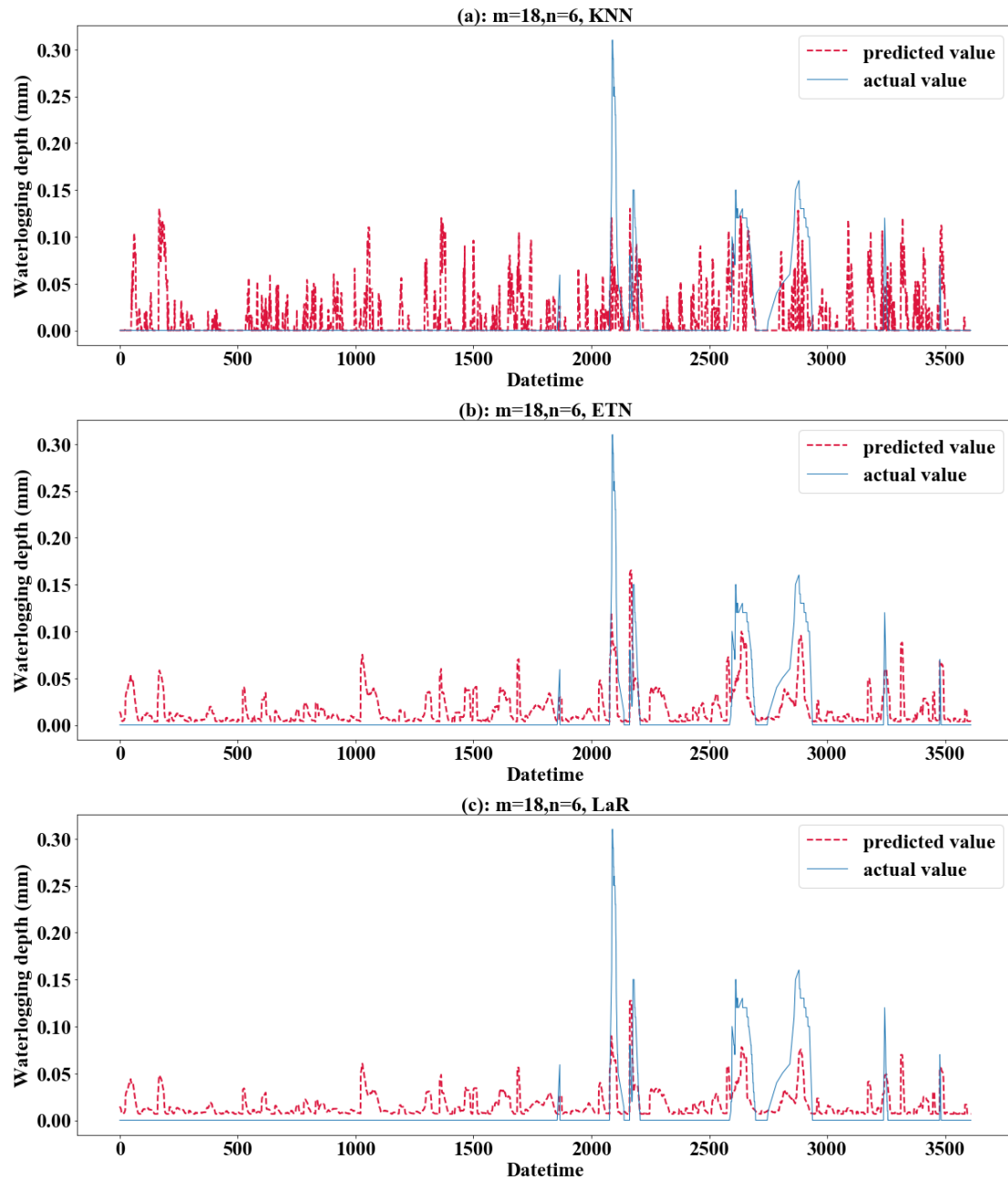


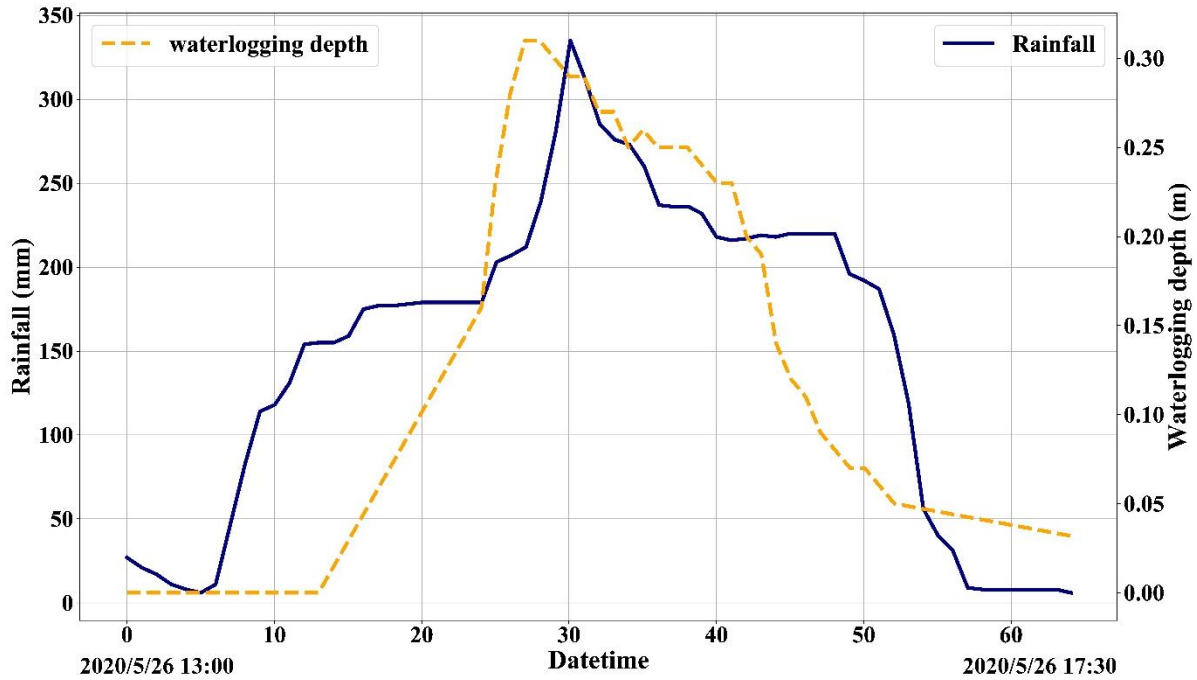
Figure 11: Performance of KNN, ETN and LaR method on testing set when  $m=18$ ,  $n=6$ . (a) for KNN, (b) for ETN, (c) for LaR.

475

#### 4.7.2 Step6: Actual value verification

Actual value verification takes a subset of the testing set, so the first 85% of the full data set is selected as the training set, which can increase the number of training samples and improve the training ability of the model. The time series from 2020/5/26 13:00 to 2020/5/26 17:30 was selected, lasting 4.5h (Figure 12), covering the complete process of waterlogging

480 fluctuation. In this way, the waterlogging-depth prediction ability of the model can be verified. The changes of rainfall and waterlogging in this period are shown in **Figure 12**. The time series was divided into 6 groups on average. The waterlogging depth changes of 30 minutes were predicted by 6 sequential steps.



**Figure 12: Actual value verification time series from 2020/5/26 13:00 to 17:30.**

485 In order to highlight the prediction performance of each strategy, we set  $s=6$  for 30-minute-prediction. That is a long forecast for real-time water levels. In practical application, 15 minutes to 20 minutes prediction may be the common prediction, and 20 minutes prediction has fully met the requirement of releasing early warning information in advance and dispatching the nearest traffic and fire personnel to the scene for disposal (Georgiadou et al., 2010). We will make evaluation from multiple indicators such as Absolute Error (AE), Absolute Percent Error (APE) and **Time Cost**. Mode (5) with  $m=18$  (12:6) and  $n=6$  was selected as the basic parameters of the model to evaluate the model performance under each strategy. **Figure A1 in appendix** represents the isometric segmentation of the verification data set with different strategies. The first 30 minutes of the time series are taken to show the curves between the actual values in each group and the predicted values for each method. KNN, LaR and ETN, perform poorly in the application of prediction and have high values of AE and APE. Therefore, we will not discuss these three poor methods in the analysis of results. Absolute Error of the predicted value and actual value of each strategy was also discussed (**Figure A2 in appendix**). We set a tolerance of 0.02m to exclude reasonable error. APE reflects the accuracy of the model, but at low values it does not independently reflect the performance of the model because even small errors ( $< 0.01m$ ) can cause APE to rise (**Figure A3 in appendix**). Therefore, the mean value of AE and APE (MAE and MAPE) was used to evaluate the model accuracy, and the variance of AE and APE (V-AE and V-APE) was used to evaluate the robustness. Since

490

495

real-time sensor data is used in prediction, continuous calculation is required to update the model. Time cost is adopted as an indicator to evaluate the continuous computing capability of the model.

500 **Table 3** to **Table 5** shows the evaluation results of different strategies. As seen in **Table 6**, MAE of Rec strategy is 0.0153m, which is better than 0.0184m of SOC and 0.0165m of MO. Of course, the MAE of the three is within the tolerance (0.02m). Under the Rec strategy, the model replaces the last data point of the input vector with the predicted value every step. The reason for the optimal Rec result is that the fluctuation of the waterlogging is basically a monotone increasing or decreasing process, and generally there is no fluctuation in a short period of time. In addition, the input vector is long enough to minimize  
505 the cumulative error caused by the predicted value deviation. The application of recursive algorithm can better continue the prediction trend of the model, so the MAE result of Rec is the best.

Rec and MO strategies have a better performance and robustness. Rec and MO have lower MAPE, corresponding accuracy can reach 86.1% and 85.7%. The accuracy of SOC was only 81.4%. The primary cause of this phenomena is the operating process of SOC, which combines the findings of six distinct models into a final prediction vector. When  $s=1$ , the prediction  
510 strategy is the same as MO. However, with the increase of  $S$ , when predicting the  $s$  step, there will be a loss of  $y_{t+1}, y_{t+2}, \dots, y_{t+s-1}$  in the middle, resulting in a large error in the following part. In contrast, the V-AE and V-APE of the SOC strategy are the lowest, indicating poor performance and model robustness.

MO has the best V-APE (0.01036), indicating that the accuracy of this strategy has the smallest fluctuation, and the model has the best robustness. The V-AE (0.00026) of Rec was similar to that of MO (0.00022), but the V-APE of Rec was 69% larger  
515 than that of MO. The reason is that APE fluctuated greatly when TR and RFR were applied under Rec strategy, and V-APE was 3.05 times and 2.49 times of MO strategy respectively. Therefore, we infer that under the same conditions, the decision tree algorithm has smaller fluctuation when applied to multidimensional output and can obtain better robustness.

**Table 3: Model performance using Rec strategy.**

P	EI	LR	TR	RFR	RR	KRR	P	EI	LR	TR	RFR	RR	KRR
1	MAE	0.0284	0.0223	0.0139	0.0443	0.0436	4	MAE	0.0112	0.0076	0.0058	0.0045	0.0042
	MAPE	0.2109	0.1661	0.1062	0.3469	0.3419		MAPE	0.2063	0.1388	0.1144	0.0829	0.0780
	V (AE)	0.0003	0.0002	0.0001	0.0003	0.0002		V (AE)	0.0001	0.0001	0.0000	0.0001	0.0000
	V (APE)	0.0085	0.0079	0.0037	0.0036	0.0034		V (APE)	0.0085	0.0042	0.0091	0.0021	0.0020
2	MAE	0.0264	0.0317	0.0119	0.0060	0.0061	5	MAE	0.0003	0.0035	0.0025	0.0010	0.0002
	MAPE	0.0976	0.1179	0.0446	0.0221	0.0222		MAPE	0.0096	0.0999	0.0705	0.0291	0.0069
	V (AE)	0.0001	0.0003	0.0001	0.0000	0.0000		V(AE)	0.0001	0.0001	0.0000	0.0000	0.0000
	V (APE)	0.0020	0.0048	0.0012	0.0001	0.0001		V(APE)	0.0001	0.0033	0.0012	0.0002	0.0000
3	MAE	0.0233	0.0483	0.0553	0.0195	0.0196	6	MAE	0.0009	0.0028	0.0064	0.0034	0.0025
	MAPE	0.1398	0.2819	0.3151	0.1219	0.1219		MAPE	0.0486	0.1446	0.3544	0.1776	0.1319
	V (AE)	0.0005	0.0014	0.0013	0.0005	0.0005		V (AE)	0.0001	0.0001	0.0000	0.0000	0.0000
	V (APE)	0.0266	0.0789	0.0756	0.0273	0.0272		V (APE)	0.0015	0.0155	0.1017	0.0100	0.0059

**Table 4: Model performance using SOC strategy.**

P	EI	LR	TR	RFR	RR	KRR	P	EI	LR	TR	RFR	RR	KRR
1	MAE	0.0349	0.0515	0.0229	0.0554	0.0549	4	MAE	0.0060	0.0047	0.0043	0.0032	0.0037
	MAPE	0.2608	0.3846	0.1878	0.4263	0.4228		MAPE	0.1261	0.1320	0.1488	0.1003	0.1054
	V (AE)	0.0005	0.0008	0.0002	0.0006	0.0006		V (AE)	0.0001	0.0001	0.0001	0.0001	0.0001
	V (APE)	0.0179	0.0289	0.0121	0.0129	0.0128		V (APE)	0.0048	0.0257	0.0237	0.0098	0.0093
2	MAE	0.0284	0.0237	0.0274	0.0176	0.0178	5	MAE	0.0015	0.0302	0.0071	0.0018	0.0008
	MAPE	0.1103	0.1103	0.0847	0.0697	0.0702		MAPE	0.0574	0.7403	0.1732	0.0659	0.0407
	V (AE)	0.0001	0.0013	0.0002	0.0001	0.0001		V(AE)	0.0002	0.0010	0.0000	0.0001	0.0000
	V (APE)	0.0028	0.0191	0.0029	0.0021	0.0022		V(APE)	0.0026	1.1122	0.0350	0.0026	0.0023
3	MAE	0.0276	0.0400	0.0334	0.0200	0.0202	6	MAE	0.0020	0.0039	0.0022	0.0034	0.0022
	MAPE	0.1804	0.2680	0.2216	0.1423	0.1434		MAPE	0.1257	0.1872	0.1612	0.1939	0.1399
	V (AE)	0.0006	0.0013	0.0006	0.0005	0.0005		V (AE)	0.0000	0.0000	0.0000	0.0000	0.0000
	V (APE)	0.0352	0.0633	0.0333	0.0297	0.0302		V (APE)	0.0110	0.0178	0.0144	0.0138	0.0099

**Table 5: Model performance using MO strategy.**

P	EI	LR	TR	RFR	RR	KRR	P	EI	LR	TR	RFR	RR	KRR
1	MAE	0.0349	0.0536	0.0284	0.0554	0.0549	4	MAE	0.0060	0.0074	0.0045	0.0032	0.0037
	MAPE	0.2564	0.4092	0.2119	0.4257	0.4217		MAPE	0.1077	0.1353	0.0833	0.0561	0.0659
	V (AE)	0.0005	0.0006	0.0003	0.0006	0.0006		V (AE)	0.0001	0.0001	0.0001	0.0001	0.0001
	V (APE)	0.0168	0.0155	0.0082	0.0128	0.0125		V (APE)	0.0030	0.0065	0.0039	0.0014	0.0020
2	MAE	0.0284	0.0100	0.0230	0.0176	0.0178	5	MAE	0.0015	0.0027	0.0071	0.0018	0.0008
	MAPE	0.1052	0.0370	0.0834	0.0659	0.0664		MAPE	0.0430	0.0779	0.2127	0.0518	0.0223
	V (AE)	0.0001	0.0001	0.0001	0.0001	0.0001		V(AE)	0.0002	0.0002	0.0000	0.0001	0.0000
	V (APE)	0.0025	0.0010	0.0009	0.0019	0.0020		V(APE)	0.0009	0.0016	0.0392	0.0009	0.0002
3	MAE	0.0276	0.0183	0.0328	0.0200	0.0202	6	MAE	0.0020	0.0039	0.0011	0.0034	0.0022
	MAPE	0.1641	0.1075	0.1844	0.1243	0.1256		MAPE	0.1065	0.2029	0.0544	0.1771	0.1135
	V (AE)	0.0006	0.0003	0.0004	0.0005	0.0005		V (AE)	0.0003	0.0003	0.0000	0.0001	0.0001
	V (APE)	0.0334	0.0145	0.0231	0.0280	0.0285		V (APE)	0.0066	0.0273	0.0019	0.0096	0.0037

Considering the time cost, the model must be updated within the 5 minutes interval for data prediction. This paper used tower workstation with 8 core Intel(R) Xeon(R) W-2123 3.60 GHz CPU, 64.0 GB RAM and NVIDIA Quadro RTX4000 GPU. MO strategy has a faster speed in calculation. The average time cost of Rec and SOC is about 2.54 times that of MO. Under the MO strategy, the output form of the model is a six-dimension-vector. The advantage of this strategy is that it only needs to perform one training and prediction process, and does not need recursion or multiple model coupling, so it is more convenient to use. Therefore, the calculation time of each regression method is greatly reduced. The time cost of KRR was shortened from

240.39s to 83.28s. It should be noted that although KRR algorithm has good model performance and robustness, its time cost is too high, reaching 241.28s under Rec strategy, which is difficult to meet the requirements of update calculation within 5 minutes. LR, TR and RR can all be updated within three seconds due to their simple structures. RFR has a high time cost because it has to traverse all trees. However, it can meet the requirement of update time (only 65.13s under MO strategy).

**Table 6: Model performance statistics with different strategies applied**

Strategy	ACC-30min	Average indicator	Evaluation indicator	Regression methods					
				LR	TR	RFR	RR	KRR	
Rec	86.17%	Avg (MAE)	0.01526	MAE-Rec	0.0905	0.0194	0.0160	0.0131	0.0127
		Avg	0.13834	MAPE-Rec	0.1188	0.1582	0.1675	0.1301	0.1171
		Avg (VAE)	0.00022	V (AE)-Rec	0.0002	0.0003	0.0003	0.0002	0.0001
		Avg (VAPE)	0.0175	V (APE)-Rec	0.0079	0.0339	0.0321	0.0072	0.0064
		Avg	75.914s	Time cost-	0.19	2.38	135.60	0.12	241.28
		Avg (MAE)	0.01842	MAE-SOC	0.0167	0.0257	<b>0.0162</b>	0.0169	0.0166
SOC	81.40%	Avg	0.18604	MAPE-SOC	<b>0.1435</b>	0.3037	0.1629	0.1664	0.1537
		Avg (VAE)	0.00034	V (AE)-SOC	0.0003	0.0008	<b>0.0002</b>	<b>0.0002</b>	<b>0.0002</b>
		Avg (VAPE)	0.05334	V (APE)-SOC	0.0124	0.2112	0.0202	0.0118	<b>0.0111</b>
		Avg	77.194s	Time cost-	0.20	2.40	142.84	0.14	240.39
		Avg (MAE)	0.01648	MAE-MO	0.0167	0.0160	0.0162	0.0169	0.0166
		Avg	0.14332	MAPE-MO	0.1305	0.1616	0.1384	0.1502	0.1359
MO	85.69%	Avg (VAE)	0.00026	V (AE)-MO	0.0003	0.0003	0.0002	0.0003	0.0002
		Avg (VAPE)	0.01036	V (APE)-MO	0.0105	0.0111	0.0129	0.0091	0.0082
		Avg	29.94s	<b>Time cost-</b>	<b>0.09</b>	<b>1.14</b>	<b>65.13</b>	<b>0.06</b>	<b>83.28</b>

In conclusion, LR, TR, RFR, RR and KRR are superior to other methods, which is consistent with the results on the testing set. Models using Rec or MO strategies have better performance and robustness, with average accuracy more than 85% for predicting waterlogging depth in the next 30 minutes. For short-term prediction, such as 15 minutes prediction, the accuracy can reach 93%, and the robustness of the model will be further improved. As can be seen from **Figure A1 to Figure A3 in appendix**, when  $s = 3$ , the prediction curves of RFR, LR, KRR and other methods basically match actual value, and AE and APE of each group are almost within tolerance.

## 5 Conclusions

The prediction and early warning of urban rainstorm and waterlogging disaster has always been a key problem. It is challenging and meaningful to predict the rapid water level rise caused by short-term heavy rainfall in advance.

Waterlogging caused by rainstorms usually accumulates in low-lying areas of the city, such as poorly drained blocks and roads, underpass tunnels, bridge culverts, municipal plumbing manholes, and underground shopping malls or parking lots. Accurate prediction of waterlogging is essential for emergency decision-making and disaster response. Government emergency departments can timely issue warning information to the public, notify traffic management departments to rush to the scene to

block the relevant roads, culverts, tunnels, etc. Effective prediction and monitoring will help minimize casualties and property losses.

550 A Multi-strategy-mode-waterlogging-prediction framework for waterlogging is proposed, which contains how to preprocess raw data, select training modes for different machine learning algorithms. In this framework, different prediction strategies were discussed and used to predict multiple dimensions of waterlogging. Results show that the mode of expanded-multi-R and multi-D performs better than any other modes; five regression algorithms are more suitable for waterlogging prediction. Recursive and Multi-Output strategies have a better performance and robustness, but MO prediction strategy has not only  
555 higher performance but also more efficient. We note that Recursive strategy is poor in the research of Ben (2012). This is mainly because of the periodic characteristics of the data. In this study, physical characteristics of waterlogging determine that water level change is generally a process of monotonically increasing or decreasing, so Rec can also have a good performance on the prediction of non-periodic data with obvious trends.

In this paper, we were concerned only with the lead time for an identified site. In the future, increasing the number of sensors  
560 can improve the geographic information of waterlogging point location, including more DEM, slope, positive and negative terrain, infiltration rate and other information. This kind of model can be extended to the spatial dimension for prediction. Through grid analysis, all position points in the study area can be traversed and waterlogging risk map can be drawn.

*Data availability.* All raw data can be provided by the corresponding authors upon request.

565 *Author contributions.* ZZ and LY conceived the research framework and developed the methodology. ZZ completed the data processing and code compilation. JL<sup>2</sup> was responsible for the graphic visualization. YZ made improvements to the time series model. JJ and ZH revised the manuscript. ZZ wrote the first draft. LY and JL<sup>6</sup> managed the implementation of the research activities and reviewed the manuscript. All the authors discussed the results and contributed to the final version of the paper.

570 *Competing interests.* The authors declare that they have no conflict of interest.

*Acknowledgements.* This research was funded by National Key R&D Program of China (2018YFC0807000), Natural Science Foundation of China (71771113), National Key R&D Program of China (2019YFC0810705) and Shenzhen Scientific Research Funding (Grant No. K22627501). It was also partly supported by the High-level Special Funding of the Southern University of Science and Technology (grant  
575 nos. G02296302 and G02296402).

## Reference

- 580 Abedin, S. and Stephen, H.: GIS Framework for Spatiotemporal Mapping of Urban Flooding, *Geosci. J.*, 9, 77, <http://doi.org/10.3390/geosciences9020077>, 2019.
- Ali, M., Prasad, R., Xiang, Y., and Yaseen, Z. M.: Complete ensemble empirical mode decomposition hybridized with random forest and kernel ridge regression model for monthly rainfall forecasts, *J. Hydrol.*, 584, 124647, <http://doi.org/10.1016/j.jhydrol.2020.124647>, 2020.
- 585 Ben Taieb, S., Bontempi, G., Atiya, A. F., and Sorjamaa, A.: A review and comparison of strategies for multi-step ahead time series forecasting based on the NN5 forecasting competition, *Expert Syst. Appl.*, 39, 7067-7083, <http://doi.org/10.1016/j.eswa.2012.01.039>, 2012.
- Chang, F., Chen, P., Lu, Y., Huang, E., and Chang, K.: Real-time multi-step-ahead water level forecasting by recurrent neural networks for urban flood control, *J. Hydrol.*, 517, 836-846, <http://doi.org/10.1016/j.jhydrol.2014.06.013>, 2014.
- Danso-Amoako, E., Scholz, M., Kalimeris, N., Yang, Q., and Shao, J.: Predicting dam failure risk for sustainable flood retention basins: A generic case study for the wider Greater Manchester area, *Comput. Environ. Urban Syst.*, 36, 423-433, <http://doi.org/10.1016/j.compenvurbsys.2012.02.003>, 2012.
- 590 Faizollahzadeh Ardabili, S., Najafi, B., Alizamir, M., Mosavi, A., Shamshirband, S., and Rabczuk, T.: Using SVM-RSM and ELM-RSM Approaches for Optimizing the Production Process of Methyl and Ethyl Esters, *Energies*. 11, 2889, <http://doi.org/10.3390/en11112889>, 2018.
- Georgiadou, P. S., Papazoglou, I. A., Kiranoudis, C. T., and Markatos, N. C.: Multi-objective evolutionary emergency response optimization for major accidents, *J Hazard Mater*. 178, 792-803, <http://doi.org/10.1016/j.jhazmat.2010.02.010>, 2010.
- 595 Gocheva-Ilieva, S. G., Voynikova, D. S., Stoimenova, M. P., Ivanov, A. V., and Iliev, I. P.: Regression trees modeling of time series for air pollution analysis and forecasting, *Neural Comput Appl.*, 31, 9023-9039, <http://doi.org/10.1007/s00521-019-04432-1>, 2019.
- 600 Guimarões Santos, C. A. and Silva, G. B. L.: Daily streamflow forecasting using a wavelet transform and artificial neural network hybrid models, *Hydrol. Sci. J.*, 59, 312-324, <http://doi.org/10.1080/02626667.2013.800944>, 2014.
- Hamzaçebi, C., Akay, D., and Kutay, F.: Comparison of direct and iterative artificial neural network forecast approaches in multi-periodic time series forecasting, *Expert Syst. Appl.*, 36, 3839-3844, <http://doi.org/10.1016/j.eswa.2008.02.042>, 2009.
- 605 Hong, H., Pradhan, B., Bui, D. T., Xu, C., Youssef, A. M., and Chen, W.: Comparison of four kernel functions used in support vector machines for landslide susceptibility mapping: a case study at Suichuan area (China), *Geomatics Nat. Hazards Risk*. 8, 544-569, <http://doi.org/10.1080/19475705.2016.1250112>, 2016.
- Hong, W.: Rainfall forecasting by technological machine learning models, *Appl. Math. Comput.*, 200, 41-57, <http://doi.org/10.1016/j.amc.2007.10.046>, 2008.
- 610 Hsu, M., Lin, S., Fu, J., Chung, S., and Chen, A. S.: Longitudinal stage profiles forecasting in rivers for flash floods, *J. Hydrol.*, 388, 426-437, <http://doi.org/10.1016/j.jhydrol.2010.05.028>, 2010.
- Hu, X., Wang, M., Liu, K., Gong, D., and Kantz, H.: Using Climate Factors to Estimate Flood Economic Loss Risk, *Int. J. Disaster Risk Sci.*, 12, 731-744, <http://doi.org/10.1007/s13753-021-00371-5>, 2021.
- 615 Jalayer, F., De Risi, R., De Paola, F., Giugni, M., Manfredi, G., Gasparini, P., Topa, M. E., Yonas, N., Yeshitela, K., Nebebe, A., Cavan, G., Lindley, S., Printz, A., and Renner, F.: Probabilistic GIS-based method for delineation of urban flooding risk hotspots, *Nat. Hazard.*, 975-1001, <http://doi.org/10.1007/s11069-014-1119-2>, 2014.
- Jefferson, M.: IPCC fifth assessment synthesis report: "Climate change 2014: Longer report": Critical analysis, *Technol. Forecasting Social Change*. 92, 362-363, <http://doi.org/10.1016/j.techfore.2014.12.002>, 2015.
- 620 Jia, J., Cui, W., and Liu, J.: Urban Catchment-Scale Blue-Green-Gray Infrastructure Classification with Unmanned Aerial Vehicle Images and Machine Learning Algorithms, *Front. Environ. Sci.*, 9, 734, <http://doi.org/10.3389/fenvs.2021.778598>, 2022.
- Ke, Q., Tian, X., Bricker, J., Tian, Z., Guan, G., Cai, H., Huang, X., Yang, H., and Liu, J.: Urban pluvial flooding prediction by machine learning approaches – a case study of Shenzhen city, China, *Adv. Water Resour.*, 145, 103719, <http://doi.org/10.1016/j.advwatres.2020.103719>, 2020.
- 625 Khashei, M. and Bijari, M.: An artificial neural network (p, d, q) model for timeseries forecasting, *Expert Syst. Appl.*, 37, 479-489, <http://doi.org/10.1016/j.eswa.2009.05.044>, 2010.

- Kim, B., Sanders, B. F., Famiglietti, J. S., and Guinot, V.: Urban flood modeling with porous shallow-water equations: A case study of model errors in the presence of anisotropic porosity, *J. Hydrol.*, 523, 680-692, <http://doi.org/10.1016/j.jhydrol.2015.01.059>, 2015.
- 630 Kim, S., Matsumi, Y., Pan, S., and Mase, H.: A real-time forecast model using artificial neural network for after-runner storm surges on the Tottori coast, Japan, *Ocean Eng.*, 122, 44-53, <http://doi.org/10.1016/j.oceaneng.2016.06.017>, 2016.
- Kourgialas, N. N., Dokou, Z., and Karatzas, G. P.: Statistical analysis and ANN modeling for predicting hydrological extremes under climate change scenarios: the example of a small Mediterranean agro-watershed, *J Environ Manage.* 154, 86-101, <http://doi.org/10.1016/j.jenvman.2015.02.034>, 2015.
- 635 Liu, Y., Li, L., Liu, Y., Chan, P. W., and Zhang, W.: Dynamic spatial-temporal precipitation distribution models for short-duration rainstorms in Shenzhen, China based on machine learning, *Atmos. Res.*, 237, 104861, <http://doi.org/10.1016/j.atmosres.2020.104861>, 2020.
- Martínez, F., Frías, M. P., Pérez, M. D., and Rivera, A. J.: A methodology for applying k-nearest neighbor to time series forecasting, *Artificial Intelligence Review.* 52, 2019-2037, <http://doi.org/10.1007/s10462-017-9593-z>, 2017.
- 640 Men, B., Wu, Z., Liu, H., Tian, W., and Zhao, Y.: Spatio-temporal Analysis of Precipitation and Temperature: A Case Study Over the Beijing–Tianjin–Hebei Region, China, *Pure Appl. Geophys.*, 177, 3527-3541, <http://doi.org/10.1007/s00024-019-02400-3>, 2020.
- Mosavi, A., Ozturk, P., and Chau, K.: Flood Prediction Using Machine Learning Models: Literature Review, *Water.* 10, 1536, <http://doi.org/10.3390/w10111536>, 2018.
- 645 Mukherjee, F. and Singh, D.: Detecting flood prone areas in Harris County: a GIS based analysis, *GeoJournal.* 85, 647-663, <http://doi.org/10.1007/s10708-019-09984-2>, 2019.
- Puttinaovarat, S. and Horkaew, P.: Flood Forecasting System Based on Integrated Big and Crowdsource Data by Using Machine Learning Techniques, *IEEE Access.* 8, 5885-5905, <http://doi.org/10.1109/access.2019.2963819>, 2020.
- Shen, F., Liu, J., and Wu, K.: Multivariate Time Series Forecasting Based on Elastic Net and High-Order Fuzzy Cognitive Maps: A Case Study on Human Action Prediction Through EEG Signals, *IEEE Trans. Fuzzy Syst.*, 29, 2336-2348, <http://doi.org/10.1109/tfuzz.2020.2998513>, 2021.
- 650 Tehrany, M. S., Pradhan, B., and Jebur, M. N.: Flood susceptibility analysis and its verification using a novel ensemble support vector machine and frequency ratio method, *Stochastic Environ. Res. Risk Assess.*, 29, 1149-1165, <http://doi.org/10.1007/s00477-015-1021-9>, 2015.
- Wang, S., Ji, B., Zhao, J., Liu, W., and Xu, T.: Predicting ship fuel consumption based on LASSO regression, *Transportation Research Part D: Transport and Environment.* 65, 817-824, <http://doi.org/10.1016/j.trd.2017.09.014>, 2017.
- 655 Wang, W., Yin, H., Yu, G., Chen, F., Jin, J., and Yan, J.: Urban flash flood forecast using support vector machine and numerical simulation, *J. Hydroinf.*, 20, 221-231, <http://doi.org/10.2166/hydro.2017.175>, 2018.
- Wang, Y., Meng, F., Liu, H., Zhang, C., and Fu, G.: Assessing catchment scale flood resilience of urban areas using a grid cell based metric, *Water Res.* 163, 114852, <http://doi.org/10.1016/j.watres.2019.114852>, 2019.
- 660 Wu, H., Cai, Y., Wu, Y., Zhong, R., Li, Q., Zheng, J., Lin, D., and Li, Y.: Time series analysis of weekly influenza-like illness rate using a one-year period of factors in random forest regression, *Biosci Trends.* 11, 292-296, <http://doi.org/10.5582/bst.2017.01035>, 2017.
- Wu, Z., Zhou, Y., Wang, H., and Jiang, Z.: Depth prediction of urban flood under different rainfall return periods based on deep learning and data warehouse, *Sci Total Environ.* 716, 137077, <http://doi.org/10.1016/j.scitotenv.2020.137077>, 2020.
- 665 Xie, K., Ozbay, K., Zhu, Y., and Yang, H.: Evacuation Zone Modeling under Climate Change: A Data-Driven Method, *J. Infrastruct. Syst.*, 23, 04017013, [http://doi.org/10.1061/\(asce\)jis.1943-555x.0000369](http://doi.org/10.1061/(asce)jis.1943-555x.0000369), 2017.
- Yu, D. and Lane, S. N.: Urban fluvial flood modelling using a two-dimensional diffusion-wave treatment, part 1: mesh resolution effects, *Hydrol. Processes.* 20, 1541-1565, <http://doi.org/10.1002/hyp.5935>, 2006a.
- 670 Yu, D. and Lane, S. N.: Urban fluvial flood modelling using a two-dimensional diffusion-wave treatment, part 2: development of a sub-grid-scale treatment, *Hydrol. Processes.* 20, 1567-1583, <http://doi.org/10.1002/hyp.5936>, 2006b.
- Yu, X. and Liong, S.-Y.: Forecasting of hydrologic time series with ridge regression in feature space, *J. Hydrol.*, 332, 290-302, <http://doi.org/10.1016/j.jhydrol.2006.07.003>, 2007.
- 675 Zhang, J., Hou, G., Ma, B., and Hua, W.: Operating characteristic information extraction of flood discharge structure based on complete ensemble empirical mode decomposition with adaptive noise and permutation entropy, *J. Vib. Control.* 24,



5291-5301, <http://doi.org/10.1177/1077546317750979>, 2018.

Zhang, T., Feng, P., Maksimović, Č., and Bates, P. D.: Application of a Three-Dimensional Unstructured-Mesh Finite-Element Flooding Model and Comparison with Two-Dimensional Approaches, *Water Resour. Manage.*, 30, 823-841, <http://doi.org/10.1007/s11269-015-1193-6>, 2015.

Table A1: Testing result of mode (1) Only multi-R input.

Mode	Evaluation Indicator	Regression methods							
		LR	TR	RFR	KNN	RR	KRR	LaR	ETN
m=6	MAE	0.0191(4)	0.0191(2)	0.0189(4)	0.0177(4)	0.0191(4)	0.0204(4)	0.0199(4)	0.0191(4)
	RMSE	0.0325(4)	0.0434(2)	0.0338(4)	<b>0.0337(1)</b>	0.0325(4)	0.0329(4)	0.0306(4)	0.0312(4)
	R <sup>2</sup> score	0.1209(4)	<b>-0.5649(1)</b>	0.0474(4)	<b>0.0540(1)</b>	0.1209(4)	0.1008(4)	0.2206(3)	0.1905(4)
m=12	MAE	0.0181(3)	0.0198(3)	0.0181(3)	0.0174(2)	0.0181(3)	0.0191(3)	0.0194(3)	0.0186(3)
	RMSE	0.0310(3)	0.0444(4)	0.0324(3)	0.0347(2)	0.0310(3)	0.0313(3)	0.0300(2)	0.0304(3)
	R <sup>2</sup> score	0.1800(3)	-0.6803(3)	0.1078(2)	-0.0264(2)	0.1800(3)	0.1632(3)	0.2339(2)	0.2133(3)
m=18	MAE	0.0168(2)	0.0198(3)	0.0180(2)	0.0174(2)	0.0168(2)	0.0175(2)	<b>0.0191(1)</b>	0.0181(2)
	RMSE	0.0286(2)	0.0442(3)	0.0323(2)	0.0366(4)	0.0286(2)	0.0289(2)	<b>0.0293(1)</b>	0.0290(2)
	R <sup>2</sup> score	0.2808(2)	-0.7160(4)	0.0861(3)	-0.1730(4)	0.2808(2)	0.2666(2)	<b>0.2465(1)</b>	0.2648(2)
m=24	MAE	<u>0.0156(1)</u>	<b>0.0189(1)</b>	<b>0.0168(1)</b>	<b>0.0168(1)</b>	<u>0.0156(1)</u>	<u>0.0163(1)</u>	<b>0.0191(1)</b>	<b>0.0175(1)</b>
	RMSE	<u>0.0261(1)</u>	<b>0.0432(1)</b>	<b>0.0307(1)</b>	0.0359(3)	<u>0.0261(1)</u>	<u>0.0264(1)</u>	0.0301(3)	<b>0.0276(1)</b>
	R <sup>2</sup> score	<u>0.3954(1)</u>	-0.6576(2)	<b>0.1654(1)</b>	-0.1438(3)	<u>0.3954(1)</u>	<u>0.3825(1)</u>	0.1980(4)	<b>0.3269(1)</b>
Underlined indicator		3	0	0	0	3	3	0	0

685

Table A2: Testing result of mode (3) Single-R and multi-D input.

Mode	Evaluation Indicator	Regression methods							
		LR	TR	RFR	KNN	RR	KRR	LaR	ETN
m=1 n=6	MAE	0.0008(4)	<b>0.0014(1)</b>	0.0010(2)	0.0073(4)	<b>0.0016(1)</b>	0.0016(4)	0.0199(4)	0.0191(4)
	RMSE	0.0039(3)	0.0073(2)	<u>0.0052(1)</u>	0.0233(4)	<u>0.0052(1)</u>	<u>0.0051(1)</u>	0.0306(4)	0.0312(4)
	R <sup>2</sup> score	0.9871(3)	0.9558(2)	<u>0.9797(1)</u>	0.5474(4)	<u>0.9779(1)</u>	<u>0.9779(1)</u>	0.2206(3)	0.1905(4)
m=1 n=12	MAE	0.0007(2)	<b>0.0014(1)</b>	0.0011(4)	0.0073(4)	<b>0.0016(1)</b>	0.0014(3)	0.0194(3)	0.0186(3)
	RMSE	0.0040(4)	0.0076(3)	0.0062(4)	0.0226(3)	0.0055(2)	0.0055(2)	0.0300(3)	0.0304(3)
	R <sup>2</sup> score	0.9866(4)	0.9512(3)	0.9674(3)	0.5669(3)	0.9745(2)	0.9746(2)	0.2339(2)	0.2133(3)
m=1 n=18	MAE	0.0007(2)	0.0015(4)	0.0010(2)	0.0071(2)	0.0017(3)	<u>0.0013(1)</u>	<b>0.0191(1)</b>	0.0182(2)
	RMSE	<b>0.0029(1)</b>	0.0079(4)	0.0062(4)	0.0220(2)	0.0057(3)	0.0056(3)	<b>0.0293(1)</b>	0.0291(2)
	R <sup>2</sup> score	<b>0.9925(1)</b>	0.9447(4)	0.9665(4)	0.5742(2)	0.9718(3)	0.9721(3)	<b>0.2467(1)</b>	0.2558(2)
m=1 n=24	MAE	<u>0.0006(1)</u>	<u>0.0014(1)</u>	<u>0.0009(1)</u>	<b>0.0070(1)</b>	0.0018(4)	0.0014(3)	0.0192(2)	<b>0.0180(1)</b>
	RMSE	<u>0.0029(1)</u>	<b>0.0068(1)</b>	0.0053(2)	<b>0.0217(1)</b>	0.0058(4)	0.0057(4)	0.0298(2)	<b>0.0281(1)</b>
	R <sup>2</sup> score	<u>0.9925(1)</u>	<b>0.9594(1)</b>	0.9750(2)	<b>0.5828(1)</b>	0.9705(4)	0.9710(4)	0.2143(4)	<b>0.2993(1)</b>
Underlined indicator		3	1	3	0	2	3	0	0

Table A3: Testing result of mode (2) Multi-R and single-D input.

Mode	Evaluation Indicator	Regression methods							
		LR	TR	RFR	KNN	RR	KRR	LaR	ETN
m=6 n=1	MAE	0.0013(4)	0.0016(4)	0.0011(2)	<b>0.0167(1)</b>	0.0022(2)	<b>0.0020(1)</b>	0.0199(4)	0.0191(4)
	RMSE	0.0044(4)	0.0079(4)	<b>0.0055(1)</b>	<b>0.0331(1)</b>	0.0050(4)	0.0050(4)	0.0306(4)	0.0312(4)
	R <sup>2</sup> score	0.9842(4)	0.9477(4)	<b>0.9731(1)</b>	<b>0.0917(1)</b>	0.9791(4)	0.9792(4)	0.2206(3)	0.1905(4)
m=12 n=1	MAE	0.0012(3)	0.0015(3)	0.0012(4)	0.0171(3)	<b>0.0021(1)</b>	<b>0.0020(1)</b>	0.0194(3)	0.0186(3)
	RMSE	0.0043(3)	0.0069(3)	<b>0.0057(1)</b>	0.0346(2)	0.0049(3)	0.0049(3)	0.0300(2)	0.0304(3)
	R <sup>2</sup> score	0.9845(3)	0.9591(2)	0.9721(2)	-0.0167(2)	0.9794(3)	0.9795(3)	0.2339(2)	0.2133(3)
m=18 n=1	MAE	0.0011(2)	0.0013(2)	0.0011(2)	0.0174(4)	0.0022(2)	<b>0.0020(1)</b>	<b>0.0191(1)</b>	0.0181(2)
	RMSE	0.0036(2)	0.0068(2)	0.0067(4)	0.0365(4)	<b>0.0046(1)</b>	<b>0.0046(1)</b>	<b>0.0293(1)</b>	0.0290(2)
	R <sup>2</sup> score	0.9888(2)	0.9589(3)	0.9606(4)	-0.1713(4)	<b>0.9815(1)</b>	<b>0.9815(1)</b>	<b>0.2465(1)</b>	0.2648(2)
m=24 n=1	MAE	<b>0.0010(1)</b>	<b>0.0010(1)</b>	<b>0.0010(1)</b>	<b>0.0167(1)</b>	0.0024(4)	0.0023(4)	<b>0.0191(1)</b>	<b>0.0175(1)</b>
	RMSE	<b>0.0035(1)</b>	<b>0.0055(1)</b>	0.0058(3)	0.0359(3)	0.0048(2)	0.0047(2)	0.0301(3)	<b>0.0276(1)</b>
	R <sup>2</sup> score	<b>0.9894(1)</b>	<b>0.9730(1)</b>	0.9706(3)	-0.1410(3)	0.9800(2)	0.9801(2)	0.1980(4)	<b>0.3269(1)</b>
Underlined indicator		3	2	3	0	2	3	0	0

Table A4: Testing result of mode (4) Multi-R and multi-D input.

Mode	Evaluation Indicator	Regression methods							
		LR	TR	RFR	KNN	RR	KRR	LaR	ETN
m=6 n=3	MAE	0.0010(7)	0.0012(2)	<b>0.0010(1)</b>	<b>0.0166(1)</b>	0.0022(7)	0.0020(7)	0.0199(7)	0.0191(7)
	RMSE	0.0039(5)	0.0062(4)	<b>0.0049(1)</b>	<b>0.0330(1)</b>	0.0058(4)	0.0058(5)	0.0306(7)	0.0312(7)
	R <sup>2</sup> score	0.9872(5)	0.9684(4)	<b>0.9803(1)</b>	0.0918(2)	0.9723(3)	0.9725(4)	0.2206(5)	0.1905(7)
m=12 n=3	MAE	<b>0.0008(1)</b>	0.0012(2)	<b>0.0010(1)</b>	0.0171(5)	0.0021(4)	0.0019(5)	0.0194(5)	0.0186(5)
	RMSE	0.0039(5)	0.0060(3)	0.0057(3)	0.0346(3)	0.0058(4)	0.0058(5)	0.0300(3)	0.0304(5)
	R <sup>2</sup> score	0.9870(7)	0.9692(3)	0.9726(3)	-0.0167(4)	0.9713(6)	0.9715(6)	0.2339(3)	0.2133(5)
m=18 n=3	MAE	<b>0.0008(1)</b>	0.0012(2)	<b>0.0010(1)</b>	0.0174(7)	<b>0.0019(1)</b>	<b>0.0017(1)</b>	<b>0.0191(1)</b>	0.0181(3)
	RMSE	<b>0.0029(1)</b>	0.0065(5)	0.0068(8)	0.0365(7)	0.0055(2)	0.0055(2)	<b>0.0293(1)</b>	0.0290(3)
	R <sup>2</sup> score	<b>0.9924(1)</b>	0.9628(6)	0.9593(8)	-0.1713(7)	0.9723(3)	0.9735(2)	<b>0.2465(1)</b>	0.2648(3)
m=24 n=3	MAE	<b>0.0008(1)</b>	<b>0.0010(1)</b>	<b>0.0010(1)</b>	0.0167(3)	<b>0.0019(1)</b>	<b>0.0017(1)</b>	<b>0.0191(1)</b>	<b>0.0175(1)</b>
	RMSE	<b>0.0029(1)</b>	<b>0.0050(1)</b>	0.0060(5)	0.0359(5)	<b>0.0054(1)</b>	<b>0.0054(1)</b>	0.0301(5)	<b>0.0276(1)</b>
	R <sup>2</sup> score	<b>0.9924(1)</b>	<b>0.9778(1)</b>	0.9678(6)	-0.1410(5)	<b>0.9739(1)</b>	<b>0.9742(1)</b>	0.1980(7)	<b>0.3269(1)</b>
m=6 n=6	MAE	0.0010(7)	0.0013(5)	<b>0.0010(1)</b>	<b>0.0166(1)</b>	0.0022(7)	0.0020(7)	0.0199(7)	0.0191(7)
	RMSE	0.0039(5)	0.0071(8)	<b>0.0049(1)</b>	<b>0.0330(1)</b>	0.0057(3)	0.0057(3)	0.0306(7)	0.0312(7)
	R <sup>2</sup> score	0.9871(6)	0.9586(8)	0.9796(2)	<b>0.0920(1)</b>	0.9730(2)	0.9733(3)	0.2206(5)	0.1905(7)
m=12 n=6	MAE	<b>0.0008(1)</b>	0.0013(5)	<b>0.0010(1)</b>	0.0171(5)	0.0020(3)	0.0018(3)	0.0194(5)	0.0186(5)
	RMSE	0.0039(5)	0.0067(7)	0.0060(5)	0.0345(3)	0.0058(4)	0.0057(3)	0.0300(3)	0.0304(5)
	R <sup>2</sup> score	0.9869(8)	0.9623(7)	0.9696(4)	-0.0166(3)	0.9717(5)	0.9720(5)	0.2339(3)	0.2133(5)
m=18 n=6	MAE	<b>0.0008(1)</b>	0.0013(5)	<b>0.0010(1)</b>	0.0174(7)	0.0021(4)	0.0018(3)	<b>0.0191(1)</b>	0.0181(3)
	RMSE	0.0030(4)	0.0065(5)	0.0064(7)	0.0365(7)	0.0060(7)	0.0059(7)	<b>0.0293(1)</b>	0.0290(3)
	R <sup>2</sup> score	<b>0.9924(1)</b>	0.9631(5)	0.9639(7)	-0.1714(8)	0.9685(7)	0.9690(7)	<b>0.2465(1)</b>	0.2648(3)
m=24 n=6	MAE	<b>0.0008(1)</b>	0.0012(2)	<b>0.0010(1)</b>	0.0167(3)	0.0021(4)	0.0019(5)	<b>0.0191(1)</b>	<b>0.0175(1)</b>
	RMSE	<b>0.0029(1)</b>	0.0056(2)	0.0059(4)	0.0359(5)	0.0062(8)	0.0062(8)	0.0301(5)	<b>0.0276(1)</b>
	R <sup>2</sup> score	0.9923(4)	0.9725(2)	0.9694(5)	-0.1410(5)	0.9660(8)	0.9664(8)	0.1980(7)	<b>0.3269(1)</b>
Underlined indicator	3	3	3	0	0	2	0	0	

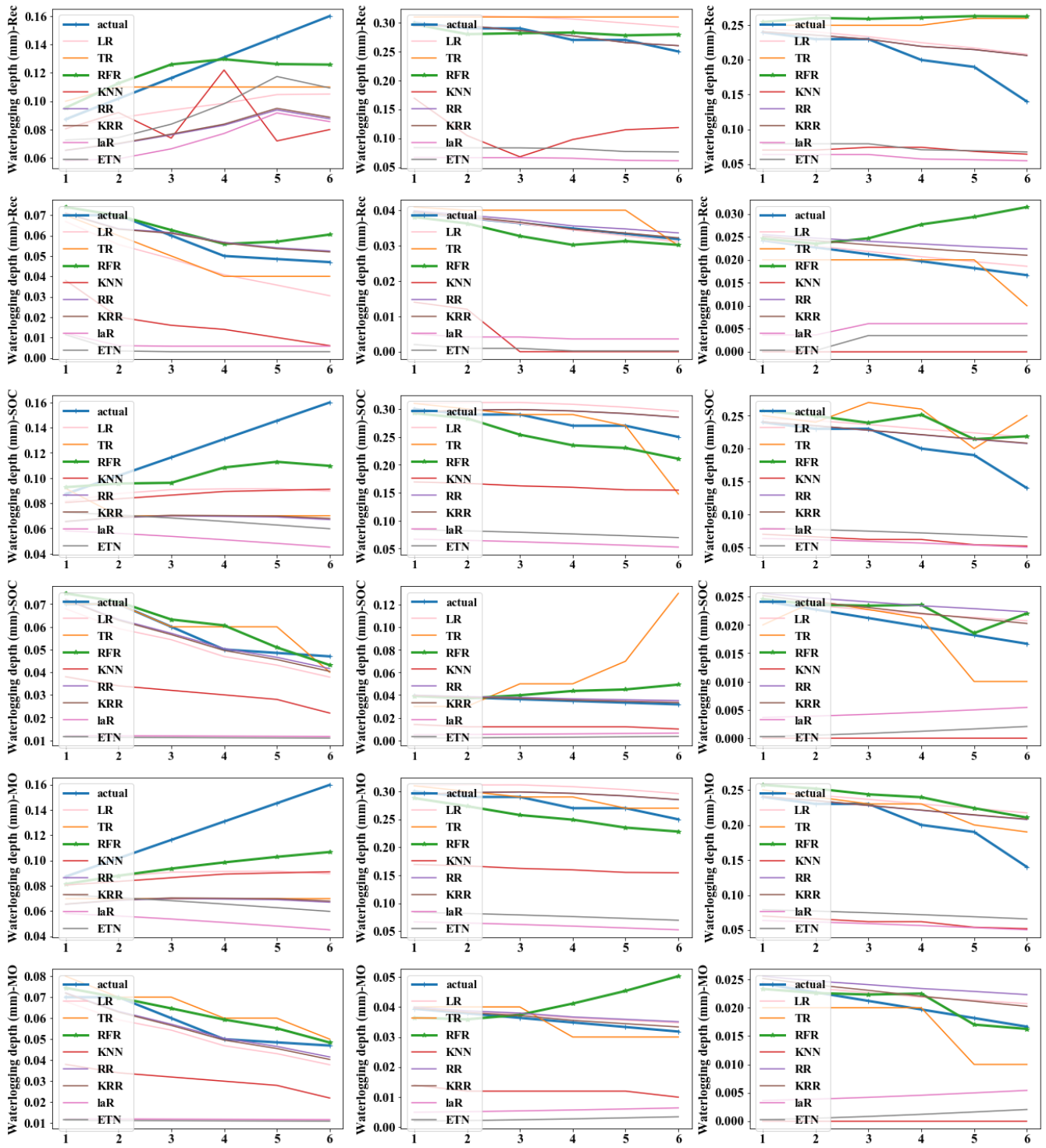


Figure A1: Predicted value and actual value of different strategies. (The x-axis represents predicted steps within each group)

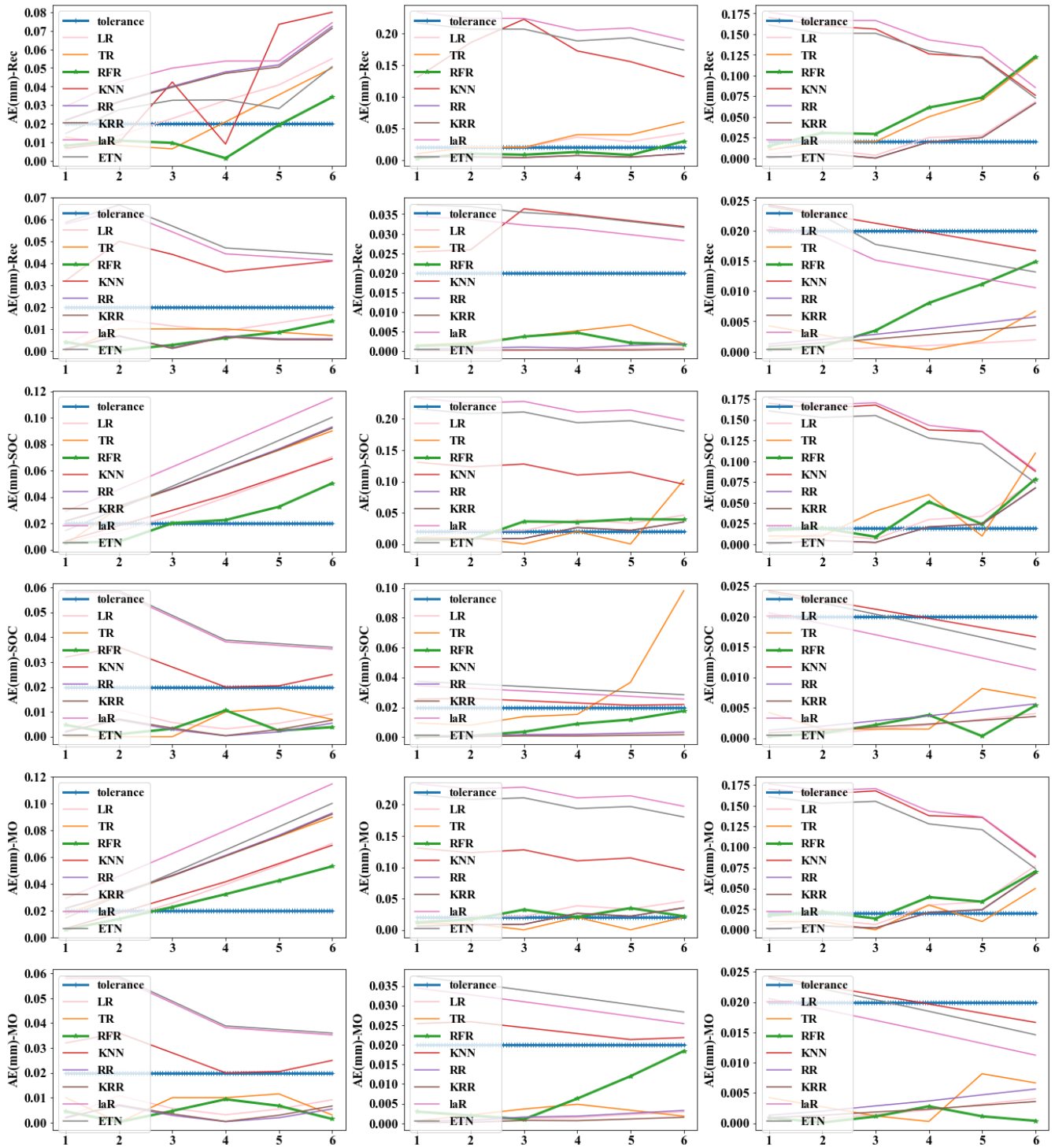


Figure A2: Absolute Error (AE) of different strategies. (The x-axis represents predicted steps within each group)

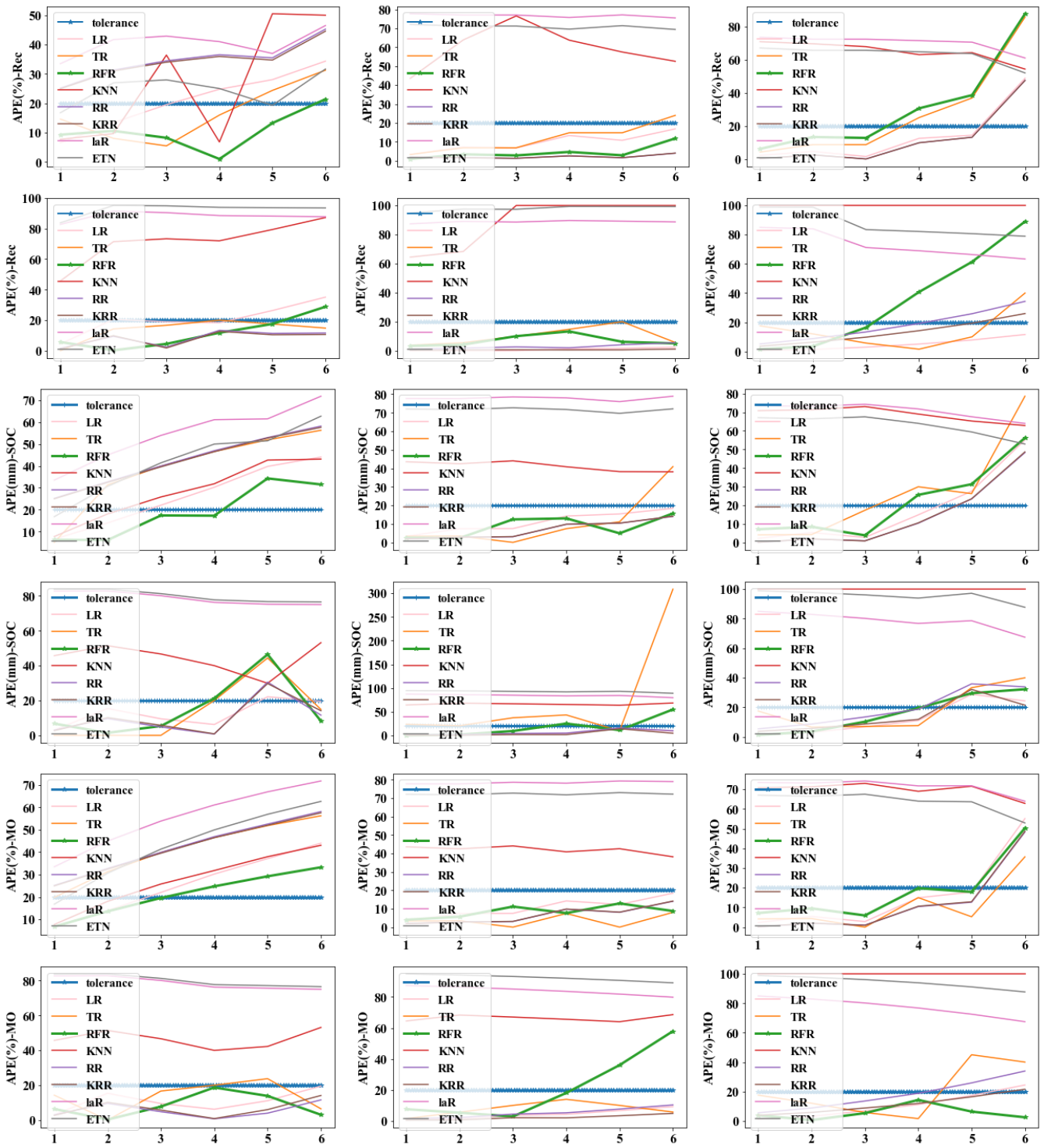


Figure A3: Absolute Percent Error (APE) of different strategies. (The x-axis represents predicted steps within each group)