

PERL: a dataset of geotechnical, geophysical, and hydrogeological parameters for earthquake-induced hazards assessment in Terre del Reno (Emilia Romagna, Italy)

Chiara Varone¹, Gianluca Carbone¹, Anna Baris², Maria Chiara Caciolli^{1,3}, Stefania Fabozzi⁴, Carolina Fortunato¹, Iolanda Gaudiosi¹, Silvia Giallini¹, Marco Mancini¹, Luca Paoletta², Maurizio Simionato¹, Pietro Sirianni¹, Rose Line Spacagna¹, Francesco Stigliano¹, Daniel Tentori¹, Luca Martelli⁵, Giuseppe Modoni², Massimiliano Moscatelli¹

¹ CNR Italian National Research Council, Institute of Environmental Geology and Geoengineering (IGAG), RM1, 00015 Montelibretti, Italy

² University of Cassino and Southern Lazio, Dept. of Civil and Mechanical Engineering, Cassino 03043, Italy

³ University of Perugia, Department of Physics and Geology, Perugia 06100, Italy

⁴ Ministero delle Infrastrutture e dei Trasporti, Roma 00157, Italy

⁵ Geological, Seismic and Soil Survey, Emilia-Romagna Region, Bologna, 40127, Italy

15 *Correspondence to:* Chiara Varone (chiara.varone@igag.cnr.it; chiara.varone@cnr.it)

Abstract. In 2012, the Emilia Romagna Region (Italy) was struck by a seismic crisis characterized by two main shocks (ML 5.9 and 5.8) which triggered relevant liquefaction events. Terre del Reno is one of the municipalities that experienced the most extensive liquefaction effects due to its complex geo-stratigraphic and geo-morphological setting. This area is indeed located in a floodplain characterized by lenticular fluvial channel bodies associated to crevasse and levee clay–sand alternations, related to the paleo-Reno River. Therefore, it was chosen as case study for the PERL project, which aims to define a new integrated methodology to assess the liquefaction susceptibility in complex stratigraphic conditions through a multi-level approach. To this aim, about 1800 geotechnical, geophysical and hydrogeological investigations from previous studies and new realization surveys were collected and stored in the PERL dataset. This dataset is here publicly disclosed and some possible applications are reported to highlight its potential.

25 1 Introduction

In these last years, an increasing number of source data are publicly disclosed, allowing a wider access to research activities. Key examples are the huge amount of free satellite imagery (i.e., Sentinel, Landsat) provided by the main space agencies and the cutting-edge tools and procedures integrated in widely known and open source EO platforms such as Google Engine. A multitude of algorithms and codes are available for all the fields of knowledge concerning natural hazards, while their application is made easier by the increasing number of open-access inventories of natural phenomena (i.e., Martino et al. 2014; Guarino et al., 2018; Tanyaş et al., 2022). However, only a few examples of datasets of in-situ investigations and related

parameters are publicly disclosed, and this should be a gap to be filled. With regard to macro-types of investigations (i.e., geological, geophysical, geotechnical, hydrogeological, etc.), some databases are currently available worldwide (i.e., Orgiazzi et al., 2017, Kmoch et al., 2021, Geyin et al., 2021, Minarelli et al., 2022), as well as for the Italian national territory. An example is provided by Vannocci et al. 2022, which includes geotechnical and hydrological soil parameters for shallow landslide modelling.

However, there are only a few examples of freely available products which integrate different macro-typologies of in-situ investigations in a unique database, especially with reference to the Italian territory (Gaudiosi et al., 2021). In the light of the above, the aim of the authors is to make freely available a dataset of about 1800 geological, geophysical, geotechnical and hydrogeological in-situ investigations and related parameters collected in the Terre del Reno municipality (Emilia – Romagna Region, Italy). The study area is affected by severe seismic hazards and prone to seismically induced effects, as extensively documented by the 2012 seismic sequence which was characterized by more than 2000 earthquakes (Facciorusso et al., 2016). Two main shocks were recorded during the crisis: the first one on 20th May with ML 5.9 and epicenter in Finale Emilia, and the second one on 29th May with ML 5.8 and epicenter in Medolla, both in Modena Province.

As widely reported in bibliography, the propagation of seismic waves through the upper portion of the soil can be modified by local site conditions (i.e., Bozzano et al., 2017; Fabozzi et al., 2021; Falcone et al., 2020,2021; Gutam 2017; Luo et al., 2020; Meza-Fajardo et al., 2019) and can determine the triggering of earthquake-induced effect at ground surface (i.e., Forte et al., 2021; Martino et al., 2017, 2019; Giannini et al., 2022; Paoletta et al., 2022;). In Terre del Reno, these earthquakes triggered several earthquake-induced effects (Chini et al., 2015, Papathanassiou et al., 2015), among which linear and punctual liquefaction effects were the most prominent. These effects may occur when saturated granular deposits are shaken by a seismic action, and their magnitude depends on the combination of earthquake intensity and soil condition. Literature reports plenty of liquefactions events happened in complex geological conditions and triggered by earthquakes with various magnitudes such as for instance Gorkha, Nepal (Gutam et a., 2017), Christchurch, New Zealand (Maurer et al., 2019), Urayasu, Japan (Baris et al., 2021), 2008 Wenchuan, China (Zhou et al., 2022) and 2019 Dürres, Albania (Mavroulis et al. 2021) earthquakes. Liquefaction effects in Terre del Reno were mainly related to the complex sedimentological and stratigraphic setting of the areas (i.e., Stefani et al., 2018, Tentori et al., 2022), characterized by multiple and alternate sandy and silty-sandy packing hosting local (shallow) and regional (deep) aquifers (Regione Emilia – Romagna, 1998). Several authors (i.e. Ecemis 2021; Jain 2022) highlighted that the presence of a tiny alternation of silt and sands seems to influence the liquefaction occurrence while other studies focused on the role of silty sands and soil packing condition on liquefaction triggering (i.e., Naeini et al., 2004, Stamatopoulos et al., 2010, Gobbi et al., 2022a). To overcome the difficulties related to heterogeneously complex soil conditions, integrated approaches are applied to predict the occurrence of liquefaction by combination of numerical and experimental methods (Gobbi et al., 2022b; Rios et al., 2022; Paoletta et al. 2022). Further steps toward this direction were made for the Terre del Reno case study by pursuing two main objectives of PERL project in order to: i) define a new integrated methodology to assess the liquefaction susceptibility in complex stratigraphic settings through a multi-level approach; ii) perform the seismic microzonation of the municipality for land and civil protection planning purposes. This project allowed

the collection and analysis of the above mentioned in-situ investigations, and the elaboration of thousands related parameters that were stored in a harmonized and standardized dataset (named “PERL”) conceived to guarantee interoperability with existing ICT solutions and data models. The availability of such a dataset of surveys, catalogued and processed according to shared standards, makes Terre del Reno one of the best-characterized municipalities in Italy in terms of seismic hazard and earthquake-induced effects. This flexible dataset can be manipulated and combine to tackle different problems and represents a powerful resource for the scientific community, for those who cannot set-up and manage a living laboratory or directly perform on-site investigations.

For these reasons, authors provide complete access to the dataset through the supplementary materials and present two different applications herein used as references to highlight the potential of PERL dataset.

75 **2 Geological setting**

Structural and Stratigraphic Setting

The study area is located within the southern portion of the Po alluvial plain, which represents the sedimentary cover of the Po Basin infill (Fig. 1). The geological substrate of the study area, which lies along the northern sectors of the Apennine chain, shows complex fold and thrust structures with arcuate geometry associated with strongly asymmetrical foredeep basins. Although the Po Basin represents both the Alpine retroforeland basin and the Apennine foredeep, its Cenozoic structural evolution was mainly driven by the north-east migration of the external front of northern Apennines, which consists of four arcuate fold-and-thrust systems: the Monferrato Arc, the Emilia Arc, the Ferrara Arc and the Adriatic Arc (Pieri and Groppi, 1981; Royden et al., 1987; Scrocca et al., 2007). These systems that are buried beneath the present Po plain, were active since the Late Miocene (Fig. 1) and are still considered seismogenic (Boccaletti et al., 2011; Ghielmi et al., 2013). In particular, the movement of a segment of the Ferrara Arc thrust system (i.e., the Mirandola thrust system) was responsible for the 2012 Emilia seismic events (IsideWorking Group, 2010), which triggered numerous co-seismic effects associated with liquefaction phenomena in the Provinces of Ferrara, Modena, and Bologna. In the study area, the shallowest Quaternary sedimentary fill consist of marine deposits (Marine Quaternary in figure 1b) and 100 ky-spaced transgressive–regressive cycles constituted by nearshore sands and alluvial deposits, formed during interglacial and glacial periods respectively (Continental Quaternary in figure 1b). The stratigraphic framework of the topmost late Pleistocene to Holocene Po Basin succession (at 0-40 m depth from the ground surface), documents a succession of tabular-shaped fluvial sands (i.e. glacial) overlain up-section by the Holocene poorly drained- and mu-rich floodplain and swamp/marsh succession with subordinate lenticular fluvial sandy channel bodies associated to crevasse and levee clay–sand alternations fed by the paleo-Reno River (i.e. interglacial) (Bruno et al., 2021; Stefani et al., 2018; Tentori et al., 2022). The Reno River modern drainage basin extends for about 2500 km² in the Northern Apennines. Owing to the low topographic gradients in the area, the paleo-Reno River experienced fast aggradation and frequent avulsion episodes during recent and historical times (see Tentori et al. 2022 and references therein).

The hydro-stratigraphic architecture reflects the depositional and tectonic evolution of the southern Po sedimentary basin from Pleistocene to Holocene (Molinari et al., 2007; Emilia-Romagna Region and ENI-AGIP, 1998). The aquifers from the most superficial hydro-stratigraphic group (e.g., Group A), consist of six lower-order hydro-stratigraphic units belonging to the Quaternary fluvio-deltaic and alluvial depositional systems. In the study area, Group A aquifers consist of the sandy fluvial bodies deposited during glacial periods, separated by the muddy-dominated intervals of transgressive alluvial facies (aquitards) deposited during interglacial periods. The more surficial composite aquifer system named A0 by Molinari et al. (2007) consists of two sandy-dominated aquifer units hosted within the late Pleistocene-Holocene channelized bodies and encased by alluvial floodplain muds. Based on the piezometric level dating back to summer 2012, Calabrese et al. (2012) placed the groundwater level of the shallower semi-confined aquifer at about 3-4 m depth below the levee and about 1-2 m in the floodplain.

3 Materials and methods

The PERL dataset was obtained by merging three databases provided by different institutions. Moreover, additional 17 geotechnical investigations were specifically performed in the framework of the PERL project.

The three existing databases are:

- MUDE database (Modello Unico Digitale per l'Edilizia – Unique Digital Model for Building)

The MUDE database is composed by 384 records including punctual and linear in-situ investigations. Data were extracted from a series of technical reports produced to design the reconstruction of the buildings collapsed during the 2012 seismic crisis. Since the digital formats of these investigations were originally not available, geo-localization, key information and measured parameters were obtained from the digital scans of technical and geological reports.

- RER database (Regione Emilia-Romagna - Emilia-Romagna Region database)

The RER database is composed by 906 geo-localized, punctual records, associated with a set of keys information (typology, date, coordinates, and maximum depth) and a scan of the investigation sheet. Parameter were extracted from investigations sheets as they are not available in a digital format. This database is available at <https://servizimoka.regione.emilia-romagna.it/mokaApp/apps/geg/index.html> (last access: 12/09/2022).

- SM database (Seismic Microzonation Studies)

The SM database is composed of 1284 records including punctual as well as linear in-situ investigations. These investigations are geo-localized and organized in a standardized structure according to Commissione tecnica per la microzonazione sismica (2015). The key information (typology, date, coordinates, etc.) of each investigation are stored in a dedicated table, while all the measured parameters are reported in chained tables. This database is available at <https://www.webms.it/> (last access: 12/09/2022).

The first problem faced to merge these three databases was the presence of duplicate information. To avoid duplicates, a methodology to discern and verify the uniqueness of an investigation was elaborated.

This methodology is based on the implementation of a series of multiple, progressive True/ False (TF) controls applied to various control parameters (CP) relative to all the investigations included in the pertinence area. This last was defined as a circle with a radius equal to 200 m centered in correspondence of the considered investigation. The progressively considered CP (Fig. 1) are: CP1) absence of another investigation within the area of pertinence; CP2) un-matching of the investigation typology; CP3) un-matching of the date of survey; CP4) matching of depth reached by the investigation. Each CPm (m=1,2,3,4) is checked in a dedicated TF test (TFn with n=1,2,3,4). Starting from TF1, an investigation that verifies CP1 is moved to TF2 for CP2 verification up to TF4. Each time that a CPm in a TFn is not verified, the investigation is defined as “unique”. If an investigation verifies all the control parameters, it is defined as “redundant” and removed from the database. The application of this methodology allowed to identify and remove 32% of the investigations, obtaining a final dataset composed of 1805 unique investigations (Fig. 2).

4 Data description

PERL dataset is composed by two shapefiles to be implemented into a GIS system and an associated geodatabase. The two shapefiles are named *ind_pc* and *ind_ln*, corresponding to punctual and linear investigations, respectively (EPSG:32633). The associated attribute tables contain the main information of each investigation:

- *ID*: unique identification number of each investigation;
- *Investigat*: investigation typology.

The complete set of investigations and the related measured parameters are reported in an Excel file following this structure:

- *ID*: unique identification number of each investigation
- *Type_par*: typology of parameters (see ‘list of parameters’ for legend)
- *Value*: value of the parameters
- *Depth_top*: top of layer depth (m) to which the parameter refers.
- *Depth_bottom*: bottom of layer depth (m) to which the parameter refers.

PERL dataset includes 1805 records corresponding to as many investigations, and guarantees an average density of 35 punctual (Fig. 3a) and/or linear measurements (Fig. 3b, c) per square kilometer of Terre del Reno municipality (about 51 km²). Focusing on investigations typologies (see the list of typologies and codes and Fig. 4a), the dataset consists of 71% of penetrometer tests (CPT, CPTU, CPTE, SCPT, SPT, DN), 16% of boreholes and trenches (S, T, SP, SC, SD), 12% of punctual and linear geophysical investigations (CH, DH, HVSR, MASW, ESAC_SPAC), 1% of laboratory and hydrogeological tests (CR, CI, CD, SM, ED, TD, LF) (Fig. 3).

Penetrometer tests, geognostic boreholes, trenches, and borehole geophysical tests are characterized by a depth of investigation ranging from few meters to more than 100 m (maximum depth: 265m) (Fig. 4b). About the 90% of them, reach a maximum depth of investigation equal to 35m. Thus, the most represented depth classes are 30-35m and 10-15m with 330 (21%) and

310 (20%), respectively. As regards to penetrometer tests they are characterized by depths ranging between 5 and 50m, with a maximum in 30-35m class. On the contrary, boreholes and trenches cover the entire spectrum of depth classes of the dataset. However, it is worth noticing that about 60 boreholes and trenches reach a depth higher than 55m, which is the most represented classes together with the 10-15m class. Penetrometer tests, boreholes, trenches, and geophysical tests are characterized by investigation depths ranging from few to some hundred meters with a maximum of 265m. About the 90% of them, reach a maximum depth of investigation equal to 35m. Most investigation are carried out up to a depth of 30-35m and 10-15m (330 (21%) and 310 (20%) respectively contained in each class). As regards to penetrometer tests, in particular, they are characterized by depths ranging between 5 and 50m, with a maximum in 30-35m class. On the contrary, boreholes and trenches cover the whole spectrum of depth classes of the dataset. However, it is worth noticing that about 60 boreholes and trenches reach a depth higher than 55m, which is the most represented class together with the 10-15m class.

5 Examples of applications

To address some of the conceptual points discussed in the Introduction and better highlight the uniqueness and potential of the PERL dataset, we present two different applications. In the first case study, we take advantage of the PERL database to represent the complex geology beneath the San Carlo alluvial plain. The second case history focusses on a statistical inference of PERL geophysical data to obtain soil dynamics when experimental information is missing.

5.1 Stratigraphic reconstruction of liquefiable layers thickness in the San Carlo subsoil

The PERL database includes several sedimentological, geotechnical, geophysical, and hydrogeological data which can be used to reconstruct the stratigraphic architecture of the Terre del Reno subsurface and provide a reliable geological framework for future studies devoted to earthquake-induced hazards mitigation. The position and the power of liquefiable portion within the subsoil are key information for liquefaction risk assessment and mitigation. The possibility of automatically build three-dimensional subsoil model with advanced procedures represents a nowadays topic of the applied technological research. A combination of these two approaches is here presented to spotlight the potential of PERL dataset.

As an example, Figure 5 shows the geostatistical interpolation, performed with the Ordinary Kriging, of the Cumulated Thickness of the Liquefiable layers (CTL) in the district of San Carlo. In particular, the CTL has been manually extracted from 33 boreholes and automatically obtained on 148 CPTs by applying the procedure proposed by Spacagna et al. (2022). The obtained map has been overlaid on the map of liquefaction evidence that occurred after the Emilia-Romagna 2012 seismic sequence, showing a good match between the liquefaction-induced surficial manifestations and the CTL distribution.

5.2 Statistical analysis of shear waves variability with depth

As widely represented by the available bibliography, the amount of the investigations progressively decreases with soil depth.

190 Thus the uncertainty in subsoil characterization increase from the ground surface to the deepest layers of the soil. To overcome this issue, an example of statistical inference of soil parameters is presented. Based on the available data, a correlation analysis between the values of V_s (m/s) and depth (m) was carried out to infer information when the depth of investigation does not guarantee a correct soil parameterization. Considering the high geological and stratigraphic complexity of the case study, a lithological-based statistical inference was performed. Specifically, for each lithology L, the scatter plot of the value of V_s 195 (m/s) as a function of depth, D (m) and the corresponding linear regression was calculated.

The linear regression model is defined by the following relationship:

$$V_s(D) = aD + V_{s0}$$

where a and V_{s0} correspond to the slope and intercept of the model line, respectively.

PERL database can rely on 164 V_s profiles mainly identified from penetrometer tests (SCPT), Down Hole (DH), MASW, 200 ESAC_SPAC, SDMT, and Cross Hole (CH) tests. Each of these V_s profiles was discretized with a step size of 1 m in depth and, through an automated procedure, each meter of depth was associated with a lithology (L) based on the boreholes in the vicinity.

For each lithology L, a statistical analysis was performed, and the linear regression models were calculated. The results obtained for MH and SP lithologies are here presented as case examples (Fig. 6). The corresponding values of coefficients a 205 and b , and the coefficient of determination R^2 are reported in Table 1.

Lithology (L)	a	V_{s0}	R^2
MH	4.18	132	0.59
SP	1.28	195	0.79

Table 1: Coefficients (a= slope, V_{s0} = intercept) of the regression model for 2 lithologies (L) and related coefficient of determination (R^2)

210 As expected, the obtained a and b values highlighted a positive slope as the mean value of the depth increase with the increasing of the mean of the dependent variable V_s . At the same time, these values allow to quantify how much the V_s value changes each one meter of depth and of SP showed a variation rate greater than that of MH. Moreover, the coefficient of determination R^2 obtained for MH and SP lithologies are characterized by a 0.59 and 0.79 value, respectively, proving the goodness of the fitting. When experimental data are lacking, for depths that fall within the variability range of the available data, the regression 215 models allow to obtain V_s by interpolation while an extrapolation can be applied for grater depths.

Results may be used in the future for comparison with other Italian estimates (Romagnoli et al., 2022) or, combined with ambient vibration measurements, to define the thickness of the resonant sedimentary layers (D'Amico et al., 2008, Giannini et al., 2021).

6 Conclusions

220 As part of PERL project, a considerable number of investigations were collected in the Terre del Reno municipality (Emilia Romagna Region (Italy). This area experienced the most extensive liquefaction effects during the 2012 Emilia Romagna seismic crisis and remains exposed to severe seismic hazards and seismically induced effects due to its complex geological setting.

Thanks to this study, a complete and free access to the PERL dataset, which includes 1805 punctual and linear *in-situ* 225 investigations consisting of geological, geotechnical, geophysical and hydrogeological data is provided. The database is composed of 71% of penetrometer tests, 16% of boreholes and trenches, 12% of geophysical investigations and 1% of laboratory and hydrogeological tests.

Two applications of the PERL dataset are presented to highlight its potentiality and to show that high-quality large dataset could be critical to infer information in areas and/or portions of the soil characterized by poor or sparse data. The first examples 230 pointed out the database potentials in overcoming problems due to the uneven distribution of surveys across the territory, while the second one spotlight its capability of providing information at subsoil depth not reached by investigations.

Other major outcomes of the PERL project in the Terre del Reno municipality included: i) a detailed reconstruction of the subsoil geology to examine the stratigraphic control on earthquake-induced liquefaction (Tentori et a., 2022); ii) data-driven and automatic subsoil characterization through the analysis of CPT-based soil behaviour type (SBT) and soil behaviour type 235 indexes (I_c) combining geostatistical and artificial intelligence genetic approach (Baris et al., 2022); and iii) 3rd level seismic microzonation study of the Terre del Reno municipal area (Varone et al., 2022) to mitigate seismic and seismically induced hazards through a sensible urban planning.

Ongoing studies currently focusses on the definition of a methodology to quantify liquefaction susceptibility in areas dominated by complex geo-stratigraphic conditions by applying a multi-level approach laying on simplified models and to 240 promote the identification of potentially liquefiable granular bodies, thus mitigating earthquake-induced hazards to allow a sustainable development of this urban area.

7 Acknowledgements

This work was carried out in the framework of the project: “*Accordo di collaborazione tra Regione Emilia-Romagna, Amministrazione Comunale di Terre del Reno, Consiglio Nazionale delle Ricerche – Istituto di Geologia Ambientale e* 245 *Geingegneria, Università degli Studi di Cassino e del Lazio Meridionale – Dipartimento di Ingegneria Civile e Meccanica,*

finalizzato a definire una strategia multilivello per valutare il rischio da liquefazione in presenza di argini e situazioni geologiche e morfologiche complesse". Authors wish to thank Olga Mantovani (Municipality of Terre del Reno) for its support to the project.

250 **Author contribution**

CV, GC and FS conceptualized the methodology. CV, GC, AB, MCC, SF, CF, IG, SG, LP, MS, PS, RS and DT curated the data. GC implemented the algorithm. CV, AB, DT and RS curated the examples of applications. LM, GM and MM conceptualized and administrated the project. CV wrote the original draft of the paper. CV, GC, AB, MCC, SF, CF, IG, SG, MM, LP, MS, PS, RS, FS, DT, LM, GM and MM reviewed and edited the paper.

255 **Competing interests**

The authors declare that they have no known competing interest.

Appendix A : List of investigation typologies and codes

- *CH*: Cross - Hole test
- *CPT*: Cone Penetration Test
- 260 ▪ *CPTe*: Electrical Cone Penetration Test
- *CPTU*: Piezocone Penetration Test
- *CR*: Resonant Column Test
- *DH*: Down-Hole test
- *DMT*: Dilatometric Test
- 265 ▪ *DN*: Dynamic Cone Penetration Test
- *ESAC_SPAC*: seismic array elaborated by ESAC/SPAC methods
- *HVSR*: ambient noise measurements elaborated by HVSR technique
- *LF*: LeFranc test
- *MASW*: Multichannel Analysis of Surface Waves
- 270 ▪ *PA*: borehole (water well)
- *S*: non-destructive borehole
- *SC*: borehole with collection of samples
- *SCPT*: Seismic Cone Penetration Testing
- *SD*: borehole
- 275 ▪ *SDMT*: Seismic Dilatometer Marchetti Test
- *SM*: laboratory test on soil sample
- *SP*: piezometer
- *SPT*: Standard Penetration Test
- *T*: trench
- 280 ▪ *TD*: shear strength test

Appendix B : List of parameters and codes

- *AR*: clay classification obtained from laboratory test (%)
- *C*: effective cohesion (MPa)
- *CAM*: number of sample (-)
- 285 ▪ *CU*: undrained cohesion (MPa)
- *EI*: index of voids (-)
- *FI*: effective soil friction angle (°)
- *FR*: resonance frequency (Hz)
- *FS*: skin friction (MPa)
- 290 ▪ *G*: shear modulus (MPa)
- *GH*: gravel classification obtained from laboratory test (%)
- *IP*: plasticity index (-)
- *K*: classification obtained from laboratory test (m/s)
- *L*: layer lithology (-)
- 295 ▪ *LID*: lithology of the hydrolayer (-)
- *LM*: silt classification obtained from laboratory test (%)
- *PT*: number of SPT blows (-)
- *PTM*: number of DN blows (-)
- *PV*: weight of the unit of volume (kN/m³)
- 300 ▪ *QC*: tip resistance (MPa)
- *SA*: sand classification obtained from laboratory test (%)
- *SG*: water table level (m)
- *U*: hydrostatic pressure (MPa)
- *VP*: compressional waves velocity (m/s)
- 305 ▪ *VS*: shear-waves velocity (m/s)
- *W*: water content (%)

Appendix C : List of lithologies (L) and codes

- *CH*: inorganic clays with high plasticity
- *CL*: inorganic clays with low- medium plasticity, gravelly or sandy, silty clays
- 310 ▪ *GP*: clean gravel poorly graded, mixture of gravel and sand
- *MH*: inorganic silts, fine sands, micaceous or diatomitic silts
- *ML*: inorganic silts, silty or clayey fine sands, silts clayey sands with low plasticity
- *OH*: organic clays of medium-high plasticity, organic silts
- *OL*: organic silt, silty clays with low plasticity
- 315 ▪ *PT*: peats and peaty soils
- *RI*: anthropogenic filling
- *SC*: clayey sands, mixture of sand and clay
- *SM*: silty sands, mixture of sand and silt
- *SP*: sands poorly graded
- 320 ▪ *SW*: sands well graded, gravelly sands

References

- Baris, A., Caciolli, M. C., Fabozzi, S., Gaudiosi, I., Mancini, M., Martelli, L., Modoni, G., Moscatelli, M., Paoletta, L., Razzano, R., Simionato, M., Spacagna, R. L., Stigliano, F., Tentori, D., and Varone, C.: Automated CPT-based soil profile characterization for liquefaction susceptibility assessment, EGU General Assembly 2022, Vienna, Austria, 23–27 May 2022, 325 EGU22-9779, <https://doi.org/10.5194/egusphere-egu22-9779>, 2022.
- Baris, A., Spacagna, R.L., Paoletta, L., Koseki, J., Modoni, G. : Liquefaction fragility of sewer pipes derived from the case study of Urayasu (Japan). *Bulletin of Earthquake Engineering* 19, 3963–3986. doi:10.1007/s10518-020-00957-2, 2021.
- Boccaletti, M., Bonini, M., Corti, G., Gasperini, P., Martelli, L., Piccardi, L., Severi, P., Vannucci, G., 2004. Carta sismotettonica della Regione Emilia-Romagna, scala 1: 250.000. Con note illustrative. Regione Emilia-Romagna–SGSS, 330 CNR-IGG. SELCA, Firenze.
- Boccaletti, M., Corti, G., Martelli, L.: Recent and active tectonics of the external zone of the Northern Apennines (Italy). *International Journal of Earth Sciences* 100, 1331–1348, <https://doi.org/10.1007/s00531-010-0545-y>, 2011.
- Bozzano F., Buccellato A., Coletti F., Martino S., Marra F., Rivellino S., Varone C.: Analysis of the seismic site effects along the Ancient Via Laurentina (Rome). *Annals of Geophysics*, 60, 4, S0435. Special Issue “Monitoring and Seismic 335 Characterization of Archaeological Sites and Structures”. doi: 10.4401/ag-7140, 2017.
- Bruno, L., Amorosi, A., Lugli, S., Sammartino, I., Fontana, D. : Trunk river and tributary interactions recorded in the Pleistocene–Holocene stratigraphy of the Po Plain (northern Italy). *Sedimentology* 68, 2918–2943. <https://doi.org/10.1111/sed.12880>, 2021.
- Calabrese, L., Martelli, L., Severi, P.: Stratigrafia dell’area interessata dai fenomeni di liquefazione durante il terremoto 340 dell’Emilia (maggio 2012). *Atti 31° Convegno del Gruppo Nazionale di Geofisica della Terra Solida*, Potenza, 20–22 novembre 2012, sess. 2.2, pp. 119–126, 2012.
- Commissione tecnica per la microzonazione sismica, *Microzonazione sismica. Standard di rappresentazione e archiviazione informatica. Versione 4.0b*, 2015.
- Chini M., Albano M., Saroli M., Pulvirenti L., Moro M., Bignami C., Falcucci E., Gori S., Modoni G., Pierdicca N. and 345 Stramondo S.: Coseismic liquefaction phenomenon analysis by COSMO-SkyMed: 2012 Emilia (Italy) earthquake. *International Journal of Applied Earth Observation and Geoinformation* 39, 65-78, doi:10.1016/j.jag.2015.02.008, 2015.
- D’Amico V., Picozzi M., Baliva F. and Albarello D.: 2008: Ambient Noise Measurements for Preliminary Site-Effects Characterization in the Urban Area of Florence, Italy. *Bulletin of the Seismological Society of America*, 98(3), 1373-1388. doi: 10.1785/0120070231, 2008.

- 350 Ecemis N.: Experimental and numerical modeling on the liquefaction potential and ground settlement of silt-interlayered stratified sands. *Soil Dynamics and Earthquake Engineering*, 144, 106691, doi: 10.1016/j.soildyn.2021.106691, 2021.
- Fabozzi S., Catalano S., Falcone G., Pagliaroli A., Peronace E., Porchia A., Romagnoli G., Moscatelli M. : Stochastic approach to study the site response in presence of shear wave velocity inversion: application to seismic microzonation studies in Italy. *Engineering Geology* 280 (2021) 105914 , doi: 10.1016/j.enggeo.2020.105914, 2021.
- 355 Facciorusso J., Madiari C. and Vannucchi G.: The 2012 Emilia earthquake (Italy): Geotechnical characterization and ground response analyses of the paleo-Reno river levees. *Soil Dynamics and Earthquake Engineering* 86, 71-88, doi:10.1016/j.soildyn.2016.04.017, 2016.
- Falcone G., Mendicelli A., Mori F., Fabozzi S., Moscatelli M., Occhipinti G., Peronace E.: A simplified analysis of the total seismic hazard in Italy. *Engineering Geology* 267, 105511. <https://doi.org/10.1016/j.enggeo.2020.105511>, 2020.
- 360 Falcone G., Acunzo G., Mendicelli A., Mori F., Naso G., Peronace E., Porchia A., Romagnoli G., Tarquini E., Moscatelli M.: Seismic amplification maps of Italy based on site-specific microzonation dataset and one-dimensional numerical approach, *Engineering Geology*, 289, 106170, doi: 10.1016/j.enggeo.2021.106170, 2021.
- Forte G., Verrucci L., Di Giulio A., De Falco M., Tommasi P., Lanzo G., Franke k. W., Santo A.: Analysis of major rock slides that occurred during the 2016–2017 Central Italy seismic sequence. *Engineering Geology*, 290, 106194, doi: 10.1016/j.enggeo.2021.106194, 2021.
- 365 Gaudiosi I., Romagnoli G., Albarello D., Fortunato C., Imprescia P., Moscatelli M., Stigliano F. : Verso un approccio totalmente probabilistico alle stime di pericolosità sismica: studio della variabilità delle curve del modulo secante normalizzato, G/G_0 (γ) e del rapporto di smorzamento, D (γ) con la deformazione di taglio, associate alle unità geologico-tecniche degli Studi di Microzonazione Sismica, Proc. of the XXXIX GNGTS - in italian, 2021.
- 370 Geyin M., Maurer B. W., Bradley B. A., Green R. A. and van Ballegooy S. : CPT-based liquefaction case histories compiled from three earthquakes in Canterbury, New Zealand. *Earthquake Spectra*, 37: 4, 2920-2945, doi:10.1177/875529302199636, 2021.
- Ghielmi, M., Minervini, M., Nini, C., Rogledi, S., Rossi, M.: Late Miocene–Middle Pleistocene sequences in the Po Plain–Northern Adriatic Sea (Italy): the stratigraphic record of modification phases affecting a complex foreland basin. *Marine and Petroleum Geology* 42, 50–81, 2013.
- 375 Giannini L.M., Varone C., Esposito C., Marmoni G.M., Scarascia Mugnozza G., Schilirò L. : Earthquake-induced reactivation of landslides under variable hydrostatic conditions: evaluation at regional scale and implications for risk assessment. *Landslides*, 19, 2005-2019, doi: 10.1007/s10346-022-01882-y, 2022.

- 380 1Giannini L.M., Varone C., Esposito C., Scarascia Mugnozza G., Schilirò L.: The potential of spatial statistics for the reconstruction of a subsoil model: A case study for the Firenze-Prato-Pistoia Basin, Central Italy. *Journal of Applied Geophysics*, 104466, doi: 10.1016/j.jappgeo.2021.104466, 2021.
- Gobbi S., Reiffsteck P., Lenti L., Santisi d'Avila M.P., Semblat J.F.: Liquefaction triggering in silty sands: effects of non-plastic fines and mixture-packing conditions. *Acta Geotechnica*, 17, 391-410, doi: 10.1007/s11440-021-01262-1, 2022a.
- 385 Gobbi S., Santisi d'Avila M.P., Lenti L., Semblat J.F., Reiffsteck P.: Liquefaction assessment of silty sands: Experimental characterization and numerical calibration. *Soil Dynamics and Earthquake Engineering*, 159, doi: 10.1016/j.soildyn.2022.107349, 2022b.
- Guarino P.M., Santo A., Forte G., De Falco M., Niceforo D.M.A.: Analysis of a database for anthropogenic sinkhole triggering and zonation in the Naples hinterland (Southern Italy). *Nat Hazards* 91: 1, 173–192, doi: 10.1007/s11069-017-3054-5, 2018.
- 390 Gutam D.: Unearthed lessons of 25 April 2015 Gorkha earthquake (MW 7.8): geotechnical earthquake engineering perspectives. *Geomatics, Natural Hazards and Risk*, 8: 1358 – 1382, doi: 10.1080/19475705.2017.1337653, 2017.
- Gutam D., Santucci de Magistris F., Fabbrocino G. : Soil liquefaction in Kathmandu valley due to 25 April 2015 Gorkha, Nepal earthquake. *Soil Dynamics and Earthquake Engineering*, 97: 37 – 47, doi: 10.1016/j.soildyn.2017.03.001, 2017.
- Iside Working Group : Italian seismological instrumental and parametric database. <http://iside.rm.ingv.it>, 2010.
- Jain A., Mittal S., Kumar Shukla S. : Liquefaction proneness of stratified sand-silt layers based on cyclic triaxial tests. *Journal of Rock Mechanics and Geotechnical Engineering*, doi: 10.1016/j.jrmge.2022.09.015, 2022.
- 395 Kmoch, A., Kanal, A., Astover, A., Kull, A., Virro, H., Helm, A., Pärtel, M., Ostonen, I., and Uemaa, E.: EstSoil-EH: a high-resolution eco-hydrological modelling parameters dataset for Estonia, *Earth Syst. Sci. Data*, 13, 83–97, doi:10.5194/essd-13-83-2021, 2021.
- Luo Y., Fan X., Huang R., Wang Y., Yunus A.P., Havenith H.B. : Topographic and near-surface stratigraphic amplification of the seismic response of a mountain slope revealed by field monitoring and numerical simulations. *Engineering Geology*, 271, 105607, doi: 10.1016/j.enggeo.2020.105607, 2020
- 400 Martino S., Prestininzi A. and Romeo W.R. : Earthquake-induced ground failures in Italy from a reviewed database. *Nat. Hazards Earth Syst. Sci.*, 14, 799–814, 2014. doi:10.5194/nhess-14-799,2014.
- Martino S., Bozzano F., Caporossi P., D'Angiò D., Della Seta, M., Esposito C., Fantini A., Fiorucci M., Giannini L.M., Iannucci R., Marmoni G.M., Mazzanti P., Missori C., Moretto S., Rivellino S., Romeo R.W., Sarandrea P., Schilirò L., Troiani F., Varone C. : Ground effects triggered by the August 24th 2016, Mw 6.0 Amatrice (Italy) Earthquake: Survey and Inventorying to update the CEDIT catalogue. *Geogr. Fis. Dinam. Quat.* 40: 1-20, DOI 10.4461/GFDQ 2017.40.7, 2017.

- Martino S., Bozzano F., Caporossi P., D'Angiò D., Della Seta M., Esposito C., Fantini A., Fiorucci M., Giannini L.M., Iannucci R., Marmoni G.M., Mazzanti P., Missori C., Moretto S., Piacentini D., Rivellino S., Romeo R.W., Sarandrea P., Schilirò L., Troiani F., Varone C. : Impact of landslides on transportation routes during the 2016-2017 Central Italy seismic sequence. *Landslides* doi: 10.1007/s10346-019-01162-2, 2019.
- Maurer B.W., Green R.A., van Ballegooy S., Wotherspoon L.: Development of region-specific soil behavior type index correlations for evaluating liquefaction hazard in Christchurch, New Zealand. *Soil Dynamics and Earthquake Engineering*, 117, doi: 10.1016/j.soildyn.2018.04.059, 2019.
- 415 Mavroulis, S.; Lekkas, E.; Carydis, P. Liquefaction Phenomena Induced by the 26 November 2019, Mw = 6.4 Durrës (Albania) Earthquake and Liquefaction Susceptibility Assessment in the Affected Area. *Geosciences*, 11, 215. <https://doi.org/10.3390/geosciences11050215>, 2021.
- Meza-Fajardo K.C., Varone C., Lenti L., Martino S., Semblat J.F. : Surface wave quantification in a highly heterogeneous alluvial basin: Case study of the Fosso di Vallerano valley, Rome, Italy. *Soil Dynamics and Earthquake Engineering*, 120, 292-300, doi: 10.1016/j.soildyn.2019.02.008, 2019.
- 420 Minarelli L., Amoroso S., Civico R., De Martini P. M., Lugli S., Martelli L., Molisso F., Rollins K. M., Salocchi A., Stefani M., Cultrera G., Milana G. and Fontana D.: Liquefied sites of the 2012 Emilia earthquake: a comprehensive database of the geological and geotechnical features (Quaternary alluvial Po plain, Italy). *Bulletin of Earthquake Engineering* (2022) 20:3659–3697 doi:10.1007/s10518-022-01338-7, 2022.
- 425 Molinari, F.C., Boldrini, G., Severi, P., Duroni, G., Rapti-Caputo, D., Martinelli, G.: Risorse idriche sotterranee della Provincia di Ferrara. Regione Emilia Romagna, DB MAP Ed (Firenze, 61 pp.), 2007.
- Naeini S.A., Baziar M.H: Effect of fines content on steady-state strength of mixed and layered samples of a sand. *Soil Dynamics and Earthquake Engineering*, 24,181–187, doi: 10.1016/j.soildyn.2003.11.003, 2004
- Orgiazzi A., Ballabio C., Panagos P., Jones A. and Fernández-Ugalde O.: LUCAS Soil, the largest expandable soil dataset for Europe: a review. *European Journal of Soil Science*. doi: 10.1111/ejss.12499, 2017.
- 430 Paoletta L., Modoni G., Spacagna R.L. and Baris A.: A generalized severity number to predict damage with lateral spreading. *Géotechnique*. doi: 10.1680/jgeot.21.00006, 2022.
- Papathanassiou G., Mantovani A., Tarabusi G., Rapti D. and Caputo R.: Assessment of liquefaction potential for two liquefaction prone areas considering the May 20, 2012 Emilia (Italy) earthquake. *Engineering Geology* 189, 1-16, doi:10.1016/j.enggeo.2015.02.002, 2015.
- 435 Pieri M., Groppi G.: Subsurface geological structure of the Po Plain (Italy); C.N.R., Prog. Fin. Geodinamica; Agip S.p.A., S. Donato Milanese: Milano, Italy, 414,1–13, 1981.

Regione Emilia-Romagna, Servizio Geologico Sismico e dei Suoli, ENI – AGIP: Book: Riserve idriche sotterranee della Regione Emilia-Romagna. Edited by Regione Emilia-Romagna, Servizio Geologico, Sismico dei Suoli, ENI – AGIP, 1998.

440 Regione Emilia-Romagna (2015) https://servizigis.regione.emilia-romagna.it/ctwmetadatiRER/metadatoISO.ejb?stato_FileIdentifier=iOrg01iEnPIfileIDr_emiro:2016-08-08T155835#_02.
Last access: 22/09/2022.

Ricci Lucchi, F. : Oligocene to recent foreland basins of northern Apennines. In: Allen, P., Homewood, P. (Eds.), *Foreland Basins IAS Special Publication*. vol. 8. Blackwell Scientific, London, 105–139, 1986.

445 Rios S., Millen M., Quintero J., da Fonseca A.V.: Analysis of simplified time of liquefaction triggering methods by laboratory tests, physical modelling and numerical analysis. *Soil Dynamics and Earthquake Engineering*, 157, doi: 10.1016/j.soildyn.2022.107261, 2022.

Romagnoli G., Tarquini E., Porchia A., Catalano S., Albarello D., Moscatelli M.: Constraints for the Vs profiles from engineering-geological qualitative characterization of shallow subsoil in seismic microzonation studies, *Soil Dynamics and Earthquake Engineering*, 161, doi: 10.1016/j.soildyn.2022.107347, 2022.

Rossi, M., Minervini, M., Ghielmi, M. and Rogledi, S.: Messinian and Pliocene erosional surfaces in the Po Plain-Adriatic Basin: Insights from allostratigraphy and sequence stratigraphy in assessing play concepts related to accommodation and gateway turnarounds in tectonically active margins. *Marine and Petroleum Geology*, 66, 192-216, 2015.

455 Royden, L., Patacca, E., Scandone, P.: Segmentation and configuration of subducted lithosphere in Italy: an important control on thrust-belt and foredeep-basin evolution. *Geology* 15, 714–717, 1987.

Scrocca, D., Carminati, E., Doglioni, C., Marcantoni, D.: Slab retreat and active shortening along the central–northern Apennines. *Thrust Belts and Foreland Basins*. Springer, pp. 471–487, 2007.

Spacagna, R.L. Baris, A., Paoletta, L. & Modoni, G. : Data-driven soil profile characterization using statistical methods and artificial intelligence algorithms. 10.1201/9781003329091-104, 2022.

460 Stamatopoulos C.A.: An experimental study of the liquefaction strength of silty sands in terms of the state parameter. *Soil Dynamics and Earthquake Engineering*, 30, 662–678, doi:10.1016/j.soildyn.2010.02.008, 2010.

Stefani, M., Minarelli, L., Fontana, A., and Hajdas, I.: Regional deformation of late Quaternary fluvial sediments in the Apennines foreland basin (Emilia, Italy). *International Journal of Earth Sciences*, 107(7), 2433–2447. doi:10.1007/s00531-018-1606-x. 2018.

465 Tanyaş, H., Görüm, T., Fadel, I. Yıldırım C. and Lombardo L.: An open dataset for landslides triggered by the 2016 Mw 7.8 Kaikōura earthquake, New Zealand. *Landslides* 19, 1405–1420 (2022). doi.org:10.1007/s10346-022-01869-9, 2022.

Tentori D., Mancini M., Varone C., Spacagna R., Baris A., Milli S., Gaudiosi I., Simionato M., Stigliano S., Modoni G., Martelli L. and Moscatelli M.: The influence of alluvial stratigraphic architecture on liquefaction phenomena: a case study from the Terre del Reno subsoil (southern Po plain, Italy). *Sedimentary Geology*, 106258. doi:10.1016/j.sedgeo.2022.106258, 470 2022.

Vannocci, P.; Segoni, S.; Masi, E.B.; Cardi, F.; Nocentini, N.; Rosi, A.; Bicocchi, G.; D'Ambrosio, M.; Nocentini, M.; Lombardi, L.; Tofani, V.; Casagli, N. and Catani, F.: Towards a National-Scale Dataset of Geotechnical and Hydrological Soil Parameters for Shallow Landslide Modeling. *Data*, 7, 37. doi:10.3390/data7030037, 2022.

Varone, C., Baris, A., Caciolli, M. C., Fabozzi, S., Fortunato, C., Gaudiosi, I., Giallini, S., Mancini, M., Martelli, L., Modoni, 475 G., Moscatelli, M., Paoletta, L., Simionato, M., Sirianni, P., Spacagna, R. L., Stigliano, F., Tentori, D., and Razzano, R.: An integrated approach for engineering - geological modelling in view of seismic microzonation, EGU General Assembly 2022, Vienna, Austria, 23–27 May 2022, EGU22-8586, <https://doi.org/10.5194/egusphere-egu22-8586>, 2022.

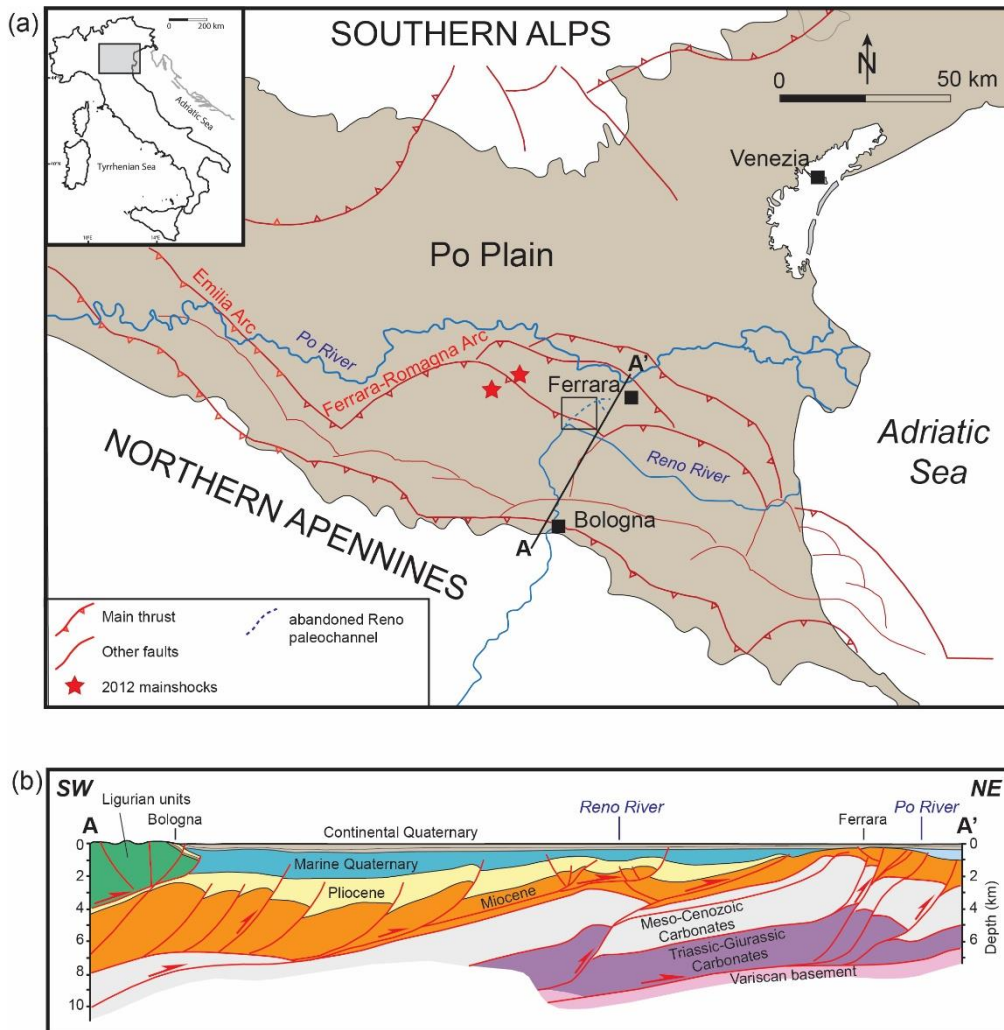
Zhou, Y., Xia P., Ling D., Chen Y.: Liquefaction case studies of gravelly soils during the 2008 Wenchuan earthquake. *Engineering geology*, 274. doi: 10.1016/j.enggeo.2020.105691, 2020.

480

485

490

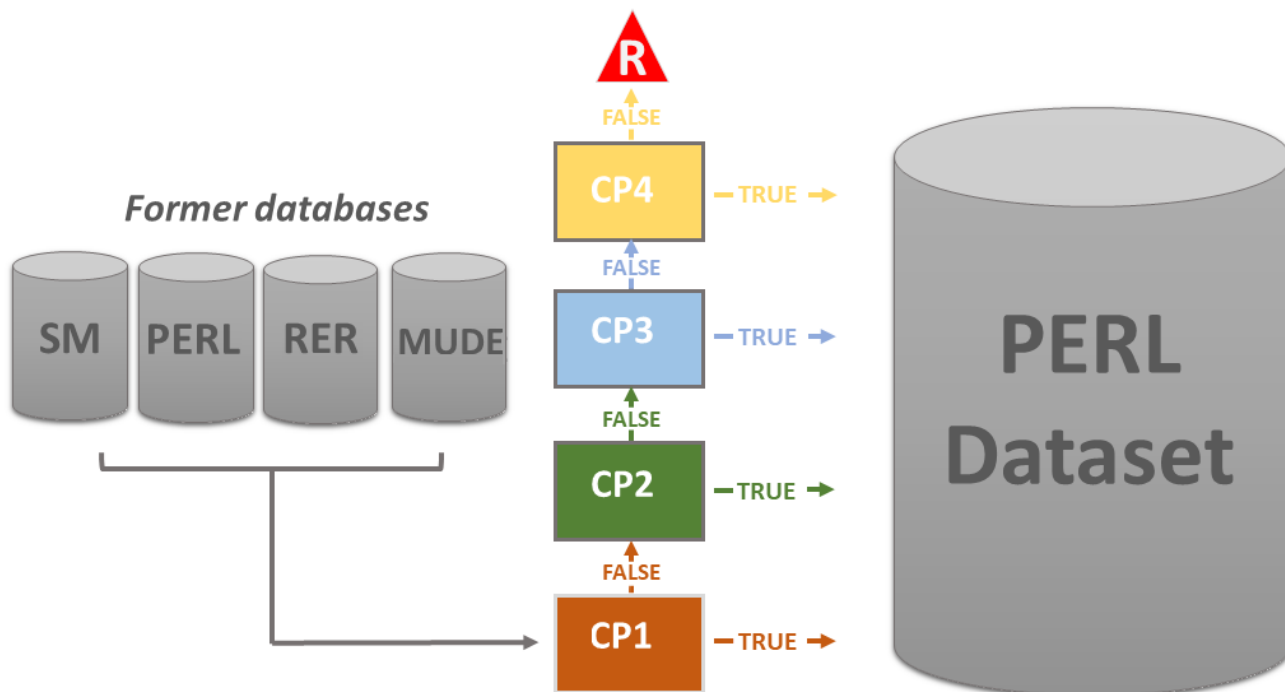
List of Figures:



495

Figure 1: a) Tectonic sketch map of the Po Plain (Northern Italy) showing the main buried faults of the Northern Apennines and Southern Alps and epicenters of the two mainshock from the 2012 Emilia sequence (red stars) (modified from Tentori et al., 2022 and Bruno et al., 2021). The black-lined rectangle encloses the study area. b) Simplified stratigraphic cross section and major tectonic structures along the trace A–A' in figure a) (modified after Boccaletti et al., 2004). The tectonic structures are enucleated into Mesozoic to Paleogene carbonate successions, and largely controlled the sedimentary evolution of the terrigenous basins during the Neogene (Ghielmi et al., 2013; Rossi et al., 2015; Ricci Lucchi, 1986). The Pliocene-Pleistocene boundary record the transition from turbiditic sedimentation to marine clay deposition whereas the Quaternary sedimentary fill consists of marine deposits, nearshore sands and alluvial deposits (see text for details).

505



510 **Figure 2: Synthetic workflow of the applied method to merge MUDE, RER, SM database and PER new realization investigations into PERL dataset.**

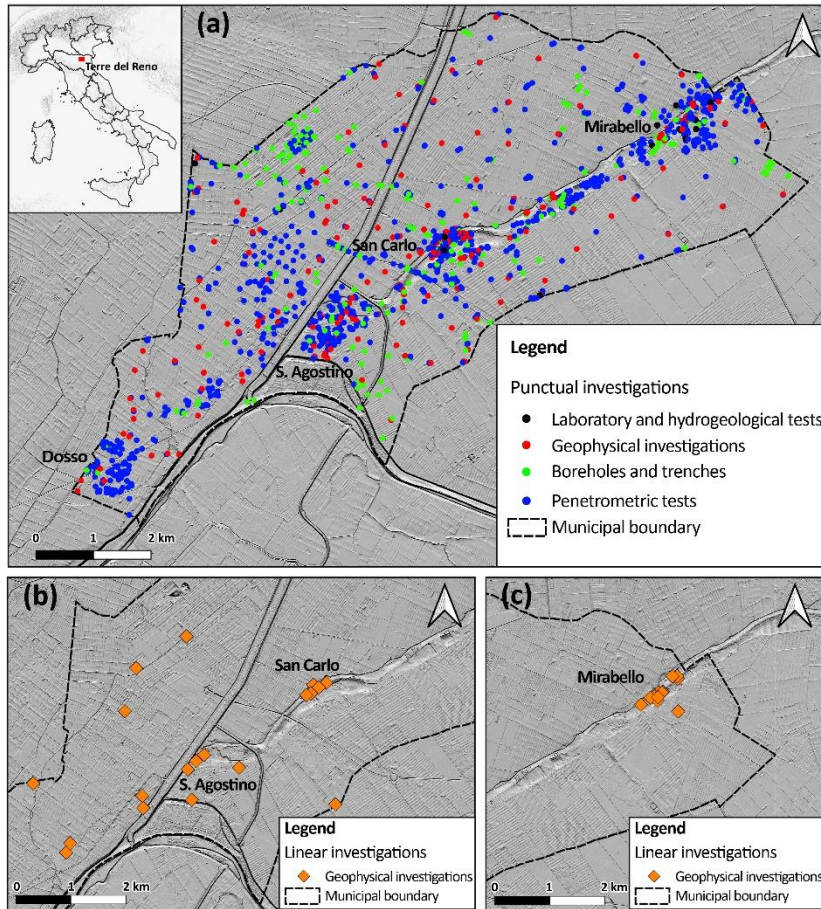
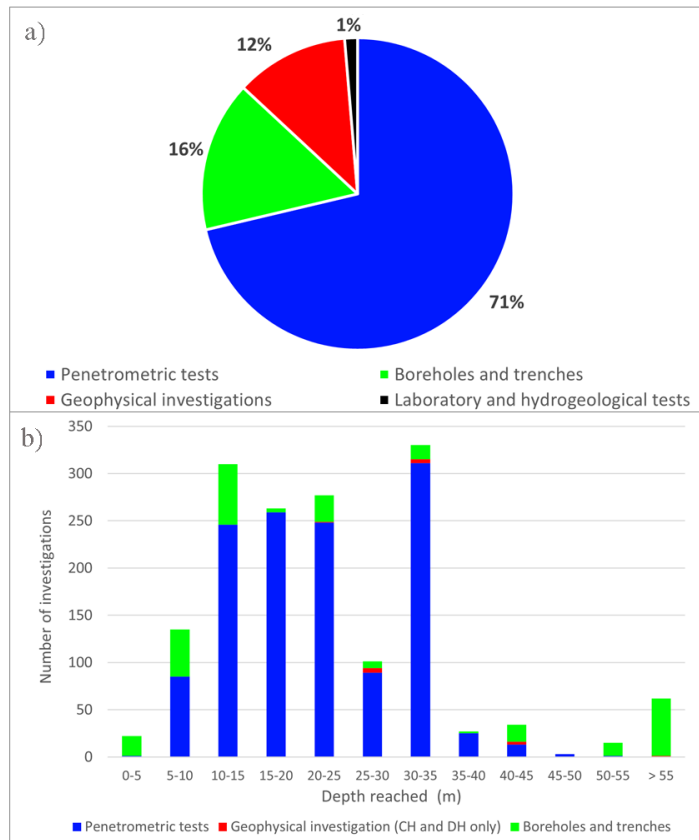
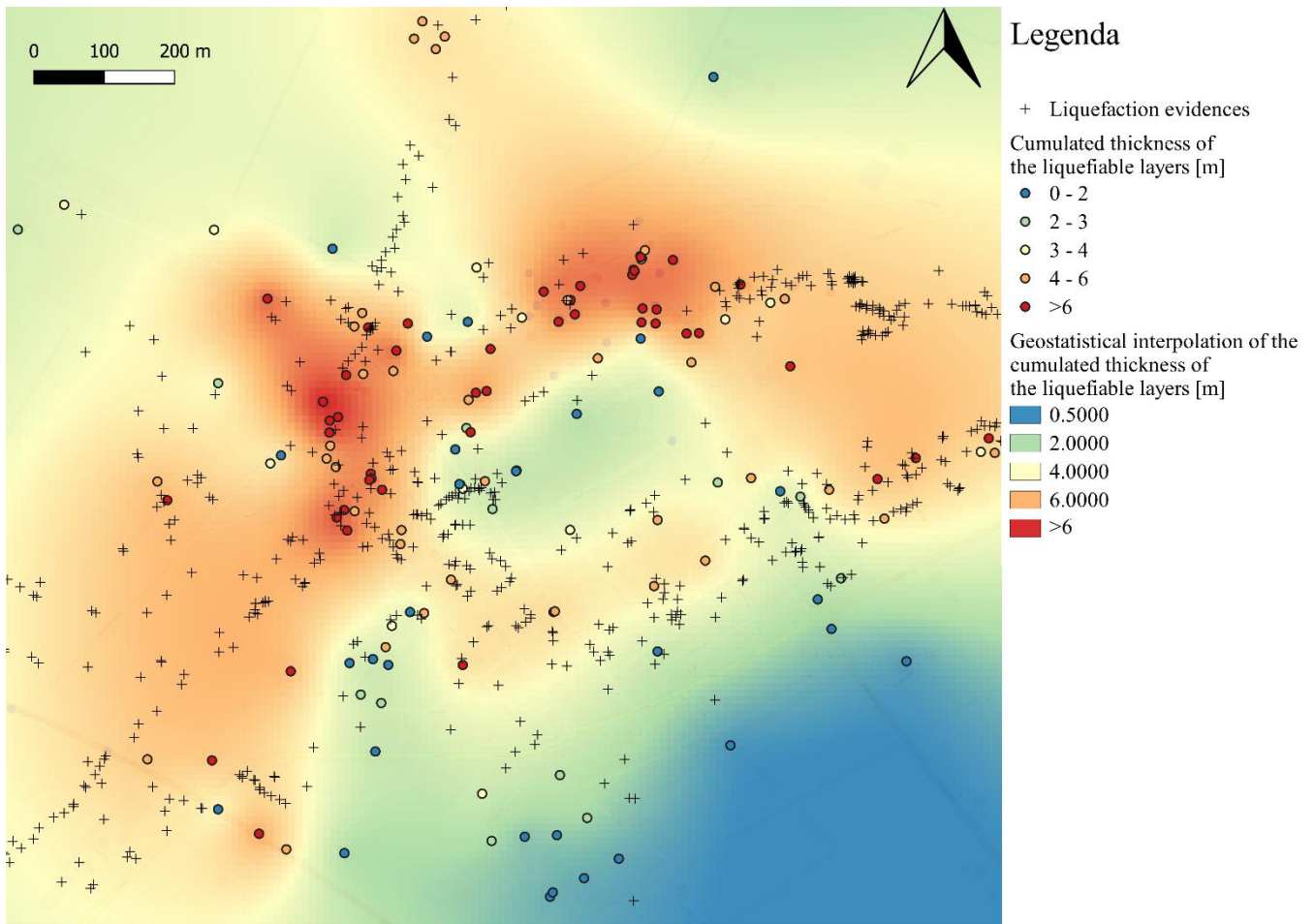


Figure 3: Spatial distribution of the in-situ punctual (a) and linear (b)(c) investigations composing the PERL dataset. The Digital Elevation Model (DEM) was retrieved from Regione Emilia Romagna (2015)



515

Figure 4: PERL dataset characteristics: a) classes of in-situ investigations; b) depth reached by penetrometer tests, geophysical investigations (CH and DH), boreholes and trenches.



520

Figure 5: Geostatistical maps of the cumulated thickness of the liquefiable layer.

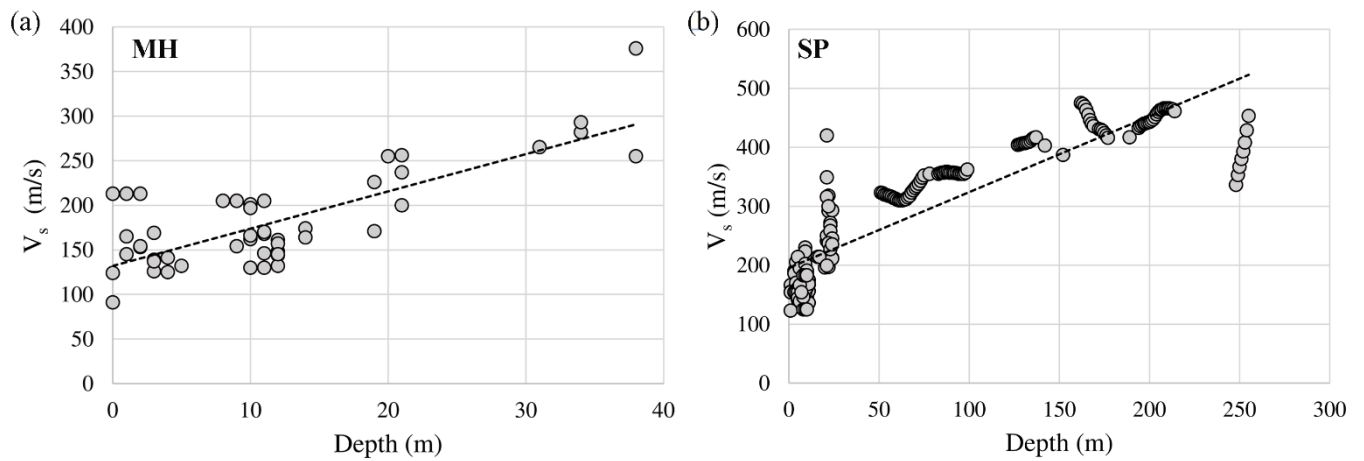


Figure 6: Scatter plot and regression line model for lithology MH (a) and SP (b)