

# Low-regret Climate Change Adaptation in Coastal Megacities – Evaluating Large-Scale Flood Protection and Small-Scale Rainwater Detention Measures for Ho Chi Minh City, Vietnam

5 Leon Scheiber<sup>1</sup>, C. Gabriel David<sup>2</sup>, Mazen Hoballah Jalloul<sup>1</sup>, Jan Visscher<sup>1</sup>, Hong Quan Nguyen<sup>3,4</sup>, Roxana Leitold<sup>5</sup>, Javier Revilla Diez<sup>5</sup> and Torsten Schlurmann<sup>1</sup>

<sup>1</sup> Ludwig-Franzius-Institute for Hydraulics, Estuarine and Coastal Engineering, Leibniz University Hannover, 30167 Hannover, Germany

<sup>2</sup> Leichtweiß-Institute for Hydraulic Engineering and Water Resources, Division of Hydromechanics, Coastal and Ocean Engineering, Technische Universität Braunschweig, 38106 Braunschweig, Germany

10 <sup>3</sup> Institute for Circular Economy Development, Vietnam National University – Ho Chi Minh City, 700000 Ho Chi Minh City, Vietnam

<sup>4</sup> Institute for Environment and Resources, Vietnam National University – Ho Chi Minh City, 700000 Ho Chi Minh City, Vietnam

<sup>5</sup> Institute of Geography and Global South Studies Center, University of Cologne, 50923 Cologne, Germany

15 *Correspondence to:* Leon Scheiber (scheiber@lufi.uni-hannover.de)

**Abstract.** ~~The risk of a~~Urban flooding is a major challenge for many megacities in low elevation coastal zones (LECZ), especially in Southeast Asia. ~~Here~~**In these regions**, the effects of environmental stressors overlap with rapid urbanization, which significantly aggravates the hazard potential ~~in these regions~~. Ho Chi Minh City (HCMC) in Southern Vietnam is a prime example of this set of problems and therefore a ~~meaningful-suitable case~~ **study case** to apply the concept of low-regret disaster risk adaptation as defined by the Intergovernmental Panel on Climate Change (IPCC). In order to explore and evaluate potential options of hazard mitigation, a hydro-numerical model was employed to scrutinize the effectiveness of two adaptation strategies: (1) a ~~large-scale classic~~ flood protection scheme **including a large-scale ring dike** as currently constructed in HCMC and (2) the widespread installation of small-scale rainwater detention as envisioned in the framework of the Chinese Sponge City Program (SPM). A third adaptation scenario (3) assesses the ~~combined implementation~~**combination** of both approaches (1) and (2).

From a hydrological point of view, the reduction of various flood intensity proxies **that were computed within this study** suggests that ~~the effectiveness of~~ large-scale flood protection ~~outweighs~~**is comparable but slightly more effective than that of** small-scale rainwater storage ~~by far~~: **for instance, the two adaptation options could reduce the Normalized Flood Severity Index (I<sub>NFS</sub>), which is a measure combining flood depth and duration, by 17.9 % and 17.7 %, respectively. The number of flood-prone manufacturing firms that are would be protected from risk after adaptation, in turn, the implementation of disaster risk adaptation is nearly two-times higher for the ring dike than for the Sponge City approach. However, the numerical results also reveal that both response options can be implemented in parallel, not only without reducing their individual effectiveness, but complementarily with considerable added value. For example, an assessment**

of the Normalized Flood Severity Index (NFSI) suggests a potential flood reduction that is 3.5 times higher for a classic infrastructure solution than for the Sponge City approach. In contrast, the numbers significantly excels for the latter response option: while the ring dike mitigates flooding at about 20 % of all considered locations, the assumed rainwater detention would protect up to 93 %. ~~And also~~ **Additionally**, from a governance perspective, decentralized rainwater storage conforms **better ideally** to the low-regret paradigm: while the **existing** large-scale ring dike depends on a binary commitment (to build or not to build), decentralized small- and micro-scale solutions can be implemented gradually (**for example** through targeted subsidies) and add technical redundancy to the overall system. In the end, both strategies are highly complementary in their spatial and temporal reduction of flood intensity. ~~, so that~~ Local decision-makers may **hence** specifically seek **multi-faceted combined** strategies, ~~avoiding~~ **adding to** singular approaches, and designing **multi-faceted** adaptation pathways in order to successfully prepare for a deeply uncertain future.

*Keywords:* climate change adaptation, disaster risk reduction, low-regret measures, Ho Chi Minh City, Southeast Asian megacities, low elevation coastal zones, flood protection, ring dike, rainwater detention, Sponge City

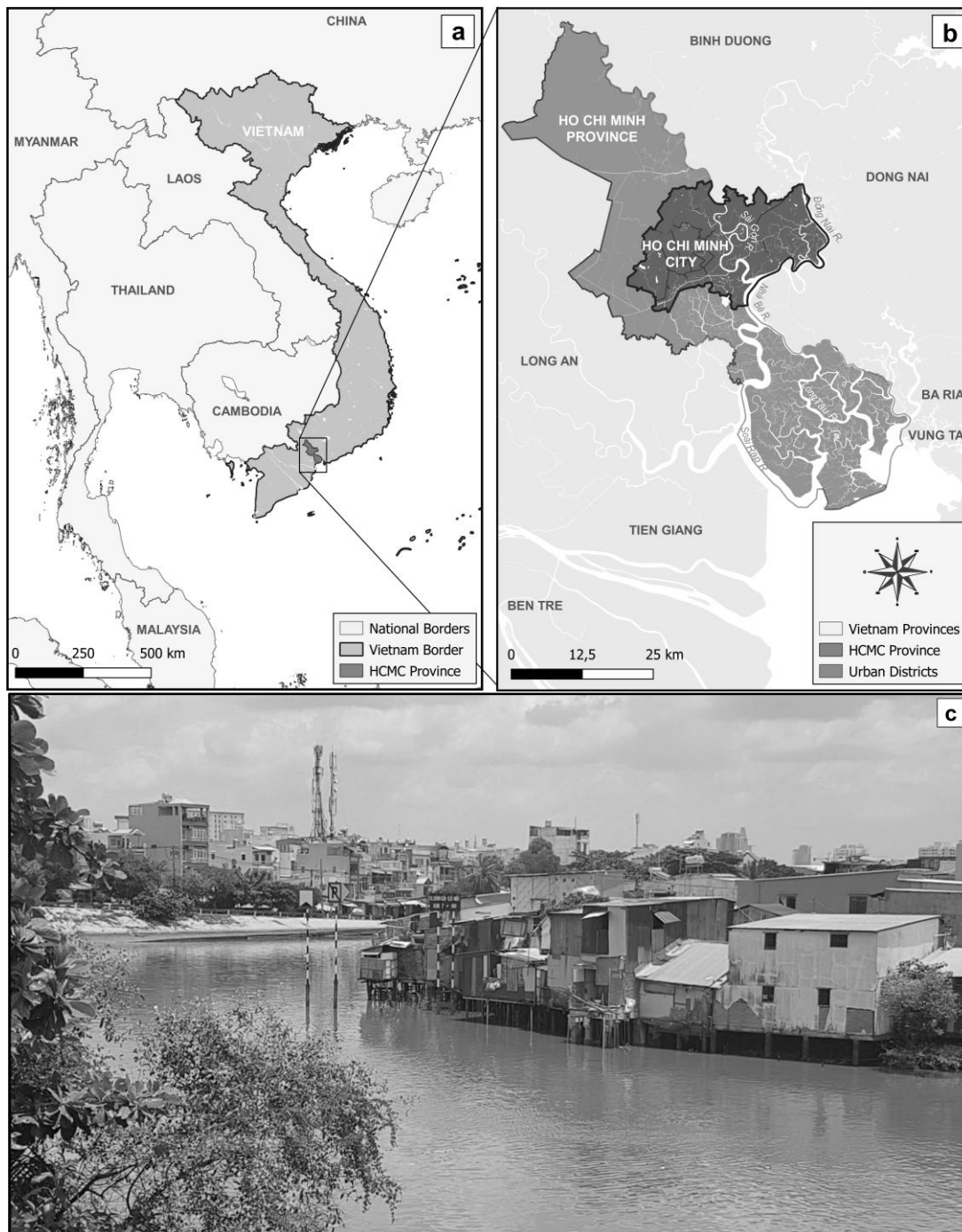
## 1 Introduction

Between 1980 and 2009, ~~the occurrence of~~ floods caused more than half a million deaths and affected another 2.8 billion people worldwide (Doocy et al., 2013). These figures will further increase with global sea levels rising as a consequence of Climate Change (IPCC - SROCC, 2019) and more than half of all urban agglomerations (>100.000 habitants) ~~located being~~ closer than 100 km from the coastline (Barragán and Andrés, 2015). Especially in Southeast Asia, where many megacities ~~he~~ **are located** in low-elevation coastal zones (LECZ), the risk of storm surges will significantly increase (McGranahan et al., 2007; Neumann et al., 2015; Kulp and Strauss, 2019). ~~And not only will~~ These regions **will not only** be affected by more frequent extreme storm events, but rainfall volumes will also increase as a consequence of the Urban Heat Island (UHI) effect fuelled by sustained urban growth (IPCC, 2021). Ranked fifth place in a global assessment of future exposure to climate extremes, Ho Chi Minh City (HCMC; Figure 1: a & b) is a prime example of the complex physical and social interactions that exacerbate the flood risk in many Southeast Asian metropolises (Hanson et al., 2011; Hallegatte et al., 2013; Abidin et al., 2015). Being the largest city in Vietnam and its major economical hub, HCMC is subject to uncontrolled urban sprawl, which **in turn** deepens the exposure to flooding for a growing, and oftentimes highly vulnerable population (Huong and Pathirana, 2013; Duy et al., 2018). Flood exposure, in this context, results from the increasing number of settlements in low-lying areas (cf. Figure 1 c), which continuously expand due to the man-made problem of land subsidence resulting from soil compaction and groundwater exploitation (Kaneko and Toyota, 2011; Erkens et al., 2015; Duffy et al., 2020).

In conjunction with globally rising sea levels and amplified tidal ranges in the adjacent Sai Gon River, ~~this setting leads to~~ **HCMC regularly experiences** backwater effects in the antiquated and, in many regards, deficient drainage system ~~of HCMC~~ causing widespread inundations (Phi; Downes and Storch, 2014; Tran Ngoc et al., 2016; MONRE, 2016). Apart from the immanent social implications, urban flood events cause major and frequent impediments to the local economy, which is

estimated to cause losses of USD 48.3 billion of the gross domestic product (GDP) in the period from 2006 to 2050 (ADB, 2010). Especially manufacturing firms (owning, among others, lots of immovable machinery and facilities) are expected to bear the brunt of damage and loss due to environmental hazards (Neise et al., 2018). Already in 2015, studies suggested that more than 15 % of the manufacturing firms in HCMC were located in current or future inundation areas. ~~Many of which~~ **these being** were small and medium-sized enterprises (SMEs) that engage about 37 % of all national employees (Leitold and Revilla Diez, 2019). Even if the city has prospered for several decades and flood control is no longer a question of preventing casualties due to extreme events, **suitable adaptation strategies are required to reduce risks and associated financial losses from it is** those recurring floods in particular. ~~that need to be accounted for by designing and implementing suitable adaptation strategies.~~

70



75

80

**Figure 1: STUDY AREA – (a) & (b) Located in proximity to the Mekong Delta, Ho Chi Minh City (HCMC) is the largest city in Vietnam and a major economical hub of Southeast Asia. Administrative boundaries and waterbodies derived from © OpenStreetMap contributors 2022, distributed under the Open Data Commons Open Database License (ODbL) v1.0. (c) Informal settlements are an epitome of the uncontrolled urban sprawl that exacerbates flood risk in this region due to an interplay of increased natural hazards, exposure and vulnerability. Picture taken by the corresponding author in September 2019.**

According to the Intergovernmental Panel on Climate Change (IPCC), there are, in general, five categories of possible adaptation ~~responses~~**options** to future risks: retreat, protection, accommodation, advance and ecosystem-based adaptation (Link; IPCC - SROCC, 2019). These strategies can also be differentiated into classic “grey” infrastructure and nature-based “green” solutions (Dong et al., 2017; Morris et al., 2018). One recent example of the latter approach is the Chinese Sponge City program (SCP), a framework which refines established concepts like Water-Sensitive Urban Drainage (WSUD) and Low Impact Development (LID) (Jia et al., 2017; Qi et al., 2020; Sun et al., 2020; Li and Zhang, 2022). To address the predicament of increasing natural hazards in ~~more and more~~**expanding** urbanized areas, Sponge Cities make use of the natural hydrological cycle to effectively reduce urban flooding, harvest rainwater and improve water quality as well as to restore ecological values (Köster, 2021; Jia et al., 2022). In practice, this can be accomplished by medium- and small-scale elements that allow water storage (detention basins and rain tanks), infiltration (permeable pavements and infiltration wells) or both (public parks and rooftop/rain gardens) (Nguyen et al., 2019; Kumar et al., 2021). Since its introduction to the public in 2013, the Sponge City program has ~~shown~~**proved** its feasibility for multiple real-world examples across China (Hawken et al., 2021; Yin et al., 2022). ~~Y-~~**yet**, especially its adaptability and possible small-scale implementation make it highly attractive to other rapidly growing megacities in Southeast Asia. Nevertheless, the aim of both grey and green adaptation strategies should be to offer a solution that is of a low regret. In the context of the IPCC, the term “low-regret” does not necessarily refer to financial aspects, but rather aims at solutions that allow coping with current challenges and hazards without impairing future options to deal with climate change effects (IPCC, 2012). In ~~the~~**contrast**, actions that alleviate current adaptation needs, but have a negative effect on future adaptation pathways are “maladaptive” (IPCC, 2014). From a socio-political perspective, adverse or deliberately false decisions leading to (recurrent) maladaptive actions are called maldevelopment (David et al., 2021). Maldevelopment is followed by continuously degrading conditions with the risk of reaching and exceeding anthropogenic tipping points – critical thresholds, from which changes to a system cannot be reversed (Duvat and Magnan, 2019). Given these significant consequences of actions and the wide range of climate change projections, suitable means of adaptation are preceded by robust decisions. With regard to low-regret adaptation, robust decision-making does not aim at providing solutions for all future scenarios, but rather lays the foundation and does not ~~impair~~**neglect** to account for a variety of possible impacts (Marchau et al., 2019). In this context, climate adaptation builds on a more flexible strategy, including scenario-based pathways and an “agree-on-decisions” approach rather than the more traditional “predict-then-act” approach (Lempert, 2019). With regard to flooding in Southeast Asian metropolises, low-regret flood adaptation should be based on multiple options, which consider the trajectories of natural hazards, like sea-level rise and the concentration of extreme rainfall, on the one hand, and anthropogenic factors, such as uncontrolled urban growth and man-made land subsidence, on the other.

For the particular case of HCMC, few authors investigated the potential of available, grey or green, flood adaptation options within the last years. Most prominently, the Vietnam Climate Adaptation PartnerShip (VCAPS) consortium presented an extensive flood protection scheme that comprises various, mostly classic adaptation measures (VCAPS, 2013). Supported by multiple flood gates and ~~five~~**six** major pumping stations, a large-scale ring dike prevents water from the Sai Gon River from entering the inner-city canal system and, thus, literally decouples the city centre from the natural hydrological regime of the

Sai Gon River. On this basis, annual damages for five different extreme events under the aforementioned adaptation strategy could be estimated by implementing the individual infrastructural elements into a hydro-numerical model of one particularly flood-prone area (Lasage et al., 2014). A comprehensive evaluation of the suggested adaptation measures and their combination was subsequently published modelling present and future storm surges for the complete city area and providing a detailed cost-benefit analysis (Scussolini et al., 2017). The study concludes with a map of proposed adaptation pathways for Ho Chi Minh City. Construction of the ring dike was, in the meantime, ordered by the Vietnamese Ministry of Agriculture and Rural Development (MARD) in 2016. Besides infrastructural flood responses, also the importance of governance decisions such as reasonable land-use planning was emphasized, to minimize the exposure and allow for the vulnerability of the ever-growing urban population (Downes and Storch, 2014). Another recent study focused on surveying and discussing examples of ecosystem-based flood adaptation in terms of Sustainable Urban Drainage Systems (SUDS) (Ho et al., 2015).

In summary, nearly all suggested flood adaptations for HCMC originate from recent work of the VCAPS consortium and their effectiveness has been thoroughly tested for the case of extreme storm surges with return periods of up to 1000 yr. However, hardly any research has been conducted to evaluate the performance of the proposed grey solutions, such as the ring dike, or any ecosystem-based approaches with respect to typical “every-year” events, which is in stark contrast to their hundredfold estimated GDP loss expected by the Asian Development Bank (ADB, 2010). Moreover, heavy rainfall has been completely disregarded in the majority of studies, although precipitation-based damages should demonstrably be an essential part of all urban flood risk assessments (Rözer et al., 2019). Finally, only a few working groups have scrutinized the combination of grey and green flood adaptation measures (Hamel and Tan, 2021).

To address this gap in current research, the presented study scrutinizes the hydraulic effectiveness of grey and green flood adaptation measures under the influence of a representative flood event, i.e. tidal water levels between -1.6 m and +1.2 m above sea level in combination with the official design storm ( $T = 1$  a;  $D = 180$  min). By employing a simple, yet robust surface runoff model, the focus is set on the following objectives:

- To explore the feasibility and juxtapose the hydraulic effects of ~~the two aforementioned exemplary grey and green flood~~ adaptation ~~measures-concepts~~ given the case of HCMC,
- To quantify the potential reduction of flood intensity, expressed through conventional and integrated proxies, that is achievable by each adaptation strategy and their combined implementation,
- To evaluate their low-regret character (including tentative co-benefits) and discuss the implications for decision-makers.

Classic, grey adaptation measures in this study are following the concept of the large-scale ring dike as envisioned by VCAPS. Decentralized, green flood adaptation, on the other hand, is represented by small-scale rainwater detention as realized in the context of the Chinese Sponge City program. Not only do these two approaches differ in terms of their size and hydraulic working principles, but the large-scale ring dike is also characterized by its binary realization, while the Sponge City concept is inherently modular. It is the aim of this study to juxtapose these two strategies both from a hydrological and a governance

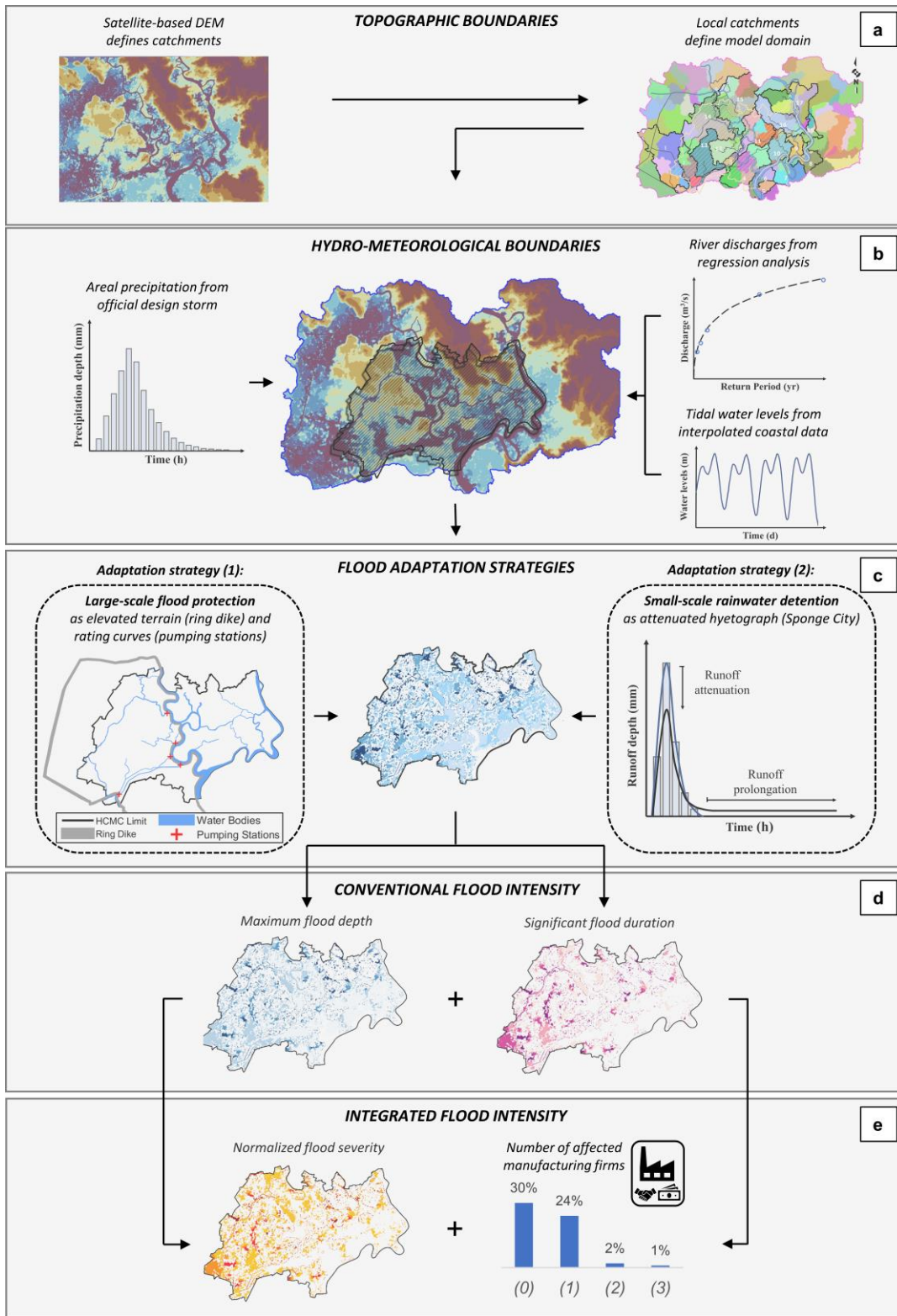
point of view, elucidating the practical validity of the IPCC's low-regret paradigm **for flood protection and disaster-risk reduction of associated rainfall events.**

## 2 Material and Methods

To assess the hydraulic effectiveness of various adaptation strategies, a simplified two-dimensional flow model, designed in HEC-RAS Version 6.0 by the U.S. Army Corps of Engineers (USACE, 2021), was used to simulate rainwater-induced inundations in HCMC. The key principle behind the employed modelling scheme is that precipitation volumes typically accumulate across the urban topography and finally discharge into the local canal system (physically-based rainfall-runoff modelling). ~~The software platform~~ **HEC-RAS** was first introduced in 1995 and, **since then**, has been validated in numerous case studies in comparable settings ~~ever since~~ (Patel et al., 2017; Muthusamy et al., 2019; Rangari et al., 2019; Yalcin, 2020). As a consequence of local data availabilities, the complete setup ~~of the utilized model was~~ **is** based on open-access input data in the form of freely available topography and hydro-meteorological conditions. The computational grid comprises about ~~47.5~~ **1.6** Mio rectangular cells of ca. ~~85-35~~ **8535** m x ~~8535~~ m resolution with combined elevation data from the Shuttle Radar Topography Mission (SRTM, 2007) and the CoastalDEM (Kulp and Strauss, 2018). On this basis, the model domain is defined by the local terrain as it contains all catchments that potentially contribute to surface runoff within the city boundaries (cf. Figure 2 a). Upstream influxes are given by the long-term mean discharges of Sai Gon (MQ = 54 m<sup>3</sup>s<sup>-1</sup>) and Dong Nai (MQ = 890 m<sup>3</sup>s<sup>-1</sup>) rivers, respectively (Tran Ngoc et al., 2016). The downstream boundary condition in the south of the city was obtained by extrapolating coastal water levels from a global database (Caldwell et al., 2015) in accordance with hydrological reports for this catchment (Gugliotta et al., 2019). The model boundaries are complemented by uniformly distributed rainfall with a hyetograph that follows an official three-hour design storm and can be readily adapted for arbitrary return periods (cf. Figure 2 b). As there is hardly any public information about the quality and condition of the existing drainage system in HCMC – except that its capacity is regularly overloaded during extreme events (Scussolini et al., 2017) – all rainfall is assumed to become gradient-controlled surface runoff **as is a common conservative estimate (e.g. Scussolini et al., 2017).** The resulting flow paths resemble the course of the physical drainage system, including site-specific backwater effects, so that ~~inundation-flooding~~ hotspots ~~could~~ **can** be reproduced reliably. ~~After calibration, the~~ **The** runoff model was validated against locally reported inundations from 25 different locations across HCMC (documenting a storm event in June 2010). **Although verification data from 2010 might seem outdated meanwhile, the practical choice for this event had to be based on the co-occurrence of all boundary conditions (incl. discharge, tidal water-levels and precipitation) with credible reports of urban inundations at a considerable number of locations. In combination with the goal of using open-access data alone, suitable events were limited to a handful of options. While three of these data sets (2010/2013) served as calibration data, the remaining event with the most data points (2010) was used for validation. In this context, t**he comparison of simulated and observed flood depths yielded a root mean square error of RMSE = 0.03 m and a correlation coefficient of R<sup>2</sup> = 0.75, respectively, making the modelling approach trustworthy enough for all intended tasks, i.e. the direct comparison

of flood intensities under different adaptation scenarios. **For a more detailed explanation regarding the processing of input data as well as the calibration/validation of the employed model, please be referred to the independent publication by Scheiber et al. (in review), which discusses the general validity of open-access data in numerical analyses more profoundly.**





190 **Figure 2: MODEL SETUP - A bias-corrected digital elevation model was derived from the combination of SRTM and CoastalDEM; the local catchments that result from the local topography define the modelling domain (a: Topographic boundaries). While tidal water levels were extrapolated from coastal data, average river discharges were taken from the literature and precipitation was forced on the model boundary in accordance with the valid design storm focussing on a return period of one year (b: Hydro-meteorological boundaries; all elevation data displayed using scientific colour maps (Cramer, 2022)). Two adaptation strategies were investigated by either implementing changed elevations due to a large-scale ring dike in combination with ~~five~~ **six** parametrized pumping stations (1) or reproducing the hydraulic effects of decentralized water detention according to a Sponge City approach in the form of an attenuated hyetograph (2), respectively (c: Flood adaptation strategies). The flood simulations resulted in spatio-temporal data on water surface elevations revealing local maximum flood depths and durations of significant flooding (d: Conventional flood intensity). Finally, the local flood severity was estimated via the Normalized Flood Severity Index (~~INFS~~ **NFSI**) and in terms of manufacturing firms that were still affected by significant flooding after implementation of the individual adaptation strategies (e: Integrated flood intensity; all numerical results displayed in monochromatic colours for illustration purposes).**

200 The described surface runoff model was employed to assess four different adaptation scenarios:

- (0) a base case scenario without any technical adaptation to mitigate urban flooding,
- (1) a large-scale protection project including a ring dike, multiple sluice gates and pumping stations protecting the central districts of HCMC from storm surges (and, in parts, pluvial flooding)
- (2) a small-scale rainwater detention scheme as implemented in the Sponge City program,
- 205 mitigating the peak of rain-induced surface runoff and
- (3) a combined application of strategies (1) and (2).

Apart from a reference simulation without any adaption options (0), the first strategy (1) originates from the large-scale development project envisioned by VCAPS that was initiated by the Vietnamese Ministry of Agriculture and Rural Development (MARD) in 2016. In the framework of the numerical model, the central ring dike was implemented by locally fitting digital elevations to a designated height of 2.3 m above sea level (cf. Figure 2 c left & Figure 3 c), thus, directly affecting the simulated surface runoff in this area. The pumping stations, on the other hand, were realized by a customary HEC-RAS feature (since Version 6.0), which allows cell-specific discharges according to a user-defined rating curve. The ~~five~~ **six** pumping stations were placed vis-à-vis of the flood gates, i.e. at all crossings between the ring dike and a major ~~inter~~ **inter**-city canal (cf. Figure 2 c left & Figure 3 c). In contrast, the six large-scale sluice gates (and multiple smaller ones) that are also part of the underlying “MARD plan variant” (Phi et al., 2015) were not implemented in this study as these facilities would be locked and therefore without hydraulic effect in the considered flood events. While the structural solutions of the first adaptation strategy were integrated directly into the hydraulic model, the decentral approach of the second strategy (2) had to be implemented in a parameterized manner. All rainwater detention measures – be it public basins, green roofs or private rain barrels – generally procure a similar alteration of surface runoff: while the effective volume stays the same, the local maxima in the hydrograph are attenuated and converted into (throttled) discharge of manageable magnitude and time. According to this volumetric analysis, the comprehensive application of small-scale rainwater detention as a realization of the Sponge City concept was represented by directly changing the hyetograph of the regular design storm, thereby translating the hydraulic effect of decentral water storage into attenuated and prolonged rainfall (cf. Figure 2 c right). In this connection, an approximate assessment based on Sentinel-2 images revealed that about one-third of the included area is covered by roofs. Optimistically estimating the potential of household-level rain detention, it was assumed that a maximum of one half of this ~~roof~~ **roof**-area could

225

be utilized for ~~this type of~~ water storage (i.e. **connected to rainwater detention measures**) leaving about 15 % of the city's total area to be considered in the parametrization scheme. The remaining scenario (3) finally combines the large-scale ring dike project with small-scale rainwater detention in order to assess the complementarity of these seemingly adverse strategies. All simulations yield spatio-temporal output data describing the water surface elevation at every cell of the modelling domain over time. To understand the resulting risks, flood intensity was further assessed through four proxies in two steps: the flood height (Figure 2 d, left), which quite intuitively represents time-independent maximum inundation depths at every point, and the flood duration (Figure 2 d, right) defined by the time span a certain point experiences a significant inundation, i.e. an **inundation** depth greater than 10 cm. These two parameters are the most common proxies for flood intensity and can directly be derived from the model outputs. Secondly, a more integrated view on the potential reduction of flood risk is provided by the Normalized Flood Severity Index ( **$I_{NFS}$** ) (Figure 2 e, left) and the number of affected manufacturing firms (Figure 2 e, right). The  **$I_{NFS}$**  combines flood depth and duration into one dimensionless parameter. ~~and~~**For a given pair of coordinates, the  $I_{NFS}$  is calculated as the ~~normalized~~ product of these two conventional flood intensity proxies **divided by the product of the 95<sup>th</sup> percentiles of the same proxies as follows:****

$$I_{NFS}(x, y)(\%) = \frac{d_{max}(x, y) * T_{d>10cm}(x, y)}{d_{max,95\%}(x, y) * T_{d>10cm,95\%}(x, y)} * 100 \quad (1)$$

where  $d_{max}(x, y)$  refers to the maximum simulated flood depth over time at coordinates x and y and  $T_{d>10cm}(x, y)$  refers to the inundation duration over the pre-defined threshold of 10 cm at the same coordinates. Using the 95<sup>th</sup> spatial percentiles in the denominator eliminates the distorting effects of potential numerical artefacts. Accordingly, as a **qualitative first estimate**, this easy-to-apply index emphasizes those areas, which are exposed to significant flooding over a significant time and, thus, are expected to experience the most severe damage across a given study area. A detailed explanation of the rationale behind the  **$I_{NFS}$**  and its ~~mathematical definition~~**validation** can be found in an independent publication by Scheiber et al. (in review) ~~Hoballah Jalloul et al. (in review)~~. The location of manufacturing firms in HCMC is based on information from the Vietnam Enterprise Census 2017 collected by the General Statistics Office of Vietnam. This data were previously utilized in a study, which investigated the constraints that affect firm decisions in undertaking flood adaptation measures based on SRTM elevation data (Leitold et al., 2021). In contrast to traditional cost-benefit analyses that require sophisticated damage/loss models, the avail of assessing only the number of affected firms is that all companies are valued equally, thereby avoiding an underestimation of (non-monetary) SME values (Kind et al., 2020; Hino and Nance, 2021). On this basis, the hydraulic effectiveness of each adaptation strategy was expressed through difference maps highlighting the local reduction of each of the described proxies in comparison with the base case, allowing a qualitative estimation of the flood reduction that each of the hypothetical strategies offers, and, what is more, facilitating a direct juxtaposition of their hydraulic effectiveness.

### 3 Results

Allowing for the highly dynamic behaviour of surface runoff volumes across the HCMC model, all spatio-temporal output data were converted into heat maps for the first three flood intensity proxies. The potential flood reduction of a given adaptation strategy was then illustrated by subtracting the respective base case heat maps. The benefits of this methodology become clearer when studying the distribution of flood severity ( $I_{NFS}$ ) reductions as depicted in Figure 3. **Analogous maps of the potential changes in maximum flood depth and duration can be found in the Supplemental Material.** In particular, **Figure 3**, the upper two panels (a) and (b), corresponding to strategies (1) and (2), visualize the reduction in flood severity due to the implementation of the VCAPS ring dike (incl. sluice gates and pumping stations) and the comprehensive application of water detention, respectively. When comparing the two strategies, areas with reduced flood severity (highlighted in green colour) significantly exceed after implementation of the first adaptation strategy (Figure 3 a), although they form certain clusters along the low-lying areas close to the major canals. This seems obvious given that the dike eradicates any tidal influence and the heavy-duty pumps are capable of emptying these crucial elements of urban drainage within hours. Then again, there are several areas (highlighted in ~~red-blue~~ colour) that experience increased flood severity, especially across the western, riverine parts of the municipal city of Thu Duc (**hatched area**), **which lies east of the northernmost pumping station and in several rural areas across the east of HCMC. Given their proximity to the Sai Gon river, these “new” flooding hotspots are very likely a consequence of excess water being pumped into the river from inside the ring dike.** Flood reductions for the second adaptation strategy (Figure 3 b), on the other hand, ~~are~~ **is** less pronounced, but ~~by far~~ more uniformly distributed, likewise addressing low- and high-lying areas. In addition, this strategy ~~does hardly induce any worsening with regard to~~ **hardly affects** flood severity except for the exact spots that are alleviated by the ring dike strategy, ~~hinting~~ **which already hints at the benefits of using both strategies in combination.**



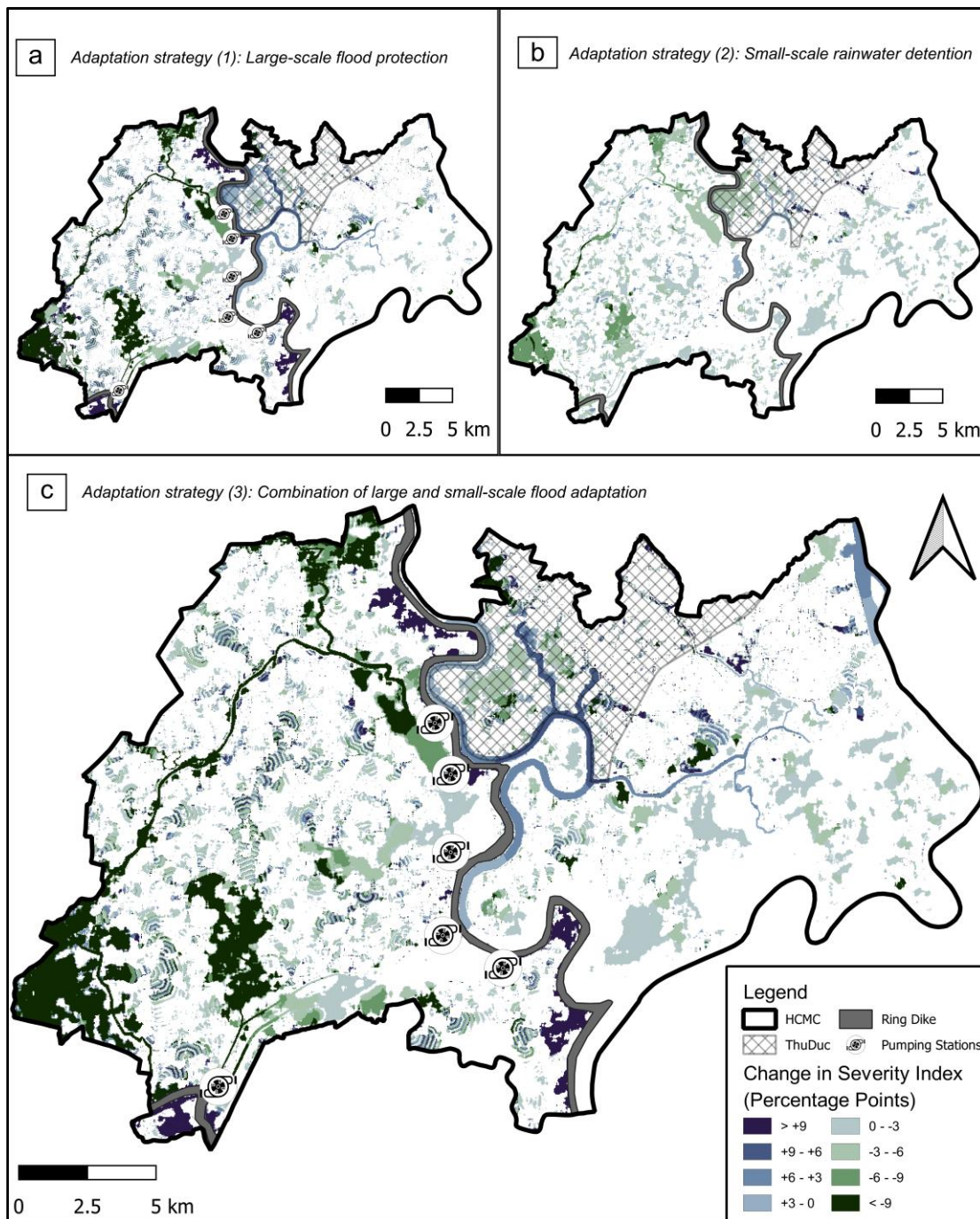


Figure 3: SIMULATION RESULTS - Spatial **reduction-changes** of flood intensity in terms of decreases (**green**) and increases (**blue**) in normalized flood severity ( $I_{NFS}$ / $NFSI$ ). (a) While the large-scale ring dike strategy improves the flooding situation in the low-lying areas along the major canals, but worsens the situation for the western parts of the municipal city of Thu Duc (**hatched area**), (b) the decentralized water detention scheme shows more uniformly distributed improvements. (c) The combination of both approaches yields even better results as increases and decreases in flood severity overlap for the former two strategies in a highly complementary way. All  $I_{NFS}$ / $NFSI$ -reductions displayed using scientific colour maps (Crameri, 2022).

Changes in flood severity that can be expected for a combination of both strategies are depicted in the lower panel (Figure 3 c). At first sight, most flood severity reductions visible in (a) can also be found for the combined approach in (c). When looking at the increases in flood severity, however, several of the inundations, which are induced by the implementation of a ring dike, diminish in case of additional rainwater detention. This applies particularly to the areas east of the Sai Gon River suggesting that certain detrimental effects of excessive pumping could be mitigated by a combined adaptation strategy. ~~Nevertheless, the spatial changes are hard to differentiate from visual inspection alone.~~ **Complementing Figure 3, the Supplemental Material includes a more detailed frequency analysis further quantifying the changes of specific value ranges.**

Adding to these findings, **also** the **following** quantitative results underline that both grey and green adaptation strategies are, in general, capable of alleviating the average intensity of local flooding in HCMC. This can be concluded, for instance, from average values of maximum flood depths and flood durations **inside the ring dike**, which are significantly reduced in relation to the reference case without adaptations (Table 1). In direct comparison, ~~however,~~ it becomes ~~obvious-evident~~ that **(1) the currently constructed** ring dike (incl. flood gates and pumping stations) would reduce average flood depths ~~about two times and flood durations even nine times more effectively than~~ **nearly as effectively as (2) the implementation of** widespread water detention, ~~whereas~~ ~~A closer look at~~ the potential improvements from (3) a combined approach suggests reductions of flood depth ~~that~~ are even higher than the sum of the single components of strategies (1) and (2).

**Table 1: Potential reduction of flood intensity for three adaptation strategies: (1) Large-scale ring dike scheme including pumping stations, (2) comprehensive application of decentralized rainwater detention and (3) the combination of both approaches. Improvements are expressed through decreasing mean values (inside the ring dike) of the conventional flood intensity proxies, maximum flood depths in cm (left) and significant flood duration with depths higher than 10 cm in hours (right), in comparison with respective values for (0) the base case without adaptation measures.**

Strategy	Conventional Flood Intensity Proxies			
	Flood depth ( $d_{\max}$ )		Flood duration ( $T_{d>10\text{cm}}$ )	
	(cm)	(%)	(h)	(%)
(1) Large-scale protection	<del>-2.7</del> <b>0.9</b>	<del>-19.5</del> <b>14.4</b>	<del>+9.2</del> <b>0.3</b>	<del>-44.2</del> <b>+5.5</b>
(2) Small-scale detention	<del>-1.5</del> <b>0.9</b>	<del>-10.6</del> <b>14.0</b>	<del>-1.1</del> <b>0.8</b>	<del>-5.5</del> <b>14.1</b>
(3) Combination	<del>-4.8</del> <b>2.5</b>	<del>-34.5</del> <b>37.4</b>	<del>-9.2</del> <b>1.1</b>	<del>-44.4</del> <b>18.1</b>

~~Although this does not hold true for flood duration and affected firms, the numerical simulations still reveal that the hydraulic benefits of a combined approach always outmatch individual solutions.~~ **The numerical simulations not only suggest that the considered strategies can be implemented without limiting their individual benefits, but also that they are highly complementary with respect to their hydraulic effects.** ~~which~~ This is ~~further~~ corroborated by the ~~other, more~~ integrated flood intensity proxies (Table 2). For example, the  ~~$I_{\text{NFS}}$  NFSI for adaptation strategies (1) and (2)~~ is reduced by ~~-41.7~~**17.9** %

310 for strategy (1) and ~~-11.9~~**17.7** % for strategy (2), respectively, in comparison to the base case without adaptation. ~~This translates into a 3.5 times higher potential of flood reduction for the classic infrastructure solution (1) than for a Sponge City approach in the outlined framework (2).~~ The combination of both, **however**, would ~~finally~~ yield a ~~-38.3~~**46.7** % ~~improvement~~**reduction** in **normalized flood severity (I<sub>NFS</sub>)** ~~values~~. ~~Further evidence for this complementarity can be found~~ ~~A different picture emerges~~, when assessing how the different adaptation strategies influence the number of manufacturing firms, ~~which experience~~ ~~a~~ **affected by** significant flooding (**with a** depth of more than 10 cm). While the classic strategy (1) ~~only~~ protects ~~49.9~~**933.8** % of the listed companies, **also** decentralized detention measures **alone** (2) could reduce the current number by ~~93.3~~**18.0** % **after all**. ~~This again translates into a 4.7 times more effective investment in the case of strategy (2). For a combined approach of classic protection and rainwater storage, this even corresponds to a 4.9 times~~ ~~But again, the combined approach (3) would protect more manufacturing firms than the individual measures, yielding a 58 % higher effectiveness~~ compared to the ring dike **scheme** alone. ~~However, although~~**Even though** these numerical results **already** indicate that small-scale measures can support future flood adaptation concepts in an effective and straightforward manner, they do not **(yet)** ~~take into consideration~~**allow for** the **strategic** low-regret qualities of the assessed options and the implications that arise for local decision-makers.

325 **Table 2: Potential reduction of flood intensity for three adaptation strategies: (1) Large-scale ring dike scheme including pumping stations, (2) comprehensive application of decentralized rainwater detention and (3) the combination of both approaches. Improvements are expressed through decreasing values (inside the ring dike) of the two integrated flood intensity proxies, namely the average normalized flood severity index (I<sub>NFS</sub>) (left) and the total number of manufacturing firms that are affected by a flood depth greater than 10 cm (right), in comparison with respective values for (0) the base case without adaptation measures.**

Strategy	Integrated Flood Intensity Proxies			
	Flood Severity (I <sub>NFS</sub> )		Number of affected manufacturing firms	
	(units)	(%)	(-)	(%)
(1) Large-scale protection	<del>-7.0</del> <b>1.0</b>	<del>-41.7</del> <b>17.9</b>	<del>-14614</del> <b>502</b>	<del>-19.9</del> <b>33.8</b>
(2) Small-scale detention	<del>-2.0</del> <b>1.0</b>	<del>-11.9</del> <b>17.7</b>	<del>-6837</del> <b>745</b>	<del>-93.3</del> <b>18.0</b>
(3) Combination	<del>-7.8</del> <b>2.1</b>	<del>-46.7</del> <b>38.3</b>	<del>-7082</del> <b>2926</b>	<del>-96.7</del> <b>53.4</b>

#### 4 Discussion and Conclusions

330 Several studies have recently assessed the available flood adaptation options of HCMC, with a special focus on resistance against extreme storm surges and such hazards under future sea-level rise scenarios (VCAPS, 2013; Lasage et al., 2014; Scussolini et al., 2017). However, no attention was paid to the more frequent, especially pluvial events, ~~although~~**But** these incidents demonstrably cause financial losses that are up to ten times higher than singular extremes (ADB, 2010) and affect

small and medium manufacturing firms, which are the backbone of the national economy, to a disproportionately high degree  
335 (Leitold and Revilla Diez, 2019). To address this knowledge gap, a numerical model was employed to evaluate possible  
responses to urban inundations resulting from heavy precipitation of an annual return period. Two exemplary adaptation  
measures, (1) a classic (grey) protection scheme in the form of a large-scale ring dike and (2) a (green) Sponge City approach  
in terms of decentralized rainwater detention, were implemented in a process-based, hydrological model. ~~However, t~~  
340 ~~The fact that thise~~ model was exclusively built on freely accessible boundary conditions introduces some uncertainties to the  
~~numerical~~ setup: first of all, the elevation data from SRTM and CoastalDEM typically come with a site-specific vertical bias  
~~as intensely discussed during the last years~~ (Schumann and Bates, 2018; Kulp and Strauss, 2019; Vernimmen et al., 2020;  
Mukul et al., 2015). ~~However, A-a~~ comparison with three ~~random-major~~ LiDAR samples suggests that, ~~also forgiven~~ the  
specific case of HCMC, errors in the order of ~~+0.5~~ m are to be expected ( $A = 4.26165$  km<sup>2</sup>;  $ME = -1.070.45$  m;  $STD =$   
~~+0.090.81~~ m;  $RMSE = 1.520.93$  m;) (Scheiber et al., in review)). Yet, although the results of the here employed model are  
345 highly dependent on the topographic conditions across the city as well, the influence of a vertical bias diminishes, when  
simulation runs with the same systematic error are directly compared. The same applies to the (conservative) assumption that  
the local drainage system is malfunctioning from the beginning of each model run. Furthermore, the impact of local land  
subsidence was not considered in the assessed simulations of present-day adaptation responses, but the extrapolation of such  
trends should be a requisite for simulations that address options under future climate change projections given their significant  
350 share in relative sea-level rise (Nicholls et al., 2021). **Additional limitations arise from the parametrization of rainwater  
detention in the form of an attenuated hyetograph (cf. section 2 Material and Methods). Even if a comparison of  
different technical solutions for this type of climate adaptation is generally possible on an analytical basis – investigating  
what rainwater detention measure would theoretically cause which attenuation – their parametrized implementation  
in the model would nearly be identical, as is their general working principle. As a consequence, also the experienced  
355 flooding would be very similar in its pattern of depth and duration for all realizations of the Sponge City concept. The  
estimation of the roofed area from satellite imagery and corresponding detention capacities entails additional  
uncertainties with respect to the assumed runoff attenuation. In reality, the actual shape of this hyetograph depends  
on a multitude of factors including technical details about the individual solutions (how much storage volume per unit)  
as well as the degree of implementation (how many units per area). Nevertheless, the presented approach is sufficiently  
360 descriptive for a conceptual juxtaposition of the effects and performance of the two mitigation strategies under  
consideration and demonstrates the general working principles despite the underlying simplifications: The large-scale  
pumping stations comprised in the classic protection scheme reduce flood volumes along the inner-city canals and thus  
represent a line or even point sink within the numerical model; the implementation of the Sponge City concept, in  
contrast, is characterized by spatially uniform runoff attenuation, which translates to an area sink for flood volumes  
365 across the whole model domain. The aim of this study, i.e. to compare the working principles behind these two,  
seemingly adverse adaptation options, is thoroughly accomplished by the employed conceptual approach. Although the  
employed surface runoff model is based on these assumptions, its implications still go beyond earlier, DEM-based analyses**



(Dang and Kumar, 2017; Leitold and Revilla Diez, 2019) and its limitations are comparable to other process-based models ~~in~~ **of** this region (Scussolini et al., 2017). Even though simulated urban inundations should not be mistaken with quantitative forecasts **(as needed by, for instance, insurance companies)**, the reduction of flood intensity and especially the spatio-temporal differences between the assessed strategies can help both researchers and decision-makers to critically compare the hydraulic effects of available adaptation options. In this context, the combination of conventional and integrated flood intensity proxies allows for a holistic view of their potential in physical flood risk reduction and avoids a singular focus on economic assets, which would underestimate the social relevance of small and medium enterprises (Kind et al., 2020; Hino and Nance, 2021).

The obtained simulation results suggest that both adaptation measures are generally capable of alleviating the flooding situation in HCMC, albeit ~~in-on~~ very different **dimensionsspatial and temporal scales**. The classic protection scheme has a ~~much~~ **higherslightly better** reduction rate ~~regarding flood intensity~~ than the projected rainwater storage **regarding flood depth, but increases the average flood duration inside the ring dike**. ~~But then,~~ positive effects of the ring dike are also limited to the low-lying areas in the vicinity of the ~~inter-~~city canals, which are easily drained in contrast to the more remote and high-lying districts. ~~What is more~~**In addition**, the grey adaptation measure relies on sufficient capacities and smooth operation of few central pumping stations, which makes this concept highly vulnerable in case of technical or operational failure. The importance of technical robustness and reliability becomes particularly clear when considering the role of the existing drainage system. Outdated and in many regards deficient, this system is one of the main drivers of growing flood risk in HCMC and an epitome of critical dependence on grey infrastructure and ~~fragile-susceptible~~ technical solutions. A Sponge City approach, in contrast, is characterized by its modularity comprising a large number of decentralized elements. This is a major advantage as it disperses the risk of failure through redundancy and therefore increases the resilience of the overall system. However, in urban settings, the implementation of medium-scale solutions for rainwater storage, like dedicated detention basins, may entail conflicts with other (mostly commercial) interests in land use management due to the required consumption of limited public space. Multiple administrative authorities, private land owners and developers typically need to be involved to make decisions. Although arising conflicts can be addressed through active participation by representatives of the local citizens and businesses as well as experts from the administration in a joint co-design process (Chen et al., 2021), their complexity can prolong and in some cases even prevent ~~such~~ implementation plans. Hence, the most promising approach to integrate the Sponge City concept into a highly urbanised area, like HCMC, ~~would be the promotionis promoting-of~~ small- and even micro-scale solutions on a neighbourhood and household or firm level. These are inherently easier to realize than medium-scale solutions as they can make use of existing residential spaces or vacant lots (not being subject to commercial interests) and can be governed through incentives **more easilyin a much simpler manner**. Also, concerning future trends, both strategies differ in their degree of sustainability: because the operation of grey flood protection measures, and specifically the ring dike, is defined by absolute design heights, these structures are constructed for one specific water level projection and constant land subsidence rates. **In contrast, whereas** these two components of relative sea-level rise hardly impair the potential of rainwater detention. Although classic flood protection shows higher ~~hydraulic~~ effectiveness **in almost all assessed flood intensity proxies**, this study of

HCMC shows that small-scale solutions, as projected in the framework of a Sponge City approach, excel in terms of technical resilience and that they are readily available options for addressing residual flood risk. Especially the combination of both strategies offers a much-needed technical redundancy, besides the obvious gains in quantitative flood reduction **which, in the present case, are even higher than if the solutions would be implemented individually**.

With regard to the low-regret paradigm, flexible approaches and strategic planning for the future are central elements of a successful disaster risk response strategy (IPCC, 2012; Marchau et al., 2019). Typically, an adaptation plan contains multiple adaptation pathways, visualizing the impact and dependence of single adaptation measures on future capacities to deal with climate change effects (Haasnoot et al., 2013; Kwakkel et al., 2015; Haasnoot et al., 2019). **Thinking-Planning** adaptation with a low-regret mindset facilitates ~~considering~~ small-scale measures along the way, with the chance to avoid more drastic interference within the natural and social setting **and circumvent maladaptation or maldevelopment** (David et al., 2021).

With this in mind, the ring dike in HCMC is a direct protection measure for the low-lying parts of the inner city. Complemented by heavy-duty pumps, it shields the central districts from harmful storm surges and eradicates the tidal influence on the inner-city canals. However, even if parts of the precipitation volumes remain in higher elevated areas, unable to drain through the deficient drainage system, this surplus of discharge still raises the water levels of the gaining Sai Gon River. Like the general dependence on a single technical structure, this fact shows a maladaptive tendency as it can be detrimental to the outer reaches of HCMC **(outside the ring dike)**, ~~which~~ **These** are increasingly inhabited by the poorer, more vulnerable portions of the population (Duy et al., 2018), who now experience even higher floods. To alleviate this tendency and prevent maldevelopment, the currently constructed solution can be complemented with incentives for societal and communal flood protection:

Decentralized rainwater detention verifiably attenuates the runoff peak and allots discharges to a longer period (Jiang et al., 2022). Considering an adaptation pathway plan for HCMC from a governance perspective, the ring dike is a unique project based on a binary decision (to build or not to build). It is designed to protect a given domain from a clearly specified set of natural hazards. Rainwater detention, on the other hand, is a modular category of individual measures following the Sponge City concept, which does not need further specification and can be tailored to the specific demands of the local situation. This makes this approach highly flexible as its spatio-temporal implementation can be controlled by targeted subsidies, e.g. for purchasing and installing private rain barrels etc. Such micro-scale solutions enable both individuals and SMEs, who currently depend on top-down decisions, to actively participate in (bottom-up) climate change adaptation on a community and household level. Finally, this approach tackles flooding at its source and does not interfere with other protection measures on site. These aspects – the flexibility, the capacity of local stakeholders to respond gradually and in accordance with near-future precipitation projections as well as the ability to mitigate without impairing protection efforts on site – make the Sponge City concept a prime addition to a successful low-regret adaptation strategy.

As mentioned before, the construction of a ring dike, multiple flood gates and pumping stations is currently underway in HCMC. This adaptation pathway is an effective response to the current flooding situation as it protects the central districts of the city from high tides and coastal storm surges. However, frequent rain events cause major socio-economic disruptions and induce significant financial losses to the local economy as well. To address those areas that are not yet protected from pluvial

flooding or even adversely affected by the **installation of the** ring dike, pursuing a Sponge City approach would be a second and highly complementary adaptation pathway. In this context, decentralized rainwater detention in any form – be it green roofs, rain barrels or detention basins – can be considered useful, especially in view of the impending rise of relative sea levels through global warming and local land subsidence. This may be even more beneficial as many of these solutions can be implemented as multi-purpose structures or possess valuable ecosystem services, first and foremost beneficial to mitigate Urban Heat Island effects (He et al., 2019). Although further adding to the low-regret character of this concept, an assessment of the co-benefits of individual Sponge City measures would go beyond the scope of this study. In the end, it is highly desirable to consider this vital concept, when technically approaching the increasingly severe disaster risk of low-elevation coastal zones in general and of Southeast Asian metropolises in particular, to allow ~~them to prepare~~**preparation** for a deeply uncertain future.

## **Code availability**

No code was used in this research. Details about the general processing of numerical data are provided in the methods section or can be inquired from the corresponding author.

## 450 **Data availability**

The references and freely available data used in this study can be accessed through the respective journals or databases.

## **Author contribution**

455 LS, MHJ and JV designed the hydro-numerical model finally set up and operated by MHJ. JRD acquired the census data, from which RL extracted the geo-location of manufacturing firms. MHJ processed the simulation results, which LS, MHJ and JV interpreted. LS and CGD conceptualized the paper outline. LS and CGD wrote the initial manuscript with input from MHJ, while JV, JRD, HQN and TS reviewed and edited the final text. JV and TS (co-)designed the overarching research project, were responsible for funding resources at LuFI as well as JRD at GSSC. All three provided guidance throughout the entire study.

## **Competing interests**

460 The authors declare that they have no conflict of interest.

## **Acknowledgements**

465 The list of inundation hotspots, forming the basis for the model validation in this study, was generously provided by Dr. Nguyen Quy from the HCMC-based engineering company EPT Ltd. Moreover, the authors wish to express their gratitude towards Friedrich Hilgenstock from WTM Engineers GmbH for his expert guidance in technical flood adaptation options. **Dr. Talia Schoonees provided helpful comments on the writing style, which is highly appreciated.** Finally, sincere thanks go to the editor at NHESS for handling the manuscript and two anonymous reviewers for their helpful comments.

## **Financial support**

This research has received funding from the DECIDER project sponsored by the German Federal Ministry of Education and Research (BMBF; grant no. 01LZ1703H).

470

## References

- Abidin, H. Z., Andreas, H., Gumilar, I., and Wibowo, I. R. R.: On correlation between urban development, land subsidence  
475 and flooding phenomena in Jakarta, in: Proceedings of the International Association of Hydrological Sciences, 15–20,  
2015.
- ADB: Ho Chi Minh City - Adaptation to Climate Change: Summary Report, Asian Development Bank, Manila, the  
Philippines, 2010.
- Barragán, J. M. and Andrés, M. de: Analysis and trends of the world's coastal cities and agglomerations, *Ocean & Coastal*  
480 *Management*, 114, 11–20, <https://doi.org/10.1016/j.ocecoaman.2015.06.004>, 2015.
- Caldwell, P. C., M. A. Merrifield, and P. R. Thompson: Sea level measured by tide gauges from global oceans—the Joint  
Archive for Sea Level holdings (NCEI Accession 0019568), Version 5.5, NOAA National Centers for Environmental  
Information., 2015.
- Chen, S., van de Ven, F. H. M., Zevenbergen, C., Verbeek, S., Ye, Q., Zhang, W., and Wei, L.: Revisiting China's Sponge  
485 City Planning Approach: Lessons From a Case Study on Qinhuai District, Nanjing, *Front. Environ. Sci.*, 9,  
<https://doi.org/10.3389/fenvs.2021.748231>, 2021.
- Crameri, F.: Scientific Colour Maps available at <http://www.fabiocrameri.ch/colourmaps/>,  
<https://doi.org/10.5281/zenodo.1243862>, 2022.
- Dang, A. T. N. and Kumar, L.: Application of remote sensing and GIS-based hydrological modelling for flood risk analysis:  
490 a case study of District 8, Ho Chi Minh city, Vietnam, *Geomatics, Natural Hazards and Risk*, 8, 1792–1811,  
<https://doi.org/10.1080/19475705.2017.1388853>, 2017.
- David, C. G., Hennig, A., Ratter, B. M. W., Roeber, V., Zahid, and Schlurmann, T.: Considering socio-political framings  
when analyzing coastal climate change effects can prevent maldevelopment on small islands, *Nature communications*,  
12, 5882, <https://doi.org/10.1038/s41467-021-26082-5>, 2021.
- 495 Dong, X., Guo, H., and Zeng, S.: Enhancing future resilience in urban drainage system: Green versus grey infrastructure,  
*Water research*, 124, 280–289, <https://doi.org/10.1016/j.watres.2017.07.038>, 2017.
- Doocy, S., Daniels, A., Murray, S., and Kirsch, T. D.: The human impact of floods: a historical review of events 1980-2009  
and systematic literature review, *PLoS Curr*, 5,  
<https://doi.org/10.1371/currents.dis.f4deb457904936b07c09daa98ee8171a>, 2013.
- 500 Downes, N. K. and Storch, H.: Current Constraints and Future Directions for Risk Adapted Land-Use Planning Practices in  
the High-Density Asian Setting of Ho Chi Minh City, *Planning Practice & Research*, 29, 220–237,  
<https://doi.org/10.1080/02697459.2014.929835>, 2014.
- Duffy, C. E., Braun, A., and Hochschild, V.: Surface Subsidence in Urbanized Coastal Areas: PSI Methods Based on  
Sentinel-1 for Ho Chi Minh City, *Remote Sensing*, 12, 4130, <https://doi.org/10.3390/rs12244130>, available at:  
505 <https://www.mdpi.com/927462>, 2020.

- Duvat, V. K. E. and Magnan, A. K.: Rapid human-driven undermining of atoll island capacity to adjust to ocean climate-related pressures, *Sci Rep*, 9, 15129, <https://doi.org/10.1038/s41598-019-51468-3>, 2019.
- Duy, P. N., Chapman, L., Tight, M., Linh, P. N., and Le Thuong, V.: Increasing vulnerability to floods in new development areas: evidence from Ho Chi Minh City, *IJCCSM*, 10, 197–212, <https://doi.org/10.1108/IJCCSM-12-2016-0169>, available at: <https://www.emerald.com/insight/content/doi/10.1108/IJCCSM-12-2016-0169/full/pdf>, 2018.
- Erkens, G., Bucx, T., Dam, R., Lange, G. de, and Lambert, J.: Sinking coastal cities, in: *Proceedings of the International Association of Hydrological Sciences*, 189–198, 2015.
- Gugliotta, M., Saito, Y., Ta, T. K. O., and van Nguyen, L.: Valley-Confinement and River-Tidal Controls on Channel Morphology Along the Fluvial to Marine Transition Zone of the Đòng Nai River System, Vietnam, *Front. Earth Sci.*, 7, 202, <https://doi.org/10.3389/feart.2019.00202>, available at: <https://www.frontiersin.org/articles/10.3389/feart.2019.00202/full>, 2019.
- Haasnoot, M., Brown, S., Scussolini, P., Jimenez, J. A., Vafeidis, A. T., and Nicholls, R. J.: Generic adaptation pathways for coastal archetypes under uncertain sea-level rise, *Environ. Res. Commun.*, 1, 71006, <https://doi.org/10.1088/2515-7620/ab1871>, 2019.
- Haasnoot, M., Kwakkel, J. H., Walker, W. E., and Maat, J. ter: Dynamic adaptive policy pathways: A method for crafting robust decisions for a deeply uncertain world, *Global Environmental Change*, 23, 485–498, <https://doi.org/10.1016/j.gloenvcha.2012.12.006>, 2013.
- Hallegatte, S., Green, C., Nicholls, R. J., and Corfee-Morlot, J.: Future flood losses in major coastal cities, *Nat. Clim. Chang.*, 3, 802–806, <https://doi.org/10.1038/NCLIMATE1979>, 2013.
- Hamel, P. and Tan, L.: Blue-Green Infrastructure for Flood and Water Quality Management in Southeast Asia: Evidence and Knowledge Gaps, *Environmental Management*, 1–20, <https://doi.org/10.1007/s00267-021-01467-w>, available at: <https://link.springer.com/article/10.1007/s00267-021-01467-w>, 2021.
- Hanson, S., Nicholls, R., Ranger, N., Hallegatte, S., Corfee-Morlot, J., Herweijer, C., and Chateau, J.: A global ranking of port cities with high exposure to climate extremes, *Climatic Change*, 104, 89–111, <https://doi.org/10.1007/s10584-010-9977-4>, available at: <https://link.springer.com/article/10.1007/s10584-010-9977-4>, 2011.
- Hawken, S., Sepasgozar, S., Prodanovic, V., Jing, J., Bakelmun, A., Avazpour, B., Che, S., and Zhang, K.: What makes a successful Sponge City project? Expert perceptions of critical factors in integrated urban water management in the Asia-Pacific, *Sustainable Cities and Society*, 75, 103317, <https://doi.org/10.1016/j.scs.2021.103317>, 2021.
- He, B.-J., Zhu, J., Zhao, D.-X., Gou, Z.-H., Qi, J.-D., and Wang, J.: Co-benefits approach: Opportunities for implementing sponge city and urban heat island mitigation, *Land Use Policy*, 86, 147–157, <https://doi.org/10.1016/j.landusepol.2019.05.003>, 2019.
- Hino, M. and Nance, E.: Five ways to ensure flood-risk research helps the most vulnerable, *Nature*, 595, 27–29, <https://doi.org/10.1038/d41586-021-01750-0>, available at: <https://www.nature.com/articles/d41586-021-01750-0>, 2021.

- Ho et al.: Exploratory assessment of SUDS feasibility in Nhieu Loc-Thi Nghe Basin, Ho Chi Minh City, Vietnam, British  
540 Journal of Environment and Climate Change, 91–103, 2015.
- Huong, H. T. L. and Pathirana, A.: Urbanization and climate change impacts on future urban flooding in Can Tho city,  
Vietnam, *Hydrol. Earth Syst. Sci.*, 17, 379–394, <https://doi.org/10.5194/hess-17-379-2013>, available at:  
<https://hess.copernicus.org/articles/17/379/2013/>, 2013.
- IPCC: Climate Change 2021: The Physical Science Basis. Contribution of Working Group I to the Sixth Assessment Report  
545 of the Intergovernmental Panel on Climate Change, Intergovernmental Panel on Climate Change, 2021.
- IPCC: Climate Change 2014: Impacts, Adaptation, and Vulnerability. Part A: Global and Sectoral Aspects. Contribution of  
Working Group II to the Fifth Assessment Report of the Intergovernmental Panel on Climate Change, Intergovernmental  
Panel on Climate Change, Cambridge, United Kingdom and New York, NY, USA, 2014.
- IPCC: Managing the Risks of Extreme Events and Disasters to Advance Climate Change Adaptation: A Special Report of  
550 Working Groups I and II of the Intergovernmental Panel on Climate Change, 2012.
- IPCC - SROCC: Special Report on the Ocean and Cryosphere in a Changing Climate (SROCC), 2019.
- Jia, H., Hu, J., Huang, T., Chen, A. S., and Ma, Y.: Urban Runoff Control and Sponge City Construction, *Water*, 14, 1910,  
<https://doi.org/10.3390/w14121910>, 2022.
- Jia, H., Wang, Z., Zhen, X., Clar, M., and Yu, S. L.: China’s sponge city construction: A discussion on technical approaches,  
555 *Front. Environ. Sci. Eng.*, 11, <https://doi.org/10.1007/s11783-017-0984-9>, 2017.
- Jiang, Y., Qiu, L., Gao, T., and Zhang, S.: Systematic Application of Sponge City Facilities at Community Scale Based on  
SWMM, *Water*, 14, 591, <https://doi.org/10.3390/w14040591>, 2022.
- Kaneko, S. and Toyota, T.: Long-Term Urbanization and Land Subsidence in Asian Megacities: An Indicators System  
Approach, in: *Groundwater and Subsurface Environments*, edited by: Kaneko & Toyota, Springer, Tokyo, 249–270,  
560 [https://doi.org/10.1007/978-4-431-53904-9\\_13](https://doi.org/10.1007/978-4-431-53904-9_13), 2011.
- Kind, J., Botzen, W. J. W., and Aerts, J. C. J. H.: Social vulnerability in cost-benefit analysis for flood risk management,  
*Envir. Dev. Econ.*, 25, 115–134, <https://doi.org/10.1017/S1355770X19000275>, 2020.
- Köster, S.: How the Sponge City becomes a supplementary water supply infrastructure, *Water-Energy Nexus*, 4, 35–40,  
<https://doi.org/10.1016/j.wen.2021.02.002>, 2021.
- 565 Kulp, S. A. and Strauss, B. H.: New elevation data triple estimates of global vulnerability to sea-level rise and coastal  
flooding, *Nature communications*, 10, 4844, <https://doi.org/10.1038/s41467-019-12808-z>, 2019.
- Kulp, S. A. and Strauss, B. H.: CoastalDEM: A global coastal digital elevation model improved from SRTM using a neural  
network, *Remote Sensing of Environment*, 206, 231–239, <https://doi.org/10.1016/j.rse.2017.12.026>, 2018.
- Kumar, N., Liu, X., Narayanasamydamodaran, S., and Pandey, K. K.: A Systematic Review Comparing Urban Flood  
570 Management Practices in India to China’s Sponge City Program, *Sustainability*, 13, 6346,  
<https://doi.org/10.3390/su13116346>, available at: <https://www.mdpi.com/2071-1050/13/11/6346>, 2021.

- 575 Kwakkel, J. H., Haasnoot, M., and Walker, W. E.: Developing dynamic adaptive policy pathways: a computer-assisted approach for developing adaptive strategies for a deeply uncertain world, *Climatic Change*, 132, 373–386, <https://doi.org/10.1007/s10584-014-1210-4>, available at: <https://link.springer.com/article/10.1007/s10584-014-1210-4>, 2015.
- Lasage, R., Veldkamp, T. I. E., Moel, H. de, Van, T. C., Phi, H. L., Vellinga, P., and Aerts, J. C. J. H.: Assessment of the effectiveness of flood adaptation strategies for HCMC, *Nat. Hazards Earth Syst. Sci.*, 14, 1441–1457, <https://doi.org/10.5194/nhess-14-1441-2014>, available at: <https://nhess.copernicus.org/articles/14/1441/2014/>, 2014.
- 580 Leitold, R. and Revilla Diez, J.: Exposure of manufacturing firms to future sea level rise in Ho Chi Minh City, Vietnam, *Journal of Maps*, 15, 13–20, <https://doi.org/10.1080/17445647.2018.1548385>, 2019.
- Leitold, R., Garschagen, M., van Tran, and Revilla Diez, J.: Flood risk reduction and climate change adaptation of manufacturing firms: Global knowledge gaps and lessons from Ho Chi Minh City, *International Journal of Disaster Risk Reduction*, 61, 102351, <https://doi.org/10.1016/j.ijdr.2021.102351>, 2021.
- 585 Lempert, R. J.: Robust Decision Making (RDM), in: *Decision Making under Deep Uncertainty*, Springer International Publishing, Cham, 23–51, [https://doi.org/10.1007/978-3-030-05252-2\\_2](https://doi.org/10.1007/978-3-030-05252-2_2), 2019.
- Li, F. and Zhang, J.: A review of the progress in Chinese Sponge City programme: challenges and opportunities for urban stormwater management, *Water Supply*, 22, 1638–1651, <https://doi.org/10.2166/ws.2021.327>, 2022.
- Marchau et al.: *Decision Making under Deep Uncertainty – From Theory to Practice*, Springer, Cham, Switzerland, 2019.
- 590 McGranahan, G., Balk, D., and Anderson, B.: The rising tide: assessing the risks of climate change and human settlements in low elevation coastal zones, *Environment and Urbanization*, 19, 17–37, <https://doi.org/10.1177/0956247807076960>, 2007.
- MONRE: *Climate change and sea level rise scenarios for Viet Nam*, Ministry of Natural Resources and Environment, 2016.
- 595 Morris, R. L., Konlechner, T. M., Ghisalberti, M., and Swearer, S. E.: From grey to green: Efficacy of eco-engineering solutions for nature-based coastal defence, *Global change biology*, 24, 1827–1842, <https://doi.org/10.1111/gcb.14063>, 2018.
- Mukul, M., Srivastava, V., and Mukul, M.: Analysis of the accuracy of Shuttle Radar Topography Mission (SRTM) height models using International Global Navigation Satellite System Service (IGS) Network, *Journal of Earth System Science*, 124, 1343–1357, <https://doi.org/10.1007/s12040-015-0597-2>, available at: <https://link.springer.com/article/10.1007/s12040-015-0597-2>, 2015.
- 600 Muthusamy, M., Rivas Casado, M., Salmoral, G., Irvine, T., and Leinster, P.: A Remote Sensing Based Integrated Approach to Quantify the Impact of Fluvial and Pluvial Flooding in an Urban Catchment, *Remote Sensing*, 11, 577, <https://doi.org/10.3390/rs11050577>, 2019.
- 605 Neise, T., Revilla Diez, J., and Garschagen, M.: Firms as drivers of integrative adaptive regional development in the context of environmental hazards in developing countries and emerging economies – A conceptual framework, *Environment and Planning C: Politics and Space*, 36, 1522–1541, <https://doi.org/10.1177/2399654418771079>, 2018.



- Neumann, B., Vafeidis, A. T., Zimmermann, J., and Nicholls, R. J.: Future coastal population growth and exposure to sea-level rise and coastal flooding--a global assessment, *PloS one*, 10, e0118571, <https://doi.org/10.1371/journal.pone.0118571>, 2015.
- 610 Nguyen, T. T., Ngo, H. H., Guo, W., Wang, X. C., Ren, N., Li, G., Ding, J., and Liang, H.: Implementation of a specific urban water management - Sponge City, *The Science of the total environment*, 652, 147–162, <https://doi.org/10.1016/j.scitotenv.2018.10.168>, 2019.
- Nicholls, R. J., Lincke, D., Hinkel, J., Brown, S., Vafeidis, A. T., Meyssignac, B., Hanson, S. E., Merkens, J.-L., and Fang, J.: A global analysis of subsidence, relative sea-level change and coastal flood exposure, *Nat. Clim. Chang.*, 11, 338–342, <https://doi.org/10.1038/s41558-021-00993-z>, 2021.
- 615 Patel, D. P., Ramirez, J. A., Srivastava, P. K., Bray, M., and Han, D.: Assessment of flood inundation mapping of Surat city by coupled 1D/2D hydrodynamic modeling: a case application of the new HEC-RAS 5, *Nat Hazards*, 89, 93–130, <https://doi.org/10.1007/s11069-017-2956-6>, 2017.
- Phi, H. L.: Climate change and urban flooding in Ho Chi Minh City, in: *Proceedings of the 3rd International Conference on Climate and Water*, Helsinki, 3-6 September.
- 620 Phi, H. L., Hermans, L. M., Douven, W. J., van Halsema, G. E., and Khan, M. F.: A framework to assess plan implementation maturity with an application to flood management in Vietnam, *Water International*, 40, 984–1003, <https://doi.org/10.1080/02508060.2015.1101528>, 2015.
- Qi, Y., Chan, F. K. S., Thorne, C., O'Donnell, E., Quagliolo, C., Comino, E., Pezzoli, A., Li, L., Griffiths, J., Sang, Y., and Feng, M.: Addressing Challenges of Urban Water Management in Chinese Sponge Cities via Nature-Based Solutions, *Water*, 12, 2788, <https://doi.org/10.3390/w12102788>, 2020.
- 625 Rangari, V. A., Umamahesh, N. V., and Bhatt, C. M.: Assessment of inundation risk in urban floods using HEC RAS 2D, *Model. Earth Syst. Environ.*, 5, 1839–1851, <https://doi.org/10.1007/s40808-019-00641-8>, 2019.
- Rözer, V., Kreibich, H., Schröter, K., Müller, M., Sairam, N., Doss-Gollin, J., Lall, U., and Merz, B.: Probabilistic Models Significantly Reduce Uncertainty in Hurricane Harvey Pluvial Flood Loss Estimates, *Earth's Future*, 7, 384–394, <https://doi.org/10.1029/2018EF001074>, 2019.
- 630 Scheiber, L., Hoballah Jalloul, M., Jordan, Christian, Visscher, Jan, and Schlurmann, T.: The Potential of Open-Access Data for Flood Estimations: Uncovering Inundation Hotspots in Ho Chi Minh City, Vietnam, through a Normalized Flood Severity Index, *Nat. Hazards Earth Syst. Sci.*, <https://doi.org/10.5194/nhess-2022-238>, in review.
- Schumann, G. J.-P. and Bates, P. D.: The Need for a High-Accuracy, Open-Access Global DEM, *Front. Earth Sci.*, 6, 225, <https://doi.org/10.3389/feart.2018.00225>, available at: <https://www.frontiersin.org/articles/10.3389/feart.2018.00225/full>, 2018.
- 635 Scussolini, P., van Tran, T. T., Koks, E., Diaz-Loaiza, A., Ho, P. L., and Lasage, R.: Adaptation to Sea Level Rise: A Multidisciplinary Analysis for Ho Chi Minh City, Vietnam, *Water Resour. Res.*, 53, 10841–10857, <https://doi.org/10.1002/2017WR021344>, 2017.

- 640 SRTM: The Shuttle Radar Topography Mission, *Rev. Geophys.*, 45, <https://doi.org/10.1029/2005RG000183>, 2007.
- Sun, Y., Deng, L., Pan, S.-Y., Chiang, P.-C., Sable, S. S., and Shah, K. J.: Integration of green and gray infrastructures for sponge city: Water and energy nexus, *Water-Energy Nexus*, 3, 29–40, <https://doi.org/10.1016/j.wen.2020.03.003>, 2020.
- Tran Ngoc, T. D., Perset, M., Strady, E., Phan, T. S. H., Vachaud, G., Quertamp, F., and Gratiot, N.: Ho Chi Minh City growing with water related challenges, 2016.
- 645 USACE: HEC-RAS Version 6.0, Hydrologic Engineering Center's River Analysis System Hydraulic Reference Manual, US Army Corps of Engineers Hydrologic Engineering Center, Davis, 2021.
- VCAPS: Climate Adaptation Strategy Ho Chi Minh City - moving towards the sea with climate change adaptation, Vietnam Climate Adaptation PartnerShip, 2013.
- Vernimmen, R., Hooijer, A., and Pronk, M.: New ICESat-2 Satellite LiDAR Data Allow First Global Lowland DTM Suitable for Accurate Coastal Flood Risk Assessment, *Remote Sensing*, 12, 2827, <https://doi.org/10.3390/rs12172827>, available at: <https://www.mdpi.com/813620>, 2020.
- 650 Yalcin, E.: Assessing the impact of topography and land cover data resolutions on two-dimensional HEC-RAS hydrodynamic model simulations for urban flood hazard analysis, *Nat Hazards*, 101, 995–1017, <https://doi.org/10.1007/s11069-020-03906-z>, 2020.
- 655 Yin, D., Xu, C., Jia, H., Yang, Y., Sun, C., Wang, Q., and Liu, S.: Sponge City Practices in China: From Pilot Exploration to Systemic Demonstration, *Water*, 14, 1531, <https://doi.org/10.3390/w14101531>, 2022.