

**Subject:** Responses to reviewers' comments and suggestions

**Manuscript Number:** NHESS-2022-223

**Title:** Improvements to the detection and analysis of external surges in the North Sea

Dear editors and reviewer,

We want to thank you again and like to express our appreciation for the constructive comments—we believe that the consideration of these comments has greatly enhanced the quality of the revised manuscript.

Please find enclosed in this letter detailed answers to reviewers' comments, as well as the corresponding actions performed to the original manuscript submission.

Sincerely,

Alexander Müller, Dr. Birgit Gerkenmeier, Benedikt Bratz, Clemens Krautwald, Dr.-Ing. Olaf Müller, Dr.-Ing. Nils Goseberg, Dr. Gabriele Gönnert

# 1 EDITOR

*The paper has now incorporated the main points from the review and is ready for publication after some minor comment (described below) is implemented.*

*The paper has incorporated the main points from the review and my only remaining suggestion would be in lines 330 to 335 (in the context of coastal protection...). Here I would suggest to include in this paragraph the coexistence between incoming wave storms and increases in mean sea level. As a matter of fact, the paragraph is well written and considers storm surge, wind set up and astronomical tide, but I think the paper message would be stronger if the paragraph includes the coexistence between the significant wave height peak and the maximum water level which would lead to the highest coastal damages and therefore the highest need for coastal protection.*

## **Answer to General Comment of the Editor:**

Thank you for the constructive comment to the discussion of the manuscript and highlighting another aspect that was so far not incorporated in the discussion of the design water level in Hamburg. We have added an additional paragraph to address the handling of wave climate in the design process.

## **Line 541:**

Additionally, the design process of coastal defence structures considers local wave climate by limiting wave runoff and overtopping. Limiting the overtopping rate results in additional elevation (Pullen et al. 2007), which has to be added to the design water level, consisting of spring tide, wind setup and external surge. A local wave climate is, however, determined by the angle of attack and the significant wave height, which are, in contrast to the still water level, statistical properties. Methods to analyse wave climate therefore differ from those to analyse water levels (e.g. in Weisse et al., 2012), hence wave climate is not further considered in this study. It is, nonetheless, monitored alongside sea level rise and storm surges to detect possible changes and plan the necessary adaption.

~~In the context of coastal protection~~ Resulting from this monitoring, serial external surges should ~~also~~ be analysed as interdependent waves in the future, [...]

## 2 REVIEWER #1

- *“Does the paper address relevant scientific and/or technical questions within the scope of NHESS? Yes*
- *Does the paper present new data and/or novel concepts, ideas, tools, methods or results? Yes*
- *Are these up to international standards? Yes*
- *Are the scientific methods and assumptions valid and outlined clearly? The methodology as a whole should be described in a little more detail, also the distinction Dataset1 and Dataset2*
- *Are the results sufficient to support the interpretations and the conclusions? Yes*
- *Does the author reach substantial conclusions? Yes*
- *Is the description of the data used, the methods used, the experiments and calculations made, and the results obtained sufficiently complete and accurate to allow their reproduction by fellow scientists (traceability of results)? see no 4*
- *Does the title clearly and unambiguously reflect the contents of the paper? Yes*
- *Does the abstract provide a concise, complete and unambiguous summary of the work done and the results obtained? Yes*
- *Are the title and the abstract pertinent, and easy to understand to a wide and diversified audience? Yes*
- *Are mathematical formulae, symbols, abbreviations and units correctly defined and used? If the formulae, symbols or abbreviations are numerous, are there tables or appendixes listing t*
- *hem? Yes*
- *Is the size, quality and readability of each figure adequate to the type and quantity of data presented? Yes*
- *Does the author give proper credit to previous and/or related work, and does he/she indicate clearly his/her own contribution? Yes*
- *Are the number and quality of the references appropriate? Yes*
- *Are the references accessible by fellow scientists? Yes*
- *Is the overall presentation well structured, clear and easy to understand by a wide and general audience? Largely, for elements to be corrected see pdf*
- *Is the length of the paper adequate, too long or too short? Adequate*
- *Is there any part of the paper (title, abstract, main text, formulae, symbols, figures and their captions, tables, list of references, appendixes) that needs to be clarified, reduced, added, combined, or eliminated? see point 4*
- *Is the technical language precise and understandable by fellow scientists? Yes*
- *Is the English language of good quality, fluent, simple and easy to read and understand by a wide and diversified audience? Yes*
- *Is the amount and quality of supplementary material (if any) appropriate? yes*

### **Answer to General Comment of Reviewer #1:**

Thank you very much for your comments on this manuscript and the opportunity to improve it with your helpful comments and further recommendations! Thanks also for providing suggestions for an improved structure of the manuscript. We have adapted the structure to have a more precise division between methodology, results and discussion. The distinction between DataSet1 and DataSet2 has been added to the new Section 3.5, where the two datasets are first mentioned.

Answers to the specific comments on the manuscript are listed below.

### **Comment 1.1:**

*“No space before percent in English.”*

### **Answer to Comment 1.1:**

Thank you for your comment. The formatting has been changed on all occurrences in the paper.

### **Lines 17-20:**

Furthermore, external surges are analysed with regard to their annual and decadal variability, corresponding weather conditions and their interaction with storm surges in the North Sea. 33% of the 101 external surges occur within close succession of each other, leading to the definition of serial external surges, in which one or more external surges follow less than 72 h after the previous external surge. These serial events tend to occur more often during wind-induced storm surges.

### **Comments 1.1. and 1.3:**

*“I’m missing a mention here of tidal changes, so in the context here of tidal high water changes in the North Sea.”*

*“Especially here, tidal changes or the trends of tidal high waters should not be ignored.”*

### **Answer to Comments 1.1. and 1.3:**

Thank you for pointing out another influence on peak water level, that we missed in the introduction. A mention of the effects was added in the introduction.

### **Lines 34-36:**

Additionally, tidal ranges in the North Sea show significant trends, which can superimpose RMSL rise and further increases the long-term variability of peak water levels (Jänicke et al. 2021).

Besides long-term changes [...]

**Comment 1.4:**

*“Missing word?”*

**Answer to Comment 1.4:**

Thank you for your correction, the missing word has been added.

**Line 132:**

The study focuses on the North Sea basin, complementing earlier studies about external surges in this area.

**Comment 1.5:**

*“A source should be cited for this information.”*

**Answer to Comment 1.5:**

Thank you for this comment. Two sources have been added.

**Line 138:**

These marsh coasts also include the unique biotope of the Wadden Sea (Lotze et al. 2005; Reise et al. 2010).

**Comment 1.6:**

*“This should be justified with a source, because for tidal waves, which have been described as similar, this is only valid to a limited extent.”*

**Answer to Comment 1.6:**

Thank you for your comment. Further explanation and sources have been added.

**Line 144-146:**

The height of the external surge at the Aberdeen tide gauge was previously used as a proxy for the height during its entrance into the North Sea (Bruss et al. 2011; Ganske et al. 2018), while Immingham is close to the location where most external surges reach their maximum height.

**Comment 1.7:**

*“The tide gauge Immingham lies far in an estuary, behind piers and other structures. How representative can it be? I do not dispute its general validity, but this should be justified briefly.”*

**Answer to Comment 1.7:**

Thank you for this question. Similar to all other tide gauges in this study, the Immingham tide gauge is influenced by local bathymetry and man-made structures. This is less of a problem, because the aim of this study is not to find the height of an idealized surge, but the realistic impacts, which include the effects of these features. Nonetheless, a section has been added to discuss their possible influence.

**Line 157-162:**

Water levels at these tide gauges are influenced by the local bathymetry, such as their position in an estuary or harbour basins, or man-made structures like breakwaters (Spencer et al., 2015; Serafin et al. 2019). Still, these tide gauges are used in the herein conducted study as they cover the desired timespan, maintain comparability and quantify the effects of external surges on coastal areas, which is the main focus of this study. Inaccuracies in the height of the external surge due to variations of density (Mehra et al. 2009) and runoff in the estuary (Müller-Navarra und Bork 2011) fall within the general uncertainties of the study e.g. due to the calculation of astronomical tides.

**Comment 1.8:**

*“This statement urgently needs a source, especially since Jänicke et al (2020) and Ebener et al (2021) have a different view on that. Is the statement even necessary for the methodology used here? Then Immingham would also cause a problem.”*

**Answer to Comment 1.8:**

Thank you for pointing out this inaccuracy. The original point was, that the tide gauge is less affected by man-made impacts than other tide gauges in the Elbe estuary. This would need further discussion of changes in the Elbe estuary and the possible usage of other German tide gauges. As per your suggestion, the statement has been omitted, since it is not essential for the study.

**Lines 151-153:**

The tide gauge in Cuxhaven has been regularly used as reference tide gauge in German coastal protection considerations as it provides a continuous data series (continuous record is available since 1918, tidal high and low waters since 1843), ~~which is nearly undisturbed (e.g. by man-made impacts)~~, and is influenced neither by barriers like the East Frisian Islands nor by the Elbe estuary fluxes.

**Comment 1.9:**

*“Texel lies on the inner side of a chain of islands and incoming waves are therefore also distorted. For all gauges a general statement would be helpful why the shortcomings of the individual tide gauges are not a problem.”*

**Answer to Comment 1.9:**

Thank you for your comment. The study uses data from the tide gauge “Texel Noordzee”, which is located on the seaward side of the Texel island. The authors have added the name of the tide gauge to eliminate confusion with the tide gauge “Oudeschild”. In the path of the external surges, Texel is the first of the Western Frisian islands, therefore the distortion of the wave due to the barrier islands should be minimal. Further, a general comment on the applicability of the used tide gauges to detect external surges in coastal areas is given in Answer to comment 1.8.

**Lines 154-157:**

Additionally, the present study uses the tide gauge ~~at~~ “Texel Noordzee” (hereafter called Texel) because it is located in almost even distance to Immingham and Cuxhaven and can thus supplement information about the propagation of external surges after they reached their maximum height near Immingham.

**Comment 1.10:**

*“Maybe I understand it wrong, but below it is explained how directly the non tidal residual is determined... why is  $h_{astro}$  referred to here in the formula?”*

**Answer to Comment 1.10:**

The sentence has been rephrased during the restructuring of the methodology section. We hope, this eliminates the doubling in the text and the equation.

**Lines 194 & 198:**

First, the astronomical tide ( $h_{astro}$ ) is eliminated from the water level records to retrieve the non-tidal residual ( $\Delta h$ ). [...]

$$\Delta h_i = h_{obs,i} - h_{astro,i} \quad (1)$$

**Comments 1.11 and 1.12:**

*“Why? The wind can shift from south to north-east and then stay north-east for more than 15 hours?”*

*“That could be correct, but “not very often” is very non-specific. Does it occur and if so how often is not very often?”*

### **Answer to Comments 1.11 and 1.12:**

Thank you for pointing out these critical aspects in our assumptions. The section has been rephrased to highlight that this is merely an assumption, which has so far proven to produce satisfactory results. Your questions highlight the importance of a deeper understanding of the meteorological conditions around external surges, which is also a topic of great interest for the authors. A detailed analysis including wind data from offshore stations or reanalysis data is unfortunately beyond the scope of this paper.

### **Lines 213-225:**

Due to the different main wind direction, **the coincidence of either two of the last three factors would require significant and sudden changes in wind conditions.**

For the Immingham tide gauge, Rossiter (1959) concluded that the following parameters influence the residuals the most:

- The residual at Aberdeen with a time lag of 5 h
- **Northeast** winds over the North Sea with a time lag of 6 h

The first accounts for local air pressure as well as external surges propagating southwards along the British coast. As the entrance of external surges is hindered by eastern winds, these two main factors **are assumed to not coincide in general.** For these two British tide gauges it can therefore be **assumed** that wind setup does not need to be accounted for during the detection of external surges, **which was proven successful in previous studies (Gönnert, 2003).** Further research on the **meteorological conditions causing external surges is certainly needed, especially focusing on wind and air pressure patterns. This detailed analysis could also enable more detailed statements about the co-occurrence of the weather patterns, that cause non-tidal residuals in Aberdeen and Immingham. This analysis is, however, beyond the scope of this study but will be the focus of further work on external surges in the North Sea.**

### **Comment 1.13:**

*“I find it very difficult to understand what is happening here. how and why is the RMSE formed and what is the scale of numbers here? Please short additional explanation.”*

### **Answer to Comment 1.13:**

Thank you for pointing out some aspects in our methods sections that have left the reviewer with confusion. The paragraph has been rewritten and an equation of the RMSE has been added to explain the RMSE error and the contents of Fig. 3.

### **Lines 271-287:**



The accuracy of the hindcast can be assessed by calculating the root mean square error (RMSE) of the verification period (2005-2020):

$$e_{RMS} = \sqrt{\frac{\sum_{i=1}^I (\Delta h_{obs,i} - \Delta h_{pre,i})^2}{I}} \quad (2)$$

For the tide gauge in Cuxhaven, the RMSE is used to verify the time lag of 3 h between wind measurements and predicted water levels, that was determined by Müller-Navarra and Giese (1999). The hindcast model generally performs better for high water phases, with a minimum RMSE of 18.5 cm compared to 20.8 cm for low water. Both minima are determined with a time lag of 4 h, but the strong increase for a time lag of 5 h suggests an optimal time lag between 3 and 4h, corresponding generally with the assumption of Müller-Navarra and Giese (1999). The relation between the RMSE and the time lag is shown in Fig. 3.

For the Texel tide gauge, the unknown factors of main wind direction and time lag between wind and water level have to be determined as well. First, the RMSE is calculated for multiple MLRs with varying main wind directions and the separation between onshore and offshore wind at  $\pm 90^\circ$  of the main direction. The optimal limit between on- and offshore wind is found to be around  $20^\circ$  and  $200^\circ$ , which is close to the general orientation of Texel's coast. The optimization of the time lag is shown in Fig. 3, which determines a time lag of 2 h. The RMSE is lower than in Cuxhaven with 16.3 cm for high water and 16.8 cm for low water phases.

**Comment 1.14:**

*“This should be in the discussion or the relevant analyses should be announced in the introduction or methodology. In any case, this is not a result.”*

**Answer to Comment 1.14:**

Thank you for you input on the structure. We moved the paragraph to the discussion and shortened the following paragraph.

**Line 604-613:**

In the context of coastal protection, serial external surges should also be analysed as interdependent waves, since they can influence peak water level in a couple of different ways depending on the timing between high waters, maximum wind setup and external surge peaks. A single storm surge spanning over multiple tide cycles might well be influenced by two or more external surges in close succession, e.g., resulting in higher peak flood elevations as compared to cases where external surge events are absent. The assumption of interactions between these external surges cannot be verified in this study as it requires more detailed analysis with higher spatial and temporal resolutions, possibly including numerical simulations.

However, this study highlighted the need to assess serial external surges, ~~a phenomenon that was found during the analysis of external surges in this study~~, more thoroughly in the future, particularly as it might alter the design assumptions regarding long-lasting (extreme) water levels stretching a couple of tidal cycles causing increased stress on coastal protection facilities. ~~Further insights on meteorological conditions, causing combined events including a serial external surge event, as well as improved knowledge about propagation velocity of external surges are needed at this point.~~

**Comment 1.15:**

*“The information is missing for Table 5 and should come earlier”*

**Answer to Comment 1.15:**

Thank you for suggesting improvements to the comparison with the previous dataset. A reference to Gönner (2003) has been added to Table 5. Due to other restructuring of the paper, the distinction between the datasets is now also mentioned in lines 346-348 (as shown in the answer to comments 1.17 and 1.18).

**Comment 1.16:**

*“The boxplot needs further explanation regarding representation, what do the crosses, the boxes, the intervals mean?”*

**Answer to Comment 1.16:**

Thank you for your comment. Further explanation has been added in the caption of Fig. 3:

**Line 470-472 (caption of Fig. 10):**

Figure 10: Boxplot of the heights of external surges in Aberdeen, Immingham, Texel, and Cuxhaven from 1995 to 2020. ~~Crosses mark the mean, the boxes represent the upper and lower quartile with the horizontal line for the median. The whiskers show the minimum and maximum height.~~

**Comments 1.17 and 1.18:**

*“This is methodology.”*

*“These are not results for me, all these things have to be explained earlier for a later comparison which then takes place here.*

*In general it should be clear from the introduction / methodology what kind of results are to be expected. The actual results are then shown here.”*

**Answer to Comments 1.17 and 1.18:**

Thank you for your comment. Section 3.5 has been added to describe the methodology and expected outcome of the analysis for weather situations. The commented lines (408-412 and 434-445) have been moved to this section and altered to give a coherent section:

**Line 345-373:**

## **2.5 Meteorology**

External surges found in this study are mainly compared to the dataset of Gönnert (2003), that spans the years 1971 to 1995. To distinguish between the datasets, the dataset of Gönnert is hereafter called DataSet1 and the dataset derived from the automated approach is called DataSet1.

The occurrence of external surges in the North Sea basin is strongly coupled to storm systems in the North Atlantic. Although the process of the physical meteo–oceanic coupling is not within the scope of this work, it will be important to correlate the observations from the tide gauge data to general weather pattern. To briefly repeat meteorological conditions in a context of surge generation, the European weather situations during the beginning of the observed external surges are assembled first. The European weather situations were originally defined by Hess and Brezowski (1977) and determined by Werner and Gerstengarbe (2010) for the duration from 1881 to 2009. From 2010 onwards, the records from German Meteorological Service (2021) are used. The Agency for Roads, Bridges and Waters Hamburg (2012) found 61 of the 73 external surges of DataSet1 to occur during four weather situations (WZ: western situation cyclonic, WA: western situation anticyclonic, SWA: south western situation anticyclonic, BM: high pressure bridge Central Europe).

The characterisation of external surges with respect to low pressure cells can be summarized from Werner and Gerstengarbe (2010) as follows:

- WZ: Single disturbances with high–pressure cells in between travel from Ireland over the British Isles, North and Baltic Sea towards Eastern Europe. The driving low–pressure cells is located north of 60° N.
- WA: The central low–pressure cell is often located north of 65° N with single disturbances travelling from west of Scotland over Scandinavia towards the Baltic.
- SWA: A low–pressure system is mostly located over the middle of the North Atlantic and the western Norwegian Sea. Single disturbances travel to the northeast.
- BM: A high–pressure bridge between the Azores and Eastern Europe with an eastward directed frontal zone north of it and single disturbances travelling eastwards.

In the analysis of DataSet2, an additional weather situation is identified, that correlates with an increased number of external surges (NWZ, north western situation cyclonic) and has the following characteristics:

- NWZ: Extensive low–pressure area over Scotland, the Norwegian Sea and Scandinavia with single disturbances travelling over the British Isles towards eastern Central Europe.

The detailed analysis of weather situations is presented in Sect. 3.2, while Sect. 3.3 analyses the influence of external surges on storm surges in the German Bight.

**Comment 1.19:**

*“This is also more of a discussion.”*

**Answer to Comment 1.19:**

Thank you for your further input on the structure of the paper. The paragraph has now been omitted in large parts, as it doubles with the more detailed contents of the respective discussion. Only lines 477-479 have been moved to line 609-610.

**Line 540:**

~~Findings presented above already underline the need to further investigate the phenomenon of serial external surge events, as they might play an important role to determine the maximum range of combined extreme events, applied for example for determination of design level heights. It can be assumed that higher quantities of extreme events during a serial external surge event increase the potential for an unfavourable superposition of storm surge and external peaks. Hence, this requires consideration of the increased time span of serial external surges (compared to the time span of combined events with one external surge) in the determination of design standards.~~

**Lines 612-613:**

Further insights on meteorological conditions, causing combined events including a serial external surge event, as well as improved knowledge about propagation velocity of external surges are needed at this point.

### 3 REVIEWER #2

- *“Does the paper address relevant scientific and/or technical questions within the scope of NHESS? Yes.*
- *Does the paper present new data and/or novel concepts, ideas, tools, methods or results? Yes.*
- *Are these up to international standards? Yes.*
- *Are the scientific methods and assumptions valid and outlined clearly? See comments below.*
- *Are the results sufficient to support the interpretations and the conclusions? Yes.*
- *Does the author reach substantial conclusions? Yes.*
- *Is the description of the data used, the methods used, the experiments and calculations made, and the results obtained sufficiently complete and accurate to allow their reproduction by fellow scientists (traceability of results)? See comments below.*
- *Does the title clearly and unambiguously reflect the contents of the paper? Yes.*
- *Does the abstract provide a concise, complete and unambiguous summary of the work done and the results obtained? Yes.*
- *Are the title and the abstract pertinent, and easy to understand to a wide and diversified audience? Yes.*
- *Are mathematical formulae, symbols, abbreviations and units correctly defined and used? If the formulae, symbols or abbreviations are numerous, are there tables or appendixes listing them? Yes, mostly.*
- *Is the size, quality and readability of each figure adequate to the type and quantity of data presented? Yes.*
- *Does the author give proper credit to previous and/or related work, and does he/she indicate clearly his/her own contribution? Yes.*
- *Are the number and quality of the references appropriate? Yes.*
- *Are the references accessible by fellow scientists? Yes.*
- *Is the overall presentation well structured, clear and easy to understand by a wide and general audience? See comments below.*
- *Is the length of the paper adequate, too long or too short? Adequate.*
- *Is there any part of the paper (title, abstract, main text, formulae, symbols, figures and their captions, tables, list of references, appendixes) that needs to be clarified, reduced, added, combined, or eliminated? The figure and table captions should be clarified and sometimes added for better understanding.*
- *Is the technical language precise and understandable by fellow scientists? See comments below.*
- *Is the English language of good quality, fluent, simple and easy to read and understand by a wide and diversified audience? Yes.*
- *Is the amount and quality of supplementary material (if any) appropriate? Yes.*

*The manuscript "Improvements to the detection and analysis of external surges in the North Sea" by Müller et al. analyses external surges in the North Sea based on existing different datasets. As a result, the knowledge about external surges as well as the detection with an automated algorithm is improved. Also, a new data set is provided to account for past external surges.*

*External surges can have a significant impact on increasing storm surges. Therefore, they are extremely relevant for coastal protection concerns. In the past, there was always the problem that external surges could only be detected indirectly. Observational data, for example at the Heligoland gauge, or hydrodynamic numerical models were used for this purpose. However, there have always been limitations with regard to the significance and correct contribution of the physical processes, especially during the transition of the external surge to the shelf. Therefore, I was very much looking forward to reading the manuscript.*

*I liked the approach and the implementation very much. There is a common thread and the graphics are also appealing. A good idea was implemented with proven methodology. To summarize, the manuscript is mostly written in a clear and concise manner whose proposed research outcome has a strong applicative character. There is an undisputed relevance of the methodology and applications presented. However, as my comments below indicate, there is a certain need for discussion and clarification at some points, which can be resolved and clarified with a little more careful work. Therefore, I recommend publication not before a minor revision."*

#### **Answer to General Comment of Reviewer #2:**

Thank you for the thorough and detailed review of the manuscript and many suggestions for improvement. Thank you as well for your interest in discussion of the results and suggestion to improve the analysis.

Answers to the specific and technical comments can be found below.

### **Specific comments**

#### **Comment 2.1:**

*"In the manuscript the background, the data and the methodology are described and finally presented and discussed. I have no fundamental reservations about the methodology and the general procedure, nor have I found any errors that are obvious to me. Overall, the paper makes a good impression. But especially the methodology needs a revision. It is difficult to fully follow the aspects and those used. This should be reworked so that a clear structure is recognizable. Also, the assumptions made and the different datasets to finally determine the external surges should be made clearer."*

### Answer to comment 2.1:

Thank you for your improvements of the structure of the article. We have reorganized the methodology section at multiple points, namely:

- The methodology to determine external surges is now divided into three parts to resemble the automated steps of the analysis.
- The methodology was extended with a short introduction into the three subsections.
- Assumption, especially on the wind setup on the British coast are so named as such.

### Lines 182-188:

To isolate external surges from hydrographic records, all other major components have to be eliminated. The methodology was developed by Gönner (2003), but was adapted for this study to make the time steps independent from tidal cycles and therefore enable a more refined analysis. While Gönner (2003) used the average residual between high and low water, resulting in time steps of 6.25 h, here the time steps are shortened to 1 h, allowing more precise assertions of the duration, height, and timing of the events. Figure 2 gives an overview over the general steps in this process, consisting of three automated steps, each eliminating one contributor to water levels, and the consecutive manual quality check. Each step explained in further detail in the following three subsections.

### Lines 193-205:

#### 2.3.1 Calculation of the non-tidal residual

First, the astronomical tide ( $h_{astro}$ ) is eliminated from the water level records to retrieve the non-tidal residual ( $\Delta h$ ). The analysis and prediction have a long history on the North Sea coast and are still continuously improved (e.g. Amin 1982; Müller-Navarra 2013; Boesch und Müller-Navarra 2019). As continuous predicted tides are available from the respective authorities, no separate analysis is conducted in this study. By removing the predicted tide, the non-tidal residual remains, which includes all parts of the water level, that do not follow the harmonic forcing of the sun and the moon:

$$\Delta h_i = h_{obs,i} - h_{astro,i} \quad (3)$$

#### 2.3.2 Wind setup hindcast

In step 2, the influence of meteorological factors on the non-tidal residual during external surges has to be discussed to derive the wind setup and the residual individually. In this study, wind setup describes the effect of wind and air pressure on the water level, but only including local forcing. The residual therefor describes the remaining components of the water level, for example remote meteorological forcing, lateral oscillations or the influence density variations.

The methodology to determine the wind setup varies between the tide gauges due to different local and regional bathymetry and time lag between wind and water level maxima (Proudman and Doodson, 1926; Dibbern and Müller-Navarra, 2009).

**Lines 312-332:**

### 2.3.3 Calculation of the residual

The meteorological influences from wind setup and air pressure are used in Eq. (7) to calculate the residual in Cuxhaven and Texel. For the wind setup, the tables, that were compiled in Sect. 3.3.2, are interpolated linearly.

$$\Delta h_R = \Delta h - \Delta h_W - \Delta h_{AP} \quad (4)$$

During timespans, where only tides and local meteorological forcing influence the water level, the residual should be approximately 0 cm, but many deviations remain, which may be caused by external surges, but can also be due to the simplified approach to hindcast the wind setup, natural variability, or other local phenomena. To find a collective term for these deviations, we call them surges, without specifying their origin. In step 3, the surges are filtered for external surges based on the following conditions proposed by Gönner (2003):

- The non-tidal residual in Aberdeen is greater than 40 cm.
- Surge heights generally increase from Aberdeen to Immingham, caused by local winds, with a maximum decrease of 10 cm.
- The arrival at Immingham is at least 2 h later than at Aberdeen, but no more than 5 h later. The time of arrival is defined as the time when the non-tidal residual is over 10 cm in height.

For each external surge, the maximum height and arrival time at each tide gauge is determined and the non-tidal residual (for Aberdeen and Immingham) or the residual (for Texel and Cuxhaven) as well as the data quality flags are plotted for 6 h before the arrival of the external surge in Aberdeen to 42 h after the arrival.

Finally, a manual quality check is conducted on the plots of the external surges. A total of four surges were eliminated due to either of the following reasons:

- Missing tide gauge data during the beginning of the surge in Aberdeen or Immingham. The height or the offset of the surge may be influenced by these missing values.
- Long surge periods that can be attributed to wind setup in Aberdeen and Immingham

**Lines 213-225:**

Due to the different main wind direction, the coincidence of either two of the last three factors would require drastic and sudden changes in wind conditions.



For the Immingham tide gauge, Rossiter (1959) concluded that the following parameters influence the residuals the most:

- The residual at Aberdeen with a time lag of 5 h
- **Northeast** winds over the North Sea with a time lag of 6 h

The first accounts for local air pressure as well as external surges propagating southwards along the British coast. As the entrance of external surges is hindered by eastern winds, these two main factors **are assumed to not coincide in general**. For these two British tide gauges it can therefore be **assumed** that wind setup does not need to be accounted for during the detection of external surges, **which was proven successful in previous studies (Gönnert, 2003)**. Further research on the **meteorological conditions causing external surges is certainly needed, especially focusing on wind and air pressure patterns**. This detailed analysis could also enable more detailed statements about the co-occurrence of the weather patterns, that cause non-tidal residuals in Aberdeen and Immingham. This analysis is, however, beyond the scope of this study but will be the focus of further work on external surges in the North Sea.

#### **Comment 2.2:**

*“The same applies to the results chapter. I recommend starting with an explanation of the final data sets and then explaining the generated results. Furthermore, structural aspects have been noticed here. Parts of the results should be moved to the methodology, others to the discussion. Then the manuscript becomes a good technical article with a lot of practical usable content.”*

#### **Answer to comment 2.2:**

Thank you again for your help to improve the structure. The results chapter, especially the section on weather situations has been restructured based on the comments of Reviewer#1, which match your suggestions, that certain paragraphs are part of the methodology or discussion respectively. The data sets are now mentioned first in Section 2.5 as well.

#### **Line 345-373:**

### **2.5 Meteorology**

External surges found in this study are mainly compared to the dataset of Gönnert (2003), that spans the years 1971 to 1995. To distinguish between the datasets, the dataset of Gönnert is hereafter called DataSet1 and the dataset derived from the automated approach is called DataSet1.

The occurrence of external surges in the North Sea basin is strongly coupled to storm systems in the North Atlantic. Although the process of the physical meteo-oceanic coupling is not within the scope of this work, it will be important to correlate the observations from the tide gauge data to general weather pattern. To briefly repeat meteorological conditions in a context of surge generation, the European weather situations during the beginning of the observed external surges

are assembled first. The European weather situations were originally defined by Hess and Brezowski (1977) and determined by Werner and Gerstengarbe (2010) for the duration from 1881 to 2009. From 2010 onwards, the records from German Meteorological Service (2021) are used. The Agency for Roads, Bridges and Waters Hamburg (2012) found 61 of the 73 external surges of Dataset1 to occur during four weather situations (WZ: western situation cyclonic, WA: western situation anticyclonic, SWA: south western situation anticyclonic, BM: high pressure bridge Central Europe).

The characterisation of external surges with respect to low pressure cells can be summarized from Werner and Gerstengarbe (2010) as follows:

- WZ: Single disturbances with high–pressure cells in between travel from Ireland over the British Isles, North and Baltic Sea towards Eastern Europe. The driving low–pressure cells is located north of 60° N.
- WA: The central low–pressure cell is often located north of 65° N with single disturbances travelling from west of Scotland over Scandinavia towards the Baltic.
- SWA: A low–pressure system is mostly located over the middle of the North Atlantic and the western Norwegian Sea. Single disturbances travel to the northeast.
- BM: A high–pressure bridge between the Azores and Eastern Europe with an eastward directed frontal zone north of it and single disturbances travelling eastwards.

In the analysis of DataSet2, an additional weather situation is identified, that correlates with an increased number of external surges (NWZ, north western situation cyclonic) and has the following characteristics:

- NWZ: Extensive low–pressure area over Scotland, the Norwegian Sea and Scandinavia with single disturbances travelling over the British Isles towards eastern Central Europe.

The detailed analysis of weather situations is presented in Sect. 3.2, while Sect. 3.3 analyses the influence of external surges on storm surges in the German Bight.

### **Comment 2.3:**

*“The last aspect is that it is not always clear to me whether the presented methodology really works in an automated manner. There is always talk of manual additions and adjustments. This should be made clearer again.*

*Further points can be found in the following paragraph and listing.”*

### **Answer to comment 2.3:**

Thank you for this important aspect that we have clarified in the revision. Manual and automated steps are now differentiated clearer in the methodology and we added this to the discussion. With the restructuring of the methodology, the distinction between manual and automated steps should now be easier. We have also added comment on which parts are automated and mark automated

and manual steps in Figure 2. In the abstract, the method is now described as semi-automated to give a more accurate description.

**Lines 14-15:**

This work describes an improved and semi-automated method to detect external surges in sea surface time histories.

**Lines 186-191 and Figure 2:**

Figure 2 gives an overview over the general steps in this process, consisting of three automated steps, each eliminating one contributor to water levels, and the consecutive manual quality check. Each step explained in further detail in the following three subsections.

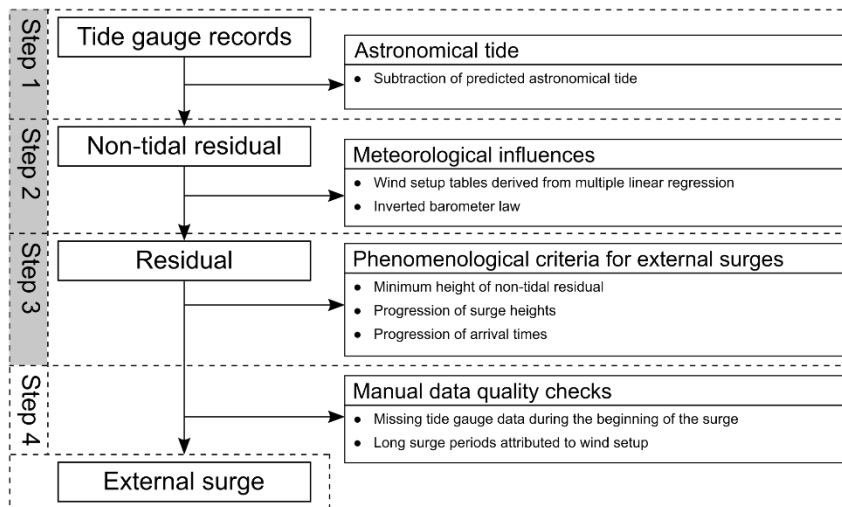


Figure 2: Schematic representation of the process to identify external surges. Grey backgrounds mark automated steps in the analysis.

**Lines 322-323:**

Finally, a manual quality check is conducted on the plots of the external surges. A total of four surges were eliminated due to one of two reasons: [...]

**Technical comments**

**Comment 2.4:**

“General:

- Please define clearly “surge”, “storm surge”, “surge residual”, “external surge”, “nontidal residual”, “residual” etc. In between it is written very hard to follow.

**Answer to comment 2.4:**

Thank you for this comment to make the manuscript more concise. We have added further explanation to several sections to define the phrases. The manuscript has additionally been checked for correct use of these.

**Lines 38-40:**

The most common effects related to wind setup are storm surges, **caused by high winds over the North Sea**, which represent the proportionately largest increases in extreme water levels.

**Lines 47-48:**

**They were determined to originate from the response of the Northeast Atlantic to low pressure cells moving eastwards and to be amplified at the continental shelf.**

**Lines 197-196:**

**By removing the predicted tide, the non-tidal residual remains, which includes all parts of the water level, that do not follow the harmonic forcing of the sun and the moon:**

**Lines 201-203:**

**In this study, wind setup describes the effect of wind and air pressure on the water level, but only including local forcing. The residual therefor describes the remaining components of the water level, for example remote meteorological forcing, lateral oscillations or the influence density variations.**

**Lines 315-319:**

**During timespans, where only tides and local meteorological forcing influence the water level, the residual should be approximately 0 cm, but many surges remain, meaning any deviations, caused by the simplified approach, natural variability or phenomena like external surges. In step 3, these surges are filtered for external surges based on the following conditions proposed by Gönner (2003):**

**Comment 2.5:**

- *no blank character before “%”*

**Answer to Comment 2.5:**

Thanks for the improvements to the typesetting. We corrected all occurrences in the manuscript.

**Comment 2.6:**

- *uniform cross-references (e.g. Figure or Fig.)*

**Answer to comment 2.6:**

Thank you. We checked, that the cross-references are formatted according to the NHESS submission guidelines (“Figure” at the beginning of a sentence, abbreviation in running text).

**Comment 2.7:**

- *easterly/westerly winds*

**Answer to comment 2.7:**

Thank you for your correction. All directions have now been checked again and corrected.

**Comment 2.8:**

- *try to avoid “in overall good agreement”, “very often”, “highly unlikely” or “relatively small” without quantitative numbers or references*

**Answer to comment 2.8:**

Thank you for this encouragement of concise language. We have changed several occurrences of these phrases throughout the manuscript, others were already deleted during the rework of Section 3.3. See for example, the answer to comment 2.1.

**Lines 56-57:**

In contrast to the extensive knowledge available about tides, wind surge and RMSL rise, knowledge about the phenomenon of external surges is still **relatively** rare.

**Lines 107-109:**

However, available knowledge of external surges is **still relatively small** and translation of knowledge and impacts resulting from external surges into practical approaches, e.g. in terms of concepts for design level for coastal protection facilities, is still **very** rare.

**Lines 167:**

Missing or **highly** unlikely data like [...]

**Lines 307:**

Hindcast and measurement are in **overall**-good agreement,

**Comment 2.9:**

- *inverted barometer effect (IBE) or inverted barometer law (IBL)?*

**Answer to comment 2.9:**

Thank you for asking for clarification. Both names are used in literature to describe the relation. In the manuscript it is now uniformly called “inverted barometer law” (IBL).

**Comment 2.10:**

- *Describe figures and tables before they are shown and referred to them.*”

**Answer to comment 2.10:**

Thank you for this remark to improve the connection between text and figures. The figures and tables were now moved closer to their first mention in the text, but are always after the mention in the text. We however suspect possible changes during the typesetting, especially for the printed/ pdf version, and trust the judgement of the editor.

**Comment 2.11 & 2.12.:**

*“Line 18: surges instead of surge”*

*“Line 20: tend to occur”*

**Answer to comment 2.12:**

Thank you, the errors have been corrected.

**Comment 2.13:**

*“Line 29: abbreviation of regional mean sea level is MSL or RMSL? If it is changed then adjust throughout the document.”*

**Answer to comment 2.13:**

Thank you for the question. To avoid confusion, the regional mean sea level is now called RMSL.

**Comment 2.14:**

*“Line 33: Probably add some sources for studies dealing with the German coastline? E.g. Dangendorf?”*

**Answer to comment 2.14:**

We agree, that MSL rise also has to be considered locally, especially in coastal protection measures. The aim of the section, however, is to name the relevant processes on a regional scale. A localized discussion of these processes would either add unnecessary length to the introduction or skew the introduction towards a certain area. In our eyes, the German Bight is covered adequately in the cited literature as they all include tide gauges on the German coast or in the case of Albrecht et al. analyse them exclusively.

**Comment 2.15:**

*“Line 36: and interactions of the individual effects...”*

**Answer to comment 2.15:**

Thank you for this comment. Nonlinear interactions are now mentioned explicitly as part of extreme sea levels.

**Lines 37-38:**

For the North Sea coast, extreme water levels are driven by various effects such as wind setup, tides, ~~and~~ intricate local effects, **and their interactions (Mikhailova 2011)**.

**Comment 2.16:**

*“Line 35-45: Some references are missing for the numbers given and the statements.”*

**Answer to comment 2.16:**

Thank you for this comment. Several sources have been added to this section.

**Lines 36-49:**

Besides long-term changes, short-term extreme sea levels in particular pose challenges for risk management and coastal protection in low lying coastal regions. For the North Sea coast, extreme water levels are driven by various effects such as wind setup, tides, ~~and~~ intricate local effects, **and their interactions (Mikhailova 2011)**. The most common effects related to wind setup are storm surges ~~events~~, caused by high winds over the North Sea, which represent the proportionately largest increases in extreme water levels. The disastrous impacts of storm surges are well known for centuries along the North Sea coast and have been an inherent part of coastal protection strategies (Siefert 1991). Well-known impacts of climate change are accounted for in recent coastal protection strategies (Dronkers und Stojanovic 2016).

Besides tides and storm surges, external surges represent an additional phenomenon that generates increased regional extreme water levels in particular along the British, Dutch and German North Sea coast. This phenomenon was first discovered in the 1940s (Corkan, 1948) along the British coastline bordering the North Sea. Increases in water level time histories could not be well explained by local wind setup or tides and were observed to propagate counter-clockwise through the shelf sea similarly to the propagation of tides. **They were determined to originate from the response of the Northeast Atlantic to low pressure cells moving eastwards and to be amplified at the continental shelf.** Reaching heights of 1.3 m on the British coast and 1.2 m in the German Bight (Koopmann, 1962; Gönner, 2003), [...]

**Comment 2.17:**

*“Line 57: I’m confused about the start and end year of the data. Please specify.”*

**Answer to comment 2.17:**

Thank you for highlighting possible misunderstanding about the data of this study and data from previous studies. The section was changed to clarify the distinction.

**Lines 61-64:**

A secondary aim is to apply the novel automated approach to isolate external surges from water level records since 1995. **Those can be combined with the dataset of Gönner (2003), spanning from 1971 to 1995,** and thus ~~to~~ generate a comprehensive dataset of external surges in the North Sea covering a period from 1971 to 2020.

**Comment 2.18:**

*“Line 59: chapter number wrong?”*

**Answer to comment 2.18:**

Thank you for also checking correct formatting. The chapter number has been corrected.

**Comment 2.19:**

*“Line 70: Which period?”*

**Answer to comment 2.19:**

Thank you for asking. The timespan that was investigated by Gönner (2003) has been added to the text. For detailed information see Table 5.

**Lines 76-78:**

Still, besides the work of Gönner (2003) who manually investigated external surges in the North Sea **occurring between 1971 and 1995,** no comprehensive datasets of external surges, identifying their occurrence within observational records are known to the authors.

**Comments 2.20 and 2.21:**

*“Line 94: can or cannot?”*

*Line 95: Is there a difference or not? Please clarify.”*

**Answer to comments 2.20 and 2.21:**

Thank you for this question. The periods on meteotsunamis and external surges differ by about an order of magnitude and their possible directions of travel. This information has been added to



the text. Nonetheless, the knowledge about the interaction of air pressure and sea level as well as the wave transformation on the continental shelf, generated by research on meteotsunamis might be applicable to external surges as well. We now give an example of the differing characteristics on meteotsunamis and external surges to

**Lines 100-103:**

They have also occurred in the North Sea (Jong, 2004; Sibley et al., 2016) but can **clearly** be differentiated by their characteristics like period, amplitude and their effect on water levels. **For example, the recorded meteotsunamis in the North Sea have periods in the order of one hour and can also travel northwards, while external surges have longer periods of 8 hours to several days and travel counter clockwise (Gönnert 2003).**

**Comment 2.22:**

*“Line 100: repetition (“still relatively/very rare”)”*

**Answer to comment 2.22:**

The sentence has been rephrased. This sentence was also part of the changes due to comment 2.4.

**Comment 2.23:**

*“Line 104: chapter number wrong?”*

**Answer to comment 2.23:**

Thank you. This chapter number has been corrected as well.

**Comment 2.24:**

*“Line 106: expression (“Not only can”)”*

**Answer to comment 2.24:**

Thank you for the language advice. The sentence has been rephrased and moved to the first bullet point to make the section more compact.

**Lines 115-117:**

The methodology **can not only** be used to include additional locations in the detection of external surges, but it can also support local authorities in considering external surges for the protection of their communities.

**Comment 2.25:**

*“Line 123: “surges” is missing”*

**Answer to comment 2.25:**

Thank you, we have added the missing word.

**Comment 2.26:**

*“Line 123-128: Some references are missing.”*

**Answer to comment 2.26:**

Thank you, references about the topography of the North Sea and the Wadden Sea have been added. One number in the text has been adjusted to match the cited source.

**Lines 132-138:**

The North Sea is a shelf sea connected to the Northeast Atlantic through a 400 km wide opening to the Norwegian Sea and the narrower English Channel, which is 34 km wide at its narrowest point. The depth of the North Sea is on average 95 m but varies between **less than 20 m** at the Dogger Bank and 700 m in the Norwegian Trench. Also, the coastal morphology in this focus area is very diverse: fjords at the Scottish and Norwegian coasts, cliffs on the west coasts and marshlands at the southern and south–eastern coasts, which border the Netherlands, Germany, and Denmark (**OSPAR Comission 2000**). These marsh coasts also include the unique biotope of the Wadden Sea (**Lotze et al. 2005; Reise et al. 2010**).

**Comment 2.27:**

*“Line 133: surge action?”*

**Answer to comment 2.27:**

Thank you for this comment, the sentence was changed due to a comment of Review#1 and the term was omitted.

**Lines 144-146:**

**The height of the external surge at the Aberdeen tide gauge was previously used as a proxy for the height during its entrance into the North Sea (Bruss et al., 2011; Ganske et al., 2018), while Immingham is close to the location where most external surges reach their maximum height.**

**Comment 2.28:**

*“Line 140: more specific: tidal high and low water back to 1843”*

**Answer to comment 2.28:**

Thank you for the addition. This is now clarified in the text.

**Comment 2.29:**

*“Line 141: this statement is risky. analyses of the tide gauge in Cuxhaven repeatedly show different behavior compared to other tide gauges in the German Bight. Furthermore, there is a lack of information from references.”*

**Answer to comment 2.29:**

We agree with this critique and thank you for bringing this to our attention. The statement has been omitted as suggested by Reviewer#1, as it does not provide essential information.

**Lines 151-153:**

The tide gauge in Cuxhaven has been regularly used as reference tide gauge in German coastal protection considerations as it provides a continuous data series (continuous record is available since 1918, tidal high and low waters since 1843), ~~which is nearly undisturbed (e.g. by man-made impacts)~~, and is influenced neither by barriers like the East Frisian Islands nor by the Elbe estuary fluxes.

**Comment 2.30:**

*“Table 1: Can you reduce the size of the table. It seems very large for the relatively little bit of information. Most of the information is given from 151-157 anyway.”*

**Answer to comment 2.30:**

Thank you for this suggestion. We were able to combine columns and omitted the mostly empty last column, which notably reduced the overall size. The important information about gaps in the data of the Texel tide gauge is now included in the text.

**Table 1:**

Table 1: Location, offset to NAP, data sources and percentage of flagged data (flags from the data providers, missing and unreasonable values) for each measurement station.

Tide gauge (Lat., Lon.)	Offset tide gauge zero (TGZ) to NAP [m]	Tide gauge data and astronomical tide source	Tide gauge data time steps	Weather data source	Weather data time steps	Flagged data points [%]
Aberdeen (57° 08' 38.6" N, 02° 04' 48.5" W)	-2.45	NOC British Oceanographic Data Center (BODC) (2021)	15 min quality checked	-	-	2.0
Immingham (53° 37' 51.7" N, 00° 11' 9.7" W)	-4.10			-	-	2.2
Texel (53° 07' 14.2" N, 4° 43' 59.4" E)	0.00	Rijkswaterstaat (2021)	10 min quality checked	Koninklijk Nederlands Meteorologisch Instituut (KNMI) (2021)  Station De Kooy	1 h	4.4

Cuxhaven (53° 52' 03.7" N, 8° 43' 02.7" E)	-5.03	1995–1997: Wasserstraßen- und Schiffahrtsverwaltung des Bundes (WSV) (2021a)	1995–1997: 1 h	DWD Climate Data Center (CDC) (2021)	1 h quality checked	2.4
		1998–2020: Wasserstraßen- und Schiffahrtsverwaltung des Bundes (WSV) (2021b)	1998–2020: 1 min	<b>Stations</b> <i>UFS Deutsche Bucht,</i> <i>UFS TW Ems,</i> <i>Helgoland,</i> <i>Cuxhaven</i>		
		Astronomical tides: Federal Maritime and Hydrographic Agency (BSH) (2021)	Astronomical tide: 10 min quality checked			

### Lines 169-170:

In the data of the tide gauge at Texel, two gaps, spanning more than a week, exist between 11 January and 22 November 2002 and 16 June and 2 July 2020.

### Comment 2.31:

*“Line 159-160: “Mean wind direction (averaged over the last 10 min before the timestamp)” This information is important. But I don't understand how you can average the last 10 minutes when the weather data has a resolution of 1 hour?”*

### Answer to comment 2.31:

Thank you for this question. We suppose a misunderstanding: the averaging was not conducted for this study but is part of the processing of data before it is published by the providers. As we agree that this is so far not pointed out in the manuscript, we have rephrased the paragraph.

### Lines 176-178:

The weather data used to hindcast wind setup at the tide gauges at Texel and Cuxhaven is provided by the meteorological institutions as the following products:

- Mean wind direction (average of the last 10 min before the full hour)

### Comment 2.32:

*“Figure 2: what does “surge heights” mean?”*

### Answer to comment 2.32:

As their source is still unknown, surges in the residual can not be identified as external surges at this step. A definition of surges has been added in response to comment 2.4. (cf. line 313-315), which should also clarify the term surge height in Fig. 2.

### Comment 2.33:

*“Line 168: “(2003)” is missing”*

### Answer to comment 2.33:

Added.

**Comment 2.34:**

Line 171: “The methodology of this step varies” of which step?

**Answer to comment 2.34:**

Thank you for the question. During the revision of the section to answer to comment 2.4, it has been clarified, that this statement refers to Step 2 of the process.

**Comment 2.35:**

*“Line 175: Did you calculate the astronomical tide? Which method is used? What about uncertainties?”*

**Answer to comment 2.35:**

The astronomical tides were provided as well by the providers of the tide gauge data or other government agencies. Table 1 has been altered to clarify the sources of the tide data. For the British tide gauges, not the astronomical tide is provided in the raw data, but the water level and the non-tidal residual, so that the astronomical tide can be calculated. For further information on the methods and uncertainties, the authors refer to the providing agencies, as their discussion would be beyond the scope of this paper. The uncertainties are not always provided with the data, but are now mentioned in lines 158-162.

**Comment 2.36:**

*“Line 193: What is surge heights here? External surge or residual or non tidal residual?”*

**Answer to comment 2.36:**

Thank you for asking for clarification. The term surge is now defined in response to comment 2.4. As air and water temperature can also influence the calculated height of other types of surges (return surges, lateral oscillations, ...), the more general term is used here.

**Comment 2.37, 2.38 & 2.39:**

*“Line 195: zonal/meridional wind”*

*“Line 198: tables”*

*“Line 206: with instead of at”*

**Answer to comment 2.37:**

Thank you for your suggestion to improve the language of the manuscript. We gladly incorporated the terms.

**Line 228-229:**

[...] like ~~x and y components of the~~ quadratic and cubic wind speeds **of the zonal and meridional winds**, [...]

**Line 230:**

These tables **group** the measurements by two criteria to account for non-linear interactions between tide and wind setup:

**Line 239:**

The time lag between wind measurements and water level deviation is given by Müller-Navarra and Giese (1999) **with** 3 h.

**Comment 2.40:**

“Line 210: reference?”

**Answer to comment 2.40:**

The value was assessed by also applying the MLR to the tide gauge Cuxhaven. The RMSE of this hindcast was slightly higher than the RMSE of the hindcast using the tables of the BSH, but their hindcast was similar. We therefore chose to use the hindcast of the BSH to obtain more precise results for the residual. Further we the regression factor for the static air pressure to compare it to the factor of the IBL, which showed good agreement. The section was slightly rephrased to highlight this as proof of our assumption instead of giving literature references.

**Lines 239-245:**

The time lag between wind measurements and water level deviation is given by Müller-Navarra und Giese (1999) **with** 3 h. For the influence of static air pressure, the *inverted barometer law* (IBL) is used. It states that a decrease in air pressure by 1 hPa correlates linear to an increase in water level by 1 cm (Koopmann 1962), **even** though this correlation is simplified and can vary depending on local factors (Ponte und Gaspar 1999; Müller-Navarra und Giese 1999; Olbert und Hartnett 2010), ~~it is found to be in good agreement with the conditions at Cuxhaven.~~ A simplified analysis of wind setup at Cuxhaven, using only wind and air pressure measurements, determined linear factors between 0.9 and 1.25 cm hPa<sup>-1</sup>, depending on tidal phase and main wind direction, **showing that the proposed value of 1 cm hPa<sup>-1</sup> is a good first approximation of the relationship.**

**Comment 2.41:**

*“Line 212: in line 190ff was mentioned that “The influence of other factors like water and air temperature or wind setup should be taken into consideration during the interpretation of surge heights, nonetheless.”?”*

**Answer to comment 2.41:**

Thank you for highlighting the need for more detailed explanation of the methodology. Wind and air pressure are the two main contributors to wind setup in Cuxhaven. To simplify the analysis, we have focused on these but are aware, that the calculated height of the residual loses accuracy. Therefore, heights have to be interpreted more carefully. A short discussion has been added.

**Lines 247-249:**

*This certainly reduces the accuracy of the hindcast and has to be discussed during analysis of the height of the external surges, but previous studies have produced satisfactory results based on wind and air pressure data (Dibbern and Müller–Navarra, 2009; Jensen et al. 2013).*

**Comment 2.42:**

*“Table 2: MLR is not defined yet”*

**Answer to comment 2.42:**

Thank you for bringing this to our attention. The abbreviation is now introduced earlier and hopefully also better describes the method of Müller–Navarra and Giese (1999).

**Lines 227-228:**

For the tide gauge at Cuxhaven, Müller–Navarra and Giese (1999) developed an empirical forecast model using **multiple linear regression (MLR)** of various meteorological input factors [...]

**Comment 2.43:**

*“Line 220: Function 0 is a constant term...”*

**Answer to comment 2.43:**

Thank for this correction. The number in the manuscript was changed.

**Comment 2.44:**

*“Table 3: Did I understand that correctly? The methodology of Müller-Navarra and Giese (1999) was used to build AND validate a MLR for Texel. For Cuxhaven only validation was done?”*

**Answer to comment 2.44:**

The 1995 to 2004 data was used to obtain the regression factors. This was done for Texel as well as Cuxhaven. The 2005 to 2020 data was used to independently verify the regression model. This was done for the tables of the BSH as well to

1. Obtain a base value for the RMSE to compare the results of the regression to
2. Verify the quality of the hindcast using the tables from the BSH

The building and verification of the regression model for Cuxhaven was omitted in the text, because it was finally not used in the determination of the external surges.

**Comment 2.45:**

*“Figure 3: RMSE instead of RMS-error”*

**Answer to comment 2.45:**

Thank you, the figure has been corrected.

**Comment 2.46:**

*“Line 247: Which significance level? “0.8 and 0.92” is not listed in Table 4. Please use similar digits.”*

**Answer to comment 2.46:**

We agree, that this information is missing. The confidence level has been added to line 289 as well as the description of Tab.4. The precision of the numbers in the text has been adjusted to match the precision of Tab. 4.

**Comment 2.47:**

*“Line 254: and instead of und”*

**Answer to comment 2.47:**

Corrected.

**Comment 2.48:**

*“Figure 4: You do not mention the overestimation of the hindcast especially in b). Did you check model criteria for the MLR? Probably the MLR does not capture all relevant processes?”*

**Answer to comment 2.48:**

Thank you for this question. The performance of the hindcast is addressed in lines 307-311 and possible improvements are discussed in lines 573-587. The few cases were the hindcast



overestimates the wind setup are now also addressed. Implementing the discussion points would require additional work, that is unfortunately beyond the scope of this paper. This includes checking for additional relevant processes and the inclusion of known, but less relevant influences. Additionally, nonlinear interaction should be considered in future approaches.

**Lines 307-311:**

Hindcast and measurement are in ~~overall~~ good agreement, but show the tendency of hindcasts underestimating wind setup, which is more pronounced at Texel tide gauge, **with the exception of three hindcasts of high wind setup during low water phases at the Cuxhaven tide gauge. This is probably due to the reduced set of predictors of wind setup. The method was tested for the British tide gauges as well but did not produce sufficient results, probably due to the wrong set of key predictors. Approaches to improve the wind setup for all locations are discussed in Sect. 5.**

**Comment 2.49:**

*“Line 286: I miss these analyses at the point, since a new and improved approach is to be developed? Please explain briefly why this is not done here.”*

**Answer to comment 2.49:**

The criteria for external surges were adapted from Gönner (2003). Deviating from the established knowledge about external surges would require extensive research about the propagation of external surges, for example the development of a hydrodynamic model and higher resolution. While we have great interest to conduct such research in the future, it is unfortunately beyond the scope of this paper. At the same time, different sets of criteria would skew the comparison between the existing dataset of Gönner (2003) and the new dataset. If a longer offset between Aberdeen and Immingham is found to be physically possible, a reanalysis of the 1971-1995 data would be required as well.

**Lines 341-344:**

**This would, however require extensive research about the propagation of external surges, which is beyond the scope of this paper. Using the dataset with a longer allowed offset between Aberdeen and Immingham would, however, invalidate the comparison of data collected by Gönner (2003) and this study.**

**Comment 2.50:**

*“Figure 5: Can you further highlight in the figure what you describe in text?”*

**Answer to comment 2.50:**

Thank you for the suggestion. Fig. 5b) has been altered to highlight to succession of the external surges and the description of Fig 5b) has been adapted.

**Figure 5:**

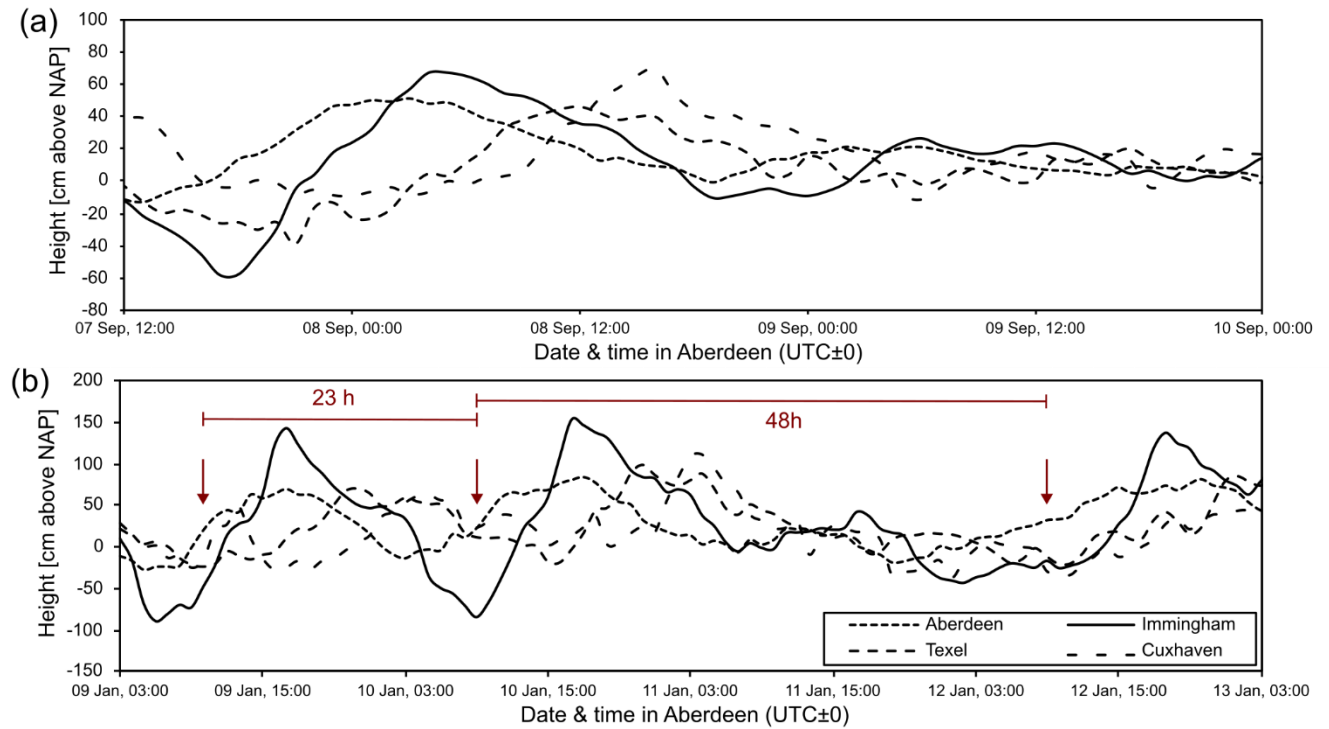


Figure 1: Height of the non-tidal residual (at the gauges in Aberdeen & Immingham) and the residual (at Texel & Cuxhaven) for examples of an external surge on 7 and 8 September 2000 (a) and a serial external surge on 9–13 January 2015 (b). The arrows in (b) mark the beginning of the external surges in Aberdeen (residual >20 cm) and the timing between the serial external surges is given.

**Comment 2.51:**

“Line 299: and 50 cm higher at Cuxhaven”

**Answer to comment 2.51:**

Thank you for this comment, the word has been added.

**Comment 2.52:**

“Line 305: Did you check this manually when these are not detected automatically?”

**Answer to comment 2.52:**

We agree that this distinction was not described clearly. The phenomenon was discovered while the external surges were quality checked for flawed data. This is now highlighted in the text and a is also a part of the discussion.

**Lines 394-398:**

Some of those external surges were also detected by the automated detection but grouped with other external surges, others do not match the required height or offset between Aberdeen and Immingham **but were identified during the manual review of the external surges**. Since they occurred shortly before or after a detected external surge **and preceding external surges may alter the height and timing of the external surge**, they are also included in the dataset. **The grouping into external surge events has therefore been conducted manually.**

**Lines 560-561:**

**As of now, the automated detection cannot accurately detect all external surge in a series of external surges and differentiate between each external surge.**

**Comments 2.53, 2.54 & 2.55:**

*“Line 347: winds”*

*“Line 361: moving average”*

*“Line 386: surge = external surge?”*

**Answer to comments 2.53, 2.54 & 2.55:**

Thank you for the corrections and your improvement of the language. The words have been corrected or clarified. Figure 8 and its description were also updated.

**Comment 2.56:**

*“Line 421: significance is always a statistical expression. Did you perform a significance here?”*

**Answer to comment 2.56:**

Thank you for the question. We did not conduct any test. We changed the expressions “significance” and “variance”, as we agree, that they convey the impression of statistical treatment.

**Line 501-503:**

Two other weather situations **also** show an increase in **relevance**: BM and SWA. Meanwhile, the share of external surges caused during the weather situations WZ and WA slightly lost **relevance**. Still, these variations lie within the natural **variability** of the occurrence of external surges.

**Comment 2.57:**

*“Line 434ff: This is methodology or should be defined earlier.”*

**Answer to comment 2.57:**

Thank you for the suggestion to improve the structure of the paper. The section has been moved during reworks according to comments 2.2 and comments 1.17 and 1.18 of Reviewer#1. The section 2.5 was added to the methodology, describing the relevant weather situations.

**Comment 2.58:**

*“Line 464: how is the mean high water calculated? How many years? It is essential due to the rising base water level (MSL)”*

**Answer to comment 2.58:**

Thank you for the question. Clarification has been added to the text. Since a moving average is used, MSL rise is accounted for in this definition.

**Lines 527-530:**

For this analysis, storm surges are defined as events reaching peaks of at least +1.5 m above mean high water (**moving average of the previous 5 years**) in Cuxhaven or a wind set up of at least 2 m is reached independent to the tidal phase [...]

**Comment 2.59:**

*“Line 488: In the BMBF-project easy-GSH the tide gauge of Heligoland was used to determine the influence of external surges. Is it possible to compare the results with yours?”*

**Answer to comment 2.59:**

Thank you for this interesting comment. To the authors, two main approaches are known to account for external surges in hydrodynamic models of the North Sea: inclusion of the Northeast Atlantic: through a model-cascade including the North Atlantic, and residuals at specific tide gauges as proxies (for example Wick, Aberdeen or in the case of easy-GSH Heligoland), which are included as boundary conditions. Comparing these assumptions with measurement data of external surges is certainly interesting, as it would benefit storm surge modelling as well as sea level forecasts and warning systems. We aim to include this comparison in future research about external surges. However, a direct comparison of model input data and the external surge dataset includes several challenges, for example differentiating between external surges and other phenomena in input data, that cause residuals. Still, the Heligoland tide gauge is one of the most important in the aim to include additional tide gauges in the analysis, as it can provide more information on the effects of external surges on offshore tide gauges.

**Comment 2.60:**

*“Line 494: Please clarify in the methodology which part of the detection is fully automated and which is manually complemented.”*

**Answer to comment 2.60:**

Thank you. Please see the answers to comments 2.3 and 2.52 for the additions to the manuscript:

## 4 Added references

The following references were added during the revisions of the manuscript:

- ABPmer (2008): Atlas of UK Marine Renewable Energy Resources. Online verfügbar unter <http://www.renewables-atlas.info/>, zuletzt geprüft am 03.06.2022.
- Agency for Roads, Bridges and Waters Hamburg (LSBG) (2012): Ermittlung des Sturmflutbemessungswasserstandes für den öffentlichen Hochwasserschutz in Hamburg. Berichte des Landesbetriebes Straßen, Brücken und Gewässer Nr. 12 / 2012. Hamburg.
- Albrecht, Frauke; Wahl, Thomas; Jensen, Jürgen; Weisse, Ralf (2011): Determining sea level change in the German Bight. In: *Ocean Dynamics* 61 (12), S. 2037–2050. DOI: 10.1007/s10236-011-0462-z.
- Amin, M. (1982): On analysis and prediction of tides on the west coast of Great Britain. In: *Geophysical Journal International* 68 (1), S. 57–78. DOI: 10.1111/j.1365-246X.1982.tb06962.x.
- Annutsch, Ralf (1977): Wasserstandvorhersage und Sturmflutwarnung. In: *Der Seewart* 38 (5), S. 185–204.
- Boesch, Andreas; Müller-Navarra, Sylvain (2019): Reassessment of long-period constituents for tidal predictions along the German North Sea coast and its tidally influenced rivers. In: *Ocean Sci.* 15 (5), S. 1363–1379. DOI: 10.5194/os-15-1363-2019.
- Bork, Ingrid; Müller-Navarra, Sylvain (2005): MUSE Modellgestützte Untersuchungen zu Sturmfluten mit sehr geringen Eintrittswahrscheinlichkeiten. Teilprojekt: Sturmsimulation. BSH. Hamburg.
- Brown, Jennifer M.; Wolf, Judith (2009): Coupled wave and surge modelling for the eastern Irish Sea and implications for model wind–stress. In: *Continental Shelf Research* 29 (10), S. 1329–1342. DOI: 10.1016/j.csr.2009.03.004.
- Bruss, Gerd; Gönnert, Babrielle; Mayerle, Roberto (2011): Extreme scenarios at the German north sea coast - a numerical model study. In: *Int. Conf. Coastal. Eng.* 1 (32), S. 26. DOI: 10.9753/icce.v32.currents.26.
- Comer, Joanne; Olbert, Agnieszka Indiana; Nash, Stephen; Hartnett, Michael (2017): Development of high–resolution multi–scale modelling system for simulation of coastal–fluvial urban flooding. In: *Nat. Hazards Earth Syst. Sci.* 17 (2), S. 205–224. DOI: 10.5194/nhess-17-205-2017.
- Corkan, R. H. (1948): Storm Surges in the North Sea. Vol. 1 & 2. Washington D.C.
- Corkan, R. H. (1950): The levels in the North Sea associated with the storm disturbance of 8 January 1949. In: *Phil. Trans. R. Soc. Lond. A* 242 (853), S. 493–525. DOI: 10.1098/rsta.1950.0008.
- Dangendorf, Sönke; Arns, Arne; Pinto, Joaquim G.; Ludwig, Patrick; Jensen, Jürgen (2016): The exceptional influence of storm ‘Xaver’ on design water levels in the German Bight. In: *Environ. Res. Lett.* 11 (5), S. 54001. DOI: 10.1088/1748-9326/11/5/054001.

- Darbyshire, J.; Darbyshire, Mollie (1956): Storm Surges in the North Sea during the Winter 1953–4. In: *Proc. R. Soc. Lond. A* 235 (1201), S. 260–274. DOI: 10.1098/rspa.1956.0081.
- Dibbern, Stefanie; Müller-Navarra, Sylvain (2009): Wasserstände bei Sturmfluten entlang der nordfriesischen Küste mit den Inseln und Halligen. In: *Küste* 76, S. 205–224.
- Dogan, Gozde Guney; Pelinovsky, Efim; Zaytsev, Andrey; Metin, Ayse Duha; Ozyurt Tarakcioglu, Gulizar; Yalciner, Ahmet Cevdet et al. (2021): Long wave generation and coastal amplification due to propagating atmospheric pressure disturbances. In: *Nat Hazards* 106 (2), S. 1195–1221. DOI: 10.1007/s11069-021-04625-9.
- Dronkers, Job; Stojanovic, Tim (2016): Socio-economic Impacts—Coastal Management and Governance. In: Markus Quante und Franciscus Colijn (Hg.): *North Sea Region Climate Change Assessment*. Cham: Springer International Publishing (Regional Climate Studies), S. 475–488.
- DWD Climate Data Center (CDC) (2021): Hourly measurements of wind and air pressure for Germany, Version v21.3. Station Cuxhaven. DWD Climate Data Center (CDC). Online verfügbar unter [cdc.dwd.de](https://cdc.dwd.de), zuletzt geprüft am 11.10.2021.
- EMODnet Bathymetry Consortium (2020): *EMODnet Digital Bathymetry (DTM 2020)*.
- Federal Maritime and Hydrographic Agency (BSH) (2021): Predicted tidal data. Station Cuxhaven–Steubenhöft.
- Fenoglio-Marc, L.; Scharroo, R.; Annunziato, A.; Mendoza, L.; Becker, M.; Lillibridge, J. (2015): Cyclone Xaver seen by geodetic observations. In: *Geophys. Res. Lett.* 42 (22), S. 9925–9932. DOI: 10.1002/2015GL065989.
- Fox-Kemper, B.; Hewitt, H. T.; Xiao, C.; Aðalgeirsdóttir, G.; Drijfhout, S. S.; Edwards, T. L. et al. (2021): Ocean, Cryosphere and Sea Level Change. In: IPCC (Hg.): *Climate Change 2021: The Physical Science Basis. Contribution of Working Group I to the Sixth Assessment Report of the Intergovernmental Panel on Climate Change*. Cambridge, United Kingdom and New York, NY, USA: Cambridge University Press, S. 1211–1362.
- Ganske, Anette; Fery, Natacha; Gaslikova, Lidia; Grabemann, Iris; Weisse, Ralf; Tinz, Birger (2018): Identification of extreme storm surges with high-impact potential along the German North Sea coastline. In: *Ocean Dynamics* 68 (10), S. 1371–1382. DOI: 10.1007/s10236-018-1190-4.
- German Meteorological Service (DWD) (2021): Großwetterlagen ab 2003. Offenbach a.M. Online verfügbar unter <https://www.dwd.de/DE/leistungen/grosswetterlage/grosswetterlage.html>.
- Gönnert, Gabriele (2003): Storm tides and wind surge in the German Bight: Character of height, frequency, duration, rise and fall in the 20th Century. In: *Küste* (67), S. 185–366.
- Gönnert, Gabriele; Gerkenmeier, Birgit (2015): A Multi-Method Approach to Develop Extreme Storm Surge Events to Strengthen the Resilience of Highly Vulnerable Coastal Areas. In: *Coastal Engineering Journal* 57 (1), 1540002-1-1540002-26. DOI: 10.1142/s0578563415400021.

- Gönnert, Gabriele; Gerkensmeier, Birgit; Müller, Jan-Moritz; Sossidi, Kristina; Thumm, Sigrid (2010): Zur hydrodynamischen Interaktion zwischen den Sturmflutkomponenten Windstau, Tide und Fernwelle. Zwischenbericht Teilprojekt 1a.
- Gönnert, Gabriele; Müller, Olaf (2014): Bemessung im Küstenschutz unter Berücksichtigung von Risikominderung und Klimaänderung. In: *Geographische Rundschau* (3), S. 30–38.
- Hess, Paul; Brezowski, Helmut (1977): Katalog der Großwetterlagen Europas 1881–1976. 3. Aufl. Deutscher Wetterdienst (DWD). Offenbach a.M. (Berichte des Deutschen Wetterdienstes).
- Horsburgh, Kevin; Haigh, Ivan D.; Williams, Jane; Dominicis, Michela de; Wolf, Judith; Inayatillah, Addina; Byrne, David (2021): “Grey swan” storm surges pose a greater coastal flood hazard than climate change. In: *Ocean Dynamics* 71 (6-7), S. 715–730. DOI: 10.1007/s10236-021-01453-0.
- Jänicke, Leon; Ebener, Andra; Dangendorf, Sönke; Arns, Arne; Schindelegger, Michael; Niehüser, Sebastian et al. (2021): Assessment of Tidal Range Changes in the North Sea From 1958 to 2014. In: *Journal of geophysical research. Oceans* 126 (1), e2020JC016456. DOI: 10.1029/2020JC016456.
- Jensen, Jürgen; Mudersbach, Christoph; Dangendorf, Sönke (2013): Untersuchungen zum Einfluss der Astronomie und des lokalen Windes auf sich verändernde Extremwasserstände in der Deutschen Bucht.
- Jong, Martijn Petrus Cornelis de (2004): Origin and prediction of seiches in Rotterdam harbour basins.
- Kettle, Anthony James (2020): Storm Xaver over Europe in December 2013: Overview of energy impacts and North Sea events. In: *Adv. Geosci.* 54, S. 137–147. DOI: 10.5194/adgeo-54-137-2020.
- Kim, H.; Kim, M.-S.; Lee, H.o-J.; Woo, S.-B.; Kim, Y.-K. (2016): Seasonal Characteristics and Mechanisms of Meteo-tsunamis on the West Coast of Korean Peninsula. In: *Journal of Coastal Research* 75 (sp1), S. 1147–1151. DOI: 10.2112/SI75-230.1.
- Kim, M.S.; Woo, S.B.; Eom, Hyunmin; You, S.-H. (2021): Occurrence of pressure–forced meteotsunami events in the eastern Yellow Sea during 2010–2019. In: *Nat. Hazards Earth Syst. Sci.* 21 (11), S. 3323–3337. DOI: 10.5194/nhess-21-3323-2021.
- Koninklijk Nederlands Meteorologisch Instituut (KNMI) (2021): Uurwarden van weerstations. Station De Kooy. Online verfügbar unter [daggegevens.knmi.nl](https://daggegevens.knmi.nl), zuletzt geprüft am 01.10.2021.
- Koopmann, Georg (1962): Wasserstandserhöhungen in der Deutschen Bucht infolge von Schwingungen und Schwallerscheinungen und deren Bedeutung bei der Sturmflut vom 16./17. Februar 1962. In: *Deutsche Hydrographische Zeitschrift* 15 (5), S. 181–198.
- Kubota, Tatsuya; Saito, Tatsuhiko; Chikasada, Naotaka Y.; Sandanbata, Osamu (2021): Meteotsunami Observed by the Deep-Ocean Seafloor Pressure Gauge Network Off Northeastern Japan. In: *Geophysical Research Letters* 48 (21). DOI: 10.1029/2021GL094255.



- Liu, Xing; Jiang, Wensheng; Yang, Bo; Baugh, John (2018): Numerical study on factors influencing typhoon-induced storm surge distribution in Zhanjiang Harbor. In: *Estuarine, Coastal and Shelf Science* 215, S. 39–51. DOI: 10.1016/j.ecss.2018.09.019.
- Lotze, Heike K.; Reise, Karsten; Worm, Boris; van Beusekom, Justus; Busch, Mette; Ehlers, Anneli et al. (2005): Human transformations of the Wadden Sea ecosystem through time: a synthesis. In: *Helgol Mar Res* 59 (1), S. 84–95. DOI: 10.1007/s10152-004-0209-z.
- Mehra, Prakash; Prabhudesai, R. G.; Joseph, Antony; Kumar, Vijay; Aga, Yogesh; Luis, Ryan et al. (2009): A one year comparison of radar and pressure tide gauge at Goa, west coast of India. In: 2009 International Symposium on Ocean Electronics (SYMPOL 2009). 2009 International Symposium on Ocean Electronics (SYMPOL 2009). Cochin, India, 2009: IEEE, S. 173–183.
- Mikhailova, M. V. (2011): Interaction of tides and storm surges at the Elbe River mouth. In: *Water Resour* 38 (3), S. 284–297. DOI: 10.1134/S0097807811030079.
- Müller-Navarra, Sylvain (2013): On Tidal Predictions by Mean of Harmonic Representation of Inequalities. Hamburg (Reports of the Federal Maritime and Hydrographic Agency (BSH), 50).
- Müller-Navarra, Sylvain; Bork, Ingrid (2011): DEVELOPMENT OF AN OPERATIONAL ELBE TIDAL ESTUARY MODEL. In: *Int. Conf. Coastal. Eng.* 1 (32), S. 48. DOI: 10.9753/icce.v32.management.48.
- Müller-Navarra, Sylvain; Giese, Harald (1999): Improvements of an empirical model to forecast wind surge in the German Bight. In: *Deutsche Hydrographische Zeitschrift* 51 (4), S. 385–405.
- NOC British Oceanographic Data Center (BODC) (2021): UK tide gauge network. Stations Aberdeen und Immingham, zuletzt geprüft am 01.12.2021.
- Olabarrieta, Maitane; Valle-Levinson, Arnoldo; Martinez, Christopher J.; Pattiaratchi, Charitha; Shi, Luming (2017): Meteotsunamis in the northeastern Gulf of Mexico and their possible link to El Niño Southern Oscillation. In: *Nat Hazards* 88 (3), S. 1325–1346. DOI: 10.1007/s11069-017-2922-3.
- Olbert, Agnieszka I.; Hartnett, Michael (2010): Storms and surges in Irish coastal waters. In: *Ocean Modelling* 34 (1-2), S. 50–62. DOI: 10.1016/j.ocemod.2010.04.004.
- Oppenheimer, Michael; Glavovic, Bruce C.; Hinkel, Jochen; Wal, Roderik van de; Magnan, Alexandre K.; Abd-Elgawad, Amro et al. (2019): Sea Level Rise and Implications for Low-Lying Islands, Coasts and Communities. In: IPCC (Hg.): *The Ocean and Cryosphere in a Changing Climate*: Cambridge University Press, S. 321–446.
- OSPAR Commission 2000: Quality Status Report 2000. Region II - Greater North Sea. Hg. v. OSPAR Commission. London.
- Ponte, Rui M.; Gaspar, Philippe (1999): Regional analysis of the inverted barometer effect over the global ocean using TOPEX/POSEIDON data and model results. In: *J. Geophys. Res.* 104 (C7), S. 15587–15601. DOI: 10.1029/1999JC900113.

- Prandle, D. (1975): Storm Surges in the Southern North Sea and River Thames. In: *Proceedings of the Royal Society of London. Series A, Mathematical and Physical Sciences* 344 (1639), S. 509–539.
- Proudman, J. (1929): The Effects on the Sea of Changes in Atmospheric Pressure. In: *Geophysical Journal International* 2, S. 197–209. DOI: 10.1111/j.1365-246X.1929.tb05408.x.
- Proudman, J.; Doodson, A. T. (1926): Time–Relations in Meteorological Effects on the Sea. In: *Proceedings of the London Mathematical Society* s2-24 (1), S. 140–149. DOI: 10.1112/plms/s2-24.1.140.
- Pullen, T.; Allsop, N. W. H.; Bruce, T.; Kortenhuis, A.; Schüttrumpf, H.; van der Meer, J. W. (2007): EurOtop. Wave Overtopping of Sea Defences and Related Structures: Assessment Manual. In: *Die Küste* 78, S. 1–178.
- Reise, Karsten; Baptist, Martin; Burbridge, Peter; Dankers, Norbert; Fischer, Ludwig; Flemming, Burghard et al. (2010): The Wadden Sea - A universally outstanding tidal wetland. Wadden Sea Ecosystem No. 29. Commen Wadden Sea Secretariat. Wilhelmshaven.
- Rijkswaterstaat (RWS) (2021): Waterinfo: Water level and astronomical tide in cm above NAP. Tide gauge Texel Noordzee. Online verfügbar unter [waterinfo.rws.nl](http://waterinfo.rws.nl), zuletzt geprüft am 11.10.2021.
- Rossiter, J. R. (1958): Storm Surges in the North Sea, 11 to 30 December 1954. In: *Phil. Trans. R. Soc. Lond. A* 251 (991), S. 139–160.
- Rossiter, J. R. (1959): Research on methods of forecasting storm surges on the east and south coasts of Great Britain. In: *Q.J Royal Met. Soc.* 85 (365), S. 262–277. DOI: 10.1002/qj.49708536508.
- Schmitz, H.P.; Habicht, D.; Volkert, H. (1988): Barotropic numerical experiments on external surge generation at the edge of the north-western European shelf. In: *Gerland Beitr. Geophysik* (5), S. 422–437.
- Serafin, Katherine A.; Ruggiero, Peter; Barnard, Patrick L.; Stockdon, Hilary F. (2019): The influence of shelf bathymetry and beach topography on extreme total water levels: Linking large-scale changes of the wave climate to local coastal hazards. In: *Coastal Engineering* 150, S. 1–17. DOI: 10.1016/j.coastaleng.2019.03.012.
- Sibley, Andrew; Cox, Dave; Long, David; Tappin, David; Horseburgh, Kevin (2016): Meteorologically generated tsunami-like waves in the North Sea on 1/2 July 2015 and 28 May 2008. In: *Weather* 71 (3), S. 68–74. DOI: 10.1002/wea.2696.
- Siefert, Winfried (1991): Ober Eintrittswahrscheinlichkeiten von Windstau, Oberwasser und örtlichem Wind in einem Tidefluß am Beispiel der Elbe. In: *Die Küste* (52), S. 171–190.
- Spencer, Thomas; Brooks, Susan M.; Evans, Ben R.; Tempest, James A.; Möller, Iris (2015): Southern North Sea storm surge event of 5 December 2013: Water levels, waves and coastal impacts. In: *Earth-Science Reviews* 146, S. 120–145. DOI: 10.1016/j.earscirev.2015.04.002.

- Steffelbauer, David B.; Riva, Riccardo E. M.; Timmermans, Jos S.; Kwakkel, Jan H.; Bakker, Mark (2022): Evidence of regional sea-level rise acceleration for the North Sea. In: *Environ. Res. Lett.* 17 (7), S. 74002. DOI: 10.1088/1748-9326/ac753a.
- Tomczak, Gerhard (1958): Verification of a progressive wave in the southern north sea. In: *Deutsche Hydrographische Zeitschrift* 11 (3), S. 129–138.
- Treloar, Philip; Taylor, David; Prenler, Paul (2010): Investigation of Wave induced Storm Surge within a large Coastal Embayment - Moreton Bay (Australia). In: *Proceeding of the Coastal Engineering Conference*.
- Vennell, Ross (2007): Long Barotropic Waves Generated by a Storm Crossing Topography. In: *Journal of Physical Oceanography* 37 (12), S. 2809–2823. DOI: 10.1175/2007JPO3687.1.
- Vennell, Ross (2010): Resonance and trapping of topographic transient ocean waves generated by a moving atmospheric disturbance. In: *J. Fluid Mech.* 650, S. 427–442. DOI: 10.1017/S0022112009993739.
- Vilibić, Ivica (2008): Numerical simulations of the Proudman resonance. In: *Continental Shelf Research* 28 (4-5), S. 574–581. DOI: 10.1016/j.csr.2007.11.005.
- Wahl, T.; Haigh, I. D.; Woodworth, P. L.; Albrecht, F.; Dillingh, D.; Jensen, J. et al. (2013): Observed mean sea level changes around the North Sea coastline from 1800 to present. In: *Earth-Science Reviews* 124, S. 51–67. DOI: 10.1016/j.earscirev.2013.05.003.
- Wasserstraßen- und Schifffahrtsverwaltung des Bundes (WSV) (2021a): Water level data. Tide gauge Cuxhaven–Steubenhöft, Years 1995–1997. Federal Waterways and Shipping Administration (WSV), provided by Bundesanstalt für Gewässerkunde (BfG), zuletzt geprüft am 11.10.2021.
- Wasserstraßen- und Schifffahrtsverwaltung des Bundes (WSV) (2021b): Water level data. Tide gauge Cuxhaven–Steubenhöft, Years 1998–2020. Online verfügbar unter [www.kuestendaten.de](http://www.kuestendaten.de), zuletzt geprüft am 12.10.2021.
- Weisse, Ralf; Storch, Hans von; Niemeyer, Hanz Dieter; Knaack, Heiko (2012): Changing North Sea storm surge climate: An increasing hazard? In: *Ocean & Coastal Management* 68, S. 58–68. DOI: 10.1016/j.ocecoaman.2011.09.005.
- Werner, P. C.; Gerstengarbe, F.-W. (2010): Katalog der Großwetterlagen Europas (1881-2009). Nach Paul Hess und Helmut Brezowsky, 7. verbesserte und ergänzte Auflage. Potsdam (PIK Report, 119).