

Seismogenic potential and tsunami threat of the strike-slip Carboneras Fault in the Western Mediterranean from physics-based earthquake simulations

José A. Álvarez-Gómez¹, Paula Herrero-Barbero^{1,2}, and José J. Martínez-Díaz^{1,3}

¹Department of Geodynamics, Stratigraphy and Palaeontology. Faculty of Geology. Complutense University of Madrid, Madrid, Spain

²Geosciences Barcelona CSIC, GEO3BCN-CSIC, Barcelona, Spain

³IGEO, Geosciences Institute, CSIC-UCM, Madrid, Spain

Correspondence: José A. Álvarez-Gómez (jaag@ucm.es)

Abstract. Strike-slip fault ruptures have a limited capacity to generate vertical deformation, and for this reason they are usually dismissed as potential destructive tsunami sources. At the western tip of the western Mediterranean, in the Alboran Sea, tectonics is characterized by the presence of large transcurrent fault systems and minor reverse and normal faults in a zone of diffuse deformation. The strike-slip Carboneras fault is one of the largest sources in the Alboran Sea, and therefore, with the greatest seismogenic capacity. It is also one of the active structures with higher slip rates in the Eastern Betic Fault Zone and has been proposed as source of the damaging 1522 (M6.5; Int. VIII-IX) Almeria earthquake. The dimensions and location of the Carboneras fault imply a high seismic and tsunami threat. In this paper we present tsunami simulations from seismic sources generated with physics-based earthquake simulators. We have generated a 1 Myr synthetic seismic catalogue consistent on 773,893 events with magnitudes ranging between M_W 3.3 and 7.6. From these events we have selected those sources producing a potential energy capable of generating a noticeable tsunami, being earthquakes with magnitudes ranging from 6.71 to 7.62. The Carboneras Fault has the capacity to generate locally damaging tsunamis, however, on a regional scale its tsunami threat is limited. The frequency – magnitude distribution of the generated seismic catalogue reflects the variability of magnitudes associated to the rupture of the entire fault, departing the upper limit from the classical Gutenberg-Richter potential relation showing a bell-shaped distribution. The inter-event time for the maximum earthquake magnitudes is usually between ~~2000 and 6000~~ 2,000 and 6,000 years. The use of physics-based earthquake simulations for tsunamigenic sources allows ~~a robust~~ an in-depth characterization of the scenarios, allowing a qualitative leap in their parametrization.

1 Introduction

Tsunamis are generated by any natural event that involves an immediate alteration of the elevation of the free surface of the sea. This alteration may be due to events that directly alter the sea surface (usually meteorological, meteoric or volcanic events) or by geological events that abruptly modify the ocean floor (earthquakes or submarine landslides). Earthquakes are the geological events that most often generate destructive tsunamis (NGDC, 2022), and this ability depends on their magnitude and depth, as well as on their mode of seismic rupture (e.g., Burbidge et al., 2015; Geist, 1998; Gibbons et al., 2022). The

25 rake, the orientation of the slip vector on the fault plane during seismic rupture, is one of the most determining parameters in the generation of tsunamis, presenting the thrust and normal faults, with dip-slip rupture, the greatest capacity. On the other hand, the strike-slip ruptures, with rakes close to the horizontal, have a limited capacity to generate vertical deformation on the seafloor, and for this reason they are usually dismissed as potential destructive tsunami sources.

Although the lower capacity of strike-slip faults to generate tsunamis is a proven fact, it is not negligible, as has been numerically demonstrated (Elbanna et al., 2021; Legg et al., 2003; Tanioka and Satake, 1996; Ulrich et al., 2019) and observed (Frucht et al., 2019; Gusman et al., 2017; Heidarzadeh et al., 2017; Ho et al., 2021) (Baptista and Miranda, 2009; Frucht et al., 2019; Gusman et al., 2019), occasionally linked to submarine landslides also (Hornbach et al., 2010; Xu et al., 2022). This is of special relevance in local sources, where the dispersion of the tsunami waves is low, and the local fault complexities and rupture-slip variations are key parameters on tsunami impact (Geist, 2002).

35 The study of tsunami hazard, due to the scarcity of events from a statistical point of view, is frequently approached from numerical modelling. These models are usually based on the simulation of tsunamis generated by ruptures of simple, rectangular, fault planes with homogeneous slip, sometimes mixed with more complex ruptures or the combination of several rectangular ruptures (e.g. Basili et al., 2021; Power et al., 2012; Davies et al., 2018; Zamora and Babeyko, 2016). Codes based on the Okada (1985) or Mansinha and Smylie (1971) equations are used to obtain the seafloor deformation produced by the earthquake.

However, the variability in the slip distribution on the fault plane is a fundamental parameter to understand the occurrence of maximum amplitudes in destructive events (Fujii et al., 2011; Gusman et al., 2012; McCloskey et al., 2008; Satake et al., 2013; Yamazaki et al., 2011). This variability is of special relevance in local sources, which if modelled as simple ruptures, cannot capture the complexity of the earthquake rupture process. Wave propagation and flooding are highly non-linear processes, very sensitive to local variations in shallow waters. To overcome this limitation, methodologies have been proposed based on the stochastic (or random) generation of slip patterns in faults (Goda et al., 2015; Lavallée et al., 2006; Løvholt et al., 2012; Mai and Beroza, 2002) (Geist, 2002; Goda et al., 2015; Lavallée et al., 2006; Løvholt et al., 2012; Mai and Beroza, 2002), or on the use of physical dynamic rupture models for particular events (Elbanna et al., 2021; Kozdon and Dunham, 2013; Madden et al., 2021; Maeda and Furumura, 2013; Ryan et al., 2015; Wendt et al., 2009; Wilson and Ma, 2021).

Our approach is based on the use of physics-based earthquake simulators (Rundle, 1988). These simulators have been developed in recent decades in order to overcome the temporal limitation of the instrumental seismic catalogue in probabilistic seismic hazard assessment (PSHA) (Robinson et al., 2011; Shaw et al., 2018), especially in the characterization of large events. Through the development of models based on earthquake physics, synthetic catalogues of hundreds of thousands of years can be generated whose characteristics reflect those of the instrumental catalogue but incorporating the long-term evolution of the seismic cycle and the complex interactions of fault systems (Console et al., 2018, 2015; Robinson and Benites, 1995). Moreover, recent development of numerical codes based on the rate-and-state constitutive law for fault slip and frictional behaviour (Dieterich, 1992, 1995) allows not only the modelling of long-term seismic cycle deformation, but also the short-term rupture process based on a quasi-dynamic physical approximation to the rupture propagation (Richards-Dinger and Dieterich, 2012) producing earthquake ruptures similar to those in fully dynamic models (Whirley and Engelman, 1993).

The western Mediterranean presents a complex tectonic history and context (e.g. Chertova et al., 2014; Gómez de la Peña et al., 2021; Romagny et al., 2020); and is characterized by the development of a series of arcuate Fold-and-Thrust Belts surrounding back-arc formed deep-water basins (Faccenna et al., 2004; Rosenbaum and Lister, 2004). The current rate of shortening between the Nubian and Eurasian plates in the western Mediterranean is approximately 5 mm/yr (Serpelloni et al., 2007; Vernant et al., 2010), which, being distributed in a large number of structures, makes them to have low or very low velocities. These low deformation rates imply that the seismic cycles of the main structures are very long and the instrumental seismic catalogue can hardly show the characteristics of the potential major events.

At the western tip of the western Mediterranean, in the Alboran Sea, tectonics is characterized by the presence of large transcurrent fault systems and minor reverse and normal faults in a zone of diffuse deformation (Ballesteros et al., 2008; Martínez-García et al., 2013). These structures, formed during the Miocene in a transcurrent and mainly extensional tectonic context, were later reactivated in a transpressional post-tortonian setting (Bourgeois et al., 1992; Comas et al., 1992; Do Couto et al., 2016; Herrero-Barbero et al., 2020; Martínez-García et al., 2017). Although the reverse faults associated with the Alboran ridge seem to have the greatest tsunamigenic potential (Álvarez-Gómez et al., 2011a, b; Gómez de la Peña et al., 2022), the mainly strike-slip faults (Yusuf, Al -Idrisi and Carboneras) are the ones with the greatest length and, therefore, the greatest seismogenic capacity (Somoza et al., 2021).

The Carboneras fault is a left-lateral transpressive structure oriented N50-60°E with a length of ~ 150 km, most of them offshore (Gràcia et al., 2006; Somoza et al., 2021). It is one of the active structures with higher slip rates in the Alboran Sea and in the Eastern Betic Shear Zone (Masana et al., 2018; Moreno et al., 2015), a fault system that crosses the SE of the Iberian Peninsula forming a tectonic corridor on which a significant density of population and industry is based (Figure 1). Moreover this fault has been proposed as source of the 1522 Almeria earthquake, a damaging earthquake that reached intensities of VIII-IX in the city of Almeria (Martínez Solares and Mezcua, 2002), and possibly related to a local tsunami (Reicherter and Hübscher, 2007; Reicherter and Becker-Heidmann, 2009). The location of this event is uncertain, being located onshore in the historic/instrumental seismic catalog (IGN-UPM, 2013) (Figure 1) but with an offshore epicentral location proposed by Reicherter and Hübscher (2007).

The dimensions and location of the Carboneras fault poses a high seismic and tsunami risk potential. According to previous studies this fault has the capacity to produce events with magnitudes up to 7.1 - 7.4 (Álvarez-Gómez et al., 2011a; García-Mayordomo et al., 2017; Gómez de la Peña et al., 2022; Gràcia et al., 2006) and even 7.6 according to Moreno (2011), with mainly horizontal left-lateral component but some reverse dip-slip motion too (Moreno et al., 2015). Although the tsunami simulations done to date (Álvarez-Gómez et al., 2011a, b; Gómez de la Peña et al., 2022) discard major damaging events, the simplicity and assumptions of such simulations must be re-evaluated. The Carboneras Fault has also been modelled in the frame of probabilistic tsunami hazard assessments but from regional simplified approaches where this source is not specifically studied (Basili et al., 2021; Sørensen et al., 2012).

In this paper we present tsunami simulations based on the generation of a synthetic catalogue of earthquakes whose characteristics resemble the instrumental and historical seismicity recorded in the area (Herrero-Barbero et al., 2021). From these simulations we make estimates of maximum wave elevations for seismogenic tsunamis and recurrence intervals for signifi-

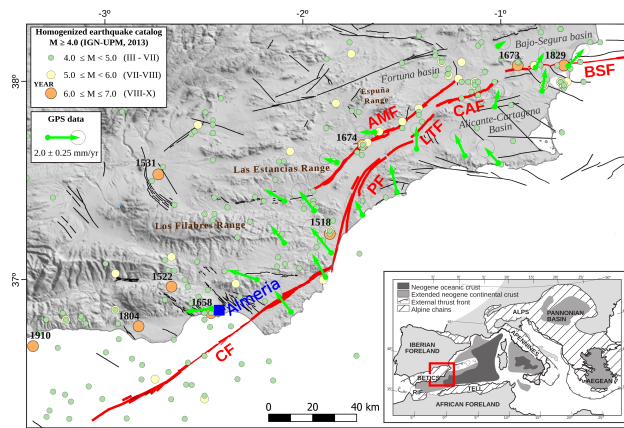


Figure 1. Seismotectonic setting of the Eastern Betic Shear Zone (EBSZ), modified from Herrero-Barbero et al. (2021). The filled circles show the epicentres of the [declustered and homogenized earthquake catalogue from the IGN-UPM \(2013\)](#) [IGN-UPM \(2013\)](#) [\(Cabañas et al., 2015\)](#). The green arrows represent geodetic velocities from GNSS networks (Borque et al., 2019; Echeverria et al., 2013) with Eurasia-fixed reference frame. Fault traces from the Quaternary Active Fault Database of Iberia, QAFI v.3 (García-Mayordomo et al., 2017). In red the main faults of the EBSZ: Carboneras fault (CF), Alhama de Murcia fault (AMF), Palomares fault (PF), Los Tollos fault (LTF), Carrascoy fault (CAF), and Bajo-Segura fault (BSF). The inset shows the location of the EBSZ in the western tip of the Alpine orogenic belt (modified from Martínez-García (2012))

cant events in order to reassess the threat posed by the Carboneras fault in the context of the Alboran Sea and the western Mediterranean.

95 2 Earthquake ruptures simulation

Reproducing a long-term catalogue of earthquake ruptures requires a computationally efficient approach to the physical processes that control earthquake occurrence. Earthquake simulators (Rundle, 1988; Tullis et al., 2012; Ward, 2000) are computer codes that use fault geometry, stress interactions and frictional resistance to produce long earthquake sequences, overcoming the completeness limitations of the instrumental record. The multi-cycle earthquake simulations necessarily adopt approxima-
 100 tions to elastodynamics to make computation feasible and, unlike fully dynamic single-event simulators (see e.g., Harris et al., 2018), seismic waves are not computed. Even so, recent modelling enhancements have successfully extended their use in more complex fault geometries (Field et al., 2014; Shaw et al., 2018) and for different representations of fault friction, rheology and stress transfer (Pollitz, 2012; Richards-Dinger and Dieterich, 2012; Sachs et al., 2012; Schultz et al., 2018; Ward, 2012); therefore, a better validation of the quasi-dynamic part of the seismic cycle is achieved.

105 Our approach is based on the application of the RSQSim earthquake simulator (Dieterich and Richards-Dinger, 2010; Richards-Dinger and Dieterich, 2012). The physics-based RSQSim code reproduces earthquakes into a fully interacting 3D fault model. It performs the physical processes leading rupture nucleation and propagation through a boundary element for-

mulation that incorporates rate- and state-dependent friction based on Dieterich (1995), in which frictional shear stress is quantified as:

$$\tau = \sigma \left[\mu_0 + a \ln \left(\frac{V}{V_0} \right) + b \ln \left(\frac{\theta V_0}{D_C} \right) \right], \quad (1)$$

110 Given that this is a quasi-dynamic approximation, long-term stress accumulation and earthquake slip at each fault element is separated efficiently into three sliding states: 0) locked, 1) nucleating, and 2) sliding. The result is a long synthetic earthquake catalogue including a comprehensive and detailed record of complex earthquake ruptures with heterogeneous slip. Recent results obtained using the RSQSim code are promising in relation to potential practical applicability (~~Chartier et al., 2021; Herrero-Barbero et al., 2021; Howarth et al., 2021; Shaw et al., 2018~~)(Chartier et al., 2021; Herrero-Barbero et al., 2021).

115 .

The 3D structure of the Carboneras fault is integrated in a more complex fault model of the Eastern Betic Fault Zone (Figure 2), which includes kinematic properties of the main faults, such as slip rates and rakes (Herrero-Barbero et al., 2021). RSQSim simulations have been run on this fault system model of triangular elements with 1 km² resolution and maximum fault depths between 8 and 12 km, considering the seismogenic thickness in the area (García-Mayordomo, 2005; Fernández-Ibañez and Soto, 2008; Masana et al., 2018; Moreno et al., 2015; Rutter et al., 2012), N45°-60° strike, and segmented into two fault sections: an onshore northern section, partially offshore at the SW and connecting with the Palomares fault at the NE; and a totally offshore southern section. In the northern Carboneras fault, an average lateral slip rate of 1.2

120 . The Carboneras fault is defined in the model as a sub-vertical (dipping 85° SE) sinistral strike-slip structure (Bousquet, 1979; Masana et al., 2018; Moreno et al., 2015; Rutter et al., 2012), N45°-60° strike, and segmented into two fault sections: an onshore northern section, partially offshore at the SW and connecting with the Palomares fault at the NE; and a totally offshore southern section. In the northern Carboneras fault, an average lateral slip rate of 1.2

The slip rate of the Carboneras Fault has been estimated by means of geodetic data (GNSS or InSAR) and geologic data (paleoseismology, tectonic geomorphology). From the geological point of view (Moreno et al., 2015) obtained a minimum strike-slip rate of 1.31 mm/yr is estimated for the last 110-130 ka (Moreno et al., 2015). In the southern section Moreno (2011) estimated a for a section in the onshore segment of the Carboneras fault, and a minimum dip-slip rate of 0.18 mm/yr. The offshore segment of the Carboneras fault has been extensively studied also by Moreno (2011); obtaining a minimum strike-slip rate of 1.3 mm/yr, which is consistent with the northern section and with geodetic lateral slip rates and dip-slip rates between 0.1 and 0.3 mm/yr. The geodetic data obtained to date is from the onshore segment by means of high resolution GNSS campaign measurement and permanent stations, with the preferred value of strike-slip rate of 1.3±0.2 mm/yr (Echeverria et al., 2015). Taking into account that the onshore and offshore geologically obtained slip rates are the same, and that the onshore geodetic data coincides with the geological data, we have used the estimated slip-rate of 1.3 mm/yr in our models. Kinematic numerical models developed in the area obtain values in the same range for the Carboneras fault slip-rate in their preferred results (Jiménez-Munt and Negredo, 2003; Cunha et al., 2012; Neres et al., 2016).

135

Besides the input kinematic data (detailed in Herrero-Barbero et al. (2021)), the simulations are governed by rate- and state-dependent friction parameters, *a* and *b*, that reproduce the effect of the velocity-change on the coefficient of friction (Dieterich, 1979; Ruina, 1983). These frictional parameters have a notable impact on the slip distribution and spatio-temporal clustering (Noda and Lapusta, 2013; Richards-Dinger and Dieterich, 2012; Scholz, 1998). We define reference rate-and-state values based

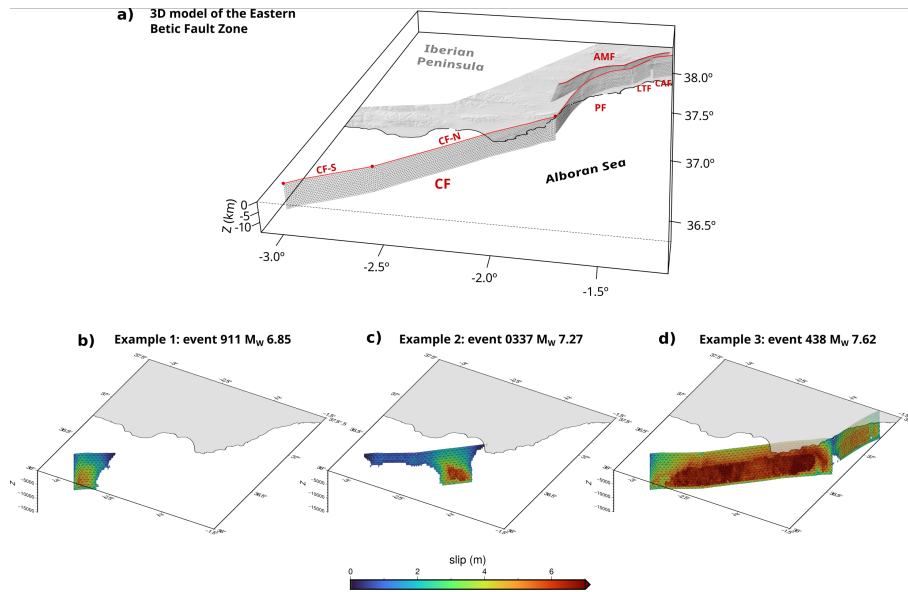


Figure 2. a) 3D fault model used for the synthetic seismic catalogue simulation. CF: Carboneras Fault, CF-S: Carboneras Fault southern section, CF-N: Carboneras Fault northern section, PF: Palomares Fault, LTF: Los Tollos Fault, CAF: Carrascoy Fault, AMF: Alhama de Murcia Fault; b) example of a M_W 6.85 event; c) example of a M_W 7.27 event; d) example of a M_W 7.62 event.

140 on experimental data taken from a nearby location in the fault zone (Niemeijer and Vissers, 2014; Rodriguez Escudero, 2017) ~~to~~
generate multiple test catalogues. These experimental values are the starting point before testing several synthetic catalogs with
variation of the rate- and state-dependent coefficients, until achieving the best-fit values (Herrero-Barbero et al., 2021). The
 aims of the testing process were to match frequency distributions with a Gutenberg-Richter b-value close to 1.0 ± 0.1 ,
 and to correlate the synthetic seismicity with instrumental and paleoseismic data (Herrero-Barbero et al., 2021). This b-value
 145 has been estimated in the same seismogenic zone in previous works based on instrumental seismicity (IGN-UPM, 2013; García-Mayordomo
, and is also a reference value as assumption in numerous papers of synthetic seismicity modeling (e.g. Console et al., 2017; Shaw et al., 201
Finally, a preferred set of input model parameters is selected for the best-fit catalogue: rate-and-state friction paramete
 rs $a=0.001$ and $b=0.010$ (not to be confused with the a-value and b-value of the Gutenberg-Richter frequency magnitude
distribution); a steady-state friction coefficient $\mu_0=0.6$; a depth-variable normal stress with a 20 MPa/km gradient, and a b-
 150 value of 1.05 (Figure 3). Defined frictional parameters in this study entail a totally seismogenic behaviour of this fault system,
 although Faulkner et al. (2003) also suggested possible creeping sections in the Carboneras fault zone due to the mechanical
 heterogeneity of its fault gouge. As the seismic productivity (the a-value in frequency magnitude distribution, FMD) depends
on the slip-rate and seismic coupling of active faults, our approximation, which considers fully coupled structures can be
considered as the maximum seismic productivity expected.

155 According to the selected input model parameters, a 1 Myr-synthetic earthquake catalogue has been generated (Figure 3),
 from which the first 2000 years have been discarded to avoid artefacts until the simulation stabilizes. In total, 773,893 events

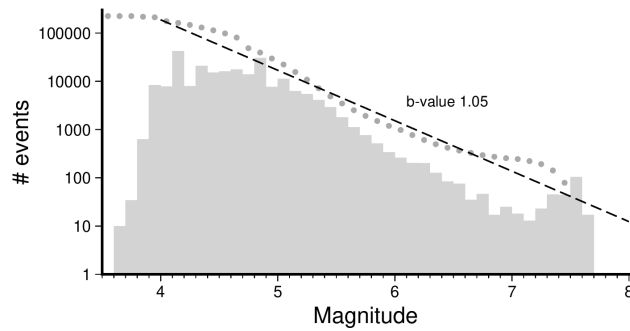


Figure 3. Frequency magnitude distribution of the generated synthetic earthquake catalogue for the Carboneras Fault. The grey bars show the discrete count of events, while the grey dots show the cumulative form of the distribution. The dashed line shows the best fit of the Gutenberg-Richter law.

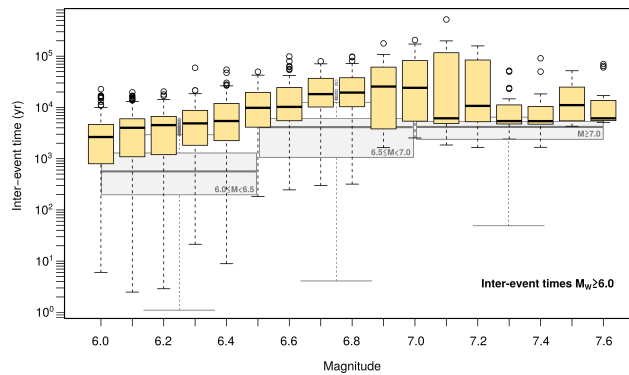


Figure 4. Inter-event time distribution. The graph shows a box and whisker plot for intervals of 0.1 in magnitude in yellow. In grey are shown box and whisker plots for different magnitude ranges.

have been obtained, with a magnitude range of $3.3 \leq M_W \leq 7.6$. The Carboneras Fault is the seismogenic source that generates the most frequent synthetic seismicity, with almost a 30% of the events in the catalogue, of which 0.6% of total events are $M_W \geq 6$ earthquakes. For $6.5 \leq M_W < 7.0$ events, the most frequent inter-event time intervals range between 800 and 6,000 years (Figure 4), ~~excluding the aftershocks~~. Logically, the earthquake frequency decreases as the magnitude increases (Figure 4). However, from magnitude M_W 7.0-7.1, the simulation shows an increase in the frequency of events, therefore the recurrence intervals of the most damaging $M_W \geq 7.0$ earthquakes would be shortened. As the inter-event time intervals depends on the seismic productivity (a-value of the FMD) our results are the most conservative (shortest inter-event times) as we are assuming fully coupled faults. The largest number of these major simulated ruptures in the Carboneras Fault is nucleated in the northern section, being physically capable to propagate a complete fault-length rupture. Between them, 115 ruptures are also transferred to a portion of the southern branch of the Palomares Fault (Figure 2d), increasing the rupture area and therefore the released seismic moment (a shear modulus of 30 GPa is used throughout the model computations).

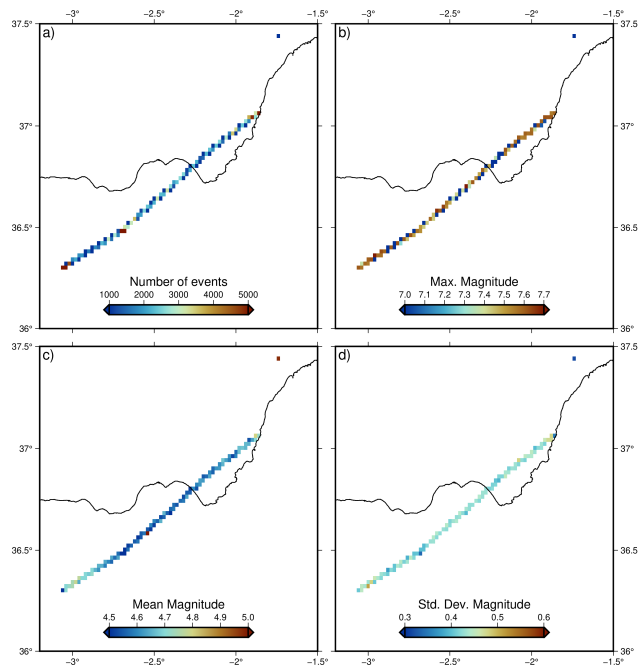


Figure 5. Different statistics for the epicentral location of the modelled events shown as heat maps with a cell size of $\sim 5 \text{ km}^2$. a) Number of epicentres; b) maximum magnitude; c) mean magnitude; d) magnitude standard deviation.

The epicentres of the generated events are not homogeneously distributed along the fault; being more frequent the generation of events at the tips of the sections and bending (Figure 5a). The rupture initiation in the code is governed by the rate-and-state formulation. When a nucleation state is reached by an element in the model, the code, spontaneously computes the rupture propagation to the neighbouring elements on a pseudo-dynamic approximation (Dieterich, 1995; Dieterich and Richards-Dinger, 2010; Ric
 170 Towards the ends of the fault is also where the average magnitude is higher (Figure 5c). However, the maximum magnitude of the generated event does not show an important variation; being generated events with magnitudes $M > 7.3$ along the entire fault trace (Figure 5b).
 175 Although the maximum magnitude estimated previously according to empirical relationships was $M_W 7.1 - 7.2$ (Álvarez-Gómez et al., 2011), our result is close to the maximum magnitude of $M_W 7.6 \pm 0.3$ proposed by Moreno (2011).

3 Tsunami modelling

Simulations for seismic triggered tsunamis are based on modelling the deformation of the ocean bottom produced by the earthquake rupture. These models use analytical solutions in an elastic half-space to reproduce the behaviour of the upper
 180 crust. The most commonly used codes for this are often based on equations derived for rectangular dislocations (Mansinha and Smylie, 1971; Okada, 1985, 1992), which makes it difficult to model complex rupture geometries without incorporating numerical artefacts. To solve this problem other mathematical approaches and alternative algorithms have been developed, also

using analytical equations, but for triangular dislocations (Gimbutas et al., 2012; Meade, 2007; Nikkhoo and Walter, 2015). In this work we have used the calculation algorithm developed by Nikkhoo and Walter (2015) for artefact-free triangular geometries with a Poisson ratio of 0.25, typical of upper crust.

As the faults involved in our models are fundamentally strike-slip structures, we have to take into account the impact of the horizontal component of the deformation in the sea bottom alteration. We have adopted the Tanioka and Satake (1996) approximation, which considers the alteration of the sea bottom morphology by the horizontal displacement of the bathymetric slopes:

$$-u_h = u_x \frac{\partial H}{\partial x} + u_y \frac{\partial H}{\partial y} \quad (2)$$

where H is the water depth and u_x and u_y are the components of the horizontal displacement. The total vertical displacement, applied as initial condition for tsunami generation, is the sum of the vertical component u_z and the horizontal sea bottom alteration u_h .

To evaluate the potential of tsunami generation of the modelled earthquakes, we have initially selected events with magnitudes greater than 6.0; obtaining a total of ~~1344~~ 1,344 events. Many of these events will not have the capacity to generate detectable tsunamis on the coast, so to avoid an excessive computational load, we have filtered these pre-selected events based on the surface deformation generated. As the sea-floor deformation generated by the earthquake is ~~usually transferred instantly to the elevation of the water free surface~~ the physical cause producing the tsunami we can use it to directly estimate the ~~event capacity to generate a tsunami~~ tsunamigenic capacity of the event.

Each earthquake rupture is characterized by its unique finite fault model composed by a number of triangular elements. The smaller events considered here, with magnitudes 6.0, are formed by a few tens of elements (~ 40); while the biggest ones, with magnitudes of ~ 7.6 are formed by the rupture of a few thousands of elements (up to ~~52795~~ 5,279). In total we have modelled the rupture of ~~1150265~~ 1,150,265 triangular elements for the ~~1344~~ 1,344 finite fault models.

We have parametrized each sea-floor deformation modelled with the following quantities (Bolshakova and Nosov, 2011; Wessel, 1998) (Figure 6):

i) maximum uplift or water elevation

$$\eta_{max} = \max[\eta_Z(x, y)] \quad (3)$$

ii) maximum vertical displacement double-amplitude defined as

$$A_\eta = \max[\eta_Z(x, y)] - \min[\eta_Z(x, y)] \quad (4)$$

iii) displaced volume

$$V = \iint_S |\eta_Z(x, y)| dS \quad (5)$$

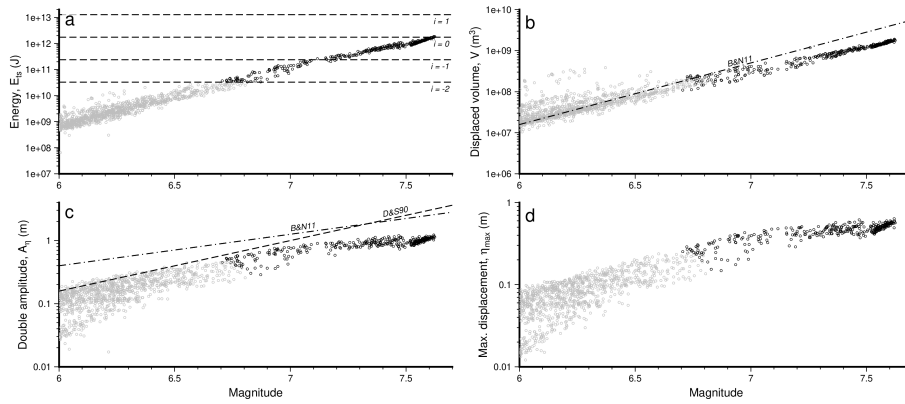


Figure 6. Relations of seafloor deformation parameters with earthquake magnitude. a) Potential energy. Dashed lines show the tsunami intensity according to equation 7. b) Displaced volume. Dash-dotted line shows the Bolshakova and Nosov (2011) upper limit for the magnitude - volume relation. c) Displacement double amplitude. Dash-dotted line shows the Bolshakova and Nosov (2011) upper limit for the magnitude - double amplitude relation and the dashed line the Dotsenko and Soloviev (1990) empirical relation. d) Maximum vertical displacement.

and iv) potential energy

$$E_{ts} = \frac{1}{2} \rho g \iint_S \eta_Z^2(x, y) dS \quad (6)$$

where ρ is the density of water (taken as ~~1038~~ 1,038 kg/m³ (Borghini et al., 2014)) and g the acceleration due to gravity.

215 Nosov et al. (2014) analysed a series of tsunamis generated by earthquakes whose source were characterized with a finite fault model. They compared the modelled surface deformation with the size and intensity of the generated tsunami. Based on these data, they established a series of relationships between the Soloviev-Imamura intensity of the tsunami (Gusiakov, 2011) and different parameters of the sea-floor deformation, among them the displaced volume and the potential energy. Figure 6a shows the ranges of intensity values defined as a function of the potential energy:

$$220 \quad i = 1.16 \log_{10}(E_{ts}) - 14.2 \quad (7)$$

We have selected to simulate those events with a potential energy capable of generating a tsunami of intensity of at least -2. This criteria restricts the number of tsunami propagations to model from ~~1344~~ 1,344 events with $M > 6$ to 331 events with earthquake magnitudes ranging from 6.71 to 7.62 and double amplitudes A_η from 0.3 m to 1.2 m.

225 Bolshakova and Nosov (2011) examined some relevant tsunamis for which they also parametrized the sea-floor deformations. It is noteworthy that those events with double amplitudes below 0.4 m were only perceptible in tide gauges, not generating a notable impact on the coast. As can be seen in Figure 6 there is a good correspondence between the events selected to simulate with those whose double amplitudes are above 0.3 - 0.4 m.

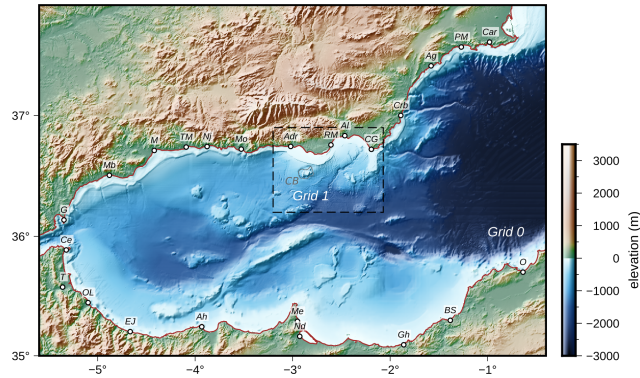


Figure 7. Bathymetric grids used in the propagation modelling. The Grid 0, with a cell size of 500m is composed by the EMODnet 2020 bathymetry (EMODnet, 2022) and the topography by the MERIT DEM (Yamazaki et al., 2017). The Grid 1, with a cell size of 100m, is composed by the EMODnet bathymetry and the 25 m resolution topographic DEM of the IGN (CNIG, 2022). The dashed polygon labelled with CB marks the location of the Chella Bank bathymetric feature. The labels show the main localities mentioned in the text: Car, Cartagena; PM, Puerto de Mazarron; Ag, Aguilas; Crb, Carboneras; CG, Cabo de Gata; Al, Almeria; RM, Roquetas de Mar; Adr, Adra; Mo, Motril; Nj, Nerja; TM, Torre del Mar; M, Malaga; Mb, Marbella; G, Gibraltar; Ce, Ceuta; T, Tetouan; OL, Oued Laou; EJ, El Jebha; Ah, Al Hoceima; Me, Melilla; Nd, Nador; Gh, Ghazaouet; BS, Beni Saf; O, Oran.

In order to model the tsunami propagation we have resort to the highly used and validated code COMCOT (Cornell Multi-grid Coupled Tsunami) (Liu et al., 1995; Wang and Liu, 2006). This algorithm is based on the Non-linear Shallow Water Equations built over a modified leap-frog nested grids scheme.

The bathymetry used is composed of three independent sources (Figure 7). On the one hand, the bathymetric data corresponds to the EMODnet 2020 mesh (EMODnet, 2022), with a horizontal resolution of $1/16'$ (~ 115 m). On the other hand, for the regional topography, we have used the MERIT global DEM (Yamazaki et al., 2017), with a horizontal resolution of $3''$ (~ 90 m). For the highest resolution mesh, on the coast of Almeria, we have used the topography of the digital model of 25 m from the National Geographic Institute of Spain (CNIG, 2022). The regional mesh has been resampled with a cell size of 500 m and the local one with 100 m. [We have used open boundary conditions for the water borders, and a Manning's roughness coefficient of 0.02 when computing the inundation.](#)

For each of the 331 tsunami propagations we have computed the maximum elevation for a model running during 90 minutes, which is enough time for the waves to propagate through the basin and capture the wave reflections. In Figure 8 tsunami travel times are shown as well as examples of the results for three events with different magnitudes.

As expected, for the smaller magnitude events, the location of the rupture, as well as the slip distribution along the fault plane, are the determining factor in the location of the maximum wave elevations (Figure 8a-d). However, for the maximum events (Figures 8e-f), in which slip occurs along the entire fault plane (see Figure 2d), the location of the maximum wave elevations are clearly determined by the morphology of the sea-floor.

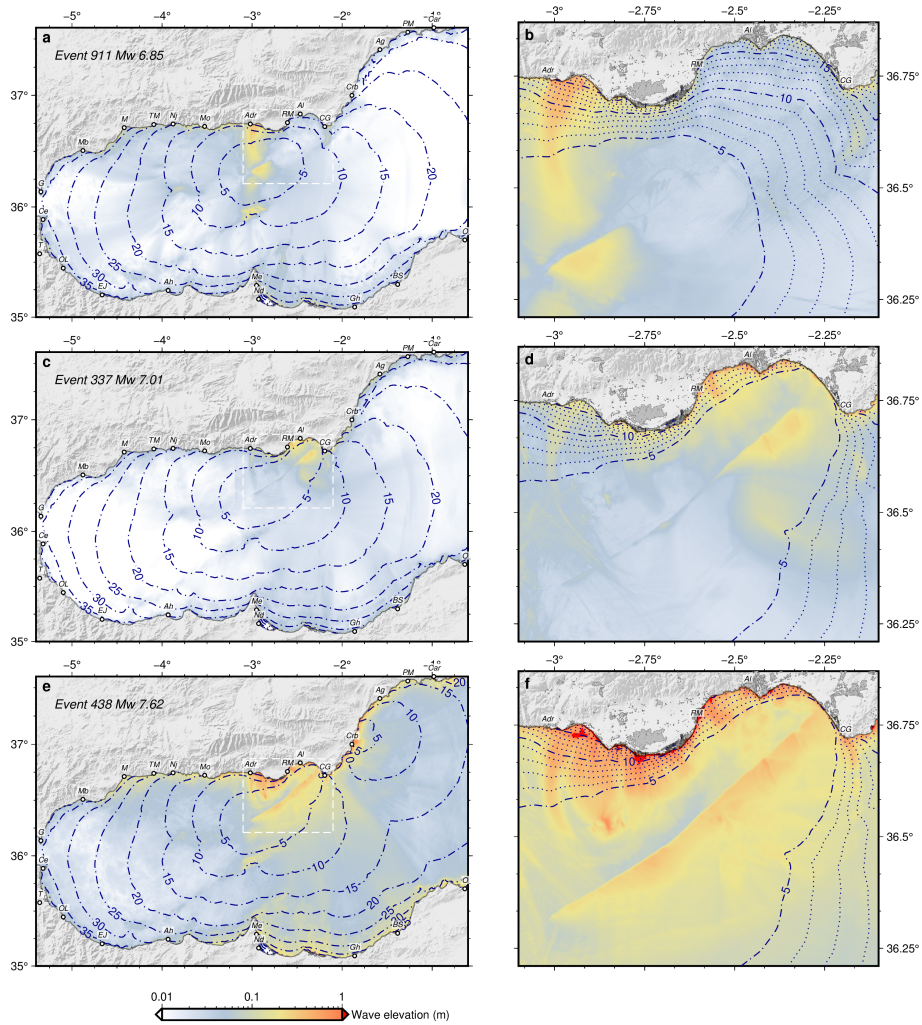


Figure 8. Example of maximum wave elevations obtained for three events (out of 331) with different magnitudes. The ruptures corresponding with these events are shown in Figure 2. Dashed contours show the wave travel time in minutes. See Figure 7 for labels of localities.

245 The classical tsunami hazard deterministic approach consist on the definition of the worst-case scenario based on the di-
 mensions of the source and the employ of a series of empirical relations to define the magnitude of the event and the average
 slip over the fault. Alternatively, instead of defining a single average homogeneous slip model, a set of stochastic variable slip
 models can be produced and analysed statistically.

A common procedure is to show the maximum wave elevation expected for each model cell from a series of modelled
 250 sources. This kind of map is usually called aggregated maximum elevation map; and is very useful to determine the worst
 impact of the wave considering all the potential sources. An extension of this reasoning is the aggregation of maximum

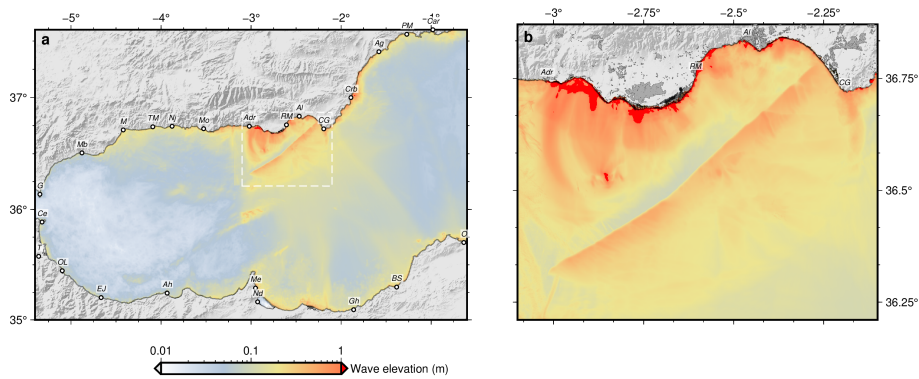


Figure 9. Maximum wave elevation aggregated a) regional and b) local maps. See Figure 7 for labels.

elevations produced by a set of tsunamis produced by variable slip models on a single source or a set of sources. With this latter approach we have produced the aggregated maximum elevation map shown in Figure 9.

The maximum elevations produced by the Carboneras strike-slip fault exceed 1 m consistently, and with relevant inundations, in the Almerian coast (Figure 9). The maximum elevations are located in front of the fault rupture, from Adra to Almeria city, but with relevant local inundations in the Cabo de Gata area. Towards the west the maximum elevations can reach locally 1 m but usually show values of a few decimetres. In the opposite coast, in northern Africa, the maximum elevations are always in the range of 0.1 - 0.8 m with the highest values from Melilla to Ghazouet. For north Africa only the coarse bathymetry has been used and local reflections and resonances not modelled could produce higher elevations locally. Although our approximation is deterministic we can compare our results with the range of elevations obtained for the same area in the context of the probabilistic NEAMTH18 model (Basili et al., 2018, 2021). In the probabilistic model an elevation of 1.3m is obtained with 50% of probability for a period of 10000 years. Our worst-case scenarios, with elevations over 1 m, have inter-event times between 2000 and 6000 years (Figure 4), compatible with the probabilistic hazard results.

Having produced hundreds of rupture scenarios that obey both dimensional and temporal characteristics to the regional seismotectonic context, we can statistically analyse the propagation results. For each calculation point on the map we obtain a statistical distribution of elevations. In Figure 10 some examples are shown for localities along the coast. These elevations have been taken for the 5 m depth isobath. The distribution shown is common for the entire calculation domain, where several local maxima in the distribution can be interpreted, being far from a normal distribution. The highest frequency is commonly related with the lower elevation values, denoting the lower recurrence interval of small events. The second peak observed is usually related to the highest wave elevations, with values ranging from 1.2 m to 2 m. In some places these higher elevations constitute the most frequent values (as is seen in the example of Figure 10a, corresponding to the locality of Adra). Between these two local maxima in the distribution two more local peaks can be interpreted, although of less importance.

In a simple way we have decided to show the statistical complexity of the distributions of maximum elevations on the coast through the use of quartiles; thus Figure 11 shows the maximum elevations corresponding to the 25%, 50% (median) and 75% quartiles. The difference between the regional and local maximum elevations arise from the different cell size used in

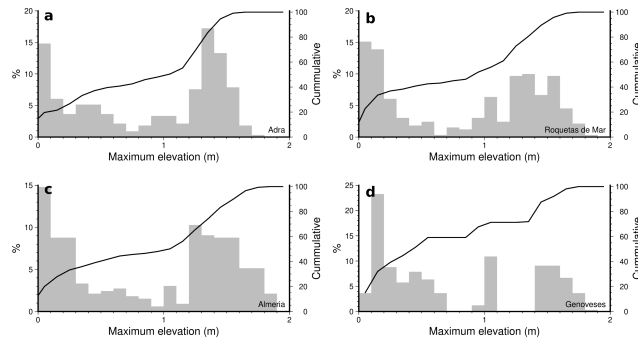


Figure 10. Tsunami wave maximum elevations frequency distribution for locations in a) Adra; b) Roquetas de Mar; c) Almería and d) Genoveses Cove.

the propagation modelling. The regional bathymetry (grid 0 in Figure 7) has a cell size of 500m, while the local bathymetry (grid 1) has a cell size of 100 m. The coarser bathymetry is unable to reproduce with precision the nearshore complexities and the maximum wave elevations are underestimated. This is clearly shown in the 75% quartile maximum elevations (Figure 11c,f), where the elevations along the coast are consistently higher using the local bathymetry compared with the regional. A specially illustrative example is shown in the area of Cabo de Gata (near the eastern edge of the local grid); where a peak on the elevation stands out. This peak is located in the Genoveses cove (Figures 11f) where resonance effects are probably responsible of exceptionally high elevations.

4 Discussion

Tsunamigenic potential of the Carboneras Fault

In line with results obtained in previous analyses of the tsunamigenic potential of strike-slip faults (Elbanna et al., 2021; Frucht et al., 2019; Gusman et al., 2017; Heidarzadeh et al., 2017; Ho et al., 2021); this work demonstrates the tsunamigenic capacity of the Carboneras Fault. This is a strike-slip fault, with some dip-slip component (rake $\sim 10^\circ$ based on field analysis of its outcrops onshore according to (Moreno et al., 2015)) and with the capacity to generate locally damaging tsunamis. However, on a regional scale considering the Alboran Sea basin, its tsunamigenic capacity is more limited, being able to produce tsunamis of small entity in the North African coast between Melilla and Ghazaouet (Figure 9) although with a low frequency (Figure 11).

If we compare the results of this work with previous results (Álvarez-Gómez et al., 2011a, b; Gómez de la Peña et al., 2022) we can see that the tsunamigenic capacity modelled here is higher. While the fault geometry is essentially the same with minor variations due to the higher resolution and fidelity used in our models than in those of Álvarez-Gómez et al. (2011a) and Gómez de la Peña et al. (2022), there are other parameters that differ significantly. The maximum magnitude, estimated according to empirical relationships, in previous models was M_W 7.1 - 7.2, notably lower than the maximum magnitude reached with

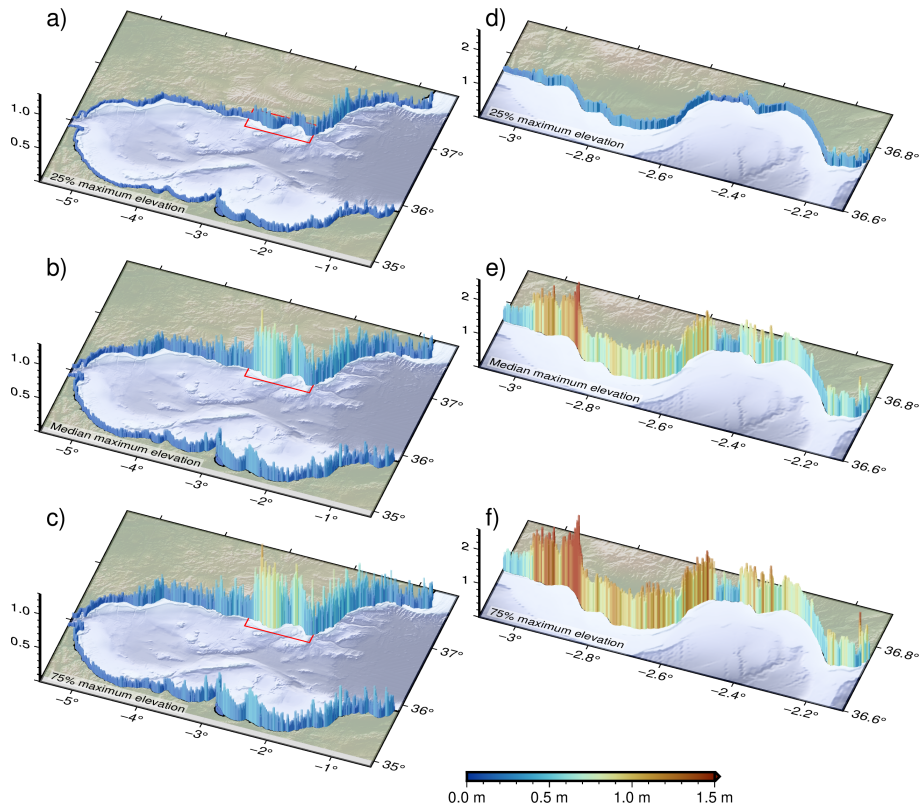


Figure 11. Quartiles of maximum wave elevations obtained from the set of modelled sources. Regional scale maps for a) 25% quartile; b) 50% quartile and c) 75% quartile. Local scale maps for d) 25% quartile; e) 50% quartile and f) 75% quartile.

our physical model, M_W 7.62, which is close to the maximum magnitude proposed by Moreno (2011). This difference in magnitude consequently produces an important difference in net slip. The one used by Álvarez-Gómez et al. (2011a) is 1.9 m and 1.38 m by Gómez de la Peña et al. (2022); these being average slips over the entire rupture area. In the models that we have developed in this work, the slip is variable, but the average slip for a worst-case of magnitude 7.62 would be ~ 6 m, with maximum slips ~ 9 m. On the other hand, the rake used in our models is 10° while Álvarez-Gómez et al. (2011a) used 15° and Gómez de la Peña et al. (2022) used 0° . Obviously this value has impact on the final results and higher rake values will produce greater wave elevations.

Although the physics-based earthquake simulators generate different catalogues each time they are run, if the boundary conditions are the same, the general picture would be equivalent. For example the range in maximum magnitudes would be probably the same as it depends on the dimensions of the structures. If we vary the slip rate or the seismic coupling, the inter-event times would be different, and consequently the statistical distribution of maximum elevations and inundations. When dealing with deterministic approaches, usually a single worst case scenario is used. In the best case a set of worst case scenarios considering the uncertainties is done. With these models we can obtain a physically coherent seismic behaviour through

310 [hundreds of seismic cycles that produce hundreds or thousands of destructive events that can be modelled to characterize not only the worst-case scenario, but also scenarios linked to probabilities of exceedance or return periods.](#)

Seismogenic potential and Frequency-Magnitude distribution

Although the difference in maximum magnitudes may seem large, it must be taken into account that those provided by the empirical relations are the mean values of the regressions best fits, with standard deviations that may be high. On the other hand, in our models we have selected the largest magnitude generated throughout a 1 Myr. catalogue; and not the average value of the maximum magnitudes generated. If we look at Figure 3, we see that the maximum magnitudes, generated by the complete rupture of the Carboneras fault, vary roughly between magnitudes 6.9 and 7.7 (maximum absolute value of 7.62). If we use the empirical relationship of Leonard (2014) for example, for a maximum rupture length of 71 km (using the Gómez de la Peña et al. (2022) value) we obtain magnitudes of 7.25 and using the rupture area we obtain values of 7.14. However, these values represent the mean of the best fit, with a one standard deviation range between 6.86 and 7.64 for the empirical length- M_W relationship and between 6.88 and 7.4 for the area- M_W relationship. Therefore, the values obtained in our model are within the range of one standard deviation of this empirical relationship, with the advantage that we can obtain ~~the maximum magnitudes in a robust manner from a statistical point of view~~ [an in-depth maximum magnitudes statistical analysis.](#)

The distribution of frequencies and magnitudes (FMD) of the generated seismic catalogue (Figure 3) reflects the variability of magnitudes associated to the rupture of the entire fault. Since the long-term behaviour of the modelled system is complex, although the construction of the model is deterministic, the statistical distribution of the generated events reflects the stochastic behaviour characteristic of dynamical systems showing self-organized criticality (SOC) (Bak et al., 1988; Bak and Tang, 1989). This stochastic behaviour of the system is reflected also in the non-linearity of the relationship between the size of the earthquake rupture and the slip; thus, for the same rupture size we obtain different slip distributions and therefore different magnitudes are generated. Maybe as a consequence of this, the upper limit of the FMD departs from the classical Gutenberg-Richter potential relation (GR), showing a distribution markedly different that can be seen on the discrete counts of the plot in Figure 3. This distribution resembles that of the characteristic earthquake behaviour (Schwartz and Coppersmith, 1984), but instead of showing a characteristic single magnitude there is a bell-shaped distribution of the characteristic earthquake magnitudes. [Similar results have been observed also in other physics-based models \(Console et al., 2021; Rafei et al., 2022; Shaw et al., 2022\).](#) In our models this behaviour can be related to the physical limit imposed to the maximum rupture area and consequently limiting the self-similar range of the dynamic system (Ben-Zion and Rice, 1995); maybe if the rupture area could be modelled as infinite, the FMD would reflect a GR relation.

Worst-case scenario approximation

This concept of characteristic earthquake, or worst-case scenario, is frequently used in deterministic hazard approximations. In these models, simple rectangular sources with homogeneous slips over the fault rupture are used. There has been much debate about the appropriateness of using these simple models and whether they can roughly reflect the tsunamigenic potential of a source. To address some of the drawbacks of this methodology, stochastic probabilistic approaches have been proposed for

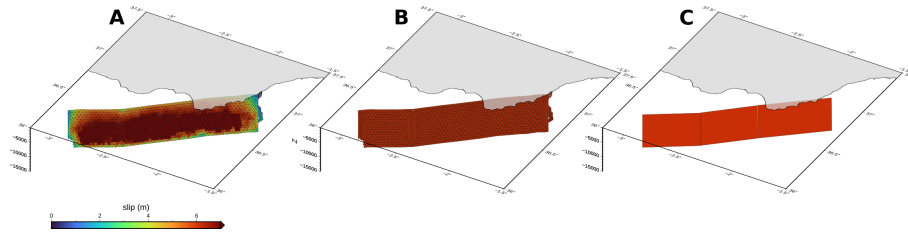


Figure 12. Comparison of source simplifications. a) Realistic geometry and variable slip maximum earthquake, M_W 7.62, model; b) realistic geometry with average homogeneous slip; c) simplified geometry and homogeneous slip.

the generation of variable slips on the fault plane. In principle, the variable slip should play a key role on the impact of local sources, which has been seen in the models shown in Figure 8 for events of different magnitudes (see supplementary models
 345 for comparison). To analyse the influence of these aspects we have compared one of the maximum scenarios modelled, with magnitude M_W 7.62 (Figure 12a), with scenarios of equal magnitude but with homogeneous slip in the detailed geometry (Figure 12b), as well as with a simplistic model based on 3 rectangular sections like the one used by Álvarez-Gómez et al. (2011a) (Figure 12c).

At first glance, the propagations are very similar and share their main features. If we compare them at a local scale (Figure
 350 13), we see that the differences are below 0.5 m in general, although locally the differences may be greater on the coast (up to 3 m). From the regional point of view, the differences are minor (Figure 14).

If we compare the local propagation between the simplified rectangular source and the variable slip source (Figure 13d) the main differences are located towards the tips of the fault sections. These sections behave as patches whose slip decreases towards the tips (Figure 12a), and it is therefore at these points where the simplified model overestimates sea-floor uplift (the
 355 blue colours in figure 13d show this important difference in the Adra area). On the contrary, towards the centre of the sections the simplified model underestimates the uplift. These differences are essentially the same as those that can be observed in the comparison of both realistic geometries but with variable or constant slips (Figure 13e). In this case, since both geometries are the same, the differences between both models are minor. [Some of these differences can be diminished using slip tapering towards the edges of the rectangular rupture or modelling elliptical ruptures.](#)

Regionally, the differences between the models are minor, although the slip differences towards the southern tip of the fault are evident, as has been seen locally as well. On both the Iberian and African coasts, values are overestimated by the simplified models towards the western part of the basin (negative values in Figures 14d and e), while elevations are underestimated towards the eastern part.

What is evident is the main role that bathymetry plays in the propagation features, determining to a large extent the location
 365 of the areas where there is major impact (Figure 9). In this sense, the Chella Bank, off the coast of Adra (Figure 7), determines the wave propagation and the impact on this coast, in which the highest wave elevations are observed (Figure 11).

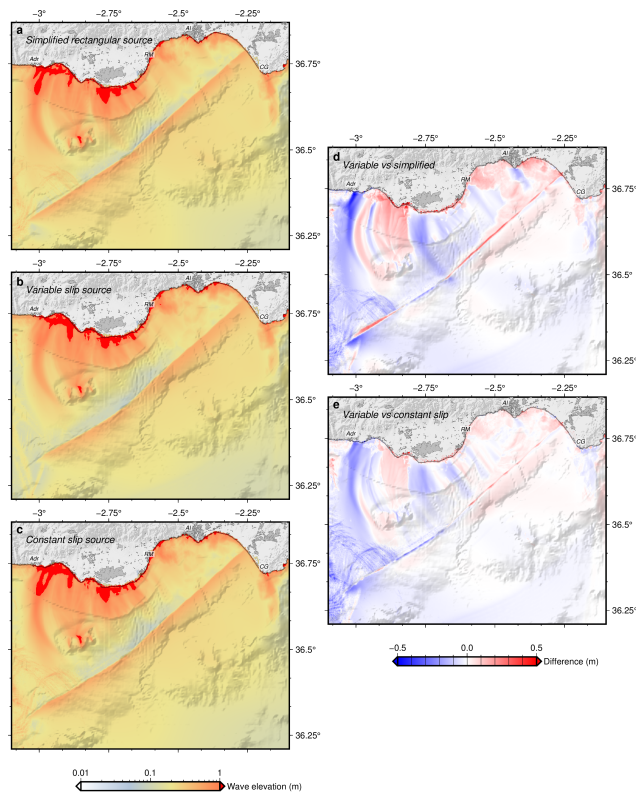


Figure 13. Comparison of local propagations for the simplified sources shown in Figure 12. a) Propagation of the simplified rectangular source. b) Propagation of the variable slip and realistic geometry source. c) Propagation of the homogeneous slip source with realistic geometry. d) Differences between variable and simplified sources. e) Differences between variable and constant slip sources. See Figure 7 for labels.

5 Conclusions

From a deterministic point of view, the one adopted in this work, the use of physics-based earthquake simulations for tsunami-
 370 elevations (Figure 9) or the statistical exploitation of the hundreds or thousands of scenarios generated (Figure 11). In addition,
 the use of this tool allows characterizing the inter-event times and the recurrence intervals of the maximum events, which are
 those that have the greatest impact on the tsunami hazard.

Regarding the estimation of the maximum magnitude of a source, a key step in the deterministic characterization of the
 tsunami impact, this methodology incorporates the stochastic natural variation in rupture area, slip and magnitude that arises
 375 from the non-linear process of seismic rupture. Thus, instead of characterizing the size of the worst-case earthquake through
 empirical relationships, we can obtain a range of magnitudes characterized by a probability distribution, which allows **a robust**

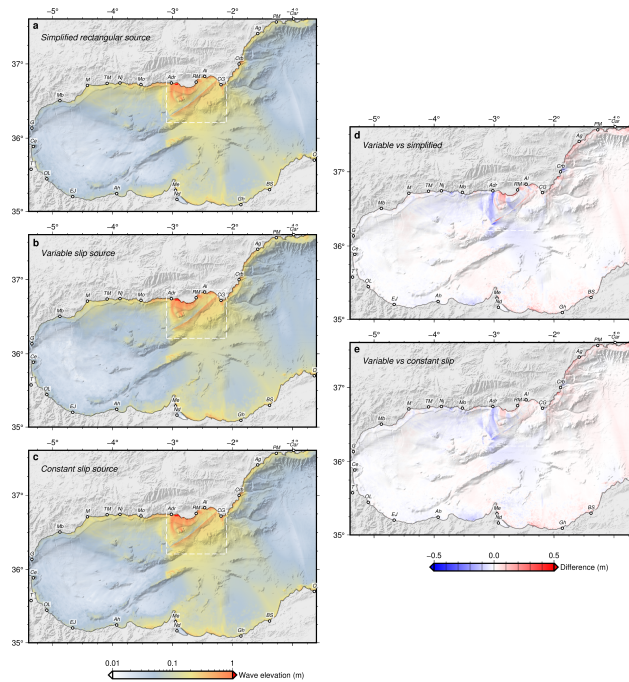


Figure 14. Comparison of regional propagations for the simplified sources shown in Figure 12. a) Propagation of the simplified rectangular source. b) Propagation of the variable slip and realistic geometry source. c) Propagation of the homogeneous slip source with realistic geometry. d) Differences between variable and simplified sources. e) Differences between variable and constant slip sources. See Figure 7 for labels.

[an in-depth](#) implementation of uncertainty estimation. In addition, each modelled seismic rupture is characterized by its own variable slip distribution and rupture process as they are modelled with a quasi-dynamic algorithm.

The strike-slip Carboneras Fault has the capacity to generate locally damaging tsunamis. However, on a regional scale, considering the Alboran Sea basin, its tsunamigenic capacity is more limited. Comparing our results with previous works (Álvarez-Gómez et al., 2011a, b; Gómez de la Peña et al., 2022) we can see that the tsunamigenic capacity modelled here is higher, basically due to the difference in maximum magnitude, which produces an important difference in maximum net slip.

The distribution of frequencies and magnitudes (FMD) of the generated seismic catalogue (Figure 3) reflects the variability of magnitudes associated to the rupture of the entire fault. The upper limit of the FMD departs from the classical Gutenberg-Richter potential relation, showing a bell-shaped distribution of the maximum earthquakes magnitude in a range between 6.9 and 7.7. The inter-event time for these magnitudes is around 2000 – 6000 years (Figure 4).

The use of physics-based earthquake simulations for tsunamigenic sources allows a qualitative leap in their characterization. From a probabilistic point of view, these models have shown in the Probabilistic Seismic Hazard Analyses (PSHA) a great potential to estimate recurrence periods and inter-event times for large earthquakes, which are poorly represented in the instrumental seismic catalogues (Chartier et al., 2021; Herrero-Barbero et al., 2021; Console et al., 2017); being one of the key

pieces in the current development of seismic forecast models (Dieterich and Richards-Dinger, 2010; Field, 2019; Field et al., 2014; Shaw et al., 2018). The implementation of these methodologies in the Probabilistic Tsunami Hazard Analyses (PTHA)₂ is a logical and necessary step.

395 *Code availability.* The RSQSim physics-based earthquake simulator has been developed by Richards-Dinger and Dieterich (2012) and can be obtained from the authors upon request. The COMCOT tsunami simulation has been developed by Liu et al. (1995). The version used in this work is an adaptation to gfortran compiler developed by Tao, Chiu at Tsunami research group, IHOS, NCU; available at <https://github.com/AndybnACT/comcot-gfortran>. GMT (Wessel et al., 2013) has been used to perform some calculations and to produce most of the figures.

400 *Author contributions.* JAAG conceived the work, performed the tsunami simulations and analysis and collaborated on the manuscript writing. PHB constructed the 3D fault model, performed the physics-based earthquake simulations and analysis and collaborated on the manuscript writing. JJMD collaborated on the manuscript writing and on the discussions on the EBSZ tectonics.

Competing interests. The authors declare no competing interests.

405 *Acknowledgements.* The bathymetry used has been provided by the EMODnet Bathymetry Consortium (EMODnet, 2022). This work has been partially funded by the project [model_SHaKER](#) (PID2021-124155NB-C31) of the Spanish National Research Agency. [We would like to thank the comments and constructive criticism of the reviewers J. García-Mayordomo and L. Matías, as well as the useful suggestions of the editor R. Omira.](#)

References

- 410 Álvarez-Gómez, J. A., Aniel-Quiroga, Í., González, M., Olabarrieta, M., and Carreño, E.: Scenarios for earthquake-generated tsunamis on a complex tectonic area of diffuse deformation and low velocity: The Alboran Sea, Western Mediterranean, *Marine Geology*, 284, 55–73, publisher: Elsevier, 2011a.
- Álvarez-Gómez, J. A., Aniel-Quiroga, Í., González, M., and Otero, L.: Tsunami hazard at the Western Mediterranean Spanish coast from seismic sources, *Nat. Hazards Earth Syst. Sci.*, 11, 227–240, 2011b.
- Bak, P. and Tang, C.: Earthquakes as a self-organized critical phenomenon, *Journal of Geophysical Research*, 94, 15 635–15 637, 1989.
- Bak, P., Tang, C., and Wiesenfeld, K.: Self-organized criticality, *Physical Review A*, 38, 364–374, <https://doi.org/10.1103/PhysRevA.38.364>,
415 1988.
- Ballesteros, M., Rivera, J., noz, A. M., noz Martín, A. M., Acosta, J., Carbó, A., and Uchupi, E.: Alboran Basin, southern Spain—Part II: Neogene tectonic implications for the orogenic float model, *Marine and Petroleum Geology*, 25, 75–101, 2008.
- [Baptista, M. A. and Miranda, J. M.: Revision of the Portuguese catalog of tsunamis, *Natural Hazards and Earth System Science*, 9, 25–42, 2009.](#)
- 420 [Basili, R., Brizuela, B., Herrero, A., Iqbal, S., Lorito, S., Maesano, F.E., Murphy, S., Perfetti, P., Romano, F., Scala, A., Selva, J., Taroni, M., Thio, H.K., Tiberti, M.M., Tonini, R., Volpe, M., Glimsdal, S., Harbitz, C.B., Løvholt, F., Baptista, M.A., Carrilho, F., Matias, L.M., Omira, R., Babeyko, A., Hoechner, A., Gurbuz, M., Pekcan, O., Yalçiner, A., Canals, M., Lastras, G., Agalos, A., Papadopoulos, G., Triantafyllou, I., Benchekroun, S., Agrebi Jaouadi, H., Attafi, K., Ben Abdallah, S., Bouallegue, A., Hamdi, H. and Oueslati, F.: NEAM Tsunami Hazard Model 2018 \(NEAMTHM18\): online data of the Probabilistic Tsunami Hazard Model for the NEAM Region from the](#)
425 [TSUMAPS-NEAM project, Istituto Nazionale di Geofisica e Vulcanologia \(INGV\), \[https://doi.org/10.13127/tsunami/neamthm18_2018\]\(https://doi.org/10.13127/tsunami/neamthm18_2018\).](#)
- [Basili R., Brizuela B., Herrero A., Iqbal S., Lorito S., Maesano F.E., Murphy S., Perfetti P., Romano F., Scala A., Selva J., Taroni M., Thio H.K., Tiberti M.M., Tonini R., Volpe M., Glimsdal S., Harbitz C.B., Løvholt F., Baptista M.A., Carrilho F., Matias L.M., Omira R., Babeyko A., Hoechner A., Gurbuz M., Pekcan O., Yalçiner A., Canals M., Lastras G., Agalos A., Papadopoulos G., Triantafyllou I., Benchekroun S., Agrebi Jaouadi K., Ben Abdallah S., Bouallegue A., Hamdi H., Oueslati F., Amato A., Armigliato A., Behrens J., Davies](#)
430 [G., Di Bucci D., Dolce M., Geist E., Gonzalez Vida J.M., González M., Macías Sánchez J., Meletti C., Ozer Sozdinler C., Pagani M., Parsons T., Polet J., Power W., Sørensen M.B., Zaytsev A.: The making of the NEAM Tsunami Hazard Model 2018 \(NEAMTHM18\). *Frontiers in Earth Sciences*, <https://doi.org/10.3389/feart.2020.616594>, 2021.](#)
- Ben-Zion, Y. and Rice, J. R.: Slip patterns and earthquake populations along different classes of faults in elastic solids, *Journal of Geophysical Research: Solid Earth*, 100, 12 959–12 983, <https://doi.org/10.1029/94JB03037>, 1995.
- 435 Bolshakova, A. V. and Nosov, M. A.: Parameters of Tsunami Source Versus Earthquake Magnitude, *Pure and Applied Geophysics*, 168, 2023–2031, <https://doi.org/10.1007/s00024-011-0285-3>, 2011.
- Borghini, M., Bryden, H., Schroeder, K., Sparnocchia, S., and Vetrano, A.: The Mediterranean is becoming saltier, *Ocean Science*, 10, 693–700, <https://doi.org/10.5194/os-10-693-2014>, 2014.
- Borque, M. J., Sánchez-Alzola, A., Martín-Rojas, I., Alfaro, P., Molina, S., Rosa-Cintas, S., Rodríguez-Caderot, G., de Lacy, C., García-Armenteros, J. A., Avilés, M., Herrera-Olmo, A., García-Tortosa, F. J., Estévez, A., and Gil, A. J.: How Much Nubia-Eurasia Convergence Is Accommodated by the NE End of the Eastern Betic Shear Zone (SE Spain)? Constraints From GPS Velocities, *Tectonics*, 38, 1824–1839, <https://doi.org/10.1029/2018TC004970>, 2019.

- Bourgois, J., Mauffret, A., Ammar, N. A., and Demnati, N. A.: Multichannel seismic data imaging of inversion tectonics of the Alboran Ridge (Western Mediterranean Sea), *Geo-Marine Letters*, 12, 117–122, 1992.
- 445 Bousquet, J.-C.: Quaternary strike-slip faults in southeastern Spain, *Tectonophysics*, 52, 277–286, [https://doi.org/10.1016/0040-1951\(79\)90232-4](https://doi.org/10.1016/0040-1951(79)90232-4), 1979.
- Burbidge, D., Mueller, C., and Power, W.: The effect of uncertainty in earthquake fault parameters on the maximum wave height from a tsunami propagation model, *Natural Hazards and Earth System Sciences*, 15, 2299–2312, <https://doi.org/10.5194/nhess-15-2299-2015>, 2015.
- 450 [Cabañas, L., Rivas-Medina, A., Martínez-Solares, J. M., Gaspar-Escribano, J. M., Benito, B., Antón, R. and Ruiz-Barajas, S.: Relationships Between Mw and Other Earthquake Size Parameters in the Spanish IGN Seismic Catalog. *Pure and Applied Geophysics*, 172\(9\), 2397-2410. <https://doi.org/10.1007/s00024-014-1025-2>, 2015.](#)
- Chartier, T., Scotti, O., Lyon-Caen, H., Richard-Dinger, K., Dieterich, J. H., and Shaw, B. E.: Modelling earthquake rates and associated uncertainties in the Marmara Region, Turkey, *Natural Hazards and Earth System Sciences*, 21, 2733–2751, [https://doi.org/10.5194/nhess-](https://doi.org/10.5194/nhess-21-2733-2021)
- 455 [21-2733-2021](#), 2021.
- Chertova, M. V., Spakman, W., Geenen, T., van den Berg, A. P., and van Hinsbergen, D. J. J.: Underpinning tectonic reconstructions of the western Mediterranean region with dynamic slab evolution from 3-D numerical modeling, *Journal of Geophysical Research: Solid Earth*, 119, 5876–5902, <https://doi.org/10.1002/2014JB011150>, 2014.
- CNIG, Centro Nacional de Información Geográfica: Modelo Digital del Terreno - MDT25, <http://centrodedescargas.cnig.es>, 2022.
- 460 Comas, M. C., Dueñas, V. G., and Jurado, M. J.: Neogene tectonic evolution of the Alboran Basin from MCS data, *Geo-Marine Letters*, 12, 157–164, 1992.
- Console, R., Carluccio, R., Papadimitriou, E., and Karakostas, V.: Synthetic earthquake catalogs simulating seismic activity in the Corinth Gulf, Greece, fault system, *Journal of Geophysical Research: Solid Earth*, 120, 326–343, <https://doi.org/10.1002/2014JB011765>, 2015.
- Console, R., Nardi, A., Carluccio, R., Murru, M., Falcone, G., and Parsons, T.: A physics-based earthquake simulator and its application to
- 465 [seismic hazard assessment in Calabria \(Southern Italy\) region, *Acta Geophysica*, 65, 243–257, <https://doi.org/10.1007/s11600-017-0020-2>, 2017.](#)
- Console, R., Vannoli, P., and Carluccio, R.: The seismicity of the Central Apennines (Italy) studied by means of a physics-based earthquake simulator, *Geophysical Journal International*, 212, 916–929, <https://doi.org/10.1093/gji/ggx451>, 2018.
- 470 [Console, R., Carluccio, R., Murru, M., Papadimitriou, E. and Karakostas, V.: Physics-Based Simulation of Spatiotemporal Patterns of Earthquakes in the Corinth Gulf, Greece, Fault System. *Bulletin of the Seismological Society of America*, 112\(1\), 98–117. <https://doi.org/10.1785/0120210038>, 2021.](#)
- [Cunha, T.A., Matias, L.M., Terrinha, P., Negredo, A.M., Rosas, F., Fernandes, R.M.S. and Pinheiro, L.M.: Neotectonics of the SW Iberia margin, Gulf of Cadiz and Alboran Sea: a reassessment including recent structural, seismic and geodetic data, *Geophysical Journal International*, 188, 850–872, 2012.](#)
- 475 [Davies, G., Griffin, J., Løvholt, F., Glimsdal, S., Harbitz, C., Thio, H.K., Lorito, S., Basili, R., Selva, J., Geist, E. and Baptista, M.A.: A global probabilistic tsunami hazard assessment from earthquake sources, *Geological Society, London, Special Publications*, 456\(1\), 219–244, 2018.](#)
- Dieterich, J. H.: Modeling of rock friction: 1. Experimental results and constitutive equations, *Journal of Geophysical Research: Solid Earth*, 84, 2161–2168, <https://doi.org/10.1029/JB084iB05p02161>, 1979.

- 480 Dieterich, J. H.: Earthquake nucleation on faults with rate-and state-dependent strength, *Tectonophysics*, 211, 115–134, [https://doi.org/10.1016/0040-1951\(92\)90055-B](https://doi.org/10.1016/0040-1951(92)90055-B), 1992.
- Dieterich, J. H.: Earthquake simulations with time-dependent nucleation and long-range interactions, *Nonlinear Processes in Geophysics*, 2, 109–120, 1995.
- Dieterich, J. H. and Richards-Dinger, K. B.: Earthquake Recurrence in Simulated Fault Systems, in: *Seismogenesis and Earthquake Forecasting: The Frank Evison Volume II*, edited by Savage, M. K., Rhoades, D. A., Smith, E. G. C., Gerstenberger, M. C., and Vere-Jones, D., pp. 233–250, Springer, Basel, https://doi.org/10.1007/978-3-0346-0500-7_15, 2010.
- 485 Do Couto, D., Gorini, C., Jolivet, L., Lebret, N., Augier, R., Gumiaux, C., d’Acremont, E., Ammar, A., Jabour, H., and Auxietre, J.-L.: Tectonic and stratigraphic evolution of the Western Alboran Sea Basin in the last 25Myrs, *Tectonophysics*, 677-678, 280–311, <https://doi.org/10.1016/j.tecto.2016.03.020>, 2016.
- 490 Dotsenko, S. F. and Soloviev, S. L.: Mathematical modeling of tsunami excitation process by displacement of the ocean bottom, *Tsunami researches (in Russian)*, 4, 8–20, 1990.
- Echeverria, A., Khazaradze, G., Asensio, E., Gárate, J., Dávila, J. M., and Suriñach, E.: Crustal deformation in eastern Betics from CuaTeNeo GPS network, *Tectonophysics*, 608, 600–612, <https://doi.org/10.1016/j.tecto.2013.08.020>, 2013.
- Echeverria, A., Khazaradze, G., Asensio, E., and Masana, E.: Geodetic evidence for continuing tectonic activity of the Carboneras fault (SE 495 Spain), *Tectonophysics*, 663, 302–309, <https://doi.org/10.1016/j.tecto.2015.08.009>, 2015.
- Elbanna, A., Abdelmeguid, M., Ma, X., Amlani, F., Bhat, H. S., Synolakis, C., and Rosakis, A. J.: Anatomy of strike-slip fault tsunami genesis, *Proceedings of the National Academy of Sciences*, 118, <https://doi.org/10.1073/pnas.2025632118>, 2021.
- EMODnet: EMODnet Digital Bathymetry (DTM 2020), 2022.
- Faccenna, C., Piromallo, C., Crespo-Blanc, A., Jolivet, L., and Rossetti, F.: Lateral slab deformation and the origin of the western Mediterranean arcs, *Tectonics*, 23, TC1012, doi:10.1029/2002TC001488, 2004.
- 500 Faulkner, D. R., Lewis, A. C., and Rutter, E. H.: On the internal structure and mechanics of large strike-slip fault zones: field observations of the Carboneras fault in southeastern Spain, *Tectonophysics*, 367, 235–251, [https://doi.org/10.1016/S0040-1951\(03\)00134-3](https://doi.org/10.1016/S0040-1951(03)00134-3), 2003.
- [Fernández-Ibáñez, F. and Soto, J.I.: Crustal rheology and seismicity in the Gibraltar Arc \(western Mediterranean\), *Tectonics*, 27, TC2007, https://doi.org/10.1029/2007TC002192, 2008.](https://doi.org/10.1029/2007TC002192)
- 505 Field, E. H.: How Physics-Based Earthquake Simulators Might Help Improve Earthquake Forecasts, *Seismological Research Letters*, 90, 467–472, <https://doi.org/10.1785/0220180299>, 2019.
- Field, E. H., Arrowsmith, R. J., Biasi, G. P., Bird, P., Dawson, T. E., Felzer, K. R., Jackson, D. D., Johnson, K. M., Jordan, T. H., Madden, C., Michael, A. J., Milner, K. R., Page, M. T., Parsons, T., Powers, P. M., Shaw, B. E., Thatcher, W. R., Weldon, II, R. J., and Zeng, Y.: Uniform California Earthquake Rupture Forecast, Version 3 (UCERF3)—The Time-Independent Model, *Bulletin of the Seismological*
- 510 *Society of America*, 104, 1122–1180, <https://doi.org/10.1785/0120130164>, 2014.
- Frucht, E., Salamon, A., Gal, E., Ginat, H., Grigorovitch, M., Shem Tov, R., and Ward, S.: A Fresh View of the Tsunami Generated by the Dead Sea Transform, 1995 Mw 7.2 Nuweiba Earthquake, along the Gulf of Elat–Aqaba, *Seismological Research Letters*, 90, 1483–1493, <https://doi.org/10.1785/0220190004>, 2019.
- Fujii, Y., Satake, K., Sakai, S., Shinohara, M., and Kanazawa, T.: Tsunami source of the 2011 off the Pacific coast of Tohoku Earthquake, 515 *Earth, Planets and Space*, 63, 55, <https://doi.org/10.5047/eps.2011.06.010>, 2011.
- [García-Mayordomo, J.: Caracterización y análisis de la peligrosidad sísmica en el sureste de España, Ph.D. Thesis, Universidad Complutense de Madrid, 2005.](https://doi.org/10.1016/j.tecto.2005.08.009)

[García-Mayordomo, J.: Creación de un modelo de zonas sismogénicas para el cálculo del mapa de peligrosidad sísmica de España. Instituto Geológico y Minero de España, Madrid, 125 pp., 2015.](#)

- 520 García-Mayordomo, J., Martín-Banda, R., Insua-Arévalo, J. M., Álvarez-Gómez, J. A., Martínez-Díaz, J. J., and Cabral, J.: Active fault databases: building a bridge between earthquake geologists and seismic hazard practitioners, the case of the QAFI v.3 database, *Natural Hazards and Earth System Sciences*, 17, 1447–1459, <https://doi.org/10.5194/nhess-17-1447-2017>, 2017.
- Geist, E. L.: Local Tsunamis and Earthquake Source Parameters, in: *Advances in Geophysics*, edited by Dmowska, R. and Saltzman, B., vol. 39 of *Tsunamigenic Earthquakes and Their Consequences*, pp. 117–209, Elsevier, [https://doi.org/10.1016/S0065-2687\(08\)60276-9](https://doi.org/10.1016/S0065-2687(08)60276-9),
525 1998.
- Geist, E. L.: Complex earthquake rupture and local tsunamis, *Journal of Geophysical Research: Solid Earth*, 107, ESE 2–1–ESE 2–15, <https://doi.org/10.1029/2000JB000139>, 2002.
- Gibbons, S. J., Lorito, S., de la Asunción, M., Volpe, M., Selva, J., Macías, J., Sánchez-Linares, C., Brizuela, B., Vöge, M., Tonini, R., Lanucara, P., Glimsdal, S., Romano, F., Meyer, J. C., and Løvholt, F.: The Sensitivity of Tsunami Impact to Earthquake Source Parameters
530 and Manning Friction in High-Resolution Inundation Simulations, *Frontiers in Earth Science*, 9, 2022.
- Gimbutas, Z., Greengard, L., Barall, M., and Tullis, T. E.: On the Calculation of Displacement, Stress, and Strain Induced by Triangular Dislocations, *Bulletin of the Seismological Society of America*, 102, 2776–2780, <https://doi.org/10.1785/0120120127>, 2012.
- Goda, K., Yasuda, T., Mori, N., and Mai, P. M.: Variability of tsunami inundation footprints considering stochastic scenarios based on a single rupture model: Application to the 2011 Tohoku earthquake, *Journal of Geophysical Research: Oceans*, 120, 4552–4575,
535 <https://doi.org/10.1002/2014JC010626>, 2015.
- Gómez de la Peña, L., R. Ranero, C., Gràcia, E., and Booth-Rea, G.: The evolution of the westernmost Mediterranean basins, *Earth-Science Reviews*, 214, 103 445, <https://doi.org/10.1016/j.earscirev.2020.103445>, 2021.
- Gómez de la Peña, L., Gràcia, E., Maesano, F. E., Basili, R., Kopp, H., Sánchez-Serra, C., Scala, A., Romano, F., Volpe, M., Piatanesi, A., and R. Ranero, C.: A first appraisal of the seismogenic and tsunamigenic potential of the largest fault systems in the westernmost
540 Mediterranean, *Marine Geology*, 445, 106 749, <https://doi.org/10.1016/j.margeo.2022.106749>, 2022.
- Gràcia, E., Pallàs, R., Soto, J. I., Comas, M., Moreno, X., Masana, E., Santanach, P., Diez, E., García, M., and Dañoibeitia, J.: Active faulting offshore SE Spain (Alboran Sea): Implications for earthquake hazard assessment in the Southern Iberian Margin, *Earth and Planetary Science Letters*, 241, 734–749, 2006.
- [Grevemeyer, I., Gràcia, E., Villaseñor, A., Leuchters, W. and Watts, A.B.: Seismicity and active tectonics in the Alboran Sea, Western Mediterranean: Constraints from an offshore-onshore seismological network and swath bathymetry data, *Journal of Geophysical Research: Solid Earth*, 120, 8348–8365, <https://doi.org/10.1002/2015JB012073>, 2015.](#)
545
- Gusiakov, V. K.: Relationship of Tsunami Intensity to Source Earthquake Magnitude as Retrieved from Historical Data, *Pure and Applied Geophysics*, 168, 2033–2041, <https://doi.org/10.1007/s00024-011-0286-2>, 2011.
- Gusman, A. R., Tanioka, Y., Sakai, S., and Tsushima, H.: Source model of the great 2011 Tohoku earthquake estimated from tsunami wave-
550 forms and crustal deformation data, *Earth and Planetary Science Letters*, 341-344, 234–242, <https://doi.org/10.1016/j.epsl.2012.06.006>, 2012.
- Gusman, A. R., Satake, K., and Harada, T.: Rupture process of the 2016 Wharton Basin strike-slip faulting earthquake estimated from joint inversion of teleseismic and tsunami waveforms, *Geophysical Research Letters*, 44, 4082–4089, <https://doi.org/10.1002/2017GL073611>, 2017.

- 555 Harris, R. A., Barall, M., Aagaard, B., Ma, S., Roten, D., Olsen, K., Duan, B., Liu, D., Luo, B., Bai, K., Ampuero, J.-P., Kaneko, Y., Gabriel, A.-A., Duru, K., Ulrich, T., Wollherr, S., Shi, Z., Dunham, E., Bydlon, S., Zhang, Z., Chen, X., Somala, S. N., Pelties, C., Tago, J., Cruz-Atienza, V. M., Kozdon, J., Daub, E., Aslam, K., Kase, Y., Withers, K., and Dalguer, L.: A Suite of Exercises for Verifying Dynamic Earthquake Rupture Codes, *Seismological Research Letters*, 89, 1146–1162, <https://doi.org/10.1785/0220170222>, 2018.
- Heidarzadeh, M., Harada, T., Satake, K., Ishibe, T., and Takagawa, T.: Tsunamis from strike-slip earthquakes in the Wharton Basin, northeast Indian Ocean: March 2016 Mw7.8 event and its relationship with the April 2012 Mw 8.6 event, *Geophysical Journal International*, 211, 1601–1612, <https://doi.org/10.1093/gji/ggx395>, 2017.
- 560 Herrero-Barbero, P., Alvarez-Gomez, J. A., Martinez-Diaz, J. J., and Klimowitz, J.: Neogene Basin Inversion and Recent Slip Rate Distribution of the Northern Termination of the Alhama de Murcia Fault (Eastern Betic Shear Zone, SE Spain), *Tectonics*, 39, e2019TC005750, <https://doi.org/10.1029/2019TC005750>, 2020.
- 565 Herrero-Barbero, P., Álvarez-Gómez, J. A., Williams, C., Villamor, P., Insua-Arévalo, J. M., Alonso-Henar, J., and Martínez-Díaz, J. J.: Physics-Based Earthquake Simulations in Slow-Moving Faults: A Case Study From the Eastern Betic Shear Zone (SE Iberian Peninsula), *Journal of Geophysical Research: Solid Earth*, 126, e2020JB021133, <https://doi.org/10.1029/2020JB021133>, 2021.
- Ho, T.-C., Satake, K., Watada, S., Hsieh, M.-C., Chuang, R. Y., Aoki, Y., Mulia, I. E., Gusman, A. R., and Lu, C.-H.: Tsunami Induced by the Strike-Slip Fault of the 2018 Palu Earthquake (Mw = 7.5), Sulawesi Island, Indonesia, *Earth and Space Science*, 8, <https://doi.org/http://dx.doi.org/10.1029/2020EA001400>, 2021.
- 570 Hornbach, M. J., Brady, N., Briggs, R. W., Cormier, M.-h., Davis, M. B., Diebold, J. B., Dieudonne, N., Douilly, R., Frohlich, C., Gulick, S. P. S., Johnson Iii, H. E., Mann, P., Mchugh, C., Ryan-mishkin, K., Prentice, C. S., Seeber, L., Sorlien, C. C., Steckler, M. S., Symithe, S. J., Taylor, F. W., and Templeton, J.: High tsunami frequency as a result of combined strike-slip faulting and coastal landslides, *Nature Geoscience*, 3, 783–788, <https://doi.org/http://dx.doi.org/10.1038/ngeo975>, 2010.
- 575 Howarth, J. D., Barth, N. C., Fitzsimons, S. J., Richards-Dinger, K., Clark, K. J., Biasi, G. P., Cochran, U. A., Langridge, R. M., Berryman, K. R., and Sutherland, R.: Spatiotemporal clustering of great earthquakes on a transform fault controlled by geometry, *Nature Geoscience*, 14, 314–320, <https://doi.org/10.1038/s41561-021-00721-4>, 2021.
- IGN-UPM: Actualización de mapas de peligrosidad sísmica de España 2012., vol. 267, 2013.
- [Jiménez-Munt, I. and Negredo, A.M.: Neotectonic modelling of the western part of the Africa–Eurasia plate boundary: from the Mid-Atlantic ridge to Algeria, *Earth and Planetary Science Letters* 205, 257–271, 2013.](#)
- 580 Kozdon, J. E. and Dunham, E. M.: Rupture to the Trench: Dynamic Rupture Simulations of the 11 March 2011 Tohoku Earthquake, *Bulletin of the Seismological Society of America*, 103, 1275–1289, <https://doi.org/10.1785/0120120136>, 2013.
- Lavallée, D., Liu, P., and Archuleta, R. J.: Stochastic model of heterogeneity in earthquake slip spatial distributions, *Geophysical Journal International*, 165, 622–640, <https://doi.org/10.1111/j.1365-246X.2006.02943.x>, 2006.
- 585 Legg, M., Borrero, J., and Synolakis, C.: Tsunami Hazards From Strike-Slip Earthquakes, AGU Fall Meeting Abstracts, 2003.
- Leonard, M.: Self-Consistent Earthquake Fault-Scaling Relations: Update and Extension to Stable Continental Strike-Slip Faults, *Bulletin of the Seismological Society of America*, 104, 2953–2965, <https://doi.org/10.1785/0120140087>, 2014.
- Liu, P. L. F., Cho, Y. S., Yoon, S. B., and Seo, S. N.: Numerical Simulations of the 1960 Chilean Tsunami Propagation and Inundation at Hilo, Hawaii, in: *Tsunami: Progress in Prediction, Disaster Prevention and Warning*, edited by Tsuchiya, Y. and Shuto, N., *Advances in Natural and Technological Hazards Research*, pp. 99–115, Springer Netherlands, Dordrecht, https://doi.org/10.1007/978-94-015-8565-1_7, 1995.
- 590 Løvholt, F., Pedersen, G., Bazin, S., Kühn, D., Bredesen, R. E., and Harbitz, C.: Stochastic analysis of tsunami runup due to heterogeneous coseismic slip and dispersion, *Journal of Geophysical Research: Oceans*, 117, <https://doi.org/10.1029/2011JC007616>, 2012.

- Madden, E. H., Bader, M., Behrens, J., van Dinther, Y., Gabriel, A.-A., Rannabauer, L., Ulrich, T., Uphoff, C., Vater, S., and van Zelst, I.: Linked 3-D modelling of megathrust earthquake-tsunami events: from subduction to tsunami run up, *Geophysical Journal International*, 224, 487–516, <https://doi.org/10.1093/gji/ggaa484>, 2021.
- Maeda, T. and Furumura, T.: FDM Simulation of Seismic Waves, Ocean Acoustic Waves, and Tsunamis Based on Tsunami-Coupled Equations of Motion, *Pure and Applied Geophysics*, 170, 109–127, <https://doi.org/10.1007/s00024-011-0430-z>, 2013.
- Mai, P. M. and Beroza, G. C.: A spatial random field model to characterize complexity in earthquake slip, *Journal of Geophysical Research: Solid Earth*, 107, ESE 10–1–ESE 10–21, <https://doi.org/10.1029/2001JB000588>, 2002.
- 600 [Mancilla, F.L., Stich, D., Berrocoso, M., Martín, R., Morales, J., Fernandez-Ros, A., Páez, R. and Pérez-Peña, A.: Delamination in the Betic Range: Deep structure, seismicity, and GPS motion, *Geology*, 41\(3\): 307–310, 2013.](#)
- Mansinha, L. and Smylie, D. E.: The displacement fields of inclined faults, *Bulletin of the Seismological Society of America*, 61, 1433–1440, 1971.
- Martínez-García, P.: Recent tectonic evolution of the Alboran Ridge and Yusuf regions, Ph.D. thesis, Universidad de Granada, 2012.
- 605 Martínez-García, P., Comas, M., Soto, J. I., Lonergan, L., and Watts, A. B.: Strike-slip tectonics and basin inversion in the Western Mediterranean: the Post-Messinian evolution of the Alboran Sea, *Basin Research*, 25, 361–387, <https://doi.org/10.1111/bre.12005>, 2013.
- Martínez-García, P., Comas, M., Lonergan, L., and Watts, A. B.: From Extension to Shortening: Tectonic Inversion Distributed in Time and Space in the Alboran Sea, Western Mediterranean, *Tectonics*, 36, 2777–2805, <https://doi.org/10.1002/2017TC004489>, 2017.
- Martínez Solares, J. M. and Mezcuá, J.: Catálogo sísmico de la Península Ibérica:(880 a. C-1900), Ministerio de Fomento, 2002.
- 610 Masana, E., Moreno, X., Gràcia, E., Pallàs, R., Ortuño, M., López, R., Gómez-Novell, O., Ruano, P., Perea, H., Stepancikova, P., and Khazaradze, G.: First evidence of paleoearthquakes along the Carboneras Fault Zone (SE Iberian Peninsula): Los Trances site, *Geologica Acta*, pp. 461–476, 2018.
- McCloskey, J., Antonioli, A., Piatanesi, A., Sieh, K., Steacy, S., Nalbant, S., Cocco, M., Giunchi, C., Huang, J., and Dunlop, P.: Tsunami threat in the Indian Ocean from a future megathrust earthquake west of Sumatra, *Earth and Planetary Science Letters*, 265, 61–81, <https://doi.org/10.1016/j.epsl.2007.09.034>, 2008.
- 615 Meade, B. J.: Algorithms for the calculation of exact displacements, strains, and stresses for triangular dislocation elements in a uniform elastic half space, *Computers & Geosciences*, 33, 1064–1075, <https://doi.org/10.1016/j.cageo.2006.12.003>, 2007.
- Moreno, X.: Neotectonic and Paleoseismic Onshore-Offshore integrated study of the Carboneras Fault (Eastern Betics, SE Iberia) / Estudio integrado tierra-mar de la Neotectónica y Paleosismología de la Falla de Carboneras (Béticas Orientales, SE Península Ibérica), Ph.D. Thesis, Universitat de Barcelona, 2011.
- 620 Moreno, X., Masana, E., Pallàs, R., Gràcia, E., Rodés, Á., and Bordonau, J.: Quaternary tectonic activity of the Carboneras Fault in the La Serrata range (SE Iberia): Geomorphological and chronological constraints, *Tectonophysics*, 663, 78–94, <https://doi.org/10.1016/j.tecto.2015.08.016>, 2015.
- 625 [Neres, M., Carafa, M.M.C., Fernandes, R.M.S., Matias, L., Duarte, J.C., Barba, S., and Terrinha, P.: Lithospheric deformation in the Africa-Iberia plate boundary: Improved neotectonic modeling testing a basal-driven Alboran plate, *Journal of Geophysical Research: Solid Earth*, 121, <https://doi.org/10.1002/2016JB013012>, 2016.](#)
- National Geophysical Data Center: Global Historical Tsunami Database, <https://doi.org/10.7289/V5PN93H7>, type: dataset, 2022.
- Niemeijer, A. R. and Vissers, R. L. M.: Earthquake rupture propagation inferred from the spatial distribution of fault rock frictional properties, *Earth and Planetary Science Letters*, 396, 154–164, <https://doi.org/10.1016/j.epsl.2014.04.010>, 2014.

- 630 Nikkhoo, M. and Walter, T. R.: Triangular dislocation: an analytical, artefact-free solution, *Geophysical Journal International*, 201, 1119–1141, <https://doi.org/10.1093/gji/ggv035>, 2015.
- Noda, H. and Lapusta, N.: Stable creeping fault segments can become destructive as a result of dynamic weakening, *Nature*, 493, 518–521, <https://doi.org/10.1038/nature11703>, 2013.
- Nosov, M. A., Bolshakova, A. V., and Kolesov, S. V.: Displaced Water Volume, Potential Energy of Initial Elevation, and Tsunami Intensity: Analysis of Recent Tsunami Events, *Pure and Applied Geophysics*, 171, 3515–3525, <https://doi.org/10.1007/s00024-013-0730-6>, 2014.
- 635 Okada, Y.: Surface deformation due to shear and tensile faults in a half-space, *Bulletin of the Seismological Society of America*, 75, 1135–1154, 1985.
- Okada, Y.: Internal deformation due to shear and tensile faults in a half-space, *Bulletin of the Seismological Society of America*, 82, 1018–1040, 1992.
- 640 Pollitz, F. F.: ViscoSim Earthquake Simulator, *Seismological Research Letters*, 83, 979–982, <https://doi.org/10.1785/0220120050>, 2012.
- [Power, W., Wang, X., Lane, E. and Gillibrand, P.: A Probabilistic Tsunami Hazard Study of the Auckland Region, Part I: Propagation Modelling and Tsunami Hazard Assessment at the Shoreline. *Pure and Applied Geophysics*, 170\(9\), 1621–1634, 2013.](#)
- [Rafei, M., Khodaverdian, A. and Rahimian, M.: A Probabilistic Physics-Based Seismic Hazard Model for the Alborz Region, Iran, *Bulletin of the Seismological Society of America*, 112, 2141–2155, <https://doi.org/10.1785/0120210238>, 2022.](#)
- 645 Reicherter, K. and Becker-Heidmann, P.: Tsunami deposits in the western Mediterranean: Remains of the 1522 Almería earthquake?, *Geological Society Special Publication*, 316, 217–235, <https://doi.org/10.1144/SP316.14>, 2009.
- Reicherter, K. and Hübscher, C.: Evidence for a seafloor rupture of the Carboneras Fault Zone (southern Spain): Relation to the 1522 Almería earthquake?, *Journal of Seismology*, 11, 15–26, <https://doi.org/10.1007/s10950-006-9024-0>, 2007.
- Richards-Dinger, K. and Dieterich, J. H.: RSQSim Earthquake Simulator, *Seismological Research Letters*, 83, 983–990, <https://doi.org/10.1785/0220120105>, 2012.
- 650 Robinson, R. and Benites, R.: Synthetic seismicity models of multiple interacting faults, *Journal of Geophysical Research: Solid Earth*, 100, 18 229–18 238, <https://doi.org/10.1029/95JB01569>, 1995.
- Robinson, R., Van Dissen, R., and Litchfield, N.: Using synthetic seismicity to evaluate seismic hazard in the Wellington region, New Zealand, *Geophysical Journal International*, 187, 510–528, <https://doi.org/10.1111/j.1365-246X.2011.05161.x>, 2011.
- 655 Rodriguez Escudero, E.: Implicaciones de la estructura interna de una zona de falla activa en la génesis de terremotos, Ph.D. Thesis, Universidad Autonoma de Madrid, 2017.
- Romagny, A., Jolivet, L., Menant, A., Bessière, E., Maillard, A., Canva, A., Gorini, C., and Augier, R.: Detailed tectonic reconstructions of the Western Mediterranean region for the last 35 Ma, insights on driving mechanisms, *Bulletin de la Société Géologique de France*, 191, <https://doi.org/http://dx.doi.org/10.1051/bsgf/2020040>, 2020.
- 660 Rosenbaum, G. and Lister, G. S.: Formation of arcuate orogenic belts in the western Mediterranean region, *Orogenic curvature: integrating paleomagnetic and structural analyses*, 383, 41–56, 2004.
- Ruina, A.: Slip instability and state variable friction laws, *Journal of Geophysical Research: Solid Earth*, 88, 10 359–10 370, <https://doi.org/10.1029/JB088iB12p10359>, 1983.
- Rundle, J. B.: A physical model for earthquakes: 2. Application to southern California, *Journal of Geophysical Research: Solid Earth*, 93, 6255–6274, <https://doi.org/10.1029/JB093iB06p06255>, 1988.
- 665 Rutter, E. H., Faulkner, D. R., and Burgess, R.: Structure and geological history of the Carboneras Fault Zone, SE Spain: Part of a stretching transform fault system, *Journal of Structural Geology*, 45, 68–86, <https://doi.org/10.1016/j.jsg.2012.08.009>, 2012.

- Ryan, K. J., Geist, E. L., Barall, M., and Oglesby, D. D.: Dynamic models of an earthquake and tsunami offshore Ventura, California, *Geophysical Research Letters*, 42, 6599–6606, <https://doi.org/10.1002/2015GL064507>, 2015.
- 670 Sachs, M. K., Heien, E. M., Turcotte, D. L., Yikilmaz, M. B., Rundle, J. B., and Kellogg, L. H.: Virtual California Earthquake Simulator, *Seismological Research Letters*, 83, 973–978, <https://doi.org/10.1785/0220120052>, 2012.
- Satake, K., Fujii, Y., Harada, T., and Namegaya, Y.: Time and Space Distribution of Coseismic Slip of the 2011 Tohoku Earthquake as Inferred from Tsunami Waveform Data, *Bulletin of the Seismological Society of America*, 103, 1473–1492, <https://doi.org/10.1785/0120120122>, 2013.
- 675 Scholz, C. H.: Earthquakes and friction laws, *Nature*, 391, 37–42, <https://doi.org/10.1038/34097>, 1998.
- Schultz, K. W., Yoder, M. R., Wilson, J. M., Heien, E. M., Sachs, M. K., Rundle, J. B., and Turcotte, D. L.: Parametrizing Physics-Based Earthquake Simulations, in: *Earthquakes and Multi-hazards Around the Pacific Rim, Vol. I*, edited by Zhang, Y., Goebel, T., Peng, Z., Williams, C. A., Yoder, M., and Rundle, J. B., pp. 75–84, Springer International Publishing, Cham, https://doi.org/10.1007/978-3-319-71565-0_6, 2018.
- 680 Schwartz, D. P. and Coppersmith, J.: Fault behavior and characteristic earthquakes: Examples from the Wasatch and San Andreas fault zones, *Journal of Geophysical Research*, 89, 5681–5698, 1984.
- Serpelloni, E., Vannucci, G., Pondrelli, S., Argnani, A., Casula, G., Anzidei, M., Baldi, P., and Gasperini, P.: Kinematics of the Western Africa-Eurasia plate boundary from focal mechanisms and GPS data, *Geophysical Journal International*, 169, 1180–1200, <https://doi.org/10.1111/j.1365-246X.2007.03367.x>, 2007.
- 685 Shaw, B. E., Milner, K. R., Field, E. H., Richards-Dinger, K., Gilchrist, J. J., Dieterich, J. H., and Jordan, T. H.: A physics-based earthquake simulator replicates seismic hazard statistics across California, *Science Advances*, 4(8), <https://doi.org/10.1126/sciadv.aau0688>, 2018.
- [Shaw, B. E., Fry, B., Nicol, A., Howell, A. and Gerstenberger, M.: An Earthquake Simulator for New Zealand, *Bulletin of the Seismological Society of America*, 112, 763–778, <https://doi.org/10.1785/0120210087>, 2022.](https://doi.org/10.1785/0120210087)
- Somoza, L., Medialdea, T., Terrinha, P., Ramos, A., and Vázquez, J.-T.: Submarine Active Faults and Morpho-Tectonics Around the Iberian
- 690 Margins: Seismic and Tsunamis Hazards, *Frontiers in Earth Science*, 9, 2021.
- [Sørensen, M.B., Spada, M., Babeyko, A., Wiemer, S. and Grünthal, G.: Probabilistic tsunami hazard in the Mediterranean Sea. *Journal of Geophysical Research: Solid Earth*, 117, <https://doi.org/10.1029/2010JB008169>, 2012.](https://doi.org/10.1029/2010JB008169)
- Tanioka, Y. and Satake, K.: Tsunami generation by horizontal displacement of ocean bottom, *Geophysical Research Letters*, 23, 861–864, <https://doi.org/10.1029/96GL00736>, 1996.
- 695 Tullis, T. E., Richards-Dinger, K., Barall, M., Dieterich, J. H., Field, E. H., Heien, E. M., Kellogg, L. H., Pollitz, F. F., Rundle, J. B., Sachs, M. K., Turcotte, D. L., Ward, S. N., and Burak Yikilmaz, M.: A Comparison among Observations and Earthquake Simulator Results for the allca2 California Fault Model, *Seismological Research Letters*, 83, 994–1006, <https://doi.org/10.1785/0220120094>, 2012.
- Ulrich, T., Vater, S., Madden, E. H., Behrens, J., van Dinther, Y., van Zelst, I., Fielding, E. J., Liang, C., and Gabriel, A.-A.: Coupled, Physics-Based Modeling Reveals Earthquake Displacements are Critical to the 2018 Palu, Sulawesi Tsunami, *Pure and Applied Geophysics*, 176,
- 700 4069–4109, <https://doi.org/10.1007/s00024-019-02290-5>, 2019.
- Vernant, P., Fadil, A., Mourabit, T., Ouazar, D., Koulali, A., Davila, J. M., Garate, J., McClusky, S., and Reilinger, R.: Geodetic constraints on active tectonics of the Western Mediterranean: Implications for the kinematics and dynamics of the Nubia-Eurasia plate boundary zone, *Journal of Geodynamics*, 49, 123–129, <https://doi.org/10.1016/j.jog.2009.10.007>, 2010.
- Wang, X. and Liu, P. L.-F.: An analysis of 2004 Sumatra earthquake fault plane mechanisms and Indian Ocean tsunami, *Journal of Hydraulic*
- 705 Research, 44, 147–154, 2006.

- Ward, S. N.: San Francisco Bay Area Earthquake Simulations: A Step Toward a Standard Physical Earthquake Model, *Bulletin of the Seismological Society of America*, 90, 370–386, <https://doi.org/10.1785/0119990026>, 2000.
- Ward, S. N.: ALLCAL Earthquake Simulator, *Seismological Research Letters*, 83, 964–972, <https://doi.org/10.1785/0220120056>, 2012.
- Wendt, J., Oglesby, D. D., and Geist, E. L.: Tsunamis and splay fault dynamics, *Geophysical Research Letters*, 36, <https://doi.org/10.1029/2009GL038295>, 2009.
- Wessel, P.: An Empirical Method for Optimal Robust Regional-Residual Separation of Geophysical Data, *Mathematical Geology*, 30, 391–408, <https://doi.org/10.1023/A:1021744224009>, 1998.
- Wessel, P., Smith, W. H. F., Scharroo, R., Luis, J., and Wobbe, F.: Generic Mapping Tools: Improved Version Released, *Eos, Transactions American Geophysical Union*, 94, 409–410, <https://doi.org/10.1002/2013EO450001>, 2013.
- 715 Whirley, R. G. and Engelmann, B. E.: DYNA3D: A nonlinear, explicit, three-dimensional finite element code for solid and structural mechanics, User manual. Revision 1, Tech. Rep. UCRL-MA-107254-Rev.1, Lawrence Livermore National Lab., CA (United States), <https://doi.org/10.2172/10139227>, 1993.
- Wilson, A. and Ma, S.: Wedge Plasticity and Fully Coupled Simulations of Dynamic Rupture and Tsunami in the Cascadia Subduction Zone, *Journal of Geophysical Research: Solid Earth*, 126, e2020JB021 627, <https://doi.org/10.1029/2020JB021627>, 2021.
- 720 Xu, Z., Sun, L., Rahman, M. N. A., Liang, S., Shi, J., and Li, H.: Insights on the small tsunami from January 28, 2020, Caribbean Sea MW7.7 earthquake by numerical simulation and spectral analysis, *Natural Hazards*, <https://doi.org/10.1007/s11069-021-05154-1>, 2022.
- Yamazaki, D., Ikeshima, D., Tawatari, R., Yamaguchi, T., O’Loughlin, F., Neal, J. C., Sampson, C. C., Kanae, S., and Bates, P. D.: A high-accuracy map of global terrain elevations, *Geophysical Research Letters*, 44, 5844–5853, <https://doi.org/10.1002/2017GL072874>, 2017.
- 725 Yamazaki, Y., Lay, T., Cheung, K. F., Yue, H., and Kanamori, H.: Modeling near-field tsunami observations to improve finite-fault slip models for the 11 March 2011 Tohoku earthquake, *Geophysical Research Letters*, 38, <https://doi.org/10.1029/2011GL049130>, 2011.
- [Zamora, N. and Babeyko, A.Y.: Tsunami potential from local seismic sources along the southern Middle America Trench, *Natural Hazards*, 80\(2\), 901–934, 2016.](https://doi.org/10.1002/nlde.1234)