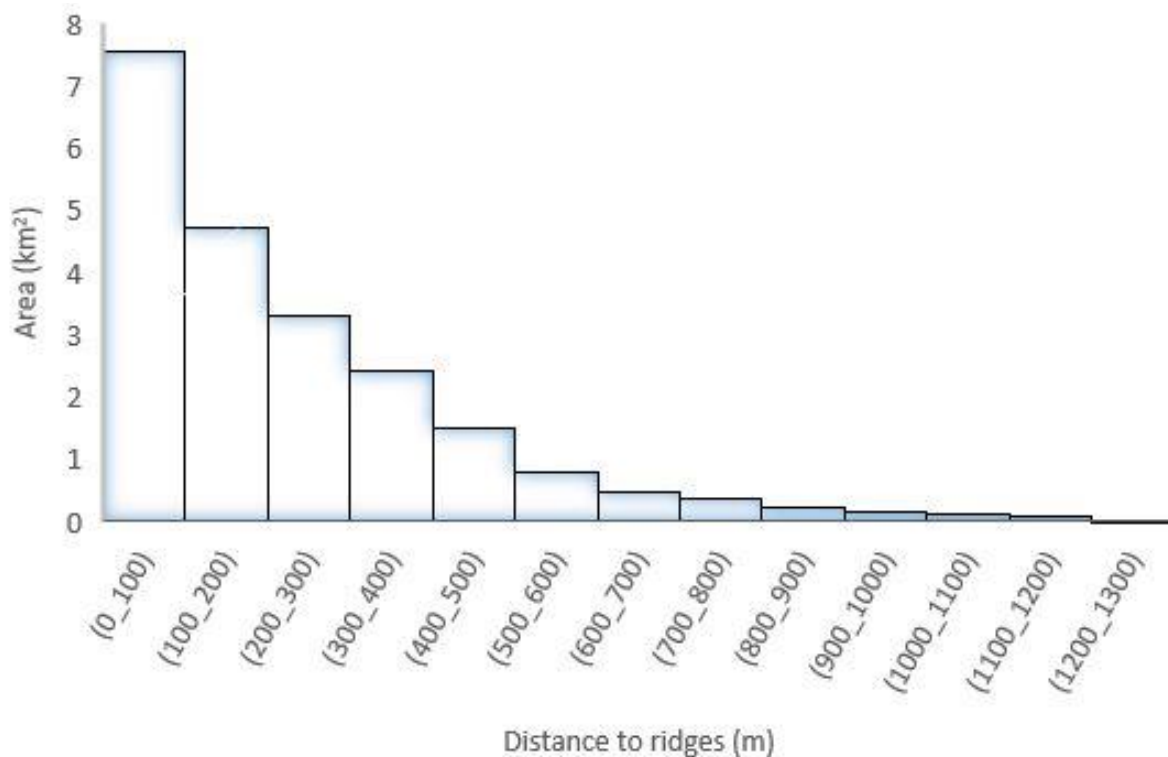


**Supplementary material for: Development and validation using ground truth of a method to identify potential release areas of snow avalanches based on watershed delineation**

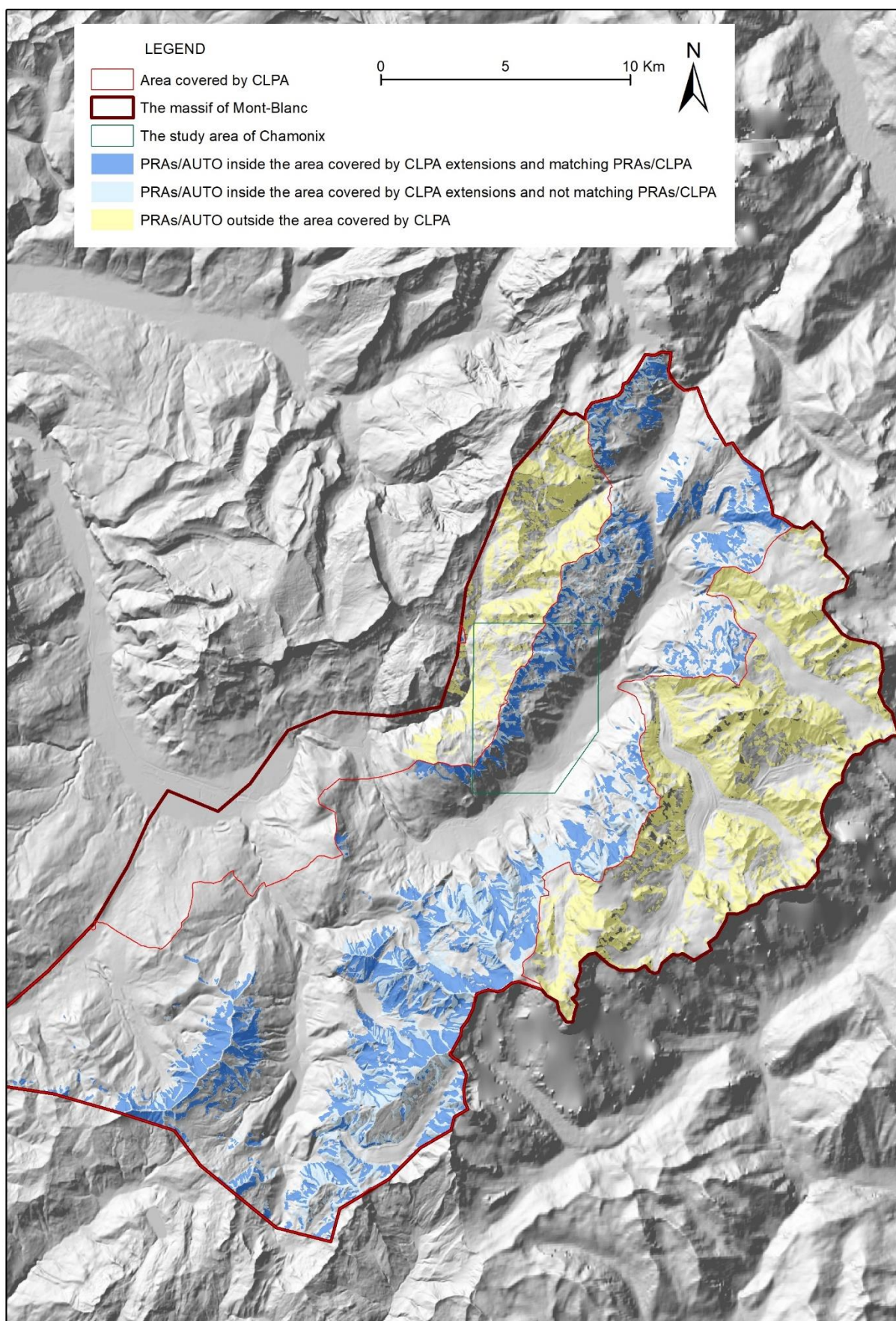
Cécile Duvillier<sup>1</sup>, Nicolas Eckert<sup>1</sup>, Guillaume Evin<sup>1</sup>, Michael Deschâtres<sup>1</sup>

<sup>1</sup>Univ. Grenoble Alpes, INRAE, UR ETNA, Grenoble, France

Correspondence: Nicolas Eckert ([nicolas.eckert@inrae.fr](mailto:nicolas.eckert@inrae.fr))

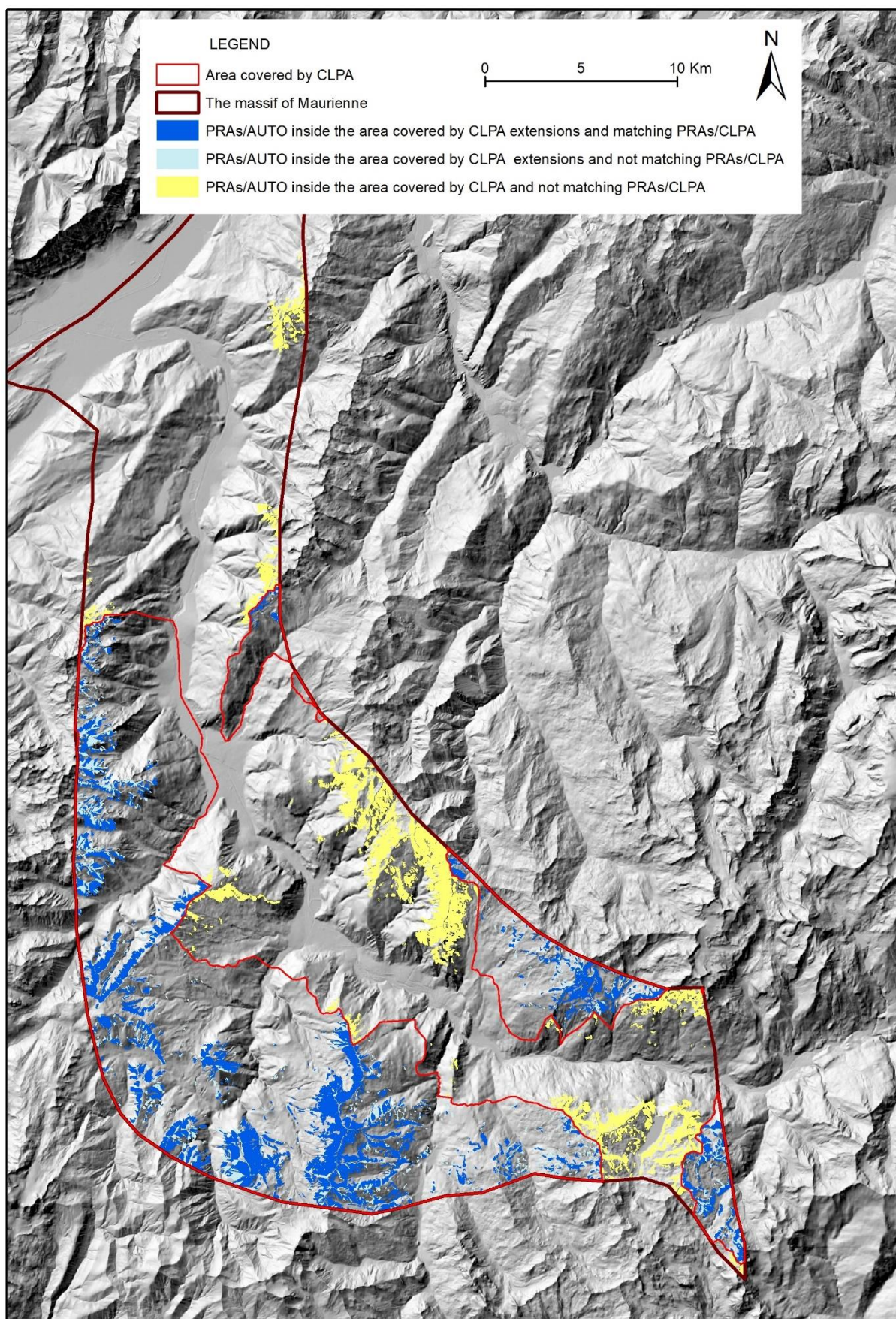


**Supplementary Figure S1: Histogram of the distance to the closest ridge for the pixels of the test area close to the town of Chamonix Mont Blanc.**



**Supplementary Figure S2: Result of the proposed PRA detection method (Fig. 5) for the entire Mont Blanc massif. Digital Elevation Model ©IGN.**





**Supplementary Figure S3: Result of the proposed PRA detection method (Fig. 5) for the entire Maurienne massif. Digital Elevation Model ©IGN.**