

# Analyzing the informative value of alternative hazard indicators for monitoring drought risk for human water supply and river ecosystems at the global scale

Claudia Herbert<sup>1</sup> and Petra Döll<sup>1,2</sup>

5 <sup>1</sup>Institute of Physical Geography, Goethe University Frankfurt, Frankfurt am Main, 60438, Germany

<sup>2</sup>Senckenberg Leibniz Biodiversity and Climate Research Centre Frankfurt (SBIK-F), Frankfurt am Main, 60325, Germany

*Correspondence to:* Claudia Herbert (c.herbert@em.uni-frankfurt.de)

## Abstract

10 Streamflow drought hazard indicators (SDHIs) are mostly lacking in large-scale drought early warning systems (DEWS). This paper presents a new systematic approach for selecting and computing SDHIs for monitoring drought risk for human water supply from surface water and for river ecosystems that is also relevant for meteorological or soil moisture drought. We recommend considering the habituation of the system at risk to the streamflow regime (e.g., to a certain interannual variability or a certain relative reduction of streamflow) when selecting indicators. Distinguishing four indicator types, we classify indicators of drought magnitude (water anomaly during a pre-defined period) and severity (cumulated magnitude since the onset of  
15 the drought event) and specify the many relevant decisions that need to be made when computing SDHIs and other drought hazard indicators. Using the global hydrological model WaterGAP2.2d, we quantify eight existing and three new SDHIs globally. For large-scale DEWS based on the output of hydrological models, we recommend specific SDHIs that are suitable for assessing the drought risk of 1) river ecosystems, 2) water users without access to large reservoirs, 3) water users with  
20 access to large reservoirs, and 4) that are suitable for informing reservoir managers. These SDHIs include both drought magnitude and severity indicators that differ by the temporal averaging period and the habituation of the risk system to reduced water availability. Depending on the habituation of the risk system, drought magnitude is best quantified either by the relative deviation from the mean or by the return period of the streamflow value that is based on the frequency of non-exceedance. To compute the return period, we favor empirical percentiles over the standardized streamflow indicator as the former do not  
25 entail uncertainties due to the fitting of a probability distribution and can be computed for all streamflow time series. Drought severity should be assessed with indicators that imply habituation to a certain degree of interannual variability, to a certain reduction from mean streamflow, and to the ability to fulfill human water demand and environmental flows. Reservoir managers are best informed by the SDHIs of the grid cell that represents inflow into the reservoir. The DEWS must provide comprehensive and clear explanations about the suitability of the provided indicators for specific risk systems.

30

## 1 Introduction

35 Drought occurs when there is a prolonged period with less water than normal in different components of the hydrological cycle (van Loon et al., 2016) but the term drought also has the connotation that during the drought period there is less water than required (Popat and Döll, 2021). No universal definition of “drought” exists (Lloyd-Hughes, 2014). While drought is a local to regional phenomenon, its impacts can have transnational to global dimensions, in particular related to crop production and trade (Wilhite and Glantz, 1985; van Loon, 2015; UNECE, 2015). Streamflow drought in transboundary basins implies direct international impacts. Hence, global-scale assessment, monitoring, and forecasting of drought hazards or risks have the potential to support drought risk management (Pozzi et al., 2013).

40 A stakeholder survey encompassing 33 regional to global drought early warning systems (DEWS) revealed that streamflow drought hazard indicators (SDHIs) are rarely applied in DEWS, while drought hazard indicators based on meteorological variables, soil moisture, and remotely-sensed vegetation conditions dominate. Among SDHIs, streamflow percentiles are mostly applied, e.g. in the US Drought Monitor. Other indicators include the Palmer Hydrological Drought Severity Index (Palmer, 1965), cumulative streamflow anomalies (Fleig et al., 2006; Lehner et al., 2006; van Loon et al., 2012; Heudorfer and Stahl, 2017), and the standardized streamflow (Modarres, 2007; Nalbantis and Tsakiris, 2009) or runoff index (Shukla and Wood, 2008; Satoh et al., 2021). At the continental scale, only the European Drought Monitor provides an SDHI (Cammalleri et al., 2016a), which has also been tested for global implementation in the Global Drought Observatory (Cammalleri et al., 2020). There is currently no global-scale operational streamflow drought hazard monitoring system.

SDHIs are commonly classified into threshold-based and standardized indicators (van Loon, 2015). The threshold level method (TLM) was first applied by Yevjevich (1967), who defined that a drought event begins when streamflow falls below a certain threshold (e.g. a percentile) and ends as soon as the threshold is exceeded. Then, drought magnitude is the streamflow deficit at the considered period (computed as the difference between the threshold streamflow and the actual streamflow in that period), while drought severity is equivalent to the cumulative magnitude since the beginning of the drought event. Standardized indicators such as the standardized precipitation index (SPI) (McKee et al., 1993) and the standardized streamflow index (SSI) (Zaidman et al., 2002; Modarres, 2007; Nalbantis and Tsakiris, 2009) quantify the anomaly of the variable (e.g. precipitation or streamflow) during a certain period from the long-term mean in units of standard deviation. Negative values quantify the drought magnitude per time step. However, classification in threshold-based and standardized indicators is somewhat misleading, since standardized indicators can also be cumulated to derive drought severity, which requires setting of a threshold as is the case for TLM indicators (McKee et al., 1993; Barker et al., 2019, van Oel et al., 2018, Tjiedeman et al., 2020). On the other hand, comparing SSI and threshold-based indicators directly implies that different drought characteristics (magnitude and severity) are analysed. Moreover, the term drought severity is sometimes used to describe drought magnitude and vice versa (Steinemann et al., 2015, Vidal et al., 2009; López-Moreno et al., 2009). Certainly, an improved classification of drought hazard indicators would facilitate a better understanding of drought characteristics and guide the selection of appropriate drought hazard indicators.

65 Previous research has revealed that there is often no common understanding among stakeholders about drought hazard  
concepts (Steinemann et al., 2015). Also, in most descriptions of drought indicator calculations, it is not made explicit what is  
assumed to be “normal”. For instance, defining the long-term mean value of the physical variable per calendar month as normal  
state implies that people and ecosystems are habituated and thus adapted to the seasonality of water availability. Applying  
percentiles per calendar month instead implies the habituation to interannual variability. Clearly, the conception or selection  
70 of hazard indicators needs to take into account the habituation and the related vulnerability of the system at risk. However,  
investigations and guidance on how to select the optimal SDHI, considering both the targeted risk and the habituation of the  
system at risk to the streamflow regime, are missing.

A further consideration in designing SDHIs is how to conceptualize drought in intermittent or highly seasonal stream-  
flow regimes. If periods of zero flow are a normal part of the streamflow regime, as is the case in arid regions, then it is mean-  
ingless to assess streamflow deficits during these periods. Hence, arid regions are often excluded from global drought anal-  
yses (Corzo Perez et al., 2011; Prudhomme et al., 2014; Spinoni et al., 2019). To overcome these limitations, van Huijgevoort  
et al. (2012) introduced a method that combines the TLM with the consecutive dry period method (CDPM) for streamflow, in  
analogy to the consecutive dry days (CDD) indicator for precipitation (Vincent and Mekis, 2006; Griffiths and Bradley,  
2007). However, this method may be too complex to be applied in DEWS.

80 This paper analyzes which SDHIs are suitable for assessing and monitoring drought risk for human water supply from  
surface water and for river ecosystems in large-scale DEWS. We propose a systematic approach to indicator selection, which  
encompasses the explicit consideration of the habituation of people and river ecosystems to streamflow availability as well as  
a new classification system for drought hazard indicators. This new methodology is exemplified at the global scale for eight  
existing and three newly developed SDHIs using a) modeled output from the global water resources and use model Wa-  
terGAP2.2d and b) observed monthly streamflow at four selected gauging stations.

The following section describes how streamflow and other variables required for the computation of the SDHIs were  
computed and defines the eleven investigated SDHIs. In Sect. 3, we present the new systematic approach for selecting and  
computing SDHIs. In Sect. 4, we analyze spatial and temporal discrepancies and similarities of the indicators at the global  
scale. In Sect. 5, we give recommendations on the general suitability of the indicators as well as for large-scale applications.  
90 Finally, we draw conclusions in Sect. 6.

## **2 Methods and data**

### **2.1 Streamflow data**

#### **2.1.1 Streamflow observations**

Eight SDHIs were computed for four selected gauging stations using monthly streamflow data from the Global Runoff Data  
95 Centre (GRDC, 2019) for the period 1986-2015 (Figs. 6, S2, and S6). The stations comprise the Danube River at Hofkirchen

(Germany), the Angara River at Boguchany (Russia), the White River near Oacoma (U.S.), and the Orange River at Vioolsdrif (South Africa). Moreover, a limited model validation was performed (supplementary material S2) using monthly streamflow data from 220 GRDC stations with continuous time series during the reference period 1986-2015. The model validation focused on the correlation between observed Q80 per calendar month (the streamflow that is exceeded in eight out of ten months) and Q80 as modeled by WaterGAP.

### 2.1.2 Modeled streamflow

Eleven SDHIs were computed for the whole land area except Greenland and Antarctica with a spatial resolution of 0.5° using monthly time series of WaterGAP 2.2d model output for the reference period 1986-2015 (Sect. 2.2). For computing each indicator, we used the 30 monthly values available for each of the 12 calendar months individually to determine distributions, thresholds, and deficits. All indicators were computed using streamflow of the standard model run (Qant) (“ant”: anthropogenic), in which the impact of human water use and man-made reservoirs on streamflow is simulated. Naturalized (“nat”) streamflow (Qnat) without these two types of human activities was only used for deriving environmental streamflow requirements for the indicator CQDI1(WUs-EFR) (Sect. 2.3.5).

## 2.2 Global-scale simulation of streamflow and surface water use

SDHIs were computed using output from the global water availability and water use model WaterGAP2.2d (Müller Schmied et al., 2021). WaterGAP2.2d has a spatial resolution of 0.5 degrees latitude by 0.5 degrees longitude (55 km × 55 km at the equator) and covers the whole global land area except Antarctica. WaterGAP consists of the WaterGAP Global Hydrology Model (WGHM) and five water use models for the sectors households, manufacturing, and cooling of thermal power plants (Flörke et al., 2013) as well as irrigation and livestock. WGHM computes daily time series of fast surface and subsurface runoff, groundwater recharge, and streamflow as well as water storage variations in canopy, snow, soil, groundwater, lakes, reservoirs, wetlands, and rivers. Model input includes time series of climate data between 1901 and 2016 and physiogeographic information, such as land cover, soil type, relief, and hydrogeology. For this study, WaterGAP 2.2d was forced by the WFDEI-GPCC climate data set (Weedon et al., 2014), which was developed by applying the forcing data methodology from the EU project WATCH on ERA-Interim reanalysis data. Daily model outputs of streamflow and surface water abstractions (WUs) were aggregated to monthly time series. WaterGAP total runoff is calibrated against long-term mean annual streamflow at 1319 gauging stations worldwide covering approximately 54% of the Earth’s land area (except Greenland and Antarctica). A detailed model description and evaluation can be found in Müller Schmied et al. (2021). Please note that while WaterGAP simulates the impact of reservoirs on streamflow, the accuracy is very low as it is unknown how all man-made reservoirs on Earth are managed such that a generic algorithm is used to simulate human reservoir management decisions.

In several model intercomparison and assessment studies, WaterGAP proved suitable for computing streamflow and SDHIs, although the discrepancies between simulated and observed low flows, seasonality, and interannual variability can be significant at the regional scale (see literature review in the supplementary material S1). A limited model validation of the

WaterGAP version 2.2d applied in this study (supplementary material S2) revealed that Q80 is overestimated by WaterGAP in 63% of all months and stations with median percent deviations between 35% in February and -7% in July (Fig. S1). In another model validation exercise, SSI3 as modeled by WaterGAP was compared to observed SSI3 at 183 gauging stations (supplementary material S2). With a median NSE of 0.5 and an interquartile range of 0.2-0.7, WaterGAP 2.2d model output showed a moderate agreement with the observations. NSE exceeded 0.7 at 25 out of the 183 stations mainly located in central and eastern Europe and the United States.

## 2.3 SDHIs

### 2.3.1 Standardized streamflow anomaly indicators SSI1 and SSI12

SSI1 was computed using mean monthly streamflow Qant analogously to SPI1 (McKee et al., 1993) following the method provided in Kumar et al. (2009). First, the 30 monthly streamflow values per calendar month were fitted to the gamma distribution using the R package fitdistrplus. The probabilities of the streamflow values were transformed to a variable Z with a normal distribution that has a mean of zero and a standard deviation of 1 (McKee et al., 1993, Stagge et al., 2015), using an approximation method introduced by Abramowitz and Stegun (1965). The value of the variable Z (also called z-score) is equal to the value of the SSI1. Thus, an SSI1 of -1 describes a streamflow value that is one standard deviation lower than the mean streamflow of the calendar month. The mean of the normal distribution is equal to the median of the fitted non-linear cumulative distribution function (Vicente-Serrano et al., 2010). The gamma distribution showed the best fit among 23 parametric probability distributions for most grid cells. The goodness-of-fit between simulated streamflow values and the probability distribution was assessed based on the one-sample Kolmogorov–Smirnov test (KS test) at the 0.05 significance level. The fits were rejected in 17% to 21% of all grid cells (excluding Greenland) depending on the calendar month.

SSI12 was computed like SSI1, but with an averaging period of 12 months. For SSI12, the fits were rejected in around 6% of all grid cells (excluding Greenland) with only slight variations among the calendar months.

### 2.3.2 Cumulative streamflow deficit indicators CQDI1(Q50), CQDI1(Q80), CQDI1(Q80-HS), and CQDI6(Q80)

CQDI1(Q50) is the cumulative, volume-based streamflow deficit computed following the threshold level method (TLM) (Sect. 1). It should be noted that the term “deficit”, which is generally used for the TLM, refers to the negative anomaly below a selected threshold, and not to an unsatisfied water demand. With CQDI1(Q50), a deficit is defined to occur if modeled monthly streamflow is lower than the 50<sup>th</sup> percentile (median) of the long-term calendar month streamflow (Eq. 1). The empirical percentile Q50 was computed in R using the quantile function with the default quantile algorithm. The streamflow deficit is computed as

$$\text{streamflow deficit}_{m,y} = Q50_m - Q_{m,y} \quad (\text{for } Q_{m,y} < Q50_m) \quad (1)$$

with  $m$  = month,  $y$  = year,  $Q50_m$  = calendar month median, and  $Q_{m,y}$  = current streamflow.

160 The last deficit month is the last month of the drought event. Monthly deficits (drought magnitude) are accumulated for  
all drought months to obtain severity. The cumulative streamflow deficit (in units of  $m^3$ ) is normalized by mean annual  
streamflow (in units of  $m^3$ ). A value of 2 [-], for example, indicates that the cumulative streamflow deficit in a certain month  
is twice the mean annual streamflow. Following Spinoni et al. (2019), a drought event is defined to start with at least two  
consecutive months with a deficit and it ends (deficit set to zero) if there are two consecutive months without a deficit (two  
165 months criterion, 2mc). This approach avoids that short-term streamflow deficits that hardly pose a drought hazard to humans  
and other biota are defined as drought events (Spinoni et al., 2019). Any streamflow surplus over the median in a single  
month between two deficit months does not decrease the cumulative deficit value. Q50 as a rather high threshold can be  
viewed as a “conservative upper bound for low flows” (Smakhtin, 2001: 153).

Streamflow intermittency generally poses a problem, as in grid cells where the threshold (in this case Q50) is zero in a  
170 particular calendar month, droughts are never identified in this month. To overcome this problem, CQDI1(Q50) allows an  
existing drought to continue during months with  $Q50=0$ , but only if  $Q$  in the respective month is also zero. In months where  
Q50 is zero, but  $Q$  exceeds zero, the drought event ends. This approach implies that a drought event can be prolonged, but  
never begin in calendar months with  $Q50=0$ .

**CQDI1(Q80)** was calculated in the same manner as CQDI1(Q50), but using Q80 per calendar month as threshold. With  
175 Q80, a deficit is computed in 20% of the 30 calendar months. Q80 was computed in R using the quantile function with the  
default quantile algorithm, such that Q80 is a streamflow value slightly higher than the sixth lowest calendar month stream-  
flow. Daily or monthly Q80 is often used as a threshold for defining the onset and termination of a streamflow deficit period  
(van Huijgevoort et al., 2014; van Loon et al., 2014; Heudorfer and Stahl, 2017; Laaha et al., 2017), but the selected threshold  
should represent local water requirements (including environmental flow) (Cammalleri et al., 2016a).

180 **CQDI1(Q80-HS)** is a variant of CQDI1(Q80) suitable in intermittent and highly seasonal (HS) streamflow regimes  
where people strongly rely on water storage in man-made reservoirs that needs to be replenished by streamflow. It allows an  
existing drought to continue in any month where Q80 is zero also if the current streamflow  $Q$  exceeds zero. However, the  
cumulative deficit is reduced by any streamflow surplus over the calendar month Q80. The rationale behind this approach is  
that streamflow during low-flow months (calendar months where Q80 is zero) is not relevant for people relying on large res-  
185ervoirs. Below-normal water storages can only marginally be replenished during a low-flow period, and hence drought severi-  
ty should remain at the level of the preceding high-flow period. Like CQDI1(Q80), a drought can be prolonged but never  
begin, in months with  $Q80=0$ .

**CQDI6(Q80)** is computed like CQDI1(Q80) but applying an averaging period of six months. The indicator is suitable in  
regions with access to large reservoirs. In each month, the streamflow deficit is computed by subtracting the average stream-  
190flow of the preceding six months (including the current month) from the long-term Q80 of the same six months during the  
reference period.

### 2.3.3 Empirical percentiles EP1 and cumulative empirical percentiles CEP1(20%)

Empirical streamflow percentiles **EP1** were computed per calendar month following Eq. (2) with an averaging period of one month. EP1 expresses the frequency of non-exceedance, while the inverse is the return period, in years, with

195

$$EP1 = \text{rank}(Q)/n \quad (2)$$

where rank(Q) is the rank of a streamflow value of a certain calendar month and n is the sample size, i.e., the number of years in the reference period.

200

Rank 1 was assigned to the smallest streamflow value. If a sample contained several months with the same streamflow value, the largest rank among these months was assigned to the tied streamflow values. For a calendar month comprising, for instance, 26 out of 30 months with zero streamflow, a value of  $EP1=26/30$  would be assigned to the respective 26 months corresponding to a return period of 1.2 years. This method slightly adjusts the approach by Tjrdeman et al. (2020), who used the average rank among the tied values. In the given example, this would result in  $EP1=0.45$  and a return period of 2.2 years for the first 26 values. In this study, we chose the largest EP1 for tied values to reflect that frequent streamflow values have a high frequency of non-exceedance and a low return period assuming that people and the ecosystem are habituated to more frequent values including zero streamflow.

205

210

**CEP1(20%)** is the cumulative percentile-based deficit. The monthly percentile deficit is computed by subtracting the current streamflow percentile from a selected percentile threshold (Eq. 3). In this study, a deficit is computed for the six lowest calendar month values (20% out of 30 values). Consequently, the selected threshold percentile is slightly higher than 20% depending on the sample size (22.7% in this study with a sample size of 30 and 22% for a sample size of 40). Monthly percentile deficits are accumulated for all drought months to obtain severity. Like CQDI1(Q80), CEP1(20%) allows an existing drought event to continue during months where both Q80 and the current streamflow are zero. The 2mc is also applied. Hence, CEP1(20%) identifies the same drought months as CQDI1(Q80). The percentile deficit is computed as

215

$$\text{percentile deficit}_{m,y} = P20 - EP1_{m,y} \quad (\text{for } EP1_{m,y} < P20) \quad (3)$$

with m = month, y = year, and  $EP1_{m,y}$  = current empirical streamflow percentile. With a sample size of 30 calendar month values, the percentile threshold  $P20_m$  is 22.7% such that 20% of all calendar months are identified as drought months.

220

### 2.3.4 Relative deviation from mean conditions RQDI1, RQDI12 and cumulative CRQDI1(-50%)

**RQDI1** is the relative deviation of monthly streamflow from mean calendar month streamflow (MMQ) in percent. In each month, it is calculated as the difference between monthly streamflow and the respective MMQ, which is then divided by MMQ.

225 **RQDI12** is the relative deviation of mean streamflow during the preceding 12 months (in km<sup>3</sup> month<sup>-1</sup>) from mean annual streamflow (in km<sup>3</sup> month<sup>-1</sup>) during the reference period. In this study, RQDI12 is only assessed for selected gauging stations (add reference supplement), but not at the global scale.

The cumulative relative deviation **CRQDI1(-50%)** is computed using a threshold of RQDI1=-50% and applying the 2mc (Sect. 2.3.2). Months with MMQ=0, where the relative deviation is not computable, are defined to end a drought event  
230 assuming that people are habituated to zero streamflow in this month. The percent deficit is computed as

$$\text{percent deficit}_{m,y} = -50\% - \text{RQDI1}_{m,y} \quad (\text{for } \text{RQDI1} < 50\%) \quad (4)$$

with m = month, y = year, and RQDI1<sub>m,y</sub> = current relative streamflow deviation in percent.

### 235 2.3.5 Water deficit indicators CQDI1(WUs) and CQDI1(WUs-EFR)

The water deficit indicators **CQDI1(WUs)** and **CQDI1(WUs-EFR)** are computed like CQDI1(Q80) but using as thresholds mean monthly potential surface water abstraction WUs, and WUs plus environmental flow requirement (EFR), respectively. Following Richter et al. (2012), EFR is assumed to be 80% of mean monthly naturalized streamflow Q<sub>nat</sub> per calendar month such that 12 EFR values are obtained per grid cell. WUs is the simulated water demand (potential water abstractions from  
240 surface water bodies) and not the actual water abstractions (Müller Schmied et al., 2021), but both values are similar in most grid cells. The satisfied (or actual) water use is not suitable for identifying periods of water deficit because it decreases along with water availability during drought. Cumulative deficits are normalized by mean annual streamflow. The indicators were not computed in grid cells where mean annual surface water demand in the reference period is zero (approx. 9% of all grid cells excluding Greenland). For CQDI1(WUs), the water deficit is computed as

$$\text{water deficit}_{m,y} = \text{WUs}_m - \text{Q}_{m,y} \quad (\text{for } \text{Q}_{m,y} < \text{WUs}_m) \quad (5)$$

with m = month, y = year, WUs<sub>m</sub> = mean potential surface water abstraction per calendar month, and Q<sub>m,y</sub> = current streamflow.

250 For CQDI1(WUs-EFR), the water deficit in each month is computed as:

$$\text{water deficit}_{m,y} = \text{WUs}_m + \text{EFR}_m - \text{Q}_{m,y} \quad (\text{for } \text{Q}_{m,y} < (\text{WUs}_m + \text{EFR}_m)) \quad (6)$$



with  $m$  = month,  $y$  = year,  $WU_{sm}$  = mean potential surface water abstraction per calendar month,  $EFR_m = 80\%$  of mean monthly naturalized streamflow  $Q_{nat}$  per calendar month, and  $Q_{m,y}$  = current streamflow.

255

## 2.4 Probability of non-exceedance and return period of drought events of a certain severity

Following the approach of Cammalleri et al. (2016a) to compute the low-flow index LFI, the probability of drought events of a certain severity was computed for six cumulative indicators, CEP1(20%), four CQDI1 variants (thresholds Q50, Q80, WUs, and WUs+EFR) and CRQDI1(-50%). First, the partial duration series of drought events was derived based on the severities of all drought events of the reference period. Grid cells with less than six drought events were excluded. The exponential cumulative distribution function proposed in Cammalleri et al. (2016a) was used to estimate the probability of non-exceedance  $p$  of a certain cumulative streamflow deficit:

260

$$p(S_i; \lambda) = 1 - e^{-\lambda S_i} \quad (\text{with } S_i > 0) \quad (7)$$

265

where the variable  $S_i$  is the severity of drought event  $i$ , as quantified by a cumulative indicator, and the parameter  $\lambda$  is the inverse of the mean of the severities of all completed drought events. For instance, a value of  $p=0.7$  in a certain month denotes that, if the drought event ended in this month, its severity would be larger than the severity of 70% of the drought events in the reference period. Different from LFI, which is based on daily streamflow data, time series of monthly streamflow were used for all indicators and the 2mc (see Sect. 2.3.2) was applied. Since  $p$  was computed for each month of the reference period, it describes the non-exceedance probability (or rather frequency) of both completed drought events and continuing droughts. Following Sharma and Panu (2015) and Beguería (2005), the return period  $T_{ri}$  of a drought event with severity  $S_i$  is computed as

270

$$T_{ri} = \frac{1}{\theta(1-p(S_i))} \quad (8)$$

275

where  $\theta$  is the average number of drought events per year during the reference period.

## 3 Proposed systematic approach for selecting and computing SDHIs

Wilhite and Glantz (1985) suggested distinguishing between a conceptual and an operational drought definition, with the former referring to the general qualitative concept of drought and the latter allowing for a quantitative drought characterization including onset, severity, termination, and spatial extent. In the following Sect. 3.1, aspects that relate to the conceptual drought definition are discussed comprising the description of the targeted drought risk and the system at risk. In particular, assumptions about the habituation of the system at risk to the streamflow regime are discussed, an aspect that is currently not taken into account or not made explicit in drought hazard studies. To translate these conceptual definitions into operational

280

285 drought hazard indicators, a new classification system for hazard indicators is proposed in Sect. 3.2. The new systematic approach is illustrated in Sect. 4 using modeled SDHIs at the global scale as well as observation-based SDHIs at four gauging stations with different streamflow regimes and different assumed levels of vulnerability.

### 3.1 Assumptions about habituation inherent in drought hazard indicators

290 The selection of drought hazard indicators for a DEWS requires a clear definition of “the risk of what for whom”. Drought hazard indicators are risk system-specific (Blauhut et al., 2021), and there is not one that fits all. Drought is usually conceptualized as anomaly (“less water than normal”) and/or deficit (“less water than needed”). Consequently, the selection of an indicator requires a definition, often based on assumptions, about “what is normal or needed”, i.e., to what the risk system is habituated to. In the case of streamflow, people and ecosystems are assumed to have adapted to certain characteristics of the flow regime. For example, if drought indicators are computed based on the calendar month-specific distribution of streamflow values, it is implicitly assumed that the risk system has adapted to the seasonality of streamflow. But also temporally constant thresholds, which have traditionally been used to define hydrological droughts (Stahl et al., 2020), are suitable for certain systems, e.g., for computing drought risk for electricity generation by thermal power plants, which require a certain minimum streamflow for operation.

300 At the global scale, it is unknown to which streamflow characteristics different risk systems such as drinking water supply, irrigation water supply, hydropower production, and the river ecosystem are accustomed. Therefore, the eleven global-scale drought hazard indicators analyzed in this study (Table 1) cover different types of habituation, including the habituation to a certain degree of interannual variability of streamflow, to streamflow seasonality, to a certain reduction from mean calendar month or mean annual streamflow, and to being able to fulfill the demand for surface water abstractions and environmental flow. It is up to the user of a large-scale DEWS, who understands the local risk system-specific habituation to reduced water availability, to select the hazard indicator that is appropriate for the risk system of interest.

305 **Table 1:** Characteristics of SDHIs suitable for global-scale assessments, classified according to inherent assumptions about habituation of people or other biota. The general terms “a certain degree” or “a certain reduction” in the first column are specified in a drought assessment by selected thresholds for drought definition.

<b>Assumed habituation and suitable indicator</b>	<b>Characteristics</b>	
<i>People or other biota accustomed to</i>		
a certain degree of inter-annual variability	SSI12, EP12 <sup>1</sup> , CQDI1(Q80-HS), CQDI6(Q80)	Suitable for quantifying 1) risk for human water supply in regions with large man-made reservoirs or lakes that buffer seasonal streamflow deficits as well as 2) risk for large lake and wetland ecosystems.
seasonality and a certain degree of interannual variability	SSI1, EP1, CQDI1(Q80)	Suitable risk for human water supply and for risk for river ecosystems in regions without access to reservoirs. Streamflow drought hazard might be underestimated in regions with high vulnerability and interannual variability.
seasonality	and median calendar month streamflow CQDI1(Q50)	Using such a high threshold (median of calendar monthly streamflow) can be beneficial in highly vulnerable regions where people cannot even cope with small reductions from median calendar month streamflow.
	being able to fulfill demand for surface water abstractions CQDI1(WUs)	The system at risk is accustomed to the seasonality of human water demand (WUs). People are used to being able to fulfill human water demand. The health of river ecosystems is not taken into account. An indicator of water deficit rather than drought hazard.
	being able to fulfill demand for surface water abstractions and environmental flow CQDI1(WUs-EFR)	The system at risk is accustomed to the seasonality of human water demand (WUs) and to the seasonality of environmental flow requirements (EFR). Alternative 1: EFR based on Qant <sup>2</sup> : The river ecosystem has adjusted to the altered flow regime over the last decades, which is considered the “new normal status”. Alternative 2: EFR based on Qnat <sup>2</sup> : the natural flow regime is the aspired status.
	a certain reduction from mean calendar month streamflow RQDI1	Suitable in highly vulnerable regions where people cannot even cope with small reductions from mean calendar month streamflow. Drought hazard might be overestimated in regions with low vulnerability and low interannual variability.
a certain reduction from mean annual streamflow	RQDI12	Suitable in study regions with large man-made reservoirs or lakes, which buffer seasonal streamflow deficits. Drought hazard might be overestimated in regions with low vulnerability and interannual variability.
temporally constant minimum streamflow	Not included in this study	Identifies drought hazard whenever water availability drops beneath a certain level (e.g., water intake for cooling of thermal power plants has to be reduced). Identifies no drought in the wet season.

<sup>1</sup> EP12: Empirical streamflow percentile with an averaging period of 12 months (not analyzed in this study)

310 <sup>2</sup> Qant, Qnat: Modeled anthropogenic streamflow altered by human water use and man-made reservoirs (Qant) and naturalized modeled streamflow (Qnat)

Percentile-based indicators including empirical streamflow percentiles, standardized indicators, and TLM indicators with a low streamflow percentile as threshold are often applied in DEWS (Bachmair et al., 2016; Cammalleri et al., 2016a).  
315 They are perceived as statistically consistent across different temporal and spatial scales, indicating the rarity of the event

(Steinemann et al., 2015; WMO and GWP, 2016). Utilization of percentile-based indicators (e.g., SSI12, SSI1, and CQDI1(Q80) in Table 1) implies that people in different climate regions and social systems are equally habituated to a certain interannual variability, which is most likely not the case. The 20<sup>th</sup> streamflow percentile (or SSI1 = -0.84) would correspond to a low relative streamflow deviation (e.g. -20%) in a humid region (low interannual variability) compared to a higher deviation (e.g. -50%) in a semi-arid region (high interannual variability). Hence, percentile-based indicators might underestimate streamflow drought hazard in semi-arid areas where people (and ecosystems, albeit possibly to a lower degree) are often more vulnerable to reductions in water availability. Regions with high interannual variability are depicted in Fig. A1b. Here, drought hazard indicators that quantify relative deviations from the long-term mean or median (RQDI1, RQDI12 in Table 1) or TLM indicators with higher percentiles as threshold (CQDI1(Q50) in Table 1) might be better suited to define drought conditions. Such indicators appear to be less preferred as periods with the same indicator value have different probabilities of occurrence in different regions and thus not the same rarity (Steinemann et al., 2015). Contrastingly, river ecosystems are, in the ideal case, perfectly adjusted to interannual variability of streamflow such that percentile-based drought hazard indicators are often suitable for drought risk assessment for river ecosystems. In conclusion, percentile-based hazard indicators and relative deviations from the long-term mean or median should be used complementarily in large-scale DEWS to cover different drought risks.

The selected averaging period defines whether people are habituated to the annual or seasonal flow regime. One can assume that river ecosystems are generally accustomed to seasonality. Therefore, indicators with a short averaging period of, for example, one month (EP1, SSI1, RQDI1 and CQDI1 variants in Table 1) are appropriate for quantifying drought hazard for river ecosystems. Furthermore, short averaging periods are suitable in regions where farmers and other water users do not have access to large water storages such as reservoirs, lakes, or groundwater (either due to missing infrastructure or due to water use restrictions). As these users abstract water directly from the stream, they are very vulnerable to seasonal (monthly) streamflow deficits. Indicators with longer averaging periods (SSI12, RQDI12), on the other hand, are suitable in regions with large man-made reservoirs, which are usually replenished during the wet season such that streamflow deficits during the low-flow months are irrelevant. People in these regions are therefore only vulnerable to either interannual variability (SSI12) or mean annual conditions (RQDI12), but not to seasonality. Certainly, other averaging periods may be suitable depending on the region-specific storage capacity. Since volume-based indicators (TLM indicators) are also important components in water resources management (van Loon, 2015), the indicators CQDI1(Q80-HS) and CQDI6(Q80) are assessed as alternatives for SSI12 and RQDI12 (or rather the cumulated variants CSSI12 and CRQDI12) in regions with highly seasonal streamflow regimes (Fig. A1a) and large reservoirs.

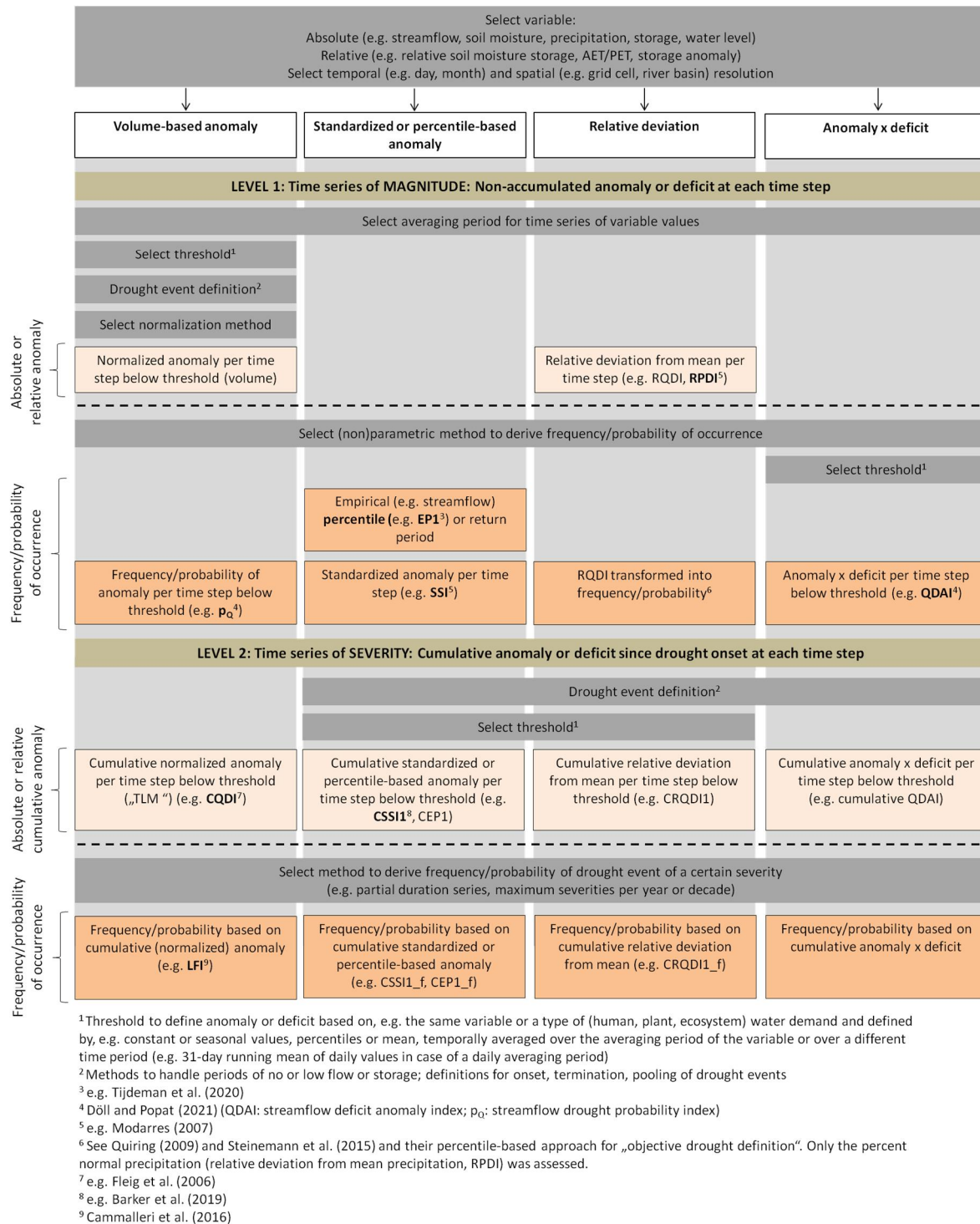
For water managers, the status of the actual water deficit in terms of unsatisfied water demand might be as informative as the status of streamflow anomaly. Drought hazard is generally defined as a climate-induced anomaly, i.e., a period of below-normal water availability (McKee et al., 1993; van Lanen, 2006; van Loon, 2015). This concept can be broadened by assuming that a drought only occurs if the anomaly coincides with a water deficit for people or ecosystems (Cammalleri et al., 2016b; Popat and Döll, 2021; Wilhite and Glantz, 1985). Nevertheless, only a few studies exist where the combination of

350 anomaly and deficit was translated into drought hazard indicators for soil moisture (Palmer, 1965; Cammalleri et al., 2016b; Popat and Döll, 2021) and streamflow (Popat and Döll, 2021). In the present study, the water deficit aspect of drought is represented by the indicators CQDI1(WUs) and CQDI1(WUs-EFR) (Table 1). Application of these indicators implies that the system at risk is habituated to the satisfaction of seasonal water demand. While CQDI1(WUs) neglects the water requirements of the ecosystem, CQDI1(WUs-EFR) assumes that the river ecosystem is habituated to the seasonality and magnitude of natural streamflow. As EFR might never be fulfilled in the case of strongly altered streamflow regimes, Qnat in the EFR computation can be replaced by Qant implying that the river ecosystem has already adapted to the altered streamflow conditions (Table 1). Figure A1c shows regions where human water demand is high compared to available streamflow and where a drought hazard due to unsatisfied human surface water demand is likely.

### 3.2 Levels of drought characterization

360 Translating conceptual drought definitions into operational, quantitative drought hazard indicators is not straightforward due to the complexity of the underlying natural processes and the large number of indicators and methods that can be applied. In the literature, there is agreement about which drought characteristics are relevant for operational applications comprising the temporal component (onset, termination, duration) and the spatial extent as well as drought magnitude and severity, from which other metrics such as intensity, return period, and frequency or probability of occurrence can be derived (van Lanen et al., 2017). We understand drought *magnitude* as an anomaly or deficit occurring within a pre-defined period and *severity* as the accumulated deficit between the magnitude and a selected threshold since the onset of drought, which is defined by water availability dropping below the threshold (van Lanen et al., 2017). However, the terms drought magnitude and severity, which represent different levels of drought characterization, are not applied consistently in the literature. The terms are not made explicit and are sometimes interchanged (Steinemann et al., 2015, Vidal et al., 2009; López-Moreno et al., 2009). In particular, the commonly accepted classification of SDHIs into threshold-based and standardized indicators (van Loon, 2015) is somewhat misleading, since the former represents time series of severity and the latter time series of magnitude.

To facilitate a better understanding of the informative value of SDHIs, we suggest a new indicator classification that includes four types of indicators and distinguishes severity from magnitude indicators (Fig. 1). The indicator types (columns in Fig. 1) include the volume-based anomaly, the standardized or percentile-based anomaly, and the relative deviation (Sect. 2.3). Deficit-anomaly indicators (last column in Fig. 1) combine an anomaly indicator with an indicator of the deficit with respect to optimal water availability (e.g., Popat and Döll, 2021). For each indicator type, two levels of drought characterization, drought magnitude (level 1) and severity (level 2), can be computed.



380 **Figure 1: Classification system including four types of drought hazard indicators, indicating 1) magnitude of the drought at a certain time step as deficit and/or anomaly (level 1) or 2) severity of the drought event, i.e. the cumulative magnitude of drought since**

drought onset (level 2). Both magnitude and severity can be expressed in terms of frequency/probability to compare the drought of interest to other droughts. The dark grey boxes indicate decisions that have to be made when computing the indicators, e.g. which averaging period is selected. Indicators in bold have already been applied in the literature. Assumptions about the habituation of people and ecosystems determine the selection of the type of indicator, the averaging period, and the threshold (see Table 1).

The dark grey boxes in Fig. 1 represent decisions regarding time step length and averaging period, drought threshold and definition of drought events (minimum length of drought event, pooling of drought events). These decisions depend on the assumed habituation of people and ecosystems to certain streamflow conditions (Sect. 3.1 and Table 1). Beige and orange boxes contain indicators that are expressed in absolute or relative values and in frequency/probability of occurrence, respectively. Indicators applied in drought monitoring (CQDI1, low-flow index LFI, percentiles, SSI, RDPI) or in the literature ( $p_0$ , cumulative SSI, streamflow deficit anomaly indicator QDAI) are written in bold. The units of the four indicator types differ both at level 1 and 2, but indicators can be directly compared when expressed in units of probability (or frequency) of non-exceedance.

Figure 1 shows that drought hazard indicators pertaining to one of the four indicator types can be transformed between level 1 (magnitude) and level 2 (severity) while still sharing the type-specific conceptual drought definition. Furthermore, the classification system clarifies that each indicator type requires a threshold setting either at level 1 or 2. Hence, the term “threshold-based” applies to any indicator of drought severity and it is therefore not a suitable criterion for distinguishing types of indicators.

The differentiation of indicator types can be ambiguous. For instance, standardized and percentile-based anomaly indicators are subsumed in Fig. 1 (column 2), although there is a minor conceptual difference between them as highlighted by Tijdeman et al. (2020). While standardized indicators show the non-exceedance probability enabling extrapolation, empirical percentiles represent the historical non-exceedance frequency within the boundaries of observations. We account for this aspect by including the terms frequency and probability in Fig. 1.

On the other hand, volume-based and standardized or percentile-based anomaly indicators are presented as different indicator types, although they can be based on the same conceptual drought definition if equivalent thresholds are applied. If Q80 is used as threshold for CQDI1 and -0.84 for cumulative SSI1 (corresponding to the 20<sup>th</sup> percentile for cumulative EP1 and a return period of 5 years), both indicators capture the same drought signal. Differences between the drought signals are then attributable to the computational methods for the standardization of streamflow. Analyzing the sensitivity of SSI1 to different parametric and nonparametric standardization methods in European river basins, Tijdeman et al. (2020) revealed considerable differences in computed SSI1 among seven probability distributions (and two fitting methods) and five non-parametric methods. A major difference between volume-based and standardized indicators is that the former detect absolute drought deficits and the latter relative drought deficits. This can result in different frequency values for the same drought event.

## 415 4 Similarities and discrepancies in SDHIs as quantified by a global hydrological model

The objective of this chapter is to identify which of the SDHIs presented in Table 1 can be meaningfully quantified at the global scale using WaterGAP 2.2d and which SDHIs are appropriate for monitoring different drought risks in large-scale DEWS. We emphasize that the objective is not a drought impact assessment, which is beyond the scope of this study. We want to show how the conceptual discrepancies and similarities between SDHIs (Sect. 3), which are of a general nature and  
420 apply to any month of the reference period, are translated into global-scale hazard indicators and how these indicators should be interpreted by end-users of a large-scale DEWS. The indicators are illustrated in global maps for two example months, July 2003 and July 2015, with known drought events in Europe. Following the classification of Table 1, SDHIs indicate drought magnitude (Figs. 2 and S3) or drought severity, the latter either expressed as volume-based anomaly or deficit (Figs. 3 and S4) or as frequency of non-exceedance (denoted with the suffix “\_f”) (Figs. 5 and S5). In addition, CQDI1(Q80) and  
425 CQDI1(Q80-HS) are compared at the global scale with respect to drought occurrence during the whole reference period (Fig. 4). SDHIs are further illustrated for four selected gauging stations with different streamflow regimes and assumed vulnerabilities of the risk system to streamflow anomalies (Figs. 6, S2 and S6). These include two stations with low interannual streamflow variability (Danube River at Hofkirchen, Germany (probably low vulnerability), and Angara River at Boguchany, Russia (possibly higher vulnerability)) and two stations with high interannual variability (White River near Oacoma, U.S. (probably  
430 low vulnerability), and Orange River at Violsdrif, South Africa (possibly higher vulnerability)).

### 4.1 SDHIs based on empirical percentiles or standardized streamflow

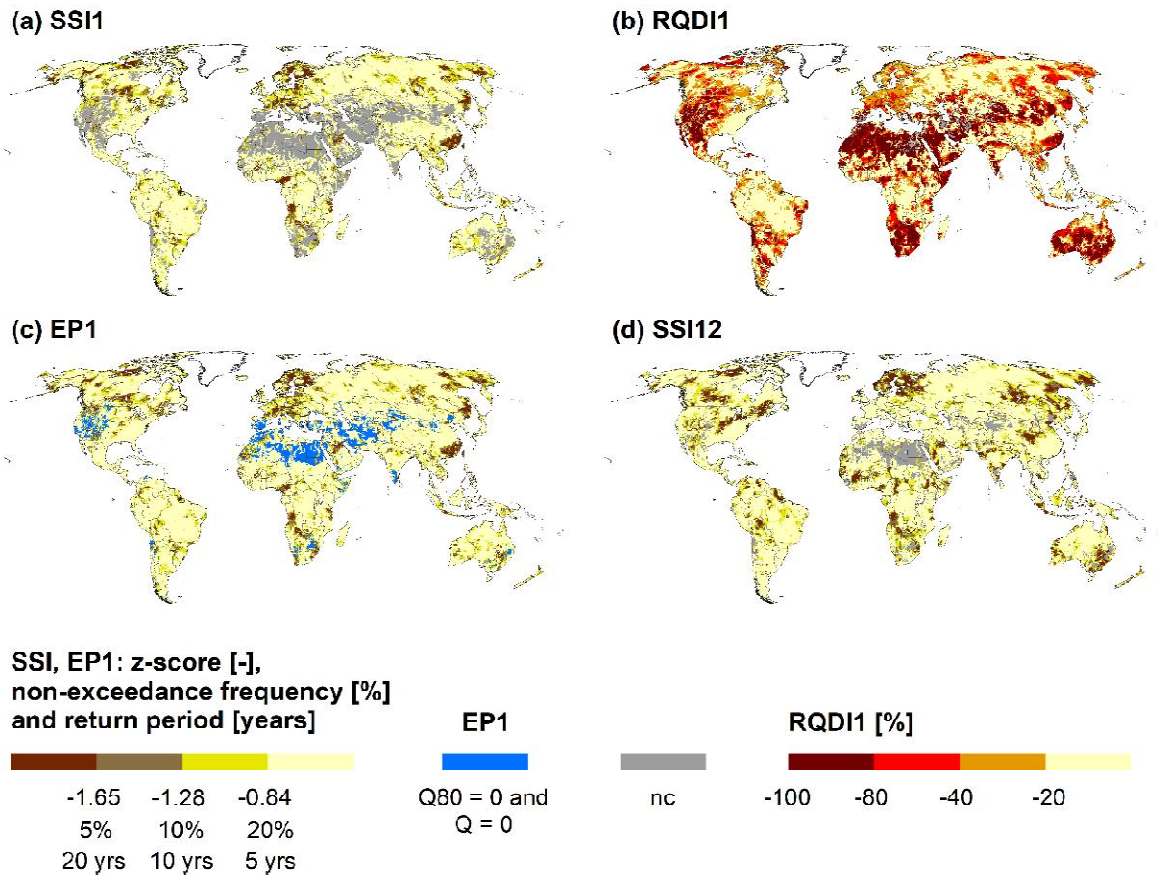
EP1 patterns (Fig. 2c (July 2003), and Fig. S3c (July 2015)) are very similar to SSI1 (Fig. 2a and S3a) since both indicators are based on the same conceptual drought definition (Sect. 3.1). Both indicators generally identify the same drought regions. However, drought classes differ in many regions of the world, with EP1 indicating both higher and lower drought magnitude.  
435 For instance, in eastern France, EP1 indicates a higher drought magnitude class in July 2003 (return period  $RP > 20$  years) than SSI1 ( $RP > 10$  years), while it is vice versa in southern Germany. In July 2015, SSI1 indicates a higher drought hazard than EP1 in the Alpine region, but a lower hazard in parts of the Oder basin in eastern Poland. These differences can be attributed to the fitting of the gamma distribution in the case of SSI1 and the assignment of the maximum rank among tied values within a streamflow sample in the case of EP1 (Sect. 2.3.3).

440 Comparing SSI1 with empirical percentiles, Tijdeman et al. (2020) identified several advantages and limitations for both indicators. SSI1 has the disadvantage that for different streamflow regimes, different parametric probability distributions would be required to achieve the best fit, which reduces consistency at the global scale. In this study, the gamma distribution showed the best fit among 23 parametric probability distributions for most grid cells and was applied in each month and grid cell. Of course, using only one distribution for the whole globe results in poorly fitting distributions for some cells and  
445 months (Tijdeman et al., 2020). Grid cells where gamma fitting was rejected in the calendar month July based on the KS test (Sect. 2.3.1) are shown in grey in Fig. 2a (18% of all grid cells excluding Greenland). EP1 does not require fitting of a distri-



bution and can therefore be computed in more grid cells than SSI1. Only if a sample includes more zero flows than the selected threshold, drought identification is not possible (blue grid cells in Figs. 2c). On the other hand if Q80 is zero and the current streamflow exceeds zero, it is possible to define that the current month is not a drought month (shown in beige in Figs. 2a and 2c). EP1 has the disadvantage that it only allows the quantification of the historical non-exceedance frequency within the reference period, while probabilistic information, for example on extreme events such as a 100-year drought, cannot be derived (Tijdeman et al., 2020). Nonetheless, EP1 seems to be more suitable for a global-scale DEWS, as the indicator does not entail the possibly large uncertainties due to the fitting of a probability distribution and can be computed in more grid cells than SSI1.

455



460 **Figure 2: Magnitude of drought hazard (level 1 in Fig. 1): Non-cumulative anomaly in July 2003 as indicated by SSI1 (a), RQDI1 (b), EP1 (c), and SSI12 (d) for the reference period 1986-2015. For the standardized indicators and EP1, the z scores and the corresponding frequencies of non-exceedance and return periods are shown. In the blue grid cells in (c), drought identification is not possible with EP1, since Q80 and Q are zero. “nc”: not computable.**

## 4.2 SDHIs assuming habituation to mean streamflow or interannual variability of streamflow

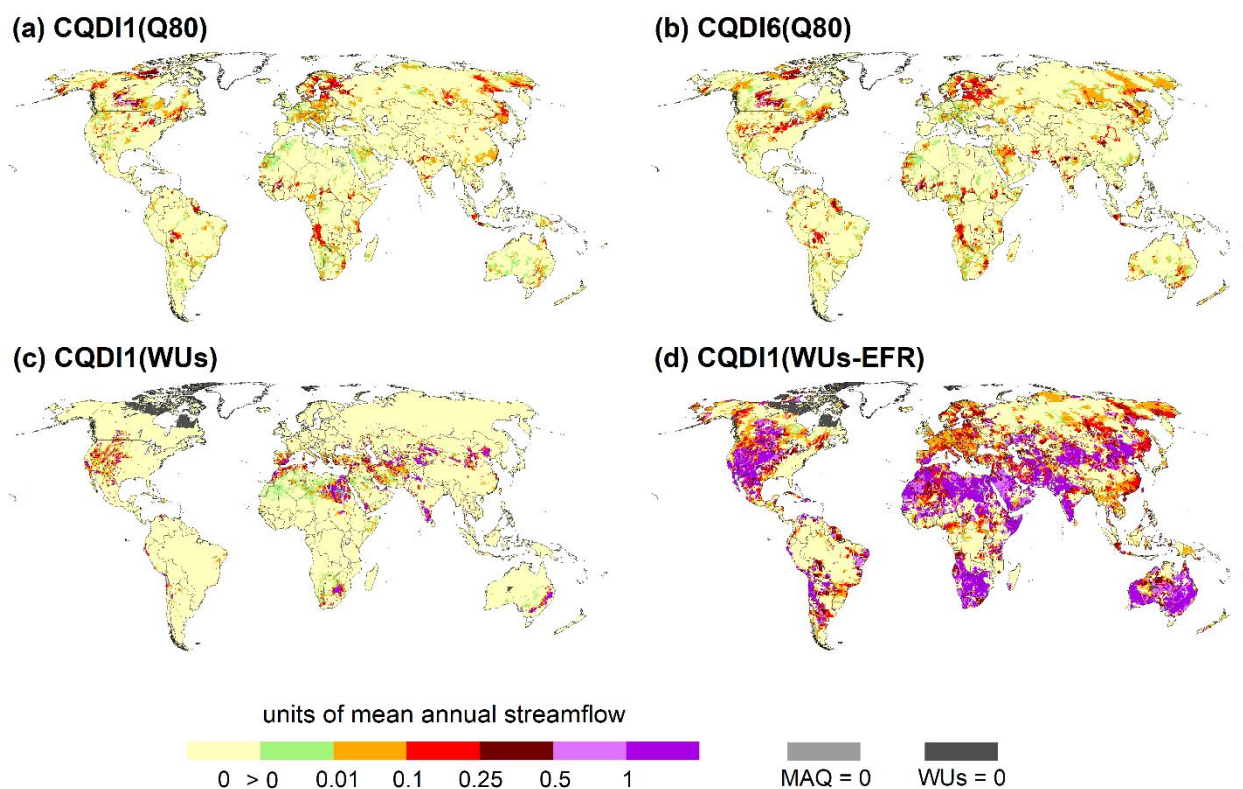
With percentile-based indicators (e.g., EP1, SSI1), risk systems in different regions are assumed to be equally habituated to a certain interannual streamflow variability, which is most likely not the case as interannual variability varies strongly (Fig. A1b). Comparing two regions with high and low interannual variability, the same streamflow percentile or z-score corresponds to a much higher relative deviation from mean calendar month streamflow (RQDI1) if interannual variability is high. For instance, at the Orange River and White River with high interannual variability (Fig. S2), SSI1 values below -0.84 (RP > 5 years) always correspond to RQDI1 values below -70% and -60%, respectively. At the Danube River and Angara River (low interannual variability), RQDI1 of -50% is (almost) never reached, while maximum SSI1 values are higher than at the Orange River and White River. Hence, SSI1 might underestimate drought magnitude if interannual variability is high, especially for vulnerable systems.

At the global scale, RQDI1 (Figs. 2b and S3b) identifies most of the drought hotspots as indicated by EP1 (Figs. 2c and S3c), although the relative levels of magnitude differ. These differences correspond well to the interannual streamflow variability depicted in Fig. A1b. Drought hotspots according to EP1 in regions with low interannual variability (parts of North America, northern Europe, northern Russia) only show moderate relative streamflow deviations by global comparison. This is because RQDI1 values of -50% or lower are never reached in these regions, as was illustrated at the Danube and Angara stations (see above). Here, RQDI1 might underestimate drought magnitude. On the other hand, in regions with high interannual variability (e.g., large parts of Africa, central Asia, western U.S.), both drought magnitude and the affected area are larger according to RQDI1. Here, RQDI1 can draw attention to potential drought impacts in regions with higher suspected vulnerability (e.g., southern Africa) that would otherwise be overlooked using EP1 or SSI1. In regions where people are probably well accustomed to the interannual variability of streamflow (e.g., western U.S.), RQDI1 is less suited than EP1 to indicate drought magnitude. At the severity level, regions with low interannual variability are excluded using CRQDI1(-50%)\_f (Figs. 4d and S5d) due to the low threshold of -50% (grid cells in light grey).

## 4.3 SDHIs taking into account human water use and EFR

The water deficit indicators CQDI1(WUs) and CQDI1(WUs-EFR) (Figs. 3c,d and S4c,b) define drought as “less water than needed” as opposed to the anomaly indicator CQDI1(Q80) (Figs. 3a and S4a) indicating “less water than normal” (or rather less water in a certain month than in 80% of the years). Consequently, the spatial pattern of the former is very different from CQDI1(Q80) patterns. For instance, the drought events in 2003 and 2015 in central and eastern Europe identified by CQDI1(Q80) are not indicated by CQDI1(WUs). This is because surface water stress is generally low in these regions. The spatial patterns of CQDI1(WUs) correlate well with Fig. A1c comparing human water demand for surface water as a fraction of mean streamflow. CQDI1(WUs-EFR) additionally considers the environmental flow requirement EFR computed as 80% of naturalized mean calendar month streamflow. Like RQDI1, the indicator thus depends on mean monthly streamflow and the spatial pattern corresponds well to the map of interannual variability (Fig. A1b). A comparison between CQDI1(WUs) and

CQDI1(WUs-EFR) shows that only in a few regions human water demand is the dominant component determining the water deficit. In most regions, EFR leads to high cumulative deficits even if seasonal human water demand is small ( $< 10\%$  of available streamflow, Fig. A1c). CQDI1(WUs-EFR) is the only indicator in this study that takes explicitly into account the health of the river ecosystem, an aspect that should be included in a global-scale DEWS. Alternatively, the cumulative anomaly-deficit indicator QDAI (Popat and Döll, 2021), considering EFR based on a similar approach, can inform decision-makers and water users about the drought hazard for water supply. In strongly altered flow regimes, where simulated anthropogenic monthly streamflow ( $Q_{ant}$ ) is always below  $80\%$  of mean monthly naturalized streamflow ( $Q_{nat}$ ), time series of CQDI1(WUs-EFR) are continuously increasing, and it is not possible to distinguish drought events. In such cases, it is more meaningful to set EFR to  $80\%$  of mean monthly  $Q_{ant}$ , implying that the altered flow regime is the “new normal” (see also Table 1).



505

510

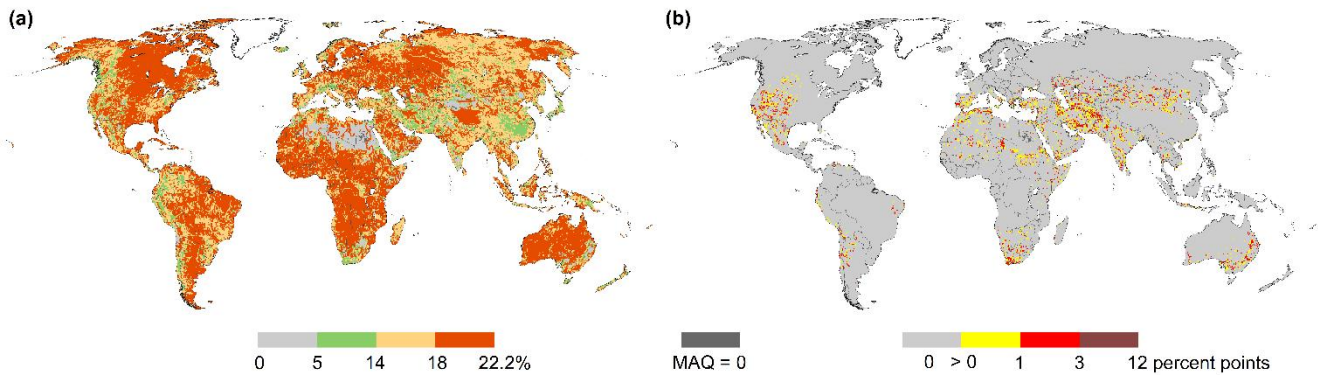
**Figure 3: Severity of drought hazard (level 2 in Fig. 1): Cumulative deficit in July 2003 since onset of drought event as indicated by CQDI1(Q80) (a), CQDI6(Q80) (b), CQDI1(WUs) (c), and CQDI1(WUs-EFR) (d) for the reference period 1986-2015. Grid cells with a deficit of zero are shown in beige. Values larger than zero and below 0.1 are shown in green. A value of 0.1, for example, denotes that the current cumulative deficit is equivalent to 10% of mean annual streamflow (MAQ). WUs: mean annual surface water withdrawals.**

#### 4.4 SDHIs for reservoir management or water users with access to reservoirs

In large-scale hydrological modeling, it is very difficult to accurately simulate how man-made reservoirs affect water availability, i.e. how they impact downstream streamflow and how reservoir storage varies in time. For water users that depend on large reservoirs, streamflow deficits during the low-flow months are not relevant, since reservoirs can store water from the high-flow season. Hence, drought magnitude should be assessed using SDHIs with longer averaging periods that either assume habituation to interannual variability (e.g., SSI12, EP12, Table 1) or mean annual conditions (RQDI12, Table 1), but not seasonality. At the four investigated gauging stations (Fig. S2), the relation between SSI12 and RQDI12 is the same as for SSI1 and RQDI1 (Sect. 4.2). If interannual variability is high (Orange River and White River), SSI12 values correspond to much higher RQDI12 values compared to the stations with low interannual variability (Danube River and Angara River). To obtain drought severity, these indicators can be cumulated using a suitable threshold. As described in Sect. 4.2, a threshold of -50% for RQDI12 would exclude regions with low interannual variability, where this value is rarely reached, and where RQDI12 might underestimate drought magnitude.

In addition to CSSI12 (or CEP12) and CRQDI12, the volume-based indicators CQDI1(Q80-HS) and CQDI6(Q80) were assessed. With CQDI1(Q80-HS), an existing drought is allowed to continue in months where the calendar month Q80 is zero, even if streamflow  $Q$  exceeds zero. In contrast, CQDI1(Q80) only allows a drought to continue if Q80 and  $Q$  are zero. A comparison of the two indicators (Fig. 4) reveals that the impact of the HS method is rather small at the global scale but can be relevant at the regional scale. Figure 4a depicts the fraction of drought months as a percentage of all 360 months during the reference period as indicated by CQDI1(Q80). Using Q80 as threshold implies that the time series should be in drought 20% of the time. The fact that this percentage is often reduced and sometimes increased can be attributed to the two months criterion (Sect. 2.3.2) (one month droughts are ignored and several droughts are pooled) and to drought prolongation if Q80 and  $Q$  are zero. The HS method leads to an increase in drought months by up to 3 percent points (corresponding to 11 out of 360 months) in 6% of all grid cells, e.g., parts of India, Pakistan, Afghanistan, Iran, and the western U.S., all of which are regions with highly seasonal streamflow regimes (Fig. 4b). Larger increases of up to 12 percent points are only computed in 0.4% of all grid cells. Hence, the additional information value of CQDI1(Q80-HS) in a large-scale DEWS would be small. Instead, CQDI variants with longer averaging periods like CQDI6(Q80) (Figs. 3b and S4b) are more suitable for assessing risk systems with reservoirs. The time series of CQDI6(Q80) at the four gauging stations (Fig. S2) illustrate how the maximum drought severity is shifted by one month or more compared to CQDI1(Q80), reflecting that a reservoir storage requires several months of “normal” streamflow to be replenished.

540



545 **Figure 4: Comparison of CQDI1(Q80) and CQDI1(Q80-HS) in the reference period 1986-2015: Percent of months in drought based on CQDI1(Q80) (a) and the increase due to the “HS method” in percent points (b). Both indicators allow an existing drought to continue in months where Q80 and the current streamflow Q are zero. The HS method additionally facilitates drought prolongation in months with Q80=0 if Q>0. Neither indicator allows a drought to begin in months with Q80=0. Drought prolongation in the case of Q80=0 is only possible if a streamflow deficit was computed in at least two antecedent months with Q80>0 (2mc, Sect. 2.3.2). In (a), the fraction of drought months is reduced to <20% if one-month droughts are ignored (2mc). In grid cells with 0% in (a), Q80 is either always zero, or the few calendar months with Q80>0 result in one-month droughts only. The fraction can be increased to >20% in case of drought pooling (2mc) or in the case of drought prolongation if Q80=0. MAQ: mean annual streamflow.**

550

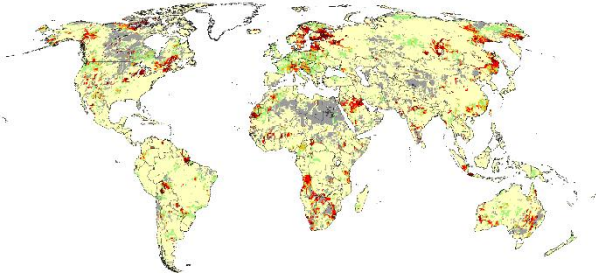
#### 4.5 Range of drought severity as quantified by the various SDHIs

A direct comparison between different severity indicators is possible when the time series of drought severity are transformed into frequency of non-exceedance. Figures 5 and S5 depict the probability (frequency) of non-exceedance  $p$  of drought severity in July 2003 and July 2015, respectively, between four CQDI1 variants, the cumulative relative deviation CRQDI1 with a threshold of -50%, and the cumulative empirical percentile CEP1 with a threshold of 20%. The indicators are denoted with the suffix “f” for frequency. A  $p$ -value of 0.7, for example, indicates a high drought hazard, where the severity up to July 2003 is higher than the severity of 70% of all completed drought events in the reference period. In both example months, the spatial extent of regions with  $p > 0.7$ , i.e. severe droughts, is larger according to the indicators that do not assume habituation to interannual variability (CQDI1(Q50)\_f, CQDI1(WUs)\_EFR\_f, and CRQDI1(-50%)\_f). CQDI1(Q50)\_f and CQDI1(WUs-  
550 EFR)\_f are rather similar. Correspondence between these two indicators is higher than between CQDI1(Q50)\_f and CQDI1(Q80)\_f. CRQDI1(-50%)\_f identifies fewer regions with severe drought status compared to CQDI1(Q50)\_f, but more regions compared to CQDI1(Q80)\_f.

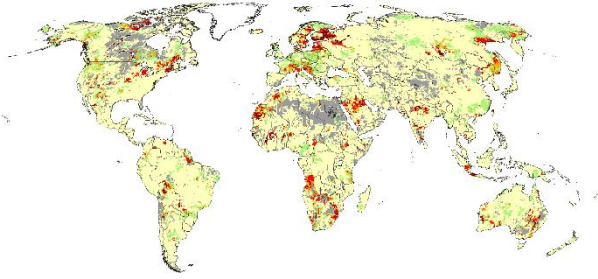
Spatial patterns of CQDI1(Q80)\_f (Figs. 5a and S5a) and CEP1(20%)\_f (Figs. 5b and S5b) are very similar, since they are based on the same drought concept. Nonetheless, small differences occur in all identified drought hotspots, which can be  
565 explained by the fact that the former quantifies absolute and the latter relative streamflow anomalies per calendar month lead-

ing to a different ranking of low-flow and high-flow droughts during the reference period. This relation is illustrated for the Danube gauging station in Fig. 6 and for the other three investigated stations in Fig. S6. Although CEP1(20%) (in units of cumulative percent) and CQDI1(Q80) (in units of mean annual streamflow) capture the same drought signal at the four stations, the relative levels among the drought events differ. In Fig. 6, the three most severe droughts according to CQDI1(Q80) are the drought events in 1998, followed by 2014 and 2003. In contrast, the 2003 drought, which occurred mainly during the low-flow period (August to November) has the second highest severity according to CEP1(20%). The high-flow drought from March to May 2011, on the other hand, has a lower severity rank according to CEP1(20%). The differences are more pronounced with higher seasonal variability (Orange River and White River, Fig. S6), but almost negligible if seasonality is very low (Angara River, Fig. S6). Consequently, in a large-scale DEWS, CEP1(20%) appears to be more suitable in regions where the risk system is more vulnerable to low-flow droughts than to high-flow droughts. These differences would not occur if volume-based monthly streamflow deficits would be normalized using mean monthly streamflow but do occur if they are either not normalized (e.g., the low-flow index LFI, Cammalleri et al., 2016a) or normalized against mean annual streamflow volume (e.g., van Loon et al. (2014) and all CQDI1 variants in this paper).

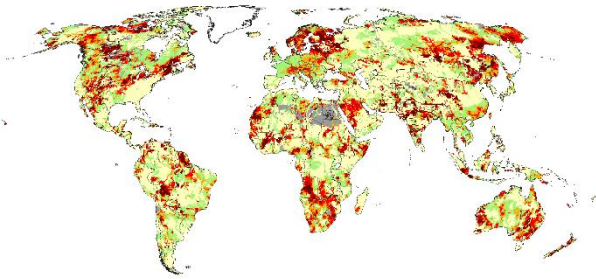
(a) CQDI1(Q80)\_f



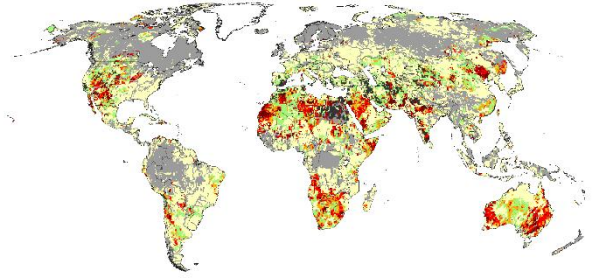
(b) CEP1(20%)\_f



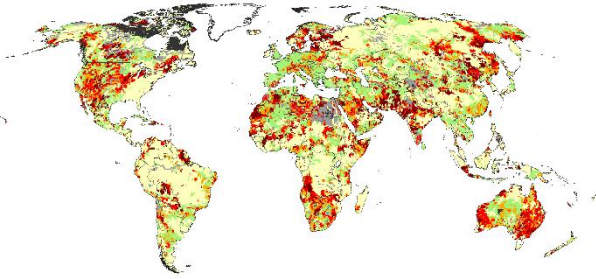
(c) CQDI1(Q50)\_f



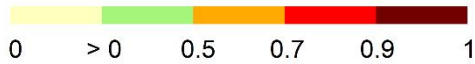
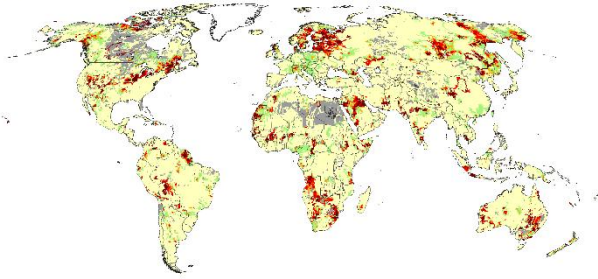
(d) CRQDI1(-50%)\_f



(e) CQDI1(WUs-EFR)\_f



(f) CQDI6(Q80)\_f

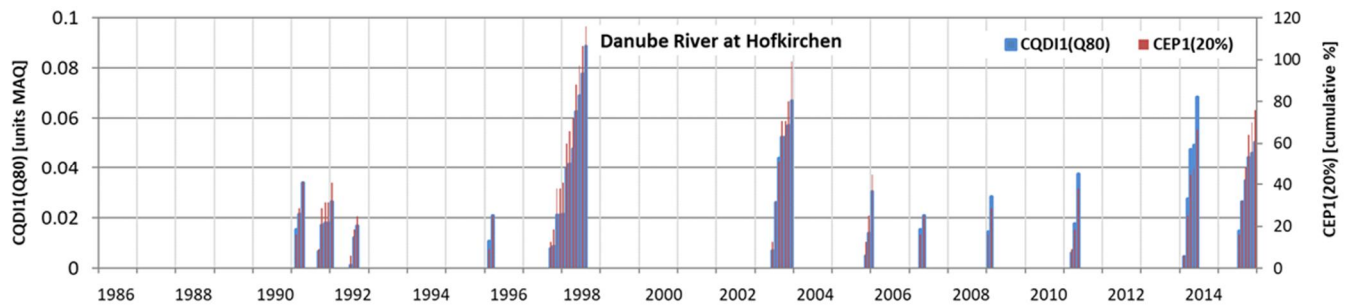


580

Figure 5: Probability of non-exceedance of drought events (level 2 in Fig. 1) in July 2003 for the cumulative indicators CQDI1(Q80)\_f (a), CEP1(20%)\_f (b), CQDI1(Q50)\_f (c), CRQDI1(-50%)\_f (d), CQDI1(WUs-EFR)\_f (e), and CQDI6(Q80)\_f (f) for the reference period 1986-2015. A value of 0.8, for example, indicates that the cumulative anomaly or deficit, i.e., the severity up to this month, is higher than the severity of 80% of all drought events in the reference period. The probability of non-exceedance was not computed for grid cells shown in light grey, where less than six drought events were computed in the reference period (Sect. 2.4). “nc”: not computable.

585

590



595 **Figure 6: Drought severity per month during the reference period 1986-2015 at the Danube River, Hofkirchen, Germany, as indicated by CQDI1(Q80) (blue) and CEP1(20%) (red). MAQ: mean annual streamflow.**

### 5 Recommendations for SDHs in continental and global DEWS

Continental and global DEWS, which encompass near-real-time monitoring as well as seasonal forecasts, are to inform about drought hazards for diverse risk systems, which are characterized by different risk bearers (e.g., human water supply, river ecosystems), habituation, streamflow regimes, and water storage capacities. Therefore, a large-scale DEWS should provide data for a rather large number of drought hazard indicators together with a clear description of suitability for different risk systems including the underlying assumptions about habituation (or adaptation) of the risk bearer to the streamflow regime (Sect. 3.1). Then, end-users can select and combine several drought hazard indicators that are most informative. Table 3 lists the SDHs that should be provided by large-scale DEWS, differentiating three risk groups and three main types of habituation. In a DEWS, drought magnitude indicators should be clearly differentiated from drought severity indicators (Sect. 3.2), and the specific suitability of each SDHI for different risk systems should be explained comprehensively.

600

605



**Table 2:** SDHIs for human water supply and river ecosystems that should be provided by large-scale DEWS for different risk groups. *Italic font:* Indicator assumes habituation to a certain degree of interannual variability (see Fig. A1b). **Bold font:** Indicator assumes the ability to fulfill seasonally varying demand for surface water abstractions and environmental flow. Normal font: Indicator assumes habituation to a certain reduction from mean monthly streamflow, and it is likely suitable for highly vulnerable systems with high interannual streamflow variability. All indicators assume habituation to the seasonality of streamflow.

Risk group	Indicators of	
	Drought magnitude *	Drought severity
Water users without access to large reservoirs and river ecosystems	<i>Return period based on EPI</i> <sup>1</sup> <b>RQDI1</b> <sup>2</sup>	<i>CQDI1(Q80)</i> <sup>3</sup> , <i>CQDI1(Q80)_f</i> <sup>4</sup> <i>with streamflow deficit<sub>m,y</sub> = Q80<sub>m</sub> - Q<sub>m,y</sub></i>  <i>CEPI(20%)_f</i> <sup>5</sup> <i>with percentile deficit<sub>m,y</sub> = P20 - EPI<sub>m,y</sub></i>  <b>CRQDI1(-50%)_f</b> <sup>6</sup> <i>with percent deficit<sub>m,y</sub> = -50% - RQDI1<sub>m,y</sub></i>  <b>CQDI1(WUs-EFR)</b> <sup>7</sup> , <b>CQDI1(WUs-EFR)_f</b> <sup>8</sup> <b>with water deficit<sub>m,y</sub> = WUs<sub>m</sub> + EFR<sub>m</sub> - Q<sub>m,y</sub></b>
Water users with access to or downstream of large reservoirs	Same as in first row but with averaging periods of 6 and 12 months	Same as in first row but with averaging periods of 6 and 12 months
Reservoir managers **	Same as in first row but with averaging periods of 1, 6 and 12 month(s)	Same as in first row but with averaging periods of 1, 6 and 12 month(s)

\* In regions with (suspected) poor quality of hydrological model output, analysis of SPEI6 and SPEI12 is suggested in addition to SDHIs.

\*\* Reservoir managers should be informed to consider SDHIs of the grid cell that represent inflow into the reservoir.

<sup>1</sup> *EPI*: Empirical streamflow percentile per calendar month with an averaging period of one month, with  $0 < EPI \leq 100\%$ . *EPI* expresses the frequency of non-exceedance of the current streamflow. The return period, in years, is computed as  $100/EPI$ . The lower the *EPI* and the higher the return period, the higher the drought hazard.

<sup>2</sup> *RQDI1*: Relative deviation of monthly streamflow from mean calendar month streamflow (MMQ), in percent. It is calculated as the difference between monthly streamflow and the respective MMQ, which is then divided by MMQ. The indicator is not computable in months with  $MMQ=0$ .

<sup>3</sup> *CQDI1(Q80)*: Cumulative volume-based streamflow deficit with an averaging period of one month divided by mean annual streamflow. A deficit occurs if monthly streamflow  $Q_{m,y}$  falls below  $Q80_m$  (the 20th percentile) of the long-term calendar month streamflow. Monthly deficits are accumulated for all drought months to obtain severity. A drought event starts with at least two consecutive months with a deficit, and it ends (deficit set to zero) if there are two consecutive months without a deficit (2mc: two months criterion). Any streamflow surplus over  $Q80$  in a single month between two deficit months does not decrease the cumulative deficit. To address flow intermittency, an existing drought continues during months where both  $Q80$  and the current streamflow are zero. If  $Q80=0$  and the current streamflow exceeds zero, the drought event ends. Hence, a

drought can be prolonged, but never begin in calendar months with  $Q80=0$ . The indicator is expressed in units of mean annual streamflow.

635 <sup>4</sup> **CQDI1(Q80)\_f**: The frequency of non-exceedance of drought events of a certain severity as quantified by CQDI1(Q80), with values between 0 and 1. A high frequency value indicates a high drought hazard. First, the partial duration series of drought events is derived based on the severities of all drought events of the reference period. Grid cells with less than six drought events are excluded. Second, the frequency of non-exceedance is quantified using the exponential cumulative distribution function. Preferably, the indicator should be expressed as return period  $T_r = 1/(\theta(1-CQDI1(Q80)_f))$ , with  $\theta$  as the average number of drought events per year during the reference period.

640 <sup>5</sup> **CEP1(20%)\_f**: The frequency of non-exceedance of drought events of a certain severity (see above) as quantified by the cumulative percentile-based anomaly CEP1(20%). The monthly percentile deficit is computed by subtracting the current streamflow percentile  $EP1_{m,y}$  from the percentile threshold P20. Like CQDI1(Q80), CEP1(20%) allows an existing drought event to continue during months where both Q80 and the current streamflow are zero. The 2mc is also applied. As the unit of CEP1(20%) (cumulative percent) is not informative, the indicator should be provided in frequency of non-exceedance or preferably as return period  $T_r = 1/(\theta(1-CEP1(20%)_f))$ , with  $\theta$  as the average number of drought events per year during the reference period.

645 <sup>6</sup> **CRQDI1(-50%)\_f**: The frequency of non-exceedance of drought events of a certain severity (see above) as quantified by the cumulative relative streamflow deviation CRQDI1(-50%). The monthly percentile deficit is computed by subtracting the relative deviation of the current month  $RQDI1_{m,y}$  from the threshold -50%. Months with  $MMQ=0$ , where the relative deviation is not computable, are defined to end a drought event assuming that people are habituated to zero streamflow in this month. The 2mc is also applied. As the unit of CRQDI1(-50%) (cumulative percent) is not informative, the indicator should be provided in frequency of non-exceedance or preferably return period  $T_r = 1/(\theta(1-CRQDI1(-50%)_f))$ , with  $\theta$  as the average number of drought events per year during the reference period.

650 <sup>7</sup> **CQDI1(WUs-EFR)**: Cumulative, volume-based water deficit with an averaging period of one month divided by mean annual streamflow. It is computed like CQDI1(Q80) but using the threshold mean monthly potential surface water abstraction  $WUs_m$  plus environmental flow requirement ( $EFR_m$ ) per calendar month. EFR is assumed to be 80% of mean monthly naturalized streamflow  $Q_{nat}$  per calendar month. As EFR might never be fulfilled in case of strongly altered streamflow regimes,  $Q_{nat}$  can be replaced by  $Q_{ant}$  implying that the river ecosystem has adapted to the altered streamflow conditions. WUs is the water demand from surface water bodies. The indicator is not computed in grid cells where mean annual WUs in the reference period is zero (approx. 9% of all grid cells excluding Greenland). The indicator is expressed in units of mean annual streamflow.

660 <sup>8</sup> **CQDI1(WUs-EFR)\_f**: The frequency of non-exceedance of drought events of a certain severity (see above) as quantified by CQDI1(WUs-EFR). The indicator should be expressed as return period  $T_r = 1/(\theta(1-CQDI1(WUs-EFR)_f))$ , with  $\theta$  as the average number of drought events per year during the reference period.

665 To assess drought *magnitude*, we recommend using empirical percentiles and relative deviations to cover risk systems that are either habituated to a certain degree of interannual variability or to a certain reduction to mean calendar month streamflow. An averaging period of 1 month is suitable for river ecosystems and water users without access to large reservoirs, who depend on the currently available streamflow. Longer averaging periods of 6 or 12 months are suitable for people with access to or downstream of reservoirs that are replenished during high-flow periods and that can alleviate short periods of below-normal streamflow. For reservoir managers, EP and RQDI with short and longer averaging periods (1, 6, and 12 months) are recommended for monitoring current reservoir inflow anomalies as well as reservoir storage anomalies (with different averaging periods depending on the storage capacity of the reservoir). Due to model uncertainties, time series of reservoir storage as simulated by WaterGAP should not be used for drought assessment. Importantly, reservoir managers

should only consider SDHIs of the grid cell that represent inflow into the reservoir. This also applies if drought hazard for large lakes is analyzed by SHDIs.

We favor empirical percentiles EP over SSI as the former are more transparent to end-users of a DEWS and do not entail uncertainties due to the fitting of a probability distribution. Moreover, application of one selected probability distribution function at large scales will always exclude many grid cells where the fitting is not possible. Here, other methods such as empirical percentiles would be required in any case. Expressing percentiles as return period (in years) may further increase the transparency of EP as end-users are accustomed to quantifying flood hazards by return periods. If the current streamflow is lower than the 30 values of the reference period, EP would only indicate a return period  $> 30$  years (or a z score below  $-1.83$ ), while SSI would indicate an extrapolated value, albeit with high uncertainty (Tijdeman et al., 2020). Hence, 40 reference years should be used, if possible, to differentiate severe and extreme droughts with return periods of up to 40 years (equivalent to  $z = -1.96$ ). In addition to the streamflow-based indicators, the standardized precipitation-potential evapotranspiration index SPEI (Vicente-Serrano et al., 2010) is suggested in regions with (suspected) poor quality of hydrological model output. Longer averaging periods of 6 and 12 months are recommended to consider the delayed response of streamflow to below-normal precipitation and potential evapotranspiration. However, it should be noted that meteorological indicators have limitations in describing hydrological drought processes (Haslinger et al., 2014; Blauhut et al., 2016; Laaha et al., 2017).

Drought *severity* should be assessed with indicators that imply habituation to a certain degree of interannual variability (CEP(20%) and CQDI(Q80)), to a certain reduction from mean monthly streamflow (CRQDI(-50%)), and to the ability to fulfill seasonally varying human water demand from surface water and environmental flow (CQDI(WUs-EFR)). Recommended averaging periods are the same as for magnitude indicators. With exceptions, we recommend that drought severity at a certain point in time is expressed in terms of the probability/frequency of non-exceedance (return period) of a drought event with such severity. These recommendations also relate to variable types other than streamflow (precipitation, soil moisture, etc.) and other spatial scales. In addition, the CQDI indicators should be provided in units of mean annual streamflow.

CRQDI(-50%) is preferred over CQDI(Q50), which is based on a similar assumption about habituation since percent deviations are often applied in climate change impact studies and may thus be easier to grasp. Moreover, CQDI(WUs-EFR) is preferred over CQDI(WUs) since the environmental component of water demand should be considered in a DEWS. Regarding the percentile-based indicators CEP1(20%) and CQDI1(Q80%), the problem of flow intermittency is overcome by allowing an existing drought to continue during months where Q80 and the current streamflow are zero. CEP1 was found to be more sensitive to low-flow droughts than CQDI1, and it is therefore preferred over the latter if the risk system is more vulnerable to low-flow droughts than to high-flow droughts. CQDI1(Q80-HS), conceptualized for risk systems with reservoirs, is not recommended due to the small impact of the HS criterion (Sect. 2.3.2) at the global scale.

According to Stahl et al. (2020), practitioners often use particular streamflow values rather than anomalies as the trigger for management actions. These practitioners could use forecasted RQDI1 as provided by the global-scale DEWS to determine whether this trigger will be reached by computing streamflow from RQDI1 and observed mean monthly streamflow.

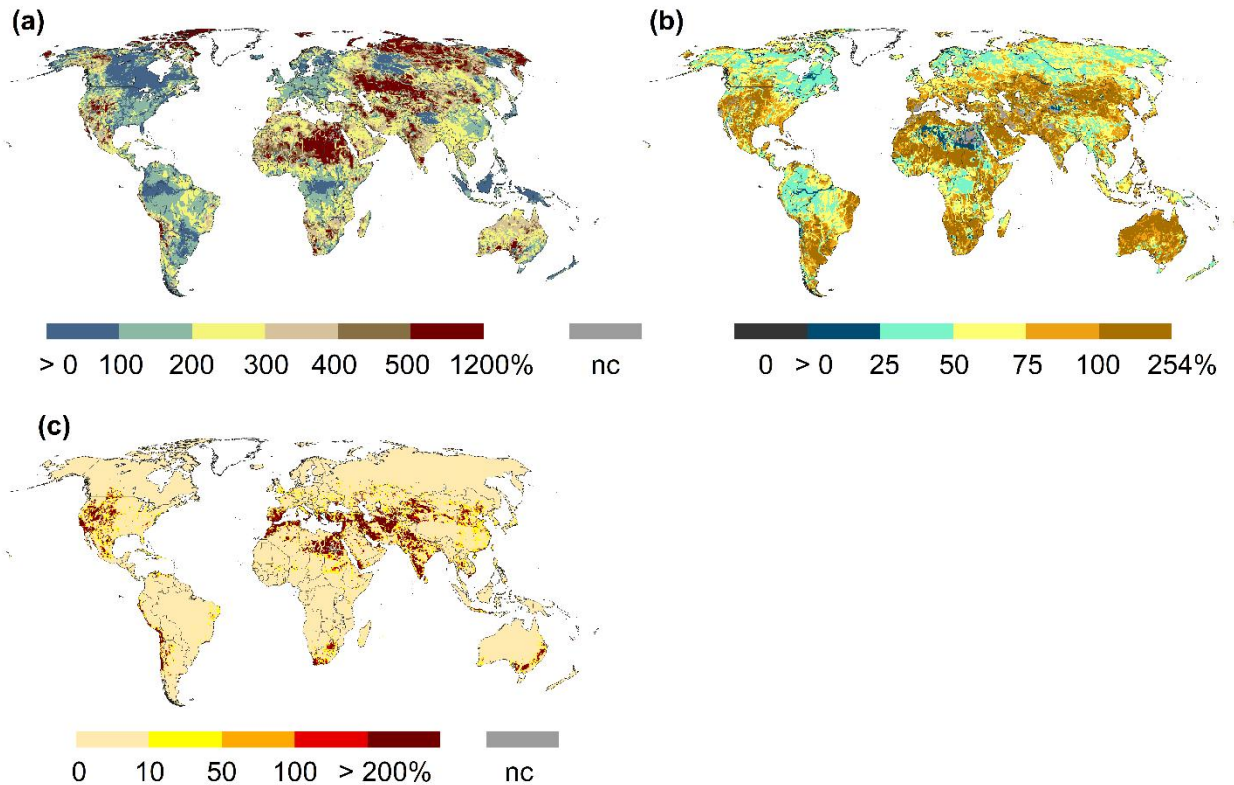
## 6 Conclusions

This paper presents a new systematic approach for selecting global-scale streamflow drought hazard indicators (SDHIs) for monitoring drought risk for human water supply and river ecosystems in large-scale drought early warning systems (DEWS).

710 The methodology replaces the conventional and imprecise classification into threshold-based and standardized indicators by a new classification scheme that distinguishes indicators pertaining to four indicator types by a) their inherent assumptions about the habituation of people and the ecosystem to the streamflow regime and b) their level of drought characterization, namely drought magnitude and drought severity. The new scheme facilitates a better understanding of the information value of drought hazard indicators. It can support the development of a (large-scale) DEWS as well as water managers who rely on  
715 drought hazard indicators for their decision-making.

When providing drought hazard information in a global- or continental-scale DEWS, it is unknown which streamflow characteristics people and river ecosystems are locally accustomed to, and it is uncertain to what degree people have access to water stored in reservoirs. The suitability of hazard indicators is region- and risk system-specific (Blauhut et al., 2021) and can only be evaluated with local knowledge about the vulnerability of the system at risk. Therefore, a large-scale DEWS  
720 should provide data for a rather large number of drought hazard indicators that characterize the condition of various water flows (streamflow, actual evapotranspiration as a fraction of potential evapotranspiration) and water storage compartments (snow, soil, groundwater, lakes). Clear explanations for the end-users about the suitability of drought hazard indicators for specific risk systems need to be provided in DEWS. When selecting hazard indicators, we recommend that end-user make their assumptions about the habituation of the risk bearer explicit before selecting a drought hazard indicator that fits these  
725 assumptions. We suggest that future studies analyze how well these hazard indicators, in combination with suitable vulnerability and exposure indicators, can estimate drought impacts in the targeted risk systems at regional or national scales.

## Appendix



730 **Figure A1: Seasonal streamflow variability indicated by the seasonal amplitude ( $Q$  in calendar month with highest mean monthly  $Q$  minus  $Q$  in calendar month with lowest mean monthly  $Q$  divided by MMQ (mean monthly  $Q$  over all calendar months)) (a), inter-annual streamflow variability indicated by the average of the 12 calendar month values of  $(Q_{20}-Q_{80})/Q_{\text{mean}}$  (b), and average of the 12 calendar month values of  $WUs_{\text{mean}}/Q_{\text{mean}}$  (c). All values in percent.**

735 *Data availability.* WaterGAP 2.2d model output data used in this study are available at <https://doi.org/10.1594/PANGAEA.918447> (Müller Schmied et al., 2021). The WaterGAP 2.2d source code is published at <https://doi.org/10.5281/zenodo.6902111>. The outputs from this study are available at <https://zenodo.org/record/6647609> (Herbert and Döll, 2022). GRDC monthly streamflow data are available at: <http://grdc.bafg.de> (GRDC, 2019).

740 *Supplement.* The supplement related to this article is available online at: tbd

*Author contributions.* This manuscript was conceptualized by PD and CH. CH conducted the data analysis, visualization, and interpretation. The original draft was written by CH and revised by PD.

745 *Competing interests.* The authors declare that they have no conflict of interest.

*Acknowledgments.* We thank the editor and four anonymous referees for their thorough reviews and helpful suggestions for improving the manuscript. We thank Eklavyya Popat for computing the time series of SSI1 and SSI2.

750 *Financial support.* This research was part of the project GlobeDrought and has been supported by the German Federal Ministry of Education and Research (BMBF; grant no. 02WGR1457B) through its Global Resource Water (GRoW) funding initiative.

This open-access publication was funded by the Goethe University Frankfurt.

755

## References

- Abramowitz, M. and Stegun, I.: Handbook of Mathematical Functions with Formulas, Graphs, and Mathematical Tables, 55, 1965.
- Bachmair, S., Stahl, K., Collins, K., Hannaford, J., Acreman, M., Svoboda, M., Knutson, C., Smith, K. H., Wall, N., Fuchs, B., Crossman, N. D., and Overton, I. C.: Drought indicators revisited: the need for a wider consideration of environment and society, *WIREs Water*, 3, 516–536, <https://doi.org/10.1002/wat2.1154>, 2016.
- 760 Barker, L. J., Hannaford, J., Parry, S., Smith, K. A., Tanguy, M., and Prudhomme, C.: Historic hydrological droughts 1891–2015: systematic characterisation for a diverse set of catchments across the UK, *Hydrol. Earth Syst. Sci.*, 23, 4583–4602, <https://doi.org/10.5194/hess-23-4583-2019>, 2019.
- 765 Beguería, S.: Uncertainties in partial duration series modelling of extremes related to the choice of the threshold value, *Journal of Hydrology*, 303, 215–230, <https://doi.org/10.1016/j.jhydrol.2004.07.015>, 2005.
- Blauhut, V., Stoelzle, M., Ahopelto, L., Brunner, M. I., Teutschbein, C., Wendt, D. E., Akstinas, V., Bakke, S. J., Barker, L. J., Bartošová, L., Briede, A., Cammalleri, C., Stefano, L. de, Fendeková, M., Finger, D. C., Huysmans, M., Ivanov, M., Jaagus, J., Jakubínský, J., Kalin, K. C., Krakovska, S., Laaha, G., Lakatos, M., Manevski, K., Neumann Andersen, M., Nikolova, N., Osuch, M., van Oel, P., Radeva, K., Romanowicz, R. J., Toth, E., Trnka, M., Urošev, M., Urquijo Reguera, J., Sauquet, E., Stevkova, S., Tallaksen, L. M., Trofimova, I., van Vliet, M. T. H., Vidal, J.-P., Wanders, N., Werner, M., Willems, P., and Živković, N.: Lessons from the 2018–2019 European droughts: A collective need for unifying drought risk management, 27 pp., 2021.

- Blauhut, V., Stahl, K., Stagge, J. H., Tallaksen, L. M., Stefano, L. de, and Vogt, J.: Estimating drought risk across Europe  
775 from reported drought impacts, drought indices, and vulnerability factors, *Hydrol. Earth Syst. Sci.*, 20, 2779–2800,  
<https://doi.org/10.5194/hess-20-2779-2016>, 2016.
- Cammalleri, C., Barbosa, P., and Vogt, J. V.: Evaluating simulated daily discharge for operational hydrological drought monitoring in the Global Drought Observatory (GDO), *Hydrological Sciences Journal*, 65, 1316–1325,  
<https://doi.org/10.1080/02626667.2020.1747623>, 2020.
- 780 Cammalleri, C., Vogt, J., and Salamon, P.: Development of an operational low-flow index for hydrological drought monitoring over Europe, *Hydrological Sciences Journal*, 346–358, <https://doi.org/10.1080/02626667.2016.1240869>, 2016a.
- Cammalleri, C., Micale, F., and Vogt, J.: A novel soil moisture-based drought severity index (DSI) combining water deficit magnitude and frequency, *Hydrol. Process.*, 30, 289–301, <https://doi.org/10.1002/hyp.10578>, 2016b.
- Corzo Perez, G. A., van Huijgevoort, M. H. J., Voß, F., and van Lanen, H. A. J.: On the spatio-temporal analysis of hydrological  
785 droughts from global hydrological models, *Hydrol. Earth Syst. Sci.*, 15, 2963–2978, <https://doi.org/10.5194/hess-15-2963-2011>, 2011.
- Fleig, A. K., Tallaksen, L. M., Hisdal, H., and Demuth, S.: A global evaluation of streamflow drought characteristics, *Hydrol. Earth Syst. Sci.*, 10, 535–552, <https://doi.org/10.5194/hess-10-535-2006>, 2006.
- Flörke, M., Kynast, E., Bärlund, I., Eisner, S., Wimmer, F., and Alcamo, J.: Domestic and industrial water uses of the past 60  
790 years as a mirror of socio-economic development: A global simulation study, *Global Environmental Change*, 23, 144–156, <https://doi.org/10.1016/j.gloenvcha.2012.10.018>, 2013.
- GRDC: Global Runoff Data Centre, Federal Institute of Hydrology, Koblenz, Germany, 2019.
- Griffiths, M. L. and Bradley, R. S.: Variations of Twentieth-Century Temperature and Precipitation Extreme Indicators in the Northeast United States, *Journal of Climate*, 20, 5401–5417, <https://doi.org/10.1175/2007JCLI1594.1>, 2007.
- 795 Hagenlocher, M., Meza, I., Anderson, C. C., Min, A., Renaud, F. G., Walz, Y., Siebert, S., and Sebesvari, Z.: Drought vulnerability and risk assessments: state of the art, persistent gaps, and research agenda, *Environ. Res. Lett.*, 14, 83002, <https://doi.org/10.1088/1748-9326/ab225d>, 2019.
- Haslinger, K., Koffler, D., Schöner, W., and Laaha, G.: Exploring the link between meteorological drought and streamflow: Effects of climate-catchment interaction, *Water Resour. Res.*, 50, 2468–2487, <https://doi.org/10.1002/2013WR015051>,  
800 2014.
- Herbert, C. and Döll, P.: Streamflow drought hazard indicators for monitoring drought risk for human water supply and river ecosystems at the global scale, <https://doi.org/10.5281/zenodo.6647609>, 2022.
- Heudorfer, B. and Stahl, K.: Comparison of different threshold level methods for drought propagation analysis in Germany, *Hydrology Research*, 48, 1311–1326, <https://doi.org/10.2166/nh.2016.258>, 2017.
- 805 Kumar, N. M., Murthy, C. S., Sessa Sai, M. V. R., and Roy, P. S.: On the use of Standardized Precipitation Index (SPI) for drought intensity assessment, *Met. Apps*, 16, 381–389, <https://doi.org/10.1002/met.136>, 2009.

- Laaha, G., Gauster, T., Tallaksen, L. M., Vidal, J.-P., Stahl, K., Prudhomme, C., Heudorfer, B., Vlnas, R., Ionita, M., van Lanen, H. A. J., Adler, M.-J., Caillouet, L., Delus, C., Fendekova, M., Gailliez, S., Hannaford, J., Kingston, D., van Loon, A. F., Mediero, L., Osuch, M., Romanowicz, R., Sauquet, E., Stagge, J. H., and Wong, W. K.: The European 2015  
810 drought from a hydrological perspective, *Hydrol. Earth Syst. Sci.*, 21, 3001–3024, <https://doi.org/10.5194/hess-21-3001-2017>, 2017.
- Lehner, B., Döll, P., Alcamo, J., Henrichs, T., and Kaspar, F.: Estimating the Impact of Global Change on Flood and Drought Risks in Europe: A Continental, Integrated Analysis, *Climatic Change*, 75, 273–299, <https://doi.org/10.1007/s10584-006-6338-4>, 2006.
- 815 Lloyd-Hughes, B.: The impracticality of a universal drought definition, *Theor Appl Climatol*, 117, 607–611, <https://doi.org/10.1007/s00704-013-1025-7>, 2014.
- López-Moreno, J. I., Vicente-Serrano, S. M., Beguería, S., García-Ruiz, J. M., Portela, M. M., and Almeida, A. B.: Dam effects on droughts magnitude and duration in a transboundary basin: The Lower River Tagus, Spain and Portugal, *Water Resour. Res.*, 45, <https://doi.org/10.1029/2008WR007198>, 2009.
- 820 McKee, T. B., Doesken, N. J., and Kleist, J.: The relationship of drought frequency and duration to time scales, 1993. Modarres, R.: Streamflow drought time series forecasting, *Stoch Environ Res Ris Assess*, 21, 223–233, <https://doi.org/10.1007/s00477-006-0058-1>, 2007.
- Müller Schmied, H., Cáceres, D., Eisner, S., Flörke, M., Herbert, C., Niemann, C., Peiris, T. A., Popat, E., Portmann, F. T., Reinecke, R., Schumacher, M., Shadkam, S., Telteu, C.-E., Trautmann, T., and Döll, P.: The global water resources and  
825 use model WaterGAP v2.2d: model description and evaluation, *Geosci. Model Dev.*, 14, 1037–1079, <https://doi.org/10.5194/gmd-14-1037-2021>, 2021.
- Nalbantis, I. and Tsakiris, G.: Assessment of Hydrological Drought Revisited, *Water Resour Manage*, 23, 881–897, <https://doi.org/10.1007/s11269-008-9305-1>, 2009.
- Palmer, W. C.: Meteorological Drought, Research Paper No. 45, 45, 1965.
- 830 Popat, E. and Döll, P.: Soil moisture and streamflow deficit anomaly index: an approach to quantify drought hazards by combining deficit and anomaly, *Nat. Hazards Earth Syst. Sci.*, 21, 1337–1354, <https://doi.org/10.5194/nhess-21-1337-2021>, 2021.
- Pozzi, W., Sheffield, J., Stefanski, R., Cripe, D., Pulwarty, R., Vogt, J. V., Heim, R. R., Brewer, M. J., Svoboda, M., Westerhoff, R., van Dijk, A. I. J. M., Lloyd-Hughes, B., Pappenberger, F., Werner, M., Dutra, E., Wetterhall, F., Wagner, W.,  
835 Schubert, S., Mo, K., Nicholson, M., Bettio, L., Nunez, L., van Beek, R., Bierkens, M., Goncalves, L. G. G. de, Mattos, J. G. Z. de, and Lawford, R.: Toward Global Drought Early Warning Capability: Expanding International Cooperation for the Development of a Framework for Monitoring and Forecasting, *Bulletin of the American Meteorological Society*, 94, 776–785, <https://doi.org/10.1175/BAMS-D-11-00176.1>, 2013.
- Prudhomme, C., Giuntoli, I., Robinson, E. L., Clark, D. B., Arnell, N. W., Dankers, R., Fekete, B. M., Franssen, W., Gerten,  
840 D., Gosling, S. N., Hagemann, S., Hannah, D. M., Kim, H., Masaki, Y., Satoh, Y., Stacke, T., Wada, Y., and Wisser, D.:



- Hydrological droughts in the 21st century, hotspots and uncertainties from a global multimodel ensemble experiment, *Proceedings of the National Academy of Sciences of the United States of America*, 111, 3262–3267, <https://doi.org/10.1073/pnas.1222473110>, 2014.
- 845 Richter, B. D., Davis, M. M., Apse, C., and Konrad, C.: A PRESUMPTIVE STANDARD FOR ENVIRONMENTAL FLOW PROTECTION, *River Res. Applic.*, 28, 1312–1321, <https://doi.org/10.1002/rra.1511>, 2012.
- Satoh, Y., Shiogama, H., Hanasaki, N., Pokhrel, Y., Boulange, J. E. S., Burek, P., Gosling, S. N., Grillakis, M., Koutroulis, A., Müller Schmied, H., Thiery, W., and Yokohata, T.: A quantitative evaluation of the issue of drought definition: a source of disagreement in future drought assessments, *Environ. Res. Lett.*, 16, 104001, <https://doi.org/10.1088/1748-9326/ac2348>, 2021.
- 850 Sharma, T. C. and Panu, U. S.: Predicting return periods of hydrological droughts using the Pearson 3 distribution: a case from rivers in the Canadian prairies, *Hydrological Sciences Journal*, 60, 1783–1796, <https://doi.org/10.1080/02626667.2014.934824>, 2015.
- Shukla, S. and Wood, A. W.: Use of a standardized runoff index for characterizing hydrologic drought, *Geophys. Res. Lett.*, 35, <https://doi.org/10.1029/2007GL032487>, 2008.
- 855 Smakhtin, V.: Low flow hydrology: a review, *Journal of Hydrology*, 240, 147–186, [https://doi.org/10.1016/S0022-1694\(00\)00340-1](https://doi.org/10.1016/S0022-1694(00)00340-1), 2001.
- Spinoni, J., Barbosa, P., Jager, A. de, McCormick, N., Naumann, G., Vogt, J. V., Magni, D., Masante, D., and Mazzeschi, M.: A new global database of meteorological drought events from 1951 to 2016, *Journal of Hydrology: Regional Studies*, 22, 100593, <https://doi.org/10.1016/j.ejrh.2019.100593>, 2019.
- 860 Spinoni, J., Muñoz, C. A., Masante, D., McCormick, N., Vogt, J. V., and Barbosa, P.: European Drought Observatory User Meeting: JRC Conference and Workshop Reports, 2018.
- Stagge, J. H., Tallaksen, L. M., Gudmundsson, L., van Loon, A. F., and Stahl, K.: Candidate Distributions for Climatological Drought Indices (SPI and SPEI ), *Int. J. Climatol.*, 35, 4027–4040, <https://doi.org/10.1002/joc.4267>, 2015.
- 865 Stahl, K., Vidal, J.-P., Hannaford, J., Tijdeman, E., Laaha, G., Gauster, T., and Tallaksen, L. M.: The challenges of hydrological drought definition, quantification and communication: an interdisciplinary perspective, *Proc. IAHS*, 383, 291–295, <https://doi.org/10.5194/piahs-383-291-2020>, 2020.
- Steinemann, A., Iacobellis, S. F., and Cayan, D. R.: Developing and Evaluating Drought Indicators for Decision-Making, *Journal of Hydrometeorology*, 16, 1793–1803, <https://doi.org/10.1175/JHM-D-14-0234.1>, 2015.
- Tijdeman, E., Stahl, K., and Tallaksen, L. M.: Drought Characteristics Derived Based on the Standardized Streamflow Index: A Large Sample Comparison for Parametric and Nonparametric Methods, *Water Resour. Res.*, 56, <https://doi.org/10.1029/2019WR026315>, 2020.
- 870 UNECE: Policy Guidance Note on the Benefits of Transboundary Water Cooperation: Identification, Assessment and Communication,

- 875 [unece.org/fileadmin/DAM/env/water/publications/WAT\\_Benefits\\_of\\_Transboundary\\_Cooperation/ECE\\_MP.WAT\\_47\\_PolicyGuidanceNote\\_BenefitsCooperation\\_1522750\\_E\\_pdf\\_web.pdf](http://unece.org/fileadmin/DAM/env/water/publications/WAT_Benefits_of_Transboundary_Cooperation/ECE_MP.WAT_47_PolicyGuidanceNote_BenefitsCooperation_1522750_E_pdf_web.pdf), 2015.
- van Huijgevoort, M. H. J., Hazenberg, P., van Lanen, H. A. J., and Uijlenhoet, R.: A generic method for hydrological drought identification across different climate regions, *Hydrol. Earth Syst. Sci.*, 16, 2437–2451, <https://doi.org/10.5194/hess-16-2437-2012>, 2012.
- 880 van Huijgevoort, M., van Lanen, H., Teuling, A. J., and Uijlenhoet, R.: Identification of changes in hydrological drought characteristics from a multi-GCM driven ensemble constrained by observed discharge, *Journal of Hydrology*, 512, 421–434, <https://doi.org/10.1016/j.jhydrol.2014.02.060>, 2014.
- van Lanen, H. A. J.: Drought propagation through the hydrological cycle, 2006.
- van Lanen, H., Vogt, J. V., Andreu, J., Carrão, H., Stefano, L. de, Dutra, E., Feyen, L., Forzieri, G., Hayes, M., Iglesias, A., Lavaysse, C., Naumann, G., Pulwarty, R., Spinoni, J., Stahl, K., Stefanski, R., Stilianakis, N., Svoboda, M., and  
885 Tallaksen, L. M. (Eds.): *Climatological risk: droughts*: Poljanšek, K., Marín Ferrer, M., De Groeve, T., Clark, I. (Eds.). *Science for disaster risk management 2017: knowing better and losing less.*, 556 pp., 2017.
- van Loon, A. F., Tijdeman, E., Wanders, N., van Lanen, H. A. J., Teuling, A. J., and Uijlenhoet, R.: How climate seasonality modifies drought duration and deficit, *J. Geophys. Res. Atmos.*, 119, 4640–4656, <https://doi.org/10.1002/2013JD020383>, 2014.
- 890 van Loon, A. F., van Huijgevoort, M. H. J., and van Lanen, H. A. J.: Evaluation of drought propagation in an ensemble mean of large-scale hydrological models, *Hydrol. Earth Syst. Sci.*, 16, 4057–4078, <https://doi.org/10.5194/hess-16-4057-2012>, 2012.
- van Loon, A. F.: Hydrological drought explained, *WIREs Water*, 2, 359–392, <https://doi.org/10.1002/wat2.1085>, 2015.
- van Loon, A. F., Stahl, K., Di Baldassarre, G., Clark, J., Rangelcroft, S., Wanders, N., Gleeson, T., van Dijk, A. I. J. M.,  
895 Tallaksen, L. M., Hannaford, J., Uijlenhoet, R., Teuling, A. J., Hannah, D. M., Sheffield, J., Svoboda, M., Verbeiren, B., Wagener, T., and van Lanen, H. A. J.: Drought in a human-modified world: reframing drought definitions, understanding, and analysis approaches, *Hydrol. Earth Syst. Sci.*, 20, 3631–3650, <https://doi.org/10.5194/hess-20-3631-2016>, 2016.
- van Oel, P. R., Martins, E. S. P. R., Costa, A. C., Wanders, N., and van Lanen, H. A. J.: Diagnosing drought using the downstreamness concept: the effect of reservoir networks on drought evolution, *Hydrological Sciences Journal*, 63, 979–990,  
900 <https://doi.org/10.1080/02626667.2018.1470632>, 2018.
- Vicente-Serrano, S. M., Beguería, S., and López-Moreno, J. I.: A Multiscalar Drought Index Sensitive to Global Warming: The Standardized Precipitation Evapotranspiration Index, *Journal of Climate*, 23, 1696–1718, <https://doi.org/10.1175/2009JCLI2909.1>, 2010.
- Vidal, J.-P., Martin, E., Franchistéguy, L., Habets, F., Soubeyroux, J.-M., Blanchard, M., and Baillon, M.: Multilevel and  
905 multiscale drought reanalysis over France with the Safran-Isba-Modcou hydrometeorological suite, 20 pp., 2009.
- Vincent, L. A. and Mekis, É.: Changes in Daily and Extreme Temperature and Precipitation Indices for Canada over the Twentieth Century, *Atmosphere-Ocean*, 44, 177–193, <https://doi.org/10.3137/ao.440205>, 2006.

- Weedon, G. P., Balsamo, G., Bellouin, N., Gomes, S., Best, M. J., and Viterbo, P.: The WFDEI meteorological forcing data set: WATCH Forcing Data methodology applied to ERA-Interim reanalysis data, *Water Resour. Res.*, 50, 7505–7514, <https://doi.org/10.1002/2014WR015638>, 2014.
- 910
- Wilhite, D. and Glantz, M.: Understanding the drought phenomenon: the role of definitions, *Water International*, 10, 111–120, <https://doi.org/10.1080/02508068508686328>, 1985.
- WMO and GWP: Handbook of Drought Indicators and Indices (M. Svoboda and B.A. Fuchs). Integrated Drought Management Programme (IDMP), Integrated Drought Management Tools and Guidelines Series 2. Geneva., 2016.
- 915
- Yevjevich, V.: An objective approach to definitions and investigations of continental hydrological droughts, *Hydrology Papers Colorado State University*, 1967.
- Yihdego, Y., Vaheddoost, B., and Al-Weshah, R. A.: Drought indices and indicators revisited, *Arab J Geosci*, 12, <https://doi.org/10.1007/s12517-019-4237-z>, 2019.
- Zaidman, M. D., Rees, H. G., and Young, A. R.: Spatio-temporal development of streamflow droughts in north-west Europe, *Hydrol. Earth Syst. Sci.*, 6, 733–751, <https://doi.org/10.5194/hess-6-733-2002>, 2002.
- 920