

# Assessing uncertainties in landslide susceptibility predictions in a changing environment (Styrian Basin, Austria)

Raphael Knevels<sup>1</sup>, Helene Petschko<sup>1</sup>, Herwig Proske<sup>2</sup>, Philip Leopold<sup>3</sup>, Aditya N. Mishra<sup>4</sup>, Douglas Maraun<sup>4</sup>, and Alexander Brenning<sup>1</sup>

<sup>1</sup>Department of Geography, Friedrich Schiller University Jena, Jena, 07743, Germany

<sup>2</sup>Remote Sensing and Geoinformation Department, JOANNEUM RESEARCH Forschungsgesellschaft mbH, Graz, 8010, Austria

<sup>3</sup>Centre for Low-Emission Transport, AIT Austrian Institute of Technology GmbH, Vienna, 1210, Austria

<sup>4</sup>Wegener Centre for Climate and Global Change, Regional Climate Research Group, Karl-Franzens-University Graz, Graz, 8010, Austria

**Correspondence:** Raphael Knevels (raphael.knevels@uni-jena.de)

**Abstract.** The assessment of uncertainties in landslide susceptibility modelling in a changing environment is an important, yet often neglected task. In an Austrian case study, we investigated the uncertainty cascade in storylines of landslide susceptibility emerging from climate change and parametric landslide model uncertainty. In June 2009, extreme events of heavy thunderstorms occurred in the Styrian basin, triggering thousands of landslides. Using a storyline approach, we discovered a generally lower landslide susceptibility for pre-industrial climate, while for future climate (2071–2100) a potential increase of 35 % in highly susceptible areas (storyline of much heavier rain) may be compensated by much drier soils (–45 % areas highly susceptible to landsliding). However, the estimated uncertainties in predictions were generally high. While uncertainties related to within-event internal climate model variability were substantially lower than parametric uncertainties of the landslide susceptibility model (ratio of around 0.25), parametric uncertainties were of the same order as the climate scenario uncertainty for the higher warming levels (+3 K and +4 K). We suggest that in future uncertainty assessments, an improved availability of event-based landslide inventories and high-resolution soil and precipitation data will help to reduce parametric uncertainties of landslide susceptibility models used to assess the impacts of climate change on landslide hazard and risk.

## 1 Introduction

Climate and land use/land cover (LULC) are changing worldwide, altering the risk of landslide occurrences. During the period from 1998 to 2017, landslides affected 4.8 million people causing more than ~~18,000~~ 55,997 deaths and over 5.28 billion US\$ total damages (Wallemacq et al., 2018) (Froude and Petley, 2018; Wallemacq et al., 2018). In the future, these landslide-associated casualties are likely to increase globally (Haque et al., 2019; Gariano and Guzzetti, 2021), and such an increase can already be observed in some regions (Schlögel et al., 2020). ~~In the Alpine region and in Austria in particular, landslides~~ Across the Austrian Alps and their forelands, a generally high proneness of landslides is observed, which are among the main natural hazards frequently causing damage to houses and infrastructure as well as casualties (Jaedicke et al., 2014; Lima et al., 2021). Here they are conditioned by local geomorphology, geology and LULC, with long-lasting heavy rainfall and rapid snowmelt as

the main natural triggers (Schweigl and Hervás, 2009). In south-eastern Austria extreme precipitation is projected to increase by up to 14 percent for each Kelvin of warming ( $\% K^{-1}$ ) as a consequence of climate change, which was found to affect the risk of landslide occurrences (Olefs et al., 2021; Maraun et al., 2022).

25 In June 2009 and September 2014, weather ~~phenomena-conditions~~ developed through a cut-off low brought ~~extreme-heavy~~ rainfall into the Styrian Basin, Austria's ~~southeastern Alpine forelands~~ (e.g., over 100 mm in 24 h in 2009). In both events in total more than three thousand landslides were triggered, causing significant damage to human infrastructure (e.g., about 13.4 million € in 2009; Hornich and Adelwöhrer 2010; ZAMG 2014). The combined effect of premoistening over the preceding winter and spring, and the ~~occurrence of the~~ actual triggering rainfall made these ~~extreme-weather~~ events into compound events  
30 (Zscheischler et al., 2020; Maraun et al., 2022). In addition to the high amount of rain, local experts identified human activities as a conditioning factor (steep or unsecured embankments, artificial slope surcharge, impervious paved surfaces; Hornich and Adelwöhrer 2010). Statistical investigations of these landslide events confirmed the important role of meteorological (rainfall intensity and five-day rainfall) and LULC (forest types) predictors (Knevels et al., 2020). Focusing on the rainfall event in 2009, Maraun et al. (2022) analysed the effect of projected future climate (2070–2100) and LULC changes (~~LULCC~~) on  
35 landslide occurrences ~~using a storyline approach~~ for the most-affected Feldbach region. ~~In Maraun et al. (2022) the concept of storylines - simulations of physically self-consistent, plausible pathways of a specific event (Shepherd et al., 2018), was first applied in a landslide context, thus asking "how would this event occur in a warmer/colder climate, and what would be the associated landslide susceptibility".~~ While cut-off lows ~~would be expected to~~ become slightly less frequent, the area threatened by landslides, given such an event, would increase by 45 % in a 4 K global warming scenario (Maraun et al., 2022). However, a  
40 comprehensive assessment of uncertainties inherent in ~~landslide susceptibility predictions~~ ~~the projected landslide susceptibility~~ has yet to be conducted, which is the objective of our study.

Uncertainty assessments are essential for the development of business strategies and policy interventions, they increase transparency and confidence in scientific analyses, and they are considered a ‘good modelling practice’ (Kirchner et al. 2021 and references therein). Generally, depending on the scientific community, different def-  
45 initions of uncertainties exist ~~(Walker et al., 2003; Refsgaard et al., 2007)~~ ~~(Walker et al., 2003; Kirchner et al., 2021)~~. In risk assessment, uncertainty is commonly categorised into aleatory and epistemic uncertainty ~~(Oberkampff et al., 2004; Roy and Oberkampff, 2011; Rougier et al., 2013)~~ ~~(Roy and Oberkampff, 2011; Rougier et al., 2013)~~. Aleatory uncertainty refers to the natural variation or randomness inherent in the natural hazard process, and is thus irreducible and unavoidable (Roy and Oberkampff, 2011; Rougier, 2013). Epistemic uncertainty arises from missing knowledge, and is  
50 reducible by enhancing knowledge on the subject (Roy and Oberkampff, 2011; Rougier and Beven, 2013). Additionally, three sources of epistemic uncertainty can be distinguished (Rougier and Beven, 2013): input uncertainty (e.g., initial or boundary condition uncertainty in climate modelling), parametric uncertainty (e.g., uncertainty in model parameter settings), and structural uncertainty (e.g., uncertainty in model form to represent the system). However, according to Roy and Oberkampff (2011) the boundary between aleatory and epistemic uncertainty is fluid and depends on the question. Furthermore, when  
55 different sources of uncertainties propagate through a sequence of calculations, the full range of uncertainties is referred to as the uncertainty cascade (Refsgaard et al., 2016).

In landslide risk management, many authors have emphasised the importance of the quantification of uncertainties, especially considering environmental change (Reichenbach et al., 2018; Gariano and Guzzetti, 2021). However, only a tiny fraction of around 3% of recent statistical landslide susceptibility analyses actually address this issue (Reichenbach et al. 2018, based on 565 articles published between 1983 and 2016). Focusing on statistically-based landslide susceptibility analysis, input and parameter uncertainties have previously investigated for landslide inventory biases or incompleteness (e.g., Steger et al., 2016, 2017), the quality, resolution and spatial scale of input data (e.g., Guzzetti et al., 2006; Fressard et al., 2014; Torizin et al., 2021) (e.g., Guzzetti et al., 2006; Brock et al., 2020; Torizin et al., 2021), and the size and strategy effects of landslide sampling (e.g., Petschko et al., 2014; Hussin et al., 2016) (e.g., Petschko et al., 2014; Ozturk et al., 2021). For the assessment of structural uncertainty, model validation procedures such as (spatial) cross-validation are well-established assessment techniques (e.g., Petschko et al., 2014; Torizin et al., 2021). However, only few studies account explicitly for often invisible effects of spatial (and temporal) autocorrelation in landslide model fitting and prediction (Reichenbach et al., 2018; Lombardo et al., 2020). Spatially varying uncertainties in landslide susceptibility predictions, emerging from parametric uncertainty (or sampling variability) and model error, have been assessed in terms of the standard error (or confidence interval) of the predicted probabilities (Guzzetti et al., 2006; Petschko et al., 2014), or by model ensembles (Kim et al., 2018; Felsberg et al., 2021) (Kim et al., 2018; Felsberg et al., 2022). Regarding climate change, landslide studies often suffer from common modelling limitation. Namely, the presence of large-scale circulation errors in global climate models (GCMs), using GCMs without downscaling and subsequent bias adjustment (Roberts et al., 2019), not resolving convection in standard regional climate models (RCMs), and ignoring factors that might be potentially relevant in a changing climate such as soil moisture (Maraun et al., 2017, 2022).

Our objective was the assessment of uncertainties in landslide susceptibility predictions considering both parametric landslide model uncertainty and climate change uncertainty (within-event internal model variability and scenario uncertainty), while accounting for different storylines of LULC and climate change in the Styrian basin, Austria. The focus was not on creating landslide susceptibility maps, but on the quantification of uncertainties. Such a joint consideration of uncertainties in integrated modelling (or interdisciplinary system of linked models) is still an important research gap (Kirchner et al., 2021), and existing studies mostly come from a non-landslide context (e.g., hydrological or crop modelling; Bastola et al. 2011; Holzkämper et al. 2015; Refsgaard et al. 2016). In our analysis, we built upon an existing landslide susceptibility model (Maraun et al., 2022) that linked different predisposing and triggering factors to the 2009 and 2014 landslide occurrences. Our workflow combines within-event internal climate model variability with probabilistic simulations of parametric uncertainties of the landslide model into an uncertainty cascade in order to obtain a storyline uncertainty assessment. With this approach, we differentiate the uncertainty components in the analysed landslide susceptibility predictions.

## 2 Study Area and Data

### 2.1 Study Area and ~~Extreme~~ Rainfall Events

90 Landslides in the Styrian Basin, Austria, have received much attention especially recently after the 2009 and 2014 compound events (Hornich and Adelwöhrer, 2010; Knevels et al., 2020; Maraun et al., 2022). Our study area (3831 km<sup>2</sup>) is characterised by flat lowlands in the East and a hilly topography in the West, ranging from 196 to 1167 metres above the Adriatic Sea (m AA) with a relative relief of 3–550 m km<sup>-2</sup>. The Styrian Prealps border the study area from southwest (Possruck Mountains, Koralpe) to northwest (Stubalpe Mountains, Graz Mountains). According to Gasser et al. (2009) and Hornich and Adelwöhrer  
95 (2010) the Styrian basin has a high predisposition to landslides due to the underlying geology of Neogene sediments (thick Miocene and minor Pliocene sediments) mainly consisting of a heterogeneous mixture and interbedded strata of sands, silts, clays, marl, and gravels (more geological details are given in Gasser et al. 2009).

In June 2009 and September 2014, ~~extreme~~ heavy rainfall events occurred in southeast Styria. From June 22 to 25, 2009, a series of heavy thunder- and rainstorms brought over 100 mm of precipitation within 24 hours in some places, which corre-  
100 sponds to a 50-year return period (Fig. 1c left; meteorological details in Haiden 2009; Hornich and Adelwöhrer 2010). In the region, around 1700 landslide-related private damage claims were submitted to the state government, surpassing 13.4 million € of cost for reconstruction and emergency response (Hornich and Adelwöhrer, 2010). The northern part of the district of South East Styria was particularly severely affected (Fig. 1b), so that for several municipalities the state of emergency had to be declared (Hornich and Adelwöhrer, 2010). The rainfall event in 2014 was similar, although less severe. In September 2014,  
105 several heavy thunderstorms occurred within a three-week period (ZAMG, 2014). From September 12 to 15, between 30 and 100 mm of rain (Fig. 1c right) was brought to the region by an upper-level low (Steiermark, 2014). Again, landslides occurred across the entire Styrian basin, but were clustered with more than 500 landslides south of Leibnitz and north of Gleisdorf (Fig.1b).

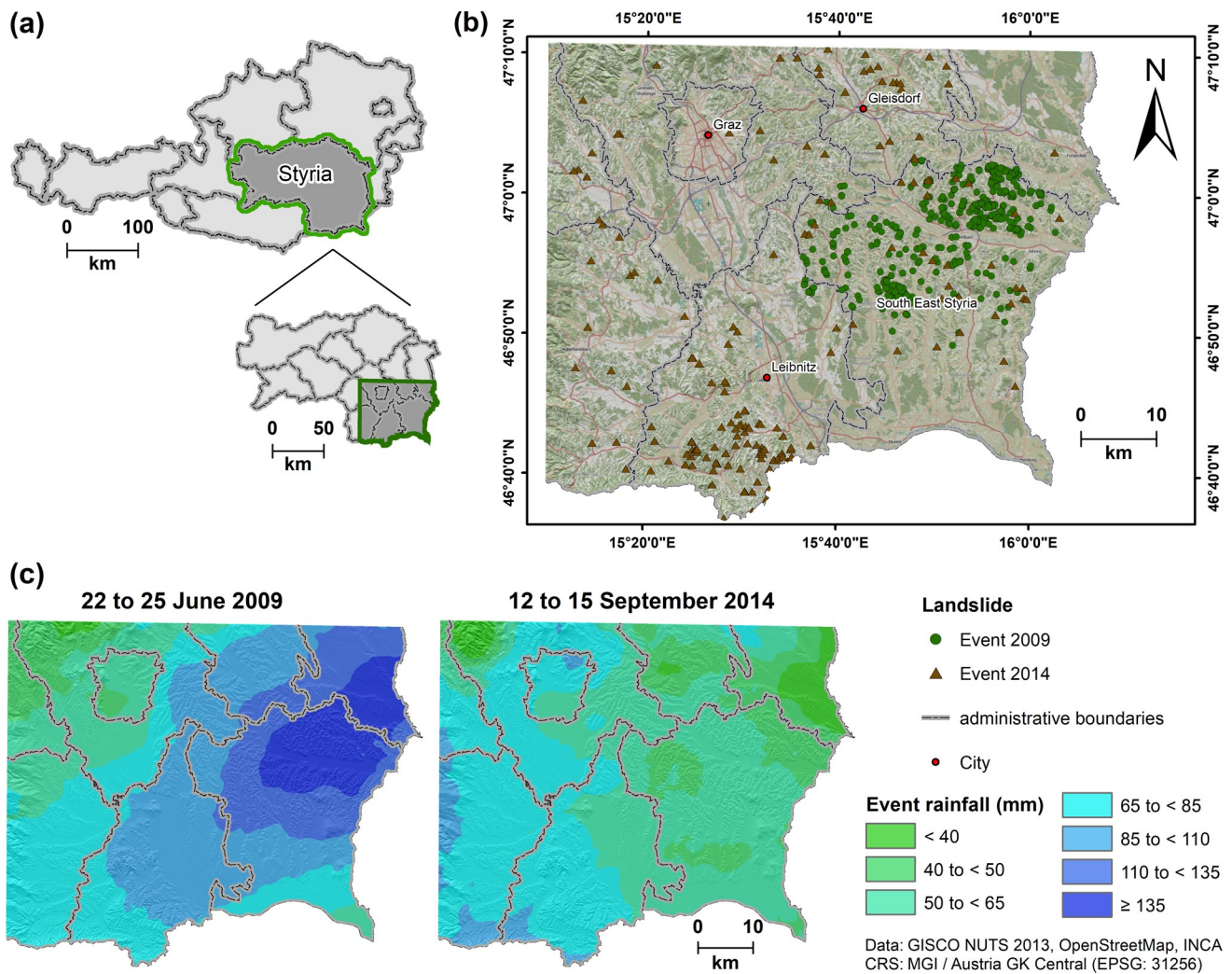
### 2.2 Data

110 The database of the analysis is consistent with the data described in Knevels et al. (2020) and Maraun et al. (2022). While detailed information on the landslide inventory, the sampling design and the landslide susceptibility model can be found in Knevels et al. (2020), model extensions and applications that account for soil moisture and environmental changes, respectively, were presented in Maraun et al. (2022). Similar to the above-mentioned studies, we used a target resolution of 10 m × 10 m for our analysis. Here we will present the database only briefly giving the details relevant for our model construction, and we refer  
115 the reader to the cited publications for further detail.

#### 2.2.1 Base Data

For the analysis, different climate, land surface and landslide data were provided by various sources. As climate data, precipitation and soil moisture data was used. INCA (Integrated Nowcasting through Comprehensive Analysis, 1 km × 1 km)





**Figure 1.** Overview of the study area. (a) Location in Austria (upper part) and federal state of Styria (lower part). (b) Occurred-landslides during extreme-rainfall events. (c) Accumulated rainfall (mm) of the event in 2009 (left) and 2014 (right). Adopted from Knevels et al. (2020).

precipitation was provided by the Austrian Central Institute for Meteorology and Geodynamics. Furthermore, precipitation  
120 was aggregated to obtain accumulated five-day rainfall (in mm) and maximum three-hour rainfall intensity (in mm h<sup>-1</sup>) on the  
landslide failure day, respectively ([for a justification of the precipitation aggregation scheme, please refer to Knevels et al. 2020](#)  
)[\). The soil moisture data was derived using HRLDAS v4.1 \(high-resolution land data assimilation system, Chen et al. 2007\)](#)  
with a 1 km × 1 km spatial and an hourly temporal resolution for the 2004–2014 period, and was provided by Maraun et al.  
(2022) (technical details in Schaffer 2021). As land surface data, an airborne LiDAR-derived high-resolution digital terrain  
125 model (HRDTM, 1 m × 1 m), a geological basemap, and LULC data (distinguishing forest types: no/broadleaf/mixed and  
conifer forest) were provided by the GIS department of Styria and JOANNEUM RESEARCH, respectively. Based on the  
HRDTM suitable land surface variables were derived (Sect. 3.1).

As landslide data, we used landslides that occurred during the ~~extreme-heavy~~ rainfall events, which were initially mapped  
by the Institute of Military Geoinformation and the Geological Survey of Austria in 2009, and in 2014 by the Department of  
130 Hydrology, Resources and Sustainability of the Styrian Government, respectively. Knevels et al. (2020) analysed and filtered  
these datasets, and compiled a quality-controlled landslide inventory comprising 626 landslides (487 for 2009 and 139 for  
2014) in total, which we classified as earth and debris slides with possible transitions to complex slide flows after Cruden and  
Varnes (1996) (refer to Table A2 in Knevels et al. (2020) for more information).

### 2.2.2 Environmental Change Simulations

135 In order to project landslide susceptibility patterns based on past and future environmental conditions, we obtained event  
storylines in pre-industrial and future climates (Maraun et al., 2022) as well as a future LULC scenario compiled from various  
sources. In an event storyline approach, the emphasis is placed on a qualitative understanding and plausibility of driving  
factors involved in an event, and thus the physically self-consistent unfolding of past, or plausible future events or pathways  
is examined (Shepherd et al., 2018). [This implies that we are not investigating all future expected extreme rainfall events,](#)  
140 [but rather a similar event manifesting itself differently in varied climate scenarios. Recently, the Intergovernmental Panel On](#)  
[Climate Change \(IPCC\) emphasised the utility of the storyline approach for constructing and communicating regional climate](#)  
[information \(Doblas-Reyes et al., 2021\).](#)

For climate change, the focus was on simulations of the 2009 rainfall event in the present climate, as well as of its character-  
istics in pre-industrial and future climates. The pre-industrial (“past”) climate is understood here as a counterfactual (present)  
145 climate, i.e. without climate change (from here on referred to as NO-CC for ‘climate with no climate change’). The simulations  
were based on the regional climate model (RCM) Consortium for Small-scale Modelling (Rockel et al., 2008) with a spatial  
resolution of 3 km × 3 km and covered the eastern Alpine region (Fig. S1 in Supplementary Material). The RCM boundary  
conditions were obtained from the integrated forecast system of the European Centre for Medium-Range Weather Forecasts  
(Bechtold et al., 2008). A spin-up was run (1 October 2008 to 20 June 2009) to ensure a balanced soil-moisture field. Based  
150 on the spin-up, a ten-member ensemble simulation of the actual event ending at 28 June 00:00 UTC was computed (“present-  
day”). Storylines for NO-CC and future conditions were simulated based on boundary conditions modified by changes from  
four ~~global climate models (GCM)~~ [GCMs](#) of the Coupled Model Intercomparison Project (Taylor et al., 2009) accounting for

the representative concentration pathways with a radiative forcing of  $8.5 \text{ W m}^{-2}$  (RCP8.5, i.e. high emission scenarios; with ten ensemble members each): IPSL-CM5A-MR (IPSL), HadGEM2-CC (HadGEM), GFDL-ESM2m (GFDL), and MIROC-ESM (MIROC). For the future simulations, the RCM boundaries were modified by imposing changes derived from GCMs, representing the difference between typical conditions during weather events comparable to the 2009 event in warmer future climates and present climate. The changes were derived from events occurring in the periods 2071–2100 and 1975–2004 under the RCP8.5 scenario and rescaled to selected global warming levels (Maraun et al., 2022). Specifically, we considered 0.5 K (Paris agreement; PARIS), 3 K (business-as-usual) and 4 K warming (worst case). For the NO-CC simulations, boundary conditions were obtained by scaling the future climate change signal down to  $-1 \text{ K}$  cooling. Please refer to Maraun et al. (2022) for more details on the climate simulations.

Since all conducted simulations showed a positional bias, a delta change approach was applied for each hydrometeorological variable (i.e. precipitation and soil moisture). Following Maraun et al. (2022) the delta change factors were estimated for the simulated hydrometeorological values as ratios of differences in areal averages within domains where the climate change signal was assumed to be constant (i.e., NO-CC to present, present to future,  $10 \times 10$  ensemble-members, i.e. 100 pairs per storyline). In contrast to Maraun et al. (2022), in this study, for soil moisture, the region was expanded to fit the actual target domain (i.e., southeast Styria vs. Feldbach region, Fig. S1 in Supplementary Material).

A LULC scenario for the future was developed jointly with the Forestry Directorate and District Forestry Authority as regional and local stakeholders. The present-day Syrian forest has a characteristic structure of small-scale changes of different forest types, but with a high percentage of spruce (around 58 %, BFW 2019). Rising temperatures and summer dryness may lead to a higher vulnerability to disturbances such as pathogens and forest pests, including bark beetles (Kolström et al., 2011; Jandl, 2020). Adopting active forest management in the developed future LULC scenario, coniferous forest was replaced by climate resilient mixed forest. Additionally, present-day agricultural land in unfavourable topography (e.g., slopes steeper than  $20^\circ$ ) were simulated as being transformed to mixed forest in the future. [The idealized LULC scenarios developed by Maraun et al. \(2022\) were not in the scope of this analysis \(i.e. extreme de- and afforestation\)](#). For the NO-CC, the present-day LULC was used as we were only interested in the climate signal.

### 2.2.3 Data for Landslide Susceptibility Predictions

For the spatial prediction of landslide susceptibility, the creation of a prediction dataset with one layer for each variable (i.e., stack of raster layers) was required. Since precipitation and soil moisture varied during the landslide-triggering period (22–25 June 2009) and landslide failure dates for the simulated NO-CC and future are unknown, we extracted process-related aggregated features for the considered period. Specifically, for each grid cell we determined the maximum three-hour rainfall intensity, and we took the maximum five-day rainfall. For soil moisture, we used the maximum value on the day prior to the beginning of the corresponding five-day rainfall aggregation. We downscaled the climate data to our target resolution using the inverse distance weighting method ( $power = 3$ ,  $maximum \ number \ of \ neighbours = 16$ ).

The proposed approach to assessing landslide susceptibility uncertainty addresses model fitting accounting for spatial dependency (Sect. 3.1), predictions considering environmental change (Sect. 3.2), and their amount of uncertainty (Sect. 3.3). Please refer to Fig. A1 in the Appendix A for an overview.

### 3.1 Landslide Susceptibility Model

190 Our analysis built on the landslide susceptibility model of Maraun et al. (2022), which was a generalised additive model (GAM). A GAM is a semi-parametric extension of a generalised linear model (GLM) since it has the ability to model nonlinear relationships by automatically fitting transformations, or so-called component smooth functions (Hastie and Tibshirani, 1986; Wood, 2017) (Wood, 2017). The additive structure of a GAM allows common model diagnostics (e.g., predictor-response relationship, variable importance, odds ratios; Brenning 2012), and thus GAMs have become  
195 popular in landslide susceptibility studies in recent years (Petschko et al., 2014; Knevels et al., 2020).

For the landslide susceptibility analysis, we linked predisposing and time-varying preparatory and triggering factors to landslide occurrences—, by following recent recommendations for non-stationary landslide susceptibility models (Gariano and Guzzetti, 2016; Reichenbach et al., 2018; Jones et al., 2021; Ozturk et al., 2021). Therefore, we are analyzing conditional landslide susceptibility in the sense of a susceptibility that applies under given (time-varying) environmental  
200 conditions. Predictor variables were land surface variables (convergence index of 100 m and 500 m, plan and profile curvature, logarithmic D-Infinity flow accumulation, normalised height, slope angle, slope angle of catchment area, North- and West-exposedness, topographic position index, and topographic wetness index), hydrometeorological variables (soil moisture, five-day rainfall and maximum three-hour rainfall intensity), geology, and forest type (representing LULC). For more information on the delineation of the predictor variables and their maps, refer to Knevels et al. (2020) and Fig. S6 in the Supplementary Material, respectively.  
205

We developed landslide susceptibility models with different model settings, some of which have been published before (Table A1 in Appendix A). As a new model, we decided to explicitly account for residual spatial autocorrelation using a low rank Gaussian process smoother (GP, Wood 2017) as an additional predictor (GAM-Spatial). This feature is often missing in landslide susceptibility modelling, which may result in residual patterns that are unaccounted for by the model and may  
210 introduce errors in predictions (Reichenbach et al., 2018). Furthermore, we kept the influence of the five-day rainfall variable constant beyond 80 mm (“top-coded”) to counteract a physically implausible predictor-response relationship beyond this threshold (GAM-SM+TC in Maraun et al. 2022). In other model settings, the five-day rainfall variable was not modified (i.e., GAM-SM, Maraun et al. 2022; cf. Fig. ??-A2 Appendix A), and soil moisture was not included as model predictor (i.e., GAM-Co, Knevels et al. 2020).

215 We used a GAM-Spatial implementation that incorporates residual spatial autocorrelation through the GP representation (Fahrmeir et al., 2013; Wood, 2017). The hyperparameters necessary for the GP implementation are a range ( $\Phi$ ) and correlation function, and were estimated based on the residuals of GAM-SM+TC. We followed Simpson (2018) in iteratively searching

for a suitable range (from 10 to 1000 m) and correlation function (spherical, exponential, Gaussian, and Matérn, the latter with  $\kappa$  values of 1.5, 2.5 and 3.5). The models' restricted maximum likelihood (REML) score was assessed to identify optimal hyperparameters (i.e., lowest REML score), which were then applied to fit the GAM-Spatial model with a GP. Additionally, the effective range, at which the residual autocorrelation drops below 0.05, was calculated using *StempCens* in R (*EffectiveRange* with  $cor = 0.05$ , Valeriano et al. 2020).

For model assessment, we used well-established diagnostic tools. The model performance was assessed using a five-fold spatial cross-validation (SpCV) with five repetitions, and measured using the area under the receiver operating characteristic curve (AUROC) (Brenning, 2012; Knevels et al., 2020)(Knevels et al., 2020). We ensured that the training and validation data were identical to those in Knevels et al. (2020) to achieve a fair comparison of the landslide susceptibility models. The AUROC values were interpreted following Hosmer et al.'s (2013) interpretation guide. To assess variable importances, we calculated the model's mean decrease in deviance explained (mDD, %) after removing the respective variable from the model (Knevels et al., 2020). Larger mDD values indicate greater explanatory power. Predictor-response relationships were analysed visually using transformation functions and quantitatively using odds ratios (OR). An OR represents the chance that an outcome happened given a specific exposure, compared to odds of the outcome under a reference exposure (Szumilas, 2010). An OR greater than one means an exposure with higher odds of landslide occurrence while an OR lower than one is associated with lower odds of landslide occurrence, while accounting for the other variables in the model (OR = 1 means no association to the exposure). In contrast to Knevels et al. (2020), the variable importance and predictor-response relationships were assessed based on GAMs using the complete data set (GAM-Spatial, GAM-SM+TC, GAM-SM), i.e. not on subsets of the SpCV models (GAM-Co).

We focused on highly susceptible areas for analysing the uncertainty cascade in storylines of the landslide susceptibility. The area of high landslide susceptibility was defined using the thresholding approach of Petschko et al. (2014), according to which 70 % of the observed landslides fall into that class; low and medium susceptibility account for 5 % and 25 % of observed landslides.

We used the free and open-source computing environment R (R version 4.1.0, Team 2021) with the GAM implementation in the *mgcv* package (Wood, 2017).

### 3.2 Modelling Landslide Susceptibility in a Changing Environment

Landslide susceptibility is commonly considered stationary (or invariant in time; Fell et al. 2008; Gariano and Guzzetti 2016; Reichenbach et al. 2018)(Fell et al. 2008). However, this assumption is often violated in space (e.g., anthropogenic land use changes, Reichenbach et al. 2014) and time (e.g. "follow-up" landslides, Samia et al. 2017). In this study, we assessed NO-CC and future landslide susceptibility by considering the LULC and hydrometeorological variables as time-varying predictors, and therefore modified their values according to the storylines. While the hydrometeorological predictors were multiplied with the corresponding delta change factor, the LULC data was replaced with the developed scenario only for the future. The other predictors (land surface variables and geology) were considered as invariant in time.



To estimate changes in landslide susceptibility between a storyline and the present day, we applied two approaches: First, we calculated the relative change in the areal extent of a susceptibility class (in % and percentage points, pp) to quantitatively derive the potential change in the area at risk. And second, we expressed the effect size of change using the average change in the odds of landslide occurrence of a susceptibility class as  $OR_{class}$  for those locations which fall into identical susceptibility classes in both predictions:

$$OR_{class} = \exp\left(\frac{1}{n} \sum_{i=1}^n (\text{logit}_{story}(i) - \text{logit}_{ref}(i))\right) \quad (1)$$

where  $\text{logit}_{story}(i)$  and  $\text{logit}_{ref}(i)$  denote the logits of landslide occurrence probabilities at a specific location  $i$  and susceptibility class (low, medium, or high) of the storyline and reference scenario (“present day”), respectively, and  $n$  as all locations of the same landslide susceptibility class in both scenarios.

### 260 3.3 Uncertainty Cascade in Landslide Predictions

In integrated modelling, there are various sources of uncertainty affecting the predicted outcomes. We quantified the uncertainty cascade in storylines of landslide susceptibility by accounting for climate model uncertainty and landslide model parametric uncertainty (or sampling variability).

For the climate model uncertainty we assessed within-event internal model variability and scenario uncertainty for each hydrometeorological variable. The applied single event storyline approach includes a particular realisation of internal climate variability, thus the established storylines are conditioning on it (Doblas-Reyes et al., 2021). By using estimates from a climate model ensemble with different realisations of internal variability, the uncertainty related to conditional internal climate model variability can essentially be removed (Maraun et al., 2022). In this study, we explicitly analyse within-event internal climate model variability, and therefore address the question how the event could locally unfold in the present climate as well as cooler and warmer climates. Regarding the climate signal or forced change, the influence of within-event internal climate model variability can be accounted for by averaging across the ensemble members of a climate models’ storyline (Maraun et al., 2022).

For the within-event internal climate model variability, we estimated the 2.5th and 97.5th percentiles from the delta change factor distribution (i.e. 100 pairs per storyline) describing the lower and upper bound of local climate model variability; the mean delta change factor represents a models’ climate signal (or forced change). The estimated delta change factors were subsequently offset against the corresponding values of the hydrometeorological predictor. For the climate scenario uncertainty, the spread-width of the predicted outcomes using the climate signals of all climate models within a scenario (NO-CC, PARIS, 3 K and 4 K warming) was calculated.

The landslide models’ parametric uncertainty is associated with measurement errors, sampling errors and variability, misclassification of data and surrogate data weaknesses (EPA, 2019), and, from a frequentist perspective, commonly expressed using confidence intervals. A common approach to quantify parametric uncertainty is bootstrapping (e.g., Brenning et al., 2015). However, in the framework of the *mgcv::gam*, this approach has limitations when penalties are present and some ob-

285 observations are sampled twice. This may cause undersmoothing and is therefore not recommended (Wood, 2017). However, the manner the *mgcv* GAM is implemented can be viewed as ‘empirical Bayes’ (Wood, 2017). This allows the calculation of *pointwise* Bayesian credible intervals for the estimated model parameters using the standard error derived from the Bayesian posterior covariance matrix (Wood, 2017; Simpson, 2018). The pointwise Bayesian credible intervals have good frequentist coverage probabilities when averaged across the function domain, but with over- and under-coverage in some parts (Nychka, 1988; Marra and Wood, 2012)(Marra and Wood, 2012). In contrast, a *simultaneous* Bayesian credible interval that contains the entire true function for a given credible level  $(1-\alpha)$ , can be achieved by posterior simulation from the posterior distribution of the model coefficients (Simpson, 2018); this is the approach we adopt in this study.

290 To simulate GAM coefficients, a Gaussian approximation to the posterior for the coefficients is a computationally very efficient approach, but not recommended for spatial models with a logit link in the *mgcv* framework (Wood, 2015). Therefore, we used a simple Metropolis Hastings (MH) sampler with random walk proposals as implemented in the *mgcv::gam.mh* function, but also calculated a Gaussian approximation for comparison purposes (*mgcv::rmvn* function). The MH function reports two types of acceptance rates: a fixed acceptance rate and a random walk acceptance rate (refer to Wood 2015 for more details). The simulations of the MH sampler are controlled by hyperparameters that need to be tuned to achieve an optimal proposal distribution. A proposal distribution is optimal for a random walk acceptance rate of 23.4 %, while high values are to be achieved for the fixed acceptance rate (Roberts et al., 1997; Wood, 2015). Thus, the optimum of the hyperparameter tuning was selected by minimising the sum of the absolute difference of both acceptance rates to their optimal rates. For the tuning, we set the initial burn-in period to 5000 simulations, the number of (actual) “simulated GAMs” to 10,000, and optimised *rw.scale* (random walk scale factor for posterior covariance matrix) and *t.df* (degrees of freedom of the t distribution) using a grid search. We defined a regular grid ranging from 0.005 to 0.02 for *rw.scale* (step size of 0.0005, i.e. 31 total steps) and from 25 to 10,000 (step size of 25, i.e. 400 total steps) for *t.df*, respectively (in total 12,400 executions).

305 Furthermore, the simulation from the posterior distribution allows to derive the so-called critical value for each non-parametric transformation function (Ruppert et al., 2003; Simpson, 2018). The critical value is a factor which modifies the pointwise Bayesian credible interval to achieve the simultaneous Bayesian credible interval for a given credible level. A critical value greater than the coverage factor for a given credible level means an underestimation of the true function for the pointwise interval compared to the simultaneous interval (e.g. critical value of 2.5 vs. coverage factor of 1.96 for 95 % credible level, 28 % underestimation; Simpson 2018), and large critical values may indicate particularly uncertain predictors.

310 For the uncertainty cascade, landslide susceptibility prediction uncertainty intervals were estimated as described in the following. First, we classified the predictions of each of the simulated GAM-Spatial models into (low, medium, and) high landslide susceptibilities. And second, we derived the 2.5th and 97.5th percentiles as lower and upper uncertainty intervals of the corresponding storyline from the resulting distribution of the high landslide susceptibility area (i.e., 3 x 10,000 values of high landslide susceptibility for mean and percentiles of delta change factor distribution). Finally, to compare the different sources of uncertainty in the uncertainty cascade, we calculated the following ratios:



$$R_{IV;Lsl} = \frac{\text{width of } CI_{IV}}{\text{width of } CI_{Lsl}} \quad (2)$$

$$R_{CS;Lsl} = \frac{\text{width of } CI_{CS}}{\text{width of } CI_{Lsl}} \quad (3)$$

where  $R_{IV;Lsl}$  and  $R_{CS;Lsl}$  denote the ratio of the uncertainty spread-width of within-event internal climate model variability ( $CI_{IV}$ ) and scenario uncertainty (i.e., spread-width of climate signals,  $CI_{CS}$ ), respectively, to the parametric uncertainty spread-width of the landslide model ( $CI_{Lsl}$ ). The joint uncertainty distribution of the landslide models' parametric uncertainty and within-event internal climate model variability is here referred to as the storyline uncertainty ( $CI_{Story}$ ).

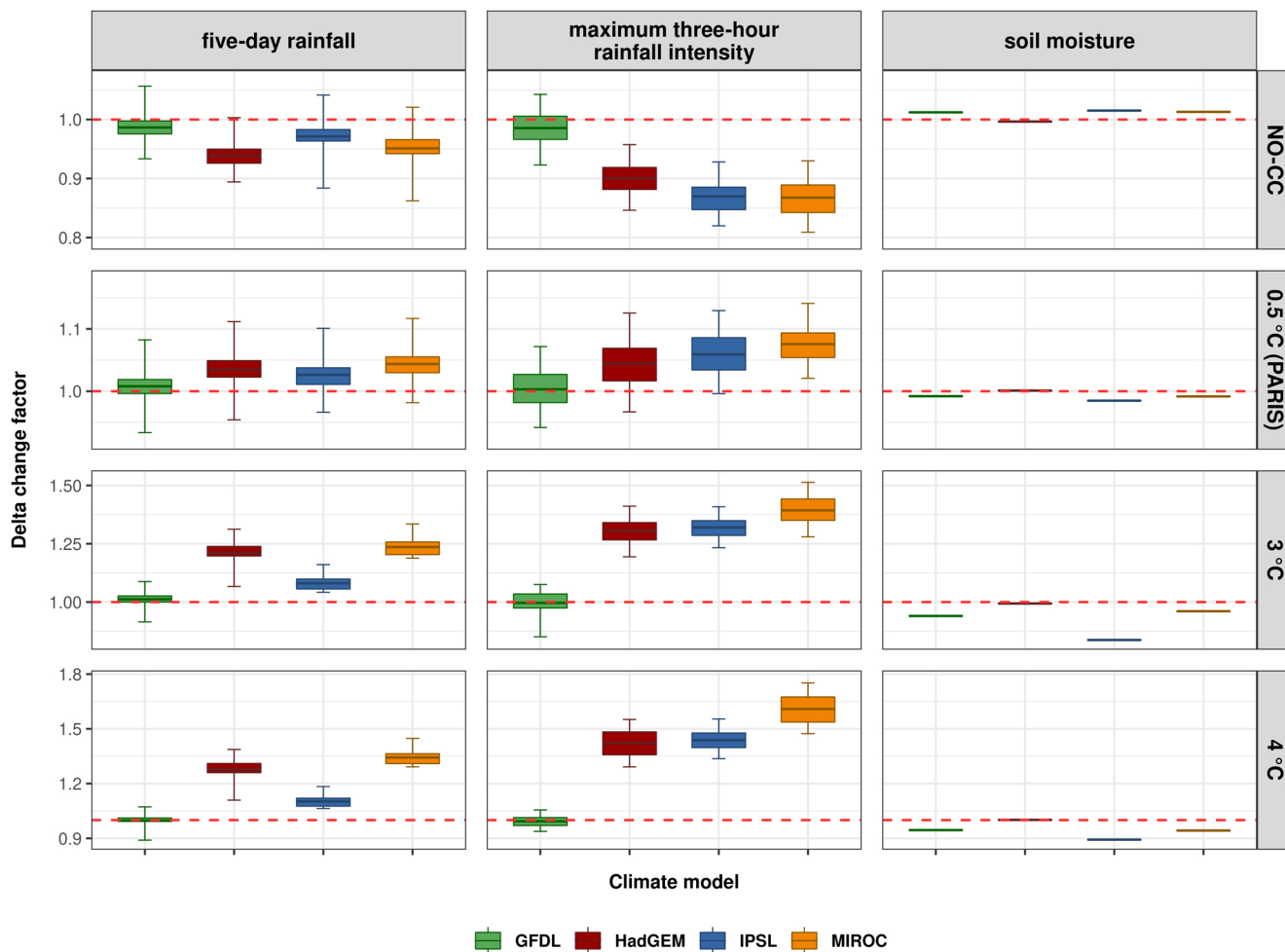
## 4 Results

### 4.1 Climate Change Uncertainty

We identified different patterns of delta change factor distributions depending on the considered hydrometeorological variable and the storyline (Fig. 2).

The mean delta change factors (i.e., climate signals) for five-day rainfall and maximum three-hour rainfall intensity were generally lower in the NO-CC and higher in the future relative to present-day climate (Table A3 in Appendix A). In the future climate, with the exception of the GFDL model, the mean increase ranged from 3 % (IPSL, PARIS) to 34 % (MIROC, 4 K warming) for five-day rainfall and from 4 % (HadGEM, PARIS) to 61 % (MIROC, 4 K warming) for maximum three-hour rainfall intensity. In the NO-CC, with the exception of the GFDL model, the changes were negative on average (i.e., factors < 1). Specifically, mean decreases were between 3 % (IPSL) and 6 % (HadGEM) for five-day rainfall, and ranged from 10 % (HadGEM) to 13 % (MIROC) for maximum three-hour rainfall intensity. The averaged delta change factor of GFDL indicated projected changes of  $\pm 1$  % in both meteorological variables in NO-CC as well as future climates. For soil moisture, the models projected on average drier soils in future and wetter soil in NO-CC relative to present-day climate, with the exception of HadGEM. IPSL in 3 K warming projected the driest soils ( $-16$  %, on average), and it also projected the wettest soil conditions overall ( $+2$  %) in NO-CC, on average. Following Maraun et al. (2022), the hydrometeorological storylines for the future can thus be summarised as (much) heavier rain (HadGEM, MIROC, IPSL) and (much) drier soil (IPSL, GFDL, MIROC), although there were also some neutral projections (rain: GFDL; soil: HadGEM; Table A2 in Appendix A).

Regarding the 2.5th and 97.5th percentiles of the storylines' delta change factor distributions (i.e., within-event internal climate model variability), we discovered opposed delta change factors in the GFDL storylines (Table A3 in Appendix A). Similarly, in the NO-CC and PARIS scenarios for five-day rainfall, all other climate models had contrasting delta change factors, while for the maximum three-hour rainfall intensity this was only the case for HadGEM and IPSL in PARIS. Regarding the percentiles of the soil moisture storylines, only coherent delta change factors were found, yet some climate signals were weak (e.g., nearly 1 for HadGEM).

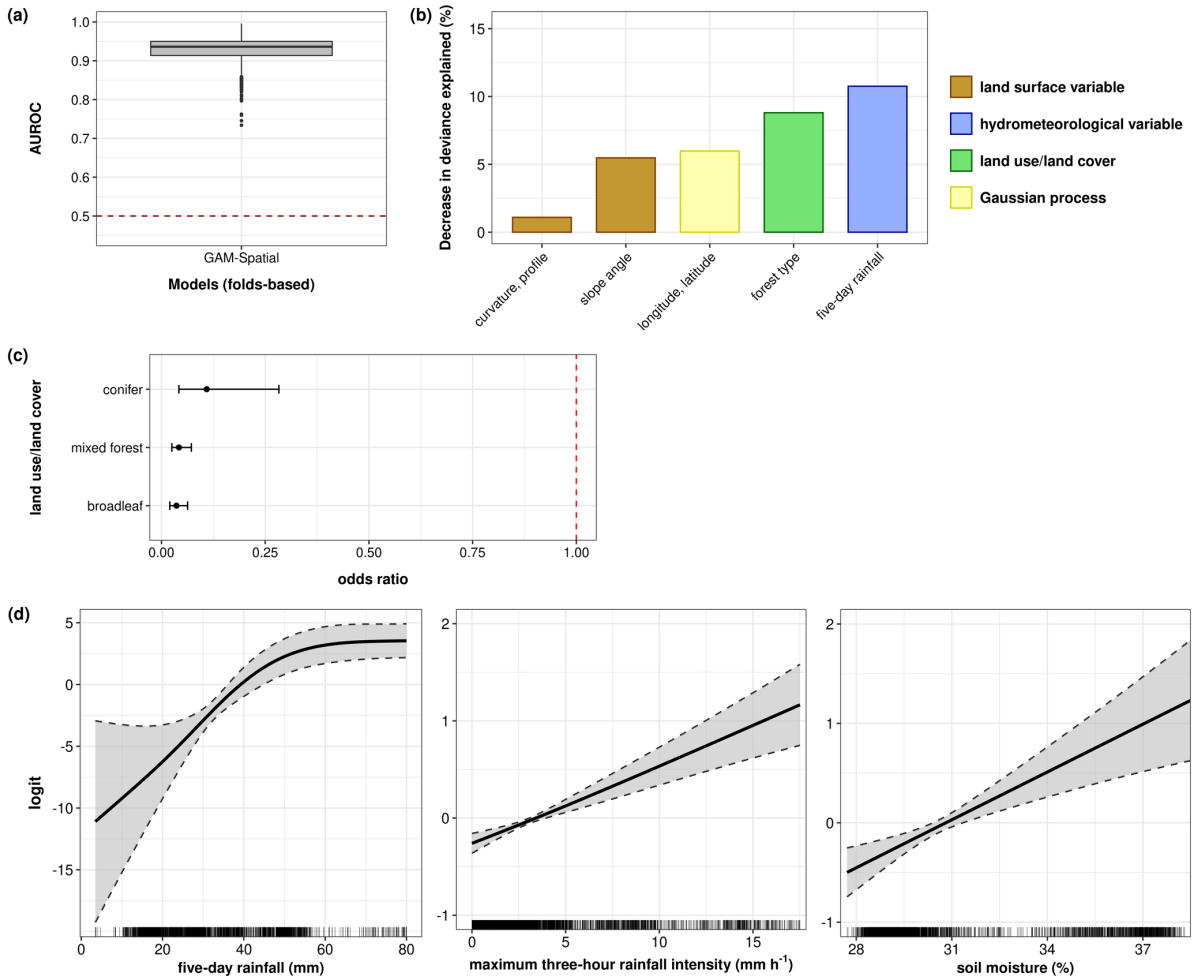


**Figure 2.** Delta change factor distribution for each storyline; variability corresponds to individual model simulations. Note: Scales of y-axes differ between scenarios. Boxplot modifications: The middle hinge shows the mean. The lower and upper whiskers represent the 2.5th and 97.5th percentiles, respectively. Potential outliers are not plotted.

## 345 4.2 Landslide Susceptibility Model

We established a spatial GAM using an optimised GP smoother. The spatial structure of GAM-SM+TC residuals was best described by a Gaussian correlation function with an effective range of 524 m ( $\Phi$  of 303 m). Nevertheless, the other correlation models achieved nearly identical REML scores with varying effective ranges (582 m to 710 m, Table A4 in Appendix A and Fig. S2 in Supplementary Material). The following subsections describe the model assessment (Sect. 4.2.1) and the posterior simulation of the coefficients (Sect. 4.2.2) for GAM-Spatial. Detailed results for the other model settings (GAM-Co and GAM-SM+TC) are included in the Supplementary Material (Fig. S3).

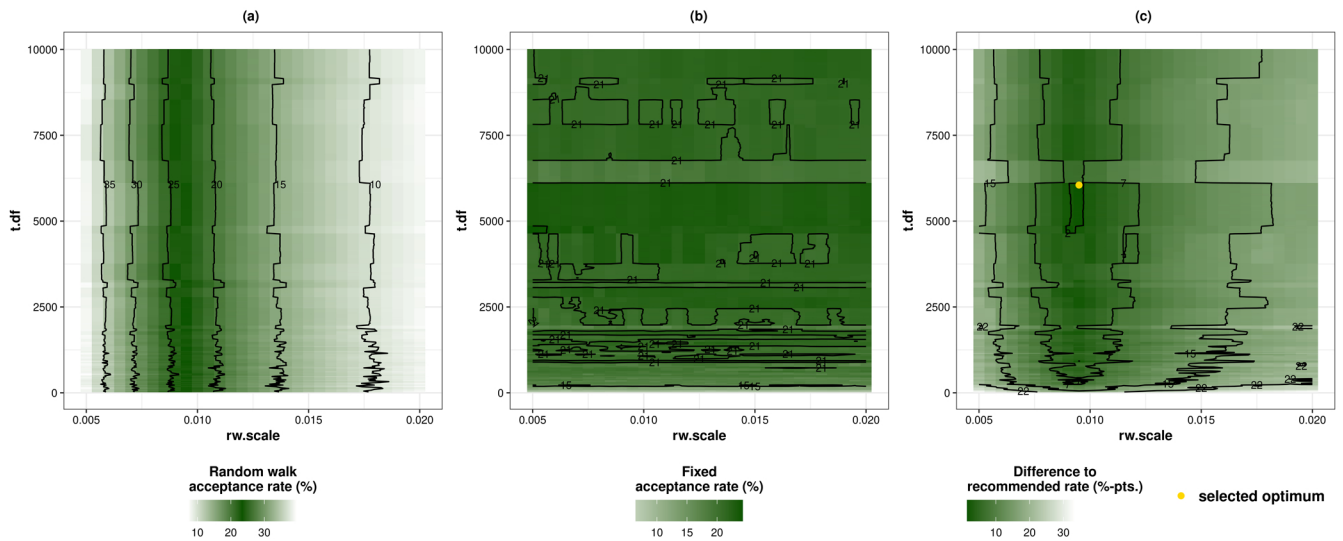
350



**Figure 3.** Model diagnostics for GAM-Spatial. (a) Top five most important variables sorted by mean decrease in deviance explained (%). For an overview of all input variables, refer to Table A6. (b) Comparison of model performances (folds-based). (c) Comparison of predictor-response relationships of LULC variables using odds ratios. (d) Comparison of predictor-response relationships of hydrometeorological variables. Note: The y axes in (d) are plot-dependent. Estimates and predictor-response relationships for GAM-Co are based on SpCV models in Knevels et al. (2020). In grey: 95 % pointwise Bayesian credible intervals.

#### 4.2.1 Assessment of the Landslide Susceptibility Model

GAM-Spatial achieved an outstanding discrimination capability with mAUROC of 0.94 (Fig. 3a, Table A5 in Appendix A). The model's five most important variables in decreasing order were five-day rainfall (10.8 % mDD), forest type (8.8 % mDD), the spatial GP smoother (6 % mDD, longitude and latitude), slope angle (5.5 % mDD) and profile curvature (1.1 % mDD) (Fig. 3b). The hydrometeorological variables maximum three-hour rainfall intensity (0.9 % mDD) and soil moisture ranked sixth and ninth (0.6 % mDD), respectively (Table A6 in Appendix A).



**Figure 4.** Optimization results for acceptance rates of `mgcv::gam.mh` using different hyperparameter values for  $rw.scale$  (random walk scale factor for posterior covariance matrix) and  $t.df$  (degree of freedom for t proposal). (a) Random walk acceptance rate. (b) Fixed acceptance rate. (c) Sum of absolute differences between acceptance rates to optimal rate. The optimal rate for random walk acceptance is 23.4 % according to Roberts et al. (1997), and the highest possible rate for fixed acceptance, respectively.

Regarding the predictor-response relationships, for the LULC variable, the chances (i.e., odds) of landslide occurrence were up to 0.04 times as low in forested areas as in non-forest areas (Fig. 3c). For five-day rainfall, the modelled chances rise as rainfall increases up to 80 mm, where a plateau was reached due to the top-coding of this variable. For maximum three-hour rainfall intensity and soil moisture, we identified a linear relationship with higher odds of landslide occurrence for higher rainfall and soil moisture values, respectively, while accounting for the other variables in the model (Fig. 3d).

Overall, the inclusion of the spatial GP smoother had little impact on the model discrimination capability, relative importance of variables or on the modelled relationships compared to other model settings (Fig. S3 in Supplementary Material).

#### 365 4.2.2 Hyperparameter Tuning for Posterior Simulation

The hyperparameter tuning for the posterior simulation allowed us to identify an optimal region at  $rw.scale = 0.0095$  and  $t.df$  between 6050 and 6100 (Fig. 4c). For the random walk acceptance rate, we discovered a non-linear relationship of  $rw.scale$  to the random walk acceptance rate describing higher acceptance rates at lower  $rw.scale$  values, while changing  $t.df$  values had no effect (Fig. 4a, Fig. ??-A3 in Appendix A). The fixed acceptance rate, in contrast, increased with higher  $t.df$  values and reached a plateau at  $t.df$  values around 2500 (Fig. 4b, Fig. ??-A3 in Appendix A). Considering the optimal rates, we identified three optima with identical  $rw.scale$  of 0.0095, random walk acceptance rate of 23.24 % and fixed acceptance rate of 22.95 %, and nearly identical  $t.df$  values (6050, 6075, 6100; overall difference of 1.47 pp, Fig. 4c). Therefore, we simulated coefficients based on the optimal hyperparameter values corresponding to the lowest  $t.df$  value (i.e., 6050).

The estimation of the critical values for the non-parametric transformation functions according to Simpson (2018) revealed a general agreement of the Gaussian approximation (*mgcv::rmvn*) and the simple Metropolis Hastings sampler (*mgcv::gam.mh*) (Table A7). For GAM-Spatial's five most important variables, the critical values ranged between 3.7 (longitude, latitude) and 37.85 (five-day rainfall), which corresponds to intervals that are approximately  $\pm 88\%$  to  $\pm 1,831\%$  wider than the equivalent across-the-function intervals for the 95% credible level.

### 4.3 Uncertainty Cascade in Landslide Predictions

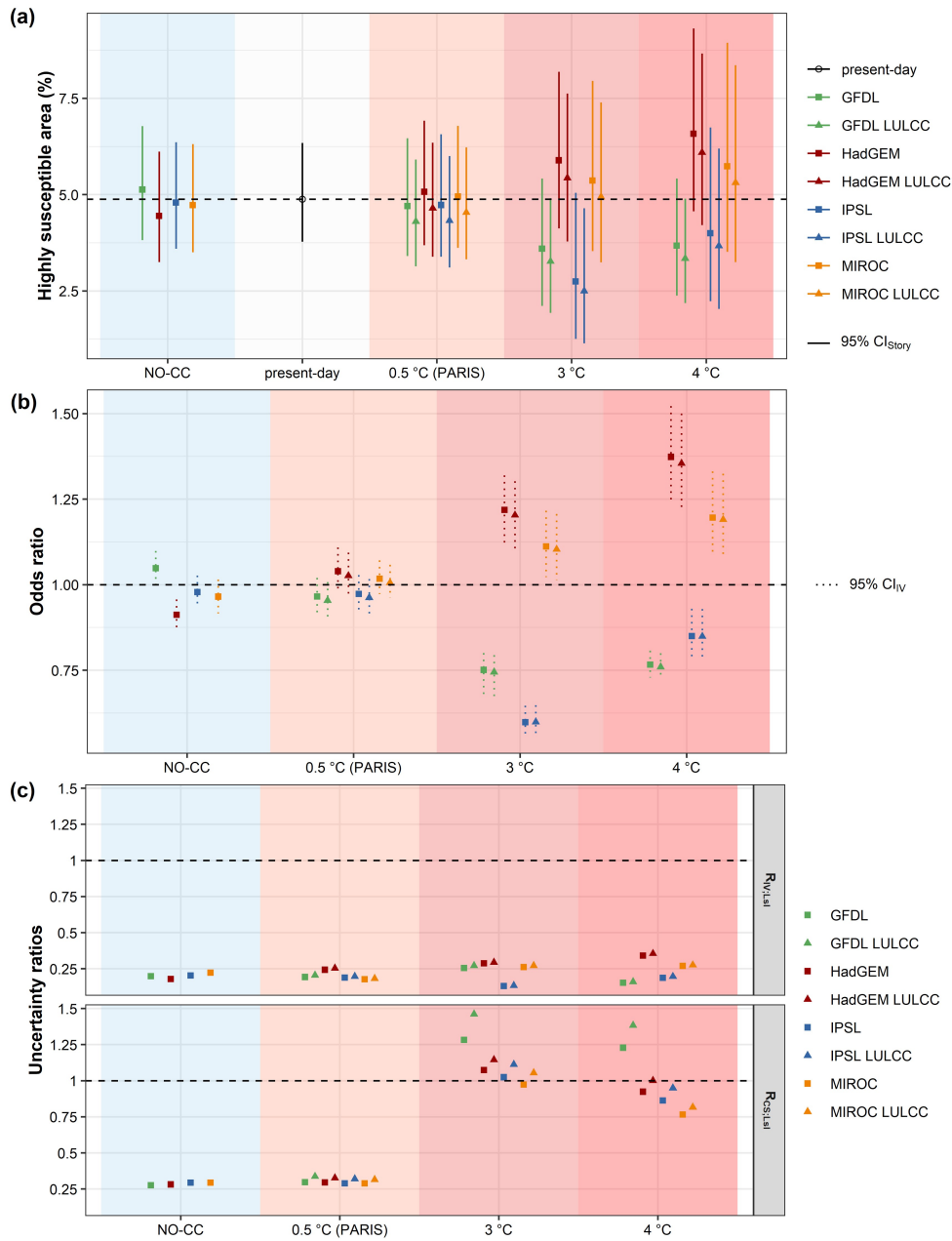
The landslide susceptibility predictions of the simulated GAM-Spatial models were classified into low, medium and high susceptibility (Petschko et al., 2014). The thresholds to discriminate low from medium and medium from high landslide susceptibility were 0.16 and 0.57 on the probability scale, respectively. In the following, we focus on the storylines of highly susceptible areas and their uncertainties (Fig. 5).

Regarding the present-day landslide susceptibility, around 4.9% of the study area was highly susceptible to landslides (Fig. 5a, Table A8 in Appendix A). In the NO-CC scenario, high susceptibility was generally less common (4.4–4.8%), with the exception of GFDL, which showed a slightly higher share (5.1%).

The projected future signal, in contrast, was less coherent. In PARIS, the mean signal was similar to present-day susceptibility ( $-0.2$  pp [percentage points difference in area] for GFDL and  $+0.2$  pp for HadGEM) while the mean changes in 3 K and 4 K warming were substantial. In 3 K and 4 K warming, GFDL and IPSL projected a decrease in highly susceptible area by up to  $-1.3$  and  $-2.2$  pp ( $-27$  and  $-45\%$ ), respectively, while HadGEM and MIROC showed the opposite signal with increases of up to  $+1.7$  and  $+0.8$  pp ( $+35$  and  $+16\%$ ), respectively. The mean signals of climate models in a 3 K warmer world were comparatively lower than in 4 K. Additionally, the considered LULC scenario resulted in a generally smaller extent of highly susceptible areas (up to 0.5 pp).

Regarding the OR of the storylines relative to present-day landslide susceptibility within the high-susceptibility class (see eq. 1), the pattern is similar to the change in susceptible area, but more coherent (Fig. 5b, Table A9 in Appendix A). The chances of landslide occurrence in the NO-CC scenario were 0.91 (HadGEM) to 0.98 times (IPSL) as high as in the present-day settings (with the exception of GFDL with OR of 1.05), based on the modelled climate signals. For the future, while in PARIS the ORs showed small effect sizes (ORs between 0.97 for GFDL to 1.04 for HadGEM), in 3 K and 4 K warming the effect sizes were medium to large. In the worst-case storyline, the chances of landslide occurrence in highly susceptible areas were 1.37 times as high as at the present day (i.e., for HadGEM in 4 K warming), while it was 0.60 times as high in the best-case storyline (i.e., for IPSL in 3 K warming).

Regarding the storyline uncertainty ( $CI_{Story}$ , Fig. 5a, Table A7 in Appendix A), for present-day landslide susceptibility, the uncertainty spread-width was from  $+1.4$  pp ( $+29\%$  area change) to  $-1.1$  pp ( $-22\%$ ), respectively. While present-day predictions were not affected by within-event internal climate model variability and thus reflected only landslide model uncertainty, the other storyline uncertainties accounted for both. The largest uncertainty interval for the NO-CC covered 3.0 pp (GFDL). For the future, we identified larger uncertainty intervals with increased warming levels (largest intervals: PARIS: 3.2 pp for HadGEM, 3 K warming: 4.4 pp for MIROC, 4 K warming: 5.4 pp for MIROC).



**Figure 5.** Uncertainty assessment results for high landslide susceptibility. (a) Area of high landslide susceptibility with 95 % CIs are based on within-event internal climate model variability ( $CI_{IV}$ ) and landslide model uncertainty ( $CI_{Lsl}$ ). (b) OR of landslide occurrence in highly susceptible areas relative to present-day landslide susceptibility. (c) Ratio of within-event internal climate model variability ( $R_{WV:Lsl}$ , see eq. 2) and climate scenario uncertainty ( $R_{CS:Lsl}$ , see eq. 3), respectively, to landslide model uncertainty.

Regarding the contributions of the uncertainty cascade in the storylines, the uncertainty introduced by within-event internal climate model variability is around 0.13 (IPSL in 3 K warming) to 0.35 (HadGEM ~~LULC~~LULCC in 4 K warming) times as large as parametric landslide model uncertainty ( $R_{IV:Lsl}$ , Fig. 5c, Table A10 in Appendix A, [see eq. 2](#)). Instead, the ratio of climate scenario uncertainty to parametric landslide model uncertainty ( $R_{CS:Lsl}$ , [see eq. 3](#)) showed a distinct pattern depending on the scenario: For NO-CC and PARIS, the uncertainty introduced by the climate models was lower relative to parametric landslide model uncertainties (ratios between 0.28 and 0.34). Instead, for 3 K warming, the climate scenario uncertainty was generally larger than the parametric landslide model uncertainty with ratios between 1.05 (IPSL) and 1.46 (GFDL ~~LULC~~LULCC) (excluding MIROC with a ratio of 0.97). For 4 K warming, while the climate scenario uncertainty was larger than the landslide model uncertainties for GFDL and GFDL ~~LULC~~LULCC (ratios of 1.23 and 1.38, respectively), for the other models the ratios were equal to (i.e., HadGEM ~~LULC~~LULCC) or lower than 1 (e.g., ratio of 0.77 for MIROC).

## 5 Discussion

### 5.1 Landslide Susceptibility in a Changing Environment

We identified different trends of projected landslide susceptibility for future storylines relative to present-day, while for the NO-CC storylines (i.e. pre-industrial, counterfactual climate), landslide susceptibility was generally estimated to be lower (exception: GFDL). For projected future changes in hydrometeorological conditions (i.e., climate signals), the storyline of *much heavier rain* showed the strongest increase in affected highly susceptible area (+35 %) with additionally higher chances of landslide occurrence relative to present-day susceptibility (OR of 1.37, HadGEM in 4 K). However, the effect of *much drier soil* may compensate for *heavier rain*, and thus reduce the affected area (−45 %) and the chance of landslide occurrence (OR of 0.6, IPSL in 3 K). The projected changes in highly susceptible areas and their magnitudes were in general agreement with the findings of Maraun et al. (2022), who used a small part of our study area (Feldbach region, 95th percentile for high susceptibility thresholding). For the worst- and best-case storylines, Maraun et al. (2022) found changes of +45 % (4 K warming) and −37 % (3 K warming) in highly susceptible area, and ORs of 1.66 (4 K warming) and 0.8 (3 K warming) in landslide susceptibility in those areas.

For other regions, some authors projected an increased landslide occurrence or affected area that is attributable to climate change (Jaedicke et al., 2008; Lee, 2017), while other authors found more complex patterns that depend on the seasonal period and location under consideration (Ciabatta et al., 2016; Gariano et al., 2017; Rianna et al., 2017). Projected increases in slope failure probability amounted to approximately 25 % for mountainous areas in Norway (for 2050; Jaedicke et al. 2008) or 40 % for the Umbria region in central Italy (for 1990–2013 to 2070–2099 under RCP8.5; Ciabatta et al. 2016), and an increase in susceptible area by around 32 % was projected for southwestern Taiwan (for 2090; Lee 2017). With a focus on seasonal differences, Ciabatta et al. (2016) projected increases in landslide occurrence mainly in winter, while in the warm and wet season, very low soil moisture (Ciabatta et al., 2016) and increased evaporation (Rianna et al. 2017; for 2071-2100 under RCP8.5) might even improve slope stability. Analysing spatial patterns in Calabria, southern Italy, Gariano et al. (2017) identified for around 27 % of the municipalities a significant increase in rainfall-events with landslides (western part of the



region and along the main mountain chains), while for 38 % of the municipalities a reduction was estimated (for 1981–2010 to 2036–2065 under RCP8.5). Therefore, we agree with Schlögel et al. (2020) that the projected interplay between a natural hazard and climatic changes is still a challenging task, especially if multiple triggers and locally driven ground responses are present.

445 Regarding changes in LULC, our findings suggest that active LULC management and afforestation may have a beneficial effect on landslide occurrences ( $-0.5$  pp in highly susceptible areas). Such effects were also reported by other authors (Picarelli et al., 2017; Pisano et al., 2017; Gariano et al., 2018).

## 5.2 Uncertainties of a Changing Environment

The analysis of uncertainties in landslide risk management under environmental change is an important, yet often neglected task  
450 (Reichenbach et al., 2018). In particular, the analysis of uncertainty cascades in integrated modelling is still an open research gap with a great potential to understand and subsequently reduce uncertainty sources (Refsgaard et al., 2016; Kirchner et al., 2021).

In our analysis, we could successfully quantify uncertainty in landslide susceptibility predictions by accounting for parametric uncertainty in the landslide model and climate change uncertainty (within-event internal model variability and scenario  
455 uncertainty). However, we found the estimated uncertainties in predictions to be generally high, which is not unusual for an uncertainty cascade (Refsgaard et al., 2016). Furthermore, we discovered the tendency towards higher uncertainty with increased warming level for both parametric uncertainty and within-event internal climate model variability. Uncertainty from within-event internal climate model variability was much lower than parametric uncertainty ( $\text{ratio-}R_{IX:Lsl}$  of around 0.25). Additionally, parametric uncertainty even exceeded scenario uncertainty for specific climate models (e.g.,  $\text{ratio-}R_{CS:Lsl}$  of 0.77  
460 for MIROC in 4 K warming). Other authors reported similar uncertainty components in the context of hydrological modelling under climate change (Bastola et al., 2011; Refsgaard et al., 2016).

In the following subsection the uncertainties in climate change modelling (Sect. 5.2.1) and landslide susceptibility modelling (Sect. 5.2.2) are further discussed.

### 5.2.1 Climate Change Uncertainty

465 In climate change modelling, there were different sources of uncertainty. We addressed uncertainties in climate sensitivity or global climate response uncertainty by conditioning the climate results on global warming levels, and thus we were capable of approximately removing this uncertainty (Chen et al., 2021; Maraun et al., 2022). Local climate response uncertainties were represented by the simulation of storylines. Furthermore, climate change projections are generally influenced by scenario uncertainty and internal variability (Stainforth et al., 2007). Scenario uncertainty was accounted for by considering landslide  
470 susceptibility conditional on different levels of global warming. Internal variability mainly arises from large-scale circulation (Shepherd, 2014), which was kept fixed and thus removed. Uncertainties related to the influence of within-event internal variability on local changes can effectively be removed (i.e. by averaging across the ensemble members; Maraun et al. 2022),

but were explicitly addressed in this study by accounting for the delta change factor distribution estimated on all possible pairs of a climate model's simulation.

475 We discovered that in our case study, the climate signal of the hydrometeorological variables showed generally more and intensified precipitation and a drier soil in future storylines (in contrast to the NO-CC storylines), which was also reported for extreme rainfall events in other regions (Ciabatta et al., 2016; Rianna et al., 2017; Olefs et al., 2021). However, regarding the within-event internal climate model variability, contrasting delta change factors were identified mainly for NO-CC and PARIS storylines, and especially for the variable five-day rainfall. While for the NO-CC the contrasting delta change factors showed  
480 that there is a low but non-zero probability that a similar event without climate change could be locally stronger than the actual event in present climate, it means for the targeted 0.5 K warming limitation (Paris agreement) that an event may unfold locally weaker than under present climate. Furthermore, the contrasting delta change factors of the GFDL climate model (in all storylines and for both meteorological variables) clearly indicates the importance of a careful selection of multiple, reliable climate models. The availability of multiple storylines ultimately avoids an under- or overestimation of the projected landslide  
485 activity (Gariano et al., 2017).

### 5.2.2 Landslide Susceptibility Model Uncertainty

In a climate change context, uncertainties from a landslide model arise from model structure and parametric uncertainty under extrapolation (Maraun and Widmann, 2018). While parametric uncertainty results from the finite sample and the fact that the observed landslide distribution was a realisation of a stochastic process, structural uncertainty comprises the presence  
490 of physically plausible climatic predictor-response relationships for environmental change conditions (Maraun et al., 2022). Additionally, by calibrating the landslide model on two rainfall events (2009 and 2014, with different hydrometeorological conditions), we adjusted the model as far as possible for extrapolation purposes.

For the assessment of the parametric uncertainty, we simulated from the posterior distribution of coefficients using a Metropolis Hastings sampler. For the most important predictor-response relationships, we identified simultaneous Bayesian  
495 credible intervals that were by far larger than the corresponding pointwise intervals at a 95 % credible level ( $\pm 88\%$  to  $\pm 1,831\%$ ), which explained the generally high parametric uncertainty. Especially, the predictor-response relationship of five-day rainfall appeared very uncertain (critical value of 37.8, Table A7 in Appendix A), while the simultaneous Bayesian credible intervals of the other hydrometeorological variables were only marginally wider than their pointwise counterparts. Furthermore, the top-coding of the variable at 80 mm additionally increased the parametric uncertainty (cf. critical value of 22.7 for  
500 GAM-SM, i.e. no top-coding of five-day rainfall). Moreover, with the application of higher and lower delta change factors, respectively, in the higher warming levels, predictor values shifted towards the bounds of the training distribution, where data tends to be sparse and, therefore, uncertainty increases.

For the reduction of structural uncertainty, we applied a physically plausible statistical landslide model that allowed us to assess the landslide response in a changing climate by varying hydrometeorological predictors. Especially, the use of moisture-  
505 related predisposing factors is an important, yet an often missed requirement in event-based landslide modelling (Bogaard and Greco, 2018). For the variable five-day rainfall, we top-coded the value range at 80 mm to remove implausible fluctuations

beyond that threshold (Maraun et al., 2022). A similar relationship of unchanged slope conditions with higher rainfall was also identified in Lee (2017) (described as Weibull cumulative distribution function). For the soil moisture variable, we identified a linear predictor-response relationship showing higher landslide occurrence probability with higher soil moisture values. However, other authors reported a more complex soil moisture relationship due to the interplay with temperature (e.g., desiccation cracking; Tang et al. 2018; Debele et al. 2019) or soil texture (coarse-grained vs. fine-grained soil, Rianna et al. 2016), which affects geomechanical characteristics and thus slope stability. Besides, the soil moisture variable had only a moderate explanatory power (0.6 % mDD), although antecedent soil moisture conditions had likely contributed to the landslide event's severity (Hornich and Adelwöhrer, 2010). We suggest that the thematic and spatial resolution of the soil moisture estimated by HRLDAS (Schaffer, 2021; Maraun et al., 2022) was too coarse to capture the “true” soil moisture in the field, and that additional, high-resolution soil physical parameters may have the potential to improve the modelled relationship (e.g. soil type, infiltration capacity, permeability, hydraulic conductivity).

Another source of structural uncertainty is the simplified representation of LULC as only four forest types (no, broadleaved, conifer or mixed forest). According to Crozier (2010), the impact of human activity on slope stability is believed to be equal to or even higher than effects of climate change. Additionally, human disturbances did certainly contribute to causing some of the observed landslides (Hornich and Adelwöhrer, 2010). The Styrian state government projects an overall increase of the region's population until the year 2060 (by +2.5 %), while peripheral regions are expected to show a decrease (der Steiermärkischen Landesregierung, 2020). Demographic and economic changes may alter the regional demand for land for urban development affecting the landscape composition. However, since detailed information on landscape impacts due to human disturbance and socio-economic pathways was not available, we had to assume changes due to such anthropogenic factors to be constant throughout our analysis.

### 5.3 Model Assessment

In this study, we successfully modified a GAM for landslide susceptibility analysis to explicitly account for spatial autocorrelation effects using a GP component (GAM-Spatial) - an often missed feature in landslide susceptibility modelling (Reichenbach et al., 2018). The spatial GP component explained a meaningful fraction of the deviance (6 % mDD), indicating that a spatial pattern remained unaccounted for by the other predictors in the model. Furthermore, the modified GAM showed similar predictor-response relationships and variable importances as well as an outstanding discrimination skill (mAUC of 0.94) comparable to GAMs used in previous studies (Kněvels et al., 2020; Maraun et al., 2022), confirming the general reliability of the landslide susceptibility model. Additionally, the time-varying modeling perspective on (conditional) landslide susceptibility as recommended by various authors (Gariano and Guzzetti, 2016; Reichenbach et al., 2018; Jones et al., 2021; Ozturk et al., 2021) allowed us to analyze the effects of LULC and climate change dynamics.

For the assessment of the uncertainties related to GAM-Spatial, we identified and applied optimal hyperparameters for a simple Metropolis Hastings sampler (*mgcv::gam.mh* function in R) to stochastically simulate GAMs by approximating the posterior distribution of the coefficients, as this approach is recommended for logit link functions (Wood, 2015). However,

the identified very large optimal hyperparameter value for  $t.df$  (i.e. 6050 degrees of freedom of the  $t$  distribution) indicated a nearly Gaussian approximation for the posterior distribution. Furthermore, regarding the similarity in the critical values for simultaneous intervals between the Metropolis Hastings sampler and a simple Gaussian approximation (`mgcv::rmvn` function in R, Table A7 in Appendix A), the effort put into tuning and applying the Metropolis Hastings sampler is worth reconsidering  
545 in future studies with similar settings.

## 5.4 Applicability

The presented methodological approaches are generally applicable to other regions. However, the established landslide susceptibility model was based on only two landslide-event inventories at the regional scale for a single study area. Thus, the projected uncertainties and effects of climate and LULC change on rainfall-induced landslide occurrences may be specific to the local  
550 geological and geomorphological setting. With a greater awareness of the need for a reliable landslide-event inventory and with additional landslides surveyed in the future, a more generalizable and less uncertain landslide model may be established.

As a practical application, the prediction of landslide susceptibility, its projections of change in area and magnitude with climate change, and its uncertainties may provide important tools for planners and decision-makers. With the chosen approach it is possible to consider susceptibility maps not only statically and retrospectively, but also to project them into the future,  
555 which is an essential prerequisite for climate change adaptation in the context of slope stability. In the spatial context, recommendations for the construction of new settlement infrastructure may be derived based on a map, and zones of high landslide susceptibility along with uncertainty graphs ([Fig. S7 in the Supplementary Material](#)) can be communicated to local planners and environmental managers (cf. Petschko et al., 2014). In the engineering context, grey (e.g., engineering structure) or green approaches (e.g., forest management) may be considered as a scenario, and their effectiveness for potential slope stabilisation  
560 on a regional scale may be assessed (cf. Debele et al., 2019). Such development scenarios also enable the analysis of the exposure of elements at risk, potential mitigation measurements and sustainable adaptations plans.

## 6 Conclusions

In this study, we analysed uncertainties in storylines of high landslide susceptibility in a changing environment. We established a landslide model based on two large rainfall-triggered landslide events in the Styrian basin (2009 and 2014), showing the  
565 direct link of hydrometeorological and LULC pattern to landslide occurrences while also accounting for residual spatial autocorrelation. We identified distinct signals of projected changes in highly susceptible areas depending on the storyline. In the worst-case of 4 K warming, *much heavier rain* may cause an increase of 35 % in highly susceptible area with additionally 37 % higher chances of landslide occurrence (HadGEM), while *much drier soils* might even over-compensate this effect, leading to more stable slopes (IPSL in 3 K warming, OR of 0.6 and -45 % in high susceptible landslide area). Proactive land-use management (i.e., afforestation and climate-resilient forest conversion) has the potential to reduce the extent of highly susceptible  
570 areas. In the NO-CC scenario (i.e. pre-industrial, counterfactual climate), the highly susceptibility was generally estimated to be lower (exception: GFDL).

The assessed landslide susceptibility uncertainty accounted for climate change and parametric landslide model uncertainty, and its uncertainty cascade was generally high. Even though for some climate models and hydrometeorological variables, within-event internal climate model variability showed opposed delta change factors (e.g., GFDL for five-day rainfall in PARIS), their associated uncertainties in the landslide predictions were by far lower than uncertainties arising from the landslide model (ratio of around 0.25). Furthermore, parametric landslide model uncertainty was found to be of the same order as the climate scenario uncertainty in the higher warming level (+3 K and +4 K). In particular, the most important predictor-response relationship, the five-day rainfall, was identified to be the most uncertain not only for the landslide susceptibility model, but also in the within-event internal climate model variability assessment. For studies focussing on the climate signal or forced change, within-event internal climate model variability can be accounted for by averaging across the ensemble members (Maraun et al., 2022).

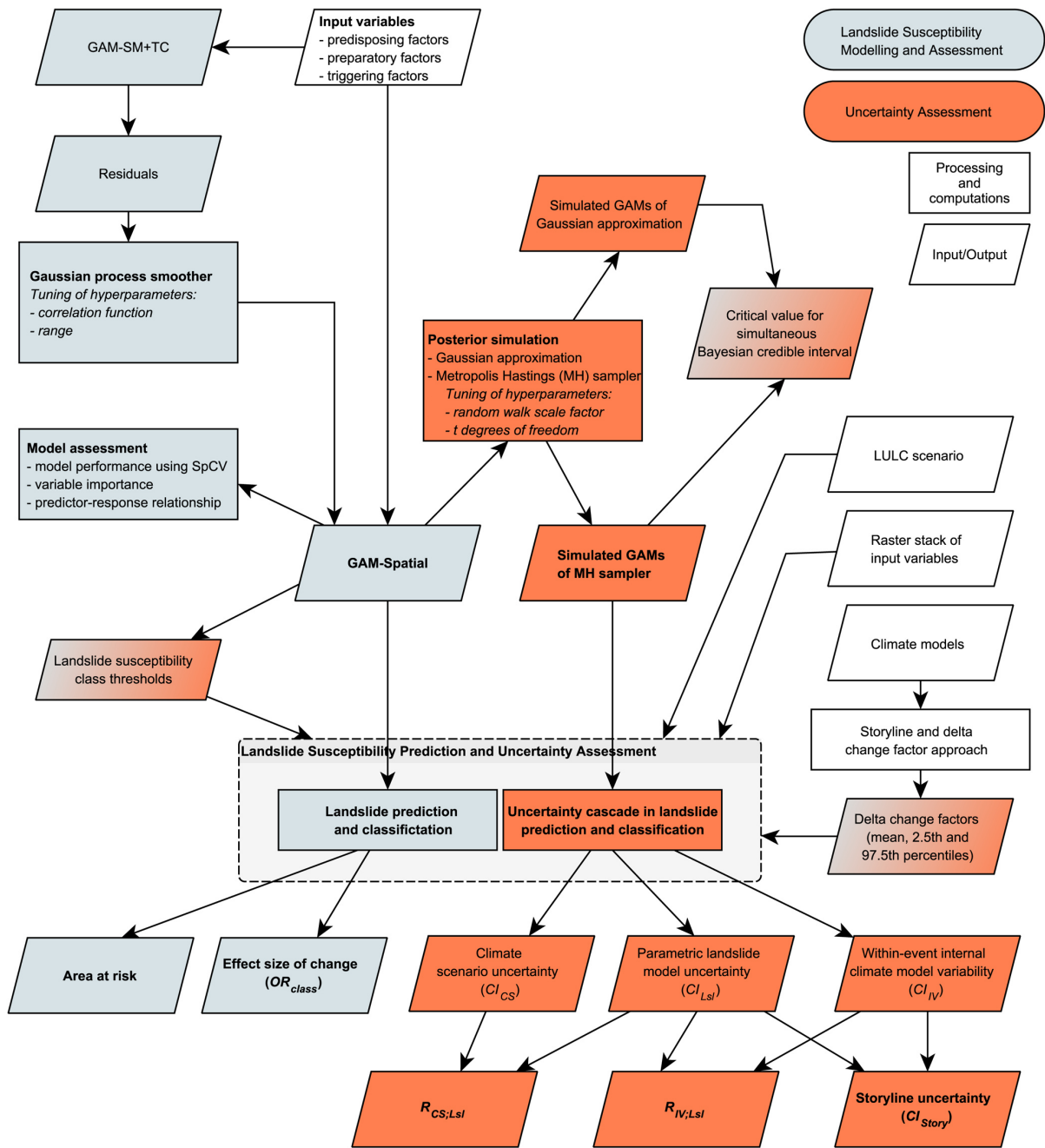
The compound characteristic of the extreme weather event in the Styrian basin in 2009 made an integrated modelling framework necessary. The assessment of future landslide occurrences and their associated uncertainties considering environmental change is a challenging task due to its complexity, feedbacks, and the requirement to involve multiple disciplines and their associated methodological uncertainties. However, the analysis of compound events and their uncertainties is crucial to understanding and improving the underlying key processes, and thus needed to support local decision makers and spatial planners in risk assessment (Zscheischler et al., 2020; Kirchner et al., 2021). With a higher awareness of the local institutes for the creation of reliable landslide inventories and the support of high-resolution ground data, model uncertainties may be reduced.

*Code and data availability.* The calibrated landslide susceptibility models can be accessed from <https://doi.org/10.5281/zenodo.6365228>. Landslide data can be requested from the State of Styria ([raimund.adelwoehrer@stmk.gv.at](mailto:raimund.adelwoehrer@stmk.gv.at)), Geological Survey (GBA, [arben.kociu@geolba.ac.at](mailto:arben.kociu@geolba.ac.at)), and the Institute of Military Geoinformation (IMG, [helene.kautz@bmlv.gv.at](mailto:helene.kautz@bmlv.gv.at)). Rainfall data from the Integrated Nowcasting through Comprehensive Analysis (INCA) System is available from the Austrian Meteorological Service (<https://data.hub.zamg.ac.at>). Climate model data for the IFS boundary conditions for the CCLM RCM can be obtained from the ECMWF ([https://www.ecmwf.int/en/forecasts/datasets\(cycle35r2\)](https://www.ecmwf.int/en/forecasts/datasets(cycle35r2))), ERA5 and ERA-Interim reanalysis data from ECMWF are available from <https://www.ecmwf.int/en/forecasts/datasets/browse-reanalysis-datasets>, and data from the chosen CMIP5 GCM simulations can be downloaded from the Climate and Environmental Retrieval and Archive (CERA) Database (<https://cera-www.dkrz.de/WDCC/ui/ceraresearch>).

## Appendix A

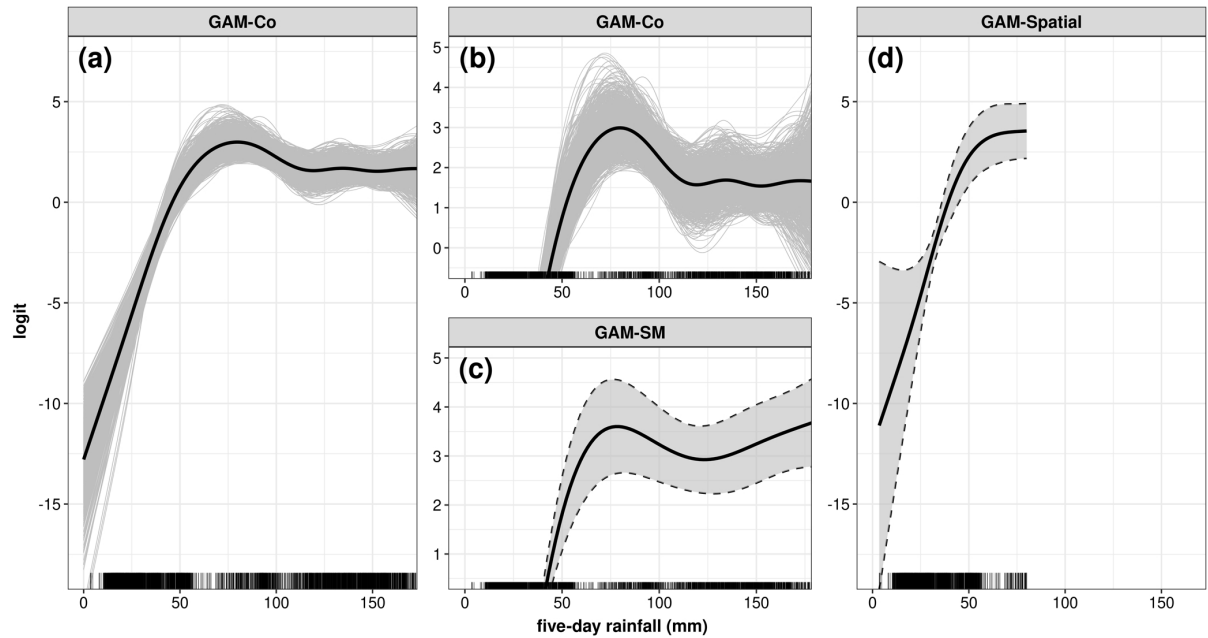
**Table A1.** Overview of landslide susceptibility models

<b>GAM</b>	<b>Variables</b>	<b>Reference</b>
GAM-Co	land surface variables, meteorological variables, geology, LULC	Knevels et al. (2020)
GAM-SM	GAM-Co, soil moisture	Maraun et al. (2022)
GAM-SM+TC	GAM-SM, five-day rainfall 80 mm top-coded	Maraun et al. (2022)
GAM-Spatial	GAM-SM+TC, Gaussian process smoother	this study



**Figure A1. Response-predictor-relationships-Overview** of five-day rainfall. (a) GAM-Co from Knevels et al. (2020) [the proposed landslide susceptibility prediction](#) and (b) [enlarged uncertainty assessment](#). (c) GAM-SM from Maraun et al. (2022) (enlarged). (d) GAM-Spatial from this study. Note: 95% pointwise Bayesian credible intervals are plotted for (c) and (d)





**Figure A2.** [Response-predictor relationships of five-day rainfall.](#) (a) [GAM-Co from Knevels et al. \(2020\)](#) and (b) [enlarged.](#) (c) [GAM-SM from Maraun et al. \(2022\)](#) (enlarged). (d) [GAM-Spatial from this study.](#) Note: 95% pointwise Bayesian credible intervals are plotted for (c) and (d).

**Table A2.** Hydrometeorological storylines for the projected future climate

<b>Climate model</b>	<b>5-day rainfall</b>	<b>Maximum 3-hours rainfall intensity</b>	<b>Soil moisture</b>	<b>Description</b>
HadGEM2-CC	++	++	~	much heavier rain
MIROC-ESM	++	++	–	much heavier rain, drier soil
IPSL-CM5A-MR	+	++	--	heavier rain, much drier soil
GFDL-ESM2m	~	~	–	drier soil

++ Strong increase; + increase; ~ no change; – decrease; -- strong decrease. Adopted from Maraun et al. (2022).

**Table A3.** Delta change factors of hydrometeorological variables

Climate Model	NO-CC	PARIS	3 K	4 K
<i>five-day rainfall</i>				
GFDL-ESM2m	0.99 [0.93; 1.06] $\perp$	1.01 [0.93; 1.08] $\perp$	1.01 [0.92; 1.09] $\perp$	1.00 [0.89; 1.07] $< \perp$
HadGEM2-CC	0.94 [0.89; 1.00] $\perp$	1.03 [0.95; 1.11] $\perp$	1.21 [1.07; 1.31]	1.28 [1.11; 1.39]
IPSL-CM5A-MR	0.97 [0.88; 1.04] $\perp$	1.03 [0.97; 1.10] $\perp$	1.08 [1.04; 1.16]	1.10 [1.06; 1.18]
MIROC-ESM	0.95 [0.86; 1.02] $\perp$	1.04 [0.98; 1.12] $\perp$	1.24 [1.19; 1.33]	1.34 [1.29; 1.45]
<i>maximum three-hour rainfall intensity</i>				
GFDL-ESM2m	0.99 [0.92; 1.04] $\perp$	1.00 [0.94; 1.07] $> \perp$	1.00 [0.85; 1.08] $< \perp$	0.99 [0.94; 1.06] $\perp$
HadGEM2-CC	0.90 [0.85; 0.96]	1.04 [0.97; 1.13] $\perp$	1.31 [1.19; 1.41]	1.42 [1.29; 1.55]
IPSL-CM5A-MR	0.87 [0.82; 0.93]	1.06 [1.00; 1.13] $\perp$	1.32 [1.23; 1.41]	1.44 [1.34; 1.55]
MIROC-ESM	0.87 [0.81; 0.93]	1.08 [1.02; 1.14]	1.39 [1.28; 1.51]	1.61 [1.47; 1.75]
<i>soil moisture</i>				
GFDL-ESM2m	1.01 [1.01; 1.01]	0.99 [0.99; 0.99]	0.94 [0.94; 0.94]	0.95 [0.94; 0.95]
HadGEM2-CC	1.00 [1.00; 1.00] $<$	1.00 [1.00; 1.00] $>$	0.99 [0.99; 0.99]	1.00 [1.00; 1.00] $>$
IPSL-CM5A-MR	1.02 [1.01; 1.02]	0.98 [0.98; 0.99]	0.84 [0.84; 0.84]	0.89 [0.89; 0.89]
MIROC-ESM	1.01 [1.01; 1.01]	0.99 [0.99; 0.99]	0.96 [0.96; 0.96]	0.94 [0.94; 0.94]

Mean is greater (>) or lower (<) than 1;  $\perp$ : 2.5th or 97.5th percentile showed contrasting delta change factors.

**Table A4.** Effective ranges of correlation functions

<b>Correlation function</b>	<b>REML Score</b>	<b>Rho</b>	<b>Effective Range</b>
Sph	3441.01	717	581.77
Exp	3444.83	237	709.99
Gau	3438.3	303	524.44
Mat1	3438.99	126	597.73
Mat2	3438.32	103	609.62
Mat3	3438.59	88	605.15

Effective range was estimated using the R function *StempCens::EffectiveRange* for a correlation  $\leq 0.05$ .

**Table A5.** Performance assessment (folds-based)

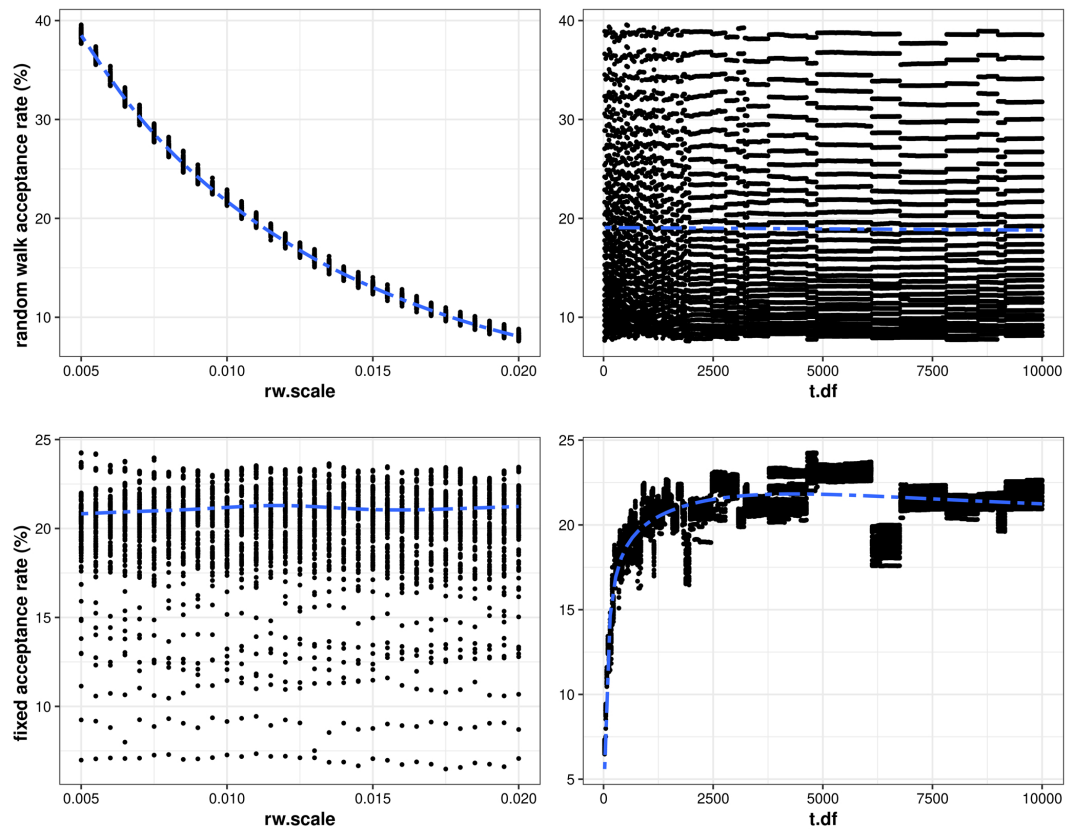
<b>Model</b>	$\hat{x}$	$\bar{x}$	<i>Range</i>	<i>Min</i>	<i>Max</i>	<i>IQR</i>
GAM-Spatial	0.94	0.93	0.26	0.73	1	0.04
GAM-SM+TC	0.94	0.94	0.15	0.85	1	0.02
GAM-Co	0.94	0.94	0.15	0.84	0.99	0.02

Statistic: median ( $\hat{x}$ ), mean ( $\bar{x}$ ), range (*Range*), minimum (*Min*), maximum (*Max*), interquartile range (*IQR*).

**Table A6.** Variable importance

<b>Variable</b>	<b>GAM-Spatial</b>	<b>GAM-SM+TC</b>	<b>GAM-Co</b>
<i>land surface variables</i>			
convergence index, 100 m	0.12 (12)	0.29 (11)	0.34 (10)
convergence index, 500 m	0.00 (18) <sup>x</sup>	0.00 (16) <sup>x</sup>	0.30 (11)
curvature, plan	0.00 (15) <sup>x</sup>	0.00 (14) <sup>x</sup>	0.21 (14)
curvature, profile	1.09 (5)	1.40 (4)	1.31 (4)
flow accumulation, logarithmized	0.01 (13) <sup>x</sup>	0.01 (12) <sup>x</sup>	0.27 (13)
normalised height	0.56 (10)	0.70 (8)	0.55 (9)
slope angle	5.48 (4)	7.09 (3)	5.31 (3)
slope angle, catchment area	0.00 (17) <sup>x</sup>	0.00 (15) <sup>x</sup>	0.08 (16)
slope aspect, S-N	0.00 (14) <sup>x</sup>	0.00 (17) <sup>x</sup>	0.09 (15)
slope aspect, W-E	0.00 (16) <sup>x</sup>	0.00 (13) <sup>x</sup>	0.27 (12)
TPI	0.33 (11)	0.46 (10)	0.66 (8)
SWI	0.76 (8)	0.85 (7)	0.71 (7)
<i>hydrometeorological variables</i>			
five-day rainfall	10.76 (1)	12.74 (1)	15.13 (1)
maximum three-hour rainfall intensity	0.85 (6)	1.25 (5)	1.05 (5)
soil moisture	0.6 (9)	0.57 (9)	
<i>geology</i>			
geology	0.82 (7)	1.06 (6)	0.73 (6)
<i>land use/land cover</i>			
forest type	8.8 (2)	10.73 (2)	8.57 (2)
<i>Gaussian process smooth</i>			
longitude, latitude	5.98 (3)		

Variable importance measured in mean decrease in deviance explained (%), rank of variable in parentheses. Note: Estimates for GAM-Co were based on SpCV models in Knevels et al. (2020). <sup>x</sup> model term was shrunk to zero.



**Figure A3.** Relationship of *mgcv::gam.mh*'s hyperparameter values to acceptance rates. Blue dashed line: Smooth function.



**Table A7.** Critical values for simultaneous credible intervals of non-parametric transformation functions at the 95 % credible level

Variable	<i>GAM-Spatial</i>		<i>GAM-SM</i>
	<i>gam.mh</i>	<i>rmvn</i>	<i>rmvn</i>
<i>land surface variables</i>			
convergence index, 100 m	1.982 (1.01)	1.922 (0.98)	3.178 (1.62)
convergence index, 500 m	0.008 <sup>x</sup> (0.00)	0.008 <sup>x</sup> (0.00)	0.017 <sup>x</sup> (0.00)
curvature, plan	0.030 <sup>x</sup> (0.02)	0.028 <sup>x</sup> (0.01)	0.075 <sup>x</sup> (0.04)
curvature, profile	4.348 (2.22)	4.120 (2.10)	5.419 (2.77)
flow accumulation, logarithmized	1.102 <sup>x</sup> (0.56)	1.082 <sup>x</sup> (0.55)	1.825 <sup>x</sup> (0.93)
normalised height	2.046 (1.04)	1.987 (1.01)	3.171 (1.62)
slope angle	7.104 (3.62)	6.724 (3.43)	9.542 (4.87)
slope angle, catchment area	0.021 <sup>x</sup> (0.01)	0.021 <sup>x</sup> (0.01)	0.062 <sup>x</sup> (0.03)
slope aspect, S-N	0.005 <sup>x</sup> (0.00)	0.005 <sup>x</sup> (0.00)	0.010 <sup>x</sup> (0.01)
slope aspect, W-E	0.002 <sup>x</sup> (0.00)	0.002 <sup>x</sup> (0.00)	0.005 <sup>x</sup> (0.00)
TPI	4.089 (2.09)	3.848 (1.96)	5.168 (2.64)
SWI	3.081 (1.57)	2.979 (1.52)	3.325 (1.70)
<i>hydrometeorological variables</i>			
five-day rainfall	37.846 (19.31)	35.422 (18.07)	22.650 (11.56)
maximum three-hour rainfall intensity	2.149 (1.10)	2.068 (1.05)	3.003 (1.53)
soil moisture	2.451 (1.25)	2.388 (1.22)	2.439 (1.24)
<i>Gaussian process smooth</i>			
longitude, latitude	3.691 (1.88)	3.616 (1.84)	

Critical values are estimated at the 95 % credible level; *mgcv::gam.mh*: Simple posterior simulation with gam fits; *mgcv::rmvn*: Generate from or evaluate multivariate normal or *t* densities. Note: Default coverage factor is 1.96 for 95 % credible level. ()-brackets show the ratio to default. <sup>x</sup> model term was shrunk to zero. GAM-SM: GAM-Co including soil-moisture, but no top-coded five-day rainfall.

**Table A8.** Uncertainty of predicted highly landslide susceptible area

Scenario	GFDL	GFDL <del>LULC</del> <u>LULCC</u>	<del>HadGem</del> HadGEM	HadGEM <del>LULC</del> <u>LULCC</u>	IPSL	IPSL <del>LULC</del> <u>LULCC</u>	MIROC	MIROC <del>LULC</del> <u>LULCC</u>
NO-CC	5.1 [3.8; 6.8]		4.4 [3.2; 6.1]		4.8 [3.6; 6.4]		4.7 [3.5; 6.3]	
PARIS	4.7 [3.4; 6.5]	4.3 [3.1; 5.9]	5.1 [3.7; 6.9]	4.6 [3.4; 6.3]	4.7 [3.4; 6.6]	4.3 [3.1; 6.0]	5.0 [3.6; 6.8]	4.5 [3.3; 6.2]
3 K	3.6 [2.1; 5.4]	3.3 [1.9; 4.9]	5.9 [4.1; 8.2]	5.4 [3.8; 7.6]	2.7 [1.3; 5.0]	2.5 [1.1; 4.6]	5.4 [3.5; 8.0]	4.9 [3.2; 7.4]
4 K	3.7 [2.4; 5.4]	3.3 [2.2; 4.9]	6.6 [4.6; 9.3]	6.1 [4.2; 8.7]	4.0 [2.2; 6.7]	3.7 [2.0; 6.2]	5.7 [3.5; 8.9]	5.3 [3.2; 8.4]

Note: Area relative to total study area. 95 % CI are based on within-event internal climate model variability and parametric landslide model uncertainty (i.e.  $CI_{Story}$ ). For results for low, medium and high landslide susceptibility, please refer to Table S1 in the Supplementary Material.

**Table A9.** Odds ratios of landslide occurrences of high susceptibility class relative to present-day high landslide susceptibility

Scenario	GFDL	GFDL <del>LULC</del> LULCC	HadGem <del>HadGEM</del>	HadGEM <del>LULC</del> LULCC	IPSL	IPSL <del>LULC</del> LULCC	MIROC	MIROC <del>LULC</del> LULCC
NO-CC	1.05 [1.00; 1.10]		0.91 [0.87; 0.96]		0.98 [0.93; 1.03]		0.96 [0.92; 1.01]	
PARIS	0.97 [0.92; 1.02]	0.95 [0.91; 1.01]	1.04 [0.98; 1.11]	1.03 [0.96; 1.09]	0.97 [0.92; 1.03]	0.96 [0.91; 1.02]	1.02 [0.97; 1.07]	1.01 [0.96; 1.06]
3 K	0.75 [0.67; 0.8]	0.74 [0.66; 0.79]	1.22 [1.12; 1.32]	1.20 [1.1; 1.3]	0.60 [0.55; 0.65]	0.60 [0.55; 0.65]	1.11 [1.02; 1.22]	1.10 [1.01; 1.21]
4 K	0.77 [0.73; 0.81]	0.76 [0.72; 0.8]	1.37 [1.24; 1.52]	1.35 [1.23; 1.5]	0.85 [0.78; 0.93]	0.85 [0.78; 0.93]	1.20 [1.08; 1.33]	1.19 [1.08; 1.32]

Note: 95 % CI are based on within-event internal climate model variability (i.e.  $CI_{IV}$ ). For results for low, medium and high landslide susceptibility, please refer to Table S2 in the Supplementary Material.

**Table A10.** Ratio of uncertainty sources in predicted high landslide susceptibility

Scenario	GFDL	GFDL <b>LULC</b> <u>LULCC</u>	<b>HadGem</b> <u>HadGEM</u>	HadGEM <b>LULC</b> <u>LULCC</u>	IPSL	IPSL <b>LULC</b> <u>LULCC</u>	MIROC	MIROC <b>LULC</b> <u>LULCC</u>
$R_{IV;Lsl} \mid R_{CS;Lsl}$								
NO-CC	0.20   0.28		0.18   0.28		0.20   0.29		0.22   0.29	
PARIS	0.19   0.30	0.20   0.34	0.24   0.30	0.25   0.33	0.19   0.29	0.20   0.32	0.18   0.29	0.18   0.31
3 K	0.25   1.28	0.27   1.46	0.29   1.07	0.29   1.15	0.13   1.02	0.13   1.11	0.26   0.97	0.27   1.05
4 K	0.15   1.23	0.16   1.38	0.34   0.92	0.35   1.00	0.19   0.86	0.20   0.95	0.27   0.77	0.28   0.82

$R_{IV;Lsl}$ : Within-event intern climate variability to landslide model uncertainty (see eq. 2).  $R_{CS;Lsl}$ : Climate scenario to landslide model uncertainty (see eq. 3). For results for low, medium and high landslide susceptibility, please refer to Table S3 in the Supplementary Material.

*Author contributions.* Conceptualization, R.K. and A.B.; data curation, R.K., H.P. (Herwig Proske), D.M, and A.M.; formal analysis, R.K.;  
600 methodology, R.K. and A.B.; supervision, H.P. (Helene Petschko) and A.B.; writing—original draft, R.K.; writing—review & editing, R.K.,  
A.B., P.L., D.M., A.M., H.P. (Herwig Proske) and H.P. (Helene Petschko). All authors have read and agreed to the published version of the  
manuscript.

*Competing interests.* The authors declare no conflict of interest.

*Acknowledgements.* This research was conducted within the Eastern Alpine Slope Instabilities under Climate Change (EASICLIM) project  
605 funded by the Austrian Climate Research Program (ACRP), grant number KR16AC0K13160.

## References

- Bastola, S., Murphy, C., and Sweeney, J.: The role of hydrological modelling uncertainties in climate change impact assessments of Irish river catchments, *Advances in Water Resources*, 34, 562–576, <https://doi.org/10.1016/j.advwatres.2011.01.008>, 2011.
- 610 Bechtold, P., Köhler, M., Jung, T., Doblas-Reyes, F., Leutbecher, M., Rodwell, M. J., Vitart, F., and Balsamo, G.: Advances in simulating atmospheric variability with the ECMWF model: From synoptic to decadal time-scales, *Quarterly Journal of the Royal Meteorological Society*, 134, 1337–1351, <https://doi.org/10.1002/qj.289>, 2008.
- BFW: Interim evaluation of the Austrian Forest Inventory 2016/18 - Styria [Zwischenauswertung der ÖWI 2016/18 – Steiermark], Tech. rep., Austrian Research Centre for Forests, Vienna, Austria, [https://www.bfw.gv.at/wp-content/uploads/Steiermark\\_OEWI\\_16\\_18.pdf](https://www.bfw.gv.at/wp-content/uploads/Steiermark_OEWI_16_18.pdf), 2019.
- 615 Bogaard, T. and Greco, R.: Invited perspectives: Hydrological perspectives on precipitation intensity-duration thresholds for landslide initiation: proposing hydro-meteorological thresholds, *Natural Hazards and Earth System Sciences*, 18, 31–39, <https://doi.org/https://doi.org/10.5194/nhess-18-31-2018>, 2018.
- ~~Brenning, A.: Improved spatial analysis and prediction of landslide susceptibility: Practical recommendations, in: Landslides and Engineered Slopes: Protecting Society through Improved Understanding, edited by Eberhardt, E., Froese, C., Turner, A. K., and Leroueil, S., vol. 1, pp. 789–794, CRC Press/Balkema, Banff, Canada, 2012.~~
- 620 Brenning, A., Schwinn, M., Ruiz-Páez, A. P., and Muenchow, J.: Landslide susceptibility near highways is increased by 1 order of magnitude in the Andes of southern Ecuador, Loja province, *Natural Hazards and Earth System Sciences*, 15, 45–57, <https://doi.org/10.5194/nhess-15-45-2015>, 2015.
- [Brock, J., Schratz, P., Petschko, H., Muenchow, J., Micu, M., and Brenning, A.: The Performance of Landslide Susceptibility Models Critically Depends on the Quality of Digital Elevations Models, \*Geomatics, Natural Hazards and Risk\*, 11, 1075–1092, 2020.](https://doi.org/10.1080/19475705.2020.1776403)
- 625 <https://doi.org/10.1080/19475705.2020.1776403>, 2020.
- Chen, D., Rojas, M., Samset, B. H., Cobb, K., Diongue-Niang, A., Edwards, P., Emori, S., Faria, S. H., Hawkins, E., Hope, P., Huybrechts, P., Meinshausen, M., Mustafa, S. K., Plattner, G.-K., and Tréguier, A. M.: Framing, context, and methods, in: *Climate Change 2021: The Physical Science Basis. Contribution of Working Group I to the Sixth Assessment Report of the Intergovernmental Panel on Climate Change*, edited by Masson-Delmotte, V., Zhai, P., Pirani, A., Connors, S. L., Péan, C., Berger, S., Caud, N., Chen, Y., Goldfarb, L., Gomis, M. I., Huang, M., Leitzell, K., Lonnoy, E., Matthews, J. B. R., Maycock, T. K., Waterfield, T., Yelekçi, Ö., Yu, R., and Zhou, B., Cambridge University Press, 2021.
- 630 Chen, F., Manning, K. W., LeMone, M. A., Trier, S. B., Alfieri, J. G., Roberts, R., Tewari, M., Niyogi, D., Horst, T. W., Oncley, S. P., Basara, J. B., and Blanken, P. D.: Description and Evaluation of the Characteristics of the NCAR High-Resolution Land Data Assimilation System, *Journal of Applied Meteorology and Climatology*, 46, 694–713, <https://doi.org/10.1175/JAM2463.1>, publisher: American Meteorological Society Section: *Journal of Applied Meteorology and Climatology*, 2007.
- 635 Ciabatta, L., Camici, S., Brocca, L., Ponziani, F., Stelluti, M., Berni, N., and Moramarco, T.: Assessing the impact of climate-change scenarios on landslide occurrence in Umbria Region, Italy, *Journal of Hydrology*, 541, 285–295, <https://doi.org/10.1016/j.jhydrol.2016.02.007>, 2016.
- Crozier, M. J.: Deciphering the effect of climate change on landslide activity: A review, *Geomorphology*, 124, 260–267, <https://doi.org/10.1016/j.geomorph.2010.04.009>, 2010.
- 640 <https://doi.org/10.1016/j.geomorph.2010.04.009>, 2010.

- Cruden, D. M. and Varnes, D. J.: Landslide Types and Processes, in: Landslides investigation and mitigation. Transportation research board, US National Research Council, edited by Turner, A. and Schuster, R., no. 247 in Special Report 247, pp. 36–75, U.S. National Academy of Sciences, Washington, DC, USA, 1996.
- 645 Debele, S. E., Kumar, P., Sahani, J., Marti-Cardona, B., Mickovski, S. B., Leo, L. S., Porcù, F., Bertini, F., Montesi, D., Vojinovic, Z., and Di Sabatino, S.: Nature-based solutions for hydro-meteorological hazards: Revised concepts, classification schemes and databases, *Environmental Research*, 179, 108 799, <https://doi.org/10.1016/j.envres.2019.108799>, 2019.
- der Steiermärkischen Landesregierung, A.: Regionale Bevölkerungsprognose. Steiermark – Bundesland, Bezirke und Gemeindegruppen, Steirische Statistiken 3, Abteilung 17 Landes- und Regionalentwicklung, Referat Statistik und Geoinformation, Graz, Austria, [https://www.landesentwicklung.steiermark.at/cms/dokumente/12658765\\_141979497/b6924e0e/Heft%203-2020%20Bev%C3%B6lkerungsprognose%20aktuell.pdf](https://www.landesentwicklung.steiermark.at/cms/dokumente/12658765_141979497/b6924e0e/Heft%203-2020%20Bev%C3%B6lkerungsprognose%20aktuell.pdf), last access: 20 May 2022, 2020.
- 650 Doblaz-Reyes, F. J., Sörensson, A. A., Almazroui, M., Dosio, A., Gutowski, W. J., Haarsma, R., Hamdi, R., Hewitson, B., Kwon, W.-T., Lamptey, B. L., Maraun, D., Stephenson, T. S., Takayabu, I., Terray, L., Turner, A., and Zuo, Z.: Linking global to regional climate change, in: *Climate Change 2021: The Physical Science Basis. Contribution of Working Group I to the Sixth Assessment Report of the Intergovernmental Panel on Climate Change*, edited by Masson-Delmotte, V., Zhai, P., Pirani, A., Connors, S. L., Péan, C., Berger, S., Caud, N., Chen, Y., Goldfarb, L., Gomis, M. I., Huang, M., Leitzell, K., Lonnoy, E., Matthews, J. B. R., Maycock, T. K., Waterfield, T., Yelekçi, Ö., Yu, R., and Zhou, B., Cambridge University Press, 2021.
- EPA, U.: Guidelines for Human Exposure Assessment, EPA/100/B-19/001, Risk Assessment Forum, U.S. Environmental Protection Agency, Washington, DC, USA, [https://ofmpub.epa.gov/eims/eimscomm.getfile?p\\_download\\_id=429103](https://ofmpub.epa.gov/eims/eimscomm.getfile?p_download_id=429103), last access: 20 May 2022, 2019.
- Fahrmeir, L., Kneib, T., Lang, S., and Marx, B.: *Regression: Models, Methods and Applications*, Springer-Verlag, Berlin Heidelberg, 660 <https://doi.org/10.1007/978-3-642-34333-9>, 2013.
- Fell, R., Corominas, J., Bonnard, C., Cascini, L., Leroi, E., and Savage, W. Z.: Guidelines for landslide susceptibility, hazard and risk zoning for land use planning, *Engineering Geology*, 102, 85–98, <https://doi.org/10.1016/j.enggeo.2008.03.022>, 2008.
- Felsberg, A., Poesen, J., Bechtold, M., Vanmaercke, M., and De Lannoy, G. J. M.: Estimating ~~global landslide susceptibility and its uncertainty through ensemble modelling~~ [Global Landslide Susceptibility and Its Uncertainty through Ensemble Modeling](#), *Natural Hazards and Earth System Sciences Discussions*, pp. 1–30, , publisher: Copernicus GmbH, 2021-, 22, 3063–3082, <https://doi.org/10.5194/nhess-22-3063-2022>, 2022.
- 665 ~~Fressard~~
- ~~Froude, M., Thiery, Y., and Maquaire, O.: Which data for quantitative landslide susceptibility mapping at operational scale? Casestudy of the Paysd’Augeplateau hillslopes (Normandy, France), J. and Petley, D. N.: Global Fatal Landslide Occurrence from 2004 to 2016~~, *Natural Hazards and Earth System Sciences*, 14, 569–588, , publisher: Copernicus GmbH, 2014-, 18, 2161–2181, <https://doi.org/10.5194/nhess-18-2161-2018>, 2018.
- 670 ~~Gariano, S. L. and Guzzetti, F.: Landslides in a changing climate, Earth-Science Reviews, 162, 227–252, https://doi.org/10.1016/j.earscirev.2016.08.011, 2016.~~
- Gariano, S. L. and Guzzetti, F.: Mass-Movements and Climate Change, in: *Reference Module in Earth Systems and Environmental Sciences*, Elsevier, <https://doi.org/10.1016/B978-0-12-818234-5.00043-2>, 2021.
- Gariano, S. L., Rianna, G., Petrucci, O., and Guzzetti, F.: Assessing future changes in the occurrence of rainfall-induced landslides at a regional scale, *The Science of the Total Environment*, 596-597, 417–426, <https://doi.org/10.1016/j.scitotenv.2017.03.103>, 2017.

- Gariano, S. L., Petrucci, O., Rianna, G., Santini, M., and Guzzetti, F.: Impacts of past and future land changes on landslides in southern Italy, *Regional Environmental Change*, 18, 437–449, <https://doi.org/10.1007/s10113-017-1210-9>, 2018.
- 680 Gasser, D., Gusterhuber, J., Krusche, O., Puhr, B., Scheucher, L., Wagner, T., and Stüwe, K.: Geology of Styria: An overview, *Mitteilungen des Naturwissenschaftlichen Vereins für Steiermark*, 139, 5–36, 2009.
- Guzzetti, F., Reichenbach, P., Ardizzone, F., Cardinali, M., and Galli, M.: Estimating the quality of landslide susceptibility models, *Geomorphology*, 81, 166–184, 2006.
- Haiden, T.: Meteorologische Analyse des Niederschlags von 22.-25. Juni 2009 [Meteorological analysis of the precipitation from 22  
685 to 25 June 2009], Tech. rep., ZAMG, Vienna, Austria, [http://www.zamg.ac.at/docs/aktuell/2009-06-30\\_Meteorologische%20Analyse%20HOWA2009.pdf](http://www.zamg.ac.at/docs/aktuell/2009-06-30_Meteorologische%20Analyse%20HOWA2009.pdf), last access: 20 May 2022, 2009.
- Haque, U., da Silva, P. F., Devoli, G., Pilz, J., Zhao, B., Khaloua, A., Wilopo, W., Andersen, P., Lu, P., Lee, J., Yamamoto, T., Keellings, D., Wu, J.-H., and Glass, G. E.: The human cost of global warming: Deadly landslides and their triggers (1995–2014), *Science of The Total Environment*, 682, 673–684, <https://doi.org/10.1016/j.scitotenv.2019.03.415>, 2019.
- 690 ~~Hastie, T. and Tibshirani, R.: Generalized Additive Models, *Statistical Science*, 1, 297–310., 1986.~~
- Holzschläger, A., Klein, T., Seppelt, R., and Fuhrer, J.: Assessing the propagation of uncertainties in multi-objective optimization for agroecosystem adaptation to climate change, *Environmental Modelling & Software*, 66, 27–35, <https://doi.org/10.1016/j.envsoft.2014.12.012>, 2015.
- Hornich, R. and Adelwöhrer, R.: Landslides in Styria in 2009, *Geomechanics and Tunneling*, 3, 455–461,  
695 <https://doi.org/10.1002/geot.201000042>, 2010.
- Hosmer, D. W., Lemeshow, S., and Sturdivant, R. X.: Applied Logistic Regression, Wiley Series in Probability and Statistics, John Wiley & Sons, Hoboken, NJ, USA, <https://doi.org/10.1002/9781118548387>, 2013.
- ~~Hussin, H. Y., Zumpano, V., Reichenbach, P., Sterlacchini, S., Micu, M., van Westen, C., and Bălteanu, D.: Different landslide sampling strategies in a grid-based bi-variate statistical susceptibility model, *Geomorphology*, 253, 508–523., 2016.~~
- 700 Jaedicke, C., Solheim, A., Blikra, L. H., Stalsberg, K., Sorteberg, A., Aaheim, A., Kronholm, K., Vikhamar-Schuler, D., Isaksen, K., Sletten, K., Kristensen, K., Barstad, I., Melchiorre, C., Høydal, Ø. A., and Mestl, H.: Spatial and temporal variations of Norwegian geohazards in a changing climate, the GeoExtreme Project, *Natural Hazards and Earth System Sciences*, 8, 893–904, <https://doi.org/10.5194/nhess-8-893-2008>, publisher: Copernicus GmbH, 2008.
- [Jaedicke, C., Van Den Eeckhaut, M., Nadim, F., Hervás, J., Kalsnes, B., Vangelsten, B. V., Smith, J. T., Tofani, V., Ciurean, R., Winter, M. G., Sverdrup-Thygeson, K., Syre, E., and Smebye, H.: Identification of Landslide Hazard and Risk ‘Hotspots’ in Europe, \*Bulletin of Engineering Geology and the Environment\*, 73, 325–339, <https://doi.org/10.1007/s10064-013-0541-0>, 2014.](#)
- 705 [Jandl, R.: Climate-induced challenges of Norway spruce in Northern Austria, \*Trees, Forests and People\*, 1, <https://doi.org/https://doi.org/10.1016/j.tfp.2020.100008>, 2020.](#)
- [Jones, J. N., Boulton, S. J., Bennett, G. L., Stokes, M., and Whitworth, M. R. Z.: Temporal Variations in Landslide Distributions Following Extreme Events: Implications for Landslide Susceptibility Modeling, \*Journal of Geophysical Research: Earth Surface\*, 126, \[e2021JF006067\]\(https://doi.org/10.1029/2021JF006067\), <https://doi.org/10.1029/2021JF006067>, 2021.](#)
- 710 Kim, H. G., Lee, D. K., Park, C., Ahn, Y., Kil, S.-H., Sung, S., and Biging, G. S.: Estimating landslide susceptibility areas considering the uncertainty inherent in modeling methods, *Stochastic Environmental Research and Risk Assessment*, 32, 2987–3019, <https://doi.org/10.1007/s00477-018-1609-y>, 2018.



- 715 Kirchner, M., Mitter, H., Schneider, U. A., Sommer, M., Falkner, K., and Schmid, E.: Uncertainty concepts for integrated modeling - Review and application for identifying uncertainties and uncertainty propagation pathways, *Environmental Modelling & Software*, 135, 104905, <https://doi.org/10.1016/j.envsoft.2020.104905>, 2021.
- Knevels, R., Petschko, H., Proske, H., Leopold, P., Maraun, D., and Brenning, A.: Event-Based Landslide Modeling in the Styrian Basin, Austria: Accounting for Time-Varying Rainfall and Land Cover, *Geosciences*, 10, 217, <https://doi.org/10.3390/geosciences10060217>,  
720 number: 6 Publisher: Multidisciplinary Digital Publishing Institute, 2020.
- Kolström, M., Lindner, M., Vilén, T., Maroschek, M., Seidl, R., Lexer, M. J., Netherer, S., Kremer, A., Delzon, S., Barbati, A., Marchetti, M., and Corona, P.: Reviewing the Science and Implementation of Climate Change Adaptation Measures in European Forestry, *Forests*, 2, 961–982, <https://doi.org/10.3390/f2040961>, number: 4 Publisher: Molecular Diversity Preservation International, 2011.
- Lee, C.-T.: Landslide trends under extreme climate events, *Terrestrial, Atmospheric and Oceanic Sciences*, 28, 33–42,  
725 [https://doi.org/10.3319/TAO.2016.05.28.01\(CCA\)](https://doi.org/10.3319/TAO.2016.05.28.01(CCA)), 2017.
- [Lima, P., Steger, S., and Glade, T.: Counteracting Flawed Landslide Data in Statistically Based Landslide Susceptibility Modelling for Very Large Areas: A National-Scale Assessment for Austria, \*Landslides\*, <https://doi.org/10.1007/s10346-021-01693-7>, 2021.](https://doi.org/10.1007/s10346-021-01693-7)
- Lombardo, L., Opitz, T., Ardizzone, F., Guzzetti, F., and Huser, R.: Space-time landslide predictive modelling, *Earth-Science Reviews*, 209, 103 318, <https://doi.org/10.1016/j.earscirev.2020.103318>, 2020.
- 730 Maraun, D. and Widmann, M.: *Statistical Downscaling and Bias Correction for Climate Research*, Cambridge University Press, Cambridge, <https://doi.org/10.1017/9781107588783>, 2018.
- [Maraun, D., Shepherd, T. G., Widmann, M., Zappa, G., Walton, D., Gutiérrez, J. M., Hagemann, S., Richter, I., Soares, P. M. M., Hall, A., and Mearns, L. O.: Towards Process-Informed Bias Correction of Climate Change Simulations, \*Nature Climate Change\*, 7, 764–773, <https://doi.org/10.1038/nclimate3418>, 2017.](https://doi.org/10.1038/nclimate3418)
- 735 Maraun, D., Knevels, R., Mishra, A. N., Truhetz, H., Bevacqua, E., Proske, H., Zappa, G., Brenning, A., Petschko, H., Schaffer, A., Leopold, P., and Puxley, B. L.: A severe landslide event in the Alpine foreland under possible future climate and land-use changes, *Communications Earth & Environment*, 3, 1–11, <https://doi.org/10.1038/s43247-022-00408-7>, number: 1 Publisher: Nature Publishing Group, 2022.
- Marra, G. and Wood, S. N.: Coverage Properties of Confidence Intervals for Generalized Additive Model Components: Coverage properties of GAM intervals, *Scandinavian Journal of Statistics*, 39, 53–74, <https://doi.org/10.1111/j.1467-9469.2011.00760.x>, 2012.
- 740 ~~Nyehka, D.: Bayesian Confidence Intervals for Smoothing Splines, *Journal of the American Statistical Association*, 83, 1134–1143, , 1988.~~  
~~Oberkampf, W. L., Helton, J. C., Joslyn, C. A., Wojtkiewicz, S. F., and Ferson, S.: Challenge problems: uncertainty in system response given uncertain parameters, *Reliability Engineering & System Safety*, 85, 11–19, , 2004.~~
- Olefs, M., Formayer, H., Gobiet, A., Marke, T., Schöner, W., and Revesz, M.: Past and future changes of the Austrian climate – Importance for tourism, *Journal of Outdoor Recreation and Tourism*, 34, 100 395, <https://doi.org/10.1016/j.jort.2021.100395>, 2021.
- 745 [Ozturk, U., Pittore, M., Behling, R., Roessner, S., Andreani, L., and Korup, O.: How Robust Are Landslide Susceptibility Estimates?, \*Landslides\*, 18, 681–695, <https://doi.org/10.1007/s10346-020-01485-5>, 2021.](https://doi.org/10.1007/s10346-020-01485-5)
- Petschko, H., Brenning, A., Bell, R., Goetz, J., and Glade, T.: Assessing the quality of landslide susceptibility maps – case study Lower Austria, *Natural Hazards and Earth System Sciences*, 14, 95–118, <https://doi.org/10.5194/nhess-14-95-2014>, 2014.
- Picarelli, L., Comegna, L., Gariano, S. L., Guzzetti, F., Mercogliano, P., Rianna, G., Santini, M., and Tommasi, P.: Potential climate changes in Italy and consequences for land stability, in: *Slope Safety Preparedness for Impact of Climate Change*, CRC Press, num Pages: 47,  
750 2017.

- Pisano, L., Zumpano, V., Malek, Ž., Roszkopf, C. M., and Parise, M.: Variations in the susceptibility to landslides, as a consequence of land cover changes: A look to the past, and another towards the future, *The Science of the Total Environment*, 601-602, 1147–1159, <https://doi.org/10.1016/j.scitotenv.2017.05.231>, 2017.
- 755 Refsgaard, J., Sonnenborg, T., Butts, M., Christensen, J., Christensen, S., Drews, M., Jensen, K., Jørgensen, F., Jørgensen, L., Larsen, M., Rasmussen, S., Seaby, L., Seifert, D., and Vilhelmsen, T.: Climate change impacts on groundwater hydrology – where are the main uncertainties and can they be reduced?, *Hydrological Sciences Journal*, 61, 2312–2324, <https://doi.org/10.1080/02626667.2015.1131899>, 2016.
- ~~Refsgaard, J. C., van der Sluijs, J. P., Højberg, A. L., and Vanrolleghem, P. A.: Uncertainty in the environmental modelling process – A framework and guidance, *Environmental Modelling & Software*, 22, 1543–1556, , 2007.~~
- 760 Reichenbach, P., Busca, C., Mondini, A. C., and Rossi, M.: The Influence of Land Use Change on Landslide Susceptibility Zonation: The Briga Catchment Test Site (Messina, Italy), *Environmental Management*, 54, 1372–1384, <https://doi.org/10.1007/s00267-014-0357-0>, 2014.
- Reichenbach, P., Rossi, M., Malamud, B. D., Mihir, M., and Guzzetti, F.: A review of statistically-based landslide susceptibility models, *Earth-Science Reviews*, 180, 60–91, <https://doi.org/10.1016/j.earscirev.2018.03.001>, 2018.
- 765 Rianna, G., Comegna, L., Mercogliano, P., and Picarelli, L.: Potential effects of climate changes on soil–atmosphere interaction and landslide hazard, *Natural Hazards*, 84, 1487–1499, <https://doi.org/10.1007/s11069-016-2481-z>, 2016.
- Rianna, G., Comegna, L., Gariano, S. L., Guzzetti, F., Mercogliano, P., Picarelli, L., and Tommasi, P.: Potential Effects of Climate Changes on Landslide Activity in Different Geomorphological Contexts, in: *Advancing Culture of Living with Landslides*, edited by Mikoš, M., Casagli, N., Yin, Y., and Sassa, K., pp. 243–249, Springer International Publishing, Cham, [https://doi.org/10.1007/978-3-319-53485-5\\_28](https://doi.org/10.1007/978-3-319-53485-5_28), 2017.
- [Roberts, D. R., Wood, W. H., and Marshall, S. J.: Assessments of Downscaled Climate Data with a High-Resolution Weather Station Network Reveal Consistent but Predictable Bias, \*International Journal of Climatology\*, 39, 3091–3103, <https://doi.org/10.1002/joc.6005>, 2019.](#)
- 775 Roberts, G. O., Gelman, A., and Gilks, W. R.: Weak convergence and optimal scaling of random walk Metropolis algorithms, *The Annals of Applied Probability*, 7, <https://doi.org/10.1214/aoap/1034625254>, publisher: Institute of Mathematical Statistics, 1997.
- Rockel, B., Will, A., and Hense, A.: The Regional Climate Model COSMO-CLM (CCLM), *Meteorologische Zeitschrift*, 17, 347–348, <https://doi.org/10.1127/0941-2948/2008/0309>, 2008.
- Rougier, J.: Quantifying hazard losses, in: *Risk and Uncertainty Assessment for Natural Hazards*, edited by Rougier, J., Hill, L. J., and Sparks, S., pp. 19–39, Cambridge University Press, Cambridge, <https://doi.org/10.1017/CBO9781139047562.003>, 2013.
- 780 Rougier, J. and Beven, K.: Model and data limitations: the sources and implications of epistemic uncertainty, in: *Risk and Uncertainty Assessment for Natural Hazards*, edited by Rougier, J., Hill, L. J., and Sparks, S., pp. 40–63, Cambridge University Press, Cambridge, <https://doi.org/10.1017/CBO9781139047562.004>, 2013.
- Rougier, J., Sparks, S., and Hill, L. J., eds.: *Risk and Uncertainty Assessment for Natural Hazards*, Cambridge University Press, Cambridge, <https://doi.org/10.1017/CBO9781139047562>, 2013.
- 785 Roy, C. J. and Oberkampf, W. L.: A comprehensive framework for verification, validation, and uncertainty quantification in scientific computing, *Computer Methods in Applied Mechanics and Engineering*, 200, 2131–2144, <https://doi.org/10.1016/j.cma.2011.03.016>, 2011.
- Ruppert, D., Wand, M. P., and Carroll, R. J.: *Semiparametric Regression*, Cambridge Series in Statistical and Probabilistic Mathematics, Cambridge University Press, Cambridge, <https://doi.org/10.1017/CBO9780511755453>, 2003.

- Samia, J., Temme, A., Bregt, A., Wallinga, J., Guzzetti, F., Ardizzone, F., and Rossi, M.: Do landslides follow landslides? Insights in path  
790 dependency from a multi-temporal landslide inventory, *Landslides*, 14, 547–558, <https://doi.org/10.1007/s10346-016-0739-x>, 2017.
- Schaffer, A.: Evaluation of the Soil Moisture-Precipitation Feedback in Austria [Beurteilung des Bodenfeuchte-Niederschlag-Feedbacks  
in Österreich], Master's thesis, Graz University of Technology, Graz, Austria, [https://online.tugraz.at/tug\\_online/wbabs.showThesis?  
pThesisNr=73261&pOrgNr=37](https://online.tugraz.at/tug_online/wbabs.showThesis?pThesisNr=73261&pOrgNr=37), last access: 20 May 2022, 2021.
- Schlögel, R., Kofler, C., Gariano, S. L., Van Campenhout, J., and Plummer, S.: Changes in climate patterns and their association to natural  
795 hazard distribution in South Tyrol (Eastern Italian Alps), *Scientific Reports*, 10, 5022, <https://doi.org/10.1038/s41598-020-61615-w>, 2020.
- Schweigl, J. and Hervás, J.: Landslide Mapping in Austria, JRC Scientific and Technical Reports EUR 23785 EN, European Commission,  
Joint Research Centre, Luxembourg, <http://dx.doi.org/10.2788/85150>, 2009.
- Shepherd, T. G.: Atmospheric circulation as a source of uncertainty in climate change projections, *Nature Geoscience*, 7, 703–708,  
<https://doi.org/10.1038/ngeo2253>, 2014.
- 800 Shepherd, T. G., Boyd, E., Calel, R. A., Chapman, S. C., Dessai, S., Dima-West, I. M., Fowler, H. J., James, R., Maraun, D., Martius, O.,  
Senior, C. A., Sobel, A. H., Stainforth, D. A., Tett, S. F. B., Trenberth, K. E., van den Hurk, B. J. J. M., Watkins, N. W., Wilby, R. L., and  
Zenghelis, D. A.: Storylines: an alternative approach to representing uncertainty in physical aspects of climate change, *Climatic Change*,  
151, 555–571, <https://doi.org/10.1007/s10584-018-2317-9>, 2018.
- Simpson, G. L.: Modelling Palaeoecological Time Series Using Generalised Additive Models, *Frontiers in Ecology and Evolution*, 6,  
805 <https://doi.org/10.3389/fevo.2018.00149>, publisher: Frontiers, 2018.
- Stainforth, D., Allen, M., Tredger, E., and Smith, L.: Confidence, uncertainty and decision-support relevance in climate predic-  
tions, *Philosophical Transactions of the Royal Society A: Mathematical, Physical and Engineering Sciences*, 365, 2145–2161,  
<https://doi.org/10.1098/rsta.2007.2074>, publisher: Royal Society, 2007.
- Steger, S., Brenning, A., Bell, R., and Glade, T.: The propagation of inventory-based positional errors into statistical landslide susceptibility  
810 models, *Nat. Hazards Earth Syst. Sci.*, 16, 2729–2745, <https://doi.org/10.5194/nhess-16-2729-2016>, 2016.
- Steger, S., Brenning, A., Bell, R., and Glade, T.: The influence of systematically incomplete shallow landslide inventories on statistical  
susceptibility models and suggestions for improvements, *Landslides*, 14, 1767–1781, <https://doi.org/10.1007/s10346-017-0820-0>, 2017.
- Steiermark, L.: Niederschlagswarnung für die Steiermark. Für den Zeitraum: Donnerstag, 11.09.2014 12:00 Uhr MESZ bis Sonntag,  
14.09.2014 12:00 Uhr MESZ [Precipitation warning for Styria. For the period: Thursday, 11 September 2014 12:00 CEST to Sunday,  
815 14 September 2014 12:00 CEST], Tech. rep., Fachabteilung Katastrophenschutz und Landesverteidigung, Referat Landeswarnzentrale  
und Kommunikationstechnik, Graz, Austria, <http://www.katastrophenschutz.steiermark.at/cms/beitrag/12083692/5461/>, last access: 20  
May 2022, 2014.
- Szumilas, M.: Explaining Odds Ratios, *Journal of the Canadian Academy of Child and Adolescent Psychiatry*, 19, 227–229, [https://www.  
ncbi.nlm.nih.gov/pmc/articles/PMC2938757/](https://www.ncbi.nlm.nih.gov/pmc/articles/PMC2938757/), last access: 20 May 2022, 2010.
- 820 Tang, A. M., Hughes, P. N., Dijkstra, T. A., Askarinejad, A., Brenčić, M., Cui, Y. J., Diez, J. J., Firgi, T., Gajewska, B., Gentile, F., Grossi,  
G., Jommi, C., Kehagia, F., Koda, E., ter Maat, H. W., Lenart, S., Lourenco, S., Oliveira, M., Osinski, P., Springman, S. M., Stirling,  
R., Toll, D. G., and Van Beek, V.: Atmosphere–vegetation–soil interactions in a climate change context; impact of changing conditions  
on engineered transport infrastructure slopes in Europe, *Quarterly Journal of Engineering Geology and Hydrogeology*, 51, 156–168,  
<https://doi.org/10.1144/qjegh2017-103>, 2018.
- 825 Taylor, K. E., Ronald, S., and Meehl, G.: A Summary of the CMIP5 experiment design, *PCDMI Rep.*, 4, 1–33, [https://pcmdi.llnl.gov/mips/  
cmip5/docs/Taylor\\_CMIP5\\_design.pdf](https://pcmdi.llnl.gov/mips/cmip5/docs/Taylor_CMIP5_design.pdf), last access: 20 May 2022, 2009.

- Team, R. C.: R: A Language and Environment for Statistical Computing, <https://www.R-project.org/>, last access: 20 May 2022, 2021.
- 830 Torizin, J., Fuchs, M., Kuhn, D., Balzer, D., and Wang, L.: Practical Accounting for Uncertainties in Data-Driven Landslide Susceptibility Models. Examples from the Lanzhou Case Study, in: Understanding and Reducing Landslide Disaster Risk: Volume 2 From Mapping to Hazard and Risk Zonation, edited by Guzzetti, F., Mihalić Arbanas, S., Reichenbach, P., Sassa, K., Bobrowsky, P. T., and Takara, K., ICL Contribution to Landslide Disaster Risk Reduction, pp. 249–255, Springer International Publishing, Cham, [https://doi.org/10.1007/978-3-030-60227-7\\_27](https://doi.org/10.1007/978-3-030-60227-7_27), 2021.
- Valeriano, K. L., Lachos, V. H., and Matos, L. A.: StempCens: Spatio-temporal estimation and prediction for censored/missing responses, <https://CRAN.R-project.org/package=StempCens>, last access: 20 May 2022, 2020.
- 835 Walker, W., Harremoës, P., Rotmans, J., van der Sluijs, J., van Asselt, M., Janssen, P., and Kreyer von Krauss, M.: Defining Uncertainty: A Conceptual Basis for Uncertainty Management in Model-Based Decision Support, *Integrated Assessment*, 4, 5–17, <https://doi.org/10.1076/iaij.4.1.5.16466>, 2003.
- Wallemacq, P., House, R., and McLean, D.: Economic Losses, Poverty & Disasters: 1998–2017, Tech. rep., Centre for Research on the Epidemiology of Disaster, UN Office for Disaster Risk Reductions, [https://www.cred.be/sites/default/files/CRED\\_Economic\\_Losses\\_10oct.pdf](https://www.cred.be/sites/default/files/CRED_Economic_Losses_10oct.pdf), last access: 20 May 2022, 2018.
- 840 Wood, S. N.: Core Statistics, Institute of Mathematical Statistics Textbooks, Cambridge University Press, Cambridge, <https://doi.org/10.1017/CBO9781107741973>, 2015.
- Wood, S. N.: Generalized Additive Models: An Introduction with R, Chapman and Hall/CRC, Boca Raton, FL, USA, 2 edn., <https://doi.org/10.1201/9781315370279>, 2017.
- 845 ZAMG: Meldungen zu Unwetter und Witterungsbedingten Schäden in der Wirtschaft / September 2014 [Reports on severe weather and weather-related losses in the economy / September 2014], Tech. rep., ZAMG, <https://www.zamg.ac.at/zamgWeb/klima/klimarueckblick/archive/2014/09/unwetter09-14.pdf>, last access: 20 May 2022, 2014.
- Zscheischler, J., Martius, O., Westra, S., Bevacqua, E., Raymond, C., Horton, R. M., van den Hurk, B., AghaKouchak, A., Jézéquel, A., Mahecha, M. D., Maraun, D., Ramos, A. M., Ridder, N. N., Thiery, W., and Vignotto, E.: A typology of compound weather and climate events, *Nature Reviews Earth & Environment*, 1, 333–347, <https://doi.org/10.1038/s43017-020-0060-z>, 2020.
- 850

## **Assessing uncertainties in landslide susceptibility predictions in a changing environment (Styrian Basin, Austria)**

Raphael Knevels<sup>1</sup>, Helene Petschko<sup>1</sup>, Herwig Proske<sup>2</sup>, Philip Leopold<sup>3</sup>, Aditya N. Mishra<sup>4</sup>, Douglas Maraun<sup>4</sup>, and Alexander Brenning<sup>1</sup>

<sup>1</sup>Department of Geography, Friedrich Schiller University Jena, Jena, 07743, Germany

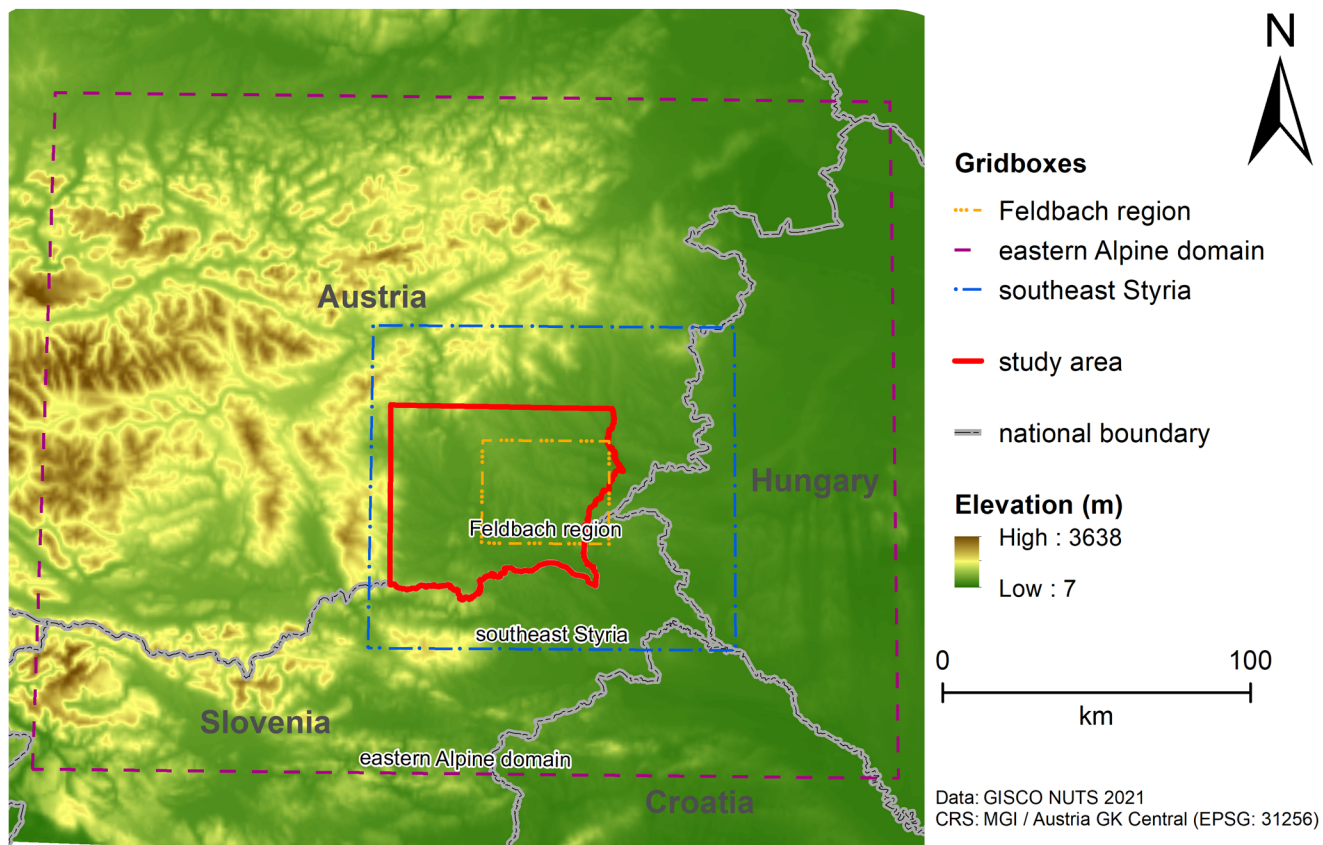
<sup>2</sup>Remote Sensing and Geoinformation Department, JOANNEUM RESEARCH Forschungsgesellschaft mbH, Graz, 8010, Austria

<sup>3</sup>Centre for Low-Emission Transport, AIT Austrian Institute of Technology GmbH, Vienna, 1210, Austria

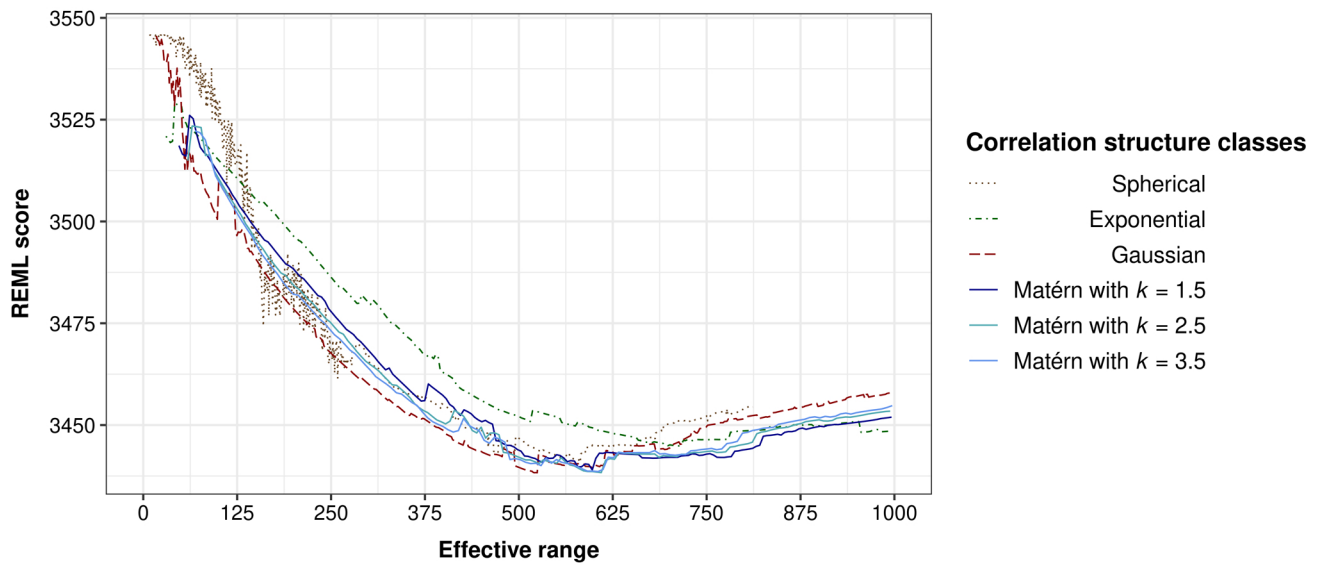
<sup>4</sup>Wegener Centre for Climate and Global Change, Regional Climate Research Group, Karl-Franzens-University Graz, Graz, 8010, Austria

**Correspondence:** Raphael Knevels (raphael.knevels@uni-jena.de)

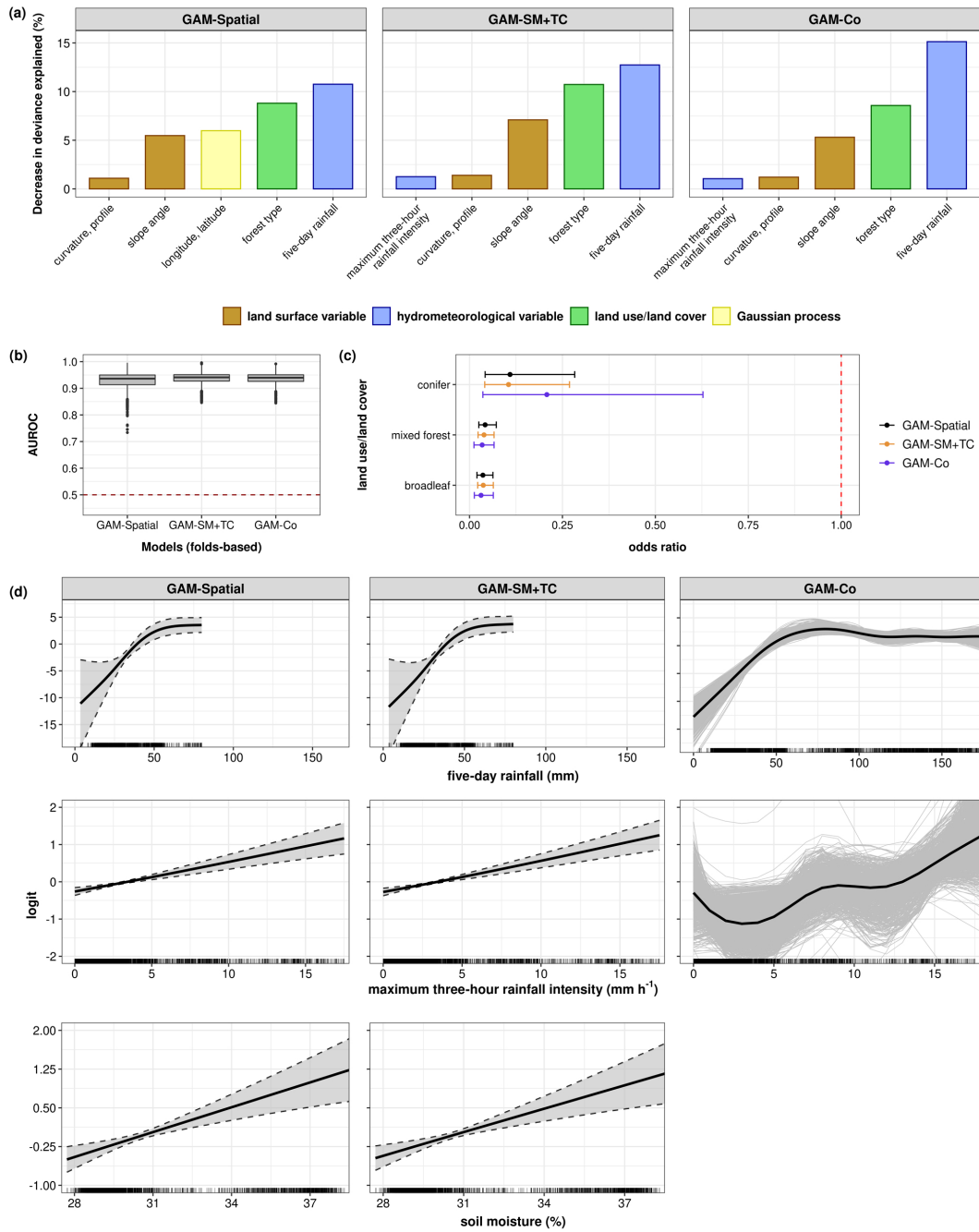
## S1 Supplemental Figures



**Figure S1.** Delta change domains. Precipitation values were based on eastern Alpine domain (Maraun et al. (2022) and this study). Soil moisture values were based on the Feldbach region in Maraun et al. (2022) but on southeast Styria in this study.

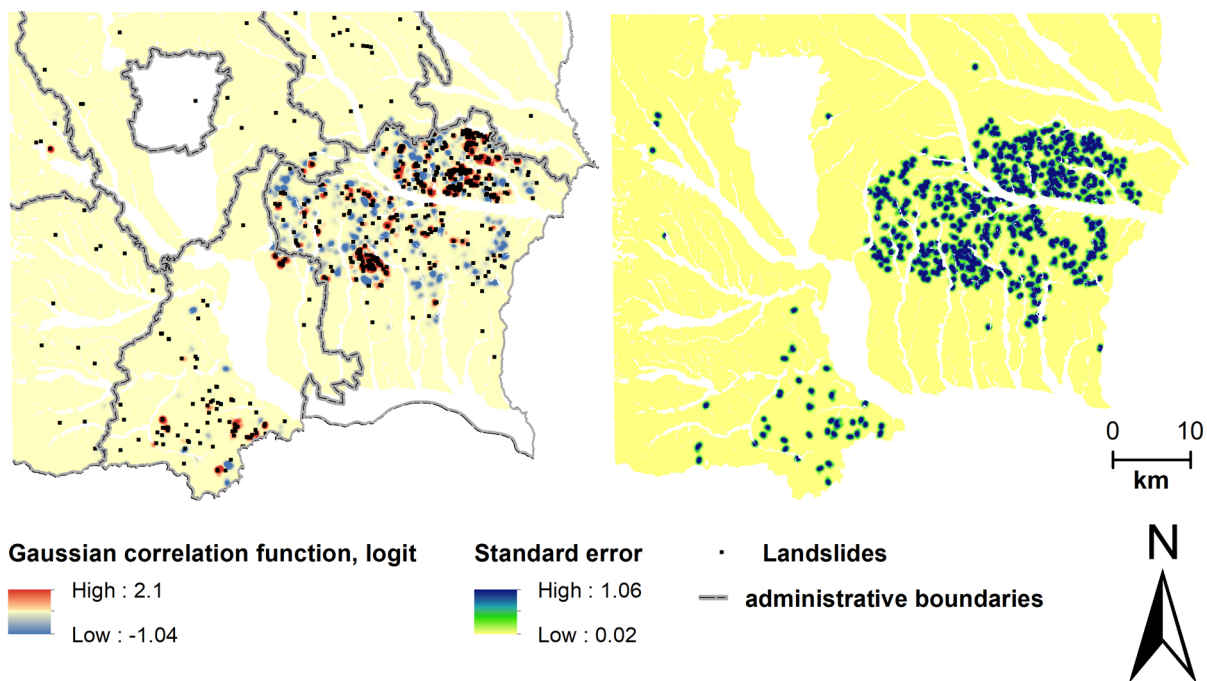


**Figure S2.** Optimization result for a Gaussian Process (GP) smoother with different correlation functions and effective ranges.

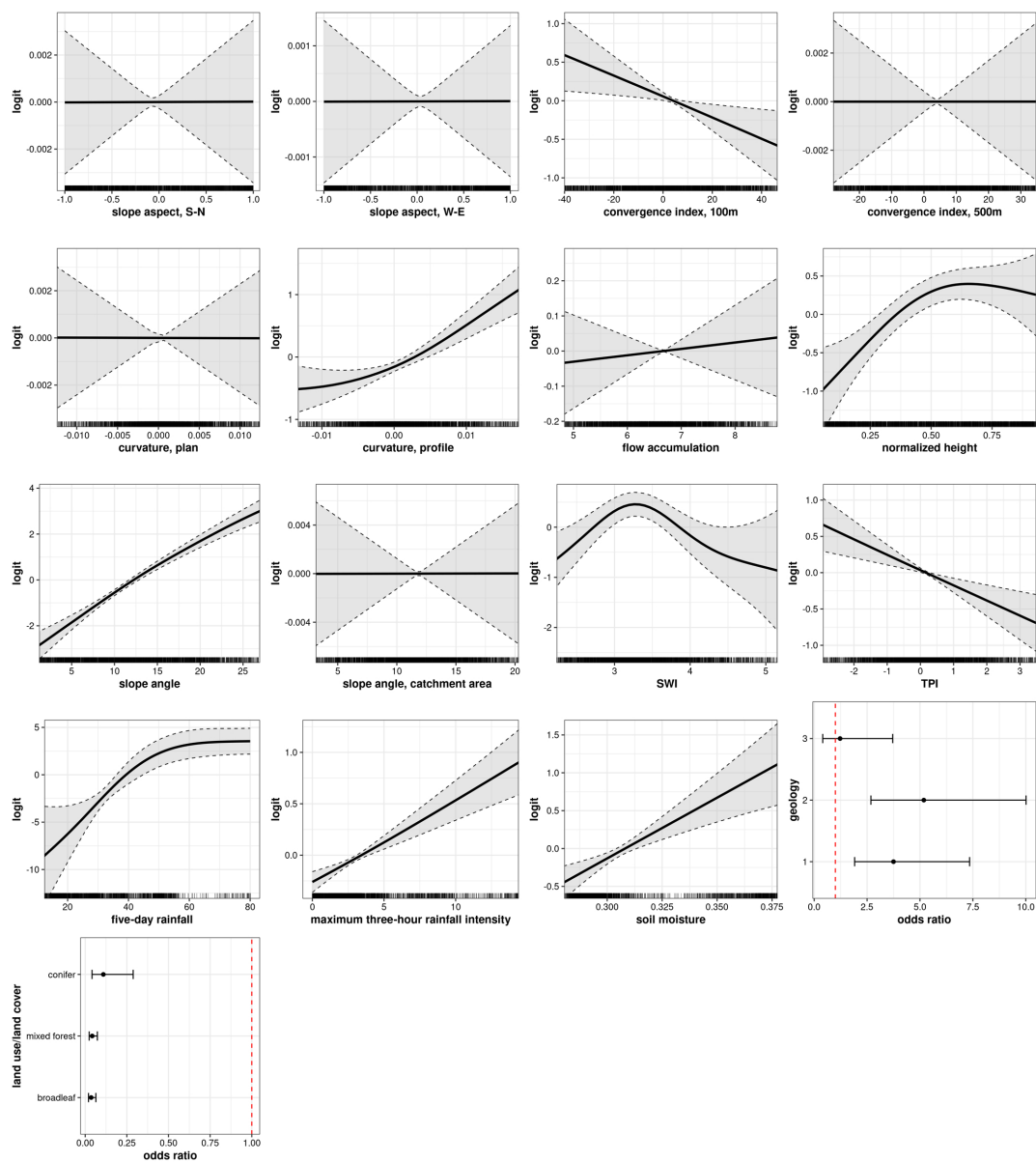


**Figure S3.** Model diagnostics. (a) Top five most important variables sorted by mean decrease in deviance explained (%). For an overview of all input variables, refer to Table A6. (b) Comparison of model performances (folds-based). (c) Comparison of predictor-response relationships of land use/land cover (LULC) variables using odds ratios. (d) Comparison of predictor-response relationships of hydrometeorological variables. Note: The y axes in (d) are plot-dependent. Estimates and predictor-response relationships for GAM-Co are based on SpCV models in Knevels et al. (2020). In grey: 95 % pointwise Bayesian credible intervals.

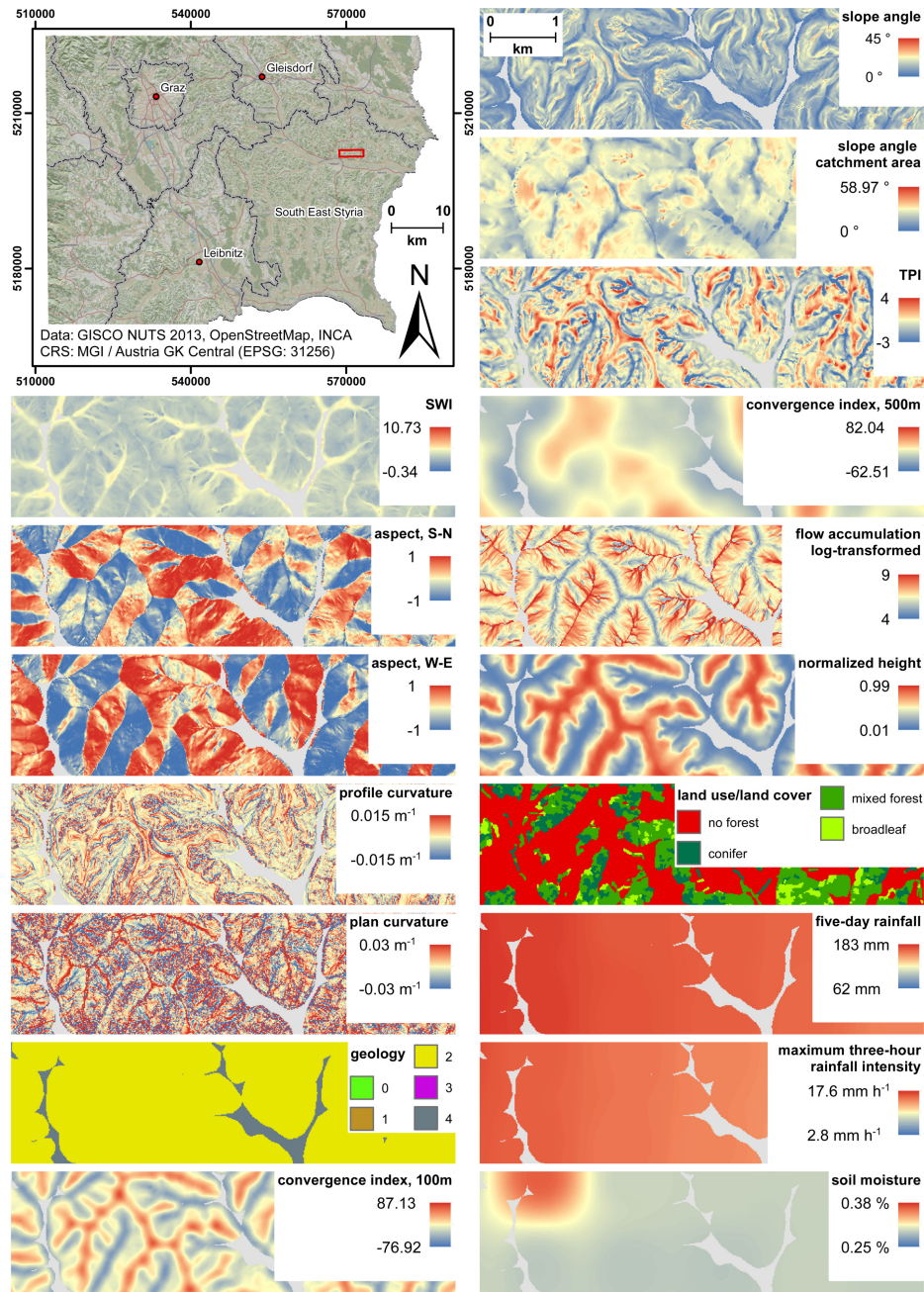




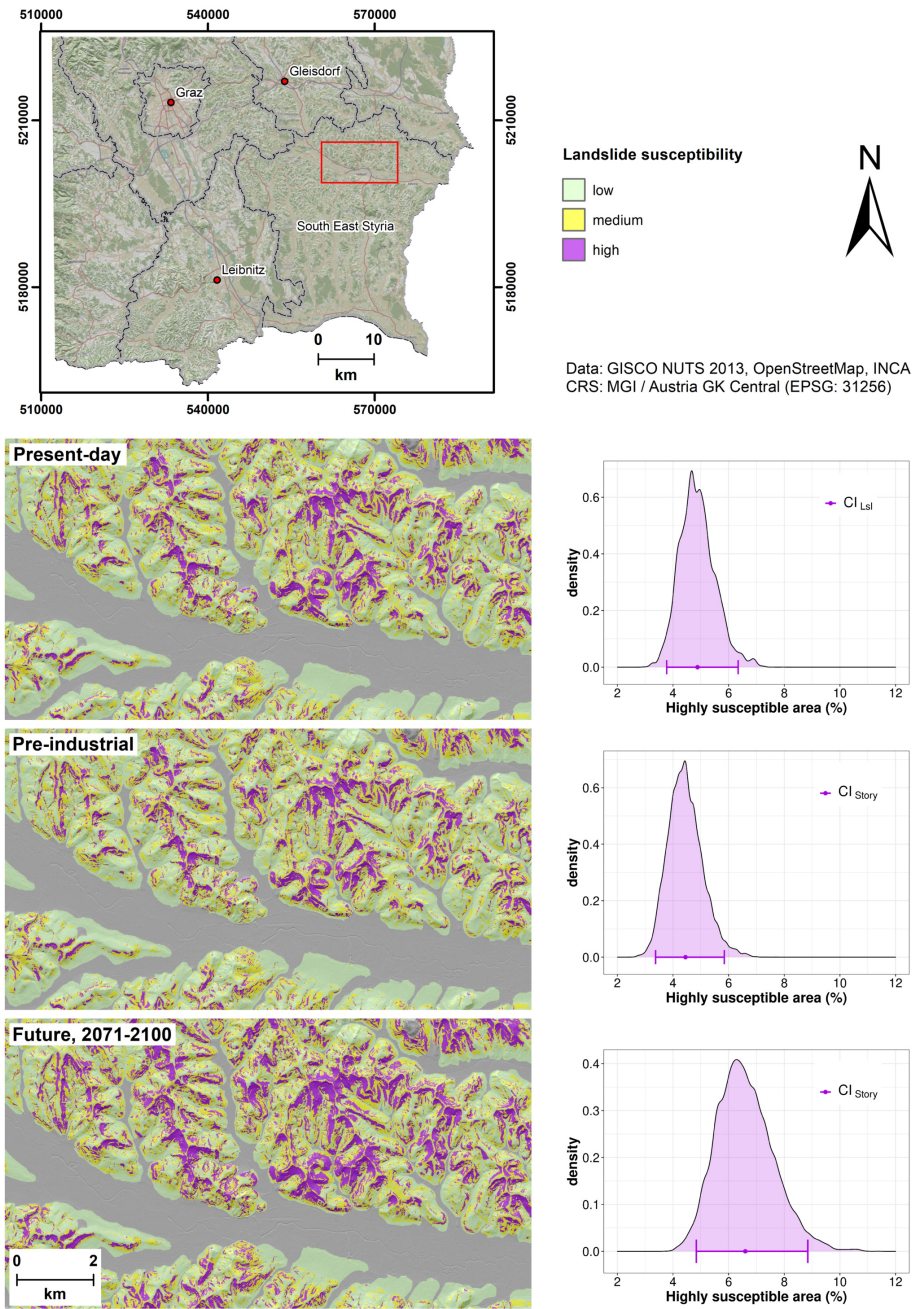
**Figure S4.** Relationship of GP smoother to landslide occurrences.



**Figure S5.** Predictor-response relationships of GAM-Spatial. Grey: 95,% pointwise Bayesian credible interval. Reference level of LULC 2015: 'Forest'; **Lithological units** **Geology**: Reference: '~~Neogene formations with coarse-grained layers~~ Others',  $\theta_1$ : 'Neogene formations dominated by fine-grained sediments',  $\theta_2$ : '~~Neogene formations with coarse-grained layers~~',  $\theta_3$ : 'pre-Würmian Pleistocene formations'. Note: the y axes are plot-dependent, and the x axes of non-parametric transformation functions are limited to the 5th and 95th percentile. For the predictor-response relationship of the GP smoother, please refer to Fig. S3.



**Figure S6.** Overview of input variables for predicting landslide susceptibility of the 2009 event. Geology: 0: 'Others', 1: 'Neogene formations dominated by fine-grained sediments', 2: 'Neogene formations with coarse-grained layers', 3: 'pre-Würmian Pleistocene formations', 4: 'Würm and Holocene sediments'.



**Figure S7.** Example of landslide susceptibility maps of the 2009 event and associated uncertainties in highly susceptible areas. Pre-industrial and future storylines are based on the HadGEM climate model in the 4 K warming scenario. Note: Uncertainty graphs are based on the entire study area.



## S2 Supplemental Tables

**Table S1.** Uncertainty of predicted landslide susceptible area

Scenario	GFDL	GFDL LULC LULCC	HadGemHadGEM	HadGEM LULC LULCC	IPSL	IPSL LULC LULCC	MIROC	MIROC LULC LULCC
<b>Low Susceptibility</b> ( <i>present-day: 79.1 [75; 82.5]</i> )								
NO-CC	78.5		80.1		79.2		79.4	
	[73.9; 82.3]		[75.5; 84.0]		[74.8; 83.0]		[74.9; 83.3]	
PARIS	79.5	80.4	78.7	79.6	79.5	80.4	79.0	79.9
	[74.8; 83.5]	[75.7; 84.3]	[73.8; 82.8]	[74.7; 83.6]	[74.6; 83.6]	[75.6; 84.3]	[74.2; 83.0]	[75.1; 83.8]
3 K	82.6	83.4	77.0	78.0	85.6	86.4	78.4	79.3
	[77.2; 87.3]	[78.2; 88.0]	[71.6; 81.7]	[72.6; 82.4]	[78.1; 91.4]	[79.1; 91.8]	[72.3; 83.2]	[73.2; 83.9]
4 K	82.3	83.2	75.7	76.6	82.0	82.8	77.8	78.7
	[77.1; 86.5]	[78.1; 87.2]	[69.8; 80.6]	[70.7; 81.3]	[74.9; 87.5]	[75.8; 88.2]	[70.8; 83.3]	[71.8; 84.1]
<b>Medium Susceptibility</b> ( <i>present-day: 16.0 [13.3; 19.0]</i> )								
NO-CC	16.4		15.4		16.0		15.9	
	[13.4; 19.6]		[12.5; 18.7]		[13.0; 19.2]		[12.9; 19.1]	
PARIS	15.7	15.3	16.3	15.8	15.7	15.2	16.1	15.6
	[12.7; 19.1]	[12.3; 18.6]	[13.1; 19.7]	[12.7; 19.2]	[12.7; 19.1]	[12.3; 18.7]	[13.0; 19.4]	[12.6; 18.9]
3 K	13.9	13.3	17.1	16.6	11.6	11.1	16.3	15.8
	[10.4; 17.6]	[9.9; 17.1]	[13.7; 20.6]	[13.3; 20.3]	[7.4; 16.8]	[7.0; 16.2]	[12.9; 20.1]	[12.5; 19.7]
4 K	14.0	13.5	17.7	17.3	14.0	13.5	16.5	16.0
	[10.9; 17.6]	[10.4; 17.1]	[14.3; 21.4]	[13.9; 21.0]	[10.3; 18.6]	[9.7; 18.1]	[12.9; 20.6]	[12.4; 20.2]
<b>High Susceptibility</b> ( <i>present-day: 4.9 [3.8; 6.3]</i> )								
NO-CC	5.1		4.4		4.8		4.7	
	[3.8; 6.8]		[3.2; 6.1]		[3.6; 6.4]		[3.5; 6.3]	
PARIS	4.7	4.3	5.1	4.6	4.7	4.3	5.0	4.5
	[3.4; 6.5]	[3.1; 5.9]	[3.7; 6.9]	[3.4; 6.3]	[3.4; 6.6]	[3.1; 6.0]	[3.6; 6.8]	[3.3; 6.2]
3 K	3.6	3.3	5.9	5.4	2.7	2.5	5.4	4.9
	[2.1; 5.4]	[1.9; 4.9]	[4.1; 8.2]	[3.8; 7.6]	[1.3; 5.0]	[1.1; 4.6]	[3.5; 8.0]	[3.2; 7.4]
4 K	3.7	3.3	6.6	6.1	4.0	3.7	5.7	5.3
	[2.4; 5.4]	[2.2; 4.9]	[4.6; 9.3]	[4.2; 8.7]	[2.2; 6.7]	[2.0; 6.2]	[3.5; 8.9]	[3.2; 8.4]

Note: Area relative to total study area. 95 % CI are based on within-event internal climate model variability and parametric landslide model uncertainty (i.e.  $CI_{Story}$ ). Susceptibility classes are based on observed landslide occurrences: low 5 %, medium 25 % and high 70 %.

**Table S2.** Odds ratios of landslide occurrences of comparable susceptibility classes relative to present-day landslide susceptibility

Scenario	GFDL	GFDL LULC LULCC	HadGemHadGEM	HadGEM LULC LULCC	IPSL	IPSL LULC LULCC	MIROC	MIROC LULC LULCC
<b>Low Susceptibility</b>								
NO-CC	1.05		0.93		1.00		0.99	
	[1.01; 1.09]		[0.89; 0.96]		[0.96; 1.04]		[0.94; 1.03]	
PARIS	0.96	0.92	1.03	0.99	0.96	0.92	1.00	0.96
	[0.93; 1.01]	[0.89; 0.96]	[0.98; 1.08]	[0.94; 1.04]	[0.92; 1.00]	[0.89; 0.96]	[0.97; 1.04]	[0.93; 1.00]
3 K	0.75	0.72	1.15	1.10	0.55	0.53	1.03	0.99
	[0.69; 0.79]	[0.66; 0.76]	[1.08; 1.22]	[1.03; 1.17]	[0.52; 0.58]	[0.50; 0.55]	[0.97; 1.10]	[0.93; 1.05]
4 K	0.77	0.74	1.27	1.21	0.76	0.73	1.06	1.02
	[0.73; 0.80]	[0.70; 0.76]	[1.18; 1.37]	[1.13; 1.31]	[0.72; 0.82]	[0.69; 0.78]	[0.98; 1.15]	[0.94; 1.10]
<b>Medium Susceptibility</b>								
NO-CC	1.05		0.92		0.99		0.98	
	[1.00; 1.09]		[0.88; 0.96]		[0.95; 1.04]		[0.93; 1.02]	
PARIS	0.96	0.95	1.04	1.02	0.97	0.95	1.01	1.00
	[0.92; 1.01]	[0.91; 1.00]	[0.98; 1.09]	[0.96; 1.08]	[0.92; 1.01]	[0.91; 1.00]	[0.97; 1.06]	[0.96; 1.04]
3 K	0.75	0.75	1.18	1.16	0.57	0.57	1.06	1.05
	[0.68; 0.79]	[0.67; 0.79]	[1.09; 1.26]	[1.08; 1.23]	[0.54; 0.61]	[0.54; 0.61]	[0.99; 1.14]	[0.98; 1.13]
4 K	0.77	0.76	1.31	1.28	0.80	0.80	1.11	1.10
	[0.73; 0.8]	[0.73; 0.79]	[1.20; 1.42]	[1.18; 1.39]	[0.75; 0.86]	[0.74; 0.86]	[1.02; 1.21]	[1.01; 1.19]
<b>High Susceptibility</b>								
NO-CC	1.05		0.91		0.98		0.96	
	[1.00; 1.10]		[0.87; 0.96]		[0.93; 1.03]		[0.92; 1.01]	
PARIS	0.97	0.95	1.04	1.03	0.97	0.96	1.02	1.01
	[0.92; 1.02]	[0.91; 1.01]	[0.98; 1.11]	[0.96; 1.09]	[0.92; 1.03]	[0.91; 1.02]	[0.97; 1.07]	[0.96; 1.06]
3 K	0.75	0.74	1.22	1.20	0.60	0.60	1.11	1.10
	[0.67; 0.8]	[0.66; 0.79]	[1.12; 1.32]	[1.1; 1.3]	[0.55; 0.65]	[0.55; 0.65]	[1.02; 1.22]	[1.01; 1.21]
4 K	0.77	0.76	1.37	1.35	0.85	0.85	1.20	1.19
	[0.73; 0.81]	[0.72; 0.8]	[1.24; 1.52]	[1.23; 1.5]	[0.78; 0.93]	[0.78; 0.93]	[1.08; 1.33]	[1.08; 1.32]

Note: 95 % CI are based on within-event internal climate model variability (i.e.  $CI_{IV}$ ). Susceptibility classes are based on observed landslide occurrences: low 5 %, medium 25 % and high 70 %.

**Table S3.** Ratio of uncertainty sources in predicted landslide susceptibility

Scenario	GFDL	GFDL <del>LULC</del> LULCC	HadGemHadGEM	HadGEM <del>LULC</del> LULCC	IPSL	IPSL <del>LULC</del> LULCC	MIROC	MIROC <del>LULC</del> LULCC
<b>Low Susceptibility</b> $R_{IV;Lsl}   R_{CS;Lsl}$								
NO-CC	0.15   0.23		0.15   0.23		0.17   0.23		0.18   0.23	
PARIS	0.15   0.23	0.16   0.24	0.19   0.23	0.19   0.24	0.15   0.23	0.15   0.23	0.14   0.23	0.14   0.23
3 K	0.22   1.12	0.22   1.14	0.22   1.13	0.22   1.16	0.10   0.78	0.10   0.81	0.20   1.03	0.20   1.04
4 K	0.14   0.91	0.14   0.93	0.26   0.89	0.27   0.91	0.15   0.68	0.15   0.7	0.22   0.73	0.22   0.74
<b>Medium Susceptibility</b>								
NO-CC	0.11   0.17		0.12   0.17		0.13   0.18		0.14   0.18	
PARIS	0.12   0.18	0.12   0.18	0.14   0.18	0.14   0.18	0.11   0.18	0.12   0.17	0.10   0.18	0.11   0.17
3 K	0.19   0.97	0.19   0.97	0.15   1.00	0.15   0.99	0.09   0.70	0.09   0.71	0.15   0.96	0.15   0.95
4 K	0.12   0.70	0.12   0.70	0.17   0.7	0.18   0.70	0.13   0.58	0.13   0.57	0.16   0.64	0.16   0.63
<b>High Susceptibility</b>								
NO-CC	0.20   0.28		0.18   0.28		0.20   0.29		0.22   0.29	
PARIS	0.19   0.30	0.20   0.34	0.24   0.30	0.25   0.33	0.19   0.29	0.20   0.32	0.18   0.29	0.18   0.31
3 K	0.25   1.28	0.27   1.46	0.29   1.07	0.29   1.15	0.13   1.02	0.13   1.11	0.26   0.97	0.27   1.05
4 K	0.15   1.23	0.16   1.38	0.34   0.92	0.35   1.00	0.19   0.86	0.20   0.95	0.27   0.77	0.28   0.82

$R_{IV;Lsl}$ : Within-event intern climate variability to landslide model uncertainty.  $R_{CS;Lsl}$ : Climate scenario to landslide model uncertainty. Susceptibility classes are based on observed landslide occurrences: low 5%, medium 25% and high 70%.

## References

- Knevels, R., Petschko, H., Proske, H., Leopold, P., Maraun, D., and Brenning, A.: Event-Based Landslide Modeling in the Styrian Basin, Austria: Accounting for Time-Varying Rainfall and Land Cover, *Geosciences*, 10, 217, <https://doi.org/10.3390/geosciences10060217>, number: 6 Publisher: Multidisciplinary Digital Publishing Institute, 2020.
- Maraun, D., Knevels, R., Mishra, A. N., Truhetz, H., Bevacqua, E., Proske, H., Zappa, G., Brenning, A., Petschko, H., Schaffer, A., Leopold, P., and Puxley, B. L.: A severe landslide event in the Alpine foreland under possible future climate and land-use changes, *Communications Earth & Environment*, 3, 1–11, <https://doi.org/10.1038/s43247-022-00408-7>, number: 1 Publisher: Nature Publishing Group, 2022.