

Spatio-temporal analysis of slope-type debris flow activity in Horlachtal, Austria based on orthophotos and LiDAR data since 1947

Jakob Rom¹, Florian Haas¹, Tobias Heckmann¹, Moritz Altmann¹, Fabian Fleischer¹, Camillo Ressler², Sarah Betz-Nutz¹, Michael Becht¹

5 ¹Chair of Physical Geography, Catholic University of Eichstätt-Ingolstadt, 85072 Eichstätt, Germany

²Department of Geodesy and Geoinformation, Technische Universität Wien, 1040 Wien, Austria

Correspondence to: Jakob Rom (JRom@ku.de)

Abstract. In order to get a better understanding about the future development of alpine slope-type debris flows in the frame of climate change, complete and gapless records for the last century for this type of geomorphologic process are necessary. However, up to now such records are scarce. Here, the slope-type debris flow activity in the Horlachtal, Austria since 1947 is investigated with the help of historic and recent area-wide remote sensing data. Using geomorphological mapping, both spatial and temporal variabilities in debris flow dynamics can be shown. The results indicate short-term variations rather than consistent increasing or decreasing trends of slope-type debris flow activity in Horlachtal. Specifically, three active periods between 1954 and 1973, 1990 and 2009 as well as between 2015 and 2018 can be registered. Analyses of the deposited debris flow volumes show that for parts of the study area the largest volumes appeared in the early 1990s which might have even influenced the dynamics in the following years. Studies on the spatial variabilities revealed differences of slope-type debris flow activity within the study area and point to local rainfall events as triggers. However, long-term precipitation data of high temporal resolution of two alpine meteorological stations do not reveal increasing or decreasing trends in the occurrence of such events.

20 **1 Introduction**

Debris flows are gravitational mass movements consisting of granular solids mixed with water that can reach high velocities (Varnes, 1978) and occur in mountainous regions around the world as natural hazards (Dowling and Santi, 2014). In high alpine regions, this process is of great importance for the sediment budget (Heckmann et al., 2012; Curry et al., 2006; Rainato et al., 2017; Hilger, 2017; Theule et al., 2012) as they couple sediment sources on slopes with alpine streams (Heckmann and Schwanghart, 2013; Iverson, 2012). Therefore, debris flows are a very important process in high alpine geomorphology and landscape evolution, as a change in debris flow activity has a high impact on sediment balances. In alpine environments, debris flows initiated in torrent beds (torrent bed type or channel-type) can be distinguished from debris flows initiated on slopes (slope-type or hillslope debris flows). These types not only differ in various geomorphic characteristics like flow length, drainage area or slope values (Chen et al., 2009), they also show different initiation mechanisms (Sassa, 1984).

30 Because of their importance for high alpine geosystems, there are many attempts trying to model debris flows in order to predict their appearance, velocities or ranges (Wichmann, 2017; Turnbull et al., 2015; Wu, 2015). But the changing environmental parameters caused by climate change (Nogués-Bravo et al., 2007; Beniston, 2005, 2003) might have an impact on debris flow occurrence and properties, and must hence be accounted for in modelling effort. Therefore, in order to predict debris flow dynamics in the future, it is necessary to understand debris flow behaviour in the past and especially in the last
35 decades that witnessed the most intense climatic changes. However, there are not many studies containing (near) complete debris flow records beyond the last few decades in alpine catchments. Some authors used historical documents to reconstruct debris flow events (D'Agostino and Marchi, 2001; Tropeano and Turconi, 2004) but there are great uncertainties, especially for earlier periods (Marchi and Tecca, 2006). In addition, these archives often do not cover smaller debris flows and high-altitude regions far from settlements and focus primarily on channel-type debris flows. Other methods for reconstructing debris
40 flow activities include dendrogeomorphology (Lopez Saez et al., 2011; Stoffel, 2010; Bollschweiler et al., 2008) or lichenometry (Helsen et al., 2002; Innes, 1983). However these methods depend on the presence of suitable vegetation and are only partly useable above the treeline. The usage of area-wide LiDAR (Light Detection and Ranging) data as a basis for determining debris flow activity can reveal past debris flow events at higher resolution (Dietrich and Krautblatter, 2017; De Haas and Densmore, 2019) but the availability of these data is restricted to the last two decades and thus in a period, which is
45 entirely dominated by climate change. Aerial images and orthophotos are used to detect changes in alpine environments and are available on an area-wide basis back to ca. 1950 for most regions of the Alps (Bayle, 2020; Altmann et al., 2020; Fleischer et al., 2021). Because they cover whole catchments in great detail, historical and recent orthophotos are used to detect and date debris flow processes (Jomelli et al., 2007; Jomelli et al., 2003; Dietrich and Krautblatter, 2017).

A synthesis of previous studies on historical long-term development of debris flows shows that the results are not univocal.
50 Dietrich and Krautblatter (2017) show an enhanced debris flow activity in Plansee, Austria, since the 1980s when investigating the debris flow activity between 1947 and 2010. Other studies seem to confirm an increase in debris flow frequency when considering a long investigation period (Winter, 2020; Pelfini and Santilli, 2008; Kiefer et al., 2021). Due to changes in sediment supply, Hirschberg et al. (2021) stated that the number of debris flows in the Illgraben in Switzerland will decrease. However, several studies revealed no trends in debris flow activity besides of short-term fluctuations (Stoffel et al., 2014;
55 Stoffel et al., 2005; Stoffel, 2010; Bollschweiler and Stoffel, 2010; Lopez Saez et al., 2011; Bollschweiler et al., 2008).

This paper aims to not only analyse slope-type debris flows in a temporal but also in a spatial way within an alpine catchment. Through this spatio-temporal view we want to better understand the characteristics of these mass movement processes using methods that provide information on both scales. Thus, we establish a slope-type debris flow record in the Horlachtal in the central Alps of Austria between 1947 and 2020 using historical and recent orthophotos as well as LiDAR elevation models.
60 The work is based on a precise mapping of all recognisable debris flows since 1947, which allows process frequencies to be derived. Process magnitudes are obtained from LiDAR data as well as from an established area–volume relationship of debris flow deposits (Hilger, 2017; Larsen et al., 2010; Bennett et al., 2012). The debris flow volumes are correlated with parameters of the respective hydrological catchment areas in order to improve the understanding of spatial differences in debris flow

activity. Because high-intensity rainfall events are decisive for the initiation of debris flows in the study area. With the help of
65 temporal high resolution precipitation data, this paper aims to analyse the spatial and temporal differences in slope-type debris
flow activity in the Horlachtal with the help of temporal high resolution precipitation data. Thus, we want, in order to gain a
better understanding of the process behavior throughout the past seven decades and thus to link the results to with changes in
precipitation patterns forcing due to the changing climate change.

2 Study area

70 The Horlachtal is located in the northern part of the central Alps (Fig. 1) and forms a side valley of the Ötztal. It is drained by
the Horlachbach, which flows over the Stuibenfall waterfall into the main stream of the Ötztal (Ötz). The Horlachtal itself can
be subdivided into three north-south striking tributary valleys (Grastal - GT, Larstigtal - LT and Zwieselbachtal - ZT), in
addition to the east-west striking main valley (HT) as well as the tributary valleys Finstertal - FT and Weites Kar – WK (Tab.
1). The main outflow of the valley is captured by a gauging station in Niederthai, which is located close to the area outlet at
75 the Stuibenfall. Another gauging station is operated by the Tyrolean Hydropower Company (TIWAG) at Horlachalm, where
part of the discharge is captured by a Tyrolean weir and fed to the Finstertal reservoir near Kühtai via underground tunnel
systems in order to use it for hydropower.

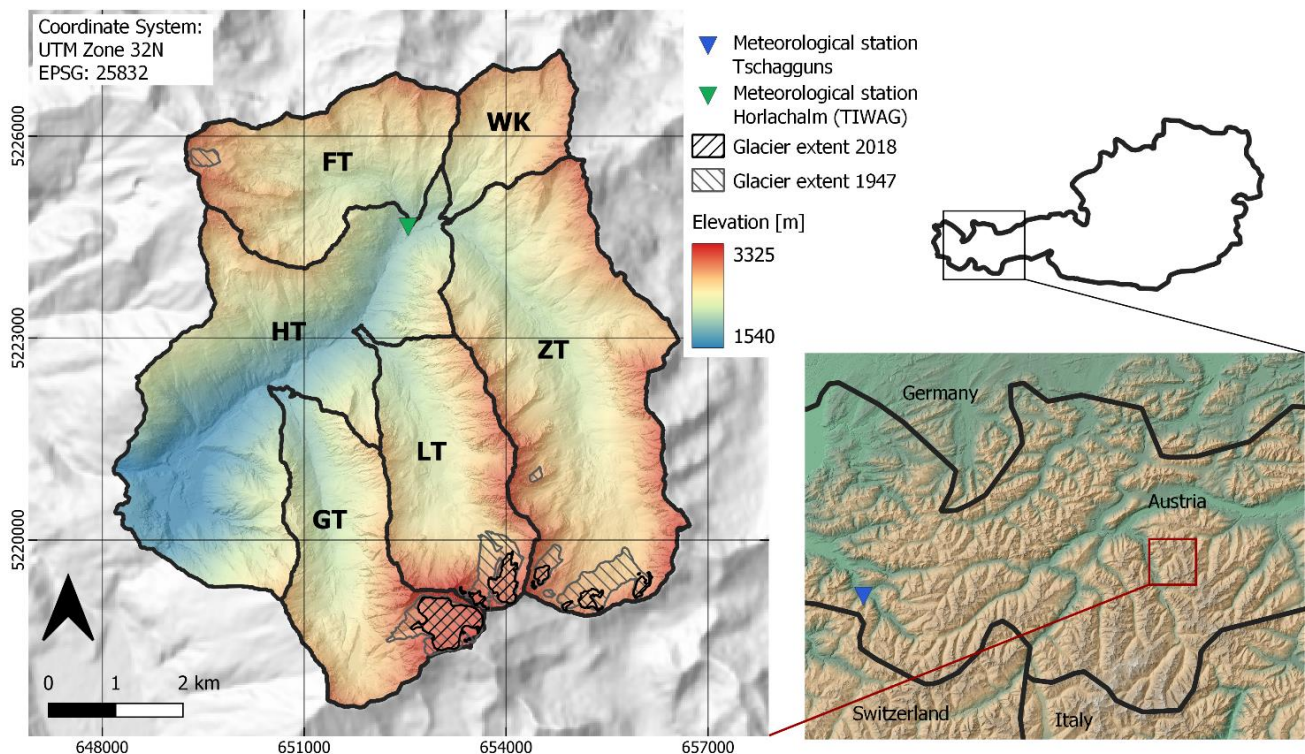


Figure 1: Location of Horlachtal in the Stubai Alps. The study area is divided in the sub-catchments main valley (HT), Grastal (GT), Larstigtal (LT), Zwieselbachtal (ZT), Weites Kar (WK) and Finstertal (FT). Shown glacier extents were mapped based on

80 orthophotos of the corresponding years. Elevation data of the study area are based on airborne LiDAR data from 2019. Large-scale
elevation data in the background are based on ALOS Global Digital Surface Model ©JAXA.

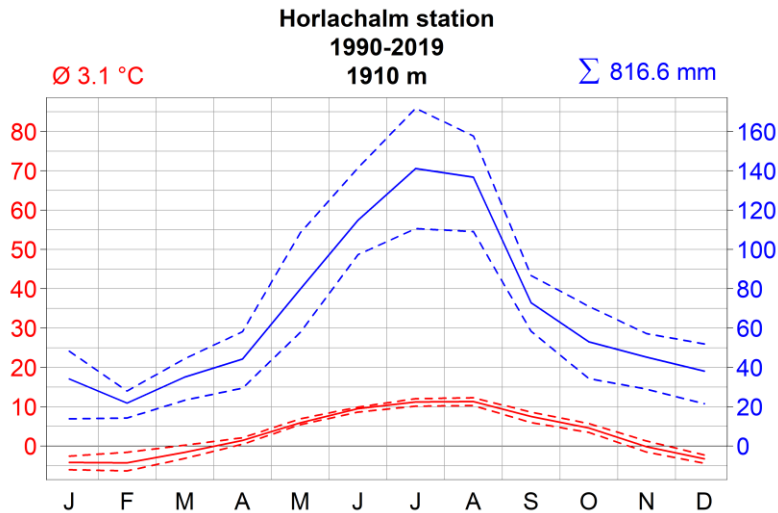
The Horlachtal spans elevations of 1557 m to 3340 m and shows a typical altitudinal alpine gradation of the vegetation with
the treeline at about 2200 to 2300 m. About 1.54 % of the area is currently glaciated, with the Grastalferner as the biggest
glacier (ca. 0.48 km²) in the study area, whose outflow is buffered by the Grastalsee. The Horlachtal shows the typical
85 geomorphic process dynamics of high mountain regions, including rock glaciers in the upper areas, which testify to the
presence of permafrost.

Geologically, the study area is located in the Ötztal Massif with predominant gneisses and mica schists, which strike in an
east-west direction parallel to the main valley (Geitner, 1999; Becht, 1995). Due to their tectonic history, the rocks are very
susceptible to weathering, which leads to a high rockfall activity and ample availability of debris for debris flows, which led
90 to the formation of in part very large debris cones.

Table 2: Attributes of the different sub-catchments in the study area based on airborne LiDAR data of 2017 (Province of Tyrol).

sub-catchment	area [km ²]	glaciated		elevation		elevation		slope mean [degree]
		2018 [%]	1947 [%]	mean [m]	min [m]	max [m]	range [m]	
HT	15.407	0.00	0.00	2092.9	1557.4	3000.5	1443.0	33.8
GT	7.386	6.48	10.08	2553.7	1702.3	3339.8	1637.5	35.6
LT	7.046	2.97	8.20	2621.4	1826.2	3339.8	1513.6	36.5
ZT	15.06	1.04	5.05	2618.3	2042.4	3240.9	1198.5	33.1
WK	3.042	0.00	0.00	2633.4	2050.1	3087.4	1037.2	29.6
FT	6.95	0.00	1.30	2569.4	1967.1	3060.5	1093.4	31.5
Total	54.891	1.54	4.00	2514.9	1557.4	3339.8	1782.4	33.3

Because of its location in the central Alps, the Horlachtal is protected from advective precipitation, so that the annual total of
95 precipitation here is lower than for example in the Northern Alps (Geitner, 1999; Becht, 1995). The mean annual precipitation
between 1990 and 2019 add up to 817 mm, which mostly occurs during the summer months (Fig. 2). The mean annual
temperature within the same time frame is 3.1 °C at the meteorological station Horlachalm (1910 m (all elevation data
throughout this study refer to ellipsoid elevations); see Fig. 1 for the location within the study area; data courtesy of Tyrolean
Hydropower Company TIWAG).



100 **Figure 2: Climate diagram of the Horlachalm station (1910 m) using temperature and precipitation data between 1990 and 2019. Dashed lines represent the 25 % and 75 % percentile respectively. Data source: TIWAG.**

The debris flows in Horlachtal, which are analysed here, can be described as slope-type debris flows with starting zones at the contact area between steep bedrock and the adjacent talus slope. The hydrological catchments of these debris flows are developed in the steep bedrock sections where rainwater is concentrated and further discharges into the slope (Zimmermann, 1990; Rieger, 1999; Wichmann, 2006; Rickenmann and Zimmermann, 1993).

The influence of the morphometry of the hydrological catchment of a slope-type debris flow can be decisive with regard to its activity and magnitude (Becht and Rieger, 1997; De Haas and Densmore, 2019; Dietrich and Krautblatter, 2019; Marchi et al., 2019; Shen et al., 2012; Wilford et al., 2004) and should be taken into account when analysing magnitudes of debris flows.

110 The debris flow material originates on the one hand from glacial morain material covered with rockfall debris on the talus slopes. On the other hand, it emerges from rockfall deposits temporarily stored in the bedrock catchments. As such, the debris flows in Horlachtal occur in transport-limited hillslope systems and are triggered by high-intensity precipitation events of about 20 mm in 30 min (Becht, 1995; Becht and Rieger, 1997). In contrast to other types of debris flow systems, the initiation of debris flows on the slopes of the study area is not affected by pre-event conditions like antecedent rainfall, as the necessary runoff is formed in bedrock areas. The most important driving factors for debris flow initiation in Horlachtal are thus high rainfall intensities that generate high peaks of surface runoff.

3 Materials and methods

3.1 Debris flow inventory using orthophotos

120 The basis for all further evaluation methods was the multi temporal mapping of individual debris flows since 1947 in the whole study area. Debris flow inventories already existed especially in LT and ZT (Rieger, 1999; Thiel, 2013; Heckmann et al.,

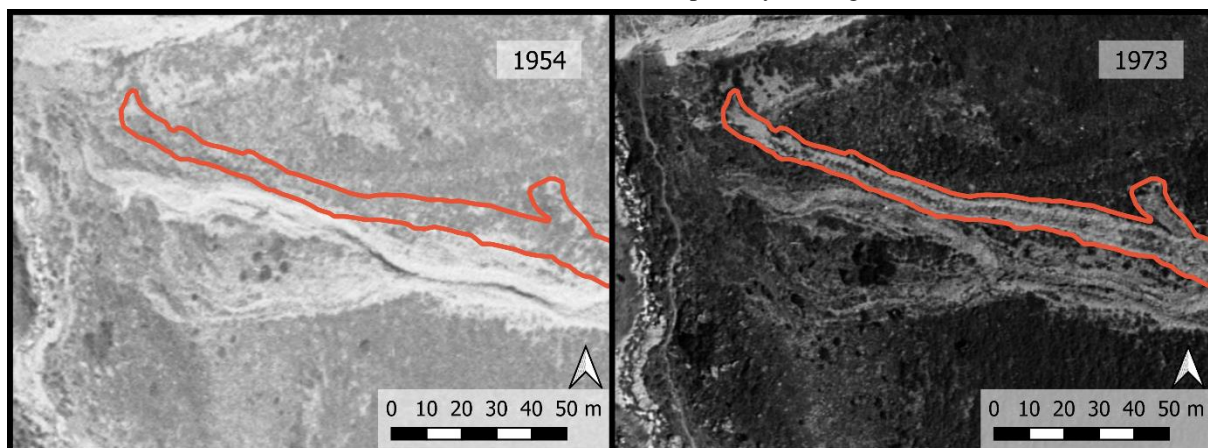
2014), which were carefully checked and updated using historical and recent orthophotos. All orthophotos used for this purpose and their characteristics are listed in Tab. 2. In some years, the aerial images do not cover the entire study area. The missing regions were supplemented with aerial images from other flight campaigns with a temporal divergence of one to three years. The coverage of the individual campaigns can be viewed in the “Laser- und Luftbildatlas Tirol” of the Province of Tyrol (lba.tirol.gv.at/public/karte.xhtml). The original aerial images of 1947, 1953, 1954, 1970 and 1973 were available from the archives of the Province of Tyrol. The scanned aerial images were oriented and calibrated in a bundle block adjustment (McGlone et al., 2004) using ground control points. These points were manually identified in recent data (orthophoto and digital elevation model) by looking for unique features (mostly rocks) in stable areas. After the bundle block adjustment, a digital surface model was derived by means of image matching and used to create an orthophoto mosaic for the mentioned years. The remaining referenced orthophotos were taken from the web map service of the Province of Tyrol (www.data.gv.at). Since the mapping is influenced by subjective interpretation of the orthophoto, it was done by one and the same person; visible typical debris flow deposits on the talus slopes were digitised into polygon shapefiles. In addition to the deposits, the starting zones in the aerial photographs were determined using the visible erosion areas. For debris flows with a hydrological catchment in bedrock, these are primarily located in the direct transition from the bedrock area to the adjacent scree slopes (Rieger, 1999). If debris flow-typical process forms (transport channels, levées, deposits) have emerged during the comparison of two consecutive orthophotos, a new debris flow was mapped and dated to the time interval between the dates of image acquisition. The example in Fig. 3 shows debris flow landforms that emerged between 1954 and 1973, the times the shown aerial images were acquired.

Table 2: Attributes of orthophotos used for debris flow mapping. Date of data acquisition for each time step, which covers most of the study area, is marked bold.

date of acquisition [y-m-d]	ground resolution per pixel [m]	colours	lower boundary of snow cover [m]
1947-09-01 1947-09-15	0.4	gray-scale	no snow
1953-09-08 1954-08-31	0.25	gray-scale	2750
1970-09-10 1973-08-06	0.2	gray-scale	2800
1983-09-24	0.5	gray-scale	2770
1990-07-27 1990-10-09	0.5	gray-scale	2400
1997-09-11	0.6	gray-scale	no snow
2003-09-04	0.2	RGB	2750
2009-09-08	0.2	RGB	no snow
2010-09-12	0.2	RGB	2650

2015-08-03	0.2	RGB	no snow
2017-08-30	0.2	RGB	no snow
2018-09-26			
2020-07-08	0.2	RGB	2500

The mapping and dating of these individual events were carried out in the entire study area and in all available time intervals. The sub-catchments HT, GT, LT, ZT, WK and FT were considered separately (cf. Fig. 1).



145 **Figure 3: Example of the mapping process. The mapped debris flow (encircled in red) must have happened between the acquisition of the orthophotos 1954 (no debris flow landforms) and 1973. Sources of aerial images: Province of Tyrol.**

For some periods, not all debris flows could be mapped because of poor image quality in shadowed areas. Due to the sometimes long time intervals between two orthophotos, especially in the first half of the considered time span, two or more debris flow process areas might have overlapped in time and space in such way that individual events could not be recorded by the mapping. This in turn leads to a possible underrepresentation of debris flows, which is more likely in longer time intervals than in shorter ones.

150

3.2 Volume measurements

We computed the planimetric area of all debris flow deposits except for those where the depositional zone could not be clearly identified; this was the case with very small events and in shadowed areas.

Because of their high spatial resolution, two different LiDAR datasets were used to determine debris flow deposition volumes for debris flows which occurred between the single LiDAR epochs. The first dataset from 2006 was provided by the Province of Tyrol. This dataset is only available as a gridded Digital Terrain Model (DTM; resolution: 1 x 1 m), the initial pointcloud was not obtainable. The second LiDAR dataset was recorded during a field campaign of the University of Eichstätt-Ingolstadt in 2019 using a Riegl VUX 1LR integrated in a Riegl VP-1 HeliCopterPod (see riegl.com for details) with a spatial resolution of 13.1 points per m² on average. The processing of the raw data included the precise calculation of the trajectory using the data of two different dGNSS ground stations installed in the study area. A final strip adjustment was done using the approaches

160

of Glira et al. (2015) and Glira et al. (2016), which are implemented in the pointcloud processing software OPALS (Pfeifer et al., 2014). The outliers of the resulting pointcloud were filtered and the ground points were classified using the extension LIS Pro 3D of Laserdata (Petrini-Monteferri et al., 2009) of the GIS-software SAGA (Conrad et al., 2015). As a result, a final DTM (resolution: 1 x 1 m) could be generated. For more details about the processing of the raw pointcloud, please refer to Rom et al. (2020).

The difference between the two topographic raster data sets (DoD) —(DTM of Difference) provided volumetric data for most of those debris flow depositions that occurred between the LiDAR data acquisitions in 2006 and 2019.

3.2.1 Error assessment of the volume data

Uncertainties in the DTMs of 2006 and 2019 lead to errors in the calculated DoD (Lane et al., 2003; Bakker and Lane, 2017) and thus also in the calculation of the debris flow volumes. In order to minimize the errors in the DoD, the two LiDAR data sets had to be co-registered. To optimize this processing step, the study area was divided into several smaller areas of interest, so that the algorithms for matching the data were able to work on a more local scale. In these regional patches, areas were identified where no geomorphologic changes were expected in between the LiDAR data acquisitions. These stable areas were mapped as close to the debris flow depositions as possible, and were selected, if possible, to be of similar steepness. As pointcloud data were available only for one of the LiDAR datasets, we coregistered the two gridded DTMs using the approach of Nuth and Kääb (2011) implemented in the Python package pybob (<https://pybob.readthedocs.io>).

To get a better understanding of the errors, the DoD within the identified stable areas were analysed regarding the precision (standard deviation) and the accuracy (RMSE – root mean square error), as well as the arithmetic mean and the absolute mean. For the total assessment of the error of the volume of debris flow deposits, the error was calculated following the approach of Anderson (2019), which combines the uncorrelated random error, the spatially correlated random error and the systematic error of the DoD. All debris flow volumes detected from the DoD together with the respective errors are listed in the Table in the Appendix A1.

3.2.2 Volume estimation for debris flows not covered by the DoD

The volumes of those debris flow deposits that are detectable in the DoD were determined in each case by summing up the values of the DoD in the mapped deposition areas. For those debris flow deposits which are not contained in the DoD (especially for debris flows prior to 2006), only the area of the deposits could be mapped using the respective pair of orthophotos. In order to estimate the volume of different types of mass movements based on the accumulation area, numerous studies derived an empirical relationship between the deposit area (A) and the deposit volume (V) (Guzzetti et al., 2009; Magirl et al., 2010; Larsen et al., 2010). This relationship is expressed by a power-law with an exponent $\gamma > 0$ and the intercept α :

$$V = \alpha * A^\gamma \quad (1)$$

190 The exponent γ in such area–volume relationships depends not only on the analysed process (e.g. rock fall, landslide, debris flow), but also on its subtypes (Larsen et al., 2010; Griswold and Iverson, 2008). Nevertheless, the range of γ usually seems to be within a similar range for several types of mass movements (Hilger, 2017).

The relationship between the volumes and deposition areas is used in order to predict the volumes of depositions for which only the areas are known. Because in this study only slope-type debris flows of the same type are analysed and no large
195 differences in the debris material are to be expected, the uncertainties here focus on the individual debris flow processes. These include the different content of water or the topography of the deposition area before the debris flow event.

In order to fit Eq. 1 to the empirical data, a variety of different fitting techniques can be used (see for example Guzzetti et al., 2009; Larsen et al., 2010). One simple method includes a least-squares linear fit to the log-transformed data. Another way of fitting a power-law function to the data is by using non-linear regression. In order to be better comparable to other studies
200 calculating such relationships, both methods were applied in the present study by using the statistical software R and the functions `lm_`([linear model](#)) and `nls_`([nonlinear least squares](#)) respectively (Baty et al., 2015).

3.2.3 Uncertainties of debris flow volumes

To get a better understanding about the uncertainties involved in the volume calculations, the goodness of fit of the area–volume models has to be described. However for non-linear correlations, the coefficient of determination R^2 is not a valid
205 measure (Spiess and Neumeyer, 2010). Instead, we use the 95 % prediction interval of the non-linear regressions. The upper and the lower boundary of the prediction interval for each area was used as the maximum and minimum debris flow volume for those events that were not quantified from the DoD. Where the lower limit of the prediction interval is negative (which occurs especially with small deposit areas), it was set to 0 m³; therefore, the lower uncertainty band of the computed volumes is frequently shorter than the upper. For all debris flows included in the DoD, the uncertainty limits were defined by the error
210 assessment in Sect. 3.2.1. For calculating the uncertainty of the total debris flow volume for each of the considered epochs, the uncertainties of each single volume calculation was propagated. Therefore, the total uncertainty of an epoch is the square root of the sum of the squared single uncertainties (Anderson, 2019).

3.2.4 Magnitude–frequency relationship

The calculated magnitudes as well as the known ages of the debris flows due to the multi-temporal mapping allowed to
215 establish a magnitude–frequency relationship. This has been done for various gravitational processes, such as landslides (Bennett et al., 2012; Gao et al., 2018; Tanyaş et al., 2019; Guzzetti et al., 2009), rockfalls (Raveland Deline, 2011), channelized debris flows (Gao et al., 2018) and also slope-type debris flows (Hilger, 2017). Using the `poweRlaw` package within R (Gillespie, 2015), we calculated an empirical cumulative distribution function (CDF) to represent the relationship between debris flow deposit volumes and their frequencies (Bennett et al., 2012; Hilger, 2017). Subsequently, we were able to
220 fit a continuous power law distribution to the CDF. However, this distribution is only valid for volumes exceeding a minimum

magnitude x_{\min} (Bennett et al., 2012) and the calculated exponent of the power law β , which is based on a cumulative distribution, has to be reduced by 1 when compared with non-cumulative exponents (Brunetti et al., 2009; Haas et al., 2012).

3.3 Hydrological catchment parameters and debris flow magnitudes

225 The tool “Upslope Area” implemented in SAGA-GIS (Freeman, 1991) was used to calculate the hydrological catchment areas
for each of the mapped debris flow starting zones based on the DTM of 2019. With the help of spatial analyses of the
catchments we derived a number of different parameters that are known as influencing variables for the magnitude and
frequency of debris flows (Wilford et al., 2004; De Haas and Densmore, 2019; Zhao et al., 2020; Zhou et al., 2016). These
parameters include the area (A) of the hydrological catchment as well as its length (L), perimeter (P) and mean slope (S). The
relief parameter (H) describes the difference between the highest and lowest point of the catchment. The Melton ratio (M)
230 Melton (1957) has been found to correlate with debris flow dynamics (Wilford et al., 2004; De Haas and Densmore, 2019). In
addition, relief ratio (R), form factor (F), elongation ratio (E), circularity (C), drainage density (D) and cut density (CD) were
calculated according to the definitions in Tab. 3 (see Sect. 4.3). All of the mentioned parameters were correlated to the
respective debris flow volumes using Spearman’s rho to see a possible connection between the magnitudes and the
morphometry of the hydrological catchments.

235 3.4 Analysis of precipitation data

Meteorological data are recorded in the study area at the Horlachalm station, operated by TIWAG at an altitude of 1910 m (see
Fig. 1). Temporally high-resolution data (measurements every 15 minutes) are available for precipitation totals since 1989.
Since slope-type debris flows in Horlachtal are transport-limited, the frequency of heavy rainfall should be related to the
frequency of debris flow events. Potential triggers are short-term events such as thundestorms rather than days with high total
240 rainfall (Bernard et al., 2020; Underwood et al., 2016; Pelfini and Santilli, 2008). For the Horlachtal, Becht and Rieger (1997)
as well as Becht (1995) determined an intensity threshold of 20 mm per 30 min. As the collected data at Horlachalm station
only date back to 1989, they cover only a small part of the study period. The meteorological station Längenfeld (provider:
BMNT – Bundesministerium für Nachhaltigkeit und Tourismus) is located further down in the Ötztal valley and has been
recording meteorological data since the year 1895. However, these data are not used for evaluation in the present work because
245 the Längenfeld station only records daily totals of precipitation values. Heavy rainfall events of short duration can hardly be
reconstructed from daily totals (Pelfini and Santilli, 2008; Jomelli et al., 2007). For example, the statistical evaluation of
meteorological data in Altmann et al. (2020) shows that the development of daily totals and heavy rainfall events through
several decades can even be opposite. Nevertheless, daily totals are used in most studies to explain long-term debris flow
development (Dietrich and Krautblatter, 2017) because there are hardly any alpine meteorological stations measuring hourly
250 or sub-hourly precipitation totals prior to the 1990s. As temporally high resolution precipitation data are decisive when
interpreting long-term debris flow records, it was decided to include the data of the precipitation measuring site Tschagguns
(provider: Hydrographischer Dienst Vorarlberg; data available at: <https://ehyd.gv.at/>). This station records totals for every

minute derived from continuous precipitation data from May 1953 until end of 2018. It is located approximately 80 km west of the study area at an altitude of 681 m (see Fig. 1), but its location north of the Alpine main divide makes the weather conditions comparable to the Horlachtal up to a certain point. Because of the distance between Tschagguns and the Horlachtal, the recorded absolute precipitation data cannot simply be transferred and the extreme precipitation events at Tschagguns are not connected to the debris flow activity in Horlachtal. However, it seems to be promising to analyse trends in high-intensity precipitation patterns since 1953 to get an idea about changes in extreme event patterns for this part of the eastern Alps.

4 Results

4.1 Spatio-temporal debris flow mapping

In the entire study area, a total of 834 debris flow events were mapped between 1947 and 2020 using historic and recent orthophotos.

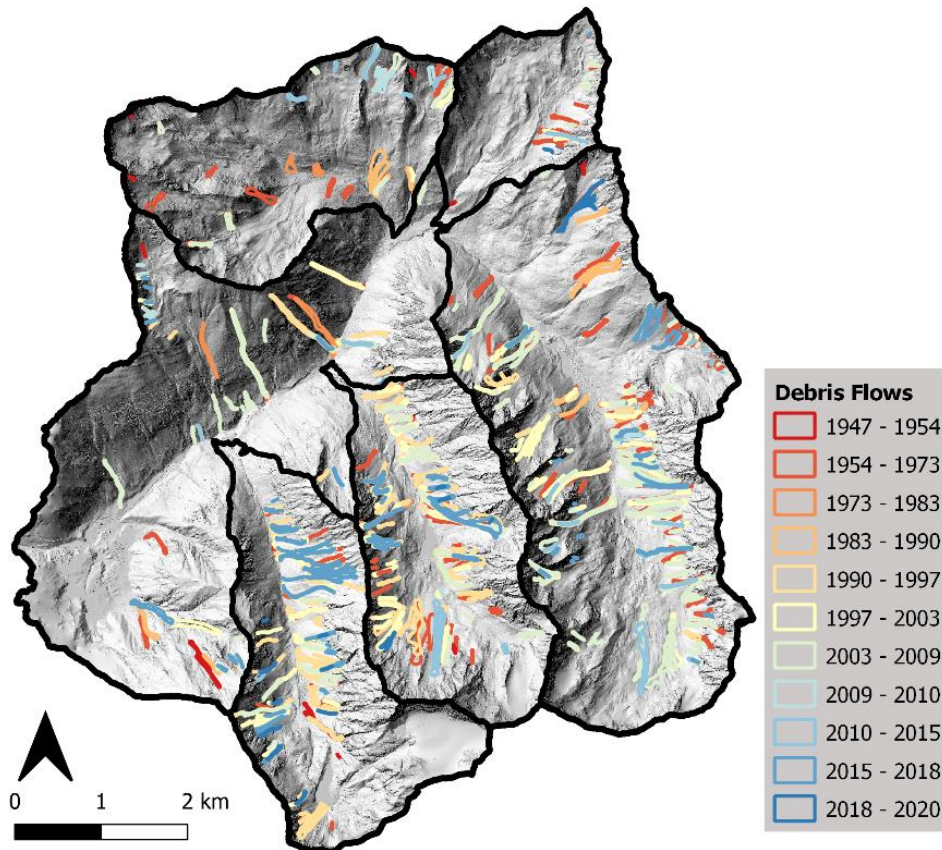


Figure 4: Results of the debris flow mapping in the entire study area. More recent debris flows overlay older ones in some places.

Figure 4 shows the spatial distribution of the mapped process areas. It reveals that the debris flows are not homogeneously distributed over the whole study area, but are mainly concentrated in the three parallel north-south oriented sub-catchments

GT, LT and ZT. However, since the sub-catchments vary in size and the periods between the aerial image acquisitions are not uniform, the number of slope-type debris flows per square kilometer and year was calculated for better comparison (Fig. 5).

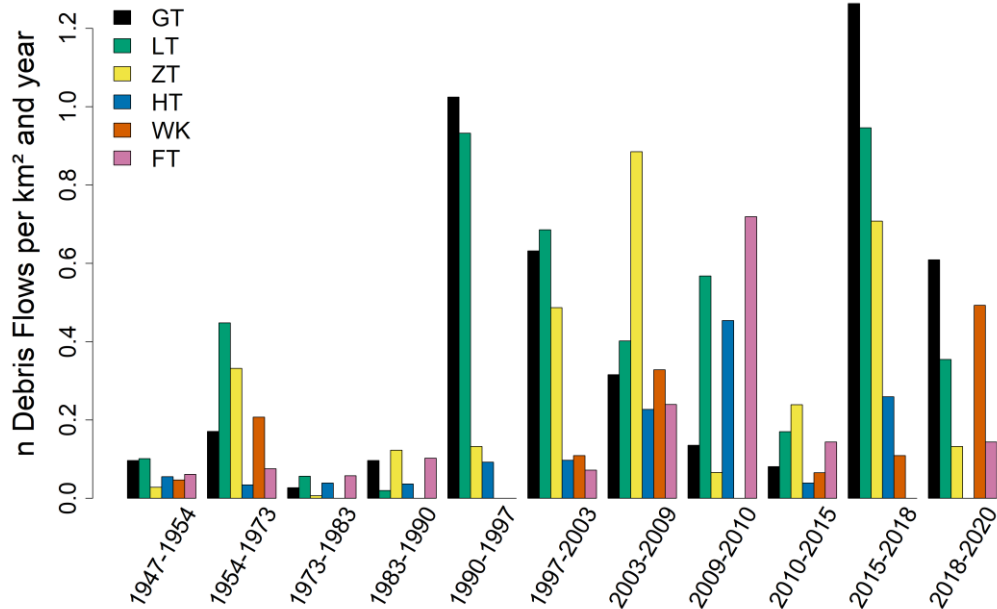


Figure 5: Mapped debris flows per km² and year. Distinguished between time intervals and sub-catchments.

270 The mapped slope-type debris flows show not only spatial but also temporal differences. In Fig. 6a, the total number of mapped
 debris flows in the entire study area (all sub-catchments) for each epoch is depicted. As the time spans of different epochs are
 not uniform, we calculated the annual frequency of debris flows per year for a better comparison of the process activity
 throughout the investigated time span. Periods of higher and lower debris flow activity can be observed in Horlachtal. Between
 1954 and 1973, significantly more debris flows were triggered in total and per year than in the periods before (1947–1954)
 275 and after (1973–1990). The next very active period lasted from 1990 to 2009. However, the highest number of debris flows
 per year within the observed time frame occurred between 2015 and 2018.

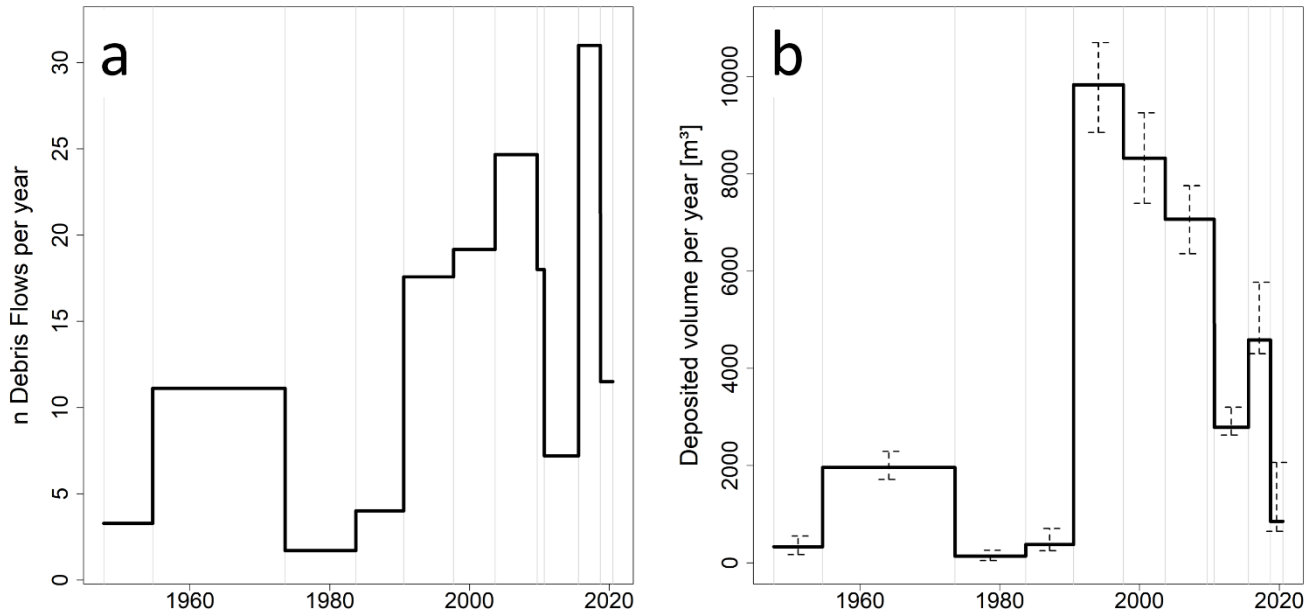


Figure 6: Temporal variations of slope-type debris flow activity in Horlachtal since 1947. Panel a: The number of mapped slope-type debris flows per year. Panel b: The deposited volume of slope-type debris flows per year. Uncertainties of the calculations are added for each time span. The light grey vertical lines in both panels represent the acquisition dates of the used orthophotos.

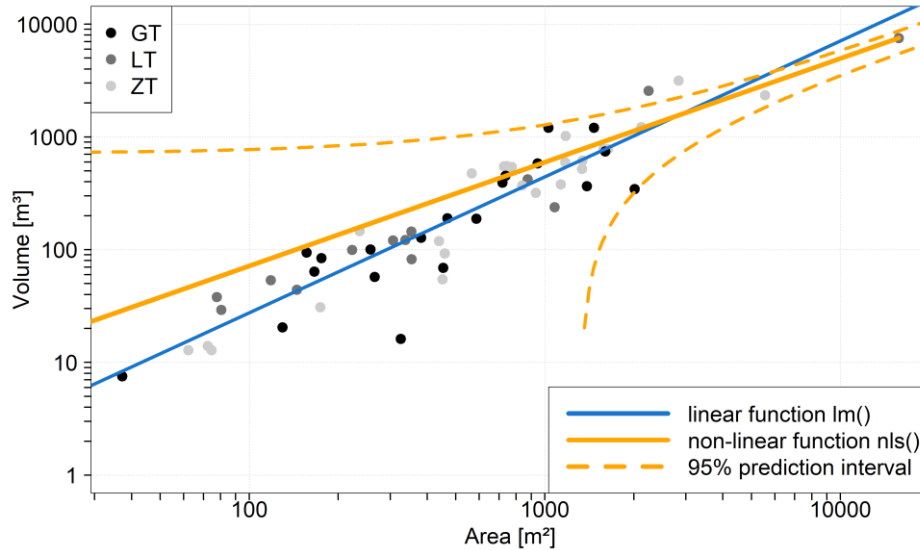
280 4.2 Debris flow volumes

The mapping of the debris flows showed a concentration of these processes in the parallel sub-catchments GT, LT and ZT. Those debris flows show a quite different picture in terms of frequency and especially magnitude when comparing them to the activity in the other sub-catchments. Most of the debris flow deposits in HT are hidden under dense vegetation in the remote sensing data and thus a precise mapping of the accumulation area there is not possible. In WK and FT, the few detected debris
 285 flows have such a small magnitude that we were not able to delineate the depositional area on the basis of the orthophotos sufficient enough, too. Because of these reasons and because of the similarities in the geomorphological and geographical settings, the analyses concerning deposition volumes were carried out exclusively in GT, LT and ZT.

Area – volume relationship

For a total of 58 debris flows, it was possible to map the deposition area in the DoD from the 2006 and 2019 terrain models
 290 with sufficient accuracy to enable a balance of the deposition volumes (Appendix A1). The volumes range from very small (7.55 m³) to large debris flows (7506 m³). With the help of this data, a relationship between the area and volume of debris flow deposits could be established which follows a power-law (Fig. 7). The exponent γ in Eq. 1 could be calculated as $\gamma = 1.21$ for the fitted linear model. This method tries to fit a linear model to the log-transformed area and log-transformed volume data. The log scaling of both of the input data results in a distortion of the residuals, which are used in the fitting process.

295 In order to reduce this bias, a non-linear model was fitted using the `nls()` function in R. This approach determines the non-linear least-squares estimates of the parameters of a power-law model (Bates and Watts, 1988) and results in a mathematical best fit with respect to the residuals. The exponent of the fitted non-linear model results to be slightly lower with $\gamma = 0.92 \pm 0.077$ for 95 % confidence interval. In the non-linear model plotted in Fig. 7, it is shown that the model slightly overestimates volumes for areas $< 500 \text{ m}^2$. Again, this is due to the log scaling of the axes.



300

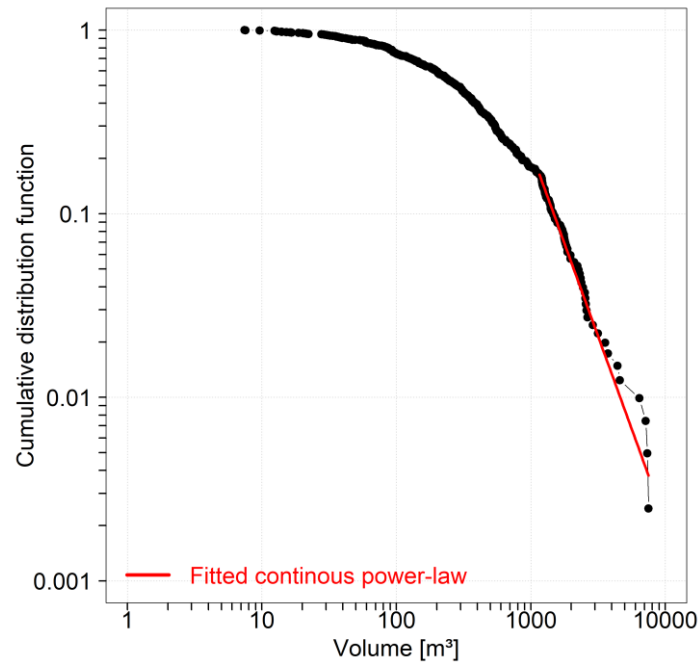
Figure 7: Relationship between area and volume of debris flow deposits in GT, LT and ZT. The 95 % prediction interval of the model calculated by the non-linear method is shown with the dashed lines.

With the help of the regression of volume on area, the debris flow volume could be calculated for all events with a precisely delimited deposit. In total, the deposition volumes could be calculated (based on the DoD) or estimated (area ~ volume) for
 305 404 debris flows in GT, LT and ZT. The uncertainties of the volume calculations were carried out as described in Sect. 3.2.3. Figure 6b reports the annual debris flow volume per epoch. Similar to the mapping results in Fig. 6a, the debris flow volumes show periods with high and low deposition rates per year. Most remarkable is the sudden and strong increase in volumes in the period 1990-1997 compared to the previous periods. After years of relatively few debris flows with little deposited material, the many triggered processes between 1990 and 1997 also transported an above-average amount of material.

310 Comparable to the mapping results, the volume data of the time intervals between 1954–1973 and 1990–2010 reveal increased deposition, but the period between 2015 and 2018 produced less deposited volume than one could have assumed from the very high number of triggered debris flows in that time interval. Thus, it can be stated that although many events occurred, they have deposited relatively little sediment in total.

Magnitude–frequency relationship

315 The calculated magnitude–frequency relationship is shown in Fig. 8. About 70 % of all debris flows in GT, LT and ZT have an accumulated volume above 100 m³ and about 20 % of all debris flows exceed a volume of 1000 m³. Extreme events, which account for less than 1 % of all debris flows, can reach volumes of more than 10000 m³. The magnitude–frequency relationship can be described by a continuous power-law distribution with an exponent of $\beta = 2.9$ for volumes of $x_{\min} = 1025$ m³ and above and therefore is especially usable for large debris flow volumes.



320

Figure 8: Magnitude–frequency relationship displayed with a cumulative distribution function for the debris flows in GT, LT and ZT. The fitted continuous power-law describes the relationship for debris flows with a volume greater than 1025 m³.

4.3 Analysis of hydrological catchment parameters

For all 404 debris flows for which the volume could be determined, we performed a correlation analysis of the volumes with various parameters of the respective hydrological catchment areas. In addition, the same statistical analyses were conducted only for the debris flows of those catchments that produced at least two debris flows between 1947 and 2020. For this reduced dataset, the sample size is decreased to 296 debris flows (Tab. 3).

Although no variable shows a very strong (positively or negatively) correlation, Spearman's rho point in both datasets to slightly positive interrelationships between debris flow volumes and A, L, P, H, F as well as E. In addition, D and CD indicate a negative correlation in the same order of magnitude. Especially the variables S and C on the other hand have no visible influence on the debris flow volumes. However, this analyses show that the morphometry of the hydrological catchments indeed have influence on the slope-type debris flow magnitudes.

330

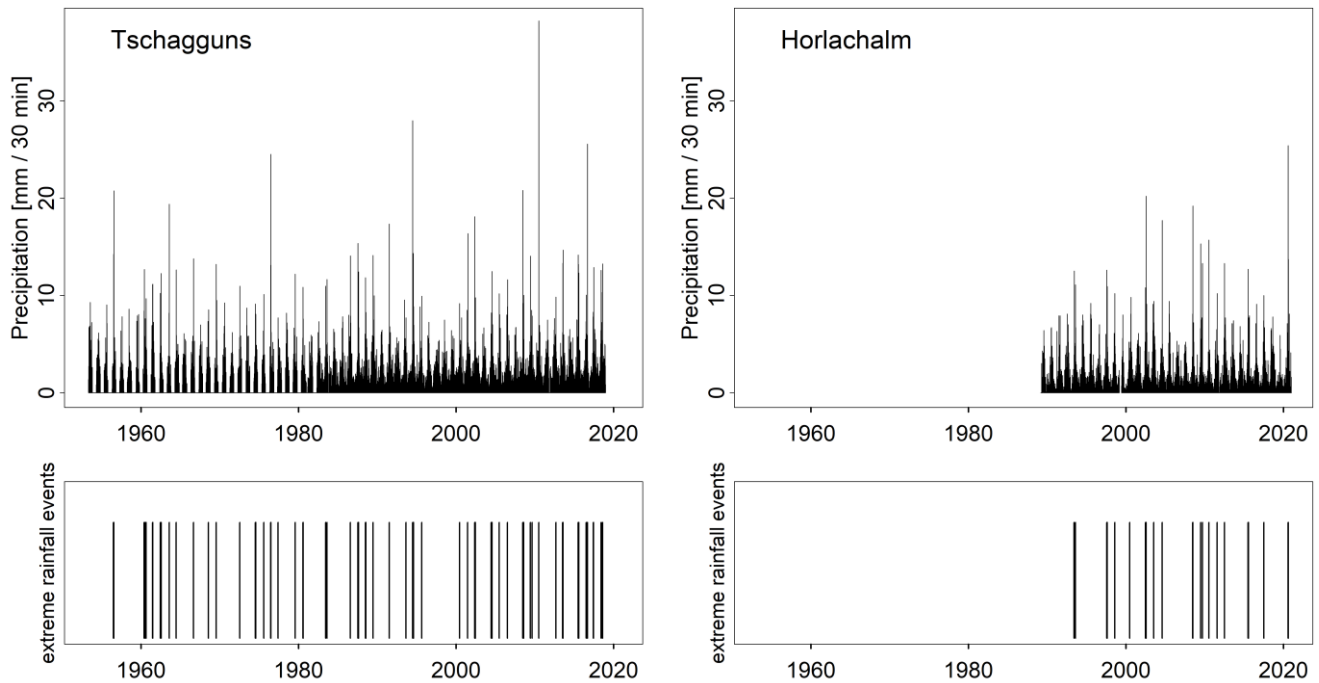
Table 3: Calculated parameters of the hydrological catchments of the slope-type debris flows alongside their definitions and dimensions. Correlation of each parameter with the respective debris flow volumes were calculated by Spearman's rho. The p-values represent the significance of the correlations. The statistical parameters are shown for the complete dataset (all; n = 404) as well as for the reduced dataset (reduced; n = 296).

catchment parameter	index and definition	dimension	Spearman's rho (all)	p-value (all)	Spearman's rho (reduced)	p-value (reduced)
planimetric area	A	m ²	0.46	< 2.2e-16	0.39	6.1e-12
length	L	m	0.43	< 2.2e-16	0.35	9.6e-10
perimeter	P	m	0.46	< 2.2e-16	0.38	2.3e-11
mean slope	S	degree	0.02	0.74	-0.04	0.50
relief	H	m	0.43	< 2.2e-16	0.34	1.1e-9
Melton ratio	$M=H/\sqrt{A}$	-	-0.22	1.1e-5	-0.20	7.6e-4
relief ratio	$R=H/L$	-	-0.11	0.02	-0.12	0.04
form factor	$F=(A/L)^2$	m	0.45	< 2.2e-16	0.38	1.1e-11
elongation ratio	$E=(4*A/\pi)/L$	m	0.45	< 2.2e-16	0.38	1.1e-11
circularity	$C=(4*\pi*A)/P^2$	-	0.05	0.29	0.03	0.63
drainage density	$D=L/A$	m ⁻¹	-0.45	< 2.2e-16	-0.38	1.1e-11
cut density	$CD=R/P$	-	-0.43	< 2.2e-16	-0.35	4.2e-10

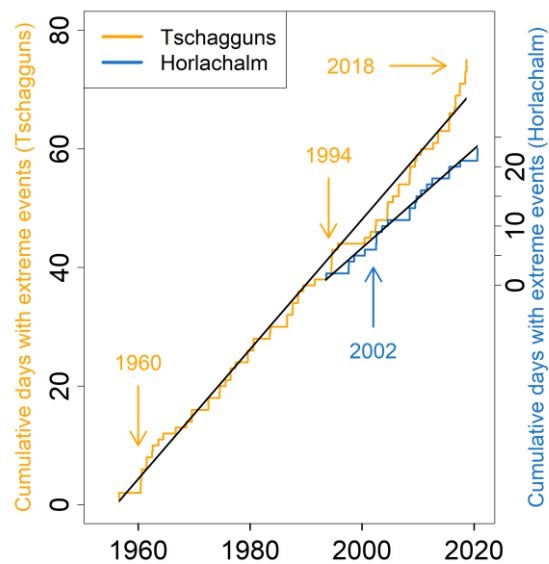
4.4 Precipitation analysis

For the initiation of debris flows in Horlachtal, high intensity rainfall events with a large amount of precipitation within a short time are necessary. Therefore, the precipitation data of the stations Horlachalm and Tschagguns were analysed regarding high intensity events. In Fig. 9, the recorded rainfall data are shown in mm per 30 min for both stations. In order to determine a possible increasing or decreasing trend in rainfall events reaching high intensities within a short time interval, all days on which 10 mm per 30 min was exceeded were marked in the records of both stations. The exact magnitude of this threshold is not of great importance because it is only used in order to get an idea about possible trends in high intensity rainfall events. As the threshold of 20 mm per 30 min turned out to be exceeded quite rarely in both rainfall records, it was set to 10 mm per 30 min. However, the frequency of these extreme events do not show statistically significant increases or decreases as can be seen in Fig. 9.

The cumulative sums of days with a high intensity rainfall event exceeding 10 mm per 30 min for both stations are shown in Fig. 10. On average, there are slightly more such events per year recorded at Tschagguns station (1.093) than at Horlachalm station (0.831). Nevertheless, there are hardly any periods with particularly many or few events that stand out. The longest time without event at Tschagguns is nearly five years between 28 August 1995 and 14 June 2000 and at Horlachalm almost four years between 05 August 2004 and 26 June 2008. But temporal trends of more or few events per year are detectable neither at Tschagguns nor at Horlachalm.



355 **Figure 9: Recorded precipitation data of the meteorological stations Tschagguns and Horlachalm. Days with intensities exceeding 10 mm per 30 minutes are marked in the respective bottom plots.**



360 **Figure 10: Cumulative sums of days with precipitation intensities exceeding 10 mm per 30 minutes for Tschagguns (orange) and Horlachalm (blue). Years with exceptionally many days with a high-intensity event (Tschagguns: four per year; Horlachalm: three per year) are marked.**

5 Discussion

5.1 Spatial variability of slope-type debris flows

Topographic variability

365 The biggest factor for the concentration of debris flow processes in the sub-catchments GT, LT and ZT is probably the presence of catchments in the steep bedrock above large talus cones, which is typical for slope-type debris flows (Rieger, 1999). Rainwater concentrates at the contact zone between these catchment areas and the slope sediments underneath and potentially triggers debris flows. These catchment morphometries are especially pronounced in GT, LT and ZT.

In these very active and north-south oriented sub-valleys, 68 % of the active debris flow catchments face west, while only 32 % face east. Becht (1995) attributes this differences to the emergence of cirques in the Pleistocene on east-exposed slopes. 370 West-exposed ones do not show these landforms. Therefore, the stepped profiles on east exposed slopes caused by the cirques prevent the accumulation of high peak discharges during a rainfall event because of a buffering effect of these cirques. Depending on the amount of loose material in the cirques, these buffering effects can cause longer or shorter delays of the runoff and therefore lower the peak discharge. In addition, the slopes beneath the cirques lack rockfall material supply, which otherwise works as suitable material on the slopes for debris flow initiation.

375 Rainfall variability

It is noticeable that in certain time intervals some sub-catchments were significantly more affected by debris flows than other sub-catchments (see Fig. 5). This is most obvious in the period between 1990 and 1997, when the two neighbouring valleys GT and LT show a strongly increased debris flow activity, especially in comparison to the other sub-catchments. Other time intervals (2003–2009, 2009–2010) also show that some sub-catchments were obviously more affected than neighbouring ones. 380 We attribute these findings to the fact that debris flow-triggering heavy rainfall events often occur during intense convective and thus spatially restricted thunderstorms (Underwood et al., 2016; Berti et al., 2020; Stoffel et al., 2005) that often affect only parts of the study area.

Effect of debris flow catchment parameters

The results of the correlation of the debris flow volumes and the parameters of the respective hydrological catchments in Tab. 385 3 indicate that the catchment morphometry is affecting the spatial variability of slope-type debris flows in Horlachtal. Only a few debris flow studies implemented analyses regarding catchment parameters and most of them deal with different debris flow types and scales than this study (Becht and Rieger, 1997; Wilford et al., 2004; Marchi et al., 2019; Li et al., 2015).

However, the results of this study match the findings of De Haas and Densmore (2019), who worked in a roughly comparable setting in the United States and found statistically significant correlations between debris flow lobe volumes and A, L, P, H 390 and M. This fits our data just as well as the lack of correlation with S, C and R. The only differences are with the variables F and E, which show a stronger relationship in Horlachtal compared to the results in De Haas and Densmore (2019). In addition, a positive correlation between slope-type debris flow volumes and A was detected by Rieger (1999) in LT as well.

Other factors for debris flow initiation

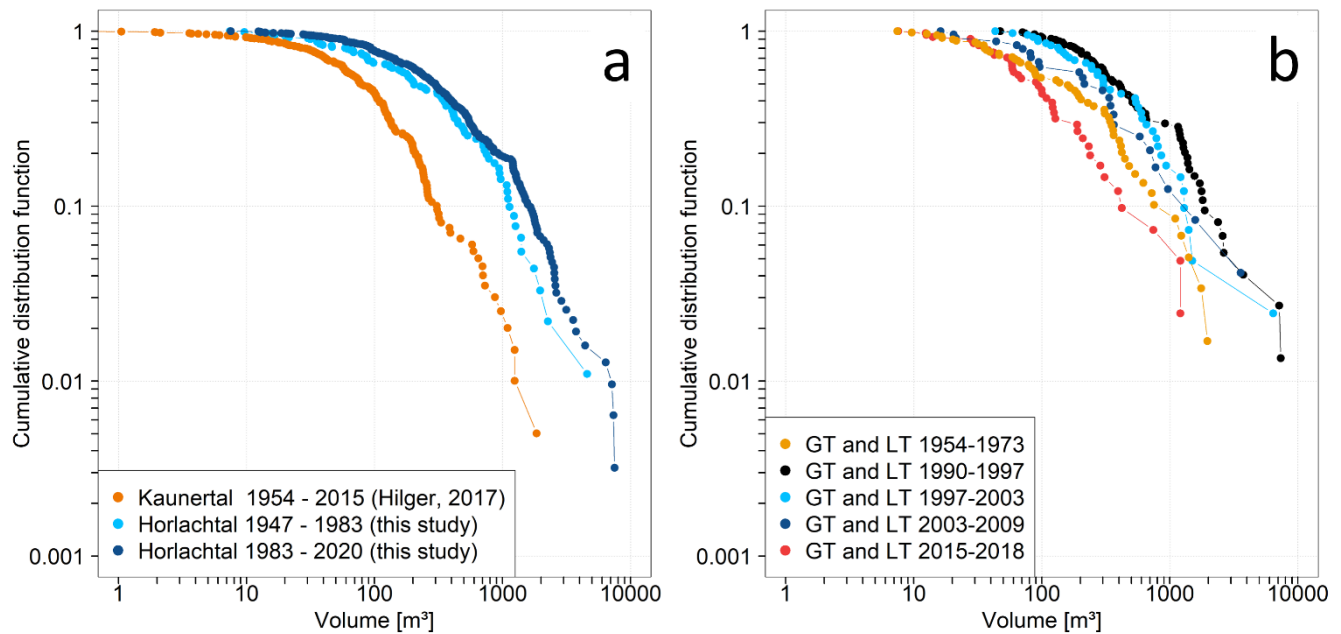
The starting points of the vast majority of the debris flows in Horlachtal are located at the contact zone between the bedrock catchments and the adjacent talus slopes. Apart from precipitation and the catchment morphometrics, only the slope gradient is of great importance for debris flow initiation here (Becht, 1995). For the present type of debris flow, a slope threshold of about 27° at the starting zones can be found in literature (Rickenmann and Zimmermann, 1993; Dikau et al., 2019). In Horlachtal, these slope gradients range between 22° and 72° , with 96 % of the starting points exceed the threshold of 27° . Other factors like vegetation cover or soil properties are of minor importance for debris flow initiation in the study area. Most of the starting points are located above the treeline (96.5 % above 2200 m and 92 % above 2300 m). Thus, no trees or higher vegetation grow in the bedrock catchments even at altitudes below the treeline as the morphodynamics are too high there. In addition, if there is any soil formation in the catchments, it consists only of shallow initial soils because of the same reasons.

5.2 Temporal variability of slope-type debris flows

5.2.1 Frequencies and magnitudes in different periods

405 Relationship between frequency and magnitude

With the help of the area ~ volume relationship we were able to calculate deposit volumes, which is necessary to establish a relationship between frequency and magnitude. The resulting exponent of $\gamma = 0.92$ of the nls() method connecting volumes and areas is comparable with the result of Hilger (2017), who used a linear regression method for slope-type debris flows in Kaunertal ($\gamma = 1.08$). Furthermore, it is consistent with other comparable studies (Jaboyedoff et al., 2020; Larsen et al., 2010; Guzzetti et al., 2009). The established relationship enabled detailed frequency – magnitude analyses. There are rarely any other studies that calculate such a magnitude–frequency relationship only for debris flows and especially slope-type debris flows. Other papers often focus on debris flows in general (Hungri et al., 2008; Riley et al., 2013). An exception is Hilger (2017), who performed such a calculation in a similar geological setting using slope-type debris flows at Kaunertal, Tyrol. While the general shape and β are very much comparable to this study, the magnitudes of debris flows in Horlachtal are larger by an order of a magnitude. Thus, the largest debris flows in Kaunertal show a volume of about 1000 m^3 , whereas in Horlachtal the volumes can reach nearly 10000 m^3 (Fig. 11a). In addition, a slight shift of debris flow magnitudes could be detected in Horlachtal. The debris flows of the second half of the investigated time span (1983 – 2020) reach very high volumes more often than debris flows of the first half (1947 – 1983) (Fig. 11a).



420 **Figure 11: Panel a: Magnitude – frequency relationship for the early debris flows in Horlachtal (1947 – 1983, light blue) compared with recent debris flows (1983 – 2020, dark blue). The results of a similar investigation from Hilger (2017) in Kaunertal is shown in orange. Panel b: Comparison of the magnitude – frequency relationships of different periods in GT and LT.**

Temporal development of slope-type debris flow activity

In Horlachtal, the multi-temporal mapping of debris flows as well as the volumetric measurements resulted in periods with higher activity (1954–1973, 1990–2010 and 2015–2018) and lower activity in between (Fig. 6a). A consistent linear trend is not recognizable although it seems that in periods with low activity, the number of debris flows has been rising since 1947. This finding might be biased because of two limitations. First, the most recent orthophotos (especially since 2003) are of very good quality, especially in terms of spatial resolution, light conditions and extent of snow cover. These circumstances allow even small events to be detected and mapped. The second reason is the aforementioned difference in time span lengths, which results in the underestimation of detected debris flows in longer periods.

The mapping results as well as the calculated deposition volumes indicate no long-term change in debris flow activity in the past 70 years but with some short-term variabilities. This matches other debris flow records in the Alps (Bollschweiler and Stoffel, 2010; Bollschweiler et al., 2008; Jomelli et al., 2007). Kiefer et al. (2021) detected significant changes over substantially longer time periods when reconstructing the debris flow activity for the past 4000 years based on turbidite measurements of a fan delta. But even in this record, no significant change within the last century is recognizable. In Horlachtal, three periods of increased slope-type debris flow activity can be recognized based on the total number of detected processes (see Fig. 6a): Between 1954 and 1973, from 1990 to 2009 and from 2015 to 2018. However, the exact datings of the upper and lower boundaries of the periods with enhanced and low debris flow activity described in this study are predetermined by the used method for establishing the process record. This means that the dates of the acquisition of the aerial images predefine and

440 distort the period boundaries to some extent. In order to delineate the “real” active and inactive periods with higher accuracy, further analyses on the dating of single debris flow events, e.g. by using dendrogeomorphology (Stoffel, 2010), might provide more detailed insights.

A particularly large debris flow event was reported for 31 July 1992, mainly affecting GT and LT (Becht, 1995). These statements can be supported by the debris flow mapping of this study, as many events could be detected in the period 1990–
445 1997 especially in GT and LT (see Fig. 5). In the two subsequent periods until 2009, still many events can be registered in GT and LT, but with a decreasing tendency. This could indicate that the large debris flow event in 1992 still had some kind of impact on the debris flow activity of the following years due to the disturbance of the system like e.g. destruction of vegetation or channel deepening. Such a kind of impact on subsequent periods could only be detected for the 1992 event. The high debris flow activities between 1954–1973 and 2015–2018 did not show this pattern of aftereffects, at least not for the temporal
450 resolution predetermined by the orthophotos.

Debris flow magnitude comparison of highly active periods

An indication of the outstanding significance of the 1992 event in GT and LT compared to 1954–1973 and 2015–2018 can be provided by considering the debris flow magnitudes. Figure 11b shows that the deposited debris flow volumes of the period 1990–1997 (which includes the 1992 event) are significantly higher in comparison with the magnitudes of 1954–1973 and
455 2015–2018, respectively. In addition, Fig. 11b shows a slightly decreasing tendency in deposited debris flow volumes from 1990–2009, which in turn supports the aforementioned impact of the 1992 event on the following years.

In the heatmap of Fig. 12, each row represents one slope-type debris flow starting zone in GT or LT, which was active at least in two different periods between 1947 and 2020. For each individual starting zone (each row of the heatmap), the magnitudes were normalized between 1 (largest event of the starting zone; dark colouring) and 0 (smallest event of the starting zone; light
460 colouring). If no debris flow could be detected at a starting zone in a specific period, the respective colour was set to grey. The heatmap shows that out of the 82 different starting zones in GT and LT which were active at least twice, the largest debris flow event could be detected within the period 1990–1997 on 42 occasions. 73 % of the starting zones produced their maximum deposited volume between 1990 and 2009, however showing a decreasing tendency. Only on 11 different occasions, the largest debris flows could be detected in the period 1954–1973 and within 2015–2018, only four starting zones produced their largest
465 event of the total considered timeframe.

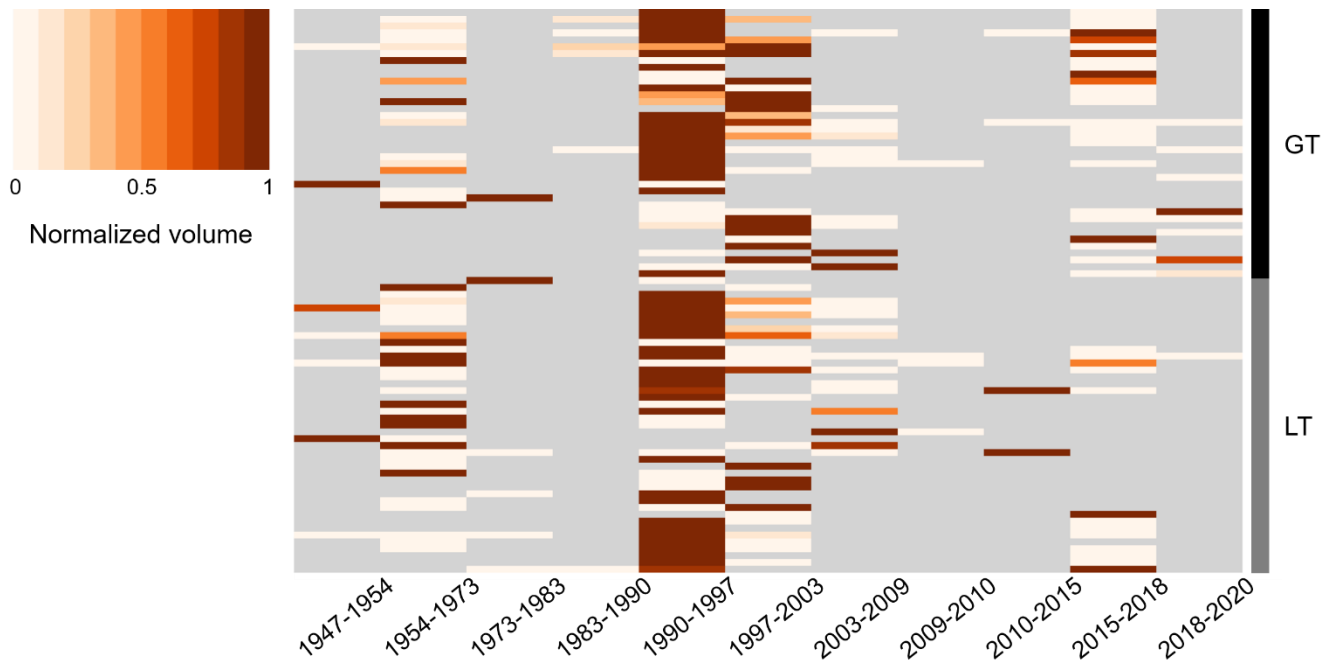


Figure 12: Heatmap of the 82 different starting zones in GT and LT which were triggered at least twice between 1947 and 2020. The normalized magnitudes of every starting zone is showed by the colouring scheme. For more details please refer to the text.

470 The results of the magnitude comparisons of the most active periods indicate a strong influence of the 1990–1997 event as it produced the largest debris flow volumes in GT and LT by far. This in turn supports the assumption that the debris flows of 1992 (Becht, 1995) affected the debris flow activity in GT and LT for the following years and the system needed some time to reach the state of before 1990.

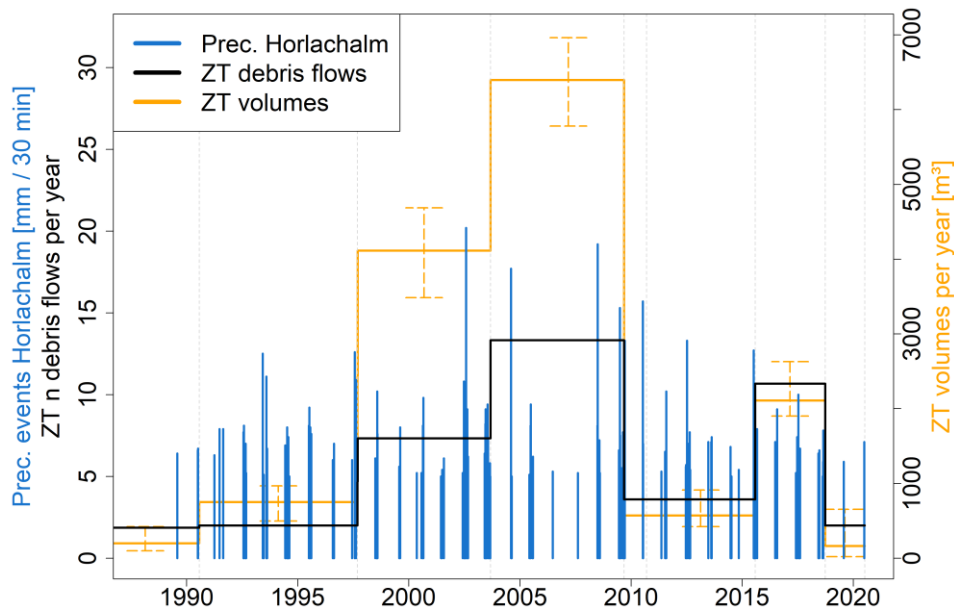
475 The highly active period 1990–2009 with the highest debris flow magnitudes might have affected the debris flow system for even longer. The discrepancy between the high number of detected debris flows from 2015 to 2018 and the relatively small deposited volumes in the same period possibly points to recharge time effects of debris flow channels, as mentioned in Pelfini and Santilli (2008) and demonstrated in Jakob et al. (2005), Jakob et al. (2020) and Berger et al. (2011). During the highly active period (1990–2009) the rockfall storages in the bedrock catchments were depleted in some cases. Thus, the debris flows triggered afterwards showed below-average magnitudes. This in turn indicates a very short-term change from transport-limited to supply-limited systems for some of the debris flow channels.

480 5.2.2 Precipitation and debris flow activity in Horlachtal

Rainfall events triggering slope-type debris flows can occur very locally (see Sect. 5.1). The precipitation data from the Horlachalm meteorological station can therefore not be related to debris flow processes in the entire Horlachtal. As a consequence, the calculation of triggering thresholds using intensity-duration relationships or other methods (Berti et al., 2020; Segoni et al., 2018) would thus be rather inaccurate. Due to the location of the meteorological station, the data are only set in

485 relation to debris flows in ZT. The threshold value for debris flow triggering of 20 mm / 30 min according to Becht and Rieger (1997) has only been exceeded on two days since 1989, namely on 31 July 2002 and 02 July 2009. Nevertheless, the mapping of debris flow processes in ZT since 1947 shows that debris flows have also occurred during periods in which the threshold value of 20 mm / 30 min was not exceeded at the Horlachalm meteorological station. This in turn indicates that a precipitation event < 20 mm / 30 min in the study area can be sufficient to trigger debris flows.

490 In Fig. 13, all high intensity rainfall events recorded at the Horlachalm station with precipitation values exceeding 5 mm per 30 minutes are shown together with the mapped number of debris flows per year in ZT and the calculated deposition volume per year in ZT. The acquisition date of the orthophotos, which were used for mapping the debris flows are marked as grey vertical lines the Figure.



495 **Figure 13: High intensity rainfall events exceeding 5 mm per 30 minutes at the Horlachalm station combined with the number of mapped debris flows per year in ZT (black) and the deposited debris flow volumes per year in ZT (orange). The sub-catchment ZT is located quite close to the Horlachalm meteorological station.**

Only very few debris flows were mapped in the period between 1990 and 1997 in ZT. The precipitation data show that between the times of the aerial images acquisition in 1990 and 1997, precipitation events of over 10 mm / 30 min were indeed recorded only rarely, and these few precipitation peaks always remained below 15 mm / 30 min. During that period, the precipitation value of 10 mm / 30 min was exceeded a total of 5 times on four different days. The maximum value is 12.6 mm / 30 min on 28 July 1997.

Between the aerial images acquisition in 1997 and 2003, however, considerably more numbers of debris flows and higher debris flow volumes per year were detected in ZT. The precipitation records also show more extreme rainfall events during
505 this period. Precipitation exceeded the value of 10 mm per 30 minutes a total of 11 times on six different days. The maximum values are also far above the level of the last period, with a maximum value of 20.2 mm / 30 min on 31 July 2002. Even more debris flow processes per year were mapped in the period between 2003 and 2009.

On four days between the acquisition of the aerial images of 2010 and 2015, the value of 10 mm / 30 min was exceeded six times. However, the maximum of 13.9 mm / 30 min on 07 July 2015 is again relatively low. During this period, comparatively
510 few debris flows per year were mapped in ZT. In the most recent time step between 2015 and 2018, the threshold value was only reached once at the Horlachalm meteorological station on 10 July 2017. At exactly 10.0 mm / 30 min, the maximum value for this period is relatively low. However, many debris flows per year could be determined in ZT during this time step. The corresponding debris flow triggering event cannot be traced in the precipitation data. It is therefore probable that this must have been a very local rainfall event that strongly affected ZT, but could only be measured at a lower level at the Horlachalm
515 meteorological station.

In general, a correlation between debris flow activity in ZT and precipitation data at Horlachalm station is recognisable. The highest precipitation intensities per 30 minutes were recorded in the time steps 1997–2003 and 2003–2009, and also many debris flow processes could be mapped during this epoch in ZT. During the periods 1990–1997 and 2010–2015 the maximum precipitation per 30 minutes was significantly lower, which is also reflected in the lower number of mapped debris flows per
520 year. Only in the time steps 2015–2018 the data sets do not seem to match. This contrast is interpreted as a further indication for very local rainfall events as triggers of debris flows.

The evaluation of high intensity rainfall events in combination with the mapped slope-type debris flows has shown that the threshold of 20 mm / 30 min specified by Becht and Rieger (1997) is indeed sufficient to trigger large debris flow events in the study area. However, even lower precipitation intensities seem to be sufficient to start debris flows on very active debris
525 cones.

5.3 Methodological limitations

Geomorphological mapping using historic and recent orthophotos is a suitable tool to generate debris flow records for larger study areas, as presented here. A big advantage is that the aerial images cover the entire study area in great detail. It is therefore possible to generate a near complete debris flow record. Problems only occur when the quality (in terms of resolution, shadow
530 effects and snow cover) of the used images is poor, or more than one debris flows occur during one epoch and the process areas overlap. In addition, in some cases it is difficult to identify debris flows in densely vegetated areas, which might lead to a slight underestimation of detected processes in the lower altitudes of the study area. Disadvantages of this method are the sometimes large time spans between the acquisition dates of two consecutive aerial images. This not only leads to an increased probability of overlapping events, but the dating of single debris flows becomes quite inaccurate. As the durations of different
535 epochs are not equal, the normalised number of debris flows per year was calculated in order to compare the debris flow

activity. It has to be mentioned, however, that slope-type debris flows are triggered by single precipitation events. The calculations of “debris flows per year” suggest a uniformly distributed debris flows activity throughout the respective epochs, which is far from reality, and hence these calculations should be treated with caution.

Because of the different durations of the epochs, the debris flow record is slightly biased, as the number of debris flows in longer intervals (e.g. 1954–1973) is likely to be underestimated because of the aforementioned reasons. This can be investigated by deliberately removing orthophotos, mapping events based on the remaining imagery, and comparing the resulting map with the complete record. In order to get an idea about the magnitude of debris flow underestimation in longer epochs, a re-mapping of debris flow processes was done in GT and LT, where the orthophotos of 1997 and 2003 as well as 2010, 2015 and 2018 were removed from the record. The number of detected debris flows of this second test mapping was then compared with the number of detected debris flows in the original record (reference) in the same timeframe (Tab. 4). Compared to the reference data, between 22 % and 29 % of the debris flows were missed in the test mapping because of the missing orthophotos in between the timeframes. These results indicate that in longer epochs (e.g. 1954 – 1973) the number of slope-type debris flows are underestimated by about 25 % in relation to shorter epochs (e.g. 2015 – 2018) due to overlapping process areas for example.

Table 4: Comparison of the number of detected slope-type debris flows of the test mapping with a reduced number of orthophotos and the original mapping (reference). This mapping was conducted in GT and LT and for the time slices 1990 – 2009 and 2009 – 2020.

sub-catchment	1990 – 2009		2009 – 2020	
	Reference	Test	Reference	Test
GT	95	74	41	29
LT	92	67	35	27

6 Conclusion

Conducting extensive analyses on remote sensing data, we were able to detect spatial and temporal characteristics of the slope-type debris flow activity in the Horlachtal. A detailed mapping using multi-temporal orthophotos revealed 834 different debris flows between 1947 and 2020. High process activity in the study area is concentrating on the west exposed slopes of the three parallel sub-catchments GT, LT and ZT. Morphometric analyses of the hydrological catchments showed that their attributes like area, length, perimeter and relief ratio have substantial influence on the magnitude of slope-type debris flows.

From a temporal perspective, a consistent trend in frequency and magnitude since 1947 cannot be detected, as periods with enhanced debris flow activity (1954-1973, 1990-2009, 2015-2018) and periods with lower activity alternate with one another. Spatial patterns of the mapped debris flows indicate that triggering precipitation events can occur on a very local scale. However, sub-hourly measurements of the Horlachtal meteorological station since 1989 as well as the Tschagguns station

565 since 1953 do not show any statistical increases or decreases of days with an extreme rainfall event. For more detailed investigations on the correlations between precipitation events and slope-type debris flow activity, an extended time series with higher spatial resolution is required.

The results of this study contribute to a better understanding of slope-type debris flows in a high-alpine environment in both spatial and temporal ways but further investigations are still necessary to better assess the process dynamics in the future. This
570 might include an expansion of such high-resolved debris flow records e.g. using multiple methods like dendrogeomorphology or lichenometry.

Appendix

Table A1: Error assessment of debris flow deposit volumes between 2006 and 2019 following Anderson (2019).

Debris flow ID	Volume [m ³]	Standard deviation [m]	RMSE [m]	Arithmetic mean [m]	Absolute mean [m]	Uncorrelated random error [m ³]	Spatially correlated random error [m ³]	Systematic error [m ³]	Total error [m ³]
123	63.899	0.124	0.124	0.007	0.088	1.612	1.899	1.126	2.734
124	365.867	0.124	0.124	0.007	0.088	4.625	5.446	9.259	11.695
127	16.218	0.124	0.124	0.007	0.088	2.243	2.641	2.178	4.092
130	20.473	0.113	0.113	0.002	0.086	1.285	0.000	0.221	1.304
131	344.987	0.113	0.113	0.002	0.086	5.054	0.000	3.419	6.102
132	582.765	0.113	0.113	0.002	0.086	3.470	0.000	1.612	3.826
136	84.162	0.113	0.113	0.002	0.086	1.495	0.000	0.299	1.525
140	94.188	0.226	0.226	0.007	0.085	2.806	0.000	1.016	2.984
141	1208.687	0.226	0.226	0.007	0.085	8.639	0.000	9.636	12.942
142	743.536	0.226	0.226	0.007	0.085	9.030	0.000	10.527	13.869
144	1207.066	0.226	0.226	0.007	0.085	7.242	0.000	6.772	9.915
145	190.190	0.226	0.226	0.007	0.085	4.881	0.000	3.076	5.769
148	393.834	0.226	0.226	0.007	0.085	6.054	0.000	4.732	7.684
149	127.653	0.226	0.226	0.007	0.085	4.419	0.000	2.521	5.088
151	188.315	0.226	0.226	0.007	0.085	5.459	0.000	3.848	6.679
160	57.467	0.113	0.113	0.002	0.086	1.835	0.000	0.451	1.889
160	82.222	0.126	0.126	0.003	0.083	2.371	0.634	1.059	2.673
161	69.029	0.113	0.113	0.002	0.086	2.391	0.000	0.765	2.510
163	7.548	0.113	0.113	0.002	0.086	0.676	0.000	0.061	0.679
164	100.305	0.113	0.113	0.002	0.086	1.803	0.000	0.435	1.855
165	2562.894	0.102	0.102	0.001	0.077	4.656	0.000	2.918	5.495
168	7506.207	0.126	0.126	0.003	0.083	15.837	4.234	47.244	50.007
169	452.303	0.170	0.171	-0.008	0.116	4.631	0.000	-6.117	7.673
171	53.523	0.101	0.101	0.000	0.077	1.101	0.000	0.012	1.101
171	120.910	0.101	0.101	0.000	0.077	1.755	0.000	0.031	1.755
174	421.772	0.101	0.101	0.000	0.077	2.959	0.000	0.087	2.960
175	99.522	0.101	0.101	0.000	0.077	1.497	0.000	0.022	1.498
177	238.448	0.101	0.101	0.000	0.077	3.301	0.000	0.108	3.303
187	29.309	0.089	0.089	0.000	0.071	0.788	0.000	-0.013	0.788
188	121.834	0.089	0.089	0.000	0.071	1.631	0.000	-0.057	1.632
190	44.118	0.126	0.126	0.003	0.083	1.530	0.409	0.441	1.644
192	37.943	0.089	0.089	0.000	0.071	0.793	0.000	-0.014	0.793

200	2346.695	0.113	0.113	0.001	0.084	8.428	0.000	3.832	9.258
202	530.794	0.081	0.081	0.007	0.057	2.212	0.000	4.823	5.306
206	379.500	0.081	0.081	0.007	0.057	2.731	0.000	7.352	7.842
210	777.085	0.145	0.146	0.014	0.117	5.916	0.000	22.988	23.737
211	3155.842	0.145	0.146	0.014	0.117	7.761	0.000	39.564	40.318
212	319.990	0.145	0.146	0.014	0.117	4.443	0.000	12.964	13.704
213	54.459	0.145	0.146	0.014	0.117	3.107	0.000	6.342	7.062
237	519.380	0.096	0.096	0.001	0.073	3.493	0.000	1.332	3.738
243	595.395	0.074	0.074	0.002	0.058	2.534	0.000	1.745	3.076
246	370.096	0.089	0.089	0.005	0.070	2.593	0.000	4.037	4.798
248	780.960	0.081	0.081	0.007	0.057	3.222	0.000	10.231	10.726
256	14.021	0.073	0.073	-0.001	0.058	0.618	0.000	-0.062	0.622
258	12.868	0.079	0.079	0.002	0.063	0.635	0.000	0.134	0.649
258	21.311	0.079	0.079	0.002	0.063	0.692	0.000	0.160	0.710
265	92.805	0.074	0.074	0.001	0.057	1.576	0.000	0.230	1.593
266	119.335	0.062	0.062	0.004	0.048	1.298	0.000	1.540	2.014
267	475.928	0.074	0.074	0.002	0.058	1.758	0.000	0.840	1.949
268	1221.917	0.074	0.074	0.002	0.058	3.240	0.000	2.853	4.317
269	616.709	0.074	0.074	0.002	0.058	2.713	0.000	2.000	3.370
270	551.152	0.120	0.120	0.006	0.096	3.273	0.000	4.730	5.752
271	145.884	0.120	0.120	0.006	0.096	1.850	0.000	1.510	2.388
273	548.626	0.120	0.120	0.006	0.096	3.244	0.000	4.646	5.667
277	542.262	0.145	0.146	0.014	0.117	4.043	0.000	10.738	11.474
279	1022.168	0.158	0.158	-0.008	0.120	5.410	0.000	-9.416	10.860
282	30.905	0.105	0.105	0.005	0.076	1.362	0.000	0.794	1.577
673	144.566	0.101	0.101	0.000	0.077	1.894	0.000	0.036	1.894

575

Data availability

The analysed meteorological data are available at the Tyrolean Hydropower Company TIWAG (www.tiwag.at) and at the “Hydrographischer Dienst Vorarlberg” (eHYD: <https://ehyd.gv.at>). Used orthophotos and single historical aerial images are available at the data services of the Province of Tyrol (www.data.gv.at) and the Federal Office of Metrology and Surveying (BEV; www.bev.gv.at). The DEM of 2006 was provided by the Province of Tyrol (www.tirol.gv.at). The LiDAR data of 2019 will be publicly available after completion of the SEHAG (SEnsitivity of High Alpine Geosystems to climate change since 1850) research project and can be provided upon request.

Author contributions

585 Planning and conceptualization was done by JR, FH and MB. Responsible for data curation were JR, FH, TH, MA, FF, CR and SBN. The mapping was done by JR and the analyses were performed by JR, MA, FF and SBN. Supervision was provided by FH, TH and MB. The original manuscript was written by JR. FH, TH, MA, FF, CR and MB were involved in reviewing and editing of the manuscript. MB, FH and TH were responsible for funding acquisition.

Competing interests

The authors declare that they have no conflict of interest.

590 **Acknowledgments**

This study is part of the SEHAG (SEnsitivity of High Alpine Geosystems to climate change since 1850) research project, which is financially supported by the German Research Foundation (DFG), the Austrian Science Fund (FWF), the autonomous province of South Tyrol and by the Swiss National Science Foundation (SNF). For providing all the essential data, we would like to thank the Tyrolean Hydropower Company (TIWAG), the Hydrographischer Dienst Vorarlberg, the Federal Office of Metrology and Surveying (BEV) and the Province of Tyrol (Land Tirol). Furthermore, we want to thank the 595 Bezirkshauptmannschaft Imst (especially Mag. Eva Loidhold and Mag. Gudrun Hofmann), the municipality of Umhausen with the Mayor Mag. Jakob Wolf, as well as Mag. Johannes Kostenzer, Dr. Werner Schwarz, Mag. Kathrin Herzer and all residents of Niederthai and Umhausen for supporting the research projects in the Horlachtal. Special thanks to all student assistants who supported our studies.

600 **Financial support**

This research has been funded by the Deutsche Forschungsgemeinschaft (DFG, German Research Foundation) - grant numbers BE 1118/38-1; BE 1118/39-1; BE 1118/40-1; HA 5740/10-1 and HE 5747/6-1 as well as by the Austrian Science Fund (FWF) - grant number 4062-N29.

605 **References**

Altmann, M., Piermattei, L., Haas, F., Heckmann, T., Fleischer, F., Rom, J., Betz-Nutz, S., Knoflach, B., Müller, S., Ramskogler, K., Pfeiffer, M., Hofmeister, F., Ressler, C., and Becht, M.: Long-Term Changes of Morphodynamics on

- Little Ice Age Lateral Moraines and the Resulting Sediment Transfer into Mountain Streams in the Upper Kauner Valley, Austria, *Water*, 12, 3375, <https://doi.org/10.3390/w12123375>, 2020.
- 610 Anderson, S. W.: Uncertainty in quantitative analyses of topographic change: error propagation and the role of thresholding, *Earth Surf. Process. Landforms*, 44, 1015–1033, <https://doi.org/10.1002/esp.4551>, 2019.
- Bakker, M. and Lane, S. N.: Archival photogrammetric analysis of river-floodplain systems using Structure from Motion (SfM) methods, *Earth Surf. Process. Landforms*, 42, 1274–1286, <https://doi.org/10.1002/esp.4085>, 2017.
- Bates, D. M. and Watts, D. G. (Eds.): *Nonlinear Regression Analysis and Its Applications*, Wiley Series in Probability and
 615 Statistics, John Wiley & Sons, Inc, Hoboken, NJ, USA, 1988.
- Baty, F., Ritz, C., Charles, S., Brutsche, M., Flandrois, J.-P., and Delignette-Muller, M.-L.: A Toolbox for Nonlinear Regression in R The Package nlstools, *J. Stat. Soft.*, 66, <https://doi.org/10.18637/jss.v066.i05>, 2015.
- Bayle, A.: A recent history of deglaciation and vegetation establishment in a contrasted geomorphological context, *Glacier Blanc, French Alps*, *Journal of Maps*, 16, 766–775, <https://doi.org/10.1080/17445647.2020.1829115>, 2020.
- 620 Becht, M. and Rieger, D.: Debris flows on alpine slopes (eastern Alps)/Coulées de débris sur des versants des Alpes Orientales, *morfo*, 3, 33–41, <https://doi.org/10.3406/morfo.1997.899>, 1997.
- Becht, M.: *Untersuchungen zur aktuellen Reliefentwicklung in alpinen Einzugsgebieten: Mit 40 Tabellen*, Zugl.: München, Univ., *Habil.-Schr. Münchener Universitätschriften / Fakultät für Geowissenschaften*, 47, Geobuch-Verl., München, 187 pp., 1995.
- 625 Beniston, M.: Mountain Climates and Climatic Change: An Overview of Processes Focusing on the European Alps, *Pure appl. geophys.*, 162, 1587–1606, <https://doi.org/10.1007/s00024-005-2684-9>, 2005.
- Beniston, M.: Climatic Change in Mountain Regions: A Review of Possible Impacts, in: *Climate Variability and Change in High Elevation Regions: Past, Present & Future*, Springer, Dordrecht, 5–31, https://doi.org/10.1007/978-94-015-1252-7_2, 2003.
- 630 Bennett, G. L., Molnar, P., Eisenbeiss, H., and McArdell, B. W.: Erosional power in the Swiss Alps: characterization of slope failure in the Illgraben, *Earth Surf. Process. Landforms*, 37, 1627–1640, <https://doi.org/10.1002/esp.3263>, 2012.
- Berger, C., McArdell, B. W., and Schlunegger, F.: Sediment transfer patterns at the Illgraben catchment, Switzerland: Implications for the time scales of debris flow activities, *Geomorphology*, 125, 421–432, <https://doi.org/10.1016/j.geomorph.2010.10.019>, 2011.
- 635 Bernard, M., Underwood, S. J., Berti, M., Simoni, A., and Gregoretti, C.: Observations of the atmospheric electric field preceding intense rainfall events in the Dolomite Alps near Cortina d’Ampezzo, Italy, *Meteorol Atmos Phys*, 132, 99–111, <https://doi.org/10.1007/s00703-019-00677-6>, 2020.
- Berti, M., Bernard, M., Gregoretti, C., and Simoni, A.: Physical Interpretation of Rainfall Thresholds for Runoff-Generated Debris Flows, *J. Geophys. Res. Earth Surf.*, 125, <https://doi.org/10.1029/2019JF005513>, 2020.
- 640 Bollschweiler, M. and Stoffel, M.: Changes and trends in debris-flow frequency since AD 1850: Results from the Swiss Alps, *The Holocene*, 20, 907–916, <https://doi.org/10.1177/0959683610365942>, 2010.

- Bollsweiler, M., Stoffel, M., and Schneuwly, D. M.: Dynamics in debris-flow activity on a forested cone — A case study using different dendroecological approaches, *CATENA*, 72, 67–78, <https://doi.org/10.1016/j.catena.2007.04.004>, 2008.
- 645 Brunetti, M. T., Guzzetti, F., and Rossi, M.: Probability distributions of landslide volumes, *Nonlin. Processes Geophys.*, 16, 179–188, <https://doi.org/10.5194/npg-16-179-2009>, 2009.
- Chen, J.-C., Lin, C.-W., and Wang, L.-C.: Geomorphic characteristics of hillslope and channelized debris flows: A case study in the Shitou area of central Taiwan, *J. Mt. Sci.*, 6, 266–273, <https://doi.org/10.1007/s11629-009-0250-0>, 2009.
- Conrad, O., Bechtel, B., Bock, M., Dietrich, H., Fischer, E., Gerlitz, L., Wehberg, J., Wichmann, V., and Böhner, J.: System for Automated Geoscientific Analyses (SAGA) v. 2.1.4, *Geosci. Model Dev.*, 8, 1991–2007, <https://doi.org/10.5194/gmd-8-1991-2015>, 2015.
- 650 Curry, A. M., Cleasby, V., and Zukowskyj, P.: Paraglacial response of steep, sediment-mantled slopes to post-‘Little Ice Age’ glacier recession in the central Swiss Alps, *J. Quaternary Sci.*, 21, 211–225, <https://doi.org/10.1002/jqs.954>, 2006.
- D’Agostino, V. and Marchi, L.: Debris Flows Magnitude in the Eastern Italian Alps: Data Collection and Analysis, *Physics and Chemistry of the Earth*, 26, 657–663, 2001.
- 655 De Haas, T. and Densmore, A. L.: Debris-flow volume quantile prediction from catchment morphometry, *Geology*, 47, 791–794, <https://doi.org/10.1130/G45950.1>, 2019.
- Dietrich, A. and Krautblatter, M.: Evidence for enhanced debris-flow activity in the Northern Calcareous Alps since the 1980s (Plansee, Austria), *Geomorphology*, 287, 144–158, <https://doi.org/10.1016/j.geomorph.2016.01.013>, 2017.
- Dietrich, A. and Krautblatter, M.: Deciphering controls for debris-flow erosion derived from a LiDAR-recorded extreme event and a calibrated numerical model (Roßbichelbach, Germany), *Earth Surf. Process. Landforms*, 44, 1346–1361, <https://doi.org/10.1002/esp.4578>, 2019.
- 660 Dikau, R., Eibisch, K., Eichel, J., Meßenzehl, K., and Schlummer-Held, M.: *Geomorphologie*, Springer Berlin Heidelberg, Berlin, Heidelberg, 487 pp., 2019.
- Dowling, C. A. and Santi, P. M.: Debris flows and their toll on human life: a global analysis of debris-flow fatalities from 1950 to 2011, *Nat Hazards*, 71, 203–227, <https://doi.org/10.1007/s11069-013-0907-4>, 2014.
- 665 Fleischer, F., Haas, F., Piermattei, L., Pfeiffer, M., Heckmann, T., Altmann, M., Rom, J., Stark, M., Wimmer, M. H., Pfeifer, N., and Becht, M.: Multi-decadal (1953–2017) rock glacier kinematics analysed by high-resolution topographic data in the upper Kaunertal, Austria, *The Cryosphere*, 15, 5345–5369, <https://doi.org/10.5194/tc-15-5345-2021>, 2021.
- Freeman, T.: Calculating catchment area with divergent flow based on a regular grid, *Computers & Geosciences*, 17, 413–422, [https://doi.org/10.1016/0098-3004\(91\)90048-I](https://doi.org/10.1016/0098-3004(91)90048-I), 1991.
- 670 Gao, L., Zhang, L. M., and Cheung, R. W. M.: Relationships between natural terrain landslide magnitudes and triggering rainfall based on a large landslide inventory in Hong Kong, *Landslides*, 15, 727–740, <https://doi.org/10.1007/s10346-017-0904-x>, 2018.
- Geitner, C.: *Sedimentologische und vegetationsgeschichtliche Untersuchungen an fluvialen Sedimenten in den Hochlagen des Horlachtals (Stubai Alpen/Tirol)*, Münchener Geographische Abhandlungen, Geobuch-Verlag, München, 1999.
- 675

- Gillespie, C. S.: Fitting heavy tailed distributions: the powerLaw package, *Journal of Statistical Software*, 64, 1–16, <https://doi.org/10.48550/arXiv.1407.3492>, 2015.
- Glira, P., Pfeifer, N., Briese, C., and Ressler, C.: Rigorous Strip Adjustment of Airborne Laserscanning Data based on the ICP Algorithm, *ISPRS Ann. Photogramm. Remote Sens. Spatial Inf. Sci.*, II-3/W5, 73–80, 680 <https://doi.org/10.5194/isprsannals-ii-3-w5-73-2015>, 2015.
- Glira, P., Pfeifer, N., and Mandlbürger, G.: Rigorous Strip Adjustment of UAV-based Laserscanning Data Including Time-Dependent Correction of Trajectory Errors, *Photogram Engng Rem Sens*, 82, 945–954, <https://doi.org/10.14358/PERS.82.12.945>, 2016.
- Griswold, J. P. and Iverson, R. M.: Mobility Statistics and Automated Hazard Mapping for Debris Flows and Rock 685 Avalanches, Scientific Investigations Report 2007–5276, US Geological Survey, 2008.
- Guzzetti, F., Ardizzone, F., Cardinali, M., Rossi, M., and Valigi, D.: Landslide volumes and landslide mobilization rates in Umbria, central Italy, *Earth and Planetary Science Letters*, 279, 222–229, <https://doi.org/10.1016/j.epsl.2009.01.005>, 2009.
- Haas, F., Heckmann, T., Wichmann, V., and Becht, M.: Runout analysis of a large rockfall in the Dolomites/Italian Alps 690 using LIDAR derived particle sizes and shapes, *Earth Surf. Process. Landforms*, 37, 1444–1455, <https://doi.org/10.1002/esp.3295>, 2012.
- Heckmann, T., Gegg, K., Gegg, A., and Becht, M.: Sample size matters: investigating the effect of sample size on a logistic regression susceptibility model for debris flows, *Nat. Hazards Earth Syst. Sci.*, 14, 259–278, <https://doi.org/10.5194/nhess-14-259-2014>, 2014.
- 695 Heckmann, T. and Schwanghart, W.: Geomorphic coupling and sediment connectivity in an alpine catchment — Exploring sediment cascades using graph theory, *Geomorphology*, 182, 89–103, <https://doi.org/10.1016/j.geomorph.2012.10.033>, 2013.
- Heckmann, T., Haas, F., Morche, D., Schmidt, K., Rohn, J., Moser, M., Leopold, M., Kuhn, M., Briese, C., Pfeifer, N., and 700 Becht, M.: Investigating an Alpine proglacial sediment budget using field measurements, airborne and terrestrial LiDAR data, *IAHS Publication*, 356, 438–447, 2012.
- Helsen, M. M., Koop, P. J. M., and van Steijn, H.: Magnitude-frequency relationship for debris flows on the fan of the Chalance torrent, Valgaudemar (French Alps), *Earth Surf. Process. Landforms*, 27, 1299–1307, <https://doi.org/10.1002/esp.412>, 2002.
- Hilger, L.: Quantification and regionalization of geomorphic processes using spatial models and high-resolution topographic 705 data: A sediment budget of the Upper Kauner Valley, Ötztal Alps, PhD thesis, Katholische Universität Eichstätt-Ingolstadt, Eichstätt-Ingolstadt, 2017.
- Hirschberg, J., Faticchi, S., Bennett, G. L., McArdeall, B. W., Peleg, N., Lane, S. N., Schlunegger, F., and Molnar, P.: Climate Change Impacts on Sediment Yield and Debris-Flow Activity in an Alpine Catchment, *J. Geophys. Res. Earth Surf.*, 126, e2020JF005739, <https://doi.org/10.1029/2020JF005739>, 2021.

- 710 Hungr, O., McDougall, S., Wise, M., and Cullen, M.: Magnitude-frequency relationships of debris flows and debris avalanches in relation to slope relief, *Geomorphology*, 96, 355–365, <https://doi.org/10.1016/j.geomorph.2007.03.020>, 2008.
- Innes, J. L.: Lichenometric dating of debris-flow deposits in the Scottish Highlands, *Earth Surf. Process. Landforms*, 8, 579–588, <https://doi.org/10.1002/esp.3290080609>, 1983.
- 715 Iverson, R. M.: Elementary theory of bed-sediment entrainment by debris flows and avalanches, *J. Geophys. Res.*, 117, <https://doi.org/10.1029/2011JF002189>, 2012.
- Jaboyedoff, M., Carrea, D., Derron, M.-H., Oppikofer, T., Penna, I. M., and Rudaz, B.: A review of methods used to estimate initial landslide failure surface depths and volumes, *Engineering Geology*, 267, 105478, <https://doi.org/10.1016/j.enggeo.2020.105478>, 2020.
- 720 Jakob, M., Mark, E., McDougall, S., Friele, P., Lau, C.-A., and Bale, S.: Regional debris-flow and debris-flood frequency–magnitude relationships, *Earth Surf. Process. Landforms*, 45, 2954–2964, <https://doi.org/10.1002/esp.4942>, 2020.
- Jakob, M., Bovis, M., and Oden, M.: The significance of channel recharge rates for estimating debris-flow magnitude and frequency, *Earth Surf. Process. Landforms*, 30, 755–766, <https://doi.org/10.1002/esp.1188>, 2005.
- Jomelli, V., Grancher, D., Naveau, P., Cooley, D., and Brunstein, D.: Assessment study of lichenometric methods for dating
725 surfaces, *Geomorphology*, 86, 131–143, <https://doi.org/10.1016/j.geomorph.2006.08.010>, 2007.
- Jomelli, V., Brunstein, D., Chochillon, C., and Pech, P.: Hillslope debris-flow frequency since the beginning of the 20th century in the Massif des Ecrins (French Alps), in: *Debris-Flow Hazards Mitigation: Mechanics, Prediction, and Assessment*, edited by: Rickenmann, D. and Chen, C., Millpress, Rotterdam, 127–137, 2003.
- Kiefer, C., Oswald, P., Moernaut, J., Fabbri, S. C., Mayr, C., Strasser, M., and Krautblatter, M.: A 4000-year debris flow
730 record based on amphibious investigations of fan delta activity in Plansee (Austria, Eastern Alps), *Earth Surf. Dynam.*, 9, 1481–1503, <https://doi.org/10.5194/esurf-9-1481-2021>, 2021.
- Lane, S. N., Westaway, R. M., and Murray Hicks, D.: Estimation of erosion and deposition volumes in a large, gravel-bed, braided river using synoptic remote sensing, *Earth Surf. Process. Landforms*, 28, 249–271, <https://doi.org/10.1002/esp.483>, 2003.
- 735 Larsen, I. J., Montgomery, D. R., and Korup, O.: Landslide erosion controlled by hillslope material, *Nature Geosci*, 3, 247–251, <https://doi.org/10.1038/ngeo776>, 2010.
- Li, L., Yu, B., Zhu, Y., Chu, S., and Wu, Y.: Topographical factors in the formation of gully-type debris flows in Longxi River catchment, Sichuan, China, *Environ Earth Sci*, 73, 4385–4398, <https://doi.org/10.1007/s12665-014-3722-7>, 2015.
- Lopez Saez, J., Corona, C., Stoffel, M., Gotteland, A., Berger, F., and Liébault, F.: Debris-flow activity in abandoned
740 channels of the Manival torrent reconstructed with LiDAR and tree-ring data, *Nat. Hazards Earth Syst. Sci.*, 11, 1247–1257, <https://doi.org/10.5194/nhess-11-1247-2011>, 2011.

- Magirl, C. S., Griffiths, P. G., and Webb, R. H.: Analyzing debris flows with the statistically calibrated empirical model LAHARZ in southeastern Arizona, USA, *Geomorphology*, 119, 111–124, <https://doi.org/10.1016/j.geomorph.2010.02.022>, 2010.
- 745 Marchi, L. and Tecca, P. R.: Some Observations on the Use of Data from Historical Documents in Debris-Flow Studies, *Nat Hazards*, 38, 301–320, <https://doi.org/10.1007/s11069-005-0264-z>, 2006.
- Marchi, L., Brunetti, M. T., Cavalli, M., and Crema, S.: Debris-flow volumes in northeastern Italy: Relationship with drainage area and size probability, *Earth Surf. Process. Landforms*, 44, 933–943, <https://doi.org/10.1002/esp.4546>, 2019.
- McGlone, J. C., Mikhail, E., and Bethel, J. (Eds.): *Manual of Photogrammetry*, 5. ed., ASPRS American Soc. for
750 *Photogrammetry and Remote Sensing*, Bethesda, Md., 2004.
- Melton, M.: An analysis of the relations among elements of climate, surface properties, and geomorphology, Technical Report No. 11, Department of Geology, Columbia University, New York, 1957.
- Nogués-Bravo, D., Araújo, M. B., Errea, M. P., and Martínez-Rica, J. P.: Exposure of global mountain systems to climate warming during the 21st Century, *Global Environmental Change*, 17, 420–428,
755 <https://doi.org/10.1016/j.gloenvcha.2006.11.007>, 2007.
- Nuth, C. and Kääb, A.: Co-registration and bias corrections of satellite elevation data sets for quantifying glacier thickness change, *The Cryosphere*, 5, 271–290, <https://doi.org/10.5194/tc-5-271-2011>, 2011.
- Pelfini, M. and Santilli, M.: Frequency of debris flows and their relation with precipitation: A case study in the Central Alps, Italy, *Geomorphology*, 101, 721–730, <https://doi.org/10.1016/j.geomorph.2008.04.002>, 2008.
- 760 Petrini-Monteferrri, F., Wichmann, V., Georges, C., Mantovani, D., and Stötter, J.: Erweiterung der GIS Software SAGA zur Verarbeitung von Laserscanning-Daten der Autonomen Provinz Bozen-Südtirol, in: *Angewandte Geoinformatik 2009: Beiträge zum 21. AGIT-Symposium Salzburg*, edited by: Strobl, J. and Blaschke, T., Wichmann, Heidelberg, 47–52, 2009.
- Pfeifer, N., Mandlbürger, G., Otepka, J., and Karel, W.: OPALS – A framework for Airborne Laser Scanning data analysis,
765 *Computers, Environment and Urban Systems*, 45, 125–136, <https://doi.org/10.1016/j.compenvurbsys.2013.11.002>, 2014.
- Rainato, R., Mao, L., García-Rama, A., Picco, L., Cesca, M., Vianello, A., Preciso, E., Scussel, G. R., and Lenzi, M. A.: Three decades of monitoring in the Rio Cordon instrumented basin: Sediment budget and temporal trend of sediment yield, *Geomorphology*, 291, 45–56, <https://doi.org/10.1016/j.geomorph.2016.03.012>, 2017.
- Ravel, L. and Deline, P.: Climate influence on rockfalls in high-Alpine steep rockwalls: The north side of the Aiguilles de
770 Chamonix (Mont Blanc massif) since the end of the ‘Little Ice Age’, *The Holocene*, 21, 357–365, <https://doi.org/10.1177/0959683610374887>, 2011.
- Rickenmann, D. and Zimmermann, M.: The 1987 debris flows in Switzerland: documentation and analysis, *Geomorphology*, 8, 175–189, [https://doi.org/10.1016/0169-555X\(93\)90036-2](https://doi.org/10.1016/0169-555X(93)90036-2), 1993.

- Rieger, D.: Bewertung der naturräumlichen Rahmenbedingungen für die Entstehung von Hangmuren: Möglichkeiten zur Modellierung des Murpotentials ; mit 21 Tabellen, Zugl.: München, Univ., Diss., 1998, Münchener Universitätschriften / Fakultät für Geowissenschaften, 51, Geobuch-Verl., München, 149 pp., 1999.
- 775 Riley, K. L., Bendick, R., Hyde, K. D., and Gabet, E. J.: Frequency–magnitude distribution of debris flows compiled from global data, and comparison with post-fire debris flows in the western U.S., *Geomorphology*, 191, 118–128, <https://doi.org/10.1016/j.geomorph.2013.03.008>, 2013.
- 780 Rom, J., Haas, F., Stark, M., Dremel, F., Becht, M., Kopetzky, K., Schwall, C., Wimmer, M., Pfeifer, N., Mardini, M., and Genz, H.: Between Land and Sea: An Airborne LiDAR Field Survey to Detect Ancient Sites in the Chekka Region/Lebanon Using Spatial Analyses, *Open Archaeology*, 6, 248–268, <https://doi.org/10.1515/opar-2020-0113>, 2020.
- Sassa, K.: The mechanism to initiate debris flows as undrained shear of loose sediments, *Internationales Symposion Interpraevent - Villach Tagespublikation*, 2, 73–87, available at: http://www.interpraevent.at/palm-cms/upload_files/publikationen/tagungsbeitraege/1984_2_73.pdf, 1984.
- 785 Segoni, S., Piciullo, L., and Gariano, S. L.: A review of the recent literature on rainfall thresholds for landslide occurrence, *Landslides*, 15, 1483–1501, <https://doi.org/10.1007/s10346-018-0966-4>, 2018.
- Shen, C.-W., Lo, W.-C., and Chen, C.-Y.: Evaluating Susceptibility of Debris Flow Hazard using Multivariate Statistical Analysis in Hualien County, *Disaster Advances*, 5, available at: <http://hdl.handle.net/11536/20889>, 2012.
- 790 Spiess, A.-N. and Neumeyer, N.: An evaluation of R2 as an inadequate measure for nonlinear models in pharmacological and biochemical research: a Monte Carlo approach, *BMC pharmacology*, 10, 6, <https://doi.org/10.1186/1471-2210-10-6>, 2010.
- Stoffel, M., Lièvre, I., Conus, D., Grichting, M. A., Raetzo, H., Gärtner, H. W., and Monbaron, M.: 400 Years of Debris-Flow Activity and Triggering Weather Conditions: Ritigraben, Valais, Switzerland, Arctic, Antarctic, and Alpine Research, 37, 387–395, [https://doi.org/10.1657/1523-0430\(2005\)037\[0387:YODAAAT\]2.0.CO;2](https://doi.org/10.1657/1523-0430(2005)037[0387:YODAAAT]2.0.CO;2), 2005.
- 795 Stoffel, M.: Magnitude–frequency relationships of debris flows — A case study based on field surveys and tree-ring records, *Geomorphology*, 116, 67–76, <https://doi.org/10.1016/j.geomorph.2009.10.009>, 2010.
- Stoffel, M., Mendlik, T., Schneuwly-Bollschweiler, M., and Gobiet, A.: Possible impacts of climate change on debris-flow activity in the Swiss Alps, *Climatic Change*, 122, 141–155, <https://doi.org/10.1007/s10584-013-0993-z>, 2014.
- 800 Tanyaş, H., Westen, C. J., Allstadt, K. E., and Jibson, R. W.: Factors controlling landslide frequency–area distributions, *Earth Surf. Process. Landforms*, 44, 900–917, <https://doi.org/10.1002/esp.4543>, 2019.
- Theule, J. I., Liébault, F., Loye, A., Laigle, D., and Jaboyedoff, M.: Sediment budget monitoring of debris-flow and bedload transport in the Manival Torrent, SE France, *Nat. Hazards Earth Syst. Sci.*, 12, 731–749, <https://doi.org/10.5194/nhess-12-731-2012>, 2012.
- 805 Thiel, M.: Quantifizierung der Konnektivität von Sedimentkaskaden in alpinen Geosystemen, PhD thesis, Katholische Universität Eichstätt-Ingolstadt, Eichstätt-Ingolstadt, 186 pp., 2013.

- Tropeano, D. and Turconi, L.: Using Historical Documents for Landslide, Debris Flow and Stream Flood Prevention. Applications in Northern Italy, *Natural Hazards*, 31, 663–679, <https://doi.org/10.1023/B:NHAZ.0000024897.71471.f2>, 2004.
- 810 Turnbull, B., Bowman, E. T., and McElwaine, J. N.: Debris flows: Experiments and modelling, *Comptes Rendus Physique*, 16, 86–96, <https://doi.org/10.1016/j.crhy.2014.11.006>, 2015.
- Underwood, S. J., Schultz, M. D., Berti, M., Gregoretti, C., Simoni, A., Mote, T. L., and Saylor, A. M.: Atmospheric circulation patterns, cloud-to-ground lightning, and locally intense convective rainfall associated with debris flow initiation in the Dolomite Alps of northeastern Italy, *Nat. Hazards Earth Syst. Sci.*, 16, 509–528, 815 <https://doi.org/10.5194/nhess-16-509-2016>, 2016.
- Varnes, D. J.: Slope Movement Types and Processes, in: *Landslides, analysis and control (Special report-Transportation Research Board)*, edited by: Schuster, R. L. and Krizek, R. J., National Academy of Sciences, Washington, DC., 11–33, 1978.
- Wichmann, V.: The Gravitational Process Path (GPP) model (v1.0) – a GIS-based simulation framework for gravitational 820 processes, *Geosci. Model Dev.*, 10, 3309–3327, <https://doi.org/10.5194/gmd-10-3309-2017>, 2017.
- Wichmann, V.: Modellierung geomorphologischer Prozesse in einem alpinen Einzugsgebiet: Abgrenzung und Klassifizierung der Wirkungsräume von Sturzprozessen und Muren mit einem GIS, Zugl.: Eichstätt, Katholische Univ., Diss., 2005 u.d.T.: Wichmann, Volker: Entwicklung von prozessorientierten Modellen zur flächenverteilten Abgrenzung und Klassifizierung der Wirkungsräume von Sturzprozessen und Muren mit einem GIS - dargestellt am Einzugsgebiet 825 des Lahnenwiesgrabens Ammergebirge, *Eichstätter Geographische Arbeiten*, 15, Profil-Verl., München, Wien, 231 pp., 2006.
- Wilford, D. J., Sakals, M. E., Innes, J. L., Sidle, R. C., and Bergerud, W. A.: Recognition of debris flow, debris flood and flood hazard through watershed morphometrics, *Landslides*, 1, 61–66, <https://doi.org/10.1007/s10346-003-0002-0>, 2004.
- Winter, M. G.: Debris flows, in: *Geological hazards in the UK: Their occurrence, monitoring and mitigation Engineering Group working party report*, edited by: Giles, D. P. and Griffiths, J. S., The Geological Society, London, 163–185, 830 <https://doi.org/10.1144/EGSP29.5>, 2020.
- Wu, W.: *Recent Advances in Modeling Landslides and Debris Flows*, Springer International Publishing, Cham, Heidelberg, New York, Dordrecht, London, 318 pp., 2015.
- Zhao, Y., Meng, X., Qi, T., Qing, F., Xiong, M., Li, Y., Guo, P., and Chen, G.: AI-based identification of low-frequency 835 debris flow catchments in the Bailong River basin, China, *Geomorphology*, 359, 107125, <https://doi.org/10.1016/j.geomorph.2020.107125>, 2020.
- Zhou, W., Tang, C., van Asch, T. W. J., and Chang, M.: A rapid method to identify the potential of debris flow development induced by rainfall in the catchments of the Wenchuan earthquake area, *Landslides*, 13, 1243–1259, <https://doi.org/10.1007/s10346-015-0631-0>, 2016.

840 Zimmermann, M.: Debris flows 1987 in Switzerland: geomorphological and meteorological aspects, IAHS, Hydrol. Mountainous Regions, 2, 387–393, available at: https://hydrologie.org/redbooks/a194/iahs_194_0387.pdf, 1990.