

# Large-scale risk assessment on snow avalanche hazard in alpine regions

Gregor Ortner<sup>1,2,3</sup>, Michael Bründl<sup>1,2</sup>, Chahan M. Kropf<sup>3,4</sup>, Thomas Rössli<sup>3,4</sup>, Yves Bühler<sup>1,2</sup>, and David N. Bresch<sup>3,4</sup>

<sup>1</sup>WSL Institute for Snow and Avalanche Research SLF, 7260 Davos Dorf, Switzerland

<sup>2</sup>Climate Change, Extremes and Natural Hazards in Alpine Regions Research Center CERC, 7260 Davos Dorf, Switzerland

<sup>3</sup>Institute for Environmental Decisions, ETH Zurich, Universitätstr. 16, 8092 Zurich, Switzerland

<sup>4</sup>Federal Office of Meteorology and Climatology MeteoSwiss, Operation Center 1, P.O. Box 257, 8058 Zurich-Airport, Switzerland

**Correspondence:** Gregor Ortner (gregor.ortner@slf.ch)

**Abstract.** Snow avalanches are recurring natural hazards that affect the population and transport infrastructure in [\[..<sup>1</sup> \]mountainous](#) regions during the winter months such as in the most recent avalanche winters of 2018 and 2019, where large damages were caused by avalanches throughout the Alps. Decision makers need detailed information on the spatial distribution of the hazard and risk [\[..<sup>2</sup> \]](#) to prioritize and apply appropriate adaptation strategies and mitigation measures to minimize impacts.

5 Here, we present a novel risk assessment approach for assessing the spatial distribution of avalanche risk by combining large-scale hazard mapping with a state-of-the-art risk assessment tool, where risk is understood as the product of hazard, exposure, and vulnerability. Hazard disposition is modeled using the large-scale hazard indication mapping method RAMMS::LSHIM, and risks are assessed using the probabilistic Python-based risk assessment platform CLIMADA, developed at ETH Zürich. The avalanche hazard mapping for scenarios with a [\[..<sup>3</sup> \]30-, 100-, and 300-year](#) return period is based on a high-resolution  
10 terrain model, 3-day snow depth increase, automatically determined potential release areas, and protection forest information. Avalanche hazard for 40,000 single snow avalanches is [\[..<sup>4</sup> \]expressed as](#) avalanche intensity measured as pressure. Exposure is represented with a detailed building layer indicating the spatial distribution of monetary assets. Vulnerability of the buildings is defined by damage functions based on the software EconoMe, which is in operational use in Switzerland. The outputs of the hazard, exposure, and vulnerability analyses are combined to quantify the risk in spatially explicit risk maps. The risk  
15 considers the probability and intensity of snow avalanche occurrence as well as the concentration of vulnerable, exposed buildings. Uncertainty and sensitivity analyses were performed to capture inherent variability in the input parameters. This new risk assessment approach allows for the quantification of avalanche risk on large scales and results in maps that show the spatial distribution of risk at specific locations. Large-scale risk maps can assist decision makers in identifying areas where hazard mitigation and/or adaptation is needed to address current and future avalanche risk.

---

<sup>1</sup>removed: alpine

<sup>2</sup>removed: in order

<sup>3</sup>removed: 30, 100, and 300 year

<sup>4</sup>removed: assessed in

## 20 1 Introduction

In a time of densely populated <sup>[..<sup>5</sup>]</sup>mountainous landscapes and continuous socio-economic growth, society is increasingly exposed to natural hazards (Zgheib et al., 2020). In mountainous regions such as the Alps, avalanches are a significant natural hazard in winter causing damage to buildings and infrastructure. In the past 20 years, <sup>[..<sup>6</sup>]</sup>countries situated in the European Alps such as Switzerland have experienced multiple catastrophic avalanche situations. <sup>[..<sup>7</sup>]</sup>The winter 2017/18 was the first since the catastrophic avalanche winter of 1999 (Wiesinger and Adams, 2007) in which the highest avalanche danger, level 5, was forecasted for wide areas across the Swiss Alps. In January 2018, 2.5 to <sup>[..<sup>8</sup>]</sup>5m of snow fell at higher altitudes within 25 days. Numerous avalanches in the categories "large" and "very large" were counted (Zweifel et al., 2019). In total, over 380 avalanches caused a damage to buildings, traffic routes, or important infrastructure in Switzerland (Bründl et al., 2019), making it to the most severe avalanche winter in recent years, not only in Switzerland, but also in Austria, and Germany (MeteoSchweiz, 2019; Pancevski, 2019; ZAMG, 2020; Trachsel et al., 2020). Also in winter 2018/19, for example, exceptional snowfall events occurred which caused high damages throughout Switzerland (Trachsel et al., 2020). Such events show that even in highly developed, well adapted countries, society is still vulnerable to extreme snowfall events causing avalanche hazards. Strategies, methods, and risk assessments to counteract this threat are well developed in most areas in the Alps, but they need to be continuously developed to strengthen and improve the resilience of the population and their assets (Zgheib et al., 2020).

35 To cope with natural hazards threatening exposed assets, various institutions have introduced the concept of risk <sup>[..<sup>9</sup>]</sup>to the field of natural hazards. The IPCC for instance defines risk as the likelihood for the disturbance of the normal functionality of a society due to a hazardous physical event under vulnerable social conditions (= vulnerability) with economic, material or environmental consequences (IPCC, 2014), see also Fig. 1. <sup>[..<sup>10</sup>]</sup>

<sup>[..<sup>11</sup>]</sup>

40 <sup>[..<sup>12</sup>]</sup>

<sup>[..<sup>13</sup>]</sup>

---

<sup>5</sup>removed: alpine

<sup>6</sup>removed: alpine countries

<sup>7</sup>removed: In winter 2019, for example, exceptional snowfall events which caused high damages throughout Switzerland (Trachsel et al., 2020).

<sup>8</sup>removed: 5 m

<sup>9</sup>removed: has been introduced in Switzerland in the late 1990s to support decision makers for dealing with natural hazards (Heinimann et al., 1998; Borter, 1999; Bründl et al., 2009). The risk concept became also the central element of the Strategy for Natural Hazards of the National Platform Natural Hazards (PLANAT) in Switzerland (PLANAT, 2009, 2018). In the context of natural hazards in Switzerland, risk is defined as the product of hazard potential, objects at risk (exposure) and their vulnerability (Borter and Bart, 1999). In more detail, Bründl et al., defines risk as the damage that is statistically expected due to the hazard intensity (= caused by avalanche pressure) in a given scenario, calculated as the product of the expected damage and the frequency (= 1/return period) of this scenario. More generally, the IPCC

<sup>10</sup>removed: In this study, we use an extended definition of the IPCC risk concept by Aznar-Siguan and Bresch (2019) expressing risk as the probability of a consequence and its severity:

<sup>12</sup>removed: , where

According to this definition, the risk concept can also be applied to harmful consequences to the environment and environmental systems. A consideration of the impacts of natural hazards to the environment is generally also of importance to the authors of this study. But since the damage to human life's and man-made objects is of greater importance to society and decision makers, this concept is mostly applied to infrastructure and buildings, as it is also in this study. The concept of risk has been introduced in Switzerland in the late 1990s to support decision makers for dealing with natural hazards (Heinimann et al., 1998; Borter, 1999; Bründl et al., 2009). The risk concept became also the central element of the Strategy for Natural Hazards of the National Platform Natural Hazards (PLANAT) in Switzerland (PLANAT, 2009, 2018). Overviews on natural hazards risks and vulnerabilities in different spatial scales were generated by various institutions in the last decade (MATRIX Consortium, 2013; van Westen and Greiving, 2017; Fuchs et al., 2019; FOEN, 2020). These studies vary from vulnerability surveys (Fuchs et al., 2015) to multi-risk and resilience approaches (Kappes et al., 2012; Komendantova et al., 2016). Projects such as RoadRisk carried out by the Swiss Federal Roads Office (ASTRA, 2012) or the National Risk Overview initiated by the Swiss Federal Office for the Environment (FOEN, 2020) were created with a lot of effort and long project duration's. Such projects indicate the demand for large-scale risk surveys.

What is missing so far [..<sup>14</sup>] is a method to assess avalanche risk at a regional or national scale, with a state-of-the-art hazard mapping tool, which would allow decision-makers to identify hot spots of avalanche risk. [..<sup>15</sup>] The so-produced risk maps show in short term studies where detailed assessment would be necessary to develop appropriate [..<sup>16</sup>] [..<sup>17</sup>] risk management.

The goal of this study is to suggest a framework for assessing avalanche risk at a large scale, as it is presented in Fig. 1. The method was applied in a case study to a region in central Switzerland, but could be deployed anywhere in the world. Since the components of risk are not constant, such a framework can also help to depict changes of the components of risk, such as hazard, exposure and vulnerability over time and space. In this paper, we focus on the presentation of the framework for the current risk situation, which will serve as a platform for modelling expected climate and socio-economic induced changes of risk in future.

Especially in the context of climate change and population growth, new strategies and tools that assist [..<sup>18</sup>] to systematically identify risk and respond to threats in exposed areas are of increasing importance (IPCC, 2012). Changes in the climate system and their influence on local weather phenomena do not only affect us already (CH2018, 2018), but will likely lead to an increase of the frequency and magnitude of natural hazards in the years to come (IPCC, 2014). In particular, various studies indicate that changes in the climate system, such as temperature rise and an increase of extreme precipitation events, will likely influence gravity-driven hazards (Mani and Caduff, 2012; Ballesteros-Cánovas et al., 2018), such as snow avalanches.

---

<sup>14</sup>removed: ,

<sup>15</sup>removed: Such hot spots show

<sup>16</sup>removed: adaptation measures.

<sup>17</sup>removed: A schematic illustration of the IPCC risk concept with the used input data for generating information on exposure, hazard and vulnerability, used to create risk maps and perform risk analyses.

<sup>18</sup>removed: in exposed regions

The paper is organised as follows. First, we present the [..<sup>19</sup>] methods in detail followed by a section in which we show how [..<sup>20</sup>] these new methods operate and how they can be applied to specific examples, such as the case study in central Switzerland. In the [..<sup>21</sup>] results section, we [..<sup>22</sup>] depict the spatial distribution of the calculated risks, analyse the uncertainties and perform a sensitivity study. Finally, we discuss progress and limitations of the new method and conclude [..<sup>23</sup>] how this framework might contribute to a dialogue on the changes of risk at a large scale.

## 2 Methods

[..<sup>24</sup>]

### 2.1 Risk

80 In the context of natural hazards in Switzerland, risk is defined as the product of hazard potential, objects at risk (exposure) and their vulnerability (Borner and Bart, 1999). In more detail, Bründl et al. (2016), defines risk as the damage that is statistically expected due to the hazard intensity (= caused by avalanche pressure) in a given scenario, calculated as the product of the expected damage and the frequency (= 1/return period) of this scenario.

In this study, the risk tool CLIMADA is used for risk assessment and therefore we use the definition of the framework developers. It is a similar but extended definition of the IPCC risk concept by Aznar-Siguan and Bresch (2019) expressing risk as the probability of a consequence resulting from a hazard and its severity:

$$\text{risk} = \text{probability} \times \text{severity} \quad (1)$$

, where

$$\text{severity} = F(\text{hazard intensity, exposure, vulnerability}) = \text{exposure} \times \text{vulnerability function}(\text{hazard intensity}) \quad (2)$$

90

---

<sup>19</sup> removed: method

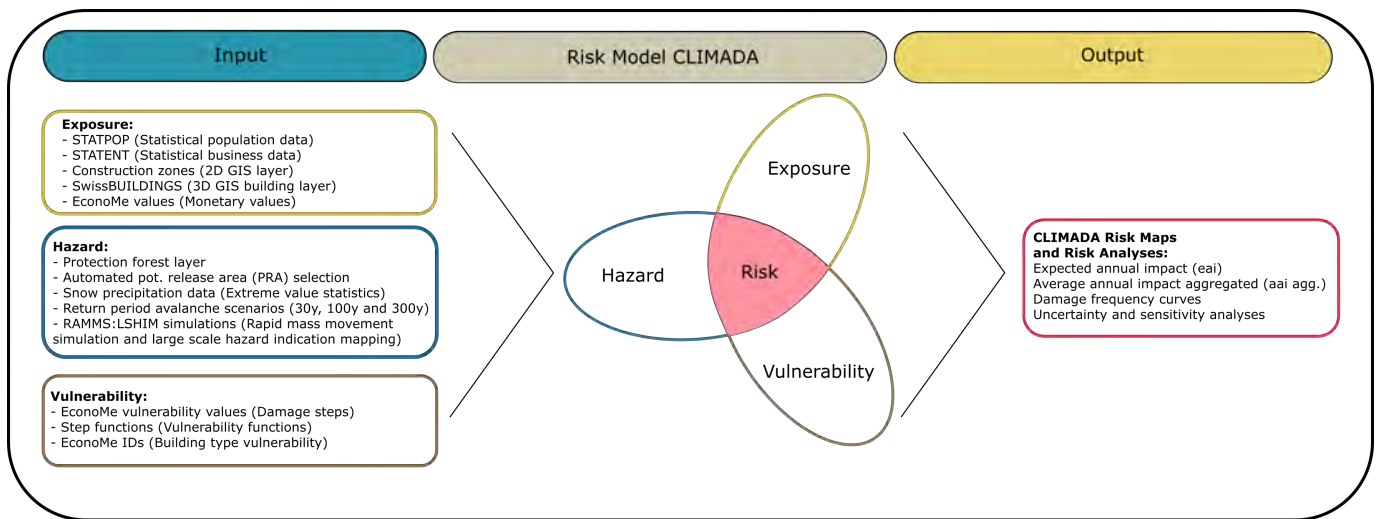
<sup>20</sup> removed: this new method operates and how it

<sup>21</sup> removed: result

<sup>22</sup> removed: show

<sup>23</sup> removed: finally

<sup>24</sup> removed: Since our



**Figure 1.** A schematic illustration of the applied IPCC risk concept with the used input components for generating the base information on exposure, hazard and vulnerability, used to create risk maps and perform risk analyses.

Since the consideration of risk requires the three components of [<sup>25</sup>]; ~~Hazard, Exposure and Vulnerability~~, see Fig. [<sup>26</sup>], we give a brief introduction to this components: The **Hazard** (Section 2.3) class is obtained by avalanche hazard mapping using the "RAMMS:LSIHM" (Rapid Alpine Mass Movement Simulation:: Large Scale Hazard Indication Mapping) method. For this purpose, a protection forest layer (Section 2.3.2) is generated that defines where protection forest is located. Using this layer, potential release areas (PRA) can be identified with an automatic algorithm. Using extreme value statistics, maximum 3-day snowfalls are analysed and three avalanche scenarios with return periods (rp) of 30 years, 100 years and 300 years are defined (Section 2.3.1). PRA calculation and also protection forest creation ~~take these scenarios into account~~. With the defined potential release areas and an assigned amount of snow, the RAMMS (Section 2.3.4) avalanche simulations can now be carried out and a hazard indication map can be generated as a hazard class.

The **Exposure** (Section 2.4) is a data set that defines the exposed monetary values. It is composed of statistical data on the resident population called STATPOP (number of persons per building) and the economic data STATENT (location of places of business). These are available in a GIS data set with coordinates. Furthermore, Swiss building zones and a 3D building data set are used. Monetary values are then assigned using the Swiss standard risk methodology "EconoMe" (Section 2.4.1). Thus, a new exposure data set is created that shows the geographical distribution of the monetary values on a map (Section 2.4.2).

The third component is the **Vulnerability** (Section 2.5) class, which defines ~~the damage sensitivity of an object~~ that is exposed to a certain avalanche pressure. The EconoMe risk methodology specifies values for building damage in

<sup>25</sup>removed: hazard, vulnerability and exposure (

<sup>26</sup>removed: ), the

110 percentage caused by a certain avalanche pressure. These values are adopted in steps and define the step function as a so-called impact or vulnerability function (Section 2.5.1). According to EconoMe, these functions can be assigned to a certain building type by means of an ID and thus be used in the risk framework.

To express these components in numbers in the context of the **Risk** concept (Section 2.1), the CLIMADA (Section 2.1.1) (Climate Adaptation) risk model is used. This model allows us to express the risk in monetary terms such as the expected annual impact (eai) as well as the aggregated average annual impact (aai agg.) and depict them on spatial risk maps (Section 3.1) of the considered region. These values can also be presented in damage frequency curves (Section 3.3) to show at which return period which monetary losses would be expected. A sensitivity and uncertainty analysis (Section 2.6.1) completes the risk assessment and shows the limitations of the framework.

The methods chapter is organized into [..<sup>27</sup>] subsections explaining all components of the risk framework from hazard, exposure and vulnerability to risk, and its application to the case study region (Section 2.2) in detail. These subsections contain the information on how the respective components were defined and generated in this study and how they are used to calculate the spatially distributed monetary terms of risk.

### 2.1.1 CLIMADA

CLIMADA is an open-source and -access *Python* package for probabilistic risk assessment (Aznar-Siguan and Bresch, 2019). It allows for the computation of the impact of natural hazards, modelled as intensity maps, on exposures, modelled as value maps, considering the vulnerability of the exposures, modelled as impact functions. It is possible to compute the risk today and in the future, including climate change that modifies the hazard and socio-economic development affecting the exposures and vulnerability. Finally, one can compute the reduction in risk and cost from adaptation options to perform a cost-benefit analysis (Kropf et al., 2021). For all the model outputs, CLIMADA provides a module to perform uncertainty and sensitivity analysis (Kropf et al., 2022) using global (quasi-)Monte-Carlo sampling.

In this project, we use CLIMADA to compute the risk of avalanches to more than 13,000 individual single buildings, from each of the 40,000 simulated avalanches using the hazard intensity maps described in Sect. 2.3, the exposures distribution described in Sec. 2.4 and the impact functions introduced in Sec. 2.5. As defined in the CLIMADA tool (Aznar-Siguan and Bresch, 2019), the impact is expressed by the following risk quantities:

- 135 – the expected annual impact (eai) for each exposure (affected building) expressed in monetary terms per year (CHF per year). It combines the hazard intensity with its expectation (= return period) and the damage degree from the impact functions;
- the average annual impact (aai) is the average of the expected annual impacts (eai) over all exposures, expressed in monetary terms per year (CHF per year);

---

<sup>27</sup>removed: these subsections

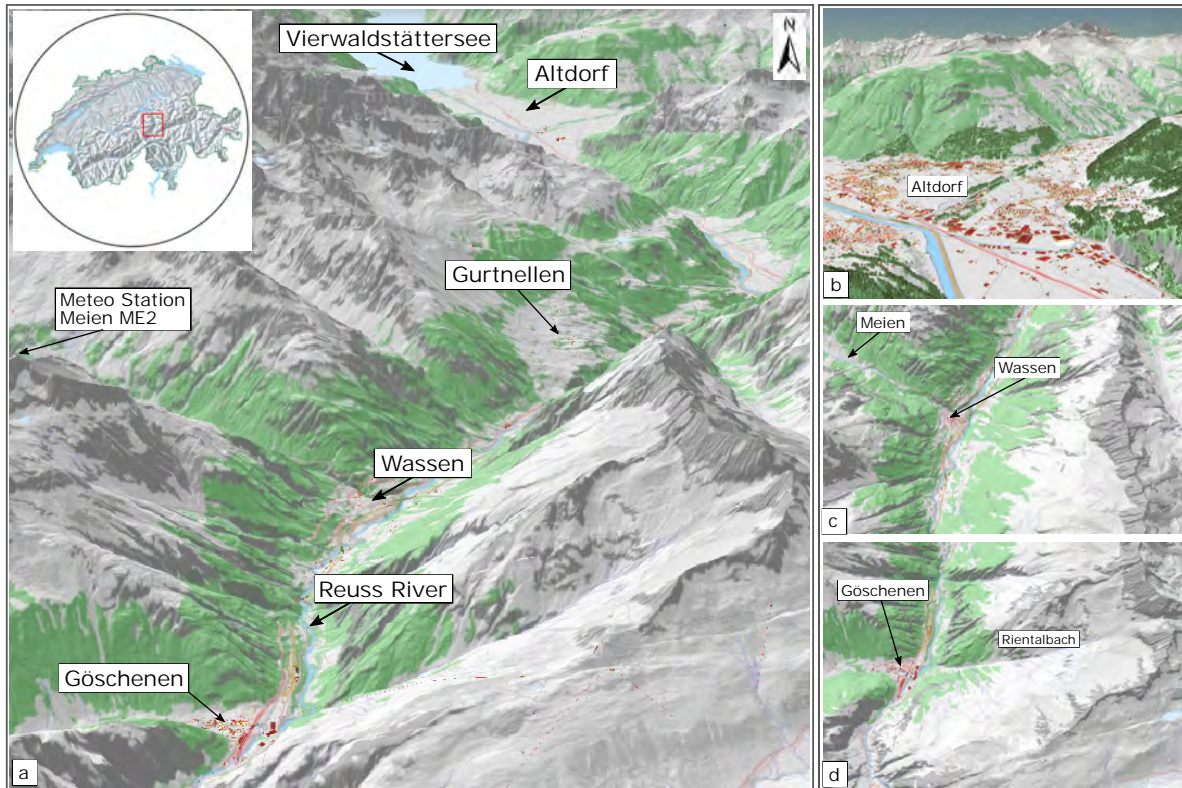
- 140 – the average annual impact aggregated (aai agg.) is the sum of the average annual impacts (aai) for each scenario or all scenarios combined expressed in monetary terms per year (CHF per year). The aai agg. corresponds to the overall risk.

To show general patterns of risk and to look at the overall risk of all scenarios, we adjusted the three scenarios for the combination with regard to the return period by  $p_{30} = p_{30} - p_{100} = 1/30 - 1/100 = 0.0233$  and  $p_{100} = p_{100} - p_{300} = 1/100 - 1/300 = 0.00667$  and  $p_{300} = 1/300 = 0.0033$ . This allowed us to combine the hazard scenarios and recalculate the overall impacts such as the expected annual impact (= eai) for single objects over all hazard scenarios in the entire study region as it is shown in the result section.

In a further step, the uncertainties and sensitivity of the risk framework will be derived as described in Sec. 2.6.

## 2.2 Case study region

- 150 For this study we focus on a case study area of the Gotthard region (Fig. 2) in central Switzerland between Altdorf and Göschenen in the Swiss Canton of Uri, one of the most important north-south transit corridors in Europe. The Gotthard area is one of the snowiest regions in Switzerland and characterized by many steep, non-forested slopes of different orientations making the region highly exposed to avalanches. Steep meadows or rocky slopes form avalanche release areas from 28° to 50° slopes in the upper catchment area of the main Reuss valley and reach from an altitude of approx.
- 155 1700 m a.s.l. up to almost 3000m a.s.l. At heavy snowfall events, avalanches start in the backcountry release zones and sometimes flow down to valley bottom where the snow masses are deposited in the river bed of the Reuss river.



**Figure 2.** Illustration of the case study area of the Gotthard region in central Switzerland with the avalanche prone slopes. a) overview of the region with a map panel of Switzerland. b) Detail of the village Göschenen with the well known Rientalbach avalanche path. c) Hazard hot-spot Wassen. d) Altdorf and its surrounding slopes. Forests are shown in green and buildings in red. Map base data source: Swiss Federal Office of Topography (map.geo.admin.ch)

### 2.3 Hazard - Avalanche hazard indication mapping with RAMMS::LSHIM

160 Hazard indication mapping of snow avalanches at a scale of 1:5,000 to 1:10,000 was carried out for backcountry users (Harvey et al., 2018) and exposed communities in Switzerland (Bühler et al., 2022), Italy (Maggioni et al., 2018; Monti et al., 2018), and other regions worldwide (Bühler et al., 2018). [..<sup>28</sup> ]To cover all possible avalanches affecting the region, every hydrological catchment stretching from the main valley up to the mountain ridges of the side valleys was regarded as potential process [..<sup>29</sup> ]area. The individual catchments were combined into a large comprehensive perimeter outlining the study area (Fig. 4). To identify relevant catchment areas that are particularly affected by avalanches, a data set of all historical damaging avalanches

<sup>28</sup>removed: For this study we focus on the Gotthard region in central Switzerland, which is one of the most important north-south transit corridors in the alps and has a long avalanche history and is still frequently threatened by avalanches (Fig. 5) . In order to

<sup>29</sup>removed: areas



observed and recorded by the WSL Institute for Snow and Avalanche Research SLF and cantonal and federal authorities were taken as a basis. The [..<sup>30</sup>]selection of the hydrological catchment areas also includes areas [..<sup>31</sup>]with no avalanche records but [..<sup>32</sup>]were regarded as relevant for hazard [..<sup>33</sup>]indication mapping in this study.

### 2.3.1 Definition of three avalanche scenarios

To cover a large range of potential avalanche events, we consider 3 different avalanche scenarios (see Tab. 1). One frequent scenario [A] corresponding to a snowfall event with a 30-year return period, one intermediate [B] (100-year return period) and one extreme [C] scenario (300-year return period). The definition of the scenarios is implemented according to the maximum 3-day snow depth increase and directly determines the mean fracture depths, thereby the release volume and thus the modelled avalanche run out lengths. The higher the return period, the larger the mean avalanche volume. The term return period (rp) describes the average number of years between two comparable events of the same intensity at the same location. By hazard frequency we denote the probability of occurrence calculated as reciprocal value of the return period (1/rp). This definition is common practice in avalanche hazard mapping (PLANAT, 2009; Salm et al., 1990).

The derivation of the 3-day snow depth increase was based on long-term snow measurement series at meteorological stations representative for the chosen area. As shown in Fig. 3, two extreme value statistical methods were applied: the generalized extreme value distribution with maximum likelihood estimations (GEV - MLE) and the Gumbel distribution (Bocchiola et al., 2008) with maximum likelihood estimations (GUM-MLE). Table 1 shows that both methods produce similar values, but slightly higher values with Gumbel (GUM-MLE). This depends on the choice of the fitted correlation through the value distribution. Since the Gumbel (GUM-MLE) distribution rather represents a "worst case" for the respective return period and Bocchiola et al. (2008) confirms the application of this method, these values were chosen for the fracture depth determination. To account for elevation of the release area, a correction factor has to be applied. Blanchet et al. (2009) estimated this factor to be about +/- 2 cm per 100 elevation meters, whereas Swiss practitioners usually use a gradient of 5 cm per 100 elevation meters (Margreth et al., 2008). In consideration of the large avalanche scenarios, we applied 5 cm per 100 elevation meters to each release polygon corresponding to existing studies in the Swiss Alps (Bühler et al., 2022). This elevation correction was applied based on the reference elevation of the measuring station ME2 at 1320m a.s.l. This correction was calculated to each individual release area depending on the difference of the respective altitude compared to the altitude of the measuring station. ~~If, for instance, a release area is 500m higher than the reference altitude, a correction surcharge of 25cm snow would be added to the release area.~~ As it is standard in avalanche practise, for steeper terrain, we assume that less snow accumulates than in flat terrain. Depending on the average inclination of the individual release area, the slope correction factor of the snow height for each PRA is individually calculated and corrected. This is applied automatically in the ArcGIS Python script for fracture depth  $d_0$  calculation by

---

<sup>30</sup>removed: combination

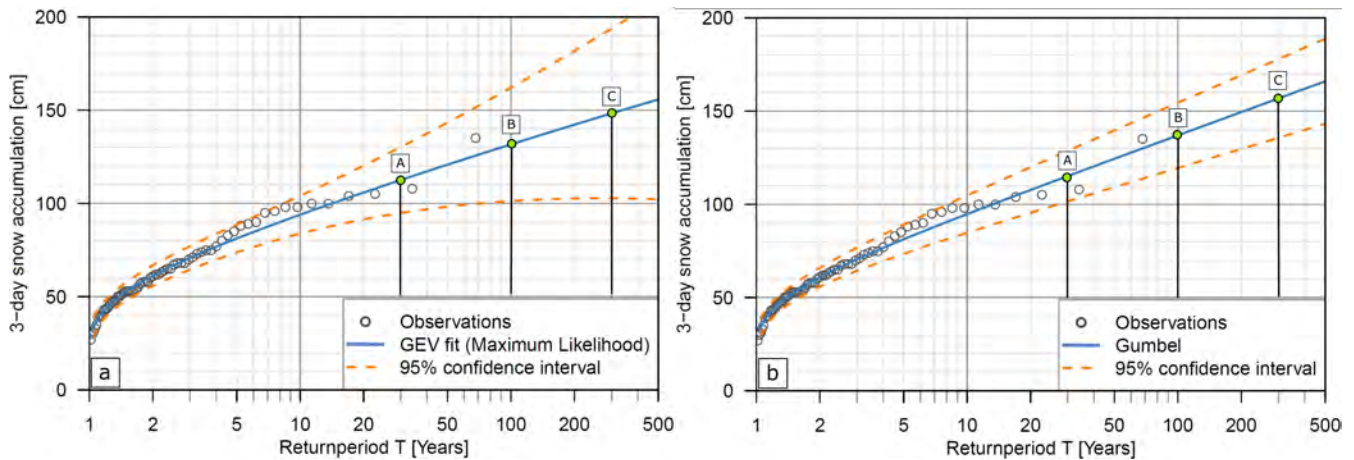
<sup>31</sup>removed: that have

<sup>32</sup>removed: may still be

<sup>33</sup>removed: mapping

195 using a slope factor  $\psi$  generally depending on the snow resistance.  $\psi = 0.291/\sin(\alpha) - 0.202 \times \cos(\alpha)$  with  $\alpha$  being the slope angle (Salm et al., 1990; Gruber and Margreth, 2001; Bühler et al., 2018) and the fracture depth  $d0$  being a function of the 3-day snow depth increase  $d0^*$  and the slope factor  $\psi$ , expressed as  $d0 = d0^* f(\psi)$  (Salm et al., 1990).

200 Snow depth increase data was taken from the SLF-station Meien ME2. This station has a record of 66 years and includes extreme snowfalls (e.g. winter 1950/51 and 1998/99), making the data basis more reliable for extreme events. It is located in the center of the project area at an altitude of 1320 m a.s.l., which is close to the average altitude of the release areas. Since the 3- day snow depth increase (see Fig. 3) at the meteorological station Meien is taken in flat field, a standard slope inclination correction (Salm et al., 1990; Margreth, 2007) was conducted at all release polygons to consider an adapted fracture depth  $d0$ . To correct for the influence of drifting snow, a snow drift factor was added depending on the size of the scenario (Salm et al., 1990). In practice, this factor strongly depends on local conditions at the release zones (Margreth, 2007). For the 30-year return period scenario we added 30 cm and for the 100-year return period scenario 40 cm and the 300-year return period scenario 50 cm of drifting snow correction. After defining the fracture depth and the area of the release zones as well as applying the corresponding correction factors, the volume for each release area could be determined and used for the hazard simulation with the RAMMS:LSHIM large scale hazard indication mapping model (Bühler et al., 2018, 2022).



**Figure 3.** Extreme value statistics of the 3-day snow depth increase data ( $\Delta$ HS3) of the meteo-station Meien (1320 m a.s.l.) for determining scenario return periods, Fig. 3(a): Generalized extreme value distribution with maximum likelihood estimations (GEV-MLE) for return period scenarios [A] = 30-year, [B] = 100-year, [C] = 300-year; Fig. 3(b): Gumbel (GUM-MLE) distribution with maximum likelihood estimations for return period scenarios [A] = 30-year, [B] = 100-year, [C] = 300-year, see Tab. 1.

**Table 1.**  $\Delta$  3-day snow depth accumulation [cm] at the weather station Meien (1320 m a.s.l.) in canton of Uri.

Scenario	Return Period	GEV-MLE [cm]	GUM-MLE [cm]
[A]	30-year	112	114
[B]	100-year	130	136
[C]	300-year	147	156

### 2.3.2 Creation of the avalanche protection forest layer and delineation of the release areas

Forest influences the snowpack structure by interception [..<sup>34</sup> ]and changes in the micro-climate. A increased topographic ground surface roughness by forests, and interregular layers in the snowpack prevent avalanche formation. In some cases dense forests are even able to stop movement of small avalanches due to higher friction in the [..<sup>35</sup> ]flow- and the avalanche run-out zone (Schneebeli and Bebi, 2004; Bebi et al., 2009; Teich et al., 2012; Brožová et al., 2021). [..<sup>36</sup> ]To take forest cover into account for hazard mapping, we used the algorithm developed by Bebi et al. (2021) and introduced by Bühler et al. (2022) [..<sup>37</sup> ]to identify protective forest in the study area (Fig. [..<sup>38</sup> ]4). The algorithm of Bebi et al. is based on a database of 150 forest avalanches and yields a logistic regression model taking into account the parameters slope gradient, degree of forest cover and gap widths. Together with a vegetation height model [..<sup>39</sup> ]and a high resolution elevation model[..<sup>40</sup> ], a generated logistic regression model was used to calculate the avalanche disposition (Bebi et al., 2021). The so-derived protective forest was calculated for frequent (return periods < 100 years) and extreme scenarios (return period > 100 years). The protection forest model [..<sup>41</sup> ]is improved and extended by "shrub forest" (= additional bush forest) layer (Weber et al., 2020) and a ground roughness layer. [..<sup>42</sup> ]Since forest classified as shrub forest has a reduced protective capacity against avalanche release, the existing protective forest layer was expanded with a shrub forest component to take account of the reduced protective effect for avalanche release. This is a significant improvement over previous protective forest layers in which shrub forest was not specially designated. In this study, in a frequent scenario with a 30-year return period, shrub forest prevents avalanche release, in the large scenarios with 100-year or 300-year return periods, this effect no longer has any influence. The ground roughness layer classifies rough ground to mitigate avalanche release to a certain extent. The so-implemented ground roughness is taken into account for the protective forest layer calculation in frequent avalanche scenarios. This procedure results in a binary protection forest layer (green forest layer in Fig. 4) that divides the area of investigation into areas with and areas without protection forest [..<sup>43</sup> ](Bebi et al., 2021). With a forest layer generated

<sup>34</sup>removed: , micro-climate and surface roughness, prevents avalanches formation and is

<sup>35</sup>removed: transition-

<sup>36</sup>removed: In order to

<sup>37</sup>removed: for avalanche hazard mapping.

<sup>38</sup>removed: 2). This algorithm

<sup>39</sup>removed: (VHM)

<sup>40</sup>removed: (DEM)

<sup>41</sup>removed: (Fig. 2)

<sup>42</sup>removed: This

<sup>43</sup>removed: (Bebi et al. (2021))

this way, it is assumed for the large-scale avalanche mapping process that an avalanche release in the forest is not possible (Bühler et al., 2018). [..<sup>44</sup> ]For more details on the algorithm see the study of Bebi et al. (2021). Further, the formation of avalanches is also [..<sup>45</sup> ]altered by infrastructure, such as [..<sup>46</sup> ]buildings, railways and roads, which subdivide avalanche release areas into smaller sub-areas. Therefore, they are also added to the binary layer as areas that prevent avalanche release.

[..<sup>47</sup> ]  
[..<sup>48</sup> ]For avalanche release volumes  $< 25'000 \text{ m}^3$ , the binary forest layer [..<sup>49</sup> ]is considered for the flow simulations with assigned friction parameters  $\mu$  (basal friction) and  $\xi$  (turbulent friction). Values of  $\mu = 0.020$  and  $\xi = 400$  were assigned for the simulations in RAMMS::LSHIM, because protective forest has an strong influence on the friction during the run out of the avalanches in frequent scenarios with smaller avalanche volumes. For avalanche release areas with volumes  $> 25'000 \text{ m}^3$ , the influence of the protective forest is neglected, since the energy generated during the flow process mostly destroys the protective forest and has often hardly any noticeable effect on the size of the affected area in the run out zone (Bartelt et al., 2017). In the extreme scenarios the [..<sup>50</sup> ]potential release zones with avalanche volumes  $< 25'000 \text{ m}^3$  are simulated with forest influence. In the frequent scenarios, on the other hand, the [..<sup>51</sup> ]potential release areas [..<sup>52</sup> ]with avalanche volumes  $> 25'000 \text{ m}^3$  are simulated also without forest.

### 2.3.3 Generation of automated avalanche release areas

[..<sup>53</sup> ]To model the avalanche hazard, it is essential to correctly identify the potential avalanche release areas. In practice and for applications on single slopes, this is usually done individually by expert assessment considering geometrical properties of the avalanche prone slopes. This individual selection is no longer efficient for a large-scale application like in this study and was therefore done with an automated approach introduced by Maggioni and Gruber (2003) and further developed by Bühler et al. (2013); Veitinger et al. (2016); Bühler et al. (2018), applied to large scales by Bühler et al. (2022).

---

<sup>44</sup>removed: The

<sup>45</sup>removed: prevented

<sup>46</sup>removed: areas with buildings or rail networks and roads. These constructed zones further

<sup>47</sup>removed: A schematic illustration of the python based forest model used for the calculation of the protection forest (PF) in the case study region. This model is based on a logistic model that represents avalanche formation in forest. GIS input data: a vegetation height model (VHM), a digital terrain model (DTM) and a shrub (bush) forest layer were used. FC = Forest cover, GW = Gap width, Fig. modified after Bebi et al. (2021).

<sup>48</sup>removed: For release volumes volume

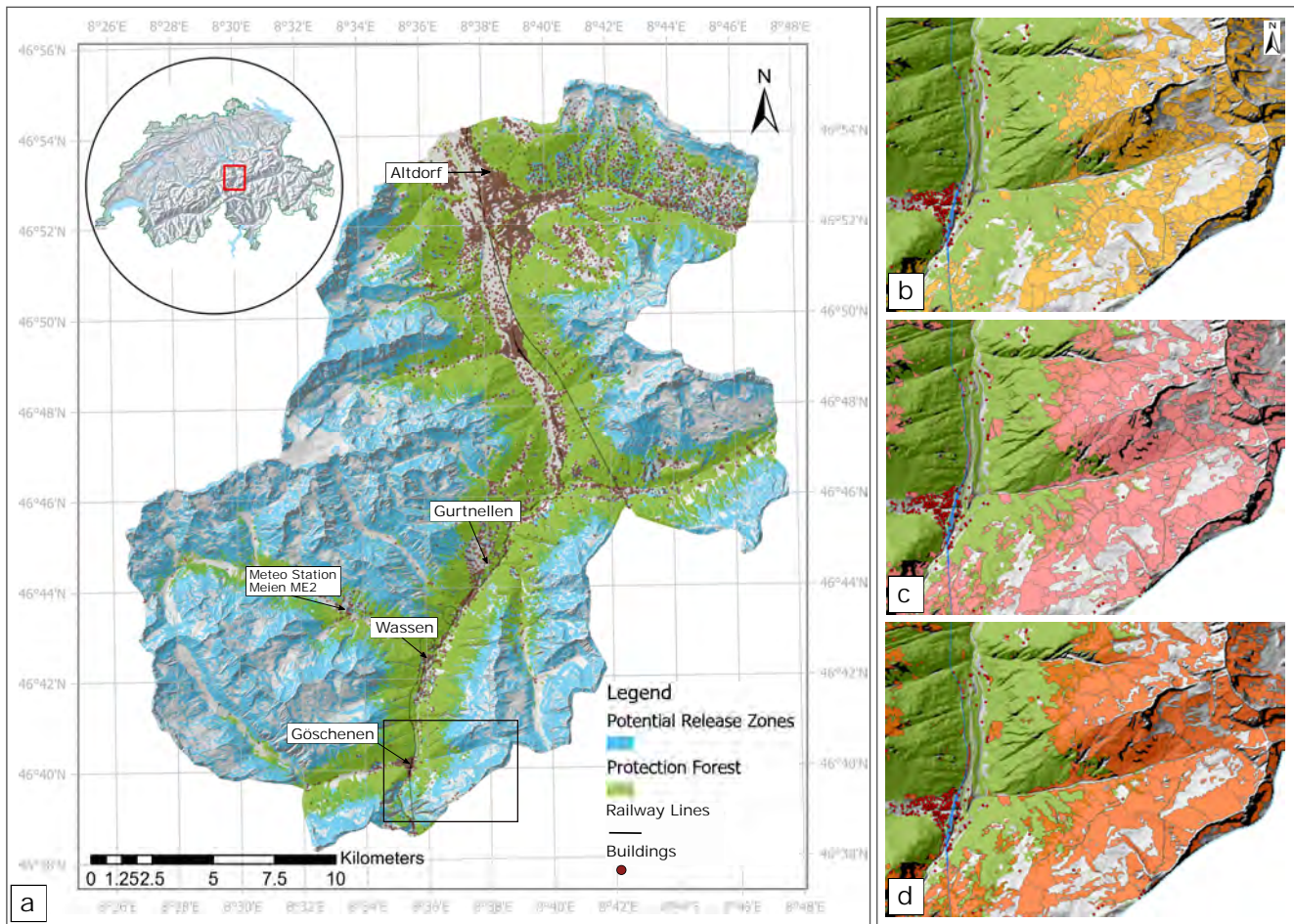
<sup>49</sup>removed: as described above

<sup>50</sup>removed: tiny and small

<sup>51</sup>removed: medium and large

<sup>52</sup>removed: are calculated

<sup>53</sup>removed: In order to



**Figure 4.** (a) Overview of the project area with the automatically generated protection forest layer in green and the area of potential avalanche release in blue, (b-d) automatically generated individual **potential avalanche** release areas (b) for a 30-year return period, (c) for a 100-year return period, (d) for a 300-year return period. Map base data source: Swiss Federal Office of Topography

This approach is based on a terrain analysis in a GIS and the "object based image classification OBIA" method (Blaschke, 2010) to delineate the individual release polygons, which serve as input for the large scale avalanche hazard indication modelling (Bühler et al., 2013; Bühler et al., 2018). The algorithm analyses the slope geometry and identifies all possible potential avalanche release zones automatically for a given set of input data. With the automated processing, the single **potential avalanche** release areas are mapped and classified into four release area size classes: large (release volume > 60[..<sup>54</sup> ],000 m<sup>3</sup>),

<sup>54</sup>removed: \*

260 medium ( $25^{[.55]}$ ,000 -  $60^{[.56]}$ ,000 m<sup>3</sup>), small ( $5^{[.57]}$ ,000 -  $25^{[.58]}$ ,000 m<sup>3</sup>) and tiny ( $< 5^{[.59]}$ ,000 m<sup>3</sup>)<sup>[.60]</sup>. Depending on these release volumes, different friction parameters are assigned to the associated avalanche for the subsequent simulation. These friction parameters **mu (basal friction) and xi (turbulent friction)** are assigned according to the RAMMS standard modelling procedure (Christen et al., 2010) which is known to be standard for hazard mapping in Switzerland.

### 2.3.4 <sup>[.61]</sup>Large scale avalanche <sup>[.62]</sup>hazard indication mapping with RAMMS::LSHIM

<sup>[.63]</sup><sup>[.64]</sup> <sup>[.65]</sup> <sup>[.66]</sup> <sup>[.67]</sup> <sup>[.68]</sup> <sup>[.69]</sup>

<sup>[.70]</sup>We used RAMMS::LSHIM ("<sup>[.71]</sup>Rapid Alpine Mass Movement Simulation ::Large Scale Hazard Indication Mapping"<sup>[.72]</sup>

---

<sup>55</sup>removed: '

<sup>56</sup>removed: '

<sup>57</sup>removed: '

<sup>58</sup>removed: '

<sup>59</sup>removed: '

<sup>60</sup>removed: , depending on the initial scenario input definitions (see Fig. 4).

<sup>61</sup>removed: Definition of three

<sup>62</sup>removed: scenarios

<sup>63</sup>removed: To cover a large range of potential avalanche events, we use 3 different avalanche scenarios (see Tab. 2). One frequent scenario

<sup>64</sup>removed: A

<sup>65</sup>removed: corresponding to a snowfall event with a 30-year return period, one intermediate

<sup>66</sup>removed: B

<sup>67</sup>removed: (100-year return period) and one extreme

<sup>68</sup>removed: C

<sup>69</sup>removed: scenario (300-year return period). The definition of the scenarios corresponds to the maximum 3-day snow depth increase and directly determines the mean fracture depths, thereby the release volume and thus the modelled avalanche run out lengths. The higher the return period, the larger the mean avalanche volume. The term return period (rp) describes the average number of years between two comparable events of the same intensity at the same location. By hazard frequency we denote the probability of occurrence calculated as reciprocal value of the return period (1/rp). This definition is common practice in avalanche hazard mapping (PLANAT, 2009; Salm et al., 1990).

<sup>70</sup>removed: The derivation of the 3-day snow depth increase was based on long-term snow measurement series at meteorological stations representative for the chosen area. As shown in Fig. 3, two extreme value statistic methods were applied: the generalized extreme value distribution with maximum likelihood estimations (GEV - MLE) and the Gumble distribution (Bocchiola et al., 2008) with maximum likelihood estimations (GUM-MLE). Table 2 shows that both methods produce similar values, but slightly higher values with GUM-MLE. This depends on the choice of the fitted correlation through the value distribution. Since the GUM distribution rather represents a

<sup>71</sup>removed: worst case

<sup>72</sup>removed: for the respective return period and Bocchiola et al. (2008) confirms the application of this method, these values were chosen for the fracture depth determination. To account for elevation of the release area, a correction factor has to be applied. Blanchet et al. (2009) estimated this factor to be about +/- 2 cm per 100 elevation meters, whereas Swiss practitioners usually use a gradient of 5 cm per 100 elevation meters (Margreth et al., 2008). In consideration of the large avalanche scenarios, we applied 5 cm per 100 elevation meters to each release polygon corresponding to further studies in the Swiss Alps (Bühler et al., 2022). For steeper terrain, we assumed that less snow accumulates than in flat terrain. This is applied automatically in the ArcGIS Python Script for fracture depth (d0) calculation by using the function  $\psi = 0.219/\sin(\alpha) - 0.202 \times \cos(\alpha)$  with  $\alpha$  being the slope angle (Bühler et al., 2018).

[..<sup>73</sup> ]), which is [..<sup>74</sup> ]

[..<sup>75</sup> ] [..<sup>76</sup> ] [..<sup>77</sup> ] [..<sup>78</sup> ] [..<sup>79</sup> ] [..<sup>80</sup> ] [..<sup>81</sup> ] [..<sup>82</sup> ] [..<sup>83</sup> ] [..<sup>84</sup> ] [..<sup>85</sup> ] [..<sup>86</sup> ] [..<sup>87</sup> ]

[..<sup>88</sup> ] [..<sup>89</sup> ] [..<sup>90</sup> ] [..<sup>91</sup> ] [..<sup>92</sup> ] [..<sup>93</sup> ] [..<sup>94</sup> ] [..<sup>95</sup> ] [..<sup>96</sup> ] [..<sup>97</sup> ] [..<sup>98</sup> ] [..<sup>99</sup> ] [..<sup>100</sup> ] [..<sup>101</sup> ] [..<sup>102</sup> ] [..<sup>103</sup> ] [..<sup>104</sup> ] [..<sup>105</sup> ] [..<sup>106</sup> ]

<sup>73</sup>removed: Snow depth increase data was taken from the SLF-station Meien ME2 (see Fig. 4). This station has a time series of 66 years and includes extreme snowfalls (e.g. winter 1950/51 and 1998/99) making the data basis more reliable for extreme events. It is located in the center of the project area at an altitude of 1320 m a.s.l.

<sup>74</sup>removed: close to the average altitude of the release areas. Since the snow depth increase  $\Delta\text{HS}(3)$  (see Fig. 3) at the meteorological station Meien is taken in flat field, a standard slope inclination correction (Margreth, 2007) was conducted at all release polygons to consider an adapted fracture depth. In order to correct for the influence of drifting snow, a snow drift factor was added depending on the size of the scenario (Salm et al., 1990). In practice, this factor strongly depends on local conditions at the release zones (Margreth, 2007). For the 30-year return period scenario we added 30 cm and for the 100y return period scenario 40 cm and the 300y return period scenario 50 cm of drifting snow correction. After defining the fracture depth and the area of the release zones as well as applying the corresponding correction factors, the volume for each release area could be determined and used for the hazard simulation with the RAMMSlarge scale hazard indication mapping model (Bühler et al., 2018, 2022).

<sup>75</sup>removed: Extreme value statistics of the 3-day snow depth increase data ( $\Delta\text{HS3}$ ) of the meteo-station Meien (1320 m a.s.l.) for determining scenario return periods, Fig. 3(a): GEV-MLE Generalized extreme value distribution with maximum likelihood estimations for scenario

<sup>76</sup>removed: A

<sup>77</sup>removed: = 30,

<sup>78</sup>removed: B

<sup>79</sup>removed: = 100,

<sup>80</sup>removed: C

<sup>81</sup>removed: = 300; Fig. 3(b): GUM Gumble distribution with maximum likelihood estimations for scenario

<sup>82</sup>removed: A

<sup>83</sup>removed: = 30,

<sup>84</sup>removed: B

<sup>85</sup>removed: = 100,

<sup>86</sup>removed: C

<sup>87</sup>removed: = 300, see Tab. 2.

<sup>88</sup>removed:  $\Delta$  3-Days Snow height accumulation

<sup>89</sup>removed: cm

<sup>90</sup>removed: at the weather station Meien (1320 m a.s.l.) in canton of Uri.

<sup>91</sup>removed: **Scenario**

<sup>92</sup>removed: **Return Period**

<sup>93</sup>removed: **GEV-MLE [cm]**

<sup>94</sup>removed: **GUM-MLE [cm]**

<sup>95</sup>removed: A

<sup>96</sup>removed: 30y

<sup>97</sup>removed: 112

<sup>98</sup>removed: 114

<sup>99</sup>removed: B

<sup>100</sup>removed: 100y

<sup>101</sup>removed: 130

<sup>102</sup>removed: 136

<sup>103</sup>removed: C

<sup>104</sup>removed: 300y

<sup>105</sup>removed: 147

<sup>106</sup>removed: 156

### 2.3.5 [..<sup>107</sup> ]

a special version of the base module of RAMMS::AVALANCHE[..<sup>108</sup> ], a numerical avalanche simulation model capable  
270 of simulating avalanches in complex topography (Christen et al., 2010). [..<sup>109</sup> ]RAMMS::AVALANCHE is based on an efficient  
second-order numerical solution of the depth-averaged avalanche dynamics equations and the [..<sup>110</sup> ]two-parameter Voellmy  
model (Voellmy, 1955) and has been calibrated with numerous [..<sup>111</sup> ]observed avalanches such as for example at the SLF test  
~~site in Vallée la Sionne (community of Arbaz, Valais).~~ [..<sup>112</sup> ]Further, we used an extended set of algorithms for automatic  
release area identification (Bühler et al., 2018; Bühler et al., 2018; Bühler et al., 2022) and the standard friction parameter set,  
275 which is commonly used in practice (Christen et al., 2010; Gruber and Margreth, 2001). [..<sup>113</sup> ]For a detailed description of  
the RAMMS::AVALANCHE application in RAMMS:LSHIM, see Bühler et al. (2018).  
For the simulations, a three-dimensional digital terrain model, with a spatial resolution of 10 m, the automated generated  
potential release areas and the avalanche fracture depth (Tab. [..<sup>114</sup> ]1) served as [..<sup>115</sup> ]inputs to calculate the flow velocity,  
flow heights and the resulting impact pressure expressed in kPa of 40,000 single avalanches, for all three scenarios (Bühler  
280 et al., 2022). Each avalanche was assigned to a release zone and individually saved as a separate file, which allowed us to  
allocate each avalanche with its pressure to a return period, which could later be used in a risk analysis. Figure 5 shows  
the resulting large-scale hazard indication map and in detail, how the individual scenarios were simulated [..<sup>116</sup> ]considering  
protection forest.

---

<sup>107</sup>removed: Large scale avalanche hazard indication mapping with RAMMS::AVALANCHE

<sup>108</sup>removed: is

<sup>109</sup>removed: It

<sup>110</sup>removed: two parameter

<sup>111</sup>removed: real

<sup>112</sup>removed: We used RAMMS:LSHIM, which is an adapted version of RAMMS::AVALANCHE, an

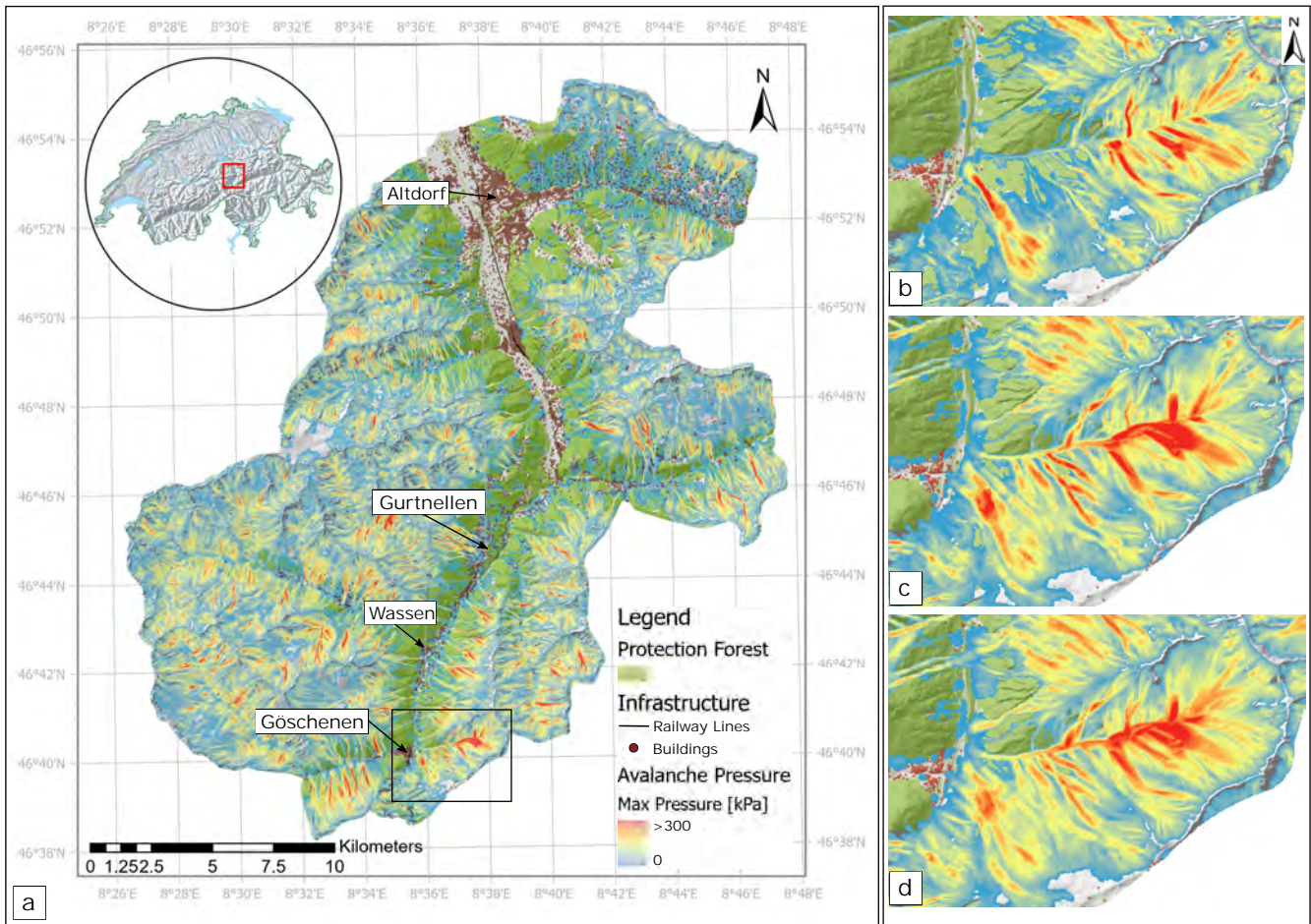
<sup>113</sup>removed: A

<sup>114</sup>removed: 2

<sup>115</sup>removed: input

<sup>116</sup>removed: under the consideration of protection forest(Fig. 4).





**Figure 5.** (a) Project area with results of the large scale avalanche simulation, pressure in [kPa], (b) detail of the simulation for the frequent scenario, corresponding to a [..<sup>117</sup>] 30-year return period, (c) detail of the simulation for the large scenario, corresponding to a [..<sup>118</sup>] 100-year return period, (d) detail of the simulation for the extreme scenario, corresponding to a [..<sup>119</sup>] 300-year return period. Map base data source: Swiss Federal Office of Topography

## 2.4 Exposure

### 285 2.4.1 EconoMe

EconoMe is an online tool for the evaluation of the effectiveness and economic efficiency of mitigation measures against natural hazards (Bründl et al., 2016). It provides a sophisticated methodology for risk analysis and the evaluation of the cost-benefit-ratio of protective measures and is used by private companies, cantonal and federal authorities for decision support in the

290 [..<sup>120</sup>]subsidies process. We used specific impact functions and building values following the EconoMe methodology as input values for the risk analysis in this study. All used values for this study, generated by following the EconoMe methodology are described in Sec. 2.4.2 and listed in Tab.2.

## 2.4.2 Generation of high-resolution exposure point data sets with monetary values

295 [..<sup>121</sup>]Four main data sets were used to determine monetary values: (1) STATPOP, statistical population data which provide information on how many people live in a building; (2) STATENT, statistical data specifying which buildings are used for economic purposes; (3) Construction zones Switzerland, providing information about settlement areas or agricultural zones, and (4) a 3D data set of all Swiss buildings, including the volume of individual objects. To allow a high performance in risk calculation and a broad applicability, buildings in the exposure data frame are considered as point objects located in the center of a building polygon. Using these four data sets, an exposure point layer was created according to the guidelines for creating risk overviews (FOEN, 2020) as described in the following.

300 The GIS layer with assigned monetary values was created for 13,304 individual [..<sup>122</sup>]objects. To generate this monetary building layer, objects [..<sup>123</sup>]needed to be classified [..<sup>124</sup>]using the above motioned data sets, also listed in Tab. 2. The classification [..<sup>125</sup>]was carried out by plotting the statistical data [..<sup>126</sup>]STATPOP and STATENT on a 2D building layer. The monetary values of buildings [..<sup>127</sup>]were assigned according to [..<sup>128</sup>]the building types also listed in Tab. 2. According to EconoMe standards, the average number of persons in one [..<sup>129</sup>]housing unit (= HU) was assigned as 2.24 persons per unit (FOEN, 2021). [..<sup>130</sup>]By using STATPOP, we identified the number of persons living in each building [..<sup>131</sup>]and determined the number of housing units [..<sup>132</sup>]rounded to the next smaller number. [..<sup>133</sup>]When the number of [..<sup>134</sup>] persons per object was below 2.5, the object was classified as single residential building; when the number of persons per object was larger than 2.5, it was classified as multi-residential building. Based on the number of HU, monetary values could be assigned to the objects as listed in Tab. 2.

---

<sup>120</sup>removed: subsidization

<sup>121</sup>removed: According to the guideline of the Swiss Federal Office for the Environment on risk overviews (FOEN, 2020), we generated a data set

<sup>122</sup>removed: buildings. To create

<sup>123</sup>removed: need

<sup>124</sup>removed: by using different data sets(see Tab. 4)

<sup>125</sup>removed: is

<sup>126</sup>removed: (STATPOP , FSO (2019)) of housing units (people per building) and employment data (STATENT : data set of industrial used objects, FSO (2019)) for industrially used buildings

<sup>127</sup>removed: are

<sup>128</sup>removed: building types (Tab. 4) following the FOEN guideline. The

<sup>129</sup>removed: building unit was assumed

<sup>130</sup>removed: Using this value and statistical STATPOPdata (provided by Swiss federal office of statistics, FSO (2019)), which provide information on

<sup>131</sup>removed: , we were able to determine

<sup>132</sup>removed: (=HU)

<sup>133</sup>removed: Based on

<sup>134</sup>removed: housing units, a value of 650,000 CHF for one single residential buildings was assigned according to the EconoMe methodology. For buildings with HU > 1 a value of 550, 000 CHF / HU was assigned.

310 Since there is no comprehensive data available for evaluating the value of companies and buildings, the STATENT [..<sup>135</sup>] data set was used. This data provides building coordinates of each registered company in Switzerland. If one or more STATENT data points plot on the location of a building, this building was classified as a business building. The value corresponds to the volume of the building (FOEN, 2021), which was taken from the Swissbuildings3D [..<sup>136</sup>] data set yielding a value of 280 CHF per [..<sup>137</sup>]

315  $m^3$  volume.

For objects with the combined usage "business and living", on which both, the STATENT and STATPOP data points apply, the number of residential units was taken for the assignment of the monetary value, as it provides the higher values. Buildings, located within the Swiss [..<sup>138</sup>] construction zone plan with no inhabitants and a volume of less than 100 [..<sup>139</sup>]  $m^3$ , were classified as uninhabited outbuildings with a value of 60,000 CHF per unit (garages and parking lots including vehicles).

320 Uninhabited outbuildings with a volume greater than 100 [..<sup>140</sup>]  $m^3$  were classified as economically used buildings and their value was determined by the volume. The same applies to buildings that are located outside the [..<sup>141</sup>] Swiss construction zone plan. If their volume is less than 100 [..<sup>142</sup>]  $m^3$  they were classified as agricultural outbuildings with a value of 80 CHF/[..<sup>143</sup>]  $m^3$ . If their volume is greater than 100 [..<sup>144</sup>]  $m^3$  they were classified as agricultural main buildings with a value of 180 CHF/[..<sup>145</sup>]  $m^3$  (FOEN, 2020). This method [..<sup>146</sup>] allowed to create a exposure data layer, shown in Fig. 6 with a  
325 monetary value for each individual building. [..<sup>147</sup>]

<sup>135</sup> removed: (provided by the Swiss federal office of statistics, FSO (2019))

<sup>136</sup> removed: dataset (Origin: Swiss federal office of topography, swisstopo)

<sup>137</sup> removed:  $m^3$  volume.

<sup>138</sup> removed: building

<sup>139</sup> removed:  $m^3$

<sup>140</sup> removed:  $m^3$

<sup>141</sup> removed: building

<sup>142</sup> removed:  $m^3$

<sup>143</sup> removed:  $m^3$

<sup>144</sup> removed:  $m^3$

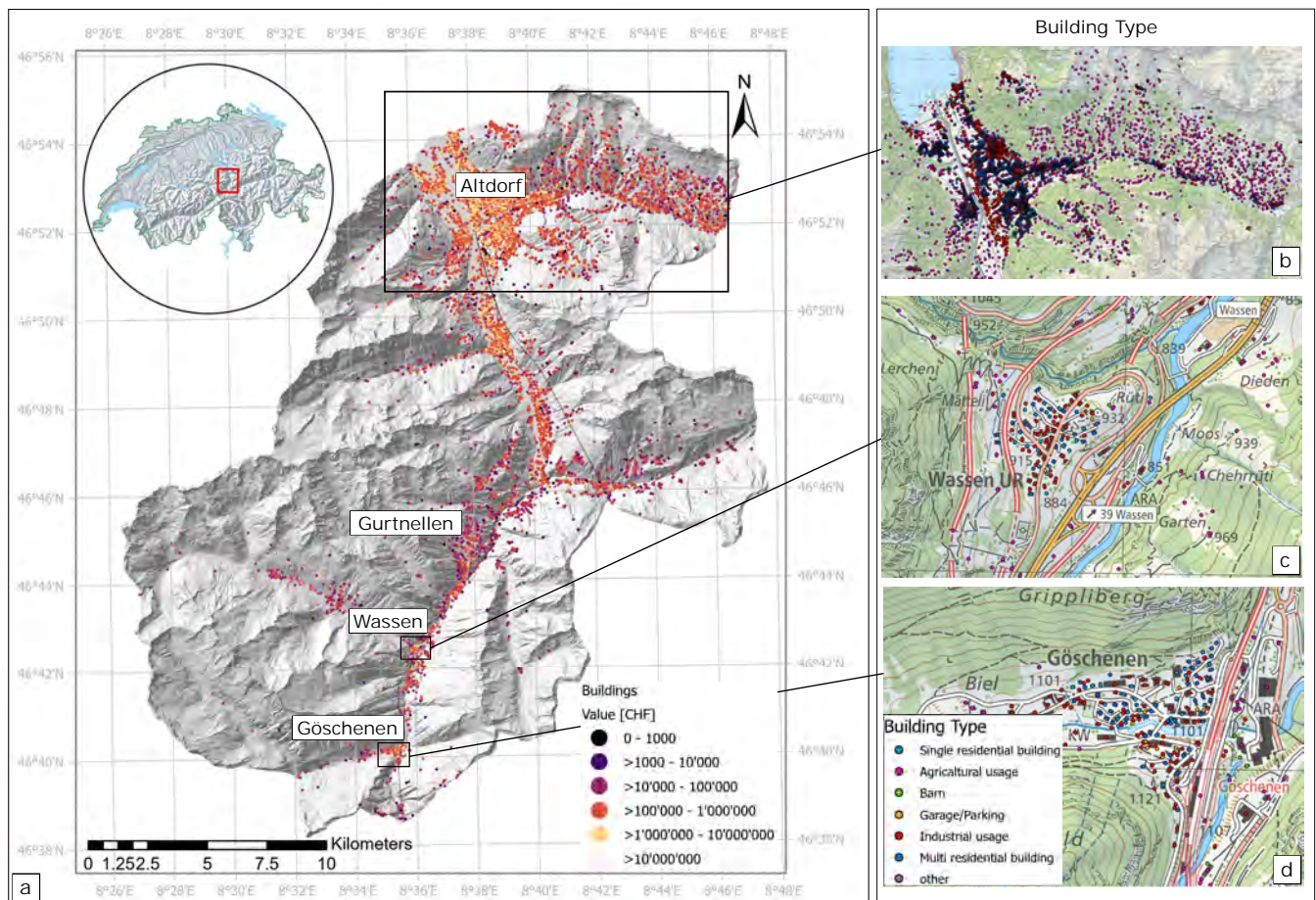
<sup>145</sup> removed:  $m^3$

<sup>146</sup> removed: provided an exposure data set

<sup>147</sup> removed: Using the impact function assigned to each building type, it was possible to define the monetary damage for each building potentially affected by an avalanche.

**Table 2.** Overview of the [..<sup>148</sup>]base data used for the creation of the monetary building layer, definition of monetary values [..<sup>149</sup>] of building [..<sup>150</sup>]types; abbreviations: HU = Housing Unit, FSO = Swiss Federal Statistical Office (FSO, 2019), swisstopo = Swiss Federal Office of Topography [..<sup>151</sup>], ID = EconoMe [..<sup>152</sup>]object identification number.

Building Type	EconoMe ID	CHF	Data Information	Data Origin
Single residential buildings	1	650,000 / HU	Resident population per Building STATPOP	FSO
Multi residential buildings	87	550,000 / HU	Resident population per Building STATPOP	FSO
Garage and parking	4	60,000 / [.. <sup>153</sup> ]unit	Construction zones of Switzerland	swisstopo
Industrial building	6	280 / [.. <sup>154</sup> ]m <sup>3</sup>	Employed population per Building STATENT	FSO \swisstopo
Agricultural use	2	180 / [.. <sup>155</sup> ]m <sup>3</sup>	Swiss BUILDINGS 3D	swisstopo
Barn	3	80 / [.. <sup>156</sup> ]m <sup>3</sup>	Swiss BUILDINGS 3D	swisstopo



**Figure 6.** (a): Spatial distribution of exposed monetary values in the project area. (b): detail section, different building types matching actual buildings on the map (Map source: [..<sup>157</sup>]Swiss Federal Office of Topography, modified map).

## 2.5 Vulnerability

### 2.5.1 Avalanche impact functions

The extent to which an object is <sup>[..<sup>158</sup>]</sup>damaged by a hazard is referred to as the "hazard impact" or "impact". We determined the impact <sup>[..<sup>159</sup>]</sup>by avalanches using so called "impact functions", which is equivalent to "vulnerability function" or "damage function" <sup>[..<sup>160</sup>]</sup>, as defined in the CLIMADA methodology (Aznar-Siguan and Bresch, 2019), which express the damage an object suffers at a certain avalanche intensity (= pressure in kPa). These functions are based on values in EconoMe (FOEN, 2021). <sup>330</sup> These step functions originate from the standardised hazard mapping procedure in Switzerland where continuous avalanche pressures  $p$  are divided into three pressure classes ( $0 < p \leq 3\text{kPa}$ ,  $3 < p \leq 30\text{kPa}$ , and  $p > 30\text{kPa}$ ). These step functions follow the Swiss standard (FOEN, 2021) and are based on an evaluation of building damages and expert <sup>335</sup> judgement. According to their type of construction, objects show a different damage susceptibility to avalanche pressure. We defined impact functions with three components for each object type and combined them into a impact function set to describe the following avalanche impacts:

- the mean damage degree (<sup>[..<sup>161</sup>]</sup>mdd), expressing the mean percentage of damage <sup>[..<sup>162</sup>]</sup>an object suffers under a certain avalanche impact pressure, expressed in kPa;
- <sup>340</sup> – the percentage of affected assets (<sup>[..<sup>163</sup>]</sup>paa) in the hazard zone that suffer damage (100% in the case of avalanches), and
- the mean damage ratio at a certain pressure (<sup>[..<sup>164</sup>]</sup>mdr), in this study <sup>[..<sup>165</sup>]</sup>mdr = <sup>[..<sup>166</sup>]</sup>mdd.

---

<sup>158</sup>removed: affected (damaged )

<sup>159</sup>removed: for

<sup>160</sup>removed: . We use impact functions

<sup>161</sup>removed: MDD

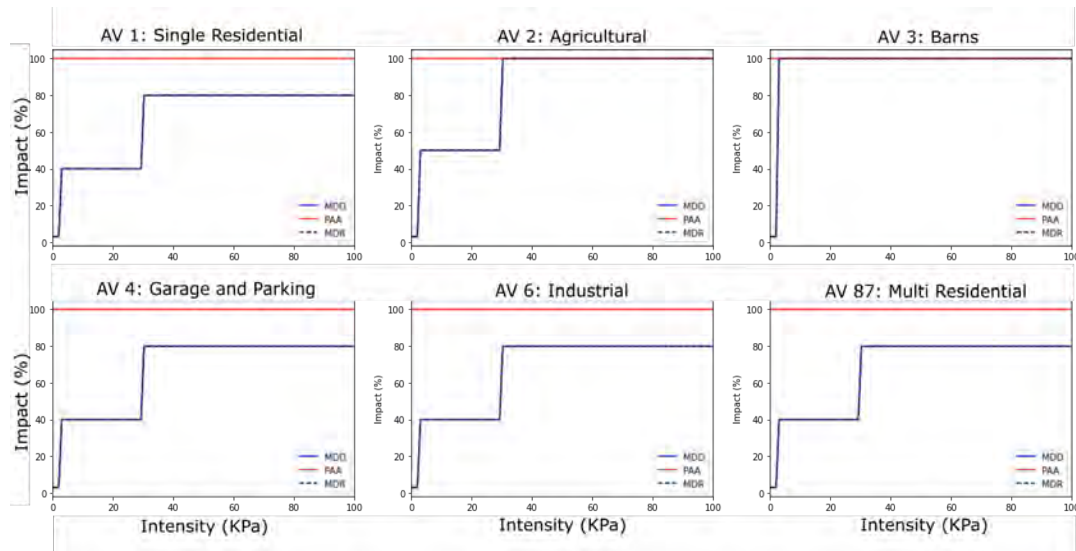
<sup>162</sup>removed: (MDD)

<sup>163</sup>removed: PAA

<sup>164</sup>removed: MDR

<sup>165</sup>removed: MDR

<sup>166</sup>removed: MDD



**Figure 7.** Impact functions showing the mean damage degree of different building types exposed to a certain intensity (= mean avalanche pressure), [..<sup>167</sup>] paa = 100% [..<sup>168</sup>]

[..<sup>169</sup>]

## 2.6 [..<sup>170</sup>]

### 345 2.5.1 [..<sup>171</sup>]

[..<sup>172</sup>]

<sup>169</sup>removed: Avalanche impact was categorized in the three classes low (0 - 3 kPa), medium (3 - 30 kPa) and extreme (>30 kPa) following the standards for hazard mapping in Switzerland (PLANAT, 2009, 2018).

<sup>170</sup>removed: Risk

<sup>171</sup>removed: CLIMADA

<sup>172</sup>removed: CLIMADA is an open-source and -access *Python* package for probabilistic risk assessment Aznar-Siguan and Bresch (2019). It allows for the computation of the impact of natural hazards, modelled as intensity maps, on exposures, modelled as value maps, considering the vulnerability of the exposures, modelled as impact functions. It is possible to compute the risk today and in the future, including climate changes that modifies the hazard and socio-economic development affecting the exposures and vulnerability. Finally, one can compute the reduction in risk and cost from adaptation options to perform a cost-benefit analysis Kropf et al. (2021). For all the model outputs, CLIMADA provides a module to perform uncertainty and sensitivity analysis Kropf et al. (2022) using global (quasi-)Monte-Carlo sampling.

[..<sup>173</sup> ][..<sup>174</sup> ]The paa describes how many objects suffer damage if exposed to a certain hazard intensity[..<sup>175</sup> ][..<sup>176</sup> ]. In this study, we assume that all objects that are affected by a certain avalanche pressure suffer damage (paa is set to 100%). The mean damage ratio (mdr) is a standard vulnerability unit. Explained as the total damage at certain hazard intensity to the affected objects as a ratio of total sums for the all the [..<sup>177</sup> ][..<sup>178</sup> ][..<sup>179</sup> ]objects exposed to the hazard. The application of these standard vulnerability components to avalanches is a special case. We assume in this framework that all objects exposed to a certain avalanche pressure also suffer damage according to the mdd thresholds. Therefore, we set the mdr equal to the mdd.

## 355 2.6 Uncertainty- and Sensitivity analysis

The uncertainty analysis describes the variability of the output of the model given a range [..<sup>180</sup> ]of the input parameters, while a sensitivity analysis describes, how a certain uncertainty in the model can be assigned to a certain input parameter (Saltelli et al., 2019; Saltelli, 2002; Kropf et al., 2022). In this study, the model outputs of interest are the average annual impact aggregated (aai agg.) over all exposure points for hazards with different return periods (c.f. Sect. 2.3.1). In general, it is not possible to consider the uncertainty [..<sup>181</sup> ]of all input parameters in a model such as CLIMADA (Otth et al., 2022). For this study, we focus [..<sup>182</sup> ]on the total [..<sup>183</sup> ]exposure value (building value), the mean damage degree thresholds of the impact functions (vulnerability), as well as the uncertainty of the intensity of the avalanches (impact pressure Sect.2.3) as discussed in details in [..<sup>184</sup> ]Sect. 2.6.1.

### 2.6.1 Uncertainty analyses

365 [..<sup>185</sup> ]

---

<sup>173</sup>removed: In this project, we use CLIMADA to compute the risk of avalanches to more than 13'000 individual single buildings, from each of the 40,000 simulated avalanches using the hazard intensity maps described in Sect. 2.3, the exposures distribution described in Sec. 2.4 and the impact functions introduced in Sec. 2.5. As defined in the CLIMADA tool (Aznar-Siguan and Bresch, 2019), the impact is expressed by the following risk quantities:

<sup>174</sup>removed: the expected annual impact (eai) for each exposure (affected building) expressed in monetary terms per year (CHF per year). It combines the hazard

<sup>175</sup>removed: with its expectation (= return period) and the damage degree from the impact functions;

<sup>176</sup>removed: the average annual impact (aai) is the average of

<sup>177</sup>removed: expected annual impacts (eai) over all exposures, expressed in monetary terms per year (CHF per year);

<sup>178</sup>removed: the average annual impact aggregated (aai\_agg) is the sum of the average annual impacts (aai) for each scenario or all scenarios combined expressed in monetary terms per year (CHF per year). The aai\_agg corresponds to the overall risk.

<sup>179</sup>removed: Furthermore, the uncertainties and sensitivity will be derived as described in the next Sects.2.6.1 and 2.6.2.

<sup>180</sup>removed: for

<sup>181</sup>removed: in all the input parameters of

<sup>182</sup>removed: the efforts

<sup>183</sup>removed: exposures

<sup>184</sup>removed: the Uncertainty

<sup>185</sup>removed: For the uncertainty analysis, a total of  $N = 8000$  samples (see Fig. 8) of the uncertainty input parameters  $ET, MDD, HI$  were generated using the Sobol sequence Kropf et al. (2022). The chosen uncertainty ranges are summarized in Tab. ?? and explained in details below. It is important to

[..<sup>186</sup> ]

Since the values of the exposure were determined with the generalized value assignment procedure introduced by FOEN (2020), it is clear that these can deviate from real life building values. [..<sup>187</sup> ]The method of FOEN provides an estimation of a building value at a large scale, but cannot resolve the differences in value of similar building types. To account for the potentially large fluctuation in asset value, an uncertainty of [..<sup>188</sup> ] $\pm 20\%$  of the total exposures value is assumed. In other words, for each run of the uncertainty sampling, all the assets value are multiplied with a value [..<sup>189</sup> ]"et" uniformly sampled from [..<sup>190</sup> ] $[0.8, 1.2]$ .

Industrial and residential buildings are the most costly building types. The steps of the impact functions for residential buildings and industrial differ by 40%. To cover a wide range of uncertainties, this value of the step jump in the function was taken as the possible uncertainty range. For agricultural buildings or outbuildings, this value can be even higher, as they often have a relatively simple construction. But due to their lower value they play a [..<sup>191</sup> ]less important role. To define a "standard case" in our analysis, we consider the function steps of industrial or residential buildings as the variability range. Therefore, for the mean damage degree of the impact function a value range of [..<sup>192</sup> ] $\pm 40\%$  was taken for the uncertainty analyses (c.f. Tab. [..<sup>193</sup> ]3).

To define a range for the hazard intensity ([..<sup>194</sup> ]hi) uncertainty analysis, we refer to data recorded in experiments at the Vallée de la Sionne test site. Sovilla et al. (2008a, b) have measured the impact pressure of dry, wet or mixed avalanches, which correspond to different flow regimes. However, in our simulations, we only simulated "dry avalanches", which have mostly higher velocities than 10 m/s. Pressure values of avalanches measured by Sovilla et al., show avalanche pressures in a range between 200 kPa and 700 kPa (Sovilla et al., 2008a). An extrapolation of the data set would yield maximum pressures of about 1000 kPa, which corresponds to the data obtained in our simulations shown in Fig. 5. The average pressure of the measurements would be around 600 kPa. Therefore, we assumed an uncertainty range of [..<sup>195</sup> ] $\pm 50\%$  for avalanche pressure (c.f. Tab. [..<sup>196</sup> ]3). The obtained samples are illustrated in the appendix section 5.1 in Fig. [..<sup>197</sup> ]1.

---

understand that the uncertainty ranges should not be interpreted as errors such as in the context of experimental measurement error, rather it is a description of a range of plausible model input values. It allows to gauge the robustness of the model and to obtain a spread of plausible risk outcomes Oth et al. (2022).

<sup>186</sup>removed: Generated samples for the chosen uncertainty variables ET = Exposure, MDD = Mean Damage Degree (impact function), HI = Hazard Intensity with a sample number of N = 8000.

<sup>187</sup>removed: Their method

<sup>188</sup>removed:  $\pm 20$

<sup>189</sup>removed: ET

<sup>190</sup>removed:  $[0.8, 1.2]$ . The obtained samples are illustrated in Fig. 8.

<sup>191</sup>removed: subordinate

<sup>192</sup>removed:  $\pm 40$

<sup>193</sup>removed: ??). The obtained samples are illustrated in Fig. 8.

<sup>194</sup>removed: HI

<sup>195</sup>removed:  $\pm 50\%$  from the

<sup>196</sup>removed: ??

<sup>197</sup>removed: 8



**Table 3.** Uncertainties ranges of the chosen input parameters for the risk assessment

Parameter	Uncertainty range
Exposure ([.. <sup>198</sup> ]et)	80% - 120%
Mean Damage Degree ([.. <sup>199</sup> ]mdd)	60% - 140%
Hazard Intensity ([.. <sup>200</sup> ]hi)	50% - 150%

## 2.6.2 Sensitivity analysis

The sensitivity analysis determines which input parameter's uncertainty has the strongest influence on the model output uncertainties (Saltelli et al., 2019). In this study, we used the Sobol sensitivity indices (Sobol, 1993, 2001) as implemented in CLIMADA (Kropf et al., 2022), which can be computed from the same Sobol sequence as used for the uncertainty analysis (c.f. Fig.[..<sup>201</sup>]1, appendix section 5.1). The Sobol sensitivity analysis method is a popular, variance based method that quantifies the contribution of the variance of a single- or two parameters to the unconditional variance of a model output (Nossent et al., 2011). It is expressed as the Sobol sensitivity index. After the distribution of the impact metrics has been computed for all samples (see Sec. 3.2), the sensitivity index for the each metrics was computed. We considered the first order Sobol index S1 that describes the contribution of a single model input to the output variance. This index therefore provides information on the most influential parameter in reference to its system (model).

## 3 Results

### 3.1 Risk maps

With the intersection of hazard maps, the objects at risk and the specific impact functions, we identified the spatial distribution of risk on large scale areas with the CLIMADA risk platform. More precisely, we are able to express risk measures such as the expected annual impact (eai) or the average annual impact (aai) for each individual object at a geographical location taking into account different synthetic hazard scenarios, and translate the damage into monetary terms per year (see Tab. [..<sup>202</sup>]4). Figure [..<sup>203</sup>]8 a) - d), shows how different hazard scenarios affect single objects located in the hazardous area. Figure [..<sup>204</sup>]8 a) depicts the risk pattern of the entire study area. Further risk overviews for the 30-year, 100-year and 300-year return period scenarios can be found in the annex section 5.1 Fig. 2. Figure 8(b) shows a detail of the risk map within a 30-year return period scenario of the Göschenen area and the Rientalbach avalanche path for comparing it with the 100-year in panel c) and the 300-year return period scenario in panel d). The colored dots represent the expected annual impact

<sup>201</sup>removed: 8).

<sup>202</sup>removed: ??

<sup>203</sup>removed: ??

<sup>204</sup>removed: ??(a) represents the

corresponding to a <sup>205</sup>30-year return period. The overall aai agg. (average annual impact aggregated) <sup>206</sup>in the entire  
410 study area is CHF 5.02 million/year. <sup>207</sup>The detail panel of Fig. 8(c) displays the expected annual impact for single objects  
in an intermediate scenario with an corresponding return period of 100 years<sup>208</sup>. The average annual impact aggregated  
<sup>209</sup>in the entire region for the 100-year return period scenario is CHF 4.6 million/year. Figure <sup>210</sup>panel 8(c) shows  
the expected annual impact in the case of an extreme hazard scenario with a corresponding return period of 300 years<sup>211</sup>  
]. The average annual impact <sup>212</sup>calculated for the entire project area in this scenario is CHF 3.2 million/year. <sup>213</sup>The  
415 representation of the expected annual impact in the entire project area, over all three hazard scenarios combined is depicted in  
Fig. <sup>214</sup>8(d) with an aggregated average annual impact (aai <sup>215</sup>agg.) of CHF 9.73 million/year. In the detail panels of  
Fig. 8 b) - d) it can be seen that with increasing return period the area affected by avalanches gets larger and the number  
of objects at risk increases. Nevertheless, the properties in the hazard zone show lower risks in the higher return periods.  
The aspect of more exposed objects at risk is expressed by the aggregated average annual impact over the entire project  
420 area.

As depicted in the risk maps of Fig. <sup>216</sup>8a) and Fig. 2 of the annex, it is striking that in all scenarios the most densely  
populated areas (see Fig. 6) in the main valleys do not represent the greatest risk accumulations in the maps. Hot spots are  
located on the slopes of the main Reuss valley near Wassen <sup>217</sup>a bit further north in Gurtellen and in the side valleys  
of Wassen near Meien. In these areas, <sup>218</sup>mountainous terrain with a high number of avalanche flow paths and a denser  
425 number of buildings overlap. There, the exposed buildings are mostly agricultural buildings. According to our method, the  
value of these buildings depend on their volume. Agricultural buildings can be large in volume, but are also very vulnerable  
to destruction by avalanches (see Fig. 7) due to their construction. This leads to high impacts at <sup>219</sup>these locations, as  
shown in Fig. <sup>220</sup>8. However, there are also a few multi-residential buildings in the endangered areas. If these buildings are  
at high risk, they appear on the map as dark dots. The largest accumulations of buildings at risk are found on the south-east

---

<sup>205</sup>removed: 30 year return periodwith an aai \_agg

<sup>206</sup>removed: of

<sup>207</sup>removed: Figure ??(b

<sup>208</sup>removed: an

<sup>209</sup>removed: of

<sup>210</sup>removed: ??

<sup>211</sup>removed: for the single avalanches

<sup>212</sup>removed: (aai)

<sup>213</sup>removed: In a further step, we combined the three scenarios and adjusted them for combination with regard to the return period by  $p_{30} = p_{30} - p_{100} = 1/30 - 1/100 = 0.0233$  and  $p_{100} = p_{100} - p_{300} = 1/100 - 1/300 = 0.00667$  and  $p_{300} = 1/300 = 0.0033$ . This allows to express the expected annual impact (= eai) for single objects over all hazard scenarios combined.

<sup>214</sup>removed: ??

<sup>215</sup>removed: \_agg

<sup>216</sup>removed: ??

<sup>217</sup>removed: ,

<sup>218</sup>removed: alpine

<sup>219</sup>removed: this locations

<sup>220</sup>removed: ??

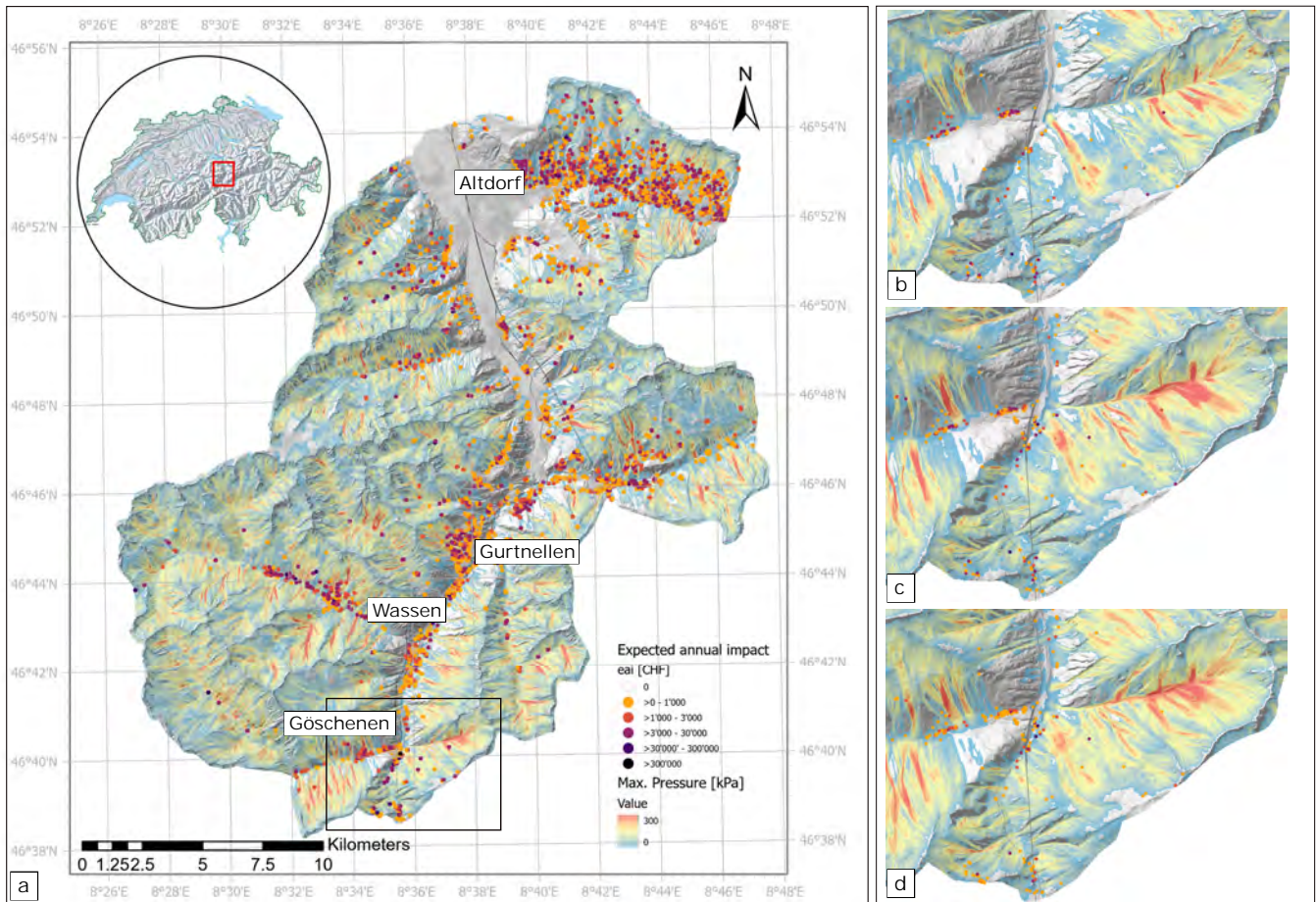
**Table 4.** Overview of the average damage and the rounded aggregated average annual impacts (aai [..<sup>222</sup>]agg.) for each of avalanche scenarios and all hazard scenarios combined. The rounded aggregated average annual impact corresponds to the overall risk of the entire region.

Return period [years]	Scenario	Average damage [million CHF]	[.. <sup>223</sup> ][.. <sup>224</sup> ][.. <sup>225</sup> ]rounded aai agg. [million CHF/year]
30	Small	150.75	[.. <sup>226</sup> ]5.02
100	Medium	458.60	[.. <sup>227</sup> ]4.59
300	Extreme	947.12	[.. <sup>228</sup> ]3.16
[.. <sup>229</sup> ][.. <sup>230</sup> ]all return periods	Combined	1390.9	9.73

430 to south-west facing slopes east of Altdorf. [..<sup>221</sup>]The identification of such a hot-spots can play a crucial role in a decision making process as discussed in Sec. 5.

---

<sup>221</sup>removed: One explanation for this hot spot is the high number of agricultural buildings and a few residential buildings on very steep, avalanche prone, open slopes.



**Figure 8.** Risk maps: Overview of the spatial distribution of expected annual impact for individual objects at the [..<sup>231</sup>] four different avalanche scenarios (a) [..<sup>232</sup>] overview of all hazard scenarios combined (b) [..<sup>233</sup>] detail Göschenen: 30-year return period, (c) [..<sup>234</sup>] detail Göschenen: 100-year return period, (d) [..<sup>235</sup>] detail Göschenen: 300-year return period, Basemap [..<sup>236</sup>] source: [..<sup>237</sup>] Swiss Federal Office of Topography, [..<sup>238</sup>] modified surface model

### 3.2 Impacts and uncertainty ranges and sensitivity analyses

To account for the dispersion of risk under various uncertainties, the annual impact was calculated for randomly sampled cases falling within the defined uncertainty ranges. For the first event set with a [..<sup>239</sup>] 30-year return period (Fig. [..<sup>240</sup>] 9 in blue), the maximum [..<sup>241</sup>] count of samples histogram bars plot between CHF 3.4 million and CHF 5.6 million. This illustrates that the annual impact severity for a hazard with a frequency of 1/30 is likely to lie in this range. The non-aggregated average annual

<sup>239</sup>removed: 30y

<sup>240</sup>removed: ??(a))

<sup>241</sup>removed: density

impact values generally range from CHF 2.0 million to CHF 9.0 million. This means a wide dispersion of risk, yet it reflects the broad distribution of the exposed monetary values in the hazard area. Building values ranges from less than CHF 1,000 to maximum building values of CHF 78 million. The sample size was <sup>242</sup>8,000 generated samples for each parameter and the impact was calculated for each of these samples. The histogram is not <sup>243</sup>normal distributed, it shows a right skewed distribution with an average impact value of CHF 4.87 million with a standard deviation of CHF 1.34 million. Taking into account <sup>244</sup>all uncertainty ranges discussed above, it is very likely that <sup>245</sup>the annual risk for a 30-year return period scenario, across the entire <sup>246</sup>region will be in the range CHF 3.4 million and CHF 5.6 million per year.

The situation is slightly different, however, for the scenario with a <sup>247</sup>100-year return period (Fig. 9 in orange) despite higher avalanche pressures, the risk is lower and also with a lower variance. <sup>248</sup>Taking into account the uncertainties, the possible annual impact in the project area is between CHF 2.9 million and CHF 5.4 million. The distribution extends almost over the same range as the <sup>249</sup>30-year return period scenario (Fig. 9 "Comparison"), but with a slightly higher sample count of 3.5e-7. The average annual impact across all values inside the chosen uncertainty range for the <sup>250</sup>100-year return period scenario is CHF 4.34 million with a standard deviation of CHF 1.11 million. The histogram for the <sup>251</sup>100-year return period shows also a right skewed distribution and compared to the <sup>252</sup>30-year return period distribution, it is almost equally distributed.

Looking at the distribution of the <sup>253</sup>300-year return period scenario and in the comparison (Fig. <sup>254</sup>9 in green), we see that the average value of the annual impact is CHF 2.99 million with a standard deviation of <sup>255</sup>0.73 million CHF; the risk is significantly lower than in the <sup>256</sup>30-year return period scenario and also lower than in the <sup>257</sup>100-year return period scenario. The highest sample count is in a variability range of CHF <sup>258</sup>2.5 million and CHF 3.6 million. <sup>259</sup>The total damage caused by avalanches in the <sup>260</sup>30-year return period scenario would be approx. CHF 150.8 million, for the

---

<sup>242</sup>removed: 8000

<sup>243</sup>removed: normally

<sup>244</sup>removed: the uncertainties

<sup>245</sup>removed: , under the assumed model conditions, the annual risk

<sup>246</sup>removed: area under investigation

<sup>247</sup>removed: 100y return period

<sup>248</sup>removed: The explanation for this is the influence of the low hazard frequency, which significantly influences the risk.

<sup>249</sup>removed: 30y

<sup>250</sup>removed: 100y

<sup>251</sup>removed: 100y

<sup>252</sup>removed: 30y

<sup>253</sup>removed: 300y

<sup>254</sup>removed: 11(c))

<sup>255</sup>removed: 734.06 kCHF

<sup>256</sup>removed: 30y

<sup>257</sup>removed: 100y

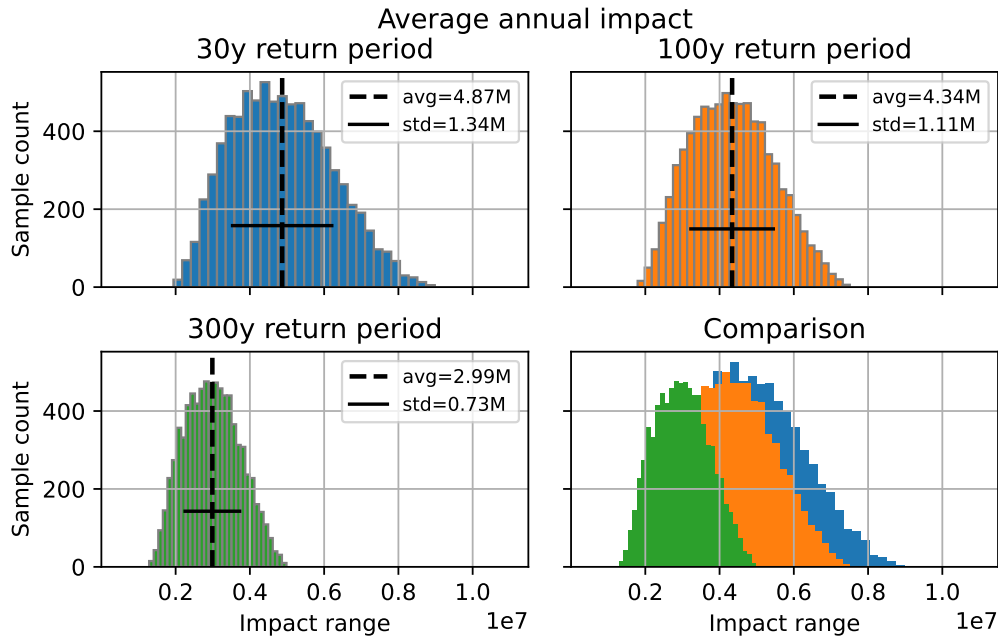
<sup>258</sup>removed: 2.1

<sup>259</sup>removed: In principle, an avalanche scenario with a high return period cover a larger areas and/or, have a longer run out and a larger lateral spread and affect more objects and therefore cause higher damages. Although the damages in the 300y and 100y scenario are higher (see Tab. ?? and Fig. 12), the risk is lower because of the lower probability. This clearly shows two things: if we compare the annual impact of the 30y return period scenario with the 300y scenario, we see that the annual impacts of the 30y return period scenario are relatively high.

<sup>260</sup>removed: 30y

[..<sup>261</sup>] 100-year return period scenario, CHF 458.6 million and approximately CHF 947.1 million for the [..<sup>262</sup>] 300-year return period scenario. [..<sup>263</sup>]

In [..<sup>264</sup>] the combined scenario Fig. 10, we see a significantly higher impact range of CHF 7.0 million to CHF 11.5 million with an average value of CHF 9.29 million and a standard deviation of CHF 2.41 million. This shows the great influence of the return period in the calculation of the risk. The risk of a [..<sup>265</sup>] 30-year return period scenario [..<sup>266</sup>] is therefore significantly greater than that of a [..<sup>267</sup>] 300-year scenario.



**Figure 9.** [..<sup>268</sup>] Histograms of the calculated distribution of the aggregated average annual [..<sup>269</sup>] impact values from the return period scenarios [..<sup>270</sup>]: blue = 30-year, orange = 100-year, green = 300-year, calculated for [..<sup>271</sup>] eight-thousand randomly pulled samples within defined uncertainty ranges (Tab. [..<sup>272</sup>] 3). [..<sup>273</sup>] avg = average, std = standard deviation

<sup>261</sup>removed: 100y

<sup>262</sup>removed: 300y

<sup>263</sup>removed: For an overview of impacts and damages (= impact excluding return periods) please see Tab. ??.

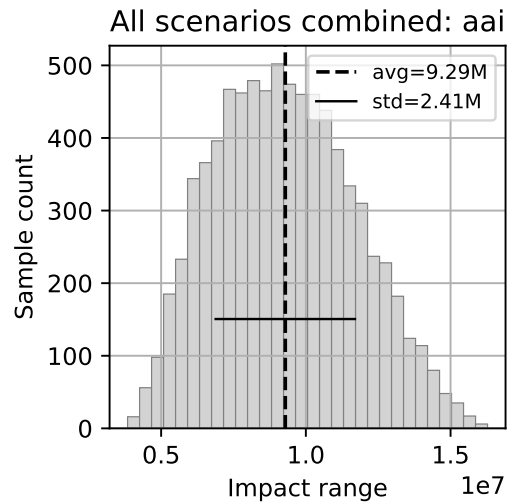
<sup>264</sup>removed: a further step, we combined the three avalanche scenarios and calculated the annual average impact aggregated for all samples (see Fig. 11).

Here

<sup>265</sup>removed: 30y

<sup>266</sup>removed: can therefore be

<sup>267</sup>removed: 300y scenario. From the perspective of risk, one could conclude that it might make sense to protect the region against a 30y or a 100y return period scenario and thus reduce the effects of a much less likely 300y scenario considerably.



**Figure 10.** Average annual impact aggregated (aai agg.) of all hazard scenarios combined and summed over the entire case study area. Calculated for eight-thousand randomly pulled samples within defined uncertainty ranges (Tab. 3). avg = average, std = standard deviation

### 3.3 Damage frequency curve

[..<sup>274</sup>] A standard in presenting the results of risk analyses are damage frequency curves, which serve to show the [..<sup>275</sup>  
465 ]calculated impacts and their uncertainty distributions [..<sup>276</sup>] for all considered scenarios. The average damage for the three considered scenarios shown in the risk overviews is depicted in Fig. 11(a)[..<sup>277</sup>]. To incorporate [..<sup>278</sup>] a comparison of the designated return period scenarios to the results of the uncertainty analysis[..<sup>279</sup>], we calculated the 95th and 5th percentile of all damages of the three scenarios [..<sup>280</sup>] of the uncertainty analysis. Thus, for the confidence interval calculation, eight-thousand values were available from the uncertainty analyses for each of the three return periods ([..<sup>281</sup>] 30-year, 100-year, 470 300-year). As shown in Tab. [..<sup>282</sup>] 4 and Fig. [..<sup>283</sup>] 11 the damage for a frequent ([..<sup>284</sup>] 30-year return period) scenario is

<sup>274</sup>removed: In order

<sup>275</sup>removed: relation of the

<sup>276</sup>removed: , on scenarios with other return periods, we produced a damage frequency curve for which we excluded the return period from the aggregated average annual impacts of the three scenarios(see Tab. ??) to obtain the average damage . For the three scenarios, we have plotted the damage against the return period (Fig. 12

<sup>277</sup>removed: )

<sup>278</sup>removed: the

<sup>279</sup>removed: in this curve

<sup>280</sup>removed: (again excluding the return period)

<sup>281</sup>removed: 30y, 100y, 300y

<sup>282</sup>removed: ??

<sup>283</sup>removed: 12

<sup>284</sup>removed: 30y

about CHF 150.8 million with a variation from CHF 151 - 216 million (5th - 95th-percentile). In the [..<sup>285</sup> ]100-year return period scenario the average damage is CHF 458.6 million with a variation (5th - 95th-percentile) of about CHF 262 - 625 million. The higher the scenario, the more objects are affected and the larger are the uncertainties expressed in monetary terms. The [..<sup>286</sup> ]300-year scenario shows an average damage of CHF 947.1 million with a large uncertainty range from CHF 548 million - 1.27 billion (5th - 95th-percentile). The dispersion of the uncertainty data for the return periods can be seen in Fig. [..<sup>287</sup> ]11(a) and (b). The median value (black line in the boxplots), calculated from all values of the uncertainty margin of the scenarios is compared with the average damage of the three designated scenarios (see Tab.[..<sup>288</sup> ]4 displayed as black square in Fig. [..<sup>289</sup> ]11(b)). Figure [..<sup>290</sup> ]11(b) shows that the average damage values of the three single scenarios are close to the median values of the box plots calculated from all values including the uncertainty margin. It demonstrates that the original calculations for the single damage values (from the three scenarios) are of good quality. Whether the interpolated damages from the scenarios that were not calculated in this study are in a linear relationship to the calculated damage is a rough assumption. Nevertheless, this curve can be used to infer approximate dimensions of the damage to be expected in other return periods, taking into account various uncertainties.

---

<sup>285</sup>removed: 100y

<sup>286</sup>removed: 300y

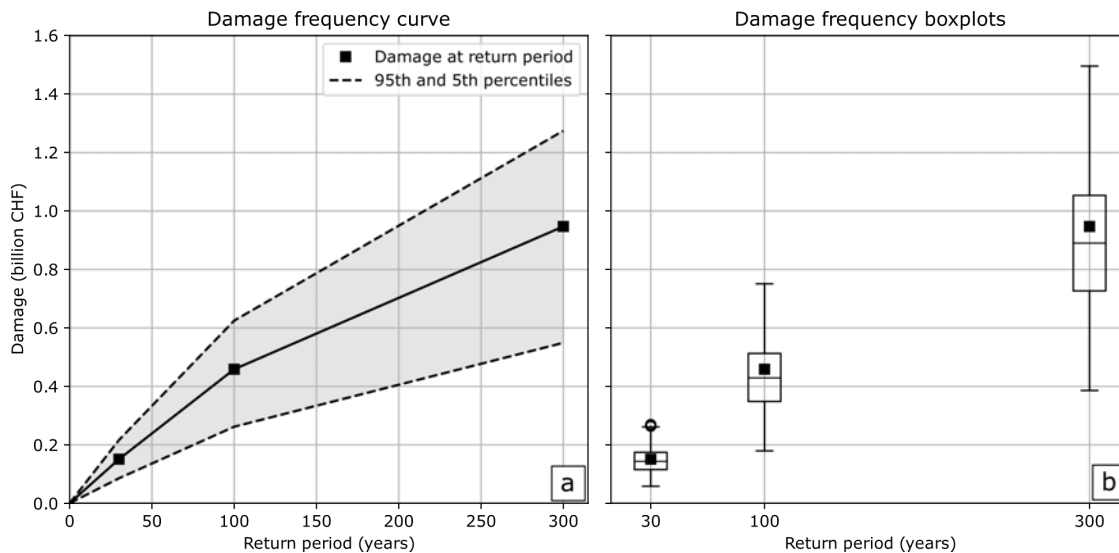
<sup>287</sup>removed: 12

<sup>288</sup>removed: ??

<sup>289</sup>removed: 12

<sup>290</sup>removed: 12





**Figure 11.** (a): Damage-Frequency curve showing the calculated damage at a certain return period with the 95th percentile of all damages calculated within the defined uncertainty ranges, (b): Boxplots of the 3 scenarios [..<sup>291</sup>] depicting all calculated damages of all uncertainty samples (black square = average damage (without return period) of the three scenarios). The boxes extend from [Q1] = first quartile to [Q3] = third quartile of the impacts at return period, the median is depicted as a line. The [..<sup>292</sup>] whisker lines enhance from the box by 1.5 x the inter-quartile range [..<sup>293</sup>]. Points are data exceeding the end of the whiskers.

### 3.4 [..<sup>294</sup>]

#### 485 3.3.1 Input parameter sensitivity analysis

[..<sup>295</sup>] The first-order sensitivity index S1 [..<sup>296</sup>] identifies, which parameter impacts the aggregated average annual impact most. Figure [..<sup>297</sup>] 12(a-c) shows that the mean damage degree [..<sup>298</sup>] mdd plays the most important role in this model for all scenarios. For the scenario with a return period of 30 years and the scenario with a return period of 100 years, the exposure [..<sup>299</sup>] "et" and the hazard intensity [..<sup>300</sup>] "hi" seem to be almost equal. In the extreme scenario with a 300-year return period, 490 [..<sup>301</sup>] substantially more objects are affected (see Fig. [..<sup>302</sup>] 8), and the exposure [..<sup>303</sup>] "et" plays a slightly more important

<sup>294</sup> removed: Input parameter sensitivity analysis

<sup>295</sup> removed: As described in the methods section above (section 2.6.2), we calculated the

<sup>296</sup> removed: to identify

<sup>297</sup> removed: ??

<sup>298</sup> removed: MDD

<sup>299</sup> removed: ET

<sup>300</sup> removed: HI

<sup>301</sup> removed: significantly

<sup>302</sup> removed: ??

<sup>303</sup> removed: ET

role here. The sensitivity index of the hazard intensity in the <sup>304</sup>30-year and 100-year return period scenario (Fig. <sup>305</sup>12(a) and <sup>306</sup>12b) is slightly higher than the S1 of the <sup>307</sup>"hi" in the 300-year return period scenario in Fig. <sup>308</sup>12(c). From this it can be concluded that it is scenario dependent, whether the hazard intensity <sup>309</sup>"hi" or the exposure <sup>310</sup>"et" have more influence. However, in all scenarios the mean damage degree <sup>311</sup>mdd defined by the impact functions is the most  
495 <sup>312</sup>relevant parameter. For the combined hazard scenario (Fig. <sup>313</sup>12(d)) it is similar to the <sup>314</sup>300-year return period scenario. Both the <sup>315</sup>"et" and the "hi" have almost the same high sensitivity index, but again the mean damage degree (<sup>316</sup>mdd) is more <sup>317</sup>decisive.

---

<sup>304</sup>removed: 30y and 100y

<sup>305</sup>removed: ??

<sup>306</sup>removed: ??

<sup>307</sup>removed: HI in the 300y

<sup>308</sup>removed: ??

<sup>309</sup>removed: HI

<sup>310</sup>removed: ET

<sup>311</sup>removed: MDD

<sup>312</sup>removed: influential

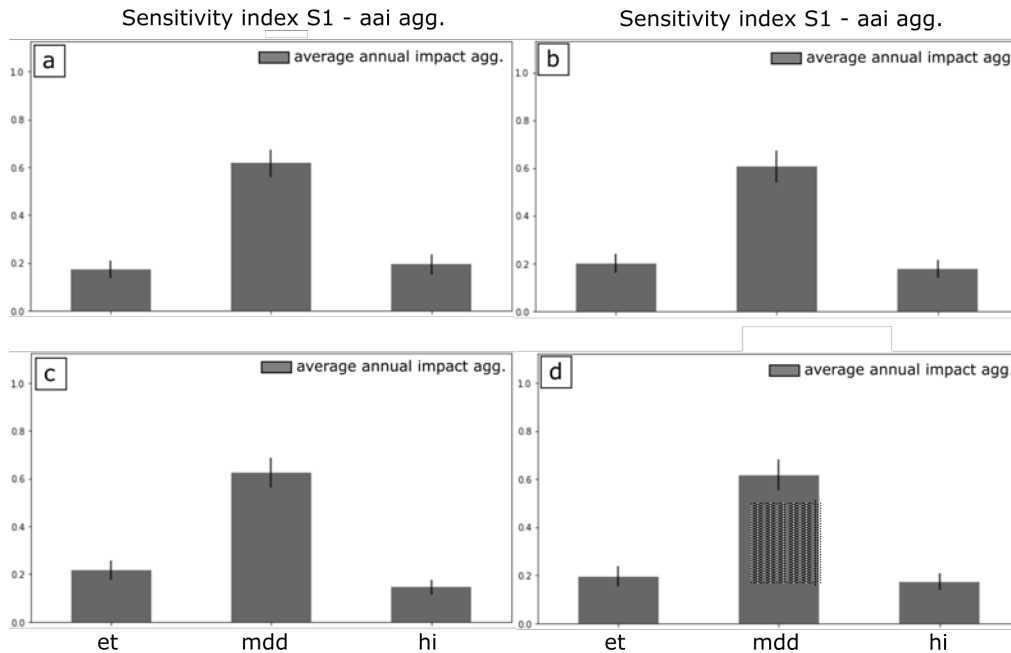
<sup>313</sup>removed: ??

<sup>314</sup>removed: 300y

<sup>315</sup>removed: ET and the HI have the almost

<sup>316</sup>removed: MDD

<sup>317</sup>removed: influential



**Figure 12.** S1 - aai <sup>[..<sup>318</sup>]</sup>agg. = S1 first order sensitivity index and its effect on the average annual aggregated impact value (a) frequent hazard scenario, <sup>[..<sup>319</sup>]</sup>30-year return period (b) medium hazard scenario, <sup>[..<sup>320</sup>]</sup>100-year return period (c) extreme hazard scenario, <sup>[..<sup>321</sup>]</sup>300-year return period (d) over all combined. et = Exposure, mdd = mean damage degree, hi = hazard intensity.

## 4 Discussion

### 4.1 <sup>[..<sup>322</sup>]</sup>Risk maps and hot spots

500 As it can be seen in the risk maps of Fig. 8a) and Fig. 2, the densest populated areas (see Fig. 6) in the main valleys are not the areas with high risks. Risk hot spots are in Göschenen and the side valley of Wassen the area around Gurtnellen. They are surrounded by steep slopes with large avalanche release areas in the back country, producing avalanche flows, which can reach down to the valley bottom. The biggest accumulation of avalanche prone object is on the south-west facing slopes east of Altdorf. One explanation for this hot spot is the high number of agricultural buildings and a few residential buildings on very steep, avalanche prone, open slopes. If one compares risk maps of 8a) and Fig. 2 it can be seen, that depending on the scenario the eai is strongly varying indicated by the different colors, also the numbers of objects affected is different. Even though the number of affected buildings is higher in the large 100-year and 300-year scenarios, the risk of the individual objects (eai) is higher in the 30-year return period scenarios. This can be explained by similar, or slightly higher avalanche pressures at the object, but the lower risks are mostly driven by the influence of the low hazard frequency (= high return period) which substantially influences the risk. The aggregated annual impact

505

510

<sup>322</sup>removed: Avalanche simulations

(overall risk) allows a comparison across the entire region and all scenario.

From a risk management perspective, one could conclude that mitigation measures reducing the damage in the 30-year and/or the 100-year return period scenario would be very effective for reducing the overall risk.

## 4.2 Limitations

515 ~~All of the work steps involved, entail uncertainties and certain limitations. These limitations are addressed and discussed in the following chapters.~~

### 4.2.1 Large scale avalanche hazard mapping

An avalanche hazard assessment in practice is a multi-step process based on a detailed analysis of the terrain characteristics, local records of snow precipitation data, documented previous events and expertise about the local hazard situation (Rudolf-  
520 Miklau et al., 2014). Avalanche release areas are manually identified by experts performing a detailed terrain assessment including an evaluation of protection forests, which is used as input for a numerical modelling of avalanche run out. In a large-scale avalanche hazard indication mapping, this detailed assessment process is largely omitted, which leads to some limitations (Bühler et al., 2022). Through the use of automated algorithms, **potential** release areas are only identified on the basis of terrain and scenario characteristics. This is an approximation, as actual avalanche release zones may vary in shape and size in nature.  
525 A validation of this algorithms has been carried out by Bühler and colleagues to evaluate the limitations of the object-based image analysis (OBIA) approach (Bühler et al., 2018). These limitations are compensated by a fast and powerful applicability, which allows to map **potential** release areas at very large areas, where only the computational capacity and the computation time define the limits of its application. [..<sup>323</sup> ]**This method is worldwide applicable and requires a small amount of input data, making it one of the unique and most powerful tools for large-scale hazard mapping. We therefore consider that the**  
530 **advantages of the large-scale applicability and the preciseness of the results [..<sup>324</sup> ]correspond very well** to the goals of our study.

The automatic calculation of protection forest also entails its limitations. The definition of the protection forest was based on data sets compiled at a specific point in time in the past (2020) using remote sensing methods. With the effects of extreme  
535 windstorms or bark beetle infestations or consequences of climate change (e.g. dry periods), the forest structure can change rapidly (Brožová et al., 2020; Brožová et al., 2021). A detailed consideration of these effects and an expert evaluation of the [..<sup>325</sup> ]**protective** forest (Bebi et al., 2021) is not [..<sup>326</sup> ]**applicable** for large-scale applications and **is** not imperative for the [..<sup>327</sup> ]**preparation** of risk overviews. [..<sup>328</sup> ]**This method is based on an evaluated state-of-the-art approach for the definition**

---

<sup>323</sup>removed: We considered

<sup>324</sup>removed: corresponding

<sup>325</sup>removed: protection

<sup>326</sup>removed: appropriate

<sup>327</sup>removed: creation

<sup>328</sup>removed: Our

of avalanche protection forest on large scales, has high quality standards and thus represents an essential basis for the de-  
540 lineation of potential avalanche release areas in our work, and can also be applied to different fields of forest and natural  
hazard interactions.

[..<sup>329</sup> ]Using 3-day snow depth from a single weather station [..<sup>330</sup> ]and, based on it, deriving avalanche fracture depth  
and return period scenarios for an entire region, may result in uncertainties for both, the scenario definition and fracture  
545 depth[..<sup>331</sup> ]. Both have a direct effect on the avalanche volume and subsequently on the extent of the avalanches in the run out  
zones. The longer the time series, the more extreme snowfall events would have been recorded. However, a time series of 66  
years used in our study is common practice[..<sup>332</sup> ]. The time series available are comparatively long and longer series were  
not available either. However, this involves bigger uncertainties for estimation of fracture depths at high return periods. As can  
be seen in Fig. 3, the GEV method results in +/- 30cm for a [..<sup>333</sup> ]100-year return period and +/- 50cm for a [..<sup>334</sup> ]300-year  
550 return period, and the Gumbel (GUM-MLE) method results in +/- 20cm for the 100 return period and +/- 25cm uncertainties  
for the [..<sup>335</sup> ]300-year return period. Due to the 66-year record period, it can be assumed that the estimate of [..<sup>336</sup> ]3-day  
snow depth increase for a 30-year scenario contains lower uncertainties (+/- 15 cm). This consideration of uncertainties does  
not [..<sup>337</sup> ]take into account local wind effects that can arise because of [..<sup>338</sup> ]topography changes at ridges and [..<sup>339</sup> ]the back  
of mountains that significantly influence snow deposition in the release areas. These effects can lead to a high variability of the  
555 snow pack in the release zones. However, these local conditions [..<sup>340</sup> ]cannot be taken into account in such large-scale appli-  
cations. Only a wind load factor (30-50cm) depending on the scenario size was added. Without detailed wind/snow deposition  
studies, this uncertainty in the modelling process is hard to quantify and has to be accepted.

After all input variables have been determined in the avalanche simulation, the topography and the assigned friction parameters  
560 play the most important role in the run out flow of an avalanche. For single slope assessments, different parameters ( $\mu$  and  $\xi$ )  
would be assigned for each change in the flow cross-section (gully, channel or open slope) and thus[..<sup>341</sup> ], more precise results  
could be [..<sup>342</sup> ]obtained. In a large scale simulation, a generalized approach is used that regulates the friction parameters via

---

<sup>329</sup>removed: In the present study, the avalanche fracture depth is extrapolated from the three-day snow depth increase of

<sup>330</sup>removed: located in the center of the project area. The three-day snow depth increase is determined using the extreme value statistics (GUM and GEV)  
(Bocchiola et al., 2008) and scenarios for three return periods are derived. This

<sup>331</sup>removed: , which

<sup>332</sup>removed: (longer time series of data are not available), but it

<sup>333</sup>removed: 100y

<sup>334</sup>removed: 300y

<sup>335</sup>removed: 300y

<sup>336</sup>removed: three-day

<sup>337</sup>removed: yet

<sup>338</sup>removed: the

<sup>339</sup>removed: mountain-backs

<sup>340</sup>removed: can't

<sup>341</sup>removed: detailed

<sup>342</sup>removed: approximated

the avalanche volume and takes the topography in the <sup>[..<sup>343</sup>]</sup>run out into account, but without manually assessed details (<sup>[..<sup>344</sup>]</sup>please see (Bühler et al., 2022)). This leads to a less differentiated hazard <sup>[..<sup>345</sup>]</sup>pattern compared to a single slope approach  
565 in the avalanche <sup>[..<sup>346</sup>]</sup>run out zone. Another effect that includes uncertainties is that all <sup>[..<sup>347</sup>]</sup>theoretically possible potential  
release areas are simulated with our model. In reality, a more differentiated picture of avalanches would result for each catch-  
ment zone in which some release areas produce an avalanche and others do not. Over an entire catchment area, this leads to  
an overestimation of avalanche risk because <sup>[..<sup>348</sup>]</sup>too many objects are affected. This effect is not uniform for each slope  
aspect or catchment area. As far as we know, <sup>[..<sup>349</sup>]</sup>there are no studies on the release probability of avalanches, that can be  
570 applied to large scales to represent an actual natural avalanche release scenario in a model. The advantage of our approach is,  
however, <sup>[..<sup>350</sup>]</sup>that <sup>[..<sup>351</sup>]</sup>all potential avalanche release areas that have the required geometrical properties for avalanche  
formation, such as slope, aspect, curvature and smoothness, are actually covered in the simulation and taken into account  
for risk assessment. Here the need for further research is identified <sup>[..<sup>352</sup>]</sup>to design probabilistic avalanche sets to cover real  
life avalanche release scenarios. In our risk analysis, each individual avalanche is treated as an individual, independent event  
575 and the resulting damage is averaged out over all events impacting an object.

### 4.3 <sup>[..<sup>353</sup>]</sup>

#### 4.2.1 Building impacts and avalanche risk mapping

In this paper, we identify the monetary avalanche risk <sup>[..<sup>354</sup>]</sup>for buildings at a large scale<sup>[..<sup>355</sup>]</sup>. We intersect impact functions  
with defined vulnerabilities of buildings with monetary values and continuous hazard indication maps of avalanche pressure.  
580 <sup>[..<sup>356</sup>]</sup>To do this at a large scale, some generalisations have to be <sup>[..<sup>357</sup>]</sup>made which leads to certain limitations in the level of  
detail.

The impact functions define the damage rate in steps and pressure classes. Actual damage does not always depend on these  
classes. If an avalanche hits an object, it is important at what angle the building is oriented in relation to the flow direction  
585 of the avalanche, **what is** the specific flow regime as well as how high the avalanche flows (Kyburz et al., 2018) or, whether

---

<sup>343</sup>removed: runout

<sup>344</sup>removed: for details

<sup>345</sup>removed: picture

<sup>346</sup>removed: run-out

<sup>347</sup>removed: geometrically possible

<sup>348</sup>removed: of the avalanche release probability. It

<sup>349</sup>removed: however,

<sup>350</sup>removed: is that all avalanche areas

<sup>351</sup>removed: could geometrically produce an avalanche

<sup>352</sup>removed: in order

<sup>353</sup>removed: Building impacts and avalanche risk mapping

<sup>354</sup>removed: on

<sup>355</sup>removed: for buildings

<sup>356</sup>removed: In order to do this on

<sup>357</sup>removed: done

the building has structural <sup>[..<sup>358</sup>]</sup> weaknesses (e.g. windows or doors) exposed to the avalanche flow. Even though the <sup>[..<sup>359</sup>]</sup> impact step function was derived from expert assessments and damage surveys of avalanche incidents, it is unlikely that <sup>[..<sup>360</sup>]</sup> damage occurs according to these steps or is linear to the avalanche pressure - <sup>[..<sup>361</sup>]</sup> depending strongly on the individual situation. Even minor damage to the foundations of a house can lead to total damage and reconstruction. In our method, all these details cannot be taken into account. To ensure the performance of our approach, we generalize. We consider buildings as point objects with a generalised vulnerability. <sup>[..<sup>362</sup>]</sup> When using central points in building polygons, we naturally underestimate the influence of the actual three-dimensional building size in the avalanche flow. Small buildings are therefore equally considered as large buildings. Nevertheless, this approach allows a simple and performative applicability and an efficient large-scale approach but introduces inaccuracies in detail. However, we try to address the framework of these uncertainties by means of an overall uncertainty analysis.

Further, <sup>[..<sup>363</sup>]</sup> our method of the avalanche impact calculation does not take into account the temporal effects of the hazard. In reality, the first avalanche that destroys an object completely, "prevents" its destruction by further events. After many minor avalanches <sup>[..<sup>364</sup>]</sup> have occurred in the same catchment area, the probability of a major event at the same location decreases. To cover these effects in a risk tool, a detailed probabilistic study would be needed for each individual catchment area. Local meteorological weather events and time-dependent interactions of individual avalanches would have to be investigated in detail. This would increase the level of detail but significantly <sup>[..<sup>365</sup>]</sup> weakens the independence of the place of application as well as the large-scale applicability for the identification of avalanche risks.

### 4.3 General insights and strengths of the approach

In this work, we have linked a risk tool with a new method for large scale hazard assessment. We have calculated and presented avalanche risks of over 40,000 single avalanches in different hazard scenarios for more than 13,300 buildings over an area of 469.3 km<sup>2</sup>. Due to the complexity and the small scale of the hazard process (compared to storms or floods), avalanche risk assessment is often addressed at the local level. Studies previously carried out in this field, such as <sup>[..<sup>366</sup>]</sup> those of Fuchs et al. (2004) and Fuchs et al. (2006) or more recent studies such as Zgheib et al. (2020) have put their focus on the scale of particular villages <sup>[..<sup>367</sup>]</sup> and are depending on existing hazard maps. Ettl et al. (2014) established a risk tool for buildings using RAMMS::Avalanche on single slopes. Large scale approaches as the one of Kazakova et al. (2017) assess risk for 60

---

<sup>358</sup> removed: weakness points

<sup>359</sup> removed: development of these steps

<sup>360</sup> removed: real damage always follows

<sup>361</sup> removed: this depends

<sup>362</sup> removed: This allows

<sup>363</sup> removed: the

<sup>364</sup> removed: at the exact

<sup>365</sup> removed: weaken

<sup>366</sup> removed: that

<sup>367</sup> removed: .

buildings, others [..<sup>368</sup> ]focus on risks and [..<sup>369</sup> ]protection forest development such as Renner and Steger (2021). Fuchs et al. (2015) uses detailed avalanche hazard maps at regional scale and flood hazards [..<sup>370</sup> ]at a countrywide scale. [..<sup>371</sup> ]Bühler et al. (2019) focus on large scale avalanche mapping from satellite data after high intensity snowfall events, but  
615 do not address corresponding risk assessment for objects in an entire region. Several studies and expert appraisals were conducted by other authors in the Gotthard area where our case study is located. Most of them are detailed expert judgments on single slopes to assess avalanche risk for specific avalanche paths or specific objects at risk. Margreth and Ammann (2004) conducted a study on the south side of Lukmanier Pass in the central part of the Swiss Alps to develop hazard scenarios to describe the impact of avalanches on specific structures such as bridges. Margreth et al. (2003), for  
620 instance, conducted an avalanche risk analysis using previous versions of the RAMMS avalanche simulation software. They also conducted a case study in the Gotthard region with the focus on avalanche safety on pass roads, but based on a detailed single slope hazard evaluation (Margreth et al., 2003). While such approaches are of high detail and accuracy, they do not allow for large-scale or site-independent application. In contrast, our method allows for modelling avalanche danger for unlimited sized territories with little time expenditure, without using hazard maps previously provided by local  
625 authorities. Exposure values can [..<sup>372</sup> ]either be generated with existing data or roughly estimated in CLIMADA via night light assessments if no detailed information on buildings is available (Aznar-Siguan and Bresch, 2019). Nightlight assessment takes the light intensity of satellite images taken of the landscape at night and assigns monetary values to a location depending on the light intensity. This approach allows the method to be applied worldwide even with a limited exposure database available. The RAMMS::LSHIM method and the good adaptability of the risk tool is a significant advantage when  
630 applying this method in areas [..<sup>373</sup> ]with no or limited hazard or asset information available.

## 5 [..<sup>374</sup> ]

Our novel approach for simulating avalanches and assessing the spatially distributed risk through monetary valuation is valid at large scales with a high degree of detail (single-object-resolution). Owing to the avalanche simulations from the RAMMS::LSHIM method, no external avalanche hazard information is needed. [..<sup>375</sup> ]CLIMADA is easy to adapt and already  
635 being used for a variety of other hazards such as hurricanes and winter storms, and now avalanches. This concept, in combination with large scale hazard mapping, can easily be [..<sup>376</sup> ]used for different hazards [..<sup>377</sup> ]such as rockfall, debris flows or landslides. Additionally, other exposure scenarios such as traffic routes or ~~energy supply lines~~ or critical

---

<sup>368</sup>removed: out their

<sup>369</sup>removed: forest (Renner and Steger, 2021)

<sup>370</sup>removed: on

<sup>371</sup>removed: If one compares the method we use, avalanche danger can be modeled

<sup>372</sup>removed: also be generated

<sup>373</sup>removed: where there is

<sup>374</sup>removed: Conclusions and outlook

<sup>375</sup>removed: Additionally, this concept

<sup>376</sup>removed: adapted

<sup>377</sup>removed: or exposure scenarios



infrastructure could be integrated. It provides an overview [..<sup>378</sup> ]on risk to objects within an area [..<sup>379</sup> ]threatened by natural hazards, and helps practitioners to identify risk hot spots and previously [..<sup>380</sup> ]unidentified hazard locations. Thus, the process presented in this paper serves to pinpoint locations of high risk where focused assessments might be necessary for hazard adaptation and mitigation.

## 5 Conclusions Outlook

This approach can be applied globally over large areas and could become particularly useful for further research, when considering anticipated future changes of risk. [..<sup>381</sup> ]A potential application might be, to study hazard changes induced by the effects of climate change and / or risk changes caused by socio-economic shifts[..<sup>382</sup> ]. Lastly, it can be applied in the context of a probabilistic options appraisal concerning risk reduction measures and adaptation planning as well as cost-benefit calculations. In a subsequent study, we will apply our approach to investigate the impact of climate change on future avalanche risk and further develop the framework for the application of other gravitational alpine mass movements.

### *Code and data availability.*

The potential release areas necessary for the reproduction of the hazard simulation and RAMMS simulations described in this paper are publicly available on ENVIDAT [www.envidat.ch](http://www.envidat.ch), the WSL data portal, together with the final submission. CLIMADA is openly available from GitHub [https://github.com/CLIMADA-project/climada\\_python](https://github.com/CLIMADA-project/climada_python), B(Aznar-Siguan and Bresch, 2019)) under the GNU GPL license (GNU Operating System, 2007). The documentation is hosted on Read the Docs <https://climada-python.readthedocs.io/en/stable/>, (Aznar-Siguan and Bresch, 2019)) and includes a link to the interactive tutorial for CLIMADA. CLIMADA [..<sup>383</sup> ]is permanently available at the ETH Data Archive <https://zenodo.org/record/5555825> ((Kropf et al., 2021)). The script reproducing the main results of this paper will be available at [https://github.com/CLIMADA-project/climada\\_papers](https://github.com/CLIMADA-project/climada_papers) after the final submission.

---

<sup>378</sup>removed: of

<sup>379</sup>removed: which are

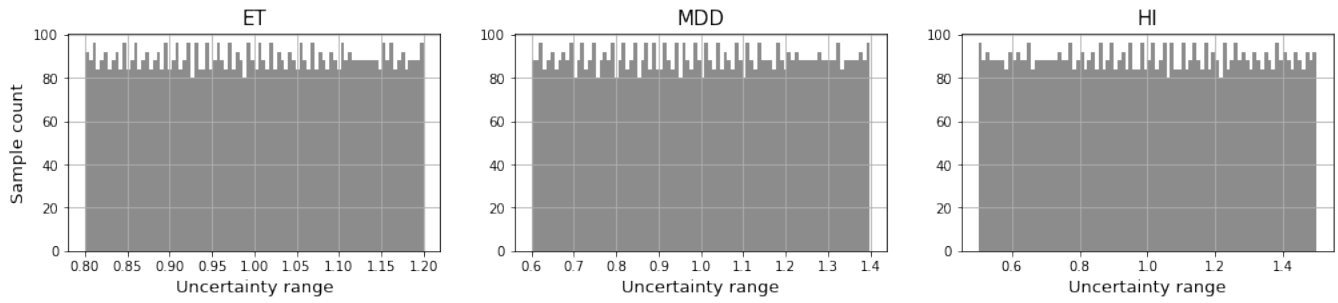
<sup>380</sup>removed: unknown threats

<sup>381</sup>removed: As such, studying hazard changes brought on by climate change or

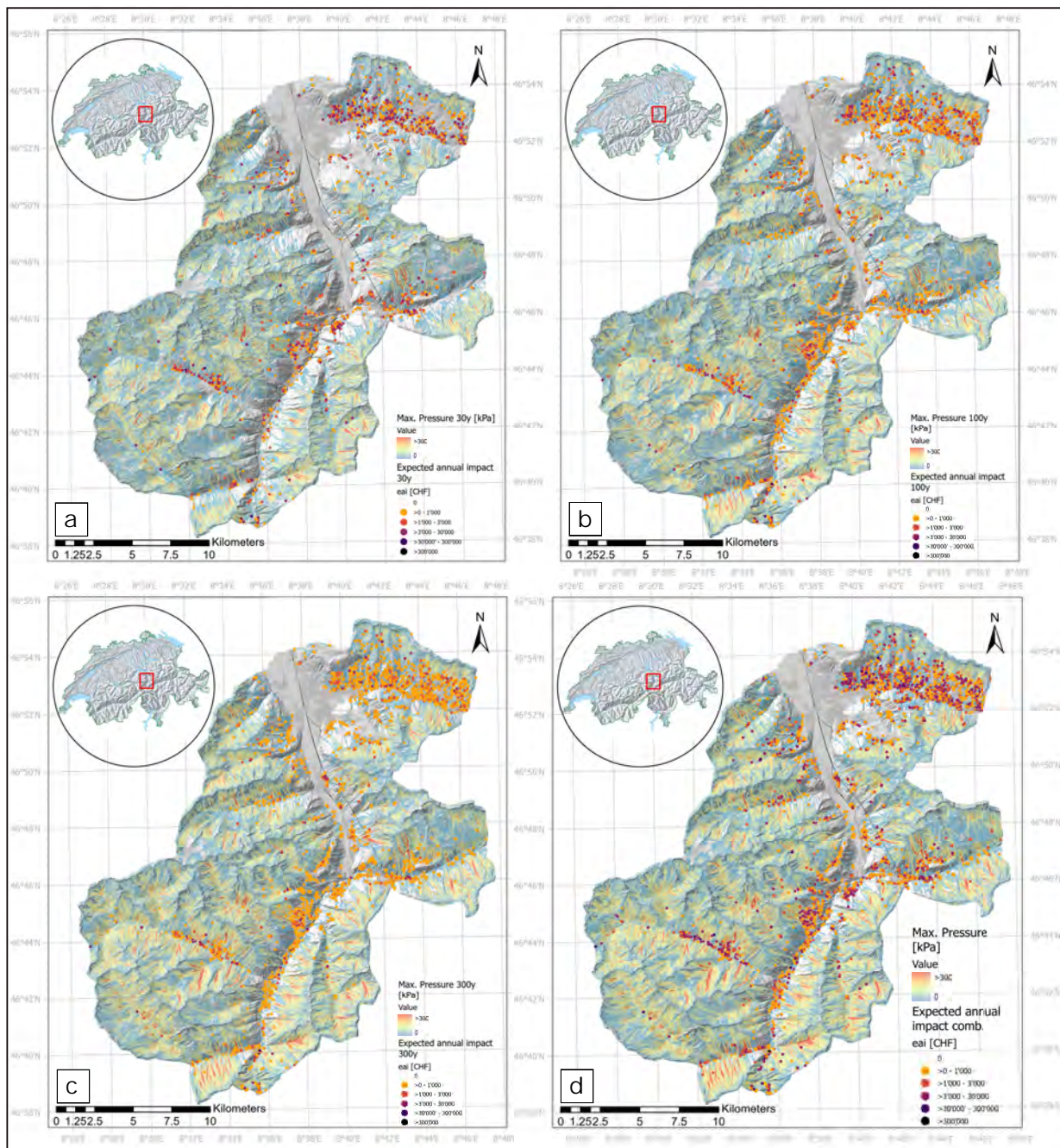
<sup>382</sup>removed: , where hazard assessments are missing, is a possible application for this analysis

<sup>383</sup>removed: , which

## 5.1 Appendix A1



**Figure 1.** Illustration of the automatically generated samples for the chosen uncertainty variables  $et$  = Exposure,  $mdd$  = Mean Damage Degree (impact function),  $hi$  = Hazard Intensity with a sample number of  $N = 8000$ .



**Figure 2.** Additional Risk maps: Overview of the spatial distribution of expected annual impact for individual objects at the three different avalanche scenarios (a) 30 return period, (b) 100 return period, (c) 300 return period (d) all hazard scenarios combined, Basemap origin (a-d): Swiss federal office of topography: Swisstopo.

*Author contributions.* G.O. and M.B. and C.M.K. designed the study, G.O. and C.M.K. performed the calculations. G.O., D.N.B., T.R. and  
660 C.M.K. programmed parts and/or made adaptations of the used risk assessment platform. Y.B. programmed and provided the necessary  
hazard mapping algorithm G.O. performed the hazard mapping and risk assessment. All authors contributed to the writing process and the  
validation of the paper, reviewed the results and proposed improvements.

*Competing interests.* The authors declare that they have no conflict of interest.

*Acknowledgements.* This work is funded by the WSL research program Climate Change Impacts on Alpine Mass Movements – CCAMM  
665 ccamm.slf.ch and the Swiss Railway Company SBB www.sbb.ch/en; we thank both for the financial support. We like to thank the WSL  
Institute for Snow and Avalanche Research SLF and ETH Zürich for providing their infrastructure and the great work environment, Marc  
Christen for adjustments to the RAMMS::Avalanche software, Peter Bebi and Gregor Schmucki for providing the forest layer methodology,  
and Stefan Margreth, Perry Bartelt, Lukas Stoffel, Linda Zaugg-Ettlin, Jan Kleinn, Michael Kyburz, Michael Lehning, Pius Krütli for their  
opinions and feedback[..<sup>384</sup> ], and Christoph Marty for meteorological data delivery. We further thank Andreas Stoffel for ArcGIS support  
670 and Natalie Brozová, Dylan S. Reynolds[..<sup>385</sup> ], Michael T. Lombardo and Amelie Fees for code troubleshooting and scientific exchange.

---

<sup>384</sup>removed: .

<sup>385</sup>removed: and

## References

- ASTRA: Naturgefahren auf den Nationalstrassen: Risikokonzept, Tech. Rep. 2, Bundesamt für Strassen ASTRA Abteilung Strassennetze N Standards und Sicherheit der Infrastruktur SSI, 2012.
- Aznar-Siguan, G. and Bresch, D. N.: CLIMADA v1: a global weather and climate risk assessment platform, *Geoscientific Model Development*, 12, 3085–3097, <https://doi.org/10.5194/gmd-12-3085-2019>, 2019.
- 675 Ballesteros-Cánovas, J. A., Trappmann, D., Madrigal-González, J., Eckert, N., and Stoffel, M.: Climate warming enhances snow avalanche risk in the Western Himalayas, *Proceedings of the National Academy of Sciences*, 115, 3410–3415, <https://doi.org/https://doi.org/10.1073/pnas.1716913115>, 2018.
- Bartelt, P., Christen, M., Bühler, Y., Deubelbeiss, Y., Salz, M., Schneider, M., and Schumacher, L.: RAMMS::AVALANCHE User Manual, 680 WSL Institute for Snow and Avalanche Research SLF, v1.7.0 edn., 2017.
- Bebi, P., Bast, A., Helzel, K., Schmucki, G., Brozova, N., and Bühler, Y.: Avalanche Protection Forest: From Process Knowledge to Interactive Maps, in: *Online First, IntechOpen*, <https://doi.org/DOI: 10.5772/intechopen.99514>, 2021.
- Bebi, P., Kulakowski, D., and Rixen, C.: Snow avalanche disturbances in forest ecosystems-State of research and implications for management, *FOREST ECOLOGY AND MANAGEMENT*, 257, 1883–1892, <https://doi.org/10.1016/j.foreco.2009.01.050>, International-Union- 685 of-Forestry-Research-Organization Conference on Natural Hazards and Natural Disturbances in Mountain Forests, Trento, ITALY, SEP, 2007, 2009.
- Blanchet, J., Marty, C., and Lehning, M.: Extreme value statistics of snowfall in the Swiss Alpine region, *Water Resources Research*, 45, <https://doi.org/https://doi.org/10.1029/2009WR007916>, 2009.
- Blaschke, T.: Object based image analysis for remote sensing, *ISPRS J. Photogramm* 65, 2–16, 2010.
- 690 Bocchiola, D., Bianchi Janetti, E., Gorni, E., Marty, C., and Sovilla, B.: Regional evaluation of three day snow depth for avalanche hazard mapping in Switzerland, *Natural Hazards and Earth System Sciences*, 8, 685–705, <https://doi.org/10.5194/nhess-8-685-2008>, 2008.
- Borter, P.: Risikoanalysen bei gravitativen Naturgefahren– 107/1–Methode, *Umwelt-Materialien 107/1*, Tech. rep., Bundesamt für Umwelt, Wald und Landschaft, BUWAL, Bern, 1999.
- Borter, P. and Bart, R.: Risikoanalysen bei gravitativen Naturgefahren–107/2–Fallbeispiele und Daten, *UmweltMaterialien 107/2*, Tech. rep., 695 Bundesamt für Umwelt, Wald und Landschaft, BUWAL, Bern, 1999.
- Brožová, N., Baggio, T., D’Agostino, V., Bühler, Y., and Bebi, P.: Multiscale analysis of surface roughness for the improvement of natural hazard modelling, *Natural Hazards and Earth System Sciences*, 21, 3539–3562, <https://doi.org/10.5194/nhess-21-3539-2021>, 2021.
- Brožová, N., Fischer, J.-T., Bühler, Y., Bartelt, P., and Bebi, P.: Determining forest parameters for avalanche simulation using remote sensing data, *Cold Regions Science and Technology*, 172, 102976, <https://doi.org/https://doi.org/10.1016/j.coldregions.2019.102976>, 2020.
- 700 Bründl, M., Krummenacher, B., and Merz, H. M.: Decision making tools for natural hazard risk management-Examples from Switzerland, in: *Proceedings of the Joint ESREL and SRA-Europe Conference*, Vol. 4, vol. 4, pp. 2773–2779, <https://www.scopus.com/inward/record.uri?eid=2-s2.0-77949495122&partnerID=40&md5=f7316416fee08698ef89c39bd518fb0d>, 2009.
- Bründl, M., Baumann, R., Burkard, A., Dolf, F., Gauderon, A. and Gertsch, E., Gutwein, P., Krummenacher, B., Loup, B., Schertenleib, A., Oggier, N., and Zaugg-Ettlin, L.: Evaluating the Effectiveness and the Efficiency of Mitigation Measures against Natural Hazards, 705 *Hazards*. Koboltschnig, G. (ed), pp. 27-33, International Research Society INTERPRAEVENT, Lucerne, Switzerland., 2016.
- Bründl, M., Hafner, E., Bebi, P., Bühler, Y., Margreth, S., Marty, C., Schaer, M., Stoffel, L., Techel, F., Winkler, K. and Zweifel, B., and Schweizer, J.: Ereignisanalyse Lawinensituation im Januar 2018, Tech. rep., Institut für Schnee und Lawinenforschung SLF, 2019.

- Bühler, Y., von Rickenbach, D., Stoffel, A., Margreth, S., Stoffel, L., and Christen, M.: Automated snow avalanche release area delineation – validation of existing algorithms and proposition of a new object-based approach for large-scale hazard indication mapping, *Natural Hazards and Earth System Sciences*, 18, 3235–3251, <https://doi.org/10.5194/nhess-18-3235-2018>, 2018.
- 710 Bühler, Y., Hafner, E. D., Zweifel, B., Zesiger, M., and Heisig, H.: Where are the avalanches? Rapid SPOT6 satellite data acquisition to map an extreme avalanche period over the Swiss Alps, *The Cryosphere*, 13, 3225–3238, <https://doi.org/10.5194/tc-13-3225-2019>, 2019.
- Bühler, Y., Bebi, P., Christen, M., Margreth, S., Stoffel, L., Stoffel, A., Marty, C., Schmucki, G., Caviezel, A., Kühne, R., Wohlwend, S., and Bartelt, P.: Automated avalanche hazard indication mapping on state wide scale, *Natural Hazards and Earth System Sciences Discussions*, 2022, 1–22, <https://doi.org/10.5194/nhess-2022-11>, 2022.
- 715 Bühler, Y., Kumar, S., Veitinger, J., Christen, M., and Stoffel, A.: Automated identification of potential snow avalanche release areas based on digital elevation models, *Nat. Hazards Earth Syst. Sci.*, 13, 1321–1335, 2013.
- Bühler, Y., von Rickenbach, D., Christen, M., Margreth, S., Stoffel, L., Stoffel, A., and Kühne, R.: Linking modelled potential release areas with avalanche dynamic simulations: An automated approach for efficient avalanche hazard indication mapping, *Linking modelled potential release areas with avalanche dynamic simulations: An automated approach for efficient avalanche hazard indication mapping*, 2018.
- 720 CH2018: CH2018 – Climate Scenarios for Switzerland, Tech. rep., National Centre for Climate Services, Zurich, 271 pp., [https://www.nccs.admin.ch/dam/nccs/de/dokumente/website/klima/CH2018\\_Technical\\_Report.pdf.download.pdf/CH2018\\_Technical\\_Report.pdf](https://www.nccs.admin.ch/dam/nccs/de/dokumente/website/klima/CH2018_Technical_Report.pdf.download.pdf/CH2018_Technical_Report.pdf), 2018.
- Christen, M., Kowalski, J., and Bartelt, P.: RAMMS: Numerical simulation of dense snow avalanches in three-dimensional terrain, *Cold Regions Science and Technology*, 63, 1–14, <https://doi.org/https://doi.org/10.1016/j.coldregions.2010.04.005>, 2010.
- 725 Ettl, L., Bründl, M., Christen, M., and Bühler, Y.: Automated risk mapping for buildings endangered by avalanches, *Proceedings, International Snow Science Workshop, Banff, 2014*, [https://www.slf.ch/fileadmin/user\\_upload/WSL/Projekte/ramms\\_risk/Ettl\\_et\\_al\\_2014\\_ISSW.pdf](https://www.slf.ch/fileadmin/user_upload/WSL/Projekte/ramms_risk/Ettl_et_al_2014_ISSW.pdf), 2014.
- FOEN: Minimale Standards Kantonale Risikoübersichten für gravitative Naturgefahren, Tech. rep., Federal Office for Environment Department Hazard Prevention, [https://www.bafu.admin.ch/dam/bafu/de/dokumente/naturgefahren/fachinfo-daten/minimale\\_standards\\_kantonaler\\_risikouebersichten.pdf.download.pdf/minimale\\_standards\\_kantonale\\_risiko%C3%BCbersichten.pdf](https://www.bafu.admin.ch/dam/bafu/de/dokumente/naturgefahren/fachinfo-daten/minimale_standards_kantonaler_risikouebersichten.pdf.download.pdf/minimale_standards_kantonale_risiko%C3%BCbersichten.pdf), 2020.
- 730 FOEN: EconoMe, Wirksamkeit und Wirtschaftlichkeit von Schutzmassnahmen gegen Naturgefahren., Federal Office for the Environment, Bern. [www.econome.admin.ch](http://www.econome.admin.ch) (Last access: 28th Mach 2021)., 2021.
- FSO: Federal Statistical Office: STATPOP and STATENT Data STATPOP: Individuals, households and economically active persons within the permanent and non permanent resident population (at their main residence and, if it applies, at their secondary residence), linked to georeferenced buildings and dwellings <https://www.bfs.admin.ch/bfs/en/home/statistics/population/surveys/statpop.html> STATENT: The statistics on the structure of enterprises (STATENT) provide central information on the structure of the Swiss economy, linked to georeferenced buildings and dwellings, <https://www.bfs.admin.ch/bfs/en/home/services/geostat/swiss-federal-statistics-geodata/business-employment/structural-business-statistics-statent-from-2011-onwards.html>, 2019.
- 735 Fuchs, S., Bründl, M., and Stötter, J.: Development of avalanche risk between 1950 and 2000 in theMunicipality of Davos, Switzerland, *Natural Hazards and Earth System Sciences*, 2004.
- 740 Fuchs, S., Keiler, M.and Zischg, A., and Bründl, M.: RISK21 - coping with risks due to natural hazards in the 21st century. *Proceedings of the RISK21 workshop*, chap. Temporal variability of damage potential in settlements – A contribution towards the long-term development of avalanche risk, p. 12, CRC Press In W. J. Ammann, S. Dannenmann, & L. Vulliet (Eds.), <https://doi.org/https://doi.org/10.1201/9780203963562>, 2006.
- 745

- Fuchs, S., Keiler, M., and Zischg, A.: A spatiotemporal multi-hazard exposure assessment based on property data, *Natural Hazards and Earth System Sciences*, 15, 2127–2142, <https://doi.org/10.5194/nhess-15-2127-2015>, 2015.
- Fuchs, S., Heiser, M., Schlögl, M., Zischg, A., Papathoma-Köhle, M., and Keiler, M.: Short communication: A model to predict flood loss in mountain areas, *Environmental Modelling & Software*, 117, 176 – 180, <https://doi.org/https://doi.org/10.1016/j.envsoft.2019.03.026>, 2019.
- 750 Gruber, U. and Margreth, S.: Winter 1999: a valuable test of the avalanche-hazard mapping procedure in Switzerland, *Ann. Glaciol*, 32, 328–332, 2001.
- Harvey, S., Schmudlach, G., Bühler, Y., Dürr, L., Stoffel, A., and Christen, C.: Avalanche terrain maps for backcountry skiing in Switzerland, *International Snow Science Workshop ISSW, Innsbruck, Austria*, 2018.
- 755 Heinimann, H., Hollenstein, K., Kienholz, H., and Krummenacher, B. Mani, P.: Methoden zur Analyse und Bewertung von Naturgefahren - Eine risikoorientierte Betrachtungsweise, Tech. rep., BUWAL, 1998.
- IPCC: Managing the Risks of Extreme Events and Disasters to Advance Climate Change Adaptation, A Special Report of Working Groups I and II of the Intergovernmental Panel on Climate Change by: Field, C. B., Barros V., Stocker T. F., Qin D., Dokken D. J., Ebi K. L., Mastrandrea M. D., Mach K. J., Plattner G.K., Allen S. K., Tignor M., Midgley P.M.eds, Cambridge University Press, Cambridge, UK, and New York, NY, USA, 582 pp., <https://www.ipcc.ch/report/managing-the-risks-of-extreme-events-and-disasters-to-advance-climate-change-adaptation/>, 2012.
- 760 IPCC: Climate Change 2014: Impacts, Adaptation and Vulnerability. Part A: Global and Sectoral Aspects. Contribution of Working Group II to the Fifth Assessment Report of the Intergovernmental Panel on Climate Change, edited by: Field, C. B., Barros, V. R., Dokken, D. J., Mach, K. J., Mastrandrea, M. D., Bilir, T. E., Chatterjee, M., Ebi, K. L., Estrada, Y. O., Genova, R. C., Girma, B., Kissel, E. S., Levy, A.
- 765 N., MacCracken, S., Mastrandrea, P. R., and White, L. L., Tech. rep., Cambridge University Press, United Kingdom and New York, NY, USA, 2014., <https://www.ipcc.ch/report/ar5/wg2/>, 2014.
- Kappes, M. S., Keiler, M., von Elverfeldt, K., and Glade, T.: Challenges of analyzing multi-hazard risk: a review, *Natural Hazards*, 64, 1925–1958, <https://doi.org/10.1007/s11069-012-0294-2>, 2012.
- Kazakova, E., Lobkina, V., Gensiorovskiy, Y., and Zhiruev, S.: Large-scale assessment of avalanche and debris flow hazards in the Sakhalin 770 region, Russian Federation, *Natural Hazards*, 88, 237–251, <https://doi.org/10.1007/s11069-016-2431-9>, 2017.
- Komendantova, N., Scolobig, A., Garcia-Aristizabal, A., Monfort, D., and Fleming, K.: Multi-risk approach and urban resilience, *International Journal of Disaster Resilience in the Built Environment*, 7, 114–132, <https://doi.org/10.1108/IJDRBE-03-2015-0013>, 2016.
- Kropf, C. M., Schmid, E., Aznar-Siguan, G., Eberenz, S., Vogt, T., Steinmann, C. B., Röösl, T., Lüthi, S., Sauer, I., Mühlhofer, E., Hartman, J., Guillod, B. P., Stalhandske, Z., Ciullo, A., Kam, P. M. M., Fairless, C., Wüthrich, J., Meiler, S., Bungener, R., Bozzini, V., Stocker, D., 775 and Bresch, D. N.: CLIMADA-project/climada\_python: v3.0.1, <https://doi.org/10.5281/zenodo.5555825>, 2021.
- Kropf, C. M., Ciullo, A., Otth, L., Meiler, S., Rana, A., Schmid, E., McCaughey, J. W., and Bresch, D. N.: Uncertainty and sensitivity analysis for probabilistic weather and climate risk modelling: an implementation in CLIMADA v.3.1.0 Non-peer reviewed preprint submitted to EarthArXiv, EarthArXiv, <https://doi.org/https://doi.org/10.31223/X5GS7B>, 2022.
- Kyburz, M., Sovilla, B., Gaume, J., and Ancy, C.: Avalanche pressures at the Vallée de la Sionne test site: interaction of avalanches and narrow structures studied with the DEM, In *International snow science workshop proceedings*, pp. pp. 40–42, <https://arc.lib.montana.edu/snow-science/item/2482>, 2018.
- 780

- Maggioni, M. and Gruber, U.: The influence of topographic parameters on avalanche release dimension and frequency, *Cold Regions Science and Technology*, 37, 407–419, [https://doi.org/https://doi.org/10.1016/S0165-232X\(03\)00080-6](https://doi.org/https://doi.org/10.1016/S0165-232X(03)00080-6), iSSW 2002: International Snow Science Workshop, 2003.
- 785 Maggioni, M., Bovet, E., Freppaz, M., Segor, V., and Bühler, Y.: Potential of automated avalanche dynamic simulations for large scale hazard indication mapping in Italy Potential of automated avalanche dynamic simulations for large scale hazard indication mapping in Italy, *International Snow Science Workshop ISSW, Innsbruck, Austria*, 2018.
- Mani, P. and Caduff, U.: *Klimasensitivität Naturgefahren Teil 1 und Teil 2: Methodenbericht und Ergebnisse*, Geo7 Bern, Tech. rep., Geo7, 2012.
- 790 Margreth, S.: Defense structures in avalanche starting zones. Technical guideline as an aid to enforcement Environment in Practice no. 0704, Tech. rep., Federal Office for the Environment, Bern; WSL Swiss Federal Institute for Snow and Avalanche Research SLF, Davos., [https://www.slf.ch/fileadmin/user\\_upload/SLF/Permafrost/Bauen\\_im\\_Permafrost/Lawinenverbau\\_im\\_Anbruchgebiet\\_E.pdf](https://www.slf.ch/fileadmin/user_upload/SLF/Permafrost/Bauen_im_Permafrost/Lawinenverbau_im_Anbruchgebiet_E.pdf), 2007.
- Margreth, S. and Ammann, W. J.: Hazard scenarios for avalanche actions on bridges, *Annals of Glaciology*, 38, 89–96, <https://doi.org/10.3189/172756404781814951>, 2004.
- 795 Margreth, S., Stoffel, L., and Wilhelm, C.: Winter opening of high alpine pass roads—analysis and case studies from the Swiss Alps, *Cold Regions Science and Technology*, 37, 467–482, [https://doi.org/https://doi.org/10.1016/S0165-232X\(03\)00085-5](https://doi.org/https://doi.org/10.1016/S0165-232X(03)00085-5), iSSW 2002: International Snow Science Workshop, 2003.
- Margreth, S., Burkard, A., and Buri, H.: Beurteilung der Wirkung von Schutzmassnahmen gegen Naturgefahren als Grundlage für ihre Berücksichtigung in der Raumplanung, Tech. rep., Plattform Naturgefahren PLANAT, [https://www.gra-nat.ch/system/media/1800/original/PLANAT\\_2008\\_-\\_Teil\\_B\\_\\_Lawinen.pdf?1421155223](https://www.gra-nat.ch/system/media/1800/original/PLANAT_2008_-_Teil_B__Lawinen.pdf?1421155223), 2008.
- 800 MATRIX Consortium: F. Wenzel, S. Laskowski and A. Garcia-Aristizabal, W. Aspinall and M. Bengoubou-Valerius, D. Monfort-Climent and N. Desramaut, A. Di Ruocco and K. Fleming, P. Gasparini and P. Gehl, B. Khazai and N. Komendantova, Z. Liu and J. Marti, W. Marzocchi and A. Mignan, R. Mrzyglocki and Nadim, F. and S. Parolai, A. Patt and A. Réveillère, A. Scolobig and S. Tyagunov, P. van Gelder and B. Vidar Vangelsten, C. Vinchon and S. Vorogushyn, J. Wang. MATRIX: New Multi-Hazard and Multi-Risk Assessment Methods for Europe, Tech. rep., Results I and Reference Report / Deliverable D8.4, <https://cordis.europa.eu/project/id/265138/reporting>, 2013.
- MeteoSchweiz: Klimabulletin Jahr 2018, Tech. rep., Federal Office of Meteorology and Climatology MeteoSwiss, [https://www.meteoschweiz.admin.ch/content/dam/meteoswiss/de/service-und-publikationen/Publikationen/doc/2019\\_ANN\\_d.pdf](https://www.meteoschweiz.admin.ch/content/dam/meteoswiss/de/service-und-publikationen/Publikationen/doc/2019_ANN_d.pdf), 2019.
- Monti, F., Alberti, R., Comin, P., Wolynski, A., and Bühler, Y.: Automated identification of forest with protective function against snow avalanches in the Trento Province (Italy), *International Snow Science Workshop ISSW, Innsbruck, Austria*, <https://arc.lib.montana.edu/snow-science/item/2636>, 2018.
- Nossent, J., Elsen, P., and Bauwens, W.: Sobol’ sensitivity analysis of a complex environmental model, *Environmental Modelling Software*, 26, 1515–1525, <https://doi.org/https://doi.org/10.1016/j.envsoft.2011.08.010>, 2011.
- Otto, L., Rügsegger, C., Kropf, C. M., Ciullo, A., Meiler, S., Bresch, D. N., and McCaughey, J. W.: Analyzing Uncertainties in Climate Risk Assessment and Adaptation Options Appraisal with a Four-Phase Analytical Framework., 2022.
- 815 Pancevski, B.: Snowbound Europe Struggles to Dig Out After Deadly Storms, *The Wall Street Journal*, 2019.
- PLANAT: Risikokzept Leitfaden Teil I Allgemeine Darstellung des Risikokzeptes und Teil II Anwendung des Risikokzeptes, Nationale Plattform Naturgefahren - Bründl M., Romang H., Holthausen N., Merz H., Bischof N., <https://www.planat.ch/de/infomaterial-detail/risikokzept-fuer-naturgefahren>, 2009.



- 820 PLANAT: Umgang mit Risiken aus Naturgefahren. Strategie 2018., Tech. rep., Strategie 2018. Nationale Plattform Naturgefahren PLANAT, Bern., <https://www.news.admin.ch/news/message/attachments/53006.pdf>, 2018.
- Renner, K. and Steger, S.: Green Risk 4 Alps: WP3 Report on Results of the risk analysis and the strategy prioritization, Tech. rep., Interreg Alpine Space, 2021.
- Rudolf-Miklau, F., Sauermoser, S., and Mears, A.: The Technical Avalanche Protection Handbook, Wiley-VCH Berlin, Germany, 430 pp., [https://www.ernst-und-sohn.de/sites/default/files/uploads/media/sonderhefte/Technical\\_Avalanche\\_Protection\\_Detail\\_dt.pdf](https://www.ernst-und-sohn.de/sites/default/files/uploads/media/sonderhefte/Technical_Avalanche_Protection_Detail_dt.pdf), 2014.
- 825 Salm, B., Burkhard, A., and Gubler, H. U.: Berechnung von Fliesslawinen., Eine Anleitung für den Praktiker mit Beispielen, Eidgenössisches Institut für Schnee- und Lawinenforschung SLF 7260 Davos, [https://www.dora.lib4ri.ch/wsl/islandora/object/wsl:26106/datastream/PDF/Salm-1990-Berechnung\\_von\\_Fliesslawinen.\\_Eine\\_Anleitung-\(published\\_version\).pdf](https://www.dora.lib4ri.ch/wsl/islandora/object/wsl:26106/datastream/PDF/Salm-1990-Berechnung_von_Fliesslawinen._Eine_Anleitung-(published_version).pdf), 1990.
- Saltelli, A.: Sensitivity Analysis for Importance Assessment, *Risk Analysis*, 22, 579–590, <https://doi.org/https://doi.org/10.1111/0272-4332.00040>, 2002.
- 830 Saltelli, A., Aleksankina, K., Becker, W., Fennell, P., Ferretti, F., Holst, N., Li, S., and Wu, Q.: Why so many published sensitivity analyses are false: A systematic review of sensitivity analysis practices, *Environmental Modelling & Software*, 114, 29–39, <https://doi.org/https://doi.org/10.1016/j.envsoft.2019.01.012>, 2019.
- Schneebeli, M. and Bebi, P.: HYDROLOGY | Snow and Avalanche Control, in: *Encyclopedia of Forest Sciences*, edited by Burley, J., pp. 397–402, Elsevier, Oxford, <https://doi.org/https://doi.org/10.1016/B0-12-145160-7/00271-4>, 2004.
- 835 Sobol, I.: Global sensitivity indices for nonlinear mathematical models and their Monte Carlo estimates, *Mathematics and Computers in Simulation*, 55, 271–280, [https://doi.org/https://doi.org/10.1016/S0378-4754\(00\)00270-6](https://doi.org/https://doi.org/10.1016/S0378-4754(00)00270-6), the Second IMACS Seminar on Monte Carlo Methods, 2001.
- Sobol, I. M.: Sensitivity analysis for non-linear mathematical models, *Math. Modeling Comput. Exp.*, 1, 407–414, <http://www.andreasaltelli.eu/file/repository/sobol1993.pdf>, 1993.
- 840 Sovilla, B., Schaer, M., Kern, M., and Bartelt, P.: Impact pressures and flow regimes in dense snow avalanches observed at the Vallée de la Sionne test site, *Journal of Geophysical Research: Earth Surface*, 113, <https://doi.org/https://doi.org/10.1029/2006JF000688>, 2008a.
- Sovilla, B., Schaer, M., and Rammer, L.: Measurements and analysis of full-scale avalanche impact pressure at the Vallée de la Sionne test site, *Cold Regions Science and Technology*, 51, 122–137, <https://doi.org/10.1016/j.coldregions.2007.05.006>, cited By 38, 2008b.
- 845 Teich, M., Marty, C., Gollut, C., Grêt-Regamey, A., and Bebi, P.: Snow and weather conditions associated with avalanche releases in forests: Rare situations with decreasing trends during the last 41 years, *Cold Regions Science and Technology*, 83–84, 77–88, <https://doi.org/10.1016/j.coldregions.2012.06.007>, 2012.
- Trachsel, J. and Zweifel, B., Techel, F., and Marty, C. and Stucki, T.: Schnee und Lawinen in den Schweizer Alpen. *Hydrologisches Jahr 2019/20*, Tech. rep., WSL Institut für Schnee und Lawinenforschung SLF, <https://www.wsl.ch/de/publikationen/default-a0030f2223.html>, 2020.
- 850 van Westen, C. and Greiving, S.: Multi-hazard risk assessment and decision making, pp. 31–94, IWA Publishing, United Kingdom, <https://research.utwente.nl/en/publications/multi-hazard-risk-assessment-and-decision-making>, 2017.
- Veitinger, J., Purves, R. S., and Sovilla, B.: Potential slab avalanche release area identification from estimated winter terrain: a multi-scale, fuzzy logic approach, *Natural Hazards and Earth System Sciences*, 16, 2211–2225, <https://doi.org/10.5194/nhess-16-2211-2016>, 2016.
- 855 Voellmy, A.: Über die Zerstörungskraft von Lawinen, *Schweizerische Bauzeitung* 73, 159–165, 1955.
- Weber, D., Rüetschi, M., Small, D., and Ginzler, C.: Grossflächige Klassifikation von Gebüschwald mit Fernerkundungsdaten, *Schweizerische Zeitschrift für Forstwesen*, 171, 51–59, <https://doi.org/10.3188/szf.2020.0051>, 2020.

- Wiesinger, T. and Adams, M.: Schnee und Lawinen in den Schweizer Alpen. Winter 1998/1999, Tech. rep., SLF. Davos, Eidg. Institut für Schnee-und Lawinenforschung SLF., 2007.
- 860 ZAMG: Chimani, B. Ganekind M., Hiebl, J. Höfler A., Orlik, A. Österreichisches Klimabulletin Jahr 2019, Tech. rep., Zentralanstalt für Meteorologie und Geodynamik, <https://www.zamg.ac.at/zamgWeb/klima/bulletin/2019/bulletin-2019.pdf>, 2020.
- Zgheib, T., Giacona, F., Granet-Abisset, A.-M., Morin, S., and Eckert, N.: One and a half century of avalanche risk to settlements in the upper Maurienne valley inferred from land cover and socio-environmental changes., *Global Environmental Change*, 65, 102 149, <https://www.sciencedirect.com/science/article/pii/S0959378020307329>, 2020.
- 865 Zweifel, B., Lucas, C., Hafner, E. and Techel, F., and Marty, C. and Stucki, T.: Schnee und Lawinen in den Schweizer Alpen. *Hydrologisches Jahr 2018/19*, Tech. rep., WSL Institut für Schnee und Lawinenforschung SLF, <https://www.slf.ch/de/publikationen/default-34cd5573e3.html>, 2019.