

Assessing minimum pyroclastic density current mass to impact critical infrastructures: example from Aso Caldera (Japan)

Andrea Bevilacqua¹, Alvaro Aravena^{2,6}, Willy Aspinall³, Antonio Costa⁴, Sue Mahony³, Augusto Neri¹, Stephen Sparks³, Brittain Hill⁵

¹Istituto Nazionale di Geofisica e Vulcanologia, Sezione di Pisa, Pisa, Italy.

²Laboratoire Magmas et Volcans, Université Clermont Auvergne, CNRS, IRD, OPGC, Clermont-Ferrand, France.

³University of Bristol, School of Earth Sciences, Bristol, United Kingdom.

⁴Istituto Nazionale di Geofisica e Vulcanologia, Sezione di Bologna, Bologna, Italy.

⁵University of South Florida, School of Geosciences, Tampa, FL, United States.

⁶[Facultad de Ciencias Básicas, Universidad Católica del Maule, Talca, Chile](#)

Correspondence to: Andrea Bevilacqua (andrea.bevilacqua@ingv.it)

Abstract. We describe a method for calculating the probability that a distal geographic location is impacted by a pyroclastic density current (PDC) of a given size, considering the key related uncertainties. Specifically, we evaluate the minimum volume and mass of a PDC generated at the Aso caldera (Japan) that might affect each of ~~fivethree~~ distal infrastructure (~~targetmarker~~) sites, with model input parameter uncertainties derived from expert judgement. The ~~fivethree~~ ~~markertarget~~ sites are all located 1 ~~1530~~-145 km from the caldera; ~~but as these lie~~ in well-separated directions ~~and thus, for each~~, we ~~can~~ test the ~~effects of the~~ different topographic shielding effects ~~in each case~~. To inform our probabilistic analysis, we apply alternative kinetic energy assessment approaches, i.e., rock avalanche and density current dynamics. In the latter formulation, the minimum mass needed to reach the ~~targetmarker~~s ranges between median values $\sim 28153 \times 10^{12}$ kg and $\sim 465 \times 10^{12}$ kg (M7. ~~25~~-7.7), depending on the site. Rock avalanche dynamics modelling indicates ~ 3 -times greater mass would be required to reach the ~~target-marker~~ sites with 50% probability, while the hypothetical scenario of a relatively dilute distal ash-cloud would require ~ 3 -times less mass. We compare our results with the ~~two~~ largest recorded Aso eruptions, showing that a catastrophic eruption, similar to Aso-4, $\approx M8$, would present a ~~high-significant~~ conditional probability of PDCs reaching the ~~target-marker~~ sites, i.e. ~~32%–96%~~, in the density current formulation and contingent on uncertainty in the erupted mass and on ~~target-marker~~ site direction. ~~This said, for Aso the current occurrence probability of such a colossal initiating eruption has been estimated $< 10^{-8}$ in the next 100 years.~~

1 Introduction

Catastrophic caldera-forming eruptions can generate gigantic clouds of ash and aerosols, extensive fallout deposits, and extremely mobile pyroclastic density currents (PDCs; Baines and Sparks, 2005; Costa et al., 2014; Black et al., 2015; Oppenheimer and Donovan, 2015; Self, 2006; 2015). For instance, the 18.8 Ma Peach Spring Tuff (AZ, USA) pyroclastic flows travelled >170 km (Roche et al., 2016) and pyroclastic flows from other large eruptions have propagated >100 km from their source vents (Wilson, 1991; Wilson et al., 1995; Streck and Gruner, 1995). However, such catastrophic caldera-forming eruptions have never been observed directly. Understanding ~~of~~ the dynamics of these large-scale PDCs is thus limited, being based ~~only~~ on interpretations of their deposits, analogue experiments, numerical modelling, ~~and~~ on extrapolations derived from the observation of smaller-scale events (e.g., Fisher et al., 1993; Cas et al., 2011; Shimizu et al., 2019). Consequently, there are large uncertainties that require use of techniques to consider them in probabilistic terms (e.g., Neri et al., 2015; Rutarindwa et al., 2019; Tadini et al., 2022a; Bevilacqua et al., 2021; 2022).

Several volcanic complexes in the world have produced catastrophic caldera-forming eruptions in the past and may do so again in the future (e.g. Lowenstern et al, 2006; Larsen et al., 2007; Aoki, 2008; Williams, 2012; Newhall et al., 2018; Suñe-Puchol et al., 2019). The expected recurrence rate of M7-8 eruptions at local and global scale has been evaluated from different datasets and through various statistical approaches (Decker, 1990; Simkin, 1993; Mason et al., 2004; Deligne et al., 2010; Brown et al., 2014; Kiyosugi et al., 2015; Rougier et al., 2016; Papale, 2018; Rougier et al., 2018; Papale et al., 2021). Inevitably, all such analyses present substantial uncertainties.

In Japan, the largest eruption in the last 100 ka was Aso-4, which created the current Aso caldera (Fig. 1). It was ~~and~~ responsible for the emission of about ~~several hundred~~ 500 km^3 DRE (Takarada and Hoshizumi 2020; Aspinall et al., 2021; Rougier et al., 2022), ~~90% credible interval [370, 685] km^3 (Aspinall et al., 2021)~~ and thus could be classed an M8 “super-eruption”, or very close to that scale. ~~Its total volume was previously estimated as $465\text{--}960 \text{ km}^3$ DRE in Takarada and Hoshizumi (2020).~~ Aso caldera is located in the densely populated Kyushu Island ($\sim 12.74\text{M}$ people; Oct. 2021), the volcano is currently active and poses significant challenges for risk mitigation (Tajima et al., 2017; Cigolini et al., 2018). One concern is the high runout distance of PDCs from this caldera; which, ~~in the past, have~~ ~~can~~ extended up to ~ 160 km in some directions, e.g., for the Aso-4 eruption (Ono and Watanabe, 1985). ~~Nevertheless, as discussed later in this paper, the recurrence rate of caldera forming eruptions, similar to Aso-4 eruption, is extremely small, i.e. 10^{-8} to 10^{-9} probability in the next 100 years (Aspinall et al., 2021).~~

In this work, we evaluate, through first-order integral PDC models based on different assumptions, the minimum volume and mass of a PDC generated at the Aso caldera that has the potential to affect any of ~~three-five selected~~ target “marker” sites (TSMS); ~~These which are populated cities or critical infrastructure positions related to the electricity grid of Japan within 160 km from the caldera, located in well-separated directions,~~ i.e. TSMS1, TSMS2, MS3, MS4 and TSMS53 (see Fig. 1; Kato et al., 2016). For this, we compared four alternative kinetic energy models with variable input parameters based on structured expert judgement. Our constraints of PDC volume and mass were then compared with the main characteristics of ~~the documented caldera-forming eruptions of Aso volcano, with emphasis on~~ the eruption of Aso-4. ~~Note that our study is not dependent on knowing the volumes of the Aso-4 or its individual flow units accurately. Indeed the volumes have large uncertainties so we can use such estimates to constrain the range of volumes of interest in the modeling and then back check that the volumes with high likelihood of reaching the observed distances are consistent with the known facts.~~

This work is organized in six sections. In Section 2 we describe the main characteristics of the volcanism of the Aso caldera. In Section 3 we briefly outline the first-order integral PDC models used in this analysis and the simplified strategy adopted to account for the shielding effects of topography. In Section 4, we present the main results derived from this study, including data elicited by expert judgement (Subsection 4.1), the minimum PDC volume and mass that would be able to reach the ~~targetmarker~~ sites (Subsection 4.2) and the probability likelihoods this threshold could be exceeded by PDCs with the characteristics ~~of largest documented caldera-forming eruptions at Aso-4 PDCs~~ ~~volcano~~ (Subsection 4.3). Then we present a brief sensitivity analysis of our numerical results (Subsection 4.4). Finally, in Section 5 we discuss the ~~probability of occurrence of caldera-forming eruptions on the scale of Aso-4 and the~~ differences and limitations of the simplified models adopted to evaluate resulting PDC runout distances ~~and the probability of occurrence of caldera forming eruptions on the scale of Aso-4~~. Supporting Information S1 contains technical notes on the derivation of the kinetic models and Supporting Information S2 is the email-log of the discussions that took place during the elicitation sessions.

2 Geological framework

2.1 The Aso caldera

Aso caldera (25 km N-S, 18 km E-W) is one of the largest calderas in Japan (Ono and Watanabe, 1985), with an area of 379 km², an average wall height of 500 m and a maximum wall height of 900 m (Matumoto, 1943). It is located in central Kyushu, S-W Japan (Fig. 1), where the Philippine Sea plate subducts beneath the Amurian plate (e.g., Petit and Fournier, 2005; DeMets et al., 2010).

Aso caldera was formed by four successive large-magnitude eruptions: Aso-1 (0.3 Ma, M6.7), Aso-2 (0.14 Ma, M6.7), Aso-3 (0.12 Ma, M7.4) and Aso-4 (86.8-87.3 ka; M8.1-8.4; Aoki, 2008; Takarada and Hoshizumi, 2020), where $M = \log_{10}[\text{erupted mass (kg)}] - 7$ (Hayakawa, 1993; Pyle, 2000). Each of Aso-1-4 caldera cycles contains abundant dacitic to rhyodacitic pumice and volcanic ash, with mafic scoria included in the last stage of each eruption cycle (Hasenaka, 2016). The four caldera-forming eruptions of Aso produced >600 km³ DRE of pyroclastic deposits in total (>1,200 km³ bulk), including hundreds of cubic kilometres of pyroclastic flow deposits (e.g., Matsumoto et al., 1991; Ono et al., 1977; Machida et al., 1985; Machida, 1999; Machida and Arai, 2003; Kaneko et al., 2007). In particular, Aso-1 erupted ≥ 40 km³ DRE (≥ 100 km³ bulk) of pyroclastic material, Aso-2 produced ~ 22 km³ DRE (50 km³ bulk), and Aso-3 emitted about 100 km³ DRE (>150 km³ bulk; Matsumoto et al., 1991; Croweller et al., 2012; Kaneko et al., 2015). Aso-4, which represents the ~~major-largest~~ eruption of Aso caldera, produced ~~several hundred between 370 and 685 km³ DRE according to Aspinall et al., (2021), and between 465 and 962 km³ DRE according to Takarada and Hoshizumi, (2020)~~ (please see next subsection for more details about Aso-4). The PDCs generated from these eruptions reached runout distances from the caldera of ~ 30 km for Aso-1, ~ 30 km for Aso-2, ~ 70 km for Aso-3, and ~ 166 km for Aso-4 (Ono and Watanabe, 1983; Takarada and Hoshizumi, 2020).

In addition to the caldera-forming events, Aso volcano has been the source of numerous smaller-magnitude eruptions, both preceding and following Aso-4:

- Inter-caldera volcanism produced silicic pumice and lava flows, which may be related to the initial phases or “precursory” eruptions to caldera-forming events (Hasenaka, 2016). For instance, the deeply dissected stratovolcano ~~Neakodake (see Fig. 1)~~, which lies in the central-eastern sector of Aso caldera, ~~mayis thought to~~ have formed about 150 ka BP, ~~although recent work would suggest a more recent age (Shinmura et al., 2021); elsewhere in Japan, the Akai and Omine volcanoes are also related to inter-caldera volcanism (Ono and Watanabe, 1985; Matsumoto et al., 1991).~~

- Post-caldera volcanism initiated soon after the Aso-4 eruption and has been dominated by smaller scale events with a wide compositional range (basalt to rhyolite). At least seventeen central cones were constructed during this period (Ono and Watanabe, 1985; Watanabe, 2001; Miyoshi et al., 2005; Miyabuchi, 2009), and many more edifices have been detected beneath the present central cones (Uto et al., 1994; Hoshizumi et al., 1997). Nakadake is the youngest and most active post-caldera volcano (see Fig. 1). The total thickness of scoria and ash-fall deposits is of order 100 m, including 36 silicic pumice-fall deposits. Most of the silicic eruptions produced deposits of $<0.1 \text{ km}^3$, while the Nojiri pumice (84 ka; $\sim 1 \text{ km}^3$) and Kusasenrigahama pumice (30 ka; 2.2 km^3), were one order of magnitude larger (Miyabuchi, 2011).

The total volume of post-caldera tephra has been calculated by Miyabuchi et al. (2003, 2004) and Miyabuchi (2009; 2011) as 18.1 km^3 DRE. The total volume of the edifices of the post caldera cones (including buried edifices) is estimated at $\sim 112 \text{ km}^3$ DRE (Komazawa, 1995) of which approximately 24 km^3 DRE are exposed at the surface (Miyoshi et al. 2012). Thus, the average rate of magma discharge during the post-caldera stage is about $1.5 \text{ km}^3/\text{kyr}$, similar to the rate at other Japanese Quaternary volcanoes (Miyabuchi, 2009). However, an analysis of these published volumes shows that post-Aso-4 eruption rate has experienced a significant waning trend. The bulk ($\sim 115 \text{ km}^3$) of the post-Aso-4 magma erupted before approximately 70 ka, suggesting elevated eruption rates of $7 \text{ km}^3/\text{kyr}$ between 70–87 ka. During the period 22–50 ka approximately 7 km^3 of magma erupted at a rate of $\sim 0.3 \text{ km}^3/\text{kyr}$, with silicic magma slightly more abundant than mafic magma. Since 22 ka, predominantly (98%) mafic magma has erupted at a rate of approximately $0.1 \text{ km}^3/\text{kyr}$.

2.2 The Aso-4 eruption and its products

The Aso-4 eruption (86.8–87.3 ka) is the largest eruption of the last 100 kyr in Japan. The PDC deposits of this eruption reached $\sim 166 \text{ km}$ to NNE from the source, being widely distributed in the northern and central zones of the Kyushu Island and also in the S-W part of Honshu, invading the Yamaguchi prefecture ($>160 \text{ km}$ from the source; Matumoto, 1943; Watanabe, 1978; Ono and Watanabe, 1985; Takarada and Hoshizumi, 2020).

The pyroclastic-flow deposits of Aso-4 have been divided into two cycles, each one characterized by a progression from silicic to more mafic magma, with evidence of magma mixing (Lipman, 1967; Watanabe, 1979; Ono and Watanabe, 1983; Kaneko et al., 2007; Ishibashi et al., 2018). The ash of Aso-4 consists of rhyodacitic glass shards with brown hornblende and orthopyroxene phenocrysts (Machida and Arai, 1983). Plagioclase and magnetite phenocrysts occur in all ejecta from the Aso-4 eruption as well (Kaneko et al., 2007). The pyroclastic flows of Aso-4 also contain abundant lithic fragments (Ono et al., 1977) with regionally differing lithologies. This lateral heterogeneity of lithic fragments may suggest that the magmas of the Aso-4 eruption were erupted from either a ring fissure or multiple vents (Kaneko et al., 2007), as has been inferred for other explosive super-eruptions (e.g., Costa and Marti, 2016); this may be explained also by surface erosion across different lithic populations.

~~The volume of magma erupted in Aso-4 remains an open question.~~ Takarada and Hoshizumi (2020) presented new estimates of the volume and mass of PDC and fallout deposits of Aso-4, ~~re~~-evaluating the magnitude ($M_{8.1-8.4}$). They estimated a volume of Aso-4 tephra ~~fallout~~ deposits of $240\text{--}370 \text{ km}^3$ DRE ($6.0\text{--}9.3 \times 10^{14} \text{ kg}$), while the volume of Aso-4 PDC deposits was estimated at about $225\text{--}590 \text{ km}^3$ DRE ($5.6\text{--}14.8 \times 10^{14} \text{ kg}$). These estimates implied a total volume of Aso-4 eruption of $465\text{--}960 \text{ km}^3$ DRE ($1.2\text{--}2.4 \times 10^{15} \text{ kg}$).

Nevertheless, the volume of magma erupted in Aso-4 and the uncertainty in volume estimates remain open questions. Aspinall et al., (2021) ~~reassessed-undertook a preliminary quantification of this uncertainty by combining several~~ the different volume

135 estimates of PDC and fallout deposits of Aso-4, through a Bayesian Belief Network approach. They defined composite volumes, determined by weighted combinations of different estimates of the various products, including those from Takarada and Hoshizumi (2020), ~~and hypothesized a lower bulk volume for the ash fall deposit and therefore a smaller total magnitude. They estimated a total volume of Aso-4 eruption of 370–685 km³ DRE with 90% confidence (0.8–1.6×10¹⁵ kg, i.e. M7.9–8.2). In a subsequent, related assessment fact, application of novel statistical methods of the Aso-4 tephra fall deposit, by Rougier et al.,~~
140 (2022) ~~applied advanced statistical methods and re-evaluated the its bulk volume of the ash fall deposit to have been as~~ in the range 220 to 370 km³, which equates to the range 95 to 160 km³ DRE (2.2 to 3.7×10¹⁴ kg). ~~Since volumes of co-ignimbrite tephra fall deposits and PDC deposits are typically comparable to one another (Sparks and Walker 1977) the reduced estimate tephra fall deposits also suggests a somewhat reduced PDC volume.~~

~~Although the Takarada and Hoshizumi (2020) volume estimates were expressed in terms of minimum–maximum, Aspinall et al.,~~
145 ~~(2021) expressed volume estimates in terms of 5th and 95th percentiles; it is evident that the latter are significantly smaller than those in Takarada and Hoshizumi, (2020). To account for this source of epistemic uncertainty, here we consider both the estimates of Takarada and Hoshizumi, (2020) and Aspinall et al., (2021) in our analysis, and they produce alternative probability estimates for impacting the critical targets, located at 130–145 km from Aso caldera, in different directions.~~

The exposure area of Aso-4 PDC deposits is about 1,000 km², but Takarada and Hoshizumi (2020) evaluated that the original
150 area covered by these deposits was about 34,000 km². However, in some directions the runout distance of Aso-4 pyroclastic flows largely exceeded 130 km, while in others the deposits could not be traced that far. Aso-4 pyroclastic flow deposits have been likely conditioned by the presence of topographical obstacles such as the Kyushu Mountains.

~~Our first order integral PDC models aim at characterizing the potential distal impact of these flows, if any, at distances in the range 130–145 km. As discussed above, there is much uncertainty about the total PDC volume and consequently the volumes of~~
155 ~~individual PDCs generated by the Aso-4 eruption. However, from the perspective of our study these uncertainties are not important as all studies agree that the total PDC volume is likely to significantly exceed 100 km³, while the volume of the largest and most extensive individual PDC emplacement units is also likely to be a significant fraction of the total volume.~~

3. Methods

3.1 Box model integral formulations

160 Our analysis relies on the implementation of four different versions of the box-model integral formulation for axisymmetric gravity-driven particle currents, based on the pioneering work of Huppert and Simpson (1980) and with theory detailed in Bonnetaze et al. (1995) and Hallworth et al. (1998). We focus on models with analytical solutions, adopting input ranges based on Expert Judgment (see Subsection 4.1). This enables us to utilize a very fast model-inversion approach in the uncertainty quantification process. ~~We note that we are not using “reduced” models (i.e. statistical surrogates; e.g. Rutarindwa et al., 2019; Yang et al. 2020).~~
165 Further details on the physical equations we adopted, as well as the mathematical expression of the analytical solutions, can be found in the Supporting Information S1. In particular, we focus on two different physical formulations:

- **Model 1: Rock avalanche dynamics with constant stress over the flow basal area**

This model for energy dissipation is described in Dade and Huppert (1998) and assumes that the entire amount of solid material falls from a prescribed height and expands laterally while preserving its initial volume. In this model, the
170 elicited input parameters are: (a) collapse height (H), (b) flow density (ρ_c), and (c) equivalent stress (τ , one third of the

constant stress value, see Supplementary Information S1). The dynamics of a similar assumption on the basal stress has been further explored in Kelfoun et al. (2009) and Kelfoun (2011), using depth-averaged models.

- **Model 2: Density current dynamics with particle deposition**

This model is described in Dade and Huppert (1995) for the simulation of oceanic turbidity currents. Dade and Huppert (1996) adopted it to simulate emplacement of the large-scale [AD 232](#) Taupo ignimbrite (New Zealand; [Holdaway et al., 2018](#)). The input parameters of Model 2 are: (a) initial solid fraction (ϕ_0), (b) velocity of settling of the solid particles (w_s), (c) density of solid particles (ρ), (d) density of ambient air (ρ_a), (e) density of interstitial gas (ρ_i), and (f) the Froude number (Fr). All the input ranges of these parameters were elicited with the exception of the Froude number, which was sampled uniformly in [1.0, 1.2]; this range captures expected conditions for PDC (Esposti Ongaro et al., 2016).

-In contrast to Dade and Huppert (1996), in this study we assume the instantaneous release of a fixed volume of pyroclastic material, as in Neri et al. (2015), Bevilacqua (2016), Bevilacqua et al. (2017) and Aravena et al. (2020; 2022). This assumption is considered reasonable in the case that the time scale of the eruption [of the PDC volume](#) is shorter than the emplacement time. Since the model accounting for the full Total Grain Size Distribution (TGSD) does not have analytical solutions (e.g., Biagioli et al., 2019; Tadini et al., 2021a) and, however, a TGSD of the studied PDCs would not be easy to constrain, we assumed monodispersed solid particles with an effective diameter. In particular, we adopted the Sauter diameter, which is the particle diameter whose volume/surface area ratio is the same as that of the particle distribution, (Crowe et al., 1998; Neri et al., 2022) to provide a reasonable approximation to the dynamics of the full TGSD.

In this work we also considered three variants of Model 2:

- Model 2a.** This variant includes interstitial gas, thermally buoyant with respect to surrounding cold air. The flow stops propagating when the solid fraction $\phi(t)$ becomes lower than a critical value ϕ_{cr} , and the remaining mixture of gas and particles lifts off possibly generating an ignimbrite cloud. Note that the thermal properties and flow volume remain constant for the duration of the flow.
- Model 2b.** The equations of this variant are equivalent to Model 2a, but an alternative input of w_s is adopted. Instead of being elicited, this range is based on the results of particle terminal velocity derived from ash fallout studies at the scale of the Sauter diameter for analogue flows (Armienti et al., 1988; Bonadonna and Phillips, 2003; Dioguardi et al., 2017). These atmospheric flows are Mt. St. Helens (Costa et al., 2016), the Campanian Ignimbrite (Costa et al., 2012; Martí et al., 2016), and the Youngest Toba Tuff (Costa et al., 2014). Moreover, this variant implements an alternative input range of ϕ_0 , based on mass discharge rate (MDR) modelling (Costa et al., 2018). Therefore, this formulation represents the hypothetical scenario of a more dilute ash cloud than the elicited flow.
- Model 2c.** This variant assumes a “cold” interstitial gas equivalent to ambient air. Thermal buoyancy effects are absent, and the flow stops when $\phi(t) = 0$ and the entire initial solid fraction has been deposited. Under this assumption, a longer runout than Model 2a is expected.

Several recent papers have focused on pyroclastic flow emplacement by more sophisticated modelling; e.g. thermodynamics modelling of cooling effects and air entrainment effects (e.g., Bursik and Woods, 1996; Fauria et al., 2016), two layer systems

(Burgisser and Bergantz, 2002; Doyle et al. 2007; Kelfoun et al., 2017; Valentine, 2020), the development of dense and dilute regimes within the same flow (Esposti Ongaro et al, 2011; 2020; Kelfoun and Gueugneau, 2022; Neri et al., 2022), the effects of pore pressure on basal friction (Roche et al. 2021; Aravena et al., 2021), and the build-up of coherent turbulent structures and gravity waves (Lube et al., 2020; Brosch et al., 2021). However, since more advanced models require more detailed data to fit additional input parameters, simplified models are suitable for probabilistic modelling in uncertain frameworks, like the present Aso-4 case study, especially for capturing extreme probabilities.

For instance, some of these models adopt a two layer approach in which a concentrated basal flow is overlain by a dilute turbulent cloud. The two layer exchange mass during emplacement through particle settling and entrainment processes, making such models computer intensive and currently unsuitable for probabilistic modelling. Models 1 and 2 can be seen as end members that treat the two layers separately and so are likely to yield a wide range of run-out distances that include those found in a hybrid two layer model. In Section 5 we further discuss the interpretation of our results in terms of such models.

3.2 Mass inversion strategy and simplified testing of topographic shielding effects

In a first step, our numerical simulations do not consider the possible shielding effect of topographic obstacles. By using the elicited probability distributions of model inputs and the analytical solutions of the kinetic energy models, for any given collapsing volume, we estimate the conditional probability for the occurrence of a PDC with runout distance on a flat topography equal or larger than the distance between the source and each **targetmarker** site (i.e. ~130 km for **TSMS1**, ~135 km for **TSMS2**, and ~145 km for **TSMS3**, ~115 km for **MS4**, and ~120 km for **MS5**; see Fig. 1).

Since the minimum volumes have a different density in the different models, we computed the equivalent mass to set up a more consistent comparison between them. In particular, Model 1 is single-phase, conceptually, and the calculated volume represents the bulk solid material at the elicited flow density. On the other hand, Models 2a-c are two-phase and include solid particles and interstitial gas, but the volume calculated only represents the solid phase, with a density that is also elicited and generally greater than the flow density of Model 1.

Nevertheless, because of the possible topographic effects in the propagation of PDCs, the simulation of 115-145 km runout in absence of topography is not a sufficient condition to assess the likelihood of **targetmarker** site incursions for those distances from the source. Therefore, in a second step, we tested the inclusion of the topography in numerical simulations, using the program BoxMapProb (Aravena et al., 2020), which can be found in <https://github.com/AlvaroAravena-/BoxMapProb>; this approach adopts the formulation of Model 2c. To do this, we followed the “energy conoid” approach, based on the assumption of nonlinear, monotonic decay of flow kinetic energy with distance adopted by Neri et al. (2015) and Bevilacqua et al. (2017). Note that we did not follow the tree-branching algorithm in Aravena et al. (2020) because strong channelizing effects were not envisaged for the Aso case (see Supporting Information S2).

In Figure 2 we show some examples of PDC invasion probability maps as a function of the **DRE** volume of pyroclasts. We compared the kinetic energy of the current front and the potential energy associated with the obstacles encountered. Our approach is mostly sensitive to the shielding effect of topography close to the **targetmarker** sites, and not to the large-scale topography around the source site (Aso caldera), that might also affect the flow dynamics significantly (e.g., Todesco et al., 2006; Esposti Ongaro et al., 2020). Therefore, according to the literature sources about Aso-4, we only simulated the mass of PDC outflowing from the caldera. Since energy calculation is calculated ~~calculated~~ performed axi-symmetrically along every radial direction,

we randomly varied the centre of propagation inside the Aso caldera (see Fig. 1) and averaged the results to include uncertainty related to the geographical coordinates of the source.

Figure 3 shows the results of a set of complementary simulations performed in this way for ~~each targetmarker~~ sites MS1-MS3. For example, we estimated that the inputs able to produce a runout distance of 150 km on a flat surface ensures that ~50% of the simulated PDCs invade the ~~targetmarker~~ site TSMS1 when the topography is considered (Figure 3a). Using these indications, to emulate the effect of topography, for TSMS1 we included in this work the results associated with a runout distance of 195 km, i.e., the value at which 95% of the simulations reach the ~~targetmarker~~ site. Similarly, we determined that sets of inputs able to produce runout distances of 2325, 225, 155 and 170235 km on a flat surface will ensure 95% of the simulations reach TSMS2, MS3, MS4 and TSMS53, respectively, when topography is considered (Figures 3b,c). See Subsection 5.23 for a discussion on the possible limitations of this strategy.

Finally, note that in all cases we modelled the sea as a flat topography, for simplicity (Neri et al., 2015; Bevilacqua et al., 2017). However, it is a debatable point whether Model 1 flows can go over the ocean. In fact, the ability of a flow or surge to pass over water is a complex matter, and it will depend on many factors, such as angle of entrance to the water, flow speed, density, and temperature (Cas and Wright, 1991; Carey et al., 1996; 2000; Allen and Cas, 2001; Dufek and Bergantz, 2007; Dufek, 2016). These effects are hardly represented in simplified kinetic models like those adopted in this study but, in our opinion, the results obtained provide a first approximation of the distal runout impacts of such catastrophic eruptions. From a safety perspective, the assumption that PDCs can travel over water is both supported by observations of past (smaller magnitude) eruptions and could be exceedingly conservative, in the sense that the assumption will not underestimate risk.

4. Results

4.1 Input ranges based on Expert Judgment

We based our input range estimation on structured expert judgement (Cooke, 1991; Aspinall, 2006). The elicitation solutions of Models 1 and 2a-c are indicated in Table 1, where we also include the modified input ranges for Model 2b based on MDR modelling and Sauter diameter of analogues (see Subsection 3.2). Note that volume is not considered an input parameter but it is varied to calculate the probability of any volume chosen in a wide range to reach the distance of each marker site. For judgment aggregation, we implemented the equal weights combination rule (Bevilacqua et al., 2015; Tadini et al., 2017; 2021b; 2022b). We did not apply performance-based scores because of the relatively small number of experts participating and because the overheads and time demands involved in implementing a formal elicitation protocol were not warranted in this case. Two elicitation sessions were organized remotely, sending out the questionnaires and collecting the responses by email. Supporting Information S2 demonstrates a comprehensive exchange of emails took place remotely, in which the models adopted, the variable elicited and their parameterizations were thoroughly discussed.

More detailed input schemes and calibration approaches could be attempted in further research (Bevilacqua et al., 2019; Patra et al., 2020; Aravena et al., 2022), but these approaches would not be straightforward because of the lack of well-preserved distal deposits. Note that we assume the model inputs are formed of an array of independent variables. A discussion of this limitation is provided in Subsection 5.34 and future research may explore the effects of possible correlations between them, especially on the computation of extreme model values. Another possibility is to develop simplified two layer models amenable to probabilistic modelling calibrated by the more computer intensive numerical models to allow simplified parameterizations of mass exchange between the two layers.

4.2 Minimum PDC volume and equivalent mass to reach the **targetmarker** sites

The volume inversion results on a flat topography are presented in Tables 2, S3, S5, [S7, S9](#) and express, for a given percentage P , the minimum PDC volume that has probability P of reaching [TSMS1](#), [TSMS2](#), [MS3](#), [MS4](#) or [TSMS53](#), based on values of runout distance equal to 130 km, 135 km, [145 km](#), [115 km](#) and [12045 km](#), respectively. In all the cases, we converted the minimum volumes into PDC mass by considering the elicited values of density (ρ_c and ρ for Model 1 and Models 2a-c, respectively; see Table 1). The estimates of the minimum PDC mass ($MinMass$) able to invade each **targetmarker** site, obtained with the four described models on a flat topography, are also included in Tables 2, S3, S5, [S7, S9](#).

This strategy to calculate $MinMass$, which is a conservative choice, according to Model 2a produces values of $\sim 17.4 \times 10^{12}$ kg (DRE equivalent 10.2 km^3) if we consider a 5% probability to [invade-reach the distance of TSMS1](#); $\sim 95.9 \times 10^{12}$ kg (DRE equivalent 55.9 km^3) if we consider a 50% probability; $\sim 390 \times 10^{12}$ kg (DRE equivalent 226 km^3) if we consider a 95% probability, [always considering a flat topography](#) (Table 2). For [TSMS2](#), [TSMS3](#), the associated values of $MinMass$ according to Model 2a are 11% and 33% higher than those of [TSMS1](#), respectively. [The estimates for MS4 and MS5 \(Tables S7 and S9\) are 28% and 19% lower, respectively.](#)

Tables 2, S3, S5, [S7, S9](#) also include the results based on larger values of runout distance, i.e. 195 km, 235 km, [225 km](#), [155 km](#) and [170225 km](#) for [TSMS1](#), [TSMS2](#), [MS3](#), [MS4](#) and [TSMS53](#) respectively, obtained by using again the analytical solutions of kinetic energy models [on a flat surface](#). This increase in the **targetmarker** runout distance is introduced so as to emulate the effect of topography, i.e., runout distance reduction derived from the effect of distal obstacles (see Subsection 3.2). [Otherwise, the analytical solutions of kinetic energy models would have been invalidated by numerically considering the topographic shielding effects in each simulation.](#)

These results are less conservative than those presented previously and indicate that the minimum PDC mass able to affect the **targetmarker** sites per Model 2a, is ~ 3 -times greater than the previous estimates based on shorter values of runout distance. In particular, for [TSMS1](#) the $MinMass$ is $\sim 51.2 \times 10^{12}$ kg (DRE equivalent 30.1 km^3) with 5% probability of incursion, $\sim 283 \times 10^{12}$ kg (DRE equivalent 165 km^3) if with 50% probability and $\sim 1150 \times 10^{12}$ kg (DRE equivalent 668 km^3) if with 95% probability. The estimates of the minimum PDC mass needed to invade the [TSMS2](#) and [TSMS3](#) (Tables S3 and S5) are 65% and 46% higher than those of [TSMS1](#), respectively. [The estimates for MS4 and MS5 \(Tables S7 and S9\) are 46% and 31% lower, respectively.](#)

Note that our four approaches are based on significantly different physical assumptions and therefore their results are presented separately. In fact, model combination schemes could be attempted, but our expert elicitation did not indicate any model preference (see Supporting Information S2). Bayesian Model Averaging (Bevilacqua et al., 2017; 2018) was not practicable in this case because of the lack of enough well-preserved distal outcrops. A more detailed discussion of all the models and the associated $MinMass$ inversion results is provided in Subsection 5.12. In particular, Model 1 requires ~ 3 -times greater $MinMass$ values to reach the same runouts as Model 2a with 50% probability, while Model 2b has ~ 3 -times smaller values; Model 2c requires $\sim 30\%$ smaller mass values than Model 2a.

We finally note that these $MinMass$ estimates represent a minimum threshold required to just reach the **targetmarker** sites; however, the distal impact of these PDC could differ radically between the models – i.e. from [ignimbrite-flowsPDCs](#) with high particle concentrations and high dynamic pressures to co-ignimbrite flows more similar to dilute ash-clouds (see Subsection 5.12).

315 **4.3 PDC invasion probability at ~~targetmarker~~ sites based on the documented eruption size ~~ofs from~~ Aso-4 caldera**

In Figure 4 we show the cumulative distribution of the mass required to reach ~~each-targetmarker~~ sites MS1-MS3 (*MinMass*) according to the four models described in the previous sections with (right panel) and without (left panel) consideration of the effect of topography. Figure 5 and Supporting Information S117 show the probability density functions of *MinMass* with and without topographic effects, respectively. In these figures, we also include very uncertain estimates of the mass of the PDCs deposited during the ~~two~~-largest caldera-forming eruptions at Aso, i.e. ~~Aso-3 and~~ Aso-4. For Aso-4 we used the range ~~and the average value~~ of PDC mass estimated by ~~Aspinall et al., (2021) and~~ Takarada and Hoshizumi (2020), considering only the mass of PDC overflow outside of the caldera, i.e. ~~270-400-810~~ $\times 10^{12}$ kg ~~and 420-780-1180~~ $\times 10^{12}$ kg, ~~respectively~~. These values of mass correspond to ~~109-161-324~~ km³ DRE ~~and 168-314-471~~ km³ DRE. ~~The first estimates are expressed in terms of a 90% confidence interval, while the second are in terms of minimum and maximum values, consistently with their original definition.~~

325 ~~Note that our models~~ Since the mass of the longest runout PDC of Aso-4 may have been a significant fraction of the PDC flows outside of the caldera, we first assume that ~~the that~~ total volume of the long runout PDC is ~~the same as the volume estimates forequal to~~ the total outflow PDCs of the eruption. ~~However, Aso-4 contains four emplacement units and the long runout PDC must be only one of these.~~ In fact, by considering the entire Aso-4 mass we assume that this single flow contains most of the erupted mass of the outflow deposits, and that this mass was erupted within a time scale less than the PDC emplacement time. This ~~is~~ assumption is further discussed in Subsection 5.12.

However, Aso-4 contained several emplacement units and the longest runout PDC could be only one of these, e.g. Aso-4A, Aso-4B, and Aso-4T (Lipman, 1967; Watanabe, 1979; Kaneko et al., 2007). These units contain evidences of at least 10-20 PDCs in total (Takarada and Hoshizumi, 2020). In particular, Aso-4T (Tosu unit) is the most widely distributed low-aspect-ratio ignimbrite unit within Aso PDCs, but its mass remains unknown (Suzuki-Kamata and Kamata, 1990). Therefore, we tentatively tested also a mass of 1/10 of the total PDC overflow outside the caldera, i.e. 42-78-118 $\times 10^{12}$ kg (17-31-47 km³ DRE), plausibly representative of Aso-4T mass. Note that this assumption is not aimed at constraining the actual mass of Aso-4T, but it provides an illustrative example of a PDC that does not contain most of the erupted mass of the outflow deposits.

340 For Aso-3, considering that ~~the only data available are the total DRE volume of pyroclastic deposits (i.e., the sum of fallout and PDC deposits; Matsumoto et al., 1991; Crosweller et al., 2012), we assumed that the PDC components represent between 30% and 70% of the total mass of the pyroclastic deposits reported in Section 2, i.e. 100 km³ DRE, respectively (see Rutarindwa et al., 2019 for a similar strategy).~~ The comparison between the mass estimates of Aso-3 and Aso-4, in both literature sources, and our kinetic energy model solutions is presented in Tables 3, S4, S6. We note that for Aso-3 we relied on the same runout model parameters set for Aso-4 (see Table 1). In fact, we would not expect significant differences between the two caldera forming eruptions, in terms of the parameters range. A separate parameter setting may be implemented to improve robustness of the results, but that would require additional expert judgement sessions and, possibly, calibration with large scale PDCs which originated from other volcanoes (see Subsection 5.3).

350 Following ~~Takarada and Hoshizumi, (2020),~~ The conditional invasion probabilities obtained according to all models and for each marker site are listed in Tables 3, S4, S6, S8, and S10. In particular, these results indicate that an event a PDC with the a mass magnitude of 1/10 of the total PDC overflow of Aso-4, without considering the shielding effects of topography, would likely affect TSMS1 according to Model 2a, with a conditional probability of 9623% - 10056%. Similarly high conditional invasion probabilities are also calculated for TS2 TS3 (95% — 100% and 90% — 100%, respectively). In contrast, we obtained

invasion probabilities of 87%–100%, 85%–100%, 79%–100%, respectively, for the three target sites and according as the volume estimates in Aspinall et al., (2021). Moderate PDC invasion probabilities, i.e. 32%–74% depending on the target site, are calculated for an eruption similar in scale to Aso 3. After including topographic shielding effects (see Subsection 3.2), an additional, less conservative, comparison with the mass estimates of Aso 3 and Aso 4, is fully detailed in Tables 3, S4, S6. Following Takarada and Hoshizumi, (2020), the results indicate that an eruption similar to Aso 4 would affect the TS1 with a this conditional probability reduces to 663.1% - 2196%. Slightly lower conditional invasion probabilities are computed for TSMS2 and TSMS3, with values of 0.546% - 9.384% and 0.950% - 1287%, respectively, slightly higher for MS4 and MS5, i.e. 11% - 40% and 7% - 32%. Alternatively, In contrast, the conditional incursion probabilities based on the total outflow PDCs of the eruption are significantly higher, i.e. 46%-100% with 90% confidence, depending on the marker site. Note that Table 3 also shows the results based on are 49%–87%, 32%–72%, and 35%–76%, respectively, for the three target sites according as the volume estimates of Aspinall et al., (2021), which are lower than those based on Takarada and Hoshizumi, (2020) but still significant, i.e. 49% - 87% instead of 66% - 96% for TS1. An eruption similar to Aso 3 would invade the target sites with 3.8% - 33% conditional probability, depending on the target site.

4.4 Sensitivity analysis

We use a Bayes Belief Network (BBN; e.g. Hinks et al., 2014) related to each model to characterize uncertainties on the *MinMass* and *MinVol* estimates (Figure 6 and ~~Supporting Information S128~~), including the existing correlation coefficients (marked with linking arc arrows) between the input variables and the calculated *MinMass* and *MinVol*. This analysis was performed with the UNINET software (Ababei, 2016). The histograms in each BNN also illustrate the shape of the uncertainty distributions for the intermediate variables (g_c , g_p and ϕ_{cr}) and for the minimum mass (*MinMass*) and volume (*MinVol*) needed to reach the first ~~targetmarker~~ site, based on the elicited distributions of the relevant input variables.

Larger correlation values highlight variables to which our probability calculations are most sensitive. Negative correlation means that an increase of that input parameter decreases the *MinMass* (or *MinVol*) required to reach the ~~targetmarker~~ site. Positive correlations produce the opposite effect. The correlation coefficients are based on the elicited input distributions and on the 130 km maximum runout distance, i.e. valid for TSMS1 with no consideration of topographic effects. We tested other runout thresholds but observed negligible differences. In Model 1, both the height of collapse and the stress coefficient are significantly relevant, the former negatively, the latter positively, while density does not affect the *MinMass* estimate.

In all versions of Model 2, a significant effect on modelling results comes from the sedimentation velocity and from the initial concentration of solid particles, both positively correlated with *MinMass*, while the solid density and the Froude number are less relevant. Further research aimed at developing better constraints on the uncertainty distributions of the most influential input parameters would likely better constrain resolution of probability results.

5. Discussion

5.12 First-order integral PDC models

Most recent models of PDCs have highlighted the stratified nature of such flows (Valentine, 2020; Roche et al., 2021; Neri et al., 2022). Nevertheless, in our study we just focused on two simple end-member types, suitable for a first-order quantitative assessment of the hazard (see Supporting Information S2). Although our simplified models do not include the development of dense and dilute regimes within the same flow (Burgisser and Bergantz, 2002; Doyle et al. 2007; Kelfoun and Gueugneau,

2022), Models 1 and 2 may represent the two end members, concentrated and dilute flows, respectively, thus shedding some light on more complex assumptions. For example, our results are consistent with Roche et al., (2021), where their model includes both dense and dilute regions, and interactions. In fact, by analysing data from well-documented explosive eruptions those authors observed that, at a given mass discharge rate, dilute PDCs have runouts generally longer than those of their concentrated counterparts.

From a risk point of view, our analysis solely derives probability estimates of PDCs reaching the **targetmarker** sites. A PDC represented by Model 2 may do so as a dilute and low temperature flow. Structural risks from these relatively dilute and “cold” PDC may be similar to risks from **ash-tephra** fall and would differ radically from the greater thermal and mechanical loads that might be associated with dense PDCs.

Note that, for simplicity, ~~rather than modelling a mass discharge rate for unknown eruption duration,~~ we ~~also~~ assumed an instantaneous release of a fixed volume of pyroclastic material, as in Neri et al. (2015), Bevilacqua et al. (2017) and Aravena et al. (2020), ~~rather than modelling a mass discharge rate for unknown eruption duration.~~ Further research could follow a similar probabilistic approach by inverting minimum mass discharge rates from the runout distance, rather than the *MinMass*, but this strategy would introduce challenging questions on how volume, eruption duration, runout and flux are related, quantitatively. Further model development could also include eliciting the proportion of magma erupted that is erupted as a single volume within a time scale less than the emplacement time. ~~Geological evidence such as observations of multiple flow units could inform expert judgements.~~

5.23 Simplified testing of topographic shielding effects

The strategy that we adopted to emulate the effect of topography on our results relies on the “energy conoid” approach. Thus, energy calculation is calculated axi-symmetrically along every radial direction, and in some cases the inferred topographic effect might be too intense, since flows can actually converge around obstacles. Also, this approach cannot include partial blocking by topographic obstacles, and returning waves (e.g. Todesco et al., 2006; Esposti Ongaro et al., 2020). Although we reduced the spurious effects related to the exact geographical coordinates of the PDC source by randomly varying the centre of propagation inside the Aso caldera (see Fig. 1), only a 2D or 3D model would be capable to capture the more complex source-dependent features of the fluid dynamics.

Whereas the *MinMass* estimates obtained on a flat surface are likely underestimated, i.e. conservative, our simplified strategy to account for topographic shielding effects might instead overestimate *MinMass*, in some cases. In fact, our approach invokes runout thresholds such that the inputs that enable the PDC to reach ~~the a~~ **targetmarker** on a flat surface will also also project **targetmarker** site invasion likelihood with 95% confidence when topography is considered by the simplifying expedient we adopt. Therefore, lower runout thresholds would produce intermediate *MinMass* values, between those obtained on a flat surface and those that account for topographic effects with 95% confidence. However, these intermediate values would be associated with a lower chance of **targetmarker** site incursion when the topography is considered, and a relatively low kinetic energy budget at the **targetmarker** site. These bounding effects may be further studied through statistical methods that analyse the edge of the inundated region, once 2D or 3D models are applied (Hyman et al., 2019).

5.34 Expert judgement approach and the input sampling strategy

Our results are valid under the assumption the BBN samples drawn from the elicited inputs are independent, but this might not be valid in some cases. For example, in Model 1 the combination of high collapse height H and low equivalent friction τ could be problematic and, likewise, high density is hard to reconcile with high collapsing height (see Table 1 and Supporting Information S2). Similar questions may arise about other combinations of input values. While the median values of our estimates are not likely to be affected significantly by such statistical dependence effects, the application of inter-parameter correlations or probabilistic copula techniques would become really important for making robust probabilistic estimates of extreme events, say with less than 5% probability (Bamber et al. 2019; Barons and Aspinall et al., 2020; Werner et al., 2021). Further model inversion analysis could evaluate which extreme events are in fact drawn from combinations of independent parameters that are physically debatable.

An indirect and interesting finding of our study is the identification of input variables that are most difficult to constrain. For example, in Model 1, while for dense debris avalanches or dome collapse PDCs the variable H can be well defined, some of the experts found it difficult to constrain height H values for PDCs generated from explosion columns. In fact, the dense underflow is thought to be formed by segregation of particles and so it is essentially unknown how initial potential energy is partitioned between the dense and less dense components of the PDC: the effective height H is not likely to be related to overall column height. There would be a similar issue with the H variable in the energy cone formulation, which was not implemented in this study (Bevilacqua et al., 2022; Aravena et al., 2022).

Since the emplacement of a low-aspect-ratio ignimbrite has never been observed, we tested several models and a wide range of input parameters. Our purpose was to capture the uncertainty affecting the plausible dynamics of similar flows, and constrain the minimum mass required to reach marker site distances; we did not endeavour to produce an optimized reconstruction of parameters for a flow identical to Aso-4 PDCs, as such. Finally, Nevertheless, one aspect that could be addressed in further research is calibration with large scale PDCs which originated from other volcanoes, e.g. Taupo, AD 1862, (Dade and Huppert, 1996; 1997; Wilson, 1985a,b; 1997), or Krakatau, 1883 (Carey et al., 1996, 2000), where volumes and as well as runouts are relatively well-established. For example, the initial solid fraction of the PDC of Taupo, AD 232, was estimated as 0.3% by Dade and Huppert, (1996), by model fitting. Nevertheless, while discussing density above the ground, Wilson, (1995) observed tens percentage solid. Although they both do not consider that column collapse creates highly variable solid fractions, these differences outline the dissimilar conditions ranging from density current dynamics with particle deposition, to one possibly similar to a rock avalanche with constant friction.

It might be feasible to repeat our analysis approach to find the runout model parameter pdfs which best fit those observations. However, since these parameters would be related to different source conditions, they might need detailed discussion and perhaps additional expert judgement sessions before being invoked as counterparts to this case study. Similarly, we note that for our Aso-4 analysis, while we did not elicit the volume, we relied on the same runout model parameters that were elicited for the total Aso-4 PDC overflow outside of the caldera; eliciting and setting different parameters in the model might well improve robustness of the Aso-4 probability estimates.

5.4 Probability of occurrence of large-scale events in Japan

The PDC invasion hazard at the marker sites is ultimately related to the recurrence rate of catastrophic caldera-forming eruptions at Aso volcano. We estimated PDC invasion probabilities that are all conditional on the occurrence of large-scale eruptions. In practice, we are dealing with extremely low probabilities of occurrence, but extremely high impact events. Although this aspect

is beyond the objectives of this paper, a full magnitude-frequency model for Aso caldera could be integrated with our PDC invasion probability estimates to obtain hazard assessments at 100 or 1000 years. We briefly review the main historical results available.

For eruptions $>M7$, global studies (Decker, 1990; Simkin, 1993; Mason et al., 2004; Deligne et al., 2010; Brown et al., 2014) suggest a minimum global average recurrence rate of ~ 1 -2 times per 1 ky (Newhall et al., 2018). Once record incompleteness is corrected for (Kiyosugi et al., 2015; Rougier et al., 2016), the value approaches 2 events per 1 ky. At individual volcanoes, $>M7$ recurrence rates range from 1 per 10 ky to 1 per 100 ky (Newhall et al., 2018). For eruptions $>M8$, Rougier et al. (2018) estimate a return period of 17 ka (95% confidence from 5.5 ka to 48 ka) from analysis of the LaMEVE database (Crosweller et al. 2012)

More recently, Aspinall et al., (2021), implementing a comprehensive stochastic uncertainty analysis, estimated the probability in the next 100 years of an eruption from Aso volcano on the same scale as Aso-4. They set up a Bayesian Belief Network informed by multiple strands of evidence from volcanology, petrology, geochemistry and geophysics, together with reviews of published data, models, and inputs from expert elicitation. Based on the current and expected state of the Aso volcanic system in the short-term, they assessed the probability of a similar eruption $\geq M8$ at Aso volcano in the next 100 years to be no greater than 10^{-8} to 10^{-9} (i.e., 10^{-10} to 10^{-11} on an annualized basis).

6. Conclusions

We describe a new method for estimating the probabilities that distal geographic locations might be invaded by a large pyroclastic density current (PDC) from a high magnitude explosive eruption by expressing the problem in terms of PDC flow mass and related uncertainties. The ranges of key parameters were obtained by expert elicitation performed in two sessions organized remotely. ~~The anonymized email exchanges supporting the elicitations are recorded in Supporting Information S2 and elucidate the discussions about model and input variable choices that were adopted for this analysis.~~

Our analysis relied on different versions of the box model integral formulation for axisymmetric gravity-driven particle currents (Huppert and Simpson, 1980), and a simplified testing of topographic shielding effects. We focused on models based on an underlying assumption of instantaneous of a fixed volume of pyroclastic material, which permit analytical solutions, enabling us to utilize a very fast model-inversion approach. In particular, we adopted the “energy conoid” approach to generate regional PDC invasion maps, based on the comparison of the mass-dependent kinetic energy of the flow with the potential energy needed to overcome topographic obstacles along radial directions. We considered four different models based on two physical sets of assumptions:

- (a) Model 1 assumed that the entire amount of solid material originates from a prescribed height above the volcano and flows as a granular current slowed down by a constant stress, i.e. a rock avalanche dynamics model.
- (b) Models 2a-c were two-phase density current dynamics with particle deposition and thermally buoyant gas. Three variants of this approach were tested, i.e. the first implemented the expert judgements, the second tested the hypothetical scenario of a more dilute ash-cloud, and the third assumed a “cold” gas phase in the PDC flow generation.

We included analytical solutions of these kinetic models on a flat topography and with a simplified approach for testing topographic shielding effects on PDC flow runout. Finally, we used a Bayes Belief Network related to each inversion model to evaluate probabilistically the uncertainties on the mass required to invade the ~~targetmarker~~ sites, estimating correlation

495 coefficients between the input variables and the calculated mass, and showing that the greatest influence of correlation effects is exerted by sedimentation velocity and initial concentration of solid particles.

500 -Our probabilistic approach was applied to the case of Aso caldera, Japan, which is located at distances between ~11530 and ~145 km from ~~three-five TSmarker sites~~. We found that a rock avalanche dynamics model would require ~3-times greater mass to reach the same ~~targetmarker~~ sites with 50% probability than the elicited density current dynamics model; a hypothetical scenario of a more dilute ash-cloud would require ~3-times less mass, and a “cold” density current would require ~30% lower mass. Our strategy to ~~emulate-consider~~ topography with a simplifying procedure produced the finding that ~3-times greater mass values are needed to overcome topographic controls than is indicated by PDC runout estimates obtained for a flat surface. We noted that in the rock avalanche model the identification and constraining of the input variables by expert judgement was more difficult than in the density current models.

505 According to the density current formulation and the emulation of topographic effects, we showed that ~~an-eruptionan axisymmetric PDC with a mass~~ similar to ~~the Aso-4 total PDC overflow outside the calderaAso-4 (i.e. ~M8)~~ would likely reach the sites of the three distal critical infrastructures with probabilities in the range ~~3246% - 10096%~~ depending on the ~~targetmarker~~ site and the ~~quantification-of~~ uncertainty on the erupted mass. ~~By tentatively testing a mass of 1/10 of the total PDC overflow of Aso-4 outside the caldera, plausibly representative of the single largest PDC flow unit, we obtained a probability range of 0.5% - 40%. These numbers are based on the PDC mass described in Takarada et Hoshizumi, (2020) and only present an illustrative example of application of our methodology to very uncertain estimatesThese are conditional probabilities, subject to the occurrence of an eruption of this magnitude (which has a diminishingly small likelihood of occurring in the next 100 years of order less than 10⁻⁸). A range of moderate PDC invasion probabilities for the three target sites, i.e. 3.8%–33%, were estimated for an Aso 3-like event (>M7), based on the implementation the same runout model parameters adopted for Aso 4.~~

515 Our methodology provides a rational basis for assessing the probability of PDC invasion at critical geographic locations when there is major uncertainty about the actual or forecast extent of flow runout from a major magnitude ignimbrite eruption scenario.

Code and data availability

BoxMapProb 2.0 is available in <https://github.com/AlvaroAravena/BoxMapProb> (Apache 2.0 license). The random datasets of runout model parameters, the derived data, and the R scripts utilized for statistical analysis are available upon request.

520 Authors contributions

AB, AC, AN, BH, SS, WA contributed to the choice of the different modeling strategies and evaluated the assumptions adopted. AB, AC, AN, BH, SS were elicited in the expert judgement sessions organized by WA. AB and AA calculated the presented results. AB and AA prepared the first draft of the manuscript. All authors contributed to the writing and revision of the manuscript.

525 Acknowledgements

Alvaro Aravena was financed by the French government IDEX-ISITE initiative 16-IDEX-0001 (CAP 20-25). We thank Charles Connor for contributing as one of experts in the elicitation sessions together with the authors AB, AC, AN, BH, SS. We are very grateful to Shinji Takarada for the scientific discussions that stimulated ~~the beginning of~~ this research initially and for the useful

530 | [comments that he and an anonymous reviewer provided during the review process](#). This work was supported in part by Aspinall & Associates. A preliminary version of this study was presented in Aspinall et al., (2019).

References

- Ababei, D.: UNINET. Software designed by the Risk and Environmental Modeling Group, Delft University of Technology. Lighttwist Software; Fitzroy North, Vic. Australia, 2016.
- Allen, S. R., and Cas, R. A.: Transport of pyroclastic flows across the sea during the explosive, rhyolitic eruption of the Kos Plateau Tuff, Greece. *Bulletin of Volcanology*, 62(6), 441-456, doi:10.1007/s004450000107, 2001.
- Aoki, K.: Revised age and distribution of ca. 87 ka Aso-4 tephra based on new evidence from the northwest Pacific Ocean. *Quaternary International*, 178(1), 100-118, doi:10.1016/j.quaint.2007.02.005, 2008.
- Aravena, A., Cioni, R., Bevilacqua, A., de' Michieli Vitturi, M., Esposti Ongaro, T., and Neri, A.: Tree-branching-based enhancement of kinetic energy models for reproducing channelization processes of pyroclastic density currents. *Journal of Geophysical Research: Solid Earth*, 125(7), e2019JB019271, doi:10.1029/2019JB019271, 2020.
- Aravena, A., Chupin, L., Dubois, T., Roche, O.: The influence of gas pore pressure in dense granular flows: numerical simulations versus experiments and implications for pyroclastic density currents. *Bull Volcanol* 83, 77, doi:10.1007/s00445-021-01507-7, 2021.
- Aravena, A., Bevilacqua, A., de' Michieli Vitturi, M., Esposti Ongaro, T., Neri, A., Cioni, R.: Calibration strategies of PDC kinetic energy models and their application to the construction of hazard maps, *Bulletin of Volcanology*, 84:29, doi:10.1007/s00445-022-01538-8, 2022.
- Armienti, P., Macedonio, G., and Pareschi, M. T.: A numerical model for simulation of tephra transport and deposition applications to May 18, 1980, Mount St. Helens eruption. *Journal of Geophysical Research: Solid Earth*, 93(B6), 6463-6476, doi:10.1029/JB093iB06p06463, 1988.
- Aspinall, W. P.: Structured elicitation of expert judgment for probabilistic hazard and risk assessment in volcanic eruptions, in *Statistics in Volcanology*, Geological Society of London on behalf of IAVCEI, edited by H. M. Mader et al., 296 pp., Geological Society for IAVCEI, London, 2006.
- Aspinall, W.P., Bevilacqua, A., Costa, A., Inakura, H., Mahony, S., Neri, A., Sparks, R.S.J.: Probabilistic reconstruction (or forecasting) of distal runouts of large magnitude ignimbrite PDC flows sensitive to topography using mass-dependent inversion models. In: *AGU Fall Meeting 2019*, San Francisco, CA, USA, doi:10.1002/essoar.10502300.1, 2019.
- Aspinall, W.P., Sparks, R.S.J., Connor, C.B., Hill, B.E., Costa, A., Rougier, J.C., Inakura, H., Mahony, S.: Aso volcano: estimating the probabilistic likelihood of a future Aso4-scale eruption from stochastic uncertainty analysis of volcanological evidence using importance sampling, *International Workshop on Rock Mechanics and Engineering Geology in Volcanic Fields (RMEGV2021)*, Fukuoka, [eds.-Japan](#), [eds.](#) T. Ito, T. Ohta, M. Osada, ISBN 978-4-907430-05-4, 2021.
- Baines, P.G. and Sparks, R.S.J.: Dynamics of volcanic ash clouds from supervolcanic eruptions. *Geophysical Research Letters* 32, L24808, doi:10.1029/2005GL024597, 2005.

- Bamber, J.L., Oppenheimer, M., Kopp, R., Aspinall, W., Cooke, R.: Ice sheet contributions to future sea-level rise from structured expert judgment, *Proceedings of the National Academy of Sciences* Jun 2019, 116 (23) 11195-11200, doi: 10.1073/pnas.1817205116, 2019.
- 565 Barons, M.J., and Aspinall, W.: Anticipated impacts of Brexit scenarios on UK food prices and implications for policies on poverty and health: a structured expert judgement approach. *BMJ open*, 10(3), e032376, [2020](#).
- Bevilacqua A, Isaia R, Neri A, Vitale S, Aspinall WP, Bisson M, Flandoli F, Baxter PJ, Bertagnini A, Esposti Ongaro T, Iannuzzi E, Pistolesi M, Rosi M (2015), Quantifying volcanic hazard at Campi Flegrei caldera (Italy) with uncertainty assessment: I. Vent opening maps, *J. Geophys. Res. Solid Earth*, 120, 2309–2329, doi:10.1002/2014JB011775, 201529.
- 570 Bevilacqua, A.: Doubly stochastic models for volcanic hazard assessment at Campi Flegrei caldera. Theses, 21, Edizioni della Normale, Birkhäuser/Springer, 227 p., Pisa, doi:10.1007/978-88-7642-577-6, 2016.
- Bevilacqua A, Neri, A., Bisson, M., Esposti Ongaro, T., Flandoli, F., Isaia, R., Rosi, M., and Vitale, S.: The effects of vent location, event scale, and time forecasts on pyroclastic density current hazard maps at Campi Flegrei caldera (Italy). *Frontiers in Earth Science*, 5, 72, doi:10.3389/feart.2017.00072, 2017.
- 575 Bevilacqua A., Bursik M.I., Patra A.K., Pitman B.E., Yang Q., Sangani R., Kobs-Nawotniak S.: Late Quaternary eruption record and probability of future volcanic eruptions in the Long Valley volcanic region (CA, USA). *Journal of Geophysical Research: Solid Earth* 123, 5466-5494, doi:10.1029/2018JB015644, 2018.
- Bevilacqua, A., Patra, A. K., Bursik, M. I., Pitman, E. B., Macías, J. L., Saucedo, R., and Hyman, D.: Probabilistic forecasting of plausible debris flows from Nevado de Colima (Mexico) using data from the Atenquique debris flow, 1955, *Nat. Hazards Earth Syst. Sci.*, 19, 791–820, doi:10.5194/nhess-19-791-2019, 2019.
- 580 Bevilacqua, A., Aravena, A., Neri, A., Gutiérrez, E., Escobar, D., Schliz, M., Aiuppa, A., and Cioni, R.: Thematic vent opening probability maps and hazard assessment of small-scale pyroclastic density currents in the San Salvador volcanic complex (El Salvador) and Nejapa-Chiltepe volcanic complex (Nicaragua), *Nat. Hazards Earth Syst. Sci.*, 21, 1639–1665, doi:10.5194/nhess-21-1639-2021, 2021.
- 585 Bevilacqua, A., Macedonio, G., Neri, A., Orsi, G., Petrosino, P.: Volcanic Hazard Assessment at the Campi Flegrei Caldera (Italy), Orsi, G. et al. (eds.), *Campi Flegrei, Active Volcanoes of the World*, Springer, doi:10.1007/978-3-642-37060-1_12, 2022.
- Biagioli, G., Bevilacqua, A., Esposti Ongaro, T., and de' Michieli Vitturi, M.: PyBox: a Python tool for simulating the kinematics of pyroclastic density currents with the box-model approach, Reference and user's guide, doi: 10.5281/zenodo.2616551, 2019.
- 590 Black, B., Neely, R., and Manga, M.: Campanian Ignimbrite volcanism, climate, and the final decline of the Neanderthals. *Geology*, 43(5), 411-414. doi:10.1130/G36514.1, 2015.
- Bonadonna, C., and Phillips, J.: Sedimentation from strong volcanic plumes. *Journal of Geophysical Research: Solid Earth*, 108(B7), doi:10.1029/2002JB002034, 2003.
- Bonnecaze, R. T., Hallworth, M. A., Huppert, H. E., and Lister, J. R.: Axisymmetric particle-driven gravity currents. *Journal of Fluid Mechanics*, 294, 93-121, doi:10.1017/S00222112095002825, 1995.
- 595 Brosch, E., Lube, G., Cerminara, M., Esposti-Ongaro, T., Breard, E.C.P., Dufek, J., Sovilla, B., Fullard, L.: Destructiveness of pyroclastic surges controlled by turbulent fluctuations. *Nat Commun* 12, 7306, doi:10.1038/s41467-021-27517-9, 2021.

- Brown, S. K., Crosweller, H. S., Sparks, R. S. J., Cottrell, E., Deligne, N. I., Guerrero, N. O., Hobbs, L., Kiyosugi, K., Loughlin, S. C., Siebert, L. and Takarada, S.: Characterisation of the Quaternary eruption record: analysis of the Large Magnitude Explosive Volcanic Eruptions (LaMEVE) database. *Journal of Applied Volcanology*, 3(1), 1-22, doi:10.1186/2191-5040-3-5, 2014.
- Burgisser, A., and ~~G. W.~~ Bergantz, G.W.: Reconciling pyroclastic flow and surge: the multiphase physics of pyroclastic density currents, *Earth Planet. Sci. Lett.*, 202, 405– 418, 2002.
- Bursik, M. I., and Woods, A. W.: The dynamics and thermodynamics of large ash flows. *Bulletin of Volcanology*, 58(2), 175-193, doi:10.1007/s004450050134, 1996.
- Carey, S., Sigurdsson, H., Mandeville, C., and Bronto, S.: Pyroclastic flows and surges over water: an example from the 1883 Krakatau eruption. *Bulletin of Volcanology*, 57(7), 493-511, doi:10.1007/BF00304435, 1996.
- Carey, S., Sigurdsson, H., Mandeville, C., and Bronto, S.: Volcanic hazards from pyroclastic flow discharge into the sea: examples from the 1883 eruption of Krakatau, Indonesia. *Special Papers-Geological Society of America*, 1-14, 2000.
- Cas, R. A., and Wright, J. V.: Subaqueous pyroclastic flows and ignimbrites: an assessment. *Bulletin of Volcanology*, 53(5), 357-380, doi:10.1007/BF00280227, 1991.
- Cas, R. A., Wright, H. M., Folkes, C. B., Lesti, C., Porreca, M., Giordano, G., and Viramonte, J. G.: The flow dynamics of an extremely large volume pyroclastic flow, the 2.08-Ma Cerro Galán Ignimbrite, NW Argentina, and comparison with other flow types. *Bulletin of Volcanology*, 73(10), 1583-1609, doi:10.1007/s00445-011-0564-y, 2011.
- Cigolini, C., Coppola, D., Yokoo, A., Laiolo, M.: The thermal signature of Aso Volcano during unrest episodes detected from space and ground-based measurements. *Earth Planets Space* 70, 67, doi:10.1186/s40623-018-0831-7, 2018.
- Cooke, R. M.: *Experts in Uncertainty: Opinion and Subjective Probability in Science*, Oxford Univ. Press, New York, 1991.
- Costa, A., Folch, A., Macedonio, G., Giaccio, B., Isaia, R., and Smith, V. C.: Quantifying volcanic ash dispersal and impact of the Campanian Ignimbrite super-eruption. *Geophysical Research Letters*, 39(10), doi:10.1029/2012GL051605, 2012.
- Costa, A., Pioli, L., and Bonadonna, C.: Assessing tephra total grain-size distribution: Insights from field data analysis. *Earth and Planetary Science Letters*, 443, 90-107, doi:10.1016/j.epsl.2016.02.040, 2016.
- Costa, A., Smith, V. C., Macedonio, G., and Matthews, N. E.: The magnitude and impact of the Youngest Toba Tuff super-eruption. *Frontiers in Earth Science*, 2, 16, doi:10.3389/feart.2014.00016, 2014.
- Costa A and Martí J: Stress Field Control during Large Caldera-Forming Eruptions. *Front. Earth Sci.* 4:92. doi: 10.3389/feart.2016.00092, 2016.
- Costa, A., Suzuki, Y. J., and Koyaguchi, T.: Understanding the plume dynamics of explosive super-eruptions. *Nature Communications*, 9(1), 1-6, doi:10.1038/s41467-018-02901-0, 2018.
- Crosweller, H. S., Arora, B., Brown, S. K., Cottrell, E., Deligne, N. I., Guerrero, N. O., Hobbs, L., Kiyosugi, K., Loughlin, S. C., Lowndes, J., Nayembil, M., Sieber, L., Sparks, R. S. J., Takarada, S., and Venzke, E.: Global database on large magnitude explosive volcanic eruptions (LaMEVE). *Journal of Applied Volcanology*, 1(1), 1-13, doi:10.1186/2191-5040-1-4, 2012.
- Crowe, C., M. Sommerfeld, and Y. Tsuji: *Multiphase Flows with Droplets and Particles*, CRC Press, Boston, 1998.

- Dade, W. B., and Huppert, H. E.: Runout and fine-sediment deposits of axisymmetric turbidity currents. *Journal of Geophysical Research: Oceans*, 100(C9), 18597-18609, doi:10.1029/95JC01917, 1995.
- Dade, W. B., and Huppert, H. E.: Emplacement of the Taupo Ignimbrite by a dilute turbulent flow. *Nature*, 381(6582), 509-512, doi:10.1038/381509a0, 1996.
- Dade, W., Huppert, H.: Emplacement of Taupo ignimbrite. *Nature*, 385, 307-308, doi:10.1038/385307a0, 1997.
- Dade, W. B., and Huppert, H. E.: Long-runout rockfalls. *Geology*, 26(9), 803-806, doi:10.1130/0091-7613(1998)026<0803:LRR>2.3.CO;2, 1998.
- Decker, R. W.: How often does a Minoan eruption occur? *Thera and the Aegean world III*, 2, 444-452, 1990.
- Deligne, N. I., Coles, S. G., and Sparks, R. S. J.: Recurrence rates of large explosive volcanic eruptions. *Journal of Geophysical Research: Solid Earth*, 115(B6), doi:10.1029/2009JB006554, 2010.
- DeMets, C., Gordon, R. G., and Argus, D. F.: Geologically current plate motions. *Geophysical Journal International*, 181(1), 1-80, doi:10.1111/j.1365-246X.2009.04491.x, 2010.
- Dioguardi, F., Mele, D., Dellino, P., and Dürig, T.: The terminal velocity of volcanic particles with shape obtained from 3D X-ray microtomography. *Journal of Volcanology and Geothermal Research*, 329, 41-53, doi:10.1016/j.jvolgeores.2016.11.013, 2017.
- Doyle, E.E., Huppert, H.E., Lube, G., Mader, H.M., and Sparks, R.S.J.: Static and flowing regions in granular collapses down channels: insights from a sedimenting shallow water model. *Physics of Fluids* 19, No.10, 106601, doi:10.1063/1.2773738, 2007.
- Dufek, J., and Bergantz, G. W.: Dynamics and deposits generated by the Kos Plateau Tuff eruption: controls of basal particle loss on pyroclastic flow transport. *Geochem., Geophys. Geosystems*. 8, Q12007. doi:10.1029/2007GC001741, 2007.
- Dufek, J.: The fluid mechanics of pyroclastic density currents. *Annual Review of Fluid Mechanics*, 48, 459-485, 2016.
- Esposti Ongaro T., Widiwijayanti C., Clarke A.B., Voight B., Neri A.: Multiphase-flow numerical modeling of the 18 May 1980 lateral blast at Mount St. Helens, USA. *Geology* 39(6):535-538, doi:10.1130/G31865.1, 2011.
- Esposti Ongaro, T., Orsucci, S., and Cornolti, F.: A fast, calibrated model for pyroclastic density currents kinematics and hazard. *Journal of Volcanology and Geothermal Research*, 327, 257-272, doi: 10.1016/j.jvolgeores.2016.08.002, 2016.
- Esposti Ongaro, T., Komorowski, J.C., Legendre, Y., Neri, A.: Modelling pyroclastic density currents from a subplinian eruption at La Soufrière de Guadeloupe (West Indies, France). *Bull Volcanol* 82, 76, doi:10.1007/s00445-020-01411-6, 2020.
- Fauria, K. E., Manga, M., and M. Chamberlain: Effect of particle entrainment on the runout of pyroclastic density currents. *Journal of Geophysical Research: Solid Earth*, 121(9), 6445-6461, doi: 10.1002/2016JB013263, 2016.
- Fisher, R. V., Orsi, G., Ort, M., and Heiken, G.: Mobility of a large-volume pyroclastic flow—emplacement of the Campanian ignimbrite, Italy. *Journal of Volcanology and Geothermal Research*, 56(3), 205-220, doi:10.1016/0377-0273(93)90017-L, 1993.
- Hallworth, M. A., Hogg, A., and Huppert, H. E.: Effects of external flow on compositional and particle gravity currents. *Journal of Fluid Mechanics*, 359, 109-142, doi:10.1017/S0022112097008409, 1998.
- Hasenaka, T.: Evaluation of eruptivity of silicic magma in Aso volcano system. *Proceedings of the International Meeting on Eruptive History and Informatics* 2016-2, 2016.

- Hayakawa, Y.: Proposal of eruption magnitude. *Bull. Volcanol. Soc. Japan* 6, 223–226, doi:10.18940/kazan.38.6_223, 1993.
- Hinks, T.K., Komorowski, J.C., Sparks, S.R., and Aspinall, W.P.: Retrospective analysis of uncertain eruption precursors at La Soufrière volcano, Guadeloupe, 1975–77: Volcanic hazard assessment using a Bayesian Belief Network approach. *Journal of Applied Volcanology*, 3, 26, doi: 10.1186/2191-5040-3-3, 2014.
- 670 [Holdaway, R.N., Duffy, B. & Kennedy, B.: Evidence for magmatic carbon bias in \$^{14}\text{C}\$ dating of the Taupo and other major eruptions. *Nature Communications*, 9, 4110, doi:10.1038/s41467-018-06357-0, 2018.](#)
- Hyman, D. M., Bevilacqua, A., and Bursik, M. I.: Statistical theory of probabilistic hazard maps: a probability distribution for the hazard boundary location, *Nat. Hazards Earth Syst. Sci.*, 19, 1347–1363, doi:10.5194/nhess-19-1347-2019, 2019.
- Hoshizumi, H., Watanabe, K., Sakaguchi, K., Uto, K., Ono, K., and Nakamura, T.: The Aso-4 pyroclastic flow deposit
675 confirmed from the deep drill holes inside the Aso caldera Programme and Abstracts the Volcanological Society of Japan, A05, 5, doi:10.18940/vsj.1997.2.0_5, 1997.
- Huppert, H.E., and Simpson, J.E.: The slumping of gravity currents. *Journal of Fluid Mechanics*, 99(4), 785-799, doi:10.1017/S0022112080000894, 1980.
- Ishibashi, H., Suwa, Y., Miyoshi, M., Yasuda, A., and Hokanishi, N.: Amphibole–melt disequilibrium in silicic melt of the Aso-4
680 caldera-forming eruption at Aso Volcano, SW Japan. *Earth, Planets and Space*, 70(1), 1-12, doi:10.1186/s40623-018-0907-4, 2018.
- Kaneko, K., Kamata, H., Koyaguchi, T., Yoshikawa, M., and Furukawa, K.: Repeated large-scale eruptions from a single compositionally stratified magma chamber: An example from Aso volcano, Southwest Japan. *Journal of Volcanology and Geothermal Research*, 167(1-4), 160-180, doi:10.1016/j.jvolgeores.2007.05.002, 2007.
- 685 Kaneko, K., Inoue, K., Koyaguchi, T., Yoshikawa, M., Shibata, T., Takahashi, T., and Furukawa, K.: Magma plumbing system of the Aso-3 large pyroclastic eruption cycle at Aso volcano, Southwest Japan: Petrological constraint on the formation of a compositionally stratified magma chamber. *Journal of Volcanology and Geothermal Research*, 303, 41-58, doi:10.1016/j.jvolgeores.2015.07.016, 2015.
- Kato Y., Koyama M., Fukushima Y., Nakagaki T.: *Energy Technology Roadmaps of Japan*. Springer, Tokyo, doi:10.1007/978-
690 4-431-55951-1, 2016.
- Kelfoun, K., Samaniego, P., Palacios, P., and Barba, D.: Testing the suitability of frictional behaviour for pyroclastic flow simulation by comparison with a well-constrained eruption at Tungurahua volcano (Ecuador). *Bulletin of Volcanology*, 71(9), 1057-1075, doi:10.1007/s00445-009-0286-6, 2009.
- Kelfoun, K.: Suitability of simple rheological laws for the numerical simulation of dense pyroclastic flows and long-runout
695 volcanic avalanches. *Journal of Geophysical Research: Solid Earth*, 116(B8), doi:10.1029/2010JB007622, 2011.
- Kelfoun, K.: A two-layer depth-averaged model for both the dilute and the concentrated parts of pyroclastic currents, *J. Geophys. Res. Solid Earth*, 122, 4293–4311, doi:10.1002/2017JB014013, 2017.
- Kelfoun, K., and Gueugneau, V.: A unifying model for pyroclastic surge genesis and pyroclastic flow fluidization. *Geophysical Research Letters*, 49, e2021GL096517, doi:10.1029/2021GL096517, 2022.

- 700 Kiyosugi, K., Connor, C., Sparks, R. S. J., Crosweller, H. S., Brown, S. K., Siebert, L., Wang, T. and Takarada, S.: How many explosive eruptions are missing from the geologic record? Analysis of the quaternary record of large magnitude explosive eruptions in Japan. *Journal of Applied Volcanology*, 4(1), 1-15, doi:10.1186/s13617-015-0035-9, 2015.
- Komazawa, M.: Gravimetric analysis of Aso volcano and its interpretation. *Journal of the Geodetic Society of Japan*, 41, 17–45, doi: 10.11501/3102626, 1995.
- 705 Larsen, J. F., Neal, C., Schaefer, J., Beget, J., and Nye, C.: Late Pleistocene and Holocene caldera-forming eruptions of Okmok caldera, Aleutian Islands, Alaska. Washington DC American Geophysical Union Geophysical Monograph Series, 172, 343-364, doi:10.1029/172GM24, 2007.
- Lipman, P.W.: Mineral and chemical variations within an ash-flow sheet from Aso caldera, south-western Japan. *Contributions to Mineralogy and Petrology*, 16, 300–327, doi:10.1007/BF00371528, 1967.
- 710 Lowenstern, J.B., Smith, R.B., and Hill, D.P.: Monitoring super-volcanoes: geophysical and geochemical signals at Yellowstone and other large caldera systems. Philosophical Transactions of the Royal Society A: Mathematical, *Physical and Engineering Sciences*, 364(1845), 2055-2072, doi:10.1098/rsta.2006.1813, 2006.
- Lube, G., Breard, E. C. P., Esposti-Ongaro, T., Dufek, J. and Brand, B: Multiphase flow behaviour and hazard prediction of pyroclastic density currents. *Nat. Rev. Earth Environ.* 1, 348–365, doi:10.1038/s43017-020-0064-8, 2020.
- 715 Machida, H.: The stratigraphy, chronology and distribution of distal marker-tephras in and around Japan. *Global and Planetary Change*, 21(1-3), 71-94, doi:10.1016/S0921-8181(99)00008-9, 1999.
- Machida, H., and Arai, F.: Extensive ash falls in and around the Sea of Japan from large late Quaternary eruptions. *Journal of Volcanology and Geothermal Research*, 18(1-4), 151-164, doi:10.1016/0377-0273(83)90007-0, 1983.
- Machida, H. and Arai, F.: Atlas of Tephra in and around Japan. University of Tokyo Press, Tokyo, 336, 2003.
- 720 Machida, H., Arai, F., and Momose, M.: Aso-4 ash: a widespread tephra and its implications to the events of Late Pleistocene in and around Japan. *Bull. Volcanol. Soc. Japan*, 30, 49–70, doi:10.18940/kazanc.30.2_49, 1985.
- Martí, A., Folch, A., Costa, A., and Engwell, S.: Reconstructing the plinian and coignimbrite sources of large volcanic eruptions: A novel approach for the Campanian Ignimbrite. *Scientific Reports*, 6(1), 1-11, doi:10.1038/srep21220, 2016.
- Mason, B. G., Pyle, D. M., and Oppenheimer, C.: The size and frequency of the largest explosive eruptions on Earth. *Bulletin of*
725 *Volcanology*, 66(8), 735-748, doi:10.1007/s00445-004-0355-9, 2004.
- Matsumoto, A., Uto, K., Ono, K., and Watanabe, K.: K–Ar age determinations for Aso volcanic rocks-concordance with volcanostratigraphy and application to pyroclastic flows. Programme and Abstract: Volcanological Society of Japan, B3, 73, doi:10.18940/vsj.1991.2.0_73, 1991.
- Matumoto, T.: The four gigantic caldera volcanoes of Kyushu. *Japanese Journal of Geology and Geography*, 19, 1943.
- 730 Miyabuchi, Y.: A 90,000-year tephrostratigraphic framework of Aso Volcano, Japan. *Sedimentary Geology*, 220(3-4), 169-189, doi:10.1016/j.sedgeo.2009.04.018, 2009.
- Miyabuchi, Y., Hoshizumi, H., Takada, H., Watanabe, K., and Xu, S.: Pumice-fall deposits from Aso volcano during the past 90,000 years, southwestern Japan. *Bulletin of the Volcanological Society of Japan*, 48, 195-214, doi: 10.18940/kazan.48.2_195, 2003.

- 735 Miyabuchi, Y., Masuda, N., and Watanabe, K.: Geologic history of the western part of post-caldera central cones of Aso volcano, southwestern Japan, based on stratigraphic relationships between lava flows and airfall tephra layers. *Bulletin of the Volcanological Society of Japan*, 49, 267-282, doi:10.18940/kazan.49.5_267, 2004.
- Miyabuchi, Y.: Post-caldera explosive activity inferred from improved 67–30 ka tephrostratigraphy at Aso Volcano, Japan. *Journal of Volcanology and Geothermal Research*, 205, 94–113, doi:10.1016/j.jvolgeores.2011.05.004, 2011.
- 740 Miyoshi, M., Hasenaka, T., and Sano, T.: Genetic relationships of the compositionally diverse magmas from Aso post-caldera volcanism. *Bulletin of the Volcanological Society of Japan*, 50, 269-283, 2005.
- Miyoshi, M., Sumino, H., Miyabuchi, Y., Shinmura, T., Mori, Y., Hasenaka, T., Furukawa, K., Uno, K. and Nagao, K.: K–Ar ages determined for post-caldera volcanic products from Aso volcano, central Kyushu, Japan. *Journal of Volcanology and Geothermal Research*, 229, 64-73, doi:10.1016/j.jvolgeores.2012.04.003, 2012.
- 745 [NASA: Shuttle Radar Topography Mission \(SRTM\) Global, *OpenTopography*, doi: 10.5069/G9445JDF, 2013.](https://doi.org/10.5069/G9445JDF)
- Neri, A., Bevilacqua, A., Esposti Ongaro, T., Isaia, R., Aspinall, W., Bisson, M., Flandoli, F., Baxter, P., Bertagnini, A., and Iannuzzi, E.: Quantifying volcanic hazard at Campi Flegrei caldera (Italy) with uncertainty assessment: 2. Pyroclastic density current invasion maps. *Journal of Geophysical Research: Solid Earth*, 120(4), 2330-2349, doi:10.1002/2014JB011776, 2015.
- Neri, A., Esposti Ongaro, T., de' Michieli Vitturi, M., Cerminara, M.: Multiphase Flow Modeling of Explosive Volcanic Eruptions. In: *Transport Phenomena in Multiphase Systems* (pp. 243-281). Springer, Cham, doi:10.1007/978-3-030-68578-2_10, 2022.
- 750 Newhall, C., Self, S., and Robock, A., Anticipating future Volcanic Explosivity Index (VEI) 7 eruptions and their chilling impacts. *Geosphere*, 14(2), 572-603, doi:10.1130/GES01513.1, 2018.
- Ono, K., Matsumoto, Y., Miyahisa, M., Teraoka, Y., and Kambe, N.: Geology of the Taketa District. Quadrangle Series, 1:50,000. Kawasaki: Geological Survey of Japan, 1997.
- 755 Ono, K., and Watanabe, K.: Aso Caldera. *Chikyu Monthly*, 5, 73–82, 1983.
- Ono, K., and Watanabe, K.: Geological Map of Aso Volcano, 1:50,000. Tsukuba: Geological Survey of Japan, 1985.
- Oppenheimer, C., and Donovan, A. R.: On the nature and consequences of super-eruptions. In *Volcanism and global environmental change* (pp. 16-29). Cambridge University Press, 2015.
- 760 Papale, P., Global time-size distribution of volcanic eruptions on Earth. *Scientific Reports*, 8(1), 1-11, doi:10.1038/s41598-018-25286-y, 2018.
- Papale, P., Marzocchi, W., and Garg, D.: Global volume distribution for subaerial volcanism on Earth. *Journal of Geophysical Research: Solid Earth*, e2021JB021763, doi:10.1029/2021JB021763, 2021.
- Patra, A., Bevilacqua, A., Akhavan-Safaei, A., Pitman, E.B., Bursik, M., Hyman D.: Comparative Analysis of the Structures and Outcomes of Geophysical Flow Models and Modeling Assumptions Using Uncertainty Quantification. *Front. Earth Sci.* 8:275, doi:10.3389/feart.2020.00275, 2020.
- 765 Petit, C., and Fournier, M.: Present-day velocity and stress fields of the Amurian Plate from thin-shell finite-element modelling. *Geophysical Journal International*, 160(1), 357-369, doi:10.1111/j.1365-246X.2004.02486.x, 2005.

- Pyle, D. M.: "Sizes of volcanic eruptions," in Encyclopedia of Volcanoes, eds H. Sigurdsson, B. F. Houghton, S. R. McNutt, H. Rymer, and J. Stix (Cambridge, MA: Academic Press), 257–264, doi:10.1016/B978-0-12-385938-9.00013-4, 2000.
- Roche, O., Buesch, D., and Valentine, G.: Slow-moving and far-travelled dense pyroclastic flows during the Peach Spring super-eruption. *Nature Communications*, 7(1), 1-8, 2016.
- Roche, O., Azzaoui, N. and Guillin, A.: Discharge rate of explosive volcanic eruption controls runout distance of pyroclastic density currents, *Earth and Planetary Science Letters*. 568. 117017, doi:10.1016/j.epsl.2021.117017, 2021.
- Rougier, J., Sparks, S. R., and Cashman, K.V.: Global recording rates for large eruptions. *Journal of Applied Volcanology*, 5(1), 1-10, doi:10.1186/s13617-016-0051-4, 2016.
- Rougier, J., Sparks, R.S.J., and Cashman, K.V.: Regional and global under-recording of large explosive eruptions in the last 1000 years. *Journal of Applied Volcanology*, 7(1), 1-10, doi:10.1186/s13617-017-0070-9, 2018.
- Rougier, J.C., Sparks, R.S.J., Aspinall, W.P. and Mahony, S.H.: Estimating tephra fall volume from point-referenced thickness measurements. *Geophysical Journal International* [230 \(3\), 1699-1710](https://doi.org/10.1093/gji/ggac131), doi:10.1093/gji/ggac131, (subjudice), 2022.
- Rutarindwa, R., Spiller, E.T., Bevilacqua, A., Bursik, M.I., and Patra, A.K.: Dynamic probabilistic hazard mapping in the Long Valley Volcanic Region CA: integrating vent opening maps and statistical surrogates of physical models of pyroclastic density currents. *Journal of Geophysical Research: Solid Earth*, 124(9), 9600-9621, doi:10.1029/2019JB017352, 2019.
- Self, S.: The effects and consequences of very large explosive volcanic eruptions. *Philosophical Transactions of the Royal Society A. Mathematical, Physical and Engineering Sciences*, 364(1845), 2073-2097, doi:10.1098/rsta.2006.1814, 2006.
- Self, S.: Explosive super-eruptions and potential global impacts. In *Volcanic Hazards, Risks and Disasters* (pp. 399-418). Elsevier, doi: 10.1016/B978-0-12-396453-3.00016-2, 2015.
- Shimizu, H.A., Koyaguchi, T., Suzuki, Y.J.: The run-out distance of large-scale pyroclastic density currents: a two-layer depth-averaged model. *Journal of Volcanology and Geothermal Research*, 381, 168-184, doi:10.1016/j.jvolgeores.2019.03.013, 2019.
- [Shinmura, T., Miyoshi, M., Sumino, H., Ueda, Y., Mori, Y., Hasenaka, T., Arakawa, Y., Nagao, K.: K-Ar ages determined for volcanic rocks from Nekodake volcano in the eastern rim of Aso caldera, central Kyushu, Japan, Programme and abstracts the volcanological society of Japan, 2021 Fall Meeting, Session ID B1-07, Page 51, doi:10.18940/vsj.2021.0_51, 2021.](https://doi.org/10.18940/vsj.2021.0_51)
- Simkin, T.: Terrestrial volcanism in space and time. *Annual Review of Earth and Planetary Sciences*, 21(1), 427-452, doi:10.1146/annurev.earth.21.050193.002235, 1993.
- [Sparks, R.S.J. and Walker, G.P.L.: The significance of vitric-enriched air fall ashes associated with crystal-enriched ignimbrites. *Journal of Volcanology and Geothermal Research* 2, 329-341, 1977.](https://doi.org/10.1007/BF00265035)
- Streck, M., and Grunder, A.: Crystallization and welding variations in a widespread ignimbrite sheet; the Rattlesnake Tuff, eastern Oregon, USA. *Bulletin of Volcanology*, 57(3), 151-169, doi:10.1007/BF00265035, 1995.
- Suñe-Puchol, I., Aguirre-Díaz, G.J., Dávila-Harris, P., Miggins, D.P., Pedrazzi, D., Costa, A., Ortega-Obregón, C., Lacan, P., Hernández, W., Gutiérrez, E.: The Ilopango caldera complex, El Salvador: Origin and early ignimbrite-forming eruptions of a graben/pull-apart caldera structure, *Journal of Volcanology and Geothermal Research*, 371, 1-19, doi:10.1016/j.jvolgeores.2018.12.004, 2019.

- Suzuki-Kamata, K., and Kamata, H.: The proximal facies of the Tosu pyroclastic-flow deposit erupted from Aso caldera, Japan. *Bulletin of Volcanology*, 52, 325-333, doi: 10.1007/BF00302046, 1990.
- 805 Tadini, A., Bevilacqua, A., Neri, A., Cioni, R., Aspinall, W.P., Bisson, M., Isaia, R., Mazzarini, F., Valentine, G.A.V., Vitale, S., Baxter, P.J., Bertagnini, A., Cerminara, M., de' Michieli Vitturi, M., Di Roberto, A., Engwell, S.L., Esposti Ongaro, T., Flandoli, F., Pistolesi, M.: Assessing future vent opening locations at the Somma-Vesuvio volcanic complex: 2. Probability maps of the caldera for a future Plinian/sub-Plinian event with uncertainty quantification, *J. Geophys. Res. Solid Earth*, 122, 4357–4376, doi:10.1002/2016JB013860, 2017.
- 810 Tadini, A., Bevilacqua, A., Neri, A., Cioni, R., Biagioli, G., de' Michieli Vitturi, M., and Esposti Ongaro, T.: Reproducing pyroclastic density current deposits of the 79 CE eruption of the Somma–Vesuvius volcano using the box-model approach. *Solid Earth*, 12(1), 119-139, doi:10.5194/se-12-119-2021, 2021a.
- Tadini A., Roche, O., Samaniego, P., Azzaoui, N., Bevilacqua, A., Guillin, A., Gouhier, M., Bernard, B., Aspinall, W., Hidalgo, S., Eychenne, J., de' Michieli Vitturi, M., Neri, A., Cioni, R., Pistolesi, M., Gaunt, E., Vallejo, S., Encalada, M., Yepes, H.,
- 815 Proaño, A., Pique, M.: Eruption type probability and eruption source parameters at Cotopaxi and Guagua Pichincha volcanoes (Ecuador) with uncertainty quantification. *Bulletin of Volcanology*, 83, 35, doi:10.1007/s00445-021-01458-z, 2021b.
- Tadini A., Azzaoui, N., Roche, O., Samaniego, P., Bernard, B., Bevilacqua, A., Hidalgo, S., Guillin, A., Gouhier, M.: (2022a): Tephra fallout probabilistic hazard maps for Cotopaxi and Guagua Pichincha volcanoes (Ecuador) with uncertainty quantification, *J. Geophys. Res. Solid Earth*, 127, e2021JB022780, doi:10.1029/2021JB022780, 2022a.
- 820 Tadini, A., Harris, A., Morin, J., Bevilacqua, A., Peltier, A., Aspinall, W., Ciolli, S., Bachèlery, P., Bernard, B., Biren, J., Brum da Silveira, A., Cayol, V., Chevrel, Coppola, D., Dietterich, H., Donovan, A., Dorado, O., Drenne, S., Dupéré, O., Gurioli, L., Kolzenburg, S., Komorowski, JC, Labazuy, P., Mangione, D., Mannini, S., Martel-Asselin, F., Médard, E., Pailot-Bonnétat, S., Rafflin, V., Ramsey, M., Richter, N., Vallejo, S., Villeneuve, N., Zafrilla, S.: Structured elicitation of expert judgement in real-time eruption scenarios: an exercise for Piton de la Fournaise volcano, La Réunion island, *Volcanica*, 5(1), 105-131, doi:10.30909/vol.05.01.105131, 2022b.
- 825 Tajima, Y., Hasenaka, T., and Torii, M.: Effects of the 2016 Kumamoto earthquakes on the Aso volcanic edifice. *Earth, Planets and Space*, 69(1), 1-15, doi:10.1186/s40623-017-0646-y, 2017.
- Takarada, S., and Hoshizumi, H.: Distribution and eruptive volume of aso-4 pyroclastic density current and tephra fall deposits, Japan: a M8 super-eruption. *Frontiers in Earth Science*, 8, 170, doi:10.3389/feart.2020.00170, 2020.
- 830 Todesco, M., Neri, A., Esposti Ongaro, T., Papale, P., Rosi, M.: Pyroclastic flow dynamics and hazard in a caldera setting: application to Phlegrean Fields (Italy). *Geochem Geophys Geosys* 7:11, doi:10.1029/2006GC001314, 2006.
- Uto, K., Sakaguchi, K., Shibuya, A., and Yoshioka, H.: K–Ar ages of volcanic rocks from the deep drill holes inside the Aso caldera: implication for the reconstruction of the early stage of the post-caldera volcanism. Programme and abstracts of the Volcanological Society of Japan, 1994.
- 835 Valentine, G.A.V.: Initiation of dilute and concentrated pyroclastic currents from collapsing mixtures and origin of their proximal deposits, *Bull. Volcanol.*, 82, 20, doi:10.1007/s00445-020-1366-x, 2020.
- Watanabe, K.: Studies on the Aso pyroclastic flow deposits in the region to the west of Aso Caldera, Southwest Japan, I: Geology. *Mem. Fac. Educ. Kumamoto Univ. Nat. Sci.* 27, 97–120, 1978.

- Watanabe, K.: Studies on the Aso pyroclastic flow deposits in the region to the west of Aso Caldera, Southwest Japan, II: Petrology of the Aso-4 pyroclastic flow deposits. *Mem. Fac. Educ. Kumamoto Univ. Nat. Sci.* 28, 75–112, 1979.
- Watanabe, K.: Geology of Aso volcano, Ichinomiya Choshi (history of Ichinomiya town, Kumamoto prefecture, Japan), 7, 238, 2001.
- Werner, C., Colson, A., Morton, A., Bedford ~~h~~ T.: Risk Assessment of Future Antibiotic Resistance—Eliciting and Modelling Probabilistic Dependencies Between Multivariate Uncertainties of Bug-Drug Combinations, *Front. Appl. Math. Stat.* 7:669391, doi:10.3389/fams.2021.669391, 2021.
- Williams, M.: The ~73 ka Toba super-eruption and its impact: History of a debate. *Quaternary International*, 258, 19-29, doi:10.1016/j.quaint.2011.08.025, 2012.
- Wilson C.J.N.: The Taupo eruption, New Zealand. I. The Taupo Ignimbrite, *Philosophical Transactions of the Royal Society of London. Series A, Mathematical and Physical Sciences*, 314, 199-228, doi:10.1098/rsta.1985.0019, 1985a.
- Wilson C.J.N.: The Taupo eruption, New Zealand. II. The Taupo Ignimbrite, *Philosophical Transactions of the Royal Society of London. Series A, Mathematical and Physical Sciences*, 314, 229-310, doi:10.1098/rsta.1985.0020, 1985b.
- Wilson, C.J.N.: Ignimbrite morphology and the effects of erosion: a New Zealand case study. *Bulletin of Volcanology*, 53(8), 635-644, doi:10.1007/BF00493690, 1991.
- Wilson, C.J.N., Houghton, B.F., Kampt, P.J.J., McWilliamst, M.O.: An exceptionally widespread ignimbrite with implications for pyroclastic flow emplacement. *Nature*, 378(6557), 605-607, doi:10.1038/378605a0, 1995.
- Wilson, C.: Emplacement of Taupo ignimbrite. *Nature*, 385, 306-307, doi:10.1038/385306a0, 1997.
- Yang, Q., Pitman, E.B., Spiller, E., Bursik, M., Bevilacqua, A.: Novel statistical emulator construction for volcanic ash transport model Ash3d with physically-motivated measures, *Philosophical Transactions of the Royal Society of London. Series A, Mathematical and Physical Sciences*, 476, 20200161, doi:10.1098/rspa.2020.0161, 2020.

Tables

Table 1: Elicitation solutions for Model 1 and Model 2 parameters, and modified input range of Model 2b based on mass discharge rate (MDR) modelling and Sauter diameter of analogues (see Subsection 3.2). The reported values express the percentiles of the probability distribution obtained by equal weights pooling of experts' judgements (also called the solution Decision Maker DM).

Model 1					
N	Input parameter	5%ile	50%ile	95%ile	Units
1	Collapse height (H)	2566	5752	9629	m
2	Flow density (ρ_c)	686.3	992	1511	kg/m ³
3	Equivalent stress (τ)	244.3	1868	7666	Pa
Model 2					
N	Input parameter⁺	5%ile	50%ile	95%ile	Units
1	Initial solid fraction (ϕ_0)	0.1789	1.103	3.675	%
1*	modified input range (ϕ_0)	0.2(min)	-	1(max)	%
2	Velocity of settling of the solid particles (w_s)	0.04492	0.4405	2.460	m/s
2*	modified input range (w_s)	0.04(min)	-	0.3(max)	m/s
3	Density of solid particles (ρ)	1089	1814	2357	kg/m ³
4	Density of ambient air (ρ_a)	1.023	1.193	1.284	kg/m ³
5	Density of interstitial gas (ρ_i)	0.3184	0.4853	0.7957	kg/m ³

*These results approximately impose the input values in the range [min, median] assessed by the joint DM.

⁺ Froude number was sampled uniformly in [1.0, 1.2].

Table 2: Numerical results of the minimum PDC volume and mass needed to reach the **TSMS1**, with and without consideration of topographic effects (see Subsection 4.4). The density is different in the two Models 1 and 2 (see Table 1). Estimates based on 100,000 statistical samples.

No topographic effects modelled				
<i>MinVol</i> : Minimum PDC volume [km ³] required to reach the TSMS1				
Model	5%ile	50%ile	mean	95%ile
Model 1: Elicited inputs	26.5	263	450	1470
Model 2a: Elicited inputs	10.2	55.9	77.9	226
Model 2b: Modified inputs*	7.31	16.7	17.4	30.0
Model 2c: Elicited inputs	6.83	43.6	64.5	201
<i>MinMass</i> : Minimum PDC mass [10 ¹² kg] required to reach the TSMS1				
Model	5%ile	50%ile	Mean	95%ile
Model 1: Elicited inputs	28.0	270	446	1410
Model 2a: Elicited inputs	17.4	95.9	133	390
Model 2b: Modified inputs*	12.6	28.6	29.6	50.8
Model 2c: Elicited inputs	11.5	74.5	111	348
With topographic effects included				
Minimum PDC volume [km ³] required to reach the TSMS1				
Model	5%ile	50%ile	mean	95%ile
Model 1: Elicited inputs	89.3	887	1520	4980
Model 2a: Elicited inputs	30.1	165	230	668
Model 2b: Modified inputs*	21.6	49.2	51.3	88.6
Model 2c: Elicited inputs	20.1	129	190	592
Minimum PDC mass [10 ¹² kg] required to reach the TSMS1				
Model	5%ile	50%ile	mean	95%ile
Model 1: Elicited inputs	94.5	913	1510	4770
Model 2a: Elicited inputs	51.2	283	393	1150
Model 2b: Modified inputs*	37.0	84.3	87.3	150
Model 2c: Elicited inputs	33.8	220	328	1030

* Modified ϕ_0 and w_s based on MDR modelling and Sauter diameter of analogues (see Table 1).

875 Table 3: Numerical results of the probability that a PDC derived from a caldera-forming eruption similar to ~~Aso-3 and~~ Aso-4 reaches
the TSMS1, with and without topographic effects. For each ~~eruptionscenario~~, we present the values of the cumulative curves displayed
in Figure 4 at the central point of the variation range of the PDC mass, while between parentheses we include the results at the
extremes of these variation ranges. We test the mass of PDC overflow outside of the caldera of Aso-4 and 1/10 of that estimate,
tentatively representing the Aso-4T unit.

880

Aso-4, total PDC overflow (volume per Takarada and Hoshizumi, 2020)		
Model	TE⁺ : No	TE⁺ : Yes
Model 1: Elicited inputs	82.6% (62.1 – 92.2%)	45.8% (27.8 – 57.0%)
Model 2a: Elicited inputs	100.0% (96.2 – 100.0%)	86.5% (66.1 – 95.5%)
Model 2b: Modified inputs*	100.0% (100.0 – 100.0%)	100.0% (100.0 – 100.0%)
Model 2c: Elicited inputs	100.0% (97.7 – 100.0%)	89.7% (73.4 – 97.1%)
Aso-4, total PDC overflow (volume per Aspinall et al., 2021)		
Model	TE⁺ : No	TE⁺ : Yes
Model 1: Elicited inputs	61.0% (50.2 – 83.5%)	26.7% (17.8 – 46.6%)
Model 2a: Elicited inputs	95.6% (87.1 – 100.0%)	64.6% (48.6 – 87.3%)
Model 2b: Modified inputs*	100.0% (100.0 – 100.0%)	100.0% (100.0 – 100.0%)
Model 2c: Elicited inputs	97.2% (90.2 – 100.0%)	72.1% (57.9 – 90.4%)
Aso-4, 1/10 of total PDC overflow (volume per Takarada and Hoshizumi, 2020)		
Model	TE⁺ : No	TE⁺ : Yes
<u>Model 1: Elicited inputs</u>	<u>17.2% (8.4 – 26.4%)</u>	<u>3.8% (1.0 – 6.6%)</u>
<u>Model 2a: Elicited inputs</u>	<u>42.6% (22.5 – 58.4%)</u>	<u>11.0% (3.1 – 21.1%)</u>
<u>Model 2b: Modified inputs*</u>	<u>100.0% (84.1 – 100.0%)</u>	<u>43.8% (8.2 – 80.5%)</u>
<u>Model 2c: Elicited inputs</u>	<u>51.9% (31.1 – 66.9%)</u>	<u>18.5% (7.4 – 29.7%)</u>

⁺ TE: Topographic effects.

* Modified ϕ_0 and w_s based on MDR modelling and Sauter diameter of analogues (see Table 1).

Figures

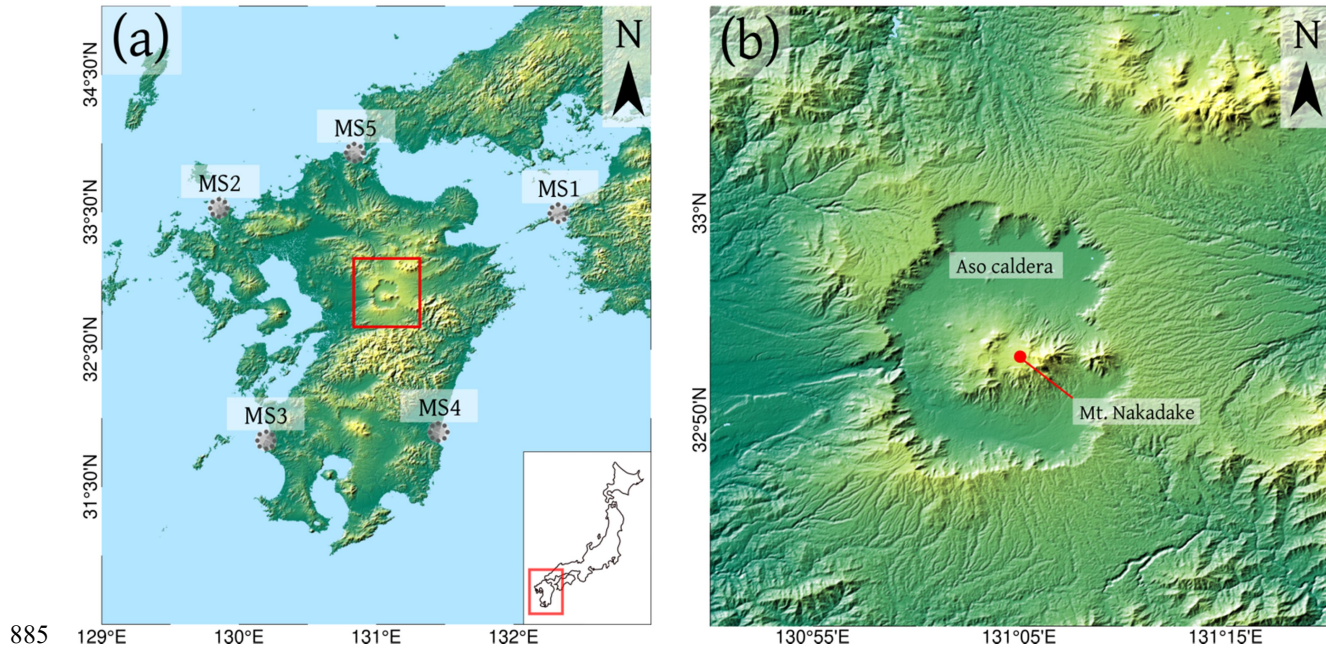


Figure 1: (a) Map of Kyushu Island (South Japan), where the Aso caldera is located (inside red rectangle). The positions of the ~~three~~ **five targetmarker** sites are indicated by dotted grey circles. A sketch showing the location of Kyushu Island within Japan is also displayed. (b) Zoom on the Aso caldera. DEM – SRTM 1 Arc-Second 30m (NASA, 2013).

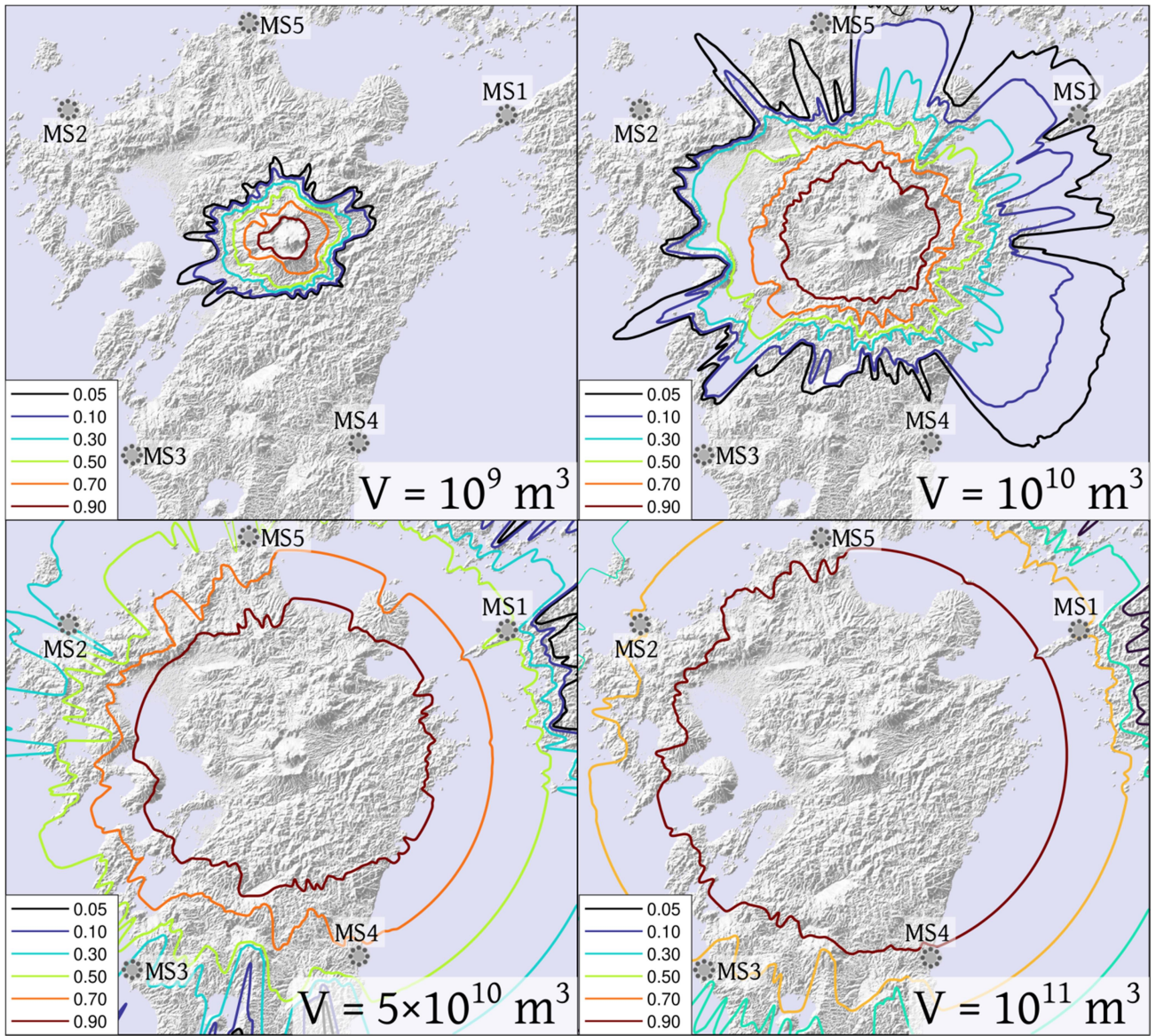


Figure 2: Probabilistic PDC invasion maps for four sets of simulations ($N = 1000$ each run) with different values of collapsing volume and vent positions sampled uniformly within Aso caldera. The other input parameters are derived from expert judgement (see Table 1). These simulations were performed using the program BoxMapProb (Aravena et al., 2020; excl. tree-branching effects), which adopts the formulation of the Model 2c. Dotted grey circles mark the positions of the five targetmarker sites. Contour lines show the invasion probability values in the lower-right box. DEM – SRTM 1 Arc-Second 30m (NASA, 2013).

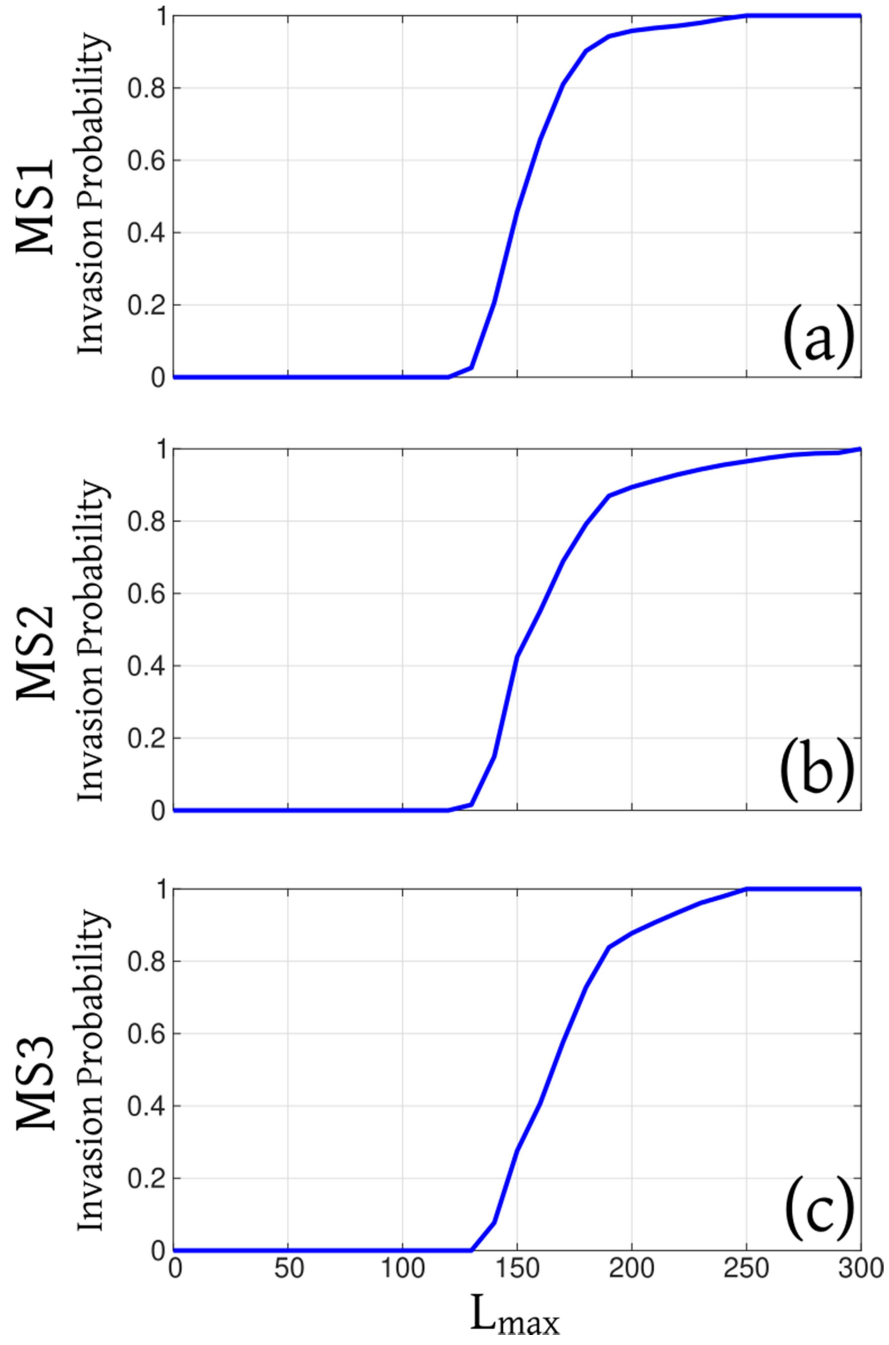


Figure 3: Cumulative curves PDC invasion probability of the **targetmarker** sites (a) **TSMS1**, (b) **TSMS2**, (c) **TSMS3**, for a set of simulations performed using the program BoxMapProb (Aravena et al., 2020) as a function of the parameter L_{max} , which represents the runout distance on a flat surface. To perform these simulations, vent positions are uniformly sampled within the Aso caldera, the volume of pyroclasts is uniformly sampled between 10^9 and 10^{12} m³, and the other input parameters derive from expert judgement (see Table 1 - 5000 samples). We observe that L_{max} of 195, 235 and 225 km ensure that most of the simulations (>95%) invade the **TSMS1**, **TSMS2**, **TSMS3**, respectively.

Cumulative distribution of MinMass

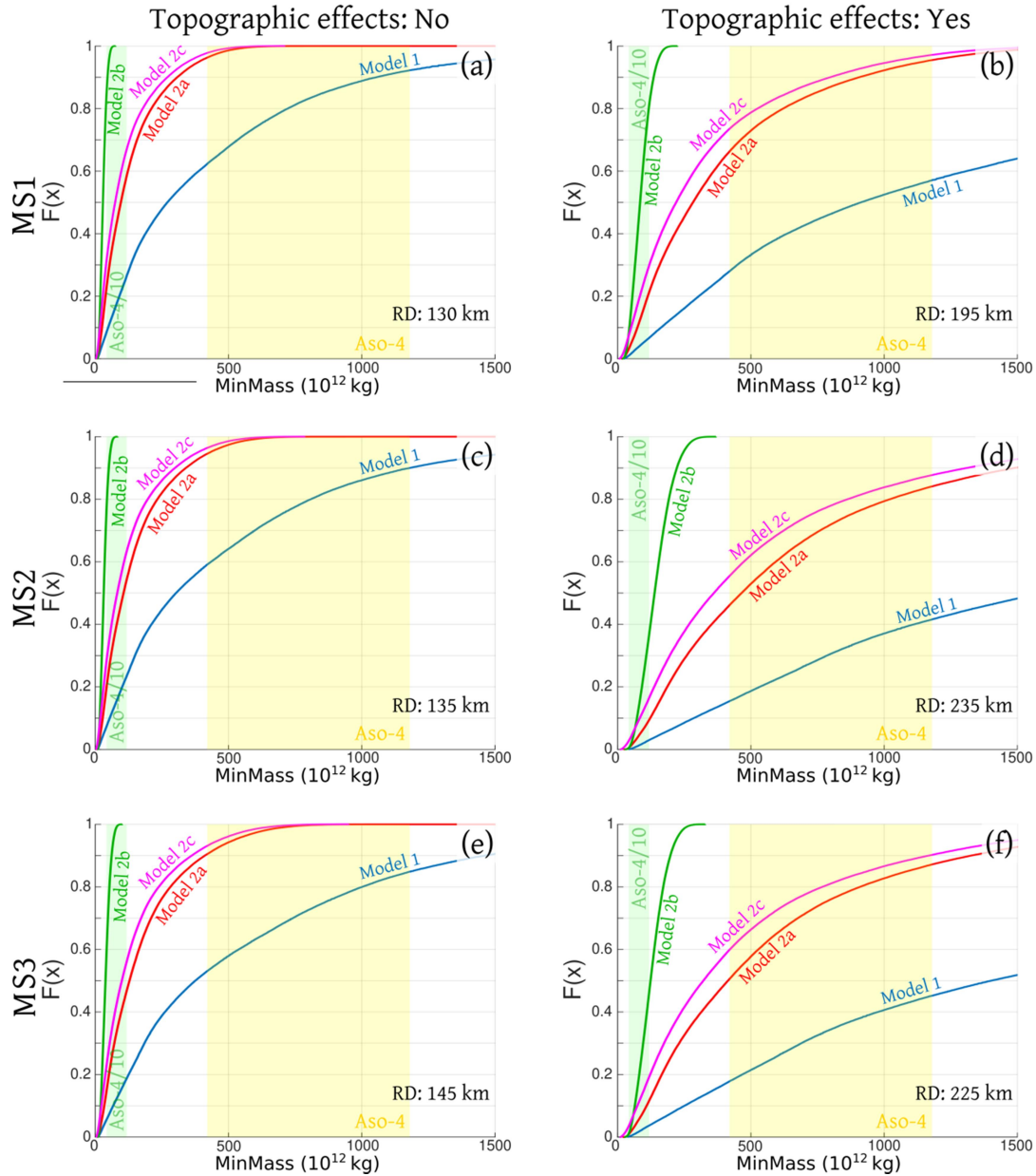


Figure 4: Cumulative distributions of the variable *MinMass*, calculated using Models 1, 2a, 2b, 2c and their combination. *MinMass* represents the mass of pyroclasts in a PDC flow required to invade the different **targetmarker** sites. Left panels are related to maximum runout distances of 130 km, 135 km and 145 km, respectively (the distance between Aso caldera and the **three-different targetmarker** sites **MS1-MS3**). Right panels are related to maximum runout distances of 195 km, 235 km and 225 km, respectively, allowing the flow to overcome possible topography shielding effects near the **targetmarker** sites. Estimates of the mass associated with the PDCs produced during the **two**-largest caldera-forming eruptions of Aso are included: Aso-4/103, plausibly representing the **Aso-4T unit**, in green; (Matsumoto et al., 1991; Crosweller et al., 2012). Aso-4, total PDC overflow,¹ in yellow; per (Takarada and Hoshizumi, 2020). Aso-4² in light red; per Aspinall et al., 2021. The overlap of the latter two is orange-colored. Plots are based on 100,000 statistical samples.

Probability distribution of MinMass
Topographic effects: Yes

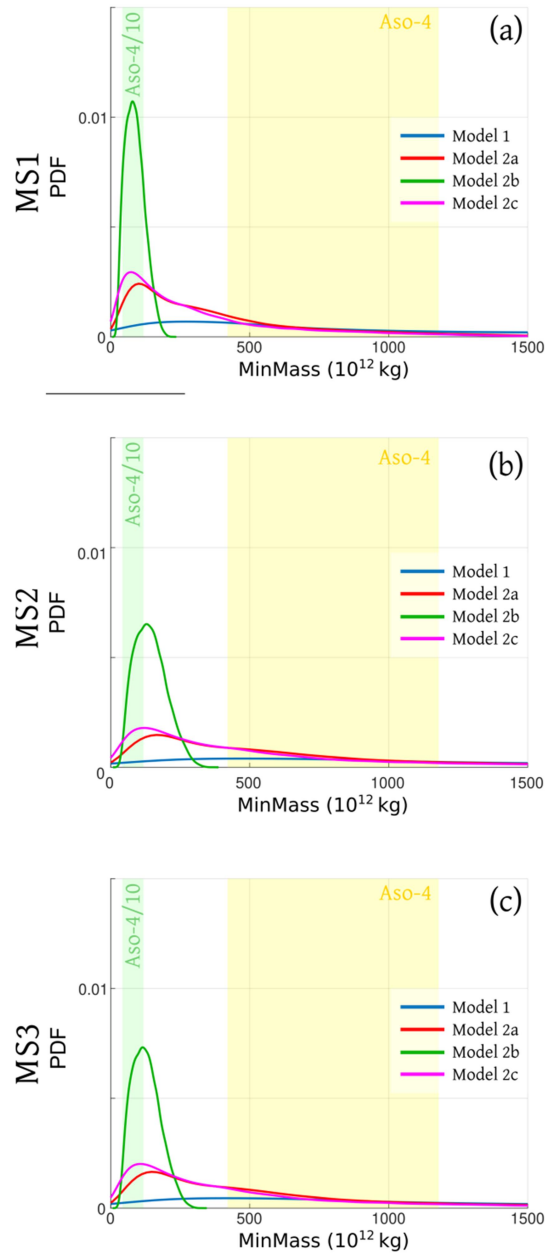


Figure 5: Probability density functions of the variable *MinMass*, calculated using Models 1, 2a, 2b, 2c and their combination. *MinMass* represents the mass of pyroclasts in a PDC flow required to invade the different ~~targetmarker~~ sites MS1-MS3, related to maximum runout distances allowing the flow to overcome possible topography shielding effects near the ~~targetmarker~~ sites. Estimates of the mass associated with the PDCs produced during the ~~two~~ largest caldera-forming eruptions of Aso are included: Aso-4/10, possibly representing the Aso-4T unit,³ in green; (Matsumoto et al., 1991; Crosweller et al., 2012). Aso-4, total PDC overflow,[†] in yellow ([‡] per Takarada and Hoshizumi, 2020). Aso-4² in light red; per Aspinall et al., 2021. The overlap of the latter two is orange-colored. Plots based on 100,000 statistical samples.

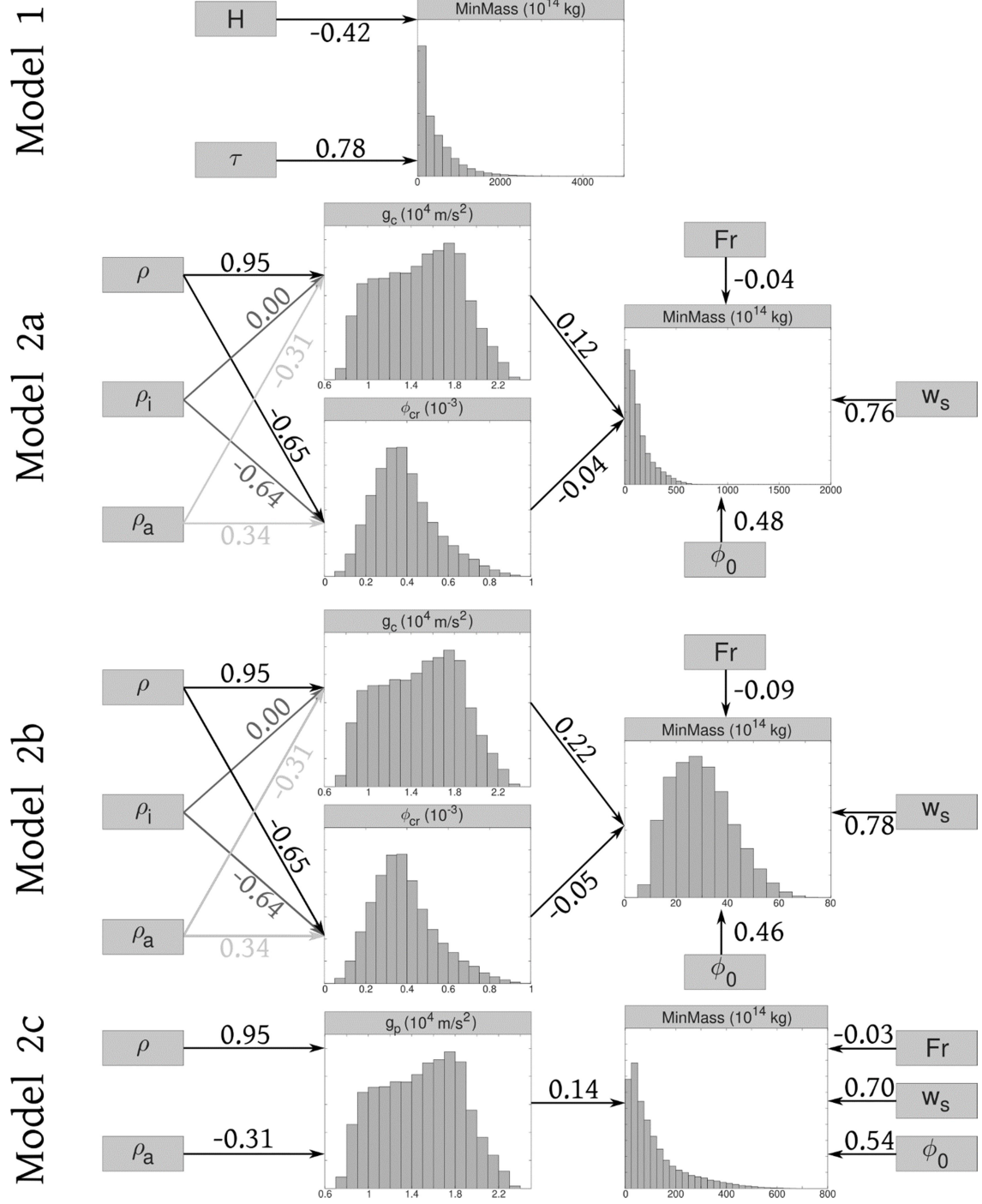


Figure 6: Sensitivity analysis of the evaluation of functional variable *MinMass* in the different models used in this work. Gray boxes indicate the input parameters, and arrow labels indicate correlation coefficients in relation to model inputs and functional variables. **BBN based on 100,000 statistical samples.**