

Rapid Tsunami Force Prediction by Mode Decomposition -Based Surrogate Modeling

Kenta Tozato¹, Shinsuke Takase², Shuji Moriguchi³, Kenjiro Terada³, Yu Otake⁴, Yo Fukutani⁵, Kazuya Nojima⁶, Masaaki Sakuraba⁶, and Hiromu Yokosu⁷

¹Department of Civil and Environmental Engineering, Tohoku University, Aza-Aoba 468-1, Aramaki, Aoba-ku, Sendai 980-8572, Japan

²Department of Civil Engineering and Architecture, Hachinohe Institute of Technology, 88-1 Ohbiraki, Myo, Hachinohe, Aomori 031-8501, Japan

³International Research Institute of Disaster Science, Tohoku University, Aza-Aoba 468-1, Aramaki, Aoba-ku, Sendai 980-8572, Japan

⁴Department of Civil and Environmental Engineering, Tohoku University, Aza-Aoba 6-6-01, Aramaki, Aoba-ku, Sendai 980-8579, Japan

⁵College of Science and Engineering, Kanto Gakuin University, Mutsuura Higashi 1-50-1, Kanazawa-ku, Yokohama-shi, Kanagawa 236-8501, Japan

⁶Research and Development Center, Nippon Koei Co., Ltd. Inarihara, 2304, Tsukuba-shi, Ibaraki 300-1259, Japan

⁷Nuclear Safety Research Development Center, Chubu Electric Power Co., Inc., Sakura 5561, Omaezaki, Shizuoka 437-1695, Japan

Correspondence: Shuji Moriguchi (s_mori@irides.tohoku.ac.jp)

Abstract. This study presents a framework for rapid tsunami force predictions by the application of mode decomposition based surrogate modelling with 2D-3D coupled numerical simulations. A limited number of large-scale numerical analyses are performed for a selection scenarios with variations in fault parameters to capture the distribution tendencies of the target risk indicators. Then, the proper orthogonal decomposition (POD) is applied to the analysis results to extract the principal modes that represent the temporal and spatial characteristics of tsunami forces. A surrogate model is then constructed by a linear combination of these modes, whose coefficients are defined as functions of the selected input parameters. A numerical example is presented to demonstrate the applicability of the proposed framework to one of the tsunami-affected areas during the Great East Japan Earthquake of 2011. Combining 2D and 3D versions of the stabilized finite element method, we carry out a series of high precision numerical analyses with different input parameters to obtain a set of time history data of the tsunami forces acting on buildings and the inundation depths. POD is applied to the data set to construct the surrogate model that is capable of providing the predictions equivalent to the simulation results almost instantaneously. Based on the acceptable accuracy of the obtained results, it was confirmed that the proposed framework is a useful tool for evaluating time series data of hydrodynamic force acting on buildings.

1 Introduction

In order to estimate the potential damage due to a tsunami, predictions need to consider both the global aspect, such as the scale of the inundation areas, and also the local hydrodynamic forces acting on individual houses and each type of infrastructure. In

fact, the potential effects of tsunami force have been implemented in recent design standards (ASCE, 2017; Nakano, 2017). In addition, thanks to the extensive efforts made in recent years to develop numerical analysis techniques, maturity can be seen especially in the numerical analysis techniques applied to coastal engineering which provide highly accurate evaluations and predictions of tsunami forces (e.g., Qin et al., 2018; Xiong et al., 2019).

It is also extremely important for adequate disaster responses, such as evacuation actions, that information about the extent of damage can be quickly ascertained. In response to this demand, numerous studies have been made on instantaneous tsunami predictions. For example, NOAA (National Oceanic and Atmospheric Administration) constructed a real-time prediction system for tsunamis based on a long-term observation database (e.g., Titov et al., 2005; Tang et al., 2008; Wei et al., 2008; Tang et al., 2009). In addition, there have been many studies focused on the development of techniques for making real-time damage predictions based on numerical simulations. The studies can be classified into two types. In the first approach, the source and seismic waveform data are obtained from real-time observation systems, and then the tsunami propagation is calculated using input data estimated from the observed data. There have been a number studies related to this approach; one on data assimilation-based tsunami forecasting (Maeda et al., 2015), another on tsunami forecasting based on inversion for initial sea surface height (Tsushima et al., 2014), another to predict tsunami waveform using extreme learning machine (Mulia et al., 2016) and another using a real-time inundation simulation with supercomputers (e.g., Oishi et al., 2015; Musa et al., 2018). The second approach is based on the use of precomputed simulation data. Numerical simulations with multiple scenarios are carried out and tsunami database is numerically created to output prediction results immediately after an earthquake occurs. This approach is also widely accepted and several studies have been reported. Among these is a study on making real-time predictions using source information and precomputed tsunami waveform and inundation databases (Gusman et al., 2014), another uses a combination of precomputed tsunami databases and the neural networks (Fauzi and Mizutani, 2019), and another features the surrogate modeling of numerical simulation results (e.g., Fukutani et al., 2019; Kotani et al., 2020).

The objective of this study is to evaluate the time-series of the spatial distribution of tsunami forces acting on buildings in real time. Because a very high computational cost is required to evaluate the tsunami force over a wide area, it is generally difficult to perform such simulations in real time. Therefore, a surrogate modeling-based prediction method is employed in this study. However, since this study considers multiple evaluation points to determine tsunami force, the methods employed in Fukutani et al. (2019) and Kotani et al. (2020), which require surrogate models to be defined at each evaluation point, are inefficient. To overcome this problem, a mode decomposition technique is used to construct a surrogate model. Spatial modes and their equivalent principal components have been successfully utilized to construct surrogate models in the research fields of earthquake engineering and tsunami engineering. My Ha et al. (2008) proposed a surrogate model of a tsunami simulation by means of Proper Orthogonal Decomposition (POD) for the purpose of reducing the dimensionality or, equivalently, the computational costs. LeVeque et al. (2016) and Melgar et al. (2016) utilize the Karhunen–Loève expansion to consider the distribution of slips on a fault under various scenarios. In the fields of earthquake and structural engineering, there have been similar studies. Nojima et al. (2018) proposed to combine numerical simulations and a mode decomposition technique that is based on the singular value decomposition for predicting the distribution of strong ground motions. Bamer and Bucher (2012) also used POD to construct a surrogate model to predict structural behaviour using a non-linear finite element analysis

method. Since POD enables us to systematically extract the feature quantities of the temporal and spatial distributions of risk indicators, it is considered suitable for surrogate modelling for evaluating all kinds of disaster risks. Although some studies using mode decomposition techniques have been reported in the research field of disaster science, the time-space surrogate modeling of tsunami force based on a high precision 3D tsunami simulation has not been extensively studied.

The present study proposes a framework for **rapid** tsunami force predictions by the application of the POD-based surrogate modelling of numerical simulations. Only a limited number of large-scale numerical analyses are performed for a selection of scenarios with various fault parameters to capture the distribution tendencies of the target risk indicators. After 2D shallow water simulations are performed, the results are used as input data for 3D flow simulations to evaluate the time histories of forces acting on buildings. Then, POD is applied to the evaluation results to extract the principal modes that represent the temporal and spatial characteristics of the forces caused by a target tsunami. A surrogate model can then be constructed by a linear combination of spatial modes whose coefficients are determined by means of the regression analysis and interpolation techniques. To demonstrate the applicability of the proposed framework, one of the tsunami-affected areas during the Great East Japan Earthquake of 2011 is targeted. Using the 2D simulation and the results are obtained for different input parameters, we carry out a series of 3D numerical analyses to obtain a set of time history data of the spatial distributions of tsunami force and then construct a surrogate model capable of predicting the time variations of the spatial distributions of tsunami forces almost instantaneously. A surrogate model of the inundation depth is also constructed and compared with that of tsunami force.

The structure of this paper is as follows. Section 2 explains a flow and specific procedures of the proposed framework. In Section 3, the proposed framework is applied to a target city to construct the surrogate model that enables **rapid** predictions of tsunami forces equivalent to the 3D tsunami runup simulations.

2 A proposed framework for the **rapid** tsunami force prediction

This section describes a flow and methodologies of the proposed framework. **In the framework proposed in this study, we carry out a series of 2D-3D coupled tsunami analyses with selected sets of fault parameters corresponding to expected scenarios beforehand to obtain the limited number of scenario-specific simulation results. Then, the principal spatial modes of tsunami forces are extracted from the precomputed simulation data to construct the surrogate models for the rapid tsunami force prediction. It is to be noted that the coefficients of the modes are interpolated in the parameter space so as to be functions of fault parameters. Thus, because this study stands on the assumption that the fault parameters are given when an actual tsunami event occurs, the tsunami force prediction is made immediately using the constructed surrogate model.** Fig.1 shows the flowchart of the proposed method. Each parts of the proposed method, such as tsunami analyses, mode decomposition, and surrogate modeling, are explained in details in the following subsections.

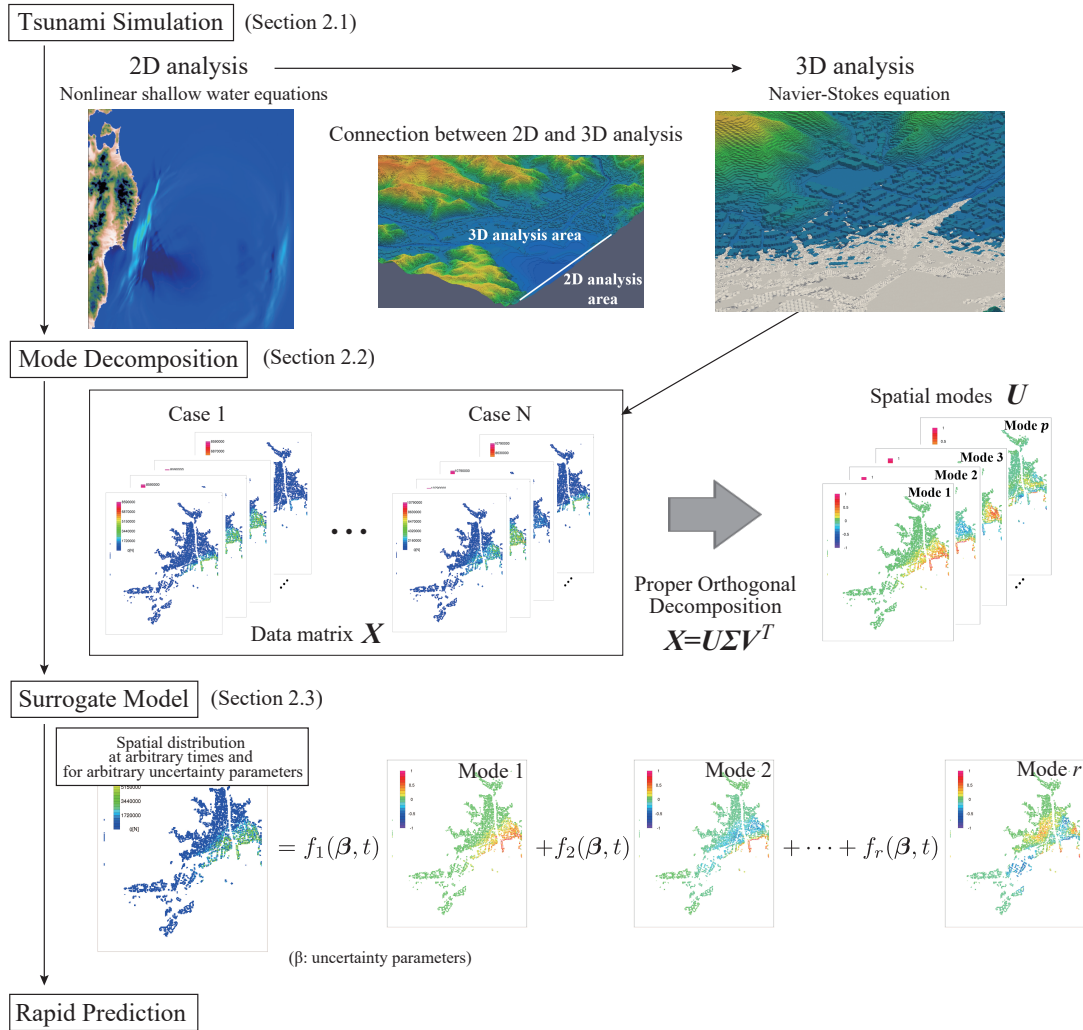


Figure 1. Flowchart of the rapid tsunami force prediction by mode decomposition-based surrogate model.

2.1 2D-3D coupled tsunami analyses

To collect the data necessary for the surrogate modelling explained in the previous section, a set of two sequential numerical analyses is carried out for each case with a selected set of fault parameters. A 2D tsunami analysis is first carried out for to
85 obtain the information about the tsunami wave caused by the offshore fault. Then, the time histories of the tsunami height and flow velocity on the specified boundary of the target urban area are extracted for use as input data for a 3D tsunami runup simulation. A 3D numerical analysis is performed to elaborately evaluate the spatial and temporal distributions of risk indicators within the target area. Since the risk indicators in this study include not only the inundation depth, but also the force

acting on buildings, the 3D calculation requires a high-fidelity numerical analysis. In this section, only the governing equations
 90 for 2D and 3D tsunami simulations are outlined. For the details of their connection, Takase et al. (2016) can be referenced.

To numerically analyze tsunami wave propagation over a wide area, 2D shallow water simulations are commonly performed. TUNAMI-N2 (Imamura (1995); Goto et al. (1997)), one of the most well-known simulation codes based, is based on the concept of the shallow water theory. In this study, we employ the TUNAMI-N2 to represent wave propagation in the offshore area. The following formats of continuity and nonlinear long wave equations are solved in the 2D analysis:

$$95 \quad \frac{\partial \eta}{\partial t} + \frac{\partial M}{\partial x} + \frac{\partial N}{\partial y} = 0 \quad (1)$$

$$\frac{\partial M}{\partial t} + \frac{\partial}{\partial x} \left[\frac{M^2}{D} \right] + \frac{\partial}{\partial y} \left[\frac{MN}{D} \right] + gD \frac{\partial \eta}{\partial x} + \frac{gn^2}{D^{\frac{7}{3}}} N \sqrt{M^2 + N^2} = 0 \quad (2)$$

$$\frac{\partial N}{\partial t} + \frac{\partial}{\partial x} \left[\frac{MN}{D} \right] + \frac{\partial}{\partial y} \left[\frac{N^2}{D} \right] + gD \frac{\partial \eta}{\partial y} + \frac{gn^2}{D^{\frac{7}{3}}} M \sqrt{M^2 + N^2} = 0 \quad (3)$$

100 where M and N are the flow rates in the x and y directions, η is the water level, D is the total water depth, g is gravitational acceleration and n is the Manning roughness coefficient. To evaluate the force acting on buildings, we employ the following set of 3D Navier-Stokes and continuity equations in the analysis domain $\Omega_{ns} \in R^3$

$$\rho \left(\frac{\partial \mathbf{u}}{\partial t} + \mathbf{u} \cdot \nabla \mathbf{u} - \mathbf{f} \right) - \nabla \cdot \boldsymbol{\sigma} = 0 \quad (4)$$

$$105 \quad \nabla \cdot \mathbf{u} = 0 \quad (5)$$

where ρ is the mass density, \mathbf{u} is the velocity vector, $\boldsymbol{\sigma}$ is the stress tensor, and \mathbf{f} is the body force vector. Also, assuming a Newtonian fluid, the stress is calculated as

$$\boldsymbol{\sigma} = -p\mathbf{I} + 2\mu\boldsymbol{\varepsilon}(\mathbf{u}) \quad (6)$$

where p is the pressure, μ is the coefficient of viscosity, and $\boldsymbol{\varepsilon}(\mathbf{u})$ is the velocity gradient tensor defined as

$$110 \quad \boldsymbol{\varepsilon}(\mathbf{u}) = \frac{1}{2} (\nabla \mathbf{u} + (\nabla \mathbf{u})^T) \quad (7)$$

To solve the governing equations of the 3D analysis, the stabilized finite element method(SFEM) is employed in this study. Details of the method is explained in the appendix(see Appendix A).

2.2 Mode Decomposition

Proper orthogonal decomposition (POD) (Liang et al. (2002)) is well known as a technique to extract the principal direction
 115 along which the variance of the collected data is maximized. In other words, POD is capable of grasping the characteristics of

data and expressing data in a lower dimension. When applying POD to data, we prepare a matrix storing the data arranged in accordance with a certain rule (hereafter, referred to as the “data matrix”). When n data are obtained for scenario case i , they are stored into a column vector denoted by x_i , which has n components. Here, n is the number of evaluation points for risk indicators, namely the tsunami force and inundation depth in this study. When the scenario ranges from 1 to N , the data matrix

120 can be defined as

$$\mathbf{X} = \begin{pmatrix} | & & | \\ x_1 & \cdots & x_N \\ | & & | \end{pmatrix} \quad (8)$$

Here, a vertical line is added to each column vector to implicate that the component alignment follows the specified rule. In POD, the data matrix is generally constructed with the mean subtraction, but in this study, the procedure was not applied because the accuracy of the constructed surrogate model with subtraction was almost the same as the one without subtraction.

125 In the case of time-space mode decomposition, a data matrix is defined by storing the data for each time in the column direction.

The covariance matrix of the data matrix is defined as

$$\mathbf{C} = \mathbf{X}\mathbf{X}^T \quad (9)$$

The eigenvectors are the principal directions, and the corresponding eigenvalue represents the variance in each principal direction. Also, larger eigenvalues have more major contributions to the data.

130 Let λ_j be the j -th eigenvalue of \mathbf{C} , and \mathbf{u}_j be the j -th eigenvector ($j = 1, \dots, n$). Since each eigenvalue corresponds to the variance in the corresponding principal direction or mode, those with small eigenvalues have almost no significant values and provide little meaningful information, and therefore can be omitted in the sequel. To omit unnecessary modes, the contribution rate is generally introduced as an indicator to compare the magnitude of each eigenvalue with others. Specifically, the contribution rate d_j of a particular mode j is defined as a percentage of each eigenvalue against the sum of all eigenvalues as

$$135 \quad d_j = \frac{\lambda_j}{\sum_{k=1}^n \lambda_k} \quad (10)$$

When this rate is arranged in descending order, the threshold for the omission is determined according to the profile of its decreasing curve. It should be noted that the information about the omitted mode is lost and is a source of error.

Also, based on the theory of singular value decomposition, data matrix \mathbf{X} can be expressed as

$$\mathbf{X} = \begin{pmatrix} | & & | \\ x_1 & \cdots & x_N \\ | & & | \end{pmatrix} = \mathbf{U}\mathbf{\Sigma}\mathbf{V}^T = \begin{pmatrix} | & & | \\ \mathbf{u}_1 & \cdots & \mathbf{u}_p \\ | & & | \end{pmatrix} \begin{pmatrix} \sqrt{\lambda_1} & & \\ & \ddots & \\ & & \sqrt{\lambda_p} \end{pmatrix} \begin{pmatrix} - & \mathbf{v}_1 & - \\ & \vdots & \\ - & \mathbf{v}_p & - \end{pmatrix} \quad (11)$$

140 where \mathbf{U} is a matrix lining up the eigenvector \mathbf{u}_j of \mathbf{C} in the column direction and \mathbf{V} is the matrix lining up the eigenvector \mathbf{v}_j and matrix $\mathbf{C}' = \mathbf{X}^T \mathbf{X}$ in the column direction. Also, $\mathbf{\Sigma}$ is the matrix having the square roots of eigenvalues in the diagonal components, which are referred to as singular values. Here, p is the number of singular values that must be greater than zero.

Equation (11) can be substituted for C and C' to have their eigenvalue decomposition as

$$C = XX^T = (U\Sigma V^T)(V\Sigma U^T) = U\Sigma^2 U^T \quad (12)$$

$$C' = X^T X = (V\Sigma U^T)(U\Sigma V^T) = V\Sigma^2 V^T \quad (13)$$

It follows that the C and C' have common **non-zero** eigenvalues, each of which is equal to the squared singular value of X , and that U and V in Eqn. (11) correspond to the eigenvectors of C and C' , respectively.

150 Additionally, from the relational expression of the singular value decomposition, data vector x_i for case i is expressed as the linear combination of the eigenvectors of the covariance matrix as

$$x_i = \sum_{k=1}^p (\sqrt{\lambda_k} v_{ik}) u_k = \sum_{k=1}^p \alpha_{ik} u_k = \alpha_{i1} u_1 + \cdots + \alpha_{ip} u_p \quad (14)$$

where v_{ij} are components of V with i and j indicating row and column numbers, respectively. Here, the modes are arranged in accordance with the descending order of the corresponding eigenvalues and α_{ik} is the coefficient of the k -th mode associated with the i -th case. Once modes to be omitted are determined according to the magnitude relationships of the contribution rates, etc., the number of modes r used to approximate the data is determined, so that the equation above yields the following reduced order expression:

$$\hat{x}_i = \sum_{k=1}^r \alpha_{ik} u_k = \alpha_{i1} u_1 + \cdots + \alpha_{ir} u_r \quad (15)$$

where \hat{x}_i is expected to be a close approximation of the original data x_i for the i -th case. In this manner, data for a certain case can be expressed as a linear combination of major modes expressing the fundamental features. Remember that each of these selected modes corresponds to the eigenvector of the covariance matrix whose associated eigenvalue has relatively larger than others. As acknowledged above, error may occur in Eqn. (15) due to the truncation or mode omission.

2.3 Construction of the surrogate model

Once the reduced order expressions of all the data vectors are obtained, a surrogate model can be obtained straightforwardly. We begin with identifying the relationship between the coefficient for each mode and the set of input parameters β , each of which corresponds to a selected scenario or case. That is, coefficients α_{ik} ($k = 1, \dots, r$) are approximated as functions of parameters β by interpolation or regression, which are denoted by $f_k(\beta)$ ($k = 1, \dots, r$). Then, the surrogate model can be expressed in the following equation whose independent variables are input parameters $f_k(\beta)$:

$$\hat{x}(\beta) = \sum_{k=1}^r f_k(\beta) u_k \quad (16)$$

In this study, $f_k(\beta)$ is determined by the interpolation with radial basis functions (RBF) (Buhmann, 1990) because it is applicable even if the parameters are not distributed in equidistant intervals and even if some defects are present in the data.

RBF interpolation for $f_k(\beta)$ can be expressed by the following equation:

$$f_k(\beta) = \sum_{i=1}^N w_i \phi(\beta, \beta_i) = \sum_{i=1}^N w_i \exp(-\gamma \|\beta - \beta_i\|^2) \quad (k = 1, \dots, r) \quad (17)$$

where β_i contains the set of parameters for case i , w_i is the weight, and $\phi(\beta, \beta_i) \equiv \exp(-\gamma \|\beta - \beta_i\|^2)$ are RBF. Here, γ is the parameter controlling the smoothness of the function. Because $f_k(\beta)$ that is a coefficient of mode k shown in Eq. (17) is individually interpolated, w_i and γ have different values for each mode. By substituting the set of actual the input parameters in Eq. (17), we obtain the following simultaneous equations to determine the set of weights w_i :

$$\begin{pmatrix} \alpha_{1k} \\ \vdots \\ \alpha_{Nk} \end{pmatrix} = \begin{pmatrix} \phi(\beta_1, \beta_1) & \cdots & \phi(\beta_1, \beta_N) \\ \vdots & & \vdots \\ \phi(\beta_N, \beta_1) & \cdots & \phi(\beta_N, \beta_N) \end{pmatrix} \begin{pmatrix} w_1 \\ \vdots \\ w_N \end{pmatrix} \quad (k = 1, \dots, r) \quad (18)$$

In this study, ridge regression (Hoerl and Kennard, 1970) is used to compute weights for Eq. (18). By introducing the ridge regression, it is possible to prevent the overfitting problem. Since the accuracy of the interpolation depends on the regularization parameter used in the ridge regression and the smoothness parameter γ of the RBF interpolation, these values are determined by the application of a certain cross-validation technique (Stone, 1974) combined with the Bayesian optimization (Moćkus, 1975) in this study.

3 Application to a real disaster case

In this section, the proposed method is applied to tsunamis that have occurred. The simulation and the construction of the surrogate model are based on the tsunami induced by the 2011 earthquake that occurred off the Pacific coast of Tohoku.

3.1 Tsunami simulation

In this study, as previously mentioned, the calculation was performed in two steps, including a numerical analysis based on the 2011 earthquake that occurred off the Pacific coast of Tohoku using 2D analysis over a wide area and 3D runup analysis for the target region. To construct a surrogate model that considers uncertainty, it is first necessary to decide what uncertainty should be considered. Next, we considered the dominant factors from the occurrence of the tsunami to its runup. For example, the epicenter position and magnitude are factors that need to be considered during the earthquake. During tsunami propagation, the fault model that controls the initial waveform of the tsunami and the submarine topography data need to be included. In this study, the 2011 earthquake that occurred off the Pacific coast of Tohoku was used as a basis. That is, the relevant factors in the process of the earthquake itself can be found in the accomplishments of research conducted up to this point. In specific terms, in our study we used a fault model (Fujii-Satake model Ver. 8.0) (Satake et al. (2013)) composed of the 55 small faults shown in Fig.2. By considering uncertainty in terms of the two parameters of slip and rake in Fig.3, which are thought to have a deep relationship with the characteristics of fault stagger, we conducted a numerical analysis of multiple scenarios using different values of these parameters. The cases that were analyzed and the names of the cases are shown in Table 2. For the slip of each

small fault, there were five patterns from 0.7 to 1.4, and for the rake, there were 10 patterns with -20° and $+25^\circ$ changes in
 200 the angle, making a total of 50 cases.

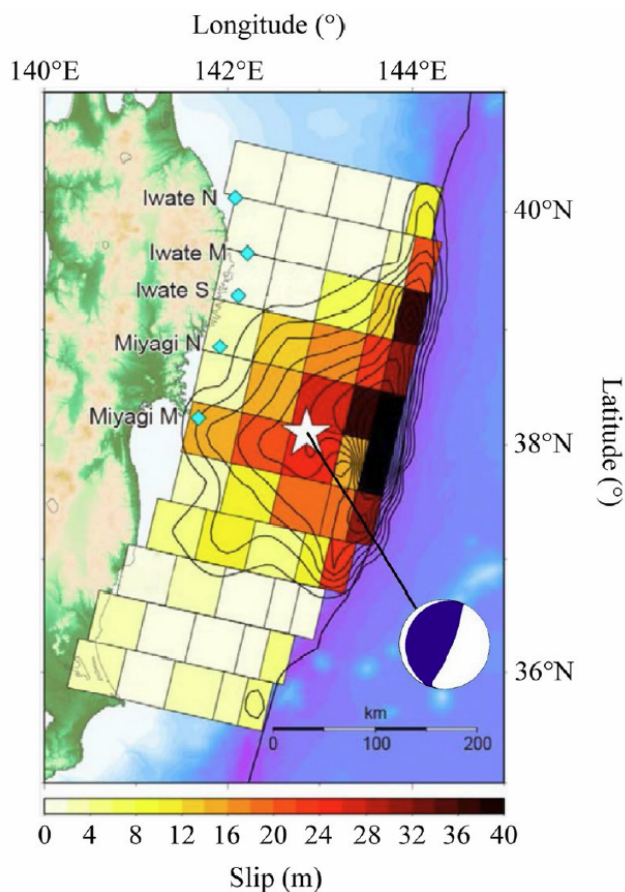


Figure 2. Fujii-Satake model Ver. 8.0. (adapted from Kotani et al. (2020)).

3.1.1 Wide-area 2D tsunami analysis

To obtain the information about the tsunami wave usable for the 3D analysis, a tsunami analysis is carried out utilizing the 2D shallow water flow model. First, a wide-area 2D analysis was performed to obtain time history data for the tsunami height and flow velocity observed within the bay of the target region. Regarding the initial waveform of the tsunami, Okada (1992)
 205 was employed. The fluctuation vertical component close to the seabed was calculated based on the fault model and the initial water level fluctuation was determined. Additionally, an analysis mesh was created with intervals of 2430 [m], 810 [m], 270 [m], and 90 [m], and nesting was performed to subdivide this mesh in relation to the target based on the tsunami wave source. An image of this nesting is shown in Fig. 4. To confirm the reasonableness of the obtained 2D analysis, we compared the

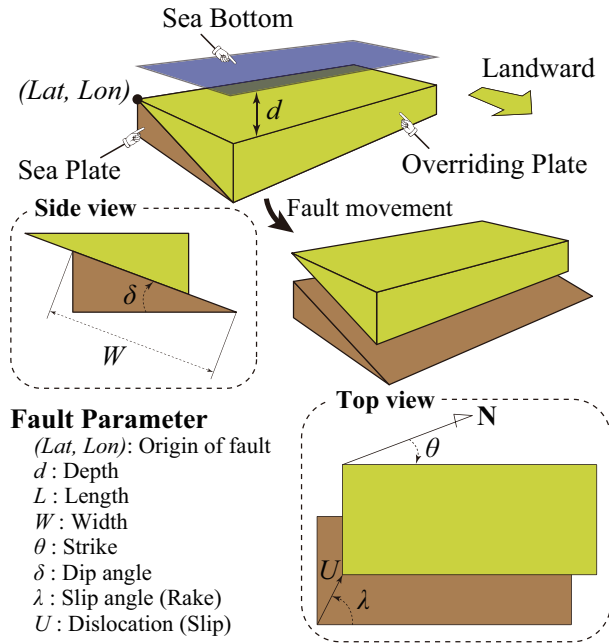


Figure 3. Illustration of the fault parameters. (adapted from Kotani et al. (2020)).

Table 1. Calculation cases.

			Rake									
			-20	-15	-10	-5	0	+5	+10	+15	+20	+25
	[%]	Normalized value	0.753	0.815	0.877	0.938	1	1.062	1.123	1.185	1.247	1.309
Slip	70	0.7	S1R1	S1R2	S1R3	S1R4	S1R5	S1R6	S1R7	S1R8	S1R9	S1R10
	85	0.85	S2R1	S2R2	S2R3	S2R4	S2R5	S2R6	S2R7	S2R8	S2R9	S2R10
	100	1	S3R1	S3R2	S3R3	S3R4	S3R5	S3R6	S3R7	S3R8	S3R9	S3R10
	120	1.2	S4R1	S4R2	S4R3	S4R4	S4R5	S4R6	S4R7	S4R8	S4R9	S4R10
	140	1.4	S5R1	S5R2	S5R3	S5R4	S5R5	S5R6	S5R7	S5R8	S5R9	S5R10

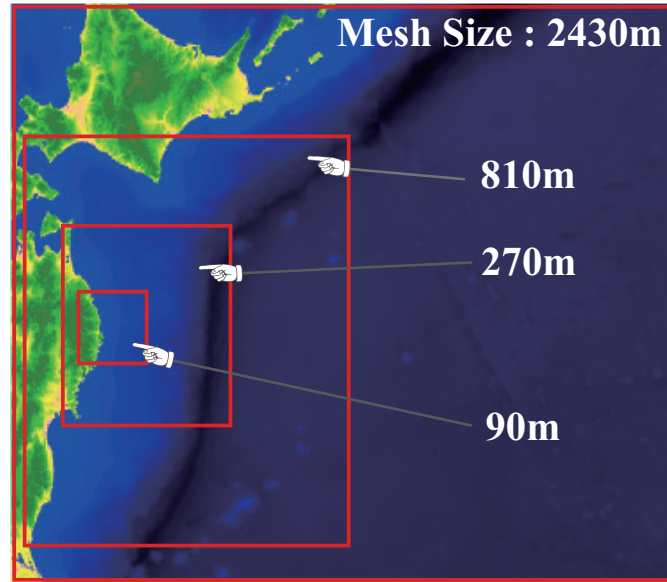


Figure 4. Nested analysis regions. (adapted from Kotani et al. (2020)).

results to the actual measured values of the fluctuation in the tsunami water level in the 2011 earthquake that occurred off the Pacific coast of Tohoku. As a point of comparison, we used the GPS wave meter observation data of the Nationwide Ocean Wave information network for Ports and Harbours (NOWPHAS) provided by the Port Bureau, Ministry of Land Infrastructure Transport and Tourism. The observation positions were offshore to the north of Iwate Prefecture (No. 1), offshore to the center of Iwate Prefecture (No. 2), offshore to the south of Iwate Prefecture (No. 3), offshore to the north of Miyagi Prefecture (No. 4) and offshore to the center of Miyagi Prefecture (No. 5), and a comparison of these is shown in Fig. 5. The result is that the actual measured values were sufficiently reproduced, and a 3D tsunami analysis was performed using these results as input values.

3.1.2 Connecting the 2D and 3D analyses

Using the results of the 2D tsunami analysis over a wide area as the input conditions, a 3D tsunami analysis was performed to represent the tsunami runup in the target region. As mentioned before, the method used in Takase et al. (2016) was employed to couple the 2D and 3D models together. An image of the location of 2D-3D boundary is shown in Fig. 6. The time-series data of the wave height and flow velocity obtained from the 2D wide-area analysis are stored and transferred to the three-dimensional numerical analysis by linear interpolation in space. Also, since the time interval in the 2D calculation differs from that in the 3D one, the 2D results are linearly interpolated in the time domain, and the interpolated values are given to the 3D analysis as input data. The reason why the 2D-3D boundary is placed at the mouth of the bay is that the boundary can be defined by a straight line.

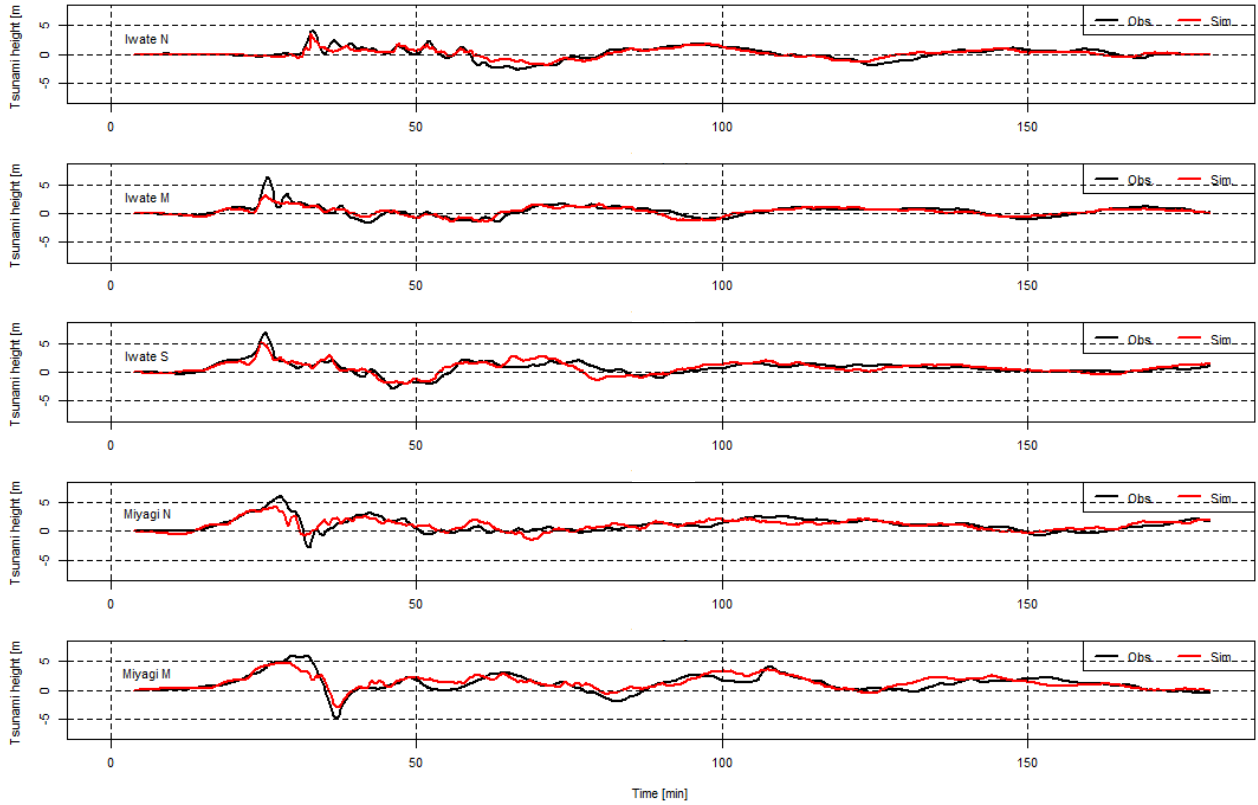


Figure 5. Comparison of tsunami height between observational data and simulation results. (borrowed from Kotani et al. (2020)).

3.1.3 3D runup analyses

Tsunami runup was represented by the 3D analysis using SFEM on the 2145 [m]×2600 [m] field shown in Fig. 8. Images of the FE mesh used in this analysis are described in Fig. 7. A fine mesh with a minimum mesh size of 1.5m is used around buildings and a coarse mesh with maximum mesh size of 10 m is used for mountainous areas. The non-slip boundary condition is used on building surfaces and ground surface. Fig. 8 shows snapshots of the tsunami runup obtained in the 3D simulation. A very complex 3D flow that cannot be represented in 2D simulations is seen in the simulated results. As mentioned in subsection 4.1, the calculation condition of Case S3R5 corresponds to the real tsunami induced by the 2011 earthquake that occurred off the Pacific coast of Tohoku. Therefore, we checked the accuracy of the simulated result obtained in Case S3R5 by comparing with survey results. Data of the maximum inundation heights are provided by the 2011 Tohoku Earthquake Tsunami Joint Survey Group (2012). Fig. 9 indicates a comparison between simulated maximum inundation heights and survey data. The evaluation points are shown in Fig. 6. The comparison shows that the simulated inundation heights near the coastline (points A, B, C, and E) well represent the real inundation heights, while there are big gap at other points. The reason for this big gap is that

buildings are assumed to be rigid bodies and the buildings are not washed away in the 3D analysis. Although most of buildings were washed away due to the tsunami, buildings suppress tsunami runup in the analysis. While this suggests it is better to consider the effect of washing away buildings, modeling this effect is difficult. Furthermore, the main objective of this study is to construct a surrogate model of tsunami force and discuss its performance. We therefore conclude that the simulated results roughly express the real tsunami, that use the simulated results in this study.

In order to construct a surrogate model of tsunami force, we can use the hydrodynamic force acting on buildings calculated in the 3D simulation. It is however difficult to quantify pointwise tsunami force because the force is strongly affected by the direction of building surfaces. To avoid this problem, we consider a 2D mesh with a grid size of 10m for evaluating the tsunami force. **The tsunami force is evaluated by averaging in each of these sub-domains but not for each building in this study.** An image of the mesh is shown in Fig. 10. The force acting on the building surface is integrated in each mesh and quantified as a scalar value. The spatial distribution of the tsunami force was obtained in this manner.

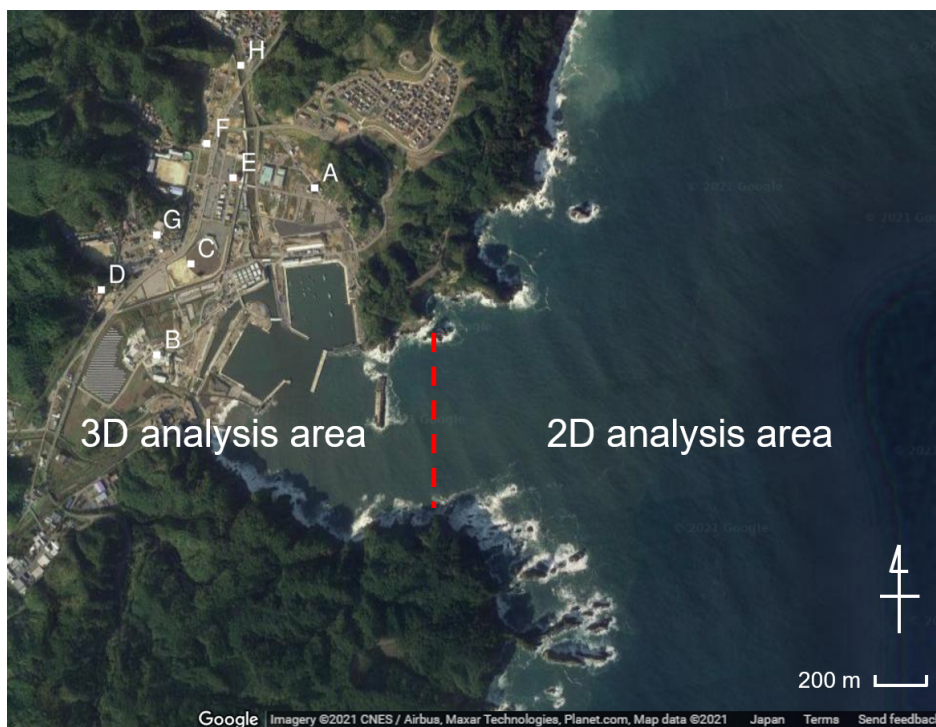


Figure 6. Boundary between the 2D analysis and 3D analysis areas. Points A to H are used to compare the inundation depths between observational data and simulation results. (© Google Maps)

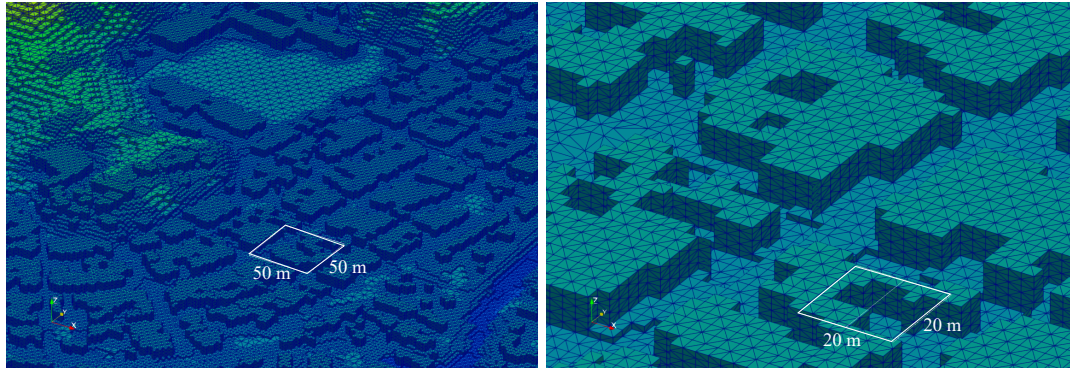


Figure 7. Bird view of FE meshes at two different rates of magnification.

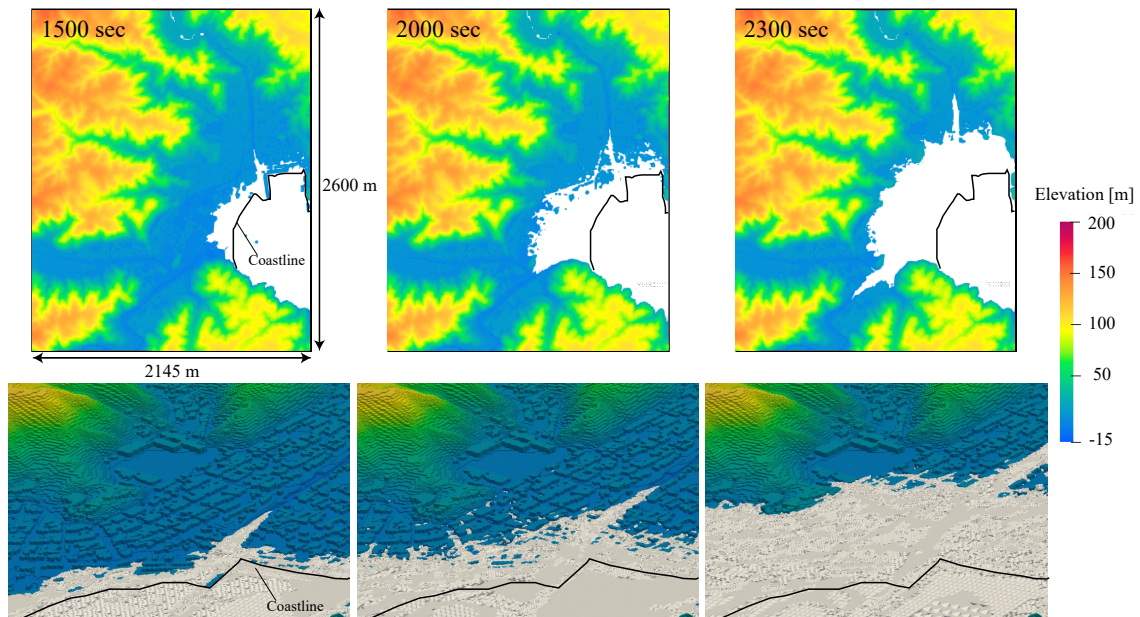


Figure 8. Snapshots of tsunami runup obtained in 3D analysis. The white-colored area represents the inundation area.

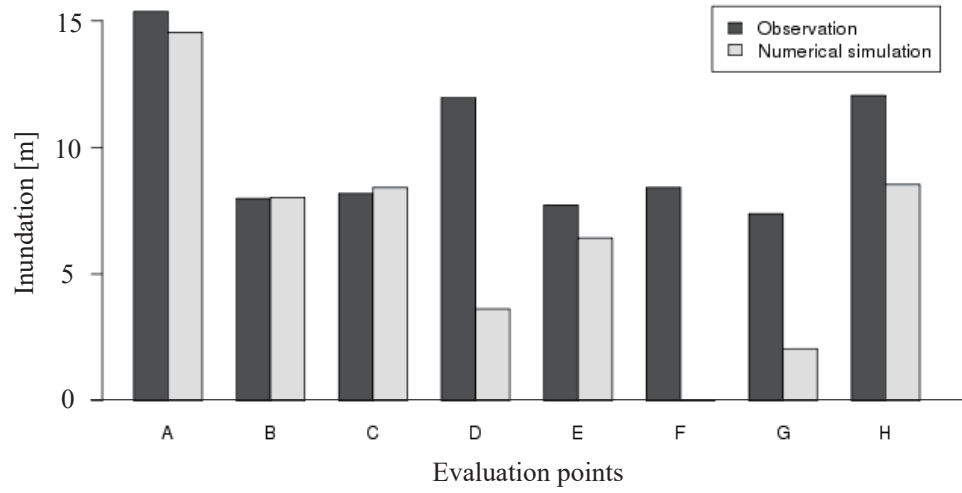


Figure 9. Comparison of inundation heights between observational data and simulation results. (Observation data are provided by the 2011 Tohoku Earthquake Tsunami Joint Survey Group (2012)).

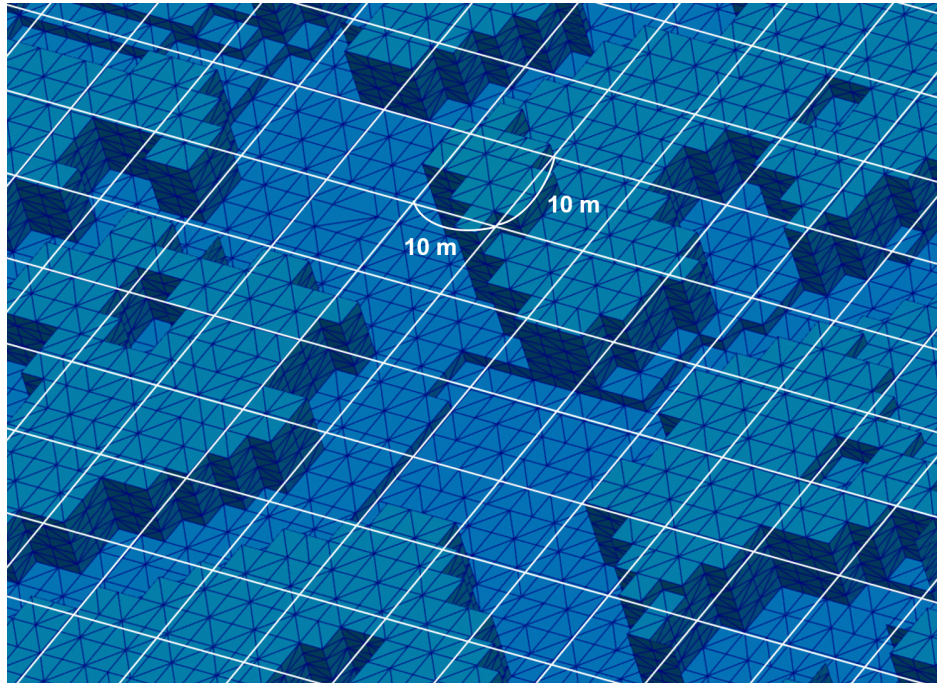


Figure 10. An Image of mesh for evaluating tsunami force.

3.2 Application of proper orthogonal decomposition

250 3.2.1 Definition of the target risk indicators and data matrix

In this study, the tsunami force acting on the buildings and the inundation depth are used as the target risk indicators, and the values integrated or averaged in the 10m mesh are used as the mean values. As the field is 2145 [m]×2600[m], the number of evaluated points is $n = 214 \times 260 = 55640$. The impact force is calculated by using the pressure and the surface affected by the pressure in a 10-meter square. Additionally, 20 seconds is used for the time interval for the use data and 150 steps
 255 of data are used in accordance with the time for the tsunami runup. In this application example, in addition to the two input parameters, time is introduced as another parameter because when predicting damage **rapidly**, it is necessary to evaluate the state of time-related developments in addition to spatial distribution.

Proper orthogonal decomposition is applied to construct a surrogate model for the results of 40 of the 50 cases shown in Table 1, excluding the 10 cases where the rake is $\pm 10^\circ$. The reason that these 10 cases are not used for surrogate model construction
 260 is that their associated data are later used to verify the reasonableness of the created surrogate model. Additionally, as 40 cases secured a sufficient number of analysis cases for the two variables in this study, verification is not performed, but it is desirable to assess how many cases are required when constructing the surrogate model.

Next, the data matrix is defined. First, the time-series data for a particular scenario can be defined as follows as matrix \mathbf{X}_i .

$$\mathbf{X}_i = \begin{pmatrix} | & & | \\ \mathbf{x}(U_i, \lambda_i, t_1) & \cdots & \mathbf{x}(U_i, \lambda_i, t_m) \\ | & & | \end{pmatrix} \quad (19)$$

265 Here, $\mathbf{x}(U, \lambda, t)$ is a vector **containing** the spatial distribution of a risk indicator in relation to time. **Specifically, in this study, the tsunami force and inundation depth at each grid point are selected for the indicators and their time-series data are stored in separate data matrices, each of which consists of the data vectors at each time.** Additionally, as a **specific** parameter, U_i expresses slip in relation to scenario (slip), and λ_i expresses rake in relation to scenario i . Additionally, m expresses the maximum number of output steps in the numerical analysis, and in the example in this study, this is $m = 150$. Data matrix \mathbf{X}
 270 is defined as follows, as laid out in the column direction.

$$\mathbf{X} = (\mathbf{X}_1 \cdots \mathbf{X}_N) \quad (20)$$

In this study, because time-space mode decomposition is performed, the data for each calculation case and each time are aligned in the column direction of the data matrix. The previously described proper orthogonal decomposition was carried out for this data matrix. By applying proper orthogonal decomposition to this matrix, it is possible to extract a common temporal mode for
 275 data including time, and it is possible to construct a surrogate model including the time direction.

3.2.2 Extracted spatial modes and construction of a surrogate model

Here, we show the results of applying proper orthogonal decomposition in relation to impact force and inundation data.

First, in relation to the extracted spatial mode, the impact force and water depth for the first mode to the third mode are as shown in Fig. 11.

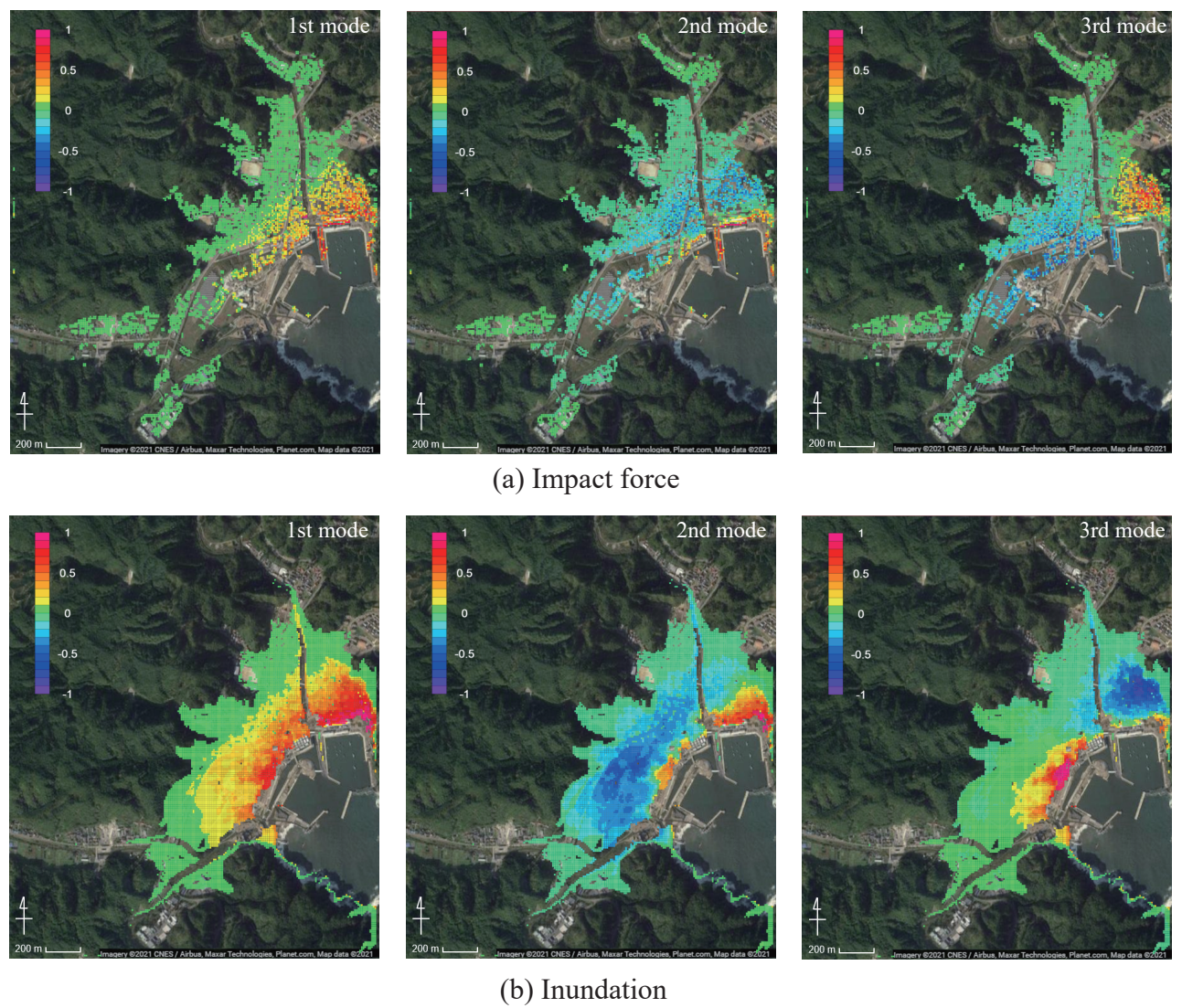


Figure 11. Spatial modes of (a) impact force and (b) inundation depth extracted by POD. (© Google Maps)

280 The values in Fig. 11 show the normalized ones for each mode. From these figures, it can be confirmed that the impact force distribution and inundation depth distribution both have roughly the same spatial distribution characteristics. If we examine the characteristics in more detail, in the case of the first mode, we can see the tendency for the coastal side to be most strongly impacted. Naturally, since the points close to the coast are most affected by the tsunami, this is a mode that best expresses

this kind of impact. The second mode expresses opposite tendencies for the section close to the coast and the section behind it, and the third mode expresses opposite tendencies for the eastern and western coastal areas. In general, the lower-order modes have higher contributions with respect to the original data, while the higher-order modes represent local effects and their contributions are relatively small.

The contribution rates of the impact force and water depth are shown in Fig. 12. The contribution in the first mode is extremely high for both impact force and inundation depth. In this study, as an indicator of the number of modes, the error and the contribution rate were investigated. In this example, for the 10 cases of data kept aside as verification data, the root mean squared error for the results obtained from the numerical analysis and the results obtained from the surrogate model for each mode are calculated. The error of case e_i is calculated using the following equation.

$$e_i = \sqrt{\frac{1}{nm} \|\mathbf{X}_i - \hat{\mathbf{X}}_i\|_F^2} \quad (21)$$

Here, n is the number of evaluation points and m is the number of time step. Additionally, \mathbf{X}_j is time series data of numerical simulation results for i -th case and $\hat{\mathbf{X}}_j$ is results obtained from a surrogate model with r modes. the relations between the number of modes and the error for each risk index is shown in Fig. 13. From Fig. 13, it can be seen that the error decreases as

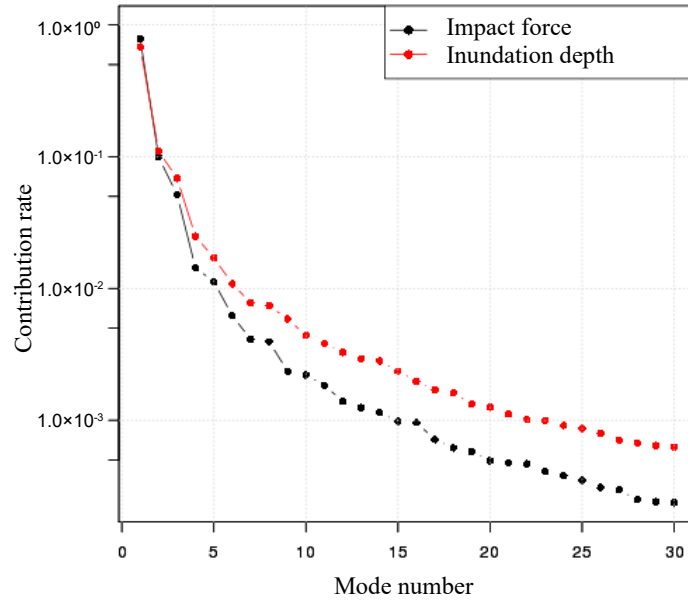


Figure 12. Contribution rate for each risk index.

the number of modes used in the surrogate model increases, and as the number of modes increases, the error rates decrease, thus

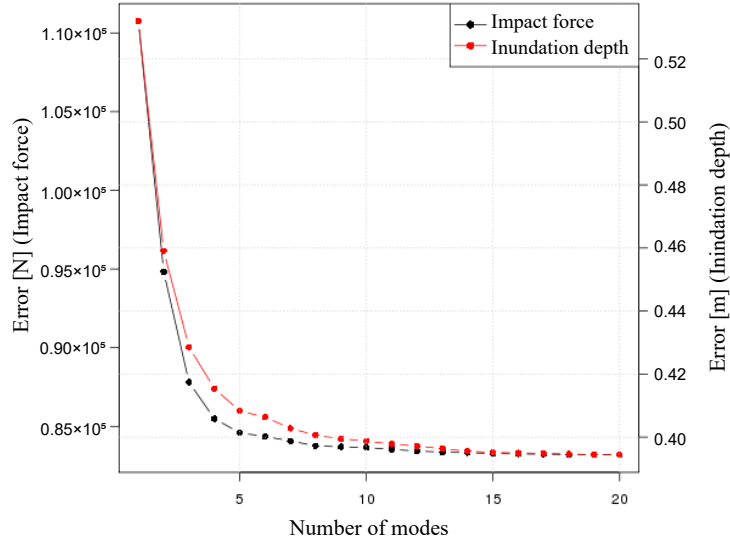


Figure 13. The root mean squared error for the results obtained from the numerical analysis and those of the surrogate model for each mode.

gradually converging. In this study, 20 modes are used to construct the surrogate model, because the error has been sufficiently reduced.

300 Next, by interpolating the proper orthogonal decomposition coefficient as a parameter function, the surrogate model is created. As shown in Eq. 20, as the data matrix contains the slip U , rake λ , and time t , which are parameters for numerical analysis in the column direction, the proper orthogonal decomposition coefficient is also expressed as a function of slip, rake and time. In **specific** terms, this coefficient can be expressed as $f_k(U, \lambda, t)$ as in the following equation.

$$\hat{\mathbf{x}}(U, \lambda, t) = \sum_{k=1}^r f_k(U, \lambda, t) \mathbf{u}_k \quad (22)$$

305 3.2.3 Reconstructing the numerical simulation results

Here, we compare the results obtained from the numerical analysis and the results from reconstructing the original data using the constructed surrogate model. First, when comparing the time-series data, several evaluation points are set. In this study, the 10 points shown in Fig. 14 are set as evaluation points. Next, for the average case scenario S3R5, a comparison of the numerical analysis results and the results when reconstructing data using the surrogate model are shown. Snapshots of the impact force and water depth are shown in Fig. 15, and the time-series data for each physical quantity at points 2 and 3 in Fig. 14 are shown in Fig. 16. Although only the time-series data obtained at the three points are shown in the figure, the same tendency is confirmed at other points. The black line indicates the results obtained from the actual numerical analysis, and the red line shows the results from reconstructing data using the surrogate model. Using the time-series data of the impact forces

shown in Fig. 16 (a), it is possible to calculate the impulse acting on the buildings. The impulse can be obtained by integrating
315 the force in time. Values of the impulse calculated by the numerical simulation and calculated by the surrogate model for the
10 evaluation points are shown in Fig. 17.



Figure 14. Evaluation points for comparing results obtained from numerical simulation and those of the surrogate model. (© Google Maps)

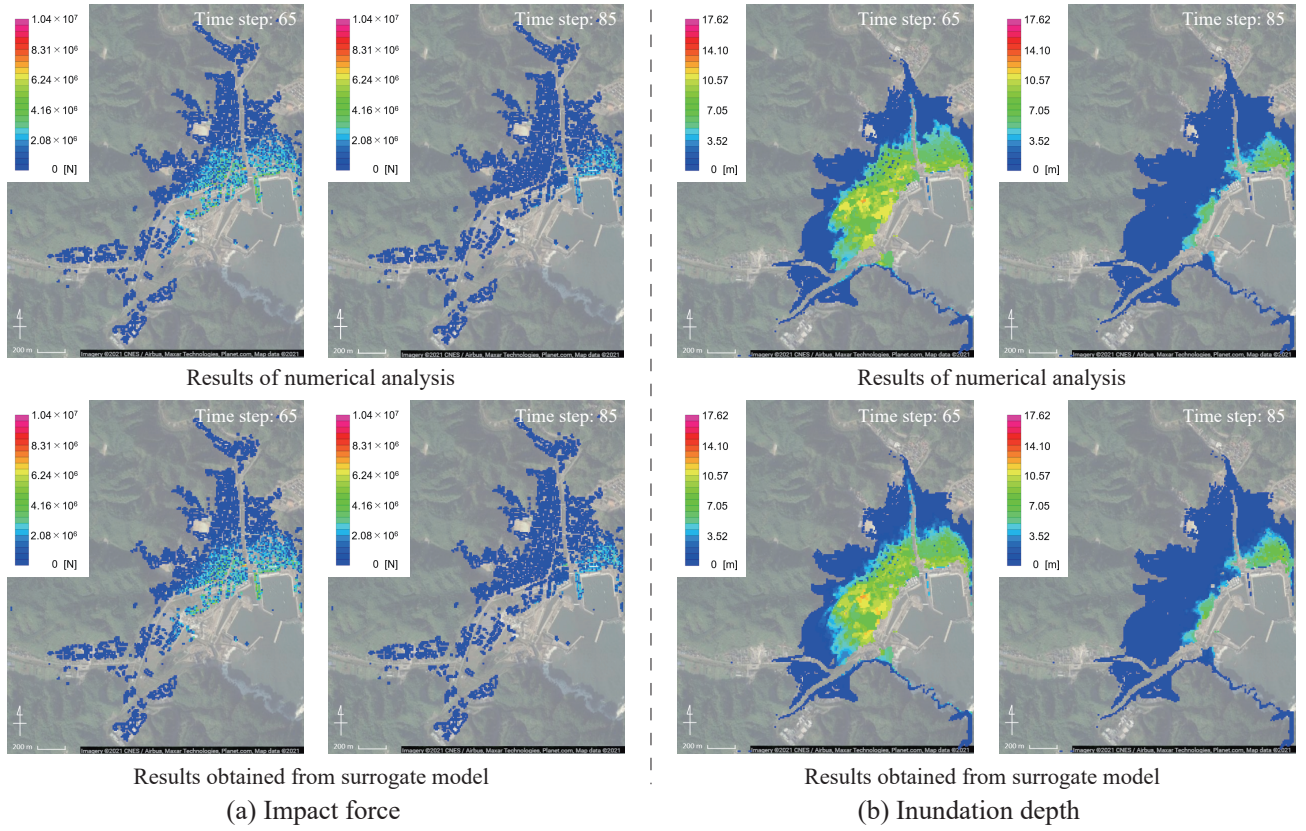


Figure 15. Snapshots of the results obtained from numerical analysis and those reconstructed by using spatial modes. (© Google Maps)

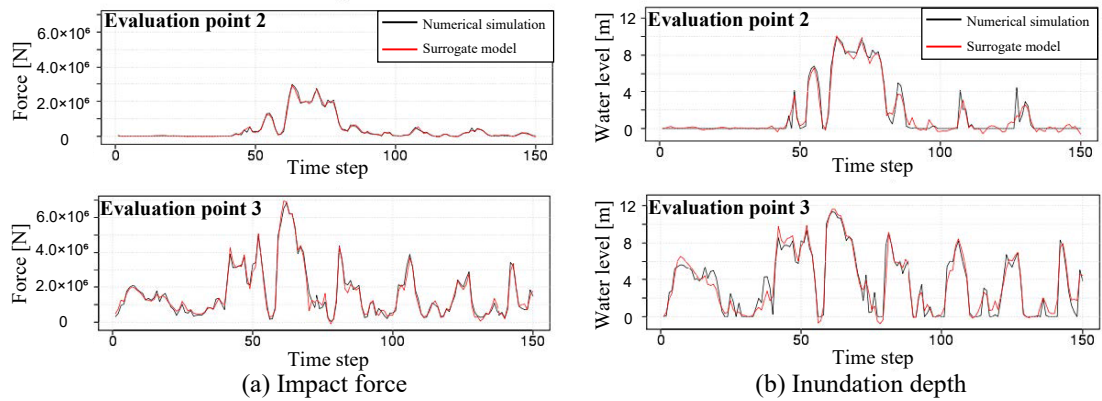


Figure 16. Comparison of time-series data obtained from numerical analysis and those reconstructed by using spatial modes.

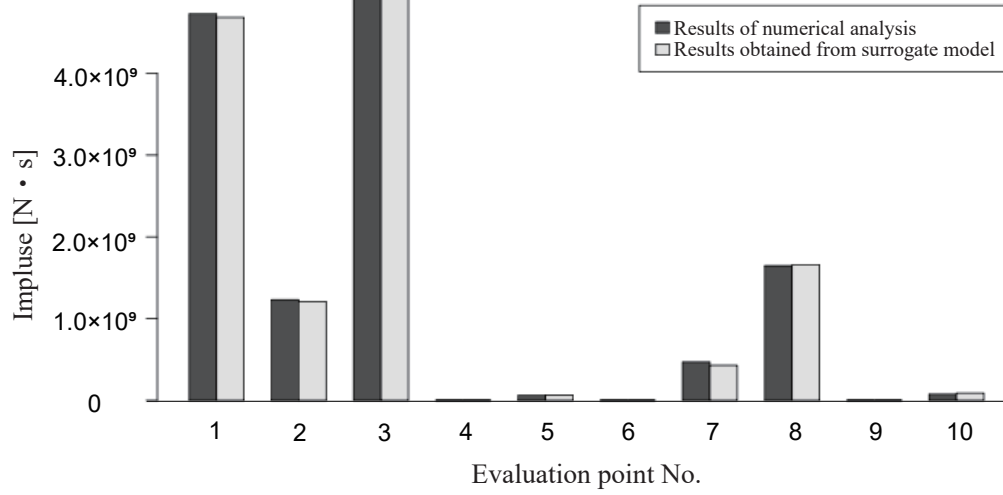


Figure 17. Comparison of impulses calculated from the results of numerical analysis and the results reconstructed by using spatial modes.

Based on these results, it can be summarised that whereas errors partially occur based on the impact of mode reduction, in general, the original data are being reproduced, and it is possible to express the data as a linear combination of modes. It should also be noted that there are different tendencies between spatial distributions of tsunami force and those of inundation depth.

320 For instance, at time step 65, high values are locally seen in the inundation depth, while that tendency is not seen in the result of tsunami force. This indicates that it's difficult to predict damage of buildings based on only inundation depth, and information of tsunami force is also respired for an accurate damage prediction.

3.2.4 Validation of the surrogate models

By comparing data that were not used for the construction of the surrogate model, it is possible to investigate whether the
 325 surrogate model could reproduce the numerical analysis results. A comparison of the results obtained from the numerical analysis and the surrogate model for the two scenarios of S2R3 and S5R7 is shown in Figs. 18-20. As in the previous section, for each physical quantity, a comparison by snapshots and time-series data at evaluation points 2 and 3 is shown.

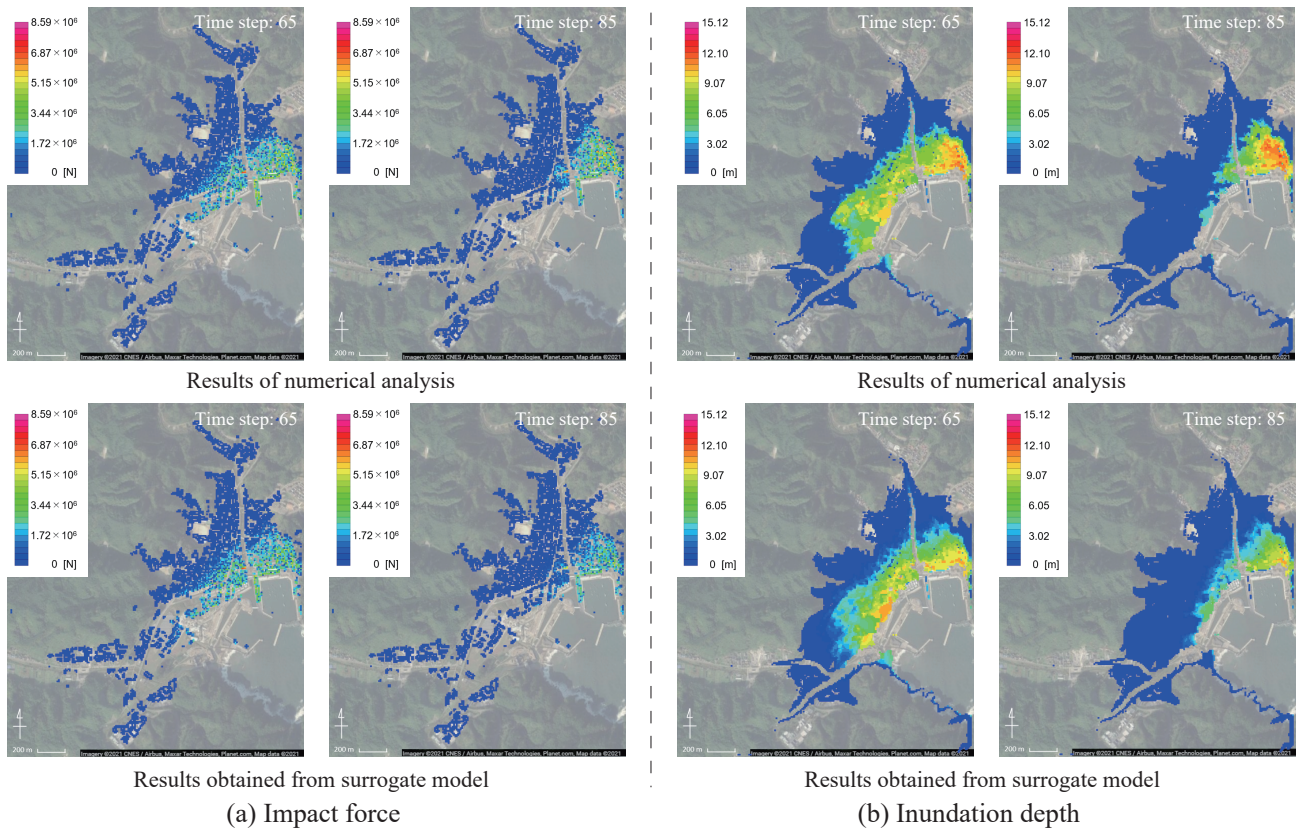
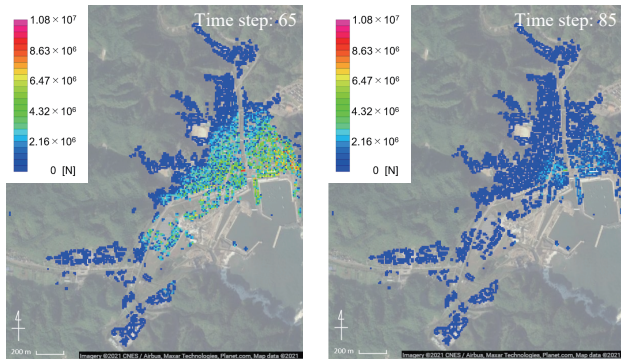
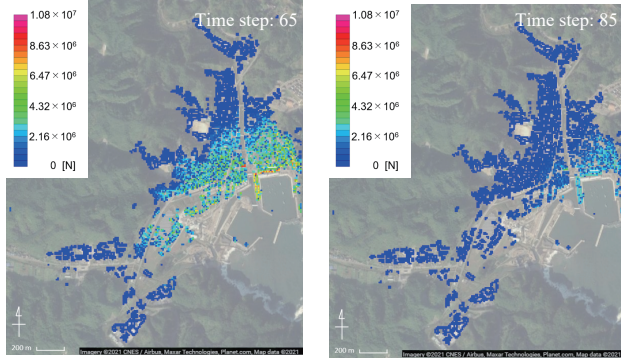


Figure 18. Snapshots of the results obtained from numerical analysis and those obtained from the surrogate model. (S2R3) (© Google Maps)

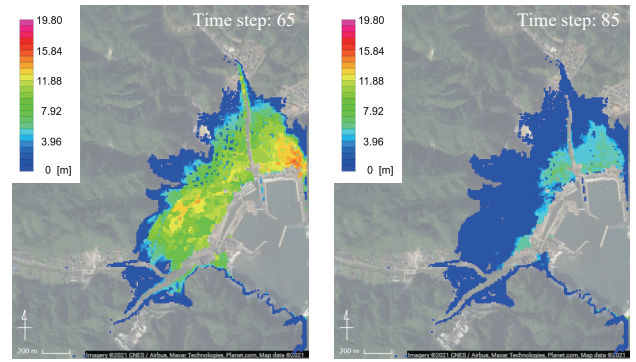


Results of numerical analysis

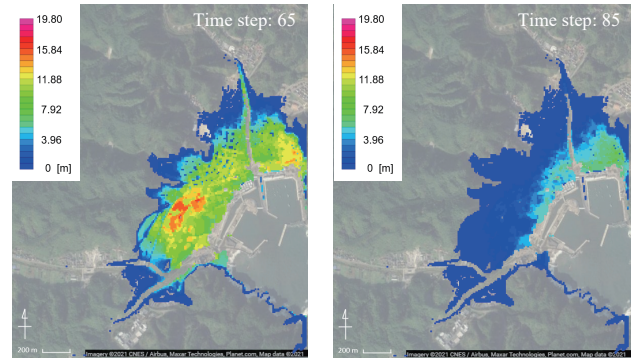


Results obtained from surrogate model

(a) Impact force



Results of numerical analysis



Results obtained from surrogate model

(b) Inundation depth

Figure 19. Snapshots of the results obtained from numerical analysis and those obtained from the surrogate model. (S5R7) (© Google Maps)

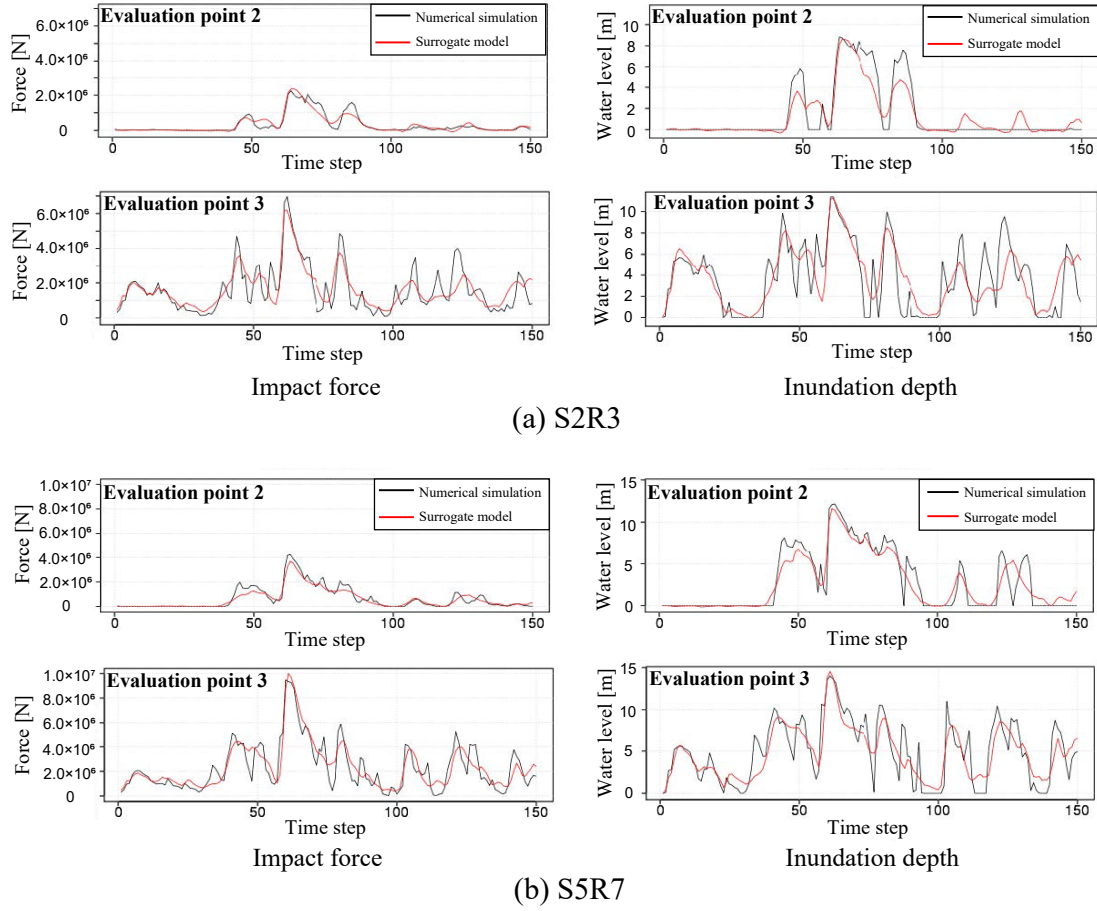


Figure 20. Comparison of time-series data obtained from the numerical analysis and the surrogate model.

Here, it is confirmed that it is possible to represent the simulation results using arbitrary parameters with the surrogate model. In **specific** terms, the error rate is calculated. For each of the physical quantities, the **root** mean squared error (**RMSE**) for the time-series data of all points are calculated **by using Eq. (21)**. The results are shown as follows in Table 2.

With regard to Table 2, **the relative error to the mean value of time series data for a specific scenario** was 434% for the impact force data and 414% for the water depth data in S2R3 and 318% for the impact force data and 252% for the water depth data in S5R7. It is acknowledged that these are very high values. This large error comes from inadequate representation of local peaks and the phase shift. In addition, because the time-series data includes a large amount of data that would not be affected by a tsunami, such as data from mountainous areas, the data include many values equal or close to zero: this would result in extremely small mean values. That is, it is likely that the large error rate value in calculations is because of the small mean values. Note that **the relative error to the maximum value of time series data for a specific scenario** is 0.78% for the impact force data and 2.15% for the water depth data for S2R3 and 0.78% for the impact force data and 2.04% for the water depth data

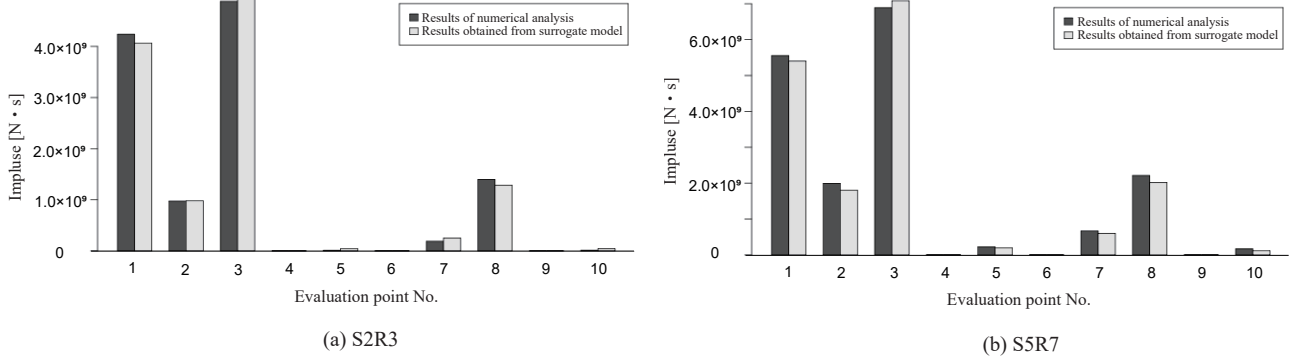


Figure 21. Comparison of impulses calculated from the results of numerical analysis and those obtained from the surrogate model. ((a)S2R3, (b)S5R7)

Table 2. Error between the results of the numerical analysis and the results obtained from the surrogate model.

Case name	S2R3		S5R7	
	Impact force	Inundation	Impact force	Inundation
Error (RMSE)	6.69×10^4 [N]	0.326 [m]	8.40×10^4 [N]	0.404 [m]
Mean value	1.54×10^4 [N]	0.0787 [m]	2.64×10^4 [N]	0.160 [m]
(RMSE)/(Mean value)	434 [%]	414 [%]	318 [%]	252 [%]
Maximum value	8.59×10^6 [N]	15.1 [m]	1.08×10^7 [N]	19.8 [m]
(RMSE)/(Mean value)	0.78 [%]	2.15 [%]	0.78 [%]	2.04 [%]

in the case of S5R7. In these cases, the error rate is low compared to the maximum value. In other words, because the error in
340 Table 2 is sufficiently small compared to the maximum value, the overall distribution and the general shape of the time-series data can be roughly captured by the surrogate model.

Next, as in the previous section, the impulse is calculated using the time-series data of the impact forces, and a comparison of the impulse calculated from the numerical analysis results and the results obtained from the surrogate model for the 10 evaluation points is shown in Fig. 21.

345 Fig. 21 shows that the surrogate model can adequately represent the impulse calculated from the numerical simulation results. Since the impulse can visualize the risk that cannot be seen by the maximum impact force alone, it can be fully utilized for the tsunami risk assessment for buildings in the target area.

Furthermore, the surrogate model has distinct advantages in terms of calculations costs. Four hours was required to complete the numerical analysis of one case when using Intel(R) Xeon(R) CPU E5-2667 v4 (3.20 GHz) 16 parallel computing for the
350 2D calculation. In the case of the 3D analysis, using an Intel Xeon Phi KNL (1.4 GHz) 8 node 544 core, the calculation time

was approximately 96 hours. Once the model was constructed, however, the calculation using the surrogate model took only a few seconds, and because it was possible to calculate the spatial temporal distribution of the physical quantity using arbitrary parameters, it would be possible to apply the surrogate model using the spatial modes for rapid damage prediction.

4 Conclusions

355 This study presents the framework for predicting time series data of tsunami force based on the results of a high precision numerical analysis at a low calculation cost. By performing proper orthogonal decomposition in relation to the numerical analysis results while considering uncertainty, we could extract spatial modes and express the spatial distribution of the risk indicators as a linear distribution of the modes. Additionally, by expressing the coefficients as functions of analysis parameters and time in the surrogate model, it was possible to calculate the distribution at extremely low calculation costs for certain cases
360 for which no numerical analysis has been performed. In this study, surrogate models of the impact force and inundation depth of a tsunami running up to a target area were constructed, and it was shown that the results of the numerical analysis could be roughly represented. It is also shown that the impulse calculated from the time-series data of the tsunami force obtained from the surrogate model can sufficiently represent the numerical simulation results. These results indicate that the surrogate model can be efficiently utilized for tsunami risk assessments.

365 In this study, for tsunami events, only the two fault parameters of slip and rake was considered as uncertainties. However, as many uncertainties are at play in an actual tsunami event, it would be possible to integrate these parameters and perform a numerical analysis and, in the same manner, create a surrogate model that incorporates a larger range of uncertainties in more detail. However, when increasing the types of input parameters, as the number of scenarios that need to be considered is immense, it is important to use an efficient method such as parameter sampling (McKay (1979)) for setting the scenarios.
370 Furthermore, it is very important to evaluate in advance the extent to which these uncertainty parameters will fluctuate. In the surrogate model created in this study, a sufficient evaluation was performed with interpolation (within the scope of the parameters for which numerical analysis was conducted). However, with extrapolation (outside the scope of the parameters for which numerical analysis was conducted), the possibility of reduced accuracy is high, so it is necessary to evaluate in advance the extent to which the uncertainty parameters fluctuate and set scenarios that allow for this range of fluctuation.

375 While the mechanism shown in this paper was designed for use with tsunamis, it has potential for use in the rapid prediction of various disasters. Since numerical simulations of disasters typically involve high computational costs, it is important to consider uncertainty in advance and perform a numerical analysis before creating a surrogate model. That is, the rapid prediction developed by the surrogate model proposed in this work can be used as a tool to gauge the extent of disasters.

Appendix A: Stabilized finite element method

380 With regard to Eqs. (4) and (5), we apply the stabilized finite element method equipped with the streamline-upwind/Petrov-Galerkin (SUPG) and pressure-stabilizing/Petrov-Galerkin (PSPG) (SUPG/PSPG method) (Tezduyar, 1991) to obtain the fol-

lowing finite element equation:

$$\begin{aligned}
& \rho \int_{\Omega_{\text{ns}}} \mathbf{w}^h \cdot \rho \left(\frac{\partial \mathbf{u}^h}{\partial t} + \mathbf{u}^h \cdot \nabla \mathbf{u}^h - \mathbf{f} \right) d\Omega + \int_{\Omega_{\text{ns}}} \varepsilon(\mathbf{w}^h) : \boldsymbol{\sigma}(\mathbf{u}^h, p^h) d\Omega + \int_{\Omega_{\text{ns}}} q^h \nabla \cdot \mathbf{u}^h d\Omega \\
& + \sum_{e=1}^{n_{\text{el}}} \int_{\Omega_{\text{ns}}^e} \left\{ \tau_{\text{supg}}^{\text{ns}} \mathbf{u}^h \cdot \nabla \mathbf{w}^h + \tau_{\text{pspg}}^{\text{ns}} \frac{1}{\rho} \nabla q \right\} \cdot \left\{ \rho \left(\frac{\partial \mathbf{u}^h}{\partial t} + \mathbf{u}^h \cdot \nabla \mathbf{u}^h - \mathbf{f} \right) - \nabla \cdot \boldsymbol{\sigma}(\mathbf{u}^h, p^h) \right\} d\Omega \\
& + \sum_{e=1}^{n_{\text{el}}} \int_{\Omega_{\text{ns}}^e} \tau_{\text{cont}}^{\text{ns}} \nabla \cdot \mathbf{w}^h \rho \nabla \cdot \mathbf{u}^h d\Omega = 0
\end{aligned} \tag{A1}$$

Here, $\Omega_{\text{ns}} \in \mathbb{R}^3$ is the analysis domain, n_{el} is the number of elements, \mathbf{u}^h and p^h are the finite element approximations for velocity and pressure, respectively, and \mathbf{w}^h and q^h are the approximations of the weight functions for the equations of motion and continuity, respectively. Also, the fourth involve the SUPG term for stabilizing the advection process and the PSPG term for avoiding pressure oscillation. In addition, the fifth term has the shock-capturing term (Aliabadi and Tezduyar, 2000) for avoiding numerical instability on free surfaces, and $\tau_{\text{supg}}^{\text{ns}}$, $\tau_{\text{pspg}}^{\text{ns}}$ and $\tau_{\text{cont}}^{\text{ns}}$ are all stabilization parameters.

In this study, the phase-field approach is employed to capture the complex geometries of free surfaces, such as breaking waves and flow around buildings. In this approach, the locations of free surfaces can be determined by solving the Allen-Cahn advection equation (Chiu and Lin, 2011; Takada et al., 2013), which was modified to the storage format as

$$\frac{\partial \phi}{\partial t} \mathbf{u} \cdot \nabla \phi = \frac{\varepsilon}{\delta} \nabla \cdot (\delta(\nabla \phi) - F_a), F_a = \phi(1 - \phi) \frac{\nabla \phi}{|\nabla \phi|} \tag{A2}$$

where the phase-field function ϕ takes 1.0 or 0.0 to identify liquid (water) and gas (air) phases, and an intermediate value represents the free surface. Here, ε is the mobility and δ is the representative width of the free surface. According to the phase field function, the fluid density ρ and viscosity coefficient μ for each element were evaluated as

$$\rho = \rho_l \phi + \rho_g (1 - \phi) \tag{A3}$$

$$\mu = \mu_l \phi + \mu_g (1 - \phi) \tag{A4}$$

where subscripts l and g indicate the quantities of the liquid and gas, respectively.

In this study, we also apply the stabilized finite element method with the SUPG method to the Allen-Cahn equation above, so that the resulting finite element equations are given as

$$\begin{aligned}
& \int_{\Omega^P} \phi_*^h \left(\frac{\partial \phi^h}{\partial t} + \mathbf{u}^h \cdot \nabla \phi \right) d\Omega + \int_{\Omega^P} \varepsilon \nabla \phi_*^h \cdot \nabla \phi d\Omega + \int_{\Omega^P} \phi_*^h \frac{\varepsilon}{\delta} \nabla F_a d\Omega \\
& + \sum_{e=1}^{n_{\text{el}}} \int_{\Omega_e^P} (\tau_\phi \mathbf{u}^h \cdot \nabla \phi_*^h) \cdot \left(\frac{\partial \phi^h}{\partial t} + \mathbf{u}^h \cdot \nabla \phi^h - \frac{\varepsilon}{\delta} \nabla \cdot (\delta(\nabla \phi) - F_a) \right) d\Omega = 0
\end{aligned} \tag{A5}$$

where ϕ^h and ϕ_*^h are finite element approximations for the phase-field function ϕ and its weight function, respectively. Here, τ_ϕ is the stabilization parameter defined as

$$\tau_\phi = \left[\left(\frac{2}{\Delta t} \right)^2 + \left(\frac{2\|\mathbf{u}^h\|}{h_e} \right)^2 \right]^{-\frac{1}{2}} \quad (\text{A6})$$

where h_e is the characteristic length of an element.

410 *Data availability.* Source code and details of the tsunami simulation were sourced from Kotani (2020). Outputs of the simulations are available in the GitHub open-access repository at https://github.com/K-Tozato/3D_tsunami_simulation.

Author contributions. Kenta Tozato contributed to analyzing the simulated data and constructing surrogate models. Shinsuke Takase, Kazuya Nojima, and Masaaki Sakuraba provided the simulated data of 2D and 3D analyses. Shuji Moriguchi, Kenjiro Terada, Yu Otake, and Yo Fukutani contributed to proposing the framework, supervising the surrogate modeling. Kenta Tozato, Shuji Moriguchi and Kenjiro Terada
415 prepared the manuscript. Hiromu Yokosu led discussion with practical viewpoints. All authors read and approved the final paper.

Competing interests. The authors declare that they have no conflict of interest.

Acknowledgements. The authors would like to gratefully acknowledge the support made through Chubu Electric Power (Public Research Concerning Nuclear Power)

References

- 420 Aliabadi, S. and Tezduyar, T. E.: Stabilized-finite-element/interface-capturing technique for parallel computation of unsteady flows with interfaces, *Computer Methods in Applied Mechanics and Engineering*, 190, 243–261, [https://doi.org/10.1016/S0045-7825\(00\)00200-0](https://doi.org/10.1016/S0045-7825(00)00200-0), 2000.
- American Society of Civil Engineers: ASCE standard "Minimum design loads for buildings and other structures" (ASCE/SEI 7-16), <https://doi.org/10.1061/9780784414248>, 2017.
- 425 Bamer, F. and Bucher, C.: Application of the proper orthogonal decomposition for linear and nonlinear structures under transient excitations, *Acta Mechanica*, 223, 2549–2563, <https://doi.org/10.1007/s00707-012-0726-9>, 2012.
- Buhmann, M. D.: Multivariate cardinal interpolation with radial-basis functions. *Constructive Approximation*, 6, 225–255, <https://doi.org/10.1007/BF01890410>, 1990.
- Chiu, P. H. and Lin, Y. T.: A conservative phase field method for solving incompressible two-phase flows, *Journal of Computational Physics*, 430, 185–204, <https://doi.org/10.1016/j.jcp.2010.09.021>, 2011.
- Fauzi, A. and Mizutani, N.: Machine learning algorithms for real-time tsunami inundation forecasting: A case study in Nankai region, *Pure and Applied Geophysics*, 177, 1437–1450, <https://doi.org/10.1007/s00024-019-02364-4>, 2019.
- Fukutani, Y., Moriguchi, S., Terada, K., Kotani, T., Otake, Y. and Kitano, T.: Tsunami hazard and risk assessment for multiple buildings by considering the spatial correlation of wave height using copulas, *Natural Hazards and Earth System Sciences*, 19, 2619–2634, <https://doi.org/10.5194/nhess-19-2619-2019>, 2019.
- 435 Goto, C., Y. Ogawa, N. Shuto, and F. Imamura, Numerical method of tsunami simulation with the leap-frog scheme, in IUGG/IOC TIME Project, IOC Manual and Guides, UNESCO, Paris, 35, 1–126, 1997.
- Gusman, A. R., Tanioka, Y., MacInnes, B. T., and Tsushima, H.: A methodology for near-field tsunami inundation forecasting: Application to the 2011 Tohoku tsunami, *Journal of Geophysical Research: Solid Earth*, 119, 8186– 8206, doi:10.1002/2014JB010958, 2014.
- 440 Hoerl, A. E. and Kennard, R. W.: Ridge regression: Biased estimation for nonorthogonal problems, *Technometrics*, 12, 55–67, <https://doi.org/10.1080/00401706.1970.10488634>, 1970.
- Imamura, F.: Review of tsunami simulation with a finite difference method, in Long-Wave Runup Models, edited by H. Yeh, P. Liu, and C. Synolakis, World Scientific Publishing, Hackensack, N. J, 25–42, 1995.
- Kotani, T., Tozato, K., Takase, S., Moriguchi, S., Terada, K., Fukutani, Y., Otake, Y., Nojima, K., Sakuraba, M. and 445 Choe, Y.: Probabilistic tsunami hazard assessment with simulation-based response surfaces, *Coastal Engineering*, 103719, <https://doi.org/10.1016/j.coastaleng.2020.103719>, 2020.
- LeVeque, R. J., Waagan, K., Gonzalez, F. I., Rim, D., and Lin, G.: Generating random earthquake events for probabilistic tsunami hazard assessment, *Pure and Applied Geophysics*, 173, 3671–3692, <https://doi.org/10.1007/s00024-016-1357-1>, 2016.
- Liang, Y.C., Lee, H.P., Lim, S.P., Lin, W.Z., Lee, K.H. and Wu, C.G.: Proper orthogonal decomposition and its applications-Part I: theory, 450 *Journal of Sound and Vibration*, 252, 527 – 544, <https://doi.org/10.1006/jsvi.2001.4041>, 2002.
- Maeda, T., Obara, K., Shinohara, M., Kanazawa, T., and Uehira, K.: Successive estimation of a tsunami wavefield without earthquake source data: A data assimilation approach toward real-time tsunami forecasting, *Geophysical Research Letters*, 42, 7923– 7932, doi:10.1002/2015GL065588, 2015.
- McKay, M. D., Beckman, R. J. and Conover, W. J.: A comparison of three methods for selecting values of input variables in the analysis of 455 output from a computer code, *Technometrics*, 21, 239–245, <https://doi.org/10.2307/1268522>, 1979.

- Melgar, D., LeVeque, R. J., Dreger, D. S. and Allen, R. M.: Kinematic rupture scenarios and synthetic displacement data: An example application to the Cascadia subduction zone, *Journal of Geophysical Research: Solid Earth*, 121, 6658–6674, <https://doi.org/10.1002/2016JB013314>, 2016.
- Močkus, J.: On bayesian methods for seeking the extremum, in: *Optimization Techniques IFIP Technical Conference Novosibirsk*, Springer, Berlin, Heidelberg, 400–404, 1975.
- Mulia, I. E., Asano, T. and Nagayama, A.: Real-time forecasting of near-field tsunami waveforms at coastal areas using a regularized extreme learning machine, *Coastal Engineering*, 109, 1–8, <https://doi.org/10.1016/j.coastaleng.2015.11.010>, 2016.
- Musa, A., Watanabe, O., Matsuoka, H., Hokari, H., Inoue, T., Murashima, Y., Ohta, Y., Hino, R., Koshimura, S. and Kobayashi, H.: Real-time tsunami inundation forecast system for tsunami disaster prevention and mitigation, *The Journal of Supercomputing*, 74, 3093–3113, <https://doi.org/10.1007/s11227-018-2363-0>, 2018.
- My Ha, D., Tkalic, P., and Chan, E. S.: Tsunami forecasting using proper orthogonal decomposition method, *Journal of Geophysical Research: Oceans*, 113, <https://doi.org/10.1029/2007JC004583>, 2008.
- Nakano, Y.: Structural design requirements for tsunami evacuation buildings in Japan, *ACI Symposium Publication*, 313, 1–12, 2017.
- Nojima, N., Kuse, M., and Duc, L. Q.: Mode decomposition and simulation of strong ground motion distribution using singular value decomposition, *Journal of Japan Association for Earthquake Engineering*, 18, 95–114, https://doi.org/10.5610/jae.18.2_95, 2018.
- Oishi, Y., Imamura, F. and Sugawara, D.: Near-field tsunami inundation forecast using the parallel TUNAMI-N2 model: Application to the 2011 tohoku-oki earthquake combined with source inversions, *Geophysical Research Letters*, 42, 1083–1091, <https://doi.org/10.1002/2014GL062577>, 2015.
- Okada, Y.: Internal deformation due to shear and tensile faults in a half-space, *Bulletin of the Seismological Society of America*, 82, 1018–1040, 1992.
- Qin, X., Motley, M. R. and Marafi, N. A.: Three-dimensional modeling of tsunami forces on coastal communities, *Coastal Engineering*, 140, 43–59, <https://doi.org/10.1016/j.coastaleng.2018.06.008>, 2018.
- Satake, K., Fujii, Y., Harada, T. and Namegawa, Y.: Time and space distribution of coseismic slip of the 2011 Tohoku earthquake as inferred from tsunami waveform data, *Bulletin of the Seismological Society of America*, 103, 1473–1492, <https://doi.org/10.1785/0120120122>, 2013.
- Stone, M.: Cross-validated choice and assessment of statistical predictions, *Journal of the Royal Statistical Society. Series B (Methodological)*, 36, 111–147, <https://doi.org/10.1111/j.2517-6161.1974.tb00994.x>, 1974.
- Takada, N., Matsumoto, J. and Matsumoto, S.: Phase-field model-based simulation of motions of a two-phase fluid on solid surface, *Journal of Computational Science and Technology*, 7, 322–337, <https://doi.org/10.1299/jcst.7.322>, 2013.
- Takase, S., Moriguchi, S., Terada, K., Kato, J., Kyoya, T., Kashiya, K. and Kotani, T.: 2D-3D hybrid stabilized finite element method for tsunami runup simulations, *Computational Mechanics*, 58, 411–422, <https://doi.org/10.1007/s00466-016-1300-4>, 2016.
- Tang, L., Titov, V. V. and Chamberlin, C. D.: Development, testing, and applications of site-specific tsunami inundation models for real-time forecasting. *Journal of Geophysical Research: Oceans*, 114, C12025, <https://doi.org/10.1029/2009JC005476>, 2009.
- Tang, L., Titov, V. V., Wei, Y., Mofjeld, H. O., Spillane, M., Arcas, D., Bernard, E. N., Chamberlin, C., Gica, E. and Newman, J.: Tsunami forecast analysis for the May 2006 Tonga tsunami, *Journal of Geophysical Research: Oceans*, 113, C12015, <https://doi.org/10.1029/2008JC004922>, 2008.
- Tezduyar, T.E.: Stabilized finite element formulations for incompressible flow computations, *Advances in Applied Mechanics*, 28, 1 – 44, [https://doi.org/10.1016/S0065-2156\(08\)70153-4](https://doi.org/10.1016/S0065-2156(08)70153-4), 1991.

- The Port and Airport Research Institute. Nationwide ocean wave information network for ports and harbours (NOWPHAS),
 495 <http://nowphas.mlit.go.jp/nowphasdata/static/sub311.htm>.
- The 2011 Tohoku Earthquake Tsunami Joint Survey Group: Field survey results, Official survey data,
<http://www.coastal.jp/tsunami2011/index.php?Field%20survey%20results>, 2012.
- Titov, V. V., Gonzalez, F. I., Bernard, E. N., Eble, M. C., Mofjeld, H. O., Newman, J. C. and Venturato, A. J.: Real-time tsunami forecasting:
 Challenges and solutions, *Natural Hazards*, 35, 35–41, <https://doi.org/10.1007/s11069-004-2403-3>, 2005.
- 500 Tsushima, H., Hino, R., Ohta, Y., Iinuma, T., and Miura, S.: tFISH/RAPiD: Rapid improvement of near-field tsunami forecasting based on
 offshore tsunami data by incorporating onshore GNSS data, *Geophysical Research Letters*, 41, 3390– 3397, doi:10.1002/2014GL059863,
 2014.
- Wei, Y., Bernard, E. N., Tang, L., Weiss, R., Titov, V. V., Moore, C., Spillane, M., Hopkins, M. and Kânoğlu, U.: Real-time
 experimental forecast of the Peruvian tsunami of August 2007 for U.S. coastlines, *Geophysical Research Letters*, 35, L04609,
 505 <https://doi.org/10.1029/2007GL032250>, 2008.
- Xiong, Y., Liang, Q., Park, H., Cox, D. and Wang, G.: A deterministic approach for assessing tsunami-induced building damage through
 quantification of hydrodynamic forces, *Coastal Engineering*, 144, 1–14, <https://doi.org/10.1016/j.coastaleng.2018.11.002>, 2019.