

Correlation of wind waves and sea level variations on the coast of the seasonally ice-covered Gulf of Finland

Milla M. Johansson¹, Jan-Victor Björkqvist^{2,1,3}, Jani Särkkä¹, Ulpu Leijala¹, and Kimmo K. Kahma¹

¹Finnish Meteorological Institute, P.O. Box 503, FI-00101, Helsinki, Finland

²Norwegian Meteorological Institute, Allégaten 70, 5007 Bergen, Norway

³Tallinn University of Technology, Department of Marine Systems, Akadeemia tee 15a, 12618 Tallinn, Estonia

Correspondence: Milla Johansson (milla.johansson@fmi.fi)

Abstract. Both sea level variations and wind-generated waves affect coastal flooding risks. The correlation of these two phenomena complicates the estimates of their joint effect on the exceedance levels for the continuous water mass. In the northern Baltic Sea the seasonal occurrence of sea ice further influences the situation. We analysed this correlation with 28 years (1992–2019) of sea level data, and four years (2016–2019) of wave buoy measurements from a coastal location outside the City of Helsinki, Gulf of Finland [in the Baltic Sea](#). The wave observations were complemented by 28 years of simulations with a parametric wave model. The sea levels and ~~waves~~ [significant wave heights](#) at this location show strongest positive correlation ($\tau = 0.5$) for southwesterly winds, while for northeasterly winds the correlation is negative (-0.3). The results were qualitatively similar when only the open water period was considered, or when the ice season was included either with zero wave heights or hypothetical no-ice wave heights. We calculated the observed probability distribution of the sum of the sea level and the highest individual wave crest from the simultaneous time series. Compared to this, a probability distribution of the sum calculated by assuming that the two variables are independent underestimates the [exceedance frequencies of high](#) total water levels ~~corresponding to one hour per 100 years by 0.1–1.2 m~~. We tested ~~three Archimedean copulas~~, ~~of which the Gumbel copula best accounted~~ [nine different copulas for their ability to account](#) for the mutual dependence between the two variables.

Copyright statement. TEXT

15 1 Introduction

Urbanized and heavily populated coastal regions around the world face concrete consequences of sea level rise and climate change. To ensure safe and effective coastal protection and city planning in the future, accurate and location targeted estimates of coastal flood probabilities are in demand. The ultimate height to which the sea water rises in a coastal flood is determined by both the sea level variations – so called "still water level" ~~, including storm surges and longer-term variations~~ – as well as wind-generated waves on top of that. Thus, when estimating coastal flooding risks, these both need to be ~~taken into~~ [account](#) ~~considered~~.

On the Baltic Sea coasts~~the~~, the still water level variations mainly consist of storm surges and longer-term variations, the amplitude of tides being small. The still-water-level related flooding risks have been extensively studied using long, high-quality tide gauge records, which ~~on~~ in many locations date back to the 19th century (~~e.g. Johansson et al. (2001), Eelsalu et al. (2014), Soomere et al. (2015), Kulikov and Medvedev (2017); see~~ (e.g. Johansson et al., 2001; Eelsalu et al., 2014; Soomere

5 See also Hünicke et al. (2015) for an overview of sea level and wind wave studies in the Baltic Sea). These data have enabled detailed analyses of sea level extremes and probability distributions useful for practical applications in coastal planning (e.g. Kahma et al., 2014).

To account for the additional effect of wind waves, Leijala et al. (2018) complemented the still-water-level-based flooding risk estimates with wave run-up on a steep shore. They estimated the probability distributions of both phenomena separately

10 and, assuming the two variables independent, calculated the probability distribution of their sum at two coastal locations close to Helsinki, Gulf of Finland. Even if the assumption of independence might not strictly hold, high sea levels and high waves do not necessarily co-occur, either. Hanson and Larson (2008) drew the conclusion that on the southern Swedish coast high run-up levels (sum of still water level and wave run-up) are typically caused by high waves in combination with modest still water levels.

15 The actual dependence of waves and sea level variations is complex. While short-term sea level variations and wind-generated waves are driven by related factors (namely wind and air pressure variations), strong winds can either fill or empty small sub-basins while simultaneously generating high waves. Also, the slowly changing total water volume of a semi-enclosed basin does not depend on the short term wind speed.

To account for the correlation between sea level variations and wind waves when estimating the exceedance frequencies of their sum, a bivariate (two-dimensional) probability distribution is needed. Copulas are a flexible tool to study this geophysical

20 problem, since they allow different types of marginal distributions of the individual variables, unlike e.g. multivariate Weibull or normal distributions. They have therefore been ~~use to study~~ used to study e.g. storm surges in the German Bight (Wahl et al., 2012), the joint probability of water levels and waves at the Adriatic coast (Masina et al., 2015), ~~and~~ extreme coastal wave overtopping (Chini and Stansby, 2012), sea-level driven non-linear changes in wave characteristics and tides (Arns et al., 2017),

25 and compound flooding from storm surge and rainfall (Wahl et al., 2015). Marcos et al. (2019) studied the dependence between extreme storm surges and wind waves and found that 55 % of the world coastlines face compound events, and neglecting these dependencies leads to underestimating extreme coastal water levels. Kudryavtseva et al. (2020) used copulas to evaluate the likelihood of joint occurrence of high water levels and wave heights along the whole Baltic Sea coast, showing that the probability of co-occurrence varies regionally, being highest in the Bothnian Sea, but also moderate in the Gulf of Finland.

30 The Gulf of Finland (GoF, Fig. 1) is a sub-basin of the Baltic Sea. The Baltic Sea is a semi-enclosed marginal sea connected to the North Sea and the North-Atlantic Ocean only through the narrow and shallow Danish Straits. The straits prevent rapid changes in the total water volume of the Baltic Sea, which therefore behaves like a closed basin on a sub-weekly time scale, with the sea level varying internally. The internal variations amount to several ~~tens of centimetres~~ decimetres, and are mainly driven by wind and air pressure, but also by the consequent internal oscillations (seiches). These variations in the GoF are

35 controlled by the local geometry of this narrow west-to-east oriented gulf, and can therefore behave differently depending on

e.g. the wind direction (Leppäranta and Myrberg, 2009). The astronomical tides are small, with amplitudes less than ~~15-cm~~ (e.g. Särkkä et al., 2017) 20 cm (e.g. Medvedev et al., 2013).

On time scales longer than a week the Baltic Sea water volume variations are a result of the water exchange that is low-pass filtered by the Danish Straits. This water level component is significant, with local sea level variations being up to 1.3 m (Leppäranta and Myrberg, 2009), while precipitation, evaporation and river runoff play a minor role. On even longer time scales, the Baltic Sea is affected by the global mean sea level rise, which is counterbalanced to varying extent by the local post-glacial land uplift (e.g. Pellikka et al., 2018; Vestøl et al., 2019).

The wind-generated waves in the GoF are influenced by the fetch, the seabed, and narrowness of the gulf (Kahma and Pettersson, 1994). The measured significant wave height has exceeded 5 m both during easterly and westerly winds (Pettersson et al., 2013; Pettersson and Jönsson, 2005), but the significant wave height close to Helsinki is expected to be less than half of the open-sea value, since waves are effectively attenuated by the coastal archipelago (Björkqvist et al., 2019).

Finally, both the sea level variations and the waves are affected by the ~~seasonal~~ ice season, which in the Baltic Sea is 5–7 months (Leppäranta and Myrberg, 2009). While the presence of ice somewhat attenuates sea level variability – mainly by blocking the piling-up effect of wind on the sea surface (Lisitzin, 1957) – it completely blocks waves if the ice concentration is high enough. The maximum ice coverage ranges from 12.5 to 100 % of the surface area of the ~~sea~~ Baltic Sea (Leppäranta and Myrberg, 2009); on normal and severe ice winters the entire GoF ~~gets~~ becomes ice-covered, while on mild winters only the eastern part of the gulf freezes.

In this paper, we explore the correlation of sea level and wind waves near Helsinki on the northern coast of the Gulf of Finland, with an aim to determine its effect on the exceedance frequencies of their sum. The study is motivated by the high relevance of flood risk estimates for the City of Helsinki, as well as the recently obtained 4-year time series of coastal wave buoy data. These data, together with the multi-decadal time series of tide gauge observations, provide an excellent data set for such case study. We aim at answering the following research questions:

1. To what extent are these two variables correlated, and does it depend on season, ice conditions or wind direction?
2. What is the observation-based probability distribution of the sum of the still water level and wave height? How much does it differ from a distribution formed assuming that the two variables are independent?
3. Can a copula-based bivariate distribution account for the correlation of the two variables, and more accurately describe the probability of the sum?

This paper is structured as follows. In Sect. 2, we describe the observation data sets used, the parametric wave model, and the methods used in calculating the uni- and bivariate probability distributions. The results are presented in Sect. 3, followed by discussion in Sect. 4. We ~~finally~~ summarize our conclusions in Sect. 5.

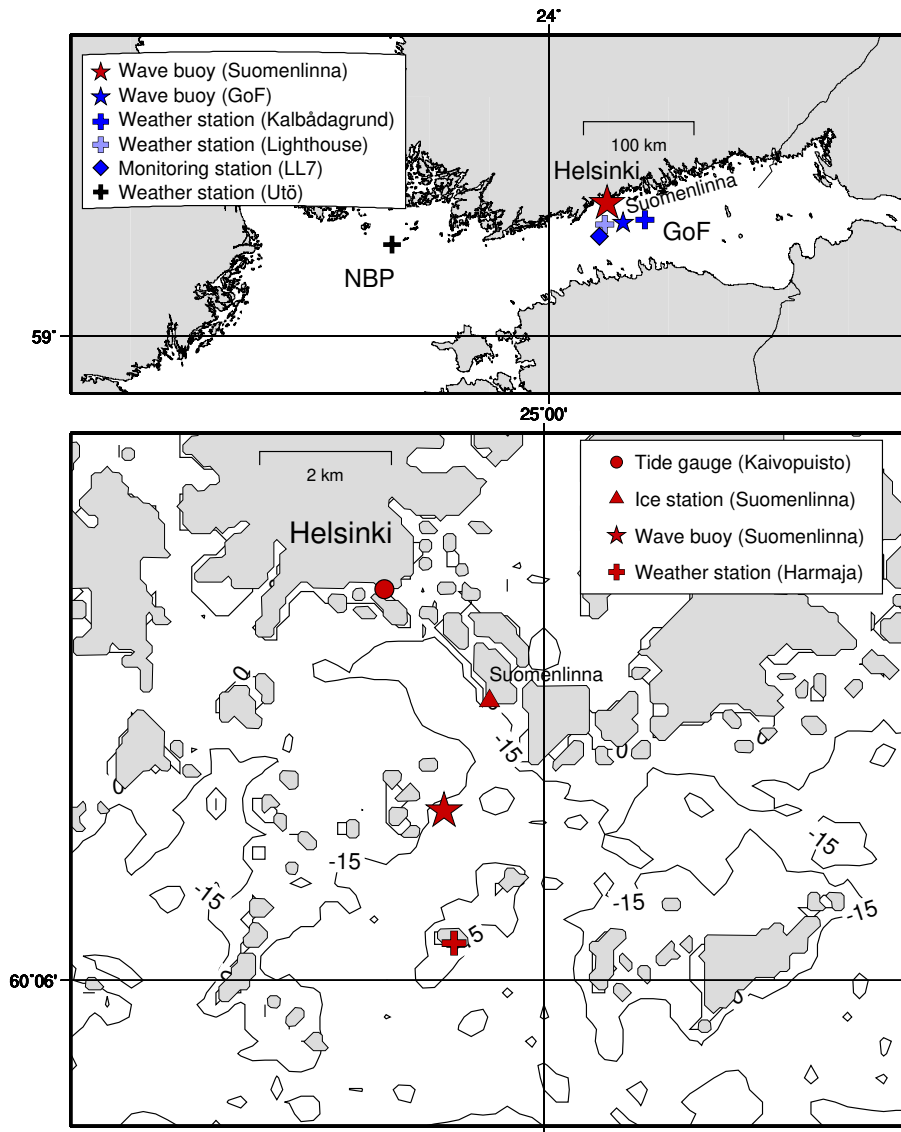


Figure 1. On top is a larger view of the study area covering the Northern Baltic Proper (NBP) and Gulf of Finland (GoF). The coastal area off Helsinki around Suomenlinna is shown on the bottom. The Suomenlinna ice station represents the ice conditions for about a 1 km radius. [The contours show the water depth in metres.](#)

2 Data and methods

2.1 Sea level measurements

Automated tide gauges have been operational on the Finnish coast since the late 19th century, at Helsinki since 1904 (see e.g. Johansson et al. (2001) for a more detailed description of data, measurement techniques and quality). We used instant

hourly sea levels measured in 1992–2019 at the Helsinki Kaivopuisto tide gauge (Fig. 1), currently operated by the Finnish Meteorological Institute (FMI). Missing values were ~~patched~~estimated by linear interpolation from the measurements at two other nearby tide gauges on the Finnish coast (Hanko and Hamina). There were 477 interpolated hourly values in 1992–2019, less than 0.2 % of the data. All sea levels in this study are given in relation to the N2000 height system, a Finnish realization of the common European height system (Saaranen et al., 2009).

The average sea level in 1992–2019 at Helsinki was +0.21 m, variations ranging from -0.73 to +1.69 m (Table 1). The linear trend in the time series was -2 cm in 28 years – the land uplift and sea level rise practically canceling each other. ~~Thus, we can safely ignore the non-stationarity introduced by the~~These long-term ~~trend~~phenomena thus have a negligible contribution to the sea level variations studied here.

10 2.2 Wind and temperature measurements

FMI's automatic weather stations provided wind speed, wind direction, and air temperature measurements (Fig. 1) which were used as a forcing for the parametric wave model (Sect. 2.4). From 1992 onwards these stations covered three areas of the Baltic Sea: i) Northern Baltic Proper (NBP) covered by Utö weather station (measuring height 19 metres above mean sea level), ii) Gulf of Finland (GoF) covered by Kalbådgrund and the Helsinki Lighthouse (31 and 33 metres above mean sea level), and iii) the coastal area near Suomenlinna, Helsinki covered by Harmaja (18 metres above mean sea level). The Helsinki Lighthouse weather station was only used for 2019 to cover a Kalbådgrund data gap.

We calculated hourly wind and air temperature values by either interpolating the older 3-hour data (up until mid to late 90s) or by calculating hourly averages of later denser measurements. All gaps shorter than six hours were interpolated. Continuous data blocks that were shorter than 12 hours were removed. Sea surface temperature (SST) data were only available from Harmaja starting end of June 1995. For other times and locations we estimated the SST using a mean yearly cycle from the GoF monitoring station LL7 (Fig. 1). The mean is defined from 434 CTD soundings from R/V *Aranda* between 1992 and 2017.

2.3 Observed wave heights

FMI's operational GoF wave buoy is located in the centre of the basin (62 m water depth), while the coastal wave buoy is anchored at a depth of 22 m outside of Suomenlinna, Helsinki (Fig. 1). While coastal wave measurements have been made in several places along the Finnish coast, this is the only permanent coastal wave buoy. Yearly measurements at these locations started in 2000 (GoF) and 2016 (Suomenlinna). In the Baltic Sea wave buoys are removed before the ice season, since freezing damages the sensors of the Datawell Directional Waveriders. The GoF buoy's measurement periods were 01 Jan – 18 Jan 2016, 12 Mar 2016 – 13 Jan 2017, 18 Apr 2017 – 29 Jan 2018, 14 Apr 2018 – 14 Jan 2019, and 11 Mar – 31 Dec 2019. For the Suomenlinna wave buoy they were 27 Apr – 29 Nov 2016, 20 Apr – 15 Dec 2017, 03 May – 26 Nov 2018, and 18 Apr – 10 Dec 2019.

The wave buoys determined the significant wave height from 27 minute vertical displacement time series as $H_s = 4\sqrt{m_0}$, where m_0 is the zeroth moment of the variance density spectrum (see Datawell, 2019). We picked every other value to get

a data set with hourly time resolution. Of these values, the highest significant wave heights during 2016–2019 were 4.12 m (GoF) and 1.47 m (Suomenlinna); the mean values were 0.81 m and 0.33 m.

2.4 Simulated wave heights

We complemented the coastal wave measurements at Suomenlinna with 28 years (1992–2019) of simulations produced by a parametric wave model. The model uses fetch-limited wave growth relations (Kahma and Calkoen, 1992), while also accounting for the wind duration and the atmospheric stratification. A description of the wave evolution scheme is presented in Appendix A.

First we simulated the wave conditions at the GoF wave buoy, which were needed as boundary conditions for the coastal wave hindcast. The GoF simulation accounted for the locally generated waves in the middle of the gulf and waves propagating from the eastern part of the basin and the Northern Baltic Proper – also simulated using the same model and the local wind. We then determined the fraction of the GoF wave energy that arrived to Suomenlinna (~~henceforth~~; these waves have longer periods than what can be generated by the local wind and the nearest fetch, and will henceforth be called "long waves"). This long wave energy was quantified as the difference between the observed wave energy (for 2016) and the modelled local wave energy at Suomenlinna. The attenuation – as a function of the wind direction – was determined using a linear regression between the simulated wave energy at the GoF and the estimated long wave energy at Suomenlinna. The final time series of coastal significant wave height was determined from the sum of the simulated local wave energy at Suomenlinna and the attenuated GoF wave energy.

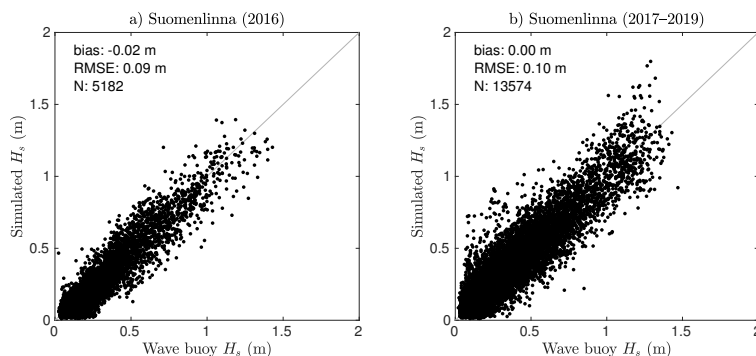


Figure 2. The significant wave height simulated by the parametric wave model compared with observations from the Suomenlinna wave buoys. The 2016 data used for model calibration are shown separately (a).

The simulated significant wave heights were validated using wave buoy data from 2016–2019. At GoF the -0.02 m bias and 0.28 m RMSE (N=25293) were slightly worse than for state-of-the-art numerical wave models (e.g. Tuomi et al., 2011; Björkqvist et al., 2018). Nonetheless, the accuracy was sufficient to serve as boundary conditions for the coastal simulations at Suomenlinna, which had a 0.00 m bias and 0.10 m RMSE (N=13574) (Fig. 2). For Suomenlinna the validation statistics compare well with those from high-resolution numerical wave model simulations (Björkqvist et al., 2020), but the parametric

model showed a slight tendency to overestimate the highest significant wave heights (Fig. 2 b). This is natural, since a linear regression cannot account for the increased wave–bottom interaction for the higher and longer waves during stronger winds that were not captured in the calibration period. We can, however, conclude that the quality of the simulated wave height time series is adequate for the purpose of this study.

5 2.5 Ice conditions and wave statistics types

Data originating from FMI’s ice charts described the ice conditions at the southern point of the Suomenlinna islands (Fig. 1). The data represent an area with a radius of roughly 1 km and is therefore fairly representative of the wave buoy location. Of the statistics available for the entire study time (1992–2019) we used the start and end dates of the permanent ice-cover. During this time – defined as our ice period – the ice concentration is typically high (over 80 %), making it reasonable to set the significant wave height to zero. The length of our ice period varied from zero (winters 2007–2008, 2017–2018, and 2018–2019) to 139 days (winter 2002–2003).

Tuomi et al. (2011) defined four different wave statistics for water bodies with a seasonal ice cover. Using this classification, we compiled the following data sets (Table 1):

- Data set F (ice-free time): simulated H_s for the open water season only.
- Data set I (ice-time-included): simulated H_s set to 0 for the ice period.
- Data set N (hypothetical no-ice): full simulated H_s data set. As the wave model does not account for ice, this represents a hypothetical situation with no ice present.
- Data set M (measurement statistics): wave observations only (this time is a true subset of the ice-free period because of measurement gaps).

We divided the 28-year data sets (F, I, and N) into seven consecutive 4-year periods, from 1992–1995 to 2016–2019. These 4-year time series were, where applicable, used to study temporal variability.

Table 1. The sea level (still water level, z_{still}) and significant wave height (H_s) data sets used in this study.

Parameter	Ice statistics	Symbol	Period	Amount of data	Mean (m)	Min / max (m)	Std (m)
Sea level		z_{still}	1992–2019	245 448	0.21	-0.73 / 1.69	0.24
Observed H_s	M	$H_{s,m}$	2016–2019	21 546	0.33	0.02 / 1.47	0.25
Simulated H_s	F	$H_{s,f}$	1992–2019	191 220	0.34	0.01 / 2.25	0.27
	I	$H_{s,i}$	1992–2019	228 727	0.29	0.00 / 2.25	0.28
	N	$H_{s,n}$	1992–2019	228 727	0.35	0.01 / 2.25	0.27

2.6 Probability distribution of the total water level

We ~~define~~ defined the *total water level*, z_{max} , as the highest hourly maximum level to which the continuous water mass reaches as a combined effect of the still water level, z_{still} , and the wave action. To do this, we first assumed that z_{still} does not change during an hour. Neglecting site specific coastal effects, ~~we took the wave action to be z_{max} in such case is determined by the~~ highest individual wave crest, η_{max} . (Note that wave crest denotes the height above z_{still} , thus being half of the actual height of the highest wave.) At Suomenlinna the highest single wave crest during 30 minutes is approximately 92 % of the significant wave height (Björkqvist et al., 2019), which we rounded up to $\eta_{max} = H_s$ for hourly values. ~~Assuming a constant water level during each hour~~ With these assumptions, the maximum water level elevation is

$$z_{max} = z_{still} + \eta_{max} = z_{still} + H_s. \quad (1)$$

The probability distributions of z_{max} were then calculated directly from the time series obtained from the observed and simulated z_{still} and H_s data.

The distributions of z_{still} and H_s both describe the actual duration of the phenomenon, and thus have units of h yr^{-1} . The distribution of z_{max} , on the other hand, has a unit of events/year, where "event" is defined as the instant hourly maximum total water level.

If simultaneous time series of z_{still} and H_s are not available, the cumulative distribution function (CDF) of z_{max} needs to be calculated based on the respective univariate distributions. If the two variables are assumed to be independent (for dependent variables, see Sect. 2.7), the CDF of their sum is the convolution

$$F_z(z_{max}) = \int_{\mathbb{R}} f_x(\xi) F_y(z_{max} - \xi) d\xi \quad (2)$$

where f_x denotes the probability density function (PDF) of z_{still} , and F_y denotes the CDF of H_s (see Leijala et al. (2018) for more details).

2.7 Copula-based probability distributions

The Sklar's theorem (Nelsen, 2006) states that if H is a bivariate CDF with marginal CDFs F_1 and F_2 , then a copula C exists such that

$$H(x_1, x_2) = C(F_1(x_1), F_2(x_2); \theta). \quad (3)$$

Thus, the joint distribution H can be expressed as a function of the marginal distributions F_1 and F_2 and the copula ~~parameter~~ θ C , which describes the dependency of the variables x_1 and x_2 . If x_1 and x_2 are independent, the copula is simply the product $F_1(x_1)F_2(x_2)$. An extensive introduction to copula methods is provided by Genest and Favre (2007). A benefit of the method is that the marginal distributions can be of any form.

We calculated θ for three copulas from the Archimedean family: Clayton, Frank and Gumbel, which have commonly been used for hydrological analyses (e.g. Wahl et al., 2012; Kudryavtseva et al., 2020). We determined θ from studied the suitability of nine different copulas (Gumbel, Frank, Clayton, Normal, t-EV, Hüsler-Reiss, Galambos, Tawn and Plackett) in representing the dependence structure of the observed z_{still} and H_s data (2016–2019). We calculated the parameters for each copula with the inversion of the Kendall's τ estimator (~~see e.g. Wahl et al. (2012) for the relationship between θ and τ~~). To quantify the goodness-of-fit for each of these copulas, we calculated the Cramér-von Mises statistic S_n , as defined in Equation (2) of Genest et al. (2009).

By using the bivariate distributions consisting of each of the ~~three~~ nine copulas and the marginal distributions (Sect. 2.8), we simulated 10^8 random pairs (z_{still}, H_s) and calculated the ~~CCDFs~~ (complementary cumulative distribution functions (CCDFs) of their sum. The calculations were performed with the R package "copula: Multivariate Dependence with Copulas" ~~package~~ (Hofert et al., 2020; Yan, 2007; Kojadinovic and Yan, 2010; Hofert and Mächler, 2011).

2.8 Marginal distributions and extrapolation

Probabilities of sea level extremes have been estimated using extreme value distributions with e.g. block maxima (annual/monthly) or peak-over-threshold values (e.g. Arns et al., 2013). However, when the focus is on the sum of sea level and wave height (Eq. 1), it is essential to use simultaneous values, and the extremes generally do not co-occur. Our purpose was to study the correlation between these two variables in general, on a hourly time scale, not just the correlation of extremes. Thus, we chose to base our analysis on the entire data set of hourly values.

Our 28 years of hourly data allow for a direct estimate of the ~~frequency of exceedance down to $4 \cdot 10^{-6}$~~ exceedance frequency down to 0.036 h yr^{-1} , and we therefore had to extrapolate the distribution to cover rarer values. Extremes are typically evaluated using some extreme value distribution (Eelsalu et al., 2014; Särkkä et al., 2017; Kulikov and Medvedev, 2017), but this approach is not applicable to extrapolate hourly data needed for this study.

The probability distribution of the observed sea levels on the Baltic Sea coasts is ~~generally~~ slightly asymmetric: the high-end tail is thicker than the low-end tail (e.g. Johansson et al., 2001; Kulikov and Medvedev, 2017). The significant wave heights in the archipelago, again, show a clear tendency to saturate (Leijala et al., 2018), and are therefore not modelled well simply by using some commonly used distribution type, such as the Weibull distribution (e.g. Battjes, 1972; Mathisen and Bitner-Gregersen, 1990). We chose to extend the distributions to high (low) extreme values by extrapolating with two-parameter exponential functions $F = e^{-\lambda(x-x_0)}$ fitted to the tails of the CDFs and CCDFs (probability levels below 0.005) tail of the CCDFs (CDFs) at exceedance frequencies below 44 h yr^{-1} , following e.g. Leijala et al. (2018). This method was applied consistently to the sea level, significant wave height (only high tail), and total water level data. The PDFs were obtained by numerically differentiating the CDFs.

3 Results

3.1 Correlation

The simultaneous hourly sea levels and significant wave heights ~~show an apparent correlation~~ (Fig. 3). ~~The~~ indicate some positive tail dependence – high sea levels co-occurring with high waves – ~~is evident~~ both in the observed and simulated data.

5 Though high waves also occur with moderate or even low sea levels, and high sea levels are not necessarily accompanied by high waves either. The individual maxima ~~, however,~~ did not occur simultaneously. During the highest measured sea level (1.69 m) on 09 Jan 2005, the simulated wave height was a relatively modest 0.87 m. The highest observed wave height was 1.47 m on 07 Dec 2017, while the simulations gave 2.25 m on 23 Dec 2004. On those occasions, the sea levels were +0.73 m and +0.94 m, respectively: high but not extreme.

10 The variations in both parameters are largest in winter (DJF; Fig. 4) and smallest in summer (JJA), when the wave height did not exceed 1.5 m and the sea level was between -0.3 m and +1.0 m. The positive tail dependence can be seen in most of the seasonal data also.

The hypothetical no-ice data (type N) show situations with low sea level and wave heights ranging from 0 to 1 m which would have occurred during the ice-covered period, especially in DJF (Figs. 3 and 4). In MAM, also many high-sea-level and
15 ~~hypothetically high-wave~~ hypothetically high-wave situations occurred during the ice-covered time.

As a measure of the correlation, we used the Kendall's tau coefficient (τ). It measures rank correlation: the similarity of the orderings of the data when ranked by each of the quantities. Thus, no assumption of a linear relationship between the variables is made. The sea level correlates stronger with the observed wave heights than the simulated wave heights from the same time period (the measurement seasons on 2016–2019) on all seasons except DJF (Table 2). The observed wave data in DJF are very
20 sparse (Fig. 4a), practically only consisting of 15 days of observations in December 2017 and 10 days in December 2019, and thus the high correlation ($\tau = 0.3$) should not be considered representative. Likewise, the observations for MAM only represent late April and May, as the wave buoy was deployed earliest on 18 Apr and latest on 03 May. Of the different seasons, autumn (SON) shows the lowest correlation in all data sets.

Table 2. Kendall rank correlation coefficients (τ) between the observed (Obs.) and simulated (Sim.) significant wave heights and sea levels on four seasons: winter (DJF), spring (MAM), summer (JJA) and autumn (SON). The data set "Sim. M" includes the simulated significant wave heights from the same time periods as the data set "Obs. M" contains observations, thus being a subset of "Sim. F" of the years 2016–2019.

Data set	Years	All	DJF	MAM	JJA	SON
Obs. M	2016–2019	0.195	0.302	0.307	0.162	0.054
Sim. M	2016–2019	0.136	0.324	0.116	0.149	0.011
Sim. F	1992–2019	0.160	0.110	0.133	0.172	0.071
Sim. I	1992–2019	0.162	0.223	0.129	0.172	0.071
Sim. N	1992–2019	0.152	0.140	0.113	0.172	0.071

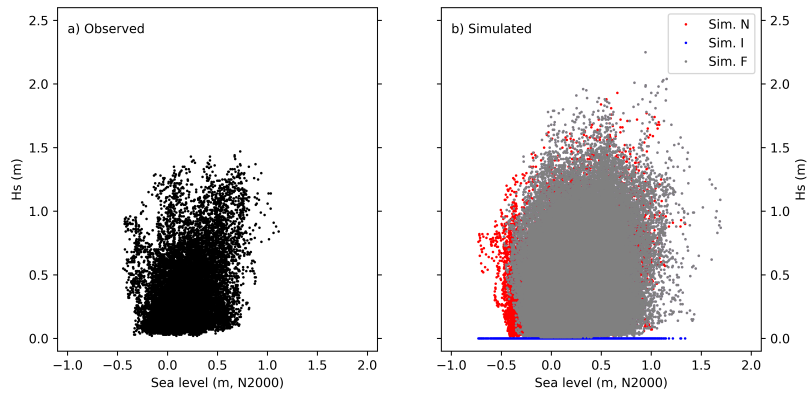


Figure 3. Scatter plot of significant wave heights vs. sea level: a) observed wave heights from 2016–2019 and b) simulated wave heights from 1992–2019, data sets F (gray), I (blue), and N (red). Note that every data point of the set F (ice-free time) is also included in sets I (wave height set to zero during ice-covered time) and N (hypothetical no-ice wave heights).

The different ways of handling the ice time in the 28-year data sets (F, I, N) do not generally result in large differences in the correlation, the only exception being DJF where the data set I shows clearly higher correlation than data sets F or N. There is a tendency of lower sea levels during the ice-covered period (the blue points with $H_s = 0$ in Fig. 4a) which likely enhances the correlation.

- 5 The correlation clearly depends on wind direction measured at Harmaja (Fig. 5, nautical convention for wind direction). The strongest positive correlation occurs with southwesterly winds ($240\text{--}260^\circ$), while northeasterly winds ($20\text{--}50^\circ$) result in zero or negative correlation. The behaviour is qualitatively similar in both the observed and simulated wave heights, and with all the data sets considered (F, I and N; results for data sets I and N shown in Appendix B).

- 10 ~~We analysed the correlation at different time scales by calculating the cross spectrum of the sea level variations and observed wave heights (Fig. ??). The spectra were calculated separately for each year 2016–2019, and Pearson correlations (r) for the frequency bins were determined by normalizing the co-spectra with the square roots of the individual power density spectra. Both the significant wave height and the sea level spectra showed a peak at the one day mark. Compared to the waves, the sea level variations weaker for sub-day times scales relative to multi-week time scales (Fig. ??a). The correlation was strongest ($r \approx 0.4$) for time scales between one and three days, with variation shorter than one day being completely de-correlated. There~~
- 15 ~~was a weak correlation ($r = 0.2$) for time scales longer than a week, but multi-month variations were not captured by the ca. 8 month time series after the applied Blackman-Harris window tapering and smoothing of the spectra.~~

~~Power density spectra (a), covariance spectra (b), and correlation spectra (c) of the measured significant wave height at Suomenlinna (2016–2019) and the coinciding sea level variations.~~

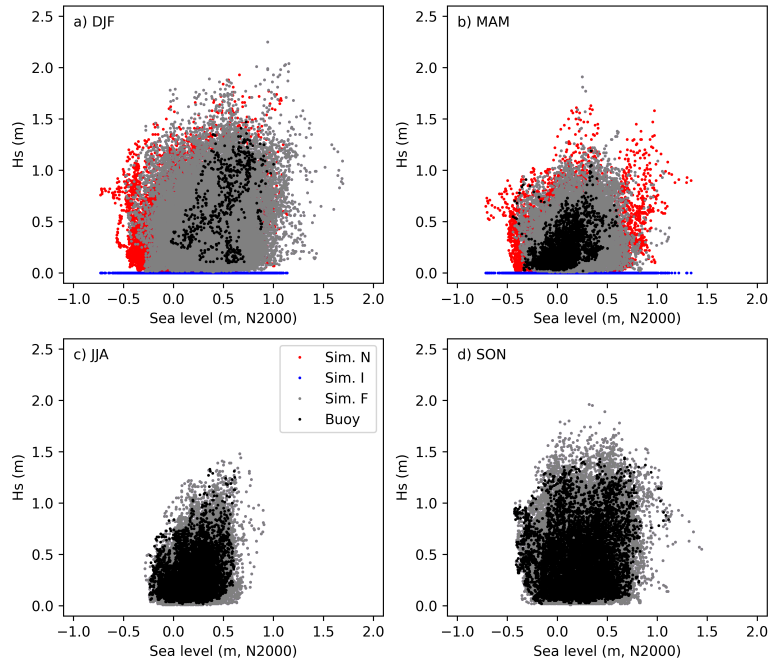


Figure 4. Scatter plots of a) winter, b) spring, c) summer, and d) autumn events. Black: observed wave heights from 2016–2019. Other colors: simulated wave heights from 1992–2019, ice types F (gray), I (blue), and N (red).

3.2 Probability distributions

The CCDF of sea level from 2016–2019 shows lower high tail than the CCDF from the entire period 1992–2019 (Fig. 6a). The 2016–2019 distribution is also on the lower limit of the ensemble of the seven different four-year distributions. The period 2016–2019 had less high sea levels than most of the four-year periods, having also the lowest four-year maximum (1.11 m) of all these periods. The distribution from 2004–2007 has a distinct tail with sea levels exceeding 1.45 m, while the maxima of
5 all the other periods are below this. All these high values resulted from the exceptional storm Gudrun on 09 Jan 2005, when the sea level at Helsinki stayed above 1.45 m for 13 hours from 01 to 13 UTC.

The shape of the CCDF obtained from the observed wave heights differs from those obtained from the simulated wave heights (Fig. 6b), the ~~probability of exceedance~~ exceedance frequency decreasing more rapidly with increasing wave height in the observed CCDF than in the simulated ones. This is in accordance with the parametric wave model validation (Fig. 2d)
10 which showed an overestimation of highest significant wave heights.

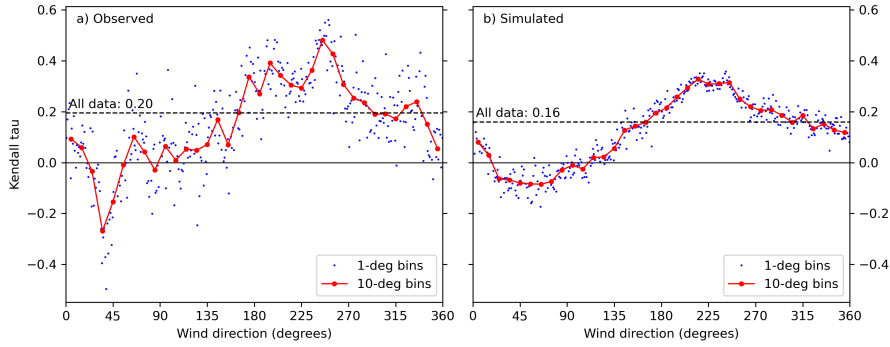


Figure 5. The Kendall correlation coefficients (τ) between significant wave height and sea level for different wind directions. The blue dots show correlation in 1-degree direction bins, and the red dots in 10-degree bins. The significant wave heights from buoy observations 2016–2019 (left) and simulated data set F 1992–2019 (right) are shown. The direction given is the direction from where the wind blows ([nautical convention](#)), observed at Harmaja weather station. The correlation coefficients for all data ($\tau = 0.20$ and 0.16 ; [Table 2](#)) are shown as horizontal lines.

The CCDFs of z_{max} calculated by summing the observed sea levels and observed or simulated wave heights according to Eq. (1), and extrapolating with exponential functions, show similar behaviour at the high tail (Fig. 6c): the distribution based on observed wave heights has lower tail than any of those based on simulated wave heights. The distributions of the sum of z_{still} and H_s obtained by assuming the two variables independent, according to Eq. (2) (Fig. 6d) give lower probabilities for high sea levels than the distributions ~~calculated from the sum of the observed sea levels and the observed/simulated wave heights~~ (of Fig. 6c). At the ~~probability level $1.14 \cdot 10^{-6}$, which corresponds to one hour per 100 years~~ [exceedance frequency of 0.1 events/year](#), the difference in the 4-year distributions ranges from ~~0.14 m to 1.24~~ [0.12 m to 0.96 m](#), and at ~~the level $1.14 \cdot 10^{-7}$ (one hour per 1000 years)~~ [from 0.16 m to 1.52](#) [0.01 events/year from 0.14 m to 1.24 m](#). The distributions based on the observed buoy data 2016–2019 differ by ~~0.36 m (10.30 m (0.1 events/100) and 0.42 m (1 year) and 0.36 m (0.01 events/1000 year)~~, and the distribution based on the [entire 28-year simulation](#) by ~~0.69 m (10.55 m (0.1 events/100) and 0.84 m (1 year) and 0.69 m (0.01 events/1000 year)~~.

The CCDFs based on data sets F, I and N show only minor differences (Fig. 6 for F, others in Appendix B). This indicates that the hypothetical wave and sea level behaviour during the ice-covered time does not differ from that during the open water period. The amount of ice days, however, is small compared to the length of the study period: 28 days (1.9 %) in 2016–2019 and 1615 days (16 %) in 1992–2019. Thus, it is expected that they do not significantly alter the results.

3.3 Copula-based distributions

Table 3 shows the parameters of ~~different Archimedean~~ [the different](#) copulas fitted to the sea levels and significant wave heights. In Fig. 7, CCDFs obtained from these copulas and the marginal distributions are compared with the observed CCDF and the CCDF obtained by assuming the two variables independent. In accordance with the above results, the observed CCDF shows

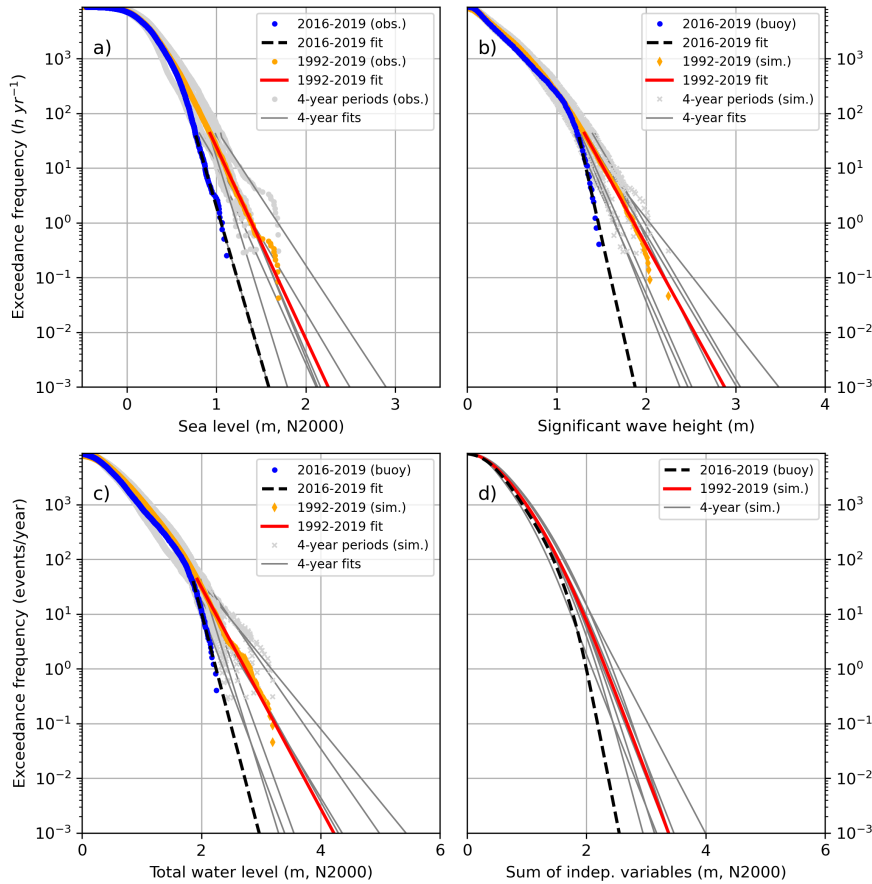


Figure 6. The CCDFs of a) observed hourly sea levels, b) observed/simulated significant wave heights, c) total water level as their sum and d) total water level calculated as a sum of two independent variables. The distributions shown are those for the data set F (ice-free season). The distributions were extrapolated with exponential functions below the probability-level-0.005-exceedance frequency of 44 h yr⁻¹. The seven consecutive 4-year periods shown separately for observed sea levels and simulated waves are 1992–1995 to 2016–2019.

higher probabilities of high total water levels than the independent case (~~here represented by the independence copula, results for which are identical to the results obtained by the convolution method, Eq. 2). Frank and Clayton copulas behave only marginally better than~~

5 ~~The copulas are divided into two distinct groups. The Clayton, Frank and Plackett copulas remain close to the independent case, apparently not being able to reproduce. On the other hand, Tawn, Gumbel, t-EV, Galambos and Hüsler-Reiss copulas capture more of the effect of correlation on the CCDF. The Gumbel copula is able to reproduce the observed CCDF on the more common cases, down to probability-level dependence on the probability distribution, giving higher probabilities for high z_{max} . The Normal copula falls between these two groups. This behaviour is confirmed by the Cramér-von Mises statistics (Table 3), where smaller S_n values correspond to better fit. For the latter group $S_n < 1$, while in the first group S_n varies from 1.22 to 3.97.~~

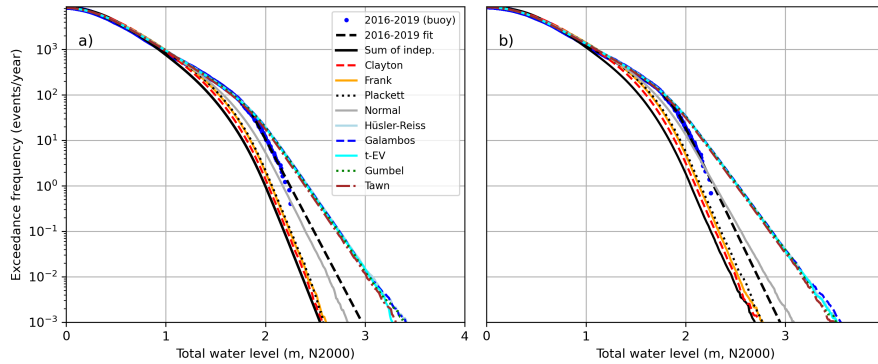


Figure 7. The observation-based CCDF of total water level in 2016–2019 ("buoy" + "fit"), the CCDF calculated assuming the variables independent ("Sum of indep."), as well as CCDFs calculated by taking 10^8 random samples based on the ~~three Archimedean~~ ~~nine~~ different copulas ~~and the independence copula~~ combined with the observation-based marginal distributions for a) all data and b) situations with southwesterly wind (160° – 340°).

The Normal copula, again, falls between these groups with $S_n = 1.17$. Note that even if the tail of the Normal copula is closer to the observations in Fig. 7 than the five copulas with smaller S_n , those five copulas more closely follow the observations above 10^{-2} , but even it fails to reproduce the downward bending of the tail on lower probabilities. The Kolmogorov-Smirnov test statistic confirms this, being lowest for the Gumbel copula-based distribution events/year, where most of the mass of the distribution is, leading to a better fit.

We tested the effect of wind direction on the copula results by doing the copula analysis separately for two subsets of the data: situations with southwesterly wind (160° – 340° , Fig. 7b) and northeasterly wind (340° – 160° , not shown). The results for the southwesterly-wind subset are qualitatively similar to those including all data: copulas are divided into two groups. The stronger correlation ($\tau = 0.269$) results in somewhat higher probabilities of high total water levels in the distributions. In the northeasterly-wind case, on the other hand, the non-existent correlation ($\tau = -0.012$) leads to the copula analysis being somewhat pointless, as all the copulas end up close to the independent case.

To further illustrate the differences in bivariate distributions based on different copulas, we simulated an ensemble of 21 546 samples from each, these being of the same size as the observed data set (Fig. 8). It is visually apparent that Gumbel copula is the only one which reproduces the ~~The copulas with $S_n < 1$ (Tawn, Gumbel, t-EV, Galambos and Hüsler-Reiss) tend to show a positive tail dependence of the observed scatter:~~ the slight bending of the scatter cloud into a tail on the upper right corner. The Frank and Clayton copulas copulas with $S_n > 1$ do not show such a tail; instead, the Clayton copula shows a negative tail in the lower left corner which is stronger than in the observations. In the independent case, no tails present as expected an apparent positive tail.

Table 3. Fitted parameters of ~~three-nine~~ different ~~types of Archimedean~~ copulas for sea levels and significant wave heights from buoy observations (~~Obs.~~) and ~~simulated data (Sim.)~~ for 2016–2019 ~~with different ice statistics.~~

Hs type Ice type τ-N Gumbel-θ Copula	Frank-θ Parameters	Clayton-θ Cramér-von Mises statistic S_n
Obs. M-Tawn	0.195-$\theta = 0.523$	21546-0.558
Gumbel	$\theta = 1.242$	1.812-0.485-0.588
Sim. F-0.148-31269-1.174-t-EV	1.359-$\rho = 0.498$, $df = 4$	0.348-0.591
Sim. Galambos	1-$\theta = 0.498$	0.148-0.622
Hüsler-Reiss	31789-$\theta = 0.862$	1.174-0.643
Normal	1.358-$\rho = 0.302$	0.348-1.168
Sim. Plackett	N-$\theta = 2.422$	0.150-1.229
Frank	31789-$\theta = 1.812$	1.176-1.305
Clayton	1.372-$\theta = 0.485$	0.352-3.972

4 Discussion

As the wave conditions in the archipelago ~~differ markedly~~ markedly differ from those on the open sea, a multi-year time series of wave data from a coastal location such as Suomenlinna provides an excellent material for studies. ~~At the time of this study, measurements from four ice-free seasons were available, but we expect the time series to continue.~~ As more data accumulate,

5 it will provide more comprehensive knowledge on the local wave behaviour.

We compensated for the shortness of the wave buoy time series by using 28 years of simulated wave data. The lightweight parametric wave model is considerably faster to run than high-resolution numerical wave models. Nevertheless, the bias and RMSE of the simulations were comparable. ~~The discrepancy of the model results and observations in the highest significant wave heights, however, naturally affects any estimates of the probabilities of extremely high total water levels~~

10 The validation suggested that the highest wave heights are overestimated in the simulations. The attenuation of longer waves through bottom processes is indirectly accounted for in the model through the calibration against measurements. Nonetheless, this calibration might not hold for even harsher weather conditions and even longer waves. While the simulations offer a good tool for assessing the general dependence between the wave height and sea level variations, they should not be used as is for analyzing extreme values. If the wave simulations of the parametric model are to be used for extreme conditions,
 15 the wave-bottom interactions need to be accounted for in a more explicit manner, and such improved model needs to be re-validated.

One of the advantages of a wave model is ~~also~~ its ability to simulate the wave conditions during ice-covered periods, or periods when there is a risk of freezing and the wave buoy cannot be kept ~~on-in the~~ sea. This extends the time series and provides an opportunity to analyse "what would happen if there was no ice?" Such question is relevant when we consider the
 20 conditions in the GoF in a warmer future climate, for instance. Our results did not indicate that the wave or sea level conditions, or the correlation of these, would markedly differ from those occurring during the ice-free period in the present climate.

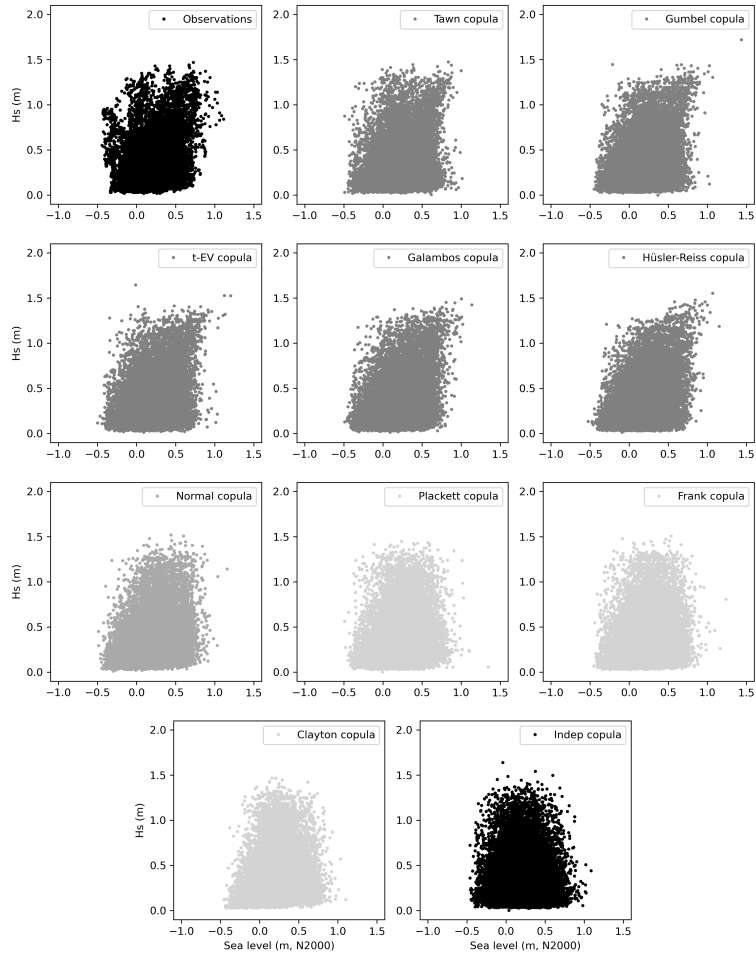


Figure 8. Scatter plots of the observed sea level (z_{still}) and significant wave height (H_s) in 2016–2019 (top left), and scatters of 21 546 random points (equalling the count of observations) sampled from the bivariate distributions based on ~~three Archimedean~~ the nine different copulas and the independence copula.

The wave conditions vary significantly among 4-year periods (Fig. 6). ~~E.g. the 4-year maximum significant wave height varied from 1.74 m to 2.25 m; a scatter of more than 0.5 m. The sea levels show a comparable variation, the 4-year maxima ranging from 1.11 to 1.69 m. Especially, it is noteworthy that the observational period on which this study was based~~ The

observational period of this study (2016–2019) ~~, was relatively peaceful when considering sea level variations or waves in the GoF. The was relatively calm: the~~ 4-year maximum sea level (1.11 m) was lowest among the seven consecutive 4-year sets, while the maximum simulated significant wave height (1.89 m) ranked fourth. To obtain reliable estimates for probabilities of extreme sea levels on the Finnish coast, at least 30 years of data are generally used (e.g. Pellikka et al., 2018; Kahma et al., 2014). Our results obtained from 4-year time series can only be considered a methodological analysis on the applicability of different methods for obtaining exceedance ~~probabilities-frequencies~~ of high total water levels. They do not provide any flooding risk estimates for practical applications.

Additionally, considering flooding on the coast, the relevant parameter is the wave run-up. While our total water level (Eq. 1) represents the elevation of the highest wave crest on the open sea, it is not applicable on the waves meeting the coastline. On a steep coast, a more appropriate estimate for the total water level would be $z_{still} + 2 \cdot H_s$ due to wave reflection (Leijala et al., 2018), while on a shallow coast the eventual run-up on the coastline is less than $z_{still} + H_s$.

The behaviour of the correlation with respect to wind direction (Fig. 5) is readily explained by the geography of the GoF. Southwesterly winds push water into the gulf and simultaneously raise high waves, leading to positive correlation. Northeasterly winds, on the other hand, push water out from the GoF while still raising waves, which shows up as a negative correlation. ~~It is possible that when~~ When the correlation is calculated from the entire data set, these two opposing situations with different mechanisms ~~somewhat likely~~ cancel each other and reduce the overall correlation. To more completely describe the effect of correlation on the distribution of the total water level, and thus the flooding risks, one option might be to use three variables instead of two: still water level, significant wave height and wind direction. We leave this as an option for future studies.

The sea level processes in the GoF act on different time scales, from the sub-daily storm surges to sub-weekly Baltic Sea internal variations, and weekly and longer-term changes in the total water volume. ~~These can be used to interpret the differences in the correlation for different time scales (Fig. ??). The sea level and wave responses to wind or pressure forcing have time delays of some hours: it takes time for the water to flow into the GoF, and wind-generated waves to develop. Different response times to the atmospheric forcing could explain the low correlation on sub-daily time scales.~~

~~From one to seven days~~ From one day to one week, the Baltic Sea mainly responds to wind and air pressure forcing like a closed basin. The response time of such variations, e.g. the transport of water between the GoF and the Baltic Proper in a seiche oscillation, is usually of the order of one day. In such time scale, the wind-generated waves have time to develop, and these phenomena co-occur.

The sea level variations in ~~7–90 days~~ time scale longer than a week usually involve changes in the Baltic Sea water volume. These are related to longer-term (up to 60 days; Särkkä et al., 2017) prevailing wind conditions, which control the in- or outflow of water in the Danish Straits. These should not have a direct relationship with the local waves. However, the longer-term weather conditions correlate with short-term weather phenomena too: e.g. prevailing westerly winds are related to more low-pressure systems with strong winds travelling over the Baltic Sea. ~~This shows up as a weaker, but still existing, and might thus contribute to the overall~~ correlation.

Our results demonstrated that the assumption of independence of sea level and significant wave height leads to an underestimation of the total water levels corresponding to certain ~~probabilities of exceedance. The probability level of $1.14 \cdot 10^{-6}$~~ exceedance

frequencies. ~~The exceedance frequency of 0.01 events/year~~, for instance, ~~corresponds to one hour in 100 years, which is a relevant level is relevant~~ for flooding risk considerations. The total water levels corresponding to this ~~probability frequency~~ were underestimated by 0.7 m in the 28-year data set, and 0.1–1.2 m in the 4-year data sets (the difference of the distributions in Figs. 6c and 6d). With lower ~~probabilities of exceedance exceedance frequencies~~, the underestimation generally increases.

5 This underlines the need to take the correlation into account when estimating probabilities of water level extremes on the coast. It turned out that a suitable copula function ~~—such as the Gumbel copula—~~is able to incorporate the effect of the correlation on the CCDF to some extent. ~~Further studies are needed to ascertain the applicability of the copula approach, and to find the optimal copula type.~~

5 Conclusions

10 Our main conclusions, related to the research questions presented in Sect. 1, are as follows.

The sea level variations and significant wave heights show a positive correlation in general. ~~The observed sea levels correlate both with the observed and the simulated wave heights. This correlation shows a dependence ($\tau = 0.20$). The correlation depends~~ on wind direction: southwesterly winds lead to strongest positive correlation (~~up to $\tau = 0.5$~~), while northeasterly winds lead to zero or negative correlation. Ice conditions did not have an apparent effect on the correlation: including hypothetical
15 no-ice wave heights during the ice season did not markedly alter the correlation, and neither did the setting of the wave height to zero during the ice-covered time.

The 4-year probability distributions of the total water level, calculated as a sum of the observed sea level and observed/simulated wave heights, give 0.1–1.2 m higher values for extremely high sea levels (~~one hour in 100 years 0.01 events/year~~) than the distributions calculated by assuming the two variables independent. This underlines the importance of accounting for the dependence
20 between the variables when calculating the probabilities of high total water levels e.g. for flooding risk estimates.

The probability distribution of the sum based on the copula approach is closer to the observed distribution than the distribution based on the independence assumption. Of the ~~three Archimedean nine~~ copulas studied, the ~~Gumbel copula proved the Tawn, Gumbel, t-EV, Galambos and Hüsler-Reiss copulas proved~~ most suitable for our data. ~~However, more studies are needed before we can say whether the copula approach is suitable for calculating the probability distributions, and which copula would
25 be optimal.~~

Code and data availability. The wave, wind and sea-level observations are available through FMI's open data portal. The code for the parametric wave model will be made available in a public repository upon the publication of the final paper.

Appendix A: Model scheme for wave evolution

The core idea of the wave model is based on known universal properties of different dimensionless parameters, namely the
30 energy, peak frequency, phase speed, fetch, and time:

$$\tilde{\varepsilon} = g^2 \varepsilon / U^4 \quad (\text{A1})$$

$$\tilde{f}_p = f_p U / g \quad (\text{A2})$$

$$\tilde{c}_p = c_p / U \quad (\text{A3})$$

$$\tilde{X} = gX / U^2 \quad (\text{A4})$$

$$5 \quad \tilde{t} = gt / U. \quad (\text{A5})$$

The wave growth in the model is quantified using the fetch limited wave growth relations of Kahma and Calhoun (1992):

$$\tilde{\varepsilon} = p_2 \tilde{X}^{p_1} \quad (\text{A6})$$

$$\tilde{f}_p = q_2 \tilde{X}^{q_1}. \quad (\text{A7})$$

The coefficients p_1, p_2, q_1, q_2 for the wave growth relations depend on the atmospheric stratification as presented by the
10 authors.

Instead of assuming that the waves are fetch limited at each time step, the model simulates a more realistic wave growth and decay by also accounting for the limitation of wind duration through the following propagation scheme:

1. Calculate the dimensionless fetch, $\tilde{X}_{\varepsilon^{i-1}}$, based on the energy from the *previous* time step, ε^{i-1} , and the *current* wind speed, U^i .

15 2. Calculate a (dimensionless) duration based on the wind, U^i , and Eq. A7 as:

$$\tilde{t}_0 = \int_0^{\tilde{X}_{\varepsilon^{i-1}}} \left(\frac{1}{2} \tilde{c}_p \right)^{-1} d\tilde{X} = \int_0^{\tilde{X}_{\varepsilon^{i-1}}} 4\pi \tilde{f}_p d\tilde{X} = \int_0^{\tilde{X}_{\varepsilon^{i-1}}} 4\pi q_2 \tilde{X}^{q_1} d\tilde{X} = \frac{4\pi q_2}{q_1 + 1} \tilde{X}_{\varepsilon^{i-1}}^{(q_1+1)}. \quad (\text{A8})$$

3. Determine an enhanced dimensionless time step as $\Delta\tilde{t} + \tilde{t}_0$, where Δt is the fixed time step of the model (e.g. 1 h).

4. As an inverse to step 2, calculate a new fetch \tilde{X}_t based on the enhanced duration $\Delta\tilde{t} + \tilde{t}_0$, and Eq. A7 as:

$$20 \quad \tilde{X}_t = \left(\frac{(\tilde{t} + \tilde{t}_0)(q_1 + 1)}{4\pi q_2} \right)^{1/(q_1+1)}. \quad (\text{A9})$$

5. Calculate the minimum dimensionless fetch for a fully developed sea (using the wind speed at 10 metre height) as:

$$\frac{U}{c_p} = \frac{2\pi f_p U}{g} = 2\pi \tilde{f}_p = 0.82 \iff \tilde{X}_{FD} = \left(\frac{0.82}{2\pi q_2} \right)^{1/q_1}. \quad (\text{A10})$$

6. Set the relevant fetch to $\tilde{X}^i = \min\{\tilde{X}_t, \tilde{X}_{FD}, \tilde{X}\}$, where \tilde{X} is the physical dimensionless fetch.

7. Calculate the new energy, ε^i , and peak frequency, f_p^i , using \tilde{X}^i , U^i , and Equations A6 and A7.

Appendix B: Supplementary figures

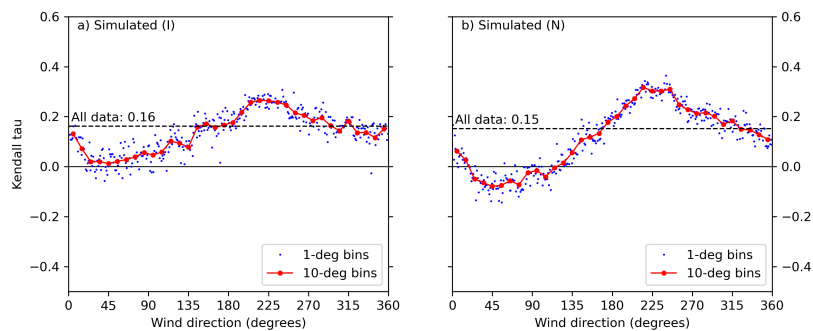


Figure B1. The Kendall correlation coefficients (τ) between significant wave height and sea level for different wind directions. The blue dots show correlation in 1-degree direction bins, and the red dots in 10-degree bins. The significant wave heights from simulated data sets I (left) and N (right) 1992–2019 are shown. The direction given is the direction from where the wind blows ([nautical convention](#)), observed at Harmaja weather station. The correlation coefficients for all data ($\tau = 0.16$ and 0.15) are shown as horizontal lines.

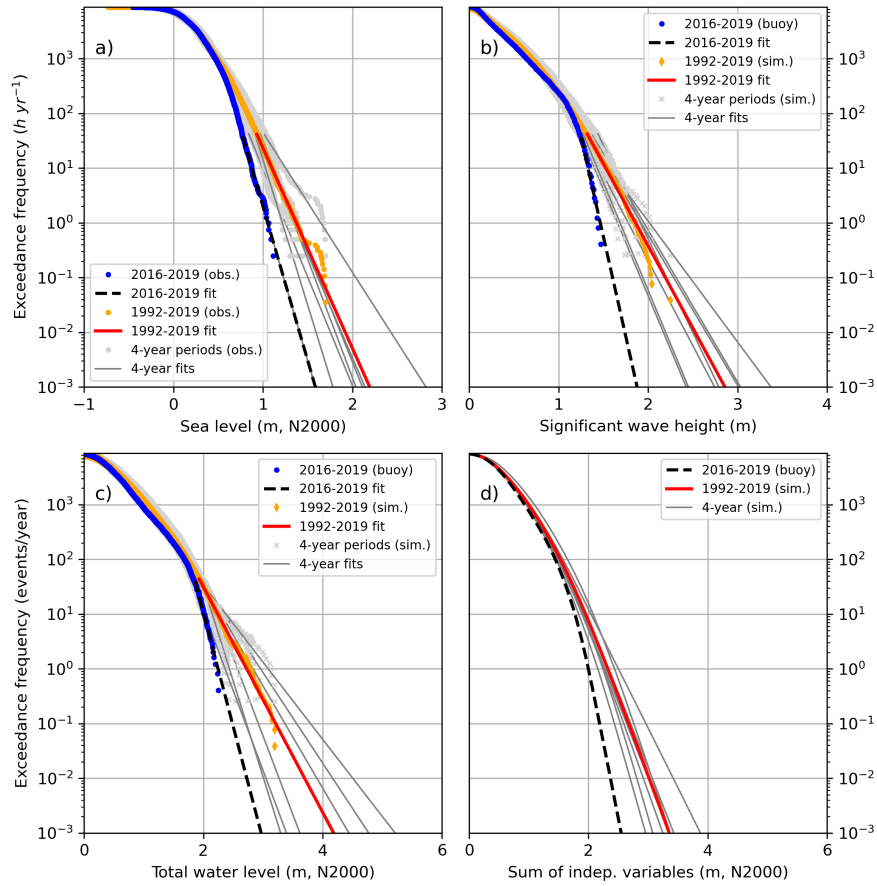


Figure B2. The CCDFs of a) observed hourly sea levels, b) observed/simulated significant wave heights, c) total water level as their sum and d) total water level calculated as a sum of two independent variables. The distributions shown are those for the data set N (hypothetical no-ice). The distributions were extrapolated with exponential functions below the probability level 0.005 exceedance frequency of 44 h yr⁻¹. The seven consecutive 4-year periods shown separately for observed sea levels and simulated waves are 1992–1995 to 2016–2019.

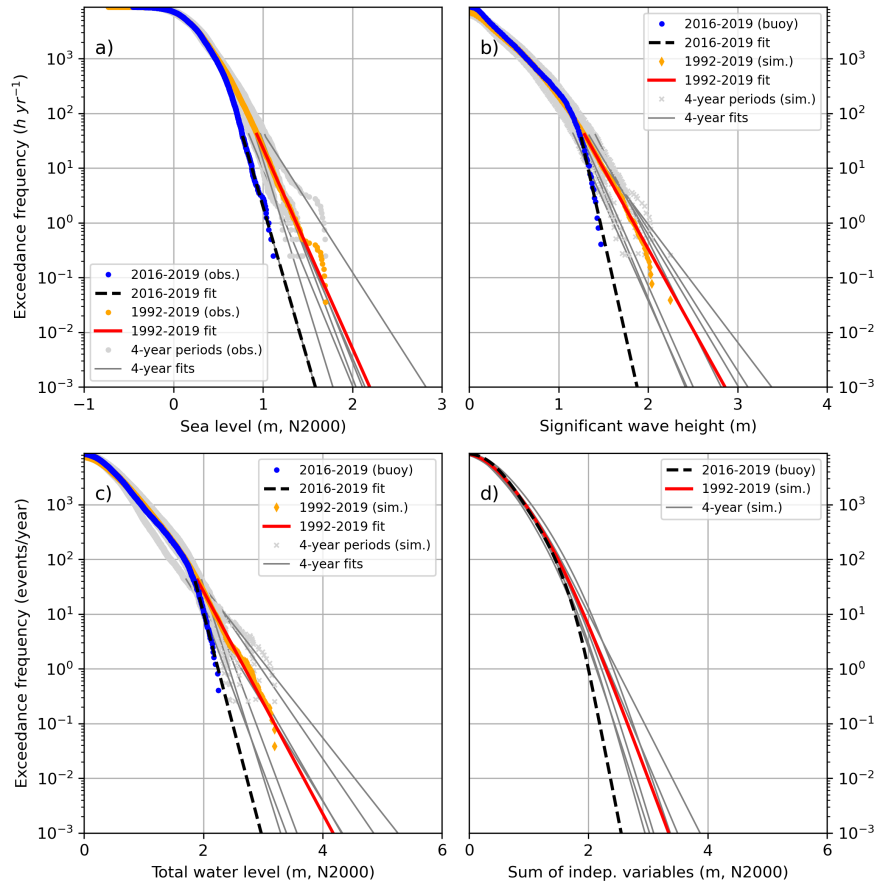


Figure B3. The CCDFs of a) observed hourly sea levels, b) observed/simulated significant wave heights, c) total water level as their sum and d) total water level calculated as a sum of two independent variables. The distributions shown are those for the data set I (ice time included). The distributions were extrapolated with exponential functions below the ~~probability level 0.005~~ exceedance frequency of 44 h yr^{-1} . The seven consecutive 4-year periods shown separately for observed sea levels and simulated waves are 1992–1995 to 2016–2019.

Author contributions. MJ calculated the correlations, probability distributions and copulas and wrote most of the paper; JVB programmed the coastal implementation of the parametric wave model, did the model runs and contributed to writing; JS started the work and wrote the first draft; UL contributed to the calculation of the probability distributions; KK originally developed the parametric wave model and proposed the idea of this study.

5 *Competing interests.* No competing interests are present.

Acknowledgements. This work was partly funded by the State Nuclear Waste Management Fund in Finland through the EXWE project (Extreme weather and nuclear power plants) of the SAFIR2018 programme (The Finnish Nuclear Power Plant Safety Research Programme 2015–2018; <http://safir2018.vtt.fi>). The work done by Pekka Alenius in providing the water temperature data for the LL7 monitoring site is greatly acknowledged.

References

- [Arns, A., Wahl, T., Haigh, I., Jensen, J., and Pattiaratchi, C.: Estimating extreme water level probabilities: A comparison of the direct methods and recommendations for best practise, *Coastal Engineering*, 81, 51–66, 2013.](#)
- 5 [Arns, A., Dangendorf, S., Jensen, J., Talke, S., Bender, J., and Pattiaratchi, C.: Sea-level rise induced amplification of coastal protection design heights, *Scientific Reports*, 7, 40 171, <https://doi.org/10.1038/srep40171>, 2017.](#)
- Battjes, J. A.: Long-term wave height distributions at seven stations around the British Isles, *Deutsche Hydrographische Zeitschrift*, 25, 179–189, <https://doi.org/10.1007/BF02312702>, 1972.
- Björkqvist, J.-V., Lukas, I., Alari, V., van Vledder, G. P., Hulst, S., Pettersson, H., Behrens, A., and Männik, A.: Comparing a 41-year model hindcast with decades of wave measurements from the Baltic Sea, *Ocean Engineering*, 152, 57–71, 10 <https://doi.org/10.1016/J.OCEANENG.2018.01.048>, 2018.
- Björkqvist, J.-V., Pettersson, H., and Kahma, K. K.: The wave spectrum in archipelagos, *Ocean Science*, pp. 1469–1487, <https://doi.org/10.5194/os-15-1469-2019>, <https://www.ocean-sci.net/15/1469/2019/>, 2019.
- Björkqvist, J.-V., Vähä-Piikkiö, O., Alari, V., Kuznetsova, A., and Tuomi, L.: WAM, SWAN and WAVEWATCH III in the Finnish archipelago – the effect of spectral performance on bulk wave parameters, *Journal of Operational Oceanography*, 13, 55–70, 15 <https://doi.org/10.1080/1755876X.2019.1633236>, 2020.
- Chini, N. and Stansby, P.: Extreme values of coastal wave overtopping accounting for climate change and sea level rise, *Coastal Eng.*, 65, 27–37, 2012.
- Datawell, B.: Datawell Waverider Reference Manual, Tech. rep., <http://www.datawell.nl/Support/Documentation/Manuals.aspx>, accessed: 28.2.2019, 2019.
- 20 Eelsalu, M., Soomere, T., Pindsoo, K., and Lagema, P.: Ensemble approach for projections of return periods of extreme water levels in Estonian waters, *Continental Shelf Research*, 91, 201–210, 2014.
- Genest, C. and Favre, A.-C.: Everything You Always Wanted to Know about Copula Modeling but Were Afraid to Ask, *Journal of Hydrologic Engineering*, 12, 347–368, [https://doi.org/10.1061/\(ASCE\)1084-0699\(2007\)12:4\(347\)](https://doi.org/10.1061/(ASCE)1084-0699(2007)12:4(347)), 2007.
- 25 [Genest, C., Rémillard, B., and Beaudoin, D.: Goodness-of-fit tests for copulas: A review and a power study, *Insurance: Mathematics and Economics*, 44, 199–213, <https://doi.org/https://doi.org/10.1016/j.insmatheco.2007.10.005>, <https://www.sciencedirect.com/science/article/pii/S0167668707001205>, 2009.](#)
- Hanson, H. and Larson, M.: Implications of extreme waves and water levels in the southern Baltic Sea, *Journal of Hydraulic Research*, 46, 292 – 302, 2008.
- 30 [Hofert, M. and Mächler, M.: Nested Archimedean Copulas Meet R: The nacopula Package, *Journal of Statistical Software*, 39, 1–20, <https://www.jstatsoft.org/v39/i09/>, 2011.](#)
- [Hofert, M., Kojadinovic, I., Maechler, M., and Yan, J.: copula: Multivariate Dependence with Copulas, <https://CRAN.R-project.org/package=copula>, *r package version 1.0-1*, 2020.](#)
- Hünicke, B., Zorita, E., Soomere, T., Madsen, K. S., Johansson, M., and Suursaar, Ü.: Recent Change—Sea Level and Wind Waves, in: Second Assessment of Climate Change for the Baltic Sea Basin, edited by The BACC II Author Team, chap. 9, pp. 155–185, Springer Cham Heidelberg New York Dordrecht London, 2015.
- 35 Johansson, M. M., Boman, H., Kahma, K. K., and Launiainen, J.: Trends in sea level variability in the Baltic Sea, *J. Marine Syst.*, 6, 159—179, 2001.

- Kahma, K. K. and Calkoen, C.: Reconciling discrepancies in the observed growth of wind-generated waves, *J. Phys. Oceanogr.*, 22, 1389–1405, 1992.
- Kahma, K. K. and Pettersson, H.: Wave growth in narrow fetch geometry, *The Global Atmosphere and Ocean System*, 2, 253–263, 1994.
- Kahma, K. K., Pellikka, H., Leijala, U., and Johansson, M. M.: Pitkän aikavälin tulvariskit ja alimmat suositeltavat rakentamiskorkeudet Suomen rannikolla [Long-term flooding risks and recommendations for minimum building elevations on the Finnish coast], [In Finnish with English summary], 2014.
- [Kojadinovic, I. and Yan, J.: Modeling Multivariate Distributions with Continuous Margins Using the copula R Package, *Journal of Statistical Software*, 34, 1–20, https://www.jstatsoft.org/v34/i09/, 2010.](https://www.jstatsoft.org/v34/i09/)
- Kudryavtseva, N., Räämet, A., and Soomere, T.: Coastal flooding: Joint probability of extreme water levels and waves along the Baltic Sea coast, *Journal of Coastal Research*, Special Issue No. 95, 1–5, <https://doi.org/10.2112/SI95-222.1>, 2020.
- Kulikov, E. A. and Medvedev, I. P.: Extreme Statistics of Storm Surges in the Baltic Sea, *Oceanology*, 57:6, 858–870, 2017.
- Leijala, U., Björkqvist, J.-V., Johansson, M. M., Pellikka, H., Laakso, L., and Kahma, K. K.: Combining probability distributions of sea level variations and wave run-up to evaluate coastal flooding risks, *Natural Hazards and Earth System Sciences*, 18, 2785–2799, <https://doi.org/10.5194/nhess-2017-438>, 2018.
- Leppäranta, M. and Myrberg, K.: *Physical Oceanography of the Baltic Sea*, Springer, 2009.
- Lisitzin, E.: On the reducing influence of sea ice on the piling-up of water due to wind stress, *Societas Scientiarum Fennica, Commentationes Physico-Mathematicae*, XX, 12pp., 1957.
- [Marcos, M., Rohmer, J., Vousedoukas, M. I., Mentaschi, L., Le Cozannet, G., and Amores, A.: Increased extreme coastal water levels due to the combined action of storm surges and wind waves, *Geophysical Research Letters*, 46, 4356–4364, https://doi.org/10.1029/2019GL082599, 2019.](https://doi.org/10.1029/2019GL082599)
- Masina, M., Lamberti, A., and Archetti, R.: Coastal flooding: A copula based approach for estimating the joint probability of water levels and waves, *Coastal Eng.*, 97, 37–52, 2015.
- Mathisen, J. and Bitner-Gregersen, E.: Joint distributions for significant wave height and wave zero-up-crossing period, *Applied Ocean Research*, 12, 93–103, [https://doi.org/10.1016/S0141-1187\(05\)80033-1](https://doi.org/10.1016/S0141-1187(05)80033-1), 1990.
- [Medvedev, I. P., Rabinovich, A. B., and Kulikov, E. A.: Tidal oscillations in the Baltic Sea, *Oceanology*, 53, 526–538, https://doi.org/10.1134/S0001437013050123, 2013.](https://doi.org/10.1134/S0001437013050123)
- Nelsen, R. B.: *An Introduction to Copulas*, Springer Series in Statistics, Springer, New York, USA, 2006.
- Pellikka, H., Leijala, U., Johansson, M. M., Leinonen, K., and Kahma, K. K.: Future probabilities of coastal floods in Finland, *Continental Shelf Research*, 157, 32 – 42, <https://doi.org/10.1016/j.csr.2018.02.006>, 2018.
- Pettersson, H. and Jönsson, A.: Wave climate in the northern Baltic Sea in 2004, <https://helcom.fi/media/documents/Wave-climate-in-the-northern-Baltic-Sea-in-2004.pdf>, online. 13.2.2021, 2005.
- Pettersson, H., Lindow, H., and Brüning, T.: Wave climate in the Baltic Sea 2012, <http://www.helcom.fi/baltic-sea-trends/environment-fact-sheets/>, online. 15.9.2017, 2013.
- Saaranen, V., Lehmuskoski, P., Rouhiainen, P., Takalo, M., Mäkinen, J., and Poutanen, M.: The new Finnish height reference N2000, in: Drewes, H. (ed.), *Geodetic Reference Frames: IAG Symposium Munich, Germany, 9-14 October 2006*, Springer, pp. 297–302, 2009.
- Särkkä, J., Kahma, K. K., Kämäräinen, M., Johansson, M. M., and Saku, S.: Simulated extreme sea levels at Helsinki, *Boreal Environment Research*, 22, 299–315, 2017.

- Soomere, T., Eelsalu, M., Kurkin, A., and Rybin, A.: Separation of the Baltic Sea water level into daily and multi-weekly components, *Continental Shelf Research*, 103, 23–32, 2015.
- Tuomi, L., Kahma, K. K., and Pettersson, H.: Wave hindcast statistics in the seasonally ice-covered Baltic Sea, *Boreal Environ. Res.*, 16(6), 451–472, 2011.
- 5 Vestøl, O., Ågren, J., Steffen, H., Kierulf, H., and Tarasov, L.: NKG2016LU: a new land uplift model for Fennoscandia and the Baltic Region, *Journal of Geodesy*, 93, 1759–1779, <https://doi.org/10.1007/s00190-019-01280-8>, <https://doi.org/10.1007/s00190-019-01280-8>, 2019.
- Wahl, T., Mudersbach, C., and Jensen, J.: Assessing the hydrodynamic boundary conditions for risk analyses in coastal areas: a multivariate statistical approach based on Copula functions, *Natural Hazards and Earth System Sciences*, 12, 495–510, 2012.
- [Wahl, T., Jain, S., Bender, J., Meyers, S. D., and Luther, M. E.: Increasing risk of compound flooding from storm surge and rainfall for major US cities, *Nature Climate Change*, 5, 1093—1097, <https://doi.org/10.1038/nclimate2736>, 2015.](#)
- 10 [Yan, J.: Enjoy the Joy of Copulas: With a Package copula, *Journal of Statistical Software*, 21, 1–21, <https://www.jstatsoft.org/v21/i04/>, 2007.](#)