

Sensitivity of simulating Typhoon Haiyan (2013) using WRF: the role of cumulus convection, surface flux parameterizations, spectral nudging, and initial and boundary conditions

5 Rafaela Jane Delfino^{1,2}, Gerry Bagtasa², Kevin Hodges¹, Pier Luigi Vidale¹

¹Department of Meteorology, University of Reading, Reading, United Kingdom

²Institute of Environmental Science and Meteorology, University of the Philippines-Diliman, Quezon City, Philippines

10 *Correspondence to:* Rafaela Jane Delfino (r.p.delfino@pgr.reading.ac.uk or rpdelfino@up.edu.ph)

Abstract. Typhoon (TY) Haiyan was one of the most intense and highly destructive tropical cyclones (TCs) to affect the Philippines. As such, it is regarded as a baseline for extreme TC hazards. Improving the simulation of such TCs will not only improve the forecasting of intense TCs but will also be essential in understanding the potential sensitivity of future intense TCs with climate change. In this study, we investigate the effects of model configuration in ~~downscaling~~ **simulating** TY Haiyan using the Weather Research Forecasting (WRF) Model. Sensitivity experiments were conducted by systematically altering the choice of cumulus schemes, surface flux options, and spectral nudging. In addition to using the European Centre for Medium-Range Weather Forecasts Re-analysis 5th Generation (ERA5) single high resolution realization as initial and boundary conditions, we also used four of the ten lower resolution ERA5 Data Assimilation System (EDA) ensemble members as initial and boundary conditions. Results indicate a high level of sensitivity to cumulus schemes, with a trade-off between using Kain-Fritsch and Tiedtke schemes that have not been mentioned in past studies of TCs in the Philippines. The Tiedtke scheme simulates the track better (with a lower mean Direct Positional Error (DPE) of 33 km), while the Kain-Fritsch scheme produces stronger intensities (by 15 hPa minimum sea level pressure). Spectral nudging also resulted in a reduction in the mean DPE by 20 km and varying the surface flux options resulted in the improvement of the simulated maximum sustained winds by up to 15 ms⁻¹. Simulations using the EDA members initial and boundary conditions revealed low sensitivity to the initial and boundary conditions, having less spread than the simulations using different parameterization schemes. We highlight the advantage of using an ensemble of cumulus parameterizations to take into account the uncertainty in the track and intensity of simulating intense tropical cyclones.

1 Introduction

30 As a country of 109 million people over more than 7,000 islands, the Philippines is considered one of the most natural hazard-prone countries in the world (Brucal et al., 2020) and is ranked in the top five of all countries in terms of exposure to climate-related risks (Eckstein et al., 2020). One of the most important hazards the Philippines is exposed to is tropical cyclones (TCs). TCs bring intense winds, extreme precipitation, and storm surges that affect a large portion of the Philippine population (Bagtasa, 2017; Lyon and Camargo, 2009). Due to its location in the western North Pacific Ocean, where TC formation is conducive all year, the Philippines is exposed to an average of 10 landfalling TCs annually (Cinco et al., 2016). Since 1990, TCs in the Philippines have resulted in up to half of the total losses from all natural disasters amounting to about USD 20 billion in damages (Brucal et al., 2020) and an annual average death toll of 885 with estimated accumulated deaths due to TCs of approximately 30,000 from 1980 to 2013 (Yonson et al. 2016). It is estimated that about 5 million people are affected annually or over 570,000 are affected on average per destructive TC (Brucal et al., 2020).

40

One of the strongest typhoons that made landfall in the Philippines in recent history is Typhoon (TY) Haiyan (locally named “Yolanda”), which is considered the second costliest Philippine TC since 1990 (EM-DAT, 2020) and one of the deadliest since the 1970s (Cinco et al., 2016; Lander et al., 2014; Lagmay et al., 2015). TY Haiyan was a category-5 super typhoon that claimed the lives of at least 7,300 people, most of them from drowning due to the devastating 5 to 7-meter-high storm surge and coastal inundation (Soria et al., 2016). It also affected more than 16 million people (NDRRMC, 2014) and caused an estimated USD 5–15 billion worth of damage particularly in agriculture and critical infrastructure (Brucal et al., 2020). Comiso et al. (2015) found that TY Haiyan coincided with the warmest sea surface temperature (SST) observed over the Pacific warm pool region which may have contributed to its intense nature. This relation between intense TCs and warmer tropical SSTs, has also been found in the Atlantic (Emanuel 2005), and suggests that continuous warming may lead to more intense TCs in the future. Consistently, an increasing trend in intense TC frequency affecting the Philippines since the 1970’s has been observed (Cinco et al., 2016; Comiso et al., 2015). TC rainfall is also expected to increase in the future as TCs intensify (Intergovernmental Panel on Climate Change, 2021; Patricola and Wehner 2018), potentially increasing the risk of flooding and landslides. Given TY Haiyan’s intensity and impacts, it is regarded as a benchmark for an intense and destructive TC. Hence, it is important to test how well it can be simulated in current models in the present climate and ~~what are the TC sensitivities to model formulation. Improving the representation of intense TCs like Haiyan in regional climate models (RCMs) such as the Weather Research and Forecasting (WRF) model (Skamarock et al. 2008) is essential for simulations of such TCs in different future climate change scenarios to provide credible impact assessments.~~

~~While global climate models (GCMs) are very useful for looking at the changes in TC activity under different climate change scenarios (e.g. frequency, intensity, genesis from a climatological and global/regional perspective) (Gallo et al., 2019; Villafuerte et al., 2021, Patricola and Wehner 2018) and some advances have been made in the past few decades in the use of global convection-permitting models (Judt et al., 2021), previous studies still demonstrate the need for (convection-resolving/convection-permitting) limited area models (LAM) to better simulate the processes relevant to the TC formation and development as well as their properties, particularly the most intense ones (e.g. Walsh et al., 2013). In consideration of the computational cost in resolving important TC processes, the use of LAMs is a valuable and complementary approach to using GCMs in investigating the potential changes in TCs in the future. One such LAM is the Weather Research and Forecasting (WRF) Model (Skamarock et al. 2008), developed by the National Center for Atmospheric Research (NCAR), which is used as both numerical weather prediction LAM and regional climate model (RCM). WRF is currently used for operational forecasting in the Philippines by the country’s meteorological office - Philippine Atmospheric, Geophysical and Astronomical Services Administration (PAGASA) (Flores 2019; Aragon and Pura 2016) and also used in hindcast simulation and sensitivity studies of TC track and intensity (Spencer and Shaw, 2012; Islam et al., 2014; Lee and Wu, 2018) and associated rainfall (Cruz and Narisma, 2016). It has also been used as an RCM to simulate TC activity in the WNP basin (Shen et al., 2017) and several TCs in the North Atlantic over a 13-year period in a convection-permitting model under current and future climate conditions (Gutmann et al., 2018). It has also been used as LAM in simulating specific TC cases with future GCM forcings as initial and lateral boundary conditions in other TC basins (Lackmann 2015; Parker et al., 2018; Patricola and Wehner, 2018).~~

~~WRF has also gained considerable popularity in recent years and has been used for TC simulations (Islam et al., 2015). Efforts are being made to identify the optimum parameterization schemes and to customize the WRF-ARW model for TC hindcast simulations. For instance, past NWP LAM studies of western North Pacific TCs, including TY Haiyan, show the cumulus (CU) convection scheme as having the most influence on its intensity over other model parameters such as the planetary boundary layer (PBL) and/or microphysics schemes (Islam et al. 2014; Di et al. 2019). In particular, the Kain-Fritsch (KF) (Kain, 2004) cumulus convection scheme has been found to produce the best TC tracks and wind intensity estimates (Zhang et al., 2011; Spencer and Shaw, 2012; Prater and Evans, 2002; Mohandas and Ashrit, 2012). Furthermore, the often-selected~~

85 KF scheme was shown to be also sensitive to model resolution (Li et al., 2018). However, the use of the KF scheme has also shown certain limitations. A study by Torn and Davis (2012) found that the KF scheme produces larger TC track biases than the Tiedtke (TK) cumulus convection scheme.

90 Other than the said parameterization schemes, improvements in simulations of TC intensity have also been found to be influenced by the surface flux options (Kueh et al., 2019). Some other studies related to the sensitivity of WRF model choices can be found i.e. spectral nudging (Moon et al., 2018) and initial and boundary conditions (Islam et al., 2015). Previous work has explored the sensitivity of TC simulations in WRF to initial condition datasets i.e. from different reanalysis data (e.g. Mohanty et al., 2010) and initial condition time (e.g. Mohanty et al., 2010; Shepherd and Walsh, 2016). Shepherd and Walsh (2016) showed that trajectories can be sensitive to initial condition time, however they are more sensitive to the CU parameterization. Mohanty et al. (2010) demonstrated that simulated intensity and vorticity maxima are sensitive to the chosen
95 initial and boundary condition data set. Alternatively, nudging could be applied to the model until TC genesis, which would constrain the model to be more consistent with observations. Mori et al. (2014) applied spectral nudging in several runs in its hindcast WRF simulations for Typhoon Haiyan and found that when applied, there is some bias in the simulated track primarily at landfall, but simulated reasonable intensities. Kueh et al. (2019) also performed several experiments with and without nudging at 3km resolution and found that nudging produced smaller track errors than the simulations without. They also found
100 small differences in the TC intensity and structure in the experiments with and without nudging. Cha et al. (2011) suggested that continued spectral nudging can suppress TC intensification. Shen et al. (2017), although using WRF as an RCM in investigating the effect of spectral nudging in inter-annual and seasonal variability of TC activity in East Asia, suggested that the nudging has an impact in reproducing TC activity. However, there are issues concerning the impact of nudging strength on model internal variability (Glisan et al., 2013). In this paper, we revisit the hindcast simulation of TY Haiyan using WRF as NWP LAM and assess its sensitivity to model formulation and the driving initial and boundary conditions, in preparation for pseudo-global warming and CMIP6 climate projection experiment studies. This study builds on the work of Islam et al. (2015) who assessed the effects of different combinations of Planetary Boundary Layer, microphysics and cumulus convection scheme using WRF but found substantial underestimation of TY Haiyan's intensity regardless of the sensitivity to physics parameterization; Li et al. (2018) who used WRF to look at the effects of the cumulus parameterization at different resolutions
110 (9-2 km) and found that the most effective resolution to simulate TY Haiyan with no cumulus parameterization or a revised KF scheme is at 2-km and 4-km resolution, respectively; and that of Kueh et al. (2019) who looked at the influence of the different surface flux options in simulating TY Haiyan's intensity using one cumulus convection scheme and found that a better representation of surface flux formulas improved the simulated intensity in WRF. Here, we investigate the effects of the different combinations of model cumulus convection schemes, spectral nudging and surface flux options on the TY Haiyan track, intensity and rainfall hindcast simulations.

120 Improving the representation of intense TCs like Haiyan in LAMs such as WRF is also essential for simulations of such TCs in different future climate change scenarios to provide credible impact assessments and useful for simulating TC cases under different climate conditions e.g. pre-industrial or future (Parker et al., 2018; Patricola and Wehner, 2018; Chen et al., 2020). From this study the best combination is determined which will then be used for investigating the effects of future climate change on TY Haiyan and other TC cases. The associated storm surge of TY Haiyan (Mori et al. (2014), Nakamura et al. (2017) and Takayabu et al. (2015) is not considered here. Model parameterization scheme sensitivity studies that assess the simulation of TCs will also provide guidance to future TC modelling studies (Villafuerte et al., 2021).

125 is (NCAR) and While global climate models (GCMs) are very useful for looking at the changes in TC activity under different climate change scenarios (e.g. frequency, intensity, genesis from a climatological and global/regional perspective) (Gallo et

al., 2019; Villafuerte et al., 2021, Patricola and Wehner 2018) and some advances have been made in the past few decades in the use of global convection-permitting models (Judt et al., 2021), previous studies still demonstrate the need for (convection-resolving/convection-permitting) RCM simulations to better simulate the processes relevant to the TC formation and development as well as their properties, particularly the most intense ones (e.g. Walsh et al., 2013). In consideration of the computational cost in resolving important TC processes, the use of RCMs is a valuable and complementary approach to using GCMs in investigating the potential changes in TCs in the future. One such RCM is the WRF Model (Skamarock et al. 2008) which is currently used for operational forecasting in the Philippines by the country's meteorological office—Philippine Atmospheric, Geophysical and Astronomical Services Administration (PAGASA) (Flores 2019; Aragon and Pura 2016) and also used in studies projecting future changes in temperature and rainfall over the Philippines (Cruz et al., 2016; Daron et al., 2018; Tolentino and Bagtas, 2021).

A consensus of past modelling studies of western North Pacific TCs, including TY Haiyan, show the cumulus convection scheme as having the most influence on its intensity over other model parameters such as the planetary boundary layer (PBL) and/or microphysics schemes (Islam et al. 2014; Di et al. 2019). In particular, the Kain-Fritsch (KF) (Kain, 2004) cumulus convection scheme has been found to produce the best TC tracks and wind intensity estimates (Shen et al., 2019; Zhang et al., 2011; Spencer and Shaw, 2012; Prater and Evans, 2002; Mohandas and Ashrit, 2012). Furthermore, the often-selected KF scheme was shown to be also sensitive to model resolution (Li et al., 2018). However, the use of the KF scheme has also shown certain limitations. A study by Torn and Davis (2012) found that the KF scheme produces larger TC track biases than the Tiedtke (TK) cumulus convection scheme. Other than the said parameterization schemes, improvements in simulations of TC intensity are also found to be influenced by the surface flux options (Kueh et al., 2019).

have been

In this paper, we revisit the simulation of TY Haiyan using downscaling with WRF and assess its sensitivity to model formulation and the driving initial and boundary conditions in preparation for pseudo-global warming and CMIP6 climate projection experiment studies. This study builds on the work of Islam et al. (2015) who assessed the effects of different combinations of Planetary Boundary Layer, microphysics and cumulus convection scheme using WRF but found substantial underestimation of TY Haiyan's intensity regardless of the sensitivity to physics parameterization; Li et al. (2018) who used WRF to look at the effects of the cumulus parameterization at different resolutions (9-2 km) and found that the most effective resolution to simulate TY Haiyan with no cumulus parameterization or a revised KF scheme is at 2 km and 4 km resolution, respectively; and that of Kueh et al. (2019) who looked at the influence of the different surface flux options in simulating TY Haiyan's intensity using one cumulus convection scheme and found that a better representation of surface flux formulas improved the simulated intensity in WRF. Here, we investigate the effects of the different combinations of model cumulus convection schemes, spectral nudging and surface flux options on the TY Haiyan track, intensity and rainfall hindcast simulations. Improving the representation of intense TCs like Haiyan in regional climate models (RCMs) such as the Weather Research and Forecasting (WRF) model (Skamarock et al. 2008) is essential for simulations of such TCs in different future climate change scenarios to provide credible impact assessments. From this study the best combination is determined which will then be used for investigating the effects of future climate change on TY Haiyan and other TC cases. The associated storm surge of TY Haiyan (Mori et al. (2014), Nakamura et al. (2017) and Takayabu et al. (2015) is not considered here. Model parameterization scheme sensitivity studies that assess the simulation of TCs provide guidance to future TC modelling studies (Villafuerte et al., 2021). This study also seeks to contribute to such studies with a particular focus on the Philippines by assessing the skill and sensitivity of a TC case study using a mesoscale numerical weather prediction model. In particular, it aims to study the influence of the combination of cumulus convection scheme and the different surface flux options to the different TC characteristics. This study adds on existing literature by looking at the effects of cumulus convection schemes combined with different flux options and spectral nudging. Specifically, it aims to address the following questions:

170 • How sensitive are the TY Haiyan simulations to convective schemes, surface flux options and spectral nudging?

Formatted: Normal, No bullets or numbering

How sensitive are the simulated track and intensity of TY Haiyan to the uncertainty in the initial and boundary conditions?

This study seeks to contribute to sensitivity studies with a particular focus on the Philippines by assessing the skill and sensitivity of a TC case study using a mesoscale ~~numerical-weather-prediction~~NWP LAM model. In particular, it aims to study the influence of the combination of cumulus convection scheme ~~and~~ the different surface flux options to the different TC characteristics ~~and the use of spectral nudging~~. This study adds on existing literature by looking at the effects of cumulus convection schemes combined with different flux options and spectral nudging. Specifically, it aims to address the following questions:

175

- How sensitive are the TY Haiyan hindcast simulations to convective schemes, surface flux options and spectral nudging?

180 • How sensitive are the simulated track and intensity of TY Haiyan to the uncertainty in the initial and boundary conditions?

The results will provide valuable information for regional climate downscaling of intense TCs, which can be used in evaluating the sensitivity of future TCs in climate change simulations. Section 2 provides a description of the methodology. Then the paper continues with the results of the sensitivity experiments followed by the discussion, and finally, Section 4 provides a summary of the findings and recommendations for future work.

185

2 Method

2.1 Case Study: Typhoon Haiyan Brief Description

Typhoon Haiyan originated from an area of low pressure near the Federated States of Micronesia (157.2°E, 5.8°N) on November 2, 2013, and moved westward forming into a tropical storm on November 2, 2013². Typhoon Haiyan formed in an environment with a significantly high SSTs (peaking at 30.1°C in November 2013), which was considered the highest observed during the period between 1981 to 2014 in the Warm Pool Region (Comiso et al 2015). It then rapidly intensified into a TY on November 5 at 142.9°E, 6.9°N and was classified as a category-5 equivalent super typhoon by the Joint Tropical Warning Center (JTWC) and was classified as a Typhoon by PAGASA, its highest classification at the time. It further intensified before making landfall on November 7 2040 UTC. It traversed the central section of the Philippines and started to slowly weaken to a tropical depression on November 11 (JMA, 2013). Typhoon Haiyan claimed the lives of more than 7,300 people, mostly due to the associated storm surge and coastal inundation. It is estimated to have caused between USD 5-15 billion worth of direct damages in agriculture and infrastructure (Brucale et al., 2020) and affected more than 16 million people (NDRRMC 2014).

190

195

200

2.2 Model Description

Simulations were conducted using WRF version 3.8.1 (Skamarock et al. 2008), a non-hydrostatic numerical weather prediction ~~RCM-LAM~~ developed by the National Center for Atmospheric Research (NCAR). It is used for atmospheric research and operational forecasting, and increasingly for regional climate research (Powers et al., 2017⁶). The model includes a variety of physical parameterization schemes, including cumulus convection, microphysics, radiative transfer, planetary boundary layer, and land surface. The WRF Advanced Research WRF (WRF-ARW) solver uses the Arakawa-C grid as the computational grid and the Runge-Kutta 3rd order time integration schemes (MMML-NCAR, 2019). Skamarock et al. (2008) provides a more detailed description of the model specifications. PAGASA uses WRF for its operational forecasting over the Philippine Area of Responsibility (Flores 2019; Aragon and Pura 2016) and it is also used in studies ~~projecting future changes in temperature~~

205

210 and simulating event-based TC-associated rainfall over the Philippines (Cruz et al. and Narisma, 2016).

The land surface information comes from the 30 arc s (*1 km) resolution Moderate Resolution Imaging Spectroradiometer (MODIS) satellite dataset with 20 global land use categories.

215 2.3 Initial and boundary conditions

The European Centre for Medium-Range Weather Forecasts (ECMWF) Re-analysis 5th Generation (ERA5) data is used for both the initial and boundary conditions. It is the latest generation of reanalysis products produced by ECMWF with horizontal resolution of 31 km, hourly temporal resolution and 137 vertical levels (Herbatsch et al., 2020). ERA5 uses observations collected from satellites and in-situ stations, which are quality controlled and assimilated using 4D-VAR, a model based on
220 the ECMWF's Integrated Forecast System (IFS) Cycle 41r2.

Alongside the release of the ERA5 single realisation deterministic data from 1979 to the present, data from the Ensemble of Data Assimilations (EDA) system was also made available. The EDA system is a 10-member ensemble at a lower resolution than the deterministic data (60 km horizontal resolution and 3-hourly) (Hennermann, 2018). The EDA system provides
225 estimates of analysis and short-range forecasts through one control and nine perturbed members, which provide background error estimates for the deterministic forecasts. This system allows for estimating uncertainty since it provides estimates of the analysis and short-range forecast. These are provided as an uncertainty measure, albeit with half the resolution of the reanalysis. To test the sensitivity to varying boundary conditions, simulations were also performed using four randomly selected representatives of the 10-member ERA5 EDA system. The selected ensemble members were used to test the sensitivity to
230 different perturbed observations, sea surface temperature fields and model physics ~~the~~ (Isaksen et al., 2010).

2.4 Design of sensitivity experiments and analysis

In this study, the WRF-ARW model has been configured with two nested domains centered over the point of 18.3° latitude, 135° longitude. The outermost grid has 294 x 159 grid points with 25-km grid spacing, while the innermost domain has 745 x
235 550 grid points with 5-km grid spacing, with ~~28-44~~ vertical ~~eta~~ levels and the model top pressure level was set to 50 hPa. A two-way nesting is allowed for the interaction between the outer and inner domain. Specifically, for the outer domain which is driven at the boundaries by ERA5, one-way nesting was used. For the inner domain, which is driven by the coarser domain, two-way nesting was used. The results shown in this paper are from the inner 5-km domain. This model resolution was chosen in favour of using supercomputing resources for the systematic testing of different ~~paramaterization~~parameterization schemes, and in consideration of additional simulations under future climate conditions. Different domain configurations were tested
240 prior to selecting this particular configuration, with the current domain configuration having the track and intensity closest to that observed (not shown). The domain configuration used in this study is used to have common domain for different TC cases (other TC cases not included in this paper) to understand and have a more general set of conclusions on the response of TCs to future warming and to properly simulate the subtropical ridge/Western North Pacific Sub-tropical High. Additional
245 simulations using convection-permitting resolution (single domain, 4.5km) were also performed and showed no significant change in simulated intensity from the configuration used here (not shown). The model domain set-up is shown in Fig. 1.

In performing the experiments, WRF was run for a ~~174~~180-hour period from 00 UTC 4 November 2013 – 12 UTC 11
250 November 2013 to cover the main part of the life cycle of TY Haiyan. Simulations with different start times were conducted (not shown) to sample the different stages in TY Haiyan's lifetime and different initializations. Starting times tested include 4

November 2013 at 00 and 12 UTC, 5 November 2013 at 00 and 12 UTC, 6 November 2013 at 00 and 12 UTC, and 7 November 2013 at 00 UTC. The simulation that started on 4 November 00 UTC was found to be optimal in terms of track and intensity, thus the initialization time of all experiments was fixed at 4 November 2013 00 UTC. The longer lead-time was also used to allow for the simulation of the early stages of development of Typhoon Haiyan. We considered the period covering 4 November 2013 00 UTC to 5 November 2013 12 UTC as the spin-up period. For the purposes of this paper, the analysis of the experiments covered only the 72-hour period between 18 UTC 5 November 2013 to 18 UTC 8 November 2013 to cover TY Haiyan's mature stage.

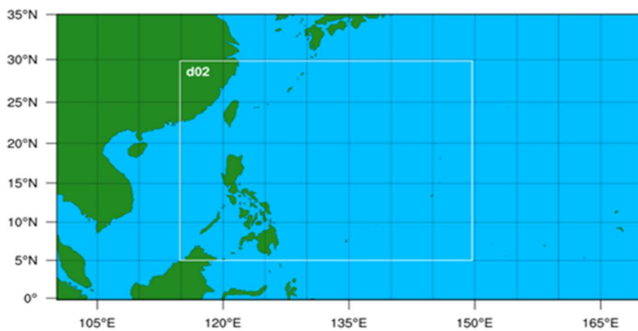


Figure 1: Study domain set-up. The outer 25-km resolution (Δx) domain is bounded by 100-170 degrees East and 0-35 degrees North while the inner 5-km resolution (Δx) domain is bounded by 115-150 degrees East and 5-28 degrees North.

Convection is mostly simulated in models with resolution coarser than 10-5km through the cumulus parameterization scheme. WRF's cumulus parameterization scheme simulates the effects of cumulus convection on heat, moisture, and precipitation at the sub-grid scale (Skamarock et al. 2008). The choice of cumulus parameterization schemes has an impact on WRF's ability to simulate the TC track, intensity, and structure (Zhang et al., 2011; Shepherd and Walsh 2016; Parker et al., 2017). Only two schemes were investigated in this study the KF scheme and TK scheme, the difference of which are summarized below in Table 1. The same physics parameterizations, including the cumulus scheme, were used in both inner and outer domains. These cumulus schemes are used because PAGASA uses KF for its operational forecasting configurations (Flores 2019). It has also often been used for TC simulation studies in the Philippines and has been found, in several studies, to be the best choice for simulating TC track and intensity (e.g. Sun et al., 2019; Li et al., 2018) and rainfall (e.g. Cruz et al. and Narisma, 2016). The TK scheme, on the other hand, has been suggested to be the more appropriate cumulus scheme in tropical weather/climate applications of the WRF model (Parker et al., 2017). Torn and Davis (2012) showed an improvement in TC track simulations when using the TK scheme compared to the KF scheme. They stated that the TK scheme allows for more appropriate treatment of oceanic shallow convection due to a more active shallow convection scheme than that of the KF scheme. There was a 1K temperature bias at 700 hPa in the KF scheme not present in the TK simulations, attributed to a lack of shallow convection in KF. These generated horizontal temperature gradients are associated with the wind biases affecting the TC tracks simulated with the KF scheme (Parker et al 2018; Torn and Davis, 2012). In addition, according to Sun et al. (2015), deep convection in mass flux schemes, such as KF, produces large amounts of anvil clouds that warm the upper troposphere and cause latent heating south of the WNPSH that leads to the weakening of the WNPSH and the movement of the TCs northward. Li et al. (2018) investigated the sensitivities of the simulated tracks, intensities and structures of Typhoon Haiyan to the use of a the revised KF scheme with varying from resolutions from 9 to 2 km and found that the resulting simulations with the application of rKF scheme is different on various resolutions. Cruz and Narisma (2016) also used the KF scheme in conducting sensitivity tests of TC-associated rainfall with different PBL and microphysics schemes in WRF.

285

Using a mass flux approach with downdraft removal, and utilizing Convective Available Potential Energy (CAPE), KF is a deep and shallow convection sub-grid scheme that includes clouds, rain, ice, and snow detrainment and cloud persistence (Kain 2004). Although KF can account for relatively small-scale processes that drive convection, it has inherent limitations in simulating shallow convection over tropical oceans (Parker et al., 2017). On the other hand, the TK scheme assumes that the moisture flux through the cloud base is equivalent to the surface moisture flux, as well as momentum transport, cloud detrainment, and ice detrainment (Tiedtke 1989; Zhang et al., 2011). According to Parker et al. (2017), the TK scheme is more appropriate for simulating intense TCs in tropical oceans.

290

295 **Table 1: Description of the cumulus schemes used in this study**

	Kain-Fristch (KF) (Kain, 2004)	Tiedtke (TK) (Tiedtke 1989, Zhang et al., 2011)
Type of scheme	Mass-flux	Mass-flux
Cloud detrainment	Yes	Yes
Closure	CAPE Removal	CAPE / Moisture convergence
Triggering mechanism	Controlled by large scale velocity in the vertical direction	Convection is triggered if the parcel is warmer than its surroundings by 0.5K if the parcel is very close to the surface
Cloud radius	Variable	Fixed
Shallow convection	Activates shallow convection when the criteria for deep convection are satisfied	Assumes that the cloud base moisture flux is equal to the surface moisture flux

Sources: Adenyi et al., (2019), Torn and Davis (2012), Shepherd and Walsh (2016)

Experiments were also conducted to examine the sensitivity to the available parameterizations for surface flux options. For TC applications, WRF-ARW provides three different formulations of aerodynamic roughness lengths of the surface momentum and scalar fields as surface flux options (isftcflx = 0,1, and 2) (see Kueh et al. 2019 for a detailed description of the differences between these options). It has been shown that surface fluxes can influence the model's ability to simulate TC intensity and structure (Green and Zhang, 2013; Kueh et al., 2019). For the default flux option (referred to here as sf0), the momentum roughness length is given as in Charnock (1955) the momentum roughness length is given as Charnock's (1955) expression plus a viscous term, following Smith (1988) - Eq. (1):

300

305

$$z_o = \alpha \left(\frac{u^2}{g} \right) + \frac{0.11\nu}{u} , \quad \text{--(1)}$$

where α is the Charnock coefficient and ν the kinematic viscosity of dry air, for which a constant value of $1.5 \times 10^{-5} \text{ m}^2 \text{ s}^{-1}$ is used. A constant value of $\alpha=0.0185$ is used for sf0.

310

Since the roughness length formulas in sf0 are demonstrably inconsistent with a substantial amount of research (Kueh et al. 2019), two more options were developed (hereinafter referred to as sf1 and sf2) (Kueh et al. 2019). Based on the findings that the drag coefficient (CD) seemed to level off at hurricane force wind speed (e.g., Powell et al., 2003; Donelan et al., 2004), the surface flux option 1 (sf1) was developed and implemented in WRF as a blend of two roughness length formulas (Green and Zhang 2013). The sf1 option was first implemented in version 3.0 of WRF (Kueh et al. 2019). The sf1 and surface flux option 2 (sf2) has the same momentum roughness length, but in sf2, the temperatures and moisture roughness lengths are

<u>Grid spacing</u>	<u>295 x 160 (D01), 746 x 551 (D02)</u>
<u>Number of vertical eta levels</u>	<u>44 (D01), 44 (D02)</u>
<u>Cloud microphysics</u>	<u>WRF Single-moment 6-class Scheme for the cloud microphysics (Hong and Lim 2006) – D01&D02</u>
<u>Cumulus parameterization</u>	<u>Kain-Fritsch scheme – D01&D02</u>
<u>Longwave radiation</u>	<u>RRTM scheme (Rapid Radiative Transfer Model) (Mlawer et al., 1997)</u>
<u>Shortwave radiation</u>	<u>Dudhia scheme (Dudhia 1989) – D01&D02</u>
<u>180-hour period</u>	<u>MM5 Monin- Obukov scheme (Monin and Obukhov 1954) – D01&D02</u>
<u>Land surface scheme</u>	<u>Unified Noah Land Surface Model (Chen and Dudhia 2001; Tewari et al. 2004) – D01&D02</u>
<u>Planetary boundary layer scheme</u>	<u>Yonsei University (YSU) PBL scheme (Hong et al., 2006) – D01&D02</u>
<u>Surface flux option</u>	<u>isfcflx = 0</u>
<u>Spectral nudging</u>	<u>Off</u>

345

2.5 Verification Data

To determine the model's skill in simulating TY Haiyan, we used the International Best Track Archive for Climate Stewardship (IBTrACS) which compiles best-track information from various agencies worldwide (Knapp et al., 2010). We compared the simulated and observed tracks by calculating the Direct Positional Error (DPE). Heming (2017) defines DPE as a measure of the great circle distance between observed and forecast positions at the same simulation time. We calculated the model bias, root-mean-square error (RMSE), and correlation coefficient between model-simulated and observed (IBTrACS) minimum sea level pressure, maximum 10m winds, and IBTrACS, to evaluate simulated TC intensity. The best-track information used here is taken from the World Meteorological Organization (WMO) subset of the IBTrACS (IBTrACS-WMO, v03r09) which was taken from the best-track data provided by the Japan Meteorological Agency (JMA). In order to directly compare the IBTrACS / JMA data with WRF's simulated winds, the 10-min averaged winds from the JMA dataset were converted to 1-min wind speeds using Li et al.'s (2018) formula i.e. multiplying the 10-min values by 1.1364.

In addition, rainfall data from the Global Precipitation Measurement (GPM) is also used for comparing the spatial distribution of the simulated rainfall. The Integrated Multi-satellitE Retrievals for GPM (IMERG) is a third-level precipitation product of GPM, which covers the area -180, -90, 180, 90 with resolutions of 0.1 degree and 30 minutes (Huffman et al. (2019). The rainfall data were accessed and downloaded from NASA's Goddard Earth Sciences Data and Information Services Center (GES DISC) at <https://disc.gsfc.nasa.gov/datasets/>.

2.6 TC Tracking Method

The simulated track and intensity values were obtained every 6 hours using the TRACK algorithm (Hodges et al., 2017) as used in Hodges and Klingaman (2019). TRACK determines TCs as follows: first the vertical average of the relative vorticity at 850-, 700-, and 600-hPa levels is obtained. The field is then spatially filtered using 2D discrete cosine transforms equivalent to T63 spectral resolution and the large-scale background is removed. The tracking is performed by first identifying the relative vorticity maxima $> 5.0 \times 10^{-6} \text{ s}^{-1}$. Using a nearest neighbour method, the tracks are then initialized and refined by minimizing a cost function for track smoothness subject to adaptive constraints (Villafuerte et al., 2021). The feature points are determined

- Formatted:** Font: (Default) +Headings (Times New Roman), 10 pt
- Formatted:** Font: (Default) +Headings (Times New Roman), 10 pt
- Formatted:** Font: (Default) +Headings (Times New Roman), 10 pt
- Formatted:** Font: (Default) +Headings (Times New Roman), 10 pt
- Formatted:** Font: Not Bold
- Formatted:** Font: (Default) +Headings (Times New Roman), 10 pt
- Formatted:** Font: (Default) +Headings (Times New Roman), 10 pt
- Formatted:** Font: (Default) +Headings (Times New Roman), 10 pt
- Formatted:** Font: (Default) +Headings (Times New Roman), 10 pt
- Formatted:** Font: (Default) +Headings (Times New Roman), 10 pt
- Formatted:** Font: (Default) +Headings (Times New Roman), 10 pt, German (Germany)
- Formatted:** German (Germany)
- Formatted:** Font: (Default) +Headings (Times New Roman), 10 pt, German (Germany)
- Formatted:** Font: (Default) +Headings (Times New Roman), 10 pt
- Formatted:** Font: (Default) +Headings (Times New Roman), 10 pt
- Formatted:** Font: (Default) +Headings (Times New Roman), 10 pt, Italian (Italy)
- Formatted:** Italian (Italy)
- Formatted:** Font: (Default) +Headings (Times New Roman), 10 pt, Italian (Italy)
- Formatted:** Font: (Default) +Headings (Times New Roman), 10 pt
- Formatted:** Font: (Default) +Headings (Times New Roman), 10 pt
- Formatted:** Font: (Default) +Headings (Times New Roman), 10 pt
- Formatted:** Font: (Default) +Headings (Times New Roman), 10 pt
- Formatted:** Font: (Default) +Headings (Times New Roman), 10 pt
- Formatted:** Font: 10 pt
- Formatted:** Font: 10 pt

by first finding the grid point maxima which are then used as starting points for a B-spline interpolation and steepest ascent maximization method, to determine as the off-grid feature points (Hodges 1995 as cited by Hodges and Klingaman, 2019). The tracking is done for the entire simulation period. Additional variables are added to the track data after the tracking is complete, such as the maximum 10-m winds within a 6° geodesic radius and the minimum sea level pressure (MSLP) within a 5° radius using the B-splines and minimization method (Hodges and Klingaman, 2019).

3. Results and Discussion

3.1 Simulated track

Fig. 2 shows the tracks obtained from the simulations of TY Haiyan for all experiments are in reasonably good correspondence with the best-track data. Simulations using the TK scheme accurately reproduced the observed positions of TY Haiyan during the first 36 h of the study period, with the observed and simulated tracks being less than 50 km apart at 36 h. On the other hand, the simulated tracks based on the KF cumulus convective scheme tracked in the same direction as the observed track, but were further north and more than 50 km from the best track during the first 36 hours of simulation.

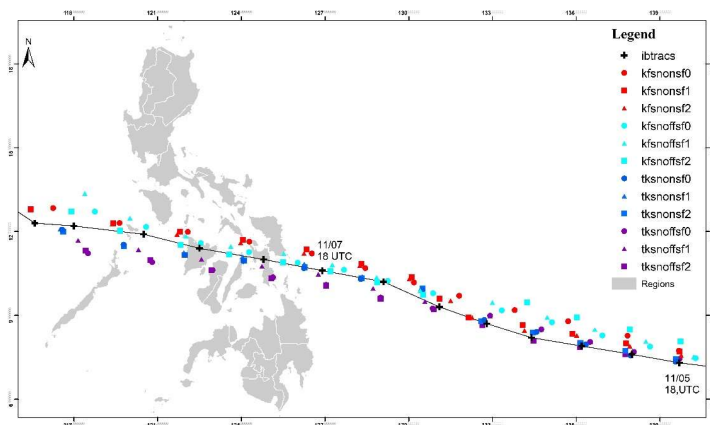


Figure 2: Simulated tracks compared with IBTRaCS and the sensitivity experiments classified according to experiment groups: Kain-Fristch (KF) convection scheme; TK (TK) convection scheme; with spectral nudging (snON); without nudging (snOFF); surface flux option 0 (sf0); option 1 (sf1); and option 2 (sf2).

Fig. 3 shows the DPE throughout the simulation and shows the KF simulations having a mean DPE of 94 km while the TK simulations having a mean of 62 km DPE. The simulations with the KF scheme have tracks that are further north of the observed track compared to simulations utilizing the TK scheme which are closer to the observed track. The minimum DPE obtained from the simulations using the TK scheme is 8km after 18 hours of simulation for the simulation using TKsnOFFsf2.

Fig. 3 shows the sensitivity of the tracks to the cumulus parameterization scheme, surface flux options, and to spectral nudging. The results show that these three model settings individually lead to significant reductions in DPE values. The difference between the mean DPE of simulations using KF and TK schemes (p-value: 0.010) were found to be statistically significant at 99% confidence levels using a Student's t test. The simulations using the TK scheme have a mean DPE of 47 ± 5 km and KF

scheme have mean DPE of 55 ± 7 km (Fig. 3a). Overall, we found the TK scheme to be best in simulating the track of TY Haiyan.

Our results show that the tracks are also slightly sensitive to the use of spectral nudging, especially in the latter half of the simulation (Fig. 3b). The evolution of DPE in Fig. 3 shows gradual increases in its value in the first half of the simulation, as the typhoon approaches land (between 48 h-54 h), the DPE then starts to abruptly increase until the end of the simulations. This suggests that the spectral nudging configuration does not constrain the model strongly. Nevertheless, simulations run with spectral nudging consistently show lower DPE in the 2nd half of the simulation compared to the no nudging experiments. Moreover, the TK runs appear to also have less dependence on nudging (not shown). The mean DPE of the TK simulations with nudging is 68 km while the simulation without nudging is 87 km. This is consistent with previous studies where spectral nudging improves TC tracks in the WNP (Guo 2017; Moon et al., 2018). Overall, the surface flux options did not have a significant effect on the tracks of the simulated TY (Fig. 3c).

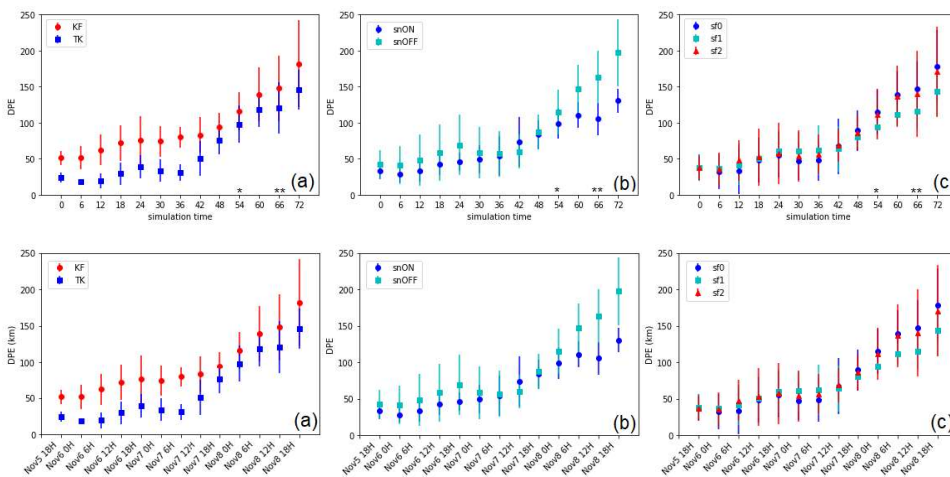
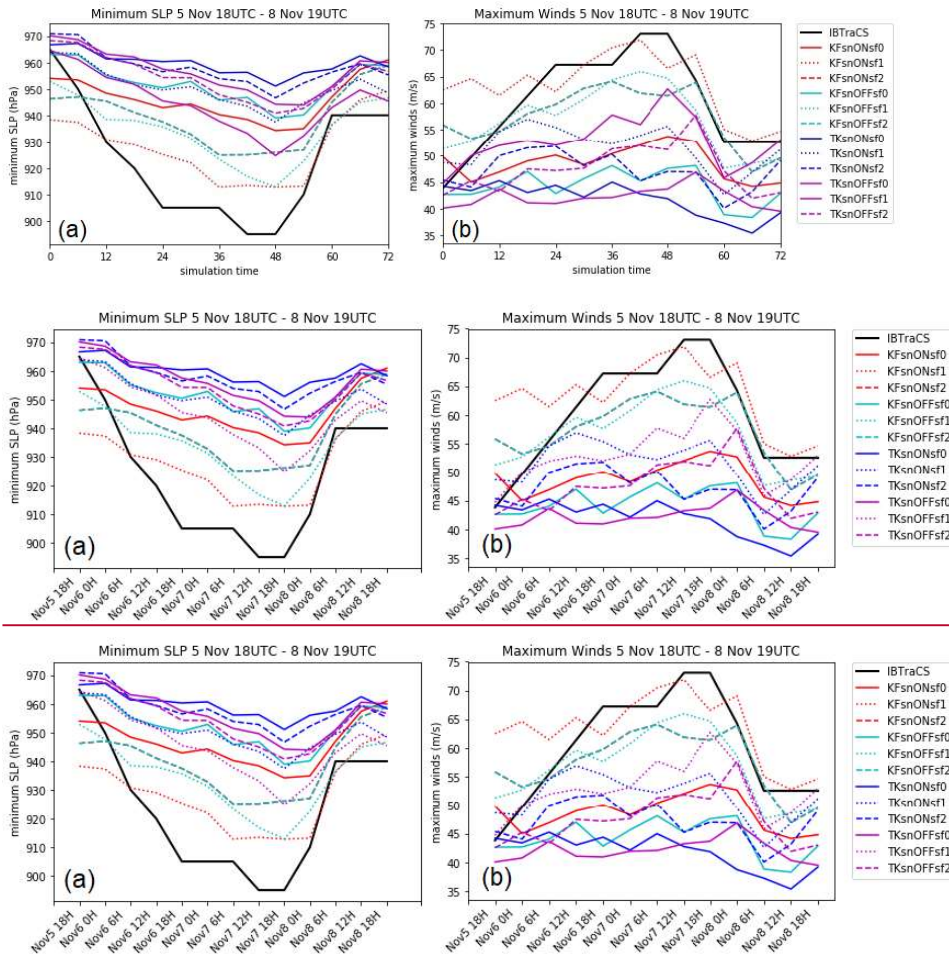


Figure 3: Mean and standard deviation of the DPE (km) per simulation group – (a) for the cumulus schemes KF and TK, (b) for with (snON) and without nudging (snOFF) and (c) for surface flux options sf0, sf1 and sf2. The one and two black stars along the x-axis of the DPE (inset) show the approximate average time the simulated TC entered and exited land, respectively. X-axis is the analysis period between 18 UTC 5 November 2013 to 18 UTC 8 November 2013.

3.2 Simulated intensity

Fig. 4 shows that most of the simulations are not able to capture the observed deepening of the minimum central pressure or the intensification of low-level winds of TY Haiyan. The control simulation (denoted as KFsnOFFsf0) has a MSLP value of only 9349 hPa and maximum wind speed of 53.6943.47 meters per second (ms^{-1}). Compared to the minimum central pressure of 895hPa and 73 ms^{-1} -min sustained wind speed in the observations, this is a difference of 398 hPa and 19-29.53 ms^{-1} , respectively. The simulations that are closest to TY Haiyan’s intensity are those that use the KF scheme and surface flux option 1 (KFsnONsf1), however, this simulates lower than observed MSLP value at the first 12 hours of simulation. The KFsnONsf1 run has a MSLP reaching to 912 hPa and winds of up to 72 ms^{-1} . The TK scheme simulations consistently have higher central pressure and lower maximum wind speeds. A Student’s t test indicates that difference between the minimum sea level pressure simulations using KF and TK schemes (p-value: 0.008) is significant at the 99% confidence level. However,

the simulations were not able to capture TY Haiyan's rapid intensification phase as in previous studies (Islam et al., 2015; 430 Kueh et al., 2018).



435 **Figure 4: Time series of intensity (a) for minimum sea level pressure in hPa and (b) for the sensitivity experiments classified according to experiment groups: Kain-Fristch (KF) convection scheme; TK (TK) convection scheme; with spectral nudging (snON); without spectral nudging (snOFF); surface flux option 0 (sf0); option 1 (sf1); and option 2 (sf2). X-axis is the analysis period between 18 UTC 5 November 2013 to 18 UTC 8 November 2013.**

440 Fig. 5 shows the mean and standard deviation of the biases of the simulated intensities to the choice of the parameterization schemes. There is a significant difference among the simulations using KF and TK cumulus convection schemes (Fig.5, 1st row). In simulating the intensity, nudging did not demonstrate a consistent improvement in the intensity of the simulations 445 (Fig. 5, 2nd row). While the choice of surface flux option had a more demonstrable effect on the resulting intensities (at 99%

confidence levels) with sf1 having the most intense simulation of the storm in terms of both MSLP and maximum winds and sf0 with least intensity (Fig. 5, 3rd row).

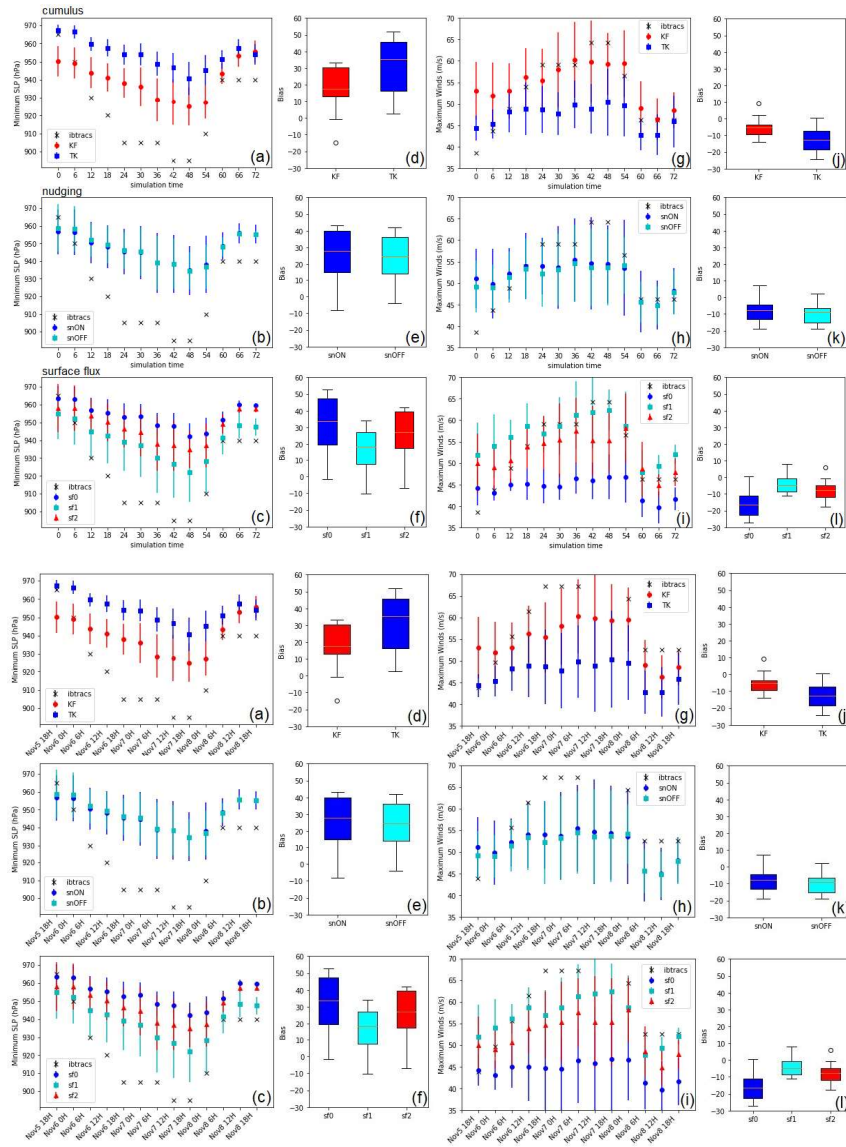


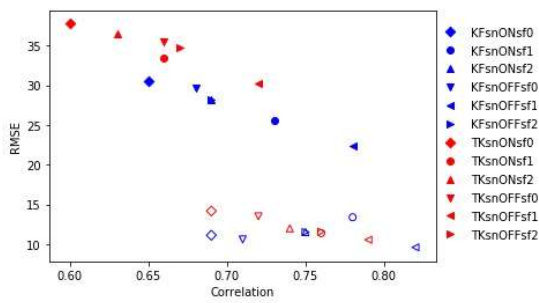
Figure 5: Time series of the mean intensities and standard deviations (a-c) for MSLP and (g-i) for maximum winds, with mean biases for MSLP (d-f), hPa and maximum winds, m/s) for each group (j-l) for cumulus schemes KF and TK, spectral nudging and for surface flux options. X-axis is the analysis period between 18 UTC 5 November 2013 to 18 UTC 8 November 2013.

450

455 Fig. 6 shows that the simulations using the KF scheme have higher correlations and smaller RMSE values than the simulations that used the TK scheme. The simulations with the KF scheme are comparatively more successful at simulating the intensity

for both minimum surface pressure and maximum winds. Of all the simulations, the simulation with the combination of KF and sf1 without nudging have the lowest RMSE (22 hPa MSLP and 9.596 ms^{-1} maximum winds) and highest correlation coefficient of 0.78 and 0.892 for MSLP and maximum winds, respectively. While the simulation with the poorest performance i.e. highest RMSE (37 hPa and 14.1720 ms^{-1}) and lowest correlation coefficient (0.60 and 0.2169 for MSLP and maximum winds, respectively) is the simulation with the combination of TK, sf0, with spectral nudging turned on.

The KF and TK schemes represent shallow convection differently, resulting in different simulated TC intensities (Torn and Davis, 2017). The TK scheme allows both upward transport of moisture across the boundary layer, as well as vertical advection of evaporation from the ocean surface (Parker et al., 2018). Consequently, this reduces the mass flux in deep convection, thereby lowering the rate of TC intensification and resulting in lower simulated intensities. The KF scheme, however, is less likely to reduce the deep convective mass flux that allows for intensification rates to increase. These results are consistent with the differences in the simulated intensities shown in Parker et al. (2017) and Shepherd and Walsh (2016). Parker et al. (2017) found that the KF scheme produces more intense TC systems (lower MSLP values) than the TK scheme for TY Yasi in Australia. Shepherd and Walsh (2016) also found that the KF scheme produces stronger storms (TY Yasi 2011 in the Southwest Pacific and TY Rita 2005 in the north Atlantic) but almost the same intensity for simulations using TK and KF schemes for TY Megi in the Western North Pacific Basin.



475 **Figure 6: RMSE vs CC for minimum sea level pressure in hPa (filled) and for maximum winds in ms-1 (not filled) for the sensitivity experiments**

The choice of surface flux option (sf0, sf1, sf2) also affects the ability to reproduce both minimum sea level pressure and maximum winds, as shown by the lower RMSE of sf1 (Fig. 6). Simulations with sf1 have generally shown to have the highest correlation coefficients. While both wind speed and MSLP intensity are strongly dependent on the surface flux option, sf1 shows to simulate the highest intensity for TY Haiyan. As in Kueh et al. (2019), the default option (sf0), in which CD does not level off, the simulation of Haiyan has the weakest wind speeds. The sf1 option is expected to have the highest intensity since it has the largest enthalpy and momentum (C_k/CD) ratio at high wind speeds and lowest CD. This gives less friction at high winds, thereby favouring higher intensity (Kueh et al. 2019).

485 Comparing the simulations with the KF and TK schemes shows that the former produces better simulated intensities with lower biases, RMSE and higher correlation coefficients (Fig. 6), consistent with Zhang et al. (2011) and Parker et al. (2017), and minimum sea level pressure as with Spencer and Shaw (2012).

490 Table 43: The resulting deviation from landfall location (km, rounded to nearest whole number); translation speed (ms^{-1} , rounded to two decimal place); and deviation from observed translation speed (ms^{-1} , rounded to two decimal places); and deviation of the simulated MSLP at landfall (hPa, rounded to the nearest whole number); compared to observations

Simulation	Deviation from landfall point 10.83°N, 125.69°E (in km)	Translation speed before landfall (ms^{-1}) (Obs. 9.48 ms^{-1})	Deviation from observed translation speed before landfall	Deviation from observed MSLP (895 hPa) at landfall
KFsnONsf0	56	9.62	0.14	40
KFsnONsf1	76	8.78	-0.70	18
KFsnONsf2	55	8.76	-0.72	32
KFsnOFFsf0	20	9.27	-0.22	46
KFsnOFFsf1	37	9.54	0.05	27
KfsnOFFsf2	3	9.58	0.10	44
TKsnONsf0	6	9.80	0.32	56
TKsnONsf1	11	9.87	0.39	43
TKsnONsf2	3	9.85	0.37	52
TKsnOFFsf0	56	9.23	-0.25	49
TKsnOFFf1	68	9.54	0.06	38
TKsnOFFsf2	61	9.20	-0.29	48

We also considered the wind-pressure relationship of the simulated intensities of all experiments, which according to Green and Zhang (2013) is affected by surface flux options. The scatterplot in Fig. 7 indicates the relationship between the MSLP and maximum wind, based on the different simulations. The IBTrACS data (black square markers) are also included in this plot. Almost all simulations show a decreasing trend of the MSLP and maximum winds as the storm intensifies; however, the intensities are evidently underestimated (MSLP and maximum wind speeds). Based on Manganello et al. (2012), the maximum wind speed is usually underestimated in **RCMs-LAMs** when the simulated MSLP is below approximately 980 hPa. It is worth pointing out that of the different simulations, those utilizing the surface flux option 1 (sf1, blue) give the most intense storm by wind speed (Fig. 8). The simulated maximum wind speeds in the simulations using the default surface flux option (sf0, red) only ranges between 35 to 55 ms^{-1} while the simulations using the other options (sf1, blue and sf2, cyan) are well distributed from ~40 to 73 ms^{-1} , consistent with the result of Kueh et al. (2019). Most simulations have an underestimated maximum wind speeds for MSLP below 910 hPa, which is consistent with a study using WRF that produced lower wind speed compared to IBTrACS for a given MSLP (Hashimoto et al., 2015). However, the simulations were able to generate considerable intensity for the maximum wind speed for TY Haiyan compared to that of Islam et al. (2015) who used different model physics options i.e. WRF single moment 6-class (WSM6), WRF single moment 3-class (WSM3), new Thompson (THOM), Milbrandt-Yau double moment (MY2) 7-class scheme, and the Goddard GCE (GGCE) schemes. Previous studies using lower resolution generated insufficient wind speeds in the regime higher than 45 ms^{-1} (Jin et al., 2015) which are primarily attributed to low model resolutions and deficiencies in surface drag representations at high wind conditions (Jin et al., 2015; Shen et al., 2017).

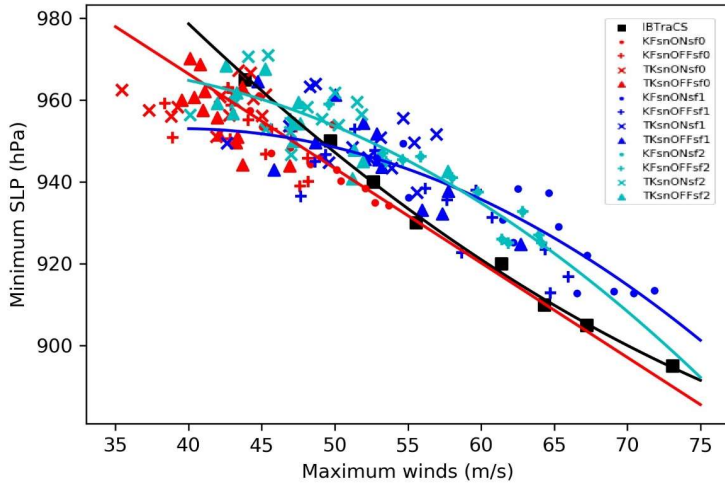


Figure 7: Scatterplot of MSLP vs maximum wind from the various sensitivity experiments compared with best track data. Solid lines of the corresponding colours (red for sf0, blue for sf1, cyan for sf2) show the second-order polynomial fit.

515

In simulating TCs, it is important to get the timing and intensity at landfall right as it gives a good indication of the potential damage along coastal areas (Parker et al. 2017). TY Haiyan made landfall in the eastern-central Philippines (Guiuan, Eastern Samar) on 7 Nov 2013 at 2040 UTC. Table 3 Figure 11 shows that the simulation with the closest landfall time and location occurs for the KFsnoffs2 simulation. The deviation from the observed landfall point, minimum deviation is 3 km for KFsnOFFsf2 and TKsnONsf2 and maximum deviation is 76 km for KFsnONsf1, is within the average forecast error for tropical cyclones at 24-hour lead time in Western North Pacific (Peng et al. 2017).

520

Fig. 8 also shows that the simulated TY is slightly slower (farther from land on 7 Nov 2013 at 00UTC) than observed, with the timing of landfall delayed between approximately 2 to 6 hours in the simulations. Based on data from IBTrACS, Haiyan's translation speed before landfall is approximately 9.48 ms^{-1} , while the mean translation speed of all the simulations is 9.43 ms^{-1} as shown in Table 34. Fig. 8 also shows that the extent of the wind field of the simulations using KF scheme are wider than the ones using TK scheme. The KF scheme simulations have a bigger radial extent, for winds speeds larger than 35 ms^{-1} or 80 miles per hour (mh^{-1}), than the simulations using the TK scheme. The wind field extent is also bigger in simulations with sf1 and sf2 than the ones using the default surface flux option (sf0), with sf1 having a wider and more symmetric radial extent of winds greater than 50 ms^{-1} or 110 mh^{-1} . TY Haiyan's radius of maximum wind was estimated to be between 25-29 km (Shimada et al. 2018). In addition, the radial extent of winds of approximately 15 ms^{-1} (30 mh^{-1}) is bigger in simulations using KF than simulations using TK scheme, with radius of maximum wind extending up to $\sim 52 \text{ km}$ and $\sim 42 \text{ km}$, respectively. The TKsnONsf0 and TKsnOFFsf0 both have radial extent of winds of 15 ms^{-1} (30 mh^{-1}) that are closer to what is estimated using the OSCAT scatterometer data.

525

530

535

3.3 Simulated Track and Intensity from ERA5 EDA Ensemble Members

The simulated tracks of TY Haiyan, using the four ERA5 EDA members as initial and boundary conditions and configurations that are the same as used for the control simulation, are found to be within the variability of the simulations using the different

540 parameterizations (Fig. 9). The average DPE of the ensemble mean is 86 km compared to the average DPE of the simulations using different parameterizations which is 78 km with a range from 7 km to 250 km throughout the whole simulation period. There is no significant difference between the mean DPE of the simulations using the different ensemble members with the simulations using the different parameterization schemes (p-value = 0.464).

545

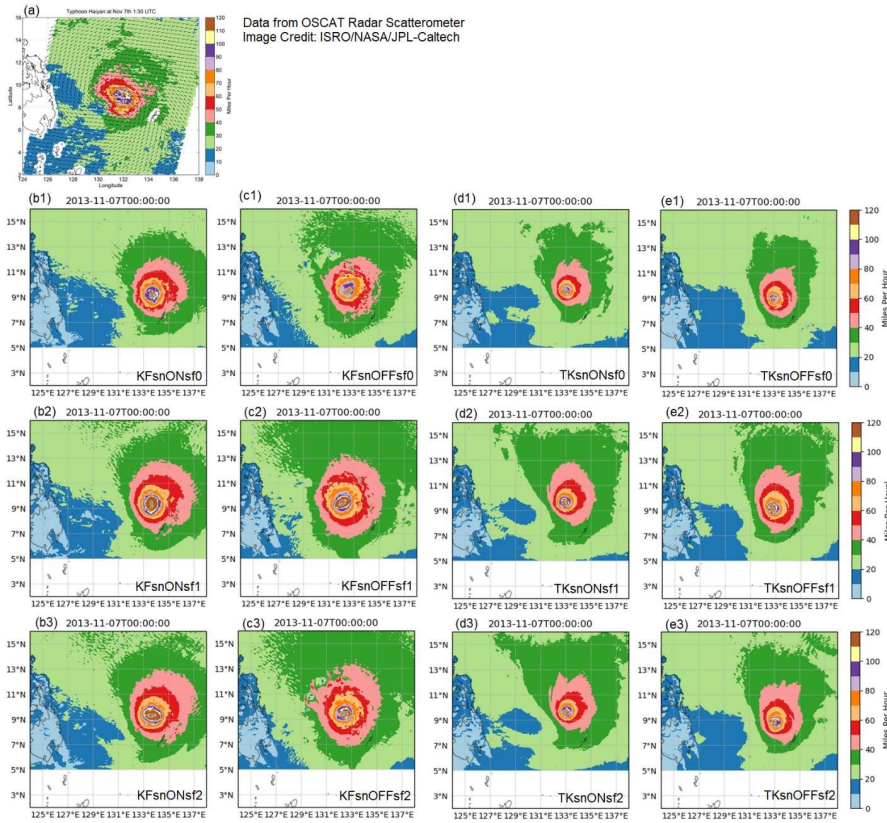


Figure 8: Surface winds (mh^{-1}) (a) from the OSCAT radar scatterometer on the Indian Space Research Organization's OceansAT-2 satellite at 0130UTC 7 November 2013' and (b-e) for each of the experiments at 00 UTC 7 November 2013.

550

¹ Source of Figure 8a: <https://www.jpl.nasa.gov/images/super-typhoon-haiyan>. Use is covered by <https://www.jpl.nasa.gov/jpl-image-use-policy>

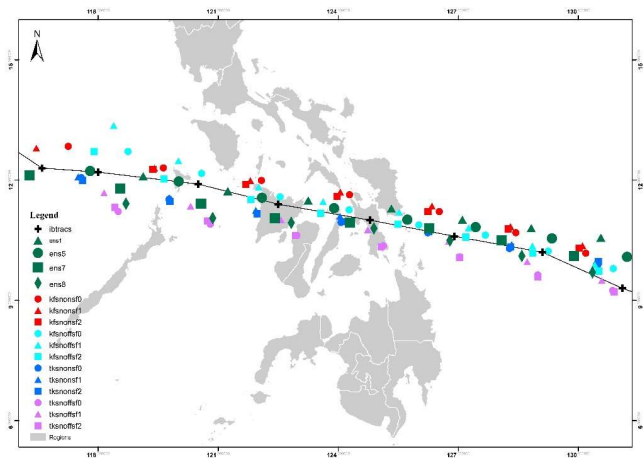


Figure 9: Simulated tracks of the four randomly selected EDA Ensemble Members (green) compared with IBTRaCS and the sensitivity experiments classified according to experiment groups: Kain-Fristch (KF) convection scheme; TK (TK) convection scheme; with spectral nudging (snON); w nudging (snOFF); surface flux option 0 (sf0); option 1 (sf1); and option 2 (sf2).

555

The spread in the mean bias of the simulated intensities (MSLP and maximum winds) using the ensemble members as boundary conditions is similar to or within the spread of the correlation between the experiments with the different parameterization schemes and spectral nudging option (Fig. 10). Judging from the spread of the simulate intensities found in the boundary conditions experiments, the use of different ensemble members has relatively less effect on the simulated intensities as compared to the sensitivity to cumulus and surface flux parameterizations.

560

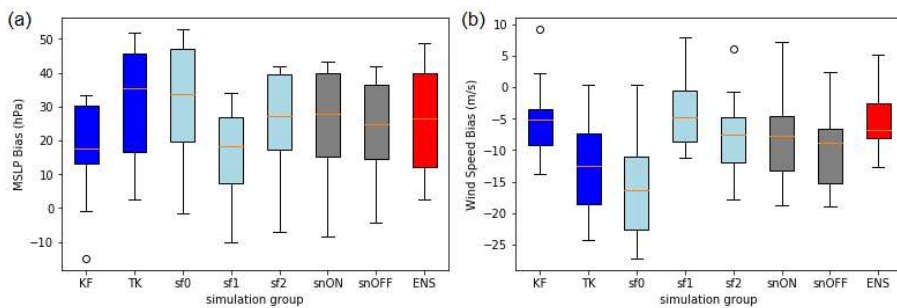


Figure 10: Mean biases for (a) MSLP in hPa and (b) maximum winds in ms-1 for each group of simulations: cumulus schemes KF and TK (blue bars), surface flux options (sf0, sf1, sf2) (light blue bars), spectral nudging ON and OFF (gray bars), and mean of the different experiments using four randomly selected EDA ensemble members (ENS) (red bars) as initial and boundary conditions.

565

3.4 Simulated Rainfall

The simulated rainfall in WRF is represented implicitly to demonstrate the effects of sub-grid scale processes through the cumulus scheme and explicitly through the microphysics scheme. In this study, we used the combination of both implicit and

explicit precipitation as the total rainfall. The spatial distribution of rainfall (mm) from 00 UTC 7 November 2013 to 18 UTC 8 November 2013 from the different experiments without spectral nudging are presented in Fig. 11. These results show a discernible difference between the spatial distribution and magnitude of the simulated rainfall, which indicates high sensitivity to the cumulus schemes. The accumulated 6-hourly rainfall was generally larger in magnitude and spatial extent for the simulations using the KF scheme (Fig. 9 b-d) than those that used TK scheme (Fig. 9 e-g). There is not much difference in the magnitude and distribution of rain among the different surface flux options.

It is also important to note the delay in the rainfall at landfall, primarily due to the relatively slower movement of the simulated TCs. The extent of the distribution of rainfall outside of Haiyan's inner rain bands were also not captured well by the simulations when compared with the satellite-derived GPM rainfall (Fig. 11a). In comparison with the GPM rainfall, the distribution of the simulated high rainfall using the KF scheme shows more similar patterns unlike with the TK scheme. The areas of high rainfall appear to be similar in the simulations using different flux options but different in simulations using KF and TK scheme. The simulations using KF scheme also seem to capture the outer rainbands of TY Haiyan, but extending further southeast compared to the GPM rainfall. Previous studies have also indicated the sensitivity of TC-associated rainfall to different physics parameterizations in WRF. Satuya et al. (2019) and Duc et al. (2019) found that KF better predicts rainfall than TK but both generally perform poorly in simulating rainfall, and WRF TC-associated rain are underestimated (Bagtasa 2021).

590

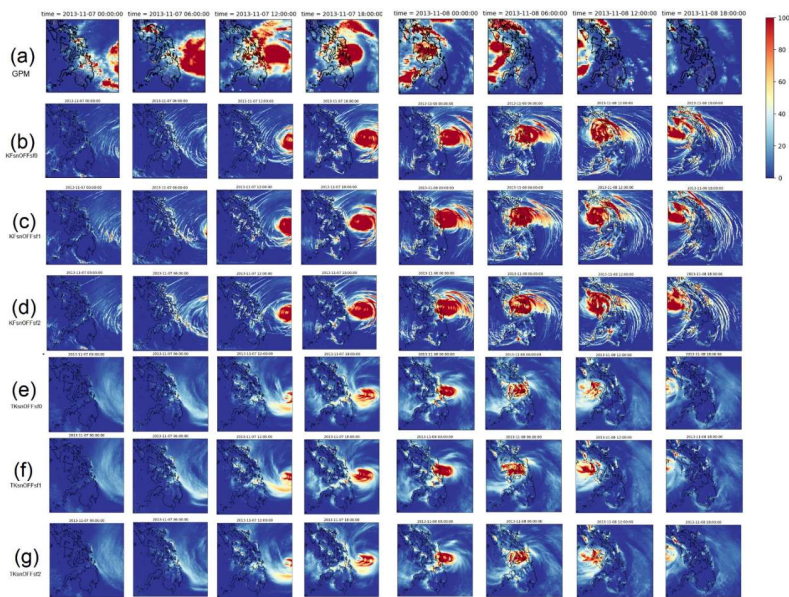
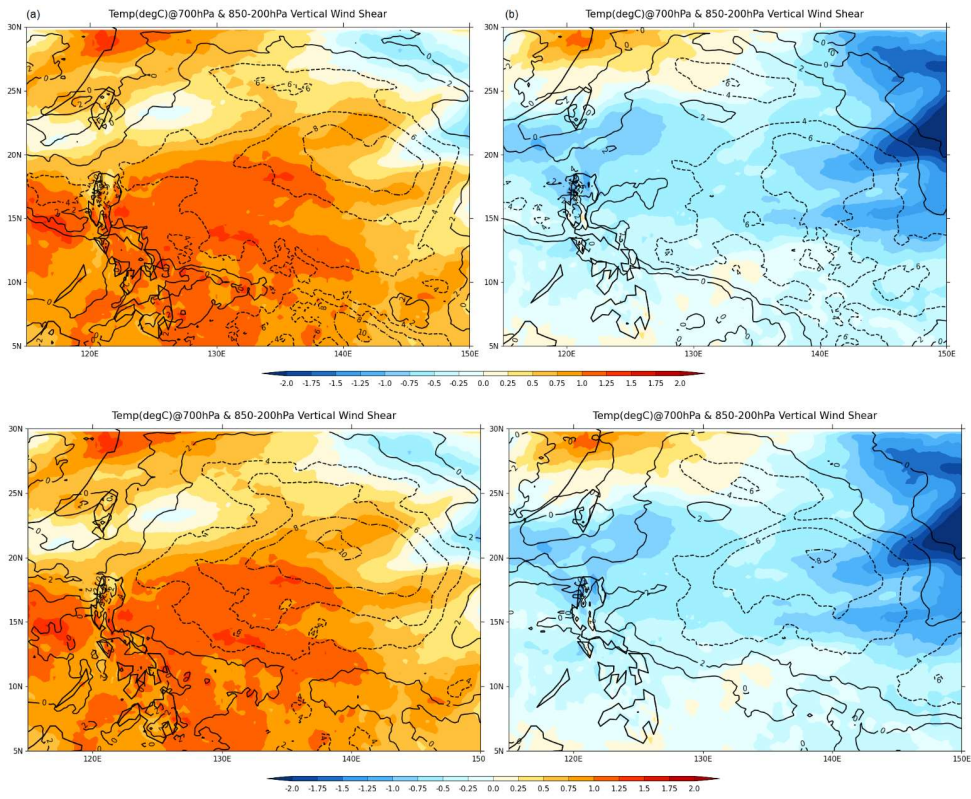


Figure 11: Spatial patterns of rainfall (in mm) every 6-hours from 00 UTC 7 Nov 2013 to 18 UTC 8 Nov 2013 (a) GPM, and the different simulations without nudging using (b,c,d) KF with sf0, s1,sf2 respectively, and (e,f,g) TK with sf0, sf1, sf2 respectively.

595 **3.5 Environmental Factors**

This section discusses the environmental variables to explain the differences between the simulations using KF and TK schemes. KFsnoFFsf1 and TKsnoFFsf1 were used in this section to represent the experiments with KF and TK runs, primarily for improved readability but more importantly, similar results were found in the average of the experiments using KF and TK as cumulus convection scheme.

600 Fig. 12, the KF scheme results in a warm temperature bias (at 700hPa), and a steering flow bias (at 850 hPa). In particular, the TK scheme produces cooler temperatures and the KF scheme simulates up to approximately 1.5 to 2°C warmer temperatures relative to ERA5, while the ones using the TK scheme have a colder bias at 700hPa (Fig. 12), which is consistent with previous studies (Parker et al. 2017 and Shepherd and Walsh 2016). On the other hand, the KF scheme is likely to simulate the deep convective mass flux which allows for an increase in intensification rates (Zhu and Smith 2002; Emanuel 1989 as cited by
605 Torn and Davis 2012).



610 **Figure 12: The difference of the simulated temperature (in degree Celsius) at 700hPa (shaded contours) and deep vertical wind shear (contour lines) averaged over the entire period of the simulation with (a) KF (corresponding to kfsnoFFsf1) and (b) TK (corresponding to tksnoFFsf1) temperature and winds from ERA5. The 6-hourly WRF output was interpolated to the coarser 6-hourly ERA5 grid using First-order Conservative Remapping through CDO remapcon function. -CDO code available at <https://code.mpimet.mpg.de/projects/cdo/>**

615 Fig. 12 also displays the simulated deep layer vertical wind shear (contour), which is defined as

$$\text{Vertical Wind Shear} = \sqrt{(U_{200} - U_{850})^2 + (V_{200} - V_{850})^2}, \quad (2)$$

where u , v are the zonal and meridional wind components, respectively, at 200 and 850 hPa, computed from time-averaged vertical wind shear calculated from u and v winds at 200 and 850 hPa at each grid-point. The simulated vertical wind shear is weaker along the track of TY Haiyan for both simulations using KF and TK, but the simulation using KF has a bigger area with weaker shear. It is likely that the more homogeneous temperature field in KF resulted in less vertical wind shear, while the simulation using the TK scheme led to a more heterogeneous temperature increasing the vertical shear. A previous study by Floors et al (2011) showed that the temperature differences through the atmospheric profile leads to geostrophic wind shear in WRF simulations. With the weaker vertical shear, the intensity is higher in the simulation using KF than the simulation using TK scheme. Weaker vertical shear has been found to be favourable in maintaining TC development and intensity (Shen et al., 2019).

To further investigate the difference in the track between KF and TK simulation runs, we analysed the 500mb geopotential height. The 5800 m geopotential height contour at 500 mb is used to depict the western North Pacific sub-tropical high (WNPSH) (Xue and Fan 2016). With the ridge location at 20°E, the WNPSH extends to the north of South China Sea (Shen et al., 2019). It has been found that the westward extent and location of the subtropical high ridge directly affect TC tracks in the WNP basin that impact the Philippines TC tracks in the WNP basin (Ho et al., 2004; Bagtasa 2020). In the simulation using the KF scheme, the subtropical high is weaker and is substantially in a more northward position compared to the simulation using the TK scheme (Fig. 13), which likely causes the tracks of the simulations using the KF scheme to drift northward, while the simulations using the TK scheme are much closer to the observed. According to Sun et al. (2014; 2015), deep convection in mass flux schemes, such as KF, produces large amounts of anvil clouds that warm the upper troposphere and cause latent heating south of the WNPSH that leads to the weakening of the WNPSH and the movement of the TCs northward. Villafuerte et al. (2021) further added that the use of cumulus schemes results in a weaker subtropical high resulting in shifts in northward re-curve of TC tracks.

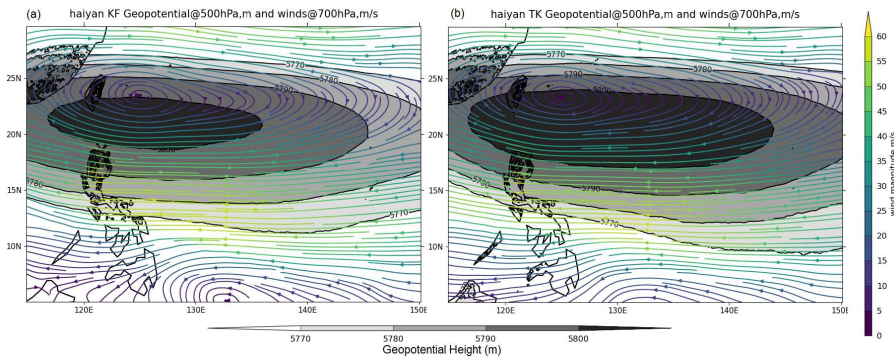
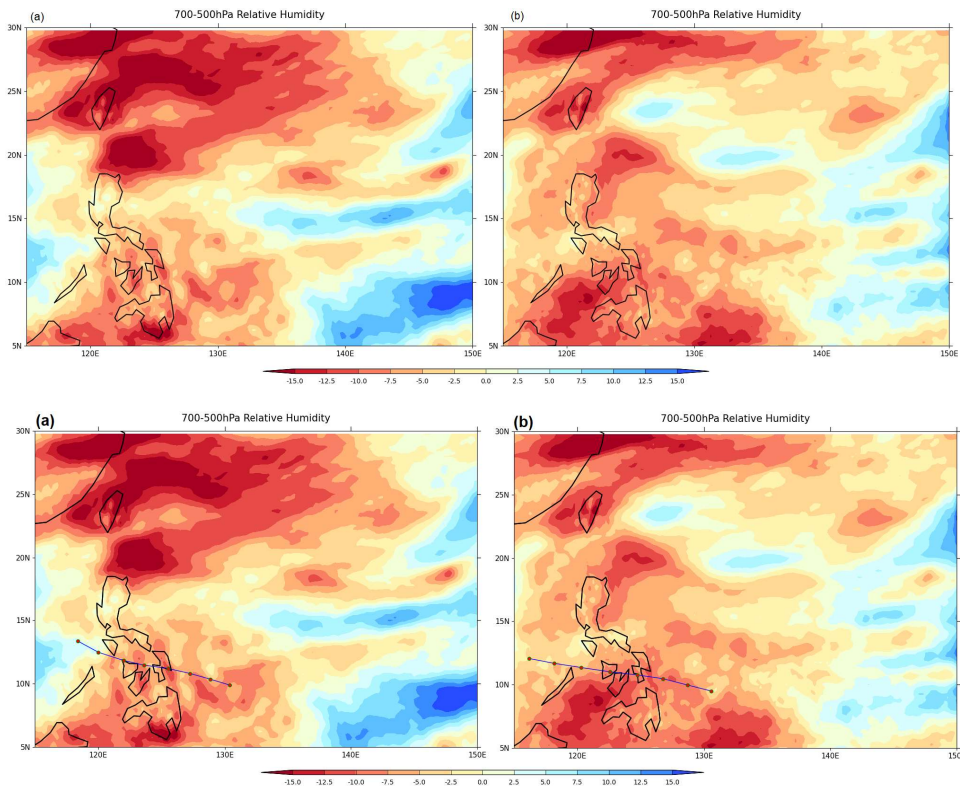


Figure 13: Geopotential height at 500hPa in geopotential meters shaded contour lines and winds (streamlines) at 700hPa averaged over the entire period of the simulation with (a) KF (corresponding to `kfsnoffsd1sf1`) and (b) TK (corresponding to `tksoffsd1sf1`). The 6-hourly WRF output was interpolated to the coarser 6-hourly ERA5 grid using First-order Conservative Remapping through CDO remapcon function. CDO code available at <https://code.mpimet.mpg.de/projects/cdo/>.

650 The TK scheme also produced relatively drier storm environments along the TC path compared to the simulation using KF scheme and as a result, less convection, which translates into weaker intensity (lower wind speeds), whereas simulations using the KF scheme are ~15% higher relative to the simulation using TK. The TK scheme has relatively drier bias with respect to ERA5 along the TC track (Fig. 14). According to Villafuerte et al. (2021), the TK scheme underestimates mid-tropospheric relative humidity, providing a drier environment thereby constraining deep convection and inhibiting TC development.

655 Furthermore, Shen et al. (2019) demonstrated that drier lower troposphere enhances downdrafts and inhibit convection, resulting in weaker intensities and less rain. When comparing the distribution of mid-tropospheric relative humidity as shown in Fig. 14, KF shows a **lower-higher** relative humidity along the track of Haiyan, which indicates **better vapor to precipitation conversion of the KF scheme. From this distribution of relative humidity, it can be easily assumed** that the KF scheme produces more convection and generates **ds** significant rainfall associated with the system, as compared to the weaker convective organization (hence less rainfall) of the simulations using the TK scheme.

660



665 **Figure 14: The difference of the simulated Mid-tropospheric (700-500hPa) Relative Humidity averaged over the entire period of the simulation with (a) KF (corresponding to kfnoffs41sfl) and (b) TK (corresponding to tknoffs41sfl) from ERA5. The 6-hourly WRF output was interpolated to the coarser 6-hourly ERA5 grid using First-order Conservative Remapping through CDO remapcon function. CDO code available at <https://code.mpimet.mpg.de/projects/cdo/>**

4. Conclusion

670 Typhoon Haiyan (2013) was one of the most intense and destructive tropical cyclones ever to hit the Philippines. As climate models project more intense storms, such as Typhoon Haiyan, will occur more frequently in the future due to climate change, it is important to improve their representation in high-resolution models, in order to improve understanding of TCs under climate change and improve confidence in model projections, and more importantly, for risk and impact assessments. The intensity of TY Haiyan proved difficult to simulate using the Weather Research and Forecasting model at 25-km and 5-km domain configurations as with other previous studies. This study was able to assess the sensitivities to different parameterizations in WRF that can be useful in future simulations of TC cases under future climate conditions. Despite the failure to simulate Haiyan's rapid intensification phase, the simulations were still able to capture the tracks and intensity reasonably well. Based on the results, there seems to be a trade-off between utilizing KF and TK cumulus schemes that has not been previously discussed in previous studies of tropical cyclones in the Philippines.

685 The simulated intensity of TY Haiyan is most sensitive to changes in the cumulus scheme and surface flux options; on the other hand, simulated track is most sensitive to cumulus scheme and spectral nudging. However, the TK cumulus scheme produces better track and the KF scheme produces better intensity. There is a statistically significant difference in the simulated tracks and intensities between the use of the two cumulus schemes. The TK scheme simulates the track better, while the KF scheme produces higher intensities, with the KF scheme simulating a mean bias of 16 hPa and 2 ms⁻¹ and the TK scheme with a mean bias of 31 hPa and -6 ms⁻¹, respectively. The KF scheme has larger DPEs (mean DPE of 55 ± 7 km ~~94 km~~ compared to mean DPE of 47 ± 5 km ~~64 km~~ for TK scheme) due to a more northward steering flow. On the other hand, simulations using the TK scheme had weaker wind and higher MSLP due to the suppression of deep convection by active shallow convection. Simulated rainfall is also sensitive to the cumulus schemes, with simulations using TK having less and smaller rainfall extent than simulations using KF cumulus convection scheme.

695 The results also show the simulated tracks are sensitive to spectral nudging which results in a reduction in the mean DPE by 20 km. The intensity varies as well with different surface flux options, with surface flux option 1, where the momentum roughness length is expressed using a combination of two roughness length formulas (Green and Zhang, 2013), in which the first is Charnock (1955) plus a constant viscous term and the second is the exponential expression from Davis et al. (2008) with a viscous term (as cited by Kueh et al., 2019) simulating better intensities than the other two options (default surface flux option and surface flux option 2). The use of boundary conditions from different ensemble members also resulted in variations in the simulated tracks and intensities, but still within the range of variability of the different parameterization experiments. The use of the KF convective scheme and a more reasonable surface flux option (sf1) can help improve the simulated intensity. While the use of the TK convective scheme and application of spectral nudging can improve the track simulation.

710 This study is part of an on-going effort to investigate the effect of future climate on the intensity and track of selected destructive TC case studies in the Philippines such as Haiyan using a regional climate model. The resulting sensitivities to the cumulus schemes will be an important consideration in simulating the TC case studies with climate change forcing. Our findings further stress the need for choosing the appropriate cumulus schemes and surface flux parameterization given its impacts on different TC characteristics, e.g. the KF scheme and surface flux option 1 for simulating better intensities of extreme TCs such as Haiyan, besides higher grid resolutions as noted in previous studies (Kueh et al., 2019, Li et al., 2018). The results presented here can also be used in further improving the value of downscaling for simulating intense TCs like Haiyan. These and future results will be useful in addressing the growing need to plan and prepare for, and reduce the impacts of future TCs in the Philippines. As shown in this study, there are uncertainties associated with the use of cumulus parameterizations

Formatted: Tab stops: 4.73 cm, Left + 8.85 cm, Centered

schemes, spectral nudging and surface flux parameterizations. To cover these uncertainties, the use of ensemble simulations can be applied. For operational applications, an ensemble of cumulus parameterizations can be used to take into account the uncertainty in the track and intensity of simulation intense TCs. This study can facilitate research on regional climate modeling to improve simulations of intense TCs like Haiyan. Furthermore, it is important to study RCMsLAMs with a model resolution less than 5 km that can be extremely useful in simulating TCs and associated rain. Li et al. (2018) suggested that a 2-km convection-permitting resolution is needed to reproduce intense TCs such as Haiyan. Other model parameterizations such as cloud microphysics and planetary boundary layer, and ocean coupling may help further improve the intensity simulations of extreme TC such as Haiyan but are beyond the scope of this paper. Simulations using a higher resolution convection-permitting model is needed. Additional simulations and further investigations on these aspects, as well as for other similar TCs will be useful.

Appendices

none

Code availability

Code for the WRF model is available at <http://www2.mmm.ucar.edu/wrf/users/downloads.html>. WPS Geographical Input data is available from https://www2.mmm.ucar.edu/wrf/users/download/get_sources_wps_geog.html#mandatory. TRACK is available from <https://gitlab.act.reading.ac.uk/track/track>. CF-python and CF-plot were used in the analysis and visualization, and installation packages are available from <https://ncas-cms.github.io/cf-python/>

Data availability

Simulation data are stored at the JASMIN data storage facility and is available upon request from the corresponding author.

Author contribution:

RJD designed the experiments with guidance from GB, PLV and KH. RJD performed the simulations and analysis with inputs from all co-authors particularly the interpretation of the results. RJD wrote the article with contributions from all co-authors.

Competing interests:

The authors declare that they have no conflict of interest.

Disclaimer

none

Acknowledgements

The authors would like to thank the inputs from Dr. Nicholas Klingaman in the design and initial analysis of the experiments. Rafaela Jane Delfino is supported by a scholarship under the Philippine Commission for Higher Education and British Council under the Joint Development of Niche Programme through Philippines-UK Linkages (JDNP) Dual PhD Program. Kevin Hodges and Pier Luigi Vidale is funded by the RCUK through the Natural Environment Research Council. This research used

resources of the JASMIN data analysis facility supported by the Centre for Environmental Data Analysis. [We also thank the two anonymous reviewers for their constructive comments and suggestions.](#)

745 **References**

Adeniyi, M.O.: Sensitivities of the Tiedtke and Kain-Fritsch Convection Schemes for RegCM4.5 over West Africa. *Meteorology Hydrology and Water Management*. 7(2):27-37. doi:[10.26491/mhwm/103797](https://doi.org/10.26491/mhwm/103797), 2019.

750 Aragon, L.G.B. and Pura, A.G.: Analysis of the displacement error of the WRF–ARW model in predicting tropical cyclone tracks over the Philippines. *Met. Apps*, 23: 401–408. doi:[10.1002/met.1564](https://doi.org/10.1002/met.1564), 2016.

Bagtasa, G.: Contribution of Tropical Cyclones to Rainfall in the Philippines. *Journal of Climate*. Vol 30. pp. 3621–3633. <http://dx.doi.org/10.1175/JCLI-D-16-0150.1>, 2017.

755 [Bagtasa, G.: Influence of Madden–Julian oscillation on the intraseasonal variability of summer and winter monsoon rainfall in the Philippines. *Journal of Climate*, 33\(22\), pp.9581–9594. <https://doi.org/10.1175/JCLI-D-20-0305.1>, 2020.](#)

Bagtasa, G.: Analog forecasting of tropical cyclone rainfall in the Philippines. *Weather and Climate Extremes*,32, doi:[10.1016/j.wace.2021.100323](https://doi.org/10.1016/j.wace.2021.100323), 2021.

760

Biswas, M. K., Bernardet, L., and Dudhia, J.: Sensitivity of hurricane forecasts to cumulus parameterizations in the HWRF model, 9113–9119. doi:[10.1002/2014GL062071](https://doi.org/10.1002/2014GL062071), 2014.

765 Brucal, A., Roezer, V., Dookie, D. S., Byrnes, R., Ravago, M. V, and Cruz, F.: Disaster impacts and financing: local insights from the Philippines, (June). <https://www.lse.ac.uk/granthaminstitute/publication/disaster-impacts-and-financing-local-insights-from-the-philippines/>, 2020.

Brutsaert, W.: A theory for local evaporation (or heat transfer) from rough and smooth surfaces at ground level, *Water Resour. Res.*, 11, 543–550, doi:[10.1029/WR011i004p00543](https://doi.org/10.1029/WR011i004p00543), 1975a.

770

Brutsaert, W.: The Roughness Length for Water Vapor, Sensible Heat, and other Scalars, *J. Atmos. Sci.*, 32, 2028–2031, doi:[10.1175/1520-0469\(1975\)032<2029:TRLFVW>2.0.CO;2](https://doi.org/10.1175/1520-0469(1975)032<2029:TRLFVW>2.0.CO;2), 1975b.

775 Camargo, S. J., and Sobel, A. H.: Western North Pacific Tropical Cyclone Intensity and ENSO. *J. Climate*, 18, 2996–3006, doi:[10.1175/JCLI3457.1](https://doi.org/10.1175/JCLI3457.1), 2005.

Cardenas, M.B., Bennett, P.C., Zamora, P.B., Befus, K.M., Rodolfo, R.S., Cabria, H.B., and Lapus, M.R.: Devastation of aquifers from tsunami-like storm surge by Supertyphoon Haiyan. *Geophys. Res. Lett.* 42(8): 2844–2851, doi:[10.1002/2015GL063418](https://doi.org/10.1002/2015GL063418), 2015.

780

Cayanan, E.O., Chen ,T-C., Argete, J.C., Yen, M-C., and Nilo, P.D.: The effect of tropical cyclones on southwest monsoon rainfall in the Philippines. *J. Meteorol. Soc. Jpn* 89A:123–139, doi:[10.2151/jmsj.2011-A08](https://doi.org/10.2151/jmsj.2011-A08), 2011.

Formatted: English (United Kingdom)

785 [Cha, D-H, Jin, C-S, Lee, D-K, Kuo, Y-H: Impact of intermittent spectral nudging on regional climate simulation using Weather Research and Forecasting model. Journal of Geophysical Research: Atmospheres. https://doi.org/10.1029/2010JD015069](https://doi.org/10.1029/2010JD015069)
2011.

790 Cha, E.J., Knutson, T., Lee, T., Ying, M. and Nakaegawa, T.: Third Assessment on Impacts of Climate Change on Tropical Cyclones in the Typhoon Committee Region – Part II: Future Projections, Tropical Cyclone Research and Review, 2020,ISSN 2225-6032, doi:10.1016/j.terr.2020.04.005 , 2020.

Charnock, H.: Wind stress on a water surface, Q. J. Roy. Meteor. Soc., 81, 639–640, doi:10.1002/qj.49708135027, 1955.

795 Chen, F. and Dudhia, J.: Coupling an advanced land-surface/ hydrology model with the Penn State/NCAR MM5 modeling system. Part I: model description and implementation. Mon Weather Rev 129:569–585, doi:10.1175/1520-0493(2001)129<0569:CAALSH>2.0.CO;2, 2001.

Chen, S.H. and Sun, W.Y.: A one dimensional time-dependent cloud model. J Meteorol Soc Japan 80:99–118 doi:10.2151/jmsj.80.99, 2002.

800 Chen, J., Wang, Z., and Tam, C. Impacts of climate change on tropical cyclones and induced storm surges in the Pearl River Delta region using pseudo-global-warming method. Sci Rep 10, 1965, doi:10.1038/s41598-020-58824-8, 2020.

805 Christensen et. Climate phenomena and their relevance for future regional climate change. In: Stocker et al., eds. Climate Change 2013: The Physical Science Basis. Contribution of Working Group I to the Fifth Assessment Report of the Intergovernmental Panel on Climate Change (IPCC AR5). Cambridge, UK and New York, NY: Cambridge University Press.

810 Cinco, T. A., de Guzman, R. G., Ortiz, A. M. D., Delfino, R. J. P., Lasco, R. D., Hilario, F. D., and Ares, E. D.: Observed trends and impacts of tropical cyclones in the Philippines. International Journal of Climatology, 36(14). doi:10.1002/joc.4659, 2016.

815 Comiso, J. C., Perez, G. P., and Stock, L. V. : Enhanced Pacific Ocean Sea Surface Temperature and Its Relation to Typhoon Haiyan. Journal of Environmental Science and Management 18 (1): 1-10 <https://ovcre.uplb.edu.ph/journals-uplb/index.php/JESAM/article/view/175>, 2015.

Copernicus Climate Change Service (CS3): ERA5. <https://confluence.ecmwf.int/pages/viewpage.action?pageId=74764925>, 2017.

820 Corporal-Lodangco, I.L. and Leslie, L.M.: Climatology of Philippine tropical cyclone activity: 1945–2011. Int. J. Climatol., 37: 3525-3539. doi:10.1002/joc.4931, 2017.

Cruz, F. and Narisma, G.: WRF simulation of the heavy rainfall over Metropolitan Manila, Philippines during tropical cyclone Ketsana: a sensitivity study. Meteorology and Atmospheric Physics, 128(4), 415–428. doi:10.1007/s00703-015-0425-x, 2016.

Formatted: English (United Kingdom)

- 825 Cruz, F. T., Sasaki, H., and Narisma, G.: Assessing the Sensitivity of the Non-Hydrostatic Regional Climate Model to Boundary
Conditions and Convective Schemes over the Philippines, *Journal of the Meteorological Society of Japan*. 94A, 165-179
[doi:10.2151/jmsj.2015-059](https://doi.org/10.2151/jmsj.2015-059), 2016.
- Daron, J., Macadam, I., Kanamaru, H., Cinco, T., Katzfey, J., Scannell, C., ... Tangang, F.: Providing future climate projections
830 using multiple models and methods: insights from the Philippines. *Climatic Change*, 148(1–2). [doi:10.1007/s10584-018-2183-
5](https://doi.org/10.1007/s10584-018-2183-5), 2018.
- Di, Z., Gong, W., Gan, Y., She, C., and Duan, Q.: Combinatorial Optimization for WRF Physical Parameterization Schemes :
A Case Study of Three-Day Typhoon Simulations over the Northwest Pacific Ocean. [doi:10.3390/atmos10050233](https://doi.org/10.3390/atmos10050233)U, 2019.
- 835 Donelan, M. A., Haus, B. K., Reul, N., Plant, W. J., Sti- assnie, M., Graber, H. C., Brown, O. B., and Saltzman, E. S.: On the
limiting aerodynamic roughness of the ocean in very strong winds, *Geophys. Res. Lett.*, 31, L18306,
[doi:10.1029/2004GL019460](https://doi.org/10.1029/2004GL019460), 2004.
- 840 Duc, T. Du, Duc, C. H., Hole, L. R., Hoang, L., Luong, H., Thanh, T., and Khanh, H. M.: Impacts of Different Physical
Parameterization Configurations on Widespread Heavy Rain Forecast over the Northern Area of Vietnam in WRF-ARW
Model, *Adv. In Met.* [doi:10.1155/2019/1010858](https://doi.org/10.1155/2019/1010858), 2019.
- Dudhia, J.: Numerical study of convection observed during the Winter Monsoon Experiment using a mesoscale two-
845 dimensional model. *J. Atmos. Sci.*, 46, 3077–3107. [doi:10.1175/1520-0469\(1989\)046<3077:NSOCOD>2.0.CO;2](https://doi.org/10.1175/1520-0469(1989)046<3077:NSOCOD>2.0.CO;2), 1989.
- Eckstein, D., Künzel, V., Schäfer, L., and Wings, M. Global Climate Risk Index 2020 Who Suffers Most from Extreme
Weather Events? Weather-Related Loss Events in 2018 and 1999 to 2018. <https://www.germanwatch.org/en/17307>, 2020.
- 850 Emanuel, K: Increasing destructiveness of tropical cyclones over the past 30 years. *Nature* 436, 686–688.
[doi:10.1038/nature03906](https://doi.org/10.1038/nature03906), 2005.
- EM-DAT: The Emergency Events Database - Université Catholique de Louvain (UCL) - CRED, D. Guha-Sapir, Brussels,
Belgium. [Last database update: 30 June 2020.] <http://www.emdat.be>, 2020.
- 855 Flores, R. A.: Geovisual Analytics on the verification of the PAGASA Numerical Weather Prediction Model Rainfall Forecast,
Int. Arch. Photogramm. Remote Sens. Spatial Inf. Sci., XLII-4/W19, 215–222, [doi:10.5194/isprs-archives-XLII-4-W19-215-
2019](https://doi.org/10.5194/isprs-archives-XLII-4-W19-215-2019), 2019.
- 860 Gallo, F., Daron, J., Macadam, I., Cinco, T., Villafuerte, M., Jones, R. G., ... Tucker, S.: High-resolution regional climate
model projections of future tropical cyclone activity in the Philippines, 1181–1194. [doi:10.1002/joc.5870](https://doi.org/10.1002/joc.5870), 2019.
- Garratt, J.R.: Review: the atmospheric boundary layer, *Earth-Science Reviews*, 37:1–2, 89-134,
[doi:10.1016/0012-8252\(94\)90026-4](https://doi.org/10.1016/0012-8252(94)90026-4), 1994.
- 865 Glisan, J. M., W. J. Gutowski, J. J. Cassano, and Higgins, M. E.: Effects of Spectral Nudging in WRF on Arctic Temperature
and Precipitation Simulations. *J. Climate*, 26, 3985–3999, [doi:10.1175/JCLI-D-12-00318.1](https://doi.org/10.1175/JCLI-D-12-00318.1), 2013.

- Green, B. W., and Zhang F.: Impacts of Air–Sea Flux Parameterizations on the Intensity and Structure of Tropical Cyclones. *Mon. Wea. Rev.*, 141, 2308–2324, doi:10.1175/MWR-D-12-00274, 2013.
- 870
- Guo, X. : The Use of a Spectral Nudging Technique to Determine the Impact of Environmental Factors on the Track of Typhoon Megi (2010) *Atmosphere*, 8(12), 257; doi:10.3390/atmos8120257, 2017.
- 875 [Gutmann, E. D., Rasmussen, R. M., Liu, C., Ikeda, K., Bruyere, C. L., Done, J. M., Garrè, L., Friis-Hansen, P., & Veldore, V.: Changes in Hurricanes from a 13-Yr Convection-Permitting Pseudo-Global Warming Simulation, *Journal of Climate*, 31\(9\), 3643-3657. doi:10.1175/JCLI-D-17-0391.1, 2018.](#)
- Hashimoto, A., Done, J.M., Fowler, L.D. and Bruyère, C.L.: Tropical cyclone activity in nested regional and global grid-refined simulations. *Climate Dynamics.*, 47, 497–508. doi:10.1007/s00382-015-2852-2, 2015.
- 880
- Heming, J.T.: Tropical cyclone tracking and verification techniques for Met Office numerical weather prediction models. *Meteorological Applications*. doi:10.1002/met.1599, 2017.
- 885 Hennermann, K.: ERA5: uncertainty estimation <https://confluence.ecmwf.int/display/CKB/ERA5%3A+uncertainty+estimation>, 2018.
- Hersbach, H., Bell, B., Berrisford, P., Hirahara, S., Horányi, A., Nicolas, J., ... Thépaut, J.: The ERA5 global reanalysis, *Q J R Meteorol Soc.* 2020; 146: 1999–2049. doi:10.1002/qj.3803, 2020.
- 890
- Hill, K. A., and Lackmann, G. M.: Influence of Environmental Humidity on Tropical Cyclone Size, *Mon Weather Rev* 137(10), 3294-331 doi:10.1175/2009MWR2679.1, 2009.
- Hodges, K.I.: Feature tracking on the unit sphere. *Mon Weather Rev* 123:3458–3465. doi:10.1175/1520-0493(1995)123%3c3458:FTOTUS%3e2.0.CO;2, 1995.
- 895
- Hodges, K.I.: Spherical nonparametric estimators applied to the UGAMP model integration for AMIP. *Mon Weather Rev* 124:2914–2932. doi:10.1175/1520-0493(1996)124%3c2914:SNEAT%3e2.0.CO;2, 1996.
- 900
- Hodges, K.I.: Adaptive constraints for feature tracking. *Mon Weather Rev* 127:1362–1373. doi:10.1175/1520-0493(1999)127%3c1362:ACFFT%3e2.0.CO;2, 1999.
- Hodges, K. I. and Klingaman, N. P. : Prediction errors of tropical cyclones in the western north Pacific in the Met Office global forecast model. *Weather and Forecasting*, 34 (5). pp. 1189-1209. ISSN 0882-8156, doi:10.1175/WAF-D-19-0005.1, 2019.
- 905
- Holden, W. N. : Typhoons, Climate Change, and Climate Injustice in the Philippines, 11(November 2015), 117–139.
- Holland, G.J., J.M. Done, M. Ge, and R. Douglas, 2016: An Index for Cyclone Damage Potential. <https://ams.confex.com/ams/32Hurr/webprogram/Paper293660.html>, 2018.
- 910

- Hong, S.-Y., Lim, J.-O.J.: The WRF single-moment 6-class microphysics scheme (WSM6). *J Korean Meteor Soc* 42:129–151, 2006.
- 915 Hong, S.-Y., Lim, K.-S.S., Kim, J.-H., Lim, J.-O.J., and Dudhia, J.: Sensitivity study of cloud-resolving convective simulations with WRF Using two bulk microphysical parameterizations: icephase microphysics versus sedimentation effects. *J Appl Meteorol Clim* 48:61–76, 2009.
- Hong, S.-Y., Noh, Y., and Dudhia J: A new vertical diffusion package with an explicit treatment of entrainment processes. *Mon Weather Rev* 134:2318–2341, 2006.
- 920 Huffman, G.J., Stocker, E.F. , Bolvin, D.T. , Nelkin, E.J., and Tan, J.: GPM IMERG Final Precipitation L3 Half Hourly 0.1 degree x 0.1 degree V06, Greenbelt, MD, Goddard Earth Sciences Data and Information Services Center (GES DISC), doi:10.5067/GPM/IMERG/3B-HH/06, 2019.
- 925 IPCC: Summary for Policymakers. In: *Climate Change 2013: The Physical Science Basis. Contribution of Working Group I to the Fifth Assessment Report of the Intergovernmental Panel on Climate Change* [Stocker, T.F., D. Qin, G.-K. Plattner, M. Tignor, S.K. Allen, J. Boschung, A. Nauels, Y. Xia, V. Bex and P.M. Midgley (eds.)]. Cambridge University Press, Cambridge, United Kingdom and New York, NY, USA, 2013.
- 930 Isaksen, L., Bonavita, M., Buizza, R., Fisher, M., Haseler, J., Leutbecher, M. and Raynaud, L.: Ensemble of Data Assimilations at ECMWF. Technical Memorandum 636, ECMWF, Reading, UK. <https://www.ecmwf.int/en/elibrary/10125-ensemble-data-assimilations-ecmwf>, 2010.
- 935 Islam, T., Srivastava, P.K., Rico-Ramirez, M.A. et al.: Tracking a tropical cyclone through WRF–ARW simulation and sensitivity of model physics. *Nat Hazards* 76, 1473–1495, doi:10.1007/s11069-014-1494-8, 2015.
- Japan Meteorological Agency (JMA): Annual Report 2013. <https://www.jma.go.jp/jma/jma-eng/jma-center/rsmc-hp-pub-g/AnnualReport/2013/Text/Text2013.pdf>, 2013.
- 940 Jin C.S., Cha D.H., Lee D.K., Suh M-S., Hong S.Y., Kang H.S., Ho C.H: Evaluation of climatological tropical cyclone activity over the western North Pacific in the CORDEX-East Asia multi-RCM simulations. *Clim Dyn*, https://doi:10.1007/s00382-015-2869-6, 2015.
- 945 Judt, F., Klocke, D., Rios-Berrios, R., et al.: Tropical Cyclones in Global Storm-Resolving Models, *Journal of the Meteorological Society of Japan*. 2021-029, , doi:10.2151/jmsj.2021-029, 2021.
- Kain, J.S.: Convective parameterization for mesoscale models: the Kain Fritsch scheme. The representation of cumulus convection in numerical models. *Meteorol. Monogr.* 46, 165–170. doi:10.1007/978-1-935704-13-3_16, 1993.
- 950 Kain, J.S.: The Kain–Fritsch convective parameterization: an update. *J. Appl. Meteorol. Climatol.* 43, 170–181. Doi:10.1175/1520-0450(2004)043<0170:TKCPAU>2.0.CO;2, 2004.

- Kimura, F. and Kitoh, A.: Downscaling by Pseudo Global Warming Method. https://www.chikyu.ac.jp/P-C09/ICCAP/ICCAP_Final_Report/2/4-climate_kimura.pdf, 2007.
- 955 Knapp, K. R., Knaff, J. A., Sampson, C. R., Riggio, G. M., and Schnapp, A. D.: A pressure-based analysis of the historical western North Pacific tropical cyclone intensity record, *Mon. Weather Rev.*, 141, 2611–2631, doi:10.1175/MWR-D-12-00323.1, 2013.
- 960 Knapp, K.R., Applequist, S., Diamond, H.J., Kossin, J.P., Kruk, M., and Schreck, C.: NCDC International Best Track Archive for Climate Stewardship (IBTrACS) Project, Version 3. NOAA National Centers for Environmental Information. doi:10.7289/V5NK3BZP, 2019.
- Knutson, T., and Coauthors: Tropical Cyclones and Climate Change Assessment: Part II: Projected Response to Anthropogenic Warming. *Bull. Amer. Meteor. Soc.*, 101, E303–E322, doi:10.1175/BAMS-D-18-0194.1, 2020.
- 965 Knutson, T., Camargo, S. J., Chan, J. C. L., Emanuel, K., and Ho, C.: Tropical Cyclones and Climate Change Assessment: Part I. Detection and Attribution, 1–61. doi:10.1175/BAMS-D-18-0189.1, 2020.
- Kubota, H., and Chan, J.C.L.: Interdecadal variability of tropical cyclone landfall in the Philippines from 1902 to 2005. *Geophys. Res. Lett.* 36: L12802, doi:10.1029/2009GL038108, 2009.
- 970 Kueh, M.-T., Chen, W.-M., Sheng, Y.-F., Lin, S. C., Wu, T.-R., Yen, E., Tsai, Y.-L., and Lin, C.-Y.: Effects of horizontal resolution and air–sea flux parameterization on the intensity and structure of simulated Typhoon Haiyan (2013), *Nat. Hazards Earth Syst. Sci.*, 19, 1509–1539, doi:10.5194/nhess-19-1509-2019, 2019.
- 975 Kueh, M.-T.: Multiformality of the tropical cyclone wind–pressure relationship in the western North Pacific: Discrepancies among four best-track archives, *Environ. Res. Lett.*, 7, 024015, doi:10.1088/1748-9326/7/2/024015, 2012.
- Lackmann, G. M.: Hurricane Sandy before 1900 and after 2100. *Bull. Amer. Meteor. Soc.*, 96, 547–560. <https://doi.org/10.1175/BAMS-D-14-00123.1>, 2015.
- 980 Lagmay, A.M.F., Agaton, R.P., Bahala, M.A.C., Briones, J.B.L.T., Cabacaba, K.M.C., Caro, C.V.C., Dasallas, L.L., Gonzalo, L.A.L., Ladiero, C.N., Lapidez, J.P., Mungcal, M.T.F., Puno, J.V.R., Ramos, M.M.A.C., Santiago, J., Suarez, J.K., Tablazon, J.P.: Devastating storm surges of Typhoon Haiyan. *Int. J. Disaster Risk Red.* 11:1–12, doi:10.1016/j.ijdrr.2014.10.006, 2015.
- 985 Lander, M., Guard, C., and Camargo, S.: Super Typhoon Haiyan, in: State of the Climate in 2013, *B. Am. Meteorol. Soc.*, 95, S112–S114, 2014.
- Lee TC, Knutson TR, Kamahori H, Ying M.: Impacts of Climate Change on Tropical Cyclones in the Western North Pacific Basin. Part I: Past Observations. *Tropical Cyclone Res. Rev.* 1:213–230. doi:10.6057/2012TCRR02.08, 2012.
- 990 Lee, J.D., and Wu, C.C.: The Role of Polygonal Eyewalls in Rapid Intensification of Typhoon Megi (2010), 4175–4199. doi:10.1175/JAS-D-18-0100.1, 2018.

- 995 Li, F., Song, J. & Li, X.: A preliminary evaluation of the necessity of using a cumulus parameterization scheme in high-resolution simulations of Typhoon Haiyan (2013). *Nat Hazards* 92, 647–67. doi:10.1007/s11069-018-3218-y, 2018.
- Lyon, B and Camargo S.J.: The seasonally-varying influence of ENSO on rainfall and tropical cyclone activity in the Philippines. *Clim. Dyn.* 32:125–141, doi:10.1007/s00382-008-0380-z, 2009.
- 1000 McSweeney, C., Jones, R., Booth, B.: Selecting ensemble members to provide regional climate change information. *J Clim* 25:7100–21. doi:10.1175/JCLI-D-11-00526.1, 2012.
- McSweeney, C., Jones, R., Lee, R., Rowell, D.: Selecting CMIP5 GCMs for downscaling over multiple regions. *Clim Dyn* 44(11-12):3237-3260. doi:10.1007/s00382-014-2418-8, 2015.
- Mesoscale and Microscale Meteorology Laboratory – National Center for Atmospheric Research (MMML-NCAR): Weather Research and Forecasting Model, ARW Version 4 Modeling System User’s Guide. <https://www.mmm.ucar.edu/weather-research-and-forecasting-model>, 2019.
- 1010 Mittal, R., Tewari, M., Radhakrishnan, C., Ray, P., and Singh, T.: Response of tropical cyclone Phailin (2013) in the Bay of Bengal to climate perturbations. *Climate Dynamics*, (2013). doi:10.1007/s00382-019-04761.2019.
- Mlawer, Eli. J., Steven. J. Taubman, Patrick. D. Brown, M. J. Iacono, and S. A. Clough: Radiative transfer for inhomogeneous atmospheres: RRTM, a validated correlated-k model for the longwave. *J. Geophys. Res.*, 102, 16663–16682. doi:10.1029/97JD00237, 1997.
- 1015 Mohandas, S. and Ashrit, R.: Sensitivity of different convective parameterization schemes on tropical cyclone prediction using a mesoscale model. *Nat Hazards* 73, 213–235 (2014). doi:10.1007/s11069-013-0824-6, 2014.
- 1020 Mohanty, U. C., Osuri, K. K., Routray, A., Mohapatra, M., and Pattanayak, S.: Simulation of bay of bengal tropical cyclones with wrf model: Impact of initial and boundary conditions. *Marine Geodesy*, 33(4), 294–314. doi:10.1080/01490419.2010.518061, 2010.
- 1025 Monin A. S., and A. M. Obukhov: Basic laws of turbulent mixing in the surface layer of the atmosphere. *Contrib Geophys Inst Acad Sci USSR* 151:163–187, https://gibbs.science/efd/handouts/monin_obukhov_1954.pdf, 1954.
- Moon, J., Cha, D.-H., Lee, M., & Kim, J. : Impact of spectral nudging on real-time tropical cyclone forecast. *Journal of Geophysical Research: Atmospheres*, 123, 12,647– 12,660. doi:10.1029/2018JD028550, 2018.
- 1030 Mori, N., Kato, M., Kim, S., Mase, H., Shibutani, Y., Takemi, T., Tsuboki, K., and Yasuda, T.: Local amplification of storm surge by Super Typhoon Haiyan in Leyte Gulf. *Geophysical Research Letters*, Volume 41, Issue 14, Pages 5106-5113. doi:10.1002/2014GL060689, 2014.
- 1035 Nakamura, R., Shibayama, T., Esteban, M. and Iwamoto, T.: Future typhoon and storm surges under different global warming scenarios: case study of typhoon Haiyan (2013). *Nat. Hazards*, 82, 1645-1681. doi:10.1007/s11069-016-2259-3, 2016.

- National Disaster Risk Reduction and Management Council (NDRRMC): NDRRMC situational reports. <http://www.ndrrmc.gov.ph/> (accessed 2 February 2020), 2020.
- 1040
- PAGASA: Observed and projected climate change in the Philippines. PAGASA, Quezon City, Philippines, 36pp, Available from https://pubfiles.pagasa.dost.gov.ph/iaas/FINAL_observed_climate_trends_and_projected_climate_change_in_the_Phils_2018.pdf, 2018.
- 1045
- Parker, C.L., Bruyère, C.L., Mooney, P.A. et al.: The response of land-falling tropical cyclone characteristics to projected climate change in northeast Australia. *Clim Dyn* 51, 3467–3485, doi:10.1007/s00382-018-4091-9, 2018.
- Parker, C. L., Lynch, A. H., and Mooney, P. A.: Factors affecting the simulated track and intensification of Tropical Cyclone Yasi (2011), 194(November 2016), 27–42. doi:10.1016/j.atmosres.2017.04.002, 2017.
- 1050
- Patricola, C. M., and Wehner, M. F: Article Anthropogenic influences on major tropical cyclone events. *Nature*. doi:10.1038/s41586-018-0673-2, 2018.
- 1055
- Peng, X., Fei, J., Huang, X., and Cheng, X. : Evaluation and Error Analysis of Official Forecasts of Tropical Cyclones during 2005–14 over the Western North Pacific. Part I: Storm Tracks, *Weather and Forecasting*, 32(2), 689-712. Retrieved Apr 28, 2021, from https://journals.ametsoc.org/view/journals/wefo/32/2/waf-d-16-0043_1.xml, 2017.
- Potty, J., Oo, S. M., Raju, P. V. S., and Mohanty, U. C.: Performance of nested WRF model in typhoon simulations over West Pacific and South China Sea. *Natural Hazards*, 63(3), 1451–1470. doi:10.1007/s11069-011-0074-4,2012.
- 1060
- Powell, M. D., Vickery, P. J., and Reinhold, T. A.: Reduced drag coefficient for high wind speeds in tropical cyclones, *Nature*, 24, 395–419, doi:10.1038/nature01481, 2003.
- 1065
- Powers, J.G., C.L. Bruyère, J.M. Done, J. Dudhia, T.J. Galarneau, Jr., M.J. Kavulich, Jr., S.E. Peckham, and W. Wang.: The Weather Research and Forecasting Model and Its Applications. *Meteor. Technology Int'l*, April 2014, 30-33. Doi:10.1175/BAMS-D-15-00308.1, 2014.
- 1070
- Powers, J.G., J.B. Klemp, W.C. Skamarock, C.A. Davis, J. Dudhia, D.O. Gill, J.L. Coen, D.J. Gochis, R. Ahmadov, S.E. Peckham, G.A. Grell, J. Michalakes, S. Trahan, S.G. Benjamin, C.R. Alexander, G.J. Dimego, W. Wang, C.S. Schwartz, G.S. Romine, Z. Liu, C. Snyder, F. Chen, M.J. Barlage, W. Yu, and M.G. Duda: The Weather Research and Forecasting Model: Overview, System Efforts, and Future Directions. *Bull. Amer. Meteor. Soc.*, 98, 1717–1737, doi:10.1175/BAMS-D-15-00308.1, 2017.
- 1075
- Prater, B., Evans, J.: Sensitivity of modeled tropical cyclone track and structure of hurricane Irene (1999) to the convective parameterization scheme. *Meteorol Atmos Phys* 80, 103–115. doi:10.1007/s007030200018, 2002.
- Sato, T., Kimura, F., Kitoh, A.: Projection of Global Warming onto Regional Precipitation over Mongolia Using a Regional Climate Model. *Journal of Hydrology* 333(1):144-154. doi:10.1016/j.jhydrol.2006.07.023, 2007.
- 1080

Satya, O. C., Mandailing, P. M., and Kaban, H.: Application of advanced research WRF model using tropical (New TK) scheme and KF scheme in predicting short-term weather in Palembang and its surrounding areas Application of advanced research WRF model using tropical (New TK) scheme and KF scheme in predicting short-term weather in Palembang and its surrounding areas. doi:10.1088/1742-6596/1282/1/012025, 2019.

1085

Scoccimarro, E.: Modeling Tropical Cyclones in a Changing Climate. Oxford Research Encyclopedias: Natural Hazard Science, DOI:10.1093/acrefore/9780199389407.013.2, 2016.

1090

Shen, W., Song, J., Liu, G., Zhuang, Y., Wang, Y., Tang, J.: The effect of convection scheme on tropical cyclones simulations over the CORDEX East Asia domain. *Clim Dyn* 52:4695–4713. doi:10.1007/s00382-018-4405-y, 2019.

Shen, W., Tang, J., Wang, Y., Wang, S., and Niu, X.: Evaluation of WRF model simulations of tropical cyclones in the western North Pacific over the CORDEX East Asia domain. *Climate Dynamics*, 48(7), 2419–2435. doi:10.1007/s00382-016-3213-5, 2017.

1095

Shepherd, T. J., and Walsh, K. J.: Sensitivity of hurricane track to cumulus parameterization schemes in the WRF model for three intense tropical cyclones: impact of convective asymmetry. *Meteorog. Atmos. Phys.*, 129(4), 345–374. doi:10.1007/s00703-016-0472-y, 2017.

1100

Shimada, U., Kubota, H., Yamada, H., Cayan, E. O., and Hilario, F. D.: Intensity and Inner-Core Structure of Typhoon Haiyan (2013) near Landfall: Doppler Radar Analysis. *Mon. Weather Rev.* 146(2), 583-597. doi:10.1175/MWR-D-17-0120.1, 2018.

1105

Skamarock, W.C., Klemp, J.B., Dudhia, J., Gill, D.O., Barker, D.M., Duda, M., Huang, X-Y., Wang, W., Powers, J.G.: A description of the advanced research WRF version 3. NCAR Technical Note, NCAR/TN-475+STR, National Center for Atmospheric Research, Boulder, Colorado, 2008.

1110

Soria, J. L. A., Switzer, A. D., Villanoy, C. L., Fritz, H. M., Bilger, P. H. T., Cabrera, O. C., Siringan, F. P., Maria, Y. Y., Ramos, R. D., and Fernandez, I. Q.: Repeat Storm Surge Disasters of Typhoon Haiyan and Its 1897 Predecessor in the Philippines, *Bulletin of the American Meteorological Society*, 97(1), 31-48. Doi:10.1175/BAMS-D-14-00245.1, 2016.

Spencer P, Shaw B, Pajuelas B. 2012. Sensitivity of typhoon Parma to various WRF model configurations. In Technical Report on 92nd American Meteorological Society Annual Meeting, 26 January 2012, New Orleans, LA; 608–619. American Meteorological Society: Boston, MA. 2012.

1115

[Sun Y, Zhong Z, Lu W, Hu Y. Why are tropical cyclone tracks over the western North Pacific sensitive to the cumulus parameterization scheme in regional climate modeling? A case study for Megi \(2010\). *Mon Weather Rev* 142:1240–1249. https://doi.org/10.1175/MWR-D-13-00232.1. 2015.](https://doi.org/10.1175/MWR-D-13-00232.1)

1120

Takayabu, I., Hibino, K., Sasaki, H., Shiogama, H., Mori, N., Shibutani, Y. and Takemi, T.: Climate change effects on the worst-case storm surge: a case study of Typhoon Haiyan, *Environ. Res. Lett.* 10 089502. doi:10.1088/1748-9326/10/6/064011, 2015.

- Tang, J., Wang, S., Niu, X., Hui, P., and Zong, P.: Impact of spectral nudging on regional climate simulation over CORDEX East Asia using WRF. *Climate Dynamics*, 48(7), 2339–2357. doi:10.1007/s00382-016-3208-2, 2017.
- 1125
- Tewari, M., F. Chen, W. Wang, J. Dudhia, M. A. LeMone, K. Mitchell, M. Ek, G. Gayno, J. Wegiel, and R. H. Cuenca: Implementation and verification of the unified NOAA land surface model in the WRF model. 20th conference on weather analysis and forecasting/16th conference on numerical weather prediction, pp. 11–15, https://ams.confex.com/ams/84Annual/techprogram/paper_69061.htm 2004.
- 1130
- Tiedtke, M.: A Comprehensive Mass Flux Scheme for Cumulus Parameterization in Large-Scale Models, *Mon. Weather Rev.* 117(8), 1779-1800. doi:10.1175/1520-0493(1989)117<1779:ACMFSF>2.0.CO;2,1989,
- 1135
- Torn, R.D., and Davis, D.A.: The influence of shallow convection on tropical cyclone track forecasts. *Mon. Weather Rev.* 140, 2188–2197, doi:10.1175/MWR-D-11-00246., 2012.
- Tolentino, J.T. and Bagtasa, G.: Calibration of Kain–Fritsch cumulus scheme in Weather Research and Forecasting (WRF) model over Western Luzon, Philippines. *Meteorol Atmos Phys*, doi:10.1007/s00703-021-00779-0, 2021.
- 1140
- Villafuerte, M. Q., John, I. I., Lambrento, C. R., Hodges, K. I., Cruz, F. T., Cinco, T. A., and Narisma, G. T.: Sensitivity of tropical cyclones to convective parameterization schemes in RegCM4. *Climate Dynamics*, (0123456789). doi:10.1007/s00382-020-05553-3, 2021.
- 1145
- Wada, A.: Effect of Air-Sea Environmental Conditions and Interfacial Processes on Extremely Intense Typhoon Haiyan (2013), 379–405. doi:10.1029/2017JD028139, 2018.
- Walsh, K.J.E., McBride, J.L., Klotzbach, P.J., Balachandran, S., Camargo, S.J., Holland, G., Knutson, T.R., Kossin, J.P., Lee, T., Sobel, A. and Sugi, M.: Tropical Cyclones and Climate Change. *WIREs Clim Change* 2015. doi:10.1002/wcc.371, 2015.
- 1150
- Walsh K.J.E., S.J. Camargo, T.R. Knutson, J. Kossin, T.-C. Lee, H. Murakami, C. Patricola, Tropical cyclones and climate change, *Tropical Cyclone Research and Review*, Volume 8, Issue 4, 2019, Pages 240-250, ISSN 2225-6032, doi:10.1016/j.tcr.2020.01.004, 2019.
- 1155
- Wang, H., Wang, Y. and Xu, H.: Improving simulation of a tropical cyclone using dynamical initialization and large-scale spectral nudging: A case study of Typhoon Megi (2010). *Acta Meteorol Sin* 27, 455–475, doi:10.1007/s13351-013-0418-y, 2013.
- Xue, F., and F. X. Fan.: Anomalous western Pacific subtropical high during late summer in weak La Niña years: Contrast between 1981 and 2013. *Adv. Atmos. Sci.*, 33(12), 1351–1360, doi:10.1007/s00376-016-5281-1, 2016.
- 1160
- Yavinchan, S., Exell, R. H. B., and Sukawat, D.: Precipitation Forecasts by the New KF Convective Parameterization Scheme during the Extreme Precipitation Event in Southern Thailand 2. 21–24., <https://www.thaiscience.info/Article%20for%20ThaiScience/Article/61/10011022.pdf>, 2006.

1165 Yesubabu, V., Srinivas, C. V., Ramakrishna, S. S. V. S., and Prasad, K. B. R. R. H.: Impact of period and timescale of FDDA analysis nudging on the numerical simulation of tropical cyclones in the Bay of Bengal, 2109–2128. doi:10.1007/s11069-014-1293-2, 2014.

1170 Yonson, R., Gaillard, J. C., and Noy, I.: The measurement of disaster risk: An example from tropical cyclones in the Philippines Rio Yonson, J C Gaillard and Ilan Noy. *Review of Development Economics*, 2(22), 736–765., 2016.

Zhang, C., Wang, Y., Hamilton, K.: Improved representation of boundary layer clouds over the Southeast Pacific in ARW-WRF using a modified TK cumulus parameterization scheme. *Mon. Weather Rev.* 139 (11), 3489–3513. Doi:10.1175/MWR-D-10-05091.1 .2011.

1175

Zhang, D.-L. and Chen, H.: Importance of the upper-level warm core in the rapid intensification of a tropical cyclone, *Geophys. Res. Lett.*, 39, L02806, doi:10.1029/2011GL050578, 2012.

1180 Zhang, J. A., Black, P. G., French, J. R., and Drennan, W. M.: First direct measurements of enthalpy flux in the hurricane boundary layer: The CBLAST results, *Geophys. Res. Lett.*, 35, L14813, doi:10.1029/2008GL034374, 2008.