

# Modelling extreme water levels using intertidal topography and bathymetry derived from multispectral satellite images

Wagner L.L. Costa<sup>1</sup>, Karin R. Bryan<sup>1</sup>, Giovanni Coco<sup>2</sup>

<sup>1</sup>School of Science, University of Waikato, Hamilton, [Aotearoa](#) New Zealand.

<sup>2</sup>School of Environment, University of Auckland, Auckland, [Aotearoa](#) New Zealand.

Correspondence to: Wagner L.L. Costa ([wc119@students.waikato.ac.nz](mailto:wc119@students.waikato.ac.nz))

**Abstract.** Topographic and bathymetric data are essential for accurate predictions of flooding in estuaries because water depth and elevation data are fundamental components of the shallow-water hydrodynamic equations used in ~~e.g.~~ models for storm surge and tides. Where LiDAR or in-situ acoustic surveys are unavailable, recent efforts have centred on using satellite images to derive bathymetry (SDB) and topography (SDT). This work is aimed at (1) determining the accuracy of SDT and (2) assessing the suitability of the SDT and SDB for surge/tidal modelling of estuaries. The SDT was created by extracting the waterline as it tracks over the topography with changing tides. The method was applied to ~~four~~ different estuaries in [Aotearoa](#) New Zealand: Whitianga, Maketū, Ōhiwa and Tauranga [Harbours](#). Results show that the waterline method provides similar topography to the LiDAR with a root-mean-squared error equal to 0.2 m, and it is slightly improved when two correction methods are applied to the topography derivations: the removal of statistical bias (~~2-m~~0.02 m improvement) and hydrodynamic modelling correction of waterline elevation (~~1-m~~0.01 m improvement). ~~Finally, the~~The use of SDT in numerical simulations of surge levels was assessed for Tauranga Harbour in ~~four~~eight different [simulation](#) scenarios ~~that explore. Each scenario explored~~ different ways of incorporating the SDT ~~compared to modelling using to replace the~~ topographic data collected using non-satellite survey methods. ~~One~~In addition, ~~one~~ of these scenarios ~~trials replacing the combined SDT (for intertidal zones) and SDB (for subtidal bathymetry with SDB, derived using the well-known ratio-log method (so that), so~~ only satellite information is used in surge modelling). ~~The latter SDB is derived using the well-known ratio-log method.~~ For Tauranga Harbour, using SDT and SDB in hydrodynamic models does not result in significant differences in predicting high water levels when compared with the scenario modelled using surveyed bathymetry.

## 1 Introduction

Coastal flooding has become increasingly concerning because of growing storm intensity (Emanuel, 2005; Webster et al., 2005; Sobel et al., 2016) and sea-level rise, which will potentially increase the risk exposure of coastal communities (Nicholls and Cazenave, 2010; Oppenheimer et al., 2019). In practice, predicting flooding depends on understanding the contribution from the astronomical tide, storm surge, wave run-up, changes in the sea level and, in some cases, the fluvial discharge and vertical land motion. In coastal zones, these processes can interfere with each other, for example, in tide-surge interactions (Spicer et

30 al., 2019; Wankang et al., 2019; ~~Du et al., 2018~~). In the case of estuaries, bathymetric and topographic data are essential for coastal risk assessment (Parodi et al., 2020) because they influence the accuracy of water level predictions (Cea and French, 2012; Pedrozo-Acuña et al., 2012; Falcão et al., 2013; Mohammadian et al., 2022). Water depth is a fundamental component in the shallow-water hydrodynamic equations used in extreme water level modelling. Together with the estuary's geometry and length — which can cause shoaling and choking — and bed-shear stress — which reduces energy due to its effect on  
35 friction, — bathymetry and topography control the amplitude and phase (timing) of the propagating tide. The estuary's morphology is also fundamental for studying the tidal response to sea-level rise ([Du et al., 2018](#); Khojasteh et al., 2020, 2021; [Du et al., 2018](#)).

The methods used to measure bathymetry and topography in coastal zones have evolved rapidly. In estuaries, there are  
40 permanently inundated areas (~~which are generally shallow~~) and intertidal zones, which are ~~areas~~-flooded and exposed by the tide. Here we define the terms bathymetry and topography to reflect permanently-inundated and intertidal areas, respectively. Currently, there are four types of systems for measuring these: ship-based systems (e.g., single-beam and multibeam echosounders); non-imaging active remote sensing (e.g. LiDAR); imaging active remote sensing (e.g. synthetic aperture radar — SAR); and, imaging passive remote sensing (e.g. optical systems) (Jawak et al., 2015; Salameh et al., 2019; Ashphaq  
45 et al., 2021). Traditionally, the most commonly-used systems are echosounders and LiDAR. Both produce highly accurate data; however, several factors constrain their application, such as ~~economic~~-cost, ~~staffing costs~~labour, inaccessibility of remote areas, and environmental conditions (e.g., low tide navigational restrictions). Consequently, ~~approximately 70% of the world's coastal areas have not been surveyed or surveyed recently (IHO, 2020)~~-according to IHO (2020), ~~approximately 70% of the world's coastal areas have bathymetric surveys that need updating or are insufficiently detailed (e.g., are of large scale 1:100)~~.

50 Space-borne remote sensing techniques overcome the limitations of traditional techniques and can provide topographic and bathymetric data for a wide range of environments, including areas that are more difficult to measure such as remote shallow coastal waters (Lyzenga, 1985; Ehses and Rooney, 2015; Caballero and Stumpf, 2019) and extensive intertidal areas (Bishop-Taylor et al., 2019; Fitton et al., 2021). Several methods are used to derive bathymetric data — hereafter called satellite-derived bathymetry (SDB) — in shallow waters (i.e., between 0–~~15m~~15 m depth) using imaging passive remote sensing of reflectance (Ashphaq et al., 2021). Most-~~of~~ methods are developed around the process of light attenuation through the water column, and ~~can~~be categorized into two approaches. Empirical methods — ~~which~~ use direct observations of water depth in the study area to calibrate the reflectance-to-depth relationship (e.g., Stumpf et al., 2003; Caballero and Stumpf, 2019); — and physics-based inversion algorithms — ~~which~~ use physical processes/models to solve for water depth (e.g., radiative transfer models)  
60 without the need for in situ calibration data (e.g., Lee et al., 1998, 1999; Kerr and Purkis, 2018).

~~In the~~The present manuscript, ~~we focused~~ [focuses](#) on empirical methods to obtain the SDB, ~~and use~~including the ratio-log method proposed by Stumpf et al. (2003). ~~the~~The main limitations [of the Stumpf method](#) are the requirement of in situ

bathymetric data for calibration and ~~theits~~ sensitivity ~~of the Stumpf method~~ to environmental conditions that can change bottom and water reflectance — e.g., [high](#) water turbidity and variation in the benthic substrates — ~~that both of which~~ often occur in enclosed seas, bays and estuaries (Morris et al., 2021). Some studies have proposed techniques to tackle [these](#) empirical issues (e.g., [Geyman and Maloof, 2019](#); [Caballero and Stumpf, 2020](#); ~~Geyman and Maloof, 2019~~); ~~Caballero and Stumpf (2020) have adjusted reflectance ratios to reduce the effects of water turbidity and calculated the maximum chlorophyll index first to identify pixels containing floating and submerged vegetation and then remove these pixels from further implementation of the ratio-log formula.~~ [Geyman and Maloof \(2019\)](#) have. For example, [Geyman and Maloof \(2019\)](#) implemented the cluster-based regression algorithm to deal with different bottom substrates, first segmenting the satellite image into zones of spectral homogeneity and then calibrating the log-linear colour-to-depth relationship separately for each class. [Caballero and Stumpf \(2020\)](#) ~~adjusted reflectance ratios to reduce the effects of water turbidity and calculated the maximum chlorophyll index prior to analysis to identify pixels containing floating and submerged vegetation, allowing them to remove these pixels before further implementation of the ratio-log formula.~~

In intertidal regions, remote sensing can also be used to obtain satellite-derived topography (SDT) — and the waterline method is the most commonly applied. The method was first applied to SAR images (Mason and Davenport, 1996), and recently also to multispectral space-borne images (Khan et al., 2019; Salameh et al., 2020; Fitton et al., 2021). The technique functions by detecting the edge between the flooded and exposed intertidal zone in multiple images (i.e., the waterline) and assigning a height to each waterline by using the local tidal level at the time of image acquisition. The tidal level can be acquired by a numerical tide model (e.g., Khan et al., 2019; Kang et al., 2020; Salameh et al., 2020) or from a local tide gauge (Mason and Davenport, 1996; Salameh et al., 2020). The resulting collection of waterlines is interpolated over the intertidal domain, generating a digital elevation model (DEM). The approach assumes that estuary morphology does not change between images and has a gentle slope. The main disadvantages of this method are the dependence of accuracy on the number of images used in processing and the reduced performance ~~in~~ [when applied to](#) sites with complex morphology, i.e., variable terrain slopes within the intertidal zone (Liu et al., 2013; Salameh et al., 2019, 2020). Other methods used to derive topography in intertidal zones are the interferometric SAR (Li ~~and Goldstein and Goldstein~~, 1990), satellite radar altimetry (Salameh et al., 2018) and near-infrared logistic approach (Bué et al., 2020).

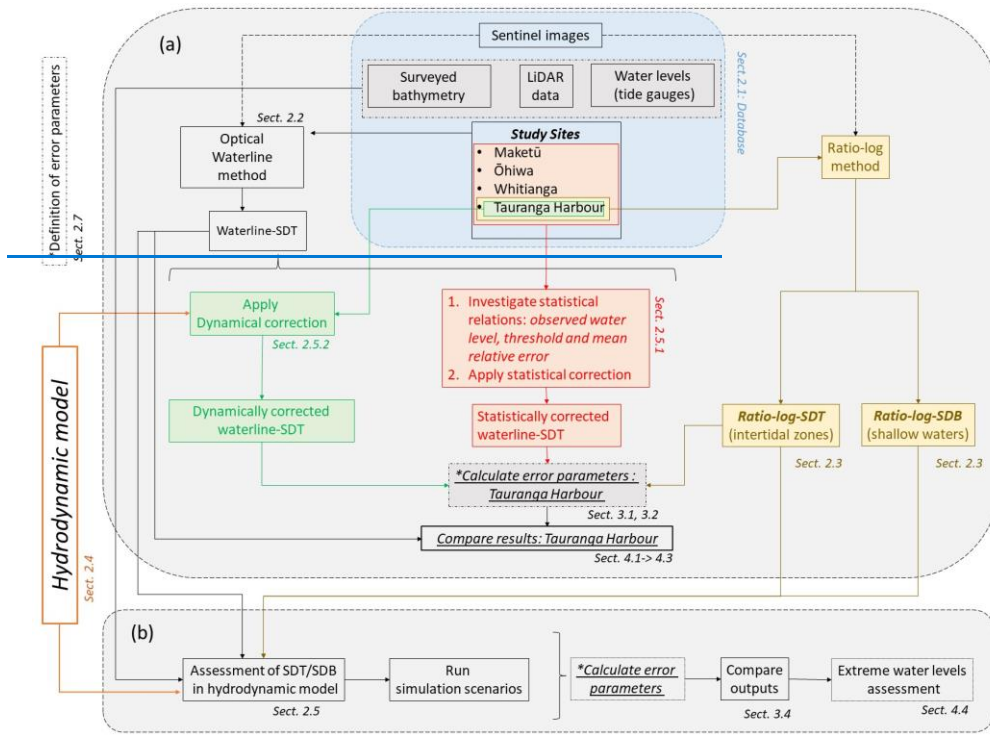
As remote-sensing techniques have developed, cloud computation and storage systems such as Google Earth Engine (Gorelick et al., 2017) have also advanced considerably. Consequently, scientists now have an enhanced capacity to quickly manage large geographical datasets, allowing global-scale studies in coastal science to evolve rapidly (e.g., Murray et al., 2019; Vos et al., 2019; Bishop-Taylor et al., 2019). For instance, databases now exist on the distribution of and changes to global tidal flats (Murray et al., 2019), as well as a global estimate of coastline position (Almeida et al., 2021; Vos et al., 2019). Satellite-derived bathymetry (SDB) and topography (SDT) techniques are now routinely applied over extensive areas (e.g., Traganos et al., 2018; Bishop-Taylor et al., 2019; Fitton et al., 2021). Despite the vast and growing application of SDB and SDT methods

to coastal science and engineering (Turner et al., 2021), it is not yet clear whether the accuracy of the resulting estimates bathymetry/topography is suitable for modelling extreme water levels in coastal areas (e.g., estuaries and bays). Only limited studies exist relating to SDB and SDT and numerical modelling — generally aimed at using the model to assign the waterline height (Khan et al., 2019; Salameh et al., 2020; Fitton et al., 2021). For instance, Mason et al. (2010) used SDT to calibrate a morphodynamical model.

The present study aims to evaluate whether SDT and SDB can replace surveyed data as a boundary condition in hydrodynamic modelling — focusing on predicting high water levels (surges and extreme high tides) in estuaries with complex morphology. The study has three specific objectives:

1. To determine whether satellite imagery can be used to extract accurate SDT;
2. To investigate the main source of errors in the satellite-derived techniques; and,
3. To assess the use of SDT and SDB for hydrodynamic modelling of estuaries compared as an alternative to data derived from traditional methods.

This manuscript is divided into two main parts, as illustrated by the two grey panels in Figure 1: (a) the SDT and SDB framework and (b) the hydrodynamic modelling assessment. The chart flow follows the numbered sections within the text, with the two small left side panels contributing to both parts (a) and (b). The methods (Sect. 2), where we show the section begins with a description of study sites and database (Sect. 2-blue box in Figure 1), the applied). Following this, the optical waterline (black box) and ratio-log (light-yellow box) methods for generating SDT (waterline and ratio-log) and SDB methods (Sect. 2.2 and 2.3), and the specifications of the (ratio-log) are described. The hydrodynamic modelling used description is given in Sect. 2.5.2 and Sect. 2.6. Then we show 4 (left side box in Figure 1). Following, the approaches we used to improve two correction methods are explained: the dynamical correction (green box, Figure 1) and the statistical correction (red box, Figure 1). The main workflow for the modelling assessment of SDT-obtained/SDB is illustrated in Part (b) (Figure 1) and consists of running simulation scenarios using our framework (Sect. 2.5), how we assess the water level simulations using SDT and SDB (Sect. 2.6), and how we assess our framework performance (Sect. 2.7). In Sect. 3, we show our results, different combinations of topo-bathymetry datasets and hydrodynamic forcing conditions. Results for Parts a and b are shown in Sect. 3, including: the waterline-derived and the ratio-log-derived intertidal elevation (Sect. 3.1); the statistical proposed correction techniques; and dynamical corrections (Sect. 3.2); the prediction of high water levels using SDT and SDB (Sect. 3.3); modelling assessment. In Sect. 4, we discuss our main findings are discussed: the advantages and limitations of our proposed SDT and SDB framework and correction approaches (Sect. 4.1 and 4.2); the comparison between SDTs derived from the waterline and ratio-log methods (Sect. 4.3); and the hydrodynamic modelling assessment (Sect. 4.4); and, in Sect. 5, the The conclusion, is in Sect. 5 (not shown in Figure 1).



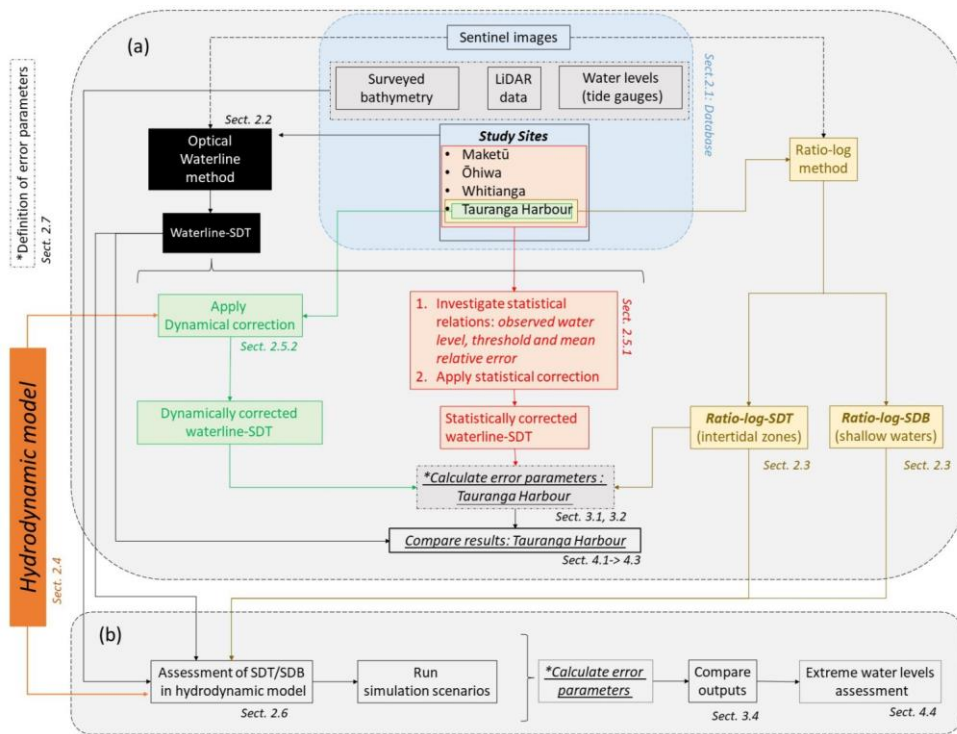


Figure 1: A flow chart showing the main structure of the manuscript. The panel (a) shows the steps taken to derive the SDT/SDB (a) and how the statistical relationships and source of errors were investigated. The panel (b) summarizes the framework to test the utility of SDT/SDB in modelling (b) high water levels.

## 2 Methods

### 2.1 Study site and database

The study areas are four estuaries on the east coast of Aotearoa New Zealand's North Island. Three are in the Bay of Plenty region: Tauranga, Ōhiwa and Maketū harbours and one in the Coromandel: Whitianga harbour. The studied sites consist of barrier-enclosed sandy estuaries which are common in Aotearoa New Zealand (Hume et al., 2007, 2016) and all have micro-tidal regimes — the spring tidal range varies between 1.4 m to 1.9 m within estuaries — and the equinoctial — and spring tides combined with severe storm surges drive the extreme sea levels (Rueda et al., 2019; Stephens et al., 2020). In Aotearoa New Zealand, the storm surges caused by storms usually add  $\leq 0.5$  m to the water level.

but the maximum surge ever registered was 2.29 m; however larger storm surges can occur occasionally (Stephens et al., 2020).

145 In Tauranga Harbour, the maximum storm driven surge ever recorded is equal to 0.88 m (Stephens et al., 2020), and the tide can be attenuated by 10% to 17% (M2 component) when the tidal wave propagates through the estuary. The extensive intertidal zones and vegetation (e.g., seagrass and mangrove) that are present in the majority of the estuaries in Aotearoa New Zealand

can attenuate tides (Tay et al., 2013); and storm surges (Montgomery et al., 2019). The water level inside the study site estuaries is not considered to be substantially affected by the action of waves (i.e., wave set-up) because all of them are enclosed coastal lagoons with restricted entrances. All four estuaries have large intertidal areas covering from 58% to 84% of the estuaries' total area (Hume et al., 2007, 2016); see Table 1. The extent of the tidal flats is evident in Tauranga Harbour by comparing low (e.g., Figure 2b) and high (e.g., Figure 2c) tide satellite images, Figure 2 (b) and (c), respectively. Mangrove forests can be observed in all the estuaries and seagrass banks are visible in Maketū, Ōhiwa and Tauranga Harbours (the latter was studied in Ha et al. (2020)). Detailed images of the intertidal zones in Tauranga Harbour and its seagrass banks and mangroves,

155 Detailed images of the intertidal zones in Tauranga Harbour, showing seagrass banks and mangroves, can be seen in Figure S3.

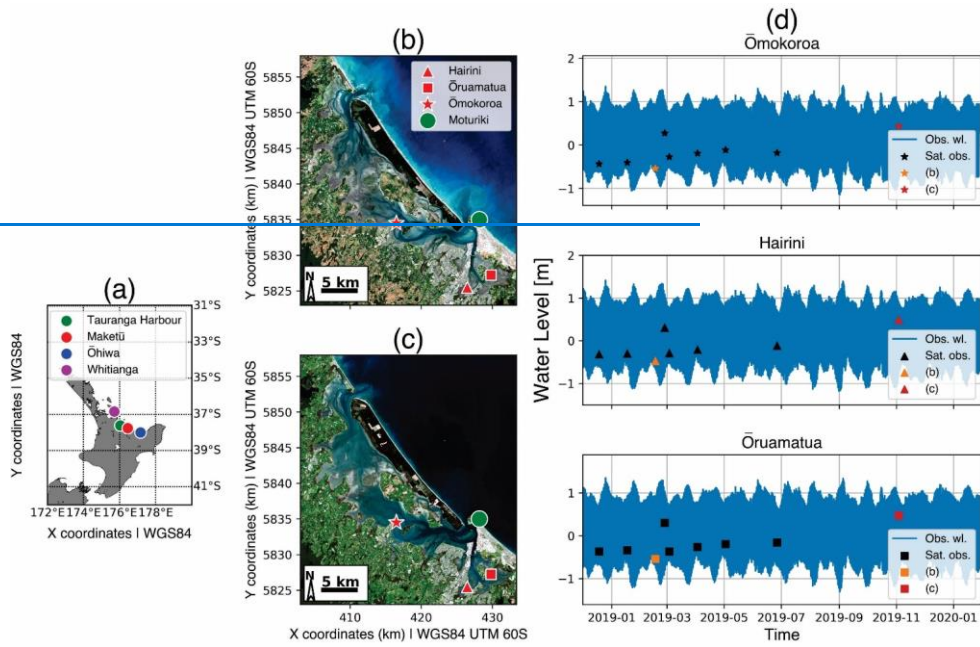
Imagery, tidal levels and topography data (e.g., LiDAR) were acquired to implement and validate the SDT techniques. For the Bay of Plenty region, historical tide levels were downloaded from the Bay of Plenty Council data portal (160 (<https://envdata.boprc.govt.nz/https://envdata.boprc.govt.nz/>)); the topography data consisted of the LiDAR survey for which, with a 1 × 1 m spatial resolution dataset was of 1 × 1 m, available on the Land Information New Zealand (LINZ) data portal (<https://data.linz.govt.nz/https://data.linz.govt.nz/>). For Whitianga, we acquired water level time series and elevation data (LiDAR) were acquired through the Thames-Coromandel District Council's website (<http://www.tcdc.govt.nz/>). The LiDAR data have an accuracy of ± 0.2 m in the vertical and ± 0.6 m in the horizontal with 95% confidence for the Bay of Plenty. All 165 LiDAR data were converted to the local vertical datum (i.e., Moturiki 1953), which is 0.13 m below mean sea level (MSL), using the GEOID elevation grids available in the LINZ data portal.

We used Satellite images from European Space Agency (ESA) Copernicus Sentinel satellite images were accessed through Google Earth Engine (Gorelick et al., 2017) from, and consisted of spacecraft Sentinel 2A and B, product type level-2A. The 170 Sentinel-2 products are composed of elementary tiles, which are 100×100 km<sup>2</sup> ortho-images in the UTM/WGS84 projection, with a revisit frequency of 5 days in the Aotearoa New Zealand region. The level-2A product type provides bottom-of-atmosphere (BOA) images, which are already corrected for the effects of the top-atmosphere, terrain and cirrus cloud using the Sen2Cor processing tool (ESA). Each image has the spectral resolution of 12 bands with spatial resolution differing between 10, 20 and 60 m depending on the band. Here we used the The green (band 3, 560 nm), blue (band 2, 490 nm) and near-infrared (band 8, 842 nm) bands were used for this analysis, all of them with 10 m spatial resolution. 175

In summary, a complete set of LiDAR, tidal gauge observations and a satellite image was obtained for each estuary. For example, the Tauranga Harbour dataset is shown in Figure 2; [including](#) the location of the tide gauges (Ōmokoroa, Hairini ~~and~~ [Ōruamatua](#), [and Moturiki](#)), and the intertidal exposure during low tide (Figure 2b) and high tide (Figure 2c); ~~as well as their~~. [In Figure 2 \(d\) the corresponding](#) water level ~~records~~ [records](#) for the acquisition period of the satellite images (~~Figure 2d~~) [are](#) shown. (Moturiki time series is not shown).

180





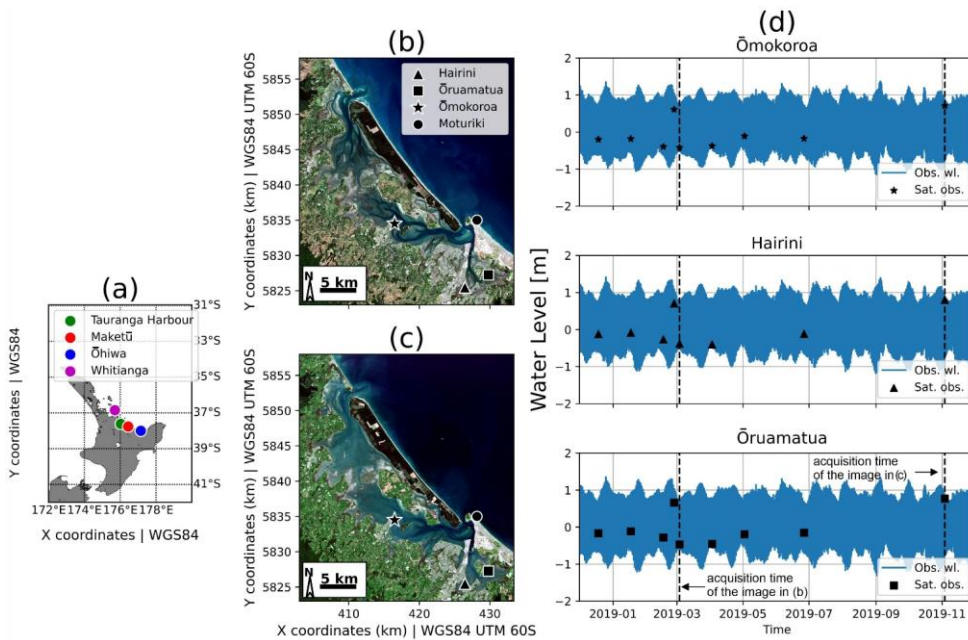


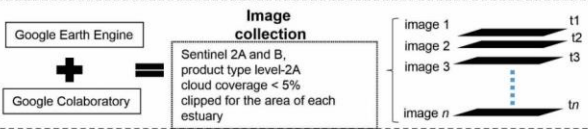
Figure 2: The location of the four New Zealand estuaries where the SDT method was tested (a). Tauranga Harbour and tide gauge locations during low tide (b) and high tide (c) with the background image from ESA Sentinel 2A. Water level time series from the three of local tide gauges shown in panels b and c during the period over which satellite images were acquired (d). The water levels associated with images shown in panels b and c are marked with yellow and red symbols a vertical dashed black line in (d) (Vertical Datum: MSL).

## 2.2 Satellite-derived topography: the waterline method.

The framework to generate the SDT in intertidal zones using the waterline method (hereafter called waterline-SDT) is composed of four stages, as illustrated in Figure 3: Stage 1 is to query an image collection; Stage 2 is to identify the intertidal zone; and Stage 3 is to determine the waterline position and height; and Stage 4 is to post-process results. First, we acquired an image collection for each estuary through the Google Earth Engine application (Gorelick et al., 2017) using the Google Colaboratory environment. Each image collection has images from the satellite Sentinel 2A and B, product type level-2A, covering the estuary domain, in which less than 5% of the pixels are covered by clouds. We have allowed a small number of images with low cloud coverage were included because of the restricted number of available images; however, any irregularities from the small areas of clouds and their shadows were removed manually in the post-processing quality control. The number of images corresponding to the

collection and environmental properties for each estuary (e.g., coverage of intertidal zone in the estuary; spring tidal range) is shown in Table 1.

1. To query an image collection



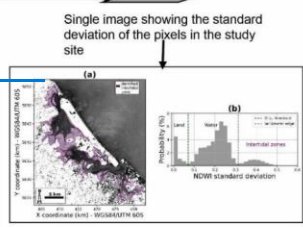
2. To identify the intertidal zone

a) To calculate the NDWI of each image in the collection

$$NDWI = \frac{p_{green} - p_{air}}{p_{green} + p_{air}}$$

b) To calculate the temporal variability of the NDWI per pixel of each image in the collection

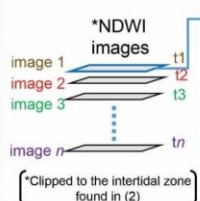
$$\sigma(x,y) = \sqrt{\frac{1}{n} \sum_{i=1}^n (NDWI_i - \overline{NDWI})^2}$$



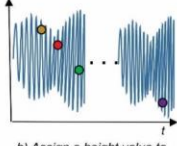
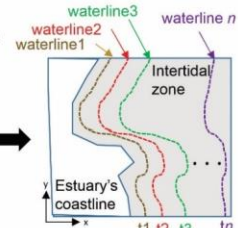
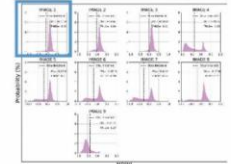
c) Determination of the intertidal area by applying Otsu threshold, See Figure 4

4. Post-processing

3. To determine waterline position and height



a) Otsu threshold for each image to define the waterline position. See Figure 5



b) Assign a height value to the waterline according to the local water level at the time the image was acquired

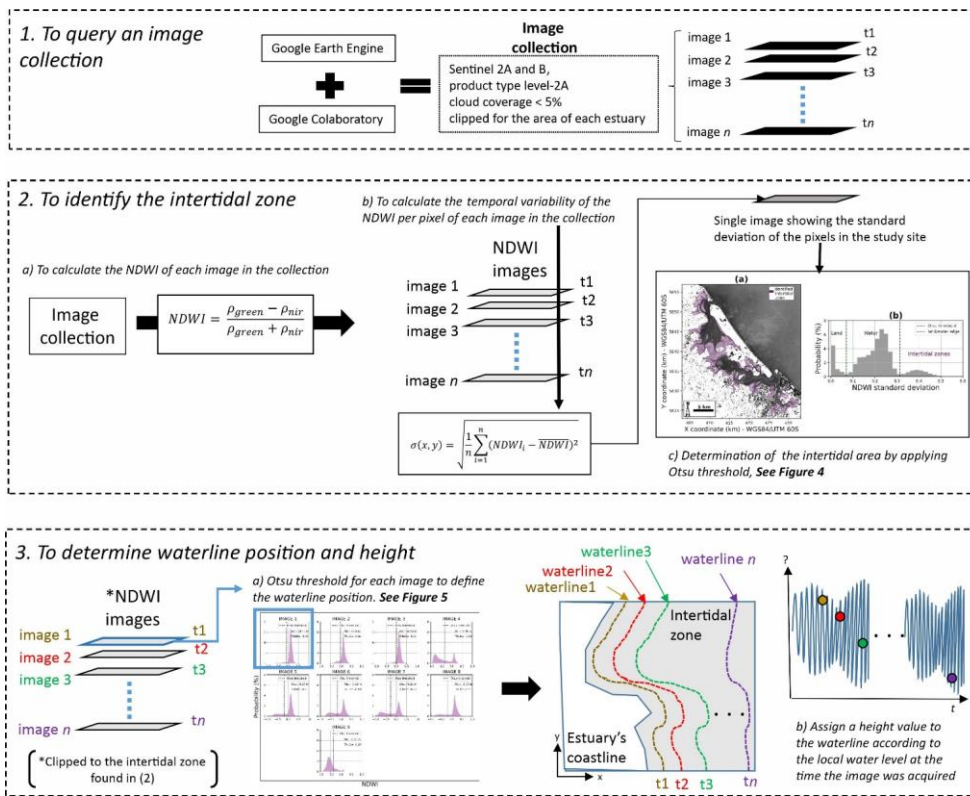


Figure 3: Our proposed framework for application of the waterline method to derive topographic data in intertidal zones. First (1) an image collection was acquired. Second (2), the intertidal zone was identified by calculating the temporal of NDWI. Note that NDWI is the index used to detect the existence of water from satellite reflectance (see text). Third (3), the waterline position and height were determined. This was done by identifying the boundary between wet and dry cells within the intertidal zone (i.e., waterline) and assigning a height value for the waterline obtained from the local tide gauge observation at the time of the image acquisition.

Table 1 Number of images in the image collection for each estuary.

Estuary	N <sup>o</sup> of images in the collection	Total intertidal area (Hume et al., 2016)	Surface area (Hume et al., 2016)	Spring tidal range

<i>Tauranga Harbour</i>	9	77%	<del>~200.44</del> km <sup>2</sup>	1.75 m
<i>Ōhiwa</i>	6	84%	<del>~27.00</del> km <sup>2</sup>	1.9 m
<i>Maketū</i>	12	58%	~ 2.646 km <sup>2</sup>	1.4 m
<i>Whitianga</i>	8	72%	~ 15.505 km <sup>2</sup>	1.7 m

Formatted: Font: Not Italic

Formatted: Font: Not Italic

Formatted: Font: Not Italic

Formatted: Font: Not Italic

Formatted: Font: Not Italic

Formatted: Font: Not Italic

Formatted: Font: Not Italic

Formatted: Font: Not Italic

In the second stage (Figure 3), the intertidal zone was identified. The aim was to eliminate pixels that are not in the intertidal area (stage 2 in Figure 3) — thus avoiding needless image processing — we used. For that, the approach based on Bué et al. (2020). We identify was used, in which the intertidal zone extent was determined by calculating the temporal variability at each pixel of the Normalized Difference Water Index (NDWI) (McFeeters, 1996) at each pixel over the entire image collection, using Equation 1 and 2:

$$\sigma(x, y) = \sqrt{\frac{1}{n} \sum_{i=1}^n (NDWI_i - \overline{NDWI})^2}; \quad (1)$$

where

$$NDWI = \frac{\rho_{green} - \rho_{nir}}{\rho_{green} + \rho_{nir}}; \quad (2)$$

and where  $x$  and  $y$  are the pixel coordinates, and  $n$  is the number of images in the collection. NDWI is determined as a normalized difference between  $\rho_{green}$  and  $\rho_{nir}$ , which are the reflectance of the green and near-infrared bands of Sentinel-2 images, respectively. As a result, one single grey scale image is generated representing the NDWI temporal standard deviation ( $\sigma$ ), Figure 4 (a). Because of the consistent change between exposed (low tide) and inundated (high tide) conditions, we assume that the highest standard deviation values will be assumed to occur in the intertidal zones. Thus, we determine that the pixels representing the intertidal zone are the ones with an  $\sigma$  greater than a threshold value —. For instance, Figure 4 (b) shows that for Tauranga Harbour, the threshold is  $> 0.32$ , Figure 4(b). The threshold is set using the Otsu (1979) approach (Otsu, 1979), where its value depends on the probability distribution of  $\sigma$ , as illustrated in each image. Figure 4 (b). The Otsu method identifies the optimum threshold between two data classes in the image distribution that maximizes the value of the within-class variance. The advantage of using an adaptive threshold is that we can be objectively tailor the threshold tailored to each image collection and estuary.

Formatted: Font: Not Italic

Formatted: Not Superscript/ Subscript

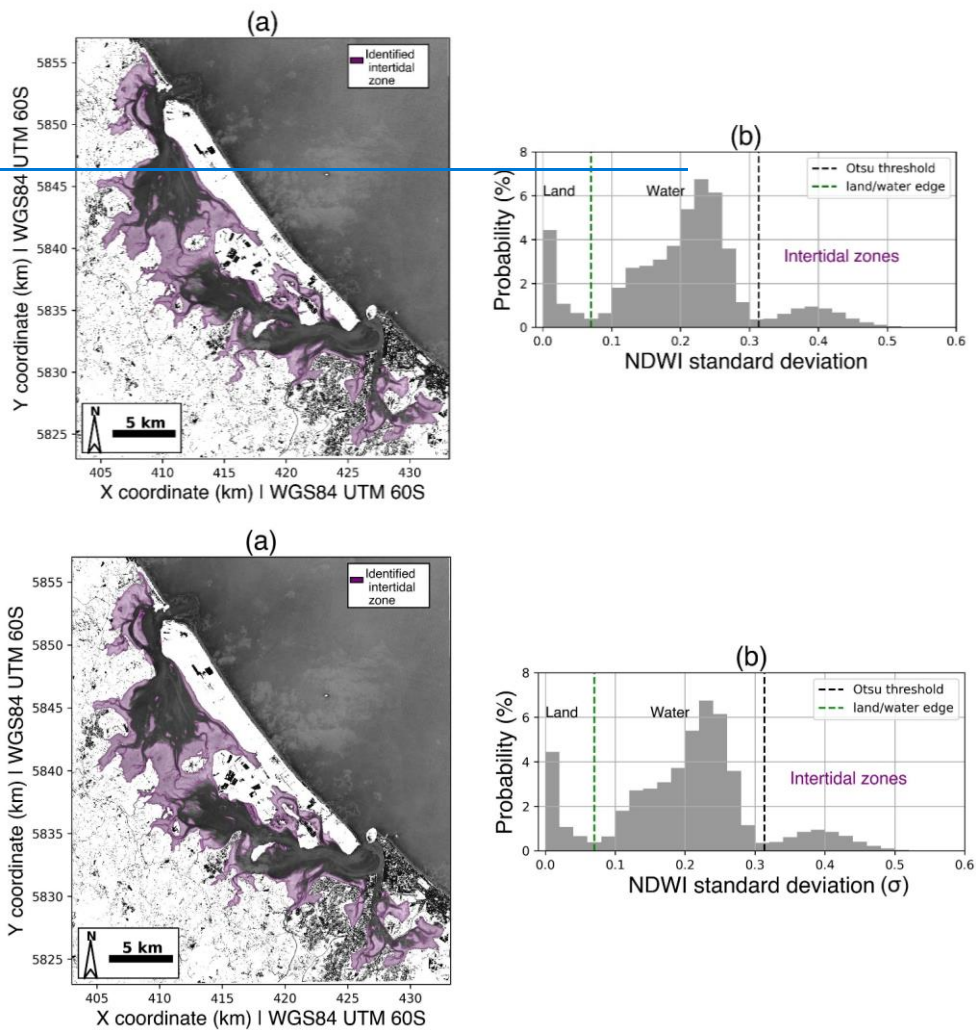
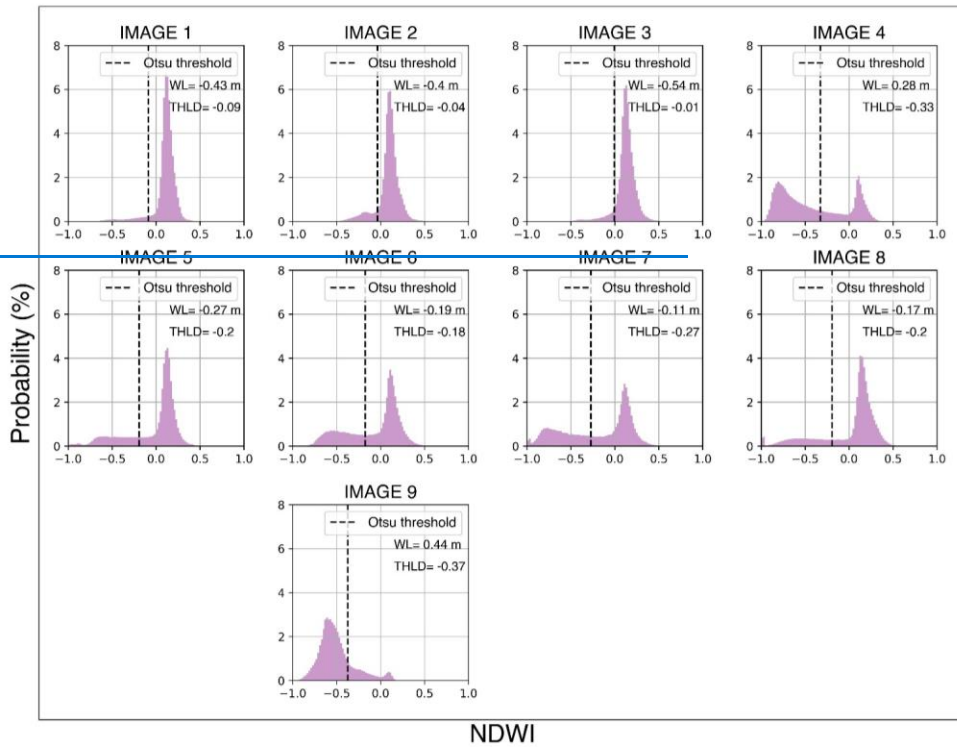


Figure 4: (a) Intertidal areas identified using the temporal variability of  $NDWI_t(\sigma)$  of the Tauranga Harbour image collection. Determination of the Otsu threshold for the identification of the intertidal zone (b).

Formatted: Font: Italic

240 In the third stage (Figure 3), for each image in the collection, ~~we clipped~~ the corresponding *NDWI* maps ~~were clipped~~ into the intertidal zone (which was defined using the whole image collection in stage two). From the intertidal *NDWI* maps, the waterline position in that image was extracted by applying the algorithm “Finding\_Contours” from the `scikit.measure` (Van ~~DerWalt~~[Der Walt](#) et al., 2014) Python library. This contour extraction method searches for a given value (*i.e.*, threshold) in a two-dimensional array of pixels, using the ‘marching squares’ algorithm (Lorenson and Cline, 1987) to ~~precisely~~ identify contour boundaries ~~precisely~~ by linearly interpolating between adjacent pixel values; therefore, the method is able to define waterline with a subpixel resolution. ~~We used~~The Otsu method ~~was used~~ to determine the threshold that should be applied to each image; Figure 5 ~~shows~~[illustrates](#) the ~~distribution of NDWI for different thresholds applied to~~ each image in the Tauranga collection; ~~according to the corresponding distribution of NDWI~~. Once ~~we identify~~ the waterline ~~position was identified~~ for a given image, ~~we assign~~ a height value ~~to it~~[was assigned to the waterline](#) by finding the corresponding observed tide level at the local tide gauge (Ōmokoroa for the Tauranga Harbour case study, Figure ~~2D2d~~). After ~~we have processed~~ all images in the collection, ~~several~~ [were processed, a collection of](#) waterlines with different height values ~~are~~[was](#) created (see Figure 3, ~~stage~~[Stage](#) 3b), which ~~can be~~[was](#) gridded to create ~~the~~[an](#) SDT (*i.e.*, ~~waterline-derived~~ ~~STD~~ (hereafter the “~~waterline~~ ~~STD~~”); ~~We assessed~~ ~~the~~SDT). The accuracy of the ~~waterline~~-SDT ~~was assessed~~ against the LiDAR data by comparing the ~~LiDAR~~ ~~at each point along the~~ waterline ~~sample~~ ~~and~~ by ~~sample~~ ~~and~~ ~~comparing~~ the corresponding digital elevation model (DEM). ~~We used~~ ~~the~~The module DELFT-QUICKIN ~~was used~~ to create DEMs for each estuary. The triangular interpolation method was applied in a grid with a spatial resolution of 10 m.





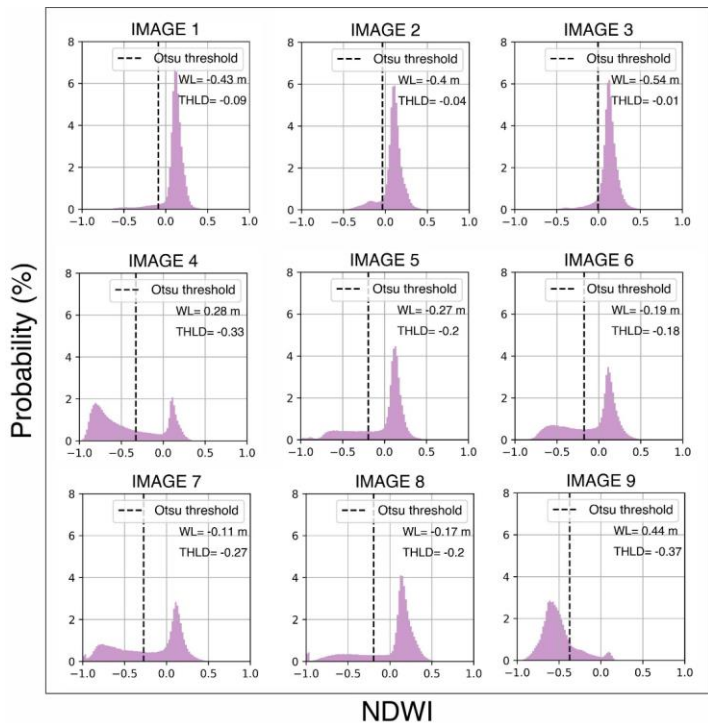


Figure 5: Otsu threshold (THLD) applied to identify the waterline position for each image in the Tauranga Harbour collection. The observed water level from the Ōmokoroa tide gauge at the moment of the image acquisition (i.e., waterline height relative to mean sea level) is also shown in each panel (marked WL).

### 2.3 Satellite-derived bathymetry: the ratio-log method.

Additionally, the ratio-log method (Stumpf et al., 2003) was applied in Tauranga Harbour separately for intertidal zones (ratio-log-SDT) and shallow water (ratio-log-SDB) (the ratio-log-SDT is used in the comparison of methods in Part (a), Figure 1 and both the SDT/SDB are used in the assessment of modelling in Part (b), Figure 1). Originally, the ratio-log empirical approach has been used to derive shallow water bathymetry. However, because of the relative low turbidity of intertidal water in Tauranga Harbour, we hypothesized that the method could be suitable also for deriving topography on intertidal zones. We applied the method to an image acquired at high tide, where the intertidal zone was completely flooded. The ratio-log and waterline methods were assessed in two different ways: first, to compare their approximation of topographic data in intertidal zones (Figure 1a) and second, to compare their use in hydrodynamic models (Figure 1b). The ratio-log method is not limited

275 by the number of satellite images available covering the estuarine area and can be applied to extract the SDT from a single image. In its original application, the ratio-log empirical approach was used to derive shallow water bathymetry (SDB). However, because of the relative low turbidity of intertidal water in Tauranga Harbour, the method may also be suitable for deriving topography (SDT) within intertidal zones. To compare, the ratio-log method was applied to an image acquired at high tide, where the intertidal zone was completely flooded. The numerical assessment was built on a pilot study in Costa et al. (2021), where the method was trialled in small region within the Tauranga Harbour. Detailed information about the application of the ratio-log method and the results for tidal flats and shallow water are provided in Supplement A, Figure S1 and Figure S2. Because the ratio-log method is based on an empirical fit, additional bathymetric data were needed to implement the ratio-log method for shallow water. For this, a multiple-source bathymetric data were used, which is detailed in Sect. 2.4.

280 In the Part 2 of the study, we use the SDT and SDB in the hydrodynamic modelling (building on a pilot study in Costa et al. (2021)), where the method was trialled in a sub-estuary of Tauranga Harbour). Detailed information about the application of the ratio-log method and the results for tidal flats and shallow water are provided in Supplement A, Figure S1 and Figure S2. Because the method is based on an empirical fit, additional bathymetric data are needed to implement the ratio-log method for shallow water. For this, we used the multiple-source bathymetric data detailed in Sect. 2.4.

Formatted: Font: Bold

#### 2.4 Hydrodynamic modelling: the baseline model

290 A baseline hydrodynamic model was set up for Tauranga Harbour. ~~We~~The modelling study was only applied the modelling study to undertaken in this estuary (rather than all four sites) because it has already a previous model a calibrated and validated for the bed roughness (following DELFT3D-FLOW model was already available (Stewart et al., 2021)). The purpose of the baseline model was first to correct the waterline SDT by accounting used to account for the tidal propagation within the estuary as a way of improving the waterline SDT (Sect. 2.5.2); the and, second was, was used as a base-case against which to assess the use of SDT and SDB as a boundary condition in the bathymetry/topography for modelling extreme water levels in estuaries (Sect. 2.6). ~~We used the model DELFT3D-FLOW for this task.~~ The grid domain and interpolated bathymetry are shown in Figure S4 (Supplement B), and they cover the central to the southern part of the Harbour with a 20 × 20 m resolution grid.

295 ~~We set the~~The north and south boundaries were set as open boundaries (free Neuman), and ~~wethe model was~~ forced ~~thewith~~ water level along the seaward boundary with the astronomical components of the tide. For the latter, harmonic astronomical tidal analysis was undertaken on the Moturiki Island tide gauge using U\_tide (Codiga, 2011). The topographic and bathymetric data used in the baseline hydrodynamic model were assembled using a combination of data from multiple sources: Multibeam survey (Port of Tauranga, 2017), LiDAR (2008 from AAMHATCH and 2016 from LINZ) and LINZ hydrological charts NZ 300 5411, 2016. These data were all converted to mean sea level (MSL) vertical reference.

The model was validated to ensure the bed roughness parameters were appropriate by simulating an equinoctial tidal period from 01/03/2019 to 31/03/2019. The details of the model setup, calibration and validation are presented in Supplement B. The

305 vertical datum in the simulation was the MSL, and the time step was 0.5 min; the advection scheme for calculating the flooded  
and dried cells is cyclic, using the water level averaged on the grid cells. ~~We~~The model was calibrated ~~the model~~ against three  
tide gauge observation points (Ōmokoroa, Hairini and Ōruamatua). ~~The model approximates the predicted data well (shown~~  
~~in~~For details on the model calibration and validation, see Supplement B).

## 2.5 The SDT correction approaches

### 2.5.1 Correcting SDT using the bias between LiDAR data and SDT: the statistical correction

310 The ~~accuracy of first method to correct~~ the waterline-SDT ~~method can be limited~~tried was to remove the statistical bias—  
~~potentially caused~~ by ~~environmental~~ conditions that ~~affect the ability to correctly determine~~can interfere with the pixel  
~~reflectance and as consequence~~, the waterline ~~position~~ at different tide levels within the tidal flats ~~and at the boundary between~~  
~~shallow water and intertidal zones.~~—e.g., ~~the complexity of the~~. Conditions that can interfere with detection include complex  
315 intertidal zone morphology, water turbidity ~~and~~ variation of the benthic substrates. ~~All estuaries that we studied have similar~~  
~~environmental conditions; for example, the complexity of the morphology (they are all barrier enclosed estuaries with~~  
~~channelization), the white (sand substrate, the presence of, seagrass), and the groundwater seepage can be potential sources~~  
~~of error in topographic data estimates. Groundwater. Specifically, groundwater~~ seepage leaves a film of moisture on the  
exposed intertidal detectable in images (Huisman et al., 2011). ~~Therefore,~~Because the studied estuaries have similar  
320 characteristics — i.e., morphology complexity (extensive intertidal zones and channelisation), tidal range, white sand, presence  
~~of seagrass~~ — a statistical correction was developed for all four estuaries on the basis that the detected waterline is consistently  
further seaward or landward than the actual waterline ~~because of these environmental conditions across all sites~~. For the  
statistical correction, ~~we fitted~~a linear equation ~~was fitted to the relationship~~ between the value of the Otsu threshold — used  
to positioning the waterline within the intertidal zone (see Sect. 2.2) — and the bias between the waterline-SDT and the LiDAR  
325 data in all the estuaries ~~we studied. The statistical correction removed the bias (i.e., Tauranga, Maketū, Ōhiwa, and Whitianga~~  
~~Harbours).~~

### 2.5.2 Correcting SDT using hydrodynamic model: the dynamical correction

330 ~~When a tidal wave propagates inside an estuary, it can experience wave deformation such as shoaling, reflection and~~  
~~dampening, which implies, together with the time it takes for the tide to propagate around a large estuary, that the water level~~  
~~is not homogeneous throughout the estuary at one instant in time. Thus, when considering a water level recorded in a single~~  
~~tide gauge to assign height values to a waterline, our estimates can be higher or lower than the actual waterline elevation. To~~  
~~The second method to correct~~ the waterline-SDT (Sect. 2.2) for the tidal propagation, ~~we used a~~was using the hydrodynamic  
model (Sect. 2.4); this correction approach is hereafter called ~~the~~ dynamical correction, ~~and we~~. The water level is not  
335 homogeneous throughout a large estuary at one instant in time, because of the time it takes for the tide to propagate around the  
estuary and the potential tidal wave deformations induced by the estuarine morphology such as shoaling, reflection and

Formatted: English (New Zealand)

Formatted: English (New Zealand)

335 ~~dampening. Thus, for every image processed by the waterline method, the detected waterline height might vary spatially, and~~  
~~assigning a waterline height using information from one tide gauge (as in Sect. 2.2) may not be appropriate. The dynamical~~  
~~correction uses the hydrodynamic model to assign a spatially-varying height to each waterline.~~

The dynamical correction was implemented ~~it~~ as follows.

340 First, ~~we replace~~ the model bathymetry ~~was replaced~~ in the intertidal zones with the ~~statistically corrected~~ waterline-SDT. ~~We~~  
~~retained~~ (with the original bathymetry ~~retained~~ in the shallow water areas) and ~~created~~ a new depth file ~~was created~~. Using this  
new depth file, ~~we performed~~ nine independent simulation cases ~~were performed~~ corresponding to the ~~acquisition times of the~~  
345 nine images in the Tauranga Harbour image collection. Each case had a simulation period ~~corresponding to the starting~~ ten  
days prior to the date and time that the satellite image was acquired to ~~ensure that initial conditions were no longer important.~~  
~~We then associated each of the spatially-varying waterlines (determined as described in Sect. 2.1) with the corresponding~~  
~~allow~~ for model spin-up. The spatially-varying water level model output, ~~using interpolation to extract collocated water levels from~~  
~~was extracted along each of the corresponding waterlines (one waterline is detected in each image, Sect.2.2). The waterline~~  
~~height was assigned by interpolating the position of each waterline onto the gridded model output. As a result, the water levels~~  
350 ~~of each waterline extracted from each image varied spatially rather than set to a constant — as is the case of the waterline-~~  
~~SDT derived according to Sect. 2.2.~~

## 2.6 Assessing extreme water level simulations with SDB and SDT

We developed four different simulation scenarios to evaluate the accuracy of hydrodynamic simulations using SDB and SDT  
against the use of our existing model bathymetry which was created with LiDAR, multibeam and echo-sounder data ('surveyed  
355 bathymetry' in Table 2). The latter is our ~~To properly assess the use of satellite derived topo-bathymetric data in hydrodynamic~~  
~~modelling, scenarios were designed with different combinations of SDB, SDT, and hydrodynamic forcing conditions. Table 2~~  
~~shows the specifications of the eight simulation scenarios: the source of elevation data, the physical forcing, and the simulation~~  
~~period. Note that the "surveyed topo-bathymetry" data refers to the multiple-source data described in Sect. 2.4.~~

360 The four first scenarios (i.e., S1–S4) test different combinations of topo-bathymetric data to be used in hydrodynamic  
modelling. Here, model was forced with the astronomical constituents extracted from the Moturiki tide gauge record, as  
described in Sect. 2.4, ~~varying only the topo-bathymetric data. For instance, our~~ baseline model, S1, ~~and was described in Sect.~~  
~~2.4. The (S1-scenario simulates) represents the condition~~ when the modeller depends only on the in situ measured  
~~bathymetry/elevation. In the S2 and S3 scenarios, we replaced~~ the intertidal zone bathymetry ~~was replaced~~ with the SDT  
365 generated by using the waterline (waterline-SDT) and the ratio-log (ratio-log-SDT) methods, respectively. The S4 scenario  
was developed to assess the use of only SDB and SDT in the entire model domain (so only satellite-derived data). ~~We use~~ Thus,  
the waterline-SDT ~~was used for~~ the tidal flat and the ratio-log-SDB for the shallow areas within the harbour. ~~To assess the~~

simulations, we compared the water level prediction made by each scenario against water level observations at the three points (Ōmokoroa, Hairini, and Ōruamatua) and the water level output maps from each simulated scenario in terms of RMSE, MAXE, and R2. Other configurations applied to the scenarios (i.e., time period, time step, forcing conditions) are the same as described in Sect. 2.4.

The simulation scenarios S5–S8 were designed to investigate the potential of SDT and SDB as a replacement for the surveyed topo-bathymetry in modelling more extreme water level events, where the interactions between storm surge and astronomical tides are important. For that, two extreme events were selected based on the water level observations at Moturiki tide gauge in the period ranging from the years 2002 to 2018, see Figure S10. Trends of sea-level rise were first filtered from the water level observations by applying a 1-year-running average, which resulted in a filtered time series hereafter called total water level. Both extreme events represent the highest water levels for the period, and consisted of peaks of total water level ~1.4 m. However, the contribution of the storm surge is different for each event. The definition of storm surge used here is the difference between astronomical tide and the detrended water level for a given time series. The first event occurred on 16/04/2003 and consisted of a storm surge = 0.55 m, which represents ~ 40% of the observed total water level. The second event occurred on 05/01/2018 and consisted of a storm surge = 0.32 m, which represents ~ 22% of the observed total water level. Ultimately, these two events were modelling using only surveyed topo-bathymetry (S5 and S7) and only satellite-derived data (S6 and S8).

To assess the simulations, the tide levels extracted from each scenario were compared to the astronomic tide at three points for S1–S4 (Ōmokoroa, Hairini, and Ōruamatua), the total water level at two points for S5–S8 (Hairini, and Ōruamatua), and the tide and total water level output maps from each simulated scenario. Note that the Ōmokoroa tide gauge was not used to assess S5–S8 because its records do not cover the period of the first storm event.

**Table 2 - Simulation scenarios to assess the use of SDT and SDB in hydrodynamic modelling.**

Scenarios	Source intertidal zone	Source shallow waters	Forcing	Contribution of storm surge at the peak of water level	Simulation start time	Simulation end time
S1	surveyed topo-bathymetry	surveyed topo-bathymetry	Astronomical constituents	-	01/03/2019	31/03/2019
S2	waterline-SDT	surveyed topo-bathymetry	“	-	“	“
S3	ratio-log-SDT	surveyed topo-bathymetry	“	-	“	“
S4	waterline-SDT	Ratio-log-SDB	“	-	“	“

Inserted Cells

Inserted Cells

Inserted Cells

Formatted: No Spacing, Line spacing: single

Formatted: No Spacing, Line spacing: single

S2S5	<u>waterline-SDT-surveyed topo-bathymetry</u>	surveyed <u>topo-bathymetry</u>	<u>Total water level</u>	<u>22%</u>	<u>02/01/2018</u>	<u>10/01/2018</u>
S6	<u>waterline-SDT</u>	<u>Ratio-log-SDB</u>	“	“	“	“
S3S7	<u>ratio-log-SDT-surveyed topo-bathymetry</u>	surveyed <u>topo-bathymetry</u>	<u>Total water level</u>	<u>40%</u>	<u>10/04/2003</u>	<u>19/04/2003</u>
S4S8	<u>waterline-SDT</u>	<u>Ratio-log-SDB</u>	“	“	“	“

## 2.7 Assessment of framework performance

We assessed the accuracy of the SDB, SDT, the hydrodynamic model, and the dynamical and statistical corrections were assessed by calculating the following error metrics: root mean square error (RMSE), maximum absolute error (MAXE), relative error (RE), coefficient correlation ( $R^2$ ), and bias (BIAS) (Eq. 3–7 respectively). In the corresponding equations,  $h_{est}$  is the estimated value (e.g., SDT, SDB, hydrodynamic model output), and  $h_{obs}$  is the observed value (e.g., LiDAR data, tide gauge measurements). In the case of SDB and SDT evaluation, its relative error can be either negative or positive when the SDB/SDT is shallower or deeper than the LiDAR or surveyed data, respectively. For illustrating this calculation, a schematic is provided in Figure 6, showing that although the error is evaluated in height differences, it can arise because of either horizontal or vertical inaccuracies.

In the case of SDB and SDT evaluation, the RE can be either negative or positive. For the results derived from the ratio-log method (SDT and SDB), the RE reflects only the vertical difference between the estimate and the in-situ data (i.e., LiDAR data for SDT and surveyed bathymetry for SDB). For the waterline-SDT, the RE reflects both vertical and horizontal accuracies. For instance, Figure 6 shows a schematic topo-bathymetric profile illustrating the error calculation for the waterline-SDT. Although the error is evaluated as a height difference, it can originate from either horizontal ( $\delta x$ ) or vertical ( $\delta z$ ) inaccuracies. Thus, negative (positive) RE means that the estimate is shallower (deeper) or located further landward (seaward) than the LiDAR data.

$$RMSE = \sqrt{\frac{\sum_{i=1}^n (h_{est_i} - h_{obs_i})^2}{n}}; \quad (3)$$

$$MAXE = \max_{i=1, \dots, n} |h_{est_i} - h_{obs_i}|; \quad (4)$$

$$RE = h_{obs} - h_{est}; \quad (5)$$

$$R^2 = \frac{\sum_{i=1}^n (h_{est_i} - \overline{h_{obs}})^2}{\sum_{i=1}^n (h_{obs_i} - \overline{h_{obs}})^2 + (h_{est_i} - \overline{h_{obs}})^2}; \quad (6)$$

$$BIAS = \overline{h_{obs}} - \overline{h_{est}}; \quad (7)$$

Formatted: No Spacing, Line spacing: single

Inserted Cells

Inserted Cells

Inserted Cells

Formatted Table

Inserted Cells

Formatted: No Spacing, Line spacing: single

Inserted Cells

Inserted Cells

Inserted Cells

Formatted Table

Inserted Cells

Formatted: No Spacing, Line spacing: single

Formatted: Superscript

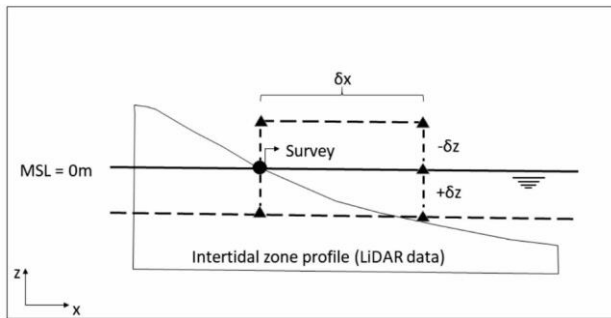


Figure 6: Schematic showing the error calculation. The circle shows the actual location of the water line, and triangles show the location of the remotely sensed shoreline. There are two ways that an error can be caused. The waterline can be detected landward or seaward of its actual location ( $\delta x$ ), or the waterline is assigned an elevation that is too high or too low ( $\delta z$ ).

### 3 Results

#### 3.1 The waterline satellite derived topography (waterline-SDT)

The waterline-SDT accuracy, compared to the LiDAR data, for all the studied estuaries, is shown in Table 3; the average RMSE across all estuaries was 0.33 m, and the average MAXE was 1.74 m. The technique's worst performance was in the Maketū estuary (RMSE = 0.41 m and MAXE = 2.38 m), Figure S6. Ōhiwa and Whitianga estuary have similar performance, Figure S5 and S7. Tauranga Harbour is associated with the best estimates with RMSE = 0.20 m. Note that the error parameters calculated for the corresponding DEMs show lower errors, especially in terms of MAXE. The details about the images that were acquired and the corresponding water level for each estuary is shown in Supplement C.

Table 3 Waterline-SDT errors for every studied estuary. DEM is the digital elevation model obtained by interpolating the corresponding waterline-SDT in the intertidal zone with spatial resolution of 20m and triangulation method. The elevation range in the LiDAR data within the intertidal zone is also shown. Vertical Datum: MSL.

Estuary	SDT		DEM		LiDAR
	RMSE (m)	MAXE (m)	RMSE (m)	MAXE (m)	elevation range (m)
Maketū	0.41	2.38	0.47	2.19	-0.63   +1.90
Ōhiwa	0.35	2.00	0.34	1.61	-0.98   +2.98
Tauranga Harbour	0.20	1.60	0.23	1.14	-1.11   +1.44



<i>Whitianga</i>	0.35	1.00	0.28	1.17	-1.12   +1.92
<i>Average</i>	0.33	1.74	0.33	1.53	

435 Although the SDT accuracy ~~differs~~differed depending on the estuary, ~~we observed that the MRE increases~~BIAS increased at high and low tide for all estuaries, and the lowest errors ~~occurred~~ occurred at mid tide. ~~We found a~~Figure 7 shows the linear correlation ~~found~~ between the ~~mean relative error (MRE~~bias (BIAS), the waterline height (Z), and the Otsu adaptive threshold (THLD), which also demonstrates the aforementioned ~~dependence on~~ tide-level ~~dependeney~~. For instance, ~~we found that the THLD and the MRE are correlated by~~BIAS have a goodness of fit of  $R^2 = 0.58$  (Figure 7b); ~~the~~ THLD and the Z ~~by~~have a goodness of fit of  $R^2 = 0.8283$  (Figure 7a), and ~~MRE~~BIAS and Z ~~by~~have a goodness of fit of  $R^2 = 0.68$  (Figure 7c). However, whether a ~~water~~waterline is ~~collected~~extracted on the flooding or the ebbing tide cycles ~~does~~ does not affect the waterline-SDT accuracy. Equation 8 (~~also shown in Figure 6e) is then applied to remove~~7c) was used as the basis of the statistical correction (~~where the statistical bias~~ ~~was removed from~~ the waterline-SDT for Tauranga Harbour, ~~which we refer to as the statistical correction~~-(Sect. 2.4.1)-)).

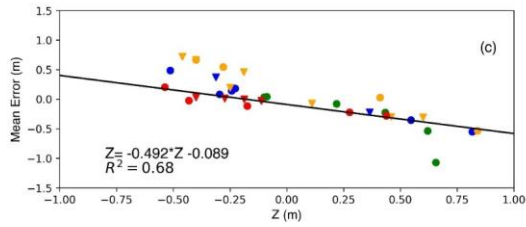
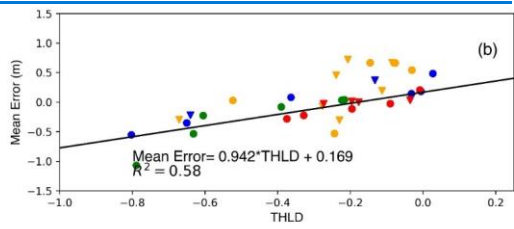
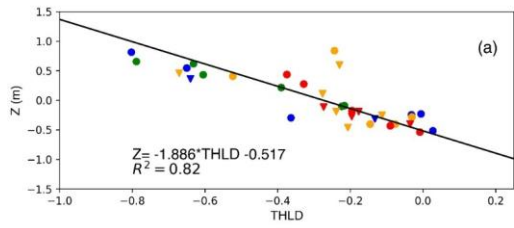
445

$$\text{MREBIAS} = -0.49249 * Z - 0.089088 \quad (8)$$

Formatted: Superscript

Formatted: Superscript

Formatted: Superscript



- ▽ Ohiwa ebb
- Ohiwa flood
- ▽ Whitianga ebb
- Whitianga flood
- ▽ Maketu ebb
- Maketu flood
- ▽ Tauranga ebb
- Tauranga flood

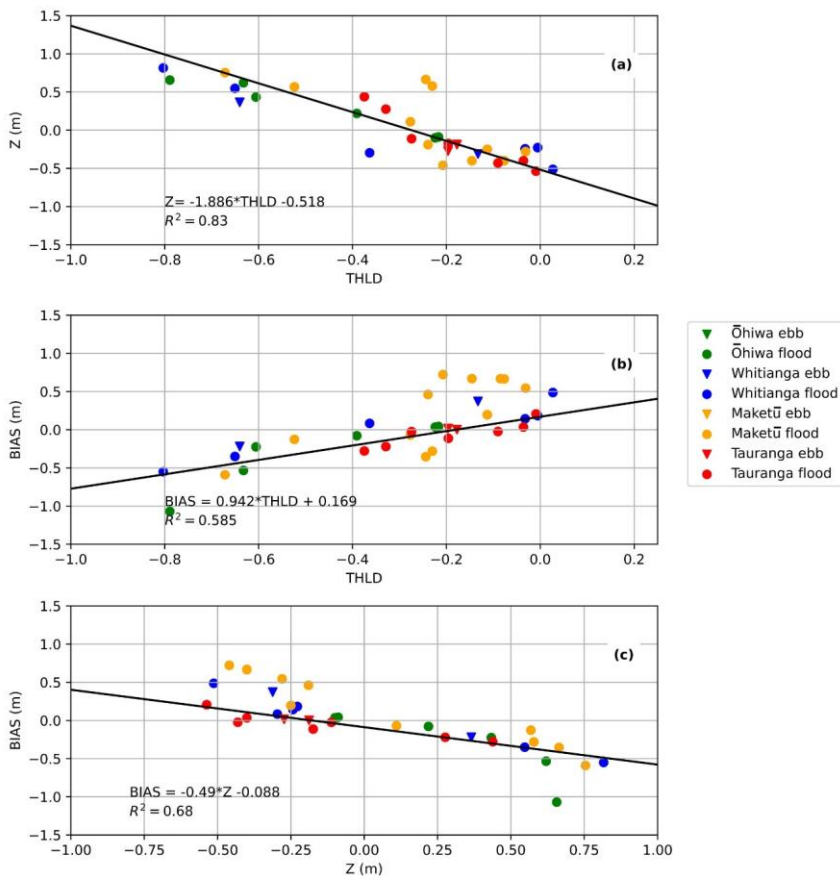


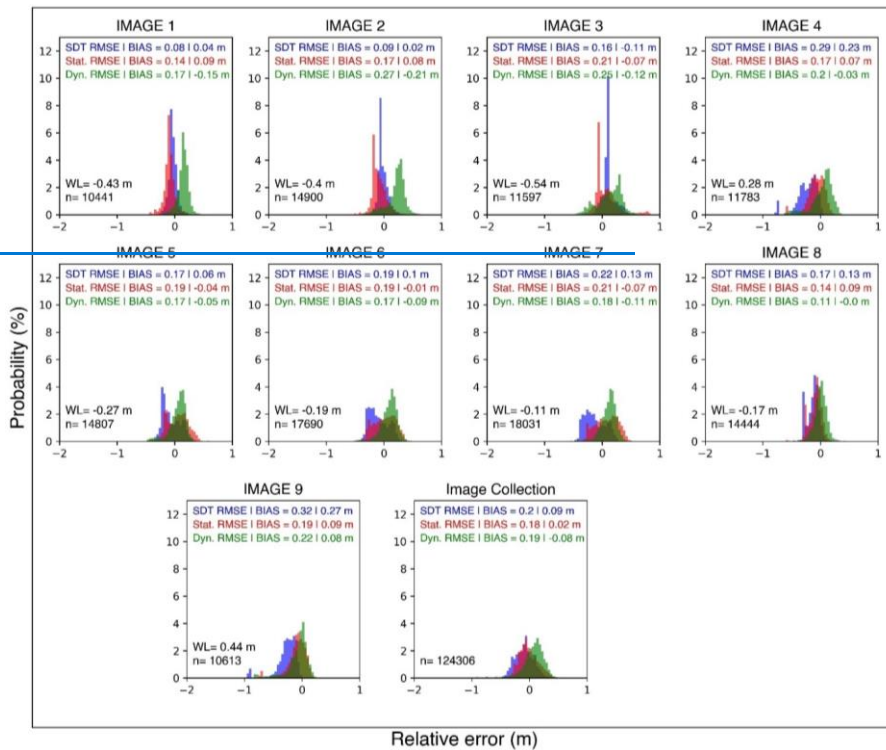
Figure 7: Statistical relationships at all estuaries (Ōhiwa, Whitianga, Tauranga, Maketū): (a) water level Otsu threshold (THLD) and observed water level (Z); (b) THLD and the SDB mean relative error per image (bias); (c) Z and the SDB mean relative error per image (bias). The relationship showed in (c) was used in the statistical correction (see Sect. 3.3).

### 3.3 The statistical and dynamical corrections

The waterline-SDT (Sect. 2.2), the statistically (Sect. 2.4.1 and 3.1), and the dynamically (Sect. 2.4.2) corrected waterline-SDT showed an overall RMSE equal to 0.20, 0.18 and 0.19  $\text{mm}$ , respectively (Figure 8). The statistical correction iswas effective where the SDT iswas strongly biased (e.g., Figure 8, images 4 and 9). However, for the cases where the uncorrected

SDT ~~shows~~ showed good results (Figure 8, images 1–3), the statistical correction ~~worsens the bathymetry~~ causes bathymetry estimates ~~to be less accurate~~ by increasing the corresponding bias. The dynamical correction ~~is~~ was more effective when the waterline ~~is~~ was extracted from images collected at mid to high tides Figure 8; images 4–9) ~~than compared to~~ at low tides (Figure 8; images 1–3), improving the RMSE values by ~~5 cm~~ 0.05 m on average. However, the estimates ~~can worsen~~ during low tides ~~by~~ are less accurate (a reduction of 0.10 ~~5 cm~~ m on average).

460



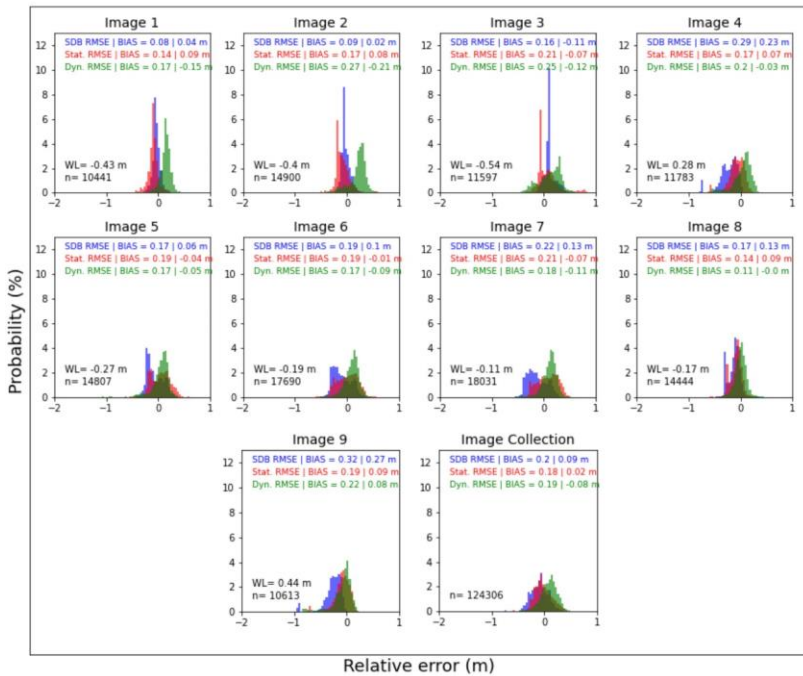


Figure 8: Histograms of the waterline-derived SDT relative error (RE) for each image in the collection for Tauranga Harbour: waterline-SDT (blue), statistically corrected waterline-SDT (red) and dynamically corrected waterline-SDT (green). RMSE, BIAS, waterline height (WL), and number of waterline samples (n) are shown.

### 3.4 Prediction of extreme water level using the SDB

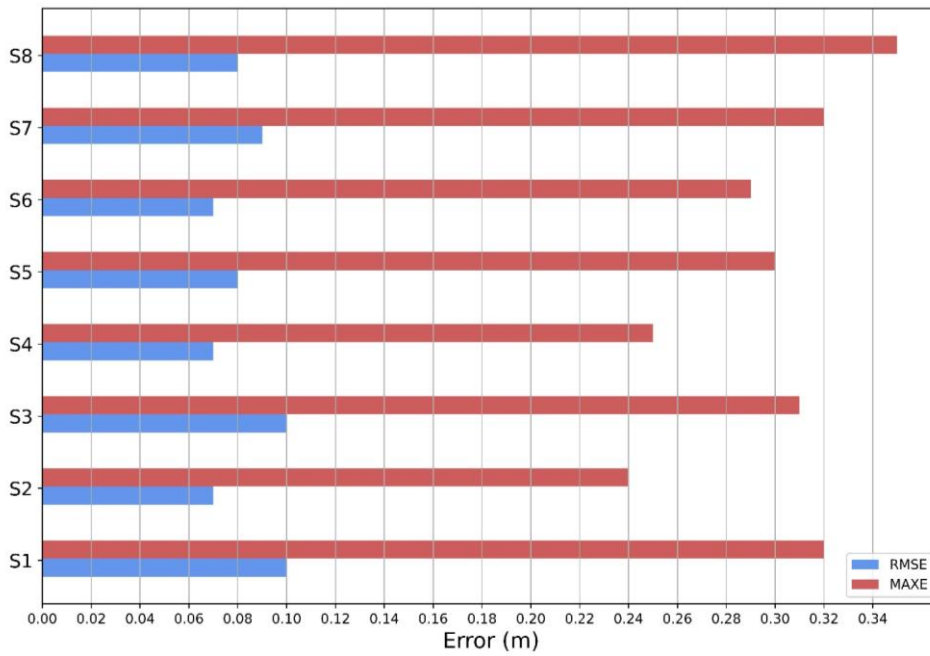
The simulation scenarios showed that the combined use of SDB and SDT can be used to obtain similar or better water level predictions compared of similar accuracy to those predicted using only surveyed bathymetry (although the log-ratio method requires some in situ calibration data). To simplify the interpretation of the results, Figure 9 illustrates the average error parameters calculated when comparing the model output with the record of the three tide gauges. For a detailed assessment of each one of the gauges, please consult is provided in Supplement D. In S4, the waterline-SDT for intertidal zones combined with the ratio-log-SDB for shallow waters can predict the astronomical tide more accurately (RMSE ~7cm; MAXE ~25cm ~ 0.07 m). In the S1 results, the model uses surveyed bathymetry (S1) with poorer performance (RMSE ~9cm; MAXE ~32cm). Specifically, ~ 0.09 m). S4 also performs better than S1 when assessed with the maximum absolute error (MAXE), ~ 0.25 m and ~ 0.31 m, respectively. In addition, Figure S9 (Supplement D) shows that at the location of the

Ōruamatua tide gauge, the predictions were improved in the S4 scenario (RMSE=~~5cm~~; MAXE=~~17cm~~ = 0.05 m) compared to S1 (RMSE=~~13cm~~; MAXE=~~42cm~~), see [Figure S9, Supplement D](#); = 0.13 m). Regarding the scenarios where SDTs replace only

480

[the intertidal topography \(S2 and S3\), the waterline-SDT \(S2\) provided superior performance \(RMSE ~ 0.07 m\). The model that uses ratio-log-SDT \(S3\) showed poorer performance \(RMSE ~ 0.09 m\).](#)

Regarding the scenarios where SDTs replace just the intertidal topography, S2



[waterline-SDT\) provided superior performance \(RMSE=7.4 cm, MAXE=24.3 cm, R2=0.97\). In S3, the model uses ratio-log-SDT and shows poorer performance \(RMSE=9.7 cm, MAXE=29 cm, R2=0.96\).](#)

485



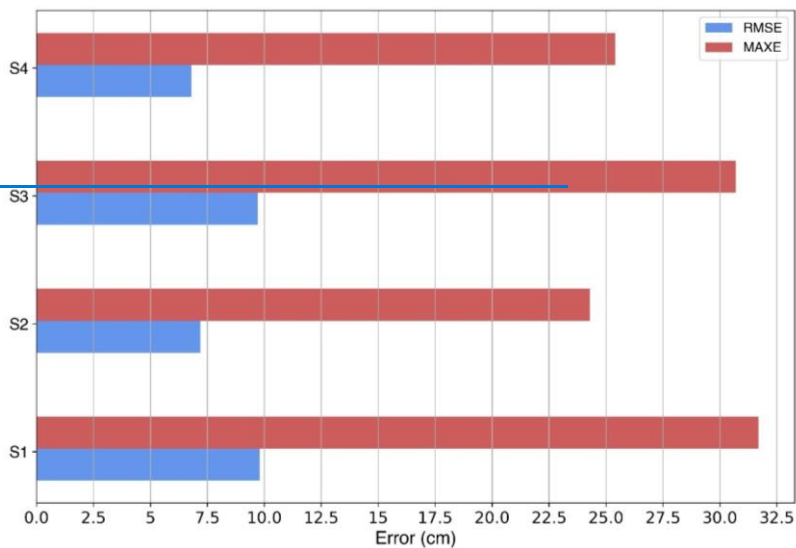


Figure 9: The average parameter errors calculated considering the results at the 3 tide gauge locations (Ōmokoroa, Hairini, Ōruamatua) for each simulation scenarios (S1, S2, S3, and S4) — RMSE (blue bar), MAXE (red bar).

Similar accuracies were shown in the simulation tests using two distinct extreme events (scenarios S5–S8), see Figure S11.

490 The averaged error parameters for the scenarios using satellite derived data (i.e., S6 and S8) are close to the ones for scenarios using only surveyed topo-bathymetry (i.e., S5 and S7) as show in Figure 9. The RMSE of these scenarios range from 0.07 m to 0.09 m and the MAXE from 0.29 m to 0.35 m. At the time of the most extreme total water level, the scenarios using surveyed topo-bathymetry and satellite derived data showed agreement on their accuracy, with some differences depending on which extreme event and the location analysed (i.e., Hairini and Ōruamatua). For the first event, the scenarios S5 and S6 underestimated the total water level at Harini by -0.05 m and -0.07 m, and at Ōruamatua by -0.33 m and -0.23 m, respectively.

495 For the second event, the scenarios S7 and S8 overestimated the total water level by 0.27 m and 0.21 m at Hairini, and by 0.07 m and 0.12 m at Ōruamatua, respectively. Note that the assessment here is not aimed at assessing whether the model accurately predicted the total water level but rather whether the satellite-derived topo-bathymetry prediction accuracy is similar to that of the surveyed topo-bathymetry.

500 The good agreement between scenarios S1 and S4 in Ōmokoroa, Hairini, and Ōruamatua causing surveyed topo-bathymetry and satellite derived data is also be extended to shown over the entire model domain. For instance, example, Figure 10 shows the difference between S1 and S4 is close to zero at the maximum (a) and minimum (b) astronomical tide/ total water level

505 ~~in~~ at each grid cell over the entire simulation (Figure 10, panel a). However, major differences in the between the scenarios S1  
x S4 (I), S5 x S6 (II), and S7 x S8 (III). The differences are  $> -0.10$  m and  $< +0.10$  m at the maximum astronomical tide/ total  
water level (a). Figure 10 (a. II and III) shows that these differences intensify across the estuary when storm surge is considered  
in the model forcing. The north-western (i.e., above Ōmokoroa) and the south-eastern (i.e., Hairini and Ōruamatua) estuarine  
regions are the most affected, showing slightly stronger red colours for S5 x S6 (a.II) and S7 x S8 (a.III) than in S1 x S4 (a.I)  
comparisons. Major differences ( $\leq -0.10$  m and  $\geq +0.10$  m) in the astronomical tide/ total water level predictions occur in the  
510 estuary's inner channels at the minimum (low-tide) total water level at each grid cell (Figure 10, panel b).

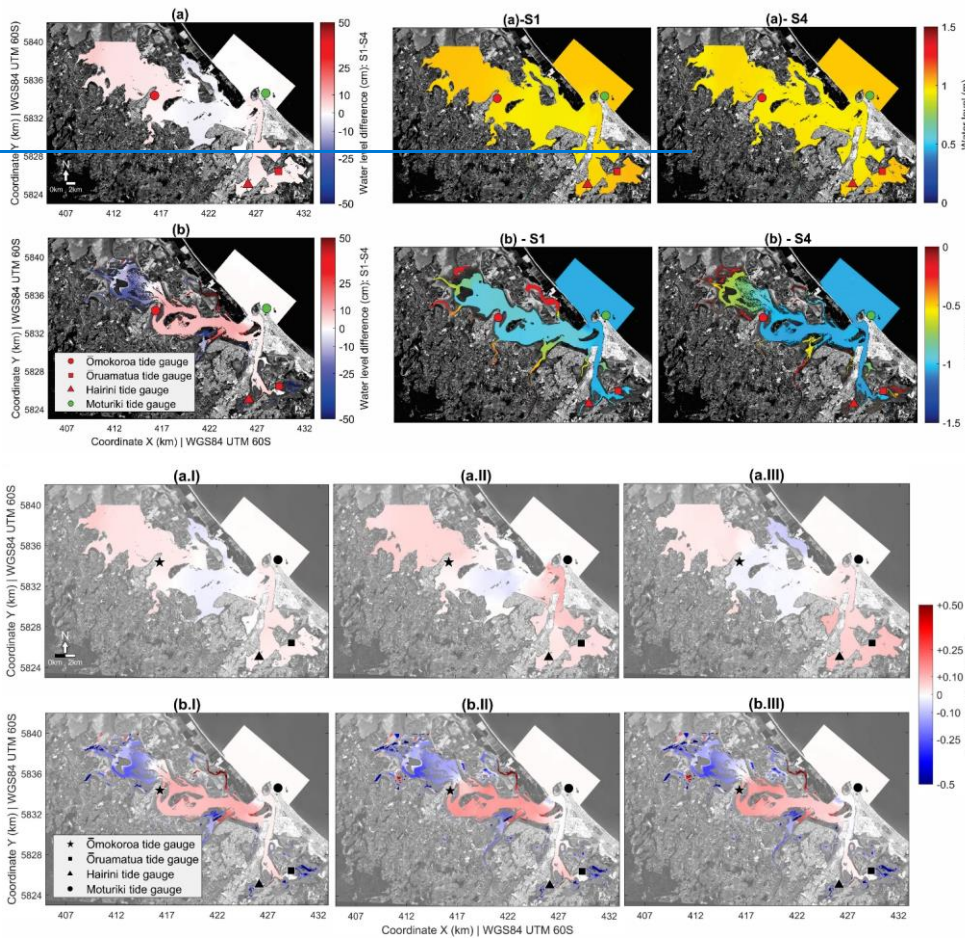


Figure 10: Spatial difference between the hydrodynamic model output using survey-surveyed topo-bathymetry (S1, S5, S7) and the waterline-derived plus ratio-log derived SDB (S4, High, S6, S8). The differences in the maximum (a) and lowminimum (b) astronomical tide condition (b), where/ total water level per grid cell over the simulation period are compared for S1 x S4 (I), S5 x S6 (II) and S7 x S8 (III). Red (blue) colours represent positive (negative) differences, which means that the resulting water level from scenarios using only topo-bathymetric surveyed data (i.e., S1, S5, S7) is higher (lower) than S4 the resulting water levels from the scenarios using only satellite derived topo-bathymetric data. Background image: ESA Sentinel 2A. Date and time of the image acquisition: 18/12/2018 10:15 h.

515

## 520 4. Discussion

525 We proposed a semi-automated framework to derive bathymetry and topography from satellite images by applying two well-known methods: the waterline method for elevation data in intertidal zones (e.g., Khan et al., 2019; Fitton et al., 2021; Jia et al., 2021) and the ratio-log-empirical method for shallow waters (Stumpf et al., 2003). We combined the satellite-derived elevation techniques with cloud-computation and database, allowing us to rapidly estimate topographic and bathymetric data for several locations simultaneously on a regional and large-scale (also shown in Jia et al., 2021; Fitton et al., 2021; Traganos et al., 2018). Here we focused on using these combined technologies for the hydrodynamic modelling of extreme water levels (caused by surges and tides) in enclosed estuaries. Our work adds to growing body of work on applying satellite techniques as an alternative to monitoring the coastline (Turner et al., 2021).

530 Our discussion is presented in four parts. In the three first parts, we addressed our first and second specific objectives, discussing our main findings and limitations when applying the waterline and ratio-log methods, including suggestion for improvements. In the fourth part, we addressed our third objective, discussing the challenges of using SDTs and SDBs in modelling extreme water levels within a complex morphology estuary.

### 4.1 Our proposed waterline method for deriving topography from space-borne images and its limitations.

535 The topography estimated using the waterline method compares well to LiDAR data in our study sites — considering that the topography in the intertidal zone ranges between -1.12 m to +2.98 m relative to MSL (see Table 3), and the vertical and horizontal accuracy of the LiDAR data are 0.20 m and 0.60 m, respectively. Although it is hard to directly compare different studies because they are conducted in different coastal areas, our results show a similar bias to other studies performed in similar estuarine environments. For instance, Salameh et al. (2020), applied the waterline method to Arcachon Bay in France, with the estimated DEM accuracy of RMSE = 0.27 m; Bué et al. (2020) generated SDTs for Azinheira Estuary (Portugal) based on logistic regression with an RMSE = 0.6 m.

545 Despite the encouraging results of waterline-SDT in NZAotearoa New Zealand's estuaries, the method is sensitive to the correct positioning and height-assigning of the waterline. Our results also shows that environmental conditions such as the complex morphology, varied bed substrates, and groundwater seepage could reduce the accuracy of the waterline position. Also, the location of the tide gauge used to assign the waterline height is important. For instance, Maketū Estuary is a small estuary with complex morphology, and the tide gauge of Moturiki is located at approximately 27 km from the estuarine entrance, which likely explains the very-low accuracy of SDT for that location. Furthermore, using just one tide gauge to assign the waterline height can add vertical error to the estimates because it does not account for the tide deformation and propagation in such a complex environment. Maketū is currently undergoing staged engineering works

550

to remove former flood protection which could have caused changes to the bathymetry between images and after the LiDAR survey was undertaken.

555 Complex morphology affects the estimates differently over different parts of the topographic profile — waterlines closer to the MSL (water level ~0 m) are more accurate, and waterlines closer to the peak of the high and low tides are less accurate (see Sect. 3.3). Our results corroborate those of Liu et al. (2013), who quantitatively analysed the waterline method in Dongsha Sandbank, China (an exposed coastal area). In their study, the authors have found that the main error source in the waterline method is linearly correlated to the slope and area of the intertidal zone. [These can be directly linked to the tidal range \(micro, meso and macro regimes\). Assuming the same intertidal slope the area of the tidal flats would increase with tidal range, which would in turn require more images to adequately represent the topographic profile.](#) Furthermore, having enough images to characterise the morphology of the study site is [also a commonly](#) limiting factor in the waterline method, as [pointed out](#) highlighted by [several previous](#) studies (e.g., [Liu et al., 2013](#); [Salameh et al., 2019](#)); ~~Liu et al., 2013~~). Our results are also clearly affected by the number of images in our collection. For [instance, we observed](#) example, gaps [between different waterlines](#), where no topographic data could be derived; [can be seen between waterlines](#), shown in Fig. 7 (Sect. 3.2). Although ~~we have used~~ the Sentinel-2 images [are](#) acquired every five days, they are often not useable due to cloud coverage.

570 The bed substrate can directly affect the waterline positioning, especially in [Aotearoa](#) New Zealand's estuaries, where clear water is common. For [instance](#) example, in Tauranga Harbour the seagrass banks, (Ha et al., 2020) and the groundwater seepage (shown to cause an error in water line detection in Huisman et al., 2011) can abruptly change the reflectance of the pixels around the waterline, especially in the centre part of the estuary, where the seagrass banks [can be seen](#) occur (Figure S3). ~~We used the~~ The adaptive Otsu method (Nobuyuki Otsu, 1979) [was used](#) to detect the edges between water and intertidal zones. The method showed good performance for determining the waterline location in estuaries, corroborating studies on lakes, rivers, water reservoirs (Donchyts et al., 2016), and coastlines (Vos et al., 2019). ~~We have~~ Other edge detection techniques [were](#) also tested [in the edge identification](#) present study, such as by calculating the mean or the median of NDWI distribution following approaches in previous studies (Sagar et al., 2017; Bishop-Taylor et al., 2019), ~~but~~. ~~However~~, these did not [perform](#) [perform](#) as well (not shown). ~~However, the~~ The Otsu method defines a threshold by detecting the value that maximises the within-class variance between two classes of a grey-scale distribution, which [can cause](#) has two limitations: first, the inability to correctly detect waterlines in images with complex conditions; ~~(i.e., where the water is clear, and the bed substrates reflectance can be seen in the satellite images);~~ and, second, the Otsu threshold method will detect waterlines even when all intertidal pixels are flooded [\(at high tide\)](#) or exposed; [\(at low tide\)](#), adding bias in the extremes of the topographical profiles ~~(peak of high or low tide).~~

580 There are currently several methods for edge detection that have been implemented in waterline-SDT that can potentially overcome the issues highlighted above. One practical solution would be the manual identification of the waterline; however,

585 it is subjective and labour-intensive when applied over a large area and in multiple study sites. Another way would be to apply image segmentation techniques, for instance, K-means clustering techniques applied to edge detection (Salameh et al., 2020). Alternatively, the ~~simple~~ identification of sea-grass banks could be used to remove areas where the waterline is poorly detected prior to analysis. ~~Simple algorithms could be used for this, such as~~ Ha et al. (2020) ~~who~~ identified seagrass using ensemble-based machine learning algorithms. Caballero and Stumpf (2020) identified algae and seagrass by using an empirical formula to calculate the maximum chlorophyll index, which uses three different optical bands to explain the radiance peak at the red-edge band.

#### 4.2 ~~Our~~The proposed correction methods for waterline-SDTs.

Our proposed correction methods (i.e., statistical and dynamical) for the SDT only resulted in a 1–2 cm improvement across the case-study estuary. However, our insights into why and where the correction resulted in improvements provide the basis for further work (e.g., when more imagery becomes available to test error sources more thoroughly). The statistical relationship between the error and the waterline height, the elevation on the tidal flat (LiDAR) and the waterline detection threshold in all four studied estuaries allowed us to set a semi-independent framework to correct the vertical level in the waterline derived SDT. For ~~instance, we can first learn~~example, the relation between THLD and MRE ~~could be learned~~ in similar estuaries. ~~And then apply the correction, and subsequently used to correct~~ to an entirely different study area with similar intertidal zone properties. ~~For instance, such as~~ estuaries with similar sediment colour, water turbidity, spring tidal range and intertidal area coverage.

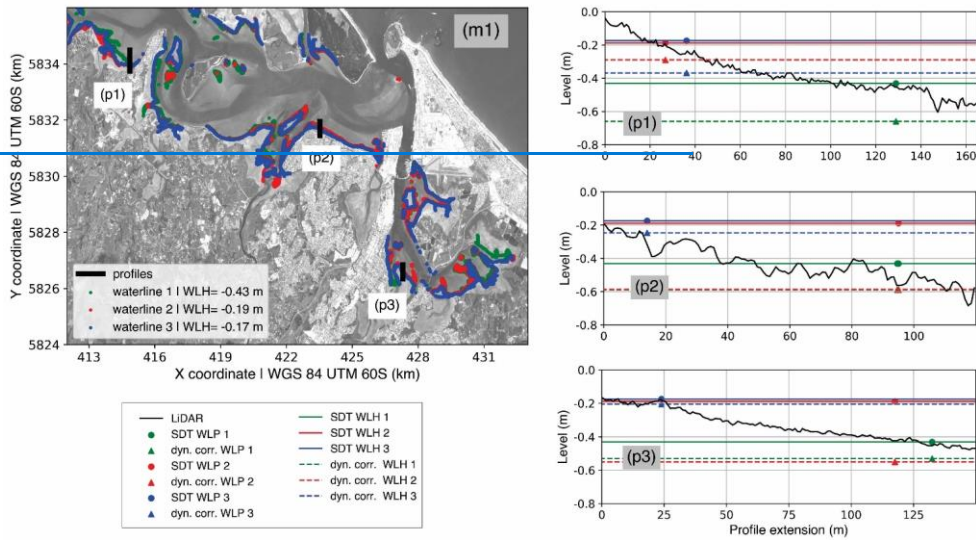
The dynamical correction ~~gives~~should give more realistic waterline heights because it accounts for the tide propagation within the estuary. However, the approach did not significantly improve the SDT. ~~We hypothesized~~three as expected. ~~There are four possible~~ reasons for the limited improvement. First, inaccuracies in horizontal waterline position may be more important ~~than~~ inaccuracies in the waterline height. ~~When correcting the waterline height (vertical errors), we are not eliminating the horizontal errors. This can be demonstrated by examining the location of waterlines on LIDAR-derived profiles.~~ Figure 11 (m1) shows three different waterline positions ~~along (red, blue, and green lines) and three different profiles. The LIDAR-derived profiles that intersect these waterlines (p1, p2, and p3) in Tauranga Harbour. In the panels p1, p2, and p3, the three profiles are shown in detail. The horizontal location of the three uncorrected waterline-SDTs~~SDTs is represented ~~for three different waterline positions (on the profiles by the coloured circles: (red, green, blue) with their corresponding tide-gauge derived heights (solid line). The corresponding dynamically-corrected waterline position and height heights are also plotted, represented by the triangles and dashed lines, respectively. In Figure 11, we. Note that in the dynamical correction, just the waterline height is corrected, and the observed~~that some of the waterline position remains unchanged. Because the numerical model is expected to give more realistic water levels — that account the tidal propagation within the estuary — the most correct position of the waterline should be where the dynamically corrected waterlines (i.e., coloured triangles) are further seaward or landward in waterline height (dashed lines) intersects the topographic profile ~~from where they should be. For~~

instance (continuous black line) in the Figure 11 (panels p1, p2, and p3). Thus, all the corrected waterlines in P1 (i.e., red, green and blue triangle) waterlines in p1 would need to be further seaward than they are to intersect with the profile at the correct location. In p2, the waterline 3 (blue circle) should be further seaward than they are. In P2, the blue-triangle waterline should be slightly landwards, and the red and waterlines 1 (green triangle waterlines, circle) and 2 (red circle), further seaward. In P3, all corrected waterlines should be further seaward. However, when the waterline is well positioned, waterline heights

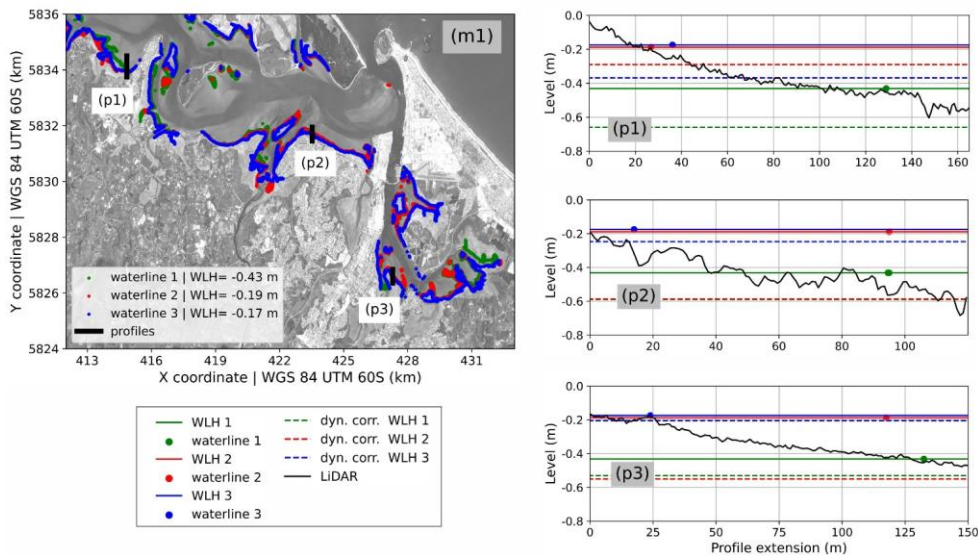
620

can be closely corrected and are similar to the LiDAR data; for instance, in P2-P3 for all waterlines (all dashed lines); and in P3 for the red and blue dashed lines).

625







**Figure 11: Profile analysis** Analysis of the dynamical correction in three different profiles (p1, p2, p3). [m1] shows the location of the LIDAR-derived profiles in Tauranga Harbour. [The panels (p1), (p2), (p3) shows] show the location of the 3 waterlines along the three profiles (black line). Each panel highlights the waterline height (WLH) extracted from the tide gauges and horizontal position (WLP) of three different waterlines (green (waterline 1), red (waterline 2), blue (3) derived from the waterline-STD (STD) and their 3)). The corresponding dynamically corrected waterline height (dyn. corr.) WLH and WLP. The continuous black line is also shown (dashed lines). Considering that the hydrodynamical model should give more accurate water levels, the correct waterline positioning should be where the dyn. corr. WLH intersects the LIDAR data along each profile. Background image: ESA Sentinel 2A. Date and time of the background image acquisition: 18/12/2018 10:15 h.

Formatted: Font: Bold

The second factor that can influence the ~~correction's~~ performance of the dynamical correction is the hydrodynamic model accuracy — especially at low tide, as can be seen in Figure 10. The spatial resolution of the numerical grid (20 m) can limit the model's ability to correctly solve the flooding and drying within grid cells around narrow channels, potentially adding horizontal bias to the waterline heights. ~~Moreover, the third~~ Furthermore, the tidal wavelength is hundreds of kilometres, which means that the water level should not be affected significantly by smaller-scale bathymetric features. Moreover, the fourth limiting factor is the LiDAR data horizontal and vertical accuracy, which limits the potential correction. The use of hydrodynamic modelling to assign the waterline heights is a common practice when generating SDTs (e.g., Liu et al., 2013; Khan et al., 2019; Salameh et al., 2020; Fitton et al., 2021). However, in most of the cases, the studies cover an extensive ~~area areas~~, with exposed coastlines or sand banks, in which regional tide models are used where there are not enough tide gauges to provide tide levels (Liu et al., 2013; Khan et al., 2019; Fitton et al., 2021). In just a few of these studies, enclosed

estuaries were studied by setting up local-scale hydrodynamic modelling (e.g., [Liu et al., 2013](#); [Salameh et al., 2020](#)). ~~In Liu et al., 2013).~~

650 For instance, in Arcachon bay (France), [Salameh et al. \(2020\)](#) compared the waterline-SDTs that were generated by assigning waterline heights according to single-location tide gauges, single-location model point output, and grid hydrodynamic model output. Similar to our results, they found that the waterline heights assigned by using grid model output did not improve the SDTs compared with using a single-location tide gauge within the estuary. They explained unexpected result as due to the slope of the tidal flat, and the model's inability to provide accurate sea level heights over the intertidal area.

655 Similarly, [Liu et al. \(2013\)](#) used a regional tide model for the South Yellow Sea (China) to assign waterline heights to a local-scale study in Dongscha Sandbank (an exposed tidal flat), which limited the vertical accuracy of the SDT up to 30 cm (corresponding to the model's accuracy).

#### 4.3 Comparison between the waterline-method and ratio-log for intertidal zones.

660 ~~Our~~The results show that, for Tauranga Harbour, the waterline ~~is a better method than~~ the ratio-log ~~techniques performed similarly for the task of~~ deriving topography ~~over intertidal zones~~ using satellite images. ~~The~~ Thus, for estuaries with low water column turbidity, pre-existing surveyed topo-bathymetric data, and low numbers of available satellite images covering its area — as is the case of Tauranga Harbour — the ratio-log method could potentially replace the waterline method for deriving elevation data for intertidal zones. Although the waterline method shows better performance when considering the RMSE — either evaluated on a point-to-point basis (0.20 m) or evaluated using the DEM (0.23 m), see Table 3 — than the ratio-log method (0.25 m). Evaluating RMSE using the DEM provides more information for comparison. Figure 12 shows the density SDT points and distribution of the relative vertical error (RE) ~~offor~~ Tauranga Harbour's waterline-SDT and ratio-log-SDT for intertidal zones ~~are shown in Figure 12. In the~~, where the colour represents positive (red) or negative (blue) errors. Positive (negative) errors indicate that SDT estimates are deeper (shallower) or further landward (seaward) than the LiDAR data (see Sect. 2.7). The waterline-SDT (Figure 12: a1, b1, c1, ~~and d1~~), the SDTs) provides estimates that are generally shallower or further seaward than the LiDAR — as the negative RE indicates (see Sect. 2.3) — with the worst estimates in the tidal flat's upper region (bluer colour dots). The positive RE values (redder colour dots) are concentrated in the estuary's wide flat centre region (Figure 12 b1) and indicate that the estimates are deeper or further landward than the LiDAR data. As discussed in Sect. 4.1, the waterline method is mainly limited by the number of images required to properly define the morphology of the study site. In the case of Tauranga Harbour, as consequence of the high complexity of its morphology, the SDT provided by the present framework could be substantially improved with more images, making the waterline method even more accurate than the ratio-log method.

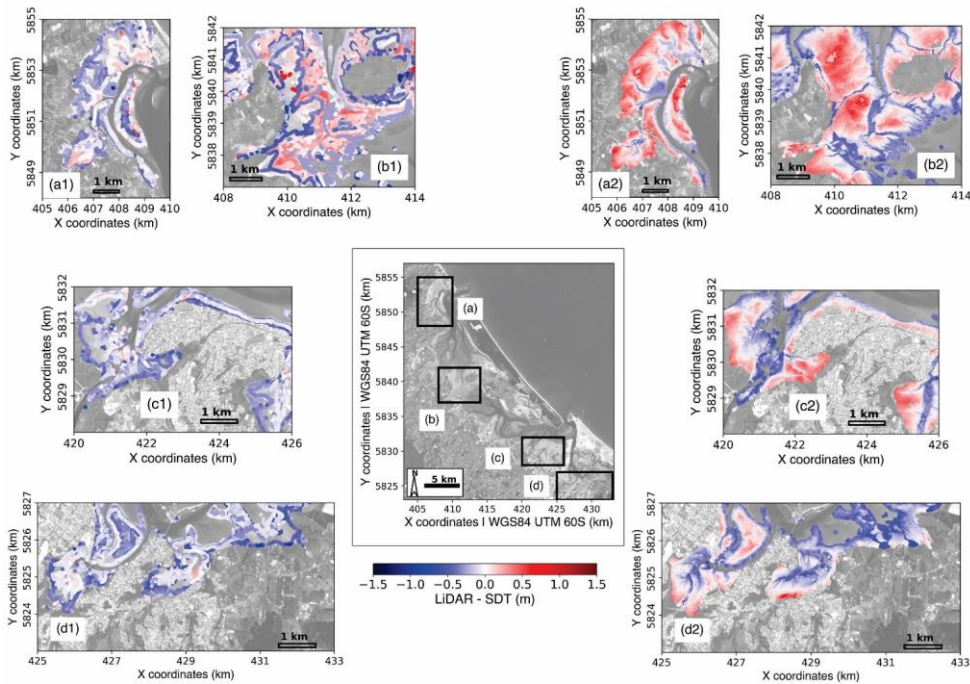
675

The ratio-log-SDT (Figure 12: a2, b2, c2, d2) allows the water depth to be assessed on a pixel-by-pixel basis, with a resolution of 10 m in the case of Sentinel Copernicus data; ~~however,~~ However, the associated error (RMSE=25 cm) is higher than the

680 waterline-SDT (RMSE=20 cm)-application of this method has several limitations. In the ratio-log-SDT application, the  
 intertidal zone becomes flat topography was flattened; the positive and negative errors are in the upper and lower parts of the  
 tidal flats, respectively. In the middle of the topographic profile, the estimates are more accurate (whiter colour dots). The low  
 data variability (pixels reflectance) probably causes the lower accuracy of the ratio-log-SDT in comparison to the waterline-  
 SDT- (the ratio-log method depends on calibration data covering the range of conditions). The ratio-log (green/blue band ratio)  
 685 poorly explains the depth (LiDAR data), which leads to a low correlation coefficient ( $R^2=0.12$ ). This assumption is confirmed  
 by the higher correlation coefficient ( $R^2=0.24$ ) obtained when the same method is applied to the shallow waters within  
 Tauranga Harbour. In addition, the presence of seagrass in the intertidal zones and shallow water (Figure S3) can potentially  
 worsen the ratio-log-SDT and SDB because it affects by affecting the reflectance of the pixel (Geyman and Maloof, 2019;  
 Caballero and Stumpf, 2020).

Formatted: Superscript

Formatted: Superscript



690 **Figure 12: Estimated SDT and corresponding relative vertical error (RELiDAR-SDT) for intertidal zone in Tauranga Harbour using waterline-derived (a1, b1, c1, and d1) and ratio-log (a2, b2, c2, and d2) methods. The root mean-squared error for waterline method is 0.20 m and for the ratio-log method is 0.25 m (not shown in the figure). However, the waterline method results in less**

695 [density of estimates \(due to imagery constraints\), while ratio-log method results in a pixel-by-pixel estimate density.](#) Background image: ESA Sentinel 2A. Date and time of the background image acquisition: 18/12/2018 10:15 h.

700 Numerous ~~Many~~ estuaries have turbid water, which would reduce the quality of SDBs and SDTs derived from both ratio-log and waterline methods. The ratio-log derivations would be affected by the interference of the suspended material on the light absorption rate through the water column — which could be improved by using methods that adjust the ratio-log method for turbid water (e.g., Caballero and Stumpf, 2020). The waterline derivations would be affected by intertidal zone identification. The NDWI of the pixels in shallow water with a high concentration of suspended materials could have similar values to those in the intertidal zone. Consequently, determining the intertidal areas would be ~~more uncertain~~ [less accurate in environments with high concentration of suspended material.](#)

705 In addition, image pre- and post-processing are other factors that may improve the accuracy of the SDT and SDB of waterline and ratio-log methods. ~~We~~ [In the present manuscript, available Sentinel images were used](#) ~~available Sentinel images, which are~~ already pre-processed by using Sen2Cor, which creates surface-reflectance images (see Sect. 2.1). However, several pre-processing tools are available (Pereira-Sandoval et al., 2019). Some of these are designed specifically for use in coastal areas — where water is often turbid, containing a high concentration of suspended sediments and other materials. For instance, the ACOLITE tool (~~Vanhellemont and Ruddick, 2018~~) ([Vanhellemont and Ruddick, 2018](#)) has been widely applied in estuaries (e.g., Bué et al., 2020; Salameh et al., 2020; Fitton et al., 2021). In the case of exposed coastal areas or where local wind waves can increase the rugosity of the water surface, filters to eliminate sun glint can be applied (Hedley et al., 2005).

#### 4.4 Hydrodynamic modelling assessment

715 The bathymetric and topographic data quality is fundamental for reliable hydrodynamic modelling. Despite the limited accuracy of the SDT and SDB (see Sect. 4.1–4.3), our results show that hydrodynamic models using satellite-derived elevation can predict water level with similar accuracy ~~in comparison with~~ [to](#) models using only surveyed data (see Sect.3.4, Figure ~~49~~ [and 10](#)). Thus, ~~we can infer that the~~ water level modelling may not be sensitive to small uncertainties in the bathymetric data, but rather to the larger scale characteristics of the estuary, such as the width of entrances and overall geometry.

720 ~~Some of the bathymetric~~ [Bathymetric](#) uncertainties can arise from the interpolation technique used to create the DEMs (Circus et al., 2000; Kang et al., 2017, 2020; Salameh et al., 2020) — e.g., spline, kriging, inverse distance weighting (~~IDW~~), nearest neighbour, triangulation. However, previous studies have found that uncertainties in the elevation data lead to minor differences in the water level predictions (Cea and French, 2012; Falcão et al., 2013). For instance, Cea and French (2012) showed that water level predictions do not significantly change with vertical uncertainties of up to 1 m in the bathymetry. Similarly, Falcão et al. (2013) have shown that the DEMs created with the same interpolation technique (i.e., kriging) but with a different spatial resolution (i.e., 5 and 50m) did not significantly affect the water level prediction. Corroborating our results, Falcão et al. (2013) also found that the worst predictions are for grid cells where the water level is at a minimum, when

comparing these two scenarios. The stream current magnitude and direction predictions are affected the most by the uncertainties in the bathymetric and topographic data (Cea and French, 2012; Falcão et al., 2013). ~~In addition, bed roughness and eddy viscosity are two important calibration parameters highlighted in several studies (Pedrozo-Acuña et al., 2012; Mohammadian et al., 2022; Cea and French, 2012) that we have not explored in this manuscript because of its focus on SDT and SDB, although the parameters were calibrated for the hydrodynamic model.~~

Despite the uncertainties in the estimates, SDT and SDB can generate a fair approximation of estuary relief, which can be helpful in long-term predictions for coastal management applications. In idealistic numerical studies, the extension and slope of the intertidal zone, the estuary's length, and the width of the mouth are the main factors causing changes in the tidal range within harbours (Khojasteh et al., 2021; Du et al., 2018; Khojasteh et al., 2020; Khojasteh et al., 2021). For instance, Du et al. (2018) show that the length of an estuary and intertidal zone slope strongly influences the tidal range. However, the entrance restriction drives the estuarine response to SLRsea-level rise (Khojasteh et al., 2020); the smaller the cross-sectional area of the estuary mouth, the smaller would be the tidal range within the estuary. Moreover, SDT and SDB could be used for data assimilation in numerical modelling, as in Mason et al. (2010), who used the SDT to calibrate a morphodynamic model. Ultimately, the SDTs and SDBs can decrease the uncertainties of flood-risk management in the present and future scenarios of SLRsea-level rise where studies are limited due to lack of elevation data in remote areas such as small islands in developing states (Parodi et al., 2020) and coastal lagoons in developing countries (Pedrozo-Acuña et al., 2012).

Although the differences in the resulting water level between the SDT, SDB, and surveyed bathymetry simulation scenarios show that satellite techniques compare well, our simulations were only conducted in one estuary, albeit a large and relatively complex estuary — where the astronomical spring tides are the main driver for estuarine flooding. Therefore, studies are required in sites with different physical conditions would be useful to validate the use of SDT and SDB more broadly. For ~~instance~~example, estuaries where the storm surge is the main driver for flooding; or/and exposed estuaries where the wave forces can increase the water level (i.e., wave set-up) (e.g., Bertin et al. (2019)). ~~Furthermore, modelling studies focusing. Many such effects can be strongly dependant on understanding whether or not the use of SDT and SDB properly represent topography, for example, the wind effect on the storm surge (wind surface stress) and generation of local waves (e.g., Smith et al., 2001; Bertin et al., 2015), and tide-surge interactions within the estuary are encouraged, due to the importance of the topic in water level modelling (Spicer et al., 2019; Wankang et al., 2019; Zheng et al., 2020), especially in the context of sea level rise.~~

## 5. Conclusions

A waterline technique for deriving topography from multispectral satellite images was developed and its use in hydrodynamic modelling assessed. The simple pre-processing required for the satellite images combined with the use of cloud computing

and storage make the present framework highly applicable to regional scale studies. Our main findings show that the accuracy of the waterline SDT is similar or even superior to other techniques applied in previous studies to comparable sites, and similar to the vertical error in the LiDAR dataset used to assess accuracy. [In addition, optical empiric methods such as the ratio-log could potentially replace the waterline-SDT in case of imagery constraints and when applied to an estuary with low water turbidity. The main source of error for the waterline-SDT is whether the number satellite images is adequate to cover the intertidal zone and the accuracy of the waterline positioning.](#) Statistical and dynamical corrections were trailed but provided limited improvements. The hydrodynamic modelling assessment was encouraging; and showed that SDT and SDB techniques have potential for use in [high predictions for extreme water level predictions](#) (such as associated with [higher than normal spring tides and severe storm surges](#)). Scenarios using different applications of the SDT and SDB did not show major high [tidewater level](#) differences over most of the numerical domain for Tauranga Harbour. The use of SDT and SDB for hydrodynamic modelling in estuaries can make flooding assessment for remote coastal areas feasible and provides a pathway around the need for expensive surveys for economically depressed vulnerable areas.

#### **Code availability**

The codes used in this work are available as python notebooks in <https://github.com/CostaAndCoasts/Intertidal-zones-satellite-derived-bathymetry>.

#### **Credit authorship contribution statement**

Wagner L.L. Costa: methodology, data analysis, writing – original draft, visualization. Karin R. Bryan: conceptualization, supervision, writing – review & editing, resources, funding acquisition. Giovanni Coco: Writing – review & editing, supervision.

#### **Acknowledgment**

The authors would like to thank Dr. Ben Stewart for numerical modelling assistance. This work was supported by the National Science Challenge: Resilience Challenge “Coasts” programme, GNS-RNC040. Data were supplied by Land Information New Zealand (LINZ), Bay of Plenty Regional Council, and Waikato Regional Council.

#### **References**

[Almeida, L. P., Efraim de Oliveira, I., Lyra, R., Searanto Dazzi, R. L., Martins, V. G., and Henrique da Fontoura Klein, A.: Coastal Analyst System from Space Imagery Engine \(CASSIE\): Shoreline management module, Environ. Model. Softw., 140, 105033, <https://doi.org/10.1016/j.envsoft.2021.105033>, 2021.](#)

- Ashphaq, M., Srivastava, P. K., and Mitra, D.: Review of near-shore satellite derived bathymetry: Classification and account of five decades of coastal bathymetry research, *J. Ocean Eng. Sci.*, 6, 340–359, <https://doi.org/10.1016/j.joes.2021.02.006>, 2021.
- Bertin, X., Mendes, D., Martins, K., Fortunato, A. B., and Lavaud, L.: The Closure of a Shallow Tidal Inlet Promoted by Infragravity Waves, *Geophys. Res. Lett.*, 46, 6804–6810, <https://doi.org/10.1029/2019GL083527>, 2019.
- Bishop Taylor, R., Sagar, S., Lymburner, L., and Beaman, R. J.: Between the tides: Modelling the elevation of Australia's exposed intertidal zone at continental scale, *Estuar. Coast. Shelf Sci.*, 223, 115–128, <https://doi.org/10.1016/j.eess.2019.03.006>, 2019.
- Bué, I., Catalão, J., and Semedo, Á.: Intertidal bathymetry extraction with multispectral images: A logistic regression approach, *Remote Sens.*, 12, <https://doi.org/10.3390/RS12081311>, 2020.
- Caballero, I. and Stumpf, R. P.: Retrieval of nearshore bathymetry from Sentinel 2A and 2B satellites in South Florida coastal waters, *Estuar. Coast. Shelf Sci.*, 226, 106277, <https://doi.org/10.1016/j.eess.2019.106277>, 2019.
- Caballero, I. and Stumpf, R. P.: Towards routine mapping of shallow bathymetry in environments with variable turbidity: Contribution of sentinel 2A/B satellites mission, *Remote Sens.*, 12, <https://doi.org/10.3390/rs12030451>, 2020.
- Cea, L. and French, J. R.: Bathymetric error estimation for the calibration and validation of estuarine hydrodynamic models, *Estuar. Coast. Shelf Sci.*, 100, 124–132, <https://doi.org/10.1016/j.eess.2012.01.004>, 2012.
- Circus, D., Kingdom, U., Extinction, M., and Strategies, S.: M. D. Hylton 1 and M.B. Hare 1, 6, 455–462, 2000.
- Codiga, D. L.: Unified Tidal Analysis and Prediction Using the UTide Matlab Functions, 59, <https://doi.org/10.13140/RG.2.1.3761.2008>, 2011.
- Costa, W., Bryan, K. R., Coco, G., Zealand, N., and Zealand, N.: ASSESSING THE USE OF SATELLITE DERIVED BATHYMETRY IN ESTUARINE STORM SURGE MODELS—STUDY CASE: TAURANGA, 2021.
- Donehyts, G., Schellekens, J., Winsemius, H., Eisemann, E., and van de Giesen, N.: A 30 m resolution surface water mask including estimation of positional and thematic differences using landsat 8, SRTM and OpenStreetMap: A case study in the Murray Darling basin, Australia, *Remote Sens.*, 8, <https://doi.org/10.3390/rs8050386>, 2016.
- Du, J., Shen, J., Zhang, Y. J., Ye, F., Liu, Z., Wang, Z., Wang, Y. P., Yu, X., Sisson, M., and Wang, H. V.: Tidal Response to Sea Level Rise in Different Types of Estuaries: The Importance of Length, Bathymetry, and Geometry, *Geophys. Res. Lett.*, 45, 227–235, <https://doi.org/10.1002/2017GL075963>, 2018.
- Ehlers, J. S. and Rooney, J. J.: Depth Derivation Using Multispectral WorldView 2 Satellite Imagery, NOAA Tech. Memo. NMFS PIFSC 46, 24, <https://doi.org/10.7289/V5668B40>, 2015.
- Emanuel, K.: Increasing destructiveness of tropical cyclones over the past 30 years, *Nature*, 436, 686–688, <https://doi.org/10.1038/nature03906>, 2005.
- Faleão, A. P., Mazzolari, A., Gonçalves, A. B., Araújo, M. A. V. C., and Trigo Teixeira, A.: Influence of elevation modelling on hydrodynamic simulations of a tidally dominated estuary, *J. Hydrol.*, 497, 152–164, <https://doi.org/10.1016/j.jhydrol.2013.05.045>, 2013.

- 820 Fitton, J. M., Rennie, A. F., Hansom, J. D., and Muir, F. M. E.: Remotely sensed mapping of the intertidal zone: A Sentinel-2 and Google Earth Engine methodology, *Remote Sens. Appl. Soc. Environ.*, 22, 100499, <https://doi.org/10.1016/j.rsase.2021.100499>, 2021.
- Geyman, E. C. and Maloof, A. C.: A Simple Method for Extracting Water Depth From Multispectral Satellite Imagery in Regions of Variable Bottom Type, *Earth Sp. Sci.*, 6, 527–537, <https://doi.org/10.1029/2018EA000539>, 2019.
- 825 Gorelick, N., Hancher, M., Dixon, M., Ilyushchenko, S., Thau, D., and Moore, R.: Google Earth Engine: Planetary scale geospatial analysis for everyone, *Remote Sens. Environ.*, 202, 18–27, <https://doi.org/10.1016/j.rse.2017.06.031>, 2017.
- Ha, N. T., Manley-Harris, M., Pham, T. D., and Hawes, I.: A comparative assessment of ensemble-based machine learning and maximum likelihood methods for mapping seagrass using sentinel-2 imagery in Tauranga Harbor, New Zealand, *Remote Sens.*, 12, <https://doi.org/10.3390/rs12030355>, 2020.
- 830 Hedley, J. D., Harborne, A. R., and Mumby, P. J.: Simple and robust removal of sun glint for mapping shallow water benthos, *Int. J. Remote Sens.*, 26, 2107–2112, <https://doi.org/10.1080/01431160500034086>, 2005.
- Huisman, C. E., Bryan, K. R., Coco, G., and Ruessink, B. G.: The use of video imagery to analyse groundwater and shoreline dynamics on a dissipative beach, *Cont. Shelf Res.*, 31, 1728–1738, <https://doi.org/10.1016/J.CSR.2011.07.013>, 2011.
- Hume, T., Gerbeaux, P., Hart, D., Kettles, H., and Neale, D.: A classification of New Zealand's coastal hydrosystems, 120, 2016.
- 835 IHO, I. H. O.: ORGANISATION HYDROGRAPHIQUE INTERNATIONALE ORGANIZACION HIDROGRAFICA INTERNACIONAL IHO/OHI Publication C-55, 2020.
- Jawak, S. D., Vadlamani, S. S., and Luis, A. J.: A Synoptic Review on Deriving Bathymetry Information Using Remote Sensing Technologies: Models, Methods and Comparisons, *Adv. Remote Sens.*, 04, 147–162, <https://doi.org/10.4236/ars.2015.42013>, 2015.
- 840 Jia, M., Wang, Z., Mao, D., Ren, C., Wang, C., and Wang, Y.: Rapid, robust, and automated mapping of tidal flats in China using time series Sentinel-2 images and Google Earth Engine, *Remote Sens. Environ.*, 255, 112285, <https://doi.org/10.1016/j.rse.2021.112285>, 2021.
- Kang, Y., Ding, X., Xu, F., Zhang, C., and Ge, X.: Topographic mapping on large scale tidal flats with an iterative approach on the waterline method, *Estuar. Coast. Shelf Sci.*, 190, 11–22, <https://doi.org/10.1016/j.ecss.2017.03.024>, 2017.
- 845 Kang, Y., Lv, W., He, J., and Ding, X.: Remote sensing of time-varying tidal flat topography, Jiangsu Coast, China, based on the waterline method and an artificial neural network model, *Appl. Sci.*, 10, <https://doi.org/10.3390/app10103645>, 2020.
- Kerr, J. M. and Purkis, S.: An algorithm for optically deriving water depth from multispectral imagery in coral reef landscapes in the absence of ground-truth data, *Remote Sens. Environ.*, 210, 307–324, <https://doi.org/10.1016/j.rse.2018.03.024>, 2018.
- 850 Khan, M. J. U., Ansary, M. N., Durand, F., Testut, L., Ishaque, M., Calmant, S., Krien, Y., Saifu, A. K. M., and Papa, F.: High resolution intertidal topography from sentinel-2 multi-spectral imagery: Synergy between remote sensing and numerical modeling, *Remote Sens.*, 11, 1–20, <https://doi.org/10.3390/rs11242888>, 2019.



- Khojasteh, D., Hottinger, S., Felder, S., DeCesare, G., Heimhuber, V., Hanslow, D. J., and Glamore, W.: Estuarine tidal response to sea level rise: The significance of entrance restriction, *Estuar. Coast. Shelf Sci.*, 244, 106941, <https://doi.org/10.1016/j.eess.2020.106941>, 2020.
- 855 Khojasteh, D., Glamore, W., Heimhuber, V., and Felder, S.: Sea level rise impacts on estuarine dynamics: A review, *Sci. Total Environ.*, 780, 146470, <https://doi.org/10.1016/j.scitotenv.2021.146470>, 2021.
- Lee, Z., Carder, K. L., Mobley, C. D., Steward, R. G., and Patch, J. S.: Hyperspectral remote sensing for shallow waters I: A semianalytical model, *Appl. Opt.*, 37, 6329, <https://doi.org/10.1364/ao.37.006329>, 1998.
- 860 Li, F. K. and Goldstein, R. M.: Studies of Multibaseline Spaceborne Interferometric Synthetic Aperture Radars, *IEEE Trans. Geosci. Remote Sens.*, 28, 88–97, <https://doi.org/10.1109/36.45749>, 1990.
- Liu, Y., Li, M., Zhou, M., Yang, K., and Mao, L.: Quantitative analysis of the waterline method for topographical mapping of tidal flats: A case study in the dongsha sandbank, china, *Remote Sens.*, 5, 6138–6158, <https://doi.org/10.3390/rs5116138>, 2013.
- Lorensen, W. E. and Cline, H. E.: Marching cubes: A high resolution 3D surface construction algorithm, *Proc. 14th Annu. Conf. Comput. Graph. Interact. Tech. SIGGRAPH 1987*, 21, 163–169, <https://doi.org/10.1145/37401.37422>, 1987.
- 865 Lyzenga, D. R.: Shallow water bathymetry using combined lidar and passive multispectral scanner data, *Int. J. Remote Sens.*, 6, 115–125, <https://doi.org/10.1080/01431168508948428>, 1985.
- Mason, D. C. and Davenport, L. J.: Accurate and efficient determination of the shoreline in ERS-1 SAR images, *IEEE Trans. Geosci. Remote Sens.*, 34, 1243–1253, <https://doi.org/10.1109/36.536540>, 1996.
- 870 Mason, D. C., Scott, T. R., and Dance, S. L.: Remote sensing of intertidal morphological change in Morecambe Bay, U.K., between 1991 and 2007, *Estuar. Coast. Shelf Sci.*, 87, 487–496, <https://doi.org/10.1016/j.eess.2010.01.015>, 2010.
- MeFeeters, S. K.: The use of the Normalized Difference Water Index (NDWI) in the delineation of open water features, *Int. J. Remote Sens.*, 17, 1425–1432, <https://doi.org/10.1080/01431169608948714>, 1996.
- Mohammadian, A., Morse, B., and Robert, J. L.: Calibration of a 3D hydrodynamic model for a hypertidal estuary with complex irregular bathymetry using adaptive parametrization of bottom roughness and eddy viscosity, *Estuar. Coast. Shelf Sci.*, 265, 107655, <https://doi.org/10.1016/j.eess.2021.107655>, 2022.
- 875 Morris, A. B. D., Coco, G., Bryan, K. R., Turner, I. L., Morris, B. D., Coco, G., Bryan, K. R., Turner, I. L., Street, K., and Vale, M.: Video-derived mapping of estuarine evolution Stable URL : <https://www.jstor.org/stable/26481623> Linked references are available on JSTOR for this article : Video-derived mapping of estuarine evolution, 410–414, 2021.
- 880 Murray, N. J., Phinn, S. R., DeWitt, M., Ferrari, R., Johnston, R., Lyons, M. B., Clinton, N., Thau, D., and Fuller, R. A.: The global distribution and trajectory of tidal flats, *Nature*, 565, 222–225, <https://doi.org/10.1038/s41586-018-0805-8>, 2019.
- Nicholls, R. J. and Cazenave, A.: Sea-level rise and its impact on coastal zones, *Science (80-. )*, 328, 1517–1520, <https://doi.org/10.1126/science.1185782>, 2010.
- Nobuyuki Otsu: A Threshold Selection Method from Gray Level Histograms, *IEEE Trans. Syst. Man Cybern.*, 9, 62–66, 1979.
- 885 Oppenheimer, M., Glavovic, B., Hinkel, J., van deWal, R., Magnan, A. K., Abd Elgawad, A., Cai, R., Cifuentes Jara, M., DeConto, R. M., Ghosh, T., Hay, J., Isla, F., Marzeion, B., Meyssignac, B., and Sebesvari, Z.: Sea Level Rise and Implications

for Low-Lying Islands, Coasts and Communities., IPCC Spec. Rep. Ocean Cryosph. a Chang. Clim., 355, 126–129, <https://doi.org/10.1126/science.aam6284>, 2019.

890 Parodi, M. U., Giardino, A., Van Dongeren, A., Pearson, S. G., Bricker, J. D., and Reniers, A. J. H. M.: Uncertainties in coastal flood risk assessments in small island developing states, *Nat. Hazards Earth Syst. Sci.*, 20, 2397–2414, <https://doi.org/10.5194/nhess-20-2397-2020>, 2020.

Pedrozo-Acuña, A., Ruiz de Alegria Arzaburu, A., Mariño-Tapia, I., Enriquez, C., and González-Villareal, F. J.: Factors controlling flooding at the Tonalá river mouth (Mexico), *J. Flood Risk Manag.*, 5, 226–244, <https://doi.org/10.1111/j.1753-318X.2012.01142.x>, 2012.

895 Rueda, A., Cagigal, L., Antolínez, J. A. A., Albuquerque, J. C., Castanedo, S., Coco, G., and Méndez, F. J.: Marine climate variability based on weather patterns for a complicated island setting: The New Zealand case, *Int. J. Climatol.*, 39, 1777–1786, <https://doi.org/10.1002/joc.5912>, 2019.

Sagar, S., Roberts, D., Bala, B., and Lymburner, L.: Extracting the intertidal extent and topography of the Australian coastline from a 28 year time series of Landsat observations, *Remote Sens. Environ.*, 195, 153–169, <https://doi.org/10.1016/j.rse.2017.04.009>, 2017.

900 Salameh, E., Frappart, F., Marieu, V., Spodar, A., Parisot, J. P., Hanquiez, V., Turki, I., and Laignel, B.: Monitoring sea level and topography of coastal lagoons using satellite radar altimetry: The example of the Arcachon Bay in the Bay of Biscay, *Remote Sens.*, 10, 1–22, <https://doi.org/10.3390/rs10020297>, 2018.

905 Salameh, E., Frappart, F., Almar, R., Baptista, P., Heygster, G., Lubac, B., Raucoules, D., Almeida, L. P., Bergsma, E. W. J., Capo, S., DeMichele, M. D., Idier, D., Li, Z., Marieu, V., Poupardin, A., Silva, P. A., Turki, I., and Laignel, B.: Monitoring Beach Topography and Nearshore Bathymetry Using Spaceborne Remote Sensing: A Review, *Remote Sens.*, 11, <https://doi.org/10.3390/rs11192212>, 2019.

910 Salameh, E., Frappart, F., Turki, I., and Laignel, B.: Intertidal topography mapping using the waterline method from Sentinel-1 & 2 images: The examples of Arcachon and Veys Bays in France, *ISPRS J. Photogramm. Remote Sens.*, 163, 98–120, <https://doi.org/10.1016/j.isprsjprs.2020.03.003>, 2020.

Sobel, A. H., Camargo, S. J., Hall, T. M., Lee, C., Tippet, M. K., and Wing, A. a: Cyclone Intensity, *Science* (80-), 353, 2016.

Spicer, P., Huguenard, K., Ross, L., and Rickard, L. N.: High-Frequency Tide-Surge-River Interaction in Estuaries: Causes and Implications for Coastal Flooding, *J. Geophys. Res. Ocean.*, 124, 9517–9530, <https://doi.org/10.1029/2019JC015466>, 2019.

915 Stephens, S. A., Bell, R. G., and Haigh, I. D.: Spatial and temporal analysis of extreme storm-tide and skew-surge events around the coastline of New Zealand, *Nat. Hazards Earth Syst. Sci.*, 20, 783–796, <https://doi.org/10.5194/nhess-20-783-2020>, 2020.

Stewart, B.: Investigating groundwater derived nutrient fluxes within Tauranga harbour, New Zealand, 1994, 2021.

Stumpf, R. P., Holderied, K., and Sinclair, M.: Determination of water depth with high-resolution satellite imagery over variable bottom types, *Limnol. Oceanogr.*, 48, 547–556, [https://doi.org/10.4319/lo.2003.48.1\\_part\\_2.0547](https://doi.org/10.4319/lo.2003.48.1_part_2.0547), 2003.

- 920 [Fay, H. W., Bryan, K. R., DeLange, W. P., and Pilditch, C. A.: The hydrodynamics of the southern basin of Tauranga Harbour, New Zeal. J. Mar. Freshw. Res., 47, 249–274, <https://doi.org/10.1080/00288330.2013.778300>, 2013.](#)
- [Traganos, D., Poursanidis, D., Aggarwal, B., Chrysoulakis, N., and Reinartz, P.: Estimating satellite-derived bathymetry \(SDB\) with the Google Earth Engine and sentinel 2, Remote Sens., 10, <https://doi.org/10.3390/rs10060859>, 2018.](#)
- [Turner, I. L., Harley, M. D., Almar, R., and Bergsma, E. W. J.: Satellite optical imagery in Coastal Engineering, Coast. Eng., 167, 103919, <https://doi.org/10.1016/j.coastaleng.2021.103919>, 2021.](#)
- 925 [Vanhellemont, Q. and Ruddick, K.: Atmospheric correction of metre-scale optical satellite data for inland and coastal water applications, Remote Sens. Environ., 216, 586–597, <https://doi.org/10.1016/j.rse.2018.07.015>, 2018.](#)
- [Vos, K., Splinter, K. D., Harley, M. D., Simmons, J. A., and Turner, I. L.: CoastSat: A Google Earth Engine-enabled Python toolkit to extract shorelines from publicly available satellite imagery, Environ. Model. Softw., 122, 104528, <https://doi.org/10.1016/j.envsoft.2019.104528>, 2019.](#)
- 930 [Van Der Walt, S., Schönberger, J. L., Nunez-Iglesias, J., Boulogne, F., Warner, J. D., Yager, N., Gouillart, E., and Yu, T.: Seikit-image: Image processing in python, PeerJ, 2014, 1–18, <https://doi.org/10.7717/peerj.453>, 2014.](#)
- [Wankang, Y., Baoshu, Y., Xingru, F., Dezhou, Y., Guandong, G., and Haiying, C.: The effect of nonlinear factors on tide-surge interaction: A case study of Typhoon Rammasun in Tieshan Bay, China, Estuar. Coast. Shelf Sci., 219, 420–428, <https://doi.org/10.1016/j.eess.2019.01.024>, 2019.](#)
- 935 [Webster, P. J., Holland, G. J., Curry, J. A., and Chang, H. R.: Atmospheric science: Changes in tropical cyclone number, duration, and intensity in a warming environment, Science \(80-\), 309, 1844–1846, <https://doi.org/10.1126/science.1116448>, 2005.](#)
- [Almeida, L. P., Efraim de Oliveira, I., Lyra, R., Scaranto Dazzi, R. L., Martins, V. G., and Klein, A.H.F.: Coastal Analyst System from Space Imagery Engine \(CASSIE\): Shoreline management module, Environ. Model. Softw., 140, 105033, <https://doi.org/10.1016/j.envsoft.2021.105033>, 2021.](#)
- [Ashphaq, M., Srivastava, P. K., and Mitra, D.: Review of near-shore satellite derived bathymetry: Classification and account of five decades of coastal bathymetry research, J. Ocean Eng. Sci., 6, 340–359, <https://doi.org/10.1016/j.joes.2021.02.006>, 2021.](#)
- 945 [Bertin, X., Mendes, D., Martins, K., Fortunato, A. B., and Lavaud, L.: The Closure of a Shallow Tidal Inlet Promoted by Infragravity Waves, Geophys. Res. Lett., 46, 6804–6810, <https://doi.org/10.1029/2019GL083527>, 2019.](#)
- 950 [Bertin, X., Li, K., Roland, A., Bidlot, J.R.: The contribution of short-waves in storm surges: Two case studies in the Bay of Biscay, Cont. Shelf Res., 96, 1–15, <https://doi.org/10.1016/j.csr.2015.01.005>, 2015.](#)

- 955 [Bishop-Taylor, R., Sagar, S., Lymburner, L., and Beaman, R. J.: Between the tides: Modelling the elevation of Australia's exposed intertidal zone at continental scale, \*Estuar. Coast. Shelf Sci.\*, 223, 115–128, <https://doi.org/10.1016/j.ecss.2019.03.006>, 2019.](#)
- [Bué, I., Catalão, J., and Semedo, Á.: Intertidal bathymetry extraction with multispectral images: A logistic regression approach, \*Remote Sens.\*, 12, <https://doi.org/10.3390/RS12081311>, 2020.](#)
- 960 [Caballero, I. and Stumpf, R. P.: Retrieval of nearshore bathymetry from Sentinel-2A and 2B satellites in South Florida coastal waters, \*Estuar. Coast. Shelf Sci.\*, 226, 106277, <https://doi.org/10.1016/j.ecss.2019.106277>, 2019.](#)
- [Caballero, I. and Stumpf, R. P.: Towards routine mapping of shallow bathymetry in environments with variable turbidity: Contribution of sentinel-2A/B satellites mission, \*Remote Sens.\*, 12, <https://doi.org/10.3390/rs12030451>, 2020.](#)
- 965 [Cea, L. and French, J. R.: Bathymetric error estimation for the calibration and validation of estuarine hydrodynamic models, \*Estuar. Coast. Shelf Sci.\*, 100, 124–132, <https://doi.org/10.1016/j.ecss.2012.01.004>, 2012.](#)
- 970 [Codiga, D.L.: Unified Tidal Analysis and Prediction Using the UTide Matlab Functions, Technical Report 2011-01, Graduate School of Oceanography, University of Rhode Island, Narragansett, RI. 59pp. <https://doi.org/10.13140/RG.2.1.3761.2008>, 2011.](#)
- 975 [Costa, W., Bryan, K. R., Coco, G.: Assessing the use of satellite derived bathymetry in estuarine storm surge models – study case: Tauranga Harbour, Proceedings of The Australasian Coasts and Ports, Christchurch, New Zealand, 2021: \[https://www.coastsandports.org/papers/2021/106\\\_costa\\\_finalpaper.pdf\]\(https://www.coastsandports.org/papers/2021/106\_costa\_finalpaper.pdf\), last access: 08 March 2023.](#)
- [Donchyts, G., Schellekens, J., Winsemius, H., Eisemann, E., and van de Giesen, N.: A 30 m resolution surfacewater mask including estimation of positional and thematic differences using landsat 8, SRTM and OPenStreetMap: A case study in the Murray-Darling basin, Australia, \*Remote Sens.\*, 8, <https://doi.org/10.3390/rs8050386>, 2016.](#)
- 980 [Du, J., Shen, J., Zhang, Y. J., Ye, F., Liu, Z., Wang, Z., Wang, Y. P., Yu, X., Sisson, M., and Wang, H. V.: Tidal Response to Sea-Level Rise in Different Types of Estuaries: The Importance of Length, Bathymetry, and Geometry, \*Geophys. Res. Lett.\*, 45, 227–235, <https://doi.org/10.1002/2017GL075963>, 2018.](#)
- 985 [Ehres, J. S. and Rooney, J. J.: Depth Derivation Using Multispectral WorldView-2 Satellite Imagery, NOAA Tech. Memo. NMFS-PIFSC-46, 24, <https://doi.org/10.7289/V5668B40>, 2015.](#)

Emanuel, K.: Increasing destructiveness of tropical cyclones over the past 30 years, *Nature*, 436, 686–688, <https://doi.org/10.1038/nature03906>, 2005.

990

Falcão, A. P., Mazzolari, A., Gonçalves, A. B., Araújo, M. A. V. C., and Trigo-Teixeira, A.: Influence of elevation modelling on hydrodynamic simulations of a tidally-dominated estuary, *J. Hydrol.*, 497, 152–164, <https://doi.org/10.1016/j.jhydrol.2013.05.045>, 2013.

995

Fitton, J. M., Rennie, A. F., Hansom, J. D., and Muir, F. M. E.: Remotely sensed mapping of the intertidal zone: A Sentinel-2 and Google Earth Engine methodology, *Remote Sens. Appl. Soc. Environ.*, 22, 100499, <https://doi.org/10.1016/j.rsase.2021.100499>, 2021.

Geyman, E. C. and Maloof, A. C.: A Simple Method for Extracting Water Depth From Multispectral Satellite Imagery in Regions of Variable Bottom Type, *Earth Sp. Sci.*, 6, 527–537, <https://doi.org/10.1029/2018EA000539>, 2019.

1000

Gorelick, N., Hancher, M., Dixon, M., Ilyushchenko, S., Thau, D., and Moore, R.: Google Earth Engine: Planetary-scale geospatial analysis for everyone, *Remote Sens. Environ.*, 202, 18–27, <https://doi.org/10.1016/j.rse.2017.06.031>, 2017.

Ha, N. T., Manley-Harris, M., Pham, T. D., and Hawes, I.: A comparative assessment of ensemble-based machine learning and maximum likelihood methods for mapping seagrass using sentinel-2 imagery in Tauranga Harbor, New Zealand, *Remote Sens.*, 12, <https://doi.org/10.3390/rs12030355>, 2020.

1005

Hare, R.; Eakins, B.W.; Amante, C.J.: Modelling bathymetric uncertainty, *Int. Hydrogr. Rev.*, 6, 455–462, 2011.

Hedley, J. D., Harborne, A. R., and Mumby, P. J.: Simple and robust removal of sun glint for mapping shallow-water benthos, *Int. J. Remote Sens.*, 26, 2107–2112, <https://doi.org/10.1080/01431160500034086>, 2005.

1010

Huisman, C. E., Bryan, K. R., Coco, G., and Ruessink, B. G.: The use of video imagery to analyse groundwater and shoreline dynamics on a dissipative beach, *Cont. Shelf Res.*, 31, 1728–1738, <https://doi.org/10.1016/J.CSR.2011.07.013>, 2011.

1015

Hume, T., Snelder, T., Weatherhead, M., and Liefing, R.: A controlling factor approach to estuary classification, *Ocn. & Coast. Manag.*, 50, 905–929, <https://doi.org/10.1016/j.ocecoaman.2007.05.009>, 2007.

Hume, T., Gerbeaux, P., Hart, D., Kettles, H., and Neale, D.: A classification of New Zealand's coastal hydrosystems, NIWA client report no HAM2016-062120, 2016.

1020

[https://www.researchgate.net/publication/314091940\\_A\\_classification\\_of\\_NZ\\_coastal\\_hydrosystems\\_for\\_management\\_purpose](https://www.researchgate.net/publication/314091940_A_classification_of_NZ_coastal_hydrosystems_for_management_purpose), last access: 28 march 2023.

International Hydrographic Organization. IHO C-55 Publication Status of Hydrographic Surveying and Charting Worldwide, 2020, Monaco, <https://iho.int/uploads/user/pubs/cb/c-55/c55.pdf>, last access: 08 March 2023.

Jawak, S. D., Vadlamani, S. S., and Luis, A. J.: A Synoptic Review on Deriving Bathymetry Information Using Remote Sensing Technologies: Models, Methods and Comparisons, *Adv. Remote Sens.*, 04, 147–162, <https://doi.org/10.4236/ars.2015.42013>, 2015.

Jia, M., Wang, Z., Mao, D., Ren, C., Wang, C., and Wang, Y.: Rapid, robust, and automated mapping of tidal flats in China using time series Sentinel-2 images and Google Earth Engine, *Remote Sens. Environ.*, 255, 112285, <https://doi.org/10.1016/j.rse.2021.112285>, 2021.

Kang, Y., Ding, X., Xu, F., Zhang, C., and Ge, X.: Topographic mapping on large-scale tidal flats with an iterative approach on the waterline method, *Estuar. Coast. Shelf Sci.*, 190, 11–22, <https://doi.org/10.1016/j.ecss.2017.03.024>, 2017.

Kang, Y., Lv, W., He, J., and Ding, X.: Remote sensing of time-varying tidal flat topography, Jiangsu Coast, China, based on the waterline method and an artificial neural network model, *Appl. Sci.*, 10, <https://doi.org/10.3390/app10103645>, 2020.

Kerr, J. M. and Purkis, S.: An algorithm for optically-deriving water depth from multispectral imagery in coral reef landscapes in the absence of ground-truth data, *Remote Sens. Environ.*, 210, 307–324, <https://doi.org/10.1016/j.rse.2018.03.024>, 2018.

Khan, M. J. U., Ansary, M. N., Durand, F., Testut, L., Ishaque, M., Calmant, S., Krien, Y., Saifu, A. K. M., and Papa, F.: High-resolution intertidal topography from sentinel-2 multi-spectral imagery: Synergy between remote sensing and numerical modeling, *Remote Sens.*, 11, 1–20, <https://doi.org/10.3390/rs11242888>, 2019.

Khojasteh, D., Glamore, W., Heimhuber, V., and Felder, S.: Sea level rise impacts on estuarine dynamics: A review, *Sci. Total Environ.*, 780, 146470, <https://doi.org/10.1016/j.scitotenv.2021.146470>, 2021.

Khojasteh, D., Hottinger, S., Felder, S., DeCesare, G., Heimhuber, V., Hanslow, D. J., and Glamore, W.: Estuarine tidal response to sea level rise: The significance of entrance restriction, *Estuar. Coast. Shelf Sci.*, 244, 106941, <https://doi.org/10.1016/j.ecss.2020.106941>, 2020.

- 1055 [Lee, Z., Carder, K. L., Mobley, C. D., Steward, R. G., and Patch, J. S.: Hyperspectral remote sensing for shallow waters I A semianalytical model, \*Appl. Opt.\*, 37, 6329, <https://doi.org/10.1364/ao.37.006329>, 1998.](#)
- [Li, F. K. and Goldstein, R. M.: Studies of Multibaseline Spaceborne Interferometric Synthetic Aperture Radars, \*IEEE Trans. Geosci. Remote Sens.\*, 28, 88–97, <https://doi.org/10.1109/36.45749>, 1990.](#)
- 1060 [Liu, Y., Li, M., Zhou, M., Yang, K., and Mao, L.: Quantitative analysis of the waterline method for topographical mapping of tidal flats: A case study in the dongsha sandbank, china, \*Remote Sens.\*, 5, 6138–6158, <https://doi.org/10.3390/rs5116138>, 2013.](#)
- [Lorenzen, W. E. and Cline, H. E.: Marching cubes: A high resolution 3D surface construction algorithm, \*Proc. 14th Annu. Conf. Comput. Graph. Interact. Tech. SIGGRAPH 1987\*, 21, 163–169, <https://doi.org/10.1145/37401.37422>, 1987.](#)
- 1065 [Lyzenga, D. R.: Shallow-water bathymetry using combined lidar and passive multispectral scanner data, \*Int. J. Remote Sens.\*, 6, 115–125, <https://doi.org/10.1080/01431168508948428>, 1985.](#)
- [Mason, D. C. and Davenport, L. J.: Accurate and efficient determination of the shoreline in ERS-1 SAR images, \*IEEE Trans. Geosci. Remote Sens.\*, 34, 1243–1253, <https://doi.org/10.1109/36.536540>, 1996.](#)
- [Mason, D. C., Scott, T. R., and Dance, S. L.: Remote sensing of intertidal morphological change in Morecambe Bay, U.K., between 1991 and 2007, \*Estuar. Coast. Shelf Sci.\*, 87, 487–496, <https://doi.org/10.1016/j.ecss.2010.01.015>, 2010.](#)
- 1075 [McFeeters, S. K.: The use of the Normalized Difference Water Index \(NDWI\) in the delineation of open water features, \*Int. J. Remote Sens.\*, 17, 1425–1432, <https://doi.org/10.1080/01431169608948714>, 1996.](#)
- [Mohammadian, A., Morse, B., and Robert, J. L.: Calibration of a 3D hydrodynamic model for a hypertidal estuary with complex irregular bathymetry using adaptive parametrization of bottom roughness and eddy viscosity, \*Estuar. Coast. Shelf Sci.\*, 265, 107655, <https://doi.org/10.1016/j.ecss.2021.107655>, 2022.](#)
- [Montgomery, J.M., Bryan, K.R., Mullarney, J.C. and Horstman, E.M.: Attenuation of storms by coastal mangroves, \*J. Geophys. Res. Letters\*. \[doi:10.1029/2018GL081636\]\(https://doi.org/10.1029/2018GL081636\), 2019.](#)
- 1085 [Morris, A. B. D., Coco, G., Bryan, K. R., Turner, I. L., Street, K., and Vale, M.: Video-derived mapping of estuarine evolution Stable URL : <https://www.jstor.org/stable/26481623> Linked references are available on JSTOR for this article : Video-derived mapping of estuarine evolution, 410–414, 2021.](#)

- 090 [Murray, N. J., Phinn, S. R., DeWitt, M., Ferrari, R., Johnston, R., Lyons, M. B., Clinton, N., Thau, D., and Fuller, R. A.: The global distribution and trajectory of tidal flats, \*Nature\*, 565, 222–225, <https://doi.org/10.1038/s41586-018-0805-8>, 2019.](#)
- [Nicholls, R. J. and Cazenave, A.: Sea-level rise and its impact on coastal zones, \*Science\*, 328, 1517–1520, <https://doi.org/10.1126/science.1185782>, 2010.](#)
- 095 [Nobuyuki Otsu: A Threshold Selection Method from Gray-Level Histograms, \*IEEE Trans. Syst. Man Cybern.\*, 9, 62–66, 1979.](#)
- [Oppenheimer, M., Glavovic, B., Hinkel, J., van de Wal, R., Magnan, A. K., Abd-Elgawad, A., Cai, R., Cifuentes-Jara, M., De Conto, R. M., Ghosh, T., Hay, J., Isla, F., Marzeion, B., Meysignac, B., and Sebesvari, Z.: Sea Level Rise and Implications for Low Lying Islands, Coasts and Communities., \*IPCC Spec. Rep. Ocean Cryosph. a Chang. Clim.\*, 355, 126–129, <https://doi.org/10.1126/science.aam6284>, 2019.](#)
- 100 [Parodi, M. U., Giardino, A., Van Dongeren, A., Pearson, S. G., Bricker, J. D., and Reniers, A. J. H. M.: Uncertainties in coastal flood risk assessments in small island developing states, \*Nat. Hazards Earth Syst. Sci.\*, 20, 2397–2414, <https://doi.org/10.5194/nhess-20-2397-2020>, 2020.](#)
- 105 [Pedrozo-Acuña, A., Ruiz de Alegria-Arzaburu, A., Mariño-Tapia, I., Enriquez, C., and González Villareal, F. J.: Factors controlling flooding at the Tonalá river mouth \(Mexico\), \*J. Flood Risk Manag.\*, 5, 226–244, <https://doi.org/10.1111/j.1753-318X.2012.01142.x>, 2012.](#)
- 110 [Rueda, A., Cagigal, L., Antolínez, J. A. A., Albuquerque, J. C., Castanedo, S., Coco, G., and Méndez, F. J.: Marine climate variability based on weather patterns for a complicated island setting: The New Zealand case, \*Int. J. Climatol.\*, 39, 1777–1786, <https://doi.org/10.1002/joc.5912>, 2019.](#)
- [Sagar, S., Roberts, D., Bala, B., and Lymburner, L.: Extracting the intertidal extent and topography of the Australian coastline from a 28-year time series of Landsat observations, \*Remote Sens. Environ.\*, 195, 153–169, <https://doi.org/10.1016/j.rse.2017.04.009>, 2017.](#)
- 115 [Salameh, E., Frappart, F., Almar, R., Baptista, P., Heygster, G., Lubac, B., Raucoles, D., Almeida, L. P., Bergsma, E. W. J., Capo, S., De Michele, M. D., Idier, D., Li, Z., Marieu, V., Poupardin, A., Silva, P. A., Turki, I., and Laignel, B.: Monitoring Beach Topography and Nearshore Bathymetry Using Spaceborne Remote Sensing: A Review, \*Remote Sens.\*, 11, <https://doi.org/10.3390/rs11192212>, 2019.](#)
- 120



125 [Salameh, E., Frappart, F., Marieu, V., Spodar, A., Parisot, J. P., Hanquiez, V., Turki, I., and Laignel, B.: Monitoring sea level and topography of coastal lagoons using satellite radar altimetry: The example of the Arcachon Bay in the Bay of Biscay. \*Remote Sens.\*, 10, 1–22, <https://doi.org/10.3390/rs10020297>, 2018.](#)

130 [Salameh, E., Frappart, F., Turki, I., and Laignel, B.: Intertidal topography mapping using the waterline method from Sentinel-1 & -2 images: The examples of Arcachon and Veys Bays in France, \*ISPRS J. Photogramm. Remote Sens.\*, 163, 98–120, <https://doi.org/10.1016/j.isprs.2020.03.003>, 2020.](#)

[Smith, M. J., Stevens, C. L., Gorman, R. M., McGregor, J. A., Neilson, C. G. : Wind-wave development across a large shallow intertidal estuary: A case study of Manukau Harbour, New Zealand. \*New Zeal. J. Mar. Freshw. Res.\* 35, 985–1000, <https://doi.org/10.1080/00288330.2001.9517058>, 2001.](#)

135 [Sobel, A. H., Camargo, S. J., Hall, T. M., Lee, C., Tippett, M. K., and Wing, A. a: \*Cyclone Intensity\*, Science, 353, 2016.](#)

[Spicer, P., Huguenard, K., Ross, L., and Rickard, L. N.: High-Frequency Tide-Surge-River Interaction in Estuaries: Causes and Implications for Coastal Flooding, \*J. Geophys. Res. Ocean.\*, 124, 9517–9530, <https://doi.org/10.1029/2019JC015466>, 2019.](#)

140 [Stephens, S. A., Bell, R. G., and Haigh, I. D.: Spatial and temporal analysis of extreme storm-tide and skew-surge events around the coastline of New Zealand, \*Nat. Hazards Earth Syst. Sci.\*, 20, 783–796, <https://doi.org/10.5194/nhess-20-783-2020>, 2020.](#)

145 [Stewart, B.: Investigating groundwater derived nutrient fluxes within Tauranga harbour, Doctoral dissertation, The University of Waikato, Hamilton, Waikato, New Zealand, 2021.](#)

[Stumpf, R. P., Holderied, K., and Sinclair, M.: Determination of water depth with high-resolution satellite imagery over variable bottom types, \*Limnol. Oceanogr.\*, 48, 547–556, \[https://doi.org/10.4319/lo.2003.48.1\\\_part\\\_2.0547\]\(https://doi.org/10.4319/lo.2003.48.1\_part\_2.0547\), 2003.](#)

150 [Tay, H. W., Bryan, K. R., De Lange, W. P., and Pilditch, C. A.: The hydrodynamics of the southern basin of Tauranga Harbour, \*New Zeal. J. Mar. Freshw. Res.\*, 47, 249–274, <https://doi.org/10.1080/00288330.2013.778300>, 2013.](#)

155 [Traganos, D., Poursanidis, D., Aggarwal, B., Chrysoulakis, N., and Reinartz, P.: Estimating satellite-derived bathymetry \(SDB\) with the Google Earth Engine and sentinel-2, \*Remote Sens.\*, 10, <https://doi.org/10.3390/rs10060859>, 2018.](#)

Turner, I. L., Harley, M. D., Almar, R., and Bergsma, E. W. J.: Satellite optical imagery in Coastal Engineering, *Coast. Eng.*, 167, 103919, <https://doi.org/10.1016/j.coastaleng.2021.103919>, 2021.

160 Van Der Walt, S., Schönberger, J. L., Nunez-Iglesias, J., Boulogne, F., Warner, J. D., Yager, N., Gouillart, E., and Yu, T.: Scikit-image: Image processing in python, *PeerJ*, 2014, 1–18, <https://doi.org/10.7717/peerj.453>, 2014.

Vanhellemont, Q. and Ruddick, K.: Atmospheric correction of metre-scale optical satellite data for inland and coastal water applications, *Remote Sens. Environ.*, 216, 586–597, <https://doi.org/10.1016/j.rse.2018.07.015>, 2018.

165 Vos, K., Splinter, K. D., Harley, M. D., Simmons, J. A., and Turner, I. L.: CoastSat: A Google Earth Engine-enabled Python toolkit to extract shorelines from publicly available satellite imagery, *Environ. Model. Softw.*, 122, 104528, <https://doi.org/10.1016/j.envsoft.2019.104528>, 2019.

170 Wankang, Y., Baoshu, Y., Xingru, F., Dezhou, Y., Guandong, G., and Haiying, C.: The effect of nonlinear factors on tide-surge interaction: A case study of Typhoon Rammasun in Tieshan Bay, China, *Estuar. Coast. Shelf Sci.*, 219, 420–428, <https://doi.org/10.1016/j.ecss.2019.01.024>, 2019.

175 Webster, P. J., Holland, G. J., Curry, J. A., and Chang, H. R.: Atmospheric science: Changes in tropical cyclone number, duration, and intensity in a warming environment, *Science*, 309, 1844–1846, <https://doi.org/10.1126/science.1116448>, 2005.