

Natural and human-induced landslides in a tropical mountainous region: the Rift flank west of Lake Kivu (DR Congo)

Jean-Claude Maki Mateso^{1,2}, Charles Bielders², Elise Monsieurs^{3,4,5}, Arthur Depicker⁶, Benoît Smets^{3,7}, Théophile Tambala¹, Luc Bagalwa Mateso¹ and Olivier Dewitte³

¹Centre de Recherche en Sciences Naturelles, Department of Geophysics, Lwiro, DR Congo,

²Université catholique de Louvain, Earth and Life Institute – Environmental Sciences, Louvain-La-Neuve, Belgium,

³Royal Museum for Central Africa, Department of Earth Sciences, Tervuren, Belgium,

⁴University of Liège, Department of Geography, Liège, Belgium ,

⁵F.R.S.-FNRS, Brussels, Belgium,

⁶KU Leuven, Department of Earth and Environmental Sciences, Belgium,

⁷Vrije Universiteit Brussel, Department of Geography, Brussels, Belgium

Correspondence to: Jean-Claude Maki Mateso (jean-claude.maki@uclouvain.be; makigeo2013@gmail.com)

Abstract

Tropical mountainous regions are often identified as landslide hotspots with ~~growing population pressure~~~~particularly vulnerable populations~~. Anthropogenic factors are assumed to play a role in the occurrence of landslides in these populated regions, yet the relative importance of these human-induced factors remains poorly documented. In this work, we aim to explore the impact of forest cover dynamics, roads and mining activities on the occurrence of landslides in the Rift flank west of Lake Kivu in the DR Congo. To do so, we compile ~~a comprehensive multi-temporal an~~ inventory of 2730 landslides ~~of different types and analyze it via frequency-area statistics, frequency ratio distribution and logistic regression susceptibility assessment, using © Google Earth imagery, high resolution topographic data, historical aerial photographs from the 1950's and extensive field surveys. We identify old and recent (post 1950's) landslides, making a distinction between deep seated and shallow landslides, road landslides and mining landslides.~~ We find that ~~susceptibility patterns and area distributions are different between old and recent deep seated landslides, which shows that~~ natural factors contributing to their occurrence ~~of recent (post 1950's) and old deep-seated landslides~~ were either different or changed over time. ~~Observed shallow landslides are recent processes that all occurred in the past two decades. The analysis of their susceptibility indicates that forest dynamics and the presence of roads play a key role in their regional distribution pattern.~~ Under similar topographic conditions, shallow landslides are more frequent, but of smaller size, in areas where deforestation has occurred since the 1950's ~~as compared to shallow landslides in forest areas, i.e. in natural environments~~. We attribute this size reduction to the decrease of regolith cohesion due to forest loss, which allows for a smaller minimum critical area for landsliding. In areas that were already deforested in 1950's, shallow landslides are less frequent, larger, and occur on less steep slopes. This suggests a combined role between regolith availability and soil management practices that influence erosion and water infiltration. Mining activities increase the odds of landsliding. Mining and road landslides are larger than shallow landslides but smaller than the recent deep-seated instabilities, ~~and. The susceptibility models calibrated for shallow and deep seated landslides do not predict them well, highlighting that~~ they are controlled by environmental factors that are not present under natural conditions. Our analysis demonstrates the role of human activities on the occurrence of landslides in the Lake Kivu region. Overall, it highlights the need to consider this context when studying hillslope instability characteristics and distribution patterns in regions under anthropogenic pressure. Our work also highlights the importance of considering the timing of landslides over a multi-decadal period of observation.

1 Introduction

Tropical mountainous regions are often identified as landslide hotspots with particularly vulnerable populations (Broeckx et al., 2018; Froude and Petley, 2018; Emberson et al., 2020). Nevertheless, the current knowledge on landslide processes in these regions remains limited as it is mostly derived from susceptibility models made at continental or global levels (Stanley and Kirschbaum, 2017; Broeckx et al., 2018;) ~~(Dewitte et al., 2022)~~. Because

they are not based on detailed local inventories, such models do not allow to properly consider region-specific characteristics of landslides (Depicker et al., 2020).

50 The growing demographic pressure and widespread land use and land cover (LULC) changes are expected to increase the frequency and impacts of landslides in tropical mountainous regions, especially in rural environments (Sidle et al., 2006; DeFries et al., 2010; Mugagga et al., 2012; Guns and Vanacker, 2014; Froude and Petley, 2018; Depicker et al., 2021a; Muñoz-Torrero Manchado et al., 2021). Deforestation and the associated loss of tree roots usually lower the slope stability by decreasing regolith cohesion and altering drainage patterns (Sidle and Bogaard, 2016). Mining, quarrying and road construction alter ~~s~~ the environment ~~and through undercutting of hillslopes, overloading, landfills and inadequate drainage systems. This commonly~~ increases the landslide activity, ~~particularly in the first years following the alteration of the landscape~~ (e.g. Sidle et al., 2006; Brenning et al., 2015; Arca et al., 2018; McAdoo et al., 2018; Vuillez et al., 2018; Muñoz-Torrero Manchado et al., 2021; ~~)(Tanyaş et al., 2022)~~. However, the exact impact of these anthropogenic factors on landslide processes depends on their timing and their legacy effect. It also depends on other environmental conditions such as slope angle and lithology (Depicker et al., 2021b). ~~It is therefore important to further d~~Developing further our understanding of landslides and their natural- and human-induced drivers is therefore needed, especially in regions such as the tropics where the dearth of data is commonplace (Dewitte et al., 2022).

65 To achieve this, a detailed multi-temporal regional landslide inventory spanning several decades is essential (Guzzetti et al., 2012). In this regard, a distinction between deep-seated landslides and shallow landslides is important; the latter type is much more sensitive to LULC and its changes (Sidle and Bogaard, 2016). However, sufficiently long and precise multi-decadal records of LULC and landslide activity are rare, especially in tropical regions (e.g. Glade, 2003; Guns and Vanacker, 2014; Monsieurs et al., 2018; Shu et al., 2019). ~~This important data gap is not easy to fill: global and regional LULC assessments derived from the first satellite data from the 70s and 80s offer a spatial resolution that is often too coarse for this purpose and very high resolution satellite data became available only at the end of the 90s at best.~~

70 Historical aerial photographs offer the best opportunity at the regional level to work across several decades, both to compile a landslide inventory but also to reconstruct LULC changes (Glade, 2003; Guns and Vanacker, 2014 ; Shu et al., 2019). It is complementary to very high spatial resolution satellite images such as those available on ©
75 Google Earth, which are widely used in the identification of landslides in many environments (e.g. Broeckx et al., 2018; Depicker et al., 2020). Fieldwork is also essential in order to validate observations made from the different image sources, to discriminate between deep-seated and shallow processes, or to confirm depth estimates (Dewitte et al., 2021). Field surveys also help to understand the role of human activities on slope dynamics (Dewitte et al., 2021).

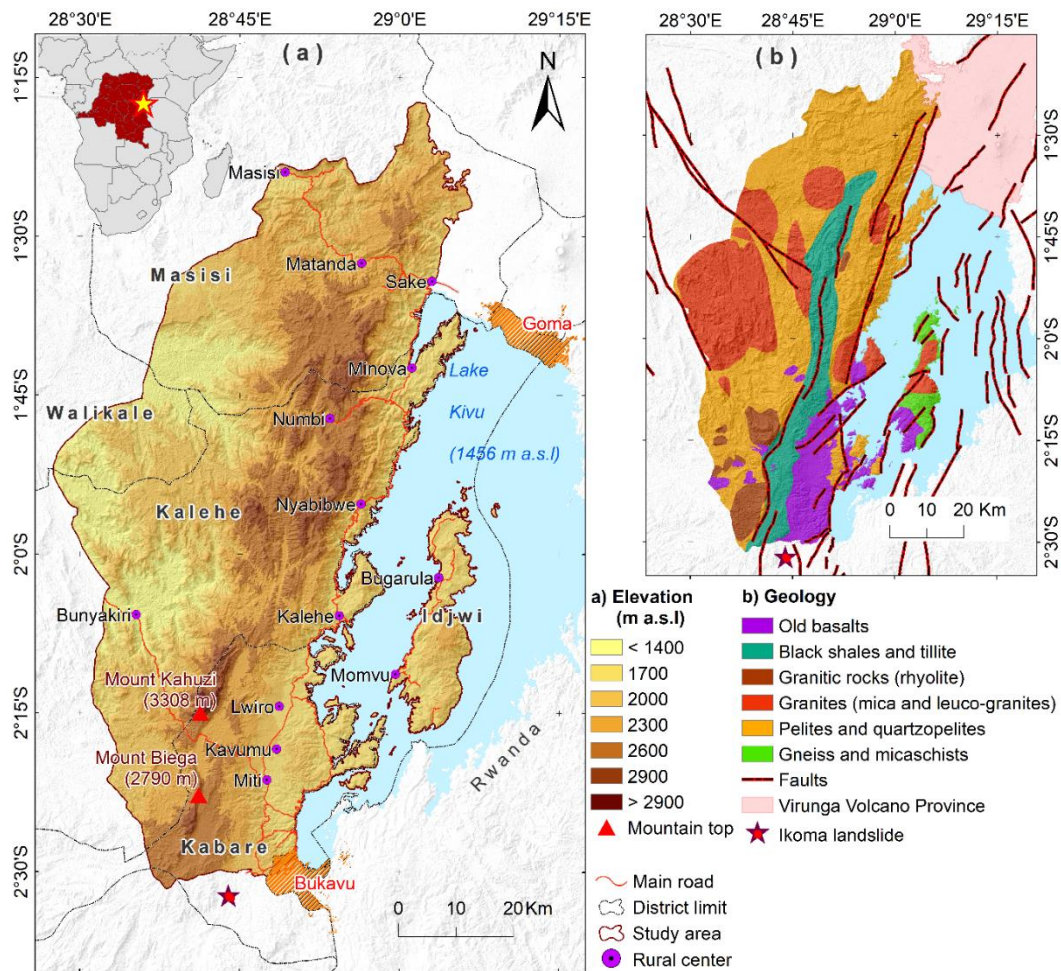
80 The aim of this work is to explore the role played by natural and ~~anthropogenic-human~~ factors on the occurrence of landslides in a rural tropical mountainous region under high anthropogenic pressure. More specifically, we are interested in the Rift flank west of Lake Kivu, a region in the DR Congo where recent studies ~~based on the sole and partial analysis of © Google Earth images~~ have shown that landslides are frequent and that recent deforestation has impacted the occurrence of shallow landslides (Maki Mateso and Dewitte, 2014; Depicker et al., 2020; Depicker et al., 2021b). We aim to: (1) further develop the existing landslide dataset and compile a comprehensive detailed multi-temporal regional landslide inventory spanning several decades; (2) describe the general characteristics of the landslides, and (3) analyze landslide distributions and regional susceptibility according to different controlling factors, with special attention to multi-decadal forest cover dynamics. Historical aerial photographs and careful field surveys are key elements in this study.

90 1.1 Environmental settings and current knowledge of the landslide processes

The study is conducted in the Rift flank west of Lake Kivu in the DR Congo (Fig. 1a). It is one of the most seismic regions of the African continent, crossed by active faults and composed of six main rock types of varying age (Fig. 1b) (Delvaux et al., 2017; Laghmouch et al., 2018). A significant portion of the study area is made of lithologies from the Archaen, the Mesoproterozoic and the Neoproterozoic, with various degrees of chemical weathering and fracturing. Lastly formed rocks are the old Neogene basalts, highly weathered, that were deposited between 11-4 Ma years. The presence of mineral resources (gold and 3T minerals - tin, tantalum and tungsten) favours the proliferation of, often illegal, artisanal and small-scale mining and quarrying (Van Acker, 2005; Bashwira et al.,

2014). Industrial mining is not present in the region and there is no new road construction associated with it (Bashwira et al., 2014).

The region has a tropical savannah/monsoon climate tempered by its altitude (Peel et al., 2007). The natural vegetation is mainly montane forest, still preserved in the Kahuzi-Biega National Park (Imani et al., 2017). However, between the 17th and 18th century, the region began to suffer the first strong effects of human influence through deforestation (Nzabandora and Roche, 2015). There has been significant deforestation and forest loss in recent decades as well (Basnet and Vodacek, 2015; Depicker et al., 2021a). Selective cutting is done for energy needs, house construction, furniture production and dugout canoes. Clearcutting, mostly small-scale, is associated with agriculture, mining and quarrying activities and road construction (Musumba Teso et al., 2019; Drake et al., 2019). After deforestation, the land is often permanently converted to agricultural land (cropland, grassland) or tree plantations (Depicker et al., 2021a). In some places, however, natural regeneration of the forest takes place (Masumbuko et al., 2012).



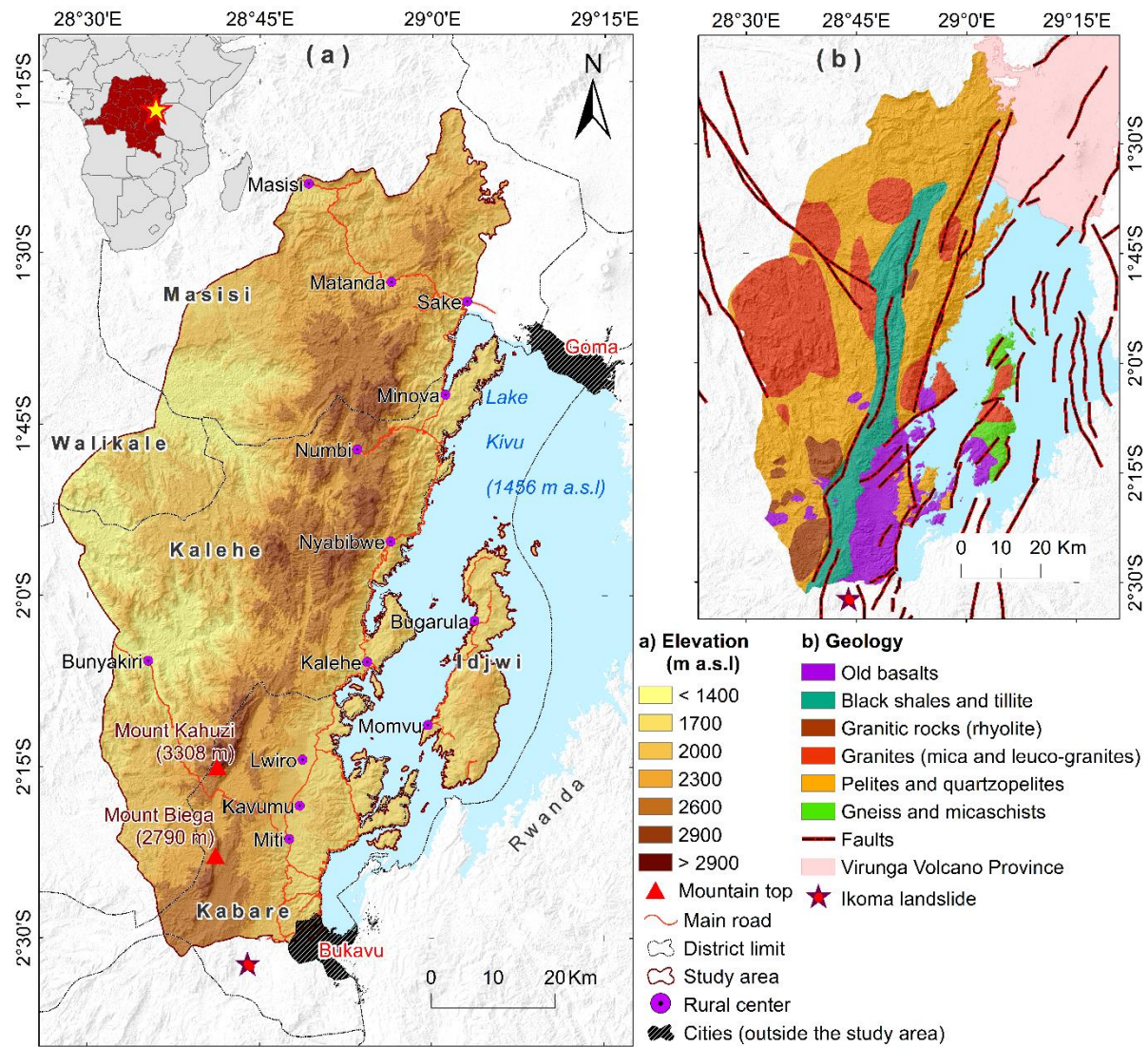


Figure 1: (a) Relief and (b) geology of the study area. The study area covers the districts of Kabare, Kalehe, Walikale, Masisi and Idjwi. Topography is derived from SRTM 1 arc second. Lithology and fault maps are from Laghmouch et al. (2018).

115

The study area (~ 5,700 km²) is one of the most densely populated regions of the DR Congo with more than 200 inhabitants/km² living mainly from agriculture, mining and quarrying activities (Linard et al., 2012; Michellier et al., 2016; Trefon, 2016). This region plays a key role in the supply of food and charcoal to the smaller rural centers and to the cities of Goma and Bukavu. Over the last decades, the population in both cities increased from a few tens of thousands to more than one million inhabitants (Michellier et al., 2016). The population growth in the study area was partly caused by the influx of Rwandan refugees in 1994-1995, as well as the growing artisanal mining industry that offers job opportunities (Bashwira et al., 2014; Van Acker, 2005; Butsic et al., 2015;). The road network is relatively limited. Most roads are dirt roads and are poorly maintained, and there are no built-up walls (concrete, gabions) to stabilize the cut slopes.

120

~~Recent studies have highlighted the presence of many landslides in the region.~~ Compiled from a limited number of very-high spatial resolution © Google Earth images partially covering the study area, a first preliminary inventory of a few hundred landslides showed that the landslide processes are diverse (~~deep-seated, shallow, recent, old, active, inactive~~) and that their impacts can be high ~~and associated with fatalities and serious damages to infrastructures~~ (Maki Mateso and Dewitte, 2014). The inventory over the North Tanganyika-Kivu Rift region (hereafter called NTK Rift) of which our study area is a subregion was further expanded by Depicker et al. (2020) through the use of © Google Earth imagery with a search time limited per image. This inventory consisted of

130

shallow and deep-seated landslides but did not make a distinction between these two processes in ~~the a~~ susceptibility analysis. Depicker et al. (2020) showed that, in addition to slope angle, land cover is a key landslide predictor in the NTK Rift region. A more detailed investigation of the annual evolution of the forest cover over the last 20 years showed that deforestation increases landslide erosion 2-8 times during a period of approximately 15 years before it eventually falls back to a level similar to forest conditions (Depicker et al., 2021b). A catalogue of > 150 accurately dated landslide events over the last two decades was compiled for the NTK Rift, allowing to demonstrate the role of rainfall seasonality on the annual distribution of the occurrence of new landslides (Monsieurs et al., 2018; Dewitte et al., 2021). Among those landslide events, some ~~are very large and~~ consist of clusters of several hundreds ~~to thousands~~ of slope failures. The spatial extent of such ~~a clusters~~ can ~~easily~~ be larger than 10 km². A few events like these occur during each wet season (Depicker et al., 2020; Dewitte et al., 2021). They are commonly associated with particularly intense convective rainfall (Monsieurs et al., 2018b). ~~Most of these landslides are shallow and small and, due to quick vegetation regeneration and/or land reclamation, their scars can disappear after a few years (Depicker et al., 2020; Dewitte et al., 2021).~~ None of the dated landslide events were triggered by earthquakes (Dewitte et al., 2021). This do not discard the role of earthquakes in triggering landslides in the region, but instead this reminds us that the return period of earthquakes with a magnitude large enough to trigger slope instabilities can be much longer than a few decades (Delvaux et al., 2017). Their potential impact, rather localized compared to that of climatic drivers, can be inexistent during a narrow time window of observation (Delvaux et al., 2017; Dewitte et al., 2021; Depicker et al., 2021).

Landslides can also occur due to rock weathering and regolith formation (Dille et al., 2019). In other words, the long-term evolution of these preconditioning drivers alone can explain that a slope can also fail without any apparent trigger. This implies that the many landslides that occur in isolation of other events must be interpreted with care in terms of origin. For these features, it is not clear from a visual analysis of the satellite images whether they can be directly linked to a direct trigger. In addition, many landslides occur in isolation along roads (Dewitte et al., 2021). Some of the larger, historical, landslides (i.e. landslides that do not appear active in our oldest source of information) clearly occurred more than 10,000 years ago (Dewitte et al., 2021), ~~i.e. over a period of time that underwent changes in environmental conditions (Felton et al., 2007; Wassmer et al., 2013; Ross et al., 2014; Smets et al., 2016).~~

2 Material and methods

2.1 Landslide inventory

The landslide inventory is an update of the inventory compiled by Depicker et al. (2020). Moreover, we differentiated between the processes and timing of landsliding. We strongly relied on three image products:

- A careful and detailed 3D (elevation exaggeration of 1) visual interpretation of © Google Earth images ~~from 2005 to 2019~~, which provides a complete coverage of the region at a very high spatial resolution (~0.5 m), often multi-temporal (Depicker et al., 2021b);
- The interpretation of two hillshade images derived from a TanDEM-X digital elevation model (DEM) provided at 5 m resolution and covering most of the region (~~see Albino et al., (2015) and; Dewitte et al., (2021) for technical explanation on the production of the DEM.~~ The hillshade images were produced with a sun elevation angle of 30° and sun azimuth angle of 315° and 45°;
- The stereoscopic analysis of one single cover of historical panchromatic photographs acquired during the 1955-1958 period at the scale ~1/50,000 (i.e. about 1 m spatial resolution on the ground); the photographs are conserved at the Royal Museum for Central Africa (RMCA, Belgium).

The historical aerial photographs allowed to differentiate between old deep-seated landslides (i.e. landslides with an unknown time of origin that can be identified on the photographs) and recent deep-seated landslides that have occurred during the last 60 years (i.e. after the acquisition of the photographs). The aerial photographs were not used for mapping shallow landslides since this inventory would be biased. Indeed, the spatial resolution of the photographs is twice lower than that of the images in © Google Earth. Furthermore, the photographs provide a single temporal cover, whereas the multi-temporal © Google Earth images cover information for an imagery range of up to 13 years, i.e. the age difference between the oldest and youngest image. (e.g. Minova, Kalehe, Matanda in Fig. 1: Depicker et al., 2021b).

For the recent landslides, the distinction between deep-seated and shallow landslides was made by visually estimating the relative landslide depth from © Google Earth and TanDEM-X hillshade images (Depicker et al., 2020; Dewitte et al., 2021). In the literature, a landslide is usually defined as shallow when the depth of its surface of rupture ranges between 2 to 5 m (Keefer, 1984; Bennett et al., 2016; Sidle and Bogaard, 2016). Here, landslides with a depth < 5 m were considered as shallow. The landslides occurring in mining and quarrying sites were all classified as mining landslides, regardless of their depth. A specific attention was also given to the landslides occurring along roads.

Six field surveys were conducted over the period 2016 to 2019 to validate the inventory and get extra information on the landslide timing and their causes and triggers. The work was carried out by selecting representative areas with various landslide and landscape characteristics, while taking into account accessibility and safety issues. We also used information from media and grey literature (student theses, field reports from local research, and academic institutions and the civil protection).

The frequency of landslide surface area distributions were analyzed to check the completeness of the inventory and also enable comparison with other inventories in different environments. If the area frequency density can be properly fitted to an inverse Γ distribution, it is considered representative of the study area (Malamud et al., 2004). A bad fit could suggest that the inventory is biased and/or incomplete. Indeed, the use of several data sources in the inventory could bias the distribution of landslides, especially bearing in mind the limitations related to the interpretation of satellite images (Guzzetti et al., 2012). We performed this analysis separately for different subsets of the inventory: all landslides, old and recent deep-seated landslides, shallow landslides, mining landslides (that also includes landslides associated with quarrying) and road landslides. The analysis of the frequency area distributions for the different shallow landslide populations defined according to the LULC and its dynamics was also used to infer about differences in environmental characteristics and slope failure mechanisms (Malamud et al., 2004; Van Den Eeckhaut et al., 2007; Guns and Vanacker, 2014; Tanyaş et al., 2018). Box-plots complemented the shallow landslide area analysis. ~~The Wilcoxon rank sum comparison test was used for assessing the independence between the landslide populations.~~

Since the extent of the study area is relatively small when considering regional climatic characteristics and given that the time window of the shallow landslide inventory is limited to a few years, the location and properties (extent, number of occurrences) of shallow-landslide events containing clusters of slope failures depends strongly on the stochastic nature (location, extent and magnitude) of the triggering rainfall and less on local terrain conditions. The consideration of all landslides of such a cluster could bias the analysis by giving an excessive weight to the local terrain conditions (Depicker et al., 2020). Thus, for the susceptibility analysis (see Section 3.2), we retained a maximum of 30 landslides per cluster, randomly sampled. For the inverse Γ analysis, those landslides selected per cluster and other isolate landslides are called distributions minus event.

2.2 Multi-decadal forest dynamics

~~LULC and its dynamics can influence the prevalence and characteristics of shallow landslides (Sidle and Ochiai, 2006; Sidle and Bogaard, 2016).~~ In the study area, the agricultural land use is complex (multiple cropping, multi-layer farming) and highly dynamic due to crop rotations and associations, shifting cultivation, and the bimodal annual rainfall pattern (Heri-Kazi and Bielders, 2021). A detailed regional land use mapping serving as input variable in our susceptibility and distribution analysis (see Section 2.3) is therefore not feasible (e.g. Jacobs et al., 2018) ~~which is an approach that differs from what can commonly be done in non-tropical environments (e.g. (Chen et al., 2019); (Shu et al., 2019)).~~ However, the dynamics of the forest can be better constrained. Here, to complement the analysis conducted by Depicker et al. (2021b; see Section 2.1) that focused on the impact of deforestation on shallow landslides over the last 20 years, we reconstructed the forest dynamics over the last ~60 years (Fig. 2). We used the 1 m resolution orthomosaics generated from the RMCA's aerial photographs of the years 1955-1958 ~~and according to the photogrammetric processing described in (Depicker et al., 2021a); and Smets et al., (to be submitted).~~ The forest areas were delineated visually. The 2016 forest cover was extracted from the continental ESA CCI land cover model which is available at a 20 m resolution (ESA, 2016) and has an accuracy of roughly 86 % in the region (Depicker et al., 2021b).

In 1955-58, 42 % of the territory was already deforested (Fig. 52a). From 1955-58 to 2016, the loss of forest continued, the forest cover decreasing from 58 % to 24 % of the study area. The area affected by the forest loss over the last 60 years is larger than the remaining permanent forest (Fig. 52b). The comparison of forest areas

between 1955-58 and 2016 allows to consider four classes for the forest dynamics. Permanent forest corresponds to forest areas that are present at both dates. The forest loss class corresponds to forests present in 1955-58 that have disappeared in 2016. Since it is impossible to identify for each portion of the landscape the exact cause of forest loss, this class contains a mix of various forest management practices and other causes of forest cut/removal. The forest gain class represents the new forest that has appeared since 1955-58. Similarly, the causes associated with the occurrence of new forest are not exactly known; afforestation and natural forest regeneration being certainly drivers at play. Permanent anthropogenic environment (e.g. cropland, grassland, built-up land) means that the landscape was not forested in both dates and it is assumed that it remained so during that period.

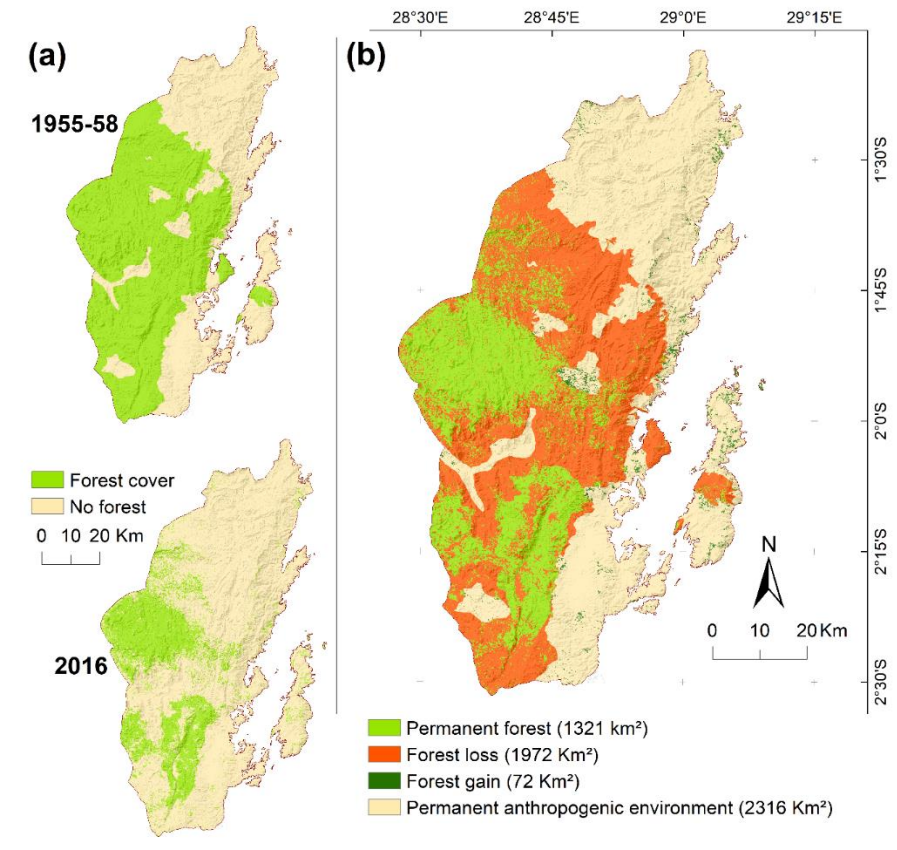


Figure 2: Forest cover dynamics over the last 60 years. (a) Forest cover in 1955-58 and 2016; (b) Areas of forest cover change between 1955-58 and 2016. Details for the images used in this figure are in Table 1.

2.3 Landslide susceptibility and distribution analysis

Landslide susceptibility approaches are numerous and more or less complex in terms of modelling implementation and result interpretability (Reichenbach et al., 2018). In a regional analysis where our study area is included, (Depicker et al., 2020) used three susceptibility models, namely logistic regression, random forests, and support vector machines. These models gave relatively similar results in terms of quantitative performance and geomorphological plausibility. The same conclusion about marginal differences between susceptibility models can be drawn from many other studies. Since our study does not aim to develop a new methodology nor to show the ability to use complex methods; we relied on a logistic regression approach (Hosmer and Lemeshow, 2000) to determine the predictor variables related to the occurrence of the different types of landslides. Logistic regression is a straightforward method that has been widely used (Reichenbach et al., 2018) and that allows a rather easy interpretation of the results (e.g. Jacobs et al., 2018; Depicker et al., 2020).

We applied the logistic regression (Hosmer and Lemeshow, 2000) and the frequency ratio (Lee and Pradhan, 2007) models as a complementary approach to better understand the role of each variable in the contribution of the landslide occurrence in terms of process characterization. For example, when slope angle is highlighted by a logistic regression model as a significant variable, we still remain unaware of the types of slopes that actually influence the occurrence of landslides. analyze the susceptibility and distribution of the landslides,

respectively, in order to better understand how they are distributed across different landscapes and how natural and human environmental factors contribute to their occurrence.

The analysis was carried out with a distinction between shallow landslides and old deep-seated landslides. The analysis was done at the scale of one point (pixel) per landslide to avoid spatial autocorrelation (e.g. Jacobs et al., 2018; Kubwimana et al., 2021). The point is manually positioned in the center of the landslide's trigger area. In doing so we also avoid the selection of the highest point of the landslide that rarely corresponds to its initiation point (Dille et al., 2019). The digital elevation model used for the analysis (see Table 1) is posterior to the occurrence of the old deep-seated landslides. Therefore, ~~f~~For deep-seated landslides, a point outside the trigger area where topography does not appear to have been disturbed by the instability is considered for the calculation of the slope associated with the landslide origin. Calculating the slope values at the level of the landslide head for this type of landslide would give values that are the consequences of landslides rather than the causes of their origin.

2.4.3.1 Predictor variables

The purpose of this research is to examine the predictor variables that contribute to the susceptibility of the different landslide types; not to look directly for their triggering factors. Nevertheless, the different predictors, highlighted by the susceptibility analysis allow to discuss the triggering conditions.

~~Table 1 presents the 10 predictor variables used for the susceptibility and frequency ratio analyses and the ancillary data from which they are derived.~~ We used eight predictors that can be considered as natural factors that influence landslide occurrence (Table 1): elevation, slope angle, planar curvature, profile curvature, topographic wetness index (TWI), aspect, lithology, and distance to faults. Although these predictors are commonly used (Reichenbach et al., 2018), it is worth specifying that, here, elevation is used as proxy for climatic conditions, namely orographic rainfall and the probability of thunderstorms, as the resolution of regional-climate derived products is too low (at least 2.8 km) to accurately capture at the scale of our study area the effect of elevation on rainfall (Monsieurs et al., 2018a; Van de Walle et al., 2020; Monsieurs, 2020; Depicker et al., 2021b). Distance to fault is used to determine the possible contribution of seismic activity in the occurrence of deep-seated landslides not only as a triggering factor (e.g. Keefer, 1984), but also as a rock weathering factor (e.g. Vanmaercke et al., 2017). Using the fault pattern is the most appropriate option to tackle the seismic zonation context since the most detailed seismic hazard assessment for this part of the continent is at a spatial resolution of 2.2 km; i.e. at a resolution that is too coarse for our study (Delvaux et al., 2017).

Table 1. Landslide predictor variables used for the susceptibility and frequency ratio analyses and the ancillary data from which they are derived.

Variable	Type	Source
- Elevation (m)	Continuous	Nasa Shuttle Radar Topography Mission (SRTM) Version 3.0 Global 1 arc second Data (Temporal Extent 2000-02-11 to 2000-02-21) https://lpdaac.usgs.gov/products/srtmgl1v003/
- Slope angle (°)	Continuous	
- Profile curvature (m ⁻¹)	Continuous	
- Plan curvature (m ⁻¹)	Continuous	
- Topographic wetness index	Continuous	
- Slope aspect (°)	Categorical	
• north	Dummy	
• northeast	Dummy	
• east	Dummy	
• southeast	Dummy	
• south	Dummy	
• southwest	Dummy	
• west	Reference*	
• northwest	Dummy	
- Lithology	Categorical	Geological map of the Kivu at scale 1/500,000 (Laghmouch et al., 2018)
• Old basalts	Dummy	
• Black shales and tillite	Dummy	
• Granites (mica and leuco-granites)	Dummy	
• Granitic rocks (rhyolite)	Reference*	
• Pelites and quartzopelites	Dummy	

<ul style="list-style-type: none"> • Gneiss and micaschists 	Dummy	
- Distance to faults (m)	Continuous	
Distance to roads (m)	Continuous	https://www.openstreetmap.org/history#map=9/-2.0475/28.5535
- Forest dynamics between 1955-58 and 2016	Categorical	Forest cover in 2016: (ESA, 2016: http://2016africallandcover20m.esrin.esa.int/viewer.php)
<ul style="list-style-type: none"> • Permanent forest • Forest loss • Forest gain • Permanent anthropogenic environment 	Reference*	
	Dummy	Forest cover in 1955-58: Historical aerial photographs and derived orthomosaics from RMCA (see Section 4.22.1)
	Dummy	
	Dummy	

* Each dummy variable is compared with the reference group.

Besides the natural factors, we identified two anthropogenic predictors (Table 1): forest dynamics and distance to roads. For the forest dynamics, we considered the four classes identified in Fig. 2. The main roads were retrieved from OpenStreetMap. Good knowledge of the study area and the analysis of the very high-resolution Google Earth images allowed us to verify the high accuracy of the road network proposed by OpenStreetMap. The comparison of forest areas between 1955-58 and 2016 allows to consider four classes for the forest dynamics variable: permanent forest, forest loss, forest gain, and permanent anthropogenic environment. Permanent forest corresponds to forest areas that are present at both dates. The forest loss class corresponds to forests present in 1955-58 that have disappeared in 2016. Since it is impossible to identify for each portion of the landscape the exact cause of forest loss, this class contains a mix of various forest management practices and other causes of forest cut/removal. The forest gain class represents the new forest that has appeared since 1955-58. Similarly, the causes associated with the occurrence of new forest are not exactly known; afforestation and natural forest regeneration being certainly drivers at play. Permanent anthropogenic environment (e.g. cropland, grassland, built up lands) means that the landscape was not forested in both dates and it is assumed that it remained so during that period. OpenStreetMap was used to retrieve the main roads in the study area. Using the historical photographs, we observe that the main roads date back to the colonial times and that no major changes in the network have occurred over the last 60 years. The few recent landslides that are observed in the field along these roads confirm the assumption that the direct impact of the main roads on the occurrence of recent landslides is limited. These landslides are clearly linked to the road cut topography, i.e. topographic conditions that cannot be constrained at the resolution of the SRTM elevation data (1" or roughly 30 m). They are often of very limited size, i.e. at a size that is too small to be features that can be identified in © Google Earth in a consistent manner. For our study, the distance to roads is taken as a proxy for human settlement, trail density, and intensity and diversity of agricultural practices. Since motorized transportation means are very limited in the region, the population growth, the expansion of villages and the agricultural activities are indeed highly associated with the main road networks.

Prior to analysis, the predictor variables were resampled at the resolution of the SRTM elevation data, a resolution that provided the best results in similar regions (Jacobs et al., 2018). The association between the dependent variable and each predictor variable was tested using the Pearson χ^2 test at a 95 % level of confidence (Van Den Eeckhaut et al., 2006; Dewitte et al., 2010). The predictors were tested for multicollinearity, variables with variance inflation factor (VIF) > 2 being excluded from the analysis (Van Den Eeckhaut et al., 2006; Dewitte et al., 2010). The flat areas (slope angle < 1°) that are spread across the region were not excluded from the analysis since their total extent is limited and their impact on the inflation of susceptibility model performance would be minor (Brenning, 2012; Depicker et al., 2020).

For the analysis of deep-seated landslides, the predictor variables associated with anthropogenic activities were excluded. For the shallow landslides, the 'distance to faults' variable was also excluded. As explained earlier, the shallow landslide inventory represents a narrow time window of observation. As such, the spatial distribution of the shallow landslides could be biased by the stochastic pattern of the recent heavy rainfall events and anthropogenic disturbances rather than being the reflect of the longer-term impact of weathering conditions associated with seismicity.

2.5.3.2 Logistic regression

Logistic regression is used to describe the relationship between a binary dependent variable (the presence or absence of landslides) and one or more independent predictor variables (Hosmer and Lemeshow, 2000). Hence,

the logistic regression does not only require landslide data, but also non-landslide data. We sampled this non-landslide data by generating a number of random points that is equal to the number of landslides in the inventory in order to avoid prevalence (Hosmer and Lemeshow, 2000). Non-landslide points were randomly generated outside a 40 m buffer zone around landslide areas. The basic equation for logistic regression is:

$$\log\left(\frac{P}{1-P}\right) = \alpha + \sum_{i=1}^n \beta_i X_i \quad (1)$$

where P is the likelihood of landslide occurrence and takes values between 0 and 1, α is the intercept of the model, X_i represents i -th of n predictors, and β_i the accompanying coefficient that has to be fitted to the data.

Calculations were performed in an RStudio environment version 1.4.1717 with LAND-SE software (Rossi and Reichenbach, 2016). In order to be considered in the final logistic regression equation, continuous variable coefficients needed to be significant at the 95 % level of confidence (e.g. Jacobs et al., 2018). For categorical variables, as soon as one dummy variable was significant, all other dummy variables were included in the model (e.g. Depicker et al., 2020). The quality of the models was judged by (i) the prediction rate (e.g. Depicker et al., 2020), (ii) a visual plausibility inspection of the susceptibility maps after reclassifying each map into four classes of increasing susceptibility that cover 40 %, 30 %, 20 %, and 10 % of the study area, and (iii) considering the area under the curve (AUC) of the receiver-operating-characteristics curve (ROC). The AUC values vary between 0 and 1 and can be interpreted as the model's capacity of differentiating between landslide and non-landslide locations. An AUC = 0.5 shows that the model performance is equivalent to random classification, while an AUC = 1 indicates a perfect classification (Hosmer and Lemeshow, 2000). Training and validation datasets were taken in the proportions of 70 % and 30 %, respectively (Broeckx et al., 2018; Fang et al., 2020).

We assessed the importance of each individual predictor for the logistic regression in two ways. First, we calculated the AUC for landslide susceptibility models that only relied on the considered predictor, to assess the extent to which this predictor can be used to differentiate between landslide and non-landslide locations. Although this is quite a straightforward approach that does not consider the possible interplay among predictor variables, this allows to have a first quantitative insight on and to quantify for the importance-contribution of each variable to the susceptibility models (Depicker et al., 2020). Note that only predictors with AUC values between 0.5 and 1.0 were retained for the logistic regression models. A second way to determine the impact of the predictors was the analysis of the odds ratio (OR). The OR of a predictor expresses how a change of a predictor value translates into an increase/decrease in the odds of landsliding, whereby the odds of landsliding is calculated as $\frac{P}{1-P}$ (see Eq. (1)). The OR_i of predictor i is calculated as:

$$OR_i = e^{\beta_i \delta_i}, \quad (2)$$

whereby β_i is the coefficient of predictor i , and δ_i is the increase in predictor i . For continuous variables an arbitrary but realistic value for δ_i is chosen. For the dummy variables, δ_i equals 1. For the categorical variables, the OR for each dummy reflects an increase or decrease relative to the reference variable (Kleinbaum and Klein, 2010).

2.6.3.3 Frequency ratio

The frequency ratio model considers each landslide predictor variable individually and classifies its values into a set of bins to indicate for each bin of the predictor variable the probability of occurrence of a landslide (Lee and Pradhan, 2007; Lee et al., 2007; Kirschbaum et al., 2012). The value of a frequency ratio indicates for each bin of the predictor variable the probability of occurrence of a landslide. The frequency ratio is calculated as:

$$Fr_{cb} = \frac{a_{cb}/a_T}{A_{cb}/A_T}, \quad (3)$$

where Fr_{cb} is the frequency ratio value for a bin $b = (1, 2, \dots, n)$ of a predictor variable $c = (1, 2, \dots, m)$, a_{cb} is the cumulative landslide area within bin b of predictor c , a_T is the cumulative landslide area in the entire study area, A_{cb} is the area attributed to bin b of predictor c , and A_T is the total extent of the study area.

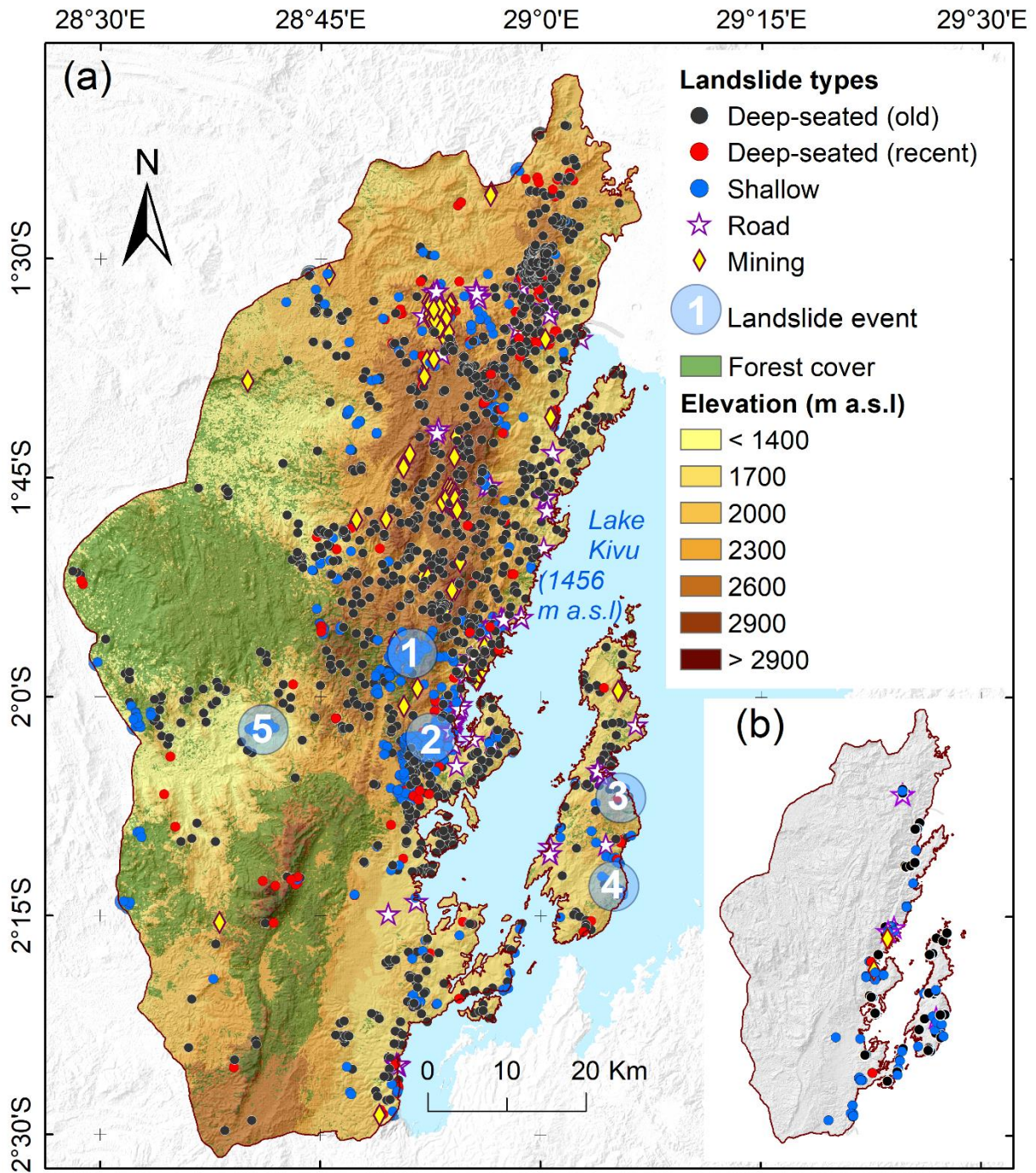
3 Results

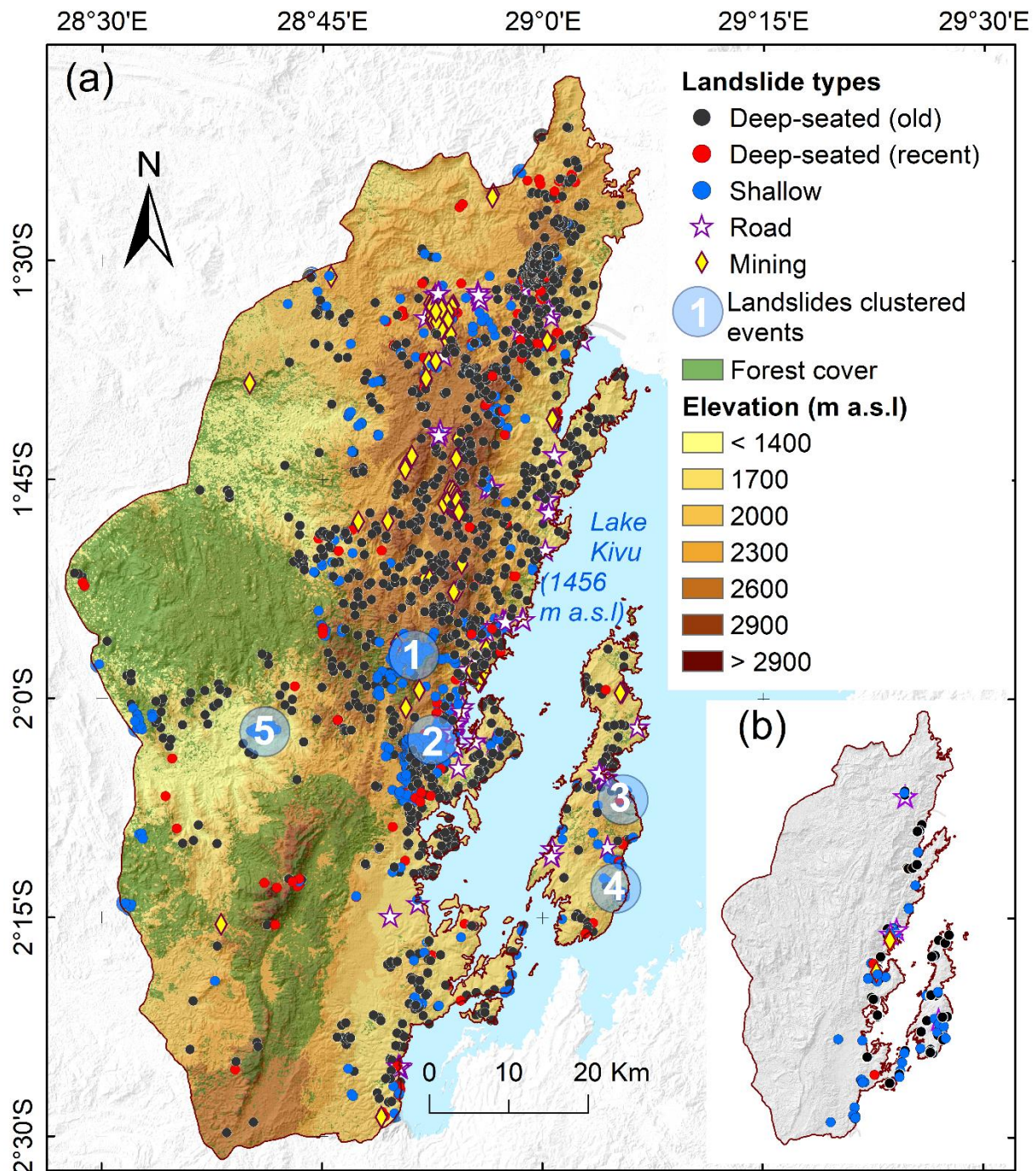
380 3.1 Landslide inventory

Overall, we mapped 2730 landslides ~~were mapped from the image analysis over the study area~~ (Fig. 2a3a; Table 2), which is an extension of 326 % compared to the inventory of Depicker et al. (2020). The landslides are diverse in terms of size, age and type (Fig. 34). The inventoried landslides cover ~3 % of the study area. The largest landslide is old and deep-seated (426.4 ha), while the smallest detected landslide is shallow (16 m²). The landslides are grouped into five categories (Fig. 2a3a; Table 2):

- Old deep-seated landslides represent 45,5 % of the inventoried landslides and cover 93 % of the total landslide affected area;
- Shallow landslides represent 40.4 % of inventoried landslides, but represent only 2.7 % of the total affected area. These landslides are all recent;
- 390 • Recent deep-seated landslides represent a small percentage of landslides (5.8 %) but cover an area (2.9 %) similar to shallow landslides;
- Mining landslides (that also include quarrying landslides) represent 5.6 % of the inventoried landslides and cover 1.2 % of the total landslide affected area. ~~Mining landslides are considered as one type, regardless of their depth;~~
- 395 • Road landslides: the inventory shows that 115 landslides are located within 50 meters of roads. 60 of these landslides are shallow, 13 recent and deep-seated, 35 old and deep-seated, and 7 are mining landslides. The shallow and recent deep-seated landslides located within 50 m of roads were classified as road landslides. We assume that the occurrence of these 73 ~~roads~~ landslides is associated with road construction ~~and altered rainwater drainage~~. The old deep-seated landslides located close to roads were retained in the old deep-seated landslide group because their timing is likely to precede road construction.

400





405 Figure 23: (a) Landslide inventory obtained from the image analysis and extent of the forest cover in 2016 (after ESA, 2016). Numbers represent clusters of shallow landslides that are associated with heavy rainfall events dated in ascending order from oldest to most recent. (b) Additional landslides identified only in the field.

410 Several clusters of shallow landslides related to heavy convective rainfall events have occurred in recent years. One of the clusters is related to the Kalehe rainstorm of October 2014 (Fig. 2a3a: event 2; Fig. 3a4a) reported by Maki Mateso and Dewitte (2014). This event triggered 634 shallow landslides, 346 of them being connected to talwegs and providing materials to 17 debris flows. Ten debris flows were particularly destructive and deadly when they reached villages on the shores of Lake Kivu (Maki Mateso and Dewitte, 2014). In this area, 14 shallow landslides present on © Google Earth images before this event were reactivated. Field observations and interviews with local populations indicated that the shallow landslides that are not associated with these clusters are also rainfall-triggered.

415 Table 2: Typology, size properties, and identification methods of the inventoried landslides (LS). The percentages of landslides linked to the TanDEM-X hillshade images (% of LS in TanDEM-X) represent landslides that could not be very well identified in © Google Earth alone.

Landslide type	Number of LS	% of LS	% of LS area	Max area (ha)	Min area (m ²)	Average area (ha)	Standard deviation (ha)	% of LS in ©Google Earth	% of LS in TanDEM-X
Deep-seated (old)	1243	45.5	93.0	426.4	604	12.6	26.8	94.9	5.1
Deep-seated (recent)	159	5.8	2.9	28.9	210	3.1	5.4	97.5	2.5
Shallow	1103	40.4	2.7	53.8	16	0.4	2.4	100	0
Mining	152	5.6	1.2	13.4	99	1.4	1.9	100	0
Road	73	2.7	0.1	2.0	149	0.3	0.3	100	0
All landslides	2730	100	100			6.2		97.5	2.5

420 Table 3: Field-based validation of the landslides (LS) inventoried from the image analysis. True Positive (TP) = landslides that were mapped in the images and validated in the field. False Positive (FP) = landslides that were mapped in the images but not validated in the field. False Negative (FN) = landslides that were identified solely in the field. Precision = TP / (TP+TN)

Landslide type	Number of LS mapped in the images and checked in the field	TP	FP	FN	Precision (%)	Total number of LS viewed in the field
Deep-seated (old)	248	239	9	60	96	308
Deep-seated (recent)	47	44	3	4	94	51
Shallow	426	420	6	55	99	481
Mining	15	9	6	2	60	17
Road	50	45	5	5	90	55
Total	786	757	29	126	96	912

Landslide type	Number of LS checked in the field	TP	FP	FN	Accuracy (%)	Total number of LS viewed in the field
Deep-seated (old)	248	239	9	60	97.1	308
Deep-seated (recent)	47	44	3	4	94.1	51
Shallow	426	420	6	55	98.8	481
Mining	15	9	6	2	64.7	17
Road	50	45	5	5	90.9	55
Total	786	757	29	126	96.8	912

425 Landslide mapping was largely done using © Google Earth; the TanDEM-X hillshades being useful to confirm the identification of about one fifth of the old deep-seated landslides (Table 2). Fieldwork carried out to validate
 430 786 landslides (25% of the inventory) showed that they were identified with a precision of ~~more than~~ 96 % (Table 3). Old deep-seated landslides and shallow landslides were mapped with the highest accuracy precision. Mining landslides were mapped with a lower accuracy precision due to the difficulty of differentiating between landslide processes and anthropogenic soil disturbance in © Google Earth imagery. The field validation allowed to also map an extra 126 landslides (Fig. 2b3b) that could only be identified in the field (Table 3). For the old deep-seated landslides, this represents an extra 25% of observations. Nevertheless, landslides identified only in the field were not considered in the analysis to avoid biases due to overrepresentation.

Each debris flow is connected to up to hundreds of shallow landslides that act as source areas. A clear distinction was made between ~~theses source~~~~these sources~~ ~~areas~~ and the debris flow path and deposition areas (Fig. 3a4a). Out of a total of the 184 debris flows identified from the images, 90 with a length-to-width ratio > 50 were excluded from the analysis since they show greater similarities to debris-rich floods than to the other landslides present in the region (Malamud et al., 2004). Nevertheless, the shallow landslides acting as source areas were kept in the analysis. Also, 22 very large, old, deep-seated landslides were excluded from the analysis because they have complex main scarps where it is difficult to determine the pixels that best represent the natural conditions of occurrence. Overall, from the 2730 landslides identified from the images, 2618 landslides were used for the subsequent analysis.

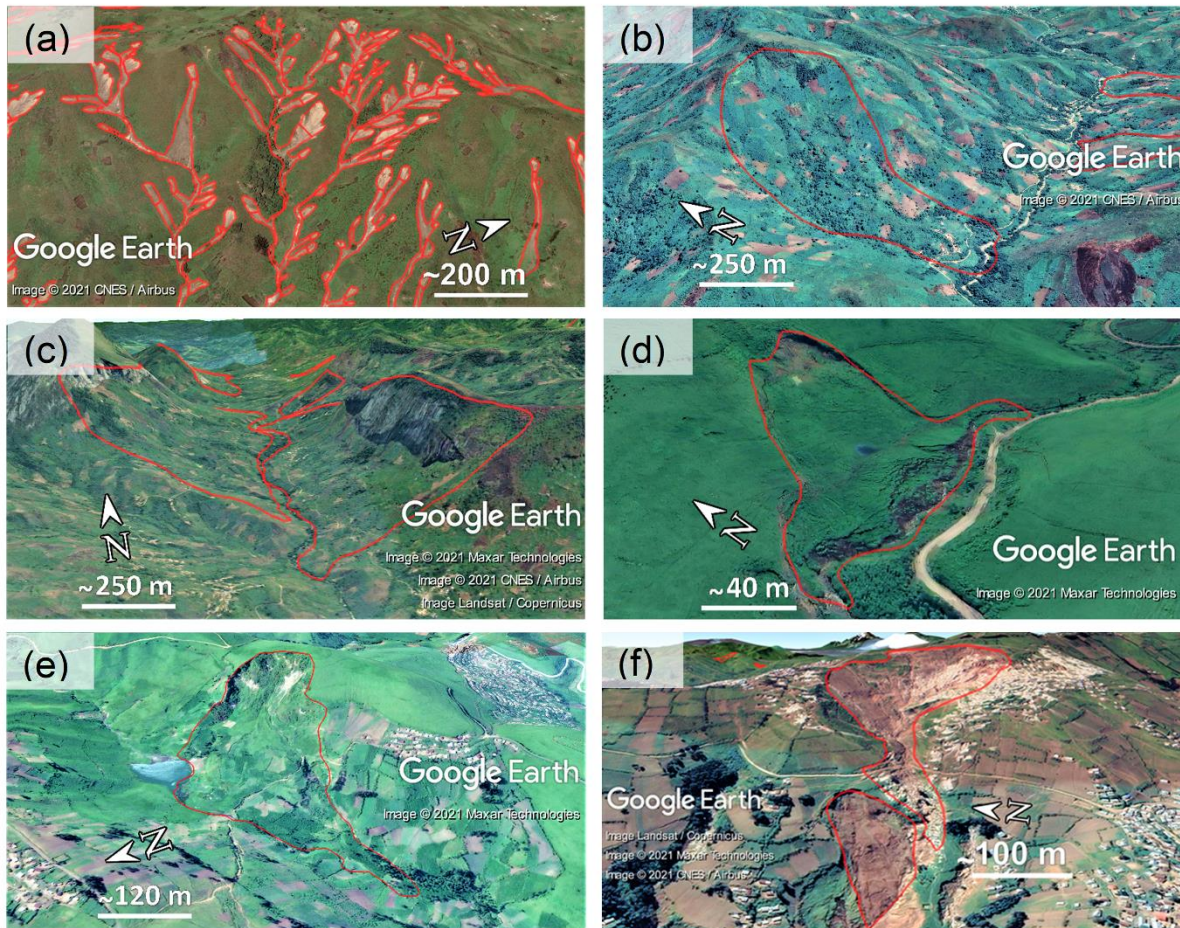
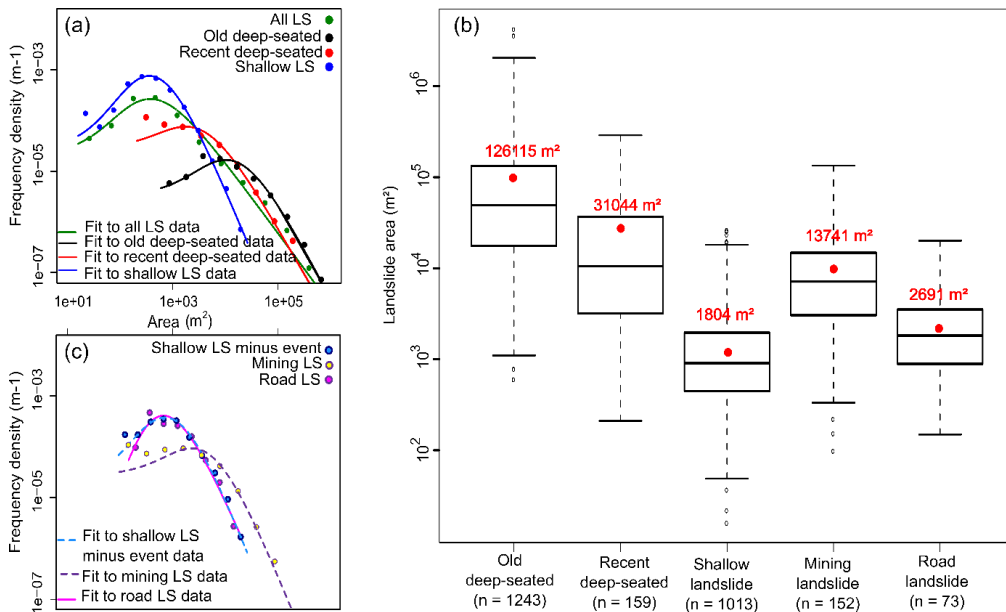


Figure 34: Examples of landslide types (according to Varnes' new classification – Hungr et al., 2014). (a) Cluster of recent debris avalanches, flowslides and debris flows triggered during an intense rainfall event (25/10/2014) in the vicinity of Kalehe (-2.041°S, 28.874°E). The landslide source areas are identified. (b) Old earthflow (-2.053°S, 28.660°E). (c) Old rock slides/rock avalanches/ with path-dependent rock falls (-2.007°S, 28.708°E). (d) Recent deep-seated rotational slide that occurred in 2002 (-1.530°S, 28.708°E). (e) Recent deep planar slide that occurred in 1994 and created a dammed lake (-1.521°S, 28.977°E). (f) Recent slides, flows and avalanches related to associated with mining activities that occurred from 2013 onwards (-1.563°S, 28.885°E).

The inverse Γ distribution fits well the distributions for all the subsets of the inventory, except recent deep-seated and mining landslides (Fig. 4a5a,c). There is also a good fit with this inventory, which supports its use for further susceptibility analysis. The Wilcoxon rank comparison test confirms significant statistical differences (p -value < 0.05) among the area distributions (Fig. 4b5b).



455

Figure 45: Landslide (LS) area characteristics. (a, c) Landslide frequency-area distributions for each landslide types. ~~The distributions called *minus event* correspond to the inventory where 30 landslides are retained per landslide cluster associated with major rainfall events (see methods section)~~ (b) Boxplots showing the distribution of landslide area for each landslide type. Boxplots show the lower and upper quartiles and median. The whiskers of each box represent 1.5 times the interquartile range. The average area of the landslides (red dots) is provided for each boxplot and the outliers beyond whiskers are shown as dots. The number of landslides in each class is shown in brackets.

460

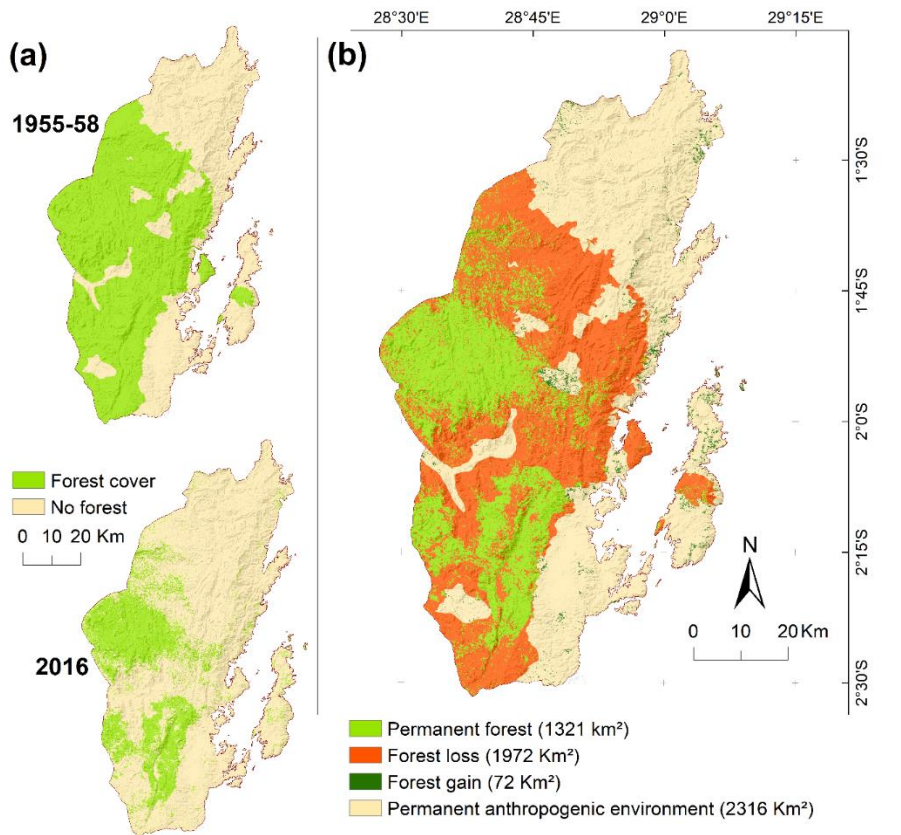
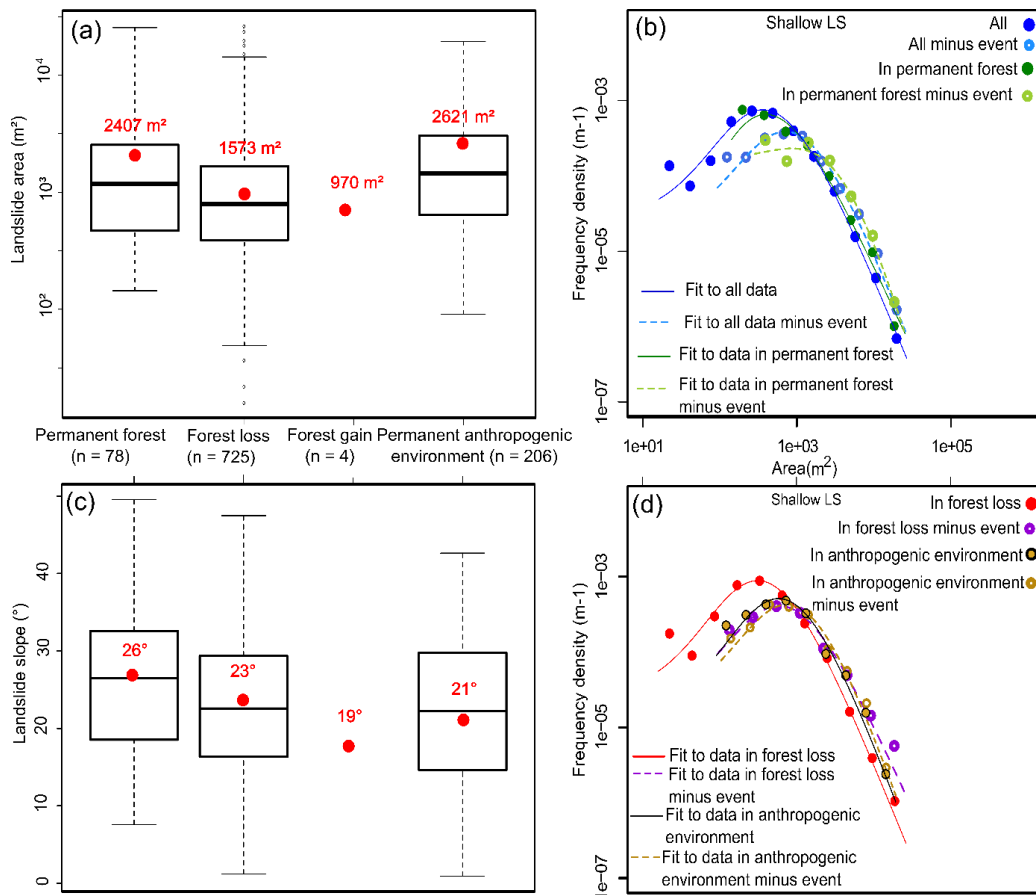


Figure 5: Forest cover dynamics over the last 60 years. (a) Forest cover in 1955-58 and 2016; (b) Areas of forest cover change between 1955-58 and 2016. Details for the images used in this figure are in Table 1.

465

In 1955-58, 42 % of the territory was already deforested (Fig. 5a). From 1955-58 to 2016, the loss of forest continued, the forest cover decreasing from 58 % to 24 % of the study area. The area affected by the forest loss over the last 60 years is larger than the remaining permanent forest (Fig. 5b).



470 Figure 6: Shallow landslide characteristics and forest cover dynamics. (a, c) Boxplots showing the distribution of
 landslide area and landslide slope, respectively, for each land cover class. A detailed description of boxplots is
 provided in Figure 45. (b, d) Shallow landslide frequency-area distributions for each land cover class. ~~The
 distributions called *minus event* correspond to the inventory where 30 landslides are retained per landslide cluster
 associated with major rainfall events (see methods section).~~

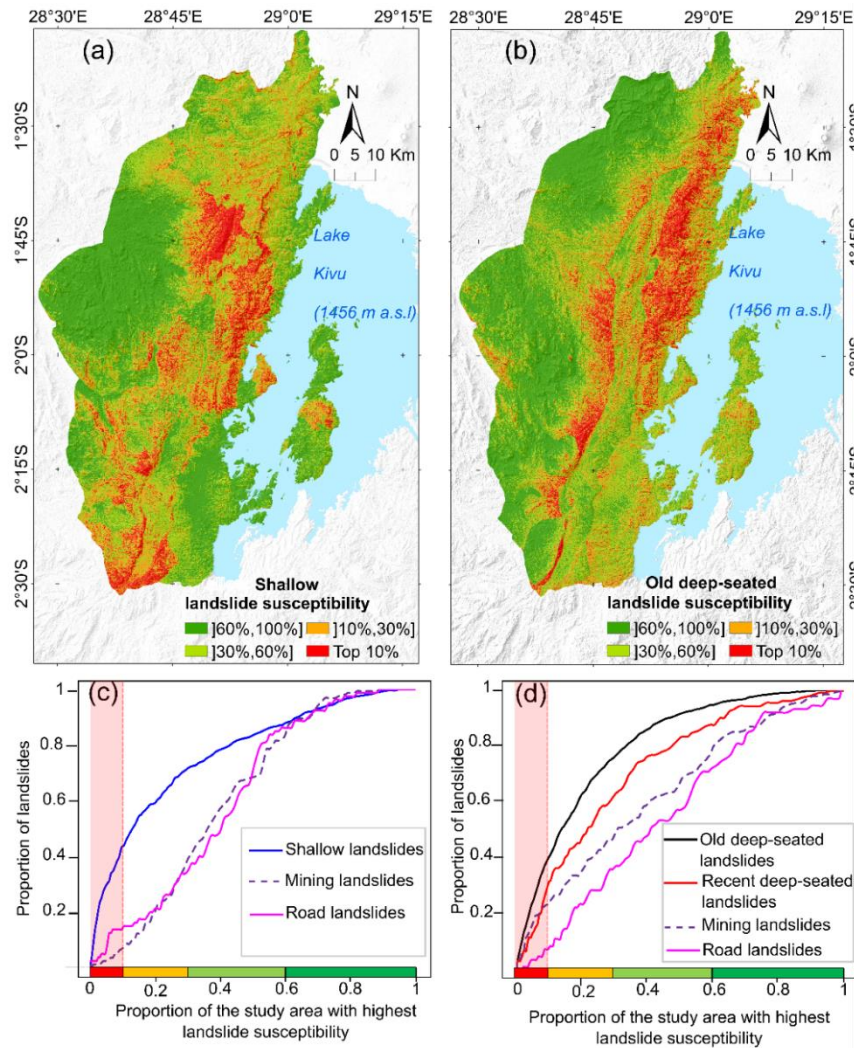
475 72 % of the shallow landslides are found in areas of forest loss (Fig. 6). The landslides in the permanent
 anthropogenic environment have the largest mean area, followed by the landslides in permanent forest, and the
 landslides in areas of forest loss. In forest gain zones, landslides are on average the smallest. The Wilcoxon rank
 comparison test confirms significant statistical differences (p -value < 0.05) among the landslide area distributions.
 480 The same differences are also confirmed for the landslide slope distribution (Fig. 6b). In permanent forest areas,
 shallow landslides occur on steeper slopes compared to shallow landslides in anthropogenic environments (Fig.
 6b). The analysis of the completeness of the inventory (Fig. 6b,d) shows that an acceptable distribution emerges
 for each category of shallow landslides except for the landslide inventory in *permanent forest minus event* (Fig.
 6b).

3.2 Landslide susceptibility and distribution analysis

485 The Pearson χ^2 tests confirm the association between the dependent variable and each predictor variable at a 95
 % level of confidence. There was not multicollinearity between the predictors (VIF < 2) retained for this study.

490 Depicker et al. (2020) assessed the impacts of the size of the landslide training dataset to calibrate a landslide
 susceptibility model. They showed that the quality of a susceptibility assessment is questionable if the number of
 landslides is too small. In view of the low number of recent deep-seated, mining, and road landslides in the present
 study (Table 3), we did not calibrate susceptibility models from these three types of landslides. Instead, we tested

these inventories against the two susceptibility models computed from the shallow and/or old deep-seated landslide datasets (Fig. 7).



495 Figure 7: Landslide susceptibility models and prediction rates. (a) shallow landslides (AUC: 0.78); (b) old deep-
 500 seated landslides (AUC: 0.82); (c) prediction rate curves for shallow, mining, and road landslides; (d) prediction
 505 rate curves for old deep-seated, recent deep-seated, mining and road landslides. The red highlight (c, d) represents
 510 the 10 % of the region with the highest landslide susceptibility values.

500 The two susceptibility models of shallow and old deep-seated landslides show similar AUC and prediction rates
 (Figure-Fig. 7). At first sight, both models have spatial similarities of high susceptibility on the eastern part of the
 region; while the entire western part is weakly susceptible (Fig. 7a,b). However, when we go into detail, the
 505 spatial patterns of the susceptibility values of the two models are quite different as it reflects the differences in the
 importance of the predictors included in the assessment (Table 4, Table 5). Table 4 shows that for shallow
 landslides, anthropogenic variables (forest loss, distance to roads and permanent anthropogenic environment) have
 a great influence on their occurrence. In contrast, continuous topographic variables and distance to faults are the
 most important for deep seated landslides. For both landslide types, slope angle and elevation also have a great
 influence on their occurrence. Variables related to slope aspect and lithology have lower importance for both types
 of landslides. The univariate AUC values are all above 0.5 (Table, 4). All predictors considered for both types of
 510 landslides where thus considered in the multivariate logistic regression models (Depicker et al., 2020).

Table 4: Relative Importance of the predictors of the logistic regression models for shallow and old deep-seated
 landslides based on. The comparison of the univariate AUC_i is made to assess the relative importance of the
 variables (ranked in descending order).

Shallow landslides		Old deep-seated landslides	
Predictor	AUC _i	Predictor	AUC _i
Forest loss	63	Profile curvature.	65.7
Elevation	61.5	Elevation	65.3
Slope angle	60.1	Distance to faults	64.2
Distance to roads	59.7	Slope angle	64
Pelites and quartzopelites	58.9	TWI	63.8
Permanent anthropogenic environment	55.9	Plan curvature.	59.5
TWI	55.3	Pelites and quartzopelites	54.5
Plan curvature.	53.1	South	52.4
East	52.2	North-east	52
South-east	52.2	North	51.6
Black shales and tillite	51.8	East	51.1
Old basalts	51.8	South-east	50.7
North	51.8	Granites (mica and leuco-granites)	50.7
Granites (mica and leuco-granites)	50.8	Old basalts	50.5
South-west	50.7	Gneiss and micaschists	50.5
Gneiss and micaschists	50.6	South-west	50.3
South	50.6	Black shales and tillite	50.3
Profile curvature	50.4	North-west	50.2
North-east	50.4		
North-west	50.1		
Forest gain	*		

* Only four landslides are present in this category.

515

Table 5. Results of the logistic regression models for shallow landslides and old deep-seated landslides.

		Shallow landslides		Old deep-seated landslides		Step δ_i
AUC		0.78		0.82		
Predictor variable		LR coef.	Odds ratio	LR coef.	Odds ratio	
(Intercept)		-3.560 ***		-1.661 ***		
Elevation		0.001 ***	1.857	0.002 ***	2.535	500
Slope aspect	Northwest	0.842 *	2.321	-0.366	0.694	1
	West	Ref.	-	Ref.	-	
	Southwest	0.674 *	1.962	-0.232	0.793	1
	South	0.630 *	1.878	0.032	1.033	1
	Southeast	0.599	1.820	-0.345	0.708	1
	East	0.513	1.670	-0.578 **	0.561	1
	Northeast	0.622	1.863	-0.897 ***	0.408	1
	North	0.481	1.618	-0.831 ***	0.436	1
	Plan curvature		-0.272 *	0.580	0.166 ***	1.394
Profile curvature		-0.190	0.999	-0.463 ***	0.998	0.005
Slope angle		0.050 ***	1.649	0.033 ***	1.391	10
Topographic wetness index		0.093	1.000	-0.281 ***	1.000	0.001
Lithology	Old basalts	-0.753 -	0.471	0.201	1.223	1
	Black shales and tillite	-1.207 ***	0.299	-1.358 ***	0.257	1
	Granite coarse grain	-17.026 -	0.000	-2.126 ***	0.119	1
	Granitic rocks (rhyolite)	Ref.		Ref.		
	Pelites and quartzopelites	-1.274 ***	0.280	0.155	1.168	1
	Gneiss and micaschists	0.506	1.659	-0.468	0.626	1

Distance to roads		0.000 ***	0.931	no	-		500
Distance to faults	no	-			0.000 ***	0.914	500
Forest cover dynamics	Permanent forest	Ref.	-	no	-		
	Forest loss	0.922 ***	2.514				1
	Gain forest	no	-	no	-		
	Permanent anthropogenic environment	-0.159	0.853	no	-		1

No = variable not included in the logistic regression model

Ref. = reference category of the dummy variable

Coefficient included in the logistic regression model = *p-value < 0.05, ** p-value < 0.01, *** p-value < 0.001

520

~~The odds ratios of the significant predictors for the two susceptibility models allow for an assessment of their relative importance (Table 5).~~ Forest loss has a large influence on the occurrence of shallow landslides as deforestation increases the odds of landsliding by a factor 2.5 (Tables 4, ~~Table &~~ 5). However, anthropogenic environments ~~(which were deforested before 1955-1958)~~ appear to be less landslide-prone than permanent forest.

525

Slope is similarly important for the prediction of both types of landslides (Table 4) but has a slightly larger impact on the odds of deep-seated landsliding than on the odds of shallow landsliding (Table 5). Slope aspect has a greater impact on the occurrence of shallow landslides than for old deep-seated landslides. It appears that the plan curvature reduces the occurrence of shallow landslides while it affects the occurrence of old deep-seated landslides. The effect of lithology is also different for shallow and deep-seated landslides. For shallow landslides, the gneiss and micaschists are most landslide-prone and the lowest susceptibility is associated with black shales, tillite and old basalts. For deep-seated landslides, black shales, tillite and old basalts favour landslides while gneiss and micaschists do not. ~~The variables ‘distance to roads’ and ‘distance to faults’ have a significant but rather limited impact on shallow and old deep-seated landslides, respectively.~~

530

535

~~The susceptibility model for shallow landslides was tested against the mining and road landslide datasets, while the old deep-seated landslide model was tested against the mining, road and recent deep-seated landslide datasets. Results indicate that m~~ Mining and road landslides are poorly predicted using the shallow landslide model (Fig. 7c). Recent deep-seated landslides are reasonably well predicted using the old deep-seated landslide model, ~~which validates to some extent the multi-temporal predicting performance of the assessment. The whereas~~ prediction of road and mining landslides using the same model is also poor, although less problematic for the mining landslides (Fig. 7d).

540

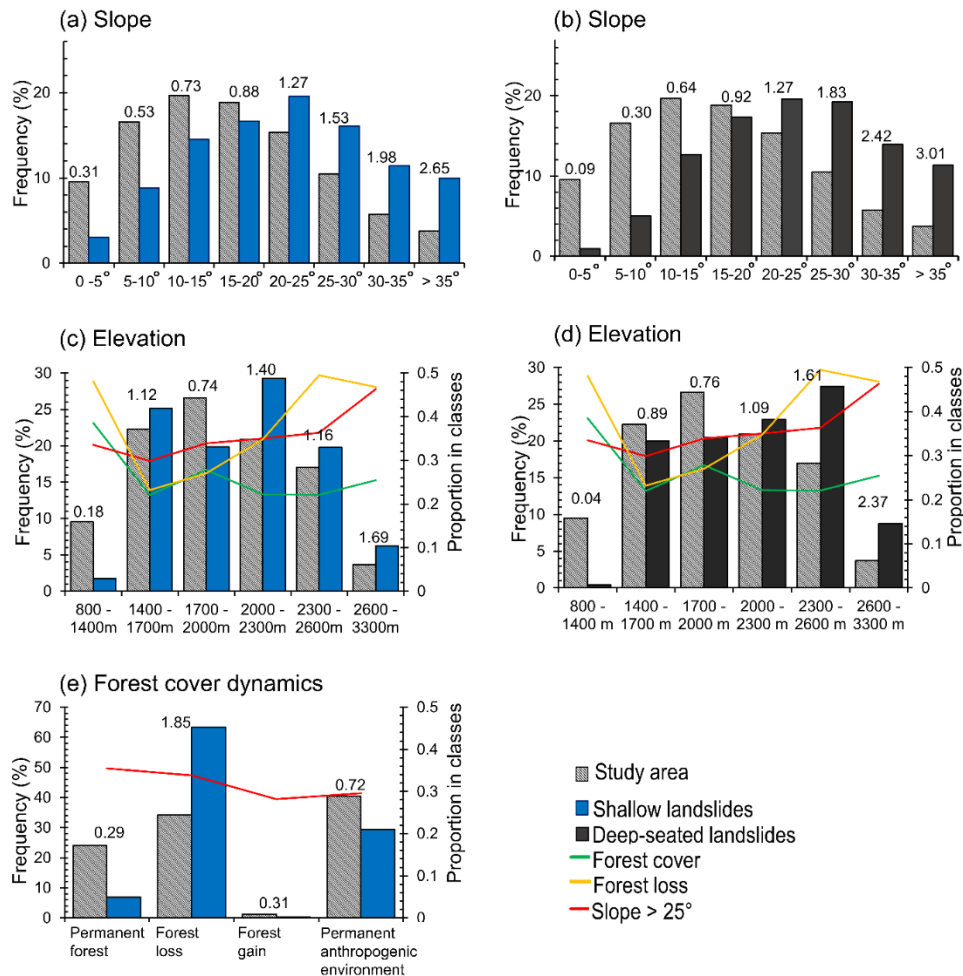


Figure 8: Frequency distribution for shallow and deep-seated landslides in function of different predictor variables. The corresponding frequency ratio is shown for each class. The green, orange and red curves indicate the proportion of forest cover, forest loss and slope > 25°, respectively, in the different classes of the predictor variables.

The frequency ratio analysis shows that slope angle is an important driver for shallow landslides as well as for old deep-seated landslides (Fig. 8a,b). Both types of landslides are favoured by slopes angles > 20-25°. Figure 8c shows we observe a trend in the landscape of increasing slopes and forest loss and decreasing forest cover with increasing elevation (Fig. 8c). The decrease in forest cover at high altitudes is also associated with a natural change of the vegetation: bamboo vegetation is found at 2300-2600 m asl and subalpine vegetation such as ferns occur at 2400-3300 m asl (Mokoso et al., 2013; Cirimwami et al., 2019). We observe that at higher elevations (> 2000 m), shallow landslides occur more frequently, and this can probably be explained by a cumulative effect of the drastic forest loss, and steeper slopes and increased orographic rainfall associated to these elevations (Fig. 8c). The positive frequency ratio in the 1400-1700 m elevation class is related to the area of permanent anthropogenic environment. This zone is characterized by low forest cover and relatively low slopes (Fig. 8c). Deep-seated landslides are also favoured by steeper slopes and higher elevations. Regarding the dynamics of forest cover (Fig. 8e), the occurrence of shallow landslides is favoured in the deforested areas.

4 Discussion

4.1 Landslide types and completeness of the inventory

We used a combination of © Google Earth imagery, TanDEM X hillshades, historical aerial photographs, and field work to compile an extensive and comprehensive inventory of recent and historical landslides. Field validation of more than 25% of the inventory showed that more than 96% of the inventoried landslides were

classified with precision into five types (old deep-seated, recent deep-seated, shallow, road-related, or mining-related). Nevertheless, despite this its high precision performance, we are aware that the inventory is still incomplete. This is particularly the case for the shallow landslides because their inventory covers a maximum period of 13 years that correspond to the imagery range available in © Google Earth. Furthermore, their scars can quickly be altered by natural vegetation regrowth, land reclamation and erosion (Malamud et al., 2004; Van Den Eeckhaut et al., 2007; Kubwimana et al., 2021). In addition, small landslides frequently happen unnoticed at the resolution of the satellite images (Guzzetti et al., 2012). Finally, field validation showed that a significant proportion of old deep-seated landslides can be missed from image analysis. This is because identifying the exact limits of the failed mass may not be easy for old deep-seated landslides, particularly in forest areas (Malamud et al., 2004). While building the inventory, we remained conservative and mapped only the features for which we had high confidence. As the protocol for landslide identification over the whole region was uniform and the number of identified landslides relatively important, we trust that the inventory is reliable and representative enough for the analysis.

The frequency area distributions of all landslides types (Fig. 4a5a,c), with the exception of recent deep-seated and mining landslides, are similar to what has been observed in other parts of the world (e.g., Malamud et al., 2004; Guns & Vanacker, 2014; Jacobs et al., 2017; Depicker et al., 2020). For the recent deep-seated landslides, an overrepresentation is noticed at the level of the smallest landslides and the rollover is absent. Since the spectral signature of these landslides is pronounced, we cannot invoke here a problem of subjectivity in the mapping. Additionally, we can give a high trust in the completeness of the inventory as evidenced by field validation that showed that almost no landslides were missed (Table 3). Therefore, we posit that this divergence in size is related to a lower influence of successive slope failure in the increase of landslide area through time; in other words, recent landslides did not have the time to grow (Tanyaş et al., 2018). This process of successive failures has been well documented for the Ikoma landslide, south of Bukavu (Figure 1b; Dille et al., 2019). The distribution of the mining landslides is irregular and different from what is typically observed, with a rollover that is flattened and a sudden increase in the frequency of the smallest slope failures. Similarly, to the inventory of the recent deep-seated landslides, the completeness and the reliability of the mapped features cannot be much questioned. We suggest that this unusual area distribution is the result of the human-induced alteration of the environmental conditions (see Section 4.4). To our knowledge, there are no similar studies that have been carried out on artificial mining slopes. Further investigations on other cases would be needed to verify our hypothesis.

The presence of a rollover in the frequency-area distribution of the shallow landslides in the anthropogenic environment (Fig. 6b,d) is in opposition to what we could have expected considering the study by Van Den Eeckhaut et al. (2007). ~~This study was also conducted in a populated rural environment and also relied on an inventory that is not associated with one single landslide triggering event. Although this study by Van Den Eeckhaut et al. (2007) was also conducted in a populated rural environment, t~~They did not find a positive power-law relation for the smaller landslides which is separated from the larger landslides by a rollover. This difference probably lies in the fact that our study area is much more landslide-prone. The research by Van Den Eeckhaut et al. (2007) was indeed carried out in a hilly region of Belgium where the temperate climate is much less favourable to the yearly occurrence of shallow landslides, ~~especially when they occur in clusters associated with intense convective rainfall. When the weight of the landslide clusters is removed from our inventory, i.e. when a maximum of 30 landslides per cluster is considered (see Section 2.1), the rollover of this distribution is also present (Fig. 6d).~~ Furthermore, the fact that our inventory covers a smaller time period than that of Van Den Eeckhaut et al. (2007), that our region is not altered by mechanized farming, and that human activities such as works associated with building and road construction and drainage systems are much less present, i.e. factors that are highlighted as causes of landslides in Belgium, are issues that can also be invoked to explain this divergence in the frequency area distribution of shallow landslides.

Under permanent forest, we do not observe a rollover point in the shallow landslide distribution, (Fig. 6b). We hypothesize that the smallest landslides may be hidden under the canopy and therefore less visible on satellite images. A second explanation is that the presence of trees and their roots increases slope stability and therefore the minimal critical area for landsliding (Milledge et al., 2014).

4.2 Drivers of deep-seated landslides

620 The old deep-seated landslide susceptibility model is the first model proposed for the region that focuses only on
deep-seated processes. The model shows a good quantitative prediction performance, both in terms of AUC and
prediction rate. The model shows that ~~the hillslope curvature (planar or profile), elevation, distance to faults, slope
625 angle, and TWI are the most important predictive factors. In other words,~~ terrain morphology and seismic activity
seem to play a dominant role in deep-seated landslide ~~distribution~~activity in the study area. The frequency ratio
analysis (Fig. 8b,d) further supports this as it highlights the association of landslides with steep slopes ($\rightarrow 25^\circ$) and
higher elevations, i.e. in topographic contexts nearer to the ridge crests that are known to amplify seismic shaking
(Meunier et al., 2008). The role of elevation as a driver of more humid conditions should, however, not be ignored
as rainfall is also known to trigger deep-seated landslides (LaHusen et al., 2020). Also, the role of the long-term
weathering of the landscape and the occurrence of non-triggered landslides should not be underestimated (Dille et
al., 2019). Lithology is of lesser importance in our study area; which is in agreement with the findings of Depicker
et al. (2021b) that show that the various lithologies in the region have similar rock strength properties. As we also
630 show that the topography and the presence of faults play a role, it is another factor that can explain that the influence
of lithology is somehow limited.

635 The lower prediction rate of the recent deep-seated landslides using the old deep-seated landslide model could be
related to the fact that the observations are made on a period that is too short to apprehend the full panel of
environmental conditions that led to old deep-seated landslides. For example, no earthquake-induced recent deep-
seated landslides were observed (Dewitte et al., 2021), whereas seismicity is an important component of the old
deep-seated landslide model. In addition, the climatic and seismic conditions have evolved over the past tens of
thousands of years (Felton et al., 2007; Wassmer et al., 2013; Ross et al., 2014; Smets et al., 2016). For example,
640 the region experienced an abrupt shift from drier conditions to more humid conditions around 13,000 BP (Felton
et al., 2007; Wassmer et al., 2013). In addition, about 10,000 BP, Lake Kivu water highstands were ~100 m above
the current level, which could have triggered few large landslides (Ross et al., 2014; Dewitte et al., 2021). This
change in the lake level was not only due to a shift in the climatic conditions but also to the formation of the
Virunga Volcano Province that created a dam on the upstream part of the Rift basin that used to drain northwards
(Figure 1b; Haberyan and Hecky, 1987). During that period of volcano formation, the regional geodynamics and
the seismicity pattern were different (Smets et al., 2016). Hence a large part of the old deep-seated landslides may
645 have been triggered under different conditions (Dewitte et al., 2021).

650 Old and recent deep-seated landslides differ also in terms of size (Fig. 4). There have not been any major events
during the past 60 years that caused large landslides comparable to the largest old deep-seated landslides (of area
 10^6 m^2). We identify five possible factors to explain this difference. First, our window of observation is too narrow
to apprehend the impact of forcing events of high-magnitude such as large earthquakes (Marc et al., 2019). Second,
the past environmental conditions may have been more favourable to large slope failures. A third factor explaining
the size difference between old and recent deep-seated processes is that larger landslides are less frequent but have
a longer-lived morphology legacy; therefore smaller old deep-seated landslides may no longer be visible. The
655 fourth factor is that old landslides have a size that is the legacy of a history of phases of slope deformation, and
not one single slope failure (Tanyaş et al., 2018) as evidenced in the analysis of the nearby Ikoma landslide (Fig.
1b; Dille et al., 2019). Fifth, amalgamation must not be excluded (Marc and Hovius, 2015), especially for the
eldest features. Overall, our current knowledge does not allow to give more credit to one factor in particular. The
common sense is certainly to assume that the difference in landslide size is the reflection of a combination of
660 factors.

4.3 Drivers of shallow landslides

665 Rainfall is the trigger of the shallow landslides that we have identified in this study, which is in agreement with
the other studies in the region (Dewitte et al., 2021; Kubwimana et al., 2021). The spatial distribution of shallow
landslides differs ~~strongly~~ from the distribution of deep-seated landslides. This is mainly due to the anthropogenic
factors such as deforestation that influence shallow processes (Table 4). The regional susceptibility model also
indicates that deforestation is the most important factor in their occurrence (Table 5). Similarly, the analysis of
frequency ratios shows that landslides disproportionately occur within areas that were deforested in the past 60
670 years, demonstrating the role of the forest in slope stabilization (Grima et al., 2020).

Shallow landslides in forest loss areas (Fig. 6a,b) have, on average, a smaller size compared to landslides in forest. This observation is in line with the findings of Depicker et al. (2021b) and is attributed to the decrease of regolith cohesion **by reduced root cohesion and evapotranspiration** due to forest loss (Glade, 2003; Masi et al., 2021), which allows for a smaller minimum critical area for landsliding (Milledge et al., 2014). In short, human-induced land cover change is associated with an increase in the number of landslides and a shift of the frequency-area distribution towards smaller landslides (Guns and Vanacker, 2014).

In permanent anthropogenic environments (Fig. 6a,c), shallow landslides are less frequent, larger, and occur on less steep slopes as compared to shallow landslides in forest. Firstly, the steepest slopes in the anthropogenic environments have been subject to increased landslide erosion the first few years after the original forest cover was removed (prior to 1955-1958) (Depicker et al., 2021b). As a result, we can assume that steep slopes in anthropogenic environments have less regolith available for landsliding compared to steep slopes in permanent forest areas. This process of regolith depletion is further exacerbated in cropland. Wilken et al.(2021) have measured in the region that erosion in cropland sites can reach up to about 40 cm in 55 years. Similarly, Heri-Kazi and Biolders (2021a) measured mean erosion rates of the order of 11 mm/year on cropland. Regolith erosion has therefore the consequence of reducing the spatial extent of areas where landslides can occur. A second process that may explain the landslide pattern in the anthropogenic environments is that, in parallel to regolith erosion, one also has sedimentation and the formation of colluvium (Wilken et al., 2021); which results in local accumulation of material. The material forms a loose sedimentary deposit usually in places with lower slope angles. This could be extra material available for the formation of landslides. Hence, we have less areas available for landslides, but a concentration of the susceptible places. A third explanation is probably related to soil management practices that influence erosion and water infiltration. In the region, usually on the less steep terrain, drainage ditches that favour water infiltration and hence an increase in pore-water pressure are widely applied by farmers (Heri-Kazi and Biolders, 2021b).

4.4 Drivers of mining landslides and road landslides

~~The poor prediction of M~~mining and road landslides ~~are poorly predicted by the shallow and old deep seated landslide~~-susceptibility models (Fig.7), ~~showing shows~~ that they respond to different environmental factors. Road construction and mining activities are commonly associated with the presence of slope cuts and an increase of slope angle. These altered local topographic conditions cannot be constrained in the covariates derived from the SRTM or similar available products. In addition, the disturbances induced by roads and mining activities are not limited to the sole change of slope angle conditions. For example, this also implies changes in water runoff and infiltration, ~~deb~~uttredding, presence of fills and eventual overloading, excess stress from engine/digging, i.e., conditions that can influence the size and frequency characteristics of landslides (Brenning et al., 2015; Arca et al., 2018; Froude and Petley, 2018; McAdoo et al., 2018; Vuillez et al., 2018; ~~);-(Tanyaş et al., 2022),~~

Road landslides are mostly shallow. While it is obvious that roads create favourable conditions for the initiation of landslides, as observed in other studies in the region (Dewitte et al., 2021; Kubwimana et al., 2021), an accurate spatio-temporal regional pattern of these human-induced slope failures cannot be assessed here. A substantial proportion of road landslides can only be observed in the field (Table 3). In addition, landslides along roads can easily disappear due to maintenance works. Furthermore, many of the main roads were already present in the 1950's, their current impact therefore being altered.

Overall, mining conditions seem to lead to landslides whose smallest features are more frequent than what would occur under natural conditions as attested in the frequency area distribution (see Section 4.1). The area of mining landslides is significantly larger than that of road landslides and their regional distribution is slightly more in agreement with the characteristics of deep-seated landslides (Fig. 7d), which is logical as mining activities are related to the lithological characteristics of the landscape.

Considering the recent development of the mining activities in the region (Butsic et al., 2015; Tyukavina et al., 2018; Musumba Teso et al., 2019), we can assume with confidence that the associated landslides represent slope instabilities that have occurred over a period of about 20 years whereas the recent deep-seated landslides represent slope failures that have occurred over the last 60 years. The distribution of the mining landslides is also restricted spatially to some lithologies. With these specificities in mind and the fact that the number of inventoried mining and recent deep-seated landslides is relatively similar, respectively 152 and 159 (Table 2), this study confirms that

725 mining activities increase the odds of landsliding. It has implication not only in terms of hazard assessment but also in assessing the population at risk, knowing that mined sites are populated. This is to be put in parallel with the findings of Depicker et al. (2021a) that show that the risk of shallow landslides has increased significantly in the region during the last decades in the places where mining activities are found due, notably, to an increase in population.

5 Conclusions

730 Our study improves the understanding of landslide processes and the human impact thereon in tropical rural mountainous environments. The use of several sources of data allowed to build a very detailed and comprehensive landslide inventory in time and space for the region: a source of information unprecedented in such environments. This inventory enabled the grouping of landslides into five types: old and recent deep-seated landslides, ~~(recent)~~ shallow landslides, mining landslides and road landslides. Among deep-seated landslides, historical aerial photographs from the 1950's were an added value in the sense that they were used for differentiating between old and recent slope processes. We deduce the differences in the driving factors and area distribution for old and recent deep-seated landslides, suggesting that factors of landslide occurrence are either different or change over time depending on geodynamic and/or climatic conditions. The role of anthropogenic factors has been established in the occurrence of shallow landslides. Deforestation initially increases landsliding, but in the long term, when forest is permanently converted into agricultural land, landslide frequency appears to be lower compared to permanent forest lands. ~~However, t~~The ~~exact~~ impact of forest, ~~and~~ forest cover changes and soil management practices depends on topographic conditions and regolith availability. The factors of occurrence of mining landslides significantly increase landsliding in areas that, under natural conditions, would be less prone to slope failures. Our analysis shows that ~~T~~the importance of human activities ~~must needs to~~ be considered when investigating landslide occurrence in regions under anthropogenic pressure. This is particularly needed when one sees that the changing spatio-temporal patterns of landslides associated with these activities tend to further exacerbate the risks that the population face. On a more technical/methodological note, our study ~~Our analysis~~ also demonstrates the importance of considering the timing of landslides in susceptibility and distribution assessments.

750 Author contribution

J-C.M.M C.B and O.D conceived the study. J-C.M.M processed and analysed the data and created the figures with inputs from C.B, O.D and A.D. J-C.M.M wrote the manuscript, with main inputs from C.B and O.D and contributions from A.D and B.S. J-C.M.M and O.D compiled the landslide inventory. J-C.M.M, O.D, E.M, T.T and L.B.M participated in the fieldwork data acquisition and interpretation. B.S. generated the orthomosaics from aerial photographs. All the authors contributed to the final version of the paper. C.B. and O.D. obtained funding for this work.

Declaration of Competing Interest

The authors declare that they have no conflict of interest.

Acknowledgements

765 Jean-Claude Maki Mateso was supported by the Université catholique de Louvain (doctoral scholarship from the Administration of International Relations) and the Development Cooperation programme of the Royal Museum for Central Africa with support of the Directorate-General Development Cooperation and Humanitarian Aid of Belgium (RMCA-DGD). Arthur Depicker and Benoît Smets were supported by the PASTECA project (BELSPO BRAIN-be Programme, Contract BR/165/A3/PASTECA; <http://pasteca.africamuseum.be/>). Elise Monsieurs was supported by a F.R.S. – FNRS PhD scholarship. The fieldwork was supported by the GeoRisCA (BELSPO SSD Programme, Contract SD/RI/02A; <http://georisca.africamuseum.be/>), RESIST (BELSPO STEREO-III Programme, Contract SR/00/305; <http://resist.africamuseum.be/>) and HARISSA (RMCA-DGD 2019-2024; <https://georisca.africamuseum.be/en/projects/harissa>) projects. We wish to thank B. Delvaux, J. Poesen and V. Vanacker for their insightful discussions and recommendations regarding this research. A special thank goes to François Kervyn for his constant support to conduct research in the region.

References

- Albino, F., Smets, B., d'Oreye, N. and Kervyn, F.: High-resolution TanDEM-X DEM: An accurate method to estimate lava flow volumes at Nyamulagira Volcano (D. R. Congo), *J. Geophys. Res. Solid Earth*, 120(6), 4189–4207, doi:10.1002/2015JB011988, 2015.
- 780 Arca, D., Kutoğlu, H. Ş. and Becek, K.: Landslide susceptibility mapping in an area of underground mining using the multicriteria decision analysis method., *Environ. Monit. Assess.*, 190(12), 725, doi:10.1007/s10661-018-7085-5, 2018.
- Bashwira, M.-R., Cuvelier, J., Hilhorst, D. and van der Haar, G.: Not only a man's world: Women's involvement in artisanal mining in eastern DRC, *Resour. Policy*, 40(1), 109–116, doi:10.1016/j.resourpol.2013.11.002, 2014.
- 785 Basnet, B. and Vodacek, A.: Tracking Land Use/Land Cover Dynamics in Cloud Prone Areas Using Moderate Resolution Satellite Data: A Case Study in Central Africa, *Remote Sens.*, 7(6), 6683–6709, doi:10.3390/rs70606683, 2015.
- Bennett, G. L., Miller, S. R., Roering, J. J. and Schmidt, D. A.: Landslides, threshold slopes, and the survival of relict terrain in the wake of the Mendocino Triple Junction, *Geology*, 44(5), 363–366, doi:10.1130/G37530.1, 2016.
- 790 Brenning, A.: Improved spatial analysis and prediction of landslide susceptibility: Practical recommendations, in *Landslides and Engineered Slopes: Protecting Society Through Improved Understanding*, Chapter Improved Spatial Analysis and Prediction of Landslide Susceptibility: Practical Recommendations, pp. 789–794, Taylor & Francis, Alberta., 2012.
- 795 Brenning, A., Schwinn, M., Ruiz-Páez, A. P. and Muenchow, J.: Landslide susceptibility near highways is increased by 1 order of magnitude in the Andes of southern Ecuador, Loja province, *Nat. Hazards Earth Syst. Sci.*, 15(1), 45–57, doi:10.5194/nhess-15-45-2015, 2015.
- Broeckx, J., Vanmaercke, M., Duchateau, R. and Poesen, J.: A data-based landslide susceptibility map of Africa, *Earth-Science Rev.*, 185, 102–121, doi:10.1016/j.earscirev.2018.05.002, 2018.
- 800 Butsic, V., Baumann, M., Shortland, A., Walker, S. and Kuemmerle, T.: Conservation and conflict in the Democratic Republic of Congo: The impacts of warfare, mining, and protected areas on deforestation, *Biol. Conserv.*, 191, 266–273, doi:10.1016/j.biocon.2015.06.037, 2015.
- Chen, L., Guo, Z., Yin, K., Shrestha, D. P. and Jin, S.: The influence of land use and land cover change on landslide susceptibility: a case study in Zhushan Town, Xuan'en County (Hubei, China), *Nat. Hazards Earth Syst. Sci.*, 19(10), 2207–2228, doi:10.5194/nhess-19-2207-2019, 2019.
- 805 Cirimwami, L., Doumenge, C., Kahindo, J.-M. and Amani, C.: The effect of elevation on species richness in tropical forests depends on the considered lifeform: results from an East African mountain forest, *Trop. Ecol.*, 60(4), 473–484, doi:10.1007/s42965-019-00050-z, 2019.
- DeFries, R. S., Rudel, T., Uriarte, M. and Hansen, M.: Deforestation driven by urban population growth and agricultural trade in the twenty-first century, *Nat. Geosci.*, 3(3), 178–181, doi:10.1038/ngeo756, 2010.
- 810 Delvaux, D., Mulumba, J.-L., Sebagenzi, M. N. S., Bondo, S. F., Kervyn, F. and Havenith, H.-B.: Seismic hazard assessment of the Kivu rift segment based on a new seismotectonic zonation model (western branch, East African Rift system), *J. African Earth Sci.*, 134, 831–855, doi:10.1016/j.jafrearsci.2016.10.004, 2017.
- 815 Depicker, A., Jacobs, L., Delvaux, D., Havenith, H.-B., Maki Mateso, J.-C., Govers, G. and Dewitte, O.: The added value of a regional landslide susceptibility assessment: The western branch of the East African Rift, *Geomorphology*, 353, 106886, doi:10.1016/j.geomorph.2019.106886, 2020.
- Depicker, A., Jacobs, L., Mboga, N., Smets, B., Van Rompaey, A., Lennert, M., Wolff, E., Kervyn, F., Michellier, C., Dewitte, O. and Govers, G.: Historical dynamics of landslide risk from population and forest-cover changes in the Kivu Rift, *Nat. Sustain.*, 4(11), 965–974, doi:10.1038/s41893-021-00757-9, 2021a.
- 820 Depicker, A., Govers, G., Jacobs, L., Campforts, B., Uwihirwe, J. and Dewitte, O.: Interactions between deforestation, landscape rejuvenation, and shallow landslides in the North Tanganyika–Kivu rift region, Africa, *Earth Surf. Dyn.*, 9(3), 445–462, doi:10.5194/esurf-9-445-2021, 2021b.

- Dewitte, O., Chung, C.-J., Cornet, Y., Daoudi, M. and Demoulin, A.: Combining spatial data in landslide reactivation susceptibility mapping: A likelihood ratio-based approach in W Belgium, *Geomorphology*, 122(1–2), 153–166, doi:10.1016/j.geomorph.2010.06.010, 2010.
- 825 Dewitte, O., Dille, A., Depicker, A., Kubwimana, D., Maki Mateso, J.-C., Mugaruka Bibentyo, T., Uwihirwe, J. and Monsieurs, E.: Constraining landslide timing in a data-scarce context: from recent to very old processes in the tropical environment of the North Tanganyika-Kivu Rift region, *Landslides*, 18(1), 161–177, doi:10.1007/s10346-020-01452-0, 2021.
- 830 Dewitte, O., Depicker, A., Moeyersons, J. and Dille, A.: *Mass Movements in Tropical Climates, in Treatise on Geomorphology, vol. 1, pp. 338–349, Elsevier., 2022.*
- Dille, A., Kervyn, F., Mugaruka Bibentyo, T., Delvaux, D., Ganza, G. B., Ilombe Mawe, G., Kalikone Buzera, C., Safari Nakito, E., Moeyersons, J., Monsieurs, E., Nzolang, C., Smets, B., Kervyn, M. and Dewitte, O.: Causes and triggers of deep-seated hillslope instability in the tropics – Insights from a 60-year record of Ikoma landslide (DR Congo), *Geomorphology*, 345, 106835, doi:10.1016/j.geomorph.2019.106835, 2019.
- 835 Drake, T. W., Van Oost, K., Barthel, M., Bauters, M., Hoyt, A. M., Podgorski, D. C., Six, J., Boeckx, P., Trumbore, S. E., Cizungu Ntaboba, L. and Spencer, R. G. M.: Mobilization of aged and biolabile soil carbon by tropical deforestation, *Nat. Geosci.*, 12(7), 541–546, doi:10.1038/s41561-019-0384-9, 2019.
- Emberson, R., Kirschbaum, D. and Stanley, T.: New global characterisation of landslide exposure, *Nat. Hazards Earth Syst. Sci.*, 20(12), 3413–3424, doi:10.5194/nhess-20-3413-2020, 2020.
- 840 ESA: ESA Climate Change Initiative – Africa Land Cover Project 2017. 20 m Resolution, Paris, France. [online] Available from: <https://www.esa-landcover-cci.org/?q=node/187>, 2016.
- Fang, Z., Wang, Y., Peng, L. and Hong, H.: Integration of convolutional neural network and conventional machine learning classifiers for landslide susceptibility mapping, *Comput. Geosci.*, 139(February), 104470, doi:10.1016/j.cageo.2020.104470, 2020.
- 845 Felton, A. A., Russell, J. M., Cohen, A. S., Baker, M. E., Chesley, J. T., Lezzar, K. E., McGlue, M. M., Pigati, J. S., Quade, J., Curt Stager, J. and Tiercelin, J. J.: Paleolimnological evidence for the onset and termination of glacial aridity from Lake Tanganyika, Tropical East Africa, *Palaeogeogr. Palaeoclimatol. Palaeoecol.*, 252(3–4), 405–423, doi:10.1016/j.palaeo.2007.04.003, 2007.
- 850 Fisher, G. B., Amos, C. B., Bookhagen, B., Burbank, D. W. and Godard, V.: Channel widths, landslides, faults, and beyond: The new world order of high-spatial resolution Google Earth imagery in the study of earth surface processes, in *Google Earth and Virtual Visualizations in Geoscience Education and Research*, vol. 492, pp. 1–22, Geological Society of America., 2012.
- Froude, M. J. and Petley, D. N.: Global fatal landslide occurrence from 2004 to 2016, *Nat. Hazards Earth Syst. Sci.*, 18(8), 2161–2181, doi:10.5194/nhess-18-2161-2018, 2018.
- 855 Geenen, S.: A dangerous bet: The challenges of formalizing artisanal mining in the Democratic Republic of Congo, *Resour. Policy*, 37(3), 322–330, doi:10.1016/j.resourpol.2012.02.004, 2012.
- Glade, T.: Landslide occurrence as a response to land use change: a review of evidence from New Zealand, *CATENA*, 51(3–4), 297–314, doi:10.1016/S0341-8162(02)00170-4, 2003.
- 860 Grima, N., Edwards, D., Edwards, F., Petley, D. and Fisher, B.: Landslides in the Andes: Forests can provide cost-effective landslide regulation services, *Sci. Total Environ.*, 745, 141128, doi:10.1016/j.scitotenv.2020.141128, 2020.
- Guns, M. and Vanacker, V.: Shifts in landslide frequency–area distribution after forest conversion in the tropical Andes, *Anthropocene*, 6, 75–85, doi:10.1016/j.ancene.2014.08.001, 2014.
- 865 Guzzetti, F., Mondini, A. C., Cardinali, M., Fiorucci, F., Santangelo, M. and Chang, K.-T.: Landslide inventory maps: New tools for an old problem, *Earth-Science Rev.*, 112(1–2), 42–66, doi:10.1016/j.earscirev.2012.02.001, 2012.
- Haberyan, K. A. and Hecky, R. E.: The late Pleistocene and Holocene stratigraphy and paleolimnology of Lakes Kivu and Tanganyika, *Palaeogeogr. Palaeoclimatol. Palaeoecol.*, 61(C), 169–197, doi:10.1016/0031-0182(87)90048-4, 1987.

- 870 Heri-Kazi, A. B. and Biolders, C. L.: “Cropland characteristics and extent of soil loss by rill and gully erosion in smallholder farms in the KIVU highlands, D.R. Congo,” *Geoderma Reg.*, 26(May), e00404, doi:10.1016/j.geodrs.2021.e00404, 2021.
- Heri-Kazi, A. B. and Biolders, C. L.: Erosion and soil and water conservation in <scp>South-Kivu</scp> (eastern DR Congo): The farmers’ view, *L. Degrad. Dev.*, 32(2), 699–713, doi:10.1002/ldr.3755, 2021.
- 875 Hosmer, D. W. and Lemeshow, S.: *Applied Logistic Regression*, Second Edi., Wiley, New York., 2000.
- Imani, G., Boyemba, F., Lewis, S., Nabahungu, N. L., Calders, K., Zapfack, L., Riera, B., Balegamire, C. and Cuni-Sanchez, A.: Height-diameter allometry and above ground biomass in tropical montane forests: Insights from the Albertine Rift in Africa, edited by D. Hui, *PLoS One*, 12(6), e0179653, doi:10.1371/journal.pone.0179653, 2017.
- 880 Jacobs, L., Dewitte, O., Poesen, J., Maes, J., Mertens, K., Sekajugo, J. and Kervyn, M.: Landslide characteristics and spatial distribution in the Rwenzori Mountains, Uganda, *J. African Earth Sci.*, 134, 917–930, doi:10.1016/j.jafrearsci.2016.05.013, 2017.
- Jacobs, L., Dewitte, O., Poesen, J., Sekajugo, J., Nobile, A., Rossi, M., Thiery, W. and Kervyn, M.: Field-based landslide susceptibility assessment in a data-scarce environment: the populated areas of the Rwenzori Mountains, *Nat. Hazards Earth Syst. Sci.*, 18(1), 105–124, doi:10.5194/nhess-18-105-2018, 2018.
- 885 Kampunzu, A. B., Bonhomme, M. G. and Kanika, M.: Geochronology of volcanic rocks and evolution of the Cenozoic western branch of the East African Rift system, *J. African Earth Sci.*, 26(3), 441–461, doi:10.1016/S0899-5362(98)00025-6, 1998.
- Keefer, D. K.: Landslides caused by earthquakes., *Geol. Soc. Am. Bull.*, 95(4), 406–421, doi:10.1130/0016-7606(1984)95, 1984.
- 890 Kirschbaum, D. B., Adler, R., Hong, Y., Kumar, S., Peters-Lidard, C. and Lerner-Lam, A.: Advances in landslide nowcasting: evaluation of a global and regional modeling approach, *Environ. Earth Sci.*, 66(6), 1683–1696, doi:10.1007/s12665-011-0990-3, 2012.
- Kleinbaum, D. G. and Klein, M.: *Logistic Regression*, edited by Intergovernmental Panel on Climate Change, Springer New York, New York, NY., 2010.
- 895 Kubwimana, D., Ait Brahim, L., Nkurunziza, P., Dille, A., Depicker, A., Nahimana, L., Abdelouafi, A. and Dewitte, O.: Characteristics and Distribution of Landslides in the Populated Hillslopes of Bujumbura, Burundi, *Geosciences*, 11(6), 259, doi:10.3390/geosciences11060259, 2021.
- Laghmouch, M., Kalikone, C. B., Ganza, G. B., Delvaux, D., Bachinyaga, J., Wazi, N., Nzolang, C., Fernandez, M., Nimpagaritse, G., Tack, L., Dewaele, S. and Kervyn, F.: Carte géologique du Kivu au 1/500 00, D/2018/0254/33, Africamuseum, Belgique. Université Officielle de Bukavu, RDC., 2018.
- 900 LaHusen, S. R., Duvall, A. R., Booth, A. M., Grant, A., Mishkin, B. A., Montgomery, D. R., Struble, W., Roering, J. J. and Wartman, J.: Rainfall triggers more deep-seated landslides than Cascadia earthquakes in the Oregon Coast Range, USA, *Sci. Adv.*, 6(38), eaba6790, doi:10.1126/sciadv.aba6790, 2020.
- 905 Lee, S. and Pradhan, B.: Landslide hazard mapping at Selangor, Malaysia using frequency ratio and logistic regression models, *Landslides*, 4(1), 33–41, doi:10.1007/s10346-006-0047-y, 2007.
- Lee, S., Ryu, J.-H. and Kim, I.-S.: Landslide susceptibility analysis and its verification using likelihood ratio, logistic regression, and artificial neural network models: case study of Youngin, Korea, *Landslides*, 4(4), 327–338, doi:10.1007/s10346-007-0088-x, 2007.
- 910 Linard, C., Gilbert, M., Snow, R. W., Noor, A. M. and Tatem, A. J.: Population Distribution, Settlement Patterns and Accessibility across Africa in 2010, edited by G. J.-P. Schumann, *PLoS One*, 7(2), e31743, doi:10.1371/journal.pone.0031743, 2012.
- Maki Mateso, J.-C. and Dewitte, O.: Towards an inventory of landslide processes and the elements at risk on the Rift flanks West of Lake Kivu (DRC), *Geo. Eco. Trop.*, 38(1), 137–154, 2014.
- 915 Malamud, B. D., Turcotte, D. L., Guzzetti, F. and Reichenbach, P.: Landslide inventories and their statistical properties, *Earth Surf. Process. Landforms*, 29(6), 687–711, doi:10.1002/esp.1064, 2004.

- Marc, O. and Hovius, N.: Amalgamation in landslide maps: Effects and automatic detection, *Nat. Hazards Earth Syst. Sci.*, 15(4), 723–733, doi:10.5194/nhess-15-723-2015, 2015.
- 920 Marc, O., Behling, R., Andermann, C., Turowski, J. M., Illien, L., Roessner, S. and Hovius, N.: Long-term erosion of the Nepal Himalayas by bedrock landsliding: the role of monsoons, earthquakes and giant landslides, *Earth Surf. Dyn.*, 7(1), 107–128, doi:10.5194/esurf-7-107-2019, 2019.
- Masi, E. B., Segoni, S. and Tofani, V.: Root Reinforcement in Slope Stability Models: A Review, *Geosciences*, 11(5), 212, doi:10.3390/geosciences11050212, 2021.
- 925 Masumbuko, N. C., Habiyaremye, M. F. and Lejoly, J.: Woody climbing plants influence the structure of the mountain forest in the Kahuzi-Biega National Park, DR Congo, *Reg. Environ. Chang.*, 12(4), 951–959, doi:10.1007/s10113-012-0309-2, 2012.
- McAdoo, B. G., Quak, M., Gnyawali, K. R., Adhikari, B. R., Devkota, S., Rajbhandari, P. L. and Sudmeier-Rieux, K.: Roads and landslides in Nepal: how development affects environmental risk, *Nat. Hazards Earth Syst. Sci.*, 18(12), 3203–3210, doi:10.5194/nhess-18-3203-2018, 2018.
- 930 Meunier, P., Hovius, N. and Haines, J. A.: Topographic site effects and the location of earthquake induced landslides, *Earth Planet. Sci. Lett.*, 275(3–4), 221–232, doi:10.1016/j.epsl.2008.07.020, 2008.
- Michellier, C., Pigeon, P., Kervyn, F. and Wolff, E.: Contextualizing vulnerability assessment: a support to geo-risk management in central Africa, *Nat. Hazards*, 82(S1), 27–42, doi:10.1007/s11069-016-2295-z, 2016.
- 935 Milledge, D. G., Bellugi, D., McKean, J. A., Densmore, A. L. and Dietrich, W. E.: A multidimensional stability model for predicting shallow landslide size and shape across landscapes, *J. Geophys. Res. Earth Surf.*, 119(11), 2481–2504, doi:10.1002/2014JF003135, 2014.
- Mokoso, J. M., Habiyaremye, F. M., Janssen, T., van Diggelen, R., Robbrecht, E. and Habimana, H. N.: Diversité des Fougères et leurs alliées le long du gradient altitudinal au sein de l'écosystème forestier des montagnes du Parc National de Kahuzi-Biega (RD CONGO), *Int. J. Environ. Stud.*, 70(2), 259–283, doi:10.1080/00207233.2013.778007, 2013.
- 940 Monsieurs, E.: the Potential of Satellite Rainfall Estimates in Assessing Regional Landslide Hazard in Central Africa, University of Liège., 2020.
- Monsieurs, E., Kirschbaum, D. B., Tan, J., Maki Mateso, J.-C., Jacobs, L., Plisnier, P.-D., Thiery, W., Umutoni, A., Musoni, D., Bibentyo, T. M., Ganza, G. B., Mawe, G. I., Bagalwa, L., Kankurize, C., Michellier, C., Stanley, T., Kervyn, F., Kervyn, M., Demoulin, A. and Dewitte, O.: Evaluating TMPA Rainfall over the Sparsely Gauged East African Rift, *J. Hydrometeorol.*, 19(9), 1507–1528, doi:10.1175/JHM-D-18-0103.1, 2018a.
- 945 Monsieurs, E., Jacobs, L., Michellier, C., Basimike Tchanganaboba, J., Ganza, G. B., Kervyn, F., Maki Mateso, J.-C., Mugaruka Bibentyo, T., Kalikone Buzera, C., Nahimana, L., Ndayisenga, A., Nkurunziza, P., Thiery, W., Demoulin, A., Kervyn, M. and Dewitte, O.: Landslide inventory for hazard assessment in a data-poor context: a regional-scale approach in a tropical African environment, *Landslides*, 15(11), 2195–2209, doi:10.1007/s10346-018-1008-y, 2018b.
- 950 Mugagga, F., Kakembo, V. and Buyinza, M.: A characterisation of the physical properties of soil and the implications for landslide occurrence on the slopes of Mount Elgon, Eastern Uganda, *Nat. Hazards*, 60(3), 1113–1131, doi:10.1007/s11069-011-9896-3, 2012.
- 955 Muñoz-Torrero Manchado, A., Allen, S., Ballesteros-Cánovas, J. A., Dhakal, A., Dhital, M. R. and Stoffel, M.: Three decades of landslide activity in western Nepal: new insights into trends and climate drivers, *Landslides*, 18(6), 2001–2015, doi:10.1007/s10346-021-01632-6, 2021.
- Musumba Teso, P., Kavira, M. and Katcho, K.: Key Factors Driving Deforestation in North-Kivu Province, Eastern DR-Congo Using GIS and Remote Sensing, *Am. J. Geogr. Inf. Syst.*, 8(1), 11–25, doi:10.5923/j.ajgis.20190801.02, 2019.
- 960 Nzabandora, C. K. and Roche, E.: Six millennia of environment evolving on the western ridge of the Kivu Lake in the Mount Kahuzi area (D.R.Congo) Palynological analysis of the Ngushu sedimentary sequence, *Geo. Eco. Trop.*, 39(1), 1–26, 2015.
- Peel, M. C., Finlayson, B. L. and McMahon, T. A.: Updated world map of the Köppen-Geiger climate

- 965 classification, *Hydrol. Earth Syst. Sci.*, 11(5), 1633–1644, doi:10.5194/hess-11-1633-2007, 2007.
- Reichenbach, P., Rossi, M., Malamud, B. D., Mihir, M. and Guzzetti, F.: A review of statistically-based landslide susceptibility models, *Earth-Science Rev.*, 180(March), 60–91, doi:10.1016/j.earscirev.2018.03.001, 2018.
- 970 Ross, K. A., Smets, B., De Batist, M., Hilbe, M., Schmid, M. and Anselmetti, F. S.: Lake-level rise in the late Pleistocene and active subaquatic volcanism since the Holocene in Lake Kivu, East African Rift, *Geomorphology*, 221, 274–285, doi:10.1016/j.geomorph.2014.05.010, 2014.
- Rossi, M. and Reichenbach, P.: LAND-SE : a software for statistically based landslide, *Geosci. Model Dev.*, 3533–3543, doi:10.5194/gmd-9-3533-2016, 2016.
- 975 **Shu, H., Hürlimann, M., Molowny-Horas, R., González, M., Pinyol, J., Abancó, C. and Ma, J.: Relation between land cover and landslide susceptibility in Val d’Aran, Pyrenees (Spain): Historical aspects, present situation and forward prediction, *Sci. Total Environ.*, 693, 133557, doi:10.1016/j.scitotenv.2019.07.363, 2019.**
- Sidle, R. C. and Bogaard, T. A.: Dynamic earth system and ecological controls of rainfall-initiated landslides, *Earth-Science Rev.*, 159, 275–291, doi:10.1016/j.earscirev.2016.05.013, 2016.
- 980 Sidle, R. C., Ziegler, A. D., Negishi, J. N., Nik, A. R., Siew, R. and Turkelboom, F.: Erosion processes in steep terrain—Truths, myths, and uncertainties related to forest management in Southeast Asia, *For. Ecol. Manage.*, 224(1–2), 199–225, doi:10.1016/j.foreco.2005.12.019, 2006.
- Smets, B., Delvaux, D., Ross, K. A., Poppe, S., Kervyn, M., d’Oreye, N. and Kervyn, F.: The role of inherited crustal structures and magmatism in the development of rift segments: Insights from the Kivu basin, western branch of the East African Rift, *Tectonophysics*, 683, 62–76, doi:10.1016/j.tecto.2016.06.022, 2016.
- 985 Stanley, T. and Kirschbaum, D. B.: A heuristic approach to global landslide susceptibility mapping, *Nat. Hazards*, 87(1), 145–164, doi:10.1007/s11069-017-2757-y, 2017.
- Tanyaş, H., Allstadt, K. E. and van Westen, C. J.: An updated method for estimating landslide-event magnitude, *Earth Surf. Process. Landforms*, 43(9), 1836–1847, doi:10.1002/esp.4359, 2018.
- 990 **Tanyaş, H., Görüm, T., Kirschbaum, D. and Lombardo, L.: Could road constructions be more hazardous than an earthquake in terms of mass movement?, *Nat. Hazards*, doi:10.1007/s11069-021-05199-2, 2022.**
- Trefon, T.: Congo’s Environmental Paradox: potential and predation in a land of plenty, Zed Books Ltd., London., 2016.
- 995 Tyukavina, A., Hansen, M. C., Potapov, P., Parker, D., Okpa, C., Stehman, S. V., Kommareddy, I. and Turubanova, S.: Congo Basin forest loss dominated by increasing smallholder clearing, *Sci. Adv.*, 4(11), eaat2993, doi:10.1126/sciadv.aat2993, 2018.
- Van Acker, F.: Where did all the land go? Enclosure & social struggle in Kivu (D.R.Congo), *Rev. Afr. Polit. Econ.*, 32(103), 79–98, doi:10.1080/03056240500120984, 2005.
- 1000 Van Den Eeckhaut, M., Vanwalleghem, T., Poesen, J., Govers, G., Verstraeten, G. and Vandekerckhove, L.: Prediction of landslide susceptibility using rare events logistic regression: A case-study in the Flemish Ardennes (Belgium), *Geomorphology*, 76(3–4), 392–410, doi:10.1016/j.geomorph.2005.12.003, 2006.
- Van Den Eeckhaut, M., Poesen, J., Govers, G., Verstraeten, G. and Demoulin, A.: Characteristics of the size distribution of recent and historical landslides in a populated hilly region, *Earth Planet. Sci. Lett.*, 256(3–4), 588–603, doi:10.1016/j.epsl.2007.01.040, 2007.
- 1005 Vanacker, V., Vanderschaeghe, M., Govers, G., Willems, E., Poesen, J., Deckers, J. and De Bievre, B.: Linking hydrological, infinite slope stability and land-use change models through GIS for assessing the impact of deforestation on slope stability in high Andean watersheds, *Geomorphology*, 52(3–4), 299–315, doi:10.1016/S0169-555X(02)00263-5, 2003.
- 1010 Vanmaercke, M., Ardizzone, F., Rossi, M. and Guzzetti, F.: Exploring the effects of seismicity on landslides and catchment sediment yield: An Italian case study, *Geomorphology*, 278, 171–183, doi:10.1016/j.geomorph.2016.11.010, 2017.
- Vuillez, C., Tonini, M., Sudmeier-Rieux, K., Devkota, S., Derron, M. H. and Jaboyedoff, M.: Land use changes,

landslides and roads in the Phewa Watershed, Western Nepal from 1979 to 2016, *Appl. Geogr.*, 94(March 2017), 30–40, doi:10.1016/j.apgeog.2018.03.003, 2018.

1015 Van de Walle, J., Thiery, W., Brousse, O., Souverijns, N., Demuzere, M. and van Lipzig, N. P. M.: A convection-permitting model for the Lake Victoria Basin: evaluation and insight into the mesoscale versus synoptic atmospheric dynamics, *Clim. Dyn.*, 54(3–4), 1779–1799, doi:10.1007/s00382-019-05088-2, 2020.

Wassmer, P., Schwartz, D., Gomez, C., Ward, S. and Barrere, P.: Geomorphology and sedimentary structures of upper pleistocene to holocene alluvium within the nyabarongo valley (Rwanda). palaeo-climate and palaeo-environmental implications, *Geogr. Fis. e Din. Quat.*, 36(1), 199–210, doi:10.4461/GFDQ.2013.36.17, 2013.

1020 Wilken, F., Fiener, P., Ketterer, M., Meusburger, K., Muhindo, D. I., van Oost, K. and Doetterl, S.: Assessing soil redistribution of forest and cropland sites in wet tropical Africa using ²³⁹⁺²⁴⁰Pu fallout radionuclides, *SOIL*, 7(2), 399–414, doi:10.5194/soil-7-399-2021, 2021.