



Characteristics and beach safety knowledge of beachgoers on unpatrolled surf beaches in Australia.

Lea Uebelhoer^{1,4}, William Koon^{1,4}, Mitchell D. Harley^{2,4}, Jasmin C. Lawes^{1,3,4} and Robert W. Brander^{1,4}

5 ¹School of Biological, Earth and Environmental Sciences, UNSW Sydney, Sydney, 2052, Australia

²Water Research Laboratory, School of Civil and Environmental Engineering, UNSW Sydney, Sydney, 2052, Australia

³Surf Life Saving Australia, Sydney, 2026, Australia

⁴UNSW Beach Safety Research Group, UNSW Sydney, Sydney, 2052, Australia

10 *Correspondence to:* Robert W. Brander (rbrander@unsw.edu.au)

Abstract. The majority of drowning deaths on Australian beaches occur significant distances away from lifeguard services. This study uses results of 459 surveys of beachgoers at five beaches unpatrolled by lifeguards in New South Wales, Australia to improve understanding of who visits these beaches and why, and to identify risk factors associated with their beach safety knowledge and behaviour. Many unpatrolled beach users were infrequent beachgoers and weak swimmers, with poor rip current hazard identification skills, who did not observe safety signage that was present, and yet intended to enter the water to swim despite being aware that no lifeguards were present. The survey found that the main reasons beachgoers visited unpatrolled beaches were because they were conveniently close to their holiday accommodation, or they represented a quieter location away from crowds. Future beach safety interventions in Australia need to extend beyond the standard ‘swim between the flags’ message in recognition that people will always frequent unpatrolled beaches. Future beach safety interventions for unpatrolled beaches should be tailored towards the varied types of demographic beach users, such as domestic tourist families, males, and day visitors attracted by social media.

1 Introduction

Tragically, many people drown unintentionally on beaches worldwide, with each drowning associated with significant emotional, societal and economic costs (Sherker et al., 2008; Houser et al., 2021). Globally, the most common and effective management response to ensuring beachgoer safety is through the provision of lifeguard services, which are often denoted by, or combined with, various types of beach safety flag systems (Gilchrist and Branche, 2016). Australia has a well-established professional lifeguarding and volunteer surf lifesaving service (Jaggard, 2006) with patrolled areas denoted by the presence of a pair (or pairs) of red and yellow beach flags. The area between these flags designate a supervised, safer swimming zone for beachgoers to recreate safely in the surf. Similar systems are also employed in New Zealand, the United Kingdom, South Africa and other countries (Brander and MacMahan, 2011). The primary beach safety message promoted to beachgoers in Australia is to ‘always swim between the red and yellow flags’. However, the ability to follow this message can be problematic



35 due to the logistical reality that lifeguard services are not present at all beaches, or at all times. Furthermore, several studies have found that while most beachgoers are aware of the meaning and importance of the red and yellow beach flags, many still choose not to swim between them when they visit patrolled beaches, or often choose to swim at unpatrolled beaches (White and Hyde, 2010; Williamson et al., 2012; Ménard et al., 2018; Pitman et al., 2021).

40 In Australia, less than 5% of the approximately 11,000 beaches are patrolled by lifeguards and surf lifesavers (herein referred to as 'lifeguards') and only 20% of the 721 beaches in New South Wales (NSW), Australia's most populated state, are patrolled (SLSA, 2021). This is problematic given that many unpatrolled beaches are easily accessible and proximal to popular tourist accommodation. McKay et al. (2014) found that more than 90% of coastal tourist parks in NSW are located closest to unpatrolled, or temporarily unpatrolled, beaches that are rated as 'hazardous' (Short and Hogan, 1994). It is unrealistic to assume that visitors to these coastal accommodations will always seek out the nearest patrolled beach, which in many cases can be a significant distance away. It is therefore not surprising that 73% of the 136 coastal drowning deaths in Australia between July 2020 – June 2021 occurred greater than 1 km away from a lifeguard service, or outside of patrol times (SLSA, 2021).

45 In the absence of lifeguarding services a common beach safety intervention is the use of warning signs alerting beachgoers of various hazards, or to the fact that the beach is unpatrolled. However, several studies have shown that beach safety signs are not necessarily as effective as authorities may assume (Matthews et al., 2014; Brannstrom et al., 2015; Houser et al., 2017; Sotés et al., 2020). Ultimately, many rescues on unpatrolled beaches are conducted by surfers (Attard et al., 2015; Berg et al., 2021) and other bystanders (Brander et al., 2019; Franklin et al., 2019). Tragically however, it is not uncommon for bystander rescuers to drown while attempting to rescue others (Lawes et al., 2020).

55 There has been a recent increase in beach safety research (Brander, 2019) that attempts to provide a better understanding of the scope of beach related drowning events. Existing studies typically describe the extent and characteristics of beach drowning (Silva-Cavalcanti et al., 2018; Koon et al., 2021; Segura et al., 2021), particularly in relation to strong, offshore flowing rip currents (Castelle et al., 2016), which are considered to be the main hazard for swimmers and bathers on surf beaches (Gensini and Ashley, 2010; Woodward et al., 2013; Brighton et al., 2013; Arozarena et al., 2015; Brewster et al., 2019; Cooney et al., 2020). Other studies have conducted surveys to describe the demographics, beach safety knowledge and behaviour of various types of beachgoers (Ballantyne et al., 2005; Williamson et al., 2012; Clifford et al., 2018; Sotés et al., 2018;), often in relation to the presence of lifeguards, beach safety flags and the rip current hazard (Sherker et al., 2010; Caldwell et al., 2013; Brannstrom et al., 2014; Fallon et al., 2018; Ménard et al., 2018; Locknick and Houser, 2021; Pitman et al., 2021).

60 While many fatal and non-fatal drowning incidents are known to occur at unpatrolled beaches, no study has yet specifically focused on the characteristics, behavior and beach safety knowledge of beachgoers visiting unpatrolled beaches. The recent Australian Water Safety Strategy 2030 has an aspirational goal of reducing drowning in Australia by 50% by 2030, and one



of the key priority areas of focus are coastal environments (beaches, oceans and rocks) where 1,143 drowning deaths occurred between 2009-2019 (AWSC, 2021). Within this priority area, an identified key research activity is to improve understanding of usage of unpatrolled and remote locations. To address this gap, this study aims to gain a better understanding of who visits unpatrolled beaches in New South Wales, Australia, the reasons why they choose to visit these beaches and whether these beach visitors are more at risk due to the absence of lifeguards. A secondary aim is to identify beach user profiles and risk factors that will assist in the future development of beach safety management interventions and education approaches for high-risk demographics that frequent unpatrolled beaches, both in Australia and internationally.

70 **2 Material and Methods**

The study was designed to obtain data by administering a survey questionnaire to beachgoers at five unpatrolled beaches along the New South Wales coast, Australia (Figure 1) between January and April, 2021. The beaches experienced different patterns of beach user demographics: i) three south coast NSW beaches (Merry Beach, Racecourse Beach, Tabourie Beach) were popular with domestic tourists during the summer months; ii) Turimetta Beach in Sydney's northern beaches is an urban beach used primarily by local residents; and iii) Dreamtime Beach in northern NSW is a popular social-media driven tourist destination (attracting both international and domestic visitors) due to being ranked as one of the best beaches in Australia, despite recording five drowning deaths since 2015 (McCutcheon, 2018).

2.1 Study site descriptions

The three south coast NSW beaches (Figure 1c) are located in a region characterized by nearby holiday accommodations and tourist parks, but few patrolled beaches (McKay et al., 2014). The closest patrolled beach was at Mollymook, a 16 km and 35 km drive from the closest (Tabourie) and furthest (Merry) surveyed beach respectively. The south coast beaches varied in terms of their geomorphology and hazards, but were all characterised by active surf zone conditions, particularly the presence of rip currents. There have been 10 drowning deaths recorded across these locations since 2004, all of which were due to drowning (SLSA, unpublished data).

Merry Beach is a 400 m long embayed beach that exhibited low-tide terrace morphology (Wright and Short, 1984) with a boundary rip current against the northern headland and a weak channelized rip near the middle of the beach. The beach has a modal hazard rating of 5/10 (moderately hazardous) according to Short (2007). Tabourie Beach is a 1.7 km long beach connected by a sandy salient called Tabourie Point with Wairo Beach on the northern side. Transverse bar and rip morphology (Wright and Short, 1984) was present along the middle-southern part of Tabourie and on the northern end of Wairo. The beach has a modal hazard rating of 7/10 (highly hazardous; Short, 2007). Racecourse Beach is situated between Merry Beach and Tabourie Beach and is a 1.5 km long transverse bar and rip beach that is considered moderately hazardous with a hazard rating



of 6/10 (Short, 2007). At all south coast beaches, low-moderate wave energy conditions prevailed during the survey period with observed breaking wave heights consistently < 1.5 m.

95

Sydney's Turimetta Beach (Figure 1b) is in close proximity (< 1 km) to patrolled beaches situated to the north and south. It is a 350 m long embayed beach considered very hazardous with a hazard rating of 7/10 (Short, 2007) as it is typified by rock platforms, rocky outcrops and several rip currents. There have been five drowning deaths recorded around Turimetta Beach since 2004, often associated with jumping off the adjacent headlands (SLSA, unpublished data). During the survey period the beach was characterized by a boundary rip current against the headland and moderate wave conditions with breaking wave heights ranging from 1.5 – 2 m.

100

Dreamtime Beach is located on the far north coast of NSW close to the Queensland border and comprises the northern end of Kingscliff Beach (Figure 1b). It is a transverse bar and rip beach rated as being moderately hazardous (6 /10; Short, 2007) and the nearest patrolled beach is < 1 km away at Fingal Beach, just north of Fingal Head. There have been five drowning deaths recorded at Dreamtime Beach since 2015 (SLSA, unpublished data). Wave activity during the survey period was moderate to high with observed breaking wave heights ranging from 1.5-3 m and channel rips were present along the beach in addition to a boundary rip against the northern headland.

105

2.2 Survey design

The survey questionnaire was designed using the web-based survey platform Qualtrics and was restricted to respondents aged 18 years or older. It consisted of 24 core questions and nine sub-questions across three thematic sections (Supplement 1). Section 1 explored demographic information, background information on respondents' participation in coastal activities, and questions related to their swimming ability and beach visitation frequency. Section 2 asked location specific questions, such as previous visitation to the beach they were being surveyed at, reasons for visiting the beach, who they were visiting the beach with, what activity they intended to participate in while at the beach, and if they would recommend the beach to others. Section 3 was designed to obtain information related to beach safety including hazard perception, questions relating to the red and yellow flags, lifeguards and beach safety signage with a focus on knowledge of the rip current hazard and rip current identification, both from images and in-situ. Ethics approval for the survey was granted by the UNSW Sydney Human Research Ethics Advisory Panel (project number HC190629).

115

120

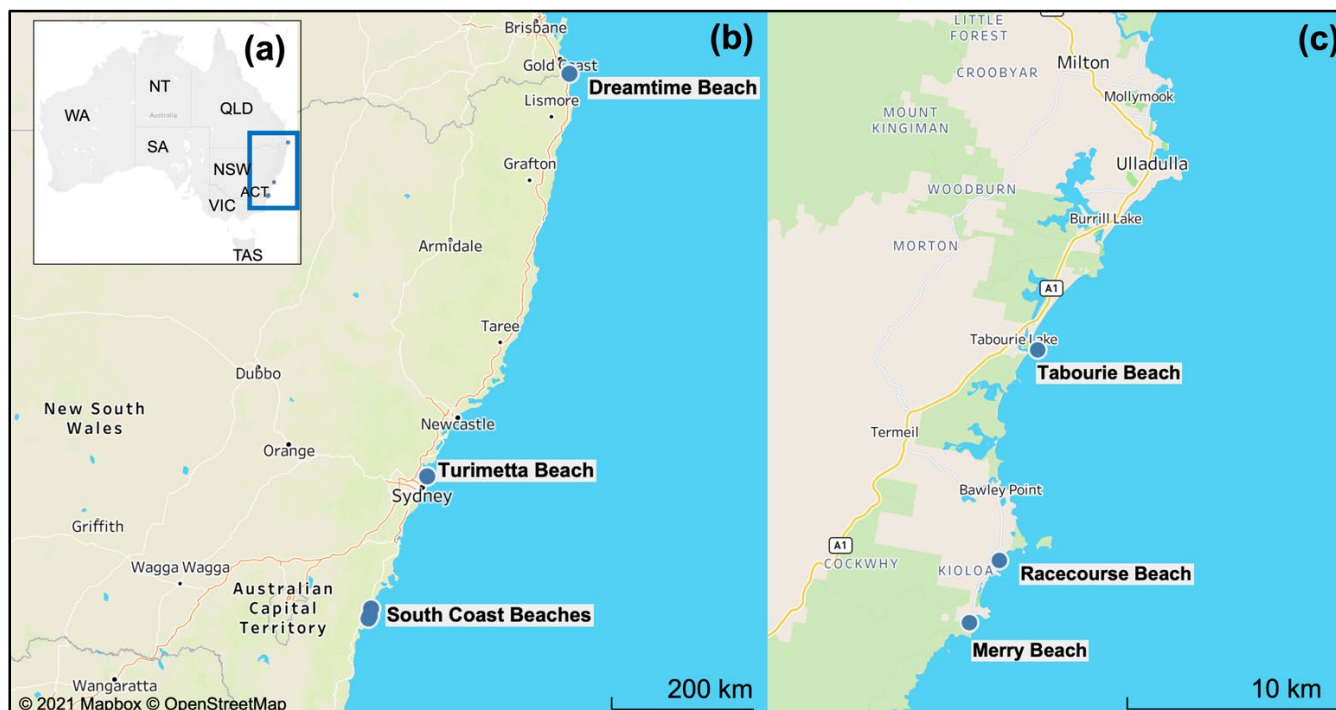


Figure 1. Study sites along the New South Wales Coast, Australia (a; b). The three nearby South Coast NSW beach (Tabourie Beach, Merry Beach and Racecourse Beach) locations are indicated in (c). © OpenStreetMap contributors 2021. Distributed under the Open Data Commons Open Database License (ODbL) v.1.0.

125 2.3 Data collection

The intended survey dissemination period was significantly impacted by both extensive bushfires along the east coast of NSW in the summer of 2019/2020, COVID-19 related travel restrictions through 2020 and early 2021, and weather conditions. Therefore, surveys were conducted on the south coast beaches during the summer holiday period between January 9-17, primarily between the hours of 10 am – 1 pm as strong sea breeze activity reduced beachgoer numbers in the afternoon. Due to COVID-19 restrictions, it was not possible to survey Turimetta Beach until the late summer/early autumn between February 27 - March 13. Weekends were chosen during this time to maximise beachgoer numbers, but several weekends experienced poor weather and therefore low beachgoer numbers. Dreamtime Beach was surveyed during the NSW Easter School holiday period between April 7-16 although the first week saw limited numbers of beachgoers due to inclement weather. On fine days, Turimetta Beach and Dreamtime Beach were surveyed throughout the day. Due to a lack of beach users Racecourse Beach was only surveyed once.

The intended survey dissemination period was significantly impacted by both extensive bushfires along the east coast of NSW in the summer of 2019/2020, COVID-19 related travel restrictions through 2020 and early 2021, and weather conditions. Therefore, surveys were conducted on the south coast beaches during the summer holiday period between January 9-17,



140 primarily between the hours of 10 am – 1 pm as strong sea breeze activity reduced beachgoer numbers in the afternoon. Due
to COVID-19 restrictions, it was not possible to survey Turimetta Beach until the late summer/early autumn between February
27 - March 13. Weekends were chosen during this time to maximise beachgoer numbers, but several weekends experienced
poor weather and therefore low beachgoer numbers. Dreamtime Beach was surveyed during the NSW Easter School holiday
145 period between April 7-16 although the first week saw limited numbers of beachgoers due to inclement weather. On fine days,
Turimetta Beach and Dreamtime Beach were surveyed throughout the day. Due to a lack of beach users Racecourse Beach
was only surveyed once.

Surveys were administered by a team of trained volunteers that ranged in number from 2-9 during the data collection periods.
Participant beachgoers were asked to fill out the survey questionnaire on hard copies or using the Qualtrics offline app on
150 tablet devices, which was necessary to conduct the study as several of the beaches did not have mobile phone reception. The
survey took approximately 10-15 minutes to complete. Survey refusals were recorded. At the beginning, middle and end of
each survey day, the weather and surf conditions were noted and a photo of the beach including the water was taken from a
higher vantage point, if possible, for later validation purposes of conditions. The Merry Beach and Turimetta Beach locations
also benefit from the presence of remote cameras that provided high-quality images of the beach at 15-minute intervals from
155 an elevated viewpoint. At each beach, the location of any fixed beach safety sign was recorded and a photo was taken in order
to cross-check information related to signage questions in the survey.

2.4 Data analysis

All survey responses were input into Qualtrics and subsequently imported into Excel where they were sorted by date and time
and each survey was assigned a unique identifier. Analyses were conducted in Qualtrics, Tableau Desktop Version 2020.3,
160 Microsoft Excel Version 16.52 and in R Studio Version 1.2.5033. To assess if statistical relationships existed between
dependent and independent variables, different statistical tests were used: Kruskal-Wallis Test, Mann-Whitney U Test, binary
logistic regression, Chi-squared test and linear regression. The effect size of the Kruskal-Wallis Test (η^2 and f) and of the
Mann-Whitney U Test (r), were computed and interpreted after Cohen (1977). As multiple comparisons to the same dependent
variables were applied, Bonferroni correction was used deeming statistical significance at $p = 0.0083$ (Armstrong, 2014).

165 3 Results

A total of 459 surveys were collected: Merry Beach ($n = 153$), Tabourie Beach ($n = 125$), Racecourse Beach ($n = 18$), Turimetta
Beach ($n = 59$) and Dreamtime Beach ($n = 104$). Based on survey refusals ($n = 53$), the survey response rate was 89.6%. To
simplify analyses and due to similar physical and demographic characteristics, Merry Beach, Tabourie Beach and Racecourse
Beached were grouped as 'South Coast'. Where reported data is not linked to a Table or Figure, the full results and statistical
170 analyses can be found in Supplement 2.



3.1 Beachgoer demographic profile

Overall, slightly more females (57.3%) participated in the study, and this gender imbalance was consistent across beach locations (Table 1). The age distribution of respondents was evenly spread although they tended to be older at the South Coast with most aged 45 – 59 years (35.1%) compared to Dreamtime Beach and Turimetta Beach where respondents were mostly aged 18 – 24 years old (34.6% and 42.4% respectively; Table 1).

The majority of respondents at the South Coast beaches (88.5%) were domestic visitors who lived greater than 100 km away from the surveyed beach (70.6%; Table 1). In contrast, most respondents at Turimetta Beach (78.0%) and Dreamtime Beach (60.6%) were locals who lived within 10 km (50.5%) and 25 km (58.7%) of their beaches respectively (Table 1). Approximately 55% of all survey respondents (55.6%) lived within 10 km from any coastal location (Table 1) and 82.4% had lived in Australia all their life. Due to COVID-19 travel restrictions, only two respondents identified as international visitors and these were subsequently grouped into the domestic visitor/tourist category in later analyses.

3.2 Beachgoer experience, swimming ability and behaviour

Almost half of the respondents (47.9%) did not consider themselves to be surfers, bodyboarders, bodysurfers, ocean/competitive swimmers, or active or previously active surf lifesavers/lifeguards and this was consistent across all beaches (Table 1). While 68.2% of respondents rated their ocean swimming ability as *competent* (35.1%) or *average* (33.1%), 11% self-identified as poor swimmers who *can't swim 25 m without stopping or touching the bottom* (10.2%) or were *unable to swim* (1.3%; Table 1). Most respondents (64.9%) identified as being infrequent swimmers, swimming at ocean beaches 3 – 11 times per year or less and this was particularly the case at the South Coast (74.0%; Table 1). Only 14.1% of all respondents identified as being frequent ocean swimmers (Table 1).

Almost half of all respondents visited the beach they were surveyed at frequently (48.2%), particularly at Turimetta Beach (61.0%). Of note, one in five respondents (21.4%) were visiting the beach they were surveyed at for the first time. Just over half (55.6%) of all surveyed respondents visited the beach with their family, followed by a group of friends (27.2%) or a friend (14.2%). Results varied between beaches, with more than two thirds (69.9%) of South Coast respondents visiting with their family compared to 22.0% at Turimetta Beach who visited the beach alone.

Respondents were asked to provide the main three reasons why they had chosen to visit the unpatrolled beach they were surveyed at (Figure 2). The main reason at the South Coast beaches (74.0%) was that it was *the closest beach to holiday accommodation*. At Turimetta Beach (67.8%) and Dreamtime Beach (50.0%) it was because they *wanted to visit a quiet location away from crowds*, although this was also a common reason for South Coast beach visitation (40.2%; Figure 2). Respondents also visited the beach because it was *the closest beach to where I live* and they *heard about it from family/friends*



(Figure 2). Despite the absence of lifeguards, 93.3% of all respondents would recommend visiting the beach they were surveyed at to others, primarily due to the *beautiful scenery* (34.2%) and because it is *quiet, secluded and uncrowded* (24.9%).

205

Almost all surveyed beachgoers intended to go in the water (85.6%, $n = 393$) at the beach they were visiting. However, while 26.0% of respondents at Dreamtime Beach did not intend to go in the water, this was likely related to poor weather and hazardous surf conditions experienced in the first week of surveying at Dreamtime. Of note, more than 60% of respondents (64.9%) who intended to go in the water identified as *infrequent beach swimmers* and 62.2% of respondents who were *weak swimmers* or *unable to swim* also indicated they intended to enter the water. Simple logistic regression indicated swimming ability was associated with intention to enter the water ($p < .001$): a competent swimmer was 4.87 times (95%CI: 0.82 - 28.82) and a highly competent swimmer was 11.12 times (95%CI: 1.55 – 79.84) more likely to go in the water compared to a non-swimmer.

210

215 3.3 Beach safety and hazards

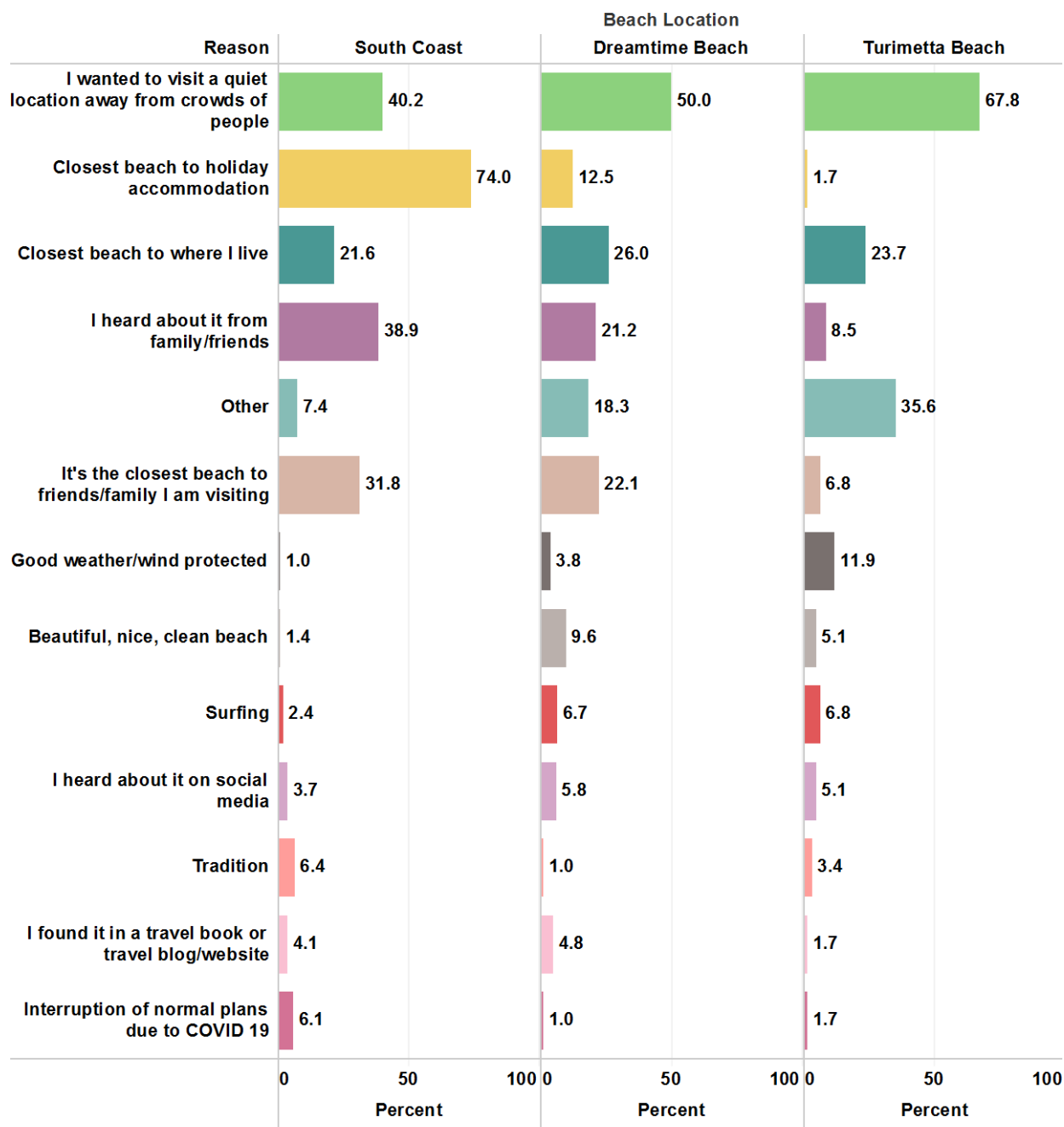
The majority (92.6%) of respondents knew that the beach they were visiting was unpatrolled with no lifeguards or lifesavers present (Table 1). Almost half (42.7%) of all respondents rated the presence of lifeguards as *not important at all* (21.6%) or *a little important* (21.1%); less than 20% (17.0%) rated the presence of lifeguards or lifesavers as *very important*. More respondents at Dreamtime Beach (35.6%) and the South Coast beaches (35.1%,) considered the presence of lifeguards to be *quite important/ very important* compared to Turimetta Beach (18.6%). On average, males valued the presence of lifeguards less when compared to females, with 53.6% rating the presence of lifeguards as *not important at all* (29.1%) or *a little important* (24.5%) compared to 34.6% of females ($W = 30430$, $p < .001$, $r = .157$ – weak effect). No relationship was found between age and importance of lifeguards ($H^{(4)} = 11.244$, $p = .024$, $f = .128$ – weak effect). Older respondents valued the presence of lifeguards more with 41.4% of 45 – 59 year olds and 41.8% of those aged > 60 years rating it as *quite important* or *very important*, compared to only 24.3% of the 18-24 year age group. Domestic visitors also had a higher perception of the importance of lifeguards than local residents ($W = 26308$, $p = .002$, $r = .134$ – weak effect).

220

225

There is evidence that swimming ability ($H^{(4)} = 16.449$, $p = .002$, $f = .164$ – weak effect) and swimming frequency ($H^{(2)} = 10.257$, $p = .006$, $f = .136$ – weak effect) have an impact on someone's perception of the importance of lifeguards. Only 30.2% of those who identified as *weak swimmers* or *unable to swim* indicated that the presence of a lifeguard is *very important*, while almost a quarter (24.5%) rated the presence of lifeguards as *not important at all* or *a little important*. Furthermore, 40% of frequent *swimmers* rated the presence of lifeguards as *not important at all* in contrast to 19.1% of the infrequent swimmers and 16.7% of occasional swimmers.

230



235

Figure 2. Most cited reasons why surveyed beachgoers visited unpatrolled beaches. Values next to coloured bars are percentages (%). The total number of responses exceeds 100% as each respondent could name up to three reasons. The number of times a reason was mentioned was divided by the number of beachgoers (South Coast: n = 296, Dreamtime Beach: n = 104, Turimetta Beach: n = 59).



240 **Table 1.** Characteristics of surveyed beachgoers in terms of demographics, residence proximity to beach and coast, participation in coastal activities, swimming ability and swimming frequency. Percentages shown in *italics*.

		Dreamtime Beach (n = 104)		Turimetta Beach (n = 59)		South Coast (n = 296)		Total	
		n	%	n	%	n	%	n	%
Age	18-24	36	<i>34.6</i>	25	<i>42.4</i>	50	<i>16.9</i>	111	<i>24.2</i>
	25-29	18	<i>17.3</i>	8	<i>13.6</i>	21	<i>7.1</i>	47	<i>10.2</i>
	30-44	23	<i>22.1</i>	16	<i>27.1</i>	67	<i>22.6</i>	106	<i>23.1</i>
	45-59	15	<i>14.4</i>	9	<i>15.3</i>	104	<i>35.1</i>	128	<i>27.9</i>
	>60	12	<i>11.54</i>	1	<i>1.7</i>	54	<i>18.2</i>	67	<i>14.6</i>
Gender	Female	64	<i>61.5</i>	35	<i>59.3</i>	164	<i>55.4</i>	263	<i>57.3</i>
	Male	40	<i>38.5</i>	24	<i>40.7</i>	132	<i>44.6</i>	196	<i>42.7</i>
Residency	Domestic visitor/tourist	39	<i>37.5</i>	13	<i>22.0</i>	262	<i>88.5</i>	314	<i>68.4</i>
	Local resident	63	<i>60.6</i>	46	<i>78.0</i>	34	<i>11.5</i>	143	<i>31.2</i>
	International visitor/tourist	2	<i>1.9</i>						
Residence proximity to this beach	Less than 1 km	16	<i>15.4</i>	7	<i>11.9</i>	38	<i>12.8</i>	61	<i>13.3</i>
	1-9 km	23	<i>22.1</i>	23	<i>39.0</i>	15	<i>5.1</i>	61	<i>13.3</i>
	10-25 km	22	<i>21.2</i>	24	<i>40.7</i>	5	<i>1.7</i>	51	<i>11.1</i>
	26-50 km	12	<i>11.5</i>	5	<i>8.5</i>	7	<i>2.4</i>	24	<i>5.2</i>
	51-100 km	4	<i>3.9</i>			21	<i>7.1</i>	25	<i>5.5</i>
	More than 100 km	25	<i>24.0</i>			209	<i>70.6</i>	234	<i>51.0</i>
Residence proximity to any coastal location	Less than 1 km	30	<i>28.9</i>	19	<i>32.2</i>	89	<i>30.1</i>	138	<i>30.1</i>
	1-9 km	34	<i>32.7</i>	22	<i>37.3</i>	61	<i>20.6</i>	117	<i>25.5</i>
	10-25 km	12	<i>11.5</i>	15	<i>25.4</i>	41	<i>13.9</i>	68	<i>14.8</i>
	26-50 km	8	<i>7.7</i>	2	<i>3.4</i>	27	<i>9.1</i>	37	<i>8.1</i>
	51-100 km	1	<i>1.0</i>			16	<i>5.4</i>	17	<i>3.7</i>
	More than 100 km	6	<i>5.8</i>			59	<i>19.9</i>	65	<i>14.2</i>
Participation in coastal activity	Competitive Swimmer	17	<i>16.4</i>	6	<i>10.2</i>	28	<i>9.5</i>	51	<i>11.1</i>
	Ocean lifeguard (Paid)	5	<i>4.8</i>	2	<i>3.4</i>	7	<i>2.4</i>	14	<i>3.1</i>
	Ocean swimmer	14	<i>13.5</i>	2	<i>3.4</i>	59	<i>19.9</i>	75	<i>16.3</i>
	Surfer/Bodyboarder/Bodysurfer etc.	33	<i>31.7</i>	12	<i>20.3</i>	96	<i>32.4</i>	141	<i>30.7</i>
	Surf lifesaver (Volunteer)	14	<i>13.5</i>	12	<i>20.3</i>	24	<i>8.1</i>	50	<i>10.9</i>
	None	47	<i>45.2</i>	30	<i>50.9</i>	143	<i>48.3</i>	220	<i>47.9</i>
Swimming ability	Highly competent swimmer	19	<i>18.3</i>	14	<i>23.7</i>	60	<i>20.3</i>	93	<i>20.3</i>
	Competent swimmer	37	<i>35.6</i>	17	<i>28.8</i>	107	<i>36.2</i>	161	<i>35.1</i>
	Average swimmer	37	<i>35.6</i>	17	<i>28.8</i>	98	<i>33.1</i>	152	<i>33.1</i>
	Weak swimmer	9	<i>8.7</i>	8	<i>13.6</i>	30	<i>10.1</i>	47	<i>10.2</i>
	Unable to swim	2	<i>1.9</i>	3	<i>5.1</i>	1	<i>0.3</i>	6	<i>1.3</i>
Swimming frequency	Frequent swimmer	29	<i>27.9</i>	9	<i>15.3</i>	27	<i>9.1</i>	65	<i>14.2</i>
	Occasional swimmer	22	<i>21.2</i>	24	<i>40.7</i>	50	<i>16.9</i>	96	<i>20.9</i>
	Infrequent swimmer	53	<i>51.0</i>	26	<i>44.1</i>	219	<i>74.0</i>	298	<i>64.9</i>



245 Respondents were asked how hazardous they thought it was to swim or wade at the beach they were visiting. Almost half (46.3%) of the South Coast respondents perceived the beach as *not very hazardous*, while 42.4% at Turimetta Beach considered it to be *somewhat hazardous*. 44.2% of respondents at Dreamtime Beach believed it to be *extremely hazardous* or *very hazardous*, possibly due to larger and rougher surf conditions present during the survey period. There was a significant difference between hazard perception and gender ($W = 29431$, $p = .005$, $r = .121$ - weak effect) and hazard perception and residency ($W = 14038$, $p < .001$, $r = .311$). Approximately 46.8% of females and 60.2% of males rated swimming or wading as *not very hazardous* or *not at all hazardous*. Moreover, local residents had a slightly higher hazard perception with 40.6% rating the beach they were visiting as *somewhat hazardous* compared to 42.1% of domestic visitors rating it as *not very hazardous*.

255 A significant difference was also found between home residence proximity to any coastal location and hazard perception ($H^{(5)} = 19.025$, $p = .002$, $f = .183$ - weak effect). Almost one-third (29.4%) of respondents who lived greater than 51 km from the coast rated swimming and wading as *not at all hazardous* compared to only 9.4% of those who live between 1 – 9 km away from any coastal location. A significant difference between hazard perception and swimming ability was also found ($H^{(4)} = 15.036$, $p = .005$, $f = .158$ - weak effect), where the majority of *highly competent swimmers* (57.0%) and *competent swimmers* (55.3%) had a low hazard perception, 53.2% of respondents who considered themselves to be *weak swimmers* also rated swimming and wading as *not very hazardous* or *not at all hazardous*.

260 Respondents were asked to provide an open text answer for *what they are most concerned about in terms of safety and hazards* at the beach they were visiting. Responses were split into 18 separate codes for a total of 561 responses with rip currents considered to be the primary hazard on all five beaches with 34.4% of all coded responses (Table 2). Respondents were also concerned about rough surf conditions (17.4%) at Dreamtime Beach, the rocks and cliffs at Turimetta Beach (25%) and the sun exposure at the South Coast (9.2%), although 11% of South Coast respondents had no concerns (Table 2).

270 Respondents were asked if they knew the meaning of the red and yellow flags on Australian beaches with 95.9% answering yes. Those respondents were then asked to explain the meaning of the flags in words. A correct response included at least one of the following concepts: they designate a safe swimming area, are an area patrolled by lifeguards/lifesavers, and that people should swim between them. The majority of these respondents provided a correct definition (89.3%). Some of the incorrect answers ($n=20$) indicated that the red and yellow flags are separate flags with red indicating dangerous areas where swimming is not allowed ($n = 17$). Other respondents believed that a yellow flag indicated surf conditions requiring caution and care for swimming ($n = 8$). Beach safety signs were present at public access paths leading to all five beaches (Figure 3). About half of



275 **Table 1.** Safety and hazard concerns at Dreamtime Beach, Turimetta Beach and the South Coast (total number of responses is greater than 459 as some survey respondents provided multiple answers). Percentages shown in *italics*.

	Dreamtime Beach		Turimetta Beach		South Coast		Total	
	n	%	n	%	n	%	n	%
Rip currents	52	<i>36.1</i>	26	<i>38.2</i>	115	<i>33.0</i>	193	<i>34.4</i>
Nothing	6	<i>4.2</i>			39	<i>11.2</i>	45	<i>8.0</i>
Rocks; Cliffs	14	<i>9.7</i>	17	<i>25.0</i>	13	<i>3.7</i>	44	<i>7.8</i>
Surf conditions; Big swell	25	<i>17.4</i>	1	<i>1.5</i>	12	<i>3.4</i>	38	<i>6.8</i>
Sun exposure	3	<i>2.1</i>	1	<i>1.5</i>	32	<i>9.2</i>	36	<i>6.4</i>
Strong currents	13	<i>9.0</i>	5	<i>7.4</i>	17	<i>4.9</i>	35	<i>6.2</i>
Waves	4	<i>2.8</i>	6	<i>8.8</i>	20	<i>5.7</i>	30	<i>5.3</i>
Sharks	5	<i>3.5</i>	2	<i>2.9</i>	23	<i>6.6</i>	30	<i>5.3</i>
Bluebottles; Jellyfish	1	<i>0.7</i>			28	<i>8.0</i>	29	<i>5.2</i>
Absence of lifeguards	5	<i>3.5</i>	3	<i>4.4</i>	16	<i>4.6</i>	24	<i>4.3</i>
Children's safety	2	<i>1.4</i>	1	<i>1.5</i>	16	<i>4.6</i>	19	<i>3.4</i>
Wind	3	<i>2.1</i>			6	<i>1.7</i>	9	<i>1.6</i>
Surfers; getting hit by board; Surfer accident			5	<i>7.4</i>	2	<i>0.6</i>	7	<i>1.2</i>
Other	2	<i>1.4</i>			4	<i>1.1</i>	6	<i>1.1</i>
Undertow; Undercurrents	5	<i>3.5</i>					5	<i>0.9</i>
Water quality	3	<i>2.1</i>	1	<i>1.5</i>			4	<i>0.7</i>
Cold water	1	<i>0.7</i>			3	<i>0.9</i>	4	<i>0.7</i>
Seaweed					3	<i>0.9</i>	3	<i>0.5</i>
Total	144	<i>100</i>	68	<i>100</i>	349	<i>100</i>	561	<i>100</i>



280 **Figure 3.** Beach safety signs at: (a) Merry Beach; (b) Tabourie Beach; (c) Racecourse Beach; (d) Turimetta Beach; (e) and (f) Dreamtime Beach. Photos courtesy of L. Uebelhoer (a,b,c), W. Koon (d), R. Brander (e,f).

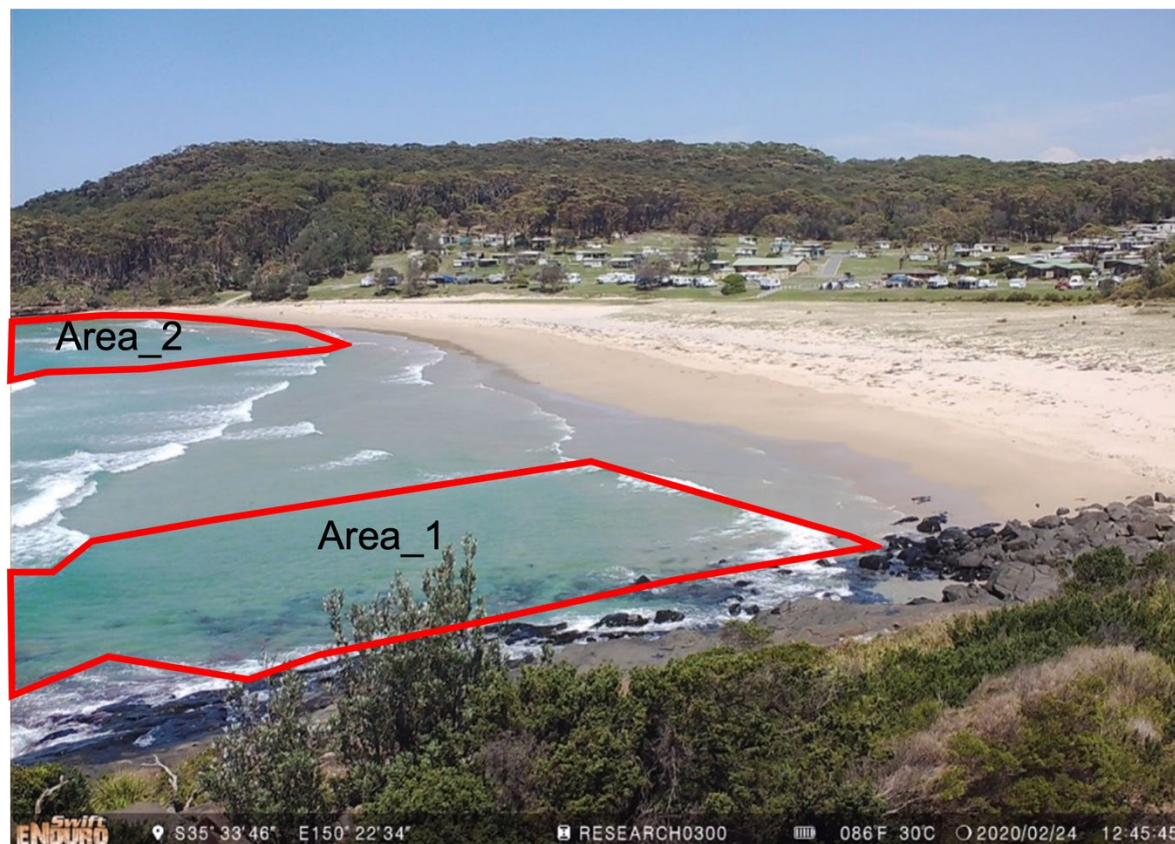
the respondents at Dreamtime (51.9%) and Turimetta (55.9%) noticed safety signs, while only a quarter (25.7%) noticed warning and safety signage at the South Coast beaches.

285 3.4 Rip current knowledge

When asked if they knew what a rip current was, 88.9% of all respondents answered yes. Only 3.7% of South Coast respondents answered no compared to 10.6% of respondents at Dreamtime Beach and 8.5% at Turimetta Beach. Respondents who answered that they knew what a rip current was, or were unsure, were then asked to describe what a rip current is in an open text answer. Responses were classified as '*correct*', '*incorrect*' or '*partially correct*'. A response was deemed '*correct*' if the respondent identified the concept of a strong current or a flow of water heading offshore. If only one of these concepts was included, the response was classified as '*partially correct*'. Two thirds (66.9%) of these respondents provided a correct definition while 20.8% were partially correct and 9.6% were incorrect. More respondents at the South Coast (66.9%) were correct compared to Dreamtime Beach (49.0%) and Turimetta Beach (44.1%).

295 Respondents were then shown a photograph of a beach with two identifiable rip currents present (Figure 4) and were asked to indicate where they would enter the water to swim or wade. Of note, the photo was taken at Merry Beach on a date outside of the South Coast survey period. While most respondents (72.8%) chose a safe swimming spot away from the rip currents, almost a quarter (24.6%, $n = 113$) would have entered the water directly into a rip current with less people marking the rip current at Turimetta Beach (16.9%) compared to Dreamtime Beach (27.9%) and the South Coast (25.0%).

300 All respondents were then asked to evaluate their own ability to visually spot a rip current with 44.7% being *somewhat confident* and 25.5% being *very confident* in their ability to do so. In terms of location, more Dreamtime Beach respondents (31.7%) were *not at all confident* or *not very confident* compared to those at Turimetta Beach (25.4%) and the South Coast (23.0%). There was a significant difference between rip identification confidence and gender with males being more confident than females ($W = 15592$, $p < .001$, $r = .306$ – medium effect). For example, 39.8% of all males were *very confident* in their ability to identify a rip current compared to 14.4% of all females. Moreover, 82.2% of respondents who were *not at all confident* were female.



310 **Figure 4.** Photo of Merry Beach (taken from the remote camera) used to test beachgoers choice of swimming location with red polygons (Area_1; Area_2) indicating rip current locations. Respondents were shown a clean (and larger) image. Image courtesy of R. Brander.

A statistical association also existed between swimming ability and rip identification confidence ($H^{(4)} = 64.444, p < .001, f = .403$ – strong effect). Respondents who were better swimmers had a higher perception of their ability to visually identify a rip current. Just over half (53.8%) of the highly competent swimmers reported to be *very confident* in this regard compared to 17.1% of average swimmers and 14.9% of weak swimmers. Conversely, there was no difference between beach swimming
315 frequency and confidence to identify a rip current ($H^{(2)} = 9.359, p = .009, f = .131$ – weak effect). Almost half of the infrequent (45%) and occasional (49%) swimmers were *somewhat confident*, while 36.9% of the frequent swimmers were *very confident*.

To specifically test rip current identification ability, a different question showed respondents six different beach photos taken from different perspectives and asked them to mark the area in the image where they thought a rip current was located (Figure
320 5). With the exception of Figure 5c, which did not have a rip current, all of the images contained channel rip currents identifiable by narrow and elongate dark gaps between areas of whitewater. Respondents were able to mark the location of the rip current by tapping on the photo on the tablet or marking it directly on the hardcopy survey with an 'X'. If respondents could not identify a rip current, or did believe a rip current was present, they were asked to tick the *No Rip* box. Correct answers had



325 to be within the polygons defining the rip current area (Figure 5). The polygons were drawn based on the collective opinions
of the authors, who have considerable experience in rip current identification and it is acknowledged that there is some degree
of error involved in this process. Responses that correctly identified the location of the rip current in the photo or correctly
identified that there was no rip current (Figure 5c), received a '1' whereas other responses were assigned a '0'. This allowed a
rip score to be created ranging from 0 (no correct answers) to 6 (all answers correct).

330 Despite the overall high level of confidence in their ability to identify rip currents, almost half (43.8%) of all respondents had
'low' rip scores (0-2 correct answers) and only 17.4% answered correctly in 5 or more photos (Table 3). In terms of location,
respondents at South Coast beaches were more proficient at identifying rip currents whereas those at Dreamtime Beach were
the least (Table 3). Most respondents (71.0%) correctly identified the rip current in Figure 4d, but only 38.1% were able to
spot the rip current in Figure 5a (Table 3). No difference existed between rip score and age ($R^2 = .0251$, $F(4, 450) = 2.894$,
335 $p = .022$) or gender ($W = 21784$, $p = .010$, $r = .108$ – weak effect). Males were slightly better at identifying rip currents with a
mean score of 3.1 compared to females with 2.7. Almost half (48.3%) of the females were low scoring compared to 37.8% of
males. Swimming frequency ($R^2 = .0154$, $F(2, 452) = 3.534$, $p = .030$) and swimming ability ($R^2 = .0114$, $F(4, 450) = 1.295$,
 $p = .271$) had no impact on someone's rip score. Infrequent swimmers had a mean score of 3 compared to a score of 2.8 for
frequent swimmers and 2.5 for occasional swimmers.

340 4 Discussion

Overall, the unpatrolled beach users surveyed in this study exhibited several key risk factors that have important implications
and create challenges for authorities responsible for beach safety and management. Almost all (92.6%) were aware that the
beach they were visiting was unpatrolled by lifeguards yet most (88.9%) still intended to go in the water and would recommend
the beach to others (93.3%). This was particularly concerning since almost half (44.7%) identified as being average, weak or
345 non-swimmers, almost two-thirds (64.9%) were infrequent beach swimmers and 21.4% were visiting the beach for the first
time. While rip currents were the primary hazard that beachgoers were concerned about, many respondents were unable to
correctly explain what a rip current was, or identify them in photographs despite confidence in their ability to do so. While
these findings are similar to those reported in previous beachgoer surveys on lifeguard patrolled beaches (Sherker et al., 2010;
Williamson et al., 2012; Caldwell et al., 2013; Brannstrom et al., 2014; Fallon et al., 2018; Llopis et al., 2018; Locknick and
350 Houser, 2021; Pitman et al., 2021;) they are of greater concern taken in the context of unpatrolled beaches. Given that more
than 95.9% of the surveyed beach users were aware of the meaning of the red and yellow flags, the obvious question is why
they chose to ignore the core Australian beach safety message to 'swim between the red and yellow flags' at a patrolled beach?

355



Table 2. Survey respondent rip scores from the images shown in Figure 4. A ‘low’ score was defined as 0-2 correct answers, ‘medium’ as 3-4, and ‘high’ as 5-6. Bottom half of table shows if respondents were able to correctly identify the rip current (marked the location inside the rip polygon) or if they believed there was no rip current (‘No Rip Box’). Photo 3 did not have a rip current and thus beachgoers who ticked the ‘No Rip Box’ were correct. NA refers to people who did not answer the question.

Rip Score Photos		Dreamtime Beach (n = 104)		Turimetta Beach (n = 59)		South Coast (n = 296)		Total (n = 459)	
		n	%	n	%	n	%	n	%
Rip Score Photos	Low (0, 1, 2)	51	49.1	22	37.3	128	43.2	201	43.8
	Medium (3, 4)	40	38.5	28	47.5	106	35.8	174	37.9
	High (5, 6)	13	12.5	5	8.5	62	21.0	80	17.4
	NA			4	6.8			4	0.9
Photo 1	Correct – Inside rip polygon	29	27.9	17	28.8	129	43.6	175	38.1
	Incorrect - No Rip Box	55	52.9	23	39.0	124	41.0	202	44.0
	Incorrect – Outside rip polygon	16	15.4	15	25.4	40	13.5	71	15.5
	NA	4	3.8	4	6.8	3	1.0	11	2.4
Photo 2	Correct – Inside rip polygon	48	46.2	24	40.7	116	39.2	188	41.0
	Incorrect - No Rip Box	8	7.7	3	5.1	27	9.1	38	8.3
	Incorrect – Outside rip polygon	43	41.3	27	45.8	147	49.7	217	47.3
	NA	5	4.8	5	8.5	6	2.0	16	3.5
Photo 3	Correct - No Rip Box	50	48.1	25	42.4	163	55.1	238	51.9
	Incorrect – Outside No Rip Box	46	44.2	29	49.2	130	43.9	205	44.7
	NA	8	7.7	5	8.5	3	1.0	16	3.5
Photo 4	Correct – Inside rip polygon	71	68.3	46	78.0	209	70.6	326	71.0
	Incorrect - No Rip Box	18	17.3	5	8.5	45	15.2	68	14.8
	Incorrect – Outside rip polygon	11	10.6	4	6.8	35	11.8	50	10.9
	NA	4	3.8	4	6.8	7	2.4	15	3.3
Photo 5	Correct – Inside rip polygon	38	36.5	18	30.5	124	41.9	180	39.2
	Incorrect - No Rip Box	22	21.2	18	30.5	49	16.6	89	19.4
	Incorrect – Outside rip polygon	38	36.5	19	32.2	117	39.5	174	37.9
	NA	6	5.8	4	6.8	6	2.0	16	3.5
Photo 6	Correct – Inside rip polygon	29	27.9	18	30.5	138	46.6	185	40.3
	Incorrect - No Rip Box	43	41.3	24	40.7	86	29.1	153	33.3
	Incorrect – Outside rip polygon	25	24.0	13	22.0	67	22.6	105	22.9

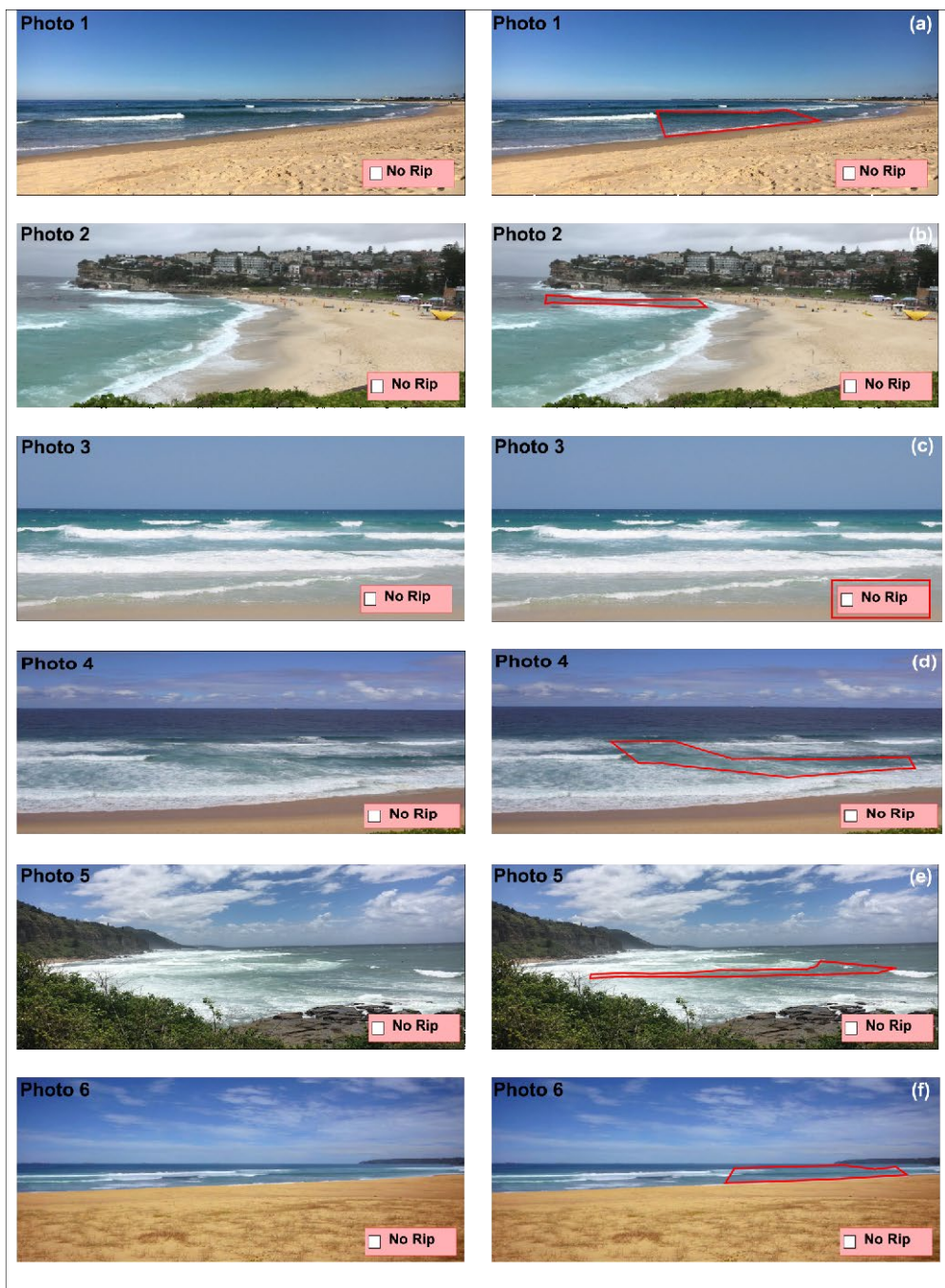


Figure 5. Images that were used to assess beachgoers' ability to identify rip currents in photos. The polygons on the right side (red area) highlight the location of the rip current. If respondents placed an 'x' within these areas, they were correct. Photo 3 (c) does not contain a rip current. During the survey, respondents were shown the photos on the left with no polygons and the size of the rip photos was larger as they were shown on a 20 x 15 cm tablet screen and only one photo was presented. The pre-determined polygons already include a small buffer to avoid possible unwanted incorrect responses. Respondents were shown much larger images than those presented here. Photos courtesy R. Brander.



370 This study has provided evidence that the main reasons beachgoers visit unpatrolled beaches are either because they are
conveniently close to their holiday accommodation, or they represent a desirable quieter location away from crowds.
Furthermore, almost all (93.3%) the surveyed beach users would recommend the (unpatrolled) beach they were visiting to
others due to the beautiful scenery and the fact that it was '*quiet and uncrowded*'. Of particular concern, almost half (42.7%)
of the surveyed beach users, including many poor or non-swimmers, did not view lifeguard presence as being a particularly
important factor for choosing a beach to visit. These results suggest that for many beachgoers convenience and aesthetic factors
outweigh safety considerations when choosing to visit a beach. These findings go some way to explaining why 67% of coastal
drowning deaths in Australia recorded since 2004 have occurred more than 1 km away from lifesaving services, many at
375 unpatrolled beaches (SLSA, 2021).

4.1 Implications for beach safety management

380 A major challenge in Australia, and internationally, has been to encourage beachgoers to always swim near lifeguards and
avoid, or never, swim at unpatrolled beaches. The findings of this study suggest that this aspiration is unrealistic. There are
simply too many accessible unpatrolled beaches and, taken in isolation, valid reasons why people will continue to visit them
and enter the water to swim despite the risk factors described previously. The next question is: how can we keep people safe
on unpatrolled beaches?

385 The first and most obvious answer is to expand lifeguarding services. Even incremental augmented services, for example
seasonally or on weekends, would make popular unpatrolled beaches safer. However, large scale expansion and
implementation of services to many new, currently unpatrolled, beaches comes with significant cost and logistical challenges.
Regardless, expanded lifeguard and surf lifesaving services should be a top safety priority for local governments with
unpatrolled beaches within their jurisdiction. Strong consideration for the impact of the tourist accommodation industry must
be a core component of decision making in where, when, and how to expand services. Collaborative advocacy between water
safety organisations and industry could be an effective tool to prevent coastal drowning and injury through supporting to
390 increase the number of patrolled beaches in the state.

395 The reliance of warning signage on unpatrolled beaches, and the common call for more and better signage following drowning
deaths (McCutcheon, 2018), also has limitations. More than half the beachgoers surveyed in this study did not see any signs,
despite some being quite large and prominent (Figure 3). These findings are supported by Matthews et al. (2014) who reported
that 45% of respondents did not notice any beach safety sign and that the shape and how the sign is organised has no impact
on people's recognition and recall ability of warning signage. While necessary, warning signs are not necessarily as effective
as authorities may assume (Matthews et al., 2014) and as evident in Figure 3, considerable variability exists between the
content and presentation of information on these signs.



400 A recent beach safety technology conference identified new technology (Beach Safety Research Group, 2021), which may increase swimmer safety at unpatrolled beaches, for example the establishment of emergency beacon stations, whereby beachgoers can alert emergency services about an incident immediately and, in some cases, access a flotation device to assist in a bystander rescue, which may save not only the life of the individual in distress, but also the bystander rescuer. Technology may also play a future role with the potential use of drones, which have primarily been used in beach safety in relation to shark surveillance (Claesson et al., 2017; Butcher et al., 2019; Ajgaonkar et al., 2020) and have the logistic constraint of requiring an operator. Remote video cameras and drones also have the potential to monitor the number and location of people on unpatrolled beaches in real-time as well as rip current locations (Guillén et al., 2008; Morgan, 2018; Provost et al., 2019).

410 Findings of this study have also identified different risk profiles of unpatrolled beaches based on beach user characteristics that have implications towards the future development and dissemination of beach safety educational and awareness interventions. For example, the South Coast NSW beaches were dominated by domestic tourists, in particular families, who lived more than 100 km away from the beach. Most were infrequent beach swimmers and approximately half did not perceive the beaches they were visiting to be hazardous, with some having no concerns at all, despite the presence of breaking waves and rip currents. In this case, educational material and messaging could be developed around these themes and disseminated directly through holiday accommodations.

415 Dreamtime Beach is a popular social media destination, and while it did not receive the usual large number of international or domestic tourists during the survey period due to COVID-19 travel restrictions, many beach users were regional day visitors who were largely not confident or competent at both swimming or identifying rip currents. This is concerning given the large number of rip current related drowning deaths at this beach in recent years (McCutcheon, 2018). Educating this demographic is potentially more problematic as the desire to obtain an 'Instagram' picture may also over-ride safety concerns (Flaherty and Choi, 2016; Jain and Mavani, 2017; Gioia et al., 2020), however the findings of this study present a potential safety intervention in this regard. In general, surveyed beach users who were locals perceived the unpatrolled beaches, and swimming at them, to be more hazardous than domestic visitors and those who lived further away from the beach. This stresses the need for coastal safety managers, in partnership with the tourism sector, to explore avenues for safety messaging and education targeted at visitors. Given the popularity of social media to find these locations, utilizing existing social media tools, including paid targeted messaging for high risk beach locations and visitor demographics should be considered. Another approach could be to encourage locals, or experienced beachgoers, to provide safety advice to beach users who appear unaware of dangers at the beach, if necessary.

430 There were also differences in beach safety characteristics of beach users based on gender and age. Across all the surveyed unpatrolled beaches, males valued the importance of lifeguards less, and rated swimming as less as of a hazard than females. Older beach users were better able to identify rip currents and placed greater value in the presence of lifeguards. There are



many examples of beach safety interventions in Australia, both past and present, that have attempted to prioritise males, particularly young males, who are overrepresented in drowning statistics and are more likely to take risks than females
435 (Willcox-Pidgeon et al., 2018; Lawes et al., 2020; SLSA, 2021), tourists and other at-risk populations in general in regards to beach safety, identifying rip currents, and the importance of swimming between the flags. However, the findings of this study suggest that Australia, and other countries, must move beyond the ‘swim between the flags’ message and also directly target the safety of beachgoers who choose to swim on unpatrolled beaches as a high-risk demographic.

440 In this regard, as part of an ongoing coastal safety campaign to address rip current drowning by raising awareness and changing beachgoer behaviour, Surf Life Saving Australia developed ‘The Think Line Campaign’ in 2018 (Figure 6). This campaign introduced the concept of beachgoers drawing a real/imaginary line in the sand to remind them to ‘Stop (to check for rips). Look (for other dangers). Plan (how to stay safe)’ before entering the water (SLSA, 2021). The ‘Think Line’ messaging applies to any beach, particularly unpatrolled beaches, and while the campaign reports successful behavioural change after being
445 exposed to the campaign (SLSA, 2021), the remaining challenge is increasing the community exposure of this message. This may be achieved through direct availability of beach safety material in coastal tourist accommodations near popular unpatrolled beaches as well as collaborating with tourism agencies and social media platforms (e.g. Instagram) to promote beach safety information.



Figure 6. Core graphic of the Surf Life Saving Australia ‘Think Line Campaign’ (SLSA, 2021). Image courtesy of Surf Life Saving Australia.

Finally, almost a third of the surveyed beachgoers in this study identified as surfers, bodyboarders, or bodysurfers. During data
455 collection, many more surfers were present in the water but not surveyed – a limitation of convenient sampling of beachgoer surveys such as in this study. Several studies have identified the valuable role that surfers perform as bystander rescuers, particularly as they have surfboards/bodyboards as flotation devices, are usually competent swimmers with the requisite ocean



skills and knowledge required to navigate conditions in the surf zone, and commonly surf at unpatrolled beaches (Attard et al., 2015; Berg et al., 2021). In the absence of lifeguards and lifesavers, surfers play an important safety role. Coastal safety
460 organisations should further promote and encourage surfers to complete basic ocean rescue and/or first aid and CPR courses, as this group could represent an essential stopgap layer of protection on all, but especially unpatrolled, beaches.

5 Conclusions

This study is the first to assess the characteristics, behaviour and beach safety knowledge of beachgoers on unpatrolled beaches in Australia and, arguably, globally. Importantly, it has provided an evidence-based understanding of who visits unpatrolled
465 beaches, why they visit these beaches and reasons why many users may be at more risk of drowning at these beaches. It is clear that many people value convenience and the absence of crowds more than the presence of lifeguards when choosing a beach to visit and that this is unlikely to change. These findings have major implications for authorities responsible for beach safety in Australia, and overseas, and indicate the need to move beyond the standard ‘swim between the flags’ or ‘swim near a lifeguard’ safety messages in order to ensure swimmer safety at all beaches. In order to reduce the risk of drowning at
470 unpatrolled beaches, the development and dissemination of future beach safety information and interventions must also take into account the diverse types of beach users that visit unpatrolled beaches.

Data availability

Raw data can be provided by the corresponding authors upon request.

475 Author contributions

LU, MH, RB conceptualized the research and developed the survey. LU, WK, RB conducted survey fieldwork. LU was responsible for data curation, investigation and together with WK conducted formal data analysis. LU created the figures and the original draft that were reviewed and edited by WK, JL, MH and RB. RB supervised the study.

480 Competing interests

The authors declare that they have no conflict of interests.



Acknowledgements

We would like to thank the many student volunteers who assisted in conducting the beach surveys, particularly Alexander Burns, Adam Halmy, Alexander Ingall, Jake Kabbout, Alva Lane, and Edoardo Santagata. Funding: this work was supported
485 by a New South Wales (NSW) Government Department of Justice, Office of Emergency Management Water Safety Fund
2018-19 WSF awarded to RB and MH.

References

Ajgaonkar, K., Khanolkar, S., Rodrigues, J., Shilker, E., Borkar, P., and Braz, E.: Development of a lifeguard assist drone for
coastal search and rescue, Global Oceans 2020 Virtual Conference, Mississippi, U.S Gulf Coast, October 2020, 1-10,
490 <https://doi.org/10.1109/IEEECONF38699.2020.9389382>, 2020.

Armstrong, R. A.: When to use the Bonferroni correction, *Ophthalmic Physiol. Opt.*, 34, 502-508,
<https://doi.org/10.1111/opo.1213>, 2014.

495 Arozarena, R. A., Houser, C., Echeverria, A. G., and Brannstrom, C.: The rip current hazard in Costa Rica, *Nat. Hazards*, 77,
753-768, <https://doi.org/10.1007/s11069-015-1626-9>, 2015.

Attard, A., Brander, R. W., Shaw, W.S.: Rescues conducted by surfers on Australian beaches, *Accid. Anal. Prev.*, 82, 70-78,
<https://doi.org/10.1016/j.aap.2015.05.017>, 2015.

500

Australian Water Safety Council: Australian Water Safety Strategy 2030, Australian Water Safety Council, Sydney, 60 pp.,
2021.

Ballantyne, R., Carr, N., and Hughes, K.: Between the flags: An assessment of domestic and international university
505 students' knowledge of beach safety in Australia, *Tour. Manag.*, 26, 617-622, <https://doi.org/10.1016/j.tourman.2004.02.016>,
2005.

Beach Safety Research Group, Beach Safety Technology Conference, virtual conference, 11 March 2021,
<https://www.beachsafetyresearch.com/bstc21>, 2021.

510

Berg, I., Haveman, B., Markovic, O., van de Schoot, D., Dikken, J., Goettinger, M., and Peden, A. E.: Characteristics of
surfers as bystander rescuers in Europe, *Am. J. Emerg. Med.*, 49, 209-215, <https://doi.org/10.1016/j.ajem.2021.06.018>, 2021.



- 515 Brander, R. and MacMahan, J.: Future Challenges for Rip Current Research and Outreach, in: Rip Currents – Beach Safety, Physical Oceanography and Wave Modelling, edited by: Leatherman, S. and Fletemeyer, J., CRC Press, Boca Raton, 1-29, <https://doi.org/10.1201/b10916>, 2011.
- 520 Brander, R. W.: Beach Safety Research, in: Encyclopedia of Coastal Science, edited by: Finkl, C. W. and Makowski, C., Springer, Cham, 296-300, https://doi.org/10.1007/978-3-319-93806-6_40, 2019.
- 525 Brannstrom, C., Brown, H., Houser, C., Trimble, S., and Lavoie, A.: “You can’t see them from sitting here”: Evaluating beach user understanding of a rip current warning sign, *Appl. Geogr.*, 56, 61-70, <https://doi.org/10.1016/j.apgeog.2014.10.011>, 2015.
- 530 Brannstrom, C., Trimble, S., Santos, A., Brown, H. L., and Houser, C.: Perception of the rip current hazard on Galveston Island and North Padre Island, Texas, USA, *Nat. Hazards*, 72, 1123-1138, <https://doi.org/10.1007/s11069-014-1061-3>, 2014.
- 535 Brewster, B. C., Gould, R. E., and Brander, R. W.: Estimations of rip current rescues and drowning in the United States, *Nat. Hazards Earth Syst. Sci.*, 19, 389-397, <https://doi.org/10.5194/nhess-19-389-2019>, 2019.
- 540 Brighton, B., Sherker, S., Brander, R., Thompson, M., and Bradstreet, A.: Rip current related drowning deaths and rescues in Australia 2004-2011, *Nat. Hazards Earth Syst. Sci.*, 13, 1069-1075, <https://doi.org/10.5194/nhess-13-1069-2013>, 2013.
- 545 Butcher, P. A., Piddocke, T. P., Colefax, A. P., Hoade, B., Peddemors, V. M., Borg, L., and Cullis, B. R.: Beach safety: Can drones provide a platform for sighting sharks? *Wildl. Res.*, 46, 701-712, <https://doi.org/10.1071/WR18119>, 2019.
- Caldwell, N., Houser, C., and Meyer-Arendt, K.: Ability of beach users to identify rip currents at Pensacola Beach, Florida, *Nat. Hazards*, 68, 1041-1056, <https://doi.org/10.1007/s11069-013-0673-3>, 2013.
- 540 Castelle, B., Scott, T., Brander, R. W., and McCarroll, R. J.: Rip current types, circulation and hazard, *Eart-Science Rev*, 163, 1-21, 2016.
- 545 Claesson, A., Svensson, L., Nordberg, P. Ringh, M., Rosenqvist, M., Djarv, T., Samuelsson, J., Hernborg, O., Dahlbom, P., Jansson, A., and Hollenberg, J.: Drones may be used to save lives in out of hospital cardiac arrest due to drowning, *Resuscitation*, 114, 152-156, <https://doi.org/10.1016/j.resuscitation.2017.01.003>, 2017.



- Clifford, K. M., Brander, R. W., Trimble, S., and Houser, C.: Beach safety knowledge of visiting international study abroad students to Australia, *Tour. Manag.*, 69, 487-497, <https://doi.org/10.1016/j.tourman.2018.06.032>, 2018.
- 550 Cohen, J.: *Statistical power analysis for the behavioral sciences*, Rev. ed., Lawrence Erlbaum Associates, Inc, Hillsdale, NJ, US, 1977.
- Cooney, N., Daw, S., Brander, R., Ellis, A., and Lawes, J.: *Coastal Safety Brief: Rip currents*, Surf Life Saving Australia, Sydney, 20 pp., 2020.
- 555 Fallon, K. M., Lai, Q., and Leatherman, S. P.: Beachgoer's recognition of rip current hazard at Miami Beach, Florida, *Ocean Coast. Manag.*, 165, 63-70, <https://doi.org/10.1016/j.ocecoaman.2018.08.011>, 2018.
- Flaherty, G. T. and Choi, J.: The 'selfie' phenomenon: reducing the risk of harm while using smartphones during international travel, *J. Travel Med.*, 23, 1-3, <https://doi.org/10.1093/jtm/tav026>, 2016.
- 560 Gensini, V. A. and Ashley, W. S.: An examination of rip current fatalities in the United States, *Nat. Hazards*, 54, 159-175, <https://doi.org/10.1007/s11069-009-9458-0>, 2010.
- 565 Gilchrist, J. and Branche, C.: Lifeguard effectiveness, in: *The Science of Beach Lifeguarding*, edited by: Tipton, M. and Wooler, A., CRC Press, Boca Raton, 29-36, ISBN: 9781482245974, 2016.
- Gioia, S., Mirtella, D., Franceschetto, L., Lancia, M., Suadoni, F., and Cingolani, M.: Media-Based Research on Selfie-Related Deaths in Italy, *Am. J. Forensic Med. Pathol.*, 41, 27-31, <http://dx.doi.org/10.1097/PAF.0000000000000526>, 2020.
- 570 Guillén, J., García-Olivares, A., Ojeda, E., Osorio, A., Chic, O., and Gonzáles, R.: Long-Term Quantification of Beach Users Using Video Monitoring, *J. Coast. Res.*, 24, 1612-1619, <https://doi.org/10.2112/07-0886.1>, 2008.
- Houser, C., Arbex, M., and Trudeau, C.: Short communication: Economic impact of drowning in the Great Lakes Region of North America, *Ocean Coast. Manag.*, 212, 105847, <https://doi.org/10.1016/j.ocecoaman.2021.105847>, 2021.
- 575 Houser, C., Trimble, S., Brander, R., Brewster, B. C., Dusek, G., Jones, D., and Kuhn, J.: Public perceptions of a rip current hazard education program: "Break the Grip of the Rip!", *Nat. Hazards Earth Syst. Sci.*, 17, 1003-1024, <https://doi.org/10.5194/nhess-17-1003-2017>, 2017.

580



- Jaggard, E.: *Between the Flags: One Hundred Summers of Australian Surf Lifesaving*, UNSW Press, Sydney, ISBN: 0868408972, 2006.
- Jain, M. and Mavani, K.: A comprehensive study of worldwide selfie-related accidental mortality: a growing problem of the modern society, *Int. J. Inj. Contr. Saf. Promot.*, 24, 544-549, <https://doi.org/10.1080/17457300.2016.1278240>, 2017.
- Koon, W., Peden, A., Lawes, J. C., and Brander, R. W.: Coastal drowning: A scoping review of burden, risk factors, and prevention strategies, *PLoS One*, 16, 1-22, <https://doi.org/10.1371/journal.pone.0246034>, 2021.
- 590 Lawes, J. C., Ellis, A., Daw, S., and Strasiotto, L.: Risky business: a 15-year analysis of fatal coastal drowning of young male adults in Australia, *Inj. Prev.*, 27, 1-8, <https://doi.org/10.1136/injuryprev-2020-043969>, 2020.
- Llopis, I. A., Echeverria, A. G., Trimble, S., Brannstrom, C., and Houser, C.: Determining Beach User Knowledge of Rip Currents in Costa Rica, *J. Coast. Res.*, 34, 1105-1115, <https://doi.org/10.2112/JCOASTRES-D-17-00131.1>, 2018.
- 595 Locknick, S. and Houser, C.: Correspondence of Beach User Perception, Lifesaving Strategies and Rip Currents: Implications for Beach Management, *Coast. Manag.*, 1-19, <https://doi.org/10.1080/08920753.2021.1967561>, 2021.
- Matthews, B., Andronaco, R. and Adams, A.: Warning signs at beaches: Do they work?, *Saf. Sci.*, 62, 312-318, <https://doi.org/10.1016/j.ssci.2013.09.003>, 2014.
- 600 McCutcheon, P.: Dangerous beach named one of Australia's best, sparking safety concerns: <https://www.abc.net.au/news/2018-02-22/concerns-after-dreamtime-beach-named-one-of-australias-best/9473244>, last access: 9 September 2021, 2018.
- 605 McKay, C., Brander, R. W. and Goff, J.: Putting tourists in harms way – Coastal tourist parks and hazardous unpatrolled surf beaches in New South Wales, Australia, *Tour. Manag.*, 45, 71-84, <https://doi.org/10.1016/j.tourman.2014.03.007>, 2014.
- Ménard, A. D., Houser, C., Brander, R. W., Trimble, S., and Scaman, A.: The psychology of beach users: importance of confirmation bias, action, and intention to improving rip current safety, *Nat. Hazards*, 94, 953-973, <https://doi.org/10.1007/s11069-018-3424-7>, 2018.
- 610



- 615 Morgan, D.: Counting beach visitors: Tools, methods, and management applications, in: *Beach Management Tools – Concepts, Methodologies and Case Studies*, edited by: Botero, C., Cervantes, O. and Finkl, C., Springer, Cham, 561-577, https://doi.org/10.1007/978-3-319-58304-4_27, 2018.
- 620 Pitman, S. J., Thompson, K., Hart, D. E., Moran, K., Gallop, S. L., Brander, R. W., and Wooler, A.: Beachgoers' ability to identify rip currents at a beach in situ, *Nat. Hazards Earth Syst. Sci.*, 21, 115–128, <https://doi.org/10.5194/nhess-21-115-2021>, 2021.
- 625 Provost, E. J., Butcher, P. A., Colefax, A. P., Coleman, M. A., Curley, B. G., and Kelaher, B. P.: Using drones to quantify beach users across a range of environmental conditions, *J. Coast. Conserv.*, 23, 633-642, <https://doi.org/10.1007/s11852-019-00694-y>, 2019.
- 630 Segura, L. E., Arozarena, I., Koon, W., and Gutiérrez, A.: Coastal drowning in Coasta Rica: incident analysis and comparisons between Costa Rica nationals and foreigners, *Nat. Hazards*, <https://doi.org/10.1007/s11069-021-04980-7>, 2021.
- 635 Sherker, S., Brander R., Finch, C., and Hatfield, J.: Why Australia needs an effective national campaign to reduce coastal drowning, *J. Sci. Med. Sport*, 11, 81-83, <https://doi.org/10.1016/j.jsams.2006.08.007>, 2008.
- 640 Sherker, S., Williamson, A., Hatfield, J., Brander, R., and Hayen, A.: Beachgoers' beliefs and behaviours in relation to beach flags and rip currents, *Accid. Anal. Prev.*, 42, 1785-1804, <https://doi.org/10.1016/j.aap.2010.04.020>, 2010.
- 645 Short, A. D.: *Beaches of the New South Wales Coast. A guide to their nature, characteristics, surf and safety*, second edition, Sydney University Press, Sydney, 2007.
- Short, A. D. and Hogan, C. L. : *Rip Currents and Beach Hazards: Their Impact on Public Safety and Implications for Coastal Management*, *J. Coast. Res.*, 197-209, 1994.
- 640 Silva-Cavalcanti, J. S., Costa, M. F., and Pereira, P. S.: Rip currents signaling and users behaviour at an overcrowded urban beach, *Ocean Coast. Manag.*, 155, 90-97, <https://doi.org/10.1016/j.ocecoaman.2018.01.031>, 2018.
- 645 Sotés, I., Basterretxea-Iribar, I. and de Las Mercedes Maruri, M.: Are the Biscayne University students ready to go to the beach safely? *Ocean Coast. Manag.*, 151, 134-149, <https://doi.org/10.1016/j.ocecoaman.2017.10.012>, 2018.



- Sotés, I., Basterretxea-Iribar, I., Sanchez-Beaskoetxea, J., and de Las Mercedes Maruri, M.: Environment understanding, signage perception and safety education in Biscay beachgoers under the view of lifeguards, *Ocean Coast. Manag.*, 189, 105149, <https://doi.org/10.1016/j.ocecoaman.2020.105149>, 2020.
- 650 Surf Life Saving Australia: National Coastal Safety Report, Surf Life Saving Australia, Sydney, 2020.
Surf Life Saving Australia: National Coastal Safety Report, Surf Life Saving Australia, Sydney, 2021.
- White, K. M. and Hyde, M. K.: Swimming between the flags: A preliminary exploration of the influences on Australians' intentions to swim between the flags at patrolled beaches. *Accid. Anal. Prev.*, 42, 1831-1838,
655 <https://doi.org/10.1016/j.aap.2010.05.004>, 2010.
- Willcox-Pidgeon, S., Kool, B. and Moran, K.: Perceptions of the risk of drowning at surf beaches among New Zealand youth, *Int. J. Inj. Contr. Saf. Promot.*, 25, 365-371, <https://doi.org/10.1080/17457300.2018.1431939>, 2018.
- 660 Williamson, A., Hatfield, J., Sherker, S., Brander, R., and Hayen, A.: A comparison of attitudes and knowledge of beach safety in Australia for beachgoers, rural residents and international tourists, *Aust. N. Z. J. Public Health*, 36, 385-391, <https://doi.org/10.1111/j.1753-6405.2012.00888.x>, 2012.
- Woodward, E., Beaumont, E., Russel, P., Wooler, A., and Macleod, R.: Analysis of Rip Current Incidents and Victim
665 Demographics in the UK, *J. Coast. Res.*, 65, 850-855, <https://doi.org/10.2112/SI65-144.1>, 2013.
- Wright, L. D. and Short, A. D.: Morphodynamic variability of surf zones and beaches: A synthesis, *Mar. Geol.*, 56, 93-118, [https://doi.org/10.1016/0025-3227\(84\)90008-2](https://doi.org/10.1016/0025-3227(84)90008-2), 1984.