

Global assessment and mapping of ecological vulnerability to wildfires

Fátima Arrogante-Funes ¹, Inmaculada Aguado ¹ and Emilio Chuvieco ¹

¹Environmental Remote Sensing Research Group, Department of Geography and Geology, Universidad de Alcalá, Colegios 2, 28801 Alcalá de Henares, Spain.

Correspondence to: Fátima Arrogante-Funes (fatima.arrogante@uah.es)

Abstract. Fire is a natural phenomenon that has played a critical role in transforming the environment and maintaining biodiversity at a global scale. However, the plants in some habitats have not developed strategies for recovery from fire or have not adapted to the changes taking place in their fire regimes. Maps showing ecological vulnerability to fires could contribute to environmental management policies in the face of global change scenarios. The main objective of this study is to assess and map ecological vulnerability to fires on a global scale. To this end, we created ecological value and post-fire regeneration delay indices on the basis of existing global databases. Two ecological value indices were identified: biological distinction and conservation status. For the post-fire regeneration delay index, various factors were taken into account, including the type of fire regime, the increase in the frequency and intensity of forest fires and the potential soil erosion they can cause. These indices were combined by means of a qualitative cross-tabulation to create a new index evaluating ecological vulnerability to fire. [The results showed that global ecological value could be reduced by as much as 50% due to fire perturbation of poorly adapted ecosystems.](#) The terrestrial biomes most affected are the tropical and subtropical moist broadleaf forest; tundra; mangroves; tropical and subtropical coniferous forests; and tropical and subtropical dry broadleaf forests.

1 Introduction

Fire is a natural phenomenon that has played an important role in the transformation of the environment and the maintenance of biodiversity on a global scale. It can have numerous positive and negative impacts. Most of the world's terrestrial habitats where fires occur depend on them for ecological sustainability. (Kirkman et al., 2001; Midgley & Bond, 2015). Fire can affect the distribution of habitats, carbon and nutrient fluxes, and the water-holding properties of soils (Bowman et al., 2009). In habitats that are adapted to and even dependent on fire exclusion policies, this can result in a decrease in biodiversity (Guyette et al., 2002). In addition, the absence of fire results in increases in fuel loads (Bond et al., 2005), which frequently augment the risk of catastrophic fires over time. Fire has also been and continues to be used by humans as a crucial tool for managing terrestrial ecosystems, producing cultural landscapes that also benefit ecological health (Caprio & Graber, 2000; Guyette et al., 2002).

On the other hand, there are some habitats, such as moist tropical forests, that have never adapted to fires. The introduction of fire by humans can lead to an irreparable loss of their structure and composition (Cochrane & Laurance, 2002). Even in fire-adapted areas such as the Mediterranean ecosystems, recent human and climate-related changes in fire regimes are having negative impacts on the functioning of ecosystems (Bajocco et al., 2011; Midgley & Bond, 2015). The increasing frequency and intensity of fires can have negative impacts on forest [stands](#)

37 and landscapes, human life, infrastructures and ecosystem services and wildlife; and can cause changes in
38 regeneration dynamics, hydrological regimes and air quality, among other environmental consequences on a global
39 scale (Alcasena et al., 2016; Barrio et al., 2011; Buhk et al., 2007; Díaz-Delgado et al., 2002; Flannigan et al.,
40 2009; Hobson & Schieck, 1999; Moreira et al., 2011; Scott & Van Wyk, 1990). As a result of this process of
41 change, [wildfires](#) have become one of the main environmental problems today at both global and local levels.

42 This means that fires must be included in global and regional assessments of vulnerability to global change
43 (Houghton et al., 2001; Lindner et al., 2010). Furthermore, fire risk assessment should be carried out spatially in
44 order to design and implement prevention strategies that enable the conservation of the ecological value of
45 ecosystems and landscapes. When fires happen, assessments of this kind can also be useful for implementing post-
46 fire strategies to bring about the recovery of pre-fire ecological values and cultural and socioeconomic assets
47 (Aretano et al., 2015; Chuvieco et al., 2010). In terms of natural hazards terminology, spatially measured fire risk
48 is a combination of ‘danger’ and ‘vulnerability’. ‘Danger’ is defined as the probability of fire occurring in a given
49 place and time, while vulnerability refers to the potential damage that fire could cause to this place (Chuvieco et
50 al., 2007).

51 The concept of vulnerability has been studied and applied at different spatial scales and in a wide range of
52 disciplines, in both social and natural studies (Abson et al., 2012; Berry et al., 2006; Cinner et al., 2012; Cutter et
53 al., 2003; Moreno & Becken, 2009).

54 Vulnerability has many different definitions. For example, the definition proposed by the [UNISDIR, \(2009\)](#) is
55 based on the assumption that an ecosystem cannot cope with a disturbing event (earthquake, fire, flood, etc.) and
56 is therefore vulnerable to it. In order to assess where adaptation actions may be necessary and beneficial,
57 vulnerability assessment must analyse the factors that determine the potential for damage from exogenous threats,
58 as well as the endogenous adaptive capacity of the ecosystem (Preston et al., 2011).

59 An ideal assessment of ecological vulnerability must therefore take into account the biotic and abiotic aspects of
60 the environment (e.g. species richness, conservation status of the ecosystems), the relationship between them (e.g.
61 ecosystem functionality) (Ippolito et al., 2010), as well as any temporal and spatial pressures (e.g. landscape
62 fragmentation) (Williams & Kapustka, 2000). An integrated approach to vulnerability can therefore be achieved
63 by developing different indices that characterize the biodiversity and ecological quality of the environment and its
64 capacity to adapt and regenerate once a fire has been extinguished.

65 [The integration and harmonization of spatial data of different origin and typology on a global scale in an index is
66 a challenge. Numerous integration techniques exist, such as multicriteria methods](#) (El Gibari et al., 2019). [But for
67 a global scale, the lack of a panel that is sufficiently representative of the world would lead to a biased result
68 \(depending on the territory of which there was representation or not\)](#) (Borrero & Henao, 2017; Hämäläinen &
69 Alaja, 2008). [For this reason, qualitative cross-tabulation seems like an integration tool that could be objective
70 enough when dealing with categorical data as proposed by numerous studies](#) (Arrogante-Funes et al., 2021;
71 Martínez Vega et al., 2007).

72 Some attempts to assess vulnerability do not take all these elements into account (Turner et al., 2003). The study
73 by Duguay et al., (2012) characterized ecological vulnerability using the species richness measurement, at a local
74 scale, in Mediterranean forests. In research in southern Italy, also on a local scale, Aretano et al., (2015) proposed
75 an ecological sensitivity index covering unique habitats, susceptibility to fire and regeneration capacity, but did
76 not evaluate soil erosion after disturbance. At the regional level, Chuvieco et al., (2010) studied ecological

77 vulnerability in line with the degree of protection of the area, reviewing the different legal forms for the official
78 protection of ecosystems, homogeneous landscape units and land uses. This approach focused more on landscape
79 ecology than on species biodiversity, in which adaptation to fire is considered through the strategies developed by
80 plants in response to fire [through the dynamic global vegetation model called ORCHIDEE](#). In other research, such
81 as the study by González, Kolehmainen, & Pukkala, (2007), the vulnerability of the ecosystem to fire was evaluated
82 by a group of experts who were provided with images and data on forest metrics measured in the field, together
83 with aerial photographs. Regional studies have been conducted to evaluate the effects of fire on soils and post-fire
84 dynamics in ecosystems (Duguay & Vallejo, 2008; Giovannini & Lucchesi, 1997). The first global analysis of
85 wildfire vulnerability was done by Chuvieco et al. (2014), who estimated the standing ecological value of
86 ecosystems from biodiversity data, their state of conservation and the fragmentation of the landscape. The delay
87 in the post-fire regeneration of vegetation was estimated by assessing their adaptation to fire and potential soil
88 erosion. Adaptation to fire was analysed by comparing the real land cover with fire simulations based on the
89 dynamic global vegetation model.

90 In this paper, we carry out a systematic assessment of ecological vulnerability to wildfires on a global scale using
91 an index that combines the two main components of vulnerability, namely the ecological value of ecosystems and
92 the delay in post-fire regeneration. The novelty of this approach lies in the characterization of structural
93 biodiversity from the point of view of its exceptionality, while also assessing biodiversity in terms of ecosystem
94 functionality. In addition, in this study, rather than approaching the post-fire regeneration of forests as part of a
95 static, immutable system, as most previous researchers have done, we view these strategies within the dynamic
96 context of changing fire regimes. This study will be carried out on a global scale so as to enable us to tackle the
97 planetary ecosystem as a whole, unrestricted by governmental or geographic borders. In this way, this research
98 could become an essential tool for decision-making about resource management and nature conservation across
99 the globe.

100 **2 Materials and methods**

101 **2.1 Conceptual framework**

102 In order to develop the Ecological Vulnerability Index proposed in this study, our first task was to estimate the
103 ecological value of the environment and its regeneration capacity after fire disturbance. To do so, we had to process
104 the different input variables and devise a way to integrate them into the index (Table 1). [In addition, the basic
105 integration tool in the different indicators and index is the qualitative cross tabulation used in many spatial studies
106 \(Arrogante-Funes et al., 2021; Martínez Vega et al., 2007\).](#)

107

108

109

110

111

112

113

114 **Table 1: Conceptual framework and diagram for the Ecological Vulnerability Index, and reference sources**
 115 **used in the input variables.**
 116

| Factor | Input Variables | Source | Method |
|---------------------------------------|---|---|---|
| Taxonomic Rarity | Vertebrate and Vascular Plant Endemisms | Kier et al., (2009); World Wildlife Fund, (2006) | Endemism Ratio to Total Species |
| Species Richness | Number of Vertebrates and Vascular Plants | Kier et al., (2005); World Wildlife Fund, (2006) | Species Total Normalized by Area |
| Functional Diversity | Specific Leaf Area, Leaf Dry Matter Content, Leaf Nitrogen Content, Leaf Phosphorus Content | Moreno-Martinez et al., (2018) | Carbon, Nitrogen and Phosphorous Cycle Productivity |
| Unique Habitats | Global 200 Map | Olson & Dinerstein, (2002) | Percentage Unique Habitats in relation to the Total by Ecoregion |
| Unique Preservation Habitats | 35 Priority Places Map, Red List of Threatened Species | Burgess et al., (2014); World Wildlife Fund, (2006) | Percentage of Protected Area, Number of Threatened Species |
| Intact Forest Landscapes Blocks | Intact Forest Landscapes Maps | Potapov et al., (2008) | Percentage of Intact Forest in relation to the Total Area by Ecoregion |
| Degree of Fragmentation | Fragmentation by Ecoregion | Hoekstra et al., (2010) | Homogeneity Percentage by Ecoregion |
| Degree of Protection | World Database on Protected Areas | IUCN & UNEP-WCMC, (2020) | Percentage of Protected Area in relation to the Total Area by Ecoregion |
| RUSLE | RUSLE Map | Borrelli et al., (2017) | Qualitative Ranges |
| Relationship fire-ecoregion | Map | Shlisky et al., (2007) | Qualitative Ranges |
| Degradation Natural condition of fire | Fire Condition Natural Degradation Map | | |

117 **2.2 Spatial Unit**

118 The spatial units used in this study were the terrestrial ecoregions proposed by the World Wildlife Fund (WWF),
 119 as corrected in 2017 (Olson et al., 2001). The terrestrial ecoregion concept refers to a land unit large enough to
 120 house a set of natural communities composed of different species, dynamics and similar environmental conditions.
 121 Thus, ecoregions are a good way to structure ecological and fire information on a global scale, since they are
 122 relatively homogeneous in terms of climate and vegetation (Pausas & Ribeiro, 2017). For this reason, ecoregions
 123 are considered a more suitable unit of reference on which to add spatial biological information, compared to other
 124 possible units such as grids.

125 The database is made up of 827 ecoregions distributed in 14 biomes. The ecoregions in which it is impossible for
 126 forest fires to occur were excluded, while other areas, such as Antarctica, were excluded due to lack of data. [In](#)
 127 [this way, the final number of ecoregions was 660, having representation of all terrestrial -biomes.](#)

128 **2.3 Burnable Area**

129 It was necessary to define the burnable area in order to identify areas in which fires are unable to expand. Our
 130 assessment of Burnable Area was based on the global Land Cover (LC) dataset produced under the Climate Change
 131 Initiative (CCI) program of the European Space Agency (ESA) (www.esa-landcover-cci.org). The CCI-LC map
 132 was generated from MERIS-Envisat images acquired at 300 m between 2008 and 2012. The original product

133 includes 22 land covers, which were reclassified to burnable/unburnable covers and then resampled at a resolution
134 of 0.25 degrees.

135 Ecoregions with burnable areas of $\leq 33\%$ were removed from further analysis, as they would suffer only marginal
136 impacts of fire. This reduced the final number of ecoregions and terrestrial biomes used in our analysis to 647 and
137 14, respectively (Fig. A1).

138 **2.4 Representativeness Criteria**

139 The approach used to establish the ecological value of the different terrestrial ecoregions is based on the concept
140 of representativeness. In this way, each biome is guaranteed to have at least one priority ecoregion, so ensuring,
141 for example, that the ecoregions in the savanna forest biome can also be classified, in addition to the more
142 important moist tropical forests, which would otherwise dominate the list of values due to their high rates of species
143 richness and endemic species (endemisms). This approach is used in ecoregional evaluations that enable
144 comparison between studies (Burgess et al., 2006; Ricketts et al., 1999). The biological values were studied by
145 ecoregion within the biome to which they belong. Then, all the ecoregions with their respective biological values
146 were combined in a map at global level.

147 **2.5 Ecological [Indicator](#)**

148 To evaluate the ecological component relative to the ecoregions within each biome, two [indicators](#) were
149 qualitatively generated and integrated by cross-tabulation: i) [Biological distinctiveness](#) and ii) [Conservation Status](#).
150 This approach enables us to characterize structural biodiversity from the point of view of its exceptionality, and in
151 terms of ecosystem functionality (Dinerstein et al., 1995; Ricketts et al., 1999).

152 **2.5.1 [Biological distinctiveness](#)**

153 [Biological distinctiveness](#) is more than just biodiversity at the species level, in that it also covers the diversity of
154 ecological functions and the processes that support structural biodiversity (Ricketts et al., 1999). Specifically, this
155 study is based on taxonomic rarity, species richness, functional diversity, and habitats with a unique evolution.

156 **Taxonomic Rarity and Species Richness.** The lists of species and endemisms (i.e. at least 75% of the taxon
157 occurs in the same place) by ecoregion for mammals, birds, reptiles and amphibians form a dataset that can be
158 gleaned from the literature, distribution databases, and fieldwork carried out by expert taxonomists (WWF, 2006).
159 Likewise, the data relating to diversity and vascular plant endemisms (Kier et al., 2005, 2009) have been used in
160 numerous ecological studies (Freudenberger et al., 2012; Poos, Walker, & Jackson, 2009).

161 To find out more about vertebrate species diversity, the total number was obtained by adding up all the vertebrate
162 species belonging to the same ecoregion. The data were then normalized according to land area (Eq. (1)):

$$163 \quad SA = S/(A)^Z \quad (1)$$

164 where SA is the number of species corrected by ecoregion, S the total number of species, A is the area in km² and
165 Z is the correction factor for continental mainland (value of 0.2) and islands (value 0.25) (Rosenzweig, 1995). As
166 numerous studies show (Burgess et al., 2006; Olson et al., 2001; Ricketts et al., 1999), the behaviour of this data
167 type is associated with the size of the territory, which is why in order to make them comparable we had to apply
168 this method of approximation to the species-area distribution curve. The same process was followed to obtain the

169 richness of vascular plant species, except that the data for the total number of species by ecoregion had already
170 been collected.

171 To assess the absolute taxonomic rarity for vertebrates and vascular plants, the endemism-richness ratio (Eq. (2))
172 was calculated. This estimates the number of species endemic to the ecoregion as a proportion of its species
173 richness:

$$174 \quad R = (\Sigma E / \Sigma S) \quad (2)$$

175 where R is the percentage of endemisms, E the endemisms and S the species.

176 **Functional Diversity.** The continuous data about Specific Leaf Area (SLA), Leaf Dry Matter Content (LDMC),
177 Leaf Nitrogen Content (LNC) and Leaf Phosphorus Content (LPC) (g x g⁻¹) was provided by Moreno-Martínez
178 et al., (2018) at 500m spatial resolution. It was used as a proxy of Carbon, Nitrogen and Phosphorus cycle
179 productivity.

180 To obtain the productivity of each cycle, an average figure by ecoregion was estimated. The productivity values
181 were then scaled in a monotonous linear manner increasing from 1 to 100, so as to enable us to compare
182 productivity between the different ecoregions. Finally, functional diversity was integrated as a sum of the
183 productivity values for the carbon, nitrogen and phosphorus cycle.

184 The environment is a holistic system, which means that loss of function affects the capacity of the ecosystem to
185 support not only itself, but also its neighbours (Pausas & Ribeiro, 2017). Ecoregions with high functional diversity
186 values are therefore considered more vulnerable to fires because they provide support for other ecosystems that
187 could also be damaged indirectly by fire in this way.

188 **Unique Habitats.** The Global 200 (G200) cartography (Olson & Dinerstein, 2002) shows the area in square
189 kilometres of habitats with unusual ecological and evolutionary phenomena by ecoregion, which make them
190 irreplaceable (Myers et al., 2010). In this way, 141 terrestrial ecoregions were identified. To assess the G200
191 cartography, we calculated the ratio between the area occupied by these habitats and the total area of the ecoregion.

192 **Integrating the Factors into the [Biological Distinctiveness](#).** The above factors were integrated into the
193 [Biological Distinctiveness](#) using the criteria established by Burgess et al., (2006). First, the factors per ecoregion
194 were scaled in a [monotonic](#) linear way [taking the range](#) from 1 to 100 [through a linear function](#) within the biome
195 [\(particular for each variable, depending on the maximum and minimum value of it\)](#). The taxonomic rarity scores
196 were given the most weight as they establish the qualitative ranges of the biodiversity through quartiles: Very
197 High, High, Moderate and Low (Table 2). In the case of endemic species, this is because if a fire occurred in one
198 of these ecoregions, the entire species would be wiped out. For the other factors, the first quartiles of species
199 richness and of unique habitats and scores of > 95 for functional diversity are taken into account when assigning
200 these ecoregions to the exceptional category (Table 2).

201

202

203

204

205

206

207

208

209 **Table 2: Summary of the criteria for assigning ecoregions within the biomes to the different categories.**

| Categories | Endemisms | Species Richness | Functional Diversity | Unique Habitats |
|------------|---|---|--|-----------------------------------|
| Very High | First quartile of total endemisms within the biome | First quartile of species richness within the biome | Ecoregions with more than 95% productivity | First quartile of unique habitats |
| High | Second quartile of total endemisms within the biome | | | |
| Moderate | Third quartile of total endemisms within the biome | | | |
| Low | Fourth quartile of total endemisms within the biome | | | |

210

211 **2.5.2 Conservation Status**

212 The Conservation Status seeks to estimate the current and future capacity of an ecoregion to meet the following
 213 biodiversity conservation and quality objectives: maintain populations and communities of viable species,
 214 maintain ecological processes, and respond effectively to environmental changes over time. Specifically, this study
 215 is based on the preservation of unique habitats, the presence of landscapes that contain intact habitats, the degree
 216 of environmental fragmentation and the level of protection they enjoy.

217 **Unique Habitats Preservation.** The 35 Priority Places (35PP) cartography, proposed by the WWF, consolidates
 218 special conservation areas because they are an extensive and intact representation of unique ecosystems (Burgess
 219 et al., 2014). Of these, we maintained the 33 terrestrial ecoregions with a degree of protection and then estimated
 220 the ratio between the area occupied by these protected ecosystems and the total area of the ecoregion to which they
 221 belonged.

222 For its part, the Red List of Threatened Species (RL) provides data about the current situation of the biodiversity
 223 (WWF, 2006). We maintained the species on this list categorized as: "critically endangered", "endangered" and
 224 "vulnerable". These categories were selected because there are common criteria for the management and
 225 conservation of the habitats that host these species (Hilton-Taylor, 2000; Mace & Lande, 1991). We then calculated
 226 the total number of threatened species by ecoregion.

227 Both processed variables were scaled from 1 to 100 in an increasing [monotonic](#) linear manner and were added
 228 together to obtain the singular habitats preservation factor.

229 **Intact Forest Landscapes Blocks.** From an ecological point of view, old-growth forests are of great importance,
 230 albeit more structural than functional, in terms of their role in the conservation of most of terrestrial diversity,
 231 hosting indigenous populations and contributing enormously to the regulation of the global climate. Outside these
 232 blocks, for example in planted forests, characteristics such as the age of the plants or the composition of the [stands](#)
 233 could not be maintained in such an exceptional way. The Intact Forest Landscapes (IFL) cartography (Potapov et
 234 al., 2008) charts the location and extent of the forests and terrestrial ecosystems that remain unaltered by humans,
 235 with a minimum mappable unit of 500 km². The IFL area data was added to the corresponding ecoregions and the
 236 area occupied by these forests as a percentage of the total area of the ecoregion was calculated.

237 **Degree of Fragmentation.** Landscape fragmentation mapping by ecoregion is based on the method proposed by
 238 Hoekstra et al., (2010). It shows the degree of fragmentation as a percentage, with the highest percentages
 239 corresponding to highly degraded or heterogeneous landscapes and the lowest to areas that are unfragmented or
 240 homogeneous.

241 The degree of homogeneity was established by scaling the values for terrestrial ecoregions in a [monotonic](#) linear
 242 manner reversing the original scale from 1-100 to 100-1. The more homogeneous compositions have higher
 243 biodiversity ratios (Collinge, 1996), so making them more vulnerable to fire due to the ecological loss that this
 244 would cause (Pausas et al., 2003).

245 **Degree of Protection.** Protected status, mainly in the form of national parks and reserves, plays an essential role
 246 in conservation. These areas are mapped in the World Database on Protected Areas (WDPA), which was generated
 247 as part of a project developed by the United Nations Environment Program (UNEP) and by the IUCN, administered
 248 by the World Center Conservation Monitoring Committee (WCMC) and UNEP (IUCN & UNEP-WCMC, 2020).
 249 In this study, we only considered the terrestrial protected areas classified under IUCN categories I-IV, as for these
 250 categories there is reliable data, verified on the ground, and they are managed in a similar way, thus enabling us
 251 to assume that they all have the same biodiversity conservation values. The area data for the WDPAs were added
 252 to the corresponding ecoregions and we then calculated the area occupied by WDPAs as a percentage of the total
 253 area of each ecoregion.

254 **Integrating the factors into the Conservation Status.** The weights ([Table 3](#)) for the different factors (i.e. unique
 255 habitats, intact forest landscapes, degree of fragmentation and degree of protection) and the method for integrating
 256 them into the Conservation [Status](#) were as proposed by Burgess et al., (2006) and by Ricketts et al., (1999). [These](#)
 257 [variables were multiplied by their weight \(Table 3\) and then added together to obtain the Conservation Status. In](#)
 258 [this way, the scores that can be obtained by an ecoregion vary between a minimum of 1 and a maximum of 100](#)
 259 [\(Table 3\).](#) The variables awarded the most weight are those that indicate the quality of an ecosystem in terms of
 260 its size and homogeneity. Then, the values were scaled according to this criterion and qualitative ranges were
 261 generated using quartiles [such as Pereira et al., \(2020\) and Xing & Ree \(2017\), among others](#) (Table 4).

262 **Table 3: Values assigned on the basis of**
 263 **conservation status obtained from the**
 264 **G200 cartography**

| Factors | Weights |
|------------------------------|-------------------------|
| Unique Habitats Preservation | 40 |
| Intact Forest Landscapes | 25 |
| Degree of Fragmentation | 20 |
| Degree of Protection | 15 |

262 **Table 4: Criteria for assigning**
 263 **ecoregions within biomes to the**
 264 **different categories**

| Categories | Conservation Status |
|------------|---------------------|
| Very High | First quartile |
| High | Second quartile |
| Moderate | Third quartile |
| Low | Fourth quartile |

266 2.5.3 Integrating the Ecological [Indicator](#)

267 The [Biological Distinctiveness](#) and Conservation Status were constructed using a qualitative cross-tabulation that
 268 prioritized the most valuable elements, given that high biodiversity and quality values also imply high ecological
 269 values in the environment (Ricketts et al., 1999) (Table 5).

270

271 **Table 5: Criteria for assigning ecoregions within biomes to the different categories in the Ecological**
272 **Indicator**.

| | | Conservation Status | | | |
|-----------------------------------|-----------|---------------------|-----------|----------|----------|
| | | Very High | High | Moderate | Low |
| <u>Biological Distinctiveness</u> | Very High | Very High | Very High | High | Moderate |
| | High | Very High | Very High | High | Moderate |
| | Moderate | High | High | Moderate | Moderate |
| | Low | High | Moderate | Low | Low |

273

274 **2.6 Post-Fire Vegetation Regeneration Delay Indicator**

275 The delay in the regeneration of vegetation after a fire is an indicator of the difficulties faced by the environment
276 when recovering naturally from fire. It depends on the various strategies adopted by forest species that have
277 adapted to fire and also on the physical state of the soil after the fire. This study provides a dynamic approach
278 which includes an assessment of the alteration of the fire regime. Habitats that have not adapted to the change in
279 fire regimes observed in recent decades will also be assessed.

280 **2.6.1 Adaptation of the Vegetation to Fire Regimes**

281 We used the two [maps](#) provided by Shlisky et al., (2007), which were generated in collaboration with WWF, the
282 Nature Conservancy (TNC), the University of Berkeley and the IUCN. Firstly, the ecoregions were grouped into
283 [relationship between fire and ecoregion](#) characterized by fire behaviour, plant strategies in response to fire, climatic
284 variables and human use of fire as a forest management tool. Secondly, the ecoregions were grouped together on
285 the basis of the alteration of the natural state of fire regimes, measured in terms of frequency, severity, size and
286 seasonality. The first grouping includes fire-dependent, sensitive and independent fire regimes, while the second
287 classifies ecoregions according to intact, altered and highly altered fire regimes.

288 After reviewing the data base, 647 terrestrial ecoregions were maintained (repeated and confusing information was
289 eliminated, as were ecoregions without data, covered with ice or rock). To estimate the adaptation of the ecoregions
290 to fire regimes, the two factors (regimes and their alteration) were integrated through a qualitative cross-tabulation
291 (Table 6).

292 The lowest values for Adaptation to Fire Regimes were for the independent and sensitive categories, while the
293 highest were for the ecoregions that were well adapted to fire. In ecosystems that are well adapted to fire, it plays
294 a fundamental role in the conservation of biodiversity. However, in poorly adapted ecosystems, fire can cause
295 serious problems in the recovery and conservation of biodiversity because the plants do not have the necessary
296 strategies to cope with and recover from it (Shlisky et al., 2007).

297

298 **Table 6: Criteria for assigning ecoregions to the different categories of adaptation to fire regimes**

| | | Natural Condition Fire | | |
|--|-------------|------------------------|----------|-----------|
| | | Very Degraded | Degraded | Intact |
| Relationship between fire and ecoregion | Independent | Low | Low | Moderate |
| | Sensitive | Low | Moderate | High |
| | Dependent | Moderate | High | Very High |

299

300 **2.6.2 Soil Erosion Potential**

301 Post-fire soil erosion can reduce the recovery capacity of the vegetation, and consequently of the ecosystem. The
 302 expansion capacity of the roots depends on the quality of the soil, in terms for example of its texture. This is why,
 303 after a fire, regeneration of the vegetation does not begin instantaneously. The soil must first recover its original
 304 structure and composition and this takes time. The Global Soil Erosion map (Borrelli et al., 2017) was developed
 305 using the Revised Universal Soil Loss Equation (RUSLE) with a spatial resolution of 250 m.

306 Potential soil losses were calculated in tons per pixel. The potential soil erosion per ecoregion (tn / ha) was
 307 estimated by adding together all the soil losses and then dividing by the total area. The values were then
 308 transformed into a categorical variable according to the criterion for soil erosion due to water, proposed by the
 309 Food and Agriculture Organization of the United Nations (FAO) (FAO/UNEP/UNESCO, 1979) (Table 7), which
 310 is also applicable to fire erosion processes (Chuvienco et al., 2014).

311

312 **Table 7: FAO criteria for assigning ecoregions to different categories of potential soil erosion.**

| Categories | Values (tn/ha year) |
|------------|---------------------|
| Low | 0 – 20 |
| Moderate | 20 – 50 |
| High | 50 – 200 |
| Very High | > 200 |

313

314 **2.6.3 Integrating the Post-Fire Vegetation Regeneration Delay Indicator**

315 The two factors - Adaptation of Vegetation to Fire and Potential Soil Erosion - were combined by qualitative cross-
 316 tabulation (prioritizing the most valuable element) to obtain the Post-Fire Regeneration Delay [Indicator](#) (Table 8).

317 This is an indicator of the time required for an ecosystem to regenerate naturally, i.e. for it to recover a structure
 318 and composition similar to that that existed pre-fire. Therefore, the higher the delay values, the greater the

319 vulnerability to fire. This factor is the opposite of the post-fire regeneration capacity index calculated by other
 320 authors in local studies (Baeza et al., 2007). Post-Fire Regeneration Delay values from High to Very High were
 321 assigned to ecoregions with a Moderate or Low Adaptation to Fire and High Potential Soil Erosion values. The
 322 lowest Regeneration Delay values corresponded to ecoregions that were well adapted to fire and had low soil
 323 erosion potential.

324
 325 Table 8: Criteria for assigning ecoregions to the different Post-Fire Vegetation Regeneration Delay categories.

| | | Potential Soil Erosion | | | |
|-------------------------------------|-----------|------------------------|----------|-----------|-----------|
| | | Low | Moderate | High | Very High |
| Adaptation of Vegetation to Fire | Very High | Low | Low | Moderate | High |
| | High | Low | Low | Moderate | High |
| | Moderate | Moderate | Moderate | High | Very High |
| | Low | Moderate | High | Very High | Very High |

326
 327 **2.7 Combining the Ecological Indicator and the Post-Fire Vegetation Regeneration Delay Indicator to form**
 328 **the Ecological Vulnerability to Fire Index**

329 Once the different components of our Ecological Vulnerability to Fire Index had been obtained, they were
 330 combined by means of a qualitative cross-tabulation in which the most valuable component was prioritized (Table
 331 9). In other words, the potential ecological losses due to fires were estimated. The lower the Post-Fire Regeneration
 332 Delay values, the lower the impacts of fire.

333
 334 Table 9: Criteria for assigning ecoregions to the different Ecological Vulnerability Index categories.

| | | Post-Fire Vegetation Regeneration Delay <u>Indicator</u> | | | |
|-----------------------------|-----------|--|----------|-----------|-----------|
| | | Low | Moderate | High | Very High |
| Ecological <u>Indicator</u> | Low | Low | Low | Moderate | High |
| | Moderate | Low | Moderate | Moderate | High |
| | High | Moderate | High | Very High | Very High |
| | Very High | High | High | Very High | Very High |

335

336 2.8 Sensitivity Analyses: One at a time

337 The objective of a sensitivity analysis is to test the uncertainty of the result of a mathematical model due to the
338 integration of numerical variables. The on-at-a-time (OAT) method is the most widely used in the literature and
339 consists of analysing the effect of making small variations on one input while others remain fixed (Saltelli et al.,
340 2000).

341 In this study, the variables that make up the Ecological Fire Vulnerability Index are of a categorical type and it is
342 for this reason that a modification of the OAT method is proposed in order to be able to estimate the uncertainty
343 of the product such as (Gonzalez et al., (2015) and (Clavijo et al., (2019) estimated in their studies. In the way of
344 integrating said index through the Ecological and Post-fire Regeneration Delay indicators, the resulting label of
345 ecological vulnerability obtained through the qualitative cross tabulation has been varied (Table 10). In this way
346 we will be able to establish stable ecoregions (reference) and changing ecoregions (uncertainty).

347

348 **Table 10: Criteria for assigning ecoregions to the different Ecological Vulnerability Index categories in**
349 **order to test the OAT.**

| | | <u>Post-Fire Vegetation Regeneration Delay Indicator</u> | | | |
|-----------------------------|------------------|--|-----------------|------------------|------------------|
| | | <u>Low</u> | <u>Moderate</u> | <u>High</u> | <u>Very High</u> |
| <u>Ecological Indicator</u> | <u>Low</u> | <u>Low</u> | <u>Moderate</u> | <u>Moderate</u> | <u>High</u> |
| | <u>Moderate</u> | <u>Moderate</u> | <u>Moderate</u> | <u>High</u> | <u>High</u> |
| | <u>High</u> | <u>Moderate</u> | <u>High</u> | <u>High</u> | <u>Very High</u> |
| | <u>Very High</u> | <u>High</u> | <u>High</u> | <u>Very High</u> | <u>Very High</u> |

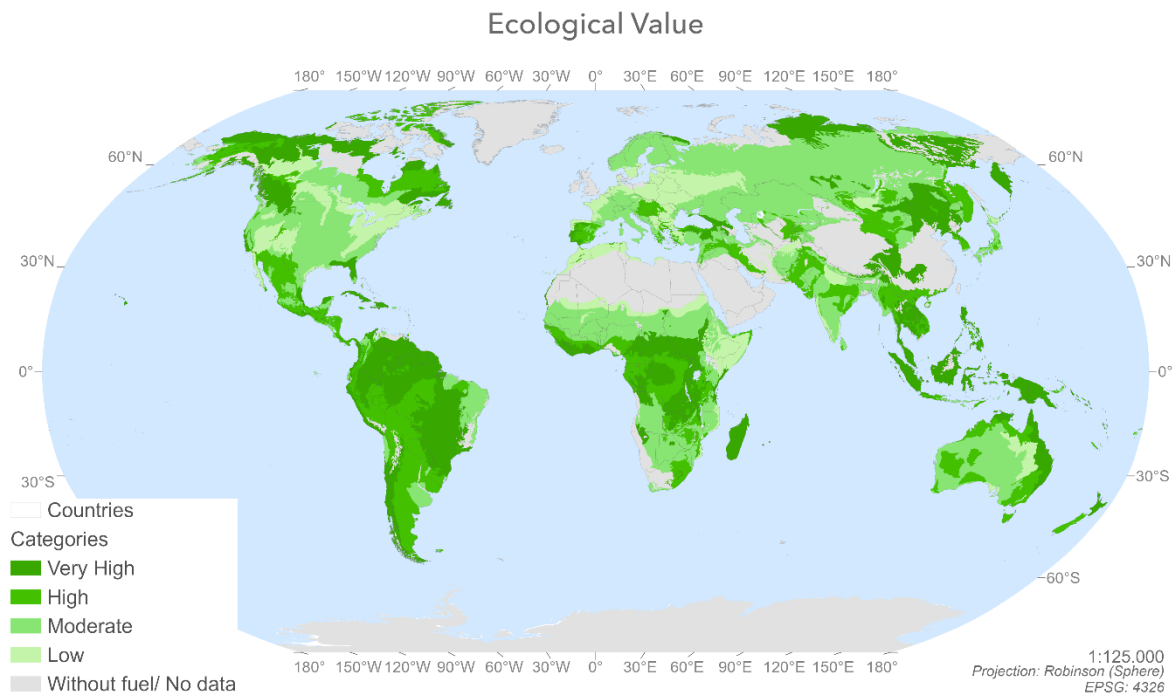
350

351 The changes made correspond to: (i) the same category of label corresponds to the same resulting label, (ii) if two
352 continuous categories face each other, the resulting label will be the one with the highest category and (iii) between
353 two different categories the label of resulting vulnerability will be an intermediate category, prioritizing the highest
354 when there are several in between.

355 **3 Results**

356 **3.1 Ecological Indicator**

357 Figure 1 shows the Ecological Value by ecoregion in terms of Biological Distinctiveness (Fig. A2) and
358 Conservation Status (Fig. A3) indices. Ecoregions of increasing ecological value are shown in a range of tones
359 from light green to dark green.



360

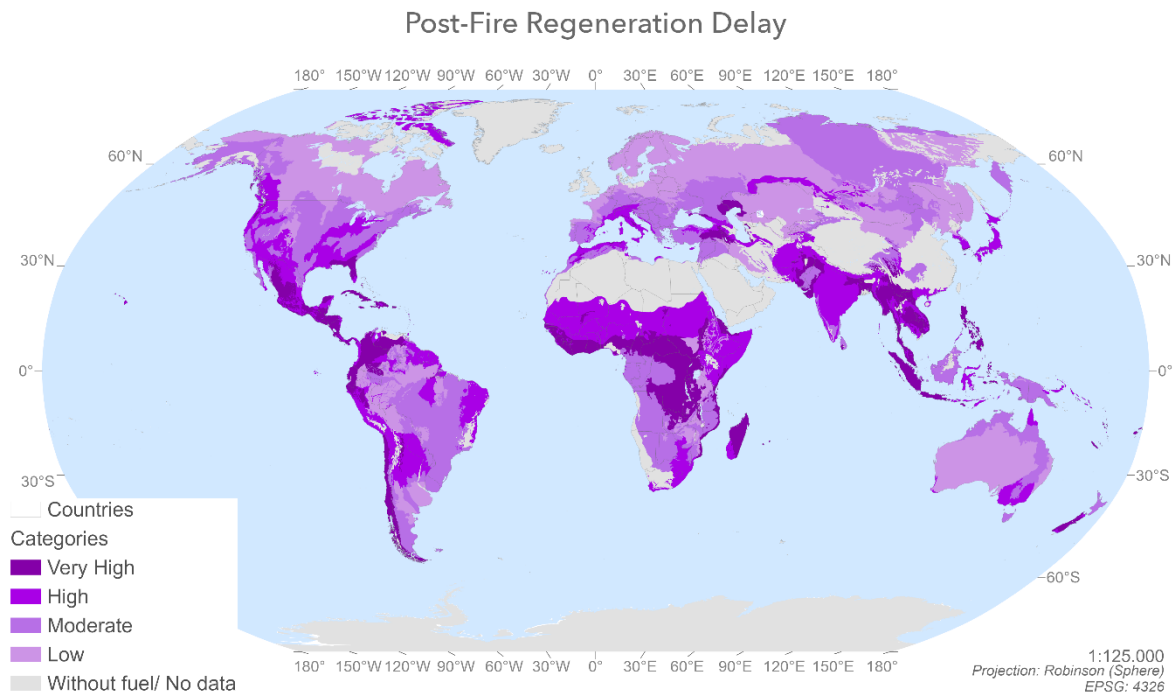
361 **Figure 1: Spatial distribution of Ecological Value by ecoregion ([Ecological Indicator](#)) calculated by**
 362 **combining the [Biological Distinctiveness](#) (by ecoregion evaluated within the biome to which it belongs) and**
 363 **the [Conservation Status](#) (by ecoregion).**

364

365 There are 220 ecoregions with Very High Ecological values, 163 with High values, 206 with Moderate values and
 366 59 with Low values. The ecoregions with the highest Ecological Values (Fig. 1) are located in temperate zones,
 367 such as British Columbia, forests in the US and European Mediterranean, China, New Zealand; and in the tropical
 368 and subtropical regions, for example the Amazon Basin, Sierra Leone, Cameroon, the Congo Basin, Zambia,
 369 Madagascar, New Guinea and northern Australia. Boreal areas, such as Canada and Russia, also show high
 370 ecological values.

371 **3.2 [Post-Fire Regeneration Delay Indicator](#)**

372 Figure 2 shows the Post-Fire Regeneration Delay [value by ecoregion](#), in terms of Adaptation of Vegetation to Fire
 373 (produced by combining the plant strategies and fire-regime alteration factors) (Fig. A4) and Potential Soil Erosion
 374 (Fig. A5). The very high and high Delay values, highlighted in dark purple tones, are for areas with high Erosion
 375 and low Adaptation to Fire, while the moderate and low values, highlighted in lighter lilac tones, are associated
 376 with vegetation with very high and high Adaptation to Fire values and moderate or low Erosion values.



377

378 **Figure 2: Spatial distribution of Post-fire Regeneration Delay Values by ecoregion calculated by combining**
 379 **the Adaptation to Fire and the Potential Soil Erosion values by ecoregion.**

380

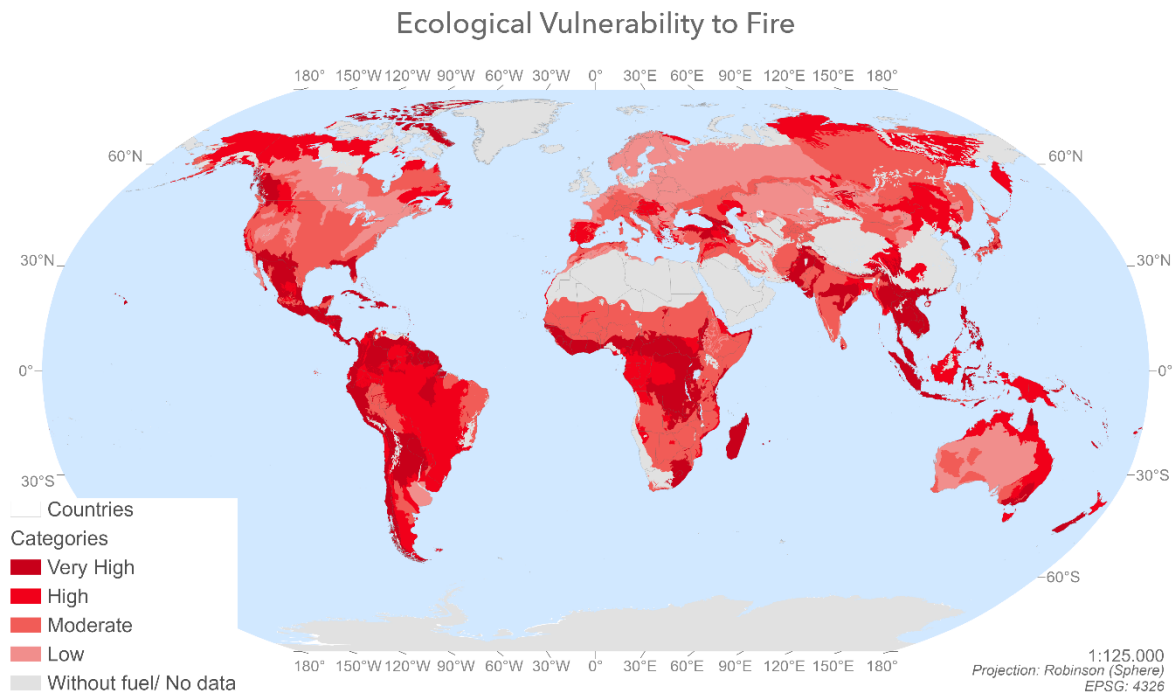
381 Of the 647 ecoregions evaluated, 154 had very high Post-fire Regeneration Delay values, 271 had high values, 157
 382 had moderate values and 120 had low values. The least resilient zones (with low or moderate Adaptation to Fire
 383 and high or very high Potential Soil Erosion) belonged to temperate regions such as Florida, the Yucatan Peninsula,
 384 eastern United States, the forests of California, Chile and the Spanish Mediterranean and forests in the Caucasus,
 385 Himalayas and New Zealand; and in tropical and subtropical areas, for example in Colombia, Ecuador, the Congo
 386 Basin, Zambia, Tanzania, Madagascar, countries bordering the Tibet Autonomous Region, the Philippines,
 387 Bangladesh, India and New Zealand.

388 By contrast, the most resilient areas of the planet (very high or high Adaptation to Fire values and low or moderate
 389 Potential Soil Erosion) are in the temperate broadleaf and mixed forests of northern Europe, the boreal forests of
 390 Canada and Russia, Mediterranean forests, the woodlands and scrubs of southern Australia, and the temperate
 391 grasslands, savannas and shrublands of Euro-Asia.

392 **3.3 Ecological Vulnerability to Fire [Index](#)**

393 **3.3.1 Spatial distribution**

394 Figure 3 shows the Ecological Vulnerability to Fires [values](#) by ecoregion ([from Ecological Vulnerability to Fire](#)
 395 [Index](#)). These values were calculated by combining the delay in post-fire regeneration and the ecological [indicator](#)
 396 [values](#). In other words, this map shows the intensity of potential damage and the capacity to regenerate after
 397 wildfires. The areas with the highest values are shown in dark red and correspond to those with significant Post-
 398 Fire Regeneration Delay values and high Ecological [values](#). By contrast, the areas shown in lighter salmon tones
 399 correspond to ecoregions that are not particularly vulnerable to fire and would incur few potential ecological losses,
 400 since they have low Ecological [and low Post-Fire](#) Regeneration Delay values.



401

402

403

404

Figure 3: Spatial distribution of Ecological Vulnerability to Fire [Index values](#) calculated by combining the Post-Fire Regeneration Delay and the Ecological [Indicators values](#) by ecoregion.

405

406

407

408

409

410

411

412

Of the 647 ecoregions analysed, 246 had very high Vulnerability to Fire values, 155 had high values, 182 were moderately vulnerable and 77 had low values. The areas that would suffer the greatest ecological losses per biome in the event of fire are the temperate zones of British Columbia, the Himalayas, central China, California, Spain, South Africa, Florida, South Sudan, New Zealand, Mongolia, eastern Australia, Chile, Hungary, Romania, Croatia, Serbia, Italy and the Caucasus area; and tropical and subtropical areas such as Mexico, Central America, the Amazon Basin, Sierra Leone, Cameroon, Guinea, the Congo Basin, Paraguay, Argentina, Uruguay, Madagascar, Borneo, Sumatra, the Philippines, Namibia and northern Australia. The ecosystems of the Canadian and Russian boreal forests and the Bolivian and Chinese montane grasslands and shrublands are also vulnerable to fire.

413

3.3.2 Biome area assessment

414

415

416

417

418

419

420

421

422

423

424

425

Almost 50% of the ecoregions have either very high or high Ecological Vulnerability to Fire values (calculated by combining the Post-Fire Regeneration Delay and the Ecological [indicators](#)), while only 21% of ecoregions have low Ecological Vulnerability to Fire. This is due to an increase in the frequency and intensity of large [Wildfires](#). The terrestrial biomes that contain most land in the very high and high Vulnerability categories as a proportion of their total area are: tropical and subtropical moist broadleaf forests, tundra, mangroves, tropical and subtropical coniferous forests, and tropical and subtropical dry broadleaf forests. Within the very high Vulnerability to Fires category, the dominant terrestrial biomes are: tropical and subtropical moist forests, tropical and subtropical grasslands, savannas and shrublands, and xeric shrublands. By contrast, the least common biomes in this category are: wetlands, temperate grasslands, savannas and shrublands, and mangroves. Boreal forests do not have any areas with very high vulnerability values. Of the 106,605,491 km² considered in this study (Table 11), the area classified as having very high vulnerability to fires consisted (from highest to lowest) of 7,611,385 km² of tropical and subtropical moist broadleaf forests,

426 5,905,304 km² of tropical and subtropical grasslands, savannas and shrublands, 1,980,099 km² of xeric shrublands,
427 1,593,959 km² of tropical and subtropical dry broadleaf forests, 1,300,302 km² of temperate broadleaf and mixed
428 forests, 1,170,778 km² of temperate conifer forests, 1,053,305 km² of montane forests and shrublands, 556,032
429 km² of tundra, 524,545 km² of tropical and subtropical conifer forest, 172,422 km² of Mediterranean forests,
430 woodlands and scrubs, 154,022 km² of mangroves, 87,651 km² of temperate grasslands, savannas and scrublands;
431 and finally 25,131 km² of flooded grasslands and savannas.

432 By contrast, if we look at the different biomes (Table 11), the most vulnerable (from highest to lowest) are as
433 follows: Tropical and subtropical moist coniferous forests with 75.07% of their area classified as very high
434 vulnerability, mangroves with 59.61%, tropical and subtropical dry broadleaf forests with 53.08%, tropical and
435 subtropical moist broadleaf forests with 41.82%, montane grasslands and shrublands with 33.83%, temperate
436 conifer forests with 29.65%, tropical and subtropical grasslands, savannas and shrublands with 29.27%; xeric
437 shrublands with 14.02%, tundra with 13.55%, temperate broadleaf and mixed forests with 12.22%, Mediterranean
438 forests, woodlands and scrubs with 5.38%, flooded grasslands and savannas with 2.93% and, lastly, temperate
439 grasslands, savannas and shrubs with 0.88%. None of the ‘Boreal forests and taigas’ biome falls within the very
440 high vulnerability category, but around 20% of its area is classified as high vulnerability.

441 As regards the biomes with the lowest Vulnerability to Fire values as a proportion of their total area (Table 11),
442 the temperate broadleaf and mixed forests stand out (44.85%) followed by boreal forests and taiga (41.37%), xeric
443 shrublands (35.01%), and Mediterranean forests, woodlands and scrubs (31.85%). The mangroves biome is also
444 worth highlighting in that its entire area is vulnerable to fire (Table 10).

445
446
447
448
449
450
451
452
453
454
455
456
457
458
459
460
461
462
463
464
465

Table 11: Number of ecoregions, surface area and percentage of land ecologically vulnerable to fires.

| Biome | Percentage of total area studied by biome | Vulnerability Categories | Ecoregions | km ² | Percentage per biome |
|---|---|--------------------------|------------|------------------|----------------------|
| Tropical & Subtropical Moist Broadleaf Forests | 92.05 | Very High | 105 | 7611385 | 41.82 |
| | | High | 55 | 8318171 | 45.70 |
| | | Moderate | 20 | 1972358 | 10.84 |
| | | Low | 3 | 300554 | 1.65 |
| Tropical & Subtropical Dry Broadleaf Forests | 99.77 | Very High | 28 | 1593959 | 53.08 |
| | | High | 11 | 454328 | 15.13 |
| | | Moderate | 9 | 929016 | 30.94 |
| | | Low | 1 | 25432 | 0.85 |
| Tropical & Subtropical Coniferous Forests | 98.52 | Very High | 12 | 524545 | 75.07 |
| | | Moderate | 2 | 174236 | 24.93 |
| Temperate Broadleaf & Mixed Forests | 82.96 | Very High | 17 | 1300302 | 12.22 |
| | | High | 14 | 1600054 | 15.03 |
| | | Moderate | 19 | 2970276 | 27.91 |
| | | Low | 16 | 4773459 | 44.85 |
| Temperate Conifer Forests | 96.62 | Very High | 19 | 1170778 | 29.65 |
| | | High | 4 | 558328 | 14.14 |
| | | Moderate | 20 | 1369471 | 34.69 |
| | | Low | 6 | 849432 | 21.52 |
| Boreal Forests & Taiga | 94.85 | High | 12 | 2753116 | 19.19 |
| | | Moderate | 5 | 5659834 | 39.45 |
| | | Low | 8 | 5935488 | 41.37 |
| Tropical & Subtropical Grasslands, Savannas & Shrublands | 100.00 | Very High | 14 | 5905304 | 29.27 |
| | | High | 12 | 4217891 | 20.90 |
| | | Moderate | 16 | 9362256 | 46.40 |
| | | Low | 3 | 691856 | 3.43 |
| Temperate Grasslands, Savannas & Shrublands | 98.26 | Very High | 2 | 87651 | 0.88 |
| | | High | 8 | 2631992 | 26.52 |
| | | Moderate | 18 | 4622103 | 46.57 |
| | | Low | 8 | 2584338 | 26.04 |
| Flooded Grasslands & Savannas | 78.70 | Very High | 2 | 25131 | 2.93 |
| | | High | 4 | 425610 | 49.54 |
| | | Moderate | 5 | 250872 | 29.20 |
| | | Low | 3 | 157458 | 18.33 |
| Montane Grasslands & Shrublands | 60.01 | Very High | 16 | 1053305 | 33.83 |
| | | High | 5 | 628994 | 20.20 |
| | | Moderate | 14 | 1089028 | 34.98 |
| | | Low | 2 | 341828 | 10.98 |
| Tundra | 35.20 | Very High | 2 | 556032 | 13.55 |
| | | High | 11 | 2916345 | 71.09 |
| | | Moderate | 3 | 385270 | 9.39 |
| | | Low | 1 | 244865 | 5.97 |
| Mediterranean Forests, Woodlands & Scrubs | 99.47 | Very High | 3 | 172422 | 5.38 |
| | | High | 5 | 624670 | 19.50 |
| | | Moderate | 21 | 1385415 | 43.25 |
| | | Low | 9 | 1020796 | 31.87 |
| Xeric Shrublands | 50.64 | Very High | 13 | 1980099 | 14.02 |
| | | High | 8 | 882566 | 6.25 |
| | | Moderate | 23 | 6314163 | 44.71 |
| Mangroves | 74.59 | Low | 14 | 4944312 | 35.01 |
| | | Very High | 9 | 154022 | 59.61 |
| | | High | 3 | 55773 | 21.58 |
| | | Moderate | 4 | 48602 | 18.81 |
| Total | 78.85 | | | 106605491 | |

3.4 Sensitivity analysis: OAT

Table 11 shows the results of the sensitivity analysis called OAT carried out through the qualitative cross-tabulation method between Ecological and Post-Fire Regeneration Delay Indicator in order to obtain the Ecological Vulnerability to Fire Index. The categories of the Ecological Vulnerability to Fire Index that present the greatest changes are: High reaching higher numbers of ecoregions (+95) and Low decreasing its number of ecoregions considerably to 14 (-65). The number of stable ecoregion per category of Ecological Vulnerability to Fire (obtain the same tag in the Ecological Vulnerability to Fire Index and then, in the OAT sensitivity method) that represent ecoregion of reference are: 185 of Very High, 152, of High, 159 of Moderate and 14 of Low. The total of it reaching 510 ecoregion stables from the 647 ecoregion of this study (Fig. A6). Thus, the percentage of matches is 80.37%.

Table 11: Accuracy of the model, number of ecoregions per category of Ecological Vulnerability to Fire from the Index and Sensitivity method, and number of stable and net change of ecoregion between the Index and Sensitivity method.

| Categories of Ecological Vulnerability | Number of ecoregion of the Ecological Vulnerability Index | Number of ecoregion of sensitivity of Ecological Vulnerability Index | Number of stable ecoregion per category of Ecological Vulnerability Index | Net change of ecoregion per category of Ecological Vulnerability Index |
|--|---|--|---|--|
| Very High | 247 | 185 | 185 | -62 |
| High | 194 | 289 | 152 | 95 |
| Moderate | 127 | 159 | 159 | 32 |
| Low | 79 | 14 | 14 | -65 |
| Total of ecoregions | 647 | 647 | 520 | - |
| Matches (%) | | 80,37 | | |

4 Discussion

This study presents an index for assessing and mapping Ecological Vulnerability to Fire on a global scale on the basis of Ecological Indicator and Post-Fire Regeneration Delay Indicator. Our results show that global ecological value may be reduced by as much as 50% due to the perturbation by fire of ecosystems that are poorly adapted to fire and have degraded fire regimes. The terrestrial biomes most affected are the tropical and subtropical moist broadleaf forest, tundra, mangroves, tropical and subtropical coniferous forests, and tropical and subtropical dry broadleaf forests. The most important determining factor is fire regime, in that current alterations to the fire regime are causing areas that were previously considered to be relatively safe to now be classified as vulnerable to fire.

This study attempts to evaluate Ecological Vulnerability to Fire on a global scale. Although the databases used were carefully examined before selection, the results are inevitably affected by the different spatial units, the lack of information, the lack of updating and the uncertainty in the data for some ecoregions; and to a lesser extent, by the way we combined the factors in the different indices.

In order to avoid problems with estimations of Species Richness, we used field data which measured this variable exactly. In comparison with the use of remote sensing data, the study by Duro et al., 2007 shows that the Net Primary Productivity (NPP) value overestimates biodiversity in areas covered by reforestations. This is because forests made up of young trees or saplings, which fix more carbon than mature forests, are being overestimated.

497 In addition, the NPP biodiversity values are evaluated in terms of the number of different individuals and not in
498 terms of the number of different species, a fundamental indicator for establishing the biodiversity values of
499 particular environments (Nagendra & Rocchini, 2008).

500 As regards the ecosystem functionality variables, remote sensing data has the advantage of providing updated
501 information for the entire planet. Despite the extensive bibliographic review carried out as part of this research,
502 we were unable to find a concise way of combining these variables due to the fact that little research has been done
503 on the specific issue of ecosystem functionality. This is one of the first studies of ecological vulnerability to fire
504 that takes this issue into account, by integrating it into ecological value. This is of the utmost importance since fire
505 affects both the functioning of the ecosystem and its ability to maintain itself (Pausas & Ribeiro, 2017).

506 Our Ecological Vulnerability to Fire Index highlights those biomes considered most susceptible (tropical and
507 subtropical moist broadleaf forests, tundra, mangroves, tropical and subtropical coniferous forests, and tropical
508 and subtropical dry broadleaf forests) to suffering a decline in their ecological value. Two clusters can be observed.
509 The first consisted of mangroves and tropical and subtropical forests associated with tropical latitudes. These
510 regions obtained high or very high Ecological Vulnerability to Fire values due to the fact that they had the highest
511 ecological values and also had high regeneration delay values. Within the ecological value dimension of this index,
512 tropical latitudes show the highest values for both [Biological Distinctiveness](#) and [Conservation Status](#) due to the
513 fact that they host the highest ratios for biodiversity and endemisms, and have high ecosystem functionality values
514 and low levels of landscape degradation. They also have high levels of official protection. In addition, these areas
515 have the highest regeneration delay values due to the low adaptation capacity of the vegetation, the high current
516 alterations of the natural fire regime and the high potential soil erosion after fire disturbance. For this reason, if a
517 wildfire occurs in biomes such as mangroves, tropical and subtropical moist and broadleaf forests, and coniferous
518 forests, the ecological value of these biomes will almost certainly be heavily degraded due to the fact that most
519 areas within these biomes fall within the very high Ecological Vulnerability to Fire category of our index.

520 Second on this list of the biomes with the largest area with a high potential for degradation by fire is tundra, due
521 to the fact that it scores highly in both Ecological Value and Regeneration Delay, the two components of our
522 Vulnerability to Fire index. In terms of the first component, the intrinsic behaviour of the tundra biome explains
523 why it has similar ecological values to the biomes in the first cluster. However, the high levels of Regeneration
524 Delay have a different explanation. Within the Regeneration Delay [Indicator](#), tundra has a fire regime in which the
525 vegetation is well adapted to fire due to the fact that, unlike the tropical and subtropical biomes, frequent fire
526 disturbance has been a constant feature of its development. In spite of this, tundra biomes have large areas in the
527 high or very high Vulnerability to Fire categories due to the fact that they score high values for potential soil
528 erosion and fire regime modification. As a result, pre-fire ecological values will be difficult to recover if the
529 wildfire occurs under a different regime than that to which the vegetation has adapted. This is why large swathes
530 of the tundra biome are classified within the very high Vulnerability to Fire category of our index.

531 In the end, both clusters meet the two requirements of our index for them to be considered highly vulnerable to
532 losing their pre-fire ecological values in the event of perturbation by fire: (i) high Ecological [Indicator](#) values and
533 (ii) high Regeneration Delay values. Within the Ecological [Indicator](#), the factors which led the different ecoregions
534 to obtain high Ecological [Indicator](#) values are related to the ability of their ecosystems to host different kinds of
535 plants and wildlife (endemisms, functional and structural biodiversity) and the degree of official protection
536 afforded to them. For its part, the factor with the greatest impact on Regeneration Delay values is the alteration of

537 the fire regime, as this means that the strategies developed by the vegetation in response to fire are no longer fit
538 for purpose, and cannot help it recover the Ecological [Indicator](#) values existing prior to the fire. This is why
539 alteration of the fire regime is the most important factor and the most closely associated with human action in that
540 it is largely a consequence of human-induced global change. In this context, a determined shift towards more
541 sustainable lifestyles would reduce ecological vulnerability to fire.

542 In this sense, up to 50% of the terrestrial ecosystem analysed in this study is vulnerable to potential degradation of
543 its ecological value due to the changes taking place in fire regimes. This estimate coincides with the climate change
544 projections that indicate an increase in the frequency and intensity of large forest fires, recently dubbed
545 “megafires”, as a result of longer, drier fire seasons (Stephens et al., 2013, Aponte et al., 2016). This increase, at
546 least in the medium term, will lead to new fire regimes and an increase in aridity in some regions as a consequence
547 of climate change (Flannigan et al., 2009). Terrestrial ecosystems will need to adapt not only to changes in mean
548 climatic variables, but also to greater variability with increased risk of extreme weather events, such as prolonged
549 droughts, storms, and floods (Lindner et al., 2010). As a result of this process of change, forest fires have become
550 one of the main environmental problems at a global scale today.

551 If we compare our evaluation of [Ecological Vulnerability](#) to [Fire Index](#) with the study carried out by Chuvieco et
552 al., (2014), substantial differences can be observed. Firstly, in our study the temperate conifer forests in the British
553 Columbia region had high vulnerability values compared to those estimated with their index. Lightning fires are
554 frequent in this area and the ecosystem has learnt to adapt to them. However, in our study, we included the
555 possibility of change in the fire regime, which indicates that these areas are in fact quite vulnerable to fire. Nitschke
556 & Innes (2013) found that due to climate change, fire regimes in boreal areas are changing in frequency and area.
557 If we look for example at the temperate broadleaf and mixed forests of Patagonia and the boreal forests of Alaska,
558 although both have adapted to fire to some extent, they also obtained high vulnerability to fire values, because of
559 the alteration in their fire regimes due to climate change, as indicated by Higuera et al., (2009) and Landesmann
560 et al., (2015).

561 If we turn our attention to the tropical and subtropical dry broadleaf forests of India, one of the greatest biodiversity
562 areas in the world, in the study by Chuvieco et al., (2014) they were considered to have low vulnerability to fire
563 because their plant communities had adapted to it. However, our study offers a different assessment, awarding
564 these parts of India higher Ecological Vulnerability to Fire values. This may be due to the fact that our model takes
565 into account a variable that characterizes the delay in post-fire regeneration as a result of changes in the fire regime.
566 In this sense, Kodandapani, Cochrane, & Sukumar (2008) refer to the fact that logging and forest fragmentation,
567 grazing and the collection of non-timber forest products are affecting the behaviour of fire in these forests.

568 In relation to the Amazon Basin, in this study the highest vulnerability to fire values only occur in the regions close
569 to the mouth. This may be due to the way in which the Species Richness variable is characterized. Species
570 Richness, adjusted in line with the size of the ecoregion, enables us to compare ecoregions of different sizes so as
571 to assess the ecological value fairly, rather than just comparing the raw data (Ricketts et al., 1999). It should be
572 noted that the areas near the coast, which have a more open plant canopy that allows sunlight to penetrate, have
573 managed to develop undergrowth vegetation that supports other forms of life (greater species richness understood
574 as diversity of species rather than abundance of species). In this case, it is important to realize that we are dealing
575 with tropical and subtropical moist broadleaf forests, which have not developed in the presence of fire. The
576 introduction of fire into these ecosystems could therefore result in significant losses in that plant species have

577 never developed post-fire regeneration strategies. This is why the small ecoregions at the mouth of the Amazon
578 suffer slightly greater losses due to fire, compared with the large central ecoregions (Cochrane & Laurance, 2002).
579 In addition, in the present study, the large temperate broadleaf and boreal forests of northern Europe and Russia
580 show less ecological vulnerability to fires than estimated by Chuvieco et al. (2014). This may be due to the fact
581 that our model, by following a representative criterion of estimating the ecological value within the biome, gives
582 higher species ratios to smaller regions, and less weight to the large ecoregions in northern Europe and Russia.
583 This is why, in our study, on a global scale, these ecoregions obtained a low vulnerability to fire value given that
584 to destroy all their ecological wealth, their entire immense area would have to be affected.

585 As for our index, despite the similarities and differences in the results with other studies, it has its own uncertainty
586 like all models. From the sensitivity analysis, it could be said that approximately 80% of the ecoregions evaluated
587 with the Ecological Vulnerability to Fire index would be considered robust. On the other hand, of the small changes
588 made, around 20% of the ecoregions would show uncertainty in the result of the index.

589 For example, some of them are located in Africa. Focusing on them, it is surprising to see Zambia and NE Angola
590 mapped with a very high Post-fire Regeneration Delay, especially considering how often they burn. Given the
591 global scale, the heterogeneity of the sources used and the extensive area that an ecoregion represents, sometimes
592 the uncertainty does not come from the integration method but from the prior uncertainty of the databases to be
593 used (Richards & Rowe, 1999). On the other hand, it should be noted that the use of the global scale gives us
594 general information on what is happening in order to detect points of controversy on which to proceed to a study
595 at a local/regional scale (Goodchild et al., 1993).

596 All integration methods, both quantitative and in our case qualitative (cross tabulation), show uncertainty in their
597 results, but as the literature points out, it is necessary to deal with it (Heuvelink, 1998; Heuvelink et al., 1989).

598 At various points in our study, we combined different factors to create an index. Although the model is based on
599 the bibliography, improvements such as multi-criteria evaluations involving expert participation could be applied
600 in the future in a bid to enrich the proposed approach in local/regional scales (Gómez-Delgado & Tarantola, 2006).
601 We could also apply machine-learning techniques to enable us to establish a more precise relationship between
602 the different factors (Semeraro et al., 2016). For all of the above, the resulting estimates should be interpreted as
603 an initial approximation.

604 Despite the aforementioned limitations, this study presents a robust, pragmatic and easily understood aggregation
605 methodology. The negative effects of fires can only be identified after the fire. This means that a model of
606 ecological vulnerability to fire cannot be correctly validated on a global scale as there is no representative sample
607 for doing so. However, at regional and local scales, there are studies that monitor post-fire ecological damage
608 (Gouveia et al., 2010). This is because the effects of fire can best be understood at these scales. As this methodology
609 can be replicated easily and the factors can be adapted to the model (to a greater or lesser extent depending on the
610 information available), the model could and indeed should be validated at these scales.

611 The ecological vulnerability model at a global scale is also very useful as it can help us to understand the global
612 impacts that fires could have on ecosystems and on climate change. In addition, on a global scale, there are studies
613 that focus on the early detection of places where fires may occur (based on climate data) (De Groot et al., 2006).
614 If these studies were combined with our map, they could help prevent or mitigate ecological losses, as well as
615 encourage the development of action plans in the event of fire, aimed at accelerating the regeneration of the
616 ecosystem.

617 This model could also be used in the field of forest management to prioritize fire intervention areas in terms of
618 ecological value, as proposed by Burgess et al. (2006) and Ricketts et al. (1999). If this vulnerability index were
619 included in fire management plans, in the event of several fires breaking out at the same time, priority action could
620 be directed at the most vulnerable area in order to protect its ecological value. Although in these cases, the
621 protection of human lives is normally the first priority, future studies are expected to develop and integrate the
622 idea of socioeconomic vulnerability into this ecological component of vulnerability. It would therefore seem more
623 logical to develop policies, prevention and restoration plans in the most vulnerable areas in order to preserve them.
624 Although this model for evaluating ecological vulnerability to fires on a global scale is an initial approximation, it
625 allows us to identify which ecoregions of the different biomes are more likely to have their ecological value
626 impaired by fire and why.

627 **5 Conclusions**

628 This paper makes an initial assessment of the spatial distribution of ecological vulnerability to fire on a global
629 scale. The methodology we implemented enabled us to systematically integrate all the ecological components
630 likely to be affected by forest fires. A novel aspect of this methodology is the way it integrates the variables in the
631 biological distinction index, the characterization of functional diversity and the fact that it takes into account the
632 impact of the alteration of the [natural condition of the fire](#) in post-fire regeneration delay. This index made it
633 possible to identify the most susceptible biomes in terms of the loss of their ecological values, and it could be
634 useful as a starting point for developing plans and strategies in response to global change scenarios.

635 At a global level, our results show that almost 50% of the world's land surface is vulnerable to a decline in its
636 ecological value due to fire as a result of the current alteration of the fire regime. The terrestrial biomes with the
637 highest degree of ecological vulnerability to fire were found in the tropical and subtropical moist broadleaf forests;
638 tundra; mangroves; tropical and subtropical coniferous forests; and tropical and subtropical dry broadleaf forests.
639 The greatest determining factor is the fire regime, a problem that is being exacerbated by current alterations, in
640 that areas that were previously considered to be relatively safe now have much higher vulnerability values due to
641 alterations in [the natural condition of the fire](#), caused by global climate change.

642 **Author contributions**

643 Fátima Arrogante-Funes: Conceptualization, data curation, formal analysis, investigation, methodology, resources,
644 software, validation, visualization, writing – original draft preparation, [review & editing](#).

645 Inmaculada Aguado: Conceptualization, funding acquisition, investigation, methodology, project administration,
646 supervision, writing – review & editing.

647 Emilio Chuvieco: Conceptualization, funding acquisition, investigation, methodology, project administrator,
648 resources, supervision, writing – review & editing.

649 **Acknowledgements**

650 This research was conducted within the framework of Spanish National Project RTI2018-097538-B-I00. In
651 addition, Fátima Arrogante-Funes was supported by a predoctoral scholarship (FPI) from the Spanish Ministry of
652 Science, Innovation and Universities (PRE2019-089208). We would also like to thank ESA, Kier, the World

653 Wildlife Fund, Moreno-Martínez, Olson, Burgess, Potapov, Hoekstra, IUCN & UNEP-WCM, Borrelli and Shlisky
654 for the databases. [Many thanks to the reviewers for helping to improve the manuscript.](#)

655 **References**

- 656 Abson, D. J., Dougill, A. J., & Stringer, L. C. (2012). Using Principal Component Analysis for information-rich
657 socio-ecological vulnerability mapping in Southern Africa. *Applied Geography*, 35(1–2), 515–524.
658 <https://doi.org/10.1016/j.apgeog.2012.08.004>
- 659 Alcasena, F. J., Salis, M., Nauslar, N. J., Aguinaga, A. E., & Vega-García, C. (2016). Quantifying economic losses
660 from wildfires in black pine afforestations of northern Spain. *Forest Policy and Economics*, 73, 153–167.
661 <https://doi.org/10.1016/j.forpol.2016.09.005>
- 662 Aretano, R., Semeraro, T., Petrosillo, I., De Marco, A., Pasimeni, M. R., & Zurlini, G. (2015). Mapping ecological
663 vulnerability to fire for effective conservation management of natural protected areas. *Ecological Modelling*,
664 295, 163–175. <https://doi.org/10.1016/j.ecolmodel.2014.09.017>
- 665 Arrogante-Funes, P., Bruzón, A. G., Arrogante-Funes, F., Ramos-Bernal, R. N., & Vázquez-Jiménez, R. (2021).
666 Integration of vulnerability and hazard factors for landslide risk assessment. *International Journal of*
667 *Environmental Research and Public Health*, 18(22). <https://doi.org/10.3390/ijerph182211987>
- 668 Baeza, A. M. J., Valdecantos, A., Alloza, J. A., Vallejo, V. R., Centro, I., Ambientales, D. E., Darwin, C. C. R., &
669 Tecnoldgico, P. (2007). *Human Disturbance and Environmental Factors as Drivers of Long-Term Post-Fire*
670 *Regeneration Patterns in Mediterranean Forests Stable URL : <http://www.jstor.org/stable/4499220>*
671 *REFERENCES Linked references are available on JSTOR for this article : long-term . 18(2), 243–252.*
- 672 Bajocco, S., Salvati, L., & Ricotta, C. (2011). Land degradation versus fire: A spiral process? *Progress in Physical*
673 *Geography*, 35(1), 3–18. <https://doi.org/10.1177/0309133310380768>
- 674 Barrio, M., Loureiro, M., & Chas, M. L. (2011). Aproximación a las pérdidas económicas ocasionadas a corto
675 plazo por los incendios forestales en Galicia en 2006. *Economía Agraria y Recursos Naturales*, 7(14), 45.
676 <https://doi.org/10.7201/earn.2007.14.03>
- 677 Berry, P. M., Rounsevell, M. D. A., Harrison, P. A., & Audsley, E. (2006). Assessing the vulnerability of
678 agricultural land use and species to climate change and the role of policy in facilitating adaptation.
679 *Environmental Science and Policy*, 9(2), 189–204. <https://doi.org/10.1016/j.envsci.2005.11.004>
- 680 Bond, W. J., Woodward, F. I., & Midgley, G. F. (2005). The global distribution of ecosystems in a world without
681 fire. *New Phytologist*, 165(2), 525–538. <https://doi.org/10.1111/j.1469-8137.2004.01252.x>
- 682 Borrelli, P., Robinson, D. A., Fleischer, L. R., Lugato, E., Ballabio, C., Alewell, C., Meusburger, K., Modugno,
683 S., Schütt, B., Ferro, V., Bagarello, V., Oost, K. Van, Montanarella, L., & Panagos, P. (2017). An assessment
684 of the global impact of 21st century land use change on soil erosion. *Nature Communications*, 8(1).
685 <https://doi.org/10.1038/s41467-017-02142-7>
- 686 Borrero, S., & Henao, F. (2017). Can managers be really objective? Bias in multicriteria decision analysis.
687 *Academy of Strategic Management Journal*, 16(1), 244–260. [https://www.abacademies.org/articles/can-](https://www.abacademies.org/articles/can-managers-be-really-objective-Bias-in-multicriteria-decision-analysis-1939-6104-16-1-114.pdf)
688 [managers-be-really-objective-Bias-in-multicriteria-decision-analysis-1939-6104-16-1-114.pdf](https://www.abacademies.org/articles/can-managers-be-really-objective-Bias-in-multicriteria-decision-analysis-1939-6104-16-1-114.pdf)
- 689 Bowman, D. M. J. S., Balch, J. K., Artaxo, P., Bond, W. J., Carlson, J. M., Cochrane, M. A., D'Antonio, C. M.,
690 DeFries, R. S., Doyle, J. C., Harrison, S. P., Johnston, F. H., Keeley, J. E., Krawchuk, M. A., Kull, C. A.,
691 Marston, J. B., Moritz, M. A., Prentice, I. C., Roos, C. I., Scott, A. C., ... Pyne, S. J. (2009). Fire in the earth

692 system. *Science*, 324(5926), 481–484. <https://doi.org/10.1126/science.1163886>

693 Buhk, C., Meyn, A., & Jentsch, A. (2007). The challenge of plant regeneration after fire in the Mediterranean
694 Basin: Scientific gaps in our knowledge on plant strategies and evolution of traits. *Plant Ecology*, 192(1),
695 1–19. <https://doi.org/10.1007/s11258-006-9224-2>

696 Burgess, N., de Lima, M. G., N., B., Blythe, S., Tompkins, I., Coad, L., & Leverington, F. (2014). Protected Area
697 Management Effectiveness in WWF Global Priority Places. *Cambridge: UNEP-WCMC*.

698 Burgess, N., Hales, J. D. A., Ricketts, T. H., & Dinerstein, E. (2006). Factoring species, non-species values and
699 threats into biodiversity prioritisation across the ecoregions of Africa and its islands. *Biological*
700 *Conservation*, 127(4), 383–401. <https://doi.org/10.1016/j.biocon.2005.08.018>

701 Caprio, A. C., & Graber, D. M. (2000). *Returning fire to the mountains: can we successfully restore the ecological*
702 *role of pre-Euroamerican fire regimes to the Sierra Nevada* (D. Cole, S. McCool, & J. O’Loughlin (eds.)).
703 In *Wilderness science in a time of change conference*.

704 Chuvieco, E., Aguado, I., Yebra, M., Nieto, H., Martín, M. P., Vilar, L., Martínez, J., Padrón, D., Martín, S., &
705 Salas, J. (2007). Cartografía del peligro de incendios forestales mediante Teledetección y SIG. *Teledetección*
706 *- Hacia Un Mejor Entendimiento de La Dinámica Global y Regional, January*, 19–26.

707 Chuvieco, E., Aguado, I., Yebra, M., Nieto, H., Salas, J., Martín, M. P., Vilar, L., Martínez, J., Martín, S., Ibarra,
708 P., de la Riva, J., Baeza, J., Rodríguez, F., Molina, J. R., Herrera, M. A., & Zamora, R. (2010). Development
709 of a framework for fire risk assessment using remote sensing and geographic information system
710 technologies. *Ecological Modelling*, 221(1), 46–58. <https://doi.org/10.1016/j.ecolmodel.2008.11.017>

711 Chuvieco, E., Martínez, S., Román, M. V., Hantson, S., & Pettinari, M. L. (2014). Integration of ecological and
712 socio-economic factors to assess global vulnerability to wildfire. *Global Ecology and Biogeography*, 23(2),
713 245–258. <https://doi.org/10.1111/geb.12095>

714 Cinner, J. E., McClanahan, T. R., Graham, N. A. J., Daw, T. M., Maina, J., Stead, S. M., Wamukota, A., Brown,
715 K., & Bodin, O. (2012). Vulnerability of coastal communities to key impacts of climate change on coral reef
716 fisheries. *Global Environmental Change*, 22(1), 12–20. <https://doi.org/10.1016/j.gloenvcha.2011.09.018>

717 Clavijo, A. U., Delgado, M. G., & González, P. B. (2019). Análisis de Sensibilidad aplicado a modelos de
718 crecimiento urbano basados en autómatas celulares de estructura irregular. *Cuadernos Geográficos*, 58, 326–
719 348.

720 Cochrane, M. A., & Laurance, W. F. (2002). Fire as a large-scale edge effect in Amazonian forests. *Journal of*
721 *Tropical Ecology*, 18(3), 311–325. <https://doi.org/10.1017/S0266467402002237>

722 Collinge, S. K. (1996). Ecological consequences of habitat fragmentation: Implications for landscape architecture
723 and planning. *Landscape and Urban Planning*, 36(1), 59–77. [https://doi.org/10.1016/S0169-](https://doi.org/10.1016/S0169-2046(96)00341-6)
724 [2046\(96\)00341-6](https://doi.org/10.1016/S0169-2046(96)00341-6)

725 Cutter, S. L., Boruff, B. J., & Shirley, W. L. (2003). Social vulnerability to environmental hazards. *Social Science*
726 *Quarterly*, 84(2), 242–261. <https://doi.org/10.1111/1540-6237.8402002>

727 De Groot, W. J. B., Goldammer, J. G., Keenan, T., Brady, M. A., Lynham, T. J., Justice, C. O., Csiszar, I. A., &
728 O’Loughlin, K. (2006). Developing a global early warning system for wildland fire. *V International*
729 *Conference on Forest Fire Research*. <https://doi.org/10.1016/j.foreco.2006.08.025>

730 Díaz-Delgado, R., Lloret, F., Pons, X., & Terradas, J. (2002). Satellite evidence of decreasing resilience in
731 mediterranean plant communities after recurrent wildfires. *Ecology*, 83(8), 2293–2303.

732 [https://doi.org/10.1890/0012-9658\(2002\)083\[2293:SEODRI\]2.0.CO;2](https://doi.org/10.1890/0012-9658(2002)083[2293:SEODRI]2.0.CO;2)

733 Dinerstein, E., Olson, D., Graham, D., Webster, A., Pimm, S., Bookbinder, M., & Ledec, G. (1995). *A*

734 *Conservation Assessment of the Terrestrial Ecoregions of Latin America and the Caribbean*. World Bank.

735 Duguy, B., Alloza, J. A., Baeza, M. J., De La Riva, J., Echeverría, M., Ibarra, P., Llovet, J., Cabello, F. P., Rovira,

736 P., & Vallejo, R. V. (2012). Modelling the ecological vulnerability to forest fires in mediterranean

737 ecosystems using geographic information technologies. *Environmental Management*, *50*(6), 1012–1026.

738 <https://doi.org/10.1007/s00267-012-9933-3>

739 Duguy, B., & Vallejo, V. R. (2008). Land-use and fire history effects on post-fire vegetation dynamics in eastern

740 Spain. *Journal of Vegetation Science*, *19*(1), 97–108.

741 Duro, D. C., Coops, N. C., Wulder, M. A., & Han, T. (2007). Development of a large area biodiversity monitoring

742 system driven by remote sensing. *Progress in Physical Geography*, *31*(3), 235–260.

743 <https://doi.org/10.1177/0309133307079054>

744 El Gibari, S., Gómez, T., & Ruiz, F. (2019). Building composite indicators using multicriteria methods: a review.

745 *Journal of Business Economics*, *89*(1), 1–24. <https://doi.org/10.1007/s11573-018-0902-z>

746 FAO/UNEP/UNESCO. (1979). A provisional methodology for soil degradation assessment. *Food and*

747 *Agricultural Organization of the United Nations, Rome*.

748 Flannigan, M. D., Krawchuk, M. A., De Groot, W. J., Wotton, B. M., & Gowman, L. M. (2009). Implications of

749 changing climate for global wildland fire. *International Journal of Wildland Fire*, *18*(5), 483–507.

750 <https://doi.org/10.1071/WF08187>

751 Freudenberger, L., Hobson, P. R., Schluck, M., & Ibsch, P. L. (2012). A global map of the functionality of

752 terrestrial ecosystems. *Ecological Complexity*, *12*, 13–22. <https://doi.org/10.1016/j.ecocom.2012.08.002>

753 Giovannini, G., & Lucchesi, S. (1997). Modifications induced in soil physico-chemical parameters by

754 experimental fires at different intensities. *Soil Science*, *162*(7), 479–486.

755 Gómez-Delgado, M., & Tarantola, S. (2006). GLOBAL sensitivity analysis, GIS and multi-criteria evaluation for

756 a sustainable planning of a hazardous waste disposal site in Spain. *International Journal of Geographical*

757 *Information Science*, *20*(4), 449–466. <https://doi.org/10.1080/13658810600607709>

758 González, J. R., Kolehmainen, O., & Pukkala, T. (2007). Using expert knowledge to model forest stand

759 vulnerability to fire. *Computers and Electronics in Agriculture*, *55*(2), 107–114.

760 <https://doi.org/10.1016/j.compag.2006.12.005>

761 Gonzalez, P. B., Aguilera-Benavente, F., & Gomez-Delgado, M. (2015). Partial validation of cellular automata

762 based model simulations of urban growth: An approach to assessing factor influence using spatial methods.

763 *Environmental Modelling & Software*, *69*. <https://doi.org/10.1016/j.envsoft.2015.03.008>

764 Goodchild, M. F., Parks, B. O., & Steyaert, L. T. (1993). Environmental Modelling with GIS. *Environmental*

765 *Modelling with GIS*. Oxford University Press, New York, 318–331.

766 Gouveia, C., DaCamara, C. C., & Trigo, R. M. (2010). Post-fire vegetation recovery in Portugal based on

767 spot/vegetation data. *Natural Hazards and Earth System Science*, *10*(4), 673–684.

768 <https://doi.org/10.5194/nhess-10-673-2010>

769 Guyette, R. P., Muzika, R. M., & Dey, D. C. (2002). Dynamics of an Anthropogenic Fire Regime. *Ecosystems*,

770 *6*(4), 326–335. <https://doi.org/10.1007/s10021-002-0115-7>

771 Hämäläinen, R. P., & Alaja, S. (2008). The threat of weighting biases in environmental decision analysis.

772 *Ecological Economics*, 68(1–2), 556–569. <https://doi.org/10.1016/j.ecolecon.2008.05.025>

773 Heuvelink, G. B. (1998). Error propagation in environmental modelling with GIS. *CRC Press*.

774 Heuvelink, G. B., Burrough, P. A., & Stein, A. (1989). Propagation of errors in spatial modelling with GIS.

775 *International Journal of Geographical Information System*, 3(4), 303–322.

776 Higuera, P. E., Brubaker, L. B., Anderson, P. M., Hu, F. S., & Brown, T. A. (2009). Vegetation mediated the

777 impacts of postglacial climate change on fire regimes in the south-central Brooks Range, Alaska. *Ecological*

778 *Monographs*, 79(2), 201–219. <https://doi.org/10.1890/07-2019.1>

779 Hilton-Taylor, C. (2000). *2000 IUCN Red List of Threatened Species*. IUCN, Gland, Switzerland and Cambridge,

780 UK.

781 Hobson, K. A., & Schieck, J. (1999). Changes in bird communities in boreal mixedwood forest: Harvest and

782 wildfire effects over 30 years. *Ecological Applications*, 9(3), 849–863. [https://doi.org/10.1890/1051-](https://doi.org/10.1890/1051-0761(1999)009[0849:CIBCIB]2.0.CO;2)

783 [0761\(1999\)009\[0849:CIBCIB\]2.0.CO;2](https://doi.org/10.1890/1051-0761(1999)009[0849:CIBCIB]2.0.CO;2)

784 Hoekstra, J. M., Molnar, J. L., Jennings, M., Revenga, C., Spalding, M. D., Boucher, T. M., Robertson, J. C.,

785 Heibel, T. J., & Ellison, K. (2010). The Atlas of global conservation: changes, challenges, and opportunities

786 to make a difference. In *Choice Reviews Online* (Vol. 48, Issue 01). J. L. Molnar. Berkeley: University of

787 California Press. <https://doi.org/10.5860/choice.48-0280>

788 Houghton, J. T., Ding, Y. D. J. G., Griggs, D. J., Noguer, M., van der Linden, P. J. Dai, X., & Johnson, C. A.

789 (2001). *Climate change 2001: the scientific basis*. The Press Syndicate of the University of Cambridge.

790 Ippolito, A., Sala, S., Faber, J. H., & Vighi, M. (2010). Ecological vulnerability analysis: A river basin case study.

791 *Science of the Total Environment*, 408(18), 3880–3890. <https://doi.org/10.1016/j.scitotenv.2009.10.002>

792 IUCN, & UNEP-WCMC. (2020). *The World Database on Protected Areas (WDPA)*. Ambridge (UK): UNEP

793 World Conservation Monitoring Centre.

794 Kier, G., Kreft, H., Tien, M. L., Jetz, W., Ibisch, P. L., Nowicki, C., Mutke, J., & Barthlott, W. (2009). A global

795 assessment of endemism and species richness across island and mainland regions. *Proceedings of the*

796 *National Academy of Sciences of the United States of America*, 106(23), 9322–9327.

797 <https://doi.org/10.1073/pnas.0810306106>

798 Kier, G., Mutke, J., Dinerstein, E., Ricketts, T. H., Küper, W., Kreft, H., & Barthlott, W. (2005). Global patterns

799 of plant diversity and floristic knowledge. *Journal of Biogeography*, 32(7), 1107–1116.

800 <https://doi.org/10.1111/j.1365-2699.2005.01272.x>

801 Kirkman, L. K., Mitchell, R. J., Helton, R. C., & Drew, M. B. (2001). Productivity and species richness across an

802 environmental gradient in a fire-dependent ecosystem. *American Journal of Botany*, 88(11), 2119–2128.

803 <https://doi.org/10.2307/3558437>

804 Kodandapani, N., Cochrane, M. A., & Sukumar, R. (2008). A comparative analysis of spatial, temporal, and

805 ecological characteristics of forest fires in seasonally dry tropical ecosystems in the Western Ghats, India.

806 *Forest Ecology and Management*, 256(4), 607–617. <https://doi.org/10.1016/j.foreco.2008.05.006>

807 Landesmann, J. B., Gowda, J. H., Garibaldi, L. A., & Kitzberger, T. (2015). Survival, growth and vulnerability to

808 drought in fire refuges: implications for the persistence of a fire-sensitive conifer in northern Patagonia.

809 *Oecologia*, 179(4), 1111–1122. <https://doi.org/10.1007/s00442-015-3431-2>

810 Lindner, M., Maroschek, M., Netherer, S., Kremer, A., Barbati, A., Garcia-Gonzalo, J., Seidl, R., Delzon, S.,

811 Corona, P., Kolström, M., Lexer, M. J., & Marchetti, M. (2010). Climate change impacts, adaptive capacity,

812 and vulnerability of European forest ecosystems. *Forest Ecology and Management*, 259(4), 698–709.
813 <https://doi.org/10.1016/j.foreco.2009.09.023>

814 Mace, G. M., & Lande, R. (1991). *Assessing extinction threats: towards a reassessment of IUCN endangered*
815 *species categories*. *Conservation Biology* 5.

816 Martínez Vega, J., Romero Calcerrada, R., & Echavarría, P. (2007). Valoración paisajística y ecológica de la
817 Comunidad de Madrid: su integración en un índice sintético de riesgo de incendios forestales. *Revista de*
818 *Teledetección*, 28(April 2016), 43–60.

819 Midgley, G. F., & Bond, W. J. (2015). Future of African terrestrial biodiversity and ecosystems under
820 anthropogenic climate change. *Nature Climate Change*, 5(9), 823–829.
821 <https://doi.org/10.1038/nclimate2753>

822 Moreira, F., Viedma, O., Arianoutsou, M., Curt, T., Koutsias, N., Rigolot, E., Barbati, A., Corona, P., Vaz, P.,
823 Xanthopoulos, G., Mouillot, F., & Bilgili, E. (2011). Landscape - wildfire interactions in southern Europe:
824 Implications for landscape management. *Journal of Environmental Management*, 92(10), 2389–2402.
825 <https://doi.org/10.1016/j.jenvman.2011.06.028>

826 Moreno-Martínez, Á., Camps-Valls, G., Kattge, J., Robinson, N., Reichstein, M., van Bodegom, P., Kramer, K.,
827 Cornelissen, J. H. C., Reich, P., Bahn, M., Niinemets, Ü., Peñuelas, J., Craine, J. M., Cerabolini, B. E. L.,
828 Minden, V., Laughlin, D. C., Sack, L., Allred, B., Baraloto, C., ... Running, S. W. (2018). A methodology
829 to derive global maps of leaf traits using remote sensing and climate data. *Remote Sensing of Environment*,
830 218(September), 69–88. <https://doi.org/10.1016/j.rse.2018.09.006>

831 Moreno, A., & Becken, S. (2009). A climate change vulnerability assessment methodology for coastal tourism.
832 *Journal of Sustainable Tourism*, 17(4), 473–488. <https://doi.org/10.1080/09669580802651681>

833 Myers, N., Mittermeier, R. A., Mittermeier, C. G., Da Fonseca, G. A., & Kent, J. (2010). Biodiversity hotspots for
834 conservation priorities. *Nature*, 468(7326), 895. <https://doi.org/10.1038/468895a>

835 Nagendra, H., & Rocchini, D. (2008). High resolution satellite imagery for tropical biodiversity studies: The devil
836 is in the detail. *Biodiversity and Conservation*, 17(14), 3431–3442. [https://doi.org/10.1007/s10531-008-](https://doi.org/10.1007/s10531-008-9479-0)
837 9479-0

838 Nitschke, C. R., & Innes, J. L. (2013). Potential effect of climate change on observed fire regimes in the Cordilleran
839 forests of South-Central Interior, British Columbia. *Climatic Change*, 116(3–4), 579–591.
840 <https://doi.org/10.1007/s10584-012-0522-5>

841 Olson, D. M., & Dinerstein, E. (2002). The Global 200: Priority Ecoregions for Global Conservation. *Annals of*
842 *the Missouri Botanical Garden*, 89(2), 199. <https://doi.org/10.2307/3298564>

843 Olson, D. M., Dinerstein, E., Wikramanayake, E. D., Burgess, N. D., Powell, G. V. N., Underwood, E. C.,
844 D'Amico, J. A., Itoua, I., Strand, H. E., Morrison, J. C., Loucks, C. J., Allnutt, T. F., Ricketts, T. H., Kura,
845 Y., Lamoreux, J. F., Wettengel, W. W., Hedao, P., & Kassem, K. R. (2001). Terrestrial Ecoregions of the
846 World: A New Map of Life on Earth. *BioScience*, 51(11), 933. [https://doi.org/10.1641/0006-](https://doi.org/10.1641/0006-3568(2001)051[0933:teotwa]2.0.co;2)
847 3568(2001)051[0933:teotwa]2.0.co;2

848 Pausas, J. G., Carreras, J., Ferré, A., & Font, X. (2003). Coarse-scale plant species richness in relation to
849 environmental heterogeneity. *Journal of Vegetation Science*, 14(5), 661–668.
850 <https://doi.org/10.1111/j.1654-1103.2003.tb02198.x>

851 Pausas, J. G., & Ribeiro, E. (2017). Fire and plant diversity at the global scale. *Global Ecology and Biogeography*,

852 26(8), 889–897. <https://doi.org/10.1111/geb.12596>

853 Poos, M. S., Walker, S. C., & Jackson, D. A. (2009). Functional-diversity indices can be driven by methodological
854 choices and species richness. *Ecology*, *90*(2), 341–347. <https://doi.org/10.1890/08-1638.1>

855 Potapov, P., Yaroshenko, A., Turubanova, S., Dubinin, M., Laestadius, L., Thies, C., Aksenov, D., Egorov, A.,
856 Yesipova, Y., Glushkov, I., Karpachevskiy, M., Kostikova, A., Manisha, A., Tsybikova, E., & Zhuravleva,
857 I. (2008). Mapping the world's intact forest landscapes by remote sensing. *Ecology and Society*, *13*(2).
858 <https://doi.org/10.5751/ES-02670-130251>

859 Preston, B. L., Yuen, E. J., & Westaway, R. M. (2011). Putting vulnerability to climate change on the map: A
860 review of approaches, benefits, and risks. *Sustainability Science*, *6*(2), 177–202.
861 <https://doi.org/10.1007/s11625-011-0129-1>

862 Richards, D., & Rowe, W. D. (1999). Decision-making with heterogeneous sources of information. *Risk Analysis*,
863 *19*(1), 69–81.

864 Ricketts, T.H., Dinerstein, E., Olson, D., Loucks, C. J., Eichbaum, W., DellaSala, D., Kavanagh, K., Hedao, P.,
865 Hurley, P. T., Carney, K. M., Abell, R., & Walters, S. (1999). *Terrestrial Ecoregions of North America: A*
866 *Conservation Assessment*. (b). Island Press.

867 Ricketts, Taylor H, Dinerstein, E., Olson, D. M., & Loucks, C. (1999). Who 's Where in North Patterns of species
868 richness and the utility of indicator taxa. *Bioscience*, *May*.

869 Rosenzweig, M. L. (1995). *Species Diversity in Space and Time*. Cambridge University Press, Cambridge, UK.

870 Saltelli, A., Chan, K., & Scott, E. . (2000). Sensitivity Analysis. *Chichester, John Wiley & Sons, LTD*.

871 Scott, D. F., & Van Wyk, D. B. (1990). The effects of wildfire on soil wettability and hydrological behaviour of
872 an afforested catchment. *Journal of Hydrology*, *121*(1–4), 239–256. [https://doi.org/10.1016/0022-](https://doi.org/10.1016/0022-1694(90)90234-O)
873 [1694\(90\)90234-O](https://doi.org/10.1016/0022-1694(90)90234-O)

874 Semeraro, T., Mastroleo, G., Aretano, R., Facchinetti, G., Zurlini, G., & Petrosillo, I. (2016). GIS Fuzzy Expert
875 System for the assessment of ecosystems vulnerability to fire in managing Mediterranean natural protected
876 areas. *Journal of Environmental Management*, *168*, 94–103. <https://doi.org/10.1016/j.jenvman.2015.11.053>

877 Shlisky, A., Waugh, J., Gonzalez, P., Gonzalez, M., Manta, M., Santoso, H., Alvarado, E., Ainuddin, A.,
878 Rodríguez-trejo, D. A., Swaty, R., Schmidt, D., Kaufmann, M., Myers, R., Alencar, A., Kearns, F., Johnson,
879 D., Smith, J., & Zollner, D. (2007). Fire, ecosystems and people : threats and strategies for global biodiversity
880 conservation. *The Nature Conservancy Global Fire Initiative Technical Report*, 17.
881 http://mrcc.isws.illinois.edu/living_wx/wildfires/fire_ecosystems_and_people.pdf

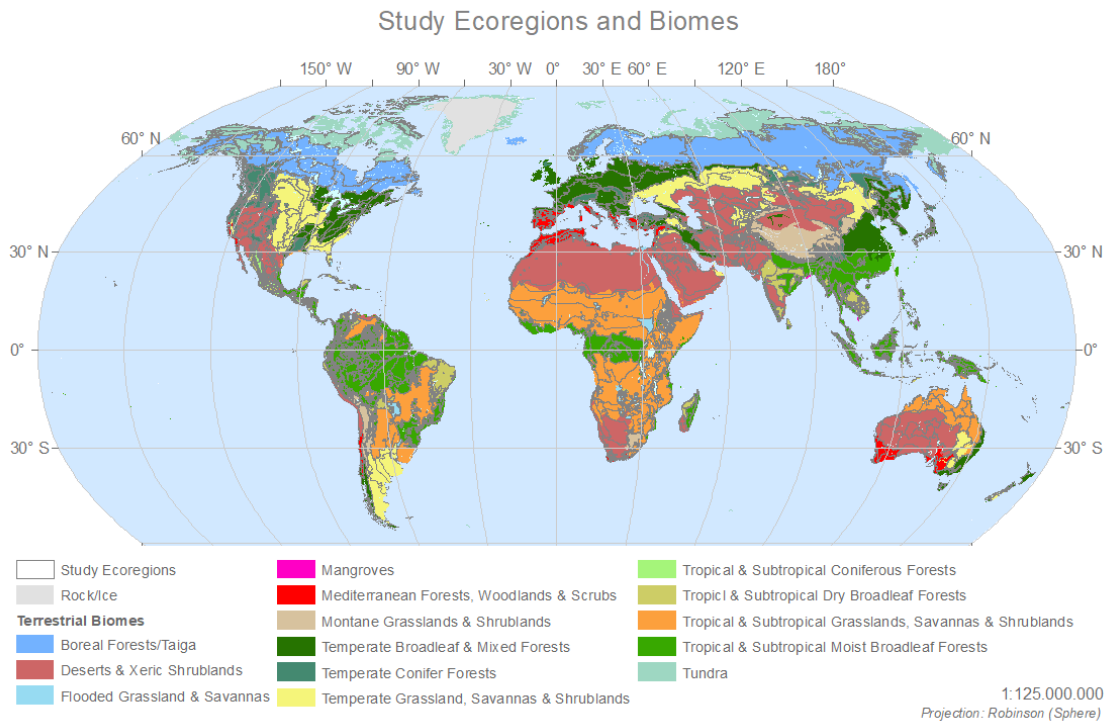
882 Turner, B. L., Kasperson, R. E., Matsone, P. A., McCarthy, J. J., Corell, R. W., Christensene, L., Eckley, N.,
883 Kasperson, J. X., Luers, A., Martello, M. L., Polsky, C., Pulsipher, A., & Schiller, A. (2003). A framework
884 for vulnerability analysis in sustainability science. *Proceedings of the National Academy of Sciences of the*
885 *United States of America*, *100*(14), 8074–8079. <https://doi.org/10.1073/pnas.1231335100>

886 UNISDIR, U. (2009). Making Disaster Risk Reduction. *Sensitive: Policy and Practical Guidelines*.

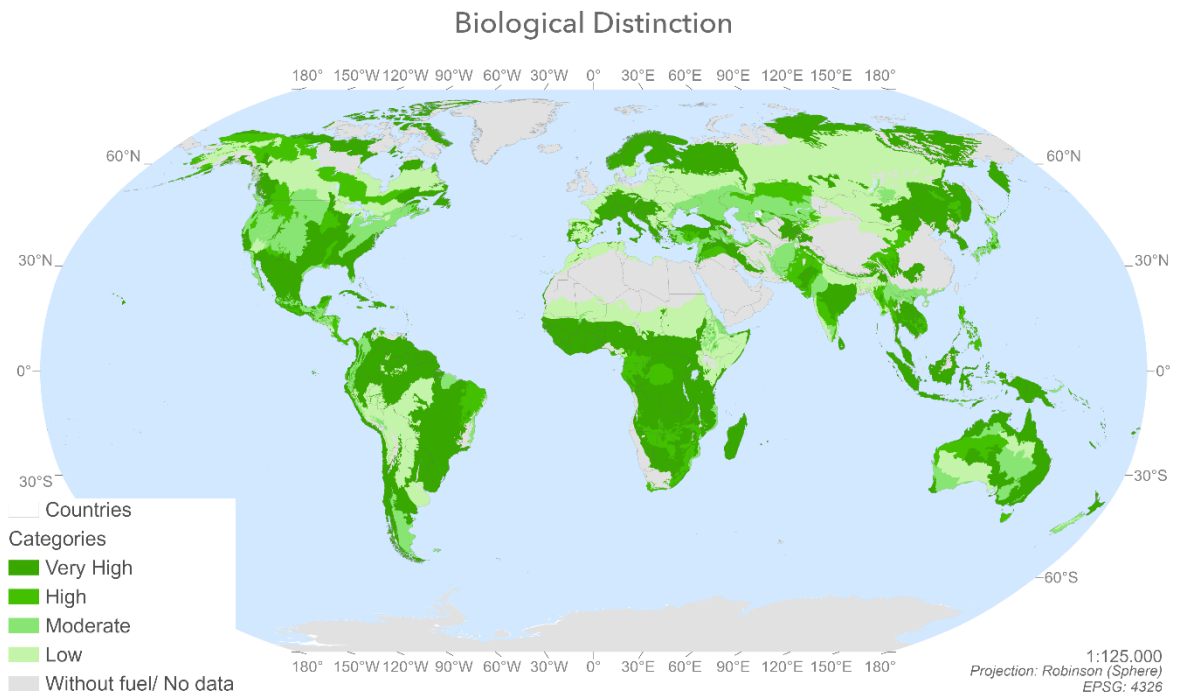
887 Williams, L. R. R., & Kapustka, L. A. (2000). Ecosystem vulnerability: A complex interface with technical
888 components. *Environmental Toxicology and Chemistry*, *19*(4 II), 1055–1058.
889 <https://doi.org/10.1002/etc.5620190435>

890 World Wildlife Fund. (2006). *WildFinder: Online database of species distributions*.

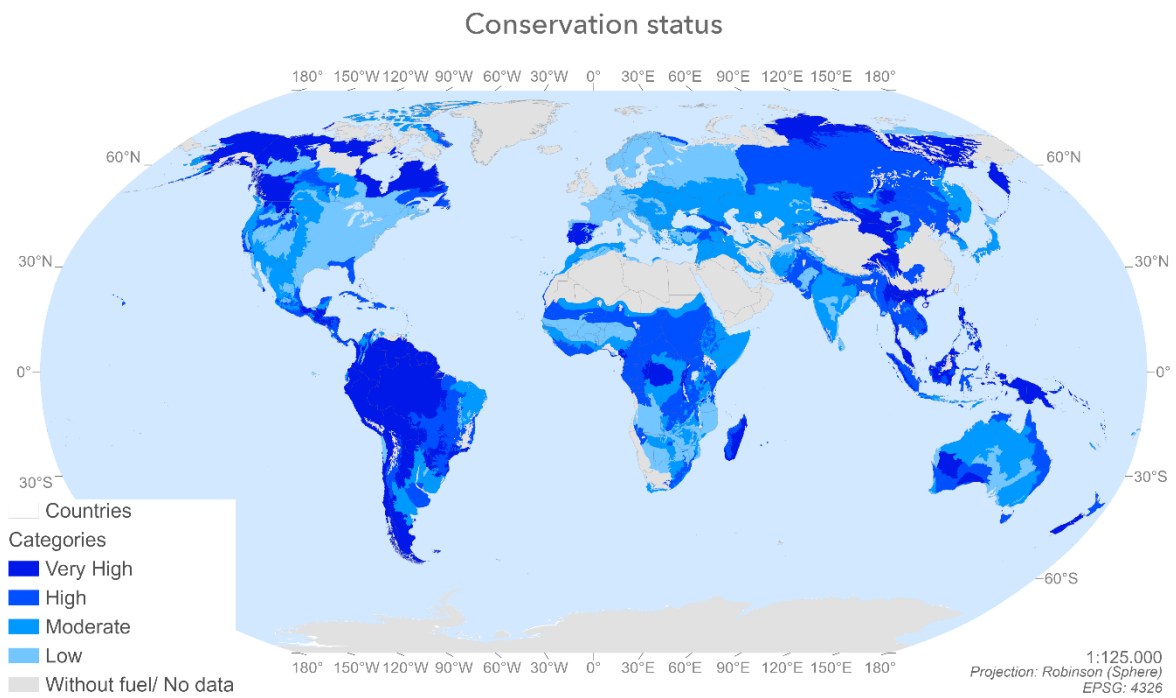
891



895 **Figure 1: Terrestrial ecoregions within their respective biomes for this study. (Source: The authors).**

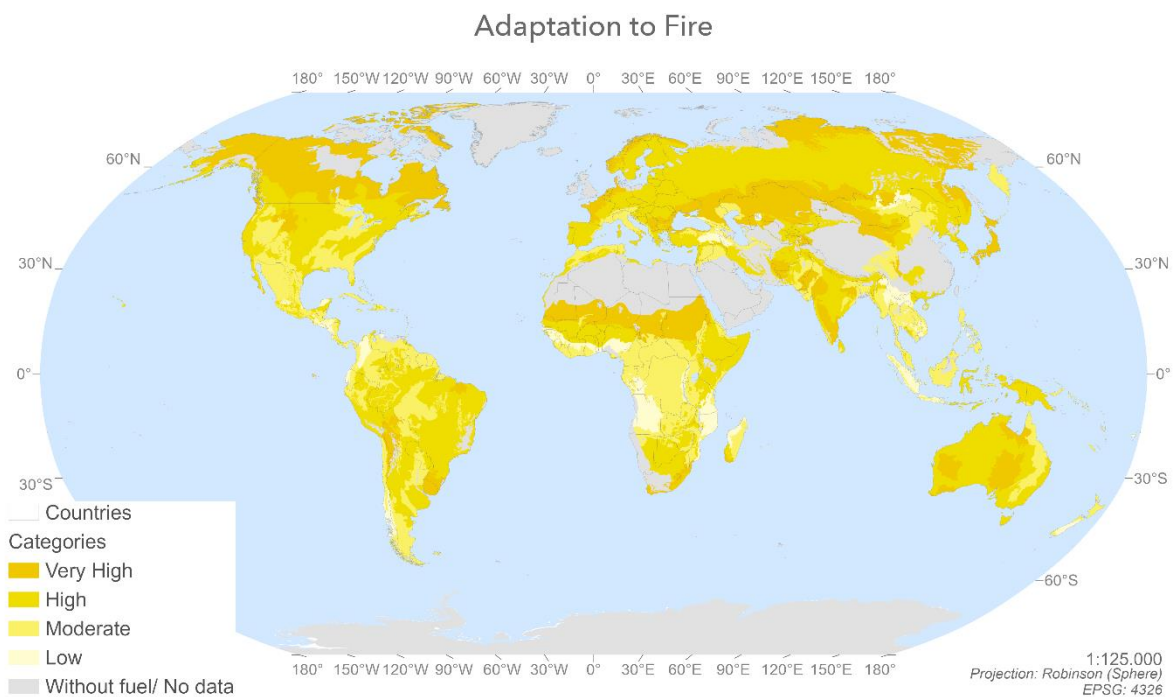


897 **Figure 2: Spatial distribution by ecoregion of the Ecosystem Biological Distinction Value prepared by**
 898 **combining the indices for Endemic Species, Species Richness, Functional Diversity and Unique Habitats by**
 899 **ecoregion evaluated within the biome to which they belong. (Source: The authors).**



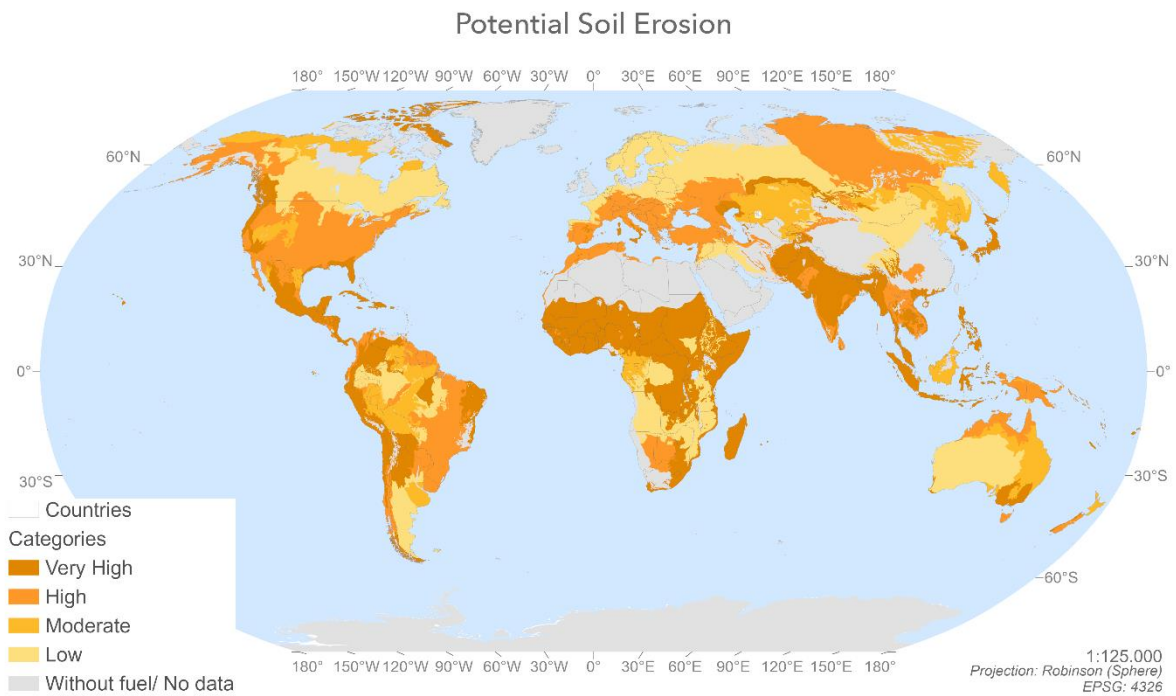
900

901 **Figure 3: Spatial distribution by ecoregion of the Ecosystem Conservation Status Value produced by**
 902 **combining the Indices for Unique Habitats Preservation, Intact Forest Landscapes, Degree of**
 903 **Fragmentation and Degree of Protection. (Source: the authors)**



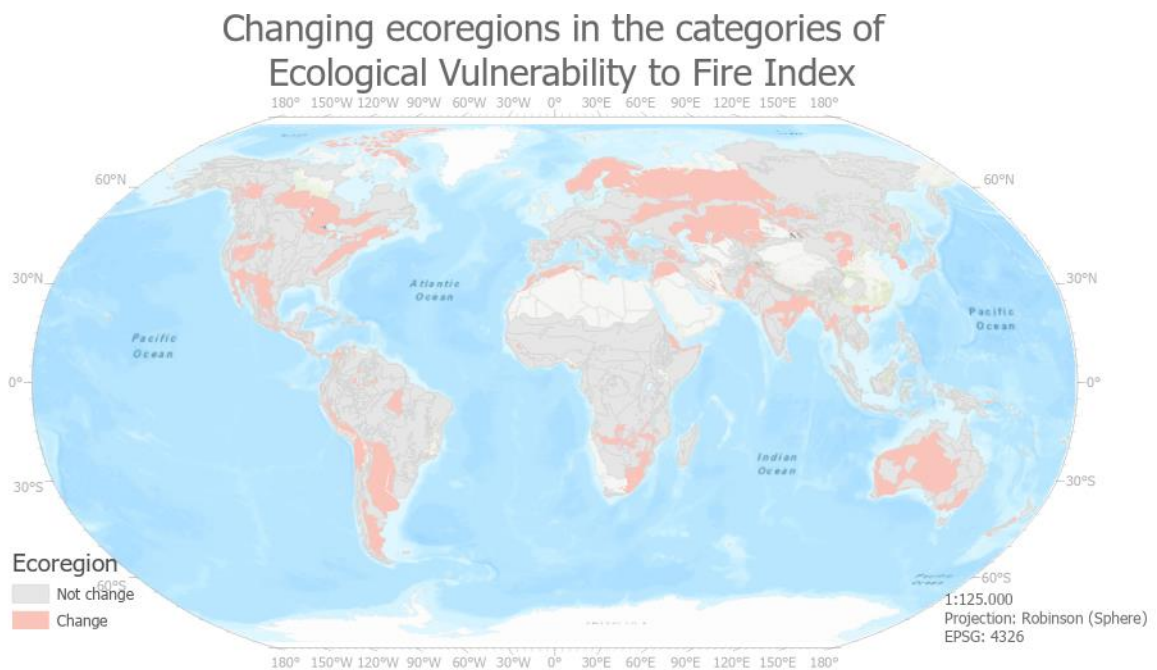
904

905 **Figure 4: Spatial distribution by ecoregion of the Ecosystem Adaptation to Fire Value produced by**
 906 **combining the Fire Regime and its degree of alteration. (Source: The authors).**



907
908 **Figure 5: Spatial distribution of Potential Soil Erosion values by ecoregion resulting from the application**
909 **of the FAO criterion for water erosion. (Source: The authors).**

910
911
912



913
914 **Figure 6: Spatial distribution of changing ecoregions in the categories of Ecological Vulnerability to Fire**
915 **Index resulted from the OAT analyses (sensitivity method). (Source: The authors).**

916