

2

3

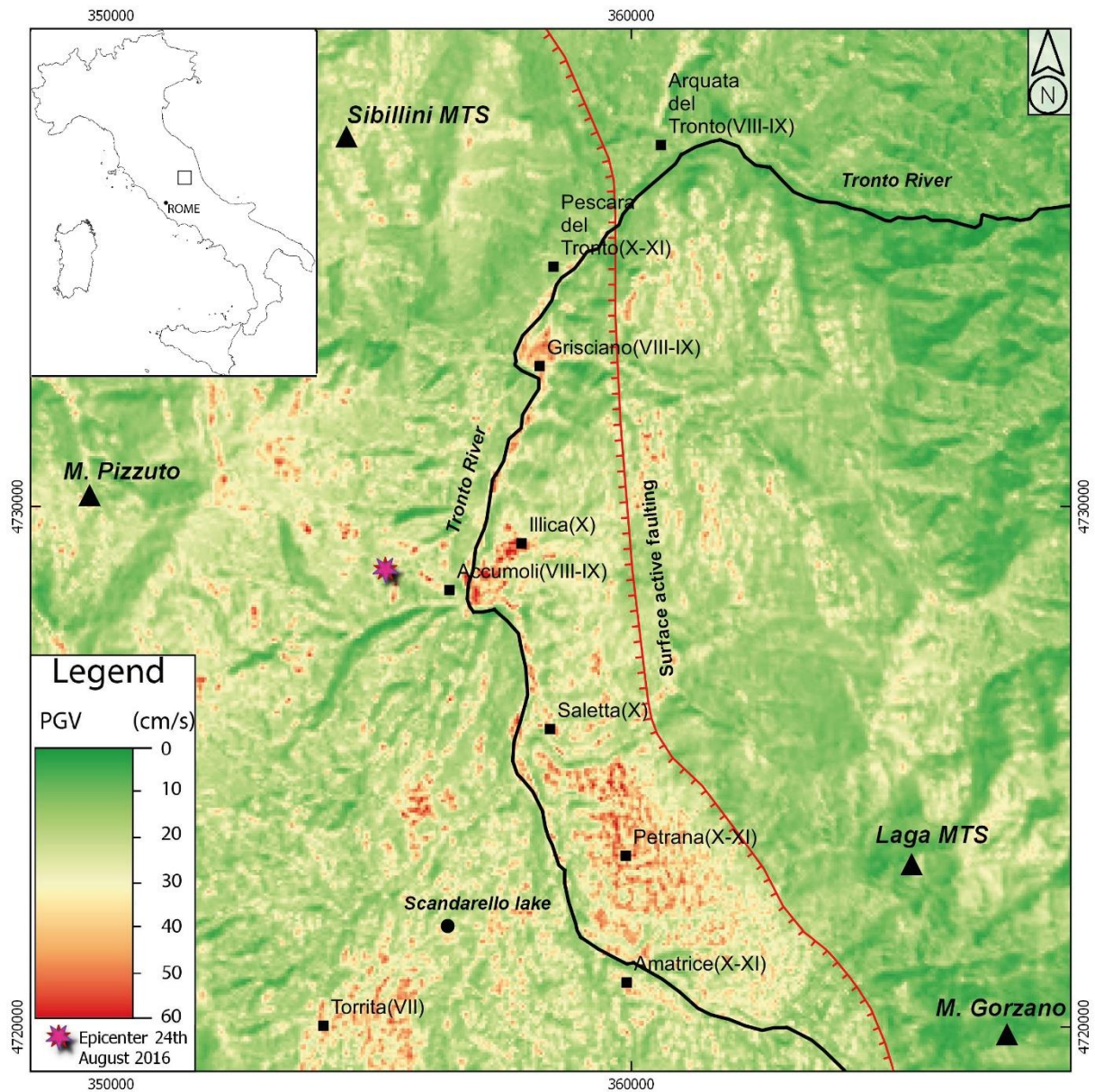
4

5

6

7

Figure S1. Ground motion prediction map of PGA (resolution 50 x 50 m) referred to the Central Italy earthquake occurred on August 24, 2016. I_MCS values retrieved by Galli et al. (2017) are reported next to the name of the villages. A and B squares are referred to the close ups at Arquata del Tronto and Amatrice, respectively. The surface active faulting, sketched in the figure, has been slightly modified after Galli et al. (2017).



8

9

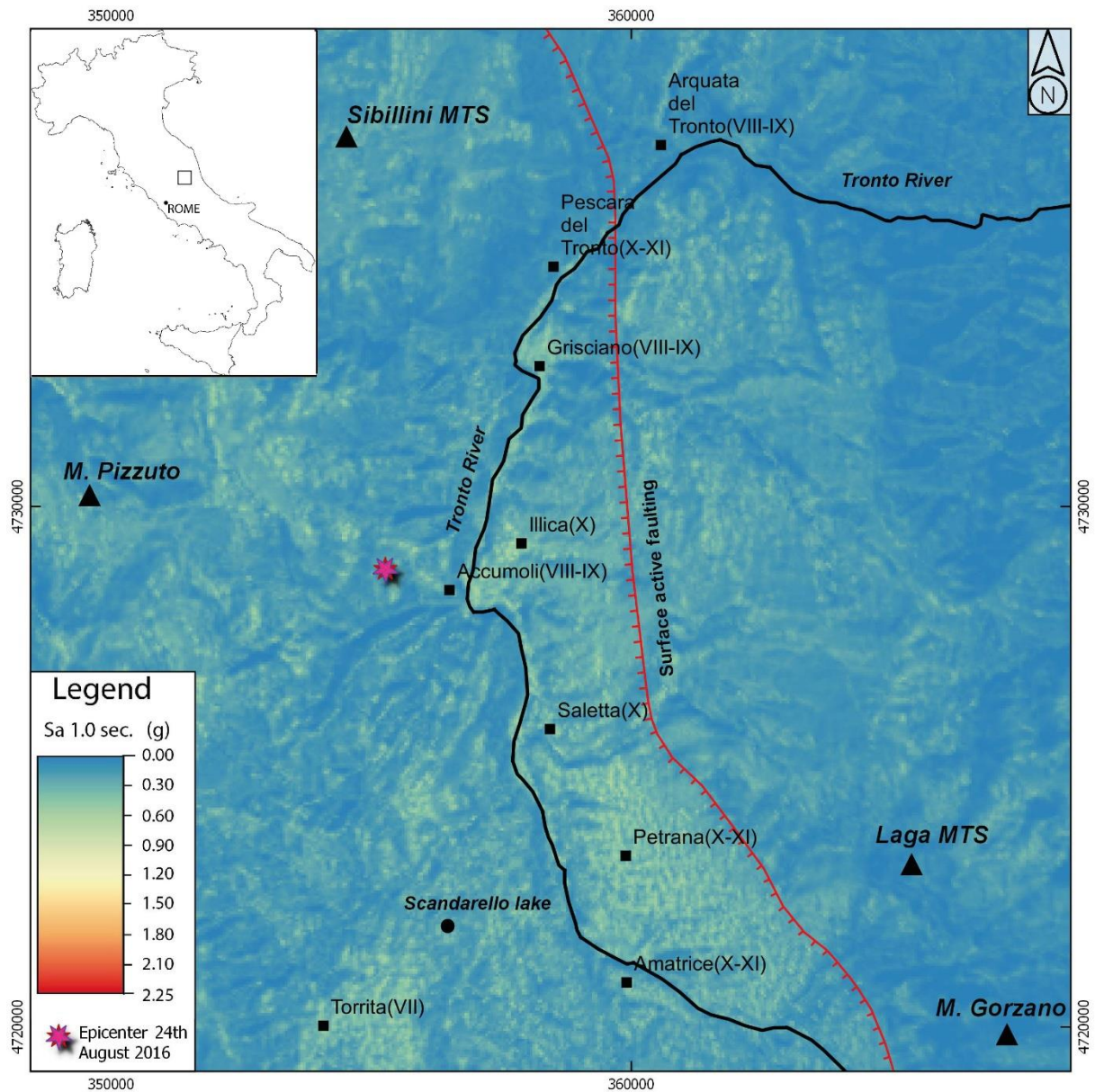
10

11

12

13

Figure S2. Ground motion prediction map of PGV (resolution 50 x 50 m) referred to the Central Italy earthquake occurred on August 24, 2016. I_MCS values retrieved by Galli et al. (2017) are reported next to the name of the villages. A and B squares are referred to the close ups at Arquata del Tronto and Amatrice, respectively. The surface active faulting, sketched in the figure, has been slightly modified after Galli et al. (2017).



14

15

16

17

18

19

20

21

22

Figure S3. Ground motion prediction map of $S_{a1.0}$ (resolution 50 x 50 m) referred to the Central Italy earthquake occurred on August 24, 2016. I_{MCS} values retrieved by Galli et al. (2017) are reported next to the name of the villages. A and B squares are referred to the close ups at Arquata del Tronto and Amatrice, respectively. The surface active faulting, sketched in the figure, has been slightly modified after Galli et al. (2017).