

# **Spatio-temporal Evolution of Wet-dry Event Features and their Transition across Upper Jhelum Basin (UJB)-South Asia**

Rubina Ansari<sup>1</sup>, Giovanna Grossi<sup>1</sup>

<sup>1</sup> Department of Civil, Environmental, Architectural Engineering and Mathematics, University of Brescia, Italy.

5 Correspondence to: Rubina Ansari (r.ansari@unibs.it)

## **Abstract**

The increasing rate of occurrence of extreme events (droughts and floods) and their rapid transition magnifies the associated socio-economic impacts with respect to those caused by the individual event. Understanding of spatio-temporal evolution of wet-dry events collectively, their characteristics and transition (wet to dry and dry to wet) is therefore significant to identify and locate most vulnerable hotspots, providing the basis for the adaptation and mitigation measures. The Upper Jhelum Basin (UJB)-South Asia was selected as a case study, where the relevance of wet-dry events and their transition have not been assessed yet, despite of clear evidence of climate change in the region. The Standardized Precipitation Evapotranspiration Index (SPEI) at the monthly time scale was applied to detect and characterize wet and dry events for the period 1981-2014. The results of temporal variations of SPEI showed a strong change in basin climatic features associated with El Niño Southern Oscillation (ENSO) at the end of 1997, with the prevalence of wet and dry events before and after 1997 respectively. The results of spatial analysis show a higher susceptibility of the monsoon-dominated region towards wet events, with more intense events occurring in the eastern part, whereas a higher severity and duration is featuring in the southwestern part of the basin. In contrast, westerlies dominated region was found to be the hotspot of dry events with higher duration, severity, and intensity. Moreover, the surrounding region of the Himalaya divide line and the monsoon-dominated part of the basin were found to be the hotspots of rapid wet-dry transition events.

## **1. Introduction**

There is growing evidence that recent warming is leading to significant alteration in hydrological cycle, exacerbating extreme weather events in general (Peterson et al., 2012) in many regions of the world. Extreme weather events such as floods and droughts and their rapid successions (recurrent spells) during past few decades have taken a heavy toll on both life and property. Moreover, such events can have large impacts on water availability, agriculture and food security, power production, and natural ecosystems (He et al., 2019, Sheffield and Wood, 2012). These events are projected to regionally intensify and be more frequent within the context of global warming, underscoring the importance of research on wet–dry extreme weather events collectively. The climate change projections for Asia continent in the sixth Assessment Report (AR6) of Intergovernmental Panel on Climate Change (IPCC) reported that during the 21<sup>st</sup> century South Asia is likely to face more intense and frequent heatwaves and humid heat stress, whereas both annual and summer monsoon precipitation will increase, with enhanced inter-annual variability (medium confidence) (Zhongming et al. 2021). Various studies at local, basin, national and regional scale already documented and acknowledged the vulnerability to climate change of that region (He and Sheffield, 2020; Zhao et al. 2020; Visser-Quinn et al. 2019; He et al. 2017).

Typically, wet and dry events are generally considered independently in water resources management and planning. However, these events are inherently interconnected and governed by the same underlying hydrological processes and atmospheric dynamics, which may augment hydro-climatic variability under the influence of climate change (He and Sheffield, 2020). A number of wet-dry rapid altered events in the last decade

40 acknowledged the relevance of sequences of wet and dry events. For example, the California's large scale flood  
event in 2017 occurred at the offset of prolonged drought (2011-2016) (He et al., 2017, NOAA National Centers  
for Environmental Information, 2018). South Carolina observed an abrupt transition (within a week) from drought  
to flood in September 2015 (He and Sheffield, 2020). Other examples include the successive drought and flood  
45 events of 2010–2012 and 2015–2016 in the UK (Parry et al., 2013) and Tasmania, Australia respectively (CSIRO,  
2018). Such abrupt flood-drought transitions put a substantial risk for water management practices, especially for  
reservoir operation, as a trade-off should be set between short-term flood-control and long-term water-storage  
imperatives to satisfy water demand (He and Sheffield, 2020). This has aroused widespread concern in the  
scientific community to understand the wet-dry interplay under a changing environment.

During the past few decades, significant effort was put forward towards the adoption of multi-hazard  
50 approach (consideration of both types of extreme hydrological conditions at the same time) in developing  
resilience to climate change. (Kourgialas, 2021) analyzed floods and droughts collectively in the Mediterranean  
agricultural region, and proposed water-saving and flood protection measures for adapting to the inevitable  
adverse effects of climate change. (Visser-Quinn et al., 2019) identified hotspots regions in UK where spatio-  
temporally concurrent increase in the number of flood and drought events were projected. (Zhao et al., 2020)  
55 investigated the rapid transition of flood and drought events under present and future climate change in the  
Hanjiang Basin and found more frequent drought to flood rapid transition events of higher intensity in the 21st  
century. Other examples include the analysis of rapid drought to flood transitions in river basins in China (Yan et  
al., 2013) and in England and Wales (Parry et al., 2013). These studies employed peak over threshold (POT)  
method and various indices recommended by the World Meteorological Organization (WMO) for the detection  
60 and characterization of wet-dry extreme events (floods and droughts).

Some commonly used indices are the Standardized Precipitation Index (SPI) (McKee et al., 1993),  
Standardized Precipitation Evapotranspiration Index (SPEI) (Vicente-Serrano et al., 2010), Palmer Drought  
Severity Index (PDSI) (Palmer, 1965), normalized difference vegetation index (NDVI) (Tucker, 1979),  
Standardized Drought Indices (SDI) (Svoboda and Fuchs, 2016), and Standardized Anomaly Index (SAI) (Katz  
65 and Glantz, 1986). Among these indices, SPI and SPEI are more widely accepted for the following reasons: a)  
simple to calculate, b) require few inputs, (precipitation and temperature), that are easily accessible in most cases,  
c) standardized indices, which facilitate the comparison of different climatic zones, and d) can be calculated at  
multiple timescales, depending on the objective. For instance, SPI and SPEI at short timescales (1, 2, 3 or 6-  
month) better reflect the meteorological and agricultural drought, while longer time scales (12, 24 or 48 months)  
70 are usually considered in hydrology (Kourgialas, 2021). The calculation of SPI and SPEI is mathematically  
similar, but it differs in the input parameters. The SPI index only uses precipitation, whereas SPEI is based on the  
climatic water balance. Many studies advocate the use of SPEI, rather than SPI, due to its link to potential  
evapotranspiration (PET), which makes it more sensitive in the context of global warming (Himayoun and Roshni,  
2019, Yao et al., 2018, Huang et al., 2017, Vicente-Serrano et al., 2010).

75 In this study, attempts were made to understand the regional evolution of wet-dry events collectively,  
their characteristics and transition (wet-to-dry and dry-to-wet) for different severity levels ranging from moderate  
to extreme. Here, the term “wet and dry events” does not necessarily imply observed flood and drought events,  
unless explicitly mentioned. There exists a basic difference between a flood and a wet event. The former has a

short duration effect (e.g., a few hours or days) while the latter is regarded as a long period without precipitation shortage (e.g., several months or years) (Wu and Chen, 2019).

The proposed framework was implemented with reference to the Upper Jhelum Basin (UJB), where the relevance of wet-dry events and their transition have not been assessed yet, despite of clear evidence of climate change in the region. The UJB is located in Western Himalaya and shared by Pakistan and India. The region already witnessed an increase in extreme hydro-meteorological events in the last few decades, but these events are expected to become even more pronounced in the coming future (Pachauri et al., 2014). A study conducted over the Northern Highlands of Pakistan investigated the trends in time distribution patterns (TDPs) and return periods for event based extreme precipitation for a period of 1961 to 2014 and found maximum values of 20 and 50-year return levels of TDP for the UJB (Zaman et al. 2020). Another study conducted on a portion of UJB located in Kashmir, India, uses SPEI index for spatio-temporal characterization of drought events only (Himayoun and Roshni, 2019). (Akhtar et al., 2020) investigated the correlation of meteorological and hydrological drought using SPEI and standardized streamflow index (SSI) over the Upper Indus Basin (UIB), including UJB. They validated the results with historically prolonged drought event observed in Pakistan (1999-02). Another study employed locally weighted SDI index and compared it with SPI and SPEI on ten meteorological stations within Pakistan (Ali et al., 2019). (Ullah et al., 2021a) evaluated four reanalysis products for drought assessment in Pakistan using SPI and SPEI at multiple time scales. All above mentioned studies put focus towards drought event characteristics only, whereas the wet events and transition of wet-dry events were overlooked. This study attempts to fill this gap by addressing the following specific points:

1. How does climate change influence the evolution of the regional wet-dry events?
2. How comparatively frequent were wet or dry events in the past?
3. What is the average transition time from wet-to-dry and dry-to-wet events?
4. Which parts of the basin are hosting hotspots for rapid wet-dry transition events?

The most widely used index, SPEI, is here adopted to detect and characterize wet and dry events of different severity levels (moderate, severe, and extreme). The analysis was carried out both at each grid cell and averaged over the basin, using corrected ERA5 precipitation and observed temperature data for a period of 35 years (1981-2014).

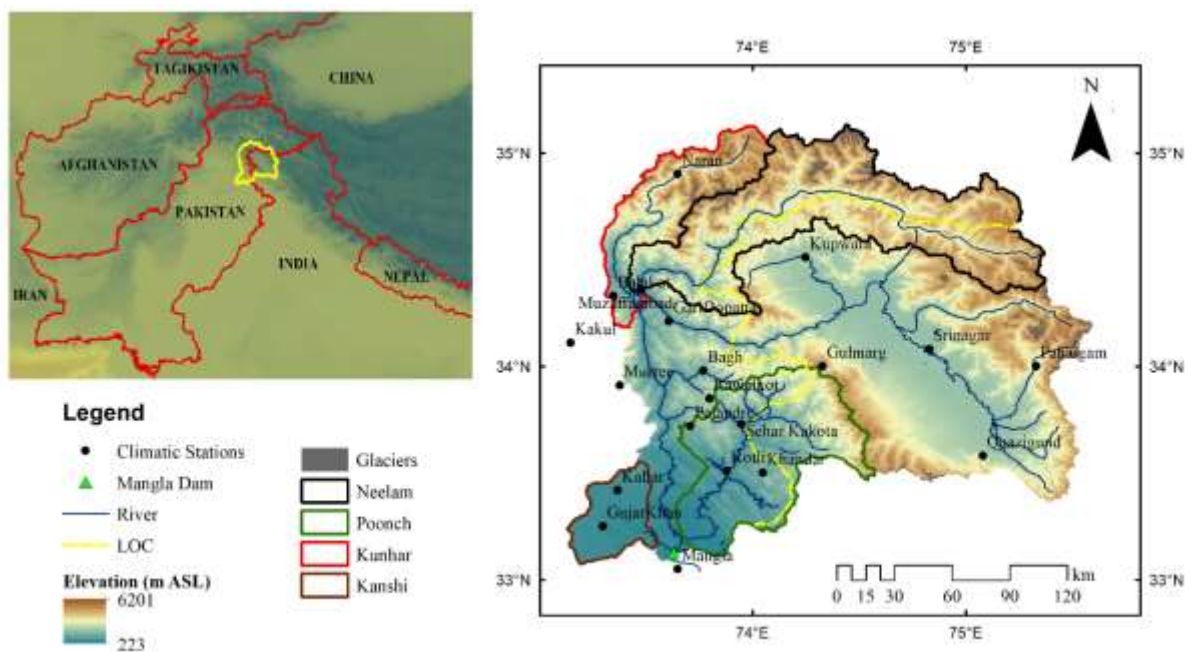
## 2. Characterization of the study area

The Upper Jhelum Basin (UJB) has a latitudinal extent stretching from 73° 07' E to 75° 40' E and latitudinal extent from 33° 00' N to 35° 12' N (Figure 1). The basin is mainly located in sub-tropics and partially in a temperate region. The basin drains the foothills of Western Himalaya and Pir-Panjal mountains and feeds the second largest reservoir of Pakistan “Mangla Reservoir”. The total area of the basin is about 33,342 km<sup>2</sup>. The elevation ranges from nearly 223 m in the southwest to about 6201 m in the north with mean elevation of 2353 m MSL. Approximately 0.75% (252 km<sup>2</sup>) of the basin is covered by perennial glaciers in the north of the basin (Consortium and Inventory, 2017). Grass, forest, and agriculture are the three major LULC dominating over high, mid, and low elevation areas, respectively. Permanent snow and ice cover a negligible area in the northwest of the basin whereas the small patch of barren land exists over the densely grassy mountains of western Himalaya and Pir-Panjal. The urban settlement covers a small portion of the basin, concentrated in the Kashmir valley.

The climate of the UJB is influenced by dynamic local and regional weather systems and the topography of the high mountains causes a huge variability in the spatial and seasonal distribution of precipitation (Dolk et

al., 2020). The two distinct precipitation patterns (i.e., western disturbances and monsoon) exist in the basin. The western disturbances bring precipitation in the form of snow during winter season. The monsoon pattern brings liquid rainfall during summer seasons. The monsoon precipitation pattern dominates in the two lower sub basins, i.e Poonch and Kanshi, and progressively loses strength northward towards the foothills of Western Himalaya, where the influence of western disturbances is predominant (Neelam and Kunhar sub basins). The basin average annual precipitation and temperature is about 1150 mm/year and 13.2°C, respectively. Owing to the steep rugged mountainous topography of the basin and consequent short lag time, the flow level in the river and its tributaries rises abruptly during a rainfall event (Dar et al., 2019). Major extreme events witnessed by the basin are primarily led by vigorous interactions of moisture-laden monsoon circulation and southward penetrating mid-latitude westerly troughs into the Himalayan region (Vellore et al., 2016).

130



**Figure 1:** Location of the UJB and spatial distribution of climatic stations

### 3. Data description

The daily observed precipitation and temperature data of 15 climatic stations located within the political boundary of Pakistan were collected from Pakistan Meteorological Department (PMD) and Water and Power Development Authority (WAPDA). For the Indian side region, Indian Meteorological Department (IMD) daily gridded precipitation and temperature datasets, derived from a dense network of meteorological stations for the Indian mainland (Pai et al., 2015), were extracted at five stations and used for that region. The analysis was carried out for a period of 34 years (1981-2014), due to the availability of observed data. In fact there are only a few climatic stations where data are available starting from 1971, but the number of stations would not be enough for the spatial analysis. The observed temperature data was used to calculate potential evapotranspiration (PET) using the Thornthwaite equation (Thornthwaite, 1948) due to data limitation. A study conducted by Beguería et al. (2014) compared the SPEI values calculated with three different methods (Penman-Manteith, Hargreaves, and Thornthwaite) and found small differences in humid regions. Mavromatis (2007) also reported similar outcomes

140

145 of PET methods for drought indices calculation. Afterwards PET values were interpolated at 0.25° using Kriging  
with External Drift (KED), considering elevation as a predictor (Goovaerts, 2000). For the precipitation,  
contrasting reviews are reported in the literature about the performance of KED technique. For instance, (Masson  
et al., 2014) reported considerable improvement in interpolation accuracy with KED compared to other linear  
regressions not accounting for any predictor in high mountainous regions. On the other hand, (Berndt and  
150 Haberlandt, 2018, Ly et al., 2011) argue that topographical impact was indispensable for only temperature  
reconstruction at all temporal resolutions and station densities, but its influence was less clear for daily to monthly  
precipitation. Furthermore, all spatial interpolation techniques can perform poorly in regions with insufficient  
high-elevation data, due to inaccurate estimation of local lapse rates (Ruelland and Sciences, 2020). Therefore,  
the distribution mapping (DM)-corrected ERA5 precipitation estimates (0.25° horizontal resolution) were used in  
155 the present study. ERA5 is a relatively new reanalysis launched by European Centre for Medium-Range Weather  
Forecasts (ECMWF) (Saha et al., 2010). The data are developed by using advanced 4Dvar assimilation scheme  
and provide various atmospheric variables at 139 pressure levels for the period 1979-present time. The suitability  
of ERA5 to the UJB and surrounding region was also reported by Liaqat et al. (2021) and Baudouin et al. (2020).  
The DM method adjusts the cumulative distribution function (CDF) of modelled precipitation to match with the  
160 observed precipitation CDF using a transfer function (Sennikovs and Bethers, 2009) and it is commonly used to  
correct the systematic distributional biases (Cannon et al., 2015). The Gamma distribution (Thom, 1958) with a  
shape and a scale parameter was found to be suitable for the precipitation distribution in the study region (Azmat  
et al., 2018). The suitability of ERA5 precipitation and bias correction method with respect to extreme  
precipitation analysis was checked against observed station data and a few results of the reliability check of DM-  
165 corrected ERA5 is provided in supplementary material (see figure S1).

#### 4. Methods

##### 4.1. Wet and Dry Events Identification

SPEI, a most widely used index was adopted to detect and characterize wet and dry events of different severity  
levels (moderate, severe, and extreme). The SPEI index support comparisons over time and space, as proxies of  
170 wet and dry conditions from both the meteorological and agricultural perspectives. Although the SPEI was  
originally proposed for drought monitoring, it can also be used as a tool to detect flood risk. The calculation  
procedure of SPEI involves two steps: fitting a log-logistic distribution to the monthly climatic water balance (P-  
PET) time series and then transforming the cumulative probability of the fitted distribution to a standard normal  
distribution (with mean zero and variance one). According to this distribution method, the probability distribution  
175 function of a variable  $x$  is expressed as:

$$F(x) = [1 + (\frac{\alpha}{x-\gamma})^\beta]^{-1} \quad (1)$$

Where  $\alpha$ ,  $\beta$  and  $\gamma$  are the shape, scale, and origin parameters, respectively. In the second step, SPEI is calculated  
as the standardized values of  $F(x)$  as follows:

$$SPEI = W - \frac{C_0 + C_1W + C_2W^2}{1 + d_1W + d_2W^2 + d_3W^3} \quad (2)$$

180 Where

$$W = \sqrt{-2 \ln(F(x))} \quad \text{for } F(x) < 0.5 \quad (3)$$

$$W = \sqrt{-2 \ln(1 - F(x))} \quad \text{for } F(x) > 0.5 \quad (4)$$

The parameters C0, C1, C2, d1, d2, d3 are SPEI constants (Vicente-serrano et al., 2010). The log-logistic distribution for SPEI calculation was used and recommended by many researchers (Ullah et al., 2021a, Akhtar et al., 2020, Himayoun and Roshni, 2019, Vicente-Serrano et al., 2010). The detailed description of the SPEI calculation procedure can be found in (Vicente-Serrano et al., 2010). In this study, SPEI was calculated using “SPEI” package in R environment (Beguería et al., 2017). The severity levels of wet and dry events based on SPEI values were classified according to (Chen et al., 2020), results are listed in Table 1. Positive and negative value of SPEI represent the severity of wet and dry events, respectively.

**Table 1:** SPEI Classification of Dry and Wet Events (from Chen et al., 2020)

SPEI value	Description
> 1.99	Extreme Wet
1.99 to 1.50	Severe Wet
1.49 to 1.00	Moderate Wet
0.99 to -0.99	Normal
-1.00 to -1.49	Moderate Dry
-1.50 to -2.00	Severe Dry
-2.00 <	Extreme Dry

#### 4.2. Wet and Dry Events Characteristics

In this study, three characteristics (severity, duration, and intensity) of wet and dry events were calculated for each pixel. Following (Spinoni et al., 2014), the duration (D) of a wet/dry event is the length of time (months) that the index is consecutively above or below a truncation value; the Severity (S) refers to the cumulative value of the index from the first month to the last month of the wet/dry event and it represents the water surplus and deficit, respectively ; the intensity (I) of an event is the ratio of severity (S) to duration (D). These characteristics were computed for each event and then further the total wet/dry event duration (TWD and TDD), total wet/dry severity (TWS and TDS), total wet/dry intensity (TWI and TDI), average wet/dry event duration (AWD and ADD), average wet/dry severity (AWS and ADS), average wet/dry intensity (AWI and ADI), maximum wet/dry event duration (MWD and MDD), maximum wet/dry severity (MWS and MDS), maximum wet/dry intensity (MWI and MDI) were calculated for a period of 34 years (1981-2014).

#### 4.3. Wet–Dry (WD) ratio

Wet-Dry (WD) ratio is defined as the natural logarithm of the ratio of the total number of wet months ( $N_w$ ) to the total number of dry months ( $N_d$ ) (Luca et al., 2020). The WD ratio was calculated for different levels of severity (moderate, severe, and extreme) at each pixel for the studied period (1981–2014) using Eq. (5):

$$WD \text{ ratio} = \ln\left(\frac{N_w}{N_d}\right) \quad (5)$$

The WD ratio provides information about the susceptibility of a given area to be more affected by wet or dry events. A WD ratio greater than 0 implies the prevalence of wet events whereas a WD ratio lower than 0 shows a dominance of dry events. The natural logarithm was used to narrow the range of WD ratio values and to separate the wet-dominated versus dry-dominated regions by sign.

#### 4.4. Wet-Dry Transition Time

The total number of transitions and their average transition time ( $T_t$ ) in months for wet-to-dry and dry-to-wet events was computed for each grid cell is computed for the period 1981–2014, as described by (Luca et al., 2020). The calculation procedure of wet-to-dry transitions time ( $T_t$ ) involves four steps: (i) extraction of wet and dry events and arrange them in an ascending order of time (from the oldest to the most recent); (ii) in case of consecutive dry and wet months, keep only the first and the last month value, respectively; (iii) calculate the difference in months between wet to dry events within the time series; and (iv) take the average of the time interval. The same procedure was applied for calculating dry-to-wet transitions time ( $T_t$ ), with the only difference being in step (ii) in which the first and last month of wet and dry event were kept, respectively and in step (iii) in which the time interval was calculated between dry to wet events. The wet-to-dry and dry-to-wet transition time were calculated separately for each level of severity (moderate, severe, extreme).

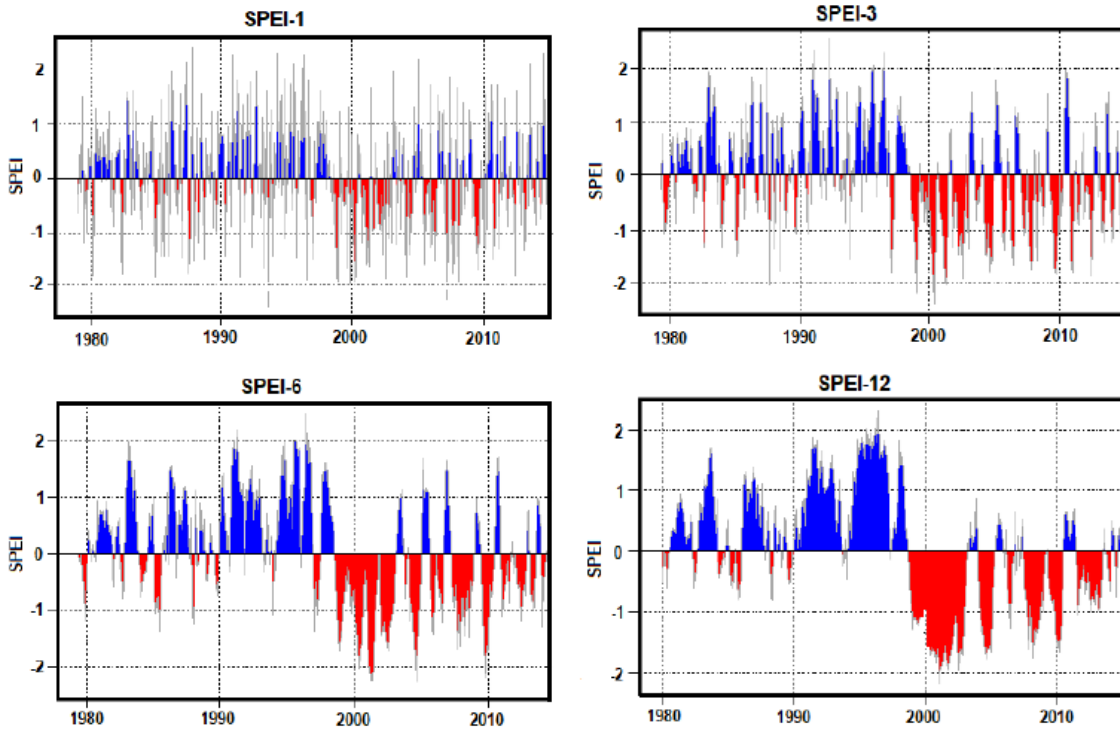
#### 4.5. Wet-Dry Rapid Transition Events

The wet-dry rapid transition event is defined as the consecutive occurrence of wet and dry months/events. For instance, a dry (or wet) event occurring in the  $i$ th month abruptly altered to wet (or dry) event in the  $i + 1$ st month. In this study, the frequency of wet-to-dry (wet event followed by dry event) and dry-to-wet (dry event followed by wet event) rapid transition events were calculated for each pixel to identify the geographical hotspot for compound extreme events. Unlike the wet/dry average transition time which were calculated separately for each severity level, the wet/dry rapid transition events were calculated considering all levels of severity together.

## 5. Results

### 5.1. Change trends of the Wet-Dry Events

The basin average SPEI time series at 1-month (SPEI-1), 3-month (SPEI-3), 6-month (SPEI-6) and 12-month (SPEI-12) time scale is presented in figure 2. It can be seen that the study domain mostly experienced moderate-to-severe wet/dry events, whereas the extreme wet/dry events ( $SPEI > 2$  or  $SPEI < -2$ ) rarely occurred during the study period. For the SPEI-1, the wet (blue) and dry (red) events changed more frequently than accumulated SPEI (at 3-, 6- and 12-month) and there was no extended dry or wet period. The reason might be that the precipitation and temperature of each new month has a substantial impact on the accumulative values of that period. By contrast, with the increase in SPEI time scale (SPEI-1 to SPEI-12), a clear change/shift of basin climate from wet to dry conditions can be seen (Figure 2), showing the stability in the frequency of incidences of wet/dry events over the study domain. This could be explained as the slow and consistent response of SPEI towards changes in climatic variables, indicating strong and clear durations of annual and multiple-year dry and wet conditions. This means that at longer time scales of SPEI the number of occurrences of wet/dry events will decrease, but the duration will increase.



245

**Figure 2:** temporal variations of SPEI at 1-, 3-, 6- and 12-month time scale over UJB for the period 1981-2014

This study focuses on the short time scale conditions to analyze frequent variations in climatic conditions and their interplay; therefore, more detailed analysis was carried out at the monthly time scale. Moreover, the floods and flash droughts are not clearly associated with long term SPEI, because the averaging effect of long-term accumulated precipitation and temperature surpasses the signal of extreme precipitation and temperature over a short period. Flash drought is relatively a new type of drought. Currently, there is not a universally accepted definition or criteria for flash drought, though there is general consensus on the principle of rapid onset or intensification characterized by moisture deficits and abnormally high temperatures for a period lasting at least 3 weeks (Lisonbee et al. 2021, Otkin et al. 2018, Hunt et al. 2009). This highlights the usefulness of SPEI at the monthly scale in representing flood and flash drought events. It is noted that the terms “wet-dry events” or “wet-dry months” present similar meaning for our study, as the analysis was made at the monthly time step. A clearer picture of the monthly evolution of wet/dry events of different severity levels and their variability can be seen in Table 2. The SPEI-1 values fluctuate remarkably from one month to another. For example, an extreme wet October in 1987 was followed by a severe dry November, and a severe wet June occurred at the tail of the longest drought spell in May 2001. Such rapid transition from wet to dry and from dry to wet events was more prominent during the first half of the study period (before the year 1997). Another interesting observation concerns the strong change in the basin climatic features which can be noticed around the year 1997/1998. During the first half of the study period (1981-1997), the dominance of wet events of different categories prevails whereas the basin conditions lean towards dryer conditions during the second half of the period (1998-2014).

250

255

260

265

**Table 2:** Temporal variations of monthly SPEI over UJB from 1981-2014. The brown, blue and white colors present dry, wet and normal months, respectively. Different shades of the colors define the different severity



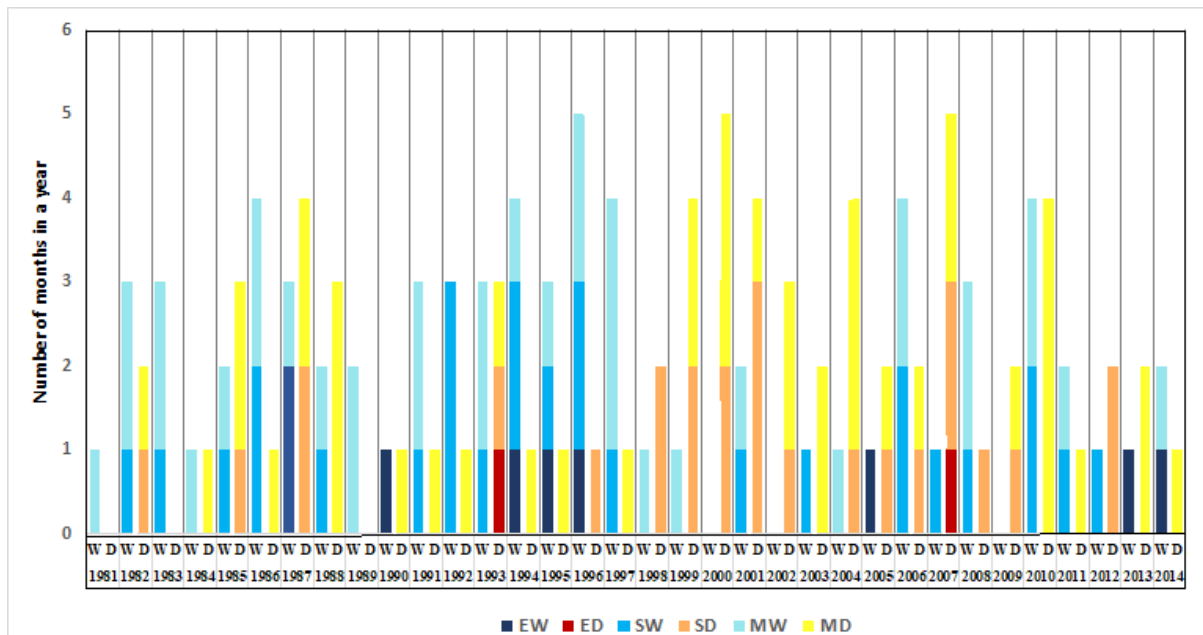
levels (EW-extreme wet, ED-extreme dry, SW-severe wet, SD-severe dry, MW-moderate wet, MD-moderate dry). The red line between 1997 and 1998 indicates the strong change in the basin climatic features

Year/ Months	1	2	3	4	5	6	7	8	9	10	11	12
1981							MW					
1982						MD	SD			MW	SW	MW
1983			SW	MW				MW				
1984									MW	MD		
1985		SD				MD	MW		MD			SW
1986	MD		SW	MW							SW	MW
1987	MD			MW	EW		SD	MD		EW	SD	
1988			MW	MD	MD		SW				MD	
1989					MW						MW	
1990					MD							EW
1991				SW	MW	SD			MW			
1992	SW		SW			MD			SW			
1993			MW	SD			SW	ED			MW	MD
1994				EW			MW	SW			MD	SW
1995				SW			EW	MW	MD			
1996			MW		SW	EW		MW	SD	SW		
1997		MD			MW	MW		SW		MW		
1998		MW									SD	SD
1999	MW	MD								SD	MW	SD
2000		MD	MD	SD	SD					MD		
2001	SD	SD	MD		SD	SW	MW					
2002					MD		SD				MD	
2003	MD	SW				MD						
2004		MD	SD		MD		MD			MW		
2005		EW						SD				MD
2006	SW		MD		SD			SW			MW	MW
2007	SD			ED		SW		MD		SD	MD	
2008	SW		SD			MW						MW
2009							MD		SD			
2010	MD	SW	MD		MW		SW	MW			MD	MD
2011		SW			MD				MW			
2012						SD	SD		SW			
2013			MD	MD				EW				
2014			MW						EW			MD

270

Annual variations in the number of months affected by dry/wet events ( $SPEI \leq -1$  and  $SPEI \geq 1$ ) is displayed in figure 3. Usually, every year encountered at least one dry and wet month of any severity level. Approximately 35% of the total number of months experienced anomalous dry or wet conditions. The proportion of wet months (18.1%) was slightly higher than the dry ones (16.9%).

275

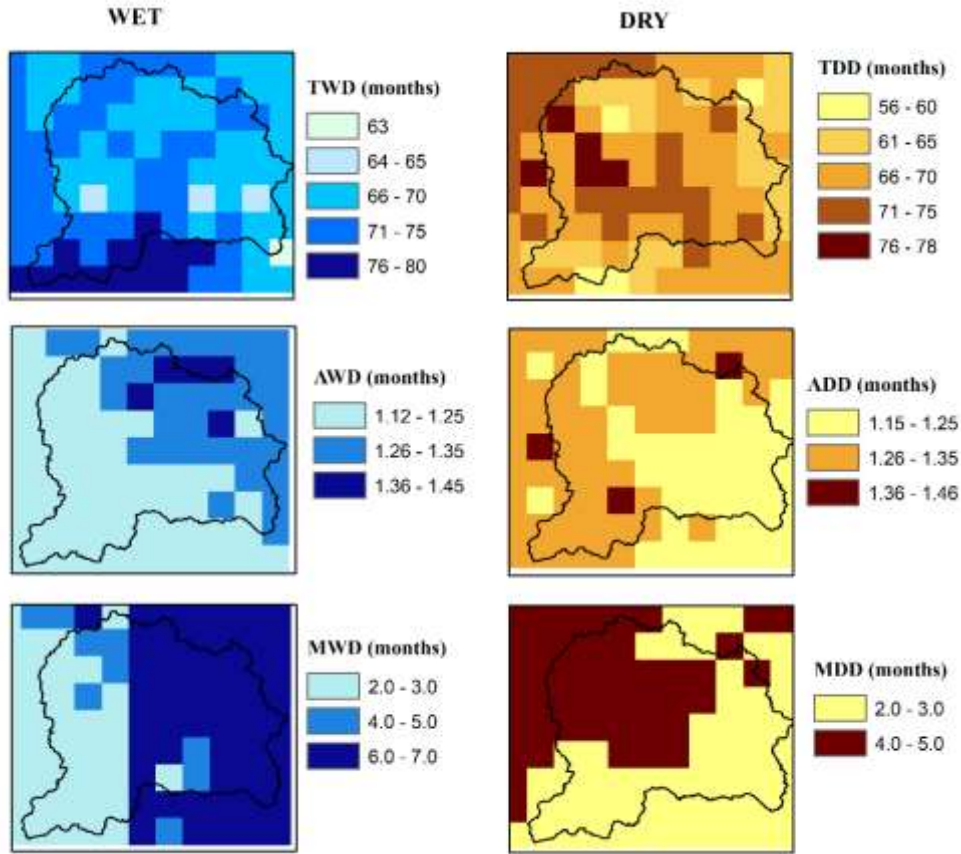


**Figure 3:** Annual variations in the number of months affected by wet/dry conditions during 1984-2014. The brown and blue colors present dry and wet months, respectively. Different shades of the colors define the different severity levels (EW-extreme wet, ED-extreme dry, SW-severe wet, SD-severe dry, MW-moderate wet, MD-moderate dry)

### 5.2. Wet/Dry Event Analysis

The wet/dry event characteristics (duration, severity, and intensity) were computed for each pixel to analyze their spatial distribution. Pixel based analysis shows the location of the most vulnerable parts of the basin, providing the basis for future decisions on adaptation and mitigation measures. In this study, the total, average and maximum value of duration, severity, and intensity were computed for the study period (1981-2014). The maps of wet and dry duration are displayed in figure 4. Overall, the study area encountered relatively more wet months than dry months during the whole study period. The total wet duration (TWD) and total dry duration (TDD) varies from 66-80 and 61-65 months for most part of the basin. The low elevation parts in the south of the basin show highest value of TWD whereas the TDD is higher across Himalaya divide line than in other parts of the basin. The Himalayas divide line is a line in the middle of the UJB at Pir Panjal mountainous range, separating the dominance of the two precipitation patterns, westerlies and monsoon in the north facing and south facing slopes of the line, respectively (Archer and Fowler, 2008).

The average wet and dry event durations (AWD & ADD) were found to be similar throughout the basin with a slight difference in the range of 1-2 weeks. However, their spatial patterns were found to be mostly complementary. Maximum wet and dry event duration (MWD & MDD) exhibits high values in two distinct parts of the basin. The MWD is about 6-7 months in the east of the basin, which is located in Kashmir, India whereas it varies between about 4-5 months and 2-3 months in the northwest and southwest parts of the basin. For the MDD, the northwest and central parts of the basin show higher values (4-5 months) than the remaining parts (2-3 months).



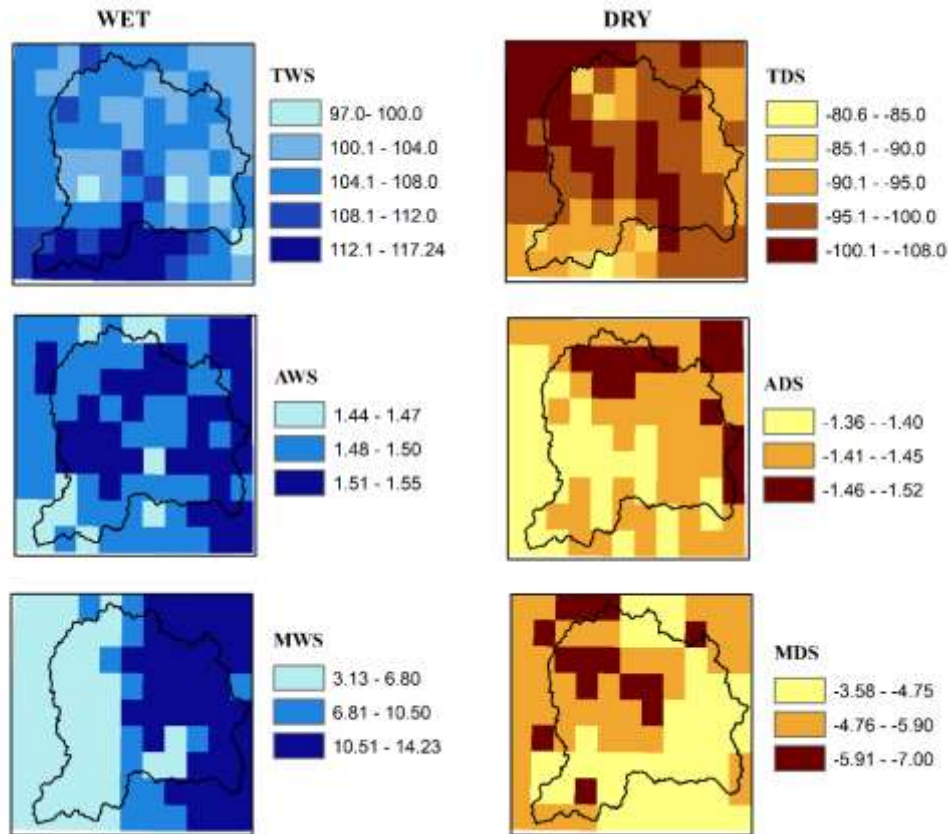
**Figure 4:** Spatial distribution of total wet duration (TWD), total dry duration (TDD), average wet duration (AWD), average dry duration (ADD), maximum wet duration (MWD) and maximum dry duration (MDD) for the period 1981-2014

305

310

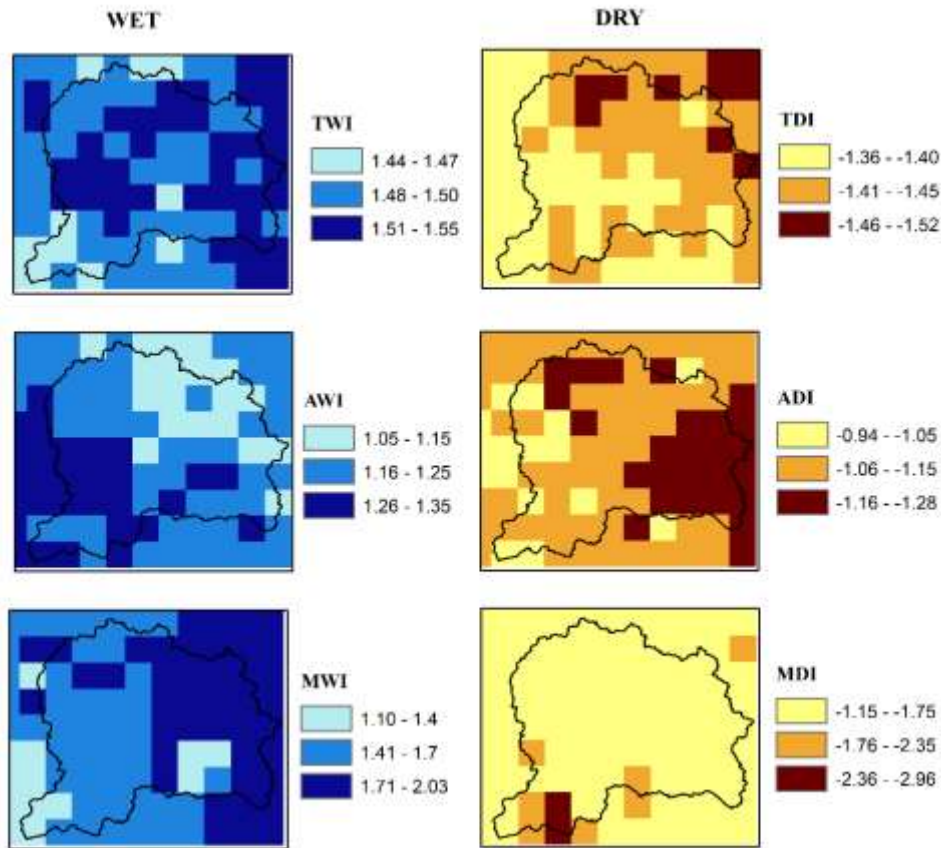
315

The spatial distribution of total, average and maximum severity of wet/ dry events is presented in figure 5. All wet/ dry severity maps show similar spatial patterns as wet/dry duration maps. In terms of total wet severity (TWS) and total dry severity (TDS), the wet and dry hotspots are located in the south and middle (across Himalaya divide line) of the basin, respectively. Unlike the spatial patterns of TDD, the TDS is relatively higher in the north of the basin above Himalaya divide line. This shows more intense dry events in this part of the basin. The underlying reason for higher TDS could be the higher warming rates in western Himalaya, hosted in the north of the basin. The average severity of wet and dry events is categorized from moderate to severe level. The average wet severity (AWS) exhibits random spatial patterns, whereas the average dry severity (ADS) is relatively higher in the north of the basin. The similar spatial patterns of maximum wet severity (MWS) and maximum dry severity (MDS) are observed as MWD and MDD. The eastern part of the basin experienced wet events of higher severity than the western one, whereas the most severe dry events affected the northwest and central parts of the basin.



**Figure 5:** Spatial distribution of total wet severity (TWS), total dry severity (TDS), average wet severity (AWS), average dry severity (ADS), maximum wet severity (MWS) and maximum dry severity (MDS) for the period 1981-2014

Figures 6 illustrates the spatial distribution of intensities of wet/dry events, calculated as the ratio of severity to duration. The total wet intensity (TWI) and total dry intensity (TDI) varies from moderate to severe with noted range of 1.44 to 1.55 and -1.36 to -1.52 for wet and dry events, respectively. Irrespective to TWD and TWS, which is highest in the south of the basin, TWI is more intense in the middle and northeast of the basin. The TDI is found to be more intense over western Himalaya Mountains, north of the basin. The average wet intensity (AWI) and average dry intensity (ADI) vary within the moderate class of hazard. However, their spatial patterns are much different from average duration (AWD & ADD) and average severity (AWS & ADS) patterns. Regarding maximum intensities, the spatial patterns of maximum wet intensity (MWI) well resemble the patterns of MWD and MWS, whereas the maximum dry intensity (MDI) exhibits much different spatial patterns from MDD and MDS. The dry events are found to be more intense than wet events, but only for a few pixels in the southwest of the basin. On the other hand, wet events with higher intensities are found to be more widespread than dry events.

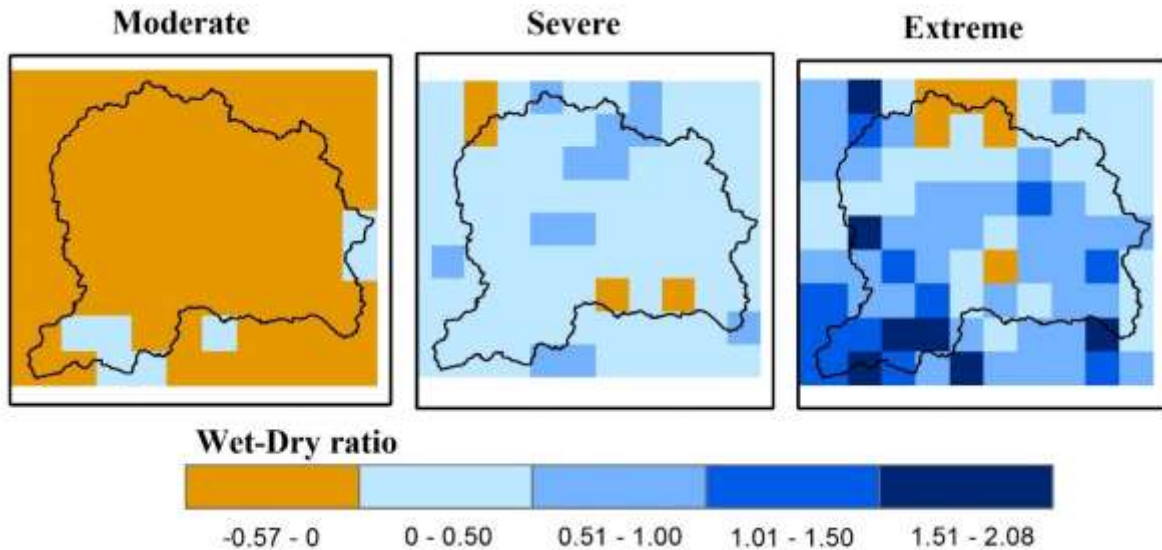


335 **Figure 6:** Spatial distribution of total wet intensity (TWI), total dry intensity (TDI), average wet intensity (AWI), average dry intensity (ADI), maximum wet intensity (MWI) and maximum dry intensity (MDI) for the period 1981-2014

### 5.3. Wet-Dry Ratio

340 The WD ratio features the dominance of wet or dry events for the period of 34 years (1981-2014). The WD ratio for the three severity levels (moderate, severe, and extreme) at pixel basis is presented in figure 7. The positive and negative value of WD ratio depicts the prevalence of wet and dry events, respectively. As the figure shows higher frequencies of moderate dry events, with respect to moderate wet events were found throughout the basin except a few pixels in the south. By contrast, severe to extreme wet events are more frequent for most parts of the basin. The highest positive values of WD ratio for extreme level of hazard was found in southwest of the basin, which shows the higher susceptibility of the area towards extreme wet events. Moreover, the analysis of wet/dry event characteristics also revealed the prevalence of wet events with higher duration and severity over monsoon dominated region.

345



350

**Figure 7:** Spatial distribution of wet–dry (WD) ratio derived for three levels of severity (moderate, severe and extreme) during 1981–2014. Blue (WD ratio>0) means that the area experienced more wet than dry events. Brown (WD ratio<0) indicates the opposite.

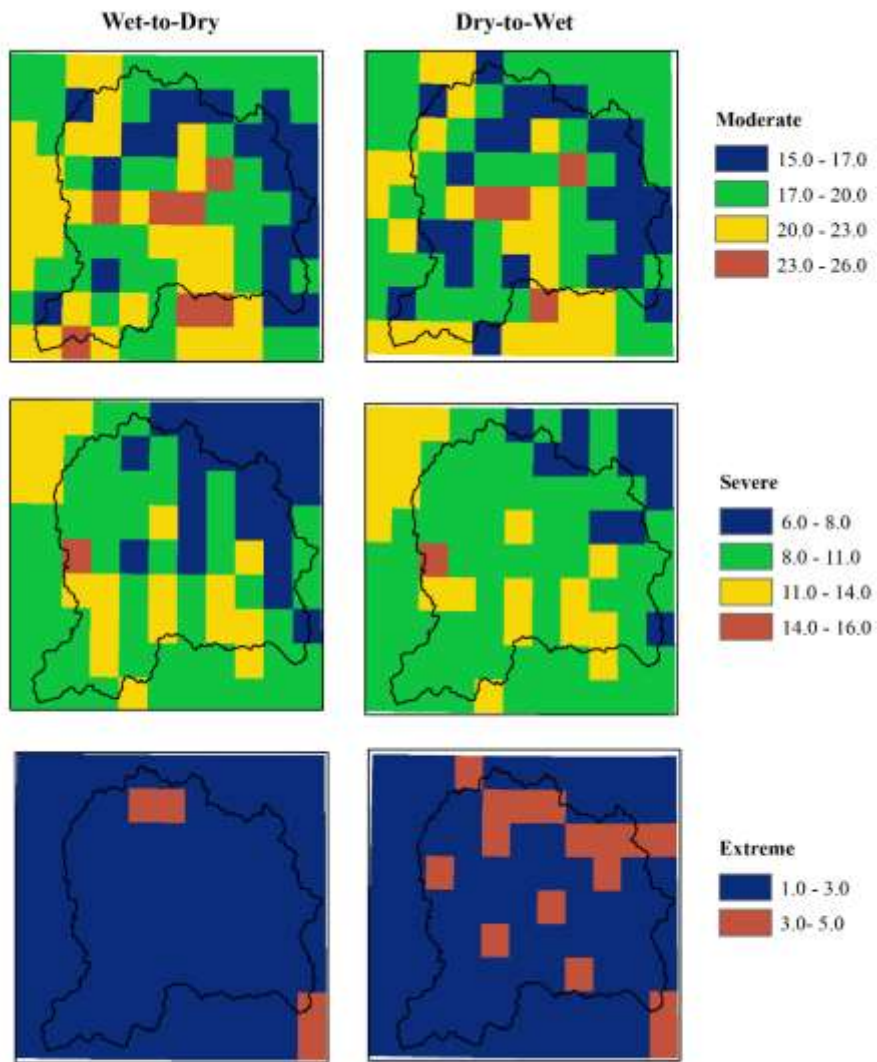
355

#### 5.4. Wet-Dry Transition Time

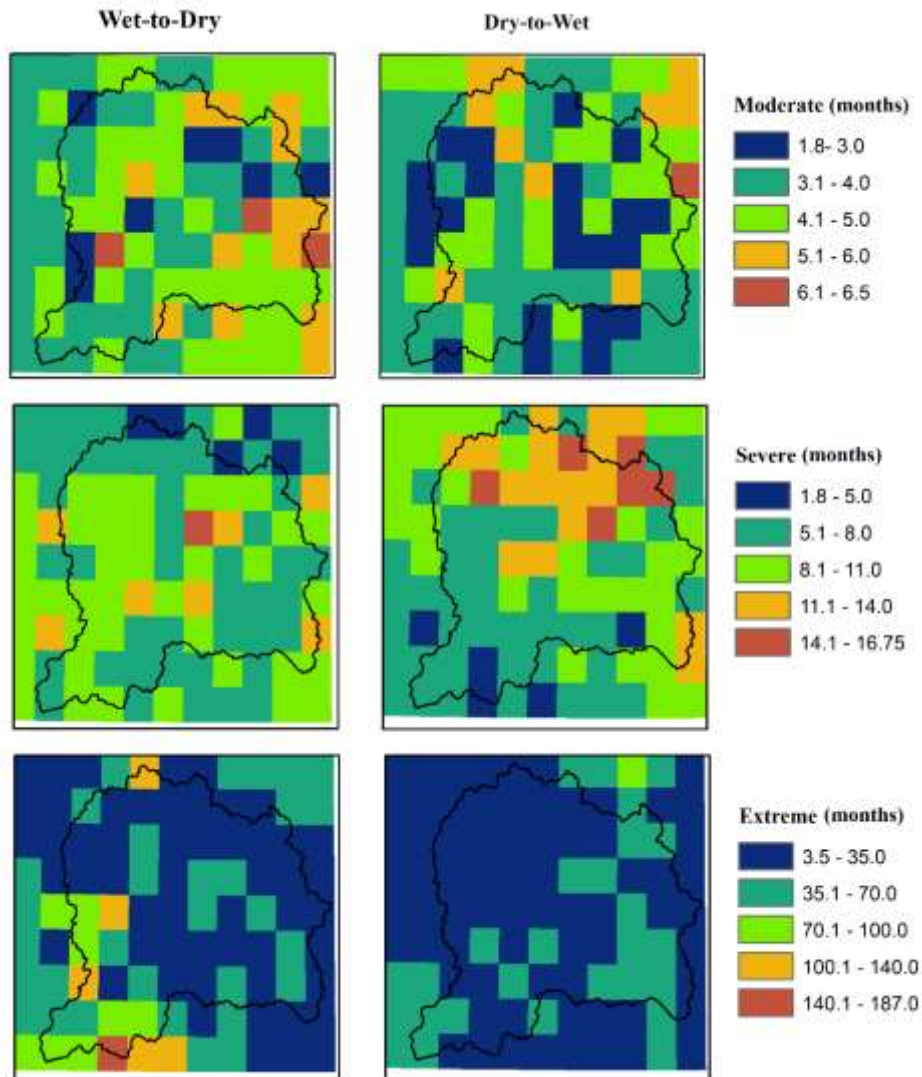
The number of transitions and their average transition time for wet-to-dry and dry-to-wet events for the period 1981–2014 is presented in figure 8 and figure 9. As expected, the number of transitions for wet-to-dry and dry-to-wet event was the highest for the moderate level of events, followed by severe and extreme levels of events. Consequently the average transition time from wet-to-dry and dry-to-wet event was found to be the highest for the extreme level of event followed by severe and moderate levels of events. The number of transitions for moderate, severe, and extreme levels of events varies from 15 to 26, from 6 to 16, and from 1 to 5 respectively. Overall, the number of transitions for dry-to-wet event is larger than the wet-to-dry event for severe and extreme levels of events, whereas the opposite was found for the moderate level of events. The transition time for moderate, severe, and extreme levels of events varies from 1.8 to 6.5, from 1.8 to 16.75 and from 3.5 to 187.0 months, respectively. Overall, 53.57% and 17.86% of pixels in the UJB showed longer transition time from wet-to-dry than from dry-to-wet for moderate and extreme levels, whereas the opposite was seen for severe events.

365





**Figure 8:** Number of transitions from wet-to-dry (left) and dry-to-wet (right) events for three levels of severity (moderate, severe, extreme) for the period 1981-2014

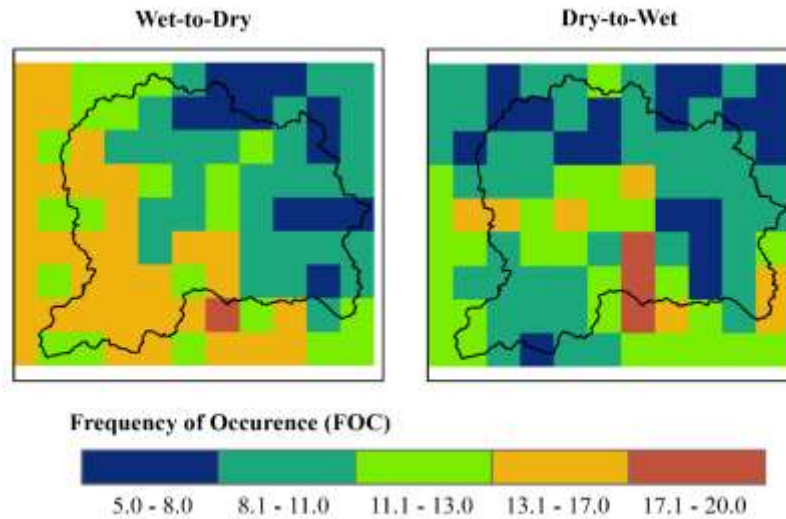


**Figure 9:** Average transition time ( $T_t$ ) intervals in months for wet-to-dry (left) and dry-to-wet (right) events for three levels of severity (moderate, severe, extreme) for the period 1981-2014

### 5.5. Wet/Dry Rapid Transition Events

The wet/dry rapid transition is the consecutive occurrence of wet and dry months of any severity level. The frequency of wet-to-dry (wet month followed by dry month) and dry-to-wet (dry month followed by wet month) rapid transition events were computed for each grid cell and are shown in figure 10. The frequency of wet/dry transition events varies/ranges from 5 to 20 events during 34 years of study period. About 50% pixels in the UJB encountered more number of wet events terminated at dry months. The spatial distribution of frequency of wet/dry rapid transition events revealed that the wet-to-dry events are less frequent over the westerlies dominated region of the basin, whereas the southwestern part of the basin was more affected by the wet-to-dry abrupt altered events. By contrast, dry-to-wet abrupt altered events are found to be more frequent over pixels surrounding the Himalaya divide line, whereas the remaining part of the basin depicts less incidence of dry-to-wet altered events.





**Figure 10:** Frequency of occurrence of abrupt altered events, wet-to-dry (left) and dry-to-wet (right) during 1981-2014

## 390 6. Discussion and Conclusion

This study attempts to investigate the spatiotemporal variations of wet-dry events collectively, their characteristics (duration, severity, intensity) and transition from wet-to-dry and dry-to-wet events during 1981-2014 in the Upper Jhelum Basin (UJB)-South Asia. The SPEI index, which incorporates precipitation and potential evapotranspiration, was used to extract and analyze the wet-dry events. The whole analysis was carried out at the monthly time scale, but the temporal evolution of the basin averaged index was also simulated at multiple time scales (1-, 3-, 6- and 12-months). The reason for selecting the monthly time scale for this study is that it is expected to provide the best performance in detecting floods and flash droughts, as longer time steps are more appropriate for long term droughts only and not for floods.

The results of temporal variations of SPEI showed that the study domain mostly encountered moderate to severe wet-dry events, whereas the extreme wet-dry events rarely occurred during the study period. The results of basin average SPEI at multiple time scales revealed that the response of SPEI to the deviations in climatic features varies with the accumulation time. Therefore, shorter time scales are more appropriate for detecting frequent seasonal and inter-annual variations, whereas longer time scales provide useful information regarding the signature of the events over the region (Ayugi et al., 2020, Du et al., 2013). Furthermore, the SPEI time-series plots well capture the observed extreme floods and drought events occurred in the basin during the study period: for instance, the longest drought event occurred from late 1990s to early 2000s, as evident in Figure 2 and Table 2. The drought started in 1998 and was considered to be the worst in the history of Pakistan. The drought spell 2001-2002 resulted in water shortage of up to 51% of normal supplies (Ahmad et al., 2004). Likewise, the notable flooding events, usually flash floods ranging from moderate to severe, occurred in the years 1988, 1992, 1994, 1997, 2007 and 2014 (Bhat et al., 2019) and were well captured by SPEI index, confirming its valuable contribution to this type of analysis.

An interesting clue to the changing climate is the strong change occurred in the basin at the end of 1997 (Table 2). Before this change (1981-1997), wet events of different severity levels predominated in the basin, whereas dryer conditions prevailed after 1997. However, it still needs to be investigated whether dryer conditions

415 are expected to continue in the future, or a large multi-decadal variation is taking place. This strong change in the basin climate coincides with the strongest El Niño Southern Oscillation (ENSO) event in the winter season of 1997-1998, where the Oceanic Niño Index (ONI) peaked at 2.3, and influenced the climate conditions all over the world (MRCC, 2021). The 1998-2002 drought in southwestern Asia, accompanied by the most severe drought conditions in the last 50 years, was also a result of this strong ENSO event (Ain et al., 2020, Ahmed et al., 2018).  
420 The ENSO is the primary mode of inter-annual variability having great influence on global weather and climate via atmospheric circulations (Ullah et al., 2021a). Many researchers reported the close association between variations in atmospheric circulation patterns and climatic variables, extreme weather phenomena like drought and flood (Luca et al., 2020, Omidvar et al., 2016, Sun et al., 2015). (Kenyon and Hegerl, 2010) examined the response patterns of hydroclimate extremes to ENSO over global land areas, and stated a significant decrease in  
425 precipitation extremes over Southeast Asia, Indonesia, Australia, and the northernmost region of South America during El Niño phases, whereas in the southern tier of the United States and the region from Argentina to southern Brazil heavy precipitation increased during El Niño phases, and vice versa during La Niña phases. The strength of such connections for Pakistan was also demonstrated in several studies. El Niño suppresses monsoon rainfall activity over Pakistan, while La Niña has a negative impact on winter precipitation over Pakistan (Farooqi et al.,  
430 2005, Azmat, 2003). (Ullah et al., 2021a) found significant impacts of three large scale climate indices, i.e Niño4-SST Index, Sea Surface Temperature (SST), and multivariate El Niño-Southern Oscillation (ENSO4.0) on seasonal droughts across Pakistan.

The results of wet-dry event characteristics (duration, severity, intensity) at pixel basis outline the greater susceptibility of westerlies dominated region towards dry events with higher duration, severity, and intensity. The  
435 dryer conditions in this region could be explained with the increasing rates of global warming over mountainous region of the basin, also reported by many researchers (Rashid et al., 2020, Shafiq et al., 2020, Zaz et al., 2019). Studies by (Negi et al., 2018) and (Dimri and Dash, 2012) also confirm that most of the western Himalayan region recorded a significant warming trend especially from 1975 onwards. This is also supported by the tree-ring chronologies of the region which indicate rapid growth of the tree rings in the recent decades especially at higher  
440 altitudes (Borgaonkar et al., 2009). The impact of global warming on short term dry event (soil moisture drought) is not straightforward as rising temperature did not necessarily cause increase in actual ET, especially in arid and semiarid regions (Trenberth et al., 2014, Sheffield et al., 2012). In fact the rate and amount of ET results from a complex interaction of temperature, radiation balance, precipitation rates and vegetation physiological control, rather than being exclusively limited by one of these factors. For flash drought, the rapid soil moisture decline  
445 should be a result of the intensification of ET driven by higher temperature, which is very common in humid and semi-humid regions, where soil moisture can sustain higher ET amounts up to a few weeks (Yuan et al., 2019). Further decrease in winter and spring precipitation leads water deficit conditions in this part of the basin. The worst drought event period (2000-2001), partially induced by a stronger ENSO in winter, was also due to the low winter and spring precipitation, as seen in Table 2. During 2000-2001, winter and spring seasons were moderate-  
450 to-severe dry, whereas the monsoon and autumn seasons observed normal months. By contrast, the higher duration and severity of wet events were detected in the monsoon dominated region, implying that floods mainly occurred during monsoon season with heavy rainfall along with snowmelt. However, the eastern part of the basin was the hotspot of more intense wet events. The above discussion is also supported by the historic database of observed flood events, as most of these events occurred during monsoon season.

455 The results of WD ratio showed the prevalence of severe to extreme wet events for most part of the basin,  
while the dry events of moderate severity level were more frequent in the study domain. The southwestern part of  
the basin, located in the monsoon-dominated region was found to be the hotspot for the extreme wet events.  
Moreover, the analysis of wet/dry event characteristics also revealed the prevalence of wet events with higher  
460 duration and severity over the same monsoon dominated region. The spatial patterns of average transition time  
from one extreme type to the other type was found to be heterogeneous and different for the three severity levels.  
Overall, a greater number of pixels took shorter time to switch from dry to wet event than wet to dry events. Apart  
from the average transition period, the study domain also experienced rapid transition of wet-dry events. In  
general, the surrounding region of the Himalaya divide line and the monsoon-dominated part of the basin were  
465 found to be the hotspots of rapid wet-dry transition. The rapid wet-dry swings could be explained in the context  
of global warming. In a warmer climate, increased evapotranspiration rates in response to increased temperature  
could elevate the drought risk and frequency. At the same time, prospect of localized heavy precipitation causing  
floods is expected to increase in response to increased atmospheric moisture content due to increased  
evapotranspiration rates (He and Sheffield, 2020, Krishnan et al., 2020). Further warming-induced changes in  
470 global climate variability, such as El Niño and La Niña can cause more inter-annual variability or persistence in  
global weather and climate, significantly affecting regional precipitation and temperature distribution in space and  
time (Ullah et al., 2021b). Further compelling scientific evidence of human interventions, such as boosted human  
water intake and land use changes, exacerbate the extreme flood and drought risk hazard.

To conclude, knowledge of wet-dry events characteristics and their rapid transition provides meaningful  
insight into the geographical hotspots of compound extreme events, which could be of practical value to inform a  
475 group of stakeholders (researchers, local authorities, policy makers, relief agencies, non-governmental  
organizations (NGOs) and (re)insurance companies) on the potential risk. In general, results contribute to  
hydrological predictability and risk assessment and therefore effectively support disaster preparedness and risk  
management, ensuring the regional water, food and socio-economic security and stability against the background  
of a changing environment.. Future work should explore to what extent future wet-dry event frequency will  
480 respond to anthropogenic forcing, internal atmospheric processes, and human interventions.

**Author contribution:** This paper was conceptualized by RA and GG. RA performed the data analysis and  
visualization. The original draft was written by RA and revised by GG.

**Competing interests:** The authors declare that they have no conflict of interest.

485 **Code/ Data Availability:** Not Applicable

**Acknowledgments:** The authors would like to acknowledge the financial support guaranteed through the  
Cooperation Agreement PFK PhD program 2019-2022 “Partnership for Knowledge-Platform 2: Health and  
WASH (Water Sanitation and good Hygiene), of the Italian Ministry of Foreign Affairs together with AICS  
(Italian Agency for Development Cooperation) to benefit higher education programs of non-Italian citizens. The  
490 authors are grateful to the Pakistan Meteorological Department (PMD) and Water and Power Development  
Authority (WAPDA) for data availability.

## References

- Ahmad, S., Hussain, Z., Qureshi, A. S., Majeed, R., & Saleem, M.: Drought mitigation in Pakistan: current status and options for future strategies, (Vol. 85): IWMI, 2004.
- Ahmed, K., Shahid, S., & Nawaz, N.: Impacts of climate variability and change on seasonal drought characteristics of Pakistan, *Atmospheric Research*, 214, 364-374, <https://doi.org/10.1016/j.atmosres.2018.08.020>, 2018.
- Ain, N., Latif, M., Ullah, K., Adnan, S., Ahmed, R., Umar, M., & Azam, M.: Investigation of seasonal droughts and related large-scale atmospheric dynamics over the Potwar Plateau of Pakistan, *Theoretical and Applied Climatology*, 140(1), 69-89, <https://doi.org/10.1007/s00704-019-03064-8>, 2020.
- Akhtar, T., Mushtaq, H., and Hashmi, M. Z.-R.: Drought monitoring and prediction in climate vulnerable Pakistan: Integrating hydrologic and meteorologic perspectives, *Hydrol. Earth Syst. Sci. Discuss.* [preprint], <https://doi.org/10.5194/hess-2020-297>, in review, 2020.
- Ali, Z., Hussain, I., and Faisal, M.: Annual Characterization of Regional Hydrological Drought using Auxiliary Information under Global Warming Scenario, *Nat. Hazards Earth Syst. Sci. Discuss.* [preprint], <https://doi.org/10.5194/nhess-2018-373>, 2019.
- Ansari, R., & Grossi, G.: Evolution of Dryness/Wetness conditions and their characteristics (duration and severity) across Upper Jhelum Basin, Pakistan, in: EGU General Assembly Conference Abstracts, pp. EGU21-12550, 2021.
- Archer, D. R., & Fowler, H. J.: Using meteorological data to forecast seasonal runoff on the River Jhelum, Pakistan, *Journal of hydrology*, 361(1-2), 10-23, <https://doi.org/10.1016/j.jhydrol.2008.07.017>, 2008.
- Ayugi, B., Tan, G., Niu, R., Dong, Z., Ojara, M., Mumo, L., Babaousmail, H. and Ongoma, V.: Evaluation of meteorological drought and flood scenarios over Kenya, East Africa. *Atmosphere*, 11(3), 307, <https://doi.org/10.3390/atmos11030307>, 2020.
- Azmat, H.: Impact of La Nina on Pakistan Winter Precipitation, *WMO-ESCAP TSU Quarterly Bulletin*, 2003.
- Azmat, M., Qamar, M. U., Huggel, C. and Hussain, E.: Future climate and cryosphere impacts on the hydrology of a scarcely gauged catchment on the Jhelum river basin, Northern Pakistan, *Science of the Total Environment*, 639:961-976, <https://doi.org/10.1016/j.scitotenv.2018.05.206>, 2018.
- Baudouin, J.-P., Herzog, M. and Petrie, C. A.: Cross-validating precipitation datasets in the Indus River basin, *Hydrology and Earth System Sciences*, 24(1), 427-450, <https://doi.org/10.5194/hess-24-427-2020>, 2020.
- Beguiría, S., Vicente-Serrano, S. M., Reig, F. and Latorre, B.: Standardized precipitation evapotranspiration index (SPEI) revisited: parameter fitting, evapotranspiration models, tools, datasets and drought monitoring, *International journal of climatology*, 34(10), 3001-3023, <https://doi.org/10.1002/joc.3887>, 2014.
- Beguiría, S., Vicente-Serrano, S. M., & Beguiría, M. S.: Package ‘SPEI’. Calculation of the Standardised Precipitation-Evapotranspiration Index, CRAN [Package], 2017.
- Berndt, C. and Haberlandt, U.: Spatial interpolation of climate variables in Northern Germany—Influence of temporal resolution and network density, *Journal of Hydrology: Regional Studies*, 15, 184-202, <https://doi.org/10.1016/j.ejrh.2018.02.002>, 2018.
- Bhat, M. S., Alam, A., Ahmad, B., Kotlia, B. S., Farooq, H., Taloor, A. K., & Ahmad, S. (2019). Flood frequency analysis of river Jhelum in Kashmir basin, *Quaternary International*, 507, 288-294, <https://doi.org/10.1016/j.quaint.2018.09.039>, 2019.
- Borgaonkar, H., Ram, S., & Sikder, A.: Assessment of tree-ring analysis of high-elevation Cedrus deodara D. Don from Western Himalaya (India) in relation to climate and glacier fluctuations, *Dendrochronologia*, 27(1), 59-69, <https://doi.org/10.1016/j.dendro.2008.09.002>, 2009.

- 535 Cannon, A. J., Sobie, S. R. and Murdock, T. Q.: Bias correction of GCM precipitation by quantile mapping: How well do methods preserve changes in quantiles and extremes?, *Journal of Climate*, 28:6938-6959, <https://doi.org/10.1175/JCLI-D-14-00754.1>, 2015.
- Chen, H., Wang, S., Zhu, J., & Zhang, B.: Projected changes in abrupt shifts between dry and wet extremes over China through an ensemble of regional climate model simulations, *Journal of Geophysical Research: Atmospheres*, 125(23), <https://doi.org/10.1029/2020JD033894>, 2020.
- 540 CSIRO, State of the Climate 2018, Commonwealth Scientific and Industrial Research Organisation, Australia, 2018.
- Dar, R. A., Mir, S. A., & Romshoo, S. A.: Influence of geomorphic and anthropogenic activities on channel morphology of River Jhelum in Kashmir Valley, NW Himalayas, *Quaternary International*, 507, 333-341, <https://doi.org/10.1016/j.quaint.2018.12.014>, 2019.
- 545 Dimri, A., & Dash, S.: Wintertime climatic trends in the western Himalayas, *Climatic Change*, 111(3), 775-800, [DOI 10.1007/s10584-011-0201-y](https://doi.org/10.1007/s10584-011-0201-y), 2012.
- Dolk, M., Penton, D. J., & Ahmad, M. D.: Amplification of hydrological model uncertainties in projected climate simulations of the Upper Indus Basin: Does it matter where the water is coming from?, *Hydrological Processes*, 34(10), 2200-2218, <https://doi.org/10.1002/hyp.13718>, 2020.
- 550 Du, J., Fang, J., Xu, W., & Shi, P.: Analysis of dry/wet conditions using the standardized precipitation index and its potential usefulness for drought/flood monitoring in Hunan Province, China, *Stochastic environmental research and risk assessment*, 27(2), 377-387, [DOI 10.1007/s00477-012-0589-6](https://doi.org/10.1007/s00477-012-0589-6), 2013.
- Farooqi, A. B., Khan, A. H., & Mir, H.: Climate change perspective in Pakistan, *Pakistan Journal of Meteorology*, 2(3), 2005.
- 555 Goovaerts, P.: Geostatistical approaches for incorporating elevation into the spatial interpolation of rainfall, *Journal of hydrology*, 228(1-2), 113-129, [https://doi.org/10.1016/S0022-1694\(00\)00144-X](https://doi.org/10.1016/S0022-1694(00)00144-X), 2000.
- He, X., Estes, L., Konar, M., Tian, D., Anghileri, D., Baylis, K., Evans, T.P. and Sheffield, J.: Integrated approaches to understanding and reducing drought impact on food security across scales, *Current Opinion in Environmental Sustainability*, 40, 43-54, <https://doi.org/10.1016/j.cosust.2019.09.006>, 2019.
- 560 He, X., & Sheffield, J.: Lagged compound occurrence of droughts and pluvials globally over the past seven decades, *Geophysical Research Letters*, 47(14), <https://doi.org/10.1029/2020GL087924>, 2020.
- He, X., Wada, Y., Wanders, N., & Sheffield, J. (2017). Intensification of hydrological drought in California by human water management, *Geophysical Research Letters*, 44(4), 1777-1785, <https://doi.org/10.1002/2016GL071665>, 2017.
- 565 Himayoun, D., & Roshni, T.: Spatio-temporal variation of drought characteristics, water resource availability and the relation of drought with large scale climate indices: a case study of Jhelum basin, India, *Quaternary International*, 525, 140-150, <https://doi.org/10.1016/j.quaint.2019.07.018>, 2019.
- Huang, C., Zhang, Q., Singh, V. P., Gu, X., & Shi, P.: Spatio-temporal variation of dryness/wetness across the Pearl River basin, China, and relation to climate indices, *International Journal of Climatology*, 37, 318-332, <https://doi.org/10.1002/joc.5005>, 2017.
- 570 Hunt, E. D., Hubbard, K. G., Wilhite, D. A., Arkebauer, T. J. and Dutcher, A. L.: The development and evaluation of a soil moisture index, *International Journal of Climatology: A Journal of the Royal Meteorological Society*, 29(5), 747-759, <https://doi.org/10.1002/joc.1749>, 2009.

- Katz, R. W., & Glantz, M. H.: Anatomy of a rainfall index, *Monthly Weather Review*, 114(4), 764-771, [https://doi.org/10.1175/1520-0493\(1986\)114<0764:AOARI>2.0.CO;2](https://doi.org/10.1175/1520-0493(1986)114<0764:AOARI>2.0.CO;2) , 1986.
- Kenyon, J., & Hegerl, G. C.: Influence of modes of climate variability on global precipitation extremes, *Journal of Climate*, 23(23), 6248-6262, <https://doi.org/10.1175/2010JCLI3617.1> , 2010.
- Kourgialas, N. N.: Hydroclimatic impact on mediterranean tree crops area–Mapping hydrological extremes (drought/flood) prone parcels, *Journal of hydrology*, 596, 125684, <https://doi.org/10.1016/j.jhydrol.2020.125684> , 2021.
- Krishnan, R., Sanjay, J., Gnanaseelan, C., Mujumdar, M., Kulkarni, A., & Chakraborty, S.: Assessment of climate change over the Indian region: a report of the ministry of earth sciences (MOES), Government of India, Springer Nature, [10.1007/978-981-15-4327-2](https://doi.org/10.1007/978-981-15-4327-2), 2020.
- Liaquat, M.U., Grossi, G., ul Hasson, S. and Ranzi, R.: Characterization of Interannual and Seasonal Variability of Hydro-Climatic Trends in the Upper Indus Basin, *Theoretical and Applied Climatology*, <https://doi.org/10.1007/s00704-021-03850-3>, 2021.
- Lisonbee, J., Woloszyn, M. and Skumanich, M.: Making sense of flash drought: Definitions, indicators, and where we go from here, *Journal of Applied and Service Climatology*, 1-19, [doi.org/10.46275/JOASC.2021.02.001](https://doi.org/10.46275/JOASC.2021.02.001), 2021.
- Luca, P. D., Messori, G., Wilby, R. L., Mazzoleni, M., and Baldassarre, G. D.: Concurrent wet and dry hydrological extremes at the global scale, *Earth System Dynamics*, 11(1), 251-266, <https://doi.org/10.5194/esd-11-251-2020> , 2020.
- Ly, S., Charles, C. and Degre, A.: Geostatistical interpolation of daily rainfall at catchment scale: the use of several variogram models in the Ourthe and Ambleve catchments, Belgium, *Hydrology and Earth System Sciences*, 15(7), 2259-2274, <https://doi.org/10.5194/hess-15-2259-2011>, 2011.
- Masson, D. and Frei, C.: Spatial analysis of precipitation in a high-mountain region: exploring methods with multi-scale topographic predictors and circulation types, *Hydrology and earth system sciences*, 18(11), 4543-4563, <https://doi.org/10.5194/hess-18-4543-2014>, 2014.
- Mavromatis, T.: Drought index evaluation for assessing future wheat production in Greece, *International Journal of Climatology: A Journal of the Royal Meteorological Society*, 27(7), 911-924, <https://doi.org/10.1002/joc.1444>, 2007.
- McKee, T. B., Doesken, N. J., & Kleist, J.: The relationship of drought frequency and duration to time scales, in: *Proceedings of the 8th Conference on Applied Climatology*, Anaheim, California, 17-22 January 1993, 179-183, 1993.
- Midwestern Regional Climate Center (MRCC), [https://mrcc.illinois.edu/mw\\_climate/elNino/climatology.jsp](https://mrcc.illinois.edu/mw_climate/elNino/climatology.jsp), accessed: 20 June 2021.
- Negi, H., Kanda, N., Shekhar, M., & Ganju, A.: Recent wintertime climatic variability over the North West Himalayan cryosphere, *Current Science*, 114(4), 760-770, 2018.
- NOAA National Centers for Environmental Information: U.S. billion-dollar weather and climate disasters, <https://www.ncdc.noaa.gov/billions/>, accessed: 20 June 2021.
- Omidvar, K., Fatemi, M., Narangifard, M., & Hatami Bahman Beiglou, K.: A study of the circulation patterns affecting drought and wet years in Central Iran, *Advances in Meteorology*, <https://doi.org/10.1155/2016/1843659>, 2016.

- Otkin, J. A., Svoboda, M., Hunt, E. D., Ford, T. W., Anderson, M. C., Hain, C. and Basara, J. B.: Flash droughts: A review and assessment of the challenges imposed by rapid-onset droughts in the United States, *Bulletin of the American Meteorological Society*, 99(5), 911-919, <https://doi.org/10.1175/BAMS-D-17-0149.1>, 2018.
- Pai, D., Sridhar, L., Badwaik, M. and Rajeevan, M.: Analysis of the daily rainfall events over India using a new long period (1901–2010) high resolution (0.25× 0.25) gridded rainfall data set, *Climate dynamics*, 45:755-776, <https://doi.org/10.1007/s00382-014-2307-1>, 2015.
- Palmer, W. C.: *Meteorological drought* (Vol. 30): US Department of Commerce, Weather Bureau, 1965.
- Parry, S., Marsh, T., & Kendon, M.: 2012: from drought to floods in England and Wales, *Weather*, 68(10), 268-274, 2013.
- Peterson, T. C., Stott, P. A., & Herring, S.: Explaining extreme events of 2011 from a climate perspective, *Bulletin of the American Meteorological Society*, 93(7), 1041-1067, <https://doi.org/10.1175/BAMS-D-12-00021.1>, 2012.
- Rashid, I., Majeed, U., Aneaus, S., & Pelto, M.: Linking the recent glacier retreat and depleting streamflow patterns with land system changes in Kashmir Himalaya, India, *Water*, 12(4), 1168, <https://doi.org/10.3390/w12041168>, 2020.
- RGI Consortium.: *Randolph Glacier Inventory – A Dataset of Global Glacier Outlines: Version 6.0: Technical Report*, Global Land Ice Measurements from Space, Colorado, USA, DOI: <https://doi.org/10.7265/N5-RGI-60>, 2017.
- Ruelland, D.: Should altitudinal gradients of temperature and precipitation inputs be inferred from key parameters in snow-hydrological models?, *Hydrology and Earth System Sciences*, 24(5), 2609-2632, <https://doi.org/10.5194/hess-24-2609-2020>, 2020.
- Saha S, Moorthi S, Pan H-L, Wu X, Wang J, Nadiga S, Tripp P, Kistler R, Woollen J, Behringer D.: The NCEP climate forecast system reanalysis, *Bulletin of the American Meteorological Society*, 91(8), 1015-1058, <https://doi.org/10.1175/2010BAMS3001.1>, 2010.
- Sennikovs, J. and Bethers, U.: Statistical downscaling method of regional climate model results for hydrological modelling, in: 18th World IMACS / MODSIM Congress on Modelling and Simulation, Cairns, Australia, pp 3962-3968, <http://mssanz.org.au/modsim09>, 13-17 July 2009.
- Shafiq, M. U., Islam, Z. U., Bhat, I. A., & Ahmed, P.: Spatio-temporal behaviour of Nehnar Glacier from 1962 to 2017, Jhelum basin, Kashmir Himalayas, India, *Physical Geography*, 41(6), 517-536, <https://doi.org/10.1080/02723646.2019.1706704>, 2020.
- Sheffield, J., & Wood, E. F.: *Drought: past problems and future scenarios*: Routledge, 2012.
- Sheffield, J., Wood, E. F., & Roderick, M. L.: Little change in global drought over the past 60 years. *Nature*, 491(7424), 435-438, [doi:10.1038/nature11575](https://doi.org/10.1038/nature11575), 2012.
- Spinoni, J., Naumann, G., Carrao, H., Barbosa, P., & Vogt, J.: World drought frequency, duration, and severity for 1951–2010, *International Journal of Climatology*, 34(8), 2792-2804, <https://doi.org/10.1002/joc.3875>, 2014.
- Sun, X., Renard, B., Thyer, M., Westra, S., & Lang, M.: A global analysis of the asymmetric effect of ENSO on extreme precipitation, *Journal of hydrology*, 530, 51-65, <https://doi.org/10.1016/j.jhydrol.2015.09.016>, 2015.
- Svoboda, M., & Fuchs, B.: *Handbook of drought indicators and indices*, Geneva, Switzerland: World Meteorological Organization, 2016.
- Thom, H. C.: A note on the gamma distribution, *Monthly Weather Review*, 86:117-122. [https://doi.org/10.1175/1520-0493\(1958\)0862.0.CO:2](https://doi.org/10.1175/1520-0493(1958)0862.0.CO:2), 1958.



- 655 Thornthwaite, C. W.: An approach toward a rational classification of climate, *Geographical review*, 38(1), 55-94, <https://doi.org/10.2307/210739> , 1948.
- Trenberth, K. E., Dai, A., Van Der Schrier, G., Jones, P. D., Barichivich, J., Briffa, K. R., & Sheffield, J.: Global warming and changes in drought, *Nature Climate Change*, 4(1), 17-22, [DOI: 10.1038/NCLIMATE2067](https://doi.org/10.1038/NCLIMATE2067), 2014.
- Tucker, C. J.: Red and photographic infrared linear combinations for monitoring vegetation, *Remote sensing of Environment*, 8(2), 127-150, [https://doi.org/10.1016/0034-4257\(79\)90013-0](https://doi.org/10.1016/0034-4257(79)90013-0), 1979.
- 660 Ullah, I., Ma, X., Yin, J., Asfaw, T.G., Azam, K., Syed, S., Liu, M., Arshad, M. and Shahzaman, M.: Evaluating the meteorological drought characteristics over Pakistan using in situ observations and reanalysis products, *International Journal of Climatology*, 41, 4437–4459, <https://doi.org/10.1002/joc.7063>, 2021a.
- Ullah, I., Ma, X., Yin, J., Saleem, F., Syed, S., Omer, A., & Habtemicheal, B. A.: Influence of large-scale circulation and interannual modes of climate variability on seasonal drought characteristics over Pakistan, *Research square [Preprint]*, [DOI: 10.21203/rs.3.rs-265535/v1](https://doi.org/10.21203/rs.3.rs-265535/v1), 2021b.
- 665 Vellore, R.K., Kaplan, M.L., Krishnan, R., Lewis, J.M., Sabade, S., Deshpande, N., Singh, B.B., Madhura, R.K. and Rao, M.R.: Monsoon-extratropical circulation interactions in Himalayan extreme rainfall, *Climate Dynamics*, 46(11), 3517-3546, [DOI 10.1007/s00382-015-2784-x](https://doi.org/10.1007/s00382-015-2784-x) , 2016.
- Vicente-Serrano, S. M., Beguería, S., & López-Moreno, J. I.: A multiscalar drought index sensitive to global warming: the standardized precipitation evapotranspiration index, *Journal of Climate*, 23(7), 1696-1718, <https://doi.org/10.1175/2009JCLI2909.1> , 2010.
- 670 Visser-Quinn, A., Beevers, L., Collet, L., Formetta, G., Smith, K., Wanders, N., Thober, S., Pan, M. and Kumar, R.: Spatio-temporal analysis of compound hydro-hazard extremes across the UK, *Advances in water resources*, 130, 77-90, <https://doi.org/10.1016/j.advwatres.2019.05.019>, 2019.
- 675 Wu, J., & Chen, X.: Spatiotemporal trends of dryness/wetness duration and severity: The respective contribution of precipitation and temperature, *Atmospheric Research*, 216, 176-185, <https://doi.org/10.1016/j.atmosres.2018.10.005>, 2019.
- Yan, D., Wu, D., Huang, R., Wang, L., & Yang, G.: Drought evolution characteristics and precipitation intensity changes during alternating dry–wet changes in the Huang–Huai–Hai River basin, *Hydrology and Earth System Sciences*, 17(7), 2859-2871, <https://doi.org/10.5194/hess-17-2859-2013>, 2013.
- 680 Yao, J., Zhao, Y., Chen, Y., Yu, X., & Zhang, R.: Multi-scale assessments of droughts: a case study in Xinjiang, China, *Science of the Total Environment*, 630, 444-452, <https://doi.org/10.1016/j.scitotenv.2018.02.200>, 2018.
- Yuan, X., Wang, L., Wu, P., Ji, P., Sheffield, J., & Zhang, M.: Anthropogenic shift towards higher risk of flash drought over China, *Nature communications*, 10(1), 1-8, <https://doi.org/10.1038/s41467-019-12692-7> , 2019.
- 685 Zaman, M., Ahmad, I., Usman, M., Saifullah, M., Anjum, M. N., Khan, M. I. and Qamar, M. U.: Event-based time distribution patterns, return levels, and their trends of extreme precipitation across Indus Basin, *Water*, 12(12), p.3373, <https://doi.org/10.3390/w12123373>, 2020.
- Zaz, S. N., Romshoo, S. A., Krishnamoorthy, R. T., & Viswanadhapalli, Y.: Analyses of temperature and precipitation in the Indian Jammu and Kashmir region for the 1980–2016 period: implications for remote influence and extreme events, *Atmospheric Chemistry and Physics*, 19(1), 15-37, <https://doi.org/10.5194/acp-19-15-2019> , 690 2019.



Zhao, Y., Weng, Z., Chen, H., & Yang, J.: Analysis of the Evolution of Drought, Flood, and Drought-Flood Abrupt Alternation Events under Climate Change Using the Daily SWAP Index, *Water*, 12(7), 1969, <https://doi.org/10.3390/w12071969>, 2020.

695 Zhongming, Z., Linong, L., Wangqiang, Z. and Wei, L.: AR6 Climate Change 2021: The Physical Science Basis, Contribution of working group I to the Sixth Assessment Report of the Intergovernmental Panel on Climate Change, Regional Fact Sheet Asia, 2021.