

# Investigating Causal Factors of Shallow Landslides in Grassland Regions of Switzerland

Lauren Zweifel<sup>1</sup>, Maxim Samarin<sup>2</sup>, Katrin Meusburger<sup>3</sup>, and Christine Alewell<sup>1</sup>

<sup>1</sup>Department of Environmental Sciences, University of Basel, Bernoullistrasse 30, 4056 Basel, Switzerland

<sup>2</sup>Department of Mathematics and Computer Science, University of Basel, Spiegelgasse 1, 4051 Basel, Switzerland

<sup>3</sup>Swiss Federal Research Institute WSL, Zürcherstrasse 111, 8903 Birmensdorf, Switzerland

**Correspondence:** Lauren Zweifel (lauren.zweifel@unibas.ch)

**Abstract.** Mountainous grassland slopes can be severely affected by soil erosion. ~~To better understand the regional differences of soil erosion patterns, we~~, among which shallow landslides are a crucial process, indicating instability of slopes. We determine the locations of shallow landslides across different sites ~~and aim at identifying to better understand regional differences and to identify~~ their triggering causal factors. Ten sites across Switzerland located in the Alps (8 sites), in foothill regions (1 site), and the Jura mountains (1 site) were selected for statistical evaluations. For the shallow landslide inventory, we used aerial images (0.25 m) with a deep learning approach (U-Net) to map the locations of eroded sites. We used logistic regression with a Group Lasso variable selection method to identify important explanatory variables for predicting the mapped shallow landslides. The set of variables consists of traditional susceptibility modelling factors and climate-related factors to represent local as well as cross-regional conditions. This set of explanatory variables (predictors) are used to develop individual site models (~~regional-local~~ evaluation) as well as an all-in-one model (cross-regional evaluation) using all shallow landslide points simultaneously. While the local conditions of the ten sites lead to different variable selections, consistently slope and aspect were selected as the essential explanatory variables of shallow landslide susceptibility. Accuracy scores range between 70.2 and 79.8% for individual site models. The all-in-one model confirms these findings by selecting slope, aspect as well as roughness as the most important explanatory variables (Accuracy = 72.3%). Our finding suggest that traditional susceptibility variables describing geomorphological and geological conditions yield satisfactory results for all tested regions. However, for two sites with lower model accuracy, important processes may be under-represented with the available explanatory variables. The regression models for sites with an east-west oriented valley axis performed slightly better than models for north-south oriented valleys, which may be due to the influence of exposition related processes. Additionally, model performance is higher for Alpine sites, suggesting that core explanatory variables are understood for these areas.

## 20 1 Introduction

Soil erosion is an issue affecting many regions of the world and can have severe consequences for the environment and humanity (e.g., water pollution or food production) (Pimentel et al., 1995; Pimentel and Burgess, 2013; O'Mara, 2012; Alewell et al., 2009, 2020). In Switzerland, grasslands of mountain and hill slopes can be strongly affected by soil erosion, which can be caused by natural (e.g., precipitation events) and anthropogenic processes (e.g., land-use management) (Tasser et al., 2003;

25 Meusburger and Alewell, 2008; Zweifel et al., 2019; Geitner et al., 2021; Lepsška, 2016). The most visible form of erosion in  
grassland soils showing bare soil areas can be categorised as shallow erosion (Geitner et al., 2021) (Figure 1). These shallow  
erosion sites are mainly triggered by prolonged and intense rainfall events (shallow landslides) or through abrasion by snow  
(snow gliding, avalanches) (Wiegand and Geitner, 2010; Geitner et al., 2021). However, in many cases, a combination of these  
processes can lead to shallow erosion sites and triggering processes cannot be distinguished from aerial photos. Therefore, we  
30 use the term *shallow landslides* in our regions and the frame of this study with no implication of the triggering event.



**Figure 1.** Images showing examples of shallow landslides. Shallow landslide sites show displaced topsoil layers and have a distinct boundary to the vegetation. A) taken in the Urseren valley showing a larger section of a south-east facing slope area affected by many shallow landslides (light coloured patches). B) taken in Val Piora showing a close up of a shallow landslide facing south. C) showing an image taken with a UAV in Val Piora with an approximate length of 10m.

The aim of our study is to statistically evaluate shallow landslide occurrence for 10 different sites (between 16 and 54 km<sup>2</sup>) across Switzerland. In the past, shallow landslide susceptibility studies have mainly focused on one or two study sites while often testing multiple modelling techniques (Gómez and Kavzoglu, 2005; Meusburger and Alewell, 2009; Vorpahl et al., 2012; Tien Bui et al., 2016; Oh and Lee, 2017; Lee et al., 2020; Nhu et al., 2020b) except for Persichillo et al.  
35 (2017), who evaluated four sites in different catchments. For our shallow landslide inventory we map the eroded sites on aerial images (0.25 m resolution) using a *U-Net* deep learning approach (Ronneberger et al., 2015). The U-Net tool was trained by Samarin et al. (2020) to identify and map the extent of soil erosion features on grassland. While this mapping tool is able to distinguish between different erosion processes/appearances (i.e., shallow landslides, livestock trails, sheet erosion and management effects Samarin et al. (2020)), here, we focus on shallow landslides, as we aim to understand their  
40 causal factors and spatial patterns better. With the U-Net mapping tool, we can identify locations of shallow landslides in a very efficient and precise manner, increasing the possibilities for mapping but also future model validation of soil erosion studies (Samarin et al., 2020). The mapped shallow landslide sites are subsequently evaluated with a statistical model to identify the most important explanatory variables and gain a better understanding of causal factors as well as regional differences. For this purpose we use the *Group Lasso* approach for logistic regressions (Tibshirani, 1996; Yuan and Lin,

45 2006; Meier et al., 2008). The Group Lasso can deal with continuous and categorical variables and is able to estimate coefficients of classes within a categorical variable. In addition to estimating coefficients, the Lasso can do variable selection simultaneously (Section 2.2). The Lasso tends to yield sparse and interpretable models, avoids over-fitting and is tolerant towards possible collinearity of variables (Dormann et al., 2013). Despite these advantages, the Lasso has only been applied a small number of times for landslide susceptibility modelling (Camilo et al., 2017; Lombardo and Mai, 2018; Gao et al., 2020)

50 (Camilo et al., 2017; Lombardo and Mai, 2018; Amato et al., 2019; Gao et al., 2020; Lombardo and Tanyas, 2021; Tanyas et al., 2021). We evaluate the shallow landslides within each study site (10 models) and across all 10 study sites simultaneously (all-in-one model) and consider only grassland surfaces. Our aim is to identify explanatory variables that have local importance but also identify variables, which may explain regional differences in shallow landslide occurrence. The selected study sites are a combination of alpine (above 1500 m asl), foothill regions (below 1500 m asl) as well as one site in the Jura mountains (below

55 1500 m asl). The explanatory variables we use are the same for all sites and consist of a combination of classic landslide susceptibility variables (Budimir et al., 2015) as well as climate-related variables (Karger et al., 2017, 2018), which may aid in explaining regional differences of shallow landslide occurrence (Section 3.2). To understand how well the selected variables and their coefficients perform, we evaluate the models on held-out test data. We determine Receiver-Operator-Characteristics (ROC) curves and the corresponding Area-Under-Curve (AUC) as well as the Brier score, which is suitable for binary variables

60 (presence/absence shallow landslides) (Section 2.3).

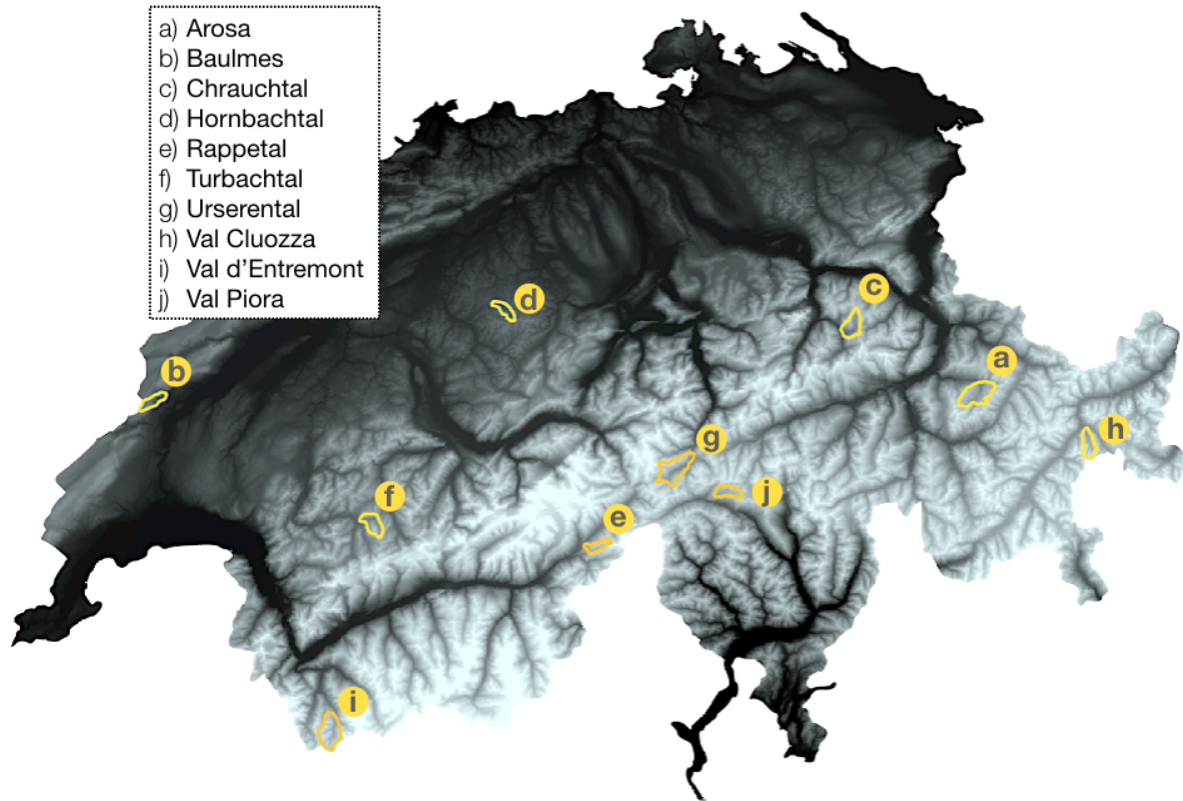
## 2 Study Sites

A total of 10 sites were selected to produce shallow landslide inventories (mapping of shallow landslides) and perform subsequent statistical evaluations of explanatory variables. We only consider grassland areas, which were identified with the aid of the surface cover information of the product *SwissTLM* (Swisstopo, 2019). The sites were selected to represent different mountain and hill regions and different geological conditions, valley expositions and slope angles. Figure 1-2 shows the locations of

65 all study sites within Switzerland, and Table 1-1 summarises important site information. Most permanent grassland surfaces in Swiss mountain regions are used either for grazing (pastures) or haying (meadows) (FSO, 2013; Stumpf et al., 2020). Of the 10 sites, nine are located across the Swiss Alps, and one was selected in the Swiss Jura mountains (Baulmes, below 1500 m asl). The sites located in the Swiss Alps represent a range of alpine (above 1500 m asl) regions as well as foothill regions

70 (Hornbachtal, below 1500 m asl). Val Cluozza is located in the Swiss National park and shows no signs of anthropogenic influences, and also contains only a small amount of grassland area (8%, rest mostly shrubs and rocks). For other sites in the Alps, grassland covers 34-55 % of the valley. The rest of the land-cover consists of forest area, rock/debris area or, in some cases, urban areas. The shallow landslide densities (shallow landslide affected area in relation to total grassland surfaces) range from 0.06% (Baulmes) to 2.31% (Chrauchtal). Figure 2 shows the locations of all study sites within Switzerland and Table 1

75 summarises important site information.



**Figure 2.** Map of Switzerland showing the 10 selected study sites (outlined in yellow). Colours of the map show lower elevations in dark and higher elevations in lighter colours.

## 2.1 Shallow Landslides Inventory

To identify the locations of shallow landslides across the 10 study sites, we use a deep learning approach based on the U-Net architecture (Ronneberger et al., 2015). These mapped shallow landslides are then used for statistical evaluations of causal factors (Section 2.2). This fully convolutional neural network approach for semantic segmentation in images allows for objective and efficient mapping. The U-Net model was trained to identify and map erosion sites on aerial images (Swisstopo, 2010) with the aid of digital terrain model information (Swisstopo, 2014), as described in Samarin et al. (2020). The U-Net model was trained on a small area of 9 km<sup>2</sup> and tested on an area of 17 km<sup>2</sup> in the Urseren Valley (Samarin et al., 2020). For this study we use the same U-Net model without further training to map the new study sites and focus only on the erosion class *shallow landslides*, as defined in the introduction. The mapping results were carefully examined for all study areas and corrected manually when necessary. [The trained U-Net used in this study has an overall precision of 73%, a recall of 84%, and a F1-score of 78% \(Samarin et al., 2020\).](#) We only consider shallow landslides of at least 4 m<sup>2</sup> located on grassland **grassland** (see Figure 4 for example of mapping results).

**Table 1.** List of Study sites and descriptive information: Elevation range, Total area of the study site, Grassland area within study site in percent, average slope of grassland area, orientation of the main valley axis, number of shallow landslides and shallow landslide density on grassland areas. The max. precipitation events (monthly values) of the previous 5 and 10 years are averaged over the study site. Note that both time spans might include the same events. GL = Grassland, SLS = Shallow Landslides, P = Precipitation.

Study Site	<u>Year of Image</u>	Elevation (m asl)	Total Area	GL %	GL Slope average	Orient. of Valley	No. SLS $\geq 4m^2$	GL SLS Density	<u>P. max. 5 years</u>	<u>P. max. 10 years</u>
Arosa	<u>2014</u>	1613 - 2535	50 km <sup>2</sup>	34 %	20.8°	NNE-SSW	896	0.24 %	<u>281 mm</u>	<u>284 mm</u>
Baulmes	<u>2014</u>	615 - 1512	21 km <sup>2</sup>	19 %	14.5°	NE-SW	26	0.06 %	<u>306 mm</u>	<u>306 mm</u>
Chrauchtal	<u>2014</u>	1421 - 2432	32 km <sup>2</sup>	53 %	27.2°	N-S	8073	2.31 %	<u>378 mm</u>	<u>378 mm</u>
Hornbach	<u>2015</u>	800 - 1256	17 km <sup>2</sup>	35 %	21.7°	NW-SE	438	0.52 %	<u>323 mm</u>	<u>368 mm</u>
Rappetal	<u>2015</u>	1427 - 2533	16 km <sup>2</sup>	50 %	27.4°	NE-SW	1023	0.54 %	<u>384 mm</u>	<u>384 mm</u>
Turbach	<u>2013</u>	1208 - 2367	28 km <sup>2</sup>	55 %	25.7°	NNW-SSE	3010	0.97 %	<u>432 mm</u>	<u>432 mm</u>
Urseren	<u>2013</u>	1514 - 2840	54 km <sup>2</sup>	48 %	25.1°	NE-SW	3702	0.70 %	<u>293 mm</u>	<u>295 mm</u>
Val Cluozza	<u>2015</u>	1643 - 2603	25 km <sup>2</sup>	8 %	30.5°	N-S	177	0.46 %	<u>181 mm</u>	<u>218 mm</u>
Val d'Entremont	<u>2013</u>	1808 - 2823	50 km <sup>2</sup>	44 %	24.5°	N-S	1823	0.41 %	<u>410 mm</u>	<u>410 mm</u>
Val Piora	<u>2015</u>	1848 - 2554	21 km <sup>2</sup>	43 %	20.8°	E-W	1116	0.49 %	<u>322 mm</u>	<u>347 mm</u>

## 2.2 Logistic Regression with Group Lasso

With the statistical evaluation of the shallow landslide sites, we aim to understand possible causal factors. We evaluate the 10 study sites individually (evaluation within each site) as well as across all of the sites simultaneously (all-in-one model). The aim of this is to test, whether the same causal factors are important on different spatial scales. For each of the 10 sites an equal number of shallow landslide and non-landslide points constitute the binary response variable (no=0, yes=1) with a set of corresponding explanatory variables (see Section 3). Our aim is to use a method that generates sparse models that are easy to interpret and avoid over-fitting. To achieve this, we use a logistic regression estimated with the *Least Absolute Shrinkage Selection Operator* (Lasso) (Tibshirani, 1996). The Lasso regression performs variable selection and coefficient estimation simultaneously. This is obtained by applying a penalty term (II.) to the log-likelihood function of the logistic regression (I.) (Hastie et al., 2016):

$$\ell_{\lambda}(\beta) = - \underbrace{\sum_{i=1}^n (y_i z_{\beta}(\mathbf{x}_i) - \log(1 + e^{z_{\beta}(\mathbf{x}_i)}))}_{I.} + \lambda \underbrace{\sum_{j=1}^p |\beta_j|}_{II.} \quad (1)$$

We consider the linear model  $z_{\beta}(\mathbf{x}) = \beta_0 + \sum_{j=1}^p \beta_j x_j$  on a data set of size  $n$  with  $p$  features, i.e.  $x_i \in \mathbb{R}^p$ , and binary response  $y_i \in \{0, 1\}$ . The penalty term is determined by the parameter  $\lambda$  which is estimated by minimising the model error. The weight of  $\lambda$  determines how many variables are selected, and in turn, the model shrinks coefficients of variables that contribute to the error (Hastie et al., 2009, 2016). By shrinking the coefficients of unimportant variables to zero, they are removed from the

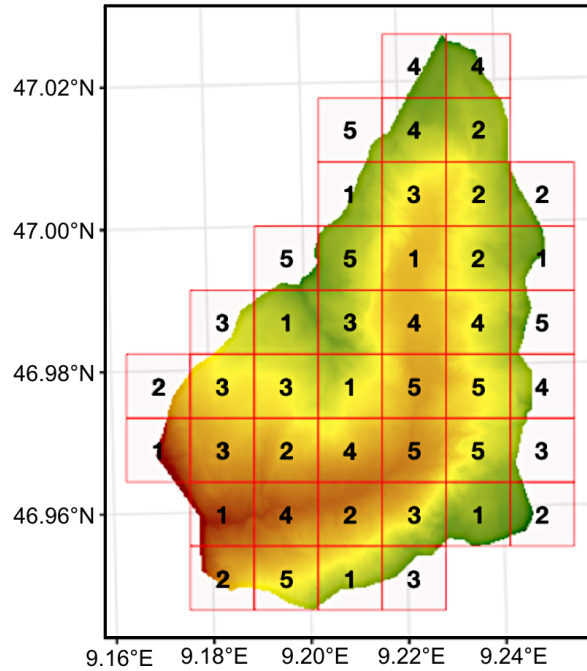
model and thereby variable selection is performed. To achieve the least complex model in terms of selected variables, we chose  $\lambda$  to be one standard error larger than the minimal mean square error (Hastie et al., 2009). As some of the explanatory variables are categorical (i.e., geology, aspect) we use the *Group Lasso* approach. All levels within a categorical variable (encoded as dummy variables) are treated as a group and all coefficients within that group become zero (dismissed) or non-zero (selected) simultaneously (Yuan and Lin, 2006; Hastie et al., 2016). This leads to a new objective function with modified penalty term,

$$\ell_{\lambda}(\beta) = -\sum_{i=1}^n (y_i z_{\beta}(\mathbf{x}_i) - \log(1 + e^{z_{\beta}(\mathbf{x}_i)})) + \lambda \sum_{g=1}^G \alpha_g \|\beta_g\|_{G_g}, \quad (2)$$

where  $\alpha_g$  is a scaling factor depending on the number of parameters in  $\beta_g$  and  $\|\eta\|_K = (\eta^T K \eta)^{1/2}$  is a norm depending on the group structure of the  $G$  different groups. For more details on the mathematical extension of the Group Lasso we refer to Meier et al. (2008). We implement the Group Lasso for logistic regression with the R-package *grpreg* (Breheny and Huang, 2015). Due to the spatial relationship of geographic data sets, we divide the data into spatially separated blocks of 1 km<sup>2</sup>, randomly numbered from 1 to 5 (Valavi et al., 2019) (see Figure 3). These blocks are used for 5-fold cross-validation of the model. Every block is held out once for testing, while the others are used for model training (e.g., while blocks labeled with 2/3/4/5 are used for training, blocks labeled with 1 are used for model testing). During each fold, coefficients are estimated for the explanatory variables. Note that the explanatory variables have been standardised to allow for easier comparisons between variables. The estimated values of the coefficients, therefore, give an indication of their relative importance to model the response variable (shallow landslide and non-shallow landslide points). With higher absolute values of an estimated coefficient, the influence of this explanatory variable is stronger. A linear transformation would be performed to ultimately get the coefficients for the variables on their original scale (Lombardo and Mai, 2018). The process of coefficient estimation is repeated 20 times (bootstrapping) with different randomly selected blocks, generating 100 estimates of coefficients for every site (20 times 5-fold cross-validation) (Goetz et al., 2015; Steger et al., 2016). We assess the model-selected coefficients by evaluating the range of the coefficient estimates (boxplots) as well as their inclusion rate (number of times selected by models) as the number of ideal variables can vary in each fold.

### 125 2.3 Model Evaluation

To evaluate the accuracy and the predictive ability of the logistic regression models, we use performance measures described in the following. All model performances are based on test set estimations (predictions evaluated on held-out test data blocks). The Receiver-Operator-Characteristic (ROC) curve is a continuous curve showing the relationship between the True Positive Rate (TPR) and False Positive Rate (FPR) for every probability threshold of the model predictions (Hosmer and Lemeshow, 2000). The accompanying Area-Under-Curve (AUC) is the integrated area under the ROC curve and describes the model skill across all possible probability thresholds. Values of the AUC above 0.5 (equivalent to a random model) are better, while a score of 1 indicates a perfect model. Additionally, we compute confusion matrix performance scores for a fixed probability



**Figure 3.** Spatial blocks for 5-fold cross-validation shown with the example of Chrauchtal. Blocks have a size of 1 km<sup>2</sup>. Blocks are assigned randomly and determined with the R-package *blockCV* (Valavi et al., 2019).

prediction threshold of 50 %. To summarise the accuracy of the models, we assess the magnitude of the error in the probability predictions using the Brier score (BS) (Equation 3) (Brier, 1950; Wilks, 2006).

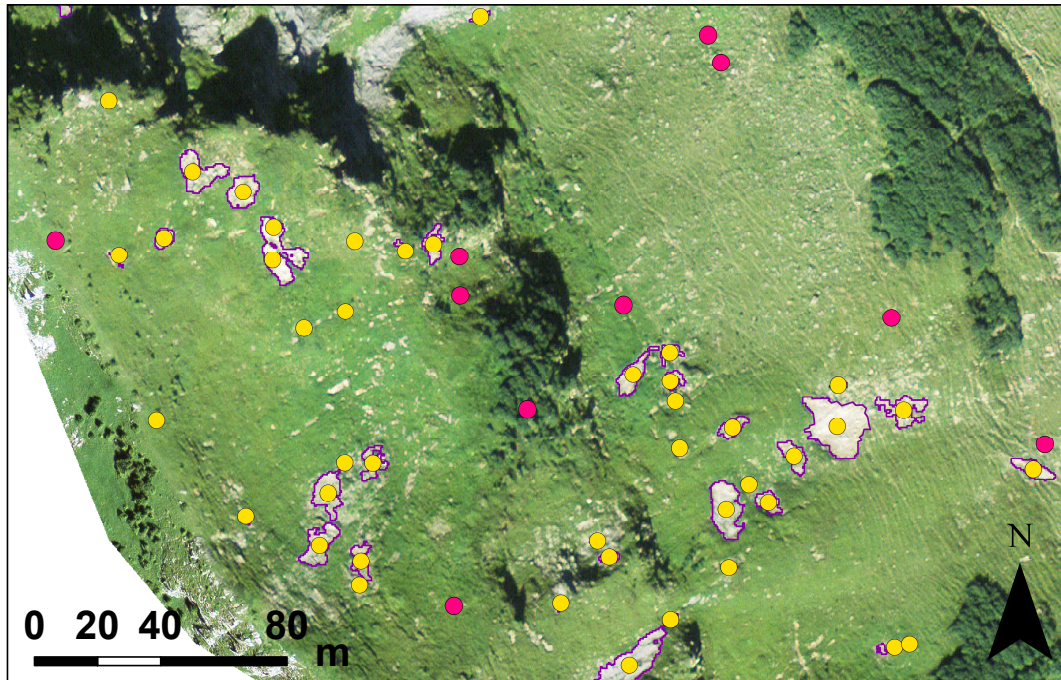
$$135 \quad BS = \frac{1}{N} \sum_{t=1}^N (f_t - o_t)^2, \quad (3)$$

where  $N$  are the number of mapped shallow landslides,  $f_t$  are the predicted probabilities for shallow landslide occurrence (between 0 or 1), and  $o_t$  are the observed (mapped) of shallow landslides (either no=0 or yes=1). The Brier score (BS) is equivalent to the Mean-squared error, yet is valid for binary observations. A BS of zero indicates perfect model performance, while 1 is the worst possible score (prediction is opposite of observation). Probability predictions that are further away from the observation are penalised more heavily. If the model predicts a 50 % chance of shallow landslide every time (random), a score of 0.25 is achieved for a balanced data set (Steyerberg et al., 2010; Raja et al., 2017). We re-estimate the BS with bootstrapping (500 repetitions, sampled with replacement) to achieve confidence intervals.

### 3 Data Sets

#### 3.1 Shallow Landslide and Non-Landslide Points

145 To perform the mapping of shallow landslide sites with the U-Net model (Section 2.1), we require aerial (ortho-)images  
(SwissImage, Swisstopo (2010)) and a digital terrain model (DTM; SwissALTI, Swisstopo (2014)). The aerial images have a  
spatial resolution of 0.25 m and red, green and blue spectral bands. The aerial images for the study sites were collected during  
the years 2013 (Turbach, Urseren, Val d'Entremont), 2014 (Arosa, Baulmes, Chrauchtal) and 2015 (Hornbach, Rappetal, Val  
Cluozza, Val Piora). From the DTM, the derivatives slope, aspect and curvature (plan and profile) are required, which are  
150 calculated with ArcGIS (10.5). Additionally, we use data set with land-cover information (SwissTLM, Swisstopo (2019))  
to assure only sites with grassland are being mapped. For the mapped shallow landslides, we extract the centre points with  
ArcGIS of sites with a minimum size of 4 m<sup>2</sup>. Non-landslide points were extracted randomly within the grassland area and  
with a minimum buffer distance to mapped shallow landslides of 5 m. This shallow landslide data set contains an equal number  
of landslide to non-landslide points for each study site (Figure 4) ([Fratini et al., 2010](#); [Petschko et al., 2014](#)).



**Figure 4.** Example of mapped shallow landslides in the Turbach valley (purple). The centred points (yellow) represent shallow landslide locations for the Lasso model evaluation. Only sites with an area larger than 4 m<sup>2</sup> were used for the evaluation. Red points represent randomised non-landslide points. Aerial image (2013) obtained from Swisstopo.



The explanatory variables selected for the statistical evaluation of the shallow landslide points are a combination of variables commonly found in landslide or shallow landslide susceptibility studies (Budimir et al., 2015; Chen et al., 2017; Cignetti et al., 2019; Kavzoglu et al., 2014; Lee et al., 2020; Meusburger and Alewell, 2009; Persichillo et al., 2017; Nhu et al., 2020a, b) and climate-related variables that may explain differences between the sites (e.g., strong precipitation events) from the CHELSA data set (Karger et al., 2017, 2018). Variables related to land-cover and vegetation are not considered as we filter our study sites to contain only grassland areas.

**Table 2.** Table containing the variables used for the logistic regression with information on the type of variable (continuous/categorical), spatial resolution and which data set the variable was originally based on.

Variable	Type	Resolution	Based on
Elevation	continuous	2 m	SwissALTI
Slope Gradient	cont.	2 m	SwissALTI
Curvature plan	cont.	2 m	SwissALTI
Curvature profile	cont.	2 m	SwissALTI
Roughness	cont.	2 m	SwissALTI
Flow Accumulation	cont.	2 m	SwissALTI
Topographic Wetness Index	cont.	2 m	SwissALTI
Distance to Roads	cont.	10 m	SwissTLM
Distance to Streams	cont.	10 m	SwissTLM
Road Density (500 m radius)	cont.	25 m	SwissTLM
Stream Density (500 m radius)	cont.	25 m	SwissTLM
Max. Precipitation Event (10 y)	cont.	1 km	CHELSA
Max. Precipitation Event (5 y)	cont.	1 km	CHELSA
Snow Days	cont.	1 km	CHELSA
Snow Cover Days	cont.	1 km	CHELSA
Growing Season Length	cont.	1 km	CHELSA
Frost Change Frequency	cont.	1 km	CHELSA
Geology (4 classes)	categorical	1:500'000	Geological Map
Aspect (8 classes)	cat.	2 m	SwissALTI

For every shallow landslide and non-landslide point the variables listed in Table 2 were extracted. The same variables are used for evaluating all 10 sites as well as the all-in-one model. The continuous variables have been standardized to allow for comparing coefficients of variables. The categorical variables were converted in to dummy variables (all classes of a categorical variable encoded as 0 or 1). Most variables can be derived from the DTM (elevation values, SwissALTI) which has a spatial

resolution of 2 m. *Slope* (in degrees) describes the maximum change in elevation to neighboring cells. *Aspect* is included as a categorical variable containing eight exposition sectors (North, North-East, East, South-East, South, South-West, West, and North-West). For *Curvature* we use *plan* and *profile*. Plan curvature describes the slopes concave (positive values) or convex (negative values) properties perpendicular to the direction of the maximum slope, while profile curvature indicates the same but parallel to the maximum slope. A value of zero indicates a flat surface. Plan curvature characterizes the convergence and divergence of surface flow and profile curvature describes the acceleration of the surface flow (Zevenbergen and C., 1987). *Roughness* expresses the difference between maximum and minimum elevation values between a cell and all of its neighboring cells (Wilson et al., 2007). Higher roughness values indicate rougher terrain. Based on flow direction (direction of the steepest descent) we determine the *Flow Accumulation*, which describes the number of cells flowing into a cell. The *Topographic Wetness Index TWI* gives indications of where water accumulates on slopes and is calculated with  $\ln(\alpha / \tan \beta)$ , where  $\alpha$  is the upslope area draining through a certain point per unit contour length (Flow Accumulation) and  $\beta$  is the slope (Beven and Kirkby, 1979). *Distance to Roads* and *Road Density* are variables that are often included in landslide susceptibility studies, as they represent constructional interference (Meusburger and Alewell, 2009; Nhu et al., 2020b). *Distance to Streams* and *Stream Density* can give further information on rainfall drainage and runoff processes (Nhu et al., 2020b). These variables were calculated based on the SwissTLM data set (Swisstopo, 2019), containing information on road and stream locations using the distance and line density tool (search radius of 500m (Meusburger and Alewell, 2009)) of ArcGIS. In addition to these terrain-related variables, we use variables derived from the *CHELSA* data set, which contains monthly values on temperature and precipitation from which many environmental parameters are derived (Karger et al., 2017, 2018). We include the strongest precipitation events of the last 5 years and 10 years prior to the recording year of the aerial images, information on snow fall/cover, growing season length and frost change frequency (5-year average of 2009-2013). While these variables have a comparatively low spatial resolution (30 arc sec, approx. 1 km), they may give a good indication of regional differences of shallow landslide occurrence as they are representative of alpine processes often linked to the triggering of shallow landslides (Meusburger and Alewell, 2008; Wiegand and Geitner, 2010; Löbmann et al., 2020; Geitner et al., 2021). Specifics on the individual CHELSA variables used can be found in Karger and Zimmermann (2019). Since we analyse 10 different sites as well as all sites in one model, we select a simplified geological data set containing only the three main rock formation classes (igneous, metamorphic, sedimentary) and unconsolidated rocks. This reduces the number of classes in the categorical variable and increases the interpretability of the model, especially when comparing between sites.

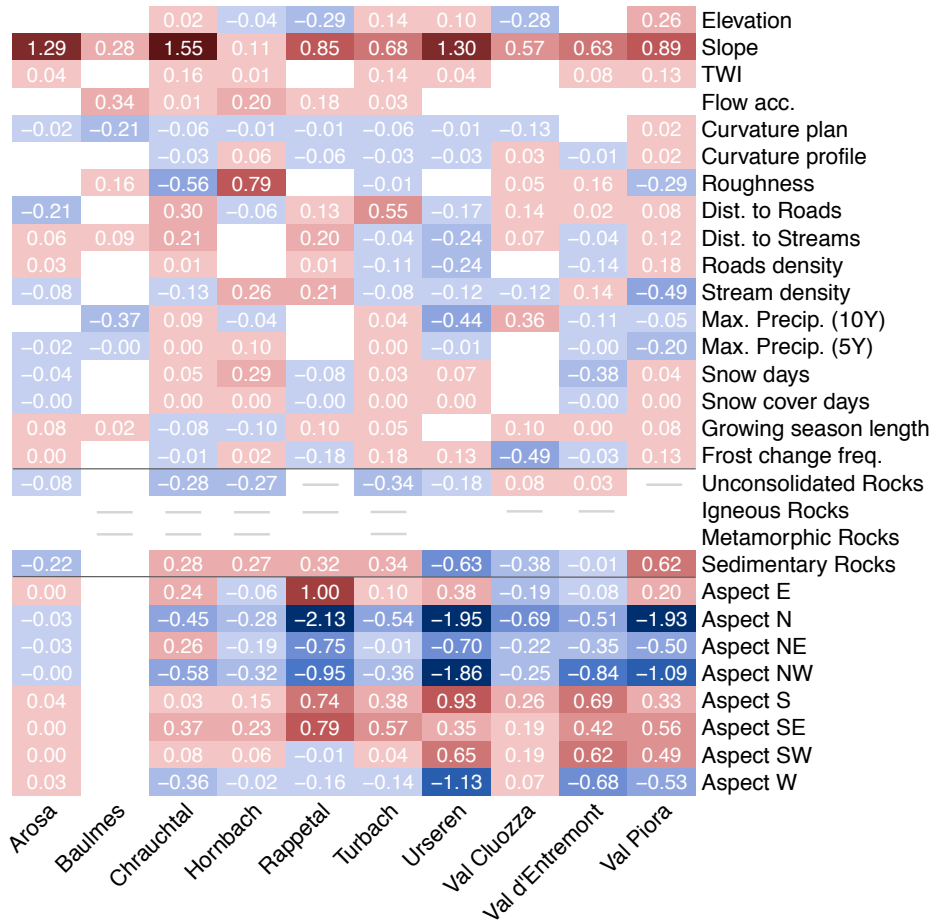
#### 4 Results and Discussion

The Lasso regression model selects the relevant explanatory variables and estimates their regression coefficients to predict the location of shallow landslides. The statistical evaluation was conducted for all 10 sites individually and for all sites combined in to one large model (all-in-one model). The same explanatory variables were used for both approaches. Due to the 5-fold cross-validation and random re-sampling of 20 times (bootstrapping), the coefficients are estimated 100 times. The *estimated coefficients* should be analysed in combination with the *variable inclusion rate*, which describes how many times the explana-

200 tory variable was selected by the Lasso regression model selected the explanatory variables (100 = selected every time) and gives an indication of the importance of the variable.

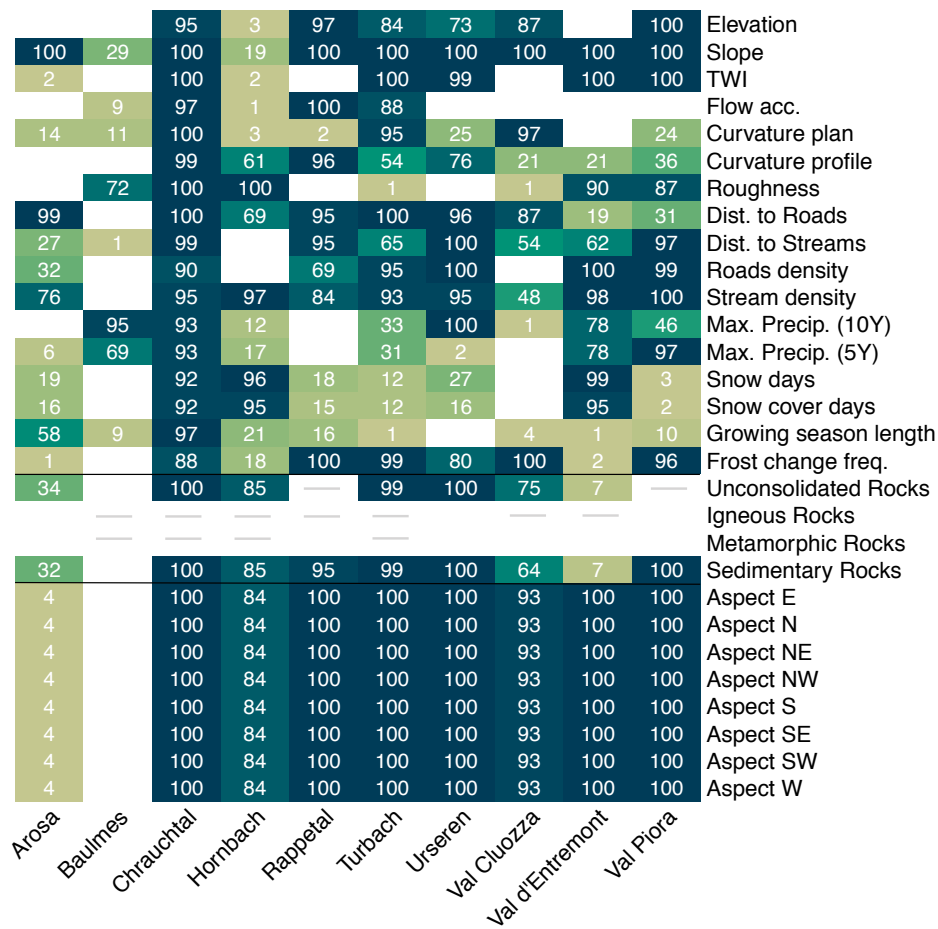
#### 4.1 Individual Site Models

The statistical evaluation of the study sites yields one model per site (10 models). We combine the results of all 10 sites in heat-maps, showing the median estimated coefficients (Figure 5) and their inclusion rate (Figure 6).



**Figure 5.** Heat-map displaying estimates of coefficients (median of 100 estimates) for all 10 sites. Note that not all geological rock classes are present at all sites (grey line). White boxes are equivalent to coefficients of zero and were therefore never selected for the models.

205 Most sites select slope as the most important variable in terms of coefficient value as well as the inclusion rate. Only the sites Baulmes (29 %) and Hornbach (19 %) rarely select slope and shrink the value of the coefficient towards zero. These sites are both located outside of the Alpine region (Jura mountains and the foothills of the Alps) and on average, have gentler slopes (Baulmes 14° and Hornbach 21°). Steeper slopes tend to be more susceptible to shallow landslides, which is in agreement with



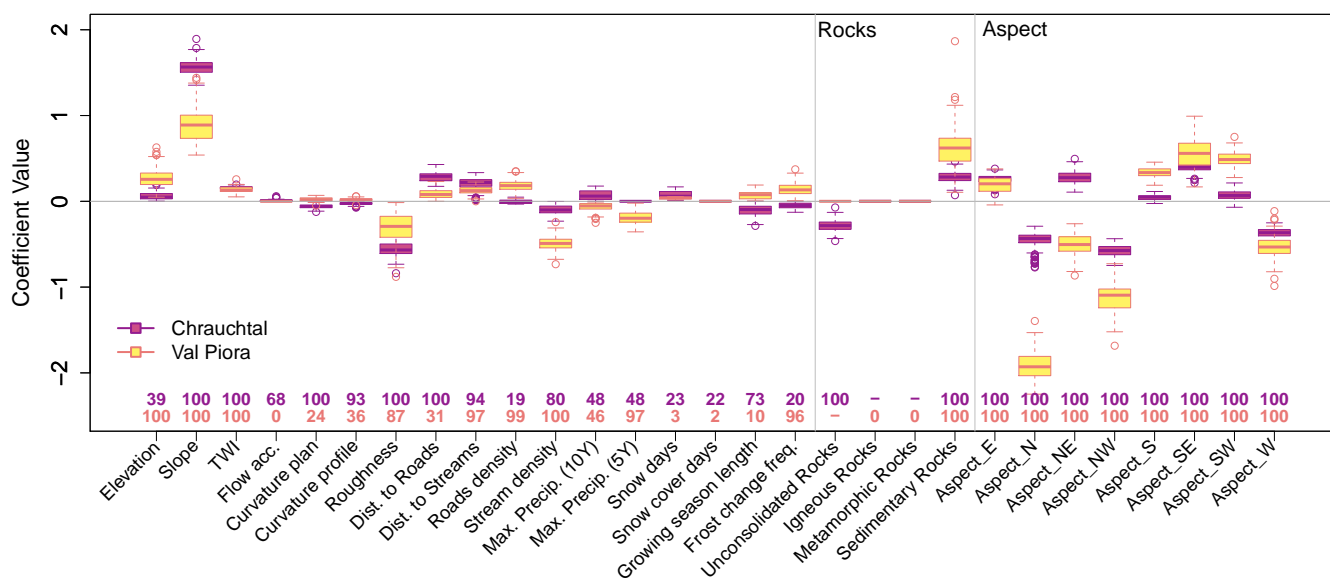
**Figure 6.** Heat-map displaying the inclusion rate of variables for all 10 sites. The numbers indicate how often variables were selected for the models out of 100 estimates. Note that not all geological rock classes are present at all sites (grey line). Darker colors show variables selected more often. White boxes indicate which variables were never selected for the models.

other studies that have found slope to be one of their top predictors (Budimir et al., 2015; Goetz et al., 2015; Tien Bui et al., 2016; Oh and Lee, 2017; Persichillo et al., 2017; Lombardo and Mai, 2018; Lee et al., 2020; Nhu et al., 2020a, b).

210 The aspect was selected most times (84-100 %) for all sites except for Arosa (4 %) and Baulmes (0 %) (Figure 6). In Baulmes, this may relate to the fact that there are only 26 mapped shallow landslides available and that all grassland areas in the valley are located on the south-east facing slope, which includes non-landslide points. The rest of this site is covered with forest, which was not considered for our evaluation. Arosa is located in a wide circular-shaped valley with no dominant slope expositions, and no typical aspect for shallow landslides is present. For the remaining eight sites, the sectors ranging from W to  
 215 NE are strong indicators of no shallow landslides occurring, while E to SW facing slopes are favourable for shallow landslides (Persichillo et al., 2017; Lombardo and Mai, 2018). The coefficient size of the individual aspect sectors varies slightly from site

to site, indicating that aspect may be more predictive in some areas (e.g., Urseren or Val Piora) than in others (e.g., Hornbach or Val Cluozza).

Other important variables, which show a high inclusion rate amongst most sites, yet often do not have a large impact concerning the coefficient values, are Roughness, TWI, Distance to Roads/Streams, Road/Stream Density and Frost Change Frequency. However, these variables were disregarded for some of the sites (low inclusion rates or even excluded completely). The coefficients' values may have a negative or positive correlation to shallow landslide points (SLS points), depending on the sites and the local conditions. Geology is important for most sites, while either sedimentary rocks and unconsolidated rocks are present at the sites or selected for the model from all available classes. Unconsolidated rocks are negatively correlated in most cases. They can often be found near the valley bottom in proximity to streams and lakes, which tend to be located outside of shallow landslide zones. Sedimentary rocks are positively correlated in most cases, but can also show a negative correlation, depending on the site.



**Figure 7.** Boxplots (with whiskers and outliers) showing the coefficient range with 100 repetitions. Numbers above variable names indicate the number of times it was selected for the model. Boxes show the interquartile range (25th and 75th percentile), and the line indicates the median of the coefficients. Chrauchtal ~~is and Val Piora are~~ selected from 10 study sites as ~~an example~~ examples.

~~Boxplots (with whiskers and outliers) showing the coefficient range with 100 repetitions. Numbers above variable names indicate the number of times it was selected for the model. Boxes show the interquartile range (25th and 75th percentile), and the line indicates the median of the coefficients. Val Piora is selected from 10 study sites as a second example.~~

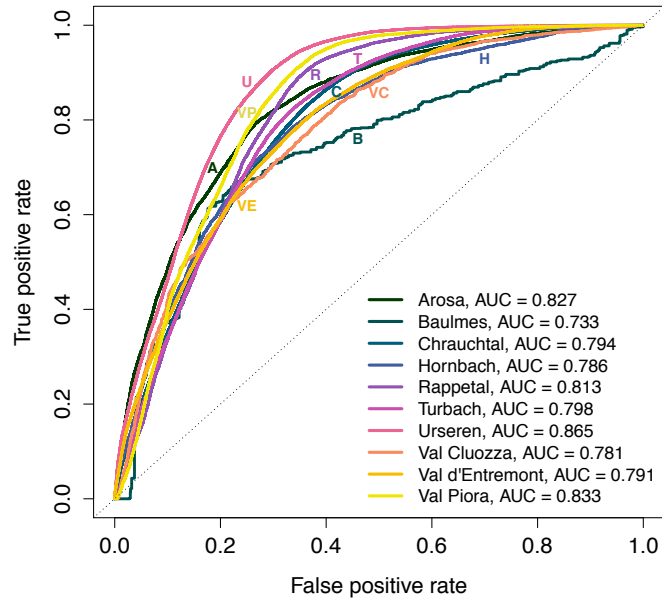
Two sites (Chrauchtal and Val Piora) have been selected as examples to show detailed results of the models and how the selection of explanatory variables can differ between sites (Figures ?? and ?? Figure 7). The boxplots of the estimated coefficients for all 10 sites can be found in the supplemental material (Figures S1 - S10). Chrauchtal (Figure ??) is located on the

northern side of the Alps, while Val Piora (Figure ??) is located on the south side. They have opposing orientations of the main valley axis (N-S and E-W, see Table 1). Chrauchtal is the site with the highest shallow landslide density (2.31 % with 8073 SLS points), which affects the very high inclusion rates for all explanatory variables (Figure 6). This also affects the spread of the boxplots, which show small variability of the coefficient values (Figure ??7 in purple). With the high number of shallow landslides the variability of coefficients decreases, which means that the Lasso regression estimates very similar coefficient values for all 100 repetitions. Val Piora has a lower landslide density (0.49 % with 1116 SLS points). Here, the spread of the boxplots shows a higher variability for the estimated coefficients (Figure ??7 in orange). Interquartile ranges are often much wider, and longer whiskers and outliers are more common than for the Chrauchtal site. For both sites, slope and aspect are very important variables in terms of coefficient size and inclusion rate. Aspect sectors S-SW are susceptible to shallow landslides while N-NW facing slopes are unfavourable. Roughness is negatively correlated for both sites, meaning that rougher terrain is less favourable to shallow landslides. Variables with smaller coefficients may also be selected often by the Lasso regression. However, these variables tend to have different effects depending on local conditions (e.g. Distance to Roads/Road Density, Elevation or TWI).

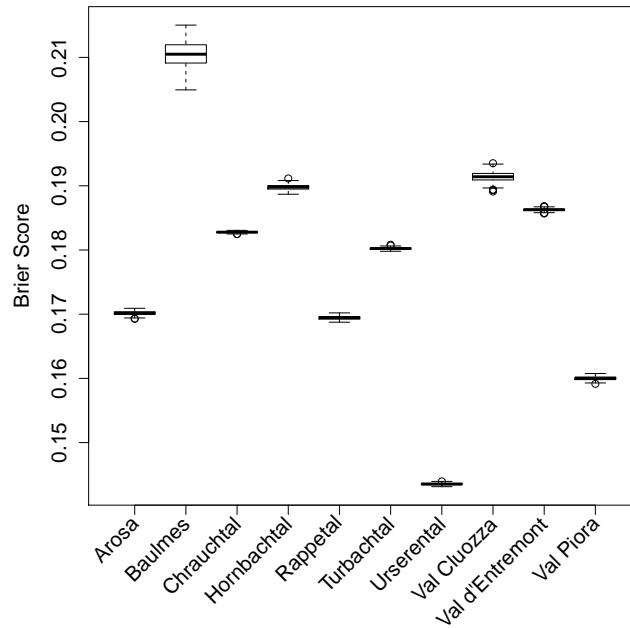
To assess the prediction skills of the individual site models, we calculate the ROC curves and the corresponding AUC values (Section 2.3). Curves closer to the top left corner of the plot show models with higher predictive skills (e.g., Urseren, AUC=0.865), while curves closer to the diagonal line have lower predictive skill (e.g., Baulmes, AUC=0.733). Confusion matrix scores summarised in Table 3 are based on a probability threshold of 0.5, which is the best threshold based on ROC curve evaluation (not shown). Brier scores describe the accuracy of the predictions, where values closer to zero indicate better model performance (Section 2.3). The Urseren site has the best model accuracy (BS = 0.14), while Baulmes has the lowest score (BS = 0.21, located in the Jura mountains with only 26 SLS points). The remaining eight models have BS values that range between 0.16 and 0.19, which is satisfactory. Models of sites with more SLS points perform better and have a smaller spread of the bootstrapped BS. Sites with fewer SLS points do not perform as well. One exception is the Chrauchtal site (BS = 0.18), which has 8074 SLS points, yet doesn't perform as well as other sites with fewer points. For models with higher Brier scores the selected explanatory variables might not have been suitable enough to predict the location of shallow landslides. Whereas for sites such as Urseren and Val Piora, the available explanatory variables are well suited to describe the mapped shallow landslides.

**Table 3.** Confusion matrix derivations using 0.5 for the prediction threshold. Perfect scores are Accuracy = 1, Bias = 1 (above 1 is over-predicted, while below 1 is under-predicted), True Positive Rate (TPR = 1 and False Positive Rate (FPR) = 0. Site names are abbreviated.

Site	A.	B.	C.	H.	R.	T.	U.	V. C.	V. E.	V. P.
Accuracy	0.760	0.716	0.727	0.723	0.758	0.741	0.798	0.702	0.717	0.770
Bias	1.023	0.851	1.071	1.066	1.123	1.098	1.081	0.989	1.029	1.083
TPR	0.772	0.641	0.763	0.756	0.819	0.790	0.838	0.697	0.731	0.812
FPR	0.251	0.209	0.308	0.310	0.303	0.308	0.243	0.293	0.298	0.271



**Figure 8.** ROC performance measure of the models for all 10 sites. Plot displays ROC curves with corresponding AUC values.



**Figure 9.** Performance measure expressed with the Brier score for the models for all 10 sites. Plot shows boxplots of Brier scores where lower Brier scores are indicative of better model performance.

260 Generally, the number of shallow landslides available at a site does not necessarily affect the mean estimated value of coefficients, but the variability of the estimates is smaller, and the inclusion rates are higher for sites with more data points. Low performing models are either for sites located outside of the Alpine region (Baulmes, Hornbach) or in the National Park (Val Cluozza, only 8% grassland in the valley) and have the lowest number of shallow landslides. This may be because different processes govern shallow landslides that are not covered by available variables. Alpine sites perform better, although  
265 performance measures can vary here too. Sites with better Lasso regression model performance may be better explained with the available explanatory variables than other sites. Additionally, the better performing models are for sites with an east-west orientation of the valley, independent of the number of shallow landslides. Because the latter implies that more slope surfaces are facing either south or north. South-facing slopes tend to be more susceptible to shallow landslides in the Alps as the exposition determines the amount of solar radiation (solar angle and duration). This, in turn, affects parameters such as  
270 evapotranspiration or soil moisture, but also affects snow characteristics such as snow cover, snow movement or snow melt, which have a strong influence on the occurrence of shallow landslide (Schauer, 1975; Moser and Hohensinn, 1983; Tasser et al., 2003; Meusburger et al., 2010; Wiegand and Geitner, 2013; Höller, 2014; Leitinger et al., 2018).

#### 4.2 Performance of Slope-only model

As the slope is always the most important predictor for shallow landslides in terms of coefficient size and model inclusion rates,  
275 a ~~slope-only~~ Slope-only model was tested for all sites. The application of the ~~slope-only~~ Slope-only model indicates how well slope predicts shallow landslides and how important additional explanatory variables can be. We, therefore, compare the results of Slope-only models for all sites to the full-variable models based on their Brier scores (Table 4). Additionally, a no-Slope model containing all predictors except for slope was included in the evaluation, demonstrating the additional importance of slope (full model) in comparison to all other predictors. Interestingly, for Baulmes with only 26 SLS points, the Slope-only  
280 model performs slightly better than the full model. Arosa has only a slightly higher BS result for the full model compared to the Slope-only model, which indicates that additional explanatory variables do not improve the model for Arosa very much. The importance of ~~Slope~~ slope for Arosa can already be seen in Figures 5 and 6. For all remaining sites, additional explanatory variables included in the model increase the model performance substantially. This is further supported by the higher BS results of the no-Slope models. The differences between the ~~slope-only models~~ Slope-only, no-Slope and the full models are  
285 statistically significant for all sites (paired t-test with p-values  $\leq 0.05$ ).

#### 4.3 Performance of All-in-one Model

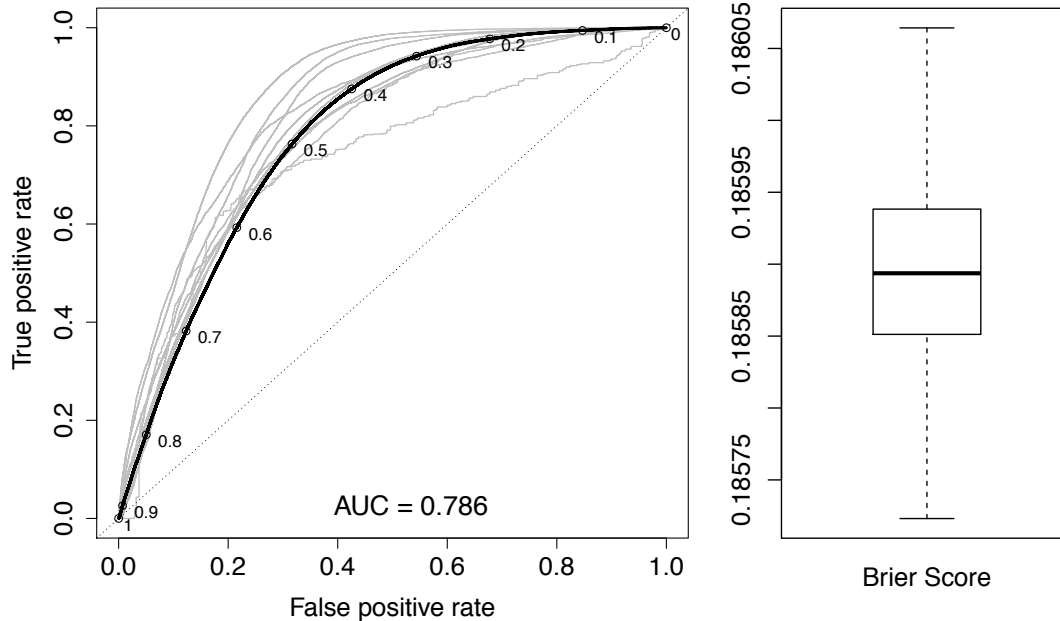
With the all-in-one model, we evaluate whether the same explanatory variables are important for cross-regional evaluations as for individual site evaluations. As all sites included in the all-in-one model have different numbers of SLS points, the sites with more points have a stronger influence on the model's outcome.

290 The all-in-one model places the ROC curve at roughly the centre of the individual site models (Figure 10), which is confirmed by the AUC value of 0.786. The same can be stated for the BS result (BS=0.186). With a Bias of 1.079, the all-in-one model only slightly over-forecasts shallow landslide points, while the overall accuracy of 72.3 % is slightly below the average for the



**Table 4.** Brier scores for the Slope-only model compared with Brier scores of the no-Slope and full models for all sites. The values displayed are median values of the bootstrapped Brier scores (500 repetitions). Lower scores are better (bold font) than higher scores.

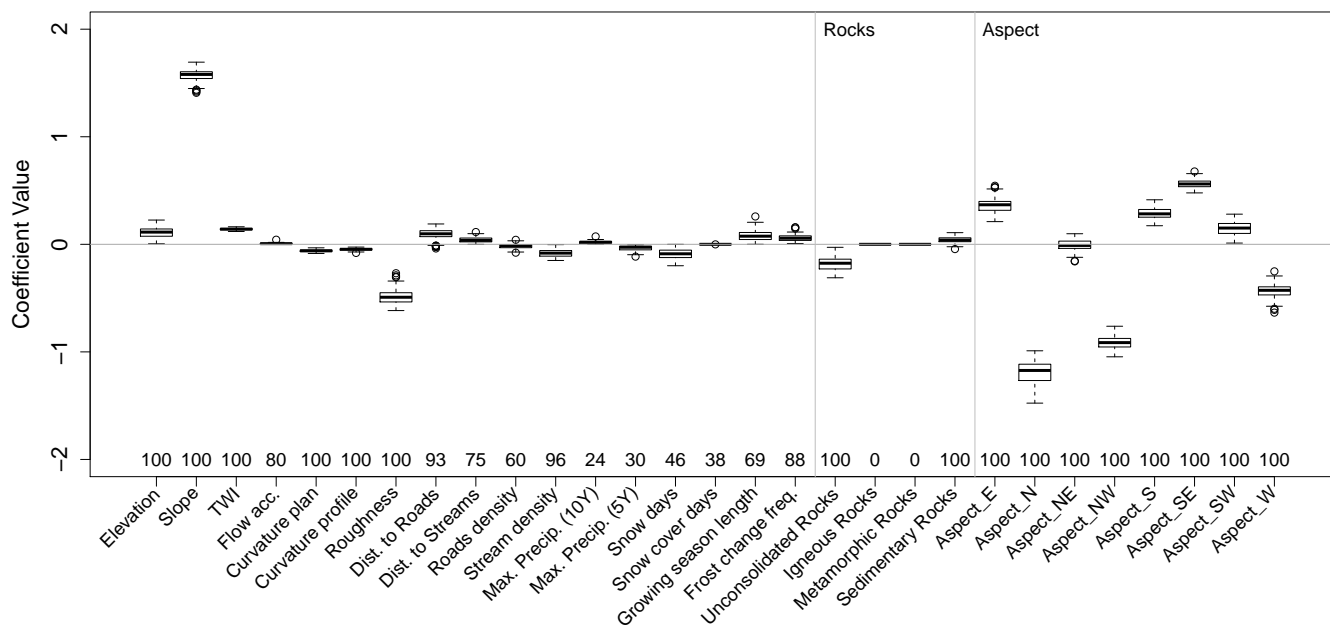
Site	Slope-only	<u>no-Slope</u>	Full Model
Arosa	0.17031	<u>0.17589</u>	<b>0.17017</b>
Baulmes	<b>0.19803</b>	<u>0.20926</u>	0.21049
Chrauchtal	0.20170	<u>0.19294</u>	<b>0.18277</b>
Hornbach	0.20348	<u>0.19085</u>	<b>0.18979</b>
Rappetal	0.22223	<u>0.17324</u>	<b>0.16944</b>
Turbach	0.20377	<u>0.18349</u>	<b>0.18023</b>
Urseren	0.18088	<u>0.14894</u>	<b>0.14354</b>
Val Cluozza	0.22741	<u>0.19268</u>	<b>0.19141</b>
Val d'Entremont	0.21468	<u>0.18634</u>	<b>0.18627</b>
Val Piora	0.19847	<u>0.16873</u>	<b>0.16000</b>



**Figure 10.** On the LHS, the ROC Curve is displayed with the AUC value for the all-in-one model in black (including locations of probability thresholds) superimposed over the individual site models in grey. On the RHS is the bootstrapped Brier score for the all-in-one model.

individual site models (74.1 %). The True Positive Rate lies at 76.3 % and the False Positive Rate at 31.6 %, which is slightly higher than all individual site models. Generally, the individual-site models perform better in most cases, as local conditions are important for the overall accuracy of models. However, the variability of the estimated coefficients of the all-in-one model is relatively low (Figure 11) indicating, that the coefficients were estimated similarly when selected.

The most important variables are comparable to the individual site models, with slope and roughness having the largest coefficients for continuous variables (Goetz et al., 2015). The categorical variables aspect and geology show similar behaviour to the individual site models. The CHELSA climatology variables (Max. Precipitation Events, Snow Days/Snow Cover Days, Growing Season Length and Frost Change Frequency) were originally included with the idea that these might have a stronger impact when doing cross-regional evaluations such as this all-in-one model. From these variables, frost change frequency was selected the most times (88 %). Frost change frequency describes the number of daily events for which the temperature encompasses zero (Karger and Zimmermann, 2019), yet the estimated coefficient is very small. This variable was tested as it may represent snow movement processes related to freezing/thawing cycles, yet, it was too ambiguous. Other climate variables were rarely selected. The inclusion of climate variables may prove helpful when comparing different regions in a "bulk" perspective (e.g. average landslide density per site), but seemingly not when explaining locations of individual shallow landslides across different regions. Additionally, the comparatively low spatial resolution of the CHELSA data set (30 arcsec) may not be suitable for such detailed analysis, and the variables might not represent triggering landslide processes well enough.



**Figure 11.** Boxplots showing the coefficient range with 100 repetitions. Numbers above variable names indicate the number of times it was selected for the model.

Additionally, shallow landslide causes can be manifold and singular triggering processes are difficult to assign and the timing of the occurrence is often unknown. If possible, it would be useful to differentiate between triggering factors of shallow landslides based on visual appearance, as was suggested by Geitner et al. (2021). With the U-Net approach used to map the shallow landslide sites on aerial images (0.25 m), it is impossible to distinguish between triggering factors (Samarin et al., 2020; Zweifel et al., 2019). With higher spatial resolutions of climate variables and a temporal component to the mapped shallow

landslides, it may become possible to assign triggering processes with such evaluation techniques. Additional variables such as  
315 land-use information (e.g., grassland management) could be of great importance if available in appropriate spatial resolution  
and high enough accuracy for all regions (Meusburger and Alewell, 2009; Budimir et al., 2015).

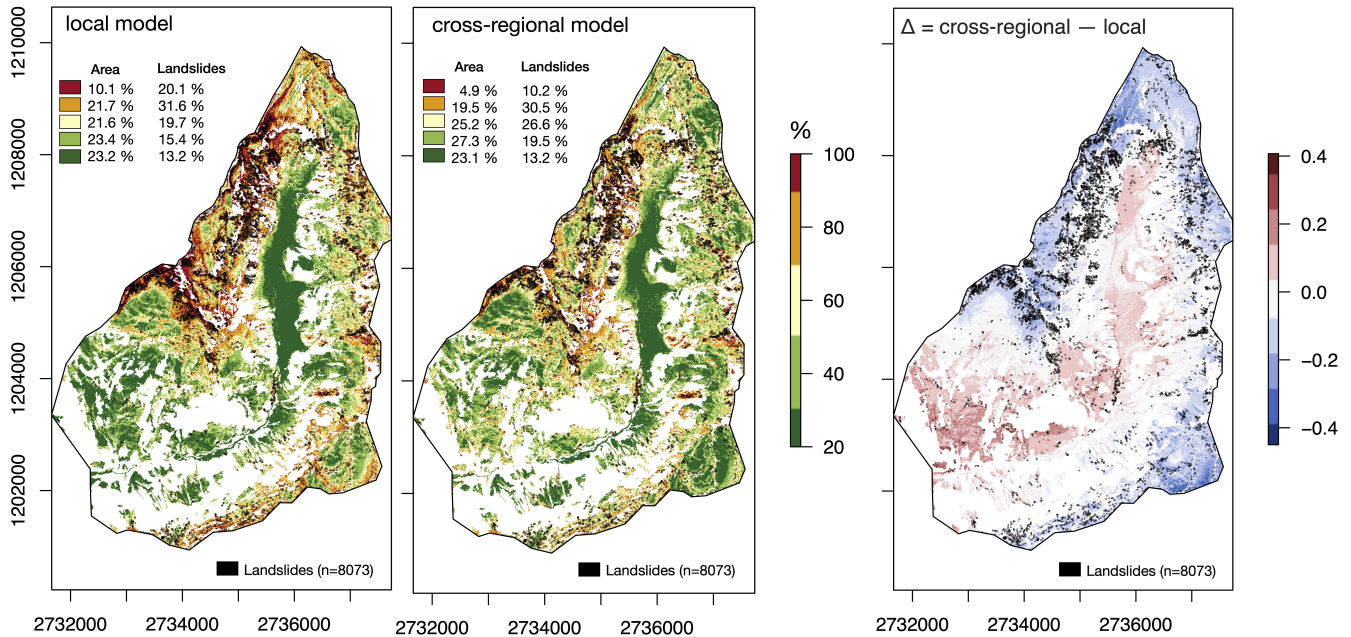
While the explanatory variables for this study were chosen based on data availability, this is not an exclusive list of possible  
predictors. Many studies have worked towards identifying triggering factors in varying Alpine regions, such as the effects of  
land-use, snow processes, precipitation events or vegetation cover (Newesely et al., 2000; Tasser et al., 2003; Rickli and Graf,  
320 2009; Wiegand and Geitner, 2010, 2013; Meusburger and Alewell, 2008; Meusburger et al., 2013; Von Ruetten et al., 2013;  
Höller, 2014; Ceaglio et al., 2017; Fromm et al., 2018; Geitner et al., 2021). Therefore, it is difficult to fully quantify all  
ongoing processes simultaneously in such a complex system, as triggering factors are often interlaced (Zweifel et al., 2019). To  
ideally represent causal factors for statistical evaluations of shallow landslides, these important processes need to be represented  
with high spatial resolutions and a temporal component needs to be included (Meusburger and Alewell, 2009).

#### 325 4.3.1 Susceptibility Map

The calculated coefficients of the logistic regression may be used for spatial predictions of shallow landslide occurrence  
yielding a susceptibility map of the region for the remaining grassland areas. These susceptibility maps are useful to identify  
areas that may likely be affected by shallow landslides in the future (Barbb, 1984). As an example we used the site Chrauchtal  
to apply both the coefficients of the local model as well as the cross-regional all-in-one model (Figure 12). As the coefficients  
330 are estimated 500 times per model, we use the mean coefficient values for the prediction process. The results are very similar,  
however, to highlight the differences between the local and cross-regional *all-in-one* model, a map showing the differences  
between the two maps is shown, where red regions show slightly higher probabilities of shallow landslides in the cross-regional  
*all-in-one* model and blue areas show slightly higher probabilities in the local model. The blue areas mainly cover areas at  
higher elevations, whereas the red areas are located at lower elevations but are facing south. Working with cross-regional  
335 models allows for catching the general pattern, however, local hot-spots might be missed.

## 5 Conclusions

In this study we located shallow landslides across 10 study sites spread across Switzerland. We use the term shallow landslides  
to describe the erosion sites which classifies the erosion feature without implication to the triggering event. Using the Lasso  
regression model, we identified the most important explanatory variables for ~~shallow landslides of 10 study sites~~ these shallow  
340 landslides located on grassland slopes ~~spread across Switzerland~~. Due to the different local conditions of the varying sites,  
different explanatory variables were identified as important. Slope and aspect are among the most important variables. Shallow  
landslides of sites with an east-west orientation of the valley axis as well as alpine sites were better explained by the available  
explanatory variables (Urseren, Val Piora, Rappetal and Arosa). This concludes that exposition-related processes in mountain-  
ous regions are essential for understanding regional patterns (e.g., snowmelt, snow movement). For the remaining sites, the  
345 available selection of explanatory variables was not as well suited and, therefore, important processes could be missed. Sites



**Figure 12.** Susceptibility maps for the study site Chrauchtal based on the local model and the cross-regional *all-in-one* model. The susceptibility maps show the probability of shallow landslides occurring at a specific pixel on the map. The difference between the two applied models are shown on the RHS. White areas on the map are not grassland and therefore not considered.

outside of the main Alpine region (Baulmes and Hornbach) or located in the National Park (Val Cluozza) have a small number of SLS points, which were not well explained by the available variables. Performance scores for individual site models range between BS = 0.144, AUC = 0.865 (Urseren) and BS = 0.210, AUC = 0.733 (Baulmes). Although we find that slope was the most important variable, predictions using only slope yield lower accuracies, indicating that additional variables are important to explain local shallow landslide occurrence. An all-in-one model evaluating all 10 sites simultaneously found comparable results to the individual-site models (i.e. slope and aspect) with performance values of BS = 0.186 and AUC = 0.786. Additionally, this model showed a relatively strong negative correlation for roughness, indicating that smooth grassland surfaces are more susceptible to shallow landslides. The decisive causal factors identified are generally related to static variables (e.g., geomorphological, geological), while the available climate-related data sets have proven to be less informative on both regional local and cross-regional scales. Nevertheless, data sets representing triggering shallow landslide conditions and processes in appropriate spatial resolutions would likely improve model performance. Studies focusing on understanding small scale processes are therefore of great importance, and with data availability shifting towards open access and higher spatial resolutions as well as large spatial coverage, such statistical evaluations may improve in the future.

*Code and data availability.* The full code of the U-Net erosion mapping tool is available under the GNU public license (<https://github.com/bmda-unibas/ErosionSegmentation>). Geodata sets were obtained from SwissTopo unless stated otherwise.

*Author contributions.* LZ, CA, KM, and MS designed the experiments and LZ carried them out. MS developed the code used for mapping the shallow landslide sites. LZ performed the mapping, evaluations and calculations. LZ prepared the manuscript with contributions from all co-authors.

*Competing interests.* The authors declare no conflict of interest.

*Acknowledgements.* This study was funded by the Swiss National Science Foundation (Project No. 167333) as part of the National Research Program NRP75 – Big Data. Calculations were performed at sciCORE (<http://scicore.unibas.ch/>) scientific computing core facility at University of Basel.

## References

- Alewell, C., Schaub, M., and Conen, F.: A method to detect soil carbon degradation during soil erosion, *Biogeosciences Discussions*, 6, 5771–5787, 2009.
- Alewell, C., Ringeval, B., Ballabio, C., Robinson, D. A., Panagos, P., and Borrelli, P.: Global phosphorus shortage will be aggravated by soil erosion, *Nature Communications*, 11, 2020.
- Amato, G., Eisank, C., Castro-Camilo, D., and Lombardo, L.: Accounting for covariate distributions in slope-unit-based landslide susceptibility models. A case study in the alpine environment, *Engineering Geology*, 260, 105 237, 2019.
- Barbb, E.: Innovative approaches to landslide hazard and risk mapping, in: *Proc. of the IV International Symposium on Landslides*, pp. 307–323, Toronto, 1984.
- Beven, K. J. and Kirkby, M. J.: A physically based, variable contributing area model of basin hydrology, *Hydrological Sciences Bulletin*, 24, 43–69, 1979.
- Breheny, P. and Huang, J.: Group descent algorithms for nonconvex penalized linear and logistic regression models with grouped predictors, *Statistics and Computing*, 25, 173–187, 2015.
- Brier, G. W.: Verification of Forecasts Expressed in terms of Probability, *Monthly Weather Review*, 78, 1–3, 1950.
- Budimir, M. E., Atkinson, P. M., and Lewis, H. G.: A systematic review of landslide probability mapping using logistic regression, *Landslides*, 12, 419–436, 2015.
- Camilo, D. C., Lombardo, L., Mai, P. M., Dou, J., and Huser, R.: Handling high predictor dimensionality in slope-unit-based landslide susceptibility models through LASSO-penalized Generalized Linear Model, *Environmental Modelling and Software*, 97, 145–156, 2017.
- Ceaglio, E., Mitterer, C., Maggioni, M., Ferraris, S., Segor, V., and Freppaz, M.: The role of soil volumetric liquid water content during snow gliding processes, *Cold Regions Science and Technology*, 136, 17–29, 2017.
- Chen, W., Xie, X., Wang, J., Pradhan, B., Hong, H., Bui, D. T., Duan, Z., and Ma, J.: A comparative study of logistic model tree, random forest, and classification and regression tree models for spatial prediction of landslide susceptibility, *Catena*, 151, 147–160, 2017.
- Cignetti, M., Godone, D., and Giordan, D.: Shallow landslide susceptibility, rupinaro catchment, liguria (Northwestern Italy), *Journal of Maps*, 15, 333–345, 2019.
- Dormann, C. F., Elith, J., Bacher, S., Buchmann, C., Carl, G., Carré, G., Marquéz, J. R., Gruber, B., Lafourcade, B., Leitão, P. J., Münkemüller, T., Mcclean, C., Osborne, P. E., Reineking, B., Schröder, B., Skidmore, A. K., Zurell, D., and Lautenbach, S.: Collinearity: A review of methods to deal with it and a simulation study evaluating their performance, *Ecography*, 36, 27–46, 2013.
- Fratini, P., Crosta, G., and Carrara, A.: Techniques for evaluating the performance of landslide susceptibility models, *Engineering Geology*, 111, 62–72, 2010.
- Fromm, R., Baumgärtner, S., Leitingner, G., Tasser, E., and Höller, P.: Determining the drivers for snow gliding, *Nat. Hazards Earth Syst. Sci.*, 18, 1891–1903, 2018.
- FSO: Land use in Switzerland. Results of the Swiss land use statistics., Federal Statistics Office, p. 24, 2013.
- Gao, H., Fam, P. S., Tay, L. T., and Low, H. C.: Logistic regression techniques based on different sample sizes in landslide susceptibility assessment: Which performs better?, *Computsoft*, 9, 3624–3628, 2020.
- Geitner, C., Mayr, A., Rutzinger, M., Tobias, M., Tonin, R., Zerbe, S., Wellstein, C., Markart, G., and Kohl, B.: Shallow erosion on grassland slopes in the European Alps – Geomorphological classification , spatio-temporal analysis , and understanding snow and vegetation impacts, *Geomorphology*, 373, 107 446, 2021.

- 405 Goetz, J. N., Brenning, A., Petschko, H., and Leopold, P.: Evaluating machine learning and statistical prediction techniques for landslide susceptibility modeling, *Computers and Geosciences*, 81, 1–11, 2015.
- Gómez, H. and Kavzoglu, T.: Assessment of shallow landslide susceptibility using artificial neural networks in Jabonosa River Basin, Venezuela, *Engineering Geology*, 78, 11–27, 2005.
- Hastie, T., Tibshirani, R., and Friedman, J.: *The Elements of Statistical Learning - Data Mining, Inference, and Prediction*, 2, 2009.
- 410 Hastie, T., Tibshirani, R., and Wainwright, M.: *Statistical Learning with Sparsity The Lasso and Generalizations*, Chapman and Hall, London, 2016.
- Höller, P.: Snow gliding and glide avalanches: A review, *Natural Hazards*, 71, 1259–1288, 2014.
- Hosmer, D. W. and Lemeshow, S.: *Applied Logistic Regression*, John Wiley & Sons, Inc., New York, 2nd editio edn., 2000.
- Karger, D., Conrad, O., Böhner, J., Kawohl, T., Kreft, H., Soria-Auza, R., Zimmermann, N., Linder, H., and Kessler, M.: Data from: Climatologies at high resolution for the earth's land surface areas. Dryad, Dataset, 2018.
- 415 Karger, D. N. and Zimmermann, N. E.: Climatologies at High resolution for the Earth Land Surface Areas CHELSA V1 . 2: Technical specification, Tech. Rep. April, 2019.
- Karger, D. N., Conrad, O., Böhner, J., Kawohl, T., Kreft, H., Soria-Auza, R. W., Zimmermann, N. E., Linder, H. P., and Kessler, M.: Climatologies at high resolution for the earth's land surface areas, *Scientific Data*, 4, 1–20, 2017.
- 420 Kavzoglu, T., Sahin, E. K., and Colkesen, I.: Landslide susceptibility mapping using GIS-based multi-criteria decision analysis, support vector machines, and logistic regression, *Landslides*, 11, 425–439, 2014.
- Lee, D. H., Kim, Y. T., and Lee, S. R.: Shallow landslide susceptibility models based on artificial neural networks considering the factor selection method and various non-linear activation functions, *Remote Sensing*, 12, 2020.
- Leitinger, G., Meusburger, K., Rüdiger, J., Tasser, E., Walde, J., and Höller, P.: Spatial evaluation of snow gliding in the Alps, *Catena*, 165, 425 567–575, 2018.
- Lepeška, T.: Dynamics of development and variability of surface degradation in the subalpine and alpine zones (an example from the Velká Fatra Mts., Slovakia), *Open Geosciences*, 8, 771–786, 2016.
- Löbmann, M. T., Tonin, R., Wellstein, C., and Zerbe, S.: Determination of the surface-mat effect of grassland slopes as a measure for shallow slope stability, *Catena*, 187, 104 397, 2020.
- 430 Lombardo, L. and Mai, P. M.: Presenting logistic regression-based landslide susceptibility results, *Engineering Geology*, 244, 14–24, 2018.
- Lombardo, L. and Tanyas, H.: From scenario-based seismic hazard to scenario-based landslide hazard: fast-forwarding to the future via statistical simulations, *Stochastic Environmental Research and Risk Assessment*, 1, 2021.
- Meier, L., Van De Geer, S., and Bühlmann, P.: The group lasso for logistic regression, *Journal of the Royal Statistical Society. Series B: Statistical Methodology*, 70, 53–71, 2008.
- 435 Meusburger, K. and Alewell, C.: Impacts of anthropogenic and environmental factors on the occurrence of shallow landslides in an alpine catchment (Urseren Valley, Switzerland), *Nat. Hazards Earth Syst. Sci.*, 8, 509–520, 2008.
- Meusburger, K. and Alewell, C.: On the influence of temporal change on the validity of landslide susceptibility maps, *Nat. Hazards Earth Syst. Sci.*, 9, 1495–1507, 2009.
- Meusburger, K., Konz, N., Schaub, M., and Alewell, C.: Soil erosion modelled with USLE and PESERA using QuickBird derived vegetation 440 parameters in an alpine catchment, *International Journal of Applied Earth Observation and Geoinformation*, 12, 208–215, 2010.
- Meusburger, K., Leitinger, G., Mabit, L., Mueller, M. H., and Alewell, C.: Impact of snow gliding on soil redistribution for a sub-alpine area in Switzerland, *Hydrol. Earth Syst. Sci. Discuss.*, 10, 9505–9531, 2013.

- Moser, M. and Hohensinn, F.: Geotechnical aspects of soil slips in Alpine regions, *Engineering Geology*, 19, 185–211, 1983.
- Newesely, C., Tasser, E., Spadinger, P., and Cernusca, A.: Effects of land-use changes on snow gliding processes in alpine ecosystems, *Basic and Applied Ecology*, 1, 61–67, 2000.
- 445 Nhu, V. H., Shirzadi, A., Shahabi, H., Chen, W., Clague, J. J., Geertsema, M., Jaafari, A., Avand, M., Miraki, S., Asl, D. T., Pham, B. T., Ahmad, B. B., and Lee, S.: Shallow landslide susceptibility mapping by Random Forest base classifier and its ensembles in a Semi-Arid region of Iran, *Forests*, 11, 2020a.
- Nhu, V. H., Shirzadi, A., Shahabi, H., Singh, S. K., Al-Ansari, N., Clague, J. J., Jaafari, A., Chen, W., Miraki, S., Dou, J., Luu, C., Górski, K., Pham, B. T., Nguyen, H. D., and Ahmad, B. B.: Shallow landslide susceptibility mapping: A comparison between logistic model tree, logistic regression, naïve bayes tree, artificial neural network, and support vector machine algorithms, *International Journal of Environmental Research and Public Health*, 17, 2020b.
- 450 Oh, H. J. and Lee, S.: Shallow landslide susceptibility modeling using the data mining models artificial neural network and boosted tree, *Applied Sciences (Switzerland)*, 7, 1–14, 2017.
- 455 O'Mara, F. P.: The role of grasslands in food security and climate change, *Annals of Botany*, 110, 1263–1270, 2012.
- Persichillo, M. G., Bordoni, M., Meisina, C., Bartelletti, C., Barsanti, M., Giannecchini, R., D'Amato Avanzi, G., Galanti, Y., Cevasco, A., Brandolini, P., and Galve, J. P.: Shallow landslides susceptibility assessment in different environments, *Geomatics, Natural Hazards and Risk*, 8, 748–771, 2017.
- Petschko, H., Brenning, A., Bell, R., Goetz, J., and Glade, T.: Assessing the quality of landslide susceptibility maps - Case study Lower Austria, *Natural Hazards and Earth System Sciences*, 14, 95–118, 2014.
- 460 Pimentel, D. and Burgess, M.: Soil Erosion Threatens Food Production, *Agriculture*, 3, 443–463, 2013.
- Pimentel, D., Harvey, C., Resosudarmo, P., Sinclair, K., Kurz, D., McNair, M., Crist, S., Shpritz, L., Fitton, L., Saffouri, R., and Blair, R.: Environmental and economic costs of soil erosion and conservation benefits, *Science*, 267, 1117–1123, 1995.
- Raja, N. B., Çiçek, I., Türkoğlu, N., Aydin, O., and Kawasaki, A.: Landslide susceptibility mapping of the Sera River Basin using logistic regression model, *Natural Hazards*, 85, 1323–1346, 2017.
- 465 Rickli, C. and Graf, F.: Effects of forests on shallow landslides – case studies in Switzerland, *For. Snow Landsc. Res.*, 82, 33–44, 2009.
- Ronneberger, O., Fischer, P., and Brox, T.: U-net: Convolutional networks for biomedical image segmentation, in: *Medical Image Computing and Computer-assisted intervention - MICCAI 2015*, edited by Navab, N., Hornegger, J., Wells, W., and Frangi, A., vol. 9351, pp. 234–241, 2015.
- 470 Samarin, M., Zweifel, L., Roth, V., and Alewell, C.: Identifying Soil Erosion Processes in Alpine Grasslands on Aerial Imagery with a U-Net Convolutional Neural Network, *Remote Sens.*, 12, 4149, 2020.
- Schauer, T.: Die Blaikenbildung in den Alpen, *Schr.reihe Bayer. Landesamtes Wasserwirt.*, 1, 29, 1975.
- Steger, S., Brenning, A., Bell, R., Petschko, H., and Glade, T.: Exploring discrepancies between quantitative validation results and the geomorphic plausibility of statistical landslide susceptibility maps, *Geomorphology*, 262, 8–23, 2016.
- 475 Steyerberg, E. W., Vickers, A. J., Cook, N. R., Gerdts, T., Gonen, M., Obuchowski, N., Pencina, M. J., and Kattan, M. W.: Assessing the performance of prediction models: A framework for traditional and novel measures, *Epidemiology*, 21, 128–138, 2010.
- Stumpf, F., Schneider, M. K., Keller, A., Mayr, A., Rentschler, T., Meuli, R. G., Schaepman, M., and Liebisch, F.: Spatial monitoring of grassland management using multi-temporal satellite imagery, *Ecological Indicators*, 113, 106 201, 2020.
- Swisstopo: *Swissimage. Das digitale Farbornthophotomosaik der Schweiz.*, 2010.
- 480 Swisstopo: *SwissALTI3D. Das hoch aufgelöste Terrainmodell der Schweiz.*, 2014.



- Swisstopo: SwissTLM3D. Das grossmassstäbliche Topografische Landschaftsmodell der Schweiz, 2019.
- Tanyaş, H., Kirschbaum, D., and Lombardo, L.: Capturing the footprints of ground motion in the spatial distribution of rainfall-induced landslides, *Bulletin of Engineering Geology and the Environment*, 80, 4323–4345, 2021.
- 485 Tasser, E., Mader, M., and Tappeiner, U.: Effects of land use in alpine grasslands on the probability of landslides, *Basic Appl. Ecol.*, 4, 271–280, 2003.
- Tibshirani, R.: *Regression selection and shrinkage via the lasso*, 1996.
- Tien Bui, D., Tuan, T. A., Klempe, H., Pradhan, B., and Revhau, I.: Spatial prediction models for shallow landslide hazards: a comparative assessment of the efficacy of support vector machines, artificial neural networks, kernel logistic regression, and logistic model tree, *Landslides*, 13, 361–378, 2016.
- 490 Valavi, R., Elith, J., Lahoz-Monfort, J. J., and Guillera-Arroita, G.: blockCV: An r package for generating spatially or environmentally separated folds for k-fold cross-validation of species distribution models, *Methods in Ecology and Evolution*, 10, 225–232, 2019.
- Von Ruetten, J., Lehmann, P., and Or, D.: Rainfall-triggered shallow landslides at catchment scale: Threshold mechanics-based modeling for abruptness and localization, *Water Resources Research*, 49, 6266–6285, 2013.
- Vorpahl, P., Elsenbeer, H., Märker, M., and Schröder, B.: How can statistical models help to determine driving factors of landslides?, *Ecological Modelling*, 239, 27–39, 2012.
- 495 Wiegand, C. and Geitner, C.: Shallow erosion in grassland areas in the Alps. What we know and what we need to investigate further, pp. 76–83, 2010.
- Wiegand, C. and Geitner, C.: Investigations into the distribution and diversity of shallow eroded areas on steep grasslands in Tyrol (Austria), *Erdkunde*, 67, 325–343, 2013.
- 500 Wilks, D.: *Statistical Methods in the Atmospheric Sciences*, Academic Press, London, 2nd editio edn., 2006.
- Wilson, M. F., O’Connell, B., Brown, C., Guinan, J. C., and Grehan, A. J.: *Multiscale terrain analysis of multibeam bathymetry data for habitat mapping on the continental slope*, vol. 30, 2007.
- Yuan, M. and Lin, Y.: Model selection and estimation in regression with grouped variables, *Journal of the Royal Statistical Society. Series B: Statistical Methodology*, 68, 49–67, 2006.
- 505 Zevenbergen, L. W. and C., T.: Quantitative analysis of land surface topography, *Earth Surface Processes and Landforms*, 12, 47–56, 1987.
- Zweifel, L., Meusbürger, K., and Alewell, C.: Spatio-temporal pattern of soil degradation in a Swiss Alpine grassland catchment, *Remote Sens. Environ.*, 235, 111 441, 2019.