

# SIMULATED COASTAL LANDSLIDES

## Simulation No. 12

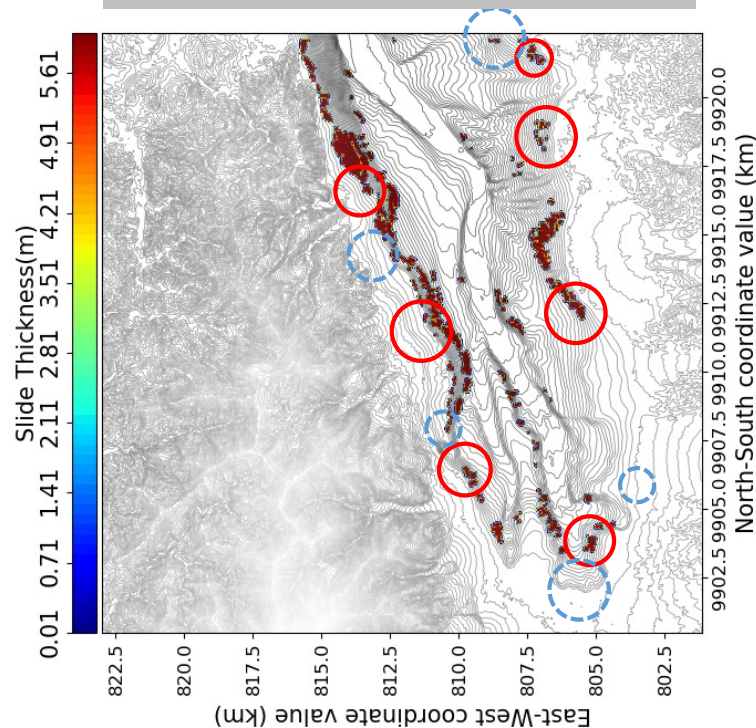
Date: 9/18/2020

Range of Inclination Angle: 15 – 20

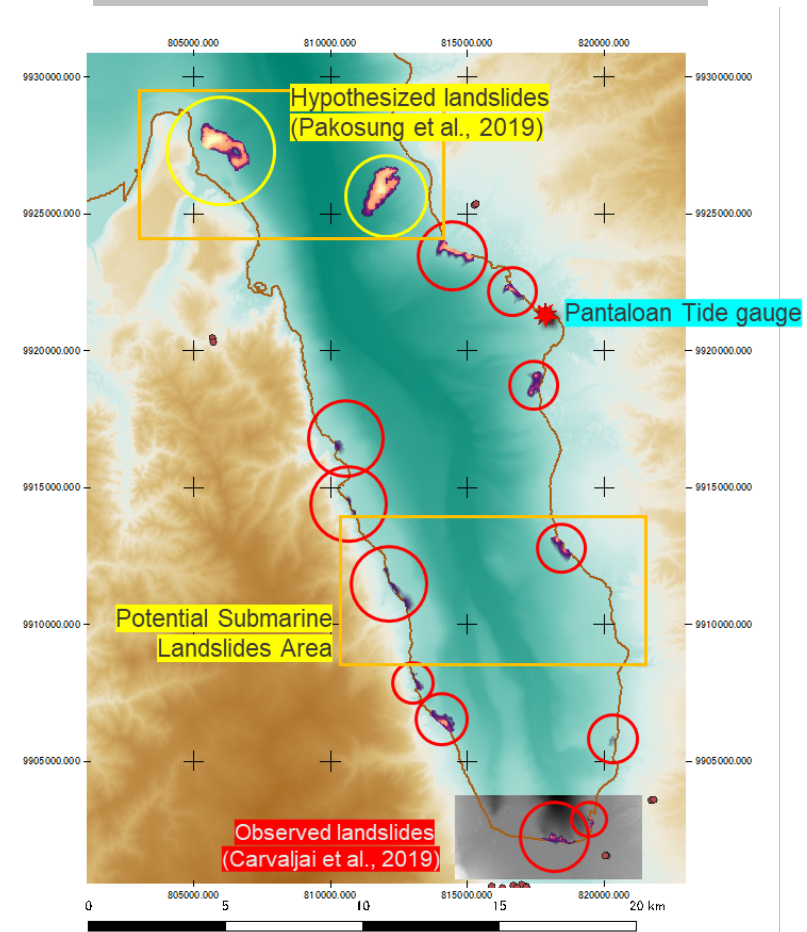
Earthquake Intensity: 0.30

Surface Thickness: 6m

### Simulated Coastal Landslides



### Literature's Coastal Landslides



○ Matching Landslide Location    ◌ Un-Matching Landslide Location