



A Harmonised Instrumental Earthquake Catalogue for Iceland and the Northern Mid-Atlantic Ridge

Kristján Jónasson¹, Bjarni Bessason², Ásdís Helgadóttir¹, Páll Einarsson³, Gunnar B. Guðmundsson⁴, Bryndís Brandsdóttir³, Kristín S. Vogfjörð⁴, and Kristín Jónsdóttir⁴

¹Faculty of Industrial Engineering, Mechanical Engineering and Computer Science, University of Iceland, Hjarðarhagi 2, Reykjavík, Iceland

²Faculty of Civil and Environmental Engineering, University of Iceland, Hjarðarhagi 2, Reykjavík, Iceland

³Science Institute, University of Iceland, Sturlugata 7, Reykjavík, Iceland

⁴Icelandic Meteorological Office, Bústaðavegur 7–9, Reykjavík, Iceland

Correspondence: K. Jónasson (jonasson@hi.is)

Abstract. A comprehensive catalogue of historical earthquakes, with accurate epicentres and homogenised magnitudes is a crucial resource for seismic hazard mapping. Here we update and combine catalogues from several sources to compile a catalogue of earthquakes in and near Iceland, in the years 1900–2019. In particular the epicentres are based on local information, whereas the magnitudes are based on teleseismic observations, primarily from international on-line catalogues. The most reliable epicentre information comes from the catalogue of the Icelandic Meteorological Office, but this is complemented with information from several technical reports, scientific publications, newspaper articles, and modified by some expert judgement. The catalogue contains 1272 $M_W \geq 4$ events and the estimated completeness magnitude is M_W 5.5 in the first years, going down to M_W 4.5 for recent years. The largest magnitude is M_W 7.01. Such melting of local and teleseismic data has not been done before for Icelandic earthquakes, and the result is an earthquake map with no obviously mislocated events. The catalogue also lists additional 5654 earthquakes on the Mid-Atlantic Ridge, north of 43°, with both epicentres and magnitudes determined teleseismically. When moment magnitudes are not available, proxy M_W values are computed with χ^2 -regression, normally on M_S , but exceptionally on m_b . All the presented magnitudes have associated uncertainty estimates. The actual combined seismic moment released in the Icelandic earthquakes is found to be consistent with the moment estimated using a simple plate motion model. The catalogue is named ICEL-NMAR and it is available online at <http://dx.doi.org/10.17632/7zh6xg22cv.1>.

1 Introduction

Seismic hazard in Iceland is the highest in Northern Europe and is comparable to that in Southern Europe. The seismicity is caused by tectonic movements of the plate boundary of the North-America plate and the Euro-Asia plate crossing the island, as well as volcanic activity (Einarsson, 1991, 2008). Based on historical records, faulting mechanisms, and tectonic context, it can be argued that earthquakes larger than about M_W 7.2 are not to be expected (Halldórsson, 1992a). This is further supported by the limited thickness of the seismogenic part of the Icelandic crust, about 8–12 km (e. g. Stefánsson et al. 1993). Since the settlement of Iceland in the 8th or 9th century A.D. destructive earthquakes have repeatedly been reported in local



chronicles with descriptions of structural damage and fatalities (Sólnes et al., 2013). However, because of the low population density, the losses and number of deaths and injuries has been low and gained little global attention. The main characteristic of the seismicity are shallow (< 10 km) strike-slip earthquakes as well as earthquakes related to volcanic activity. The first instrumentally recorded earthquakes in Iceland occurred in 1896 when six destructive earthquakes struck in South Iceland in a two week period (Ambraseys and Sigbjörnsson, 2000; Sigbjörnsson and Rupakhety, 2014). These events were recorded at several stations in Europe: England, France, Poland and Italy, equipped with rather primitive seismographs (Sólnes et al., 2013, p. 579–583). Damped seismographs, which could measure absolute ground motion, were introduced around the year 1900, allowing (later) magnitude computation. The first seismograph was installed in Iceland in 1909 and was operated until 1914, and again from 1925 when continuous operation was secured.

The main motivation behind this study is to construct a harmonised earthquake catalogue for Iceland to use in seismic hazard analysis. A selection criterion for inclusion is that the earthquake was instrumentally recorded by seismic centres outside Iceland and assigned an M_S , m_b or M_W value, and that it is listed either in the International Seismological Centre (ISC) Bulletin Event Catalog (ISC, 2020), or in the catalogue of Ambraseys and Sigbjörnsson (2000), which lists and reappraises internationally recorded earthquakes in the region 62° – 68° N and 12° – 26° W (Fig. 1), in the period 1896–1995. This catalogue will be referred to as the AMB-SIG catalogue. The new catalogue contains reappraised magnitudes and locations for earthquakes in the AMB-SIG region (referred to as ICEL) and the period 1900–2019, a total of 1272 earthquakes.

The magnitudes are all copied or computed from ISC, AMB-SIG, or the Global Centroid Moment Tensor (GCMT) catalog (GCMT, 2020). M_W values are provided for all earthquakes. They are of three types: (a) taken directly from the GCMT catalogue if available there (the golden standard), (b) averaged or copied from values in the ISC catalogue, or (c) proxy values computed with regression using M_S or m_b . For the regression, region-specific magnitude relationships were developed using data from a larger region, referred to as NMAR. This region follows the Northern Mid-Atlantic Ridge (Fig. 2), and includes all of the region AOI (Atlantic Ocean and Iceland) of Grünthal and Wahlström (2012). A byproduct of our study is therefore a catalogue of 6926 events in the whole NMAR region (including the 1272 ICEL events). Locations of events outside ICEL are copied directly from the ISC catalogue, and magnitudes are obtained in the same way as inside it. The magnitude range of the new catalogue is M_W 4–7.08, as events $M_W < 4$ were omitted.

Opposite to magnitudes, earthquake locations in the international catalogues are often very inaccurate (by tens of km), being based on teleseismic data. One of the innovations in the new catalogue is therefore to use local information on epicentres. The primary sources for these locations are catalogues compiled at the Icelandic Meteorological Office (IMO), seismological bulletins, newsletters and reports published by the IMO and the University of Iceland Science Institute (UII), journal articles with results of studies on Icelandic earthquakes, and contemporary accounts of earthquakes from newspapers. These sources are complemented by the authors' judgement.

All origin times are copied from the international catalogues, but, since origin times after 1990 are probably more accurate in local catalogues, the new catalogue also reports these.

An early published list of instrumentally recorded earthquakes in Iceland and the surrounding oceans appeared in Gutenberg and Richter's book (1949), p. 196, 207, which lists 60 large earthquakes in the period 1910–1945 in the NMAR region, of

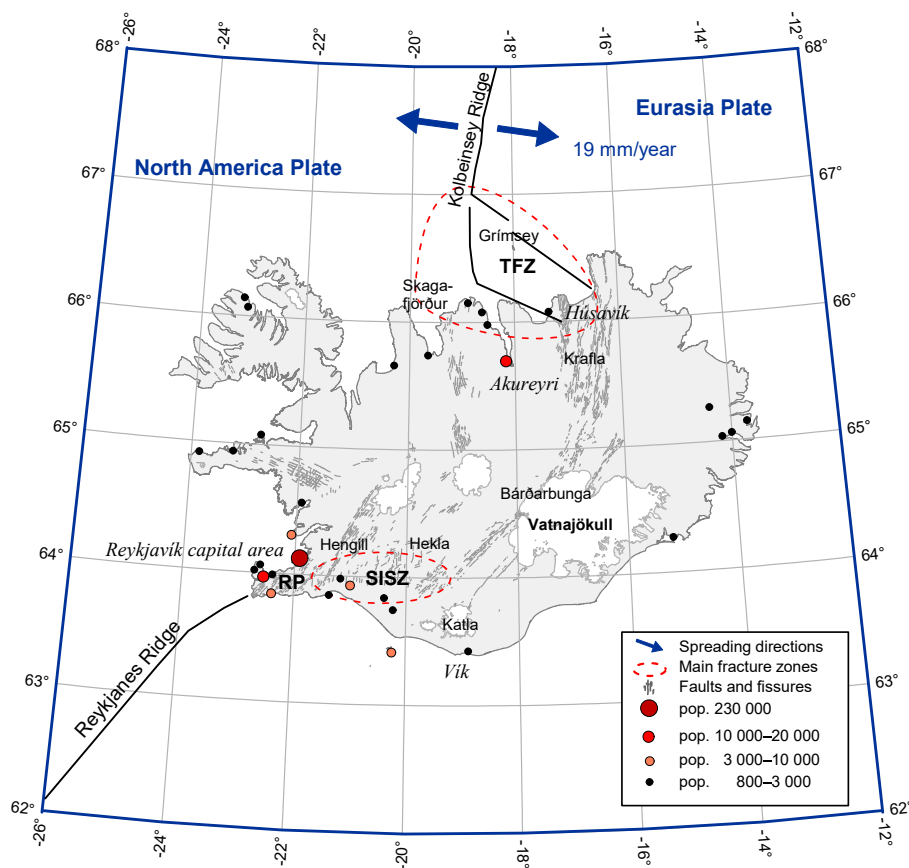


Figure 1. The ICEL region, 62°–68°N and 12°–26°W. The figure shows place names in Iceland mentioned in the article. Towns and villages with 2020 population of at least 800 are also indicated as well as the Tjörnes Fracture Zone (TFZ), the South Iceland Seismic Zone (SISZ), and the Reykjanes Peninsula (RP)

these 8 are in the ICEL region. Six years later Tryggvason (1955) compiled a list of earthquakes $M \geq 5\frac{1}{4}$ in 1927–1945, 121 in NMAR, of these 22 are in ICEL.

Since shortly after the IMO was established, it has been responsible for monitoring earthquakes in Iceland. From the beginning, accounts of earthquakes have been published in the IMO monthly newsletter *Veðráttan* (the Weather) (IMO, 1924–2006), in addition the Seismological Bulletin (IMO, 1926–1973) was compiled and distributed to seismological centres abroad, and since 1975 computerised earthquake catalogues have been kept, and made available to scientists working elsewhere. After 1965 earthquake research took off at the University of Iceland, and has flourished ever since with a number of case studies, as well as historical summaries.

The new century has seen a surge in the publication of local and global earthquake catalogues, and Iceland is not an exception. The aforementioned catalogue of Ambraseys and Sigbjörnsson (2000), covers the same ICEL region as the current study and lists 415 earthquakes with M_S and/or m_b magnitudes. The epicentres for a portion of these were reassessed, but for the

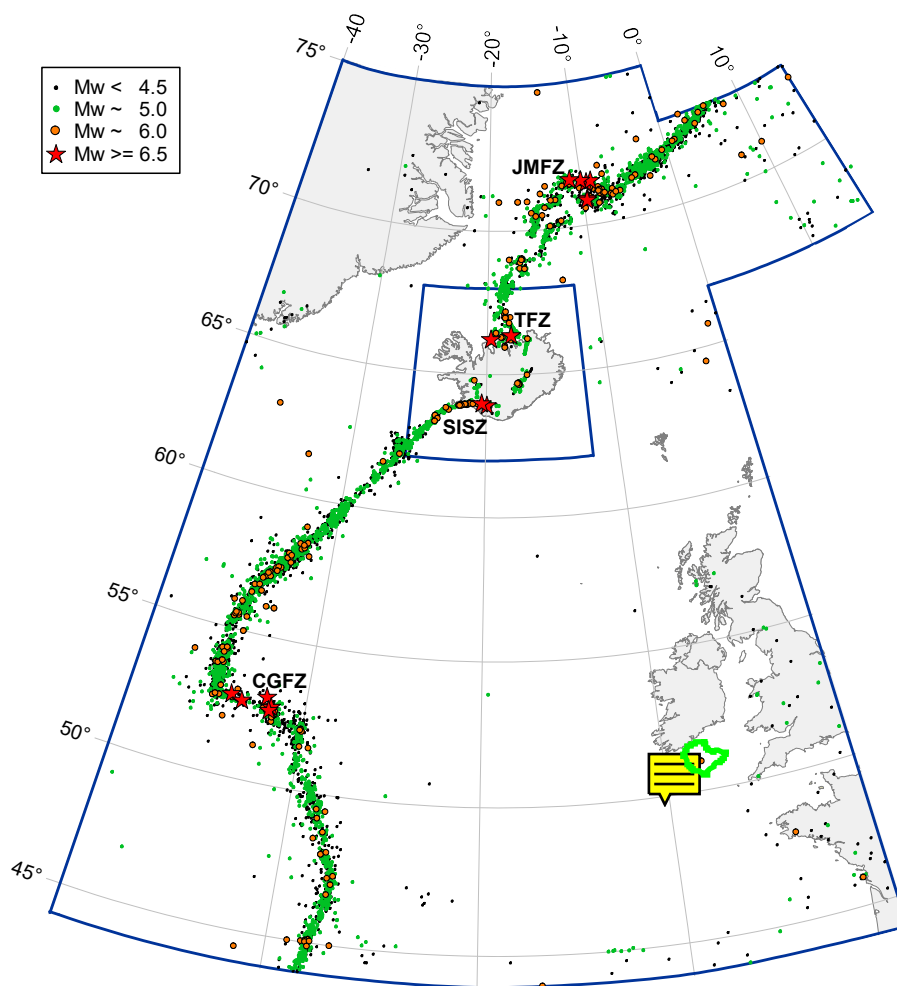


Figure 2. The NMAR region, 44° – 75° N, 0° – 40° W, and 67° – 73° N, 0° – 17° E. The small part in the eastern hemisphere is added to make the region include all of the AOI region of Grünthal and Wahlström (2012). The ICEL region is also marked in. Four main seismic zones are marked on the map, i. e. Charlie-Gibbs Seismic Zone (CGSZ), South-Iceland Seismic Zone (SISZ), Tjörnes Fracture Zone (TFZ), and Jan Mayen Fracture Zone (JMFZ).

remaining ones, inaccurate teleseismically determined locations were given. To our knowledge, this is the only catalogue apart from the current one where local locations and global magnitudes have been combined. Unfortunately this catalogue was only published in a very limited distribution, and it is not available online.

Grünthal and Wahlström (Grünthal and Wahlström, 2003) compiled a historical catalogue of earthquakes in Central and Northern Europe until 1993, with magnitudes and locations in Iceland taken from a data file obtained from the IMO. These data were compiled at the IMO independently of the IMO catalogue discussed in Sect. 2.2.1, and are still available on the IMO website (hraun.vedur.is/ja/ymislegt/storskjalf.html). The locations are reasonably accurate, but the resulting M_W magnitudes



75 are exaggerated, often by a whole magnitude (less for the most recent earthquakes, or ~ 0.2 – 0.3 magnitudes). The work on this catalogue continued with a number of subsequent projects (Grünthal et al., 2009; Grünthal and Wahlström, 2012; Grünthal et al., 2013), under several acronyms, CENEC (Central, Northern and northwestern European Catalogue), EMEC (European Mediterranean earthquake catalogue), SHARE (seismic hazard harmonization), and SHEEC (SHARE European earthquake catalogue). For the Iceland region, all these projects adopt the original 2003 catalogue, adding data (locations and
 80 local magnitudes) after 1990 from IMO's catalogue. Among the products of these studies were hazard maps for Iceland where the hazard was greatly overestimated in many places, among them in the Reykjavík capital area (Woessner et al., 2015).

In 2010 the ISC initiated work on a global catalogue of large earthquakes since 1900, ISC-GEM (ISC-Global Earthquake Model). The first version was released in 2013 and the work is ongoing, with version 6 being released in 2019. The magnitude thresholds are: 1900–1917: $M_S \geq 7.5$, 1918–1959: $M_S \geq 6.25$, 1960–2015: $M_S \geq 5.5$ (Storchak et al., 2013; Di Giacomo
 85 et al., 2015). The catalogue contains 40 earthquakes in the ICEL region.

Panzer et al. (2016) compiled a catalogue of earthquakes in South-Iceland 1991–2013. It reports locations and magnitudes from IMO's database, cleaned and corrected, as well as proxy M_W -values based on regression of GCMT-magnitudes on the IMO data, like the CENEC/EMEC catalogues. It has more than 150 000 events with magnitudes down to $M = 0$.

2 Sources and data

90 This section discusses the primary sources used to compile the new ICEL-NMAR catalogue. These sources consist of four international catalogues, used primarily to obtain and/or compute magnitudes, and several types of local Icelandic sources used as a basis for event locations. The local sources include the catalogue of the IMO, scientific publications, seismological bulletins, newsletters and technical reports, as well as newspaper articles. The section concludes with a few remarks on how individual events in different sources have been matched up.

95 2.1 International catalogues

2.1.1 The ISC Bulletin Event Catalog

The ISC database (2020) contains data on earthquake location and magnitude contributed by several seismological agencies from around the world. For each earthquake a single origin time (UTC) and location with multiple magnitude values are provided. The magnitudes are of several different types, but in the present work only M_S , m_b and M_W are considered.
 100 Magnitudes coded as m_S and M_s are treated as M_S , and similarly for varying capitalization of m_b . In addition in the period 1955–1970 there are a few magnitude values marked as M and these are also treated as M_S cf. (Sykes, 1965). When both M and M_S values are available for an earthquake the difference is small. Each magnitude is either marked ISC, to signify that the value is computed by ISC themselves, or else it is marked with the abbreviation of a submitting agency. The ISC-marked values are referred to as reviewed, and according to Storchak et al. (2017), "seismic events are reprocessed resulting in
 105 more robust and reliable m_b and M_S magnitudes". Di Giacomo and Storchak (2016) say that ISC puts considerable effort into



relocating earthquakes and recomputing their magnitudes. They also recommend that preference be given to three agencies, CTBTO (Comprehensive nuclear-Test-Ban Treaty Organization, also known as International Data Centre, IDC, Vienna), MOS (Geophysical Survey of Russian Academy of Sciences, Moscow), and USGS (United States Geological Survey).


2.1.2 The GCMT Earthquake Catalog

- 110 The GCMT catalogue (2020) contains data on seismic moment tensors with associated M_W magnitudes of large earthquakes ($M_W \geq 5$) around the world, starting in 1976 (Dziewonski et al., 1981; Ekström et al., 2012). This is considered to be the most authoritative catalogue providing M_W (Di Giacomo and Storchak, 2016). There are 653 events in the NMAR region in this catalogue, and all but 9 of them are also in the ISC catalog, marked as originating from GCMT. In 482 cases the M_W match but in 171 cases there is a mismatch of 0.1 magnitude, and the average is used here.

115 2.1.3 The catalogue of Ambraseys and Sigbjörnsson

- Ambraseys and Sigbjörnsson (2000) published an earthquake catalogue for Iceland or more specifically for the region shown in Fig. 1. The catalogue covers exactly one century, i. e. from 1896 to 1995, and lists 422 earthquakes. The catalogue is based on teleseismic data from seismological bulletins, and information from books, journals, newspapers and reports. The authors recalculated surface magnitudes (M_S) and locations when possible. Ambraseys and Sigbjörnsson (2000) mention that the
- 120 greatest outstanding problem was the epicentral accuracy, particularly for pre-1960 macroseismic and instrumental events. They specially remark that epicentres before 1918 reported by the British Association for Advancement of Science (BAAS) are crude, as well as epicentres estimated by the ISC before 1950, although to lesser degree (Ambraseys and Sigbjörnsson, 2000). This catalogue contains valuable information for the time period from 1900 to 1960 when fewer records are available from other catalogues.

125 2.1.4 The USGS Earthquake Catalog

The USGS catalogue (2020) provides one magnitude value per earthquake (M_W , M_S or m_b), which is in almost all cases identical to the corresponding USGS-labeled value in the ISC database. However the locations in the USGS catalog are different from those in the ISC catalog, the difference frequently amounting to a few tens of kilometers. 

2.2 Local sources and catalogues

130 2.2.1 The catalogue of the Icelandic Meteorological Office

- The Icelandic Meteorological Office (IMO) in Reykjavík has been responsible for monitoring earthquakes in Iceland since shortly after its foundation in 1920 when the Mainka seismograph mentioned in the introduction was reinstalled there in 1925. A second Mainka instrument was installed in 1927, also in Reykjavík. Data processing was conducted at the IMO and the results were published in Seismological Bulletins (IMO, 1926–1973) which were sent to several seismological agencies
- 135 around the world. These results were mainly phase readings and reports of felt earthquakes along with a few locations.



After 1980 the IMO reanalyzed these data and combined them with other local and global sources, e. g. the University of Iceland (UI) reports discussed in the next subsection, and Kárník (1968), to mention a few. The resulting event locations and magnitudes form the basis of IMO's catalogue for the period 1926–1952.

140 In 1951–1952 three Sprengnether short-period seismographs, measuring all three components of motion, were installed in Reykjavík and the old seismographs were moved to Akureyri in North Iceland and to Vík in South Iceland (Fig. 1), and in the following two decades several more instruments were installed.

As detailed in the next subsection, the University of Iceland Science Institute (UII) initiated several research projects involving seismic measurements after 1970. Many of these were in cooperation with the IMO, and at the same time IMO's network continued to expand. As before the resulting data were published in the Seismological Bulletins. The IMO catalogue
145 1952–1974 is based on these and a digital-only bulletin for 1974.

From 1975 to 1986 no bulletins were published, and to fill up this gap, phase readings from the UII and the IMO stations were merged and reanalyzed to compute locations and magnitudes. This work was carried out at the IMO after 1990, and earthquakes of magnitude $M_L > 3$ were entered into the IMO database. The database for this period is somewhat preliminary and incomplete, as manual review is lacking. The period 1987–1990 is also in the IMO database, with results based on
150 *Mánaðaryfirlit jarðskjálfta* (Monthly reports of earthquakes) (IMO, 1987–1990), published by the IMO in cooperation with the UII.

In 1991 a digital seismic system, the South Iceland Lowland (SIL) system was implemented by the IMO (Stefánsson et al., 1993; Bödvarsson et al., 1996). As the name implies, it began in South Iceland, but was gradually expanded to cover all geologically active areas in the country. In 2020 around 80 stations are in operation in the SIL-network. Even if the system did
155 not cover the whole island to begin with, all events of magnitude $M_L > 4$ occurring within a few tens of km offshore should be present for the whole period. Locations and local magnitudes are automatically computed by the system, all automatically located events are manually reviewed, and the location recomputed. The IMO catalogue from 1991 is based on the SIL system analysis.

2.2.2 Data from the University of Iceland Science Institute

160 Research on historical seismicity at the University of Iceland relies heavily on reports by Tryggvason (1978a,b, 1979) and Ottósson (1980). Tryggvason's reports are based on the early seismographic observations at IMO and overseas for the years 1930–1960, augmented by felt reports and newspaper reports. Ottósson's report on earthquakes during 1900–1930 is based on felt reports and newspapers, supported by rare teleseismic observations.

Technical advances and increasing interest in crustal activity following the Surtsey eruptions in 1963–1967 led to a pro-
165 liferation of seismic observations in Iceland in the late 1960ies (Einarsson, 2018). Cooperation started between the UII and the Lamont-Doherty Earth Observatory (LDEO) at Columbia University in NY. A team from LDEO came to Iceland with several portable seismographs to study the background seismicity of the mid-Atlantic plate boundary (Ward, 1971). A network of six stations was operated on the Reykjanes Peninsula segment of the boundary during 1971–1976 (Björnsson et al., 2020), augmented by a dense network in the summers of 1971 and 1972 (Klein et al., 1973, 1977). The work continued by building an



170 island-wide network of short-period, vertical component seismographs, designed and built at UI SI. The installation began in
 South Iceland in 1973 and the network was gradually expanded in the following years, to the Tjörnes Fracture Zone (TFZ) in
 North Iceland in 1974, and to other parts in 1975–1979. A telemetered network was installed in Central Iceland in 1985. These
 networks provided valuable data on major events such as the Krafla volcano-tectonic episode of 1975–1984 (Einarsson and
 Brandsdóttir, 1980; Brandsdóttir and Einarsson, 1979; Buck et al., 2006; Wright et al., 2012), the Hekla eruptions of 1980 and
 175 1991 (Grönvold et al., 1983; Soosalu and Einarsson, 2002) and the Gjálp eruption in Central Iceland in 1996 (Einarsson et al.,
 1997), as well as the location of the major seismically active structures of Iceland (Einarsson, 1991). After 1991, the analog
 seismic stations were gradually replaced by the SIL-system discussed in the previous subsection. The last analog stations were
 dismantled in Central Iceland in 2010. Some of the data gathered by the seismic network discussed above, including epicentres,
 are documented in the *Skjálftabréf* (Earthquake letter) (UI SI, 1975–1988).

180 2.2.3 Newspapers

Newspapers are an important source on earthquakes in Iceland during the first part of the 20th century. The web page <http://timarit.is> provides search access to all newspapers published in Iceland during 1830–2016. News about earthquakes often
 provide direct or indirect information on their epicentres. In the current work we have used this data source extensively to check
 the correctness of the sources listed in the previous sections, and when deemed appropriate, to correct earthquake locations for
 185 the new catalogue.

2.3 Combining catalogues

All the catalogues, that need to be combined for the current study, have their own version of both origin time and location
 of each earthquake. As proposed by Jones et al. (2000) and several later publications we consider two records that differ by
 less than 16 s and 100 km to refer to the same earthquake. In a few cases we have found that this window is a little too
 190 narrow and we have made an appropriate manual adjustments. Furthermore, the AMB-SIG catalogue only provides times to
 the nearest whole minute, so for that a 90 s time window is used. For each earthquake, the ISC-time, all available locations
 (ISC, AMB-SIG, IMO, other local sources), and all available magnitude values of different types (M_W , M_S , m_b) and from
 different catalogues/contributors are entered into a data file. This file is then used for further processing as described below.

3 Earthquake locations



195 When accurate instrumentally determined location of an earthquake is missing, which applies to a large part of the study period,
 several methods may be used to determine the epicentre. Sometimes the historical accounts, discussed in Sect. 2.2 provide quite
 accurate locations, especially in inhabited areas. For the past decades a major effort has been devoted to the mapping of surface
 expressions of earthquake faults in Iceland, and these often indicate the location of historical earthquakes (Einarsson, 2015).
 Furthermore, the main faults tend to produce microearthquakes detected with the SIL network. By relative locations, detailed
 200 maps of the subsurface faults can be produced (Slunga et al., 1995). Combining all these methods and adding expert judgement



will normally give a much more accurate locations than those provided by the international catalogues, and the same holds for many of the locations in the IMO catalogues, even before 1990.

The remainder of this section describes details of how this methodology has been applied for several subperiods of the study period.

205 3.1 The period until 1990

In the period 1900–1925 there are 22 earthquakes in the ICEL region listed in our data file. All of these are in the AMB-SIG catalogue, and 4 are also in the ISC catalogue, originally coming from Gutenberg and Richter (1949). The authors have viewed all these earthquakes on a map, checked newspapers articles for contemporary accounts of them (using the web service timarit.is mentioned in Sect. 2.2.3), as well as scientific publications, in particular the report of Ottósson (1980). The result
 210 of this scrutiny is to use the AMB-SIG location for 14 earthquakes, the aforementioned report for one event, and **relocate** 6 events using the methodology described at the beginning of this section. In the new catalogue these location sources have been specified as “Amb-Sig”, “Report” and “New” respectively. Finally, for the 22 January 1910 earthquake we use the location provided by (Stefánsson et al., 2008), 20 km offshore North-Iceland. This source is marked as [1] in the catalogue, with details in an accompanying reference list.

215 In the period 1926–1955 there are 98 earthquakes in our data set, and their location has been scrutinised in the same way. Sometimes we can take into account that an origin time is within a known earthquake series. For this period additional data sources are the IMO catalogue (Sect. 2.2.1), as well as the reports of Tryggvason (1978a,b, 1979) which often provide direct epicentres. This results in using 36 AMB-SIG locations, 21 IMO locations (marked “IMetO” in the new catalogue), 34 locations from the reports, 4 computed as average of the most believable reported locations (marked “Average”), and 3 relocated (marked
 220 “New”).

In the period 1956–1990 there are 380 earthquakes in the data file. Having multiple local seismometers opens the possibility of computing locations from local measurements. Such locations have found their way into several of our sources, but the quality is variable. There are several journal articles stemming from this period providing locations for 41 earthquakes and our choice is to trust these. The relevant articles are listed in the reference list in the readme-file accompanying the catalogue, and
 225 specified as [2], [3], etc. in the catalogue itself. Some of the articles are also cited in Sect. 2.2.2 above. Available locations for the remaining 338 earthquakes were viewed on a map, upto 4 locations per earthquake: From AMB-SIG, IMO, ISC, and one of the earthquake reports, newsletters or bulletins. It transpired that none of these sources could be used as an overall first choice, but instead we had to select the most believable one in each case, or sometimes take an average or relocate. The result was to use AMB-SIG for 59 cases, the IMO catalogue for 107, ISC for 36, 12 from reports, 55 locations from the *Skjálftabréf*
 230 (Earthquake letter) (UISI, 1975–1988) (marked “Letter”), 14 averaged, and 56 relocated.

3.2 Earthquakes after 1990

For the period 1991–2019 our data file contains 980 earthquakes in the ICEL region. With the introduction of the SIL system described in Sect. 2.2.1, the quality of the local epicentre information vastly improved after 1990. We have viewed maps of




these locations together with ISC and USGS locations, along with a background layer showing microearthquake activity. From
 235 this comparison it was evident that the errors in the teleseismic locations are in many cases tens of kilometers (c. f. Sect.
 3.3), whereas the SIL locations are very convincing, normally accurate to a few km (1 or 2 inside the network, but somewhat
 more outside). The only region where the SIL-locations seem suspect is on the Reykjanes Ridge, more than 150 km offshore,
 or approximately south of 63°N. This inaccuracy is not important for future work with these data e. g. in hazard analysis,
 and we have chosen to use the ISC locations for the relevant 40 earthquakes. In addition there are 33 ISC-earthquakes in the
 240 ISC catalogue missing from the SIL catalogue. Of these, 25 were located far offshore and 8 were in or near the Bárðarbunga
 caldera, in the uninhabited interior of Iceland. The earthquakes near the caldera were relocated to the caldera itself, and the
 ISC locations for the offshore events were retained.

3.3 Accuracy of earthquake locations

To get some indication of the accuracy of event locations in the international catalogues the locations in the AMB-SIG and
 245 the ISC catalogues have been compared. For 292 events in both catalogues (period 1910–1996), the maximum mismatch in
 location is 113 km, the median is 10.0 km, and in 90% of cases the difference is < 30 km. The accuracy does not seem to
 increase markedly with time or with earthquake magnitude. A similar comparison between the ISC and the USGS catalogues
 (1973–2019) gave a maximum difference of 108 km and median difference of 9.5 km. Comparison of ISC and SIL in the
 ICEL region (925 events; 1991–2019) gave a median of 5.7 km with 93% < 30 km, and ISC-USGS comparison in the ICEL
 250 region (630 events; 1973–2019) gave a median of 15.3 km with 89% < 30 km.

4 Earthquake sizes

Contrary to earthquake locations, where local information is better, estimating earthquake sizes with teleseismic data is often
 easier and more reliable than using regional and local data. The dominant periods at teleseismic distances are longer and the
 structure is smoother, and therefore the waveforms fit better (Wang et al., 2009; Karimiparidari et al., 2013; Yadav et al., 2009).

255 Modern earthquake catalogues generally provide moment magnitudes for all earthquakes larger than about M_W 4. For
 earthquakes, whose source mechanism and magnitude have not been modeled by moment tensor inversion of seismic data,
 regression on surface or body-wave magnitudes is customarily used to obtain proxy M_W values, and this procedure is followed
 here. As mentioned in the introduction a larger collection of earthquakes than is really needed in the Iceland context is used to
 construct the M_S - M_W and m_b - M_W regression relationships, thus killing two birds with one stone, improving the accuracy of
 260 these relationships, and getting a larger catalogue of 6926 earthquakes. The data file discussed in Sect. 2.3 above contains some
 earthquakes that are too small to be included in the catalogue, but are used in the regression in order to improve the relationship
 for small magnitudes.


For each earthquake there are usually several m_b -values, contributed by different agencies, and the same applies to M_S ,
 and sometimes also M_W . These values must be appropriately averaged or selected before they can be used in the regression.
 265 This subtask is dealt with in the next subsection, followed by a subsection on uncertainty in the magnitude estimates in the



context of previous studies. Subsection 4.3 discusses the proxy regression, and finally there are two short subsections on the uncertainty in the proxy and local magnitudes.

4.1 Best estimates of M_W , M_S and m_b

4.1.1 Estimates of M_W

270 In the NMAR region 873 earthquakes in our data have modeled moment magnitudes, of these 147 are in the ICEL region. The GCMT catalogue is the golden standard for moment magnitudes, and available GCMT M_W values are used verbatim, 666 in total in the larger NMAR region. The magnitudes range from M_W 4.51 to 7.08, stemming from the period 1976–2019. Additional 208 earthquakes have M_W -values from other sources, 204 are from the Swiss Seismological Service (the “Zurich Moment Tensors” (ZUR-RMT)), all stemming from the period 2000–2005, and 3 are from the USGS catalogue. In addition
 275 to the 204 earthquakes, 61 earthquakes are listed in both the GCMT and the ZUR-RMT catalogues, with ZUR-RMT values on average 0.08 magnitudes higher (standard deviation 0.09). The common values are in the range 4.8–6.6 and a graph of M_{GCMT} against $M_{ZUR-RMT}$ shows that the relationship is approximately linear with slope 1, which justifies using -0.08 as an agency correction for ZUR-RMT. More precisely, we set $M_{est} = M_{ZUR-RMT} - 0.08$, and the estimated values are in the range 3.62–5.22. 
 280 Similarly GCMT and USGS have 109 common events, with a correction of 0.00 and standard deviation of 0.08, and we set $M_{est} = M_{USGS}$ for the 3 events. Other agencies which provide 35 additional M_W values in the ISC catalogue have been compared with the GCMT catalogue in the same way, but in all cases the standard deviation is too high to include them.

4.1.2 Estimates of M_S

The data contains 5076 M_S values for earthquakes in the NMAR region, of these 1074 in the ICEL region. This time the
 285 golden standard consists of reviewed values in the ISC catalogue. The situation is somewhat complicated by the fact that three important sources for magnitudes in the first half of the catalogue period have very little overlap with these reviewed values, so that corresponding agency corrections cannot be determined. In fact all sources have small overlap with ISC before 1965. The period has therefore been divided in two, 1900–1964, and 1965–2019.

Of the 317 M_S values before 1965, 43 are ISC-reviewed. The remaining 274 M_S values come from a total of 24 other
 290 sources, the most important being Ambraseys and Sigbjörnsson (2000), Sykes (1965) (PAL in the ISC catalogue), and the California Institute of Technology in Pasadena (PAS). For each of these earthquakes a direct average of available magnitudes is used.

Of the 4759 earthquakes occurring since 1965, 2828 have ISC-reviewed magnitudes, again used unchanged. The remaining
 1931 events have M_S values from a total of 33 sources. After pooling agencies with fewer than 20 events all sources have
 295 sufficient overlap with ISC to estimate an agency correction, Δ_i , computed as the average of all available differences, $\delta_i = M_{ISC} - M_i$, where M_i is the magnitude estimated by agency i . When only one source is available, M_{est} is set to $M_i + \Delta_i$, but



otherwise a weighted average is computed using

$$M_{\text{est}} = \sum_i w_i (M_i + \Delta_i), \quad (1)$$

where the w_i are normalised weights, and the sum is taken over all available M_i . If the Δ_i are independent it is optimal to weigh with their inverse variance, and, even if not optimal, it is more robust to use the same weights when the Δ_i are correlated (Schmelling, 1995). To be precise, $w_i = (1/\sigma_i^2) / \sum_i (1/\sigma_i^2)$, where σ_i is the standard deviation of the available δ_i . The lowest corrections (0.02–0.04) and the lowest standard deviations (0.10–0.16) are those for AMB-SIG, CTBTO, MOS and USGS. Of the 1931 events without reviewed ISC magnitudes, 1802 are contributed by a single agency (the majority, 1373, from CTBTO), and for 129 of them Eq. (1) is used.

4.1.3 Estimates of m_b

Our data file contains 7794 NMAR events with an m_b value, of these 1308 ICCEL events. Again it is beneficial to split the period at year 1965. ISC-reviewed values are once more used when available, for 38 earthquakes out of 64 before 1965 and for 5774 out of 7730 since 1965. Of the 26 remaining earthquakes in the first period Ambraseys and Sigbjörnsson (2000) provide m_b for 21 events and USGS provides the last 5. Of the 1892 remaining earthquakes in the second period there are 44 contributors of m_b values, the largest being CTBTO and USGS. Final m_b values are computed as for M_S : 1688 have a single contributor and 268 use Eq. (1). Agency corrections and standard deviations are somewhat higher than for M_S , typically 0.1–0.2 and 0.15–0.25, respectively.

4.2 Uncertainty of magnitude estimates

4.2.1 A short survey of uncertainty estimates

Helffrich (1997) discusses the uncertainty of moment magnitudes in the GCMT and USGS catalogues, and his conclusion corresponds to a standard deviation in M_W of 0.05, 0.04, and 0.10, for deep, intermediate, and shallow events, respectively. Kagan (2003) studies the accuracy of earthquake catalogues extensively. Among his conclusions are the standard deviation of M_W for both the GCMT and USGS catalogues on the order of 0.05–0.09 for deep to shallow earthquakes, 0.07–0.11 for M_W 6 to 8, and decreasing from 0.11 to 0.06 in the period 1980–2002. Werner (2008) models the magnitude accuracy of 25000 events during 1980–2006 with a Laplace-distribution. The confidence interval presented in the article corresponds to the confidence interval of a normal distribution with $\sigma = 0.08$. Finally, Gasperini et al. (2012) conclude with an even lower value, $\sigma(M_W) = 0.07$. Many of the estimates cited above are obtained by dividing the standard deviation of magnitude difference between the USGS and the GCMT catalogues by $\sqrt{2}$, on the assumption that the errors in them are independent and have the same variance. In reality the errors are probably correlated, so that the cited values may be underestimates of the actual uncertainties.

With a little handwaving Kagan (2003) estimates the uncertainty of M_S in the ISC catalogue to be about 0.2, and that of m_b to be about 0.25. In line with these numbers, Kagan also concludes that when M_S and/or m_b is turned into proxy M_W , the



uncertainty is about 3–4 times higher than when M_W is found with moment tensor modeling. This reckoning is supported by both Werner (2008) and Gasperini et al. (2013).

330 4.2.2 Uncertainty of the best estimates

For earthquakes occurring before 1965, there is not enough data to compute the uncertainty objectively, so that a subjective estimate must be used: For this period the uncertainty in M_S has been set to 0.25, and that in m_b to 0.30.

After 1964, Eq. (1) is used. Let M denote the actual magnitude of an earthquake, and M_g its “golden standard” estimated magnitude (which may be unavailable), M_{GCMT} for moment magnitude and M_{ISC} for the other two magnitudes. Also, let
 335 $d = M_g - M$. The uncertainty in M_g , or standard deviation of d , is set to

$$\sigma_d = \begin{cases} 0.09 & \text{for moment magnitude} \\ 0.18 & \text{for surface magnitude} \\ 0.23 & \text{for body-wave magnitude} \end{cases} \quad (2)$$

and these numbers are used directly when M_g is available and $M_{\text{est}} = M_g$. Keeping in mind that almost all the earthquakes in the NMAR region are shallow, these uncertainties are perhaps somewhat lower than those quoted in Sect. 4.2.1. However, the accuracy of the global catalogues has probably improved since the quoted studies were carried out, and, furthermore, these
 340 studies do not explicitly specify GCMT or reviewed ISC magnitudes.

When M_g is not available, and M_{est} is computed via Eq. (1) the error in the magnitude estimate may be partitioned into several terms:

$$\begin{aligned} M_{\text{est}} - M &= (M_{\text{est}} - M_g) + (M_g - M) \\ &= \sum w_i (M_i + \Delta_i - M_g) + d \\ 345 &= \sum w_i (\Delta_i - \delta_i) + d \end{aligned}$$

using that the w_i sum to 1. Treating d and the δ_i as random variables, and the Δ_i as constants this gives,

$$\text{Var}(M_{\text{est}} - M) = \sigma_d^2 + \sum_i w_i^2 \text{Var} \delta_i + 2 \sum_{i < j} w_i w_j \text{Cov}(\delta_i, \delta_j) - 2 \sum_i w_i \text{Cov}(d, \delta_i)$$

The first term is given by Eq. (2), and $\text{Var} \delta_i$ and $\text{Cov}(\delta_i, \delta_j)$ can be approximated by σ_i^2 and σ_{ij} , the data covariance of the available pairs (δ_i, δ_j) . Finally, for the last term, we have

$$w_i \text{Cov}(d, \delta_i) = r_i \sigma_d \sigma_i \quad (3)$$

where r_i is the correlation between d and δ_i . A reasonable constraint is that this correlation is positive: If M_g overestimates
 350 M , why should M_i overestimate M even more? Another constraint is that the estimated variance in M_{est} is not smaller than when the golden standard M_g can be used. The second constraint corresponds to $r_i = \sigma_i / (2\sigma_d)$. Selecting the middle road with $r_i = \sigma_i / (4\sigma_d)$ seems reasonable: it gives r_i in the range 0.11–0.64; on average 0.28. This choice corresponds to approximating



the last term with $\sum_i w_i^2 \sigma_i^2$, and the uncertainty estimate:

$$SD(M_{\text{est}} - M) = \sqrt{\sigma_d^2 - \frac{1}{2} \sum_i w_i^2 \sigma_i^2 + 2 \sum_{i < j} w_i w_j \sigma_{ij}} \quad (4)$$

355 The root-mean-square (RMS) average uncertainty for all cases where Eq. (1) is used to estimate M_W is 0.113, for M_S it is 0.205, and for m_b 0.302.

4.3 Proxy values for M_W

In the New Manual of Seismological Observatory Practice, Bormann et al. (2013) recommend the use of general orthogonal regression to convert between magnitude types when uncertainties in the types differ significantly, as when estimating M_W from M_S or m_b . They also recommend using a nonlinear relationship. An implementation of such a procedure is given by 360 Gasperini et al. (2013) which is based on Stromeyer et al. (2004), and we have chosen to follow this procedure. A proxy M_W value is computed from M_S using

$$M_W^{\text{proxy}} = \exp(a + bM_S) + c, \quad (5)$$

where M_S is the best estimate of Sect. 4.1, a , b and c are parameters determined by χ^2 -regression using Matlab's optimization 365 toolbox and the formulae in Appendix B of Gasperini et al. (2013) (note that the two terms in curly braces in Eq. (B2) in the Appendix should be squared).

Bormann et al. (2013) also recommend weighing data points in magnitude ranges with low data frequency higher (histogram 370 equalization). We use a moderately weighted regression of this type: an earthquake with moment and surface magnitudes M_W and M_S gets a weight of $M_W + M_S - 2$. The effect is that the largest earthquakes weigh about twice as much as the smallest ones.

There is freedom in the regression to fix one of the uncertainties, $\sigma(M_S)$ or $\sigma(M_W)$, and it is also possible to fix their ratio. If the ratio is taken as 2.0, as in Gasperini's article, the NMAR data gives $\sigma(M_S) = 0.176$ and $\sigma(M_W) = 0.0881$.

Exactly the same method could be used to compute M_W from best estimates of m_b . However the NMAR dataset contains much fewer large earthquakes than the one used by Gasperini et al., so when this is attempted, the relationship turns out to 375 be very slightly concave rather than convex (logarithmic rather than exponential). The nonlinearity is so slight that it can be ignored with a linear model. For earthquakes larger than about $m_b = 5.75$ an M_S value is almost always available, and, as explained below, preferred. Thus a model valid for $m_b < 5.75$ is constructed and used:

$$M_W^{\text{proxy}} = a + bm_b, \quad (6)$$

Earthquakes in the Bárðarbunga caldera (Fig. 1) exhibit a different relationship between M_W and m_b than the rest of the data 380 set: for the same M_W , their m_b is ~ 0.15 higher. Therefore a separate model is used for these earthquakes. The relationship between M_W and M_S is also slightly different in the caldera than elsewhere, and for consistency separate models are also used in this case. The ratio used by Gasperini et al., $\sigma(m_b)/\sigma(M_W) = 2.5$, gives $\sigma(m_b) = 0.225$ and $\sigma(M_W) = 0.0900$.

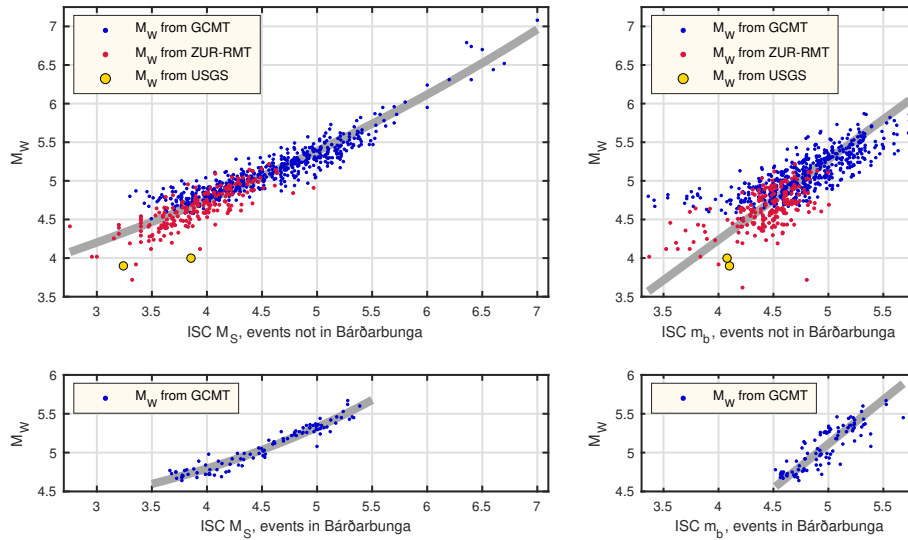


Figure 3. Magnitude pairs for earthquakes in the Northern Mid-Atlantic Ridge (NMAR) region 1976–2019, exponential relations for M_S and linear relations for m_b , all fitted with χ^2 -regression. There are 733 M_W - M_S pairs outside Bárðarbunga and 95 in it, and 744 M_W - m_b pairs outside and 97 in Bárðarbunga. Note that a few earthquakes with $m_b < 3.5$, and thus not included in the final catalogue, are used for the regression. A slight random jitter has been applied to the pairs to improve the visual appearance of the graphs.

As one might expect the deviation in the M_S model is considerably lower than in the m_b model (Fig. 3). Thus M_S is used to compute a proxy M_W when it is available, for 4217 events in the NMAR region, of these 933 are in the ICEL region. In the absence of an M_S value the m_b relation must be used, for 2954 events in NMAR, of these 379 are in ICEL. M_S is available for almost all large earthquakes, the ones that are important for hazard assessment. Only three $m_b > 5$ -values are used to compute proxy M_W in the ICEL region and therefore the regression only uses data with $m_b < 5.5$ (Fig. 3).

To use a somewhat round number, and to have a single M_W uncertainty, the current work uses $\sigma(M_W) = 0.09$ for all the models, m_b and M_S , in and outside Bárðarbunga (Fig. 3, Table 1). These uncertainty values are in good agreement with the results quoted in Sect. 4.2.1, perhaps somewhat lower, which might reflect that our data is more recent and there is continuous improvement in the quality of the global catalogues.

To study possible change in the M_S - M_W relationship or in the accuracy of the moment tensor M_W values, a separate modeling was tested for a few sub-periods. A slight, somewhat erratic, improvement in the accuracy was observed, but no significant change in the relationship. Thus it was decided to use a single model for the whole period.



Table 1. Parameters of exponential and linear models for M_W , obtained with $\sigma(M_W) = 0.09$, c. f. Eqs. (5) and (6), RMSD is the root-mean-square deviation between the model and the y -coordinates of the data, and the last column gives the estimated $\sigma(m_b)$ and $\sigma(M_S)$, respectively.

Model	a	b	c	RMSD	Uncertainty
non-caldera $M_W \sim M_S$	0.850	0.143	0.612	0.142	0.174
non-caldera $M_W \sim m_b$	0.077	1.040		0.256	0.225
caldera $M_W \sim M_S$	-0.961	0.322	3.410	0.070	0.008
caldera $M_W \sim m_b$	-0.602	1.143		0.155	0.112

395 4.4 Uncertainty of the proxy magnitudes

Following Gasperini et al. (2013), the variance of M_W^{proxy} for an earthquake obtained with M_S regression may be estimated with:

$$\begin{aligned}\sigma_{\text{proxy}}^2 &= (f'(M_S)\sigma_{\text{MS}})^2 + \sigma(M_W)^2 \\ &= \exp(a + bM_S)^2 \sigma_{\text{MS}}^2 + \sigma(M_W)^2\end{aligned}\quad (7)$$

where σ_{MS}^2 is the variance estimate for the earthquake, obtained as described in Sect. 4.2.2, $\sigma(M_W) = 0.09$ as in Sect. 4.3, f is the model function given in 5, and a and b are the regression parameters (Table 1). The values of σ_{proxy} computed with Eq. (7) are in the range 0.125–0.245, and their RMS-average is 0.146, indicating that only few earthquakes have uncertainty in the high end of the range. A similar procedure is used in the m_b regression case and the uncertainties given by the analog of Eq. (7) are in the range 0.256–0.527 (RMS-avg. 0.288). For the caldera models, the uncertainty ranges are 0.102–0.177 (RMS-average 0.113) for M_S and 0.277–0.391 (RMS-avg. 0.281) for m_b .

405 4.5 Uncertainty in recent local magnitudes

The SIL system described in Sect. 2.2.1 provides two types of local magnitudes, denoted with M_L and M_{LW} . To assess the uncertainty in these values χ^2 -regression has been applied, with modeled (non-proxy) M_W -magnitudes on the y -axis and M_L and M_{LW} on the x -axis with $\sigma(M_W) = 0.09$, as in Sect. 4.3 (with caldera earthquakes excluded). The resulting estimates are $\sigma(M_L) = 0.471$ and $\sigma(M_{LW}) = 0.570$, far higher than the corresponding values 0.176 for M_S and 0.225 for m_b . Restricting the comparison to earthquakes onshore Iceland (24 events) gave an improved $\sigma(M_L) = 0.224$ but a worse $\sigma(M_{LW}) = 0.748$. In all cases there is a considerable negative bias of 0.6–1.4 magnitudes, more offshore (outside the SIL network) than onshore. One explanation for the large spread and bias of the local magnitudes is that the SIL system's analysis is optimised towards robust magnitude estimation of smaller earthquakes than those of this comparison. Figure 4 shows the spread of the data, evidently in line with these estimates. It has no meaning to show the regression curves because of the high uncertainties.

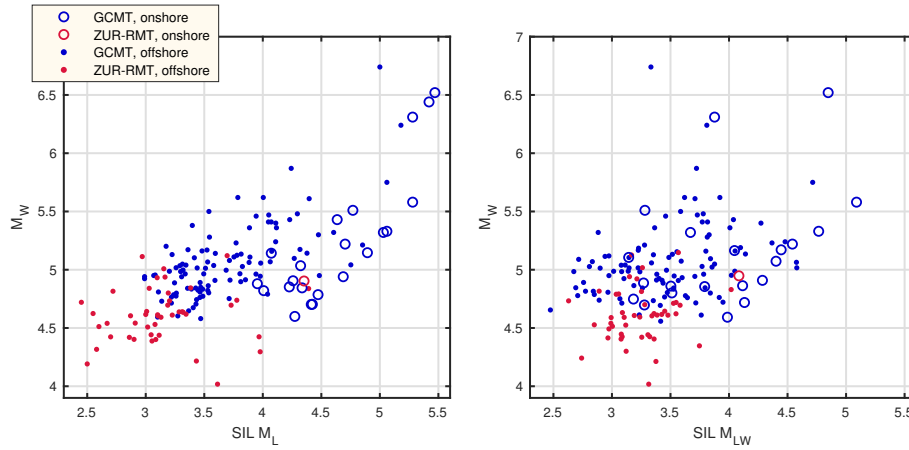


Figure 4. Moment tensor modeled magnitudes (M_W) and two types of local magnitudes computed by the SIL system (see Sect. 2.2.1). Earthquakes in the calderas Bárðarbunga and Katla have been excluded, but apart from that all events with both SIL- and M_W -magnitudes are included, 24 onshore and 146 offshore. The ZUR-RMT M_W values were computed by the Swiss Seismological Service 2000–2005.

5 Results and discussion

The primary results of this study is the ICEL-NMAR catalogue, described briefly in the next subsection. Section 5.2 discusses the completeness of the catalogue as a function of magnitude and time. Next is a section which compares the new catalogue with the ISC-GEM catalogue discussed in the introduction, and finally there is a section with a general discussion. The catalogue earthquakes within the region 63° – 67° N and 13° – 25° W are plotted in Fig. 5.

5.1 The ICEL-NMAR Earthquake Catalogue

The new catalogue is available in the Mendeley Data Repository, as the *ICEL-NMAR Earthquake Catalogue*; see Data Availability section below. There are three files, `icel-nmar.txt` with the actual earthquake data, `supporting-info.txt` with meta information, and `sil-time.txt` with SIL origin times for comparison. For each earthquake `icel-nmar.txt` provides region (ICEL or NMAR), origin time, location, M_W , the M_W uncertainty estimated with Eq. (4) or (7) as appropriate, and information on how the M_W value is computed or what its source is. When available, similar information for M_S and m_b are given, and finally information on the origin time and location sources. All events smaller than M_W 4 were excluded and the uncertainty was not computed for $M_W < 4.5$. The available information on hypocentral depth is very inconsistent and it is not provided in the catalogue. The brittle part of the Icelandic crust in most areas is less than 12 km thick, and earthquakes of any significance will rupture the whole thickness (Hjaltadóttir, 2010; Pedersen et al., 2003; Stefánsson et al., 1993).

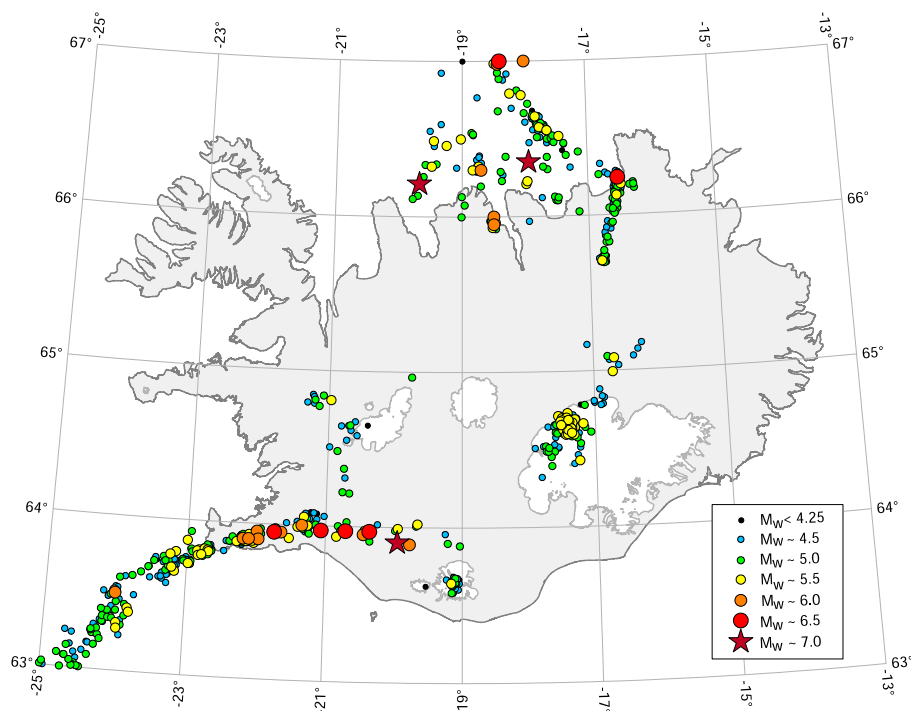


Figure 5. Earthquakes in or near Iceland during 1900–2019 listed in the new catalogue. For the first part of the period, location coordinates are often given in round numbers (tenths of degrees or even half or whole degrees). The map shows slightly jittered locations (≤ 3 km; except when $M_W > 5.75$) to avoid superimposing different events. The magnitude range for the smallest earthquakes is M_W 4–4.25. For the other ranges the central value is specified, so that e. g. $M_W \sim 4.5$ implies the range 4.25–4.75. The largest event is M_W 7.01 in the TFZ at 18°W.

430 5.2 Magnitude of completeness

To investigate the magnitude of completeness of the new harmonised catalogue for the whole NMAR region, two methods were used. Firstly, histograms with 10–30 year bins of the earthquake count with magnitudes exceeding different thresholds were created (Fig. 6), and secondly Gutenberg-Richter models were constructed for a few selected periods and minimum magnitudes. The histograms show that the catalogue appears to be complete for $M_W \geq 6$ for the whole period, for $M_W \geq 5.5$ since 1915, for $M_W \geq 5$ since 1970, and for $M_W \geq 4.5$ since 2000. Gutenberg-Richter modeling with simple declustering (Gardner and Knopoff, 1974) indicate a magnitude of completeness of 5.5 for the whole period, and 4.5 for the period after 1970 (data not shown). For the ICEL region similar histograms indicated a completeness magnitude of 5.5 for the whole period, 5 from 1915, and 4.5 from 1965.

It is interesting to compare the number of large events during the 20th century with lists of historical earthquakes in earlier centuries. Table 2 shows earthquakes with estimated magnitude ≥ 6 in Iceland or within 20 km offshore during 1700–1899, in total 17 events. In the new catalogue there are 8 earthquakes with $M_W \geq 6$ in the 20th century in the same region, and 4 more in the first two decades of the 21st century.

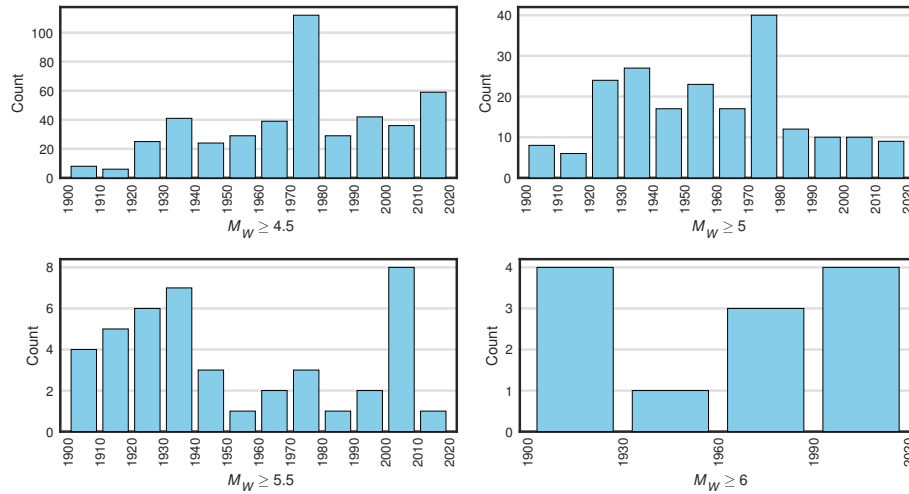


Figure 6. Count of earthquakes in the NMAR region exceeding different M_W thresholds according to period.

In the final catalogue there are a few periods with disproportionately many earthquakes connected to tectonic activity (SISZ 2000 and 2008) and volcanic activity (Krafla region 1975–1976, Hengill 1994–1999, Bárðarbunga 2014–2015).

445 In the wake of large earthquakes it is possible that other events are triggered by their propagating waves. These secondary events can be missing from the international catalogues because their signal is lost in the coda of the primary event at teleseismic distances. An example of this are two events on the Reykjanes Peninsula triggered by the M_W 6.52 South-Iceland event on 2000-06-17 15:40:41, occurring 26 and 30 seconds later, and 65 and 80 km farther west, respectively. The size of the first one was estimated to be M_L 5.5 (Antonioli et al., 2006), and that of the second one M_W 5.79 (Pagli et al., 2003). Our estimated
 450 M_W for the first event is 5.5, and both M_W values have been added to the new catalogue with uncertainties of 0.4 and 0.2, respectively. These are the only events not coming from one of the four international catalogues of Sect. 2.1.

5.3 Comparison with the ISC-GEM catalogue

Version 7.0 of the ISC-GEM catalogue was released in 2020. In the NMAR region it contains much fewer events than our new catalogue (168, with M_W in the range 5.42–7.00), and no local information is used to relocate them. Non-proxy M_W
 455 magnitudes in ISC-GEM and the current catalogue are identical, but in general the proxy values differ, both because ISC-GEM uses a different regression model and because the underlying M_S and m_b data may differ. The difference in the more important M_S regression curves is slight. Comparing Fig. 3 and the corresponding figure in (Di Giacomo et al., 2015) for $M_S = 5$ the ISC-GEM curve is 0.06 higher, for $M_S = 6$ it is 0.02 lower and for $M_S = 7$ it is 0.05 lower.

There are 119 earthquakes with proxy M_W common to the catalogues, of these 30 in the ICEL region. Their ISC-GEM
 460 magnitudes are on average 0.06 lower than the ones presented here. The largest absolute difference is 0.47 and for 85 events the difference is less than 0.2. For the ICEL region the mean difference is 0.02, the largest absolute one is 0.26, and there are 24 events which differ by less than 0.2 magnitudes.



Table 2. Historical large earthquakes in Iceland in the 18th and 19th centuries. The magnitude estimates are based on the resulting damage (Halldórsson, 1992b; Stefánsson et al., 2008; Sólness et al., 2013). The epicentral locations are approximate but overall the longitude is more accurate than the latitude since in most cases N-S surface faults have been mapped and linked to the largest events. Note that these earthquakes are not included in the new catalogue.

Date	Lat.	Lon.	M_S	M_W^{proxy}
1706, April	63.9	21.2	6.0	6.1
1732, Sept.	64.0	20.0	6.7	6.7
1734, March	63.9	20.8	6.8	6.8
1755, Sept.	66.1	17.6	7.0	7.0
1766, Sept.	63.9	21.2	6.0	6.1
1784, August	63.9	20.5	7.1	7.1
1784, August	63.9	21.0	6.7	6.7
1829, Feb.	63.9	20.0	6.0	6.1
1838, June	66.3	18.8	6.5	6.5
1872, April	66.1	17.4	6.5	6.5
1872, April	66.2	17.9	6.5	6.5
1885, Jan.	66.3	16.9	6.3	6.4
1896, August	64.0	20.1	6.9	6.9
1896, August	64.0	20.3	6.7	6.7
1896, Sept.	63.9	21.0	6.0	6.1
1896, Sept.	64.0	20.6	6.5	6.5
1896, Sept.	63.9	21.2	6.0	6.1

A few events which differ most were investigated, and it transpired that the explanation was usually a combined effect of the regression curve difference and the underlying data difference.

465 5.4 Cumulative seismic moment and the earthquake cycle

The question arises how representative the seismic activity of the catalogue period is for any period of 120 years. The answer depends on the length of the typical earthquake cycle. If the cycle is significantly longer than 120 years our sample may underestimate the seismicity greatly, e. g., if the period does not contain a characteristic maximum magnitude earthquake. Studies of South Iceland earthquakes indicate that we may be near this critical duration of the cycle. The study of Einarsson et al. (1981) gave an average time between major earthquake sequences of about 80 years, ranging between 45 and 112 years. Stefánsson and Halldórsson (1988) concluded that the South Iceland Seismic Zone (SISZ) had a total release of accumulated strain in about 140 years. Decriem et al. (2010) estimated the accumulated strain by plate movements since the 1896–1912 earthquakes and compared to the released seismic moment during the earthquakes of 2000 and 2008. They found that only about half of the strain had been released by these events.



475 For comparison with our catalogue we estimate the potential seismic moment release in the two fracture zones, the SISZ and the TFZ, by a simplified geometric model of two transform faults parallel to the relative plate motion. The simplification is justified by the arguments of Sigmundsson et al. (1995), who showed that the seismic moment of many closely spaced, short transverse faults (bookshelf faults) is equivalent to that released by a single transform fault. We also assume that almost all the seismic moment is released by the transform zones and not by the divergent segments of the plate boundary or the magmatically
 480 induced seismicity. The length of the transform zones is taken as 180 km and 150 km for the South and North Iceland zones, respectively, i. e. the offset of the ridge axes. The width of the fault is taken to be the thickness of the seismogenic part of the crust, about 10 km, the spreading rate is 19 mm/yr, and the shear modulus $20 \cdot 10^9$ Pa (McGarr and Barbour, 2018). The moment rate will then be:

$$20 \cdot 10^9 \times 19 \cdot 10^{-3} \times 330 \cdot 10^3 \times 10 \cdot 10^3 = 1.25 \cdot 10^{18} \text{ Nm/yr.} \quad (8)$$

485 This result can be compared with the total seismic moment released in Iceland during the catalogue period, which may be estimated using the catalogue data and the completeness information of Sect. 5.2. Such computation for all earthquakes $\geq M_W$ 4 in the area shown in Fig. 6, excluding the Reykjanes Ridge and Bárðarbunga, gives a total of $1.61 \cdot 10^{20}$ Nm. Adding a simple correction for smaller events assuming the Gutenberg-Richter law with $b = 1$ raises the estimate to $1.64 \cdot 10^{20}$ Nm, corresponding to an annual rate of $1.37 \cdot 10^{18}$ Nm/yr. This agrees quite (even surprisingly) well with the result of Eq. (8).

490 5.5 General discussion

We have constructed a new catalogue of earthquakes in Iceland and, as a byproduct, for the Northern Mid-Atlantic Ridge. A general criterion for entry into the catalogue is that an earthquake has been instrumentally recorded by agencies outside Iceland. Locations of events in the ICEL region (Fig. 1) have been reassessed and proxy M_W values for earthquakes without modeled moment magnitudes have been computed. The resulting moment magnitudes range from 4 to 7.08. For the ICEL region the
 495 catalogue is reasonably complete for $M_W \geq 5.5$ for the whole period. There are 36 earthquakes of this size onshore or less than 20 km offshore, i. e. 2.8 per decade, and of these 10 have $M_W \geq 6$, i. e. 0.8 per decade.

To our knowledge, the map in Fig 5 is the first earthquake map of Iceland which is not substantially confounded by misplaced events. The locations of the two large TFZ-events marked with a star in Fig. 5 (the easternmost 1910 and the westernmost 1963) are still uncertain and controversial. Neither of them appears to have occurred on the best known structures, the Húsavík-Flatey
 500 fault or the Grímsey Oblique Rift. Stefánsson et al. (2008) suggest that the 1963 event originated on a NNE-striking fault offshore Skagafjörður, based on the distribution of recent earthquakes and the focal mechanism solutions of Stefánsson (1966) and Sykes (1967). They furthermore suggest that the 1910 event originated on the eastern margin of the Grímsey Shoal. We adopt these locations in our catalogue. Distribution of epicentres and recent bathymetric data support these suggestions (Einarsson et al., 2019).

505 The largest events occur in the two seismic zones, where the plate boundaries are parallel to the plate movements (Fig. 1 and 5). The distance from these events to the Reykjavik capital area, where 63% of the population live, is some tens of kilometers, and the same holds for Akureyri in North Iceland, with 5% of the population. However there are several towns and villages



within the zones. An important future task is to carry out a detailed analysis of the seismic hazard both in these urban areas and elsewhere in Iceland. The new catalogue should prove to be an essential resource for such seismic hazard mapping.

510 *Data availability.* The international earthquake catalogues from USGS, GCMT and ISC are freely available online. In addition we used the catalogue of Ambraseys and Sigbjörnsson (2000), as well as scattered data on individual earthquakes from various printed sources, as detailed in Sect. 2. We also used the Icelandic Meteorological Office catalogue for the period 1926–2019. Work is currently underway to put at least part of this catalogue online. The new catalogue is available in the Mendeley data repository as the ICEL-NMAR Earthquake Catalogue (<http://dx.doi.org/10.17632/7zh6xg22cv.1>).

515 *Author contributions.* K Jónasson and B Bessason prepared the manuscript with contributions from all authors, K Jónasson and Á Helgadóttir wrote software for data processing, P Einarsson, GB Gudmundsson, K Jónasson, B Bessason, B Brandsdóttir and Kristín Vogfjörð reappraised event locations.

Acknowledgements. We thank all the people and institutions who have set up seismometers, gathered data from these, and used them to compute earthquake locations and magnitudes. Without their contribution this work would not have been possible. The public datasets that
520 we have used are available from three open web sources: the ISC Bulletin Event Catalog (2020); the GCMT Earthquake Catalog (2020); and the USGS Earthquake Catalog (2020). Finally, we use the earthquake catalogue of the Icelandic Meteorological Office for the period 1926–2019.



References

- Ambraseys, N. N. and Sigbjörnsson, S.: Re-appraisal of the seismicity in Iceland, Earthquake Engineering Research Centre, University of
 525 Iceland, Selfoss, Iceland, 2000.
- Antonioli, A., Belardinelli, M., Bizzarri, A., and Vogtfjord, K.: Evidence of instantaneous dynamic triggering during the seismic sequence of
 year 2000 in south Iceland, *Journal of Geophysical Research: Solid Earth*, 111, 2006.
- Björnsson, S., Einarsson, P., Tulinius, H., and Hjartardóttir, A. R.: Seismicity of the Reykjanes Peninsula 1971–1976, *Journal of Volcanology
 and Geothermal Research*, 391, 2020.
- 530 Bormann, P., Wendt, S., and DiGiacomo, D.: Chapter 3: Seismic Sources and Source Parameters, in: *New Manual of Seismological Obser-
 vatory Practice 2 (NMSOP-2)*, edited by Bormann, P., pp. 1–259, Deutsches GeoForschungszentrum GFZ, Potsdam, 2013.
- Brandsdóttir, B. and Einarsson, P.: Seismic activity associated with the September 1977 deflation of the Krafla central volcano in northeastern
 Iceland, *Journal of Volcanology and Geothermal Research*, 6, 197–212, 1979.
- Buck, W. R., Einarsson, P., and Brandsdóttir, B.: Tectonic stress and magma chamber size as controls on dike propagation: Constraints from
 535 the 1975–1984 Krafla rifting episode, *Journal of Geophysical Research: Solid Earth*, 111, 2006.
- Bödvarsson, R., Rögnvaldsson, S. T., Jakobsdóttir, S., Slunga, R., and Stefánsson, R.: The SIL data acquisitional and monitoring system,
Seismological Research Letters, 67, 35–47, 1996.
- Decriem, J., Árnadóttir, T., Hooper, A., Geirsson, H., Sigmundsson, F., Keiding, M., Ófeigsson, B. G., Hreinsdóttir, S., Einarsson, P.,
 LaFemina, P., , and Bennett, R. A.: The 2008 May 29 earthquake doublet in SW Iceland, *Geophysical Journal International*, 181,
 540 <https://doi.org/10.1111/j.1365-246X.2010.04565.x>, 2010.
- Di Giacomo, D. and Storchak, D. A.: A scheme to set preferred magnitudes in the ISC Bulletin, *Journal of Seismology*, 20, 555–567, 2016.
- Di Giacomo, D., Bondár, I., Storchak, D. A., Engdahl, E. R., Bormann, P., and Harris, J.: ISC-GEM: Global instrumental earthquake catalogue
 (1900–2009), III. Re-computed MS and mb, proxy M W, final magnitude composition and completeness assessment, *Physics of the Earth
 and Planetary Interiors*, 239, 33–47, 2015.
- 545 Dziewonski, A. M., Chou, T.-A., and Woodhouse, J. H.: Determination of earthquake source parameters from waveform data for studies of
 global and regional seismicity, *Journal of Geophysical Research: Solid Earth*, 86, 2825–2852, 1981.
- Einarsson, P.: Earthquakes and present-day tectonism in Iceland, *Tectonophysics*, 189, 261–79, 1991.
- Einarsson, P.: Plate boundaries, rifts and transforms in Iceland, *Jökull*, 58, 35–58, 2008.
- Einarsson, P.: Mechanisms of earthquakes in Iceland, in: *Encyclopedia of Earthquake Engineering*, edited by Beer, M., Patelli, E., Kou-
 550 gioumtzoglou, I. A., and Au, S. K., Springer, 2015.
- Einarsson, P.: Short-term seismic precursors to Icelandic eruptions 1973–2014, *Frontiers in Earth Science*, 6, 45, 2018.
- Einarsson, P. and Brandsdóttir, B.: Seismological evidence for lateral magma intrusion during the July 1978 deflation of the Krafla volcano
 in NE-Iceland, *Journal of Geophysics*, 47, 160–165, 1980.
- Einarsson, P., Björnsson, S., Foulger, G., Stefánsson, R., and Skaftadóttir, T.: Seismicity pattern in the South Iceland seismic zone, in:
 555 *Earthquake Prediction: An International Review*, edited by Simpson, D. and Richards, P., vol. 4, pp. 141–151, Wiley Online Library, 1981.
- Einarsson, P., Brandsdóttir, B., Gudmundsson, M. T., Björnsson, H., Grönvold, K., and Sigmundsson, F.: Center of the Iceland hotspot
 experiences volcanic unrest, *Eos, Transactions American Geophysical Union*, 78, 369–375, 1997.
- Einarsson, P., Brandsdóttir, B., and Ásta Rut Hjartardóttir: Seismicity, faults, and bathymetry of the Tjörnes Fracture Zone, in: *Proceeding of
 the Northquake 2019 Workshop*, Husavik Academic Centre, Húsavík, Iceland, 2019.



- Ekström, G., Nettles, M., and Dziewoński, A. M.: The global CMT project 2004–2010: Centroid-moment tensors for 13,017 earthquakes, *Physics of the Earth and Planetary Interiors*, 200, 1–9, 2012.
- Gardner, J. K. and Knopoff, L.: Is the sequence of earthquakes in Southern California, with aftershocks removed, Poissonian?, *Bulletin of the Seismological Society of America*, 64, 1363–1367, 1974.
- Gasparini, P., Lolli, B., Vannucci, G., and Boschi, E.: A comparison of moment magnitude estimates for the European-Mediterranean and Italian regions, *Geophysical Journal International*, 190, 1733–1745, 2012.
- Gasparini, P., Lolli, B., and Vannucci, G.: Body-Wave Magnitude m_b is a Good Proxy of Moment Magnitude M_W for Small Earthquakes ($m_b < 4.5$ –5.0), *Seismological Research Letters*, 84, 932–937, 2013.
- GCMT: Global Centroid Moment Tensor Earthquake Catalog, <https://www.globalcmt.org>, 2020.
- Grönvold, K., Larsen, G., Einarsson, P., Thorarinsson, S., and Sæmundsson, K.: The Hekla eruption 1980–1981, *Bulletin Volcanologique*, 46, 349–363, 1983.
- Grünthal, G. and Wahlström, R.: An M_w based earthquake catalogue for central, northern and northwestern Europe using a hierarchy of magnitude conversions, *Journal of Seismology*, 7, 507–531, 2003.
- Grünthal, G. and Wahlström, R.: The European-Mediterranean earthquake catalogue (EMEC) for the last millennium, *Journal of Seismology*, 16, 535–570, 2012.
- Grünthal, G., Wahlström, R., and Stromeyer, D.: The unified catalogue of earthquakes in central, northern, and northwestern Europe (CENEC)—updated and expanded to the last millennium, *Journal of Seismology*, 13, 517–541, 2009.
- Grünthal, G., Wahlström, R., and Stromeyer, D.: The SHARE European earthquake catalogue (SHEEC) for the time period 1900–2006 and its comparison to the European-Mediterranean earthquake catalogue (EMEC), *Journal of Seismology*, 17, 1339–1344, 2013.
- Gutenberg, B. and Richter, C. F.: *Seismicity of the Earth*, Princeton University Press, Princeton, New Jersey, 1949.
- Halldórsson, P.: Seismic hazard assessment based on historical data and seismic measurements, in: *Proceedings of the International Conference on Preparedness and Mitigation for Natural Disasters '92*, pp. 53–63, Association of Chartered Engineers in Iceland, Reykjavík, 1992a.
- Halldórsson, P.: Um jarðskjálftasvæði Suðurlands (About the South Iceland seismic zone), *Árbók VFÍ (Icelandic Journal of Engineering)*, 4, 226–239, 1992b.
- Helffrich, G. R.: How good are routinely determined focal mechanisms? Empirical statistics based on a comparison of Harvard, USGS and ERI moment tensors, *Geophysical Journal International*, 131, 741–750, 1997.
- Hjaltadóttir, S.: Use of relatively located microearthquakes to map fault patterns and estimate the thickness of the brittle crust in Southwest Iceland, Tech. Rep. VI-2010-003, Icelandic Meteorological Office, Reykjavík, 2010.
- IMO: Veðráttan (the Weather), Icelandic Meteorological Office, Reykjavík, 1924–2006.
- IMO: Seismological Bulletin, Icelandic Meteorological Office, Reykjavík, 1926–1973.
- IMO: Mánaðaryfirlit jarðskjálfta (Monthly reports of earthquakes), Icelandic Meteorological Office, Reykjavík, 1987–1990.
- ISC: International Seismological Centre Bulletin Event Catalog, <http://www.isc.ac.uk/iscbulletin/search/>, 2020.
- Jones, A., Michæl, A., Simpson, B., Jacob, S., and Oppenheimer, D.: Rapid distribution of earthquake information for everybody, *Seismological Research Letters*, 71, 355–358, 2000.
- Kagan, Y. Y.: Accuracy of modern global earthquake catalogs, *Physics of the Earth and Planetary Interiors*, 135, 173–209, 2003.
- Karimiparidari, S., Zare, M., Memarian, H., and Kijko, A.: Iranian earthquake, a uniform catalog with moment magnitudes, *Journal of Seismology*, 17, 897–911, 2013.



- Klein, F. W., Einarsson, P., and Wyss, M.: Microearthquakes on the mid-Atlantic plate boundary on the Reykjanes Peninsula in Iceland, *Journal of Geophysical Research*, 78, 5084–5099, 1973.
- 600 Klein, F. W., Einarsson, P., and Wyss, M.: The Reykjanes Peninsula, Iceland, earthquake swarm of September 1972 and its tectonic significance, *Journal of Geophysical Research*, 82, 865–888, 1977.
- Kárník, V.: Seismicity of the European area, Part 1, Academia, Praha, 1968.
- McGarr, A. and Barbour, A. J.: Injection-induced moment release can also be aseismic, *Geophysical Research Letters*, 45, 5344–5351, 2018.
- Ottósson, K. G.: Jarðskjálftar á Íslandi 1900–1929 (Earthquakes in Iceland 1900–1929), Tech. Rep. RH-80-05, University of Iceland Science
 605 Institute, Reykjavík, 1980.
- Pagli, C., Pedersen, R., Sigmundsson, F., and Feigl, K. L.: Triggered fault slip on June 17, 2000 on the Reykjanes Peninsula, SW-Iceland captured by radar interferometry, *Geophysical Research Letters*, 30, 2003.
- Panzer, F., Zechar, J. D., Vogfjörð, K. S., and Eberhard, D.: A Revised earthquake catalogue for South Iceland, *Pure and Applied Geophysics*, 173, 97–116, 2016.
- 610 Pedersen, R., Jónsson, S., Árnadóttir, T., Sigmundsson, F., and Feigl, K. L.: Fault slip distribution of two June 2000 M_W 6.5 earthquakes in South Iceland estimated from joint inversion of InSAR and GPS measurements, *Earth and Planetary Science Letters*, 213, 487–502, 2003.
- Schmelling, M.: Averaging correlated data, *Physica Scripta*, 51, 676, 1995.
- Sigbjörnsson, R. and Rupakhety, R.: A saga of the 1896 South Iceland earthquake sequence: magnitudes, macroseismic effects and damage, *Bulletin of earthquake engineering*, 12, 171–184, 2014.
- 615 Sigmundsson, F., Einarsson, P., Bilham, R., and Sturkell, E.: Rift-transform kinematics in south Iceland: Deformation from Global Positioning System measurements, 1986 to 1992, *Journal of Geophysical Research: Solid Earth*, 100, 6235–6248, 1995.
- Slunga, R., Rögnvaldsson, S. T., and Bödvarsson, R.: Absolute and relative locations of similar events with application to microearthquakes in southern Iceland, *Geophysical Journal International*, 123, 409–419, 1995.
- Soosalu, H. and Einarsson, P.: Earthquake activity related to the 1991 eruption of the Hekla volcano, Iceland, *Bulletin of Volcanology*, 63,
 620 536–544, 2002.
- Stefánsson, R.: Methods of focal mechanism studies with application to two Atlantic earthquakes, *Tectonophysics*, 3, 209–243, 1966.
- Stefánsson, R. and Halldórsson, P.: Strain release and strain build-up in the South Iceland seismic zone, *Tectonophysics*, 152, 267–276, 1988.
- Stefánsson, R., Bödvarsson, R., Slunga, R., Einarsson, P., Jakobsdóttir, S., Bungum, H., Gregersen, S., Havskov, J., Hjelme, J., and Korhonen, H.: *Bulletin of the Seismological Society of America*, 83, 696–716, 1993.
- 625 Stefánsson, R., Gudmundsson, G. B., and Halldórsson, P.: Tjörnes fracture zone. New and old seismic evidences for the link between the North Iceland rift zone and the Mid-Atlantic ridge, *Tectonophysics*, 447, 117–126, 2008.
- Storchak, D. A., Di Giacomo, D., Bondár, I., Engdahl, E. R., Harris, J., Lee, W. H. K., Villaseñor, A., and Bormann, P.: Public release of the ISC-GEM global instrumental earthquake catalogue (1900–2009), *Seismological Research Letters*, 84, 810–815, 2013.
- Storchak, D. A., Harris, J., Brown, L., Lieser, K., Shumba, B., Verney, R., Di Giacomo, D., and Korger, E. I. M.: Rebuild of the Bulletin of
 630 the International Seismological Centre (ISC), part 1: 1964–1979, *Geoscience Letters*, 4, 32, 2017.
- Stromeyer, D., Grünthal, G., and Wahlström, R.: Chi-square regression for seismic strength parameter relations, and their uncertainties, with applications to an M_W based earthquake catalogue for central, northern and northwestern Europe, *Journal of Seismology*, 8, 143–153, 2004.
- Sykes, L. R.: The seismicity of the Arctic, *Bulletin of the Seismological Society of America*, 55, 501–518, 1965.



- 635 Sykes, L. R.: Mechanism of earthquakes and nature of faulting on the mid-oceanic ridges, *Journal of Geophysical Research*, 72, 2131–2153, 1967.
- Sólnes, J., Sigmundsson, F., and Bessason, B., eds.: *Natural Hazard in Iceland, Volcanic Eruptions and Earthquakes*, University of Iceland Press and Natural Catastrophe Insurance of Iceland, Reykjavík, 2013.
- Tryggvason, E.: Jarðskjálftar á Íslandi og nyrzta hluta Atlantshafsins (Seismicity of Iceland and the surrounding oceans), *Náttúrufræðingurinn*, 25, 194–197, 1955.
- 640 Tryggvason, E.: Jarðskjálftar á Íslandi 1930–1939 (Earthquakes in Iceland 1930–1939), Tech. Rep. RH-78-21, University of Iceland Science Institute, Reykjavík, 1978a.
- Tryggvason, E.: Jarðskjálftar á Íslandi 1940–1949 (Earthquakes in Iceland 1940–1949), Tech. Rep. RH-78-22, University of Iceland Science Institute, Reykjavík, 1978b.
- 645 Tryggvason, E.: Jarðskjálftar á Íslandi 1950–1959 (Earthquakes in Iceland 1950–1959), Tech. Rep. RH-79-06, University of Iceland Science Institute, Reykjavík, 1979.
- UISI: Skjálftabréf (Earthquake Letter), University of Iceland Science Institute, Reykjavík, <https://jardvis.hi.is/skjalftabref>, 1975–1988.
- USGS: United States Geological Survey Earthquake Catalog, <https://earthquake.usgs.gov/earthquakes/search/>, 2020.
- Wang, Q., Jackson, D. D., and Kagan, Y. Y.: California earthquakes, 1800–2007: A unified catalog with moment magnitudes, uncertainties, and focal mechanisms, *Seismological Research Letters*, 80, 446–457, 2009.
- 650 Ward, P. L.: New interpretation of the geology of Iceland, *Geological Society of America Bulletin*, 82, 2991–3012, 1971.
- Werner, M. J.: Magnitude uncertainties impact seismic rate estimates, forecasts, and predictability experiments, *Journal of Geophysical Research - Solid Earth*, 113, 1–20, 2008.
- Woessner, J., Laurentiu, D., Giardini, D., Crowley, H., Cotton, F., Grünthal, G., Valensise, G., Arvidsson, R., Basili, R., Demircioglu, M. B., et al.: The 2013 European seismic hazard model: key components and results, *Bulletin of Earthquake Engineering*, 13, 3553–3596, 2015.
- 655 Wright, T. J., Sigmundsson, F., Pagli, C., Belachew, M., Hamling, I. J., Brandsdóttir, B., Keir, D., Pedersen, R., Ayele, A., Ebinger, C., et al.: Geophysical constraints on the dynamics of spreading centres from rifting episodes on land, *Nature Geoscience*, 5, 242–250, 2012.
- Yadav, R., Bormann, P., Rastogi, B. K., Das, M. C., and Chopra, S.: A homogeneous and complete earthquake catalog for northeast India and the adjoining region, *Seismological Research Letters*, 80, 609–627, 2009.