

Wildfire-Atmosphere Interaction Index for Extreme Fire behaviour

Tomàs Artés¹, Marc Castellnou², Tracy Houston Durrant³, and Jesús San-Miguel¹

¹European Commission, Joint Research Centre (JRC), Ispra, Italy

²Grup de Recolzament a Actuacions Forestals (GRAF), Generalitat de Catalunya, Carretera de l'Autònoma, sn. 08290 Cerdanyola del Vallés, Spain

³External consultant for the European Commission (Engineering Ingegneria Informatica S.p.A.) Engineering Ingegneria Informatica S.p.A., Rome, Italy

Correspondence: Tomàs Artés (tomas.artes-vivancos@ec.europa.eu)

Abstract. During the last 20 years extreme wildfires have challenged firefighting capabilities. Often, [\[..¹\]](#) the prediction of [\[..²\]](#) the extreme behaviour is essential for the safety of citizens and fire fighters. Currently, there are several fire danger indices routinely used by firefighting services, but they are not suited to forecast extreme wildfire behaviour [at global scale](#). This article proposes a new fire danger index, extreme fire behaviour index (EFBI), based on the analysis of the vertical profiles of the atmosphere above wildfires as an alternative to the use of traditional fire danger indices. The EFBI evaluates the ease of interaction between wildfires and the atmosphere that could lead to convective, erratic and extreme wildfires. Results of this research in the analysis of some of the critical fires in the last years show that the EFBI can potentially be used to provide valuable information to identify [\[..³\]](#) [convection driven](#) fires and to enhance fire danger rating schemes worldwide.

1 Introduction

Fires [\[..⁴\]](#) have naturally occurred in nearly all world biomes, shaping ecosystems and landscapes [but are intrinsically linked to human activities](#). As humans spread to colonize most regions of the world, they brought fire with them and used it as a tool in agriculture and cattle raising activities. Currently, over 90% of the fires that occur in the world are caused by humans, deliberately or accidentally (Balch et al., 2017; Short, 2017; San-Miguel-Ayanz et al., 2012). In most regions of the world the most prominent fire management policy is that of fire exclusion. Fires that are purposely or accidentally started affect human assets and are thus controlled and extinguished as fast as possible. Only fires in very high latitudes, where human dwellings do not exist, are left to burn naturally. In the context of this paper we use the term wildfires, referring to those fires that escape beyond human control and cause damage to human lives and properties. Nowadays, it is estimated that about 400 million ha of natural and agricultural lands are burnt annually, although it is recognized that this figure is likely a gross underestimate of the total area burnt in reality (Boschetti et al., 2019). [\[..⁵\]](#) [Wildfires are responsible of vast economic and environmental](#)

¹removed: such extreme events occur as spatial and temporal clusters of wildfires and

²removed: their

³removed: convective

⁴removed: are intrinsically linked to human activities and

⁵removed: These fires are responsible for about 17% of global CO_2 (Shi et al., 2015; Friedlingstein et al., 2019) emissions and result in great economic damages and

20 damage, the loss of human lives and about 17% of the global CO_2 (Shi et al., 2015; Friedlingstein et al., 2019) emissions. Most wildfires occur in the vicinity of humans, as they are caused by humans, and thus they affect people and human assets in the area where they occur. In Europe, this inter-mingle of human dwellings and natural areas is referred to as the wildland urban interface(WUI) and corresponds to the area where most fires and burnt areas occur.

The damage caused by fires in the WUI is thus much greater than that of fires occurring in remote areas. [⁶]This last fact is due to the high adaptability of ecosystems(Pausas and Keeley, 2009, 2017), the damage accountability and mitigation done by civil protection policies.In recent years, the occurrence of extreme fire seasons has increased dramatically in many regions of the world, being associated in most cases [⁷]with the effect that climate change is already posing on wildfire regimes and wildfire behaviour. Examples of these extreme wildfires were those occurring in Indonesia (2015), Chile (2016), California (USA, 2017, 2018,2020), Canada (2017), Portugal (2017), California (2018), Greece (2018), Australia (2019), 30 Siberia (2019), Argentina (2021), Brazil, Bolivia and Paraguay (2019). Common to these events was the explosive behaviour of the single fires, which resulted in the loss of many lives and [⁸]huge economic damage. Several entities reported and analysed these wildfires that interact with the atmosphere[⁹](Delicado and Gomes; Guerreiro, 2017) increasing wind speed, causing sudden wind direction changes, local fire tornadoes(Lareau et al., 2018b; Pirsko et al., 1965) and vortexes(Khaykin et al., 2020).

35 Often, fire management agencies of the countries make use of past fire history to [¹⁰]analyse the potential behaviour of future wildfires. Fires are characterized by their rate of spread and fire intensity and the weather and fuel conditions when they occurred. One of the most commonly used fire danger indices is the Canadian Fire Weather index (Van Wagner et al., 1974); this is currently used in many countries of the world (Van Wagner et al., 1987) and even at global scale (Vitolo et al., 2020). Other common fire danger [¹¹]indices are the Australian McArthur, the USA NFDRS or the Ketch-Byran index (McArthur, 40 1967; Deeming et al., 1977; Keetch and Byram, 1968). Most of these indices provide reasonable information on the potential of a wildfire to spread and cause damage. However, these indices do not evaluate the context of the atmosphere around the fire.

Wildfires are phenomena driven by fuel conditions, topography and weather. Fuel conditions are determined by rainfall, temperature and relative humidity among others factors. Some of these factors, such as wind and rainfall, are very dynamic in time while others are static and characterize the local fire behaviour, such as topography. The behaviour of extreme fires, 45 which prevents the evacuation of the affected areas and the possibility of fire extinction, is often related to the interaction of the wildfire dynamics and the conditions of the atmosphere around it (also known as coupled effects). There are multiple factors that define the fire spread behavior, the relevance of a given factor as the most important or dominant for the spread sometimes define the fire type. One single fire event may transition to one type to another. For instance, examples of these types are fuel dominated fires or wind driven fires. In this work we will refer to fire driven by convection when 50 convection is an important driving factor of the fire spread.

⁶removed: In the last

⁷removed: to

⁸removed: the

⁹removed: (Delicado and Gomes; "Independente", 2017)

¹⁰removed: analyze

¹¹removed: fire danger

A first approximation to take into account the atmospheric instability around wildfires was the Haines index (Haines and Service, 1988), which is usually computed between two different heights of the atmosphere above the fire. In cases of extreme wildfire events, the Haines index (Potter, 2018a) can identify dangerous fire spread conditions by using values of temperature and humidity at different elevations. Although the index was successfully used in large fire episodes in the USA (Potter, 2018b),
55 it failed [..¹²]to explain or predict the behaviour of extreme fires that have happened recently (Pinto et al., 2020)).

The main objective of our work is to evaluate a new fire danger index (EFBI) that considers atmospheric conditions, which are not usually taken into account in most [..¹³]traditional fire danger rating indices, incorporating the effects of the interaction of the inner atmosphere created by the fire with the surrounding atmospheric conditions. [..¹⁴]

In some cases, the Haines index saturates (Potter, 2018a), remaining at its maximum value, as in the case of the fire in
60 Pedrógão, in Portugal 2017 (San-Miguel-Ayanz et al., 2019). The aim of the EFBI is to summarize the factors that may imply a change in fire behaviour and to determine how easy is for the change in fire behaviour to happen. Several authors used factors for storm forecast [..¹⁵]such as the convective available potential energy (CAPE) and convective inhibition (CIN) to address fire behaviour (Moncrieff and Miller, 1976). Conditioned atmosphere stability was often a common factor of extreme wildfire events. Consequently, increasing the temperature at the surface could lead to atmospheric instability; causing local, dangerous
65 and unexpected conditions.

Wildfire behaviour can be modeled by forest fire simulators, which provide a forecast of the fire intensity and spread. These simulators are based on semi-empirical (Rothermel, 1972) or physical (Mell et al., 2007) models and can be coupled with atmospheric simulation models (WRF-Fire, (Mandel et al., 2011), MESO-NH ForeFire (Baptiste Filippi et al., 2009)) or wind field production models Windninja, (Forthofer et al., 2009) to assess wildfire behaviour. However, as the [..¹⁶]numbers of
70 coupled models grow, the simulation becomes computationally more expensive and it is difficult to gather the required input data without strong uncertainties. Therefore, fire danger ratings and the experience of meteorologists, civil protection officers and fire analysts play an important role in decision making. Moreover, it is not feasible to use coupled models for simulating all wildfires detected at global scale. The capacity to forecast the conditions under which these critical fires can develop is thus of paramount importance and essential for the prevention of damage to the population and human assets. We hereby present a
75 fire danger index referred to as the Extreme Wildfire behaviour Index (EFBI), which looks into the interaction of the wildfire dynamics with the surrounding atmosphere and determines if the behaviour of an ignited fire can become critical, allowing it to develop into an extreme wildfire (Duane et al., 2021). It considers the atmospheric conditions [..¹⁷]incorporating the

¹²removed: in explaining or predicting

¹³removed: of

¹⁴removed: First, Section 2 describes the proposed index, the workflow for wildfire event selection from the global wildfire database and the retrieval of the meteorological data and the description of three study cases. The results of the EFBI for the study cases are explained in Section 3. Finally, the conclusions are presented in Section 4.

¹⁵removed: like

¹⁶removed: number

¹⁷removed: , which are not usually taken into account in most of traditional fire danger rating indices,

effects of the interaction of inner atmosphere created by the fire with the surrounding atmospheric conditions [..¹⁸]targeting atmosphere stability, conditioned instability and moist convection. The size distribution of the fire events is unbalanced, being more common the small with an expected fire spread speed. Although there are a less common set of fire events with high fire spread which overwhelms fire fighting capabilities and reach larger amounts of burnt area. A subset of these fires, considered as extreme fires, interact with the atmosphere around them leading to unexpected or erratic behaviour. Among these extremes fires, some are characterised by the occurrence of pyrocumulus (pyroCu) and pyrocumulonimbus (pyroCb), analysed in Lareau and Clements (2016). The occurrences of this phenomena leads to works that analyse the pyrocumulus (Tory et al., 2018), and to the assesment the potential of pyroconvection (LEACH and GIBSON, 2021; Tory and Kepert, 2021) from different approaches and, for instance, including the moisture and heat released by the fire (Potter, 2005). In the last decades the amount of extreme fires become very relevant and it increased awareness about fires as dangerous natural hazard. Besides, the relation of climate change with that events has been studied (Di Virgilio et al., 2019) relying in regional records as (McRae et al., 2015) (for Australia) and using well known danger indexes as McArthur Forest Fire Danger Index(FFDI) (McArthur, 1967) and Haines Index (Haines and Service, 1988). At global scale, the existing records of fire data is quite fragmented and there is much more uncertainty than using methods and data suitable for specific regions as mentioned in fire related studies at global scale as in Bowman et al. (2017).

We used a global wildfire database (GlobFire (Artés et al., 2019)) and ERA5 weather reanalysis data (Hersbach, 2016) to compute the EBFI over a set of wildfires. Our approach is suited to be computed at global scale using operational weather forecast models to determine when an ongoing large fire can develop extreme wildfire behaviour. First, Section 2 describes the proposed index, the workflow for wildfire event selection from the global wildfire database and the retrieval of the meteorological data and the description of three study cases. The results of the EFBI for the study cases are explained in Section 3. Finally, the conclusions are presented in Section 4.

2 Data and methods

[..¹⁹]The proposed EFBI relies on the premise that the atmosphere can cause a wildfire to become [..²⁰]convection driven or the wildfire can disrupt the atmosphere creating a convective trend.

The extreme fire behaviour index(EFBI) is computed as follows:

$$EFBI = \frac{((CAPE + CIN) - (CAPEP + CINP))}{\Delta T} \quad (1)$$

¹⁸removed: . The EFBI uses similar principles as those of the Haines Index but it summarizes the factors that may imply a change in fire behaviour and determine how easy is for the change in fire behaviour to happen. It takes advantage of the advances in weather forecast modeling and computational capabilities to enhance the predictability of extreme fire events

¹⁹removed: In this work, an statistical approach is used to check the feasibility of using convective index to foresee extreme convective wildfires at global scale. The

²⁰removed: convective

$$105 \quad CAPE = \int_{Z_f}^{Z_n} g \frac{(T_{v,parcel} - T_{v,env})}{T_{v,env}} dz \quad (2)$$

$$CIN = \int_{Z_{bottom}}^{Z_f} [..21] g \frac{(T_{v,parcel} - T_{v,env})}{T_{v,env}} dz \quad (3)$$

$$\{\Delta T \in \mathbb{R} | (\Delta T = T[..22]_{bottomConv} - T_{bottom}) \wedge CIN[..23] \geq 0 \wedge \Delta T[..24] \geq 0\} \quad (4)$$

110 Where CAPE and CIN are defined by Eq. 2 and 3 (Moncrieff and Miller, 1976; Williams and Renno, 1993) and ΔT is the number of degrees required to achieve a null or negative convective inhibition energy (CIN) (Eq. 4). CAPE and CIN are recomputed with the increased temperature ($T_{bottom} + \Delta T$) and called CAPEP and CINP, CINP value being zero or [..25] greater than zero (no inhibition). The proposed EFBI determines the amount of increase in temperature degrees at the surface required to cause a null CIN and quantifies the change in the convective trend (addition of CAPE and CIN), allowing the prediction of fast fire spread due to convection. Z_n is the height of the equilibrium level; Z_f is the height of the level of free convection(LFC); g is the acceleration due to gravity; $T_{v,parcel}$ is the virtual temperature of the a given parcel; $T_{v,env}$ is the virtual temperature of the environment; Z_{bottom} is the lower height; T_{bottom} is the temperature at the lower altitude; $T_{bottomConv}$ is the temperature at the lower altitude which causes $CIN >= 0$.

120 In cases in which the atmosphere is already unstable, CIN is equal [..26] to or greater than 0 being $\Delta T=0$, the values assigned to the index are the full integration of CAPE+CIN.

The EFBI is expressed in J Kg⁻¹C⁻¹, which is the amount of energy exchange per unit of mass and per degree of temperature. The value can be used as an estimation of potential wildfire-atmosphere interaction.

125 High values of EFBI point [..27] to a sudden change of energy per mass for a small temperature increase (low value ΔT and high value of total convective energy). Under these conditions, air can potentially move vertically creating local conditions which are not explicitly provided by meteorological forecasts. When the values are low, the magnitude of the change is small and/or a higher temperature is required at the surface to cause any change. This information is essential for firefighters, since local eddies and sudden weather changes can occur and lead to very fast ember spotting fire spread, which create dangerous and unpredictable conditions for the front line safety (Lareau et al., 2018a).

130 To test the EFBI, we propose [..28] two machine learning approaches, a decision tree and a multilayer perceptron. EFBI and FWI were used to evaluate the discriminatory potential between two classes; small [..29] (500ha during more than one

²⁵removed: higher

²⁶removed: or less

²⁷removed: out

²⁸removed: a machine learning approach using

²⁹removed: and large fires. We selected a set of fires that burnt more than 10000ha in one day and an equal number of fires that burnt less than

day) and large fires (10000ha in one day^[.30]). Fire events were extracted from GlobFire database. The thresholds were chosen to consider both average and extreme fire spread. Small size fires were selected in the same zones where the large fires were selected, but ^[.31]in a different year, always outside the area burnt by the large fires. Using the same zone for both sets of fires we limited the variability in fuel and topography, ensuring that the differences in fire behaviour were due to the meteorological conditions under which the fires evolved. Often small fires are caused by fire spotting or the result of agricultural practices. To avoid these ^[.32]types of fires, it was required that the fires had more than 90% of the burnt area in wild land vegetation. The final selection was a total of 445 cases, with 223 fires larger than 10000ha and 222 fires smaller than 500ha. Figure 1 shows the distribution and the year of each fire at global scale.

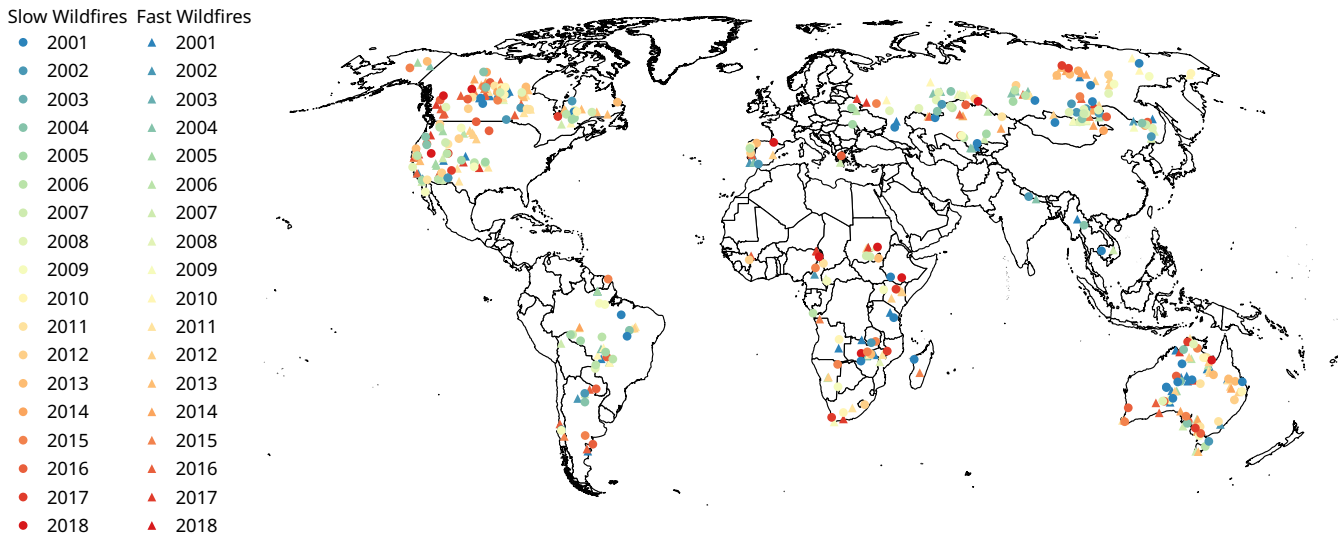


Figure 1. Location of the wildfires coloured by year. Fast fires and slow fires are depicted with triangles and circles respectively.

For each fire, the Canadian Fire Weather index (FWI) and all its components were retrieved from the ECMWF ERA5 dataset at 0.25 degrees resolution (Vitolo et al., 2020). In order to differentiate between agricultural fires or wildfires, the land cover from the Climate Change Initiative, CCI, (Defourny et al., 2012) was used, requiring that 90% of the burnt area was forest or shrubs, and thus ^[.33]avoiding fires in crops or agricultural areas. For each selected fire, temperature, relative humidity and wind profile were retrieved for all the heights above the wildfire event using the application user interface (API) of the Climate Data Store (CDS) for the ERA5 reanalysis dataset(Hersbach, 2016). Then, the EFBI and the vertical profiles for every event were computed, producing skew-t plots for every time step and generating plots with the time evolution of the index and the

³⁰removed: from the Globfire

³¹removed: on

³²removed: type

³³removed: avoid

factors used for the computation of the EFBI. The aim of the skew-t plots is to visualize the ease with which the fire may become [..³⁴]convection driven given an atmosphere context.

All the parameters obtained from FWI and EFBI were used to compute the mutual information(MI) of the wildfires that spread more than 10000ha in one day(large) or less than 500ha in more than one day(small). The MI has been chosen to quantify the individual importance of the variables gathered for each fire ([..³⁵]such as the FWI components and EFBI) in relation to the speed of the spread of the fire, which is categorized into either small or large fire events. The FWI was computed for an entire day, and EFBI was computed with one hour time steps. Therefore, the values of the EFBI were aggregated using the minimum, the maximum and the average value for the time window. In addition, the date associated with the burnt area was based on GlobFire which uses the burnt area product of MODIS MCD64A1(Giglio et al., 2015). Due to clouds or dense smoke plumes, it is possible that a fire might have not been detected until some days after its ignition. To account for this delay, the initial day of the time window for the FWI and EFBI was increased by two days. The maximum value of the FWI and its components during the time window were selected. When applying FWI at global scale its values are not comparable between different locations. Despite that fact, the percentiles of FWI can provide information about the fire danger for a given area. Therefore, the values of the FWI were used in percentile values, computed for the period 1979 to 2019 of the same week of the year.

[..³⁶]The MI for continuous values was computed using the method described in (Kraskov et al., 2004) and (Ross, 2014) using (Pedregosa et al., 2011). These methods use nearest neighbours with a random initialization; for that reason, 10 additional attributes were added to the analysis with random values to evaluate the noise of the MI. The MI computation was done 1000 times. The computations of MI were initialized with random values to evaluate the noise of the attributes for the MI computation.

In addition, the behaviour of the EFBI is shown analysing three different study cases. First, the fire in Pedrógão Grande[..³⁷], Portugal in 2017 using high spatial and temporal resolution fire perimeters. Following, EFBI is used [..³⁸]with forecast data using daily fire perimeters of the wildfire that took place in Robore Bolivia in 2019. Lastly, the spatial distribution of EFBI for the set of extreme wildfires in the southeast coast in Australia at [..³⁹]the end of 2019.

170 3 Results

EFBI results are evaluated combining the resulting values of the EFBI and FWI (Vitolo et al., 2020) to predict extreme fire behaviour observed in GlobFire using weather data from ERA5 (Hersbach, 2016). In this work, [..⁴⁰]a machine learning

³⁴removed: convective

³⁵removed: like

³⁶removed: In order to estimate the relevance of the EFBI to discriminate between large and small fires, the

³⁷removed: Portugal

³⁸removed: using

³⁹removed: then

⁴⁰removed: an statistical

approach is used to check the feasibility of using the EFBI to predict extreme ^[..⁴¹]wildfire behaviour at global scale. In addition, the EFBI values are shown for several study cases.

175 ^[..⁴²]In Fig. 2, we illustrate how EFBI components behave for a given vertical profile at given time step. The blue area is the ^[..⁴³]convective inhibition (CIN)^[..⁴⁴], and the red area (from level of free convection (LFC) point to equilibrium level (EL)) is the ^[..⁴⁵]convective available energy (CAPE)^[..⁴⁶]. When CIN values are low and CAPE values are high, wildfires can be ^[..⁴⁷]convection driven at high altitudes. A temperature increase at the surface can reduce CIN values and increase CAPE values. Figure 2 shows a Skew-t plot with the parameters used to compute the EFBI. The figure shows the vertical
180 profile of the atmosphere with the temperature as a red line and the temperature dew point in green at different altitudes(right vertical axis). These parameters are enough to compute the amount of work caused by the buoyancy force. ^[..⁴⁸]By modifying temperature and dew point temperature ^[..⁴⁹]the buoyancy changes, and consequently, the trend of the air to move. Figure 2 shows how a change of 14 degrees Celsius at the surface causes a considerable change in the vertical air motion, and a stable atmosphere becomes unstable, with a CAPEP close to 2443 Jkg-1 and a low value of CINP. Therefore, the amount of work due
185 to the buoyancy change, passes from 34 Jkg-1 (CAPE) to 2443 Jkg-1(CAPEP) when CIN is not an inhibition (passing from a negative value to a positive value). This leads to a total change of 233.531 Jkg-1°C-1 per each degree increase at the surface. A wildfire in this condition has a high likelihood of ^[..⁵⁰]becoming driven by convection. The CAPEP is around 2443 Jkg-1 when ^[..⁵¹]thunderstorms often exceed CAPE values of 1000 Jkg-1 and 5000 Jkg-1 in extreme cases (Lombardo and Colle, 2011).

190 It is worth mentioning that CIN values at lower heights are also related with the temperature dew point at the surface (green line at 1000hPa). With a constant temperature at the surface and an increase of dew point temperature, the CIN is reduced and therefore the EFBI increases. This may happen with a sudden increase of humidity at the surface, without any increase of temperature ^[..⁵²](already taken into account in the computation of the EFBI).

The timeline of the EFBI for the wildfire in Sala (2014, Sweden) is shown in ^[..⁵³]Fig. 3. The time period when the fire had
195 an extreme behaviour, as documented by firefighters on the ground, is delimited with vertical dashed lines. In this period, the modified convective available energy reaches values above 2500J*kg-1 and the index values are near 800 Jkg-1°C-1.

^[..⁵⁴]

⁴¹removed: convective wildfires

⁴²removed: Figure 2shows the vertical profile with annotations of the EFBI

⁴³removed: descent air trend (convective inhibition energy)

⁴⁴removed:)

⁴⁵removed: ascending air trend (

⁴⁶removed:)

⁴⁷removed: convective

⁴⁸removed: Modifying the

⁴⁹removed: changes the buoyancy and consequently

⁵⁰removed: convective behaviour

⁵¹removed: thunderstorm

⁵²removed: . In the computation CAPE and CIN dew point temperature is used so EFBIalso takes into account this last case

⁵³removed: Figure

⁵⁴removed: Decision tree based on entropy reduction build with the 445 wildfire events (222 small and 223 big wildfires).

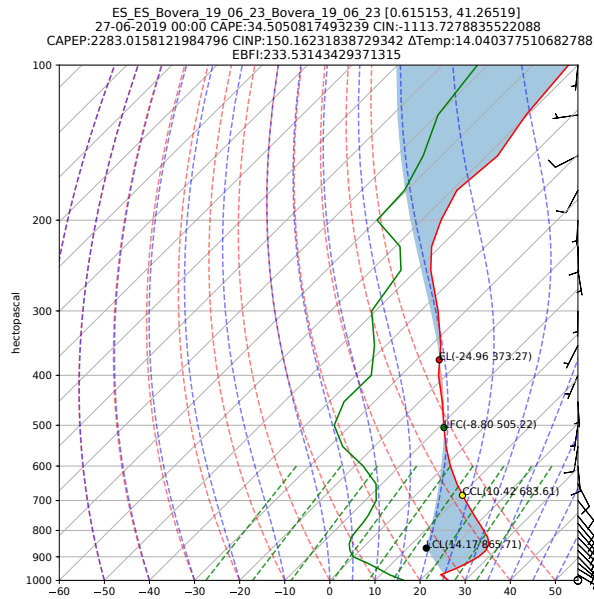


Figure 2. Sample of one Skew-t plot for a given time step for the wildfire that took place in Torre del Español (Spain) that burnt 6625ha from 26th to 27th June of 2019.

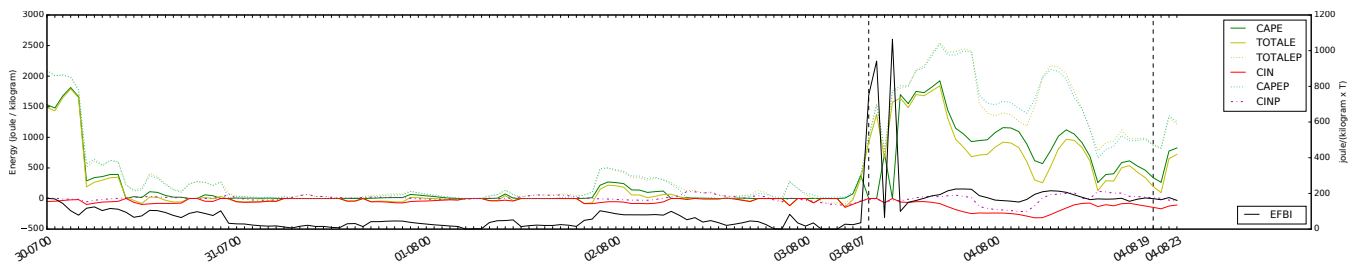


Figure 3. Sample of time line of the EFBI (right vertical axis) and the factors used (left vertical axis) for the wildfire in Sala (2014, Sweden) that burnt close to 10000ha from 3h to 4th August of 2014 (time period marked with vertical dashed lines). Horizontal axis is the time line using hourly steps in format dd/mm hh.

The EFBI is computed for each time step, as explained in the previous illustrative example, for all the cases extracted from GlobFire database using the method described in section 2. Regarding the information [..⁵⁵] of the different features used to discriminate small from large fires, [..⁵⁶] Fig.4 shows the values of the MI mean and standard deviations of each attribute for the 1000 iterations. Using only the minimum, maximum or average of the EFBI was shown to provide more

⁵⁵removed: provided

⁵⁶removed: figure

information to separate small from large fires than the percentile and value of the drought code (DC) of the FWI. Figure 4 is not a discriminatory power^[..⁵⁷], but the amount of information that the factors ^[..⁵⁸]individually contribute to the classification between the two classes. EFBI on its own cannot easily discriminate between the classes without using factors included in the computation of the FWI such as fine fuel moisture content (FFMC), duff moisture code(DMC) or drought code(DC). The discriminatory potential between the two classes using the EFBI is very low without using the FWI.

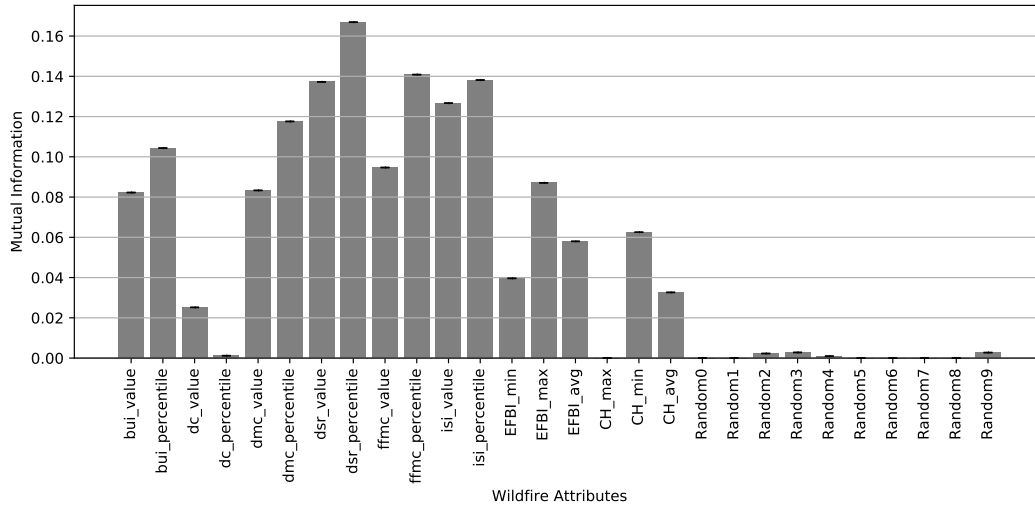


Figure 4. Mutual information of the different attributes gathered for each fire regarding their tag as fast or slow fires.

^[..⁵⁹]For instance, the EFBI can have high values after a rainfall event. It is thus important to stress that the EFBI becomes relevant when combined with the FWI components. A decision tree based on information gain as criteria was used to show the relevance of the EFBI in discriminating small fires from large fires. Figure 5 shows the decision tree, which is based on entropy reduction with a maximum depth of 4 levels (for visualizing purposes). The root uses the daily severity rating (DSR), which is a transformation of the FWI. At the second level, the maximum value of the EFBI is used, before any of the FWI components such as the percentiles of the initial spread index (ISI), the drought code (DC), the built up index (BUI) and the fine fuel moisture content (FFMC). Therefore, EFBI helps to reduce the entropy when discriminating between the two classes at global scale, being more relevant than the ISI or DC percentile.

A machine learning approach was applied using a decision tree and a multilayer perceptron. Removing the maximum depth restriction to the decision tree and performing a ^[..⁶⁰]cross-validation of 1000 splits with 5% of cases, as a test, the average

⁵⁷removed: of different factor

⁵⁸removed: , individually ,

⁵⁹removed: Although it may seem that the EFBI did not reduce the uncertainty in discriminating large fires because of its low values of MI, it is important to note that EFBI does not contain information about fuel conditions or ease of spread.

⁶⁰removed: cross validation

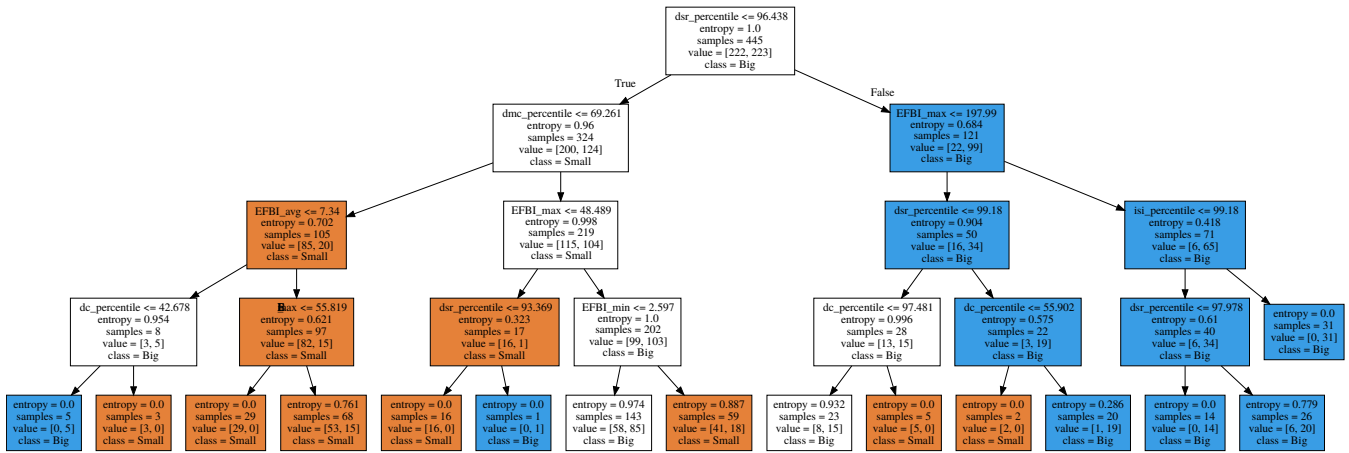


Figure 5. Decision tree based on entropy reduction build with the 445 wildfire events (222 small and 223 large wildfires).

accuracy was 65,13% with a standard error of 7.29%. The accuracy was computed using Scikit Learn considering the accuracy of the percentage of each sample that each label is correctly predicted.

Applying a multilayer perceptron with [..⁶¹] 3 hidden layers of 300 neurons each and using a Adam solver with ReLU
 220 activation, (KingaD, 2015) optimizer for training, and the same parameters for a [..⁶²] cross-validation, an accuracy of [..⁶³]
]78,37% (standard error 1.85%) was reached. If the parameters related with the FWI were exclusively used, the accuracy
 decreased to [..⁶⁴] 60.75% (standard error 2.24%). Using FWI with Continuous Haines raised the accuracy to 63.42%
 (standard error 4.12%).

[..⁶⁵] As previously mentioned in Section 2, the dataset used to test the EFBI was obtained using a fully automated process.
 225 The information regarding the fire behaviour was obtained from GlobFire using SQL queries. The query guarantees that there
 are no fires happening in a 2 degree radius around a detected fire during a time period of 30 days. During the [..⁶⁶] cross-
 validation process, the wildfires that were more frequently misclassified can be [..⁶⁷] identified. When looking at the first 50
 wildfires that are often misclassified, the proportion of the cases is very balanced between true small and large fire cases.
 Assuming that such cases are a source of noise and can be deleted from the dataset, the accuracy [..⁶⁸] rises to 80.30%
 230 (standard error 1.94%). It should be noted that some cases could be false positives or false negatives. False positives could
 happen when a fire was burning in a cloudy area for several days. Once the area is free of clouds, the burnt area is detected
 for that day but it was burning for days before that. False negatives may have happened with re-ignitions of [..⁶⁹] large fires.

⁶¹ removed: 30 neurons and 130 hidden layers using a Broyden–Fletcher–Goldfarb–Shannowith LBFGS, (Byrd et al., 1995)

⁶² removed: cross validation

⁶³ removed: 65,46%

⁶⁴ removed: 58%

⁶⁵ removed: It is worth mentioning that

⁶⁶ removed: cross validation

⁶⁷ removed: detected

⁶⁸ removed: raises to 72%

⁶⁹ removed: big

Besides, ^[.70]large fires are not always ^[.71]convection driven or related to an unstable atmosphere. The current automated process to discriminate potential large fires using the GlobFire database can be implemented in near-real time, using weather forecast data, allowing the potential identification of dangerous ^[.72]convection driven fires in advance, and thus increasing wildfire danger rating. This, in turn, would increase preparedness for firefighting procedures and enhance the safety of crews on the ground. Additionally, the overall procedure in the discrimination of potential large fires can be improved if the dataset is manually checked and the fire types are better defined.

3.1 Study Cases

3.1.1 Pedrógão Grande, Portugal 2017

This wildfire had ^[.73]some of the most severe fire ^[.74]behaviour in Europe. The fire was ignited on 17th June and ran until 23th June. Figure 6 shows an explosive expansion from 17th June to 18th June, which is followed by a constant but severe fire expansion. For this analysis the fire perimeters made for a wildfire report done by a technical commission ^[.75](Guerreiro, 2017) were used as reference for the fire spread.

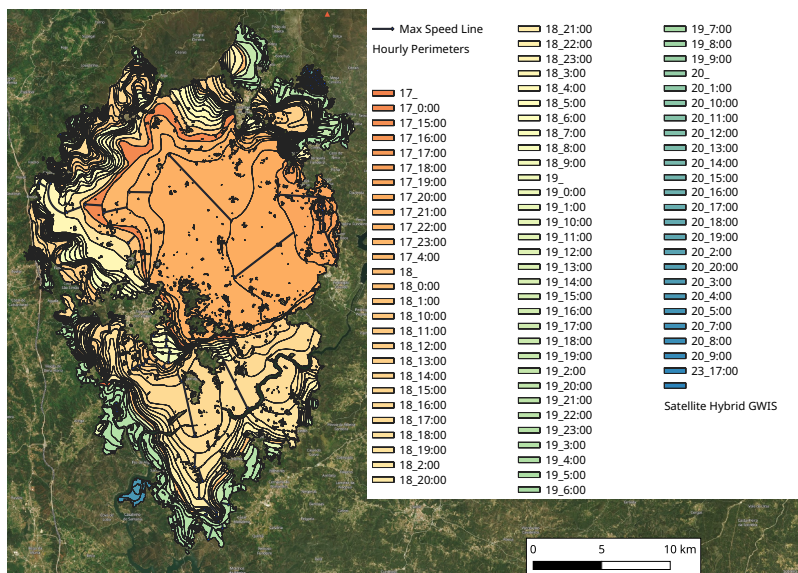


Figure 6. Time sequence of the wildfire which took place in Pedrógão Grande ^[.76](Guerreiro, 2017), Portugal on 17th June of 2017. The maximum speed line between time steps is shown with a ^[.77]black arrow. Background image ©MapTiler (<https://maptiler.com/copyright>).

⁷⁰removed: big

⁷¹removed: convective

⁷²removed: convective

⁷³removed: one

⁷⁴removed: behaviours

⁷⁵removed: ("Independente", 2017)

245 From 17th to 18th June there was an increase of burnt area larger than 20000ha in one day.

Figure 7 shows the value of the EFBI and its components during the entire month for the fires computed from the ERA5 reanalysis; the two vertical dashed lines in the figure delimit the duration of the fire. The EFBI shows that there is a considerable potential for the interaction of the fire with the atmosphere. In addition, during the days of the fire there was a natural CAPE of nearly 5000J*kg⁻¹ inhibited by a small value of CIN. Increasing the temperature at the surface removing the inhibition, would produce a sudden convection. The index values are close to 250 J*kg⁻¹ per temperature degree increased and a total convective energy about 6000 J*kg⁻¹.

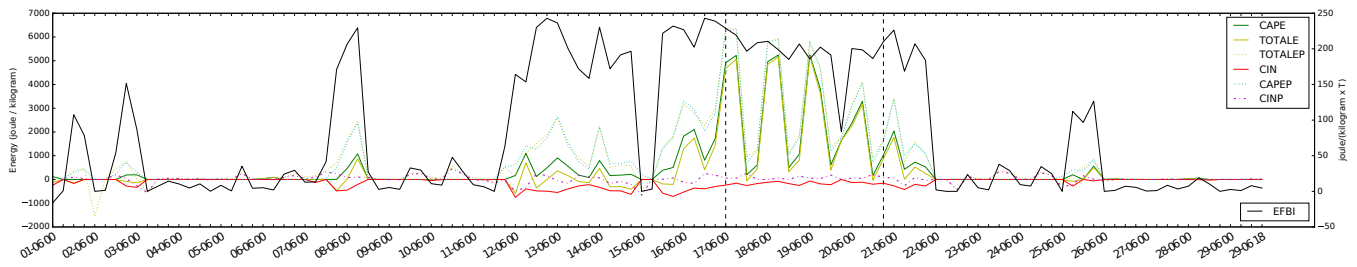


Figure 7. EFBI and its components for the wildfire in Pedrógão on June 2017 for the fire centroid (-8.2252, 39.952).

This case shows a natural tendency towards a [..⁷⁸]convection driven behaviour that may be caused by the atmospheric instability itself, without the need for a considerable amount of heat and/or an increase in relative humidity at the surface.

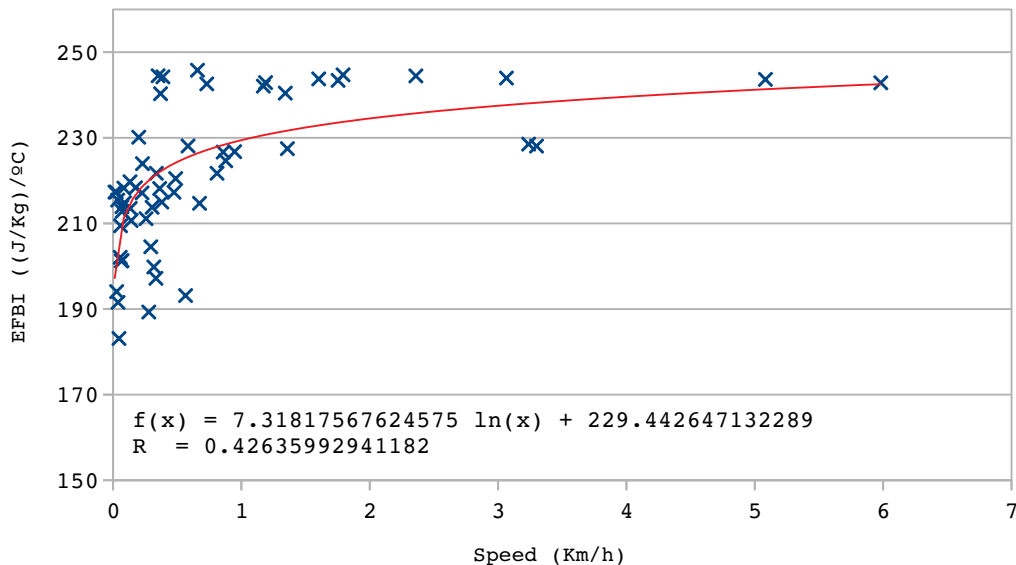


Figure 8. Scatter plot showing the maximum fire front speed and the values of the EFBI for each time step with a logarithmic trend line.

⁷⁸removed: convective

For this case study, detailed fire perimeters for each time step were available, which makes it possible to analyse the relation between the maximum fire spread and the EFBI. Figure 8 shows a scatter plot where each point is a time step given an EFBI value and the estimated maximum fire speed. While a wide variety of values of EFBI are shown for low fire spread speed values, considerably higher EFBI values are shown for high speed values, compared with the rest of the point cloud. However, there is a weak correlation between the speed and the EFBI. It is worth mentioning that the blow up of the wildfire took place at the beginning; assuming that the fire was in convection almost from the first time steps, EFBI and fire spread speed may not show a strong correlation when looking at all the hourly time steps. However, Fig.8 shows that, even with an ongoing convection driven fire, the atmosphere stability context computed from a numeric model is still important and speeds faster 1 km/h are only present when EFBI is above 220.

3.1.2 Forecast use Roboré, Bolivia 2019

The values of the EFBI were computed using ERA5 forecast for the fire that took place in Roboré, Bolivia in 2019. This wildfire lasted 2 months and had a very variable fire behaviour. Figure 9 shows the daily burnt area for this wildfire using the GlobFire database. However, the level of detail of the fire mapping for this study case is not as accurate as in the previous case shown in Fig. 6.

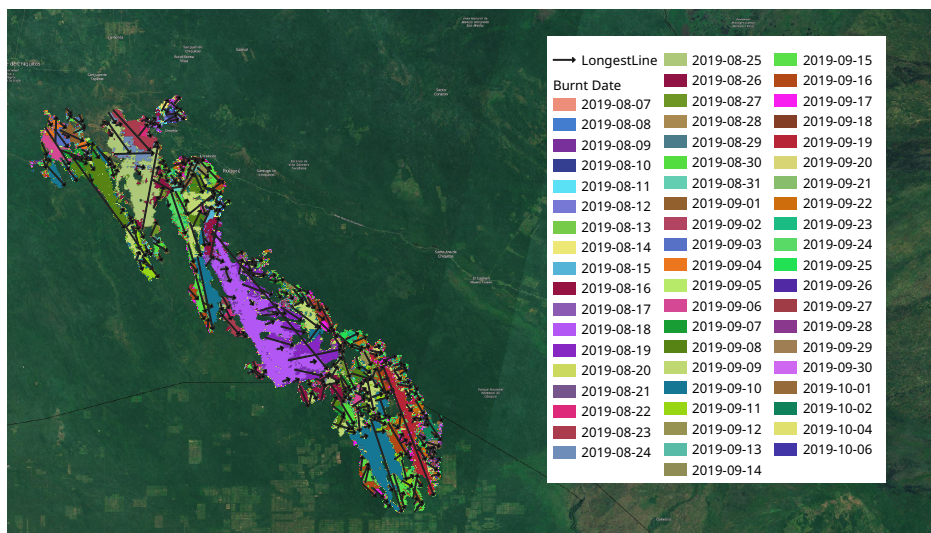


Figure 9. Daily burnt area for the duration of wildfire in Roboré, Bolivia in 2019. The maximum speed line between time steps is shown with a black arrow. The missing days do not have any daily burnt area in GlobFire. Background image ©MapTiler (<https://maptiler.com/copyright>).

⁷⁹ removed: a

⁸⁰ removed: Figure

⁸¹ removed: convective

⁸² removed: .

⁸³ removed: Figure

For this case, the EFBI was computed with three different deterministic forecasts of ERA5 on August 15 and 29, and on September 3. During this wildfire, the EFBI forecast different periods of extreme behaviour caused by conditioned convection without a clear correlation as in the case shown in Section 3.1.1. For long duration wildfires that interact with the atmosphere it can be assumed that once a wildfire interacts strongly with the atmosphere, the trends of the EFBI are no longer valid, since they are based on a forecast that does not include the interaction. However, in the above case of Bolivia, our results points out that despite the fire-atmosphere interactions, the atmospheric stability trend may remain important and the values of the EFBI can be relevant for a second convection interaction. It is not feasible to find a correlation between the fire spread and the EFBI values in this case because the quality of the fire mapping is daily with a potential uncertainty of days. Also, the weather forecast that has been computed previously to a potential wildfire-atmosphere interaction may not depict the atmosphere around the fire just after [..⁸⁴] a wildfire-atmosphere interaction.

Figure 10 shows the computation of the daily EFBI average joining the data from the different forecasts. In addition, the GlobFire database was retrieved and used to estimate the maximum daily fire run. Since the daily burnt area could have been mapped with some days of delay, an average has been applied to the maximum daily fire run using a time window of the 2 previous days. Figure 10 shows a peak of the EFBI followed by another [..⁸⁵] one which started on 16th of August and a third peak on 22nd of August. After the first peak, the maximum fire longitude of the daily burnt areas had increased from the 16th to the 20th of August, while the highest runs of the fire happened between the 18th and 20th; the fire activity has another peak after August 22 having two observed pyroCb on 18th and 25th of August. After 25th August, the EFBI trends [..⁸⁶] seem to be totally uncorrelated with the fire runs until 1st September. Afterwards, there is another peak on 7th of September which also seems to affect the fire runs and with 2 observed pyroCb on 7th and 8th of September. Later, EFBI and the maximum line length are again uncorrelated until 17th September when the relation there is the last peak with another pyroCb observed.

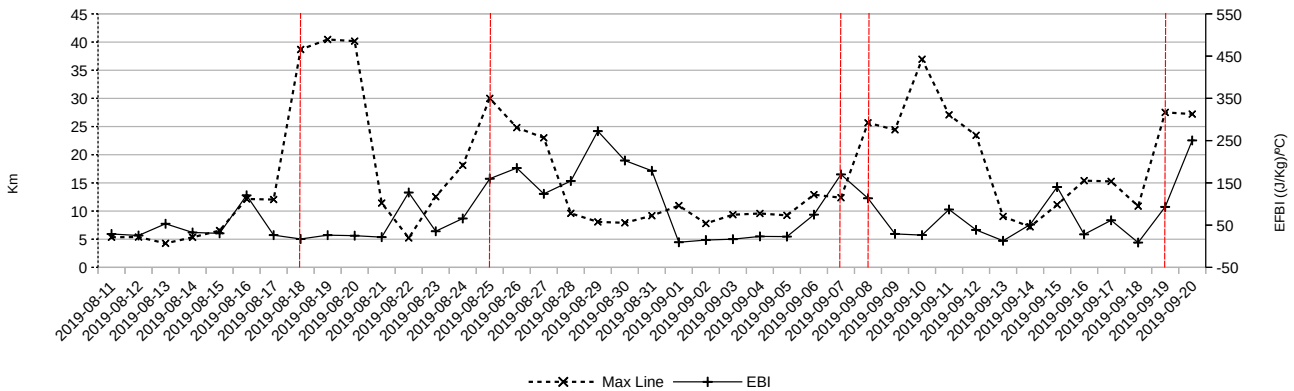


Figure 10. Maximum longitude of the the daily burnt area and the EFBI and its components for the wildfire in Roboré, Bolivia 2019. Vertical dashed red lines show when a pyroCb took place.

⁸⁴removed: an interaction

⁸⁵removed: peak

⁸⁶removed: seems

An example of pyroCb seen with Sentinel 2 [..⁸⁷] displayed in Fig. 11, where parts of the plume are shown in white.

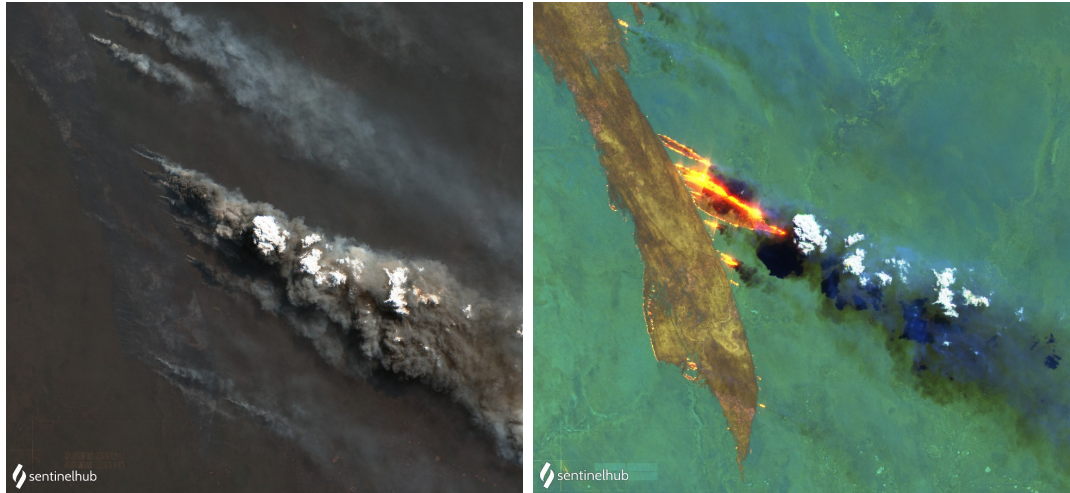


Figure 11. Sentinel 2, natural colour and atmospheric penetration, from right to left from S2 on 18th August. Roboré, Bolivia.

3.1.3 Wildfires Australia 2019

290 The EFBI was computed with ERA5 reanalysis for this area at the time of the fires showing very high values. Figure 12 shows the maximum values of the EFBI overlapped with the active fires (thermal anomalies shown as black points) that took place the next day.

It is worth mentioning that the assimilation system used to generate the ERA5 reanalysis dataset could partially affect the behaviour of the EFBI. In reanalysis, some of the consequences of heat release from the fire could be taken into account, while
295 in the forecast for a given day those conditions would not be considered.

4 Conclusions

This work demonstrates that simple metrics of the atmospheric stability could provide valuable information for enhanced fire danger rating, increasing preparedness and improving safety and efficiency of firefighting operations. The EFBI could be used to detect days in which fires could exhibit extreme behaviour [on a global scale](#). On those days, fires could add an unpredictable
300 interaction with atmospheric vertical profile, increasing fire behaviour due to plume dominated dynamics. However, EBI is subject to several factors which could cause uncertainty due to the [..⁸⁸] wildfire-atmosphere [interaction](#) during a forecast and the resolution of data used. Also, [..⁸⁹] [convection driven](#) fires are not the only kind of fire that can become extremely fast spreading. Despite this last fact, the approach used to differ between fast and slow fires at global scale demonstrates a potential

⁸⁷removed: in Figure

⁸⁸removed: interaction

⁸⁹removed: convective

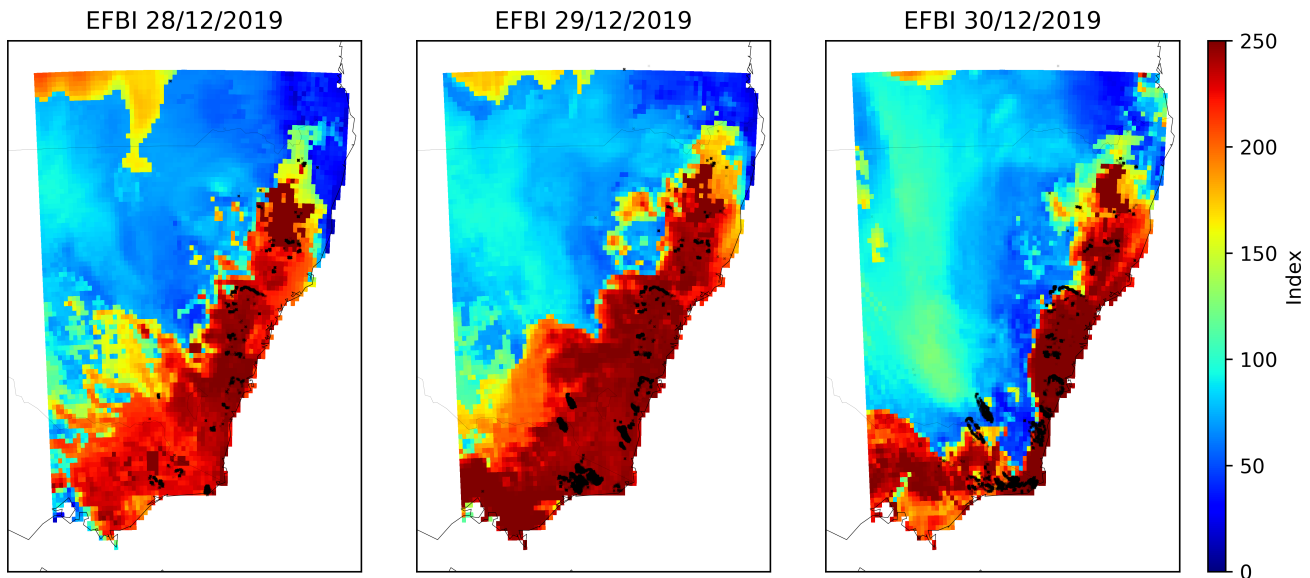


Figure 12. EFBI from 28/12/2019 to 30/12/2019 overlapped with the active fires (black dots) that took place the next day over southeast Australia.

use of the EFBI combined with the FWI. Moreover, the data used for the vertical profiles could be improved by estimating
 305 the surface temperature and relative humidity at the surface using the altitude of the fire event.

[..⁹⁰]The EFBI holds the potential to improve fire danger forecast ratings at global scale. The initial testing presented in
 this article reached a 72% accuracy, discriminating the final size of fires between small(≤ 500 ha) or [..⁹¹]large (≥ 10000)
 at global scale. Accuracy could be improved [..⁹²]by increasing the number of classes and using other input factors to
 discriminate [..⁹³]wind driven fires in small bushes or grass which can become large fires [..⁹⁴]but have low probability of
 310 becoming [..⁹⁵]convection driven wildfires or breaking the atmosphere stability. These big fires are not discarded in this
 work. For instance, dry and strong catabatic wind-driven fires like those of the Mistral (Western Europe), Santa Ana and Diablo
 winds (California) or Zonda wind (Argentina and Chile) are not always fast wildfires caused by convection. These kinds of
 fires are not [..⁹⁶]convection driven but are extreme anyway, and can reduce the accuracy reached in this work. This could
 relate also with the study case in Roboré (Bolivia), that generated several pyroCb but it also had wind driven fire spreads.

315

⁹⁰removed: Therefore the

⁹¹removed: big

⁹²removed: increasing the classes to differ

⁹³removed: also

⁹⁴removed: and

⁹⁵removed: convective

⁹⁶removed: convective but extreme anyway

The EFBI can be computed at least twice per day at global scale with up to 10 days [\[.97 \]forecast](#). For instance, using the Global Forecast System(GFS) for a 10 day forecast at 0.25 degrees of spatial resolution (approximately 25 km), the computation of the EFBI at the global scale took 4 hours in a single node with linear speed up, using multiple cores.

320 The EFBI has shown high [\[.98 \]discriminatory](#) power of large fires using ERA5 [\[.99 \]](#)at 0.25 degrees resolution at hourly steps and GlobFire at 500m with a temporal resolution of 1 day. It showed a considerable relevance in the mutual information and [\[.100 \]in the discriminative power with the](#) decision tree. It should be noted that the training of the neural network with only FWI values and its components, which are the fire danger indices most used worldwide, dropped the accuracy from 65.5% to 58%. Our results also highlight the relevance of the GlobFire dataset to [\[.101 \]analyse](#) fire behaviour and improve current danger ratings for extreme wildfires that may happen more frequently worldwide under climate change. [\[.102 \]This work also](#)
325 [stress the importance of developing datasets for fire behavior improving temporal and spatial resolution.](#)

Using a high spatial and temporal resolution in the study case of Pedrógão Grande in Portugal, EFBI has shown a relation with the fire spread speed. Moreover, using the daily data of GlobFire for the fire behaviour in the case of Roboré, EFBI could have been applied for the forecast of convective periods during the wildfire. For the last study case, this includes a cluster of extreme wildfires in Australia, high values of the EFBI match spatially with the occurrences of the
330 [such events. However, this work did not analyse the different behaviour of the fires inside the cluster.](#)

[Therefore](#), the EFBI has the potential to improve the current fire danger rating at global scale by establishing a fire typology, which could characterize potential explosive behaviour of wildfires under certain atmospheric conditions.

Author contributions. T.A. conceived and designed the experiments; J.SMA. directed the research project. T.A. performed the experiments and the creation of the method. T.A., M.C. analysed the data, the method and the overall application. The first manuscript draft was written
335 by T.A. All authors discussed the results and contributed to the manuscript editing process. T.HD provided language check and proofreading.

Competing interests. All authors declare that no competing interests are present

Acknowledgements. A non-published work between T.A and Thomas Petroligkis in 2015 [\[.103 \]led](#) to the proposed method after the development of GlobFire, the customization of Metpy and the publication of ERA5. [Reconstructed wildfire spread data for Pedrogão Grande was supplied by Nuno Guiomar and Paulo Fernandes.](#)

⁹⁷removed: forecasts

⁹⁸removed: discrimination

⁹⁹removed: is

¹⁰⁰removed: also in the

¹⁰¹removed: analyze the

¹⁰²removed: Furthermore

¹⁰³removed: leaded

340 References

- Artés, T., Oom, D., De Rigo, D., Durrant, T. H., Maianti, P., Libertà, G., and San-Miguel-Ayanz, J.: A global wildfire dataset for the analysis of fire regimes and fire behaviour, *Scientific data*, 6, 1–11, 2019.
- Balch, J., Bradley, B., Abatzoglou, J., Nagy, R., Fusco, E., and Mahood, A.: Human-started wildfires expand the fire niche across the United States, *Proceedings of the National Academy of Sciences of the United States of America*, 114, 2–946, 2017.
- 345 Baptiste Filippi, J., Bosseur, F., Mari, C., Lac, C., Le Moigne, P., Cuenot, B., Veynante, D., Cariolle, D., and Balbi, J.-H.: Coupled atmosphere-wildland fire modelling, *Journal of Advances in Modeling Earth Systems*, 1, 2009.
- Boschetti, L., Roy, D. P., Giglio, L., Huang, H., Zubkova, M., and Humber, M. L.: Global validation of the collection 6 MODIS burned area product, *Remote Sensing of Environment*, 235, 111 490, 2019.
- Bowman, D. M., Williamson, G. J., Abatzoglou, J. T., Kolden, C. A., Cochrane, M. A., and Smith, A. M.: Human exposure and sensitivity
350 to globally extreme wildfire events, *Nature ecology & evolution*, 1, 1–6, 2017.
- Byrd, R. H., Lu, P., Nocedal, J., and Zhu, C.: A limited memory algorithm for bound constrained optimization, *SIAM Journal on scientific computing*, 16, 1190–1208, 1995.
- Deeming, J. E., Burgan, R. E., and Cohen, J. D.: The national fire-danger rating system–1978, vol. 39, Intermountain Forest and Range Experiment Station, Forest Service, US . . . , 1977.
- 355 Defourny, P., Kirches, G., Brockmann, C., Boettcher, M., Peters, M., Bontemps, S., Lamarche, C., Schlerf, M., and Santoro, M.: Land cover CCI, Product User Guide Version, 2, 2012.
- Delicado, N. T. S. and Gomes, A.: O GRANDE INCÊNDIO FLORESTAL DE PEDROGÃO GRANDE Análise Crítica.
- Di Virgilio, G., Evans, J. P., Blake, S. A., Armstrong, M., Dowdy, A. J., Sharples, J., and McRae, R.: Climate change increases the potential for extreme wildfires, *Geophysical Research Letters*, 46, 8517–8526, 2019.
- 360 Duane, A., Castellnou, M., and Brotons, L.: Towards a comprehensive look at global drivers of novel extreme wildfire events, *Climatic Change*, 165, 1–21, 2021.
- Forthofer, J., Shannon, K., and Butler, B.: 4.4 simulating diurnally driven slope winds with windninja, USDA Forest Service, Rocky Mountain Research Station, Missoula, MT, 2009.
- Friedlingstein, P., Jones, M., O’sullivan, M., Andrew, R., Hauck, J., Peters, G., Peters, W., Pongratz, J., Sitch, S., Le Quéré, C., et al.: Global
365 carbon budget 2019, *Earth System Science Data*, 11, 1783–1838, 2019.
- Giglio, L., Justice, C., Boschetti, L., and Roy, D.: MCD64A1 MODIS/Terra+ Aqua Burned Area Monthly L3 Global 500 m SIN Grid V006 [Data Set], NASA EOSDIS Land Processes DAAC: Sioux Falls, SD, USA, 2015.
- Guerreiro, J., F. C. S. A. F. P. L. E. d. N. R. M. F. C. M. S. J. M. J. R. F. M. P.: Análise e apuramento dos factos relativos aos incêndios que ocorreram em Pedrógão Grande, Castanheira de Pêra, Ansião, Alvaiázere, Figueiró dos Vinhos, Arganil, Góis, Penela, Pampilhosa da Serra, Oleiros e Sertã entre 17 e 24 de junho de 2017, Comissão Técnica Independente, Assembleia da República, Lisboa, https://www.parlamento.pt/Documents/2017/Outubro/RelatórioCTI_VF%20.pdf, 2017.
- 370 Haines, D. A. and Service, U. F.: A lower atmospheric severity index for wildland fires, 1988.
- Hersbach, H.: The ERA5 Atmospheric Reanalysis., in: AGU fall meeting abstracts, 2016.
- "Independente", C. T.: Relatório: Análise e apuramento dos factos relativos aos incendios que ocorreram em Pedrógão Grande, Castanheira
375 de Pera, Ansiao, Alvaiázere, Figueiró dos Vinhos, Arganil, Góis, Penela, Pampilhosa da Serra, Oleiros e Sertã, entre, 17, 2017.

- Keetch, J. J. and Byram, G. M.: A drought index for forest fire control, vol. 38, US Department of Agriculture, Forest Service, Southeastern Forest Experiment, 1968.
- Khaykin, S., Legras, B., Bucci, S., Sellitto, P., Isaksen, L., Tence, F., Bekki, S., Bourassa, A., Rieger, L., Zawada, D., et al.: The 2019/20 Australian wildfires generated a persistent smoke-charged vortex rising up to 35 km altitude, *Communications Earth & Environment*, 1, 1–12, 2020.
- KingaD, A.: A method for stochastic optimization, Anon. International Conference on Learning Representations. San Diego: ICLR, 2015.
- Kraskov, A., Stögbauer, H., and Grassberger, P.: Estimating mutual information, *Physical review E*, 69, 066 138, 2004.
- Lareau, N., Nauslar, N., and Abatzoglou, J. T.: The Carr Fire vortex: a case of pyrotornadogenesis?, *Geophysical research letters*, 45, 13–107, 2018a.
- 385 Lareau, N. P. and Clements, C. B.: Environmental controls on pyrocumulus and pyrocumulonimbus initiation and development, *Atmospheric Chemistry and Physics*, 16, 4005–4022, 2016.
- Lareau, N. P., Nauslar, N. J., and Abatzoglou, J. T.: The Carr Fire Vortex: A Case of Pyrotornadogenesis?, *Geophysical Research Letters*, 45, 13, 107–13, 115, <https://doi.org/https://doi.org/10.1029/2018GL080667>, 2018b.
- LEACH, R. N. and GIBSON, C. V.: Assessing the Potential for Pyroconvection and Wildfire Blow Ups., *Journal of Operational Meteorology*, 390 9, 2021.
- Lombardo, K. A. and Colle, B. A.: Convective storm structures and ambient conditions associated with severe weather over the northeast United States, *Weather and forecasting*, 26, 940–956, 2011.
- Mandel, J., Beezley, J. D., and Kochanski, A. K.: Coupled atmosphere-wildland fire modeling with WRF-fire, arXiv preprint arXiv:1102.1343, 2011.
- 395 McArthur, A.: Fire behaviour in eucalyptus forests, vol. 107, *Commonw. Aust., Dep. Nat. Devel., Forest and Timber Bureau*, Canberra, 1967.
- McRae, R. H., Sharples, J. J., and Fromm, M.: Linking local wildfire dynamics to pyroCb development, *Natural Hazards and Earth System Sciences*, 15, 417–428, 2015.
- Mell, W., Jenkins, M. A., Gould, J., and Cheney, P.: A physics-based approach to modelling grassland fires, *International Journal of Wildland Fire*, 16, 1–22, 2007.
- 400 Moncrieff, M. W. and Miller, M. J.: The dynamics and simulation of tropical cumulonimbus and squall lines, *Quarterly Journal of the Royal Meteorological Society*, 102, 373–394, 1976.
- Pausas, J. G. and Keeley, J. E.: A burning story: the role of fire in the history of life, *BioScience*, 59, 593–601, 2009.
- Pausas, J. G. and Keeley, J. E.: Epicormic resprouting in fire-prone ecosystems, *Trends in Plant Science*, 22, 1008–1015, 2017.
- Pedregosa, F., Varoquaux, G., Gramfort, A., Michel, V., Thirion, B., Grisel, O., Blondel, M., Prettenhofer, P., Weiss, R., Dubourg, V., Vanderplas, J., Passos, A., Cournapeau, D., Brucher, M., Perrot, M., and Duchesnay, E.: Scikit-learn: Machine Learning in Python, *Journal of Machine Learning Research*, 12, 2825–2830, 2011.
- 405 Pinto, M. M., DaCamara, C. C., Hurdac, A., Trigo, R. M., and Trigo, I. F.: Enhancing the fire weather index with atmospheric instability information, *Environmental Research Letters*, 15, 0940b7, <https://doi.org/10.1088/1748-9326/ab9e22>, 2020.
- Pirsko, A. R., Sergius, L. M., and Hickerson, C. W.: Causes and behavior of a tornadic fire-whirlwind, Res. Note PSW-RN-061. Berkeley, CA: US Department of Agriculture, Forest Service, Pacific Southwest Forest and Range Experiment Station. 13 p, 61, 1965.
- 410 Potter, B.: The Haines Index—it's time to revise it or replace it, *International journal of wildland fire*, 27, 437–440, 2018a.
- Potter, B. E.: The role of released moisture in the atmospheric dynamics associated with wildland fires, *International Journal of Wildland Fire*, 14, 77–84, 2005.

- Potter, B. E.: Quantitative Evaluation of the Haines Index's Ability to Predict Fire Growth Events, *Atmosphere*, 9, 177, 2018b.
- 415 Ross, B. C.: Mutual information between discrete and continuous data sets, *PloS one*, 9, 2014.
- Rothermel, R. C.: A mathematical model for predicting fire spread in wildland fuels, vol. 115, Intermountain Forest and Range Experiment Station, Forest Service, United . . . , 1972.
- San-Miguel-Ayanz, J., Schulte, E., Schmuck, G., Camia, A., Strobl, P., Liberta, G., Giovando, C., Boca, R., Sedano, F., Kempeneers, P., et al.: Comprehensive monitoring of wildfires in Europe: the European forest fire information system (EFFIS), in: Approaches to managing disaster-Assessing hazards, emergencies and disaster impacts, IntechOpen, 2012.
- 420 San-Miguel-Ayanz, J., Oom, D., Artes, T., Viegas, D., Fernandes, P., Faivre, N., Freire, S., Moore, P., Rego, F., and Castellnou, M.: Forest fires in Portugal in 2017, in: Science for Disaster Risk Management 2020: acting today, protecting tomorrow, edited by Casajus Valles, A., Marin Ferrer, M., Poljansek, K., and Clark, I., Publications Office of the European Union, Luxembourg, <https://doi.org/doi:10.2760/438998>, 2019.
- 425 Shi, Y., Matsunaga, T., Saito, M., Yamaguchi, Y., and Chen, X.: Comparison of global inventories of CO₂ emissions from biomass burning during 2002–2011 derived from multiple satellite products, *Environmental pollution*, 206, 479–487, 2015.
- Short, K. C.: Spatial wildfire occurrence data for the United States, 1992-2015, Forest Service Research Data Archive, <https://doi.org/https://doi.org/10.2737/RDS-2013-0009.4>, 2017.
- Tory, K. and Kepert, J.: Pyrocumulonimbus Firepower Threshold: Assessing the atmospheric potential for pyroCb, *Weather and Forecasting*, 430 36, 439–456, 2021.
- Tory, K. J., Thurston, W., and Kepert, J. D.: Thermodynamics of pyrocumulus: A conceptual study, *Monthly Weather Review*, 146, 2579–2598, 2018.
- Van Wagner, C., Forest, P., et al.: Development and structure of the canadian forest fireweather index system, in: Can. For. Serv., Forestry Tech. Rep, Citeseer, 1987.
- 435 Van Wagner, C. et al.: Structure of the Canadian forest fire weather index, vol. 1333, Environment Canada, Forestry Service, 1974.
- Vitolo, C., Di Giuseppe, F., Barnard, C., Coughlan, R., San-Miguel-Ayanz, J., Libertà, G., and Krzeminski, B.: ERA5-based global meteorological wildfire danger maps, *Scientific data*, 7, 1–11, 2020.
- Williams, E. and Renno, N.: An analysis of the conditional instability of the tropical atmosphere, *Monthly weather review*, 121, 21–36, 1993.