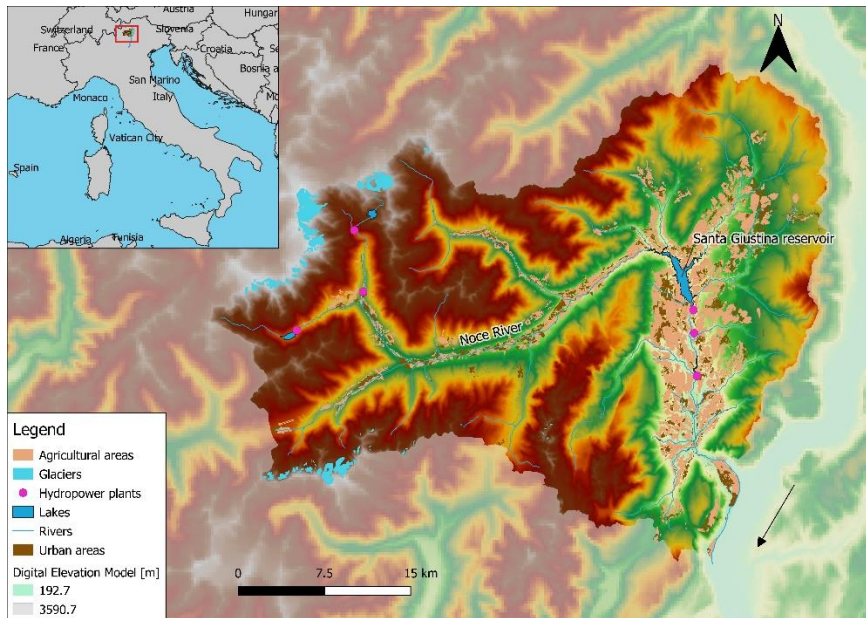


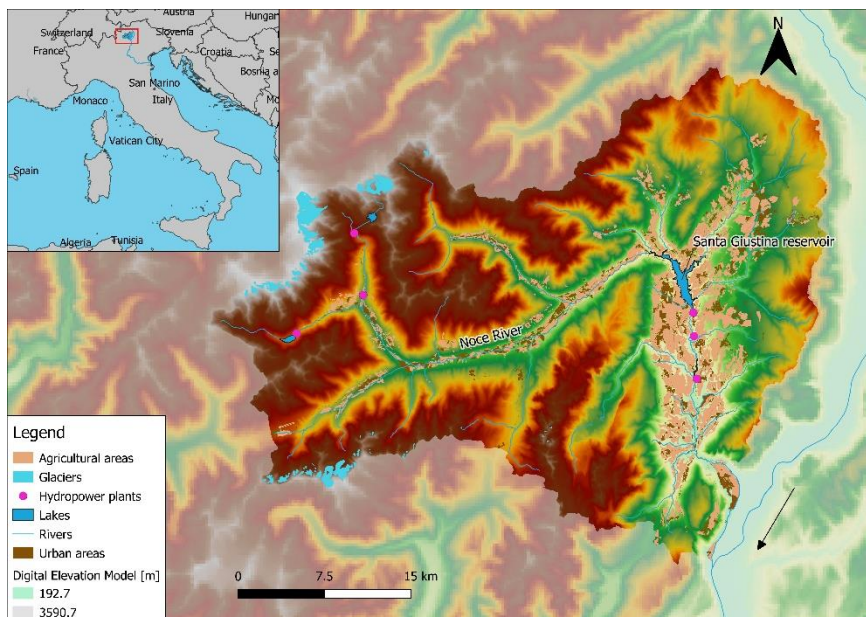
Dear Editor,

I am writing to ask for a minor change in the current version of Figure 1 of the accepted manuscript nness-2021-114 in order to correctly display the main river line.

Here reported the current image (with the minor error, missing line for the river next to the bottom-right arrow):



And here is the modified one I ask your approval for:



Thank you for taking care of this

Regards

Stefano Terzi