



Skill of large-scale seasonal drought impact forecasts

Samuel J. Sutanto¹, Melati van der Weert¹, Veit Blauhut², and Henny A. J. Van Lanen¹

¹Hydrology and Quantitative Water Management Group, Environmental Sciences Department, Wageningen University and Research, Droevendaalsesteeg 3a, 6708PB, Wageningen, the Netherlands

²Hydrological Environmental Systems, University of Freiburg, Fahnbergplatz, D-79098, Freiburg, Germany

Correspondence: Samuel Jonson Sutanto (samuel.sutanto@wur.nl)

Abstract. Forecasting drought impacts is still missing in drought early warning systems that presently do not go beyond hazard forecasting. Therefore, we developed drought impact functions using machine learning approaches (Logistic Regression and Random Forest) to predict drought impacts with a lead-time of 7 months ahead. The skill of the drought impact functions to forecast drought impacts was evaluated using the Brier Skill Score and Relative Operating Characteristic metrics for 5 Cases representing different spatial aggregation and lumping of impacted sectors. For German regions, impact functions developed using Random Forest show a higher discriminative ability to forecast drought impacts than Logistic Regression. Moreover, skill is higher for Cases with higher spatial resolution and less-lumped impacted sectors (Cases 4 and 5), with considerable skill up to 3-4 months ahead.

1 Introduction

Drought is a creeping phenomenon that slowly covers and affects extensive areas (Wilhite, 2000; Tallaksen and Van Lanen, 2004; Mishra and Singh, 2010; van Loon, 2015). It can last from months to years and can have multi-faceted impacts on, for example, crop production, drinking water supply, electricity production, waterborne transportation, and recreation (Wilhite, 2000; UNDP, 2006; EEA, 2007; Stahl et al., 2016). In terms of the number of affected people and economic losses, drought is categorized as one of the most damaging natural hazards (Wilhite and Vanyarkho, 2000; EEA, 2012). Worldwide, 2 billion people were affected and more than 10 million people passed away, due to the impacts of drought between 1900 and 2010 (Georgi et al., 2012). In the period 1976-2006, 15% of the European territory and 17% of the European population was affected by drought on an average annual basis and it was estimated that the total damage amounted to > 100 billion Euro (EEA, 2007).

Actions, such as the development of drought monitoring and early warning systems, as it is highlighted in the UN Sendai Framework for disaster risk reduction (Poljanšek et al., 2017), have been taken to reduce the impacts of drought. However, present drought monitoring and early warning systems, only provide the end-users with information of present and forecasted drought hazard conditions, mainly derived from the hydro-meteorological drought indices (Sepulcre-Canto et al., 2012; Pozzi et al., 2013; Sheffield et al., 2014; Sutanto et al., 2019a). Information on forecasted drought conditions, expressed by a drought hazard index, does not directly translate the hazard into impacts. Thus, the forecasting of drought impacts is still missing in drought early warning systems. This may be due to finding information on drought impacts is quite challenging, as drought occurs in different hydrological domains and has mainly non-structural consequences (Lackstrom et al., 2013; Stahl et al.,



2016; Kreibich et al., 2019). Nevertheless, the likelihood of impact occurrence, which is a result of the hazard, exposure, and vulnerability, is essential to stakeholders in order to manage drought events. Relating drought hazard indices with their impacts is beneficial for decision-making and risk management (Hayes et al., 2011). For water managers, stakeholders, and policymakers, there is a vital need to be informed about forecasted impacts of drought events, rather than only about the drought hazard. Thus, adaptation actions can be prepared and taken well in advance, to reduce the impact of drought.

As alternative to conventional bottom-up approach that links potential risks/impacts to hazard, exposure and vulnerability (e.g. Carrão et al. (2016); Naumann et al. (2014, 2015)), some studies have been conducted to develop a link between drought impacts and the underlying hazard (top-down approach). Gudmundsson et al. (2014) were, among others, the first to study this relationship using the Standardized Precipitation Index (SPI, McKee et al. (1993)) and the European Fire Database (EDF, Camia et al. (2014)). This study in southern Europe showed that there is a significant relationship between the probability of above normal wildfire incidents and meteorological drought hazards. The development of the European Drought Impact Inventory (EDII; Stahl et al. (2016)), a unique collection of categorized, temporally, and spatially assigned drought impact information, offers novel possibility to evaluate drought impacts. Using the EDII database, Blauhut et al. (2015) assessed the link between drought hazard and various impacted sectors across Europe on an annual scale, such as Agriculture and Livestock farming, Energy and Industry, Public Water Supply, and Water Quality. Stagge et al. (2015) enhanced this link by accounting for seasonality, incorporating inter-annual trends, and allowing for non-linear effects. In a joint publication, Blauhut et al. (2016) developed a method to test currently monitored drought hazard indices and vulnerability information on their ability to model the likelihood of impact occurrence. All the studies described above used similar methods to derive predictor-impact relations, which were based on the machine learning method, Logistic Regression (LR). In addition, Bachmair et al. (2017) assessed further machine learning approaches for deriving the link between drought hazard and their impacts, such as zero-altered negative binomial regression, and Random Forest (RF) models.

The aforementioned studies in general used historical observational data to derive the meteorological drought indices (SPI and Standardized Precipitation Evaporation Index, SPEI). Sutanto et al. (2019b) have conducted a first study that explored the possibility of forecasting the drought impacts using hydro-meteorological drought indices and the EDII database with data from Germany. They used the RF method to forecast drought impacts for four different lumped impacted sectors (i.e. impact groups). Their study shows that, in general, forecasting drought impacts is feasible, with skill up to a few months ahead depending on the number of reported impacts and drought duration. However, the skill likely depends on the machine learning approach adopted to derive functions that relate drought hazard indices to impacts (i.e. impact functions).

In this study, the skill of seasonal drought impact forecasts using the RF and LR approaches is evaluated for different combinations of spatial aggregations and impact categories (i.e. Cases). To achieve this, we, divided the study into three parts with the following objectives (Fig. 1): 1) evaluation of the skill to forecast drought hazards using re-forecast data from 2002-2010 (box g), which is a first step in the forecasting chain, 2) evaluation of the skill of the drought impact functions based upon the RF and LR approaches using proxy observed data and a split sampling method (box l), and 3) testing the skill of developed drought impact functions based upon the RF and LR approaches to forecast drought impacts using re-forecast data from 2002 to 2010 (box o).



2 Data and methods

The flowchart that summarizes the Data and Method section, as well as the objectives of the three parts of the study, is presented in Figure 1. In general, two datasets and two machine learning approaches were used in this study. The hydro-meteorological data (yellow boxes in Fig. 1) were required to calculate the drought hazard indices (SPI-x, SPEI-x and SRI-x). The drought impact data (green box in Fig. 1) were prerequisite to translate the drought hazard into the Likelihood of drought Impact Occurrence (LIO) in the next phase using the binary Logistic Regression (LR) model and the Random Forest (RF) model (blue boxes in Fig. 1). Three forecast skill analyses were carried out to assess 1) the drought hazard forecast skill (objective 1), 2) impact forecasting skill by using observed impact data and a split sampling technique (objective 2), and 3) drought impact forecasting skill by using re-forecast data (objective 3).

2.1 The EDII database

The EDII is a joint effort of the EU FP-7 project Drought RSPI (eu-drought.org), which is actually hosted, updated, and maintained by the University of Freiburg (Stahl et al., 2016). The database is a compilation of drought impact reports in Europe, which stem from a variety of sources e.g. governmental reports, scientific publications, media, or questionnaires (box a in Fig. 1). In the EDII, drought impacts are considered as negative environmental, economic, or social effects of the hazard of drought. Hence, drought conditions, such as an anomaly in precipitation, soil moisture, groundwater levels, or runoff, which do not result in a negative consequence, are not considered as an impact in the EDII inventory. Each impact report is assigned to: 1) temporal reference; this can be indicated by month, season or year as minimum, 2) spatial reference; the location of the reported impacts can be either referred to different levels of geographical regions using the European Union Nomenclature of Units for Territorial Statistics (NUTS) (Eurostat, 2011), or specified by rivers or lakes, and 3) one of 15 impact categories and a selection of 105 impact types (see Stahl et al. (2016) for detailed information on the EDII database). In this study, drought impact reports from the period 1990-2017 for Germany at country and county level (NUTS-1 regions, Fig. S1 in the supplementary for the Germany NUTS-1 regions) were used. For each NUTS region and impacted category, binary time-series (0: no drought, 1: drought) of monthly reported drought impacts were derived from the EDII (1990-2017, box h Fig. 1) following Blauhut et al. (2015) and Bachmair et al. (2017).

Since the availability of impact information from the EDII database appears to vary across Europe (Stahl et al., 2016; Sutanto et al., 2019b), we developed drought impact functions for the five different Cases, i.e. combinations of spatial aggregations and impact categories. For Cases 1 and 2, we accumulated the entire country of Germany and for Cases 3, 4, and 5, a higher spatial resolution, i.e. NUTS-1 regions (Fig. S1), was applied. For the cases 2 and 5, all 15 individual impacted sectors were tested to forecast drought impacts. For the Cases 1 and 3 all sectors were lumped. For Case 4, the EDII impacted sectors were arbitrarily grouped as follows: Group 1 consists of agriculture and livestock farming and forestry, Group 2 consists of Energy and Industry, Transportation, and Public Water Supply, Group 3 consists of Water Quality, Freshwater Ecosystem, and Terrestrial Ecosystem, and Group 4 consists of Wildfire, Air Quality, and Human Health and Public Safety. We grouped the impacts based on their likely relation to specific drought types (meteorological, agricultural, and hydrological drought) and



topic (water quality, ecosystems). Group 1 relates to agricultural drought, group 2 relates to streamflow drought (hydrology),
95 group 3 relates to hydrological drought linked to ecosystems, and last, group 4 relates to meteorological drought and heat.
These Cases and the selection of the EDII impacts are documented in Table 1. Hence, the binary time-series differ and case
specific (the more impact categories and regions merged, the more reported impacts reported). The impacts that were reported
as a season were transformed into months of that season (e.g. winter = December, January, and February, spring = March,
April, and May, and so on).

100 2.2 Hydro-meteorological dataset

The hydro-meteorological data used in this study were obtained from the European Flood Awareness System (EFAS, Thielen
et al. (2009); Pappenberger et al. (2011)) with a spatial resolution of 5 km by 5 km. The EFAS used in the study is based upon
a state-of-the-art LISFLOOD rainfall-runoff model (Bartholmes et al., 2008; van der Knijff et al., 2010; Burek et al., 2013) and
the European Centre for Medium-Range Weather Forecasts (ECMWF) seasonal forecasts S4 (SEAS4, Smith et al. (2016)).
105 Gridded observed meteorological data, such as precipitation and evapotranspiration were used by the LISFLOOD model to
simulate gridded runoff. The gridded meteorological and runoff data (Simulation Forced with Observed, SFO, hereafter referred
as proxy observed data, box b Fig. 1) were used to calculate the observed drought hazards with a time scale of 1990-2017 (box
e Fig. 1). Simulated runoff had to be used since gridded observed runoff is not available. Meteorological and hydrological
re-forecasts (in many cases referred to as hindcasts) were obtained from the ECMWF meteorological forecast SEAS4 and the
110 LISFLOOD model forced with the ECMWF SEAS4, respectively (box c Fig. 1). These re-forecast data were used to calculate
the forecasted drought hazards from 2002 to 2010 (box f Fig. 1), using the distribution parameters derived from the observed
datasets (box d Fig. 1). Re-forecasts of meteorological and hydrological variables have a lead-time of 215 days (circa 7 months)
and consist of 15 ensemble members. Detailed information on the hydro-meteorological dataset from EFAS can be found in
Arnal et al. (2018), van Hateren et al. (2019), and Sutanto et al. (2019a). The daily proxy observed and re-forecast data were
115 transferred into monthly time series.

2.3 Standardized drought hazard indices

The calculation of hydro-meteorological drought hazards was carried out using the Standardized Precipitation Index (SPI,
McKee et al. (1993)), the Standardized Precipitation Evaporation Index (SPEI, Vicente-Serrano et al. (2010)), and the Stan-
dardized Runoff Index (SRI, Shukla and Wood (2008)), with accumulation periods of 1, 3, 6, and 12 months (box e and f Fig.
120 1). The standardized indices were calculated by fitting a probabilistic distribution on monthly observed variables (1990-2017):
precipitation for SPI, precipitation minus potential evapotranspiration for SPEI, and runoff for SRI. These input data were
averaged for the German counties (NUTS-1) and country before the calculation of the standardized indices was performed. A
gamma distribution (SPI and SRI), and three-parameter log-logistic distribution (SPEI) were selected to transform the monthly
hydro-meteorological data into 144 distributions for every month of the year, for each drought hazard index, and for each
125 accumulation period (12x3x4, box d Fig. 1). We used the distributions to calculate monthly time series of the three drought



hazard indices (SPI, SPEI, SRI) for the observed data (1990-2017) (box e Fig. 1) and re-forecasted data (2002-2010, box f Fig. 1).

2.4 Machine learning for modeling drought impacts

LR predicts the probability of a dichotomous variable. This model belongs to the class of Generalized Linear Models (GLMs, Zuur et al. (2009)). The likelihood of impact occurrence (LIO, logit-transformed) is modeled as a linear function of drought hazard predictors as:

$$\log \frac{LIO}{1-LIO} = \alpha + \sum_i \beta_i x_i \quad (1)$$

The left side of the equation represents the logit transformation of LIO. The model parameter α and β are intercept and coefficient, respectively, that were estimated using standard regression techniques within the framework of GLM (Peng et al., 2002). x is predictor variables e.g., month, year, SPI-x, SPEI-x, and SRI-x, with different accumulation periods, and i is the number of predictor variables. The months of impact occurrence (e.g. January, February, and so on until December) were included to account for seasonality, as some drought impacts are connected to particular seasons. The years of impact occurrence were included (e.g., 2003, 2010, 2015, and so on) as a predictor since drought impacts gradually have been better documented throughout the years. To find the best LR models for LIO (box j, m Fig. 1), we applied three steps following Blauhut et al. (2016) as follow. 1) A selection from the initial predictors (SPI-x, SPEI-x, SRI-x, month, and year) was tested for their single ability to predict the impact. Insignificant predictors indicated with a probability value (p) larger than 0.05 were omitted, and the remaining predictors were tested for collinearity (step 2). 2) Each combination of 2 independent variables was tested for their collinearity. For predictors, which were highly correlated to each other ($p > 0.7$), the best was kept. Thereafter 3), the forward and backward stepwise selection was used to find the best combination of predictors defined by the Akaike Information Criterion (AIC). This analysis was performed using the “MASS” package in Rstudio (Ripley et al., 2019). In this procedure, the model started with no independent variables. Sequentially, the most significant independent variable was added to the model and was examined for the model improvement. The independent variable was removed from the model if it did not increase the model performance. This procedure was performed until all selected independent variables from step 1 and 2 were analyzed. The selection procedures of the best predictors mean that not all predictors are used in the LR method. To estimate the contribution of each variable to the model, the absolute value of the t-statistic for each model parameter was assessed using the “Caret” package in Rstudio (Kuhn, 2019).

Random Forest (RF) is a Machine Learning algorithm that is powerful to develop a predictive model (Breiman, 2001). The system creates a multitude of random independent decision trees as an ensemble to avoid overfitting and sensitivity to training data configuration (in our case 2000 trees). Each tree is constructed based on a bootstrapped fix size of subsample of the data and predictions are made by the mean prediction of the individual trees. The RF method was performed using the “RandomForest” package in Rstudio (Liaw and Wiener, 2002). We used all the predictor variables in the RF model (box e Fig. 1) and the response variables consist of the binary time-series of reported drought impacts from the EDII (box h Fig. 1). To



identify the drought hazard indices best linked to impact occurrence, the “Caret” feature was used (Kuhn, 2019). The Caret uses the prediction accuracy on the out-of-bag portion for both the full model and after permuting each predictor variable. The differences between the two models are then averaged over all trees, and normalized by the standard error. Likelihood of Impact Occurrence (LIO) was estimated by calculating the probability of the number of trees that indicated the impact for every German NUTS region. We trained the machine learning models (LR and RF) using the data from 1990 to 2015 for objective 2 (box j Fig. 1). For objective 3, we used all observations from 1990 to 2017 for model trainee (box m Fig. 1). Bachmair et al. (2016), Bachmair et al. (2017), and (Sutanto et al., 2019b) provide a detailed explanation of the use of RF to develop drought impact forecasting functions.

2.5 Forecasting skill score

The skill of forecasted drought hazard indices and drought impacts was evaluated using common skill score metrics, such as the Brier Skill Score (BSS, Brier (1950)) and Relative Operating Characteristic (ROC, Mason (1982)). The BSS can be used to measure both the reliability and sharpness of forecasts (Trambauer et al., 2015; Arnal et al., 2018). For the BSS, both the Brier Score for the climatology (BSclim) and the Brier Score for the forecast (BSf) are required. The Brier Score (BS) measures the mean squared difference between the predicted probability and the verification sample. For BSclim, a threshold of -0.5 was chosen to give a good balance between capturing either too many minor droughts or too few drought events (Trambauer et al., 2015). The standardized index of -0.5 stems from a normal distribution, and therefore the value for p is 0.3085 for every month (van Hateren et al., 2019). The BSS measures the improvement of the probabilistic forecasts relative to climatology. It has a range of $[1, -\infty]$ where 1 indicates the highest skill and values below 0 indicate that the probabilistic forecast does not show additional predictive performance against the climatology.

The ROC curve was used as a criterion to measure the discriminate ability between two outcomes (Mason and Graham, 1999). The ROC curve gives the relation between the true positive rate (sensitivity) and the false positive rate (specificity). The Area Under the Curve (AUC) was calculated to measure the accuracy of the forecast. The AUC has a range from 0 to 1, with a perfect score of 1. $AUC=0.5$ is as good as flipping a coin and $AUC<0.5$ is unskillful.

3 Results

3.1 Skill of drought hazard forecasts

Skill of probabilistic drought hazard forecasts (SPI-x, SPEI-x, and SRI-x) for our example, Germany, using median of the ensemble of re-forecast data from 2002 to 2010 is presented in Figure 2. The skill was measured using the BSS and ROC skill scores and presented for forecasts done in each season (colored lines) and for the annual time scale (black line). Figure 2 shows that drought indices with longer accumulation periods perform better than the ones with short accumulation periods. For example, SPI-1 forecasts using the BSS show no skill for all seasons except for forecast done in autumn for a lead-time (LT) of 1 month. On the other hand, the skill much improves for longer accumulation periods, i.e. SPI-12, with BSS values around



0.7 for 1-month LT. The lowest skill is found for forecasts done in summer for all accumulation periods. As expected, the skill
190 also decreases for higher LTs.

The predictive skill of drought hazard forecasts varies between the drought indices. In general, SPI-x and SPEI-x have similar
predictive skill for long accumulation periods (e.g., x=6 and 12 months). However, the SPEI-x index shows higher skill than
the SPI-x for short accumulation periods. The SPI-3 forecasted during summer shows a BSS value of 0.75 while the SPEI-3
shows a BSS value of 0.85. The hydrological drought index, SRI-x, predicts drought better than the meteorological drought
195 indices, e.g., SPI-x and SPEI-x. This is illustrated in the BSS and ROC figures. The BSS for SRI-1, for example, shows that
there is predictive value up to a LT of 2 months, which indicates similar skill than SPI-3 and SPEI-3. For drought indices with
longer accumulation periods, SRI-x performs better for almost all LTs than SPI-x and SPEI-x. The comparison between the
BSS and ROC skill score learns that drought forecasts using the ROC method produces a higher score. This is clearly seen for
droughts forecasts with higher accumulation periods and LTs (Fig. 2).

200 3.2 Skill of drought impact forecasts using observed data

To test drought impact function performance for the five different Cases (box l Fig. 1 and Table 1), we developed these functions
using the observed data from 1990 to 2015 (Box j Fig. 1). The predictive power of the model is assessed by comparing with
observed impacts from the last 2 years (2016 to 2017, split sampling technique). Please note, no re-forecasted data were used in
this analysis. A summary of the model performance using the ROC skill score for the different Cases is presented as boxplots
205 in Figure 3. Please keep in mind that Case 1 only covers one impact function, which is developed using all impact data lumped,
irrespective of the impacted sector, for Germany (all NUTS-1 regions). Hence, Case 1 is presented as a single line in Figure 3.
For each boxplot, the median of the ROC values obtained from all models is also presented as a single line.

Figure 3 shows that, overall, the models have skills in distinguishing impact and no impact. This is indicated by the median
for all five Cases above 0.5. The analysis of the medians between the two machine learning approaches shows a large difference
210 in skill score for Case 1. The model's skill score for LR (ROC=0.53) is substantially lower than RF (ROC=0.7). However, both
methods show similar skills for the other Cases, which have a substantially lower number of impact reports. Cases 2 and 3
show lower performance than Cases 4 and 5. Variation within the Cases seems more pronounced in LR than in RF.

3.3 Skill of drought impact forecasts using re-forecast data

After testing the drought impact functions performance using a split sampling technique (Section 3.2), we re-developed drought
215 impact functions using all observed datasets from 1990 to 2017 (Box m Fig. 1). These models were built as if these would be
implemented in a drought early warning system. Another reason to use the full dataset is that we would like to train the models
with as much data as possible. After developing the functions, these were used to forecast the drought impacts (Box n Fig.
1) using the re-forecast data from 2002-2010 (Box f Fig. 1). A summary of the skill of drought impact functions to forecast
drought impacts (box o Fig. 1) using the ROC skill score is presented in Figure 4.

220 In Figure 4, we divide the analysis of drought impact forecasting skill into short LTs (1-3 months) and long LTs (4-7 months).
Obviously, forecasting drought impacts for shorter LTs produce a higher skill than longer LTs. This is true for all Cases and the



two modeling approaches. Figure 4 also shows that the RF performs better than the LR for all LTs. If only the median value is considered, models developed using the LR method have skill only for Cases 3, 4, and 5 and only for short LTs. For long LTs, all the LR models show no skill. For RF, however, skill is obtained for both short and long LTs and for all Cases. Variation within Cases seems to be smaller for RF than LR and the differences are larger for longer LTs than for shorter ones. The skill of drought impact forecasts using LR for short LTs (Cases 3, 4, and 5) varies around 0.74 whilst the skill using RF fluctuates around 0.85.

As discussed in the previous paragraph, the highest skill is achieved using the RF method for Cases 4 and 5. Therefore, the skill of drought impact forecasts developed using RF for Case 4 is presented in Figure 5, for each German NUTS-1 region and different impact groups. We only present the skill of drought impact forecasts for Case 4 because the number of drought impact functions that can be developed for Case 5 is limited. This is due to the large differences in the number of reported impacts for each impacted sector between the German NUTS-1 regions (Stahl et al., 2016; Sutanto et al., 2019b). For example, for Case 5, drought impacts on Agriculture and Livestock Farming or Forestry can be forecasted in BW and BV regions only, respectively (Figure not shown). However, if we combine these two impacted sectors into one group (Group 1, Case 4), impact functions can be developed for regions BW, BV, RP, and LS (Fig. 5).

Figure 5 shows that even if we combine several impacted sectors into four different impact groups, drought impact functions can be developed only for some regions in Germany due to the aforementioned data limitation and regional characteristics. For example, HH and HB are mainly cities, hence, there are no reported agriculture and livestock farming impact. Based on the BSS skill score, good drought impact forecasting skill is achieved only for impact Group 2 in BV. However, the ROC skill score shows good skill for all impact groups for short LTs. In general, the skill of drought impact forecasts using BSS is fair for short LTs and poor for longer LTs implying that for shorter LTs a reasonable distinction can be made between impact and no impact. This is especially the case for situations where the observed data show prolonged periods with drought impacts (Sutanto et al., 2019b).

4 Discussion

Analysis of model performance using the split sampling method (Fig. 3) indicates that both machine learning approaches (LR and RF) seem to have similar descriptive power. However, for drought impact models evaluated using re-forecast data, RF shows better performance, denoted by higher ROC scores (Fig. 4). For evaluation using re-forecast data, the drought impact models were trained using all observed data from 1990 to 2017. This implies that RF seems to have a longer memory than LR, meaning that RF keeps memory of the trained data, which were used to build the drought impact functions. Moreover, the number of predictors used in RF and LR differs because of the selection processes in the LR method, as done in previous studies (Stagge et al., 2015; Blauhut et al., 2015), whereas in RF, we used all predictors (Bachmair et al., 2016).

Figure S2 provides the importance of predictors in LR and RF. Figure S2 clearly shows that in the LG method only some of the predictors were used, whereas in the RF method, all the predictors were used. For example, in BV for impact Group 2, LG only used SPI-3, SPEI-12, and year as the predictors, with SPEI-12 as the most important predictor followed by SPI-3



255 and year. Using the RF method to predict drought impact Group 2 in BV, the most important predictors are SPEI-6, SRI-6,
and year, while the less important predictors are SPI-1, SPI-12, and SPEI-1. In this study, we did not use the same numbers of
predictor for both LR and RF, instead, we followed the same approach as in previous studies (Stagge et al., 2015; Blauhut et
al., 2015; Bachmair et al., 2016, 2017). Whether the skill of drought impact functions developed using LR (RF) would improve
(decrease), if we trained the models using the same number of predictors, is subject to future study.

260 It is also worth to mention that the RF has several advantages relative to the LR in this study because: (i) it can handle
non-linear relationships among variables, (ii) it is robust to noise, (iii) the bootstrap sampling provides a way to account for
the uncertainty in the impact data, and (iv) it has higher the true positive rate (Breiman, 2001; Hastie et al., 2009; Evans et
al., 2011; Trigila et al., 2015; Kirasich et al., 2018). Furthermore the RF has the potential to handle information on severity of
the impact, which is beneficial for future decision making (Breiman, 2001; Bachmair et al., 2016, 2017). Our results support
265 previous drought studies, which concluded that RF performs better than any other machine learning methods, such as LR,
Boosted Regression Trees, Cubist, decision trees, and Hurdle (Park et al., 2015; Bachmair et al., 2017; Rhee and Im, 2017).

Machine learning is a data-driven approach, in which the model performance is strongly related to the quality and quantity
of the underlying data (Solomatine and Shrestha, 2009; Elshorbagy et al., 2010; Mount et al., 2016). Drought impact functions
could not be developed in HH, HB, ST, TH, and SL for any Case because there is less than 20 months with reported impacts
270 in the period 1990 to 2017 (Fig. S3). Many reports were collected in the south of Germany, while only a few reports were
collected in the north of Germany. For example, many reports were found in BV and BW (>120 months) during the study
period of 1990-2017. However, less than 20 months of reports were collected in SH, HH, HB, ST, BE, TH, and SL (red line
Fig. S3). The total number of reported impacts in the whole of Germany from 1990 to 2017 is ~1160. Combining all impact
data from all impacted sectors for a NUTS-1 region helps to build a drought impact function in a region that has a limited
275 number of reported impacts. However, if impacts on all sectors are lumped (Case 3), then obviously, the model only provides
total impact occurrence (impact or no impact) without any information on impacted sectors. For example, a drought impact
model can be built in the SH region, which has a total number of reported impacts from around 20 coming from eight different
impacted sectors. In this case, the model can predict the impact occurrence relatively well, with a ROC value of 0.8 for LT=1
(Figure not shown). When we break down all impacts for a NUTS-1 region into impact groups (Case 4), meaning less reported
280 impacts for each group, a drought impact model cannot be made in this region (Fig. 5). Thus, a good balance between the
number of groups and reported impacts in each group by considering similar impact types and causes should be taken into
account when developing drought impact models. The forecasting skill assessment was carried out using the BSS and ROC
approaches for drought hazard and drought impact forecasts. Our results show that, in general, the BSS skill score produces a
lower skill than ROC. The ability of the BSS and ROC to distinguish between good and fail forecasts is limited by the number
285 of years in the re-forecast period (Kumar, 2009) and ensemble members (Scaife et al., 2014; Dunstone et al., 2016). The BSS
assesses all joint distributions of forecasts and observations based on the ensemble members in probability binary time series.
Therefore, BSS is subject to large sampling variability and more sensitive to the details of the datasets (Hamill and Juras, 2006).
Conversely, the ROC skill score uses the probability thresholds of the ensemble members. Thus, it may subject to be noisier
but it is insensitive to the particular probabilities themselves and insensitive to bias (Bett et al., 2018). The BSS is also sensitive



290 to rare events, such as extreme wet and dry conditions. Therefore, large sample sizes are required to stabilize the BSS when
one evaluates rare events. The reliability of the BSS values of the re-forecasted drought impacts is uncertain as these events are
subjected to a more skewed distribution, which is not the case for ROC. In the ROC analysis, the success rate in predicting no
impact is not part of the goodness-of-fit measure. Therefore, the ROC is not sensitive to biases and does not include reliability.
The downside, however, is that it ignores the predicted probability values and the goodness-of-fit of the model.

295 5 Conclusions

This study evaluates the skills of both drought hazard and impact forecasts, which were developed using observed and re-
forecasted hydro-meteorological data, and drought impact reports (EDII). Empirical drought impact functions were developed
by utilizing Logistic Regression (LR) and Random Forest (RF) machine learning approaches to link drought hazards to drought
impacts.

300 Our results show that re-forecasted drought hazard indices with longer accumulation periods have higher skill than those with
short periods. In general, higher prediction skill is obtained for hydrological drought hazard indices than for meteorological
indices, which is associated with the memory represented in initial hydrological conditions and storage in the hydrological
system.

The descriptive power of Logistic Regression (LR) and Random Forest (RF) to forecast drought impacts was assessed for
305 multiple Cases. Both data-driven models show similar skills for predicting drought impact occurrence when compared with
observed impact data from 2016-2017. However, when the drought impact functions that were trained using all observed impact
data and drought hazard indices (1990-2017), were used to predict drought impacts based upon re-forecast data (2002-2010),
RF shows higher discriminative ability than LR. Our findings also reveal that models with higher spatial resolution and less-
lumped impacted sectors (Cases 4 and 5) have higher predictive skill than the ones for more generic Cases (Cases 1, 2, and 3).
310 For the former Cases, drought impacts can be predicted up to 3-4 months ahead with considerable skill.

The forecasting skill of drought impacts greatly depends on the availability of impact data. Data-driven models require
sufficient reported impact data for training the model. This study demonstrated that the drought impact functions could not be
developed for certain regions and impacted sectors, owing to the lack of reported impacts. Although higher skill was gained
for Case 5 than Case 4, less drought impact functions could be developed for Case 5. This is a reason that we are in favor of
315 lumping impact data into several impact groups (Case 4). In this study, we used all drought hazard indices with all accumulation
periods (SPI-x, SPEI-x, and SRI-x) to develop drought impact functions using RF. A further study to develop drought impact
functions based on pre-defined drought indices with certain accumulation periods, which are linked to specific impacts, is
suggested. For example, drought indices with long accumulation periods are used to forecast hydrological drought impacts and
vice versa for meteorological drought impacts.



320 *Data availability.* The EFAS data are accessible under a COPERNICUS open data license (<https://doi.org/10.24381/cds.e3458969>). Other data generated and/or analyzed during this study are freely available in the 4TU Center for Research Data (<https://data.4tu.nl>).

Author contributions. All authors conceived and implemented the research. Data analyses, model output analyses, and all figures have been performed by M.V.D.W and S.J.S. S.J.S and H.A.J.V.L wrote the initial version of the paper. V.B contributed to interpreting the results, discussion, and improving the paper.

325 *Competing interests.* The authors declare no competing interests.

Acknowledgements. The research was supported by the ANYWHERE project (Grant Agreement No.: 700099), which is funded within EU's Horizon 2020 research and innovation program (www.anywhere-h2020.eu). The hydro-meteorological output came from the EFAS Computational Center, which is part of the Copernicus Emergency Management Service (EMS) and Early Warning Systems (EWS). Finally, we acknowledge the Ministry of Science, Research and the Arts of the State of Baden-Württemberg for financing the DRiER-project, which
330 maintains EDII. This research is part of the Wageningen Institute for Environment and Climate Research (WIMEK-SENSE) and it supports the work of UNESCO EURO FRIEND-Water program and the IAHS Panta Rhei project Drought in the Anthropocene.



References

- Arnal, L., Cloke, H. L., Stephens, E., Wetterhall, F., Prudhomme, C., Neumann, J., Krzeminski, B., and Pappenberger, F.: Skilful seasonal forecasts of streamflow over Europe?, *Hydrol. Earth Syst. Sci.*, 22, 2057–2072, <https://doi.org/10.5194/hess-22-2057-2018>, 2018.
- 335 Bachmair, S., Svensson, C., Prosdocimi, I., Hannaford, J., and Stahl, K.: Developing drought impact functions for drought risk management, *Natural Hazards and Earth System Sciences*, 17 (11), 1947–1960, <https://doi.org/10.5194/nhess-17-1947-2017>, 2017.
- Bachmair, S., Svensson, C., Hannaford, J., Barker, L. J., and Stahl, K.: A quantitative analysis to objectively appraise drought indicators and model drought impacts, *Hydrol. Earth Syst. Sci.*, 20, 2589–2609, <https://doi.org/10.5194/hess-20-2589-2016>, 2016.
- Bachmair, S., Kohn, I., and Stahl, K.: Exploring the link between drought indicators and impacts, *Nat. Hazards Earth Syst. Sci.*, 15, 1381–1397, <https://doi.org/10.5194/nhess-15-1381-2015>, 2015.
- 340 Bartholmes, J., Thielen, J., and Kalas, M.: Forecasting medium-range flood hazard on European scale, *Georisk*, 2, 181–186, <https://doi.org/10.1080/17499510802369132>, 2008.
- Bett, P., Thornton, H., and Troccoli, A.: Skill assessment of energy-relevant climate variables in a selection of seasonal forecast models. Report using final data sets, ECEM Deliverable D2.2.1 v2, ECMWF Copernicus Report, 2018.
- 345 Blauhut, V., Stahl, K., Stagge, J. H., Tallaksen, L. M., De Stefano, L., and Vogt, J.: Estimating drought risk across Europe from reported drought impacts, drought indices, and vulnerability factors, *Hydrol. Earth Syst. Sci.*, 20, 2779–2800, doi:10.5194/hess-20-2779-2016, 2016.
- Blauhut, V., Gudmundsson, L., and Stahl, K.: Towards pan-European drought risk maps: quantifying the link between drought indices and reported drought impacts, *Environmental Research Letters*, 10 (1), 014008, <https://doi.org/10.1088/1748-9326/10/1/014008>, 2015.
- 350 Breiman, L.: Random forests, *Mach. Learn.*, 45, 5–32, 2001.
- Brier, G. W.: Verification of forecasts expressed in terms of probability, *Monthly Weather Review*, 78 (1), 1–3, 1950.
- Burek, P., van der Knijff, J., and Roo, A. D.: LISFLOOD distributed water balance and flood simulation model, JRC Tech. Report, <https://doi.org/102788/24719>, 2013.
- Camia, A., Durrant, T., and San-Miguel-Ayanz, J.: The European fire database technical specifications and data submission, Executive Report, Joint Research Center, <https://doi.org/10.2788/2175>, 2014.
- 355 Carrão, H., Naumann, G., and Barbosa, P.: Mapping global pattern of drought risk: An empirical framework based on sub-national estimates of hazard, exposure and vulnerability, *Global Environmental Change*, 39, 108–124, doi:10.1016/j.gloenvcha.2016.04.012, 2016.
- Dunstone, N., Smith, D., Scaife, A., Hermanson, L., Eade, R., Robinson, N., Andrews, M., and Knight, J.: Skilful predictions of the winter North Atlantic Oscillation one year ahead, *Nat. Geosci.*, 9(11), 809–814, <https://doi.org/10.1038/ngeo2824>, 2016.
- 360 EEA.: Climate change and water adaptation issues, EEA Technical Report No. 2/2007, European Environmental Agency, Copenhagen, Denmark, 2007.
- EEA.: Urban adaptation to climate change in Europe Challenges and opportunities for cities together with supportive national and European policies, European Environment Agency, Report No 2/2012, Copenhagen, Denmark, 2012.
- Elshorbagy, A., Corzo, G., Srinivasulu, S., and Solomatine, D. P.: Experimental investigation of the predictive capabilities of data driven modeling techniques in hydrology – part 1: Concepts and methodology, *Hydrol. Earth Syst. Sci.*, 14, 1931–1941, <https://doi.org/10.5194/hess-14-1931-2010>, 2010.
- 365 Eurostat.: Regions in the European union: Nomenclature of territorial units for statistics nuts 2010/eu-27, Eur. Union, 2011.



- Evans, J. S., Murphy, M. A., Holden, Z. A., and Cushman, S. A.: Modeling Species Distribution and Change Using Random Forest, in: Predictive Species and Habitat Modeling in Landscape Ecology, edited by: Drew, C. A., Wiersma, Y. F., and Huettmann, F., Springer New York, New York, NY, 313 pp, 2011.
- Georgi, B., Swart, R., Marinova, N., Van Hove, B., Jacobs, C., and Klostermann, J.: Urban adaptation to climate change in Europe: Challenges and opportunities for cities together with supportive national and European policies, Tech. rep., EEA. (URL <https://www.eea.europa.eu/publications/urban-adaptation-to-climate-change>), 2012.
- Gudmundsson, L., Rego, F., Rocha, M., and Seneviratne, S. I.: Predicting above normal wildfire activity in southern Europe as a function of meteorological drought, *Environmental Research Letters*, 9, 084008, <https://doi.org/10.1088/1748-9326/9/8/084008>, 2014.
- Hamill, T. M., and Juras, J.: Measuring forecast skill: is it real skill or is it the varying climatology?, *Q. J. R. Meteorol. Soc.*, 132, 2905-2923, <https://doi.org/10.1256/qj.06.25>, 2006.
- Hastie, T., Tibshirani, R., and Friedman, J.: *The Elements of Statistical Learning*, Springer New York, New York, NY, 2009.
- Hayes, M., Svoboda, M., Wall, N., and Widhalm, M.: The Lincoln declaration on drought indices, universal meteorological drought index recommended, *Bulletin of the American Meteorological Society*, 485-488, <https://doi.org/10.1175/2010BAMS3103.1>, 2011.
- Kirasich, K., Smith, T., and Sadler, B.: Random forest vs logistic regression: binary classification for heterogeneous datasets, *SMU Data Science Review*, Vol. 1, No. 3, 2018.
- Kreibich, H., Blauhut, V., Aerts, J. C. J. H., Bouwer, L. M., Van Lanen, H. A. J., Mejia, A., Mens, M., and Van Loon, A. F.: How to improve attribution of changes in drought and flood impacts, *Hydrological Sciences Journal*, 64:1, 1-18, doi: 10.1080/02626667.2018.1558367, 2019.
- Kuhn, M.: Classification and regression training, package 'caret', CRAN R Project <https://cran.r-project.org/web/packages/caret/caret.pdf>, 2019.
- Kumar, A.: Finite samples and uncertainty estimates for skill measures for seasonal prediction, *Mon. Weather Rev.*, 137(8), 2622-2631, <https://doi.org/10.1175/2009mwr2814.1>, 2009.
- Lackstrom, K., Brennan, A., Ferguson, D., Crimmins, M., Darby, L., Dow, K., Ingram, K., Meadow, A., Reges, H., Shafer, M., and Smith, K.: The Missing Piece: Drought Impacts Monitoring. Workshop report produced by the Carolinas Integrated Sciences & Assessments program and the Climate Assessment for the Southwest, 5-6 March 2013, Tucson, AZ, 1-23, 22 pp., (<https://www.climas.arizona.edu/publication/report/missing-piece-drought-impacts-monitoring>), 2013.
- Liaw, A., and Wiener, M.: Classification and regression by random forest, *R News* 2(3), 18-22, 2002.
- Mason, S. J., and Graham, N. E.: Conditional Probabilities, Relative Operating Characteristics, and Relative Operating Levels. *Weather Forecast*, 14, 713-725, [https://doi.org/10.1175/1520-0434\(1999\)014<0713:CPROCA>2.0.CO;2](https://doi.org/10.1175/1520-0434(1999)014<0713:CPROCA>2.0.CO;2), 1999.
- Mason, I.: A model for assessment of weather forecasts, *Aust. Meteor. Mag* 30 (4), 291-303, 1982.
- McKee, T. B., Doesken, N. J., and Kleist, J.: The relationship of drought frequency and duration to time scales. In: *Proceedings of the 8th Conference on Applied Climatology*, Vol. 17, American Meteorological Society Boston, MA, pp. 179-183, 1993.
- Mishra, A. K., and Singh, V. P.: A review of drought concepts, *Journal of Hydrology*, 391, 202-216, <https://doi.org/10.1016/j.jhydrol.2010.07.012>, 2010.
- Mount, N. J., Maier, H. R., Toth, E., Elshorbagy, A., Solomatine, D., Chang, F.-J., and Abrahart, R. J.: Data-driven modelling approaches for socio-hydrology: opportunities and challenges within the Panta Rhei Science Plan, *Hydrological Sciences Journal*, 61:7, 1192-1208, <https://doi.org/10.1080/02626667.2016.1159683>, 2016.



- 405 Naumann, G., Spinoni J., Vogt, J., and Barbosa, P.: Assessment of drought damages and their uncertainties in Europe, *Environmental Research Letters*, 10, 124013, doi:10.1088/1748-9326/10/12/124013, 2015.
- Naumann, G., Barbosa, P., Garrote, L., Iglesias, A., and Vogt, J.: Exploring drought vulnerability in Africa: an indicator based analysis to be used in early warning systems, *Hydrol. Earth Syst. Sci.*, 18, 1591–1604, doi:10.5194/hess-18-1591-2014, 2014.
- Pappenberger, F., Thielen, J., and Del Medico, M.: The impact of weather forecast improvements on large scale hydrology: analyzing a
410 decade of forecasts of the European Flood Alert System, *Hydrol. Process.*, 25, 1091–1113, <https://doi.org/10.1002/hyp.7772>, 2011.
- Park, S., Im, J., Jang, E., and Rhee, J.: Drought assessment and monitoring through blending of multi-sensor indices using machine learning approaches for different climate regions, *Agric. For. Meteorol.*, 216, 157–169, <https://doi.org/10.1016/j.agrformet.2015.10.011>, 2015.
- Peng, C.-Y. J., Lee, K. L., and Ingersoll, G. M.: An introduction to logistic regression analysis and reporting. *The journal of educational research*, 96 (1), 3–14, <https://doi.org/10.1080/00220670209598786>, 2002.
- 415 Poljanšek, K., Marin Ferrer, M., De Groeve, T., and Clark, I.: Science for disaster risk management 2017: knowing better and losing less, executive summary, EUR 28034 EN, ISBN 978-92-79-60679-3, <https://doi.org/10.2788/842809>, JRC102482, 2017.
- Pozzi, W., Sheffield, J., Stefanski, R., Cripe, D., Pulwarty, R., Vogt, J. V., Heim Jr, R. R., Brewer, M. J., Svoboda, M., Westerhoff, R.,, and Lawford, R.: Toward global drought early warning capability: Expanding international cooperation for the development of a framework for monitoring and forecasting, *Bulletin of the American Meteorological Society*, 94 (6), 776–785, [https://doi.org/10.1175/BAMS-](https://doi.org/10.1175/BAMS-D-11-00176.1)
420 D-11-00176.1, 2013.
- Rhee, J., and Im, J.: Meteorological drought forecasting for ungauged areas based on machine learning: Using long-range climate forecast and remote sensing data, *Agric. For. Meteorol.*, 237-238, 105–122, <https://doi.org/10.1016/j.agrformet.2017.02.011>, 2017.
- Ripley, B., Venables, B., Bates, D. M., Hornik, K., Gebhardt, A., and Firth, D.: Package "mass", CRAN Repos., <http://www.stats.ox.ac.uk/pub/MASS4/>, 2019.
- 425 Scaife, A. A., Arribas, A., Blockley, E., Brookshaw, A., Clark, R. T., Dunstone, N., Eade, R., Fereday, D., Folland, C. K., Gordon, M., Hermanson, L., Knight, J. R., Lea, D. J., MacLachlan, C., Maidens, A., Martin, M., Peterson, A. K., Smith, D., Vellinga, M., Wallace, E., Waters, J., and Williams, A.: Skillful long-range prediction of European and North American winters, *Geophys. Res. Lett.*, 41(7), 2514–2519, <https://doi.org/10.1002/2014gl059637>, 2014.
- Sepulcre-Canto, G., Horion, S., Singleton, A., Carrao, H., and Vogt, J.: Development of a combined drought indicator to detect agricultural
430 drought in Europe, *Natural Hazards and Earth System Sciences*, 12 (11), 3519–3531, <https://doi.org/10.5194/nhess-12-3519-2012>, 2012.
- Sheffield, J., Wood, E. F., Chaney, N., Guan, K., Sadri, S., Yuan, X., Olang, L., Amani, A., Ali, A., Demuth, S., and Ogallo, L.: A drought monitoring and forecasting system for sub-Saharan African water resources and food security, *Bulletin of the American Meteorological Society*, 95 (6), 861–882, <https://doi.org/10.1175/BAMS-D-12-00124.1>, 2014.
- Shukla, S., and Wood, A. W.: Use of a standardized runoff index for characterizing hydro-logic drought, *Geophysical Research Letters*,
435 35(2), L02405, <https://doi.org/10.1029/2007GL032487>, 2008.
- Smith, P., Pappenberger, F., Wetterhall, F., Thielen, J., Krzeminski, B., Salamon, P., Muraro, D., Kalas, M., and Baugh, C.: On the operational implementation of the European Flood Awareness System (EFAS), *ECMWF Tech. Memorandum*, 778, 1-34 pp, 2016.
- Solomatine, D. P., and Shrestha, L.: A novel method to estimate model uncertainty using machine learning techniques, *Water Resources Research*, 45, W00B11, <https://doi.org/10.1029/2008WR006839>, 2009.
- 440 Stagge, J. H., Kohn, I., Tallaksen, L. M., and Stahl, K.: Modeling drought impact occurrence based on meteorological drought indices in Europe, *Journal of Hydrology*, 530, 37–50, <http://dx.doi.org/10.1016/j.jhydrol.2015.09.039>, 2015.



- Stahl, K., Kohn, I., Blauhut, V., Urquijo, J., De Stefano, L., Aca´cio, V., Dias, S., Stagge, J. H., Tallaksen, L. M., Kampragou, E., . . . , and Van Lanen, H. A. J.: Impacts of european drought events: insights from an international database of text-based reports., *Natural Hazards and Earth System Sciences*, 16 (3), 801–819, <https://doi.org/10.5194/nhess-16-801-2016>, 2016.
- 445 Sutanto, S. J., Van Lanen, H. A. J., Wetterhall, F., and Llort, X.: Potential of pan-European seasonal hydro-meteorological drought forecasts obtained from a Multi-Hazard Early Warning System, *Bulletin of the American Meteorological Society*, <https://doi.org/10.1175/BAMS-D-18-0196.1>, 2019a.
- Sutanto, S. J., Van der Weert, M., Wanders, N., Blauhut, V., and Van Lanen, H. A. J.: Moving from drought hazard to impact forecasts, *Nat. Comm.*, 4945, <https://doi.org/10.1038/s41467-019-12840-z>, 2019b.
- 450 Tallaksen, L. M., and Van Lanen, H. A. J.: Hydrological drought: processes and estimation methods for streamflow and groundwater, In: *Developments in Water Science*, vol. 48, Amsterdam, the Netherlands: Elsevier Science B.V, 2004.
- Thielen, J., Bartholmes, J., Ramos, M.-H., and Roo, A. D.: The European Flood Alert System - part 1: concept and development, *Hydrol. Earth Syst. Sci.*, 13, 125–140, <https://doi.org/10.5194/hess-13-125-2009>, 2009.
- Trambauer, P., Werner, M., Winsemius, H. C., Maskey, S., Dutra, E., and Uhlenbrook, S.: Hydrological drought forecasting and skill assess-
455 ment for the Limpopo River basin, southern Africa, *Hydrology and Earth System Sciences*, 19(4), 1695–1711, 2015.
- Trigila, A., Ladanza, C., Esposito, C., and Scarascia-Mugnozza, G.: Comparison of Logistic Regression and Random Forest techniques for shallow landslide susceptibility assessment in Giampileri (NE Sicily, Italy), *Geomorphology*, 249, 119–136, <http://dx.doi.org/10.1016/j.geomorph.2015.06.001>, 2015.
- UNDP.: Summary Human Development Report, *Beyond Scarcity: Power, Poverty and the Global Water Cycle*, New York: Palgrave MacMil-
460 lan, 2006.
- Van Der Knijff, J. M., Younis, J., and De Roo, A. P. J.: Lisflood: a gis-based distributed model for river basin scale water balance and flood simulation, *International Journal of Geographical Information Science*, 24:2, 189–212, <https://doi.org/10.1080/13658810802549154>, 2010.
- Van Hateren, T., Sutanto, S. J., and Van Lanen, H. A. J.: Evaluating uncertainty and robustness of seasonal meteorological and hydrological
465 drought forecasts at the catchment scale-case Catalonia (spain), *Env. Int.*, 133, 105206, <https://doi.org/10.1016/j.envint.2019.105206>, 2019.
- Van Loon, A. F.: Hydrological drought explained, *WIREs Water*, <https://doi.org/10.1002/wat2.1085>, 2015.
- Vicente-Serrano, S. M., Begueria, S., and López-Moreno, J. I.: A multi-scalar drought index sensitive to global warming: the standardized precipitation evapotranspiration index-SPEI, *Journal of Climate*, 23(7), 1696–1718, <https://doi.org/10.1175/2009JCLI2909.1>, 2010.
- 470 Wilhite, D. A.: ed. *Drought: A Global Assessment*, Routledge Hazards and Disasters Series, vol. I & II, London: Routledge, 2000.
- Wilhite, D. A., and Vanyarkho, O. V.: Drought: Pervasive Impacts of a Creeping Phenomenon. in *Drought: A Global Assessment*, Vol. I, edited by Donald A. Wilhite, chap. 18, pp. 245–255, London, Routledge, 2000.
- Zuur, A. F., Ieno, E. N., Walker, N. J., Saveliev, A. A., and Smith, G. M.: *GLM and GAM for Absence–Presence and Proportional Data*, Springer, New York, 245–259, 2009.

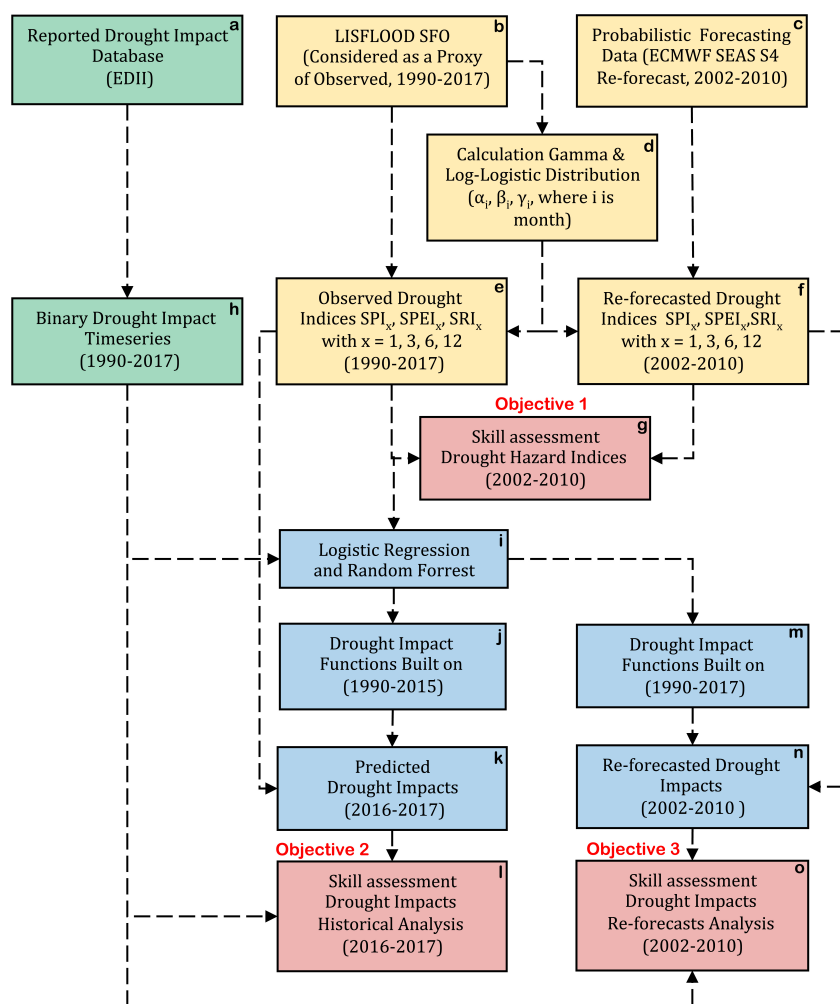


Figure 1. Workflow diagram, including colored boxes to illustrate the main components (drought hazard = yellow, drought impact = green, linking impact to hazard = blue, and validation of forecasting skill = red), as well as the objectives of the three parts of the study.

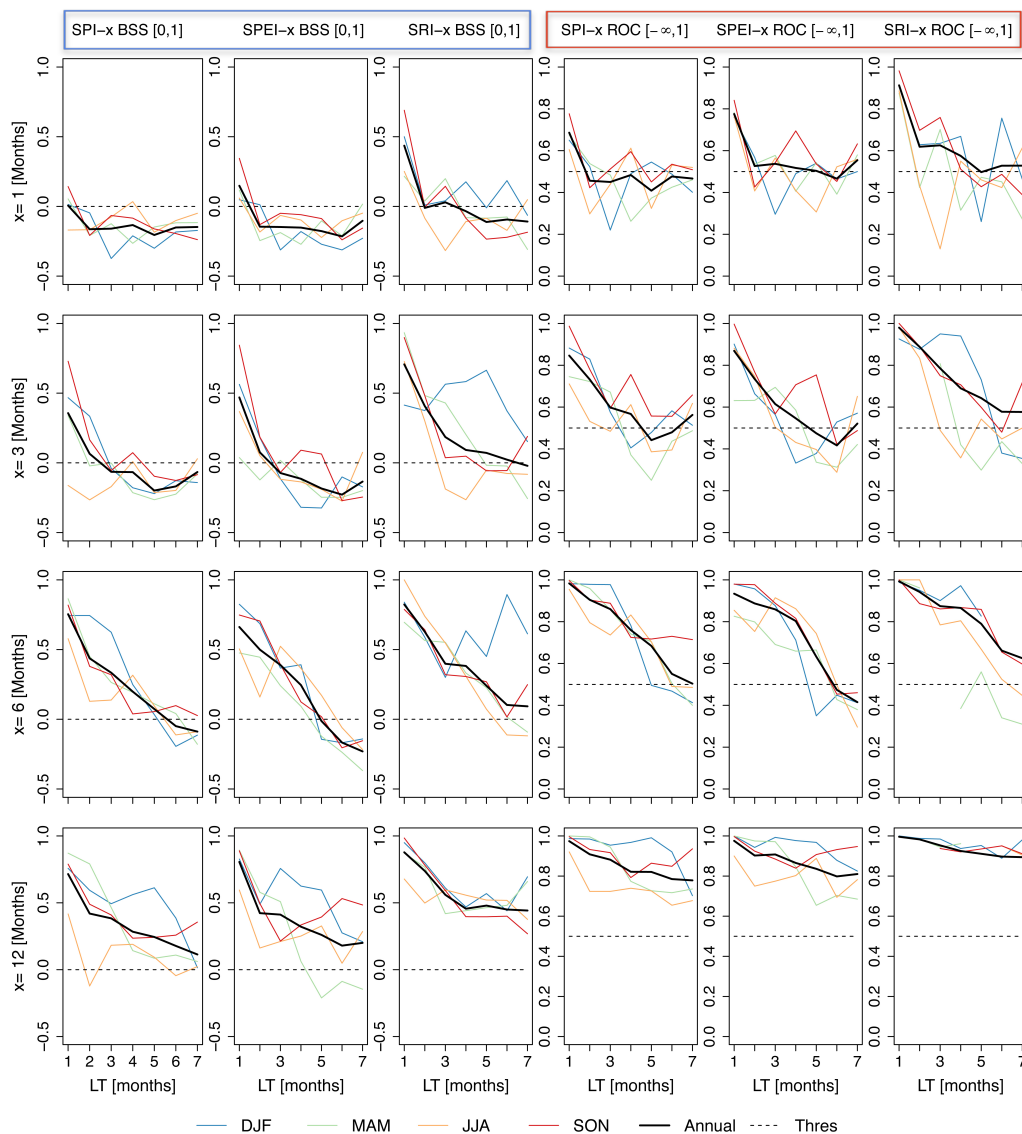


Figure 2. Skill scores of re-forecasted drought hazards indices (SPI-x, SPEI-x, and SRI-x) for 7-month lead-time (LT) in Germany for the period 2002-2010 (median of 15 ensemble members). The 4 different rows of graphs represent 4 different accumulation periods ($x=1, 3, 6,$ and 12 months). The first 3 columns show the BSS for the 3 different drought indices (indicated by a blue box at top). The last 3 columns are for ROC (indicated by a red box at top).

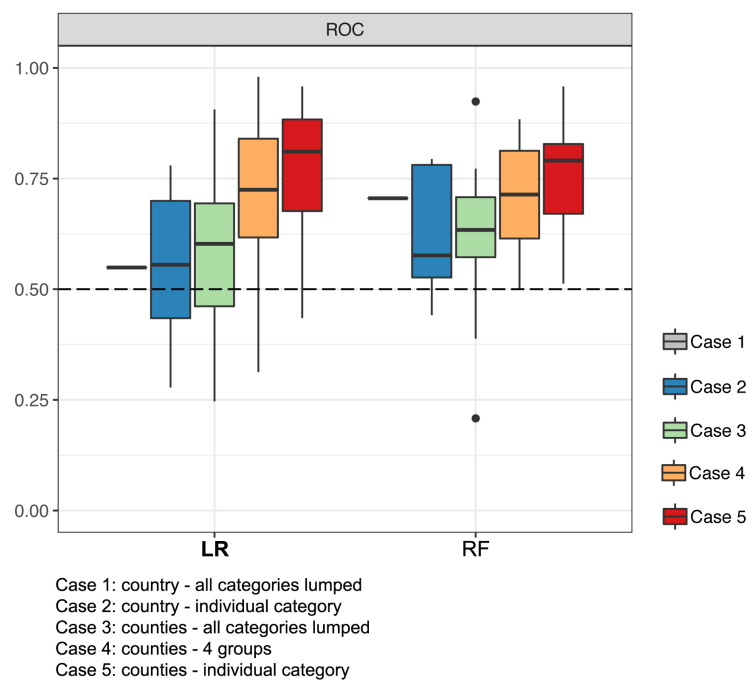


Figure 3. Model performance for the five Cases using Logistic Regression (LR) and Random Forest (RF) approaches to predict drought impacts for the period 2016-2017. The boxes indicate the spread of ROC values for drought impact functions (15 ensemble members). The performance is measured using ROC. The black dashed line indicates the threshold (ROC=0.5). All values below this line models have no discriminative capacity to distinguish impact and no impact. The dots stand for models outliers.

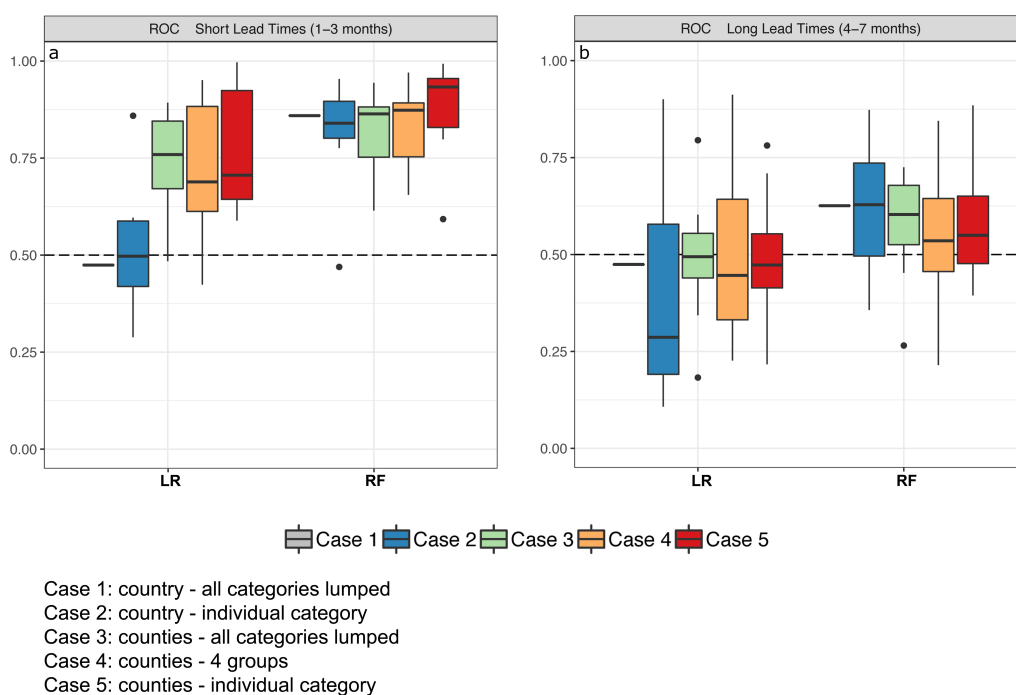


Figure 4. Skill of re-forecasted drought impacts for the five Cases using Logistic Regression and Random Forest approaches for the period 2002–2010. The boxes indicate the spread of ROC values for drought impact functions (15 ensemble members). The performance is measured using ROC for: a) short lead-times (1–3 months), and b) long lead-times (4–7 months). The black dashed line indicates the threshold. All values below this line models have no discriminative capacity to distinguish impact and no impact. The dots stand for models outliers.

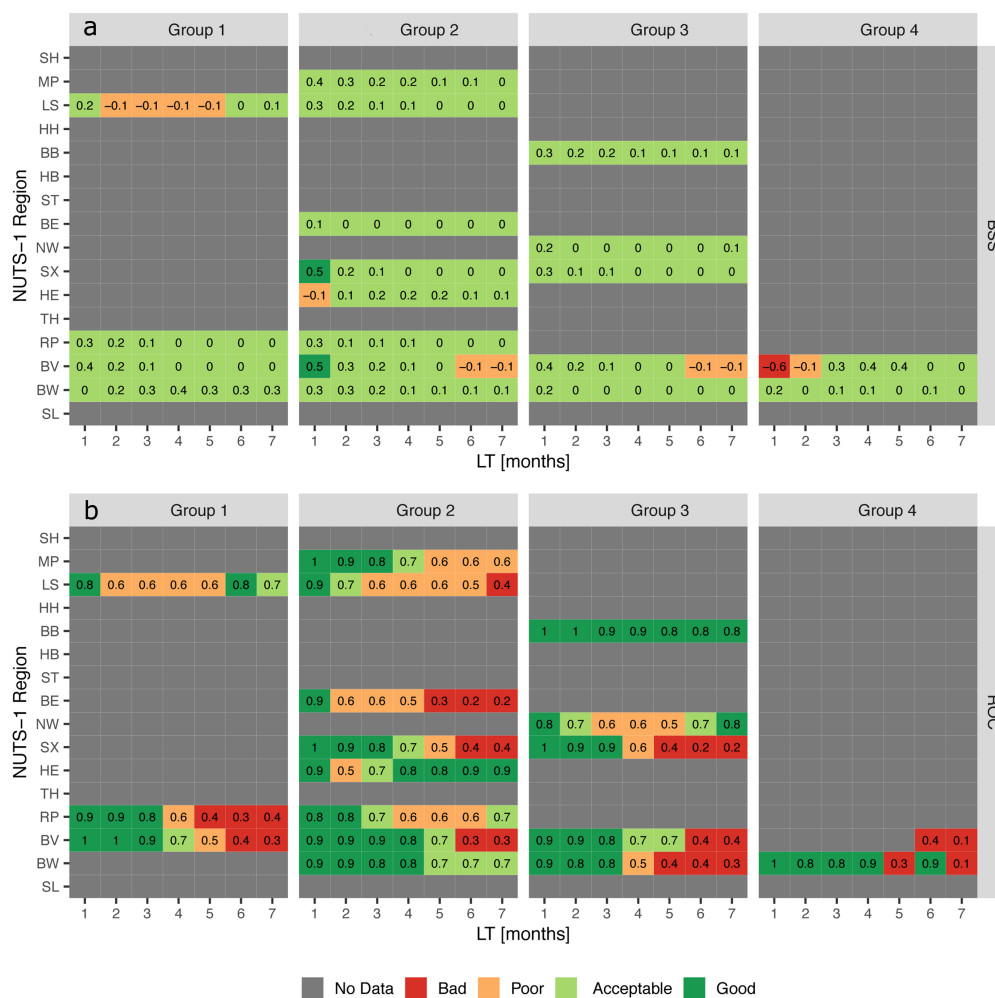


Figure 5. Skill of re-forecasted drought impacts for four different impact groups and each German NUTS-1 region using the Random Forest approach for the period 2002-2010. The performance is measured using: a) BSS, and b) ROC, for lead times up to 7 months. For the acronym of NUTS-1 regions, see Fig. S1.



Table 1. Different Cases for which drought impacts were forecasted. For the German NUTS-1 regions, see Fig. S1

Case	Spatial resolution	Impact	Ideal number of impact functions per method	Realization number of impact functions per method
1	Germany	Impacts of all impacted sectors lumped	$1 \times 1 = 1$	1
2	Germany	Individual impact category	$1 \times 15 = 15$	9
3	NUTS-1 level	Impacts of all impacted sectors lumped	$16 \times 1 = 16$	12
4	NUTS-1 level	Impacted sectors lumped in four groups	$16 \times 4 = 64$	19
5	NUTS-1 level	Individual impact category	$16 \times 15 = 240$	15