

Dear Editor,

we submit here the revised version of our paper 'The Volcanoes of Naples....', together with a copy marked with changes and with our answers, point by point, to the reviews and short comments.

Best Regards

Giuseppe De Natale

### **Answers to the Reviewer 1 (Roberto Moretti)**

We thank the reviewer for his helpful suggestions; we are going here to answer point by point:

- 1) **I would spend words to distinguish between long-term and short-term assessment; This is particularly about hazard, and it is about forecasting during unrest. At Campi Flegrei caldera this is an even hotter topic. More in general, I think the paper would benefit of this: the nice introduction seems to prelude to some discussion of the short-term forecasting, especially when false and missing alarms are described or where it is said that successful decision were taken “in progress” (e.g., Hekla or Montserrat ). So a brief description of the state-of-the-art, including contradictions, can be given, very likely when describing each of the three Neapolitan volcanoes. Of course, most of the interest turns around Campi Flegrei and its ongoing unrest. This has a peculiar relevance, given the high-level of OV monitoring and the impressive amount of publications that have appeared based on monitoring data.**

Answer: *we thank the reviewer for such an interesting suggestion. We therefore added a little more discussion about the actual difficulty to distinguish real precursors, mainly at Campi Flegrei caldera where somewhat anomalous activity associated to the unrest lasts since many decades.*

- 2) **The concept of progressive evacuation is important. Phasing is already invoked for other emergency plans (e.g. the La Soufrière the Guadeloupe one approved by Pré- fecture de Guadeloupe in France). It would be highly interesting if more insights and/or point of views could be given for CF caldera, where the main vent of next eruption is known probabilistically and where a robust local phreatic phase could start anticipating the magmatic one, which in turn can evolve following different scenarios. I think that the concept of phasing/progressive evacuation might already be introduced around line 330, where the logistical non-sense of an immense red area is discussed.**

Answer: *thank you, we agree the concept of progressive evacuation is absolutely important, and should be necessarily included in any emergency plan for Neapolitan volcanoes. In fact, it is non realistic to think to evacuate in few days 600,000-700,000 people, given the very high probability of false alarm even in presence of macroscopic ‘anomalies’ of seismicity, ground deformation, geochemistry of gases and waters, and any*

*other signal. Actually, the two evacuations of 1970 and 1984 implicitly followed the concept of 'progressive evacuation', because only the areas considered at highest immediate risk in case of eruption were involved, not excluding further evacuation of larger areas. We have followed the reviewer's suggestion, and introduced the concept of progressive evacuation in the part where we discuss the problems of defining a very large red zone.*

Answers to specific comments follow:

**-Line 60 "as it can be". . .**

**-Personally I think that entire cycles of public conferences should be given around the concepts of "false" and "missing" alarms. This is likely one of the best way to make people understanding and appreciating the uncertainty of (short-term) hazard assessment, eruption forecasting and decision-making. It implies, of course, that whatever one may do in hazard assessment and forecasting is likely to be wrong for someone else. I think that in the case of many codes of law those two concepts may lead to opposite juridical implications and force a priori the decision (think about the "procurato allarme" and "mancato allarme"). I wonder if the Authors wants to spend few words on this.**

Answer: *thank you, this is a very intriguing question, which rightly involves also juridical aspects, which can become more and more important in natural disaster management. In Italy, we have a very good example of that in the case of 2009 L'Aquila earthquake. This is a further, very good reason why the very hard problem of volcanic risk management in the Neapolitan area has to be afforded with maximum transparency and rationality, without understating any of the numerous problems involved. This very important question is the background to the paper content. However, we agreed to discuss even more this point, in the revised version.*

**-Line 140, about the De Natale et al; (2000) interpretation: please say few words on the explanation offered in that paper.**

Answer: *Ok, we added some more explanation of that. This request is common to the one from reviewer 1. Thank you.*

**-Line 190: I think that the reference here should be also given to Moretti, R., Troise, C., Sarno, F., & De Natale, G. (2018). Caldera unrest driven by CO<sub>2</sub>-induced drying of the deep hydrothermal system. Scientific reports, 8(1), 1-11. In this paper the symmetry between post-1984 subsidence and the on-going unrest is described for the first time.**

Answer: *Yes, of course. We completely agree and included that reference.*

**-Line 206: there is place to cite papers that promote this hypothesis: Moretti et al 2017 G3, Moretti et al., 2018 SciRep, Troise et al. 2018, but also Moretti et al. 2013 (on EPSL) where it was first formulated. The paper that better summarizes interpretations and querelles is certainly "Moretti, R., De Natale, G., & Troise, C. (2020). Hydrothermal versus magmatic: geochemical views and clues into the unrest dilemma at Campi Flegrei. In Vesuvius, Campi Flegrei, and Campanian Volcanism (pp. 371-406). Elsevier. Az' Again, a brief description of the short-term hazard assesement (i.e. outcomes of monitoring quantities) could help, especially for CFc and its unrest.**

Answer: *Thank you for the suggestions. We included all of them in the revision.*

**-Line 345 on: people reallocation and 2nd life is a really good point of discussion Is any previous experience about this ? perhaps from different experiences such as cyclones. If yes, please cite.**

Answer: *It is a very interesting question. At our knowledge, there has not been a similar experience till now, regarding programmed evacuation to avoid a disaster in a very hazardous area. There has been experience of relocation after a disaster (there are some experience of partial relocation of population also in Italy, after large tectonic earthquakes). We found a good example of complete relocation of a small town (900 people): Valmeyer, Illinois, where population, after a catastrophic flood of the Mississippi in 1993, moved the whole town at a new site in 1995 (Rozdilsky J. Environment and Planning Newsletter. Indianapolis, IN: Environmental, Natural Resources and Energy Division, American Planning Association, Center for Urban Policy and the Environment, School of Public and Environmental Affairs, Indiana University – Purdue University; 1996. Flood-related relocation of Valmeyer: Implications for the development of sustainable cities.). Kiruna, Sweden, 23,000 inhabitants, is another town which is going to be moved 3 km apart, because of hazard posed by ore activities which are causing continuing ground sinking and felt seismicity (Dineva, S & Boskovic, M 2017, 'Evolution of seismicity at Kiruna Mine', in J Wesseloo (eds.), Proceedings of the Eighth International Conference on Deep and High Stress Mining, Australian Centre for Geomechanics, Perth, pp. 125-139, [https://doi.org/10.36487/ACG\\_rep/1704\\_07\\_Dineva](https://doi.org/10.36487/ACG_rep/1704_07_Dineva)).*

**-Line 355 on. Please take it as a very minor point that you can obviously disregard: could you do some parallel with the economic impact of the covid19 pandemics ? I say that because it would help a lot in terms of perception.**

Answer: *Ok, it is an intriguing question. Obviously, when we submitted the paper there was not such experience. However, we have now included a small discussion on what we could learn from the pandemic, useful for our problem.*

**-Line 445 on. Still about 2nd life. Given the “size” of the problem you outline, I wonder if this could be part of a general socio-economic development plan of Keynesian nature at a national scale. Again, do you know if similar experiences have been done in this sense, even at a smaller scale and for different risks ?**

Answer: *At our knowledge, there has not been a similar experience till now, at least on large economic scale*

## **Answers to the Reviewer 2 (Marco Sacchi)**

We thank the reviewer for his helpful suggestions; we are going here to answer point by point:

**The review of the volcanological framework of the Neapolitan district is concise but informative and it may eventually benefit from (even very short) additional mention/discussion on Roccamonfina, as the NW boundary of the Campania volcanic area, as well as on the volcanic edifices and subvolcanic structures offshore the Napoli Bay, as the S border of the volcanic district, (see detailed reference list below). The**

mentioning of the (significantly vast) submerged volcanic features of the Napoli Bay may also serve to highlight the importance the volcanic hazard associated with the (relatively less known) submarine volcanic features for a more comprehensive and reliable hazard estimate and mapping.

Answer: *We agree with this suggestion, so we included, in the overview of the Campanian Volcanic zone, more details about Roccamonfina and the submerged volcanic features of the Naples Bay. Thank you, it was a very good point.*

line 144-145: Consider the possibility of adding (a selection of) the following references: “The main volcanic hazards are pyroclastic flows and ash/pumice fallout (e.g. Sacchi et al., 2005; 2019; 2020), but also associated hazards like earthquakes, lahars, lava flows and floods (Sacchi et al., 2009), need to be considered”;

Answer: *we agree, and have included the related references. Thank you.*

line 177: Cassano and La Torre, 1987 instead of “Cassano et al., 1987”

line 177: Capuano and Achauer, 2003 instead of “Capuano et al., 2003”;

Answer: *thank you for having pointed out this small mistakes with indicated references.*

line 177-178: Consider the possibility of adding (a selection of) the following references: “has a radius of about 3 km, with center approximately located at the Pozzuoli town harbour” (Sacchi et al., 2014; Somma et al., 2015; Steinmann et al, 2016; 2018 Sacchi et al, 2019; 2020);

Answer: *ok, thank you. We added some of the quoted references in the revised version.*

Line 192: Consider the possibility of adding the following reference: “(the so-called ‘mini-uplift’ episodes: see Gaeta et al., 2003; Troise et al., 2007;” Iuliano et al., 2015);

Answer: *ok, thank you. We added the suggested reference.*

Line 228-229: Consider the possibility of adding the following reference: Ischia island, located South-West of Campi Flegrei, is another volcanic field, characterized by both effusive and explosive eruptions (Passaro et al., 2015);

Answer: *Ok, we added the suggested reference.*

### Answers to the Reviewer 3 (Giuseppe Rolandi)

We thank the reviewer for his helpful suggestions; we are going here to answer point by point:

- 1) The authors should include, in the references about the discussion on the Vesuvius emergency plans, the paper by Rolandi (2010);

Answer: *we agree, and apologise we did not before. However, the reference has been added in the revised version of the manuscript.*

- 2) Regarding fig.7, the authors should mention the paper by Bellucci et al. (2006) which, at my knowledge, has been the first one to propose the depicted behaviour for the secular ground movements;

Answer: *we agree, we missed to mention it in the first version, but we added in the revised one.*



- 3) **You could perhaps spend some more lines explaining the benefits of a 'progressive evacuation' approach, which I find absolutely correct as opposite to a 'giant' red zone to suddenly evacuate in few days;**

Answer: *yes, we agree this is a very crucial point, because an extreme enlargement of the red zone, while giving a false feeling of safety, makes actually unlikely, or else impossible, to decide the evacuation. This is because more severe are the consequences of a false alarm (and unnecessarily evacuating 600,000-700,000 people is a really catastrophic outcome), more evidence for a really impending eruption the decision-makers (politicians) will need to decide an evacuation. But waiting more and more evidence from precursors, given the implicit, large uncertainty of their significance, can easily prove fatal. We have stressed more, in the revised version, the importance of a progressive evacuation, starting from smaller, more critical areas (just as it was made in the Pozzuoli town evacuation in 1984). Thank you for this important suggestion.*

- 4) **You could explain a little more the model for background seismicity at Vesuvius, where you quote De Natale et al., 2000;**

Answer: *we agree, it s an important point, and we discussed it in more detail in the revised version of the manuscript.*

#### **Answers to Short Comment 1 (Paolo Harabaglia)**

The paper is extremely interesting. It is mainly a review paper (up to line 360) that correctly points out both the enormous problems in forecasting (worldwide) and in emergency management (in the Napoli area). The last part suggests a very interesting idea, that of incentivating people to move. If I remember correctly however the italian authorities already tried to do so in the Vesuvius area in the 90s but they failed. I think the authors should address or at least mention this issue.

Two more minor remarks:

- 1) I would like to see a figure of pozzuoli uplift, since it is very hard to follow description
- 2) I would like a brief discussion on Roccamonfina (the four volcanic apparatus in the area) as well as the fact that the ignimbrites seems not to originate by any of the known volcanoes in the area (if I remember correctly).

**Answer:** *we thank you for your constructive comments. We agree with your suggestion to discuss a little more the framework of the Campanian Plain and the role of Roccamonfina volcano. Actually, we are accurately studying the volcanism in the Campanian Plain, in a new perspective which considers such a whole area as the most volcanologically important and active, rather than the single volcanoes which erupted in recent times. Roccamonfina is in fact, in our opinion, just the northernmost boundary of such a larger volcanic area. We will also add, just as you suggest, more details (in the figure) about the uplift episodes occurring at Campi Flegrei, which is the area most concerning, at present, giving the long lasting unrest.*

#### **Answers to Short Comment 2 (Christopher R.J. Kilburn)**

We thank the colleague for the very helpful comments and suggestions. We try to synthesize our answers to the comments/suggestions received, since it is not a formal review.

‘Previous discussions of the emergency plans, especially for Vesuvius, have focussed on

preparations before an eruption (e.g., Rolandi (2010) J Volcanol Geotherm Res, 189, 347-362; Papale (2017) J App Volcanol 6, 13). This paper raises the importance of considering also how to mitigate the economic and social consequences of long-term evacuation, which it has identified as a key goal for interdisciplinary social and volcanological studies. The results will have implications beyond the Neapolitan area. Nearly 70 cities with populations exceeding 100,000 live with the threat from volcanic eruptions (Heiken, 2013, Dangerous neighbors: volcanoes and cities. Cambridge) and so effective measures for permanently reducing the numbers at risk will have value worldwide.'

*Answer: Thank you, we added all he suggested references in the revised version.*

The paper also notes the advantages of evacuation by sea (Lines 335-340). Have the authors assessed the numbers that could realistically be transported, especially during the 72 hours of the emergency evacuation? Local ferries have a notional capacity of 1,000 passengers and so c. 100 journeys would be required to transport numbers on the order of 100,000. For ferries to make a significant contribution, might it be necessary to increase the official evacuation time to more than 72 hours?

*Answer: As we specified, in one case at least, namely Ischia island, the evacuation by sea is the only possibility; in this case, the people to evacuate would be reasonably less than the whole island population (there is not an emergency plan or red zone yet), i.e. about 60,000 people. However, although local ferries capacities are more limited, large cruise ships can host more than 3000, 4000 or else 5000 people. So, little more than 100 trips to the closest safe places could be enough to evacuate even the largest red zones. Obviously, the departure ports should be able to host the large cruise ships. This also calls for a serious improvement of the port basins and of their facilities, which fall into the more general infrastructural improvement needed in the areas of maximum volcanic hazard.*

Fig. 4. shows an age of about 18 ka BP for the Pomici di Base at Somma-Vesuvius, whereas the text (Line 131) quotes 22 ka BP. Could the preferred age be confirmed? Rolandi (1998) has also recognised an earlier plinian eruption - the Codola eruption - at 25,000 BP (Rolandi, G., 1998. The eruptive history of Somma-Vesuvius. In: Cortini, M., De Vivo, B. (Eds.), Volcanism and archaeology in Mediterranean area. Research Signpost, 3, 77-88. He may additionally have described this eruption in a more widely distributed journal).

*Answer: Thank you for having pointed out the mistake, and for suggesting to include Codola eruption. The most accredited age in literature, for the Pomici di Base eruption, is 18 ky BP, just as shown in the figure. So, we corrected the age at lin 131. Furthermore, we did not mention the Codola 25 ky BP eruption, which is however now recognized by most of the recent literature. We then also added it in the figure, which was redrawn from the website of INGV-Osservatorio Vesuviano, and did not report the Codola eruption.*

Fig. 7. The graph (and associated analysis) of ground movements at Pozzuoli, in Campi Flegrei, since Roman times is due to Bellucci et al. (2006, Geol Soc London, Spec Pub, 269, 141-158) and not to Troise et al. (2018) nor to Morhange et al. (2006 - Line 186).

*Answer: Thank you, we sincerely apologise to have missed this reference, which is undoubtedly the first one in which such a secular deformation behaviour was proposed (it was noted also by the reviewer 2). We added the original reference to the revised manuscript.*

Examples of additional studies that could be cited to broaden the review include:

(1) At Vesuvius, probabilistic analysis of hazard and risk have also been presented by Scandone et al. (1993, J Volcanol Geotherm Res 58, 263-271), Neri et al. (2008, J Volcanol Geotherm Res 178, 397-415), and Lirer et al. (2010, Bull Volcanol (2010) 72, 411-429).

(2) At Campi Flegrei, alternative reconstructions of ground movements since Roman times have been proposed by Parascandola (1947, I Fenomeni Bradisismici del Serapeo di Pozzuoli. Genovese, Naples); Dvorak. & Mastrolorenzo (1991, USGS Spec Paper, 263, 1-47); Morhange et al. (2006, Geology, 34, 93-96); and Di Vito et al. (2016, Sci. Rep. 6, 32245).

***Answer:** Thank you. We knew such papers, and not quoted all of them just to avoid to make references too much cumbersome. However, we actually included some of them.*

# The Volcanoes of Naples: how effectively mitigating the highest volcanic risk in the World?

Giuseppe De Natale<sup>1,2</sup>, Claudia Troise<sup>1,2</sup>, Renato Somma<sup>1,3</sup>

<sup>1</sup>Istituto Nazionale di Geofisica e Vulcanologia, Via Diocleziano 328, 80124 Naples, Italy

<sup>2</sup>CNR-INO, Via Campi Flegrei 34, 80078 Pozzuoli, Italy

<sup>3</sup>CNR-IRISS, Via Guglielmo Sanfelice, 8, 80134 Naples, Italy

Correspondence to: Giuseppe De Natale (Giuseppe.denatale@ingv.it)

**Abstract.** The Naples (Southern Italy) area has the highest volcanic risk in the World, due to the coexistence of three highly explosive volcanoes (Vesuvius, Campi Flegrei and Ischia) with extremely dense urbanisation. More than three millions people live to within twenty kilometres from a possible eruptive vent. Mitigating such an extreme risk is made difficult because volcanic eruptions forecast is today an empirical procedure with very uncertain outcome. This paper starts recalling the state of the art of eruption forecast, and then describes the main hazards in the Neapolitan area, shortly presenting the activity and present state of its volcanoes. Then, it proceeds to suggest the most effective procedures to mitigate the extreme volcanic and associated risks. The problem is afforded in a highly multidisciplinary way, taking into account the main economic, sociological and urban issues. The proposed mitigation actions are then compared with the existing emergency plans, developed by Italian Civil Protection, by highlighting their numerous, very evident faults. Our study, besides regarding the most complex and extreme situation of volcanic risk in the World, gives guidelines to assessing and managing volcanic risk in any densely urbanised area.

## 1. Introduction

Volcanic eruptions, in particular super-eruptions from large calderas, represent one of the highest natural threats to the mankind (Newhall and Dzurisin 1988, Papale and Marzocchi, 2019). However, the eruption forecast is still an empirical, largely uncertain practice. The successful forecasts are very few, and sometimes obtained too shortly before the eruption (Consensus study report, 2017). Globally, the percentage of timely and correct volcanic alarms is still very low, and the failure cases often resulted in considerable human losses (Winson et al., 2014). Many volcanoes, on the Earth, are located in remote areas, not densely populated. In remote areas, the only threatening volcanoes are the very explosive ones, in particular the large collapse calderas, which are able to produce large scale catastrophes. However, there are places on the Earth in which very explosive volcanic areas are also densely populated; in such cases, the volcanic threat can be very high also in case of moderate to small eruptions, and the volcanic risk can attain extremely high values. This is exactly the case of the volcanoes located in the Neapolitan area (Southern Italy). The Neapolitan volcanism is hosted in the larger Campania Plain, a former volcanic field which, since about 300.000 years to 39.000 years BP, gave rise to six Ignimbritic eruptions; the last one (Campanian Ignimbrite, 39.000 y BP) has been the largest eruption ever occurred in Europe, at our knowledge. The Neapolitan volcanic area has always been (since 4000 years at least) one of the most densely populated ones in the World (Mastrolorenzo et al., 2006a), and one of the main cradles of the Western civilization (Astarita, 2013). The high attractions of this area, namely mild climate, fertile land, landscapes, hot springs and natural bays and inlets, have been in fact always perceived as largely overcoming the volcanic threat. Neapolitan volcanoes are among the most known in the World, since ancient times: Vesuvius, Campi Flegrei and Ischia island; all of them very explosive volcanoes. Ischia island has been, in the VIII century BC, the first Greek colony in Italian peninsula, named at the time: ‘Magna Grecia’ (Carratelli, 1985). The large metropolitan area of Naples, the largest one in Southern Italy, contains about three millions people, all of them living to

Pino 18/6/20 18:53

Formattato: Apice

Pino 18/6/20 18:53

Formattato: Apice

Pino 18/6/20 18:53

Formattato: Apice

Pino 18/6/20 18:57

Formattato: Apice

Pino 18/6/20 18:57

Formattato: Apice

Pino 18/6/20 18:57

Formattato: Apice

within about 20 km from a possible eruptive vent. The Neapolitan area is then characterized by the highest volcanic risk in the World, which must be somehow managed and mitigated. Actually, there are emergency plans, issued by the National Department of Civil Protection in Italy, for the two main volcanic areas: Vesuvius and Campi Flegrei. This paper describes the main volcanological issues of the three Neapolitan volcanic areas, the associated risks, and describes the main problems of the present emergency plans. It then proceeds to define the most important features that a realistic emergency plan, aimed to effectively mitigate the extreme volcanic risk of the area, should contain. Mitigation of volcanic risk is here afforded in a highly multidisciplinary framework, because the main actions needed start from volcanological considerations, but necessarily involve economic, sociologic and urbanistic considerations. The extreme risk of Neapolitan volcanic area is a paradigm for other volcanic areas of the World. Addressing the best procedures to mitigate volcanic risk here is a very important bench mark, for any populated volcanic area in the World.

## 2. The state of the art in the eruption forecast and alerts

Eruption forecast for timely evacuation is, today, the only way to defend populations exposed to volcanic risk. In fact, if people can be made safe from earthquakes provided the edifices are robust enough (which can be a difficult task only in areas of extreme magnitude events occurring very close to urbanized areas) there is not, at present, any possible defence from the most hazardous eruption products (i.e. pyroclastic flows, very fast lava flows or, in some cases, huge pyroclastic falls) other than timely evacuation, before the climax of the eruption.

Eruption forecast is often considered in principle feasible, as opposed to earthquake forecast, today considered impossible. Such statements are equally wrong, since eruption forecast is just easier to imagine, because volcanoes are well identified and localized objects easy to monitor, whereas active faults involve very large areas, and specific active patches are not evident. Actually, however, eruption forecast is still a largely empirical matter, with very uncertain outcome (Winson et al., 2014). Although some studies are starting to constrain, with physical considerations and modelling, the volcano behaviour forecast (Kilburn, 2012; Robertson and Kilburn, 2016; Kilburn et al., 2017), this is still forefront research, not easily generalizable for a practical use. The basic problem of eruption forecast, which can be dramatic in extreme risk areas (i.e.

very densely populated volcanic areas) is schematically shown in fig.1. As it can be inferred from the figure, a timely forecast of an eruption occurs when a well defined alarm is given, followed by an eruption. The alarm can be considered effective, if it allows the population to be evacuated before an eruption occurs. If an alarm is issued, not followed by an eruption, it should be regarded as a false alarm. As a consequence, in contrast with an appropriate alarm (implying evacuation), two types of failure should be considered: false alarm and missed alarm. In the most general case, depicted by fig.1, a certain trend of precursory phenomena (which usually involve increase of seismicity, ground uplift and changes of chemical species and/or equilibrium in waters and in gas emissions) increases (more or less monotonically) until the eruption occurs. If the alarm for evacuation is given in the initial phase of precursors increase, there is a low probability of missed alarm, but a high probability of false alarm. In contrast, when waiting for the precursory phenomena to become very high, there is a low probability of false alarm, but a high probability of missed alarm; because the eruption could start before having the time to complete evacuation. Thus, giving the complete trade-off between false alarm and missed alarm probability, the time of alarm should be given in such a way to minimize the 'cost': which, in case of false alarm is the economic and social cost of moving away the population, whereas in case of missed alarm is the loss of human lives likely killed by the eruption. It is then very clear that, in the case of large population exposed, the probability of missed alarm can be unsustainable, for the human losses, also for very low values of eruption probability; but, in contrast, a false alarm could have an economic and social cost anyway unsustainable. Failure to correctly manage this problem, in case of high exposed value, can also imply heavy judicial responsibility for decision-maker.

The serious complexity of volcanic risk mitigation, when it is extremely high, can be further clarified by considering the low degree of confidence of actual forecasting techniques. Considering that the catastrophic Mt. St. Helens eruption can be

a a 19/6/20 12:38

Eliminato: more easy

a a 19/6/20 12:37

Eliminato: equilibria

Pino 19/6/20 12:17

Formattato: Non Evidenziato

a a 19/6/20 12:39

Eliminato: ors

considered the starting point of the modern awareness of the importance of eruption forecast, a look at the most renowned eruptions in literature, occurred since 1980 can give a first insight into the problem. A good comprehensive review on the outcomes of eruption forecast as applied to volcanic eruptions since 1980 has been given in Consensus Study Report (2017). The outcomes from that report, indicate much less than 50% of success in the forecast for the most important eruptions of the last four decades. However, even in case of ‘successful’ forecasts, the time of alarm before the eruption should be taken into account: in fact, the most successful forecast is considered the 2000 Hekla eruption, for which a very precise timing of the eruption was predicted, but only half an hour before the eruption occurred (Stefansson, 2011). Obviously, forecasts achieved very shortly before the eruption occurrence are not of any practical use for evacuation of large numbers of people exposed.

A very complete assessment of the state of the art in the practical use of eruption forecast, evaluated through the timely issue of proper volcanic alerts, has been given by Winson et al. (2014). They analysed 194 eruptions occurred in the period 1990-2013, from 60 volcanoes, measuring the appropriateness of the issued volcanic alerts. Fig.2 shows the main results of their study: only appropriate Volcano Alert Levels issued by authorities anticipated 19% of the eruptions. Such a discouraging outcome is only a little bit higher (30%) for larger eruptions (VEI>3), increases for better monitored as well as for closed vent volcanoes, but in any case never reaches 50%. In addition, there is an average 33% of issued alerts for unrests which gave not rise to eruptions: i.e., ‘false alarms’.

These results clearly show that, presently, the state of the art for eruption forecast implies it is much more probable to miss an eruption, or to give a false alarm, rather than correctly forecast it. In such conditions, the ‘forecast dilemma’ depicted by fig.1 becomes very dramatic to solve, in extremely risky (i.e. extremely populated) volcanic areas.

Before discussing the implications of such an ambiguous outcome for the extremely populated Neapolitan volcanoes, let’s just recall the main elements of the actual emergency plans for these volcanoes, which are based on rather common procedures: 1) defining a ‘red zone’, which should be evacuated before the eruption starts; 2) defining a ‘traffic light’ system, in our case made of four colours (green, yellow, orange, red) such that the green level is the ‘completely quiescent’ one, and the hazard level for a possible eruption increases until, with red alert, the complete evacuation of the red zone must be realized in 72 hours (three days).

3. The Campanian Volcanic Zone and the Neapolitan volcanoes

The Campanian margin displays the typical features of a continental crust and lithosphere extensional domain: several normal faults, very shallow Moho (Ferrucci et al., 1989; ), high heat flow values (Della Vedova et al., 2001) and large volume ignimbrite eruptions (Di Girolamo 1968, Rolandi et al 2003; Rolandi et al., 2019a). All these features indicate the Campanian Plain forms an elongated sedimentary - volcanic plateau, 50 km long by 20 km wide, limited to the north, east and south by the Apennine chain. In accordance with these special volcanic and tectonic features, the Campanian Plain (see fig.3) has been indicated as **Campanian Volcanic Zone (CVZ)** (Rolandi et al 2003, Bellucci et al, 2006). In the last 600 ka, the CVZ has been affected by uplift and intense volcanism, alternating with periods of subsidence and marine sedimentation (Cinque et al. 1990; Scandone et al., 1991). Presently, the Campanian Plain hosts at least three active volcanic areas: Mt. Vesuvius, Campi Flegrei caldera, Ischia island. Besides such well-identified volcanic edifices, at least six ignimbrites were emplaced over the CVZ, out of the three mentioned, known volcanoes, in the last 300 ka (Rolandi et al. 2003; Rolandi et al., 2019a). The existence of a unique, large volcanic area involving the whole Campanian Plain, in which the three most known volcanoes are the ones which erupted in recent times, is supported by seismic tomography studies (Zollo et al., 1996; Zollo et al., 2008) which identified a large, thin melt layer spread at least beneath the whole Vesuvius-Campi Flegrei area, at a depth ranging between 8-10 km. The CVZ is delimited, in the Northern part, by the Roccamonfina volcano, and in the Southern part by the Somma-Vesuvius, Campi Flegrei and, offshore, Ischia and Procida islands (Rolandi et al., 2019a). The active volcanoes of the Naples district (Somma-Vesuvius, Campi Flegrei, Ischia and Procida) will be described in more

a a 19/6/20 12:40  
**Eliminato:** 19% of the eruptions were anticipated by appropriate Volcano Alert Levels issued by authorities

Pino 11/6/20 00:10  
**Eliminato:**

Pino 19/6/20 15:53  
**Eliminato:** T

Pino 19/6/20 15:53  
**Eliminato:** actually

a a 19/6/20 12:40  
**Eliminato:** well identified

Pino 19/6/20 15:53  
**Eliminato:** not from



detail later. We shortly describe here Roccamonfina volcano, which is considered extinct. It is a large stratovolcano with numerous post-caldera cones within the summit caldera and on the flanks. The eruptive history consists of three main phases. The first stage built the main cone via lava flows and pyroclastics. The second stage is defined by large explosive eruptions, brown leucitic tuff, white trachitic tuffs, and caldera collapse. The third stage formed the lava domes, and scoria cones that exist on the volcanic edifice today (Giannetti and Luhr, 1983). Rouchon et al. (2008) dated summit caldera lava domes at 170-150,000 years ago. Peccerillo (2005) gives an age range of 0.58-0.1 Ma for the whole Roccamonfina activity. Eruptive activity of Roccamonfina volcano in the last 300,000 years is then coeval to five of the six Ignimbritic eruptions generated from the CVZ.

The offshore volcanism does not involve only Ischia and Procida islands; the Campi Flegrei caldera is below the sea level for more than 50% (Somma et al., 2015), and the Gulf of Naples hosts several submerged volcanic centres (Passaro et al., 2015; 2016). The Southernmost area then contains the three volcanoes surely active today; about three million people live to within less than 20 km from a possible eruptive vent.

### 3.1 Mt. Vesuvius

The Somma-Vesuvius volcanic complex (SV) is the most known volcano of the Neapolitan area, and one of the most famous in the World, mainly because of its ancient eruption of 79 A.C., well described by Plinius the Young (Scandone et al., 2019). SV is a renowned volcano also because it frequently erupted in the last centuries, so becoming popular as a natural attraction in Europe, and one of the classical stops of the XIX century Italian 'Grand Tour' (Astarita, 2013). The eruptive history of SV, shown in Fig.4, is characterized by periods of frequent activity (open conduit activity) alternated with period of quiescence (closed conduit periods). The history of the SV began 0.3–0.5 million years ago. Periods of closed conduit have lasted, in the past, up to 1000 years; they are generally interrupted by plinian and subplinian explosive eruptions, which only differ in the volume of emitted magma and the energy of the eruption. SV is composed of a multistage and older summit caldera (Mt. Somma, 1132 m a.s.l.) and a nested younger cone (Mt. Vesuvius, 1281 m a.s.l.) (Fig.3). In the last 25 ka, five plinian caldera-forming eruptions (25 ka Pomice di Codola, 18 ka Pomice di Base, 9.7 ka Mercato, 4.3 ka Avellino, and AD 79 Pompei) and at least three major subplinian eruptions (17.6 ka Pomice Verdoline, AD 472 Pollena, and AD 1631) occurred (Rolandi, 1998). The last cycle of open conduit activity started in 1631 and lasted until 1944. Since 1944, this area has experienced a very large urban development: towns around the volcano grew of about three times in population, becoming seamlessly connected to the city of Naples. It is important to note that towns around Vesuvius, which were primarily tourism-oriented before the II World War, are now very busy outskirts of Naples hosting resident population. The present activity of this volcano, otherwise quiescent, only consists of a background seismicity seldom overcoming magnitude 2, with maximum magnitude M=3.6 reached by an earthquake occurred in October 9th 1999, during a period of increased seismicity rate and magnitude, lasted some months (between 1999 and 2000; see De Natale et al., 2004). A convincing explanation for background seismicity, at this and similar composite volcanoes, was given by De Natale et al. (2000); it is interpreted as due to the gravitational stress, due to the volcano topography load, which is focused along the sharp rigidity contrast between the external rocks, made of explosive pyroclastic deposits, and the central conduit made of solidified magma. At Vesuvius however, except for the increased seismicity occurred in the mentioned period, no other signals of anomalous activity have been ever recorded at this volcano (i.e. ground uplift, geochemical anomalies, consistent LP seismicity, seismic tremor, etc.).

The volcanic hazard at SV has been thoroughly described, in a probabilistic framework: firstly by Rossano et al. (1998) and then, in a more complete way, by De Natale et al. (2005). The main volcanic hazards are pyroclastic flows and ash/pumice fallout (see also Sacchi et al., 2019; 2020), but also associated hazards like earthquakes, lahars, lava flows and floods, need to be considered (Sacchi et al., 2009). In particular, large floods caused by the re-mobilization, due to heavy rains, of the old,

Pino 16/6/20 17:58  
**Formattato:** Tipo di carattere:(Predefinito)  
 Times New Roman, Colore carattere:  
 Automatico, Inglese (Regno Unito),  
 Motivo: Trasparente

Pino 16/6/20 17:58  
**Formattato:** Inglese (Regno Unito)

Pino 17/6/20 01:10  
**Eliminato:** 2  
 Pino 17/6/20 01:10  
**Eliminato:** four  
 Pino 17/6/20 01:10  
**Eliminato:** 22

Pino 14/6/20 00:21  
**Eliminato:**  
 Pino 14/6/20 00:22  
**Eliminato:** h

loose pyroclastic deposits on the topographic reliefs around Vesuvius, caused almost total destruction and 160 casualties in May 1998 (Mazzarella and Tranfaglia, 2002).

Somma-Vesuvius volcano was the first one for which a complex emergency plan had been issued, by Italian Civil Protection, in 1995. The features of this first plan were almost the same of the present ones (Dipartimento Protezione Civile, 2015), although some minor modifications have been made in the last decades. The eruptive scenario, used to define the red zone (shown in fig.5), was a sub-plinian eruption, mainly because, at the time in which the first plan was released, the idea that a shallow magma chamber was almost constantly fed by deeper magma was predominant in literature (e.g. Santacroce, 1983), and related computations of the volume of magma fed from 1944 were consistent with a sub-plinian eruption. Later on, such a volcanological hypothesis has been heavily questioned, mainly as a consequence of seismic tomography studies which failed to identify such a shallow chamber filled with molten magma (Zollo et al., 1996). In particular, Marzocchi et al. (2004) pointed out that, from probabilistic estimates, after 60-200 years of quiescence a violent Strombolian eruption (VEI=3) is the most probable event, whereas a subplinian one (VEI=4) has a probability to occur much lower and a Plinian one (VEI=5) has still a probability >1%. However, in the emergency plan the sub-Plinian scenario has been maintained. The updated red zone of Somma-Vesuvius hosts today about 700.000 resident people, and totally or partially includes 25 municipalities (see Italian Civil Protection website: [http://www.protezionecivile.gov.it/media-communication/dossier/detail/-/asset\\_publisher/default/content/aggiornamento-del-piano-nazionale-di-emergenza-per-il-vesuvio](http://www.protezionecivile.gov.it/media-communication/dossier/detail/-/asset_publisher/default/content/aggiornamento-del-piano-nazionale-di-emergenza-per-il-vesuvio)).

### 3.2 Campi Flegrei Caldera

Campi Flegrei caldera, located in the Southwestern part of the Campanian Volcanic Zone, contains the Western District of the city of Naples (see fig.3). It is a collapse caldera, formed by the huge eruption of Neapolitan Yellow Tuff, occurred about 15.000 years BP (Rolandi et al., 2003; 2019a; De Natale et al., 2016). Neapolitan Yellow Tuff, a VEI=6 event with an erupted volume of about 40 km<sup>3</sup>, generated pyroclastic flows which represent the main eruptive products found in the Naples province, that have been the main building material in this area for more than 2.000 years, before the concrete became diffused. One of its facies, named 'Pozzolana' (from the name of the town, Pozzuoli, located at the caldera center) has been the main element composing the famous 'Roman cement' which allowed ancient buildings of the Roman age to be so resistant and long lived (Vanorio and Kanitpanyacharoen, 2015). Campi Flegrei caldera has been long thought to be firstly formed by the larger European eruption ever known, namely the Campanian Ignimbrite, a VEI=7 event whose erupted volume estimates range between 150-300 km<sup>3</sup> (Rosi and Sbrana, 1987; Orsi et al., 1996). However, Rolandi et al. (2019b) recently demonstrated that Campanian Ignimbrite main products (Grey Tuffs) were erupted from the Campanian Plain, North of Campi Flegrei, and did not cause any caldera collapse. Campi Flegrei caldera eruptive activity has been dominated by phreato-magmatic eruptions, whose explosivity is due to the contact of rising magma with the large geothermal system located beneath the caldera, down to about 2.5-3.0 km (Rosi and Sbrana, 1987; Piochi et al., 2014). The collapsed area, as recognized by geophysical data (Cassano and La Torre, 1987; Capuano and Achauer, 2003) has a radius of about 3 km, with center approximately located at the Pozzuoli town harbour. more than 50% of the caldera is below the sea level (Somma et al., 2015; Steinman et al., 2018; Sacchi et al., 2019). All the eruptions younger than 10.000 years are located within such an area, more frequently occurring from its borders, marked by buried caldera ring faults (De Natale and Pingue, 1993; De Natale et al., 1997). The eruptive history of Campi Flegrei is sketched in fig.6. The only eruption in historical times occurred in 1538, and this is the reason why this volcanic area is by far less renowned than Vesuvius. However, this area is also characterized by unrest episodes with large uplift and subsidence of the ground level. In the last 2.000 years, subsidence, at an almost constant rate between 1.5 and 2.0 cm/year, has been generally dominant, except during about one century preceding the 1538 eruption, when fast uplift occurred, at an average rate about one order of magnitude larger than the secular subsidence (see Fig.7). Another episode of fast uplift, but without a subsequent eruption, has been inferred by Morhange et al. (2006) between the VII and the VIII century. Starting since the 50's of the last century, the ground

Pino 13/6/20 16:41

Eliminato: issued

Pino 11/6/20 00:06

Eliminato: et al.

Pino 11/6/20 00:06

Eliminato: et al.

movements in the area again reversed to uplift, which, since 1950 to 1984 totalled about 4.5 m with peak rates, in 1983–1984, of about 1 m/year. After about 20 years of relatively fast subsidence following the 1984 peak of vertical ground displacement, uplift started again around year 2005 (Fig.7), at rates comparable to those of subsidence (on average 9 cm/year), but much lower than previous uplifts (Moretti et al., 2018; Troise et al., 2019). Both the post-1984 subsidence and the subsequent and still ongoing uplift phase, showed minor, short-lived peaks of uplift followed by a fast recovery of the whole uplift (the so-called ‘mini-uplift’ episodes: see Gaeta et al., 2003; Troise et al., 2007; Iuliano et al., 2015). The intermittent uplift phases, started in 1950 and still ongoing, show a cumulative uplift, in about 70 years, consistent with an average rate of 0.075 m/year. The average uplift rate computed from the total uplift observed since about one century and half before the 1538 eruption, although in the very rough approximation of secular inferences, is about 0.1 m/year, which is the same order of magnitude and not clearly distinguishable considering the large uncertainties. The 1950-2019 unrest, with intermittent ground movements and seismicity, gives a very precise idea about the large uncertainty to identify true eruption precursors in this area (Moretti et al., 2013; Troise et al., 2019; Moretti et al., 2020). In 1970, during the first, fast uplift episode clearly identified, the urban area of Pozzuoli closest to the harbour, namely the ‘Rione Terra’, was completely evacuated, and never inhabited anymore. In 1984, the whole town of Pozzuoli was evacuated (in the newly built town of Monteruscello), and spontaneously re-occupied some months after when seismicity stopped and ground started to subside (Barberi and Carapezza, 1996). Today, after about 15 years of uplift at an average rate of about 0.08-0.09 m/year, and after about 60 years of intermittent unrest, it is not clear yet if Campi Flegrei caldera is going towards an eruption (Chiodini et al., 2016; Kilburn et al., 2017; Forni et al., 2018; Troise et al., 2019). Campi Flegrei then represents a typical example of an area where the short-term forecast is made particularly difficult due to the problem of distinguish between hydrothermal and magmatic effects during unrest (Moretti et al., 2017; 2018; 2020). Troise et al. (2019) recently demonstrated that the 1982-1984 unrest was accompanied by a shallow magma intrusion (with volume of about 0.06 km<sup>3</sup>), whereas the present unrest (started in 2005) cannot be ascribed to shallow magma migration. It is due to the rising of magmatic gases and consequent heating of the shallow aquifers. Whatever the physical explanation of the on-going unrest, however, the area is in the alert level ‘Yellow’ (‘Attention’ level) since December 2012. Recent unrest events, however, naturally require a well organized response at least in the average-long term, because we cannot actually predict the possible, future evolution of the state of the volcano.

It is worthy to note that the emergency plan for Campi Flegrei, actually on the way to be completed, at the end of 2012 did not exist yet, not even the red zone was defined (it was officially released in 2015, see Department of Civil Protection website). This probably occurred because, differently from the first edition of Vesuvius emergency plan of 1995, there was no idea of a given eruptive scenario for this area, not even the eruptive vent could be defined because it could be everywhere in the caldera area. In fact, Rossano et al. (2004) firstly suggested to use a probabilistic scenario made up of any possible kind of eruption from any possible vent spanning the caldera area; the probability of each eruption type was inferred from its frequency in the last 10.000 years. Rossano et al. (2004), using a rigorous Bayesian approach and a simplified modelling technique for pyroclastic flows on the actual topography, first obtained a probability hazard map which clearly indicated, as the most probable zones experiencing pyroclastic flows, an area very similar to the presently defined red zone. More accurate results, using the same methodology, were further obtained by Mastrolorenzo et al. (2006b). However, their hazard maps were never considered by Civil Protection authorities, at the time, and only 11 years after they officialised the red zone, based on a paper by Neri et al. (2015), which used a very similar probabilistic approach (although with a much more approximated and less rigorous pyroclastic flow modelling technique). The only difference between the two methods (besides the oversimplification of pyroclastic flow modelling) is that Neri et al. (2015) assumed a non uniform probability for vent opening, based on the assumptions and results of Bevilacqua et al. (2015). The final results are, regarding the definition of the red zone, very similar to the results obtained by Rossano et al. (2004) and Mastrolorenzo et al. (2006b). The red zone of Campi Flegrei hosts today about 600.000 resident people, and totally or partially includes 6 towns and several

Pino 13/6/20 17:55

Eliminato: 7

Pino 10/6/20 23:42

Eliminato: 8

Pino 19/6/20 15:27

Eliminato: 6

Pino 10/6/20 23:42

Eliminato: 8

Pino 10/6/20 23:42

Eliminato: 8

275 suburbs of Naples city (see Italian Civil Protection website: <http://www.protezionecivile.gov.it/attivita-rischi/rischio-vulcanico/vulcani-italia/flegrei/piano-nazionale-di-protezione-civile>).

### 3.3 Ischia island

Ischia island, located South-West of Campi Flegrei, is another volcanic field, characterized by both effusive and explosive eruptions (see Passaro et al., 2015). Eruptions here, in fact, range from lava flows to phreato-magmatic ones, thus being halfway between the Vesuvius and Campi Flegrei eruption styles. The Ischia volcanism developed between about 130–150 ka BP (Vezzoli, 1988) and 1302 AD (de Vita et al., 2006; 2010). Fig.8 shows the eruptive history of Ischia island. The volcanism in the island is strictly linked with the resurgence phenomena of the Mt. Epomeo, an horst which is thought to move up and down (with dominant uplift in the past, due to its prominently high topography). Resurgence has been ascribed to repeated injections of magma at depths of 2–3 km, where a laccolite magma chamber is hypothesized (Orsi et al., 1991; Cubellis and Luongo, 1998; Tibaldi and Vezzoli, 1998; Acocella and Funicello, 1999; Molin et al., 2003; Carlino et al., 2006; Paoletti et al., 2009; Sbrana et al., 2009;). The last eruption occurred in 1302, so common people often does not recognize Ischia as a volcano. The movements of the Epomeo horst also cause slip on the bordering faults, which decouple it from the rest of island. For this reason, Ischia has been struck in the past by several catastrophic earthquakes that, although not so high in magnitude, are very shallow and then, very destroying within short distances (see Table 1). The most destructive earthquake at our knowledge has been the July 23<sup>rd</sup>, 1883 event, which completely destroyed the town of Casamicciola and parts of neighbouring towns, killing 2313 people (De Natale et al., 2019). This catastrophic event was preceded, two years before, by a slightly smaller event, killing anyway 126 people; these two larger events were the final ones of a sequence of 6 large earthquakes started in 1828 (which killed 56 people, see De Natale et al., 2019). After 134 year of negligible microseismicity, a new larger earthquake occurred on August 21<sup>st</sup>, 2017 (De Natale et al., 2019) killing two people and causing severe damages in a specific area between Casamicciola and Lacco Ameno (the same one experiencing the most severe damages and/or destruction from the major earthquakes of the XIX century). De Natale et al. (2019) also warned that the 2017 earthquake could represent the beginning of a new major earthquake sequence, just like the XIX century one, further suggesting detailed and urgent mitigation measures. The occurrence of the 2017 earthquake also raises the question if such major seismicity could be linked to magmatic pressure increase. Looking at the past activity, it doesn't appear any clear correlation among major earthquakes and eruptions, but we don't know much about the eruption precursors, since the last eruption dates back 1302. Actually, there is not even agreement about the dip of the fault plane and earthquake mechanism (Nappi et al., 2018; De Novellis et al., 2018; Calderoni et al., 2019), which is critical to understand if the event corresponds to an uplift pulse of Epomeo horst (which could reflect a pulse of increased magma pressure) or to cumulated subsidence (in the last decades Epomeo horst is subsiding, at an average rate on the order of 0.1-0.5 cm/year). Despite the high hazard posed by seismic and volcanic activity in the island, which hosts about 70.000 resident people in only 46 km<sup>2</sup>, the risk here has been generally understated, and in fact there is no emergency plan for volcanic eruptions, nor an appropriate plan to secure urban areas from seismic risk has been undertaken till now (besides specific suggestions and warnings given by De Natale et al., 2019). Ischia island also represents the absolute needing for planning an eventual evacuation by sea routes, which have been till now, in the Vesuvius and Campi Flegrei emergency plans, completely neglected.

### 4. The Emergency Plans: short history and description

Emergency plans for the Neapolitan volcanic areas date back 1995, the year in which the first plan, related to Mt. Vesuvius, was released. The scenario used for a next eruption of this volcano was a sub-plinian one, i.e., taking as reference the large eruption of 1631, which opened, after several centuries, the eruptive period ended with the last eruption of 1944. At the time when the plan was elaborated, the prevailing scientific opinion was that the main magma chamber were refilled at a constant

Pino 19/6/20 15:24

Eliminato: also

a a 19/6/20 12:43

Eliminato: Ischia is poorly recognized as a volcano, by common people

Pino 19/6/20 15:25

Eliminato: poorly

Pino 19/6/20 15:25

Eliminato: ecognize

a a 19/6/20 12:43

Eliminato: earthquakes which, although not so high in magnitude, are very shallow

Pino 19/6/20 15:26

Eliminato: us

Pino 19/6/20 15:26

Eliminato: a

325 rate (Santacroce, 1983); based on such assumption, the computed magma volume after 50 years gave almost the same value  
than the erupted volume computed for 1631. Based on such a scenario, the red zone was defined, as the one which could be  
hit by pyroclastic flows during a sub-plinian eruption (similar to the 1631 one). In more recent times, such a model of  
constant magma chamber replenishment has been abandoned, although the red zone has remained almost the same. Besides  
the red zone, the most prone to pyroclastic flow hazard, a yellow zone has been defined, as the most prone to large thickness  
330 of pyroclastic falls (i.e. ash and pumice). Since the first emergency plan of 1995, some basic assumptions have been  
established and used for subsequent plans, for instance the alert levels. Actually, there are four levels of alert: Green (basic  
level, no anomalies), Yellow (first alert, some anomalies), Orange (pre-alarm, several anomalies), Red (alarm, evacuation).  
The red zone of Mt. Vesuvius at the time contained about 800,000 people. The definition of the red zone for Vesuvius gave  
rise, since it was released, to strong (and sometime harsh) scientific and political discussions; [however, in literature, the](#)  
335 [scientific debate about the emergency plan, and more in general about the volcanic hazard and risk in this area, can be](#)  
[synthesized by few papers \(e.g. Scandone, 1993; Rolandi, 2010; Papale, 2017\).](#) The main objections to that plan questioned  
the choice of the scenario and the possibility to really evacuate 800,000 people in three days, as claimed on the plan. Most of  
the criticism addressed to the choice of a single scenario, based on a sub-plinian eruption, indicated by a constant magma  
feeding model that was not supported anymore in literature since the years 2000. Alternative scenarios, based on  
340 probabilistic (Bayesian) hazard estimation from the whole spectrum of possible eruptions, were firstly proposed by Rossano  
et al. (1998), but never adopted. The present red zone is shown in fig.5 and contains about 700,000 people. Since 2015, also  
the red zone for Campi Flegrei eruptions has been released (fig.5). Differently from the Mt. Vesuvius one, the red zone for  
Campi Flegrei has not been designed on the basis of a specific scenario, but taking into account, in a probabilistic approach,  
the whole spectrum of possible eruptions (Neri et al., 2015); just like Rossano et al. (1998) had firstly suggested for  
345 Vesuvius, and then for Campi Flegrei (Rossano et al., 2004). The Rossano et al. (2004) probabilistic approach for Campi  
Flegrei pyroclastic flow hazard map, developed eleven years before the study adopted to define the red zone (Neri et al.,  
2015), gave very similar results for the area with maximum probability to be hit by pyroclastic flows, and then for the red  
zone.

What is also relevant, for the subsequent considerations, is that both the two existing Emergency Plans (for Vesuvius and  
350 Campi Flegrei), regarding the evacuation plan in case of red alarm, relies only on the use of land transportations, not  
considering the use of ships. This choice, [probably driven by the concern for possible tsunamis accompanying eruptions](#)  
(anyway extremely rare in such areas, and surely not expected before the eruption), cannot be equally applied to an  
Emergency plan of the Ischia [Island](#) that, however, is the only remaining volcanic area where there is not yet any Plan.

Natural hazards at Ischia [Island](#) have always been surprisingly underestimated. Despite the catastrophic earthquakes  
355 occurred in the past in the Casamicciola area, including the devastating one of 1883 causing about 2300 casualties (De  
Natale et al., 2019), there were no monitoring seismic stations on the island until 1993, when the first permanent monitoring  
network was installed in three sites, then improved with the fourth site in 2015 (De Natale et al., 2019). The recent  
earthquake occurred in August 2017, as already discussed, poses new heavy concern, both regarding the vulnerability of  
urban areas (De Natale et al., 2019) and because, at present, the relation of such seismicity with eventual volcanic processes  
360 is not clear at all (Calderoni et al., 2019; Nappi et al., 2018; De Novellis et al., 2018).

Coming back to describe more details of the Emergency Plans, it is important to note that the first three steps of the alert:  
Green, Yellow, Orange, are decided by the National Civil Protection, normally upon advice from the National Commission  
for High Risks, whereas the last step, from Orange to Red (implying complete evacuation of the red zone in 72 hours) is only  
decided by the Italian Premier (Dipartimento Protezione Civile, 2015). Regarding the evacuation plan, which starts once the  
365 Red alert is declared, evacuated people is meant to be distributed in all the Italian Regions, according to a correspondence  
between each municipality and a given Italian Region. There is however no other detail in the Plan, programming, for  
instance, exactly where (i.e. in which houses, hotels, etc.) people will be [relocated in each Region](#).

a a 19/6/20 13:02

Eliminato: that is

a a 19/6/20 12:43

Eliminato: island

a a 19/6/20 12:43

Eliminato: island

a a 19/6/20 13:02

Eliminato: -allocated

a a 19/6/20 13:05

Eliminato: each

## 5. Evacuation Plans: strength and weakness

We do not aim to discuss in detail the Emergency Plans in their intermediate steps. We only focus on what should occur after the declaration of the Red alert, which implies the rapid (within 72 hours), complete evacuation of the red zone. As already mentioned, the red zones of Campi Flegrei and Vesuvius presently contain, respectively, about 600,000 and about 700,000 people. The evacuation plans, in the present formulation, state they must be evacuated by roads, on-land. Most of residents in the red zones (and also out of them) are sceptic about the real possibility to successfully evacuate such a high number of people within three days (Solana e al. 2008; Carlino et al., 2008). They believe it would be not possible, both because of the likely massive panic that would spread across, and for the huge traffic which characterizes the few main roads to evacuate, even in normal days. In the turmoil that would likely accompany a massive evacuation, it is easy to imagine those roads completely jammed. These are, however, just feelings of the people, and we will assume here the evacuation can be successfully organized. There are anyway two former, successful example of evacuation in the Neapolitan area, both of them in the Campi Flegrei area. The first evacuation occurred in 1970, at the beginning of the first recent (recognized) large Campi Flegrei unrest of the period 1969-1972. About 3000 people were forcedly evacuated, in just one day, from the Rione Terra, a district of Pozzuoli just behind the Port of Pozzuoli, which was at the time (and also in the following unrest episodes) the area of maximum uplift. After that episode, in 1984, when the subsequent unrest was rapidly progressed and continuous earthquakes caused extreme concern, the whole town of Pozzuoli, about 40,000 people, was evacuated and transferred in a new town: Monteruscello, located about 3 km NW and built in few months to host the Pozzuoli citizens (Barberi and Carapezza, 1996). The evacuation of Pozzuoli town was, in the opinion of several experts, probably the most successful operation of Civil Protection in Italy. However, it involved more than an order of magnitude less people, with respect to the present red zone of Campi Flegrei (or, equivalently, of Vesuvius). In addition, the main productive activities (factories) in the Pozzuoli area were not stopped, and evacuated people could go to work anyway in the 'red zone' of that time. Finally, while the Rione Terra was never let to be populated again, the complete evacuation of Pozzuoli lasted about one year or less, and after that period the town was fully populated again, because people almost spontaneously came back. The red zones defined in the present emergency plans are chosen in order to take into account the largest eruptions having non negligible probability, so involving very large numbers of people; and some volcanologists ask for even higher precaution (e.g. Mastrolorenzo et al., 2017). Actually, however, defining very large red zones to be evacuated before an impending eruption, could seem a better caution, but it also makes the evacuation decision a much heavier responsibility to assume; dramatically costly in case of false alarm. The success of the first two evacuations was undoubtedly due to the limited area, and limited number of people involved. Each of them was in effect a single step following the concept of a progressive evacuation; in which areas progressively larger could be involved, following the eventual increase of anomalous phenomena and/or the starting of phreatic activity or magmatic eruption. The concept of progressive evacuation has been actually implicit also in the few successful evacuations before eruptions, which proceeded in steps, enlarging the evacuated areas in response to the increase of eruptive activity (Tayang et al., 1996). Another choice which could be surely debated, about the effectiveness of the present evacuation plan, is the lack of evacuation by sea, with large ships which could rapidly move a lot of people without any traffic problem. This choice is probably due to the fact that the ports in Campi Flegrei and Vesuvius towns (except for the port of Naples) are not suited to host large ships; another obstacle is probably thought to be the possibility that tsunamis may accompany the eruptions. The evacuation by the sea, anyway, is the only one that can work for an evacuation plan of Ischia Island, which is compelling and, sooner or later, must be done. Moreover, looking at historical eruptions of Neapolitan volcanoes, it turns out there is no evidence for any tsunamis associated to their eruptions. We proceed now to make clearly evident the main problems of the present day Emergency Plans. As already said, we will not discuss the steps from Green to Orange, nor we want to assess the details of the first evacuation phase, i.e. the way to move 600,000-700,000 people out of the red zone. Regarding the present choice to move people exclusively on-land, we just

Pino 13/6/20 17:56

Eliminato: more

Pino 13/6/20 17:56

Eliminato: y

a a 19/6/20 12:44

Eliminato: one which

a a 19/6/20 13:00

Eliminato: island,



420 | noted that evacuation by sea, using large [cruise](#) ships, would be much more rapid and effective, avoiding the multiple problems linked to the traffic and to the lack of appropriate roads.

We want, instead, to discuss here two problems, which are also in some way interrelated: the extremely high number of people to evacuate in case of an impending eruption, and the lack of plans, today, to reallocate such a high number of evacuated people taking into account realistic times people will have to spend out of their homes in the red zone.

425 Regarding the first problem, namely the high number of people to evacuate, it is clear that the decision-makers have to take a very big responsibility to declare the Red alert, which will cause dramatic social problems and economic damages. The economic loss per each year the evacuation lasts can be reasonably estimated by considering that 600000 people are almost 1% of the total Italian population. So, by suddenly stopping the economy produced by 600000 people would represent a loss of 1% of the Italian PIL. Since the annual Italian PIL is around 2000 G€, 1% is about 20 G€. To such high cost it should be

430 added the cost of assistance to the evacuated people (i.e. travel, hosting, subsistence, services, etc.), whose minimum estimate (15-20 k€ per year per person) gives another 10-20 G€/year. A total cost in the range 30-40 G€/year (for Campi Flegrei; for Vesuvius it would be about 20% larger) represents the amount of one of largest annual financial package of Italian Government; so, it is likely unsustainable, even for just one-two years. But the real problem, fundamental also to evaluate the real amount of social disease and total economical loss, is the second one: how much time will such a large

435 number of people spend out of the original towns? To answer this question, we can consider two possible cases:

- 1) the eruption occurs in short times after the alert
- 2) the eruption does not occur in short times

In the first case, it is clear that a considerable part of the evacuated area will be destroyed or anyway seriously affected, so that several years, probably decades, will be needed to restore conditions to make liveable again the area. But, anyway, the

440 occurrence of an eruption [would likely indicate a new state of the volcano dynamics, making even more unpredictable its subsequent activity](#). A clear example of such a long lasting eruptive phase, for a volcano which was quiescent since 400 years, is the case of Soufriere Hills in Monserrat, erupted for the first time in 1995, evacuated since then and still in alarm because experiencing consecutive eruptions (Smithsonian Institution website: <https://volcano.si.edu/volcano.cfm?vn=360050> and references therein)

445 Regarding Neapolitan volcanoes, volcanologists normally assume that, after a long non-eruptive period, a new eruption of Mt. Vesuvius will open a new cycle of eruptive activity, which can become much more frequent like it was during the XVII to XX centuries period (Santacroce, 1983). For Campi Flegrei and Ischia, which are dormant since several centuries, the occurrence of an eruption today would make equally much more unpredictable the future evolution of volcanic activity. All these considerations make very evident that, in the event 1, realistic times to repopulate the red zone would be extremely

450 long or indefinite, on the basis of objective considerations.

What would happen if, on the contrary, the eruption would not occur in short times after the evacuation (event 2)? In this case, we have to consider that, if the precursory signals were so strong and evident to convince decision-makers to evacuate 600,000-700,000 people causing a real 'disaster', in an economical and social sense, they could certainly not decide to put again people at the same high risk situation, considering that times of preparation of an eruption, are mostly unknown but

455 can certainly be very long in some cases. Also in this case, a typical example of what could happen is given by the unrest episodes at Campi Flegrei. We know that intense uplift episodes started already in 1950, although apparently that unrest was not noted. However, after the unrest of 1969-1972, people thought the danger were over, even if the 'Rione Terra', the urban area very close to the Port, which was evacuated at that [time](#), was never re-populated again. After about 10 years, a new unrest episode started, with even higher rates of uplift and much more intense seismicity (De Natale et al., 1991). At the end

460 of 1985, people again thought the danger was over, and Pozzuoli town was populated again after the evacuation. However, after about 20 years, a new unrest episode has started, still [on going today](#), which again poses large concern in the volcanologists, authorities and population. In practice, the alert at Campi Flegrei lasted 70 years till now, and is still on-

a a 19/6/20 12:51

**Eliminato:** volcanologically

a a 19/6/20 12:51

**Eliminato:** represents a new variable, which will

a a 19/6/20 12:53

**Eliminato:** e

a a 19/6/20 12:53

**Eliminato:** what could be the

a a 19/6/20 12:51

**Eliminato:** of the volcano

a a 19/6/20 12:46

**Eliminato:** time

a a 19/6/20 12:47

**Eliminato:** -

470 going; the first evacuated zone, Rione Terra (3000 people evacuated), has not been repopulated; Pozzuoli was, but it must be noted that only 40,000 people were evacuated, that the main economic activities were not stopped, and that Monteruscello (the new town hosting evacuated people) was very close to Pozzuoli and 'inside' the Pozzuoli municipality. In case of 600,000-700,000 people, scattered all along Italy (as the present evacuation plan prescribes), it would be impossible, today, to consider they could come back to their homes in similar conditions.

475 [Finally, let's make a comparison with another, catastrophic emergency recently occurred because of COVID-19: it caused an economic damage, for Italy, on the order of some hundreds millions of euros in a lockdown lasted 2-3 months. With a not programmed, sudden massive evacuation of Campi Flegrei or Vesuvius, as presently planned, the same amount of economic loss would be totalled in the first few years. However, such a loss would be, in this case, accompanied by an additional, catastrophic social unrest due to the uprooting and provisional reallocation of almost a million people.](#)

## 480 **6. Elements for a reliable Evacuation Plan and Emergency Management**

The nature and size of volcanic hazard in the Neapolitan areas, as well as the experience of previous evacuation inside the Campi Flegrei area, give important suggestions on how to build a really working Emergency Plan. The previous experiences of evacuation inside the Campi Flegrei area were successful (although no eruption occurred), but limited to 3000-40000 people. Increasing the number of evacuated people by 1 to 2 orders of magnitude, although it could seem to be more conservative with respect to the possible occurrence of larger eruptions, introduces additional, very huge problems. They are related, how we explained in the previous paragraph, to the extreme responsibility taken by the decision maker, in terms of economic and social costs, as compared to the high uncertainty about the evolution of volcanic phenomena. These problems necessarily translate into very long times of permanence of evacuated people out of the red zone, in case of evacuation. Such times can be estimated, in the most optimistic way, in the order of many years or decades. This means that the evacuation plan cannot simply provide that all the people goes safely away from the red zone: it must provide a sort of 'second life' for the evacuated people, which must live in the new place for decades, perhaps forever. Obviously, in this case it is not realistic to assume (as the present plan implicitly does) that several hundred thousands people can live for decades as refugees, in temporary accommodation like hotels, etc., assisted by the Government. Making some simple (and optimistic) calculations, besides the unbearable social unease, the economic costs of such a condition would be on the order of 30-40 billions euros per year. The amount of economic and social costs of an evacuation from one of the two main volcanic areas, operated as imagined till now, thus clearly demonstrate this is not only a problem for Italy, but surely of European scale.

It should be now clear that the problem of volcanic hazard in the Neapolitan area cannot be afforded in the way it has been thought till now. In view of a rational approach to this incredibly hard problem, some basic conditions should be reached well before the starting of a volcanic crisis possibly leading to an eruption. The most basilar conditions are:

- 500 1) the number of residents in the red zones must be decreased;
- 2) the urban areas in the red zones must be made less densely populated and chaotic, with large roads, escape routes and edifices resistant to seismicity which accompanies volcanic unrest;
- 3) the evacuation of the population must be completely organized well before the crisis: all people should be assigned a new home, a new working perspective, and all the services for living there for many years/decades, likely forever
- 505 (schools, hospitals, medical care, leisure's, etc.).

The first two points are fundamental in order to make really feasible a massive evacuation in case of red alert, and to protect the population from the most common phenomena (mainly earthquakes) occurring during unrest and pre-eruptive phases. The third point is, on the contrary, compelling to avoid that a possible evacuation would result in a social and economic disaster. However, a careful prior organization of a future evacuation, for all the population (point 3), may also help to afford the problem at point 1, and consequently the problem at point 2. In fact, a prior organization of the 'second life' of people in case of evacuation may convince several people, if incentivized in some way, to abandon in advance the red zone, well

before any significant official alert. A significant decrease of residents in the red zone (point 1) will make easier to re-organise and re-planning the urban areas, making them more resistant and resilient (point 2). Associated to these measures, another important improvement of the Emergency Plans would be to introduce the concept of 'progressive evacuation'. At present, only massive, total evacuation of the whole red zone is considered in the Emergency procedures. As we already discussed, deciding to move several hundreds thousands people is a very huge responsibility for decision makers; in particular because, even in presence of strong anomalies which can be considered pre-eruptive signals, the probability of false alarm is extremely high: probably anyway higher, even very close to the eruption time, than the probability of eruption. The experience of the past, and in particular the two successful but limited evacuations in the Campi Flegrei area (1970 and 1984, respectively 3000 and 40000 people) suggests to operate a progressive evacuation, which starts in a limited area, where precursory signals (and/or prior data) indicate the highest probability of eruption and/or of phreatic explosions, and then proceeds in progressively larger areas if the pre-eruptive signals increase (or first eruption phases start/progress). Past examples of successful evacuation (i.e. Pinatubo 1991, see Tayang et al., 1996) operated in a progressive way, by enlarging the evacuated area following the evolution of the eruptive activity. Such a procedure has the advantage to allow to evacuating the most hazardous areas without causing disastrous social and economic consequences and, in particular, without to be pushed to wait for macroscopic unrest signals (in the hope to absolutely avoid false alarms). When operating with progressive evacuation, in the first steps (with relatively few people evacuated) residents could be let free to choose if definitively abandon the red zone, proceeding to the planned 'second life', or to wait for some time in temporary housing, likely not very far from the evacuated area.

The association of prior programmed 'second life' of evacuated people and of the progressive evacuation could hence work very well, in cases similar to the very long and variable 1950 to present Campi Flegrei unrest, to help decreasing the number of residents and to allow improving the urban resilience in the risky areas.

It should be noted anyway that moving away several hundred thousand people to prevent disasters, to reallocate them in new permanent positions, is however a formidable goal, which can only be obtained during a well programmed, long enough period. Experiences of massive reallocations of whole urban centres are very rare, and normally they occur after disasters, to reconstruct the partially destroyed towns in new sites. We could find in literature only two examples of displacement of whole urban centers to prevent disasters. The first case is Valmeyer, Illinois, 1245 inhabitants, where population, after a catastrophic flood of the Mississippi in 1993, moved the whole town at a new site in 1995 (Rozdilsky, 1996). The second case is Kiruna, Sweden, 23,000 inhabitants, is another town which is going to be moved 3 km apart, because of hazard posed by ore activities which are causing continuing ground sinking and felt seismicity (Dineva and Boskovic, 2017). Dineva, S & Boskovic, M 2017, 'Evolution of seismicity at Kiruna Mine', in J Wesseloo (eds.), Proceedings of the Eighth International Conference on Deep and High Stress Mining, Australian Centre for Geomechanics, Perth, pp. 125-139, [https://doi.org/10.36487/ACG\\_rep/1704\\_07\\_Dineva](https://doi.org/10.36487/ACG_rep/1704_07_Dineva).

## Conclusion

The Neapolitan volcanic area, with three explosive volcanoes and about three million people closely exposed, has the largest risk in the World. The volcanic risk is here associated with other risks, the main one being the seismic risk. Risk mitigation in this area is, for these reasons, a paradigm to manage all the situations of densely populated volcanic areas in the World. It is very clear that, given the present state of the art of volcanology, volcanic risk mitigation in densely populated areas cannot rely only on eruption forecast, still based on empirical procedures largely uncertain and not even really quantifiable in a probabilistic way. For this reason, we suggest here that effective mitigation procedures must, in these cases, to be flexible enough to take into account economic, social and political considerations in addition to volcanological ones. In fact, in densely populated areas one is faced by the double problem of low reliability of forecast and no possibility to estimate the size of the eventual eruption. In the present emergency plans for Neapolitan volcanoes, the probability of missed alarm is

Pino 13/6/20 23:53  
**Formattato:** Tipo di carattere:Non Corsivo, Colore carattere: Automatico

Pino 13/6/20 23:53  
**Formattato:** Tipo di carattere:Non Corsivo, Colore carattere: Automatico

Pino 13/6/20 23:53  
**Formattato:** Tipo di carattere:Non Corsivo, Colore carattere: Automatico

Pino 13/6/20 23:53  
**Formattato:** Tipo di carattere:Non Corsivo, Colore carattere: Automatico

Pino 13/6/20 23:53  
**Formattato:** Colore carattere: Automatico

Pino 13/6/20 23:53  
**Formattato:** Colore carattere: Automatico

Pino 13/6/20 23:53  
**Formattato:** Colore carattere: Automatico

practically neglected, and the 'red zones' (i.e. the areas to be quickly evacuated before the eruption) are assumed very large  
555 on a precautionary base, in order to manage the occurrence even of the largest eruptions, unless considered very unlikely.  
These two assumptions are both very critical: the first one is demonstrated to be simply wrong, from all recent eruptions  
experience; the second one, in the light of volcanological considerations, is demonstrated to make the evacuation decision  
560 too heavy for decision makers, because potentially catastrophic in economic and social terms, mainly considering the high  
probability of false alarm. Once we put in evidence the clear faults of the present emergency plans, we show what should be  
the guidelines for making them really effective. The first, essential requirement for Neapolitan area, is to decrease population  
in the most exposed urban zones, well before any volcanic emergency. There are economical considerations, only mentioned  
here and to be deepened with the help of economists and social scientists, which could make feasible such a difficult task in  
this region. Another imperative action is to improve the quality of buildings, reinforcing them to be resistant to earthquakes  
565 which unavoidably precede and accompany both eruptions and unrest episodes. Once the closest urban areas are made more  
resistant and hence more resilient, the possible evacuation before an impending eruption must be thoroughly programmed in  
advance, so to minimize the economic and social impacts. A really feasible emergency plan, in addition, should consider a  
'progressive' evacuation, which would start from the most risky area and then would progressively proceed to farther areas,  
if the precursory signals increase or eruption starts.  
Besides the peculiarity of the Neapolitan area, the most striking guidelines to be followed in any densely populated volcanic  
570 area can be summarized in few important points:  
if possible, decrease the resident population density in the most risky areas;  
improve the resistance of the buildings and, in general, the quality of infrastructures and the resilience of urban centres;  
plan in great detail the possible evacuation, well before any emergency, by taking registered all the population and its  
changes over time, so that it can be relocated, with jobs and services, in the new places. It will minimize economic and social  
575 costs;  
identify, well before the emergency or, in large polygenetic volcanic fields, as soon as possible, the most risky areas very  
close to the possible vent opening. Then, rather than a massive total evacuation of the red zone, plan a progressive one,  
starting from the areas closest to the likely vent and involving the farthest from it only when precursory signals are  
extremely evident or the first eruptive phases start.  
580 In conclusion, mitigation of extreme volcanic risk in densely populated areas require a widely multidisciplinary approach,  
which starts with volcanological considerations but heavily involves several disciplines: economy, social sciences, city  
planning, information technology. Actually, nearly 70 cities with populations exceeding 100,000 live with the threat from  
volcanic eruptions (Heiken, 2013); so, the elements and conclusions presented here will have value worldwide.

## References

- 585 Acocella, V. & Funicello, R.: The interaction between regional and local tectonics during resur-gent doming: the case of  
the island of Ischia, Italy, J. Volc. and Geoth. Res., 88, 109–123, 1999.
- Astarita, T.: Naples is the whole World. In: a Companion to Early Modern Naples, Brill's Companion to European History,  
2, (in Italian) [https://doi.org/10.1163/9789004251830\\_002](https://doi.org/10.1163/9789004251830_002), 2013.
- 590 Barberi, F., Carapezza, M.L.: The Problem of Volcanic Unrest: The Campi Flegrei Case History. In: Monitoring and  
Mitigation of Volcano Hazards. Springer, Berlin, Heidelberg, 1996.

a a 19/6/20 12:55

Eliminato: be quickly

a a 19/6/20 13:08

Eliminato: -al

a a 19/6/20 13:08

Eliminato:

- Barberi, F., Corrado, G., Innocenti, F., Luongo, G. : Phlegraean Fields 1982-84: Brief Chronicle of a Volcano Emergency in a Densely Populated Area, *Bull. Volcanol.*, 47-2, 1984.
- 600 Barberi, F., Cassano, E., La Torre, P., Sbrana, A.: Structural evolution of Campi Flegrei caldera in light of volcanological and geophysical data, *J. Volc. and Geoth. Res.*, 48, 1-2, pp. 33-49, [https://doi.org/10.1016/0377-0273\(91\)90031-T](https://doi.org/10.1016/0377-0273(91)90031-T), 1988.
- Bellucci, F., Milia, A., Rolandi, G. & Torrente, M. : Structural control on the Upper Pleistocene ignimbrite eruptions in the Neapolitan area (Italy): volcano tectonic faults versus caldera faults, In: B. De Vivo (Ed.). *Volcanism in the Campania Plain: Vesuvius, Campi Flegrei and Ignimbrites*. Elsevier, Series «Developments in Volcanology», 9, 163-180, 2006.
- 605 [Bellucci, F., Woo, J., Kilburn, C. R. J. & Rolandi, G.: in Troise, C., De Natale, G., Kilburn, C. R. J. eds., \*Mechanisms of Activity and Unrest at Large Calderas\*, \*Geol. Soc. London Spec. Publ.\*, Vol. 269 \(eds\), 141-158, 2006.](#)
- 610 Bevilacqua, A., Isaia, R., Neri, A., Vitale, S., Aspinall, W.P., Bisson, M., Flandoli, F., Baxter, P.J., Bertagnini, A., Esposti Ongaro, T., Iannuzzi, E., Pistolesi, M., and Rosi, M.: Quantifying volcanic hazard at Campi Flegrei caldera (Italy) with uncertainty assessment: 1. Vent opening maps, *J. Geophys. Res. Solid Earth*, 120, 2309- 2329. <https://doi.org/10.1002/2014JB011775>, 2015.
- 615 Calderoni, G., Di Giovambattista, R., Pezzo, G., Albano, M., Atzori, S., Tolomei, C., Ventura, G.: Seismic and geodetic evidences of a hydrothermal source in the Md 4.0, 2017, Ischia earthquake (Italy), *J. Geophys. Res. Solid Earth*, 124, 5014-5029 <https://doi.org/10.1029/2018JB016431>, 2019.
- Capuano, P., and Achauer, U.: Gravity field modeling in the vesuvius and campanian area, in *The TomoVes Seismic Project: Looking Inside Mt. Vesuvius*, edited by A. Zollo et al., Cuen, Napoles, 2003.
- 620 [Carlino, S., Cubellis, E., Luongo, G., Obrizzo, F.: On the mechanics of caldera resurgence of Ischia Island \(southern Italy\). In: Troise, C., De Natale, G., Kilburn, C. \(Eds.\), \*Mechanisms of Activity and Unrest at large Calderas\*. Geological Society 269. Special Publications, London, pp. 181-193, 2006.](#)
- 625 Carlino, S., Somma, R., Mayberry, G.C.: Volcanic risk perception of young people in the urban areas of Vesuvius: Comparison with other volcanic areas and implications for emergency management, *J. Vol. and Geoth. Res.*, 172, 3-4, pp. 229-243, <https://doi.org/10.1016/j.jvolgeores.2007.12.010>, 2008.
- 630 Carlino, S.: Neapolitan Volcanoes: A Trip Around Vesuvius, Campi Flegrei and Ischia, pp. 312 <https://doi.org/10.1007/978-3-319-92877-7>, 2019.
- Carratelli, G.P.: *Megale Hellàs*, Scheiwiller ed., pp. 744 (in Italian), 1983.
- 635 Cassano, E., La Torre, P.: Geophysics. In: Rosi, M., Sbrana, A. (Eds.) *Phlegrean Fields*. CNR Quad. Ric. Sci. 114, 9, 103-133, 1987.
- Chiodini, G., Paonita, A., Aiuppa, A. et al.) Magmas near the critical degassing pressure drive volcanic unrest towards a critical state, *Nat. Commun.* 7, 13712 <https://doi.org/10.1038/ncomms13712>, 2016.

Pino 19/6/20 01:16

Eliminato: ,

Pino 14/6/20 18:54

Formattato: Tipo di carattere: Non Corsivo

Pino 14/6/20 18:52

Formattato: Italiano

Pino 19/6/20 01:15

Eliminato:

Pino 19/6/20 01:15

Eliminato: Carlino, S., Cubellis, E., Luongo, G., Obrizzo, F.: On the mechanics of caldera resurgence of Ischia Island (southern Italy). In: Troise, C., De Natale, G., Kilburn, C. (Eds.), *Mechanisms of Activity and Unrest at large Calderas*. Geological Society 269. Special Publications, London, pp. 181-193, 2006. [1]

Cinque, A. & Romano, P. : Segnalazione di nuove evidenze di antiche linee di riva in Penisola Sorrentina (Campania, Geogr. Fis. Dinam. Quat., 13(1), 23-26, 1990.

Consensus Study Report: Volcanic Eruptions and Their Repose, Unrest, Precursors, and Timing, The National Academy Press, 134 pp., <https://doi.org/10.17226/24650>, 2017.

Cubellis, E., Lungo, G.: Il terremoto del 28 luglio 1883 a Casamicciola nell'Isola di Ischia – Il contest fisico, In: Monografia n. 1, Presidenza del Consiglio dei Ministri, Servizio Sismico Nazionale. Istituto Poligrafico e Zecca dello Stato, Rome, Italy, pp. 49-123 (in italian), 1998.

De Natale, G., Pingue, F., Allard, P. and Zollo, A.: Geophysical and geochemical modelling of the 1982-1984 unrest phenomena at Campi Flegrei caldera (southern Italy), In: G. Luongo and R. Scandone (Editors), Campi Flegrei. J. Volc. Geoth. Res., 48, 199-222, 1991.

De Natale, G. and Pingue, F.: Ground deformations in collapsed caldera structures, J. Vol. Geoth. Res., 57, 19-38, [https://doi.org/10.1016/0377-0273\(93\)90029-Q](https://doi.org/10.1016/0377-0273(93)90029-Q), 1993.

De Natale, G., Petrazzuoli, S. M. and Pingue, F.: The effect of collapse structures on ground deformations in calderas, Geophys. Res. Lett., 24, 13, 1555-1558, 1997.

De Natale, G., Petrazzuoli, S. M., Troise, C., Pingue, F., and Capuano, P. : Internal stress field at Mount Vesuvius: A model for background seismicity at a central volcano, J. Geophys. Res., 105( B7), 16207– 16214, <https://doi.org/10.1029/2000JB900031>, 2000.

De Natale, G., Kuznetsov, I., Kronrod, T., Peresan, A., Saraò, A., Troise, C. and Panza, G.F.: Three decades of seismic activity at Mt. Vesuvius: 1972-1999, Pure appl. geophys., 161, 123–144, <https://doi.org/10.1007/s00024-003-2430-0>, 2004.

De Natale, G., Troise, C., Pingue, F., Mastrolorenzo, G., Pappalardo, L.: The Somma-Vesuvius volcano (Southern Italy): Structure, dynamics and hazard evaluation, Earth Science Reviews., <https://doi.org/10.1016/j.earscirev.2005.08.001>, 2005.

De Natale, G., Troise, C., Mark, D., Mormone, A., Piochi, M., Di Vito, A. M., Isaia, R., Carlino, S., Barra, D., and Somma, R.: The Campi Flegrei Deep Drilling Project (CFDDP): New insight on caldera structure, evolution and hazard implications for the Naples area (Southern Italy), Geochem. Geophys. Geosyst., 17, 4836– 4847, doi:10.1002/2015GC006183, 2016.

De Natale, G., Petrazzuoli, S., Romanelli, F., Troise, C., Vaccari, F., Somma, R., Peresan, A., Panza, G.F. : Seismic risk mitigation at Ischia island (Naples, Southern Italy): an innovative approach to prevent catastrophic scenarios, Eng. Geology, 261, <https://doi.org/10.1016/j.enggeo.2019.105285>, 2019.

De Novellis, V., Carlino, S., Castaldo, R. et al.: The 21 August 2017 Ischia (Italy) earthquake source model inferred from seismological, GPS, and DInSAR measurements, Geophys. Res. Lett., 65, 5, <https://doi.org/10.1002/2017GL076336>, 2018.

a a 19/6/20 13:09

Eliminato:

a a 19/6/20 13:09

Formattato: Colore carattere: Colore personalizzato( RGB(35;31;32))

Pino 19/6/20 01:13

Eliminato: 0033 – 4553/04/010123 – 22

a a 19/6/20 13:09

Formattato: Tipo di carattere: 10 pt, Colore carattere: Colore personalizzato( RGB(35;31;32))

a a 19/6/20 13:09

Formattato ... [2]

a a 19/6/20 13:09

Formattato ... [3]

a a 19/6/20 13:09

Formattato ... [4]

a a 19/6/20 13:09

Formattato ... [5]

a a 19/6/20 13:09

Formattato ... [6]

a a 19/6/20 13:09

Formattato ... [7]

a a 19/6/20 13:09

Formattato ... [8]

a a 19/6/20 13:09

Formattato ... [9]

a a 19/6/20 13:09

Formattato ... [10]

a a 19/6/20 13:09

Formattato ... [11]

a a 19/6/20 13:09

Formattato ... [12]

a a 19/6/20 13:09

Formattato: Inglese (Stati Uniti)

a a 19/6/20 13:09

Formattato ... [13]

a a 19/6/20 13:09

Formattato ... [14]

a a 19/6/20 13:09

Formattato ... [15]

a a 19/6/20 13:09

Formattato ... [16]

a a 19/6/20 13:09

Formattato ... [17]

a a 19/6/20 13:09

Formattato ... [18]

a a 19/6/20 13:09

Formattato ... [19]

Pino 19/6/20 01:12

Eliminato:

a a 19/6/20 13:09

Formattato ... [20]

a a 19/6/20 13:09

Formattato ... [21]

a a 19/6/20 13:09

Formattato ... [22]



690 de Vita, S., Sansivero, F., Orsi, G. and Marotta, E.: Cyclical slope instability and volcanism related to volcano-tectonism in  
resurgent calderas: The Ischia island (Italy) case study, Eng. Geology, 86, 148–165,  
<https://doi.org/10.1016/j.enggeo.2006.02.013>, 2006.

695 de Vita, S., Sansivero, F., Orsi, G., Marotta, E., Piochi, M.: Volcanological and structural evolution of the Ischia resurgent  
caldera (Italy) over the past 10 k.y. In: Groppelli, G., Viereck-Goette, L. (Eds.), Stratigraphy and Geology of Volcanic  
Areas, Vol. 464, Geol. Soc. Am. Sp. Pap., Boulder, CO, pp. 193–241, 2010.

700 [Dineva, S. and Boskovic, M.: Evolution of seismicity at Kiruna Mine, in J. Wesseloo \(eds.\), Proceedings of the Eighth  
International Conference on Deep and High Stress Mining, Australian Centre for Geomechanics, Perth, 125-  
139, \[https://doi.org/10.36487/ACG\\\_rep/1704\\\_07\\\_Dineva\]\(https://doi.org/10.36487/ACG\_rep/1704\_07\_Dineva\), 2017.](#)

705 [Dipartimento di Protezione Civile Nazionale: Gazzetta Ufficiale Gazzetta Ufficiale, 75 del 31 marzo 201 p. 9 available at  
\[https://www.gazzettaufficiale.it/atto/serie\\\_generale/caricaDettaglioAtto/originario?atto.dataPubblicazioneGazzetta=2015-03-  
31&atto.codiceRedazionale=15A02488&elenco30giorni=false\]\(https://www.gazzettaufficiale.it/atto/serie\_generale/caricaDettaglioAtto/originario?atto.dataPubblicazioneGazzetta=2015-03-31&atto.codiceRedazionale=15A02488&elenco30giorni=false\), 2015.](#)

[Dipartimento di Protezione Civile Nazionale: Disposizioni per l'aggiornamento della pianificazione di emergenza per il  
rischio vulcanico dei Campi Flegrei, Gazzetta Ufficiale, 173 del 24 giugno 2016, available at  
<https://www.gazzettaufficiale.it/eli/id/2016/08/19/16A06080/sg>, 2016.](#)

710 Gaeta, F.S., Peluso, F., Arienzo, I., Castagnolo, D., De Natale, G., Milano, G., Albanese, C., Mita, D.G.: A physical  
appraisal of a new aspect of bradyseism: the mini uplifts, J Geophys. Res., 108 (B8), <https://doi.org/10.1029/2002JB001913>,  
2003.

715 [Giannetti B., Luhr J.F.: The White Trachytic Tuff of Roccamonfina Volcano \(Roman Region, Italy\), Contrib. Mineral.  
Petrol., 84, 235-252, 1983.](#)

Groppelli, G., Viereck-Goette, L. (Eds.) : Stratigraphy and Geology of Volcanic Areas, Vol. 464, Geol. Soc. Am. Sp. Pap.  
, Boulder, CO, pp.193-241, 2010.

720 Della Vedova, B., Bellani, S., Pellis, G., Squarci, P.: Deep temperatures and surface heat flow distribution, In: Vai, G.B.,  
Martini, I.P., editors. Anatomy of an Orogen: the Apennines and Adjacent Mediterranean basins, Kluwer Academic  
Publishers; 65–76, 2001.

725 Di Girolamo, P.: Petrografia dei tufi Campani: Il processo di pipernizzazione ( tufo-> tufo pipernoide- > piperno), Rend.  
Acc. Sci. Fis. Mat. Napoli, 4-25, pp 5, 1968.

Ferrucci, F., Gaudiosi, G., Pino, N.A., Luongo, G., Hirn, A., Mirabile, L.: Seismic detection of a major moho upheaval  
beneath the Campania volcanic area (Naples, southern Italy), Geoph. Res. Lett., 16, 11, 1317-1320,  
<https://doi.org/10.1029/GL016i011p01317>, 1989.

730

Pino 19/6/20 01:12
Formattato: A sinistra
Pino 19/6/20 01:12
Eliminato:
a a 19/6/20 13:10
Formattato: Carattere predefinito
Pino 14/6/20 00:12
Eliminato: -
a a 19/6/20 13:10
Formattato: Carattere predefinito
a a 19/6/20 13:10
Formattato: Tipo di carattere:Non Corsivo, Colore carattere: Automatico, Inglese (Regno Unito), Motivo:
a a 19/6/20 13:10
Formattato: Carattere predefinito paragrafo, Inglese (Regno Unito), Motivo:
Trasparente
Unknown
Codice campo modificato
a a 19/6/20 13:10
Formattato: Carattere predefinito paragrafo, Motivo: Trasparente
a a 19/6/20 13:10
Formattato: Colore carattere: Automatico, Inglese (Regno Unito), Motivo:
a a 19/6/20 13:10
Formattato: Carattere predefinito paragrafo, Inglese (Regno Unito)
a a 19/6/20 13:10
Formattato: Tipo di carattere:Non Corsivo, Colore carattere: Automatico, Inglese (Regno Unito), Motivo:
a a 19/6/20 13:10
Formattato: Colore carattere: Automatico, Inglese (Regno Unito), Motivo:
Pino 19/6/20 01:10
Eliminato: Dipartimento di Protezione Civile Nazionale: Gazzetta Ufficiale Gazzetta Ufficiale, 75 del 31 marzo 201 p. 9 available at ... [24]
Unknown
Codice campo modificato
a a 19/6/20 13:10
Formattato ... [23]
a a 19/6/20 13:10
Formattato: Carattere predefinito
a a 19/6/20 13:10
Formattato ... [25]
a a 19/6/20 13:10
Formattato ... [26]
a a 19/6/20 13:10
Formattato: Carattere predefinito
a a 19/6/20 13:10
Formattato ... [27]
a a 19/6/20 13:10
Formattato: Carattere predefinito
a a 19/6/20 13:10
Formattato ... [28]
Pino 16/6/20 17:56
Formattato: Tipo di carattere:Non
Pino 16/6/20 17:57
Eliminato: -

- Gaeta, F.S., Peluso, F., Arienzo, I., Castagnolo, D., D., De Natale, G., Milano, G., Albanese, C., Mita, D.G.: A physical appraisal of a new aspect of bradyseism: the miniuplifts, *J. Geophys. Res.*, 108 (B8), 2363 <https://doi.org/10.1029/2002JB001913>, 2003.
- 750 Forni, F., Degruyter, W., Bachmann, O., De Astis, G. and Mollo, S.: Long-term magmatic evolution reveals the beginning of a new caldera cycle at Campi Flegrei, *Science Advances*, 14 Nov 2018: 4, 11, eaat9401 <https://doi.org/10.1126/sciadv.aat9401>, 2018.
- 755 Heiken, G., & Wilbert, J.: In J. Heiken (Ed.), *Dangerous Neighbors: Volcanoes and Cities* (pp. V-Vi), Cambridge: Cambridge University Press, 2013.
- Iuliano, S., Matano, F., Caccavale, M., Sacchi, M.: Annual rates of ground deformation (1993–2010) at Campi Flegrei, Italy, revealed by Persistent Scatterer Pair (PSP) – SAR interferometry. *International Journal of Remote Sensing*, vol. 36, No. 24, 6160–6191. 2015.
- 760 Kilburn, C. R.J.: Precursory deformation and fracture before brittle rock failure and potential application to volcanic unrest, *J. Geophys. Res.*, 117, B02211, 2012.
- Kilburn, C.R.J., De Natale, G., Carlino S.: Progressive approach to eruption at Campi Flegrei caldera in Southern Italy, *Nature Communications*, 8, 15312, <https://doi.org/10.1038/ncomms15312>, 2017.
- 765 Marzocchi, W., Sandri, L., Gasparini, P., Newhall, C. and Boschi, E.: Quantifying probabilities of volcanic events: The example of volcanic hazard at Mount Vesuvius, *J. Geophys. Res.*, 109, B11201, <https://doi.org/10.1029/2004JB003155>, 2004.
- 770 Mastrolorenzo, G., Petrone, P., Pappalardo, L., Sheridan, M.F.: The Avellino 3780-yr-B.P. catastrophe as a worst-case scenario for a future eruption at Vesuvius, *Proc. Nat. Acad. Sciences*, 103, 12:4366–4370, <https://doi.org/10.1073/pnas.0508697103>, 2006a.
- 775 Mastrolorenzo, G., Pappalardo, L., Troise, C., Rossano, S., Panizza, A., De Natale, G.: Volcanic hazard assessment at Campi Flegrei caldera, *Geol. Soc. Lond.*, 269:159–171, 2006b.
- Mastrolorenzo, G., Palladino, D.M., Pappalardo, L., Rossano, S.: Probabilistic-numerical assessment of pyroclastic current hazard at Campi Flegrei and Naples city: Multi-VEI scenarios as a tool for “full-scale” risk management, *PLoS ONE*, 12(10): e0185756, <https://doi.org/10.1371/journal.pone.0185756>, 2017.
- 780 Mazzarella, A., Martone, M. & Tranfaglia, G.: The latest flood event of 4-5 May 1998 in the Sarno area and the inadequate resolution of the rain-gauge network, In *Italian. Quaderni di Geologia Applicata*, 203-211, 2002.
- 785 Molin, P., Acocella, V., Funicello, R.: Structural, seismic and hydrothermal features at the border of an active intermittent resurgent block: Ischia island (Italy), *J. Volcanol. Geotherm. Res.*, 121, 65-81, 2003.
- Morhange, C., Marriner, N., Laborel, J., Todesco, M. and Oberlin, C.: Rapid sea-level movements and noneruptive crustal deformations in the Phlegrean Fields caldera, Italy, *Geology*, 34, 2, 93–96, 2006.

Pino 11/6/20 00:05

**Formattato:** A sinistra, Interlinea: singola, Nessun controllo righe isolate, Non regolare lo spazio tra testo asiatico e in alfabeto latino, Non regolare lo spazio tra testo asiatico e caratteri numerici

Pino 11/6/20 00:05

**Formattato:** Tipo di carattere: 11 pt, Italiano

Pino 14/6/20 00:35

**Formattato:** Motivo: Trasparente

Pino 14/6/20 00:35

**Eliminato:** -

... [29]

795 [Moretti, R., Orsi, G., Civetta, L., Arienzo, I. & Papale, P.: Multiple magma degassing sources at an explosive volcano, Earth Plan. Sci. Lett., 367, 95–104, 2013.](#)

Moretti, R., De Natale, G., Troise, C.: A geochemical and geophysical reappraisal to the significance of the recent unrest at Campi Flegrei caldera (Southern Italy) *Geochem. Geophys. Geosyst.*, 18, 1244-1269, <https://doi.org/10.1002/2016GC006569>, 2017.

800 [Moretti, R., Troise, C., Sarno, F., De Natale, G.: Caldera unrest driven by CO<sub>2</sub>-induced drying of the deep hydrothermal system, \*Sci. Rep.\*, 8, 8309, <https://doi.org/10.1038/s41598-018-26610-2>, 2018.](#)

[Moretti, R., De Natale, G., & Troise, C. Hydrothermal versus magmatic: geochemical views and clues into the unrest dilemma at Campi Flegrei. In De Vivo, B., Belkin, H.E., Rolandi, G.: Vesuvius, Campi Flegrei, and Campanian Volcanism, Elsevier, 371-406, 2020.](#)

805 [Nappi, R., Alessio, G., Gaudiosi, G., et al.: The 21 August 2017 MD 4.0 Casamicciola earthquake: first evidence of coseismic normal surface faulting at the Ischia volcanic island, \*Seismol. Res. Lett.\*, 89, 4, 1323-1334, <https://doi.org/10.1785/0220180063>, 2018.](#)

810 Neri, A., Bevilacqua, A., Esposti Ongaro, T., Isaia, R., Aspinall, W.P., Bisson, M., Flandoli, F., Baxter, P.J., Bertagnini, A., Ianuzzi, E., Orsucci, S., Pistolesi, M., Rosi, M., Vitale, S.: Quantifying volcanic hazard at Campi Flegrei caldera (Italy) with uncertainty assessment: 2. Pyroclastic density current invasion maps, *J. Geophys. Res. Solid. Earth*, 120, 4, 2330–2349, 2015

815 Newhall, C. G. and Dzurisin, D.: Historical Unrest at Large Calderas of the World, *US Geol. Surv. Bull.* 1855, 210–213, 1988

Orsi, G., Gallo, G., Zanchi, A.: Simple shearing block-resurgence in caldera depressions. A model from Pantelleria and Ischia, *J. Vol. Geoth. Res.*, 47, 1-11, 1991

820 Orsi, G., De Vita, S., di Vito, M.: The restless, resurgent Campi Flegrei nested caldera (Italy): constraints on its evolution and configuration, *J. Volc. Geoth. Res.*, 74, 3-4, pp. 179-214, [https://doi.org/10.1016/S0377-0273\(96\)00063-7](https://doi.org/10.1016/S0377-0273(96)00063-7), 1996

Paoletti, V., Di Maio, R., Cella, F., Florio, G., Mocka, K., Roberti, N., Secomandi, M., Supper, R., Fedi, M., Rapolla, A.: The Ischia volcanic island (Southern Italy): inferences from potential field data interpretation, *J. Volc. Geoth. Res.*, 179, 69–86, <https://doi.org/10.1016/j.jvolgeores.2008.10.008>, 2009

825 [Papale, P.: Rational volcanic hazard forecasts and the use of volcanic alert levels, \*J Appl. Volcanol.\* 6, 13, <https://doi.org/10.1186/s13617-017-0064-7>, 2017.](#)

830 [Papale, P., Marzocchi, W.: Volcanic threats to global society, \*Science\*, 363, 1275-1276, <https://doi.org/10.1126/science.aaw7201>, 2019](#)

Pino 14/6/20 00:33

Formattato: Italiano

Pino 13/6/20 17:30

Eliminato: -

Pino 14/6/20 17:57

Eliminato: -

Passaro, S., de Alteriis, G., Sacchi, M.: Bathymetry of Ischia Island and its offshore (Italy), scale 1:50.000. *Journal of Maps*, Vol. 12, No. 1, 152–159, doi:10.1080/17445647.2014.998302, 2015.

Piochi, M., Kilburn, C.R.J., Di Vito, M. A., Mormone, A., Tramelli, A., Troise, C. & De Natale, G.: The volcanic and geothermally active Campi Flegrei caldera: an integrated multidisciplinary image of its buried structure, *Int. J. Earth Sci.*, 103, 401–421, <https://doi.org/10.1007/s00531-013-0972-7>, 2014.

Robertson, R. M. & Kilburn, C.R. J.: Deformation regime and long-term precursors to eruption at large calderas: Rabaul, Papua New Guinea, *Earth Planet. Sci. Lett.*, 438, 86–94, 2016.

Rolandi, G.: Volcanic hazard at Vesuvius: An analysis for the revision of the current emergency plan, *Journ. Volcan. Geotherm. Res.*, 189, 3-4, 347-362, <https://doi.org/10.1016/j.jvolgeores.2009.08.007>, 2010.

Rolandi, G., Bellucci, F., Heizler, M.T., Belkin, H.E., De Vivo, B.: Tectonic controls on the genesis of ignimbrites from the Campanian Volcanic Zone, southern Italy, *Mineral. Petrol.*, 79, 3–31, 2003.

Rolandi, G., Di Lascio, M., Rolandi, R.: The 15 ka Neapolitan Yellow Tuff Eruption: An Analysis of the Caldera-forming Phase and the Post-Caldera Volcanic Activity. In De Vivo, Belkin, Rolandi (Eds.): *Vesuvius, Campi Flegrei, and Campania Volcanism*, Elsevier, 2019a.

Rolandi, G., De Natale, G., Kilburn, C.R.J., Troise, C., Somma, R., Di Lascio, M., Fedele, A., Rolandi, R.: The 39 ka Campanian Ignimbrite eruption: new data on source area in the Campanian Plain, In De Vivo, Belkin, Rolandi (Eds.): *Vesuvius, Campi Flegrei, and Campania Volcanism*, Elsevier, 175-205, <https://doi.org/10.1016/B978-0-12-816454-9.00008>, 2019b.

Rosi, M., Sbrana, A.: Phlegrean Fields, *Quaderni de la Ricerca Scientifica*, CNR, Rome, 114, 9, 60–79, 1987.

Rossano, S., Mastrolorenzo, G., De Natale, G.: Computer simulations of pyroclastic flows on Somma-Vesuvius volcano, *J. Volcan. Geoth. Res.*, 82, 113-137, 1998.

Rossano, S., Mastrolorenzo G., De Natale G.: Numerical simulation of pyroclastic density currents on Campi Flegrei topography: a tool for statistical hazard estimation, *J. Volc. Geoth. Res.*, 132, 1–14, 2004.

Rouchon, V., Gillot, P.Y., Quidelleur, X., Chiesa, S., Floris, B., Temporal Evolution of the Roccamonfina volcanic complex (Pleistocene), Central Italy, *Journ. Volcan. Geotherm. Res.*, 177, 500-514, doi:10.1016/j.jvolgeores.2008.07.016, 2008.

Rozdilsky, J.L.: Flood-related relocation of Valmeyer: Implications for the development of sustainable cities, *American Planning Association, Environmental Planning Newsletter*, 3, 1, 1996.

Sacchi, M., Molisso, F., Esposito, E., Insinga, D., Lubritto, C., Porfido, S., Tóth, T., Violante, C.: Insights into flood-dominated fan deltas: very high-resolution seismic examples off the Amalfi cliffed coasts, Eastern Tyrrhenian Sea, In: Violante, C. (ed.) *Geohazard in Rocky Coastal Areas*. The Geological Society, London, Special Publications, 322, 33–71, 2009.

Pino 10/6/20 23:47

Formattato: Italiano

Pino 19/6/20 01:01

Eliminato: ..

Pino 13/6/20 23:54

Eliminato:

Pino 19/6/20 01:00

Eliminato:

885 [Sacchi, M., De Natale, G., Spiess, V., Steinmann, L., Acocella, V., Corradino, M., de Silva, S., Fedele, A., Fedele, L., Geshi, N., Kilburn, C., Insinga, D., Jurado, M.-J., Molisso, F., Petrosino, P., Passaro, S., Pepe, F., Porfido, S., Scarpato, C., Schmincke, H.-U., Somma, R., Sumita, M., Tamburrino, S., Troise, C., Vallefucio, M., Ventura, G.: A roadmap for amphibious drilling at the Campi Flegrei caldera: insights from a MagellanPlus workshop. \*Scientific Drilling\*, 7, 1–18; doi: 10.5194/sd-7-1, 2019.](#)

890 [Sacchi, M., Passaro, S., Molisso, F., Matano, F., Steinmann, L., Spiess, V., Pepe, F., Corradino, M., Caccavale, M., Tamburrino, S., Esposito, G., Vallefucio, M., Ventura, G.: The Holocene marine record of unrest, volcanism, and hydrothermal activity of Campi Flegrei and Somma Vesuvius. In: B. De Vivo, H.E. Belkin and G. Rolandi \(Eds.\) \*Vesuvius, Campi Flegrei, and Campanian Volcanism\*, Elsevier Inc., Amsterdam, 1435-469, 2020.](#)

895 Santacroce, R.: A general model for the behavior of the Somma-Vesuvius volcanic complex, *J. Volc. Geoth. Res.*, 17, 237–248, 1983

Sbrana, A., Fulignati, P., Marianelli, P., Boyce, A.J., Cecchetti, A., Exhumation of an active magmatic-hydrothermal system in a resurgent caldera environment. The example of Ischia Island (Italy), *J. Geol. Soc. London*, 166, 1061-1073, 2009

900 Scandone, R., Bellucci, F., Lirer, L. and Rolandi, G.: The structure of the Campanian Plain and the activity of the Neapolitan Volcanoes (Italy), *J. Volc. Geoth. Res.*, 48, 1–2, 1–31, 1991

Scandone, R., Giacomelli, L., Rosi, M.: Death, Survival and Damage during the 79 AD Eruption of Vesuvius which destroyed Pompeii and Herculaneum. *J. Res. and Didact. in Geogr.*, pp. 5-30, <https://doi.org/10.4458/2801-01>, 2019

905 Selva, J., Orsi, G., Di Vito, M.A. et al.: Probability hazard map for future vent opening at the Campi Flegrei caldera, Italy, *Bull. Volcanol.*, 74, 2, 497-510, <https://doi.org/10.1007/s00445-011-0528-2>, 2012

Solana, M.C., Kilburn, C.R.J., Rolandi, G.: Communication eruption and hazard forecasts on Vesuvius, Southern Italy, *J. Volc. Geoth. Res.*, 172, 3-4, pp. 308-314, <https://doi.org/10.1016/j.jvolgeores.2007.12.027>, 2008

910 [Somma, R., Iuliano, S., Matano, F., Molisso, F., Passaro, S., Sacchi, M., Troise, C., De Natale, G.: High-resolution morpho-bathymetry of Pozzuoli Bay, southern Italy. \*Journal of Maps\*, Vol. 12, No. 2, 222–230, doi:10.1080/17445647.2014.1001800, 2016.](#)

915 Stefánsson, R.: *Advances in Earthquake Prediction, Research and Risk Mitigation*. Berlin: Springer-PRAXIS, 271 pp., 2011

920 [Steinmann, L., Spiess, V., Sacchi, M.: Post-collapse evolution of a coastal caldera system: Insights from a 3D multichannel seismic survey from the Campi Flegrei caldera \(Italy\). \*Journal of Volcanology and Geothermal Research\*, 349, 83-98, 2018.](#)

Tayang, J., Insauriga, S., Ringor, A., Belo, M.: People's Response to Eruption Warning: The Pinatubo Experience, 1991-92, In: Newhall CG, Punongbayan RS (eds) *Fire and mud: eruptions and lahars of Mount Pinatubo*, Philippines: Quezon City, Philippine Institute of Volcanology and Seismology, and Seattle, University of Washington Press, 67–85, 1996.

925 Tibaldi, A. & Vezzoli, L.: The space problem of caldera resurgence: an example from Ischia Island, Italy. *Geologische Rundschau* 87, 53–66, 1998

Pino 10/6/20 23:56

**Formattato:** A sinistra, Interlinea: singola

Pino 10/6/20 23:56

**Formattato:** Tipo di carattere: 11 pt, Italiano

Pino 10/6/20 23:54

**Formattato:** A sinistra, Interlinea: singola, Nessun controllo righe isolate, Non regolare lo spazio tra testo asiatico e in alfabeto latino, Non regolare lo spazio tra testo asiatico e caratteri numerici

Pino 10/6/20 23:54

**Formattato:** Tipo di carattere: 11 pt, Colore carattere: Automatico, Italiano

Pino 10/6/20 23:55

**Formattato:** A sinistra, Interlinea: singola, Nessun controllo righe isolate, Non regolare lo spazio tra testo asiatico e in alfabeto latino, Non regolare lo spazio tra testo asiatico e caratteri numerici

Pino 10/6/20 23:55

**Formattato:** Tipo di carattere: 11 pt, Colore carattere: Automatico, Italiano

- 930 Troise, C., De Natale, G., Pingue, F., Obrizzo, F., De Martino, P., Tammaro, U., and Boschi, E.: Renewed ground uplift at  
Campi Flegrei caldera (Italy): New insight on magmatic processes and forecast, *Geophys. Res. Lett.*, 34, L03301,  
<https://doi.org/10.1029/2006GL028545>, 2007
- Troise, C., De Natale, G., Schiavone, R., Somma, R., & Moretti, R.: The Campi Flegrei caldera unrest: Discriminating  
935 magma intrusions from hydrothermal effects and implications for possible evolution, *Earth Science Reviews*, 18, 108-122,  
<https://doi.org/10.1016/j.earscirev.2018.11.007>, 2018
- Vanorio, T. and Kanitpanyacharoen, W. : Rock physics of fibrous rocks akin to Roman concrete explains uplifts at Campi  
Flegrei Caldera, *Science*, 349, 617-621, <https://doi.org/10.1126/science.aab1292>, 2015
- 940 Vezzoli, L. (ed.) *Island of Ischia*, C.N.R. Quaderni de “La Ricerca scientifica”, 114, 10, 135 pp., Rome., 1988
- Zollo, A., Gasparini, P., Virieux, J., Le Meur, H., De Natale, G., et al.: Seismic evidence for a low velocity zone in the upper  
crust beneath Mt. Vesuvius, *Science*, 274, 592-594, 1996
- 945 Zollo, A., Maercklin, N., Vassallo, M., Dello Iacono, D., Virieux, J. and Gasparini, P. Seismic reflections reveal a massive  
melt layer feeding Campi Flegrei caldera, *Geophys. Res. Lett.*, 35, L12306, <https://doi.org/10.1029/2008GL034242>, 2008
- Winson, A.E.G., Costa, F., Newhall, C.G. et al.: 2014 An analysis of the issuance of volcanic alert levels during volcanic  
950 crises, *J Appl. Volcanol.* 3, 14, <https://doi.org/10.1186/s13617-014-0014-6>, 2014
- Acocella, V. & Funicello, R.: The interaction between regional and local tectonics during resurgent doming: the case of  
the island of Ischia, Italy, *J. Volc. and Geoth. Res.*, 88, 109–123, 1999.
- 955 Astarita, T.: Naples is the whole World. In: a Companion to Early Modern Naples, Brill’s Companion to European History,  
2, (in Italian) [https://doi.org/10.1163/9789004251830\\_002](https://doi.org/10.1163/9789004251830_002), 2013
- Barberi, F., Carapezza, M.L. :The Problem of Volcanic Unrest: The Campi Flegrei Case History. In: *Monitoring and  
Mitigation of Volcano Hazards*. Springer, Berlin, Heidelberg, 1996.
- 960 Barberi, F., Corrado, G., Innocenti, F., Luongo, G. : Phlegraean Fields 1982-84: Brief Chronicle of a Volcano Emergency in  
a Densely Populated Area, *Bull. Volcanol.*, 47-2, 1984.
- Barberi, F., Cassano, E., La Torre, P., Sbrana, A.: Structural evolution of Campi Flegrei caldera in light of volcanological  
965 and geophysical data, *J. Volc. and Geoth. Res.*, 48, 1–2, pp. 33-49, [https://doi.org/10.1016/0377-0273\(91\)90031-T](https://doi.org/10.1016/0377-0273(91)90031-T), 1988.
- Bellucci, F., Milia, A., Rolandi, G. & Torrente, M. : Structural control on the Upper Pleistocene ignimbrite eruptions in the  
Neapolitan area (Italy): volcano tectonic faults versus caldera faults, In: B. De Vivo (Ed.). *Volcanism in the Campania Plain:  
Vesuvius, Campi Flegrei and Ignimbrites*. Elsevier, Series «Developments in Volcanology», 9, 163-180, 2006.
- 970 Bellucci, F., Woo, J., Kilburn, C. R. J. & Rolandi, G.: in Troise, C., De Natale, G., Kilburn, C. R. J. eds., *Mechanisms of  
Activity and Unrest at Large Calderas*, *Geol. Soc. London Spec. Publ.*, Vol. 269 (eds), 141–158, 2006.



Bevilacqua, A., Isaia, R., Neri, A., Vitale, S., Aspinall, W.P., Bisson, M., Flandoli, F., Baxter, P.J., Bertagnini, A., Esposti  
975 Ongaro, T., Iannuzzi, E., Pistolesi, M., and Rosi, M.: Quantifying volcanic hazard at Campi Flegrei caldera (Italy) with  
uncertainty assessment: 1. Vent opening maps, *J. Geophys. Res. Solid Earth*, 120, 2309– 2329.  
<https://doi.org/10.1002/2014JB011775>, 2015.

Calderoni, G., Di Giovambattista, R., Pezzo, G., Albano, M., Atzori, S., Tolomei, C., Ventura, G.:  
980 Seismic and geodetic evidences of a hydrothermal source in the Md 4.0, 2017, Ischia earthquake (Italy), *J. Geophys. Res.*  
*Solid Earth*, 124, 5014-5029 <https://doi.org/10.1029/2018JB016431>, 2019.

Capuano, P., and Achauer, U.: Gravity field modeling in the vesuvius and campanian area, in *The TomoVes Seismic Project:*  
*Looking Inside Mt. Vesuvius*, edited by A. Zollo et al., Cuen, Napoles, 2003.

985 Carlino, S., Cubellis, E., Luongo, G., Obrizzo, F.: On the mechanics of caldera resurgence of Ischia Island (southern Italy),  
In: Troise, C., De Natale, G., Kilburn, C. (Eds.), *Mechanisms of Activity and Unrest at large Calderas*. Geological Society  
269. Special Publications, London, pp. 181–193, 2006,

990 Carlino, S., Somma, R., Mayberry, G.C.: Volcanic risk perception of young people in the urban areas of Vesuvius:  
Comparison with other volcanic areas and implications for emergency management, *J. Vol. and Geoth. Res.*, 172, 3-4, pp.  
229-243, <https://doi.org/10.1016/j.volgeores.2007.12.010>, 2008,

Carlino, S.: Neapolitan Volcanoes: A Trip Around Vesuvius, Campi Flegrei and Ischia, pp. 312 [https://doi.org/10.1007/978-](https://doi.org/10.1007/978-3-319-92877-7)  
995 [3-319-92877-7](https://doi.org/10.1007/978-3-319-92877-7), 2019,

Carratelli, G.P.: *Megale Hellàs*, Scheiwiller ed., pp. 744 (in Italian), 1983,

Cassano, E., La Torre, P.: Geophysics. In: Rosi, M., Sbrana, A. (Eds.) *Phlegrean Fields*. CNR Quad. Ric. Sci. 114, 9, 103–  
1000 133, 1987,

Chiodini, G., Paonita, A., Aiuppa, A. et al.) *Magmas near the critical degassing pressure drive volcanic unrest towards a*  
*critical state*, *Nat. Commun.* 7, 13712 <https://doi.org/10.1038/ncomms13712>, 2016,

1005 Cinque, A. & Romano, P. : Segnalazione di nuove evidenze di antiche linee di riva in Penisola Sorrentina (Campania, Geogr.  
*Fis. Dinam. Quat.*, 13(1), 23-26, 1990,

Consensus Study Report: Volcanic Eruptions and Their Repose, Unrest, Precursors, and Timing, The National Academy  
Press, 134 pp., <https://doi.org/10.17226/24650>, 2017.

1010 Cubellis, E., Lungo, G.: Il terremoto del 28 luglio 1883 a Casamicciola nell'Isola di Ischia – Il contest fisico, In: *Monografia*  
n. 1, Presidenza del Consiglio dei Ministri, Servizio Sismico Nazionale. Istituto Poligrafico e Zecca dello Stato, Rome, Italy,  
pp. 49-123 (in italian), 1998,

- 1015 De Natale, G., Pingue, F., Allard, P. and Zollo, A.: Geophysical and geochemical modelling of the 1982-1984 unrest phenomena at Campi Flegrei caldera (southern Italy), In: G. Luongo and R. Scandone (Editors), Campi Flegrei. J. Volc. Geoth. Res., 48, 199-222, 1991,
- De Natale, G. and Pingue, F. : Ground deformations in collapsed caldera structures, J. Vol. Geoth. Res., 57, 19-38, [https://doi.org/10.1016/0377-0273\(93\)90029-Q](https://doi.org/10.1016/0377-0273(93)90029-Q), 1993,
- 1020 38, [https://doi.org/10.1016/0377-0273\(93\)90029-Q](https://doi.org/10.1016/0377-0273(93)90029-Q), 1993,
- De Natale, G., Petrazzuoli, S. M. and Pingue, F.: The effect of collapse structures on ground deformations in calderas, Geophys. Res. Lett., 24, 13, 1555-1558, 1997,
- 1025 De Natale, G., Petrazzuoli, S. M., Troise, C., Pingue, F., and Capuano, P. : Internal stress field at Mount Vesuvius: A model for background seismicity at a central volcano, J. Geophys. Res., 105( B7), 16207– 16214, <https://doi.org/10.1029/2000JB900031>, 2000,
- De Natale, G., Kuznetsov, I., Kronrod, T., Peresan, A., Saraò, A., Troise, C. and Panza, G.F.: Three decades of seismic activity at Mt. Vesuvius: 1972-1999, Pure appl. geophys., 161, 123–144 0033 – 4553/04/010123 – 22, <https://doi.org/10.1007/s00024-003-2430-0>, 2004,
- 1030 activity at Mt. Vesuvius: 1972-1999, Pure appl. geophys., 161, 123–144 0033 – 4553/04/010123 – 22, <https://doi.org/10.1007/s00024-003-2430-0>, 2004,
- De Natale, G., Troise, C., Pingue, F., Mastrolorenzo, G., Pappalardo, L.: The Somma-Vesuvius volcano (Southern Italy): Structure, dynamics and hazard evaluation, Earth Science Reviews, <https://doi.org/10.1016/j.earscirev.2005.08.001>, 2005,
- 1035 Structure, dynamics and hazard evaluation, Earth Science Reviews, <https://doi.org/10.1016/j.earscirev.2005.08.001>, 2005,
- De Natale, G., Troise, C., Mark, D., Mormone, A., Piochi, M., Di Vito, A. M., Isaia, R., Carlino, S., Barra, D., and Somma, R.: The Campi Flegrei Deep Drilling Project (CFDDP): New insight on caldera structure, evolution and hazard implications for the Naples area (Southern Italy), Geochem. Geophys. Geosyst., 17, 4836– 4847, doi:10.1002/2015GC006183, 2016,
- 1040 De Natale, G., Petrazzuoli, S., Romanelli, F., Troise, C., Vaccari, F., Somma, R., Peresan, A., Panza, G.F. : Seismic risk mitigation at Ischia island (Naples, Southern Italy): an innovative approach to prevent catastrophic scenarios, Eng. Geology, 261, <https://doi.org/10.1016/j.enggeo.2019.105285>, 2019,
- De Novellis, V., Carlino, S., Castaldo, R. et al.: The 21 August 2017 Ischia (Italy) earthquake source model inferred from seismological, GPS, and DInSAR measurements, Geophys. Res. Lett. , 65, 5, <https://doi.org/10.1002/2017GL076336>, 2018,
- 1045 seismological, GPS, and DInSAR measurements, Geophys. Res. Lett. , 65, 5, <https://doi.org/10.1002/2017GL076336>, 2018,
- de Vita, S., Sansivero, F., Orsi, G. and Marotta, E.: Cyclical slope instability and volcanism related to volcano-tectonism in resurgent calderas: The Ischia island (Italy) case study, Eng. Geology, 86, 148–165, <https://doi.org/10.1016/j.enggeo.2006.02.013>, 2006
- 1050 <https://doi.org/10.1016/j.enggeo.2006.02.013>, 2006
- de Vita, S., Sansivero, F., Orsi, G., Marotta, E., Piochi, M.: Volcanological and structural evolution of the Ischia resurgent caldera (Italy) over the past 10 k.y, In: Groppelli, G., Viereck-Goette, L. (Eds.), Stratigraphy and Geology of Volcanic Areas, Vol. 464, Geol. Soc. Am. Sp. Pap., Boulder, CO, pp. 193–241, 2010,
- 1055

- Dineva, S. and Boskovic, M.: Evolution of seismicity at Kiruna Mine, in J. Wesseloo (eds.), Proceedings of the Eighth International Conference on Deep and High Stress Mining, Australian Centre for Geomechanics, Perth, 125-139, [https://doi.org/10.36487/ACG\\_rep/1704\\_07\\_Dineva](https://doi.org/10.36487/ACG_rep/1704_07_Dineva), 2017,
- 1060 Dipartimento di Protezione Civile Nazionale: Gazzetta Ufficiale Gazzetta Ufficiale, 75 del 31 marzo 201 p. 9 available at [https://www.gazzettaufficiale.it/atto/serie\\_generale/caricaDettaglioAtto/originario?atto.dataPubblicazioneGazzetta=2015-03-31&atto.codiceRedazionale=15A02488&elenco30giorni=false](https://www.gazzettaufficiale.it/atto/serie_generale/caricaDettaglioAtto/originario?atto.dataPubblicazioneGazzetta=2015-03-31&atto.codiceRedazionale=15A02488&elenco30giorni=false), 2015,
- Dipartimento di Protezione Civile Nazionale: Disposizioni per l'aggiornamento della pianificazione di emergenza per il rischio vulcanico dei Campi Flegrei, Gazzetta Ufficiale, 173 del 24 giugno 2016, available at <https://www.gazzettaufficiale.it/eli/id/2016/08/19/16A06080/sg>, 2016,
- Gaeta, F.S., Peluso, F., Arienzo, I., Castagnolo, D., De Natale, G., Milano, G., Albanese, C., Mita, D.G.: A physical appraisal of a new aspect of bradyseism: the mini uplifts, J Geophys. Res., 108 (B8), <https://doi.org/10.1029/2002JB001913>, 2003,
- 1070 2003,
- Groppelli, G., Viereck-Goette, L. (Eds.) : Stratigraphy and Geology of Volcanic Areas, Vol. 464, Geol. Soc. Am. Sp. Pap., Boulder, CO, pp.193-241, 2010,
- 1075 Della Vedova, B., Bellani, S., Pellis, G., Squarci, P.: Deep temperatures and surface heat flow distribution, In: Vai, G.B., Martini, I.P., editors. Anatomy of an Orogen: the Apennines and Adjacent Mediterranean basins, Kluwer Academic Publishers; 65–76, 2001,
- Di Girolamo, P.: Petrografia dei tufi Campani: Il processo di pipernizzazione ( tufo-> tufo pipernoide- > piperno), Rend. Acc. Sci. Fis. Mat. Napoli, 4-25, pp 5, 1968,
- 1080 1968,
- Ferrucci, F., Gaudiosi, G., Pino, N.A., Luongo, G., Hirn, A., Mirabile, L.: Seismic detection of a major moho upheaval beneath the Campania volcanic area (Naples, southern Italy), Geoph. Res. Lett., 16, 11, 1317-1320, <https://doi.org/10.1029/GL016i011p01317>, 1989,
- 1085 1989,
- Gaeta, F.S., Peluso, F., Arienzo, I., Castagnolo, D., D., De Natale, G., Milano, G., Albanese, C., Mita, D.G.: A physical appraisal of a new aspect of bradyseism: the miniuplifts, J. Geophys. Res., 108 (B8), 2363 <https://doi.org/10.1029/2002JB001913>, 2003,
- 1090 2003,
- Forni, F., Degruyter, W., Bachmann, O., De Astis, G. and Mollo, S.: Long-term magmatic evolution reveals the beginning of a new caldera cycle at Campi Flegrei, Science Advances , 14 Nov 2018: 4, 11, eaat9401 <https://doi.org/10.1126/sciadv.aat9401>, 2018,
- Heiken, G., & Wilbert, J.: In J. Heiken (Ed.), Dangerous Neighbors: Volcanoes and Cities (pp. V-Vi), Cambridge: Cambridge University Press, 2013.
- 1095 2013.
- Juliano, S., Matano, F., Caccavale, M., Sacchi, M.: Annual rates of ground deformation (1993–2010) at Campi Flegrei, Italy, revealed by Persistent Scatterer Pair (PSP) – SAR interferometry. International Journal of Remote Sensing, vol. 36, No. 24, 6160–6191. 2015.

a a 19/6/20 12:56

Formattato: Tipo di carattere:10 pt, Inglese (Regno Unito)

a a 19/6/20 12:56

Formattato: Tipo di carattere:10 pt

Kilburn, C. R.J.: Precursory deformation and fracture before brittle rock failure and potential application to volcanic unrest, *J. Geophys. Res.*, 117, B02211, 2012.

Kilburn, C.R.J., De Natale, G., Carlino S.: Progressive approach to eruption at Campi Flegrei caldera in Southern Italy, *Nature Communications*, 8, 15312, <https://doi.org/10.1038/ncomms15312>, 2017.

Marzocchi, W., Sandri, L., Gasparini, P., Newhall, C. and Boschi, E.: Quantifying probabilities of volcanic events: The example of volcanic hazard at Mount Vesuvius, *J. Geophys. Res.*, 109, B11201, <https://doi.org/10.1029/2004JB003155>, 2004.

Mastrolorenzo, G., Petrone, P., Pappalardo, L., Sheridan, M.F.: The Avellino 3780-yr-B.P. catastrophe as a worst-case scenario for a future eruption at Vesuvius, *Proc. Nat. Acad. Sciences*, 103, 12:4366-4370, <https://doi.org/10.1073/pnas.0508697103>, 2006a.

Mastrolorenzo, G., Pappalardo, L., Troise, C., Rossano, S., Panizza, A., De Natale, G.: Volcanic hazard assessment at Campi Flegrei caldera, *Geol. Soc. Lond.*, 269:159–171, 2006b.

Mastrolorenzo, G., Palladino, D.M., Pappalardo, L., Rossano, S.: Probabilistic-numerical assessment of pyroclastic current hazard at Campi Flegrei and Naples city: Multi-VEI scenarios as a tool for “full-scale” risk management, *PLoS ONE*, 12(10): e0185756, <https://doi.org/10.1371/journal.pone.0185756>, 2017.

Mazzarella, A., Martone, M. & Tranfaglia, G.: The latest flood event of 4-5 May 1998 in the Sarno area and the inadequate resolution of the rain-gauge network, In *Italian. Quaderni di Geologia Applicata*, 203-211, 2002.

Molin, P., Acocella, V., Funicello, R.: Structural, seismic and hydrothermal features at the border of an active intermittent resurgent block: Ischia island (Italy), *J. Volcanol. Geotherm. Res.*, 121, 65-81, 2003.

Morhange, C., Marriner, N., Laborel, J., Todesco, M. and Oberlin, C.: Rapid sea-level movements and noneruptive crustal deformations in the Phlegrean Fields caldera, Italy, *Geology*, 34, 2, 93–96, 2006.

Moretti, R., Orsi, G., Civetta, L., Arienzo, I. & Papale, P.: Multiple magma degassing sources at an explosive volcano, *Earth Plan. Sci. Lett.*, 367, 95–104, 2013.

Moretti, R., De Natale, G., Troise, C.: A geochemical and geophysical reappraisal to the significance of the recent unrest at Campi Flegrei caldera (Southern Italy) *Geochem. Geophys. Geosyst.*, 18, 1244-1269, <https://doi.org/10.1002/2016GC006569>, 2017.

Moretti, R., Troise, C., Sarno, F., De Natale, G.: Caldera unrest driven by CO<sub>2</sub>-induced drying of the deep hydrothermal system, *Sci. Rep.*, 8, 8309, <https://doi.org/10.1038/s41598-018-26610-2>, 2018.

Moretti, R., De Natale, G., & Troise, C. Hydrothermal versus magmatic: geochemical views and clues into the unrest dilemma at Campi Flegrei. In De Vivo, B., Belkin, H.E., Rolandi, G.: *Vesuvius, Campi Flegrei, and Campanian Volcanism*, Elsevier, 371-406, 2020.

- Nappi, R., Alessio, G., Gaudiosi, G, et al.: The 21 August 2017 MD 4.0 Casamicciola earthquake: first evidence of coseismic normal surface faulting at the Ischia volcanic island, *Seismol. Res. Lett.*, 89, 4, 1323-1334, <https://doi.org/10.1785/0220180063>, 2018.
- Neri, A., Bevilacqua, A., Esposti Ongaro, T., Isaia, R., Aspinall, W.P., Bisson, M., Flandoli, F., Baxter, P.J., Bertagnini, A., Ianuzzi, E., Orsucci, S., Pistolesi, M., Rosi, M., Vitale, S.: Quantifying volcanic hazard at Campi Flegrei caldera (Italy) with uncertainty assessment: 2. Pyroclastic density current invasion maps, *J. Geophys. Res. Solid. Earth*, 120, 4, 2330–2349, 2015.
- Newhall, C. G. and Dzurisin, D.: Historical Unrest at Large Calderas of the World, *US Geol. Surv. Bull.* 1855, 210–213, 1988.
- Orsi, G., Gallo, G., Zanchi, A.: Simple shearing block-resurgence in caldera depressions. A model from Pantelleria and Ischia, *J. Vol. Geoth. Res.*, 47, 1-11, 1991.
- Orsi, G., De Vita, S., di Vito, M.: The restless, resurgent Campi Flegrei nested caldera (Italy): constraints on its evolution and configuration, *J. Volc. Geoth. Res.*, 74, 3-4, pp. 179-214, [https://doi.org/10.1016/S0377-0273\(96\)00063-7](https://doi.org/10.1016/S0377-0273(96)00063-7), 1996.
- Paoletti, V., Di Maio, R., Cella, F., Florio, G., Mocka, K., Roberti, N., Secomandi, M., Supper, R., Fedi, M., Rapolla, A.: The Ischia volcanic island (Southern Italy): inferences from potential field data interpretation, *J. Volc. Geoth. Res.*, 179, 69–86, <https://doi.org/10.1016/j.jvolgeores.2008.10.008>, 2009.
- Papale, P.: Rational volcanic hazard forecasts and the use of volcanic alert levels, *J Appl. Volcanol.* 6, 13, <https://doi.org/10.1186/s13617-017-0064-7>, 2017.
- Papale, P., Marzocchi, W.: Volcanic threats to global society, *Science*, 363, 1275-1276, <https://doi.org/10.1126/science.aaw7201>, 2019.
- Passaro, S., de Alteriis, G., Sacchi, M.: Bathymetry of Ischia Island and its offshore (Italy), scale 1:50.000. *Journal of Maps*, Vol. 12, No. 1, 152–159, doi:10.1080/17445647.2014.998302, 2015.
- Piochi, M., Kilburn, C.R.J., Di Vito, M. A., Mormone, A., Tramelli, A., Troise, C. & De Natale, G.: The volcanic and geothermally active Campi Flegrei caldera: an integrated multidisciplinary image of its buried structure, *Int. J. Earth Sci.*, 103, 401–421, <https://doi.org/10.1007/s00531-013-0972-7>, 2014.
- Robertson, R. M. & Kilburn, C.R. J.: Deformation regime and long-term precursors to eruption at large calderas: Rabaul, Papua New Guinea, *Earth Planet. Sci. Lett.*, 438, 86–94, 2016.
- Rolandi, G.: The eruptive history of Somma–Vesuvius. In Cortini, M., De Vivo, B. (Eds.): *Volcanism and archaeology in Mediterranean area*. *Research Signpost*, 3, 77–88, 1998.
- Rolandi, G.: Volcanic hazard at Vesuvius: An analysis for the revision of the current emergency plan, *Journ. Volcan. Geotherm. Res.*, 189, 3-4, 347-362, <https://doi.org/10.1016/j.jvolgeores.2009.08.007>, 2010.

Rolandi, G., Bellucci, F., Heizler, M.T., Belkin, H.E., De Vivo, B.: Tectonic controls on the genesis of ignimbrites from the Campanian Volcanic Zone, southern Italy, Mineral. Petrol., 79, 3–31, 2003.

1190 Rolandi, G., Di Lascio, M., Rolandi, R.: The 15 ka Neapolitan Yellow Tuff Eruption: An Analysis of the Caldera-forming Phase and the Post-Caldera Volcanic Activity. In De Vivo, Belkin, Rolandi (Eds.): Vesuvius, Campi Flegrei, and Campania Volcanism, Elsevier, 2019a.

Rolandi, G., De Natale, G., Kilburn, C.R.J., Troise, C., Somma, R., Di Lascio, M., Fedele, A., Rolandi, R.: The 39 ka

1195 Campanian Ignimbrite eruption: new data on source area in the Campanian Plain, In De Vivo, Belkin, Rolandi (Eds.): Vesuvius, Campi Flegrei, and Campania Volcanism, Elsevier, 175-205, <https://doi.org/10.1016/B978-0-12-816454-9.00008>, 2019b.

Rosi, M., Sbrana, A.: Phlegrean Fields, Quaderni de la Ricerca Scientifica, CNR, Rome, 114, 9, 60–79, 1987.

1200 Rossano, S., Mastrolorenzo, G., De Natale, G.: Computer simulations of pyroclastic flows on Somma-Vesuvius volcano, J. Volcan. Geoth. Res., 82, 113-137, 1998.

Rossano, S., Mastrolorenzo G., De Natale G.: Numerical simulation of pyroclastic density currents on Campi Flegrei topography: a tool for statistical hazard estimation, J. Volc. Geoth. Res., 132, 1–14, 2004.

1205 Rozdilsky, J.L.: Flood-related relocation of Valmeyer: Implications for the development of sustainable cities, American Planning Association, Environmental Planning Newsletter, 3, 1, 1996.

1210 Sacchi, M., Molisso, F., Esposito, E., Insinga, D., Lubritto, C., Porfido, S., Tóth, T., Violante, C.: Insights into flood-dominated fan deltas: very high-resolution seismic examples off the Amalfi cliffed coasts, Eastern Tyrrhenian Sea, In: Violante, C. (ed.) Geohazard in Rocky Coastal Areas. The Geological Society, London, Special Publications, 322, 33–71, 2009.

1215 Sacchi, M., De Natale, G., Spiess, V., Steinmann, L., Acocella, V., Corradino, M., de Silva, S., Fedele, A., Fedele, L., Geshi, N., Kilburn, C., Insinga, D., Jurado, M-J., Molisso, F., Petrosino, P., Passaro, S., Pepe, F., Porfido, S., Scarpati, C., Schmincke, H-U., Somma, R., Sumita, M., Tamburrino, S., Troise, C., Vallefucio, M., Ventura, G.: A roadmap for amphibious drilling at the Campi Flegrei caldera: insights from a MagellanPlus workshop. Scientific Drilling, 7, 1–18; doi: 10.5194/sd-7-1, 2019.

1220 Sacchi, M., Passaro, S., Molisso, F., Matano, F., Steinmann, L., Spiess, V., Pepe, F., Corradino, M., Caccavale, M., Tamburrino, S., Esposito, G., Vallefucio, M., Ventura, G.: The Holocene marine record of unrest, volcanism, and hydrothermal activity of Campi Flegrei and Somma Vesuvius. In: B. De Vivo, H.E. Belkin and G. Rolandi (Eds.) Vesuvius, Campi Flegrei, and Campanian Volcanism, Elsevier Inc., Amsterdam, 1435-469, 2020.

1225 Santacroce, R.: A general model for the behavior of the Somma-Vesuvius volcanic complex, J. Volc. Geoth. Res., 17, 237–248, 1983.

a a 19/6/20 12:57

Formattato: Tipo di carattere:10 pt, Inglese (Stati Uniti)

a a 19/6/20 12:57

Formattato: Giustificato, Interlinea: 1,5 righe

a a 19/6/20 12:57

Formattato: Inglese (Stati Uniti)

a a 19/6/20 12:57

Formattato: Tipo di carattere:10 pt, Inglese (Stati Uniti)

a a 19/6/20 12:57

Formattato: Giustificato, Interlinea: 1,5 righe

a a 19/6/20 12:57

Formattato: Nessun controllo righe isolate, Non regolare lo spazio tra testo asiatico e in alfabeto latino, Non regolare lo spazio tra testo asiatico e caratteri

a a 19/6/20 12:57

Formattato: Tipo di carattere:(Predefinito) Times New Roman

1230	Sbrana, A., Fulignati, P., Marianelli, P., Boyce, A.J., Cecchetti, A., Exhumation of an active magmatic-hydrothermal system in a resurgent caldera environment. The example of Ischia Island (Italy), J. Geol. Soc. London, 166, 1061-1073, 2009.	a a 19/6/20 12:57 <b>Formattato:</b> Colore carattere: Automatico
	Scandone, R., Bellucci, F., Lirer, L. and Rolandi, G.: The structure of the Campanian Plain and the activity of the Neapolitan Volcanoes (Italy), J. Volc. Geoth. Res., 48, 1-2, 1-31, 1991.	a a 19/6/20 12:57 <b>Formattato:</b> Colore carattere: Automatico
1235	Scandone, R., Giacomelli, L., Rosi, M.: Death, Survival and Damage during the 79 AD Eruption of Vesuvius which destroyed Pompeii and Herculaneum. J. Res. and Didact. in Geogr. pp. 5-30, <a href="https://doi.org/10.4458/2801-01">https://doi.org/10.4458/2801-01</a> , 2019.	a a 19/6/20 12:57 <b>Formattato:</b> Colore carattere: Automatico, Non Evidenziato
	Selva, J., Orsi, G., Di Vito, M.A. et al.: Probability hazard map for future vent opening at the Campi Flegrei caldera, Italy, Bull. Volcanol., 74, 2, 497-510, <a href="https://doi.org/10.1007/s00445-011-0528-2">https://doi.org/10.1007/s00445-011-0528-2</a> , 2012.	a a 19/6/20 12:57 <b>Formattato:</b> Carattere predefinito paragrafo, Inglese (Regno Unito)
1240	Solana, M.C., Kilburn, C.R.J., Rolandi, G.: Communication eruption and hazard forecasts on Vesuvius, Southern Italy, J. Volc. Geoth. Res., 172, 3-4, pp. 308-314, <a href="https://doi.org/10.1016/j.jvolgeores.2007.12.027">https://doi.org/10.1016/j.jvolgeores.2007.12.027</a> , 2008.	a a 19/6/20 12:57 <b>Formattato:</b> Carattere predefinito paragrafo, Inglese (Regno Unito)
	Somma, R., Iuliano, S., Matano, F., Molisso, F., Passaro, S., Sacchi, M., Troise, C., De Natale, G.: High-resolution morpho-	a a 19/6/20 12:57 <b>Formattato:</b> Colore carattere: Automatico
1245	bathymetry of Pozzuoli Bay, southern Italy. Journal of Maps, Vol. 12, No. 2, 222-230, doi:10.1080/17445647.2014.1001800, 2016.	a a 19/6/20 12:57 <b>Formattato:</b> Carattere predefinito paragrafo, Inglese (Stati Uniti)
	Stefánsson, R.: Advances in Earthquake Prediction, Research and Risk Mitigation. Berlin: Springer-PRAXIS, 271 pp., 2011	a a 19/6/20 12:57 <b>Formattato:</b> Colore carattere: Automatico, Inglese (Stati Uniti)
1250	Steinmann, L., Spiess, V., Sacchi, M.: Post-collapse evolution of a coastal caldera system: Insights from a 3D multichannel seismic survey from the Campi Flegrei caldera (Italy). Journal of Volcanology and Geothermal Research, 349, 83-98, 2018.	a a 19/6/20 12:57 <b>Formattato:</b> Tipo di carattere: 10 pt, Inglese (Stati Uniti)
	Tayang, J., Insauriga, S., Ringor, A., Belo, M.: People's Response to Eruption Warning: The Pinatubo Experience, 1991-92, In: Newhall CG, Punongbayan RS (eds) Fire and mud: eruptions and lahars of Mount Pinatubo, Philippines: Quezon City, Philippine Institute of Volcanology and Seismology, and Seattle, University of Washington Press, 67-85, 1996.	a a 19/6/20 12:57 <b>Formattato:</b> Giustificato, Interlinea: 1,5
1255	Tibaldi, A. & Vezzoli, L.: The space problem of caldera resurgence: an example from Ischia Island, Italy. Geologische Rundschau 87, 53-66, 1998.	a a 19/6/20 12:57 <b>Formattato:</b> Nessun controllo righe isolate, Non regolare lo spazio tra testo asiatico e in alfabeto latino, Non regolare lo spazio tra testo asiatico e caratteri
	Troise, C., De Natale, G., Pingue, F., Obrizzo, F., De Martino, P., Tammaro, U., and Boschi, E.: Renewed ground uplift at Campi Flegrei caldera (Italy): New insight on magmatic processes and forecast, Geophys. Res. Lett, 34, L03301, <a href="https://doi.org/10.1029/2006GL028545">https://doi.org/10.1029/2006GL028545</a> , 2007.	a a 19/6/20 12:57 <b>Formattato:</b> Colore carattere: Automatico
1260	Troise, C., De Natale, G., Schiavone, R., Somma, R. & Moretti, R.: The Campi Flegrei caldera unrest: Discriminating magma intrusions from hydrothermal effects and implications for possible evolution, Earth Science Reviews, 18, 108-122, <a href="https://doi.org/10.1016/j.earscirev.2018.11.007">https://doi.org/10.1016/j.earscirev.2018.11.007</a> , 2018.	a a 19/6/20 12:57 <b>Formattato:</b> Tipo di carattere: 10 pt, Inglese (Stati Uniti)
	Vanorio, T. and Kanitpanyacharoen, W.: Rock physics of fibrous rocks akin to Roman concrete explains uplifts at Campi Flegrei Caldera, Science, 349, 617-621, <a href="https://doi.org/10.1126/science.aab1292">https://doi.org/10.1126/science.aab1292</a> , 2015.	a a 19/6/20 12:57 <b>Formattato:</b> Giustificato, Interlinea: 1,5
1270		a a 19/6/20 12:57 <b>Formattato:</b> Colore carattere: Automatico
		a a 19/6/20 12:57 <b>Formattato:</b> Nessun controllo righe isolate, Non regolare lo spazio tra testo asiatico e in alfabeto latino, Non regolare lo spazio tra testo asiatico e caratteri numerici



Vezzoli, L. (ed.) Island of Ischia, C.N.R. Quaderni de “La Ricerca scientifica”, 114, 10, 135 pp., Rome., 1988.

Zollo, A., Gasparini, P., Virieux, J., Le Meur, H., De Natale, G., et al.:Seismic evidence for a low velocity zone in the upper crust beneath Mt. Vesuvius, Science, 274, 592-594, 1996.

Zollo, A., Maercklin, N., Vassallo, M., Dello Iacono, D., Virieux, J. and Gasparini, P. Seismic reflections reveal a massive melt layer feeding Campi Flegrei caldera, Geophys. Res. Lett., 35, L12306, <https://doi.org/10.1029/2008GL034242>, 2008.

Winson, A.E.G., Costa, F., Newhall, C.G. et al.: 2014 An analysis of the issuance of volcanic alert levels during volcanic crises, J Appl. Volcanol. 3, 14, <https://doi.org/10.1186/s13617-014-0014-6>, 2014.

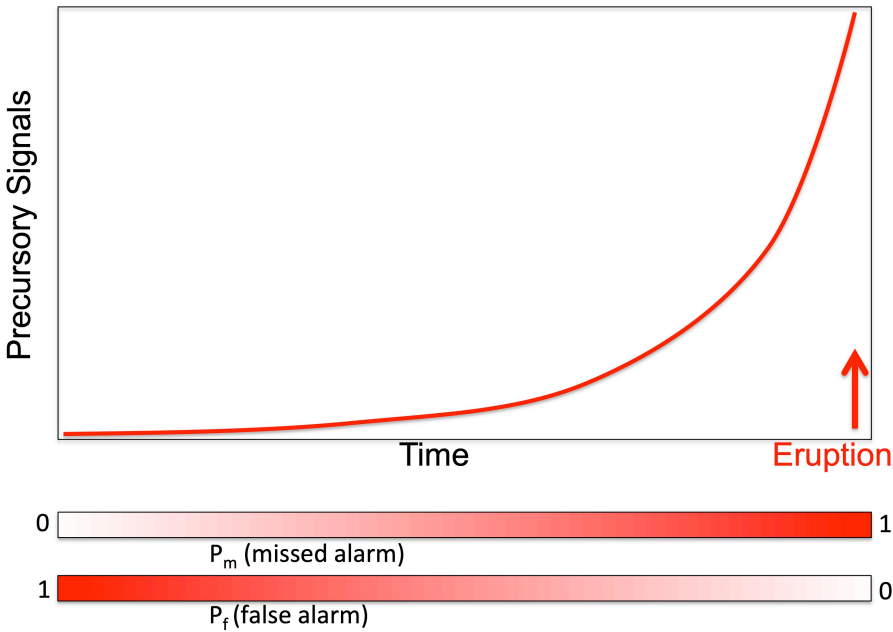
Author Contribution

GDN prepared the manuscript with contributions from all co-authors.

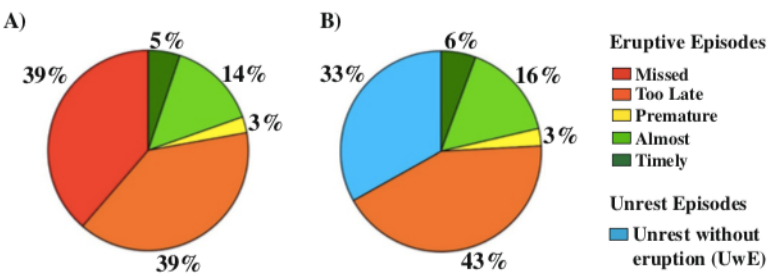
Competing Interests

The authors declare that they have no conflict of interest.

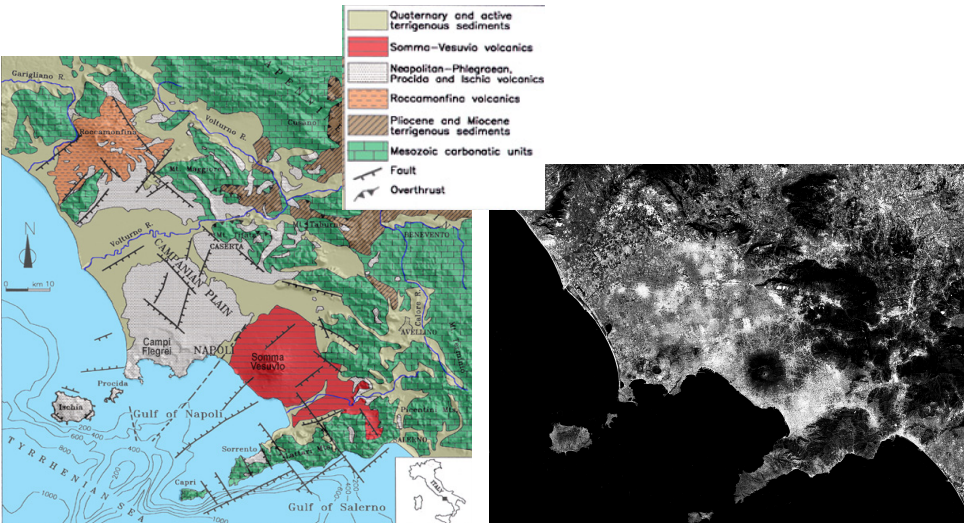
FIGURES



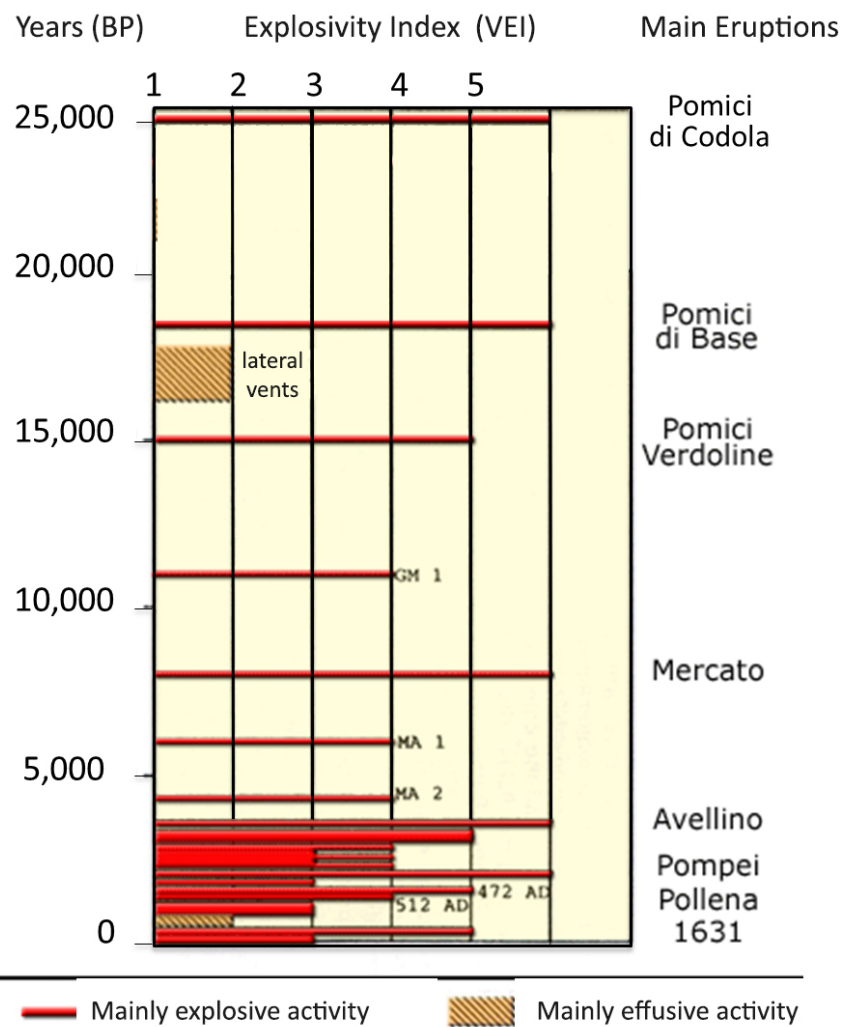
**Figure 1:** Sketch of an ‘ideal’ evolution in time of precursory signals before an eruption. Declaring an eruption alert shortly after the beginning of precursory signals increase, the probability of false alarm is very high, but the probability of missed alarm is low; on the contrary, declaring an alert only when precursory signals are extremely high, the probability of false alarm is low, but it is very high the probability of missed alarm (in the sense of ‘too late’), because eruption could start suddenly, before any civil protection measure (normally, evacuation of most risky areas) can be completed.



**Figure 2:** Percentages (in terms of relative frequencies) of successful and unsuccessful volcanic forecasts and warnings (from Winson et al., 2014). A) Relative frequencies of the eruption forecasts in each category, associated to a colour. Note that successful forecasts (Timely and Almost timely, in two gradations of green) are only 19% of the total. B) proportion of alerts for Unrests without Eruption (false alarms), as a percentage of all categories but the first (‘Missed’).



**Figure 3:** Geological sketch map of the Campanian Plain, with the Neapolitan volcanic area (left, Modified from Orsi et al., 1996). Also shown (right, modified from Google Earth) is a map with the most densely urbanized areas evidenced (more intense white means denser urbanization). Note that more than 3 million people live in the shown volcanic area, than making it the most risky in the World.



**Figure 4:** Eruptive history at Somma-Vesuvius volcano (redrawn after Osservatorio Vesuviano-INGV website [www.ov.ingv.it](http://www.ov.ingv.it) and Rolandi, 1998).

Pino 17/6/20 00:57

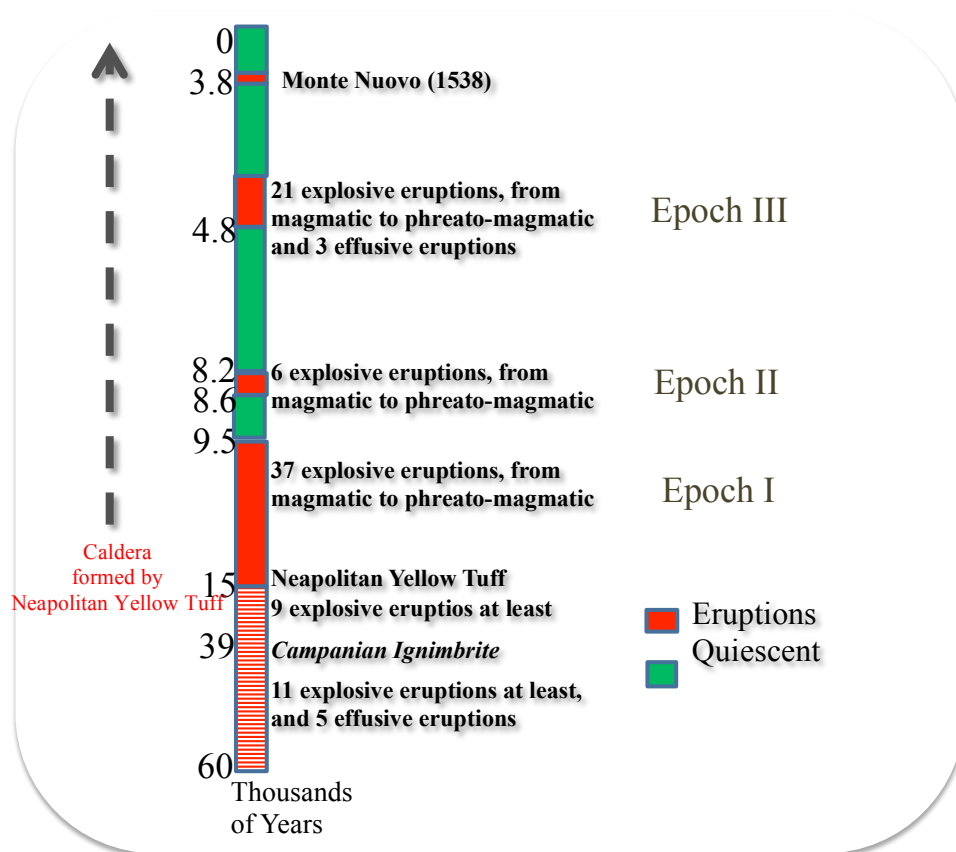
Eliminato:

Pino 17/6/20 01:09

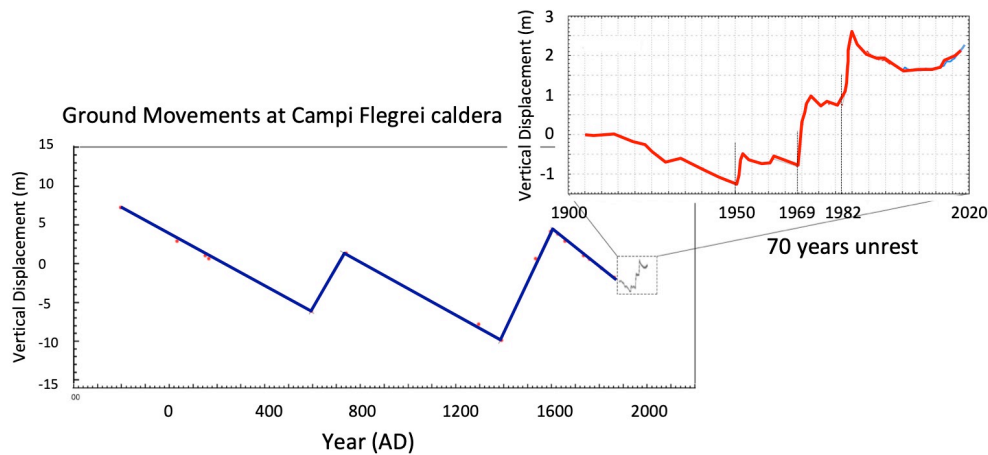
Eliminato: from



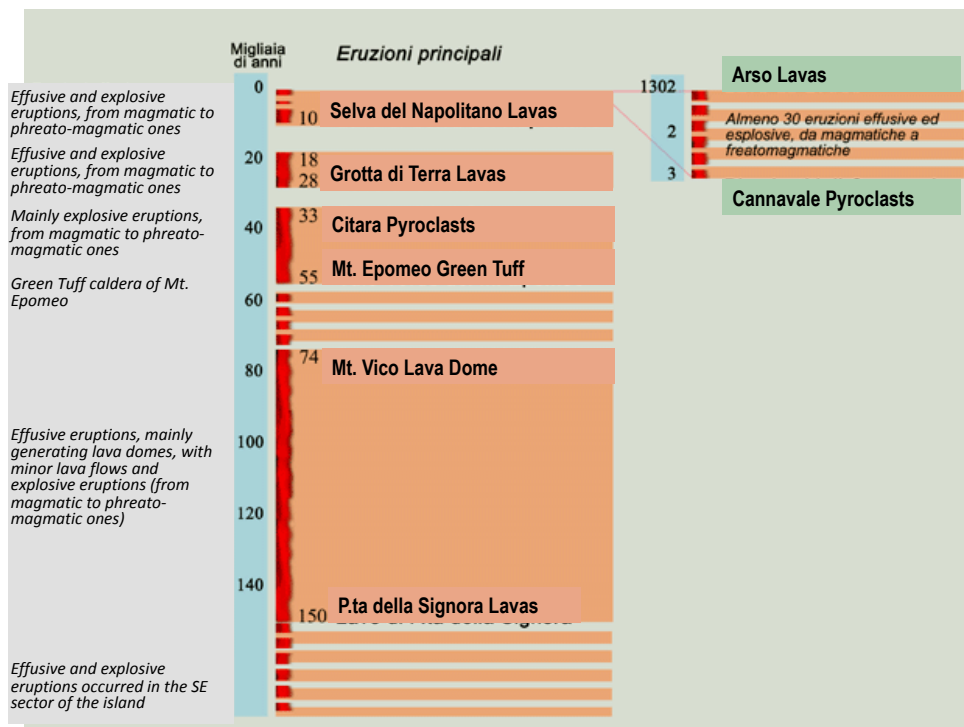
**Figure 5:** Red and Yellow zones for Campi Flegrei and Vesuvius. Red zones are the areas with maximum pyroclastic flow hazard, which have to be completely evacuated within 72 hours from the declaration of 'Red alert'. Yellow zones are the areas with maximum hazard for accumulation of pyroclastic falls on flat roofs (visit <http://www.protezionecivile.gov.it/risk-activities/volcanic-risk/italian-volcanoes>)



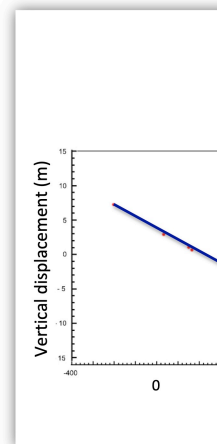
**Figure 6:** Eruptive history of Campi Flegrei caldera. Note that, according to recent results (De Natale et al., 2016; Rolandi et al., 2019b) the Campi Flegrei caldera was formed by Neapolitan Yellow Tuff (15 ky BP), and only hosted secondary events of the Campanian Ignimbrite (39 ky BP) whose main vents opened North of Campi Flegrei area (in the Campanian Plain).



**Figure 7:** Ground movements at the Campi Flegrei caldera centre (Port of Pozzuoli town). The larger figure shows secular displacements, inferred from the traces of marine ingression on the archaeological remains of Serapeo (redrawn after Bellucci et al., 2006 and Troise et al., 2019). The exploded figure shows the vertical displacements observed since 1900 to present; data here are from precision levellings until year 2000, and then from continuous GPS measurement.



**Figure 8:** Eruptive history of Ischia island



Eliminato:

Pino 10/6/20 23:41

Eliminato: see Troise

Pino 14/6/20 18:54

Eliminato: I