

***Interactive comment on* “Comparison of machine learning classification algorithms for land cover change in a coastal area affected by the 2010 Earthquake and Tsunami in Chile” by Matias I. Volke and Rodrigo Abarca-Del-Rio**

Matias I. Volke and Rodrigo Abarca-Del-Rio

matiasvolke@udec.cl

Received and published: 2 July 2020

Thank you for the comment that allows us to improve the representation. Now, in the thematic maps (see figure 5), we defined polygons that shows areas where representative changes in land cover classes were observed. The polygons are used to help understand the values of changes in classes represented in manuscript

Interactive comment on Nat. Hazards Earth Syst. Sci. Discuss., <https://doi.org/10.5194/nhess-2020-41>, 2020.

[Printer-friendly version](#)

[Discussion paper](#)



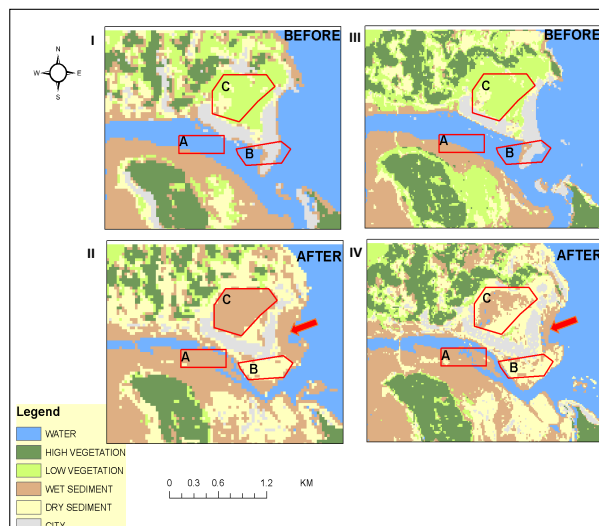


Fig. 1. The thematic maps generated by the SVM classification algorithm focused on Tubul for the pre- and post-tsunami period (27-F). (I) & (II): Thematic maps for Landsat image. (III) & (IV): Thematic maps

[Printer-friendly version](#)

[Discussion paper](#)

