

Investigating 3D and 4D Variational Rapid-Update-Cycling Assimilation of Weather Radar Reflectivity for a Heavy Rain Event in Central Italy

Vincenzo Mazzarella¹, Rossella Ferretti¹, Errico Picciotti¹, Frank S. Marzano^{1,2}

5 ¹ Centre of Excellence CETEMPS, Department of Physical and Chemical Sciences - University of L'Aquila, L'Aquila, 67100, Italy

² Department of Information Engineering, Sapienza University of Rome, Rome, 00185, Italy

Correspondence to: Vincenzo Mazzarella (vincenzo.mazzarella@aquila.infn.it)

10 **Abstract.** The precipitation forecast over the Mediterranean basin is still a challenge because of the complex orographic region which amplifies the need for local observation to correctly initialize the forecast. In this context the data assimilation techniques play a key role in improving the initial conditions and consequently the timing and position of precipitation forecast. For the first time, the ability of a cycling 4D-Var to reproduce a heavy rain event in central Italy, as well as to provide a comparison with the largely used cycling 3D-Var, is evaluated in this study. The radar reflectivity measured by the Italian ground radar network is assimilated in the WRF model to simulate an event occurred on May 3, 2018 in central Italy. In order to evaluate the impact of data assimilation, several simulations are objectively compared by means of a Fraction Skill Score (FSS), which is calculated for several threshold values, and a Receiver Operating Characteristic (ROC) curve. The results suggest that both assimilation methods in cycling mode improve the 1, 3 and 6-hourly quantitative precipitation estimation. More specifically, the cycling 4D-Var with a warm start initialization shows the highest FSS values in the first hours of simulation both with light and heavy precipitation. Finally, the ROC curve confirms the benefit of 4D-Var: the area under the curve is 0.91 compared to the 0.88 of control experiment without data assimilation.

1 Introduction

25 Nowadays, the high-resolution rainfall forecast from Numerical Weather Prediction (NWP) models is essential for several applications. It is used by civil protection agencies to contrast the hydrological risks and safeguard people during severe weather event, by disaster management agencies to prepare emergency interventions as well as by public event managers, private enterprises and common people to plan their daily activities. Recently, the development of more accurate parametrization of physical processes allowed a significant progress in NWP at high resolution but the prediction of exact location, timing and intensity of a convective event is still a challenge (Stensrud et al., 2009; Yano et al., 2018; Mass et al., 2002; Torcasio et al., 2021).

ha eliminato: Flash Flood

ha eliminato: pattern

ha eliminato: severe weather

ha eliminato: The precipitation forecast is a key variable in Numerical Weather Prediction (NWP) especially because of the interest of civil protection agencies, business sectors as well as common people to plan their daily activities

The Mediterranean basin is prone to flash flood and heavy precipitation events. One of the most relevant peculiarities of this area is the presence of mountain ranges in proximity of coastal areas that lift the airflow, favouring the condensation and the triggering of convection. The Italian territory, which is characterized by a complex orography with two relevant mountain chains (Alpes and Apennines) and steep, urbanized, small catchments, is one of the most exposed Mediterranean area to the hydrogeological risks. About 90% of Italian municipalities are susceptible to floods which have caused 466 deaths between 1990 and 2006 alone and over 19 billion of Euro of damages (Llasat et al., 2010).

The Mediterranean region has also been identified as hotspot for climate change because of its high sensitivity to Global Greenhouse Gas (GHG) concentrations (Giorgi, 2006). The heat stress growing, expected in future years, will contribute to a temperature rise, as well as to increase the water vapour amount in the atmosphere. These factors will lead to an intensification of intense and extreme precipitation events (Willet et al., 2008; Giorgi, 2011). In this context, an accurate prediction and observation of rainfall will be crucial to prevent economic and social damages. The precipitation forecasts from the Numerical Weather Prediction (NWP) models is strongly dependent on the initial state, that dominates the evolution of the prognostic variables and consequently the development of precipitation. In NWP model convective rain events are usually associated with low forecast probabilities due to the high spatial variability of precipitation and uncertainties in convective initiation, hence, small errors in the initial conditions produce a significant shift in the position and intensity of convective events.

Nowadays, the large availability of high frequency (both in space and time) meteorological data, remote sensing observations and in situ measurements, has encouraged many operational centres to use data assimilation techniques for improving the accuracy of initial state. More specifically, the assimilation of ground radar reflectivity and radial velocity with three-dimensional variational (3D-Var) method proves good results in terms of quantitative precipitation forecast (QPF) for several case study in United States and Korea (Xiao and Sun, 2007; Lee et al., 2010; Ha et al., 2011). The assimilation of radar data with 3D-Var confirms positive results also in Europe by using Advanced Regional Prediction System (ARPS) and Application of Research to Operations at Mesoscale (AROME) models for two heavy rainfall cases in Croatia and France (Stanesic and Brewster, 2016; Caumont et al. 2009) respectively, as well as by using WRF model (Schwitalla et al., 2014), for the simulation of a convective event during the Convective and Orographically induced Precipitation Study (COPS).

The benefits of assimilation of radar reflectivity are also confirmed for two flash flood events in central (Maiello et al., 2014; 2017) and northern Italy (Lagasio et al., 2019) with WRF model, and in combination with lightning (Federico et., 2019; Torcasio et al., 2021). Gastaldo et al. (2018), instead, assimilated reflectivity volumes using a local ensemble transform Kalman filter (LETKF) implemented in the convection-permitting model of the Consortium for Small-scale Modelling (COSMO) operating at Hydro-Meteo-Climate Service of the Emilia-Romagna Region (Arpa-SIMC) pointing out the positive impact of radar assimilation in quantitative precipitation forecast (QPF) accuracy both when a latent heat nudging (LHN) is applied or not. Finally, a new work made by Gastaldo et al. (2021) confirms the positive impact, up to 7 hours, of radar assimilation with LETKF in COSMO model, especially in convective cases, replacing the LHN scheme. Recently, a few works showed a positive impact in the prediction of intense precipitations using four-dimensional variational (4D-Var) with radar data and conventional observations if compared to 3D-Var, they concern the simulation of a cyclonic event in Antarctic region (Chu et al., 2013) and

ha eliminato: 000

ha eliminato: m

ha eliminato: The precipitation forecast

ha eliminato: ing

ha eliminato: The assimilation of radar data with Weather Research Forecast (WRF) 3D-Var confirms positive results also in Europe by using WRF model, for the simulation of flash flood events in central (Maiello et al., 2014; 2017) and northern Italy (Lagasio et al., 2019), as well as by using Advanced Regional Prediction System (ARPS) and Application of Research to Operations at Mesoscale (AROME) models for two heavy rainfall cases in Croatia and France (Stanesic and Brewster, 2016; Caumont et al. 2009), respectively

ha eliminato: .

ha eliminato: for

85 a squall line over US Great Plains (Sun and Wang, 2013), respectively. In Europe, the 4D-Var method proved good performance, improving the QPF and reducing the precipitation spinup time (Mazzarella et al., 2017; 2020), but due to its high computational cost, it is scarcely applied except in big operational centres.

The low predictability and the high spatial and temporal variability of convective precipitation pattern requires a rapid update of initial state (analysis) to reduce the errors and to ensure a well balanced and physically consistent initial conditions. Newly, significant efforts have been made by scientific community to improve the temporal and spatial resolution of remote sensing data by weather radar or satellite-borne sensors, and this has enabled the first experiments with an update frequency equal or less than 3 hours. In this context, several weather centres have adopted a cycling assimilation with a 3-hourly update frequency by using 3D-Var with promising results (Ballard et al., 2012; Gao et al., 2004; Stephan et al., 2008; Wang et al. 2013; Caumont et al. 2009). Only the High-Resolution Rapid Refresh (HRRR) system, developed by NCAR, assimilates radar data with sub-hourly frequency over USA, but it does not use a variational method (Smith et al., 2008).

95 The cycling assimilation with 4D-Var is still a challenge because of the high demand of computational resources. A first attempt to apply the cycling 4D-Var in operational mode was made during the London Olympic Game in 2012 using an NWP-based nowcast system (Ballard et al., 2016). This work shows the advantages of 4D-Var that ingests more observations than 3D-Var, estimating with a greater accuracy the initial state of the atmosphere. In addition, the weather radar reflectivity over the whole Italian territory, previously used in a LETKF assimilation scheme (Gastaldo et al., 2018) with promising results, are now assimilated for the two variational methods.

100 This study aims at: i) assessing the performance of 1-hour cycling assimilation with 3D-Var and 4D-Var methods by using WRF model; ii) evaluating the impact of radar reflectivity mosaic, acquired by the Italian radar network, in cycling assimilation with variational methods; iii) quantifying the improvements of assimilation techniques in terms of QPF for a complex orography region in the Mediterranean basin. In this regard, a heavy rain case occurred in Central Italy on May 3, 2018 is used and several experiments are carried out to quantify the impact of the two assimilation methods in cycling mode. To the aim of identifying the best configuration in terms of QPF, two different statistical methods are applied: a filtering (neighbourhood) technique and a Receiver Operating Characteristic (ROC) statistical indicator. The keys novelty of this paper resides in: i) the application of hourly cycling 4D-Var assimilation with WRF model; ii) the comparison between the two variational assimilation methods 3D/4D-Var in cycling mode; iii) the assessment of the precipitation forecast skill of cycling 4D/3D-Var assimilation methods in an orographically complex region.

110 The paper is organized as follows. The case study is described in Section 2, while the assimilated dataset is presented in Section 3. Section 4 contains the methodological approach: more specifically a brief overview of the assimilation and verification methods, while the model's setup and the design of experiments are described in Section 5. The results are summarized in Section 6, lastly, the conclusions are discussed in Section 7.

- ha eliminato: prove
- ha eliminato: s
- ha eliminato: QPF
- ha eliminato: .
- ha eliminato: B
- ha eliminato: the 4D-Var,
- ha eliminato: the
- ha eliminato: 4D-VAR
- ha eliminato: ing
- ha eliminato: satellite and ground radar
- ha eliminato: . T

ha eliminato: The

- ha eliminato: ¶
- ha eliminato: ¶
- ha eliminato: ¶
- ha eliminato: ¶
- ha eliminato: .

2 Case Study

On 2 May 2018, the synoptic scenario was characterized by an upper level through at tear off stage extended from Central Europe to northern Africa whose evolution is slowed by the presence of two anticyclonic circulations over Atlantic Ocean and Russia respectively (Fig. 1). The upper level through, with a northwest-southeast oriented axis, brought cool and dry air from the Arctic region towards the Mediterranean basin, and advected a moist and warm south-easterly flow over the Adriatic region. In the following 24 hours the upper level through evolved in a cut off low, producing a deep low-pressure system (992 hPa) on the western side of Sicily (Fig. 2a). The surface depression slowly moved north-eastward, dissipating its energy over the next 12 hours.

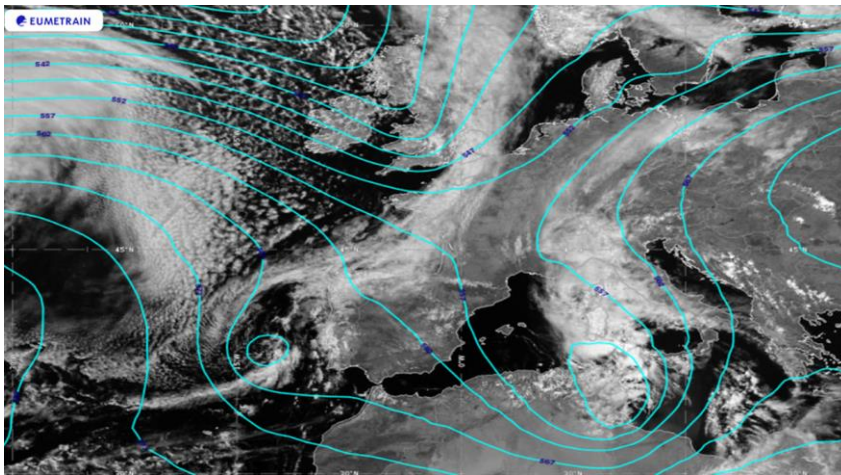


Figure 1: ECMWF analysis: geopotential height at 500hPa (cyan lines, contour lines 5 dam) and visible satellite image on 2 May 2018 at 1200UTC. Image retrieved from Eport portal - EUMeTrain.

The mesoscale conditions over Italian peninsula showed a strong and moist south-easterly flow at upper and middle atmospheric levels, whereas a convergence line between the north eastern (Bora) and south-eastern (Sirocco) winds developed at low levels (Fig. 2b). This produced heavy precipitations on May 3 over the central Italy Adriatic region which was enhanced by the complex orography of this area. Indeed, the highest peaks of the Apennines mountains (Gran Sasso and Majella, 2912 m and 2793 m MSL, respectively) near the coast further increased the atmospheric instability, promoting the triggering of convective cells.

ha eliminato: ing

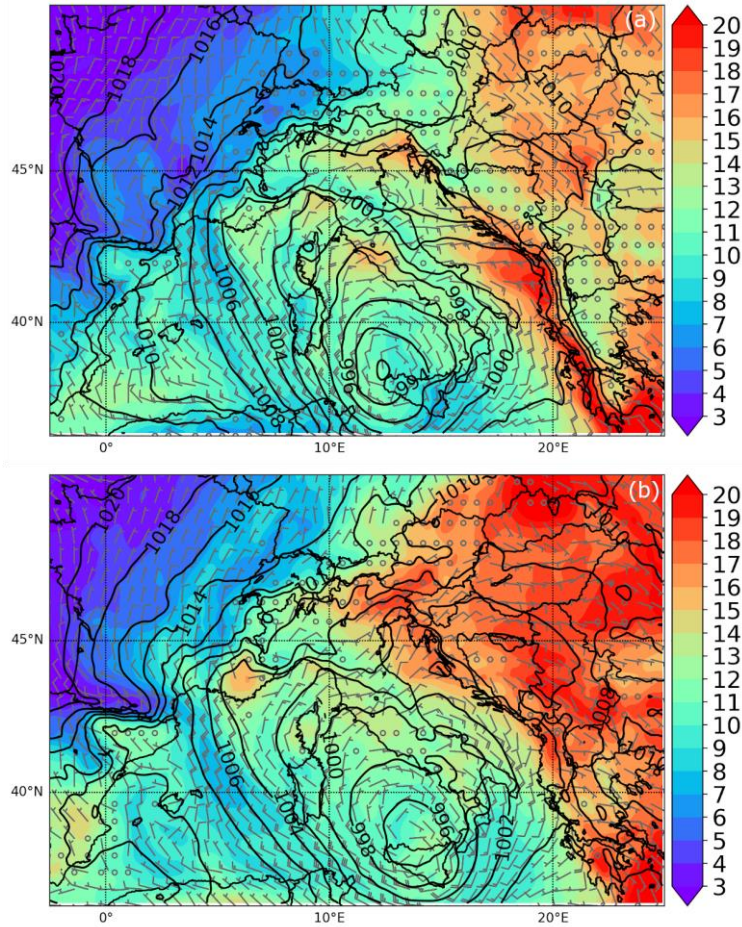
ha spostato (inserimento) [1]

ha eliminato: -

ha spostato in alto [1]: In the following 24 hours the upper level through evolved in a cut off low, producing a deep low-pressure system (992 hPa) on the western side of Sicily (Fig. 2a). The surface depression slowly moved north-eastward, dissipating its energy over the next 12 hours. ¶

ha eliminato: However, the convective event cannot be considered as a severe weather event because of taking into account the absence of damage and the amount of precipitation.. data. Relevant daily accumulations were reported in Gran Sasso mountainous area with values ranging from 80 and 90 mm, except the rain gauge station located in Fano a Como, which measured 152 mm. The precipitation also affected the coastal sector but with smaller amount: 73 mm at Pescara and Pineto and 42 mm at Vasto (Fig. 3).

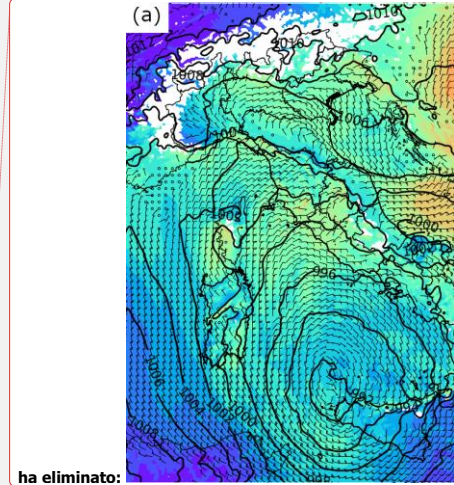
165 Relevant daily accumulations were reported in Gran Sasso mountainous area with values ranging from 80 and 90 mm, except the rain gauge station located in Fano a Corno, which measured 152 mm. The precipitation affected the coastal sector with amounts of about 73 mm at Pescara and Pineto and 42 mm at Vasto (Fig. 3).



170 **Figure 2:** ECMWF analyses: 850 hPa temperature (°C), wind field (wind barbs) at 950 hPa and sea level pressure (black lines) on 3 May at 1200 UTC at 0600 UTC (a) and 1200 UTC (b).

ha eliminato: but with smaller

ha eliminato: :



ha eliminato:

Formattato: Allineato al centro

ha eliminato: ECMWF analyses: 850 hPa temperature (°C), wind field (wind barbs) at 950 hPa and sea level pressure (black lines) on 3 May at 1200 UTC at 0600 UTC (a) and 1200 UTC (b).

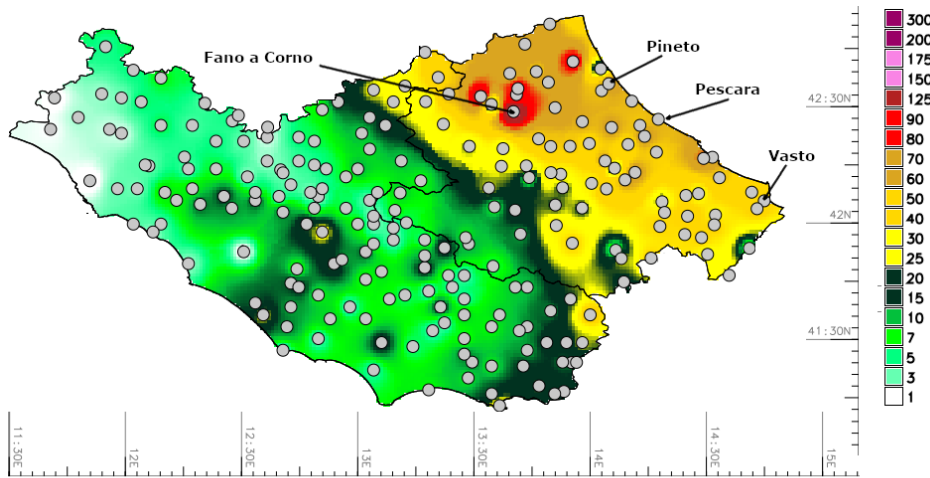
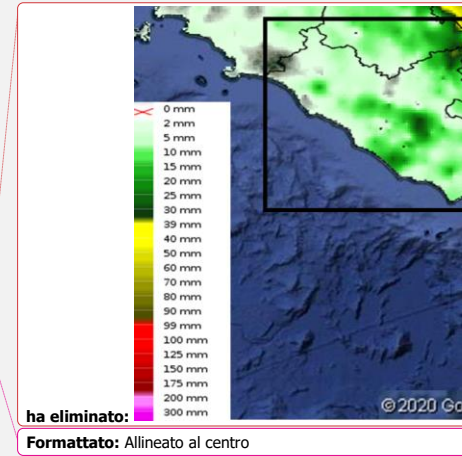


Figure 3: Observed daily precipitation (mm) on 3 May 2018 in Lazio Abruzzo regions. The points represent the locations of rain-gauges. Data courtesy of Italian Civil Protection Department.



ha eliminato: Observed daily precipitation on 3 May 2018 in Lazio Abruzzo subregion (black rectangle). The image is provided by the DEWETRA platform (Italia Civil Protection Department). © Google Earth 2020.

3 Datasets Description

To the aim of assessing the impact of cycling 3D-Var and 4D-Var, the composite radar reflectivity provided by the Italian radar network (Vulpiani et al., 2008) are assimilated in WRF for the numerical simulations.

The Italian ground radar network includes 20 C-band and 3 X-band radar, managed by 11 regional administrations. Among these, 7 C-band and the 3 X-band systems (all with dual-polarization capability) are managed directly by the Italian Civil Protection Department (DPC), which is also the developer and distributor of the national precipitation product. The processing architecture is basically composed of two main steps: firstly, the radar measurements are locally processed by a unique software system, secondly all the products are centralized to generate the national level products.

Different sources of error can affect the radar measurements (Collier, 1996): non-weather returns (clutter), partial beam blocking, beam broadening at increasing distances, vertical variability of precipitation, Radio Local Area Network (RLAN) interferences and rain path attenuation. Due to the morphology of the Italian territory, the uncertainty can be mainly associated to the orography-related effects, especially in southern Italy where the radar coverage as well as the radar overlapping is poor. The DPC processing system aims at identifying most of the uncertainty sources in order to compensate them, whenever it is possible, before estimating precipitation. A point-by-point description of the operational radar processing chain can be found

in (Petracca et al., 2018). After the processing, some composite products are generated in real time by DPC and disseminated at national and regional level. Among these, the reflectivity Constant Altitude Plan Position Indicator (CAPPI) at 2000, 3000 and 5000 m MSL, which cover the whole Italian territory, are assimilated into WRF model.

It is worth mentioning that the CAPPI gives a horizontal cross-section of the data at constant altitude, it is a two-dimensional areal representation extracted from three-dimensional radar volume scan data.

Moreover, a thinning is applied to the CAPPI reflectivity data to ensure uncorrelated observation errors (Chang et al., 2014; Liu and Rabier, 2003) and to reduce the computational complexity, especially for 4D-Var method. CAPPI data are thinned over the 3km domain grid (described in section 5.2) by using an 'ad hoc' procedure. The rainfall data to assess the impact of 3D/4D-Var methods in cycling mode are provided by the rain-gauge network of the Italian Civil Protection Department (DPC) composed by roughly 3000 tipping bucket gauges with the minimum detectable rain of 0.2 mm. A careful quality check is applied to the data before using them in the statistical analysis (Hanachi et al., 2014). More specifically, the following actions are carried out:

- control of rain gauges with the same name but different coordinates;
- removal of data associated with rain gauges without valid coordinates;
- removal of duplicate data;
- identification of anomalous data (for example very different values respect to the surrounding rain gauges).

4 Variational Data Assimilation

The Weather Research and Forecasting (WRF) model (Skamarock et al., 2019) is used for the numerical simulations, while the CAPPI radar data are assimilated by using the WRF data assimilation system (WRFDA, Barker et al., 2012). This system contains the algorithms required by 3D/4D-Var variational assimilation methods which are described in the following subsections.

4.1 3D-Var and 4D-Var methods

Nowadays, the WRF 3D-Var (Barker et al., 2012) variational assimilation method is widely applied in meteorological and oceanographic modelling to assimilate a large variety of observations and to generate reliable initial conditions. The 3D-Var is a mathematical technique that combines observations and a short-range forecast (first guess) through the minimization of a cost function. The goal of this method is to reduce the misfit between the observation and the background fields to obtain the best estimate of the true state of the atmosphere. In general, the cost function with respect an atmospheric state variable \mathbf{x} is defined as follow:

$$J(\mathbf{x}) = \frac{1}{2} \{ (\mathbf{x} - \mathbf{x}_b)^T \mathbf{B}^{-1} (\mathbf{x} - \mathbf{x}_b) + [\mathbf{y}_0 - \mathbf{H}(\mathbf{x})]^T \mathbf{R}^{-1} [\mathbf{y}_0 - \mathbf{H}(\mathbf{x})] \} \quad (1)$$

ha eliminato: in order

ha eliminato: It is

ha eliminato: Errors due to instrument failures, connection problems and erroneous values are removed.

ha eliminato: a

ha formattato: Tipo di carattere: Grassetto

235 where \mathbf{B} and \mathbf{R} are the background and observation error matrices, respectively; y_0 represents the observations, \mathbf{x}_0 the background field or first guess and finally \mathbf{H} is the forward observation operator that converts data from model space to observation space.

The 3D-Var method has the advantage of being computationally cheap even if it misses the time dependency, hence all the observations that are acquired during the assimilation window are considered at its central time.

240 The WRF 4D-Var (Huang et al., 2009) take the time variable into account using a numerical weather forecast as dynamical constraint. More specifically, the method computes the model trajectory that reduce the misfit with the observations distributed in the assimilation window. The initial atmospheric state is determined by minimizing the following cost function (2):

$$J(\mathbf{x}_0) = \frac{1}{2}(\mathbf{x}_0 - \mathbf{x}_0^b)^T \mathbf{B}^{-1}(\mathbf{x}_0 - \mathbf{x}_0^b) + \frac{1}{2} \sum_{k=0}^n \{y_0^k - \mathbf{H}_k[\mathbf{M}_k(\mathbf{x}_0)]\}^T \mathbf{R}^{-1} \{y_0^k - \mathbf{H}_k[\mathbf{M}_k(\mathbf{x}_0)]\} \quad (2)$$

245 The assimilation window is divided in k discrete sub windows, where \mathbf{x}_0 is the analysis state vector at time k_0 ; \mathbf{H}_k and \mathbf{M}_k are the nonlinear forward and observation models, respectively. Finally, \mathbf{B} and \mathbf{R} are, as already mentioned, the background and observation error matrices.

The 4D-Var has the advantage of assimilating the observation at its exact time compared to 3D-Var, ensuring a more consistent physics and dynamical balance of the initial conditions. Given the high computational complexity, the incremental approach proposed by Courtier et al. (1994) has been adopted. The tangent linear and adjoint model with a simplified physics are used in the inner loop to increase the computational efficiency. Despite that the application of 4D-Var in operational mode is still limited to the major weather centres only.

255 The \mathbf{B} matrix is a key component in the assimilation processes because it weights the errors in the background field adjusting the spatial spreading of observational information. In this context, the National Meteorological Center (NMC) method (Parrish and Derber, 1992), widely use in the data assimilation community, has been adopted for this work. The \mathbf{B} matrix is estimated evaluating the difference between forecasts valid at the same time, but one of them is initialized 12 hours after the other. More in detail, the new method (Wang et al., 2013b) considers u , v , temperature, pseudo relative humidity, and surface pressure as control variables, in contrast with the old one which utilizes the streamfunction, the unbalanced velocity potential and the unbalanced temperature. Recent works using the new method, shows a slightly benefit in the precipitation forecast skill as well as an improving of performance when radar data are assimilated (Wang et al., 2013b; Sun et al., 2016). Thus, for this work the \mathbf{B} matrix is computed over a period of 2 weeks from 1 May to 15 May 2018 by using this new method. According to the values provided in Mazzarella et al. (2020), the `var_scaling`, and `len_scaling` parameters which adjust the influence of \mathbf{B} matrix over the background field, Len_scaling controls the spatial decorrelation for the following five variables: unbalanced velocity potential, unbalanced temperature, pseudo-relative humidity, unbalanced surface pressure and stream function. The use of a len_scaling factor of 0.5 reduces the variable perturbation length scale by 50%, ensuring that the water vapour increments are comparable with the weather radar range: therefore, this value has been adopted for the simulations.

260

265 The `no_echo` option, developed by Min and Kim (2016), allows the assimilation of null-echo within the radar observation range. This information reduces the excessive humidity and the contents of the following hydrometeors: snow, graupel, and

ha formattato: Tipo di carattere: Grassetto

ha formattato: Tipo di carattere: Grassetto

ha formattato: Tipo di carattere: Grassetto

ha eliminato: , are set to 1 and 0.5, respectively

ha eliminato: _

rainwater based on radar reflectivity, improving the convective precipitation predictability. In addition, a recent study (Lee et al., 2020) confirms the benefit of this option for the simulation of three summer convective events over the Seoul metropolitan area. For this reason, the `no-echo` option is used for this study.

ha eliminato: no_echo

4.2 Radar observation operator

The assimilation of CAPPI radar reflectivity for both 3D/4D-Var assimilation methods has been performed through the indirect method (Wang et al. 2013c; Gao and Stensrud 2012). The new approach converts the observed reflectivity in the three hydrometeor mixing ratios in contrast to the direct method (Xiao et al. 2007) which only uses the rainwater mixing ratio.

ha eliminato: Recent studies show the positive behaviour of NO_ECHO radar assimilation (Min and Kim, 2016) in reducing the overestimation of precipitation. For this reason, the NO_ECHO option is used for this study. The observations with non-precipitation echo within the radar range are assimilated to correct the precipitation pattern, removing excessive water vapor and hydrometeors (Lee et al., 2020).¶

The forward reflectivity operator considers the contribution of snow, rain and hail components and it is represented as:

$$Z_e \begin{cases} Z(q_r), T_b > 5 \text{ }^\circ\text{C} \\ Z(q_s) + Z(q_h), T_b < -5 \text{ }^\circ\text{C} \\ a Z(q_r) + (1 - a)[Z(q_s) + Z(q_h)], -5 \text{ }^\circ\text{C} < T_b < 5 \text{ }^\circ\text{C} \end{cases} \quad (3)$$

where Z_e is the equivalent reflectivity factor, a varies linearly between 0 at $T_b = -5 \text{ }^\circ\text{C}$ and 1 at $T_b = 5 \text{ }^\circ\text{C}$, and T_b is the background temperature from an NWP.

The three hydrometeor mixing ratios, rain, snow, and hail in Eq. (3) are calculated using the formulation proposed by (Lin et al. 1983; Gilmore et al. 2004; Dowell et al. 2011).

The rain contribution (Smith et al. 1975) is calculated as follow:

$$Z(q_r) = 3.63 \times 10^9 (\rho q_r)^{1.75} \quad (4)$$

where ρ is the air density.

The snow component is divided in dry and wet snow according to the T_b temperature:

$$Z(q_s) = 9.80 \times 10^8 (\rho q_s)^{1.75}, \text{ if } T_b < 0 \text{ }^\circ\text{C} \quad (5)$$

$$Z(q_s) = 4.26 \times 10^{11} (\rho q_s)^{1.75}, \text{ if } T_b \text{ is } > 0 \text{ }^\circ\text{C} \quad (6)$$

For the hail component the formulation based on (Lin et al. 1983; Gilmore et al. 2004) is adopted:

$$Z(q_h) = 4.33 \times 10^{10} (\rho q_h)^{1.75} \quad (7)$$

Finally, the equivalent reflectivity (Z_e) is converted in Z (dBZ) using:

$$Z_{dB} = 10 \log_{10} Z_e \quad (8)$$

The option, allowing the assimilation of in-cloud humidity from radar reflectivity, has been considered for this study (Wang et al., 2013). In this case the observed operator H is defined by:

$$q_v = rh \times q_s \quad (9)$$

where q_v represents the specific humidity, rh the relative humidity, and q_s the saturated specific humidity of water vapor.

Hence, this option allows the assimilation of vapor from in cloud region in addition to the three hydrometeor species calculated with the indirect method.

5 Model setup

The numerical simulations are carried out with the ARW-WRFV4.0 model (Skamarock et al., 2019). WRF is a mesoscale model, supported by National Center for Atmospheric Research (NCAR) and largely used by the atmospheric modelling community. The main features consist of a fully compressible Euler nonhydrostatic equations with hydrostatic option, staggered Arakawa C grid, and a highly portable and flexible code that optimize the use of computational resources.

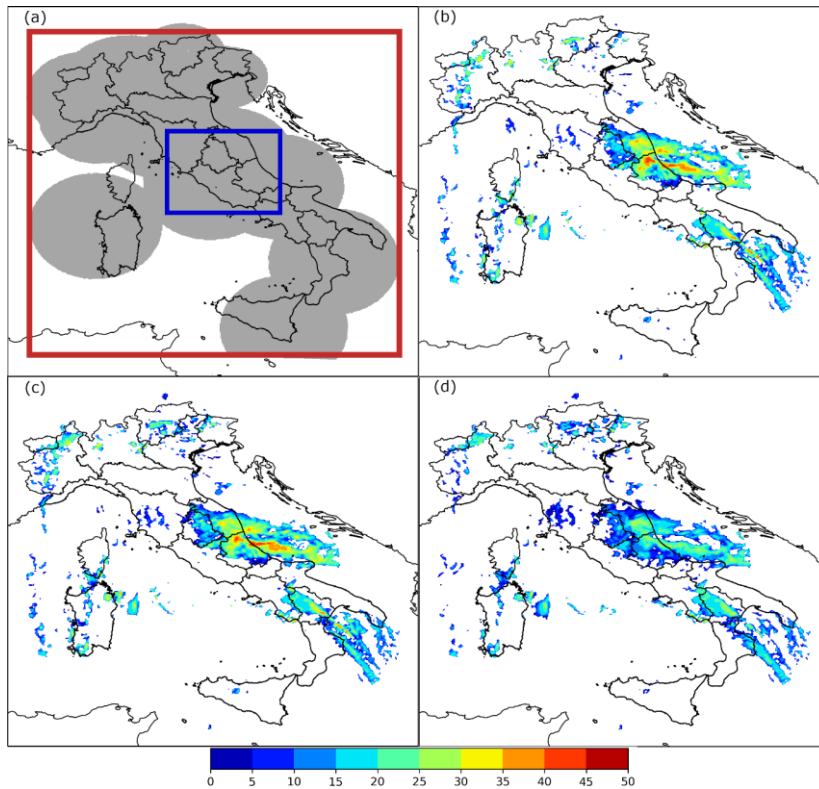


Figure 4: Spatial coverage of Italian radar network (grey area), the two rectangles represent the WRF domains: 3 km (in red) and 1 km (in blue), respectively (a). Three examples of CAPPI radar reflectivity (dBZ) at 2 km (b), 3 km (c) and 5 km (d) assimilated at 0200 UTC on 3 May.

ha eliminato: A two-way nesting configuration with two domains is used for this study: the mother domain with 379x431 grid points, covers the Italian peninsula with a horizontal resolution of 3 km, while the inner domain (340x319 grid points) is centred over the Abruzzo region (central Italy) with a grid spacing of 1 km (Fig. 4a). To avoid compatibility issues with WRFDA, the vertical terrain following coordinates are used instead of terrain-following hybrid. Both domains adopt 40 vertical levels from the ground up 100 hPa. Because of the high spatial resolution, the convection is explicitly resolved. The same physical parameterizations used by the Center of Excellence in Telesensing of Environment and Model Prediction of Severe Events (CETEMPS) meteorological-hydrological forecast system, are set for this work (Ferretti et al., 2014). More specifically, the microphysical processes are parameterized by using the WSM6 scheme (Hong and Lim, 2006), while the MYJ scheme (Janjic et al., 1994) is applied for the PBL. Shortwave and long wave radiation are considered through the Rapid Radiative Transfer Model (RRTM) scheme (Mlawer et al., 1997). Finally, the Noah land surface model is chosen to parameterize the land surface processes (Chen and Dudhia, 2001). The operational analysis/forecast cycle from the integrated forecast system (IFS) global model of the European Centre for Medium-Range Weather Forecasts (ECMWF) with a spatial resolution of $0.1^\circ \times 0.1^\circ$ are used for this work and the boundary conditions are update every 3 hours. The initial and boundary conditions for the mother domain are provided by European Centre for Medium-Range Weather Forecasts (ECMWF) with a 0.1-degree resolution.¶

Formattato: Allineato al centro

ha eliminato: .
ha eliminato: T

A two-way nesting configuration with two domains is used for this study: the mother domain with 379x431 grid points, covers the Italian peninsula with a horizontal resolution of 3 km, while the inner domain (340x319 grid points) is centred over the Abruzzo region (central Italy) with a grid spacing of 1 km (Fig. 4a). To avoid compatibility issues with WRFDA, the vertical terrain following coordinates are used instead of terrain-following hybrid. Both domains adopt 40 vertical levels from the ground up 100 hPa. Because of the high spatial resolution, the convection is explicitly resolved. The same physical parameterizations used by the Center of Excellence in Telesensing of Environment and Model Prediction of Severe Events (CETEMPS) meteorological-hydrological forecast system, are set for this work (Ferretti et al., 2014). More specifically, the microphysical processes are parameterized by using the WSM6 scheme (Hong and Lim, 2006), while the MYJ scheme (Janjic et al., 1994) is applied for the PBL. Shortwave and long wave radiation are considered through the Rapid Radiative Transfer Model (RRTM) scheme (Mlawer et al., 1997). Finally, the Noah land surface model is chosen to parametrize the land surface processes (Chen and Dudhia, 2001). The operational analysis/forecast cycle from the integrated forecast system (IFS) global model of the European Centre for Medium-Range Weather Forecasts (ECMWF) with a spatial resolution of 0.1° x 0.1° are used for this work and the boundary conditions are update every 3 hours.

Formattato: Normale

5.1 Design of experiments

A total of five experiments are carried out to evaluate the impact of 3D/4D-Var in cycling mode. All simulations started at 0000 UTC on 3 May 2018 and last for 24 hours. Both 3D-Var and 4D-Var are applied every hour in cycling mode from 0000 UTC to 0300 UTC assimilating the CAPPI reflectivity data at 2000, 3000 and 5000 m MSL. The same number of observations has been assimilated for both 3D-Var and 4D-Var simulations, considering a 10-minute assimilation window. More specifically the CAPPI are assimilated at 0000 UTC, 0100 UTC, 0200 UTC, 0300 UTC and at 0010 UTC, 0110 UTC, 0210 UTC and 0310 UTC (Fig. 4b, c, d). Moreover, two additional simulations are performed with the aim of evaluating the performance of cycling assimilation methods in warm start mode. For this purpose, a previously numerical forecast, initialized six hours before, is used as background field. The same aforementioned CAPPI are assimilated in these experiments. In table 1 a summary of all the experiments performed.

ha eliminato: ¶

ha eliminato: With the aim of using an equal number of observations for the numerical experiments, a 10 minutes assimilation window is used for both the 3D-Var and 4D-Var methods. ...

Table 1: Description of the five simulations carried out.

Experiment	Description
CTL	No assimilation
CYC3DVAR_cold	3D-Var with reflectivity data; cold start
CYC4DVAR_cold	4D-Var with reflectivity data; cold start
CYC3DVAR_warm	3D-Var with reflectivity data; warm start

5.2 Verification methodologies

To the aim of evaluating the impact of both 3D-Var and 4D-Var in cycling mode, an objective comparison between the observed and forecast precipitation is performed. To this purpose, the rainfall data collected by DPC rain gauge network are spatially interpolated on the model grid. More in detail, the Inverse-Distance-Weighting (IDW) conservative method (Jones,1999) is used to remap the rain data to the 3km domain grid. The statistical analysis is only performed in a restricted area of the mother domain (Fig. 4a, red rectangle) that includes Lazio and Abruzzo regions (hereafter LA, Fig. 3), because these are the regions where relevant accumulated precipitations was recorded.

Finally, this work represents a preliminary study to investigate the reliability of the cycling assimilation before implementing it in an operational meteorological–hydrological chain like that operative at CETEMPS focused on the meteorological–hydrological forecast in the Abruzzo region.

To avoid the spatial limitations of using a point-by-point approach in the evaluation of quantitative precipitation forecast (Roberts, 2003) a filtering method is used. Based on the positive response in the recent literature (Tong et al., 2016; Wang et al., 2013c; Romine et al., 2013; Gustafsson et al., 2018), the Fraction Skill Scores (FSS; Roberts and Lean, 2008), is computed for the precipitation assessment. A few accumulated periods are considered to the aim of investigating the forecast ability for different kind of precipitation. For the 3-hourly accumulated precipitation a neighbourhood size of 3x3 grid points is used for this purpose.

In addition, the Receiver Operating Characteristic (ROC) statistical indicator is computed to strengthen the statistical analysis, evaluating how skilful are the cycling assimilation methods in terms of QPF. The ROC curve synthetizes the information obtained with different thresholds in one diagram, just comparing the hit rate against false alarm rate (Swets 1973). Finally, the area under the ROC curve (AUC) which is largely used to quantify the skill of a forecast system (Mason, 1982; Buizza and Palmer, 1998; Storer et al., 2019; Ferretti et al., 2020), is calculated for each simulation.

ha formattato: Italiano (Italia)

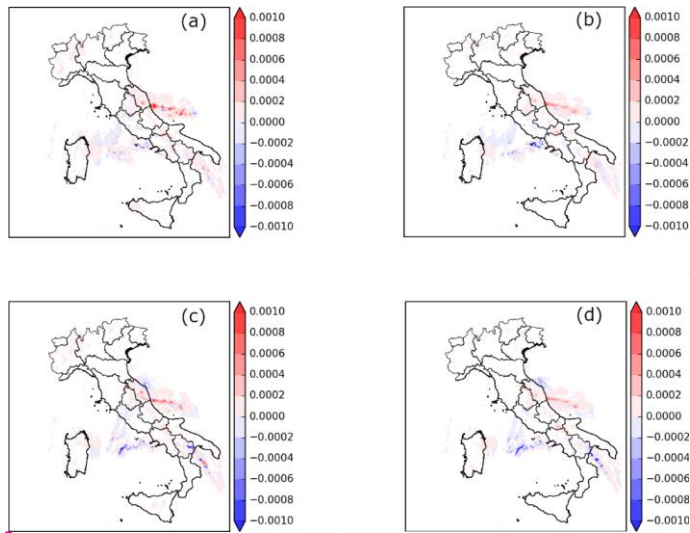
ha eliminato: as the one

ha eliminato: which activity is

ha eliminato: point by point

ha eliminato: On the basis of

ha eliminato: are



405 **Figure 5: Rain water mixing ratio (kg kg^{-1}) analysis increments at vertical level 15 from CYC4DVAR warm (a), CYC3DVAR warm (b), CYC4DVAR cold (c) and CYC3DVAR cold (d) experiments.**

410 Before presenting the results, to the aim of clarifying the impact of reflectivity CAPPI at 2, 3 and 5 km in cycling 3D/4D-Var methods, the analysis increments (analysis minus first guess) are calculated at the end of the last assimilation cycle (1200 UTC). The assimilation of radar reflectivity mainly impacts on water vapour and cloud hydrometeors variables other than on temperature and wind components. Therefore, the analysis increments for rain water (Fig. 5) and water vapour mixing ratios (not shown), which best represent the added value of the radar reflectivity assimilation, are considered. For this purpose, the vertical level 15 (about 2000 m above ground) is selected because the influence of radar data is more relevant. A qualitative comparison between the two assimilation methods points out that the 4D-Var is more impactful in terms of grain both with warm (Fig. 5a) and cold start (Fig. 5c) compared to 3D-Var (Figs. 5b and 5d). Furthermore, the larger analysis increments of grain are along the Adriatic Sea near Abruzzo coastline in agreement with the assimilated CAPPI maps, which show high reflectivity values in this area. The vapour distribution is similar to the previous analysis, but the magnitude becomes larger than grain. The 4D-Var simulations produce greater qvapor increments compared to 3D-Var, in line with the next result.

6 Results

420 A preliminary qualitative comparison is performed with the aim of explaining the impact of cycling assimilation in short-term rainfall prediction. To this purpose, the differences between forecast and observed precipitation fields have been calculated for

ha eliminato: Before presenting the results, to the aim of clarifying the impact of reflectivity CAPPI at 2, 3 and 5 km in cycling 3D/4D-Var methods, the analysis increments (analysis minus first guess) are calculated at the end of the last assimilation cycle (1200 UTC). The assimilation of radar reflectivity mainly impacts on water vapour and cloud hydrometeors variables other than on temperature and wind components. Therefore, the analysis increments for rain water (Fig. 5) and water vapour mixing ratios (not shown), which best represent the added value of the radar reflectivity assimilation, are considered. For this purpose, the vertical level 15 (about 2000 m above ground) is selected because the influence of radar data is more relevant. A qualitative comparison between the two assimilation methods points out that the 4D-Var is more impactful in terms of grain both with warm (Fig. 5a) and cold start (Fig. 5c) compared to 3D-Var (Figs. 5b and 5d). Furthermore, the larger analysis increments of grain are along the Adriatic Sea near Abruzzo coastline in agreement with the assimilated CAPPI maps, which show high reflectivity values in this area. The vapour distribution is similar to the previous analysis, but the magnitude becomes larger than grain. The 4D-Var simulations produce greater qvapor increments compared to 3D-Var, in line with the next result.¶

Formattato: Allineato al centro

ha eliminato: ¶

each simulation considering the rainfall amounts from 0900 UTC to 1200 UTC, when the FSS shows the highest values and the gap between the different simulations is more meaningful.

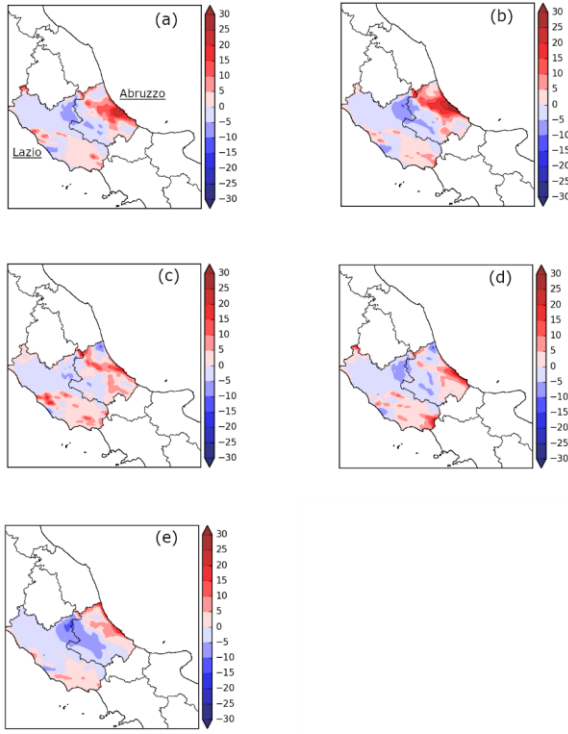


Figure 6: Differences (mm) between observed and predicted 3-hourly precipitation fields for CYC4DVAR cold (a) and CYC3DVAR cold (b) CYC4DVAR warm (c), CYC3DVAR warm (d) and CTL (e) simulations in Lazio Abruzzo regions.

The results (Fig. 6) confirm the positive impact of cycling assimilation: both methods reduce the underestimation of the rainfall (blue area) over the mountain area at the border between Lazio and Abruzzo regions. In this context, the 4D-Var and 3D-Var experiments with a warm start initialization show the best performances in this area (Figs. 6c and 6d), improving the precipitation forecast accuracy also compared to the CTL (Fig. 6e). Conversely, the two simulations in cold mode overestimate the rainfall along the coastal area of the Abruzzo region, even though they partially mitigate the error in the internal areas (Figs. 6a and 6b).

ha spostato in basso [2]: The results (Fig. 6) confirm the positive impact of cycling assimilation: both methods reduce the underestimation of the rainfall (blue area) over the mountain area at the border between Lazio and Abruzzo regions. In this context, the 4D-Var and 3D-Var experiments with a warm start initialization show the best performances in this area (Figs. 6c and 6d), improving the precipitation forecast accuracy also compared to the CTL (Fig. 6e). Conversely, the two simulations in cold mode overestimate the rainfall along the coastal area of the Abruzzo region, even though they partially mitigate the error in the internal areas (Figs. 6a and 6b).

Formattato: Allineato al centro

ha spostato (inserimento) [2]

6.1 Statistical Evaluation

To the aim of evaluating the performance of 3D-Var and 4D-Var assimilation methods in cycling mode, the FSS and ROC, previously described in Section 5.2, have been calculated. The FSS is calculated in LA region, where significant precipitation occurred. To this purpose, several threshold values are used to evaluate the impact of cycling assimilation with light, moderate and heavy precipitation. Finally, the ROC and AUC are calculated to reinforce the statistical analysis and summarize the information obtained with the FSS.

To compare the 4D/3D-Var experiments in warm/cold start and their ability to reproduce the precipitation pattern, the statistical index has been calculated considering the precipitation accumulated over three specified time periods: 1, 3 and 6 hours, respectively. The time series of FSS is presented in the sections below.

6.1.1 Hourly precipitation

The FSS for the 1 mm h⁻¹ accumulated threshold (Fig. 7a) is calculated for all the experiments starting from 0600 UTC to 1500 UTC in LA region. The results are quite similar for all experiments in the first hour of simulation due to the small amount of accumulated precipitation, even if CTL is starting from higher values than the other experiments. Later, all experiments display higher FSS values than CTL experiment (red dashed line), pointing out the positive feedback of cycling assimilation in the interval from 0700 UTC to 1200 UTC. Moreover, the simulations with warm initialization clearly show (Fig. 7a, blue and green lines) higher values demonstrating a larger impact on the precipitation forecast than those with cold start. On the other hand, CTL performs better in the last three hours of simulation, suggesting that the positive impact of radar reflectivity assimilation is decreasing in time. The FSS computed for the 3 mm h⁻¹ threshold (moderate precipitation) is shown in Fig. 7b. The simulations with data assimilation confirm the improvements in term of QPF from 0700 UTC to 1200 UTC. In addition, the two experiments with 4D-Var (Fig. 7b, yellow and blue lines) performs better than 3D-Var, except in the first hours of simulation. This behaviour proves the positive impact of 4D-Var with moderate precipitation. However, similarly to the results for 1 mm h⁻¹ threshold, the impact of radar reflectivity assimilation decreases toward the end of the simulation. Finally, the FSS is calculated for 8 mm h⁻¹ threshold (Fig. 7c) in conformity with World Meteorological Organisation (WMO-No. 544) that classifies the precipitation with a rain rate greater than 7.6 mm h⁻¹ as heavy rain. According to the results for the 3 mm h⁻¹ threshold, the FSS confirms the good performance of 4D-Var in cycling mode. More specifically the CYC4DAVR_warm (Fig. 7c, blue line) shows the highest FSS values in the whole period with heavy precipitation, except for a very short period where the 4D-Var cold start is reaching higher values than the warm start. Conversely, the benefit of 3D-Var simulations is limited to the first hours of simulation.

ha eliminato: ¶

¶
¶
¶
¶
¶

ha eliminato: ¶
With

ha eliminato: subregion

ha eliminato: three

ha eliminato: : 1, 3 and 7 mm (10 and 15 mm for 6 h accumulated precipitation)

ha eliminato: 6.1 FSS evolution¶

ha eliminato: 5

ha eliminato: the

ha eliminato: 5

ha eliminato: the

ha eliminato: 5

ha eliminato: 5

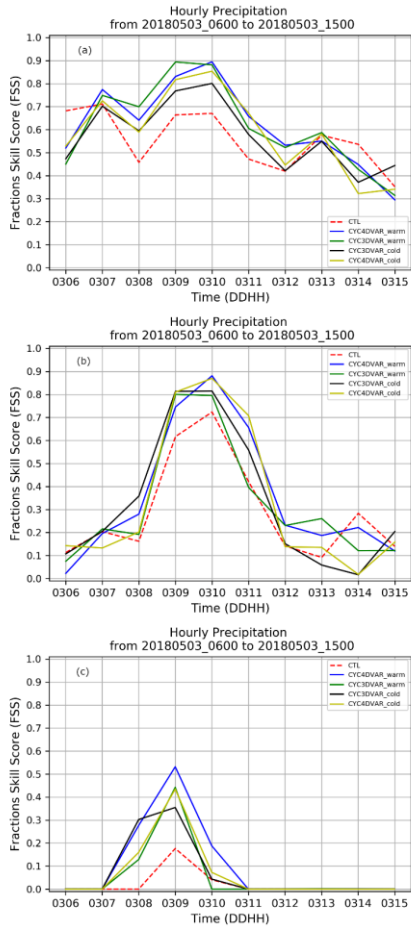
ha eliminato: in the final hours

ha eliminato: 5

ha eliminato: heavy precipitation

ha eliminato: , using a threshold value greater than 7 mm h⁻¹ (Fig. 5c)

ha eliminato: 5

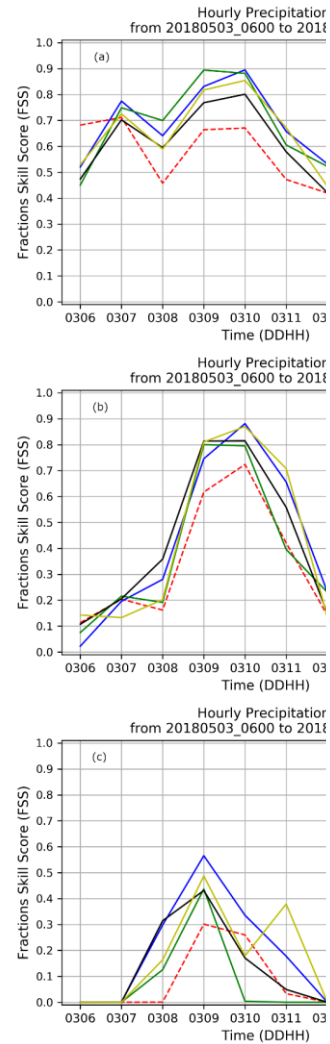


520 **Figure 7:** Evolution of FSS calculated in LA region considering the hourly accumulated precipitation for three threshold values: **1** mm h^{-1} (a), **3** mm h^{-1} (b) and **8** mm h^{-1} (c), respectively. Dashed red line represents the CTL, blue line CYC4DVAR_warm, green line CYC3DVAR_warm, black line the CYC3DVAR_cold and yellow line the CYC4DVAR_cold.

525 The statistical analysis with hourly precipitation clearly shows the positive impact of assimilation in cycling mode with both methods in the initial hours of simulation. Moreover, the simulations in warm mode show the best performance compared to those in cold start, especially the CYC4DVAR_warm (Fig. 7c, blue line) when heavy precipitation occurred.

ha eliminato: The statistical analysis with hourly precipitation clearly shows the positive impact of assimilation in cycling mode with both methods in the initial hours of simulation. Moreover, the simulations in warm mode show the best performance compared to those in cold start, especially the CYC4DVAR_warm (Fig. 7c, blue line) when heavy precipitation occurred.¶

Formattato: Allineato al centro



ha eliminato:

ha eliminato: 5

ha eliminato: 7

6.1.2 Three hourly precipitation

545 The statistical analysis is also carried out for the 3-hourly precipitation accumulation interval to deeper investigate the response of cycling data assimilation for precipitation characterized by different mechanisms as for example convection or orographic uplifting. The FSS for 1 mm 3h⁻¹ threshold (Fig. 8a) highlights the benefit of using 3D and 4D-Var with cold start for a short initial period (0600-0730 UTC), suggesting that the background field is probably more accurate than the previous forecast. But the rate of increasing for both the warm start is larger than CTL and cold starts. Indeed, the FSS values for the warm start are higher than the cold starts up to 1200 UTC (Fig. 8a, blue and green lines). Later the improvement reduces, and CTL performs better (Fig. 8a, red dashed line). The score is also computed for 3 mm 3h⁻¹ threshold (Fig. 8b). Similarly to the results for 1 mm threshold the cycling 4D-Var in cold mode (CYC4DVAR_cold) improves the precipitation forecast at the initial time (0600 UTC to 0800 UTC), while the CYC4DVAR_warm mode confirms the higher values from 0900 to 1200 UTC as well as the poor performance in the first hour. Moreover, the reduction in FSS values for both 4D-Var and 3D-Var compared to CTL in the final hours of simulation period proves that the influence of cycling is restricted to a short time range.

555 Finally, the FSS is also calculated for threshold value of 10 mm 3h⁻¹ in LA region (Fig. 8c). The highest values are associated with CYC4DVAR_warm (blue line), although all experiments show an improvement compared to CTL in the first hours of simulation period. Later, all the experiments converge to the CTL, but the values for FSS decrease due to the small accumulated rainfall.

560 The statistical analysis performed using the three threshold values (1, 3 and 10 mm), proves the positive impact of cycling assimilation with radar reflectivity in the interval 0600-1500 UTC and confirms the benefit of 4D-Var compared to 3D-Var. Moreover, the two simulations with a warm start initialization show a low impact at 0600 UTC. The reason for this is probably the poor dynamic balance of the initial fields at the beginning of simulations in warm mode.

ha eliminato: ¶

ha formattato: Tipo di carattere: Non Grassetto

ha eliminato: 6

ha eliminato: 6

ha eliminato: 6

ha eliminato: 6

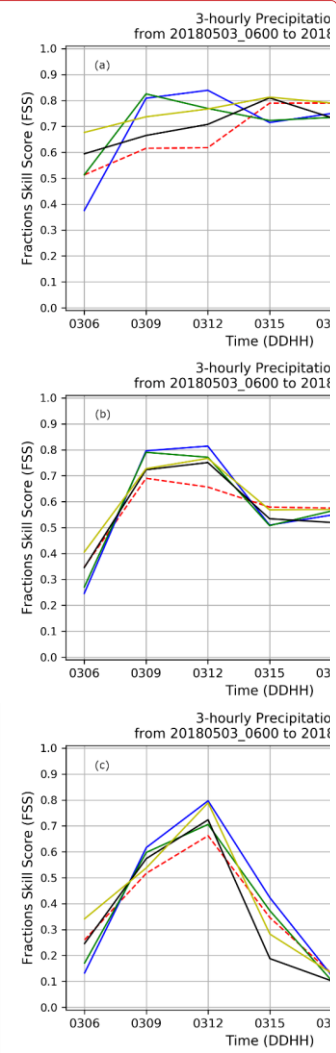
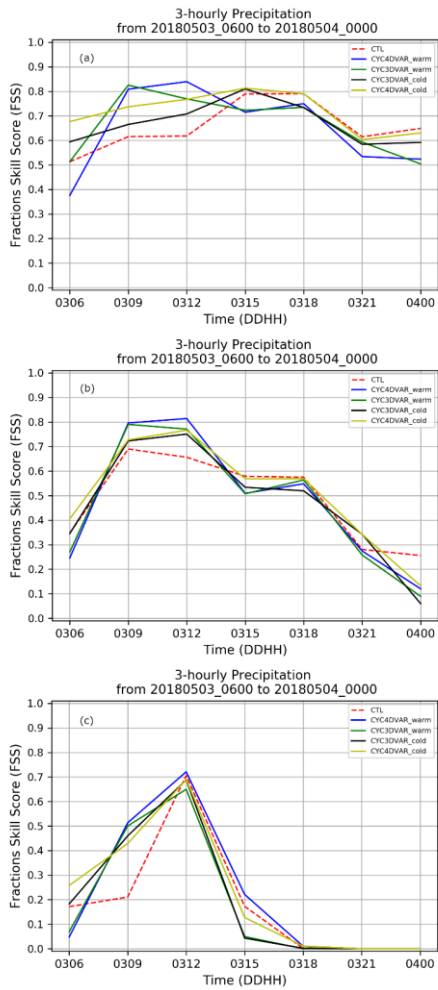
ha eliminato: 7

ha eliminato: 6

ha eliminato: control run

ha eliminato: of

ha eliminato: 7



575 **Figure 8:** Evolution of FSS calculated in LA region considering the 3-hourly accumulated precipitation for three threshold values: 1 mm 3h⁻¹ (a), 3 mm 3h⁻¹ (b) and 10 mm 3h⁻¹ (c), respectively. Dashed red line represents the CTL, blue line CYC4DVAR_warm, green line CYC3DVAR_warm, black line the CYC3DVAR_cold and yellow line the CYC4DVAR_cold.

ha eliminato:
 Formattato: Allineato al centro
 ha eliminato: 6
 ha eliminato: 7

6.1.3 Six hourly precipitation

The FSS is also calculated using the 6-hourly precipitation in LA region using three threshold values: $10 \text{ mm } 6\text{h}^{-1}$, $15 \text{ mm } 6\text{h}^{-1}$ and $25 \text{ mm } 6\text{h}^{-1}$. The FSS calculated for the $10 \text{ mm } 6\text{h}^{-1}$ threshold (Fig. 9a) proves the positive impact of CYC4DVAR_warm (blue line) compared to the 3D-Var and CTL simulations for the whole simulation interval. The results also suggest that the cycling assimilation with warm start performs better than experiments in cold start for both assimilation methods.

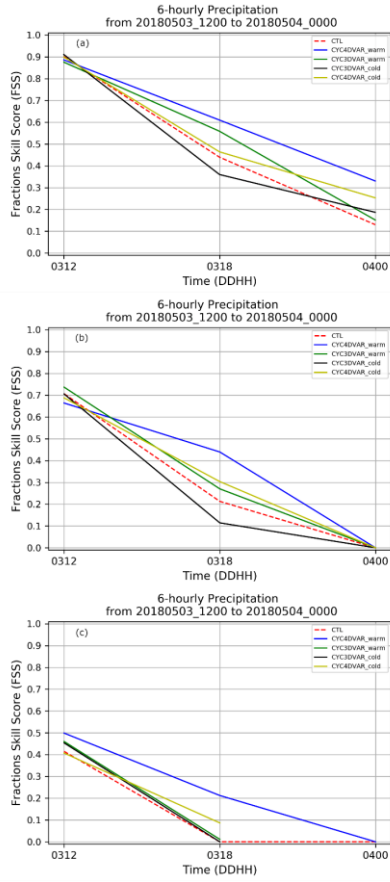


Figure 9: Evolution of FSS calculated in LA region considering the 6-hourly accumulated precipitation for three threshold values: $10 \text{ mm } 6\text{h}^{-1}$ (a), $15 \text{ mm } 6\text{h}^{-1}$ (b) and $25 \text{ mm } 6\text{h}^{-1}$ (c), respectively. Dashed red line represents the CTL, blue line CYC4DVAR_warm, green line CYC3DVAR_warm, black line the CYC3DVAR_cold and yellow line the CYC4DVAR_cold.

ha eliminato: 7...mm 6h⁻¹, 150...mm6h⁻¹ and 21

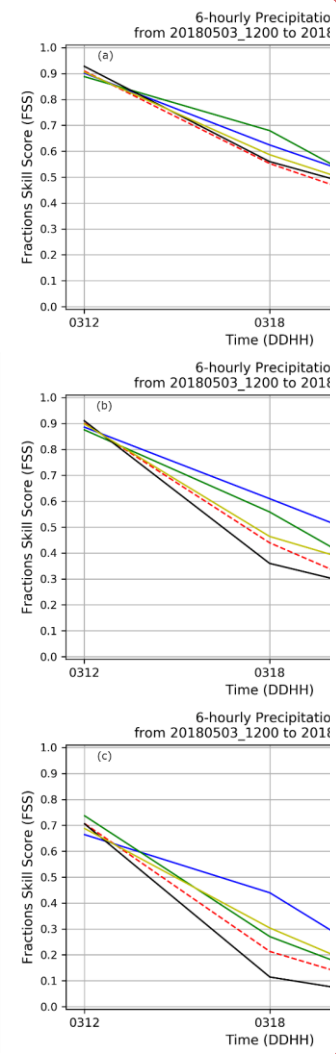
ha eliminato: 1

ha eliminato: 7

ha formattato: Apice

ha eliminato: According to the results for the previous threshold, the CYC4DVAR_warm confirms the best performance in term of FSS for the $15 \text{ mm } 6\text{h}^{-1}$ threshold (Fig. 97b). Both CYC4DVAR_cold and CYC3DVAR_warm display a positive impact in QPF during the whole simulation period. Conversely, the CYC3DVAR_cold show...

Formattato: Allineato al centro



ha eliminato:

ha eliminato: 7

585

590

715 According to the results for the previous threshold, the CYC4DVAR_warm confirms the best performance in term of FSS for the 15 mm 6h⁻¹ threshold (Fig. 9b). Both CYC4DVAR_cold and CYC3DVAR_warm display a positive impact in QPF during the whole simulation period. Conversely, the CYC3DVAR_cold shows a worsening at 1800 UTC when compared to CTL and the other experiments.

720 The FSS is also calculated for 25 mm 6h⁻¹ (Fig. 9c) threshold to investigate the impact of cycling assimilation with larger accumulated precipitation. The CYC4DVAR_warm shows the highest FSS values, pointing out the benefit of 4D-Var in warm start mode in the whole simulation interval compared to CTL. Nevertheless, also the other simulations with cycling assimilation show a positive impact in the whole interval, even though with a slight improvement and up to 1800 UTC. In conclusion, the time series of FSS points out the benefit of using a cycling assimilation for radar reflectivity. The warm start with 3D/4D-Var assimilation methods confirm the improvement in terms of QPF, for:

- 725 • the hourly accumulated precipitation, highlighting the good performance in the localization and timing of the onset of the precipitation and for very light precipitation;
- the 3-hourly accumulated precipitation highlighting the improvements for convective cells and orographic precipitation;
- the 6-hourly accumulated precipitation.

730 On the other hand, the FSS depends on threshold values, thus a further statistical indicator has been calculated to the aim of endorse the previous results. Hence, the ROC curve, which summarizes the result obtained with several thresholds in one plot allowing for an easy comparison, is built for this study.

6.3 Receiver operating characteristic (ROC)

The Receiver Operating Characteristic (ROC), which compare the probability of detection (POD) and false alarm rate (FAR), is calculated to evaluate how the simulations are skilful in precipitation forecast. The 12-hourly precipitation accumulated from 0600 UTC to 1800 UTC on May 3, 2018 for the NWP experiments and the rain gauge network are used to build the curve (Fig. 10) for the LA region. To investigate the ability of cycling assimilation in predicting rainfall with light, medium and heavy intensity the following precipitation threshold are chosen: 1 mm, 12 mm, 24 mm, 36 mm, 48 mm and 54 mm. The curves show low POD values for 1mm threshold and a worsening compared to the CTL. On the other hand, the benefit of cycling assimilation is clearly found with higher threshold values. In fact, the steepness of 3D/4D-Var curves is greater than CTL, suggesting a good forecast skill with moderate and heavy precipitation, namely from 12 mm to 48 mm. In this regard, the CYC4DVAR_warm (green line) shows the best performance, while the CYC3DVAR_cold (red line) reduces its impact with high threshold values. In addition, the area under the curve (AUC) is also computed to objectively compare each curve. The AUC for the cycling 4D-Var experiments is 0.91, while the CTL reaches a lower value of 0.88, confirming the positive impact of 4D-Var in cycling mode, in line with the previous results. The 3D-Var simulations, instead, show AUC values comparable to CTL.

ha eliminato: 6.2 Further assessments¶

In addition to the previous statistical analysis a qualitative comparison is performed with the aim of explaining the impact of cycling assimilation in short-term rainfall prediction. To this purpose, the differences between forecast and observed precipitation fields have been calculated for each simulation considering the rainfall amounts from 0900UTC to 1200UTC, when the FSS shows the highest values and the gap between the different simulations is more meaningful. The results (Fig. 8) confirm the positive impact of cycling assimilation: both methods reduce the underestimation of the rainfall (blue area) over the mountain area at the border between Lazio and Abruzzo regions. In this context, the 4D-Var and 3D-Var experiments with a warm start initialization show the best performances in this area (Figs. 8c and 8d), improving the precipitation forecast accuracy also compared to the CTL (Fig. 8e). Conversely, the two simulations in cold mode overestimate the rainfall along the coastal area of the Abruzzo region, even though they partially mitigate the error in the internal areas (Figs. 8a and 8b).¶

Furthermore, to clarify the impact of reflectivity CAPPI at 2, 3 and 5 km in cycling 3D/4D-Var methods, the analysis increments (analysis minus first guess) are calculated at the end of the last assimilation cycle (1200 UTC). The assimilation of radar reflectivity mainly impacts on water vapour and cloud hydrometeors variables other than on temperature and wind components. Therefore, the analysis increments for rain water (Fig. 9) and water vapour mixing ratios (not shown), which best represent the added value of the radar reflectivity assimilation, are considered. For this purpose, the vertical level 15 (about 2000 m above ground) is selected because the influence of radar data is more relevant. A qualitative comparison between the two assimilation methods points out that the 4D-Var is more impactful in terms of grain both with warm (Fig. 9a) and cold start (Fig. 9c) compared to 3D-Var (Figs. 9b and 9d). Furthermore, the larger analysis increments of grain are along the Adriatic Sea near Abruzzo coastline in agreement with the assimilated CAPPI maps, which show high reflectivity values in this area. The vapour distribution is similar to the previous analysis, but the magnitude becomes larger than grain. The 4D-Var simulations produce greater vapor increments compared to 3D-Var, in line with the previous result.¶

Formattato: Allineato a sinistra

ha eliminato: ¶

ha eliminato: 2

ha eliminato: 8

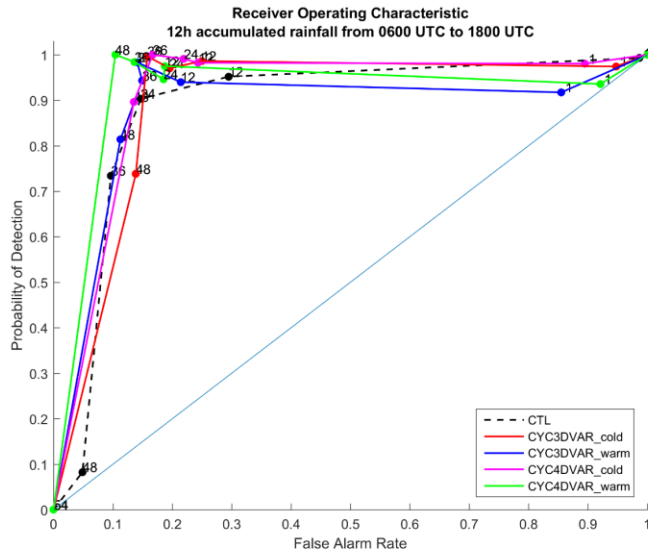


Figure 10: The receiver operating characteristic curves (ROC) are computed for the CTL (black) CYC3DVAR_cold (red), CYC3DVAR_warm (blue), CYC4DVAR_cold (magenta) and CYC4DVAR_warm (green). The 12-hourly cumulated precipitation from 0600 UTC to 1800 UTC on May 3, 2018 are used to build the curves.

7 Conclusions

In this paper the impact of cycling 3D-Var and 4D-Var variational assimilation methods on the forecast of a heavy precipitation event, occurred in an orographically complex region namely the Central Italy, is evaluated. The reflectivity CAPPI (Constant Altitude Plan Position Indicator) obtained by Italian radar network at 2, 3 and 5 km are assimilated every hour in cycling mode into the WRF model. The comparison among the experiments is performed by using a filtering approach, the Fraction Skill Score (FSS), for the Lazio-Abruzzo regions, where relevant rainfall occurred on May 3, 2018. In this regard, the statistical analysis is performed considering 1, 3 and 6 hourly accumulated precipitation with three different threshold values in order to evaluate the benefit of cycling assimilation with light, moderate and heavy precipitation. Finally, the ROC curve is built, to further evaluate the reliability of cycling assimilation in precipitation forecast.

The FSS time series for the hourly precipitation highlights the positive impact of radar data for both 3D-Var and 4D-Var assimilation methods compared to CTL. The benefit of using a cycling assimilation is clearly shown in the results for both light and moderate precipitation. However, the impact reduces in the last hours of the simulation when all experiments converge to the CTL. Conversely, the poor amount of precipitation at the start time, reduce the impact of both assimilation

Formattato: Allineato al centro

ha eliminato: 8

ha eliminato: 0

ha eliminato: sub

ha eliminato: that is the area

ha eliminato: and its area is calculated

ha eliminato: control run

815 methods at the start time for 1mm h⁻¹ threshold. The results for 3 hours precipitation for all thresholds confirm the benefits of assimilating reflectivity data. In this regard, the cycling 4D-Var has a greater impact than 3D-Var experiments and consequently higher FSS value. More specifically, the cold start initializations for cycling both 4D-Var and 3D-Var show an improvement in terms of QPF compared to CTL at beginning of analysis, while the experiments in warm start perform better after few hours. This behaviour is probably caused by a slightly unbalanced initial field for the warm start simulations.

820 For what concerns the 6-hourly precipitation, the FSS for 10 mm 6h⁻¹ threshold confirms the improvement of warm start simulations compared to CTL and cold initialization. The CYC4DVAR_warm clearly displays the greatest FSS values at 1 5 and 25 mm thresholds, pointing out the positive impact of radar reflectivity. Also, the 4D-Var in cold start and the 3D-Var with a warm initialization produce an improvement in QPF although it is smaller than CYC4DVAR_warm. On the other hand, the CYC3DVAR_cold shows a worsening in FSS.

825 Finally, the ability of cycling assimilation to reproduce the 12 h precipitation field is evaluated by using the ROC and the area under the curve (AUC). The curves are calculated considering the period from 0600 UTC to 1800 UTC on May 3, 2018. because of the significant rainfall. The comparison between the simulations confirms that cycling 4D-Var in both warm and cold mode is the best technique, indeed the highest value of AUC=0.91 is obtained. The CTL shows lower steepness than the cycling 4D-Var and an AUC of 0.88. Finally, the AUCs for the two simulations with 3D-Var, respectively 0.87 for warm initialization and 0.89 for the cold, are lower than 4D-Var and comparable with CTL simulation. Therefore, the impact of 3D-Var over 12h accumulated precipitation is less clear.

830 In conclusion, the cycling assimilation with 3D-Var and 4D-Var methods for this heavy rain event, improves the reliability of the precipitation forecast, even if the positive impact reduces in time. Therefore, to further investigate the impact of cycling assimilation with 3D/4D methods and to generalize the achieved results, a larger number of events should be considered.

835 Moreover, the two simulations with a warm start initialization produce good results in terms of FSS, but the differences are small compared to the cold simulations that perform better at the initial time. This behaviour suggests that the precipitation spinup time decreases in cycling assimilation with cold start, while for warm initialization this is not true. In addition, the cycling 4D-Var with warm start (CYC4DVAR_warm) shows better performance than 3D-Var over all precipitation accumulation intervals considered for this study. Finally, the ROC cures and the AUC values also confirms the benefit of 4D-Var in warm start.

840 The next step of this work will be to assimilate the radial velocity to improve the accuracy of wind field and vertical velocity, thus the positioning of convective cells. This opportunity allows us to complete the assessment of weather radar assimilation in a 4D-Var cycling data assimilation. In addition, the impact of a wider data assimilation windows in cycling 4D-Var could be tested, in combination with a strategy with more outer loops. These solutions allow the assimilating of more data and to take into account the non-linear effects, producing significant increments in the analysis field. For what concerns the computational time, the three assimilation cycles with 4D-Var requires about 3 hours using the CRAY XC40 cluster at EMCWF. On the other hand, the cycling 3D-Var is significantly faster and takes less than 1 hour. However, despite the 4D-Var requires greater computational resources, it may be used for operational purpose when using the assimilation window

ha eliminato: Conversely, the FSS calculated for 1mm h⁻¹ threshold shows a worsening of both assimilation methods at the start time of the statistical analysis, because of the low cumulated precipitation.

ha formattato: Apice

ha eliminato: To further evaluate the impact of cycling assimilation with 3D and 4D-Var the analysis is also performed considering the 3 h cumulated rainfall.

ha eliminato: Different thresholds are used to evaluate the reliability of cycling data assimilation with

ha eliminato: .

ha eliminato: T

ha eliminato: 7

ha eliminato: a slight improvement

ha eliminato: 0

ha eliminato: 1

ha eliminato: considered .

ha eliminato: In conclusion, the use of 3D-Var and 4D-Var methods in cycling assimilation with weather radar reflectivity mosaic data improves the reliability of the precipitation forecast, even if the positive impact reduces in time.

ha eliminato: T

adopted for this work. Lastly, the results of this study are helpful to decide which cycling assimilation methods will be implemented in operationally CETEMPS meteorological-hydrogeological chain.

870 **Data availability**

Rain gauges data are provided by DEWETRA data portal (<http://www.mydewetra.org/>), the platform is accessible upon request to the Italian Civil Protection Department (DPC). Radar data are obtained from the Italian Civil Protection Department (DPC), access to these data are restricted and readers must request it through contacting the lead author.

Author contribution

875 VM and RF conceptualized the study. VM and RF design the simulations and VM performed them. VM prepared the methodology. RF procured the resources. VM and RF prepared the original draft of the paper. EP wrote the section about the description of the assimilated dataset. EP and FSM revised the paper.

Competing interests

The authors declare that they have no conflict of interest.

880 **Acknowledgements**

The authors acknowledge the European Centre for Medium-Range Weather Forecasts (ECMWF) for the computational resources on CRAY Supercomputer that allow us to perform the simulation with 4D-Var (ECMWF Special Project). We thank the National Center for Atmospheric Research (NCAR) for providing the WRF and WRFDA code and the Italian Civil Protection Department (DPC) for providing rain gauges and radar reflectivity data. The first author also thanks the Center of

885 Excellence in Telesensing of Environment and Model Prediction of Severe events (CETEMPS) for the financial resources.

References

Ballard, S. P., Li, Z., Simonin, D., Buttery, H., Charlton-Perez, C., Gaussiat, N., and Hawkness-Smith, L.: Use of radar data in NWP-based nowcasting in the Met Office. *Weather Radar and Hydrology*, Moore, R. J., Cole, S. J., and Illingworth, A.J., Eds., IAHS Publ. 351, 336–341, 2012.

890 Ballard, S.P., Li, Z., Simonin, D. and Caron, J.-F.: Performance of 4D-Var NWP-based nowcasting of precipitation at the Met Office for summer 2012. *Q.J.R. Meteorol. Soc.*, 142: 472-487. doi:10.1002/qj.2665, 2016.

- Barker, D., Huang, X., Liu, Z., Auligné, T., Zhang, X., Rugg, S., Ajjaji, R., Bourgeois, A., Bray, J., Chen, Y., Demirtas, M., Guo, Y., Henderson, T., Huang, W., Lin, H., Michalakes, J., Rizvi, S. and Zhang, X.: The Weather Research and Forecasting model's Community Variational/Ensemble Data Assimilation System: WRFDA. *Bulletin of the American Meteorological Society*, 93, 831–843. <https://doi.org/10.1175/BAMS-D-11-00167.1>, 2012.
- 895 Buizza, R. and Palmer, T. N.: Impact of ensemble size on ensemble prediction, *Mon. Weather Rev.*, 126, 2503–2518, 1998.
- Caumont, O., Ducrocq, V., Wattrelot, E., Jaubert, G., and Pradier-Vabre, S.: 1D+3DVar assimilation of radar reflectivity data: A proof of concept. *Tellus*, 62A, 173–187, 2009.
- Chang, W., Chung, K., Fillion, L., and Baek, S.: Radar Data Assimilation in the Canadian High-Resolution Ensemble Kalman Filter System: Performance and Verification with Real Summer Cases. *Mon. Wea. Rev.*, 142, 2118–2138, <https://doi.org/10.1175/MWR-D-13-00291.1>, 2014.
- 900 Chen, F. and Dudhia, J.: Coupling an advanced land-surface/hydrology model with the Penn State/NCAR MM5 modeling system. Part I: model description and implementation. *Monthly Weather Review*, 129, 569–585, 2001.
- Chu, K., Xiao, Q. and Liu, C.: Experiments of the WRF three-/four-dimensional variational (3/4DVAR) data assimilation in the forecasting of Antarctic cyclones. *Meteorology and Atmospheric Physics*, 120, 145–156. <https://doi.org/10.1007/s00703-013-0243-y>, 2013.
- 905 Collier, C. G. “Applications of weather radar systems,” A guide to uses of radar data in meteorology and hydrology. Wiley-Praxis, ISBN 0-7458-0510-8, Chichester, UK, 1996.
- Courtier, P., Thépaut, J.-N. and Hollingsworth, A.: A strategy for operational implementation of 4D-Var, using an incremental approach. *Quarterly Journal of the Royal Meteorological Society*, 120, 1367–1387, 1994.
- 910 Dowell, D. C., Wicker, L. J., and Snyder, C.: Ensemble Kalman filter assimilation of radar observations of the 8 May 2003 Oklahoma City supercell: Influences of reflectivity observations on storm-scale analyses. *Mon. Wea. Rev.*, 139, 272–294, 2011.
- [Federico, S., Torcasio, R. C., Avolio, E., Caumont, O., Montopoli, M., Baldini, L., Vulpiani, G., and Dietrich, S.: The impact of lightning and radar reflectivity factor data assimilation on the very short-term rainfall forecasts of RAMS@ISAC: application to two case studies in Italy. *Nat. Hazards Earth Syst. Sci.*, 19, 1839–1864, <https://doi.org/10.5194/nhess-19-1839-2019>, 2019.](https://doi.org/10.5194/nhess-19-1839-2019)
- 915 [Ferretti, R., Lombardi, A., Tomassetti, B., Sangelantoni, L., Colaiuda, V., Mazzarella, V., Maiello, I., Verdecchia, M., and Redaelli, G.: A meteorological–hydrological regional ensemble forecast for an early-warning system over small Apennine catchments in Central Italy. *Hydrol. Earth Syst. Sci.*, 24, 3135–3156, <https://doi.org/10.5194/hess-24-3135-2020>, 2020.](https://doi.org/10.5194/hess-24-3135-2020)
- 920 [Ferretti, R., Pichelli, E., Gentile, S., Maiello, I., Cimini, D., Davolio, S., Miglietta, M.M., Panegrossi, G., Baldini, L., Pasi, F., Marzano, F.S., Zinzi, A., Mariani, S., Casaioli, M., Bartolini, G., Loglisci, N., Montani, A., Marsigli, C., Manzato, A., Pucillo, A., Ferrario, M.E., Colaiuda, V. and Rotunno, R.: Overview of the first HyMeX Special Observation Period over Italy: observations and model results. *Hydrology and Earth System Sciences*, 18, 1953–1977. <https://doi.org/10.5194/hess-18-1953-2014>, 2014.](https://doi.org/10.5194/hess-18-1953-2014)

ha formattato: Inglese (Regno Unito)

Gao, J., and Stensrud, D. J.: Assimilation of Reflectivity Data in a Convective-Scale, Cycled 3DVAR Framework with Hydrometeor Classification. *J. Atmos. Sci.*, 69, 1054–1065, <https://doi.org/10.1175/JAS-D-11-0162.1>, 2012.

Gao, J.-D., Xue, M., Brewster, K., and Droegemeier, K. K.: A three-dimensional variational data analysis method with recursive filter for Doppler radars. *J. Atmos. Oceanic Technol.*, 21, 457–469, 2004.

930 [Gastaldo, T., Poli, V., Marsigli, C., Cesari, D., Alberoni, P., Paccagnella, T.: Assimilation of radar reflectivity volumes in a pre-operational framework. *Q J R Meteorol Soc.*, 1–24. <https://doi.org/10.1002/qj.3957>, 2021.](#)

Gastaldo, T., Poli, V., Marsigli, C., Alberoni, P. P., and Paccagnella, T.: Data assimilation of radar reflectivity volumes in a LETKF scheme. *Nonlin. Processes Geophys.*, 25, 747–764, <https://doi.org/10.5194/npg-25-747-2018>, 2018.

935 Gilmore, M. S., Straka, J. M., and Rasmussen, E. N.: Precipitation and evolution sensitivity in simulated deep convective storms: Comparisons between liquid-only and simple ice and liquid phase microphysics. *Mon. Wea. Rev.*, 132, 1897–1916, 2004.

Giorgi, F., Im, E.-S., Coppola, E., Diffenbaugh, N. S., Gao, X. J., Mariotti, L., and Shi, Y.: Higher Hydroclimatic Intensity with Global Warming. *J. Climate*, 24, 5309–5324, <https://doi.org/10.1175/2011JCLI3979.1>, 2011.

Giorgi, F.: Climate change hot-spots. *Geophys. Res. Lett.*, 33, L08707, doi:10.1029/2006GL025734, 2006.

940 Gustafsson, N., and Coauthors: Survey of data assimilation methods for convective-scale numerical weather prediction at operational centres. *Quart. J. Roy. Meteor. Soc.*, 144, 1218–1256, <https://doi.org/10.1002/qj.3179>, 2018.

Ha, J., Kim, H. and Lee, D.: Observation and numerical simulations with radar and surface data assimilation for heavy rainfall over central Korea. *Adv. Atmos. Sci.* 28, 573–590. <https://doi.org/10.1007/s00376-010-0035-y>, 2011

945 [Hanachi, C.; Bénaben, F.; Charoy, F. \(Eds.\) *The Dewetra Platform: A Multi-perspective Architecture for Risk Management during Emergencies. In Information Systems for Crisis Response and Management in Mediterranean Countries; Springer International Publishing: Cham, Switzerland, pp. 165–177, 2014.*](#)

Honda, Y., Nishijima, M., Koizumi, K., Ohta, Y., Tamiya, K., Kawabata, T., and Tsuyuki, T.: A pre-operational variational data assimilation system for a non-hydrostatic model at the Japan Meteorological Agency: Formulation and preliminary results. *Quart. J. Roy. Meteor. Soc.*, 131, 3465–3475, 2005.

950 Hong, S.Y. and Lim, J.O.J.: The WRF single-moment 6-class microphysics scheme (WSM6). *Asia-Pacific Journal of Atmospheric Sciences*, 42(2), pp.129-151, 2006.

Huang, X.Y., Xiao, Q., Barker, D.M., Zhang, X., Michalakes, J., Huang, W., Henderson, T., Bray, J., Chen, Y., Ma, Z., Dudhia, J., Guo, Y., Zhang, X., Won, D.J., Lin, H.C., and Kuo, Y.H.: Four-Dimensional Variational Data Assimilation for WRF: Formulation and Preliminary Results. *Mon. Wea. Rev.*, 137, 299–314, 2009.

955 Janjić, Z. I.: The Step-Mountain Eta Coordinate Model: Further Developments of the Convection, Viscous Sublayer, and Turbulence Closure Schemes. *Mon. Wea. Rev.*, 122, 927–945, [https://doi.org/10.1175/1520-0493\(1994\)122<0927:TSMECM>2.0.CO;2](https://doi.org/10.1175/1520-0493(1994)122<0927:TSMECM>2.0.CO;2), 1994.

Jones, P. W.: First- and Second-Order Conservative Remapping Schemes for Grids in Spherical Coordinates, *Mon. Weather Rev.*, 127, 2204–2210, 1999.

ha formattato: Francese (Francia)

- 960 Lagasio, M., Silvestro, F., Campo, L., and Parodi, A.: Predictive Capability of a High-Resolution Hydrometeorological Forecasting Framework Coupling WRF Cycling 3DVAR and Continuum. *J. Hydrometeor.*, 20, 1307–1337, <https://doi.org/10.1175/JHM-D-18-0219.1>, 2019.
- Lee, J.-H., Lee, H.-H., Choi, Y., Kim, H.-W. and Lee, D.-K.: Radar data assimilation for the simulation of mesoscale convective systems. *Advances in Atmospheric Sciences*, 27, 1025–1042. <https://doi.org/10.1007/s00376-010-91628>, 2010.
- 965 Lee, J.-W.; Min, K.-H.; Lee, Y.-H.; Lee, G.: X-Net-Based Radar Data Assimilation Study over the Seoul Metropolitan Area. *Remote Sens.*, 12, 893, 2020.
- [Lee, Ji-Won; Min, Ki-Hong; Lee, Young-Hee; Lee, GyuWon:X-Net-Based Radar Data Assimilation Study over the Seoul Metropolitan Area. Remote Sens. 12, no. 5: 893. https://doi.org/10.3390/rs12050893,2020.](https://doi.org/10.3390/rs12050893)
- Lin, Y.-L., Farley, R. D., and Orville, H. D.: Bulk parameterization of the snow field in a cloud model. *J. Climate Appl. Meteor.*, 22, 1065–1092, 1983.
- 970 Liu ZQ, Rabier F.: The potential of high-density observations for numerical weather prediction: A study with simulated observations. *Quarterly Journal of the Royal Meteorological Society* 129: 3013–3035, <https://doi.org/10.1256/qj.02.170>, 2003.
- Llasat M.C., Llasat-Botija M., Prat M.A., Porcu F., Price C., Mugnai A., Lagouvardos K., Kotroni V., Katsanos D., Michaelides S., Yair Y., Savvidou K., Nicolaides K.: High-impact floods and flash floods in Mediterranean countries: the FLASH preliminary database. *Adv Geosci* 23:47–55. <https://doi.org/10.5194/adgeo-23-47-2010>, 2010
- 975 Maiello, I., Ferretti, R., Gentile, S., Montopoli, M., Picciotti, E., Marzano, F.S. and Faccani, C.: Impact of radar data assimilation for the simulation of a heavy rainfall case in central Italy using WRF–3DVAR. *Atmospheric Measurement Techniques*, 7, 2919–2935. <https://doi.org/10.5194/amt-7-2919-2014>, 2014.
- Maiello, I., Gentile, S., Ferretti, R., Baldini, L., Roberto, N., Picciotti, E., Alberoni, P.P. and Marzano, F.S.: Impact of multiple radar reflectivity data assimilation on the numerical simulation of a flash flood event during the HyMeX campaign. *Hydrology and Earth System Sciences*, 21, 5459–5476. <https://doi.org/10.5194/hess-21-5459-2017>, 2017.
- 980 [Manual on the global observing system volume I \(annex V to the WMO technical regulations\) global aspects 2003 edition", WMO-No. 544., 2003. International Meteorological Vocabulary, Geneva, no. 182, 1992a.](https://doi.org/10.5194/hess-21-5459-2017)
- Mason, I.: A model for assessment of weather forecasts. *Aust. Meteor. Mag.*, 30, 291–303, 1982.
- 985 [Mass, C. F., Ovens, D., Westrick, K., and Colle, B. A.: DOES INCREASING HORIZONTAL RESOLUTION PRODUCE MORE SKILLFUL FORECASTS?. Bulletin of the American Meteorological Society 83, 3, 407-430. available from: <https://doi.org/10.1175/1520-0477\(2002\)083<0407:DIHRPM>2.3.CO;2>, 2002.](https://doi.org/10.1175/1520-0477(2002)083<0407:DIHRPM>2.3.CO;2)
- Mazzarella, V, Maiello, I, Ferretti, R, et al. Reflectivity and velocity radar data assimilation for two flash flood events in central Italy: A comparison between 3D and 4D variational methods. *Q J R Meteorol Soc.* 2020; 146: 348– 366. <https://doi.org/10.1002/qj.3679>, 2020.
- 990 Mazzarella, V., Maiello, I., Capozzi, V., Budillon, G., and Ferretti, R.: Comparison between 3D-Var and 4D-Var data assimilation methods for the simulation of a heavy rainfall case in central Italy, *Adv. Sci. Res.*, 14, 271–278, <https://doi.org/10.5194/asr-14-271-2017>, 2017.

- 995 [Min, K.-H.; Kim, Y.-H. Assimilation of null-echo from radar data for QPF. In Proceedings of the 17th WRF Users' Workshop, Boulder, CO, USA, 27 June–1 July 2016.](#)
- Mlawer, E.J., Taubman, S.J., Brown, P.D., Iacono, M.J. and Clough, S.A.: Radiative transfer for inhomogeneous atmospheres: RRTM, a validated correlated-k model for the longwave. *Journal of Geophysical Research: Atmospheres*, 102, 16663–16682, 1997.
- Parrish, D.F.; Derber, J.C.: The National Meteorological Center's spectral statistical-interpolation analysis system. *Mon. Weather Rev.* 1992, 120, 1747–1763, 1992.
- 1000 Petracca, M.; D'Adderio, L.P.; Porcù, F.; Vulpiani, G.; Sebastianelli, S.; Puca, S. Validation of GPM Dual-Frequency Precipitation Radar (DPR) Rainfall Products over Italy. *J. Hydrometeorol.* 2018, 19, 907–925.
- Roberts, N.M. and Lean, H.W.: Scale-selective verification of rainfall accumulations from high-resolution forecasts of convective events. *Monthly Weather Review*, 136, 78–97, 2008.
- 1005 Roberts, N.M.: The impact of a change to the use of the convection scheme to high-resolution simulations of convective events. Met Office Forecasting Research Technical Report number: 407, 2003.
- Romine, G.S., Schwartz, C.S., Snyder, C., Anderson, J.L. and Weisman, M.L.: Model bias in a continuously cycled assimilation system and its influence on convection-permitting forecasts. *Monthly Weather Review*, 141, 1263–1284, 2013.
- 1010 [Schwitalla, T. and Wulfmeyer, V.: Radar data assimilation experiments using the IPM WRF Rapid Update Cycle. Meteorologische Zeitschrift, pp.79-102, 2014.](#)
- Skamarock, W. C., Klemp, J. B., Dudhia, J., Gill, D. O., Liu, Z., Berner, J., ... Huang, X. -yu.: A Description of the Advanced Research WRF Model Version 4 (No. NCAR/TN-556+STR). doi:10.5065/1dfh-6p97, 2019.
- Smith, P. L., Myers, C. G. and Orville, H. D.: Radar reflectivity factor calculations in numerical cloud models using bulk parameterization of precipitation processes. *J. Appl. Meteor.*, 14, 1156–1165, [https://doi.org/10.1175/1520-0450\(1975\)014<1156:RRFCIN>2.0.CO;2](https://doi.org/10.1175/1520-0450(1975)014<1156:RRFCIN>2.0.CO;2), 1975.
- 1015 Smith, T. L., Benjamin, S. G., Brown, J. M., Weygandt, S., Smirnova, T., and Schwartz, B.: Convection forecasts from the hourly updated, 3-km High Resolution Rapid Refresh (HRRR) model. Preprints, 24th Conf. on Severe Local Storms, Savannah, GA, Amer. Meteor. Soc., 11.1, 2008.
- Stanešić, A. and Brewster, K.A.: Impact of radar data assimilation on the numerical simulation of a severe storm in Croatia. *Meteorologische Zeitschrift*, 25(1), p.37., 2016.
- 1020 [Stensrud, D. J., Xue, M., Wicker, L. J., Kelleher, K. E., Foster, M. P., Schaefer, J. T., Schneider, R. S., Benjamin, S. G., Weygandt, S. S., Ferree, J. T., and Tuell, J. P.: Convective-Scale Warn-on-Forecast System. Bulletin of the American Meteorological Society 90, 10, 1487-1500, available from: < <https://doi.org/10.1175/2009BAMS2795.1>>, 2009.](#)
- Stephan, K., Klink, S., and Schraff, C.: Assimilation of radar derived rain rates into the convective scale model COSMO-DE at DWD. *Quart. J. Roy. Meteor. Soc.*, 134, 1315–1326, 2008.
- 1025 Storer, N. L., Gill, P. G., and Williams, P. D.: Multi-Model ensemble predictions of aviation turbulence, *Meteorol Appl.*, 26, 416–428, <https://doi.org/10.1002/met.1772>, 2019.

- Sun, J. and Wang, H.: Radar data assimilation with WRF 4DVar. Part II: comparison with 3D-Var for a squall line over the US Great Plains. *Monthly Weather Review*, 11, 2245–2264. <https://doi.org/10.1175/MWR-D-12-00169.1>, 2013.
- 1030 Sun, J., Wang, H., Tong, W., Zhang, Y., Lin, C.-Y. and Xu, D.: Comparison of the impacts of momentum control variables on high-resolution variational data assimilation and precipitation forecasting. *Mon. Wea. Rev.* 144, 149–169, 2016.
- Swets, J. A.: The relative operating characteristic in psychology. *Science*, 182, 990–1000, 1973.
- Tong, W., Li, G., Sun, J., Tang, X., and Zhang, Y.: Design Strategies of an Hourly Update 3DVAR Data Assimilation System for Improved Convective Forecasting. *Wea. Forecasting*, 31, 1673–1695, <https://doi.org/10.1175/WAF-D-16-0041.1>, 2016.
- 1035 [Torcasio, R.C.; Federico, S.; Comellas Prat, A.; Panegrossi, G.; D’Adderio, L.P.; Dietrich, S. Impact of Lightning Data Assimilation on the Short-Term Precipitation Forecast over Central Mediterranean Sea. *Remote Sens.*, 13, 682. <https://doi.org/10.3390/rs13040682>, 2021.](https://doi.org/10.3390/rs13040682)
- Vulpiani, G., and Coauthors: The Italian radar network within the national early-warning system for multi-risks management. *Proc. of Fifth European Conference on Radar in Meteorology and Hydrology*, Helsinki, Finland, ERAD, 2008.
- 1040 Wang, H., Huang, X. Y. and Sun, J.: A comparison between the 3/4DVAR and hybrid ensemble-VAR techniques for radar data assimilation. In: 35th Conference on Radar Meteorology. Breckenridge, 2013b.
- Wang, H., Sun, J., Fan, S., and Huang, X.: Indirect Assimilation of Radar Reflectivity with WRF 3D-Var and Its Impact on Prediction of Four Summertime Convective Events. *J. Appl. Meteor. Climatol.*, 52, 889–902, <https://doi.org/10.1175/JAMC-D-12-0120.1>, 2013c.
- 1045 Wang, H., Sun, J., Fan, S., and Huang, X.-Y.: Indirect assimilation of radar reflectivity with WRF 3D-Var and its impact on prediction of four summertime convective events. *J. Appl. Meteor. Climatol.*, 52, 889–902, 2013a.
- Willett, K. M., Jones, P. D., Gillett, N. P., and Thorne, P. W.: Recent changes in surface humidity: Development of the HadCRUH dataset, *J. Climate*, 21, 5364–5383, 2008.
- Xiao, Q. and Sun, J.: Multiple-radar data assimilation and short-range quantitative precipitation forecasting of a squall line observed during IHOP_2002. *Monthly Weather Review*, 135, 3381–3404, 2007.
- 1050 [Yano, J., Ziemiański, M. Z., Cullen, M., Termonia, P., Onvlee, J., Bengtsson, L., Carrassi, A., Davy, R., Deluca, A., Gray, S. L., Homar, V., Köhler, M., Krichak, S., Michaelides, S., Phillips, V. T. J., Soares, P. M. M., and Wyszogrodzki, A. A.: Scientific Challenges of Convective-Scale Numerical Weather Prediction. *Bulletin of the American Meteorological Society* 99, 4, 699-710, available from: <https://doi.org/10.1175/BAMS-D-17-0125.1>, 2018.](https://doi.org/10.1175/BAMS-D-17-0125.1)