

Figure S1. (left) FFWC's food forecast issued at Aug-16, 2017, (middle) Sentinel-1 based satellite flood inundation, and (right) Worldpop's population per pixel data

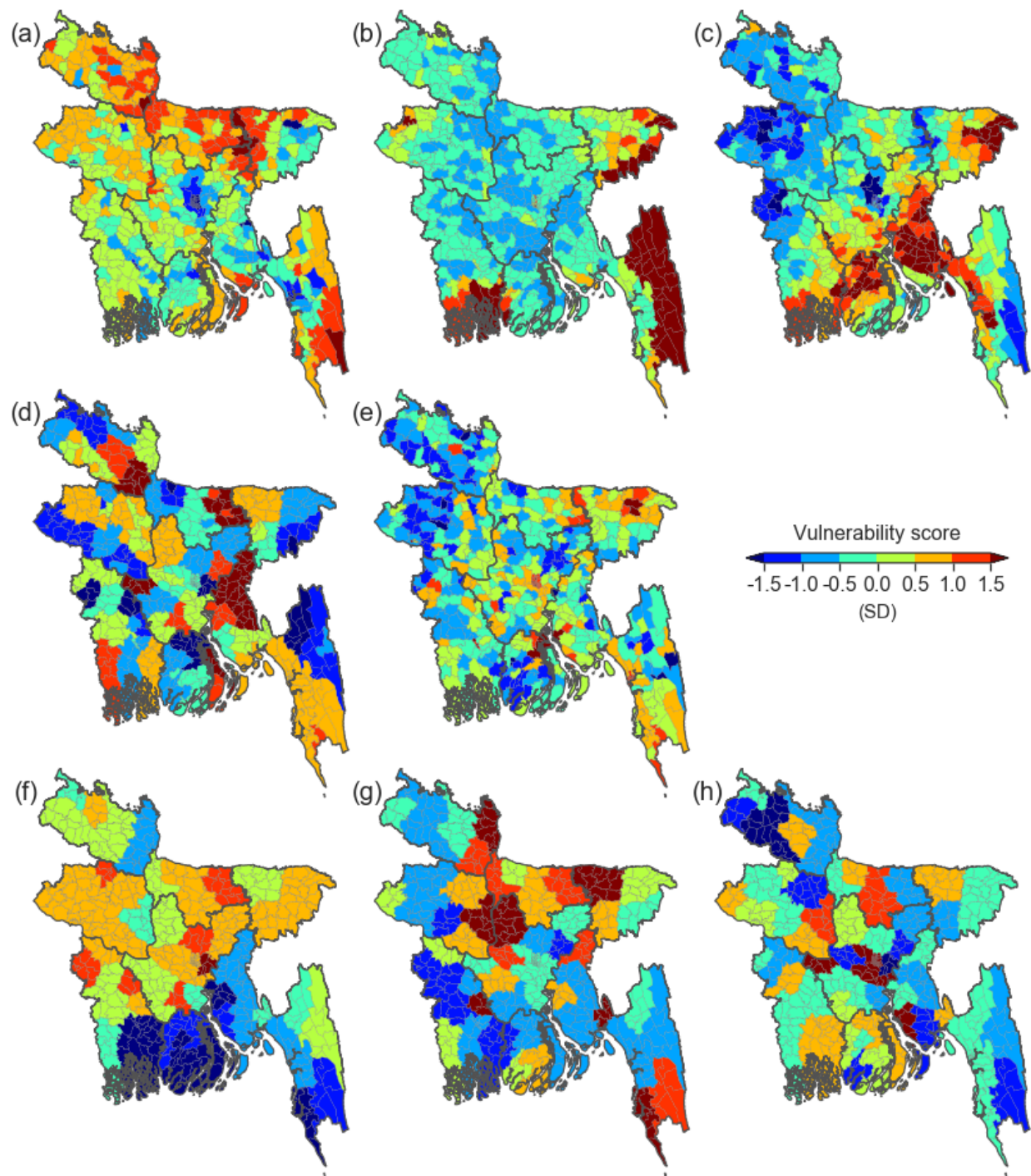


Figure S2. The vulnerability scores of the selected principal components in (a-c) socio-economic, (d and e) health, and (f-h) coping capacity domains.

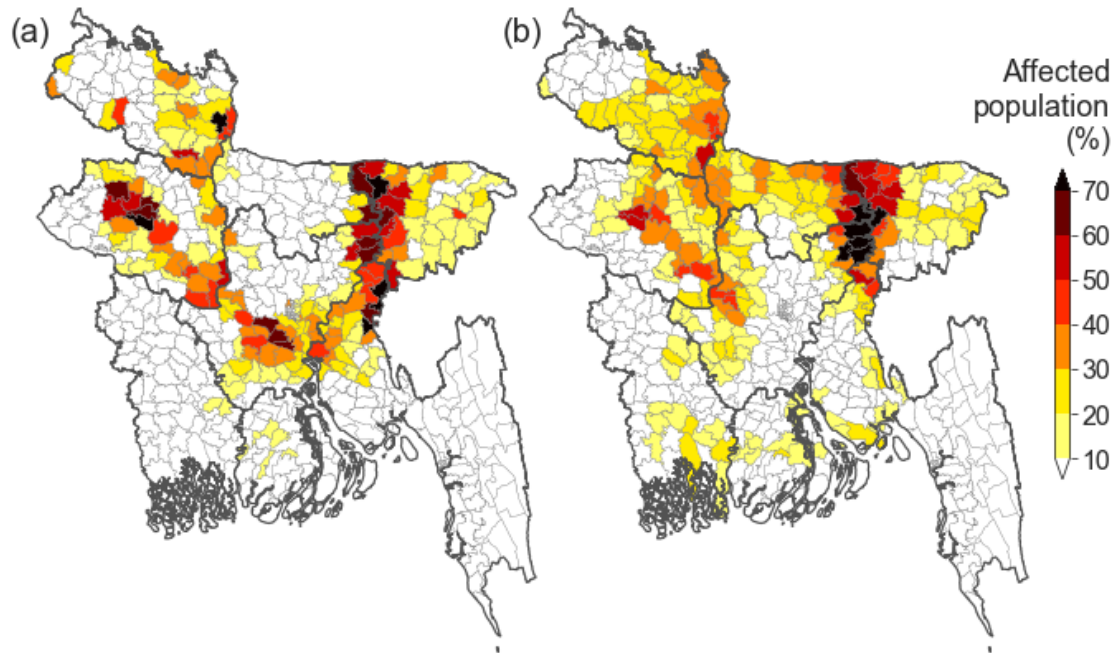


Figure S3. Percentage of affected population by the August 2017 flood event estimated from (a) flood forecast and (b) satellite inundation

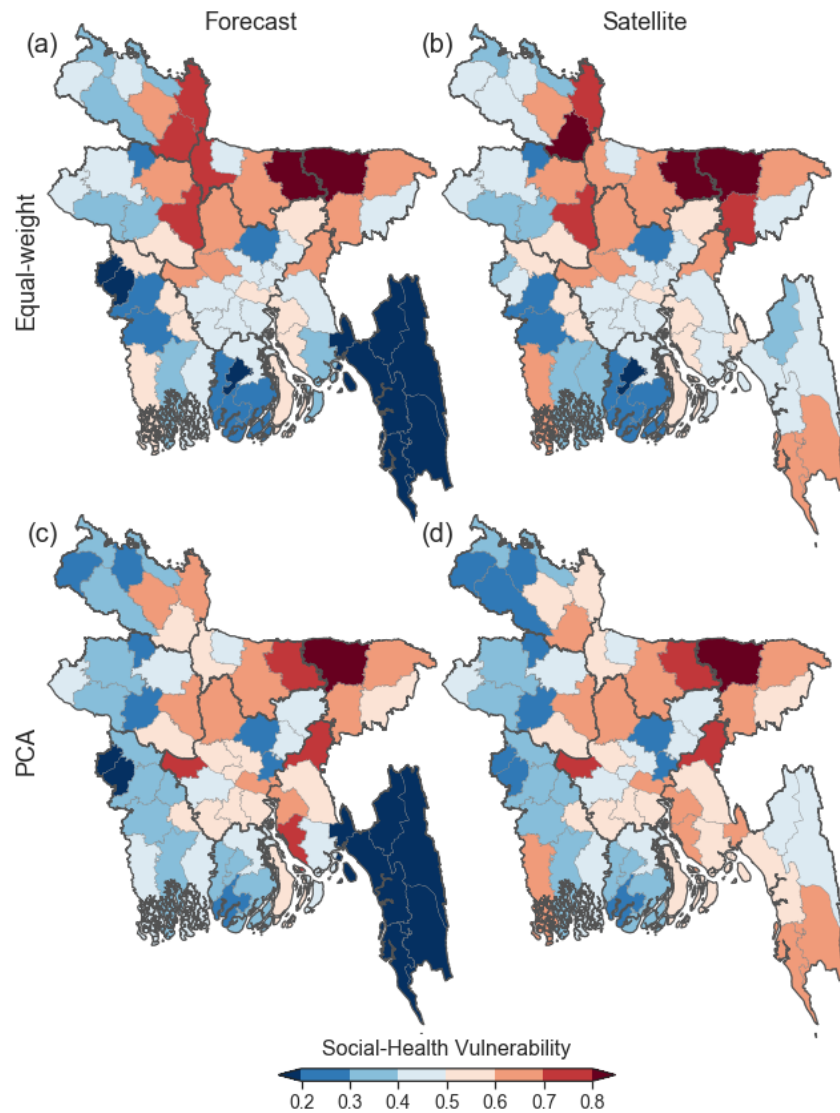


Figure S4. District-level social-health vulnerability (SHV). The top and bottom panels represent the FHV determined by the equal weight and PCA approaches, respectively, while the left and right panels represent the flood forecast and satellite inundation-driven SHV, respectively.