

1 The mud volcanoes at Santa Barbara and Aragona (Sicily, 2 Italy): A contribution to risk assessment

3
4 Alessandro Gattuso ^{1*}, Francesco Italiano¹, Giorgio Capasso¹, Antonino D'Alessandro², Fausto
5 Grassa¹, Antonino Fabio Pisciotta¹, Davide Romano^{1,3}.

6
7 1 Istituto Nazionale di Geofisica e Vulcanologia, Sede Operativa di Milazzo (ME), via dei Mille 44-46,
8 98057 Milazzo - Sezione INGV di Palermo, via Ugo La Malfa 153, 90146 Palermo.

9 2 Istituto Nazionale di Geofisica e Vulcanologia, Osservatorio Nazionale Terremoti, Via Vigna Murata 605,
10 00143 Roma Italy

11 3 Dipartimento di Scienze Matematiche e Informatiche, Scienze Fisiche e Scienze della Terra (MIFT),
12 Università di Messina, Viale Stagno D'Alcontres, 98166 Messina, Italy

13
14 *Correspondence to: Alessandro Gattuso (alessandro.gattuso@ingv.it)

15 16 Abstract

17 The Santa Barbara and Aragona areas are affected by mud volcanism (MV) phenomena, consisting of continuous or
18 intermittent emission of mud, water, and gases. This activity could be interrupted by paroxysmal events, with an
19 eruptive column composed mainly of clay material, water, and gases. They are the most hazardous phenomena and,
20 nowadays, it is impossible to define the potential parameters for modeling the phenomenon. In 2017, two Digital
21 Surface Models (DSM's) were performed by drone in both areas, thus allowing the mapping of the emission zones and
22 the covered areas by the previous events.

23 Detailed information about past paroxysms was obtained from historical sources and, with the analysis of the 2017
24 DSMs, a preliminary hazard assessment was carried out, for the first time at two sites. Two potentially hazardous
25 paroxysm surfaces of 0.12 km² and 0.20 km² for Santa Barbara and Aragona respectively, were defined. In May 2020,
26 at Aragona, a new paroxysm covered a surface of 8,721 m². After this, a new detailed DSM was collected with the aim
27 to make a comparison with the 2017 one. Since 2017, a seismic station was installed in Santa Barbara. From preliminary
28 results, both seismic events and ambient noise showed a frequency of 5-10 Hz.

29
30
31
32
33
34
35
36
37
38
39
40
41
42
43
44
45
46 Keywords: Mud Volcanism; Macalube; Paroxysm; Hazard assessment; Risk; monitoring.

49 **1.0 Introduction**

50 The mud volcanoes (MV) activity is a typical expression of the sedimentary volcanism mainly occurring in the
51 compressive tectonic regimes, along discontinuities for the presence at depth, of under pressure gases or by diapirism
52 phenomena. It consists mainly of a slow and continuous/intermittent uprising of mud, composed of a mixture of saline
53 water, clay and gases (essentially methane and heavy hydrocarbons), from petroleum seepage (natural gas and oil) at
54 depth, to the Earth's surface (Mazzini et al., 2017). In some cases, a violent and instantaneous explosion ("paroxysm") of
55 mud, water and gases could interrupt this activity.

56 Thousands of mud volcanoes occur globally and they develop in greater numbers in offshore regions than on land (Higgins
57 and Saunders, 1974; Guliyev and Feizullayev, 1998; Milkov, 2000; Dimitrov, 2002; Kopf, 2002; Deville, 2009).
58 In the world, within the 42 geographical areas, as well as Alpine-Himalayan, Pacific and Central Asian folding zones, in
59 the deep-water zones of the Caspian, Black and Mediterranean seas and on the passive margins of the continents, a total
60 of 2508 mud volcanoes and mud volcanic manifestations are present (Aliyev et al., 2015).

61 The largest number of mud volcanoes, including the biggest, most frequently erupting ones and in general, all their known
62 types are located in Eastern Azerbaijan and the adjacent water area of the South Caspian. It is in accordance with these
63 factors, that Azerbaijan region, is considered to be the "Motherland of mud volcanoes". In total, there are 353 mud
64 volcanoes, 199 of which are terrestrial. A complete catalogue of the paroxysm events from 1810 to 2018, for this region,
65 is reported in Baloglanov et al., 2018.

66 According to a detailed study performed by (Mellors et al., 2007), for the mud volcanoes in Azerbaijan, the temporal
67 correlation between earthquakes and eruptions is most pronounced for nearby earthquakes (within 100 km) and with
68 intensities of Mercalli 6 or greater. According to (Bonini et al., 2009), mud volcanoes of the Pede-Apennine margin in
69 Italy, are intimately connected with rising fluids trapped in the core of anticlines associated with the seismogenic Pede-
70 Apennine thrusts.

71 Monitoring the activity of the mud volcanoes, in terms of gas outflow, could be helpful to predict a future paroxysmal
72 event. From geochemical point of view, the monitoring is generally carried out by capturing gaseous emissions at the
73 emitting conduits (Kopf et al., 2010). Sciarra et al., 2016, monitoring the soil gas concentration (222Rn, CO2, CH4), have
74 carried different geochemical surveys in 2006 in the Sidoarjo district (Eastern Java Island, Indonesia). However, this
75 approach is not always effective and applicable, due to logistic difficulties, which make this kind of measurement
76 infeasible and expensive in many contexts. For this reason, several multidisciplinary monitoring approaches have been
77 proposed in different MVs in the world. More recently, Mazzini et al., 2021, have estimated the total CH4 emissions from
78 Lusi using both ground-based and for, the first time, satellite (TROPOMI) measurements; CO2 emission is additionally
79 measured by ground-based techniques. In May and October 2011, it was documented the activity with high-resolution
80 time-lapse photography, open-path FTIR, and thermal infrared imagery (Vanderkluyesen et al., 2014).

81 In areas characterized by MVs the gas "bubbling" phenomena can be effectively recorded by geophysical monitoring
82 system, as a local seismic network. Low permeability of clays in mud-volcano areas (Kopf, 2002) suggests that, in the
83 lack of large mud outflow (typical of quiescent phases), gas propagation from the reservoir mainly occurs by the uprising
84 of gas bubbles (Etiopio and Martinelli, 2002; Albarello, 2005). Recent researches (Albarello et al., 2012) showed that
85 seismic monitoring could provide useful signals to characterize the activity of mud volcanoes. The seismic signals
86 recorded on the Dashgil mud volcano allowed to model of several transients as a surface effect of resonant gas bubbles
87 in a shallow basin just below the volcano (Albarello et al., 2012). The interpretation of transient events in seismic tremor
88 in terms of bubble resonance suggests a new approach to stimulate gas emissions in the mud volcano.

89 In Italy, the mud volcanoes are clustered in three main geographical zones: in the northern Apennines (mainly in the
90 Emilia Romagna Region); in central Apennines (Marche and Abruzzo Regions); in the southern Apennines (in Basilicata,
91 Calabria and Campania Regions) and in Sicily where 13 mud volcanoes areas are present both in central and western
92 sectors. The sizes and shapes of the Italian mud volcanoes vary considerably. According to (Martinelli et al., 2004), only
93 a small proportion (20%) can be described as 'large' with a surface area >500 m², while only 5% exceed 2 m in height.

94 In Sicily, mud volcanoes are mostly located within Caltanissetta and Agrigento Provinces (S. Barbara and Aragona
95 locations respectively). The name of these phenomena is known as "macalube" (or macalube), which derives from Arabic
96 and it means, "overturning". In some cases, a violent and instantaneous explosion called "paroxysm" could occur and,
97 the erupted material, consisting of mud breccias composed of a mud matrix with chaotically distributed angular to rounded
98 rock clasts from a few millimeters to meters diameter, could reach a long distance from the emission point. The volume
99 of the erupted materials is generally in the order of tens cubic meters and covers a big portion of the surface. On 27
100 September 2014 at Macalube of Aragona two kids died covered by thick erupted mud deposits, during a violent

Eliminato: in

Eliminato: s,

Eliminato: ing

Eliminato: or

Formattato: Tipo di carattere: Corsivo

Eliminato: shallow fluid-gas-mud emission at the Earth's surface. The uprising of mud, composed of a mixture of saline cold water, clay and gases (essentially methane), from depth to the Earth's surface, generally occurs along tectonic discontinuities as a result of the presence of under pressure gases or by diapirism phenomena

Eliminato: ¶

Eliminato: s

Eliminato: M

Formattato: Non Evidenziato

Eliminato: indirect approaches,

Spostato (inserimento) [1]

Eliminato: Multidisciplinary monitoring approaches have been used in different MVs in the world; more recently at Lusi Mud Volcano during and after the 2006 eruption. The last few years of activity have been characterized by periodic short-lived eruptive bursts. In May and October 2011, it was documented the activity with high-resolution time-lapse photography, open-path FTIR, and thermal infrared imagery (Vanderkluyesen et al., 2014). Different geochemical surveys have been carried in 2006 by Sciarra et al., 2016, monitoring the soil gas concentration (222Rn, CO2, CH4) in the Sidoarjo district (Eastern Java Island, Indonesia).

Eliminato: Mazzini et al., 2021, have estimated the total CH4 emissions from Lusi using both ground-based and for, the first time, satellite (TROPOMI) measurements; CO2 emission is additionally measured by ground-based techniques. ¶ based on vibration monitoring, have been proposed (Albarello et al., 2012).

Eliminato: sedimentary volcanism

Eliminato: it is known that

Eliminato: Bubbling plays an important role in mud volcanism.

Spostato in su [1]: Multidisciplinary monitoring approaches have been used in different MVs in the world; more recently at Lusi Mud Volcano during and after the 2006 eruption. The last few years of activity have been characterized by periodic short-lived eruptive bursts. In May and October 2011, it was documented the activity with high-resolution time-lapse photography, open-path FTIR, and thermal infrared imagery (Vanderkluyesen et al., 2014). Different geochemical surveys have been carried in 2006 by Sciarra et al., 2016, monitoring the soil gas concentration (222Rn, CO2, CH4) in the Sidoarjo district (Eastern Java Island, Indonesia). ¶ Mazzini et al., 2021, have estimated the total CH4 emissions from Lusi using both ground-based and for, the first time, satellite (TROPOMI) measurements; CO2 emission is additionally measured by ground-based techniques. ¶

Formattato: Evidenziato

147 paroxysm. At Santa Barbara village, the last paroxysmal episode occurred in August 2008, causing significant damages
148 to houses, roads, electric and water pipelines.

Eliminato: important

149 The majority of the mud eruptions occurred in the absence of any earthquake, suggesting that mud volcanoes may erupt
150 in response to a seismic input only if the internal fluid pressure approaches the lithostatic one. A dormancy time is needed
151 for triggering an eruption, related to the production rate of the driving gas to overcome the permeability of the system at
152 depth (Bonini et al., 2009).

153 In this paper, we have gathered some historical information about the pre and post-paroxysmal events that occurred in the
154 past at both study areas as a starting point for a correct hazard assessment.

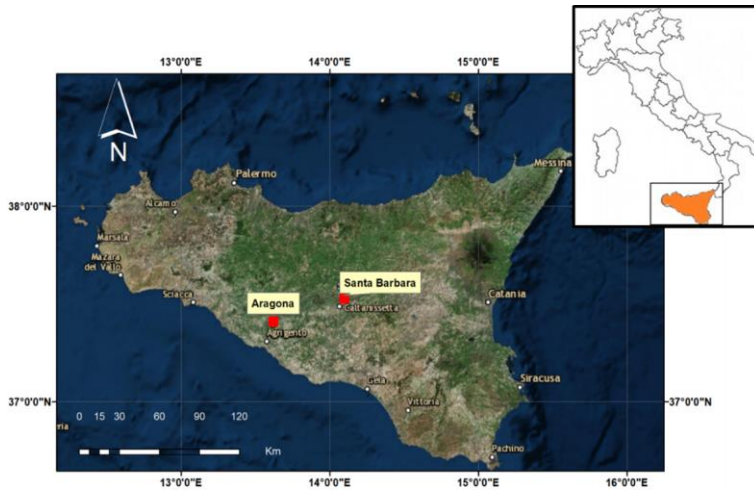
155 In October 2017, a seismic monitoring station was installed at Santa Barbara, in order to collect some seismic information
156 of the site. Moreover, a number of drone surveys were performed both at Santa Barbara and Aragona. Finally, at Aragona
157 a drone survey has been carried out a few days after the last paroxysm event occurred on 19th May 2020, with the aim of
158 mapping the surface of the erupted material and estimating volume and thickness.

159 Moreover, a Digital Surface Model (DSM) has been elaborated and the emission points at the Earth's surface were
160 mapped. Based on the DSM analysis and our historical information, two main hazardous paroxysm areas at Santa Barbara
161 and Aragona have been elaborated, in this paper, for the first time.

162
163

164 2.0 The study areas

165 Santa Barbara and Aragona MVs areas are located in the central and south-west sector of the Sicily Region respectively,
166 inside the Caltanissetta Basin (locations in Fig. 1). These two areas, consisting of Late Miocene to Pleistocene
167 accretionary prism, have been formed simultaneously with the Tyrrhenian Sea opening, during the convergence between
168 the African and Eurasian plates in the Neogene-Quaternary (Catalano et al., 2000b), reaching a deposit thickness of the
169 order of some km.



170
171 *Fig.1. Location of the two investigated mud volcanoes areas: Santa Barbara (Caltanissetta Province) and Aragona*
172 *(Agrigento Province) (image from ESRI).*

174 At Santa Barbara, the mud volcanism is located eastward of the Caltanissetta town, near the “Santa Barbara village”. The
175 composition of its deposits consists essentially of clay, clayey- marly and sandy composed. Around the main mud
176 emission, in the northern sector, different residential buildings are present which were built mainly in the 60’s while, in
177 the southern sector, twenty mono-familiar houses (Fig.2a). Several public facilities are present at the western side of the
178 mud volcano and, electric pipelines, roads and services for about 4,000 resident people should be considered for a correct
179 risk assessment of the entire area.

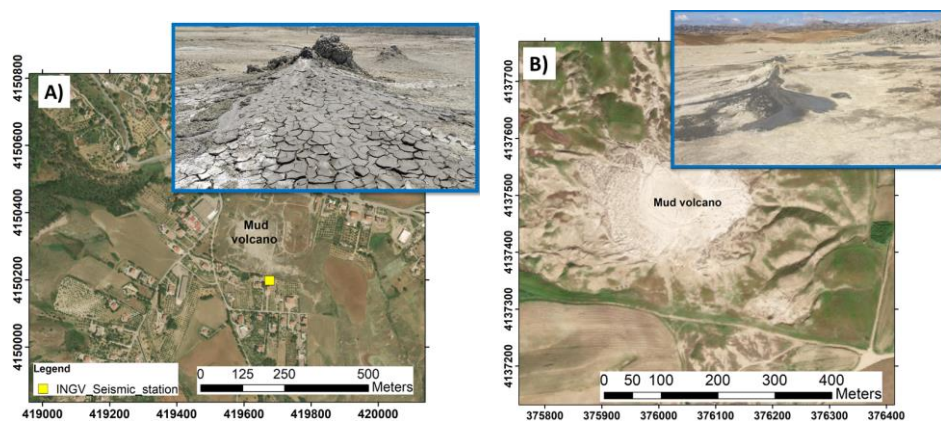


Fig 2. Location of the two mud volcano areas: Santa Barbara (A) and Aragona (B). Image of ArcGis 10.5, ESRI.

The Aragona MV area is located about 3.5 km from the town, in the SW direction. The *Macalube of Aragona* MV area is a beautiful natural touristic attraction over time and in 1995 has been established Integral Natural Reserve, nowadays managed by Legambiente. The geology of the entire area is mainly characterized by clay deposits, clayey-sands and marls, alternating with sandstone that favour low-relief geomorphology (Fig.2b). No residential buildings and public facilities are present around the main mud emission area but the site represents a naturalistic attraction for tourists. After the 2014 paroxysm, where two kids died, the entire area was closed.

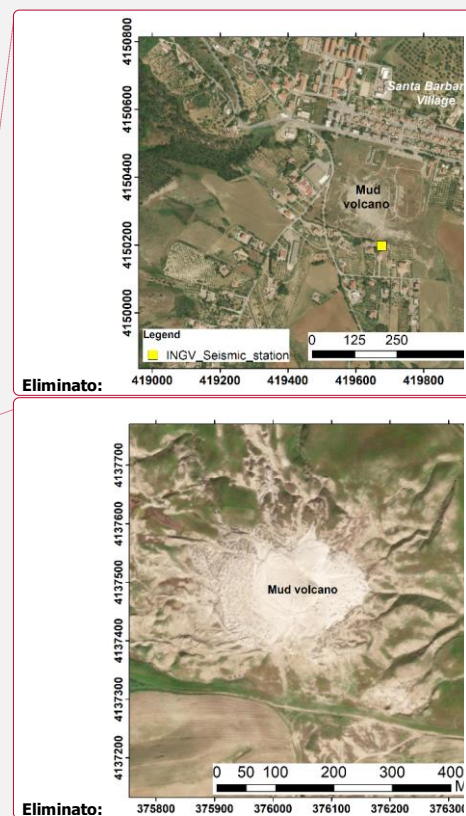
3. The historical background: a tool for the hazard assessment

The Macalube of Aragona and Santa Barbara have been affected in the past by different paroxysmal events, characterized by violent explosions of gas and mud, which periodically cause the interruption of the normal degassing activity, with a rapid emission of considerable quantities of clayey material and ballistics, accompanied by strong rambles. The paroxysmal activity, reaching a maximum column height of about 20-30 meters is generally, determined by the accumulation and the sudden release of pressurized gases (mainly CH₄ with 95-97% vol.) at depth. The volumes of the expelled mud during these events have reached tens of thousands of cubic meters and consequently, after a paroxysmal event, a drastic variation in the morphology occurs. Sometimes, during historical paroxysmal manifestations, the emitted gas giving rise to suggestive manifestations like burning fountains (Grassa et al., 2012). However, MVs do not represent only a relevant geological phenomenon as they also act as elements of hazard. Therefore, the understanding of the occurrence of historic events, together with the intensities of the pre- and post-evidences associated with this phenomenon, could be a useful tool for the Civil Protection authorities in order to define the most probable hazard scenarios for a correct risk assessment in both study areas.

3.1 The Santa Barbara historical paroxysms

The old naturalists and geologists have described the activity of the mud volcano at Santa Barbara, since 1800, reporting some of their major paroxysmal events (Carnemolla, 2017). The first scientific document was produced in 1823 with a manuscript entitled "*Descrizione geologico-mineralogica nei dintorni di Caltanissetta*" by Gregorio Barnabà La Via, who documented one of the paroxysmal eruption reporting: "[...] on March 5th, 1823 at 5:25 PM, the wind from the north with strong and broken turbines, the sky being clear, a few dense clouds with long stripes appeared. Five earthquakes occurred in 9 seconds without damages at factories. Going to mud volcano with the Villarosa duke, Luigi Barrile and Livolsi abbot, that observed since 1818 the phenomenon, increasing up to 50 cm the width of the cracks at the macalube (that were 27 cm) and observing an increasing of the height of the mud volcano with a continuous emission of mud, water and hydrogen sulphide at 2.30 m height [...]".

The Livolsi abbot, in his study entitled "*Sul vulcano aereo di Terrapilata in Caltanissetta*" reported the description of the entire area of the mud volcano: "[...] Its surface is conical in shape, and at first glance offers the appearance of an



221 *extinct volcano [...]*. According to this manuscript, different paroxysms occurred in 1783, 1817, 1819 and 1823 (Madonia
 222 et al., 2011).
 223 The intense phenomena have occurred continuously over time, and there is evidence of a significant event that occurred
 224 between the years 1930 -40.
 225 On August 11th, 2008, near the village of Santa Barbara, a sudden emission of natural gas occurred, accompanied by the
 226 expulsion of large quantities of clayey material, gas and water, reaching a maximum height of about 30 meters. From the
 227 morning, the village was affected by intense phenomena of soil cracking causing diffuse damages to civil and industrial
 228 buildings. A general uplift of the area around the mud volcano, together with the presence of variable fractures with
 229 horizontal and vertical rejections were observed (DRPC report, 2008). During the period just before the paroxysmal event,
 230 from December 2007 to August 2008, Cigna et al., (2012) recorded up to 3–5 cm of progressive movements accumulating
 231 in the direction towards the satellite with the Satellite-based synthetic aperture radar interferometry method.
 232 As a consequence of these phenomena heavy damages to factories, roads, residential buildings and public facilities (water,
 233 gas, electricity pipelines) occurred. The Regional Department of Civil Protection forced the evacuation of several
 234 buildings both in the southern sector of the mud volcano area at a short distance (hundreds of meters) from the MVs area,
 235 as well as at a distance 2.5 km far from the main area, where, a large scale of soil deformations and fracturing occurred
 236 (DRPC, 2008).
 237 At 16.52 of the same day (11th August) a paroxysm occurred next to the Santa Barbara village, accompanied by strong
 238 rumble and by an about 30 meters column height composed mainly by clayey material, gas and water that covered in
 239 seven minutes about 12,000 m² of the area with an estimated volume of about 9,550 m³ (INGV, Report 2008). The
 240 maximum width of the deposit was 3.5 meters next to the emission points up to 30 cm in the SE direction reaching a total
 241 distance of about 136 m from the main vents. The paroxysmal event lasted several minutes and was anticipated by a
 242 telluric event (Madonia et al., 2011) that occurred a few hours before in the whole Terrapelata area and,
 243 contemporaneously, in the neighbouring area of St. Anna. According to Madonia et al., 2011, in august 2008, 5
 244 earthquakes occurred with magnitudes ranging from 1.7 to 2.4 in the radius of 10-55 km from the sites. After the end of
 245 the paroxysm, an increase in the length of the pre-existing fractures occurred. The main pre- and post-historical
 246 observations of these events are shown in table 1.
 247

248 *Table 1. Pre and post observation of the historical paroxysm events at Santa Barbara.*
 249

Pre-event observations	Paroxysm Event	Post-event observations
✓ Large scale soil fractures	1783, 1817,1819	✓ Paroxysm related to large scale fracturing
✓ five earthquakes felt by population in 9 seconds	5th March	✓ Erupted clayey material up to 2,30 meters height;
✓ Increasing of soil fractures from 27 cm to 50 cm	1823	✓ Increasing of the mud volcano surface; ✓ Water and gas bubbles with the H ₂ S presence;
11 th AUGUST 2008 – MORNING:		✓ Audible roar up to a few hundred meters; ✓ Maximum height of the column of clay material mixed with water, gas and ballistic = 30 meters;
✓ Soil displacement, decimetric to metric fracturing with damages to civil and industrial buildings, roads and electrical networks	11th August 2008	✓ Cover of 12000 m ² with a newly formed clay deposits; ✓ Volume of erupted material of about 9500 m ³ ;
✓ Uplift of the entire area;	hours:	✓ Presence of lithics with a particle size from decimeters to centimeters;
✓ Deformations up to 2.5 km far from the mud volcano.	16:52	✓ Extent of fractures about 1 km from the eruptive center;
✓ Seismic event		✓ Maximum thickness of the new erupted deposit = 3.5 meters near the mud volcanoes;

-
- ✓ Diffuse methane flux up to 85 gm² / day with a NNW-SSE direction;
 - ✓ Maximum distance reached by the erupted material towards SE direction = 136 meters.
-

250

251

252

3.2 The Aragona historical paroxysms

253

254

255

256

257

258

259

The activity of the Maccalube of Aragona, according to Greek, Roman and Arab historical evidences, has occurred at least for 2,500 years. The cosmetic and therapeutic use of the mud, emitted from these geological manifestations, has been reported by Platone, Aristotle, Diodoro Siculo and Plinio. In 1777, the first big mud eruption (today called paroxysm) has been documented by Abruzzese (1952), reporting: " [...] *In the early hours of September 29th, the inhabitants of the neighbouring felt a strong shaking of the ground and observed a copious mud flow from the craters up to different heights*".

260

261

262

263

264

265

Furthermore, the Ferrara abbot described the same paroxysm as one of the most violent eruption known: "[...] *On the September 29th they heard before a roaring noise in all the surroundings. The ground shaking around a great chasm formed up a few miles [...] an enormous column of mud rose up to almost a hundred feet high, having been abandoned by the force that pushed it upward [...] the terrible explosion lasted half an hour, then calmed down, but recovered after a few minutes and intermittently continued all day but the smoke lasted all night. In all the time of the phenomenon the very strong smell of hydrogen sulphide gas was felt at a great distance in all the surroundings.*

266

267

268

269

270

271

272

273

An unknown author reports the same eruption on 30th describing: "[...] *on September 30th 1777, after half an hour when the sun had risen, a murmur was heard in the above mentioned place, which, momentarily advancing, surpassed the roar of the strongest thunders. The earth begins to tremble, and shows the deep cracks, which widened more than usual to ten palms, the main crater, from where the clay and the murky water emerged perpetually, like a cloud of smoke, although somewhere it was flame-colored [...] this eruption lasted for half an hour, and, with a quarter-hour interval, replied three more times. The next day, the clay material emitted, however, appeared at the natural consistency, in such a way that it allowed the curious to approach the mud volcano. The clay material erupted still retained the smell of sulfur, which more penetrating was felt during the eruption.*"

274

275

276

277

278

279

280

281

282

On October 19th, 1936, at 5, some of Aragona and Giancaxio neighbor villages heard two rumbles, like thunders, which had followed one another in a short period of time. A violent explosion destroyed the central part of the Maccalube from where an imposing fountain of mud raised, which in its ascent dragged blocks of marl mixed with sandstones and gypsum. This fountain reached ten to fifteen meters in height.

Only at the sunrise the people noticed that a large black mass had covered the place where the mud volcanoes are located for about 2 hectares. From the surveys data detected by Prof. Ponte and Prof. Abruzzese, [...] since February 1935 there were the presence of a soil fracture extending for about 400 m to E direction, then distancing 600 m towards the W. In March 1935, at the proximity of the fracture, several mud volcanoes arose, some of which reached a height of one meter.

The main pre and post observations of these historical paroxysms at Aragona are showed in table 2.

283

284

285

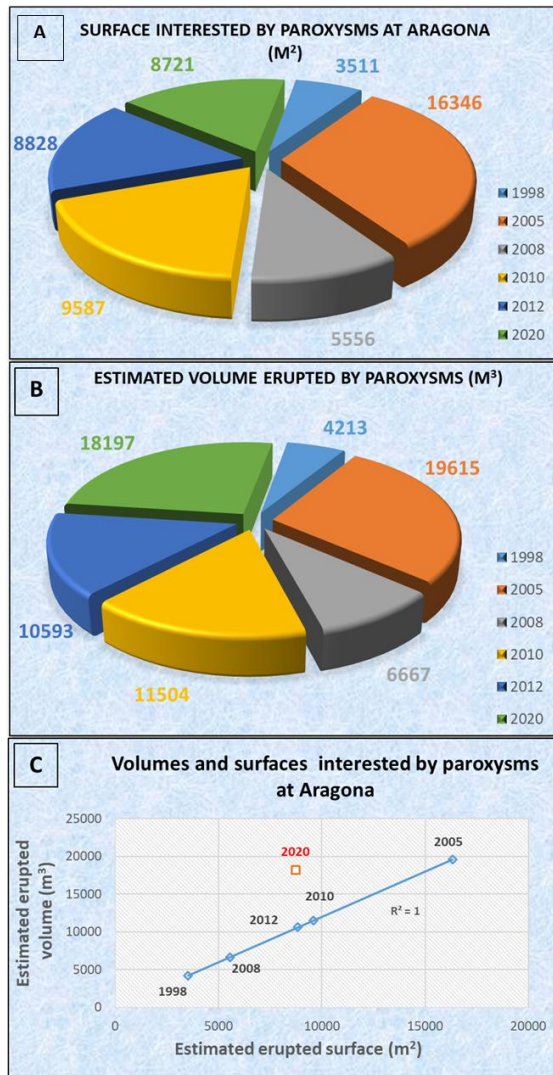
Table 2. Pre and post observation of the historical paroxysm events at Aragona.

Pre-event observations	Paroxysm Event	Post-event observations
<ul style="list-style-type: none"> ✓ Seismic events felt by population ✓ Large scale soil fractures ✓ Rumbles 	<ul style="list-style-type: none"> ✓ September 29th 1777 	<ul style="list-style-type: none"> ✓ Mud, ballistics, water and gases column up to 30 m height; ✓ Half an hour duration with intermittent activity for all day; ✓ Presence of Hydrogen Sulphide smell at considerable distance from the mud volcano;

		✓	Presence of lithics of various sizes aligned on the both sides of the mud volcano.
<hr/>			
FEBRUARY 1935:			
✓ Presence of a soil fracture extending for about 400 m to E direction, then distancing 600 m towards the W	✓	October 19 th 1936	✓ Emission of mud mixed with water, gas and lithics with a column height <= 15 meters;
MARCH 1935:			✓ Cover with newly formed clayey material of 2 hectares of the surface.
✓ Appearance of some mud volcanoes set on the previously fracture, with heights of 1 meter			
<hr/>			
AUGUST 2014:			
✓ Large scale soil fractures	✓	September 27 th 2014	✓ Emission of mud mixed with water and gas with a column height <= 15 meters;

286
287
288
289
290
291
292
293
294
295
296
297

Since 1995, the year of establishment of the Natural Reserve, eight paroxysmal events took place in 1998, 2002, 2005, 2008, 2010, 2012 (Fig.3) 2014 and the last one occurred on 19 May 2020. Grassa et al., (2012) reported the volumes and the covered areas for each of the first six events. The largest event was in 2005, with an estimated volume of about 19,600 m³ (Fig.3B) covering an area of about 16,350 m² (Fig.3A). It is interesting to note that a strong correlation exists between the erupted material and the covered surface areas for the paroxysms that occurred from 1998 to 2012 (no volume data are available for the 2014 paroxysm) as is demonstrated by the high correlation coefficient (R²=1) and showed in figure 3C. From the same plot, the 2020 paroxysm event falls far from the general trend previously highlighted covering a smaller surface (approximately a half) rather than the expected one. In our opinion, this could be linked to a different location of the main emissive vent, being 2020 the only one eccentric event, and/or to the different nature of the emitted material.



298
 299 Fig.3. A) Estimated volume and B) interesting surfaces at Aragona mud volcanoes during paroxysmal events. C)
 300 Correlation coefficient for erupted volume and interesting surface for the 1998-2012 events (Grassa et al., 2012,
 301 modified). In blue the linear correlation with $R^2=1$. The red square represents the 2020 paroxysm.
 302
 303

304 **4. Associated hazards at Santa Barbara and Aragona mud volcanoes**

305 From the historical information, obtained by the past documentary sources, it is clear and evident that the most hazardous
 306 phenomena existing in both areas are the paroxysms.
 307 They are quite common, especially at Aragona, and therefore, it is likely to hypothesize that others hazardous events, with
 308 the same magnitude or higher, could repeat in the future.

309 In all of the paroxysmal events that occurred in the past, both at Santa Barbara and Aragona (Tables 1-2), diffuse soil
310 fractures and deformations, even at considerable distances from the mud volcanism area, occurred during a pre-paroxysm
311 period. In particular, at Santa Barbara the population has felt several seismic events before the 2008 paroxysm.
312 Another important element that emerges from historical descriptions is that, following the paroxysms, people approaching
313 the mud volcano areas, usually detected a strong acrid smell of gas, reasonably being H₂S. It could be lethal to human life
314 if breathed in high concentrations; It is a toxic, corrosive, irritant and colorless gas with the characteristic unpleasant smell
315 of rotten eggs. It can cause chronic diseases of the respiratory organs through prolonged exposure even at very low
316 concentrations; at concentrations of 200-250 ppm it can cause pulmonary edema and risk of death, while at 1,000 ppm it
317 is immediately lethal (NIOSH, 1981).

318

319

320

5. Methods

321

322

5.1 Digital Surface Model (DSM)

323

324 High-resolution DSM maps of both study areas have been performed in 2017 while, in 2020 only at Aragona MV, with
325 a range of 0.1-0.15 m. For these surveys, we used a DJI Phantom III Professional drone (quadcopter) with a mounted 12
326 Mega Pixel digital camera (Lens FOV 94° - 20 mm, Sony Sensor EXMOR 1/2.3", effective pixels resolution of 12.4 M).
327 Before conducting drone mapping, we planned the flight paths and areas for each flight mission. The drone was set to
328 take aerial photographs using "autopilot mode" with a camera facing directly downwards for hilly terrain. The surveys
329 were conducted with the camera mounted 90° sideways. We selected 75% forward and sideways overlap of images.

330 The acquisition of field data requires the determination of several control points on the ground, known as GCPs (Ground
331 Control Points). Therefore, 11 points distributed within the defined area, were recorded using a GPS NAVCOM SF-3040
332 with angular accuracy of 1 cm.

333 The images were processed with a Structure-from-Motion (SfM) and multi-view stereo approach, in order to produce a
334 high-resolution DSM (Digital Surface Model) and to identify the morphological structures linked to the sedimentary
335 volcanic activity. These approaches allow the geometric constraints of camera position, orientation and GCPs from many
336 overlapping images to be solved simultaneously through an automatic workflow. The image datasets were processed with
337 the software Agisoft Photoscan (Agisoft, 2016). The post-processing of the acquired data merged in GIS software
338 (ArcGIS 10.5), allowed to extrapolate the thickness and the volume of the erupted material, with its reached distance.

339

340

5.2 Hazard assessment

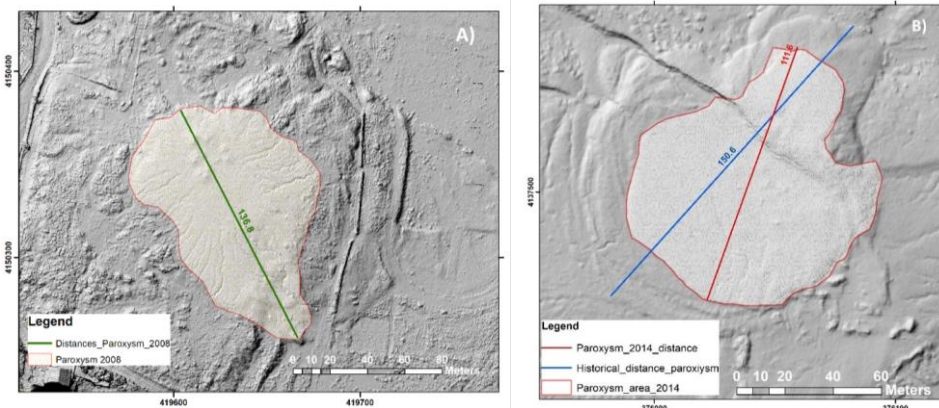
341

342 In order to define the potential paroxysm hazardous scenarios for both areas, in this paper, we consider the maximum real
343 distances reached by the erupted material over time through the analysis of the high-resolution (12x12 cm) DSM acquired
344 by the drone during the 2017 surveys at Aragona and Santa Barbara areas.

345 At Santa Barbara mud volcano, the erupted material, has reached a total distance along its major axis in the main event
346 of 2008, of about 136 meters while at Aragona, it has reached a total distance of 150 meters. In the 2014 paroxysm event
347 at Aragona, the distance reached by the erupted material was 111 m (Fig.4).

348

349

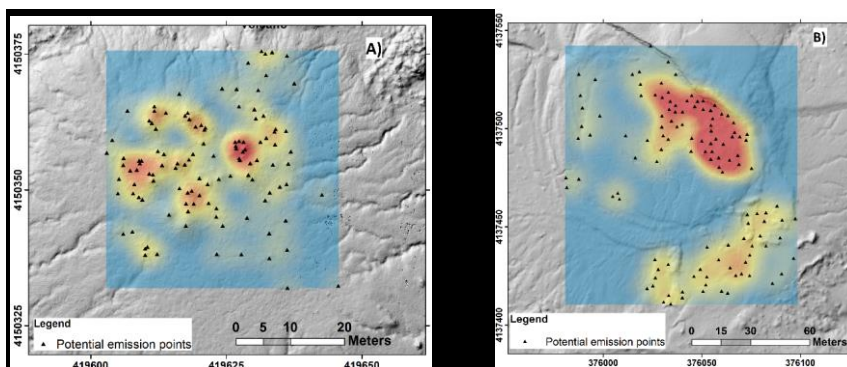


350
351
352
353
354
355
356
357
358
359
360
361
362
363
364
365
366
Fig.4. Historical distances reached by the erupted paroxysm material: A) Santa Barbara; B) Aragona. (Source: 2017 DSM's in ArcGIS 10.5)

In both areas, according to the historical sources, the maximum estimated erupted column height, is in the range of about 20-30 meters. During the 2008 paroxysm, the erupted clay material fallout at Santa Barbara covered an area of about 9,000 m² with a maximum thickness of about 3.5 meters next to the emission points (INGV, 2008 report) while at Aragona, during the 2014 ones, the affected surface was 7,525 m².

In this preliminary phase, in order to model the potential hazard scenarios, we assumed that both areas, in the next future, will be affected by similar erupted fallout deposits that reaches a maximum distances of 136 m and 150 m for Santa Barbara and Aragona area respectively.

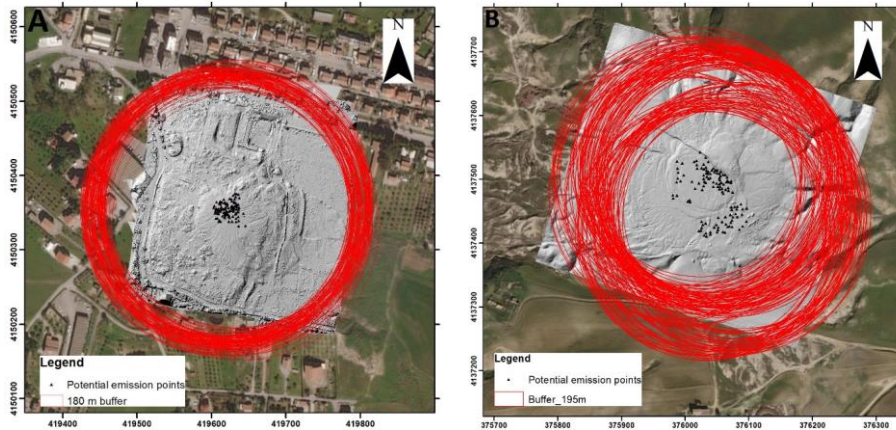
For these reasons, starting from our 2017 DSM, we identified the mud volcanoes and bubbling pools in both areas (Fig.5) as the potential emission points for generating a future paroxysmal event. By using the kernel density tool in ArcGIS 10.5, we defined different clusters maps (Fig.4), with two main directions, appeared mostly highlighting NW-SE and NE-SW directions at Aragona (Fig.5b) while, at Santa Barbara, the distribution at the surface seems to be inhomogeneous (Fig.5a).



367
368
369
370
371
372
373
Fig.5. Density maps of the potential emission points investigated. Red: high-density values; Yellow: low-density values. A) Santa Barbara MV area and at B) Macalube of Aragona. (Source: 2017 DSM's in ArcGIS 10.5)

Secondly, through the elaboration in ArcGis 10.5, we created from each emission point checked in 2017, different omnidirectional buffer circumferences, considering an increase in distance of + 30% with respect to the greatest historical distance reached, due to the creation of the safety limits in both areas. For the hazard assessment, we elaborated 117 and

374 165 buffer circumferences with a radius of 180 m and 195 m at Santa Barbara and at Aragona respectively (Fig.6a and
375 b).
376 The final potential paroxysmal hazardous areas, in both areas, are considered as the envelope among the entire buffer
377 circumferences elaborated (Fig.7).



378
379 Fig.6. Buffer circumferences in ArcGIS 10.5 at Santa Barbara (A) and Aragona (B) mud volcanoes areas. (Source:
380 2017 DSM's in ArcGIS 10.5)
381

382 5.3 Uncertainties

383 The application of the methodology for the hazard assessment in both study areas, inevitably, is based on assumptions
384 which could give us some uncertainties. At the same time, the absence of a modelling approach for the paroxysm events
385 at both study areas and, the poor availability of data from all the past events, follow a semi-quantitative approach for the
386 hazard definition. The Digital Surface Model elaborated on 2017 was used to calculate, with some uncertainties, in ArcGis
387 10.5 the maximum distance reached by the erupted fallout materials. The emission points checked in 2017 at S.Barbara
388 and Aragona may change the location over time due to their constantly evolving, also depending on the seasonality, on
389 the weather conditions or to a new deposition of the erupted clay materials.
390

391 5.4 Seismic monitoring activity at Santa Barbara

392 Since October 2017, a seismic INGV station was installed at Santa Barbara (see Fig.2 for location). It was equipped with
393 a Lennartz 3D-LITE/1s short period velocimeter, with flat response in the bandwidth 1-80 Hz, and a 24-bit seismic data
394 logger RefTek 130 model. To take full advantage of the sensor frequency band, the sampling frequency was set at 200
395 Hz, while the signals were synchronized via GPS.
396

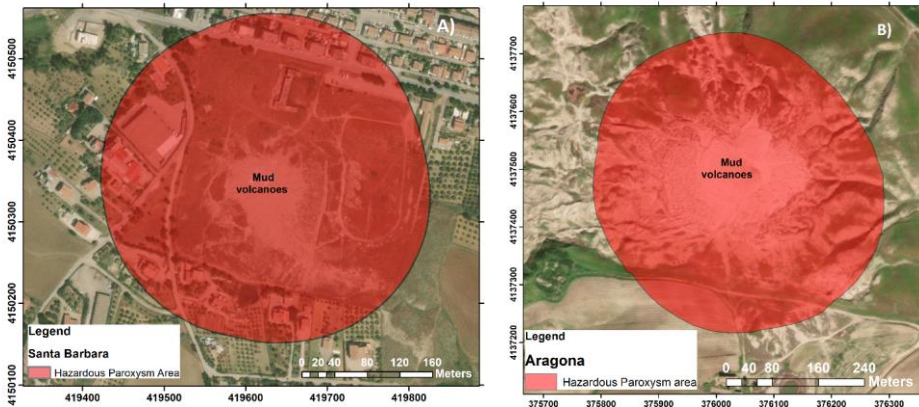
397 6.0 Results

398 6.1 Paroxysm hazard assessment

399
400
401 The hazardous paroxysm areas for both areas were created through the envelope of all buffer circumferences of Fig.6. An
402 area of 0.12 km² and 0.20 km², potentially exposed to possible paroxysmal events was calculated for the Santa Barbara
403 and Aragona site respectively (Fig.7). In these two hazardous paroxysm areas, different geophysical phenomena as well
404 as deformation, fracturing and seismic events together with geochemical ones could occur. For that reason, these two
405 exposed areas should be interdicted to visitors, residential or public activities, due to their correlated hazardous
406 phenomena that could occur before, during and after a paroxysm event. In both areas, a dedicated safe path, outside the
407 hazardous paroxysm areas of Fig.7 should be created in order to permit the safety observations of these geological
408 phenomena to visitors.
409

410 The decreasing of the gas output in the central area of the Maccalube of Aragona before the paroxysmal events could be
411 an important parameter. It may occur, according to Grassa et al., (2012), due to the increasing of the tectonic stress field

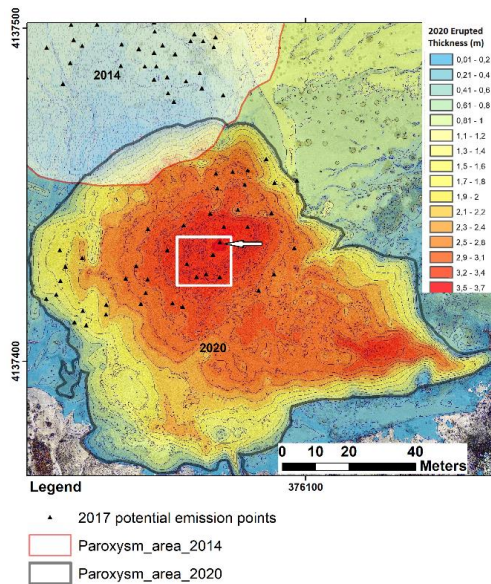
412 in the compression regime, generating an overpressure of the interstitial pores fluids at depth while, on the surface, it
 413 reduces the permeability of the structural discontinuities along which the gases migrate, thus reducing the outgassing at
 414 the surface. The paroxysmal event would occur, according to these deductions, when the gas pressure at depth exceeds
 415 the lithostatic pressure resistance opposed by the overlying rocks.



416
 417 Fig.7. Hazardous Paroxysm areas in ArcGis 10.5 for Santa Barbara (A) and Aragona (B) mud volcanoes area. (Source
 418 image from ArcGIS 10.5, ESRI)
 419

420 **6.2 The 2020 paroxysm at Aragona**
 421

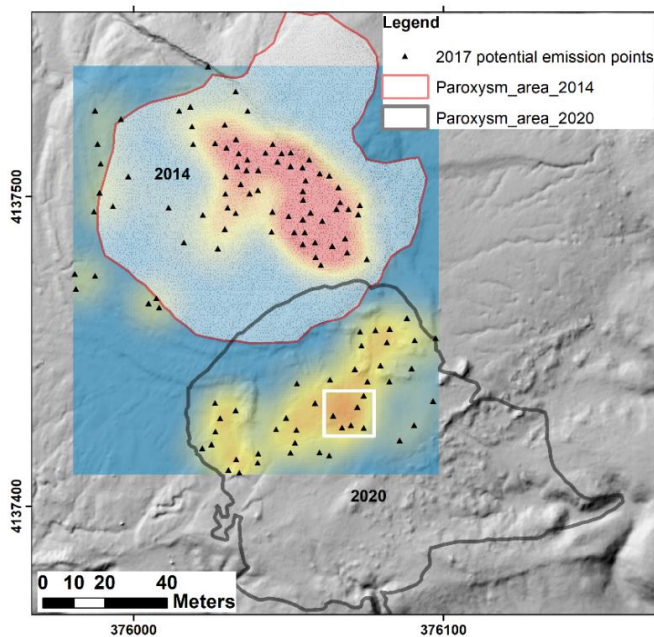
422 On 19 may 2020 at around 2 p.m. a new paroxysmal event occurred at the Aragona MVs area. This violent paroxysm
 423 occurred in the south-eastern part of the main emission area, emitting a mud volume of 18,196 m³ and covering a surface
 424 of 8,721 m² with a maximum thickness of 3.7 m (Fig.8).



425

426 Fig.8. 2020 Thickness map for the erupted materials, due to the paroxysm event of May 19th. Inside the white square,
 427 the emission point detected in 2017, corresponding to the main centre for the 2020 paroxysm. (Source: 2020 contour
 428 map in ArcGIS 10.5)
 429
 430

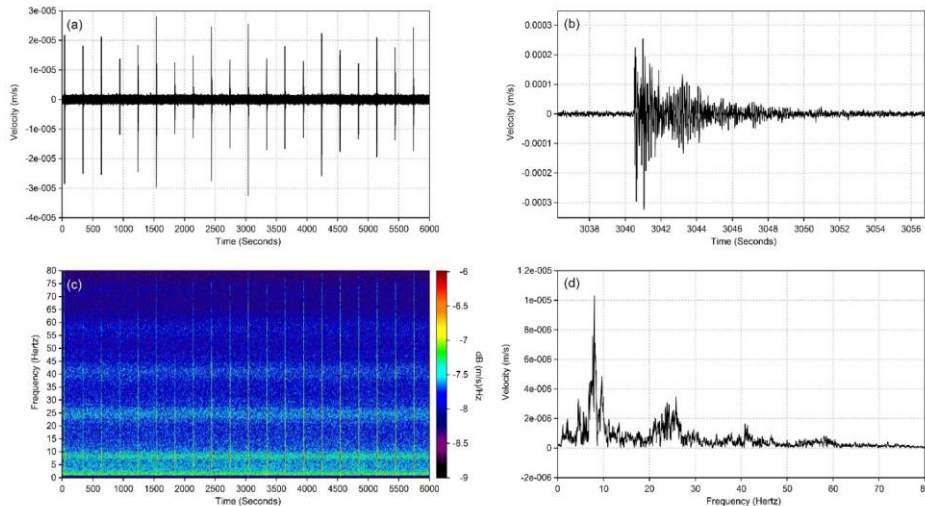
431 The maximum distance reached by the erupted materials, according to our analysis is around 130 meters. The 2020
 432 paroxysm occurred in a medium–high density area of emission points detected from our 2017 survey, where a NE-SW
 433 structural lineament has been highlighted (Fig. 5 and Fig. 9). In particular, the eruptive centre for the 2020 event is located,
 434 according to our thickness map of Fig 8, where the maximum is recorded (arrow in Fig.8) and where, in 2017, the emission
 435 points were mapped. Nowadays, the 2017 emission points have been buried by the 2020 new erupted material.



436 Fig.9. Density maps for the 2017 emission points (Red: High density; yellow: low density). The covered surface area for
 437 the 2014 and 2020 paroxysms is shown with red and grey lines respectively. In the white square, the 2017 emission
 438 points, likely responsible for the new 2020 paroxysm event. (Source: 2017 DTM's in ArcGIS 10.5)
 439
 440

442 6.3 The seismic monitoring at Santa Barbara

443 Preliminary analysis of the continuous recordings allowed to identify variations in the power of the ambient vibrations,
 444 mainly in the frequency range 5-10 Hz, which could be due to changes in the emissions activity. Periods of intense activity
 445 have also been observed as shown in Fig.10. These periods are characterized by numerous micro-events with high-
 446 frequency content (several tens of Hz). This micro-seismicity, of clear local origin, appears to have energy/temporal
 447 characteristics similar to a swarm, that is comparable energy of events and stable temporal interdistance from seconds to
 448 several minutes. Both ambient noise and seismic events show energy in the frequency range 5-10 Hz, with some possible
 449 overtones, that could be generated from local resonance phenomena. This activity could be related to the surface effect
 450 of resonant gas bubbles, but we cannot rule out the possibility of a deep origin connected to gas flows at the root of the
 451 “volcanic” system.
 452
 453



454 Fig.10. Example of micro-seismicity record by the seismic station installed at Santa Barbara: (a) time signal relative of
 455 some minutes of the vertical component (velocity) record and (b) zoom on a single waveform with relative spectrogram
 456 (c) and amplitude spectrum (d). The spectrogram allows highlighting the presence in the ambient noise of a continuous
 457 energy band in the frequency range 5-10 Hz; and some possible overtones. The same frequencies can be identified in the
 458 amplitude spectra of the micro-events, suggesting a possible link to local resonance phenomena.
 459
 460

461 **7. Discussion and conclusions**

462
 463
 464 In this paper, for the first time, a preliminary hazard assessment of two main mud volcanoes area of Sicily was evaluated.
 465 We calculated the hazard scenarios based on the most recent paroxysm events at Santa Barbara and Aragona, in order to
 466 define a realistic dimension for a correct risk assessment. It is evident that the hazardous paroxysm areas that we have
 467 computed, should be implemented with a probabilistic modelling approach, deriving from the real measured parameters
 468 on both areas. For these reasons, it should be important to implement in terms of acquisition frequency as well as the
 469 number of parameters, the actual discrete multidisciplinary surveys, with a new technological geochemical and
 470 geophysical observatory, in order to minimize the knowledge gaps in these two areas. In light of this, therefore, it is
 471 appropriate to realize and maintain a high-frequency multidisciplinary data acquisition system to allow the construction
 472 of a forecast model able to best represent the real conditions and, on the basis of which, a monitoring system should be
 473 implemented.
 474 Nowadays, it is impossible to define "when" the next paroxysm will occur and how much will be intensity. This is because
 475 currently there are not enough information to recognize the parameters that could potentially change before a paroxysm
 476 as well as a modelling approach of the phenomenon does not exist.
 477 In this work, our hazard assessment for the Santa Barbara and Aragona areas, represent a picture of the 2017 survey. The
 478 emission points, checked in 2017, could change their location over time. It is therefore appropriate, in the light of this, to
 479 monitor the new emission points and fractures in both sites, as potential sources of future paroxysmal events, as
 480 demonstrated in 2020 at Aragona where the paroxysm occurred in an emissive point, mapped in our 2017 survey.
 481 It is important to underline that we cannot exclude that these paroxysmal events, could occur out of the restricted area in
 482 which most of the emission points are located at the surface. At the same time, an update of the actual hazard maps for
 483 the two areas must be implemented. However, a better comprehension of the sedimentary volcanism paroxysmal
 484 processes is needed, with particular reference to their hazard assessment; it is certainly important in a next future, to build
 485 a paroxysmal events catalog in order to be able to apply advanced assessment approaches such as the one proposed by
 486 Mellors et al, (2007).

487 From historical informations, we know that different phenomena could occur before a paroxysm in the mud volcanoes
488 areas, in particular deformations, soil fractures and increasing of seismicity.
489 After the paroxysmal event, according to the historical descriptions, a strong smell of acrid gas reasonably H₂S is
490 recorded. H₂S, if breathed in high concentrations, could be lethal to human life. It is a toxic, corrosive, irritant and colorless
491 gas with the characteristic unpleasant smell of rotten eggs. It can cause chronic diseases of the respiratory organs through
492 prolonged exposure even at very low concentrations; at concentrations of 200-250 ppm it can cause pulmonary edema
493 and risk of death, while at 1,000 ppm it is immediately lethal (NIOSH, 1981).
494 Since October 2017, a short period seismic station was installed in Santa Barbara site. The continuous monitoring and the
495 preliminary analysis of the acquired signals allowed to highlight variations in the power of environmental vibrations.
496 Moreover, the presence of periodic micro-seismicity, likely due to linked variation in emissions and bubbling activity,
497 was detected. However, the use of a single station does not allow a complete characterization of the seismic activity, for
498 which the creation of a micro-network would be desirable. Continuous monitoring of local microtremor and micro-
499 seismicity, in particular before and during a paroxysmal event, could allow us to understand the source mechanisms of
500 these events and propose useful predictive models for risk reduction.
501 Only with the installation of a multidisciplinary geochemical and geophysical observatory at the two study areas, we
502 could speculate to discriminate the “potential” phenomena that could occur before, during and after a paroxysm event.
503 For these reasons, different geochemical and geophysical parameters will have to be analysed, verified and validated in
504 the next future.
505 It could be a useful tool for Civil Protection Authorities in order to take the appropriate risk mitigation measurements for
506 the exposed people. A safety path outside our hazardous detected areas should be considered by the local administrations,
507 in order to reduce the risk. Our hazardous paroxysm areas, in both sites, finally should be forbidden to visitors, especially
508 during the period where high deformation, fractures and seismicity occur.

510 **Competing interests**

511
512 The authors declare that they have no conflict of interest.

514 **Acknowledgements**

515 The paper was supported by the INGV-DRPC (Dipartimento Regionale Protezione Civile – Regione Sicilia) agreement
516 N°1840/December2016.

517 We would thank Giuseppe Passafiume for the installation support of the seismic station in the field and Salvatore Scudero
518 for continuous checking and downloading of the seismic data.

519 We would thank the Editor Oded Katz for the constructive comments and integrations to the paper, the prof. Martinelli
520 for his prestigious contributions to the work and the anonymous reviewer for the correct and constructive analysis.

523 **References**

- 525 • Abruzzese, D.: Le Maccalube di Aragona e le eruzioni di fango del 1936 e 1940. Relazione della commissione
526 di revisione composta dai soci effettivi prof B. Foresti e G. Cumin, 1954.
- 527 • Albarello, D.: Mud volcanoes as natural strainmeters: a working hypothesis. Mud Volcanoes, geodynamics and
528 seismicity, edited by: Martinelli, G and Panahi, B, NATO Science Series IV, v51, Kluwer, 239–249, 2005.
- 529 • Albarello, D., Palo, M., Martinelli, G.: Monitoring methane emission of mud volcanoes by seismic tremor
530 measurements: a pilot study, Nat Hazards Earth Syst Sci, 12, 3617–3629, 2012.
- 531 • Aliyev, Ad.A., Guliyev, IS., Dadashov, FH., Rahmanov, RR. Atlas of world mud volcanoes. Baku:Publishing
532 house “Nafta-Press”, “Sandro Teti Editore”, 2015, 321 pp.
- 533 • Agisoft, LLC.: Agisoft PhotoScan User Manual - 1.2 tech. rep, 2016.
- 534 • Baloglanov, EE., Abbasov, OR., Akhundov, RV. Mud Volcanoes Of The World: Classifications,Activities and
535 Environmental Hazard (Informational-Analytical Review), European Journal Of Natural History 5, 2018
- 536 • Bonini, M.: Mud volcano eruptions and earthquakes in the Northern Apennines and Sicily, Italy, Tectonophysics
537 474 723–735, 2009.
- 538 • Bonini, M.: Mud volcanoes: Indicators of stress orientation and tectonic controls, Earth-Science Reviews, 2012

Formattato: Tipo di carattere: (Predefinito) Times New Roman, 10 pt, Colore carattere: Automatico, Non eseguire controllo ortografia o grammatica

Formattato: Rientro: Sinistro: 0 cm

Formattato: Tipo di carattere: (Predefinito) Times New Roman, 10 pt, Colore carattere: Automatico, Non eseguire controllo ortografia o grammatica

Formattato: Tipo di carattere: (Predefinito) Times New Roman, 10 pt, Non eseguire controllo ortografia o grammatica

Formattato: Giustificato

Formattato: Inglese (Regno Unito)

539 • Cangemi, M., Madonia, P.: Mud volcanoes in onshore Sicily: a short overview, *Gottingen Contributions to*
540 *Geosciences*, 77: 123-127, 2014

541 • Carnemolla F.: Evidenze geologiche, sismologiche e geodetiche di deformazioni attive a thrust e pieghe nell'area
542 di Caltanissetta. Attività tettonica e manifestazioni del vulcanismo sedimentario delle macalube di Santa
543 Barbara, Tesi di Laurea Magistrale in Scienze Geofisiche, Università degli studi di Catania, 2017.

544 • Catalano, R., Valenti, V., Albanese, C., Accaino, F., Sulli, A., Tinivella, U., Gasparo Morticelli, M., Zanolta, C.,
545 and Giustiniani, M.: Sicily's fold-thrust belt and slab roll-back: the SIRIPRO seismic crustal transect *Journal*
546 *of the Geological Society*, London, Vol 170, 2013, pp 451-464 doi: 10.1144/jgs2012-099, 2013.

547 • Catalano, R., Franchino, A., Merlini, S., Sulli, A.: Central western Sicily structural setting interpreted from
548 seismic reflection profiles, *Memorie della Società Geologica Italiana* 55: 5-16, 2000b.

549 • Cigna, F., Tapete, D., Casagli, N.: Semi-automated extraction of Deviation Indexes (DI) from satellite Persistent
550 Scatterers time series: tests on sedimentary volcanism and tectonically-induced motions, *Nonlinear processes in*
551 *geophysics*, 19 (6). pp. 643-655, 2012.

552 • Deville, Eric: *Mud Volcano Systems. Volcanoes: Formation, Eruptions and Modelling*. Editors: N. Lewis, A.
553 Moretti, pp. 95-126, 2009, Nova Science Publishers, Inc.

554 • Dimitrov LI. *Mud volcanoes – the most important pathway for degassing deeply buried sediments*. *Earth-Science*
555 *Reviews*, 59, 49-76, 2002.

556 • Dipartimento Regionale della Protezione Civile (DRPC): Emergenza "Macalube" dell'11 Agosto 2008 nel
557 Comune di Caltanissetta; Descrizione dell'evento e dei danni Caltanissetta, 2008.

558 • Etiope, G., Caracausi, A., Favara, R., Italiano, F., Baciù, C.: Methane emission from the mud volcanoes of Sicily
559 (Italy) *Geophysical Research Letters* 29, 56-1-564 http://dxdoiorg/101007/1-4020-3204-8_12, 2002.

560 • Grassa, F., Capasso, G., Favara, R., Inguaggiato, S., Faber, E., Valenza, M.: Molecular and isotopic composition
561 of free hydrocarbon gases from Sicily, Italy doi: 10.1029/2003GL019362, 2004.

562 • Grassa, F., Gucciardo, D., Interlandi, M., Noto, G.: Aspetti geologici e caratterizzazione geochemica delle
563 Macalube di Aragona, Provincia di Agrigento, Bollettino dell'Ordine dei Geologi Siciliani, 2012.

564 • Guliyev I.S., Feizullayev, A.A. *All about mud volcanoes*. Nafta press, Azerbaijan Publishing House, 1998

565 • Higgins, G.E., Saunders, J.B. *Mud volcanoes, their nature and origin*. *Verhandlungen Naturforschenden*
566 *gesellschaft in Basel*, 84, 101-152, 1974.

567 • INGV Report - Istituto Nazionale di Geofisica e Vulcanologia, Sezione di Palermo, Comunicato sull'eruzione
568 di fango in C.da Terrapelata - Santa Barbara (CL) 11 Agosto 2008.
569 http://1932062139/intranet/gest_news/uploads/3929Comunicato_14_Agostopdf, 2008.

570 • INGV Report – Capasso, G., Madonia, P.: Relazione sull'intervento effettuato in C da Terrapelata-Santa Barbara
571 (Cl) 12 Agosto, 2009.

572 • INGV Report; Esito del sopralluogo effettuato in C da Terrapelata-Santa Barbara (CL) il 6 agosto 2015.

573 • Kopf, A., Significance of mud volcanism, *Rev Geophys*, 40, 1-52, 2002.

574 • Kopf, A., Delisle, G., Faber, E., Panahi, B., Aliyev., C. S., Guliyev, I.: Long term in situ monitoring at Dashgil
575 mud volcano, Azerbaijan: a link between seismicity, pore-pressure transients and methane emission, *Int J Earth*
576 *Sci (Geol Rundsch)*, 99 (suppl 1), S227-240, doi:01007/s00531-009-0487-4, 2010

577 • Lentini, F., Carbone, S.: *Geologia della Sicilia Memoria descrittive della Carta Geologica d'Italia - Volume XCV*

578 • Li Volsi, S.: Memoria sul vulcano aereo (ossia gassoso) di Terrapilata in Caltanissetta dell'abate Salvatore Li
579 Volsi, dedicata a S.E sig March Delle Favere Ministro Segretario di Stato, Luogotenente Generale in Sicilia
580 *Giornale di Scienze, Lettere ed Arti per la Sicilia*, Tomo XIII, Anno IV, Febbraio e Marzo. 1826

581 • Madonia, P., Grassa, F., Cangemi, M., Musumeci, C.: Geophormological and geochemical characterization of
582 the 11 August 2008 mud volcano eruption at S Barbara village (Sicily, Italy) and its possible relationship with
583 seismic activity *Natural Hazard and Earth System Sciences*, 1545-1557, 2011.

584 • Martinelli, G.: Mud volcanoes of Italy: A review; *Giornale di Geologia*, 61,107- 113, 1999.

585 • Mazzini, A., Sciarra, A., Etiope, G., Sadavarte, Pankaj., Houweling, S., Pandey, S., Husein, A: Relevant methane
586 emission to the atmosphere from a geological gas manifestation. *Scientific Reports*) 11:4138|
587 <https://doi.org/10.1038/s41598-021-83369-9>, 2021

588 • Mellors, R., Kilb, D., Aliyev, A., Gasanov, A., Yetirmishli G.: Correlations between earthquakes and large mud
589 volcano eruptions *Journal of Geophysical Research*, Vol 112, B04304, Doi:101029/2006jb004489, 2007.

Formattato: Inglese (Regno Unito)

Formattato: Italiano (Italia)

Formattato: Italiano (Italia)

Formattato: Inglese (Regno Unito)

Formattato: Inglese (Regno Unito)

Formattato: Inglese (Regno Unito)

Formattato

Formattato: Inglese (Regno Unito)

Formattato: Puntato + Livello:1 + Allinea a: 0.63 cm +
Imposta un rientro di: 1.27 cm

Eliminato: ¶

Eliminato: 2009

Eliminato: ,

Eliminato: Cl

Eliminato: , (2002)

Eliminato: r

596
597
598
599
600
601
602
603
604
605

- [Milkov, A.V. Worldwide distribution of submarine mud volcanoes and associated gas hydrates. *Marine Geology*, 167, 29-42, 2000.](#)
- NIOSH—National Institute for Occupational Safety and Health: Occupational Health Guidelines for Chemical Hazards, DHHS (NIOSH) Publication No. 81–123. <http://www.cdc.gov/niosh/81-123.html>. 1981
- Sciarra, A., Mazzini, A., Etiope, G., Inguaggiato, S., Hussein, A., Hadi J, S: Geochemical surveys in the Lusi mud eruption. *Geophysical Research Abstracts* Vol. 18, EGU2016-9270-1, 2016.
- Vanderkluisen, L., Burton, M. R., Clarke, A. B., Hartnett, H. E., Smekens J.-F: Composition and flux of explosive gas release at LUSI mud volcano (East Java, Indonesia), *Geochem. Geophys. Geosyst.*, 15, 2932–2946, doi:10.1002/2014GC005275, 2014.

Codice campo modificato